





J. Sep.  
226/3.

Hübner

Abbildungen der Papuanhaulingen

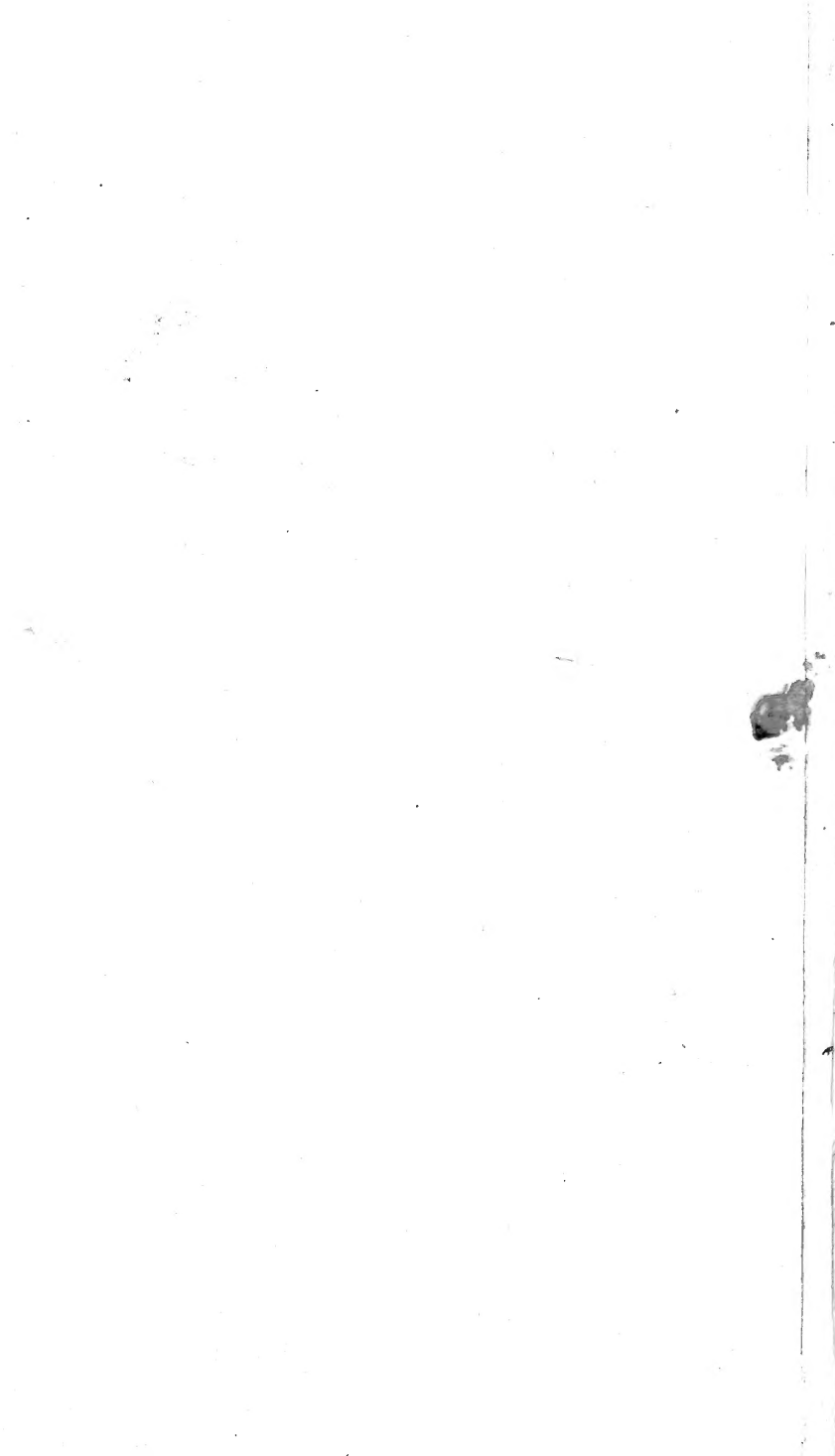
besitzend

aus J. Hübner. —

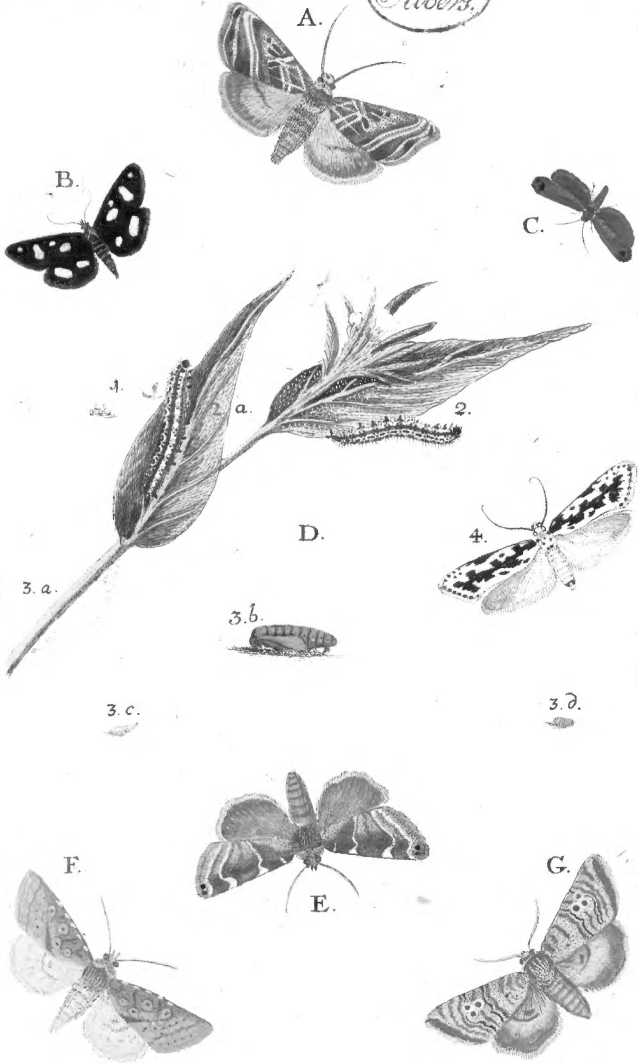




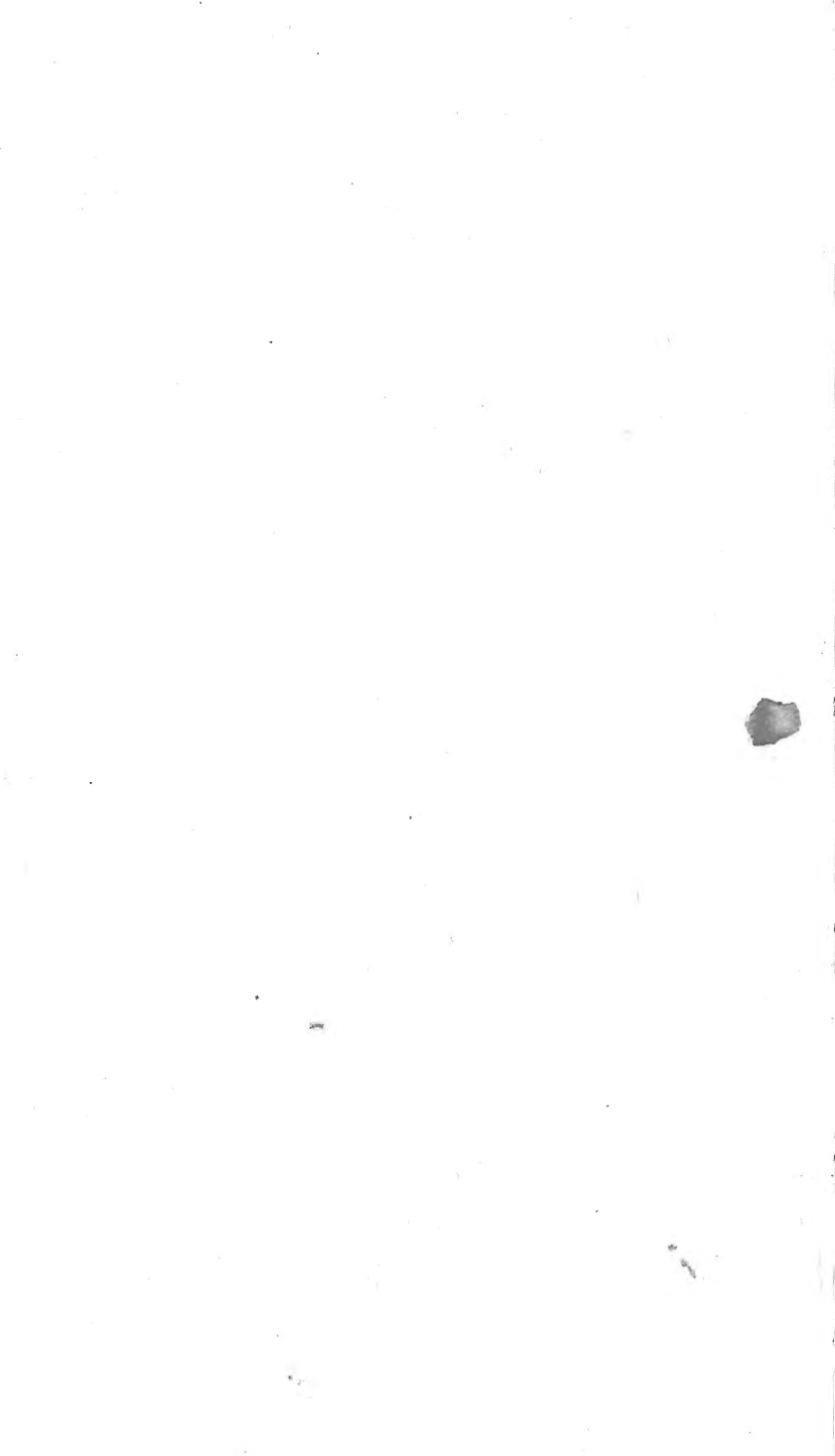




Anton  
Albers.

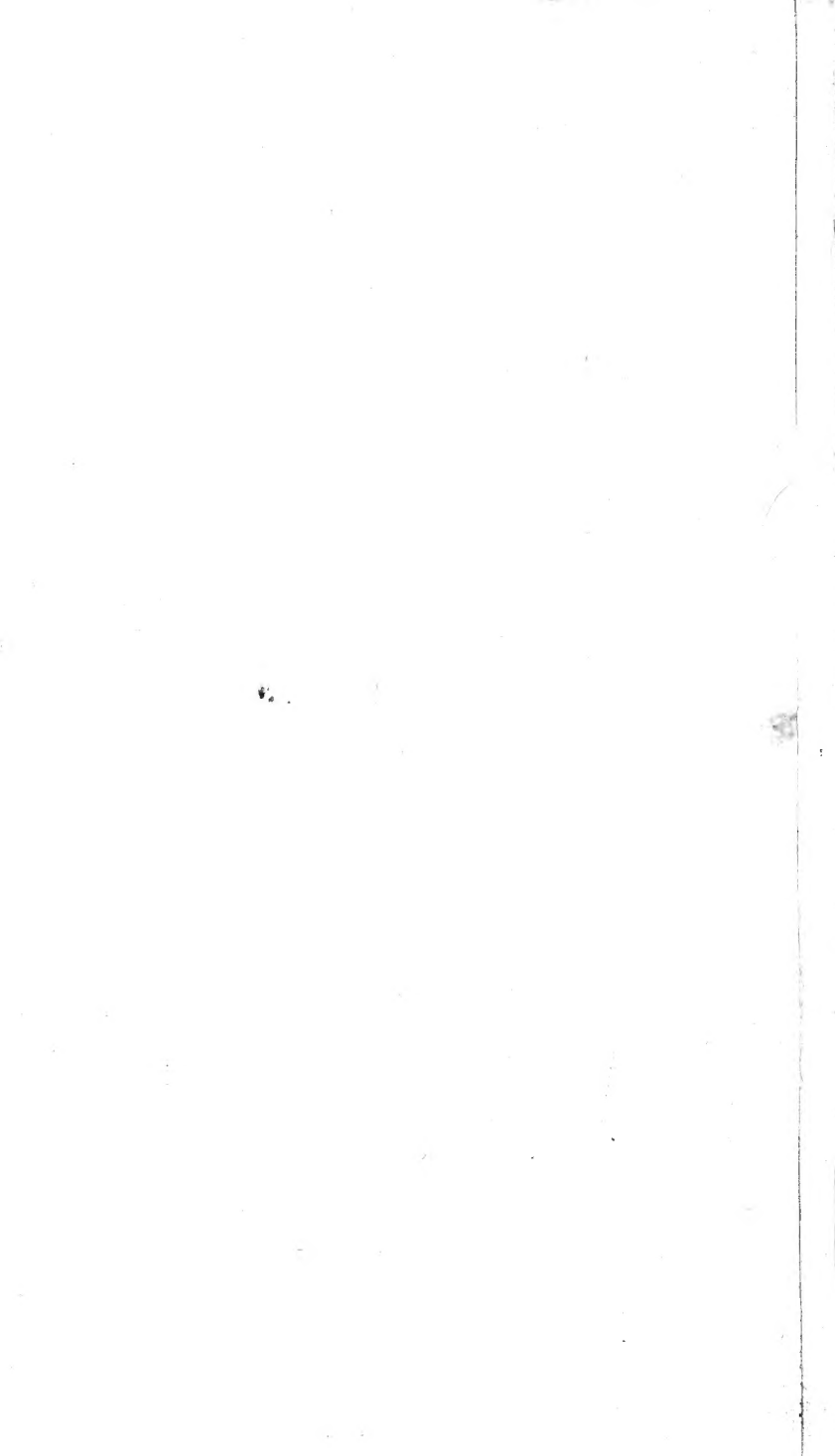


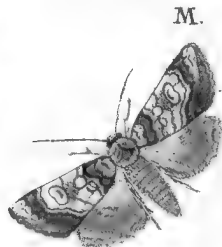
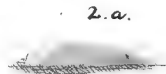
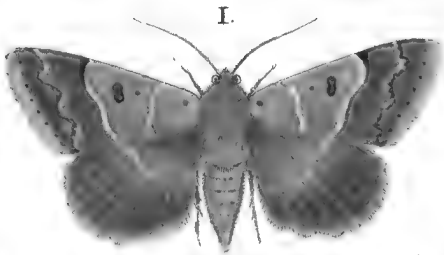
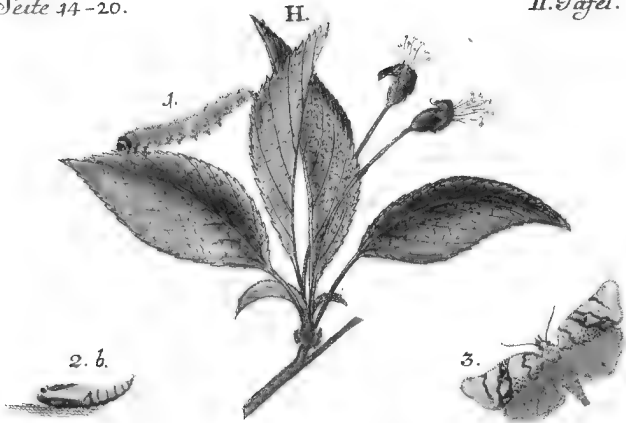
A. *Ph. Noct. Modesta*. B. *Ph. Pyr. Guttalis*. C. *Ph. Tin. Combinella*.  
 D. 1. 2. 3. 4. *Ph. Tin. Pusiella*. E. *Ph. Noct. Affinis*. F. *Ph. Noct. Fulvago*. G. *Ph. Noct. Octogesimea*.



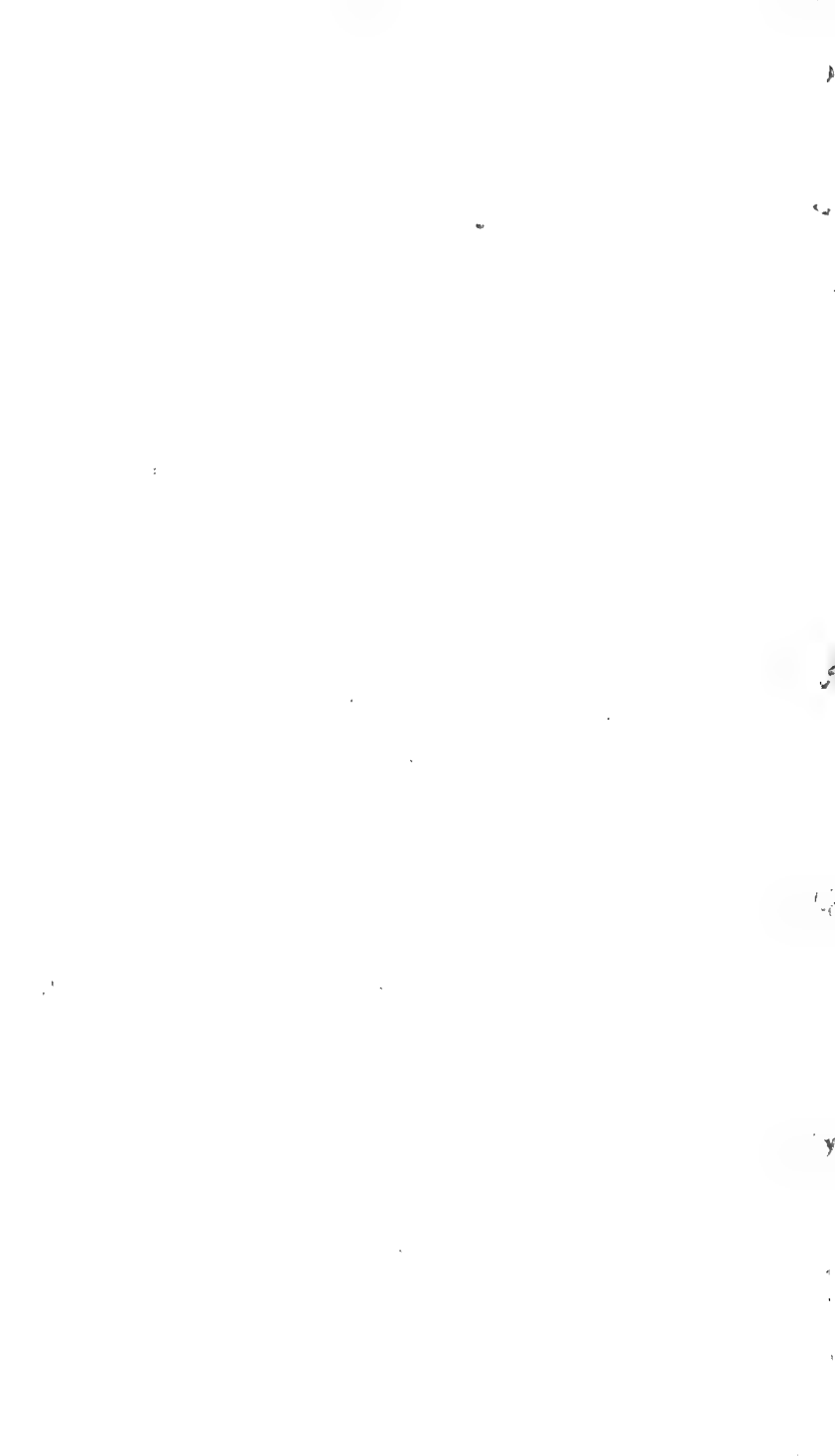




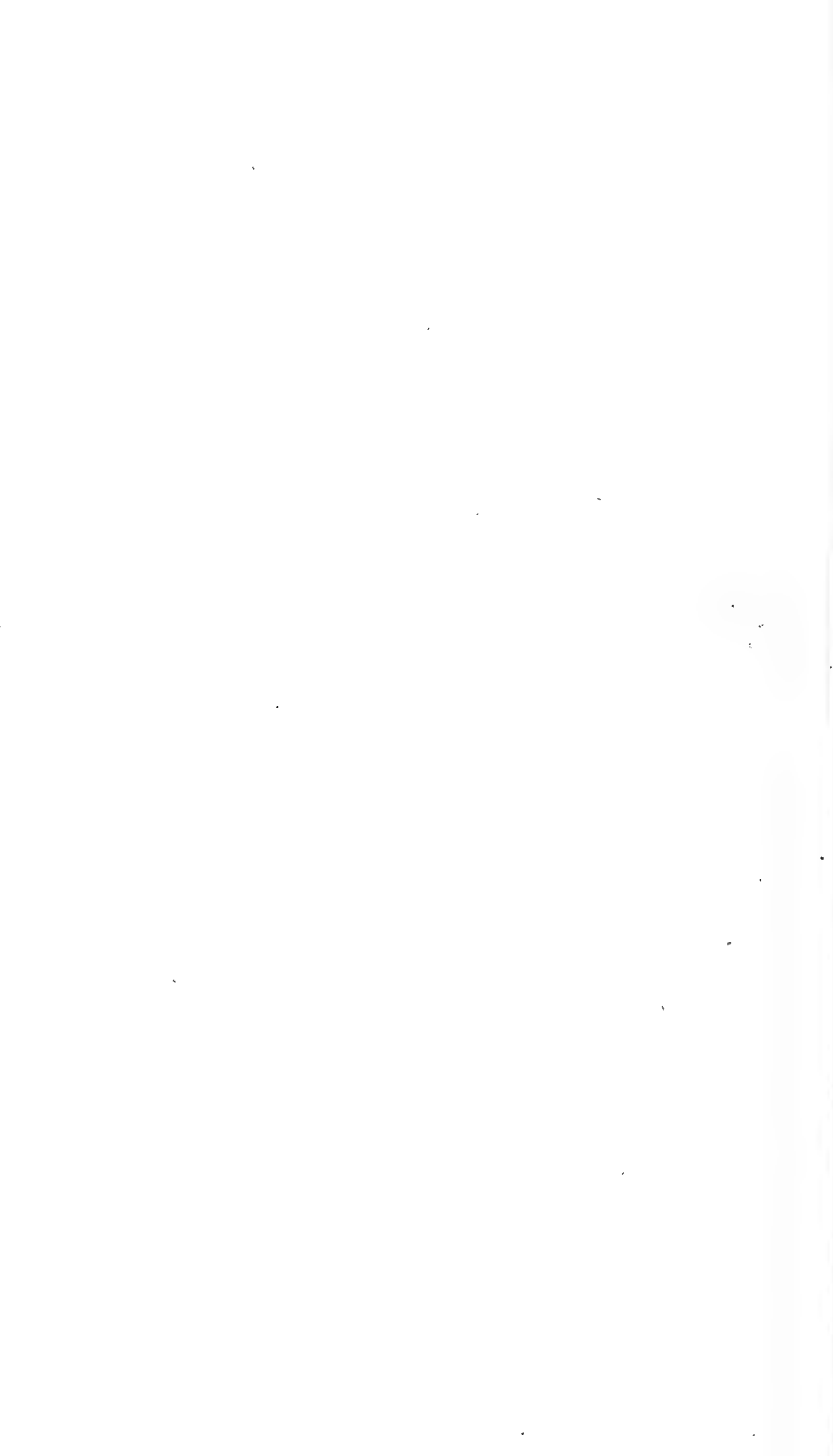


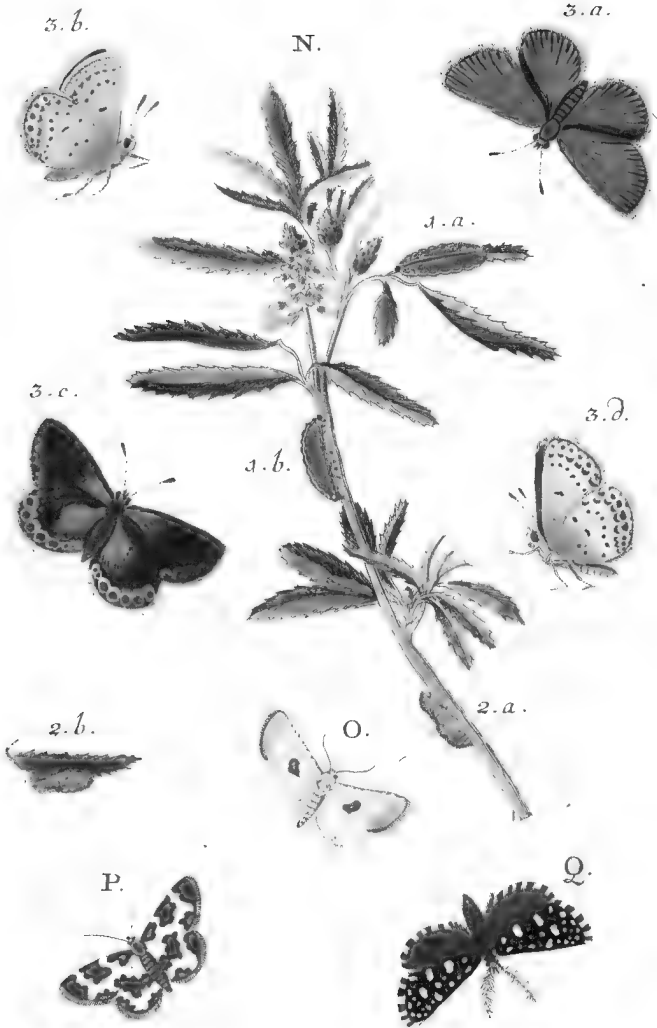


H. 1. 2. 3. *Ph. Tort. Cerasana* . I. *Ph. Noct. Lunaris*.  
 K. *Ph. Pyr. Marginalis* . L. *Ph. Noct. Rutilago*.  
 M. *Ph. Noct. Ochracea*.

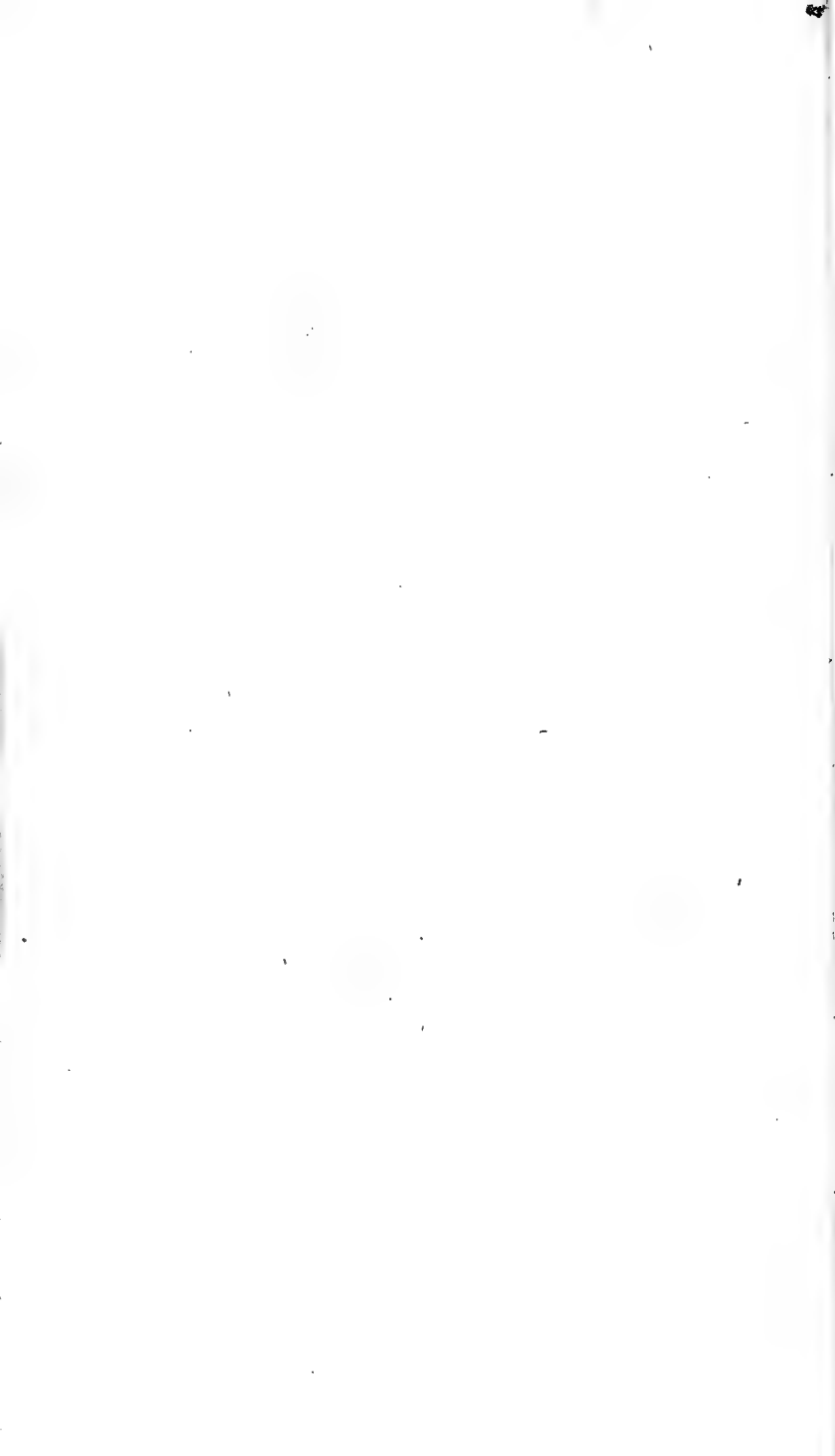






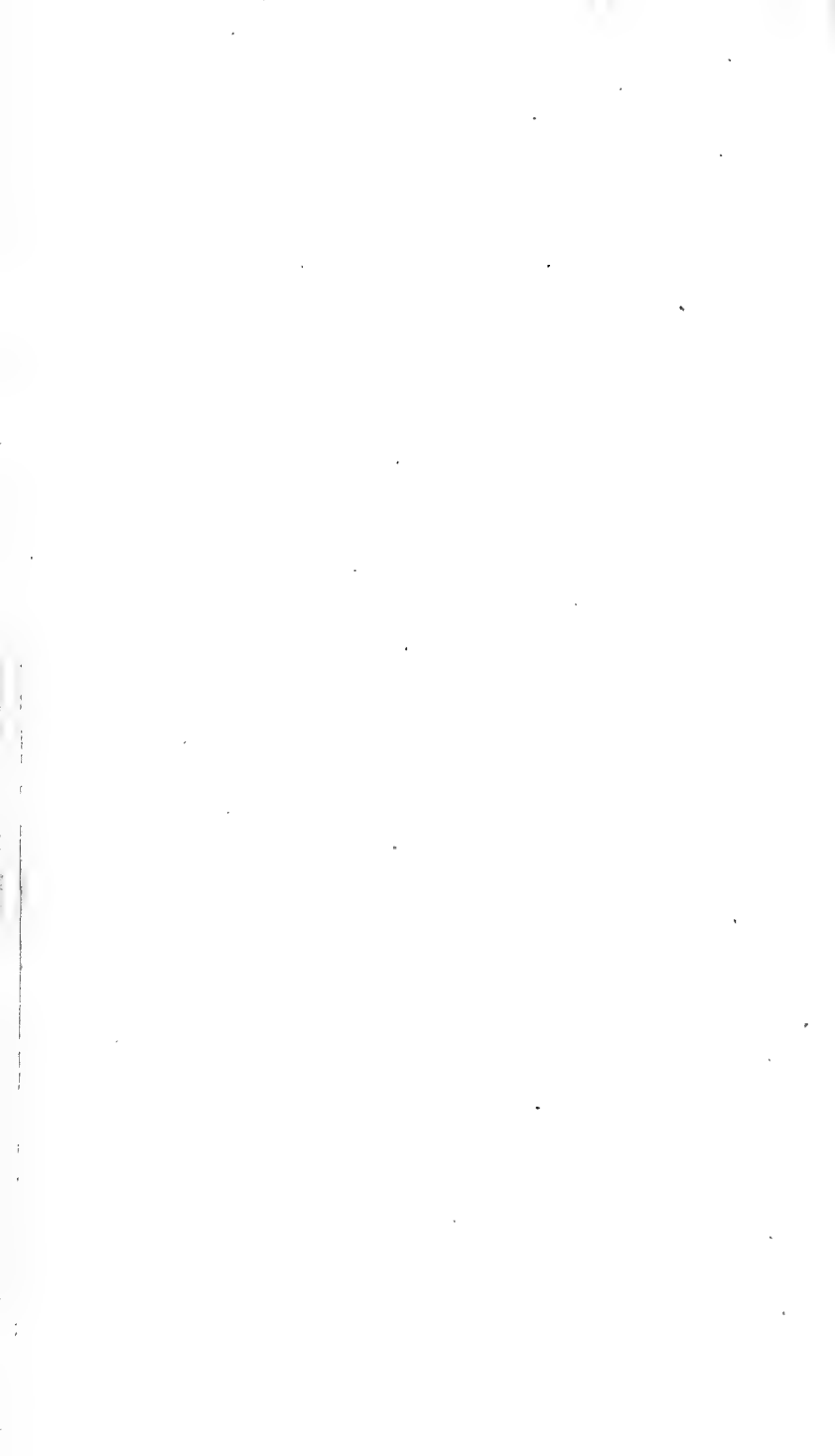


N. 1-3. *Lap. Alsus*. O. *Ph. Noct. Comunimacula*.  
 P. *Ph. Geom. Maculata*. Q. *Ph. Tin. Anthracinella*.





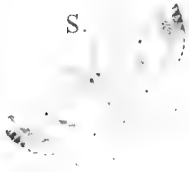
54.



R.



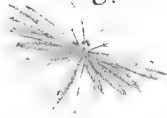
S.



T.



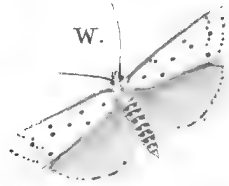
U.



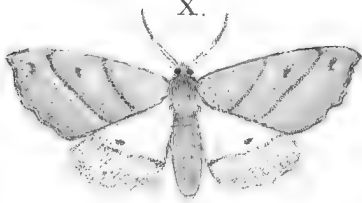
V.



W.



X.



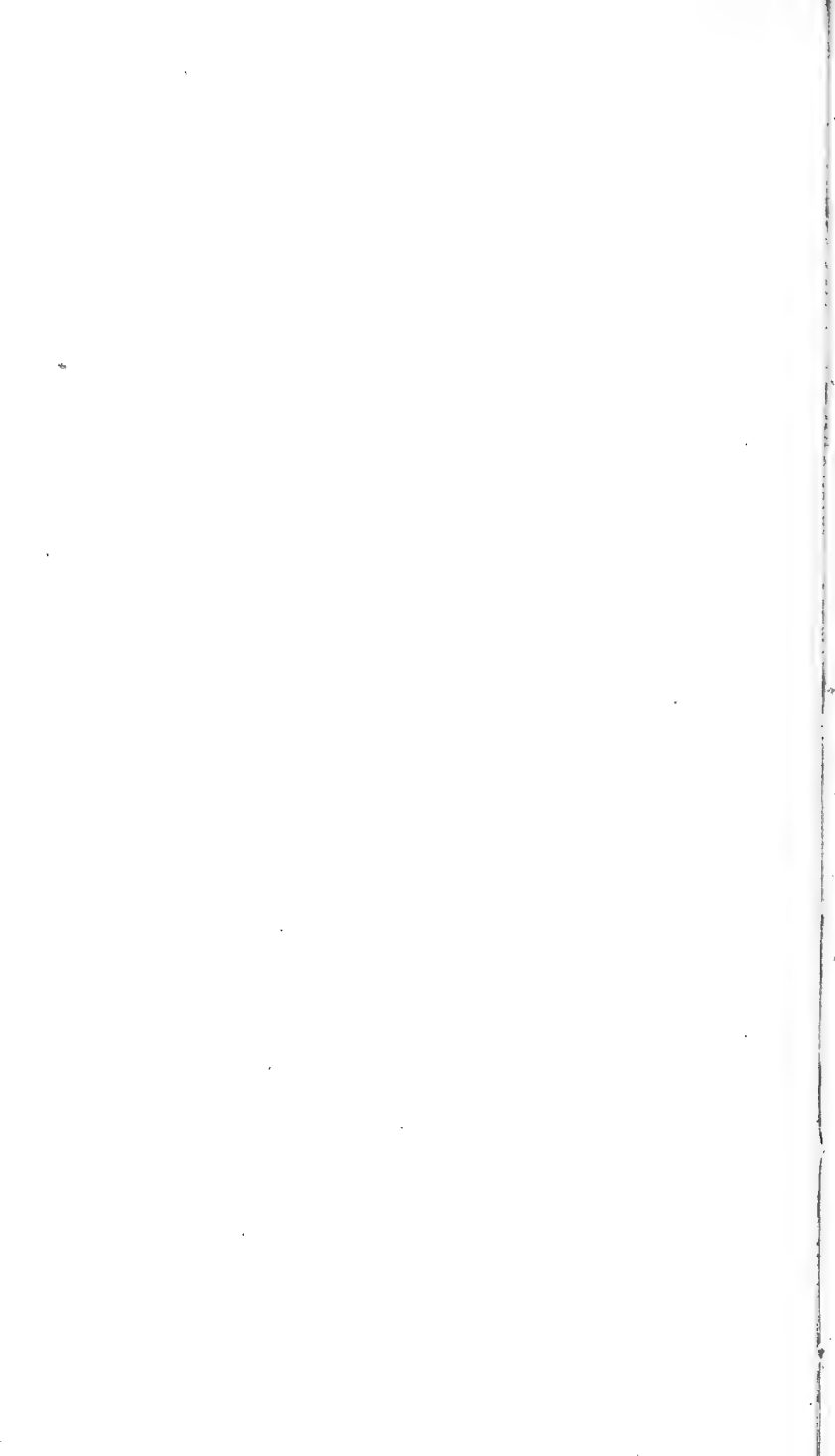
Y.



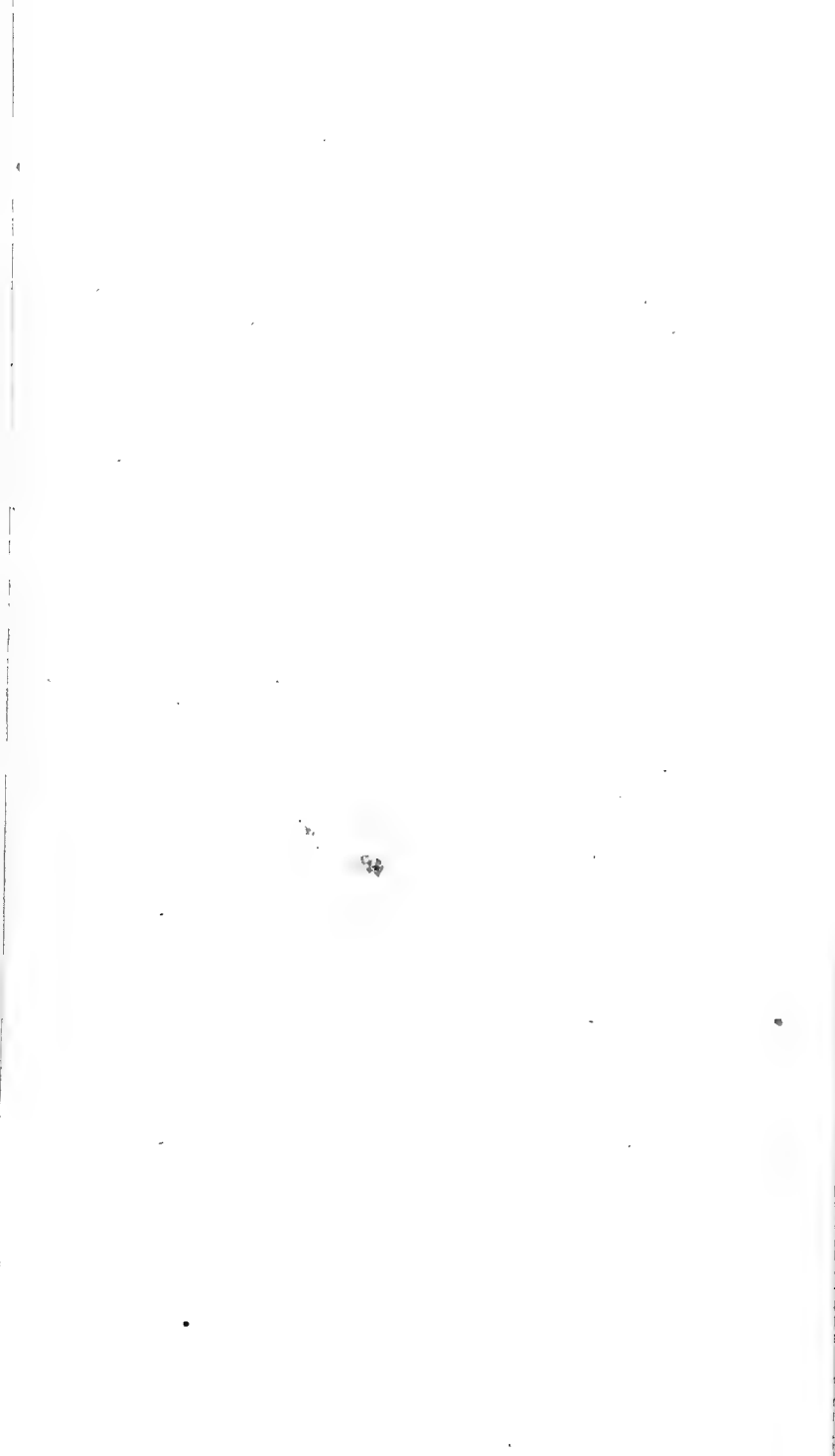
Z.

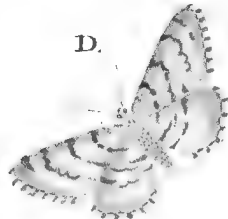
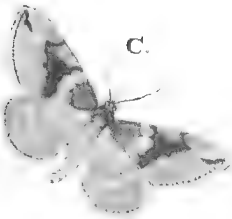
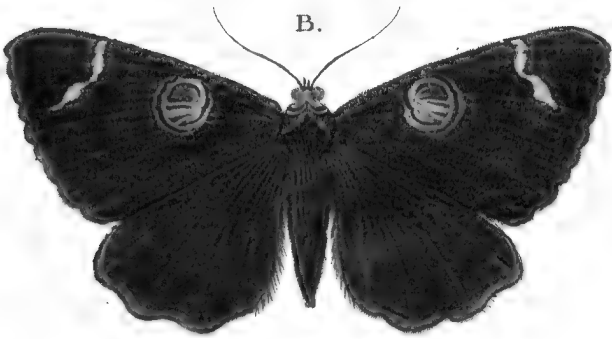
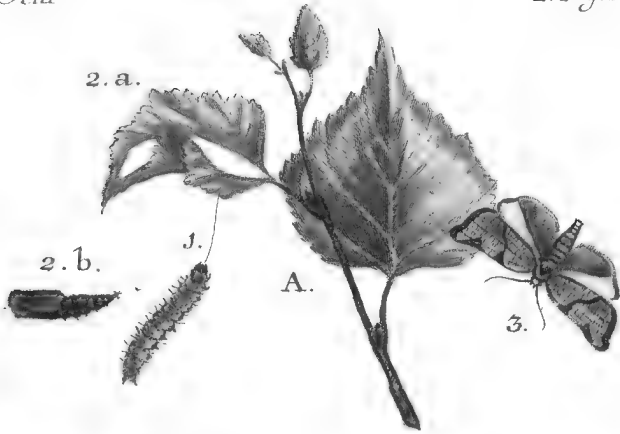


R. Ph. Aluc. Doceadactyla. S. Ph. Geom. Sylvestrata.  
 T. Ph. Bomb. Lupulina. U. Ph. Aluc. Galactodactyla.  
 V. Ph. Noct. Urita. W. Ph. Tin. Oribrumella. X. Ph. Geom.  
 Peñaria. Y. Ph. Geom. Luctuata. Z. Ph. Bomb. Flavula.

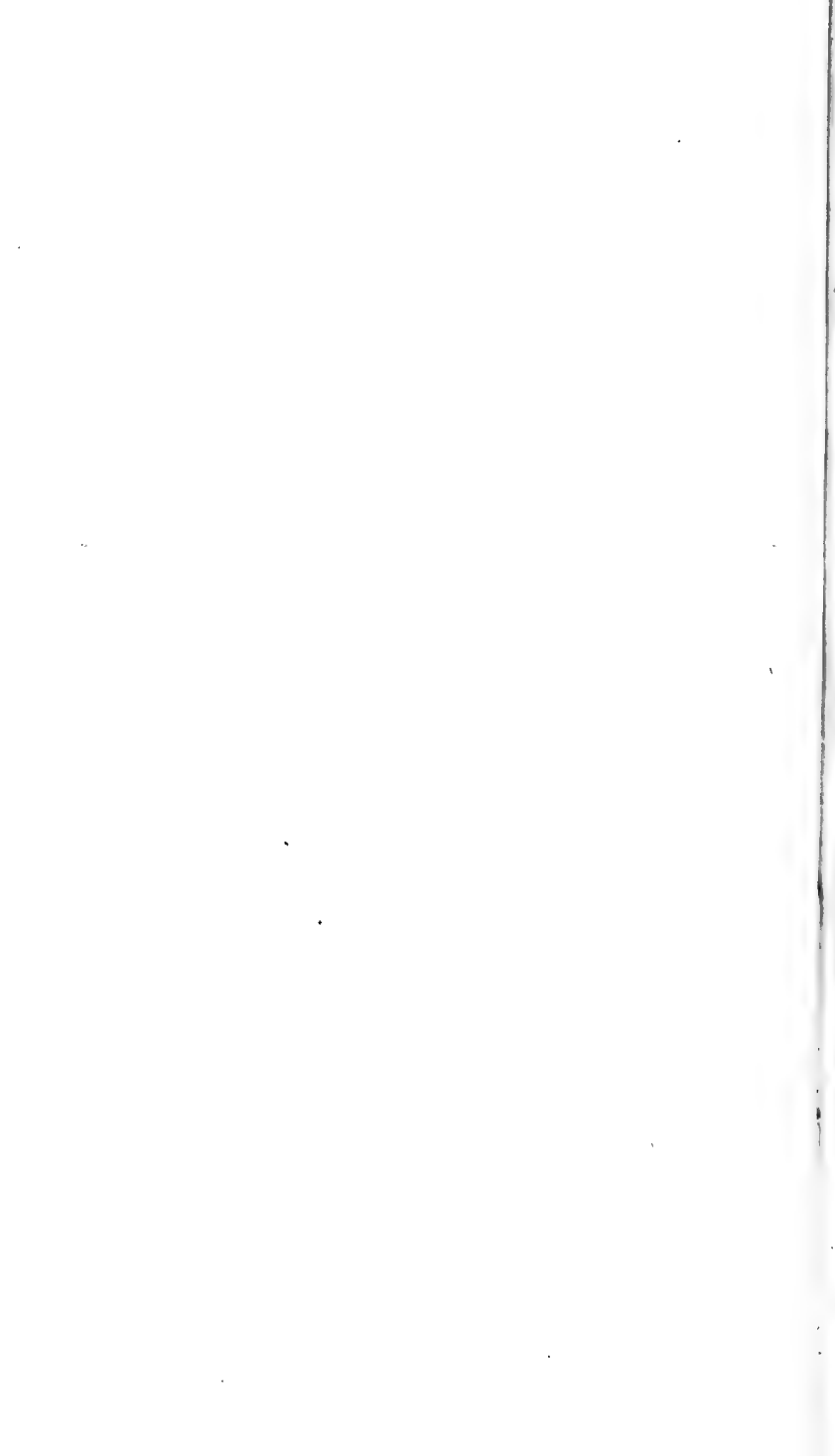


T. 5.



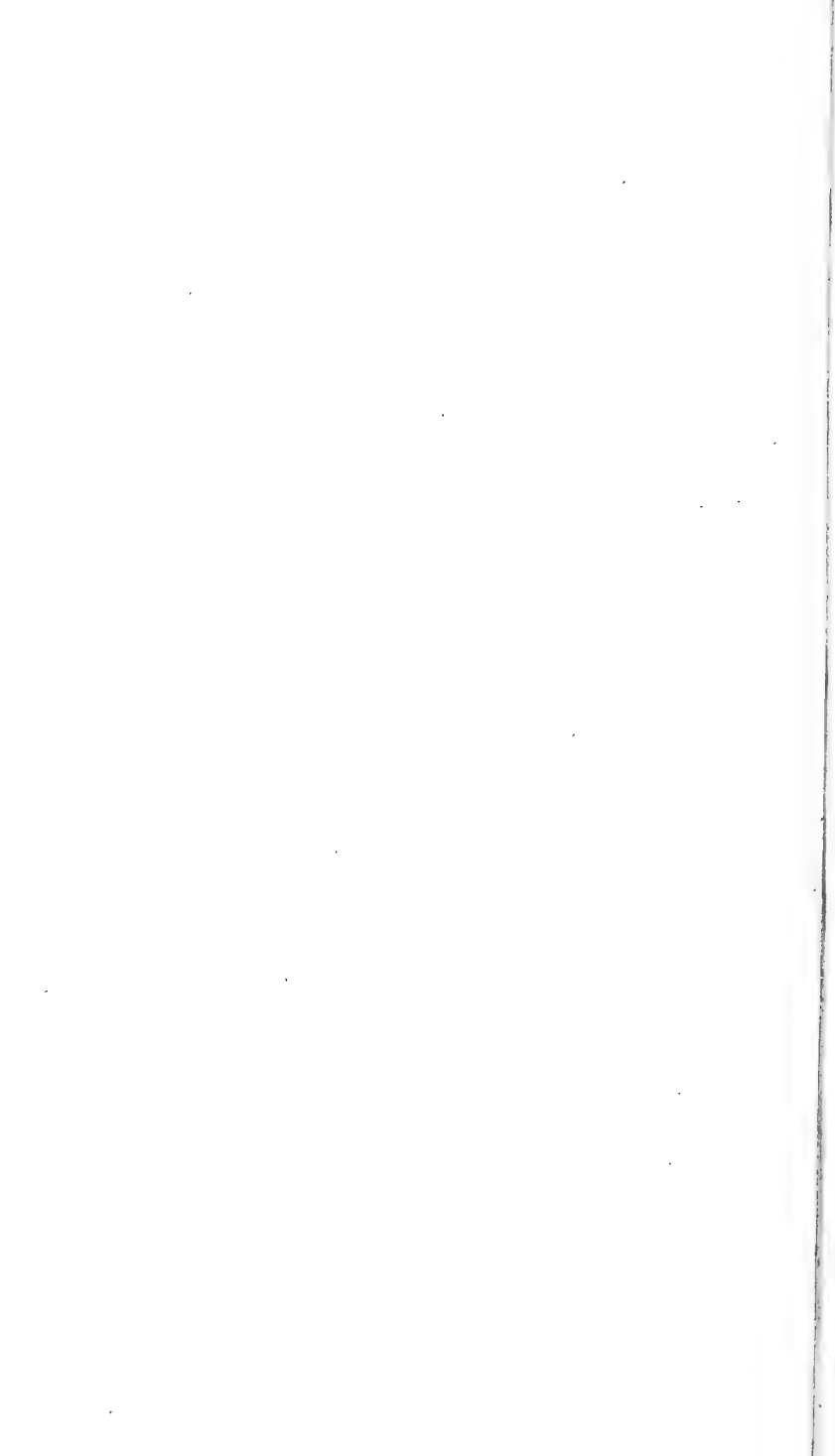


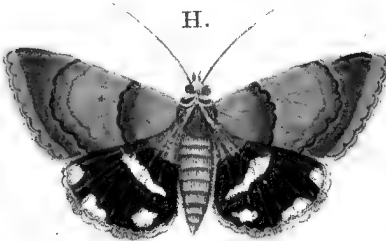
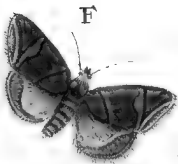
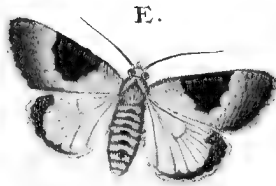
A. 1-3. *Ph. Tort. Betulana*. B. *Ph. Noct. Pavonia*.  
 C. *Ph. Geom. Obeliscata*. D. *Ph. Geom. Punctularia*.







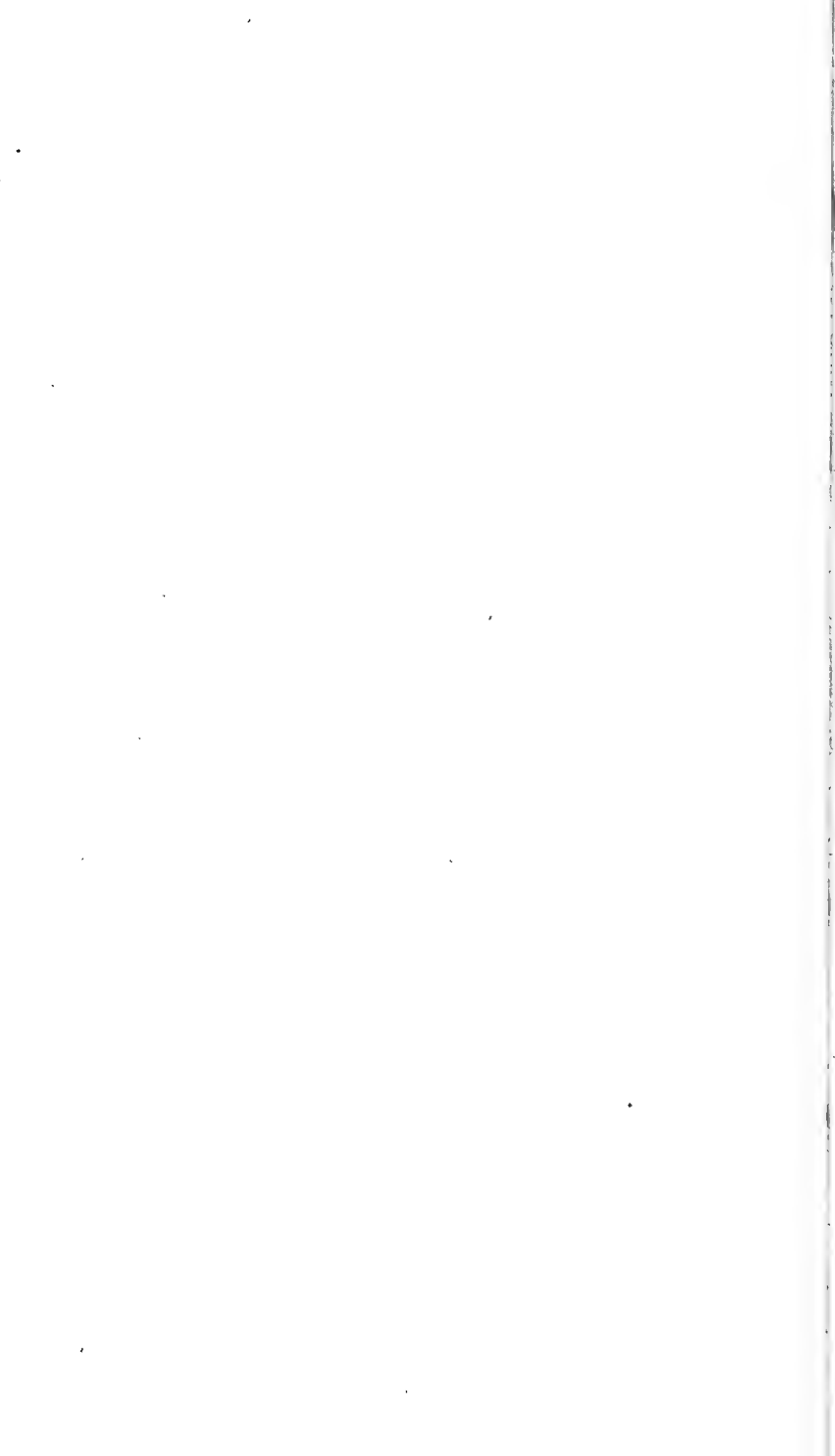




E. *Ph. Noct. Macularis*. F. *Ph. Noct. Argentula*. G. *Ph. Noct. Purpurina*. H. *Ph. Noct. Fascia*. I. *Ph. Geom. Strigil-laria*. K. *Ph. Geom. Bombycata*.







I.



M.



N.



O.



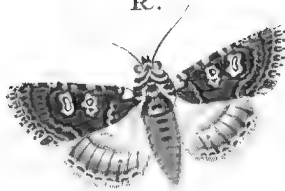
P.



Q.



R.



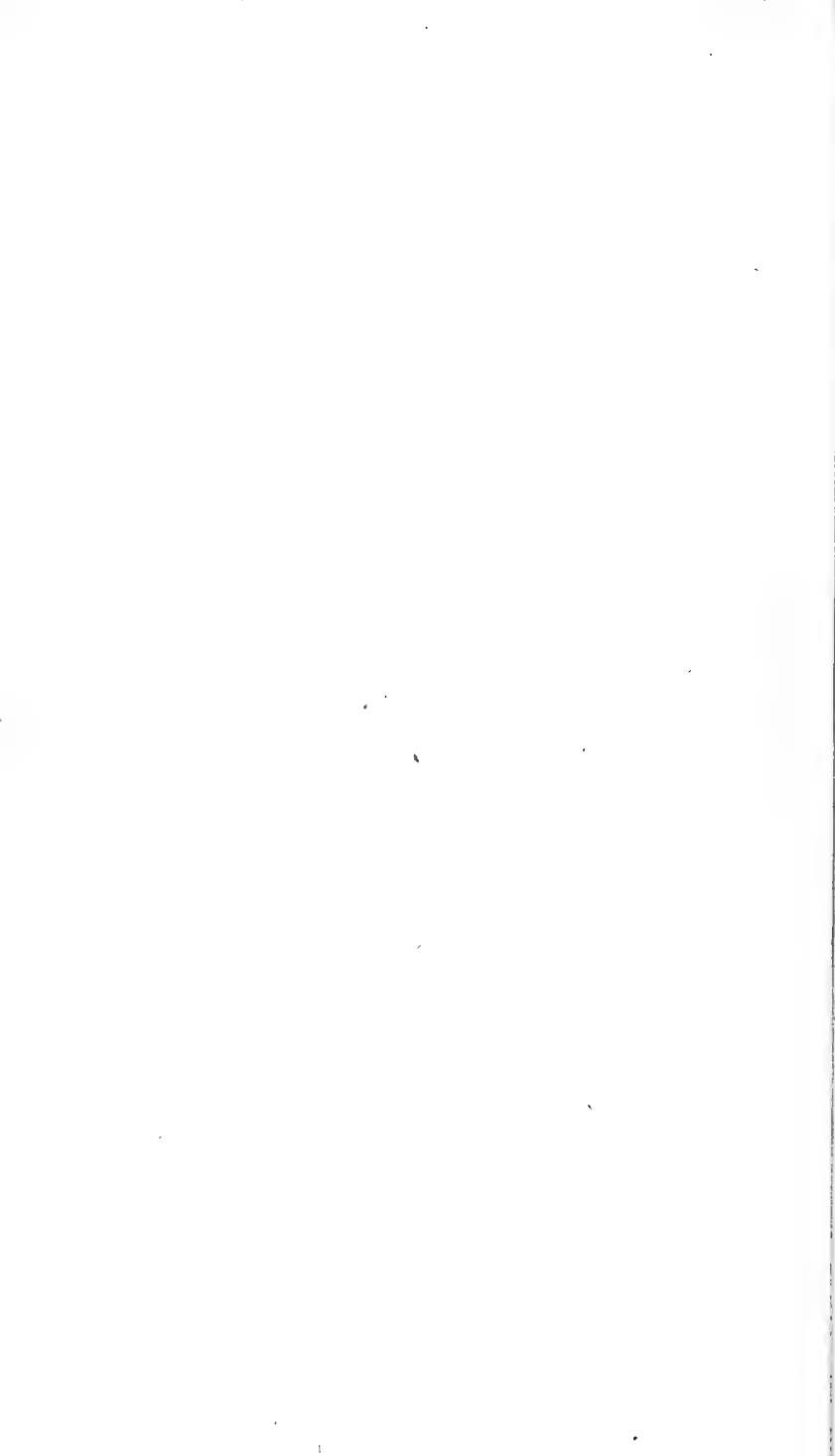
S.



T.

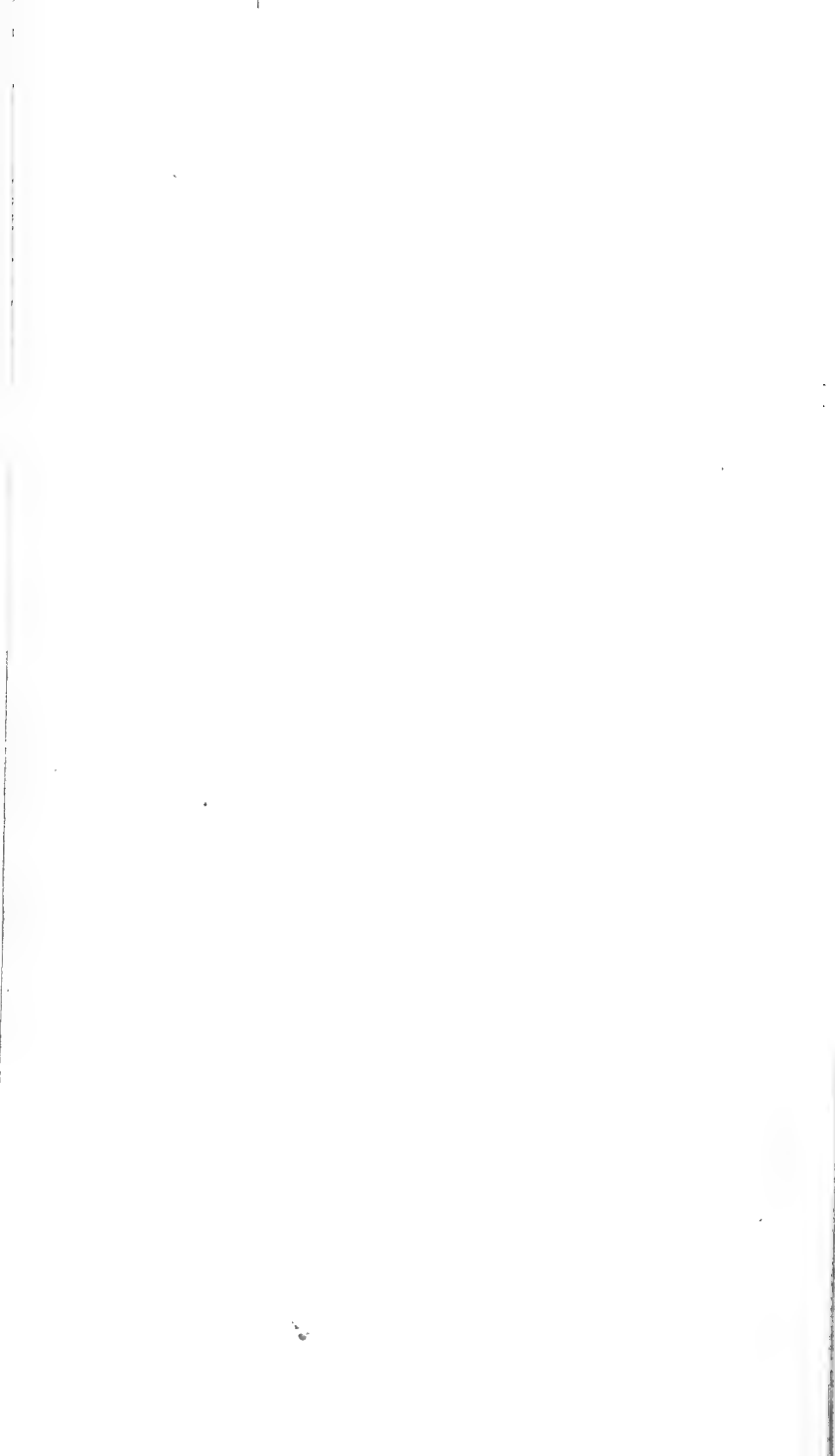


I. Ph. Geom. Unicolorata. M. Ph. Tort. Bifasciana. N. Ph. Tort. Hartmanniana. O. Ph. Noct. Umbra. P. Ph. Tort. Arcuana. Q. Ph. Tort. Lecheana. R. Ph. Noct. Culta. S. Ph. Geom. Sanguinaria. T. Ph. Geom. Trilinearis.









U.



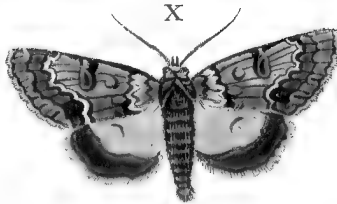
V.



W.



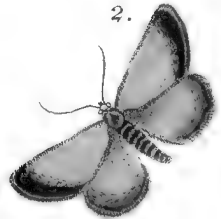
X



J.



2.

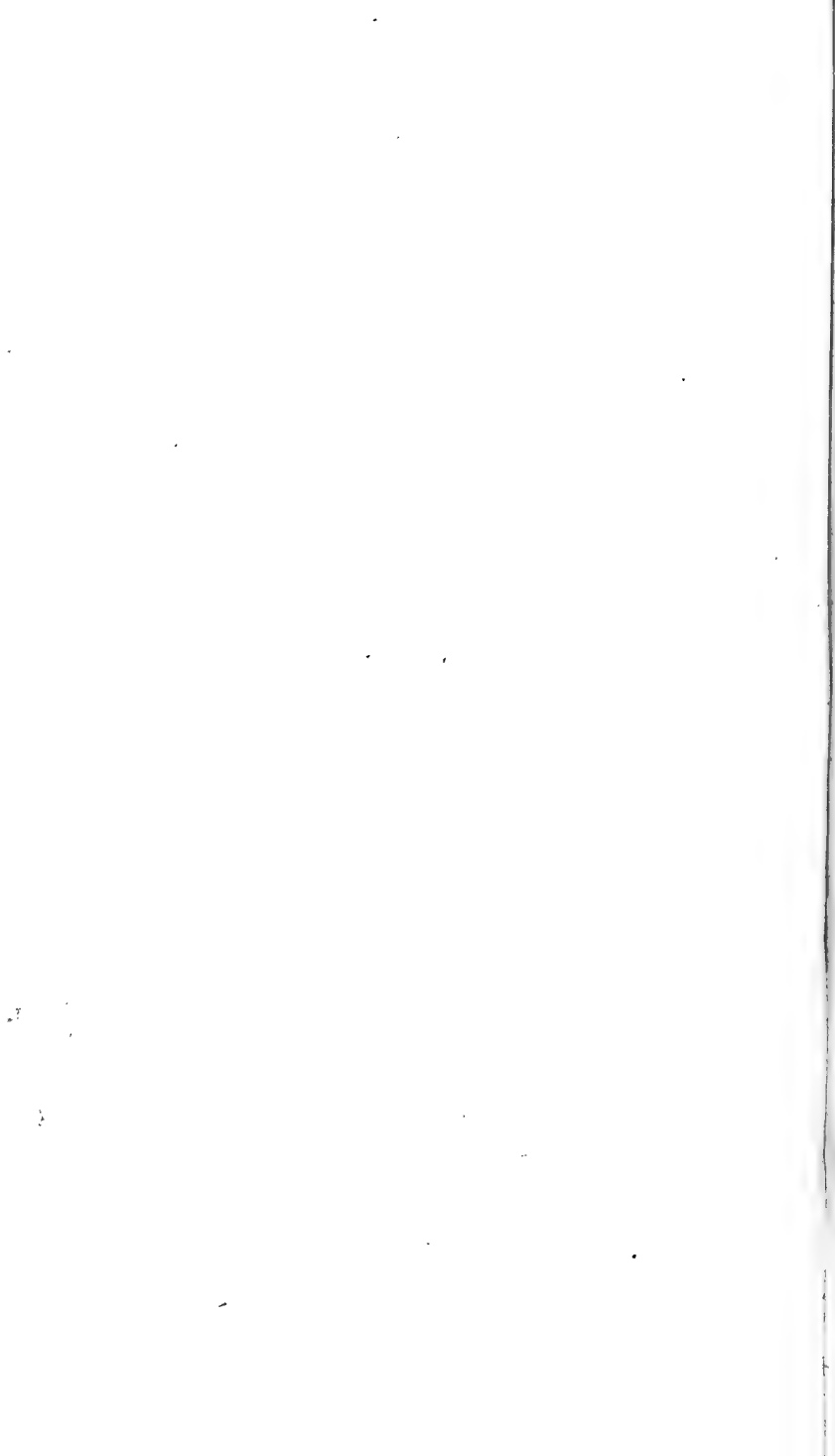


Y.



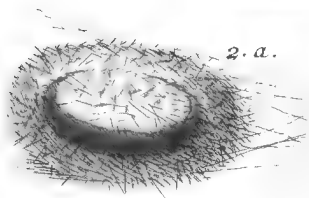
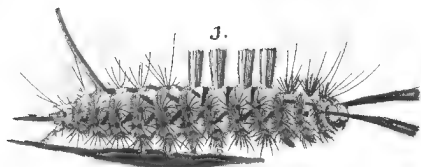
Z.

U. Ph. Tin. Pascuella. V. Ph. Geom. Lineolata. W. Ph. Noct. Ononis. X. Ph. Noct. Linogrifea. Y. 1. 2. Ph. Geom. Aroraria. Z. Ph. Tin. Margaritella.

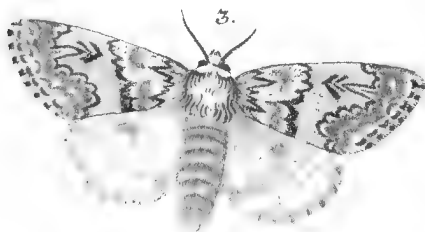


.F. 9.





A.



B.



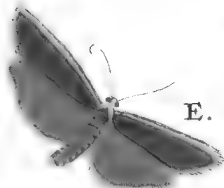
C.



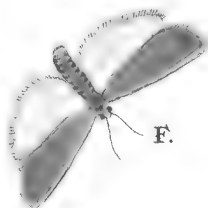
D.



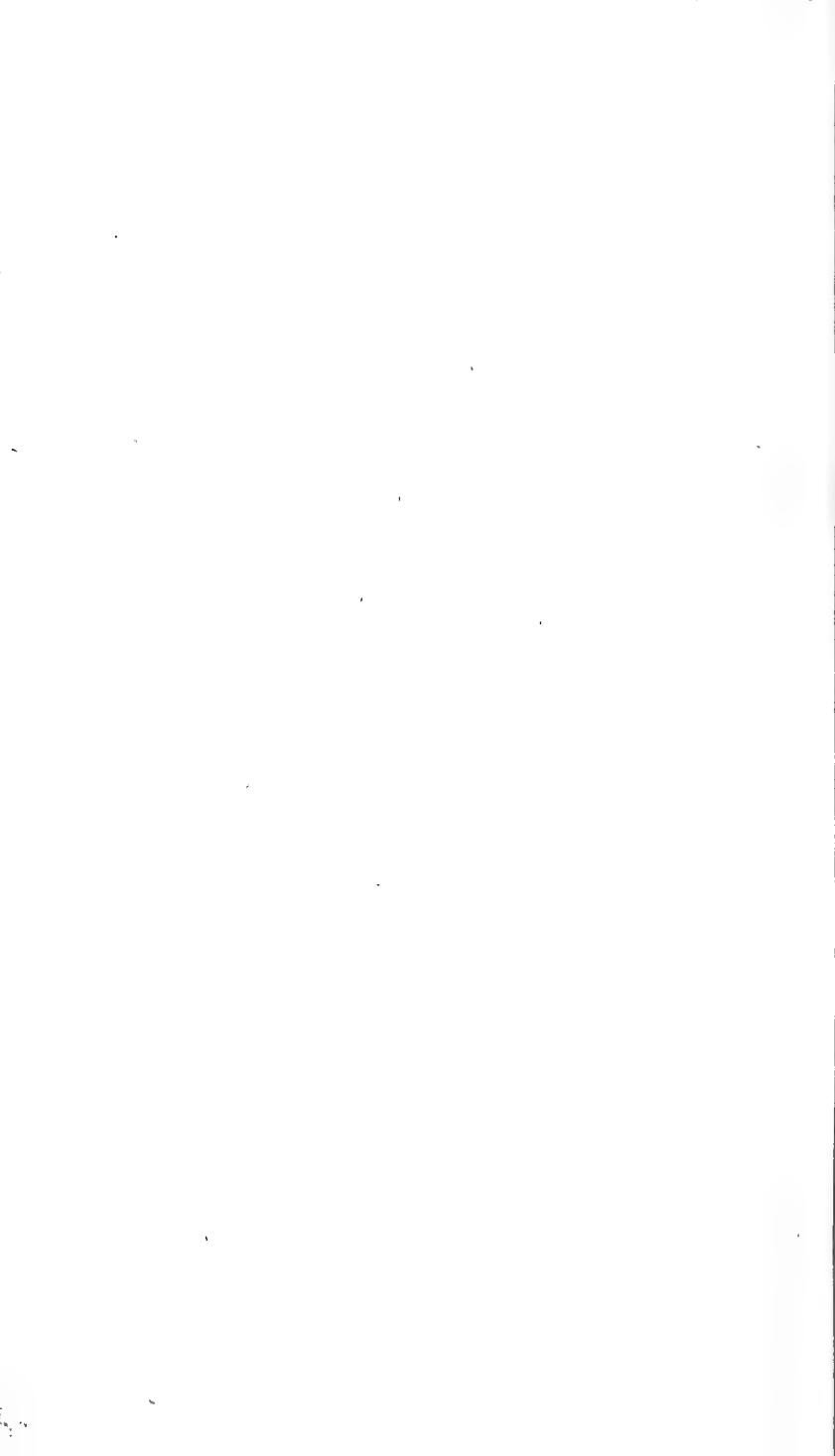
E.



F.

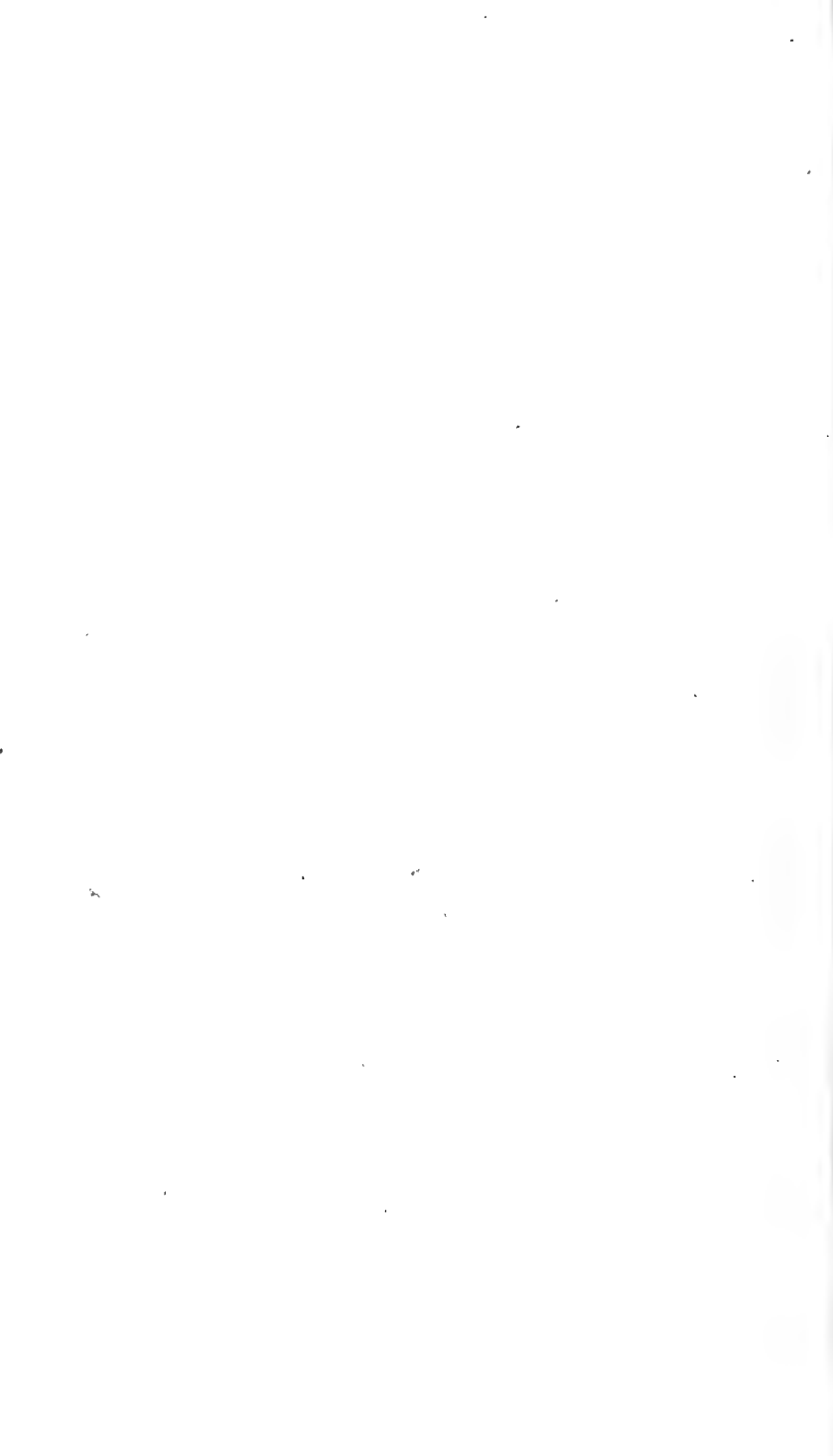


A. 1-3. *Ph. Bomb. Abietis*. B. *Ph. Fir. Leucatella*.  
 C. *Ph. Tort. Holmiana*. D. *Ph. Noct. Aenea*.  
 E. *Ph. Noct. Luteola*. F. *Ph. Noct. Complana*.





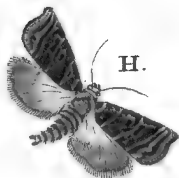




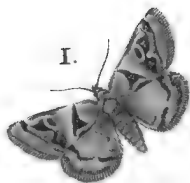
G.



H.



I.



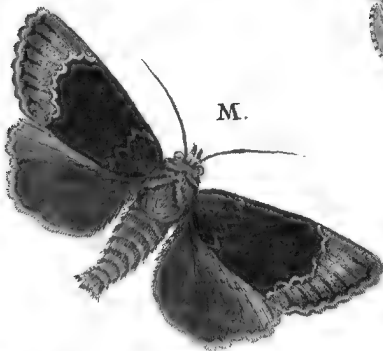
K.



L.



M.



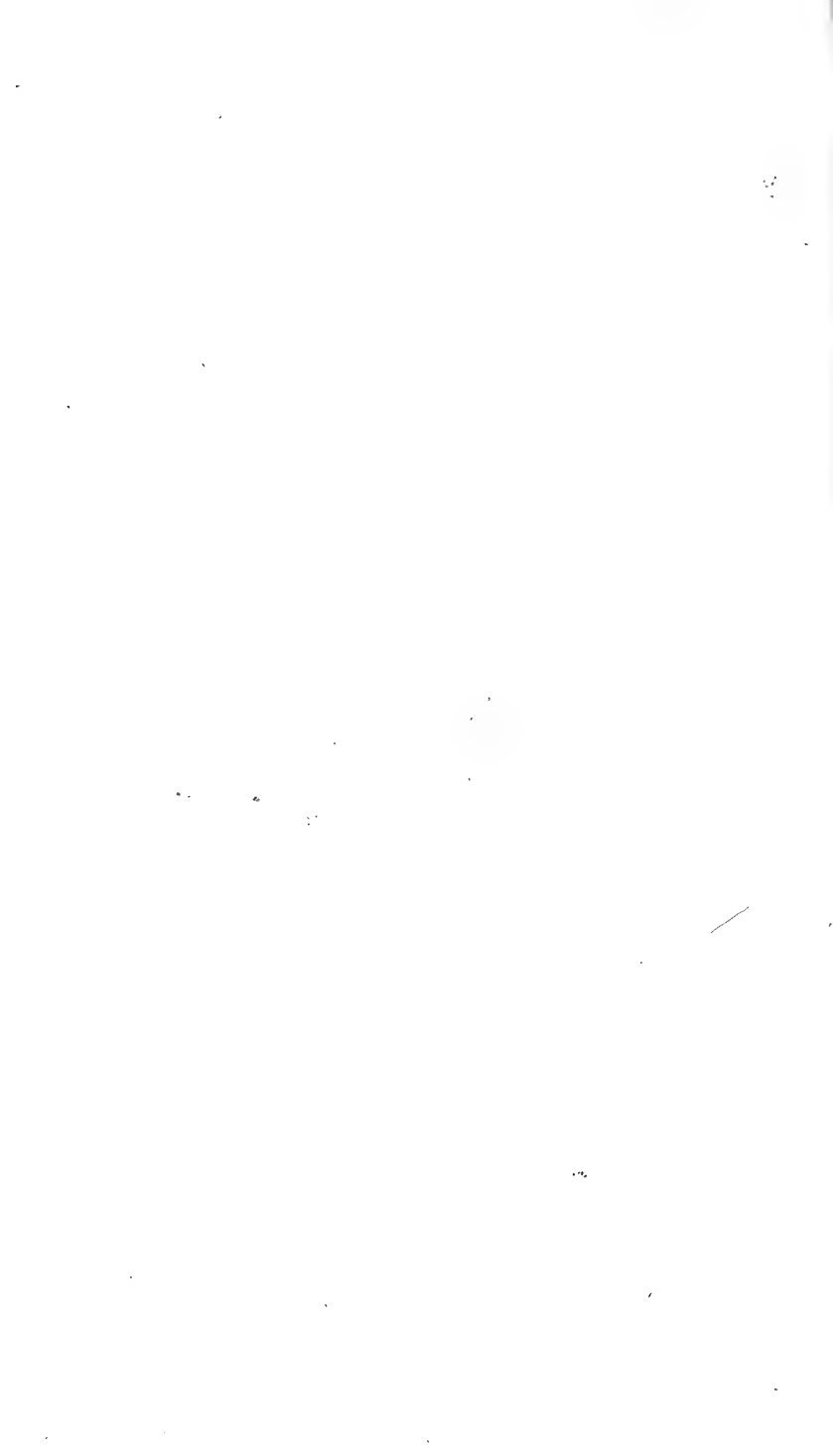
N.



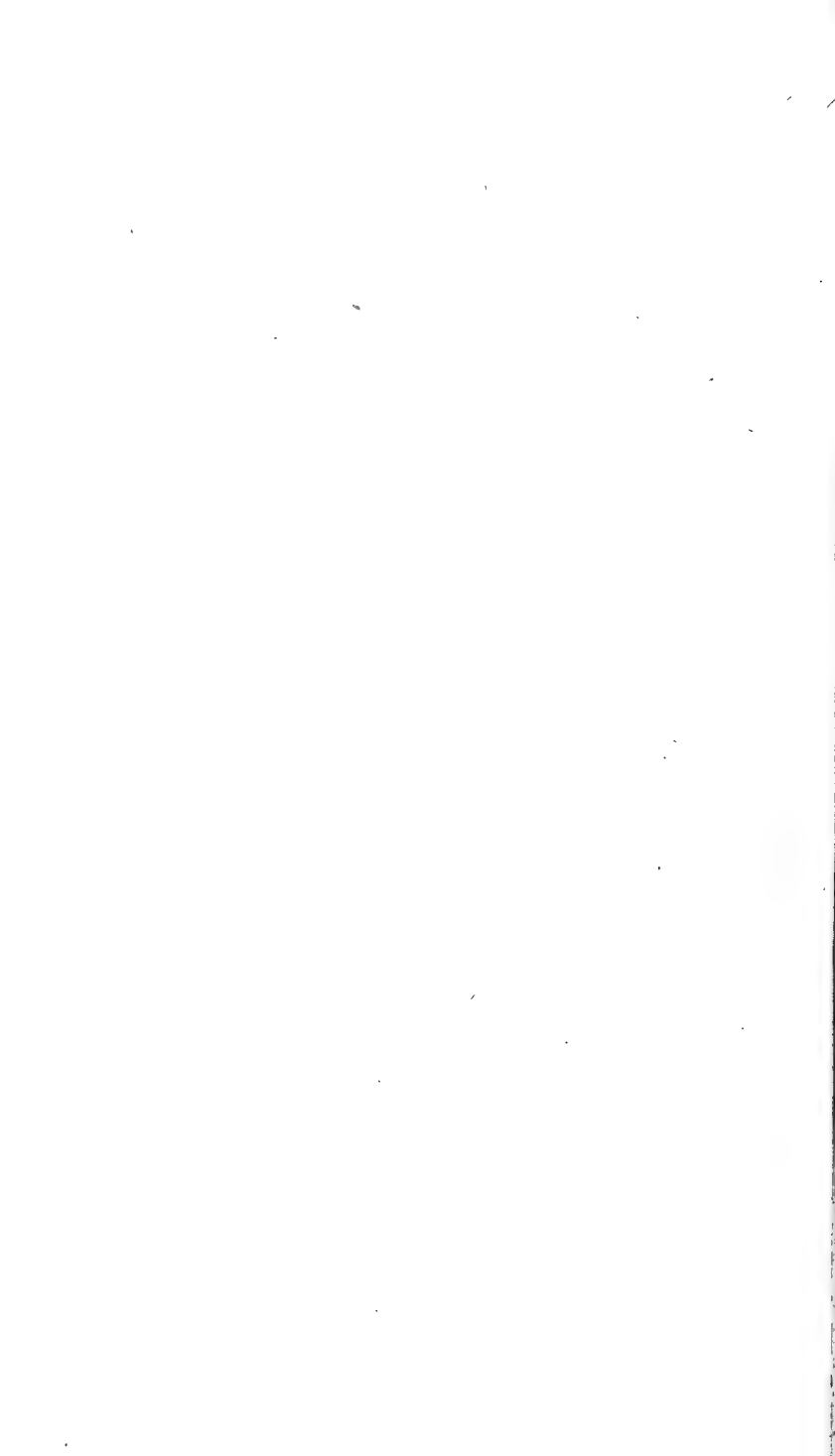
O.

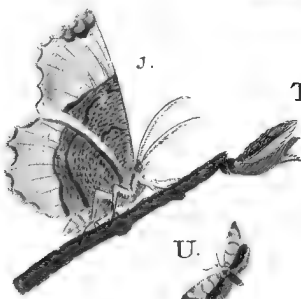
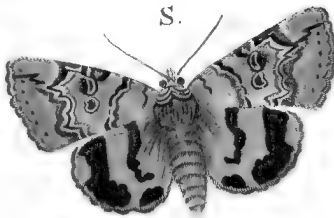
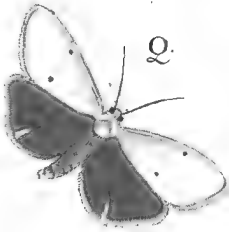
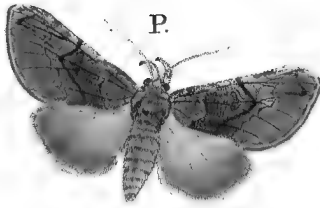


G. Ph. Tort. Literana. H. Ph. Noct. Vetula. I. Ph. Noct. Triquetra. K. Ph. Pyr. Atralis. L. Ph. Geom. Sexalifata. M. Ph. Noct. Pyramidea. N. Ph. Noct. Mi. O. Ph. Geom. Apiciaria.

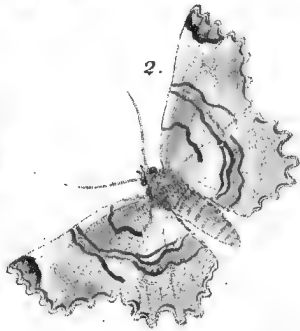








T.

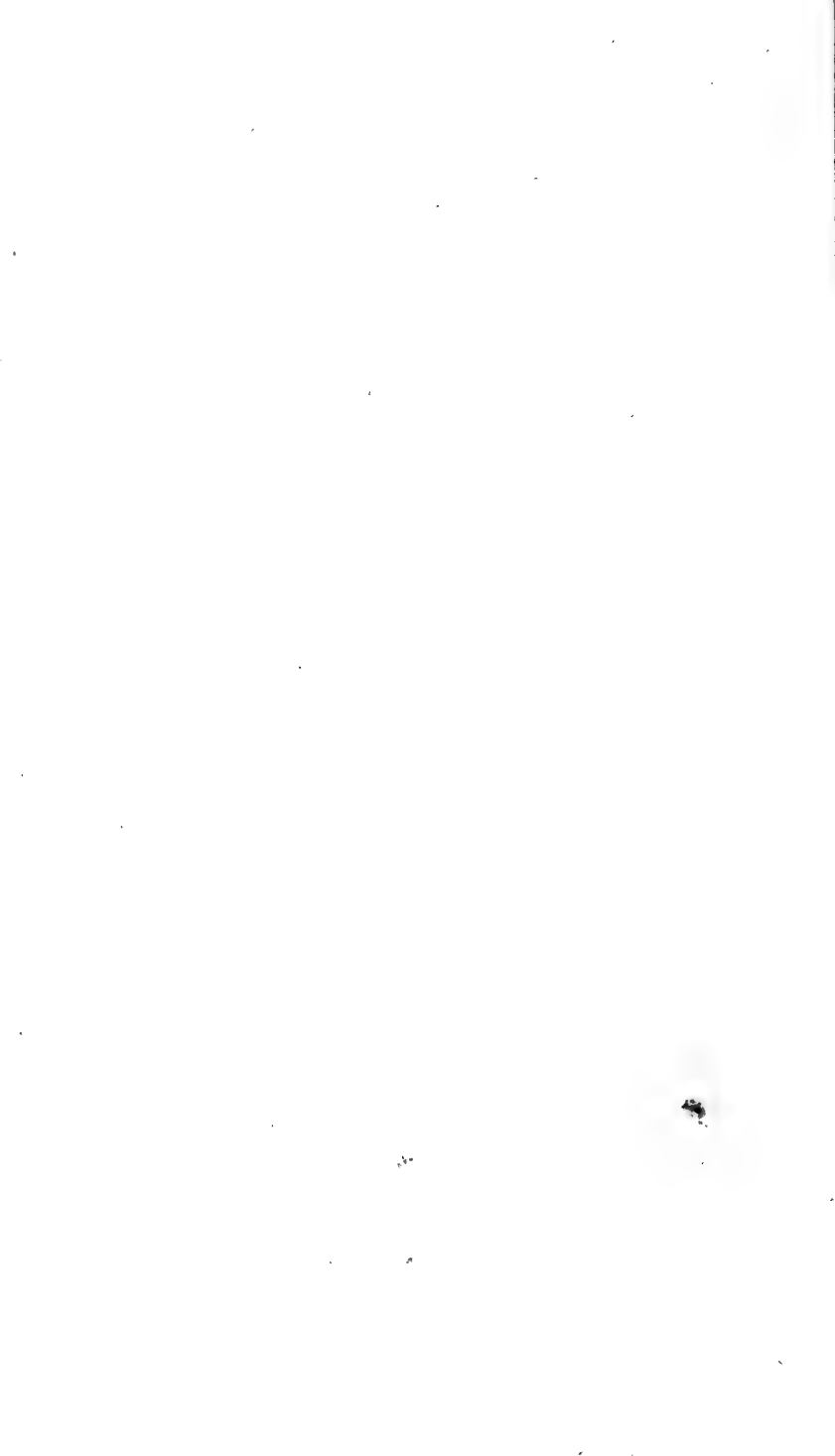


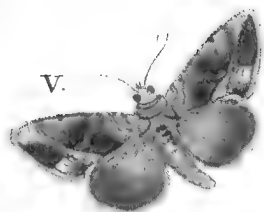
P. Ph. Noct. Moneta. Q. Ph. Noct. Eborina. R. Ph. Geom. Nivearia. S. Ph. Noct. Hymenaea. T. 3. 2 Ph. Geom. Lunularia. U. Ph. Tin. Procerella.



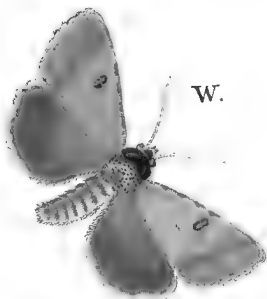




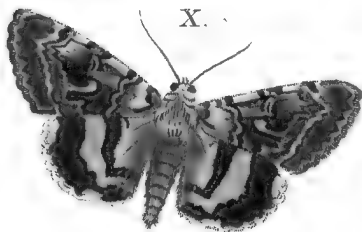




V.



W.



X.

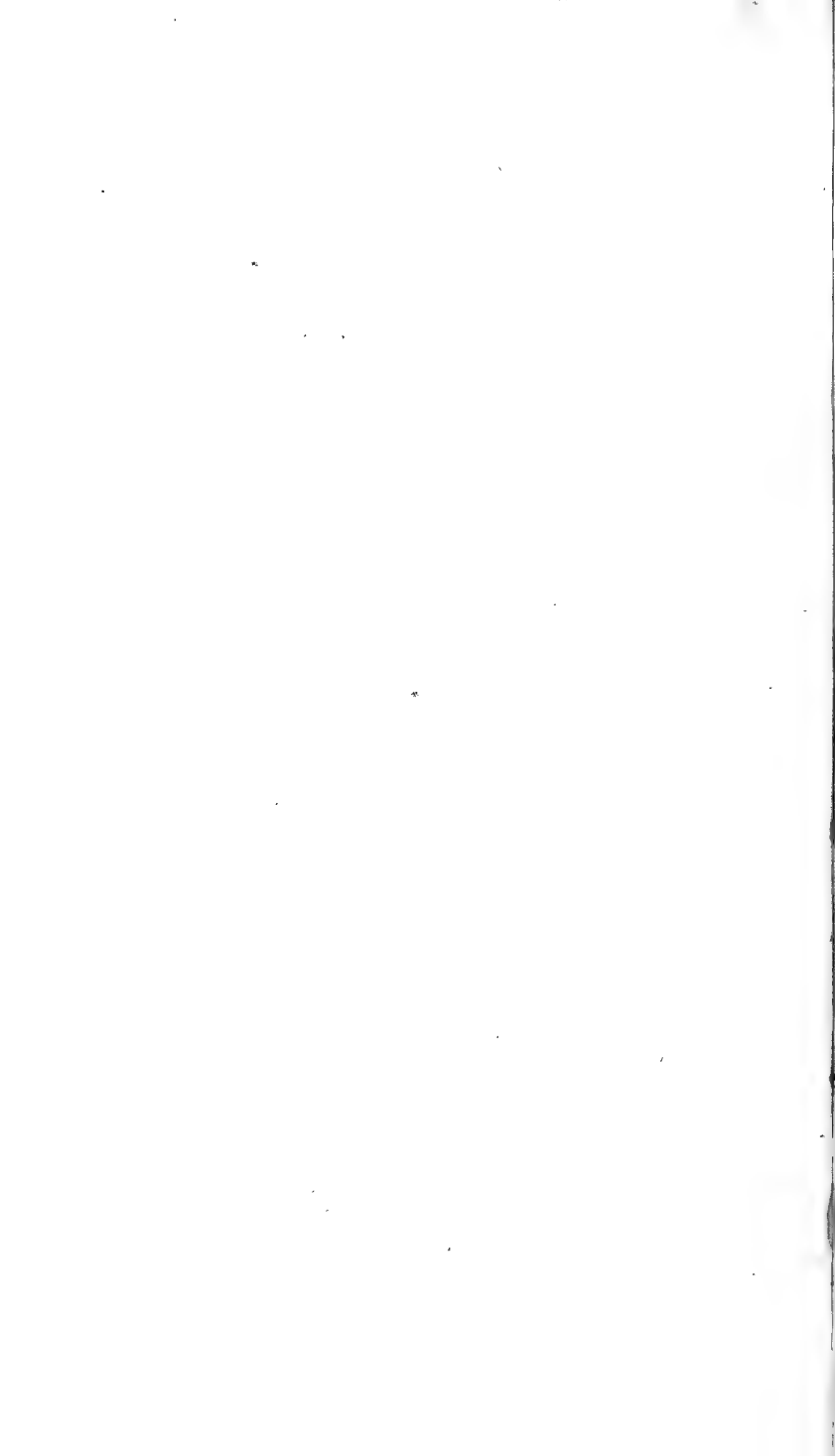


Y.

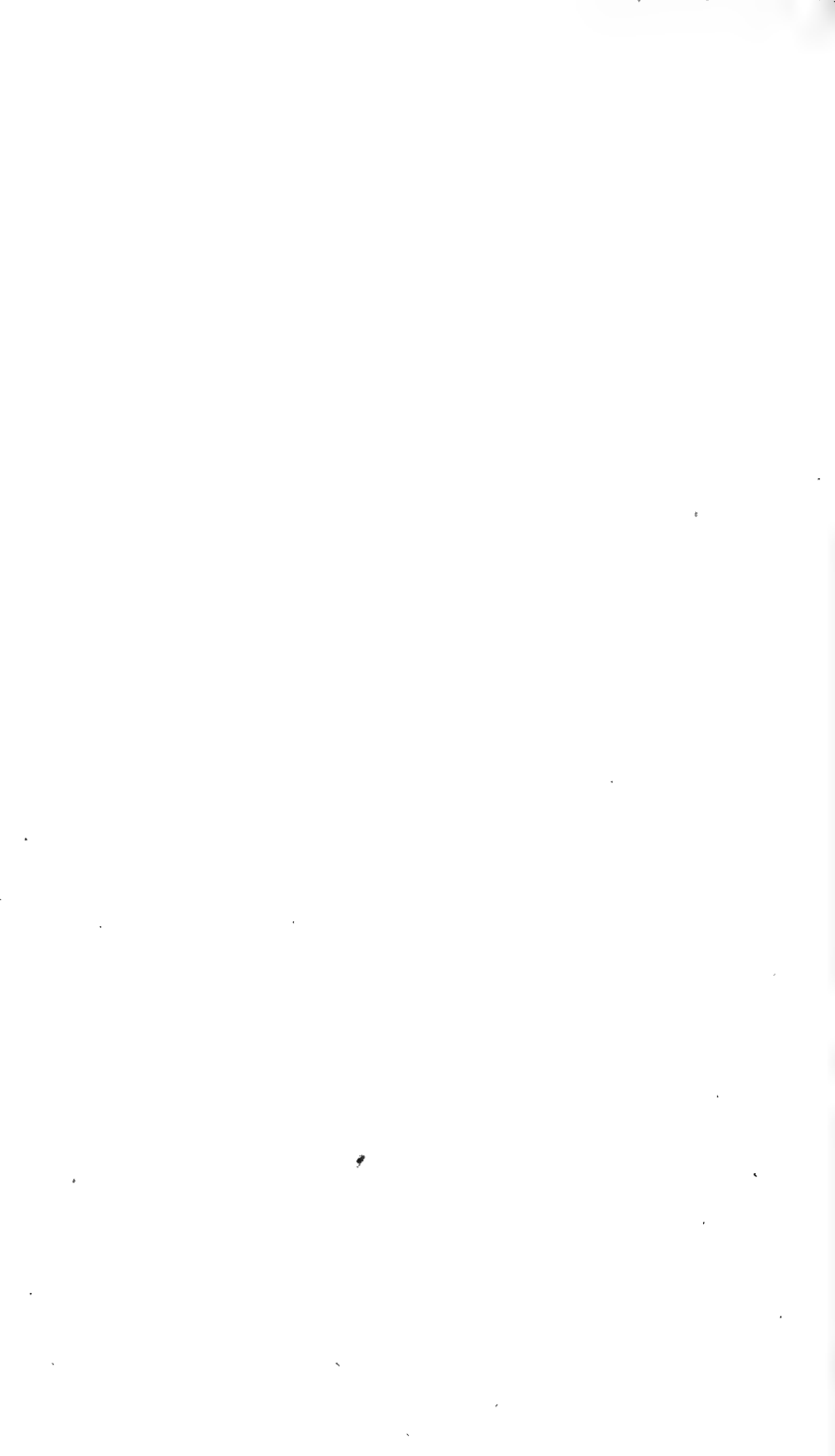


Z.

V. Ph. Noct. Circumflexa. W. Ph. Noct. Cracca.  
X. Ph. Noct. Uxor. Y. Ph. Noct. Subsequa.  
Z. Ph. Noct. Scotophila.

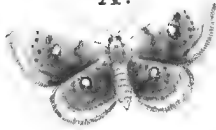




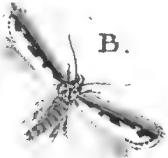


Albion  
Albion

A.



B.



C.

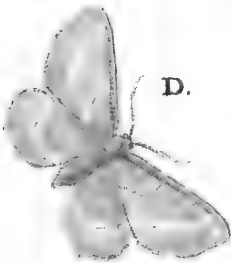


J.

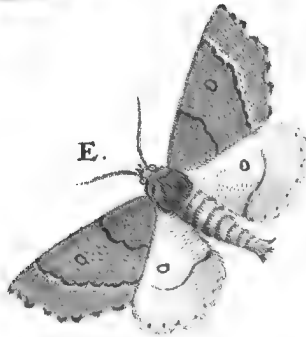
2.



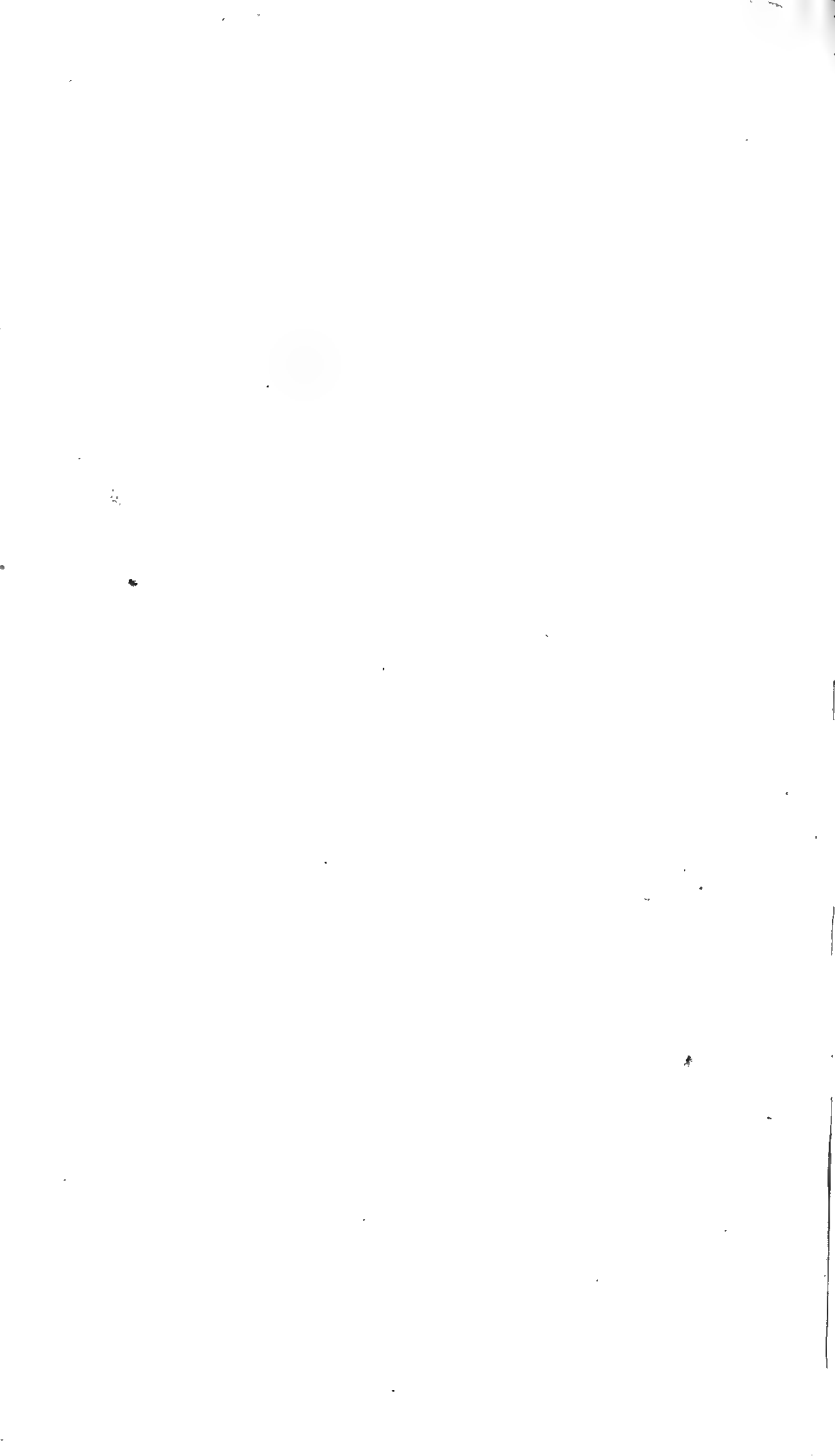
D.



E.

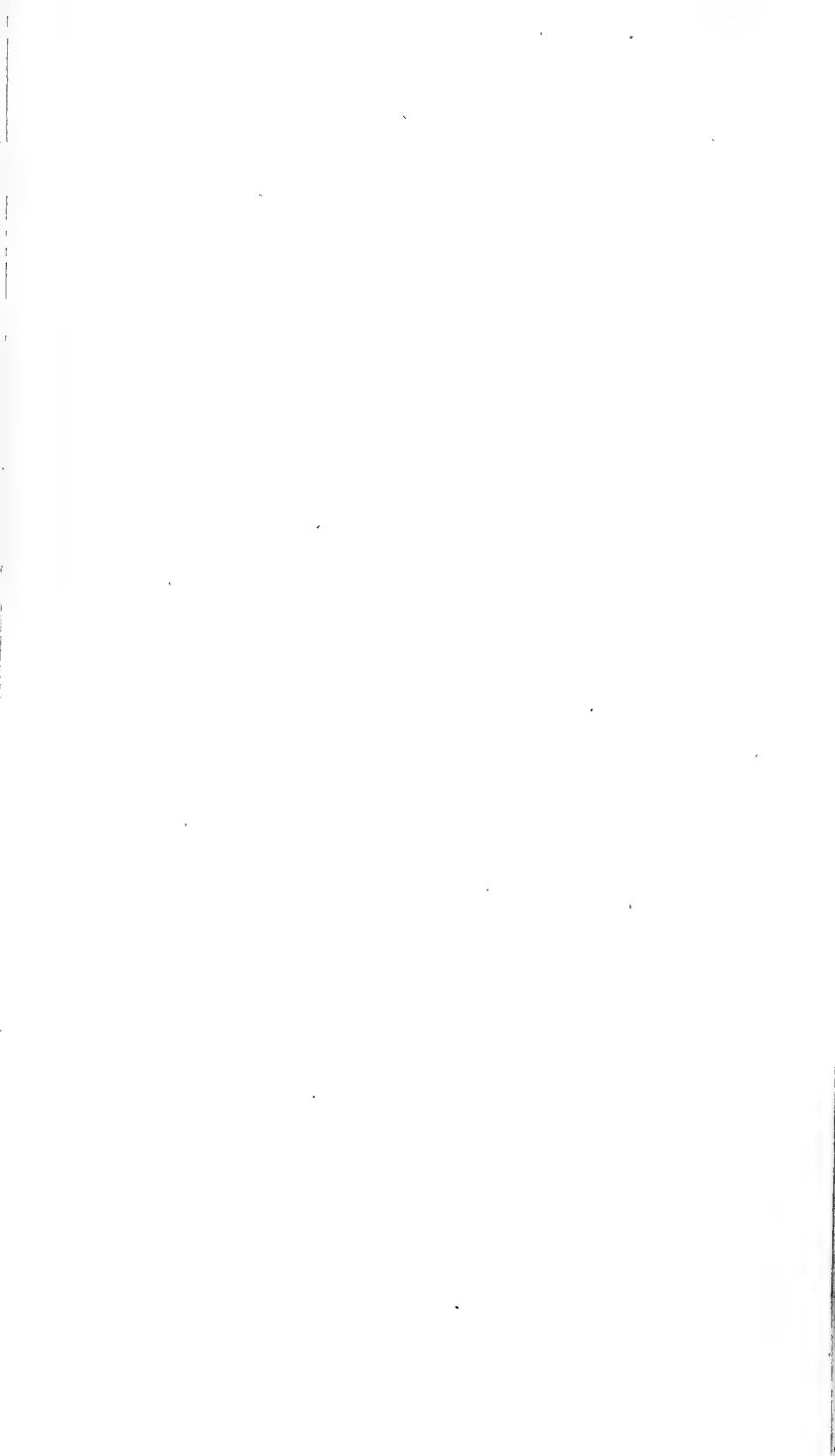


A. Ph. Geom. Albiocellaria. B. Ph. Tin. Echiella.  
C. s. 2. Ph. Geom. Lunaria. D. Ph. Geom. Vernaria.  
E. Ph. Geom. Dentaria.





T. 14.



F.



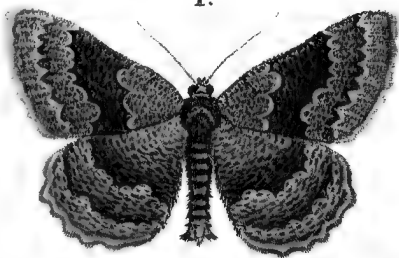
G.



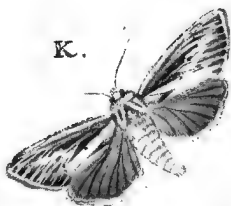
H.



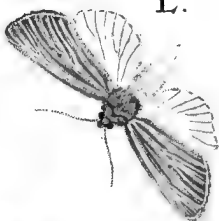
I.



K.



L.



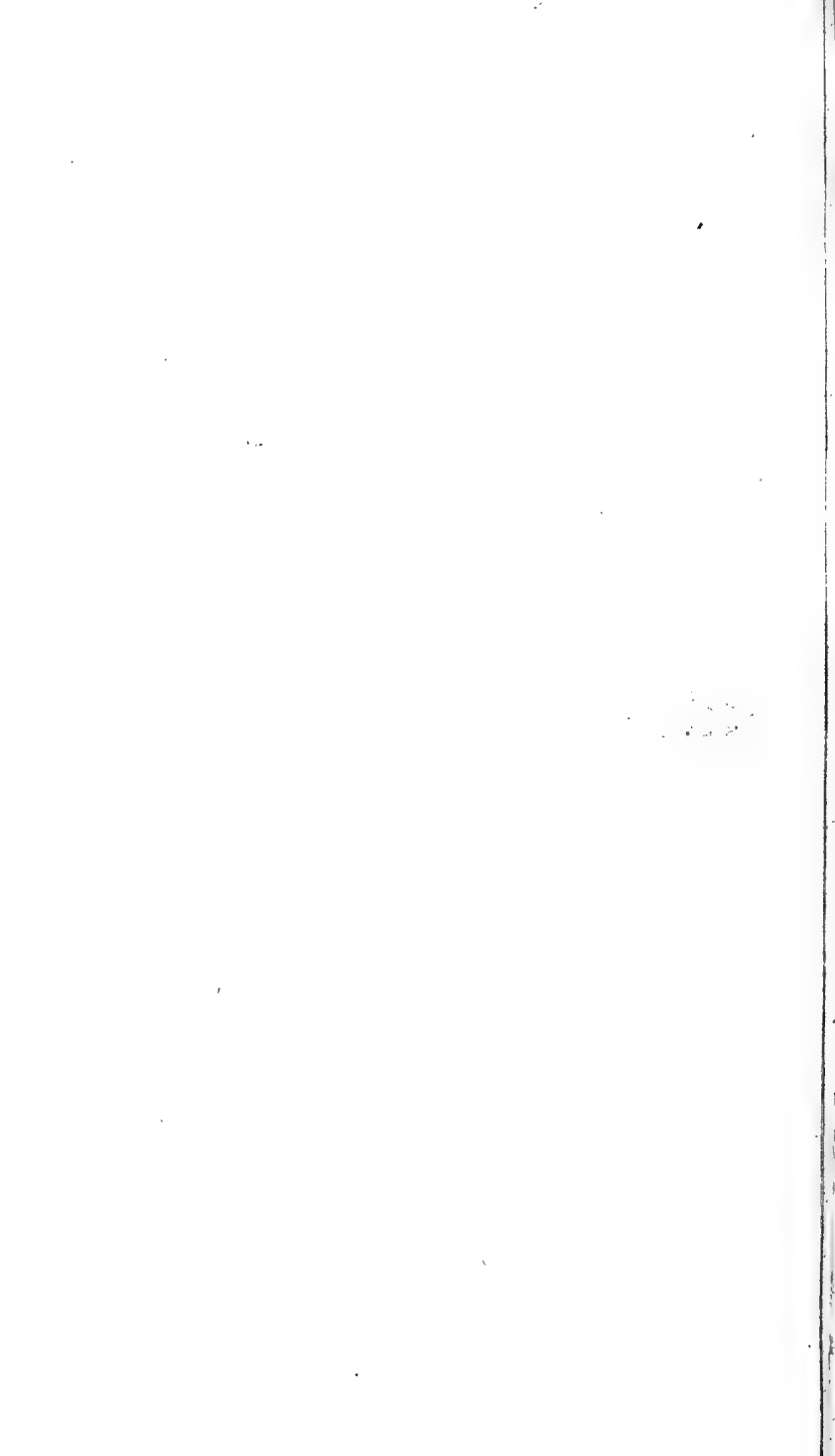
M.

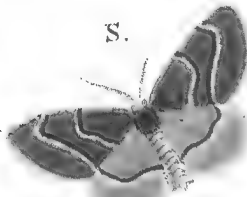
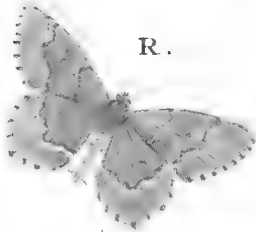
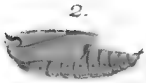
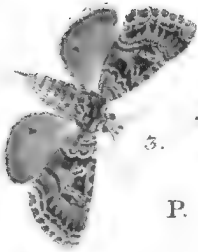
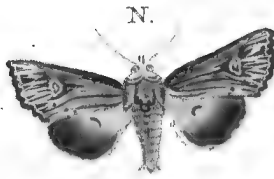


F. *Ph. Noct. Rupicola*. G. *Ph. Geom. Insignata*.  
 H. *Ph. Pyr. Fimbrialis*. I. *Ph. Geom. Fuvvata*.  
 K. *Ph. Noct. L'album*. L. *Ph. Noct. Pallens*.  
 M. *Ph. Pyr. Dentalis*.

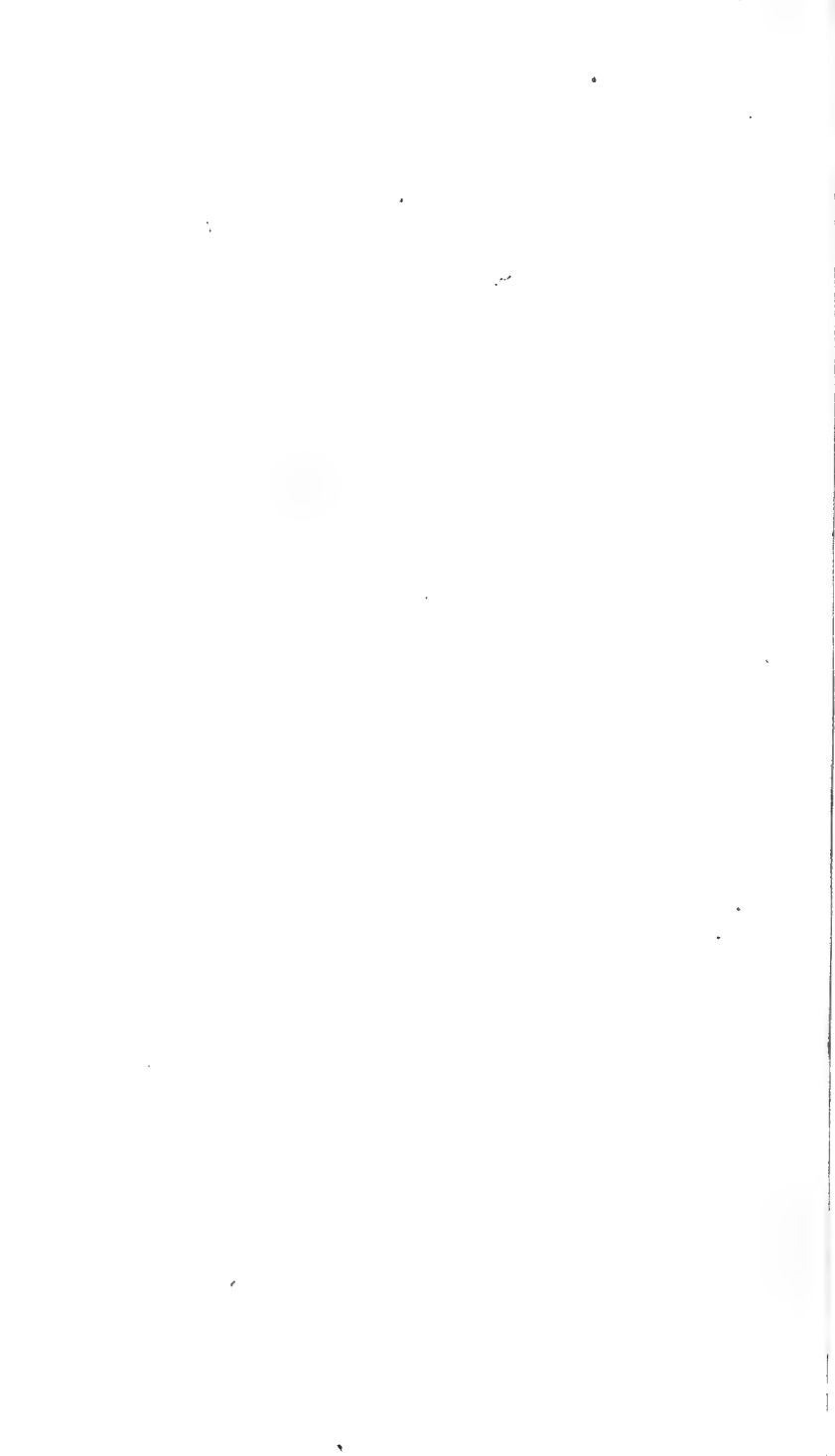






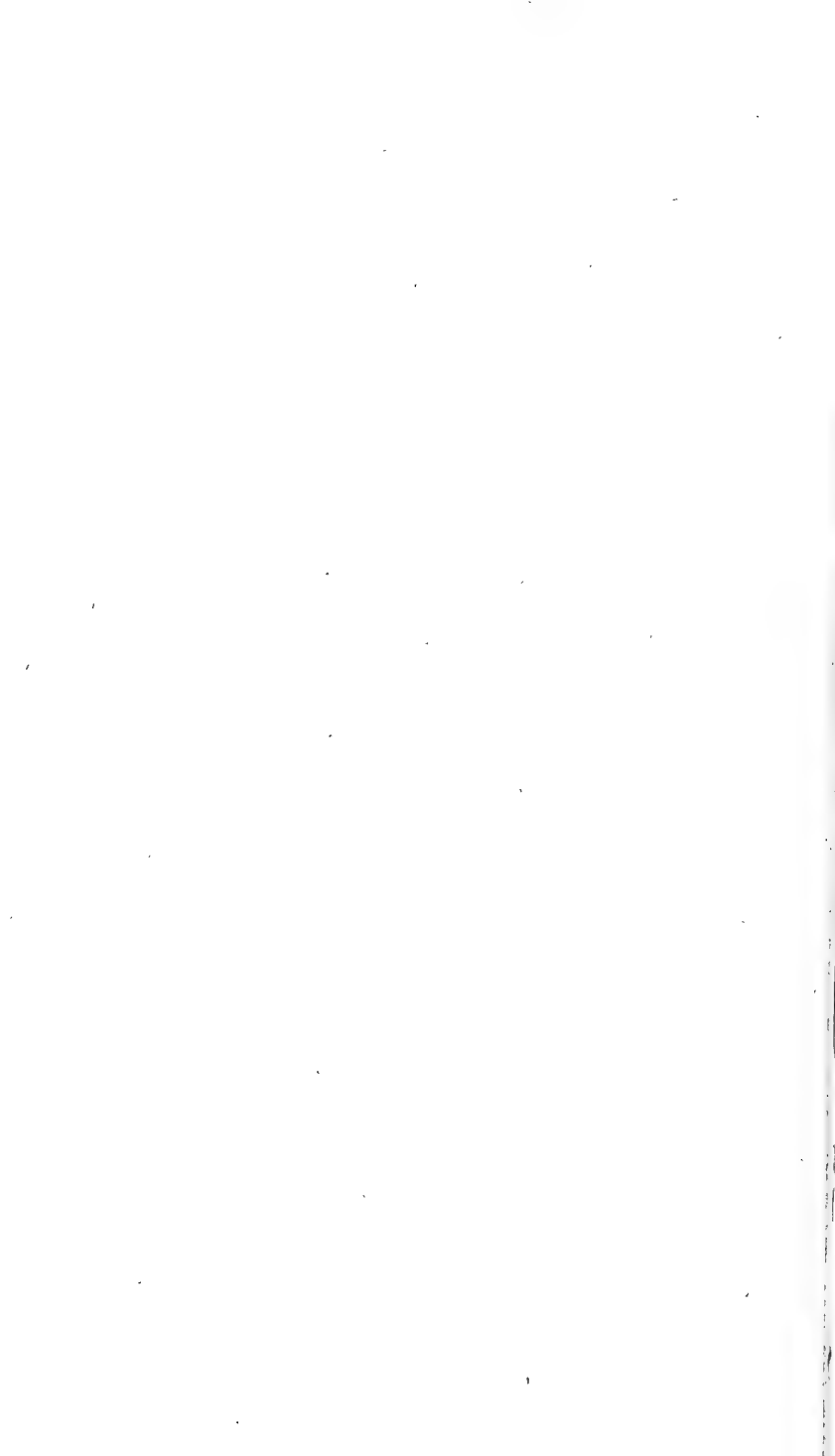


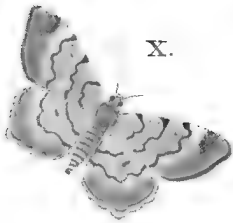
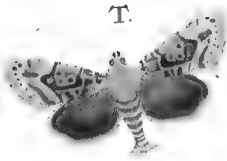
N. Ph. Noct. Perspicillaris. O. Ph. Pyr. Nemoralis.  
 P. 1-3. Ph. Noct. Capficola. Q. Ph. Noct. Celebr.  
 R. Ph. Geom. Aestivaria. S. Ph. Geom. Prasinaria.







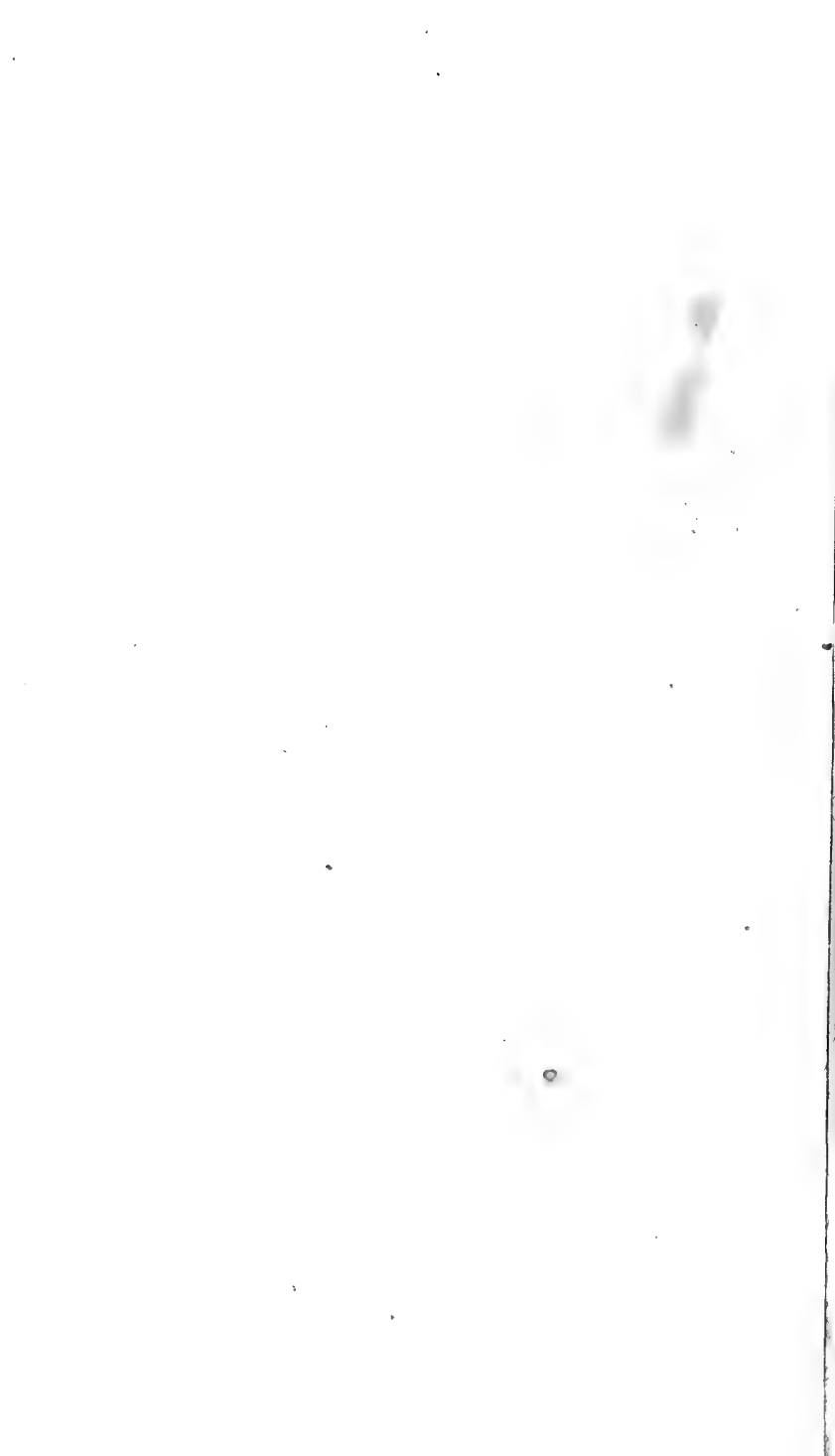




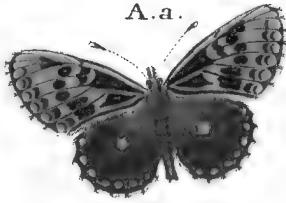
T. Ph. Noct. Diffinis. U. Ph. Geom. Omicronaria.  
 V. Ph. Geom. Fulvata. W. Ph. Noct. Solaris.  
 X. Ph. Geom. Liturata. Y. Ph. Geom. Taminata.  
 Z. Ph. Noct. Conigera.



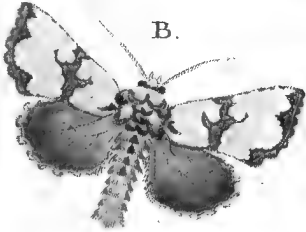




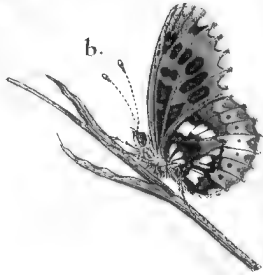
A.a.



B.



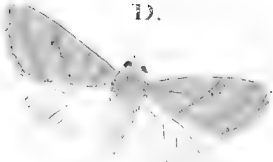
b.



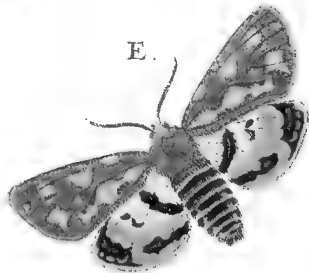
C.



D.



E.

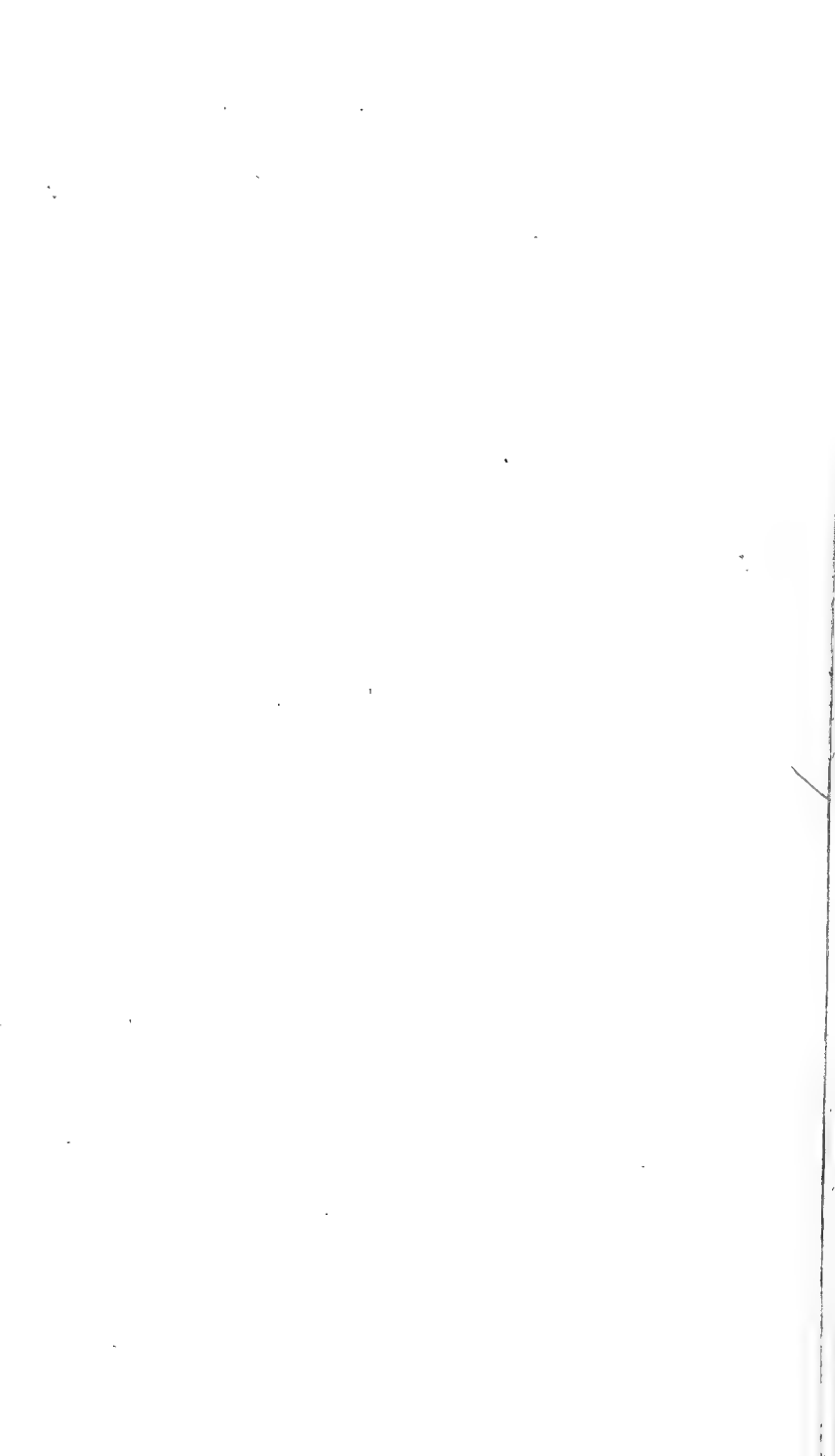


A.a-b. Pap. Arsilache . B. Ph. Noct. Celsia . C. Ph.  
Bomb. Castaneæ . D. Ph. Noct. Ochreago . E. Ph.  
Bomb. Civica .

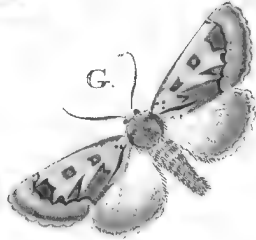
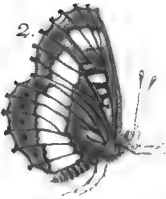








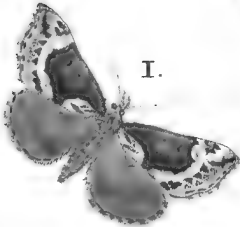
F. J.



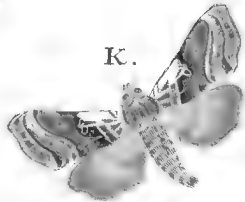
H.



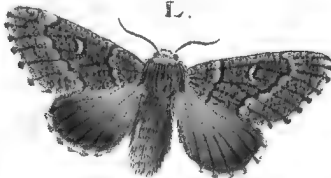
I.



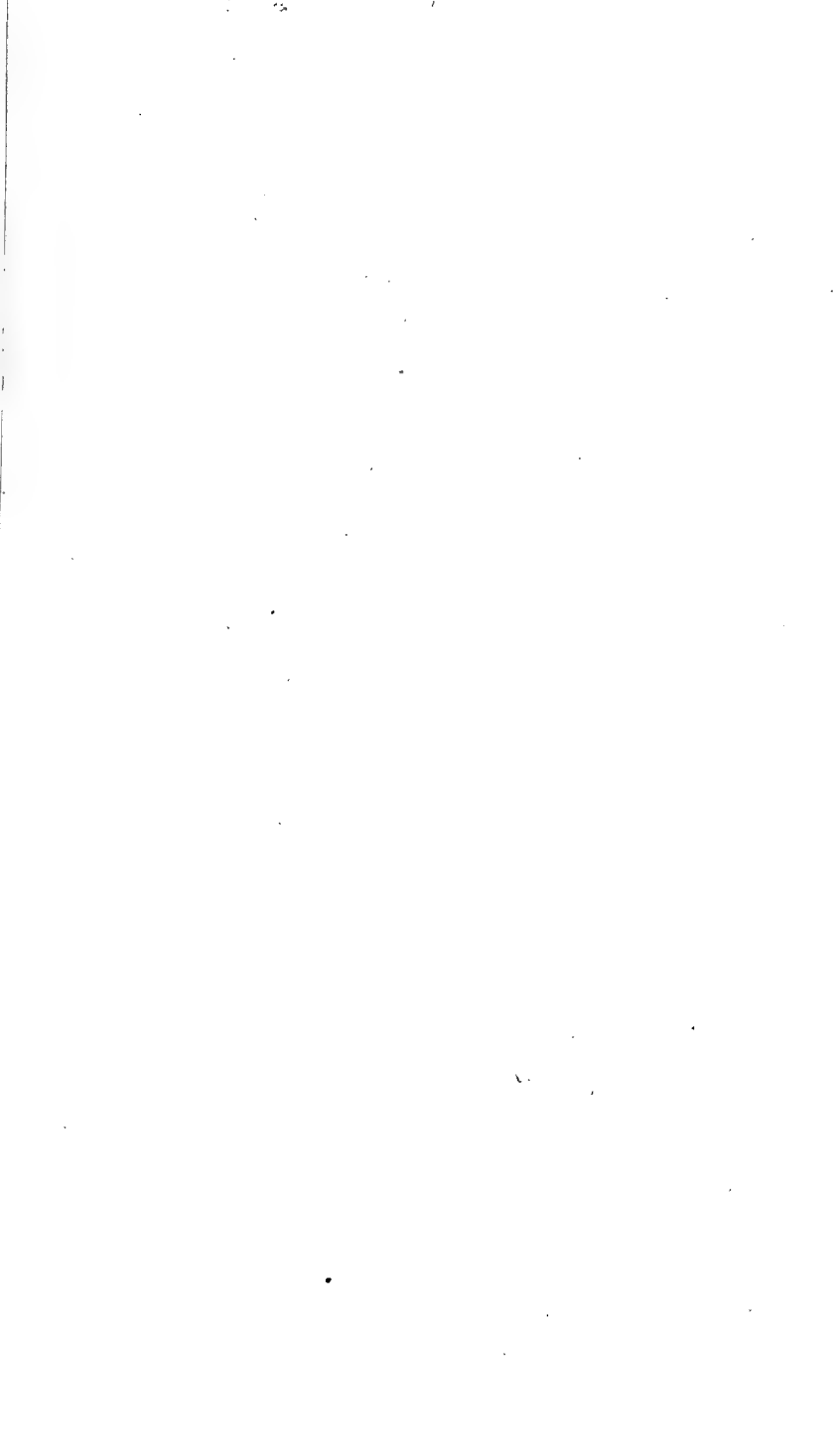
K.



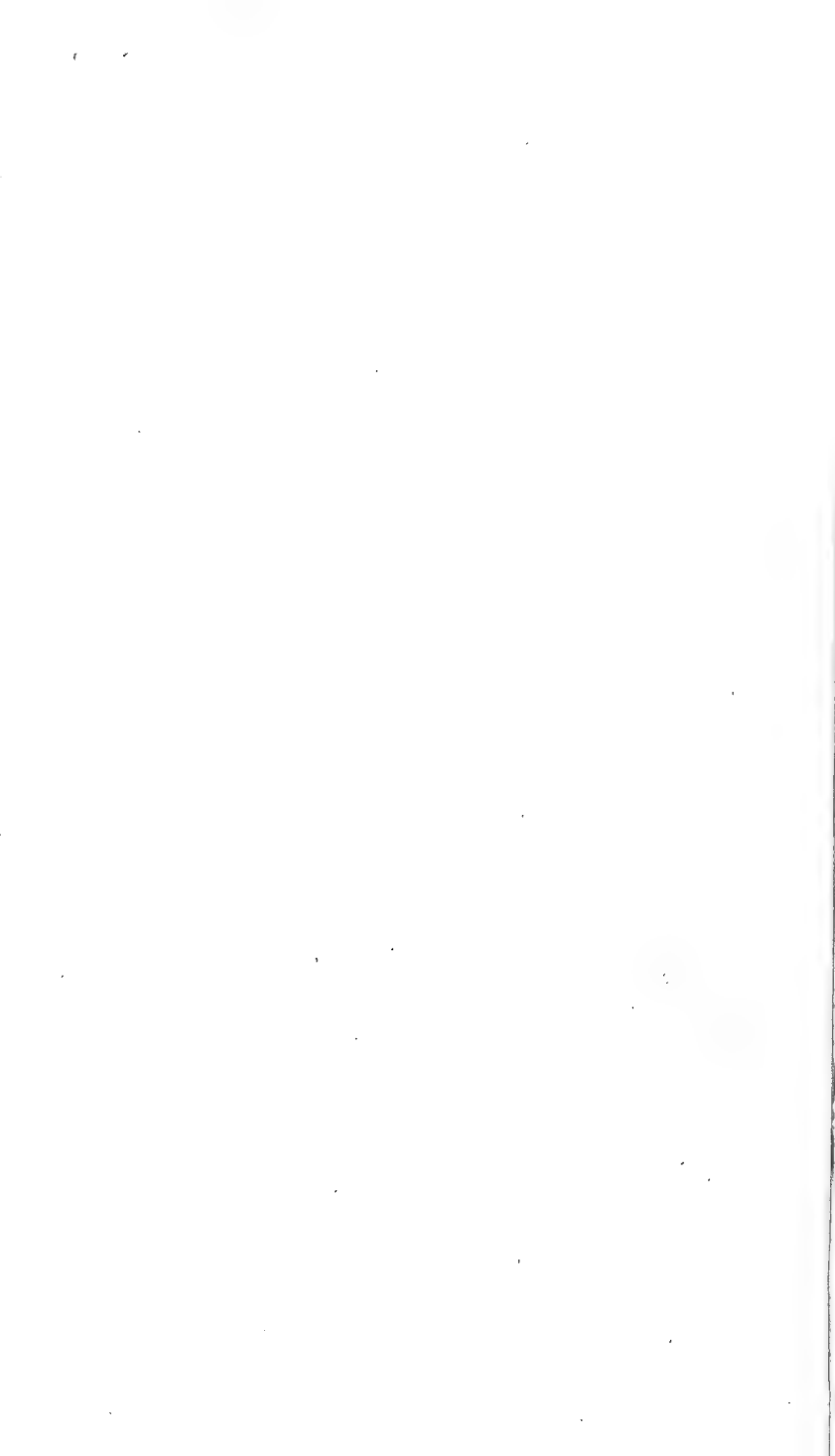
L.

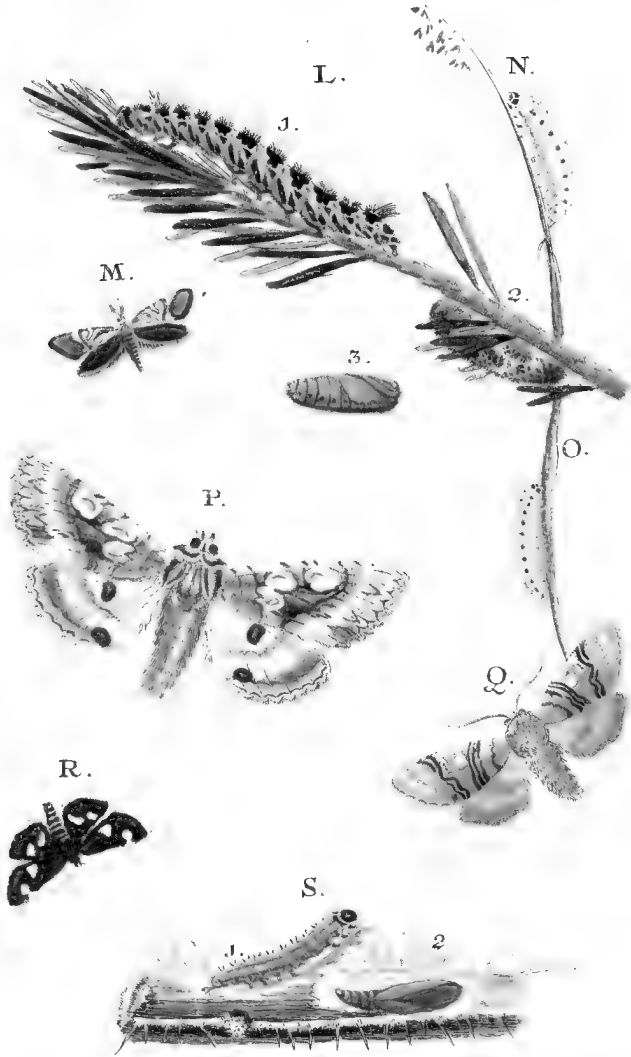


F. J. 2. *Pap. Lucilla*. G. *Ph. Noct. Dentimacula*.  
H. *Ph. Noct. Respensa*. I. *Ph. Pyr. Achatalis*.  
K. *Ph. Noct. Consona*. L. *Ph. Bomb. Lobulina*.

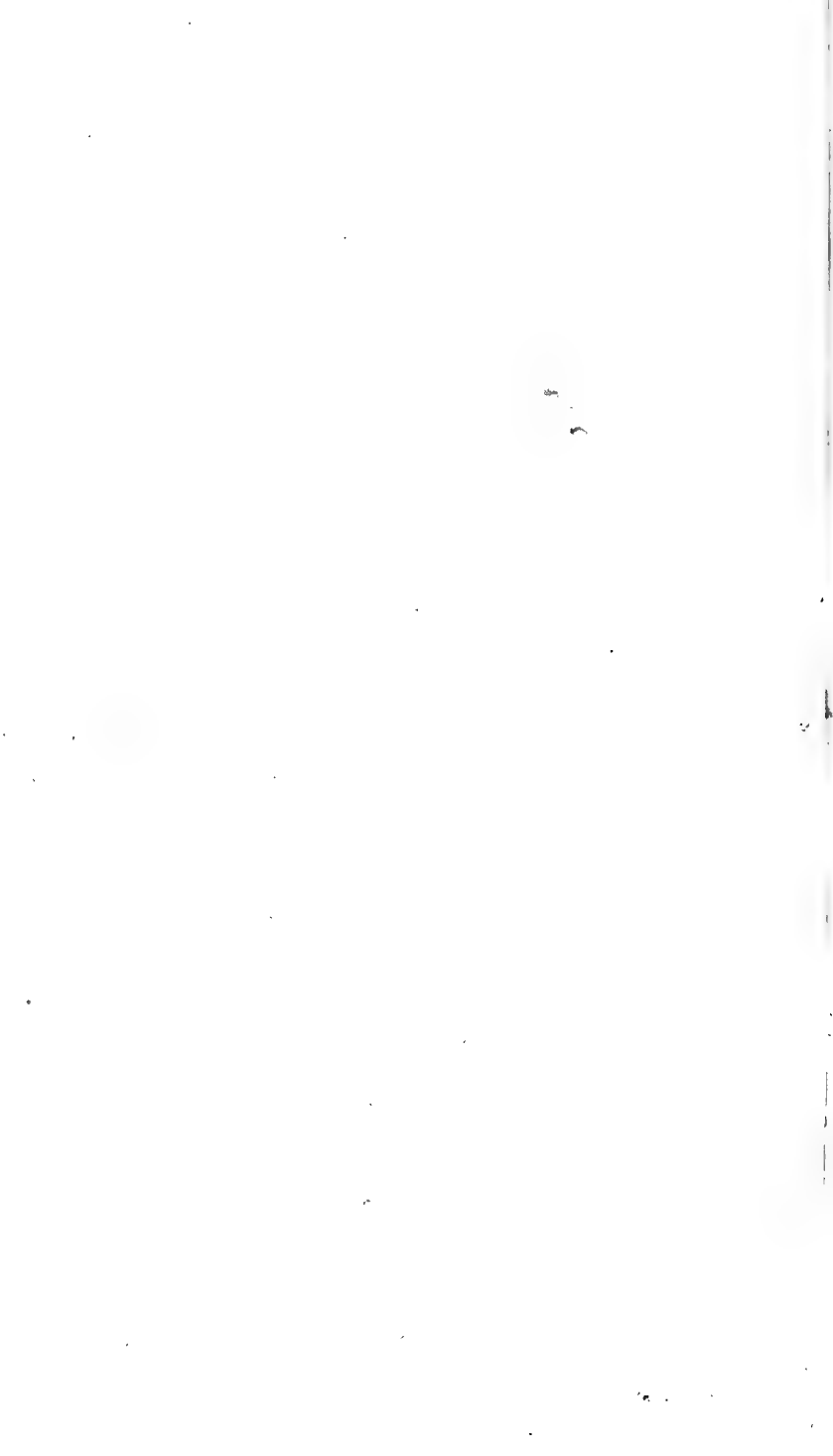








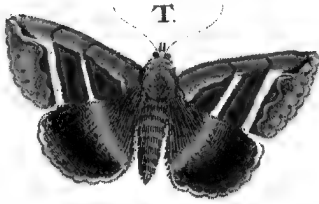
I, 3-3. Larv. Bomb. Lobulinae. M. Ph. Tin. Geoffrella.  
 N. Larv. Sph. Scabiosae. O. Larv. Sph. Minois. P. Ph.  
 Noct. Bimaculosa. Q. Ph. Noct. Flavicornis. R. Ph.  
 Pyr. Pollinalis. S. 3-2. Larv. Tin. Cribrumella.



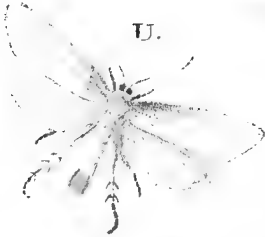








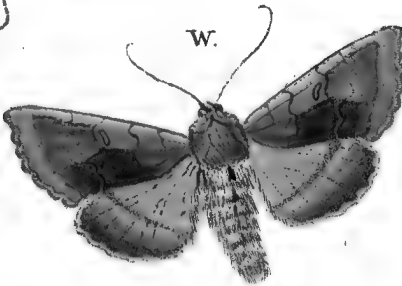
T.



U.



V.



W.



X.

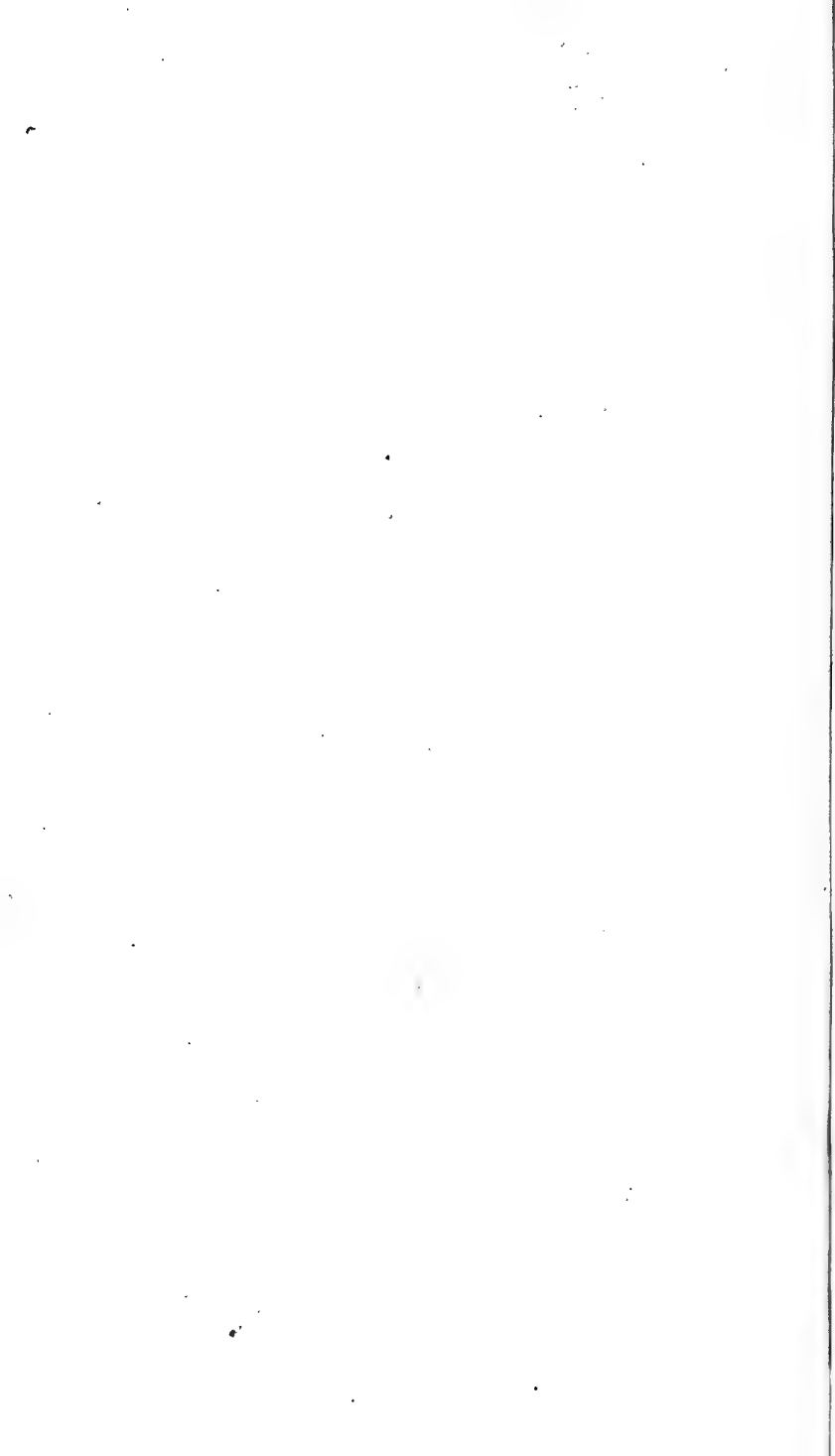


Y.



Z.

T. Ph. Noct. Linearis. U. Ph. Aluc. Latidactyla.  
 V. Ph. Tin. Sericella. W. Ph. Noct. Orichalcea. X. Ph.  
 Bomb. Pantherina. Y. Ph. Bomb. Sericina. Z. Ph.  
 Geom. Cordiaria.



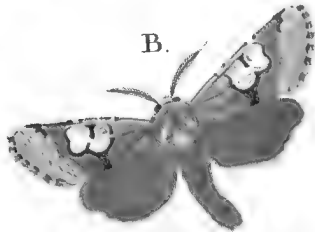




A.



B.



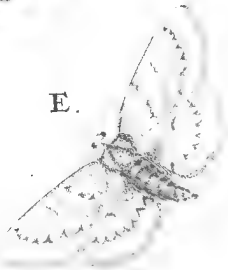
C.



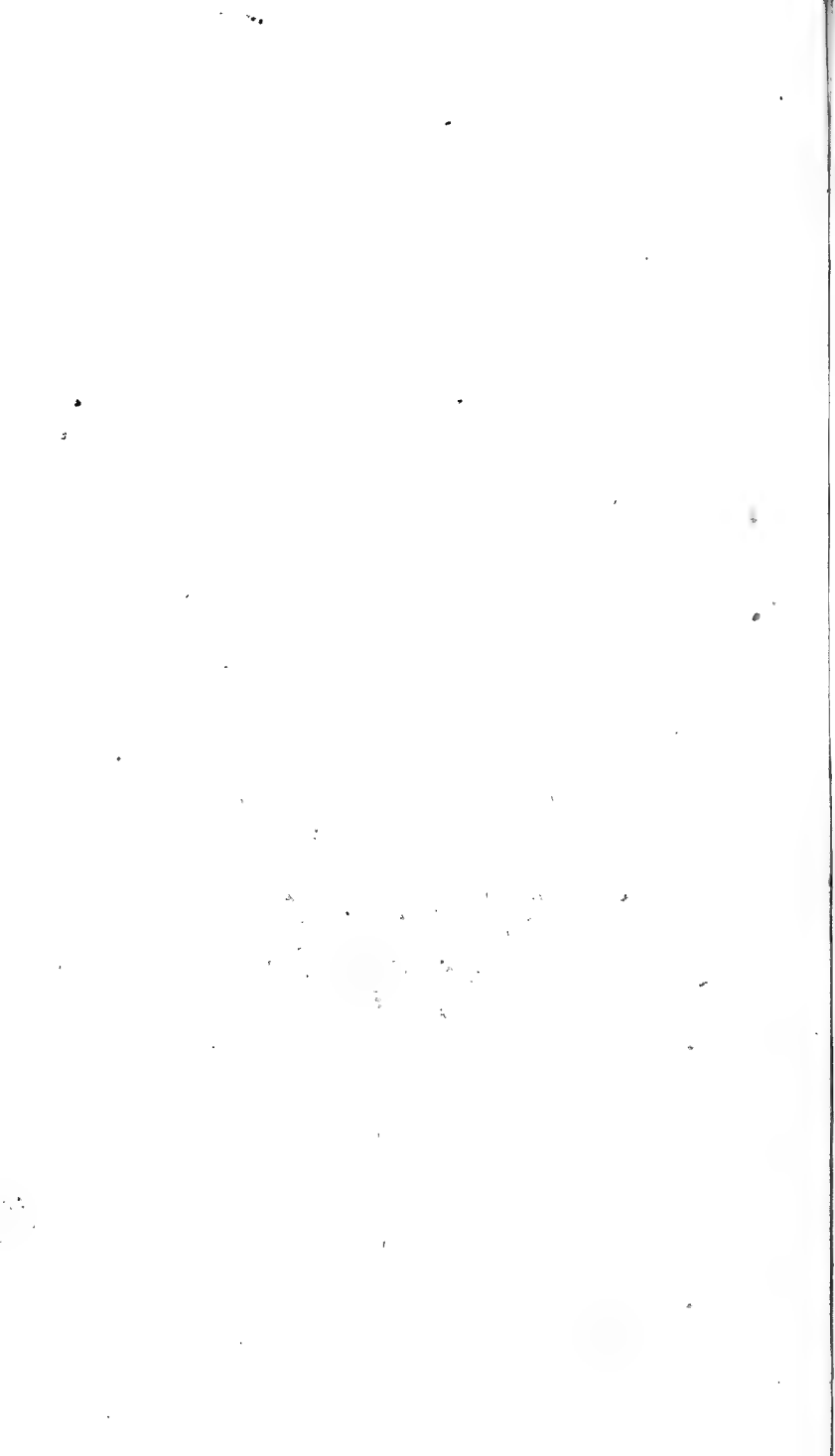
D.



E.

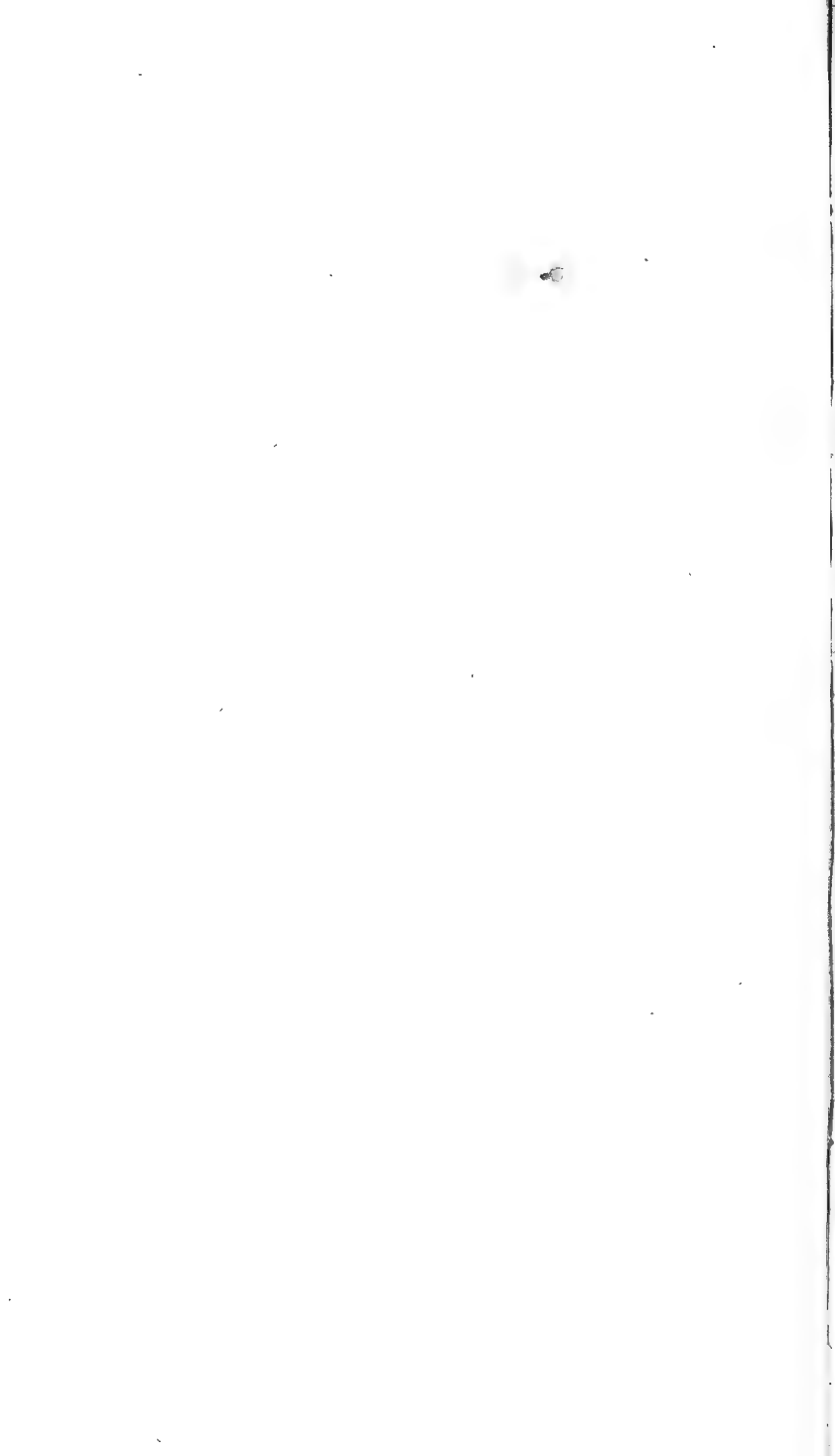


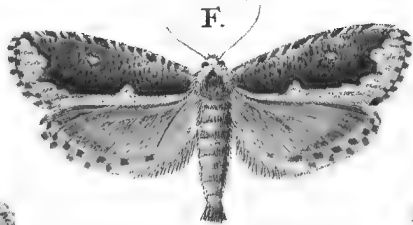
A. *Ph. Noct. Scita*. B. *Ph. Noct. Incinctum*. C. 1-2. *Pap. Thalia*. D. *Ph. Noct. Acetofella*. E. *Ph. Noct. Cuniculina*.



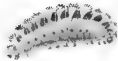




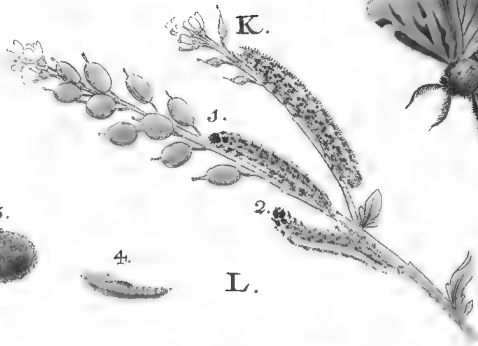




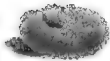
G.



H.



3.

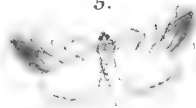


4.



L.

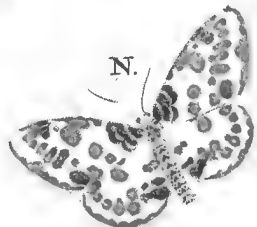
5.



M.



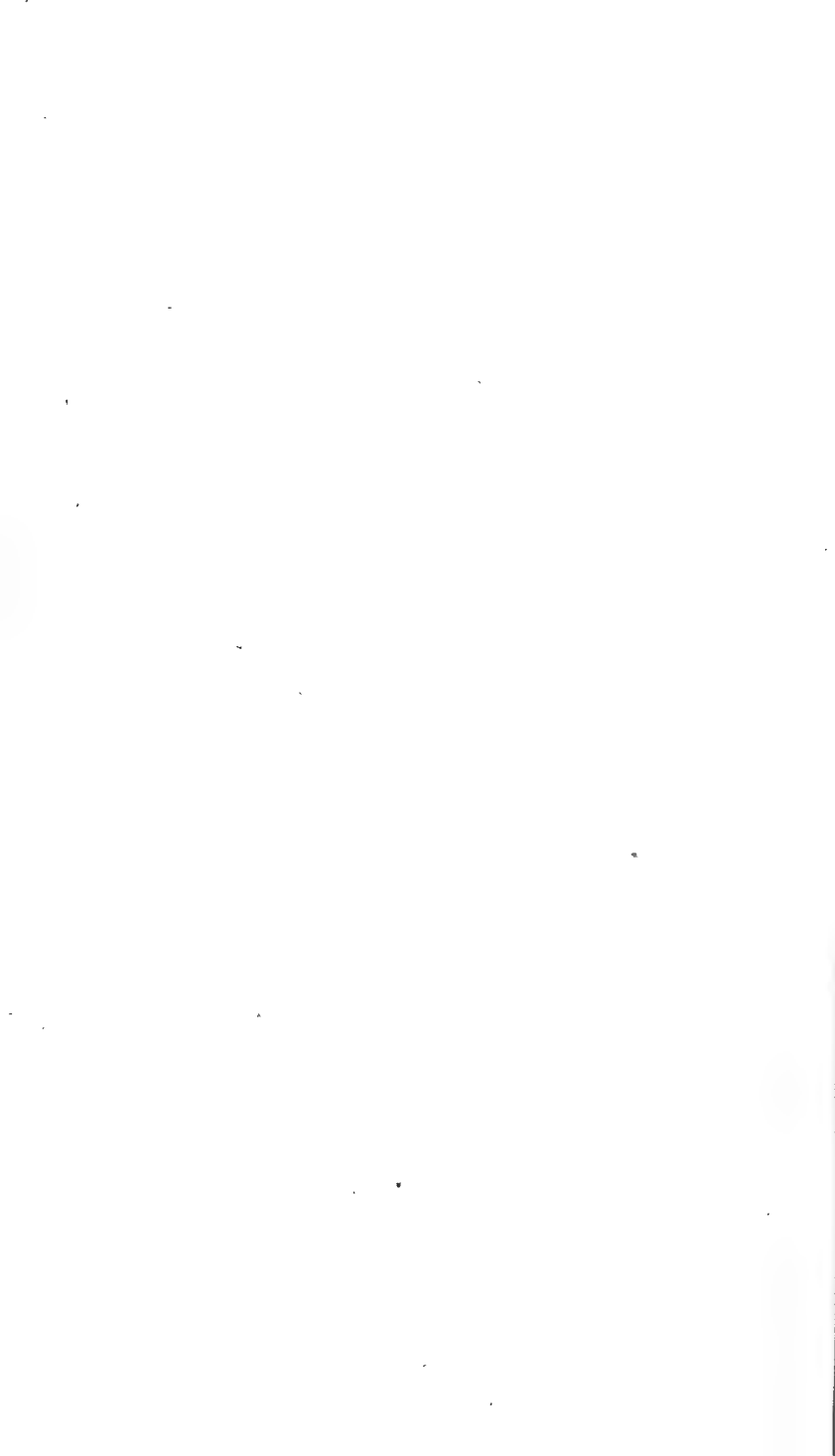
N.



F. Ph. Tin. Gigantella. G. Sph. Loti Larv. H. Sph. Lonicerae Larv. I. Ph. Bomb. Parasita. K. Pap. Daphnice Larv. L. 3-5. Ph. Pyr. Margaritais. M. Ph. Geom. Smaragdaria. N. Ph. Geom. Pantherata.







O.



P.



Q.



R.



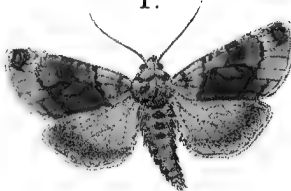
b.



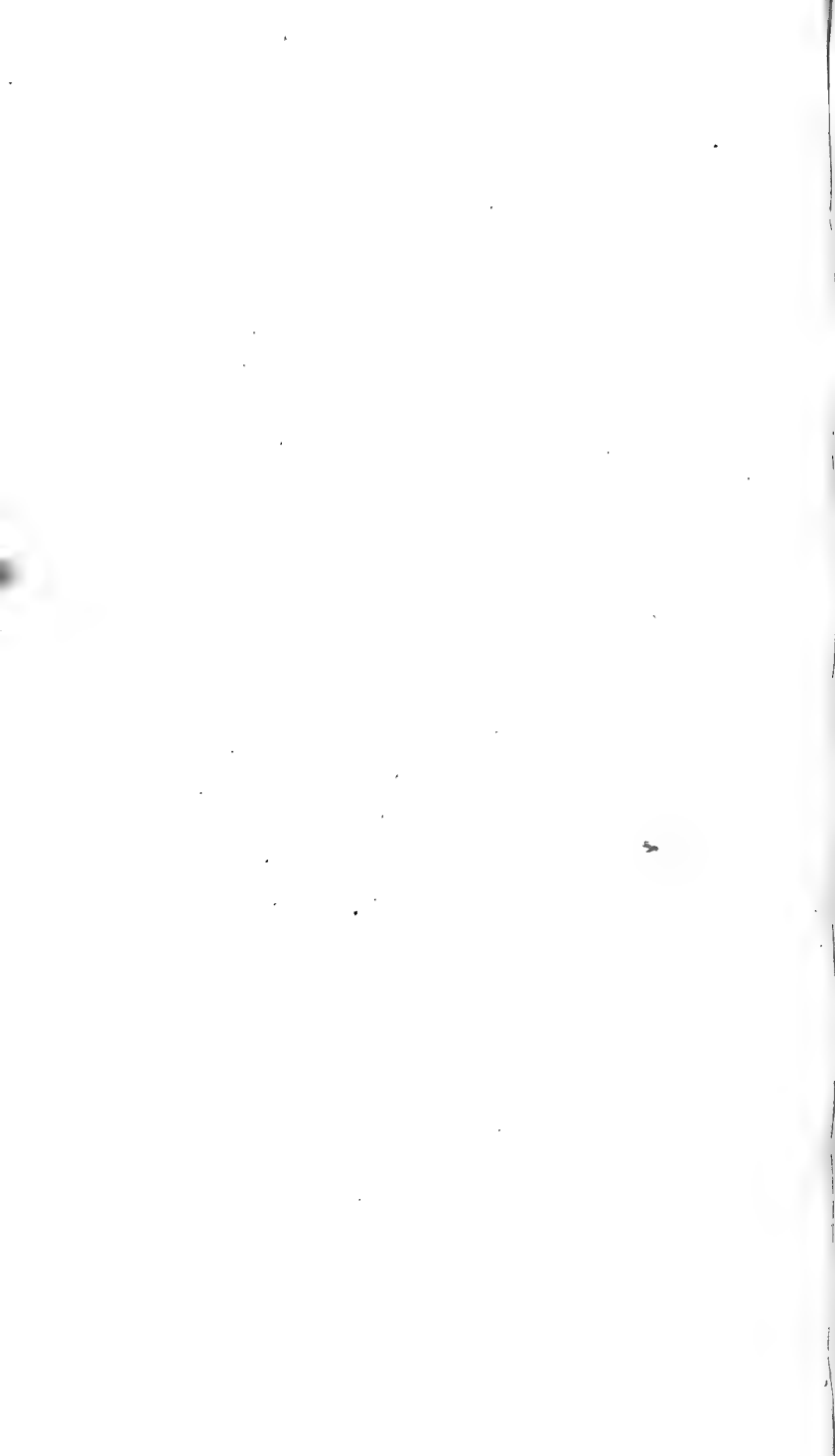
S. a.



T.

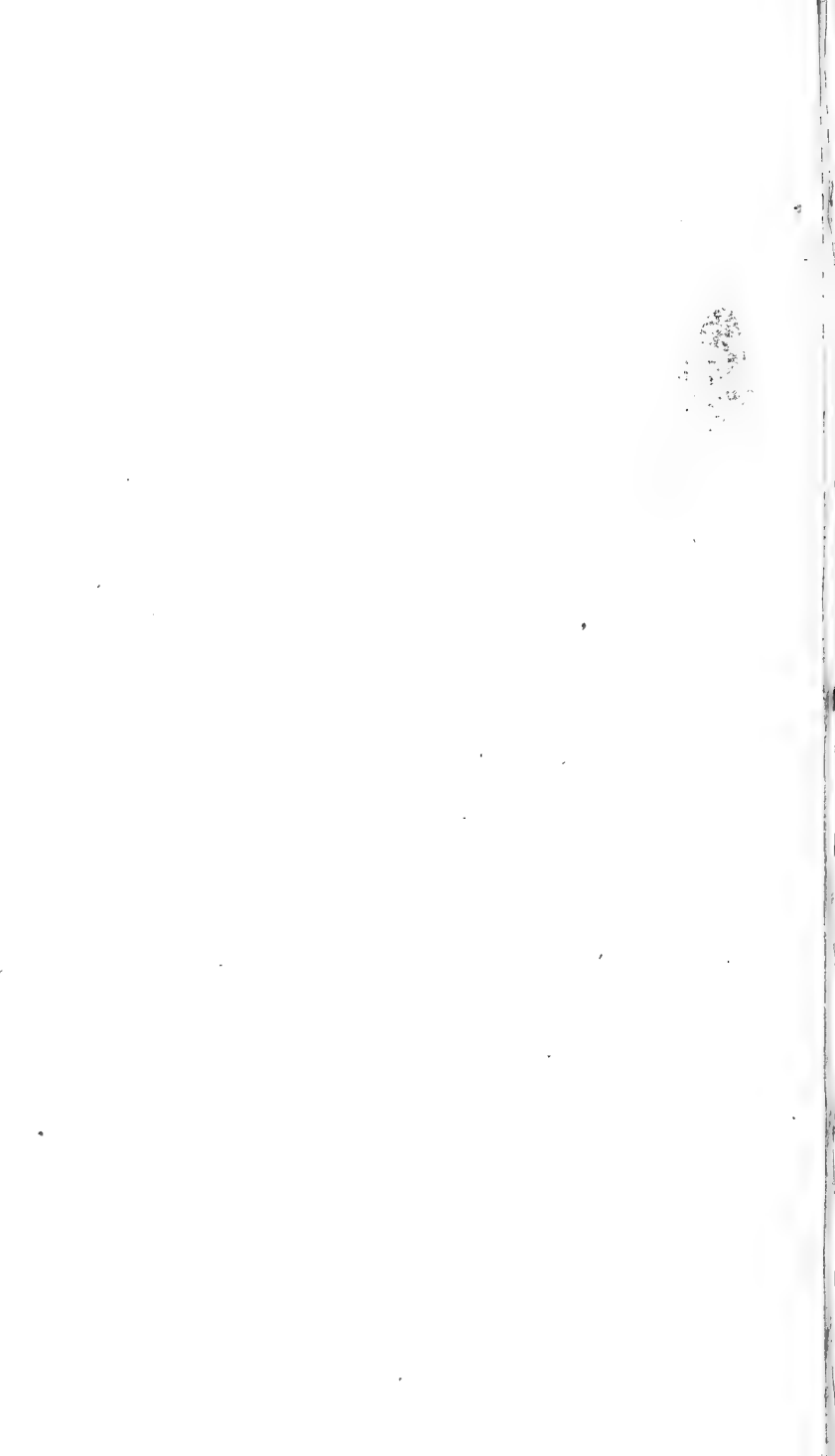


O. Ph. Bomb. Laricis. P. Ph. Geom. Flavicaria.  
Q. Ph. Bomb. Rubea. R. Ph. Noct. Rosea. S. a-b.  
Pap. Corythalia. T. Ph. Noct. Aemula.

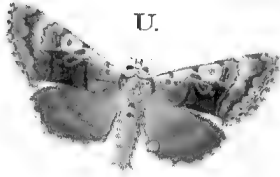




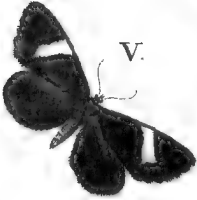




U.



V.



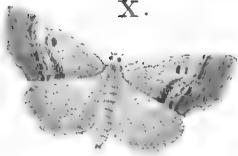
2.



W. 3.



X.



Y.



Z.



U. Ph. Noct. Conscripta . V. Ph. Geom. Dinidiata .  
W. 3. 2. Pap. Athalia . X. Ph. Geom. Festucaria .  
Y. Ph. Noct. Ocellina . Z. Ph. Noct. Unca .



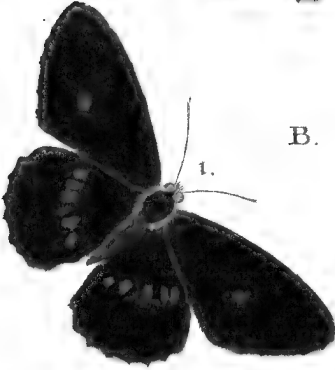




A.



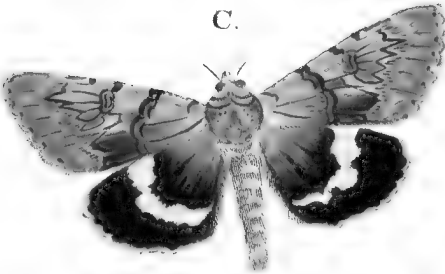
B.



2.



C.



D.



E.



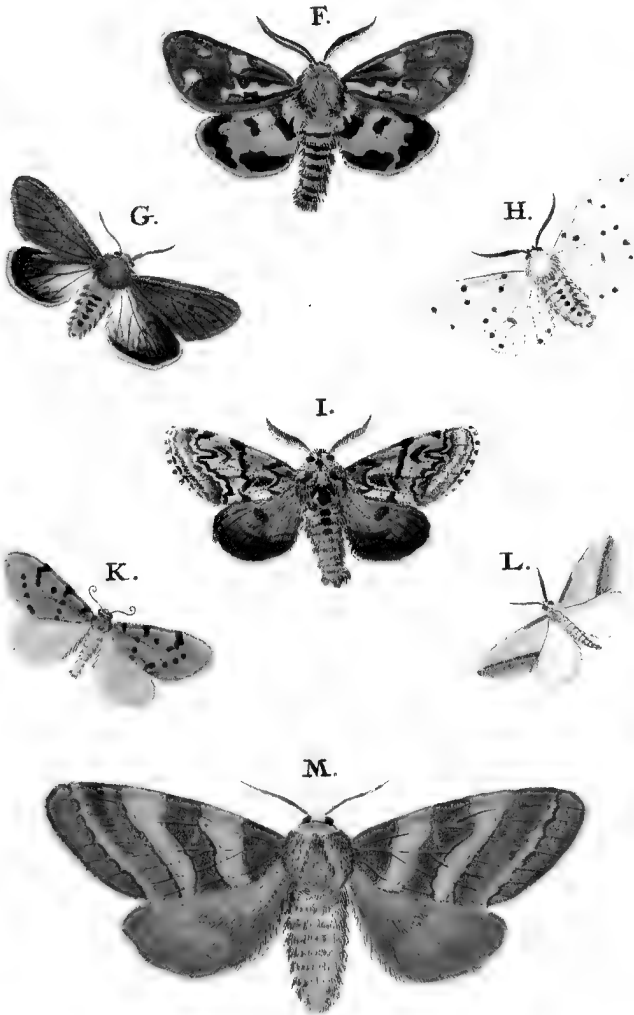
A. Ph. Bomb. Selenitica. B. 1-2. Pap. Sibylla.  
C. Ph. Noct. Uxor. D. Ph. Noct. Fulvago. E. Ph.  
Noct. Diluta.



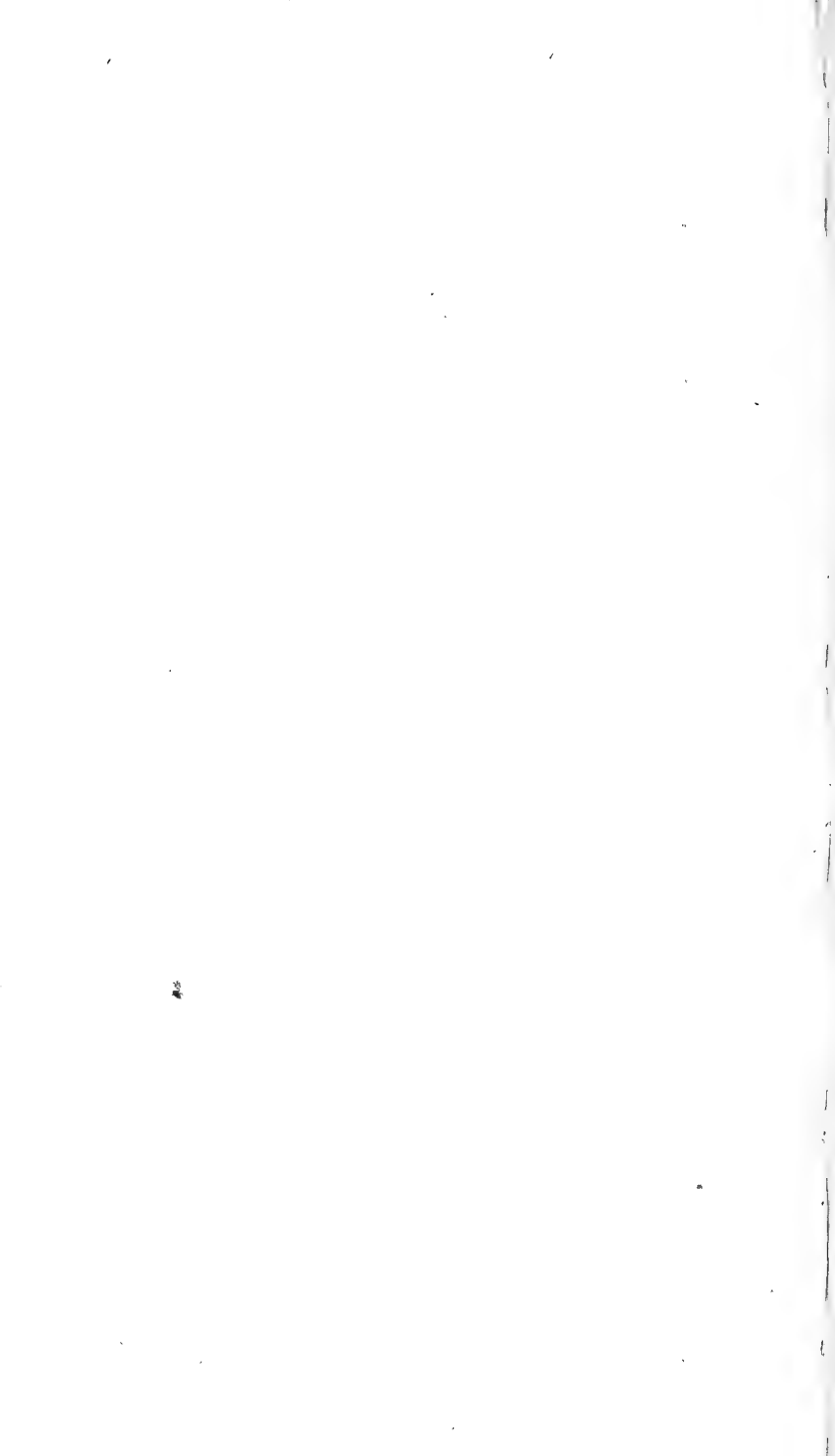




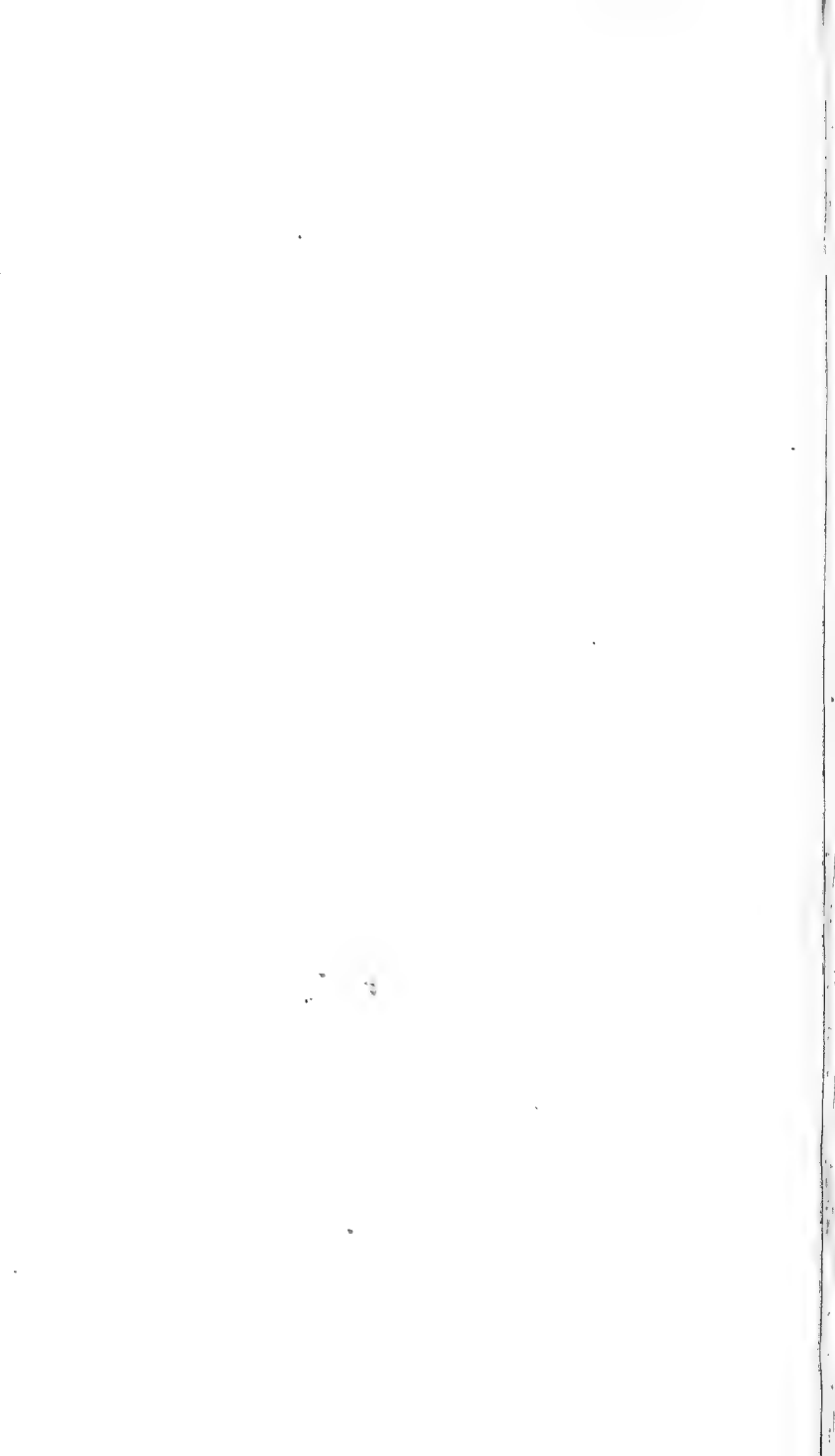




F. Ph. Bomb. Civica . G. Ph. Bomb. Fuliginosa .  
 H. Ph. Bomb. Rustica . I. Ph. Bomb. Abietis .  
 K. Ph. Bomb. Murina . L. Ph. Geom. Saccharia .  
 M. Ph. Bomb. Laricis .







II. Band.

III. Theil.

III. Tafel.

N.



O.

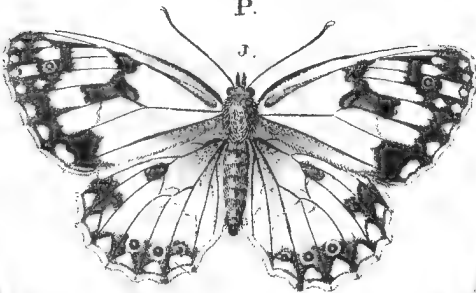


2.



P.

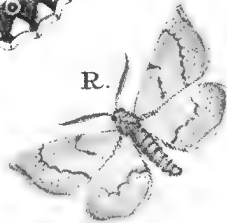
J.



Q.



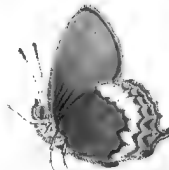
R.



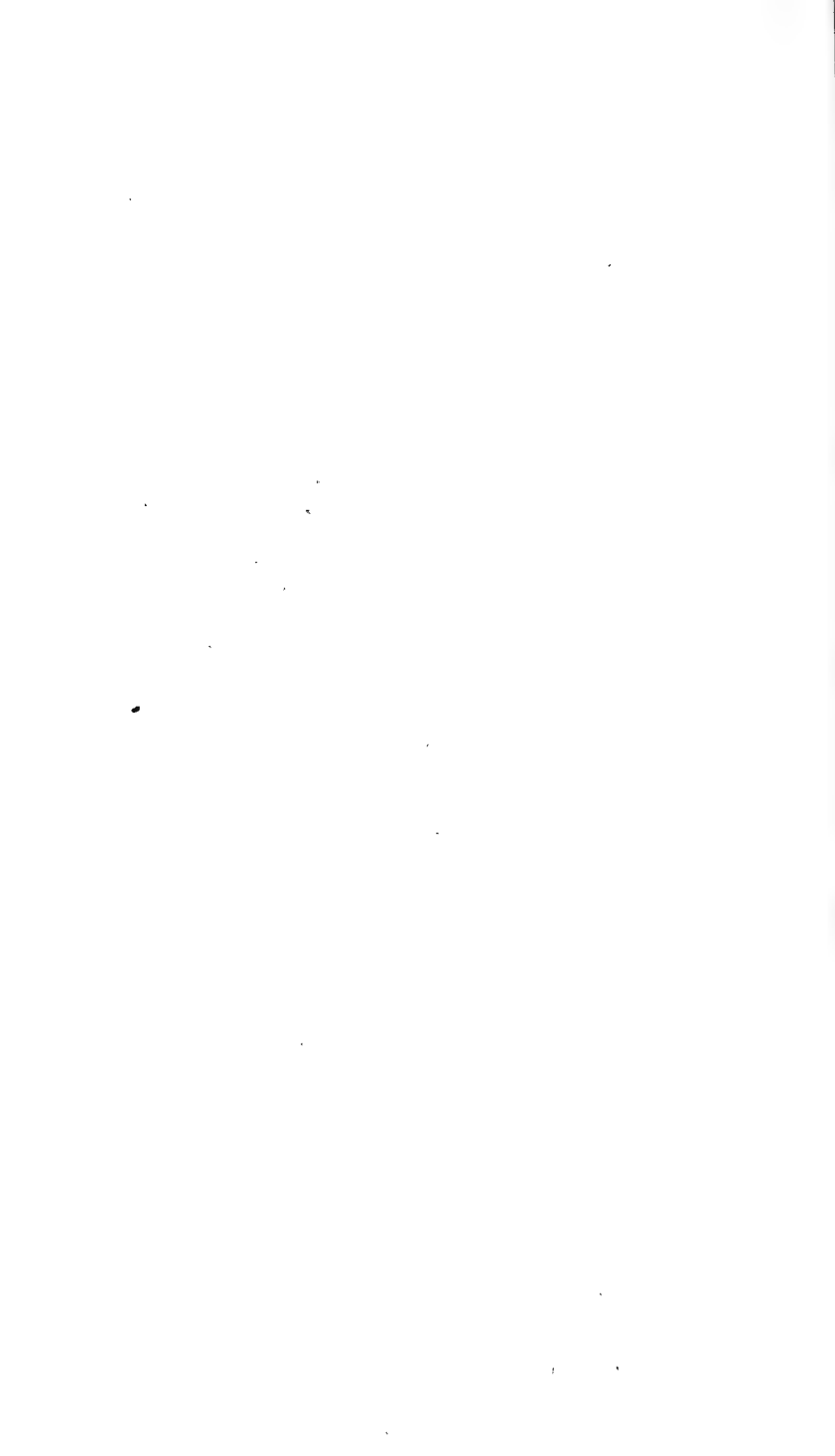
S.



T.

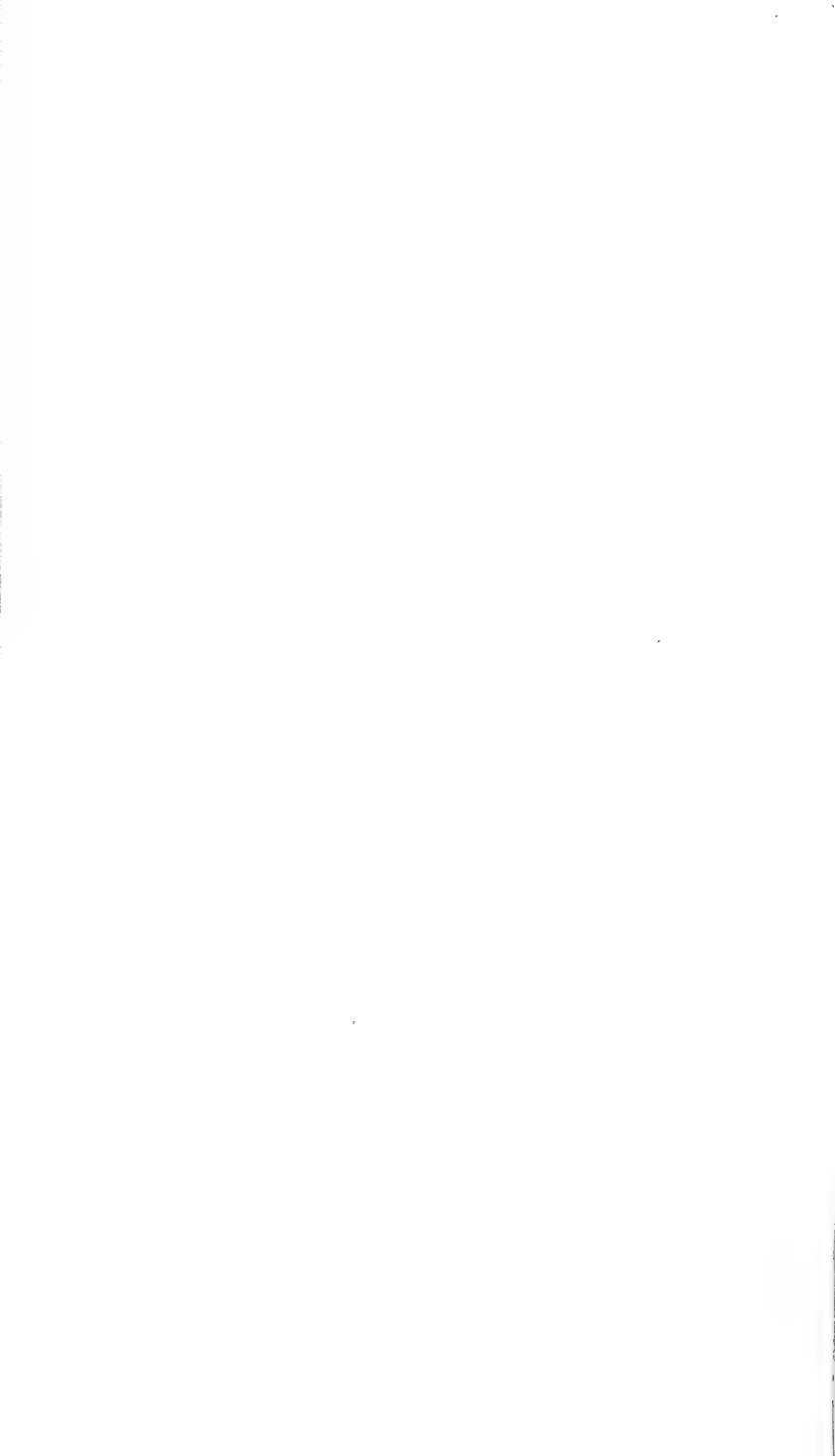


N. Ph. Geom. Moniliata. O. Sph. Lavandulae. P. J. 2.  
Pap. Lachesis. Q. Ph. Geom. Avenaria. R. Ph. Geom.  
Asperjaria. S. Pap. Cumedon. T. Pap. Pruni.

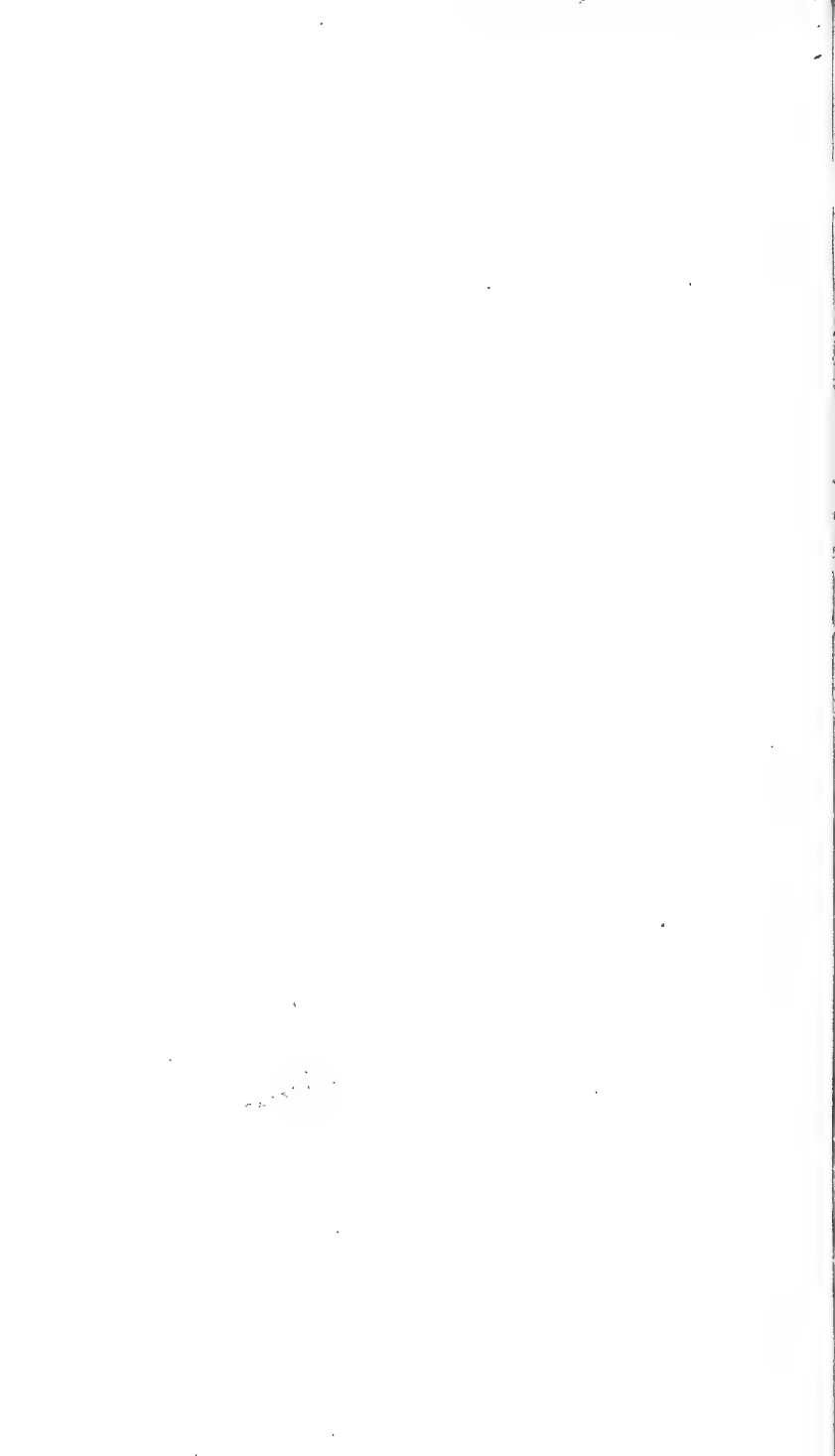


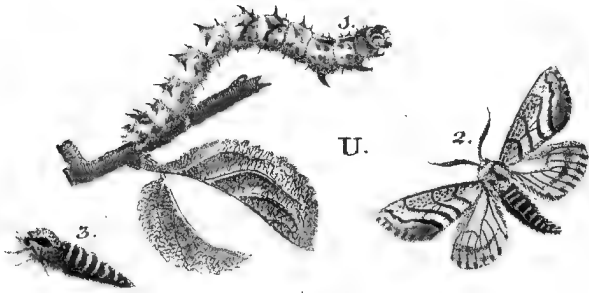




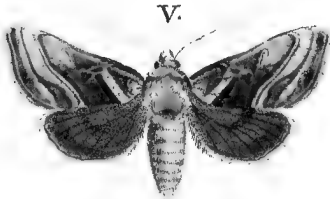


129





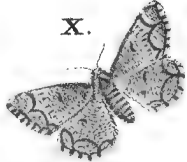
U.



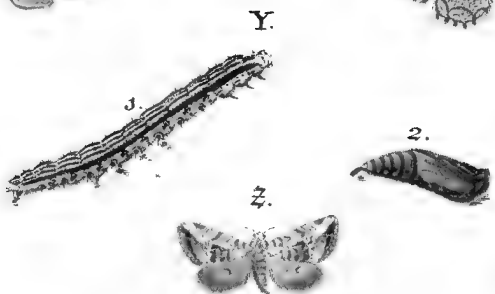
V.



W.



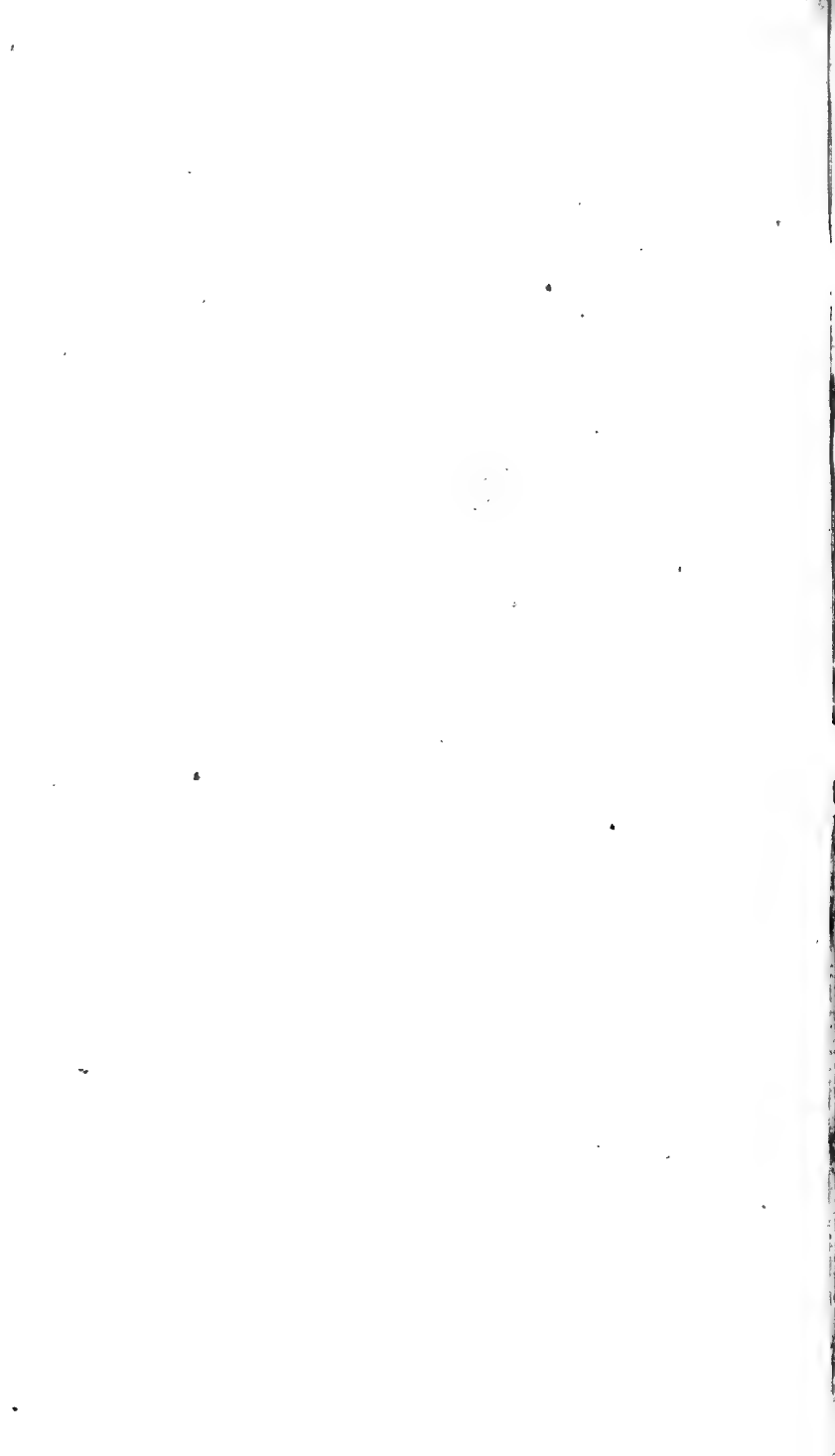
X.



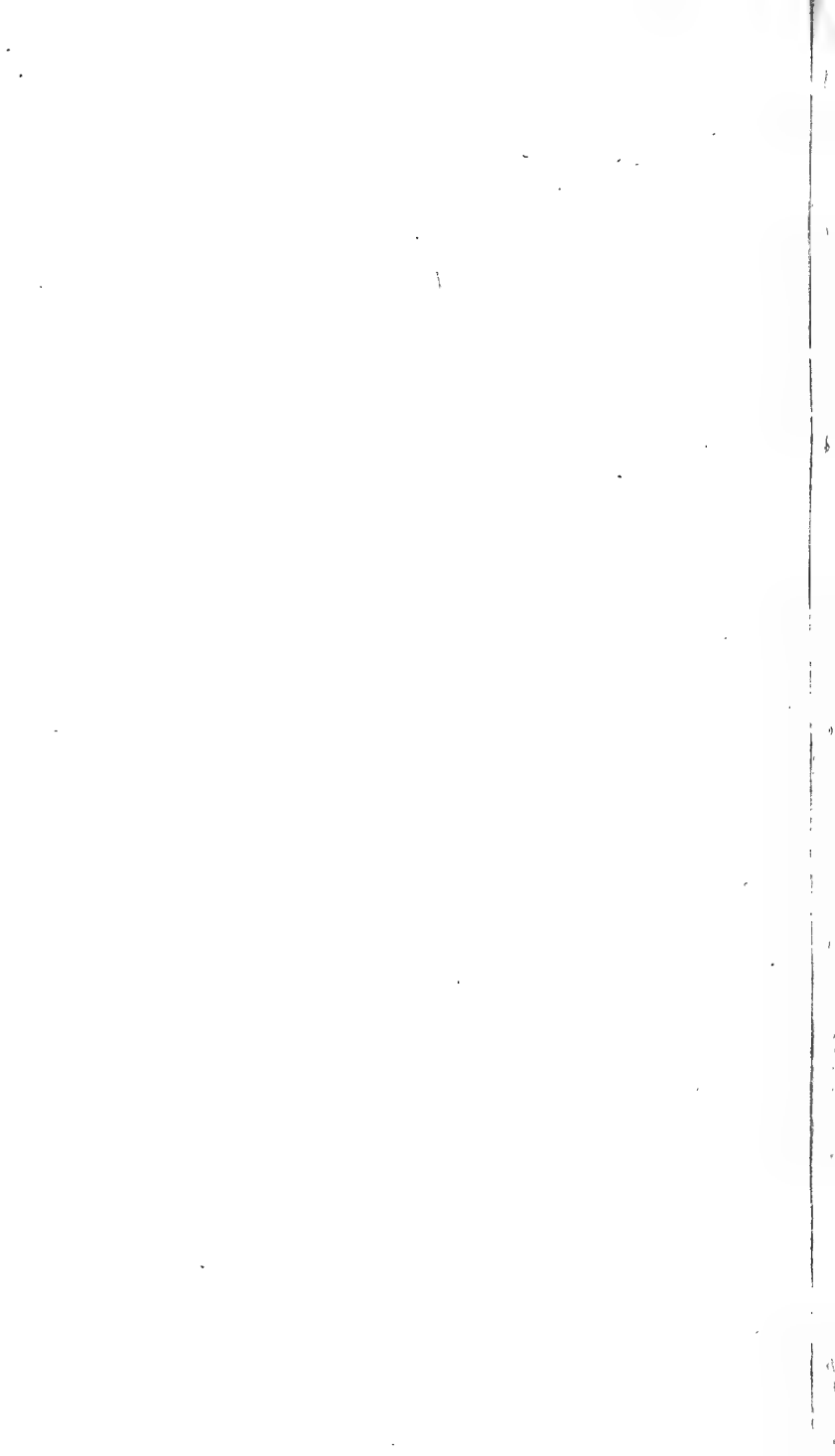
Y.

Z.

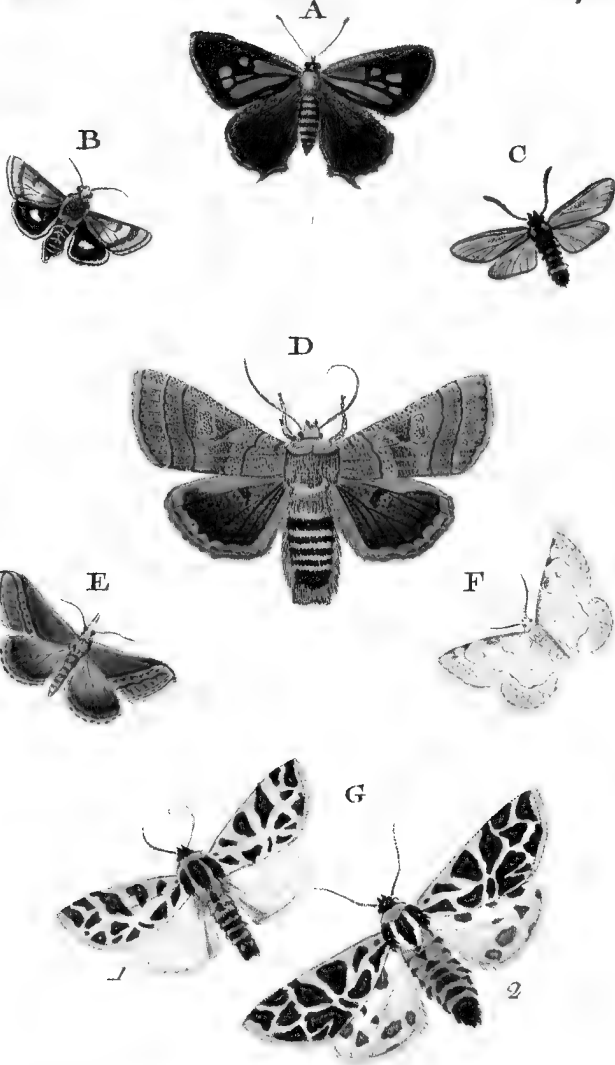
U. 1. 2. 3. Ph. Geom. Pomonaria. V. Ph. Noct. Chalyptis.  
 W. Ph. Geom. Dilectaria. X. Ph. Geom. Cararia. Y. 1. 2.  
 Larv. Ph. Noct. Scutofa. Z. Ph. Noct. Venustula.





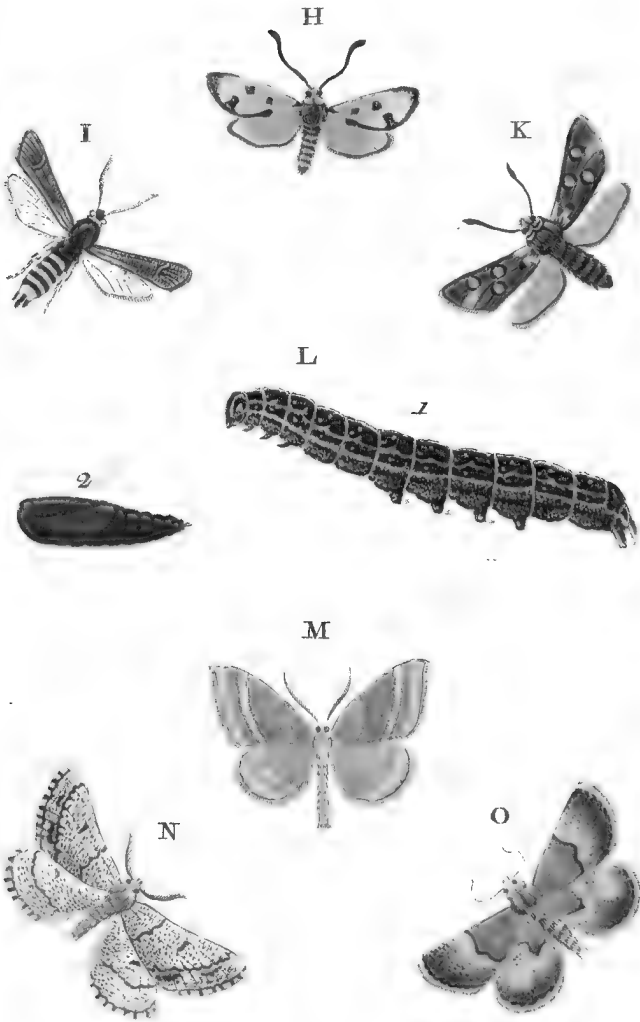




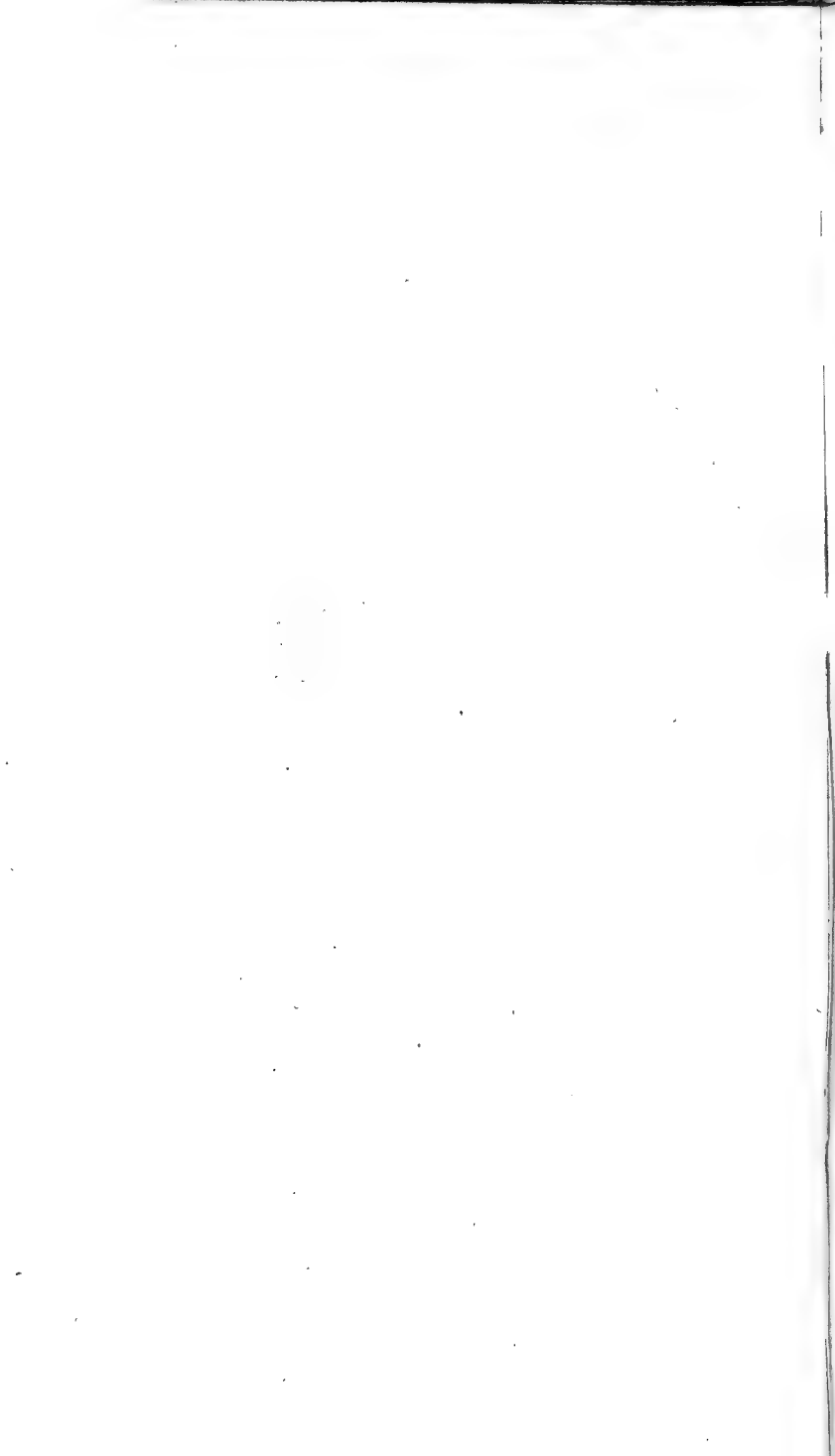


A. *Pap. Quercus*. B. *Ph. Noct. Cardui*. C. *Sph. Carpedon*. D. *Ph. Noct. Orbona*. E. *Ph. Pyr. lividalis*. F. *Ph. Geom. Pematataria*. G. 1. 2. *Ph. Bomb. Pudica*.

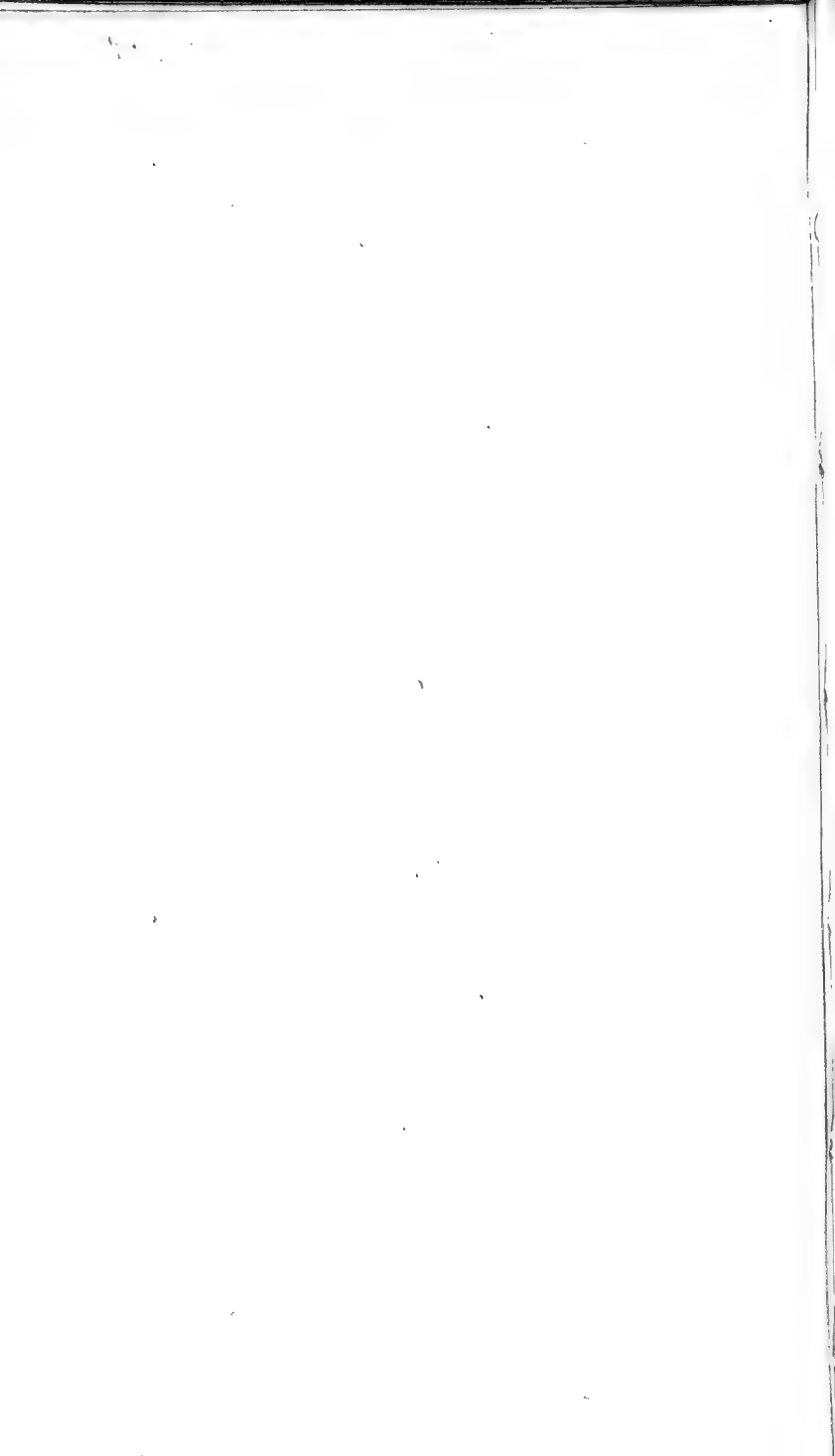




H. *Sph. Lactu.* I. *Sph. Rhingiaeformis.* K. *Sph. Rhudamanthus.* L. 1. 2. *Larva Ph. Noct. Occultae.* M. *Ph. Geom. Calabrarum.* N. *Ph. Geom. Belgica.* O. *Ph. Noct. Arcuina.*







II. Band.

IV. Theil.

III. Tafel.

P.



2.

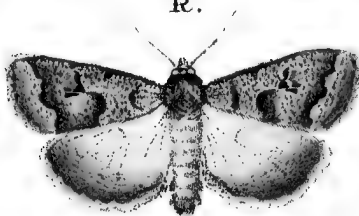


1.



Q.

R.



S.



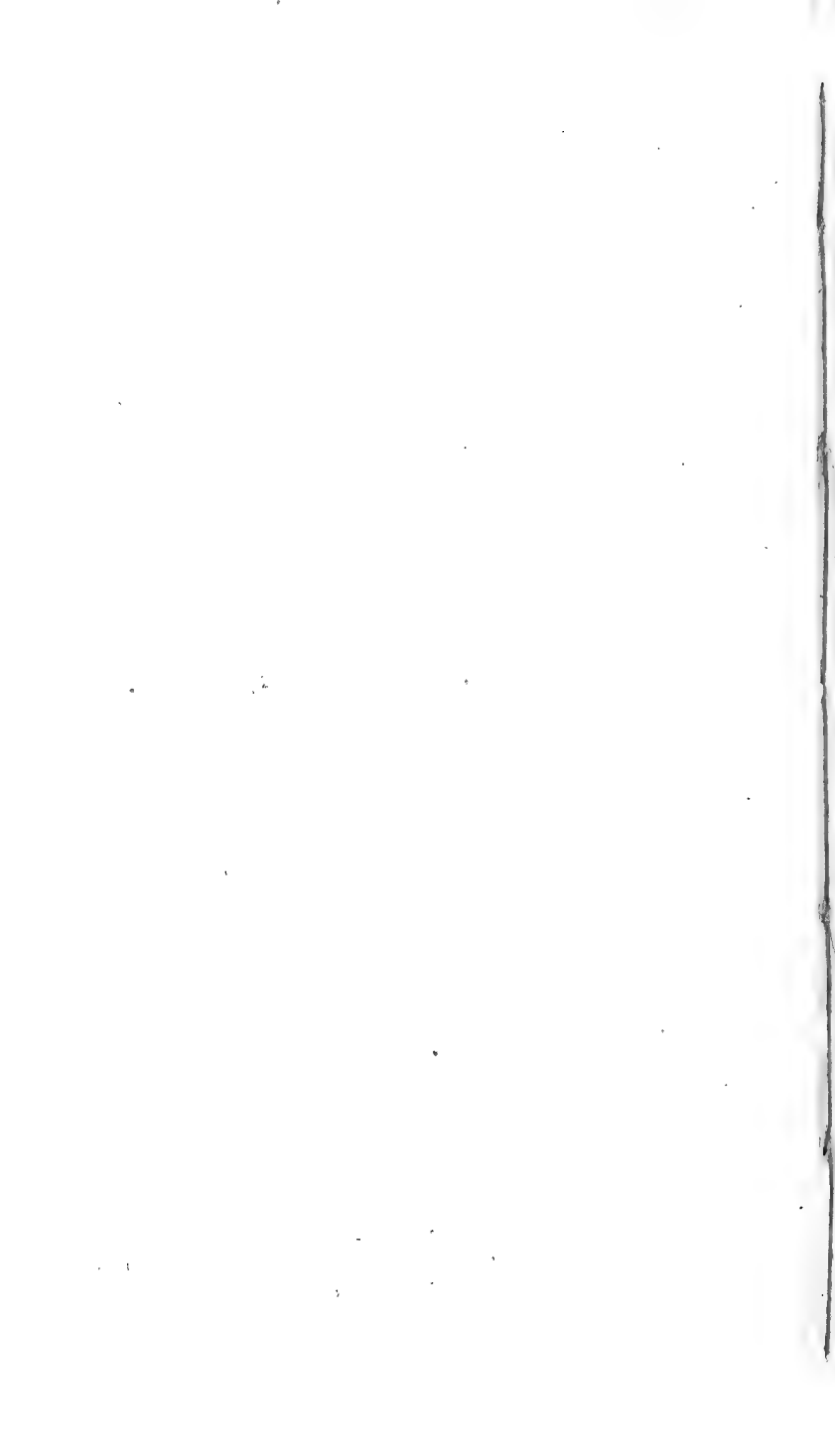
T.



U.

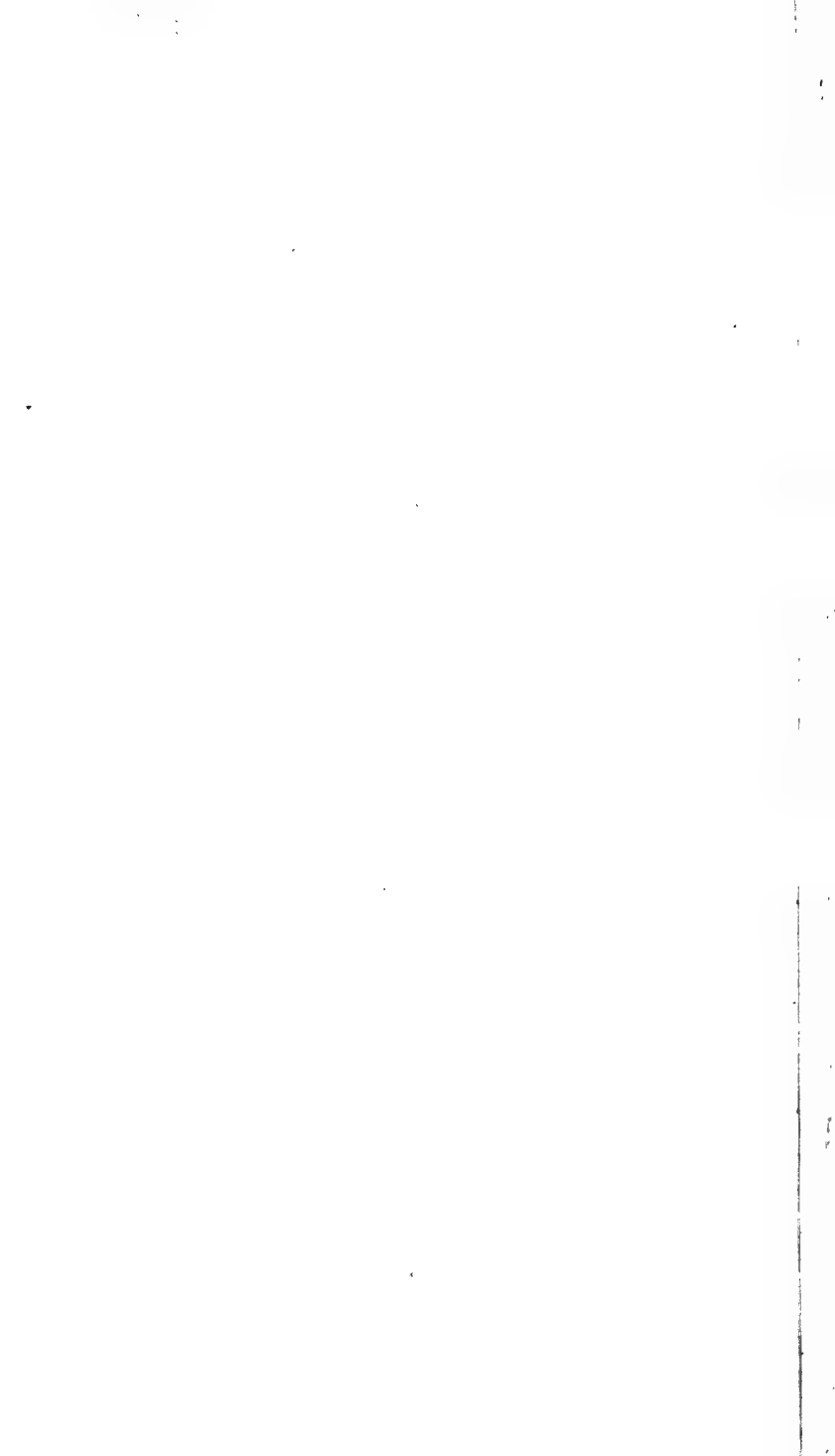


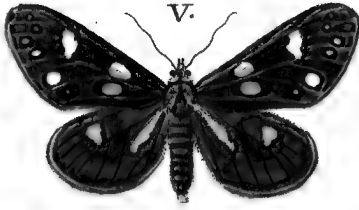
P. *Sph. Stomoxiformis*. Q. 1. 2. *Ph. Geom. Paralellaria*.  
R. *Ph. Noct. Ludicra*. S. *Ph. Bomb. Detrita*. T. *Ph.*  
*Geom. Luctuata*. U. *Ph. Geom. Insigniata*.



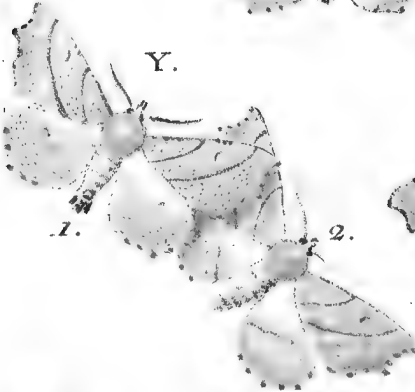
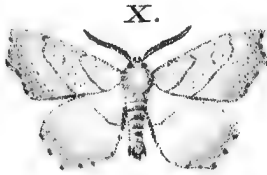








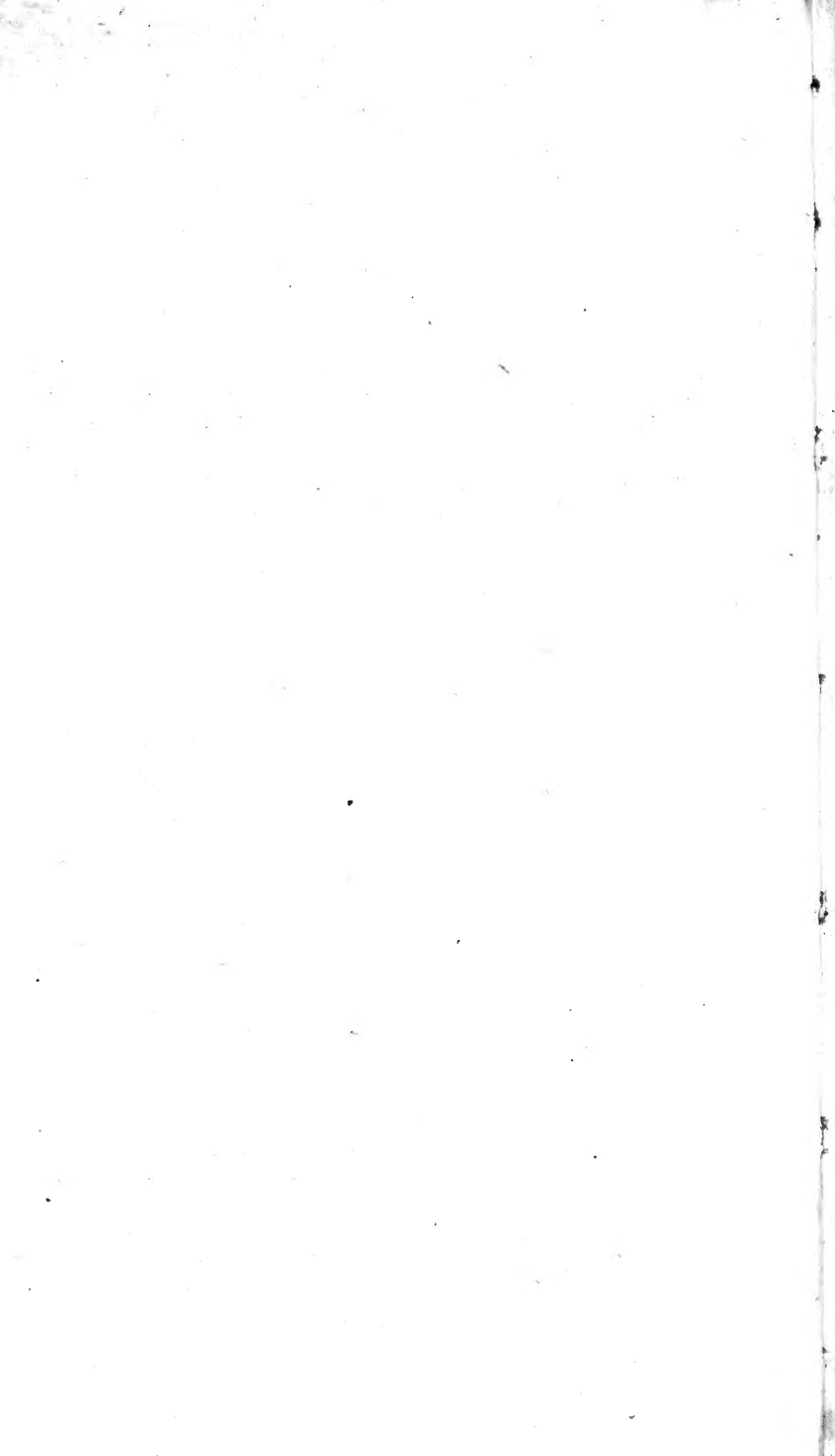
W.



V. Ph. Bomb. Persona. W. 1. 2. Ph. Geom. Angularia.  
 X. Ph. Geom. Filiaria. Y. 1. 2. Ph. Geom. Canaria.  
 Z. Ph. Geom. Crofaria.







7054

