

Historic, archived document

Do not assume content reflects current scientific knowledge, policies, or practices.

62,95
Vegetable Seed Trials

Bolignano's

Bulbs - Plants - Seeds *for* Fall Planting

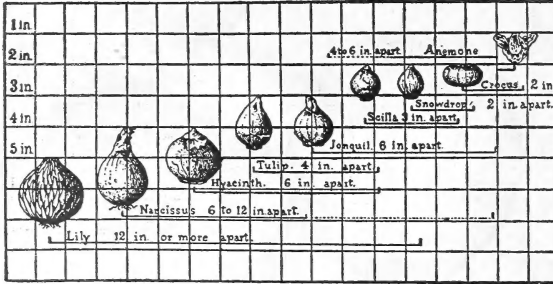
1931

LIBRARY
JUL 12 1931
Department of Agriculture

EASTER
1932
COMES
MARCH 27

F. W. Bolignano & Co.
607 E Street Northwest
Washington, D. C.

BOLGIANO'S FALL BULBS



HOW TO PLANT

OUTDOOR CULTURE—Plant the bulbs as soon after September as possible to enable the roots to make good growth before the cold weather sets in. They can, however, be planted from September until the ground becomes frozen. They require a moderately rich soil, or else apply Loma, Sheep Manure or Bone Meal. How far apart and how deep to plant the different bulbs is shown in the accompanying chart. When the ground freezes cover with 3 or 4 inches of leaves or dry litter. Rake off after frost.

INDOOR CULTURE—Plant hyacinths, tulips and narcissus in a sandy soil. Give a good soaking after planting and water once or twice a week during the time the bulb makes root. After planting keep in a dark place in the house and keep a paper bag over the pot until the sprout is about three inches long. They may then be brought to the light and bag removed.

GROWING PAPER WHITE NARCISSUS IN WATER—Place a dozen bulbs in a shallow bowl, cover with small stones and keep filled with water. Place a few small pieces of charcoal in the bottom of the bowl to keep the water from fouling. Keep in a moderately temperate room. They require no care, no attention. They keep on growing and produce a beautiful flowering plant in about six weeks.

HOW TO ORDER

NAME AND ADDRESS should be written plainly both on the Order Blank and on the envelope enclosing the order. Names of seeds and bulbs should be written out in full in plain writing.

OUR TERMS are always cash with order. **MONEY** can be sent at our risk by Post Office or Express Money Order, New York or Chicago Draft, or by registered letter. We cannot hold ourselves responsible for cash sent loose in letters.

POSTAGE AND EXPRESS CHARGES.—**ALL BULBS** will be sent by Mail, charges prepaid, when ordered at single or dozen rates. At 100 rates and over add 5 per cent to the cost of the bulbs to cover carrying charges. Packets, Ounces, Quarter-Pounds or Pounds, ordered at list prices, will be sent **FREE** by mail or express. This **DOES NOT APPLY** to Beans, Corn, Peas, Field and Grass Seeds and Seed Potatoes, which will be sent at regular Parcel Post or Express Rates. Orders for greater than one pound lots will also be delivered at regular parcel post or express rates.

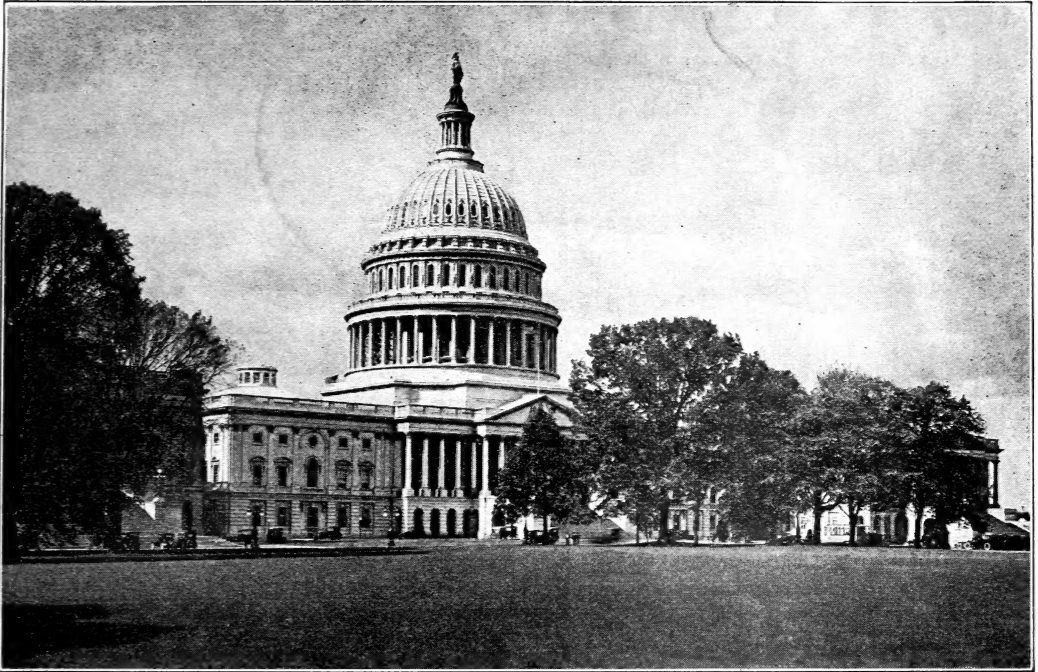
GIVE FULL DIRECTIONS always, whether shipment is made by freight, express or Parcel Post.

EXPRESS OR FREIGHT shipments should have the name of the station plainly given where different from the post office.

WE GUARANTEE our seeds and bulbs to reach our customer in good condition. We give no warranty, expressed or implied, as to description, purity or productiveness, or any other matter of any seeds, plants or bulbs we send out, and will not be in any way responsible for the crop. If purchaser does not accept the goods on these terms they are to be returned at once, and the money that has been paid for same will be refunded.

Capitol Park Lawn Grass Seed

Never Fails to Give Satisfaction



Remember! Fall, Not Spring, Is the Best Time to Seed Your Lawn
Seed from August 1 to October 10

BOLGIANO'S "CAPITOL PARK" LAWN GRASS SEED

Has Greatly Helped to Make Washington the City Beautiful. Used in Seeding Many of the Handsome Lawns Surrounding the Government Buildings. It Never Fails to Give Satisfaction.

BOLGIANO'S "CAPITOL PARK" LAWN GRASS SEED, from yearly comparative trials, has proven to be unsurpassed for first-class and permanent results. This is due to the fact that we use only the very finest varieties of the most suitable grasses, thoroughly re-cleaned, free from all chaff and weed seeds.

BOLGIANO'S "CAPITOL PARK" LAWN GRASS SEED will give a green, smooth, velvety sod with a thick bottom and free from such varieties of common grasses as produce clumps and knots on the lawn, which so frequently spoil the desired smooth and deep effect.

Pkt., 10c; lb., 40c; 5 lbs., \$1.75; 25 lbs., \$8.25; 100 lbs., \$30.00.

BOLGIANO'S "SHADY NOOK" LAWN GRASS SEED

The Grass That Will Grow in Shady Places

It will quickly produce an abundant and even growth of beautiful green grass. The grasses used in making this special mixture are only those that are well adapted for growing in shade and as it blends well with our Capitol Park Lawn Grass Seed it may be used on those portions of the lawn which are shaded by trees, buildings, etc., thus covering the whole area with a beautiful carpet of green.

Pkt., 10c; lb., 45c; 5 lbs., \$2.00; 25 lbs., \$9.25; 100 lbs., \$35.00.

Lōma The Lawn Tonic

It is quick acting. You can readily see on an established lawn a vast difference in ten days after applying Lōma. Greener, healthier, thicker, more velvety. Apply on a new lawn three days before you sow your seed, the grass will come up more quickly and thicker than you have ever seen before. Full directions on every package. Five lbs., 50c; 10 lbs., 85c; 25 lbs., \$1.75; 50 lbs., \$3.00; 100 lbs. \$5.00.

Write for Our Free Booklet "How to Make and Maintain a Lawn"

Bolgiano's Specially Selected Single Dutch Hyacinths

READY FOR DELIVERY IN SEPTEMBER

We have condensed our list to only the very best of each particular shade or color. The varieties we list produce the largest and finest trusses of bloom and should always be selected for specimens in pots, for fiber culture and for garden bedding when the largest and most perfect blooms are desired.

6 of One Variety Sold at the Dozen Rate, 25 at the 100 Rate

SINGLE PURE WHITE

L'Innocence. The very best white. White as the driven snow. Extra fine truss with very large bells. A wonderful variety for bedding and forcing. Always produces good flowers.

SINGLE RED, ROSE AND PINK

Gertrude. Deep carmine rose. A very large, well-filled truss of a fine color. Excellent for forcing and bedding.

Gigantia. Fine blush pink. Large compact flowers. Fine for forcing and bedding.

La Victorie. Brilliant carmine red; one of the very finest red varieties for bedding and forcing. It retains its superb color to the end.

SINGLE DARK AND LIGHT BLUE

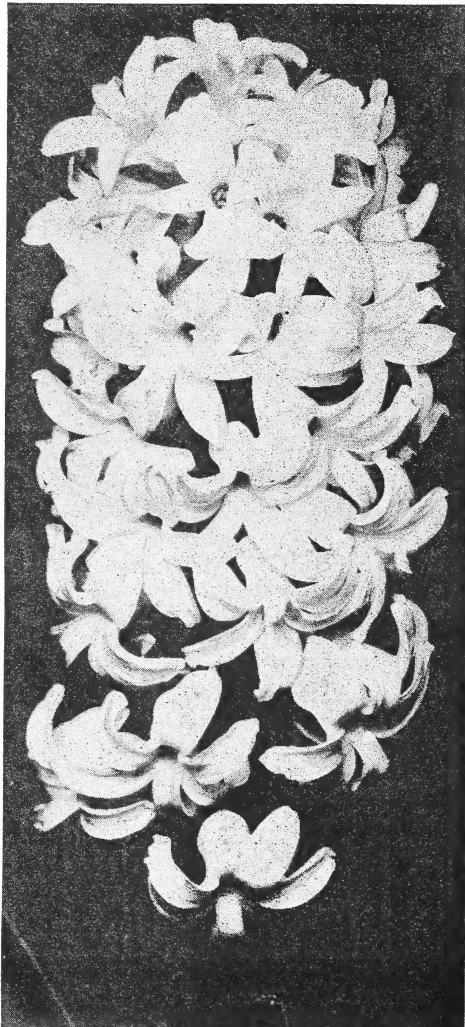
Grand Maitre. Beautiful porcelain blue, gigantic truss filled with fine bells. Extra strong stem. One of the finest of the lighter blue hyacinths for all purposes.

Johan. Light blue; very large spike; strong bells of great substance. Excellent for bedding.

King of the Blues. Deep, glossy blue, splendid well formed large spike, on short stem. Bells of medium size but of great substance.

SINGLE YELLOW

Yellow Hammer. Compact spike of a lovely creamy yellow. Excellent for pot culture.



Single Early Hyacinth—L'Innocence

First Size Bulbs, 12c each; \$1.35 dozen; \$10.00 per 100

Second Size Bulbs, 10c each; \$1.15 dozen; \$9.00 per 100

Bolgiano's First Size Double Hyacinths

Ready for Delivery in September

6 Sold at the Dozen Rate

25 at the 100 Rate

BOUQUET ROYAL. Pure White, large spike.

BOUQUET ROYAL ROSE. Salmon Rose, red center.

BOUQUET TENDRE. Brilliant Dark Carmine Red, good truss.

GENERAL KOHLER. Bright Blue, large spike.

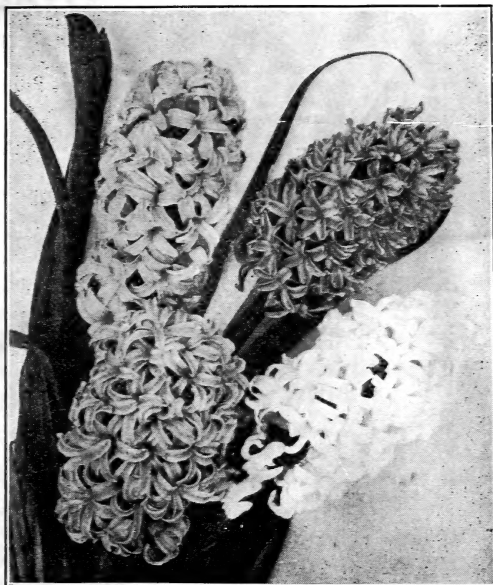
LA GRANDESSE. Pure White, waxy well formed bells.

PRINCE OF ORANGE. Dark Rose, large truss.

PRINCE OF WATERLOO. Pure White, large bells, slight-rosy center.

10c each, \$1.15 dozen

\$9.00 per 100



Single Hyacinths

MIXED HYACINTHS

Single Bedding Varieties

White, Red, Yellow, Pink, Blue

.08c each, 85c dozen; \$6.50 per 100

Double Bedding Varieties

White, Red, Blue, Pink

BOLGIANO'S ESPECIALLY PREPARED BULB FIBRE is composed of disintegrated Holland Peat, fertilized and blended with pulverized charcoal and crushed oyster shells. It furnishes in an assimilable form all the plant food elements needed by bulbs. It does not dry out as quickly as soil nor will it get water-logged nor sour if too much water be given, and it does not harbor insects or worms. Lb. 15c; 2 lbs. 25c.

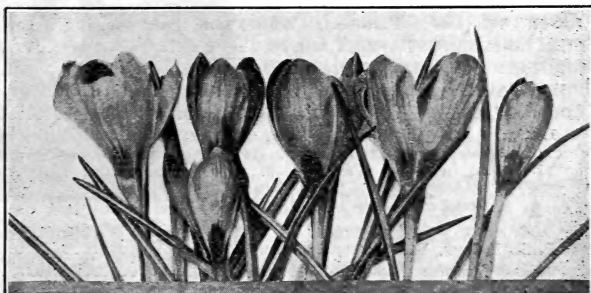
Crocus

Ready for Delivery Late in September

The earliest of flowers to show its head among the grass almost before the snow is gone, this little gem has endeared itself to all those who look to nature for signs of returning spring.

EXTRA LARGE SIZE

	Each	Doz.	100
White ...	\$0.05	\$0.35	\$2.25
Blue05	.35	2.25
Striped .	.05	.35	2.25
Yellow .	.05	.40	2.85

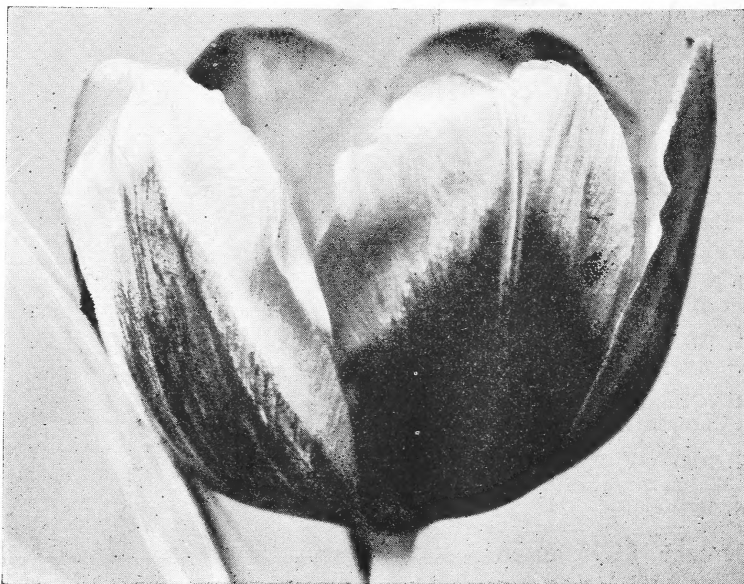


LOMA has proven to be a wonderful fertilizer to work in your bulb beds.

Ready for
Delivery
in September

Bolgiano's Extra Selected Single Early Tulips

6 Sold at
Doz. Rate
25 at 100 Rate



Single Early Tulip—Keizerkroon

It would be impossible to conceive of anything more brilliant and attractive than a bed of beautiful tulips. The single early varieties give us bright flowers in the early Spring and are followed by the gorgeous Darwins and Breeder Tulips, giving us a continuous display from April until late May.

	Each	Doz.	100
ARTUS. Dark scarlet, large elegant flower, splendid for bedding....	\$0.06	\$0.65	\$4.75
CHRYSOLORA. Pure yellow, large flower. The best for bedding on account of its long keeping qualities07	.80	5.75
COTTAGE MAID. White, edged with rose; extra fine; lovely; splendid for bedding06	.65	4.85
COULEUR CARDINAL. Rich glittering cardinal red.....	.07	.75	5.50
CRAMOISE BRILLIANT. Rich glowing scarlet with yellow base..	.06	.65	4.75
DUCHESE DE PARMA. Brownish red with large light orange yellow border07	.70	5.25
FRED MOORE. Brilliant apricot orange shaded scarlet.....	.07	.75	5.50
KEIZERKROON. Bright red with broad golden yellow border, extra large flower on tall, strong stem; fine for forcing; very effective for bedding08	.85	6.25
LA REINE (Queen Victoria). White, sometimes showing a rose tint	.06	.65	4.60
POTTEBAKKER SCARLET. Bright scarlet, large flowers.....	.07	.80	5.75
ROSE GRIS-DE-LIN. Delicate rose, shading to white at base.....	.06	.65	4.75
ROSE HAWK or FLAMINGO. Rich brilliant pink on a white ground.	.06	.65	4.75
ROSE LUISANTE. Dark silky rose pink.....	.07	.80	5.75
YELLOW PRINCE. Bright yellow, the best yellow for forcing on account of its earliness in growing, its fine shaped flower on strong erect stem and its very sweet scent.....	.07	.75	5.50

MIXED SINGLE TULIPS

	Each	Doz.	100
Red, Pink, Yellow, White; separated as to color.....	0.05	\$0.55	\$4.50
Single Early Tulips; mixed05	.50	3.75

We Pay Postage on All Bulbs at the Each and Doz. Rate. At 100 Rate Add 5 Per Cent to the Cost of the Bulbs for Carrying Charges

Bolgiano's Extra Selected Double Early Tulips

Ready for
Delivery
in September

6 Sold at Dozen Rate
25 at 100 Rate

Many prefer these to the Single varieties because they remain in bloom longer. Their large, double peony-like flowers produce a gorgeous display in the early Spring.



Double Early Tulip—Rose Blanche

	Each	Doz.	100
IMPERATOR RUBRORUM. Fine bright scarlet; large flower, extra for forcing and bedding.....	\$0.07	\$0.80	\$5.85
MR. VAN DER HOEFF. Pure golden yellow, large flower, good forcer07	.80	5.75
PEACH BLOSSOM. Deep rosy-pink deepening with age to a deep rose. A very fine flower with a wonderful color. A new variety of superb quality which we are glad to recommend.....	.07	.70	5.25
ROSE BLANCHE. Pure white, splendid for bedding.....	.07	.70	5.25
TITIAN. Red with yellow border, good for forcing and for bedding. Strong, erect stem07	.70	5.25
BOULE DE NEIGE. Large Peony-like pure white flower06	.65	5.00
MIXED. Red, pink, yellow, white.....	.05	.55	4.25

Old Dutch or Breeder Tulip

This fine old May Flowering type is exceedingly popular. They are very similar to the Darwins in their tall strong growth but with even larger flowers. They bloom about the same time as the Darwins, but have an entirely different range of colors, comprising Bronze, Terra-cotta, Orange, Brown and other artistic tones.

	Each	Doz.	100
BRONZE QUEEN. Buff, tinged bronze	\$0.06	\$0.65	\$5.00
DOM PEDRO. Coffee color08	.80	6.00
LOUIS XIV. Rich dark purple, with a broad margin of golden bronze06	.65	4.90
MADRAS. Dark bronzy yellow edge07	.75	5.50
PANORAMA. Reddish mahogany; very large forcer.....	.05	.55	4.25
SANSPAREILLE. Dark violet, extra fine07	.80	5.85
YELLOW PERFECTION. Olive yellow color06	.65	5.00
BREEDER TULIPS MIXED05	.55	4.25

LOMA used around your bulbs produces earlier, larger and better blooms.

Bolgiano's Giant Darwin Tulips



Darwin Tulip

6 Sold at Doz. Rate

25 at 100 Rate

Ready for
Delivery in
September

The gorgeous Darwin Tulips are of comparative recent introduction. Their majestic flowers on tall stems 20 to 26 inches high, are beautiful beyond description. To know them is to love them. Darwins bloom in late May and early June. We have selected the best varieties.

	Each	Doz.	100
AFTERGLOW. Rosy orange, salmon-tinted margins.....	\$0.06	\$0.65	\$5.00
BARTIGON. Carmine red05	.55	4.25
CLARA BUTT. Bright salmon rose, lovely color and shape.....	.05	.55	4.25
DREAM. Soft rosy mauve on heliotrope ground.....	.06	.65	4.90
FARNCOMBE SANDERS. Brilliant rose scarlet.....	.05	.55	4.25
FAUST. Dark satiny purple with blue base, very large and well formed..	.07	.80	5.85
FLAMINGO. An even tone of pale shell pink.....	.07	.75	5.50
GRETCHEN (Margaret). Soft flesh rose, beautiful shape.....	.06	.65	4.60
MAD. KRELAGE. Bright rose, light border, large flower.....	.06	.65	4.75
PRIDE OF HAARLEM. Brilliant carmine rose, very large.....	.05	.55	4.25
REV. H. EWBANK. Soft lavender violet07	.70	5.25
WILLIAM PITT. One of the largest brilliant carmine.....	.06	.65	5.00
YELLOW DARWIN. Rich yellow globular flowers.....	.06	.65	4.75
ZULU. Rich velvety purple black, very fine distinct shape06	.65	5.00
DARWIN TULIPS. Bolgiano's Superior Mixture05	.50	3.75

Parrot Tulips

The petals are curiously fringed or lacinated on the edges and the form of the flowers, especially before they open, resembles the head and neck of a parrot.

	Each	Doz.	100
ADMIRAL CONSTANTINOPIE. Red tipped orange	\$0.07	\$0.75	\$5.50
CAFE BRUN. Brown....	.07	.75	5.50
CRAMOISIE BRILLIANT. Scarlet07	.70	5.25
MARKGRAAF VAN BADEN. Yellow07	.70	5.25
PARROT TULIPS. Mixed06	.65	4.75

LOMA If Loma is used in and around the bulb beds you will enjoy the earliest and most beautiful blooms.



Parrot Tulip

Cottage Tulips

Or May Flowering

An excellent class of single, late flowering Tulips which are especially adapted for planting among shrubbery or in masses in the open border where, if left undisturbed, they will often bloom freely for several years. They come into bloom about the same time as the Darwins. This is a great advantage as it permits the planting together of both types in one bed and having the varieties in bloom all about the same time.



	Each	Doz.	100
ARTEMIS (Lily Flowered). Reflexed petals, bright carmine rose with pure white base	\$0.07	\$0.75	\$5.50
ECLIPSE. Beautiful large orange flower..	.07	.75	5.50
ELLEN WILMOT. Soft creamy yellow, reflexed petals, elongated flower07	.70	5.25
FAIRY QUEEN. Rosy heliotrope, margined amber-yellow07	.70	5.25
GESNERIANA MAJOR (Spathulata). True rich crimson scarlet with blue black center07	.75	5.40

	Each	Doz.	100
INGLESCOMBE PINK. Delicate rose pink, tinted salmon, blue-green center	\$0.05	\$0.55	\$4.50
LA MERVILLE. Large orange red with carmine; sweet scented.....	.06	.65	5.00
MRS. MOON. Very deep yellow, reflexed pointed petals; one of the most beautiful07	.80	5.85
PICOTEE (Maiden's Blush). White margined carmine rose.....	.05	.55	4.50
SIRENE (Lily Flowered). Rich cerise pink, reflexed petals.....	.06	.65	5.00

Freesia

One of the most charming bulbs known for Winter-flowering and cut flowers. They grow well and bloom freely in an ordinary sitting room, if placed near a window and not kept too warm. They need not be kept in the dark as other bulbs. Plant 4 to 6 bulbs in a 5-inch pot, in light, rich soil.

Improved Purity. The finest and purest white variety yet introduced; of strong growth and very large flowers. 5c each; 50c doz.; \$3.50 per 100.

Rainbow Mixture. Clusters of yellow, blue, violet, mauve, pink and lavender borne on graceful stems. 5c each; 55c doz.; \$4.00 per 100.



Freesias

We Pay Postage on All Bulbs at the Each and Doz. Rate. At the 100 Rate Add 5 Per Cent to the Cost of the Bulbs for Carrying Charges

Narcissus or Daffodils



Single Large Trumpet Varieties (Daffodils)

There is no hardy bulbous plant which has more points of merit than the Narcissus. Perfectly hardy, growing and doing well in almost any and every position, sun or shade, moist or dry. They are equally suited to pot culture for Winter flowering.

BICOLOR VICTORIA. Petals creamy white, trumpet rich yellow, unsurpassed for forcing. First Size Double Nose Bulbs. 15c each, \$1.50 doz., \$12.00 per 100.

EMPEROR. This grand variety is one of the finest daffodils in cultivation. Pure yellow trumpet of immense size and wide overlapping, rich primrose perianth. First Size Double Nose Bulbs. 15c each, \$1.50 doz., \$12.00 per 100.

GOLDEN SPUR. The most popular of the golden-yellow trumpets with cut flower growers as it produces freely and early its handsome rich, deep yellow flowers. First Size Double Nose Bulbs. 15c each, \$1.50 doz., \$12.00 per 100.

VON SION. Double. A famous old variety just recently grown successfully in America. Large double golden yellow flowers. 15c each, \$1.50 doz., \$11.50 per 100.

SIR WATKINS (Incomparabilis). Petals primrose yellow; trumpet yellow, tinted deep yellow. A large flower of great substance. 12c each, \$1.25 doz., \$9.75 per 100.

MIXED. All sorts large trumpet mixed. 7c each; 80 cts. doz.; \$5.75 per 100.

MEDIUM AND SMALL TRUMPET VARIETIES

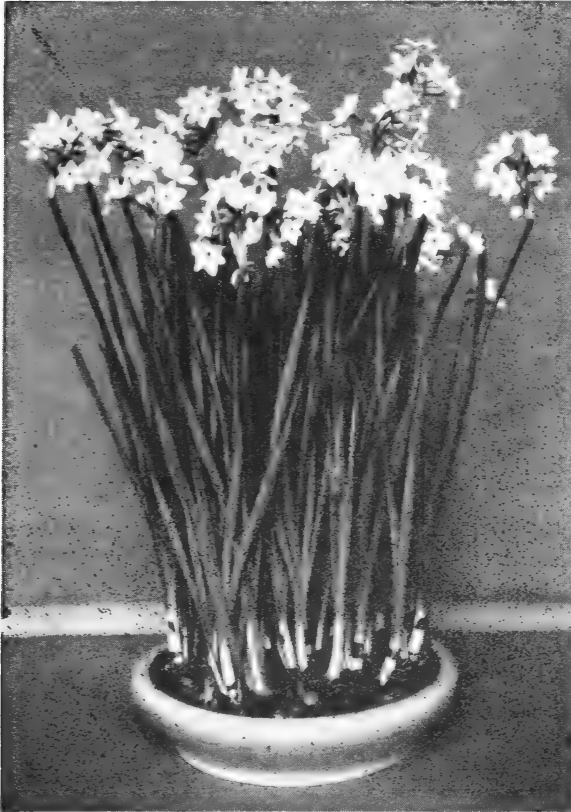
	Each.	Doz.	100.
POETICUS ORNATUS. Pheasant's Eye. Pure white petals, cup yellow with red. First Size Double Nose Bulbs	\$0.10	\$1.00	\$7.00
POETAZ, LAURENS KOSTER. Pure white flowers with orange cups borne in clusters	.12	1.25	9.00

JONQUILS

CAMPERNELLE REGULOSUS. Rich yellow sweet scented	.10	1.10	8.00
---	-----	------	------

We Pay Postage on All Bulbs at the Each and Doz. Rate. At the 100 Rate Add 5 Per Cent to the Cost of the Bulbs for Carrying Charges

Narcissus Paper White Grandiflora



Paper White Narcissus

**CHARMING
FRAGRANT
BEAUTIFUL**

Their charming, fragrant, beautiful white flowers fill your home with delicious perfume at Fall, Winter and Spring.

**Make a Handsome
Decoration for
Your Thanksgiving
and Christmas
Table**

**EVERYBODY CAN
RAISE THEM**

Plant a dozen Bulbs in a shallow bowl, cover with small stones and fill with water. Be sure to place in the dark for 2 weeks to develop the roots and then keep in a moderately temperate room. They require no care, no attention. They will keep on growing and produce a beautiful flowering plant.

Grand Soliel D'Or. A beautiful variety bearing clusters of golden yellow flowers with orange cups; 15c each; \$1.75 doz.

NARCISSUS PAPER WHITE GRANDIFLORA MONSTER BULBS, 6c each; 65c doz; \$5.00 per 100.

PEBBLES FOR PLANTING PAPER WHITE BULBS, Qt. 10c; 4 Qts. 35c.

IRIS—QUEEN OF PERENNIALS

ALBERT VICTOR. Light hyssop-violet.

CELESTE. Standards lavender-blue.

DR. BERNICE. Smoky lavender bronze.

FLAVASCENS. Pale lemon yellow.

FLORENTINA. Blue.

FLORENTINA ALBA. White.

MONORABILIS. Standards vivid yellow, falls yellow marked cocoa-brown.

IRIS KING. Brown standards, coppery yellow falls.

KOCHI. Rich claret purple. Early.

LOHENGRIN. Gigantic foliage and flowers. Deep violet mauve.

MME. CHERAU. White edged with bluish purple.

PALLIDA DALMATICA. Standards and falls clear lavender blue shading to pale silvery blue at base; sweet scented.

QUEEN OF THE MAY. Soft, rosy pink.

RHEIN NIXE. Standards white, falls rich violet purple with distinct narrow white edge; very large.

Roots, 30 cents each; any ten for \$2.50; ten of a kind, \$2.00



SPANISH IRIS

SPANISH IRIS. Known as "Orchids of the Hardy Flower Garden." They grow from 18 to 24 inches high and produce their exquisite airy blooms during the last of May and through June. Plant the latter part of September. Mixture containing all colors, bulbs, 75c per doz.

Lilies—Other Spring Flowering Bulbs



LILIUM CANDIDUM (Annunciation or Madonna Lily). Many people do not know how easily they may grow these wonderful flowers in their own gardens. From twenty to thirty large snow-white bells are borne each season on their long stems giving forth a delightful fragrance during May and June. Plant as early as possible in the fall, covering with not more than 2 inches of dirt. Dust bulbs lightly with sulphur before planting to insure best results. Prices, 25c each; \$2.50 doz. Powdered sulphur, 10c per lb.

LILY OF THE VALLEY PIPS. Especially valuable for indoor forcing. If planted in open ground will come into full bearing the second year. Pips, 10c each, \$1.00 per dozen, \$2.00 for bundle of 25.

WHITE CALLA LILY (Lily of the Nile). Pure white blooms of an attractive, unusual form and one of our best window plants. Pot bulbs in 6 to 8-inch pots as soon as received. Give an abundance of water, light, and heat and the results will be very satisfactory. 25c each, \$2.75 per dozen.

OXALIS. Large, pink, white, lavender, and yellow flowers held well above dwarf sturdy growth. Keep close to the light to keep foliage from growing too long. Bulbs, 5c each, 50c per dozen.

REGALE ("A Royal Beauty"). The flowers are white, slightly suffused with pink, with a beautiful shade of canary yellow at the center, blending out part way up the trumpet. The fragrance is fascinating. A splendid hardy Lily for the garden, flowering in July. Well-grown bulbs often produce five to eight blooms. Medium size bulbs, 25c, large size, 45c each.

CHIONODOXA (Glory of the Snow). Brilliant sky-blue flowers that come into bloom soon after the snow is gone. They require no further care when once planted. 5c each, 50c doz., \$3.00 per 100.

FRITILLARIA MELEAGRIS (Snake's Head or Guinea Hen Flower). Pendant bell-shaped flowers oddly marked and checkered. Some are splashed white and purple, cream and maroon, etc. Does well in semi-shade and is perfectly hardy. 10 to 18 inches high. Blooms in the spring. 5c each, 55c doz., \$4.00 per 100.

IXIAS (African Corn Lily). These charming flowers come from the Cape of Good Hope. Their rich and varied hues make a brilliant display in the spring, when planted outdoors in a protected place. They may be grown indoors for winter blooms also. 5c each, 35c doz., \$2.50 per 100.

MUSCARI (Heavenly Blue Grape Hyacinths). Numerous spikes of light blue flowers in early spring. 5c each, 45c doz., \$3.50 per 100.

SCILLAS (Squills). Exquisite rich blue flowers in the early spring. A charming effect may be had by planting in conjunction with yellow crocus, Chionodoxas and Snowdrops. 5c each, 55c doz., \$4.00 per 100.

SNOWDROPS. The loveliest and earliest spring flowers. Single Snowdrops. 5c each, 45c doz., \$3.50 per 100. Double Snowdrops. 6c each, 65c doz., \$5.00 per 100.

WINTER ACONITE (Eranthis Hyemalis). Golden blossoms look charming resting on an emerald-green cushion of leaves. The foliage remains long after the flowers and does well in a moist situation, such as under trees. 5c each, 35c doz., \$2.50 per 100.

Perennial and Biennial Seeds and Plants for Fall Planting

PLANTS. We can supply large field grown plants ready to be transplanted, after August 15th. For those who cannot conveniently raise their own plants from seed, or who have put off sowing until too late, our strong field grown plants are most satisfactory.

While we exercise the greatest care possible to have our nursery products all genuine and reliable, we will replace on proper proof, all that prove untrue. We do not give any warranty, expressed or implied, or guarantee them to live and grow or give specific results. In case of error on our part, it is understood that we shall at no time be held responsible for a greater amount than the original price of the goods.

POSTAGE ON PLANTS. Add postage as follows: Single plants, 8c; 3 plants, 10c; 6 plants, 15c; 12 plants, 25c. We accept no responsibility for delays or conditions that may prove injurious to the contents.

ASTERS (Hardy or Michelmas Daisy). Lovely, daisy-like flowers, 4 to 5 ft. high; blooming September and October. Climax, blue violet; Novae-Angliae, lavender pink. Plants, 35c each; 3 for 75c; 6 for \$1.20; \$2.25 per doz.

996. PERENNIAL ASTERS MIXED. Various shades of blue. Pkt. 10c, 1/4 oz. 35c.

ASTILBE (Goat's Beard). An extra hardy plant of feathery plumes of flowers and neat, attractive foliage. June and July.

America. Deep pink; excellent bloomer; 24 inches.

Gladstone. Snow white; 18 inches tall.

Queen Alexander. Pink; 15 inches.

Rubens. Rose red, 18 inches. Price of all Astilbe Plants, 45c each; \$1.25 for three.

BLEEDING HEART (Dicentra Spectabilis). Rose crimson, 18 inches. Plants, 45c each.

FALSE BLEEDING HEART (Dicentra Formosa). Flowers pink, fern-like foliage; 1 foot tall; May to June. Plants, 35c each; 3 for 75c; 6 for \$1.20; \$2.25 per doz.

819. CAMPANULA, SINGLE MIXED CANTERBURY BELLS. Blooms from early to midsummer; height, 2 ft. Of most attractive growth, and the second year produce abundantly the beautiful bell-flowers in many colors. Pkt. 10c; 1/4 oz., 25c. Plants, 35c each; 3 for 75c; 6 for \$1.20; \$2.25 per doz.

CHRYSANTHEMUM PLANTS. These are the hardy sorts producing a profusion of beautiful blooms from early September until frost, and sometimes even afterward.

Anna L. Moran. Scarlet-bronze.

Cometa. Rose pink.

Emalinda. Old rose.

Black Hawk. Large red.

Queen of Whites. Large white.

Grover. Yellow.

Plants, 35c each; 3 for 75c; 6 for \$1.20; \$2.25 per doz. of one variety. One each of the above six for \$1.25.

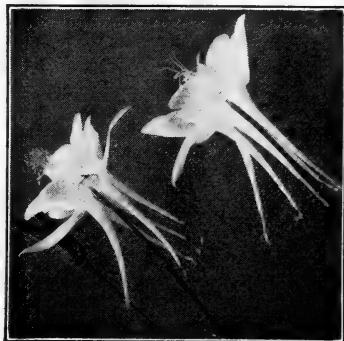
830. COLUMBINE (Aquilegia). 1 to 2 ft.; May to July. One of the most valuable of the early flowering perennials. The long-spurred blooms and lengthy stems are well adapted to use as cut flowers, but they also produce a beautiful effect when massed in the garden. They do best in a sheltered location that gets the sunshine.

Long Spurred Hybrids. Mixed colors, Pkt. 10c; 1/4 oz. 40c.

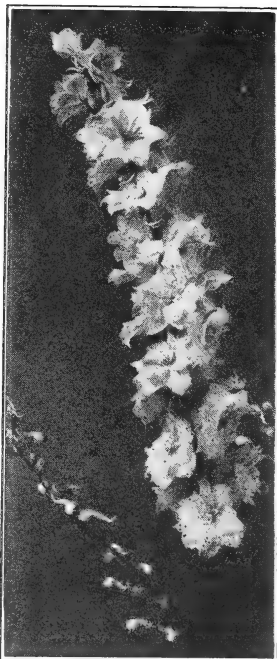
Chrysantha (Golden Columbine). Yellow flowers with long spurs.

Canadensis (American Columbine). Red and yellow flowers.

Plants, 35c each; 3 for 75c; 6 for \$1.20; \$2.25 per doz. of one variety.



COLUMBINE



Gold Medal Hybrid

818. **CANDYTUFT (Hardy)**. May and June; six inches. Evergreen plants covered with white or pale pink blooms in spring and early summer. Excellent for rockeries or borders. Pkt., 10 cts.; $\frac{1}{4}$ oz., 25 cts. Plants, 35c each; 3 for 75c; 6 for \$1.20; \$2.25 per doz. of one variety.
831. **COREOPSIS GRANDIFLORA**. One to two feet; June to October. During the summer bears profusely golden yellow flowers which are very useful for cutting. Pkt., 10 cts.; $\frac{1}{4}$ oz., 25 cts.; oz. 75 cts. Plants, 35 cts.; 3 for 75c; 6 for \$1.20; \$2.25 doz.
845. **DAISY, ENGLISH DOUBLE MIXED (Bellis Perennis)**. The hardy plants thrive best in cool, shady places. The attractive small, double flowers appear very early in the summer. Pkt., 10 cts.; $\frac{1}{2}$ oz., 35 cts. Plants, 10 cts. each.
846. **DAISY, SHASTA, ALASKA**. Large, white flowers with a yellow center that make a splendid show all summer. Useful for cutting. Pkt., 10 cts; $\frac{1}{2}$ oz., 25c. Plants, 35c each; 3 for 75c; 6 for \$1.20; \$2.25 per doz.
- DELPHINIUM (Perennial Larkspur)**
852. **CHINESE MIXED**. Although a perennial, this will bloom in August if planted in early spring. On account of its dwarfness (2 to 3 feet high) and brilliant blue and white flowers, it is a popular plant for bedding and cut flowers. Pkt., 10 cts. and 25 cts.; $\frac{1}{4}$ oz., 75 cts. Plants, 35c each; 3 for 75c; 6 for \$1.20; \$2.25 per doz. of one variety.
853. **GOLD MEDAL HYBRIDS**. Mixture of the most beautiful tall varieties. Long graceful spikes of harmonizing blue colors. Plants grow 5 to 8 feet tall. Pkt., 20 cts.; $\frac{1}{4}$ oz., 50 cts. Plants, 35 cts. each, \$3.00 for 10.
854. **BELLADONA**. Tall, light blue. Pkt., 20 cts.; $\frac{1}{2}$ oz., 75c. Plants, 35c each; 3 for 75c; 6 for \$1.20; \$2.25 per doz.
- BELLAMOSUM**. A dark blue form of Belladonna with which it is identical excepting in color, which is a rich deep blue. Plants, 35 cts. each, 6 for \$1.20. \$2.25 doz.
1018. **FORMOSUM**. Dark blue, white center. Pkt., 20c; $\frac{1}{2}$ oz., 75c. Plants, 35c each; 3 for 75c; 6 ofr \$1.20; \$2.25 per doz.
851. **DIANTHUS PLUMARIUS (Pheasant's Eye Pink)**. Sweet scented, low growing, hardy fringed flowers; pink or white. Blooms in early summer. Pkt., 10 cts.; $\frac{1}{4}$ oz., 35 cts.; oz., \$1.00. Plants, 35c each; 3 for 75c; 6 for \$1.20; \$2.25 per doz.
- EUPATORIUM (Coelestinum)**. A pretty hardy plant, with light blue flowers similar to the Ageratum. This is a particularly fine thing in hardy perennials; a splendid cut flower; 18 to 24 inches. Plants, 35c each; 3 for 75c; 6 for \$1.20; \$2.25 per doz.
1021. **FOXGLOVE MIXED (Digitalis)**. The plants grow three feet high and bear long spikes of thimble-shaped flowers, brilliantly colored and spotted. If planted in well-drained soil will thrive nicely. Pkt., 10 cts.; $\frac{1}{4}$ oz., 25 cts.; oz., 75 cts.. Plants, 35c each; 3 for 75c; 6 for \$1.20; \$2.25 per doz of one variety.
860. **GAILLARDIA GRANDIFLORA**. June to October; two feet. The beautiful single flowers are red in the center with clear yellow markings on outer edges of petal. Pkt., 10 cts.; $\frac{1}{4}$ oz., 25 cts.; oz., 75 cts. Plants, 35c each; 3 for 75c; 6 for \$1.20; \$2.25 per doz.
- HEMERCALLIS (Yellow Day Lily)**. 35 cts. each; 75c for 3; \$2.50 per doz.
- FLAVA (Lemon Lily)**. Sweet scented, clear full yellow; 2 $\frac{1}{2}$ feet; flowers in June. 35 cts. each, 75 cts. for three, \$2.50 per doz.
866. **HIBISCUS MIXED (Mallow)**. Of late the Mallows have become very popular, and are worthy of a place in all beds of perennials. The plants attain a height of from 4 to 6 feet and produce profusely the handsomest flowers from June until fall. Pkt., 10 cts.; $\frac{1}{4}$ oz., 20 cts.; oz., 75 cts. Plants, 35c each; 3 for 75c; 6 for \$1.20; \$2.25 per doz. of one variety.
- HOLLYHOCKS**. Six to 8 feet; August-September. These are best treated as biennials. One of the most showy of all hardy garden plants. The majestic plants produce magnificent long spikes bearing beautiful double flowers which measure 3 to 4 inches across.
867. Crimson; 1025. Maroon; 1026. Newport pink; 868. Salmon; 1027. White; 1028. Yellow. Pkt., 10 cts.; $\frac{1}{4}$ oz., 40 cts.; oz., \$1.50.
869. Double mixed. Pkt., 10 cts.; $\frac{1}{4}$ oz., 35 cts.; oz., \$1.25
- Plants, 35c each; 3 for 75c; 6 for \$1.20; \$2.25 per doz. of one variety, or unlabeled mixed.
1044. **ORIENTAL POPPY**. Three feet; May and June. Flowers of gorgeous brilliancy. Colors from soft rose to dazzling scarlet and richest maroon purple. Pkt., 10 cts.; $\frac{1}{4}$ oz., 40 cts. Plants: Scarlet Queen, 30 cts. each; Salmon Queen, 35 cts. each.
- PHLOX (Hardy)**. One of the most important perennials. Does well in any soil. Produces large heads of fragrant flowers from early July to September. Height, 1 $\frac{1}{2}$ to 3 feet:
899. Choice mixed. Pkt., 10 cts.; $\frac{1}{4}$ oz., 75 cts
- Miss Lingard. Tall, pure white.
Rheinlander. Immense salmon pink.
Iris. Light purple.
- Pantheon. Rose pink.
Bridesmaid. White with pink eye.
Jules Sandreau. Extra large pink.
- R. P. Struthers. Red. Plants, 35c each; 3 for 75c; 6 for \$1.20; \$2.25 per doz. of one variety; any 6 for \$1.25.
- PHLOX SUBULATA (Moss or Mountain Pink)**. An early Spring-flowering type with pretty moss-like, evergreen foliage, which, during the flowering season, in April and May, is hidden under the masses of bloom. An excellent plant for the rockery, the border, and invaluable for carpeting the ground. Plants, 35c each; 3 for 75c; 6 for \$1.20; \$2.25 per doz. of one variety.



Bolgiano's Magnificent Trimardeaux Pansies

PANSIES

Sow in drills during the middle of August, covering the seeds to a depth of 4 times their thickness. as soon as the plants are large enough to handle, thin out and transplant to stand nine inches apart. After cold weather sets in a mulch of leaves or straw should be spread over the bed for protection. In this manner the earliest spring blooms are obtained.

893. **GIANT ADONIS.** Beautiful light blue with white margin. Pkt. 10c and 25c; $\frac{1}{8}$ oz., 50c; $\frac{1}{4}$ oz., 90c.

1039. **GIANT GOLD WITH BLACK EYE.** One of the most effective Pansies grown. A veritable mass of molten gold. Pkt. 10c and 25c; $\frac{1}{8}$ oz., 50c; $\frac{1}{4}$ oz., 90c.

894. **GIANT FLOWERING TRIMARDEAU MIXED.** Finest and largest flowering varieties. Much attention has been paid to color combinations used in this mixture. Pkt., 10c and 25c; $\frac{1}{4}$ oz., 50c; oz., \$1.20. Plants, 10c each; \$1.00 per doz.

892. **EXHIBITION GIANTS.** The most beautiful forms and color combinations imaginable. The result of the efforts of Europe's best growers. Flowers attain a size of two to three inches under favorable conditions. Pkt., 25c; $\frac{1}{8}$ oz., 75c; oz., \$5.00. Plants, 10c each; \$1.00 per doz.

TUFTED PANSY

VIOLA, JERSEY GEM. One of the new and most valuable bedding Violas yet introduced. Well suited to our climate in which it will succeed in any good garden soil in a sunny position, blooming practically from May to the end of the season. Flowers are pure violet color with stems about 6 inches long. Plants, 35c each; 3 for 75c; 6 for \$1.20; \$2.25 per doz.

VIOLA, LUTEA. Bright yellow. Plants, 35c each; 3 for 75c; 6 for \$1.20; \$2.25 per doz.
912. **PYRETHRUM.** One to two feet; May and June. A very useful hardy perennial, daisy-like flowers. Most desirable for edging or bordering beds filled with other plants. Pkt., 15c; $\frac{1}{4}$ oz., 60c. Plants, 35c each; 3 for 75c; 6 for \$1.20; \$2.25 per doz.

SEDUM (Stonecrop) SPECTABILE. A pretty erect-growing variety with broad, light green foliage and immense heads of showy rose-colored flowers during the Autumn; 18 inches. Plants, 35c each; 3 for 75c; 6 for \$1.20; \$2.25 per doz.

921. **SWEET ROCKET MIXED.** Plants attain a height of 2 feet and produce sweet scented panicles of white and lavender flowers. Pkt., 10c; $\frac{1}{2}$ oz., 25c; oz., 40c. Plants, 35c each; 3 for 75c; 6 for \$1.20; \$2.25 per doz. of one variety.

SWEET WILLIAM—An Old-Time, Hardy Garden Favorite

922. **Newport Pink (Watermelon Pink).** Pkt., 10c; $\frac{1}{4}$ oz., 35c; oz., 95c.

923. **Scarlet Beauty.** Bright scarlet; single. Pkt., 10c; $\frac{1}{4}$ oz., 25c; oz., 75c.

1052. **White (Double).** Pkt., 10c; $\frac{1}{4}$ oz., 35c; oz., 95c.

926. **Johnson's Giant Hybrids.** Immense flowers; large eyes. Pkt., 10c; $\frac{1}{4}$ oz., 35c.

924. **Single Mixed.** Pkt., 10c; $\frac{1}{4}$ oz., 30c; oz., 75c.

925. **Double Mixed.** Pkt., 10c; $\frac{1}{4}$ oz., 25c; oz., 75c. Plants of all varieties. Plants, 35c each; 3 for 75c; 6 for \$1.20; \$2.25 per doz. of one variety.

VERONICA (Speedwell) SPICATA. Long spikes of bright blue flowers during June and July; 18 inches. An excellent border plant. Plants, 35c each; 3 for 75c; 6 for \$1.20; \$2.25 per doz.

931. **WALL FLOWER.** An attractive Biennial. Pkt., 10c; $\frac{1}{4}$ oz., 20c; oz., 60c. Plants, 35c each; 3 for 75c; 6 for \$1.20; \$2.25 per doz.

1055. **SIBERIAN WALL FLOWER (P.)** Flashy trusses of orange yellow in May. Pkt., 10c; oz., 50c. Plants, 35c each; 3 for 75c; 6 for \$1.20; \$2.25 per doz.

TIGRINUM SPLENDENS (Tiger Lily). Orange, spotted black. Plants, 35c each; 3 for 75c; 6 for \$1.20; \$2.25 per doz.

Roses

FOR FALL PLANTING

Our stock is budded on Japonica Multiflora Roots which is conceded to be the best stock for budding roses on by most of the leading rose growers.

STRONG 2-YEAR-OLD FIELD GROWN PLANTS

Five New Everblooming Varieties

DAME EDITH HELEN. Color a brilliant yet soft Rose du Barri Pink.
ETOILE DE HOLLAND. A deep velvety crimson rose.

GOLDEN PERNET (Julien Potin). Brilliant golden yellow; free blooming.

REV. F. PAGE ROBERTS. A large, double, beautifully formed, of indian yellow, covered with carmine on the reverse of the pedals.

VILLE-DE-PARIS. A beautiful but-tercup yellow. Fragrant and free blooming.

Any of the above, \$1.25 each, 3 for \$3.50.



NEW SENSATIONS

TALISMAN. Shadings of gold, apricot, yellow, deep pink and old rose. \$1.50 each.
PRESIDENT HERBERT HOOVER. A happy blend of orange and pink. \$1.50 each.

STANDARD VARIETIES. \$1 Each, 3 for \$2.75, 6 for \$5, 12 for \$9.50

BETTY. Glowing coppery rose, suffused with a golden sheen.

CHARLES K. DOUGLAS. Bright red; vigorous.

DUCHESS OF WELLINGTON. An intense saffron yellow stained deep crimson.

FRANCIS SCOTT KEY. Rich Crimson red.

FRAU KARL DRUSCHKI. Beautiful pure white.

GEORGES PERNET. Oriental red.

KAISERINE AUGUSTA VICTORIA. Soft pearly white, tinted yellow.

LADY ALICE STANLEY. Coral and salmon.

LADY ASHTOWN. Solid pink; free blooming and vigorous.

MME. EDOUARD HERRIOTT. Superb coral-red, shaded with yellow and bright scarlet.

MRS. AARON WARD. A distinct indian yellow, shading lighter toward edges.

MRS. CHARLES BELL. Delicate salmon pink; vigorous.

MME. BUTTERFLY. Soft light pink.

RADIANCE. Brilliant rose-pink.

RED RADIANCE. Deep rose-red.

SCOTT COLUMBIA (Improved Columbia). Rose-pink.

CLIMBING ROSES. \$1 Each, 3 for \$2.75, 6 for \$5, 12 for \$9.50

CLIMBING LADY ASHTOWN. Everblooming; large, well-formed flowers of pale carmine pink with golden yellow at the base.

ZEPHIRINE DROUHIN. Everblooming; well-formed, bright silvery-pink, semi-double flowers of good size and exquisite perfume.

CLIMBING AMERICAN BEAUTY. Brilliant carmine.

DR. W. VAN FLEET H. W. Beautiful pale pink.

MARY WALLACE. Charming flowers of brilliant warm pink.

PAUL SCARLET CLIMBER. Clear vivid scarlet.

SILVER MOON. Buds; pale yellow. Flowers pure white.

Sweet Peas

SPENCER SWEET PEAS

Plant in October or November.

971. Blanche Ferry. Carmine rose.

973. Constance Hinton. Best white.

974. Countess Spencer. Rose pink.

978. Fiery Cross. Red, orange, cerise.

980. George Herbert. Rosy carmine.

983. Illuminator. Salmon orange, cerise.

1001. Wedgewood. Fine blue.

The above varieties, pkt. 10c; oz. 25c; ¼ lb. 75c; lb. \$2.50.

1002. Superb Mixed. Including newest and most popular varieties. Pkt. 10c; oz. 20c; ¼ lb., 60c; lb., \$1.75.

949. Blanche Ferry. Grandiflora type. Rose and white. Pkt., 10c; oz., 15c; ¼ lb., 40c; lb., \$1.00.

EARLY SPENCER SWEET PEAS

They flower several weeks earlier than the regular Spencers.

958. Aviator. Large crimson.

959. Fair Maid. Blush pink suffused salmon.

960. Hercules. Giant rose pink.

962. Morning Star. Orange scarlet.

963. Peace. Rose pink on cream.

964. Pink and White. Pink on white.

965. Snowflake. Pure white.

966. Songster. Large lavender.

967. Warbler. Rich mauve purple.

The above varieties, Pkt., 10c; oz., 50c; ¼ lb., \$1.50.

969. Mixed Early Spencers. A well-balanced mixture of the newest and brightest colors. Pkt., 10c; oz. 40c; ¼ lb. \$1.25.

957. Bolgiano's Special Grandiflora Mixed. All the above varieties and others, pkt. 10c; oz., 15c; ¼ lb., 30c; lb., \$1.00.

Bolgiano's "Capitol City"

Garden
Seed

For Fall
Planting



We Pay Postage on All Vegetable Seed on Pkt., Ozs., ¼ Lbs. and Lbs., Excepting Peas, Beans and Corn. Peas, Beans and Sugar Corn We Pay Postage Only on Pkts., Pts., and Qts. Larger Quantities Carrying Charges Extra

BEANS

REFUGEE (1,000 to 1). One of the most popular and attractive beans we have, especially adapted for Fall truck and market growing. Will stand light frosts without injury. The pods are about 7 inches long, nearly straight, round. They are brittle and of fine flavor. The plants are strong, vigorous growers and very productive. Pkt. 10c; pt. 35c; qt. 60c; pk. \$2.50; bu. \$9.00.

	Pt.	Qt.	Pk.	Bu.
Tendergreen	\$0.35	\$0.65	\$2.85	\$10.50
Full Measure35	.65	2.85	10.50
Stringless Greenpod35	.65	2.75	10.00
Giant Stringless35	.65	2.85	10.50
Black Valentine35	.60	2.50	9.00
King of the Earlies35	.60	2.65	9.25
Bolgiano's New Wax35	.65	2.75	10.00
Improved Stringless Refugee Wax35	.60	2.65	9.25
Wardwell's Kidney Wax35	.60	2.65	9.50
Hodson's Wax35	.60	2.65	9.50

LIMA BEANS

Ford Hook Bush Lima45	.85	4.25	16.50
Bolgiano's Enormous Bush Lima45	.80	4.00	15.00

BEETS

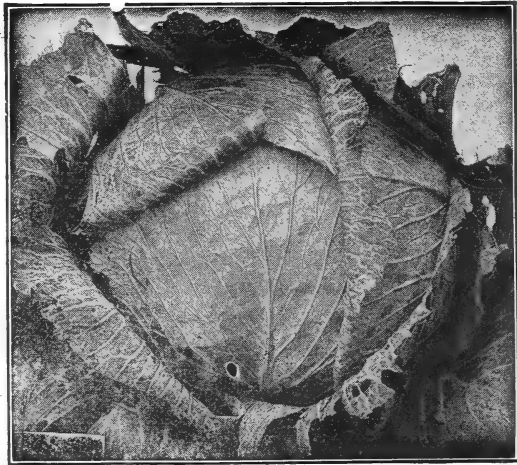
	Pkt.	Oz.	¼ lb.	Lb.
Superb	\$0.10	\$0.15	\$0.35	\$1.25
Crosby Egyptian10	.15	.30	.85
Detroit Dark Red10	.15	.30	.85
Deep Blood Beauty10	.15	.30	.95
Wonderful Early Spring10	.15	.35	1.10
Eclipse10	.15	.30	.85
Crimson Globe10	.15	.20	.65
Lentz10	.15	.20	.65

Cabbage Seed

New Early. A favorite with the market gardeners. Pkt. 10c; oz. 25c; $\frac{1}{4}$ lb. 75c; 1 lb. \$3.00; 5 lbs. \$11.00. All postpaid.

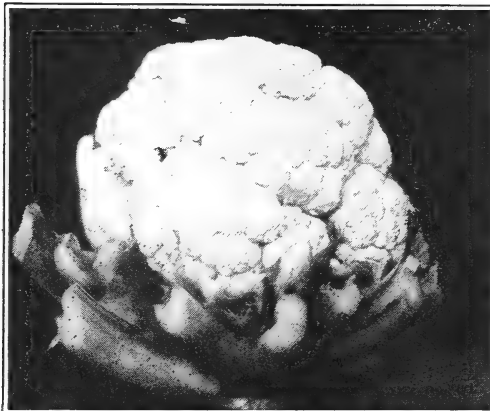
Charleston Large Wakefield. Resembles the Early Jersey Wakefield in form, but it is much larger. Very desirable for the market gardener. Pkt. 10c; oz. 25c; $\frac{1}{4}$ lb. 75c; 1 lb. \$2.50; 5 lbs. \$10.50. All postpaid.

Succession. A very good variety for second early use. Makes good sized flat heads and is very tender and of fine grain. Pkt. 10c; oz. 25c; $\frac{1}{4}$ lb. 75c; 1 lb. \$2.50; 5 lbs. \$10.50. All postpaid.



Bolgiano's New Early Cabbage

	Pkt.	Oz.	$\frac{1}{4}$ lb.	Lb.
Big Winter Wakefield.....	\$0.10	\$0.25	\$0.80	\$3.00
Early Jersey Wakefield10	.25	.75	2.50
Large Charleston Wakefield.....	.10	.25	.75	2.50
Early Flat Dutch.....	.10	.25	.75	2.50
Allhead Early10	.25	.75	2.50
All Season10	.25	.75	2.50
Extra Large Flat Dutch.....	.10	.25	.75	2.50
Drumhead Savoy.....	.10	.25	.75	2.50
Mammoth Red Rock.....	.10	.25	.75	2.50
Wisconsin All Season (Wilt Resistant).....	.10	.45	1.35	5.00



Early Snowball Cauliflower.

Cauliflower

Early Snowball. Pkt. 10c and 15c; $\frac{1}{2}$ oz. \$1.25; oz. \$2.00; $\frac{1}{4}$ lb. \$7.50.

Dwarf Erfurt. Pkt. 10c and 15c; $\frac{1}{2}$ oz. \$1.25; oz. \$2.00, $\frac{1}{4}$ lb. \$7.50.

Autumn Giant. Pkt. 10c and 15c; $\frac{1}{2}$ oz. 30c; oz. 50c; $\frac{1}{4}$ lb. \$1.65; lb. \$6.00.

Collards

True Georgia Southern. Pkt. 10c; oz. 15c; $\frac{1}{4}$ lb. 25c; lb. 75c.

CARROT

Chantenay. For a general crop the best; the largest yield; the most profitable for the market gardeners. Flesh sweet, crisp and tender. It is a desirable second early Carrot for the home garden and is also suitable for field culture. Pkt. 10c; oz. 15c; ¼ lb. 30c; lb. 85c.

Danvers. Medium early. Pkt. 10c; oz. 15c; ¼ lb. 30c; lb. 85c.

Oxheart. Early. Pkt. 10c; oz. 15c; ¼ lb. 30c; lb. 90c.

Early Rubicon. Pkt. 10c; oz. 15c; ¼ lb. 35c; lb. \$1.00.



Chantenay Carrot

CELERY

Golden Self-Blanching Bolgiano's Special Strain. The ribs are perfectly solid, crisp, brittle and of delicious flavor. It is self-blanching to a very remarkable degree, for without banking up or any covering whatever, even the outer ribs become a handsome, fresh, yellowish white color. The heart is large and solid and of a beautiful, rich, golden yellow color. Pkt. 10c; oz. 55c; ¼ lb. \$1.90; lb. \$7.00.

	Pkt.	Oz.	¼ lb.	Lb.
Easy Blanching	\$0.10	\$0.30	\$1.00	\$3.50
Sweet Nut10	.15	.50	1.75
Giant Pascal10	.15	.35	1.25
Celeriac, Giant Smooth Prague.....	.10	.15	.50	1.75

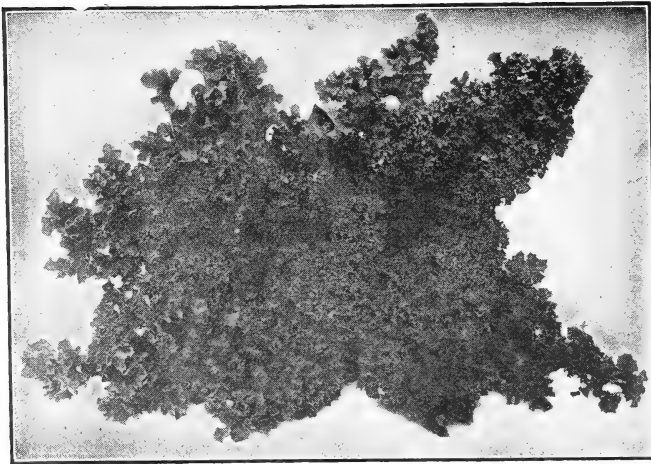
CUCUMBER



Bolgiano's Early Fortune Cuke

Bolgiano's Early Fortune Cucumber. By far the earliest and best cucumber for table, market or shipping purposes. Rich attractive deep green. Regular in size. Free from bitterness. Crisp and brittle. Pkt. 10c; oz. 15c; ¼ lb. 35c; lb. \$1.25.

	Pkt.	Oz.	¼ lb.	Lb.
Bolgiano's Prosperity White Spine.....	\$0.10	\$0.15	\$0.35	\$1.25
Klondyke10	.15	.30	.95
Arlington White Spine.....	.10	.15	.25	.90
Improved Extra Early White Spine.....	.10	.15	.30	.95



Dwarf Curled Norfolk Kale.

vigorous habit; perfectly hardy, bright green color, and very attractive in appearance. Pkt. 10c; oz. 15c; $\frac{1}{4}$ lb. 25c; lb. 75c.

CURLED BEAUTY or BLUE SCOTCH KALE. Distinct blue-green. Heavily curled. Pkt. 10c; oz. 15c; $\frac{1}{4}$ lb. 25c; lb. 75c.

SIBERIAN DWARF CURLED. 50c lb.

KALE

Extra Dwarf Green Curled Scotch, or Norfolk. It is hardy and will remain over winter in any place where temperature does not go below zero. Pkt. 10c; oz. 15c; $\frac{1}{4}$ lb. 25c; lb. 85c.

New American Long-Standing Extra Curled Kale. Beautiful green color, perfectly hardy. Will stand the coldest winters. Pkt. 10c; oz. 15c; $\frac{1}{4}$ lb. 25c; lb. 75c.

Imperial Curly Long-Standing. A beautiful curled and crimped sort, of strong,

ENDIVE

Escarole, or Broad-Leaved Batavian. Leaves a pale green. Forms large heads of broad, thick leaves. Pkt. 10c; oz. 15c; $\frac{1}{4}$ lb. 45c; lb. \$1.50

Green Curled. Self-blanching. Pkt. 10c; oz. 15c; $\frac{1}{4}$ lb. 35c; lb. \$1.25.

White Curled. As the color of the leaves is a light golden yellow, little or no blanching is required. Pkt. 10c; oz. 15c; $\frac{1}{4}$ lb. 35c; lb. \$1.25.

LETTUCE

Big Boston (Special Stock). Produces during all seasons, under ordinary favorable conditions, splendid, large, buttery-yellow heads, packed with thoroughly blanched leaves, crisp, tender and sweet. Although "Big Boston" is one of the best large-heading midsummer Lettuces, it is also peculiarly adapted for late fall culture. Pkt. 10c; oz. 15c; $\frac{1}{4}$ lb. 35c; lb. \$1.25.

Los Angeles. Large, late. Pkt. 10c; oz. 20c; $\frac{1}{4}$ lb. 65c; lb. \$2.25. Postpaid.

Trianon Cos. Pkt. 10c; oz. 15c; $\frac{1}{4}$ lb. 45c; 1 lb. \$1.50.

Masterpiece. Pkt. 10c; oz. 25c; $\frac{1}{4}$ lb. .85; lb. \$3.00.

May King. Pkt. 10c; oz. 15c; $\frac{1}{4}$ lb. 45c; lb. \$1.50.

New York or Wonderful. Pkt. 10c; oz. 20c; $\frac{1}{4}$ lb. 65c; lb. \$2.25.

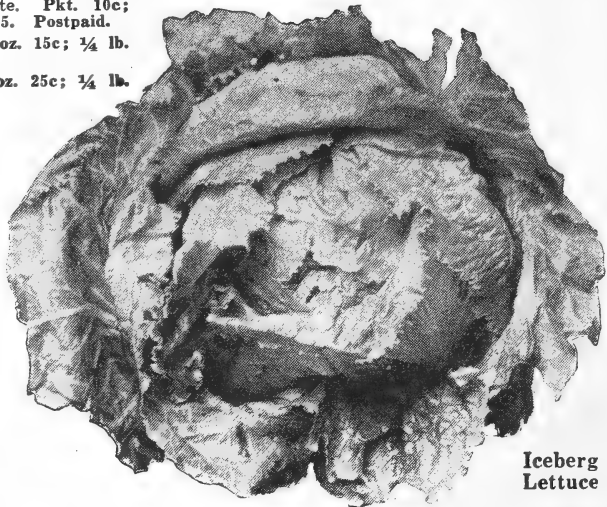
Hanson. Pkt. 10c; oz. 15c; $\frac{1}{4}$ lb. 45c; lb. \$1.50.

Grand Rapids. Pkt. 10c; oz. 15c; $\frac{1}{4}$ lb. 45c; lb. \$1.50.

Iceberg. Pkt. 10c; oz. 15c; $\frac{1}{4}$ lb. 45c; lb. \$1.50.

Eclipse Cos. Pkt. 10c; oz. 15c; $\frac{1}{4}$ lb. 45c; lb. \$1.50.

Salamander. Pkt. 10c; oz. 15c; $\frac{1}{4}$ lb. 45c; lb. \$1.25.



Iceberg Lettuce

Muskmelon Postpaid **Watermelon**

	Pkt.	Oz.	¼ lb.	Lb.		Pkt.	Oz.	¼ lb.	Lb.
Sweet Air.....	\$0.10	\$0.15	\$0.45	\$1.50	General Pershing.....	\$0.10	\$0.15	\$0.35	\$1.00
Rockyford.....	.10	.15	.30	.90	Tom Watson.....	.10	.15	.25	.75
Junior Rockyford.....	.10	.15	.50	1.75	Irish Gray.....	.10	.15	.25	.85
Unsurpassed.....	.10	.20	.60	2.00	Florida Favorite.....	.10	.15	.25	.75
Knight.....	.10	.15	.35	1.25	Kleckley Sweet.....	.10	.15	.25	.75
Baltimore Nutmeg.....	.10	.15	.35	1.00	Excell.....	.10	.15	.25	.85



Early Bird Peas

PEAS

On Peas, Beans and Sugar Corn, We Pay Postage Only on Pkts., Pts. and Qts. Larger Quantities Carrying Charges Extra

Laxtonian. Extremely early, wrinkled Pea. Peas very sweet; deep green. Pkt. 10c; pt. 40c; qt. 75c; pk. \$3.00; bu. \$9.75.

Thomas Laxton. Pkt. 10c; pt. 40c; qt. 75c; pk. \$2.75; bu. \$9.50.

Gradus. Pkt. 10c; pt. 40c; qt. 75c; pk. \$2.75; bu. \$9.50.

	Pt.	Qt.	Pk.	Bu.
Early Bird.....	\$0.35	\$0.60	\$2.65	\$9.50
Early Springtime.....	.35	.60	2.65	9.50
Long Pod Alaska.....	.35	.60	2.65	9.25
Pilot.....	.35	.60	2.65	9.25
Extra Early Alaska.....	.35	.60	2.50	8.50
Ameer.....	.35	.60	2.50	9.00
First and Best.....	.35	.60	2.50	8.50
Wonder Worker.....	.35	.65	2.75	10.00
100% Profit.....	.40	.70	3.00	11.00
Little Marvel.....	.35	.65	2.85	10.50
Telephone.....	.35	.60	2.65	9.50
Prolific Early Market.....	.35	.60	2.35	8.25
Notts Excelsior.....	.35	.60	2.50	9.50
Premium Gem.....	.35	.60	2.65	9.50
American Wonder.....	.40	.70	2.90	10.75
Pedigree Extra Early.....	.35	.60	2.50	8.50
Bolgiano's New Victory.....	.35	.60	2.70	9.75
Alderman.....	.35	.60	2.65	9.50
Melting Sugar.....	.40	.70	3.00	11.00

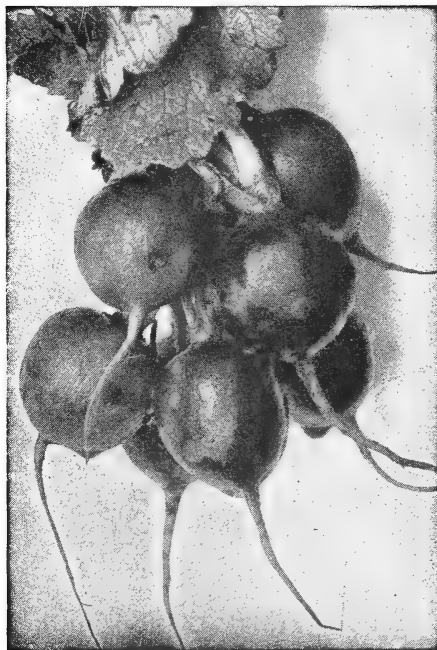
ONIONS Postpaid

	Pk.	Oz.	¼ lb.	Lb.
White Silver Skin.....	\$0.10	\$0.25	\$0.80	\$2.75
Southport White Globe.....	.10	.25	.75	3.00
Southport Yellow Globe.....	.10	.20	.65	2.25
Yellow Globe Danvers.....	.10	.20	.60	2.00
Red Wethersfield.....	.10	.20	.60	2.00
White Portugal.....	.10	.25	.80	2.75
Yellow Flat Danvers.....	.10	.15	.45	1.50
Crystal Wax Bermuda.....	.10	.30	1.00	3.50
Yellow Bermuda.....	.10	.30	1.00	3.50

Lōma

Vegetables Relish It

Loma, because it is readily soluble, gets down to the roots at once, and so can be used at once. And, because it is completely balanced, your vegetables relish it, and will thrive as they never have thrived before. 5 lbs. 50c; 10 lbs. 85c; 25 lbs. \$1.75; 50 lbs. \$3.00; 100 lbs. \$5.00.



Early Scarlet Globe Radish

RADISHES

Postpaid

Early Scarlet Globe. A splendid extra early, round, bright red radish. Pkt. 10c; oz. 15c; $\frac{1}{4}$ lb. 25c; lb. 75c.

White Tip Scarlet Turnip. Pkt. 10c; oz. 15c; $\frac{1}{4}$ lb. 25c; lb. 85c.

Early Long Scarlet Short Top. Pkt. 10c; oz. 15c; $\frac{1}{4}$ lb. 25c; lb. 75c.

Long Red. The roots are slender and are often six to seven inches long. Pkt. 10c; $\frac{1}{4}$ lb. 25c; lb. 75c.

Icicle. Long White. Pkt. 10c; $\frac{1}{4}$ lb. 25c; lb. 75c; 5 lbs. \$3.25.

White Chinese Winter. Pkt. 10c; oz. 15c; $\frac{1}{4}$ lb. 25c; lb. 75c.

Chinese Rose Winter. Pkt. 10c; oz. 15c; $\frac{1}{4}$ lb. 25c; lb. 75c.

Round Black Spanish. Pkt. 10c; oz. 15c; $\frac{1}{4}$ lb. 30c; lb. 90c.

Long Black Spanish. Pkt. 10c; oz. 15c; $\frac{1}{4}$ lb. 30c; lb. 90c.

PARSLEY

Market Gardener's Triple Curled. Exceedingly large yielder. Stands heat and cold. Pkt. 10c; oz. 15c; $\frac{1}{4}$ lb. 30c; lb. 75c. All postpaid.

PEPPER

Postpaid

Royal King. Pkt. 10c; oz. 30c; $\frac{1}{4}$ lb. \$1.00; lb. \$3.50.

Chinese Giant. Pkt. 10c; oz. 45c; $\frac{1}{4}$ lb. \$1.35; lb. \$5.00.

Ruby King. Large scarlet fruit; rather mild flavor. Pkt. 10c; oz. 25c; $\frac{1}{4}$ lb. 75c; lb. \$2.50.

World Beater. Pkt. 10c; oz. 30c; $\frac{1}{4}$ lb. \$1.00; lb. \$3.50.

Perfection. Pimento. Pkt. 10c; oz. 25c; $\frac{1}{4}$ lb. 85c; lb. \$3.00. Postpaid.

Bell or Bull Nose. Pkt. 10c; oz. 25c; $\frac{1}{4}$ lb. 90c; lb. \$3.25.

Scarlet Mammoth Pepper. Pkt. 10c; oz. 55c; $\frac{1}{4}$ lb. \$1.90; lb. \$7.00.

Long Red Cayenne. Pkt. 10c; oz. 25c; $\frac{1}{4}$ lb. 90c; lb. \$3.25.

Red Chili. Pkt. 10c; oz. 35c; $\frac{1}{4}$ lb. \$1.15; lb. \$4.00.



Chinese Giant Pepper

TURNIPS All Postpaid

Purple Top White Globe. Superior quality. A heavy cropper, early, and a fine keeper. Pkt. 10c; oz. 15c; ¼ lb. 20c; lb. 50c; 5 lbs. \$2.25.

Early Snowball. Very fine. Pkt. 10c; oz. 15c; ¼ lb. 20c; lb. 60c.

Golden Ball. Yellow, early. Pkt. 10c; oz. 15c; ¼ lb. 20c; lb. 60c.

Extra Early Purple Top Milan. Pkt. 10c; oz. 15c; ¼ lb. 25c; lb. 75c.

Purple Top White Flat Strap Leaf. Pkt. 10c; oz. 15c; ¼ lb. 20c; lb. 50c.

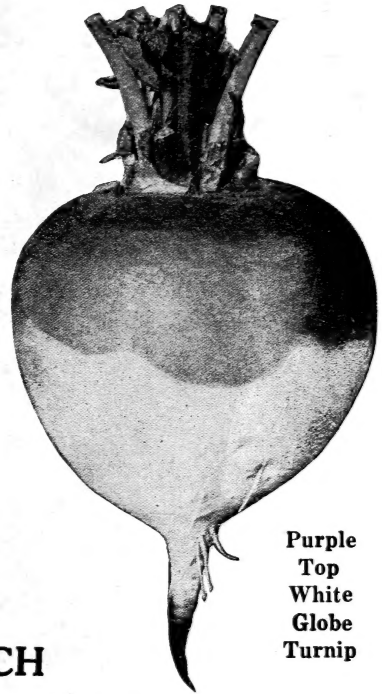
White Flat Dutch Extra Early. Pkt. 10c; oz. 15c; ¼ lb. 20c; lb. 40c.

Green Top Yellow Aberdeen. Pkt. 10c; oz. 15c; ¼ lb. 20c; lb. 60c.

Yellow Globe. Pkt. 10c; oz. 15c; ¼ lb. 20c; lb. 60c.

Amber Globe. Pkt. 10c; oz. 15c; ¼ lb. 20c; lb. 60c.

Rutabaga—Long Island Improved Purple Top. Pkt. 10c; oz. 15c; ¼ lb. 25c; lb. 75c.



Purple Top White Globe Turnip

SPINACH

Bolgiano's Selected Bloomsdale Savoy. A mammoth seeded selection that possesses a vitality and vigor of growth and far outyields any other variety. After many years of tireless effort at breeding we are pleased to be able to offer a limited quantity of this improvement on the old standby. Productive, tender and excellent quality. Oz. 10c; ¼ lb. 15c; lb. 30c; 5 lbs. \$1.25; 10 lbs. at 22c lb.; 25 lbs. at 20c lb.; 50 lbs. at 18c lb.; 100 lbs. at 16c lb.

Norfolk Bloomsdale Curled Savoy Blight Resistant. Pkt. 10c; oz. 15c; ¼ lb. 20c; lb. 30c.

Long Standing Savoy. Pkt. 10c; oz. 15c; ¼ lb. 20c; lb. 40.

Princess Juliana. Pkt. 10c; oz. 15c; ¼ lb. 20c; lb. 45c.

King of Denmark. Pkt. 10c; oz. 15c; ¼ lb. 20c; lb. 45c.

New Spring. Oz. 10c; ¼ lb. 15c; lb. 30c; 5 lbs. \$1.25.

Viroflay. Oz. 10c; ¼ lb. 15c; lb. 30c; 5 lbs. \$1.25.

TOMATOES

All Postpaid

Break O' Day. Pkt. 10c and 25c; oz. \$1.25; ¼ lb. \$4.00; lb. \$15.00.

The Arlington (Strain of Marglobe). Pkt. 10c and 25c; oz. 50c; ¼ lb. \$1.65; lb. \$6.00.

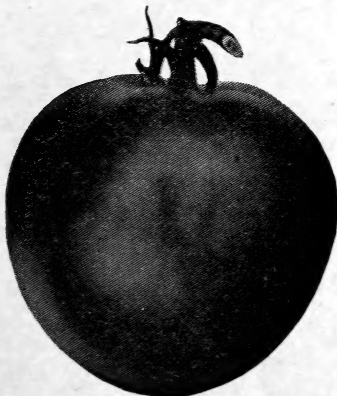
Bolgiano. Pkt. 10c and 25c; oz. 50c; ¼ lb. \$1.65; lb. \$6.00.

Improved Stone. Pkt. 10c; oz. 25c; ¼ lb. 80c; lb. \$2.75.

Greater Baltimore. Pkt. 10c; oz. 35c; ¼ lb. \$1.15; lb. \$4.00.

Florida Special. Blight resistant. Pkt. 10c; oz. 40c; ¼ lb. \$1.40; lb. \$4.50.

Livingston's Globe. Purple-red. Pkt. 10c; oz. 35c; ¼ lb. \$1.25; lb. \$4.00.



Livingston's Globe Tomato

TULIPS -- BOLGIANO LIST

Single Early

- 1 doz. Artus (dark scarlet) \$.65
 1 " Cottage Maid (White, edged with rose) .65

~~Old Dutch or Breeder~~

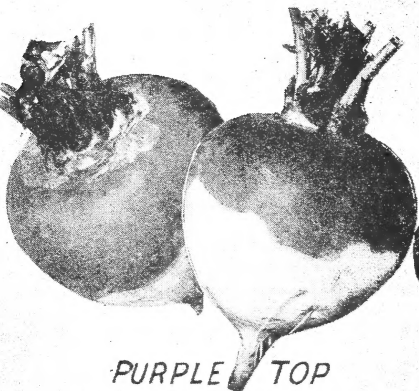
Cottage

- 1/2 doz. Inglescombe Pink (delicate rose pink, tinted salmon, blue-green center) \$.28
 1/2 doz. Sirene (Lily flowered) (rich cerise pink, reflexed petals) .33
 3 (u) Fairy Queen (rosy heliotrope, margined amber-yellow) .21

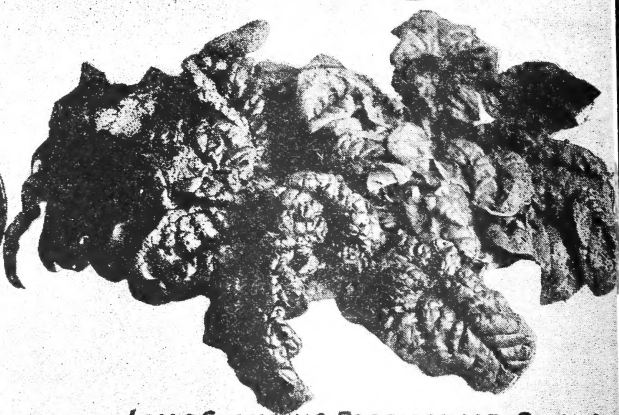
Darwin

- 1 doz. Clara Butt (bright salmon rose) .55
 " (u) Dream (soft rosy mauve on heliotrope ground) .33
 " Farncombe Sanders (brilliant rose scarlet) .28
 " Pride of Haarlem (brilliant carmine rose) .28
 3 me. Mrs. Krelage (bright rose, light border) .18
 3 (u) Rev. H. Ewbank (Soft lavender violet) .21

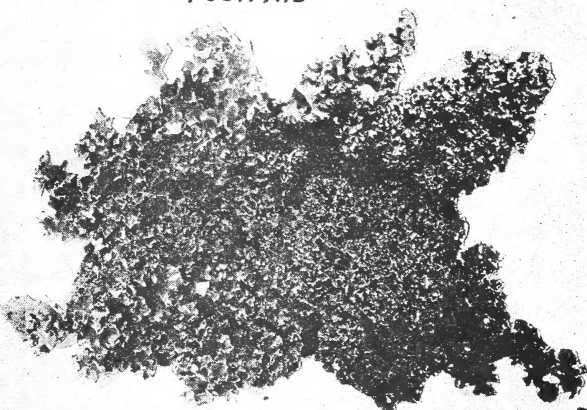
Bolgiano's "Capitol City" Garden Seeds For Fall Planting



*PURPLE TOP
WHITE GLOBE TURNIP*
PKT 10¢: OZ 15¢: ¼ LB 20¢: LB 50¢
POSTPAID



*LONG STANDING BLOOMSDALE SAVOY
SPINACH: PKT. 10¢: ¼ LB 15¢: LB 30¢*



DWARF CURLED NORFOLK KALE
PKT. 10¢: OZ 15¢: ¼ LB 25¢: LB 85¢
POSTPAID



*BOLGIANO'S
SCARLET GLOBE RADISH*
PKT 10¢: OZ 15¢: ¼ LB 25¢: LB 75¢
POSTPAID

F. W. Bolgiano & Co.
Washington, D. C.