

Historic, archived document

Do not assume content reflects current scientific knowledge, policies, or practices.

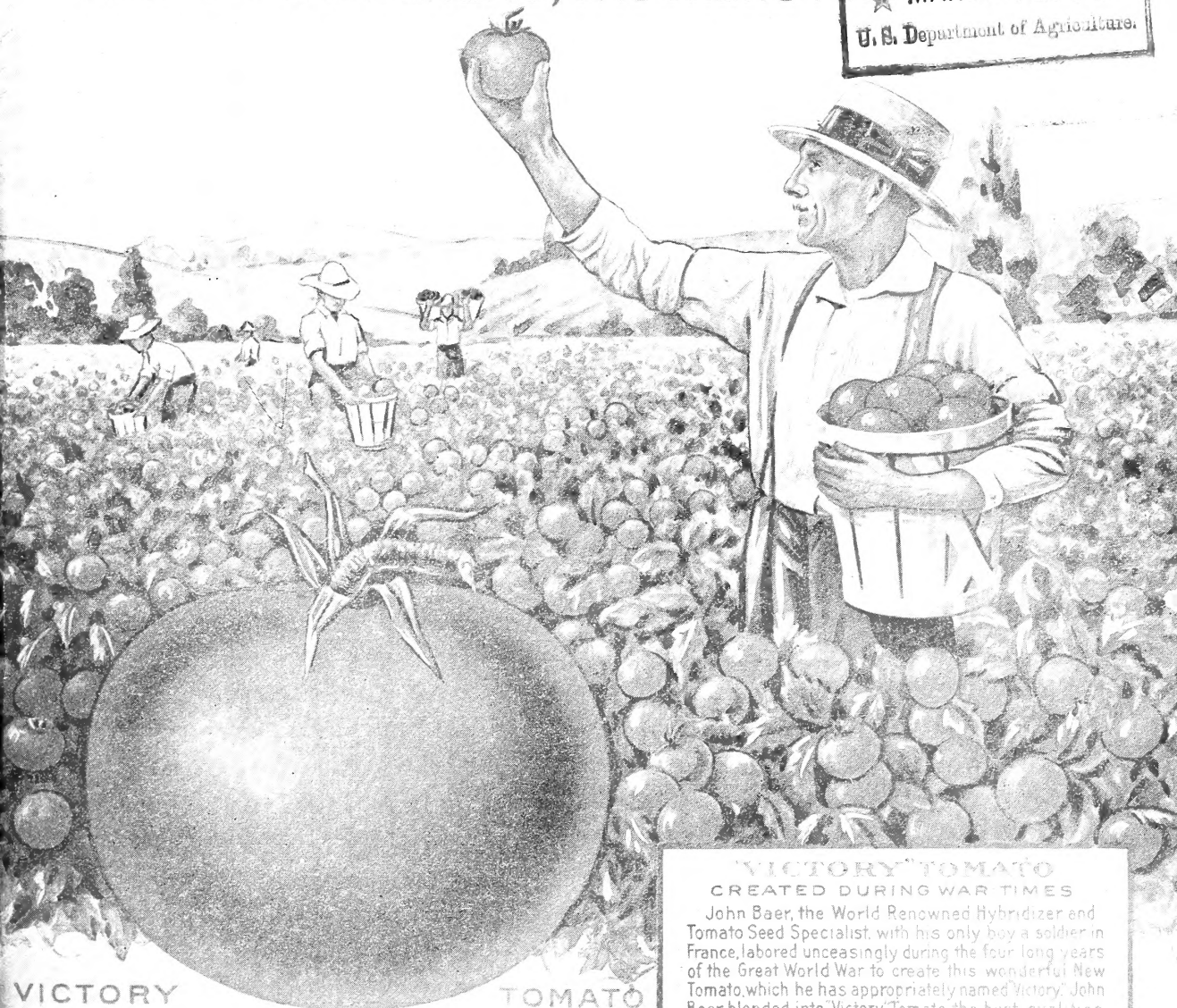
6237
SPRING 1920 WHOLESALE PRICES

Bolgiano's

SEED LIBRARY
RECEIVED

MARKET GARDENERS, TRUCKERS AND

MAR 20 1920 S.
U. S. Department of Agriculture.



VICTORY

TOMATO

EARLY FULL OF VIM, NEW LIFE AND HEALTH. FREE FROM WILT, BLIGHT, DISEASE, PERFECT SHAPE, HIGH GROWN FRUIT, ENTIRELY FREE FROM CORE, FIRM, SOLID AND MEATY, BEAUTIFUL, BRILLIANT RED COLOR, PERFECTLY SMOOTH AND EVEN, MILD REFRESHING, DELICIOUS FLAVOR, FREE FROM ACIDITY, A MARVELOUS YIELDER OF HEAVY CROPS, SURPASSES ANY TOMATO EVER KNOWN FOR SHIPPING, CANNING OR TABLE USE. SEED IS SCARCE, ORDER EARLY

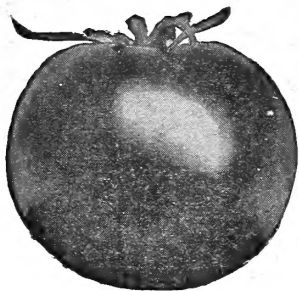
"VICTORY" TOMATO
CREATED DURING WAR TIMES
John Baer, the World Renowned Hybridizer and Tomato Seed Specialist, with his only boy a soldier in France, labored unceasingly during the four long years of the Great World War to create this wonderful New Tomato, which he has appropriately named Victory; John Baer blended into "Victory" Tomato the best qualities of "John Baer" Tomato and the Strongest points of the "Greater Baltimore" Tomato, the result produced is the MARVEL OF THE SEED WORLD.

PRICES - PKT. \$1.00, 1/2 OZ. \$2.50, OZ. \$4.00, 1/4 LB. \$15.00
1/2 LB. \$25.00, LB. \$50.00 POSTPAID.

J. BOLGIANO & SON
PRATT, LIGHT & ELLICOTT STS.
MONTGOMERY ST. KEY HIGHWAY & HARBOR
BALTIMORE, MARYLAND, U.S.A.

Bolgiano's Seven "Money Makers"

"JOHN BAER" TOMATO



"John Baer" Tomato
The Earliest and Best
Tomato on Earth.

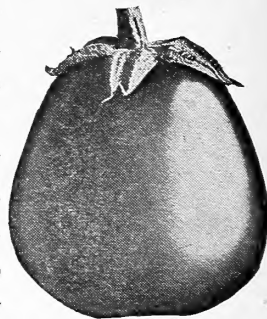
fruit, mild delicious flavor, almost seedless. A perfect shipper. Pkts., 10c, 25c and 50c. Oz., 70c. ¼ Lb., \$2.10. Lb., \$7.50. Postpaid. We offer veneer bands at \$1.25 per 100.

produces perfect, solid, high crown, beautiful, brilliant red shipping Tomatoes in 30 days from strong plants grown in veneer bands or from potted plants if the roots are undisturbed when set out. John Baer Tomato produces an enormous crop of Tomatoes, from 50 to 100 fruit to each plant. Entirely free from core and ripens evenly right up to the stem. No misshapen

BLACK BEAUTY EGG PLANT

TWO WEEKS EARLIER THAN ANY OTHER EGG PLANT

Fine flavor, most attractive appearance. Its rich coloring adds greatly to the beauty of the plant. The rich color is uniform over the whole plant and it does not change or fade at the blossom end. Come two weeks earlier than any

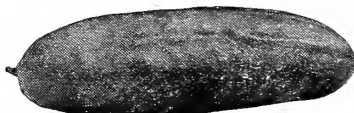


other Egg Plant and retails for double the price.

Pkt., 10c. Oz., 40c. ½ Lb., \$2.40. Lb., \$4.50.

BOLGIANO'S EARLY FORTUNE WHITE SPINE CUCUMBER THE GREAT MONEY-MAKING CUCUMBER

In color Early Fortune is a rich attractive green. This inviting color it retains during a very much longer period than any other variety. It is the greatest producer of all varieties, and at all stages of its growth it is a model for shape. It has a superb flavor, re-

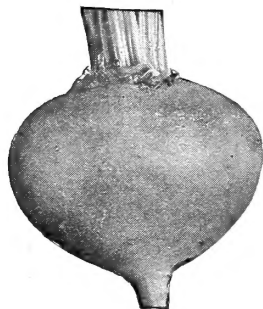


Early Fortune Cucumber.

freshing and delightful, entirely free from bitterness, being thin grained, flesh compact it is exceedingly crisp and brittle, making it an ideal slicing cucumber. Early Fortune is the best cucumber for home market or shipping use.

Pkt., 10c. Oz., 15c. ½ Lb., 55c. Lb., \$1.00. 5 Lbs. at 95c Lb. 10 Lbs. at 90c Lb.

BOLGIANO'S NEW "EARLY SPRING" BEET



It is the first Beet in market, where it commands the fancy prices. Most perfect in shape and beautiful deep red color. Even in maturing; that is, all the Beets can be pulled one week after you start in pulling. Can

be sown under glass and transplanted outdoors or sown in the open field and will mature much earlier than Crosby's Egyptian. Seed is very scarce. It will pay you handsomely to give it a trial. Pkt., 10c. Oz., 15c. ¼ Lb., 45c. Lb., \$1.50. Postpaid.

BOLGIANO'S NEW "SQUARE-DEAL" CABBAGE



Without a single exception, Bolgiano's New "Square-Deal" Cabbage is the Biggest Money Making Cabbage ever offered the American Trucker. We have seen ten-acre fields without a single irregular head. The uniform heads are of excellent size for shipping. The color is a fine fresh green and is retained during long shipments.

The heads are solid and compact with very few outer leaves. For a fine Solid, Tender, Uniform, Early Flat Cabbage, Bolgiano's New "Square-Deal" Cabbage challenges the world. Pkt., 10c. Oz., 35c. ¼ Lb., \$1.15. Lb., \$4.00.

BOLGIANO'S FRENCH GROWN GOLDEN SELF-BLANCHING CELERY

WON THE BLUE RIBBON AT TAMPA, FLA., FAIR,
FEBRUARY 15-22

It is used extensively by the largest and most experienced celery growers and annually produces enormous profits. This is the finest stock in the world. Stands shipment better than any other. It is tender crisp, compact and self-blanching to a very remarkable degree; even the outer ribs become a handsome golden yellow color, with a heart that is large, solid and of a rich golden yellow color. It never becomes stringy or pethy. Many of our customers place their orders with us six months before planting time to be sure of obtaining this stock. Pkt., 10c. ¼ Oz., 25c. ½ Oz., 40c. Oz., 70c. ¼ Lb., \$2.10. ½ Lb., \$3.90. Lb., \$7.50. Postpaid.



BOLGIANO'S RUBY KING PEPPER SEED EXTRA SELECTED STOCK

We have the finest strain of the well-known Ruby King Pepper in cultivation. It is noted for trueness to form, large size, brilliant color and sweet, mild flavor. It is a heavy bearer and a splendid shipper. If you are seeking the finest strain of Ruby King Pepper on the market, place your order with us.

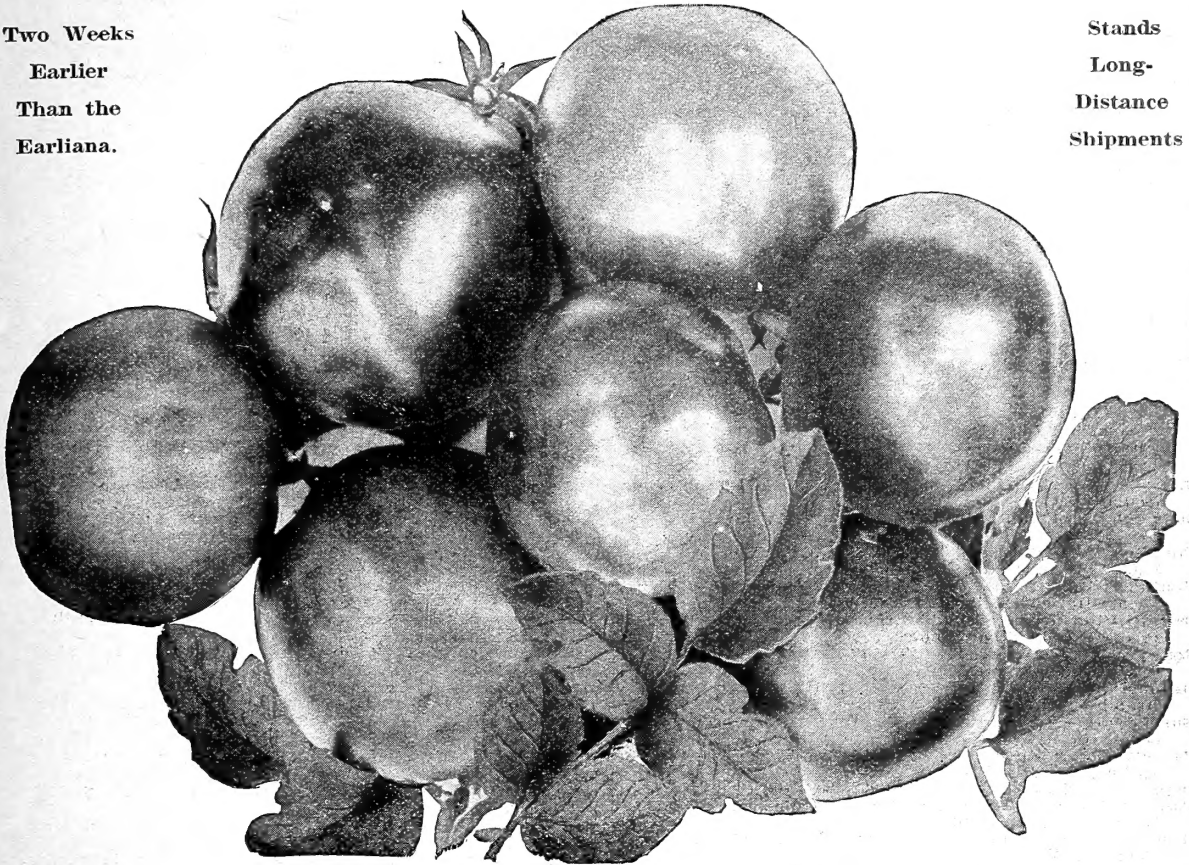
Pkt., 10c. Oz., 35c. ¼ Lb., \$1.15. Lb., \$4.00. Postpaid.



460 **The "Bolgiano" Tomato**
 NEW 1920 CREATION
The Most Wonderful Yields Ever Known

**Two Weeks
 Earlier
 Than the
 Earliana.**

**Stands
 Long-
 Distance
 Shipments**



THE "BOLGIANO" TOMATO.

First Fruit as Good as the Prime of the Season. A Solid Mass of Red Meaty Flesh
Skin Tough. Flesh, Tender and Sweet.

Pkt., \$1.00; 1/8 oz., \$1.75; 1/4 oz., \$3.00; 1/2 oz., \$5.50; oz., \$10.00. Postpaid.

You will see with your own eyes in your own field, and your own bank account will show why we have been willing to call this new creation in the tomato family "Bolgiano," putting back of it our 100 years of experience, reputation and success.

Never have we received such acknowledgments from any of our new creations as we have from the "Bolgiano" Tomato. Nature with her wonderful activities, helped by our expert selections, has produced this wonder of the tomato family. We know the tomato grower and his every need, whether for canning, market gardening, or home gardening, and we have always found him appreciative of our earnest efforts for his advancement.

One of our largest tomato growers last year had confidence and planted his entire acreage with the "Bolgiano" Tomato. His crop was far superior to anything that has ever been seen. Every vine was loaded with great quantities of perfect, red, solid tomatoes, picking as many as a bushel or more from a single vine.

The "Bolgiano" Tomato is two weeks earlier than the "Earliana," very smooth, first fruit as good as the prime fruit of the season. The heavy potato-leaf foliage protects the fruit from sun-scald and blister. It blossoms continuously. "Bolgiano" Tomato is the most wonderful producer ever known. More than 1,000 bushels have been gathered from a single acre when adjoining fields of other varieties have been almost barren.

Deep red in color, very solid, no watery seed cavities, a solid mass of meaty flesh. No tough green core. No green streaks radiating from the stem end. Fruit does not crack, but is all smooth and selected types. Tomatoes picked ripe have been left in the sun for two weeks and remain fit for table use. Skin is very tough, flesh is sweet and tender. Will stand long distance shipping in perfect condition. Although shipped long distances, it will appear as solid and as fresh as though just pulled from the vine. The best seller on the market stall. Plants set out on the 20th of May produced ripe fruit on the first of July. "Bolgiano" Tomato can be grown in any part of the United States with wonderful success. "Bolgiano" Tomato is accepted and acknowledged the most wonderful tomato ever grown.



All Prices
Subject to
Market Changes.

Grass and Clover Seeds

Write Us for
Prices Delivered
to Your Station.

BOLGIANO'S "GOLD" BRAND SEEDS ARE STANDARD.

Bermuda Grass. "Gold" Brand, lb. 65c. 100 lb. lots and over 60c lb.
Sudan Grass. "Gold" Brand, lb. 20c. 100 lb. lots and over, 15c lb.
Timothy. "Ideal" Brand, 18c lb. Pk., \$1.60. Bus. of 45 lbs., \$6.00. Silver Choice, \$5.75 bu.
Kentucky Blue Grass. "Gold" Brand Seed, lb. 35c. Pk., \$1.15. Bus. of 14 lbs., \$4.25. Silver Choice, \$4.00.
Canada Blue Grass. "Gold" Brand Seed, lb. 25c. Bus. of 14 lbs., \$2.60. Silver Choice, \$2.50.
Red Top or Herds Grass. "Gold" Brand Fancy, lb. 25c. Silver Choice, 24c lb.
Meadow Fesque, Randall or English Blue Grass. "Gold" Brand, lb. 45c. Pk. \$2.50. Bus. of 24 lbs., \$9.50.
English or Perennial Rye Grass. Lb. 20c. Bus. of 24 lbs., \$3.50. 100 lbs., 14c lb.
Pacey's Italian Rye Grass. "Gold" Brand, 20c lb. Bus. of 18 lbs., \$2.75. 100 lbs., 14c lb.
Crested Dogstail. Lb. 40c. 10 lbs., 38c. 100 lbs., 35c lb.
Tall Meadow Oat, Evergreen Grass. "Gold" Brand Fancy, \$3.25 per bu. of 11 lbs.
Orchard Grass. "Gold" Fancy, bus. of 14 lbs., \$4.00. Silver Choice, \$3.75 bu.
Red or Creeping Fesque. "Gold" Brand, lb. 45c. 10 lbs., \$4.00.
Timothy and Alsike Clover, mixed. Lb., 35c. 50 lbs. or over, 30c lb.

CLOVERS

Alfalfa Seed. American Grown. "Gold" Brand Fancy Seed. Bu. of 60 lbs. at 45c lb. "Silver" Choice, bu. of 60 lbs., 44c lb.
Alsike Clover. "Gold" Brand, bu. of 60 lbs., 55c lb. "Silver" Choice, bu. of 60 lbs., 54c lb.
Medium Red Clover. "Gold" Brand Fancy, bu. of 60 lbs. at 55c lb. "Silver" Brand Choice, bu. of 60 lbs. at 54c lb.
Mammoth or Sapling Clover. "Gold" Brand Fancy, bu. of 60 lbs. at 56c lb. "Silver" Brand Choice, bu. of 60 lbs. at 55c lb.
White Clover. "Gold" Brand Fancy, ½ lb., 35c. Lb., 60c.



Crimson Clover Seed. The great Nitrogen Gatherer. "Gold" Brand, bu. of 60 lbs., \$8.50.
Japan Clover. Lb., 45c. 10 lbs. and over, 42c lb.
White Blossom Sweet Clover (Hulled). 35c per lb. 60 lb. bu., \$21.00.
White Blossom Sweet Clover (Unhulled). Lb., 30c. 10 lbs. and over, 25c lb.
Burr Clover (Hulled). Write for lowest market price.
Hairy Vetch. Lb., 40c. 10 lbs., 38c lb. 100 lbs., 35c lb.
Burt or 90-Day Oats, Fk., 40c. Bu., \$1.40.
White Spring Oats, "Gold" Brand, Pk., 40c. Bu., \$1.40.
Bancroft Oats, Pk., 40c. Bu., \$1.40.
Appler Oats, Pk., 40c. Bu., \$1.40.
Montana or Swedish Oats, Pk., 40c. Bu., \$1.40.
Va. Gray Winter Oats, Write for lowest market price

MILLET

German or Golden Millet, Southern grown "Gold," Pk., 95c. \$3.25 per bu. of 50 lbs.
Tennessee (Cultivated) Golden Millet, \$1.10 pk. \$4.00 bu. of 50 lbs.
Hungarian Millet, "Gold" Brand, Pk., \$1.10. \$4.00 per bu.
Japanese Millet, "Gold" Brand, 10 lbs., 90c. 100 lbs., \$8.00.
Pearl or Cat Tail Millet, Pencilaria. Write for lowest market price.

SOJA BEANS

Mammoth Yellow, \$4.00 bu. **Wilson,** \$6.00 bu.
Mammoth Brown, \$4.75 bu. **Pekin,** \$6.00 bu.
Mammoth Black, \$4.75 bu. **Sable,** \$6.00 bu.
Spring Vetches or Tares, "Gold" Brand, lb. 20c. 10 lbs. 17c lb. 50 lbs., 16c lb. 100 lbs., 15c lb.
Dwarf Essex Rape, 15c lb. 10 lbs., 14c. 100 lbs., 12c lb.
White Kaffir Corn, Lb., 10c. 10 lbs., 50c. 100 lbs., \$4.50
Red Kaffir Corn or Milo Maize, Lb., 10c. 10 lbs., 50c. 100 lbs., \$4.50.
Flax Seed. Write for lowest market prices.
Japanese Buckwheat, Pk., 65c. Bu., \$2.25.
Silver Hull Buckwheat, Pk., 75c. Bu., \$2.50.
Speltz or Emmer, Pk., 65c. 40 lb. bu., \$2.25.
Amber Sorghum, 50-lb. bu., \$2.50. Fk., 75c.
Early Orange Sorghum. Write for lowest market prices.

Spring Rye. Please write for lowest market prices.
Canada Field Peas, \$1.15 pk. \$4.25 bu.

Beardless Spring Barley. Write for lowest market prices.

Mixtures for Permanent Pastures, but Can Be Mown.
 25 Lbs. or Over at 100 Lb. Rates.

Mixture No. 1. For Light, Dry, Gravelly or Sandy Soils. Sow 30 to 35 lbs. to the acre. Lb., 30c. 10 lbs., 27c. 100 lbs., 25c per lb.
Mixture No. 2. For Good Loam Soil. Sow 30 to 35 lbs. to the acre. Lb., 30c. 10 lbs., 27c per lb. 100 lbs., 25c per lb.
Mixture No. 3. For Heavy Loam or Clay Soil. Sow 30 to 35 lbs. to the acre. Lb., 30c. 10 lbs., 27c per lb. 100 lbs., 25c lb.
Mixture No. 4. For Moist Bottom Lands. Sow 25 to 30 lbs. to the acre. Lb., 30c. 10 lbs., 27c. 100 lbs., 25c per lb.

Mixtures for Mowing for Hay, but Can Be Grazed.
 25 lbs. or over at 100-lb. rate.

Mixture No. 5. For Wet Bottom Land. Sow 25 to 30 lbs. per acre. Lb., 30c. 10 lbs., 27c per lb. 100 lbs., 25c per lb.
Mixture No. 6. For Light, Dry, Gravelly or Sandy Soils. Sow 30 to 35 lbs. to the acre. Lb., 30c. 10 lbs., 27c per lb. 100 lbs., 25c per lb.
Mixture No. 7. For Good Loam Soil. Sow 30 to 35 lbs. to the acre. Lb., 30c. 10 lbs., 27c per lb. 100 lbs., 25c per lb.
Mixture No. 8. For Heavy Loam or Clay Soil. Sow 30 lbs. to the acre. Lb., 30c. 10 lbs., 27c per lb. 100 lbs., 25c per lb.
Mixture No. 9. For Moist Bottom Land. Sow 20 to 25 lbs. per acre. Lb., 30c. 10 lbs., 27c per lb. 100 lbs., 25c per lb.
Mixture No. 10. Shady Nook Meadow Mixture. Sow 30 to 35 lbs. to the acre. Lb., 30c. 10 lbs., 27c per lb. 100 lbs., 25c per lb.

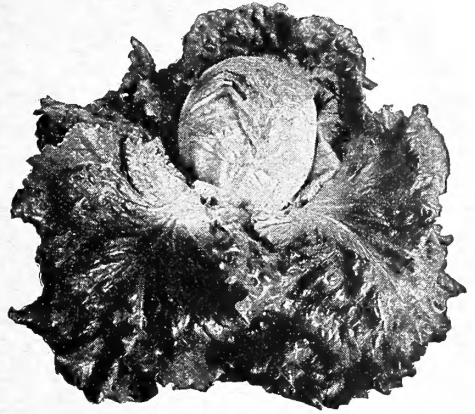
Bolgiano's "Masterpiece" Lettuce

SURE HEADER—BEAUTIFULLY BLANCHED—VERY SOLID

Crisp as Ice—Mild, Tender, Delicious Flavor.

This wonderful lettuce was grown and tested last year by thousands of lettuce growers both for home and market use. They were unanimous in pronouncing this lettuce to be a sure header, very solid, beautifully blanched, crisp as ice, with a mild, tender, sweet delicious flavor. No matter how hot, or how long it remains in the garden it will keep crisp, tender and sweet. No bitterness. It will not go to seed quickly. Heads grow to the size of 24 inches around, and 12 inches from tip to tip of leaf. Can be grown in open ground after danger of frost is over, all during summer and early fall. Never spots or turns dark in any parts.

This lettuce will please the most critical Market Gardeners. It is equally well suited for the home garden, nearby markets or long-distance shipments. It does well in any section of the country, and lettuce growers throughout the United States will find it a very profitable variety to grow. Our supply of seed for this year will not equal the demand. Order early. Pkt., 10c; ½ Oz., 40c; Oz., 75c; ¼ Lb., \$2.25; ½ Lb., \$4.15; Lb., \$8.00. Postpaid.



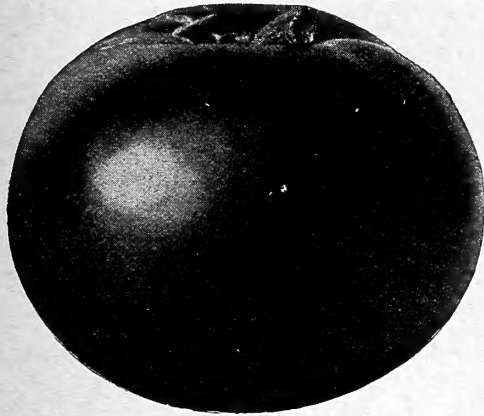
Bolgiano's "Masterpiece" Lettuce.

Bolgiano's "Victory" Tomato

THE MARVEL OF THE SEED WORLD.

The Bolgiano's "Victory" is the product of two wonderful full-blooded, healthy parent stocks. The new creation has been selected and developed to reproduce the best qualities of both parents.

It would take many pages to tell about this marvelous new Tomato, for it has never been equaled, but we give below a few of its wonderful strong point and outstanding good qualities. When you grow it you will say even more good things about it than we have.



Bolgiano's "Victory" Tomato.

1st. The Bolgiano's "Victory" Tomato is the most beautiful shaped tomato the world has ever seen.

2nd. The Bolgiano's "Victory" Tomato is free from core. It produces all perfect high crown fruit.

3rd. The color is a startling, beautiful, brilliant red.

4th. The fruit is firm, solid and heavy. Crowded full of delicious meat.

5th. The Bolgiano's "Victory" Tomato ripens perfectly right up to the stem.

6th. The development is perfect, smooth and even at both stem and blossom end.

7th. Absolutely no waste.

8th. Entirely free from wilt and blight.

9th. The Bolgiano's "Victory" Tomato ripens a little later than "John Baer" Tomato, but earlier than "Greater Baltimore" Tomato.

10th. It is a marvelous yielder. The abundance of its crops will amaze you.

11th. The flavor is distinct, mild, refreshing and delicious, entirely free from any stinging or biting acidity.

12th. Produces heavy crops of fine fruit when other varieties are complete failures.

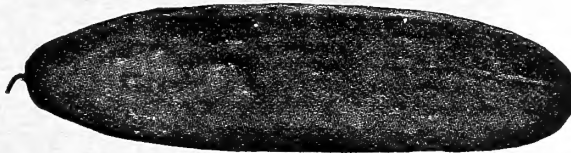
Pkt., \$1.00; ½ Oz., \$2.50; Oz., \$4.00; ¼ Lb., \$15.00; ½ Lb., \$25.00; Lb., \$50.00. Postpaid.

The Earliest

Best

White Spine

Cucumber.



Bolgiano's "Crystal Springs" Cucumber.

No Mishappen

Fruits or

Culls.

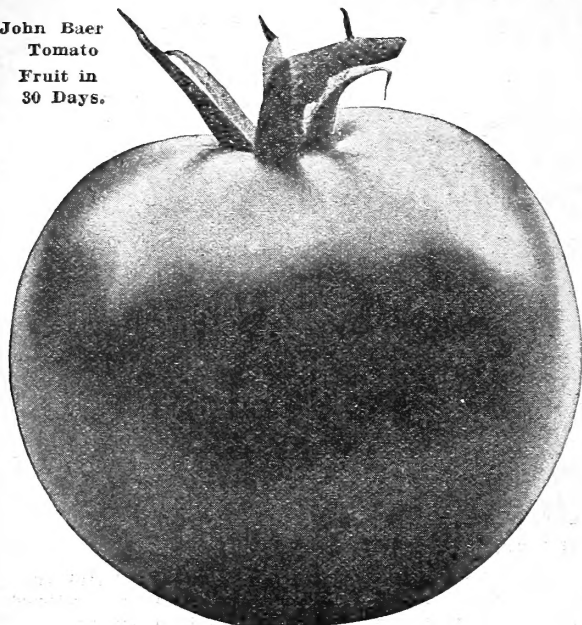
Bolgiano's "Crystal Springs" Cucumber

The vines are of strong vigorous growth with healthy foliage, mildew-proof and maintain their luxuriance and set the extra long fruit abundantly from the earliest to the latest season. The Cucumbers are uniformly smooth and regular in form—in fact, it is the most perfect Cucumber that you have ever seen. No misshapen fruits or culls. The skin is thin and tender. An attractive rich glossy deep green in color, which it carries to the very tips. It never turns yellow, even when fully ripe. The flesh is firm, fine grained and tender, sparkling white, of

the most delightful and refreshing flavor. It is entirely free of the bitter taste so often noticed in other varieties. The flesh is thick, the fruit being two to three inches in diameter, with very few seeds. It is ideal for slicing. The quality is superb. Bolgiano's New "Crystal Springs" Cucumber is the Earliest, Heaviest Yielding Long Green White Spine Cucumber ever known, under all conditions of culture, whether under glass or in the open ground. It is the ideal Cucumber for either shipping, market or home use.

Pkt., 5c. and 10c.; Oz., 20c; 2 Ozs., 35c; ¼ Lb., 60c; ½ Lb., \$1.10; Lb., \$2.00. Postpaid.

John Baer
Tomato
Fruit in
30 Days.



Perfect "John Baer" Tomato—the Earliest of the Earliest.

Bolgiano's "Big Crop" Tomato Seed

PRODUCES THE
BEST TOMATOES THAT GROW

Bolgiano's "Big Crop" Tomato Seed is saved from fully developed ripe tomatoes grown for seed only, entirely free from blight, dry rot and other diseases.

We grow our tomato seed in the far Northern Climate to keep down blight and other diseases and to keep the tomatoes solid and meaty. At our growing station we have no extreme weather conditions, there is a complete absence of humidity. This has proven very favorable to our success in growing such perfect fruit for seed.

A full year's work often depends upon the seed that is used. Take no chance in buying your Tomato Seed. Bolgiano's "Big Crop" Seed, so carefully grown and selected, will give you the best results.

Years of experience have taught us many important tomato facts: if you desire to grow Big Crops of Tomatoes, it will pay you to profit by our long years of experience and use Bolgiano's "Big Crop" Seed.

Send us your order at once. We can now fill your order with our highest quality tomato seed. We only supply seed of our own growing; when this is exhausted we cannot fill an order. If you put off ordering, you may then be too late.

WE PREPAY POSTAGE
ON ALL TOMATO SEED

Red Tomatoes

WE PREPAY POSTAGE
ON ALL TOMATO SEED

	In Lots of	Five Pounds or More	Deduct 10 Cents Per Pound.
Bolgiano's New "Glory" Tomato.	Pkt. Oz.	¼ Lb.	Lb.
.....	10c.	15c	25c
"John Baer" Tomato, the Earliest Tomato on Earth.	10c	.70	2.10 7.50
"Prosperity," The Wonder Among New Very Early Tomatoes	10c	.50	1.40 5.00
Bolgiano's I. X. L., extremely early wonderfully productive tomato	10c	.35	1.15 4.00
"My Maryland" Tomato, King of them all, a wonderful double yielding Tomato (stock seed)	10c	.70	2.10 7.50
"Greater Baltimore," a most wonderfully productive main crop Tomato	10c	.35	1.15 4.00
The Wisdom Tomato	10c	.40	1.30 4.50
Bolgiano's Extra Early "Florida Special"	10c	.30	1.00 3.50
"Bonnie Best" Early Tomato	10c	.30	1.00 3.50
Chalk's Early Jewel Tomato	10c	.30	1.00 3.50
Spark's Earliana Tomato, the best stock in the world, latest improved strain	10c	.30	1.00 3.50
Spark's Earliana Seed, saved from earliest Stem Set Fruit only	10c	.35	1.15 4.00
Maul's Earliest Tomato	10c	.30	1.00 3.50
Bolgiano's Best Tomato, the Great R B.	10c	.30	1.00 3.50

	Pkt.	Oz.	¼ Lb.	Lb.
The Matchless Tomato, splendid canner	10c	.30	.85	3.00
Maul's Success Tomato, large main crop	10c	.30	.85	3.00
Filder's Early Cropper Tomato	10c	.70	2.10	7.50
Livingston Paragon Tomato, Improved	10c	.30	.85	3.00
Livingston's New Stone Tomato, specially selected Stock	10c	.30	.85	3.00
New Stone—Saved from earliest Stem Set Fruit only	10c	.30	1.00	3.50
Red Rock Tomato	10c	.30	1.00	3.50
Bolgiano's New Queen Tomato, the reliable canner	10c	.30	.85	3.00
King of the Earliest Tomato	10c	.30	1.00	3.50
Dwarf Stone Tomato	10c	.30	1.00	3.50
Livingston Favorite Tomato	10c	.30	.85	3.00
Livingston Perfection Tomato	10c	.30	.85	3.00
Ten Ton Tomato	10c	.30	.85	3.00
Dwarf Aristocrat Tomato	10c	.30	1.00	3.50
Livingston Trophy Tomato	10c	.30	1.00	3.50
Enormous Tomato	10c	.40	1.30	4.50
Brinton's Best Tomato	10c	.30	.85	3.00
World's Fair Tomato	10c	.30	.85	3.00
Henderson's New Freedom Tomato	10c	.30	1.00	3.50
Henderson's Ponderosa Tomato	10c	.40	1.30	4.50
Atlantic Prize Tomato	10c	.30	1.00	3.50
Maryland Pride Tomato	10c	.36	1.00	3.50
Kelly Red or Wade	10c	.35	1.15	4.00

Asparagus Seed

1. **New Palmetto.** Is very early, large yielder, and very regular and even in growth. Average bunches contain 15 shoots, measuring 13½ inches in circumference; weighs 2 pounds. It is equally well adapted for all sections. Its quality is unequalled. Pkt. 5c. Oz. 10c. ¼ Lb. 15c. Lb. 45c. 5 Lbs. at 40c.

2. **Conover's Colossal.** A well-known variety. Pkt. 5c. Oz. 10c. ¼ Lb. 15c. Lb. 45c. 5 Lbs. at 40c.

526 **Columbian Mammoth White.** Pkt. 5c. Oz. 10c. ¼ Lb. 15c. Lb. 45c. 5 Lbs. at 40c.

582. **Barr's Mammoth.** Pkt. 5c. Oz. 10c. ¼ Lb. 15c. Lb. 45c. 5 Lbs. at 40c.

583. **Argentine Giant.** Pkt. 5c. Oz. 10c. ¼ Lb. 15c. Lb. 45c. 5 Lbs. at 40c.

"Glory" a Perfect Tomato in Every Respect.
On December 2, 1919, C. A. Scivally, of Grayson Co., Texas, wrote: "I wish to say that Bolgiano's "Glory" Tomato Seed is just what you advertised it to be. I find it the best drought resister and the most prolific plant I have ever had any experience with and I have used many. We never had any rain from the 9th of June until the 2nd of September, but the "Glory" bore just the same and the vines stayed green when the other varieties perished right away. Everybody around here surely opened their eyes when I sold tomatoes after their's were gone long ago. It is a perfect tomato in every respect, early bearing and heavy fruiting vines. I am going to grow it exclusively another season and will send in my order at any early date."

"Glory" Tomato Cannot be Beat.

On October 1, 1919, E. Faidley, of Washington Co., Va., wrote: "I wish to say that your "Glory" Tomato cannot be beat. It is a close race between it and the John Baer, and it would take an expert to decide which is the better. As you know I paid \$4.00 an ounce for my seed while some only paid 50c and 60c for that bought of other firms, but I am a great believer in knowing what you are planting, and I certainly have had fine results."

"John Baer" Sold for 25c. Per Pound.

On October 4, 1919, T. M. Franklin, of Cobb Co., Fla., wrote: "The John Baer Tomato seed bought of you was planted in hot beds with four other varieties, bought from local dealers here. The John Baers were up 3 to 5 days ahead of the others and grew so rapidly they were crowded before the weather permitted their being transplanted to cold beds or the open. The fruit beat any I have ever seen and was as smooth as could be. The flavor was exceptionally good. I sold them from \$4.00 to \$5.00 per bushel on the Atlanta, Ga. market, and they retailed at 25c per pound."

"John Baer" in North Carolina.

On September 10, 1919, N. C. Browder, of Hickory, Catawba Co., N. C., wrote: "I must say that the John Baer Tomatoes are the best tomatoes that we have ever raised. No others can compare with them in flavor, and they are preferred by all our customers. They have from 8 to 10 on a stalk. This is September 10 and they are still bearing."

Bolgiano's "Glory" Tomato

Lives and Bears Abundantly When Other Varieties Die

We Pay Postage
on all
Tomato Seed

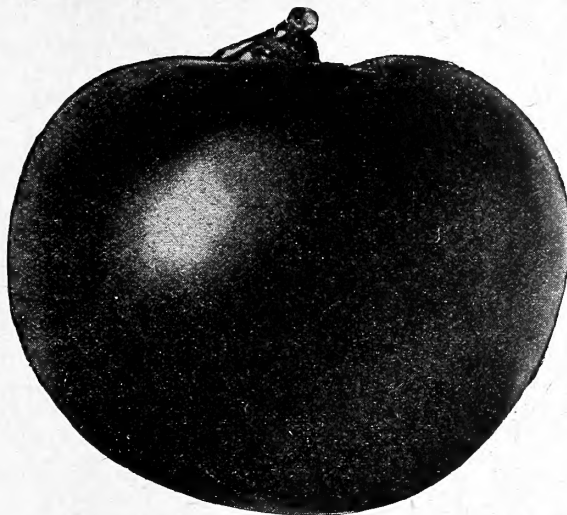
For Very Early or Second
Early Crops

Round as an Apple

Entirely Free From
Cracks or Ridges

Color a Beautiful
Bright Red

Mild Delicious Flavor
Almost Seedless
All Meat



Leads All Varieties for
Shipping, Canning or
Table Use

Marvelous Yields

Thrives Well Either in
Wet or Dry Season

Produces at Every Joint
Large Clusters
of Good Size Smooth,
Firm, Beautifully Shaped
Fruit

Fruit is Uniform in
Shape, Color and Size

"Glory" Tomato.

Bolgiano's "Glory" Tomato. Pkts. 10c, 15c, and 25c. Oz. \$2.25. ¼ Lb. \$7.50. Lb. \$25.00. Postpaid.

Pink Tomatoes

Parcel Post Rates—See Page 16.

We Prepay Postage on All Tomato Seed.

In lots of 5 pounds or more deduct 10c per lb.

	Pkt.	Oz.	¼ Lb.	Lb.
Globe Tomato Livingston.....	10c	35c	\$1.15	\$4.00
Livingston's Globe Tomato Seed, Saved from finest Clusters of the Earliest Stem Set fruit...	10c	40c	1.30	4.50
Duke of York Tomato, Old Type, Blue Stem.....	10c	30c	1.00	3.50
Bolgiano's Prizetaker Tomato—the Best Large Early Purple.....	10c	30c	1.00	3.50
Redfield Beauty Tomato.....	10c	30c	1.00	3.50
Livingston's "Beauty" Tomato Extra Fine Stock.	10c	30c	1.00	3.50
June Pink Tomato.....	10c	30c	1.00	3.50
June Pink Tomato, Saved from the finest Clus- ters of Earliest Stem Set fruit.....	10c	35c	1.15	4.00
Burpee's Earliest Pink Tomato.....	10c	30c	1.00	3.50
Dwarf Champion—Extra Selected Stock.....	10c	40c	1.30	4.50

In Lots of 5 Pounds, each
at 5c Per Pound Less.

Garden Beets

	Oz.	2 Ozs.	¼ Lb.	Lb.
Bolgiano's New Early Spring Beet.....	15c	25c	45c	\$1.50
Extremely Early "Bonfire" Beet, New.....	10c	15c	25c	.75
American Beauty Beet.....	10c	15c	25c	.75
Bolgiano's Deep Blood Beauty Beet.....	10c	15c	25c	.75
Nuttings Early Gem Beet.....	10c	15c	20c	.60
Early Model Beet.....	10c	15c	20c	.65
New Royal Red Beet.....	10c	15c	25c	.75
Burpee's Black Red Ball, Dark Leaf.....	10c	15c	20c	.60
Early Ox Blood Dark Red Beet.....	10c	15c	20c	.65
Eclipse Extra Early Beet.....	10c	15c	20c	.60
Crosby's Improved Egyptian Beet (Extra Early Se- lected Market Gardeners' Stock.....	10c	15c	20c	.60
New Crimson Globe Beet.....	10c	15c	20c	.60
Detroit Dark Red Beet.....	10c	15c	20c	.65
Extra Early Dark Red Flat Egyptian Beet.....	10c	15c	20c	.60
Early Blood Turnip Beet, New Improved.....	10c	15c	20c	.60
Edmond's Blood Turnip Beet.....	10c	15c	20c	.60
Early Large Egyptian Beet.....	10c	15c	20c	.60
Bastian's Extra Early Blood Turnip Beet.....	10c	15c	20c	.60
Lentz Extra Early Blood Turnip Beet.....	10c	15c	25c	.75
Extra Early Bassano Beet.....	10c	15c	20c	.60
Half Long Dark Blood.....	10c	15c	20c	.60
Long Smooth Dark Blood Beet.....	10c	15c	20c	.60
Dewing Early Blood Turnip Blood Beet.....	10c	15c	20c	.60
Lucullus Swiss Chard.....	10c	15c	25c	.75
Swiss Chard or Silver Beet.....	10c	15c	20c	.65

MANGEL WURZEL BEETS

Write for Special Prices in Large Quantities.

	Oz.	¼ Lb.	Lb.
New Jumbo Mangel Wurzel.....	10c	20c	50c
Gate Post Mangel Wurzel.....	10c	20c	50c
Giant Sugar Feeding Beet.....	10c	15c	45c
Giant Long Red Mangel Wurzel.....	10c	15c	45c
Golden Tankard Mangel Wurzel.....	10c	15c	45c
Golden Giant Intermediate.....	10c	15c	45c
Klein Wanzlebener Elite.....	10c	15c	45c
Lane's Improved Sugar.....	10c	15c	45c

	Pkt.	Oz.	¼ Lb.	Lb.
Dwarf Champion Tomato.....	10c	35c	\$1.15	\$4.00
Improved Early Acme Tomato.....	10c	30c	1.00	3.50
Extra Early Climax Tomato.....	10c	30c	1.00	3.50
Crimson Cushion or Beefsteak.....	10c	35c	1.15	4.00
Buckeye State Tomato.....	10c	30c	1.00	3.50

Yellow Tomatoes

	Pkt.	Oz.	¼ Lb.	Lb.
Yellow Pear-Shaped Tomato.....	10c	30c	\$1.00	\$3.50
Red Pear-Shaped Tomato.....	10c	30c	1.00	3.50
Red Plum-Shaped Tomato.....	10c	30c	1.00	3.50
Golden Eagle Tomato.....	10c	35c	1.15	4.00
Pink Peach Tomato.....	10c	30c	1.00	3.50
Yellow Plum-Shaped Tomato..	10c	30c	1.00	3.50
Golden Queen Tomatoes.....	10c	30c	.85	3.00
Yellow Peach Tomato.....	10c	30c	1.00	3.50
Red Peach-Shaped Tomato..	10c	30c	1.00	3.50
Red Cherry Tomato.....	10c	30c	1.00	3.50
Yellow Cherry Tomato.....	10c	30c	1.00	3.50

All Our Best Seed are Grown from Selected
Transplanted Roots—Market Gardeners' Stocks.



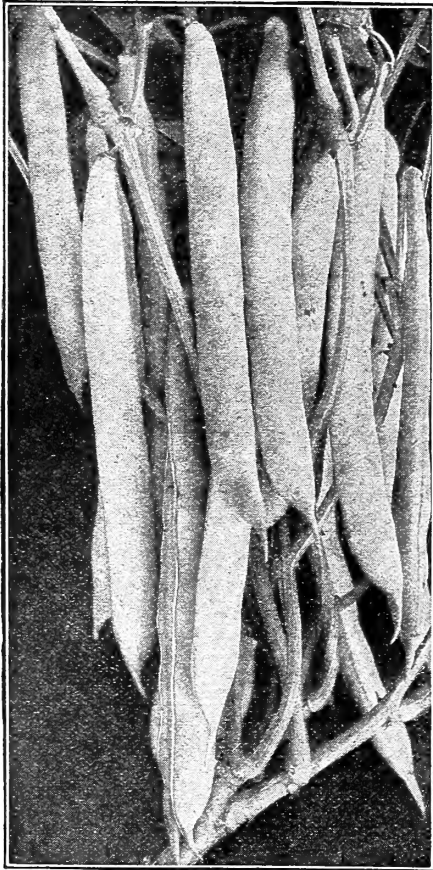
Bolgiano's New
"Early Spring"
Beet.
Most perfect
shape and
color.

Earlier
maturing
than Crosby's
and of much
finer grain.

All New 1919 Crop
First Class Selected Stock

Green Podded Bush Beans

Finest Hand
Picked Samples



Bolgiano's Improved Stock Black Valentine Beans.

Green Podded Pole Beans

1 Quart to 150 Hills. 10 to 12 Quarts to the Acre.

	Pt.	Qt.	Pk.	½ Bu.	Bu.
Lazy Wife Pole Beans.....	35c	60c	\$3.65	\$7.10	\$14.00
Point Market Prolific Pole Beans...	35c	55c	3.40	6.60	13.00
White Creaseback, or Fat Horse Pole Beans.....	35c	55c	3.30	6.35	12.50
Old Homestead, or Kentucky Wonder	30c	50c	2.90	5.60	11.00
Horticultural, Cranberry or Wren's Egg.....	30c	45c	2.65	5.10	10.00
Red Speckled Cut Short Pole Beans..	30c	45c	2.65	5.10	10.00
Dutch Case Knife Pole Beans.....	30c	45c	2.65	5.10	10.00

Bush Lima Beans

We Supply Packets of all Beans at 5c and 10c Each, Postpaid.
Parcel Post Rate—See Page 16.

	Pt.	Qt.	Pk.	½ Bu.	Bu.
Bolgiano's Extra Early Enormous Bush Limas.....	40c	65c	\$4.15	\$8.10	\$16.00
Fordhook Bush Lima Beans.....	40c	65c	3.90	7.60	15.00
Burpee's "Improved" Bush Limas.....	40c	65c	3.90	7.60	15.00
Wood's Prolific Bush Lima Beans.....	30c	50c	2.80	5.35	10.50
Dreer's New Wonder Bush Lima Beans.....	35c	60c	3.55	6.85	13.50
Burpee's "Large" Bush Lima Beans..	35c	60c	3.55	6.85	13.50
Dreer's Bush Lima or Kumerle.....	35c	60c	3.80	7.35	14.50
Henderson's Dwarf Bush Limas.....	30c	50c	2.80	5.35	10.50

Pole Lima Beans

	Pt.	Qt.	Pk.	½ Bu.	Bu.
Henderson's Ideal Pole Limas.....	35c	60c	\$3.55	\$6.85	\$13.50
Seibert's Early Pole Lima Beans....	35c	60c	3.55	6.85	13.50
Extra Early Jersey Pole Lima Beans..	35c	60c	3.55	6.85	13.50
Carolina or Sieve Pole Lima Beans..	35c	55c	3.30	6.35	12.50
Extra Large White Pole Lima Beans	35c	60c	3.55	6.85	13.50
Ford's Mammoth Pole Lima Beans..	35c	60c	3.55	6.85	13.50
Carpenteria Pole Limas.....	35c	60c	3.55	6.85	13.50
New Giant Emerald Isle Pole Limas..	35c	60c	3.85	7.10	14.00
Extra Early Leviathan Pole Limas..	35c	60c	3.55	6.85	13.50
King of the Garden Pole Lima Beans	35c	60c	3.55	6.85	13.50
Dreer's Improved Pole or Challenger Lima Beans.....	35c	55c	3.30	6.35	12.50

Parcel Post Rates—See Page 16—We Pay Postage on 5c and 10c Pkts. Seed Beans Weight by Parcel Post. Pints 2 lbs. Qts. 3 lbs. 4 Qts. 9 lbs. Pk. 17 lbs. 1 Qt. to 100 feet of drill, two bushels to the acre.

	Pt.	Qt.	Pk.	½ Bu.	Bu.
Bolgiano's "Mighty Nice" Beans.....	30c	50c	\$2.90	\$5.60	\$11.00
Bolgiano's "May Queen" Beans.....	30c	50c	2.90	5.60	11.00
Giant Stringless Valentine Beans.....	30c	45c	2.65	5.10	10.00
Burpee's Stringless Green Pods.....	30c	45c	2.65	5.10	10.00
Extra Early Refugee Green Pods.....	30c	45c	2.65	5.10	10.00
Refugee or 1,000-to-1 Beans.....	30c	50c	2.80	5.35	10.50
Best of All Early Market Beans.....	30c	45c	2.65	5.10	10.00
Hopkins Red Valentine Beans.....	30c	50c	2.80	5.35	10.50
Earliest Red Valentine Beans.....	30c	50c	2.80	5.35	10.50
Black Valentine Beans.....	30c	45c	2.65	5.10	10.00
King of the Earlyies.....	30c	45c	2.65	5.10	10.00
New Emerald Beauty Beans.....	30c	50c	2.90	5.60	11.00
Home, Sweet Home, Beans.....	30c	50c	2.90	5.60	11.00
Dwarf Horticultural Beans.....	30c	50c	2.90	5.60	11.00
Ruby Dwarf Horticultural.....	30c	50c	2.90	5.60	11.00
Henderson's Bountiful Beans.....	30c	45c	2.65	5.10	10.00
Longfellow's Green Pod Beans.....	30c	45c	2.65	5.10	10.00
Early Long Yellow Six Weeks Beans..	30c	45c	2.65	5.10	10.00
Broad Windsor Beans.....	30c	45c	2.30	4.35	8.50
White Navy or Pea Beans.....	25c	40c	2.15	4.10	8.00

Wax Podded Bush Beans

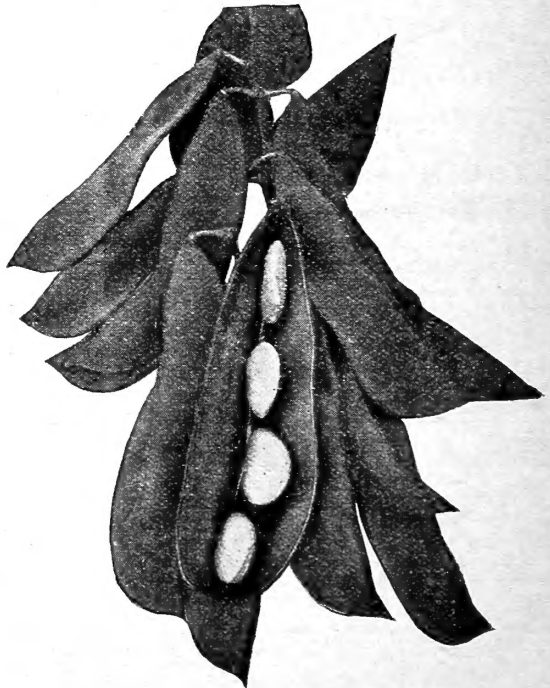
	Pt.	Qt.	Pk.	½ Bu.	Bu.
Bolgiano's "Best Yet" New Stringless Wax.....	40c	65c	\$3.90	\$7.00	\$15.00
Brittle Wax.....	35c	55c	\$3.15	\$6.10	\$12.00
New Davis Kidney Wax Beans.....	30c	50c	2.90	5.60	11.00
Wardwell's Kidney Wax Beans.....	30c	50c	2.90	5.60	11.00
Keeney's Rustless Golden Wax.....	30c	50c	2.90	5.60	11.00
Truckers' Reward Wax Beans.....	30c	50c	2.90	5.60	11.00
New Pearl Wax Beans.....	30c	50c	2.90	5.60	11.00
Sure Crop Wax.....	35c	55c	3.15	6.10	12.00
Pencil Podded Black Wax Beans.....	30c	50c	2.90	5.60	11.00
Round Podded Kidney Wax Beans.....	35c	55c	3.15	6.10	12.00
New Hodson Wax Beans.....	30c	50c	2.90	5.60	11.00
California Rust Proof Wax Beans.....	30c	45c	2.65	5.10	10.00
Curries Rust Proof Wax Beans.....	30c	45c	2.65	5.10	10.00
Prolific German Dwarf Black Wax.....	30c	50c	2.90	5.60	11.00

They Are, Indeed, a Wonder.

On July 30, Mr. John F. Gore, of Hillsborough Co., Fla., wrote: "In reference to Bolgiano's Mighty Nice Bean Seed, will say they are all you claim for them. They sold on the market as well as any other bean and produced more than any bean I ever planted. They are, indeed, a wonder. Will send in my order later for early spring planting."

Recommend Them to All Gardeners.

On August 8, Mrs. R. E. Ellison, of Fairfield County, S. C., wrote: "The Mighty Nice Bean Seed bought of you last spring gave great satisfaction, and I take pleasure in recommending them to all gardeners. Notwithstanding a very hot, drop spell, we had, they bore profusely. It is a nice flavored bean and very tender."



Henderson's Dwarf Bush, or Baby Lima Beans.

Cabbage

All Our Cabbage Seed is High-Bred American Grown

We Pay Postage on All Cabbage Seed.

For sureness of crops, for trueneess of kinds, for solidity and uniformity of heads we challenge the world. Crops from our Cabbage Seed bespeak their own praise in the field. We thank our many customers for their voluntary testimonials of praise and satisfaction.

Every grain of seed True American Grown. 1/4 Lb. to transplant an acre. One Oz. will produce 2,500 plants.

Extra Early Varieties

In Lots of Five Pounds or More Deduct 10 Cents Per Pound.

	Oz.	1/4 Lb.	Lb.
Bolgiano's "Big Winner" Wakefield Cabbage	35c	\$1.15	\$4.00
Extra Early Express Cabbage	30c	.85	3.00
Bolgiano's "New Leader" Cabbage	30c	.85	3.00
Extra Early Jersey Wakefield Cabbage	30c	.85	3.00
Extra Early Pilot Cabbage	30c	.85	3.00
Select (True Type) Early Jersey Wakefield Cabbage	30c	.85	3.00
The Charleston or Large Wakefield Cabbage	30c	.85	3.00
Early Spring Cabbage	30c	.85	3.00
Eureka Cabbage	30c	.85	3.00
Early Large York Cabbage	30c	.85	3.00
Volga Cabbage	35c	1.15	4.00
Early Winingstadt Cabbage	30c	.85	3.00
Copenhagen Market	35c	1.15	4.00

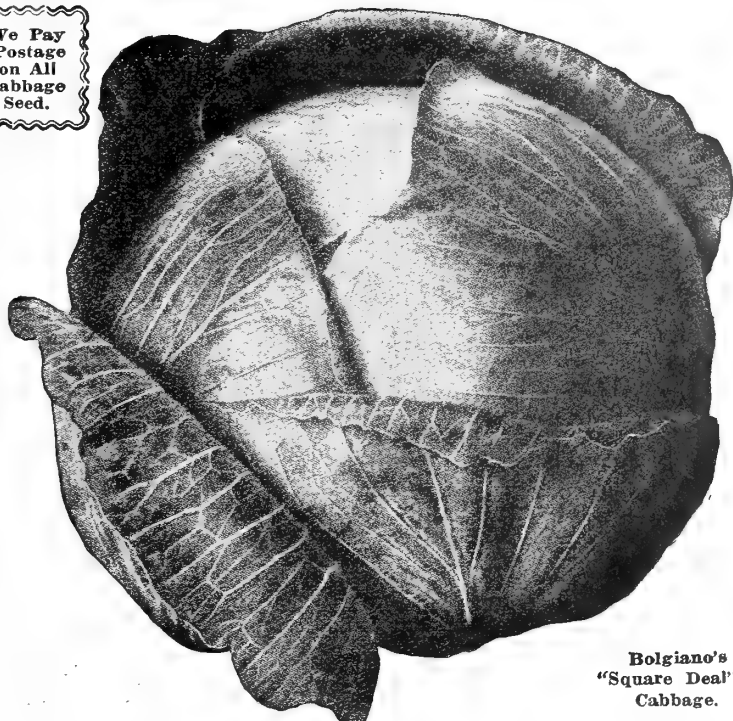
Second Early Varieties

In Lots of Five Pounds or More Deduct 10 Cents Per Lb.

	Oz.	1/4 Lb.	Lb.
Bolgiano's "Square-Deal" Cabbage	35c	\$1.15	\$4.00
Bolgiano's "New Early" Cabbage	30c	.85	3.00
Florida Header Cabbage	30c	.85	3.00
All Head Early Cabbage, Fine	30c	.85	3.00
Henderson's Early Summer Cabbage	30c	.85	3.00
All Season Cabbage	30c	.85	3.00
Early Sure Head Cabbage	25c	.75	2.50
Long Island Early Flat Dutch Cabbage	25c	.75	2.50
Early Short Stem Drumhead Cabbage	25c	.75	2.50
Henderson's Early Succession Cabbage	30c	.85	3.00
Solid South Cabbage	25c	.75	2.50
Fottler's Improved Brunswick	25c	.75	2.50

Finest Heads I Have Ever Seen.

On October 16th, 1919, Mr. J. A. Graham, of Upshur County Texas, wrote: "In regard to the Charleston Wakefield Cabbage Seed I purchased from you, I wish to say that it was very satisfactory in every way. It produced the finest large head I have ever seen. I know of nothing better."



Bolgiano's "Square Deal" Cabbage.

Late or Winter Varieties

In Lots of Five Pounds or More Deduct 10 Cents Per Lb.

	Oz.	1/4 Lb.	Lb.
Bolgiano's "Ring Leader" Cabbage	35c	\$1.15	\$4.00
Market Gardeners' Extra Large Late Flat Dutch Cabbage	30c	.85	3.00
Louisville Drumhead Cabbage	30c	.85	3.00
Large Late Drumhead Cabbage	30c	.85	3.00
Henderson's Autumn King Cabbage	30c	.85	3.00
Danish Ball Head Cabbage, Short Stem	30c	1.00	3.50
Danish Round Head Cabbage	30c	1.00	3.50
Savoy Cabbage, Bolgiano's Perfection Drumhead	30c	.85	3.00
The Lupton Cabbage	30c	.85	3.00
Premium Large Late Flat Dutch Cabbage	30c	.85	3.00
Boss Large Late Flat Dutch Cabbage	30c	.85	3.00
Mammoth Rock Red Dutch Cabbage	35c	1.15	4.00
Pe-Tsai Chinese or Celery Cabbage	25c	.75	2.50

Gave Excellent Results.

On September 29th, 1919, Cecelia M. Carter, of Lancaster County, Va., wrote: "The Early Charleston Wakefield Cabbage Seed purchased from you gave excellent results. We prefer them to any other early variety."

Best for Market Use.

On Aug. 1st, 1919, Messrs. W. E. Ball & Son, of Howard Co., Md., wrote: "Bolgiano's 'Square Deal' Cabbage makes a very solid head, and I find it best for market use. It also makes up sooner than any other solid-head cabbage. I have raised it on ground that would not grow cabbage at previous times."

Brussels Sprouts

Bolgiano's Long Island Improved Matchless Brussels Sprouts, Pkts. 5 and 10c.	1/2 Oz.	15c.	Oz.	20c.	1/4 Lb.	60c.	Lb.	\$2.00.
Half Dwarf Paris Market, Pkts., 5 and 10c.	1/2 Oz.	15c.	Oz.	20c.	1/4 Lb.	50c.	1/2 Lb.	95c.
	Lb.	\$1.75.						

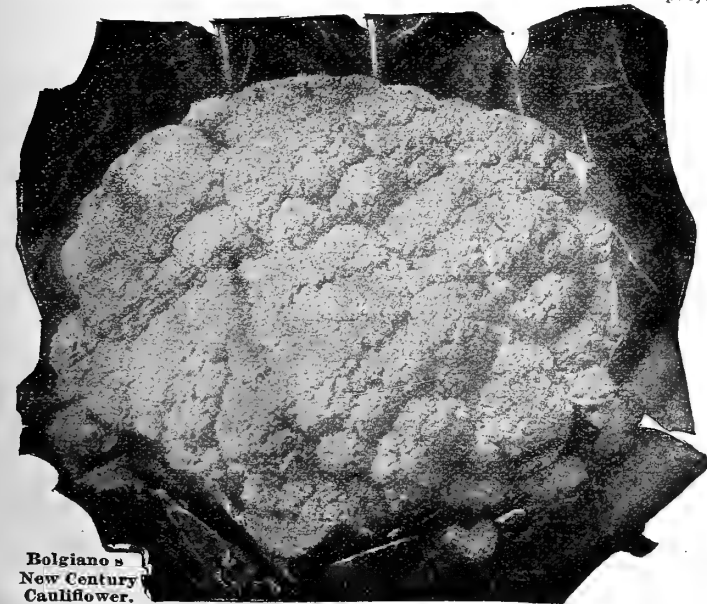
Cauliflower

The Freshest and Purest 1919 Seed.

	Pkt.	1/4 Oz.	Oz.	1/4 Lb.	Lb.
Bolgiano's New Century	10c	25c	70c	\$2.25	\$7.50 \$25.00
Henderson's Early Snowball	10c	25c	40c	1.50	5.50 20.00
Earliest Dwarf Erfurt Extra					
Selected	10c	25c	40c	1.50	5.50 20.00
Danish Giant	10c	25c	70c	2.25	7.50 25.00
Autumn Giant	5c	10c	25c	.70	2.10 7.50
Early Paris	5c	10c	25c	.70	2.10 7.50

Collards

Georgia Southern or Creole	Pkts. 5c and 10c.			
Oz. 10c.	1/4 Lb. 25c.	Lb. 75c.	5 Lbs. at 70c.	Lb. 10 Lbs. at 65c.



Bolgiano's New Century Cauliflower.

Carrot

All our Carrot Seed is extra clean rubbed seed. It is grown from the Finest Stock Seed in the World and from Carefully Selected Transplanted Roots.
Parcel Post Rates—See Page 16—We Pay Postage on Pkts., Ozs., ¼ Lbs. In Lots of 5 Pounds Deduct 5 Cents Per Pound.

	Oz.	¼ Lb.	½ Lb.	Lb.
"Sunbeam" New Carrot, Extremely Early.....	15c	30c	55c	\$1.00
Parisian Forcing Carrot	15c	30c	55c	1.00
"Klondike" or Coreless, The Grand New Carrot.....	15c	30c	55c	1.00
New King Carrot, Long, Red, Perfect Shape.....	15c	30c	55c	1.00
Pride of the Market, Fine.....	15c	30c	55c	1.00
New Scarlet Beauty	10c	25c	40c	.75
Earliest Scarlet French Horn.....	10c	25c	40c	.75
Early Oxheart or Guerande	10c	25c	40c	.75
Improved Long Orange.....	10c	25c	40c	.75
Half Long Orange	10c	25c	40c	.75
Early Scarlet Chantenay or Model.....	10c	25c	40c	.75
Nantes or Half Long Scarlet Stump Rooted.....	10c	25c	40c	.75
Early Rubicon	10c	25c	40c	.75
Danvers Half Long Carrot.....	10c	25c	40c	.75
St. Vallery, or Intermediate.....	10c	25c	40c	.75
James Intermediate Scarlet	10c	25c	40c	.75
Carrot for Stock Feed, Large White Belgian.....	10c	20c	35c	.60

Well Pleased With Bolgiano's "Pride of the Market" Carrot.

On August 22nd, Mr. E. Bovey, of Greenville County, S. C., wrote: "I have been very well pleased with Bolgiano's Pride of the Market Carrot. They came up fine and were very early. The flavor is exceptionally fine."

"Early Fortune" In a Bad Season.

On October 11th, 1919, Mr. E. G. Grimes, grower and shipper of Florida fruits and vegetables, of Manatee County, Fla., wrote: "In all my experience I have never before had a cucumber crop that did as well as the crop raised from your Early Fortune Cucumber Seed. The weather conditions were anything but favorable. Just as the plants began to run we had a three-day rain on them, which I thought was going to kill them, but to my glad surprise they grew out of it in fine shape. That was the last rain they had and it got pretty dry. With the weather conditions so against them I never had more or better cucumbers in my farming experience."

\$7.00 Per Bushel for "Early Fortunes."

On October 9th, 1919, Mr. W. B. Glodewell, of Seminole County, Fla., wrote: "I wish to say that the Early Fortune Cucumber Seed we bought from you last December was all you claim for it. Although the weather conditions were not very favorable after I planted them January 1st. They, however, made a good yield and I sold some of them for \$7.00 per bushel hamper. I can recommend this variety of cukes to anyone."

"Early Fortune" 3 Week Before Any Other.

On October 22nd, 1919, Mr. Raymond M. Champe, of Oakland County, Mich., wrote: "I forced Bolgiano's Early Fortune Cucumber Seed in 4-inch pots and had cukes 3 weeks before the outside crop was ready. We transplanted outside in well-manured ground and they did very well."

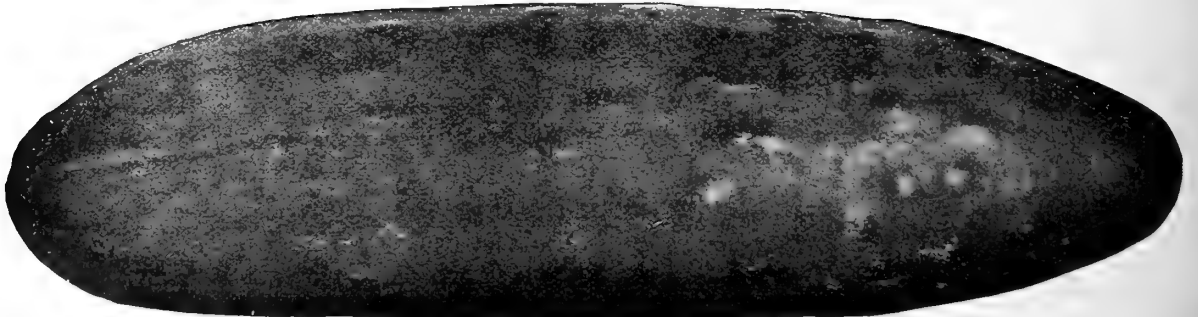


Pride of the Market Carrot.

Cucumber

Parcel Post Rates—See Page 16—We Pay Postage on Pkts., Ozs., ¼ Lbs. In Lots of 5 Pounds Deduct 5 Cents Per Pound

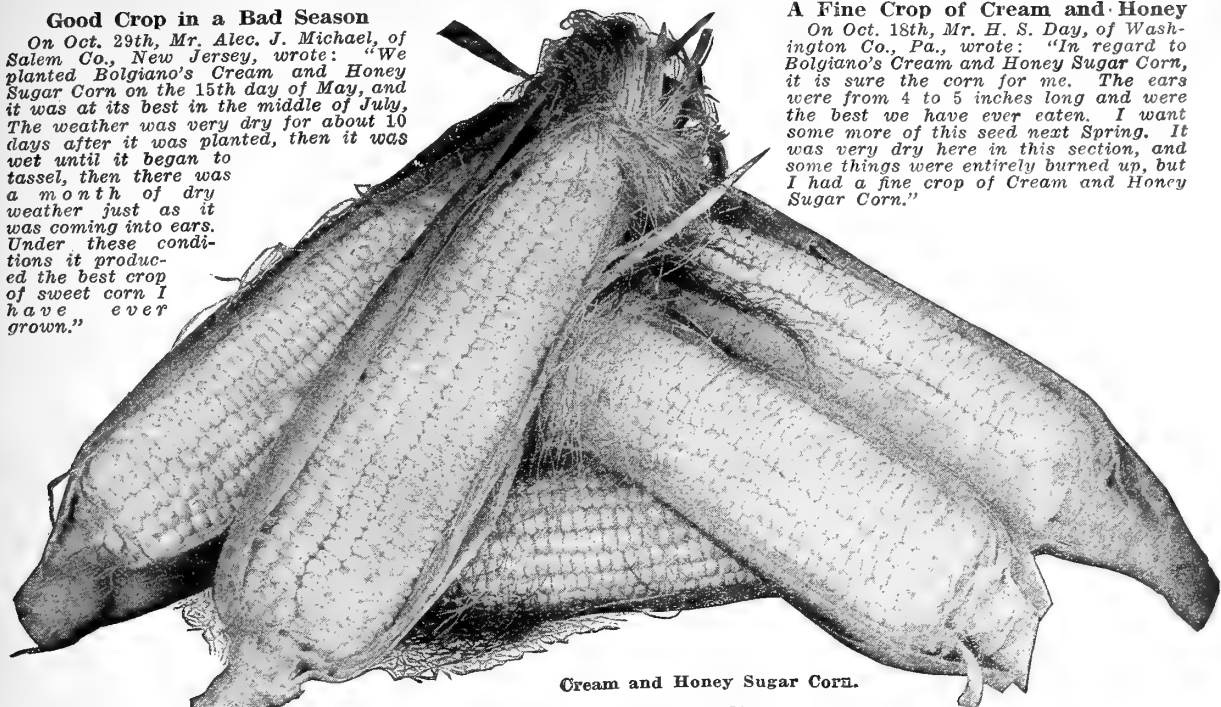
	Pkt.	Oz.	¼ Lb.	Lb.		Pkt.	Oz.	¼ Lb.	Lb.
Bolgiano's New "Crystal Springs" Cucumber, the best price-getter.....	10c	20c	60c	\$2.00	Evergreen White Spine New Extra	5c	10c	25c	.75
Early Fortune, Bolgiano's World Famous Cucumber (The most profitable on earth). Often yields over \$1,000 per acre	5c	15c	30c	1.00	Early	5c	10c	25c	.75
Bolgiano's "Prosperity" White Spine Cucumber, New Introduction.....	5c	10c	25c	.85	Bolgiano's New Prolific Pickling.....	5c	10c	25c	.75
"Lord Baltimore," the New Dry Weather Cucumber that has attracted so much attention	5c	10c	25c	.85	Jersey Pickling Improved	5c	10c	25c	.75
New Klondike, one of the Great White Spine Cucumbers for Market Gardeners and Shippers	5c	10c	25c	.75	Extra Long White Spine or Fordhook Famous	5c	10c	25c	.75
New Pittsburg Pickling	5c	10c	25c	.85	Thomas Perfection (true stock).....	5c	10c	25c	.75
Henderson's Perfection White Spine Cucumber	5c	10c	25c	.75	Ford Hook Pickling	5c	10c	25c	.75
Davis Perfect Cucumber.....	5c	10c	25c	.75	New Excelsior Long Green.....	5c	10c	25c	.75
Arlington Improved White Spine.....	5c	10c	25c	.75	Boston Pickling	5c	10c	25c	.75
Improved Extra Early White Spine....	5c	10c	25c	.75	Chicago or Westerfield Pickling.....	5c	10c	25c	.75
					Cool and Crisp Spine Cucumber.....	5c	10c	25c	.75
					New Lemon Cucumber	10c	15c	45c	1.50
					Early Frame or Short Green Cucumbers	5c	10c	25c	.75
					Early Cluster Cucumber.....	5c	10c	25c	.75
					Thornburn's Everbearing	5c	10c	25c	.75
					Improved Long Green Cucumber	5c	10c	25c	.75
					West India Gherkin	5c	15c	30c	1.00
					Japanese Climbing Cucumbers	5c	15c	30c	1.00
					Wild Cucumber	5c	15c	30c	1.00



Bolgiano's Famous New "Early Fortune" Cucumber.

Good Crop in a Bad Season

On Oct. 29th, Mr. Alec. J. Michael, of Salem Co., New Jersey, wrote: "We planted Bolgiano's Cream and Honey Sugar Corn on the 15th day of May, and it was at its best in the middle of July. The weather was very dry for about 10 days after it was planted, then it was wet until it began to tassel, then there was a month of dry weather just as it was coming into ears. Under these conditions it produced the best crop of sweet corn I have ever grown."



Cream and Honey Sugar Corn.

A Fine Crop of Cream and Honey

On Oct. 18th, Mr. H. S. Day, of Washington Co., Pa., wrote: "In regard to Bolgiano's Cream and Honey Sugar Corn, it is sure the corn for me. The ears were from 4 to 5 inches long and were the best we have ever eaten. I want some more of this seed next Spring. It was very dry here in this section, and some things were entirely burned up, but I had a fine crop of Cream and Honey Sugar Corn."

We Pay Postage on 5c and 10c Packages

Sweet or Sugar Corn

Write for Prices if Wanted on the Ear

Sugar Corn, weight by Parcel Post:		Pt., 1 Lb.;	Qt., 2 Lbs.;	4 Qts., 6 Lbs.;	Pk., 11 Lbs.	Parcel Post Rates—See Page 16.	Pt.	Qt.	4 Qts.	Pk.	Bu.
Double XX Extra Early Adams' Sweet Corn	Pt. 25c Qt. 40c	\$1.05	\$1.90	\$7.00		20c	30c	\$.95	\$1.65	\$6.00	
Adams' Extra Early	20c 30c	.95	1.65	6.00	Stowell Evergreen	20c	30c	.95	1.65	6.00	
2nd Early Adams	20c 30c	.95	1.65	6.00	Snow White Evergreen	20c	30c	.95	1.65	6.00	
Gillespies First Early Patapsco Neck Corn	25c 40c	1.05	1.90	7.00	Leonard's Narrow Grained Evergreen	20c	30c	.95	1.65	6.00	
Bolgiano's "New Cream and Honey" Early Sweet Corn	25c 40c	1.20	2.15	8.00	Zigzag Evergreen	20c	30c	.95	1.65	6.00	
Early "Butter Nut" Sweet Corn	25c 40c	1.20	2.15	8.00	Hickox Improved	25c	40c	1.15	2.05	7.50	
Cory White Cob	25c 40c	1.15	2.05	7.50	Large Late Mammoth Sugar	25c	40c	1.15	2.05	7.50	
Red Cory	25c 40c	1.15	2.05	7.50	Country Gentleman Sugar Corn	25c	40c	1.15	2.05	7.50	
Kendell's Early Giant	25c 40c	1.15	2.05	7.50	Ne Plus Ultra or Shoe Peg	25c	40c	1.15	2.05	7.50	
Howling Mob	25c 40c	1.15	2.05	7.50	Black Mexican	25c	40c	1.20	2.15	8.00	
Metropolitan	25c 40c	1.15	2.05	7.50	California Golden Country Gentleman	25c	40c	1.20	2.15	8.00	
65-Day White Cob Corn	20c 30c	.95	1.65	6.00	Rice Pop Corn, for Seed or Popping	20c	30c	.95	1.65	6.00	
Premo 60-Day Corn	25c 40c	1.15	2.05	7.50							
Early Minnesota	25c 40c	1.15	2.05	7.50							
Mammoth White Cory Sweet	25c 40c	1.15	2.05	7.50							
Golden Bantam Corn	25c 40c	1.20	2.15	8.00							
Red Cob 90-Day Corn	20c 30c	.80	1.40	5.00							
Peep-O-Day	30c 45c	1.25	2.30	8.50							
Crosby Extra Early	25c 40c	1.15	2.05	7.50							
Earliest Sheffield Sweet Corn	25c 40c	1.15	2.05	7.50							
Trucker's Favorite	20c 30c	.95	1.65	6.00							
Extra Early Evergreen	25c 40c	1.15	2.05	7.50							
Early Mammoth Sugar	25c 40c	1.15	2.05	7.50							

Celery

All Our Celery is French Grown from Extra Selected Plants. American Grown Celery Seed is not reliable and will grow pethy.

Pkts., Ozs. and 1/4 Lbs. Delivered Free. Parcel Post Rate, See Page 16.

In Lots of 5 Pounds or More, 10c. a Pound Less.

	Pkt.	Oz.	1/4 Lb.	Lb.
Bolgiano's Easy Blanching Celery	Pkt., 10c,	25c	and 40c.	
\$1.50, 1/4 lb. \$5.50. Lb. \$20.				
Sweet Nut, New	5c	and 10c	\$.30	\$.85 \$3.00
French Golden Self-Blanching Originator's stock seed grown in France	10c	and 25c	.70	2.10 7.50
New Victory Celery	5c	and 10c	.30	.85 3.00
White Plume (perfected)	5c	and 10c	.25	.75 2.50
Dwarf Golden Heart	5c	and 10c	.15	.45 1.50
New Giant Golden Heart	5c	and 10c	.15	.45 1.50
Giant Pascal	5c	and 10c	.15	.45 1.50
Perle Le Grand	5c	and 10c	.15	.45 1.50
New Winter Queen	5c	and 10c	.15	.45 1.50

Celeriac or Root Celery

Bolgiano's New Giant French Celeriac. Pkt. 5c and 10c. Oz. 20c. 2 Ozs. 35c. 1/4 Lb. 60c. Lb. \$2.00. Postpaid. Celeriac, Giant, Smooth, Prague. Pkt. 5c and 10c. Oz. 15c. 2 Ozs. 25c. 1/4 Lb. 45c. Lb. \$1.50. Postpaid.

Corn Salad and Cress

Large German Corn Salad. Used to a considerable extent as a salad. Pkt. 5c. Oz. 15c. 1/4 Lb. 40c. Lb. \$1.25. True Water Cress. Pkt. 5c and 10c. Oz. 25c. 2 Ozs. 40c. 1/4 Lb. 65c. 1/2 Lb. \$1.20. Lb. \$2.25. Postpaid. Fine Curled Cress or Pepper Grass. Pkt. 5c. Oz. 10c. 1/4 Lb. 20c. Lb. 65c.





Bolgiano's Big Boston Lettuce Is the Finest in the World.
Stands Shipment Better Than Any Other.

Solid Crisp Head Lettuce, also Loose Leaf Varieties

In Lots of 5 Pounds Deduct 10 Cents		Per Pound.	
Pkt.	Oz.	¼ Lb.	Lb.
Bolgiano's "Frozen North" Lettuce	10c	15c	45c \$1.50
Denver Market	5c	10c	25c .85
Hanson	5c	10c	25c .85
Black Seeded Simpson	5c	10c	25c .85
Early Curled Simpson or Silesia Lettuce	5c	10c	25c .85
Early Prize Head (Brown Cabbage)	5c	10c	25c .75
Grand Rapids	5c	10c	25c .85
Brittle Ice	5c	15c	40c 1.25
Iceberg	5c	15c	40c 1.25
Crisp as Ice Lettuce	5c	15c	45c 1.50

Cos or Celery Lettuce.		Pkt.	Oz.	¼ Lb.	Lb.
Trianon White Cos or Romaine	5c	15c	30c	\$1.00	
Eclipse or "Express" Cos	5c	15c	30c	1.00	
Paris Self-Folding White Cos	5c	15c	30c	1.00	

Egg Plant		Pkt.	Oz.	¼ Lb.	Lb.
Bolgiano's Black Beauty Egg Plant	5c & 10c	40c	\$1.30	\$4.50	
The Florida High Bush Egg Plant	5c & 10c	30c	.85	3.00	
Bolgiano's Improved Large Purple Thornless Egg Plant	5c & 10c	35c	1.15	4.00	
New York Improved Egg Plant (Spineless)	5c & 10c	35c	1.15	4.00	
New Orleans Egg Plant	5c & 10c	25c	.75	2.50	
New Jersey Improved Large Smooth Eggs Plant	5c & 10c	35c	1.15	4.00	

Endive		Pkt.	Oz.	¼ Lb.	Lb.
Bolgiano's New Self Blanching Endive	5c	15c	40c	\$1.25	
Large Green Curled Endive	5c	15c	30c	1.00	
Broad Leafed Batavia	5c	15c	30c	1.00	
Giant Fringed	5c	15c	30c	1.00	

Kale		Pkt.	Oz.	¼ Lb.	Lb.
Bore Cole or Kale	10c	20c	60c	\$2.00	
Extra Dwarf Green Curled Scotch or Norfolk Kale	5c	15c	45c	1.50	
New Imperial Very Curly Long Standing Kale	5c	10c	25c	.75	
Curled German Kale	5c	10c	20c	.65	
Siberian Curled Kale	5c	10c	20c	.65	
New American Extra Early Long Standing Kale	5c	10c	25c	.75	
Spring or Smooth Kale	5c	10c	15c	.25	

Kohlrabi		Pkt.	Oz.	¼ Lb.	Lb.
Bolgiano's "Best of All" Kohlrabi	5c & 10c	25c	75c	\$2.50	
Early White Vienna	5c & 10c	20c	60c	2.00	
Purple Vienna	5c & 10c	20c	60c	2.00	

Leek		Pkt.	Oz.	¼ Lb.	Lb.
Bolgiano's Mammoth King Leek	5c & 10c	25c	65c	2.25	
Monstrous Carenton or Scotch Champion	5c & 10c	20c	60c	2.00	
Extra Large American Flag or Broad London	5c & 10c	20c	60c	2.00	

Mushroom Spawn

1 brick to a bed 6 feet square.
American Pure Mushroom Spawn Bricks 25c. 10 bricks at 22½c. 25 bricks at 20c. 50 to 100 bricks at 18c.
Special Prices quoted on large quantities.

Lettuce

Finest Market Gardeners' Strains.
Parcel Post Rates—See Page 16
We pay postage on Pkts., Ozs. and ¼ Lbs.
In lots of 5 Pounds Deduct 10 Cents Per Pound.
Earliest Varieties

Pkt. Oz.		¼ Lb.	Lb.
"Long Lost" Lettuce—New Variety	10c & 25c	50c	\$1.40 \$5.00
"Millionaire" Lettuce	10c	15c	.40 1.25
"Bully Good" Lettuce	5c	15c	.40 1.25
"Best of All" Lettuce	10c	15c	.40 1.25
Earliest "Wayahead" Lettuce	5c	15c	.30 1.00
New Lettuce "Unrivalled"	5c	15c	.30 1.00
Big Boston Lettuce, Bolgiano's Famous Selected Stock	5c	10c	.25 .85
5 Lbs. \$4.00; 10 Lbs. \$7.50.			
May King Lettuce	5c	10c	.25 .85
Improved White Loaf Lettuce	5c	10c	.25 .85
Bolgiano's New Early Spring Lettuce	5c	15c	.30 1.00
Black Seeded Tennis Ball	5c	10c	.25 .85
Boston Market Lettuce	5c	10c	.25 .85
New York or Wonderful	10c	20c	.60 2.00

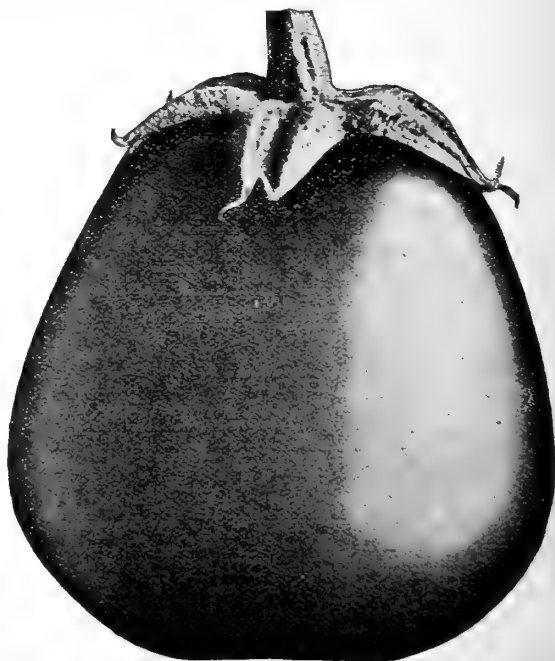
Cabbage or Heading Lettuce

Pkt. Oz.		¼ Lb.	Lb.
Lucky Stroke Lettuce, New Variety	10c	15c	40c \$1.25
Tender and True Summer Lettuce	10c	15c	40c 1.25
Simon's Cabbage Head Lettuce	10c	15c	40c 1.25
Bolgiano's Gold Prize	5c	15c	30c 1.00
Bolgiano's Celebrated Big Head Lettuce	5c	15c	40c 1.25
Bolgiano's New Golden Heart Lettuce	5c	15c	40c 1.25
California Cream Butter Lettuce	5c	10c	25c .85
5 lbs. \$4.00; 10 lbs. \$7.50.			
"All Season's" Lettuce	5c	10c	25c .85
Early White Summer Cabbage	5c	10c	25c .85
Tait's Imperial Cabbage Lettuce	5c	10c	25c .85
Mammoth Black Seeded Butter	5c	10c	25c .85
Salamander Improved	5c	10c	25c .85
Royal Cabbage Lettuce	5c	15c	40c 1.25
Baltimore Cabbage Lettuce	5c	10c	25c .85
Burpee's Butterhead Lettuce	5c	15c	30c 1.00

MUSTARD

Parcel Post Rates—See Page 16.
We Pay Postage on Pkts., Ozs. and ¼ Lbs.
In lots of 5 Pounds Deduct 5c Per Pound.

Pkt. Oz.		¼ Lb.	Lb.
Southern Giant Curled Mustard	5c	10c	20c 60c
Ostrich Plume or Fordhook Fancy Mustard	5c	10c	20c 60c
Chinese Broad Leaf	5c	10c	20c 65c
Fordhook Fancy	5c	10c	20c 65c
Black or Brown Mustard	5c	10c	25c 75c
White or Yellow Mustard	5c	10c	25c 75c



Bolgiano's Black Beauty Egg Plant.

Muskmelons - Cantaloupe

Parcel Post Rates—See Page 16—We Pay Postage on Pkts., Ozs. and ¼ Lbs.

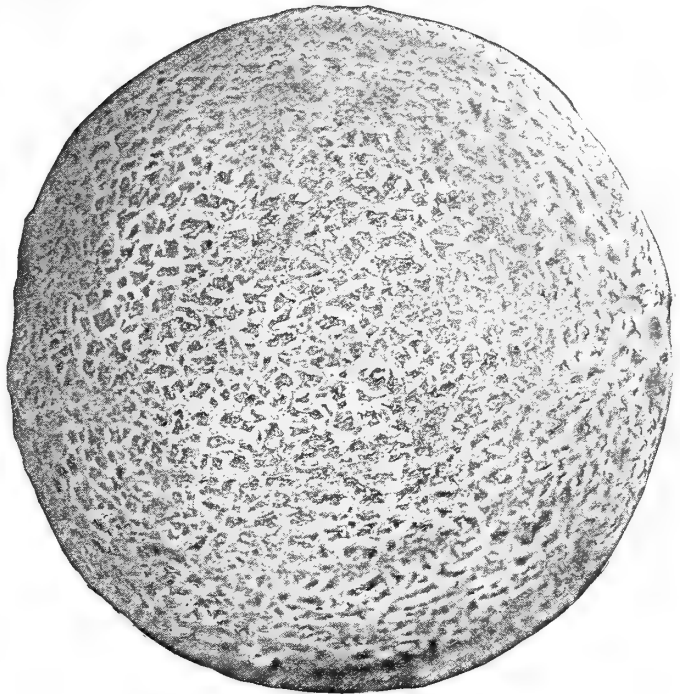
In Lots of 5 Pounds or More Deduct 5c Per Lb.

Honey Dew. The Grand New Muskmelon. Pkts. 10c. Oz. 15c. 2 Ozs. 25c. ¼ Lb. 40c. ½ Lb. 70c. Lb. \$1.25.

"Junior" Rocky Ford. A little larger, two weeks earlier, twice as prolific as Rocky Ford. Pkts. 5c & 10c. Oz. 15c. 2 Ozs. 25c. ¼ Lb. 40c. ½ Lb. 70c. Lb. \$1.25; postpaid.

Melting Gold Cantaloupe. Simply the best delicious Cantaloupe that was ever eaten. Pkts. 5c & 10c. Oz. 15c. ¼ Lb. 40c. ½ Lb. 70c. Lb. \$1.25; postpaid.

	Pkt.	Oz.	¼ Lb.	Lb.
10-25 Wonderful New Cantaloupe	10c	25c	75c	\$2.50
Rocky Ford Cantaloupe				
Thoroughbred Stock	5c	10c	15c	\$.75
Salmon Flesh Eden Gem Rocky Ford Cantaloupe, No. 25	10c	15c	30c	1.00
Delicious Gold Lined Rocky Ford Cantaloupe	10c	15c	30c	1.00
Burrell's Gem	5c	10c	25c	.75
Eden Gem or Netted Rock	5c	10c	25c	.75
Polock Rocky Ford	5c	10c	25c	.75
Knight or New Maryland	5c	15c	40c	1.25
The Long Island Beauty	5c	10c	30c	.90
New Fork Hook	5c	10c	25c	.75
Sweet Home	5c	10c	30c	.90
Osage Gem Extra Early	5c	10c	25c	.75
Paul Rose Cantaloupe	5c	10c	25c	.75
Improved Jenny Lind	5c	10c	25c	.75
Orange Fleshed Osage	5c	10c	25c	.75
Emerald Gem	5c	15c	30c	1.00
Banana Cantaloupe	5c	10c	25c	.75



The Wonderful New 10-25 Cantaloupe.

	Pkt.	Oz.	¼ Lb.	Lb.
Bolgiano's Baltimore Nutmeg Cantaloupe	5c	10c	30c	\$.90
Ferry Defender	5c	10c	25c	.75
Watters Improved Solid Net Rocky Ford	5c	10c	25c	.75
Netted Gem	5c	10c	25c	.75
Extra Early Hackensack	5c	10c	30c	.90
Anne Arundel	5c	10c	30c	.90
Acme or Baltimore	5c	10c	30c	.90
Norfolk Button	5c	10c	25c	.75

\$4.00 An Acre From Bolgiano's Jf. Rocky Ford Cantaloupe.

On March 6th, 1919, Mr. W. R. Slaughter, of Jefferson County, Ky., wrote: "I received my seed ordered of you today by express O. K. Your seed certainly do grow Big Crops. I have planted them for several years with great satisfaction. Bolgiano's Junior Rocky Ford Cantaloupe is the finest I have ever planted. I made \$400.00 an acre from it last year and the season was unfavorable."

In Lots of 5 Pounds Deduct 5c Per Lb.

Melon-Water

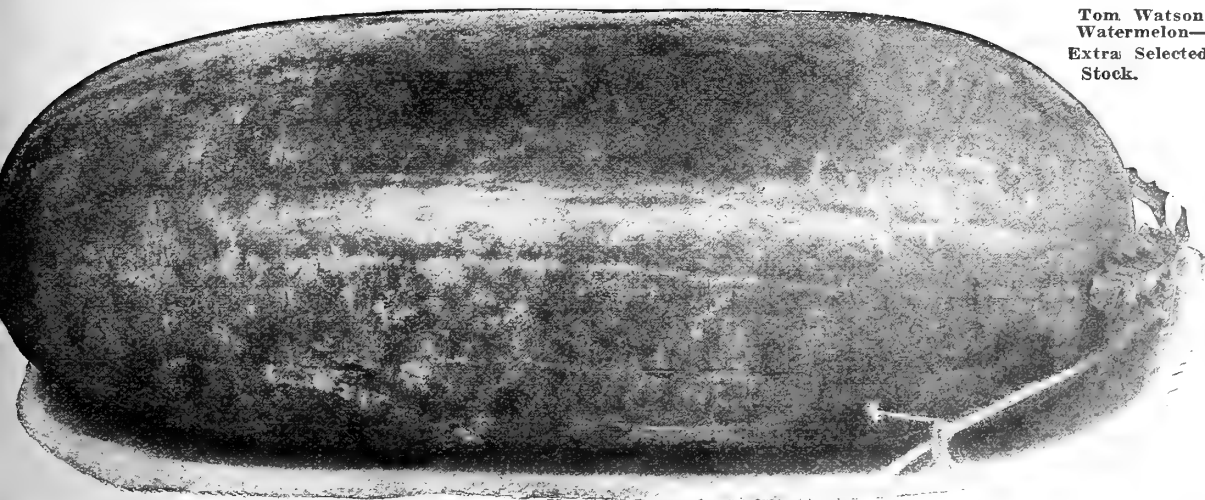
Parcel Post Rates—See Page 16. Pkts., Ozs. and ¼ Lbs. Delivered Free.

	Pkt.	Oz.	¼ Lb.	Lb.
General Pershing	10c	15c	45c	\$1.50
New Tuxedo	10c	15c	45c	1.50
Tom Watson Watermelon	5c	10c	15c	.40
Irish Gray Watermelon	5c	10c	20c	.65
Goliath, New Giant Watermelon	5c	10c	20c	.60
Indian Chief	5c	10c	20c	.60
Excel Watermelon	5c	15c	30c	1.00
Cold Mountain Spring Watermelon	5c	10c	20c	.50
Black Striped Kolb Gem Watermelon	5c	10c	15c	.40
Success Watermelon	5c	10c	15c	.40
Halbert Honey	5c	10c	15c	.40
Black Boulder Watermelon	5c	10c	15c	.40

	Pkt.	Oz.	¼ Lb.	Lb.
Duke Jones	5c	10c	15c	.40
Alabama Sweet	5c	10c	15c	.40
Luscious Favorite Watermelon	5c	10c	20c	.50
Cole's Early Watermelon	5c	10c	15c	.40
Florida's Favorite Watermelon	5c	10c	15c	.40
Georgia Rattlesnake or Gypsy	5c	10c	15c	.40
Sweetheart Watermelon	5c	10c	15c	.40
Lord Baltimore	5c	10c	15c	.40
Kleckley's Sweet	5c	10c	15c	.40
Black Diamond	5c	10c	15c	.40
Kolb Gem	5c	10c	15c	.40
Mountain Sweet	5c	10c	15c	.40

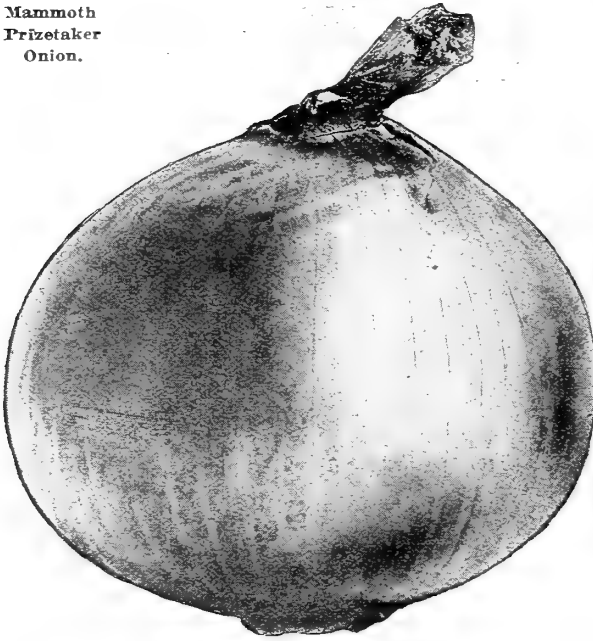
Citron

Colorado Preserving Citron. Pkts. 5c. Oz. 10c. ¼ Lb. 20c. Lb. 55c.
Red Seeded Citron. Pkts. 5c. Oz. 10c. ¼ Lb. 15c. Lb. 45c.



Tom Watson Watermelon—Extra Selected Stock.

Mammoth
Prizetaker
Onion.

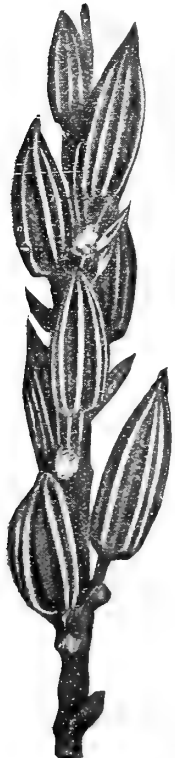


Found Out From Experience.

On Sept 30, 1913, J. Slitcher, of Dillon Co., S. C., wrote:
"The Prizetaker Onion Seed purchased from you turned out fine.
It came up so well it seemed there must have been more than
one plant to the seed. I will know, hereafter, where to go for
good onion seed."

Okra or Gumbo

	Pkts.	Oz.	¼ Lb.	10 Lb.	10 Lbs.
Perkins' Mammoth Long Green Pod Okra..	5c	10c	20c	50c	45c
Bolgiano's Imperial Dwarf Short Podded Okra	5c	10c	15c	45c	40c
Lady Finger Okra	5c	10c	15c	45c	40c
Dwarf Green Prolific Density Okra or Gumbo	5c	10c	15c	45c	40c
White Velvet Okra	5c	10c	15c	45c	40c



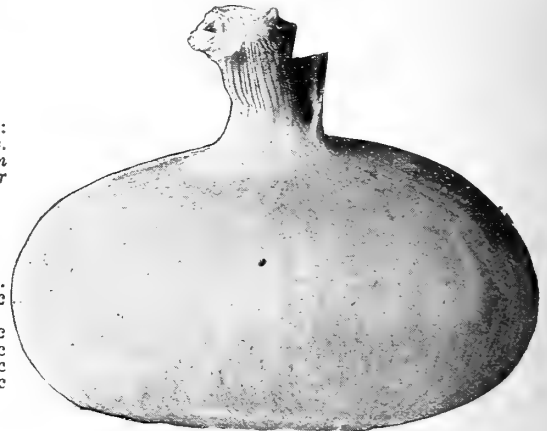
Onions

In Lots of 5 Pounds or More Deduct 5c Per Pound.
In Lots of 10 Pounds or More Deduct 10c Per Pound.
Parcel Post Rates—See Page 16—We pay postage on Pkts.,
Ozs. and ¼ Lbs.

	Pkt.	Oz.	¼ Lb.	Lb.
Mammoth Prize Taker Onion...	5c and 10c	20c	50c	\$1.75
White Silver Skin Onion.....	5c and 10c	20c	60c	2.00
Mammoth Silver King Onion.....	5c and 10c	25c	75c	2.50
Southport White Globe	5c and 10c	25c	65c	2.25
Southport Yellow Globe	5c and 10c	20c	50c	1.75
Southport Red Globe Onion.....	5c and 10c	20c	50c	1.75
Extra Early Pearl Onion or White Queen	5c and 10c	30c	85c	3.00
Yellow Globe Danvers.....	5c and 10c	20c	50c	1.75
Round Yellow Danvers	5c and 10c	20c	50c	1.75
Yellow Dutch or Strasburg.....	5c and 10c	20c	50c	1.75
Large Red Wethersfield Onion...	5c and 10c	20c	50c	1.75
Large White Portugal.....	5c and 10c	20c	60c	2.00
Extra Early Barletta.....	5c and 10c	30c	85c	3.00
Ohio Yellow Globe.....	5c and 10c	20c	50c	1.75
Yellow Flat Danvers.....	5c and 10c	20c	50c	1.75
Red Flat Onions.....	5c and 10c	20c	50c	1.75

Bermuda Onions
Genuine Teneriffe Grown

	Pkt.	Oz.	½ Lb.	Lb.
Crystal Wax Bermuda Onion.....	5c and 10c	30c	85c	\$3.00
White Bermuda Onion.....	5c and 10c	15c	45c	1.50
Red Bermuda Onion.....	5c and 10c	15c	45c	1.50



Bermuda Onion.

"I Feel It a Duty."

On May 23, 1919, Geo. W. O'Neal, of Palm Beach Co., Fla., wrote: "I feel it a duty to say
a word of commendation in regard to the shipment of Bermuda Onion Seed you sent me last
September. I planted it as soon as it arrived and in a few days the plants were up as thick
and nice as any I have ever seen. The growth was very even all through, notwithstanding the
fact that we had a heavy rain in the fall, followed by a drouth. The onions prospered won-
derfully. The only mistake I made was in not ordering enough. I also advised many of my
neighbors to order their onion seed from you if they want good onion seed."



Hand Picked and
Doubly Re-cleaned.

Onion Sets

Parcel Post Rates,
See Page 16.

By Parcel Post, 1 Qt. Onion Sets, Weigh 1 Lb Plant in drills about 12 inches apart and 4
inches in the rows. They must have high culturc.

Prices of Sets subject to market changes. Write for special prices in quantity. We give a
weighed bushel of 32 Lbs.

	Pt.	Qt.	4 Qts.	Pk.	Bu.
Fancy White Silver Skin Onion Sets.....	15c	25c	75c	\$1.30	\$4.50
Fancy Red Wethersfield Onion Sets.....	15c	25c	70c	1.15	4.00
Fancy Yellow Danvers Onion Sets.....	15c	25c	70c	1.15	4.00

Parcel Post Rates—
See Page 16.

BOLGIANO'S NEW GREEN MOUNTAIN TRIPLE CURLED PARSLEY.

Never before have we been able to offer to the public a gift of Nature equal to our beautiful Green Mountain Parsley. Always alert, always ready to appreciate any seed of exceptional merit, we saw that everybody would want our New Green Mountain Parsley when they heard of its wonderful beauty. Hardy, immensely productive, deep velvet-green. The leaves are densely curled and borne in abundance. It is exceptionally easy to grow, and with very little ease everybody can have the finest flavored Parsley in cultivation. Prices: Pkt. 5c and 10c. Oz. 15c. 2 Ozs. 25c. ¼ Lb. 30c. ½ Lb. 55c. Lb. \$1.00.

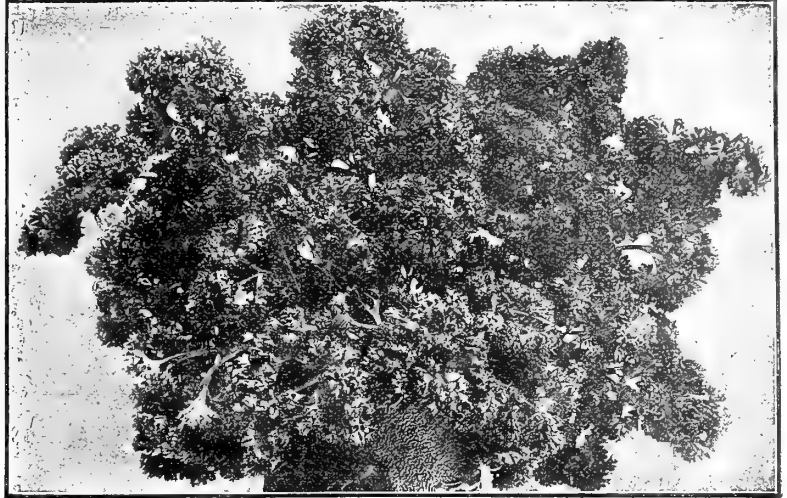
Market Gardener's Best Triple Curled Parsley. Very handsome; plants are of a robust and free growth and it is improved by severe cutting; leaves large, beautifully curled; very dark green, stands the heat, drought and cold. Pkts. 5c and 10c. Oz. 10c. ¼ Lb. 25c. ½ Lb. 40c. Lb. 75c. Post-

Extra Dark Champion Moss Curled Parsley. The large moss, curled leaves are of a rich, dark green color and very productive. Pkts. 5c and 10c. ¼ Lb. 25c. ½ Lb. 40c. Lb. 75c.

Fine Double Curled Parsley. Pkts. 5c and 10c. Oz. 10c. ¼ Lb. 20c. ½ Lb. 35c. Lb. 65c.
Extra Curled Dwarf or Emerald. Pkts. 5c. Oz. 10c. ¼ Lb. 20c. ½ Lb. 35c. Lb. 65c.
Plain or Single Parsley. Pkts. 5c and 10c. Oz. 15c. ¼ Lb. 30c. ½ Lb. 55c. Lb. \$1.00.
Hamburg Rooted. Pkts. 5c and 10c. Oz. 15c. ¼ Lb. 30c. ½ Lb. 55c. Lb. \$1.00.

Parsley

We pay postage on
Pkts., Ozs. and ¼ Lbs



Green Mountain Parsley.

Parsnip

Parcel Post Rates—See Page 16. We pay postage on Pkts., Ozs. and ¼ Lbs. deduct 5c per pound.

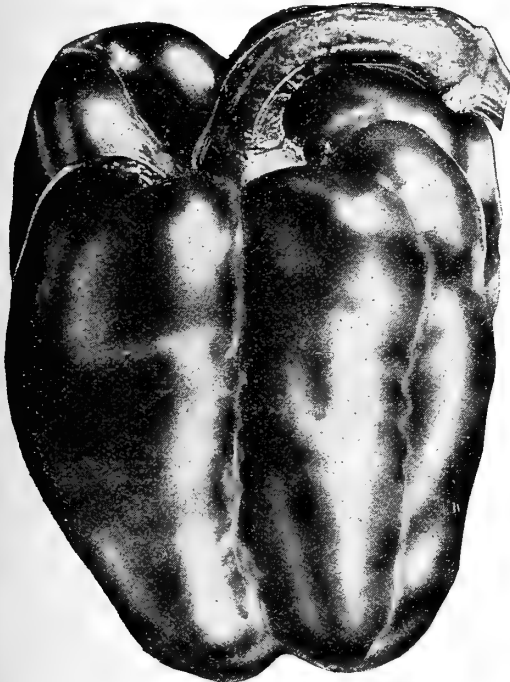
	Pkt.	Oz.	¼ Lb.	½ Lb.	Lb.
Bolgiano's Hollow Hub.....	5c	10c	25c	\$.85	
Hollow Crown Sugar.....	5c	10c	25c	.75	
Guernsey Half Long.....	5c	10c	25c	.75	

Well Pleased With Bolgiano's Ruby King Pepper.

On Oct. 11, 1919, E. G. Grimes, Shipper and Grower of Florida Fruits and Vegetables, Manatee Co., Fla., wrote: "The Ruby King Pepper seed bought of you was all that could be asked of in the way of seed. It germinated well and made strong, thrifty plants, which did well, considering the weather conditions."

Bolgiano's Ruby King Pepper Best.

On Oct. 28, 1918, Carter & Sons, of Burlington Co., N. J., wrote: "We had fine results with the Ruby King Pepper seed which we purchased from you. We tried seed from several other firms, but were disappointed. We grew several thousand plants this year and at the time we bought the seed thought it a little high, but we found that it was the cheapest in the long run. We had a dry spell for about six weeks, which set the plants back, but they have made up for lost time and are doing fine."



Bolgiano's Selected Ruby King Pepper.



Hollow Hub Sugar Parsnip

Pepper

Parcel Post Rate—See Page 16. We pay postage on Pkts., Ozs. and ¼ Lbs.

	Pkt.	Oz.	¼ Lb.	½ Lb.	Lb.
New Early Scarlet Mammoth Pepper.....	5c and 10c	40c	\$1.30	\$4.50	
World Beater.....	5c and 10c	35c	1.15	4.00	
New Neapolitan Pepper.....	5c and 10c	35c	1.15	4.00	
Chinese Giant Pepper.....	5c and 10c	40c	1.30	4.50	
Ruby King Pepper.....	5c and 10c	35c	1.15	4.00	
Ruby Giant Pepper.....	5c and 10c	40c	1.30	4.50	
Ohio Crimson Pepper.....	5c and 10c	40c	1.30	4.50	
Crimson Giant Pepper.....	5c and 10c	40c	1.30	4.50	
Celestial Pepper.....	5c and 10c	35c	1.15	4.00	
Bell or Red Hot Bull Nose Pepper.....	5c and 10c	35c	1.15	4.00	
Sweet Bull Nose Pepper.....	5c and 10c	35c	1.15	4.00	
Sweet Mountain Pepper.....	5c and 10c	35c	1.15	4.00	
Red Chili Pepper.....	5c and 10c	30c	1.00	3.50	
Long Narrow Red Cheyenne Pepper.....	5c and 10c	30c	1.00	3.50	
Red Cherry Small Round Pepper.....	5c and 10c	35c	1.15	4.00	
Pimerto Pepper.....	5c and 10c	30c	1.00	3.50	

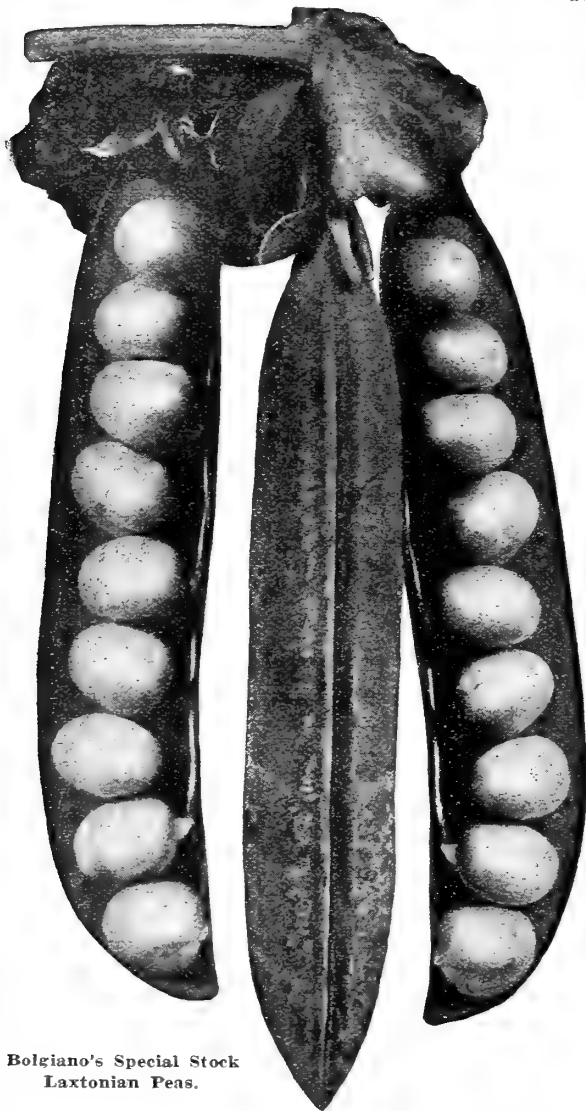
Seed Peas

Parcel Post Rates, see Page 16. We pay postage on 5c and 10c packages of all Seed Peas. Extra Early Smooth Seed Peas, weight by Parcel Post, Pt., 2 Lbs. Qt. 3 Lbs. 4 Qts., 9 Lbs. Pk., 17 Lbs. Wrinkled Seed Peas, weight by Parcel Post, Pt., 1 Lb. Qt., 2 Lbs. 4 Qts., 8 Lbs. Pk., 15 Lbs.

Prices are Subject to Change

First Class Selected Stock. Finest Hand Picked Samples.

One quart will plant about 100 feet of drill. One and one-half to two bushels for an acre. Those Marked With a Star (*) are wrinkled marrows and unless otherwise stated should be sown thicker than the round Peas, and not until the ground has become warm, as they are more liable to rot. They are the finest flavored of all Peas.



Bolgiano's Special Stock Laxtonian Peas.

Extra Early Dwarf Varieties

	Pt.	Qt.	4 Qts.	Pk.	Bu.
"Bolgiano's New "Early Bird" Pea	45c	80c	\$2.70	\$5.15	\$20.00
Laxtonian	45c	75c	2.45	4.85	18.00
100 Per Cent Profit Peas	45c	75c	2.45	4.65	18.00
McLean's Little Gem	40c	65c	2.05	3.90	15.00
*Little Marvel	45c	80c	2.70	5.15	20.00
*Nott's Excelsior Pea	40c	65c	2.05	3.90	15.00
*American Wonder Peas	40c	65c	2.05	3.90	15.00
*Premium Gem Peas	40c	65c	2.05	3.90	15.00
*Sutton's Excelsior	45c	80c	2.70	5.15	20.00
Tom Thumb or Blue Peter	40c	65c	2.05	3.90	15.00

Extra Early Varieties

Bolgiano's Extra Early Alaska Peas	30c	45c	\$1.45	\$2.65	\$10.00
New Long Podded Alaska Peas	35c	55c	1.75	3.30	12.50
*Gradus or Prosperity Pea	45c	75c	2.45	4.65	18.00
*Thomas Laxton Extra Early Pea	45c	75c	2.45	4.65	18.00
The Hustlers Extra Early	35c	55c	1.75	3.30	12.50
New Extremely Early Prolific Bolgiano's "Good Luck"	35c	55c	1.75	3.30	12.50
Bolgiano's Extra Early Triumph Peas	30c	45c	1.45	2.65	10.00
Ameer Peas	35c	55c	1.75	3.30	12.50
Bountiful Peas	35c	55c	1.75	3.30	12.50
Pedigree Extra Early	35c	55c	1.75	3.30	12.50
Prolific Early Markets	35c	55c	1.75	3.30	12.50
Bolgiano's Extra Early Non-pariel	30c	45c	1.45	2.65	10.00
Extra Early Morning Star Peas	30c	45c	1.45	2.65	10.00
First and Best Peas	30c	45c	1.45	2.65	10.00
Rural New Yorker Peas	30c	45c	1.45	2.65	10.00
Philadelphia Extra Early	30c	45c	1.45	2.65	10.00
*Horsford Market Gardeners	35c	55c	1.75	3.30	12.50
French Canner Peas	30c	45c	1.45	2.65	10.00
*Improved Sugar Marrowfat Pea	30c	45c	1.45	2.65	10.00
*Bolgiano's Wonder Worker Pea, Earliest Extra Early Wrinkled Pea	45c	75c	2.45	4.65	18.00
*Large White Marrow Peas	30c	45c	1.45	2.65	10.00
Canada Field Peas	20c	30c	.95	1.65	6.00

Second Early Varieties—General Crop

	Pt.	Qt.	4 Qts.	Pk.	Bu.
*Bolgiano's "Cracker Jack" Pea	35c	55c	\$1.75	\$3.30	\$12.50
*Dwarf Champion	35c	55c	1.70	3.15	12.00
*Heroine	35c	55c	1.75	3.30	12.50
*Abundance	35c	55c	1.70	3.15	12.00
*Telephone Carter's Improved	45c	75c	2.45	4.65	18.00
*Duke of Albany	45c	75c	2.45	4.65	18.00
*Alderman (Admiral Dewey)	45c	75c	2.45	4.65	18.00
*Everbearing	35c	55c	1.75	3.30	12.50
*Shropshire Hero	35c	55c	1.75	3.30	12.50
*Champion of England	35c	55c	1.70	3.15	12.00
*Daisy or Dwarf Telephone	45c	80c	2.70	5.15	20.00
*Dwarf Giant Podded Prolific Green Marrow Pea	35c	55c	1.75	3.30	12.50
*Improved Strategem	35c	55c	1.75	3.30	12.50
*Juno	35c	55c	1.70	3.15	12.00
*Gardener's Favorite	35c	55c	1.70	3.15	12.00
*Edible Podded or Sugar Pea—Melting Sugar	35c	55c	1.75	3.30	12.50

"Cracker Jack" Rightly Named.

On Sept. 15, 1919, Mr. T. T. Brubaker, of Page County, Va., wrote: "In regard to the Cracker Jack Peas that I bought from you, wish to say that I am delighted with them. They are profuse, prolific and tender. I think they have the right name, and I shall want to plant them again."

Extra Early Alaska Pea Undoubtedly the Best Pea Ever Raised.

On July 10, 1919, E. Everett Esridge, of Northumberland Co., Va., wrote: "In regard to the Extra Early Alaska Pea Seed which I bought from you last Spring, wish to say that they are undoubtedly the best Peas I ever raised, although I did not sow them until the 22nd of March. They gave the best satisfaction of any I have ever used, and I was only one picking behind my neighbors and my yield was much larger than theirs. I shall always plant Bolgiano's Extra Early Alaskas."

Hustler Vines Are Hustlers.

On Sept. 11, 1919, Mr. R. M. Carrol, of Orange Co., Fla., wrote: "I planted Bolgiano's Hustler Peas last year and are better than any others I have ever grown. The vines were simply loaded from top to bottom with large, sweet flavored, delicious peas. I want to place my order now for next planting."

Bolgiano's Wonder Worker a Money Maker.

On August 6th, 1919, Mr. E. P. Winemiller, of York Co., Penna., wrote: "Regarding Bolgiano's Wonder Worker Peas, wish to say, in quality, they are the most excellent I have ever raised. In earliness and size they rival Gradus, and in prolificness they are second to none. All things taken into consideration, they are the best Pea for table or market. I recommend it to all who want a money-maker and satisfied customers."

Bolgiano's Long Podded Alaskas Always a Success.

On August 2, 1919, Mrs. Cresner, of Harford Co., Md., wrote: "I want to say that Bolgiano's Long Podded Alaska Peas are certainly fine. The weather was very wet this season but in spite of unfavorable weather conditions Bolgiano's Long Podded Alaska Peas have always been a success for us. We will plant no other kind for the earliest and the best."

Radish

Finest French Stocks.

Parcel Post Rates—See Page 16—We pay Postage on Pkts., Ozs. and ¼ Lbs.

Write for Special Prices in 100 and 1,000-Lb. Lots.

Extra Early Round Varieties

	Pkt.	Oz.	¼ Lb.	5 Lb.
Tip Top White Tip Extra Early Radish.....	5c	10c	25c	85c 75c
Strawberry Early Deep Scarlet Turnip Radish	5c	10c	25c	85c 75c
Ruby King, Bolgiano's Extra Early Radish (Olive Shaped)	5c	10c	25c	85c 75c
White Tip Scarlet Turnip Radish.....	5c	10c	25c	75c 65c
Crimson Giant Globe Radish.....	5c	10c	25c	75c 65c
Early Round Scarlet Globe Radish.....	5c	10c	25c	75c 65c
Rosy Gem Extra Early Round Radish.....	5c	10c	25c	75c 65c
Lexington Market Money Maker.....	5c	10c	25c	75c 65c
Vick's Scarlet Globe Radish.....	5c	10c	25c	75c 65c
Felton's Model or Philadelphia White Box Radish	5c	10c	25c	75c 65c
French Breakfast Radish	5c	10c	25c	75c 65c
Early White Turnip or Snowball Radish.....	5c	10c	25c	75c 65c
Prussian Globe Radish	5c	10c	25c	75c 65c
Bolgiano's Early White Olive-Shaped Radish.....	5c	10c	25c	75c 65c
Bolgiano's Solid Crimson King.....	5c	10c	25c	85c 75c
Tait's Favorite Forcing Extra Early Radish.....	5c	10c	25c	75c 65c
New Sparkler White Tip Red Radish.....	5c	10c	25c	75c 65c
Scarlet Olive-Shaped Radish.....	5c	10c	25c	75c 65c
Extra Early Deep Red Turnip Radish.....	5c	10c	25c	75c 65c

Early Long Varieties

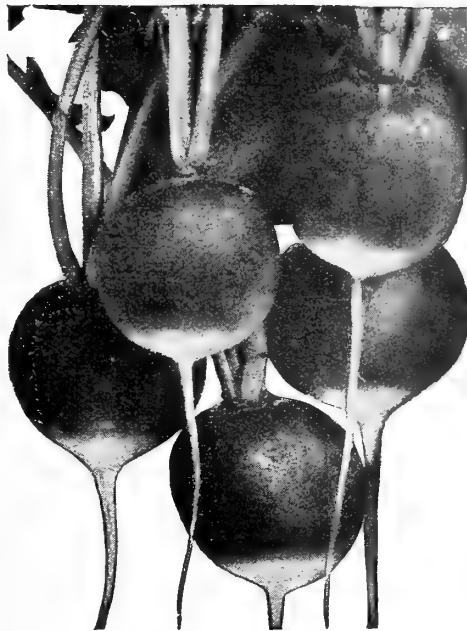
Improved Early Long Scarlet Short Top.....	5c	10c	25c	75c 65c
Long Cardinal or Brightest Long Scarlet.....	5c	10c	25c	75c 65c
Bolgiano's New Glass Radish.....	5c	10c	25c	75c 65c
Cincinnati Market	5c	10c	25c	75c 65c
Woods Early Frame	5c	10c	25c	75c 65c
Bolgiano's Extra Early Long White Pearl Forcing Radish	5c	10c	25c	85c 75c
New White Icicle Radish	5c	10c	25c	75c 65c
Lady Finger or Long White Vienna.....	5c	10c	25c	75c 65c
Half Long Deep Scarlet.....	5c	10c	25c	75c 65c

Summer and Autumn Varieties

New White Strasburg Radish.....	5c	10c	25c	75c 65c
Large White Globe Summer	5c	10c	25c	75c 65c
Giant White Stuttgart	5c	10c	25c	75c 65c
Chartier or Shepherd	5c	10c	25c	75c 65c

Winter Varieties

New Short White Chinese Winter or Celestial Radish	5c	10c	25c	75c 65c
Chinese Rose Winter	5c	10c	25c	75c 65c
Round Black Spanish Winter.....	5c	10c	25c	85c 75c
New Winter Radish Osaka	5c	10c	25c	75c 65c
Long White Spanish Winter.....	5c	10c	25c	85c 75c
Long Black Spanish Winter.....	5c	10c	25c	85c 75c



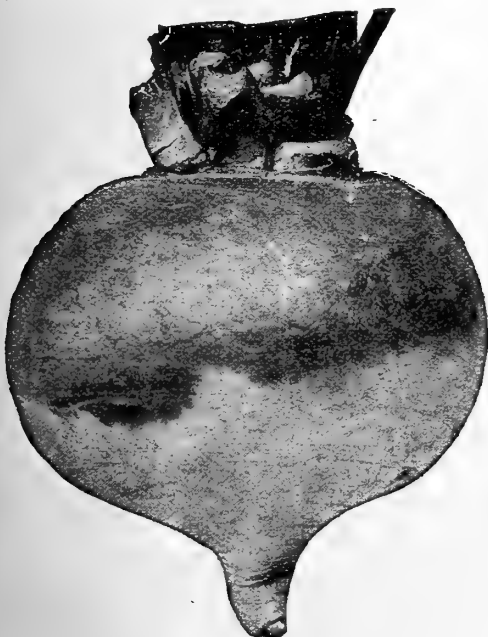
Tip Top White-Top Radish.

Garden Turnips - Ruta Baga

Parcel Post Rates—See Page 16. We pay postage on Pkts., Ounces and Quarter Pounds.

Write for Special Prices in 100 and 1,000-Lb. Lots.

	Oz.	¼ Lb.	5 Lb.
Extra Early Purple Top Milan.....	15c	40c	\$1.35 \$1.30
Extra Early White Milan.....	15c	40c	1.35 1.30
Red or Purple Top White Globe.....	10c	20c	.65 .60
Red or Purple Top White Flat Strap Leaf Turnip.....	10c	20c	.65 .60
Ruta Baga Market Gardeners' American Improved Purple Top	10c	20c	.65 .60
White Top White Globe Turnip, Strap Leaf	10c	20c	.65 .60
Southern Seven Top Turnip.....	10c	15c	.40 .35
White Egg Turnip.....	10c	25c	.70 .65
White Flat Dutch Extra Early.....	10c	20c	.65 .60
Purple Top Yellow Aberdeen.....	10c	20c	.65 .60
Yellow Globe Turnip.....	10c	20c	.65 .60
Dixie.....	10c	15c	.40 .35
Southern Prize or Large Amber Yellow Globe.....	10c	20c	.65 .60
Large White Norfolk Turnip.....	10c	20c	.65 .60
Pomeranian White Globe Turnip.....	10c	20c	.65 .60
Sweet German Turnip	10c	25c	.75 .70
Cow Horn or Long White Turnip.....	10c	25c	.85 .80
Golden Ball, Orange Jelly or Robertson's.....	10c	20c	.65 .60
Yellow Stone Turnip	10c	20c	.65 .60
Long White French	10c	25c	.75 .70



Red or Purple Top White Globe Turnip.

Rhubarb or Pie Plant

Victoria. A good market sort, stalks red. Pkts. 5c and 10c. Oz. 10c. ¼ Lb. 20c. Lb. 65c.

Since 1903 With Good Results.

On July 9, Mr. H. R. Sams, of the Oakridge Truck Farm, Beaufort Co., S. C., wrote: "The Scarlet Globe Radish Seed purchased from you in February were as bright scarlet and as fine shape as any I have ever planted. I planted the 200 pounds February 14th and gathered first three hundred baskets March 20. I have just written you for quotations on 300 pounds more. I have been planting your seeds since 1903 with good results."

Thoroughly Convinced After Comparison.

On February 20, Mrs. Varina H. Horaback, of Kent Co., Del., wrote: "I am thoroughly convinced that Bolgiano's Tomato Seeds are superior to other dealers'. Two years ago I made the experiment. Before that my plants were not uniform. The field would have the same cultivation and treatment, but at intervals the plants would be small and many of them would be very small producers. I changed my patronage to you. Since then my plants have been all that I could wish for, a strong and even growth and very productive."

Squash

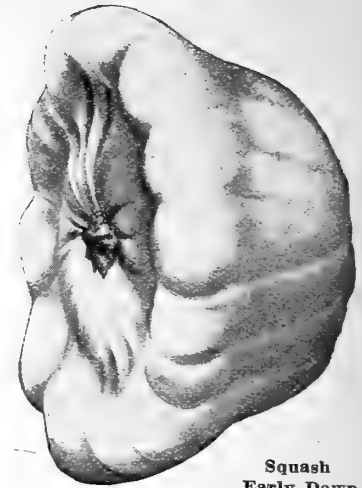
Parcel Post Rates—See this page below. We pay postage on Pkts., Ozs. and ¼ Lbs.

Bush Varieties

	Oz.	¼ Lb.	½ Lb.	5 Lbs.
Bolgiano's Extra Early Dawn Squash.....	10c	30c	90c	\$.85
Long Island White Bush Squash.....	10c	30c	90c	.85
Early Yellow Bush Squash.....	10c	30c	90c	.85
Early White Bush Scaloped or Patty Pan Squash.....	10c	25c	80c	.75
New Extra Early Jersey White Bush.....	10c	30c	90c	.85
Mammoth White Bush Squash.....	10c	30c	90c	.85
Golden Summer Crookneck Squash.....	10c	30c	1.00	.95
Mammoth Giant Summer Crookneck Squash.....	15c	40c	1.15	1.10
Mammoth Yellow or Golden Custard Bush Squash.....	10c	30c	90c	.85
Fordhook Bush Squash.....	10c	30c	1.00	.95

Running Varieties

	Oz.	¼ Lb.	½ Lb.	5 Lbs.
Early Prolific Orange Marrow.....	10c	25c	75c	\$.70
Boston Marrow Squash.....	10c	20c	65c	.60
Improved Winter Crookneck or Cushaw Squash.....	15c	40c	1.25	1.20
New Red or Golden Hubbard Squash.....	10c	30c	1.00	.95
True Hubbard Squash.....	15c	40c	1.35	1.30
Chicago Warty Hubbard.....	15c	40c	1.35	1.30



Squash Early Dawn

Pumpkins

	Oz.	¼ Lb.	½ Lb.	5 Lbs.
Md. Sweet Potato Pumpkin.....	10c	20c	65c	60c
King of the Mammoth, or True Potiron Pumpkin.....	10c	25c	80c	75c
Small Sugar Pie Pumpkin.....	10c	20c	65c	60c
New England Pie, or Sugar.....	10c	20c	65c	60c
Japanese Pie Pumpkin.....	15c	40c	1.25	1.20
Large Cheese Pumpkin.....	10c	20c	65c	60c
Golden Oblong.....	10c	25c	75c	70c
Winter Luxury Pumpkin.....	15c	40c	1.25	1.20
Connecticut Field, or Large Yellow Pumpkin.....	10c	20c	60c	55c
Kentucky Large Field.....	10c	20c	50c	40c

Salsify or Oyster Plant

In 5-lb. lots deduct 10c per lb.
 Bolgiano's "New Giant" Salsify, Pkt. 5c and 10c. Oz. 25c. ¼ Lb. 75c. Lb. \$2.50.
 Sandwich Island Mammoth Salsify, Pkt. 5c. Oz. 20c. ¼ Lb. 60c. Lb. \$2.00.
 Large White Salsify, Pkt. 5c and 10c. Oz. 20c. ¼ Lb. 60c. Lb. \$2.00.

Spinach

Write for Special Prices in Large Quantities. We pay postage on Pkts., Ozs and ¼ Lbs.

	Oz.	¼ Lb.	½ Lb.	5 Lbs.
Long Season Curled Spinach.....	10c	15c	25c	35c 30c
New Improved Curled Long Standing.....	10c	15c	25c	35c 30c
Curled Leaf Savoy or Bloomsdale American Grown.....	10c	15c	25c	35c 30c
Mammoth Seeded Curled Leaf Savoy American Grown.....	10c	15c	25c	40c 35c
Curled Leaf Savoy, or Bloomsdale Imported.....	10c	15c	25c	35c 30c
New Triumph Spinach.....	10c	15c	25c	35c 30c
Mammoth Seed Curled Leaf Savoy, Imported.....	10c	15c	25c	40c 35c
Long Standing Thick Leaved Spinach.....	10c	15c	25c	35c 30c
New Victoria Spinach.....	10c	15c	25c	35c 30c
Monstrous or Viroday.....	10c	15c	25c	35c 30c
Early Giant Thick Leaf.....	10c	15c	25c	35c 30c
New Zealand—Oz. 10c. ¼ Lb. 20c. Lb. 65c.				

POSTAGE RATE TABLE FOR PARCEL POST PACKAGES.

Ask your Postmaster or Rural Letter Carrier to tell you what zone you are in from Baltimore, Md., then refer to the table and you will know how much postage to send for mailing.

	First Pound or Fraction	Each Additional Pound or Fraction
Local Zone, Baltimore and Suburbs.....	5c	½c
First Zone, within 50 miles of Baltimore.....	5c	1c
Second Zone, 50 to 150 miles from Baltimore.....	5c	1c
Third Zone, 150 to 300 miles from Baltimore.....	6c	2c
Fourth Zone, 300 to 600 miles from Baltimore.....	7c	4c
Fifth Zone, 600 to 1,000 miles from Baltimore.....	8c	6c
Sixth Zone, 1,000 to 1,400 miles from Baltimore.....	9c	8c
Seventh Zone, 1,400 to 1,800 miles from Baltimore.....	11c	10c
Eight Zone, all over 1,800 miles from Baltimore.....	12c	12c

C. O. D. By Mail. If your Postoffice is a Money Order office, we can, if you desire and if it is more convenient for you, send anything you want out of this catalogue by Mail, C. O. D. (Collect On Delivery), if you want it this way, you need not send any money with your order.

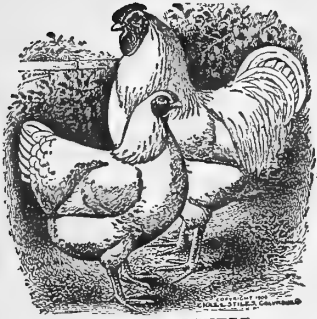
Something New. Cost of remittance may, on all orders over \$1.00, be deducted from the amount sent.

SAFE DELIVERY GUARANTEED.—On all shipments when remittance accompanies order.
As to Warranty. We give no warranty, expressed or implied, as to description, purity, productiveness, or any other matter of any seeds, plants or bulbs we send out, and we will not be in any way responsible for the crop. If the purchaser does not accept the goods on these terms, they are at once to be returned and money that has been paid for the same will be refunded.

Cash Accompanying the Order. We will be responsible for money sent by Postoffice Order, Express Money Order or Bank Draft.

Are You Interested in Poultry?

Bolgiano's New 1920 Poultry Book Is Just Out



WHITE WYANDOTTES

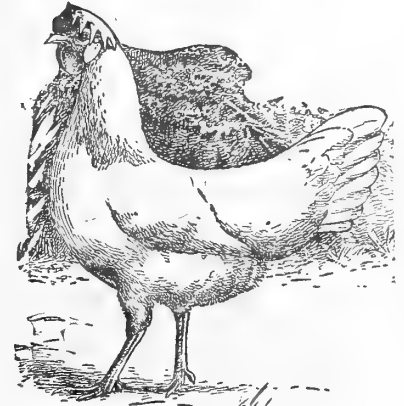
Single Birds and Pens
For Sale

The Most Helpful Poultry Book Ever Published

Contains 50 pages of Practical Poultry Information which will be of valuable assistance to you if you keep poultry either in a large or small way.



FREDERICK H. THAYER



SINGLE COMB WHITE LEGHORNS
"AMERICA'S BUSINESS HEN"

Single Birds and Pens For Sale

Rearing, Feeding, Breeding, Incubation, Health of the Birds, Proper Care of Baby Chicks, Best Remedies, Tonics and Supplies. All these are fully described and beautifully illustrated in Mr. Thayer's New Poultry Book.

This Book has been Written by Mr. Thayer, himself, who has done more for the promotion of the Poultry Industry in the United States than any other man. Mr. Thayer has put thousands of Poultry Raisers on the Road to Profitable Poultry Success.

We will Send You this Valuable Poultry Book—Absolutely Free
If You are Interested in Poultry, Cut Out and Mail Us the Attached Card

Date.....

*J. Bolgiano & Son
Baltimore, Md.*

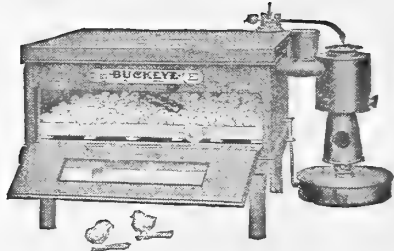
Gentlemen:

*I am interested in Poultry and would thank you to
kindly send me one of Bolgiano's New 1920 Poultry Books.*

Name.....

Address.....

Special Poultry Offers



BUCKEYE INCUBATOR
"The Perfect Hatcher"

Guaranteed to hatch more chicks and better chicks than any other incubator.

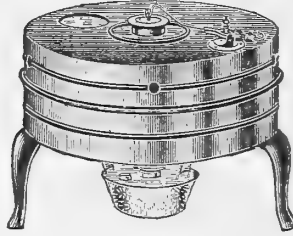
No. 14
Style E

Weight, crated for shipment, 55 lbs.

Capacity, 60 eggs. Price.....\$15.00

No. 14 is especially adapted for use by the small raiser. It has all the important features of the larger machines, such as visible thermometer, and the Buckeye heating and ventilating system. The temperature is easily regulated and the consumption of oil is low.

OUR LITTLE BABY GRAND INCUBATOR

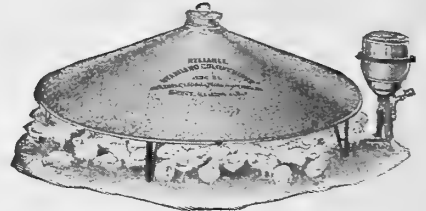


50-Egg Size—All Metal.

Unique and superior in its construction. Beautiful in its appearance. Excellent in its hatching qualities and the most reliable and easiest operated small incubator ever offered to the trade. It has a glass window in top, so thermometer and chickens can be seen hatching without opening machine. It has a positive heat and moisture regulation, and is equipped with a moisture receptacle for applying additional moisture when needed. Has double top, well insulated and packed double side walls, with a free circulation of hot air between the walls all the time, making an equal distribution of heat through the machine. The ventilation is perfect, supplying warm, fresh air to all parts of egg chamber at all times.

50-Egg Size—Price \$7.50.

RELIABLE BECAUSE RIGHT. THE RELIABLE BLUE FLAME WICKLESS OIL-HEATED COLONY HOVER.



Cut Represents No. 0-1-2 Hovers

THE MODERN HOVER

The hover has the same chick as the coal burning brooder. They are made in four sizes—18 inch, 30 inch, 42 inch and 52 inch hovers. A few of the special points on this oil-heated hover are as follows: Burns gas generated from coal oil. Steady blue flame. Comfortable and easy to operate. Economy of operation. No wick to trim. Abundance of heat. No oil fumes. Visible oil feed. Convenient and safe. No coal, smoke or gas. The flow of oil is regulated automatically by our screw valve.

No. 00, 18 inch, 100 Chick.....\$ 7.50
No. 0, 30 inch, 250 Chick..... 16.50
No. 1, 42 inch, 500 Chick..... 18.50
No. 2, 52 inch, 1000 Chick..... 22.00



MOE'S ROUND BABY CHICK FEEDERS

Pure food for the baby chicks. A great feed saver, as the little chicks cannot get into it and contaminate the feed. Cannot be upset. Can also be used for water or milk. This is a practical, well-made feeding device that will last for years. Manufactured in two sizes.

No. 11—6 inches in diameter, 8 feeding holes, each, 25c.

No. 12—8 1/4 inches in diameter, 12 feeding holes, each 40c.

Postage, 7c extra.

ORDER NOW Chicks with Vitality

BRED FOR CONSTITUTIONAL VIGOR. BRED FOR HEAVY EGG PRODUCTION.



All Leading Varieties.
Barred Plymouth Rocks,
White Plymouth Rocks,
Rhode Island Reds, White
Wyandottes, Silver Laced
Wyandottes, White Leghorns,
Brown Leghorns, Buff Leghorns,
Anconas.

Their Parentage Is Right.
They're Bred Right.
Their Management Is Right.
Their Breeding Records Are Right.
Their Egg Production Is Right.
The Chicks Are Hatched Right.
They Grow and Thrive Right.

We Are in a Position to Take Special Care of the South for Early Delivery of "Vital Hatch" Baby Chicks.

Post Card

STAMP

J. Bolgiano & Son

Pratt, Light and Ellicott Sts.

Baltimore, Md.

Up to Date Prices on Field Seeds

Owing to the Advance in the Prices of all Field Seeds since this Catalog went to press, the Prices Listed on this sheet take the place of the Prices on Page 2 of this catalog. We urgently advise you to Place Your Order Immediately for Your Full Requirements of Field Seeds as we can only make these Prices Subject to Market Changes.

All Prices
Subject to
Market Changes

Grass and Clover Seeds

Write Us for
Prices Delivered
to Your Station.

BOLGIANO'S "GOLD" BRAND SEEDS ARE STANDARD.

- Bermuda Grass.** "Gold" Brand, lb. 65c.; 100-lb. lots and over, 60c. lb.
- Sudan Grass.** "Gold" Brand, lb. 20c.; 100-lb. lots and over, 15c. lb.
- Timothy.** "Ideal" Brand, 18c. lb.; pk. \$2.00; bus. of 45 lbs., \$6.90; Silver Choice, \$6.65 bu.
- Kentucky Blue Grass.** "Gold" Brand Seed, lb. 35c.; pk. \$1.15; bus. of 14 lbs., \$4.25. Silver Choice, \$4.00.
- Canada Blue Grass.** "Gold" Brand Seed, lb. 25c.; bus. of 14 lbs., \$2.75. Silver Choice, \$2.65.
- Red Top or Herds Grass.** "Gold" Brand Fancy, lb. 25c. Silver Choice, 24c. lb.
- Meadow Fesque, Randall or English Blue Grass.** "Gold" Brand, lb. 45c.; pk. \$2.50; bus. of 24 lbs., \$9.50.
- English or Perennial Rye Grass.** Lb. 20c.; bus. of 24 lbs., \$3.00; 100 lbs. 12c. lb.
- Italian Rye Grass.** "Gold" Brand, 20c. lb.; bus. of 18 lbs., \$2.35; 100 lbs. 12c. lb.
- Pacey's Rye Grass.** Lb. 20c.; bus. of 18 lbs., \$2.70; 100 lbs. 14c. lb.
- Crested Dogstail.** Lb. 40c.; 10 lbs. 38c. lb.; 100 lbs. 35c. lb.
- Tall Meadow Oat, Evergreen Grass.** "Gold" Brand Fancy, \$3.50 per bu. of 11 lbs.
- Orchard Grass.** "Gold" Fancy, bus. of 14 lbs., \$4.00. Silver Choice, \$3.75 bu.
- Red or Creeping Fesque.** "Gold" Brand, lb. 45c.; 10 lbs. \$4.00.
- Timothy and Alsike Clover (Mixed).** Lb. 40c.; 50 lbs. or over, 35c. lb.

CLOVERS

- Alfalfa Seed.** American Grown. "Gold" Brand Fancy Seed. Bu. of 60 lbs. at 45c. lb. "Silver" Choice, bu. of 60 lbs., 44c. lb.
- Alsike Clover.** "Gold" Brand, bu. of 60 lbs., 60c. lb. "Silver" Choice, bu. of 60 lbs., 59c. lb.
- Medium Red Clover.** "Gold" Brand Fancy, bu. of 60 lbs. at 60c. lb. "Silver" Brand Choice, bu. of 60 lbs. at 59c. lb.
- Mammoth or Sapling Clover.** "Gold" Brand Fancy, bu. of 60 lbs. at 61c. lb. "Silver" Brand Choice, bu. of 60 lbs. at 60c. lb.
- White Clover.** "Gold" Brand Fancy, ½ lb. 35c.; lb. 60c.
- Crimson Clover Seed.** The great Nitrogen Gatherer. "Gold" Brand, bu. of 60 lbs., \$8.50.
- Japan Clover.** Lb. 45c.; 10 lbs. and over, 42c. lb.
- White Blossom Sweet Clover (Hulled).** 35c. per lb.; 60-lb. bu. \$21.00.
- White Blossom Sweet Clover (Unhulled).** Lb. 30c.; 10 lbs. and over, 27c. lb.
- Burr Clover (Hulled).** Write for lowest market price.
- Hairy Vetch.** Lb. 40c.; 10 lbs. 38c. lb.; 100 lbs. 35c. lb.
- Burt or 90-Day Oats.** Pk. 40c.; bu. \$1.40.
- White Spring Oats.** "Gold" Brand. Pk. 40c.; bu. \$1.40.
- Bancroft Oats.** Pk. 40c.; bu. \$1.40.
- Appler Oats.** Pk. 40c.; bu. \$1.40.
- Montana or Swedish Oats.** Pk. 40c.; bu. \$1.40.
- Va. Gray Winter Oats.** Write for lowest market price.

MILLET

- German or Golden Millet,** Southern grown "Gold." Pk. 95c.; \$3.25 per bu. of 50 lbs.
- Tennessee (Cultivated) Golden Millet.** \$1.10 pk.; \$4.00 bu. of 50 lbs.
- Hungarian Millet.** "Gold" Brand. Pk. \$1.10; \$4.00 per bu.
- Japanese Millet.** "Gold" Brand. 10 lbs. \$1.00; 100 lbs. \$9.00.
- Pearl or Cat Tail Millet, Pennellaria.** Write for lowest market price.

SOJA BEANS

- Mammoth Yellow,** \$4.75 bu. **Wilson,** \$7.50 bu.
- Mammoth Brown,** \$5.00 bu. **Pekin,** \$7.50 bu.
- Mammoth Black,** \$5.00 bu. **Sable,** \$7.50 bu.
- Spring Vetches or Tares.** "Gold" Brand, lb. 20c.; 10 lbs. 17c. lb.; 50 lbs. 16c. lb.; 100 lbs. 15c. lb.
- Dwarf Essex Rape.** 15c. lb.; 10 lbs. 14c. lb.; 100 lbs. 12c. lb.
- White Kaffir Corn.** Lb. 10c.; 10 lbs. 50c.; 100 lbs. \$4.50.
- Red Kaffir Corn or Milo Maize.** Lb. 10c.; 10 lbs. 50c.; 100 lbs. \$4.50.
- Flax Seed.** White for lowest market prices.
- Japanese Buckwheat.** Pk. 65c; bu. \$2.25.
- Silver Hull Buckwheat.** Pk. 75c.; bu. \$2.50.
- Speltz or Emmer.** Pk. 65c.; 40-lb. bu. \$2.25.
- Amber Sorghum.** 50-lb. bu. \$2.50; pk. 75c.
- Early Orange Sorghum.** Write for lowest market prices.
- Spring Rye.** Please write for lowest market prices.
- Canada Field Peas.** \$1.15 pk.; \$4.25 bu.
- Beardless Spring Barley.** Write for lowest market prices.

Mixtures for Permanent Pastures, But Can Be Mown.
25 lbs. or over at 100-lb. rates.

Mixture No. 1. For Light, Dry, Gravely or Sandy Soils. Sow 30 to 35 lbs. to the acre. Lb. 30c.; 10 lbs., 27c. per lb.; 100 lbs., 25c. per lb.

Mixture No. 2. For Good Loam Soil. Sow 30 to 35 lbs. to the acre. Lb. 30c.; 10 lbs., 27c. per lb.; 100 lbs., 25c. per lb.

Mixture No. 3. For Heavy Loam or Clay Soil. Sow 30 to 35 lbs. to the acre. Lb. 30c.; 10 lbs., 27c. per lb.; 100 lbs., 25c. per lb.

Mixture No. 4. For Moist Bottom Lands. Sow 25 to 30 lbs. to the acre. Lb. 30c.; 10 lbs., 27c. per lb.; 100 lbs., 25c. per lb.

Mixtures for Mowing for Hay, But Can Be Grazed.
25 lbs. or over at 100-lb. rates.

Mixture No. 5. For Wet Bottom Land. Sow 25 to 30 lbs. per acre. Lb. 30c.; 10 lbs., 27c. per lb.; 100 lbs., 25c. per lb.

Mixture No. 6. For Light, Dry, Gravely or Sandy Soil. Sow 30 to 35 lbs. to the acre. Lb. 30c.; 10 lbs., 27c. per lb.; 100 lbs., 25c. per lb.

Mixture No. 7. For Good Loam Soil. Sow 30 to 35 lbs. to the acre. Lb. 30c.; 10 lbs., 27c. per lb.; 100 lbs., 25c. per lb.

Mixture No. 8. For Heavy Loam or Clay Soil. Sow 30 lbs. to acre. Lb. 30c.; 10 lbs., 27c. per lb.; 100 lbs., 25c. per lb.

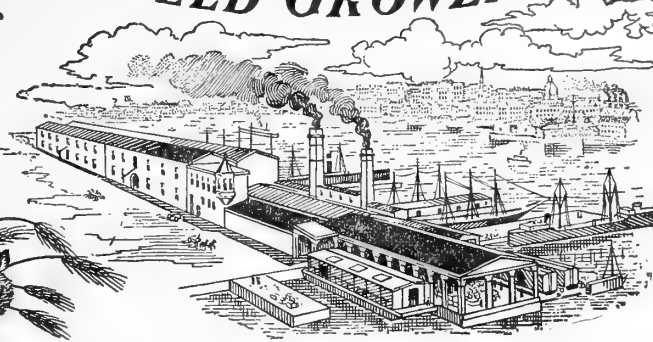
Mixture No. 9. For Moist Bottom Land. Sow 20 to 25 lbs. per acre. Lb. 30c.; 10 lbs., 27c. per lb.; 100 lbs., 25c. per lb.

Mixture No. 10. Shady Nook Meadow Mixture. Sow 30 to 35 lbs. to the acre. Lb. 30c.; 10 lbs., 27c. per lb.; 100 lbs., 25c. per lb.

CHARLES J. BOLGIANO.

J. BOLGIANO & SON

SEED GROWERS AND IMPORTERS



GARDEN, FIELD & FLOWER SEEDS.
CLOVER, TIMOTHY & GRASSES.
MILLET, PEAS, BEANS, ONION SETS.
CORN, POTATOES, COW PEAS, VETCHES
SEED WHEAT, RYE, BARLEY.
OATS, BUCKWHEAT.
KAFFIR CORN, SORGHUMS.
CANARY, HEMP, BIRD MILLET
SUNFLOWER, BIRD RAPE, CANADA PEAS.
TEN SPECIAL PERMANENT PASTURE MIXTURES.

TOMATO AND CABBAGE SEEDS
TURNIP, SPINACH, KALE.
MANUFACTURERS OF
"SQUARE DEAL" BRAND
(REG. U. S. PAT. OFFICE.)
DRY MASH, GROWING MASH.
CHICK STARTER, CHICK FOOD.
POULTRY OR SCRATCH FOOD, PIGEON FOOD.
"SQUARE DEAL" REMEDIES.
"ORUID HILL PARK" LAWN SEED.
"SQUARE DEAL BIRD" SEED & GRAVEL.

GENERAL OFFICES
& STORES:
PRATT, LIGHT & ELLICOTT STS.

Distributors

CHAS. CYPHERS "BUFFALO" INCUBATORS.
"BUCKEYE" INCUBATORS, BROODERS.
PORTABLE POULTRY HOUSES.
ALL POULTRY SUPPLIES & REMEDIES.

BOLGIANO'S PIER
POULTRY FOOD MANUFACTURING PLANT.
SEED, GRAIN, ONION SET AND SEED POTATO WAREHOUSES.
MONTGOMERY ST., KEY HIGHWAY AND THE HARBOR.

BALTIMORE, Md.

Dear Sir:

We have just paid \$500.00 for a small quantity of Tomato Seed. We have named it The "Bolgiano" Tomato because we proudly put back of it our one hundred years of experience and reputation.

In order to have this wonderful new tomato tested in all parts of the country, we are making the following liberal offer;

If you will mail us immediately an order on the enclosed order sheet amounting to \$1.00 or over for anything you need in Garden Seeds, Flower Seed, Summer Flowering Bulbs, Onion Sets, Seed Potatoes, Clover Seeds, Field Seeds, Seed Grains, Poultry Feeds, Poultry Supplies, Baby Chicks, Feed Grains, Cattle Feed, Hog Feed, Lawn and Garden Tools, Insecticides, etc., we will send you absolutely free a \$1.00 package of The "Bolgiano" Tomato Seed.

We are going to give away on November 1st, 1920, \$250.00 for the Best Description of this New Tomato, as follows;



PERSONAL SERVICE FROM
ROZELL J. BOWEN
(PATENT PENDING)

- | | |
|---------------------|-----------------------|
| 1st Prize, \$100.00 | 4th Prize, \$10.00 |
| 2nd Prize, 50.00 | 5th Prize, 5.00 |
| 3rd Prize, 25.00 | 50 Prizes \$1.00 each |

Your descriptions must be in by Oct. 15th. 1920

You may receive the \$100.00 Prize - send us your full order to-day.

Yours respectfully

J. BOLGIANO & SON

TERMS—All sales subject to loss or damage by fire, shortage or failure of our crops, and contingencies beyond our control. We give no warranty, express or implied, as to description, purity productiveness, or any other matter of any Seeds, Plants or Bulbs we send out, and we will not be, in any way responsible for the crops grown therefrom. If the purchaser does not accept the goods on these terms, they are at once to be returned and the money that has been paid for same will be refunded.

All offers and quotations are made for immediate acceptance F. O. B. Baltimore unless otherwise specified, prices subject to change without notice and being unsold on receipt of order.

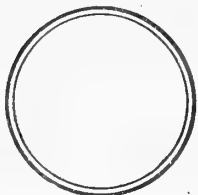
Money Order. If not a Money Order Office send remittance by Registered Mail.

PURCHASER MUST SEND ORDER (ON BLUE PAPER) TO PAYEE.

Dollars	Cents

Fee.....cents

Stamp of Issuing Office



Form No. 6001.
DOMESTIC.

No.

Space above this line is for the Postmaster's record, to be filled by him.

Application for Money Order.

Amount..... Dollars..... Cents.

Sent to J. Bolgiano & Son

Street and No. Pratt and Light Streets

City or town BALTIMORE,

State MARYLAND

Sent by

Address of sender : No. Street.

Fees for Money Orders.

Payable in the United States (which includes Guam, Hawaii, Porto Rico and Tutuila, Samoa); also for Orders payable in Canada, Cuba, Newfoundland, the United States Postal Agency at Shanghai (China), and the Philippine Islands.

For Orders for sums not exceeding \$2.50	3 cents.
Over \$ 2.50 and not exceeding \$ 5.00	5 cents.
Over \$ 5.00 and not exceeding \$ 10.00	8 cents.
Over \$10.00 and not exceeding \$ 20.00	10 cents.
Over \$20.00 and not exceeding \$ 30.00	12 cents.
Over \$30.00 and not exceeding \$ 40.00	15 cents.
Over \$40.00 and not exceeding \$ 50.00	18 cents.
Over \$50.00 and not exceeding \$ 60.00	20 cents.
Over \$60.00 and not exceeding \$ 75.00	25 cents.
Over \$75.00 and not exceeding \$100.00	30 cents.

Memoranda of Issuing Postmaster:

NOTE.—The maximum amount for which a single Money Order may be issued is \$100. When a larger sum is to be sent additional Orders must be obtained. Any number of Orders may be drawn on any Money Order office; but, if Orders are drawn in excess of \$200 on any one day upon an office of the 4th class, notice of the fact by letter (or Form 6037) is to be promptly sent to the Department by the issuing Postmaster so that provision may be made for payment.

Applications must be preserved at the office of issue for four years from date of issue.

[REVISED MAY, 1904.]

C & P TELEPHONE
 ST. PAUL 7150-7151-7152
 CHARLES J. BOLGIANO

J. BOLGIANO & SON
 FOUNDED 1818
 BALTIMORE, MD.

CABLE ADDRESS "BOLGIANO BALTO"
 CABLE CODES USED ARE C 5712 AND SEED TRADE ASSN
 ROYALTONS CODE

GARDEN
 FIELD
 FLOWER
 SEEDS

Poultry Supplies

BOLGIANO'S PIER, POULTRY FOOD MANUFACTURING PLANT,
 SEED, GRAIN, ONION SET AND SEED POTATO WAREHOUSES
 MONTGOMERY ST. KEY HIGHWAY AND THE HARBOR

PLACE
 STAMP
 HERE

Address of Sender

J. BOLGIANO & SON

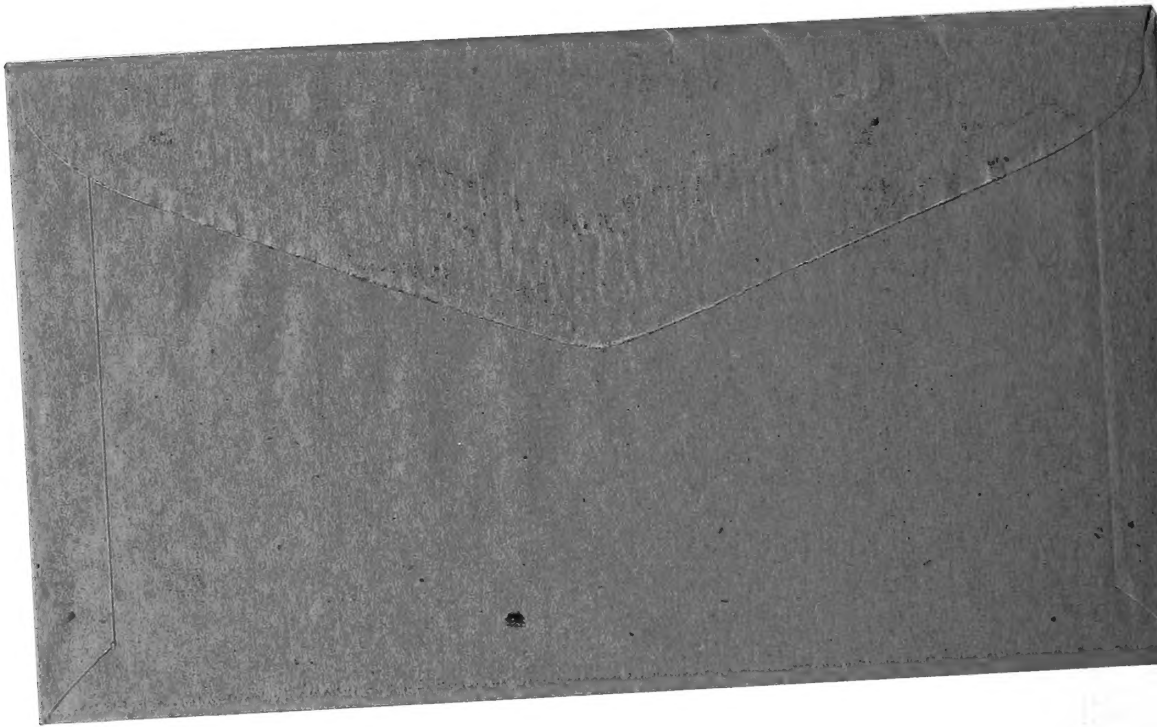
"CAREFUL SEED GROWERS"
 FOR 100 YEARS

Name _____

P.O. _____

State _____

**PRATT, LIGHT & ELICOTT STS.,
 BALTIMORE, MD.**



BOLGIANO'S SIX BIG CROPPERS

Bring Highest Prices In The
Early Market.
Reselected and Improved Stocks

Bolghiano's
Earliest Red
Valentine Beans

BOLGHIANO'S EARLIEST RED VALENTINE BEANS.

A standard variety since 1865 and today the most extensively planted. Popular with market gardeners because so early and reliable. The favorite with home gardeners on account of excellent qualities and other good features. Can be picked within 35 days after planting. Pkt., 10c.; Pt., 35c.; Qt., 55c.; 2 qts., 95c.; 4 qts., \$1.70; Pk., \$3.15; ½ bu., \$6.10; Bu., \$12.00.

GRADUS OR PROSPERITY PEAS.

A very large wrinkle pea, four inches long, maturing with the early sorts. It withstands an extraordinary amount of cold and wet weather. This variety is very extensively grown by the market growers in the South, and has attracted the attention of the home gardener for their most delicious flavor. Pkt., 10c.; Pt., 45c.; Qt., 80c.; 4 qts., \$2.70; Pk., \$5.15; ½ bu., \$10.10; Bu., \$20.00.

NEW HODSON WAX BEANS.

The best and most reliable late wax bean. Far surpasses all others in productiveness. Very hearty and large, handsome pods. A great favorite with the market gardeners and home gardeners. Pkt. 10c.; Pt., 35c.; Qt., 55c.; 2 qts., 95c.; 4 qts., \$1.75; Pk., \$3.30; ½ bu., \$6.35; Bu., \$12.50.

TELEPHONE IMPROVED PEAS.

A decided improvement over the old variety; pods 5½ inches long filled with large, tender, sweet peas. They are a great favorite with the market gardeners as they retain their color long after picking. Pkt., 10c.; Pt., 45c.; Qt., 80c.; 4 qts., \$2.70; Pk., \$5.15; ½ bu., \$10.10; Bu., \$20.00.

BURPEES STRINGLESS GREEN POD BEANS.

The pods are tender, brittle and of finest flavor, being entirely stringless, even when fully matured. It combines unusual heartiness, extreme earliness and wonderful productiveness with handsome appearance and finest quality of pods. Pkt., 10c.; Pt., 35c.; Qt., 55c.; 2 qts., 95c.; 4 qts., \$1.70; Pk., \$3.15; ½ bu., \$6.10; Bu., \$12.00.

THOMAS LAXTON PEAS.

This variety is well known among the market gardeners for its abundant yield. Pods 3½ inches long filled with large, luscious flavored peas. An excellent shipper and a money-maker. Pkt., 10c.; Pt., 45c.; Qt., 80c.; 4 qts., \$2.70; Pk., \$5.15; ½ bu., \$10.10; Bu., \$20.00.

Gradus or
Prosperity Peas

Telephone Improved
Peas

Thomas
Laxton
Peas

New Hodson
Wax Beans

Burpee's
Stringless
Greenpod Beans

BOLGIANO'S "BEST YET" COLLECTION

ONE LARGE 10¢ PACKAGE OF EACH OF THESE
SIX DELICIOUS VEGETABLES FOR 50¢ POSTPAID

FOUNDED 1818

J. BOLGIANO & SON

PRATT, LIGHT & ELLICOTT STS.
BALTIMORE, M.D.

U.S.A.

ESTABLISHED
OVER A CENTURY

"NEW VICTORY" PEAS

Healthy, Vigorous, Productive,
Best Yet Produced.

1/2 PT. 25¢ & PT. 40¢ QT. 75¢
2 QTS. \$1.40, 4 QTS. \$2.75
PK. \$5.00, BU. \$18.00
Postpaid

**BOLGIANO'S
"BEST YET"
STRINGLESS
MAX BEANS**

New Extra Early
Crisp, Tender,
Protho, Stringless

1/2 PT. 25¢, PT. 40¢,
QT. 75¢ & 2 QTS. \$1.40
4 QTS. \$2.75, PK. \$5.00
BU. \$18.00, Postpaid.



"TIP TOP" WHITE TIP RASH

Crisp, Tender, Brilliant Red Wax-Blue Lips
PKT. 10¢, OZ. 15¢ & 2 OZS. 25¢
4 QTS. \$1.50, 1/2 LB. 80¢, 1 LB. \$1.50, Postpaid

BOLGIANO'S LONG LOST LETTER
Heads early, Sweet, Tender, Shiny
PKT. 10¢ & 25¢, 1/2 OZ. 30¢, OZ. 50¢, 2 OZ. 95¢
1/2 LB. \$1.50, 1 LB. \$2.75, LB. \$5.00, Postpaid

"GOLDEN BANTAM" SUGAR CORN
Delicious, Sweet as Honey, Extremely Early
PKT. 10¢, PT. 30¢, QT. 50¢ & QTS. 95¢
4 QTS. \$1.75, PK. \$3.25, BU. \$12.00, Postpaid

BOLGIANO'S CHERRY TOMATO
Grows and bears abundantly
When other varieties die
PKTS. 10¢ & 25¢ & 50¢, 1/2 OZ. 75¢,
1 OZ. \$2.00, 1/2 LB. \$7.50, LB. \$25.00
Postpaid

