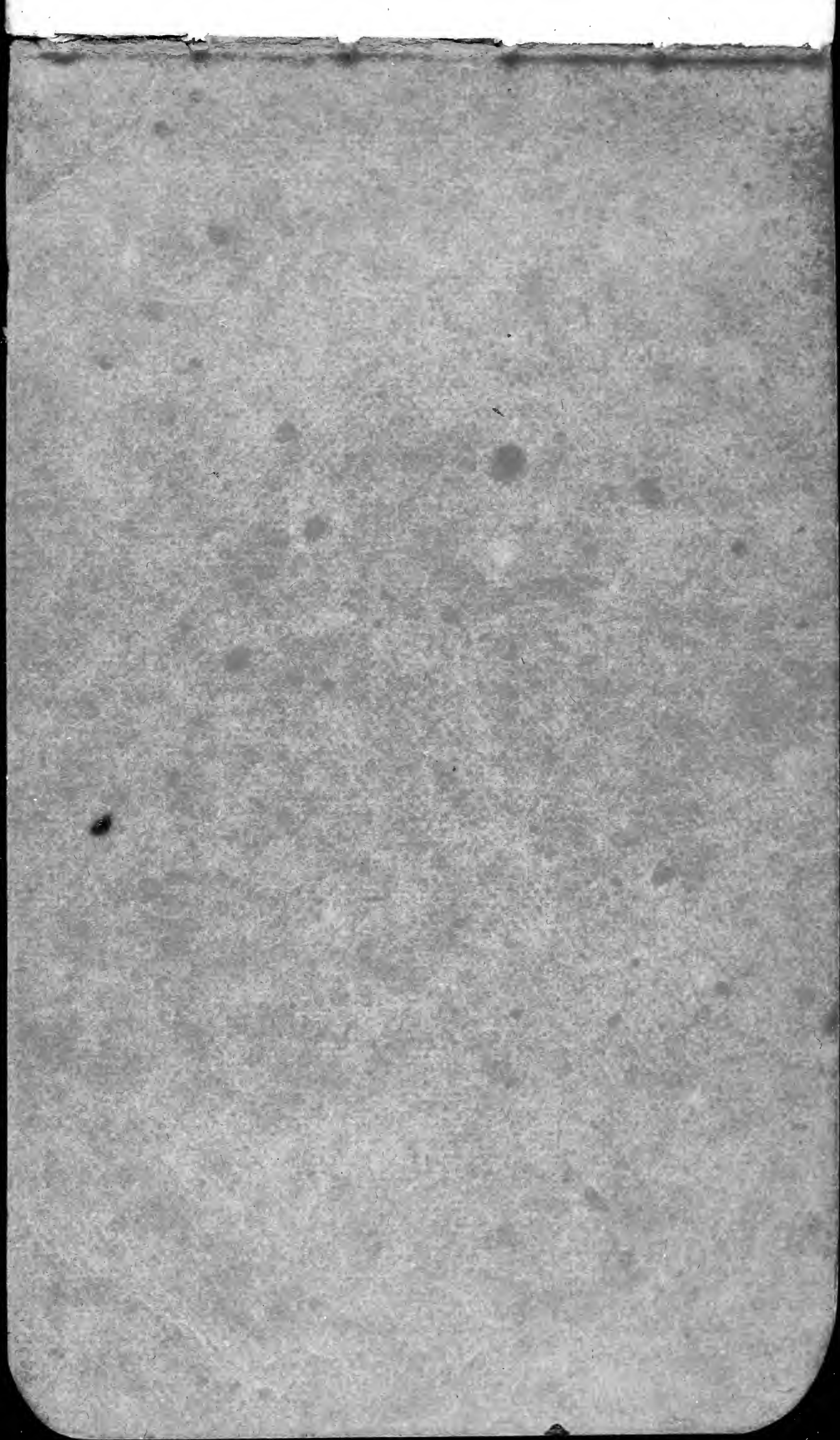


Portsmouth Notes

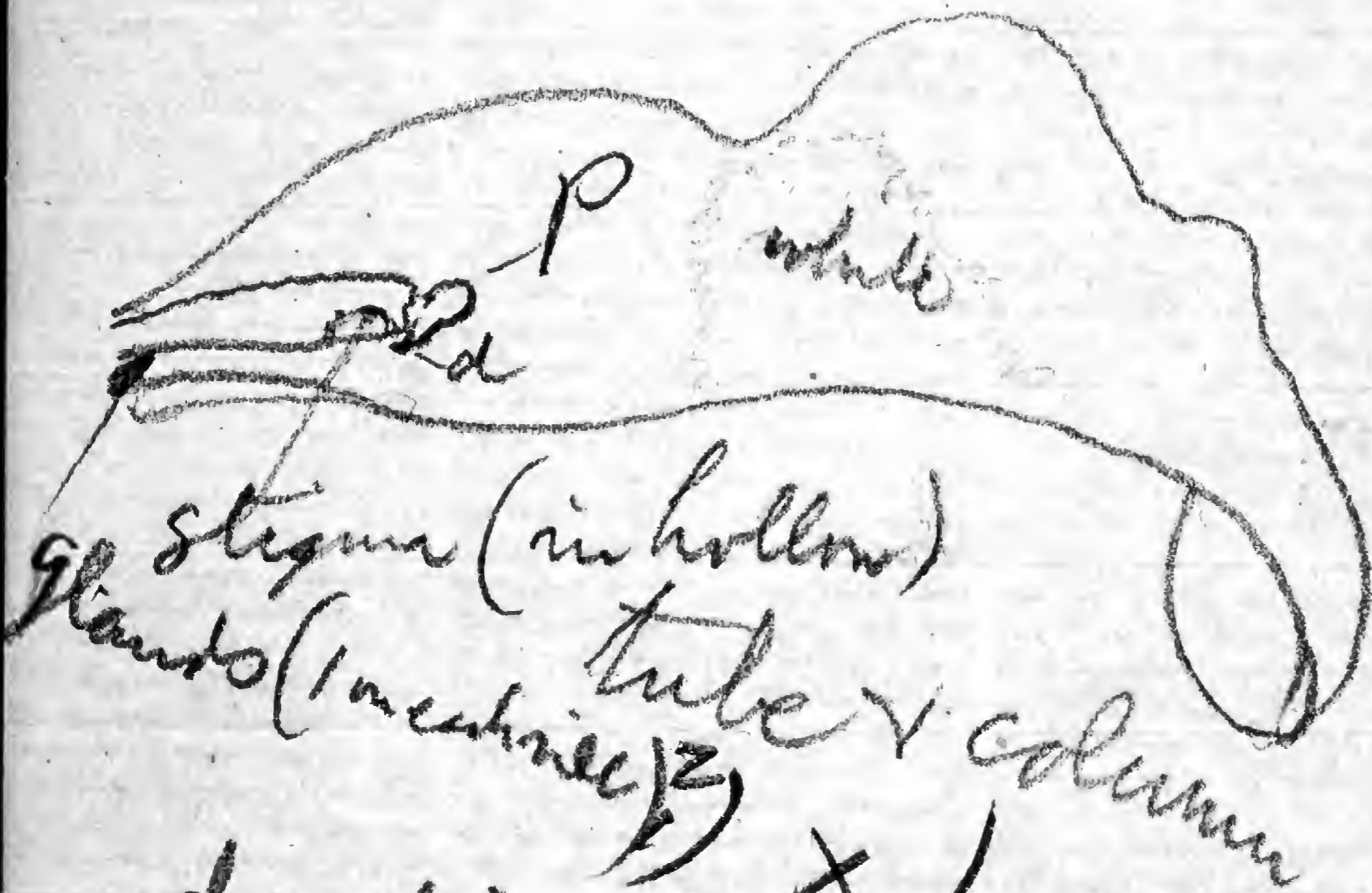
1861

Gregory

1861



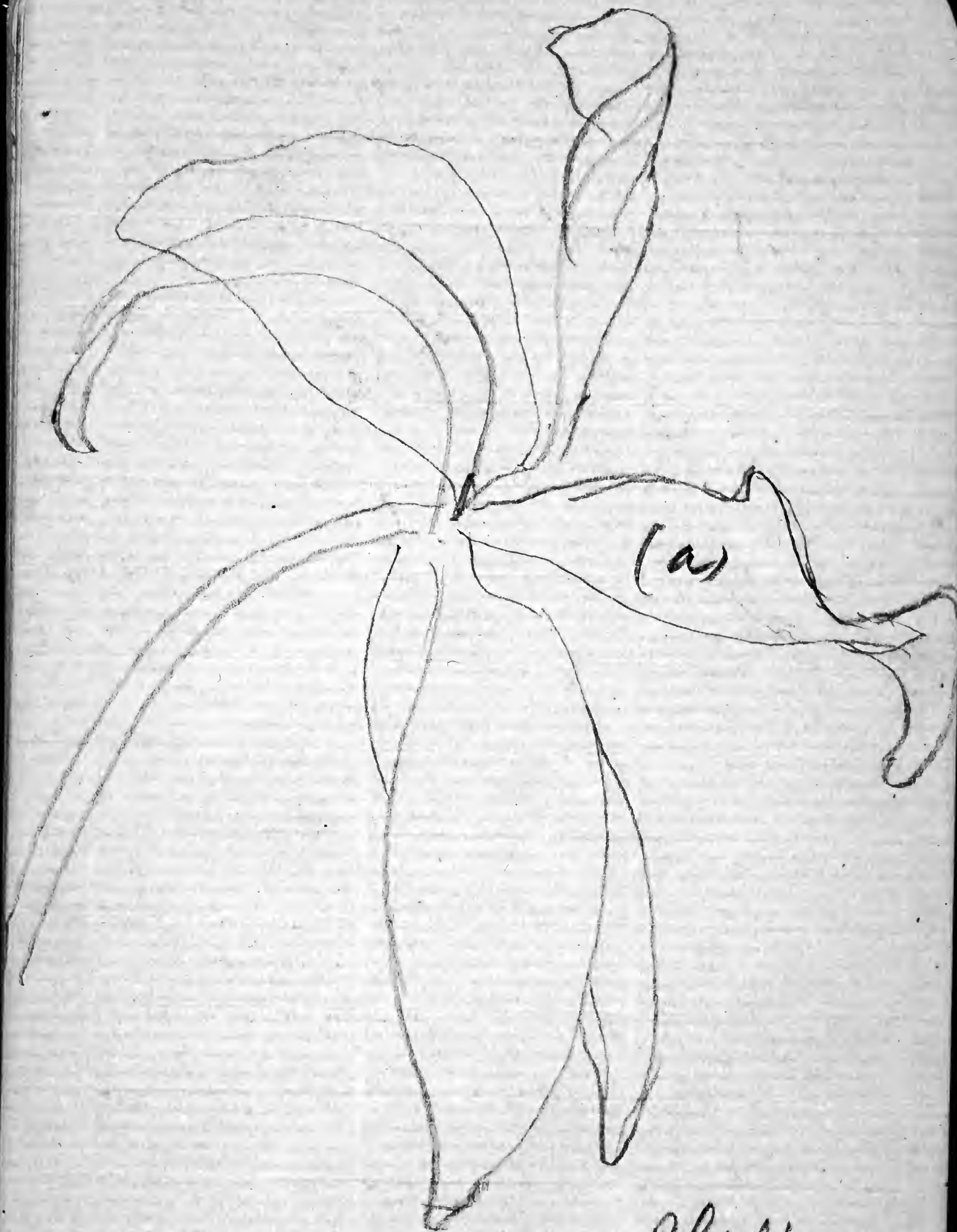
The fls are in
 short spikes 5-7 flowers.
 The flower is a rich
 rose-red, the throat
 of the tube (a) being
 white.



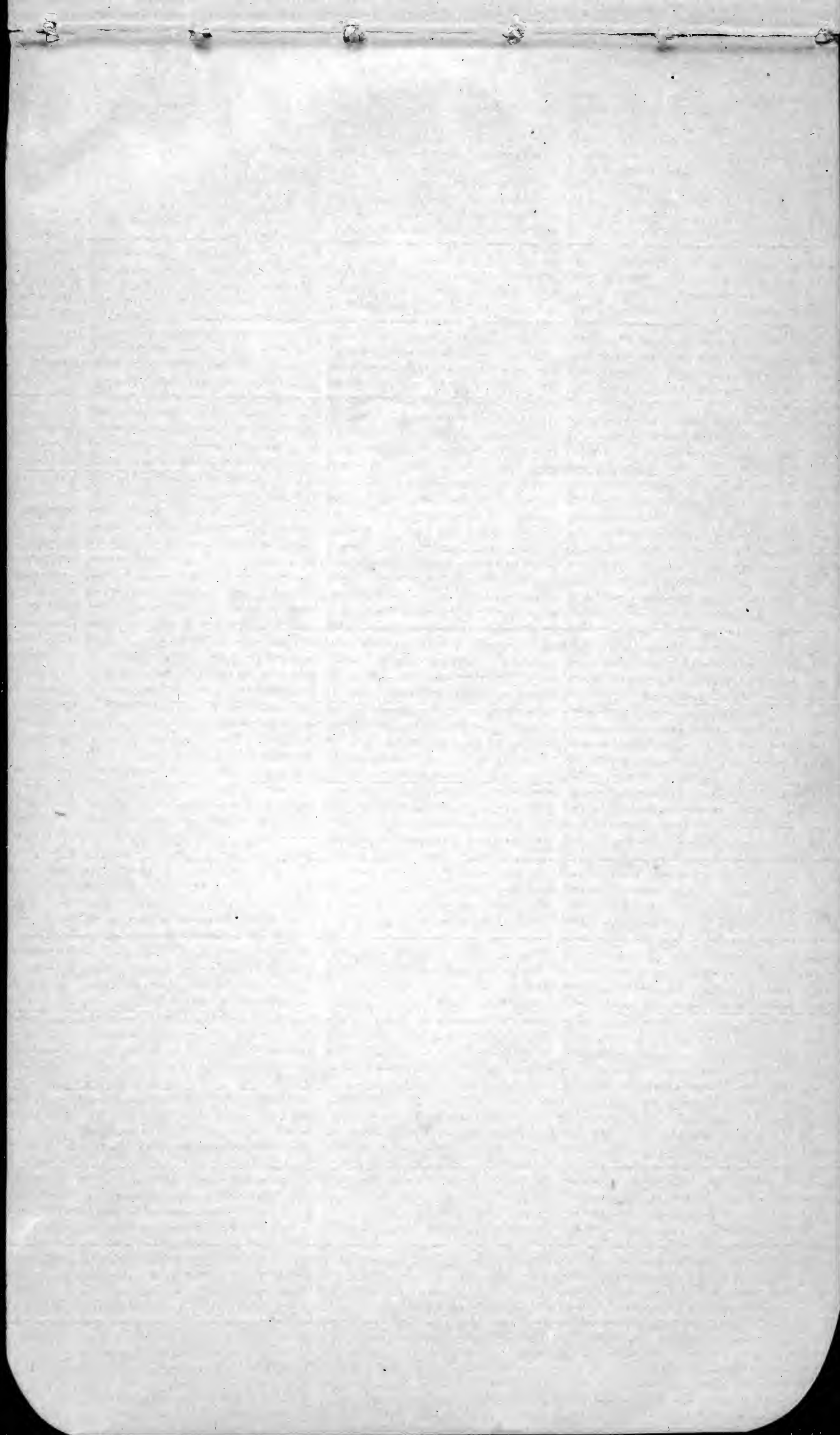
d = disc

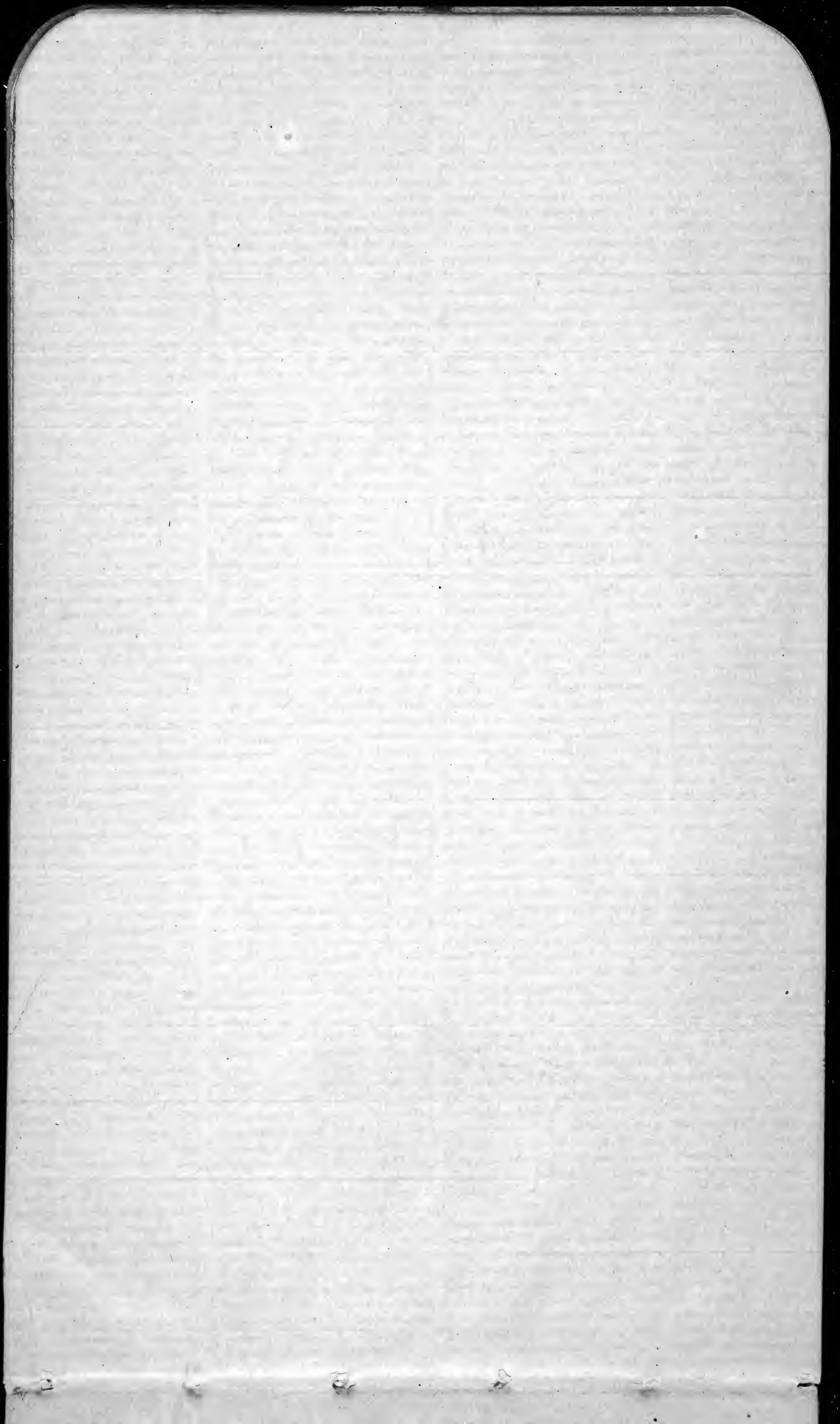
P = pollen mass, (white cap)

Pollen mass yellow, each
 2 lobes, reflexed on stalk
 cap 2-lobed, white.



Flower of Van Phai's
"Harrin" from Iragu
Corta Rica





XXXI

✓

Small, lance, entire
Polygodium, ^{repens} on tree
near Camp 7.

XXXII

Pittaria lineata on
tree in Egypt

Hymenophyllum

~~XXX~~

polyanthos

delicate

bushy

Hymenophyllum

on trees above

Menorca

not rare

1 1/2

1 1/2

1

Trichomanes crispum L.
~~XXVIII~~

~~Hymenophyllum~~ - with
larger than the delicate
ones - on tree (low) ^{in woods}
in woods above
Merrill
Ralph
Not rare.

~~XXIX~~ *Trichomanes*
brachypteris

~~Hymenophyllum~~
with slender black
rootstock + prostrate
spreading
climbing
Not rare

Acrostichum

tatei Baker

~~XXVII~~

entire

Fern like small climbing
Polypodium, but
with fruit scattered all
over upper fronds.
Climbs in trees.
In woods alone
Mentioned.
Not rare.

~~XXVII~~

Trichomanes pinnatum
to climbing acrostichum.
On tree in woods
above Memorial
Park.

XXV

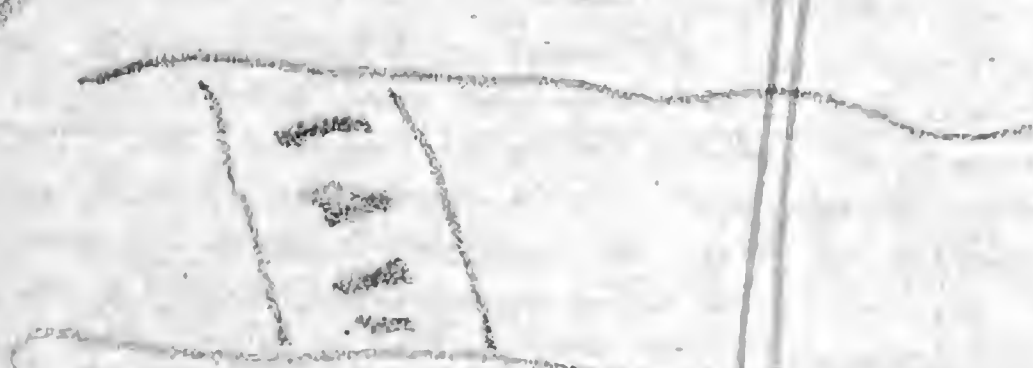


longifolium

Small Plechnum with
reddish, smooth stipe.
On rocks below the
Saltos Lanza in
the Desierto.

~~XXIV~~ ✓

Fern with 1 minute
fronds - 2°-3° long,



frond
cannish

Wanum

(Found also at Castille?)

along banks

at Newnan

Stipe dark green,

slightly curly.

~~XXII~~ ✓

1 Pinnate Asplenium ^{serrata} L. & F.

pinnae sharply serrate

On tree at camp

Manoal

~~XXIII~~

P. ~~rhodum~~ nerviifolium

On log at

camp Manoal

(Also from the following Castles numbers.

D = Senado,
G = Greyson.

3, 8.

43-D.

4, 8.

45-D

~~5, 8.~~

7(7) D.

20. D + G.

23 - Camp 7.

24 - D + G

25 - Senado

26. D.

27(3) G. One open.

30. D

31 D

34. D + G.

The small ones - 1 hour
Plain. All Council that
number 20 at Castles

2000

Hypolepis ~~sp.~~ *sp.* Presl.
~~XXXI~~

Large fern (almost like
tree fern) with shiny
stipe & rachis, fronds
broadly Δ , finely 3 or 4
pinnate!
leaves 8-9" long.
On bottom (Deserds)
at Camp Memorial.
Common

~~XXXX~~
~~XXXX~~
~~XXXX~~
~~XXXX~~
Oleandra nodosa ✓

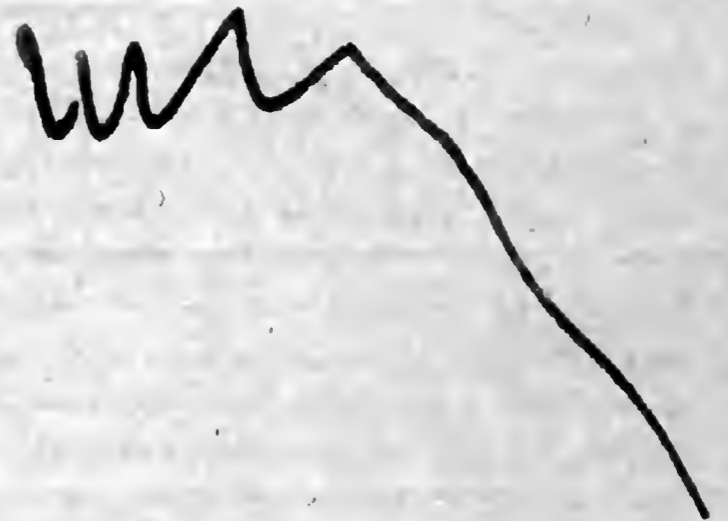
~~Aspidium~~ with entire

oblong-lance, acuminate
entire frond & short
black waxy stripe

On trees above
menorah

fruit scattered

Not common



Antrotylum subresile

~~XIX~~ ✓

Fern with oblong
fronds, with network
of veins.

Found on trees
above New York.
Not rare, though
few were found in fruit

entire

XVIII elata Agardh

Large pteris, fronds
broadly Δ , like P.

aquilina.

Stipe 2' long, green,
smooth.

Along Descado river at
Camp Mavoral.

2-pinnate,

Not common, nor
yet rare.

XVII

Aerostichum scolopendrifolium

Ralli

~~Fr. ...~~, but with entire, oblance fronds, growing on trees near camp Menoval.

XVI

Trichomanes
radicans

~~Hypnum phyllinum~~, general

appearance & habit
same as those of the
climbing Acrostichum.

In woods above Newcomb, etc.
Rather common ~~on~~
on trees of all kinds.

Dicranum adiantoides
HBK.

Frond 2-3' long, rather
broadly Δ , stem &
rachis brownish, with
rather minute scurfy
scales.

2 or 3-crested

See leaf of frond &
2 (lower) pinnae.

A wood above Newcomb,
Not common.

Acrostichum *canaliculatum*

XIV

Fern with fertile frond
(4-compound) narrower.

Both fronds rather
broadly Δ , lowest pinnae
longest, sterile fronds

3-compound

Stems green with
few scales.

Fronds 2^o - 4^o high.

In woods above

Menocal.

Only one patch found.

~~XIII~~

Davallia *inqualis* Kz.

~~Diakromia~~ (with general aspect of a large *Cyst. propolis*.)

Ferns sometimes grow 2 1/2' long.

Stipe brown, smooth, base 3 pinnate.

Note rare in woods above Newcal.

Hemitelia
grandifolia Gr.

XII

The great 2-pronged
ovate fern, with lowest
pinnae not much shorter
than those above.

Grows 8' high.

Stipe 3' or more long
green, (sometimes brownish)
with sparse short spines
(prickles) & fine ocreous
scales.

The pattern of pinnae is
beautiful.

In woods above Newcomb


Common along the Deser...

Phyopteria

decussatum

XI

♂

The delicate hairy
3 emp. fem. found
ovate (not boat) shape &
shading brown & white
hairs  found.
Found 3°-4° In
woods above Menoval.

Not very common.
The stripe is, 2°-3° long
& has 2 lines on opp. sides
which are scaly (openly)
brown.
Entire found 6-7

Polygodium aureum
var. acrolatum

IX ✓

The pale glaucous-blown

Polygodium found on

fallen tree at

Camp Douglas.

Rare

X acrophila
prespuria

The very scaly 2 comp

fern with fronds 2-4"

long, growing in tufts

in woods above

Memorial.

Rather frequent

Lindsaya trapeziformis

VII

Pteris-like (Adiantum-like)
the more delicate one
Found on tree above
Menoual.

Rare

VIII Lindsaya
stricta

Similar to VII but common.
On ground above Menoual.

Rare

V *prieurii* Kze.
Trichomanes ~~*viridum* S. J.~~

The Copper-green *Trichomanes*
found above Menocal.
Rather rare

VI
The long *Blechnum* ^{*volubile*} var.
(found also at Castillo)
in woods above Menocal.
Grows all of 25° high.

Not rare

Gleichenia ^{III} ~~pubescens~~, WPK.

Delicate fern on bank
in cut along RR.

Has the 3 branches of
fronds? on a sort of vine
10-20 high.

Not common

~~III~~ ✓

Acrostichum aureum

In swamp near Weytown.
Fronds 6' high, stipe thick,
smooth, green, long,
notched.

Common - 18-46

198 104

~~143 85~~

~~118 84~~

83-

79 - 18 - 11
81 - 11 - 11

II

Alsophila arinata Presl

Tree fern - trunk (see spec)

smooth, 10' high, fronds

10'-12' long - 3-pinnate

(see the 3 pinnate)

In woods above Memorial.

Not rare

Heinitzia

nigricans

Greytown, etc. Ferns.

~~Cyathea~~
arborescens

Tree fern - from 40-50 lbs,

trunk, ~~spring~~

3-4 high, 2-3' in dia

Stipe black-brown scaly.

Ferns 3-pinnate

(See pinnate)

~~Cyathea~~

See words above Manual.

Not rare.



INVITATION PASS BOOK

