

## Historic, archived document

Do not assume content reflects current scientific knowledge, policies, or practices.



*Miss Newman*

Plant Bountiful  
Ridge Trees  
They Bring Results

Sole Introducers  
**THE NEW HOPE PEACH**  
originating on Hope  
Farm, owned by H. W.  
Collingwood, Editor The  
Rural New Yorker.

# BOUNTIFUL RIDGE NURSERIES.



Plant Bountiful  
Ridge Trees  
They Bring Results

Also Introducers  
of the New Apple  
**MONMOUTH BEAUTY**  
America's Most  
Beautiful Apple

Growers and Distributors of the New **RICHARD** Apple—the all Red **DELICIOUS** Supreme  
The **BLAXTAYMAN**—a new **ALL RED** Staymans Winesap

Also Apple, Peach, Pear, Cherry and Plum Trees, Evergreens, Roses and  
Shrubbery and Other Small Vines

PRINCESS ANNE, MD.

Dear Friends:

Most anyone receiving our price list or general catalogue soon realizes that we specialize in growing **FRUIT TREES**. Closely allied to our production of fruit trees is the complete line of **SMALL FRUITS** such as Strawberries, Raspberries, Blackberries, Grapes, Gooseberries, Currants, Blueberries and Rhubarb and Asparagus plants which we produce and sell. We believe where due consideration is given to the selection of varieties and location of planting and market those who consistently grow these items will be able to talk to you with a smile even in these trying times and say they are doing well in comparison with those who are following other lines of agricultural production. There is no reason why the production of these items should not prove consistently profitable in the future for they have a place on the menu, during their season, in every home or wherever an appetizing meal is being prepared.

In reviewing the sales of the various items we list we find that our sales are increasing each year on the above items and we sold more of them during the shipping season of 1934 and 1935 than any one shipping season in the past ten years. This is indeed gratifying and we contribute it to the following reasons. First, there are but few Nurseries today specializing in this type of stock and growing and delivering good trees and plants. Second, the production of these products are proving consistently profitable. Third, the Bountiful Ridge Nurseries is proving a dependable place to buy this type of stock. Even with the acute shortage which existed in fruit trees last spring we went through the season with a minimum of shortages on orders which we had acknowledged. We received hundreds of orders late in the season which we could not fill because we were sold out of the items wanted and we hope these folks will come to us a little earlier this year so they may be able to secure what they want to plant. We have always felt it best to turn down an order rather than substitute another variety without the permission of the purchaser and we shall continue this policy.

We constructed a large, modern storage last Winter which almost doubled our storage capacity and we were able to hold our stock in excellent condition during the past Spring's shipping season. This building is insulated with cork and is modern in every department. We do not believe in all-Winter storage but we must have adequate room to assemble, grade, and prepare for shipment the hundreds of thousands of trees and plants we ship during the Spring months into all sections of the United States and Canada and you will find the Bountiful Ridge Nurseries always ready to modernize their Nurseries and storages if they feel it necessary in order to deliver better stock to their patrons.

The general supply of fruit trees is such this year that we must confine our offering to one year stock in many cases. In addition to our yearling Peach this year we are offering June Budded Peach. These are being grown far from the infested area of the phoney peach and the peach nematode which are two of the peach industry's most feared enemies in the Southern Districts, and the orchardist can buy either our yearling peach or June Budded peach with the assurance that he will have the best to plant for his future orchards. They are grown as carefully as it is humanly possible to grow them. Peaches have generally sold well this year and there will be a good demand for trees which means a shortage on some varieties and you should try and anticipate your needs and place your order as a reservation as early in the season as possible.

You will find our prices to be consistent with the quality of tree we are offering. They may be a little higher in some cases than you can buy trees for from some other source but we are sure that you have found out long ago that it does not always pay to buy the cheapest tree you can buy. We do not mean that you should always buy the highest priced stock either. We do feel that it is good business to always try and buy a good article at a fair price and that is what we are trying to produce and sell to you.

We shall always do our best to give service and satisfaction to our customers. We have appreciated all of the orders that have come to us and the yearly increase in these orders indicates we are giving satisfaction and we hope for the continued patronage of our friends. We wish to sell you good nursery stock and **GIVE YOU SERVICE**. Read this price list over carefully - note our listings and prices - let us hear from you.

Very truly yours,  
BOUNTIFUL RIDGE NURSERIES

*Homer Kemp*

# A McIntosh Type Apple for The Entire Year

Can be had by selecting from these varieties

AN EXAMPLE OF HOW UP-TO-DATE OUR VARIETY LISTS ARE. WE STRIVE TO PROPAGATE THE BEST FOR OUR PATRONS AND WE DO NOT HESITATE TO SECURE NEW VARIETIES OF MERIT WHEN THEY ARE OBTAINABLE. FOLLOW OUR NEW LISTINGS CLOSELY. THEY TYPIFY PROGRESS IN THE HORTICULTURAL WORLD.

**EARLY MCINTOSH:** Typical McIntosh in appearance; not quite so good quality, ripening about DUCHESS season or six to eight weeks before regular McIntosh. Extremely thrifty and good cropper.

**MILTON:** Typical McIntosh, coloring full red; very good quality, about equal to McIntosh, being same textured apple. Tree not as vigorous as Early McIntosh. Ripens three to four weeks before McIntosh or just before Wealthy.

**KENDALL:** A McIntosh seedling and a product of the Geneva, N. Y. Experimental station. Very attractive, being handsomely colored over the entire surface with dark red covered with a rich bloom. Season about same as McIntosh but seems to keep longer. The apples are large, trim in outline, and possess the whitish, fine grained flesh of McIntosh. Flavor slightly more sprightly than McIntosh and the fruit hangs better to the tree than McIntosh but not as well as Cortland. Our stock is limited of this splendid variety and we only have one year stock. **10c extra per tree on all grades.**

**LOBO:** Same season as the McIntosh, larger apple, and colors a more full red than the regular McIntosh before dropping. Extra good quality. Tree equal to McIntosh. Comes recommended highly to replace the regular McIntosh for the Middle Atlantic and Southern growers.

**MCINTOSH RED.** We have improved our strain of McIntosh through bud selection and are able to offer our patrons trees which have reproduced a solid red McIntosh type of fruit. Other Nurseries are offering these at advanced prices. We made our bud selections more than six years ago and are pleased to give our patrons the advantage of this improved McIntosh without additional cost.

**CORTLAND:** A cross between Ben Davis and McIntosh, ripening two to four weeks later than McIntosh. About equal in size, colors well, same textured fruit, but not quite as good quality. **IT'S MAIN QUALITY IS THAT IT HANGS TO THE TREE TILL IT IS WELL COLOR-ED AND WILL SELL AS MCINTOSH ON THE MARKETS.**

**MACOUN:** Very highly colored, having no stripe. Same quality as McIntosh, same textured fruit, hangs to the tree better than McIntosh, and ripens two to three weeks after Cortland. Tree about equal to McIntosh, a regular bearer, and strongly recommended to lengthen the McIntosh season and give the Middle Atlantic and Southern growers a McIntosh type fruit they can grow successfully. **FOR THE FIRST TIME SINCE LISTING THE MACOUN VARIETY WE BELIEVE WE HAVE AN AMPLE SUPPLY OF EXCEPTIONALLY FINE ONE YEAR OLD TREES OF THIS VARIETY. NO GROWER OF THE MCINTOSH TYPE OF FRUIT CAN IGNORE THE MERITS OF THIS MOST EXCELLENT VARIETY.**

## Golden Jubilee Peach

A Development of the New Jersey  
Experimental Station

The Outstanding Peach of All Recent  
Introductions

A HIGH QUALITY, EARLY, YELLOW, FREESTONE PEACH. THE VALUE OF THIS PEACH TO EASTERN AND SOUTHERN GROWERS CANNOT BE ESTIMATED. A TYPICAL ELBERTA TYPE FRUIT, HIGHLY COLORED, RIPENING BEFORE CARMAN OR ABOUT FOUR WEEKS BEFORE THE REGULAR ELBERTA.

The GOLDEN JUBILEE reaches its highest state of perfection on light sandy soil, where the elevation is not too great.

THE SOUTHERN GROWERS CANNOT HELP BUT RECOGNIZE ITS VALUE. A YELLOW FREESTONE PEACH OF ELBERTA TYPE RIPENING 4 WEEKS EARLIER THAN ELBERTA. IT GIVES THE NORTHERN GROWER AN IDEAL PEACH TO COMPETE WITH SOUTHERN ELBERTAS ON THE MARKETS AND IT CANNOT BE EQUALLED AS AN EARLY PEACH FOR ROAD- STAND MARKETS. It has proven during the past two Winters to be among the hardiest of our present day varieties.

The Golden Jubilee is a second generation seedling of the Elberta crossed with the Greensboro. The tree is unusually hardy. The buds resist winter freezes well and open after Elberta, which insures a regular crop. The blossoms are self-fertile. The peach is medium to large size and firm. It has proven a good shipper. **WE RECOMMEND IT TO BE PLANTED ANY PLACE WHERE OTHER PEACHES CAN BE GROWN SUCCESSFULLY.**

We offer this splendid variety at no advanced price. We were the first Nursery to offer it to the planting public generally. We have distributed more trees of it than all other Nurseries combined. We are growing more today than any other Nursery in the U. S. If you are wanting genuine Golden Jubilee Peach Trees come to the BOUNTIFUL RIDGE NURSERIES for them. This splendid variety will be reproduced in actual color in our 1936 catalogue.

FIRST OFFERED BY US FALL SHIPPING SEASON 1928  
PLANTED AND PRODUCING IN EVERY PEACH GROWING  
SECTION OF THE U. S.

It could be justly called the most popular peach of recent introduction for wherever it has fruited it is the pride of that grower. We have never known a new variety to prove so universally satisfactory.



## THE RED ROME BEAUTY SPORTS GALLIA BEAUTY - OHIO RED ROME - DARK RED ROME

WE FIRST OFFERED THESE IMPROVED ROME BEAUTY TYPES TO THE PLANTERS SPRING SEASON OF 1929. THEY HAVE NOW BEEN TRIED AND THEIR SUPERIORITY PROVEN IN PRACTICALLY EVERY SECTION OF THE U. S. WHERE THE ROME BEAUTY TYPE OF FRUIT WILL THRIVE. AGAIN OUR CONFIDENCE IN NEW VARIETIES HAS BEEN JUSTIFIED AND WE BELIEVE OUR DISTRIBUTION OF THESE VARIETIES WILL MEAN THOUSANDS AND THOUSANDS OF DOLLARS IN ADDED PROFITS TO THE FRUIT GROWERS. As they come into production in various sections their real value becomes more and more pronounced and no grower of the Rome Beauty type of apple can afford to be without these improved varieties. The Gallia Beauty and Ohio Red Rome are proving to be superior to other Red Rome types in the East. The Dark Red Rome comes to its highest state of perfection on light sandy soils and when planted at a high elevation. We are constantly on the alert for new and improved varieties and we hope in this way to improve the standard of the fruit growing industry. **WE REGRET THAT BECAUSE OF SHORTAGE OF PROPAGATING STOCKS WE DO NOT HAVE ANYTHING TO OFFER THIS YEAR EXCEPT GALLIA BEAUTY. THESE ARE ALL FINE ONE YEAR TREES AND SHOULD PLEASE THE MOST EXACTING PLANTER.**

THESE NEW VARIETIES ARE NOW FRUITING GENERALLY THROUGHOUT THE COUNTRY AND ARE THEY GIVING SATISFACTION—YOU BET THEY ARE.—WHAT MORE CAN WE SAY—WHY, IF YOU WANT THE STAYMANS AND DELICIOUS TYPE OF FRUIT PLANT THE BLAXTAYMAN AND RICHARED DELICIOUS.

# BLAXTAYMAN

(Trade-Mark)

JUST THE APPLE THE FRUIT GROWERS HAVE BEEN WANTING FOR YEARS. A FULL BRIGHT RED APPLE WITH THE SAME QUALITY AS THE FAMOUS STAYMANS WINE-SAP.

NO ONE CAN QUESTION THE POPULARITY OF THE STAYMANS WINESAP ON THE MARKETS AND LACK OF COLOR WAS IT'S CHIEF FAULT. NOW THIS HAS BEEN OVERCOME WITH THE INTRODUCTION OF THE BLAXTAYMAN. THE COLOR IS EQUAL TO THE SOLID RED OF THE JONATHAN AND THE TREES AND BUDS HAVE THE SAME HARDY CHARACTERISTICS AS THE OLD STAYMANS.

No grower can afford to pass up these tried and proven new sports we are offering. They will mean added profits to them in the future. They can be compared to a new model automobile, the same dependable tree with an improved finished product. The fruit of these new varieties with its increased color will sell for more money and you will be able to sell it when the older, poorer colored type of the same varieties will be a drag on the markets. PREPARE TO GIVE THE CONSUMING PUBLIC THE BEST WITHOUT ANY ADDED EXPENSE TO YOU. The difference in price of the tree will be realized from the sale of the first bushel of fruit harvested. Every alert grower should readily see the many advantages of these improved fruits and plant this year for the future markets and bring his orchard up to date. Because of the extremely heavy sale on Blaxtayman last spring our supply is very limited this year.

## Prices: RICHARED DELICIOUS BLAXTAYMAN

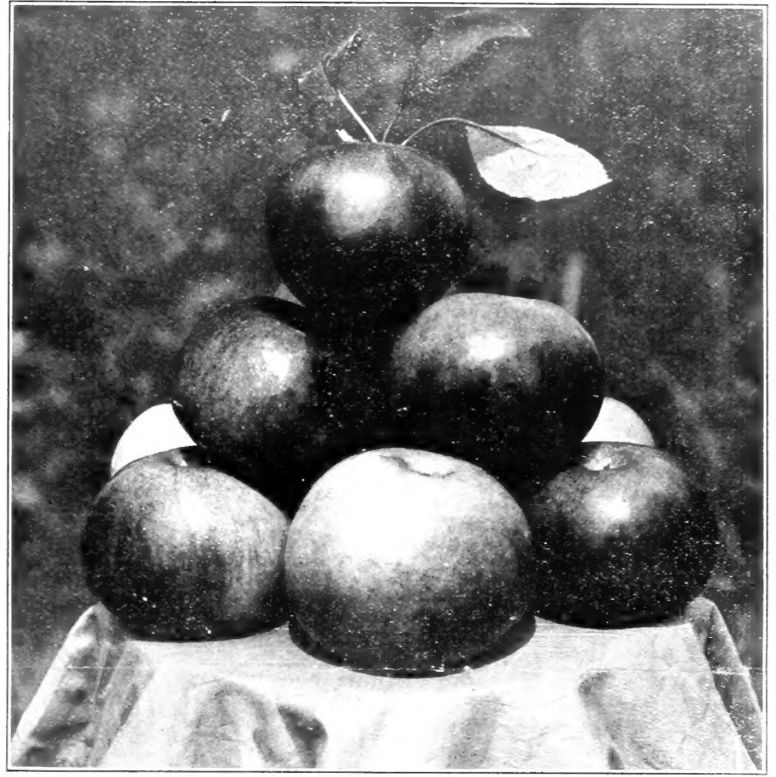
These Prices are for Fall of 1935.

WE ARE MAINTAINING THE SAME PRICE LEVEL ON OUR LEADING FRUITS

	ONE YEAR				
	1-11	12-24	25-49	50-99	100-499
4-6 ft., 1 yr.....	\$.80	\$.70	\$.60	\$.50	\$.45
3-4 ft., 1 yr.....	.75	.65	.55	.45	.40
2-3 ft., 1 yr.....			.40	.30	.25
	TWO YEAR				
	1-11	12-24	25-49	50-99	100-499
5-7 ft., 2 yr., 11/16 in. up.....	\$1.00	\$.80	\$.65	\$.55	\$.50
4-5 ft., 2 yr., 9/16-11/16 in.....	.90	.70	.55	.45	.40
3-4½ ft., 2 yr., 8-9/16 in.....	.60	.50	.40	.30	.20

## NOTICE

The universal demand for these phenomenal sports of two of the most popular apples in production today has absorbed our supply of trees each year to such an extent that we have very few two year old trees to offer this year. We have, however, many thousands of excellent one year old trees which we feel will fill every planter's expectation. Please do not order large quantities of two year old trees of either variety.



## FALL PLANTING

Our years of experience in the Nursery and orchard business has taught us that every one should do their planting in the FALL, whenever it is possible for them to do so and their climatic conditions are not too severe and where they can secure well matured stock to plant. We do not recommend that plantings be made on land which is inclined to heave from the effects of frost unless the plants can be heavily mulched or are protected by drawing a mound of earth about them to help hold them. We do especially recommend the planting of fruit and shade trees and small berry plants except Strawberry plants. The roots will heal where cut when dug, the winter rains will settle the dirt well about the roots, the tree will be ready to start with the first movement of sap in the Spring and you will have 25% more growth and almost a perfect stand on the planting. Then too you will have more time to make the planting in the Fall after you have harvested your fruit and are awaiting pruning time. By Fall planting time we mean any time that the ground is not frozen during Fall and Winter months. If you get a cold snap and then it warms up go ahead and do your planting but in late planting be sure and finish each tree as it is planted and draw a mound of earth about 12 inches high to protect it against swaying by Winter winds. In all cases where Fall planting is done do not trim your trees 'till Spring. Remember it is essential that the stock be well matured and if you are dealing with the right kind of a nursery they won't ship 'till the stock is right.

OUR STOCK SOLD TO ORCHARDISTS LAST FALL PROVED ITS HARDINESS IN NEARLY ALL SECTIONS OF THE COUNTRY WHERE IT WAS GIVEN PROPER CARE BY COMING THROUGH THE LOW TEMPERATURES OF LAST WINTER WITH NO MATERIAL DAMAGE. THIS PROVES THE VALUE OF RECEIVING WELL GROWN, AND WELL MATURED TREES SUCH AS WE GROW AND DELIVER.

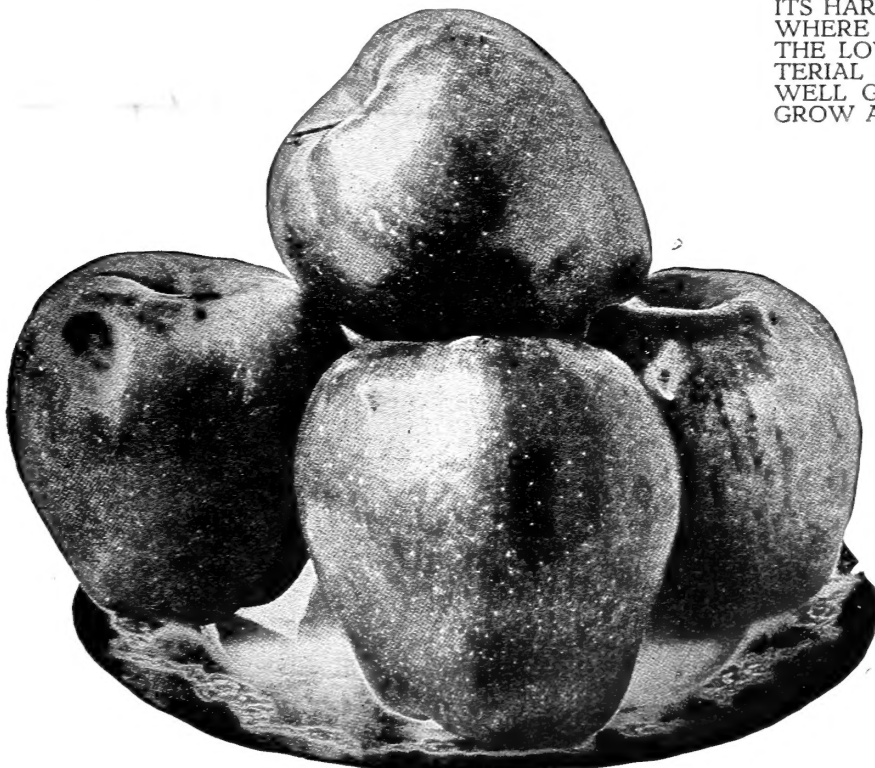
# RICHARED

TRADE-MARK REG. U. S. PAT. OFF.

## The DELICIOUS Supreme

The DELICIOUS APPLE is conceded to be the most popular variety in cultivation today and it leads in giving to the apple industry new and improved bud variations.. The RICHARED, in our estimation, is one of the best now being offered by the various nurseries in the U. S. The color may not be as dark as some others but the clear bright red completely covering the fruit before it actually matures should make it the favorite. It is past the experimental stage now and is fruiting generally in the U. S. and has proven itself to be just what we claim.

Think of the increased profits such an apple would give to you for you can grade out practically 100% extra fancy fruit with the RICHARED DELICIOUS. The tree characteristics are the same as the old Delicious but the apple is a clear bright red. You can pick it earlier; you can keep it longer; you can ship it to distant markets more successfully; you have no loss from drop apples and you have an apple that will sell more readily on any market. YOU HAVE AN APPLE THAT WILL SELL AT AN ADVANCED PRICE AT ALL TIMES OVER THE OLD DELICIOUS. Considering these points of merit we say without hesitation that anyone desiring the Delicious type of fruit should plant the RICHARED DELICIOUS.







# PEACH TREES

ONE YEAR OLD and JUNE BUDDED

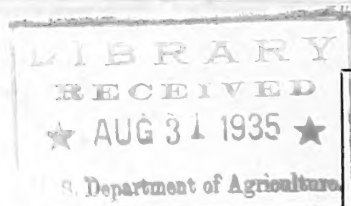
Few people are aware of the general shortage which exists on yearling peach trees this year. The supply was generally short enough last year but a poor break of seed planted during the Fall of 1934 has now resulted in the greatest shortage of one year peach known in many years. We did not have enough for normal trade so we JUNE BUDDED 150,000 trees to the leading varieties which brings us to the Fall planting season with a little over 250,000 peach trees to offer the planters. Knowing the situation as we do it is our advice that if you are going to plant this year buy the trees as early as possible for most every planter knows the shortage which existed last year and what a time many planters had in trying to locate the trees they wanted to plant and many of them never secured the trees at all for their planting. This has been one of the pet stories of the agents to get you to buy early but the story proved true last year and is going to again prove true this year so don't ignore the FACTS. These are not just peach trees. They are superior stock grown the BOUNTIFUL RIDGE NURSERY WAY. We should be able to take care of your needs if you get in touch with us early. However with prices for Peaches generally good throughout the season and a general replacement of the damaged orchards of Northern districts being planned for this year combined with a general shortage of trees can only mean that there will be a sell out on many varieties early in the season. MANY ARE GOING TO BE DISAPPOINTED BY NOT BEING ABLE TO SECURE THE TREES. WILL YOU BE ONE OF THEM? PLAN YOUR PLANTING EARLY, BUY YOUR TREES EARLY, and BUY THEM FROM THE BOUNTIFUL RIDGE NURSERIES.



Growers of the World's Finest Fruit and Ornamental Trees  
PRINCESS ANNE, MARYLAND

POSTMASTER:—Postage for return and forwarding guaranteed. This package may be opened for postal inspection if necessary. If forwarded to new address notify sender on Form 3547. Postage for notice guaranteed.

OUR COMPLETE PRICE LIST FOR FALL 1935  
CONSTRUCTED TO MEET THE DEMANDS OF OUR PRESENT TIME



Sec. 435½, P. L. & R.  
U. S. POSTAGE

**Paid**

Princess Anne, Md.  
Permit No. 4

Mr. E. C. Auchter

Bureau of Plant Industry

Washington, D. C.

## PERSONAL SERVICE - DEPENDABILITY

### 5% DISCOUNT FOR CASH

With Order on All Orders Received Before January 1st, 1936

All Orders of \$50.00 or more Shipped Prepaid if Within 500 Miles of Nursery

We are giving our Nursery personal supervision which is so very essential in order to deliver you good stock. We are GIVING PROMPT TRUCK DELIVERY TO IMPROVE OUR SERVICE WHERE POSSIBLE AND PRACTICAL TO DO SO. This means delivery of the trees to your farm in less than 48 hours after they are dug from the ground. We are constantly trying to strengthen the weak links in our chain of SERVICE and you will find the Kemp boys have a deep personal interest in every patron of theirs and want to and will cooperate with you in every way possible to make your purchasing our stock a pleasant task and your plantings a success. Each of us are a tiny cog in Life's great plan; one is essential to the other. We need your patronage for our future success. You should have our products to make your home a place of beauty and profit.

**Announcing...**

## A RED YORK IMPERIAL APPLE

NATURE AGAIN CONTRIBUTES TO THE FRUIT GROWING INDUSTRY by giving us an ALL RED YORK. Think of harvesting York apples that are colored A FULL, BRIGHT, CHERRY RED. It is almost too good to be true. We want you to see it. We are planning a tour to the original tree in late September. Write to us if you want to be there and receive full particulars of the tour. REMEMBER FOLKS, THIS IS A REAL APPLE. Not a dull dark red but A FULL BRIGHT RED WITHOUT A TRACE OF STRIPE. It will be illustrated in actual colors with full description in our annual Catalogue for 1936. We will have a few thousand one year trees to offer for spring delivery only. It will be a patented variety for sale only by the Bountiful Ridge Nurseries.