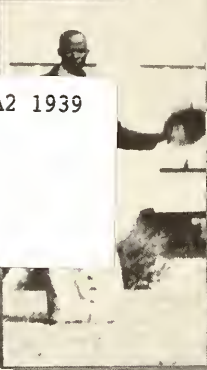
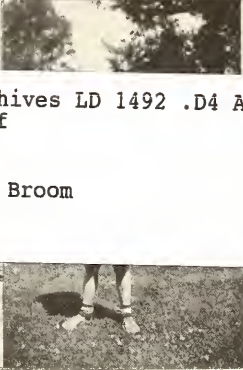




THE BROOM 1939



Archives LD 1492 .D4 A2 1939  
Ref  
The Broom

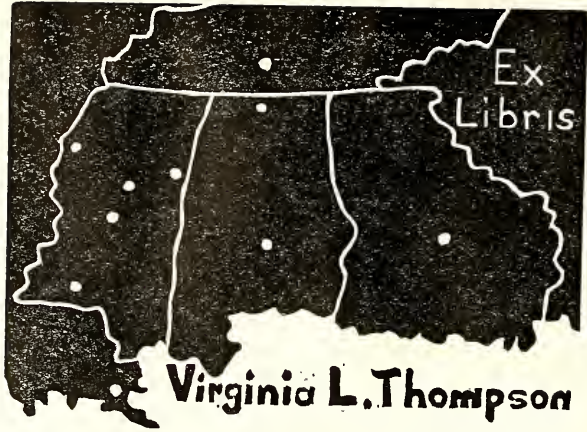






DELTA STATE	MINUTES TO PLAY	VISITORS
SCORE		SCORE
66	DOWNS	10
PENALTY	YDS TO GO	PENALTY
III	QUARTER 4	





Ex  
Libris

Virginia L. Thompson



E X - L I B R I S



*The*

**B R O O M**

*Published by the Students of*  
DELTA STATE TEACHERS COLLEGE  
*at Cleveland Mississippi*

RUTH AGNER . . . . . *Editor*  
B. F. SMITH . . . . . *Business Manager*



*for* 1939



# F O R E W O R D

We offer the 1939  
*Broom*, with the  
hope that it will  
serve as a reminder  
of one year of your  
college life.

The *Broom* is named for Mr. Jim  
Broom, the first president of Delta  
State Teachers College.



# C O N T E N T S

College

Faculty

Classes

Features

Organizations

Athletics

Student Life

Our Backers

*We* dedicate the 1939 issue of the Broom to Mrs. W. A. Carpenter, because, as matron of Hardee Hall, she has won the admiration and affection of the student body, and has helped to make Delta State Teachers College a more pleasant place for everyone.

D E D I C





M R S . W . A . C A R P E N T E R

A T I O N

*In*  
M E M O R I A M

MISS ABBIE JANE LITTLE

Lambert, Mississippi

*Student in Summer Sessions*

ABRAHAM McCALEB

Cleveland, Mississippi

*Class of 1940*

MRS. ESTUS JAMES GRAY

Doddsville, Mississippi

*Student in Summer Sessions*

JAMES HERBERT WALKER

Sumner, Mississippi

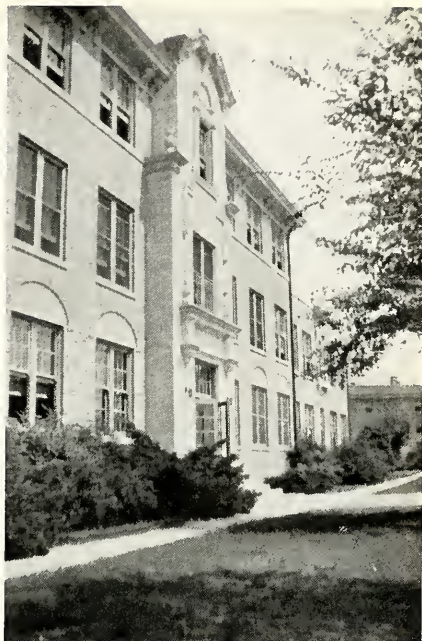
*Class of 1934*



*College*



*Entrance--Ward Hall*



*Broom Administration Building*

*Entrance--  
Hardee Hall*







*Cleveland Hall  
Night*



*Cleveland Hall  
Spring*



*Cleveland Hall  
Summer*

*Dining Hall  
Spring*



*Dining Hall  
Summer*

*Ward Hall  
Day*







*Ward Hall*

*Scott Dining Hall*



*Hardee Hall*





*Broom Administration Building*

*Scott Dining Hall*



*Taylor Hall*





*Hardee Hall*

*Entrance--Administration Building*



*Hill Demonstration School*







*Broom Administration Building*



# Delta State *Grows*

An extensive building program has been carried out at Delta State Teachers College during the 1938-39 session.

The Doolittle Annex to the Hill Demonstration School was completed. This building houses the Music Department. A new Gymnasium, located on the site of the old one, has been erected. It is one of the finest plants in the state, containing a basketball court, locker and shower rooms, offices and class rooms for the Physical Education Department, and rooms for various sports such as badminton and ping-pong. An Athletic Field House, which is used by the football team and golf club, was added. A Library was constructed just north of the Administration Building. Built of buff colored brick, it follows the same Renaissance style of architecture as most of the other buildings on the campus.

Thus the Delta State Teachers College campus presents quite a different aspect from that of a year ago. The BROOM hopes to show all of these beautiful new buildings in its next issue.



*Faculty*











# *The* F A

WILLIAM MARION KETHLEY, A.M.  
*President*

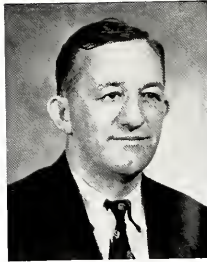
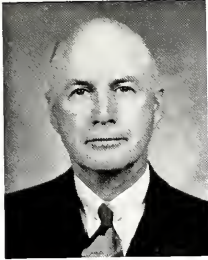
By his ceaseless efforts, boundless enthusiasm, and genuine interest in Delta State, Mr. Kethley has guided Mississippi's youngest college to national prominence as a teacher training institution. Moreover, he has found time to make personal contacts with the student body which will be an inspiration and help to them in their future lives.

# CULTY

WILLIAM H. ZEIGEL, Ph.D.  
*Dean of Faculty*



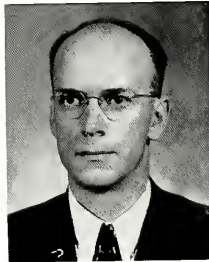
By his sincere conviction of the important service the teaching profession has to render, Dr. Zeigel has led every student to appreciate and realize more fully the opportunity and responsibility of the future teacher. Having won for himself a national reputation as an educator, he has helped to maintain a high scholastic standard at Delta State Teachers College.



# The F A C

WIRT ALFRED WILLIAMS, A. M.  
*Head of Department of Social  
Science.*

RICHARD LEE CAYLOR, M. A.  
*Head of Department of Science.*



KENNETH L. DAUGHRITY, PH. D.  
*Head of Department of English.*

S. T. SANDERS, JR., PH. D.  
*Head of Department of Mathematics*



GRACE GAW, M. A.  
*Head of Department of Fine Arts.*

CHAUNCEY B. KING, B. MUS., M. S.  
*Head of Department of Music.*



ETHEL CAIN, ED. M.  
*Head of Department of Physical  
Education.*

JANE OLIVER, M. A.  
*Directory of Elementary School.*

# ULTY..

KATE DURELLE MAULDIN, A. M.  
*Register.*



MARIETTA DOWNS, B. S.  
*Business Manager.*

ALBERT LEON YOUNG, PH. D.  
*Education.*



GEORGIA LEE TATUM, PH. D.  
*Social Science.*

EVELYN ALLEN HAMMETT, A. M.  
*Languages and Literature.*



MYRA O'BRIEN, A. B., B. L. S.  
*Librarian.*

ELIZABETH C. STAMPS, A. M.  
*Home Economics.*



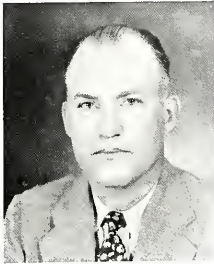
ELIZABETH ZEIGEL, M. A.  
*Education.*

# The F A C



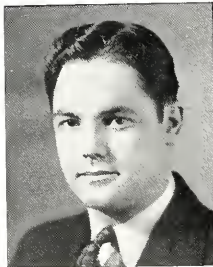
MARY MARGARET FUGLER, A. M.  
*Language and Literature.*

TOM S. PERRIN, PH. D.  
*Science*



ALEX DOCKERY DICKSON, B. S.  
*Health and Physical Education.*

MAUD CAIN, M. A.  
*Demonstration School.*



SARA E. HUNT, B. S.  
*Health and Physical Education.*

C. V. CASADY, M. A.  
*Commerce.*



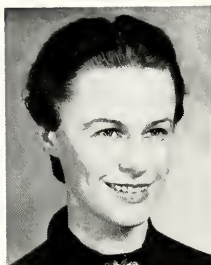
EDWARD L. SANDERSON, M. S.  
*Science.*

CAROL BRUMBY, M. A.  
*Social Science.*



# ULTY..

LILYAN COLSON, M. A.  
*Education.*



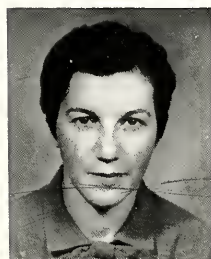
THELMA MAFFETT, B. S.  
*Commerce.*

NELL WYNN, M. M.  
*Music.*



EDNA NUNNERY, B. MUS.  
*Music.*

MRS. MARK HARRIS, M. A.  
*Demonstration School.*



MARY ROYCE ECKLES, B. S.  
*Demonstration School.*

DOUGLAS ALLEN, M. A.  
*Languages and Literature.*



LANIER PRATT, M. A.  
*Languages and Literature.*



# FACULTY

ELIZABETH COATS, B. S.  
*Dietitian.*

MRS. W. A. CARPENTER  
*Matron Hardee Hall.*



RUTH STEEN, R. N.  
*Supervisor of Infirmary.*

VIRGINIA THOMPSON, A. B.  
*Secretary to President.*

GLADYS CASTLE, B. S.  
*Secretary to Dean.*

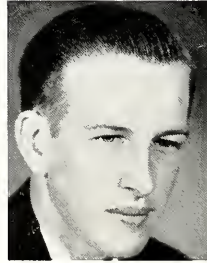
JAMES SIGLER  
*Engineer.*



ETHEL GILLESPIE  
*Matron Ward Hall.*

William Tarver, B. S.  
*Assistant Business Manager.*

ETHEL CRAWLEY  
*Matron Cleveland Hall.*





*Classes*



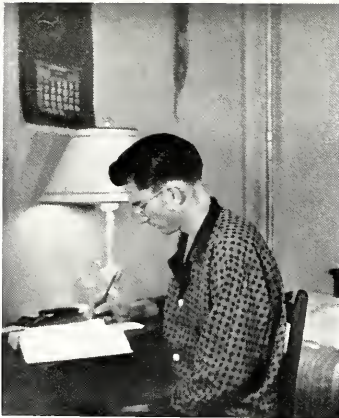




# SENIOR CLASS

## OFFICERS

L. N. VARNADO	<i>President</i>
JAMIE LAURA BARHAM	<i>Vice President</i>
MARY ELLEN ARNOLD	<i>Secretary-Treasurer</i>
DR. KENNETH L. DAUGHRITY	<i>Sponsor</i>



Believe it or not—a Senior has a serious moment.

The

... S E N I O

**VIRGINIA A. ADKISSON** Jackson, Mississippi  
*Elementary Education*  
 Vice President Girls Honor Council '37, '39, President '38; Nature Club; W. A. A.; Junior Athletic Captain; All-Star Soccer; All-Star Basketball; All-Star Badminton; Pep Squad; All-Star Soft-Ball; Intra-Mural Basketball Official '37; Who's Who Among Students in American Universities and Colleges, '39; Pirouette Club; M. S. U. Cabinet '36; Y. W. C. A. Cabinet '37, '38; Broom Staff '37, '38, '39; Elementary Council '36, '37; Pageant; Chaperone.

**RUTH E. AGNER** Cleveland, Mississippi  
*English, French, Art*  
 Delta Singers; President Girls' Glee Club '36; Delta Playhouse; Pirouette Club; Orchestra; Y. W. C. A. Cabinet '37; M. S. U. Cabinet '37; Girls Honor Council; Vice President Student Cabinet '38, '39; Vice President Class '37; Pageant; Most Talented Girl '39; Miss Delta Staff; Broom Staff '37, '38; Who's Who Among Students in American Colleges and Universities '39; Editor-in-Chief "The Broom" '39.

**MARY ELLEN ARNOLD** Gunnison, Mississippi  
*Elementary Education*  
 Girls' Honor Council; Elementary Club; Secretary-treasurer of Class '37, '38, '39; Vice-President W. A. A. '38; Pirouette Club; Tumbling Team; Pageant; Most Popular Girl '37; All-Star Badminton; All-Star Tennis; Chaperone.

**BEN TOWNES BAILEY** Oakland, Mississippi  
*Social Science*  
 Delta Playhouse; Alpha Psi Omega; Delta Singers.

**WARNER BALLARD** Cleveland, Mississippi  
*Mathematics, Science*

**JAMIE LAURA BARHAM** Crenshaw, Mississippi  
*English, Social Science*  
 All-Star Basketball; All-Star Softball; All-Star Badminton; President W. A. A. '39; Chaperone; Annual Staff; Miss Delta Staff; Vice President Class '39

\*Error—Class of 1940.

**LOIS MURIEL BILES** Boyle, Mississippi  
*Elementary Education*  
 Home Economics Club; Orchestra; Pageant; All-Star Soccer; Pirouette Club

**CLIFTON F. BISHOP** Drew, Mississippi  
*Mathematics, Science*  
 Transfer Sunflower Junior College; Football; Vice President M. Club '39; Vice President Mens' Council '39; Student Cabinet; Broom Staff '39; Shands Scholarship Winner '38.

**JEFFERSON BOGUE, JR.** Tchula, Mississippi  
*English, Social Science*  
 Transfer Alabama Polytechnic Institute; Football; M. Club; Wittiest Boy '37.

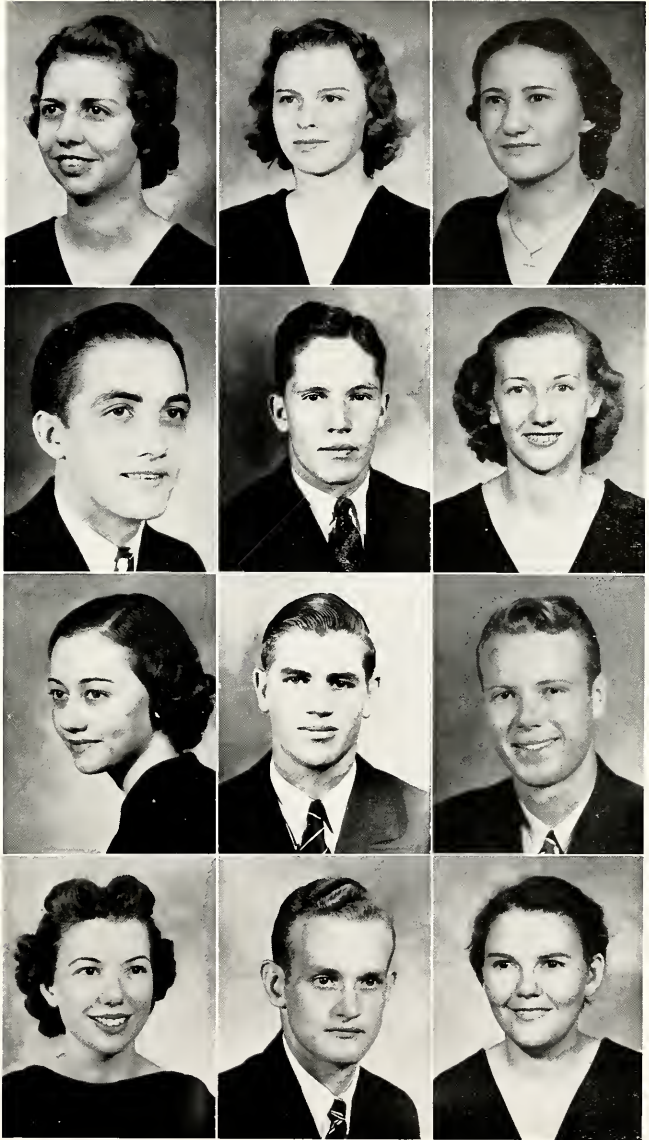
**MARTHA ANN BOGUE** Tchula, Mississippi  
*Elementary Education*  
 Cheerleader '38, '39; Queen of Carnival Ball '39; Most Popular Girl '38; Best Girl Dancer '39; Best Girl Athlete '37; Pageant; Broom Staff; Senior Athletic Captain '39; Pep Squad; Shield Winner; All-Star Basketball; All-Star Soccer; All-Star Softball; President Pirouette Club '37, '38; Secretary-Treasurer W. A. A. '37.

**WILLIAM F. BOTKIN** Greenwood, Mississippi  
*Mathematics, Social Science*  
 Transfer Millsaps College; Delta Playhouse; Alpha Psi Omega; Vice President Class '38; Broom Staff '39; Wittiest Boy '38; Baseball; Football; Interclass Play Tournament; Track.

**BARBARA BUSH** Cleveland, Mississippi  
*Elementary Education*  
 Vice President Elementary Club '38; President '39; Pageant; All-Star Soccer; All-Star Softball; All Star Tumbling; Girl's Honor Council; W. A. A.; Broom Staff '37, '38 '39.

T H E B R O O M

R S



1 9 3 9



*The Tri-C's*

VIRGINIA BUTLER . . . Duncan, Mississippi  
*English, French, Social Science*

All-Star Soccer; All-Star Basketball; All-Star Softball; W. A. A.: Secretary of Girls' Honor Council '37; Vice-President '38; President '39; Senior Editor Miss Delta '39; Nature Club; Photography Club; Miss D. S. T. C.; Shield Winner; Who's Who Among Students in American Colleges and Universities '39.

MABEL CAMERON . . . Maud, Mississippi  
*Elementary Education*

Delta Playhouse; Alpha Psi Omega; Elementary Council; Pageant.

ANNIE LAURIE CHAPMAN . . . Pochontas, Mississippi  
*Elementary Education*

Transfer Hinds Junior College; Elementary Club; Y. W. C. A.; Pageant.

MARTHA F. CONLEY . . . Jonestown, Mississippi  
*English, Social Science*

Girl's Honor Council; W. A. A.; All-Star Soccer; All-Star Badminton; All-Star Softball; All-Star Basketball; Pageant; Pep Squad.

DOROTHY MAY CURRIE . . . Utica, Mississippi  
*Public School Music, Piano*

Transfer Hinds Junior College; Delta Singers; Girls' Glee Club.

PATYE CURRY . . . Drew, Mississippi  
*Elementary Education*

Transfer Sunflower Junior College; Business Manager Delta Playhouse '39; B. S. U.; Elementary Council; Y. W. C. A.

ROBERT MAXWELL DAY . . . Crosby, Mississippi  
*Science, Social Science*

Transfer Holmes Junior College; Football; Basketball; Baseball; M Club

JACK G. DUNN . . . Cleveland, Mississippi  
*English, Social Science*

Transfer Freed-Hardeman College; Debate Team '38; Delta Singers; Senior Editor Miss Delta '39; Most Intellectual Boy '39; English Department Fellowship '39

GRACE ESTELLE DYCK . . . Hutchison, Kansas  
*Public School Music, English*

Transfer Hinds Junior College; Delta Playhouse; Delta Singers; President Girls' Glee Club '39; Elementary Council; Pageant; Senior Chaperone; Inter-Class Play Tournament '39.

LILLIAN L. EDDINS . . . Batesville, Mississippi  
*English, Social Science*

Transfer Northwest Junior College; Miss Delta Staff; Pageant; Delta Playhouse; Y. W. C. A.

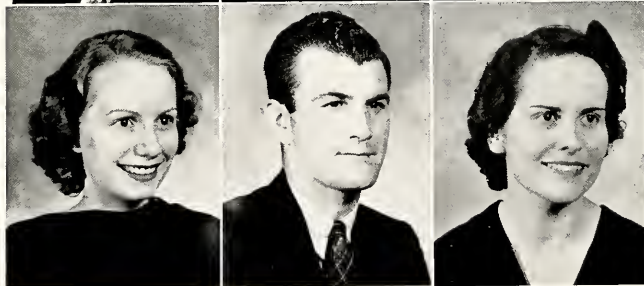
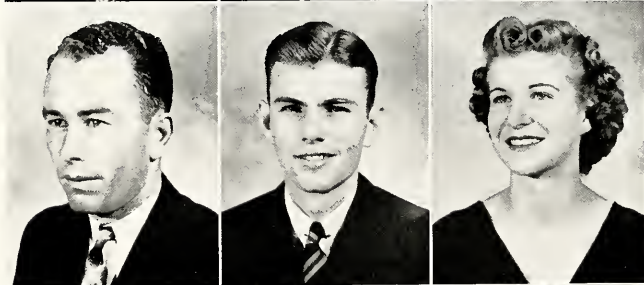
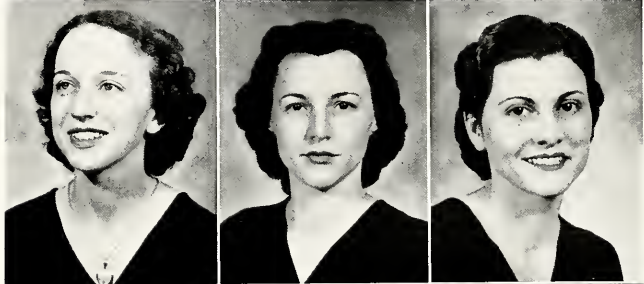
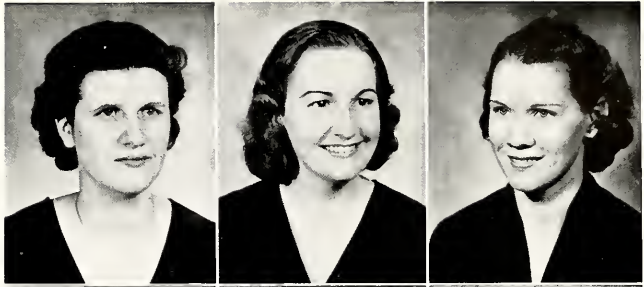
G. B. EDGAR . . . Sharon, Mississippi  
*Social Science*

Transfer Hinds Junior College; Football; M Club; Manager of Basketball Team '39.

LILLIE MAE FLICKNER . . . Bourbon, Mississippi  
*English, Social Science*

T H E B R O O M





R S

1 9 3 9



*They also tried.*

ABBIE FOWLER Enid, Mississippi  
*Home Economics, Science*  
 Transfer Northwest Junior College; Y. W. C. A. Cabinet '39; Secretary Home Economics Club '39; Delta Playhouse; Chemistry Club; M. S. U.

JESSE N. FREDERICK Cleveland, Mississippi  
*Science, Mathematics*  
 President Nature Club '38; Photography Club; Chemistry Club

MARGUERITE GEORGE Terry, Mississippi  
*English, Social Science*  
 Transfer Hinds Junior College; Y. W. C. A.; Delta Playhouse; Miss Delta Staff; M. S. U.

JAMES GOODMAN Pelahatchie, Mississippi  
*Science, Social Science*  
 Transfer Ellisville Junior College; M Club; Football; Basketball.

FRANCES P. HARDEN Cleveland, Mississippi  
*Home Economics, Science*  
 Transfer Weed Junior College; Home Economics Club.

MRS. JUANITA HOUSE HAWKINS Cleveland, Mississippi  
*Elementary Education*  
 Transfer Mississippi State College for Women.

# The . . . S E N I O

ARLIE G. HOLDER Paden, Mississippi  
*Mathematics, Social Science*  
 Transfer Freed-Hardeman College.

MARY E. HOUSE Cleveland, Mississippi  
*English, Social Science*  
 Pageant; Pirouette Club; All-Star Volleyball; Senior Editor Miss Delta '39; Delta Playhouse; Winston Scholarship Winner '39.

VIRGINIA HUGHES Skene, Mississippi  
*Elementary Education*  
 All-Star Tumbling Team; All-Star Softball; All-Star Basketball; Pageant.

MARY C. JOHNSON Morgan City, Mississippi  
*English, Social Science*  
 All-Star Soccer; All-Star Basketball; All-Star Tumbling; Pirouette Club; W. A. A.; Delta Playhouse; Y. W. C. A.; Pageant; Miss Delta Staff

EDNA KEARNEY Cleveland, Mississippi  
*Elementary Education*  
 Orchestra; W. A. A.; All-Star Soccer; All-Star Softball; All-Star Tumbling; All-Star Volleyball; Photography Club; Pageant; Athletic Shield Winner; Elementary Club; B. S. U.; Broom Staff '39; Violin Ensemble.

MARY E. KENNEDY Drew, Mississippi  
*Home Economics, Science*  
 Vice-President Home Economics Club '39; Elementary Club.

T H E B R O O M



R S

1 9 3 9



You have to be a football hero to get along with a beautiful girl.

The

. . . S E N I O

DORAH OVENE KING            Anguilla, Mississippi  
*Elementary Education*  
 All-Star Soccer; Delta Playhouse; Nature Club; Girls' Honor Council; Glee Club; Pirouette Club.

ANNIE FAYE LEE                Indianola, Mississippi  
*Public School Music*  
 Piano Scholarship '39; W. A. A.; All-Star Soccer; All-Star Table Tennis; All-Star Badminton; Pageant; Orchestra; Violin Ensemble '39; Y. W. C. A.; All-Star Tumbling.

MYRTLE A. LINDSEY          Dockery, Mississippi  
*Public School Music*  
 Transfer Sunflower Junior College; Vice-President Elementary Council '39; Secretary-Treasurer Y. W. C. A. '39; Delta Singers; Girls' Glee Club; Senior Chaperone.

BILL MANN                        Grenada, Mississippi  
*Science, Social Science*  
 Football; Photography Club; Nature Club; Men's Council; College Taxidermist.

EUNICE MARSHALL          Greenwood, Mississippi  
*English, Social Science*  
 Transfer Holmes Junior College; Delta Singers; Girls' Glee Club; Y. W. C. A.

HAZEL MARTIN                 Indianola, Mississippi  
*Elementary Education*  
 Elementary Club; Home Economics Club; Y. W. C. A.; Pageant.

MARY RUTH MOORE          Cleveland, Mississippi  
*Elementary Education*  
 Home Economics Club; Girls' Glee Club; Pageant

CHARLES L. MCCRIS, JR.      Cleveland, Mississippi  
*Mathematics, Science*  
 Business Manager Delta Playhouse '38, Vice-President '39; Vice-President Alpha Psi Omega '39; Most Typical Freshman '36; Miss Delta Staff; Delta Singers; Inter-Class Play Tournament; Cheerleader; Head Cheerleader '39.

MARIE MOTLEY                 Maud, Mississippi  
*Social Science, Commerce*  
 Debate Club; Nature Club; Pageant; M. S. U.; Delta Playhouse; Y. W. C. A.

J. T. OWEN                        Holcomb, Mississippi  
*English, Social Science*  
 Transfer Sunflower Junior College; Men's Council.

LENORE POWELL                Doddsville, Mississippi  
*Commerce*  
 Transfer Sunflower Junior College; Y. W. C. A.; Reporter '39.

JOHN RAY RICKS                Wheeler, Mississippi  
*Mathematics, Science*  
 Transfer Sunflower Junior College; Football; Basketball; M Club; Men's Council.

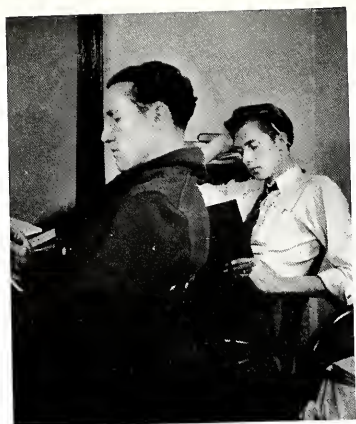
T        H        E        B        R        O        O        M



R S



1 9 3 9



This picture was made to impress superintendents.

The

S E N I O

CLAUDIA ROBERTS Money, Mississippi  
*Mathematics, Public School Music*  
 Transfer Sunflower Junior College; Delta Singers;  
 Business Manager Glee Club '39; Y. W. C. A.; Ele-  
 mentary Club; Girls' Honor Council.

LURA WALKER ROGERS Shaw, Mississippi  
*Public School Music*  
 Transfer Grenada College; Home Economics Club;  
 Chorister Y. W. C. A. '39; Vice-President Girls' Glee  
 Club '38, '39; Most Charming Girl '39.

WALTER G. SANDERS Longview, Mississippi  
*Social Science*  
 Transfer East Mississippi Junior College; Football.

H. PRESTON SHOWS Laurel, Mississippi  
*Science*  
 Transfer Jones County Junior College; Football; Basket-  
 ball; M Club; Best Boy Athlete '39.

LORA SIMS Ponotoc, Mississippi  
*Commerce, Social Science*  
 Y. W. C. A.; Broom Staff; Student Cabinet; Nature  
 Club.

BENJAMIN F. SMITH, JR Money, Mississippi  
*Science, Social Science*  
 Transfer Sunflower Junior College; Broom Staff '38;  
 Business Mgr. Broom '39; Delta Palyhouse; Most Pop-  
 ular Boy '39.

MARK ELVIN SMITH Flora, Mississippi  
*Science, Social Science*  
 Transfer Hinds Junior College; Football.

S. A. SWEARENGEN, JR. Oakland, Mississippi  
*Science, Social Science*  
 Men's Council; President Nature Club '39; Chemistry  
 Club; Miss Delta Staff; M. S. U.

PAULINE TAYLOR Calhoun City, Mississippi  
*Science, Social Science*  
 Secretary-Treasurer B. T. U. '37, President '38; Vice-  
 President B. S. U. '38, '39; President Y. W. C. A. '39;  
 Girls' Honor Council; Secretary-Treasurer Nature Club  
 '38; Vice-President '39; Debate Club; Pageant; Senior  
 Chaperone; All-Star Paddle-Tennis; Elementary Club.

RUTHEL TURNER Rosedale, Mississippi  
*Elementary Education, Commerce*  
 Pageant; Y. W. C. A.

LOUIS N. VARNADO, JR Crosby, Mississippi  
*Mathematics, Science, English*  
 President Student Body '38, '39; Who's Who Among  
 Students in American Colleges and Universities '39;  
 Class President '36, '37, '38, '39; Student Cabinet; Busi-  
 ness Mgr. Delta Singers '37; Debate Club; B. S. U.  
 Cabinet; Best All-Round Student '39; Broom Staff '37,  
 '38; Assistant Mgr. Miss Delta '37; Book Store Mgr.  
 '37, '38, '39; King of Carnival Ball '39.

DOROTHY J. WALKER Webb, Mississippi  
*Social Science, Violin*  
 Transfer Mississippi State College for Women; Orches-  
 tra; Violin Ensemble '38, '39.

T H E B R O O M

R S



1 9 3 9



# The SENIORS

ELLEN K. WAMBLE Greenwood, Mississippi  
*Elementary Education*  
 All-Star Soccer; All-Star Basketball; All-Star Softball;  
 Pageant; Elementary Club; W. A. A.; Girls' Glee  
 Club; Pionette Club.

ANNIE LAURA WARD Sidon, Mississippi  
*English, Social Science*  
 Transfer Sunflower Junior College; Y. W. C. A.;  
 Nature Club.

ROGER TRUITT WARD Louisville, Mississippi  
*English*  
 Transfer Sunflower Junior College.

CYRIL WHITE Morgan City, Mississippi  
*Biological Science, Social Science*  
 Football; Basketball; Baseball; Vice-President M Club  
 '38, President '39; Secretary-Treasurer Men's Council  
 '39; Vice-President Chemistry Club '38; Most Hand-  
 some Boy '38.

SYLVIA F. P. WIGGINS Cleveland, Mississippi  
*English, Social Science, Commerce*  
 Alpha Psi Omega; Secretary-Treasurer Delta Play-  
 house '39; President M. S. U. '37, '38; Secretary-Treas-  
 urer '39; Winston Scholarship Winner '39; Girls' Hon-  
 or Council '39; Most Intellectual Girl '39; Inter-Class  
 Play Tournament '39.

ALVA C. WILLIAMS, JR. Lambert, Mississippi  
*Social Science*  
 Transfer Northwest Junior College; Football; Baseball;  
 Miss Delta Staff; Best Boy Dancer '39; M Club Re-  
 porter '39.

MAXWELL WILLIAMS San Angelo, Texas  
*Commerce*  
 Delta Playhouse; Home Economics Club; Nature Club.

J. C. WILSON Thomasville, Alabama  
*Social Science*  
 Transfer Jones County Junior College; Football; Base-  
 ball; M Club

T H E B R O O M O M 1 9 3 9



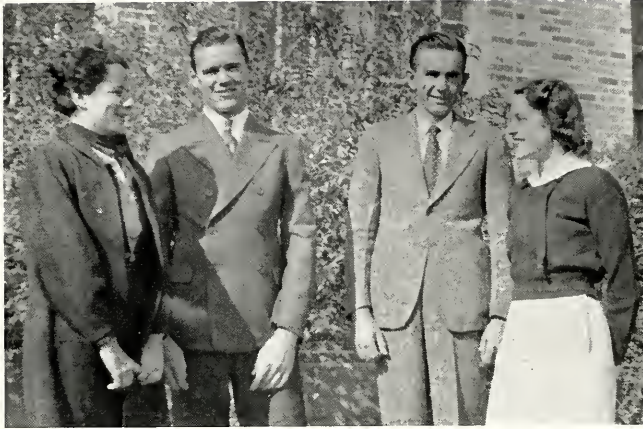


THE  
CANDID  
CAMERA  
SEES THE  
SENIORS

1. Meditation.
2. Something's up.
3. Where's Patsy.
4. The Lady relaxes.
5. Last minute cramming.
6. One alone.
- 7, 9, 12. Senior smiles.
8. Go it Delta.
10. Shows gets a tough break.
11. Senior Swing.
13. Block that kick.
14. Gentlemen at leisure.
15. Who else did you expect.
16. Jamie's dual personality.
17. Men only.
18. Greek gods.
19. Pipe dreams.
20. Grace confides.
21. Close harmony.

# ALMA MATER

Oh Delta State, we cling to the memory  
Of happy days we've spent,  
Of standards high, and of friendships dear,  
Making our life there something to treasure.  
We have come to sing the praises  
Of the old school we love best,  
Oh, hail to you, to our dear Alma Mater,  
Oh, hail to old Delta State.

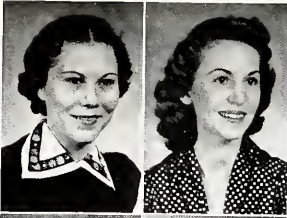


# JUNIOR CLASS

## OFFICERS

JACK SUTPHEN	<i>President</i>
ROBERT LESHE	<i>Vice President</i>
MYRA HUFFSTATLER	<i>Secretary-Treasurer</i>
MISS MARY MARGARET FUGLER	<i>Sponsor</i>

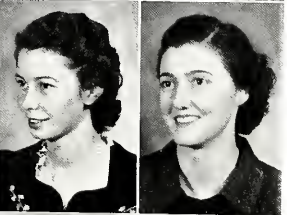
# T H E J U N I



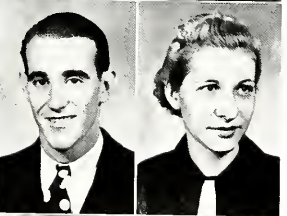
NINA LOUISE BERRY      Jonestown, Mississippi



MARY ALYCE BOUNDS      Leland, Mississippi



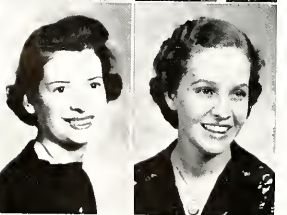
KITTY S. BRANSCOME      Kilmichael, Mississippi



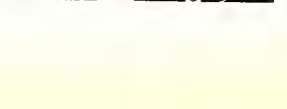
ALICE CAMPBELL      Boyle, Mississippi



THELMA CHAPMAN      Hermanville, Mississippi



MARY OLIVER CLAY      Tutwiler, Mississippi



WILLIAM CURTIS      Greenwood, Mississippi



ELIZABETH DAVIS      Cleveland, Mississippi



JCYEE DUPUY      Hollandale, Mississippi



JAMES FRENCH      Water Valley Mississippi



WARENE GILBERT      Wiggins, Mississippi



MARY WARD GORDIN      Oakland, Mississippi



# O R C L A S S

FRANCES HALL                      Hollandale, Mississippi

CLARA B. HOLLIS                      Zama, Mississippi

RUTH HUFFMAN                      McCool, Mississippi

MYRA HUFFSTATLER                      Lexington, Mississippi

LULA MAE JENNINGS                      Cleveland, Mississippi

SARA BESS JENNINGS                      Cleveland, Mississippi

JASPER LA PRESTO                      Rosedale, Mississippi

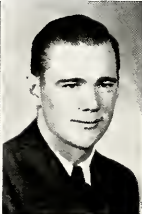
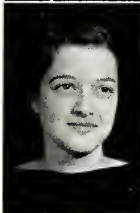
ROBERT LESHE                      Mattson, Mississippi

GLADYS McCAIN                      Merigold, Mississippi

FRED McMURRAY                      Courtland, Mississippi

DCRIS JEAN SISSON                      Blaine, Mississippi

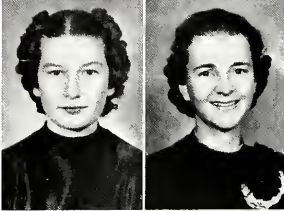
HARLEY SMITH                      Kossuth, Mississippi



# JUNIORS



CATHERINE SNIPES                      Lula, Mississippi



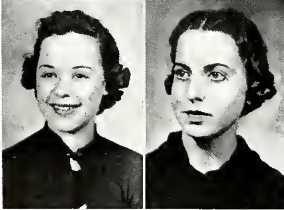
JACK SUTPHEN                          Alligator, Mississippi



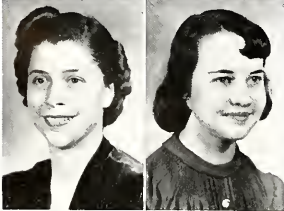
FRANCES SWITZER                      Isola, Mississippi



ELIZABETH THOMPSON                Charleston, Mississippi



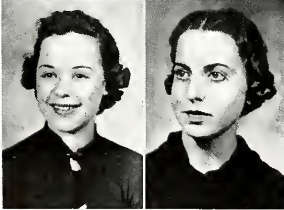
MARY FRANCES TURNER                Sumner, Mississippi



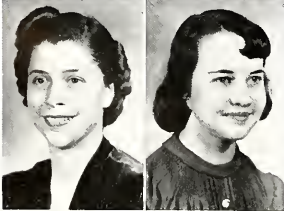
NELLIE WALLACE                        Shelby, Mississippi



ERNESTINE WELLS                      Lula, Mississippi



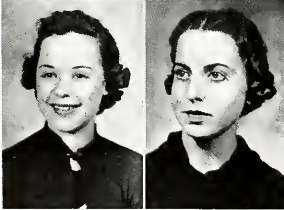
JESSE WHITE                              Cleveland, Mississippi



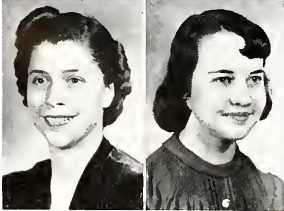
MARY JEAN WILKINS                    Duck Hill, Mississippi



OLIVIA WILKINS                         Tunica, Mississippi



LEILA LYLE WILKINSON                Waxhaw, Mississippi



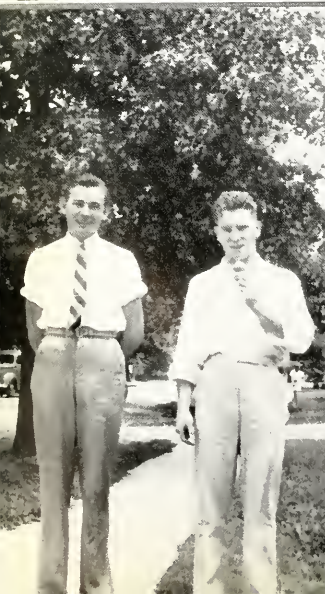
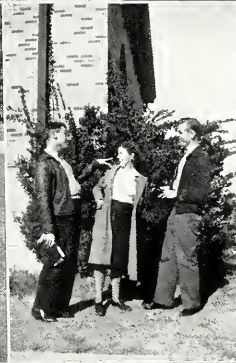
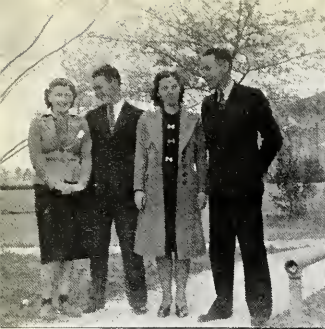
MARIBETH YANCEY                      Hernando, Mississippi



JUNIORS

1. Miss Hollis steps into the picture.
2. President Jack.
- 3, 9. Fine Art.
4. Lobbying.
- 5, 15. Waiting for dinner.
6. Autograph hounds.
7. Keeping up with the world.
8. French music.
- 10, 19. The girls go in for art too.
11. Pageant Pages.
12. Fanny herself.
13. Watch for the birdie.
14. Third floor down to earth.
- 16, 18. Roman History baffles Bullrats.
17. Room mates.
20. Doris caters to books.
21. Frances thinks of a Major.









# SOPHOMORE CLASS

## OFFICERS

ALBERT HAND

*President*

PAULINE McCoy

*Vice President*

LUCILLE WILKINSON

*Secretary-Treasurer*

MR. D. M. ALLEN

*Sponsor*



# T H E S O P H

- |                   |                         |
|-------------------|-------------------------|
| CHARLES BARBOUR   | Cleveland, Mississippi  |
| HELEN BECKHAM     | Shaw, Mississippi       |
| CATHERINE CANNON  | Merigold, Mississippi   |
| LE POINT CASSIBRY | Cleveland, Mississippi  |
| MARTHA EVANS      | Isola, Mississippi      |
| MARY OLIVE EVANS  | Greenwood, Mississippi  |
| MARY FRANCES FOX  | Charleston, Mississippi |
| SARA FREDERICK    | Cleveland, Mississippi  |
| CHARLES GRANGER   | Kankakee, Illinois      |
| ALBERT HAND       | Cleveland, Mississippi  |
| POLLY HARRIS      | Charleston, Mississippi |
| ROBERT HENLEY     | Rosedale, Mississippi   |
| ROSALIE HOLMES    | Kilmichael, Mississippi |
| SARA ALLIE INGRAM | Maud, Mississippi       |
| CLARIECE KELLY    | Cleveland, Mississippi  |
| JANE MICHIE       | Cleveland, Mississippi  |

# O M O R E S . .

CLYDE MOORE      Cleveland, Mississippi

PAULINE McCOY      Leland, Mississippi

PATSY McPHEETERS      Cleveland, Mississippi

FANNY LOU OWEN      Hollandale, Mississippi

LUKE PERKINS      Water Valley, Mississippi

ERCILLE RAY      Ackerman, Mississippi

ROBERT L. SHANNON      Pontotoc, Mississippi

MARY EVELYN SHAW      Eupora, Mississippi

ELAINE SMITH      Sumner, Mississippi

NINA SPRINGER      Clarksdale, Mississippi

SUE THWEATT      Cleveland, Mississippi

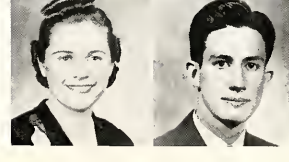
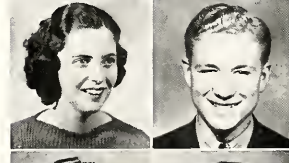
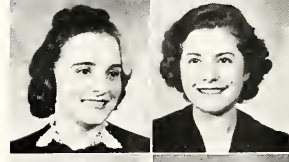
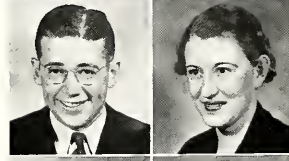
MARY VETRANO      Rosedale, Mississippi

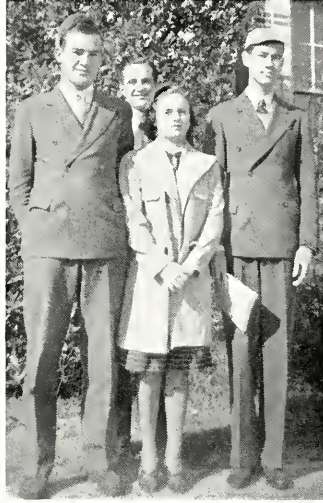
LUCILLE WILKINSON      Shelby, Mississippi

WIRT A. WILLIAMS      Cleveland, Mississippi

MARJORIE YOUNG      Cleveland, Mississippi

HOWARD ZEIGEL      Cleveland, Mississippi





# FRESHMAN CLASS

## OFFICERS

GARTH INGRAM

*President*

PITT SHEPHERD

*Vice President*

RUTH BUTLER

*Secretary-Treasurer*

MR. LANIER PRATT

*Sponsor*



# FRESHMEN

VIRGINIA BAILEY . . . . . Rolling Fork, Mississippi

RUTH BARKLEY . . . . . Ripley, Mississippi

ANNE BEDWELL . . . . . Cleveland, Mississippi

MARY STUART BEST . . . . . Cleveland, Mississippi

EMMA BLACK . . . . . Leland, Mississippi

ODELL BLAND . . . . . Skene, Mississippi

MARY EUDY BOOZER . . . . . Boyle, Mississippi

RITA BOYKIN . . . . . Lone Oak, Texas

VIRGINIA BRADING . . . . . Rosedale, Mississippi

ANNA GREEN BRISTER . . . . . Shaw, Mississippi

CARRIE MAE BRISTER . . . . . Rosedale, Mississippi

HAROLD BROWN . . . . . Leland, Mississippi

RUTH BUTLER . . . . . Webb, Mississippi

ALICE CLAY . . . . . Tutwiler, Mississippi

IRENE CLEMONS . . . . . Cleveland, Mississippi





# T H E F R E S H

HALLE G. CROWSON

MARTHA DARBY

ANNE DORR

DOROTHY ENGLEBERG

RUBY ANNE ERWIN

CARLENE FARNED

RUBY MARGARET FISACKERLY

THOMAS GAMMILL

BERNARD GARFINKEL

LEONA GARFINKEL

EDNA GENTRY

JO NELL GREGORY

MYRA GUNTER

LEE HAMRICK

MARGUERITE HART

R. D. HEMPHILL

KATHREEN HOYLE

FRANCES HUMPHREY

Water Valley, Mississippi

Charleston, Mississippi

Alligator, Mississippi

Cleveland, Mississippi

Duncan, Mississippi

Cleveland, Mississippi

Winona, Mississippi

Skene, Mississippi

Boyle, Mississippi

Boyle, Mississippi

Baldwyn, Mississippi

Hollandale, Mississippi

Lexington, Mississippi

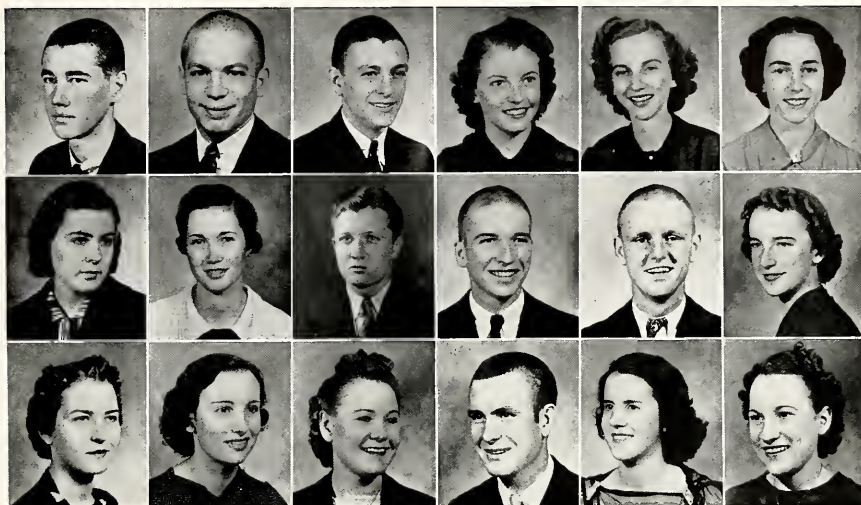
Crosby, Mississippi

Water Valley, Mississippi

Money, Mississippi

Itta Bena, Mississippi

Deeson, Mississippi



# M A N C L A S S

GARTH INGRAM

MYRON JONES

ABRAHAM KAPLAN

EOLA LORANCE

EDYTHE LOWE

ELOISE MOBLEY

MARY JANE MYERS

RACHEL McCAIN

ROBERT McDONALD

GEORGE McFALL

MASSEY McLAURIN

DOROTHY McQUIRTER

LILLIAN NEFF

LOLA OLIVER

SALLY PORTER

HAROLD CLAY RAINEY

IONE RAINWATER

ELIZABETH RINGOLD

Cleveland, Mississippi

Indianola, Mississippi

Cleveland, Mississippi

Cleveland, Mississippi

Alligator, Mississippi

Carlsdale, Mississippi

Cleveland, Mississippi

Merigold, Mississippi

Canton, Mississippi

Sumner Mississippi

Hollandale, Mississippi

Cleveland, Mississippi

Catchings, Mississippi

Ethel, Mississippi

Indianola, Mississippi

Rich, Mississippi

Cleveland, Mississippi

Water Valley, Mississippi

# FRESHMEN



HELEN ROBERTS West Point, Mississippi

LAURA SANFORD Crenshaw, Mississippi

WINFRED SENIOR Sumner, Mississippi



JANIE SHANNON Pontotoc, Mississippi

EVELYN SHARP Leland, Mississippi

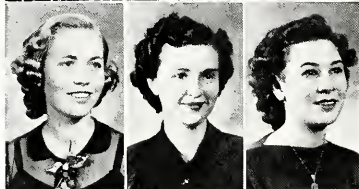
PITT SHEPHERD Lexington, Mississippi



PAULINE SIGLER Hazelhurst, Mississippi

CALVIN SIMMONS Cleveland, Mississippi

KATHERINE SPENCER Catchings, Mississippi



CHRISTINE TAYLOR Calhoun City, Mississippi

CAROLYN TEMPLETON Hollandale, Mississippi

NELL UPSHUR Greenwood, Mississippi



WESLEY WALKER Webb, Mississippi

CLAIRE WEIR Grenada, Mississippi

DONA FAY WILKINS Clarksdale, Mississippi



MAURICE WOOD Eupora, Mississippi





## MISS DELTA MEMOS

- Sept. 27—Freshmen and transfers galore at D. S. T. C. Amateurs try out for Delta Playhouse. The BROOM staff completed.
- Oct. 4—Such smart frosh! Tests show their knowledge plenteous. Delta Band gives initial performance.
- Oct. 18—"400" Club replaced by "Deltans." Play Day attracts many. Footlight Revue a gala event.
- Oct. 25—HOMECOMING! At that dance everyone was in his best bib and tucker—a good time was had by all.
- Nov. 1—"Be A Little Cuckoo" and "Thanks Awfully" given for students Delta State recognized by Associations.
- Nov. 8—State Student Government Conference held at Delta State. A new feature appears in MISS DELTA—Newsy Views. Remember your name?
- Nov. 15—Statesmen defeat Middle Tennessee. Judge Camille Kelly speaks to students.
- Nov. 22—Ted Shawn dancers presented under auspices of W. A. A. Demonstration School children give play in assembly.
- Dec. 13—Frances Switzer elected Treasurer for State Student Government Conference. CHRISTMAS HOLIDAYS.
- Jan. 10—Basketball schedule announced. Plans made to enroll 200 Freshmen next year.
- Jan. 24—Survey shows Bolivar County students hold majority at Delta State. Mrs. Hunt leaves for L. S. U.
- Jan. 31—Mary Oliver Clay gives beautiful recital. Carrie Mae Brister awarded Cassity Scholarship. The JEEP held amid splendor.
- Feb. 7—Carnival Ball committees named. "Murder By Morning," presented in assembly.
- Feb. 15—At it again! "Alice In Wonderland," a great success. Statesmen leave for Kansas City.
- Feb. 21—Leila Lyle Wilkinson elected president of Methodist Student Conference for ensuing year. Statesmen-Choctaw combat in Leland. Charles Granger presents band and "Miss Delta March."
- Feb. 28—Freshman Edition of MISS DELTA. Glee Club performs at Hollandale.
- March 14—Need I say more than Carnival Ball? What a grand time! Alpha Psi Omega gives pledges formal dinner. MISS DELTA in new hands.
- March 21—Dr. Boswell addresses assembly. Everybody plans to go to Mississippi Educational Association.
- March 28—Alumni Luncheon at Mississippi Educational Association. Delta State's vocal ensemble presented over W. J. D. X.
- April 4—Freshmen win Inter-class Play Tournament. Sissy Snipes and "Pippy" McFall chosen best actress and actor. Negro Minstrel planned by "M" Club and Men's Council.



*Features*









VIRGINIA BUTLER

*Miss D. S. T. C.*



SUE THWEATT

*Most Beautiful*



MYRA GUNTER

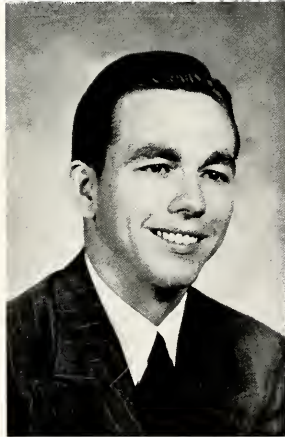
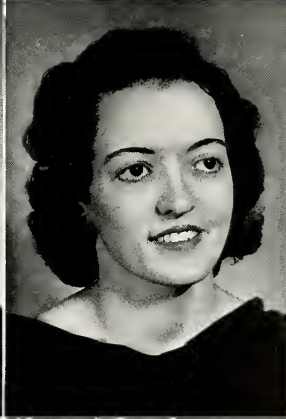
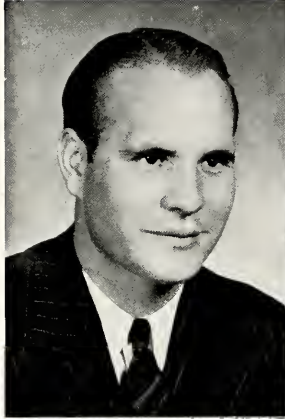
*Most Beautiful*



KATHERINE SPENCER

*Most Beautiful*





L. N. VARNADO  
*Best All Round Student*

B. F. SMITH  
*Most Popular Boy*

LURA ROGERS  
*Most Charming Girl*

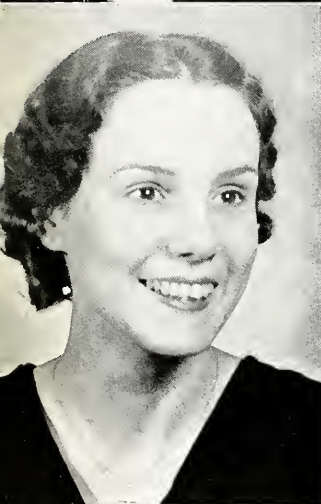
CATHERINE SNIPES  
*Most Popular Girl*



Most Talented Girl Ruth Agner

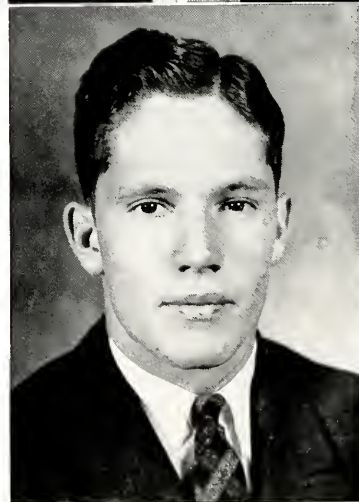
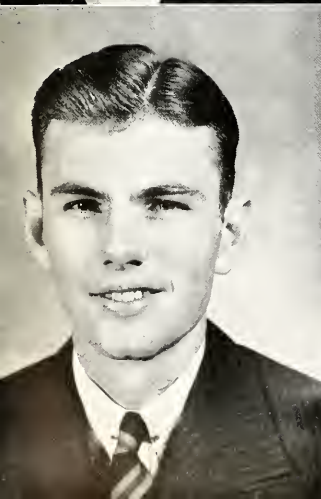
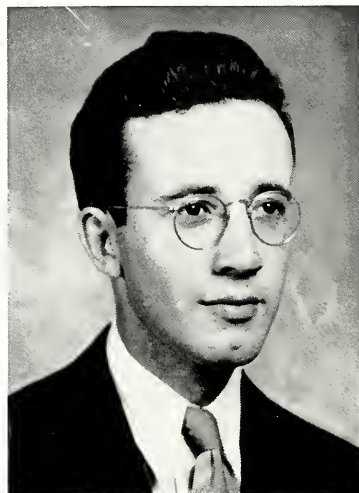
Most Intellectual Girl Peggy Wiggins

Most Intellectual Boy Jack Dunn



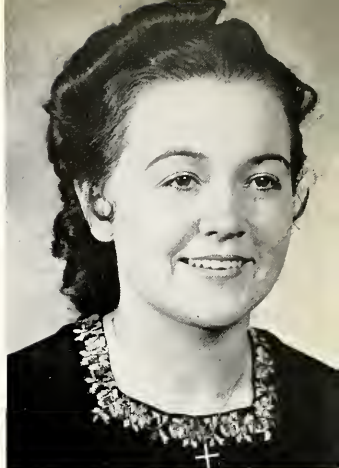
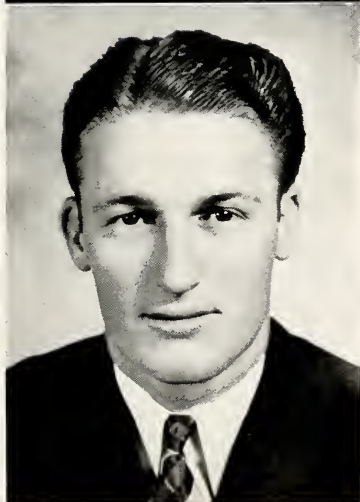
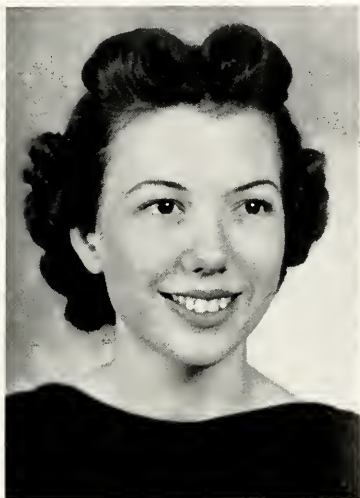
Most Talented Boy Jasper La Presto

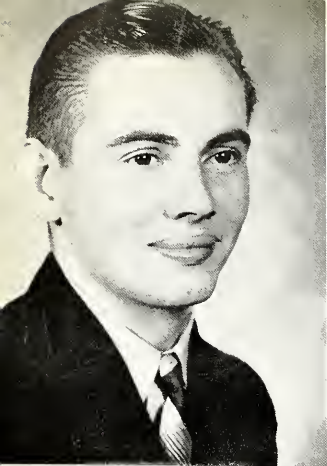
Most Handsome Boy Bill Ballard



Best Girl Athlete      Nellie Wallace  
Best Boy Athlete      Preston Shows  
Best Dressed Girl      Thelma Chapman

Best Girl Dancer      Martha Bogue  
Best Boy Dancer      A. C. Williams





Best Dressed Boy

Luke Perkins

Wittiest Girl

Martha Evans

Wittiest Boy

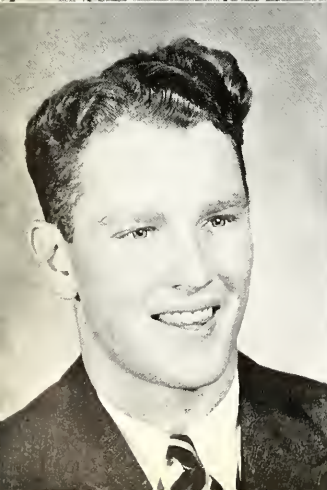
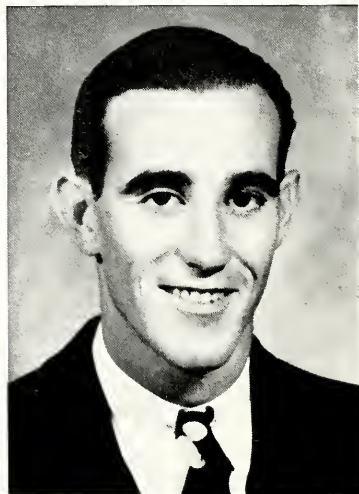
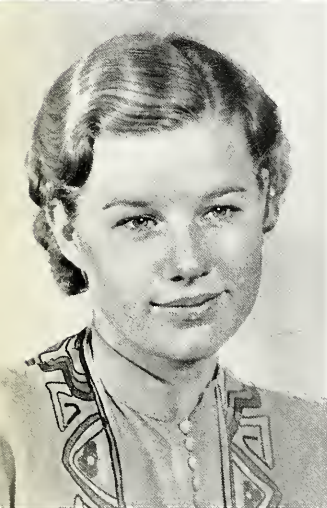
Albert Hand

Most Courteous Boy

William Curtis

Most Typical Freshman

Robert McDonald

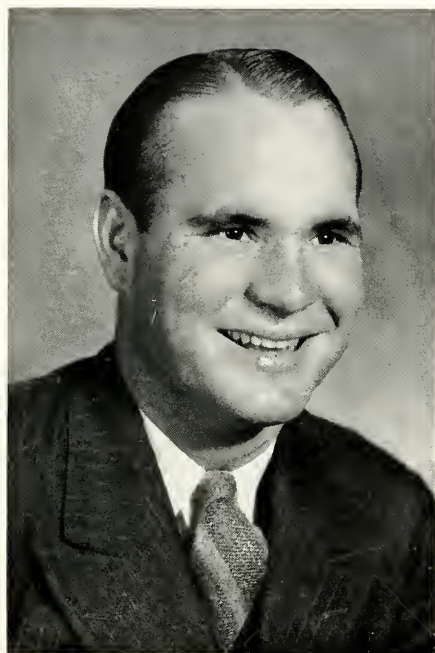






# *Organizations*





LOUIS N. VARNADO, *President*  
O F T H E S T U D E N T B O D Y

Having served his second year as President of the Student Body, Varnado has completed a record of unprecedented student leadership. He has succeeded in bringing about a more democratic Student Government, having this year instituted open forum meetings, in which students may constructively solve many of their problems

# THE STUDENT CABINET

JACK SUTPHEN *President*  
RUTH AGNER *Vice-President*  
LORA SIMS *Secretary-Treasurer*

Clifton Bishop  
Albert Hand

Louise Berry  
L. N. Varnado

The Student Cabinet, chief governing body on the campus, is the organization through which students voice their opinions and needs. The function of the Cabinet is to administer student government and to plan recreational activities through cooperation with the administration of the school. The 1938-39 Cabinet has made the student government more cross-sectional of the entire student body.







# MISS DELTA STAFF

## EDITORIAL STAFF

*Managing Editor* . . . . .

*Senior Editor* . . . . .

*Senior Editor* . . . . .

*Senior Editor* . . . . .

*Associates*—HARLEY SMITH, WIRT WILLIAMS, JR., CATHERINE SNIPES,  
JAMIE BARHAM, ERNESTINE WELLS, L. N. VARNADO.

JASPER LAPRESTO

VIRGINIA BUTLER

JACK DUNN

MARY ELIZABETH HOUSE

## BUSINESS STAFF

*Business Manager* . . . . .

*Assistant Business Manager* . . . . .

*Assistant Business Manager* . . . . .

*Circulation Manager* . . . . .

*Assistant Circulation Manager* . . . . .

*Sponsor* . . . . .

JASPER LAPRESTO

RUBY ANNE ERWIN

CHARLES MORRIS

HARLEY SMITH

LEE HAMRICK

MR. DOUGLAS ALLEN

"Miss Delta" is the weekly newspaper published by the students at Delta State Teachers College. The 1938-39 Staff has produced the finest publication that has ever been issued here.



## WOMEN'S HONOR COUNCIL

VIRGINIT BUTLER  
VIRGINIA ADKISSON  
FRANCES SWITZER

*President*  
*Vice-President*  
*Secretary-Treasurer*

Peggy Wiggins  
Sara Ingram  
Nina Springer  
Claudia Roberts

Martha Conley  
Mary Ellen Arnold  
Lucille Wilkinson  
Joyce Dupuy

Claire Weir

As a connecting link between the student body and the administration, the Women's Honor Council is instrumental in developing on the campus, an atmosphere of good will and fellowship.

# MEN'S HONOR COUNCIL

JASPER LAPRESTO

*President*

CLIFTON BISHOP

*Vice-President*

CYRIL WHITE

*Secretary-Treasurer*

Bill Mann

Ray Ricks

J. T. Owen

S. A. Swearngen

The Men's Honor Council represents an intelligent effort on the part of young college men to govern themselves with a minimum of rules and regulations, and a maximum of good fellowship.



# THE WOMEN'S GLEE CLUB

GRACE DYCK

*President*

LURA ROGERS

*Vice-President*

DOROTHY CURRIE

*Librarian*

CLAUDIA ROBERTS

*Business Manager*

Virginia Brading  
Carrie Mae Brister  
Sue Branscome  
Mary Oliver Clay  
Alice Clay  
Elizabeth Byrne  
Warrene Gilbert  
Myrtle Lindsey  
Ruth Walters  
Helen Roberts  
Myra Gunter  
Fannie Lou Owen  
Lola Oliver  
Helen Payne

Pauline Sigler  
Mary Frances Turner  
Joy Summerville  
Olivia Wilkins  
Gene McKinney  
Alice Campbell  
Mary Vetrano  
Jo Nell Gregory  
Ovene King  
Lillian Neff  
Elaine Smith  
Claire Weir  
Nellie Wallace  
Bonnie Bess Crutchfield

Isabelle Pullen

The 1938-39 session has been a very successful one for the Women's Glee Club. This organization, under the direction of Mr. C. B. King, has broadcast from Memphis and Jackson stations and has brought credit to themselves and Delta State Teachers College.







# THE ORCHESTRA

## *Clarinets*

Helen Payne  
L. A. Farmer  
Wesley Walker  
Paul Howell

Jesse White  
Edna Kearney  
Charles Granger  
Faye Lee

## *Saxophones*

Robert Henley  
Massey McLaurin

## *Pianist*

Olivia Wilkins

## *Trumpet*

Hale Crowson

## *Trombones*

Sally Porter  
Albert Hand

## *Violins*

Dorothy Walker

## *Mellophones*

Muriel Biles  
Hazel Henry

Miss Edna Nunnery, Conductor

The College Orchestra gives students an opportunity to participate in musical activities and to make public performances.



# T H E   Y .   W .   C .   A .

PAULINE TAYLOR	President
ANNE LAURA WARD	Vice-President
MYRTLE LINDSEY	Secretary-Treasurer
ABBIE FOWLER	Program Chairman
LURA ROGERS	Chorister
OLIVIA WILKINS	Pianist
MISS GLADYS CASTLE	Sponsor
MISS EDNA NUNNERY	Sponsor

The Y. W. C. A. has been more active than ever before at Delta State. The membership, numbering over fifty, was the largest in its history.

# ALPHA PSI OMEGA

LOUISE BERRY . . . . . *President*  
CHARLES MORRIS . . . . . *Vice-President*  
MABEL CAMERON . . . . . *Secretary-Treasurer*

Catherine Snipes

William Botkin

Jesse White

Polly Coleman

Peggy Wiggins

Miss Mary Margaret Fugler, *Sponsor*

The Alpha Psi Omega is a National Honorary Dramatic Fraternity. The Delta State Chapter purposes to further interest in good drama.





# DELTA PLAYHOUSE

BILL BALLARD  
*President*

CHARLES MORRIS  
*Vice-President*

PEGGY WIGGINS  
*Secretary-Treasurer*

MISS MARY MARGARET  
FUGLER  
*Sponsor*



Louise Berry, Mabel Cameron, Polly Coleman, Patye Curry, Grace Dyck, Ovene King, Jasper LaPresto, B. F. Smith, Catherine Snipes, Jesse White, Olivia Wilkins, Wirt Williams, Bill Botkin, Maribeth Yancey, Virginia Mayhall, Winfred Senior, Alice Clay, Mary Vetrano, Euginia Bays, William Curtis, Ernestine Wells, Mary Alyce Bounds, Warene Gilbert, Howard C. Raney, Leila L. Wilkinson, Mary E. House, Anne Bedwell, Ione Rainwater, Mary J. Myers, Eola Lorance, Ruby M. Fisackerly, Marie Motley, Mary F. Turner, Thomas Gammill, Elise Mobley, Celeste Johnson, Abbie Fowler, Lorene Eddins, Frances Humphrey, Marjorie Young, Jane Michie, Sue Branscome, Margaurite George, Garth Ingram, Ruth Barkley, Maxwell Williams, Sara Ingram, Sophie Gritman, Elizabeth Byrne.



# ELEMENTARY CLUB

BARBARA BUSH  
*President*

MYRTLE LINDSEY  
*Vice-President*

JOYEE DUPUY  
*Secretary-Treasurer*

Annie Laurie Chapman,  
Frances Hall, Mary Ellen Arnold,  
Rosalie Holmes, Christine Taylor,  
Hazel Martin, Fannie Lou Owen,  
Lucille Wilkinson, Sara Bess Jennings,  
Alice Campbell, Ruth Walters, Mary Evelyn Shaw,  
Kathryn Wamble, Sara Ingram, Gladys McCain,  
Mary Alyce Bounds, Mabel Cameron,  
Edna Kearney, Miss Mary Royce Eckles,  
Miss Maud Cain, Miss Jane Oliver,  
Mrs. Dorothy McClain Causey.





# HOME ECONOMICS CLUB

POLLY COLEMAN

*President*

ELIZABETH KENNEDY

*Vice-President*

ABBIE FOWLER

*Secretary-Treasurer*

MRS. ELIZABETH STAMPS

*Sponsor*

Charlotte Bachman  
 Martha Evans  
 Frances Harden  
 Glenda Ingram  
 Ann Bedwell  
 Catherine Cannon  
 Lula Mae Jennings  
 Edythe Lowe  
 Katherine Malone  
 Hazel Martin

Ruth Moore  
 Ione Rainwater  
 Eleanor Ramey  
 Ericille Ray  
 Elizabeth Ringold  
 Lura Rogers  
 Gladys Smith  
 Katherine Spencer  
 Claire Weir  
 Ernestine Wells

Maxwell Williams

The Home Economics Club is the social unit organized for those who are interested in the field of Home Economics.

# THE NATURE CLUB

S. A. SWEARENGEN  
PAULINE TAYLOR  
WILLIAM CURTIS  
MR. R. L. CAYLOR

*President*  
*Vice-President*  
*Secretary-Treasurer*  
*Sponsor*

Ruby Anne Erwin  
Mary Evans  
Edna Fowler  
Jesse Frederick  
Frances Hall  
Lee Hamrick  
Frances Humphrey  
Garth Ingram  
Bill Mann  
Lora McCarthy  
Lola Oliver

Richard O'Rourke  
Helen Roberts  
Calvin Simmons  
Doris Jean Sisson  
Gladys Smith  
James Stafford  
Christine Taylor  
Carolyn Templeton  
Ruthel Turner  
Anne Laura Ward  
Maribeth Yancey

The Nature Club was organized to further the interest in Science. It is designed to help future teachers as they go into the field.





# WOMEN'S ATHLETIC ASSOCIATION

JAMIE LAURA BARHAM  
RUTH WALTERS  
SUE THWEATT  
MARTHA CONLEY  
MISS ETHEL CAIN  
MRS. SARA HUNT

*President*  
*Vice-President*  
*Secretary-Treasurer*  
*Reporter*  
*Advisory Member*  
*Advisory Member*

Virginia Adkisson  
Mary Ellen Arnold  
Anne Bedwell  
Martha Bogue  
Virginia Butler  
Thelma Chapman

Nell Dean  
Carlene Farned  
Ruby Margaret Fisackerly  
Edna Fowler  
Clara Hollis  
Mary Celeste Johnson

Edna Kearney  
Faye Lee  
Jane Michie  
Nellie Wallace  
Leila Lyle Wilkinson  
Marjorie Young





# T H E " M " C L U B

CYRIL WHITE  
CLIFTON BISHOP  
PRESTON SHOWS  
A. C. WILLIAMS  
J. C. WILSON

*President*  
*Vice-President*  
*Secretary-Treasurer*  
*Reporter*  
*Sargeant-at-Arms*

Ben Bailey  
Bill Ballard  
Jeff Bogue  
Max Day

G. B. Edgar  
Wayne Harris  
Robert Leshe

Fred McMurry  
Ray Hicks  
Louis Thornton  
James Goodman

The "M" Club is made up of boys who have won a letter in a sport at Delta State.





# T H E B R O O M

The BROOM here gives you a few glimpses into the process of making a year-book. General plans are made. Then photographers, art editors, class editors, business managers, athletic editors, activities editors and typists have to complete their various jobs before the bulk of material can be assembled and sent to print.





# and it's STAFF..

RUTH AGNER  
 B. F. SMITH  
 GLADYS McCAIN  
 MARY ALYCE BOUNDS  
 SUE THWEATT  
 LE POINT CASSIBRY  
 BARBAR BUSH  
 MARTHA BOGUE  
 NINA SPRINGER  
 JAMIE BARHAM  
 BILL BOTKIN  
 JESSE WHITE  
 VIRGINIA ADKISSON  
 FRANCES SWITZER  
 MARY OLIVE EVANS  
 RUTH BARKLEY  
 NELLIE WALLACE  
 CLIFTON BISHOP  
 THELMA CHAPMAN  
 EDNA KEARNEY  
 MISS GRACE GAW

*Editor*  
*Business Manager*  
*Assistant Editor*  
*Assistant Business Manager*  
*Assistant Business Manager*  
*Assistant Business Manager*  
*Art Editor*  
*Assistant Art Editor*  
*Assistant Art Editor*  
*Activities Editor*  
*Activities Editor*  
*Photography Editor*  
*Senior Editor*  
*Junior Editor*  
*Sophomore Editor*  
*Freshman Editor*  
*Athletic Editor*  
*Athletic Editor*  
*Typist*  
*Typist*  
*Faculty Advisor*

# *Who's Who*

## AMONG STUDENTS IN AMERICAN UNIVERSITIES AND COLLEGES . . .

The annual publication of "Who's Who Among Students In American Universities and Colleges" this year included Delta State Teachers College for the first time. A representation of six students was allowed. Because of outstanding leadership and for service rendered the college, the following students were chosen to represent the student body:

L. N. VARNADO

VIRGINIA BUTLER

JASPER LA PRESTO

VIRGINIA ADKISSON

RUTH AGNER

JACK SUTPHEN





*Athletics*



# F O O T B A L L

D. S. T. C.'s athletic mentor, Alec Dickson, has done a splendid job of sports here. This is Coach's third year with us and we hope that he will be with us for many years to come. He is not only a builder of athletes, but he is also a builder of friends. Coach is one of the most popular members of the Faculty.

Louis Thornton, Statesman Captain, handled his duties well on the practice field as well as in the games. He is also a valuable member of our basketball and baseball squad.



## *Cheerleaders . . .*

Charlie Morris, "Hootie" Thompson, Martha Bogue, "Shine" Hemphill, and Luke Perkins, as Delta's Cheerleaders, have made D. S. T. C. one of the peppiest schools in the S. I. A. A., at all athletic events. We can say that Delta State's School Spirit has increased at least one hundred per cent, due to their efforts.



## FOOTBALL *at* DELTA STATE

A bird's eye view of the Statesmen shows us Athletic Director A. D. Dickson, Assistant Coach Howard Shook, Trainers Ray Ricks and Mac Day, and twenty-eight gridmen. Howard Shook, first assistant coach at Delta State, deserves a great deal of praise for his work in helping Coach Dickson iron out defects in individual players.

Even though the Statesmen were not so very successful in the number of games won, it must be remembered that Delta State played the top-notchers of the S. I. A. A. The season opened with Southwestern Louisiana Institute of Lafayette, La., where Delta trailed by a 19-0 score. The last game was with the S. I. A. A.

champions, Memphis Teachers, which resulted in an 8-0 score. The two bright spots of the season were against Troy, Alabama Teachers on Homecoming Day, and Middle Tennessee Teachers on Armistice Day.

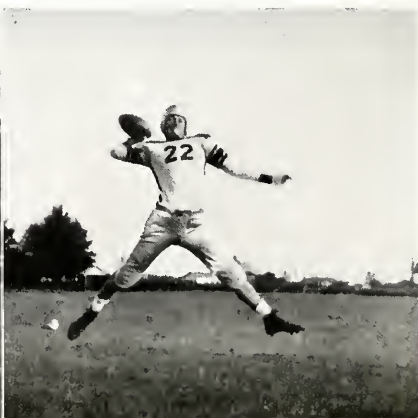
The "Wrecking Crew," as the Freshmen were known, was composed of Wynn, McDonald, Senior, Magers, Boyd, and Walker. Though they are not in the above pictures, we are expecting them to be in the front row next year.

Both trainers and twelve members of the squad will be lost by graduation, but prospects for the coming year seem brighter because of the remaining Juniors, Sophomores and the "Wrecking Crew."

*The college band supports the team*



*A.C. Williams in action*





Warming up

## The '38-'39 SQUAD

39—Preston Shows, (Sr.), outstanding athlete of the season, came up to the highest expectations as Delta's most consistent ground gainer. Even a broken arm didn't slow him up much.

24—J. C. Wilson, (Sr.), whose regular position was end, was really a general utility man, in that he did everything from calling signals to catching passes.

*A new angle on the football player*



30—Cyril "Bub" White, (Sr.), was a good, consistent end, especially noted for his ability to keep up the "pepper."

40—Jeff Bogue, (Sr.), Delta's 200 lb. left tackle, wrecked havoc with the opponents' line by hard drive and quick follow-up.

23—Gardner Sanders, (Sr.), was both center and guard for Delta. Despite his size, his spirit and uncanny ability to sift through the opponents made him an outstanding cog in Delta State's wheel of defense.

34—G. B. Edgar, (Sr.), was center or guard on offense, and line backer on defense. His job was to fill the holes on the defense and was accomplished in a most effective manner.

28—Rod Smith, (Sr.), was a utility linesman, by playing either guard or tackle, and will be greatly missed in Delta's next campaign.

22—A. C. Williams, (Sr.), came to Delta State from Northwest Junior College. Though a regular for only one year, he has demonstrated his ability, as a quarterback, to maneuver a football team.

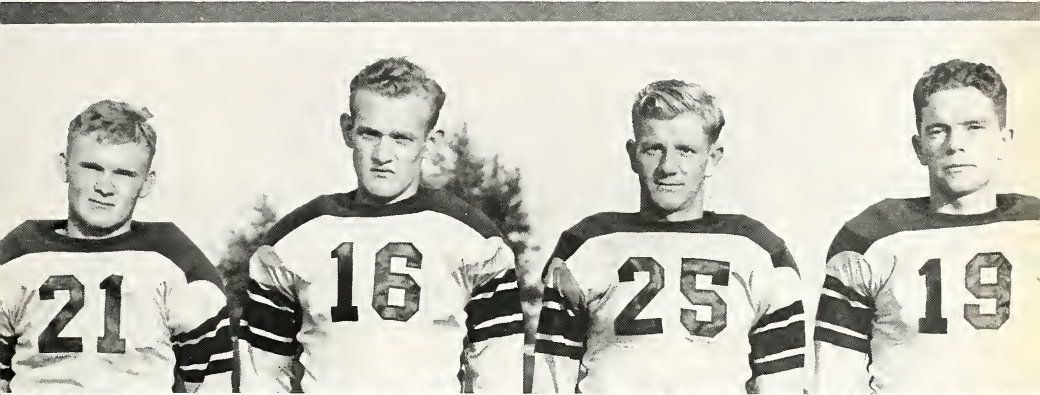
33—Clifton Bishop, (Sr.), was the only man who played every minute of the past season. His ability to kick and to back the line made him invaluable to the Statesmen.

18—James Goodman, (Sr.), was lean and lanky, and a good influence on the team.

16—Bill Borkin, (Sr.), joined the squad for the first time this year. To speed he added a clear, snappy diagnosis of plays and thus developed into a jam-up back.







- 38—Glen “Stumpy” Thompson, (Jr.), was Delta’s outstanding end. He was held up most of the season by an injured leg, but we’re expecting great things from him next year.
- 17—James McKelvy, (Jr.), was most promising of Delta’s guards. He could penetrate any of the opponents’ lines and throw them for losses. The Student Body should watch him next season.
- 20—Wayne “Snooky” Harris, (Jr.), was a back who could hit the line, reminding us of Chuck, (Charlie Thomas, ’38).
- 29—Edward “Dopey” Glover, (Jr.), came into his own midway of the season, and continued to improve the remainder of the time.
- 35—Bill Ballard, (Jr.), was playing a wonderful game at right-end, when he was shifted to the tailback position. Here he made an even better man with his running and his easy-to-catch passes.
- 12—Manley Reeves, (Jr.), is better known as “Little Man.” A harder to tackle ball-carrier wasn’t known on the team until a shoulder injury kept him out of most of the last games.
- 31—“Sonny Boy” Gordon, (Jr.), showed great promise as a runner and blocker. He should be one of Delta’s “Four Horsemen” when the Statesmen meet the best the S. I. A. A. has to offer.
- 27—Bob Leshe, (Jr.), was changed from end to guard. It was a pleasure to see Bob come out of the hole and lead interference, knocking over all who tried to stop him.
- 37—Earl Buckley, (Jr.), joined the ranks after two years at S. J. C. His Grade A defense made him a problem for the opponents’ line players.
- 36—Fred Poe, (Jr.), should have been twins. He was an excellent passer, and could catch them when it seemed impossible.
- 26—H. H. Rowell, (Jr.), was hard to stop when he lowered his red head and charged forward from his tackle position.
- 42—Roscoe Bryson, (Jr.), was another 200 pound tackle. Coming from Hinds Junior College with two years’ experience, he was a welcome addition to the squad.
- 19—Fred McMurry, (Jr.), has been developing into a splendid blocking back, and by adding his spirit to his love of the game, you have an asset to any team.
- 25—Charles “Hoss” Barbour, (Soph.), was the “southpaw” of the passing staff. Opponents couldn’t tell whether he would pass or run. This with his signal calling will contribute greatly to next year’s football assets.
- 32—Lawrence “Early” Shannon, (Soph.), was the only Soph. Linesman. His never-give-way guard work was of the best.
- 21—William “Art” Castle, (Soph.), was the third of the Soph Trio. His work as a line-backer commanded the respect of the opposing ball-carriers.







# B A S K E T B A L L

Manley Reeves

Willie Gillan

Preston Shows

James Goodman

Fred McMurry

Luther Marlal

Bob Leshe

Louis Thornton

Max Day

Ray Ricks

Willard Overton

G. B. Edgar, Manager

On the gym floor, Delta State presented a quintet second to none in the Tri-States. They hold the record of not suffering a defeat before the student body in two years.

Although the team didn't advance so far in the S. I. A. A. and National Tournaments, the student body is very proud of them and will never forget their masterful performances. The Statesmen defeated such strong teams as Millsaps, Miss. College, Murray, and Troy.





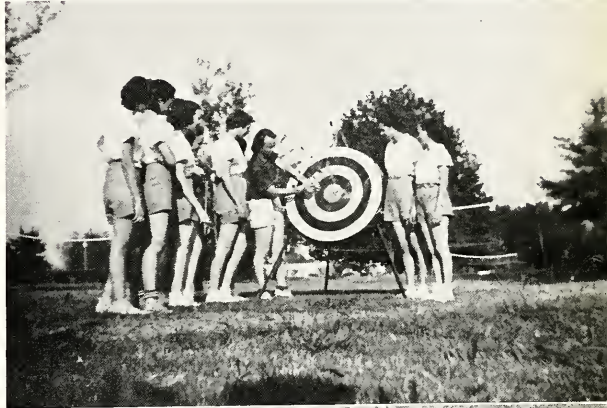
# WOMEN'S ATHLETICS

The department of Women's Physical Education is directed by Miss Ethel Cain and Mrs. Sarah Hunt.

Delta State Teachers College has a varied program in Physical education in which everyone finds some activity. Some of these activities are:

Soccer, Basketball, Aerial Darts, Badminton, Table Tennis, Shuffleboard, Softball, Dancing, Tumbling, Etc.

The aim of our Physical Education program is to teach people to play and to create a love for sports which will carry over in private and professional life.



*Archery  
Pirouette Club*





*Wedding Scene*

*Wedding Altar Dance*

# The P A

The spring pageant presented by the Physical Education Department has become one of the most interesting events at Delta State Teachers College.

*Pandora*, the pageant illustrated, was presented on May 19, 1938. The theme was taken from the myth, "Pandora," by M. L. Hutchison in his book, *Orpheus And His Lute*. The pageant concerns itself with the Greek legend of creation.

Briefly, the story is as follows:

The gods of Greek legend had taken a great deal of interest in the promotion of mankind on the Earth.

One day a mortal, Prometheus, crept into the abode

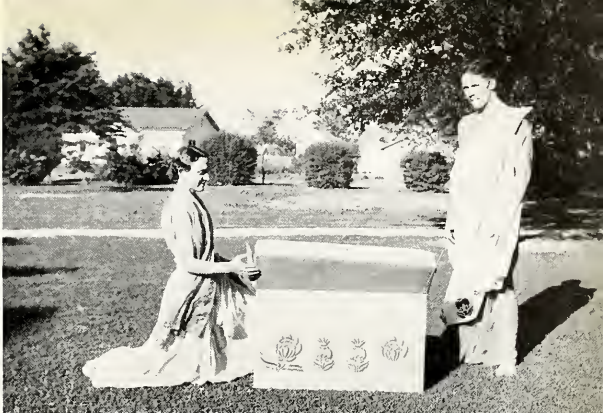
*Dance of the Golden Ball*





# GEANT

of the gods and stole fire, which he carried back to earth. This so angered Zeus, chief of the gods, that in order to get revenge on mankind, he created Pandora, a beautiful woman, and gave her unbounded curiosity and a very ornate chest. Pandora met and was married to Prometheus. They were quite happy until Pandora's curiosity got the upper hand of her, and she opened the chest. All the evils that Zeus could imagine poured forth to worry mankind eternally. Prometheus, who came just in time to see the chest of evils set free, despaired of life, but the spirit of Hope emerged from the chest and encouraged him to face his many trials and tribulations.



*Pandora's Box*

*Dance of Fire*



*Dance of  
Fear*



*The Greek Wedding*



*Dance of Ignorance*



*Imps in Action*



*Dance of Fear*

P A G E



*Greek Soldiers*



*Greek Sacrificial Dance*



A N T ..

*Dance of Disease*



*The Gods Asleep*





## *Shield* WINNERS

To receive a shield a girl must excel in a variety of sports. 100 points are allowed for each major All-Star team made. Minor sports carry 25 to 75 points. Membership in the W. A. A. Pirouette Club, and making the basketball officiating team give points. 1,000 points are required to make a shield.

Nellie Wallace and Edna Kearney made shields this year. Due to the late announcement of Edna's winning the honor, her picture does not appear.

Those girls who excel in a sport make the All-Star team. When two All-Star teams are made, a plate is awarded. The following girls are qualified for plates in 1938-39.

MARTHA CONLEY  
PAULINE HAWKINS  
CLARA HOLLIS  
CELESTE JOHNSON  
EDNA KEARNEY  
FAYE LEE  
NELLIE WALLACE  
LEILA LYLE WILKINSON  
THELMA CHAPMAN





*Student Life*





**DELTA STATE CARRIES OUT THE SEVEN CARDINAL PRINCIPLES OF EDUCATION . . .**

**PROMOTION OF GOOD HEALTH**

1, 2, 3. We sponsor a Playday. 4. Games for all. 5. The water's fine. 6. Let's have an ace.  
7. Spectator sports. 8. Touchdown Delta.





#### GOOD CITIZENSHIP

1, 4. Among the Alumni—Superintendent Lowe, Mr. and Mrs. Bill McCain, and Artist Nathan House. 2. Mrs. Nathan House, also an artist. 3. Proud parents. 5. School marmas Gilley and Bird-sing. 6. The band does its part. 7. Old friends—Cely and Mr. Kethley. 8. Coach Flack. 9, 11. Campus Leaders. 10. They also serve who only stand and yell.





WORTHY HOME MEMBERSHIP

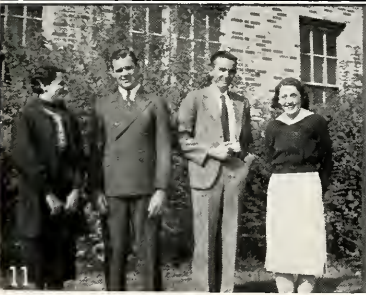
1. Where friends meet friends. 2. Fun after supper. 3, 5. Intellectual interludes. 4. Bull session. 6. The conqueror smiles. 7. Men at work. 8. Cleveland Hall's own "Ma". 9. The Barbershop Quartet.



#### FUNDAMENTALS OF LEARNING

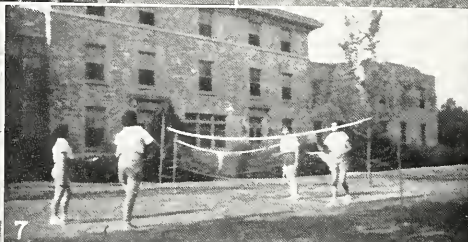
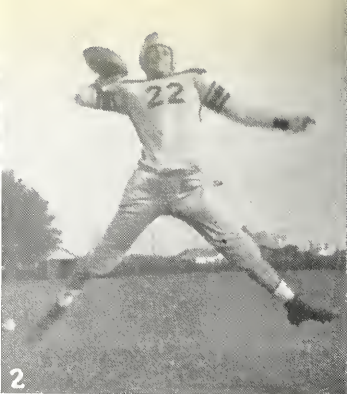
1,5. Microbe hunters. 2. A girl's best friend is her book. 3. Behind the scenes with play producers.  
 4. Gentleman of the press. 6. News and views. 7, 8. Research. 9. Beauty and the Book.





ETHICAL CHARACTER

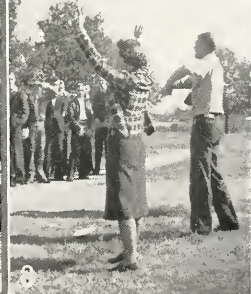
1. Future leaders. 2. Rev. Jack Dunn. 3, 11. Class leaders. 4. B. S. U. cabinet. 5, 8. Dean Zeigel and President Kethley. 7. M. S. U. Cabinet. 9. The Christmas pageant. 10. Y. W. C. A. Council. 12. The Student Cabinet.



WORTHY USE OF LEISURE TIME

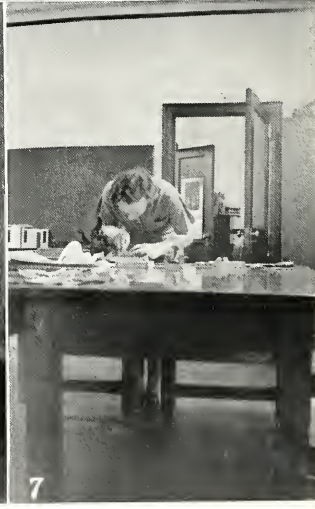
1. Coming Home.
2. Football Form.
3. Freshmen and flutes.
4. Picnicing.
5. S'ct'ing.
6. Bowling.
7. Badminton.
8. Rest between halves.
9. Helping the roommate.
10. Prof. Sanderson takes a walk.
11. Remember Play Day.





WORTHY USE OF LEISURE TIME

1. Backing the team. 2, 8. Pep meeting. 3, 5, 6. A very popular use of leisure time. 4. Football sponsors and escorts. 7. Jolly good company. 9. The pause that refreshes. 10. Off for the weekend. 11. Ship Ahoy!



#### VOCATIONAL SKILL

1. The trumpeter. 2. A study in black and white. 3. The dance quartet. 4. The band plays.  
5, 7. Blockprinting. 6. The violin ensemble.





*Our Backers*





# MISSISSIPPI DELTA STATE TEACHERS COLLEGE

A Standard Four Year Institution for Higher  
Education Offering Equal Opportunities to Young  
Men and Women

**Cleveland, Mississippi**



**In The Heart of The Mississippi Delta**



Write for Catalogue

Address:

The Secretary

**DELTA STATE TEACHERS COLLEGE**

CLEVELAND, MISSISSIPPI

Compliments Of



**Cleveland National Bank**

CLEVELAND, MISSISSIPPI

If it's used in an office we have it

**LAWRENCE'S PRINTING COMPANY, Inc.**

OFFICE OUTFITTERS

LITHOGRAPHING—BINDING

221-225 WEST MARKET STREET

GREENWOOD, MISSISSIPPI

**CLEVELAND LAUNDRY**

"Headquarters for DELTA STATE'S Dirty Work."

WHEN CLOTHES ARE DIRTY

RING 230

CLEVELAND, MISSISSIPPI

**ELMER NOWELL LUMBER COMPANY**

"BUILD A HOME AND BE HAPPY"

CLEVELAND, MISSISSIPPI

SAFETY—STRENGTH—SERVICE

**BANK OF CLEVELAND**

*"THE FRIENDLY BANK"*

Students And Teachers Are Welcome

CLEVELAND, MISSISSIPPI



**Fletcher Funeral Home**

Courteous and Efficient

Service 24 Hours A Day

Phone 318

Cleveland, Mississippi

**Planters Equipment  
Company**

McCORMICK-DEERING

FARM MACHINES

IMPLEMENTS

AND TRUCKS

Cleveland, Mississippi

*Compliments of*

**Cleveland Lumber  
And Supply Company**

Phone 311

Cleveland, Mississippi

When You Buy Meat,

Remember There Is

No Substitute For

Quality. We Suggest

You Try ABROS Meat

Products

**ABRAHAM BROS.  
PACKING COMPANY**

Memphis, Tennessee

**NANCE WHOLESALE COMPANY**

CLEVELAND, MISSISSIPPI

Furnishes You With Good Wholesome Food

**OWEN'S  
DRUG STORE**

J. H. OWEN, *Proprietor*

COCA COLA, PRESCRIPTIONS

SUNDRIES

Phone 166

Delivery

Cleveland, Mississippi

**I. A. KAMIEN**

FOOT FASHION SHOES

SHIRTCRAFT SHIRTS

Complete Stock of

LADIES- READY-TO-WEAR

MEN'S CLOTHING

Cleveland, Mississippi

**MORGAN &  
LINDSEY**

STORES OF COURTESY

Showing a Very Complete

Line of Merchandise

From

**5c To \$1.00**

**C. E. JORDAN & CO.**

**FURNITURE**

Cleveland—Greenville

**THE GOYER COMPANY  
WHOLESALE GROCERIES**

MANUFACTURERS OF PURE GOLD COFFEE

Distributors of OMEGA FLOUR

MODERN COLD STORAGE

**THE BOLIVAR  
COMMERCIAL**

JOB PRINTING

OFFICE SUPPLIES

Cleveland, Mississippi

*Compliments of*

**SHOENHOLZ**

DEPARTMENT STORE

EVERYTHING TO WEAR

Cleveland, Mississippi

**PACE SEED &  
SUPPLY COMPANY**

**SEED            FEED**

**FERTILIZERS**

Cleveland

Indianola

**CARL C. DAVIS**  
PRINTING &  
PUBLISHING COMPANY

PRINTERS

STATIONERS

OFFICE SUPPLIES

FURNITURE

Phone 76

Cleveland, Mississippi



**THE PARISIAN**

CLEVELAND, MISSISSIPPI

HEADQUARTERS

FOR

DELTA STATE COEDS

**CLEVELAND  
ENTERPRISE**

Published Every Wednesday

JOB DEPARTMENT

OFFICE SUPPLIES

Phone 22

*"We're For Delta State"*

Cleveland, Mississippi

**KAPLAN'S MEN'S SHOP**

CLEVELAND,  
MISSISSIPPI

FOR

STYLE

And QUALITY

**THE STYLE SHOP**

Cleveland, Mississippi

**Kennedy Motor Co.**

COMPLETE FORD

SERVICE

Cleveland, Mississippi

COMPLIMENTS

OF

**Wonder Bread Bakery**

**THE ELLIS**

AND THE

**REGENT THEATRES**

COLLEGE RATES

BILL ELLIS, *Proprietor*

Cleveland, Mississippi

ENERGY UP

DRINK

**DR. PEPPER**

At 10, 2 and 4 o'Clock

DELTA BEVERAGES

Phone 602

Greenville, Mississippi

## THE TWINS OF POWER



Have you ever tried Woco Pep Motor Fuel and Tiolene 100% Super Pennsylvania Motor Oil?

Stop by your nearest Pure Oil Dealer and give your motor a treat to the best . . . The Pure Oil dealer is easily identified by the Pure Seal Sign . . . Patronize him . . . He is your Friendly Neighbor.

Yale Tires are the best that money can buy . . . Made by the General Tire and



Rubber Co., exclusively for The Pure Oil Co., and its distributors.

## THE MID-SOUTH OIL COMPANY

Distributors of Pure Oil Company Products  
General Offices: Memphis, Tennessee

Drink

**BARQ'S**

"It's Good"

**LELAND OIL WORKS**

COTTON SEED PRODUCTS

LELAND, MISSISSIPPI

COMPLIMENTS OF

**PIDGEON-THOMAS IRON COMPANY**

MEMPHIS, TENNESSEE

**Eyes  
Without  
Birthdays**

Sparkling, Happy, Carefree Eyes  
Aren't A Matter of Birthdays.  
Many A Youngster, Just Starting  
The Battle of Life Is Already  
Handicapped by Defective Vision.

**Sight Is Priceless  
Light Is Cheap**

Many an Older Is Free of Eye-  
strain—Through the Aid of Plenty  
of Glareless Light For Easy, Com-  
fortable Seeing. You, too, May  
Have Eyes Without Birthdays—  
If You Have Your Eyes Exam-  
ined Regularly, and Use Modern  
Light Conditioning.

**MISSISSIPPI POWER AND LIGHT CO.**



**CLEVELAND  
SERVICE STATION**

Phone 131

SINCLAIR PRODUCTS

FREE ROAD SERVICE

Everything For The

Motorist

**MATTIE'S PLACE**

"Delta State's

Roundevouz"

GOOD EATS

Phone 45

Cleveland, Mississippi

*Compliments of*

**DENTON  
MANUFACTURING  
COMPANY**

Soda Fountain

Luncheonette

Swimming Pool

Cleveland, Mississippi

**THE COLLEGE  
BOOK STORE**

The Place To Meet

Your Friends Between

Classes

Books

Supplies

Confections



EXTENDING OUR APPRECIATION  
TO THE FACULTY AND STUDENT  
BODY FOR THEIR SPLENDID COOP-  
ERATION IN HELPING US TO PRO-  
DUCE THE PHOTOGRAPHIC WORK  
IN THIS ANNUAL



*Cole Studio*

*Yvette M. Cole*

PHOTOGRAPHER

Jackson, Mississippi

**FEDERAL COMPRESS &  
WAREHOUSE COMPANY**

SERVICE IMPARTIALLY RENDERED

Cleveland, Mississippi

Compliments of

**THWEATT  
FUNERAL HOME**

INSTITUTION  
FOUNDED  
ON  
PRINCIPLES

Cleveland, Mississippi

Compliments of

**HIGHWAY  
MATERIALS CO.**

Jackson, Mississippi

Compliments of

**AMERICAN STANDARD &  
RADIATOR SANITARY CORPORATION**

666 Beale Avenue

Memphis, Tenn.

ECONOMICAL-PERMANENT

FIREPROOF CONSTRUCTION

DOUBLE WALL CONCRETE BUILDINGS

For Full Information write

**SUPEROCK COMPANY**

Empire Building

Birmingham, Alabama





*This Annual*  
is a  
**PARAGON**  
**Production**



**The Paragon Press**  
PRINTERS, PUBLISHERS, AND LITHOGRAPHERS

*At 14 Adams Avenue*  
Montgomery, Alabama



# Ready to Face the World

★ ★ COME WHAT MAY.

CONFIDENCE is the heritage of youth . . . . it is also a fundamental requirement of business . . . . attained by long study, training and experience • We have enjoyed the confidence of yearbook Staffs throughout the country for over thirty years . . . . an accomplishment for which we are truly grateful and justly proud . . . .

★ ★ ★ ★ ★

COLLEGE ANNUAL DIVISION  
ALABAMA ENGRAVING COMPANY  
BIRMINGHAM











DELTA STATE	MINUTES TO PLAY	VISITORS
SCORE		SCORE
06	DOWN	10
PENALTY	YDS TO GO	PENALTY
23	QUARTER 4	

  
 THE DRINK OF THE WORLD  
 BOTTLED EVERYWHERE



