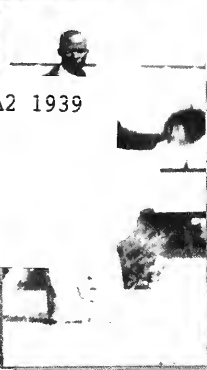


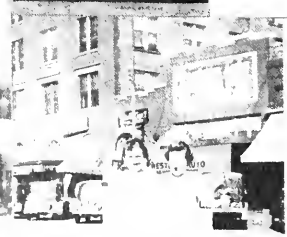


THE BROOM 1939

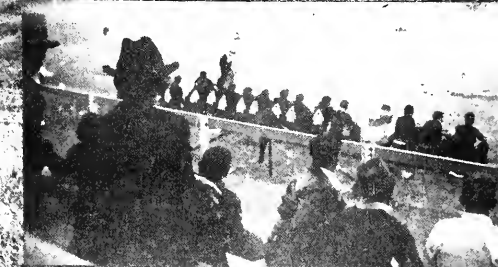
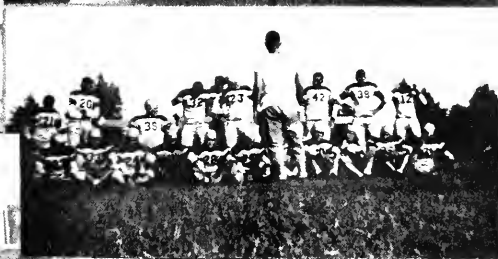
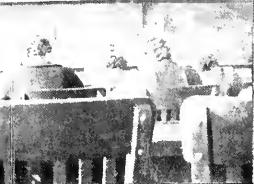


- Archives LD 1492 .D4 A2 1939
Ref

The Broom



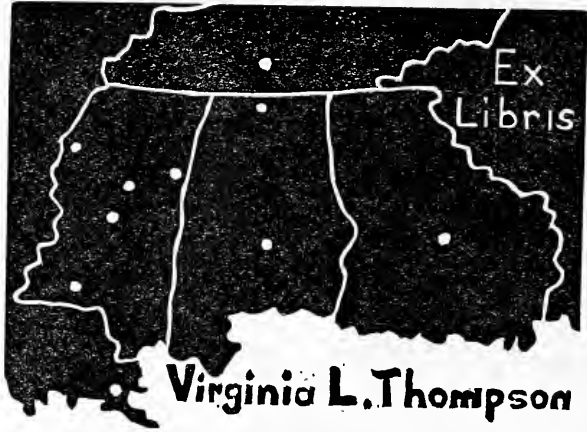
3 2277 00314 7127



DELTA STATE	MINUTES TO PLAY	VISITORS
SCORE		SCORE
DOWN	DOWN	DOWN
PENALTY	YARDS	PENALTY
QUARTER 4		

Coca-Cola
DELICIOUS AND REFRESHING





Ex
Libris

Virginia L. Thompson

E X - L I B R I S



The

B R O O M

Published by the Students of
DELTA STATE TEACHERS COLLEGE
at Cleveland Mississippi

RUTH AGNER *Editor*
B. F. SMITH *Business Manager*

for 1939



F O R E W O R D

We offer the 1939
Broom, with the
hope that it will
serve as a reminder
of one year of your
college life.

The *Broom* is named for Mr. Jim
Broom, the first president of Delta
State Teachers College.

C O N T E N T S

College

Faculty

Classes

Features

Organizations

Athletics

Student Life

Our Backers

We dedicate the 1939 issue of the Broom to Mrs. W. A. Carpenter, because, as matron of Hardee Hall, she has won the admiration and affection of the student body, and has helped to make Delta State Teachers College a more pleasant place for everyone.

D E D I C



M R S . W . A . C A R P E N T E R

A T I O N

In
M E M O R I A M

MISS ABBIE JANE LITTLE

Lambert, Mississippi

Student in Summer Sessions

ABRAHAM McCALEB

Cleveland, Mississippi

Class of 1940

MRS. ESTUS JAMES GRAY

Doddsville, Mississippi

Student in Summer Sessions

JAMES HERBERT WALKER

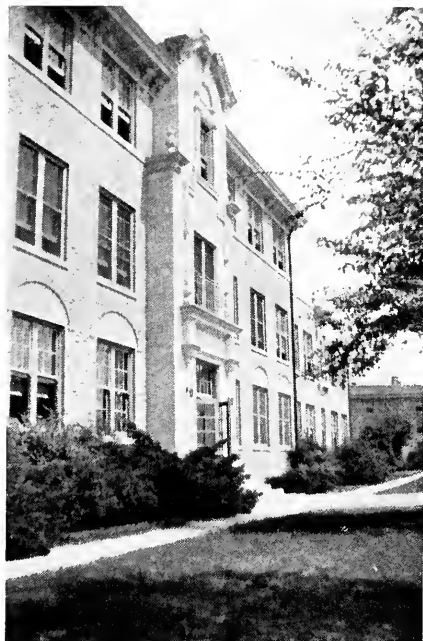
Sumner, Mississippi

Class of 1934



College

Entrance--Ward Hall



Broom Administration Building

*Entrance--
Hardee Hall*

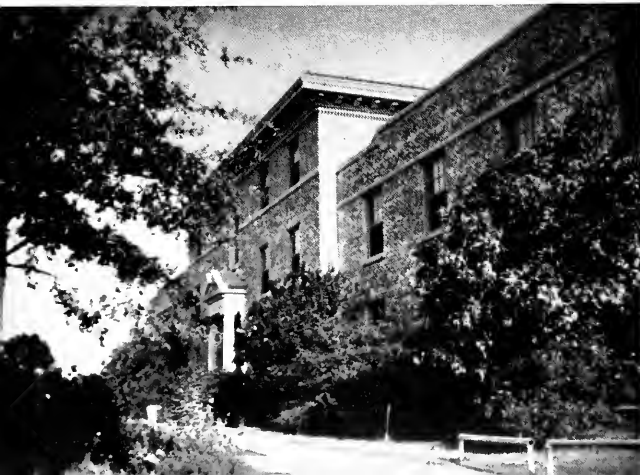




*Cleveland Hall
Night*



*Cleveland Hall
Spring*



*Cleveland Hall
Summer*

*Dining Hall
Spring*



*Dining Hall
Summer*

*Ward Hall
Day*





Ward Hall

Scott Dining Hall



Hardee Hall





Broom Administration Building

Scott Dining Hall



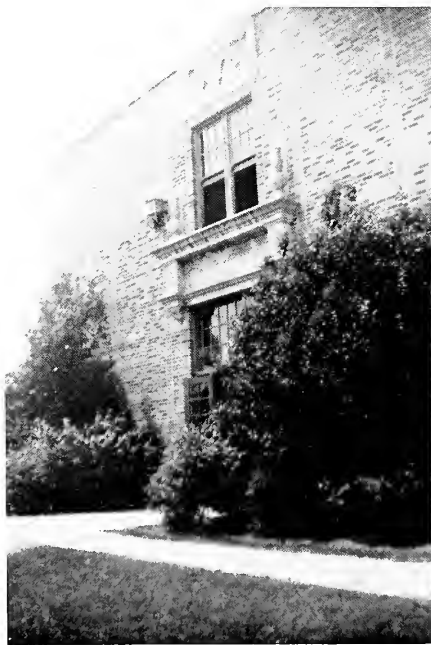
Taylor Hall





Hardee Hall

Entrance--Administration Building



Hill Demonstration School





Broom Administration Building



Delta State *Grows*

An extensive building program has been carried out at Delta State Teachers College during the 1938-39 session.

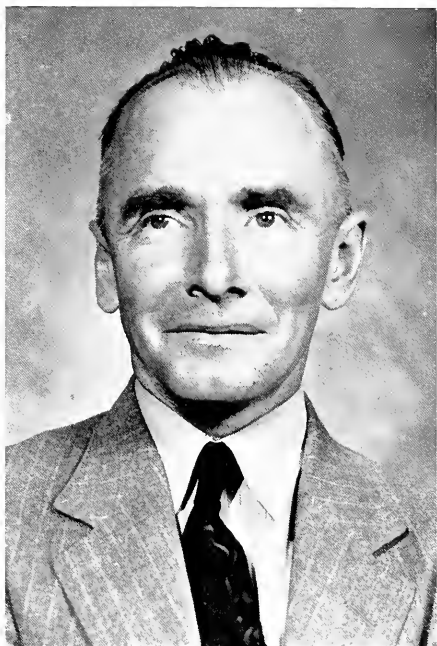
The Doolittle Annex to the Hill Demonstration School was completed. This building houses the Music Department. A new Gymnasium, located on the site of the old one, has been erected. It is one of the finest plants in the state, containing a basketball court, locker and shower rooms, offices and class rooms for the Physical Education Department, and rooms for various sports such as badminton and ping-pong. An Athletic Field House, which is used by the football team and golf club, was added. A Library was constructed just north of the Administration Building. Built of buff colored brick, it follows the same Renaissance style of architecture as most of the other buildings on the campus.

Thus the Delta State Teachers College campus presents quite a different aspect from that of a year ago. The BROOM hopes to show all of these beautiful new buildings in its next issue.



Faculty





The F A

WILLIAM MARION KETHLEY, A.M.
President

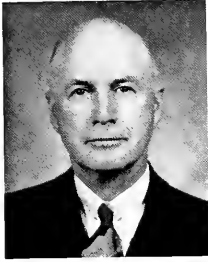
By his ceaseless efforts, boundless enthusiasm, and genuine interest in Delta State, Mr. Kethley has guided Mississippi's youngest college to national prominence as a teacher training institution. Moreover, he has found time to make personal contacts with the student body which will be an inspiration and help to them in their future lives.

CULTY

WILLIAM H. ZEIGEL, Ph.D.
Dean of Faculty



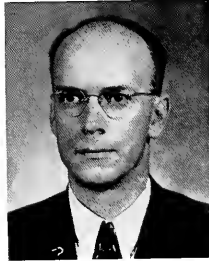
By his sincere conviction of the important service the teaching profession has to render, Dr. Zeigel has led every student to appreciate and realize more fully the opportunity and responsibility of the future teacher. Having won for himself a national reputation as an educator, he has helped to maintain a high scholastic standard at Delta State Teachers College.



The F A C

WIRT ALFRED WILLIAMS, A. M.
*Head of Department of Social
Science.*

RICHARD LEE CAYLOR, M. A.
Head of Department of Science.



KENNETH L. DAUGHRITY, PH. D.
Head of Department of English.

S. T. SANDERS, JR., PH. D.
Head of Department of Mathematics



GRACE GAW, M. A.
Head of Department of Fine Arts.

CHAUNCEY B. KING, B. MUS., M. S.
Head of Department of Music.



ETHEL CAIN, ED. M.
*Head of Department of Physical
Education.*

JANE OLIVER, M. A.
Directory of Elementary School.

ULTY..

KATE DURELLE MAULDIN, A. M.
Register.



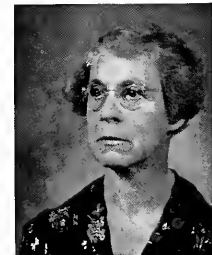
MARIETTA DOWNS, B. S.
Business Manager.

ALBERT LEON YOUNG, PH. D.
Education.



GEORGIA LEE TATUM, PH. D.
Social Science.

EVELYN ALLEN HAMMETT, A. M.
Languages and Literature.



MYRA O'BRIEN, A. B., B. L. S.
Librarian.

ELIZABETH C. STAMPS, A. M.
Home Economics.



ELIZABETH ZEIGEL, M. A.
Education.



The F A C



MARY MARGARET FUGLER, A. M.
Language and Literature.

TOM S. PERRIN, PH. D.
Science



ALEX DOCKERY DICKSON, B. S.
Health and Physical Education.

MAUD CAIN, M. A.
Demonstration School.



SARA E. HUNT, B. S.
Health and Physical Education.

C. V. CASADY, M. A.
Commerce.



EDWARD L. SANDERSON, M. S.
Science.

CAROL BRUMBY, M. A.
Social Science.

ULTY..

LILYAN COLSON, M. A.
Education.



THELMA MAFFETT, B. S.
Commerce.

NELL WYNN, M. M.
Music.



EDNA NUNNERY, B. MUS.
Music.

MRS. MARK HARRIS, M. A.
Demonstration School.



MARY ROYCE ECKLES, B. S.
Demonstration School.

DOUGLAS ALLEN, M. A.
Languages and Literature.



LANIER PRATT, M. A.
Languages and Literature.



FACULTY

ELIZABETH COATS, B. S.
Dietitian.

MRS. W. A. CARPENTER
Matron Hardee Hall.



RUTH STEEN, R. N.
Supervisor of Infirmary.

VIRGINIA THOMPSON, A. B.
Secretary to President.

GLADYS CASTLE, B. S.
Secretary to Dean.

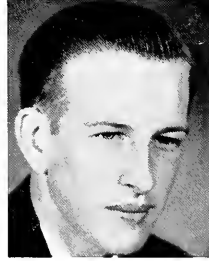
JAMES SIGLER
Engineer.



ETHEL GILLESPIE
Matron Ward Hall.

William Tarver, B. S.
Assistant Business Manager.

ETHEL CRAWLEY
Matron Cleveland Hall.





Classes



SENIOR CLASS

OFFICERS

L. N. VARNADO	<i>President</i>
JAMIE LAURA BARHAM	<i>Vice President</i>
MARY ELLEN ARNOLD	<i>Secretary-Treasurer</i>
DR. KENNETH L. DAUGHRITY	<i>Sponsor</i>



Believe it or not—a Senior has a serious moment.

VIRGINIA A. ADKISSON Jackson, Mississippi
Elementary Education

Vice President Girls Honor Council '37, '39, President '38; Nature Club; W. A. A.; Junior Athletic Captain; All-Star Soccer; All-Star Basketball; All-Star Badminton; Pep Squad; All-Star Soft-Ball; Intra-Mural Basketball Official '37; Who's Who Among Students in American Universities and Colleges, '39; Pirouette Club; M. S. U. Cabinet '36; Y. W. C. A. Cabinet '37, '38; Broom Staff '37, '38, '39; Elementary Council '36, '37; Pageant; Chaperone.

RUTH E. AGNER Cleveland, Mississippi
English, French, Art

Delta Singers; President Girls' Glee Club '36; Delta Playhouse; Pirouette Club; Orchestra; Y. W. C. A. Cabinet '37; M. S. U. Cabinet '37; Girls Honor Council; Vice President Student Cabinet '38, '39; Vice President Class '37; Pageant; Most Talented Girl '39; Miss Delta Staff; Broom Staff '37, '38; Who's Who Among Students in American Colleges and Universities '39; Editor-in-Chief "The Broom" '39.

MARY ELLEN ARNOLD Gunnison, Mississippi
Elementary Education

Girls' Honor Council; Elementary Club; Secretary-treasurer of Class '37, '38, '39; Vice-President W. A. A. '38; Pirouette Club; Tumbling Team; Pageant; Most Popular Girl '37; All-Star Badminton; All-Star Tennis; Chaperone.

BEN TOWNES BAILEY Oakland, Mississippi
Social Science

Delta Playhouse; Alpha Psi Omega; Delta Singers.

WARNER BALLARD Cleveland, Mississippi
Mathematics, Science

JAMIE LAURA BARHAM Crenshaw, Mississippi
English, Social Science

All-Star Basketball; All-Star Softball; All-Star Badminton; President W. A. A. '39; Chaperone; Annual Staff; Miss Delta Staff; Vice President Class '39

*Error—Class of 1940.

The S E N I O R

LOIS MURIEL BILES Boyle, Mississippi
Elementary Education

Home Economics Club; Orchestra; Pageant; All-Star Soccer; Pirouette Club

CLIFTON F. BISHOP Drew, Mississippi
Mathematics, Science

Transfer Sunflower Junior College; Football; Vice President M. Club '39; Vice President Mens' Council '39; Student Cabinet; Broom Staff '39; Shands Scholarship Winner '38.

JEFFERSON BOGUE, JR. Tchula, Mississippi
English, Social Science

Transfer Alabama Polytechnic Institute; Football; M. Club; Wittiest Boy '37.

MARTHA ANN BOGUE Tchula, Mississippi
Elementary Education

Cheerleader '38, '39; Queen of Carnival Ball '39; Most Popular Girl '38; Best Girl Dancer '39; Best Girl Athlete '37; Pageant; Broom Staff; Senior Athletic Captain '39; Pep Squad; Shield Winner; All-Star Basketball; All-Star Soccer; All-Star Softball; President Pirouette Club '37, '38; Secretary-Treasurer W. A. A. '37.

WILLIAM F. BOTKIN Greenwood, Mississippi
Mathematics, Social Science

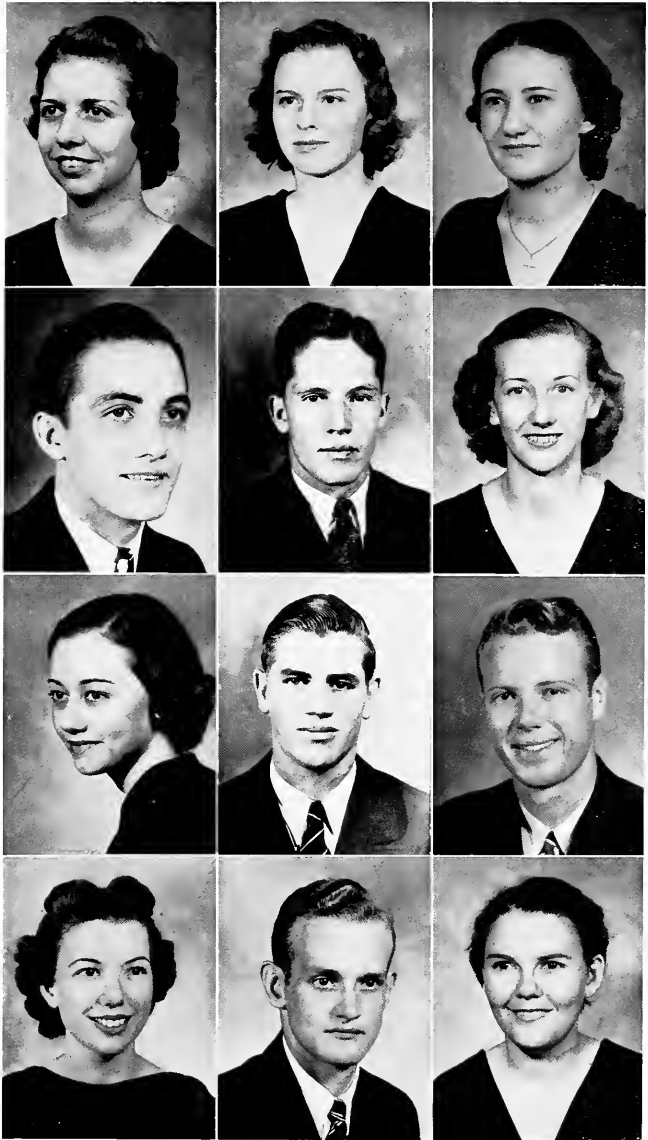
Transfer Millsaps College; Delta Playhouse; Alpha Psi Omega; Vice President Class '38; Broom Staff '39; Wittiest Boy '38; Baseball; Football; Interclass Play Tournament; Track.

BARBARA BUSH Cleveland, Mississippi
Elementary Education

Vice President Elementary Club '38; President '39; Pageant; All-Star Soccer; All-Star Softball; All-Star Tumbling; Girls' Honor Council; W. A. A.; Broom Staff '37; '38 '39.

T H E B R O O M

R S



1 9 3 9



The Tri-C's

VIRGINIA BUTLER . . . Duncan, Mississippi
English, French, Social Science

All-Star Soccer; All-Star Basketball; All-Star Softball; W. A. A.: Secretary of Girls' Honor Council '37; Vice-President '38; President '39; Senior Editor Miss Delta '39; Nature Club; Photography Club; Miss D. S. T. C.; Shield Winner; Who's Who Among Students in American Colleges and Universities '39.

MABEL CAMERON . . . Maud, Mississippi
Elementary Education

Delta Playhouse; Alpha Psi Omega; Elementary Council; Pageant.

ANNIE LAURIE CHAPMAN . . . Pochontas, Mississippi
Elementary Education

Transfer Hinds Junior College; Elementary Club; Y. W. C. A.; Pageant.

MARTHA F. CONLEY . . . Jonestown, Mississippi
English, Social Science

Girl's Honor Council; W. A. A.; All-Star Soccer; All-Star Badminton; All-Star Softball; All-Star Basketball; Pageant; Pep Squad.

DOROTHY MAY CURRIE . . . Utica, Mississippi
Public School Music, Piano

Transfer Hinds Junior College; Delta Singers; Girls' Glee Club.

PATYE CURRY . . . Drew, Mississippi
Elementary Education

Transfer Sunflower Junior College; Business Manager Delta Playhouse '39; B. S. U.; Elementary Council; Y. W. C. A.

ROBERT MAXWELL DAY . . . Crosby, Mississippi
Science, Social Science

Transfer Holmes Junior College; Football; Basketball; Baseball; M Club

JACK G. DUNN . . . Cleveland, Mississippi
English, Social Science

Transfer Freed-Hardeman College; Debate Team '38; Delta Singers; Senior Editor Miss Delta '39; Most Intellectual Boy '39; English Department Fellowship '39

GRACE ESTELLE DYCK . . . Hutchison, Kansas
Public School Music, English

Transfer Hinds Junior College; Delta Playhouse; Delta Singers; President Girls' Glee Club '39; Elementary Council; Pageant; Senior Chaperone; Inter-Class Play Tournament '39.

LILLIAN L. EDDINS . . . Batesville, Mississippi
English, Social Science

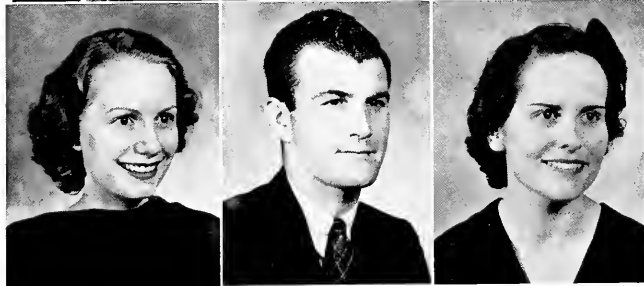
Transfer Northwest Junior College; Miss Delta Staff; Pageant; Delta Playhouse; Y. W. C. A.

G. B. EDGAR . . . Sharon, Mississippi
Social Science

Transfer Hinds Junior College; Football; M Club; Manager of Basketball Team '39.

LILLIE MAE FLICKNER . . . Bourbon, Mississippi
English, Social Science

T H E B R O O M



R S

1 9 3 9



They also tried.

ABBIE FOWLER Enid, Mississippi
Home Economics, Science
 Transfer Northwest Junior College; Y. W. C. A. Cabinet '39; Secretary Home Economics Club '39; Delta Playhouse; Chemistry Club; M. S. U.

JESSE N. FREDERICK Cleveland, Mississippi
Science, Mathematics
 President Nature Club '38; Photography Club; Chemistry Club.

MARGUERITE GEORGE Terry, Mississippi
English, Social Science
 Transfer Hinds Junior College; Y. W. C. A.; Delta Playhouse; Miss Delta Staff; M. S. U.

JAMES GOODMAN Pelahatchie, Mississippi
Science, Social Science
 Transfer Ellisville Junior College; M Club; Football; Basketball.

FRANCES P. HARDEN Cleveland, Mississippi
Home Economics, Science
 Transfer Weed Junior College; Home Economics Club.

MRS. JUANITA HOUSE HAWKINS Cleveland, Mississippi
Elementary Education
 Transfer Mississippi State College for Women.

ARLIE G. HOLDER Paden, Mississippi
Mathematics, Social Science
 Transfer Freed-Hardeman College.

MARY E. HOUSE Cleveland, Mississippi
English, Social Science
 Pageant; Pirouette Club; All-Star Volleyball; Senior Editor Miss Delta '39; Delta Playhouse; Winston Scholarship Winner '39.

VIRGINIA HUGHES Skene, Mississippi
Elementary Education
 All-Star Tumbling Team; All-Star Softball; All-Star Basketball; Pageant.

MARY C. JOHNSON Morgan City, Mississippi
English, Social Science
 All-Star Soccer; All-Star Basketball; All-Star Tumbling; Pirouette Club; W. A. A.; Delta Playhouse; Y. W. C. A.; Pageant; Miss Delta Staff

EDNA KEARNEY Cleveland, Mississippi
Elementary Education
 Orchestra; W. A. A.; All-Star Soccer; All-Star Softball; All-Star Tumbling; All-Star Volleyball; Photography Club; Pageant; Athletic Shield Winner; Elementary Club; B. S. U.; Broom Staff '39; Violin Ensemble.

MARY E. KENNEDY Drew, Mississippi
Home Economics, Science
 Vice-President Home Economics Club '39; Elementary Club.

The

. . . S E N I O

T H E B R O O M



R S

1 9 3 9



You have to be a football hero to get along with a beautiful girl.

The

. . . S E N I O

DORAH OVENE KING Anguilla, Mississippi
Elementary Education
 All-Star Soccer; Delta Playhouse; Nature Club; Girls' Honor Council; Glee Club; Pirouette Club.

ANNIE FAYE LEE Indianola, Mississippi
Public School Music
 Piano Scholarship '39; W. A. A.; All-Star Soccer; All-Star Table Tennis; All-Star Badminton; Pageant; Orchestra; Violin Ensemble '39; Y. W. C. A.; All-Star Tumbling.

MYRTLE A. LINDSEY Dockery, Mississippi
Public School Music
 Transfer Sunflower Junior College; Vice-President Elementary Council '39; Secretary-Treasurer Y. W. C. A. '39; Delta Singers; Girls' Glee Club; Senior Chaperone.

BILL MANN Grenada, Mississippi
Science, Social Science
 Football; Photography Club; Nature Club; Men's Council; College Taxidermist.

EUNICE MARSHALL Greenwood, Mississippi
English, Social Science
 Transfer Holmes Junior College; Delta Singers; Girls' Glee Club; Y. W. C. A.

HAZEL MARTIN Indianola, Mississippi
Elementary Education
 Elementary Club; Home Economics Club; Y. W. C. A.; Pageant.

MARY RUTH MOORE Cleveland, Mississippi
Elementary Education
 Home Economics Club; Girls' Glee Club; Pageant

CHARLES L. MCCRIS, JR. Cleveland, Mississippi
Mathematics, Science
 Business Manager Delta Playhouse '38, Vice-President '39; Vice-President Alpha Psi Omega '39; Most Typical Freshman '36; Miss Delta Staff; Delta Singers; Inter-Class Play Tournament; Cheerleader; Head Cheerleader '39.

MARIE MOTLEY Maud, Mississippi
Social Science, Commerce
 Debate Club; Nature Club; Pageant; M. S. U.; Delta Playhouse; Y. W. C. A.

J. T. OWEN Holcomb, Mississippi
English, Social Science
 Transfer Sunflower Junior College; Men's Council.

LENORE POWELL Doddsville, Mississippi
Commerce
 Transfer Sunflower Junior College; Y. W. C. A.; Reporter '39.

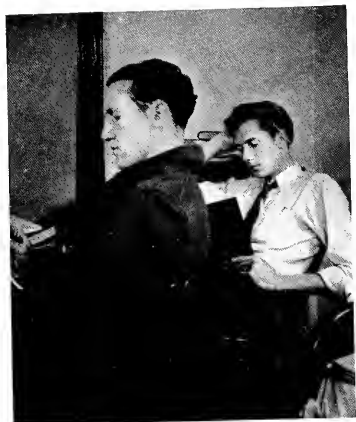
JOHN RAY RICKS Wheeler, Mississippi
Mathematics, Science
 Transfer Sunflower Junior College; Football; Basketball; M Club; Men's Council.

T H E B R O O M

R S



1 9 3 9



This picture was made to impress superintendents.

CLAUDIA ROBERTS Money, Mississippi
Mathematics, Public School Music
 Transfer Sunflower Junior College; Delta Singers;
 Business Manager Glee Club '39; Y. W. C. A.; Ele-
 mentary Club; Girls' Honor Council.

LURA WALKER ROGERS Shaw, Mississippi
Public School Music
 Transfer Grenada College; Home Economics Club;
 Chorister Y. W. C. A. '39; Vice-President Girls' Glee
 Club '38, '39; Most Charming Girl '39.

WALTER G. SANDERS Longview, Mississippi
Social Science
 Transfer East Mississippi Junior College; Football.

H. PRESTON SHOWS Laurel, Mississippi
Science
 Transfer Jones County Junior College; Football; Basket-
 ball; M Club; Best Boy Athlete '39.

LORA SIMS Ponotoc, Mississippi
Commerce, Social Science
 Y. W. C. A.; Broom Staff; Student Cabinet; Nature
 Club.

BENJAMIN F. SMITH, JR Money, Mississippi
Science, Social Science
 Transfer Sunflower Junior College; Broom Staff '38;
 Business Mgr. Broom '39; Delta Palynhouse; Most Pop-
 ular Boy '39.

MARK ELVIN SMITH Flora, Mississippi
Science, Social Science
 Transfer Hinds Junior College; Football.

S. A. SWEARENGEN, JR. Oakland, Mississippi
Science, Social Science
 Men's Council; President Nature Club '39; Chemistry
 Club; Miss Delta Staff; M. S. U.

PAULINE TAYLOR Calhoun City, Mississippi
Science, Social Science
 Secretary-Treasurer B. T. U. '37, President '38; Vice-
 President B. S. U. '38, '39; President Y. W. C. A. '39;
 Girls' Honor Council; Secretary-Treasurer Nature Club
 '38; Vice-President '39; Debate Club; Pageant; Senior
 Chaperone; All-Star Paddle-Tennis; Elementary Club.

RUTHEL TURNER Rosedale, Mississippi
Elementary Education, Commerce
 Pageant; Y. W. C. A.

LOUIS N. VARNADO, JR Crosby, Mississippi
Mathematics, Science, English
 President Student Body '38, '39; Who's Who Among
 Students in American Colleges and Universities '39;
 Class President '36, '37, '38, '39; Student Cabinet; Busi-
 ness Mgr. Delta Singers '37; Debate Club; B. S. U.
 Cabinet; Best All-Round Student '39; Broom Staff '37,
 '38; Assistant Mgr. Miss Delta '37; Book Store Mgr.
 '37, '38, '39; King of Carnival Ball '39.

DOROTHY J. WALKER Webb, Mississippi
Social Science, Violin
 Transfer Mississippi State College for Women; Orches-
 tra; Violin Ensemble '38, '39.

The

S E N I O

T H E B R O O M

R S



1 9 3 9



The SENIORS

ELLEN K. WAMBLE Greenwood, Mississippi
Elementary Education
 All-Star Soccer; All-Star Basketball; All-Star Softball;
 Pageant; Elementary Club; W. A. A.; Girls' Glee
 Club; Pionette Club.

ANNIE LAURA WARD Sidon, Mississippi
English, Social Science
 Transfer Sunflower Junior College; Y. W. C. A.;
 Nature Club.

ROGER TRUITT WARD Louisville, Mississippi
English
 Transfer Sunflower Junior College.

CYRIL WHITE Morgan City, Mississippi
Biological Science, Social Science
 Football; Basketball; Baseball; Vice-President M Club
 '38, President '39; Secretary-Treasurer Men's Council
 '39; Vice-President Chemistry Club '38; Most Hand-
 some Boy '38.

SYLVIA F. P. WIGGINS Cleveland, Mississippi
English, Social Science, Commerce
 Alpha Psi Omega; Secretary-Treasurer Delta Play-
 house '39; President M. S. U. '37, '38; Secretary-Treas-
 urer '39; Winston Scholarship Winner '39; Girls' Hon-
 or Council '39; Most Intellectual Girl '39; Inter-Class
 Play Tournament '39.

ALVA C. WILLIAMS, JR. Lambert, Mississippi
Social Science
 Transfer Northwest Junior College; Football; Baseball;
 Miss Delta Staff; Best Boy Dancer '39; M Club Re-
 porter '39.

MAXWELL WILLIAMS San Angelo, Texas
Commerce
 Delta Playhouse; Home Economics Club; Nature Club.

J. C. WILSON Thomasville, Alabama
Social Science
 Transfer Jones County Junior College; Football; Base-
 ball; M Club

T H E B R O O M 1 9 3 9

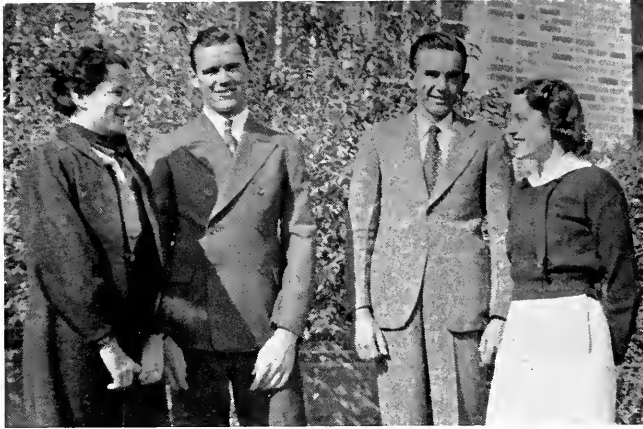


THE
CANDID
CAMERA
SEES THE
SENIORS

1. Meditation.
2. Something's up.
3. Where's Patsy.
4. The Lady relaxes.
5. Last minute cramming.
6. One alone.
- 7, 9, 12. Senior smiles.
8. Go it Delta.
10. Shew's gets a tough break.
11. Senior Snugg.
13. Block that kick.
14. Gentlemen at leisure.
15. Who else did you expect.
16. Jamie's dual personality.
17. Men only.
18. Greek gods.
19. Pipe dreams.
20. Grace confides.
21. Close harmony.

ALMA MATER

Oh Delta State, we cling to the memory
Of happy days we've spent,
Of standards high, and of friendships dear,
Making our life there something to treasure.
We have come to sing the praises
Of the old school we love best,
Oh, hail to you, to our dear Alma Mater,
Oh, hail to old Delta State.



JUNIOR CLASS

OFFICERS

JACK SUTPHEN	<i>President</i>
ROBERT LESHE	<i>Vice President</i>
MYRA HUFFSTATLER	<i>Secretary-Treasurer</i>
MISS MARY MARGARET FUGLER	<i>Sponsor</i>



T H E J U N I

NINA LOUISE BERRY Jonestown, Mississippi

MARY ALYCE BOUNDS Leland, Mississippi

KITTY S. BRANSCOME Kilmichael, Mississippi

ALICE CAMPBELL Boyle, Mississippi

THELMA CHAPMAN Hermanville, Mississippi

MARY OLIVER CLAY Tutwiler, Mississippi

WILLIAM CURTIS Greenwood, Mississippi

ELIZABETH DAVIS Cleveland, Mississippi

JCYEE DUPUY Hollandale, Mississippi

JAMES FRENCH Water Valley Mississippi

WARENE GILBERT Wiggins, Mississippi

MARY WARD GORDIN Oakland, Mississippi

O R C L A S S

FRANCES HALL Hollandale, Mississippi

CLARA B. HOLLIS Zama, Mississippi

RUTH HUFFMAN McCool, Mississippi

MYRA HUFFSTATLER Lexington, Mississippi

LULA MAE JENNINGS Cleveland, Mississippi

SARA BESS JENNINGS Cleveland, Mississippi

JASPER LA PRESTO Rosedale, Mississippi

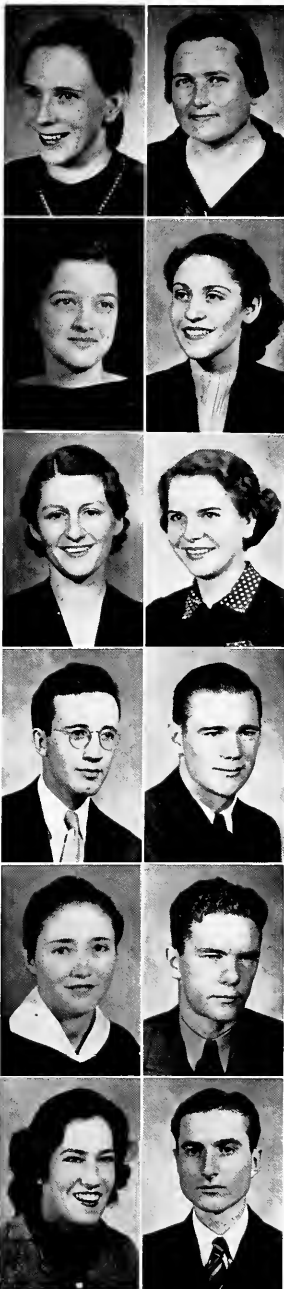
ROBERT LESHE Mattson, Mississippi

GLADYS McCAIN Merigold, Mississippi

FRED McMURRAY Courtland, Mississippi

DORIS JEAN SISSON Blaine, Mississippi

HARLEY SMITH Kossuth, Mississippi



JUNIORS



CATHERINE SNIPES Lula, Mississippi



JACK SUTPHEN Alligator, Mississippi



FRANCES SWITZER Isola, Mississippi



ELIZABETH THOMPSON Charleston, Mississippi



MARY FRANCES TURNER Sumner, Mississippi



NELLIE WALLACE Shelby, Mississippi



ERNESTINE WELLS Lula, Mississippi

JESSE WHITE Cleveland, Mississippi

MARY JEAN WILKINS Duck Hill, Mississippi

OLIVIA WILKINS Tunica, Mississippi

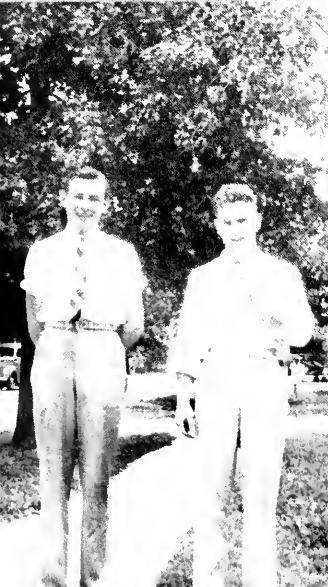
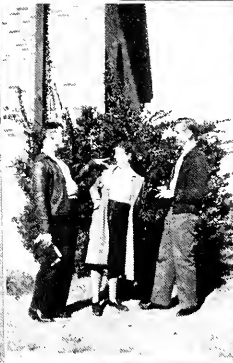
LEILA LYLE WILKINSON Waxhaw, Mississippi

MARIBETH YANCEY Hernando, Mississippi



JUNIORS

1. Miss Hollis steps into the picture.
2. President Jack
- 3, 9. Fine Art.
4. Lobbying.
- 5, 15. Waiting for dinner.
6. Autograph hounds.
7. Keeping up with the world.
8. French music.
- 10, 19. The girls go in for art too.
11. Pageant Pages.
12. Fanny herself.
13. Watch for the birds.
14. Third floor down to earth.
- 16, 18. Roman History baffles Bullrats.
17. Room mates.
20. Doris caters to books.
21. Frances thinks of a Major.





SOPHOMORE CLASS

OFFICERS

ALBERT HAND *President*

PAULINE McCoy *Vice President*

LUCILLE WILKINSON *Secretary-Treasurer*

MR. D. M. ALLEN *Sponsor*



T H E S O P H

- | | |
|-------------------|-------------------------|
| CHARLES BARBOUR | Cleveland, Mississippi |
| HELEN BECKHAM | Shaw, Mississippi |
| CATHERINE CANNON | Merigold, Mississippi |
| LE POINT CASSIBRY | Cleveland, Mississippi |
| MARTHA EVANS | Isola, Mississippi |
| MARY OLIVE EVANS | Greenwood, Mississippi |
| MARY FRANCES FOX | Charleston, Mississippi |
| SARA FREDERICK | Cleveland, Mississippi |
| CHARLES GRANGER | Kankakee, Illinois |
| ALBERT HAND | Cleveland, Mississippi |
| POLLY HARRIS | Charleston, Mississippi |
| ROBERT HENLEY | Rosedale, Mississippi |
| ROSALIE HOLMES | Kilmichael, Mississippi |
| SARA ALLIE INGRAM | Maud, Mississippi |
| CLARIECE KELLY | Cleveland, Mississippi |
| JANE MICHIE | Cleveland, Mississippi |

O M O R E S . .

CLYDE MOORE Cleveland, Mississippi

PAULINE McCOY Leland, Mississippi

PATSY McPHEETERS Cleveland, Mississippi

FANNY LOU OWEN Hollandale, Mississippi

LUKE PERKINS Water Valley, Mississippi

ERCILLE RAY Ackerman, Mississippi

ROBERT L. SHANNON Pontotoc, Mississippi

MARY EVELYN SHAW Eupora, Mississippi

ELAINE SMITH Sumner, Mississippi

NINA SPRINGER Clarksdale, Mississippi

SUE THWEATT Cleveland, Mississippi

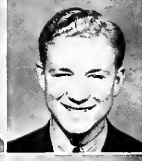
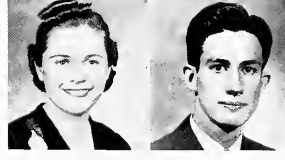
MARY VETRANO Rosedale, Mississippi

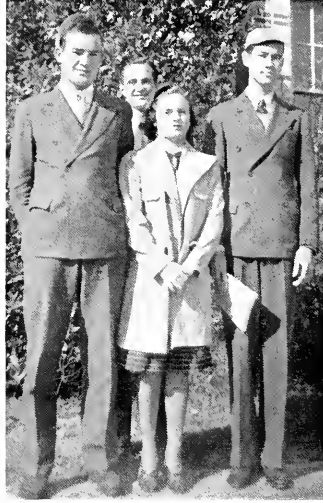
LUCILLE WILKINSON Shelby, Mississippi

WIRT A. WILLIAMS Cleveland, Mississippi

MARJORIE YOUNG Cleveland, Mississippi

HOWARD ZEIGEL Cleveland, Mississippi





FRESHMAN CLASS

OFFICERS

GARTH INGRAM

President

PITT SHEPHERD

Vice President

RUTH BUTLER

Secretary-Treasurer

MR. LANIER PRATT

Sponsor

FRESHMEN

VIRGINIA BAILEY Rolling Fork, Mississippi

RUTH BARKLEY Ripley, Mississippi

ANNE BEDWELL Cleveland, Mississippi

MARY STUART BEST Cleveland, Mississippi

EMMA BLACK Leland, Mississippi

ODELL BLAND Skene, Mississippi

MARY EUDY BOOZER Boyle, Mississippi

RITA BOYKIN Lone Oak, Texas

VIRGINIA BRADING Rosedale, Mississippi

ANNA GREEN BRISTER Shaw, Mississippi

CARRIE MAE BRISTER Rosedale, Mississippi

HAROLD BROWN Leland, Mississippi

RUTH BUTLER Webb, Mississippi

ALICE CLAY Tutwiler, Mississippi

IRENE CLEMONS Cleveland, Mississippi





T H E F R E S H

HALLE G. CROWSON

MARTHA DARBY

ANNE DORR

DOROTHY ENGLEBERG

RUBY ANNE ERWIN

CARLENE FARNED

RUBY MARGARET FISACKERLY

THOMAS GAMMILL

BERNARD GARFINKEL

LEONA GARFINKEL

EDNA GENTRY

JO NELL GREGORY

MYRA GUNTER

LEE HAMRICK

MARGUERITE HART

R. D. HEMPHILL

KATHREEN HOYLE

FRANCES HUMPHREY

Water Valley, Mississippi

Charleston, Mississippi

Alligator, Mississippi

Cleveland, Mississippi

Duncan, Mississippi

Cleveland, Mississippi

Winona, Mississippi

Skene, Mississippi

Boyle, Mississippi

Boyle, Mississippi

Baldwyn, Mississippi

Hollandale, Mississippi

Lexington, Mississippi

Crosby, Mississippi

Water Valley, Mississippi

Money, Mississippi

Itta Bena, Mississippi

Deeson, Mississippi



M A N C L A S S

GARTH INGRAM

MYRON JONES

ABRAHAM KAPLAN

EOLA LORANCE

EDYTHE LOWE

ELOISE MOBLEY

MARY JANE MYERS

RACHEL McCAIN

ROBERT McDONALD

GEORGE McFALL

MASSEY McLAURIN

DOROTHY McQUINTER

LILLIAN NEFF

LOLA OLIVER

SALLY PORTER

HAROLD CLAY RAINEY

IONE RAINWATER

ELIZABETH RINGOLD

Cleveland, Mississippi

Indianola, Mississippi

Cleveland, Mississippi

Cleveland, Mississippi

Alligator, Mississippi

Carlsdale, Mississippi

Cleveland, Mississippi

Merigold, Mississippi

Canton, Mississippi

Sumner, Mississippi

Hollandale, Mississippi

Cleveland, Mississippi

Catchings, Mississippi

Ethel, Mississippi

Indianola, Mississippi

Rich, Mississippi

Cleveland, Mississippi

Water Valley, Mississippi

FRESHMEN



HELEN ROBERTS . . . West Point, Mississippi

LAURA SANFORD . . . Crenshaw, Mississippi

WINFRED SENIOR . . . Sumner, Mississippi



JANIE SHANNON . . . Pontotoc, Mississippi

EVELYN SHARP . . . Leland, Mississippi

PITT SHEPHERD . . . Lexington, Mississippi



PAULINE SIGLER . . . Hazelhurst, Mississippi

CALVIN SIMMONS . . . Cleveland, Mississippi

KATHERINE SPENCER . . . Catchings, Mississippi



CHRISTINE TAYLOR . . . Calhoun City, Mississippi

CAROLYN TEMPLETON . . . Hollandale, Mississippi

NELL UPSHUR . . . Greenwood, Mississippi



WESLEY WALKER . . . Webb, Mississippi

CLAIRE WEIR . . . Grenada, Mississippi

DONA FAY WILKINS . . . Clarksdale, Mississippi



MAURICE WOOD . . . Eupora, Mississippi



MISS DELTA MEMOS

- Sept. 27—Freshmen and transfers galore at D. S. T. C. Amateurs try out for Delta Playhouse. The BROOM staff completed.
- Oct. 4—Such smart frosh! Tests show their knowledge plenteous. Delta Band gives initial performance.
- Oct. 18—"400" Club replaced by "Deltans." Play Day attracts many. Footlight Revue a gala event.
- Oct. 25—HOMECOMING! At that dance everyone was in his best bib and tucker—a good time was had by all.
- Nov. 1—"Be A Little Cuckoo" and "Thanks Awfully" given for students Delta State recognized by Associations.
- Nov. 8—State Student Government Conference held at Delta State. A new feature appears in MISS DELTA—Newsy Views. Remember your name?
- Nov. 15—Statesmen defeat Middle Tennessee. Judge Camille Kelly speaks to students.
- Nov. 22—Ted Shawn dancers presented under auspices of W. A. A. Demonstration School children give play in assembly.
- Dec. 13—Frances Switzer elected Treasurer for State Student Government Conference. CHRISTMAS HOLIDAYS.
- Jan. 10—Basketball schedule announced. Plans made to enroll 200 Freshmen next year.
- Jan. 24—Survey shows Bolivar County students hold majority at Delta State. Mrs. Hunt leaves for L. S. U.
- Jan. 31—Mary Oliver Clay gives beautiful recital. Carrie Mae Brister awarded Cassity Scholarship. The JEEP held amid splendor.
- Feb. 7—Carnival Ball committees named. "Murder By Morning," presented in assembly.
- Feb. 15—At it again! "Alice In Wonderland," a great success. Statesmen leave for Kansas City.
- Feb. 21—Leila Lyle Wilkinson elected president of Methodist Student Conference for ensuing year. Statesmen-Choctaw combat in Leland. Charles Granger presents band and "Miss Delta March."
- Feb. 28—Freshman Edition of MISS DELTA. Glee Club performs at Hollandale.
- March 14—Need I say more than Carnival Ball? What a grand time! Alpha Psi Omega gives pledges formal dinner. MISS DELTA in new hands.
- March 21—Dr. Boswell addresses assembly. Everybody plans to go to Mississippi Educational Association.
- March 28—Alumni Luncheon at Mississippi Educational Association. Delta State's vocal ensemble presented over W. J. D. X.
- April 4—Freshmen win Inter-class Play Tournament. Sissy Snipes and "Pippy" McFall chosen best actress and actor. Negro Minstrel planned by "M" Club and Men's Council.



Features



VIRGINIA BUTLER

Miss D. S. T. C.



SUE THWEATT

Most Beautiful



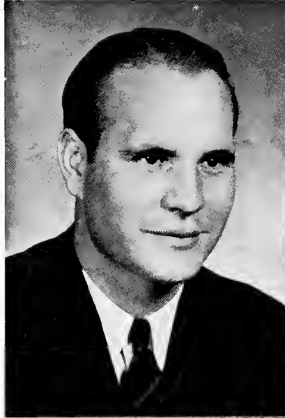
MYRA GUNTER

Most Beautiful



KATHERINE SPENCER

Most Beautiful

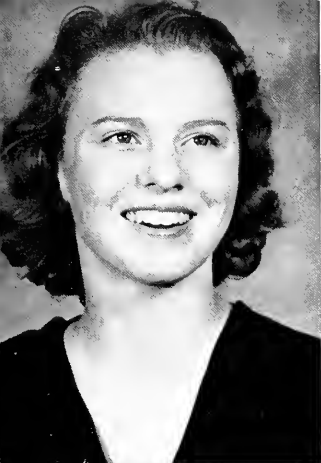


L. N. VARNADO
Best All Round Student

B. F. SMITH
Most Popular Boy

LURA ROGERS
Most Charming Girl

CATHERINE SNIPES
Most Popular Girl



Most Talented Girl Ruth Agner

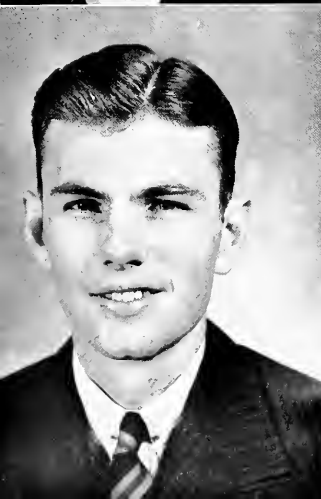
Most Intellectual Girl Peggy Wiggins

Most Intellectual Boy Jack Dunn



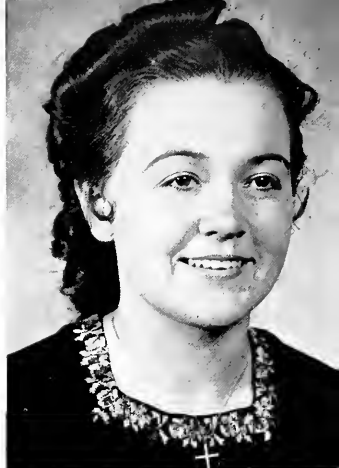
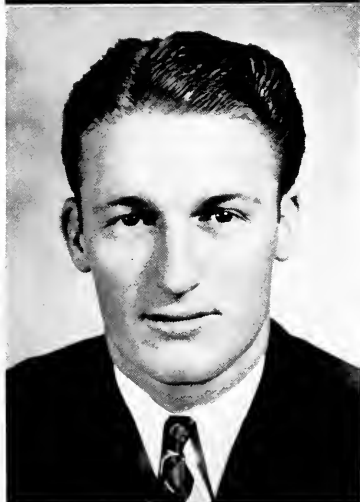
Most Talented Boy Jasper La Presto

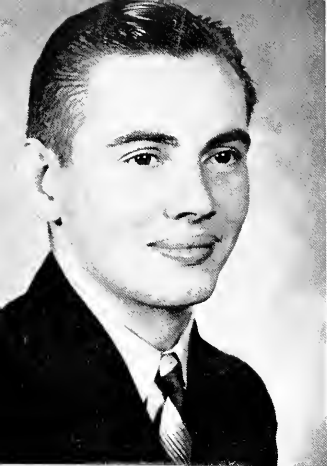
Most Handsome Boy Bill Ballard



Best Girl Athlete Nellie Wallace
Best Boy Athlete Preston Shows
Best Dressed Girl Thelma Chapman

Best Girl Dancer Martha Bogue
Best Boy Dancer A. C. Williams





Best Dressed Boy

Luke Perkins

Wittiest Girl

Martha Evans

Wittiest Boy

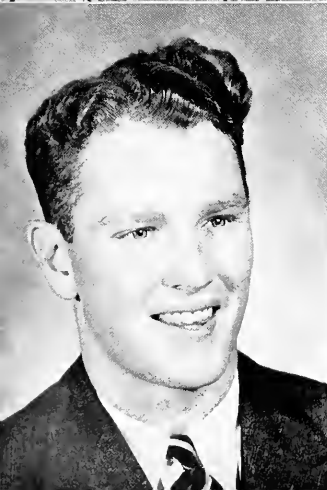
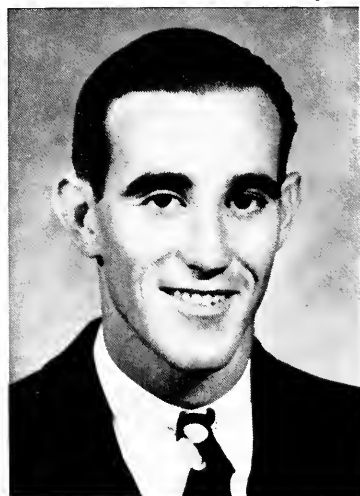
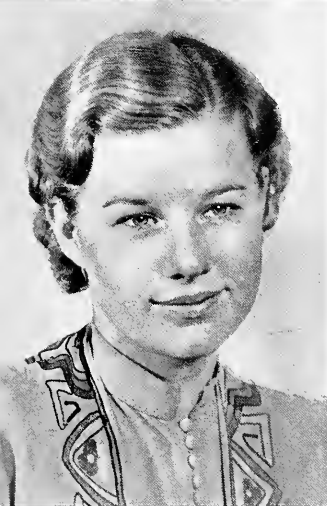
Albert Hand

Most Courteous Boy

William Curtis

Most Typical Freshman

Robert McDonald





Organizations



LOUIS N. VARNADO, *President*
O F T H E S T U D E N T B O D Y

Having served his second year as President of the Student Body, Varnado has completed a record of unprecedented student leadership. He has succeeded in bringing about a more democratic Student Government, having this year instituted open forum meetings, in which students may constructively solve many of their problems

THE STUDENT CABINET

JACK SUTPHEN

President

RUTH AGNER

Vice-President

LORA SIMS

Secretary-Treasurer

Clifton Bishop

Louise Berry

Albert Hand

L. N. Varnado

The Student Cabinet, chief governing body on the campus, is the organization through which students voice their opinions and needs. The function of the Cabinet is to administer student government and to plan recreational activities through cooperation with the administration of the school. The 1938-39 Cabinet has made the student government more cross-sectional of the entire student body.





MISS DELTA STAFF

EDITORIAL STAFF

Managing Editor

Senior Editor

Senior Editor

Senior Editor

Associates—HARLEY SMITH, WIRT WILLIAMS, JR., CATHERINE SNIPES,
JAMIE BARHAM, ERNESTINE WELLS, L. N. VARNADO.

JASPER LAPRESTO

VIRGINIA BUTLER

JACK DUNN

MARY ELIZABETH HOUSE

BUSINESS STAFF

Business Manager

Assistant Business Manager

Assistant Business Manager

Circulation Manager

Assistant Circulation Manager

Sponsor

JASPER LAPRESTO

RUBY ANNE ERWIN

CHARLES MORRIS

HARLEY SMITH

LEE HAMRICK

MR. DOUGLAS ALLEN

"Miss Delta" is the weekly newspaper published by the students at Delta State Teachers College. The 1938-39 Staff has produced the finest publication that has ever been issued here.



WOMEN'S HONOR COUNCIL

VIRGINIT BUTLER
VIRGINIA ADKISSON
FRANCES SWITZER

President
Vice-President
Secretary-Treasurer

Peggy Wiggins
Sara Ingram
Nina Springer
Claudia Roberts

Martha Conley
Mary Ellen Arnold
Lucille Wilkinson
Joyce Dupuy

Claire Weir

As a connecting link between the student body and the administration, the Women's Honor Council is instrumental in developing on the campus, an atmosphere of good will and fellowship.

MEN'S HONOR COUNCIL

JASPER LAPRESTO *President*
CLIFTON BISHOP *Vice-President*
CYRIL WHITE *Secretary-Treasurer*

Bill Mann
J. T. Owen

Ray Ricks
S. A. Swearengen

The Men's Honor Council represents an intelligent effort on the part of young college men to govern themselves with a minimum of rules and regulations, and a maximum of good fellowship.



THE WOMEN'S GLEE CLUB

GRACE DYCK

President

LURA ROGERS

Vice-President

DOROTHY CURRIE

Librarian

CLAUDIA ROBERTS

Business Manager

Virginia Brading
Carrie Mae Brister
Sue Branscome
Mary Oliver Clay
Alice Clay
Elizabeth Byrne
Warrene Gilbert
Myrtle Lindsey
Ruth Walters
Helen Roberts
Myra Gunter
Fannie Lou Owen
Lola Oliver
Helen Payne

Pauline Sigler
Mary Frances Turner
Joy Summerville
Olivia Wilkins
Gene McKinney
Alice Campbell
Mary Vetrano
Jo Nell Gregory
Ovene King
Lillian Neff
Elaine Smith
Claire Weir
Nellie Wallace
Bonnie Bess Crutchfield

Isabelle Pullen

The 1938-39 session has been a very successful one for the Women's Glee Club. This organization, under the direction of Mr. C. B. King, has broadcast from Memphis and Jackson stations and has brought credit to themselves and Delta State Teachers College.





THE ORCHESTRA

Clarinets

Helen Payne
L. A. Farmer
Wesley Walker
Paul Howell

Jesse White

Edna Kearney
Charles Granger
Faye Lee

Saxophones

Robert Henley
Massey McLaurin

Pianist

Olivia Wilkins

Trumpet

Hale Crowson

Trombones

Sally Porter
Albert Hand

Violins

Dorothy Walker

Mellophones

Muriel Biles
Hazel Henry

Miss Edna Nunnery, Conductor

The College Orchestra gives students an opportunity to participate in musical activities and to make public performances.



T H E Y . W . C . A .

PAULINE TAYLOR	<i>President</i>
ANNE LAURA WARD	<i>Vice-President</i>
MYRTLE LINDSEY	<i>Secretary-Treasurer</i>
ABBIE FOWLER	<i>Program Chairman</i>
LURA ROGERS	<i>Chorister</i>
OLIVIA WILKINS	<i>Pianist</i>
MISS GLADYS CASTLE	<i>Sponsor</i>
MISS EDNA NUNNERY	<i>Sponsor</i>

The Y. W. C. A. has been more active than ever before at Delta State. The membership, numbering over fifty, was the largest in its history.

ALPHA PSI OMEGA

LOUISE BERRY *President*
CHARLES MORRIS *Vice-President*
MABEL CAMERON *Secretary-Treasurer*

Catherine Snipes

William Botkin

Jesse White

Polly Coleman

Peggy Wiggins

Miss Mary Margaret Fugler, *Sponsor*

The Alpha Psi Omega is a National Honorary Dramatic Fraternity. The Delta State Chapter purposes to further interest in good drama.





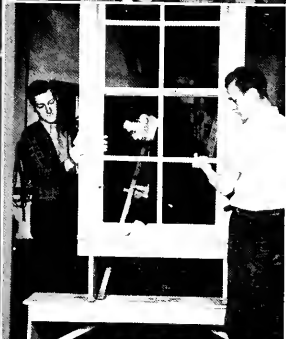
DELTA PLAYHOUSE

BILL BALLARD
President

CHARLES MORRIS
Vice-President

PEGGY WIGGINS
Secretary-Treasurer

MISS MARY MARGARET
FUGLER
Sponsor



Louise Berry, Mabel Cameron, Polly Coleman, Patye Curry, Grace Dyck, Ovene King, Jasper LaPresto, B. F. Smith, Catherine Snipes, Jesse White, Olivia Wilkins, Wirt Williams, Bill Botkin, Maribeth Yancey, Virginia Mayhall, Winfred Senior, Alice Clay, Mary Vetrano, Euginia Bays, William Curtis, Ernestine Wells, Mary Alyce Bounds, Warene Gilbert, Howard C. Raney, Leila L. Wilkinson, Mary E. House, Anne Bedwell, Ione Rainwater, Mary J. Myers, Eola Lorance, Ruby M. Fisackerly, Marie Motley, Mary F. Turner, Thomas Gammill, Elise Mobley, Celeste Johnson, Abbie Fowler, Lorene Eddins, Frances Humphrey, Marjorie Young, Jane Michie, Sue Branscome, Margaurite George, Garth Ingram, Ruth Barkley, Maxwell Williams, Sara Ingram, Sophie Gritman, Elizabeth Byrne.

ELEMENTARY CLUB

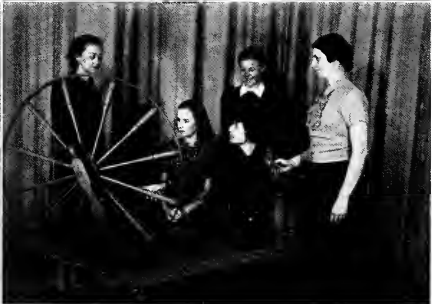
BARBARA BUSH
President

MYRTLE LINDSEY
Vice-President

JOYEE DUPUY
Secretary-Treasurer

Annie Laurie Chapman,
Frances Hall, Mary Ellen Arnold,
Rosalie Holmes, Christine Taylor,
Hazel Martin, Fannie Lou Owen,
Lucille Wilkinson, Sara Bess Jennings,
Alice Campbell, Ruth Walters, Mary Evelyn Shaw,
Kathryn Wamble, Sara Ingram,
Gladys McCain, Mary Alyce Bounds,
Mabel Cameron, Edna Kearney, Miss Mary Royce Eckles,
Miss Maud Cain, Miss Jane Oliver,
Mrs. Dorothy McClain Causey.





HOME ECONOMICS CLUB

POLLY COLEMAN

President

ELIZABETH KENNEDY

Vice-President

ABBIE FOWLER

Secretary-Treasurer

MRS. ELIZABETH STAMPS

Sponsor

Charlotte Bachman
Martha Evans
Frances Harden
Glenda Ingram
Ann Bedwell
Catherine Cannon
Lula Mae Jennings
Edythe Lowe
Katherine Malone
Hazel Martin

Ruth Moore
Ione Rainwater
Eleanor Ramey
Ercille Ray
Elizabeth Ringold
Lura Rogers
Gladys Smith
Katherine Spencer
Claire Weir
Ernestine Wells

Maxwell Williams

The Home Economics Club is the social unit organized for those who are interested in the field of Home Economics.

THE NATURE CLUB

S. A. SWEARENGEN
PAULINE TAYLOR
WILLIAM CURTIS
MR. R. L. CAYLOR

President
Vice-President
Secretary-Treasurer
Sponsor

Ruby Anne Erwin
Mary Evans
Edna Fowler
Jesse Frederick
Frances Hall
Lee Hamrick
Frances Humphrey
Garth Ingram
Bill Mann
Lora McCarthy
Lola Oliver

Richard O'Rourke
Helen Roberts
Calvin Simmons
Doris Jean Sisson
Gladys Smith
James Stafford
Christine Taylor
Carolyn Templeton
Ruthel Turner
Anne Laura Ward
Maribeth Yancey

The Nature Club was organized to further the interest in Science. It is designed to help future teachers as they go into the field.



WOMEN'S ATHLETIC ASSOCIATION

JAMIE LAURA BARHAM
RUTH WALTERS
SUE THWEATT
MARTHA CONLEY
MISS ETHEL CAIN
MRS. SARA HUNT

President
Vice-President
Secretary-Treasurer
Reporter
Advisory Member
Advisory Member

Virginia Adkisson
Mary Ellen Arnold
Anne Bedwell
Martha Bogue
Virginia Butler
Thelma Chapman

Nell Dean
Carlene Farned
Ruby Margaret Fisackerly
Edna Fowler
Clara Hollis
Mary Celeste Johnson

Edna Kearney
Faye Lee
Jane Michie
Nellie Wallace
Leila Lyle Wilkinson
Marjorie Young



T H E " M " C L U B

CYRIL WHITE
 CLIFTON BISHOP
 PRESTON SHOWS
 A. C. WILLIAMS
 J. C. WILSON

President
Vice-President
Secretary-Treasurer
Reporter
Sargeant-at-Arms

Ben Bailey
 Bill Ballard
 Jeff Bogue
 Max Day

G. B. Edgar
 Wayne Harris
 Robert Leshe

Fred McMurry
 Ray Hicks
 Louis Thornton
 James Goodman

The "M" Club is made up of boys who have won a letter in a sport at Delta State.





T H E B R O O M

The BROOM here gives you a few glimpses into the process of making a year-book. General plans are made. Then photographers, art editors, class editors, business managers, athletic editors, activities editors and typists have to complete their various jobs before the bulk of material can be assembled and sent to print.





and it's STAFF..

RUTH AGNER
 B. F. SMITH
 GLADYS McCAIN
 MARY ALYCE BOUNDS
 SUE THWEATT
 LE POINT CASSIBRY
 BARBAR BUSH
 MARTHA BOGUE
 NINA SPRINGER
 JAMIE BARHAM
 BILL BOTKIN
 JESSE WHITE
 VIRGINIA ADKISSON
 FRANCES SWITZER
 MARY OLIVE EVANS
 RUTH BARKLEY
 NELLIE WALLACE
 CLIFTON BISHOP
 THELMA CHAPMAN
 EDNA KEARNEY
 MISS GRACE GAW

Editor
Business Manager
Assistant Editor
Assistant Business Manager
Assistant Business Manager
Assistant Business Manager
Art Editor
Assistant Art Editor
Assistant Art Editor
Activities Editor
Activities Editor
Photography Editor
Senior Editor
Junior Editor
Sophomore Editor
Freshman Editor
Athletic Editor
Athletic Editor
Typist
Typist
Faculty Advisor

Who's Who

AMONG STUDENTS IN AMERICAN UNIVERSITIES AND COLLEGES . . .

The annual publication of "Who's Who Among Students In American Universities and Colleges" this year included Delta State Teachers College for the first time. A representation of six students was allowed. Because of outstanding leadership and for service rendered the college, the following students were chosen to represent the student body:

L. N. VARNADO

VIRGINIA BUTLER

JASPER LA PRESTO

VIRGINIA ADKISSON

RUTH AGNER

JACK SUTPHEN

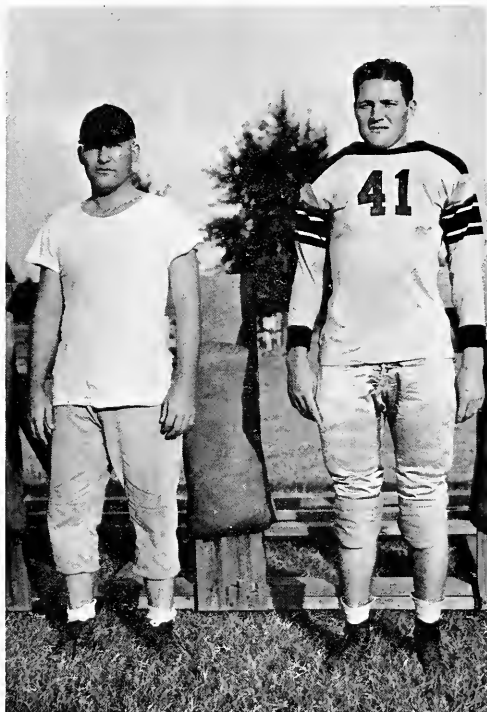


Athletics

F O O T B A L L

D. S. T. C.'s athletic mentor, Alec Dickson, has done a splendid job of sports here. This is Coach's third year with us and we hope that he will be with us for many years to come. He is not only a builder of athletes, but he is also a builder of friends. Coach is one of the most popular members of the Faculty.

Louis Thornton, Statesman Captain, handled his duties well on the practice field as well as in the games. He is also a valuable member of our basketball and baseball squad.



Cheerleaders . . .

Charlie Morris, "Hootie" Thompson, Martha Bogue, "Shine" Hemphill, and Luke Perkins, as Delta's Cheerleaders, have made D. S. T. C. one of the peppiest schools in the S. I. A. A., at all athletic events. We can say that Delta State's School Spirit has increased at least one hundred per cent, due to their efforts.



FOOTBALL *at* DELTA STATE

A bird's eye view of the Statesmen shows us Athletic Director A. D. Dickson, Assistant Coach Howard Shook, Trainers Ray Ricks and Mac Day, and twenty-eight gridmen. Howard Shook, first assistant coach at Delta State, deserves a great deal of praise for his work in helping Coach Dickson iron out defects in individual players.

Even though the Statesmen were not so very successful in the number of games won, it must be remembered that Delta State played the top-notchers of the S. I. A. A. The season opened with Southwestern Louisiana Institute of Lafayette, La., where Delta trailed by a 19-0 score. The last game was with the S. I. A. A.

champions, Memphis Teachers, which resulted in an 8-0 score. The two bright spots of the season were against Troy, Alabama Teachers on Homecoming Day, and Middle Tennessee Teachers on Armistice Day.

The "Wrecking Crew," as the Freshmen were known, was composed of Wynn, McDonald, Senior, Magers, Boyd, and Walker. Though they are not in the above pictures, we are expecting them to be in the front row next year.

Both trainers and twelve members of the squad will be lost by graduation, but prospects for the coming year seem brighter because of the remaining Juniors, Sophomores and the "Wrecking Crew."

The college band supports the team



A.C. Williams in action



Warming up

The '38-'39 SQUAD

39—Preston Shows, (Sr.), outstanding athlete of the season, came up to the highest expectations as Delta's most consistent ground gainer. Even a broken arm didn't slow him up much.

24—J. C. Wilson, (Sr.), whose regular position was end, was really a general utility man, in that he did everything from calling signals to catching passes.

A new angle on the football player



30—Cyril "Bub" White, (Sr.), was a good, consistent end, especially noted for his ability to keep up the "pepper."

40—Jeff Bogue, (Sr.), Delta's 200 lb. left tackle, wrecked havoc with the opponents' line by hard drive and quick follow-up.

23—Gardner Sanders, (Sr.), was both center and guard for Delta. Despite his size, his spirit and uncanny ability to sift through the opponents made him an outstanding cog in Delta State's wheel of defense.

34—G. B. Edgar, (Sr.), was center or guard on offense, and line backer on defense. His job was to fill the holes on the defense and was accomplished in a most effective manner.

28—Rod Smith, (Sr.), was a utility linesman, by playing either guard or tackle, and will be greatly missed in Delta's next campaign.

22—A. C. Williams, (Sr.), came to Delta State from Northwest Junior College. Though a regular for only one year, he has demonstrated his ability, as a quarterback, to maneuver a football team.

33—Clifton Bishop, (Sr.), was the only man who played every minute of the past season. His ability to kick and to back the line made him invaluable to the Statesmen.

18—James Goodman, (Sr.), was lean and lanky, and a good influence on the team.

16—Bill Botkin, (Sr.), joined the squad for the first time this year. To speed he added a clear, snappy diagnosis of plays and thus developed into a jam-up back.





- 38—Glen “Stumpy” Thompson, (Jr.), was Delta’s outstanding end. He was held up most of the season by an injured leg, but we’re expecting great things from him next year.
- 17—James McKelvy, (Jr.), was most promising of Delta’s guards. He could penetrate any of the opponents’ lines and throw them for losses. The Student Body should watch him next season.
- 20—Wayne “Snooky” Harris, (Jr.), was a back who could hit the line, reminding us of Chuck, (Charlie Thomas, ’38).
- 29—Edward “Dopey” Glover, (Jr.), came into his own midway of the season, and continued to improve the remainder of the time.
- 35—Bill Ballard, (Jr.), was playing a wonderful game at right-end, when he was shifted to the tailback position. Here he made an even better man with his running and his easy-to-catch passes.
- 12—Manley Reeves, (Jr.), is better known as “Little Man.” A harder to tackle ball-carrier wasn’t known on the team until a shoulder injury kept him out of most of the last games.
- 31—“Sonny Boy” Gordon, (Jr.), showed great promise as a runner and blocker. He should be one of Delta’s “Four Horsemen” when the Statesmen meet the best the S. I. A. A. has to offer.
- 27—Bob Leshe, (Jr.), was changed from end to guard. It was a pleasure to see Bob come out of the hole and lead interference, knocking over all who tried to stop him.
- 37—Earl Buckley, (Jr.), joined the ranks after two years at S. J. C. His Grade A defense made him a problem for the opponents’ line players.
- 36—Fred Poe, (Jr.), should have been twins. He was an excellent passer, and could catch them when it seemed impossible.
- 26—H. H. Rowell, (Jr.), was hard to stop when he lowered his red head and charged forward from his tackle position.
- 42—Roscoe Bryson, (Jr.), was another 200 pound tackle. Coming from Hinds Junior College with two years’ experience, he was a welcome addition to the squad.
- 19—Fred McMurry, (Jr.), has been developing into a splendid blocking back, and by adding his spirit to his love of the game, you have an asset to any team.
- 25—Charles “Hoss” Barbour, (Soph.), was the “southpaw” of the passing staff. Opponents couldn’t tell whether he would pass or run. This with his signal calling will contribute greatly to next year’s football assets.
- 32—Lawrence “Early” Shannon, (Soph.), was the only Soph. Linesman. His never-give-way guard work was of the best.
- 21—William “Art” Castle, (Soph.), was the third of the Soph Trio. His work as a line-backer commanded the respect of the opposing ball-carriers.





B A S K E T B A L L

Manley Reeves

Willie Gillan

Preston Shows

James Goodman

Fred McMurry

Luther Marl

Bob Leshe

Louis Thornton

Max Day

Ray Ricks

Willard Overton

G. B. Edgar, Manager

On the gym floor, Delta State presented a quintet second to none in the Tri-States. They hold the record of not suffering a defeat before the student body in two years.

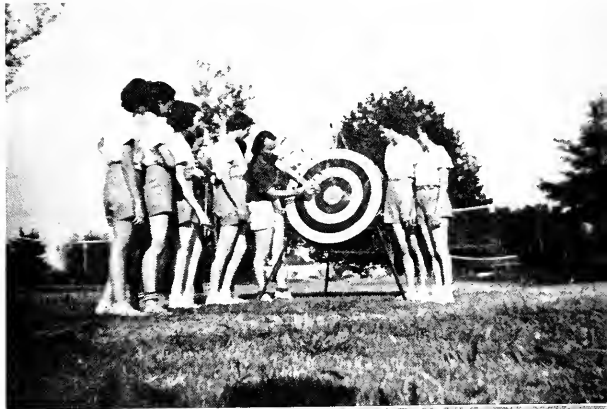
Although the team didn't advance so far in the S. I. A. A. and National Tournaments, the student body is very proud of them and will never forget their masterful performances. The Statesmen defeated such strong teams as Millsaps, Miss. College, Murray, and Troy.





WOMEN'S ATHLETICS

The department of Women's Physical Education is directed by Miss Ethel Cain and Mrs. Sarah Hunt.



Delta State Teachers College has a varied program in Physical education in which everyone finds some activity. Some of these activities are:

Soccer, Basketball, Aerial Darts, Badminton, Table Tennis, Shuffleboard, Softball, Dancing, Tumbling, Etc.

The aim of our Physical Education program is to teach people to play and to create a love for sports which will carry over in private and professional life.



*Archery
Pirouette Club*



Wedding Scene

Wedding Altar Dance

The P A

The spring pageant presented by the Physical Education Department has become one of the most interesting events at Delta State Teachers College.

Pandora, the pageant illustrated, was presented on May 19, 1938. The theme was taken from the myth, "Pandora," by M. L. Hutchison in his book, *Orpheus And His Lute*. The pageant concerns itself with the Greek legend of creation.

Briefly, the story is as follows:

The gods of Greek legend had taken a great deal of interest in the promotion of mankind on the Earth.

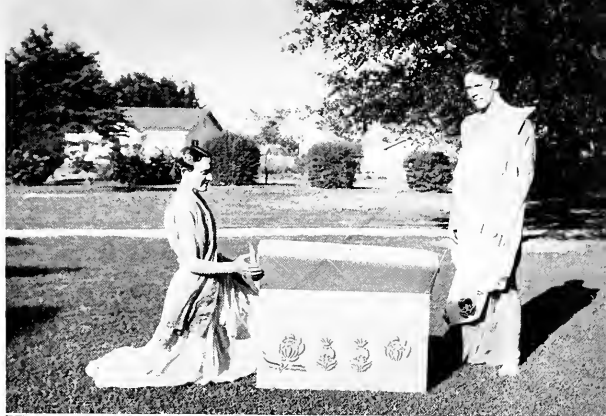
One day a mortal, Prometheus, crept into the abode

Dance of the Golden Ball



GEANT

of the gods and stole fire, which he carried back to earth. This so angered Zeus, chief of the gods, that in order to get revenge on mankind, he created Pandora, a beautiful woman, and gave her unbounded curiosity and a very ornate chest. Pandora met and was married to Prometheus. They were quite happy until Pandora's curiosity got the upper hand of her, and she opened the chest. All the evils that Zeus could imagine poured forth to worry mankind eternally. Prometheus, who came just in time to see the chest of evils set free, despaired of life, but the spirit of Hope emerged from the chest and encouraged him to face his many trials and tribulations.



Pandora's Box

Dance of Fire



*Dance of
Fear*



The Greek Wedding



Dance of Ignorance



Imps in Action



Dance of Fear

P A G E

Greek Soldiers



Greek Sacrificial Dance



A N T ..

Dance of Disease



The Gods Asleep





Shield WINNERS

To receive a shield a girl must excel in a variety of sports. 100 points are allowed for each major All-Star team made. Minor sports carry 25 to 75 points. Membership in the W. A. A. Pirouette Club, and making the basketball officiating team give points. 1,000 points are required to make a shield.

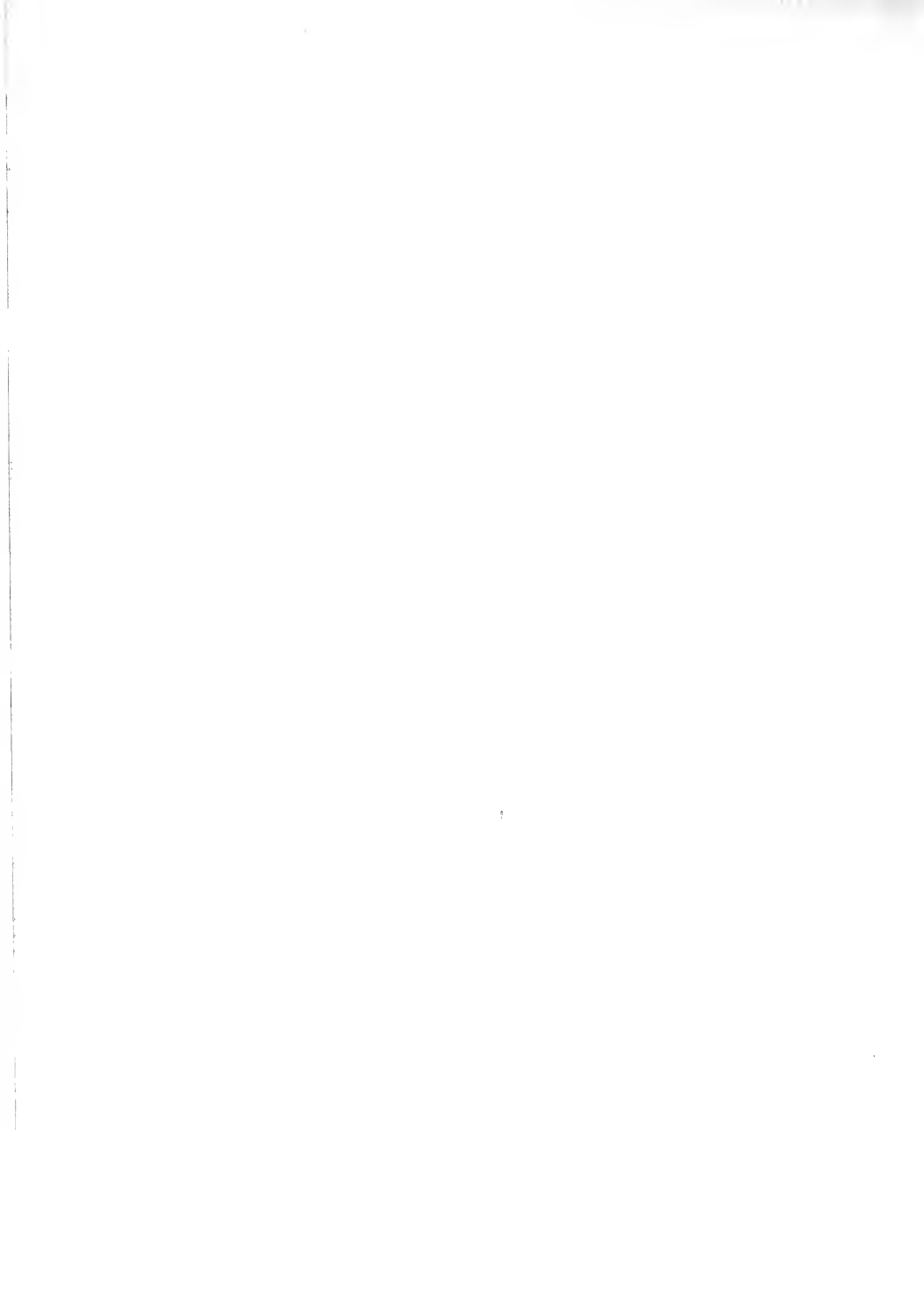
Nellie Wallace and Edna Kearney made shields this year. Due to the late announcement of Edna's winning the honor, her picture does not appear.

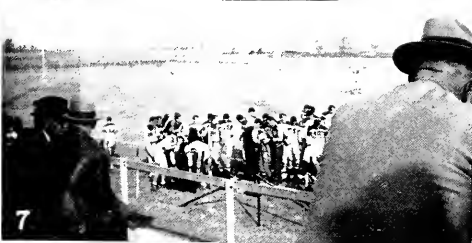
Those girls who excel in a sport make the All-Star team. When two All-Star teams are made, a plate is awarded. The following girls are qualified for plates in 1938-39.

MARTHA CONLEY
PAULINE HAWKINS
CLARA HOLLIS
CELESTE JOHNSON
EDNA KEARNEY
FAYE LEE
NELLIE WALLACE
LEILA LYLE WILKINSON
THELMA CHAPMAN



Student Life





DELTA STATE CARRIES OUT THE SEVEN CARDINAL PRINCIPLES OF EDUCATION . . .

PROMOTION OF GOOD HEALTH

1, 2, 3. We sponsor a Playday. 4 Games for all. 5. The water's fine. 6. Let's have an ace.
7. Spectator sports. 8. Touchdown Delta.



GOOD CITIZENSHIP

1, 4 Among the Alumni— Superintendent Lowe, Mr. and Mrs. Bill McCam, and Artist Nathan House. 2 Mrs. Nathan House, also an artist. 3. Proud parents. 5. School mairns Gilley and Bird-sing. 6 The band does its part. 7. Old friends—Cely and Mr. Kethley. 8. Coach Flack. 9, 11. Campus Leaders. 10. They also serve who only stand and yell.



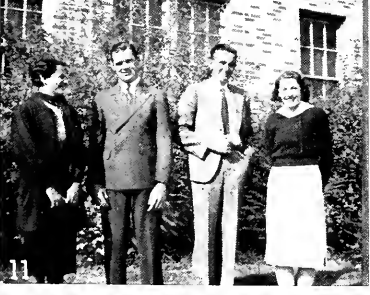
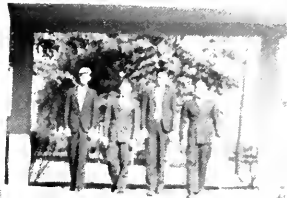
WORTHY HOME MEMBERSHIP

1. Where friends meet friends. 2. Fun after supper. 3. 5. Intellectual interludes. 4. Bull session. 6. The conqueror smiles. 7. Men at work. 8. Cleveland Hall's own "Ma". 9. The Barbershop Quartet.



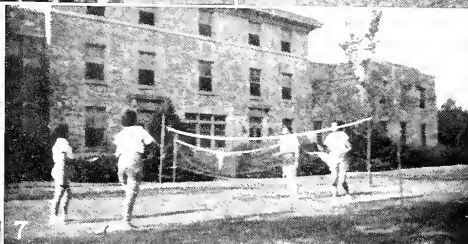
FUNDAMENTALS OF LEARNING

1,5 Microbe hunters. 2. A girl's best friend is her book. 3. Behind the scenes with play producers. 4. Gentleman of the press. 6. News and views. 7, 8. Research. 9. Beauty and the Book.



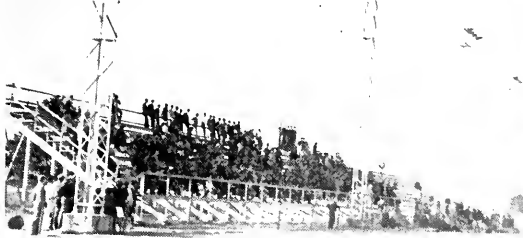
ETHICAL CHARACTER

1. Future leaders. 2. Rev. Jack Dunn. 3, 11. Class leaders. 4. B. S. U. cabinet. 5, 8. Dean Zegel and President Kethley. 7. M. S. U. Cabinet. 9. The Christmas pageant. 10. Y. W. C. A. Council. 12. The Student Cabinet.



WORTHY USE OF LEISURE TIME

1. Coming Home
2. Football Form
3. Freshmen and flute
4. Picnicing
5. Sitting
6. Bowling
7. Badminton
8. Rest between halves
9. Helping the roommate
10. Prof. Sanderson takes a walk
11. Remember Play Day



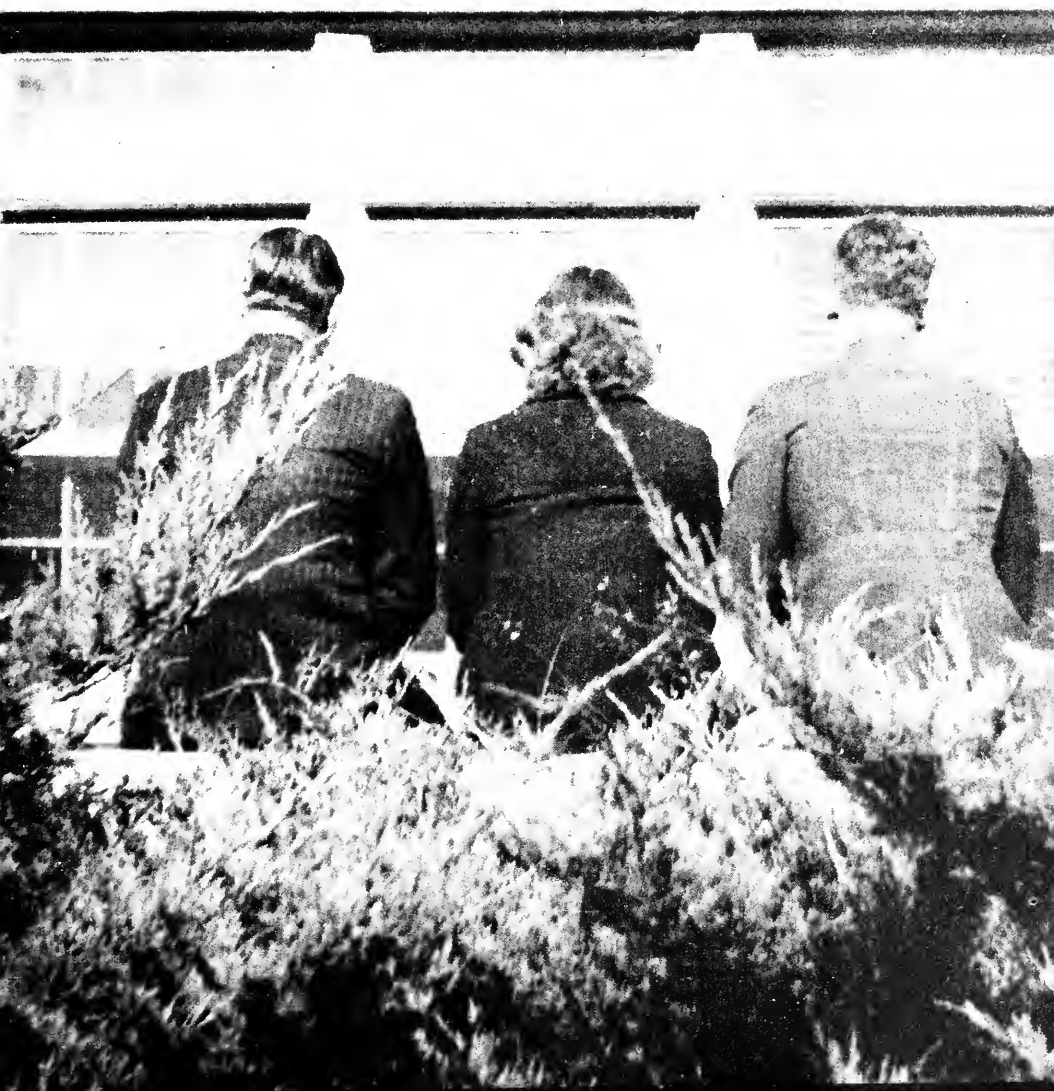
WORTHY USE OF LEISURE TIME

1. Backing the team. 2, 8. Pep meeting. 3, 5, 6. A very popular use of leisure time. 4. Football sponsors and escorts. 7. Jolly good company. 9. The pause that refreshes. 10. Off for the weekend. 11. Ship Ahoy!



VOCATIONAL SKILL

1. The trumpeter. 2. A study in black and white. 3. The dance quartet. 4. The band plays.
5, 7. Blockprinting. 6. The violin ensemble



Our Backers

MISSISSIPPI DELTA STATE TEACHERS COLLEGE

A Standard Four Year Institution for Higher
Education Offering Equal Opportunities to Young
Men and Women
Cleveland, Mississippi



In The Heart of The Mississippi Delta



Write for Catalogue

Address:

The Secretary

DELTA STATE TEACHERS COLLEGE

CLEVELAND, MISSISSIPPI

Compliments Of



Cleveland National Bank

CLEVELAND, MISSISSIPPI

If it's used in an office we have it

LAWRENCE'S PRINTING COMPANY, Inc.

OFFICE OUTFITTERS

LITHOGRAPHING—BINDING

221-225 WEST MARKET STREET

GREENWOOD, MISSISSIPPI

CLEVELAND LAUNDRY

"Headquarters for DELTA STATE'S Dirty Work."

WHEN CLOTHES ARE DIRTY

RING 230

CLEVELAND, MISSISSIPPI

ELMER NOWELL LUMBER COMPANY

"BUILD A HOME AND BE HAPPY"

CLEVELAND, MISSISSIPPI

SAFETY—STRENGTH—SERVICE

BANK OF CLEVELAND

"THE FRIENDLY BANK"

Students And Teachers Are Welcome

CLEVELAND, MISSISSIPPI

Fletcher Funeral Home

Courteous and Efficient

Service 24 Hours A Day

Phone 318

Cleveland, Mississippi

**Planters Equipment
Company**

McCORMICK-DEERING

FARM MACHINES

IMPLEMENTS

AND TRUCKS

Cleveland, Mississippi

Compliments of

**Cleveland Lumber
And Supply Company**

Phone 311

Cleveland, Mississippi

When You Buy Meat,

Remember There Is

No Substitute For

Quality. We Suggest

You Try ABROS Meat

Products

**ABRAHAM BROS.
PACKING COMPANY**

Memphis, Tennessee

NANCE WHOLESALE COMPANY

CLEVELAND, MISSISSIPPI

Furnishes You With Good Wholesome Food

**OWEN'S
DRUG STORE**

J. H. OWEN, *Proprietor*

COCA COLA, PRESCRIPTIONS

SUNDRIES

Phone 166

Delivery

Cleveland, Mississippi

I. A. KAMIEN

FOOT FASHION SHOES

SHIRTCRAFT SHIRTS

Complete Stock of

LADIES- READY-TO-WEAR

MEN'S CLOTHING

Cleveland, Mississippi

**MORGAN &
LINDSEY**

STORES OF COURTESY

Showing a Very Complete

Line of Merchandise

From

5c To \$1.00

C. E. JORDAN & CO.

FURNITURE

Cleveland—Greenville

THE GOYER COMPANY

WHOLESALE GROCERIES

MANUFACTURERS OF PURE GOLD COFFEE

Distributors of OMEGA FLOUR

MODERN COLD STORAGE

**THE BOLIVAR
COMMERCIAL**

JOB PRINTING

OFFICE SUPPLIES

Cleveland, Mississippi

Compliments of

SHOENHOLZ

DEPARTMENT STORE

EVERYTHING TO WEAR

Cleveland, Mississippi

**PACE SEED &
SUPPLY COMPANY**

SEED FEED

FERTILIZERS

Cleveland

Indianola

CARL C. DAVIS
PRINTING &
PUBLISHING COMPANY

PRINTERS

STATIONERS

OFFICE SUPPLIES

FURNITURE

Phone 76

Cleveland, Mississippi

THE PARISIAN

CLEVELAND, MISSISSIPPI

HEADQUARTERS

FOR

DELTA STATE COEDS

**CLEVELAND
ENTERPRISE**

Published Every Wednesday

JOB DEPARTMENT

OFFICE SUPPLIES

Phone 22

"We're For Delta State"

Cleveland, Mississippi

KAPLAN'S MEN'S SHOP

CLEVELAND,
MISSISSIPPI

FOR

STYLE

And QUALITY

THE STYLE SHOP

Cleveland, Mississippi

Kennedy Motor Co.

COMPLETE FORD

SERVICE

Cleveland, Mississippi

COMPLIMENTS

OF

Wonder Bread Bakery

THE ELLIS

AND THE

REGENT THEATRES

COLLEGE RATES

BILL ELLIS, *Proprietor*

Cleveland, Mississippi

ENERGY UP

DRINK

DR. PEPPER

At 10, 2 and 4 o'Clock

DELTA BEVERAGES

Phone 602

Greenville, Mississippi

THE TWINS OF POWER



Have you ever tried Woco Pep Motor Fuel and Tiolene 100% Super Pennsylvania Motor Oil?

Stop by your nearest Pure Oil Dealer and give your motor a treat to the best . . . The Pure Oil dealer is easily identified by the Pure Seal Sign . . . Patronize him . . . He is your Friendly Neighbor.

Yale Tires are the best that money can buy . . . Made by the General Tire and



Rubber Co., exclusively for The Pure Oil Co., and its distributors.

THE MID-SOUTH OIL COMPANY

Distributors of Pure Oil Company Products
General Offices: Memphis, Tennessee

Drink

BARQ'S

"It's Good"

LELAND OIL WORKS

COTTON SEED PRODUCTS

LELAND, MISSISSIPPI

COMPLIMENTS OF

PIDGEON-THOMAS IRON COMPANY

MEMPHIS, TENNESSEE

**Eyes
Without
Birthdays**

Sparkling, Happy, Carefree Eyes
Aren't A Matter of Birthdays.
Many A Youngster, Just Starting
The Battle of Life Is Already
Handicapped by Defective Vision.

**Sight Is Priceless
Light Is Cheap**

Many an Older Is Free of Eye-
strain—Through the Aid of Plenty
of Glareless Light For Easy, Com-
fortable Seeing. You, too, May
Have Eyes Without Birthdays—
If You Have Your Eyes Exam-
ined Regularly, and Use Modern
Light Conditioning.

MISSISSIPPI POWER AND LIGHT CO.

**CLEVELAND
SERVICE STATION**

Phone 131

SINCLAIR PRODUCTS

FREE ROAD SERVICE

Everything For The

Motorist

MATTIE'S PLACE

"Delta State's

Roundevouz"

GOOD EATS

Phone 45

Cleveland, Mississippi

Compliments of

**DENTON
MANUFACTURING
COMPANY**

Soda Fountain

Luncheonette

Swimming Pool

Cleveland, Mississippi

**THE COLLEGE
BOOK STORE**

The Place To Meet

Your Friends Between

Classes

Books

Supplies

Confections



EXTENDING OUR APPRECIATION
TO THE FACULTY AND STUDENT
BODY FOR THEIR SPLENDID COOP-
ERATION IN HELPING US TO PRO-
DUCE THE PHOTOGRAPHIC WORK
IN THIS ANNUAL



Cole Studio

Yvette M. Cole

PHOTOGRAPHER

Jackson, Mississippi

**FEDERAL COMPRESS &
WAREHOUSE COMPANY**

SERVICE IMPARTIALLY RENDERED

Cleveland, Mississippi

Compliments of

**THWEATT
FUNERAL HOME**

INSTITUTION
FOUNDED
ON
PRINCIPLES

Cleveland, Mississippi

Compliments of

**HIGHWAY
MATERIALS CO.**

Jackson, Mississippi

Compliments of

**AMERICAN STANDARD &
RADIATOR SANITARY CORPORATION**

666 Beale Avenue

Memphis, Tenn.

ECONOMICAL-PERMANENT

FIREPROOF CONSTRUCTION

DOUBLE WALL CONCRETE BUILDINGS

For Full Information write

SUPEROCK COMPANY

Empire Building

Birmingham, Alabama



This Annual
is a
PARAGON
Production



The Paragon Press
PRINTERS, PUBLISHERS, AND LITHOGRAPHERS

At 14 Adams Avenue
Montgomery, Alabama



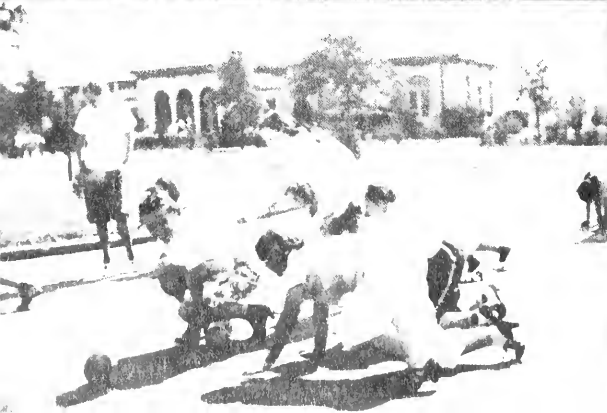
Ready to Face the World

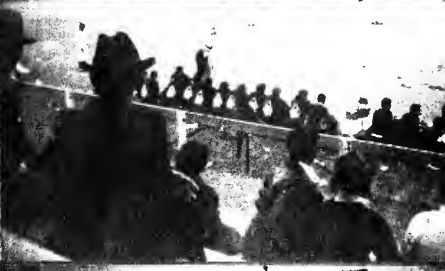
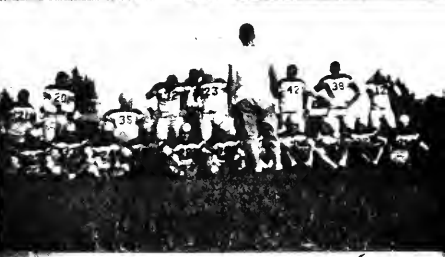
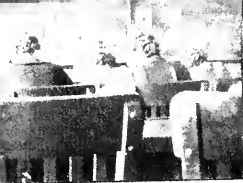
★ ★ COME WHAT MAY.

CONFIDENCE is the heritage of youth it is also a fundamental requirement of business attained by long study, training and experience • We have enjoyed the confidence of yearbook Staffs throughout the country for over thirty years an accomplishment for which we are truly grateful and justly proud

★ ★ ★ ★ ★

COLLEGE ANNUAL DIVISION
ALABAMA ENGRAVING COMPANY
BIRMINGHAM





DELTA STATE	MINUTES TO PLAY	VISITORS
SCORE	0 15	SCORE
0 8	DOWN	10
PENALTY	YARDS	PENALTY
0 0	QUARTER 4	

