


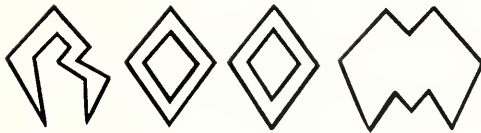
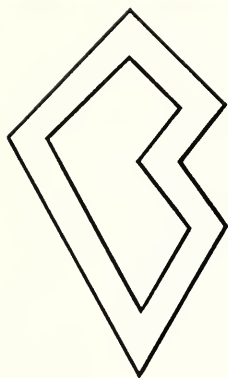
James D. Jones, Jr.





Digitized by the Internet Archive
in 2010 with funding from
Lyrasis Members and Sloan Foundation

<http://www.archive.org/details/broom1961delt>



CLEVELAND, MISSISSIPPI

Patricia Middleton, *Editor*
Joycelyn Milner
Mary Wallace Bailey
Assistant Editors
Betty Lane Eidt, *Business Manager*



ADMINISTRATION
AND FACULTY

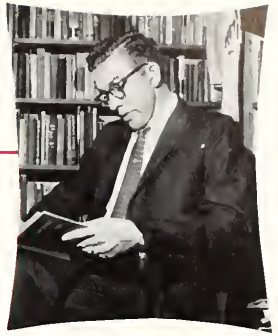
CLASSES

FEATURES
AND SPECIAL EVENTS

SPORTS

ORGANIZATIONS

ADVERTISING



FOREWORD

Within the pages of the 1961 BROOM is revealed the promise of Delta State College's future growth. Progress is evident in its increased student body and faculty, renovations in the school plant, and the addition of five new buildings to the campus.

Delta State recognizes the need to expand its facilities to benefit its students and the BROOM depicts the campus life of Delta State revolving around these improvements.

Delta State has steadily progressed since its formation in 1924 and will continue to progress. The 1961 BROOM is a tribute to that growth.

DEDICATION

In 1942 Delta State graduated a young man who was destined to return shortly to our campus and to assume a large responsibility for the planning and execution of our present growth.

During the twelve years he has served as financial secretary, he has worked with state officials, as well as the administration, faculty, staff, and student body, to make Delta State the fastest growing senior college in Mississippi.

It is with pride and gratitude that we, the Senior Class of 1960-61, dedicate this year's BROOM to HUGH C. SMITH, who symbolizes the adventurous spirit of growth and progress which motivates each of our undertakings.





Broom Memorial Administration Building

Cleveland Hall

DELTA STATE

19



MISS VIRGINIA THOMPSON
President's Secretary

In the words of Benjamin Disraeli, "Change is constant." What we consider to be the zenith of progress at Delta State College will no doubt appear as 'out of date to those who teach and learn here in 2000 A.D. as the above picture, made when Delta State College was Delta State Teachers College, appears to you in 1960-61.

To those who know Delta State College only as the thriving institution it is today, be assured that much has preceded to make this possible, just as much will be required for the preservation and furtherance of Delta State College.

The function of Delta State College, founded in 1924 by legislative action for the training of teachers, was broadened by legislative action in 1955.



Scott Dining Hall



Ward Hall

TEACHERS COLLEGE

30

Ours is a teaching job at Delta State College. This teaching job is well summarized by William G. Saltonstall, Principal of the Phillips Exeter Academy, who believes "It's the most important job in the world."

Delta State College, sustained by the efforts of men and women who dared to support a young institution, is loved and revered. The time is ripe for today's harvest of mental, moral, physical, and social opportunities provided under the leadership of Dr. James Milton Ewing, President, just as this and the future will be the fulfillment of the wise planning and leadership of Dr. Ewing; Dr. William Marion Kethley, President Emeritus; and the late Jim Broom, First President of Delta State College.

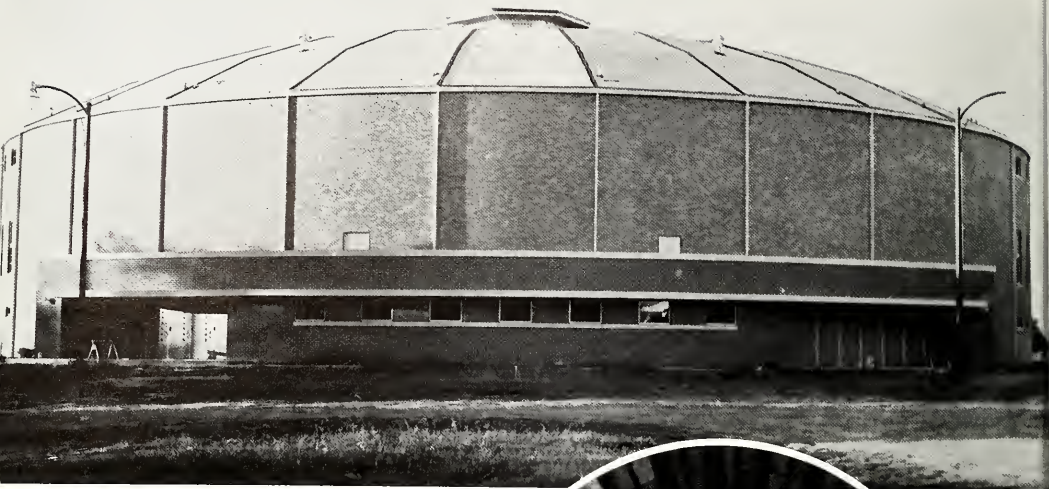
Virginia Thompson



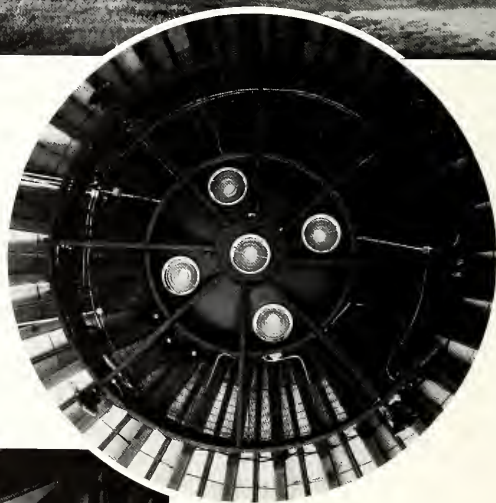
MISS VIRGINIA THOMPSON







WALTER SILLERS
PHYSICAL EDUCATION
BUILDING





FINE ARTS
BUILDING





Boys' Dormitory

NEW HOMES FOR DSC STUDENTS

Married Couples' Apartments





Girls' Dormitory



Married Couples' Apartments





THE HONORABLE ROSS BARNETT

Governor of Mississippi

ADMINISTRATION
AND
FACULTY



ELIZABETH
WYNNE
division editor



PRESIDENT
Dr. James M. Ewing



DEAN
Dr. T. D. Young



Assistant to the President and
Athletic Director
DAVID "BOO" FERRISS



President Emeritus
W. M. KETHLEY



Professor Emeritus
A. L. YOUNG

Registrar
MAC G. McRANEY



Dean of Men and
Director of Student Activities
H. L. NOWELL



Dean of Women
NELL LAWLER





Registrar's Office
 ALICE TURNER
 ADA GIFFORD
 LINDA JENKINS



Financial Secretary's Office
 MARINE COLE
 CHARLENE SMITH
 RAYMOND WRIGHT



Secretary, Buildings and Grounds
 MARY F. SWINDELL



Dean's Secretaries
 GLADYS CASTLE
 MARGARET GARY

Journalism and Publicity
 Department
 JAMES MYERS
 ROBERT SIMONTON, Director
 BILL CIVENS
 SUE WILSON





BETTY DONALD

WILLIAM P. NEAL



JOHN C. GIBSON, Head
JOHN YURKOW, JR.

BUSINESS

IRA CASTLES

KATHRYN KEENER

ARTHUR S. GIFFORD



ART

GRACE GAW



MARGARET WADE



JO ANN MOSIER

PHYSICAL EDUCATION

FOREST WYATT, Head

JOHN RAY RICKS



HORACE McCOOL

EUGENE CHADWICK





HUGH T. KEENAN
English



RALPH E. HITT, Head
English



IRA DU BOIS JOHNSON
English

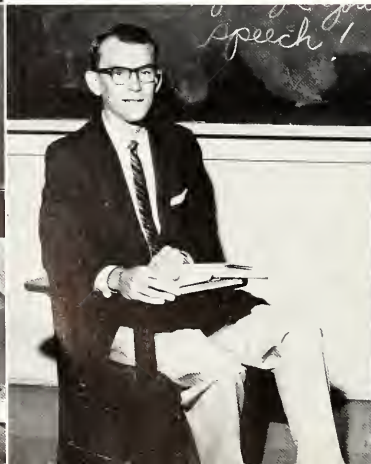
LANGUAGE AND

ROBERT D. BOWMAN
Foreign Languages

LOUISE MONTGOMERY
Foreign Languages

THOMAS TEDFORD
Speech

RUTH WILLIAMS
Speech





WILLIAM L. FRANK
English

LITERATURE

IRBY ELLIS



S
O
C
I
A
L

S
C
I
E
N
C
E

WILLIAM LaFORGE
Head

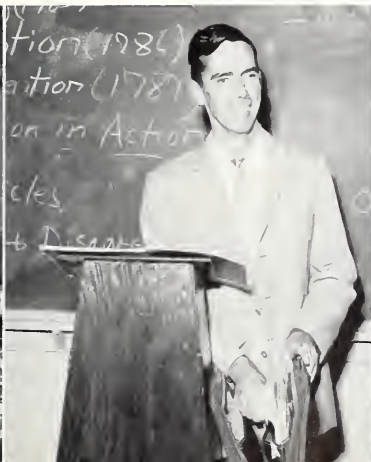


CAROL BRUMBY



A. D. GORDON

TIP ALLEN





RALPH FRANKLIN

BERTRAN DAVIS

NELL WYNN

DONNA McHENRY



GEORGE MUNS, Head

MUSIC

HOME ECONOMICS

ALLENE McCORMICK, Head
BEULAH HESTER
ANN O'HARE





ROBERT A. CARLTON



DONALD R. RUSSELL



J. S. WHITE, Head



ROY LEE WILEY

SCIENCE

ROBERT GREENE

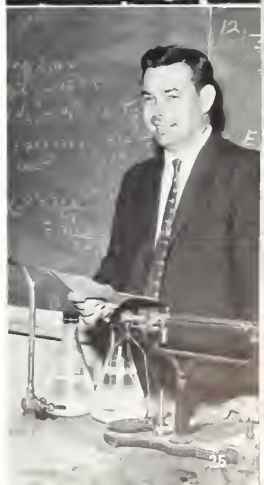


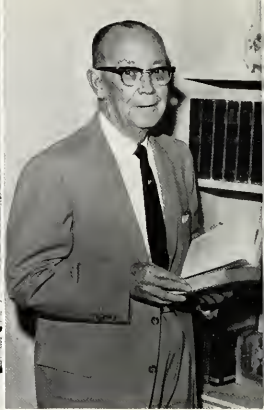
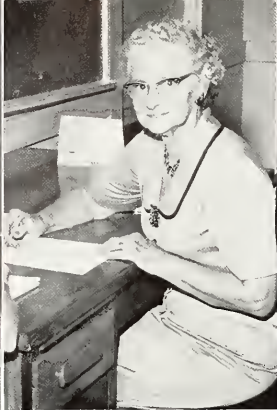
CS



VELMA HAMILTON

HENRY C. LUTRICK





BIRDIE C. HALE

DEWITT T. OAKS

JOE FARRAR



F. F. WILKINSON

EDUCATION

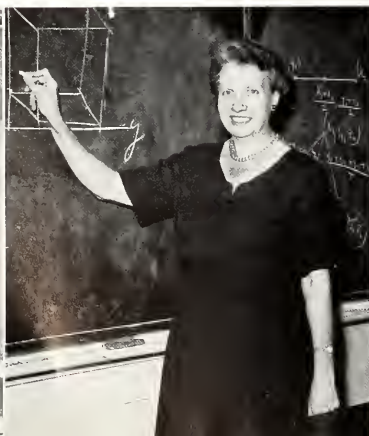
HENRY J. JACOB, Head

MATHEMATICS

WILSON DAVIS

ELEANOR WALTERS, Head

RAY WILSON





Library Staff
JONETT SANFORD
ELIZABETH DAKIN
VITHA TUCKER
MABEL BRISTER
ELEANOR HARKINS, Head

MARTHA BEAUCHAMP
Dietitian

Dormitory Hostesses
OPAL COLLINS
ELIZABETH FLOYD
RUBY CLARK
MARY JEFFREY
CATHRON DANTZLER
VINA BELLE LIDDELL

B. F. SIBLEY
Assistant Cafeteria Manager





Infirmiry Personnel
 ELIZABETH A. MURRAY
 JO WRIGHT



College Physicians
 Wm. D. FITZGERALD
 OSCAR E. RINGOLD
 PHIL NELSON



Night Watchman
 H. A. "POP" RILEY



Religious Advisors
 ELLIS TUCKER
 JAMES BRELAND
 NELL SMITH



Mill Staff
 JIM WILLIAMS, Manager
 LINDA BARON
 LINDA TAYLOR
 OSCAR CARADINE
 MRS. JO GRIFFITH

CLASSES



LUCILLE DUNN
and
JEAN STRINGFELLOW
division editors

SENIOR CLASS



SENIOR CLASS OFFICERS

Elizabeth Wynne	<i>Reporter</i>
Shelley Denley	<i>Secretary</i>
Jimmy Davidson	<i>President</i>
James Hannah	<i>Treasurer</i>
Joe Maxcy	<i>Vice-President</i>

BOB N. ABEL

B.S.E. (Social Science)

Grenada

NOAL AKINS, JR.

B.S.E. (Physical Education)

Transfer, Northeast Junior College; P.E. Majors Club 3, 4; Basketball 3.

Ripley



JAMES ALFORD

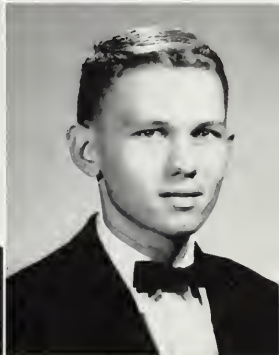
B.S.E. (Mathematics)

Winona

RICHARD EDWIN ALFORD

B.S. (Business Administration)

Steele, Mo.



F. E. ALLEGREZZA

B.S.E. (Physical Education)

Baseball 3, 4; "M" Club 3, 4; P.E. Majors Club.

Shaw

BOB ARNOLD

B.S. (Business Administration)

Basketball 3, 4.

Baldwyn



KEATS CARTWRIGHT ASHLEY

B.S.E. (Home Economics)

Delhecons 1; B.S.U. 1, 2, 3, 4.

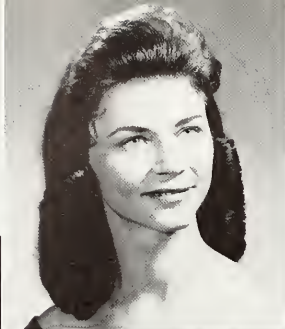
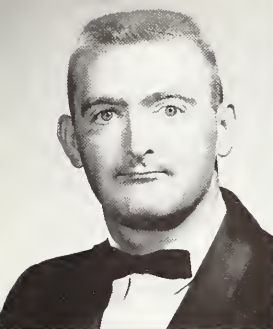
Moorhead

E. WADE AUSTIN

B.A. (English)

Associate Editor, "Miss Delta" 3.

French Camp



JOHN AYCOCK

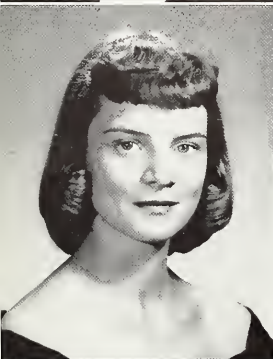
Crenshaw

B.M.E. (Music)
Band 3, 4; Delta Singers 3, 4; B.S.U. 3, 4; Phi Mu Alpha
3, 4; Veterans' Club 3, 4; M.E.N.C. 3, 4.

MARY WALLACE BAILEY

Dublin

B.S.E. (Home Economics)
Women's Honor Council 1; Student Government; Delta
Belles 1, 2, 3; Delhecons 1, 2, 3; Y.M.A. 2, 3; Homecoming
Maid 2; Sophomore Class Favorite; Assistant Editor BROOM,
4; Dance Club 1, 2, 3.



RACHEL CECILE BARNETT

Cleveland

B.S.E. (Business Education)

GAIL ELIZABETH BASS

Pinola

B.S.E. (Elementary Education)
Delta Singers 3; A.C.E. 3, 4, Treasurer 4; Pi Gamma Mu 4.



ELIZABETH POWERS BEARD

Cary

B.S.E. (Elementary Education)
Transfer, Mississippi Southern; Kappa Delta Pi 4, Vice-Presi-
dent 4; Canterbury Club 3, 4; Pi Gamma Mu 4; Chi Delta 4;
Intersorority Council; A.C.E. 3, 4, Reporter 4; W.A.A. 4.

CAROL ANN BECK

North Carrollton

B.S.E. (Social Science)
Delta Playhouse 1, 2, 3, Vice-President 4; Women's Honor
Council 1; BROOM Staff 1.



ELIZABETH JANE BELL

Crystal Springs

B.S.E. (English)
Transfer, Copiah-Lincoln Junior College; Snapshot Editor,
BROOM 4; B.S.U. 4.

ROBERT L. BELLIPANNI

Indianola

B.S.E. (Mathematics)

JIMMIE MEEKS BENNETT
B.S.E. (Elementary Education)

Sunflower



LEON B. BEST
B.S. (Business Administration)
Delta Singers 1; Track 1.

Greenville



MARY JO BISHOP

Greenville

B.S.E. (Elementary Education)
Delta Singers 1, 2; Wesley 1, 2, 3, 4, Secretary 4; A.C.E.
2, 3, 4, Secretary 4; Women's Honor Council 3; Student Gov-
ernment 3; Chi Delta 4.

DEWEY BOSTIC

Magnolia

B.S.E. (Social Science)
Transfer, Southwest Junior College; Football 3, 4; "M" Club 4.

DORIS G. BOYER
B.S. (Social Science)

Indianola



BOBBIE CAROLYN BROWN
B.S.E. (Elementary Education)
A.C.E. 1, 2, 3, 4; Y.W.A. 1, 2, 3, 4.

Crenshaw

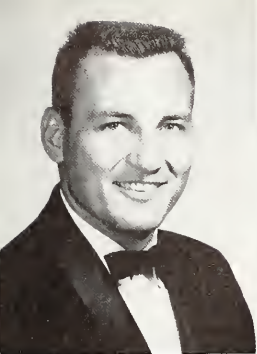


CATHRYN T. BROWN

Glen Allan

B.S.E. (Mathematics)
Delta Playhouse 1, 2; Women's Honor Council 1, 2.





JAMES WILLMAN BROWN Talladega, Alabama
 B.S.E. (Social Science)
 Transfer, Belhaven and Livingston State College.

SANDRA LOUISE BROWN Vicksburg
 B.S.E. (Elementary Education)
 A.C.E. 2, 3, 4, President 4; Kappa Delta Pi 4; Wesley 4.

OSCAR CARADINE, JR. Greenville
 B.S. (Business Administration)
 Band 2, 3; Delta Singers 2.

"Mr. Simonton, I don't doubt your word, but . . ."
 Pat and David receive instructions for the day.



SALLY CARADINE Greenville
 B.M.E. (Piano)
 Delta Singers 1, 2, 3, 4; MENC 1, 2, 4; Deltones Accompanist
 1; Deltaires Accompanist 1, 2, 3, 4.

ANNE CARNES Glen Allan
 B.S.E. (Elementary Education)
 Transfer, Sunflower Junior College; A.C.E. 3, 4; Y.W.A. 3,
 4, Secretary 4.



KATHRYN FINDLEY CARROLL Goodman
 B.S.E. (Elementary Education)

ROBERT CARTER Cleveland
 B.S.E. (Social Science)

THOMAS E. CARTER

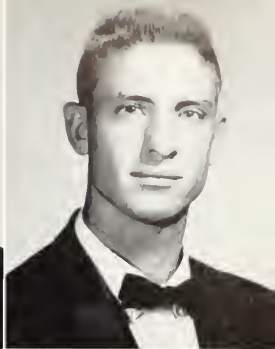
B.S. (Social Science)
Band 1, 2, 3, 4; Tennis 3.

Kosciusko

ED CAULEY

B.S. (Accounting)
Baseball 3, 4; "M" Club 2, 3.

Indianola



Let's get in step, Jean!



CLAYTON SHIU-CHEE CHOO

B.A. (Social Science)

Moorhead

DAVID A. COSTANZI

B.S. (Business Administration)

Rosedale



IZELLA A. CRANSTON

B.S.E. (Home Economics)
Delhecons 2.

Leland

GERALD LAMAR CRAWFORD

Memphis, Tennessee

B.S. (Business Administration)
Transfer, Northwest Junior College; Sigma Theta Psi, Grand Scribe 4; Interfraternity Council 4, President 4; Men's Honor Council 4; Student Executive Cabinet 4; President's Cabinet 4; Commerce Guild, Treasurer 4; Baptist Student Union 3; Young Democrats 4.





PAT CRAWFORD

Rolling Fork

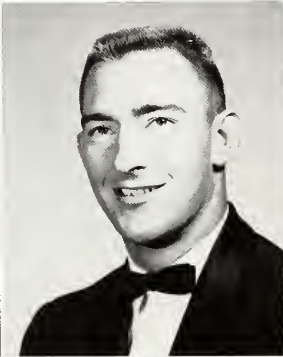
B.S. (Physics)
Band 1, 2, 3, 4; Men's Honor Council 2; Class Officer 1;
Delta Playhouse 4.



BIRCH CRISS

Cleveland

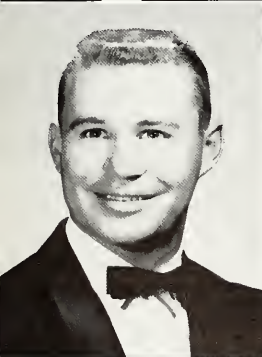
B.S. (Mathematics)
Golf Team 3.



ELLIS WAYNE CHRISTIAN

Baldwyn

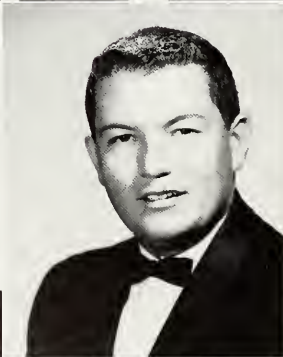
B.S.E. (Social Science)



WILLIAM T. DALLISON, JR.

Booneville

B.S. (Chemistry)
Transfer, Northeast Junior College; Baseball 3, 4.



THOMAS EDWARD DALTON

Eupora

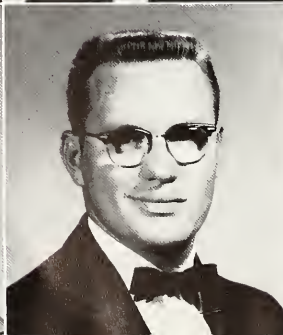
B.S. (Chemistry)
"M" Club 3, 4; Football Manager 3.



GWEN SMITH DAVES

Merigold

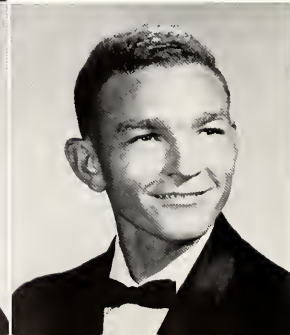
B.S.E. (Elementary Education)



JAMES DANIEL DAVIDSON

Greenville

B.S. (Mathematics)
Class Officer 3, 4; Men's Honor Council 2, 4; Class Favorite
2, 4; Delta Alpha Omega 3, 4.



CLAUDE MELVIN DAVIS

Benton

B.S.E. (Mathematics)

SHELLEY DENLEY

Charleston

B.S.E. (Business Education)
W.A.A. 1, 2, 3, 4, Vice-President 3; Y.W.A. 3, 4; B.S.U. 1, 2, 3, 4, Social Vice-President 2, Noonday Chairman 3, Devotional Chairman 4; Miss Delta 1, 4; Chi Delta 4; Women's Honor Council 4; Delta Singers 1, 2; Student Government 4; Class Officer 4; Friendliest Girl 4; Class Favorite 4.

KENNETH DIXON

Drew

B.S.E. (Social Science)
Veteran's Club 1, 2, 3, 4; Baseball 1, 2, 3, 4; "M" Club 2, 3, 4.

DORSEY EDWARDS DRAPER

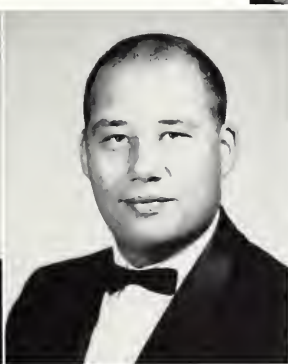
Cleveland

B.S.E. (Elementary Education)

LUCILLE DUNN

Holcomb

B.S.E. (Elementary Education)
Delta Playhouse 1, 2; A.C.E. 1, 2, 3, 4; B.S.U. Council 1, 2, 3, 4, Devotional Chairman 2; Y.W.A. 3, 4, Treasurer 3; BROOM Staff 1, 2, 3, 4, Class Editor 4; Delta Singers 1; Miss Delta 1.



TOMMY DEL DYKES

Mendenhall

B.S.E. (Physical Education)
Transfer, Copiah-Lincoln Junior College; Football 3, 4; "M" Club 3, 4.

JAMES D. EIDT

Natchez

B.S.E. (Social Science)
Transfer, Memphis State; "M" Club 3, 4; D.A.O. 3, 4; New-man Club 3, 4; Veterans' Club 3, 4; Football 3, 4.



VIRGINIA EMONS

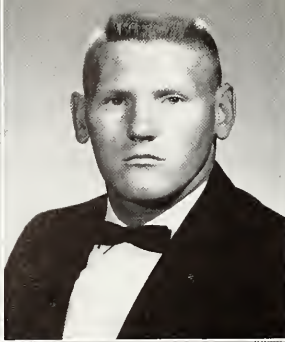
Newton

B.S.E. (Elementary Education)
Delta Playhouse 3, 4; A.C.E. 4.

GEORGE WILLIAM ESTELLE

Baldwyn

B.A. (Social Science)
Transfer, Mississippi State University.



ETHELYN FERGUSON

Weir

B.S.E. (Elementary Education)
Transfer, Holmes Junior College; Delta Singers 3; A.C.E.
3, 4; Chi Delta 3, 4; "M" Club Sweetheart 4.

JAMES E. FISACKERLY

Morton

B.S.E. (Physical Education)
Transfer, East Central Junior College; Football 4.



MARTHA JANE FISHER

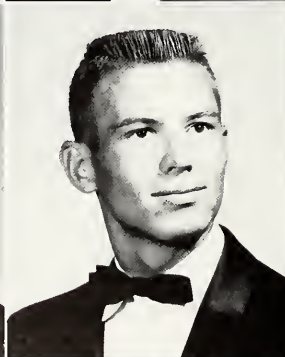
Winona

B.S.E. (Elementary Education)
Transfer, Holmes Junior College; Wesley Foundation Council
3, 4, Secretary 3, 4; Cheerleader 4.

WAYNE FLEMING

Vardaman

B.S.E. (Elementary Education)
B.S.U. 3, 4.



KENNETH FLOYD

Marietta

B.S.E. (Social Science)
Mississippi Historical Society 1.

DONALD MYERS FOSTER

Belzoni

B.S.E. (Science)
Transfer, Mississippi Delta Junior College.

FRANCES NELL FOSTER

Sledge

B.S.E. (Elementary Education)
A.C.E. 3, 4; Wesley 3, 4, President 4; Interfaith Council
President 4.

LEON FRANKLIN

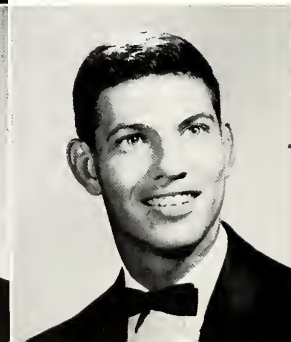
Vidalia, Louisiana

B.S.E. (Physical Education)
Transfer, Jones Junior College; "M" Club 3, 4; Football 3.

DUMONT SIDNEY FREEMAN

Fayette

B.A. (Social Science)
Sigma Theta Psi President 3, 4; Men's Honor Council 4;
Interfraternity Council 4, Secretary-Treasurer; President's
Council 4.



RICHARD GARRETT
B.S. (Biology)

Gunnison



JOSEPH BOYD GRAY

B. S. (Business Administration)
Miss Delta Staff 3; Sigma Theta Psi 3, 4, Officer 3; Band 3, 4.

Greenwood



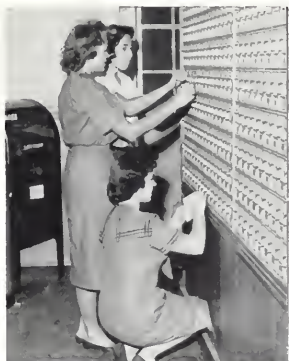
WILLIAM LEE GIVENS

Cleveland

B.A. (English)
Delta Playhouse 1, 2, 3, 4; Delta Singers 1, 2, 3, 4; BROOM
Staff 3; Miss Delta Staff 1, 2, 3, 4; Miss Delta Editor 4.

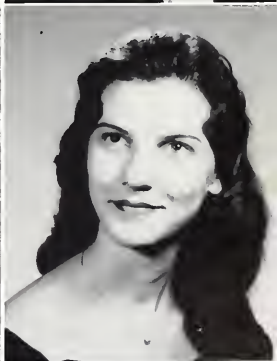


Weekly Box Cleaning!



ANTOINETTE GOFORTH
B.S.E. (Business Education)

Cleveland



MARY LEE GOODE

Houston

B.A. (English)
Transfer, Wood Junior College; B.S.U. 3, 4; Kappa Delta Pi
3, 4; Y.W.A. 3, 4; Debate Club 3, 4, President 4; Miss Delta
Staff 4.

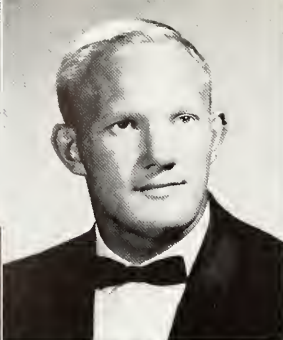
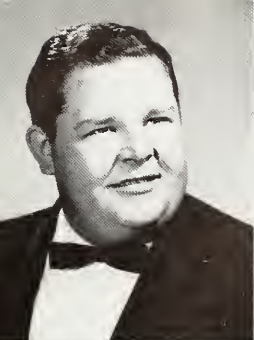


NANCY GOODSON

Guntown

B.S.E. (Home Economics)
Transfer, Itawamba Junior College; B.S.U. Officer 3, 4;
Y.W.A. 3, 4, Vice-President 4; Delhecons 3, 4; Interfaith
Council 4.





ROBERT GRAY

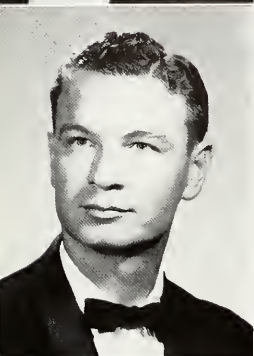
B.M.E. (Music)
Delta Singers 3, 4; Band 3, 4; MENC 3, 4.

Ashland

FRANK EARL GREENLEE, JR.

B.S. (Accounting)
Football 3, 4; Delta Alpha Omega 3, 4, Vice-President 3, 4;
"M" Club 3, 4.

Sumner



RICHARD ELLIS GUNTARP

B.S. (Business Administration)

Ruleville

JACK W. HALL, JR.

B.S.E. (Elementary Education)
Delta Singers 1; Band 2; Veterans' Club 3, 4; Canterbury
Club 1, 2, 3, 4; Cavaliers 3.

Greenville

MARY FRANCES HAMILTON

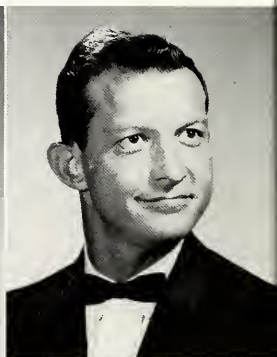
B.S.E. (Elementary Education)
Transfer, East Central Junior College. B.S.U. 3, 4; Women's
Honor Council 4; A.C.E. 3, 4.

Philadelphia

JAMES ROBERT HANNAH

B.S. (Accounting)
Veterans' Club 1, 2, 3, 4, Officer 2, 3; Class Treasurer 3, 4;
Men's Honor Council 4; Baseball 1.

Clarksdale



LENA FRANCES HANNAH

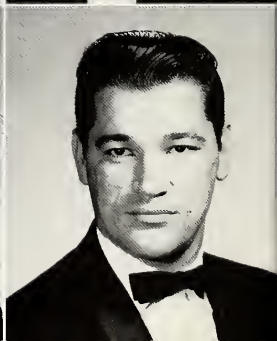
B.A. (Art)
Women's Honor Council.

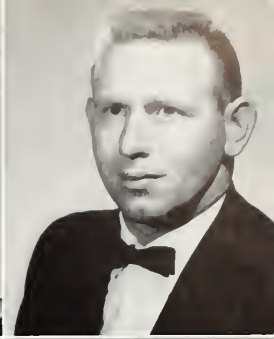
Cleveland

JACK E. HARPER

B.S.E. (Social Science)

Grenada





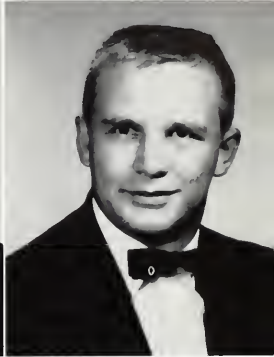
BEVERLY PINKSTON HARRISON Sledge
 B.S.E. (Home Economics)
 Deltoacs 1; Delta Singers 2; Delhecons 1, 2, 3, 4, Vice-President 4.

CAROLYN LEA HARRISON Greenville
 B.S.E. (Elementary Education)
 Transfer, Blue Mountain College; B.S.U. 3, 4; Y.W.A. 3, 4; A.C.E. 4; W.A.A. 4.

"BOO" ELLIOTT HARRISON Sledge
 B.S. (Business Administration)
 Transfer, Northwest Junior College and Mississippi College.

STANLEY HAMILTON HATHORN Louisville
 B.A. (History)
 Transfer, Millsaps.

JOHN OLIVER HAWKINS Clarksdale
 B.S. (Business Administration)
 Transfer, Mississippi University.

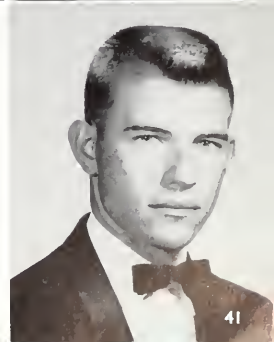


SYLVIA HAWTHORNE New Albany
 B.S.E. (Home Economics)
 Omega Phi 3, 4; Wesley 3, 4; Delhecons 3, 4; Delta Belles 3; Best Dressed 3; Miss Navy 3.

SHIRLEY W. HEMPHILL Holcomb
 B.S.E. (Business Education)
 Transfer, Holmes Junior College; B.S.U.; National Business Education Association.



WILLIAM YANCY HENLEY, JR. Senatobia
 B.M.E. (Music)
 Band; Delta Singers; Phi Mu Alpha Officer; MENC.





WALTER HERBISON

Shaw

B.S. (Business Administration)
Baseball 1, 2; Wesley President 3, Treasurer 2; SGA Treasurer 3, Inter-Faith Council 3; Inter-Faith Council President 3.

PATRICIA WANITA HESTER

Vicksburg

B.S.E. (Elementary Education)
Transfer, Howard College; A.C.E. 3, 4; Delta Playhouse 3, 4; Westminster Fellowship 3, 4.



"Heaven can't be better!"

Metro was caught in his natural habitat before the TV.



GLYNDA FAY HILL

Senatobia

B.S.E. (Elementary Education)
Transfer, Northwest Junior College; Y.W.A. 3, 4; B.S.U. 3, 4; Kappa Delta Pi 3, 4; Delta Playhouse 3, 4; Women's Honor Council 4; A.C.E. 3, 4.

ANNE HOGUE

Skene

B.S.E. (Elementary Education)
W.A.A. 1, 2, 3, 4; Delta Belles 4; A.C.E. 1, 2, 3, 4.



LYNN DARBY HOLLOWAY

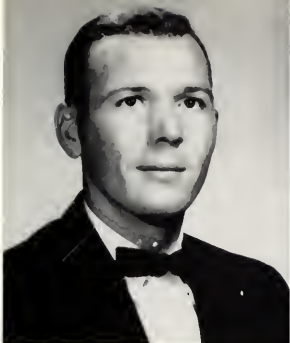
Indianola

B.A. (English)
Transfer, Millsaps College.

SANDRA CRAMA HOLMES

Sallis

B.S.E. (Business Education)
Transfer, Holmes Junior College; Chi Delta 3, 4, Vice-President 4; Wesley 3, 4.



OSCAR HOUSTON
B.S. (Accounting)



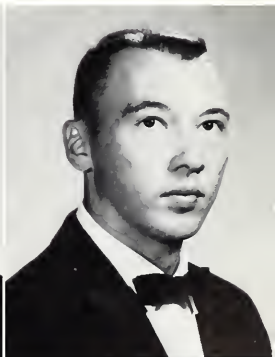
SAMMIE LEE HOWELL
B.S.E. (Elementary Education)
BROOM Staff 4; A.C.E. 1, 2, 3, 4.



Fulton JAMES E. HUBBERT Fayette, Alabama
B.S.E. (Physical Education)
Transfer, Itawamba Junior College; "M" Club; Football 3, 4;
P. E. Club 3, 4.
Darling

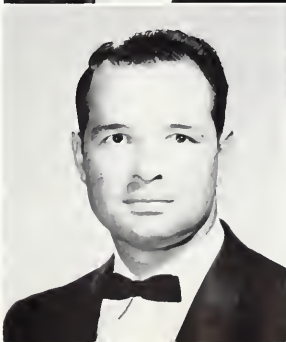
CHARLES JACKSON Leland
B.S. (Business Administration)
Sigma Theta Psi.

CARL DAVID JAMES Calhoun City
B.S.E. (Physical Education)
Transfer, Holmes Junior College; P.E. Majors Club 3, 4.



DAVID H. JENKINS Sallis
B.S.E. (Social Science)
Transfer, Holmes Junior College.

BARBARA BELLE JONES Coldwater
B.S.E. (Elementary Education)
Kappa Delta Pi 4; Band 3; Delta Singers 3, 4; Deltones 3, 4;
Music Club 3, 4; A.C.E. 3, 4; Newman Club Secretary 3,
Treasurer 4.





KENNETH R. JONES

Clarksdale

B.S. (Accounting)
Veterans Club 2, 4.

LEHMON "BAMA" JUNKIN

Northport, Alabama

B.S. (Math, Business Administration)
Transfer, University of Alabama; Basketball 2; Whirlwinds
3, 4.



MICHEAL LEON KEALHOFER

Durant

B.S. (Business Administration)
Cavaliers 4.

LESCA MAE KEMP

Inverness

B.S.E. (Home Economics)
Transfer, MSCW; Delhecons 4; Chi Delta 4.



LYNN KENDALL

Cleveland

B.S.E. (English)

WILLIAM KENDALL

Cleveland

B.S. (Business Administration)

JAMES GORDON KINCADE

Clarksdale

B.S. (Business Administration)
"M" Club 3, 4; Tennis 3, 4.

ROBERT CLIFTON KLUTTS

Cleveland

B.S. (Accounting)
Band 1, 2, 3, 4; Delta Singers 1, 2, 3, 4; Deltaires 2, 3, 4;
Phi Mu Alpha Secretary 3, 4; B.S.U. 1, 2, 3, 4, President 4;
Miss Delta 2, 3, 4; Baseball 1; Glee Club 1, 2, 3, 4; B.S.U.
Choir and Quartet 1, 2, 3, 4; Health Council 3; Accounting
Club 2, 4; Annual Staff 1; Interfaith Council 4; Cavaliers 3.

"O-oh, he's simply divine!"

Ella, Liz, Sandra, and Cavlyne hold nightly meetings at 10:30 to work on "Operation J."



EVELYN LACEY

B.S.E. (Elementary Education)
Transfer, Holmes Junior College; Chi Delta.

Weir



GERALD LANCE

B.S. (Business Administration)
Football 3, 4.

Philipp

ARTHUR LAWLER

B.S. (Business Administration)

Rolling Fork



GERALDINE LEE

B.M.E. (Music)
Transfer, Northwest Junior College; Deltones 3; MENC 3, 4;
Band 3, 4; Delta Singers 3, 4.

Dundee

MARY LINDSAY

B.S.E. (Physical Education)
P.E. Club 1, 2, 3, 4; W.A.A. 1, 2, 3, 4; Dance Club 1, 2, 3.

Kosciusko

BILLYE JEAN LIPE

B.S. (Accounting)
W.A.A. 1, 2, 3, 4; Tri-B 1.

Boyle

JEAN STRINGFELLOW LOWERY

B.S.E. (Business Education)
Dramatics Club 1, 2; Annual 2, 3, 4.

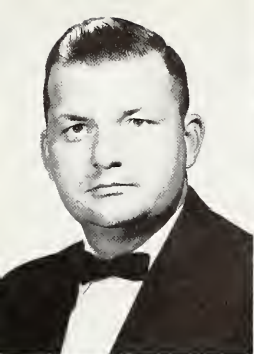
Drew

BETTYE BLAIR LUSK

B.S.E. (Elementary Education)
Transfer, Copiah-Lincoln Junior College; Delta Bell 3, 4;
Head Delta Belle 4; Omega Phi 4; Dance Club 3, 4; A.C.E.
3, 4.

Wesson





DOUGLAS B. MANNING

B.S. (Biology)

SALLY RUTH MANNING

B.M. (Music-Piano)

Deltones 3, 4; Delta Singers 3, 4; MENC 3, 4; Delta Singers Secretary 4.

Lyon

Anguilla

SHIRLEY LOU MANNING

B.S.E. (Elementary Education)
Deltones 2; A.C.E. 4.

Merigold



NANCY ANNETTE MARCELLINI

B.S.E. (Art)

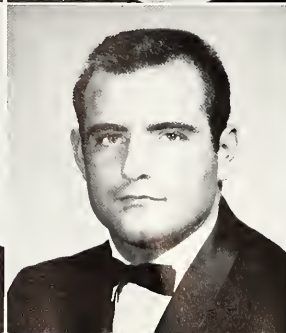
Newman Club 1, 2, 3, 4; Interfaith Council 2, 3, 4; Band 2, 3, 4; Student Government 4; Class Officer 3; Annual Staff 2, 4.

Marks

NAN GRAY MARTIN

B.S.E. (Elementary Education)
Kappa Delta Pi 4.

Cleveland



WATSON L. MARTIN

B.S.E. (Mathematics)

Yazoo City

JOE MATHIS

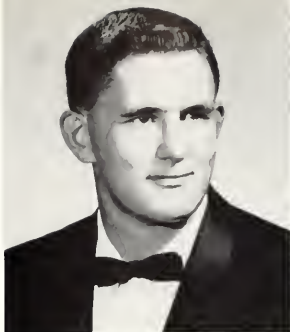
B.S.E. (Physical Education)
P.E. Majors Club 1, 2; Football 1, 2.

Marks

DANNY JOE MAXCY

Fulton

B.S.E. (Science)
B.S.U. 3; Senior Vice-President.



REGIS METRO

Uniontown, Pennsylvania

B.S.E. (Physical Science)
Football 3, 4.

PATRICIA MIDDLETON

Columbia

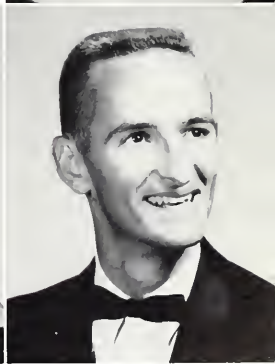
B.S.E. (Business Education)
BROOM Staff 1, 2, 3, 4, Editor 4, Organizations Editor 2, 3;
B.S.U. Executive Council 2, 3; Y.W.A. 3, 4; Interfaith Vice-
President 3; Pi Omega Pi 3, 4, Secretary; Delta Playhouse
2; W.A.A. 1; President's Council 4.



JOYCELYN MILNER

Jackson

B.S.E. (English, Business Education)
BROOM Staff Assistant Editor 4; Pi Omega Pi 3, 4, President
4; W.A.A. 1, 2, 3, 4, Secretary 3; Chi Delta 3, 4; Class Of-
ficer 2; Pi Gamma Mu 4; President's Council 4.



ROBERT MIMS

Phillip

B.S. (Business Administration)
Veterans' Club 1, 2, 3, Officer 2, 3; Color Guard 1, 2, 3.

PEE WEE MIXON

Linn

B.S.E. (General Science)
Delta Belles 3, 4; W.A.A. 1, 2, 3, 4; Wesley Council 1;
BROOM Staff 4.



BILLIE RUTH MOORE

Lexington

B.S.E. (Elementary Education)
Transfer, Holmes Junior College; A.C.E. 3; Chi Delta 3, 4.



CHARLES H. MURPHY
B.S.E. (Physical Education)
Transfer, Millsaps, College.

Parchman



THOMAS EUGENE MURPHY
B.S. (Accounting)

Tunica



RICHARD MYERS

Cleveland

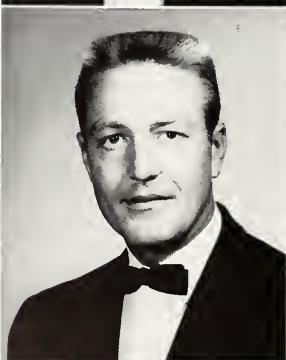
B.S. (Pre-Med)
Vice-President 4; Delta Playhouse 2, 3; President, Pledge
Class, Delta Alpha Omega 4; Dance Club 3, 4; Delta Play-
house 2, 3, 4, Vice-President 4.



LYNN McCALLUM

Potts Camp

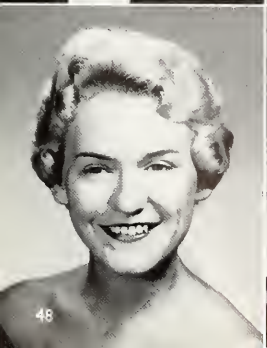
B.S.E. (Social Science)
Transfer, Northwest Junior College; Pi Gamma Mu.



KENNETH D. McCLAIN

Clarksdale

B.S. (Business Administration)



PATRICIA ANN McCLELLAN

Rolling Fork

B.S.E. (Business Education)
Delta Singers 1; Deltones 1; Delta Belles 2; Cheerleader 3,
4; Valentine Queen 3; Friendliest Girl 3; Class Favorite 3;
Pi Omega Pi 3, 4, Vice-President 4; Student Government
Secretary 4; Chi Delta President 3, 4.



NANCY McLEOD

Greenwood

B.A. (English)
Transfer Millsaps College; Delta Playhouse 2, 3, 4, Secretary-
Treasurer 3, President 4; Alpha Psi Omega 4, President 4;
Delta Singers 2; Wesley; Annual Staff 2; Miss Delta Staff
3, 4, Associate Editor 4.



JO BETTY McDANIEL

Sallis

B.A. (English)
Transfer, Holmes Junior College; Delta Playhouse 3; W.A.A.
3; Wesley.

JOHN McELROY

Columbia

B.S.E. (Physical Education)
Transfer, Pearl River Junior College; Football 3, 4; "M"
Club 3, 4.



MARY BROACH MCFARLANE

Natchez

B.S.E. (Mathematics)
Women's Honor Council 3; Health Council 1; Wesley
Council 4, Treasurer 2; Kappa Delta Pi 3, 4; Who's Who
Among Students in American Universities and Colleges 4.

ROBERT G. MCGRAW, JR.

Inverness

B.S.E. (Physical Education)
Transfer, Sunflower Junior College.



LAURENE B. McLEMORE

Gunnison

B.S.E. (Home Economics)
B.S.U. 3, 4; Delhecons 3, 4.



PEYTON O. McQUARY

Woodland

B.S.E. (History)
B.S.U. 2, 3, 4; Men's Honor Council 1, 2; Veterans Club
2, 3, 4.

ANNETTE NASH

Duncan

B.A. (History)



JANICE LEE NEAL

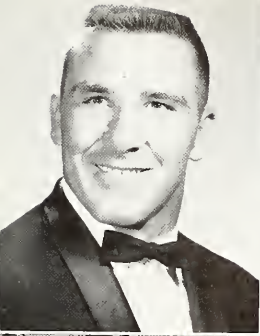
Leland

B.S.E. (Elementary Education)
Delta Playhouse 3, 4; A.C.E. 1, 2, 3, 4; Y.W.A. 3.

MARY NEELY

Hollandale

B.S.E. (Elementary Education)
Transfer, Mississippi Delta Junior College.



JAMES NORMAN

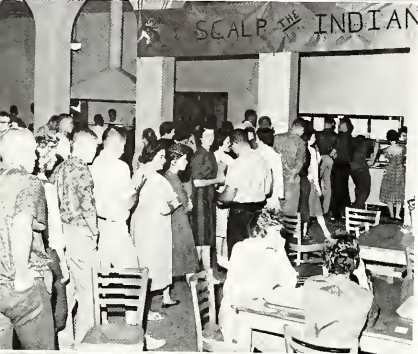
Hernando

B.S.E. (Social Science)
"M" Club 2, 3, 4; Veterans Club 1, 2, 3, 4; Football
1, 2, 3, 4.

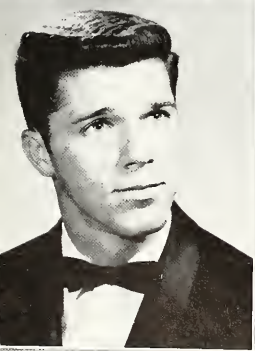
LILA LEE NOSSER

Clarksdale

B.S.E. (Home Economics)
Dance Club 2; Cheerleader 2, 3, 4; Homecoming Court 2;
Women's Honor Council 2, 3; Omega Phi 3; Canterbury
Club 3, 4, Vice-President 4; Delhecons 1, 2, 3, 4.



Martha Rowe peeps around to see if there will be any food left for her. You'll get fat, Martha.



RONALD OLTREMARI

Greenville

B.S. (Accounting)
Newsman Club 1, 2, 3, 4.

ELLA O'NEAL

Drew

B.S.E. (Elementary Education)
Transfer, University of Mississippi; Chi Delta 3, 4; Inter-
Sorority President 4.



SARA JANE O'NEILL

Marks

B.S.E. (English)
Miss Delta 4; Chi Delta 4; Wesley 4.

BOBBIE ANN O'QUIN

Cleveland

B.S.E. (Mathematics)
B.S.U. 1, 2, 3; Debate Team 1, 2, Most Promising Debater
1; Pi Kappa Delta 2, 3, 4; Y.W.A. 1, 2.



HENRY OUTLAW

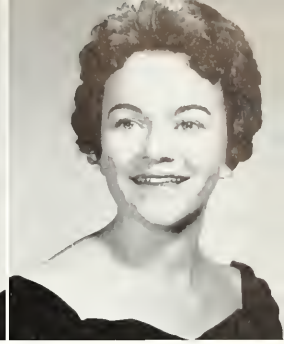
B.S. (Biology)
Beta Beta Beta Honorary Fraternity.



Baldwyn

ANICE CARPENTER POWELL

B.S.E. (English)
Kappa Delta Pi 4.



Sunflower

NANCY PHARR PITCHFORD

B.S.E. (Elementary Education)
Delta Belles 3, 4; Dance Club 3, 4; W.A.A. 3; Omega Phi
3; Health Council 3; A.C.E. 3, 4.

Vicksburg

BENNIE MONROE PRICE

B.S.E. (Physical Education)
"M" Club 4; B.S.U. 3, 4; Football 3, 4.

McComb

ROBERT PRIVETTE

B.S. (Physics)

Cleveland



PEGGY STALLING RASBERRY

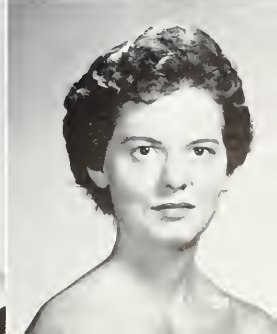
B.A. (English)
Delta Singers 1; B.S.U. Executive Council 1, 2, 3; Y.W.A.
2, 3, President 3; W.A.A. 2, 3; Delta Playhouse 3, 4.

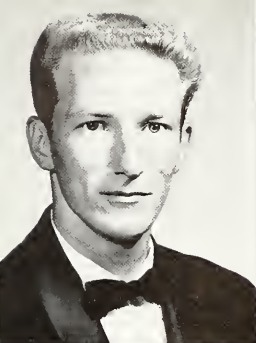
Cascilla

FRANKIE JEAN REYNOLDS

B.S.E. (Social Science)

Cleveland





PERCY C. RICE

B.S. (Business Administration)

Rolling Fork



CAROLYN FAY RICHARDSON

B.A. (English)

Delta Singers; Assistant Dormitory Hostess.

Stewart

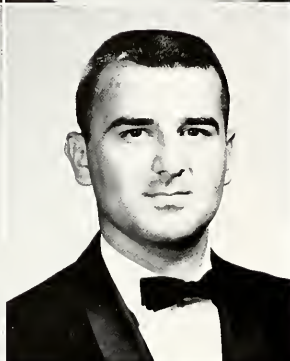


JANE ELIZABETH ROBERTSON

Booneville

B.S.E. (Elementary Education)

Transfer, Northwest Junior College; Student Government Treasurer 4; Chi Delta 3, 4; A.C.E. 3, 4; Y.W.A. 3; Class Favorite 4; B.S.U. Council 3, 4; Delta Singers 3.

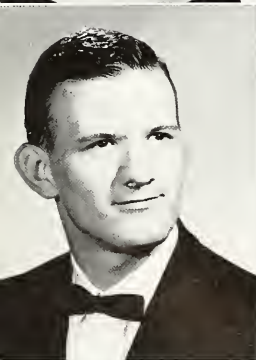


PETER EUGENE ROBINSON

Cleveland

B.A. (History)

Pi Gamma Mu 3, 4, President 4.



BILLY RAY RODMAN

Senatobia

B.A. (Business Administration)

Wesley 3, 4, Social Action Chairman 4.



DOLORES ROSSIE

Clarksdale

B.S.E. (Physical Education)

P.E. Majors Club 2, 3, 4; W.A.A. 2, 3, 4; Newman Club 2, 3, 4.

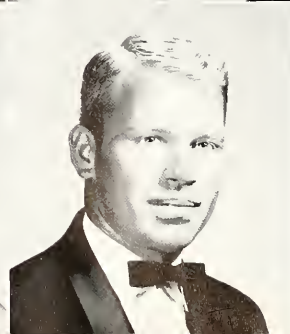


JEAN ROUNTREE

Louise

B.S.E. (Elementary Education)

A.C.E. 3, 4; Delta Belles 4; BROOM Staff 4; Chi Delta Correspondence Secretary 3, 4.



ELMER ROUSE

Greenville

B.A. (Political Science)

Jean Roundtree exhibits that southern hospitality.



MARTHA LORRAINE ROWE Greenville

B.S.E. (Elementary Education)
 Cheerleader 4; Dance Club 2, 3, 4; Delta Belles 3; Band
 1, 2, 3; Wesley Council 1, 2; A.C.E. 4; Miss D.S.C.;
 Omega Phi 3, 4.

ROBERT RICHARD ROWE Tchula

B.S. (Mathematics-Chemistry)
 Westminster Fellowship, President 3, Vice-President 4;
 Men's Honor Council 1, 3; Treasurer 3, Executive Council
 3, 4; President's Council 3, 4, Chairman 4; Student Council
 1, 3, 4; Mr. D.S.C.; Class President 2, 3.



THOMAS G. RUSSELL Isola

B.S. (Business Administration)
 Veterans Club 4; Business Club 4.

JACK SAVAGE Eupora

D.M.E. (Music)
 Band 3, 4; Delta Singers 3, 4; Phi Mu Alpha 3, 4; Del-
 taires Quartet 3, 4.

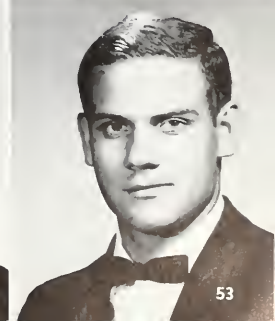


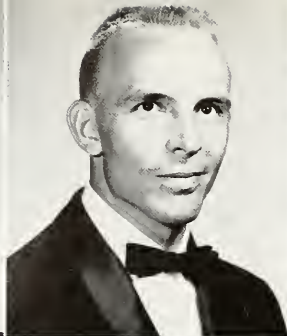
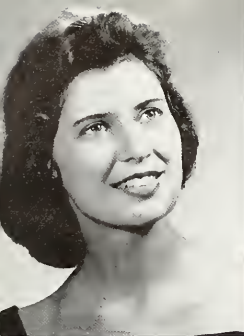
GEORGE R. SCHEIDERMAN, JR. Englishtown, New Jersey

B.S.E. (History)
 Basketball 1, 2, 3, 4; Newman Club 1, 2, 3, 4, President 1,
 2; Men's Honor Council 2, 3, 4; "M" Club 1, 2, 3, 4; Class
 Favorite 1; Tennis 3, 4.

SHELBY SESSUMS Drew

B.S. (Biology)
 Dance Group 4; Sigma Theta Psi.





PEGGY ERWIN SHUTT

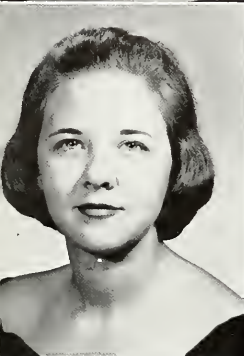
Chatham

B.S.E. (Elementary Education)
Interfaith Council 2, 3, Secretary; Canterbury Club 2, 3, 4,
Secretary 3; Miss Delta 3; A.C.E. 4.

HARRY BULLOCK SIMCOX

Greenville

B.S. (Business Administration)



JOYCE SIMPSON

Rosedale

B.M.E. (Piano)
Music Club 4; Chi Delta 3.

CHARLES W. SMITH

Duncan

B.S.E. (English)

JACK S. SMITH, JR.

Holcomb

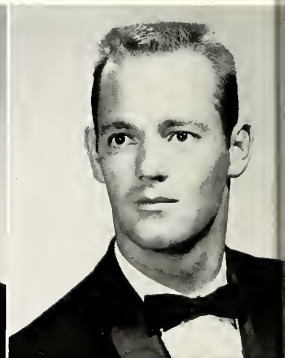
B.S.E. (Social Science)

JIMMY SMITH

Ruleville

B.M.E. (Music)

Band 1, 2, 3, 4; Delta Singers 1, 2, 3, 4; Deltaires 2, 3, 4;
Phi Mu Alpha 4; MENC 1, 2, 3, 4.



JOSEPH HENRY SMITH

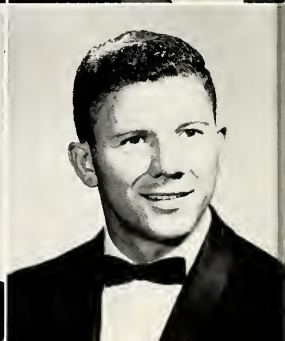
Boyle

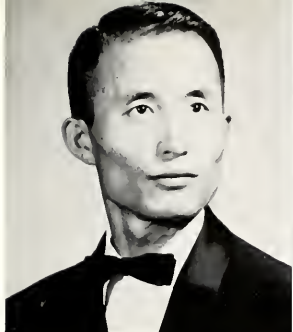
B.S. (Science)
Westminster Fellowship.

ROBERT E. SMITH

Canton

B.S. (Business Administration)
"M" Club 3, 4; Football 3; Men's Honor Council 3, 4.





YOUNG BUM SONG

Seoul, Korea

B.S. (Mathematics)
Newman Club.

JOANNE SORRELLS

Pleasant Grove

B.S.E. (Physical Education)
W.A.A. 1, 2, 3, 4, Treasurer 4; A.C.E. 1, 2; P.E. Majors
Club 3, 4.

SHAFER SPENCE

Grenada

B.S.E. (Social Science)
Baseball 3; "M" Club 3, 4.

MARIE STELLA

Minter City

B.S.E. (Social Science)
Delta Playhouse 3, 4.

JIMMIE CAROL STILL

Batesville

B.A. (English)
Wesley 2, 3, 4; Kappa Delta Pi 3, 4, Secretary 4; Miss
Delta 3; Delta Playhouse 3, 4; Pi Gamma Mu 4.



DAVID PAUL STOKES

Greenwood

B.S.E. (Social Science)
Transfer, Clarke Memorial College; Veterans Club.

KAYE STONE

Marks

B.S. (Business)
Transfer, M.S.C.W.; Chi Delta 3.

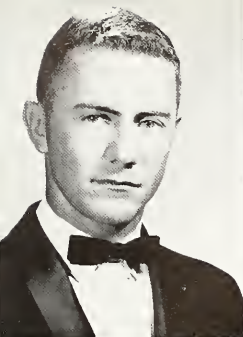


GEORGE CURRY STROHM

Cleveland

B.S.E. (Physical Education)
Veterans Club 3, 4.





JERRY PHILLIP SULLIVAN

Louisville

B.S.E. (Social Science)
"M" Club Vice-President 4; Intramural Council 3; Class Favorite 3; Baseball 1, 2, 3, 4; Football Manager 1, 2.

GLORIA SULTAN

Cleveland

B.A. (Art)
Delta Belles 1, 2, 3; Dance Club 2, Vice-President 3; Wesley 1, 2, 3, 4.



ANNETTE TANNER

Vicksburg

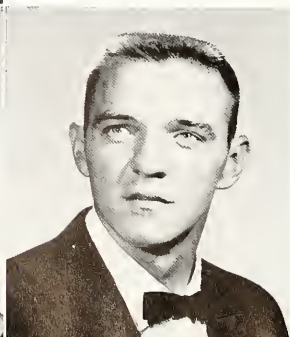
B.S.E. (Elementary Education)
A.C.E. 2, 3, 4; Delta Singers 2, 3, 4; Deltones 2, 3, 4, Vice-President.



RAMONA TATE

Shannon

B.S.E. (Mathematics)
Transfer, Itawamba Junior College; B.S.U. Executive Council 3, 4; Y.W.A. President 4; Delta Playhouse 3, 4; Miss Delta 4.



ANNE CULPEPPER TAYLOR

Flushing Queens, New York

B.S.E. (Elementary Education)
A.C.E.; Canterbury Club; M.E.A.

JIM F. TAYLOR

Eaton, Indiana

B.S.E. (Physical Education)
Basketball; "M" Club 3, 4.

MARY BLADES TICKELL

Vicksburg

B.S.E. (Elementary Education)
A.C.E. 1, 2, 3, 4, Vice-President; Dance Club 2, 3.

JIMMY TROTTER

Sardis

B.S.E. (Physical Education)
Football 2, 3; P.E. Majors Club; "M" Club; Class Favorite 4.



CAVLYNE USSERY

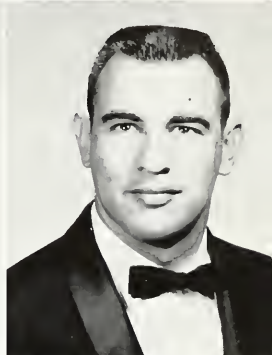
Lexington

B.S.E. (Elementary Education)
Transfer, Holmes Junior College; Chi Delta 3, 4; A.C.E. 4.

STYKE "PEPSI" VALMUS

Pensacola, Florida

B.S.E. (Social Science)
Basketball 1; Golf 3; Film Library 2, 3.



RUBY MELTON VANCE

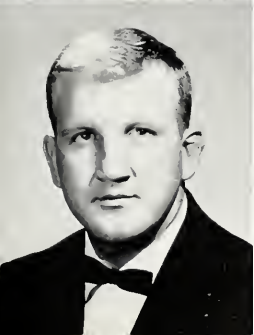
Drew

B.S.E. (Physical Education)
P.E. Majors Club 1, 2, 3, 4; Dance Group 2; Tumbling Team 2.

VALERA LEE VAUGHT

Tylertown

B.S.E. (English)
Transfer, Co-Lin Junior College; Wesley President 3, Vice-President 4; Delta Singers 3; Delta Playhouse 3; Interfaith Council 1, Vice-President 4.



LOUIS D. VICCINELLI

Natchez

B.S.E. (Social Science)
Debate Team 3; Pi Kappa Delta Treasurer 3; Newman Club 3.

CHARLES EDWARD VICKERY

Coffeeville

B.S.E. (Mathematics)
Cavaliers Social Club 3, 4, Secretary 4; Delta Singers 3, 4.



SYLVIA WALDRUP

Vaughan

B.M.E. (Piano)
Wesley 3, 4, Officer 4; Delta Singers 3, 4; MENC 3, 4.

HENRY J. WARD

Jackson

B.S. (Pre-Dentistry)
Beta Beta Beta; Delta Playhouse.



NORMA ANGELINE WEBB

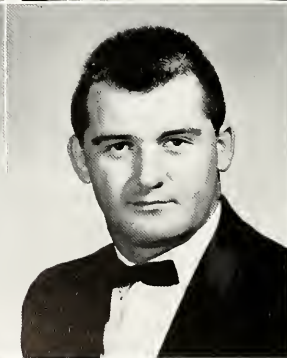
Ruleville

B.S.E. (English)
Deltones; Delta Singers; Fabulous Four; BROOM Staff 4.

BOBBIE JEAN WELLS

Lambert

B.S.E. (Home Economics)
Delhecons 1, 2, 3; Y.W.A. 1, 2, 3; Delta Belles 2, 3, 4;
W.A.A. 2.



MARY LOU WHITE

Jackson

B.S.E. (Physical Education)
P.E. Majors Club 1, 2, 3, 4, Reporter 2, Secretary 4;
W.A.A. 1, 2, 3, Reporter 2; Health Council 2; Delta Singers
1, 2; Deltones 1, 2, 3, 4, Secretary 2; Miss Delta 3, 4;
Women's Honor Council 3, President 4; President's Council
4.

ARLEY RENALDO WHITESSELL

Tunica

B.S. (Business Administration)
Transfer, Northwest Junior College.



MARY AMELIA WHITTINGTON

Cleveland

B.S.E. (Elementary Education)
Transfer, M.S.C.W.; Delta Singers.

ANNE WILKINSON

Shaw

B.S.E. (Elementary Education)
Delta Singers 1, 2; MENC 1, 2; Canterbury Club 2, 3,
President; Deltones 1; Miss Delta 2; A.C.E. 3.

CHARLOTTE MILNER WILLIAMS

Moss Point

B.S.E. (Business-English)
Miss Delta 1, 2, 3, Feature Editor 2; B.S.U. Council 2;
BROOM Campus Editor 3; Business Club 1; Pi Omega
Pi 4.



JOE WILLIAMSON

Hollandale

B.S.E. (Biology)
Delta Playhouse 2, 3, 4; Cavaliers 3, 4.

BOB WILSON

Greenville

B.S. (Chemistry)
Veterans Club 2, 3, 4, Sergeant 3, Commander 4; Men's
Honor Council 4, President 4; Delta Singers 3.



y Smith enjoy a quiet evening



BEVERLY MARIE WOLFE

Cleveland

B.S.E. (Home Economics)
Delta Belles; Omega Phi; Delhecons; Who's Who in
American Universities and Colleges.

CHEIYEN JONES WONG

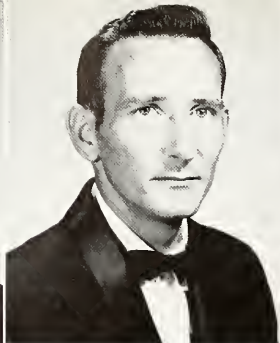
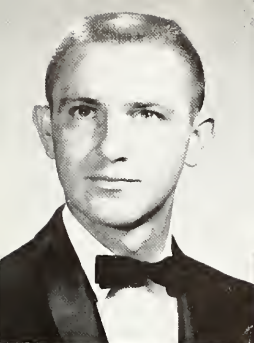
Moorhead

B.S. (Accounting)
Transfer, Mississippi Delta Junior College.



Cheer up, Rabbit. Maybe Mary Jo can cook better than this
"Rabbit" Hannah and Walter Herbison dutifully eat their lunch.





Louisville T. C. WOODS, JR.

Cleveland

B.S. (Business Administration)

Baseball 1, 2, 3, 4; BROOM
oil 4; Class Treasurer 2.

Winona



HOYT C. WOOTEN

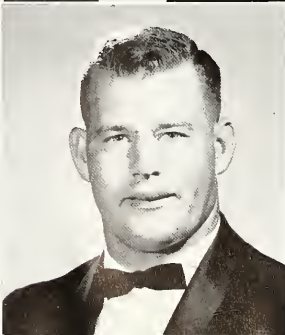
Bruce

B.M.E. (Music)
Transfer, Northwest Junior College; Delta Singers 3, 4;
Deltaires 4.

LYNWOOD N. WRIGHT

Indianola

B.S. (Accounting)
Transfer, Mississippi Delta Junior College.



ELIZABETH WYNNE

Coldwater

B.S.E. (Social Science)
Miss Delta 3, 4; BROOM 4; Delta Playhouse 3, 4; Kappa
Delta Pi 4; Class Reporter 4; Omega Phi 3, Treasurer 4;
Pi Gamma Mu 4.

THOMAS RAY YOUNG

Aberdeen

B.S.E. (Physical Education)
Football 3, 4; "M" Club 3, 4.



College has been a little too much for Joycelyn Milner.



Martha Rowe and Snuffy Smith enjoy a quiet evening watching TV.

Oh, what a day!
Tommy Dykes won't forget "M" Club initiation day.



But, Coach, I'm so tired!
Coach Wyatt instructs Sookie Vance in water safety.



Contact!
"Bama" Junkin says it takes skill.



JUNIOR CLASS



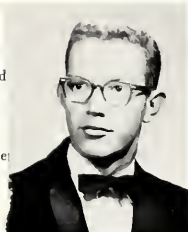
JUNIOR CLASS OFFICERS

Gerry Sultan *Secretary*
Jean Neal *Treasurer*
Bobby Moore *President*
Arlas Dickson *Reporter*

Sandra is bul
half-time show



Carolyn Crawford
Frank Crawford
Pattie Crenshaw
Charles E. Critter



Sally Adams
Mack Alford

Charleston
Itta Bena

George Hayes Ayers
Bob Baker

Coffeerville
Philadelphia



Lyndra Allison
George Anderson

Charleston
Inverness

Carolyn Ball
Hugh Ballard

Biloxi
Kosciusko



Larry Arrington
Nora Ashcraft

Bruce
New Albany

Thomas Barrentine
David Belford

Carrollton
Elizabeth, New Jersey

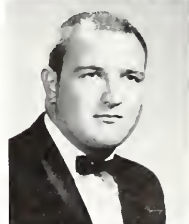


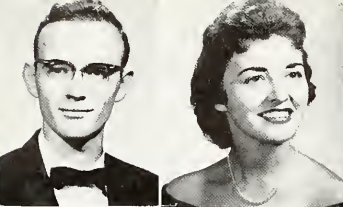
Lazette Ashley
George Aust

Ingomar
Itta Bena

Raymond Bell
Lynda Bennett

Pascagoula
Fulton





JUNIOR

W. H. Bowie
Ruth Boyd
Bettye Branch

*Lexington
Walnut
Goodman*



Iris Brantley
Steve Brazdovic
Julie Brookhart

*Cleveland
Dunellin, New Jersey
Lula*

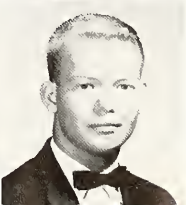
Ruth Brooks
Samuel Carol Broussard
Helen Brown
Sara Browning

*Vaiden
Schlater
Cleveland
Goodman*



Bob Brumfield
Jane Burgin
Ron Camp

*Ruleville
Starkville
Amherst, Ohio*



Mary Carmichael
William Carr
Wayne Carson

*Friars Point
New Albany
Grenada*

Richard Chesteen
 Larry Cockrell
 Carolyn Ann Cook
 Vicky Conry

Winona
Batesville
Biloxi
Clarksdale



Carolyn Crawford
 Frank Crawford
 Pattie Crenshaw
 Charles E. Crittenden

Minter City
Boyle
Scobey
Greenville



"I saw you, Rouse!"
 "Blue" likes a clean, fair game.



Burlon Crocker
 Jackie Crocker
 Ruby Crockett
 Colbert Crowe

Cleveland
Vance
Jackson
Carthage



Sledge
Cleveland

John I. Crumby
 Claudette Curtis
 Martha Dacus
 Nell Dancy

Cleveland
Vicksburg
Winona
Holly Springs





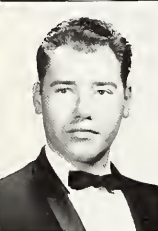
Jeanette David
 Charles Davis
 Ann Deakle
 Billie Ruth Dickerson

Greenville
Pontotoc
Lucedale
Isola



Arlas Dickson
 Anna Sue Dixon
 Merry Lou Dudley

Tippo
Vaughan
Winona



Reuben Junior Dyer
 Linda Eaker

Pinola
New Albany

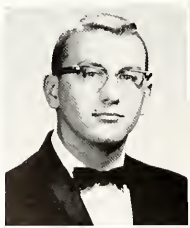


Samuel Lee Ellis

Cleveland



Carolyn Fauver
 Bobby Ferguson
 Jeanette Ferri



Claude Fleming, Jr.
 Clint Fletcher
 Martha Ruth Floyd

Cruger
Greenville
Booneville



Kenneth Furniss
Allie Coker Garrett
Mary Jo Garst

Clarksdale
Clarksdale
Silver City



Peggie Gentry
Ella Gill

Doddsville
Tunica



Some people just loaf all the time.
Example—David Heflin.

Terry Goodbread

Clarksdale



Afraid to turn around and face the
music, Carolyn?

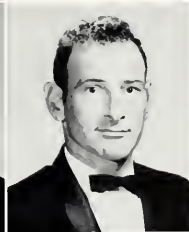
Helen Claire Gordon

Sledge



Margaret Jane Gordon
Ned Graziosi

Sledge
Cleveland



Kay Gregg
Travis Griffin
Joyce Guntharp

Gleenville
Merigold
Clarksdale



Norma Hall
Helen Hancock

*Sledge
Onward*



Eva Hardy
Barbara Harpole

*Tutwiler
Clarksdale*



William R. Hartley
John L. Hazelp

*Cleveland
Clarksdale*



David Heflin
Larry Henderson
Beth Hendrix
Albert Hill, Jr. *Baton Rouge, Louisiana*

*Ripley
Forest
Tunica*

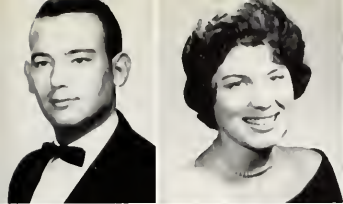
Nancy Lee Hirsch *Arlington, Virginia*
David L. Hitchen *St. Mary's, Ohio*
Joyce Hoop *Holcomb*
James A. Hooten *Bragg City, Missouri*



Bobby Howell
Martha Hull
Pat Inman
Nancy Isom

*Kilmichael
Merigold
Drew
Sunflower*





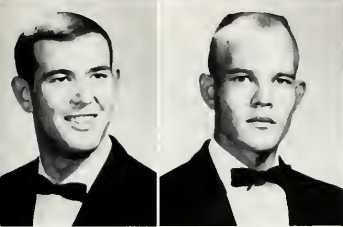
Roderick Irwin *Letland*
Miriam Jacks *Cleveland*

James Jackson *Greenwood*



Dot Jeffcoat *Shaw*
Jeraldean Jenkins *West*

James Hollis Johnson *Holly Bluff*
Lilly Mae Jue *Cary*



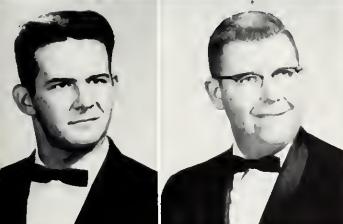
Dean Kamm *Dunnellen, New Jersey*
Carey Kelly *Lake*

Kenneth Knight *Grenada*
Ignatius Labella *Indianola*



Betty Florence Latham *Beulah*
Thomas Earl Latham *Eupora*

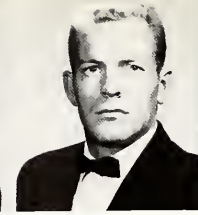
Reha Leigh *Vicksburg*
Pat Lewis *Dundee*



Kermit R. Littleton *Greenville*
Bob Livingston *Cleveland*

"How I wish football season wasn't over!"





Lee Ella Long
 Peggy Lusk
 Dale McCann
 Reggie McClure

Greenwood
Goodman
Sebastopol
Ackerman



Milton McMaster
 Paul McMillian

Yazoo City
Cleveland



Raymond Mabry

Lake



Martha Maloue

Darling



"Where's the referee?" Jackie Crocker looks on as Bobby Moore jumps for the ball.

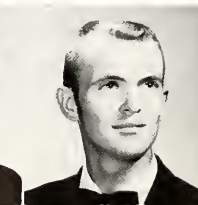


David Martin
 Reba Mills

Coffeerville
Crowder



Kilmichael
Merigold
Drew
Sunflower

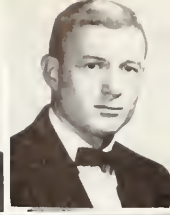


James Mitchell
 Ned Mitchell
 Kenneth Mixon
 Bobby Allen Moore

Rena Laura
Cleveland
Grenada
Grenada

Mabel Rivers Moore
 Mac Morgan
 Wilburn Murphree
 Jean Neal

Vaughan
Boyle
Bruce
Indianola



Connie Newman
 Janette Nichols

Utica
Tishomingo



"I'll do it right while Miss Hester is watching." Mary Wallace and Janette learn to sew.

Cecile Nix

Clarksdale



A. M. Norwood

Algona



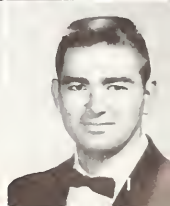
Pat Owen
 Lawrence E. Oxner

Senatobia
Rolling Fork



l" Pace
 r
 arnell

Winona
Lambert
Tupelo
Bruce





Nancy Perry

Greenwood



Arlene Peyton
Martha Rose Pharr



Vicksburg
Vicksburg



Nell Crumby Phillips
Sara Powell
Charles William Preston



Cleveland
Potts Camp
Cranford,
New Jersey

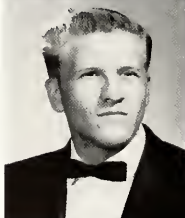
Dot Prevost
Lucille S. Reaves
Benjamin Howell Reece, Jr.

Linn
Duncan
Calhoun City



Kenneth Rencher
Marlon Rico, Jr.
Helen Robertson

Corinth
Pascagoula
Merigold



Billy Robinson
Kristin Robinson
Seymour Robinson

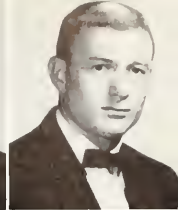
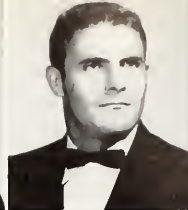
Shaw
Greenwood
Indianola



Rena Laura
Cleveland
Grenada
Grenada

Shirley Rogers
Henry L. Russell
Frank Ryals

*Lexington
Monticello
Biloxi*



Joe Sabbatini
Jo Leta Sanders

*Leland
Carrollton*

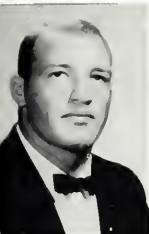


"That Southern h
Ashley is helped to
Collins,



Sanders

Grenada



Ralph Sanders
Joan Sims
Charles Smith

*Mendenhall
Burnsville
Shelby*



Patricia Smith
Solon B. Smith
Jeanie Snyder

*Drew
Greenville
Canton*



Harvey Springer
John Robert Stallings
Martha Stancill

*Clarksdale
Cleveland
Yazoo City*

James Steen
 William Stevens
 Dot Stovall

Cleveland
Greenville
Leland

Elizabeth Stuart
 Gerry Sultan
 Roy Terry

Carthage
Marks
Kosciusko



Billy Thomas
 Francis Thornton
 Janell Tipton

Kilmichael
Pace
Hernando

Frances Tomlinson
 James Townes
 Vivian Tribble

Parchman
Minter City
Charleston

JUNIOR DAZE



Jackie Tullos
James Turner
Ruby Turner

*Lake
Algoma
Greenville*



Bill Upchurch *New Castle, Indiana*
Sara Valencino *Greenville*
Marilee Van Cleve *St. Marys, Ohio*

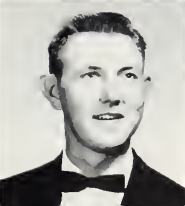


"Percy, the TV is this way."



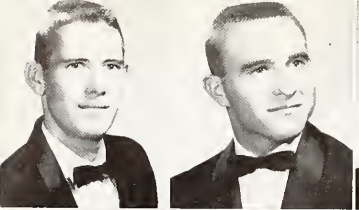
Mary Vickers
Jesse A. Vincent
Frances Walden

*Eupora
Indianola
Booneville*



Marion T. Waldrup
Rebecca Ward
Lynn Watkins

*Drew
Ackerman
Natchez*



Cleveland



John Robert Webb *Leland*
Paul Webster *Cleveland*
John D. Welch *Bridgeport, Connecticut*
Mary Dixon Welch *Natchez*



Jeff D. Wheeler *Dundee*
Pete White *Tuckahoe, New York*



Richard D. White *Marks*
Jerry Wigington *Cleveland*



Ruth Wilder *Tunica*
Linda Wilson *Lyon*



Tony Wilson, Jr. *Rosedale*
Bryant Wolfe *Cleveland*
Walt Yahl *St. Marys, Ohio*
Sandra Alsbooks Young *Tunica*

JUNIOR DAZE



Remember Psycho!

"Dear John"



We're glad it's over . . .



I'll starve when football season
is over . . .

Shhhhh! Daddy is studying



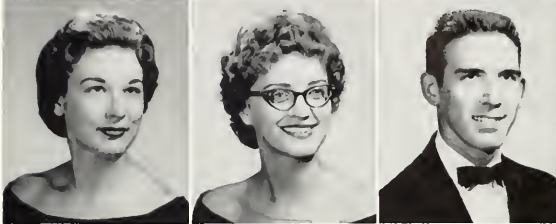
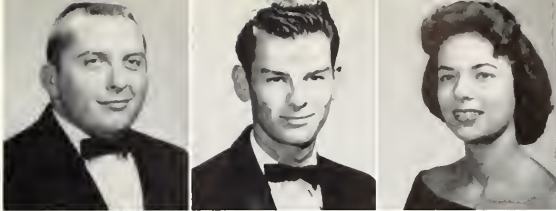
This is really living!

SOPHOMORE CLASS



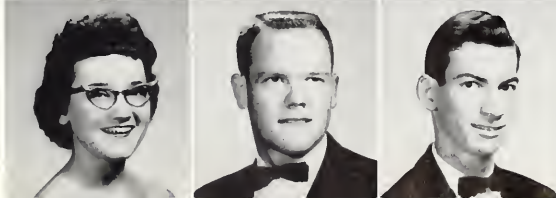
SOPHOMORE CLASS OFFICERS

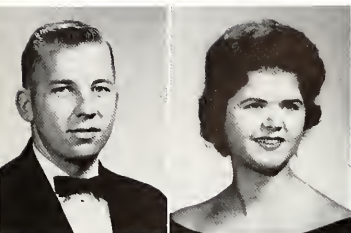
Ronnie Guest Reporter
Kelly Klein President
Frank Bridges Vice-President
Clydene Rutledge Treasurer
Kay Cobb Secretary



Bobby Abernathy	<i>Crowder</i>	Betty Jean Ates	<i>Indianola</i>
Charles Douglas Andrews	<i>Drew</i>	Dolores Bagley	<i>Hollandale</i>
Marion Ann Arnold	<i>Greenwood</i>	John Robert Baker	<i>Greenwood</i>

Linda Baker	<i>Rosedale</i>	Chris Breedlove	<i>Coffeeville</i>
Phillip L. Boggs	<i>Greenville</i>	Frank Bridges	<i>Ruleville</i>
Bill Bondeson	<i>Greenville</i>	Melvin Brodofsky	<i>Sunflower</i>



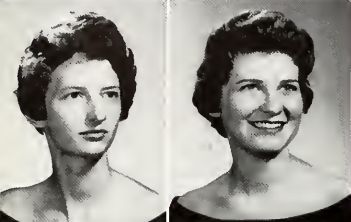


Hanson B. Bufkin
Bonnie Burford

*Cleveland
Crowder*

Barnet Chiz
Barbara Jean Clifton

*Shaw
Benoit*

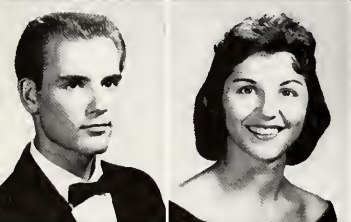


Betty Campbell
Robbie Campbell

*Natchez
Cleveland*

Kay Cobb
Martha Coleman

*Lambert
Greenwood*



Joe Frank Carollo
Pam Carollo

*Leland
Leland*

James Donald Cooper
Lewis Carroll Cotton

*Drew
Boyle*

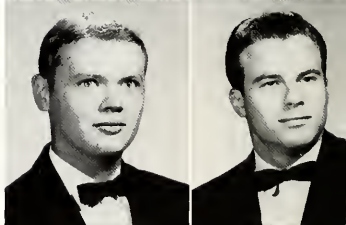
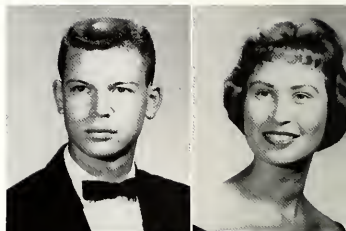


Fay Carrol
Lady Jane Castle

*Rolling Fork
Eupora*

Bill Cox
Martha Crawford

*Greenville
Shaw*





Lacey Ann Crisler
Virginia Curtis
Becky Dalton
Bopsy Davis

Jackson
Stewart
Eupora
Leland



Gale Davis
Gwin Davis

Jackson
Pontotoc



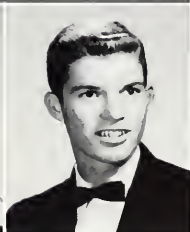
Mary Ann Davis
Howard Dodd

Clarksdale
Schlater



Kay Doss
Patricia Dribben

Clarksdale
Rolling Fork



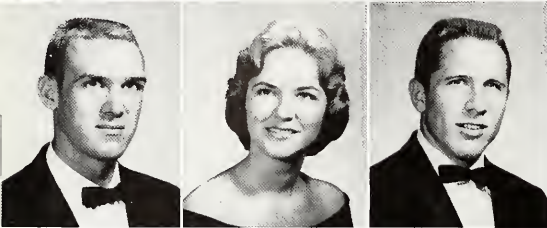
John Dyess
Margie Earnheart
Bobby Elliott
John Ervin

New Albany
Hernando
Cleveland
Cleveland



Philip Farr
Linda Fisher
Jack Fletcher

*Greenville
Utica
Cleveland*

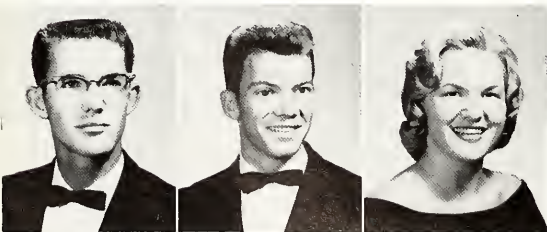
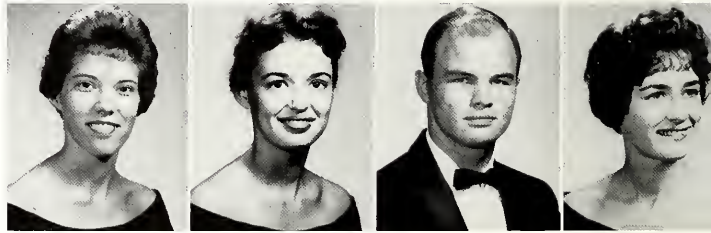


Bill Fort
Faye Freeman
Charles Fuller

*Plymouth, Florida
Minter City
Meridian*

Carol Fullilove
Shula Gary
Garland Gibson
Linda Crozinger

*Duncan
Cleveland
Cleveland
Crowder*



Ronnie Guest
George Albert Hancock
Diane Harris

*Lambert
Cleveland
Clarksdale*

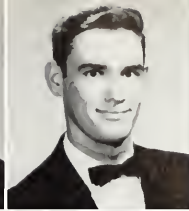
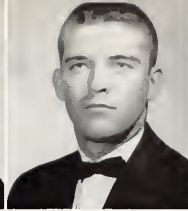


Ricky Haynes
Audrey Hazzard
Thomas Lee Henderson

*Lake Cormorant
Cleveland
Tutwiler*

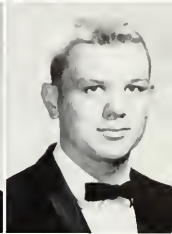
Brenda Joyce Hill
 Al Hopkins
 Terry Hopper
 Mary Hutchinson

Clarksdale
Walnut
Batesville
Hollandale



Jimmy Jackson
 Karen Jenkins
 Larry Wing Jeong
 Harvey Johnston

Aberdeen
Greenwood
Shelby
Greenwood



"Hurry with the hotdog, Rabbit."

Ann Lamon patiently waits for refreshments.

Tom Kimbro
 Kelly Klein
 Patsy Koonce
 Ann Lamon

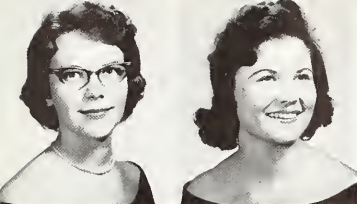
Marks
Greenville
Grenada
Greenville



Mary Ann Little
 Joyce Logan
 Robert "Blue" Logan
 Brenda Long

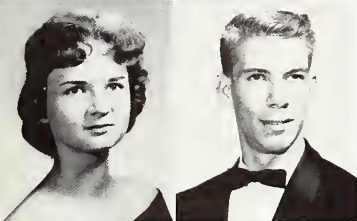
Grenada
Cleveland
Bruce
Shelby





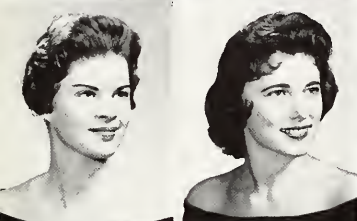
Jo Anne Love
Connie Luter

*Amory
Indianola*



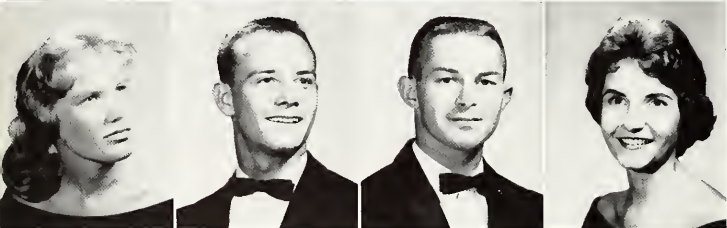
Mary Ann McCuan
Robert McCurdy

*Greenwood
Greenwood*



Glynn McPherson
Kaffie Mallette

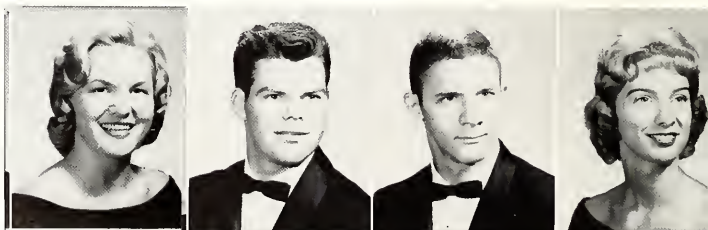
*Grenada
Indianola*



Carol Manning *Merigold*
Larry Marberry *Merigold*
Charles "Wink" Martindale *Tutwiler*
Jane Montgomery *Lexington, Kentucky*

Lattra Moore
Ray Murphy
Sammy Neyman
Diane Oakman

*Cleveland
Clarksdale
Greenville
Indianola*



Raymond Oltremari
Tommy Pinkerton
Kathleen Poag
Betty Sue Powell

*Greenville
Winona
Leland
Robinsonville*

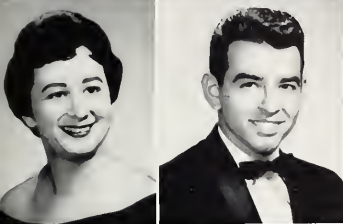




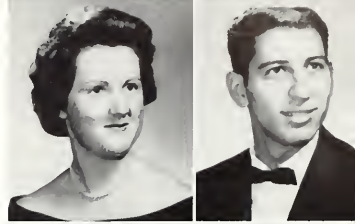
Brenda Prewitt *Merigold*
John Ramcy *New Iberia, Louisiana*



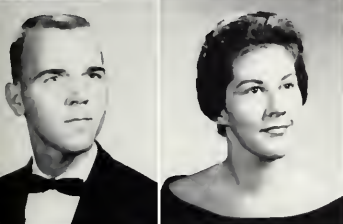
Marvin H. Randall *Vaiden*
Carol Renfroe *Louise*



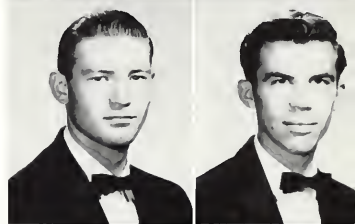
Ann Robertson *Ruleville*
Mike Robinson *Greenville*



Bettye Rozier *Cleveland*
Leonard Rubenstein *Shaw*



Frank Rule *Ruleville*
Clydean Rutledge *Linn*



Arthur Lee Sanders *Shelby*
Charles Sanders *Cleveland*



Leigh Sanders *Cleveland*
Sylvia Savage *Eupora*



Ronald Schuyler *Greenville*
Winston Scrivner *Merigold*

"And I got a rep?"





Glenn Sexton *Irving, Kentucky*



Pat Shelton *Greenwood*
Melba Showah *Hollandale*
David Sims *Hollandale*



Johnnie Charlene Smith *Merigold*
Margie Smith *Boyle*
Wanda Smith *Batesville*

Billy Smith-Vaniz *Cleveland*
Sue Rita Stockton *Winona*
Bobbette Stribling *Cleveland*



Billy Strohm *Cleveland*
Morris Stuart *Edinburg*



Anne Taylor *Webb*



Benny Taylor
 Gayle Taylor
 Jimmy Thompson

*Itta Bena
 Greenwood
 Clarksdale*



"You don't say!" Pat enjoys telling gossip to upperclassman.

Johnnie Ruth Towles
 Wanda Faye Towles

*Sunflower
 Sunflower*



David Turner
 Kay Kay Turner

*Cleveland
 Greenville*



Carl Welch
 Pat Wicker
 Monroe Williams

*Gibsonville, North
 Carolina
 Louisville
 Jackson*



Mamie Lou Williamson
 Carol Ann Wilson
 Lamar Wilson

*Belzoni
 Greenwood
 Hollandale*



Charles Wong
 Martha Wood
 Cookie Wright

*Cleveland
 Charleston
 Jackson*

ROCKHOUSE—Duit tuit!



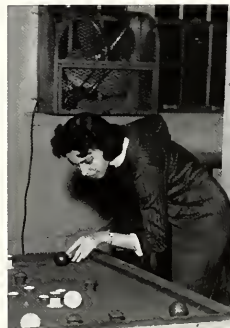
Our regular date . . . the tv



. . . to go home!



Go, man, Go!



I'm nothing but good!

FRESHMAN CLASS



FRESHMAN CLASS OFFICERS

Al Mann	Reporter
Charlene Hall	Vice-President
Fred Cribbs	President
Betty Jo Abraham	Secretary
Jocy Myers	Treasurer



Linda Abide *Greenville*
 Betty Jo Abraham *Clarksdale*
 Jim Adrean *Franklin, Michigan*
 Ellis A. Allen, Jr. *Clarksdale*



Patti Allen *Greenville*
 Allen Ambrose *Memphis, Tennessee*



Fairy Austin

Linn



Sara Charlene Bagwell

Eupora



"Don't shake the table. My house will fall."



Ben Bailey
 Glenda Bailey

Cleveland
Dublin



Tommy Bailey *Memphis, Tennessee*
 Bernice Baker *Shaw*
 Tommy Ballenger *Jackson*
 Olen Beam *Clarksdale*

Carolyn Bianca
Ed Bibb
Patsy Blount
Bob Bondeson

Indianola
Drew
Indianola
Greenville



Edith Carol Boyce
Johnny Brackin

Indianola
Boyle



Dorothy Brannon

Eupora



Carolyn Jo Bratton

Hollandale



Rosemary Brock
Audrey Brown

Greenwood
Cleveland



Barbara Brown
Barbara Elaine Brown
Sandra Kay Brunson

Greenville
Anguilla
Avalon





Jimmy Burkett
Pat Burney
Richard Burnside
Margaret Carraway

*Jackson
Ackerman
Shelby
Cleveland*

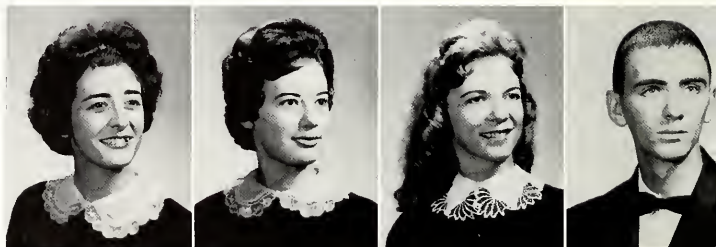


Martha Carroll
Peggy Cates
Donald Chenault

*Marks
Cleveland
Rosedale*

Carolyn Chentault
Jamie Chiles
Susan Clarke
Calvin Coleman

*Shaw
Louisville
Belle Glade, Florida
Eupora*



Burnice Collier
Tommy Crenshaw
Fred Gibbs

*Cleveland
Clarksdale
Sumner*

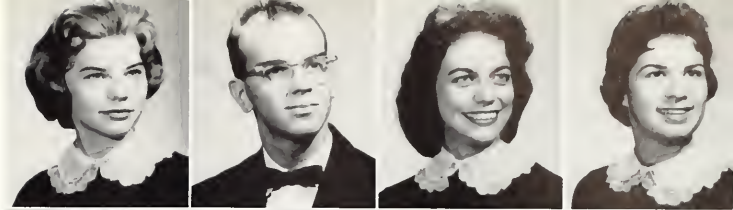


Lester Denley
Joe Howard DePriest
Emily Duckworth
Regina Dugan

*Drew
Shelby
Cleveland
Grenada*

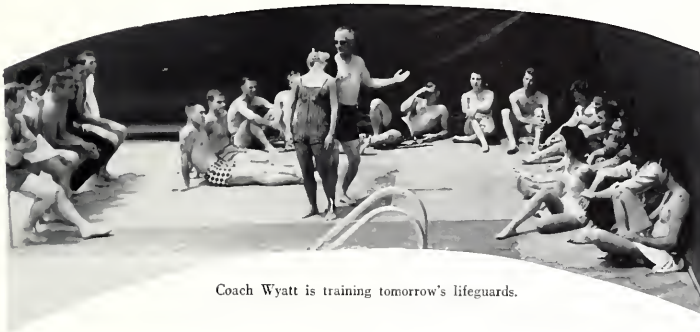
Linda Dunlap
 Roger Earl
 Nancy Edmonds
 Joan Edwards

Tupelo
Greenville
Drew
Indianola



Peggy Edwards
 Louise Elliott
 Linda Exsterstein
 Harmon Feather

Duncan
Greenwood
Greenville
Hushpuckena



Coach Wyatt is training tomorrow's lifeguards.

Charles Feduccia
 Josephine Ferri
 Doug Ferriss
 Patricia Forbes

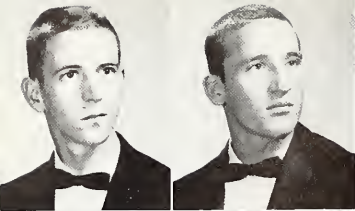
Cleveland
Boyle
Shaw
Greenwood



Ann Fox
 Jimmy Fox
 Geraldine Fulcher
 Loyce Gaddy

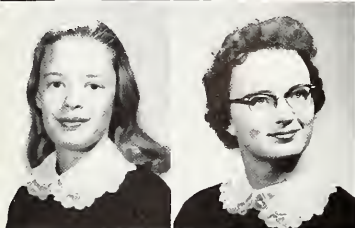
Cleveland
Shaw
Yazoo City
Clarksdale





Tommy Gammill
Doyle Garrett

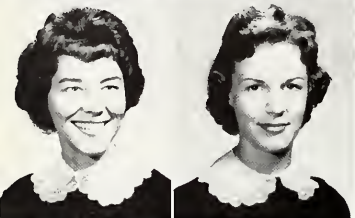
*Cleveland
Gunnison*



Sharon Gary
Barbara Gay

*Cleveland
Memphis, Tennessee*

Barbara Ann Hancock *Onward*
Gail Hanna *Pine Bluff, Arkansas*



Joan Gibson
Linda Goodman

*Sidon
Indiana*

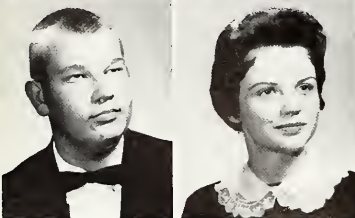
Carolyn Ann Hansbrough *Greenville*
Edwin B. Harpole *Clarksdale*



William Griffith
Glenda Grittman

*Cleveland
Drew*

Jimmy Hathcock *Cary*
Jimmy Howard Helms *Lyon*



Jack Haire
Charlene Hall

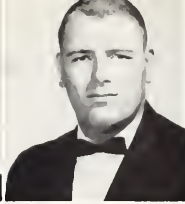
*Drew
Tutuiler*

Lawrence Henson *Cleveland*
Shirley Ann Herbison *Boyle*



Michael Donal Herring *Mobile, Alabama*
Robert J. Hodge *Houston*





Tom Horne *Cleveland*
 Martha Joy Huffman *Greenville*
 Rita Hughes *Lynn*
 Bobby Hutchison *Greenville*



Virgie Isaac *Philadelphia*
 Edward Jackson *Cleveland*



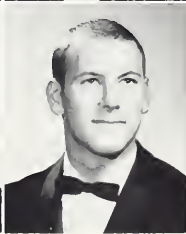
Jan Johnson *Ruleville*
 William Parks Johnson *New Albany*



Sue Jones *Boyle*
 Fonda Keith *Anguilla*



Sonny Kelly *Lyon*
 Joyce Faye King *Lexington*
 Robert Earl King *Greenville*
 Carolyn Kisner *Indianola*



Teddy Kittle *Cleveland*
 James Kurts *Greenville*
 Steve LaMastus *Drew*
 Joyce Lay *Webb*



Larry Liddell

Cleveland



Loretta Livingston
Betty Jo Love



*Stoneville
Swiftown*



Shirley Lovell
Karen Lovorn
Kathy Lovorn



*Canton
Louisville
Louisville*

Janie Lowe
Bobbie Sue Luckie
William Nelson McArthur

*Drew
Tutwiler
Cleveland*



Bonnie McClure
Carolyn McElroy

*Shaw
Tutwiler*



Jerry McHenry

*Murfreesboro,
Tennessee*



Faye McMillan
Al Mann
Nancy Manning

Dublin
Greenwood
Merigold



Kent Marshall *Shaw*
Katherine Hickland Matthews *Clarksdale*



Sarah Ann Maxcy *Tremont*



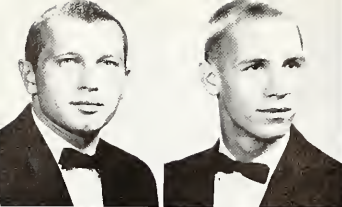
Levenia Maxwell *Inverness*
Shirea May *Jonestown*
Van Meador *Drew*



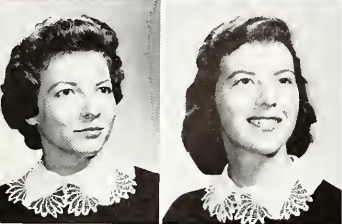
Billie Lou Meadows *Drew*
Jo Ann Mims *Greenwood*
Joe Mitchell *Duncan*



Mike Mitchell *Vardaman*
Rufus Mock, Jr. *Greenville*
Joyce Montgomery *Kilmichael*



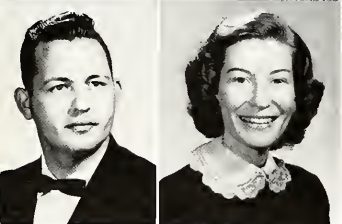
Jim Murphy
New Cumberland, Pennsylvania
Joey Myers
Cleveland



Patsy Nation
Indianola
Linda Faye Newsome
Pine Bluff, Arkansas



Betty O'Briant
Kilmichael
Sam Odom
Flora



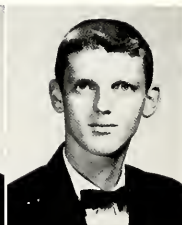
W. D. Odom
Benella Oltremari
Mickey O'Malley



Greenville
Greenville
Ruleville

Betty Outlaw
Mary Palmore
Percy Peeler
Martha Pennebaker

Baldwyn
Inverness
Kosciusko
Inverness



Nancy Philpot
Antonio Orellana Pinero
Mary Willie Pitts
Gloria Poag

Perthshire
Juncos, Puerto Rico
Clarksdale
Leland





Charlotte Poole *Greenville*
 Charles H. Pope *Greenville*



Elizabeth Pope *Show*
 Gene Pope *Belzoni*



Carol Elaine Porter *Clarksdale*
 Sara Reid *Rolling Fork*



Faye Richardson *Greenwood*
 Dorothy Lynn Riddle *Shaw*



William Edward Rorie *Greenville*
 Susan Rose *Greenville*



Betty Rose *Weir*
 Fred Rossi *Gillette, New Jersey*



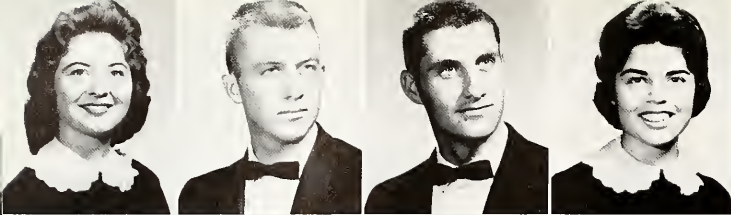
Dinah Pearl Rotenberry *Cleveland*
 Beverly Rucker *Kilmichael*



Lynette Russell *Cleveland*
 Carole Sanders *Cleveland*



If this would
 only end.



Cecilia Josephine Santucci *Leland*
 Jerald Selby *Shaw*
 Charles Shoffner *Greenville*
 Martha Signa *Greenville*



Ann Marie Skelton
 Madelyn Slaughter
 Marsha Slaughter

Winterville
Greenville
Greenville



Carole Kay Smith
 Elaine Smith

Cleveland
Greenwood

Dancing is a favorite pastime at Delta State.



Frances Smith

Inverness

Lucretia Smith
 Paula Smith
 Sally Smith
 Mary Jane Sowell

Greenwood
Greenville
Holcomb
Canton



Brenda Faye Stanford
 Sherman Stauffer
 Mary Elizabeth Stockton
 Joan Stringfellow

Skene
Greenville
Winona
Drew



Robert Strohm
 Joe Sullivan
 Billy Swafford

Clarksdale
Port Gibson
Cleveland



Harvey Swindall, Jr.
 Jackie Switzer

Cleveland
Inverness



Sammy Tedford

Lyon



Jenny Sue Thach

Schlater



Paul Thomas
 Linda Lee Thweatt

Edinburg
Miami, Florida



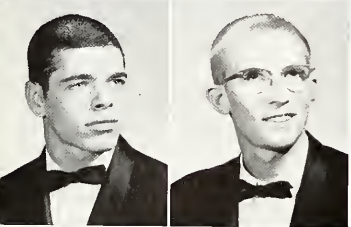
Dorothy Tiser
 Carolyn Townsend
 John Turner

Cleveland
Cleveland
Cleveland



Babs Walker
Mary Anne Walker

*Drew
Flora*



Gerald Wallace
Calvin Ward

*Greenville
Lourel*



Delores Wasson
Ruth Wells
Mary West

*Greenville
Noxapater
Boyle*

Carolyn White
Evelyn Hall Wigley
Sue Wilson

*Ruleville
Greenville
Greenville*



Betty Jean Windham
Nina Jo Winter
Jeannie Wise

*Lombert
Tunica
Louise*



Jo Ann Wolfe
Mary Louise Wood

*Cleveland
Inverness*



FRESHMAN MEMORIES . . .



It's better with a knife anyway!



. . . if Mother could see me now!

It seems that only the upperclassmen get mail . . .



Now, who did that?

Letters first . . . studies later.



But of course it was good!



FEATURES



AND SPECIAL EVENTS



LADY JANE CASTLE
feature editor

SAMMIE HOWELL MCKEE
special events editor

JANE BELL
campus life editor

WHO'S WHO AMONG
STUDENTS IN
AMERICAN
UNIVERSITIES
AND COLLEGES



MARY WALLACE BAILEY



PAT CRAWFORD



DUMONT FREEMAN



FRANK GREENLEE



BETTYE BLAIR LUSK



WALTER HERBISON



PEGGY JENNINGS



RUTH HART



PAT McCLELLAN



MARY BROACH McFARLANE



PATRICIA MIDDLETON



JOYCELYN MILNER



HENRY OUTLAW



ANGIE WEBB FRANK



BEVERLY WOLFE

Anticipation ran high in the back gym as Editor Patricia Middleton and Footlite Revue Editor Joy Milner gave last minute instructions to Emcee Paul Wood and Candidate Pat McClellan.



Bettye Blair Lusk, candidate for beauty, wore a big smile as she made her debut.

Shelley Denley was a two-time winner—class favorite and friendliest girl.



Carolyn Fauver is guided to her seat by Escort Kelly Collins.

REVUE



The winners! Percy Peeler and Fred Cribbs engage in hush-hush talk as the rest of the winners are announced.



Notice Jane Robertson's reaction as President Ewing presents Mr. DSC cup to Bobby Rowe.



Ella O'Neal serves punch to Shelley Denley. Did you spike it, Cavlyne?

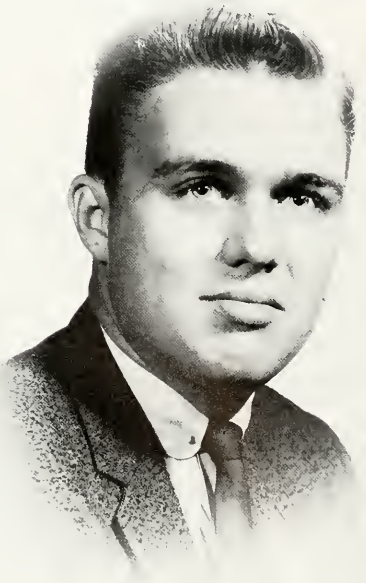
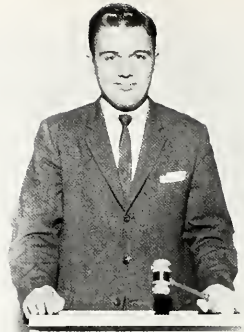
Everyone joins in the dance around the "M" Club Christmas tree after the Footlite Revue.





MR. DSC

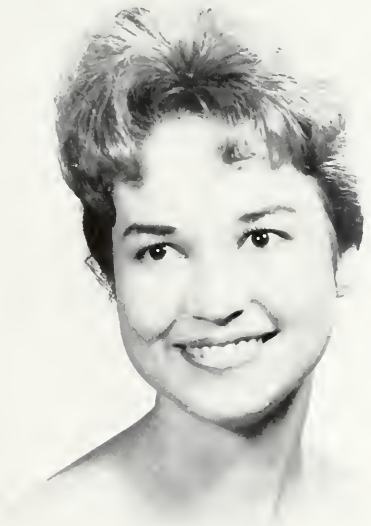
BOBBY ROWE





MISS DSC

MARTHA ROWE





MOST BEAUTIFUL

JOYCE KING



ita

INTERNATIONAL TALENT ASSOCIATES, INC.
SAN FRANCISCO • 916 KEARNY • PHONE EX 2-2576 • LOS ANGELES • LONDON • NEW YORK

NEW YORK

NEW YORK • 527 MADISON AVE • PHONE PL 1-3344

Jan. 25, 1961

Miss Patricia Middleton
Editor, BROOM
Delta State College
Cleveland, Miss.

Dear Miss Middleton:

Thank you for your flattering invitation to judge the most beautiful girl on the Delta State campus.

What a difficult choice, too, we might add. All the girls were so pretty that it was an extremely difficult decision. After much balloting behind closed doors, we finally selected the young lady (whose name we do not know) and have indicated our choice by writing "winner" on the back of her picture.

We enjoyed very much our recent appearance at Delta State and are looking forward to presenting another concert there in the not too distant future.

Sincerely yours,

Bob Flick, Dick Foley, John Paine, Mike Kirkland
Bob Flick, Dick Foley, John Paine and Mike Kirkland-THE BROTHERS FOUR

COLLEGE CONCERT BUREAU



BEAUTY

SYLVIA HAWTHORNE



BEAUTY

CAROL FREEMAN





BEAUTY

AUDREY HAZZARD



BEAUTY

GERRY SULTAN





BEAUTY

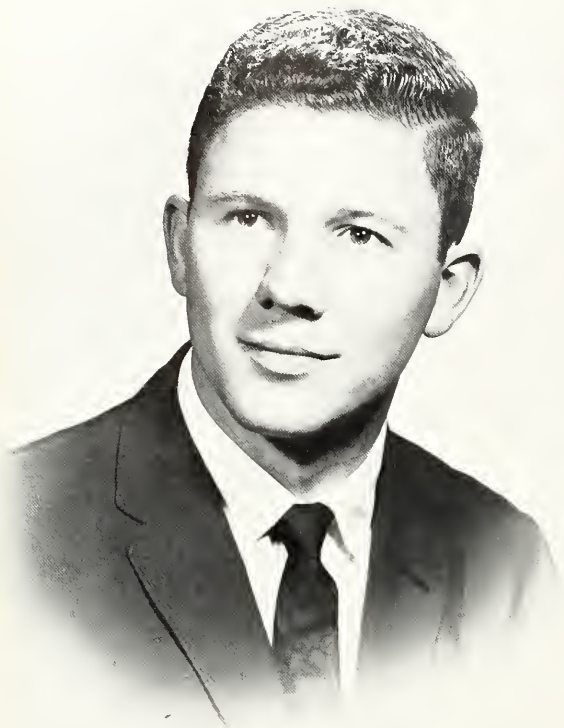
PAT WICKER



BEAUTY

MARY ANN WEBER





MOST HANDSOME

ROBERT SMITH



FRIENDLIEST GIRL

SHELLEY DENLEY



FRIENDLIEST BOY

PAT LEWIS



SENIOR CLASS FAVORITES

JANE ROBERTSON
JIMMY DAVIDSON



SHELLEY DENLEY
JIMMY TROTTER



JUNIOR CLASS FAVORITES



GERRY SULTAN
DAVID HEFLIN

SALLY ADAMS
JACKIE CROCKER
JEAN NEAL



SOPHOMORE
CLASS FAVORITES

PAT WICKER
TOM KIMBRO



CAROL ANN WILSON
MONROE WILLIAMS



FRESHMAN CLASS FAVORITES

CAROLYN BIANCA
PERCY PEELER



CHARLENE HALL
FRED CRIBBS





QUEEN OF HEARTS

CAROL ANN WILSON

VALENTINE COURT

Sammy Britt, Linda Newsome, Queen Carol, Bobby Elliot, Arlis Dickson, Frank Ryals,
JoAnne Sorrells, Jack Case.





HOMECOMING QUEEN

Patricia McCallum



CHI DELTA BEAU

Shafer Spence

"M" CLUB SWEETHEART

Lynn Ferguson



DELTA ALPHA OMEGA SWEETHEART

Peggy Cates



VETERAN'S QUEEN

Mary Jo Bishop



MULE TRAIN! The freshman boys escort the Homecoming Queen, Particia McClellan, and her maids onto the football field at the Homecoming game, November 5, 1960.



We don't want to set the world on fire—just our well-worn heenies. Sam and Courtney seem reluctant to part with their heenies after having worn them for so long.

HOMEcoming

The Continentals' view of the Homecoming dance—Billy Henley on the trumpet, Hoyt Wooten and his electric guitar, and "Boone" Newton on the saxophone.

And the band played on . . .





"Old Grads"—Robin Griffin, Carolyn Milner, Nancy "Shack" Shakelford, and Judy Palmer Nutter—cheer their alma mater to victory at the Homecoming football game with Northeast Louisiana State College.



Swinging to the music of the Continentals at the "After the Game" dance are Carol Sanders, Bobby Elliott and Leigh Sanders.

ACTIVITIES

Old and new students mingle at the Homecoming dance —"Wimp" Nichols, Joe Gary, Chuck Preston, The McGraws, and Jimmy Rose. Do you "Seymour"?



Burn your beansies, boys! Edwin Harpole warms his toes by the heat of his hot hat as Al Mann takes careful aim at the flame with his own beanie.





HOMECOMING COURT

Queen Patricia and her court presided over the Homecoming dance. From left to right: Maids, Gerry Sultan, Carol Renfroe Freeman, Queen Pat McClellan, Mary Ann Weber, and Audrey Hazzard.



Queen Pat and her court were graciously received by a capacity crowd at the Homecoming football game. From left to right: Paul Wood, Mary Ann Weber, Dumont Freeman, Carol Freeman, David Dodd, Patricia McClellan, Kelly Kline, Audrey Hazzard.



The "Fantastic Four" present the laundry list.

F
R
E
S
H
M
A
N



WHAT! no fork?



Roll over, Rover!

Freshman BEAUTIES???

War dance, Statesman style.



D
A
Y





RELIGIOUS EMPHASIS WEEK

This year the theme of Religious Emphasis Week was "What is Vital in Religion: Love, Study, Faith, Prayer, Devotion, Meditation." Religious Emphasis Week, sponsored by the Inter-Faith Council, was held February 13 through February 16, 1961.

During Religious Week Noonday Meditations, Discussion Groups, Dormitory Prayer Meeting, and Morning Watch were held. Each day an assembly was held with Mr. Richard E. Harbison, minister of the Presbyterian Church at Canton, Mississippi, as guest speaker.

THE MATCHMAKER



Nancy McLeod, and Joe Williamson, stars of "The Matchmaker," appear in this scene together where Nancy starts to scheme for making matches.



Betty Andrews and Joyce Montgomery, workers in Mrs. Malloy's hat shop, discuss the dull life of a milliner.

Jackie Crocker and Al Mann begin making plans for their adventure in New York.





NATALIE BODYANA

The Broom Auditorium was the setting for a concert featuring Natalie Bodyana, lyric soprano, on October 24, 1960.



THE BROTHERS FOUR

The Brothers Four entertained on December 7, 1960, with folk songs and ballads from their popular repertoire. They were the first entertainers to perform on the stage of the Walter Sillers Coliseum.

DR. NICHOLAS NYARADI

Dr. Nicholas Nyaradi, former Minister of Finance of Hungary and currently Director of the Institute of International Studies at Bradley University, Peoria, Illinois, spoke to a packed Broom Auditorium audience on Thursday, January 12, 1961. The subject of the speech which held all those who heard him in rapt attention was "The Dangers of Communism."





KELLY COLLINS

MOST VALUABLE PLAYER

Kelly Collins, a senior from Yazoo City, Mississippi, has been recognized by sports writers throughout Mississippi as the outstanding lineman on Delta State's 1960-61 football team.

He was formally recognized at a banquet given by the Jackson Touchdown Club on December 8, 1960. W. C. "Pop" Allen, quarterback for the 1943 Delta State team and president of the Jackson Touchdown Club, presented the award to Kelly.

1960 ATHLETIC CLASS DAY AWARDS



JIM TAYLOR—Basketball



BOBBY SPIKES—Baseball



JIMMY DEAKLE—Football



FREDDIE BLACK AWARD

George Arendale and Jimmy Craig were recipients of the Freddie Black Memorial Award in 1960. The award is given each year as a memorial to Freddie Black, a member of the 1953 football team who was drowned in a hunting accident.

1960 CLASS DAY AWARDS



TOMMY McCORMICK
Business Administration Award



LOUISE MEYERS
Business Award



PAT WICKER
Freshman Math Award



ANGIE HALE
Dance Award



"The Boyfriend"



With a beatnik beat

1959-60

DANCE

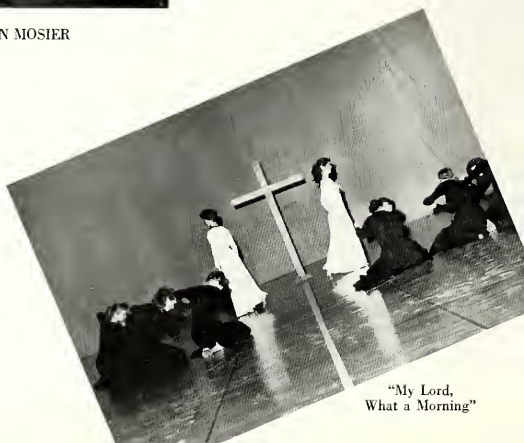


MISS JO ANN MOSIER

CONCERT



"Isle of Capri"



"My Lord,
What a Morning"



Kathleen Poag
MISS AIR FORCE

Evelyn Beard
MISS ARMY

Carol Renfro
MISS NATIONAL GUARD

Pat Wicker
MISS MARINE CORPS

Sylvia Hawthorne
MISS NAVY

1960 ARMED FORCES DAY SWEETHEARTS



I N T R A M U R A L S



Delta State sponsors an intramural program in order to give all students the opportunity to participate in individual and team sports. Each student is a member of one of four teams: Reds, Blues, Grays, and Blacks. Year-round activities include volleyball, badminton, basketball, softball, horseshoes, ping-pong, archery, and tennis.



DEDICATION OF NEW BUILDINGS

Thursday, January 19, 1961, was the date for dedication ceremonies for four buildings included in Delta State's two-million dollar building program. Governor Ross R. Barnett, Lt. Governor Paul Johnson, Mississippi legislators, members of the board of trustees of Institutions of Higher Learning, the State Building Commission, and members of the families of the persons for whom the new buildings were named were honored guests at the event.

The gymnasium was named Walter Sillers Coliseum for the Honorable Walter Sillers, speaker of the Mississippi House of Representatives. The new boys' dormitory was named Caylor-Williams Dormitory for the late Dr. R. L. Caylor, former head of the Science Department at Delta State and late W. A. Williams, head of the Department of Social Science.

The new girls' dormitory was named Cain-Tatum Dormitory for Miss Ethel Cain and also in honor of Miss Maude Cain. Miss Ethel Cain was head of the Department of Health, Physical Education and Recreation; Miss Maude Cain served as a teacher in the Demonstration School. The Tatum Wing of the dormitory was named for Miss Georgia Tatum, former professor of history.

Delta State's new music and art building was named Zeigel Fine Arts Center for the late Dr. William H. Zeigel, dean of the college.

Dedication ceremonies were held in the Sillers Coliseum on the night of January 19 with Governor Barnett as guest speaker.



B. F. SMITH
SIDNEY LEVINGTON
MILLER HOLMES
R. T. STEVENS, Speaker
JAMES EASTLAND
J. M. EWING



DELTA COUNCIL DAY 1960

The crowd was large, and the food was good.



EVERY THING HAPPENS IN THE DORM



SOME STUDY . . .

Ira Coates and Dot Stovall seem to be studying . . .

Which one really is?



OTHERS PLAY . . .

Have cards, will play . . . call Newton



Patricia Middleton shows these girls how it's done

MANY ENJOY MUSIC . . .

Everyone selects his favorite while Mary Wallace plays them . . .



A star is born . . . Robert Gray and Jimmy Smith are pleased with his success?



A FEW . . .

Marth Rowe has those "washday blues"
...



Barbara Jones has her troubles too . . .

EVEN WORK!

Young Bum Song says there's nothing
to it . . .



BUT . . .

EVERYBODY EATS!

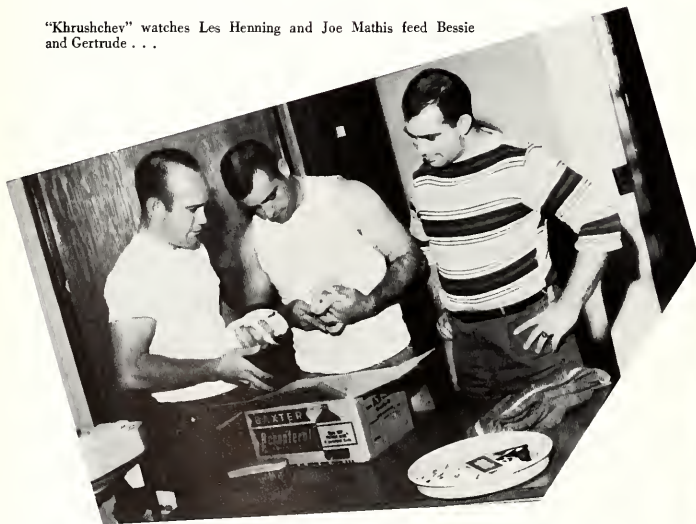


Gale Davis and Tom Barrentine make sure even the dog gets fed . . .



"Broachie" McFarlane and Anne Wilkinson make use of the dormitory kitchen . . .

"Khrushchey" watches Les Henning and Joe Mathis feed Bessie and Gertrude . . .



If there's any left . . . give me a hite . . .



SOME EVEN PRIMP . . .



These freshmen didn't have a chance!



Kay Gregg believes in making use of her time . . . primping, eating, and reading



It's business for Trotter, a necessity for Raymond Bell, and a lesson for Benny Price . . .



Lynn Watkins makes sure Frankie Hamilton gets her primping done . . .

The boys get a lesson from Charles . . .



WHILE MANY RELAX

That story that Melba is telling must be interesting . . .



Jeanette Guntharpe, Fran Tomilson and Lizette Ashley enjoy a coffee break



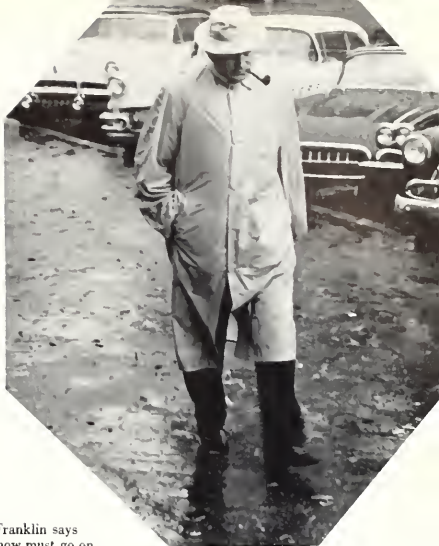
Reba Leigh's nightly hen party . . .



DELTA FORECAST . . . RAIN



Pat Wicker is disgusted with the rain . . . but . . .



Mr. Franklin says
the show must go on . . .



Rain, rain, go away . . . little Jimmy wants to play . . .



It rained so much
I almost drowned . . .



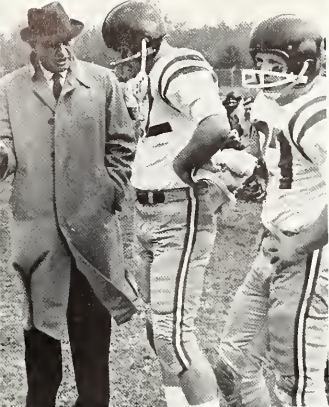
Sylvia Hawthorne and Bobby Ferguson take advantage
of the rain . . .

SPORTS

sports editor
PEE WEE MIXON







GENE CHADWICK
Head Coach

D E L T A
S T A C H I N G
C O A C H E S
S T A F F



HORACE McCOOL
Assistant Coach



TRAINERS: George Arendale, Bill Hitch, Jimmy Deakle, James Echols, Robert McGraw.
MANAGER: Buddy Sanford.

DELTA STATE — 12

FLORENCE — 0



DON WARD—QB

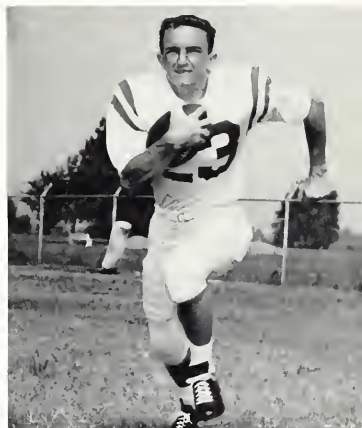


BILLY BOWMAN—RHB

The key play that sparked the first touchdown for the Statesmen was a 29 yard pass from Don Ward to Winston Scrivner.

From the 4 yard line Don plunged over for the first touchdown.

Billy Bowman helped to set up the second score with a drive deep into Florence territory and Dewey Bostick tallied for the Green and White.



DEWEY BOSTICK—LHB



Ward makes the catch, flanked by Bowman and Bostick.



WINSTON SCRIVNER—LE



FRANK RYALS—LE



JOE SABATINI—LE



WILBURN MURPHIE—RT

DELTA STATE — 27

ARKANSAS A. & M. — 7

Practice pays off! This was proven by the Statesmen as they won their second game of the season and their eighth in a row.



JIMMY BURKETT—RC



Down, set, ready-set . . .



PARKS JOHNSON—C



Brumfield carries . . .



BOB BRUMFIELD—QB



Good tackle . . .

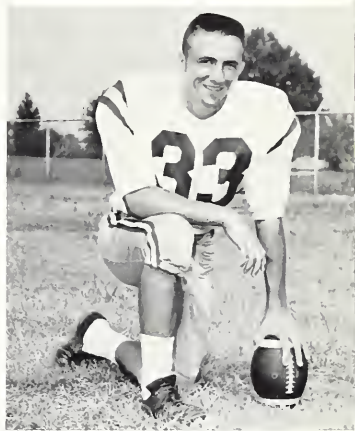
DELTA STATE — 8

ARLINGTON, TEXAS — 19

Delta's only TD came when Thomas Young blocked a punt and John McElroy scooped up the ball and carried it into pay dirt.

Don Ward's pass to "Moon Pie" Thomas for a two-point conversion gave Delta an 8 point total.

Luke Terry, along with many other linemen, showed a strong, solid defense.



BILLY PAT THOMAS—LHB



Delta's offense . . .



ROY "LUKE" TERRY—LG



Delta's defense . . . 157



LES HENNING—LHB



JAMES NORMAN—C



THOMAS YOUNG—RG

DELTA STATE — 13

SOUTHEAST MO. — 6

Thomas Young led a host of Delta linemen through the Southeast defense and blocked a punt. John McElroy fell on the loose ball and gave Delta possession.

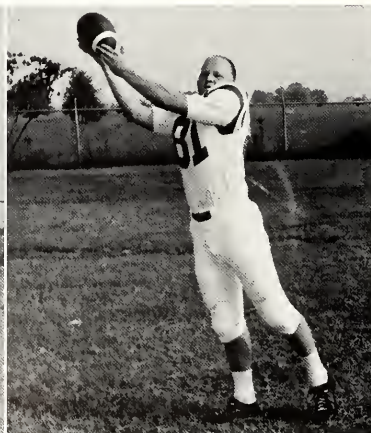
Les Henning carried the mail into the striped zone for the first touchdown.

Delta linemen knocked an opening and Greenlee gained 48 yards during the next drive.

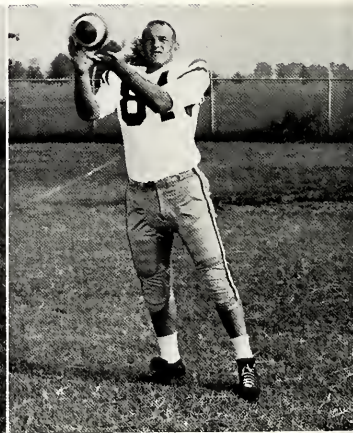
Les Henning ducked his head and plowed in for the second TD of the night.



KELLY COLLINS—LT



JOHN McELROY—LE



WAYNE LEONARD—RE



JAMES HUBBERT—RHB



PAT HENNINGTON—RE



BOBBY FERGERSON—LHB

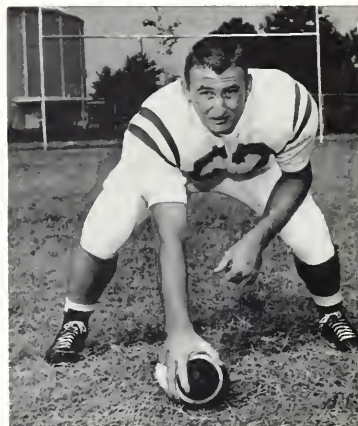
DELTA STATE — 14

HOWARD COLLEGE — 28

Coaches "Chad" and McCool drilled the Statesmen two weeks in preparation for the "Bulldogs."

The backfield worked on passing accuracy and gaining speed.

The linemen worked on "strength" in view of the fact that Howard had a tough line and a hard-charging backfield.



TOM BARRENTINE—C



Getting the linemen in shape . . .



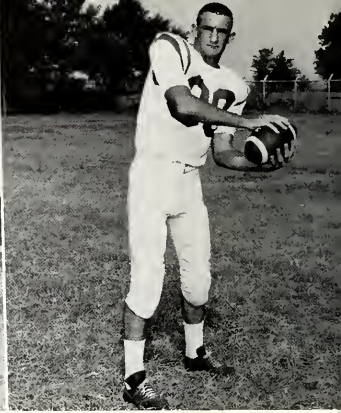
JIM EIDT—RT



FRANK GREENLEE—QB



GERALD LANCE—FB



BENNIE PRICE—RE

DELTA STATE — 34

MARTIN BRANCH UT — 8

The Statesmen under the guidance of Frank Greenlee marked up the fourth win.

Gerald Lance plowed over for the first TD.

Frank Greenlee wasn't through with his guidance for the Statesmen yet. And "Moon Pie" Thomas did the honors to give the Statesmen a 20-0 lead.

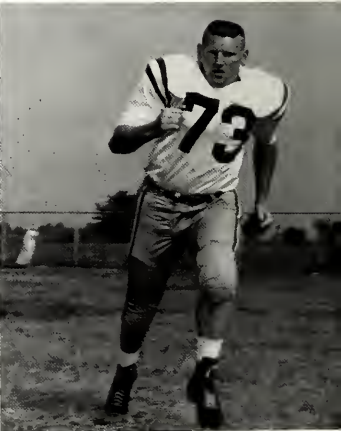
Bennie Price blocked a punt to give the Statesmen possession. And the strong forward line of Statesmen, including Raymond Bell, Joe Mathis and Jimmy Fisackerly opened the way to paydirt.



RAYMOND BELL—RT



JOE MATHIS—LG



JIMMY FISACKERLY—LT



Coates, Bell and Scrivner



IRA COATES RB



Everyone in action

DELTA STATE — 27
NORTHEAST LA. — 0

"This was the best team effort we have had all year," said Coach Chad after the impressive win of our Homecoming.

Ira Coates intercepted a Northeast pass and carried it 32 yards for a TD.

The score itself stands as proof of a strong drive; the stubborn Delta defense refused to yield.



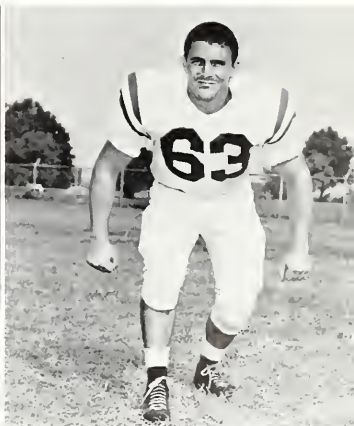
Delta drives



BENNY PITTMAN C



Delta's defense



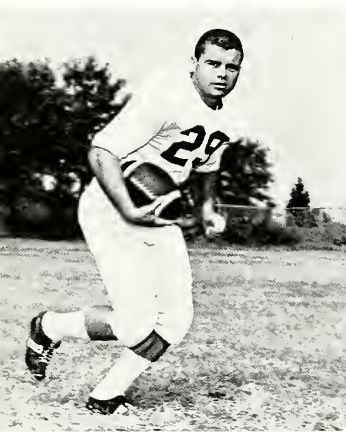
HENRY RUSSELL LG 161



REGIS METRO RG



Statesmen meet Wildcats



PHILLIP FARR RH

DELTA STATE — 6
L.A. COLLEGE — 40

The Statesmen traveled to defeat in Pineville, La., against the tough Wildcats.

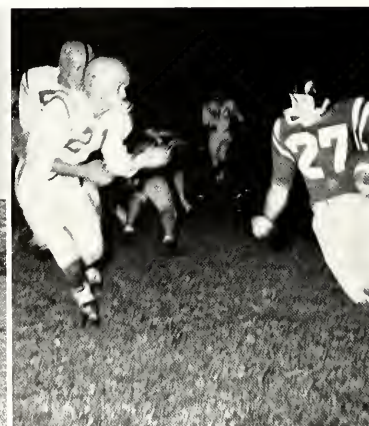
Delta's strong defense—Metro, "Moose," and Larry; and hard-charging offense—Tommy, Hub, and Greenlee gave with their best.



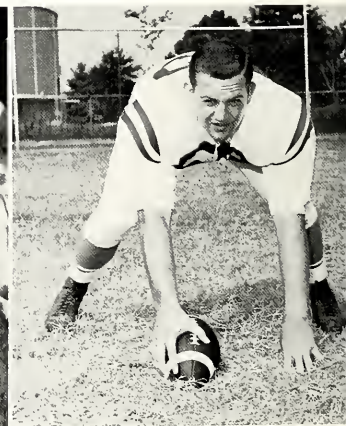
TOMMY DYKES FB



162 JIMMY ALEXANDER LT



"Hub" gains yardage



LARRY HENDERSON RT



GALE DAVIS RH



Preparation day . . .



SONNY HILL QB

DELTA STATE — 27

OUACHITA COLLEGE — 6

The Deltans came back to end the season with a win. They met Ouachita full of spirit and proved that they were still a team.

The TD's were made by: Les Henning, Gerald Lance, Frank Greenlee, and Tommy Dykes.

Some of the returning lettermen for the 1961-62 season are: Gale Davis, Sonny Hill, James Jackson, Ralph Sanders, and Pittman Keen.

Everyone has his eyes on Sonny Hill, the outstanding QB for the Statesmen this year, and it is expected that he will have an even better season next year.



The "brain work "



JAMES JACKSON RE



RALPH SANDERS LG



PITTMAN KEEN LT



Statesmen's strong line stops Volunteers

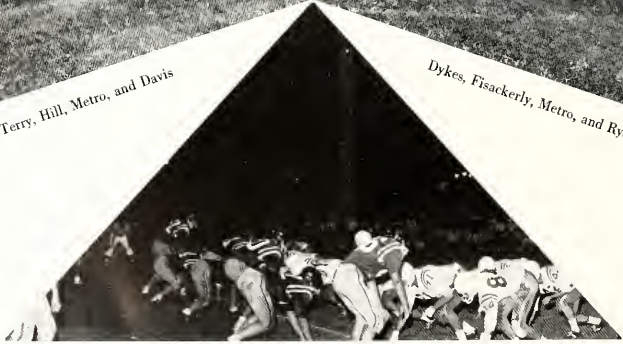
D
E
F
E
N
S
I
V
E



Terry, Hill, Metro, and Davis



Dykes, Fisackerly, Metro, and Ryals



Ready for action



... hope that flag stays in his pocket



... can't keep a good man down



... dig out, Bob!

STATESMEN'S OFFENSE



Who's watching for Coach?



Not me, Coach, I played ...



... foot race???



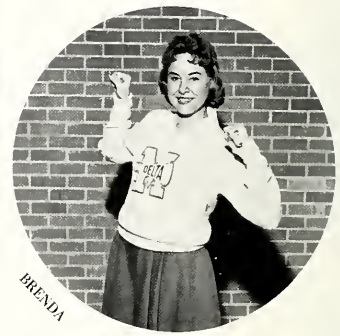
... he hasn't got a chance



MARtha



PAT



BRENDA



SYLVIA



LILA



MARtha

CHEERLEADERS



Martha Rowe, Brenda Hill, Pat McClellan, Lila Nossler, Sylvia Hawthorne, Martha Fisher.

OUR COACH

John Ray Ricks is completing his thirteenth consecutive year as Head Basketball Coach at Delta State. Since he has been here, Coach Ricks has produced more wins than any other basketball coach at Delta.

A native of Wheeler, Mississippi, Ricks started his college career at Sunflower Junior College at Moorhead, Mississippi. After finishing junior college, he transferred to Delta State College, where he was an outstanding star on the basketball teams of 1937-38 and 1938-39.

In the fall of 1916, he assumed a coaching position at Copiah-Lincoln Junior College at Wesson, Mississippi. In 1917, Coach Ricks returned to his Alma Mater, where he became head coach of basketball. From then until the present time, basketball at Delta State has appropriately been called the "Rick's Era."



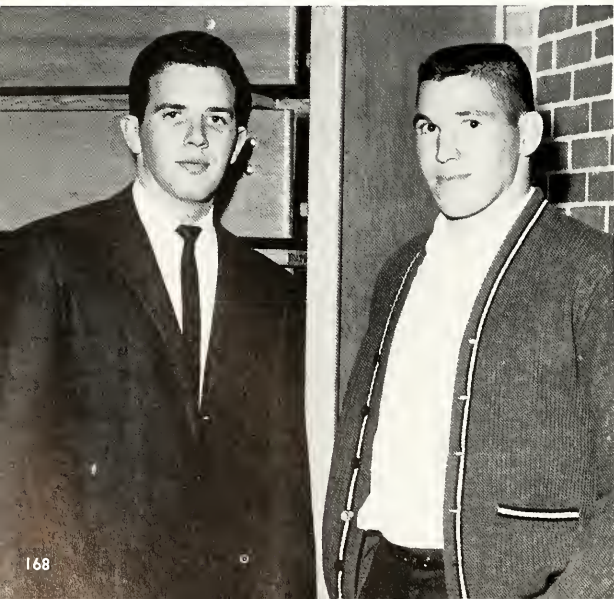
DELTA STATESMEN 1960-61

BASKETBALL SCORES

Delta State	59	Northeast Louisiana	69
Delta State	57	Arkansas A & M	70
Delta State	49	Murray State	81
Delta State	79	Southeast Missouri	83
Delta State	84	Southwestern	80
Delta State	77	Spring Hill	83
Delta State	53	Northeast Louisiana	58
Delta State	58	Southeast	77
Delta State	53	Mississippi State	92
Delta State	73	Univ. of Tenn. Martin Branch	50
Delta State	70	Arkansas A & M	54
Delta State	107	Mississippi College	85
Delta State	62	Southwestern	52
Delta State	86	Univ. of Tenn. Martin Branch	89
Delta State	77	Mississippi State	99
Delta State	72	Arkansas State	53
Delta State	39	Christian Brothers College	63
Delta State	105	Mississippi College	109
Delta State	66	Northeast Louisiana	68
Delta State	96	Millsaps College	55
Delta State	85	Arkansas State	99



Left to right: Hooten, Case, Barron, Parker, Preston, Dowdy, Upchurch, Long. KNEELING: Hopkins, Belford, Coach Ricks, Rossi, Scheiderman. NOT PICTURED: Harry Garverick.



MANAGERS

Bill Fox
Jimmy Alexander



No Excitement! . . . WAY AHEAD or way behind?



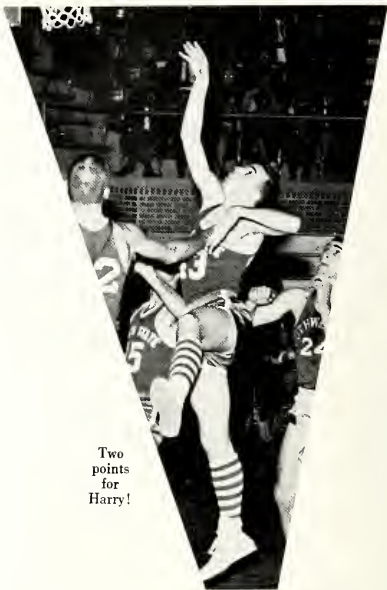
JACK CASE
6' 1"
Bogue Chitto, Miss.



CHUCK PRESTON
6' 5"
Cranford, N. J.

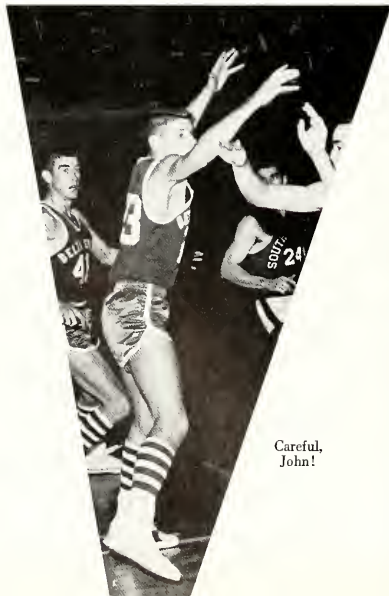


DAVE BELFORD
5' 11"
Elizabeth, N. J.



Two
points
for
Harry!

GRANDLE BARRON
6' 3"
Wheeler, Miss.



Careful,
John!



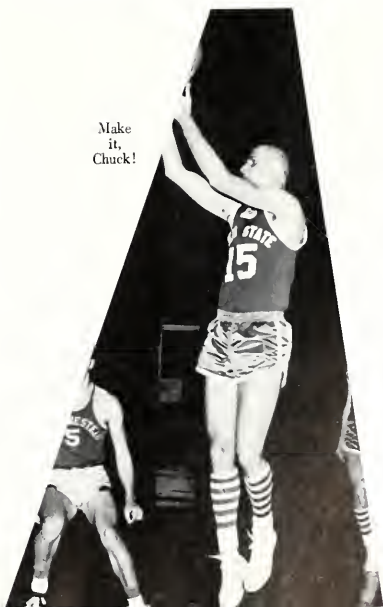


Let's
go,
"Arkie"!

LARRY DOWDY
6' 4"
Kevel, Ky.



CHICK SCHEIDERMAN
6' 1"
Elizabeth, N. J.



Make
it,
Chuck!

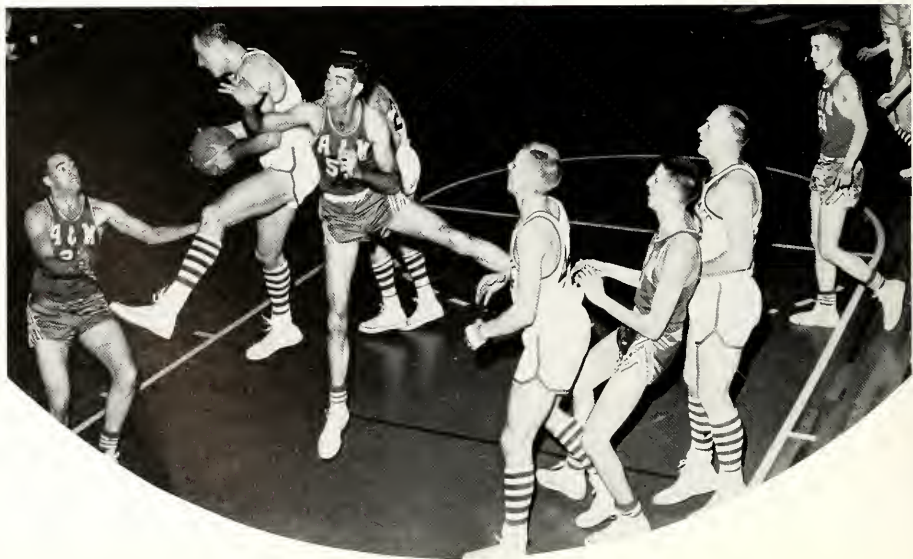


AL HOPKINS
5' 10"
Walnut, Miss.



JIM HOOTEN
6' 0"
Bragg City, Mo.

Rebound, Delta!





Let's get the ball, Statesmen!

BILL UPCHURCH
6' 2"
New Castle, Ind.

FRED ROSSI
6' 1"
Gillette, N. J.

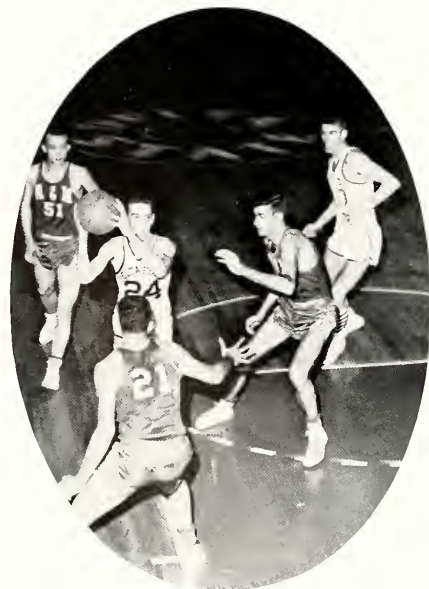




JOHN LONG
6' 1"
LeFollette, Tenn.



Hit 'im with it, Larry!



Hold on to it, Chick!



Jump for it, boys!



Where's the ball?



KENNETH PARKER
6' 4"
Cherry Valley, Ark.

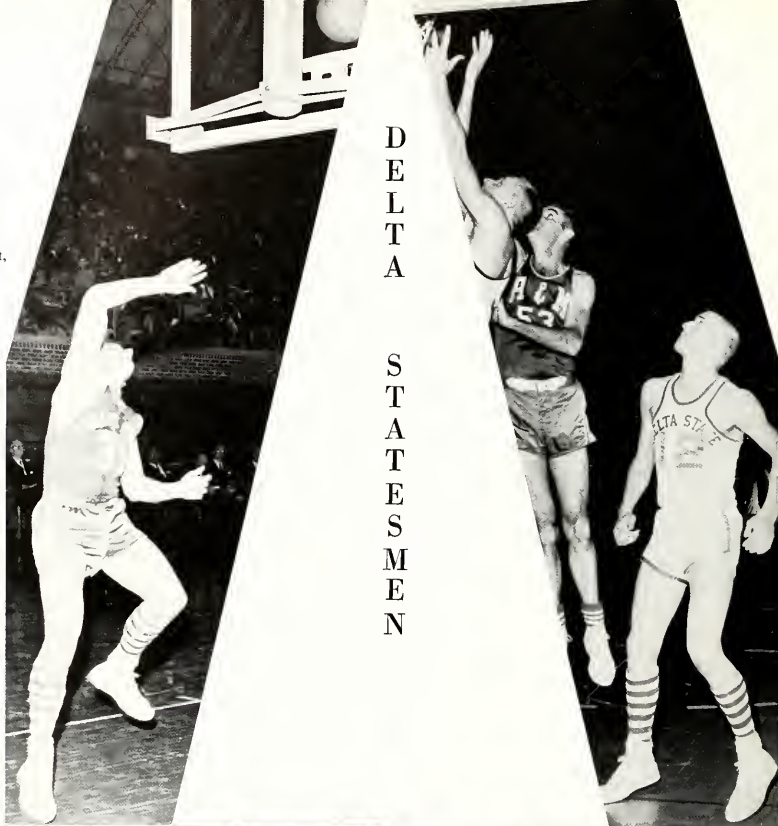


Oh, there it is!



Down the court, Jack!

Good
hook shot,
Hoot!



Watch
'em,
Grandle!

D
E
L
T
A

S
T
A
T
E
S
M
E
N



Get the ball!

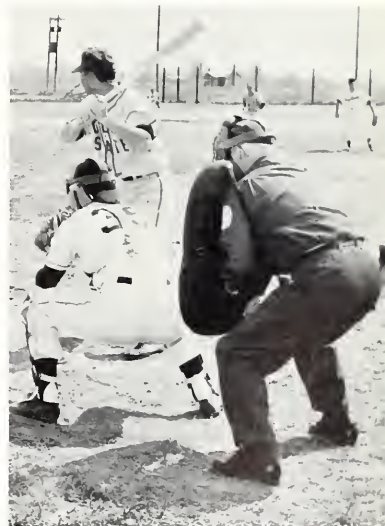


1959 BASEBALL TEAM

Delta State.....	5	Ole Miss	14
Delta State.....	4	Ole Miss	13
Delta State.....	3	Central College of Mo.	1
Delta State.....	4	Central College of Mo.	1
Delta State.....	11	Mississippi College	6
Delta State.....	13	Mississippi Southern	8
Delta State.....	18	Millsaps College	3
Delta State.....	3	Millsaps College	2
Delta State.....	11	Ouachita College	9
Delta State.....	2	Mississippi College	7
Delta State.....	8	Mississippi College	3
Delta State.....	4	Mississippi College	3
Delta State.....	8	Millsaps College	2
Delta State.....	6	Millsaps College	4
Delta State.....	5	Mississippi Southern	3
Delta State.....	10	Mississippi Southern	11

Leading hitter—Shortstop Bobby Longordo, .412. He also led in hits, 21, and runs-batted-in, 18. F. E. Allegrizza, rightfielder, led in home runs with 6, and in runs scored with 18. Longordo had the most doubles, 5, and Don Ward, centerfielder, led in triples with 4. Other leading hitters were: Third baseman Bob Brumfield, .364; Allegrizza, .327; Ward, .303.

Pitching records: A. C. Williams 3-0; Paul Wood 4-1; Robert McGraw 3-1; Bud Grimmett 2-1; Bob Brumfield 0-1.



All set to hit the high hard one!

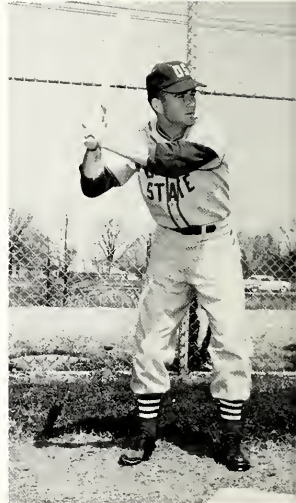


"What's the holdup?"



BOBBY LONGORDO

F. E. ALLEGREZZA

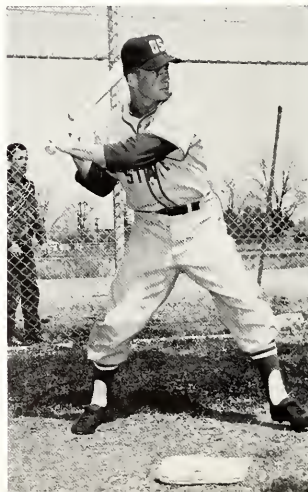


DON WARD

A. C. WILLIAMS



BOB BRUMFIELD





PAUL WOOD



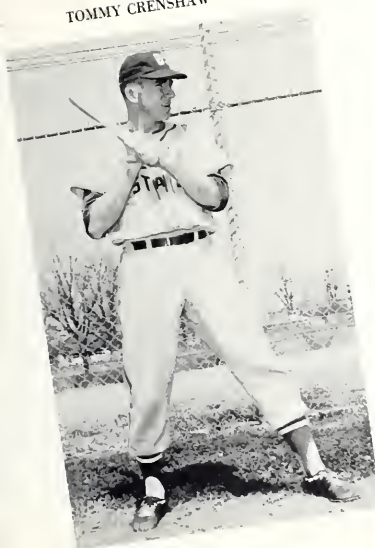
BUD GRIMMETT



ROBERT POPE

12 WINS, 4 LOSSES
ONE OF THE BEST RECORDS EVER COMPILED BY A
DELTA STATE BASEBALL TEAM

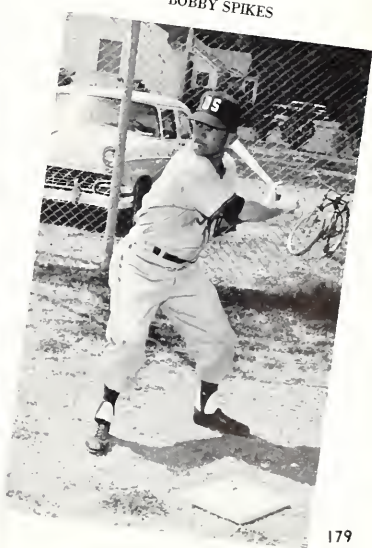
TOMMY CRENSHAW



"They also serve who only stand and wait."



BOBBY SPIKES





SHAFER SPENCE



JERRY "FLIP" SULLIVAN

SOME OF THE STATESMEN WHO SUPPLIED

GLENN SEXTON



JOHN HAZELIP



WILLIAM DALLISON





ED CAULEY



"BLUE" LOGAN



ROBERT MCGRAW

THE "GO" FOR THE "GO-GO" TEAM

"Flip? Another Babe Ruth?"



NED MITCHELL





Coach Wyatt, Robert Smith, Bobby Junkin, Bobby Moore, Birch Criss, Ken Phillips

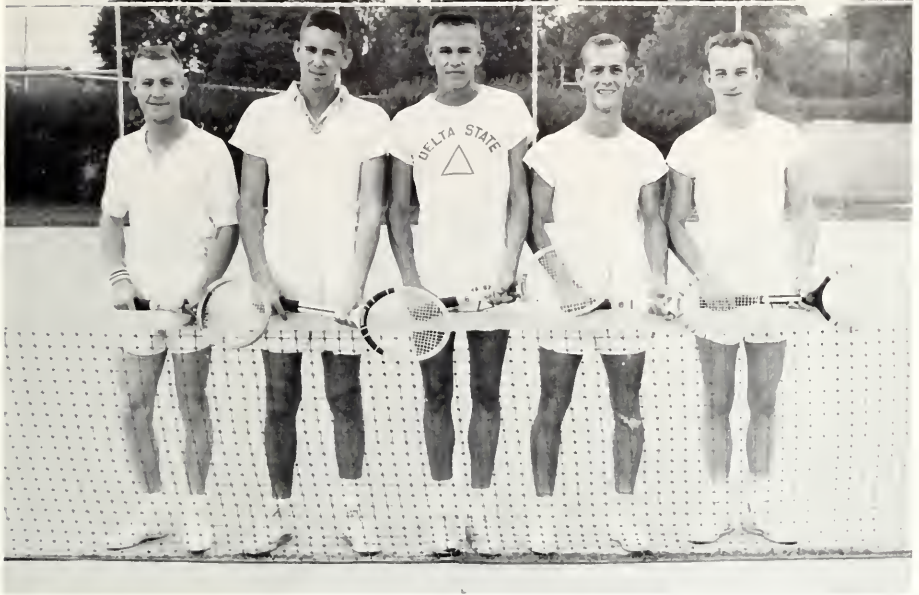


"Don't just stand there. Do something!"



"Hey, caddy, you forgot the pin!"

GOLF TEAM



Bryant Wolfe, John Webb, Stanley Dean, James Kincade, Bill Bondeson

TENNIS TEAM



"Oh-h, watch that ball, Bryant!"



"Stand aside! It's my serve!"

ORGANIZATIONS

organizations editor
ANGELINE WEBB FRANK





STUDENT GOVERNMENT ASSOCIATION

Every student at Delta State is a member of the Student Government Association. Through this organization, each is able to state his views on any subject of student concern, and each can work for any condition that he may wish to exist at Delta State. The Executive Cabinet and the honor councils are the representatives of the "voice of the students." Participation in student government is encouraged by the faculty because of its value as training for life in a democracy.



BOBBY ROWE
President

Pat Lewis	_____	Vice-President
Kelly Klein	_____	Social Vice-President
Pat McClellan	_____	Secretary
Jane Robertson	_____	Treasurer
Nancy Marcellini	_____	Publicity Chairman





INTER-ORGANIZATIONS COUNCIL

BOBBY ROWE
President

MEMBERS

Sammy Broussard	Newman Club
Sandra Brown	Association of Childhood Education
Bob Brunfield	Delta Alpha Omega
Jimmy Davidson	Senior Class
Frances Foster	Interfaith Council
Leon Franklin	Dance Club
Dumont Freeman	Sigma Theta Psi
Bill Givens	Miss Delta
Mary Lee Goode	Kappa Delta Pi
Sandra Holmes	Chi Delta Representative
Kelly Klein	Student Government Association Sophomore Class
Cliff Klutts	Baptist Student Union
Pat Lewis	Student Government Association Cavaliers
Pat McClellan	Student Government Association
Nancy McLeod	Delta Playhouse
Nancy Marcellini	Student Government Association
Patricia Middleton	BROOM
Joy Milner	Pi Omega Pi
Jane Robertson	Student Government Association
Peter Robinson	Pi Gamma Mu
Bobby Rowe	Student Government Association and Westminster Fellowship
Jimmy Smith	Music Educators' National Conference and Delta Singers
Gerry Sultan	Omega Phi
Ramona Tate	Young Women's Auxiliary
Mary Lou White	Women's Honor Council
Ann Wilkinson	Canterbury
Bob Wilson	Men's Honor Council Veterans' Club
Paul Wood	"M" Club



WOMEN'S HONOR COUNCIL

OFFICERS

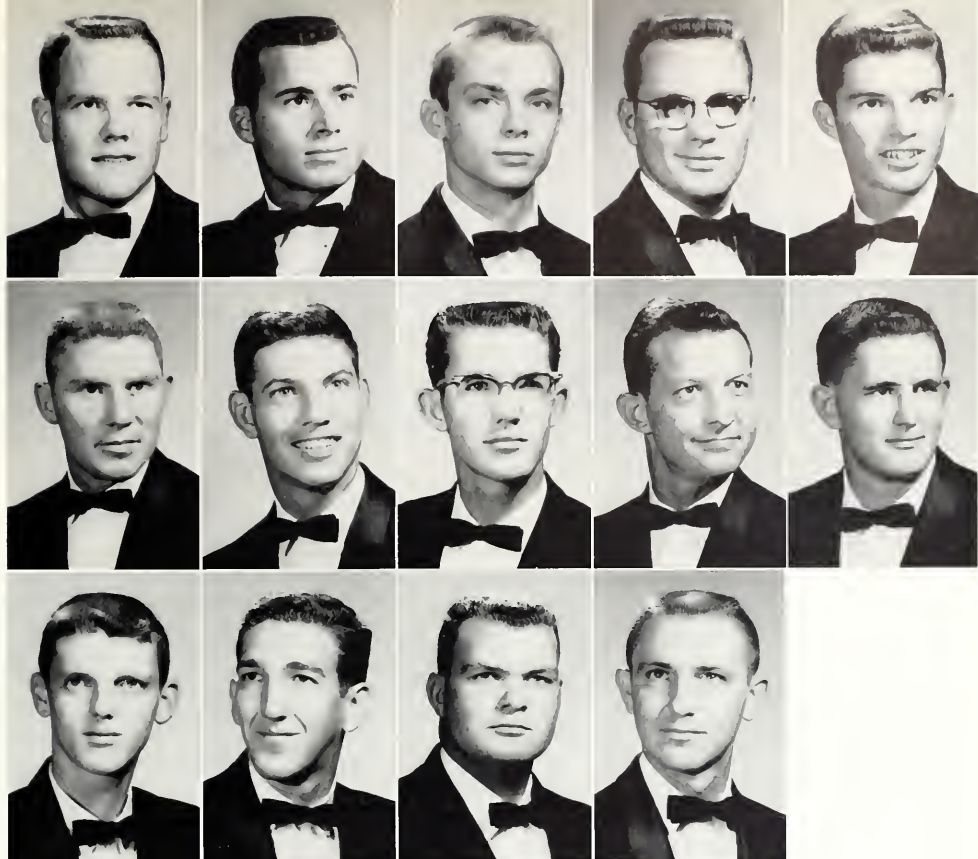
Mary Lou White	President
Mary Frances Hamilton	Vice-President
Nancy Perry	Secretary

MEMBERS

Dorothy Brannon
 Bobbie Brown
 Kay Cobb
 Shelley Denley
 Loyce Gaddy
 Mary Frances Hamilton
 Lena Hanna
 Glynda Hill
 Nancy Perry
 Clydean Rutledge
 Pat Wicker
 Eve Wigley



MARY LOU WHITE
President



MEN'S HONOR COUNCIL

OFFICERS

Bob Wilson President
 Jimmy Davidson Vice-President
 Frank Bridges Secretary

MEMBERS

Frank Bridges
 Gerald Crawford
 Fred Cribbs
 Jimmy Davidson
 Bobby Elliott
 Wayne Fleming
 Dumont Freeman
 Ronnie Guest
 James Hannab
 Joe Maxcy
 Percy Peeler
 Chick Scheiderman
 James Turner
 Paul Wood



BOB WILSON
 President

EDITOR



PATRICIA MIDDLETON

BACK ROW, left to right: Sponsor Bill Frank, Betty Jean Ates, Jane Bell, Sammie Howell, Karen Lovorn, Elizabeth Wynne, Clandette Curtis, Barbara Hancock, Ann Deakle, Ann Robertson, Bobby Moore, Cecilia Santucci, Susan Clarke, Angie Webb, Juanita Nixon. FRONT ROW, left to right: Jean Stringfellow, Mary Bailey, Patricia Middleton, Joy Milner, Nancy Marcellini.



BROOM

EDITORIAL STAFF



Joy Milner
assistant editor



Mary Wallace Bailey
assistant editor



Angie Webb
organizations editor
STAFF:
Mickey O'Malley
Brenda Stanford



Juanita Mixon
sports editor
STAFF:
Betty Jean Ates
Dolores Bagley
Ann Robertson



Lady Jane Castle
feature editor
STAFF:
Nancy Marcellini
Sylvia Savage

STAFF:
Ann Deakle



Sammie Howell
special events editor
STAFF:
Susan Clarke
Karen Lovorn
Betty Branch



Lucille Dunn
class editor
STAFF:
Jean Roundtree
Carol Manning



Jane Bell
campus life editor
STAFF:
Ellen Moore
Claudette Curtis
Patsy Koonee



Elizabeth Wynne
faculty editor
STAFF:
Barbara Hancock
Cecilia Santucci



Nancy Marcellini
art editor

Bobby Moore
photography editor



NOT
PICTURED:

Betty Lane Eidt
business manager
STAFF:
Charlotte Poole
LoVina Maxwell

Ellen Moore
art editor

Jean Stringfellow
class editor





BILL GIVENS
editor

MISS DELTA

EXECUTIVE STAFF



Juliet Kossman
assistant circulation manager
Betty Latham
business manager
James A. Townes, Jr.
assistant editor
Mary Ann Weher
assistant editor

EDITORIAL STAFF

Mary Carmichael
managing editor
Cecile Nix
feature editor
Ann Lamon
society editor
Elizabeth Wynne
makeup editor



Mary Lee Goode
fashions editor
Pat Smith
news editor
Bill Bowie
photography editor
Larry Liddell
sports editor

Becky Dalton
Mary Lou White
"Stop & Think"
David Heflin
"Poor Statesman's Almanack"
Ramona Tate
"Lyrist"
Shelly Denley
"Students Speak"
Sara Valencino
"Behind the Scenes"
Brenda Hill
"Delta Yells"

Cliff Klutts
Jimmie Carol Still
Lee Ella Long
Sara O'Neill

JOURNALISM STUDENTS



COLUMNISTS





INTERFAITH COUNCIL

OFFICERS

Frances Foster	President
Valera Vaught	Vice-President
Patricia Smith	Secretary-Treasurer
Cliff Klutts	Publicity Chairman

MEMBERS

Jeanette Ferri	Catholic
Clint Fletcher	Church of Christ
Nancy Goodson	Baptist
Brenda Hill	Christian
Nancy Marcellini	Catholic
Bobby Rowe	Presbyterian
Jimmy Thompson	Presbyterian
James Townes	Episcopal
Linda Wilson	Christian
James Breland	Sponsor
Ellis Tucker	Sponsor
Miss Eleanor Walters	Sponsor
Mrs. Nell Smith	Sponsor

(not pictured)



FRANCES FOSTER
President



BAPTIST STUDENT UNION

OFFICERS

President	Cliff Klutts
Vice-President	Ann Deakle
Secretary	Mary Frances Hamilton
Enlistment Chairman	Tommy Henderson
Social Chairman	Mary Lee Goode
Devotional Chairman	Shelley Denley
Publicity Chairman	Betty Latham
Publications Chairman	Melba Showah
Missions Chairman	Nancy Goodson
Music Chairman	Charles Martindale
Noonday Chairmen	John Aycock Glynda Hill
Sunday School Representatives	Jane Burgin Wayne Fleming
Training Union Representatives	Jane Robertson Ruby Turner
Y.W.A. President	Ramona Tate

NOT PICTURED

Student Center Chairman	Larry Givens
Faculty Advisor	Mr. Henry Lutrick
B.S.U. Director	Rev. James Breland



CLIFF KLUTTS
President



CANTERBURY CLUB

OFFICERS

Ann Wilkinson President
 Lila Nosser Vice-President
 Shula Gary Secretary-Treasurer
 Lavalle House Sponsor
 Rev. Clifton McInnis Religious Advisor

MEMBERS

FIRST ROW:

Shula Gary
 Peggy Shutt
 Sharon Gary
 Lavalle House
 Ann Wilkinson
 Lila Nosser
 Jack Hall

MEMBERS

SECOND ROW:

Rev. Clifton McInnis
 Roger Earl
 Nicky Griffith
 Betsy Beard
 James Townes
 Vicky Coury
 Kelly Klein



ANN WILKINSON
 President



NEWMAN CLUB

OFFICERS

Samuel Carol Broussard President
 Nancy Marcellini Vice-President
 Barbara Belle Jones Secretary-Treasurer
 George Scheiderman Publicity Chairman
 Mary Ann Weber Reporter

MEMBERS

Betty Jo Abraham
 Carolyn Lee Bianca
 Josephine Amelia Ferri
 Jeanette Elizabeth Ferri
 Barbara Belle Jones
 Nancy Annette Marcellini
 Dolores Rossie
 Fred Vincent Rossi
 Cecilia Josephine Santucci
 George Scheiderman
 Paula Signa Smith
 Lynn Marie Watkins
 Peter Paul White
 Mary Ann Weber (not pictured)



SAMUEL BROUSSARD
 President



WESLEY FOUNDATION

OFFICERS

President	Frances Foster
Vice-President	Valera Vaught
Secretary	Mary Jo Bishop
Treasurer	Mary Broach McFarlane
Director	Ellis Tucker
Worship	Tom Barrentine
Evangelism and Membership	Bonnie Burford
Recreation	Betty Campbell
Editor of Wesley Word	Robbie Campbell
Study	Colbert Crowe
Personnel and Training	Martha Fisher
Deputation	Miriam Jacks
Publicity	John Ramey
Social Action	Billy Ray Rodman
Transfer Representative	Bill Upchurch
Music	Sylvia Waldrup
Transportation	Monroe Williams
World Christian Community	Carol Ann Wilson
Faculty Advisor (not pictured)	Dr. Wilson Davis



FRANCES FOSTER
President



WESTMINSTER FELLOWSHIP

OFFICERS

Bobby Rowe	President
Joanne Love	Vice-President
Sue Stockton	Secretary
Nell Dancy	Treasurer

MEMBERS

James Adrean
 Barbara Brown
 Martha Coleman
 Carolyn Ann Cook
 Pat Crawford
 Nell Dancy
 Gale Davis
 Joan Edwards
 Douglas Ferriss
 Beth Hendrix
 Patricia Hester
 Thomas Horne

Harvey Johnston
 Thomas Kimbro
 Carolyn Kisner
 Lee Long
 Joanne Love
 Connie Luter
 Charles Preston
 Helen Robertson
 Seymour Robinson
 Betty Ross
 Joyce Simpson

Joseph Smith
 Wanda Smith
 Billy Smith-Vaniz
 Mary Sowell
 Mary Stockton
 Sue Stockton
 Dot Stovall
 Joe Sullivan
 Harvey Swindall
 James Thompson
 John Welch
 Pat Wicker



BOBBY ROWE
 President



YOUNG WOMEN'S AUXILIARY

OFFICERS

President	Ramona Tate
Vice-President	Nancy Goodson
Secretary	Ann Carnes
Treasurer	Frances Hamilton
Program Chairmen	Mary Lee Goode Mary Wallace Bailey Clynda Hill
Prayer Chairman	Joyce Gantharp
Music Chairman	Jan Johnson
Community Missions Chairman	Ruth Brooks
Social Chairman	Bobbie Jean Wells
Publicity Chairman	Nancy Perry
Mission Study Chairman	Lynda Bennett
Literature Chairman	Frances Tomlinson

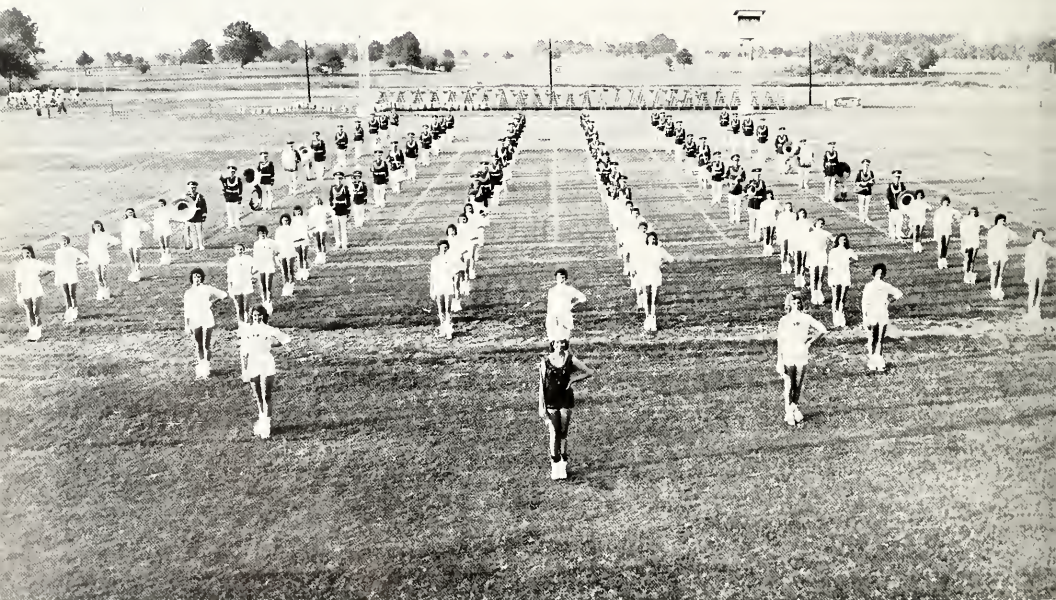
MEMBERS

Betty Jean Ates	Linda Newsome
Bobbie Brown	Diane Oakman
Jane Burgin	Mickey O'Malley
Lacey Crisler	Arlene Peyton
Lucille Dunn	Peggy Stallings Rasberry
Virgie Isaac	Betty Jean Windham
Patricia Middleton	



RAMONA TATE
President

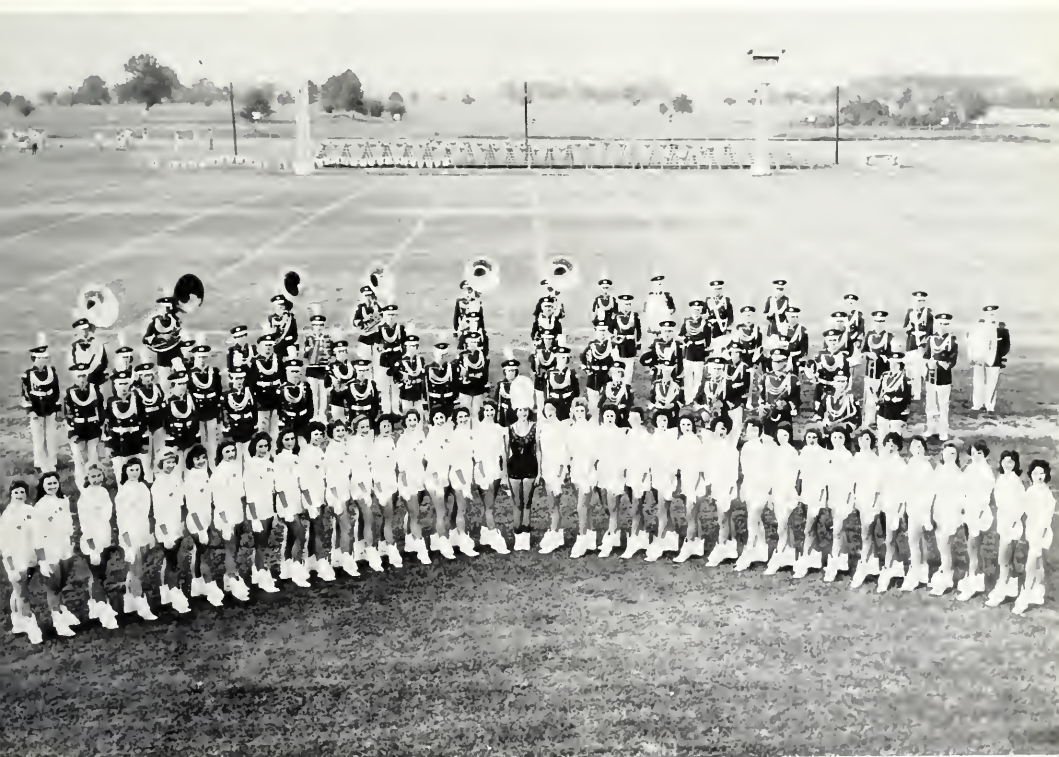
THE 1960-1961 DELTA STATE
BAND AND BELLES
IN MARCHING FORMATION



Bettye Blair Lusk, Head Delta Belle

DELTA STATE BAND AND DELTA BELLES

The picture on the opposite page is, of course, familiar to all students of Delta State; the one below, however, is actually better known to friends of Delta State throughout the country, for here the Delta State Marching Band and Delta Belles are pictured in the concert formation that the groups use when performing at such meetings as the National Junior Chamber of Commerce Convention, for which the Band and Belles travelled to St. Louis in June of 1960, and for the annual meeting of the Veterans of Foreign Wars, held in Detroit in August, 1960. The Band and Belles also performed on a nation-wide televised show during the halftime of the Houston Oilers and Dallas Cowboys pro-football game.



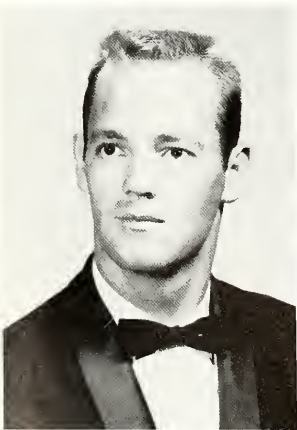
Best foot forward!

DELTA SINGERS



OFFICERS

Jimmy Smith	President
Jack Savage	Vice-President
Sally Manning	Secretary
Jane Burgin	Librarian
Julie Brookhart	Librarian
Joyce Logan	Robe Chairman
Bill Givens	Reporter
Ronald Schuyler	Accompanist



JIMMY SMITH
President



MUSIC EDUCATOR'S NATIONAL CONFERENCE

OFFICERS

Jimmy Smith	President
Charles Martindale	Vice-President
Miriam Jacks	Secretary-Treasurer
Jimmy Thompson	Projects Chairman
(not pictured)	
Tommy Henderson	Social Chairman
Sylvia Waldrup	Publicity Chairman

MEMBERS

Christine Breedlove
 Bonnie Burford
 Jane Burgin
 Julie Brookhart
 James Cooper
 Ann Deakle
 Howard Dodd
 Robert Gray
 Billy Henley
 Jan Johnson
 Geraldine Lee
 Percy Peeler
 Hal Reese
 Madelyn Slaughter
 Pete White
 Hoyt Wooten

NOT PICTURED

John Aycock
 James Newton
 John Ramey
 Jack Savage
 Jimmy Thompson



JIMMY SMITH
 President

THE DELTONES



Annette Tanner Vice-President
 Glenda Grittman Secretary-Treasurer
 Barbara Jones Publicity Chairman

ROLL

Carolyn Ball
 Bonnie Burford
 Jane Burgin
 Betty Campbell
 Margaret Carraway
 Carolyn Cook
 Ann Deakle
 Patricia Forbes
 Frances Foster
 Gerri Fulcher
 Reba Leigh

Betty Love
 Sally Manning
 Jo Ann Mims
 Carolyn McElroy
 Cecile Nix
 Carolyn Richardson
 Beverly Rucker
 Madelyn Slaughter
 Marrilee Van Cleve
 Carolyn White



MIRIAM JACKS
 President



Jack Savage



James Smith



Robert Gray



Hoyt Wooten

THE DELTAIRES



THE CONTINENTALS



Billy Henley
Jack Savage
James "Boone" Newton,
Manager
Hoyt Wooten
Hanson Bufkin
Gerri Fulcher

FABULOUS FOUR

John Ramey, Accompanist
Margaret Carraway
Miriam Jacks
Glenda Gritman
Carolyn Cook





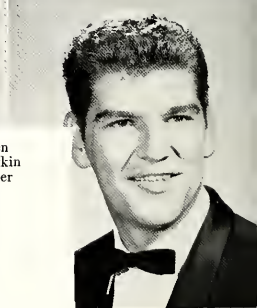
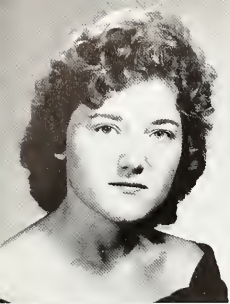
DEBATE CLUB

MEMBERS

Frank Crawford
Mary Lee Goode
Carol Manning
Gloria Poag
Mergie Smith

NOT PICTURED

Betty Lane Andrews



Manager
Hoyt Wooten
Hanson Butkin
Gerri Fulcher

DELTA PLAY

OFFICERS

- Nancy McLeod _____
- Carol Ann Beck _____
- Richard Myers _____
- Sara Valencino _____
- John Mann _____

(not pictured) **FOUR**

MEMBERS

- Bob Baker
- Bill Givens
- Pat Inman
- David Heflin
- Joe Williamson
- James Myers
- (not pictured)

PLEDGES

- Betty Andrews
- Linda Bennett
- Sara Browning
- William Bowie
- Lady Jane Castle
- Pat Crawford
- Jackie Crocker
- Vickey Coury
- Virginia Curtis
- Barbara Hancock
- Pat Hester
- Glynda Hill
- Dorothy Jeffcoat
- Henry Ward

- Earl Latham
- Lee Long
- Loretta Livingston
- Al Mann
- Jo Betty McDaniel
- Joyce Montgomery
- Peggy Rasberry
- Lucretia Smith
- Jimmie Carol Still
- Sue Stockton
- Ramona Tate
- Elizabeth Wynne
- Ann Taylor
- Valera Vought



NANCY McLEOD
President



WOMEN'S ATHLETIC ASSOCIATION

OFFICERS

President _____	Mary Lindsay
Vice-President _____	Betty Latham
Secretary _____	Jo Leta Sanders
Treasurer _____	JoAnne Sorrells
Reporter _____	Mary Carmichael

MEMBERS

Lazette Ashley
 Betsy Beard
 Fatsy Blount
 Barbara Brown
 Betty Campbell
 Claudette Curtis
 Shelley Denley
 Margie Earnheart
 Faye Freeman

Kay Gregg
 Linda Grozinger
 Charlene Hall
 Anne Hogue
 Nancy Isom
 Billye Jean Lipe
 Karen Lovorn
 Kathy Lovorr
 Carol Manning

Joycelyn Milner
 Juanita Mixon
 Latra Moore
 Martha Pharr
 Cloria Poag
 Dolores Rossie
 Carole Sanders
 Martha Signa
 Sara Valencino



PHYSICAL EDUCATION

OFFICERS

Sara Valencino	President
Mary Lou White	Secretary-Treasurer
Kay Gregg	Reporter
Forest E. Wyatt	Faculty Advisor

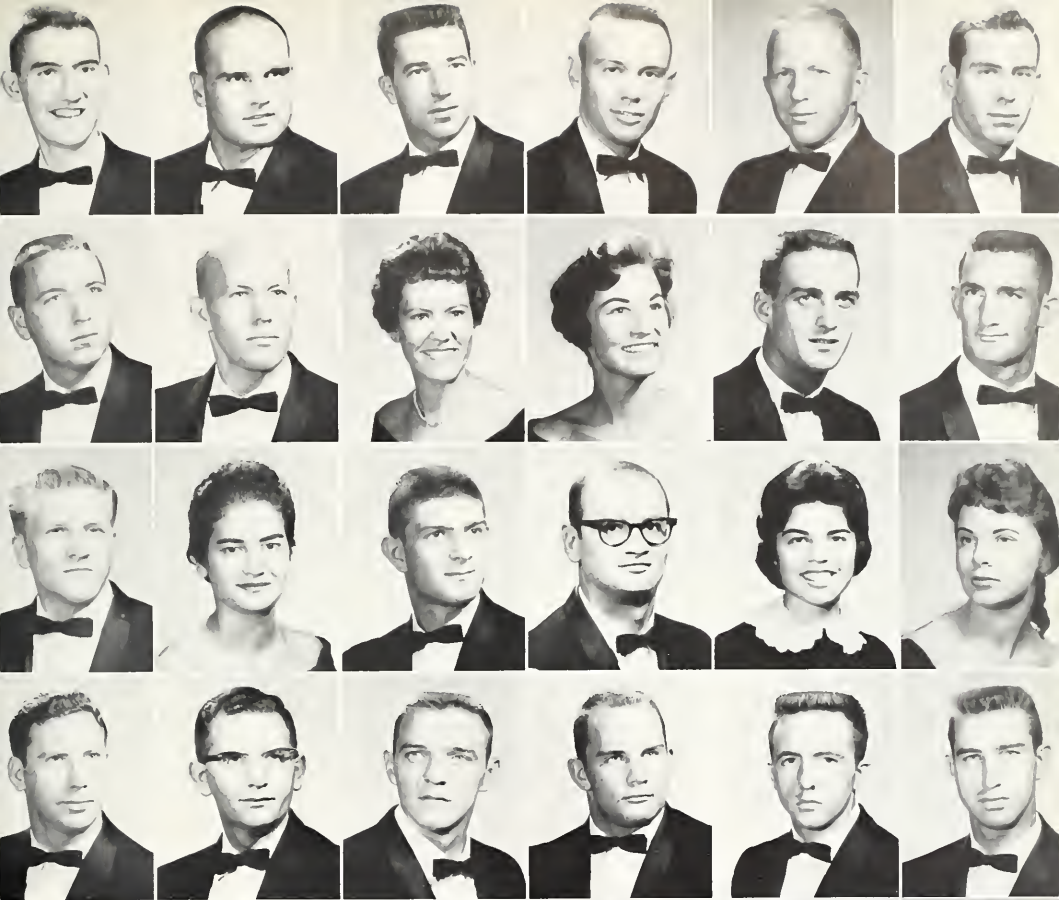
NOT PICTURED

James Hubbert
 Allen Jenkins
 Pittman Keen
 Wayne Leonard
 Kathy Lovorn
 Regis Metro
 Robert McGraw
 Jackie Tullos
 Frank Alford
 Crandle Barron
 Billie Bowman
 Jack Case

Imogene Childress
 Ira Coates
 Kelly Collins
 Harry Garverick
 Leslie Henning
 David Herbert

Bob Abel
 Noal Akins
 Jimmy Alexander
 Richard Alford
 F. E. Allegrizza
 Lazette Ashley
 Raymond Bell
 David Belford
 Sandra Brunson
 Claudette Curtis
 Charles Davis
 Tommy Dykes
 Bobby Ferguson
 James Fisacherly

Leon Franklin
 Kay Gregg
 Linda Grozinger
 James Hathcock
 John Hazelp
 Larry Henderson
 Albert Hill
 David Hitchens
 Nancy Isom
 Carl James
 William Johnson
 Mary Lindsay
 Joe Mathis



MAJORS CLUB



SARA VALENCINO
President

Mae Morgan
Wilburn Murphee
Charles Murphy
Dale McCann
John McElroy
Robert McGraw
Arthur Norwood
Henry Pace
Martha Pharr
Kathleen Poag
Charles Preston
Bennie Price
Kenneth Rencher
Dolores Rossie



Fred Rossi
Joe Sabbatini
Martha Signa
JoAnne Sorrells
George Strohm
Morris Stuart
Jim Taylor
Roy Terry
Billy Pat Thomas
James Trotter
James Turner
Ruby Vance
Mary Lou White

NOT PICTURED

Deanie Miller
John Orman
Kenneth Parker
Margaret Sansing
Bettie Stewart
Don Ward
Mary Ann Weber
A. C. Williams
Kenneth Young
Mr. Forest Wyatt



DANCE CLUB

OFFICERS

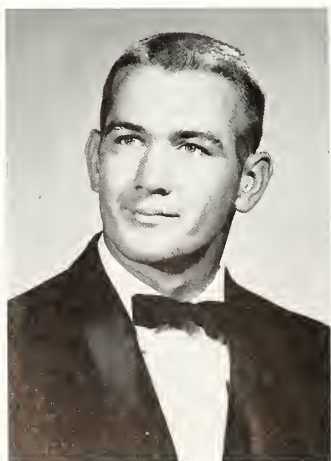
Leon Franklin President
 Kelly Klein Vice-President
 Jean Neal Secretary-Treasurer
 Gerry Sultan Reporter
 Shelby Sessums Publicity and School Spirit Rep.
 Mary Wallace Bailey
 and
 Martha Rowe Student Directors

MEMBERS

Patti Allen	Ned Mitchell
Mary Wallace Bailey	Jean Neal
Frank Crawford	Raymond Oltremari
Linda Dunlap	Martha Rowe
Clint Fletcher	Shelby Sessums
Leon Franklin	Melba Showah
Faye Freeman	Martha Signa
Kelly Klein	Paula Smith
Arthur Lawler	Gerry Sultan
Billye Jean Lipe	Gloria Sultan
Bettye Blair Lusk	Ruby Vance
Richard Myers	

NOT PICTURED

Gene Fioranelli
 Bob Parnel

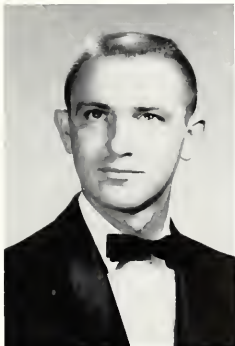


LEON FRANKLIN
 President



M

CLUB



PAUL WOOD
President





VETERANS CLUB

OFFICERS

Boh Wilson	Commander
Peyton McQuary	Executive Officer
John Aycock	Finance Officer
Robert Mims	Public Information Officer
James Miller (not pictured)	Sergeant Officer

MEMBERS

Hanson Bufkin
 Roger Earl
 Jack Hall
 James Hannah
 Lynn McCallum
 James Norman
 Richard Parnell
 Marvin Randall
 John Turner
 John Welch



QUEEN MARY JO BISHOP



ASSOCIATION OF CHILDHOOD EDUCATION

Sally Adams
 Lynda Allison
 Glenda Bailey
 Gail Pass
 Treasurer
 Betsy Beard
 Reporter
 Mary Jo Bishop
 Secretary
 Betty Branch
 Ruth Brooks
 Barbara Brown
 Scribe
 Bobbie Brown
 Sarah Jane Browning
 Robbie Campbell
 Ann Carnes
 Sue Dixon
 Mrs. Dorsey Draper
 Merry Lou Dudley
 Lucille Dunn
 Joan Edwards
 Virginia Emmons
 Jeanette Ferri

Josephine Ferri
 Martha Fisher
 Wayne Fleming
 Frances Foster
 Helen Claire Gordon
 Jack Hall
 Beth Hendrix
 Clynda Hill
 Publicity
 Ann Hogue
 Joyce Hoop
 Jerri Jenkins
 Fonda Keith
 Joyce Faye King
 Reba Leigh
 Loretta Livingston
 Shirley Manning
 Nan Martin
 Levenia Maxwell
 Billie Lou Meadows
 Jean Neal
 Mary Neely
 Ella O'Neal

Richard Parnell
 Nancy Perry
 Jean Rountree
 Martha Rowe
 Betty Rozier
 Peggy Shutt
 Jean Sims
 Jeanie Snyder
 Dot Stovall
 UNESCO Chairman
 Annette Tanner
 Mary Tickell
 Vice-President
 Linda Lee Thweatt
 Faye E. Towles
 Vivian Tribble
 Cavlyne Ussery
 Marrilee Van Cleve
 Mary Vickers
 Lynn Watkins
 Ann Wilkinson
 Mamie Williamson
 Martha Claire Wood



SANDRA BROWN
 President



DELHECONS

Betty Latham	President
Beverly P. Harrison	Vice-President
Mary Wallace Bailey	Secretary
Linda Wilson	Treasurer
Arlene Peyton	Social Chairman
Bobbie Jean Wells	Reporter
Karen Lovorn	Parliamentarian
Lesca Kemp	Historian

MEMBERS

Charlene Bagwell	Margaret Jane Gordon
Lynda Bennett	Glenda Gritman
Carolyn Bianca	Sylvia Hawthorne
Ruth Boyd	Mary Hutchinson
Lady Jane Castle	Janette Nichols
Barbara Jean Clifton	Lila Nossor
Linda Eaker	Sara Ruth Powell
Martha Floyd	Shirley Rodgers
Ella Gill	Beverly Wolfe
Nancy Goodson	



BETTY LATHAM
President



INTRAMURAL COUNCIL

The Intramural Council supervises and publicizes intramural sports on the campus.

MEMBERS

Noal Akins
Raymond Bell
Shelley Denley
James Norman
Kathleen Poag
Brenda Prewitt
JoAnne Sorrells
Jimmy Trotter

NOT PICTURED

Margarett Wade—Sponsor
Forest Wyatt—Sponsor



BETSY BEARD
CHI DELTA



ANN LAMON
OMEGA PHI

INTER-SORORITY COUNCIL

NOT PICTURED

Ella O'Neal—President
Gerry Sultan—Omega Phi

The Inter-Sorority Council is the co-ordinating body between the sororities on the campus. Representatives from each sorority set up standards for the clubs and rules and regulations for rush. They are in charge of indoctrinating other girls about the sorority.



BETTYE LUSK
OMEGA PHI



PAT McCLELLAN
CHI DELTA



INTER-FRATERNITY COUNCIL

The Inter-Fraternity Council, composed of representatives from each fraternity, brings the different groups together to set up standards by which they are all governed. It serves as a connecting link among the fraternities.

Gerald CrawfordPresident Sigma Theta Psi
Dumont FreemanSecretary-Treasurer Sigma Theta Psi
Phillip FarrVice-President Sigma Theta Phi
Bob Brunfield Delta Alpha Omega
Frank Greenlee Delta Alpha Omega
Ned Mitchell Delta Alpha Omega
Kelly Klein Delta Alpha Omega
Pat Lewis The Cavaliers
Seymour Robinson The Cavaliers
Charles Vickery The Cavaliers

NOT PICTURED

Penny Moss Sigma Theta Psi
Larry Cole The Cavaliers



KAPPA DELTA PI

National Honor Society in Education

OFFICERS

President	_____	Mary Lee Goode
Vice-President	_____	Elizabeth Powers Beard
Secretary	_____	Jimmie Carol Still
Treasurer	_____	Glynda Hill
Historian	_____	Barbara Belle Jones
Reporter	_____	Elizabeth Wynne

MEMBERS

Elizabeth Beard
 Sandra Brown
 Mary Lee Goode
 Glynda Hill
 Barbara Jones
 Mary Broach McFarlane
 Nannie Martin
 Anice Powell
 Jimmie Carol Still
 Elizabeth Wynne

NOT PICTURED

Miss Mabel Brister
 Miss Carol Brumby
 Miss Gladys Castle
 Miss Birdie Hale
 Miss Mary Frances Hamilton
 Dr. H. J. Jacob
 Miss Kathryn Keener
 Miss Nell Lawler
 Mrs. Donnis McDonald
 Mr. Mac McRaney
 Miss Jonett Sanford
 Dr. Eleanor Walters
 Miss Nell Wynn
 Dr. A. L. Young



MARY LEE GOODE
 President



National Honorary
Fraternity in Social
Science and History

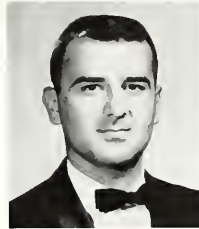
MEMBERS

- Gail Bass
- Betsy Beard
- Lynn McCallum, Vice-President
- Joyceen Milner
- Billie Ruth Moore
- Nancy Lou Perry
- George Scheiderman
- Jimmie Carol Still
- Troy Woods
- Elizabeth Wynne

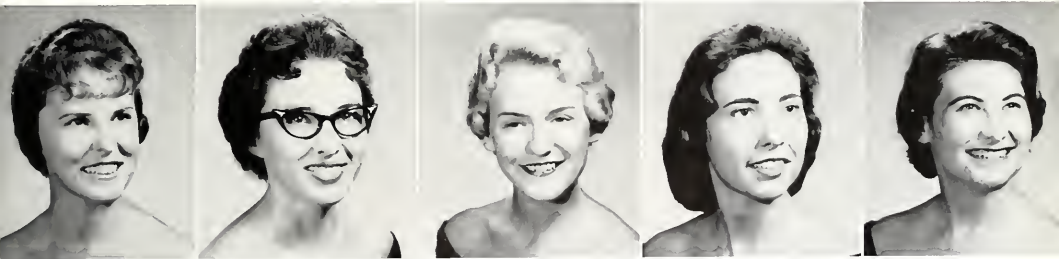
PI GAMMA MU

NOT PICTURED

- Tip Allen
- Carol Bramby, Secretary-Treasurer
- Darl Burnside
- Irby Ellis
- Ruth Hart
- William LaForge, Faculty Advisor
- Natalie Miller
- Dewitt Oaks
- Eleanor Walters
- Donald Ward
- T. D. Young



President
PETER ROBINSON



MEMBERS

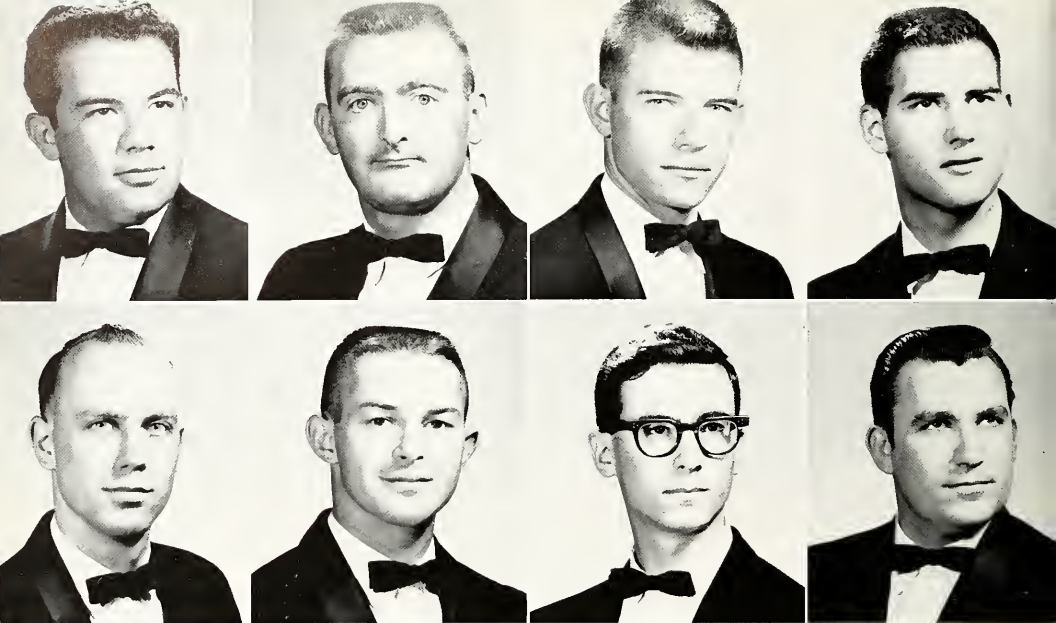
- Sandra Holmes
- Patricia Middleton, Secretary
- Pat McClellan, Vice-President
- Joy Milner, President
- Charlotte Williams

PI OMEGA PI

National Honorary Fraternity
for Business Education

NOT PICTURED

- Miss Betty Lynn Donald, Treasurer
- Mr. John Gibson
- Miss Kathryn Keener



PHI MU ALPHA SINFONIA FRATERNITY OF AMERICA



THETA UPSILON CHAPTER

OFFICERS

Pete White	President
Jack Savage	Vice-President
Cliff Klutts	Secretary-Treasurer
John Aycock	Warden
Bill Henley	Historian
Seymour Robinson	Executive Alumni Secretary
John Ramey	Pledgemaster
Dr. George Muns	Faculty Advisor
	(not pictured)

MEMBERS

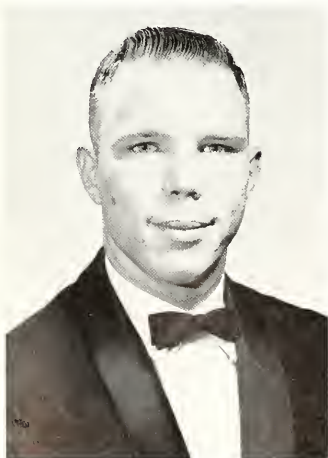
Tommy Henderson
Charles Martindale
Ronald Schuyler
Hoyt Wooten

NOT PICTURED

Ralph Cooper
James Newton
Seymour Robinson

PLEDGE MEMBERS

Percy Peeler	Howard Dodd
Hal Reese, Jr.	Bob Esterline
Ben Bailey	Bill Givens
Hanson Bufkin	Robert Gray
Jimmy Smith	Tom Kimbro
Ralph Washington	Robert Logan
Johnny Baker	Jimmy Thompson
James Cooper	



President
PETE WHITE



OMEGA PHI SORORITY

ACTIVES

Lady Jane Castle, Historian
 Arlas Dickson, Corresponding Secretary
 Sylvia Hawthorne
 Ann Lamon, Inter-Sorority Rep.
 Betty Lusk, Pledge Mistress
 Jean Neal, Pledge Mistress
 Martha Rowe
 Pat Wicker, Parliamentarian
 Beverly Wolfe, Vice-President
 Elizabeth Wynne, Treasurer

NOT PICTURED

Sandra Wherry, Secretary
 Miss Margaret Wade, Sponsor

PLEDGES

Linda Abide
 Jane Bell
 Ruth Boyd
 Bettye Branch
 Sarah Browning
 Martha Carroll
 Susan Clarke

Barbara Clifton
 Claudette Curtis
 Becky Dalton
 Linda Dunlap
 Linda Exsterstein
 Carolyn Fauver
 Peggy Gentry
 Kay Gregg
 Carolyn Hansborough
 Eva Hardy
 Peggy Lusk
 Latra Moore
 Linda Faye Newsome
 Mickey O'Malley
 Charlotte Poole
 Carole Sanders
 Paula Smith
 Dot Stovall
 Jenny Sue Thach
 Frances Walden
 Jo Anne Wolfe

NOT PICTURED

Ellen Moore
 Martha Signa



GERRY SULTAN
 President



CHI

Chi Delta was organized in the spring of 1960. Colors of garnet and gold and the American Beauty Rose are familiar to all who wear the Chi Delta pin. The motto, "Friendship, Charity, and Loyalty," truly symbolizes each girl who helps make up the Chi Delta Sorority.

Chi Delta girls have received many honors. In 1959 Audrey, Kathleen, and Mary Ann were elected beauties. Mary Ann was chosen most beautiful girl and was a finalist in the 1960 Lady of the Lake Contest. Audrey was the reigning Lady of the Lake and was a representative in the Miss Mississippi Contest. The Gary sisters, Shula and Sharon, held titles of Miss Hospitality and Miss Bolivar County of 1960, respectively.

When cheerleaders were elected for 1960, Chi Delta came in loud and clear with Brenda and Pat. Pat was a head cheerleader. Pat was also elected secretary and Jane treasurer of SGA. Other honors for Pat were friendliest girl, class favorite and Valentine Queen. Chi Delta was also well represented in the nationally renowned Delta Belles and Band.

MEMBERS

Betty Jo Abraham
Ann Arnold
Delores Bagley
Betsy Beard
Inter-Sorority Rep.
Linda Bennett
Carolyn Bianca
Mary Jo Bishop
Barbara Brown
Pat Barney
Martha Coleman
Lacey Crisler
Virginia Curtis
Ann Deakle
Shelley Denley
Recording Secretary

Margie Earnheart
Nancy Edmonds
Joan Edwards
Lynn Ferguson
Song Leader
Faye Freeman
Sharon Gary
Shula Gary
Glenda Crittman
Charlene Hall
Norma Hall
Audrey Hazzard
Brenda Hill
Reporter
Sandra Holmes
Vice-President



Don't be alarmed! That's just Cavlyne!



Dig that dignity!



DELTA

Pat M. was elected 1960 Homecoming Queen and Mary Ann and Audrey were among her maids. Pat M. and Joy were elected to Who's Who Among Students in American Universities and Colleges. Joy is also president of Pi Omega Pi and Pat is vice-president. Betsy is vice-president of Kappa Delta Pi. Serving their classes are Shelley, secretary of the senior class, Charlene, vice-president, and Betty Jo, secretary of the freshman class. In the Who's Who Contest, Shelley was elected friendliest girl; and Jane, Shelley, Carol Ann, Carolyn B. and Charlene were class favorites. Among the campus beauties were Mary Ann, Audrey, and Joyce Faye. Lynn is "M" Club Sweetheart for 1960-61 and Mary Jo reigns as Veterans Club Queen.

In the heart of every Chi Delta girl is love for Mrs. Hamilton, the sponsor. She has encouraged the girls as they entertained with rush parties and parties for different holidays. Boxes of food were sent to families, and clothes were sent to children on Thanksgiving and Christmas. Time has also been found for worshipping together.



MEMBERS

Sue Jones
Lesca Kemp
Joyce Faye King
Evelyn Lacey
Joyce Logan
Betty Jo Love
Martha Malone
Carolyn McElroy
Joycelyn Milner,
Parliamentarian
Billie Ruth Moore,
Pledge Mother
Ella O'Neal,
Inter-Sorority Rep.

Sara O'Neill
Cloria Poag
Kathleen Poag
Brenda Prewitt
Jane Robertson,
Chaplain
Betty Ross
Jean Roundtree,
Corresponding Sec.
Melba Showah,
Social Chairman
Pat Smith
Wanda Smith
Kay Kay Turner
Ruby Turner

Cavlyne Ussery,
Historian
Rebecca Ward
Carol Ann Wilson
Martha Claire Wood

NOT PICTURED
Mary Ann Weber
Mrs. Velma Hamilton,
Advisor



Pat McClellan
PRESIDENT



DELTA ALPHA OMEGA

OFFICERS

Bob Brumfield	<i>President</i>
Frank Greenlee	<i>Vice-President</i>
Kelly Klein	<i>Treasurer</i>
Ned Mitchell	<i>Secretary</i>

ACTIVES

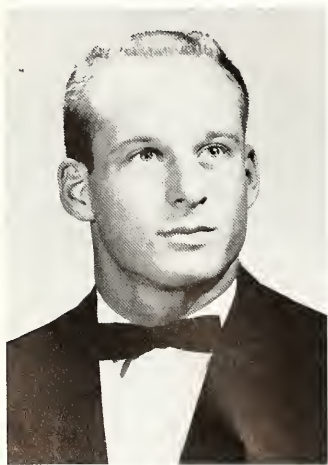
William Carr
 Jimmy Davidson
 Gale Davis
 Jim Eidt
 Bobby Elliott
 Frank Greenlee
 Ronnie Guest
 Al Hopkins
 Dean Kamm
 Kelly Klein
 Ned Mitchell
 Richard Myers
 Leigh Sanders
 Jim Steen

NOT PICTURED
 Foster Hollingsworth
 Murray Sanford

PLEDGES

Ben Bailey
 Frank Bridges
 Fred Cribbs
 Doug Ferriss
 Clint Fletcher
 Nicky Griffith
 Parks Johnson
 Joey Myers
 Pete Peden
 John Ramey
 Glenn Sexton
 Billy Smith-Vaniz
 John Robert Webb

NOT PICTURED
 Austin Banks
 Dee Corton
 Erby Hazzard
 A. C. Williams



Bob Brumfield
 PRESIDENT



THE CAVALIERS

OFFICERS

Pat Lewis	<i>President</i>
John Dyess	<i>Vice-President</i>
Charles Vickery	<i>Secretary</i>
Tom Kimbro	<i>Treasurer</i>
Seymour Robinson	<i>Publicity Chairman</i>
Joe Williamson	<i>Social Chairman</i>
Richard Garrett	<i>Pledge Master</i>
Mike Kealhofer	<i>Sergeant-at-Arms</i>

ACTIVES

John Dyess
 Richard Garrett
 Mike Kealhofer
 Tom Kimbro
 Bobby Moore
 Seymour Robinson
 Charles Vickery
 Joe Williamson

NOT PICTURED

Bobby Cain
 Larry Cole

PLEDGES

Eddie Dalton
 Tommy Gammill
 Doyle Ray Garrett
 Robert Gray
 David Heflin

Billy Henley
 Lehmon Junkin
 Robert Logan
 Larry Marberry
 James Mitchell
 A. M. Norwood
 Pat Owens
 Percy Peeler
 Howell Reese
 Jack Savage
 Jimmy Thompson
 Monroe Williams
 Hoyt Wooten

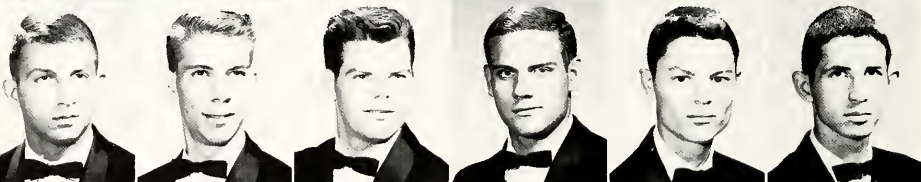
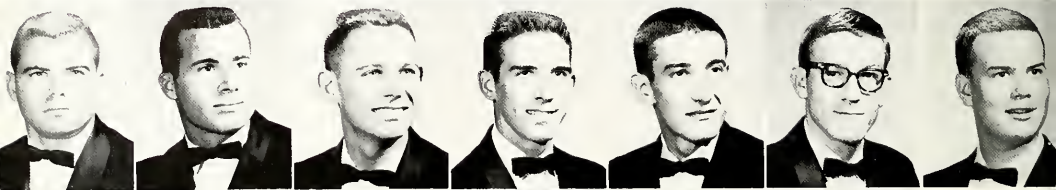
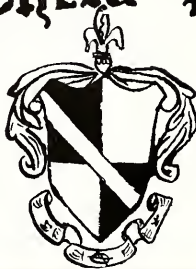
NOT PICTURED

James Newton



Pat Lewis
 PRESIDENT

The Sigma Theta Psi Fraternity

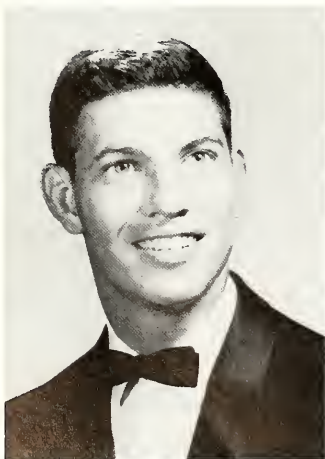


OFFICERS

Dumont Freeman	President
Philip Farr	Vice-President
Gerald Crawford	Secretary
Charles Smith	Treasurer
Penny Moss	Guard
		(not pictured)

MEMBERS

Philip Farr
 Gerald Crawford
 Charles Smith
 Johnny Baker
 Lester Denley
 Joe Gary
 Tom Horne
 Charles Jackson
 Robert McCurdy
 Pee Wee Murphy
 Shelby Sessums
 Solon Smith
 Harvey Swindall



Dumont Freeman
 PRESIDENT

ADVERTISEMENTS



BETTY LANE
EIDT
business manager

Studebaker Lark
Sales Service
SERVICE MOTOR COMPANY

M. C. SIMPSON, Owner
Telephone: VI 3-4068
CLEVELAND, MISSISSIPPI



Oh, but we like to stand in line . . .



The pause that refreshes . . .

THE BOLIVAR

Commercial
Job Printers—Publishers
Office Supplies
PHONE VI 3-2776



WOW! What legs!

Compliments
of
**SUNFLOWER
FOOD STORE**

"Where You Save Something
on Everything"
CLEVELAND, MISSISSIPPI

**BERGER'S
GOOD HOUSEKEEPING
SHOP**

CLEVELAND, MISS.
VI 3-3791 143 North St.



Mary Ann Weber is a good "house-keeper" . . .

DATTEL'S DEPARTMENT STORE

One of
Mississippi's Finest
Cleveland, Mississippi



MODERN ELECTRONICS TV CABLES, INC.

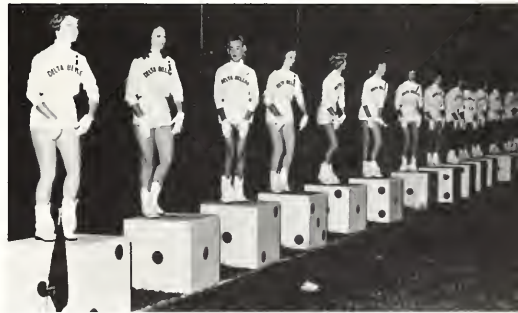
222 North Street
PHONE VI 3-3465
Cleveland, Mississippi
J. E. WOLFE W. F. CRESS



Couch talk . . .

5-10 BEN FRANKLIN 5-10

C. R. ASHFORD
Nationally Known—Locally Owned



Practice made perfect!



Sandra Brown
really likes
to stay clean!

Compliments
of
FLEMING LUMBER CO.
CLEVELAND, MISS.

BRYAN BROS.

"A Meal in
a Minute!"



**BRYAN BROS.
PACKING COMPANY**

WEST POINT
MISSISSIPPI

Compliments
of

**LIVINGSTON
FURNITURE STORE**
CLEVELAND and CLARKSDALE,
MISSISSIPPI

**MISSISSIPPI
POWER AND LIGHT
COMPANY**

"Helping Build Mississippi
for Over
1/3 of a Century"

CLEVELAND, MISSISSIPPI



YOUR SEARCH ENDS
at

**DEFENBAUGH
FINANCE COMPANY**

Personal, FHA, GI, Farm Loans
Financing Mutual Insurance
115 COURT STREET
Cleveland, Mississippi

Congratulations, Broom Staff

**BOB REDDING
PONTIAC-CADILLAC CO.**

403 East Sunflower Road
CADILLAC—PONTIAC
VAUXHALL—TEMPEST
The Two Great Compacts
WE SERVICE ALL MAKES

**WARD
LUMBER COMPANY**

CLEVELAND, MISSISSIPPI
Building Materials

Your Key
TO GREATER VALUES

**STERLINGS
DEPT. STORE**

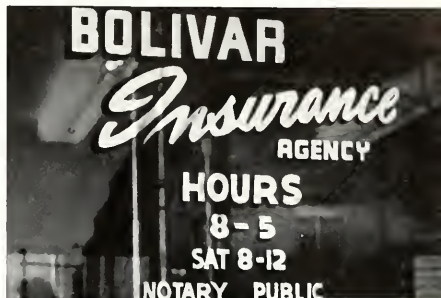
Cleveland, Mississippi

To be big and strong
like Joe Williamson
try a coke . . . then
try, try again.



Compliments of
COCA-COLA
BOTTLING COMPANY
Cleveland, Mississippi

Compliments
of
BOLIVAR
INSURANCE AGENCY
Cleveland, Mississippi



So this is what Delta Belles are made of!

Compliments
of
GOODYEAR
SERVICE STORES

127 North Street
Cleveland, Mississippi
PH. VI 3-3695
3-3694

SIMMONS
Walgreen Agency
CLEVELAND, MISS.

Dewey Bostick
looks for the
brand before
he buys . . .



DIXIE TOBACCO & CANDY COMPANY

Cigarette Vending Machines
Yellow Cab and King Edward Cigars
YOUR BOLIVAR COUNTY WHOLESALER

Growing With Delta State College
SHAW PHONE 3561

MEDICAL ARTS PHARMACY

Ethical Prescription Service
John E. Ward, F.A.C.A.—Owner
PHONE VI 3-4744
Cleveland, Mississippi



Willie Carr, will you please get off Peggy Cates' foot!



KAMIEN'S

"Your Favorite Store Since 1904"

McGREGOR AND JANTZEN
SPORTSWEAR

VAN HEUSEN SHIRTS

JONATHAN LOGAN DRESSES

DEB SHOES

**CLEVELAND
MOTOR COMPANY, INC.**
CHEVROLET OLDSMOBILE CORVAIR
Cleveland, Mississippi



Our Miss DSC relaxes with Most Handsome, Friendliest Girl and Beauty like TV, too . . .

OWEN'S DRUG STORE

Guralain Perfume
Elizabeth Arden and
DuBarry Cosmetics
CLEVELAND, MISS.

NOWELL

Quality Building Materials

PHONE VI 3-2731
Cleveland, Mississippi

RIDE with ROSE
Gas Oil
Your Friend

Buy One Tire
Get Another Free

ROSE OIL COMPANY

Cleveland, Mississippi
WE SELL FOR LESS



Compliments
of
JAY FREEMAN COMPANY



"Are you sure you don't want to watch 'Cheyenne' on TV, James?" But Hubbert is sure, "No" . . .

**WEST
IMPLEMENT CO., INC.**

John Deere Farm Equipment
and
West Machine Shop, Inc.
CUSTOM WORK
Cleveland, Mississippi



**IT PAYS
TO TRADE
AT JAYS**

**D and N
AUTO PARTS COMPANY**

Distributors of
AUTOMOTIVE EQUIPMENT
Cleveland, Mississippi



Oh, what a night



Compliments of

THE CLEVELAND STATE BANK

CLEVELAND MISSISSIPPI

Compliments
of

DELTA PACKING COMPANY



From the look on Pat Smith's face, JoAnne Sorrells' and Sara O'Neill's only chance is to duck into the phone booth with Pee Wee Mixon.

CLEVELAND TEA ROOM

Hiway 61 and 8
CLEVELAND, MISSISSIPPI

May we offer our congratulations to DELTA STATE COLLEGE on such excellent progress in its fine building program, which further enhances it as one of Mississippi's finest colleges.

ELLIS-CHIEF THEATRES, INC.



Terry Hopper likes the hand he's coaching, but Jim Murphy had rather play the game.

CARL C. DAVIS
Printing & Publishing
Company

PRINTERS
STATIONERS
OFFICE SUPPLIES
FURNITURE

Phone VI 3-4044

111-113 SOUTH COURT STREET • CLEVELAND, MISS.

**DENTON
DAIRY PRODUCTS,
INC.**



George Arendale hopes there is enough milk left for him . . .

CLEVELAND
Phone
VI 3-2781
Ice Cream, Milk
and
Creamery Products

LARSON PHOTOGRAPHERS

1017 Washington Ave.
GREENVILLE, MISSISSIPPI
EDison 2-8422

Portraiture
Babies Brides
Children Weddings
Adults

Commercial Photography
Black and White
or Color

1960-61 Broom Photographer

W. R. WALSH

JOHN B. WALSH

WALSH PLUMBING COMPANY

PLUMBING, HEATING AND AIR CONDITIONING

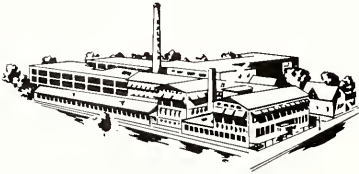
P. O. BOX 8431 -- 2343 HICKORY DRIVE

JACKSON, MISSISSIPPI

PHONE 372-6542

Compliments

L. G. Balfour
COMPANY



*Manufacturers of America's Finest
Class Rings, Invitations and Diplomas*

H. E. ALLEN
ED COPELAND

BILL PULLEN
VIRGIL MELOHN

Box 83 Jackson, Mississippi

Congratulations to
DELTA STATE COLLEGE
on its still-continuing
building program

Compliments of

**WEBER'S
ECONOMY GROCERY**

YAZOO CITY



Exams just won't wait!

Compliments of
the

**DELTA
WHOLESALE HARDWARE CO.,
INC.**

CLEVELAND—CLARKESDALE

We are boosters of Delta State.



In the spring, "Moose", isn't one enough!

MARCEL DAVIDOW'S WESTERN AUTO STORE

Cleveland, Mississippi
STUDENTS AND FACULTY
WELCOME

"We help keep your cars
running"

CLEVELAND LUMBER AND SUPPLY CO., INC.

Cleveland, Mississippi
PHONE 311
Better Your Home
Better Your Living



But fellows, I need
my beauty sleep . . .



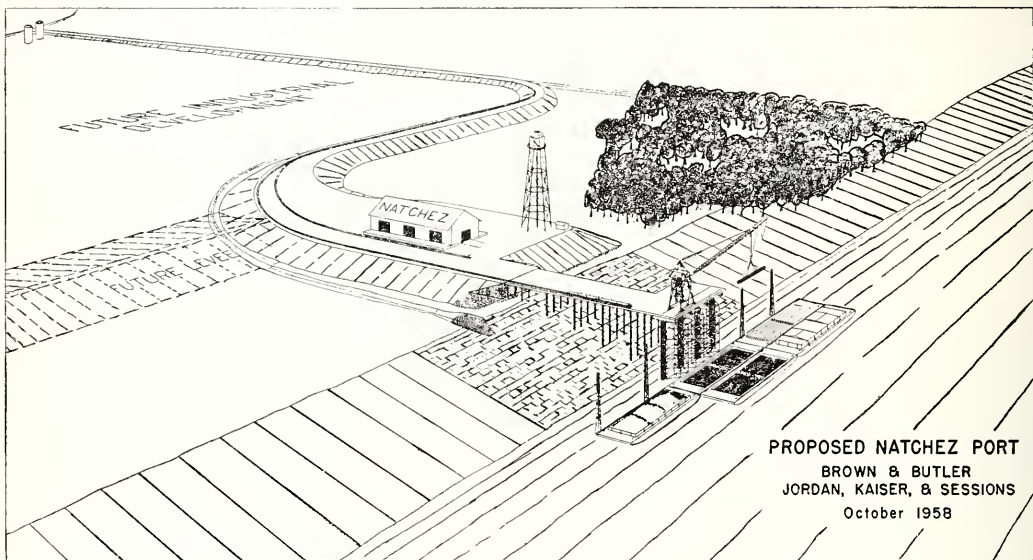
"The old order changeth,
yielding place to new"

at

K
O
S
S
M
A
N

Buick
Company

GROWING WITH DELTA STATE
AND THE STATE OF MISSISSIPPI



PROPOSED NATCHEZ PORT
BROWN & BUTLER
JORDAN, KAISER, & SESSIONS
October 1958

Compliments of

ADAMS COUNTY
BOARD OF SUPERVISORS

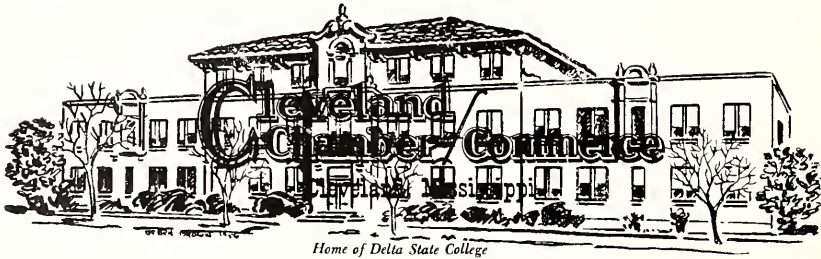
The
BOARD OF SUPERVISORS
BOLIVAR COUNTY, MISSISSIPPI

extends its sincere appreciation to
DELTA STATE COLLEGE

for its Educational, Cultural,
and Economic Contributions to
our Bolivar County Community.

BOLIVAR COUNTY,
growing with Mississippi and the Mississippi Delta

Congratulations, DELTA STATE,
on your still-continuing building program

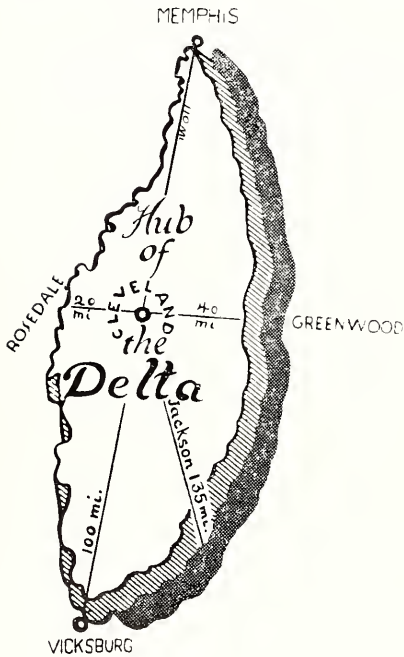


The CLEVELAND CHAMBER OF COMMERCE

works to bring together

- 1) the COLLEGE
- 2) the COMMUNITY
- 3) the COUNTY

for the betterment of
CLEVELAND,
the HUB OF THE DELTA.



**CHAMBER
of
COMMERCE**
Cleveland
Mississippi

Hugh C. Smith
George B. Woodward
Jay Mann
Ellis Griffith
Dalton H. Poole

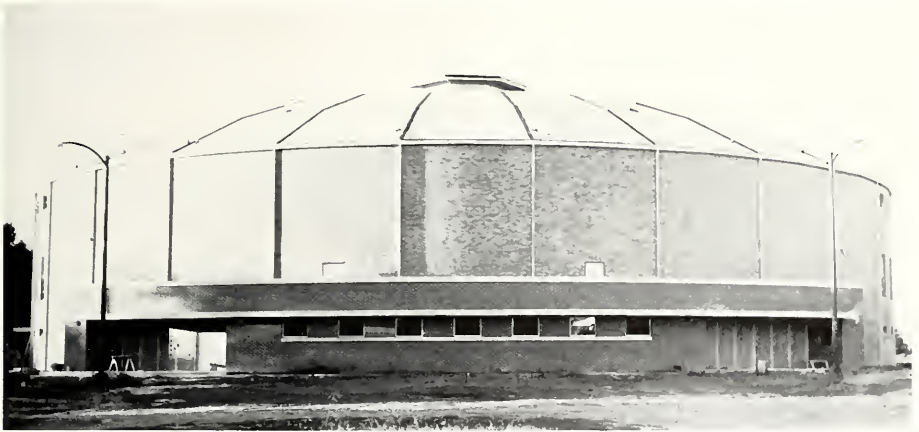
President
1st Vice-President
2nd Vice-President
Treasurer
Manager



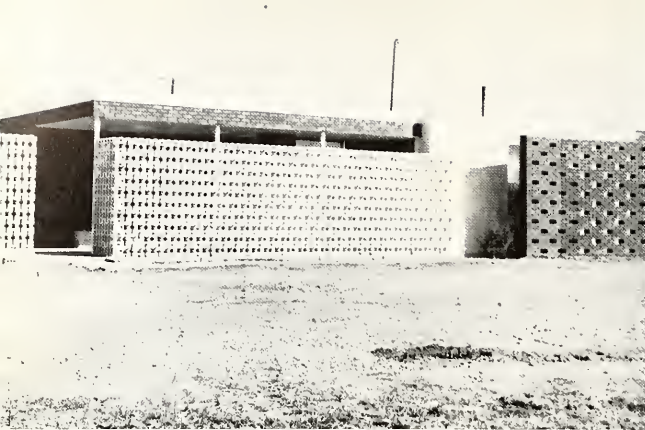


THE CITY OF CLEVELAND and DELTA STATE COLLEGE

Growing Together for a Better
Tomorrow



WATTIE BISHOP Mayor	NEVIN SLEDGE Alderman
HOMER L. SLEDGE Alderman	BREWER H. HUTCHINSON Alderman
J. W. HAYLES Alderman	T. T. REID Alderman



DELTA BRICK TILE CO., INC.

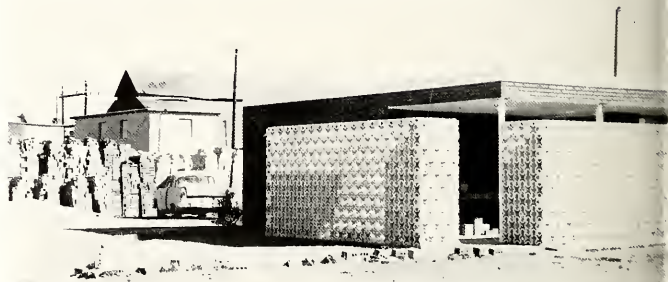
INDIANOLA, MISSISSIPPI

Phone 1000

P. O. Box 539

OLD RIVER BRICK
SIMULATED USED BRICK
STRUCTURAL GLAZED FACING TILE
STRUCTURAL UNGLAZED FACING TILE
STRUCTURAL SCORED TILE
MORTAR COLOR
PAVERS

We Manufacture the
Largest Color Variety
of Quality Face Brick
in the South. We Are
Distributors of All
Colors and Textures:
Roman, Norman, Standard,
and Modular Size Brick.





TAYLOR PUBLISHING COMPANY

"The World's Best Yearbooks Are Taylor-made"

YEARBOOKS



