

**BULLETIN**  
**du MUSÉUM NATIONAL**  
**d'HISTOIRE NATURELLE**

**PUBLICATION BIMESTRIELLE**

**zoologie**

**320**

**N° 457 MARS-AVRIL 1977**

**BULLETIN**  
**du**  
**MUSÉUM NATIONAL D'HISTOIRE NATURELLE**

57, rue Cuvier, 75005 Paris

---

Directeur : Pr M. VACHON.

Comité directeur : Prs J. DORST, C. LÉVI et R. LAFFITTE.

Conseillers scientifiques : Dr M.-L. BAUCHOT et Dr N. HALLÉ.

Rédacteur : M<sup>me</sup> P. DUPÉRIER.

---

Le *Bulletin du Muséum national d'Histoire naturelle*, revue bimestrielle, paraît depuis 1895 et publie des travaux originaux relatifs aux diverses branches de la Science.

Les tomes 1 à 34 (1895-1928), constituant la 1<sup>re</sup> série, et les tomes 1 à 42 (1929-1970), constituant la 2<sup>e</sup> série, étaient formés de fascicules regroupant des articles divers.

A partir de 1971, le *Bulletin* 3<sup>e</sup> série est divisé en six sections (Zoologie — Botanique — Sciences de la Terre — Sciences de l'Homme — Sciences physico-chimiques — Écologie générale) et les articles paraissent, en principe, par fascicules séparés.

S'adresser :

- pour les **échanges**, à la Bibliothèque centrale du Muséum national d'Histoire naturelle, 38, rue Geoffroy-Saint-Hilaire, 75005 Paris (C.C.P., Paris 9062-62) ;
- pour les **abonnements** et les **achats au numéro** à la Librairie du Muséum, 36, rue Geoffroy-Saint-Hilaire, 75005 Paris (C.C.P., Paris 17591-12 — Crédit Lyonnais, agence Y-425) ;
- pour tout ce qui concerne la **rédaction**, au Secrétariat du *Bulletin*, 57, rue Cuvier, 75005 Paris.

Abonnements pour l'année 1977

ABONNEMENT GÉNÉRAL : France, 530 F ; Étranger, 580 F.

ZOOLOGIE : France, 410 F ; Étranger, 450 F.

SCIENCES DE LA TERRE : France, 110 F ; Étranger, 120 F.

BOTANIQUE : France, 80 F ; Étranger, 90 F.

ÉCOLOGIE GÉNÉRALE : France, 70 F ; Étranger, 80 F.

SCIENCES PHYSICO-CHIMIQUES : France, 25 F ; Étranger, 30 F.

*International Standard Serial Number (ISSN) : 0027-4070.*

## The genus *Phthirpediculus* Ewing (Anoplura, Phthiraptera, Insecta)

by Theresa CLAY \*

**Résumé.** — L'auteur décrit une nouvelle espèce de *Phthirpediculus* (Polyplacinae), sur *Lemur mongoz* Linné ; elle donne des caractères additionnels pour *P. avahidis* Paulian, y compris ceux des mâles, et les deux espèces sont comparées aux figures et à la description de *P. propitheci* Ewing in FERRIS, 1932.

**Abstract.** — A new species of *Phthirpediculus* (Polyplacinae) from *Lemur mongoz* Linneus is described ; further characters of *P. avahidis* Paulian are given including those of the male and both species are compared with the figures and description of *P. propitheci* Ewing in FERRIS, 1932.

---

I am indebted to Dr E. R. BRYGOO for sending me the material of the new species and to Dr Loïe MATILE of the Muséum national d'Histoire naturelle for the loan of the type slide of *P. avahidis*. This slide is labelled "Type *Phthirpediculus avahidis*" and the second label has details of the locality, host and collector as in the published description. There are two females as stated, but also two males ; these are small and inconspicuous and were, no doubt, overlooked. As no holotype has been marked on the slide it is necessary to designate one of the females as lectotype : this has been done and the slide marked accordingly. No specimens of *propitheci* having been seen, comparisons have been made with the figures of FERRIS (1932 : 296-297) ; his terminology for the parts of the male genitalia has been followed. All references, therefore, to the characters of this species refer to the FERRIS figures.

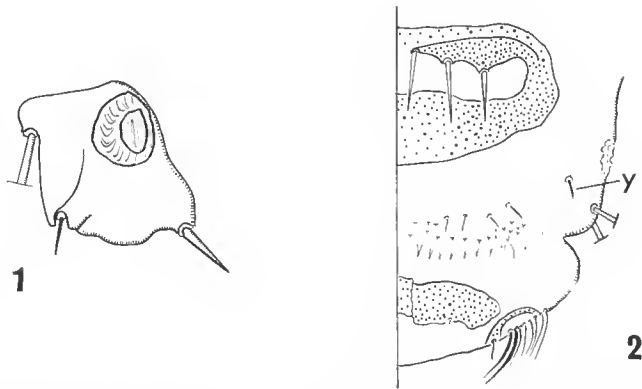
### *Phthirpediculus brygooi* n. sp.

#### DESCRIPTION

Head and thorax as in figure of *avahidis* in PAULIAN (1960, fig. 1a) except that the stout seta at the postero-lateral corner of the head has been omitted in that figure ; it is shown in the FERRIS figures and is present in all three species. The male antenna as in FERRIS, but with the tubercles as in the female of *avahidis* ; *propitheci* appears to have fewer tubercles on the head and a more rounded anterior margin. There is a tubercle on the third coxa, pointed in the new species, bifid in *avahidis* and absent in the figure of *propit-*

\* c/o British Museum (Natural History), Cromwell Road, London SW7 5BD, Angleterre.

*theci*. In both *avahidis* and *brygocci* there is a single stout seta on each of the sclerites forming the divided thoracic sternal plate, whereas *propitheci* has a pair of long, probably finer, setae on each plate.

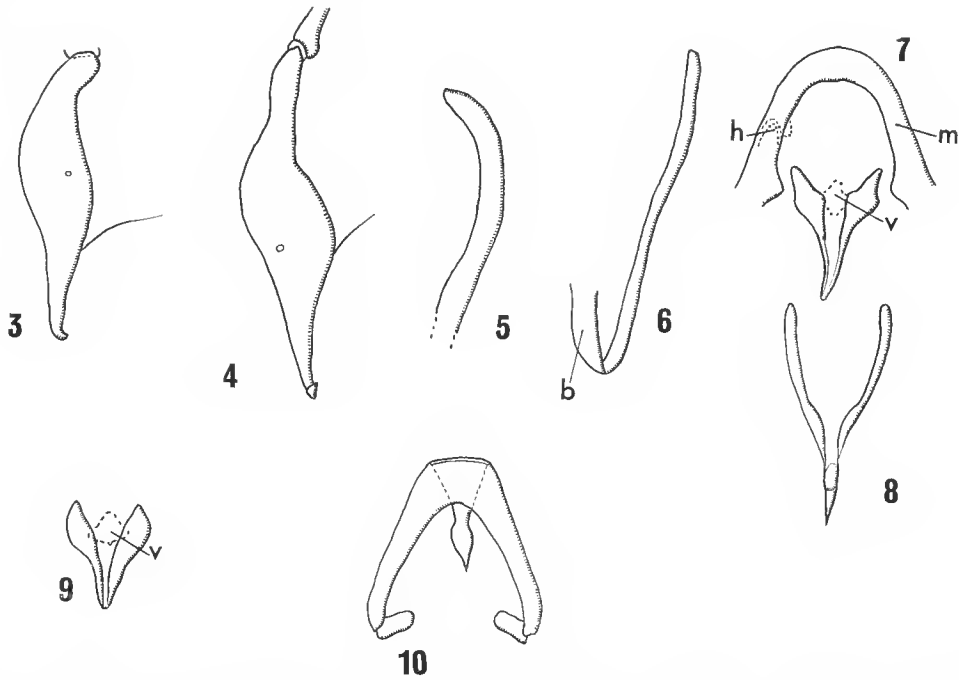


FIGS 1-2. — *Phthirpediculus brygocci* sp. n. : 1, Paratergite IV, ♀; 2, Sterna of ♀ terminal segments. Seta y. shows considerable intraspecific variation in length.

Abdomen with spiracles on III-VIII. Paratergites on segments III-VIII, III-VI similar in shape but becoming smaller towards the posterior end of the abdomen; sclerotization of VII and VIII greatly reduced; chaetotaxy of paratergite III-VII as in figure 1, VIII with two elongate setae only. *P. avahidis* differs in having the outer seta of III-VII longer (♂ 0.076, ♀ 0.100 on IV) than in *brygocci* (♂ 0.015, ♀ 0.022); *propitheci* has two long inner setae, the two posterior setae are smaller and the plate differs in shape. The chaetotaxy and the shape of the plate in the two most recent species invalidates couplet 7 of the key in FERRIS, 1951: 163. Male genital plate faintly sclerotized and similar in shape to that of *propitheci*, not apparent in the available specimens of *avahidis*. Dorsum and venter of male and female abdomens transversely rugose with numerous minute spines in female *avahidis* (PAULIAN, fig. 1 d), these being less numerous in the male and present only anterior to the vulval margin of the female in *brygocci*. Female genital region similar in the three species; central setae 4 and 6 in figures of *propitheci*, 6 and 7 in the two specimens of *avahidis* (not 8 as shown in figure) and 6 in *brygocci*, this latter species differs in having the setae borne on projections of the sclerite (fig. 2). Pointed projections from the vulval edge shorter and less numerous than in *avahidis*. Both *avahidis* and *brygocci* have 4-5 small setae each side, submarginal to the vulval edge (omitted in PAULIAN, fig. 1 d); in *propitheci* there are in addition two longer setae each end.

Male copulatory apparatus similar in general features to that of *propitheci* with the exception of the paramere which is a narrow transparent structure continuous with the outer bar of the basal apodeme (fig. 6). Lateral sclerite (FERRIS, F.) broad with distal hooked end (fig. 4) appearing to articulate anteriorly with the curved mesal sclerite (FERRIS, B) (fig. 7); penis larger and differing in detail from that of *propitheci*; pseudopenis (fig. 8) with shorter and weaker arms than those of the other species. Copulatory apparatus in the two specimens of *avahidis* distorted but similar to that of *brygocci*; it is not

possible to see the true shape of the mesal sclerite. Penis shorter and the small ventral sclerite (fig. 9 v) differs in shape; the longer and thicker arms of the pseudopenis perhaps articulate with the mesal sclerite as probably does sclerite F as in *brygooi*. In both specimens of *avahidis* the arms are bent back on the body of the pseudopenis and have been drawn in this position (fig. 10). Paramere and sclerite F (figs 5,3) similar to those of *brygooi* but smaller.



FIGS. 3-10. — Male copulatory apparatus of *Phthirpediculus* spp.: 3, Sclerite F, *P. avahidis*; 4, *id.*, *P. brygooi*; 5, Paramere, *P. avahidis*; 6, *id.*, *P. brygooi*; 7, Mesal sclerite and penis, *P. brygooi*; 8, Pseudopenis, *P. brygooi*; 9, Penis, *P. avahidis*; 10, Pseudopenis (bent back on itself), *P. avahidis*; b, basal apodeme; h, head of sclerite F; m, mesal sclerite; v, ventral sclerite of penis.

Chaetotaxie of the abdomen. Tergum ♂: I, 2 rows of 4 setae with 1-2 minute setae each end; II-VII, each with 4 central setae and a more lateral seta each side, the outer seta of the 4 central setae on segments II-IV may be shorter and stouter than the rest; VIII, 1-2 short setae each side and 16-21 minute central setae. VII has the outer setae each end of the 4 central considerably shorter and finer. *P. avahidis* as above except the central minute setae of VIII are in two clumps of 4 setae each with 2-3 scattered setae. ♀: I-VI as in ♂ but the outer setae of the 4 central are not shorter and more spiniform; VII as in VI; VIII, a continuous row of 6 similar setae; IX, 2 + 2. *P. avahidis* as above except that VIII has only 4 setae. I have considered the segment with the two rows of setae to be I not II as in FERRIS, 1951: 199: the first two rows of setae are similar to each other, whereas the third has the arrangement as on segments III-VII; it seems, reasonable therefore to consider the third row to belong to segment II and the first two rows to segment I. In 1951:

199, FERRIS states that the two rows are found only in the female but shows them correctly as present in his figure of the male. Sternum ♂ : I, 0 ; II, 5-6 ; III-VII, 4 ; VIII-IX, 2. *P. avahidis* differs in having the two outer setae each side of II short and fine. ♀ : I-VII as in male ; terminal segments as in fig. 2. *P. avahidis* as in *brygooi* ; *propithecii* appears to have a greater number of setae. Paratergal setae described above.

*Dimensions* (in mm.). — Head width : ♂ 0.142-0.157,  $\bar{X}$  0.148 (12) ; ♀ 0.150-0.160,  $\bar{X}$  0.155 (5). Head and thorax length (to posterior margin of meso-thoracic pleural ridge, FERRIS, 1932 : 298) : ♂ 0.262-0.270,  $\bar{X}$  0.268 (11) ; ♀ 0.285-0.300,  $\bar{X}$  0.292 (4). Total length : ♂ 0.877-1.012,  $\bar{X}$  0.955 (11) ; ♀ 1.342-1.470,  $\bar{X}$  1.390 (5).

#### MATERIAL EXAMINED

*P. brygooi* : 12 ♂, 5 ♀ from *Lemur mongoz* Linn., 1766, Zoological Gardens (captive for 6 months), Majunga, Malagasy Republic, March, 1963 (E. R. BRYGOO : 125/63. L. 57).

Holotype : ♂ with the above data deposited in the Muséum national d'Histoire naturelle, Paris, at the request of Dr E. R. BRYGOO. Paratypes : 11 ♂, 5 ♀ with the same data as holotype.

*P. avahidis* : slide marked type : 2 ♀ (1 holotype, 1 paratype but specimens not marked), 2♂♂. Lectotype of *P. avahidis* here designated : ♀ (in ink circle).

Dimensions of 2 ♂, 2 ♀ of *P. avahidis*. — Head width : ♂ 0.157, 0.146 ; ♀ 0.157, 0.165. Head and thorax length : ♂ 0.240, 0.236 ; ♀ 0.247, 0.247. Total length ♂ 0.743, 0.805 ; ♀ 1.19, 1.21.

#### DISCUSSION

These three species are most easily separated by the chaetotaxy and shape of the paratergites ; other distinguishing characters have been given under the description of the new species. Of the three known species, *avahidis* and *brygooi* resemble each other the most closely, especially in the abdominal chaetotaxy and the form of the sclerites of the copulatory apparatus.

#### REFERENCES

FERRIS, G. F., 1932. — Contributions toward a monograph of the sucking lice. *Stanford Univ. Pubs (Biol.)*, **5** : 273-413.

— 1951. — The sucking lice. *Mem. Pacif. Cst ent. Soc.*, **1** : 1-320.

PAULIAN, R., 1960. — Un nouvel Anoploure de Lemurien malgache. *Bull. Soc. ent. Fr.*, **65** : 306-308.

*Manuscrit déposé le 4 juin 1976.*

*Bull. Mus. natn. Hist. nat., Paris*, 3<sup>e</sup> sér., n<sup>o</sup> 457, mars-avril 1977,  
Zoologie 320 : 657-660.

*Achévé d'imprimer le 30 juillet 1977.*

## Recommandations aux auteurs

Les articles à publier doivent être adressés directement au Secrétariat du *Bulletin du Muséum national d'Histoire naturelle*, 57, rue Cuvier, 75005 Paris. Ils seront accompagnés d'un résumé en une ou plusieurs langues. L'adresse du Laboratoire dans lequel le travail a été effectué figurera sur la première page, en note infrapaginale.

Le *texte* doit être dactylographié à double interligne, avec une marge suffisante, recto seulement. Pas de mots en majuscules, pas de soulignages (à l'exception des noms de genres et d'espèces soulignés d'un trait).

Il convient de numérotter les *tableaux* et de leur donner un titre ; les tableaux compliqués devront être préparés de façon à pouvoir être clichés comme une figure.

Les *références bibliographiques* apparaîtront selon les modèles suivants :

BAUCHOT, M.-L., J. DAGET, J.-C. HUREAU et Th. MONOD, 1970. — Le problème des « auteurs secondaires » en taxionomie. *Bull. Mus. Hist. nat., Paris*, 2<sup>e</sup> sér., 42 (2) : 301-304.

TINBERGEN, N., 1952. — *The study of instinct*. Oxford, Clarendon Press, 228 p.

Les *dessins* et *cartes* doivent être faits sur bristol blanc ou calque, à l'encre de chine. Envoyer les originaux. Les *photographies* seront le plus nettes possible, sur papier brillant, et normalement contrastées. L'emplacement des figures sera indiqué dans la marge et les légendes seront regroupées à la fin du texte, sur un feuillet séparé.

Un auteur ne pourra publier plus de 100 pages imprimées par an dans le *Bulletin*, en une ou plusieurs fois.

Une seule épreuve sera envoyée à l'auteur qui devra la retourner dans les quatre jours au Secrétariat, avec son manuscrit. Les « corrections d'auteurs » (modifications ou additions de texte) trop nombreuses, et non justifiées par une information de dernière heure, pourront être facturées aux auteurs.

Ceux-ci recevront gratuitement 50 exemplaires imprimés de leur travail. Ils pourront obtenir à leur frais des fascicules supplémentaires en s'adressant à la Bibliothèque centrale du Muséum : 38, rue Geoffroy-Saint-Hilaire, 75005 Paris.

---

