

Historic, archived document

Do not assume content reflects current scientific knowledge, policies, or practices.

WINTER

1921

SPRING

BULLETIN NO. 1

JANUARY 17TH, 1921



CHASE NURSERY COMPANY

(INCORPORATED)

CHASE, ALABAMA



This list shows our complete Grade Count Surplus.

Orders booked in rotation as received.

Can ship immediately or hold

for spring delivery, as
desired.

Chase, Alabama, Jan. 17th, 1921.

To the Trade:

This Bulletin shows our entire stock. Practically all Fruit Trees are now under cover and graded up. Some of Shrubs and Roses yet in field and figures are only approximate but by the time this reaches you these will be finished and we will know just where we stand. There are some items offered here that we have refused orders for. Past experience in depending upon field estimates accounts for this. Don't like to sell something we **think** we have.

It's not necessary to tell you a lot about how good this stuff is. Most of you know how we put it up and others can easily find out by inquiry of some of your neighbors. It's GOOD.

Yours very truly,
CHASE NURSERY COMPANY.

HENRY B. CHASE, - - - - - President

ROBERT C. CHASE, - - Secretary-Treasurer

TERMS AND CONDITIONS

TERMS

All Invoices payable net 60 days from date to customers of known responsibility.

Cash before shipment is required from parties unknown to us, or references with sufficient time for investigation before shipment.

All prices are for goods in Nursery, Packing Extra (except on Seedlings, etc., as noted).

No claims for rejections or deficiencies will be entertained unless made within five days after arrival of goods.

SHIPMENTS

Please state how you want your shipments made, whether by freight or express; also route. Where no instructions are given, we will ship as we think best serves your interests without assuming responsibility.

THE RISK AND COST OF TRANSPORTATION BELONG TO PURCHASER.

PRICES

We quote prices per 10, per 100, and per 1,000, as our stock warrants, and will supply nurserymen and dealers at prices named regardless of the size of the order, except in cases of long assorted lists of small quantities, when an additional charge will be made to cover the extra labor involved. PRICES ARE SUBJECT TO MARKET CHANGES.

REFERENCES

As to our standing and responsibility we refer you to any bank or business house in Huntsville, Alabama, the Commercial Agencies and the leading nurserymen of the United States.

SPECIAL NOTICE

This list is intended for the TRADE ONLY. If it reaches people NOT ENTITLED to Trade prices, we will thank any Nurseryman or Florist to advise us, so that our mailing list may be corrected.

We do not employ agents. We do not pack dealers' orders on our grounds, and do not authorize dealers to use our name.

TERMS AND CONDITIONS CONTINUED ON PAGE 28

FRUIT TREES

APPLE—One Year Whips. 3 to 4 feet per 100 \$30.00

280 Early Harvest	70 Yates
90 Mammoth Black Twig	1070 Winesap
10 Striped June	70 Hackworth
170 Gano	20 Red Reese
80 Red Astrachan	90 York Imperial

APRICOT—One Year on Peach

3 to 4 feet per 100 \$40.00

270 Alexander	310 Early Golden	350 Budd
---------------	------------------	----------

2 to 3 feet per 100 \$30.00

440 Alexander	130 Wilson
225 Moorpark	825 Early Golden
625 Budd	90 Superb
45 Royal	

1 to 2 feet per 100 \$20.00

200 Alexander	45 Wilson
200 Moorpark	615 Early Golden
310 Budd	35 Superb
34 Royal	

CHERRY—2 Year on Mahaleb

3 to 5 feet, 1/2 to 5/8 inches, per 100 \$40.00

120 Baldwin	190 May Duke
840 Eng. Morello	50 Napoleon
10 Gov. Wood	35 Schmidts Big
35 Late Duke	55 Yellow Spanish
200 Ostheime	570 Dyehouse
14 Rockport	1480 Early Richmond
60 Wragg	50 Lambert
100 Black Tartarian	3200 Montmorenci
10 Elton	25 Reine Hortense
380 Louis Phillip	10 Windsor

COMPASS CHERRY—One Year on Peach

430 4 to 5 feet, whips	Per 100
110 5 to 6 feet, whips	\$40.00
	50.00

MULBERRY EVERBEARING—One Year Whips

5 to 7 feet	Per 100
4 to 5 feet	\$50.00
3 to 4 feet	40 00
2 to 3 feet	30.00
1 to 2 feet	25.00
	15.00

	5-7 ft.	4-5 ft.	3-4 ft.	2-3 ft.	1-2 ft.
Abundance			30	50	50
Black English	130	200	110	140	110
Downing			90	85	75
Hicks	140	140	190	250	200
Merritt	90	90	70	50	45
500 Multicaulus Mulberry 5 to 7 feet					\$25.00
800 " " 4 to 5 feet					20.00
400 " " 3 to 4 feet					15.00
400 " " 2 to 3 feet					12.50
300 Russian Mulberry 4 to 5 feet					20.00
120 " " 3 to 4 feet					12.50

PLUM—One Year on Marianna

				Per 100
5 to 7 feet, 5/8 up, branched.....				\$60.00
4 to 6 feet, 9/16 to 5/8, branched.....				50.00
4 to 5 feet, 1/2 to 9/16, branched.....				40.00
3½ to 5 feet, 7/16 to 1/2, whips mostly.....				25.00
	¾ up	9/16-¾	½-9/16	7/16-½
Abundance	600	500
Burbank	1000
Red June	300	600	1200	400
Wickson	150	150	100	100

One Year on Peach

5 to 7 feet, 5/8 up, branched.....					\$50.00	
4 to 6 feet, 9/16 to 5/8, branched.....					40.00	
4 to 5 feet, 1/2 to 9/16, branched.....					30.00	
3½ to 5 feet, 7/16 to 1/2, whips mostly.....					25.00	
3 to 4 feet, 5/16 to 7/16, whips mostly.....					20.00	
2 to 3 feet, whips.....					15.00	
	¾ up	9/16-¾	½-9/16	7/16-½	5/16-7/16	2-3 ft.
Red June	190	480	700	380	440	100
Wickson	290	230	220	125

Two Year on Marybolan

					Per 100
3 to 5 feet, 1/2 to 5/8 branched.....					\$40.00
2 to 4 feet, 3/8 to 1/2, whips mostly.....					25.00
			¾-¾	¾-½	
Bradshaw			90	25	
German Prune			170	
Green Gage			60	30	
Lombard			190	65	
Ponds Seedling			15	
Shippers Pride			25	

PEAR—One Year on Japan Stocks Budded

					Per 100
5 to 7 feet, whips.....					\$60.00
4 to 5 feet, whips.....					50.00
3 to 4 feet, whips.....					40.00
2 to 3 feet, whips.....					30.00
		5-7 ft.	4-5 ft.	3-4 ft.	2-3 ft.
Garber		200	300	300	200
Koonce		100	200	200	100
Kieffer		500	800	700	400

Two Year on French Stocks

3½ to 5 feet,.....					Per 100
					\$40.00
1100 Bartlett			120	Beurre de Anjou	
25 B. Clarigeau			290	Clapps Favorite	
45 Duchess			140	Flemish Beauty	
830 Kieffer			40	Koonce	
170 Seckel			170	Sheldon	
90 Worden-Seckel					

PEACH—One Year on Southern Natural Seedlings

		Per 100
6 to 8 feet, ¾ to 1 inch.....		\$40.00
5 to 7 feet, 5/8 to ¾ inches.....		40.00
4 to 6 feet, 9/16 to 5/8 inches.....		35.00
3½ to 5 feet, 1/2 to 9/16 inches.....		30.00
3 to 5 feet, 7/16 to 1/2 inches.....		25.00
3 to 4 feet, under 7/16 inches.....		20.00
2 to 3 feet.....		15.00

PEACH—Continued

	¾-1	⅝-¾	9/16-⅝	½-9/16	7/16-½	3-4 ft.	2-3 ft.
✓ Alexander	80	220	250	300	300	200	150
✓ Belle Georgia	120	230	340	400	350	300	250
✓ Blood Cling		20	30	30	40	50	100
✓ Beers Smock	40	50	80	120	100	75	150
✓ Carman	60	150	120	200	150	175	100
✓ Champion	120	290	360	450	300	275	200
✓ Chinese Cling	70	180	300	520	400	250	200
✓ Crawford Early	230	300	250	340	300	280	250
✓ Crawford Late	180	240	370	360	300	250	175
✓ Elberta	350	1600	2200	2500	3600	3800	4000
✓ Early Rose				150	390	75	
✓ Fitzgerald	100	130	200	200	150	100	50
✓ F. St. John	20	30	100	300	450	400	200
✓ Gov. Hogg	50	50	150	200	200	250	200
✓ Gordon	60	80	130	150	180	200	300
✓ Greensboro	30	50	200	250	400	300	500
✓ Heath Cling	160	200	350	380	420	250	200
✓ Hiley	80	220	300	250	200	200	200
✓ Hale, J. H.						80	175
✓ Krummels	110	230	370	400	250	200	150
✓ Lemon Cling	60	150	280	340	300	250	100
✓ Levy Late	80	160	200	220	250	300	250
✓ Mayflower	30	120	240	360	540	280	700
✓ Mamie Ross							200
✓ Matthews Beauty	60	110	130	190	220	230	150
✓ Mountain Rose	30	50	160	290	210	300	100
✓ Old Mixon Free	90	200	270	300	350	200	150
✓ Picquets Late	40	140	180	260	320	300	200
✓ Queen Dixie	50	80	120	150	200	150	200
✓ Salway	120	230	380	460	400	370	200
✓ Slappy	80	110	200	260	240	180	150
✓ Sneed	100	180	210	250	280	250	350
✓ Stump	50	160	280	300	350	220	100
✓ Sunrise Cling	60	140	290	370	520	460	600
✓ Triumph			80	270	400	380	150
✓ Wonderful	100	250	280	340	210	270	300

PEACH—"June Buds"

	18-24	12-18	6-12	2-6
18 to 24 inches.....				\$12.50
12 to 18 inches.....				10.00
6 to 12 inches.....				7.50
2 to 6 inches.....				4.00
✓ Arp Beauty.....	590	575	325	200
✓ Brackett.....			325	175
✓ Belle Georgia.....		1250		
✓ Carman.....	425	500		
✓ Early Rose.....			450	
✓ Elberta.....			5200	2850
✓ Gordon.....			1350	775
✓ Mayflower.....	650	775		
✓ Red Bird.....	75	25		

The 6 to 12 and 2 to 6 inch June Buds are used by many for lining out. They make good trees, if properly handled.

MISCELLANEOUS FRUIT TREES

		Per 100
70	New White Nectarine - - -	6 to 8 feet, 3/4 inches up.....\$60.00
130	" " " - - -	5 to 7 feet, 5/8 to 3/4 in..... 50.00
80	" " " - - -	4 to 6 feet, 1/2 to 9/16 in..... 40.00
80	" " " - - -	3 to 5 feet, 7/16 to 1/2 in..... 25.00
60	" " " - - -	3 to 4 feet, 5/16 to 7/16 in..... 20.00
110	Red Roman " - - -	6 to 8 feet, 3/4 in., up..... 60.00
150	" " " - - -	5 to 7 feet, 5/8 to 3/4 in..... 50.00
35	Van Deman Quince - - -	3 to 4 feet, whips..... 50.00
40	" " " - - -	2 to 3 feet, whips..... 30.00
300	Japanese Persimmon - - -	3 to 4 feet, whips 30.00
700	" " " - - -	2 to 3 feet, whips 25.00
100	American " - - -	3 to 4 feet, branched 25.00
200	" " " - - -	2 to 3 feet, whips 20.00
230	Brown Turkey Fig - - -	12 to 18 inches, 20.00
325	Blue Genoa " - - -	12 to 18 inches, 20.00
70	Celestial " - - -	3 to 4 feet, 35.00
70	" " " - - -	2 to 3 feet, 30.00
100	White Adriatic Fig - - -	12 to 18 inches, 20.00

GRAPES—One Year

		Per 100
4350	Concord No. 1.....	\$10.00
9600	" No. 2.....	7.50
15000	" No. 3.....	3.50
3800	Niagara No. 1.....	17.50
3100	" No. 2.....	12.50
1500	" No. 3.....	7.50
300	Scuppernong No. 1.....	20.00
600	James No. 1.....	20.00
400	Thomas No. 1.....	20.00

Concord and Niagara are NEW YORK grown—Good grades.

SMALL FRUITS, ETC.

		Per 1000
1600	Early Harvest Blackberry	\$40.00
1200	Eldorado Blackberry	40.00
1500	Snyder Blackberry	40.00
3000	Cumberland Raspberry	20.00
8200	Cuthbert Raspberry	25.00
10000	St. Regis Raspberry	30.00
3500	Rhubarb, One year selected.....	30.00
4000	Asparagus, Two year	12.50

FRUIT TREE SEEDLINGS

Boxed and F. O. B. Chase at Prices Named

		Per 1000
	Apple (American Grown) No. 1, 3/16 up, straight.....	\$26.00
	Apple (American Grown) No. 2, 2/16 to 3/16 straight.....	15.50
	Cherry (French Grown) No. 1, 5/9 M. M.....	35.00
	Cherry (French Grown) No. 2, 3/5 M. M.....	20.00

Georgia:

"They have arrived and been opened up. They are as nice a lot of June Buds as I ever saw."

New York:

"Both cars have arrived and made mighty good time. Your Traffic Department seems to be right on the job."

NUT TREES

		Per 100
15	Almond I. X. L. - - - -	3 to 4 feet,\$30.00
10	" I. X. L. - - - -	2 to 3 feet, 25.00
95	Chestnut Japan - - - -	4 to 5 feet, 75.00
160	" " - - - -	3 to 4 feet, 60.00
240	" " - - - -	2 to 3 feet, 50.00
135	" " - - - -	1 to 2 feet, 25.00
600	" Spanish - - - -	2 to 3 feet, 35.00
200	" " - - - -	18 to 24 inches, 25.00
30	Filbert American - - - -	2 to 3 feet, 30.00
140	Pecan Seedlings - - - -	4 to 5 feet, 60.00
260	" " - - - -	3 to 4 feet, 50.00
300	" " - - - -	2 to 3 feet, 40.00
250	" " - - - -	18 to 24 inches, 25.00
600	" Stuart - - - -	3 to 4 feet, 90.00
800	" " - - - -	2 to 3 feet, 80.00
160	" Schley - - - -	3 to 4 feet, 90.00
400	" " - - - -	2 to 3 feet, 80.00
40	" Success - - - -	3 to 4 feet, 90.00
40	" " - - - -	2 to 3 feet, 80.00
270	" Van Deman - - - -	3 to 4 feet, 90.00
600	" " - - - -	2 to 3 feet, 80.00
40	Walnut Black - - - -	6 to 8 feet, 60.00
40	" " - - - -	5 to 6 feet, 50.00
80	" " - - - -	4 to 5 feet, 40.00
150	" " - - - -	3 to 4 feet, 30.00
200	" " - - - -	2 to 3 feet, 25.00
75	" English - - - -	3 to 4 feet, 80.00
180	" " - - - -	2 to 3 feet, 60.00
230	" " - - - -	18 to 24 inches, 40.00
300	" " - - - -	12 to 18 inches, 25.00
100	" Japan - - - -	2 to 3 feet, 40.00
200	" " - - - -	18 to 24 inches, 25.00

NOTE—In accordance with ruling of Southern Association of Nurserymen we cannot accept orders for Seedling Pecans in territory where named sorts can be successfully grown.

SHRUBS

All plants offered are Two Years or older and are well branched unless otherwise specified.

		Per 100
50	Acer Tartaricum - - - -	4 to 5 feet,\$50.00
50	" " - - - -	3 to 4 feet, 40.00
2000	Althea Ass'td (named sorts) - - - -	18 to 24 inches, 15.00
70	" Tree Purple - - - -	5 to 6 feet, 60.00
50	" " Red - - - -	5 to 6 feet, 60.00
80	" " Purple - - - -	4 to 5 feet, 50.00
50	Aronia Arbutifolia - - - -	3 to 4 feet, 30.00
50	" " - - - -	2 to 3 feet, 20.00
50	" Melanocarpa - - - -	3 to 4 feet, 30.00
100	" " - - - -	2 to 3 feet, 20.00
50	" " - - - -	18 to 24 inches, 15.00
600	Berberis Purpurea - - - -	2 to 3 feet, 25.00
800	" " - - - -	18 to 24 inches, 15.00
3000	" Thunbergii - - - -	18 to 24 inches, 17.50
1500	" " - - - -	15 to 18 inches, 15.00
440	" " - - - -	12 to 15 inches, 12.50
1300	Buddleia Veitchiana - - - -	2 year, 22.50
25	Callicarpa Americana - - - -	18 to 24 inches, 20.00

SHRUBS—Continued

				Per 100
30	Callicarpa	Americana	- -	12 to 18 inches,\$10.00
15	"	Purpurea	- - -	2 to 3 feet, 25.00
15	"	"	- - -	18 to 24 inches, 20.00
250	Calycanthus	- - - -	- - -	12 to 18 inches, 10.00
100	Cornus Alba	(Siberica)	- - -	2 to 3 feet, 17.50
200	"	"	- - -	18 to 24 inches, 12.50
30	"	Kousa	- - - -	4 to 5 feet, 60.00
30	"	"	- - - -	3 to 4 feet, 50.00
10	"	"	- - - -	2 to 3 feet, 35.00
50	"	Paniculata	- - - -	3 to 4 feet, 20.00
290	"	Sanguinea	- - - -	3 to 4 feet, 20.00
40	"	"	- - - -	12 to 18 inches, 10.00
300	"	Stolonifera	- - - -	3 to 4 feet, 20.00
400	"	"	- - - -	2 to 3 feet, 15.00
30	Crataegus	Crus Galli	- - - -	4 to 5 feet, 60.00
30	"	"	- - - -	3 to 4 feet, 50.00
20	"	"	- - - -	2 to 3 feet, 35.00
100	"	Oxyacantha	- - - -	4 to 5 feet, 40.00
200	"	"	- - - -	3 to 4 feet, 30.00
200	"	"	- - - -	2 to 3 feet, 20.00
100	Deutzia	Crenata Rosea Fl. Pl.	- - - -	4 to 5 feet, 35.00
150	"	"	- - - -	3 to 4 feet, 22.50
200	"	Pride of Rochester	- - - -	4 to 5 feet, 35.00
200	"	"	- - - -	3 to 4 feet, 22.50
100	"	Scabra	- - - -	4 to 5 feet, 35.00
150	"	"	- - - -	3 to 4 feet, 22.50
150	Euonymus	Alatus	- - - -	3 to 4 feet, 40.00
200	"	"	- - - -	2 to 3 feet, 35.00
100	"	"	- - - -	18 to 24 inches, 25.00
100	Forsythia	Fortuneii	- - - -	3 to 4 feet, 22.50
300	"	Intermedia	- - - -	3 to 4 feet, 22.50
200	"	"	- - - -	2 to 3 feet, 17.50
100	"	Suspensa	- - - -	3 to 4 feet, 25.00
150	"	"	- - - -	2 to 3 feet, 20.00
100	"	"	- - - -	18 to 24 inches, 15.00
400	"	Viridissima	- - - -	3 to 4 feet, 22.50
300	"	"	- - - -	2 to 3 feet, 17.50
200	Hydrangea	A. G., one year	- - - -	12 to 18 inches, (light)..... 25.00
250	"	P. G.	- - - -	2 to 3 feet, 35.00
350	"	P. G.	- - - -	18 to 24 inches, 30.00
75	"	Quercifolia	- - - -	3 to 4 feet, 75.00
150	"	"	- - - -	2 to 3 feet, 60.00
50	"	"	- - - -	18 to 24 inches, 50.00
50	Hypericum	Aureum	- - - -	2 to 3 feet, 30.00
300	"	Moserianum	- - - -	2 year, 25.00
200	Jasminum	Nudiflorum	- - - -	2 " 25.00
250	Lagerstromia	(Pink Crepe Myrtle)	- - - -	5 to 6 feet, Tree..... 45.00
150	"	"	- - - -	4 to 5 feet, " 40.00
60	"	"	- - - -	3 to 4 feet, " 35.00
70	"	"	- - - -	2 to 3 feet, Bush..... 30.00
100	"	"	- - - -	1 year, 2 to 3 feet, (light)..... 20.00
100	"	"	- - - -	2 year, 18 to 24 inches, 20.00
80	"	"	- - - -	1 year, 18 to 24 inches, (light) 15.00
300	"	"	- - - -	1 year, 12 to 18 inches, (light) 12.50
125	"	Alba (White C. Myrtle)	- - - -	18 to 24 inches, 30.00
100	"	"	- - - -	12 to 18 inches, 25.00
110	"	Rubra (Red C. Myrtle)	- - - -	18 to 24 inches, 30.00
150	"	"	- - - -	12 to 18 inches, 25.00
30	Lonicera	Fragrantissima	- - - -	18 to 24 inches, 15.00
60	"	"	- - - -	12 to 18 inches, 10.00
200	"	Morrowi	- - - -	18 to 24 inches, 15.00
2	"	"	- - - -	12 to 18 inches, 10.00

SHRUBS—Continued

				Per 100
125	<i>Lonicera</i>	<i>Ruprechtiana</i>	- -	2 to 3 feet, \$20.00
200	"	"	- -	18 to 24 inches, 15.00
100	"	"	- -	12 to 18 inches, 10.00
280	"	<i>Tartarica Alba</i>	- -	2 to 3 feet, 20.00
450	"	"	- -	18 to 24 inches, 15.00
300	"	"	- -	12 to 18 inches, 10.00
100	"	"	<i>Rosea</i>	18 to 24 inches, 15.00
150	"	"	- -	12 to 18 inches, 10.00
50	"	"	<i>Rubra</i>	2 to 3 feet, 20.00
150	"	"	- -	18 to 24 inches, 15.00
125	"	"	- -	12 to 18 inches, 10.00
50	<i>Myrica</i>	<i>Cerifera</i>	- -	3 to 4 feet, 40.00
50	"	"	- -	2 to 3 feet, 35.00
200	<i>Philadelphus</i>	<i>Coronarius</i>	- -	4 to 5 feet, 25.00
300	"	"	- -	3 to 4 feet, 22.50
100	"	"	- -	2 to 3 feet, 17.50
250	"	<i>Gordonianus</i>	- -	4 to 5 feet, 25.00
300	"	"	- -	3 to 4 feet, 22.50
200	"	"	- -	2 to 3 feet, 17.50
280	"	<i>Grandiflorus</i>	- -	4 to 5 feet, 25.00
360	"	"	- -	3 to 4 feet, 22.50
150	"	"	- -	2 to 3 feet, 17.50
200	<i>Rhamnus</i>	<i>Frangula</i>	- -	4 to 5 feet, 25.00
300	"	"	- -	3 to 4 feet, 17.50
200	"	"	- -	2 to 3 feet, 15.00
150	<i>Rhus</i>	<i>Aromatica</i>	- -	3 to 4 feet, 35.00
200	"	"	- -	2 to 3 feet, 30.00
120	"	"	- -	18 to 24 inches, 25.00
50	"	"	- -	12 to 18 inches, 15.00
100	<i>Rosa</i>	<i>Blanda</i>	- -	2 to 3 feet, 25.00
200	"	"	- -	12 to 18 inches, 10.00
150	"	<i>Caroliniana</i>	- -	12 to 18 inches, 10.00
100	"	<i>Lucida</i>	- -	2 to 3 feet, 25.00
150	"	"	- -	12 to 18 inches, 10.00
50	"	<i>Nitida</i>	- -	2 to 3 feet, 25.00
100	"	<i>Wichuraiana</i>	- -	2 year, 25.00
500	<i>Spirea</i>	<i>A. Waterer</i>	- -	10 to 12 inches, 12.50
3900	"	"	- -	6 to 10 inches, 8.00
380	"	<i>Arguta</i>	- -	3 to 4 feet, 30.00
210	"	"	- -	2 to 3 feet, 22.50
330	"	"	- -	18 to 24 inches, 17.50
1000	"	"	- -	12 to 18 inches, 12.50
100	"	<i>Billardi Alba</i>	- -	2 to 3 feet, 20.00
150	"	"	- -	18 to 24 inches, 15.00
50	"	<i>Callosa Superba</i>	- -	18 to 24 inches, 20.00
150	"	"	- -	12 to 18 inches, 15.00
150	"	<i>Douglasi</i>	- -	3 to 4 feet, 25.00
160	"	"	- -	2 to 3 feet, 20.00
200	"	<i>Opulifolia Aurea</i>	- -	4 to 5 feet, 30.00
200	"	"	- -	3 to 4 feet, 25.00
50	"	"	- -	2 to 3 feet, 20.00
150	"	"	- -	18 to 24 inches, 15.00
250	"	"	- -	12 to 18 inches, 10.00
50	"	<i>Prunifolia Fl. Pl.</i>	- -	2 to 3 feet, 25.00
210	"	"	- -	18 to 24 inches, 20.00
125	"	"	- -	12 to 18 inches, 15.00
50	"	<i>Thunbergii</i>	- -	30 to 36 inches, 35.00
230	"	"	- -	15 to 18 inches, 17.50
1300	"	"	- -	12 to 15 inches, 15.00
400	"	<i>Van Houttei</i>	- -	4 to 5 feet, 30.00
1500	"	"	- -	3 to 4 feet, 20.00
2800	"	"	- -	2 to 3 feet, 15.00

SHRUBS—Continued

			Per 100	
3500	Spirea	Van Houttei	- - -	18 to 24 inches, \$10.00
2000	"	"	- - -	12 to 18 inches, 7.50
25	Styrax	Japonica	- - -	4 to 5 feet, 50.00
50	"	"	- - -	3 to 4 feet, 40.00
100	"	"	- - -	2 to 3 feet, 30.00
75	Symphoricarpos	Molle	- - -	2 to 3 feet, 17.50
50	"	"	- - -	18 to 24 inches, 15.00
700	"	Racemosus	- - -	2 to 3 feet, 17.50
800	"	"	- - -	18 to 24 inches, 15.00
400	"	"	- - -	12 to 18 inches, 10.00
250	"	Vulgaris	- - -	2 to 3 feet, 15.00
500	"	"	- - -	18 to 24 inches, 10.00
400	"	"	- - -	12 to 18 inches, 7.50
120	Syringa	Rothomagensis	- - -	12 to 18 inches, 15.00
50	"	Vulgaris (purple Lilac)	- - -	2 to 3 feet, 25.00
50	"	"	- - -	18 to 24 inches, 20.00
100	Tamarix	- - -	One Year	3 to 4 feet, slim, 20.00
150	"	- - -	One Year	2 to 3 feet, slim, 15.00
50	Viburnum	Dentatum	- - -	18 to 24 inches, 15.00
100	"	"	- - -	12 to 18 inches, 10.00
25	"	Opulus	- - -	18 to 24 inches, 20.00
50	"	"	- - -	12 to 18 inches, 12.50
300	"	"	Sterilis	2 to 3 feet, 20.00
450	"	"	"	18 to 24 inches, 17.50
110	"	Plicatum	- - -	3 to 4 feet, 35.00
25	"	Prunifolium	- - -	3 to 4 feet, 50.00
35	"	"	- - -	2 to 3 feet, 40.00
285	Weigela	Amabilis	- - -	2 to 3 feet, 22.50
70	"	"	- - -	18 to 24 inches, 20.00
130	"	Rosea	- - -	3 to 4 feet, 30.00
450	"	"	- - -	2 to 3 feet, 22.50
80	"	"	- - -	18 to 24 inches, 20.00

VINES

			Per 100	
500	Ampelopsis	Engelmanni	- - -	2 year No. 1, \$18.00
500	"	"	- - -	2 year Medium, 12.00
800	"	Quinquefolia	- - -	2 year No. 1, 15.00
1200	"	"	- - -	2 year Medium, 10.00
2500	"	Veitchii	- - -	2 year No. 1, 20.00
700	"	"	- - -	2 year Medium, 15.00
320	Celastrus	Scandens	- - -	2 year No. 1, 20.00
310	"	"	- - -	2 year Medium, 15.00
55	Clematis	Henryii	- - -	2 year No. 1, 40.00
250	"	Jackmanni	- - -	2 year No. 1, 40.00
600	"	"	- - -	2 year Medium, 25.00
825	"	Paniculata	- - -	2 year No. 1, 20.00
1800	"	"	- - -	2 year Medium, 15.00
200	Honeysuckle	Halls Japan	- - -	2 year No. 1, 15.00
600	"	"	- - -	2 year Medium, 12.00
650	Kudzu	- - -	- - -	2 year No. 1, 15.00
900	"	- - -	- - -	2 year Medium, 12.00
60	Wistaria	Chinese Purple	- - -	2 year Medium, 20.00
45	"	"	White	2 year No. 1, 40.00
20	"	"	"	2 year Medium, 25.00
90	"	Magnifica	- - -	2 year No. 1, 20.00
135	"	"	- - -	2 year Medium, 15.00

• BROAD LEAVED EVERGREENS

		Per 100
1500	Abelia Grandiflora - - - -	3 year 3 to 4 feet,\$75.00
300	" " - - - -	3 year 18 to 24 inches, 50.00
1000	" " - - - -	2 year 15 to 18 inches, 40.00
500	" " - - - -	2 year 12 to 15 inches, 35.00
100	Ilex Opaca (Am. Holly) - -	3 year 2 to 3 feet, 75.00
300	" " " - - -	2 year 18 to 24 inches, 50.00
800	" " " - - -	2 year 12 to 18 inches, 25.00
400	Ligustrum Japonica (Jap. Privet)	2 to 3 feet, 50.00
300	" " - - - -	18 to 24 inches, 40.00
200	Magnolia Grandiflora - - - -	4 to 5 feet, 150.00
300	" " - - - -	3 to 4 feet, 75.00
400	" " - - - -	2 to 3 feet, 50.00

We defoliate Ilex and Magnolia before digging.

ORNAMENTAL DEPARTMENT

California Privet

		Per 1000
3900	Two Year 3 to 4 feet, 4 canes and more.....	\$60.00
1600	" " 3 to 4 feet, 2 and 3 canes.....	50.00
10000	" " 2 to 3 feet, 4 canes and more.....	50.00
4600	" " 2 to 3 feet, 2 and 3 canes.....	40.00
8000	" " 18 to 24 inches, 4 canes and more.....	40.00
11000	" " 12 to 18 inches, 3 canes and more.....	35.00
10000	" " 6 to 12 inches, 2 canes and more.....	20.00
2000	One " 18 to 24 inches, 3 canes and more.....	37.50
3500	" " 18 to 24 inches, 2 canes.....	35.00
5000	" " 12 to 18 inches, 2 canes.....	30.00
10000	" " 6 to 12 inches, 2 canes and more.....	20.00
20000	" " 6 to 18 inches, 1 cane (transplanting).....	15.00

NOTE—Two year plants were cut back to ground last Spring. All wood of one season's growth.

Amoor River (North) Privet

		Per 1000
2500	Two Year 3 to 4 feet, 4 canes and more.....	\$175.00
4000	" " 2 to 3 feet, 4 canes and more.....	150.00
2000	" " 18 to 24 inches, 3 canes and more.....	125.00
450	" " 12 to 18 inches, 3 canes and more.....	100.00
3500	One " 12 to 18 inches, 3 canes and more.....	75.00
15000	" " 12 to 18 inches, 2 canes.....	65.00
10000	" " 6 to 12 inches, 2 canes and more.....	40.00
10000	" " 6 to 18 inches, 1 cane (transplanting).....	30.00

NOTE—Two year plants were cut back to ground last Spring. All wood of one season's growth. This is the hardiest type of Privet.

Amoor River (South) Privet

		Per 1000
300	One Year 18 to 24 inches.....	\$75.00
8000	" " 12 to 18 inches.....	50.00

NOTE—This is the Evergreen form and is one year from seed.

Texas:

"The car arrived on the 13th making a very quick trip and the stock was in excellent condition. We want to thank you and congratulate you for getting the stock out in such nice condition and following up the shipment as you did.

SHADE TREES

		Per 100
150	Acer Dasycarpum (Silver Maple)	2½ to 3 inch, caliper,.....\$250.00
200	" "	2 to 2½ inch, caliper,..... 150.00
200	" "	1¾ to 2 inch, caliper,..... 125.00
250	" "	1½ to 1¾ inch, caliper,..... 85.00
250	" "	1¼ to 1½ inch, caliper,..... 60.00
250	" "	8 to 10 feet,..... 45.00
300	" "	6 to 8 feet,..... 35.00
25	" Platanoides (Norway Maple)	2 to 2½ inch, caliper,..... 250.00
50	" "	1¾ to 2 inch, caliper,..... 200.00
50	" "	1½ to 1¾ inch, caliper,..... 150.00
50	" "	1¼ to 1½ inch, caliper,..... 125.00
50	" Rubrum (Scarlet Maple)	6 to 8 feet,..... 125.00
100	" "	5 to 6 feet,..... 100.00
100	" Saccharum (Sugar Maple)	2 to 2½ inch, caliper,..... 225.00
200	" "	1¾ to 2 inch, caliper,..... 160.00
250	" "	1½ to 1¾ inch, caliper,..... 125.00
300	" "	8 to 10 feet,..... 85.00
200	" "	6 to 8 feet,..... 75.00
100	Aralia Spinosa	6 to 8 feet,..... 60.00
200	Catalpa Bungeii (2 year heads)	5 to 7 feet, stems,..... 100.00
100	Celtis Occidentalis (Hackberry)	10 to 12 feet,..... 100.00
400	" "	8 to 10 feet,..... 70.00
300	" "	6 to 8 feet,..... 50.00
150	Cercis Canadensis (Red Bud)	8 to 10 feet,..... 100.00
300	" "	6 to 8 feet,..... 80.00
400	" "	5 to 6 feet,..... 60.00
500	" "	4 to 5 feet,..... 50.00
300	" "	3 to 4 feet,..... 40.00
200	" "	2 to 3 feet,..... 25.00
100	Cornus Florida (Dogwood)	6 to 8 feet,..... 65.00
150	" "	5 to 6 feet,..... 50.00
200	" "	4 to 5 feet,..... 40.00
150	" "	3 to 4 feet,..... 30.00
50	" "	2 to 3 feet,..... 25.00
50	" " Plena (d'ble Dog'd)	5 to 6 feet,..... 150.00
50	" "	4 to 5 feet,..... 125.00
50	" " Rubra (red Dog'd)	5 to 6 feet,..... 150.00
50	" "	4 to 5 feet,..... 125.00
200	Fraxinus Viridis (Green Ash)	10 to 12 feet,..... 75.00
350	" "	8 to 10 feet,..... 50.00
450	" "	6 to 8 feet,..... 40.00
100	Koelreuteria Paniculata, varnish tree	8 to 10 feet,..... 100.00
100	" "	6 to 8 feet,..... 75.00
50	" "	5 to 6 feet,..... 60.00
200	Liquidamber Stryaciflua (sw't gum)	6 to 8 feet,..... 100.00
250	" "	5 to 6 feet,..... 75.00
500	" "	4 to 5 feet,..... 50.00
50	Magnolia Alexandriana	4 to 5 feet, balled,..... 400.00
50	" "	3 to 4 feet, balled,..... 300.00
30	" Alba Superba	4 to 5 feet, balled,..... 400.00
20	" "	3 to 4 feet, balled,..... 300.00
50	" Glauca	3 to 4 feet,..... 100.00
200	" "	2 to 3 feet,..... 75.00
25	" Tripetala	6 to 8 feet,..... 125.00
50	" "	5 to 6 feet,..... 90.00
50	" "	4 to 5 feet,..... 75.00
50	" "	3 to 4 feet,..... 50.00
30	Morus Tart Pendula (Teas Mulb'y)	2 year heads..... 150.00

SHADE TREES—Continued

			Per 100
40	Persica Alba (D'ble white Peach)	6 to 8 feet,	\$60.00
130	" "	5 to 6 feet,	50.00
80	" "	4 to 5 feet,	40.00
70	" "	3 to 4 feet,	30.00
68	" "	2 to 3 feet,	25.00
56	Persica Rubra (D'ble Red Peach)	5 to 6 feet,	50.00
38	" "	4 to 5 feet,	40.00
20	" "	3 to 4 feet,	30.00
95	" "	2 to 3 feet,	25.00
100	Populus Nigra Italica (L. Poplar)	8 to 10 feet,	35.00
350	" "	6 to 8 feet,	25.00
100	" Simoni (Pryamidal Pop.)	8 to 10 feet,	35.00
200	" "	6 to 8 feet,	25.00
50	Pyrus Coronaria	3 to 4 feet,	50.00
100	" "	2 to 3 feet,	40.00
25	" Floribunda	4 to 6 feet,	60.00
50	" "	3 to 4 feet,	50.00
25	" "	2 to 3 feet,	40.00
25	" " Astrosanguinea	4 to 6 feet,	60.00
25	" " "	3 to 4 feet,	50.00
25	" " "	2 to 3 feet,	40.00
50	" Niedzwetzkyana	4 to 6 feet,	60.00
50	" "	3 to 4 feet,	50.00
25	" "	2 to 3 feet,	40.00
120	Quercus Palustris (Pin Oak)	1½ to 2 inch, caliper,	150.00
250	" "	8 to 10 feet,	125.00
400	" "	6 to 8 feet,	100.00
10	" Phellos (Willow Oak)	2 to 2½ inch, caliper,	300.00
10	" "	1¾ to 2 inch, caliper,	250.00
50	" "	8 to 10 feet,	125.00
150	" "	6 to 8 feet,	100.00
150	Sassafras Officinale	8 to 10 feet,	75.00
200	" "	6 to 8 feet,	50.00
250	" "	5 to 6 feet,	40.00
150	" "	4 to 5 feet,	30.00
100	" "	3 to 4 feet,	25.00
50	Stereulia Platanifolia (C. Parasol)	6 to 8 feet,	75.00
50	" "	5 to 6 feet,	60.00
50	" "	4 to 5 feet,	50.00
150	Ulmus Americana (Am. Elm)	1¾ to 2 inch, caliper,	125.00
250	" "	1½ to 1¾ inch, caliper,	100.00
250	" "	1¼ to 1½ inch, caliper,	75.00
250	" "	8 to 10 feet,	50.00
400	" "	6 to 8 feet,	30.00

New Jersey:

"We unpacked shipment of peach trees today and were very much pleased with them."

Texas:

"The Ornamental stock in our order of last week opened up in good condition and was up to grade."

CONIFERS

Prices Include Balling and Burlapping

			Per 10	Per 100
10	Biota Orientalis (Chi. A. Vitae)	5 to 6 feet,	\$ 30.00	
20	" "	4 to 5 feet,	22.50	
20	" "	3 to 4 feet,	12.50	
150	" "	2 to 3 feet,		\$75.00
200	" "	18 to 24 inches,		55.00
50	" Aurea Nana (Dw'f Golden)	24 to 30 inches,	22.50	
20	" Elegantissima (Rollinson's)	6 to 8 feet,	75.00	
10	" Semperauscens (Evergolden)	3 to 4 feet,	30.00	
10	" "	30 to 36 inches,	25.00	
10	Cedrus Atlantica Glauca	8 to 10 feet,	100.00	
10	" "	6 to 8 feet,	75.00	
20	" Deodora	8 to 10 feet,	100.00	
30	" "	6 to 8 feet,	75.00	
20	" "	5 to 6 feet,	60.00	
40	" "	4 to 5 feet,	50.00	
10	Cupressus Lawsoniana	8 to 10 feet,	100.00	
100	Juniperus Communis	2 to 3 feet,		75.00
300	" "	18 to 24 inches,		50.00
100	" Hibernica	4 to 5 feet,		125.00
300	" "	3 to 4 feet,		100.00
300	" "	30 to 36 inches,		75.00
300	" "	24 to 30 inches,		50.00
500	" "	18 to 24 inches,		35.00
100	" Virginiana	3 to 4 feet,		125.00
200	" "	2 to 3 feet,		100.00
150	" Glauca	30 to 36 inches,		250.00
250	" "	24 to 30 inches,		200.00
20	Retinospora Plumosa Aurea	5 to 6 feet,	40.00	
30	" "	4 to 5 feet,	35.00	
50	" "	3 to 4 feet,	25.00	
50	" "	30 to 36 inches,	22.50	
40	" "	24 to 30 inches,	17.50	

For Prices on above without balling, deduct as follows

18 to 24 inches,	.10
2 to 3 feet,	.15
3 to 4 feet,	.20
4 to 5 feet,	.25
5 to 6 feet,	.40
6 to 8 feet,	.50
8 to 10 feet,	.75

Indiana:

"Enclosed find check as per invoice of the 4th. Thank you for good stock."

Georgia:

"We have received the shipment of plants by freight, which reached us in good condition."

Louisiana:

"Case of shrubs received today, all in good shape. I am well satisfied with them."

New Jersey:

"Trees were opened up and found to be well packed, good stock and good count. Everybody seems to be happy with their trees. Thanks for fixing them up in such good shape."

ROSES

Climbing Own Roots Two Year No. 1

	Per 100
1700 Crimson Rambler	\$30.00
830 Dorothy Perkins	30.00
250 Dr. Van Fleet	35.00
2000 Excelsa	25.00
2380 Seven Sisters	25.00
460 Tausendschon	35.00
620 Veilchenblau (Blue Rambler)	25.00
190 White Perkins	30.00

Climbing Own Roots Two Year No. 3 Per 100 \$5.00

1400 Crimson Rambler	350 Tausendschon
275 Dorothy Perkins	800 Blue Rambler
130 Flower Fairfield	50 White Perkins
600 Seven Sisters	

No culls in the above—Good for lining out.

BUDED—No. 1 per 100 \$45.00, except as noted.

100 Capt. Hayward	180 Mad. A. Carriere
450 Frau Karl Druschki	150 Mad. Caroline Testout
300 George Dickson	90 Prince Camille
50 Hugh Dickson	450 Ulrich Brunner
100 John Hopper	50 Pink Moss
250 Marechal Neil—per 100 \$55.00	50 Red Moss
50 Magna Charta	50 White Moss

OWN ROOTS—Two Year No. 1 per 100 \$45.00

500 Antoine Revoire	300 Bessie Brown
500 British Queen	400 Baby Rambler
400 Baby Dorothy	500 Baby Echo
500 Baby Orleans	500 Baby Tausendschon
500 Clara Watson	470 Duchess Albany
500 Edith Part	500 Edward Mawley
700 Etoile de France	300 F. K. Druschki
500 Gen. S. A. Jannsen	300 Gen. Jack
300 Helen Gould	200 Killarney
300 La France	200 Mad. J. Guillemot
100 Mad. C. Testout	800 Mad. A. Chatenay
500 Prince Arenberg	300 Radiance
100 Red Radiance	500 Queen Beatrice
500 Wellesley	500 Wm. Notting
500 Winnie Davis	

Missouri:

"We have unloaded car and wish to tell you how pleased we were with all the stock. We appreciate you letting us have the Privet as it is bully stock and am sure it will please all who purchase."

Georgia:

"The plants ordered have been received in good order and I am very much pleased with the stock. The shipment came through promptly, being on the road only two days."

Massachusetts:

"The car of stock has arrived, and we are unloading it today. From all appearances, you have sent us a very nice lot of stuff, and the car was well packed."

LINING OUT STOCK

No Charge for Packing. Make Orders in Multiples of 50 Please

One year from cuttings or seed. Mostly of our own growing

			Per 1000
500	Althea	Boule de Feu - - - 6 to 12 inches,	\$35.00
2300	"	Jean de Arc - - - 12 to 18 inches,	40.00
250	"	Lady Stanley - - - 12 to 18 inches,	40.00
2000	"	Totus Albus - - - 6 to 12 inches,	35.00
500	Ampelopsis	Engelmanni - - - 12 to 15 inches,	40.00
500	"	Quinquefolia - - - 12 to 15 inches,	40.00
2000	Aristolochia	(American) - - - 1 year Seedlings,	40.00
3300	Calycanthus	- - - 8 to 15 inches,	35.00
3000	Cydonia	Japonica - - - 12 to 18 inches,	35.00
800	Deutzia	Crenata Rosea Fl. Pl. - 12 to 18 inches,	35.00
1100	"	Pride of Rochester - 12 to 18 inches,	35.00
400	"	Scabra - - - 12 to 18 inches,	40.00
3500	Forsythia	Intermedia - - - 12 to 15 inches,	20.00
4000	"	Viridissima - - - 12 to 15 inches	20.00
800	Honeysuckle	Halls Japan - - - 8 to 15 inches,	30.00
3600	"	Scarlet Trumpet - 8 to 15 inches,	30.00
500	"	Fragrantissima - 12 to 18 inches,	40.00
500	"	Morrowii - - - 12 to 18 inches,	40.00
500	"	Ruprechtiana - - - 12 to 18 inches,	40.00
1000	"	Tartarica Alba - 8 to 15 inches,	35.00
1000	"	" Rosea - 8 to 15 inches,	35.00
1000	"	" Rubra - 8 to 15 inches,	35.00
500	Ilex	Opaca (Am. Holly) - - - 6 to 12 inches,	75.00
2000	Philadelphus	Grandiflorus - 12 to 18 inches,	35.00
20000	Privet	California - - - 6 to 12 inches,	15.00
5000	"	Amoor River North - 6 to 12 inches,	30.00
3000	"	" " South - 6 to 12 inches,	25.00
500	Spirea	Arguta - - - 8 to 15 inches	50.00
500	"	Opulifolia Aurea - - - 12 to 18 inches,	40.00
1700	"	Thunbergii - - - 8 to 15 inches,	50.00
2500	"	Van Houtte - - - 8 to 15 inches,	35.00
1500	Symphoricarpos	Racemosus - 12 to 18 inches,	40.00
500	"	Vulgaris - - - 12 to 18 inches,	35.00
800	Weigela	Amabalis - - - 12 to 18 inches,	45.00
1500	"	Rosea - - - 12 to 18 inches,	45.00
1000	"	Stelzneri - - - 12 to 18 inches,	45.00
500	"	Van Houtte - - - 12 to 18 inches,	45.00
1500	Wistaria	Chinese Purple - - - 1 year Seedlings,	50.00
2000	Irish Juniper,	twice transplanted 8 to 15 inches,	75.00

Illinois:

"Have just finished checking up and find that stock is correct as per your invoice. It was a very satisfactory lot of stock, and we thank you for the care taken in packing and handling."

North Carolina:

"When the stuff came out here and was unloaded, and we saw how nice it looked, we were entirely satisfied with the shipment. The Mahonia Japonicas are "jim dandy"; worth sure enough money."

NURSERYMEN'S SUPPLIES

PROMPT SHIPMENT

All supply orders (except printed matter) are usually shipped next train after receipt. We try to carry a complete stock at all times. Our location at Chase gives us unsurpassed facilities for quick action on rush orders—two lines of railway at our doors.

KNIVES

Made especially for us by a manufacturer who is "fussy" about the quality of his output. Have used and handled these knives for twenty years.



C. A. G. PRUNER—Stationary handle; full length 8 inches; length of blade $3\frac{3}{4}$ inches; well balanced "hook" and easy on the operator. Handle of hardwood fastened with three rivets set diagonally. After testing out this knife in our own work we have decided to offer it to the trade as the best Pruning Knife of reasonable cost that we can find. Price, 85c each, postpaid; \$9.40 per dozen, postage extra.



GRAFTING—C. A. G. Grafter ($\frac{3}{4}$ size)—Our sales on this knife to satisfied nurserymen and florists are more than five hundred dozen. It is more knife for grafting and general use for the money than any on the market. Makes a good serviceable pocket knife. Cocoa handle; 70c each, postpaid; \$7.25 per dozen, postage extra.



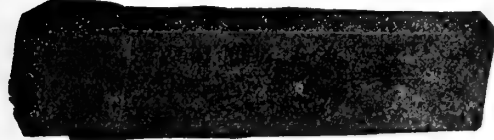
BUDDING—Heavy American Budder ($\frac{3}{4}$ size)—This knife has been selected after trial as the best Budding Knife available in sure supply. Cannot get Wostenholm now. Price, each, postpaid, \$1.50; per dozen \$17.00, postage extra.



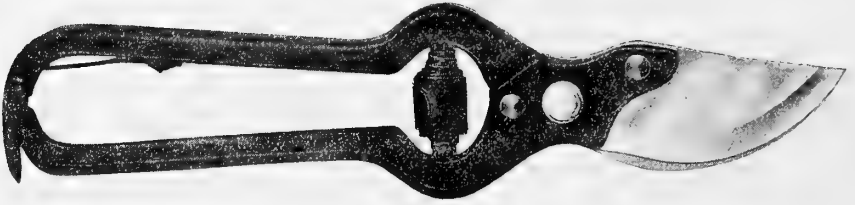
BUDDING—Stationary Budder (blade does not fold)—Note shape, size and "hang" of blade. Made for budding, but not as convenient for the pocket as the others; 50c each, postpaid; \$5.20 per dozen, postage extra.

WHETSTONE

The best for budding and grafting knives; 28c each, postpaid. Per dozen, \$3.00. Postage extra.

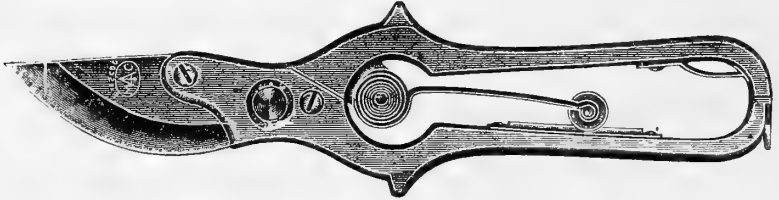


PRUNING SHEARS



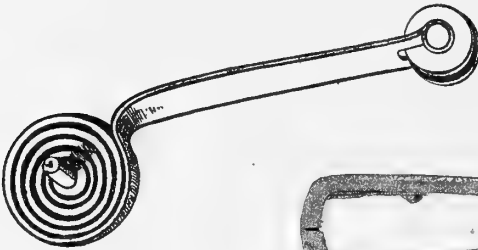
AMERICAN, 9 inches—This is a low-priced, good, well built, all around pruning shear. Have handled these for years and they give full value in service. Weight, 14 ounces; volute steel spring. Per pair, postpaid, \$1.00, per dozen, freight or express, \$10.75. Half dozen at dozen rate. Extra volute springs, 20c each, postpaid.

THE WATCH SPRING FRENCH SHEARS stand at the head of the list for making cuttings of all kinds. For cutting back seedlings to the bud or any heavy work the 9-inch is recommended.



WATCH SPRING, FRENCH, 9-inch—Per pair, postpaid, \$3.00, per dozen pairs, freight or express (weight per dozen pairs, 11 lbs.), \$32.00.

WATCH SPRING, FRENCH, 6 inches—Per pair, postpaid, \$2.25, per dozen pairs, freight or express (weight per dozen pairs, 5½ lbs.), \$25.00.



Extra springs for the Watch Spring French Shears, postpaid, 25c. Easily put in place.



LADIES' ROSE SHEARS 6 INCH NICKEL PLATED

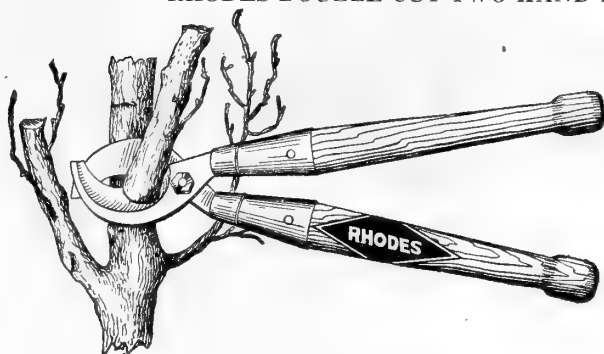
Ladies' Rose Shears—Six inch, heavily nickeled. Cuts the rose or any flower AND HOLDS THE STEM AT THE SAME TIME. A great favorite with the ladies. Beautifully finished, high grade throughout. Price each, postpaid, \$1.30, per dozen, postage extra, \$14.00. Extra springs each, postpaid, 20c.



PRUNING SAW—"The Virginian," a real Simonds Saw, handle curved exactly to fit the hand; draw cut, with teeth on inside of curve of blade; differs from all other saws in angle of teeth, number to inch, and curve of blade. Cuts small branches without tearing bark, and will cut with ease the larger limbs. Designed by G. C. Starcher, formerly expert Virginia Orchardist, now our State Horticulturist. High grade metal; twenty gauge; handle of hardwood, securely fastened. Set and filed.

PRICE—12 inches long, \$1.00 each, postpaid \$1.10 each.
14 inches long, \$1.10 each, postpaid \$1.20 each.

RHODES DOUBLE-CUT TWO-HAND PRUNER



Rhodes Double Cut
Two-hand Pruner

The most powerful Two-Hand Pruner made. Cuts from both sides of limb and does not bruise. Made of highest quality tool steel; four inch ferrule riveted through; well finished. In our opinion the very best two-hand pruner on the market.

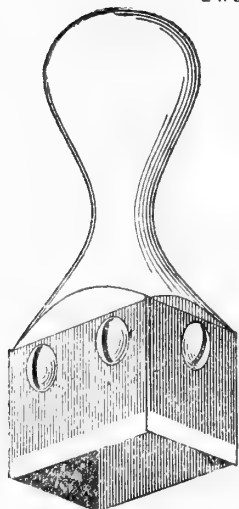
26-inch, each\$3.50
postpaid,\$3.65

THE JONES PATCH BUDDER

Designed especially for budding Nut Trees or other subjects which cannot be propagated by ordinary methods. With this Budder, Pecans, Walnuts, Hickories, Chestnuts, Persimmons, etc., may be budded almost as easily and rapidly as the more common fruit trees.

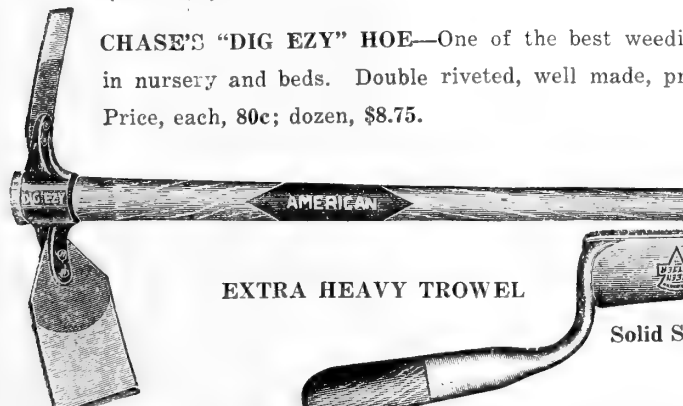
With careful work, one entirely inexperienced in propagation can get good results with this Budder right from the beginning, and with some practice can do rapid and very efficient work.

This little tool is now used by the U. S. Government, many Experimental Stations and by all the leading propagators of Nut Trees, both North and South. Made of aluminum, machined perfectly true and nicely finished. The blades are made from safety razor blade steel, but of heavier stock. With full directions for budding Nut Trees, handling the buds, preparing waxed muslin, etc. Price \$2.00 each, pre-paid.



(Patented)

CHASE'S "DIG EZY" HOE—One of the best weeding hoes for use in nursery and beds. Double riveted, well made, properly balanced. Price, each, 80c; dozen, \$8.75.



EXTRA HEAVY TROWEL



Solid Steel Shank and
Blade.

This is, we think, the best trowel made. Shank is solid steel. No rivets. Will last for years; \$1.40 each, postpaid; \$1.30 each with other goods, by freight or express.



BOX MAKERS HATCHET (Improved)—This all-metal Box Maker's Hatchet has been greatly improved; now has a checkered face on head; best of all, a **HEAVY STEEL RE-INFORCEMENT** in the **NECK** making it 50 per cent stronger and just the right weight. Will make as many boxes and get lost just as easily as a hatchet costing three times the price. Price, each, 85c; per dozen, \$9.60.

SPADING FORK



SPADING-DIGGING FORK—English pattern; fork, shank and strap in one solid piece of steel; the strongest fork we know, a joy to use it; square tines 12 inches long; extra length shank; will outlast a dozen cheap forks. Price each, \$2.50; per dozen, \$28.00.



AMES NURSERY SPADE—D handle, double strapped full length of handle, tapered nursery spade; size of blade, $12\frac{3}{4} \times 7\frac{1}{2} \times 5\frac{1}{2}$; weight, 9 pounds; \$3.50 each, \$38.00 per dozen.



50-lb Box Steel Box Straps

BOX STRAPS

STEEL BOX STRAPS—One-inch wide, 9 inches long, thin, soft steel, strong enough to hold the heaviest box. You can drive an ordinary nail through it without punching. About 2,800 pieces in 100 pounds. Less than 50 pounds, per lb., 14c; 50 pound boxes, per pound, 12c.

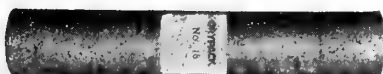
New York:

"The shipment of Roses reached us on Oct. 6th, and we do not believe they were in any better condition the day they left your place than they were the day we opened the box. They were fine."



BOX LINING PAPER

This season we offer only **KRAFT** Paper. While it costs more per pound it is most economical because of its greater yardage. Put up in rolls of about 45 to 60 lbs. each; widths, 30, 36 and 40 inches. Price, per pound 15c.

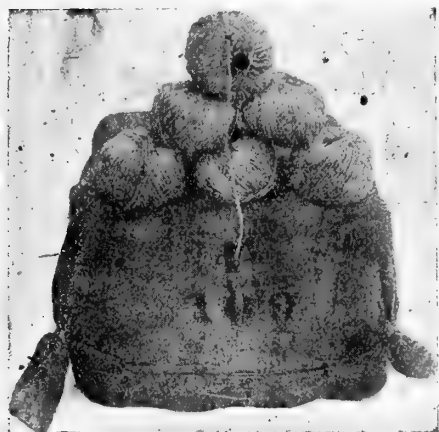


"PACKRITE" DUPLEX PAPER

For express bales, parcel post packages, export or long distance shipments. "PACKRITE" is made of two sheets of Kraft paper cemented together with an asphalt preparation, strong, moisture-resisting. In rolls of one hundred yards each, width 36 inches. Cannot break rolls.

Price per roll\$4.25

CORDAGE, TWINES, ETC.



Bale of Wool Twine



Reel of
Sisal Cord

EXPRESS CORD

For heavy bales. Two-ply Sisal. Just the thing for express bales. Single end, on reels of about fifty pounds each. Cannot break reels. Price 24½c per pound.

WOOL TWINE, Four-Ply—For tying in bunches; in balls of about one pound each, packed in bales of about 130 lbs. each. In bale lots, per pound, 25½c; less than bale lots at, per pound 28c.

WOOL TWINE, Three-Ply—For bunching small fruits, roses, etc., this is plenty strong, and because of the greater yardage is cheaper than the four-ply. Price, same as four-ply.

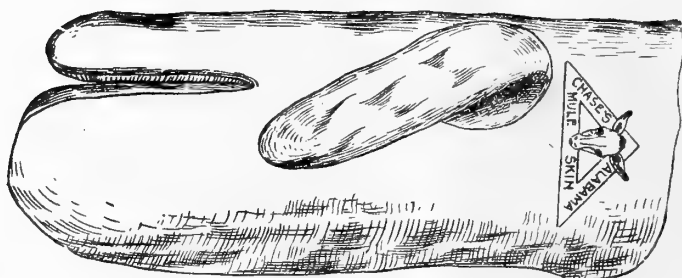
SAIL TWINE—For sewing burlap. Best quality Jute, 3-ply. Put up in skeins and 12-lb. packages. Will sell any quantity desired. Price, per pound, 48½c.

NEEDLES FOR SEWING BURLAP

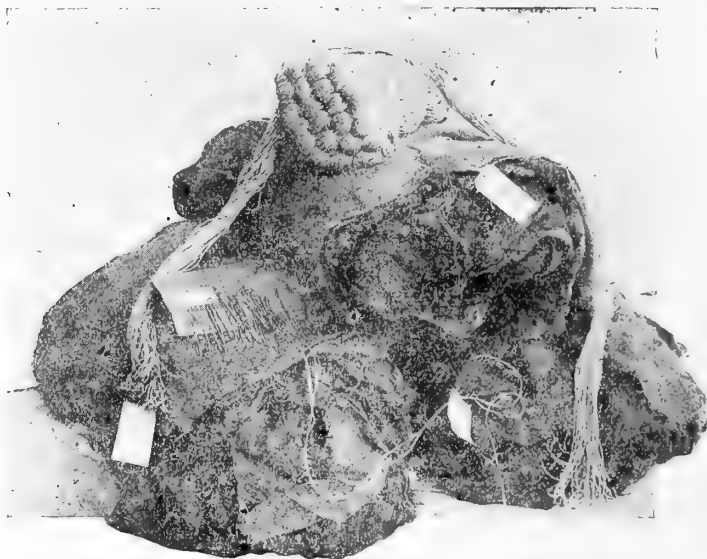


Best grade, five-inch, large stiff shaft, wide flat shank, sharp point and large eye. Per dozen, 65c.

ALABAMA MULE SKIN MITTENS



MULE SKIN MITTENS—Because of the high price, we cut out Mule Skin Mittens last year and experimented with something cheaper, but have decided that old reliable mule skin is the most economical after all. Nearly as durable as buckskin. Price, per pair, 95c; postpaid, \$1.00; per dozen, \$10.75, postage extra.



BURLAP AND SEWING (SAIL) TWINE

BURLAP RE-WORKED—The same high grade selected once-used Burlap, SEWED TOGETHER IN CONTINUOUS PIECES OF 100 YARDS EACH. Easy to handle, sound and strong. Width 40 inches. Price, 100 yard pieces, per yard, 7¾c.

Oklahoma:

"Your shipment of Dec. 20th came in and checked out satisfactory. We have no complaint on anything received from you."

Georgia:

"The trees you shipped me November 27th came in good shape and I am more than pleased with them."

GRAFTING THREAD

Put up in balls and packed 200 balls to the box. A box of twenty balls will wrap about 40,000 average grafts.

Price per ball unwaxed.....\$.14

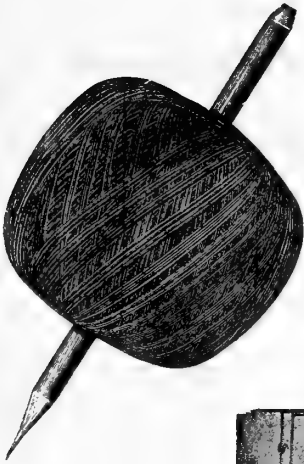
Price per ball waxed..... .30

Price per box 20 balls unwaxed..... 2.40

Price per box 20 balls waxed..... 5.00

(If mailed, add 2c ball unwaxed and 5c ball waxed.)

The opposite illustration shows a ball of our grafting thread with a pencil run through the hole in the center.

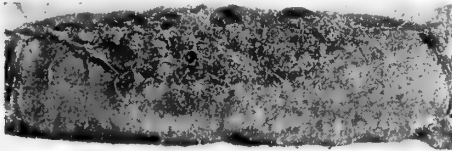


GRAFTING WAX

For out-door use in top grafting fruit trees, etc. Often you have use for a small quantity of Grafting Wax and do not want the bother of mixing it. This will just fill the bill.

1/4-lb. cake, postpaid 18c

1/2-lb cake, postpaid 30c



SPHAGNUM MOSS IN BURLAPPED BALES

Fresh stock from Wisconsin; each bale wrapped in burlap. Almost bone dry; weight of bales not guaranteed; size about 10x20x48 inches. Fine for Florists and Strawberry Plant shippers. Price per bale \$2.00.



RAFFIA

Write for price on Raffia; we try to have a stock constantly on hand and of the very best quality.

Tennessee:

"Years ago I handled quite a lot of stock from you and was pleased then, as I am now, with what I got from you."

LABELS



Plain Labels

Printed Labels

PLAIN IRON-WIRED— $3\frac{1}{2}$ inches, plain, 1,000 to package; \$1.55 per 1000, by freight or express. In 10,000 lots \$1.40 per 1000.

PLAIN COPPER-WIRED—Size same as above, add 40 cents per 1,000.

PRINTED LABELS—We can furnish nearly every standard variety, but will not sell less than 100 of a kind. These printed labels are copper-wired, $2\frac{1}{2}$ -inch notched. Price, 20 cents per 100, postpaid; \$1.90 per 1,000, by freight or express.



Label Wire

Large Head Labels

LABEL WIRE—Best quality Copper Label Wire cut 7 inches long. Per pound \$1.00.

LABEL WIRE—Best quality Iron Label Wire cut 7 inches long. Per pound 60c.

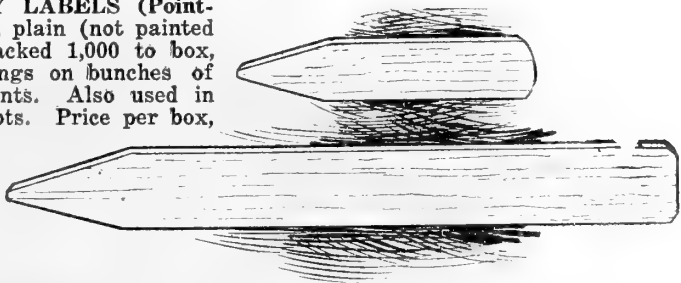
LARGE "HEAD" LABELS—Size $5 \times 1\frac{1}{2}$ inches, copper wired, plain. Packed 200 in box. Price, per box 85c.

Kentucky:

"We enclose check for \$2735.65 in settlement of account. We appreciate the good service you have given us."

STRAWBERRY AND FLORISTS' POT LABELS

STRAWBERRY LABELS (Pointed)—Size $4 \times \frac{7}{8}$, plain (not painted or printed), packed 1,000 to box, slip under strings on bunches of strawberry plants. Also used in small flower pots. Price per box, \$1.15.

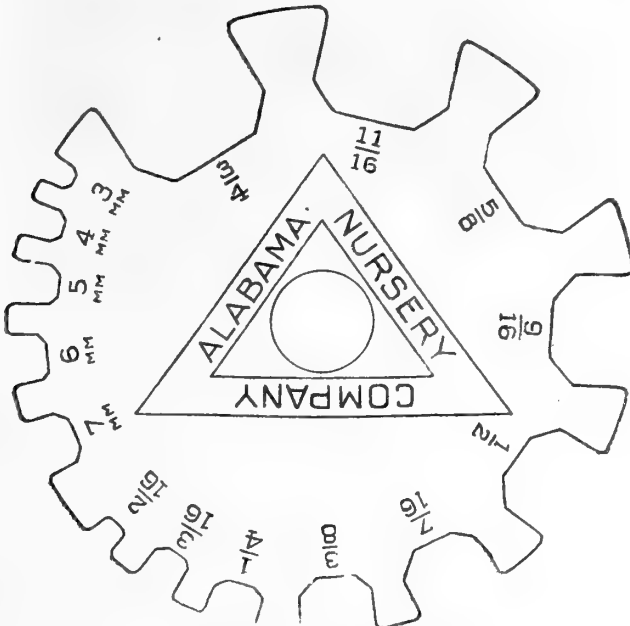


FLORISTS' POT LABELS (Pointed)—Size $8 \times \frac{7}{8}$, plain (not painted or printed), packed 250 to box. Price, per box, \$1.15.



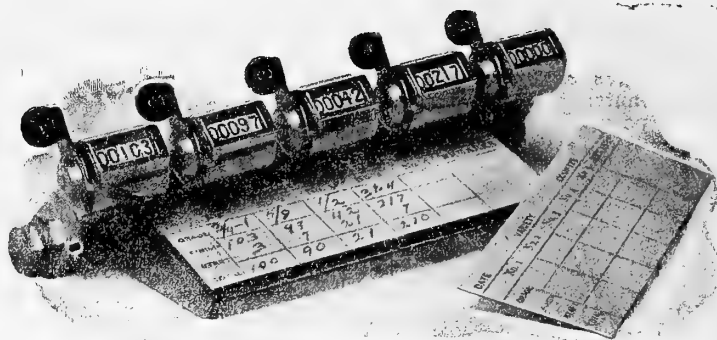
SHEET COPPER PERMANENT LABEL

An indestructible label for use on trees, shrubs, etc., as a **PERMANENT MARKER**. Directions: Lay label on folded newspaper; write with a very hard pencil or wire nail, bearing on to indent metal. Give wire one turn around branch, securing end in loop. Remove to smaller branch every two years to prevent cutting wood. Price, per 10, 25c, postpaid, 28c; per 50, \$1.25, postpaid, \$1.30; per 100, \$2.25, postpaid, \$2.35.



Designed by Herbert Chase

IMPROVED TREE GAUGE—Price, any quantity, 50 cents each, postpaid. Made from "Sheradised" steel (a new process of treating steel); absolutely rust-proof; both sides marked alike; always right side up; guaranteed accurate to within one-hundredth of an inch; indestructible, easy to read.



CHASE TREE COUNTER

Still the Best Tree Counter on the Market

Designed by Robert Chase

These new machines are of the very latest type, extra heavy levers and springs, solid construction, heavily nickel plated. Guaranteed for three years. If for any reason a dial fails to work properly, send it to us to be put in order and returned without charge. The Chase Tree Counter is now used by most of the leading nurserymen.

- Four-dial machine with 1,000 record cards, delivered.....\$22.50
 Five-dial machine with 1,000 record cards, delivered..... 25.50
 Extra record cards, correct size, printed like cut, for 500, postpaid..... .85

Accurate, quick, no guess work. Place in the hands of a good man, and as he passes down the row he presses the lever which indicates the grade of the tree. When through with a variety, the dials show the total number of each grade in the block—the only method of taking a correct grade count in the field. One thousand record cards furnished with each machine.

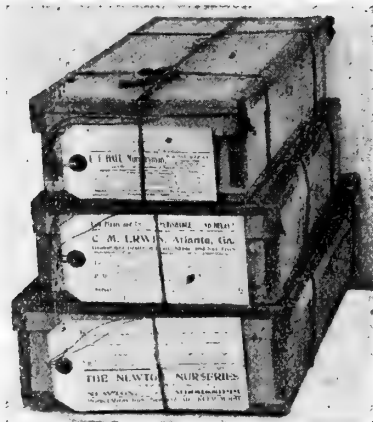
OFFICE SUPPLIES

ORDER BOOKS—Your name and address printed, 100 orders to book, best quality, heavy glazed paper, latest form. Sample sheet free for the asking. Not less than 500; \$5.25 for 500 (5 books) postage extra; \$8.50 per 1000 (10 books), postage extra. Postage extra, 5c per book. Always give plain copy of firm name and address so that no mistake in printing will occur.

DELIVERY BOOKS—Bound in paper cover, ruled, showing name of customer, postoffice address, amount of order, how settled, etc. For 24 accounts, 50 cents per dozen, postpaid; for 72 accounts, 75 cents per dozen, postpaid; for 120 accounts, 85 cents per dozen, postpaid; for 168 accounts, \$1.00 per dozen, postpaid. Half dozen at dozen rates. Inexpensive and mighty handy.

New Jersey:

"My order for nursery stock came just as I expected—on time. I was pleased of course, but better, my customers were pleased and they told me so."



Printed Tags

SHIPPING TAGS—PRINTED

All Shipping Tags are printed to order. We usually ship second day after receipt of order though when the rush is on we are sometimes unable to do so. This year all tags are furnished unstrung but a bunch of good quality Tag String cut to the right length is included with each lot. NO ORDER FOR LESS THAN 500 WILL BE ACCEPTED.

Tags of Extra Quality, Waterproof with Re-inforced Brass Bound Eyelet.

PRICES INCLUDE STRINGS

	Per 500	Per 1000
Size No. 5 2½ x 4¼ inches, printed on one side.....	\$3.75	\$6.35
Printed on two sides	4.25	6.85
Size No. 7 2¾ x 5¼ inches, printed on one side.....	4.10	6.65
Printed on two sides	4.70	7.20
Size No. 8 3½ x 6¾ inches, printed on one side.....	4.60	7.65
Printed on two sides	5.10	8.20

Note the large size (No. 8). This tag has plenty of room for address and Inspection Certificate on one side without crowding.

Always send copy showing how tags are to be printed. Samples on request.

NOTE—The No. 5 Tag is too small for Inspection Certificate. The No. 7 is too crowded if Inspection Certificate and address are used on one side. The No. 8 size is the best where Certificate is to be printed on the address side.

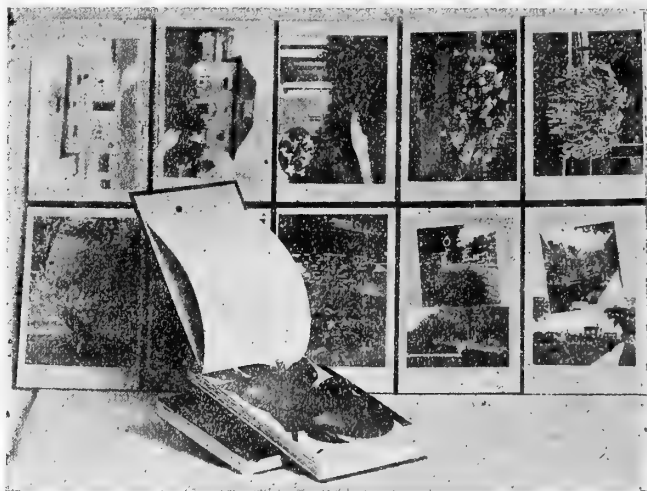
IF YOUR JOB CALLS FOR AN UNUSUAL AMOUNT OF TYPESETTING THERE WILL BE AN EXTRA CHARGE TO COVER.

Georgia:

"Please advise if you can duplicate the peach order shipped us Nov. 1st. We never saw a finer lot of trees than those just received."

PLATE BOOKS
Salesman's Plate Books
 (Shown in Foreground of Cut)

These Plate Books are of the loose-leaf type; easy to take out or insert plates. Plates are secured by brass screw-sockets at top; bound in black cloth, showing one plate at a time. They contain 100 plates in color showing Fruits, Small Fruits, Grapes, Shrubs, Vines, Shade Trees, Evergreens, Hedge Plants and Roses adapted to the general south. Neat and compact. Price, each \$5.55; postpaid, \$5.65.

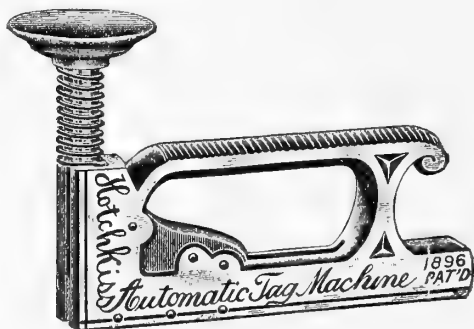


ORNAMENTAL PLATE BOOK

10 Plate Folder of Ornaments
 (Cut Shows Folder Open)

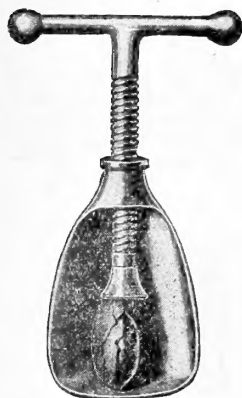
Here is a compact Folder-Plate-Book (size 5¼ by 8¼ folded—will slip in coat pocket) containing 10 plates of selected Shrubs and Hedges for the South. Also shows house and grounds before and after planting. Designed to aid the salesman in meeting the ever increasing demand for Ornaments. Price, each \$1.60; postpaid \$1.65.

**AUTOMATIC TACKING
 MACHINE**



For fastening tags or cards to tree boxes, cars, etc. The slickest little labor saver in our packing house. No hunting for tacks, no finger pricks, fumbling for hammer or lost motion. Just lay it on top of tag or card and tap the knob with palm of hand, a light tap, quick as lightning, will tag a box so quickly and easily that it is a joy to do it. Instead of round headed tacks this little machine automatically staples the tag or card in place. Guaranteed to work on any wood. Money

back if not satisfactory; will ship on thirty days trial to any responsible nurseryman. Machine guaranteed against breakage for three years. Machine each, \$1.75; staples, per box of 5,000, \$1.60; postage extra.



THE IDEAL NUT CRACKER

Here is a little novelty that is so handy and useful that we have added it to our list of Supplies. The Ideal Nut Cracker operates quickly and easily with no danger of hammered fingers. It keeps the shells from flying all over, and gives you "whole meats." Comes in an attractive box, makes a very welcome holiday gift. Simply place the nut in the cracker, place the palm of the hand over nut and turn the handle just enough to crack the shell and there you are.

PRICE

No. 2, Nickeled finish, each 60c, postpaid 65c; No. 4, Polished finish, each 85c; postpaid 90c.

The Ideal Nut Cracker

CHEMICALS FOR FUMIGATING

SODIUM CYANIDE (Merck & Co.'s 97-99%) Lumps, in original scaled tin packages, 1-lb. cans, \$1.10. Cyanide is excluded from the mails, but can be shipped by express or freight.

SULPHURIC ACID (Specific Gravity 1.83). Large, glass stoppered bottles, securely packed in cases ready for shipment. 10-lb bottle, \$3.50. Sulphuric Acid cannot be shipped by express, but can be shipped by freight.



TERMS AND CONDITIONS—Continued

GRADES

We grade liberally by caliper and height. When both are specified, caliper measure governs, but we are careful to see that stock is uniform throughout. Our rule is: "WHEN IN DOUBT, PUT IN THE LOWER GRADE."

All stock is graded and bunched in our storage houses, where we have water in abundance. Stock is handled from field to these buildings under large tarpaulins and roots kept moist until boxed.

LIABILITY AND CLAIMS

We are not liable for injury to stock from frost, hail, fire, or other causes beyond our control, and book all orders with this understanding. While we use every means at our command to secure prompt delivery, WE ARE NOT LIABLE FOR DELAYS IN TRANSIT; OUR RESPONSIBILITY ENDS UPON DELIVERY IN GOOD ORDER TO RAILWAY COMPANY. Remedy for loss must lie between the buyer and the railway company, but we will gladly render all the aid we can. Any other claims must be made within five days after arrival of goods.

NON-WARRANTY CLAUSE

We give no warranty, express or implied, as to description, quality, productiveness, or any other matter of any nursery stock, seeds, bulbs or plants we sell.

SUBSTITUTION

We do not substitute unless instructed to do so, AND THEN LABEL TRUE TO NAME.

BOXING

Charges as low as possible for well-made boxes, paperlined:

	7½ ft.	9½ ft.
30 x 30.....	\$4.75	\$5.50
24 x 30.....	4.25	5.00
24 x 24.....	4.00	4.50
18 x 24.....	3.50	4.00
18 x 18.....	3.25	3.75
15 x 15.....	2.75
12 x 12.....	2.25

On orders for Roses, Small Fruits, etc., we can frequently use dry goods cases or shoe boxes at lower cost, and shall endeavor at all times to make lowest possible charges.

Bales, 25 cents to \$3.50, according to size.

