

Historic, archived document

Do not assume content reflects current scientific knowledge, policies, or practices



R
430
G51

Lepidoptera.

As some sort of general classification is absolutely necessary, in order to be able to refer to certain families of the Lepidoptera figured in this work, and as no general arrangement has recently been published in this country, we have taken the liberty of quoting Westwood's "Synopsis of the genera of British insects, as being" one of the most comprehensive works on the subject, & the most easily understood by young Entomological Students. It is true that more modern entomologists may despise this authority, as being too antiquated for the present advanced state of the science. Yet at the same time, we have always found - Westwood's classifications and descriptions, as reliable as the more modern works.

The names of the Rhopalocera, (Butterflies) as published by Mr Scudder in his systematic revision of the American butterflies (1872.) will be given merely as Synonyms for reference, as many of our leading Lepidopterists, Mr. Edwards and others totally ignore the names given by Mr Scudder from Hübner &c. as if retained, they would only lead to confusion in the identification of genera.

Arrangement of Families. &c.

<u>Order.</u>	<u>Section 1.</u>	Fam 1. Papilionidae.	<table border="0" style="width: 100%;"> <tr> <td style="width: 15px;">{</td> <td style="width: 15px;">Subfam 1</td> <td style="width: 15px;">Papilionides.</td> <td style="width: 55px;">Westw. Syn. 87.</td> </tr> <tr> <td></td> <td></td> <td>2. Florides.</td> <td>" " " 87.</td> </tr> </table>	{	Subfam 1	Papilionides.	Westw. Syn. 87.			2. Florides.	" " " 87.
{	Subfam 1	Papilionides.	Westw. Syn. 87.								
		2. Florides.	" " " 87.								
	1. Rhopalocera, Dum.	Fam 2. Heliconidae Swain. Westw. Syn. 87.									
		3. Nymphalidae.	<table border="0" style="width: 100%;"> <tr> <td style="width: 15px;">{</td> <td style="width: 15px;">Subfam 1</td> <td style="width: 15px;">Nymphalides.</td> <td style="width: 55px;">" " " "</td> </tr> <tr> <td></td> <td></td> <td>2. Hesperochides.</td> <td>" " " "</td> </tr> </table>	{	Subfam 1	Nymphalides.	" " " "			2. Hesperochides.	" " " "
{	Subfam 1	Nymphalides.	" " " "								
		2. Hesperochides.	" " " "								
		4. Erycinidae. Westw. Syn. 88.									
		5. Lycaenidae. Leach. " 88.									
		6. Hesperidae. Swain. " 88.									
Order IX.		Fam 1. Pieridae. Leach. " 88.									
		2. Uracidae. " " 89.									
		3. Anthracidae. " " 89.									
		4. Ctenopidae. Steph. " 89.									
Lepidoptera.	2. Heterocera, Bois.	5. Theclidae. Lat									
		6. Theclidae. Steph. " 89.									
		7. Arctidae.	<table border="0" style="width: 100%;"> <tr> <td style="width: 15px;">{</td> <td style="width: 15px;">Subfam 1</td> <td style="width: 15px;">Notodontides</td> <td style="width: 55px;">West. Syn. 90.</td> </tr> <tr> <td></td> <td></td> <td>2. Arctides</td> <td>" " " 91.</td> </tr> </table>	{	Subfam 1	Notodontides	West. Syn. 90.			2. Arctides	" " " 91.
{	Subfam 1	Notodontides	West. Syn. 90.								
		2. Arctides	" " " 91.								
		8. Lithosuidae. Parkers. " 92.									
		9. Noctuidae. " do " 93.									
		10. Geometridae. Steph.	<table border="0" style="width: 100%;"> <tr> <td style="width: 15px;">{</td> <td style="width: 15px;">Subfam 1</td> <td style="width: 15px;">Geometrides.</td> <td style="width: 55px;">" " " " 98.</td> </tr> <tr> <td></td> <td></td> <td>2. Platystroctides.</td> <td>" " " " 104.</td> </tr> </table>	{	Subfam 1	Geometrides.	" " " " 98.			2. Platystroctides.	" " " " 104.
{	Subfam 1	Geometrides.	" " " " 98.								
		2. Platystroctides.	" " " " 104.								
		11. Tortricidae. Leach. " 106.									
		12. Rhonomatidae. Steph. " 110.									
		13. Cnecidae. Steph. " 113.									
		14. Alucitidae. Leach. " 113.									
		15. Pterothoridae. Lat									



plate 1 (1)

1. *L.P. papulis* (Sinn) *asterias* (F. Sinn) *troilus* S.A. Edwards 10 - 51.
2. *L.P. lanais* (Sinn) *archippus* (L. S.V.A) *kleiffus* Sm. Edwards 19. 75 13
3. *L.P. (young) papulis* (Sinn) *troilus* (L. B.A) *uconus* (S.V.A) Edwards 10 - 75 6.
4. *L.P. (old) papulis* (Sinn) *troilus* (L. B.A) *uconus* (S.V.A) Edwards 10 - 75 6
5. *L.P. Terias* (Swains) *nicippe* (Cramer) Say 7. Edwards 18 - 75 11
6. *L.P. Calichyas* (Pais) *fabale* (L. S.V.A) Edwards 18. 75 8.
7. *L.P. Colis* (F) *Phedice* (Lod) Edwards 16 - 75 11.
8. *L.P. Agraulis* (Blan) *vanillae* (L. B.S) *hastiflorae* S.A. Edwards 19. 75 14.
9. *L.P. Euphyela* (Doubé) *Laudia* (Cramer) Edwards 24 - 75 14
argyromis (F. columbica) (B.S.)
10. *L.P. Grapha* (Karl) *interrogationis* (F) *C. album* B.S. Edwards 28 75 14
11. *L.P. Simoniis* (F) *desippus* (Godt) Edwards 32. - 75 23
12. *L. vanessa* (F) *antiope* (L. B.S.) *Sintnerii* Edwards 39 - 75 26
13. *L.P. Eudamus* (Swains) *lycidas* (S.V.A) Edwards 55 - 75 34
14. *L.P. Eudamus* (Swains) *proteus* (L. S.V.A) Edwards 59 - 75 34
15. *L.P. Eudamus* (Swains) *lityrus* (S.V.A) Edwards 59 - 75 34





Plate 11. (2)

5. *S. l. Papilio (S) prax. (S) var marcellus. (S) Edwards* p. 751.
 6. *S. l. Phanaeus (Bor) ja... (B&A) Hist. Nat. N. W. Edw. 29* { 79 30. }
 7. *S. l. Lycaina (Fal) comytas (God) Edwards* 51-73 31 { Messenides, Hub }
 8. *S. l. Papius (S) turmus (Say) Edw. 11, 22 5.* { See in Morris Hill }
 9. *S. l. Anomala (Lafault) (Synthia) SVA. Coma Bdo Edw. 30, 31, 32, 33, 34, 35, 36, 37, 38, 39, 40, 41, 42, 43, 44, 45, 46, 47, 48, 49, 50, 51, 52, 53, 54, 55, 56, 57, 58, 59, 60, 61, 62, 63, 64, 65, 66, 67, 68, 69, 70, 71, 72, 73, 74, 75, 76, 77, 78, 79, 80, 81, 82, 83, 84, 85, 86, 87, 88, 89, 90, 91, 92, 93, 94, 95, 96, 97, 98, 99, 100*
 10. *S. l. Parnis (Sch) prolixi (B&A) Edw. 13 79, 7.*
 11. *S. l. Parnis (Hub) imperialis (Hub) arceonifera pag. 89⁸⁸ 89*
 12. *S. l. ? taken on Oak. Sept. pag 16*
 13. *S. l. Eplustion (Hub) elongophila (Hub) Gate. Sep. Md*
 14. *S. l. unanum? taken on Oak. 9nd, see page 168, 161.*
 15. *S. l. unanum? taken on Oak. 2d. Md. see page 161.*
 16. *S. l. unanum? taken on Oak. 3rd Md. see page 161.*
 17. *S. l. Passananda (Trach) prolixi (Linn) attaca Penn see page 36*
 18. *S. l. Paonias (Hub) excaecata (Harr) SVA. Hub) Smeranthus (Fal) Sphinx (Linn)*
 Md page 47, 24
 19. *S. l. in tabulis (Linn) ca. tercia (Harr) Charocampa Lur see page 44*
 20. *S. l. unanum? taken on Oak 7th see page 168*
 21. *S. l. unanum? taken on Oak Sept. 9nd see page 168.*
 22. *S. l. L. ocha (Trach) hylaeus (Trach) Sphinx (Linn) (Cv 2) plate 27, see page 32.*
 23. *S. l. Passananda (Trach) jugoslavica SVA) Sphinx (S) see page 48*
 24. *S. l. Philampelus (Harr) uchemon (Harr) crantor SVA see p. 45*



Plate III. 3.

- 1 ♀ *Sphinx* 2) *drufiferarum* (SVA) plate 51 52.
-2 ♀ *Delilephila* (Ow) *lineata* (Fab Harr) page 45 54.
-2 ♀ do do do do do (Lark variety)
-4 ♀ *Phlegontheus* (Hal) *quingemaculatus* (Happ) } *oleus* (Deul) page 50 54.
-5 ♀ do do do } *macrosila* (Walt) } *Sphinx* (L) } *Macrosila* (Walk)
-6 *Phlegontheus* (Hal) *carolina* (Linn) (Hal) } *Macrosila* (Walk) } *Sphinx* (Linn) SVA
page 48 54.



Plate IV (4)

1. *L. Limacodes* (Lat) unnamed? Taken on oak swa Aug see p. 11
 2. *L. P. Sphinx* (L) unnamed? Taken on grape n Scandinavia JF p 52
 3. *L. Gueryx* (Blv) *myron* (Walk) *laripia* (Walk) (*Chorocampa* (Wagn)
pampinatrix (SvA) taken on *impatiens* DC see JF p 64
-
4. *L. Cerura* (Wlk) *canis* (Harr) taken on trellow Sep. 20. see page 54 JF.
 5. *L. Laga* (Harr) *pyxidifera* (SvA) Inherleberg Sep. 20. see page 72 JF.
 6. *L. Hyloicus* (Faul) *harressii* (Clem) *Sphinx* () taken on pine Feb. 1mo Jan. 30 JF
 7. *L. unnamed* on oak Sep. 9mo see page 165 JF. { see *Elasma*
americanum
 8. *L. Citheronia* (Hul) *sepulchralis* (G. & C) June. Sep. Ind. see page 84 JF.
 9. *L. notodonta* (Goh) (probably) Oct. Sep. Ind. see page 161
 10. *L. Plegythontius* (Faul) *nuslicia* (Tal) (Walk) *macrodite* (Walk) *duviantide*.
see p. 16 see page 20 JF



Plat. V. (5)

How

76

1. L. (Pithecanis) (Hub) nega (Hüb.) Ceratocampa taken on Walnut DC, Sept. 1889.
2. L. do do do do younger in Aug.
3. Pupa do do do do in earth Sept. Md.
4. L. P. Evers x (Baill) myron (Walk) Larapsa (Walk.) Chaerocampa hampinat
hampinatrix (Loew) - note Aug. 22. page 44 78.
5. L. Philampelus (Loew) acron Sphinx (Loew) crater (Kraml)
from Md. S.M. plate 45 55.
6. L. Salixia (Loew) Salixia (Loew) 249 255.
7. L. Hemica (Hüb.) maia (Loew) Salixia Sch. see plate 85 74.
oak woods. Insect September.



Plate VI. 16.

1. *L. uncinata* (Hüb) *Stigma* (Hüb) *Lorycampha* (Gor) Cak Sep. Sta. see page 91. 38.
2. *L. Hepatica* (Sinn) ~~Massiniana~~ *Massiniana* *Xystris* (Grote) Locust branch Sep. p. 94 } see Plate VI.
3. *L. uncinata* (Hüb) *fulvicornis* (S&A) *Lorycampha* Gak Sep. Ind. page 90. 38
4. *L. uncinata* (Hüb) *rubicunda* (Harris) Silver maple July 20. page 91. 38.
5. *L. uncinata* (Hüb) *senatoriis* (S&A) (large) Gak Geo. Sep. page 91. 38.
6. *L. do do do do do* (small) do
7. *L. bacalis* (Hüb) *imperialis* (Hüb) *Lorycampha* (Harr) (green var.) Cak Sep. Ind. page 89. 38.
8. *L. do do do do do do* (brown var.) do do page 89. 38.
9. *L. madata* (Goumbodoy) *gibbosa* (S&A p. 92) Cak October Ind. plate 20. 38.
10. *L. Edema* (Walk) *aliphons* (S&A p. 85) (*pygmaea* (Och) p. 81. 38.
11. *L. Edema* (Walk) *cecinna* (Lamb) (S&A p. 85) page 82. 38.
- } *pygmaea* (Och) *Edema* (Walk)
12. unnamed, found on Cotton but not common Georgia July see p. 160. 38.
13. *L. Schizura* (Hüb) *inclusa* (Hüb) on *Mulinum* & *Poplar* L. E. Col. see p. 77
- } *Closteria* (Fitch) *americana* Harr 132 (Ph. anastomosis S&A p. 72 page 77. 38.
14. *L. longilobata* (Pack) *anguina* (S&A p. 86) Locust Wild Indigo Sep. Ind. *holodonta* Och p. 82. 38.
15. *L. do do do do* variety - do do
16. *L. Agrotis* (Och) unnamed on Cabbage & cl. Ind. see page 103. 38.
17. *L. do do do* on Cotton roots Geo. see page 168.
18. *L. do do do* do on cotton Geo. see page 103.

Pl. 6

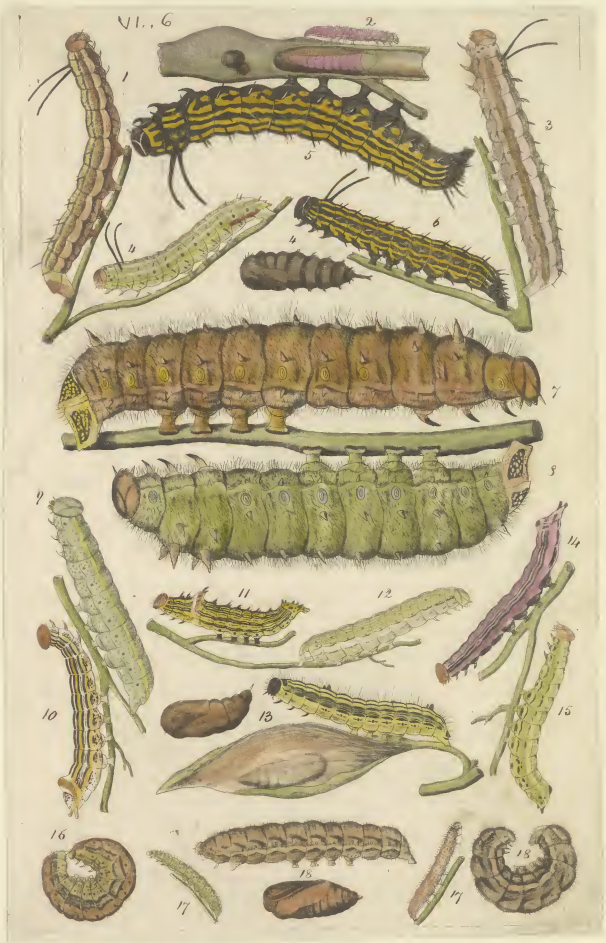


Plate VII (7)

- (Hub)
1. Platanus (Lam.) imperator (Hub) in Elm Md. see pag. 48. 59
P. Aquius (Hub) quadricornis (Lam)
 2. Platysmia (Grote) carolina (Hub) attacus Linn Samia Hub Appl Md pag. 87. 59
 3. Astias (Seach) luna (Hub) Salurnia (Sch) attacus (Linn) see page 86. 59.
 4. Callotania (Pack) promethea (Linn) Salurnia (Sch) attacus Linn
Co. } Sassafras Md. see pag. 86. 59.
 5. Teia (Hub) polyphemus (Hub) attacus Linn Salurnia Sch (in Md. pag. 86. 59.)
P.
-

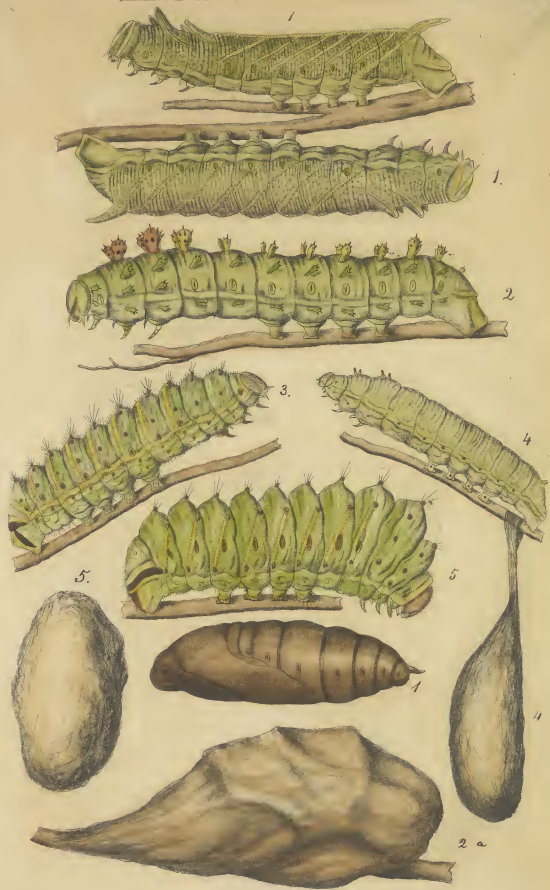


Plate VIII 8.

1. *Arcia* (Schr 944) *argo* (Harr) *diene* (Walt) Mountain, Aug. Md. page 63 25.
 2. *Spilosoma* (Steph) *virginica* (Harr) *arcia* Harr Sun Cover 2: Aug. Md page 67 35.
 3. *Arcia* (Sch) *nais* (Hüb) *phalerata* (Harr) Clover July Md page 63 35.
 4. *Leucarcia* (Pack) *arrosa* (Hack) *Spilosoma* (Walt) Sunflower July Md page 67 34.
 5. *Hexphantria* (Harr) *textor* (Harr) *Spilosoma* (Step) Cotton, S.C. page 67 35.
 6. *Arcia* (Sch) *phylora* (Lowry) *Euplagia* (Hüb) *hyletina* (Hack) Md. page 63 35.
 7. *Arcia* (Sch) *burgo* (Linn) *Sida* (Linn) Cotton, S. Car. page 65 35. *Spilosoma*
 8. *Hexphantria* (Harr) *textor* (Harr) *Spilosoma* (Steph) Plum Ma 65 page 67 35.
 9. *Pyraustia* (Hack) *chlotia* (Harr) *Arcia* var. *Stelocoma* (Steph)
 { Mountain grasses Md Light Col. page 66 35
 10. L: do — do — do — do (variety) — " — " — "
 11. *Arcia* (Sch) *unnaea* meads in Millaw Oct. S. Carolina see page 67 35.
 12. *Echinthora* (Hüb) *Sombonia* (Hüb) Platane Clover 7: Md Oct Nov in Shrivg
thalena *oculata* (Syll) (G) see page 67 35
 13. *Leucarcia* (Pack) *arrosa* (Syll) (G) *Spilosoma* (Schub) Clover June Md page 67 35.
 14. L: do — do — do — do — " — " — " — "
 15. *Spilosoma* (Steph) *virginica* (Harr) 359 *Arcia* Sch Cotton, S. Car June. page 67 35
 16. *Hexphantria* (Harr) *textor* (Harr) 358 *Spilosoma* (Steph) Maryland. page 67 35.
 17. *Arcia* (Sch) *unnaea* Florida Sch. on persimmon. page 65 35.
 18. *Spilosoma* (Steph) *virginica* (Harr) *Arcia* (Sch) smartweed Sch. Md. page 67 35

VIII. 6.



Plat. IX (9)

1. *L. P. D. Tinea* (Sinn) *gracella* (de Farris 793) ^{found in Georgia in} South Carolina on Cotton form + page 163 79
 2. *L. Hypena* (Osh) *scabrata* (Fab) *humilis* (Harris) clover heads July Ind. plate 122 79.
 3. *L. pilusca* (Osh) unnamed on clover July Ind. page 111 79.
 4. *L. Boarmia* (Tweils) *fragiliana* (Guen) Clover July Ind. page 130 79
 5. *L. Drastena* (Hub) *erectea* (Cram. Guen) (Ins LX/33) clover July Ind. page 117 79.
 6. *L.* unnamed. ped. on Oak July Ind. page 138 79. ?
 7. *L. Tortrix* (Zuck) unnamed (Ins LXI/9.) on Oak July Ind. page 138 79.
 8. *L. Pyramicella* sub. *hirsuta* (Cram) Cynthia (Harr) July Ma Edward, 70 page 32 79
 9. *L. Boarmia* (Tweils) *fragiliana* (Guen) Clover July Ind. page 130 79
 10. *L. Anonychia* (Osh) *aberrata* (Guen) Belgards Oak Ind. page 98 79.
 11. *L. Parorgyia* (Pack) *paralicia* (B&R ?) Oak July Ind. page 113 79.
 12. *L. Boarmia* (Tweils) *fragiliana* (Guen) Clover. Sep. Ma page 130 79
 13. do do do do variety do do do do
 14. *L.* unnamed Apple June - Ind. page 161 79
 15. *L.* unnamed Oak July Ind. page 163 79.
 16. *L. Boarmia* (Tweils) *fragiliana* (Guen) var Clover July 71 Oct Ind. page 130 79
 17. *L. Papilio* (Sinn) *philonot* (Sinn) (Sta p 3) ~~erectea~~ (Cram) Edward, pag 7 - 79, 9
 18. *L. Heliozampa* (Loub) *pulvosa* (S&R) Insect see LXIV/30. on Oak July Ind. 168 79.
 19. *L. Drastena* (Hub) *erectea* (Cram) Insect LXI/3. clover July Ma 117 79



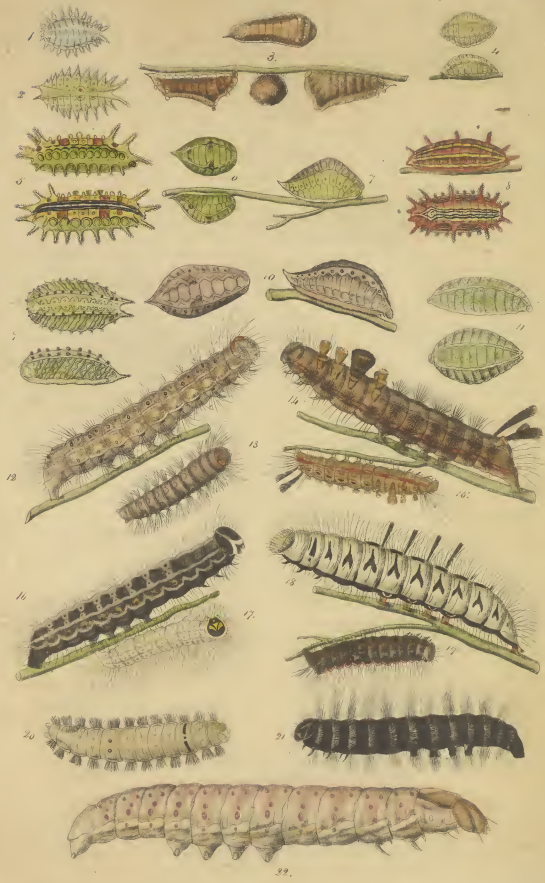
Plate X. (10)

1. *L. Halisidota* (Gibb) unnamed P. *Halisidota* (Gibb), near. Md Aug. page 69. 78.
2. *L. Halisidota* (Gibb) *tricoloris* (Sm) do oak Md Aug page 69 78.
3. *L. Anonyeta* (Gibb) *americana* (Hull) *Aphala* (Fab) *aceris* (S. & G.) on Oak Sep. Md page 70 78.
4. *L.* unnamed P. found in tomentos *brunnea* (F.) on Apple, Md. Aug. 11. 78.
5. *L. Aphalodes* (Pack) *torrefacta* (Syll. n. 76) *diffusa* (Gibb) June 76. 78.
6. *L. Orzyia* (Gibb) *centralis* (Har. & H.) near Md Aug. (atop of "aromat") page 70. 78.
7. *L.* do do do do do do do do (do large ♀ cocoon) do do
8. *L.* do do do do do do do do do caterpillar large do do
9. *L.* do do do do do do do do do ♀ chrysalis sm. do do
10. *P. (Chrys)* do do do do do do do chrysalis large female do do
11. *L. Latana* (Walk) unnamed on high huckleberry Md Sep. page 80 78.
12. *L.* unnamed P. (XIV?) oak Oct. Md page 168 78.
13. *L.* unnamed P. huckleberry, Aug Md page 168 78.
14. *L. Mamestra* (Gibb) *plata* (Harr 462) *cleus* Md July page 161 78.
15. *L. Acronycta* (Gibb) *psi* (Guer) *occidentalis* (G. & H.) near July Md page 98 78.
16. *L.* unnamed on cabbage July Md. page 168 78.
17. *L. Platana* (Walk) *minuta* (Gibb) *pygmaea* (Gibb) Oak S. Car. Sep. page 79 78.
18. *P. Emprelia* *stimulea* (S. & G.) *rimosa* (Gibb) on Cape Myrtle Fla page 73 78.
19. *L.* do do do see cocoon ♀ S. C. do
20. *L. Latana* (Walk) *contracta* (Walk) (G. & H. II) Oak S. C. Aug page 77 78.
21. *L. Tomacoles* Lat unnamed P. on oak Iowa. S. C. Nov 73 78.
22. *L. Latana* (Walk) unnamed P. on oak Md. Sep. page 80 78.
23. *L.* do do Young caterpillar on high huckleberry Md. page 80 78.

X. 10.



1. *L. semarodes* (Lat) unnamed Oak Md Sep. page 73.
 2. *L. semarodes* (Lat) unnamed Oak Sep. Md page 73.
 3. *Parada* (Moer) *chloris* (Rafk) *Calochlera* (Pack) *viridis* Pack Walnut Sep. Md page 74 75.
 4. *Syllorha* (Pack) as *wa* (Coh) *Calochlera* (Pom) col. ~~was~~ Md page 72 73.
 5. *Eulea* (Hub) *paucicostis* (Pack) *noulas* (Pack) Oak Sep. Md page 72 73.
 6. *L. semarodes* (Lat) *scapha* (Harr) *olestra* (Hoffm) *annamensis* (Pack)
 from cherry sp. Md. page 76 77.
 7. *L. maculata* (Lat) unnamed Oak Sep. Md page 73 74.
 8. *L. semarodes* (Lat) unnamed Oak Sep. Md page 73. 74.
 9. *L. semarodes* (Lat) unnamed Oak Sep. Md page 73. 74.
 10. *L. maculata* (Lat) unnamed Oak Sep. Md. page 73 74.
 11. *L. semarodes* (Lat) *biguttata* (Pack) Oak Sep. Md page 73 74.
 12. *L.* unnamed old caterpillar on oak Md. page 169 74.
 13. *L.* unnamed young on oak Md. page 169 74.
 14. *L.* unnamed caterpillar on walnut Sep. Md page 169 74.
 15. *L.* unnamed probably young of rolls on oak Aug. Md page 169 74.
 16. *L.* unnamed on oak Sep. Md. page 169 74.
 17. *L.* unnamed stems in cans Oak Sep. Md page 169 74.
 18. *L. charadra* (Walk) *divinella* (Walk) *Lophera* (Coh) page 97 74.
 19. *L.* unnamed on wild cherry Aug. Md page 169 74.
 20. *L. fulva* (Hub) *vellata* (Hub) *gastropacha* (Coh) Oak Md. page 169 74.
 21. *L.* unnamed on oak Sep. Md. page 169 74.
 22. *L. typicalis* (Hub) *crepera* (Harr) in oak stump Nov. Md page 98 74.



Pl. 11 - 1/2

1. ~~♀~~ ♀ *P. ...* (♂) *SE (pl) ...* ... *... 1895*
2 ♀ *...* ... *...* ...
3 cocoon ♂ *...* ... *...* ...
4 cocoon ♀ *...* ... *...* ...
5. *...* ... *...* ...
6. *...* ... *...* ...
7. *...* ... *...* ...
8. *...* ... *...* ...
9. *...* ... *...* ...
10. *...* ... *...* ...
11. *...* ... *...* ...
12. *...* ... *...* ...
13. *...* ... *...* ...
14. *...* ... *...* ...
15. *...* ... *...* ...
16. *...* ... *...* ...
17. *P. Psyché* (Och) *confusorata* (Pate) *Orange* ...
18. *P. B. Groggio* (Och) *antiquaria* (Linn) *...* ...
19. *...* ... *...* ...
20. *...* ... *...* ...



Plate XIII. 13.

- 1. *Byrrhopha* (Kub. norms. Kub) *monogona* (Guen. *Parapota*) 3rd July 1893.
- 2. do do do do do Oak Sep. 1894 page 118. pl. 11.
- 3. *madata* (Walk) unnamed. Oak Aug. 1894 page 118.
- 4. L. unnamed Oak Aug. 1894 page 118.
- 5. L. do Oak. Sep. 1894 page 119.
- 6. *madata* (Walk) unnamed. Oak Sep. 1894 page 118.
- 7. L. unnamed? Oak Aug. 1894 page 118.
- 8. L. unnamed? Birch. Oct. 1894 page 119.
- 9. L. unnamed? Oak. Oct. 1894 page 119.
- 10. L. *inchi* (Guen) *prostrata* (Kub) *platanus* July 1894 page 118.
- 11. L. unnamed? Oak. Oct. 1894 page 119.
- 12. do *signata* (Kub) *platanus* July 1894 page 118.
- 13. *Parapota* (Guen) *roseoalba* (Kub) Oak. Sep. 1894 page 119.
- 14. L. *prostrata* (Kub) *platanus* July 1894 page 118.
- 15. L. *signata* (Kub) *platanus* July 1894 page 118.
- 16. L. *signata* (Kub) *platanus* July 1894 page 118.
- 17. L. *signata* (Kub) *platanus* July 1894 page 118.
- 18. L. *signata* (Kub) *platanus* July 1894 page 118.
- 19. L. *signata* (Kub) *platanus* July 1894 page 118.
- 20. L. *signata* (Kub) *platanus* July 1894 page 118.
- 21. L. *signata* (Kub) *platanus* July 1894 page 118.
- 22. L. *signata* (Kub) *platanus* July 1894 page 118.
- 23. L. *signata* (Kub) *platanus* July 1894 page 118.
- 24. L. *signata* (Kub) *platanus* July 1894 page 118.
- 25. L. *signata* (Kub) *platanus* July 1894 page 118.
- 26. L. *signata* (Kub) *platanus* July 1894 page 118.
- 27. L. *signata* (Kub) *platanus* July 1894 page 118.
- 28. L. *signata* (Kub) *platanus* July 1894 page 118.
- 29. L. *signata* (Kub) *platanus* July 1894 page 118.
- 30. L. *signata* (Kub) *platanus* July 1894 page 118.
- 31. L. *signata* (Kub) *platanus* July 1894 page 118.
- 32. L. *signata* (Kub) *platanus* July 1894 page 118.
- 33. L. *signata* (Kub) *platanus* July 1894 page 118.
- 34. L. *signata* (Kub) *platanus* July 1894 page 118.
- 35. L. *signata* (Kub) *platanus* July 1894 page 118.
- 36. L. *signata* (Kub) *platanus* July 1894 page 118.
- 37. L. *signata* (Kub) *platanus* July 1894 page 118.
- 38. L. *signata* (Kub) *platanus* July 1894 page 118.
- 39. L. *signata* (Kub) *platanus* July 1894 page 118.
- 40. L. *signata* (Kub) *platanus* July 1894 page 118.
- 41. L. *signata* (Kub) *platanus* July 1894 page 118.
- 42. L. *signata* (Kub) *platanus* July 1894 page 118.
- 43. L. *signata* (Kub) *platanus* July 1894 page 118.
- 44. L. *signata* (Kub) *platanus* July 1894 page 118.
- 45. L. *signata* (Kub) *platanus* July 1894 page 118.
- 46. L. *signata* (Kub) *platanus* July 1894 page 118.
- 47. L. *signata* (Kub) *platanus* July 1894 page 118.
- 48. L. *signata* (Kub) *platanus* July 1894 page 118.
- 49. L. *signata* (Kub) *platanus* July 1894 page 118.
- 50. L. *signata* (Kub) *platanus* July 1894 page 118.



- PLATE XIV. 22
3. *...* ...
 4. *...* ...
 5. *...* ...
 6. *...* ...
 7. *...* ...
 8. *...* ...
 9. *P. Pygmaea* (Linn.) *hustoria* ... *Edwards* 32 page 22 59.
 10. *...* (prot young of 11/15. *Cole* ... *page* 170 59.
 11. *...* *Cherul* ... *page* 72 59.
 12. *...* (not common) in *...* ... *page* 170 59.
 13. *...* *prota* (Fal) *Grass* ... *page* 170 59.
 14. *...* *florida* (Guen) *R. ...* *page* 106 59.
 15. *...* named on *grape* *Md.* *Aug* ... *page* 170 59.
 16. *...* named *Jas* 55 & 77. *Prota* ... *page* 170 59.
 17. *...* *Locust* ... *page* 70 59.
 18. *...* *are* ... *page* 170 59.
 19. *Eupithecia* *and* - *miscellaneous* ... *Clover* ... *page* 134 59.
 20. *...* ... *page* 170 59.
 21. *...* ... *page* 124 59.
 22. *...* ... *page* 170 59.
 23. *...* ... *page* 170 59.
 24. *...* ... *page* 170 59.
 25. *...* ... *page* 170 59.
 26. *...* ... *page* 170 59.



- 1. *P. lineata* (Linn.) [?] ~~Chal.~~ ~~Wilm?~~ ...
- 2. *P. uncinata* ...
- 3. *P. uncinata* ...
- 4. *P. uncinata* ...
- 5. *P. uncinata* ...
- 6. *P. uncinata* ...
- 7. *P. uncinata* ...
- 8. *P. uncinata* ...
- 9. *P. uncinata* ...
- 10. *P. uncinata* ...
- 11. *P. uncinata* ...
- 12. *P. uncinata* ...



Plate XVI. 16.

1. *P. n. nepthoploea* (L.) *trichocoma* (L.) *trichocoma* (L.) *trichocoma* (L.)
2. *P. n. monticola* (L.) *monticola* (L.) *monticola* (L.) *monticola* (L.)
3. *P. n. grandis* (L.) *grandis* (L.) *grandis* (L.) *grandis* (L.)
4. *P. n. strachaniana* (L.) *strachaniana* (L.) *strachaniana* (L.) *strachaniana* (L.)
5. *P. n. ...*
6. *P. n. ...*
7. *P. n. ...*
8. *P. n. ...*
9. *P. n. ...*
10. *P. n. ...*
11. *P. n. depressaria* (L.) *depressaria* (L.) *depressaria* (L.) *depressaria* (L.)

New York Aug 14/88



Plate XVII
 1. *Diptera* *Zetter* *concolorata* (n. sp.) subd. 37. *Diptera* 1865
concolorata (Curtis) (Butl.)
 2. *Diptera* *F. unguis* *uniquis* (Curtis) (Butl.)
 3. *Diptera* *Ureolus* (Curtis) *americanus* (Curtis) 336. *Proctos* *Bic* *Platynucha* (Curtis) page 504
 4. *Diptera* *Lesmia* *post* *unicolor* (Curtis) *unicolor* (Curtis) page 504
 5. *Diptera* *Ureolus* *post* *unicolor* (Curtis) *unicolor* (Curtis) page 504
 6. *Diptera* *Phaenocarpa* *indiana* *indiana* (Curtis) *indiana* (Curtis) page 504
 (Curtis)

Diptera of whom 72
Butl. of whom 1



1. *Ph. ...*
 2. *Ph. ...*
 3. *Ph. ...*
 4. *Ph. ...*
 5. *Ph. ...*
 6. *Ph. ...*
 7. *Ph. ...*
 8. *Ph. ...*
 9. *Ph. ...*
 10. *Ph. ...*
 11. *Ph. ...*
 12. *Ph. ...*
 13. *Ph. ...*
 14. *Ph. ...*
 15. *Ph. ...*
 16. *Ph. ...*
 17. *Ph. ...*
 18. *Ph. ...*
 19. *Ph. ...*
 20. *Ph. ...*

Index of whom XVIII/4
 Index of whom XVIII/5





- 1. *S. imelita* (Grote) 1854 (1854) p. 110
- 2. *S. ...*
- 3. *S. ...*
- 4. *S. ...*
- 5. *S. ...*
- 6. *S. ...*
- 7. *S. ...*
- 8. *S. ...*
- 9. *S. ...*
- 10. *S. ...*
- 11. *S. ...*
- 12. *S. ...*
- 13. *S. ...*
- 14. *S. ...*
- 15. *S. ...*
- 16. *S. ...*
- 17. *S. ...*
- 18. *S. ...*
- 19. *S. ...*
- 20. *S. ...*
- 21. *S. ...*
- 22. *S. ...*
- 23. *S. ...*
- 24. *Tamela Eucosma ...*
- 25. *S. ...*
- 26. *S. ...*
- 27. *S. ...*
- 28. *S. ...*
- 29. *S. ...*
- 30. *S. ...*
- 31. *S. ...*
- 32. *S. ...*
- 33. *S. ...*
- 34. *S. ...*
- 35. *S. ...*
- 36. *S. ...*
- 37. *S. ...*
- 38. *S. ...*
- 39. *S. ...*
- 40. *S. ...*



- 1 ♀ *Grapta (A. H. 1.)* *leucogalerus* (Harr) *C. Curcum* B.S. p. 61. Hope Md July
 Edwards 35, page 18 59
- 2 ♀ *P. banissa* (B.S. L) *antiocha* (B.S. 173) Edwards 29, page 29 56
- 3 ♀ *P. pampae* *Helv. cardui* (Linn) B.S. 170. *Thistle* on July 31. Edwards 35, page 22 59
- 4 ♀ *P. Samea* *Helv. cyathia* (Hüb) France. l. *Valerianthes* silk worms July page 36. 59
- 5 ♀ unnamed on apple Md Oct. page 161. 59
- 6 ♀ *Sphinx* (Linn) unnamed on wild cherry Md July page 76 59
- 7 ♀ *Calas. m. latus* (Gros) *myops* (Harr. S. 4) *Smerinthus* (Lat) *Sphinx* (Linn S. 4) p. 26
 on wild cherry. Md. Aug page 87. 59.
- 8 ♀ *A. acronycta* (Goh) unnamed on hop Md July page 78 59.
- 9 ♀ *Prodenia* (Esch) *Commaeae* (Esch) *S. 4* (larva young & high color) grape July Md.
 page 100 59
- 10 ♀ *L. hypena* (Sch) *humilis* (Harr) 377 on hop Md July. page 122 59.
- 11 ♀ *Polioptila* (Sch) *probatilis* unnamed 9me May page 171 59.
- 12 ♀ *P. Bombyx* (Linn) *more* Linn; *Sarcotia* (Esch) feeds on *Morus mulicaulis* &
 on *M. auraria* *Asperthusa* v? common & Japanese silk worms
 Md. page 42 59.
- 13 Cocoon of silk worms fed on 1/2 green variety of Sakan ex. & rarely
 1/2 d. do do do do do do race de coite in France
 15 do do do do do do race forestalgeter do
 16 do do do do do do race de milan do



- 1. *P. laticornis* (Loeb) *Platycelis* (1893: 175) *Parasitica*, *Monog.* 2, p. 102
- 2. *P. laticornis* (Loeb) *Platycelis* (1893: 175) *Parasitica*, *Monog.* 2, p. 102
- 3. *Rhagothrips* (Hüb.) *argentalis* (Fabr.) *Macrosela* (Walk) *Skinner* (Linn) *convulsalis* (S&G) *Ind. Sect.* pag. 30 38
- 4. *R. hirsuta* (Linn) *Farquhar* (Linn) *Chrysophanus* (Linn) *crataegi* (1845: p. 3) (Linn. 42) *pag.* 30
- 5. *unannata* Loeb (Linn) *minor*, *Ma. Plate* 17, 38.
- 6. *R. mellicola* (Linn) *phacton* (Linn) *in* *terrestrial* *Ma. vol.* *Edwards* 20 *pag.* 17.
- 7. *R. foveatella* (Linn) *salicicola* (Linn) *in* *terrestrial* *Ma. vol.* *Edwards* 20 *pag.* 17.
- 8. *R. foveatella* (Linn) *salicicola* (Linn) *in* *terrestrial* *Ma. vol.* *Edwards* 20 *pag.* 17.
- 9. *R. cingula* (Linn) *leucostigma* (Linn) *in* *terrestrial* *Ma. vol.* *Edwards* 20 *pag.* 17.
- 10. *R. hylaei* (Linn) *tiliania* (Harr) *pag.* 13, 30
- 11. *R. cingula* (Linn) *linguialis* (Harr) *pag.* 13, 30
- 12. *R. cingula* (Linn) *unannata* *in* *woollen* *clothes* *Ma.* *pag.* 15, 30
- 13. *Case* *of* *Colophora* *Zeller* *quercella* (Linn) *Oak* *Ind. Sect.* *pag.* 15, 30.
- 14. *L. Every* (Bris) *choenidis* (Cram Walk) *Larapsa* (Walk) *Stis* (Hüb) *Skinner* (Linn) *pag.* 13, 30.
- 15. *Simenites* (Linn) *discepus* (Gul) *in* *winter* *case* (Linn. 132) *pag.* 53 30
- 16. *Simenites* (Linn) *discepus* (Gul) *in* *winter* *case* (Linn. 132) *pag.* 53 30
- 17. *S. crambellus* (Pier) *hirsuta* (Pier) *in* *terrestrial* *Ma.* *pag.* 15, 30.
- 18. *S. halana* (Linn) *contracta* (Linn) *in* *terrestrial* *Ma.* *pag.* 15, 30.
- 19. *S. halana* (Linn) *contracta* (Linn) *in* *terrestrial* *Ma.* *pag.* 15, 30.
- 20. *S. halana* (Linn) *contracta* (Linn) *in* *terrestrial* *Ma.* *pag.* 15, 30.



1. *S. Pamphila* (F.) *massasoit* (Scud) ♀ *Xesperia* ♂ Edwards 50 page 39. 54.
 2. *S.* " " *lassicus* (Scud) ♀ " " 50 page 40. 54
 3. *S.* " " " " ♂ " " 50 " "
 4. *S.* " " *metacomt* (Ham) ♂ *torea* (Edw) *Keowa* (Reak) Edw 53 page 39. 53.
 5. *S.* " " " " do do ♀ do do do do
 6. *S.* " " *cornes* (Btl) ♀ *Xesperia* ♂ *Urogas* (Btl)
 { *Udton* (Ham) *origines* (Morr) Edw 53 page 37. 53
 { *Parrema* (Fab) Edw. 51. page 39. 54
 7. *S.* " " *Leonarda* (Ham) ♂ " " do do do do
 8. *S.* " " " " do do do do do do
 9. *S.* " " *cornes* (Btl) ♀ { *Xesperia* (Fab) *Urogas* (Btl) } Edw 53 page 37. 53
 { *Udton* (Ham) *origines* (Morr) } 54
 10. *S. argynnis* (F.) *diana* (Cram) ♂ Edw 19. page 16. 54.
 11. *S. Junicea* (Grate) *tanquinius* (F.) *Chrysophanes* (Doubt) *Crataegi* (Btl) } Edw 62
 { *Perseus* (Scud) page 32. 54.
 12. *S. Chrysophanes* (Houb) *arades* (Hdb) *Castro* (Reak) Edw 43 page 33. 54
 13. *S. Argynnis* (F.) *diana* (Cram) ♀ Edw. 14. page 16. 54.
 14. *S. Chrysophanes* (Houb) *Euxanthe* (Btl) ♀ Edw 43 page 32. 54
 15. *S.* do do do do ♂ do do



Pl. XXIV. 24

L. Papilio (L) *crispifrons*.
" Thos. BTL

L. injures fed. orange
Lemon & pinky Cit Florida
Edwards. p 11 Page 5102



Plate XXV

- 1-3 *Papilio* *sinus* (♂), *pectus* (♂), *hirsutus* (♂) Edwards 9. page 5-8.
- 2-1. *Physocles* (♂), *nyctis* (♂), *argyranus* (♂), *melitea* (♂) Edwards 25. page 17-38.
- 3-1. *Melitea* (♂), *chalcidion* (♂) Edwards 24. page 17-38.
- 4-1. *Tharis* (L.) *canon* (♂), *amphulix* (♂), *pumea* (♂) Edwards 38. page 38-38.
- 5-1. *Thecla* (♂), *javana* (♂) Edwards 34. page 27-38.
- 6-1. *Papil.* (♂), *eurymedon* (♂) Edwards 11. page 2-38.
- 7-1. *Thecla* (♂), *m. albom.* (♂), *psyché* (♂) Edwards 38. page 30-38.
- 8-1. *Thecla* (♂), *hirs.* (♂) Edwards 41. page 30-38.
- 9-1. *Stenoparsanes* (Loub.) *thoe* (♂) Edwards 43. page 32-38.
- 10-1. *J.* de - de - de - de - ♀ - - -
- 11-1. *Graphis* (♂) *beckmanni* (Kirb.) Edwards 37. page 28-38.



Plate XXVI (20)

1. *Pipilo (L. nae nor (L. Sw.) aslinicus (Gram) Edw. vol. 9. p. 578*
2. *(Argynnis) (L. Myrina (Gram) Edw. 22. p. 16. 5.*
3. *sp. (Fus. conyrtus (God. Fr) Edw. 48. p. 31. 5.*
4. *Chronotus (Bois) emilia (Sw) Cerna (Belu) C. u. Bel. Edw. 3. p. 27. 5.*
5. *Papilio (L. albia ♂ (F) tricus (Sw) Sw. 1. p. 1. 5.*
6. *Canonymus (Stoll) ochracea (Edw) Edw. 24. p. 25. 5.*
7. *Femecia (Grote) torymenus (F) Chrysol. h. (Grote) Edw. 42. p. 32. 5.
cratugi (Bois) h. (Grote) (Sw)*
8. *Pipilo (L.) tricus (Sw) tricus (Sw) Edw. 10. p. 1. 5.*
9. *Apatura (H) tricus (Sw) tricus (Sw) Edw. 27. p. 24. 5.*
10. *Torymenus (Grote) tricus (Sw) Edw. 42. p. 33. 5.*



- 1 - *Parnassius* (Lut.) *smeythensis* (Boul.) Sage (Cdu) Behr (Edu) Edwards 12. page 7.86
- 2 - *Anthracaris* (Fsd) *genalia* ♀ (Bd) Edu 15 page 8.89.
- 3 - " " " " " " " " " " " "
- 4 - *Papilio* (L) *ajax* (L) Edwards 9. Page 1.88.
- 5 - *Anthracaris* (Bd) *crucata* (Baid) Edu. 14 page 8.88.
- 6 - *Lycæna* (Fab) *compulsa* (Fsd) Edu 18 page 9. 84.
- 7 - *Pieris* (Sch) *oleracea* (Bd) *crucifera* (Bd) Casta (Plot) Edu. 13. page 7.86.
- 8 - *Papilio* (L) *ajax* (L) Macmillan (Bd) Edu 9. page 1.88
- 9 - *Pieris* (Fab) *compulsa* (Fsd) Edu 29. page 21. . .
- 10 - " " " " " " " " " " " "
- 11 - *Pieris* (Sch) *protodice* ♀ (1875) Waller (Edu) Macmillan (Edu) Edu 13 page 7.86
- 12 - " " " " " " " " " " " "
- 13 - *Chrysophanus* (Boul.) *americanus* (L. A. Van) Chilcous (Bd) Pyrophorus (Bd) Edu. 13 page 8.89



1. *Papilio (L.) turnus* ♂ (L.) *plancus* ♀ L. Edwards 11 page 52.
 2. *Lycæna (Fab.) pseudangulata* ♂ (1842) var *violaceo* (Edw.) Edw. 49. page 1.
 3. *Thecla (F.) similis* (Bx) *delumbata* (Herr) Edw. 41. page 31 29.
 4. *Lycæna (Fab.) pseudangulata* ♀ (1842) var *violacea* (Edw.) Edw. 47. page 37.
 5. *Thecla (F.) calanus* (Fab) *placida* (B&L) *marata* (H&K) Edw. 39. page 31 27.
 6. *Thecla (F.) melina* (Fab) *trichia* (Edw.) (var) Edw. 39. page 30 24.
 7. *Thecla (F.) nippon* (Fab) Edw. 41. page 30.
 8. *Papilio (L.) turnus* (L.) *geucus* ♀ (L.) Edw. 11. page 52.
 9. *Lycæna (Fab.) comyntas* (God) var Edwards 48. page 31. 29.
 10. *do do do do do do*
 11. *do do do do do do*
 12. *do do do do do do*
 13. *Thecla (Fab.) nequius* (Hüb) Edw. 41. page 29. v.







1. *S. Rafelio* (Linn) polydamus (L.) Bdr. Edwards 11 page 478.
2. *S. Peris* (Schr) curvata (Bdr) crucifera (Bdr) castra (Kirby) avarens (Bdr).
Edwards 13 page 708.
3. *S. Peris* (Schr) monusta (L. 1842) cleomes (Bdr) Edu 12 page 778.
4. *S. Argynnis* (F) adianta (Bdr) Edu 22 page 1578.
5. *S. Limeris* (F) arthemis (Linn) Say no 31 page 3978.
6. *S. Oncophanes* (F) nuda (L. 1801) heperia helveticus puella
marginalis Corr Edwards 49 page 3978.
7. *S. Pheocora* (L.) maculata (F) eclipsis (Cram) inopiteris Edu 60 page 978.
8. *S. Nisia* (Linn) discoidalis (Kirby) Edu. 34 page 2778. hipparchia Bdr.
9. *S. Monophtha* (Linn) eurythra (F) eurythra Bdr Edu. 33 page 2678.
? hipparchia Bdr



1. *J. Colias* (*F.*) *philodice* (God) B&L ♂ Edward, 16. page 11 89.
2. *J. de do do do ♀ do do*
3. *J. Colias* (*F.*) *pelidne*. (Bd. & variety *labradorensis* (Scua.) Edu. 17 page 11 89
4. *J. Tomus* (Swain) *lisa* (Bd) Edwards 18. page 12 89.
5. *J. Tomus* (Swain) *fecunda* (Bd) Edwards 18 page 11 89.
6. *J. Nathalis* (Bd) *lola* (Bd) a var *luna* (Fitch) Edu. 14 page 8 89.
7. *J. Gonopteryx* (Leach) *lyside* (God) Edu 15. page 9. 89.
8. *J. Tomus* (Swain) *annamata* ? Edu 18 page 12. 89.
9. *J. Nathalis* (Bd) *lola* (Bd) ~~var~~ a var Fitch. Edu 14 page 11. 89.
10. *J. Tomus* (Swain) *nicajope* ♂ Edu. 18 page 12 89.
11. *J. Colias* (*F.*) *caesonia* (Stor) Edwards 15. page 10 89.
12. *J. Tomus* (Swain) *nicajope* ♀ Cram. Edu 18 page 12. 89.
13. *J. Colias* (*F.*) *eurytheme* (Bd) ♂ *Amphidusia* (Bd) & *lisa* var Edu Edu 16. page 10 89.
14. *J. de do do do ♀ do do*



1. *S. Vanosca* (F. Antipa (L. B&L) indurii (F. Tak) Edwards 29 page 20 58.
2. *S. Pyramis* (Doubt) huentera (Doury) Edwards 30 page 22 58.
3. *S. Pyramis* (Doubt) cardui (L. B&L) Edward 30 page 22 58.
4. *S. Pyramis* (Doubt) atlanta (L. B&L) Edwards 30 page 21 58.
5. *S. Stracta* (Hüb.) interrogationis (L.) C. Aurum Edwards 28 page 19 58.
6. *S. de de de de de de de de*
7. *Lycera* (F.) pseudangiolus (B&L) violacea (Edu) 4^o Edu 41 page 32 58.
8. *L. Semenitis* (F.) ursula (F. B&A) astanax (F.) ephestia (F. Har) Edu. 31 page 24 58.
9. *Pamphila* (F.) hookeri (Hüb.) amsatti (Hüb.) (S&A) Edu 32 page 30 58.
10. *L. junonia* (Doubt) lamia (Cram) orthia S&A Coria Hüb. Edu 30 page 22 58.



Notes

1. The first thing I noticed when I stepped
out of the plane was the fresh air. It felt like
I had been in a cocoon for weeks. The sun was
shining brightly, and the birds were chirping.
I had heard that the weather was perfect, and
it was. The hotel was beautiful, and the
staff was friendly. I had heard that the
food was good, and it was. I had heard that
the views were amazing, and they were. I had
heard that the people were nice, and they were.
I had heard that the trip was worth it, and
it was. I had heard that the trip was
amazing, and it was. I had heard that the
trip was perfect, and it was. I had heard
that the trip was the best, and it was.



1870
1. ...
2. ...
3. ...
4. ...
5. ...
6. ...
7. ...
8. ...
9. ...
10. ...
11. ...
12. ...
13. ...
14. ...
15. ...
16. ...
17. ...
18. ...
19. ...
20. ...
21. ...
22. ...
23. ...
24. ...
25. ...
26. ...
27. ...
28. ...
29. ...
30. ...
31. ...
32. ...
33. ...
34. ...
35. ...
36. ...
37. ...
38. ...
39. ...
40. ...
41. ...
42. ...
43. ...
44. ...
45. ...
46. ...
47. ...
48. ...
49. ...
50. ...
51. ...
52. ...
53. ...
54. ...
55. ...
56. ...
57. ...
58. ...
59. ...
60. ...
61. ...
62. ...
63. ...
64. ...
65. ...
66. ...
67. ...
68. ...
69. ...
70. ...
71. ...
72. ...
73. ...
74. ...
75. ...
76. ...
77. ...
78. ...
79. ...
80. ...
81. ...
82. ...
83. ...
84. ...
85. ...
86. ...
87. ...
88. ...
89. ...
90. ...
91. ...
92. ...
93. ...
94. ...
95. ...
96. ...
97. ...
98. ...
99. ...
100. ...



1. 1870
 2. 1871
 3. 1872
 4. 1873
 5. 1874
 6. 1875
 7. 1876
 8. 1877
 9. 1878
 10. 1879
 11. 1880
 12. 1881
 13. 1882
 14. 1883
 15. 1884
 16. 1885
 17. 1886
 18. 1887
 19. 1888
 20. 1889
 21. 1890
 22. 1891
 23. 1892
 24. 1893
 25. 1894
 26. 1895
 27. 1896
 28. 1897
 29. 1898
 30. 1899
 31. 1900
 32. 1901
 33. 1902
 34. 1903
 35. 1904
 36. 1905
 37. 1906
 38. 1907
 39. 1908
 40. 1909
 41. 1910
 42. 1911
 43. 1912
 44. 1913
 45. 1914
 46. 1915
 47. 1916
 48. 1917
 49. 1918
 50. 1919
 51. 1920
 52. 1921
 53. 1922
 54. 1923
 55. 1924
 56. 1925
 57. 1926
 58. 1927
 59. 1928
 60. 1929
 61. 1930
 62. 1931
 63. 1932
 64. 1933
 65. 1934
 66. 1935
 67. 1936
 68. 1937
 69. 1938
 70. 1939
 71. 1940
 72. 1941
 73. 1942
 74. 1943
 75. 1944
 76. 1945
 77. 1946
 78. 1947
 79. 1948
 80. 1949
 81. 1950
 82. 1951
 83. 1952
 84. 1953
 85. 1954
 86. 1955
 87. 1956
 88. 1957
 89. 1958
 90. 1959
 91. 1960
 92. 1961
 93. 1962
 94. 1963
 95. 1964
 96. 1965
 97. 1966
 98. 1967
 99. 1968
 100. 1969
 101. 1970
 102. 1971
 103. 1972
 104. 1973
 105. 1974
 106. 1975
 107. 1976
 108. 1977
 109. 1978
 110. 1979
 111. 1980
 112. 1981
 113. 1982
 114. 1983
 115. 1984
 116. 1985
 117. 1986
 118. 1987
 119. 1988
 120. 1989
 121. 1990
 122. 1991
 123. 1992
 124. 1993
 125. 1994
 126. 1995
 127. 1996
 128. 1997
 129. 1998
 130. 1999
 131. 2000
 132. 2001
 133. 2002
 134. 2003
 135. 2004
 136. 2005
 137. 2006
 138. 2007
 139. 2008
 140. 2009
 141. 2010
 142. 2011
 143. 2012
 144. 2013
 145. 2014
 146. 2015
 147. 2016
 148. 2017
 149. 2018
 150. 2019
 151. 2020
 152. 2021
 153. 2022
 154. 2023
 155. 2024
 156. 2025
 157. 2026
 158. 2027
 159. 2028
 160. 2029
 161. 2030
 162. 2031
 163. 2032
 164. 2033
 165. 2034
 166. 2035
 167. 2036
 168. 2037
 169. 2038
 170. 2039
 171. 2040
 172. 2041
 173. 2042
 174. 2043
 175. 2044
 176. 2045
 177. 2046
 178. 2047
 179. 2048
 180. 2049
 181. 2050
 182. 2051
 183. 2052
 184. 2053
 185. 2054
 186. 2055
 187. 2056
 188. 2057
 189. 2058
 190. 2059
 191. 2060
 192. 2061
 193. 2062
 194. 2063
 195. 2064
 196. 2065
 197. 2066
 198. 2067
 199. 2068
 200. 2069
 201. 2070
 202. 2071
 203. 2072
 204. 2073
 205. 2074
 206. 2075
 207. 2076
 208. 2077
 209. 2078
 210. 2079
 211. 2080
 212. 2081
 213. 2082
 214. 2083
 215. 2084
 216. 2085
 217. 2086
 218. 2087
 219. 2088
 220. 2089
 221. 2090
 222. 2091
 223. 2092
 224. 2093
 225. 2094
 226. 2095
 227. 2096
 228. 2097
 229. 2098
 230. 2099
 231. 2100
 232. 2101
 233. 2102
 234. 2103
 235. 2104
 236. 2105
 237. 2106
 238. 2107
 239. 2108
 240. 2109
 241. 2110
 242. 2111
 243. 2112
 244. 2113
 245. 2114
 246. 2115
 247. 2116
 248. 2117
 249. 2118
 250. 2119
 251. 2120
 252. 2121
 253. 2122
 254. 2123
 255. 2124
 256. 2125
 257. 2126
 258. 2127
 259. 2128
 260. 2129
 261. 2130
 262. 2131
 263. 2132
 264. 2133
 265. 2134
 266. 2135
 267. 2136
 268. 2137
 269. 2138
 270. 2139
 271. 2140
 272. 2141
 273. 2142
 274. 2143
 275. 2144
 276. 2145
 277. 2146
 278. 2147
 279. 2148
 280. 2149
 281. 2150
 282. 2151
 283. 2152
 284. 2153
 285. 2154
 286. 2155
 287. 2156
 288. 2157
 289. 2158
 290. 2159
 291. 2160
 292. 2161
 293. 2162
 294. 2163
 295. 2164
 296. 2165
 297. 2166
 298. 2167
 299. 2168
 300. 2169
 301. 2170
 302. 2171
 303. 2172
 304. 2173
 305. 2174
 306. 2175
 307. 2176
 308. 2177
 309. 2178
 310. 2179
 311. 2180
 312. 2181
 313. 2182
 314. 2183
 315. 2184
 316. 2185
 317. 2186
 318. 2187
 319. 2188
 320. 2189
 321. 2190
 322. 2191
 323. 2192
 324. 2193
 325. 2194
 326. 2195
 327. 2196
 328. 2197
 329. 2198
 330. 2199
 331. 2200
 332. 2201
 333. 2202
 334. 2203
 335. 2204
 336. 2205
 337. 2206
 338. 2207
 339. 2208
 340. 2209
 341. 2210
 342. 2211
 343. 2212
 344. 2213
 345. 2214
 346. 2215
 347. 2216
 348. 2217
 349. 2218
 350. 2219
 351. 2220
 352. 2221
 353. 2222
 354. 2223
 355. 2224
 356. 2225
 357. 2226
 358. 2227
 359. 2228
 360. 2229
 361. 2230
 362. 2231
 363. 2232
 364. 2233
 365. 2234
 366. 2235
 367. 2236
 368. 2237
 369. 2238
 370. 2239
 371. 2240
 372. 2241
 373. 2242
 374. 2243
 375. 2244
 376. 2245
 377. 2246
 378. 2247
 379. 2248
 380. 2249
 381. 2250
 382. 2251
 383. 2252
 384. 2253
 385. 2254
 386. 2255
 387. 2256
 388. 2257
 389. 2258
 390. 2259
 391. 2260
 392. 2261
 393. 2262
 394. 2263
 395. 2264
 396. 2265
 397. 2266
 398. 2267
 399. 2268
 400. 2269
 401. 2270
 402. 2271
 403. 2272
 404. 2273
 405. 2274
 406. 2275
 407. 2276
 408. 2277
 409. 2278
 410. 2279
 411. 2280
 412. 2281
 413. 2282
 414. 2283
 415. 2284
 416. 2285
 417. 2286
 418. 2287
 419. 2288
 420. 2289
 421. 2290
 422. 2291
 423. 2292
 424. 2293
 425. 2294
 426. 2295
 427. 2296
 428. 2297
 429. 2298
 430. 2299
 431. 2300
 432. 2301
 433. 2302
 434. 2303
 435. 2304
 436. 2305
 437. 2306
 438. 2307
 439. 2308
 440. 2309
 441. 2310
 442. 2311
 443. 2312
 444. 2313
 445. 2314
 446. 2315
 447. 2316
 448. 2317
 449. 2318
 450. 2319
 451. 2320
 452. 2321
 453. 2322
 454. 2323
 455. 2324
 456. 2325
 457. 2326
 458. 2327
 459. 2328
 460. 2329
 461. 2330
 462. 2331
 463. 2332
 464. 2333
 465. 2334
 466. 2335
 467. 2336
 468. 2337
 469. 2338
 470. 2339
 471. 2340
 472. 2341
 473. 2342
 474. 2343
 475. 2344
 476. 2345
 477. 2346
 478. 2347
 479. 2348
 480. 2349
 481. 2350
 482. 2351
 483. 2352
 484. 2353
 485. 2354
 486. 2355
 487. 2356
 488. 2357
 489. 2358
 490. 2359
 491. 2360
 492. 2361
 493. 2362
 494. 2363
 495. 2364
 496. 2365
 497. 2366
 498. 2367
 499. 2368
 500. 2369
 501. 2370
 502. 2371
 503. 2372
 504. 2373
 505. 2374
 506. 2375
 507. 2376
 508. 2377
 509. 2378
 510. 2379
 511. 2380
 512. 2381
 513. 2382
 514. 2383
 515. 2384
 516. 2385
 517. 2386
 518. 2387
 519. 2388
 520. 2389
 521. 2390
 522. 2391
 523. 2392
 524. 2393
 525. 2394
 526. 2395
 527. 2396
 528. 2397
 529. 2398
 530. 2399
 531. 2400
 532. 2401
 533. 2402
 534. 2403
 535. 2404
 536. 2405
 537. 2406
 538. 2407
 539. 2408
 540. 2409
 541. 2410
 542. 2411
 543. 2412
 544. 2413
 545. 2414
 546. 2415
 547. 2416
 548. 2417
 549. 2418
 550. 2419
 551. 2420
 552. 2421
 553. 2422
 554. 2423
 555. 2424
 556. 2425
 557. 2426
 558. 2427
 559. 2428
 560. 2429
 561. 2430
 562. 2431
 563. 2432
 564. 2433
 565. 2434
 566. 2435
 567. 2436
 568. 2437
 569. 2438
 570. 2439
 571. 2440
 572. 2441
 573. 2442
 574. 2443
 575. 2444
 576. 2445
 577. 2446
 578. 2447
 579. 2448
 580. 2449
 581. 2450
 582. 2451
 583. 2452
 584. 2453
 585. 2454
 586. 2455
 587. 2456
 588. 2457
 589. 2458
 590. 2459
 591. 2460
 592. 2461
 593. 2462
 594. 2463
 595. 2464
 596. 2465
 597. 2466
 598. 2467
 599. 2468
 600. 2469
 601. 2470
 602. 2471
 603. 2472
 604. 2473
 605. 2474
 606. 2475
 607. 2476
 608. 2477
 609. 2478
 610. 2479
 611. 2480
 612. 2481
 613. 2482
 614. 2483
 615. 2484
 616. 2485
 617. 2486
 618. 2487
 619. 2488
 620. 2489
 621. 2490
 622. 2491
 623. 2492
 624. 2493
 625. 2494
 626. 2495
 627. 2496
 628. 2497
 629. 2498
 630. 2499
 631. 2500
 632. 2501
 633. 2502
 634. 2503
 635. 2504
 636. 2505
 637. 2506
 638. 2507
 639. 2508
 640. 2509
 641. 2510
 642. 2511
 643. 2512
 644. 2513
 645. 2514
 646. 2515
 647. 2516
 648. 2517
 649. 2518
 650. 2519
 651. 2520
 652. 2521
 653. 2522
 654. 2523
 655. 2524
 656. 2525



Plate XXXVII (27)

- 1. *... ..*
- 2. *... ..*
- 3. *... ..*
- 4. *... ..*
- 5. *... ..*
- 6. *... ..*
- 7. *... ..*
- 8. *... ..*
- 9. *... ..*
- 10. *... ..*
- 11. *... ..*
- 12. *... ..*
- 13. *... ..*
- 14. *... ..*
- 15. *... ..*
- 16. *... ..*
- 17. *... ..*
- 18. *... ..*
- 19. *... ..*
- 20. *... ..*
- 21. *... ..*
- 22. *... ..*
- 23. *... ..*
- 24. *... ..*
- 25. *... ..*
- 26. *... ..*
- 27. *... ..*





1. *urena* (Walk) *conduca* (Walk) Maryland pag. 28. 58.
 } *Ceratomya* (Hubs) *reba* (Hubs)
2. *Enyo* (Hubs) *lygubris* (Hubs) Md. Page 42 59. (v SVA p. 32)
3. *Lecliphila* (Wlk) *lineata* (Harr.) SVA p. 39. *Sphinx* (Zinn) *clausus* (Cram) Md. p. 55. 58.
4. *Paonia* (Hubs) *excavatus* (SVA. Hubs.) Harris 32. *Smoranthus* (Lat) Md. page 55 58.
5. *kytis* (Hubs) *crana neri* (Harr 325) *Lecliphila* (Wlk) *gascu* (Walk) Md. page 25 55.
6. *Pan. ampelus* (Harr) *achemon* (Harr 325) *Stelox* (Linn) *crater* SVA 241
 Maryland pag. 23. 52.
7. *Smoranthus* (Erol) *geminalis* (var. h. 12) *Smoranthus* Lat Md. page 47 58.
8. *Calasymbotus* (Fr) *myops* (SVA 26) *Smoranthus* (Lat) rosaceae rum. Bois Md. Page 47 58.
9. *Algebra* (Lat) *Syringae* (Harr) *Trochellium* (Scop) page 55 58.

8 rosaceae rum. if not rosaceae



Plate XL (40)

1. *Ceratonia* (Harr) *amyntor* (G&K) *quadricornis* (Harr) Ind page 48 58
2. *Phlegelthontis* (Hüb) *carolina* (Hüb Linn) Scam 320. S&A p. 33. *Macrosela* (Hüb)
Sphinx (Linn) Ind page 49 58.
3. *Sphinx* (Linn) *lauperarum* (S&A p. 36) Ind page 51. 58.
4. *Sphinx* (Linn) *muscaria* (S&A p. 37) Ind page 51. 58.
5. *Sphinx* (Linn) *dupuyi* *rara* (S. & A. spec) S&A p. 36 page 51 58.
6. *Phlegelthontis* (Hüb) *quatuor maculata* (Hüb) *Macrosela* (Walk) *celus* (Hüb)
Ind page 52 58.











3
very rare
in the
country



1875 XLVI. 120

1. *Rhopilema* ... Rhopilema ...
2. *Rhopilema* ...
3. *Rhopilema* ...

4. *Rhopilema* ... 1875

5. *Rhopilema* ... page 106. 58

6. *Rhopilema* ... *Rhopilema* ...

7. *Rhopilema* ... *Rhopilema* ...

8. *Rhopilema* ... *Rhopilema* ...

9. *Rhopilema* ... *Rhopilema* ...

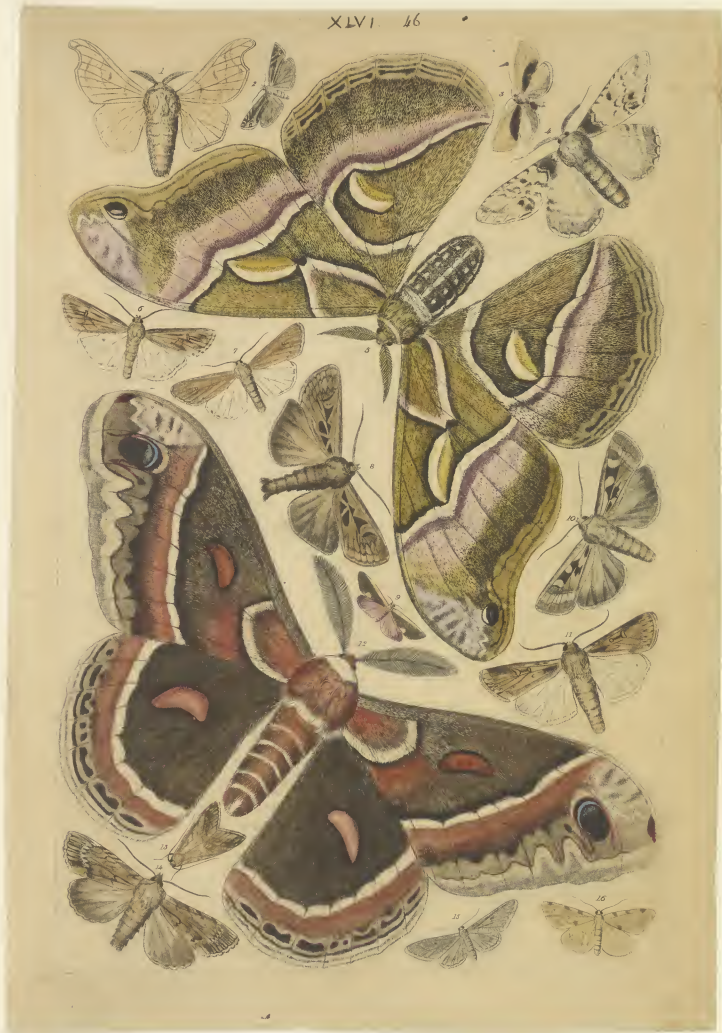
10. *Rhopilema* ... *Rhopilema* ...

11. *Rhopilema* ... *Rhopilema* ...

12. *Rhopilema* ... *Rhopilema* ...

13. *Rhopilema* ... *Rhopilema* ...

14. *Rhopilema* ... *Rhopilema* ...



- 7. *...* (+Sch) Ind page 164 35.
- 8. *...* *quingumaculata* (Forsk.) Ind page 142 36.
- 9. *ellacae* *...* *...* Ind page 110 37.
- 10. *...* *monitifera* (Guér.) *...* Ind page 123 38.
- 11. *...* *...* *...* Ind page 123 39.
- 12. *...* *...* *...* Ind page 123 40.
- 13. *...* *...* *...* Ind page 123 41.
- 14. *...* *...* *...* Ind page 123 42.
- 15. *...* *...* *...* Ind page 123 43.
- 16. *...* *...* *...* Ind page 123 44.
- 17. *...* *...* *...* Ind page 123 45.
- 18. *...* *...* *...* Ind page 123 46.
- 19. *...* *...* *...* Ind page 123 47.
- 20. *...* *...* *...* Ind page 123 48.
- 21. *...* *...* *...* Ind page 123 49.
- 22. *...* *...* *...* Ind page 123 50.
- 23. *...* *...* *...* Ind page 123 51.
- 24. *...* *...* *...* Ind page 123 52.
- 25. *...* *...* *...* Ind page 123 53.
- 26. *...* *...* *...* Ind page 123 54.
- 27. *...* *...* *...* Ind page 123 55.
- 28. *...* *...* *...* Ind page 123 56.
- 29. *...* *...* *...* Ind page 123 57.
- 30. *...* *...* *...* Ind page 123 58.
- 31. *...* *...* *...* Ind page 123 59.
- 32. *...* *...* *...* Ind page 123 60.
- 33. *...* *...* *...* Ind page 123 61.
- 34. *...* *...* *...* Ind page 123 62.
- 35. *...* *...* *...* Ind page 123 63.
- 36. *...* *...* *...* Ind page 123 64.
- 37. *...* *...* *...* Ind page 123 65.
- 38. *...* *...* *...* Ind page 123 66.
- 39. *...* *...* *...* Ind page 123 67.
- 40. *...* *...* *...* Ind page 123 68.
- 41. *...* *...* *...* Ind page 123 69.
- 42. *...* *...* *...* Ind page 123 70.
- 43. *...* *...* *...* Ind page 123 71.
- 44. *...* *...* *...* Ind page 123 72.
- 45. *...* *...* *...* Ind page 123 73.
- 46. *...* *...* *...* Ind page 123 74.
- 47. *...* *...* *...* Ind page 123 75.
- 48. *...* *...* *...* Ind page 123 76.
- 49. *...* *...* *...* Ind page 123 77.
- 50. *...* *...* *...* Ind page 123 78.
- 51. *...* *...* *...* Ind page 123 79.
- 52. *...* *...* *...* Ind page 123 80.
- 53. *...* *...* *...* Ind page 123 81.
- 54. *...* *...* *...* Ind page 123 82.
- 55. *...* *...* *...* Ind page 123 83.
- 56. *...* *...* *...* Ind page 123 84.
- 57. *...* *...* *...* Ind page 123 85.
- 58. *...* *...* *...* Ind page 123 86.
- 59. *...* *...* *...* Ind page 123 87.
- 60. *...* *...* *...* Ind page 123 88.
- 61. *...* *...* *...* Ind page 123 89.
- 62. *...* *...* *...* Ind page 123 90.
- 63. *...* *...* *...* Ind page 123 91.
- 64. *...* *...* *...* Ind page 123 92.
- 65. *...* *...* *...* Ind page 123 93.
- 66. *...* *...* *...* Ind page 123 94.
- 67. *...* *...* *...* Ind page 123 95.
- 68. *...* *...* *...* Ind page 123 96.
- 69. *...* *...* *...* Ind page 123 97.
- 70. *...* *...* *...* Ind page 123 98.
- 71. *...* *...* *...* Ind page 123 99.
- 72. *...* *...* *...* Ind page 123 100.





Plate XLIX. 1894

1. *S. Soteracis* (Guen) Conata (Gr. P&S. 3. p. 91) Md page 129. 50
2. *S. Perophras* (Garr) meliboeus. (Harr) Md page 76. 56.
3. *S. Pangrapta* (Hub) decorata (Hub) Md. page 122. 56.
 } *hypanthia* *regantalis* Fitch
4. *S. Pantosamia* (Prok) *Promethia* (V. rory) & *Attacus* (S&A) *Sama* (Hul)
 Saturnus Md. page 22. { *Pheosia* *promethia*
 do do do do } 57. p. 46
5. *S. Athala* (Fab) *ceana* (Linn) Md page 97. 56.
6. *S. Orithides* (Guen) *infirma* (Guen) Md. page 109. 56. 104
7. *S. Falana* (Wals) *costaria* (Walk) Md page 99. 56.
8. *S. Anatra* (G&H) *lelix* (Guen) (F&S) Md page 125. 56.
9. *S. Anatra* (G&H) *lelix* (Guen) (F&S) Md page 125. 56.
10. *S. Atheronia* (Hub) *regalis* (Hub) Md page 87. 56. *Conat* (Garr) (Harr)
11. *S. Euvymene* (Huf) *ventrigi* (G.) Md page 125. 56.
12. *S. Euvymene* (Huf) *ventrigi* (G.) Md page 125. 56. *Conat* (Garr) (Harr)



Plate 1 (50)

1. *S. Ph. 6, Iron* (Sat) *Hythecium* (S&L p 74) Md page 73 58.
2. *S. Lemacodes* (Sat) unnamed Md page 73. 58
3. *S. Lemacodes* (Sat) *inversa* Pack PESP 3/30, Md page 73 58
4. *S. unnamed* Md page 173. 58.
5. *S. Oxyolis* (Gch) *hyrcollis* (Fitch) In: Ag Soc 1865 h 504
} var ♂ on Maize Md page 102. 58.
6. *S. Oxis* (Tr) *illibulis* (Hub) Md page 121 58.
7. *S. Calaclysta* (Hub) unnamed Md page 122. 58
8. *S. Edomadia* (Pack) *badia* (Pack) PESP 3/360. Md. page 82 58.
9. *S. Conchigis* (Cress) *quinquemaculata* Robinson In: 1188 284 h 8 14 76
} Md. Page 122 58
10. *Gratocampa* *flava* (Hub) *imperialis* (no.) S&L h 55 *Dryocampa* (Carr) Md. Page 89. 58
11. *S. Scolocampa* (Guen) *ligni* (Guen) Md page 100 58.
12. *S. Cressa* (Hub) *virginiana* (Clem) Md page 142 58.
13. *S. Leptina* (Guen) *doubledayi* (Guen) Md page 95. 58
14. *S. delea* (Hub) *polyphemus* (S&L S&L p 47) *Uttacus* (Linn) *Saturnia* (Sch) Md
} page 66 58
15. *S. unnamed* Md page 173 58.
16. *S. unnamed* Md page 173 58
17. *S. unnamed* Md page 173 58
18. *S. noctuella* (S&L) Md page 163. 58.
19. *S. Anaphora* (Clem) ~~no name~~ (Clem) Md page 173. 58. (unnamed)
20. *S. Loztaenia* (Stebb) *rosaceana* (Harr) (var) *Sortrix* (Linn) Md page 173 58
21. *S. Isopica* (Trat) *costalis* (S&L Sat) *Pyralis* (Linn) *lunalis* Md page 124 58

Anaphora of whom
 21 *lunalis* (*Isopica*) of whom



Plate LI. (51)

1. *Strophurus* (Geof) *torridactylus* (Fitch) Mac page 161. 59.
2. *do do marginidactylis* Fitch Mac page 161. 59.
3. *Strophurus* (Hilleb) *stelaensis* (Lam.) Mac (at 170, 171) Mac page 173. 59.
4. *Strophurus* (Hilleb) *semipunctatus* Mac page 173. 59.
5. *Strophurus* (L.) *annuus* Mac page 161. 59.
6. *Strophurus* (L.) *parvus* (Fitch) Mac page 9. 59.
7. *Strophurus* (L.) *concolor* Mac page 17. 59.
8. *Strophurus* (Hilleb) *subjecta* (Hilleb) *kyppopala* (L.) *hachantii* (L.) Mac page 173. 59.
9. *Strophurus* (L.) *trinitatis* (L.) Mac page 173. 59.
10. *Strophurus* (Hilleb) *ulata* (Lam.) Brit museum. Mac page 173. 59.
11. *Strophurus* (Hilleb) *viridis* (Lam.) Mac page 162. 59.
12. *Strophurus* (Hilleb) *rufoauratus* (Hilleb) Mac page 173. 59.
13. *Strophurus* (L.) *do* (Lam.) *do* *do* *do* *do*
14. *Strophurus* (L.) *do* (Lam.) *do* *do* *do* *do*
15. *Strophurus* (L.) *do* (Lam.) *do* *do* *do* *do*
16. *Strophurus* (L.) *do* (Lam.) *do* *do* *do* *do*
17. *Strophurus* (L.) *do* (Lam.) *do* *do* *do* *do*
18. *Strophurus* (L.) *do* (Lam.) *do* *do* *do* *do*
19. *Strophurus* (L.) *do* (Lam.) *do* *do* *do* *do*
20. *Strophurus* (L.) *do* (Lam.) *do* *do* *do* *do*
21. *Strophurus* (L.) *do* (Lam.) *do* *do* *do* *do*
22. *Strophurus* (L.) *do* (Lam.) *do* *do* *do* *do*
23. *Strophurus* (L.) *do* (Lam.) *do* *do* *do* *do*
24. *Strophurus* (L.) *do* (Lam.) *do* *do* *do* *do*
25. *Strophurus* (L.) *do* (Lam.) *do* *do* *do* *do*
26. *Strophurus* (L.) *do* (Lam.) *do* *do* *do* *do*
27. *Strophurus* (L.) *do* (Lam.) *do* *do* *do* *do*
28. *Strophurus* (L.) *do* (Lam.) *do* *do* *do* *do*
29. *Strophurus* (L.) *do* (Lam.) *do* *do* *do* *do*
30. *Strophurus* (L.) *do* (Lam.) *do* *do* *do* *do*

Semi-ellus (crabrus) 4 of whom
Collochlora (harasa) 19 of whom
Stenans (esopus) 22 do
Melissa (ocypoda) 22 do



Plate LII. (52)

9. *J. Polypa* (Hul) velleda (Hul) Gastropacha (Och) Md page 92 & 93
9. *J. Ichthyura* (Hul) abbesyma (Fitch) Clostera (Curtis) Md page 77 & 78
9. *J. Gastropacha* (Och) americana (Harr) occidentalis (M.) 19 92 & 93.
1. *J. Gallera* (Fab) cercana (Fab) Md Page 126 & 93.
5. *J. Psychomorpha* (Harr) eluminata (Harr) Flauropus (Harr) Md page 57 & 58
6. *J. Aizya* (Hul) californica (Hul) Aizya (Hul) uganata (Hul) Md page 57 & 58
7. *J. Polypa* (Hul) lanceolata (Fitch) Gastropacha (Och) planosa Md plate 92 & 93.
3. *J. Pseudohaxia* (Hul) hara (Hul) hara (Hul) tembuluca (Mack) Salurnia (Sch) Southern Md page 53 & 54
9. *J. Pseudothyatira* (Gr) exulatrix (Gr) Cymatoptheroides (Hul) Md page 95 & 96.
10. *J. Eustrotia* (Hul) carniola (Guen) Eustrotia (Gr) Md page 110 & 93.
11. *J. Leidamia* (Hul) inscripta (Hul) Pterogon roseipennis (Hul) Md page 42 & 93
12. *J. Anonymia* (Och) pusulina (Guen) Md page 98 & 93.
13. *J. Loryodes* (Mack) acutaria (Hul) Md. page 124 & 93.
14. *J. Agnomia* (Hul) antia (Hul) Md. page 118 & 93.
15. *J. Melanthera* (Hul) gollucata (Guen) Md page 124 & 93. 34
16. *J. scolopteryx* (Guen) ulabrix (Guen) Md page 111 & 93.
17. *J. Melanthera* (Hul) reflexata (Guen) Md page 134 & 93.
18. *J. Eucirrhoea* (Hul) pampina (Guen) Gr Md page 104 & 93.
19. *J. Calorosa* (Gr) calorosa (Hul) Md page 132 (Basalus ?) Zerema ? Bas
20. *J. Hadena* (Och) arctica (Hul) namestra (Och) Md page 101, 105 & 93.
21. *J. Scolia* (Hul) undulata (Guen) Eucosma Md. page 108 & 93

7. planosa of whom (Tolype)
 11 Pterogon (inscripta) of whom
 21 Eucosma of whom
 19 Basalus of whom + if plech & Zerema Pajipon

L. 11652



Plate LIII (33)

- 1
1. *J. Choerodes* (Guen) *transversata* (Drury) Md page 127 55
2. *J. Grammos* (Felt) *serrata* (Drury) Md page 129 59.
3. *J. amphidasys* (Loeit) *quernaria* (S&A p 108) Md page 130 58
4. *J. Homoptera* (Bois) *ecusa* (Drury) Md page 112 56 } *abraxas* *Ellopha*
5. *J. Eufitchea* (Pack) *rhaxera* (Felt) not *abraxas* (not) Md page 129 59.
6. *J. Angerona* (Dup) *crocatania* (Guen) Md page 128 58.
7. *J. Calerodes* (Guen) *metacamparia* (Guen) Md page 128 58
8. *J. Agrotis* (Gch) *clandestina* (Barr) Md page 102 54
9. *J. Agrotis* (Gch) *c. nigrum* (Linn) Md page 103 58.
10. *J. Plusia* (Gch) *gallea* (Geyer) Md page 111 59
11. *J. Agrotis* (Gch) *suffusa* (L&S) Md page 102.
12. *J. Tebracis* (Guen) *crocallata* (Guen) Md page 129 59.
13. *J. Hypera* (Sch) *ballionalis* (Guen) *madefactalis* (Guen) Md page 122 58.
14. *J. Corycia* (Dup) *vestitata* (Guen) Md page 132 59
15. *J. Ulysis* (Gch) *plecta* (Linn) *ochropleura* Md page 104 58.
16. *J. Mamestra* (Gch) *herbimacula* (Guen) *caluena* (S&A) Md page 102 58.
17. *J. Heliothis* (Gch) *pallens* (Gut) Md page 98 58.
18. *J. Agrotis* (Gch) *trivosa* (Linn) Md page 102 58.
19. *J. Plusia* (Gch) *contorta* (Felt) Md page 110 58

<i>Abraxas</i> of whom	do	1/2	5
<i>Ellopha</i>	do	do	5
<i>Crocalenia</i>	do	do	6
<i>Crocallata</i>	do	do	12
<i>Ochropleura</i> (<i>Agrotis</i>)	do	do	15



Plate LIV (54)

- 1 ♀ *Arctia* (Sch) *nais* (Walk) *Ma page 62. ♂♂.*
 2 ♀ *Arctia* (Sch) *perseptone* (Harr) ♀ *Ma page 63. ♂♂.*
 3 ♂ *do do nais* (var *phalerata* Harr) ♀ *do do*
 4 ♂ *do do do* ♂ *do do*
 5 ♂ *do do figurata* (Harr) *Ma page 63. ♂♂*
 6 ♀ *Ephemerella* (Hul) *scribneri* Stoll *Phalena oculatissima* (10 pl. ♀)
Ma page 62. ♂♂.
 7 ♀ *Pachystia* (Park) *orbella* (Wlk) *Arctia* vs (Sch) *Ma page 62. ♂♂.*
 8 ♀ *Arctia* (Wl.) *auge* (H.) *Ma page 62. ♂♂.*
 9 ♀ *Arctia* (Park) *arctica* ♂ (Wlk) *Arctia* (Sch) *perseptone* (Harr) *Ma page 63. ♂♂.*
 10 ♀ *Arctia* (Sch) *nigra* (30. 16. 65) *Arctia* (Sch) *perseptone* (Harr) *Ma page 63. ♂♂.*
 11 ♀ *Arctia* (Park) *arctica* ♀ (Wlk) *Arctia* (Sch) *perseptone* (Harr) *Ma page 63. ♂♂.*
 12 ♀ *Arctia* (Stoll) *arctica* (al) *Arctia* (Sch) *perseptone* (Harr) *Ma page 63. ♂♂.*
 13 ♀ *Arctia* (Harr) *arctica* (Harr) *Arctia* (Sch) *perseptone* (Harr) *Ma page 63. ♂♂.*
 14 ♀ *Arctia* (Park) *arctica* (Wlk) *Arctia* (Sch) *perseptone* (Harr) *Ma page 63. ♂♂.*
 15 ♀ *Arctia* (Stoll) *arctica* (al) *Arctia* (Sch) *perseptone* (Harr) *Ma page 63. ♂♂.*
 16 ♀ *Arctia* (Harr) *arctica* (Harr) *Arctia* (Sch) *perseptone* (Harr) *Ma page 63. ♂♂.*
 17 ♀ *Arctia* (Sch) *arctica* (Wlk) *Arctia* (Sch) *perseptone* (Harr) *Ma page 63. ♂♂.*
 18 ♀ *Arctia* (Harr) *arctica* (Harr) *Arctia* (Sch) *perseptone* (Harr) *Ma page 63. ♂♂.*

Phalena arctica H. G.



1. *S. Gramica* (Gu.) *hiota* (Sw.) Mamestra (Ck.) exusta (Ck.) 6. 11. 21;
 ma page 101. 25.
2. *S. albipura* (Gu.) pyramoides (Gu.) ma page 111. 25
3. *S. (Molition) Pack* depunctata (G. & P.) 3. 4. 90 n. 2. 5. 1. 4. ma page 125. 25.
4. *S. Nardana* (Ck.) mistoloides (Gu.) ma page 105. 25.
5. *S. (Molition) Pack* irrorata (Pack) ma page 85. 25.
6. *S. Eustratia* (Hüb.) apicosa (Gu.) Eustratia (Ck.) negretula (Gu.) ma page 116. 25.
7. *S. (Molition) Pack* malana (Sill.) 5. 14. 11. ma page 172. 25.
8. *S. (Molition) Pack* sericea (Gu.) ma page 128. 25.
9. *S. (Molition) Pack* stramentaria (Sw.) ma page 120. 25.
10. *S. (Molition) Pack* verea (Hüb.) ma page 110. 25.
11. *S. (Molition) Pack* interior Mamestra (Ck.) exusta (Ck.) 6. 11. 21;
 ma page 101. 25.
12. *S. (Molition) Pack* herbaria (Sw.) Bronchia (Gu.) ma page 120. 25.
13. *S. (Molition) Pack* cyrenoides (Gu.) herbaria (Ck.) ma page 120. 25.
14. *S. (Molition) Pack* multispinata (Gu.) Harpala (Pack) 7. 11. 21;
 ma page 120. 25.
15. *S. (Molition) Pack* aduncta (Gu.) ma page 171. 25.
16. *S. (Molition) Pack* adipens (Sw.) Pyraea ma page 91. 25.
17. *S. (Molition) Pack* tris (Gu.) ma page 104. 25.
18. *S. (Molition) Pack* romaria (Sw.) ma page 118. 25.
19. *S. (Molition) Pack* costalis (Hüb.) ma page 173. 25.
20. *S. (Molition) Pack* costalis (Hüb.) ma page 101. 25.
21. *S. (Molition) Pack* costalis (Hüb.) pyraea (Gu.) ma page 123. 25.
22. *S. (Molition) Pack* costalis (Hüb.) pyraea (Gu.) ma page 123. 25.
23. *S. (Molition) Pack* costalis (Hüb.) pyraea (Gu.) ma page 123. 25.
24. *S. (Molition) Pack* costalis (Hüb.) pyraea (Gu.) ma page 123. 25.

Harpala of whom 13
Pyraea of whom 16
Globaena of whom 9.



1. *A. unguis* (Lam) unnamed Florida pag 11. 56.
 2. *S. spargueria* (Pret.) var. (Lam) *Cyrtopelta* (Hul) Florida pag 118. 21. 56.
 3. *S. id.* *id.* *id.* (Lam) *id.* *id.* *id.*
 4. *S. id.* *id.* *id.* (Lam) Florida *id.* *id.* *id.*
 5. *S. id.* *id.* *id.* (Lam) Florida *id.* *id.* *id.*
 6. *Xanthophora* (Lam) *id.* *id.* (Lam) Florida pag 55. 56.
 7. *Glyphodes* (Lam) unnamed ? Florida *id.* *id.* *id.*
 8. *S. corchoracea* (Lam) *id.* *id.* (Lam) Florida page 124. 56.
 9. unnamed ? Florida. pag 105. 56.
 10. *S. ygeranthocia* *marginata* (Lam) *Anthracia* (Bris) Florida pag 105. 56.
 11. unnamed ? Florida pag 172. 56.
 12. *S. phakellura* (quidding) *lygalinalis* (Lam) Florida page 123. 56.
 13. *S. nemora* (Hul) *chlorosteuca* (Lam) Md. pag 131. 56.
 14. *S. stenophyes* *serinalis* (Walk) Georgia page 173. 56.
 15. *S. nemolita* (Lam) *id.* (Lam) Florida *id.* *id.* *id.*
 16. *S. Zenobonia* *perspectalis* (Hul) Florida page 123. 56.
 17. *S. Lygranthocia* *id.* (Lam) *Anthracia* (Bris) Florida page 105. 56.
 18. *S. Eudryas* (Hul) *id.* (Lam) *Eratia* (Lam) Md page 110. 56.
 19. *S. Clara* (Lam) Florida (Lam) Florida page 106. 56.
 20. *S. Lygrantha* (Hul) *aurora* (Lam) Md page 80. 56.
 21. *S. unnamed.* ? Florida pag 178. 56.
 22. *S. Otenucha* (Hul) *id.* (Lam) Fla. page 57. 56.
 23. *S. Pyromorpha* (Hul) *id.* (Lam) *Matthaca* (Lam) *id.* (Lam) Md page 83. 56.
 24. *S. Sopsis* (Walk) *id.* (Lam) *id.* (Lam) Md page 59. 56.
 25. *S. Crocota* (Hul) *id.* (Lam) Md page 66. 56.
 26. *S. Eudryas* (Bris) *id.* (Lam) Md page 87. 56.
 27. *S. Eudryas* (Bris) *id.* (Lam) Md page 87. 56.
 28. *S. Crambeida* (Pret.) *id.* (Lam) Md page 60. 56.
 29. *S. halidota* (Hul) *id.* (Lam) Md page 69. 56. *Sophoca* (Lam)
 30. *S. id.* *id.* (Lam) Md page 69. 56. *Sophocera* (Lam)
 31. *S. Calomorphia* (Lam) *id.* (Lam) *id.* (Lam) Md page 62. 56.
 32. *S. Calomorphia* (Lam) *id.* (Lam) *id.* (Lam) Md page 62. 56.
 33. *S. Calomorphia* (Lam) *id.* (Lam) *id.* (Lam) Md page 63. 56.

Renegia of whom see p 14
 Setiformis *id.* of whom p. 5
 Nipropombrina of whom — p 6
 Lygranthocia of whom — p 17
 Zenobonia of whom — p 16
 Stenophyes of whom — 14
 Lecanota (Calomorphia) — 33.

2 LVI. 86



1. *Cerciocampa* (Curt.) americana (Harr 372) *Acipiens* (Walk) Md page 93 58.
 2. *Saga* (Harr) *pyxidifera* (S&A p. 36) Md page 72 59.
 3. *Scathura* (Kub) *inclusa* (Kub) *Castora* (Curt.) *americana* (Harr) Md page 77 58.
 4. *S. canadensis* (Pack) *unicornis* (S&A) *edema* (Walk) Md page 52 58.
 5. *Cerciocampa* (Curt.) *distria* ♀ (Gr) *Stenolisa* (Harr. Jr.) Md. page 92 58.
 6. *Taphodonta* (Pack) *angulosa* (S&A) ♀ Md page 51 58.
 7. *Chlorocampa* (Kraut) *obliqua* (S&A) Md page 87 58.
 8. *Inguira* (Guen) *delincata* (Guen) Md page 118 58.
 9. *Unictor* (Hub) *nubilunda* (S&A) *Dryocampa* (Harr) Md page 91 58.
 10. *Edema* (Walk) *albicornis* (S&A p. 80) Md page 81 58.
 11. *Unicta* (Hub) *stigma* (Hub) (S&A. 171) *Lynocampa* (Harr) Md page 92 58.
 12. *Periphora* (Harr) *mesheimeri* (Harr) Md page 76 58.
 13. *Hadata* (Mun) *gibbosa* (S&A p. 82) Md page 80 58.
 14. *Amirapis* (Guen) *crispinulata* (Harr) Md page 133 58.
 15. *Unicta* (Hub) *anatolica* ♂ (S&A) *Lynocampa* (Harr) Md page 91 58.
 16. *Hadata* (Walk) *major* (S&A p. 63 p. 62 f. 5.) Md page 80 58.
 17. *Amirapis* (Pack) *terrestris* (S&A) Md page 75 58.
 18. *Unicta* (Hub) *anatolica* ♀ (S&A) *Lynocampa* (Harr) Md page 81 58.
 19. *Hadata* (Guen) *phacalis* (Guen) Md page 123 58.
 20. *Hadata* (Guen) *exlineata* (Pack) (S&A p. 12) Md page 122 58.

ex lineata of whom p 20



Plate LVIII. (58)

1. *S. (Chytolita) (Gr.) morbidalis* (Guen) Md. page 132 58.
 2. *S. (Chytolita) (Gr.) figurata* (Swamy) Md. page 63. 58.
 3. *S. (Chytolita) (Gr.) unnamea* Md. p. 114. 58.
 4. *S. (Chytolita) (Gr.) ultra* (Grate) Md. page 174 58.
 5. *S. (Chytolita) (Gr.) rosea* (Pack) Md. page 35 58.
 6. *S. (Chytolita) (Gr.) pedipalata* (Guen) Md. page 122 58.
 7. *S. (Chytolita) (Gr.) maculochia* (Kirb) Missouri. page 37 58.
 8. *S. (Chytolita) (Gr.) opella* (Gr) Md. page 61 58.
 9. *S. (Chytolita) (Gr.) albata* (Clem) Md. page 60 58.
 10. *S. (Chytolita) (Gr.) unnamea* ? Md. page 150 58. Cam
 11. *S. (Chytolita) (Gr.) nebris* (Guen) Md. page 99 58.
 12. *S. (Chytolita) (Gr.) unnamea* ? Md. p. 16. 58. (page 16 58)
 13. *S. (Chytolita) (Gr.) slimula* (Pack) Md. page 73. 58.
 14. *S. (Chytolita) (Gr.) egle* (Swamy) Md. page 67 58.
 15. *S. (Chytolita) (Gr.) distria* (Grate) ex (valical) (Hos) (bar) Md. page 98 58.
 16. *S. (Chytolita) (Gr.) newmani* (Clem) Md. page 159 58. (newmaniella)
 17. *S. (Chytolita) (Gr.) brunnea* (Gr) Md. page 85 58.
 18. *S. (Chytolita) (Gr.) cerni-jara* (Harvey) Md. page 113 58. (newmaniella)
 19. *S. (Chytolita) (Gr.) parvula* (G. R. in LXIII) Md. page 11. 58.
 20. *S. (Chytolita) (Gr.) (newmani) (Grate)* from Missouri page 81. 58.
 21. *S. (Chytolita) (Gr.) unnamea* Md. page 147. 58.
 22. *S. (Chytolita) (Gr.) angulosa* (Pack) Kansas page 61 58.
 23. *S. (Chytolita) (Gr.) grayna* (Cram) Md. page 115. 58.
 24. *S. (Chytolita) (Gr.) coryana* (Guen) Md. page 114. 58.
 25. *S. (Chytolita) (Gr.) hawlandti* (Gue) Utah. page 115. 58.



Plate LIX 59.

- 1. *S. Manisstra* (Coh) latex (Guen) Cu cis (Hub. Md page 101. 52.
 -2. *S. Heterocampa* (Loub) unnamed? Md page 84. 54.
 -3. *S. Opiliva* (ab) americana (Harr) acris (S&G 73) Md. page 98. 55.
 -4. *S. Ypsia* (Guen) aeviginosa (Guen) Md. page. 119. 56.
 -5. *S. do do do* (Var) do do do
 -6. *S. Eribus* (Lat) odoriferus. Md (ag coll) page 113. 59.
 -7. *S. Ditemitus* (Gr) elongatus (Gr) Remigia (Guen) discussa (Guen. Md page 118. 1917.
 -8. *S. Heterocampa* (Guen) biundata (Walk) se lxxiii/91.
 ? Gochmaeus (Loub. Cavalus (Pack) Md page 84. 56.
 -9. unnamed? (se lx/q.) Md page 110. 56.
 -10. *S. Kadena* (Coh) muscoides (Guen) Md page 106. 52.
 -11. *S. parvicornis* (Hüb) bistriaria (deub. Opiliva Md. page 117. 55.
 -12. *S. panopoda* (Guen) rosicosta (Guen) se lxxiv. Md page 117. 55.
 -13. *S. Opiliva* (Guen) hexastyla (Thoug) Md page 117. 55.
 -14. *S. panopoda* (Guen) carneicosta (Guen) Md page 117. 55.



1. *S. Tomacodes* (Lab) *inornata* (S. & R.) *Ind. page 73. 58.*
2. *S. Anantha* (Guen) *ramulosa* (Guen) *Ind. page 112. 58.*
3. *S. Odemaria* (Parks) *concreta* (Leach) ♂ *Ind. page 82. 58.*
4. *S. unnamed* ♀ *Ind. page 174. 58.*
5. *S. Siphonogorgia* (Steph) *pinastri* (Steph) *Ind. page 116. 121. 58.*
6. *S. Perigea* (Guen) *xanthioides* (Steph) *Ind. page 118. 121. 58.*
7. *S. unnamed* ♀ *Ind. page 172. 58.*
8. *S. Thadema* (Lech) *xylencoides* (Guen) *Ind. page 106. 58.*
9. *S. unnamed* ? probably same as 6X/4 *Ind. page 174. 58.*
10. *S. Acronycta* (Lech) *afflicta* (Gr) *Ind. page 47. 58.*
11. *S. Busytophia* (Pack) *anguina* (S. & R.) *notodonta* (Lech) *Ind. page 82. 58.*
12. *S. Keratothis* (Lech) *armiger* (Mab) *Ind. page 108. 58.*
13. *S. unnamed* ♀ *Ind. page 175. 58.*
14. *S. Euplexia* (Steph) *Luajana* (Finn) *Ind. page 108. 58.*
15. *S. Plusia* (Cob) *simplex* (Guen) *Ind. page 111. 58.*
16. *S. Plusia* (Cob) *precatioris* (Guen) *Ind. page 111. 58.*
17. *S. Plusia* (Cob) *simplex* (Guen) *Ind. page 111. 58. (over 100)*
18. *S. Sitosca* (Gr) *convalescens* (Guen) ♀ *Ind. page 174. 58.*
19. *S. Cucullia* (Lech) *astrooides* (Guen) *Ind. page 102. 58.*
20. *S. Pseudaglossa* (Gr) *tubricalis* (Geyer) *Ind. page 174. 58.*
21. *S. Acronycta* (Lech) *oblongata* (S. & R.) *Ind. page 98. 58.*
22. *S. Acronycta* (Lech) *lobeliae* *Ind. page 98. 58.*
23. *S. Paodes* (Lois) *cinerola* (Guen) *Ind. page 101. 58.*
24. *S. unnamed* ♀ *Ind. page 104. 58.*
25. *S. niphelodes* (Guen) *minions* (Guen) *Ind. page 100. 58.*

Loesiae of whom p 22

LX. 60





[Faint handwritten notes]

[Faint handwritten notes]

[Faint handwritten notes]

1. *S. macrocarum* (Guen) *obovata* (Erdt) *ind. pag 175. 56.*
2. *S. unnamid* ? *ind. pag 174. 56.*
3. *S. unnamid* ? *ind. pag 174. 56.*
4. *Euphanea* (Pack) *manducal* (Walt.) *Eulch* (*sp. f. ornata*) *H. Sch* *ind. pag 174. 56.*
5. *S. Sphyr* (Walt.) *myrtilaris* (Guen) *ind. pag 132. 56.*
6. *S. unnamid* ? *ind. pag 174. 56.*
7. *S. unnamid* ? *ind. pag 174. 56.*
8. *Humilis* (Lut.) *obfornaria* (Fous) *ind. pag 133. 56.*
9. *S. unnamid* ? *ind. pag 174. 56.*
10. *S. unnamid* ? *ind. pag 174. 56.*
11. *Procyon* (Guen) *armataria* (H. Sch) *ind. pag 127. 56.*
12. *S. unnamid* ? *ind. pag 174. 56.*
13. *Platylabus* (Sesq.) *varcovata* (Walt.) *ind. pag 35. 56.*
14. *Cedaria* (Treib) *diversolineata* (Kuh) *ind. pag 135. 56.*
15. *S. unnamid* ? *ind. pag 174. 56.*
16. *S. unnamid* ? *ind. pag 174. 56.*
17. *Bourm* (Emit) *intraria* (Guen) *ind. pag 130. 56.*
18. *S. unnamid* ? *ind. pag 174. 56.*
19. *S. Hyperot* (Guen) *exhumaria* (G. C) *ind. pag 128. 56.*
20. *S. Endrocia* (Guen) *madusaria* (Walt.) *ind. pag 128. 56.*
21. *S. Endrocia* (Guen) *effectaria* (Walt.) *ind. pag 129. 56.*
22. *S. ochorodes* (Guen) *unnamid* ? *ind. pag 174. 56.*
23. *S. unnamid* ? *ind. pag 174. 56.*
24. *S. unnamid* ? *ind. pag 174. 56.*
25. *S. unnamid* ? *ind. pag 174. 56.*
26. *S. unnamid* ? *ind. pag 174. 56.*



Plate LXIII (63)

1. *S. Xystus* (Grote) *robeniae* (Peck) & *Xyleutes* (Hüb.) Crepura Md page 93. 25.
2. *S. Calocala* (Sch) *ilia* (Cram) Md page 115. 26.
3. *S.* unnamed? Md page 174. 26.
4. *S. Epiparthenos* (Grote) *nubilis* (Hüb) Md page 113. 26.
5. *S. Eurymera* (Dup) *frigidaria* (HSch) Md page 129 X. 26.
6. *S. Anophora* (Clem) *fluripennis* (Clem) Page 174. 26.
7. *Pur or ~~Aggya~~* (Peck) *paralalla* (G.H.) see LVIII/19 Md. page 71. 26
8. *S. Calocala* (Sch) *desperata* (Guen) Md page 116. 26.
9. *S. Xystus* (Grote) *robeniae* ♂ (Peck. Hüb) *Xyleutes* (Hüb.) Crepura Md page 93.
10. *S. calocala* (Sch) *amasia* (Hüb) Md page 113. 26.
11. *S. calocala* (Sch) *amica* (Hüb) or, prob. *androphila* of Guen) Md page 113.
12. *S. Calocala* (Sch) *mira* (Grote) Md page 113. 26.
13. *S. Ephisia* (Hüb) *clonymphæ* (Hüb) Md page 113. 121. 26.

Crepura of whom 10!



Plate LXIV .64.

1. *S. Panopoda* (Guen) *roseicosta* (Guen) Md page 117. 58.
2. *S. unnamed* (new) Md p. 174 58
3. *S. unnamed* Md p 174 58
4. *S. unnamed.* (S on Thistle) Md June p. 174. 58.
5. *S. unnamed* Md June p 174 58.
6. *S. unnamed* Md June p 174 58.
7. *S. unnamed* Md (Ser X/12) p 174 58.
8. *S. Agrotis* (Och) *incanis* (Guen) Md page 103 58
9. *S. Tortrix* (Treils Linn) unnamed (LXXIII/13) May } Md page 133 58
June
10. *S. Diphthera* (Och) *devidens* (Pack) *charadrea* (Pack) Md page 94 58
11. *S. Empretia* (Clem) *stimulea* (Pack) Md page 73. 58.
12. *S. unnamed* ? June Md page 174 58.
13. *S. de* — ? Oct. de de 174 58
14. *S. de* — ? N Md page 174 58.
15. *S. Chrysothra* (G&R) *fungorum* (G&R) Md page 162 58. (Cheophaez)
16. *S. unnamed* (L 11/16, April. Md page 174 58.
17. *S. unnamed* (New) May, Md page 174 58 (New)
18. *S. Tortrix* (Treil Linn) unnamed Md page 174 58.
19. *S. unnamed* ? (L 11/16) May. Md page 174 58.
20. *S. unnamed* ? — Md page 174 58.
21. *S. Phobotron* (Foub) *pithecum* ♀ (Sca) Md page 73 58.
22. *S. unnamed* ? (new) Md page 174 58
23. *S. Limacodes* (Lat) *scapha* (Harr) Md page 78 58
24. *S. Eutrapela* (Hüb) *transversata* Md page 124 58
25. *S. ucla* (Hüb) *panulata* (Clem) *Limacodes* (Lat) *cypus* (Gram) Md page 72. 58
26. *S. Anisota* (Hüb) *hellucida* (Sca) ♀ *Loryocampa* (Harr) Md page 70 58
27. *S. de* → de → de → ♀ de → de → de →
28. *S. Heleroampa* (Doub) *pulverea* (G&R) Md page 83
29. *S. Arctae* (Pack) *hunctostriga* (Pack) Md. page. 9. 58
30. *S. unnamed* ? Md page 174 58.
31. *S. Catoxoa* (Sch) *minuta*. (G and Lentre) Md page 111 58.



Plate LXV. 65.

1. *J. namostra* (Coh) corea (Guen) Mass. page 175. ♂♀.
 2. *J. Ochryra* (Hub) designata (Hub) Mass. page 175. ♂♀.
 3. *J. Euclia* (Hub) querceti (H Sch) monitor (Pack) Mass. page 70. ♂♀.
 4. *J. Hadena* (Wot) feritima (Guen) Mass. page 101, 105. ♂♀.
 5. *J. Pachecospila* (Guen) unnamed ♀. Mass. page 131. ♂♀.
 6. *J. unnamed* ♀. Mass. page 175. ♂♀.
 7. *J. Geophila* (Hub) unipuncta (Guen) (Dark variety) Mass. page 98. ♂♀.
 Leucania (Coh) extranea Guen
 8. *J. Anti thesia* furinosa (Pack) Mass. page 139. ♂♀.
 9. *J. Eufestonia* (Pack) notaria (Walk) Mass. page 133. ♂♀.
 10. *J. Hepialus* (Linn) mustalinus (Pack) Mass. page 94. ♂♀.
 11. *J. Corycia* (Lsh) semiclavata (Walk) Mass. page 132. ♂♀.
 12. *J. Hydrocacia* (Guen) nictitans (Linn) Mass. page 99. ♂♀.
 13. *J. Baptria* (Hub) elbovillata (Guen) Mass. page 132. ♂♀.
 14. *J. Stegania* (Guen) ~~festuaria~~ *festuaria* (Guen) Mass. page 132. ♂♀.
 15. *J. Arctia* (Sch) virguncula (Walk) Mass. page 63. ♂♀.
 16. *J. Anisopteryx* (Steph) vernata ♂ (Harr) Mass. page 137. ♂♀.
 17. v. do - do - do - ♀ do do
 18. *J. Anisopteryx* (Steph) homotaria ♂ Harr Mass. page 137. ♂♀.
 19. *J. do* do do ♀ do do
 20. *J. Plusia* (Coh) oxygramma (Guen) Mass. page 110. ♂♀.
 21. *J. Curullia* (Coh) umbratica (Gr) Mass. page 106. ♂♀.
 22. *J. unnamed* Mc. 11. 65 fig 22.
 23. *J. Elima* (Clem) bombycoides (Walk) *Hyloicus* (Hub) *harrisi* Clem
 24. *J. Cleora* (Curtis) fulchamra (Minot) Mass. page 150. ♂♀.
 25. *J. Calocampa* (Hub) rufepera (Lutimer) Mass. page 106. ♂♀.
 26. *J. Nerice* (Walk) bidinata (Walk) Mass. page 81. ♂♀.
 27. *J. Xylota* (Coh) bathemai (Guer) Mass. page 106. ♂♀.
 28. *J. Calocala* (Sch) badia (Guer) Mass. page 111. ♂♀.
 29. *J. Dylomiges* (Guen) confusa (Hub) Mass. page 100. ♂♀.

Anti thesia of whom p. 8



1. *S. Dasylophia* (Pack) *anguina* (SVA p 84) Geo. Page 52 59.
2. *S. Soli* (Hub) *velloda* (SVA p 52) Geo. Page 72 59.
3. *S. Chloridea* (West) *rhoxiae* (SVA p 100) Geo. page 107 59. Phalana SVA
4. *S. Adeta* (Grote) *chionanthi* (SVA p 195) Geo. page 118 59.
5. *S. Xylomyges* (Guen) *Phytolaccae* (SVA p 94) Geo. page 100 59.
6. *S. do do do do do do do do*
7. *S. (Alaria* (West) *gaurae* (SVA p 99) Rhizophora page 106 59.
8. *S. Pholetron* (Gul) *pithecum* (SVA p 74) Geo. page 73 59.
9. *S. Oudemasia* (Pack) *concinna* (SVA p 85) Geo. page 82 59
10. *S. do do do do do do do do*
11. *S. Laphnygma* (Guen) *fugiperda* (SVA p 96) Geo. page 100 59.
12. *S. do do do do do do do do*
13. *S. Parorgyia* (Pack) *leucophaea* (SVA p 79) Geo. page. 71 59.
14. *S. Linea* (Linn) *flavifrontella* (Harr) taken in Md. see page 148 59.
15. *S. Svararia* (Pack) *echo* (SVA p 68) plate 65 59.
16. *S. Acronycta* (Gch) *Americana* (L.) see Apatela (Fab) (Aceris) SVA p 92
Georgia page 97 59
17. *S. Homoptera* (Bdu) *calycanthata* (SVA p 104) Geo. page. 112 59.
18. *S. do do do do do do do do*
19. *S. Parorgyia* (Pack) *leucophaea* (SVA p 78) Geo) plate 71 59.
20. *S. Urcia* (Sch) *placentia* (SVA p 65) Geo. page 63 59.
21. *S. Catocala* (Sch) *consors* (SVA p 89) Geo. page 114 59.
22. *S. Rhacoma* *furcula* (Ritter moth) Smith & Abbott LXXI. 59
Cecura (Sch) *furcula* (Sm) (Morris 23) Ptygocera (pack & Grote)

Figured from Smith & Abbott's "Insects of Georgia"
as the plates are out of print, and are very scarce. 59.



1. *S. Gerrima* (Walk) *henrietta* (Grote) Mass. page 107. ♂♂.
2. *S. Lithosia* (Fab) *licolor* (Gr) Mass. page. 60 ♂♂
3. *S. Bortyna* (Coh) *leucostigma* (Guen) Mass. page 99. ♂♂.
4. *S. Anthracia* (Bdr) *hirilla* (Gr) Mass. page 107 ♂♂
5. *S. do do brevis* (Gr) Mass. page 107 ♂♂.
6. *S. Mamestra* (Coh) *legitima* (Gr) Anameca (Cov) Mass. page 101. ♂♂.
7. *S. Loxotaenia* (Steph) *cerasivorana* ♀ (Fitch, Tortrix (Sinn) Mass. page 139. ♂♂
8. *S. Loxotaenia* (Steph) *rossicana* (Harr) Tortrix (Linn) Mass. page 139. ♂♂.
9. *S. do do do ♂ do do do do do do*
10. *S. do do do do ♀ do do do do do do*
11. *S. Microcaelia* (Guen) *diphtheroides* (Guen) Mass. page 96. ♂♂.
12. *S. Ceramica* (Coh) *picta* (Harr) Mamestra (Coh) *exusta* Guen, Mass. page 101 ♂♂
13. *S. Harrisimemna* (Guen) *s. guttata* (Harr) Grammophora (Guen) trisinuata (Loub. } Mass. page 96 ♂♂
14. *S. Calpa* (Sneis) *canadensis* (Bethune) Mass. page 111. ♂♂.
15. *S. Sthenopis* (Pack) *argentea* (Pack) Lichobius Mass. page 94
16. *S. Orthosia* (Coh) *unnamed* Mass. (L. 108) ♂♂
17. *S. Hypena* (Coh) *elegantis* (Fulton) Mass. page 122 ♂♂.
18. *S. Heliothis* (Coh) *phlogophora* (L. ♀♂) Illinois page 108 ♂♂.
19. *S. Trucha* (Kirby) *virginica* (Clem) Tale page 59. ♂♂.
20. *S. Lycomorpha* (Harr) *pholus* (Drury) Tale. page. 79. ♂♂.
21. *S. unnamed* ♀. Md. page 176 ♂♂.
22. *S. Homopyralis* (Grote) *lactus* (Gr) (see p 16/6) Md. page 170 ♂♂.
23. *S. Heliothela* (Hüb) *harveyi* (Gr) Md. page 98 ♂♂.
24. *S. Platystrotes* (Lsh) *juncea* (Gr) Sespeyres virgiana Md. page 55 ♂♂.
25. *S. do do do fabula* (Fitch) arcuata (Walk) Md. page 85 ♂♂.
26. *S. Panopoda* (Guen) *nufimargo* (Hüb) cessionii (Gr) Md. page 117. ♂♂.
27. *S. Acidalia* (Sneis) *persimilata* (Gr) Md. page. 132. ♂♂.
28. *S. Hamileuca* (Walk) *maia* (Drury) Leucozonia (Pack northern specimen fm Tale. page 58 ♂♂

Helopis of whom see p 15
Sespeyres of whom " 24.
virgiana of whom " 24



G. H. Waller



1. *Depressaria* (Harr) *cinerea* Costella (Clem) *Walsh Illinois* page 144 59.
Lorotaenia (Slegh) *placida* (Kobler) *Sorbia* (Wrat) *Walsh Ill. plate 138 59.*
 2. *Sorbia* (Wrat) *unamed* ? *Walsh Illinois Plate 139 59.*
 3. *Depressaria* (Harr) *pulvifimella* (Clem) *Walsh Ill. page 144 59.*
 4. *Machonia* *texturifolia* (Clem) *Depressaria* (Harr) *confertellus* (Walsh)
 G. R. Tr. A. S. 2. 84 *Walsh Illinois page 147 59.*
 5. *unamed* (Wrat or Junge) *Walsh Ill. page 175 59.*
 6. *unamed* ? *Walsh Ill. page 175 59.*
 7. *Phaeocarpophora* (Grote) *mutabiliana* (Clem) *Walsh Ill. page 175 59.*
 8. *unamed* *Brev* in *Umbroda* *July* in *flum* *tree* *black* *knout* 59. *Walsh Ill plate 175 59.*
 9. *Batachela* (Zeller) (Slant) *salicibromella* (Clem) *Walsh Ill. page 189 59.*
 10. *Brenthia* (Clem) *havanacella* (Clem) *Walsh Ill. page 182 59.*
 11. *B. Batis* (Wrat) *unamed* ? *Walsh Ill. page 129 59.*
 12. *Sorbia* (Wrat) *gallicolana* (Clem) *PESP 2 p. 513* *peronea* *Walsh Ill. page 121 59.*
 13. *Protella* (Walsh) (new Genus *noctuidae*) (Clem) *Walsh Ill. page 118, 121. 59.*
 14. *do do do do do do do do*
 15. *do do do do do do do do*
 16. *do do do do do do do do*
 17. *Philemora* (Grote) *longilabris* (Grote) *Walsh Illinois page 142 59.*
 18. *Bomolocha* (Hub) *profecta* (Grote) *Walsh Illinois page 122 59.*
 19. *Bomolocha* (Hub) *perangulata* (Hannay) *Walsh page 122 59.*
 20. *Schinia* (Hub) *trifascia* (Hub) *Walsh Illinois Page 118, 122. 59.*
 21. *Walshia* (Clem) *amorphella* (Clem) *Walsh Illinois page 158 59.*
 22. *Eustrotia* (Hub) *apicosa* (Harr) *Erastria* (Ck) *Walsh Ill. page 117 59.*
 23. *Crambodes* (Guen) *talidiformis* (G.) *Walsh page 102 59.*
 24. *unamed* ? *Walsh Illinois plate 175 59.*
 25. *Agrotis* (Ck) *messonia* (Harr) *Walsh, plate 102 59. Illinois*
 26. *unamed* ? - *Walsh Illinois page 175 59.*
 27. *Catadactyla* (Hub) *fulvicalis* (Clem) *Walsh page 126 59.*
 28. *noctuidae* (Ck) *ps* of *Euroke* *Walsh Ill. page 126 59.*
 29. *unamed* ? *Walsh Illinois page 175 59.*
 30. *Acronycta* (Ck) *afflicta* (Ck) *Walsh Illinois page 97 59.*
 31. *Hedya* (Hub) *saliciana* (Clem) *Walsh Illinois page 142 59.*
 32. *Hedya* (Hub) *saliciana* (Clem) *Walsh Illinois page 142 59.*
 33. *Tracilaria* (Zeller) *coroniella* (Clem) *Walsh Illinois page 130 59.*
 34. *Tarache* (Hub) *biplaga* (Guen) *Acronia* (Ck) *Walsh Illinois plate 118, 121. 59.*
 35. *Tarache* (Hub) *apivaa* (Hub) *acronia* *Walsh Illinois page 118, 121 59.*
 36. *Thyris* (Stig) *lugubris* (Bois) *Walsh Illinois page 56 59.*
 37. *Thyris* (Stig) *maculata* (Harr) *Walsh Illinois page 56 59.*
 38. *Lorotaenia* (Sleghers) *placida* (Kob) *Sorbia* (Wrat) *Walsh page 138 59.*
 39. *Eustrotia* (Hub) *musculosa* (Guen) *Erastria* (Ck) *Walsh Illinois page 110 59.*
 40. *Leilinia* (Hub) *erythema* (Guen) *Walsh Illinois page 175 59.*
 41. *unamed* ? *Walsh Illinois page 175 59.*
 42. *unamed* ? *Walsh Illinois page 175 59.*
 43. *Pterophorus* (Neuf) *periscedactylus* (Fitch) *Walsh Illinois page 161 59.*
 44. *Batis* (Wrat) *ruralis* (Guen) *Walsh Illinois page 136 59.*
 45. *unamed* ? *Walsh page 126 59. Illinois*
 46. *Tarache* (Hub) *candacta* (Guen) *var Acronia* (Ck) *Walsh Illinois page 110, 121 59.*
 47. *unamed.* *Walsh Illinois page 137 59.*

Machonia of whom p. 5
peronea of whom p. 13
hu of whom p. 38
Lorotaenia of whom p. 38



L. S. G. 1840

Plate LXX (70)

1. *Batis* (Lat) unnamed, Walsh, Illinois, page 126. 59.
2. *Ichnepteryx* (Zeller) undulataella (Clem) Phycita n. sp. Walsh, Walsh 59
126. 59.
3. *Batis* unnamed, Walsh, Illinois, page 179. 59.
4. *Centia* (Schr) saundersii (Gn) Phycita 65. 59.
5. *Batis* unnamed, Walsh, Illinois, Walsh, page 178. 59.
6. *Batis* do do do do page 178. 59.
7. *Proctia* (Hrb) unnamed, Walsh, Illinois, page 152. 59.
8. *Microdia* (Guss) *Duliterata* (Gn) Phycita NY, plate 97. 59.
9. *Euprepia* (Germ) americana ♀ (Harr) NY, page 62. 59.
10. *Tortona* (Coh) cataphracta (G & R) NY, page 99. 59.
11. *Batis* unnamed, Walsh, Illinois, page 172. 59.
12. *Crambodes* (Fab) leachellus (Lurck) Walsh, Illinois, page 175. 59.
13. *Cryptolechia* (Zeller) schlaegeri (Zeller) (Loak) see 515 Walsh, Illinois, page 163. 59.
14. *Cateocala* (Schr) epione (Drury) Walsh, Illinois, page 116. 59.
15. *Batis* unnamed, Walsh, Illinois, page 168. 59.
16. *Crambus* (Fab) mirimellus (Clem) Walsh, Illinois, page 126. 59.
17. *Microplitis* (Hub) noctuella (Dr) Walsh, Illinois, page 172. 59.)
18. *Cateocala* (Schr) concumbens, Walsh, NY, page 114. 59.
19. *Perilitus* (Pack) punctata, Walsh, Philadelphia, page 64. 59.
20. *Pangaris* (Pack) californica (G & R) NY, page 75. 59.
21. *Batis* unnamed, Walsh, Illinois, page 176. 59.
22. *Phyllocnistis* (Zeller) unnamed, Walsh, Illinois, page 162. 59.
23. *Stenocala* (Cn) curvata (Gn) G. & R. NY, page 114. 59.
24. *Batis* unnamed, Walsh, Illinois, page 175. 59.
25. *Anthracis* (Bois) spraguei (G) NY, page 108. 59.
26. *Stenocala* (Cn) chrysolata (G) NY, page 70. 59.

Phycita of whom 19. 2





J. G. Herr

Crocota is this right. Why not *Crocota* (of Kuhn?)

See Morris page 353. & 38 see 51/12/24

Catantopae cataractaria (p 52/19) if not also *Bassalus*. U. Zetter

Graphia unipuncta

Heliophila unipuncta if syn of *Leucania Ebrauca* p 65.

see also 16. pallens 53/7 4*

Eupithecia rubearia 53/5 if not syn of *Abraxas*.

What is *Hecaeerge* (Cch) see (D. 11) *Lylthea* Fab. (ask Strecker)

List of names wanted to finish plate no 1.

Lalana of whom see page 1, rig 1.

Acrotia sacchari of whom 25/11

Paratelia (Lichneria) 15/10 of whom

Clanaris (Urbia) 68/2 "

Urophora (plumipennis) 58/19 "

Calochoroma (Parasa) 51/14 "

Utheca (Lelia) 51/33 "

Planosa (Selys) 52/7 "

Paragor (Anacampa) 52/11 "

Eucosma (Scotana) 52/21 "

Ochromyza (Myotis) 53/5 "

Orubaera (Stramentalis) 53/4 "

Pemigia (belfragei) 56/10 "

Selysina (elegans) 56/5 "

nigropennis (Xanthoptera) 56/6 "

Lycanthacia (Antheca) 56/17 "

Stenophyes (serinalis) 56/14 "

Leucania (perispectalis) 56/16

Kingia

Leontei (Cuculimorphia) 56/33. --- "

extenuata (Nodalia) 57/9. --- "

Lobesia (Nodalia) 60/25. --- "

Lobesia

Empusa (Xylealis) 65/11. --- "

Intellectia (pinnosa) 66/8. --- "

~~*Leucania (perispectalis)* 56/16. --- "~~

Leucania olivata see *Heterocampa truncata* 68/21.

olivatus do do

Statalis (Anacampa) 17/1. --- "

Phyala (in Xanthoptera minus) 10/2. --- "



The larva of this insect burrows into the centre of the stems of sugar canes occasionally destroying whole acres. The larva figured was sent from Louisiana & had been described as very destructive to the cane in that region, The insect figured was presented to Mr Glover ~~an~~ ^{imported} from Mont. Guerin Meneville of Paris as coming from the Maurias. This worm ^{is} ~~was~~ also taken abundantly in New Orleans in the autumn of ~~1820~~ from Demerara and Sagueri in canes sent by the sugar cane expedition where the plant, had previously been introduced by the planters.

The system of bracking and keeping the cane clean is said to be the best method of keeping and preserving them and of preventing the borer and to protect the juice or sap.

This borer worm commences ^{its} ~~the~~ greatest injury in the cane after a rapid growth which is followed by a spell of dry weather.

The larva of another ^{lover} ~~various~~ (probably also a *Liatria*) ~~is~~ ^{was} also figured at pl 17 (fig 2) is very similar to the cane borer in form size and habits & is said to be very destructive to maize in low grounds in South Carolina in boring into the stalk generally & is sometimes found in the ears.

This insect resembles the cane borer so much, it may ~~be~~ ^{be} ~~thought~~ ^{supposed} that it may prove to be closely allied to it. ~~It~~ ^{It} needs further examination.



A & Ab. Abbreviations used
A or Aff. affairs or related to
Alab. Alabama
Apr. April
Av. avionic
Aug. August
Auth. Authority
Ugaviz

B & L. Basal and Lecompte
Bath
Bismarck
Bur & Burn. Burnmaster
But. Butler

C of Coc. Coccus & cocoon
Calif. California
Cat. Caterpillar
Chr. Chrysalis
Clem. Clematis
Coc. Cocoon
Conn. Connecticut
Cran. Cramer
Cramb. Crambus
Cur. Curtis

LD & S
LD & DC. District of Columbia
or Washington

Dal. Dalman
Dec. December
Der. Derivation
Doubt. Doubtful
Dor. Doray
Dun. Duncan
Dup.

1.
Other initials

Edu. Edwards
Esp. Experience
Ex. Example

F & Fab. Fabricius
Fam. Family
Feb. February
Feld. Felder
Fi & Fitch
Fig. Figure
Flo. Florida

For. Georgia
Gen. Genus
Germ. German
Prof. Geoffrey
Geo. Georgia
God. Godley
Gr. & Grö. Gröte & Robinson
Gr. Gröte
Gu. Guene
Guild. Guilding
Guiff. ?

Hal. Habitat
Harr. Harris
Harr. Harris
Hub. Hubner

I. Imago or perfect insect
In. Insect
Illig. Illiger
Ill. Illinois
Ind. Indiana

Jan January
 Ju Ju
 Ju Ju

Nc North Carolina
 Nj New Jersey
 New newly found or figured Sp.
 Nov November

Kan Kansas
 Ken Kentucky
 Kir Kirgiz

Och
 Oct October
 Ohio

L.P.P. Larva pupa & period of life
 L or Lar Larva or caterpillar
 Lad
 Lat Laticollis
 Lea Leach
 Lea Leder
 Lead Leadbury
 Lep. Lepellet
 Lerm or L. Lermicus
 Lent Lenticular

P.S.P. Proceedings of Entomological
 Society of Pennsylvania
 Pa Pennsylvania
 Pack Packard
 Phil Philadelphia
 Pl. plate
 pup. pupa or chrysalis

Reck Reckert

S & A Smith and Abbott
 Sand Sandborn
 Sand or Sand Saunders
 Sat Saturday or saturnia
 Say

Ma May
 Ma & made this ~~~~~
 signifying another name also
 used as a synonym

Mar March
 Mass Massé Russell & Mansueti
 Mex Mexico
 Mex Mexico
 Miss. Mississippi
 Mich Michigan
 Misso & Mo Missouri
 Mor Morris
 Mor Menetries

Sc, S, Scud Scudder
 Sch Schenck
 Sep September
 So South Carolina
 So am South America
 So Cal South California
 Sp & Shy Skyes
 St Stanton
 St Stephens
 Syn. Synonyms
 Swain Swainson
 Sp. Shoppara Librarian Congress
 Library

S or S^a. Synonymus
So of whom

T or T^a. Louisiana Glover
Tab Tableau or Table
Ten Tennessee
Tex. Texas
Tret or Treits

U or U.S. united states

V or Va. Virginia

W or Wash Washington
West. Westwood
Wh. Wheeler
Walk Walker
Weid Weida meyer

Zell Zeller
Zel. Zelen
Zim. Zimken.

Marks & figures used to signify
numbers names &c

P signifies { a note of interrogation
 } etcetera or doubtful
♂ male. ♀ female ♀ neutral
1⁰⁰ or the twelfth part of an inch
1" an inch measure
1' one foot
X injurious
XX very injurious
An insect or figure marked thus
~~~~~ signifies it to be either  
an old name or synonym

Additional abbreviations, annotations, names, numbers,  
remarks, dates, habits etc etc

Townsend Glover Washington D.C.

A. G. (1) (2) (3) (4) (5) (6) (7) (8) (9) (10) (11) (12) (13) (14) (15) (16) (17) (18) (19) (20) (21) (22) (23) (24) (25) (26) (27) (28) (29) (30) (31) (32) (33) (34) (35) (36) (37) (38) (39) (40) (41) (42) (43) (44) (45) (46) (47) (48) (49) (50) (51) (52) (53) (54) (55) (56) (57) (58) (59) (60) (61) (62) (63) (64) (65) (66) (67) (68) (69) (70) (71) (72) (73) (74) (75) (76) (77) (78) (79) (80) (81) (82) (83) (84) (85) (86) (87) (88) (89) (90) (91) (92) (93) (94) (95) (96) (97) (98) (99) (100)

Academy of Sciences Philadelphia  
Notes Entomological observations

Am Ent (American entomologist) edited by Chas H. Riley & State Entomol of  
Cambridge agricultural college Massachusetts  
Agribio

Ben Benediccia <sup>Smith</sup> to agriculture etc

Bet Benthon CTS editor Canadian entomologist Canada

Ber Berlin Ent verein Prussia

BBSH Boston Society of natural history

Bost Boston Soc. nat hist

1

Can Ent Canadian entomologist Edited by rev CTS Posthum Toronto Can.

CBM catalogue of the British museum compiled by Walker

CEB Canadian entomological society

Con Canadian naturalist by M Gosse

Cam Cambridge ~~Massachusetts~~ Massachusetts

Clam Clams on synthesis of American Sphingidae

Corn Cornell university. N.Y.

Col Coleoptera. Beetles

DC District of Columbia or Washington

Dip Diptera. Flies

Dodge Ch R, agricultural department D.C.

E, Egg

Edo Edwards synopsis of American butterflies

by W. Edwards of Carlisle and Virginia

Ent Soc. St Petersburg. Russia

Ent Entomologist americana by Walsh & Riley purchased by

R. P. Stuckey & Co Missouri

Ent club Cambridge Mass<sup>ts</sup>

F Fitch Trans Nat State society for reports by Geo Fitch on insects

Fitch CD's insects injurious to the pear & other

Gill Theodore Librarian congr of Washington D.C

Gosa Naturalist Canada

Krag Hagen Herrman Mass.  
Krom Homoptera (Acada 94. vulgare locust)  
Kerr Harris insects injurious to vegetation Boston  
do do do another edition by Ch. Riley in 1862  
Keller Heteroptera Plant bugs as on Spanish  
Horns 1<sup>st</sup> Heteroptera Philadelphia (on 2<sup>nd</sup> leaf)

374 Insect injurious to agriculture

Klep. Kleppart Columbus Ohio

Leb LeBaron Entomology Geneva Illinois  
Leconte John Coleopterist Philadelphia  
Leduc Dep. of agriculture Washington DC  
Louds Philosophical & Literary Society Leeds Yorkshire England  
Lent Lentner J.A. formerly of Illinois now of Albany NY  
London (England) Entomological Society in Newman  
London in Canadian see in Saunders Bellows V.

Mess Messens or Goultonen  
Mess J. R. Messens Frodo & Robinson formerly of NY in Trans of Entomol  
Mie Meier Lepidoptera directions for collecting by Lord Malborough  
Mor or Morris catalogue of the described Lepidoptera of US of Nth America  
by John G. Morris & pull. by the Smithsonian Institution, DC.  
Munch Munich Bavaria ~~Lehrbuch~~ Lehrbuch verzin

NY New York

Newm Newmann

Neww Newoptera Zoogon flies

No. Noctuidae or night moths etc.

Ohio State board of agriculture (see Kleppart V.)  
Osten Sackter Barco Boston, N.Y.

Pack Packard of Palmer Salem Massachusetts

Paris Soc Ent de France

PANS proceedings of Academy natural sciences Pennsylvania

P.S. Peabody Institute in Baltimore Maryland Librarian Philip R. Uhler

PO Patent office agricultural reports containing Entomology etc by J. Davis etc

Natr. Ratsburg 16<sup>o</sup>. J. S. madon-der Berlin Prussia  
Plak N. Ritt in P. R. edings in P. R. edings  
Rox. ch. in D. S. al. Entom. logist. mussati V<sup>o</sup>  
Rob. Robinson in Gale & Robinson  
Rio de Janeiro Brazil Royal museum

Saint Louis see Riley & Studley  
Sal Salem Massachusetts  
Scua Scauder Review of Amer. Butterflies 4<sup>o</sup> See Amer. Naturalist 61/339  
Schweizerische Entomol. Gesellschaft, Switzerland  
Sph. Spingidae  
Studley R. P. museum Entomology by Riley no 211 Maine St. St. Louis  
St. Stanton Tineidae of N. Amer. 1878  
Syn. Synopses

J. S. S. Trans. Am. Entomological Society  
Thom. Thomas Cyrus carbonaria Illinois, Local Grasshoppers &  
Tineidae of N. Amer. 1878  
Tr. ...  
Tr. ...

W. W. W. Philip R. ...

W. W. W. college Pokrops  
W. W. W. ...

Wald insecten Berlin by D. Ratsburg  
Walk. first annual report on insects injurious to the state of Illinois 1868  
Walker in Catalogue British Museum  
Wald madon-der ...

Y. Sponomantidae

Wald (P) a note of interrogation placed after a name or insect it signifies it to be a name  
doubtful or wrong Synonyms are likewise frequently  
so marked.

No 1.

Notes and Queries

ask Mr Grote Urban

No 17 fig 2 Diatraea ? of whom (see Diatraea? but taken in maize Sacchari)  
7 fig 1 Batalis of whom (see Dolichia concolor)

No 18 fig 4 Anomis of whom (see Actia engyptaca)  
18 fig 5 maera of whom (see Lophorygia pygmaea)

No 19 fig 10 Paralelia of whom (see Opheusa bicolorata)

No 36 fig 8 ? of this is not Calosymbolus rosaceus

No 39 fig 8 ? of this is not Calosymbolus rosaceus

No 60 fig 11 ? L. litorea ? of whom (see also Diatraea Sacchari)  
fig 11 Sacchari - of whom (in sugar cane)

No 46 fig 10 Pterogon ? of whom (Proserpinus garrae)

No 48 fig 2 olemaris ? of whom (Asopia) costalis

50 fig 21 do do do

51 fig 22 do do do

1

No 52 fig 11 Pterogon ? of whom (see also Sedamia unscripta)

No 52 fig 19 Basilus of whom (see Caterpa calenaria)

fig 21 Eucosmia of whom (see Scotaea unnamea)

No 52

No 52 fig 7 Planosa of whom (Dolypa lanosa)

No 52 fig 19 Basilus of whom (see Caterpa calenaria)

No 52 fig 21 Eucosmia of whom (see Scotaea) unnamea

No 53 fig 5 Altrax as of whom (see Euphrosia nibearea)

No 53 fig 5 Euphrosia of whom (see Euphrosia nibearea)

No 53 fig 12 Ematocleura of whom (see Agrotis plebea)

No 57 fig 4 Somifuscus ? of whom (Crambus somifuscus) if male

57 fig 19 callochloa ? of whom (Parasa unides)

57 fig 32 Utelhara ? of whom (see also Loxopea or Utelhara ornatrix)

No 53 fig 5 Alloxys of whom (See Euplocha nubicaria)

" fig 5 Elopha do do

" fig 12 Ochopseura do (See Agrotis plecta)

No 54 fig 6 Phalaena of whom (See Ecpantheria senbounia)

No 55 fig 14 Harpalyce of whom (See Pteryra multipasciata)

" fig 16 Pergesa do (See Edema albifrons)

" fig 9 Trobaena do (See Trobaena stramentalis)

No 56 fig 4 Remigia of whom (See Remigia leafragel)

" fig 5 Selphonus do (See Cgeria setiformis affinis Brit Mus  
This is not right, what is it?)

No 56 fig 6 Nigropombonia of whom (See Xanthoptera nigropombonia  
(but doubtful)

No 56 fig 14 Stenophyes? of whom (See Stenophyes sommaria)

56 fig 16 Ximochonia of whom (See X. pampictalis)

" fig 33 Macrauli do (See Callimorpha L. unguis)

No 57 fig 2 extincta P. a. whom (See extincta?)

(See Acacia senaria)

No 60 fig 22 causis of whom (See Uromyces?)

No 63 fig 1. Coxera (See Xylois (or Xyletus) rubens?)

No 65 fig 8. Antithesia of whom (See Antithesia prunosa)

No 67 fig 15 Hesperia of whom (See Hesperia dis. (See Stenopus argente  
lens)

No 67 fig 24 Platyptera of whom (See Platyptera geniculata)

No 67 fig 26 Stenoponia of whom (See Stenoponia)

No 68 fig 13 Ege of whom (See Eucrates ege (Colaris))

No 68 fig 21. Heterocampa of whom (See Heterocampa binuata)

No 68 fig 21. chivius of whom (See Heterocampa binuata)

No 68 fig 23 Udencera of whom (See Spirax piceana (Gorton))

No 69 fig 5 Marponia of whom (See also Leptis onella tentoribellia)

No 69 fig 28 pei of whom (See Acronycta pei)

No 69 fig 33 Lorotania of whom (Is not this also Lorotania which is right)

No 70 fig 2. Phyceta of whom (See Protopharyx unclatata)



No 71 fig 16 *Sarcosa* of whom (See *Sarcosa caenata*)

No 72. fig 1. *Botys* is this of *met* - *abrielle* & also how *tril*  
is written

No 73 fig 15 *Lacmia* of whom (See *Bracon leptura acutata*)

do fig 24 *Monitor* of whom (See *Euclea querceti*)

do fig 22 *Callasomma* of whom (See *Parasa eredis*)

do fig 25 *otivaris* of whom (See *Asopia costalis*)

do fig 18. *Crocota*? is this right or is *crocota* as it is sometimes spelt

No 74 fig 20 *Tarache* of whom (See *Tarache metallica*)

" do *debilis* of whom & if right (do do)

?

No 76 fig 4 *Ancheris* of whom (See *Bracon* sp.)

" fig 8 *macyna* do (See *Botus reversalis*)

" fig 25 *Exartema* of whom (See *Sarcaria formidosa*)

" fig 34 *Smeleonis* of whom (See *Smeleonis formidosa*)

(Some include  
as *Exartema*  
var. *causa*)

No 77 fig 5 *Acrotellus* is this right? (See *Crambus acrotellus*)

" fig 9 *Venosa* do (See *Tinea gallicolana*)

" fig 24 *Eloqua* of whom (See *Eupithecia venosa*)

fig 26 *marginata* of whom (See *Lycranthea marginata*)

No 78 fig 9. & 7. *Locheogramma* of whom (See *Scopelostoma* ? *venusta* & *waterii*)

" " fig 16 *Callulidia* of whom (See *Gnophosia vermiculata*)

" " fig 11. *subalbicans* of whom (See *Locheodes mantes*)

" " do do *mantes* of whom (do do do)

No 81 fig 12. *Anthropone* of whom (See *Ephra depontanata*)

No 82 fig 14 *litata* St. of whom (See *Blanchana*) St. of whom

fig 15 *Anlethasiah* of whom (See *Anlethas nimbolana*) St. of whom

fig 20 *Phactia* of whom (See *Phactia venosa*)

fig 22 *Joplocama* (or *Explocama*) of whom (How written)

(See *Joplocama formosana*)

fig 22 *Formosana* of whom (See *Joplocama* do)

No 83 fig 4 *Semanella* of whom (See *Crambus Sarcocollis*)

" fig 5 *virgipollis* do (See *Crambus virgipollis*)

" fig 11 *Densaria* of whom (See *Densaria densaria*)

" fig 15 *nubicundaria* of whom (See *Anchylopera nubicanaria*)

" fig 32 *Lozogramma* of whom (See *L. duplicata*)

" fig 34 *Smerolus* of whom (See *Smerolus peritona*)

" fig 34 *peritona* of whom (See *Smerolus peritona*)

" fig 35 *casaria* of whom (See *Metanema casaria*)

" fig 36 *formigena* of whom (See *Crocota nubicanaria*)

" fig 24: *Crambus* is this right

- No 84 fig 1. *Alphadonaria* of whom (see *Alphadonaria*) La 200  
14  
 " fig 6 *onuda* of whom (see *Lithophano onuda*)
- No 85 fig 17 *Leclercia* of whom (see *Leclercia perspectiva*)
- No 87 fig 6. *cluntonii* of whom (see *Paronychia cluntonii*)  
 " fig 15 *dubulata* of whom (see *Scotosia dubulata*)
- No 88 fig 9. *Rhynchastera* is this right (see *R. lacustrata*)  
 " *acutata* of whom (see *Rhynchastera acutata*)
- No 91 fig 19. *Lecontei* of whom (see *Callimorpha lecontei*)
- No 93 fig 5 *Cyrtosia* of whom (see *Pachyrhiza elegans*)
- No 4 fig 10 *Stenocera* of whom (see *Stenocera*)  
 " fig 13 *bonata* of whom (see *Stenocera bonata*)  
 " fig 6 *leucecyca* how better (see *Stenocera leucecyca*)  
 " fig 21 *psuedoleucocera* of whom (see *Stenocera psuedoleucocera*)  
 No 4 fig 14 *Stenocera* of whom (see *Stenocera*)
- No 96 fig 11. *densata* of whom (see *Carpeta densata*)  
 " " fig 19 *ferrogenea* of whom (see *Euclia ferrogenea*)  
 " " fig 21 *fuspidata* of whom (see *Fuspidia*)  
 " " fig 14 *spassonata* of whom (see *Gonima spassonata*) 2000  
1411
- No 97. *Pa. S.* - *carduiclytus* of whom (see *Phaenocarpa carduiclytus*)  
 " " fig 6 *percepsera* of whom (see *Oeta compla*)  
 " " fig 24 *basellus* of whom (see *Calera Catalanica*)
- No 101 fig 9. *Gemmatellus* of whom (see *Litharia gemmatellus*)  
 " " fig 5 *Rosella* of whom (see *Rosella robinia*)
- No 103 fig 1. *Heteroclytus* of whom (see *Euglyphis Heteroglyphis*)
- No 103 fig 2. *basellana* of whom (see *Paronychia basellana*)  
 " " fig 5 *ap. bagossum* of whom (see *Seculus*)  
 " " *Seculus* of whom (see *Euprythoglossum seculus*)
- No 106. fig 12 *Onobacia* of whom (see *Bates onobaciana*)
- No 108 fig 6 *oculata* of whom (see *Chalidonia oculata*)  
 " " fig 22 *oculana* of whom (see *Grapholitha oculana*)
- No 113 fig 10 *Onobacia* of whom (see *Onobacia sinuata*)

- No 117. fig 1. *Hammondi* of whom (see *Hammondi*)  
 " " fig 13. *Hammondi* of whom (see *Pempelia hammondi*)
- No 8 fig 12. *Hammondi* of whom (see *Hammondi*)

is *Hammondi* on *Hammondi* is also 200  
 of whom is 13 *Hammondi* of whom (see *Hammondi*)





Book taken apart. Leaves deacidified.  
Some illustrations attached to new  
back sheets. Lead whites converted.  
Polyester film album leaves constructed  
and post bound linen buckram album  
constructed. December, 1979.

Carolyn Horton & Associates  
430 West 22nd Street  
New York, N.Y. 10011

