



# Harrisons' Nurseries

J. G. HARRISON & SONS

FRUIT AND ORNAMENTAL  
NURSERY STOCK

Berlin  
Maryland



# About Our Nurseries and Trees



FOR a quarter of a century Harrisons' Nurseries have been growing trees that are without a superior, and the result of our painstaking care has been the growth of our nurseries until they are the largest in the world. We have millions of trees and plants growing on over 2,500 acres of ground.

The quality of Harrison-grown trees is our main pride and the big reason for our marvelous expansion. We grow each and every fruit tree that leaves our packing sheds, and only the very best are allowed to go. Any tree that is not just right is thrown on the brush-pile and burned, as it would not be Harrison policy to allow inferior stock to go to our friends.

If you stand in our nurseries and see the blocks of growing trees, you would have to look nearly a mile to see the end of the clean, well-kept rows. Millions of Peach, Apple, and other trees take up considerable space. As far as the eye can really distinguish an object you see nothing but the tops of little trees.

## *Come to See Us*

Every year hundreds of people visit our nurseries and we are glad to have them come. We want to get acquainted with all our friends and have them see the world's greatest nurseries. Here, if you so desire, you may select such trees and plants as you wish direct from the rows. Many of our friends do this, more particularly those who are interested in shade trees and evergreens.

Our nurseries are situated 124 miles south of Baltimore and can be easily reached via Baltimore, Chesapeake & Atlantic, boat and rail; 143 miles south of Philadelphia, via Philadelphia, Baltimore & Washington Railroad; 153 miles north of Norfolk, Va., via New York, Philadelphia & Norfolk Railroad, and Baltimore, Chesapeake & Atlantic Railroad. We are only 7 miles from the Atlantic Ocean and Ocean City. This is a popular summer resort and a good place to spend your vacation. Owing to the shortness of the distance away you can then spend part of your time as our guest in Berlin.

Come to see us any time. The latch-string is always out and you will be welcome. Another thing—just let us know when to expect you and we will be at the station to welcome you. More than this—we will pay your expenses at the hotel in Berlin.

**COME WHEN YOU CAN, BUT COME ANYWAY**





**Yellow Transparent is the most profitable extra-early Apple grown; sold this season at from \$1.50 to \$2.25 per bushel hamper**

## APPLES

The time is here when the man who plants Apple trees is putting himself on the right side of the money-making fence. Many men who heretofore cultivated only corn, oats and other farm crops, have come to realize that they were not getting enough from their land to repay them for the back-breaking labor of planting these crops year in and year out. They were getting too small a return each year.

Think of this. Figures compiled by the Baltimore & Ohio Railroad show that wheat yields an average of \$12.50 an acre. Corn is usually good for about the same sum, and cotton for about \$100 each acre. All this time Apples are returning their lucky owners an average of \$200 an acre or more. This comparison by an uninterested party is surely food for thought, and the fact that an acre planted with Apple trees is good for fifteen times the money that an acre of ordinary farm produce will bring is worthy of your earnest consideration. An Apple orchard means more money every year than other farm crops.

Apple trees from Harrisons' Nurseries are worthy trees for any orchard. They are hardy, rapid growers, and excellent bearers. They are money-makers for the man who plants them, as clean, healthy, well-packed fruit will bring good prices at any time.

Get busy now, and make your selection from the following list. Tear out the order blank in the back of this catalogue, write down the number and kinds of trees you desire, and mail to us in the inclosed envelope. It will be a move that you will never regret and one that will pay big dividends.

<b>Prices of Two-Year Budded Apple Trees.</b>	Each	10	100	1,000
3 to 4 feet.....	\$0 16	\$1 50	\$12 00	\$100 00
4 to 5 feet.....	25	2 00	15 00	125 00
5 to 6 feet.....	30	2 50	20 00	150 00

**Prices of Extra-Large Apple Trees.** These trees have extra-heavy roots and bodies, and well-formed tops. They produce quick results.

	Each	10	100	1,000
6 to 7 feet.....	\$0 35	\$3 00	\$25 00	\$200 00
7 to 8 feet.....	40	3 50	30 00	250 00

**WE GROW THE FRUIT TREES WE SELL**



## APPLES, continued

Prices of One-Year Budded Apple Trees.	Each	10	100	1,000
3 to 4 feet.....	\$0 16	\$1 50	\$12 00	\$100 00
4 to 5 feet.....	25	2 00	15 00	125 00
5 to 6 feet.....	30	2 50	20 00	150 00

1 to 4 trees are sold at the each rate; 5 to 49 trees are sold at the 10 rate; 50 to 299 trees are sold at the 100 rate; 300 trees or more are sold at the 1,000 rate.

Parcel Post. Trees not larger in size than 2 to 3 feet can be sent by parcel post, prepaid, at 3 cts. per tree extra.

**Special Prices on Large Orders.** Special quotations on large orders will be given on application. When writing, tell us what varieties are wanted, the approximate number of trees of each variety, and the size.

**Leading Varieties.** For the convenience of our customers who may not be entirely familiar with the best and most profitable varieties, we have given full description of such sorts. In making your selection, it will pay you to choose from among those varieties.

**Alexander.** Summer. Red.

**BALDWIN.** Winter. A good late keeper when grown in the North. Standard in the section from New England to West Virginia and west to Michigan. Fruit large, round; red all over; rich subacid; splendid shipper. Quick and large grower; yields big crops, but does not bear until six or eight years old. We recommend it highly for northern Pennsylvania, New York, all of New England and similar country. Good care will make Baldwin trees bear when six years old, if proper cross-pollination with other varieties is secured.

**Ben Davis.** Winter. Red.

**Bonum.** Fall. Red.

**Bullock** (American Golden Russet). Fall. Russet.

**Chenango.** Summer. Red.

**DELICIOUS.** Winter. It is not the least bit of exaggeration to say that this Apple is one of the best, if not the best, of the new varieties. It has been

tested in all parts of the country, and has been extremely satisfactory in hardiness, quality of fruit and as a shipper. The color is brilliant dark red, shading to yellow at the blossom end. The flesh is crisp, fine-grained, and quite juicy; flavor slightly acid but very pleasing. The tree is vigorous.

**Early Harvest.** Summer. Yellow.

**Fallwater.** Fall. Yellow with blush.

**FAMEUSE.** Fall. Medium to large; deep red on white; flavor fair; fine for home use fresh or in cooking; sells at high prices in local markets, but not recommended for shipping. A standard sort in New York and Ontario.

**Stayman's Winesap** is a money-maker. The usual price is \$4 to \$5 a barrel; sometimes as high as \$8 to \$10

**Gano.** Winter. Red.

WRITE FOR SPECIAL PRICES ON LARGE ORDERS



## APPLES, continued

**GRAVENSTEIN.** Fall. This variety is considered among the leading twenty sorts, and is one of the best cooking Apples of its season. Always commands high prices in market. The fruit is perfect in form and handsome in coloring—orange-yellow overlaid with broken stripes of light and dark red; flesh is yellowish, firm, crisp, tender, juicy, subacid, in quality one of the finest. Tree is extra vigorous in growth, comes into bearing rather early, and bears profuse crop regularly.

**GRIMES.** Fall. Usually rated (at the 40th parallel) as a fall Apple. Good in September, but later on it is even better, and the best markets usually have Grimes during December and January and even February. Keeps without losing any of its crispness or rich flavor. It is medium sized, golden yellow, tender, rich, aromatic, spicy like a peach, subacid, delicious. Few Apples are more profitable commercially. Quality is too good for any but the best trade, and will justify packing with all care in boxes. Tree is very hardy and productive, and one of the best fillers, as it comes into bearing very early. Blossoms come late in the spring; frost seldom catches them. Our trees show a heavy crop this season. We have refused an offer of \$2.75 per barrel for 3,000 barrels from 1,000 trees, 10 years old.

**Hubbardston.** Winter. Red.

**JONATHAN.** Winter. Medium to large; brilliant red; very highly flavored, juicy, fine-grained, tender, mild, subacid. Will keep well without special care, and also stand much handling. Tree long-lived, but comes into bearing very young and produces big crops every year. Jonathan is often the kind to plant in higher Appalachian country. Southern Pennsylvania, Maryland, and all states to the west having similar conditions, produce fine Jonathans. Farther north it ripens a little small, but everywhere is of best quality.

**July** (Fourth of July). Summer. Red.

**Lowry.** Winter. Red.

**Maiden Blush.** Fall. Yellow with blush.

**McINTOSH.** Fall. The Apple that has made the Bitter Root Valley famous. The color is bright, deep red; flesh white, with pinkish tinge; juicy, with slight acid flavor. The fruit will keep a long time, but is mellow and good to use almost from the time it is picked till the next crop comes. Requires no special storage to be kept like fresh. In New England, New York and Michigan its high quality and attractive appearance put it in the lead. It is extra good for all the higher and colder sections. Trees bear in three and four years, and make fine fillers. Quick grower; long-lived; big cropper.

**Nero.** Winter. Red.

**NORTHERN SPY.** Winter. Old standby sort from West Virginia north. Large; bright light red and yellow; flesh juicy, crisp, rich, tender, aromatic, of good flavor. Tree very healthy, strong-growing, rugged. Blossoms very late, escaping frosts. Slow coming into bearing, which is the only thing that keeps the Northern Spy from ranking with the most important commercial varieties. Its large size, handsome appearance and superfine quality give it first rank for fancy trade, and when well grown and properly packed, it sells for higher prices than any other winter Apple. It retains its crispness and high flavor well to the end of its season. In the right sections no more valuable Apple can be grown.

**Northwestern** (Northwestern Greening). Fall. Greenish yellow.

**OLDENBURG** (Duchess of Oldenburg). Summer. One of the important varieties for all sections north of the Mason and Dixon Line. Thrives and yields abundantly of high-grade fruit at all elevations in Maryland, Pennsylvania, New York, Ohio and other northern states. The fruit is medium sized, red-striped; flesh white, juicy and of excellent flavor. Trees are naturally dwarf growers and make fine fillers; require small root and branch space. Tree among the hardiest and one of the few that will stand the climate of Iowa, Minnesota, Montana and other cold locations. You can depend on Duchess to yield Apples you can sell for good prices.

**Opalescent.** Winter. Red.

---

**APPLES, continued**

**PARAGON** (Mammoth Black Twig). Winter. A round Apple of extra-large size; skin smooth, yellowish, covered with deep red, the general effect being dark red; flesh tender, tinged with yellow, crisp, subacid, aromatic, of excellent quality in every way. Tree is vigorous and healthy and yields big crops every year. In the East many times will be about the best commercial sort. Seems to prefer the lower elevations, that is, an altitude of 400 to 1,000 feet in Maryland, and higher or lower as you are north or south. A most dependable sort under these conditions.

**Rambo.** Summer. Red.

**Rambo** (Winter Rambo). Winter. Red.

**Red Astrachan.** Summer. Red.

**Red June** (Carolina Red June). Summer. Red.

**RHODE ISLAND GREENING.** Winter. The color of this large Apple is greenish yellow. In form the fruit is flattened slightly at both ends; flesh crisp, juicy, quite acid, of very fine flavor and quality. Most of the money made in the East with winter Apples during the last generation came from Rhode Island Greening, Spy and Baldwin. These have been standard commercial varieties in New York and New England for a generation.

**ROME BEAUTY.** Winter. Large, round; mottled and striped in different shades of red; flavor and quality way above the average; appearance and size are its valuable points; always sells and always brings good prices; good grower; blooms late; bears heavily every year; is adapted to a wide range of soils, elevations and conditions. In Ohio, Pennsylvania, New York and West Virginia will make more money than some of the sorts which are now a large part of the total number of trees in commercial orchards. Reliability, due to being frost-proof, strong-growing and sure-bearing, makes it a favorite with the grower. Fine quality for use and for handling makes it popular with consumers and dealers. When packed in boxes it shows up splendidly.

**Smokehouse.** Fall. Red.

**Spitzenburg.** Winter. Red.

**STARK.** Winter. A reliable commercial sort. Fruit large, round, greenish yellow, with red stripes; flesh yellow, crisp and mildly acid. Tree a regular bearer, reliable and satisfactory in an orchard, grows even and regularly, seldom splits or breaks. Has been planted in the East and in California to a considerable extent during the past twenty years. One of the strongest growers we have, even more so than Northern Spy. Desirable trees to top-work other sorts on.

**STARR.** Summer. A particularly attractive, large Apple, with bright yellowish, smooth skin, sometimes marked with a faint blush and numerous russet dots; flesh yellow, fine, very tender, crisp, juicy, aromatic and of extra-fine quality. Tree is a vigorous grower, comes into bearing when quite young and yields large crops annually.

**STAYMAN WINESAP.** Winter. Stayman succeeds wonderfully in the middle Atlantic states. It is a splendid Apple, some growers say the best there is for these sections. The trees come into bearing in five years or sooner, and, with good care, give four to ten or more bushels of fruit per tree after the eighth year. The fruit is medium to large; attractive green and yellow, almost hidden by dark red stripes, flesh yellow, not in the least mealy; plenty of juice; quality the finest, ranking with Yellow Newtown and Grimes. Tree a quick and large grower, and seems to prefer dry soils and those not so rich and heavy. Preëminently the Apple to plant on dry hills where the soil is thin and water often decidedly lacking. Stayman is now planted in nearly all new orchards in the East to a large extent. You cannot find a better sort in the whole list, either for bearing habit, size of fruit, looks or quality. Except at the highest elevations, this splendid variety is almost always our most desirable Apple for all sections east of the Mississippi. We are planting tens of thousands of Stayman trees in our own orchards; some new orchards we are setting almost solid to Stayman. The man who plants Stayman plants for quick, sure profit.

---

WRITE FOR SPECIAL PRICES ON LARGE ORDERS





**Williams Early Red.** Ripens about the same time as Carman peaches. From 1,600 trees (4 to 6 years old) we picked a quantity of fruit this year that sold at \$2.25 per bushel hamper.

#### APPLES. continued

**Sweet Bough.** Summer. Yellow with blush.

**Tompkins King.** Fall. Will keep quite late in winter if stored in a cool place. Fruit is bright red, with yellow tint; flesh yellow, crisp and juicy.

**Wagner.** Winter. A bright red Apple of fine flavor and texture. Tree is an early bearer and a reliable producer.

**WEALTHY.** Fall. Medium size, round or with a point; almost solid red; flesh white or a little stained, tender, crisp, juicy, fine-grained, aromatic and very good. Splendid keeper, but best in December and January. It is one of the most profitable market Apples and always brings good prices, especially late in the season, when its quality is of the best. Tree very hardy and vigorous, and bears regular and abundant crops. "Wealthy belts" are in the higher districts and mountains. If Wealthy has been grown successfully in locations and soils similar to yours, plant it by all means.

**WILLIAMS** (Williams Early Red). Summer. Large size; dark red, sometimes yellow-splashed; flesh crisp, tender, juicy and subacid. Ready for market when people are growing hungry for new Apples. Especially popular in New England, and in the Boston markets it brings a good price. It is worthy of planting in every Apple-growing section. Trees begin to bear when quite young. See front cover for illustration of this splendid Apple in color.



## APPLES, continued

**WINESAP.** Winter. In the great Apple regions of Maryland, Virginia, West Virginia and the Appalachian section the Winesap is the Apple that should be planted freely. It can be grown in southern Pennsylvania, but, as a general rule, we recommend Stayman Winesap for planting north of Maryland. Winesap is of medium size, oblong, smooth; fine, dark red skin; the flesh is tinted yellow, tender, crisp and juicy. The fruit is firm and keeps well, making it a splendid commercial sort. When good specimens are packed in an attractive way—in boxes or small baskets—Winesap brings the highest prices of almost any Apple. The trees are strong growers, with an exceptional spread of roots; bears early, freely and regularly.

**Winter Banana.** Fall. Yellow. Fruit is large or even extra-large, rich yellow in color, firm and desirable for shipping. Tree grows almost anywhere.

**Winter Paradise** (Paradise Winter Sweet). Winter. Color dull green, with brownish red flush. Tree vigorous grower.

**WOLF RIVER.** Summer. An exceedingly large and handsome Apple, which has supplanted Alexander in many of the large commercial orchards in the West. Skin is bright yellow, mottled and blushed with deep red and marked with conspicuous splashes and broad stripes of bright carmine; flesh is slightly tinged with yellow, firm, tender, juicy, aromatic and of good quality. It keeps remarkably well in ordinary storage, and with cold storage its season is practically unlimited. Bears profuse crops every other year, sometimes annually.

**Yellow Bellflower.** Winter. A handsome, large Apple, with crisp, tender, juicy flesh.

**Yellow Newtown.** Winter. Yellow.

**YELLOW TRANSPARENT.** Summer. We consider this one of the best commercial Apples, and one of the few kinds that grow and bear as well North as South. Will stand Canadian winters as well as Georgia summers. By many this is considered the best of all extra-early white Apples, and comes into market when the demand for summer Apples is extra strong; consequently it always brings the best prices. For nearby markets, to which it can be shipped in fancy baskets or boxes, it is one of the most valuable Apples in our list. It bruises readily and must be handled with extra care. The fruit is medium to large, cream and yellow; tender, juicy, of fine flavor, subacid, fragrant. Trees very young bearers and yield big crops. Dwarf growers; prefer thin soil, such as hillsides and upland.

**YORK IMPERIAL.** Winter. This is one of the most important commercial Apples grown. York Imperial trees have not missed a crop in the West Virginia section for many years. Does well everywhere; eastern, central and western growers find it adapted to their conditions. Often exported and sold for fancy prices. It has the advantage of mellowing in time for use soon after picking if not stored to prevent it. Medium sized, round, irregular, greenish yellow overlaid with bright red stripes; flesh tender, firm, crisp, juicy. Tree is a vigorous grower, strong and healthy, and an unusually heavy bearer. A variety that should be in every orchard.

## DWARF APPLE TREES

**Delicious**

**Duchess**

**Gravenstein**

**McIntosh**

**Williams Early Red**

**Yellow Transparent**

Sizes 2 to 3, 3 to 4 and 4 to 5 feet. Prices the same as for standard varieties.

## CRAB-APPLE

Prices of one- and two-year trees same as other sorts. See pages 1 and 2.

**Golden Beauty.** Yellow.

**Hyslop.** Crimson.

**Martha.** Red.

**Transcendent.** Red.

WRITE FOR SPECIAL PRICES ON LARGE ORDERS





Belle of Georgia is one of the best white Peaches grown. 150 ten-year-old trees of this variety in our Berlin Orchards produced this season 800 six-gallon carriers of fruit which sold at \$3.50 per carrier in Boston.

## PEACHES

The Peach is the one fruit that enjoys a demand far greater than the supply. There are not nearly so many grown as there should be and the man who owns a peach orchard has an investment that will return a far larger dividend than the same money invested in stocks or bonds. Good fruit, well packed, is always in demand and brings high prices.

Harrisons' Peach Trees are all grown right here in our nurseries. We have millions of them in rows a mile or so in length. Harrison-grown trees are hardy, rapid growers and bear heavy annual crops. Our trees are healthy and free from the diseases so dangerous to the life of the tree and so harmful to the fruit.

### Prices of Peach Trees.

	Each	10	100	1,000
1 to 2 feet.....	\$0 10	\$0 90	\$8 00	\$50 00
2 to 3 feet.....	12	1 00	9 00	60 00
3 to 4 feet.....	15	1 25	10 00	70 00
4 to 5 feet.....	20	1 75	11 00	80 00
5 to 6 feet.....	25	2 00	12 00	90 00

1 to 4 trees are sold at the each rate; 5 to 49 trees are sold at the 10 rate; 50 to 299 trees are sold at the 100 rate; 300 trees or more are sold at the 1,000 rate.

Parcel Post. Trees not larger in size than 2 to 3 feet can be sent by parcel post, prepaid, at 3 cts. per tree extra.

**Special Prices on Large Orders.** Special quotations on large orders will be given on application. When writing, tell us what varieties are wanted, the approximate number of trees of each variety, and size.

**Leading Varieties.** For the convenience of our customers who may not be entirely familiar with the best and most profitable varieties, we have given full descriptions of such sorts. In making your selection it will pay you to choose from among those varieties.

Dates of ripening are for Berlin, Maryland

**Alexander.** White. Free. Ripens June 25 to July 4.

**Beer's Smock.** Yellow. Free. Ripens August 1 to 10.

WE GROW THE FRUIT TREES WE SELL



## PEACHES, continued

**BELLE** (Belle of Georgia). Ripens early in August. Fruit very large and most attractive in color and shape, with a light red cheek; flesh white, firm and delicious; the quality is fine. The Belle of Georgia has become one of the standard varieties in the big commercial orchards of the United States, as it stands shipping to all markets in such a way that it invariably brings the best prices. In many respects it is equal to Elberta.

**Bilyeu**. White. Free. Ripens September 25 to October 15.

**Brackett**. Yellow. Free. A valuable peach which ripens a few days later than Elberta. Fine; good cropper and shipper.

**CARMAN**. Ripens third week in July. This is a favorite variety with many growers, as it is one of the most profitable in its season of ripening ever introduced. The returns from a successful Carman orchard are almost beyond belief, and the fruit stands shipping so well that it always reaches market in prime condition. The fruit is remarkably attractive and luscious; large and broad, oval-shaped, yellowish white, flesh creamy white, red with tinge, spicy and good; free. We picked four cars of this variety from 10-year-old trees this season which sold at \$2.12½ to \$2.50 per six-gallon carrier. Our three-year trees bore one-half bushel to one bushel per tree. This is a valuable early peach.

**Chairs**. Yellow. Free. Ripens September 1.

**CHAMPION**. Ripens August 1. Fruit large; creamy white, with red cheek; sweet, juicy, very high quality. Good shipper; its fault, if it has one, is that it is too tender. Free. One of the showiest Peaches in our sample orchard, and one that sells for a good price. The tree is hardy and productive, and it is a valuable Peach for either the home or the commercial orchard. From 400 trees ten years old we picked this season two cars of select peaches which sold at \$2 to \$3 per six-gallon carrier. Three-year-old trees produced one basket per tree.

**Denton**. Yellow. Free. Ripens August 25 to September 1.

**Dewey** (Admiral Dewey). Yellow. Free. Ripens June 25 to July 4.

**Early Crawford**. Yellow. Free. Ripens July 28 to August 10.

**Early Wheeler** (Red Bird Cling). Creamy white. Ripens very early, July 25 to August 10.

**Easton Cling**. White. Cling. Ripens September 10 to 25.

**Ede** (Captain Ede). Yellow. Free. Ripens August 10 to 25.

**Edgemont**. Yellow. Free. Ripens September 1.

**ELBERTA**. Ripens middle of August. The reliable Peach, of which more are planted and from which more money has been made than from any other variety. The fruit is large to extra large; golden yellow, with brilliant shades of red; firm, juicy, rich, sweet. Tree vigorous, sturdy, hardy; thrives in widely differing localities. The Elberta is the one variety that every fruit-stand customer seems to know. No other Peach has even been introduced which fills all the requirements of a commercial Peach with such success as Elberta, in size, appearance and quality.

**Engle**. Yellow. Free. Ripens September 1 to 10.

**Fitzgerald**. Yellow. Free. Ripens August 25 to September 1.

**Ford Late**. White. Free. Ripens September 10 to 25.

**Foster**. Yellow. Free. Ripens July 28 to August 10.

**Fox**. White. Free. Ripens middle of September.

**Francis**. Yellow. Free. Ripens August 25 to September 1. A good one to follow Elberta.

**Geary**. Yellow. Free. Ripens September 1 to 10.

**GREENSBORO**. Ripens June 25 to July 10. Many growers consider this to be the best of the early Peaches. It has proved its value in our test orchard, and with commercial growers, many of whom rightly consider it a most important part of their orchards. Being somewhat tender, it requires extra care in shipment, but it reaches the market when Peaches are in strong demand, and it amply repays any attention given to its handling. The fruit is extra large for such an early Peach and one of the handsomest, being of a rich yellowish white, with a crimson cheek; the flesh is white, exceedingly tender and of fine quality; ripens perfectly to the pit. Free.





This season 21 cars of our Berlin-grown Elbertas, containing 357 to 448 six-gallon carriers per car, sold at \$3.50 to \$4 per carrier. Three-year-old trees bore one bushel per tree; four-year-old trees two bushels per tree.

#### PEACHES, continued

- Hale** (J. H. Hale or Million Dollar Peach). Yellow, finely colored, round; very large; quality excellent. One of the best late sorts for market or garden.
- HARRISON CLING**. White. Cling. Ripens September 10 to 25. This is a new variety, originated and introduced by Harrisons' Nurseries. The fruit is unusually large; the skin is white, mottled with crimson. We have thoroughly tested this sort in our own orchards and are convinced that it is one of the best of the midseason clings.
- Heath** (White Heath Cling). White. Cling. Ripens September 10 to 25.
- HILEY** (Hiley Early Belle). Ripens July 10 to 15. This Peach is of large size, with a delightful red cheek; flesh is white, tender and exceedingly juicy; free. It is one of the best shippers among the early Peaches and invariably brings top prices. It should be planted freely in commercial orchards.
- Iron Mountain**. White. Free. Ripens August 25 to September 1. Very popular in New Jersey.
- Kalamazoo**. Yellow. Free. Ripens August 10 to 25.
- Krummel**. Yellow. Free. Ripens September 10 to 25.
- LATE CRAWFORD**. Ripens September 1. One of the best late sorts. Superb in size and shape; splendid yellow, with broad, dark red cheek; flesh deep yellow, juicy and melting, rich, winy flavor; free. Coming in at a time when the early Peaches are over, this variety is eagerly bought up for canning and preserving, and brings the highest prices. By many it is considered the best of all late yellow Peaches, and, being such a remarkably good shipper, it reaches market in thoroughly first-class condition. The trees are vigorous and can be depended on to produce good crops almost every year.
- Late Elberta**. Same as Elberta, only a month later. Free. September 1 to 10.
- Lemon Free**. Very large fruit. Lemon-shape and color. September 25.

WE GROW THE FRUIT TREES WE SELL





Ray was the greatest money-maker of any of the white varieties this season. We picked this season, from 540 ten-year-old trees, four cars of fruit which sold for \$3, \$3.50 and \$3.75 per six-gallon carrier. Ray should have a place in every orchard.

#### PEACHES, continued

**Levy.** Yellow. Cling. Ripens September 10 to 25.

**Lorentz.** Yellow. Large; superior quality. Free. September.

**Mamie Ross.** White. Free. Ripens about the first of August. Very similar to Carman, except that it is larger and ripens two or three days later.

**Matthew.** Yellow. Free. Ripens August 10 to 25.

**Mayflower.** Red. Free. Ripens June 15 to July 4.

**McCallister.** Yellow. Free. Ripens September 1 to 10.

**Miss Lola.** White; delicious. Free. Similar to Carman. Ripens July 15 to 30.

**Moore (Moore's Favorite).** White. Free. Ripens first week in August.

**Mountain Rose.** White. Free. Ripens in early August.

**New Prolific.** Yellow. Free. Ripens August 25 to September 1.

**Niagara.** Yellow. Free. Ripens August 25 to September 1.

**Oldmixon Free.** White. Free. Ripens middle of August.

**RAY.** Ripens August 10 to 25. Sometimes a nurseryman's enthusiasm gets the better of him when he attempts to tell of the qualities of a new variety. We believe in the Ray, and we are enthusiastic about it, but we want to be strictly truthful. It has been tested thoroughly, as growers in the eastern, central and western states have large numbers of Ray trees. We have thousands of bearing trees in our own orchards here in Berlin, and elsewhere in Maryland and West Virginia, and our experience with these trees makes us all the more sure of our position in recommending it. The fruit is extremely large; the skin is creamy white, deeply tinted with crimson and shades of yellow. It is one of the handsomest Peaches we have ever seen. Flesh white, with no stain at the stone; firm, of the most excellent quality, juicy, delicious, tender, and keeps well. An excellent shipper, of fine appearance, even after much handling. Trees exceedingly strong growers, shapely and symmetrical. The Ray is the Peach for all purposes, and the orchardist who sets a large acreage shows good common business judgment.

**Reeves (Reeves' Favorite).** Yellow. Free. Ripens middle of August.

**Ringgold (Wilkins' Cling).** White. Cling. Ripens September 10 to 25.

WRITE FOR SPECIAL PRICES ON LARGE ORDERS



**PEACHES, continued**

- St. John** (Yellow St. John). Yellow. Free. Ripens July 4 to 12.
- Salway**. Yellow. Free. Ripens September 10 to 25.
- Slappey**. Yellow. Free. Ripens July 12 to 28. Finest early yellow peach grown; resembles Elberta.
- Stevens** (Stevens' Rareripe). White. Free. Ripens middle of September.
- Stump**. White. Free. Ripens last two weeks in August.
- Waddell**. White. Free. Ripens July 1 to 10.
- Walker**. White. Free. Ripens September 1 to 10.
- Willett**. Yellow. Free. Ripens September 10 to 25.
- Wonderful**. Yellow. Free. Ripens September 1 to 10.

**APRICOTS**

Prices of Apricot Trees, 3 to 5 feet, 30 cts. each, \$2.50 for 10, \$20 per 100.

Parcel Post. Trees not larger in size than 2 to 3 feet can be sent by parcel post, prepaid, at 3 cts. per tree extra.

- Alexander
- Budd, J. L.
- Moorpark
- Superb

**CHERRIES**

Prices of Cherry Trees:

	Each	10	100
3 to 4 feet.....	\$0 20	\$1 50	\$12 50
4 to 5 feet.....	25	2 00	17 50
5 to 6 feet.....	30	2 50	22 50

Parcel Post. Trees not larger in size than 2 to 3 feet can be sent by parcel post, prepaid, at 3 cts. per tree extra.

**Sour Cherries**

**MONTMORENCY**. Red. June. One of the largest of the Sour Cherries, the fruit being bright red, with solid, juicy flesh, very rich and acid. The tree is hardy, healthy and extremely prolific, bearing abundant crops even in unfavorable seasons. It is less susceptible to disease than other sour sorts.

**RICHMOND** (Kentish Virginia). Red. May. Fruit light red, medium size, very sour. Tree thrifty, healthy and prolific; at home everywhere.

**Morello**. Red.

**Sweet Cherries**

- Baldwin. Red.
- Schmidt. Black.
- Windsor. Red.
- Bing. Brown or black.
- Spanish. Yellow.
- Wood. Yellow and red.
- Dyehouse. Red.
- Tartarian. Black.

**QUINCES**

Prices of Quince Trees, 3 to 4 feet, 40 cts. each, \$3.50 for 10.

Parcel Post. Trees not larger in size than 2 to 3 feet can be sent by parcel post, prepaid, at 3 cts. per tree extra.

- Champion. Large oval fruit. Oct.
- Orange. Bright yellow; large. Oct.

**PLUMS**

Prices of Plum Trees:

	Each	10	100
2 to 3 feet.....	\$0 20	\$1 50	\$10 00
3 to 4 feet.....	20	2 00	15 00
4 to 5 feet.....	25	2 50	20 00
5 to 6 feet.....	30	3 00	25 00

Parcel Post. Trees not larger than 2 to 3 feet can be sent by parcel post, prepaid, at 3 cts. per tree extra.

- Abundance. Red.
- October Purple. Purple.
- Satsuma. Purplish crimson.
- Bradshaw. Violet-red.
- Red June. Red.
- Wickson. Red; large.
- Burbank. Red.
- Shropshire. Purple.
- Wild Goose. Bright red.
- Imperial Gage. Green.
- Italian. Purple.



## PEARS

### Prices of Anjou, Barseck, Bartlett, Clapp's Favorite, Duchess, Lawrence, Seckel and Winter Nellis:

	Each	10	100	1,000
3 to 4 feet.....	\$0 25	\$2 00	\$15 00	\$125 00
4 to 5 feet.....	30	2 50	20 00	150 00
5 to 6 feet.....	35	3 00	25 00	200 00

### Prices of Garber, Kieffer and LeConte:

3 to 4 feet, 1 and 2 years.....	15	1 25	10 00	90 00
4 to 5 feet, 1 and 2 years.....	20	1 50	12 50	100 00
5 to 6 feet, 1 and 2 years.....	25	2 00	15 00	125 00

### Prices of Extra-Large Kieffer Trees: These have extra-heavy roots and bodies, and well-formed tops.

	Each	10	100	1,000
6 to 7 feet, 2 years.....	\$0 30	\$2 50	\$20 00	\$150 00
7 to 8 feet, 3 years.....	35	3 00	25 00	200 00

1 to 4 trees are sold at the each rate; 5 to 49 trees are sold at the 10 rate; 50 to 299 trees are sold at the 100 rate; 300 or more are sold at the 1,000 rate.

Parcel Post. Trees not larger in size than 2 to 3 feet can be sent by parcel post, prepaid, at 3 cts. per tree extra.

**Anjou** (Beurre d'Anjou). Autumn. Fruit is light green, with a red and russet cheek. Tree vigorous.

**Barseck**. A cross between Bartlett and Seckel. Larger than Seckel. Summer.

**BARTLETT**. Summer. A golden colored Pear, with a red cheek on most specimens. Bartlett mellows and is excellent for eating very early in the fall, yet when picked a week before it is ripe, and properly stored, will keep till late. Flavor delicious and musky; flesh buttery, rich and juicy. One of the finest Pears that grows to eat raw, and extra good for canning. A mingling of the flavor of Bartlett Pear and quince gives about the finest taste of any food this world's folks have. Bartlett trees bear early, produce enormous crops, and are not nearly so subject to damage by insects and disease as some other sorts. The trees do especially well with high culture.

**Clapp Favorite**. Summer. A lemon-yellow fruit, spotted with brown dots. Flesh fine, flavor rich and sweet.

**Duchess** (Angouleme). Bears young. Fruit large; good quality. October 20.

**Garber**. Fall. A good pollenizer for Kieffer. Fruit resembles Kieffer, but ripens two to three weeks earlier.

**KIEFFER**. Fall. We cannot say too much in favor of this money-maker, for it has proved such a boon to us and everyone who has planted it that we want its merits fully known by those who are contemplating Pears either in a commercial way or in the home orchard. Kieffer can be placed on the market in perfect condition, and the top prices of the market can always be secured for it. It is unfortunate that the merits of this Pear have become under-estimated because of the haste in which it has been hurried to market in an immature condition by some growers, and often before it has attained the proper size. When allowed to hang upon the trees until in October, and then carefully ripened in a cool, dark room, there are few Pears which are more attractive. The fruit is large to very large; skin yellow, with a light vermilion cheek; flesh brittle, very juicy, with a marked musky aroma; good quality; combines extreme juiciness with a sprightly, subacid flavor and the peculiar aroma of the Bartlett. Large fruit-growers are planting whole orchards of it—90 per cent Kieffer and 10 per cent of other good varieties should be the arrangement in every orchard to secure the pollination necessary for producing large crops from Kieffer.

**Lawrence**. Winter.

**LeConte**. Fall. A good pollenizer for Kieffer.

**Seckel**. Fall. Very juicy; highly flavored; trees small and stocky. An excellent fruit for home or market.

**Winter Nellis**. Delicious fruit; keeps well; fine grained. Tree regular bearer.

## DWARF PEARS

**Bartlett**

**Duchess**

Sizes: 2 to 3 feet, 3 to 4 feet, 4 to 5 feet. Prices the same as for Bartlett Standard.

WRITE FOR SPECIAL PRICES ON LARGE ORDERS



### GRAPES

1 to 4 vines are sold at the each rate; 5 to 49 vines are sold at the 10 rate; 50 to 299 vines are sold at the 100 rate; 300 vines or more are sold at the 1,000 rate.

Parcel Post. Vines can be sent by parcel post, prepaid, at 2½ cents per vine extra.

	Strong Vines—2-year Selects				One-year Vines			
	Each	10	100	1,000	Each	10	100	1,000
Catawba. Red...	\$0 10	\$0 80	\$6 00	\$50 00	\$0 10	\$0 75	\$4 00	\$30 00
Concord. Black..	10	80	5 00	40 00	10	75	3 50	25 00
Delaware. Light red.....	10	80	6 00	50 00	10	75	4 00	30 00
Moore (Moore's Early). Black...	10	80	6 00	50 00	10	75	4 00	30 00
Niagara. White..	10	80	6 00	50 00	10	75	4 00	30 00
Worden. Black...	10	80	6 00	50 00	10	75	4 00	30 00
Wyoming. Red..	10	80	6 00	50 00	10	75	4 00	30 00

### BLACKBERRIES

Price, 15 cts. each, 75 cts. for 10, \$3.50 per 100, \$25 per 1,000.

Parcel Post. Plants can be sent by parcel post, prepaid, at 2½ cts. per plant extra.

Eldorado Snyder Rathbun

### CURRENTS

Price, 15 cts. each, \$1 for 10, \$5 per 100.

Parcel Post. Plants can be sent by parcel post, prepaid, at 2½ cts. per plant extra.

	1,000
Fay .....	\$40 00
Perfection .....	40 00
Wilder .....	35 00

### DEWBERRIES

Price, 5 cts. each, 25 cts. for 10, \$1.50 per 100, \$12.50 per 1,000.

Parcel Post. Plants can be sent by parcel post, prepaid, at 2½ cts. per plant extra.

Austin Lucretia

### GOOSEBERRIES

Price, 20 cts. each, \$1.25 for 10, \$7.50 per 100, \$70 per 1,000.

Parcel Post. Plants can be sent by parcel post, prepaid, at 3 cts. per plant extra.

Downing Houghton Pearl

### RASPBERRIES.

Price, 15 cts. each, 75 cts. for 10, \$3 per 100, \$20 per 1,000.

Parcel Post. Plants can be sent by parcel post, prepaid, at 2½ cts. per plant extra.

Cumberland. Black. Gregg. Black. Perfection. Red.  
 Ruby. Red. St. Regis. Red.

### ASPARAGUS

Prices: 1-year crowns, 25 cts. for 10, 65 cts. per 100, \$3 per 1,000; 2-year crowns, 30 cts. for 10, \$1 per 100, \$4 per 1,000.

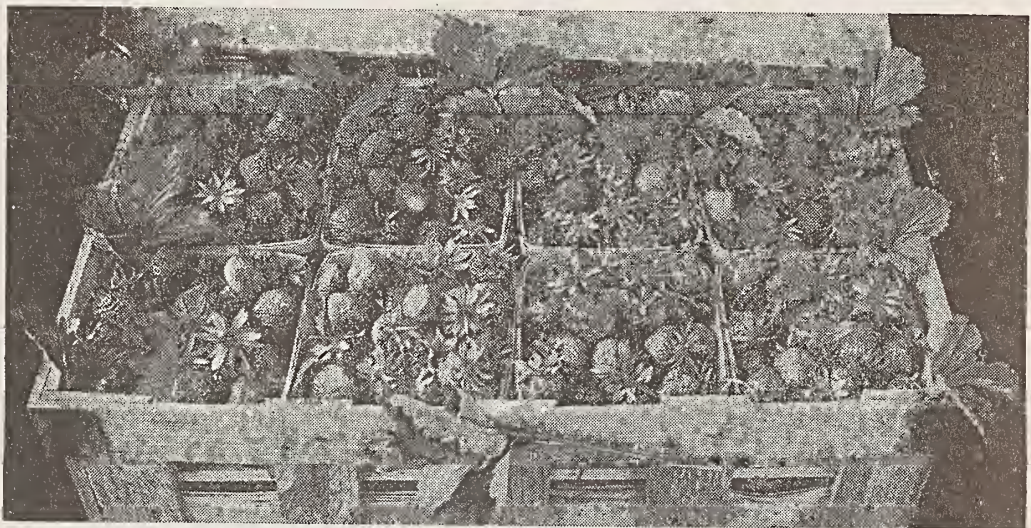
10 to 49 crowns are sold at the 10 rate; 50 to 299 crowns are sold at the 100 rate; 300 or more crowns are sold at the 1,000 rate.

Parcel Post. Crowns can be sent by parcel post, prepaid, at ½ ct. per crown extra.

Barr's Mammoth. Green. Conover's Colossal. White.  
 Donald's Elmira. Green. Giant Argenteuil. White.  
 Palmetto. Green.







By making a proper selection from our list you can have nice large beauties like these all through the season

## STRAWBERRY PLANTS

Parcel Post. Plants can be sent by parcel post, prepaid, at 1/2 ct. per plant extra.

### Prices of Strawberry Plants, for spring shipment only:

	12	25	50	100	250	500	1,000	5,000
<b>Aroma.</b> (Per.).....	\$0 20	\$0 35	\$0 50	\$0 75	\$1 25	\$2 00	\$3 00	\$13 75
<b>Bubach.</b> (Imp.).....	20	35	50	75	1 25	2 00	3 00	13 75
<b>Brandywine.</b> (Per.)....	20	35	50	90	1 50	2 25	4 00	17 50
<b>Chesapeake.</b> (Per.)....	25	40	60	1 00	1 75	3 00	4 00	17 50
<b>Climax.</b> (Per.).....	20	30	40	60	1 00	1 60	3 00	13 75
<b>Early Ozark.</b> (Per.)...	20	35	50	90	1 50	2 25	4 00	
<b>Excelsior.</b> (Per.).....	20	30	40	60	1 00	1 60	3 00	13 75
<b>Fendall.</b> (Imp.).....	25	40	60	1 00	1 75	3 00	5 00	20 00
<b>Gandy.</b> (Per.).....	20	30	40	60	1 00	1 60	3 00	13 75
<b>Haverland.</b> (Imp.)....	20	35	50	75	1 25	2 00	3 00	13 75
<b>Joe Johnson.</b> (Per.)...	25	40	60	1 00	1 75	3 00	5 00	
<b>Klondike.</b> (Per.).....	20	30	40	60	1 00	1 60	3 00	13 75
<b>Lady Thompson.</b> (Per.)..	20	30	40	60	1 00	1 60	3 00	13 75
<b>Missionary.</b> (Per.)....	20	30	40	60	1 00	1 60	3 00	13 75
<b>Mitchell's Early.</b> (Per.)	20	35	50	75	1 25	2 00	3 00	13 75
<b>New York.</b> (Per.).....	25	40	60	1 00	1 75	3 00	5 00	
<b>Parsons' Beauty.</b> (Per.)	20	35	50	75	1 25	2 00	3 00	13 75
<b>Progressive</b> .....	40	60	1 00	1 75	3 00	5 00	9 00	
<b>Superb</b> .....	40	60	1 00	1 75	3 00	5 00	9 00	
<b>Tennessee Prolific.</b> (Per.)	20	35	50	75	1 25	2 00	3 00	13 75
<b>Warfield.</b> (Imp.).....	20	35	50	75	1 25	2 00	3 00	13 75
<b>Woolverton.</b> (Per.)....	20	35	50	90	1 50	2 25	4 00	

**GANDY.** (Per.) The latest Strawberry we grow. Not only does it bring the very highest prices, but yields tremendous crops of a quality that leaves nothing to be desired in flavor, texture, color, and keeping qualities. Berries bright red, with somewhat smooth surface. Foliage broad and dark green. As a late market sort and long-distance shipper, it is the best kind we have grown. Plant is perfect bloomer, but should be set near other bisexuals.

**KLONDYKE.** (Per.) Early. Berries uniform, shapely, dark red, mild and delicious, very juicy, handsome, sell quickly. Plants make a remarkable growth, are tall, compact, stalks strong, leaves light green; make abundant runners and an unusual number of crowns. Yields are wonderful. Blossoms are perfect, but do not fully fertilize themselves, and need other sorts near.

**PROGRESSIVE.** One of the finest berries on the market today. Everbearing; fine color; shapely; delicious. Will bear fruit until late October. A very desirable plant for you to set out.

**SUPERB.** Another everbearing Strawberry. Excellent grower; berries handsome; very large. Bears immense crops of tasty fruit. A field of Progressive and Superb will keep luscious fruit on your table from early spring to late fall.





An avenue of Norway Maples. The premier street and lawn tree

## Shade and Ornamental Trees

If there is any one thing that turns a house into a home, it is plantings of the beautiful live things so generously provided by Mother Nature. They are valuable because they increase the worth of your property in a very few years, provide delightful shade in summer, and serve to break the cold winds of winter.

You do not need a landscape architect to lay out your grounds, unless you want something elaborate and expensive. Before planting your trees it is always wise to draw a rough plan and then work with it as a guide. Here are a few hints that should help you to get a more satisfactory result: Plan your planting so that, when your place is approached from the road, a pleasing picture will be seen. Plant large trees at either end of the house, but studiously avoid any plantings that will obstruct the view from the road. Let the passer-by see your home and then you can see him. Plant shrubs and hedge plants in front of the house. Look on page 19 for suggestions for planting evergreen trees and on page 24 for hints on planting hedges. If you want a planting that is intended to carry out your own ideas and reflect your individuality, the proper thing is to get a few Harrison trees and plant them yourself.

All ornamental trees we sell receive the same good care and treatment that our fruit trees get, thus assuring you that the trees you buy are *right* in every respect. Our trees are excellent specimens, are graded liberally, and have extra well-developed root-systems—a point you should always look for when buying trees.

Parcel Post. Trees not larger in size than 2 to 3 feet can be sent by parcel post, prepaid, at 3 cts. per tree extra.

	Each	10
<b>Ailanthus glandulosa</b> (Tree of Heaven). 8 to 10 feet.....	\$1 25	\$10 00
10 to 12 feet.....	1 50	12 50
12 to 14 feet.....	2 00	15 00



## SHADE AND ORNAMENTAL TREES, continued

	Each	10
<b>Ash, Black</b> ( <i>Fraxinus nigra</i> ). 12 to 14 feet.....	\$4 00	\$35 00
18 to 20 feet.....	5 00	40 00
<b>Ash, Mountain</b> ( <i>Sorbus americana</i> ). 5 to 6 feet.....	1 00	9 00
6 to 7 feet.....	1 25	10 00
<b>Beech, Purple</b> ( <i>Fagus atropurpurea</i> ). 3 to 4 feet.....	90	7 50
4 to 5 feet.....	1 00	8 00
5 to 6 feet.....	2 00	17 50
<b>Beech, Weeping Purple</b> ( <i>Fagus atropurpurea pendula</i> ).		
4 to 5 feet.....	2 00	15 00
5 to 6 feet.....	3 00	25 00
<b>Birch, European</b> ( <i>Betula alba</i> ). 8 to 10 feet.....	2 00	17 50
10 to 12 feet.....	2 50	20 00
12 to 14 feet.....	3 00	25 00
14 to 16 feet.....	3 50	30 00
<b>CATALPA BUNGEI</b> (Round-headed Catalpa). Very hardy and effective; much used in formal gardens; has the outlines of the standard bay trees. 6- foot stems.	Each	10
2-year crowns.....	\$2 50	\$20 00
1-year crowns.....	1 50	12 50
<b>Catalpa speciosa</b> (Indian Bean Tree). 4 to 5 feet.....	40	3 00
5 to 6 feet.....	50	4 00
6 to 7 feet.....	60	5 00
7 to 8 feet.....	75	6 00
8 to 10 feet.....	1 25	10 00
<b>Chestnut</b> ( <i>Castanea americana</i> ). A noble shade tree. Flowers showy, opening in June. Nuts sweeter than other kinds.		
3 to 4 feet.....	40	3 00
<b>ELM, AMERICAN</b> ( <i>Ulmus americana</i> ). Wide-spreading, gracefully curving branches growing up in a form like the outline of long-stemmed flowers in a tall vase.	Each	10
4 to 5 feet.....	\$0 50	\$4 00
5 to 6 feet.....	60	5 00
6 to 7 feet.....	75	6 00
7 to 8 feet.....	1 50	12 50
8 to 10 feet.....	2 00	18 00
10 to 12 feet.....	2 50	20 00
<b>Ginkgo, or Maidenhair Tree.</b> 3 to 4 feet.....	75	6 00
4 to 5 feet.....	1 00	7 50
5 to 6 feet.....	1 25	10 00
6 to 7 feet.....	1 50	12 50
7 to 8 feet.....	2 00	17 50
8 to 10 feet.....	3 00	25 00
<b>Horse-Chestnut, European</b> ( <i>Æsculus Hippocastanum</i> ).		
4 to 5 feet.....	50	4 00
5 to 6 feet.....	75	6 00
6 to 7 feet.....	1 00	8 00
7 to 8 feet.....	1 25	10 00
8 to 10 feet.....	1 75	15 00
<b>Horse-Chestnut, Double White.</b> 4 to 5 feet.....	75	6 00
5 to 6 feet.....	1 00	8 00
6 to 7 feet.....	1 25	10 00
<b>Judas Tree, or Red-Bud</b> ( <i>Cercis canadensis</i> ). 4 to 5 feet.....	50	4 00
5 to 6 feet.....	75	6 00
6 to 7 feet.....	1 00	7 50
<b>LINDEN, AMERICAN</b> ( <i>Tilia americana</i> ). A fast-growing, graceful tree. Leaves heart-shaped and dark above, pale beneath; flowers creamy white, in graceful clusters, very early in the summer.	Each	10
4 to 5 feet.....	\$0 60	\$5 00
5 to 6 feet.....	75	6 00
6 to 7 feet.....	1 00	7 50
7 to 8 feet.....	1 25	10 00



SHADE AND ORNAMENTAL TREES, continued

<b>Linden, American</b> , continued	Each	10
8 to 10 feet.....	\$1 75	\$15 00
10 to 12 feet.....	2 00	17 50
12 to 14 feet.....	3 00	25 00
14 to 16 feet.....	4 00	35 00
<b>Linden, European</b> ( <i>Tilia europæa</i> ). 4 to 5 feet.....	60	5 00
5 to 6 feet.....	75	6 00
<b>Locust, Honey</b> ( <i>Gleditschia triacanthos</i> ). 7 to 8 feet.....	1 00	9 00
8 to 10 feet.....	1 50	12 50
10 to 12 feet.....	2 00	17 50
12 to 14 feet.....	2 50	20 00
16 to 18 feet.....	3 00	25 00
18 to 20 feet.....	4 00	30 00
<b>Locust, Black</b> ( <i>Robinia Pseudacacia</i> ). 7 to 8 feet.....	75	6 00
8 to 10 feet.....	1 00	7 50
10 to 12 feet.....	1 25	10 00
12 to 14 feet.....	1 50	12 50
14 to 16 feet.....	2 50	20 00
<b>Maple, Ash-leaved, or Box Elder</b> ( <i>Acer Negundo</i> ). 6 to 7 feet.	25	2 25
7 to 8 feet.....	30	2 50
8 to 10 feet.....	35	3 00
10 to 12 feet.....	50	4 50
12 to 14 feet.....	75	6 00
<b>Maple, Colchicum or Red</b> ( <i>Acer rubrum</i> ). 5 to 6 feet.....	1 00	9 00
6 to 7 feet.....	1 50	12 50
7 to 8 feet.....	1 75	15 00
8 to 10 feet.....	2 00	17 50
10 to 12 feet.....	3 00	25 00

**MAPLE, NORWAY** (*Acer platanoides*). Typical Maple leaves, large and bright green, fading to gold in the fall. Trunk and branches are sturdy and strong, lending an effect of ruggedness. Growth is fast. Branches and foliage are thick and compact, and the head, which is round-topped, begins to branch not far above the ground. The tree is large, towering 50 feet high when fully grown. For lining the sides of lanes and roads, for a lawn, to protect the house from sun and weather, for shade, and for real permanent worth in all landscape planting, there are no other trees in its class. The handsomest American lawn tree.

Our Norway Maples are beauties. We have blocks of them that are the finest we have ever seen. They are 12 to 16 feet high with perfectly straight trunks that will caliper a good 3 inches at the base. The heads are broad, symmetrical, with lower branches at least 6 feet above the ground.

Send your order as soon as you can, so you will be sure to get some of these splendid trees.

**Prices of Norway Maples:**

	Each	10	100	1,000
7 to 8 feet, 1 inch caliper.....	\$0 60	\$5 00	\$45 00	\$400 00
8 to 9 feet, 1¼ inch caliper.....	75	6 00	55 00	500 00
9 to 10 feet, 1½ inch caliper.....	1 00	9 00	80 00	700 00
10 to 12 feet, 1½ to 1¾ inch caliper..	1 50	14 00	125 00	1,000 00
12 to 14 feet, 1¾ to 2 inch caliper.....	2 00	17 50	150 00	1,250 00
14 to 16 feet, 2 to 2½ inch caliper.....	3 00	25 00	200 00	1,500 00
2½ to 3 inch caliper.....	4 00	30 00	250 00	2,000 00
3 to 3½ inch caliper.....	5 00	40 00	300 00	2,500 00
3½ to 4 inch caliper.....	6 00	50 00	400 00	3,000 00
4 inch caliper.....	7 00	60 00		
5 inch caliper.....	8 00	70 00		
6 inch caliper.....	9 00	80 00		

**MAPLE, SUGAR** (*Acer saccharum*). Not far from the head of the list of handsome and all-round good shade trees for street and lawn. Leaves in summer are green and beautiful; in autumn, scarlet and orange. Growth thick and dense; large and stately.

	Each	10	100	1,000
5 to 6 feet.....	\$0 40	\$3 00	\$27 00	\$250 00
6 to 7 feet.....	50	4 00	32 00	300 00
7 to 8 feet.....	75	7 00	60 00	500 00
8 to 9 feet.....	1 00	9 00	80 00	700 00



SHADE AND ORNAMENTAL TREES, continued

Maple, Sugar, continued

	Each	10	100	1,000
9 to 10 feet .....	\$1 50	\$12 50	\$110 00	\$1,000 00
10 to 12 feet.....	2 00	17 50		
12 to 14 feet.....	3 00	25 00		

**MAPLE, SILVER** (*Acer dasycarpum*). The name comes from the color of the leaves. Underneath, these are the same shade as new, bright silver; on top they are light green. Many of them are carried on their edges, and when wind blows the trees are alive with silver and green flashes. In the fall the leaves fade to pale yellow. A rapid grower, and a good street and ornamental tree.

	Each	10	100	1,000
8 to 10 feet.....	\$0 75	\$6 00	\$50 00	\$400 00
10 to 12 feet.....	1 00	8 00	70 00	600 00
12 to 14 feet.....	1 50	10 00	90 00	800 00
14 to 16 feet.....	2 00	15 00	125 00	1,000 00
16 to 20 feet.....	3 00	25 00	200 00	1,500 00

**MAPLE, SCHWEDLER'S** (*Acer Schwedleri*). This Maple has three distinct changes of dress in a season. In spring it is purple and crimson; in summer dark green, and in fall brown and red.

	Each	10
7 to 8 feet.....	\$1 50	\$12 50
8 to 10 feet.....	1 75	15 00
10 to 12 feet.....	2 50	20 00
12 to 14 feet.....	3 00	25 00

**Maple, Wier's Cut-leaved** (*Acer saccharinum Wieri*).

10 to 12 feet.....	1 25	10 00
12 to 14 feet.....	1 50	12 50

**Mulberry, Teas' Weeping** (*Morus alba pendula*).

6-foot stems, 2-year buds.....	2 00	17 50
--------------------------------	------	-------

**Oak, Bear** (*Quercus ilicifolia*). 8 to 10 feet.....

8 to 10 feet.....	3 50	30 00
10 to 12 feet.....	5 00	40 00
12 to 14 feet.....	6 00	50 00

**Oak, Black Jack** (*Quercus marilandica*). 8 to 10 feet.....

8 to 10 feet.....	3 50	30 00
10 to 12 feet.....	5 00	40 00
12 to 14 feet.....	6 00	50 00

**Oak, Bur or Mossy Cup** (*Quercus macrocarpa*).

8 to 10 feet.....	3 50	30 00
10 to 12 feet.....	5 00	40 00
12 to 14 feet.....	6 00	50 00

**Oak, Pin** (*Quercus palustris*).

4 to 5 feet....	1 00	7 50
5 to 6 feet....	1 50	12 50
6 to 7 feet....	2 00	17 50
7 to 8 feet....	2 50	20 00
8 to 10 feet....	3 50	30 00

**Oak, Red** (*Quercus rubra*).

5 to 6 feet....	1 00	9 00
6 to 7 feet....	1 25	10 00
7 to 8 feet....	1 75	15 00
8 to 10 feet....	2 25	20 00
10 to 12 feet....	3 00	25 00
12 to 14 feet....	5 00	40 00

**Oak, Scarlet** (*Quercus coccinea*).

5 to 6 feet....	1 50	12 50
6 to 7 feet....	2 00	17 50
8 to 10 feet....	3 50	30 00
10 to 12 feet....	4 00	35 00

**Oak, White** (*Quercus alba*).

5 to 6 feet....	1 50	12 50
6 to 7 feet....	2 00	17 50
7 to 8 feet....	2 50	20 00
8 to 10 feet....	3 50	30 00
10 to 12 feet....	5 00	40 00



In addition to being valuable for its shade, the Pecan is also a money-maker, as its nuts are always in good demand.



**SHADE AND ORNAMENTAL TREES, continued**

**Pecan (*Hicoria Pecan*).**

	Each	10
2 to 3 feet.....	\$1 00	\$7 50
3 to 4 feet.....	1 25	10 00
4 to 5 feet.....	1 50	12 50
5 to 6 feet.....	2 00	17 50
6 to 7 feet.....	3 00	25 00
7 to 8 feet.....	4 00	30 00
8 to 10 feet.....	5 00	40 00

**PLANE, ORIENTAL (*Platanus orientalis*).** One of the very best of all trees for street planting. Has a very wide, round-topped head and heavy, thick trunk and branches. The dense foliage makes it specially desirable as a shade tree. It is a rapid grower, almost equaling the poplars in this respect.

- 4 to 5 feet, 40 cts. each, \$3.50 for 10, \$30 per 100.
- 5 to 6 feet, 45 cts. each, \$4 for 10, \$35 per 100.
- 6 to 7 feet, 50 cts. each, \$4.50 for 10, \$40 per 100.
- 7 to 8 feet, 75 cts. each, \$7 for 10, \$60 per 100.

	Each	10	100
8 to 10 feet.....	\$1 00	\$9 00	\$80 00
10 to 12 feet.....	2 00	17 50	160 00
14 to 16 feet.....	4 00	25 00	200 00

	Each	10
<b>Poplar, Carolina (<i>Populus caroliniana</i>).</b> 4 to 5 feet.....	\$0 30	\$2 50
5 to 6 feet.....	35	3 00
6 to 7 feet.....	40	3 50
7 to 8 feet.....	45	4 00
20 feet.....	2 00	17 50
25 feet.....	3 00	25 00

<b>Poplar, Lombardy (<i>Populus nigra italica</i>).</b> 7 to 8 feet.....	1 00	9 00
8 to 10 feet.....	1 25	10 00
10 to 12 feet.....	1 50	12 50
12 to 14 feet.....	1 75	15 00

<b>Tulip Tree (<i>Liriodendron tulipifera</i>).</b> 8 to 10 feet.....	1 00	9 00
10 to 12 feet.....	1 50	12 50

<b>Walnut, Black (<i>Juglans nigra</i>).</b> 4 to 5 feet.....	50	4 00
5 to 6 feet.....	75	6 00
6 to 7 feet.....	1 00	7 50
7 to 8 feet.....	1 25	10 00
8 to 10 feet.....	1 50	12 50
10 to 12 feet.....	2 00	17 50
12 to 14 feet.....	3 00	25 00

<b>Walnut, English (<i>Juglans regia</i>).</b> 2 to 3 feet.....	50	4 00
3 to 4 feet.....	75	6 00
4 to 5 feet.....	1 00	9 00

<b>Willow, Babylonian Weeping (<i>Salix babylonica</i>).</b> 4 to 5 feet..	50	4 00
6 to 7 feet.....	75	6 00
7 to 8 feet.....	1 00	7 50
8 to 10 feet.....	1 25	10 00
10 to 12 feet.....	1 50	12 50
12 to 14 feet.....	2 00	17 50



As a street tree, the Oriental Plane creates an unusual appearance. Its symmetrical shape and the unique markings on the trunk make it valuable for planting.





An appropriate planting of Evergreens. Your collection will not be complete unless you have a few Koster's and Colorado Blue Spruces on your grounds

## EVERGREEN TREES

Every lawn's appearance can be greatly enhanced by Evergreens. Their beautiful colors, remaining solid throughout the year, are much appreciated in winter when the deciduous trees have succumbed to the frosts and have lost their beauty until spring comes again.

Even though the home grounds seem well planted with shrubs, maples, elms, birches, and other trees of grace and beauty, there is always a place for the Evergreens—the dwarf Juniper, the Yews, and other low-growing kinds, as well as the massive sorts, like the Pines and Spruces.

There are several ways to make effective plantings of Evergreens. A very good scheme is to mass them in groups of from three to eight, if they are of the small-growing varieties, and of two to six, if they are liable to reach any considerable height. The planting shown above is in the mass style. Another plan much in vogue on small lawns or where there is room for but a few trees, is to plant them singly as individual specimens. Plantings made after this style give the grounds an appearance of being larger and, if your grounds are small, we feel that the latter plan will prove the most satisfactory.

Evergreen trees are widely used as screens and windbreaks, and a double row of them planted on the windward side of your home will break the force of the winter winds and make the house warmer. Evergreens are much used in hedges and information about their use as such is given on pages 26 and 27. Don't fail to include a few Evergreens when you send your order.

**PLEASE NOTE THAT WE DO NOT SHIP EVERGREEN TREES BY PARCEL POST**



EVERGREEN TREES, continued

**ARBORVITÆ, AMERICAN** (*Thuja occidentalis*). Much used for hedges, screens, singly on lawns and in tubs for porches, etc. In summer the flat foliage is bright green above, yellowish beneath, changing in winter to rich tones of bronze. Arborvitæ make a dense hedge, affording protection from intruders and breaking the force of winter winds.

	Each	10	100
18 to 24 inch.....	\$0 75	\$6 00	\$50 00
2 to 3 feet.....	1 00	8 00	70 00
3 to 4 feet.....	1 50	12 50	100 00
4 to 5 feet.....	2 50	20 00	180 00
5 to 6 feet.....	3 50	30 00	250 00
6 to 7 feet.....	5 00	40 00	350 00
7 to 8 feet.....	6 00	50 00	450 00

**Arborvitæ, Ellwanger's Siberian** (*T. occidentalis Ellwangeriana*). Each 10  
12 inch.....\$0 60 \$5 00

**Arborvitæ, Globular** (*T. globosa*). 12 to 18 inch..... 1 00 9 00

**Arborvitæ, Hovey's Globular.** 3 to 4 feet..... 3 00 25 00

**ARBORVITÆ, CHINESE** (*Biota orientalis*). Foliage of a deep green color. Of the same pyramidal outline as our native Arborvitæ (*Thuja occidentalis*), but the texture of the foliage is more delicate, making the tree really more valuable for ornamental planting.

	Each	10	100
5 to 6 feet.....	\$3 50	\$30 00	\$250 00
6 to 7 feet.....	5 00	40 00	350 00
7 to 8 feet.....	6 00	50 00	450 00

**Arborvitæ, Fern-like** (*T. occidentalis filicoides*). 12 in. 60 5 00

**Arborvitæ, Peabody's Golden.** 18 to 24 inch..... 75 6 00

**Arborvitæ, Pyramidal** (*T. pyramidalis*). 12 inch.. 60 5 00

**Cedar, Blue Virginia** (*Juniperus glauca*). 12 inch.. 1 00 7 50

**Cedar, Indian** (*Ce-*

<i>drus Deodara</i> ).	Each	10
18 to 24 inch.....	\$0 75	\$6 00
8 to 10 feet.....	7 00	60 00
10 to 12 feet.....	8 00	70 00
12 to 14 feet.....	9 00	80 00

**Cedar, Japanese** (*Cryptomeria japonica*).

12 to 18 in..... 1 00 7 50

**Cedar, Red** (*Juniperus virginiana*).

12 inch..... 75 6 00

**Cypress, Glory of**

**Boskoop.** 12 in... 50 4 00

5 to 6 feet..... 3 00 25 00

6 to 7 feet..... 3 50 30 00

7 to 8 feet..... 5 00 40 00

8 to 10 feet..... 7 50 60 00

10 to 12 feet..... 10 00 75 00

**Fir** (*Abies umbellata*). 12 inch.. 50 4 00

**Fir, Balsam** (*Abies balsamea*). 12 in. 50 4 00

**FIR, CEPHALONIAN** (*Abies cephalonica*). The growth is stiff and rigid in every limb, and the tree is wide-spreading and stately.

	Each	10
2 to 3 feet.....	\$1 50	\$12 50
3 to 4 feet.....	2 50	22 50
4 to 5 feet.....	3 50	32 50
5 to 6 feet.....	5 00	47 50
6 to 7 feet.....	7 50	70 00

**Fir, Noble** (*Abies nobilis*). 12 inch. 75 6 00



American Arborvitæ





Canadian Hemlock Spruce

**EVERGREEN TREES, continued**

	Each	10
<b>Fir, Nordmann's</b> ( <i>Abies Nordmanniana</i> ). 12 to 18 inch.....	\$0 75	\$6 00
18 to 24 inch.....	1 25	10 00
<b>Fir, White or Concolor</b> ( <i>Abies concolor</i> ). 3 to 4 feet.....	3 00	27 50
4 to 5 feet.....	5 00	45 00
<b>HEMLOCK, CANADIAN</b> ( <i>Tsuga canadensis</i> ). A tall tree, with drooping branches, forming a pyramidal crown; foliage dark green. Makes a grand hedge, either clipped or untrimmed.	Each	10 100
18 to 24 inch.....	\$1 00	\$9 00 \$80 00
2 to 3 feet.....	1 50	12 00 100 00
3 to 4 feet.....	2 00	17 50 150 00
4 to 5 feet.....	3 00	27 50 260 00
5 to 6 feet.....	4 00	35 00 300 00
6 to 7 feet.....	6 00	55 00 500 00
<b>Juniper, Chinese Golden</b> ( <i>Juniperus chinensis aurea</i> ). 12 inch.....	Each	10
12 inch.....	\$1 00	\$9 00
<b>Juniper, Common</b> ( <i>Juniperus communis</i> ). 12 inch.....	1 00	9 00
<b>Juniper, Common Golden</b> ( <i>Juniperus communis aurea</i> ). 12 in.....	1 00	9 00
<b>Juniper, Irish</b> ( <i>Juniperus communis hibernica</i> ). 12 inch.....	1 00	9 00
<b>Juniper, Needle</b> ( <i>Juniperus virginiana tripartita</i> ). 12 inch.....	1 00	9 00
<b>Juniper, Pfitzer's</b> ( <i>Juniperus chinensis Pfitzeriana</i> ). 12 inch....	1 00	9 00
<b>Juniper, Prostrate</b> ( <i>Juniperus nana</i> ). 12 inch.....	1 50	12 50
<b>Juniper, Savin</b> ( <i>Juniperus Sabina</i> ). 12 inch.....	1 00	9 00
<b>Juniper, Schott's</b> ( <i>Juniperus virginiana Schottii</i> ). 12 inch.....	1 00	9 00
<b>Juniper, Tamarix-leaved</b> ( <i>Juniperus sabina tamariscifolia</i> ). 12 in.....	1 25	10 00
<b>Juniper, Waukegan Trailing</b> . 2 feet.....	3 00	27 50
<b>PINE, AUSTRIAN</b> ( <i>Pinus austriaca</i> ). Dense-foliaged tree, adapted to any soil and location. Tall, sturdy, with broad, round crown.	Each	10
3 to 4 feet.....	\$1 50	\$12 50
4 to 5 feet.....	2 00	17 50
5 to 6 feet.....	2 50	22 50



EVERGREEN TREES, continued

	Each	10
<b>Pine, Japanese Umbrella</b> ( <i>Sciadopitys verticillata</i> ). 12 inch...	\$1 25	\$10 00
<b>Pine, White</b> ( <i>Pinus Strobus</i> ). 3 to 4 feet.....	2 50	20 00
4 to 5 feet.....	3 50	30 00
5 to 6 feet.....	5 00	40 00
<b>RETINOSPORA, Japanese</b> ( <i>Retinospora obtusa</i> ). 12 inch....	75	6 00
<b>Retinospora, Japanese Graceful</b> ( <i>Retinospora obtusa gracilis</i> ). 12 inch.....	75	6 00
<b>Retinospora, Japanese Thread-like</b> ( <i>Retinospora pisifera filifera</i> ). 12 inch.....	75	6 00
<b>Retinospora, Japanese Golden Thread-like</b> ( <i>Retinospora pisifera filifera aurea</i> ). 12 inch.....	75	6 00
<b>Retinospora, Japanese Pea-fruited</b> ( <i>Retinospora pisifera</i> ). 8 in.	75	6 00
<b>Retinospora, Japanese Golden Pea-fruited</b> ( <i>Retinospora pisifera aurea</i> ). 8 inch.....	75	6 00
<b>Retinospora, Japanese Plume-like</b> ( <i>Retinospora plumosa</i> ). 12 inch.....	75	6 00
3 to 4 feet.....	3 00	27 50
4 to 5 feet.....	4 00	37 50
<b>Retinospora, Japanese Golden Plume</b> ( <i>Retinospora plumosa aurea</i> ). The young growth has an old-gold color, which contrasts richly with the dark green of older foliage.	Each	10
12 inch.....	\$0 75	\$6 00
2 to 3 feet.....	2 00	17 50
3 to 4 feet.....	3 00	25 00
<b>Retinospora, Leptoclada</b> ( <i>Retinospora spherioidea leptoclada</i> ). 8 inch.....	75	6 00
<b>Retinospora, Sulphur-tinted</b> ( <i>Retinospora sulphurea</i> ). 8 inch.....	75	6 00
<b>Retinospora, Veitch's Japanese or Silver Cypress</b> ( <i>Retinos- pora squarrosa Veitchii</i> ). 8 inch.....	75	6 00
<b>SPRUCE, COLORADO BLUE</b> ( <i>Picea pungens glauca</i> ). Foliage blue and sage-green. As a specimen tree on the lawn or planted in groups, in front of darker-colored evergreens, the Blue Spruce is at its best. Tree usually has a symmetrically shaped, narrow-pointed or rounding top; is hardy and quick-growing.	Each	10
2 to 3 feet.....	\$2 00	\$18 00
3 to 4 feet.....	4 00	35 00
4 to 5 feet.....	6 00	55 00
5 to 6 feet.....	8 00	60 00
6 to 7 feet, specimens.....	10 00	
7 to 8 feet, specimens.....	12 00	
<b>SPRUCE, COLORADO</b> ( <i>Picea pungens</i> ). The original form of the now-famous Colorado Blue Spruce. The foliage is occasionally quite blue, but mostly a light green. It is a strong, hardy grower and makes a tree of great beauty, especially when planted individually or in groups.	Each	10
2 to 3 feet.....	\$1 75	\$15 00
3 to 4 feet.....	3 50	30 00
4 to 5 feet.....	5 00	45 00
5 to 6 feet.....	7 00	55 00
6 to 7 feet.....	9 00	
7 to 8 feet.....	10 00	
<b>SPRUCE, KOSTER'S BLUE</b> ( <i>Picea pungens glauca Kosteriana</i> ). Foliage intense, silvery blue and very dense on the branch ends; rapid grower and has regular, slim branches. We have the finest stock of this to be found in the United States. The trees in our nursery are grafted from the very finest specimens, and have the rich pronounced blue color that makes this tree so strikingly handsome.	Each	10
8 to 24 inch.....	\$3 00	\$25 00
2 to 3 feet.....	4 00	30 00
3 to 4 feet.....	5 00	40 00
4 to 5 feet.....	6 00	50 00
5 to 6 feet.....	8 00	70 00
6 to 7 feet.....	12 00	100 00
7 to 8 feet.....	14 00	



EVERGREEN TREES, continued

**SPRUCE, NORWAY** (*Picea excelsa*). During the past twenty-five years the most widely planted Spruce. It is fast-growing, tall, graceful and handsome ornamental tree, suitable for grouping around the large estate or park, or as a windbreak to protect the farm buildings. All our Norway Spruces are three times transplanted and are extra hardy.

	Each	10	100	1,000
2 to 3 feet.....	\$0 50	\$4 50	\$40 00	\$350 00
3 to 4 feet.....	60	5 00	45 00	400 00
4 to 5 feet.....	75	6 00	55 00	500 00
5 to 6 feet.....	85	7 00	65 00	600 00
6 to 7 feet.....	1 00	9 00	80 00	750 00

**Spruce, Oriental** (*Picea orientalis*).

	Each	10
2 to 3 feet.....	\$1 25	\$10 00
3 to 4 feet.....	2 00	15 00
4 to 5 feet.....	3 00	25 00

**Spruce, Douglas'** (*Pseudotsuga Douglasii*). 4 to 5 feet.....

4 to 5 feet.....	3 00	25 00
5 to 6 feet.....	4 00	35 00
6 to 7 feet.....	6 00	50 00
7 to 8 feet.....	7 50	60 00

**SPRUCE, WHITE** (*Picea canadensis*, or *P. alba*). Has light foliage, with an agreeable odor. Cones are less than 2 inches long; glossy brown. Native in the northern United States and Canada. Hardy anywhere; one of the best for windbreaks or shelter-belts in the North and West.

	Each	10
2 to 3 feet.....	\$1 00	\$8 00
3 to 4 feet.....	2 00	15 00
4 to 5 feet.....	3 00	25 00
5 to 6 feet.....	4 00	35 00
6 to 7 feet.....	5 00	40 00
7 to 8 feet.....	6 00	55 00

**Spruce, Tiger-tail** (*Picea polita*). 12 inch.....

**Yew, English** (*Taxus baccata*). 12 inch.....

12 inch.....	75	6 00
2 to 3 feet.....	2 00	17 50
3 to 4 feet.....	3 00	25 00
4 to 5 feet.....	4 00	35 00

**Yew, Irish** (*Taxus baccata fastigiata*). 12 inch.....

**Yew, Japanese** (*Taxus cuspidata brevifolia*). 12 inch.....



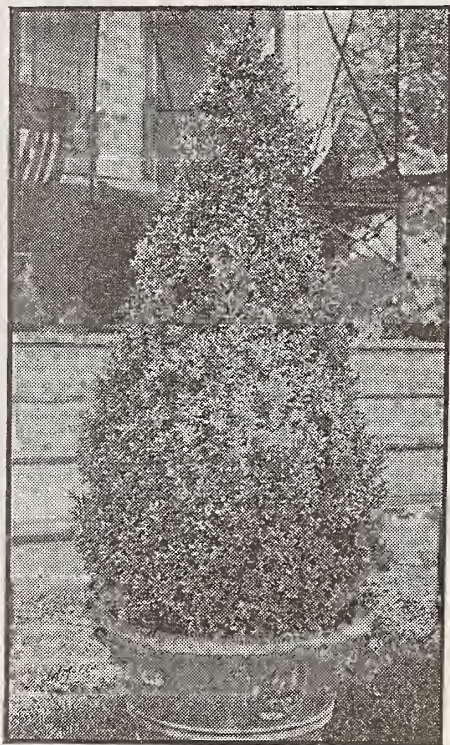
One of the best Evergreens is the Norway Spruce. It is always a credit to your lawn



## BROAD-LEAVED EVERGREENS

Parcel Post. We do not ship these plants by parcel post.

		Each	10
<b>Azalea, Evergreen</b> ( <i>Azalea amæna</i> ). 12 inch .....	\$1 50		\$12 50
<b>Azalea, Hinodegiri.</b> 12 inch.....	1 50		12 50
<b>Azalea, Japanese</b> ( <i>Azalea mollis</i> ). 12 to 18 inch.....	1 00		9 00



Tubbed specimens of Pyramidal Box are widely used as porch ornaments. They are beautiful the year round.

**BOXWOOD** (*Buxus suffruticosa*). A dwarf variety. Splendid for planting in window-boxes, and is much used for edging along walks and about beds of shrubbery, etc.

	Each	10	100
12 inch.....	\$1 00	\$7 50	\$60 00
18 inch.....	2 00	15 00	100 00

**BOXWOOD, GLOBULAR** (*Buxus sempervirens*). Trimmed to globe form. Popular for planting as individual specimens in tubs, or on the lawn.

	Each	10	100
12 inch.....	\$0 50	\$4 00	\$30 00
18 inch.....	1 00	7 50	60 00

**BOXWOOD, PYRAMIDAL** (*Buxus sempervirens*). Trimmed to pyramidal form. Popular for planting as individual specimens in tubs, or on the lawn.

	Each	10	100
18 inch.....	\$1 00	\$7 50	\$60 00
2 feet.....	1 50	12 50	100 00
2½ feet.....	2 00	15 00	125 00

**Euonymus, Japanese** (*Euonymus japonica*)

	Each	10
2 to 3 feet.....	\$1 50	\$12 50
3 to 4 feet.....	2 00	17 50
4 to 5 feet.....	3 00	25 00

**Cotoneaster Simonsii.**

2 to 3 feet .....	1 00	9 00
-------------------	------	------

**Fetter Bush, Japanese** (*Andromeda japonica*). 18 to 24 in.... 2 00 17 50

**Fetter Bush, Mountain** (*Andromeda floribunda*). 12 inch.... 2 00 17 50

**Holly, Japanese** (*Ilex crenata*). 2 to 3 feet..... 1 50 12 50

**Laurel, Cherry** (*Prunus Laurocerasus*). 18 to 24 inch .....

2 to 3 feet..... 1 25 10 00

3 to 4 feet..... 1 75 15 00

4 to 5 feet..... 2 50 20 00

3 to 4 feet..... 3 50 30 00

**Laurel, Mountain** (*Kalmia latifolia*). 12 inch .....

1 00 7 50

**Magnolia grandiflora.** 3 to 4 feet..... 2 00 17 50

4 to 5 feet..... 3 00 25 00

5 to 6 feet..... 4 00 35 00

**Mahonia, or Oregon Grape** (*Mahonia Aquifolium*). 2 feet ... 1 50 12 50

**Mahonia, Japanese** (*Mahonia japonica*). 18 to 24 inch..... 1 50 12 50

**Rhododendron, Catawbiense Hybrids.** Assorted white and purple. 18 to 24 inch..... 1 00 9 00

**COWPEA SEED IN SEASON**

ASK FOR QUOTATIONS





Catalpa Bungei and Hedge of California Privet

## HEDGE PLANTS

Many people do not realize the value of an attractive hedge and how it will increase the worth of their grounds. The usual objection put forward by those not familiar with Harrison's prices is: "They cost too much." A look at our prices will soon prove the fallacy of such a statement.

Some of the desirable hedge plants are listed below and others (notably the Arborvitae) are given on page 20. A hedge of any of the selected plants listed here will add dollars to the value of your home and make its appearance more charming.

### California Privet (*Ligustrum ovalifolium*)

The California Privet is undoubtedly the leading hedge plant, except in the extreme north where it is likely to winter-kill in extreme weather. The roots, however, may remain intact and the tops will start again. Under ordinary conditions it is hardy, nearly evergreen, with dense attractive-looking foliage. After being planted for a time, a hedge of California Privet is almost impenetrable. Single plants may be trained and pruned to any desired shape and either the globe- or pyramidal-shaped plants create a very handsome appearance when used as single specimens on the lawn or porch.

#### Prices of California Privet:

	10	100	1,000
6 to 8 inch.....	\$0 30	\$1 50	\$10 00
8 to 12 inch.....	30	2 00	15 00
12 to 18 inch.....	40	3 00	20 00
18 to 24 inch.....	50	4 00	30 00
2 to 3 feet.....	60	5 00	40 00
3 to 4 feet.....	75	6 00	50 00
4 to 5 feet.....	1 00	7 50	60 00
5 to 6 feet.....	1 25	10 00	70 00
6 to 7 feet.....	1 50	12 50	100 00
7 to 8 feet.....	1 75	15 00	125 00





Thunberg's Barberry (*Berberis Thunbergii*)

**Thunberg's Barberry (*Berberis Thunbergii*)**

If you want a hedge that will give your grounds a real natural effect, plant Thunberg's Barberry. If allowed to grow without pruning or training in any way, it will form a compact mass so dense that even a cat can't get through it. The picture above gives an idea of what it looks like when allowed to grow without trimming.

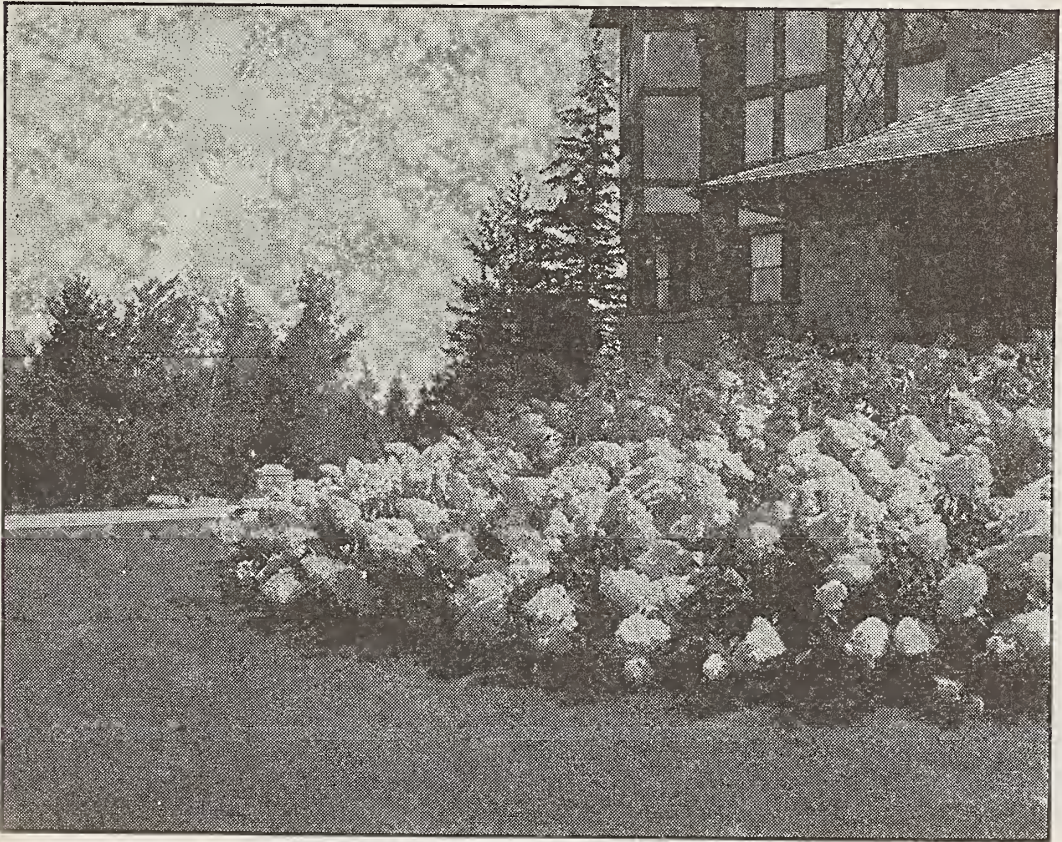
For a low hedge Thunberg's Barberry stands at the head of the list. The leaves are small, light green, and toward fall turn to various colors which produce a very pleasing aspect. In fall this handsome plant bears a profusion of bright red berries which remain through the winter, making Thunberg's Barberry equally beautiful in summer or winter. This Barberry is without doubt one of the best hedge plants and one that requires no attention as it can be pruned or not at the owner's discretion.

**Prices of Thunberg's Barberry:**

	Each	10	100	1,000
6 to 8 inch.....	\$0 08	\$0 75	\$6 00	\$40 00
8 to 12 inch.....	10	90	7 00	60 00
12 to 18 inch.....	15	1 25	10 00	75 00
18 to 24 inch.....	20	1 50	12 50	100 00
2 to 3 feet.....	25	2 00	15 00	125 00

**VISIT BERLIN**  
**See Our Nurseries and Orchards**  
**WE WILL ENTERTAIN YOU**





*Hydrangea paniculata grandiflora*

## FLOWERING SHRUBS

Parcel Post. We do not ship these plants by parcel post.

**Barberry, Purple-leaved** (*Berberis atropurpurea*). See under Hedge Plants.

	Each	10
<b>Bladder Senna</b> ( <i>Colutea arborescens</i> ). 5 to 6 feet.....	\$0 70	\$6 00
6 to 7 feet.....	80	7 00
<b>Coral Berry, or Indian Currant</b> ( <i>Symphoricarpos vulgaris</i> ). 3 to 4 feet.....	50	4 00
<b>Crape Myrtle, Pink.</b> 4 to 5 feet.....	I 50	12 50
<b>Currant, Red-flowering</b> ( <i>Ribes sanguineum</i> ). 2 to 3 feet.....	50	4 00
3 to 4 feet.....	60	5 00
<b>Currant, Mountain</b> ( <i>Ribes alpinum</i> ). 2 to 3 feet.....	50	4 00
<b>Deutzia, Double White</b> ( <i>Deutzia crenata candidissima</i> ). 3 to 4 feet.....	50	4 00
4 to 5 feet.....	60	5 00
5 to 6 feet.....	70	6 00
<b>Deutzia, Single White</b> ( <i>Deutzia crenata flore-alba</i> ). 3 to 4 feet..	50	4 00
4 to 5 feet.....	60	5 00
<b>Deutzia, Pride of Rochester</b> ( <i>Deutzia crenata, Pride of Rochester</i> ). 3 to 4 feet.....	50	4 00
4 to 5 feet.....	60	5 00
<b>Deutzia, Double Pink</b> ( <i>Deutzia crenata flore rosea plena</i> ). 3 to 4 feet.....	50	4 00
4 to 5 feet.....	60	5 00
5 to 6 feet.....	70	6 00
<b>Deutzia, Slender</b> ( <i>Deutzia gracilis</i> ). 2 to 3 feet.....	50	4 00
<b>Deutzia, Lemoine's</b> ( <i>Deutzia Lemoinei</i> ). 3 to 4 feet.....	50	4 00
<b>Deutzia, Wells'</b> ( <i>Deutzia scabra Wellsi</i> ). 3 to 4 feet.....	50	4 00
4 to 5 feet.....	60	5 00



## FLOWERING SHRUBS, continued

	Each	10
Dogwood, Red-flowering ( <i>Cornus florida rubra</i> ). 2 to 3 feet..	\$1 50	\$12 50
Dogwood, Red-Twig ( <i>Cornus stolonifera</i> ). 3 to 4 feet.....	50	4 00
4 to 5 feet.....	60	5 00
Dogwood, White-flowering ( <i>Cornus florida</i> ). 2 to 3 feet.....	1 00	9 00
Garland Flower ( <i>Daphne Cneorum</i> ). 12 inch.....	50	4 00
Golden Bell, Hybrid ( <i>Forsythia intermedia</i> ). 3 to 4 feet.....	50	4 00
4 to 5 feet.....	60	5 00
Golden Bell, Drooping ( <i>Forsythia suspensa</i> ). 3 to 4 feet.....	50	4 00
Golden Bell, Fortune's ( <i>Forsythia Fortunei</i> ). 3 to 4 feet.....	50	4 00
4 to 5 feet.....	60	5 00
5 to 6 feet.....	70	6 00
Golden Bell, Dark Green ( <i>Forsythia viridissima</i> ). 2 to 3 feet..	50	4 00
Golden Chain ( <i>Laburnum vulgare</i> ). 4 to 5 feet.....	60	5 00
5 to 6 feet.....	70	6 00
6 to 7 feet.....	80	7 00
Goldflower ( <i>Hypericum Moserianum</i> ). 5 to 6 feet.....	70	6 00
Honeysuckle, Fly ( <i>Lonicera Xylosteum</i> ). 3 to 4 feet.....	50	4 00
4 to 5 feet.....	60	5 00
Honeysuckle, Japanese Bush ( <i>Lonicera Morrowii</i> ). 2 to 3 ft..	50	4 00
Honeysuckle, Tartarian ( <i>Lonicera tatarica</i> ). 3 to 4 feet.....	50	4 00
Hydrangea, Japanese Blue ( <i>Hydrangea hortensia</i> ).. 2 to 3 ft.	50	4 00
Hydrangea, Large-flowered ( <i>Hydrangea paniculata grandiflora</i> ).		
2 to 3 feet.....	1 00	9 00
Indigo, False ( <i>Amorpha fruticosa</i> ). 6 to 7 feet.....	80	7 00
Jasmine, Naked-flowered ( <i>Jasminum nudiflorum</i> ). 2 to 3 feet.	50	4 00
Juneberry, or Service Berry ( <i>Amelanchier atropurpurea</i> ).		
3 to 4 feet.....	50	4 00
Lilac, Charles X. 2 to 3 feet.....	75	6 00
Lilac, Common White ( <i>Syringa vulgaris</i> ). 2 to 3 feet.....	75	6 00
Lilac, Single White, Marie Legraye. 2 to 3 feet.....	75	6 00
Lilac, Double White, Mme. Lemoine. 2 to 3 feet.....	75	6 00
Magnolia grandiflora. See Broad-leaved Evergreens.		
Magnolia, Soulange's ( <i>Magnolia Soulangeana</i> ). 2 to 3 feet... I	1 00	7 50
3 to 4 feet..... I	50	12 50
4 to 5 feet..... 2	00	15 00
5 to 6 feet..... 2	50	20 00
6 to 7 feet..... 3	00	25 00
Maple, Japanese Blood-leaved ( <i>Acer palmatum atropurpureum</i> ).		
18 to 24 inch..... I	50	12 50
Mock Orange, Common ( <i>Philadelphus coronarius</i> ).		
3 to 4 feet.....	50	4 00
4 to 5 feet.....	60	5 00
5 to 6 feet.....	70	6 00
Mock Orange, Lemoine's ( <i>Philadelphus Lemoinei</i> ). 2 to 3 ft..	50	4 00
Mock Orange, Large-leaved ( <i>Philadelphus latifolius</i> ).		
4 to 5 feet.....	60	5 00
5 to 6 feet.....	70	6 00
Mock Orange, Zeyher's ( <i>Philadelphus Zeyheri</i> ). 3 to 4 feet... I	50	4 00
4 to 5 feet.....	60	5 00
New Jersey Tea, or Red Root ( <i>Ceanothus americanus</i> ).		
2 to 3 feet.....	50	4 00
4 to 5 feet..... I	00	9 00
Plum, Purple-leaved ( <i>Prunus Pissardi</i> ). 6 to 7 feet..... I	50	12 50
Rose of Sharon ( <i>Althea</i> or <i>Hibiscus syriacus</i> ). 3 to 4 feet....	50	4 00
4 to 5 feet.....	60	5 00
5 to 6 feet.....	70	6 00
6 to 7 feet.....	80	7 00



## FLOWERING SHRUBS, continued

	Each	10
<b>Siberian Pea Shrub</b> ( <i>Caragana arborescens</i> ). 5 to 6 feet.....	\$0 70	\$6 00
<b>Smoke Tree</b> ( <i>Rhus cotinus</i> ). 2 to 3 feet.....	50	4 00
<b>Snowberry</b> ( <i>Symphoricarpos racemosus</i> ). 2 to 3 feet.....	50	4 00
<b>Spirea, Crimson, Anthony Waterer</b> ( <i>Spiræa Bumalda</i> ). 2 to 3 feet.....	50	4 00
<b>Spirea, Meadowsweet</b> ( <i>Spiræa callosa scabra</i> ). 3 to 4 feet ....	50	4 00
<b>Spirea, Opulifolia</b> ( <i>Physocarpus opulifolia</i> ). 3 to 4 feet.....	50	4 00
4 to 5 feet.....	60	5 00
5 to 6 feet.....	70	6 00
<b>Spirea, Plum-leaved</b> ( <i>Spiræa prunifolia</i> ). 3 to 4 feet .....	50	4 00
4 to 5 feet.....	60	5 00
5 to 6 feet.....	70	6 00
<b>Spirea, Thunberg's Snow Garland</b> ( <i>Spiræa Thunbergii</i> ). 2 to 3 feet.....	50	4 00
<b>Spirea, Van Houtte's Bridal Wreath</b> ( <i>Spiræa Van Houttei</i> ). 2 to 3 feet.....	50	4 00
<b>Spirea, White-flowering</b> ( <i>Spiræa alba</i> ). 2 to 3 feet.....	50	4 00
<b>Sweet-scented Shrub</b> ( <i>Calycanthus floridus</i> ). 2 to 3 feet.....	50	4 00
<b>Viburnum Lantana</b> (Wayfaring Tree). 4 to 5 feet.....	60	5 00
<b>Viburnum plicatum</b> (Japanese Snowball). 2 to 3 feet.....	1 00	7 50
3 to 4 feet.....	1 50	12 50
<b>Weigela, Eva Rathke</b> ( <i>Weigela hybrida</i> ). 2 to 3 feet.....	50	4 00
<b>Weigela, Rose-colored</b> ( <i>Weigela amabilis</i> , or <i>rosea</i> ). 8 to 3 feet.....	50	4 00
<b>Willow, Rosemary</b> ( <i>Salix rosmarinifolia</i> ). 5 to 6 feet.....	70	6 00



**Spiræa Van Houttei.** A beautiful shrub bearing an abundance of delightful white flowers



## HARDY CLIMBING VINES

Parcel Post. We do not ship these plants by parcel post.

**Bittersweet** (*Celastrus scandens*). 4 to 5 feet. \$1 each, \$9 for 10.

**Clematis paniculata**. 2-year. 75c. each, \$7 for 10.

**Dutchman's Pipe** (*Aristolochia Siphon*). 4 to 5 feet. \$1 each, \$9 for 10.

**Ivy, Boston** (*Ampelopsis Veitchii*). 4 to 5 feet. 75 cts. each, \$7 for 10.

**Ivy, Engelmann's** (*Ampelopsis Engelmannii*). 4 to 5 feet. 75 cts. each, \$7 for 10.

**Ivy, English** (*Hedera helix*). 4 to 5 feet. 75 cts. each, \$7 for 10.

**Ivy, Broad-leaved** (*Hedera hibernica*). 4 to 5 feet. 75 cts. each, \$7 for 10.

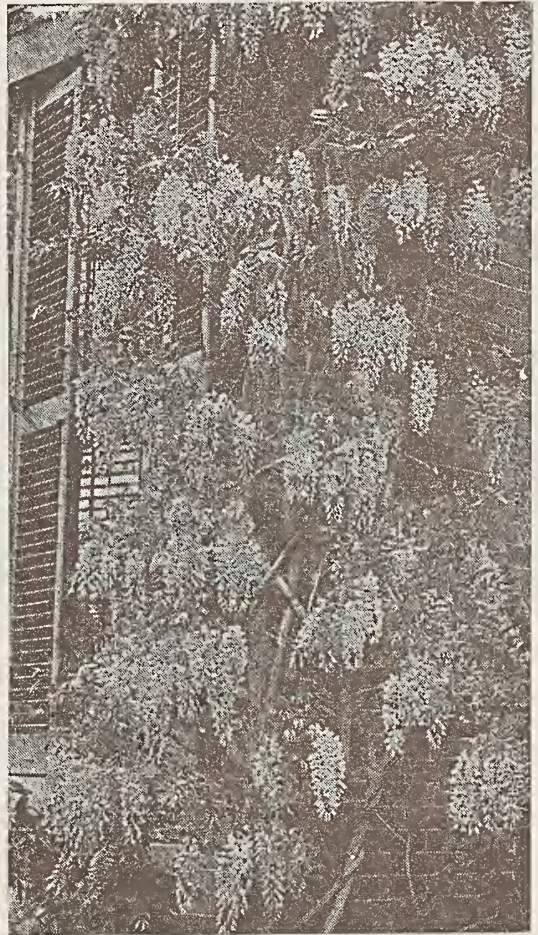
**Silk Vine** (*Periploca græca*). 4 to 5 feet. 50 cts. each, \$4.50 for 10.

**Trumpet Vine** (*Bignonia grandiflora*). 2 to 3 feet. 50 cts. each, \$4.50 for 10.

**Virginia Creeper** (*Ampelopsis quinquefolia*). 3 to 4 feet. 75 cts. each, \$7 for 10; 4 to 5 feet, \$1 each, \$9 for 10.

**Wistaria, Purple** (*Wistaria chinensis*). 4 to 5 feet. \$1 each, \$9 for 10.

**Wistaria, White** (*Wistaria chinensis*). \$1 each, \$9 for 10.



Wistaria chinensis

## PEONIES

Peonies are absolutely hardy, and will thrive in a good soil, whether in beds or pots. They are not bothered by insects or fungi, and have attractive foliage. A few cents' expense and ten minutes' work are often rewarded by a magnificent series of blooms.

1 to 9 plants are sold at the each rate; 10 to 49 plants are sold at the 10 rate; 50 plants or more are sold at the 100 rate.

Parcel Post. Plants can be sent by parcel post, prepaid, at 10 cts. per plant extra.

**Alexandriana**. Light violet-rose.

**Alexander Dumas**. Violet-rose; early bloomer.

**Dorchester**. Pale pink.

**Duke of Wellington**. White with sulphur center.

**Fleix Crousse**. Brilliant red.

**Festiva Maxima**. Pure white center, flecked crimson.

**Louis Van Houtte**. Deep carmine-rose.

**Madame Coste**. Pink, cream-white and crimson.

**Victor Lemoine**. Very dark crimson.

**Whitleyi**. Milk-white.

75 cts. each, \$6 for 10

**Assorted Dark Red Peonies.**

**Assorted Pink Peonies.**

50 cts. each, \$4 for 10, \$30 per 100





Roses are known the world over as the Queen of flowers. Your garden is not complete unless it has at least a few of these fragrant beauties

## ROSES

### Hybrid Perpetual or June Roses, 2-year

Parcel Post. Harrisons' bush-form plants can be sent by parcel post, prepaid, at 3 cts. per plant extra.

**Anne de Diesbach.** Fine pink.  
**Captain Christy.** Pink; large.  
**Captain Hayward.** Pink; extra.  
**Clio.** Light pink; large.  
**Frau Karl Druschki.** Snow-white.  
**General Jacqueminot.** Scarlet-crimson.

**Hugh Dickson.** Bright red.  
**Magna Charta.** Bright pink.  
**Margaret Dickson.** Brilliant white.  
**Mrs. John Laing.** Exquisite pink.  
**Paul Neyron.** Pink; extra large.  
**Ulrich Brunner.** Bright crimson.

40 cts. each, \$4 per doz.

### Everblooming Hybrid Teas, 2-year

**Caroline Testout.** Bright pink.  
**Gross an Teplitz.** Scarlet-crimson.  
**Kaiserin Augusta Victoria.** Ivory-white.

**Killarney.** Brilliant pink.  
**La France.** Fine satiny pink.  
**Mme. Francisca Kruger.** Yellow.

50 cts. each, \$2.75 for 6

### Climbing and Ramblers

**Alberic Barbier.** White; shining foliage.  
**Baltimore Belle.** Blush-white; double.  
**Dorothy Perkins.** Delightful pink.

**Crimson Rambler.** Flowers in trusses.  
**Lady Gay.** Tender pink.  
**Tausendschon.** Pink, white and yellow.

50 cts. each, \$2.75 for 6

**BABY RAMBLERS.** 2 years old. 40 cts. each, \$4 per doz., \$30 per 100.

**ROSA RUGOSA.** 2 to 3 feet. 50 cts. each, \$4 for 10; 5 to 6 feet, 75 cts. each, \$6 for 10.



## *Harrisons' Service to Fruit-Growers*

When you buy fruit trees from Harrisons' Nurseries, you pay for the trees alone and get a service that is worth as much as the trees themselves.

Sometimes it happens that a landowner has wisely decided to plant fruit trees, but doesn't know the varieties to which his land is best adapted.

Here is where the Harrison service is valuable. Our friend writes us about his land, and tells us whether it is sand, loam, or clay. With this information we are able correctly to inform him not only what fruits will prove the most productive on his land but also just what varieties he should plant.

In our help and advice to you we bring to bear what we have learned in the many years spent in raising fruit for market, and our long experience is at your service. We have expert orchardists who have supervised the planting of orchards for many years and their suggestive helps are yours for the asking. If you are intending to plant a large orchard, we can furnish a man to supervise the planting at a slight cost above his actual expenses.

### *Designing Landscapes*

If you want to make your home beautiful with Harrisons' Ornamentals, our expert designers will be glad to give you valuable hints that will help greatly. Some of our friends consider it wise to employ a landscape architect when making extensive plantings and desire to have us handle the work. Then they are sure that the planting is in keeping with the quality of the trees they get from Harrisons' Nurseries. In such cases we are glad to send one of our landscape experts to lay out the grounds and give you the advantage of his experience. If you need help in working out an effective scheme, we shall be glad to hear from you.

### *Just a Word in Closing*

The nursery stock listed in this catalogue is the best that experience and care can grow. Each plant is carefully examined before leaving our packing-sheds, every plant that goes out is *right*, and Harrisons' Nurseries (the largest in the world) are back of it. Order from this catalogue on the enclosed order-blank.

Let us repeat our invitation to come to Berlin and see us, and see a nursery that is so far ahead of others that they sell their stock as being "as good as Harrisons'."





# Harrison's Nurseries

J. G. HARRISON & SONS

THE LARGEST GROWERS OF  
FRUIT TREES IN THE WORLD

Berlin  
Maryland

