

Historic, archived document

Do not assume content reflects current scientific knowledge, policies, or practices.

62.87

1953/54

LIBRARY
RECEIVED
★ AUG 24 1953 ★
U. S. Department of Agriculture



VERHALEN

NURSERY
Company

SCOTTSVILLE • 12140 HARRY HINES BLVD.
TEXAS • DALLAS, TEXAS

Your Profits Grow in Verhalen Plants



POLICY—

Our policy is to furnish stock fully graded and properly named. Any deviation from this plan will be accidental and we assume no responsibility greater than the invoice amount of the stock involved.

TERMS—

ALL SALES ARE STRICTLY CASH with the one exception of those whose credit has been established in past years. Nursery supplies are cash to everyone alike. Open account sales 2%—10. Net 30 days.

Full payments made 60 days in advance on stock held for later deliveries are subject to 5% discount. All stock reserved for later delivery must have 25% Deposit with order.

All other sales are due no later than 30 days after invoice date and at net amount shown.

PAST DUE ACCOUNTS WILL BE CHARGED AT 6% interest.

TAGGING AND CHECKING: An extra charge of 10% will be made when customers select their plants in the fields or if we tag nursery stock for our customers for any reason. Increased labor costs make this move necessary.

We trust you BUT all customer-selected plants, as well as regular orders, are liable to careful grade stock check in the Packing House. If discrepancies are found, they will be corrected and the necessary changes made in the billing.

CLAIMS—

Our responsibility for condition of plants being shipped ends when we make delivery in good order to the transporting companies. Damage inflicted thereafter are to be taken up with the carrier. We will assist when we can help in settling such problems.

Claims for quality of stock must be made within 10 days after date of invoice. LATE CLAIMS WILL NOT BE CONSIDERED.

PACKING CHARGES AND TRUCK DELIVERIES—

Baling, boxing or crating for local freight or express shipments will be charged at cost. No charges are made for bulk truck or car loading.

Deliveries to customers in Dallas on invoices of \$50 or over will be made on our truck at F.O.B. Dallas Warehouse prices.

To other destinations where two or more orders are delivered in the same load each customer will be charged proportionately as to mileage and size of his order.

DELIVERY CHARGES PAYABLE AT TIME OF DELIVERY.

ORDERS—

All orders are accepted with the understanding that we are not to be held liable in event of accident, extremities of weather or other causes beyond our control.

Prices herein cancel all previous listings. We reserve the right to alter prices at any time.

CATALOGUE

1953 - 1954

VERHALEN NURSERY COMPANY SCOTTSVILLE, TEXAS

TELEPHONE
Marshall, Texas, 4-4876

TELEGRAMS
Western Union, Scottsville, Texas

C. E. Verhalen, Pres.
Telephone Marshall 5-2164

R. P. Verhalen, Vice-Pres.
Telephone Marshall 4-4831

J. P. Verhalen, Vice-Pres.
Marshall Telephone 4-4814

Steve G. Verhalen, Sec'y and Sales
Telephone Marshall 5-5898

ADDRESS ALL CORRESPONDENCE
TO SCOTTSVILLE, TEXAS

Dallas Warehouse

Verhalen Nursery Company

C. P. HARRIS, Mgr.

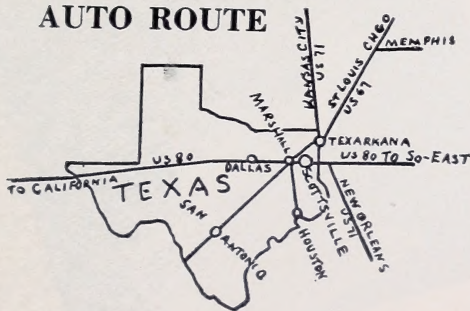
12140 Harry Hines Blvd.—Dallas, Texas

Phone Nichols 7-7237

and

Nichols 7-7229

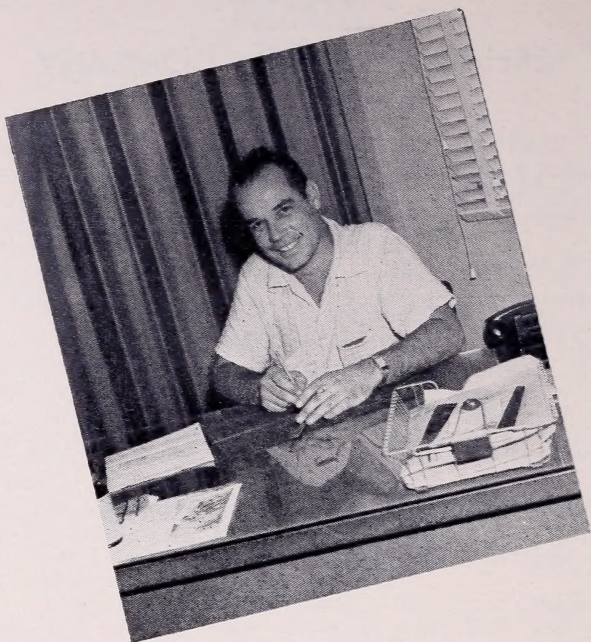
AUTO ROUTE



Wholesale Only—No Retail Sales

Members of National and State
Nursery Associations

Meet The People at Verhalens . . .



Upper—

C. E. (Cameron) VERHALEN
President and Production Manager

Lower—

STEVE VERHALEN
Secretary and Sales

Department of Public Relations



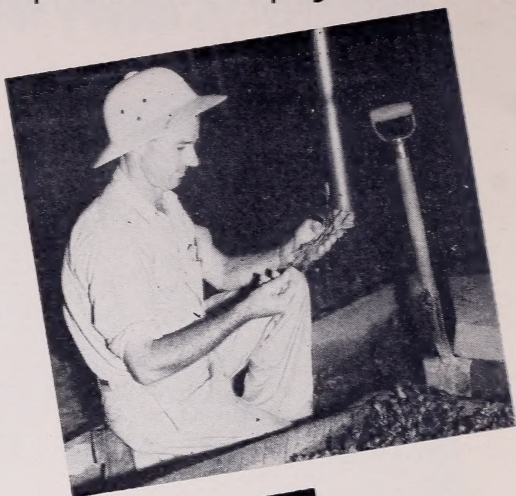
Upper—

R. P. (Ray) VERHALEN
Vice-President and Representative at Ease

Lower—

C. P. HARRIS
Dallas Office and Warehouse Manager

Department of Propagation

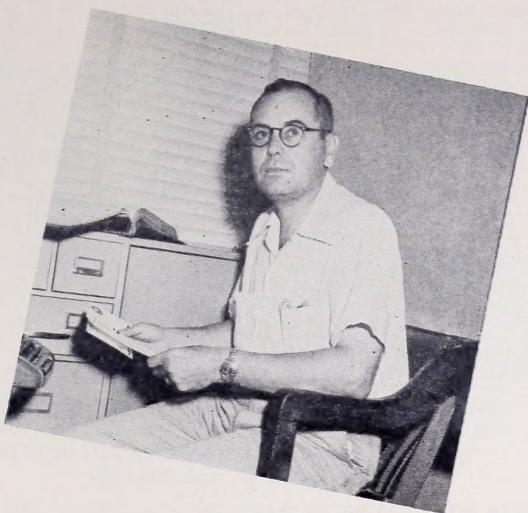


Top—
J. B. (Burl) ROLLER Propagation Department Manager

Center—
GEORGE CAMPBELL Supervisor Potted Liners

Bottom—
J. W. ROLLER Assistant Propagator

Departments of Finance and Transportation



Upper—

F. C. (Clifford) GREEN

Credit and Accounting Department Manager

Lower—

MRS. LA VERA ROBERTS

Bookkeeper and Shipping Departments

ALL PLANTS ARE BALLED AND BURLAPPED WHERE WEIGHT IS SHOWN. WITHOUT WEIGHT THEY ARE BAREROOT.

CONIFERS



BONITA, BAKER, BLUESPIRE GOLDEN BONITA,
GOLDCONE, BERCKMANN

**Biota orientalis aurea conica.....GOLDCONE
ARBORVITAE**

A compact grower; is smaller, more brilliant and more uniformly golden than Berckmann's. Hardy. 4 feet.

	Weight	10 or More F.O.B. Nursery	F.O.B. Dallas Less than 10 at Nursery
Liners, 2½ inch pots	\$.17	\$.17
15-18 inch	22	.90	1.00
18-24 inch	30	1.15	1.25
24-30 inch	40	1.35	1.50
30-36 inch	70	1.65	1.80
36-42 inch	70	2.00	2.20

**Biota orientalis aurea conspicua.....GOLDSPIRE
ARBORVITAE**

Conspicuously golden color on very flat panels. Growth is pyramidal and open. 20 feet.

Liners, 2½ inch pots	\$.18	\$.18
----------------------------	-------	--------	--------

**Biota orientalis aurea nana...BERCKMANN'S GOLDEN
ARBORVITAE**

Very compact and moderately slow in growth. New foliage is golden. 15 feet.

Liners, 2½ inch pots	\$.18	\$.18
1 gallon	8	.50	.55
15-18 inch	22	.90	1.00
18-24 inch	30	1.15	1.25
24-30 inch	40	1.35	1.50
30-36 inch	70	1.65	1.80
3-4 feet	110	2.25	2.50
4-5 feet	160	3.00	3.35

Biota orientalis bonita.....BONITA ARBORVITAE

Dwarf size, rich dark green color, compact and round character. 4 feet.

Liners, 2½ inch pots	\$.17	\$.17
18-24 inch	30	1.15	1.25
24-30 inch	40	1.35	1.50
30-36 inch	70	1.65	1.80

**Biota orientalis aurea bonita.....GOLDEN BONITA
ARBORVITAE**

Golden form of Bonita Arborvitae. Color is just as good as Goldcone Arborvitae. 4 feet.

Liners, 2½ inch pots	\$.17	\$.17
15-18 inch	22	.90	1.00
18-24 inch	30	1.15	1.25
24-30 inch	40	1.35	1.50
30-36 inch	70	1.65	1.80

Biota orientalis excelsa.....EXCELSA ARBORVITAE

A very hardy and cold resistant type having broader base and darker color than Baker Arborvitae and equally at home in either the north or south. Particularly well suited for Oklahoma, Kansas, and Missouri. 8 feet.

	Weight	10 or More F.O.B. Nursery	F.O.B. Dallas Less than 10 at Nursery
24-30 inch	40	\$1.15	\$1.25
30-36 inch	40	1.35	1.50
3-4 feet	70	1.65	1.80

Biota orientalis.....BLUECONE ARBORVITAE

More compact than Excelsa Arborvitae, slightly darker green and more symmetrical in growth.

Liners, 2½ inch pots	\$.17	\$.17
----------------------------	--------	--------

Biota orientalis howardi.....BLUESPIRE ARBORVITAE

More columnar and darker than Baker arborvitae. Bluish foliage prompts its name. Keeps its good color during dry or cold weather. 10 feet.

Liners, 2½ inch pots	\$.17	\$.17	
1 gallon	8	.55	.60
2-3 feet	40	1.20	1.35
3-4 feet	70	1.75	1.90
4-5 feet	110	2.10	2.30
5-6 feet	160	2.50	2.75



ONE GALLON CONTAINER STOCK

CONTAINER GROWN STOCK

The introduction of Container Grown or Canned Plants is relatively new in our Southwest areas. Nevertheless, its rapid acceptance by the Nursery trade and general public proves its practical value.

Canned Plants are helping in a large way to make the landscape business a year round enterprise rather than seasonal as heretofore. Canned Plants are taking the summer slump out of salesyard receipts. An attractive display of plants throughout the summer will pay for the operation of a retail yard and bring profit to the owner as well.

Plants growing in cans may be harvested in any kind of weather. A truck may be loaded without advance notice of arrival, and the stock moves without loss.

Biota orientalis pyramidalis.....BAKER'S HYBRID ARBORVITAE

Pyramidal, compact and fast grower. Light green color. 15 feet.

	Weight	10 or More F.O.B. Nursery	F.O.B. Dallas Less than 10 at Nursery
Liners, 2½ inch pots	\$.17	\$.17
1 gallon	8	.55	.60
2-3 feet	40	1.20	1.35
3-4 feet	70	1.75	1.90
4-5 feet	110	2.10	2.30
5-6 feet	160	2.50	2.75



KIYONO JUNIPER - ARIZONA CYPRESS
One Gallon Cans
Arizona Cypress

Cupressus arizonica.....ARIZONA CYPRESS

Pyramidal growing conifer. Rather slender in shape and has silvery light blue foliage. A fast grower. A good seller on the sales yard. 25 feet.

Liners, 2½ inch pots (Grafts)	\$.50	\$.50
1 gallon	8	1.00	1.10
18-24 inch	30	1.25	1.40
2-3 feet	40	1.50	1.65
3-4 feet	70	2.00	2.20
4-5 feet	110	2.50	2.75
5-6 feet	110	3.00	3.30

Cupressus sempervirens.....ITALIAN CYPRESS

Narrow, with branches tight against main stem; dark green foliage. B&B plants are cutting grown, assuring uniformity. 35 feet.

Liners, 2½ inch pots	\$.15	\$.15
3-4 feet	40	1.00	1.10
4-5 feet	70	1.50	1.65
5-6 feet	70	2.00	2.20

JUNIPERS**Juniperus chinensis pfitzeriana.....PFITZER JUNIPER**

Our field plants are well developed, full bodied, high crowned stock due to heavy shearing.

Liners, 2½ inch pots	\$.18	\$.18
1 gallon	8	.65	.70
5 gallon	35	1.75	1.90
15-18 inch	22	1.65	1.75
18-24 inch	30	2.25	2.50
24-30 inch	40	2.75	3.00



PFITZER JUNIPER



SPINEY GREEK AND PFITZER JUNIPERS
One Gallon Cans

Juniperus chinensis sylvestris.....SYLVESTER JUNIPER

Its special attraction is its soft green two types of foliage and thickly covered irregular side branches. 25 feet.

	Weight	10 or More F.O.B. Nursery	F.O.B. Dallas Less than 10 at Nursery
Liners, 2½ inch pots	\$.18	\$.18
1 gallon	8	.60	.60
5 gallon	35	1.25	1.35
24-30 inch	30	1.50	1.65
30-36 inch	40	1.60	1.75
36-42 inch	70	1.85	2.00

SYLVESTRIS JUNIPER—An excellent upright and hardy plant with plenty of character. Good in Arkansas, Missouri, Oklahoma, Tennessee, and Gulf coast areas from Texas east to Atlantic. Our stock has been sheared frequently and are worth every penny asked for them.

Juniperus communis ashfordi.....ASHFORD JUNIPER

A fast growing plant, most useful in hedging because of its compactness, and straight sides. Also, its inexpensiveness makes it very useful for competitive real estate plantings. 10 feet.

18-24 inch	30	\$.90	\$1.00
2-3 feet	40	1.25	1 35

Juniperus communis depressa vaseshape...VASE SHAPE JUNIPER

New, symmetrically bowl-shaped. Does not sunburn. 4 feet.

	Weight	10 or More F.O.B. Nursery	F.O.B. Dallas Less than 10 at Nursery
Liners, 2½ inch pots	8	\$.15	\$.15
1 gallon	8	.50	.55

Juniperus communis hibernica fastigiata.....IRISH JUNIPER

An exceedingly narrow form of upright pillar-like Juniper which is weather and sun resistant and does well in our southwest. 8 feet.

Liners, 2½ inch pots	8	\$.15	\$.15
1 gallon	8	.50	.55
5 gallon	35	1.50	1.65
18-24 inch	30	1.00	1.10
24-30 inch	30	1.25	1.40
30-36 inch	40	1.50	1.65
3-4 feet	70	1.75	1.90



OUTDOOR GROWN LINERS
Spiny Greek and Pfitzer Junipers in pots.

Juniperus communis columnaris kiyonoi.....KIYONO JUNIPER

Upright growing. Should be used for medium columnar effects. Does not sunburn. 12 feet.

1 gallon (24-30 inch)	8	\$.50	\$.55
2-3 feet	40	1.00	1.10
3-4 feet	70	1.50	1.65
4-5 feet	70	1.75	1.90
5-6 feet	110	2.00	2.20



SYLVESTRIS AND SHORE JUNIPERS ONE GALLON SIZE

Juniperus conferta.....SHORE JUNIPER

Pleasing light green, soft foliage, not spiny; prostrate on ground; branchlets growing upright to 12 inches. Excellent for driveway entrance, hanging over walls, etc. 8 foot spread.

	Weight	10 or More F.O.B. Nursery	F.O.B. Dallas Less than 10 at Nursery
1 gallon	8	\$.55	\$.60

Juniperus excelsa stricta.....SPINEY GREEK JUNIPER

Small, conical glaucous tree. 6 feet.

Liners, 2½ inch pots		\$.18	\$.18
1 gallon	8	.50	.55
15-18 inch	22	.80	.85
18-24 inch	30	1.00	1.10
3-4 feet	160	2.00	2.20

Juniperus pachyphloea.....ALLIGATOR JUNIPER

Grafted on arborvitae understock making a more durable plant for transplanting and growing in our Texas and southwest climate. A bright silver color juniper found in west Texas. A good plant.

Liners, 2½ inch pots (Grafts)		\$.50	\$.50
----------------------------------------	--	--------	--------



IRISH AND PROCUMBENS

Juniperus procumbens.....JAPANESE JUNIPER

Low, creeping plant with thick blue-green foliage. Upright trained specimens are grown on a single straight stem with all the spread above ground. They stand without support when ready to sell. A most novel plant. 10 foot spread.

Liners, 2½ inch pots		\$.18	\$.18
1 gallon	8	.55	.60
15-18 inch, Spreading	30	1.25	1.35
2-3 feet, Upright70	3.50	3.85
3-4 feet, Upright	110	4.50	4.90

Juniperus virginiana canaerti.....CANAERT JUNIPER

Dark green foliage interspersed with blue berries and growing in tufts of varying lengths which give the slender pyramidal form a naturally irregular and rugged style. 18 feet.

Liners, 2½ inch pots (Grafts)		\$.50	\$.50
1 gallon	8	1.00	1.10
30-36 inch	40	3.00	3.30
42-48 inch	70	4.00	4.40

**Juniperus virginiana glauca.....SILVER (CEDAR)
JUNIPER**

Silvery blue foliage closely set on slender branches with new growth adding a lighter hue to this majestic pyramid. 20 feet.

Liners, 2½ inch pots (Grafts)		\$.50	\$.50
1 gallon	8	1.00	1.10
30-36 inch	40	3.00	3.30
42-48 inch	70	4.00	4.40



SECTION OF LATH HOUSE

Juniperus virginiana hillii.....HILL DUNDEE JUNIPER

An attractive grayish green during summer months, turning to a purple in winter. Compact growth which responds favorably to trimming. 20 feet.

	Weight	10 or More F.O.B. Nursery	F.O.B. Dallas Less than 10 at Nursery
30-36 inch	40	\$3.00	\$3.30
42-48 inch	70	4.00	4.40

Pinus halepensis.....ALEPPO PINE

Light green in color with leaves three to four inches long; cones 3½ inches.

Liners, 2½ inch pots \$.15 \$.15

Pinus mugho mugho.....MUGHO PINE

A spreading tree which grows horizontally with stiff upright branches. Nice for rock garden or foundation plantings.

1 gallon 8 \$.50 \$.55

Pinus nigra.....AUSTRIAN PINE

Favored in mid-west. Has rich deep green color with straight slender needles four to five inches long.

1 gallon8 \$.40 \$.45

Pinus sylvestris.....SCOTCH PINE

A rather small, straight stemmed tree. Grows well on dry sandy soil where other pines cannot survive.

1 gallon 8 \$.40 \$.45

Pinus strobus.....WHITE PINE

Tall symmetrical pyramidal crown; a very hardy tree. Best known American evergreen tree grown everywhere.

1 gallon 8 \$.40 \$.45



ABELIA ONE GALLON SIZES

Both sizes a good buy, and will be even bigger by September.

BROADLEAF EVERGREENS



ABELIA FIVE GALLON SIZE

Abelia grandiflora.....GLOSSY ABELIA

Shrub with dark green and coppery very glossy leaves and covered all summer with a myriad of fragrant, dainty, pinkish-white bell shaped flowers. 7 feet.

	Weight	10 or More F.O.B. Nursery	F.O.B. Dallas Less than 10 at Nursery
1 gallon	8	\$.50	\$.55
5 gallon	35	1.35	1.45

ADINO.....ADINO RUBELLA

A shrub growing about four feet tall. A very rare plant having leaves similar to Abelia, but flower is much different. Native of China.

1 gallon	8	\$.80	\$.85
5 gallon	35	1.75	1.90

Buxus harlandi.....HARLAND'S BOXWOOD

A longer, lighter green leaf than sempervirens. Also, the leaf has a round tip whereas sempervirens has a pointed one. Fastest growing of all boxwood except, perhaps, the japonica.

1 gallon	8	\$.55	\$.60
----------------	---	--------	--------

Buxus microphylla japonica.....JAPANESE BOXWOOD

Round, light green leaves. Fast grower. Good for general east Texas and Gulf states area.

1 gallon	8	\$.50	\$.55
5 gallon	35	1.50	1.65



PINEAPPLE GUAVA AND BOXWOOD
Paper pots at no extra cost to our customers.

Buxus rotundifolia.....ROUNDLEAF BOXWOOD

Hardy, drought resistant Boxwood. Large thick, round, dark green leaves. Faster but not so compact a grower as sempervirens. Good in blacklands.

	Weight	10 or More F.O.B. Nursery	F.O.B. Dallas Less than 10 at Nursery
1 gallon	8	\$.50	\$.55
12-15 inch	22	1.50	1.65
15-18 inch	22	1.75	1.90

Buxus sempervirens.....COMMON BOXWOOD

Small, smooth and slightly curved dark glossy green leaves growing as close to one another as it is possible for them to grow which makes each plant a solid mass ideally suited to either specimen or hedge use. The most popular variety. 6 feet.

Liners, 2½ inch pots		\$.15	\$.15
1 gallon	8	.55	.60
10-12 inch	14	1.35	1.45
12-15 inch	22	1.60	1.75
15-18 inch	22	1.90	2.10

Cotoneaster parnayi.....PARNAY COTONEASTER

Thick nearly black leaves with large red berries. Weather and sun resistant. Fast becoming the most popular large variety.

1 gallon	8	\$.55	\$.60
----------------	---	--------	--------

Cunninghamia lanceolata.....CHINESE FIR

A graceful fir tree suited to the southeastern states. Long, stiff, sharp pointed leaves add to its beauty and character. Fast grower. 30 feet.

1 gallon	8	\$.60	\$.65
----------------	---	--------	--------

Elaeagnus pungens simoni.....SIMON ELAEAGNUS

Long and narrow leaves, grayish green over a silvery back. Medium grower. 8 feet.

1 gallon	8	\$.55	\$.60
----------------	---	--------	--------

Elaeagnus simoni rotundifolia.....ROUNDLEAF ELAEAGNUS

The most shapely, round bodied of them all. 4 feet.

1 gallon	8	\$.55	\$.60
----------------	---	--------	--------



EUONYMUS JAPONICA ONE GALLON SIZES
Five gallon and liner sizes available also.

Euonymus japonica.....EVERGREEN EUONYMUS

Bushy form with dark green oblong evenly notched leaves. Excellent for hedges. Most suitable in West Texas. 20 feet.

1 gallon (15-18 inch)	8	\$.50	\$.55
5 gallon (24-30 inch)	35	1.35	1.50

Feijoa sellowiana.....PINEAPPLE GUAVA

A silvery shrub, compact grower. Not hardy in Oklahoma or west Texas but very popular in south Texas and Gulf Coast regions.

Liners, 2½ inch pots		\$.15	\$.15
1 gallon (15-18 inch)	8	.50	.55

Gardenia fortunei.....FORTUNE'S GARDENIA

Has large double white fragrant flowers. This is the everblooming variety. Excellent for an unusual hedge. It can be used most satisfactorily as a tub plant in climates where it will not survive the winter; and it is cheap enough that replacement can be made each spring. It is useful as an annual in those areas. Always a good seller. 6 feet.

	Weight	10 or More F.O.B. Nursery	F.O.B. Dallas Less than 10 at Nursery
1 gallon	8	\$.45	\$.50

Ilex cassine.....DAHOON HOLLY

A tree holly with willow-like leaves; fruits abundantly at a young age with red berries from fall until spring. 20 feet.

1 gallon, 30-36 inch	8	\$.55	\$.60
5 gallon, 42-48 inch	36	1.65	1.80
3-4 feet	40	2.00	2.20



ONE GALLON SIZES

Two Cornuta Holly (Berry Bearing) and one Yaupon Holly on right. Good color on all stock.

Ilex cornuta.....CHINESE HORNED HOLLY

Very stiff, bright, glossy green holly leaves gracefully curved. Large red berries add to its attractiveness. 15 feet.

1 gallon (8-12 inch)	8	\$.65	\$.70
1 gallon (12-15 inch)	8	.85	.90



BURFORDI HOLLY ONE GALLON SIZE
Fifteen inches or taller. Thousands are grown but we never have enough.



JACK (TONY) VERHALEN, MANAGER OF CAN NURSERY PROD



ON, - GREEKS IN FOREGROUND, 15,000 PFITZERS IN BACKGROUND



JACK (TONY) VERHALEN, MANAGER OF CAN NURSERY PRODUCTION, - GREEKS IN FOREGROUND, 15,000 PFITZERS IN BACKGROUND



BURFORDI HOLLY ONE GALLON AND FIVE GALLON
Some of each size with berries. Selection of all berried plants at 10% extra

Ilex cornuta burfordi.....BURFORD CHINESE HOLLY

Lark, glossy green, stiff leaves with one tip spine forming a very smooth appearance; large red berries. Our most popular holly. 8 feet.

	Weight	10 or More F.O.B. Nursery	F.O.B. Dallas Less than 10 at Nursery
1 gallon (8-12 inch)	8	\$.65	\$.70
1 gallon (12-15 inch)	8	.85	.90
5 gallon (18-24 inch)	35	2.00	2.20

Ilex cassine opaca.....HUME HYBRID NO. II HOLLY

A cross between American and Dahoon hollies resulting in a holly tree similar in general appearance to the Christmas Holly, but being more prolific in berry production. Leaves are lighter colored than American Holly. 25 feet.

Liners, 2½ inch pots	\$.15	\$.15
1 gallon, 18-24 inch	8	.60	.65
5 gallon, 42-48 inch	35	1.75	1.90
3-4 feet	40	2.25	2.45
4-5 feet	70	3.00	3.25



AMERICAN HOLLY ONE GALLON SIZE
These are seedling grown but nice just the same.



HUME HOLLY - FIVE GALLON

Most all of them are fruited this year. A good sales yard plant.

Ilex opaca.....AMERICAN HOLLY

Very hardy native tree with medium green oval leaves surrounded by evenly spaced short spines on the edge. Red berries. 50 feet.

	Weight	10 or More F.O.B. Nursery	F.O.B. Dallas Less than 10 at Nursery
1 gallon 15-18 inch	8	\$.65	\$.70

Ilex crenata rotundifolia.....JAPANESE HOLLY

Roundleaved. Splendid new dark green spineless holly for formal plantings; makes a fine, low hedge. A good substitute where other than Boxwood is desired. 4 feet.

Liners, 2½ inch pots		\$.15	\$.15
1 gallon	8	.60	.65

Ilex vomitoria.....YAUPON HOLLY

A great favorite for hedges. Bright red berries. 15 feet.

1 gallon	8	\$.60	\$.65
5 gallon	35	1.50	1.65
18-24 inch	30	2.00	2.00

Illicium anisatum.....ANISE TREE

A handsome broad-leaved evergreen shrub or small tree of narrow, upright habit reaching a height of ten to twelve feet; foliage is light green and blooms are creamy yellow. Not hardy in north.

5 gallon	35	\$1.65	\$1.80
----------------	----	--------	--------

Jasminum humile.....FLORIDA JASMINE

The most versatile and popular of the Jasmine family. Flowers through most of the summer after a profusion of blossoms in the spring. A most attractive plant. 4 feet.

Liners, 2½ inch pots		\$.15	\$.15
1 gallon	8	.50	.55
18-24 inch	30	1.50	1.50



CHERRY LAUREL FIVE GALLON SIZE

These will get more shearings yet and will grow more too.
Some are 4 feet now.



CHERRY LAUREL ONE GALLON SIZE

This is one of best offers for the season. See quantity discount
rate in box below.

Laurocerasus caroliniana.....CHERRY LAUREL

Since this plant is subject to loss of foliage when transplanted, container grown stock is all the more desirable. Our field plants are young and have been root pruned so they should transplant with less difficulty than the average. This is an exceptionally good plant for hedge work. It responds to shearing as well as any. 12 feet.

	Weight	10 or More F.O.B. Nursery	F.O.B. Dallas Less than 10 at Nursery
Liners, 2½ inch pots	\$.15	\$.15
1 gallon, 18-24 inch	8	.45	.50
5 gallon, 36-48 inch	35	1.65	1.80
18-24 inch	30	1.10	1.20
24-30 inch	40	1.35	1.45
30-36 inch	40	1.65	1.80
3-4 feet	70	2.20	2.40

NOTE: Special rates on Cherry Laurel, 1 gallon size—500 on one delivery—10% off, 1000 on one delivery—20% off.



CHERRY LAUREL AND ROMAN MYRTLE LINERS
Proven money makers for all our customers.

Lavendula vera.....TRUE LAVENDER

To vary the color scheme in a planting, this is the hardy perennial to use. Lavender sachets are made from the flowers and seeds of this low growing symmetrical little plant. Very fragrant gray color herb. Blue flowers. Good for low borders. The True English Lavender. 2 feet.

1 gallon	8	\$.50	\$.55
----------------	---	--------	--------



DWARF HONEYSUCKLE

Leucophyllum texanum.....**SENISA**

Sage-like shrub. Abundant orchid colored flowers after every summer rain. Dwarf variety. Compact grower. 5 feet.

	Weight	10 or More F.O.B. Nursery	F.O.B. Dallas Less than 10 at Nursery
1 gallon	8	\$.55	\$.60
5 gallon	35	1.50	1.65
18-24 inch	30	2.00	2.00



JAPANESE LIGUSTRUM ONE GALLON
Just fine for real estate work.

Ligustrum japonica.....**JAPANESE PRIVET**

Evergreen, good for tall hedges. Fast growing, easy to transplant. 20 feet.

1 gallon	8	\$.45	\$.50
3-4 feet	40	1.25	1.25



WAXLEAF LIGUSTRUM AND JAPANESE HOLLY ONE GALLON
It's easy to satisfy your customers with these.

Ligustrum lucidum compactum.....**WAXLEAF PRIVET**

Dense, compact, glossy dark green leaves. Grows to six feet in height and horizontally the same, but requires some shearing to keep it symmetrical.

Liners, 2½ inch pots		\$.15	\$.15
1 gallon	8	.50	.55
5 gallon	35	1.50	1.65

Lonicera yunnanensis.....YUNNAN HONEYSUCKLE

Hardy in southern Kansas and Oklahoma. Dwarf, but relatively fast growing semi-prostrate shrub with small dark leaves; pink, but not prominent flowers. Most attractive for hedge or planter boxes.

	Weight	10 or More F.O.B. Nursery	F.O.B. Dallas Less than 10 at Nursery
Liners, 2½ inch pots		\$.15	\$.15
1 gallon	8	.50	.55
5 gallon	35	1.50	1.65

Due to increased production of Dwarf (Yunnan) Honeysuckle, we now have lining out stock to sell in this new but very widely publicized and popularized item. See listing above.

Loropetalum chinensis.....SOUTHERN WITCHHAZEL

Formerly known as Chinese White Fringe Shrub. New, semi-dwarf evergreen shrub. Covers itself with white feathery flowers in earliest spring and a few flowers occasionally in summer and fall. One of the few lesser size shrubs seeking better acquaintance and wider use. 3 to 5 feet.

1 gallon	8	\$.55	\$.60
----------------	---	--------	--------



SOUTHERN MAGNOLIA ONE GALLON SIZES

Five gallon size even nicer. Container grown is best way to grow and move magnolias.

Magnolia grandiflora.....SOUTHERN MAGNOLIA

Very large and handsome dark green glossy leaves with the familiar huge, fragrant, white blossoms which make these trees a thing of majestic beauty. 50 feet.

Liners, 2½ inch pots		\$.15	\$.15
1 gallon (up to 18 inch)	8	.45	.50
1 gallon (18 inch and up)	8	.60	.65
5 gallon (30-36 inch)	35	1.75	1.90
5 gallon (36 inch and up)	35	2.25	2.45
2-3 feet (B&B)	40	1.75	1.90
3-4 feet (B&B)	70	2.25	2.45
4-5 feet (B&B)	70	3.50	3.85



HUME HOLLY AND MAGNOLIA LINERS
 Percentage and uniformity of growth makes potted liners the best buy.

Mahonia bealei.....LEATHERLEAF MAHONIA
 Great popularity has caused buying in advance of this plant. As a result all stock is sold since January 1953. Every effort to obtain more stock is being made. We may be able to provide it for you yet.

Myrica cerifera.....SOUTHERN WAXMYRTLE
BAYBERRY

Leaves spicily fragrant. Bears blue Cedar-like berries on trunk and base of branches which, with its shiny leaves and spiciness, make it very useful and attractive. A hardy evergreen which will survive Missouri cold, west Texas' heat and east Texas' wet and humid conditions. 10 feet.

	Weight	10 or More F.O.B. Nursery	F.O.B. Dallas Less than 10 at Nursery
Liners, 2½ inch pots	\$.15	\$.15
1 gallon	8	.50	.55
5 gallon	35	1.50	1.65

Myrtus communis.....ROMAN MYRTLE

2½ inch Pots	\$.15	\$.15
1 gallon	8	.50	.55



NANDINA



RED BARBERRY

GOOD PLANTS—GOOD SUPPLY

Nandina domestica.....NANDINA

This cane-like shrub with its small dainty and light green summer foliage is an accepted "must" with gardeners because of the gorgeous leaf coloring in the fall and immense cluster of red berries which are retained through out the winter. 8 feet.

1 gallon (8-12 inch)	8	\$.45	\$.50
1 gallon (12-18 inch)	8	.60	.65

Photinia serrulata.....**PHOTINIA**

Large, holly-like, dark green foliaged ornamental evergreen shrub. 15 feet.

	Weight	10 or More F.O.B. Nursery	F.O.B. Dallas Less than 10 at Nursery
Liners, 2½ inch pots	\$.15	\$.15
18-24 inch	30	1.10	1.20
24-30 inch	40	1.50	1.65
30-36 inch	40	1.80	2.00



SO. WAXMYRTLE



PYRACANTHA

SOUTHERN WAXMYRTLE AND PYRACANTHA. ONE GALLON SIZE. BOTH GOOD FOR FHA JOBS AND PYRACANTHA IS MARVELOUS SALES YARD NUMBER.

Pyracantha graber, henderson, barlow, miller.....**RED BERRIED FIRETHORN**

Large evergreen shrub with glossy foliage and produces huge clusters of large red berries. Wonderful for cash and carry sales. 8 feet.

1 gallon	8	\$.65	\$.70
5 gallon	35	1.65	1.80

Pyracantha lalandi.....**LALAND FIRETHORN**

Upright growing; orange fruit early in fall. Well known. Makes a brilliant show until late winter. Hardier than Red varieties. 10 feet.

1 gallon	8	\$.65	\$.70
5 gallon	35	1.65	1.80

Viburnum burkwoodi.....**BURKWOOD VIBURNUM**

Shrub with leathery green foliage remaining until very late. Blooms in early spring having clusters of very fragrant, pinkish-white flowers.

1 gallon (15-18 inch)	8	\$.60	\$.65
-----------------------------	---	--------	--------



FIELD SCENE OF ONE GALLON CAN STOCK. SOME ARE SHADED BUT MOST ARE OPEN FIELD GROWN. WE HAVE 400,000 PLANTS IN CANS.

VINES

Gelsemium sempervirens.....CAROLINA JASMINE

Tubular, yellow, pleasantly fragrant flowers on evergreen vine.
THIS ITEM WILL BE AVAILABLE IF WE CAN OBTAIN THEM IN DECENT GRADE AND REASONABLE PRICES FROM OTHER GROWERS. OUR STOCK IS VERY LOW.

Hedera helix.....ENGLISH IVY

Excellent dark green, large leaved vine for climbing and shady ground cover. Adheres to walls.

	Weight	10 or More F.O.B. Nursery	F.O.B. Dallas Less than 10 at Nursery
Liners, 2½ inch pots	\$.15	\$.15
1 gallon	8	.55	.60



PURPLE AND HECKROTTI HONEYSUCKLE
 Outdoor grown in 2½ inch pots.



PURPLE HONEYSUCKLE AND PINEAPPLE GUAVA
 ONE GALLON SIZE

Honeysuckle good for plant boxes. It is evergreen in our general area.

Lonicera halleana.....HALL'S HONEYSUCKLE

White flowering, climbing vine. Flowers from June to October. A fast growing evergreen used quite frequently in planter boxes. 25 feet.

1 gallon (staked, 15-18 inch)	8	\$.40	\$.45
-------------------------------------	---	--------	--------

Lonicera heckrottii.....HECKROTTI HONEYSUCKLE

Flame; everblooming; semi-evergreen.

	Weight	10 or More	F.O.B. Dallas
		F.O.B. Nursery	Less than 10 at Nursery
Liners, 2½ inch pots	\$.15	\$.15
1 gallon	8	.50	.55

Lonicera japonica purpurea.....HONEYSUCKLE, PURPLE-LEAF

Purplish-bronze foliage with white flowers tinged in pink. Very fragrant. Often called Texas Honeysuckle. Best for planter boxes and blooms very well all summer. Has a very attractive winter color. Definitely evergreen in our area.

Liners, 2½ inch pots	\$.15	\$.15
1 gallon	8	.50	.55

Lonicera sempervirens.....RED CORAL OR SCARLET TRUMPET HONEYSUCKLE

Everblooming, red; usable as either shrub or vine.

Liners, 2½ inch pots	\$.15	\$.15
1 gallon	8	.50	.55

Wistaria chinensis.....CHINESE WISTARIA

Prepagated from plants which bloom before the leaves appear. Makes a gorgeous spring display of purple flowers.

Rooted cuttings	\$.12	\$.12
1 gallon	8	.45	.50

DECIDUOUS SHRUBS AND TREES**Albizzia julibrissin.....PINK MIMOSA TREE**

Wide spreading lawn tree. Pink flowers all summer. Fern-like foliage. One of our best summer sellers in cans. 20 feet.

Liners, seedlings	\$.05	\$.05
2-3 feet (Bed Grown)10	.11
3-4 feet (Bed Grown)	8	.20	.22
1 gallon (36 inch)	8	.40	.45
8 gallon (5-6 feet)	50	1.75	1.90
4-5 feet (bareroot)50	.55
5-6 feet (bareroot)80	.90

Berberis thunbergi atropurpurea.....JAPANESE REDLEAF BARBERRY

Well-known ornamental. Dark red stems and foliage.

1 gallon (6-12 inch)	8	\$.50	\$.55
5 gallon (18-24 inch)	35	1.25	1.35

Cercis canadensis.....AMERICAN REDBUD

Light green, heart shaped leaves which are preceded in the spring by lavender-pink blooms all along the branches. Used extensively for highway beautification. 25 feet.

4-5 feet (bareroot)	\$.50	\$.55
5-6 feet (bareroot)75	.80
4-5 feet (B&B)	70	1.00	1.10
5-6 feet (B&B)	70	1.35	1.50

Cercis chinensis.....CHINESE REDBUD

A dwarf variety branching heavily from the ground forming a bush rather than a tree. Flowers and leaves are closer together on branches. 5 feet.

Liners, seedlings	\$.08	\$.08
2-3 feet (bareroot)60	.65
2-3 feet (B&B)	40	1.00	1.10

Cornus florida.....WHITE DOGWOOD

Beautiful shrub or tree with large white flowers in early spring. 20 feet.

1 gallon (18-24 inch)	8	\$.50	\$.55
5 gallon (30-36 inch)	35	1.50	1.65

Euonymus patens.....SPREADING EUONYMUS

Semi-upright spreading form with large dull green leaves. Orange fruits. 10 feet.

1 gallon	8	\$.50	\$.55
----------------	---	--------	--------

Lagerstroemia indica.....CRAPEMYRTLE

One of the few midsummer flowering shrubs. It is covered with a gorgeous array of blcom heads; flowers are produced the first summer on new growth and may be increased in size from year to year by annual fall pruning. Needs little or no care and is unrivaled for its colorful beauty in any situation, formal, naturalistic, specimen or group plantings. Often called the Southern Lilac. Red. 10 feet.

	Weight	10 or More F.O.B. Nursery	F.O.B. Dallas Less than 10 at Nursery
1 gallon	8	\$.40	\$.45
5 gallon	35	1.00	1.10



SWEET GUM AND BLACKGUM TREES IN GALLON CANS

Dandy little fellows especially where the cash register is concerned.
Fast sellers. Fast growers.

Liquidambar styraciflua.....SWEETGUM TREE

Deep rich green five pointed leaves which in the fall enhance any landscape with their assorted bright colors. Also, the burrs or seed pods are ornamental in flower decoraticns. 50 feet.

Liners, 2½ inch pots		\$.15	\$.15
1 gallon (30 inch)	8	.40	.45
5 gallon (3-4 feet)	35	1.50	1.65
5-6 feet	70	2.20	2.40
6-8 feet	110	2.75	3.00
8-10 feet	160	3.85	4.25

Nyssa sylvatica.....BLACKGUM

One of the best coloring shade trees in the fall.

2½ inch Pots		\$.15	\$.15
1 gallon	8	.50	.55

Salix babylonica pendula.....WEEPING WILLOW

The universally known weeping favorite.

5 gallon	35	\$1.50	\$1.65
----------------	----	--------	--------

Spirea reevesi flora plena.....REEVES SPIREA

This is the real white double flowering Bridal Wreath. 6 feet.

18-24 inch (bareroot)		\$.30	\$.35
2-3 feet (bareroot)60	.65
18-24 inch (B&B)	30	.50	.60
2-3 feet (B&B)	40	1.00	1.10

Ulmus parvifolia.....CHINESE ELM

Open headed tree; leaves small and thick, 2 to 3 inches long, shiny and smcoth.

8 gallon (6-8 feet)	50	\$1.75	\$1.75
---------------------------	----	--------	--------



CHINESE ELM IN FIFTY POUND CAN

Not all are this good now but by fall this should be average or less.



REDBUD

Wistaria chinensis.....CHINESE WISTARIA,
TREE FORM

Propagated from plants which bloom before the leaves appear. Makes a wonderful spring display. Should be dug and delivered early while dormant, preferably by February 1st, as the flower buds shatter off during later delivery.

BELIEVE IT OR NOT—WE HAVE NO TREE WISTARIA THIS YEAR. WHAT FEW WE HAD WERE BOUGHT SIX MONTHS TO A YEAR IN ADVANCE. THERE WILL BE SOME TWO YEAR TREES, BUT THESE ARE LIGHT. IT TAKES THREE TO FOUR YEARS TO MAKE A GOOD WISTARIA TREE. WE HAVE NO EXCUSE EXCEPT THAT THE DEMAND HAS SO FAR EXCEEDED OUR EXPECTATIONS WE WERE UNPREPARED FOR THE OCCASION.

GRASSES

Cortaderia argentea.....PAMPAS GRASS

Clumps of giant grass which bend into a fountain effect and send up huge white foamy plumes that are outstandingly attractive. 6 feet.

	Weight	10 or More F.O.B. Nursery	F.O.B. Dallas Less than 10 at Nursery
1 gallon	8	\$.45	\$.50



MONKEY GRASS AND BOXWOOD ONE GALLON CANS
Both used frequently in low borders and plant boxes.

Ophiopogon.....MONKEYGRASS

A low growing *Ophiopogon* with very narrow, dark, green leaves. Excellent ground cover and border plant.

1 gallon	8	\$.50	\$.55
----------------	---	--------	--------

For "Real Estate" or "FHA" jobs these plants are of size and quality to meet specifications—certainly the price is right! All plants listed are in gallon cans.

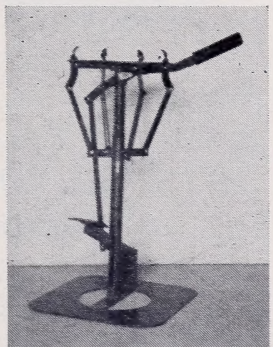
Bluespire Arborvitae	\$.60
Arizona Cypress	1.10
Kiyono Juniper60
Euonymus japonica55
Pineapple Guava60
Hume Holly65
Dahoon Holly65
Cherry Laurel55
Japanese Ligustrum50
Southern Waxmyrtle55
Pyracantha70

NURSERY SUPPLIES

All supplies are NET CASH with order. Prices quoted are F.O.B. Dallas or Scottsville.

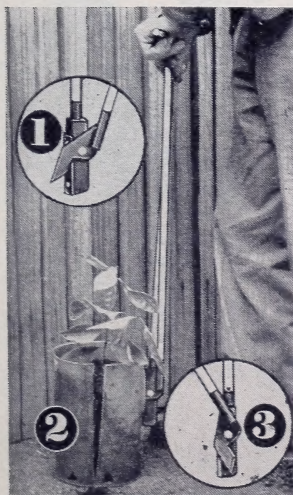
Multiple Can Punch

Any nurseryman growing stock in cans is losing money if not using this speedy method of punching holes. Punches four holes at one time. Adjustable to fit one gallon and five gallon cans.



- With Handle and Foot Lever
- Each \$46.25
- Without Handle
- Each \$40.50
- Packing Weight - 50 Pounds

Redhead Can Shear



Handiest, fastest, and safest of any tool for removing cans from plants. Simple to operate, long lasting. Does a complete and thorough job. Buy one and save time, temper and fingers.

- Each . . . \$ 6.75
- 3 for . . . 17.50
- 6 for . . . 30.36
- 12 for . . . 54.00

Packing Weight
4 1/2 lbs. each

HOME GARDEN SHEARS

Same as the Redhead, except for shorter handle.

\$4.95 each

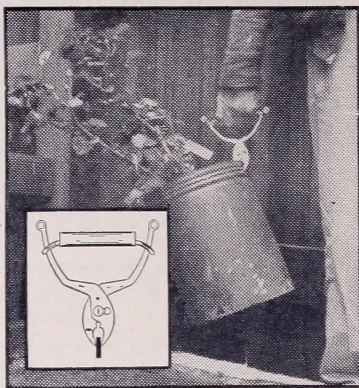
Weight - 2 1/6 lbs.

Handy-Man Gripzit Pliers

Working principle is same as ice tongs. Two cans may be carried with one pliers. Small and light enough to keep in pocket. For moving any size canned plant for any reason the Gripzit is the tool to use. Buy two at a time, carry four large cans instead of two.

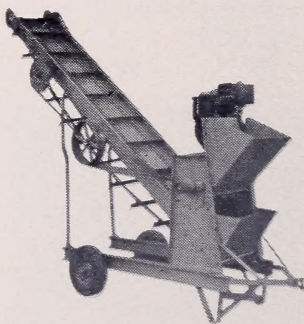
Each . \$2.90
2 for . 5.30

Packing Weight
2 Units, 2 lbs.



NO. 1-D HEAVY DUTY GRINDING SCREEN

2000-2500 RPM—20 cutting tips. Two to fifteen yards per hour depending on fineness of finished soil desired. For large scale, heavy duty work, this is the best machine available. Easily moved, piles soil 7½ feet high, great labor saver in can nursery. After you have used one, you will realize how much it cost to have been without it. Seven hundred ninety pounds complete, as pictured—wheels, motor and elevator easily assembled. If we deliver in our truck or you pick it up in your truck, we will assemble, fill with gas and oil and have it ready to run.



(Patented)
NO. 1-D
HEAVY DUTY
GRINDING SCREEN

\$568.25
F.O.B. Dallas

NO. 2-XB GRINDING SCREEN



(Patented)
NO. 2-XB GRINDING SCREEN

1200-2000 RPM—30 cutting tips—one to six yards soil per hour, depending on size of screens and type of soil used. Produces finest type soil possible. Ideal for preparing dirt for seed flats, potting, and with coarser screens or with roller for canning soil.

Shipping weight with gasoline motor . . . 235 lbs.

\$182.35

F.O.B. Dallas

NURSERY NAILS

Regular Thin Line Wire Nails, Needlepoint, Large Head.

Per Keg, each.....	\$ 15.50
2 Kegs.....	29.00
10 Kegs.....	130.00

F.O.B. Scottsville or Dallas

Weight - 100 lbs.

PEAT MOSS

Standard bales German or Canadian. Best Horticultural grades.

Per Bale.....	\$3.85
Each, per 10 Bales.....	3.50

F.O.B. Scottsville or Dallas



SPECIAL NOTICE

NEW ITEMS WORTH A TRY:

Adino.....	Page 13
Boxwood, Roundleaf.....	Page 14
Illicium Anisatum.....	Page 19
Lonicera Yunnanensis.....	Page 23