

Andorra
Nurs.
1910

©
**Andorra
Nurseries**

PRICE LIST OF

SPECIMEN TREES

SHRUBS, ROSES

AND FRUIT

Fall, 1910

CANCELING ALL PREVIOUS LISTS



**WHOLESALE
PRICES**

**ON QUANTITIES OF TEN
TO ONE THOUSAND**



**SPECIAL :
SEE NOTES ON
PAGES 20, 64
AND BACK
COVER**



SUPERIOR FERTILIZERS

For the Lawn, Garden or Farm

PRICES NET F. O. B. SHIPPING POINT

CANADA UNLEACHED HARD-WOOD ASHES (ANDORRA BRAND)

Are a complete fertilizer, replenishing worn-out soils, and, for the lawn or pasture, are economical and valuable. For the lawn, they are easy to handle, produce no offensive odors, are not unsightly, and, quickly leaching into the soil, the chemical properties are at once available for plant food.

Our ashes are selected only from the hard-wood districts of Canada, are carefully screened, and put in convenient packages. Apply at the rate of 1,000 to 1,500 lbs. per acre for top-dressing, or 2,000 to 2,500 lbs. for new lawns.

50-lb. bag	100-lb. bag	200-lb. bbl.	Ton (10 bbls.)	Cars, 15 to 20 tons
\$1 00	\$1 50	\$2 50	\$20 00	At special prices.

PREPARED LIME

Where soils, from constant applications of manure, are sour and need a fertilizer to sweeten them, lime is a valuable agent. It quickly puts the soil in condition to assimilate plant-food. It frees the potash, phosphoric acid and nitrogen already in the soil, and turns the nitrogen into the rich nitrates valuable for plant use.

Our prepared lime is fresh from the kilns, clean, well burnt, thoroughly decarbonized and especially prepared, so that it will go three times as far as the lump lime generally used, and is fine enough to run through a drill. Use 500 lbs. per acre.

100-lb. bag	Ton	Cars, 12 to 25 tons
\$1 25	\$12 00	\$10 per ton.

POTASH AND PREPARED LIME

Where potash is needed in addition to lime, this preparation will be found valuable. It contains 4% actual potash, equal to 8% of sulphate of potash, the prepared lime being used as a filler, and makes a valuable top-dresser for lawn, pasture, or grass lands. Apply at the rate of 500 lbs. per acre.

100-lb. bag	Ton	Cars, 12 to 25 tons
\$1 50	\$14 00	\$12 00 per ton

PEAT

We have on hand a stock of carefully selected peat, suitable for potting or planting Rhododendrons and shrubs that need such soil. Sack of about 100 lbs., 75 cents. In sacks, \$13.50 per ton.

PURE GROUND BONE

A brand of excellent quality. Analysis on request.

200-lb. bag	Ton	Cars, 15 to 30 tons
\$3 50	\$32 00	Special price.

Andorra Nurseries

CHESTNUT HILL, PHILADELPHIA, PA.

OUR NURSERIES are extensive, covering six hundred acres, of which over three hundred are planted with trees and shrubs. They are easy of access, as Chestnut Hill is the terminus of branches of the Pennsylvania and the Philadelphia & Reading railroads, and the Chestnut Hill (City Line) trolley runs from the stations to within three minutes' walk of the Nurseries.

QUALITY.—The trees and shrubs offered are grown in open, unsheltered ground, in a very exposed situation, which insures their hardiness, and on soil admirably adapted for forming robust plants having an abundance of roots. Special attention is called to the fact that our stock is grown a good distance apart in the rows, insuring heavier trees and shrubs than are generally offered.

SHIPPING SEASON opens about March 1 in the spring and August 15 in the fall.

INSPECTION AND FUMIGATION.—Our stock is regularly inspected and certificate will be sent with each shipment. Stock will be fumigated when requested or when the State laws require it.

TERMS AND CONDITIONS

ORDERS.—All orders are accepted subject to the following terms and conditions. Write plainly and give explicit directions as to address and mode of shipment.

STOCK SELECTED by customers at the Nurseries will be charged according to the value of the trees chosen.

QUANTITY.—Lots of 5 and 50 will be furnished at the 10 and 100 rates respectively.

PACKING.—All goods are thoroughly packed, thus avoiding risk, if delayed in transit. **Packing charges are made at actual cost.**

FORWARDING.—Shipments will be forwarded exactly as directed; but when without instructions, we will use our best judgment and forward by shortest and safest route. We recommend all herbaceous plants be shipped by express.

RISK.—All goods are at purchaser's risk after they are delivered to the forwarding companies and we receive their receipt for the shipment in good condition.

CLAIMS for damage while in transit must be made to the delivering company. Have delivering agent note the damaged condition on the freight bill and present your claim through him promptly.

GUARANTEE AND CLAIMS.—All goods are guaranteed true to name, full count, up to grade, and in good condition when shipped. Any plant proving untrue to name will be replaced. Claims to receive consideration must be made within **five days** after receipt of goods. **We give no guarantee of the life of stock.**

TERMS, CASH WITH ORDER, except to persons who satisfy us as to their responsibility.

Address all orders to

ANDORRA NURSERIES

WM. WARNER HARPER, Prop.

CHESTNUT HILL, PHILADELPHIA, PA.

*Local and Long
Distance Telephone*

Telegraphic Address

CHESTNUT HILL, PHILADELPHIA

Cable Address

"ANDORRA," PHILADELPHIA



Nursery Entrance and Office.

EVERGREEN TREES

	Each	10
ABIES balsamea. Balsam Fir. 3 to 4 ft.	\$3 00	\$27 50
4 to 5 ft.	3 50	32 50
5 to 6 ft.	4 00	37 50
Canadensis. See <i>Tsuga Canadensis</i> .		
concolor. White Fir. 3 to 3½ ft.	3 50	
3½ to 4 ft.	5 00	
4 to 4½ ft.	6 00	
4½ to 5 ft.	♦ 7 50	
5 to 6 ft.	♦ \$10 to 12 50	
6 to 9 ft.	♦ \$12.50 to 15 00	
nobilis, var. glauca. Noble Silver Fir. 4 to 4½ ft. ...	5 00	
4½ to 5 ft.	6 00	
5 to 6 ft.	\$7.50 to 10 00	
Nordmanniana. Nordmann's Fir. 3 ft.	3 50	
3 to 3½ ft.	4 50	42 50
3½ to 4 ft.	6 00	57 50
4 to 4½ ft. Specimens	♦ 7 50	70 00
4½ to 5 ft. Specimens	♦ 10 00	85 00
5 to 5½ ft. Specimens	♦ \$10 to 15 00	
6 to 12 ft. Fine specimens. Prices on application.		
pectinata. European Silver Fir. 4 to 5 ft.	2 50	20 00
5 to 6 ft.	3 50	32 50
6 to 8 ft.	♦ \$4 to 7 50	
BIOTA orientalis. Oriental Arborvitæ. 5 to 6 ft.	3 00	27 50
6 to 7 ft.	4 00	37 50
6 to 7 ft. Very heavy	6 00	55 00
7 to 9 ft.	6 00	55 00
7 to 10 ft. Very heavy	\$7.50 to 15 00	

PRICE LIST FOR FALL OF 1910

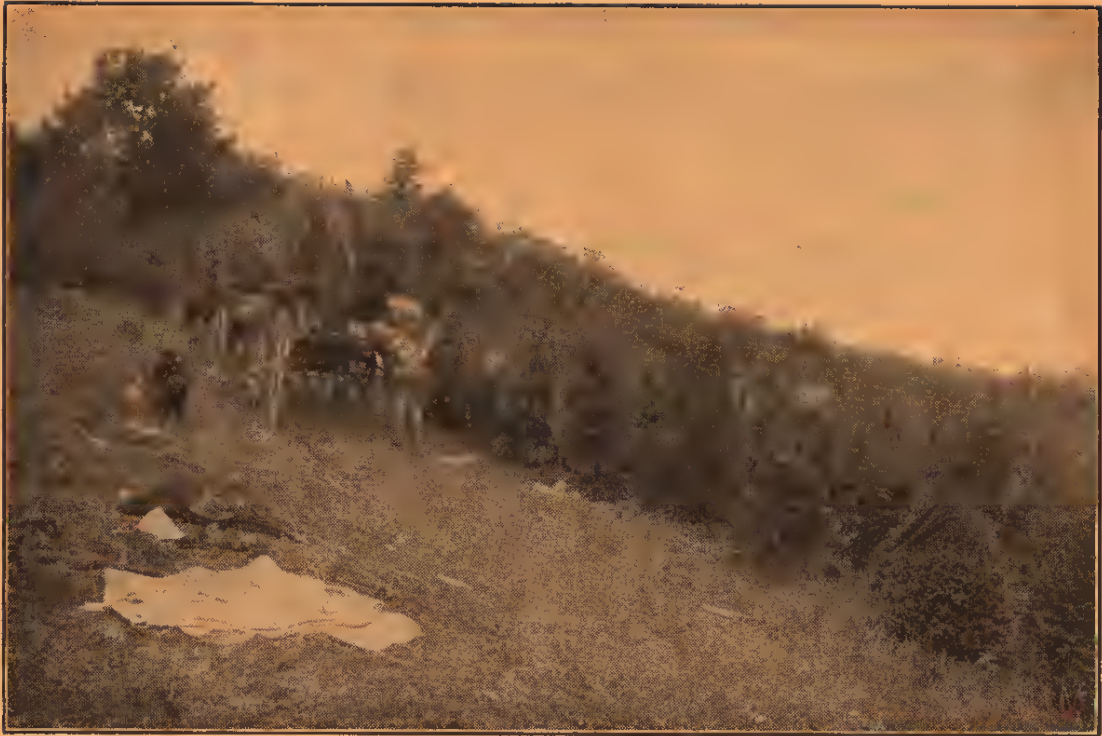
	Each	10
BIOTA orientalis, var. aurea. 3½ to 4 ft.✦..	\$3 50	
orientalis, var. aurea nana. 15 to 18 in.	2 00	\$17 50
orientalis, var. aurea pyramidalis.		
3 to 4 ft.	3 50	32 50
4 to 5 ft.	5 00	42 50
5 to 7 ft.	\$5 to 7 50	
orientalis, var. compacta. Compact Chinese Arbor-		
vitæ. 3 to 3½ ft.	3 50	30 00
3½ to 4 ft.	4 00	35 00
4 to 5 ft.	5 00	45 00
5 to 6 ft.	7 50	70 00
orientalis, var. conspicua. 5 to 6 ft.✦..	5 00	
6 to 7 ft.	7 50	70 00
7 to 8 ft.	10 00	90 00
orientalis, var. elegantissima. Rollinson's Golden Ar-		
borvitæ. 3 to 3½ ft.	3 50	
3½ to 4 ft.	4 00	
4 to 6 ft.	\$5 to 7 50	
orientalis, var. filiformis; syn., Japonica. Thread-		
branched Arborvitæ. 2½ to 3 ft.	2 50	
3 to 3½ ft.	3 50	32 50
4 to 5 ft.	5 00	
orientalis, var. semperaurescens. Ever-golden Arbor-		
vitæ. 2½ to 3 ft.✦..	3 50	
3 to 3½ ft.	5 00	45 00
CEDRUS Atlantica, var. glauca. Mt. Atlas Silver Cedar—		
5 to 6 ft.	4 50	42 50
6 to 7 ft.	6 00	55 00
7 to 8 ft.	7 50	70 00
8 to 10 ft.✦..	\$10 to 15 00	
Deodara. Deodar, or Indian Cedar. 2½ to 3 ft. ...	3 50	
3½ to 4 ft.	5 00	45 00
CEPHALOTAXUS Fortunei. Fortune's Yew. 4 to 4½ ft.	3 50	
5 to 6 ft. Very broad and heavy....	5 00	
6 to 7 ft.	7 50	
CRYPTOMERIA Japonica elegans. 6 to 7 ft.✦..	7 50	
Japonica, var. Lobbi compacta. 2½ to 3 ft.	2 50	
6 to 7 ft.	7 50	
7 to 8 ft.	10 00	
ILEX opaca. American Holly. 2½ to 3 ft.✦..	3 50	32 50
3 to 4 ft.	\$3.50 to 5 00	
4 to 6 ft.	\$7.50 to 10 00	
JUNIPERUS Canadensis. Spreading Canadian Juniper—		
12 to 15 in. spread.per 100, \$60..	1 00	9 00
15 to 18 in. spread.	1 50	12 50
18 to 24 in. spread.	2 00	
Canadensis, var. aurea; syn., Douglasi. Douglas'		
Golden Juniper. 12 to 15 in. spread. ...	1 00	8 50
15 to 18 in. spread.	1 50	12 50
18 to 24 in. spread. Heavy	2 00	
2 ft. spread. Heavy	2 50	
2 x 2½ ft. spread. Heavy✦..	3 50	
Canadensis, var. prostrata. Trailing Canadian		
Juniper. 12 to 15 in.	1 25	
15 to 18 in.	2 00	

ANDORRA NURSERIES

	Each	10
JUNIPERUS Chinensis. Chinese Juniper. 3 ft.	\$2 00	\$17 50
3½ to 4 ft.	3 50	32 50
4½ to 5 ft.	5 00	45 00
5 to 6 ft.	6 00	55 00
6 to 7 ft.	7 50	70 00
Chinensis, var. argentea marginata. A grand hardy variety. 2½ to 3 ft.	3 50	32 50
3½ to 4 ft.	4 50	42 50
4 to 4½ ft.	5 00	
5 to 6 ft.	\$6 to 7 50	
6 to 8 ft. Specimens	\$7.50 to 15 00	
Chinensis, var. aurea. Golden Chinese Juniper—		
2½ to 3 ft.	2 50	
3 to 3½ ft.	3 50	
4 to 5 ft.	5 00	
Chinensis, var. Pfitzeriana. 3 ft.	3 50	
Chinensis, var. femina Reevesii. 5 to 6 ft.	5 00	47 50
communis. Common Upright Juniper—		
2 to 2½ ft.	2 50	
3 to 4 ft.	3 50	
communis, var. oblonga. 5 to 6 ft.	4 50	40 00
communis, var. Suecica. Swedish Juniper—		
3 to 3½ ft.	2 50	22 50
3½ to 4 ft.	3 50	32 50
Fortunei. 4 to 4½ ft.	3 50	32 50
4½ to 5 ft.	4 00	37 50
Japonica. 4½ to 5 ft.	5 00	45 00
5 to 6 ft.	7 50	70 00
Japonica, var. aurea. Golden Japan Juniper—		
1½ to 2 ft.	1 50	13 50
2 to 2½ ft.	2 50	22 50
2½ to 3 ft.	3 50	32 50
3 to 3½ ft.	4 00	37 50
3½ to 4 ft.	5 00	47 50
4 to 5 ft.	\$7.50 to 10 00	
5 to 5½ ft.	\$10 to 12 50	
Japonica, var. nana aurea. Dwarf, 10 to 12 in., broad	1 50	12 50
recurva. 2 to 2½ ft.	2 50	
recurva, var. squamata. Scaly-leaved—		
10 to 12 in.	1 50	12 50
3 to 4 ft. spread.	\$4 to 5 00	
rigida. 7 to 12 ft.	\$7.50 to 25 00	
Sabina. Savin Juniper. 12 to 15 in.	1 00	9 00
18 to 24 in.	2 00	18 50
2 to 2½ ft.	2 50	22 50
3 to 3½ ft.	3 50	32 50
Sabina, var. aurea variegata. Savin's Golden Juniper. 1½ to 2 ft.	1 50	
2 to 2½ ft.	3 50	
Sabina, var. mas. Prostrate, 1 to 1½ ft.	2 50	
Sabina, var. tamariscifolia. 1½ to 2 ft.	1 50	13 50
2 to 2½ ft.	2 50	
2½ to 3 ft.	3 00	
Virginiana. Red, or Virginia Cedar. 3 to 3½ ft.	1 50	13 50
3½ to 4 ft.	2 50	22 50
4½ to 5 ft.	3 50	32 50
5 to 6 ft.	\$4 to 5 00	

PRICE LIST FOR FALL OF 1910

	Each	10
JUNIPERUS <i>Virginiana</i> , var. <i>glauca</i> . Blue Virginia Cedar—		
3 to 3½ ft.♦..	\$2 50	\$22 50
4 to 4½ ft.♦..	3 50	32 50
5 to 6 ft.♦..	4 00	37 50
6 to 8 ft.♦..	\$7.50 to 10 00	
<i>Virginiana</i> , var. <i>Kosteri</i> . Spreading—		
12 to 15 in.♦..	1 50	13 50
2 to 2½ ft.♦..	2 50	23 50
3 to 3½ ft.♦..	3 50	32 50
<i>Virginiana</i> , var. <i>Leei elegantissima</i> . Golden Vir- ginian Cedar—		
3 to 3½ ft. Extra heavy♦..	3 50	32 50
4½ to 5 ft. Extra heavy♦..	5 00	
5 to 7 ft. Extra heavy♦..	\$7.50 to 10 00	
7 to 9 ft.♦..	\$12.50 to 15 00	
<i>Virginiana</i> , var. <i>pendula</i> . 3½ to 4 ft.♦..	3 50	32 50
4 to 5 ft.♦..	5 00	
<i>Virginiana</i> , var. <i>Schotti</i> . 3 to 3½ ft.♦..	2 50	20 00
4 to 5 ft.♦..	3 50	32 50
5 to 6 ft.♦..	5 00	45 00
6 to 8 ft.♦..	\$6 to 10 00	
PICEA <i>alba</i> . White Spruce. 2½ to 3 ft.	1 50	12 50
3 to 3½ ft.	2 00	17 50
3½ to 4 ft.	2 50	20 00
4 to 5 ft.	3 50	30 00
5 to 6 ft.♦..	5 00	
6 to 8 ft. Very fine specimens♦..	\$7.50 to 10 00	
<i>Alcockiana</i> . Alcock's Spruce. 3½ to 4 ft.♦..	3 50	
4 to 5 ft.♦..	5 00	
<i>Engelmanni</i> . Engelmann's Spruce—		
4 to 7 ft.♦..	\$5 to 10 00	
<i>excelsa</i> . Norway Spruce. 3 to 3½ ft.	2 00	
3½ to 4 ft.	2 50	
4 to 4½ ft.	3 00	
4½ to 5 ft.	3 50	32 50
5 to 6 ft. Specimens	5 00	45 00
6 to 7 ft. Specimens	6 00	57 50
7 to 9 ft. Specimens	7 50	60 00
9 to 12 ft.	\$10 to 25 00	
<i>excelsa</i> , var. <i>aurea</i> . Golden Norway Spruce—		
3 to 4 ft.♦..	3 50	
<i>excelsa</i> , var. <i>inverta</i> . Weeping Norway Spruce—		
5 to 6 ft.♦..	\$6 to 7 50	
7 to 9 ft.♦..	\$7.50 to 15 00	
<i>excelsa</i> , var. <i>Remonti</i> . 3 to 3½ ft.	3 50	32 50
<i>orientalis</i> . Eastern Spruce. 2 to 2½ ft.♦..	2 50	22 50
3 to 3½ ft.♦..	3 50	32 50
3½ to 4 ft. Specimens♦..	5 00	45 00
4½ to 5 ft. Specimens♦..	\$7.50 to 10 00	
5 to 8 ft. Specimens♦..	\$10 to 20 00	
<i>pinsapo</i> . Spanish Fir. 3 to 3½ ft.♦..	2 50	22 50
4 to 4½ ft.♦..	3 50	32 50
<i>polita</i> . Tiger's Tail Spruce. 6 to 8 ft.♦..	\$5 to 10 00	



Loading White Pines.

		Each	10
PICEA pungens.	Colorado Spruce.		
	3 to 3½ ft.	♦..\$4 00	\$37 50
	3½ to 4 ft.	♦.. 5 00	45 00
	4 to 5 ft.	♦.. 7 50	
☛	6 to 10 ft.	♦..\$7.50 to 25 00	
	pungens, var. glauca.	Blue Colorado Spruce—	
	2½ to 3 ft. Selected color	♦.. 3 50	32 50
	3 to 3½ ft. Selected color	♦..\$5 to 7 50	
	3½ to 4 ft. Selected color	♦..\$7.50 to 10 00	
☛	5 to 8 ft. Selected color	♦..\$12.50 to 35 00	
	pungens, var. Kosteriana.	Koster's Blue Colorado	
	Spruce. 1½ to 2 ft.	2 50	22 50
	2 to 2½ ft.	♦.. 3 50	32 50
	2½ to 3 ft. Specimens	♦..\$5 to 7 50	
	3 to 3½ ft. Specimens	♦..\$7.50 to 10 00	
	3½ to 4 ft. Specimens	♦..\$10 to 12 50	
☛	4 to 5 ft. Specimens	♦..\$12.50 to 15 00	
☛	6 to 7 ft. Grand specimens	♦..\$15 to 35 00	
	pungens, var. pendula.	Weeping Blue Colorado Spruce—	
	3 to 4 ft. Fine specimens	♦.. 7 50	
	4 to 4½ ft. Fine specimens	♦..10 00	
PINUS Austriaca.	Austrian Pine.	2 to 2½ ft.	2 50 22 50
	3½ to 4 ft.	3 50	
	4 to 4½ ft.	4 00	
	4½ to 5 ft.	5 00	
	5 to 8 ft.	\$6 to 12 50	
	Cembra.	Swiss Stone Pine.	2 to 2½ ft. 2 50 22 50
	2½ to 3 ft.	3 50	32 50
	3 to 3½ ft.	4 00	37 50
	3½ to 4 ft.	5 00	47 50
☛	4 to 4½ ft.	7 50	
	5 to 8 ft.	♦..\$10 to 15 00	

PRICE LIST FOR FALL OF 1910

	Each	10
PINUS excelsa. Bhotan Pine. 3 to 3½ ft.	\$3 50	\$32 50
4 to 4½ ft.	4 00	37 50
5 to 7 ft.	5 00	47 50
7 to 10 ft.	\$7.50 to 12 50	
Koraiensis. Corean Pine. 1½ to 2 ft.	2 50	
Monticola. Mt. White Pine. 5 ft.	3 50	
Mughus. Dwarf Mountain Pine. 12 to 15 in. ...	◆ 1 50	12 50
15 to 18 in.	◆ 2 00	17 50
18 in.	◆ 2 50	
24 in.	◆ 3 50	
ponderosa. Bull Pine. 4 to 5 ft.	◆ 3 50	32 50
5 to 8 ft.	◆ \$5 to 7 50	
rigida. Pitch Pine. 6 to 7 ft.	5 00	
7 to 8 ft.	◆ \$6 to 7 50	
Strobus. White Pine. 15 to 18 in.per 100, \$25		
1½ to 2 ft.	◆ per 100, \$35 } .. 75	4 00
2 to 2½ ft.	◆ per 100, \$50 } .. 1 00	6 00
2½ to 3 ft.	◆ per 100, \$75 } .. 1 25	8 50
3 to 3½ ft.	◆ per 100, \$108 } .. 1 50	12 50
3½ to 4 ft.	2 00	17 50
4 to 4½ ft.	2 50	20 00
4½ to 5 ft.	3 50	27 50
5 to 6 ft.	4 00	32 50
6 to 7 ft.	5 00	
7 to 9 ft.	\$7.50 to 15 00	
The finest and best rooted stock in this country.		
sylvestris. Scotch Pine. 4 to 5 ft.	◆ 3 50	32 50
5 to 6 ft.	◆ 4 00	37 50
6 to 7 ft.	◆ \$5 to 7 50	
8 to 12 ft.	\$7.50 to 15 00	
Tanyosho. Dwarf Japanese Variety—		
2½ ft.	◆ 5 00	
PODOCARPUS Japonica. Japanese Yew. 2½ to 3 ft.	◆ 2 50	22 50
4 to 4½ ft.	◆ 3 50	32 50
PSEUDOTSUGA Douglasi. Douglas' Spruce. 3 to 4 ft.	1 75	15 00
4 to 5 ft.	2 50	22 50
5 to 6 ft.	\$3.50 to 5 00	
6 to 8 ft.	\$7.50 to 10 00	
RETINOSPORA ericoides. Heath-like Japan Cypress—		
1½ to 2 ft.	◆ 1 00	8 50
3 to 3½ ft.	◆ 2 00	17 50
3½ to 4 ft.	◆ 3 00	25 00
filifera. Thread-branched Japan Cypress—		
1½ ft.	1 00	8 50
2½ to 3 ft.	3 50	32 50
3 to 3½ ft.	5 00	
3½ to 4 ft. Specimens	◆ 7 50	
4 to 6 ft. Specimens	◆ \$7.50 to 10 00	
6 to 8 ft. Specimens	◆ \$10 to 25 00	
filifera, var. aurea. Golden Thread-branched Japan Cypress. 2 x 2 ft.	◆ 3 50	
2 x 2½ ft. Specimens	◆ 5 00	
2½ x 3 ft. Specimens	◆ 7 50	
3½ x 4 ft. Specimens	◆ 10 00	
filifera, var. aurea variegata. Golden variegations. 4 to 5 ft.	◆ 10 00	

ANDORRA NURSERIES

	Each	10
RETINOSPORA leptoclada. Thuya-like Japan Cypress—		
3 to 3½ ft.	\$3 00	\$27 50
3½ to 4 ft.	3 50	32 50
4 to 4½ ft.	5 00	40 00
4½ to 5 ft.	6 00	50 00
lycopodioides. Club-moss Japan Cypress—		
2½ ft.	2 50	
3 to 4 ft.	\$3.50 to 5 00	
4 to 5 ft.	\$5 to 7 50	
obtusa. Obtuse-leaved Japan Cypress—		
2½ to 3 ft.	2 50	22 50
3½ to 4 ft.	3 50	32 50
4½ to 5 ft.	5 00	47 50
5 to 8 ft.	\$6 to 15 00	
obtusa, var. compacta. Compact Obtuse-leaved Japan Cypress. 3 to 3½ ft.	3 50	
4 to 6 ft.	\$5 to 10 00	
obtusa, var. gracilis. Graceful Obtuse-leaved Japan Cypress. 2 to 2½ ft.	2 50	22 50
2½ to 3 ft.	3 50	32 50
3 to 3½ ft.	5 00	47 50
4 to 5 ft.	\$7.50 to 10 00	
obtusa, var. magnifica. 3 to 3½ ft.	\$5 to 7 50	
obtusa, var. nana. Dwarf Obtuse-leaved Japan Cypress. 1 ft.	1 25	10 00
1½ ft.	2 00	17 50
2 ft.	2 50	22 50
2½ ft.	3 00	27 50
3 ft.	\$5 to 7 50	
3½ ft.	\$7.50 to 15 00	
4 to 6 ft. Specimens	\$15 to 20 00	
obtusa, var. nana aurea. Dwarf Golden Obtuse-leaved Japan Cypress—		
1½ ft.	2 50	
2 to 2½ ft.	\$3 to 4 00	
3 to 3½ ft. Specimens	\$5 to 10 00	
pisifera. Pea-fruited Japan Cypress. 2 to 2½ ft.	2 50	22 50
3 to 3½ ft.	3 50	32 50
4 to 4½ ft.	5 00	47 50
4½ to 5 ft.	6 00	55 00
5 to 6 ft.	7 50	70 00
6 to 8 ft. Specimens	\$7.50 to 15 00	
pisifera, var. aurea. Golden Pea-fruited Japan Cypress. 2 to 2½ ft.	2 00	18 00
2½ to 3 ft.	3 00	27 50
3 to 3½ ft.	3 50	30 00
3½ to 4 ft.	4 00	37 50
4 to 4½ ft.	5 00	47 50
5 to 6 ft. Specimens	\$7.50 to 12 50	
6 to 14 ft. Specimens	\$12.50 to 35 00	
plumosa. Plume-like Japan Cypress—		
1½ to 2 ft.	1 50	13 50
2 to 2½ ft.	2 50	22 50
2½ to 3 ft.	3 50	32 50
3 to 3½ ft.	4 00	37 50
3½ to 4 ft. Specimens	\$5 to 7 50	
4 to 8 ft. Specimens	\$7.50 to 20 00	

PRICE LIST FOR FALL OF 1910

	Each	10
RETINOSPORA plumosa, var. argentea. 2 to 2½ ft.	\$1 50	\$12 50
2½ to 3 ft.	2 50	22 50
3 to 4 ft.	3 50	32 50
4 to 5 ft.	5 00	45 00
plumosa, var. aurea. Golden Plume-like		
Japan Cypress. 12 in.	50	4 00
12 to 18 in.	75	6 00
2 to 2½ ft.	2 00	18 50
2½ to 3 ft.	3 00	28 50
3 to 3½ ft.	3 50	32 50
3½ to 4 ft. Specimens♦	4 00	37 50
4 to 4½ ft. Specimens♦	5 00	45 00
5 to 12 ft. Specimens♦	\$5 to 35	00
plumosa, var. flavescens. 1 to 1½ ft.	1 00	8 50
3 to 4 ft.♦	\$5 to 7	50
plumosa, var. sulphurea. 1½ to 2 ft.	1 75	15 00
2 to 2½ ft.♦	3 50	
3½ to 4 ft. Very heavy.....♦	6 00	
4 to 5 ft. Very heavy.....♦	7 50	
squarrosa. Squarrose-leaved Japan Cypress—		
2 to 2½ ft. Sheared; heavy	2 50	22 50
2½ to 3 ft. Sheared; heavy	3 50	30 00
3 to 3½ ft. Sheared; heavy	5 00	45 00
4 to 4½ ft. Heavy specimens	10 00	90 00
4½ to 5 ft. Heavy specimens.....	\$12.50 to 15	00
5 to 10 ft. Heavy specimens....	\$15 to 35	00
This is excellent stock; exceptionally broad, bushy and low-branched.		
SCIADOPITYS verticillata. Umbrella Pine. 2 to 2½ ft. ...♦	3 50	
2½ to 3 ft.♦	5 00	
3½ to 4 ft.♦	6 00	
4½ to 5 ft.♦	\$7.50 to 10	00
6 to 7 ft.♦	\$15 to 25	00
TAXUS baccata. English Yew. 2 ft.	1 50	12 50
2 to 2½ ft.♦	2 00	17 50
2½ to 3 ft.♦	2 50	22 50
3 to 3½ ft.♦	3 50	32 50
3½ to 4 ft. Specimens♦	5 00	47 50
4 to 4½ ft. Specimens♦	7 50	
4½ to 7 ft. Specimens♦	\$7.50 to 15	00
baccata, var. aurea. Golden English Yew—		
2½ to 3 ft.♦	3 50	
4½ to 5 ft.♦	\$5 to 10	00
baccata, var. Cheshuntensis. 4 to 4½ ft.♦	5 00	
baccata, var. Dovastoni. Dovaston's Yew—		
2 to 2½ ft.♦	2 75	25 00
2½ to 3 ft.♦	3 50	32 50
4 to 5 ft.♦	\$7.50 to 10	00
5 to 6 ft. Specimens♦	\$10 to 15	00
baccata, var. Dovastoni aurea. Dovaston's Golden Yew. 4 to 5 ft. Specimens♦	\$5 to 12	50
5 to 7 ft. Specimens♦	\$15 to 25	00
baccata, var. elegantissima. Elegant English Yew—		
3 to 3½ ft.♦	4 00	
3½ to 4 ft.♦	\$5 to 7	50
4 to 6 ft.♦	\$7.50 to 20	00

	Each	10
TAXUS baccata, var. erecta. Erect English Yew—		
2 to 2½ ft.	♦..\$2 50	
2½ to 3 ft.	♦.. 3 50	\$32 50
4 to 4½ ft.	♦..\$5 to 7 50	
baccata, var. erecta aurea. Erect Golden English Yew. 2½ to 3 ft.	♦.. 3 50	32 50
baccata, var. erecta, Overeynder. (Form similar to Fastigiata.) 5 to 6 ft.	♦..\$7.50 to 12 50	
baccata, var. fastigiata. Irish Yew. 2½ ft.	♦.. 2 50	22 50
3 ft.	♦.. 3 50	
3½ ft.	♦.. 7 50	
4 to 6 ft. Specimens	♦..\$10 to 15 00	
baccata, var. fastigiata aurea. Golden Irish Yew—		
2 ft.	♦.. 2 50	22 50
2½ ft.	♦.. 3 50	32 50
3½ to 4 ft.	♦..\$7.50 to 10 00	
4 to 6 ft.	♦..\$10 to 15 00	
baccata, var. gracilis pendula. 3½ to 4 ft.	♦.. 5 00	
4½ to 5 ft. { NEW }	♦..\$7.50 to 10 00	
5 to 7 ft. { NEW }	♦..\$10 to 20 00	
baccata, var. repandens. Spreading English Yew—		
12 to 15 in.	♦.. 2 00	
baccata, var. Washingtoni aurea. Washington's Golden English Yew. 2½ ft.	♦.. 3 50	
3 to 3½ ft.	♦..\$5 to 7 50	
3½ to 4 ft.	♦..\$7.50 to 10 00	
Canadensis, var. aurea. Golden Canadian Yew—		
2 to 2½ ft.	♦.. 3 50	32 50
3 ft.	♦.. 6 00	
3½ to 5 ft.	♦..\$7.50 to 15 00	
cuspidata. Abrupt-leaved Japan Yew. 12 to 15 in.	♦.. 2 00	
1½ ft.	♦.. 2 50	
2 ft.	♦.. 3 50	
2½ ft.	♦.. 5 00	
cuspidata, var. brevifolia. 12 to 15 in.	♦.. 2 00	18 50
1½ ft.	♦.. 2 50	
2 ft.	♦.. 3 50	
2½ ft.	♦.. 5 00	
cuspidata, var. capitata. 1½ ft.	♦.. 2 50	
2½ ft.	♦.. 5 00	
3 to 4 ft.	♦..\$6 to 10 00	
THUJOPSIS borealis; syn., Cupressus Nutkænsis. Yellow or Sitka Cypress—		
3 to 4 ft.	♦.. 3 50	
5 to 7 ft. Specimens	♦..\$10 to 15 00	
borealis, var. latifolia glauca. Glaucous Sitka Cypress. 3½ to 4 ft.	♦.. 3 50	32 50
4 to 4½ ft. Specimens	♦.. 5 00	
5 to 6 ft. Specimens	♦.. 7 50	
borealis, var. pendula. Drooping Sitka Cypress—		
4 to 5 ft.	♦.. 3 00	
6 to 7 ft.	♦.. 6 00	
Standishi. Standish's Sitka Cypress—		
8 to 9 ft. Specimens	♦..15 00	

PRICE LIST FOR FALL OF 1910



THUYA occidentalis. American Arborvitæ—

Each

10

2½ to 3 ft.	♦..\$1 00	\$8 00
3 to 3½ ft.	♦.. 1 25	10 00
3½ to 4 ft.	♦.. 1 50	13 50
4 to 4½ ft.; very heavy	♦.. per 100, \$175..	2 00 19 00
4½ to 5 ft.; very heavy	♦.. per 100, \$200..	2 50 22 50
5 to 5½ ft.; very heavy	♦.. per 100, \$250..	3 00 27 50
5½ to 6 ft.; very heavy	♦.. 3 50	32 50
6 to 7 ft.; very heavy	♦.. 4 00	37 50
7 to 8 ft.; very heavy	♦.. 4 50	42 50
8 to 9 ft. Specimens	♦.. \$5 to 7 50	
occidentalis, var. aurea. George Peabody's Arborvitæ—		
2½ to 3 ft.	♦.. 1 50	
3 to 3½ ft.	♦.. 2 50	
4 to 5 ft.	♦.. 4 00	37 50
5 to 6 ft.	♦.. 5 00	45 00
7 to 10 ft. Specimens	♦.. \$7.50 to 15 00	
occidentalis, var. Douglasi. 4 to 5 ft.		
5 to 6 ft.	♦.. 5 00	
6 to 7 ft.	♦.. \$10 to 12 50	
occidentalis, var. erecta viridis. 3 to 3½ ft.		
	2 50	22 50
occidentalis, var. globosa. Globe Arborvitæ—		
15 to 18 in.	♦.. 1 50	
1½ to 2 ft.	♦.. 2 00	17 50
2 to 2½ ft.	♦.. 2 50	22 50
occidentalis, var. Hoveyi. Hovey's Golden Arborvitæ—		
2 ft.	♦.. 1 50	13 50
2½ to 3 ft. Very heavy	♦.. 2 50	22 50
3 to 4 ft. Very heavy	♦.. \$3 to 4 00	
occidentalis, var. Lobbi. Lobb's Arborvitæ. 4½ to 5 ft.		
5 to 7 ft.	♦.. \$5 to 7 50	32 50
occidentalis, var. Lobbi aurea. 4 to 5 ft.		
5 to 6 ft.	♦.. 2 50	22 50
6 to 7 ft.	♦.. 3 00	27 50
	♦.. 3 50	32 50
occidentalis, var. plicata pyramidalis. 4 to 5 ft.		
	♦.. 5 00	
occidentalis, var. pyramidalis. Pyramidal Arborvitæ—		
3 to 3½ ft.	♦.. 1 50	
3½ to 4 ft.	♦.. 2 00	17 50
4 to 5 ft.	♦.. 2 50	22 50
5 to 6 ft.	♦.. 3 50	32 50
6 to 8 ft.	♦.. \$4 to 7 50	
occidentalis, var. recurva nana. 2½ to 3 ft.		
3 to 4½ ft.	♦.. \$3.50 to 4 00	
	♦.. \$5 to 7 50	
occidentalis, var. Vervæneana. Vervæne's Arborvitæ—		
3 to 3½ ft.	♦.. 3 50	32 50
3½ to 4 ft.	♦.. 4 00	37 50
4½ to 5 ft.	♦.. 4 50	42 50
5 to 6 ft.	♦.. 5 00	47 50
6 to 7 ft. Heavy specimens	♦.. 7 50	70 00
7 to 10 ft. Heavy specimens	♦.. \$10 to 20 00	
occidentalis, var. Wareana. Siberian Arborvitæ—		
2 to 2½ ft.	♦.. per 100, \$150..	2 50 22 50
3 to 3½ ft.	♦.. per 100, \$250..	3 50 32 50
4 ft.	♦.. 4 00	37 50
5 ft.; very heavy	♦.. 5 00	47 50
5 to 5½ ft.; very heavy	♦.. 7 50	70 00
5½ to 6 ft.; very heavy	♦.. 10 00	

	Each	10
THUYA occidentalis, var. Wareana aurea. 2½ ft.	\$2 50	\$22 50
3 to 3½ ft.	3 00	28 00
4½ to 5 ft.	4 50	42 50
5 to 6 ft.	5 00	47 50
TSUGA Canadensis. Hemlock. 1½ to 2 ft. ♦..per 100, \$50..	75	4 00
2 to 2½ ft. {	1 00	7 50
2½ to 3 ft. {	♦..per 100, \$90.. 1 25	10 00
3 to 3½ ft. {	♦..per 100, \$125.. 1 50	13 50
3½ to 4 ft. {	2 00	17 50
4 to 4½ ft. {	2 25	20 00
4½ to 5 ft. {	♦ 2 50	22 50
5 to 5½ ft. {	♦ 3 00	27 50
5½ to 6 ft. {	♦ 3 50	32 50
6 to 10 ft. Heavy specimens ♦..\$4 to 15 00		
The finest and largest stock offered.		
Canadensis, var. gracilis. 3 to 3½ ft. ♦..	3 50	
Canadensis, var. Sargentii pendula. Weeping Hemlock—		
2 to 3½ ft. Specimens ♦..\$3.50 to 15 00		
Caroliniana. Southern Hemlock. 2½ to 3 ft. ♦..	3 00	27 50
3 to 3½ ft. ♦..	3 50	32 50
4 to 5 ft. Specimens ♦..\$5 to 7 50		
5 to 6 ft. Specimens ♦..\$7.50 to 15 00		
6 to 7 ft. Specimens ♦.. 15 00		
Hookeriana. Alpine Hemlock. 4 to 4½ ft.	4 00	
5 to 6 ft. \$5 to 7 50		
Sieboldi. Japanese Hemlock. 5 to 5½ ft. ♦..	5 00	
6 to 7 ft. \$6 to 7 50		



Showing Fibrous Roots of Hemlock.



A Block of Box Bush and Evergreens.

EVERGREEN SHRUBS

	Each	10
ANDROMEDA <i>Catesbæi</i> . See <i>Leucothoë</i> .		
<i>floribunda</i> . 12 in.♦..	\$1 50	\$13 50
12 to 15 in.♦..	1 75	16 00
2 to 2½ ft. Specimens♦..	\$10 to 15 00	
<i>Japonica</i> . 12 in.♦..	1 25	10 00
12 to 15 in.♦..	1 50	12 50
15 to 18 in.♦..	2 00	18 50
18 to 24 in.♦..	2 50	20 00
AZALEA <i>amœna</i> . 12 to 15 in.	1 00	8 50
15 to 18 in. Bushy	1 50	12 50
1½ ft. Bushy	2 00	17 50
2½ ft. Specimens♦..	3 50	32 50
<i>amœna</i> , var. <i>Hinondigiro</i> . Bright carmine—		
10 to 12 in.♦..	1 00	7 50
18 in.♦..	1 50	
<i>Indica alba</i> . Pure white. 18 to 20 in.♦..	2 50	22 50
20 to 22 in.♦..	3 50	32 50
22 to 24 in.♦..	5 00	47 50
BUXUS <i>Japonica</i> ; syn., <i>Fortunei</i> . Japanese Box. 1 to 1½ ft..	1 50	12 50
1½ to 2 ft.	2 00	17 50
3 to 4 ft. Specimens♦..	\$3.50 to 7 50	
<i>Japonica</i> , var. <i>aurea</i> . Golden Japanese Box—		
12 to 15 in.	1 00	9 00
15 to 18 in.	1 50	12 50
1½ ft.	1 75	15 00
2 ft.	2 50	22 50
2½ ft.	3 50	32 50
<i>Japonica</i> , var. <i>rotundifolia</i> . Round-leaved—		
2½ to 3 ft. Bush shape♦..	5 00	
4 to 5 ft. Bush shape♦..	\$7.50 to 10 00	
5 to 6 ft. Pyramids♦..	\$10.00 to 15 00	

ANDORRA NURSERIES

	Each	10
BUXUS Japonica, var. rotundifolia glauca. 1½ to 2 ft.✦..	\$1 50	\$13 50
2 to 2½ ft.✦..	3 00	27 50
sempervirens. 1 ft. Andorra-grown...per 100, \$40..	75	6 00
1½ ft.; light. Andorra-grown...per 100, \$50..	1 00	7 50
2 ft.; Andorra-grown	1 50	13 50
2½ ft.; Andorra-grown	2 50	22 50
3 ft.; Andorra-grown. Specimens...✦..	4 50	40 00
3½ ft.; Andorra-grown. Specimens...✦..	6 00	54 00
4 ft.; Andorra-grown. Specimens...✦..	7 50	67 50
4½ ft.; Andorra-grown. Specimens...✦..	10 00	90 00
5 to 5½ ft.; Andorra-grown✦..	\$12.50 to 25 00	
sempervirens. Pyramids—		
2½ ft.; Andorra-grown. Specimens	3 00	
3 ft.; Andorra-grown. Specimens	4 50	40 00
3½ ft.; Andorra-grown. Specimens	6 00	54 00
4 ft.; Andorra-grown. Specimens	7 50	70 00
4½ ft.; Andorra-grown. Specimens	10 00	90 00
5 to 6 ft.; Andorra-grown. Spec.....	\$12.50 to 25 00	
sempervirens. Standards—		
2½ to 3 ft. stems, 22 to 24 in. head. Andorra-grown	5 00	
2½ to 3 ft. stems, 24 to 26 in. head. Andorra-grown	7 50	
sempervirens, var. angustifolia. 1½ to 2 ft.✦..	1 50	13 50
sempervirens, var. arborescens. Tall Tree Box—		
2½ to 3 ft.✦..	3 50	32 50
3 to 3½ ft.✦..	5 00	47 50
sempervirens, var. argentea marginata. Silver-tipped Box. 1½ to 2 ft.✦..	1 50	13 50
2 to 2½ ft.✦..	2 50	22 50
sempervirens, var. aurea variegata. 3 to 3½ ft. ...✦..	5 00	45 00
sempervirens, var. Handsworthi. 3 to 3½ ft.✦..	4 00	37 50
4 to 4½ ft.✦..	5 00	42 50
sempervirens, var. latifolia. 2½ to 3 ft.✦..	3 50	32 50
3 to 3½ ft.✦..	5 00	42 50
3½ to 4 ft.✦..	\$5 to 7 50	
sempervirens, var. myrtifolia. Myrtle Leaf—		
3 to 3½ ft.✦..	4 50	42 50
4 to 5 ft.✦..	\$5 to 10 00	
sempervirens, var. salicifolia. 2 to 2½ ft.✦..	2 00	17 50
sempervirens, var. suffruticosa. Dwarf Box Edging—		
3 to 4 in....✦..per 100, \$5; per 1,000, \$40..		75
4 to 5 in....✦..per 100, \$10; per 1,000, \$60..	25	1 50
6 to 7 in....✦..per 100, \$15; per 1,000, \$90..	35	2 00
CERASUS Laurocerasus Caucasica. Caucasian Laurel—		
2 to 2½ ft.✦..	2 50	22 50
2½ to 3 ft.✦..	3 50	32 50
Laurocerasus, var. Schipkaensis. 1½ to 2 ft. ...✦..	2 00	17 50
2 to 2½ ft.✦..	2 50	22 50
CHAMÆDAPHNE calyculata. Leather Leaf—		
2 to 2½ ft.....per 100, \$75..	1 50	12 50
COTONEASTER buxifolia. 12 to 15 in.✦..	75	6 00
microphylla. 10 to 12 in.✦..	75	6 00

PRICE LIST FOR FALL OF 1910

	Each	10
CRATÆGUS <i>Pyracantha</i> . Evergreen Thorn. 2 ft.	\$0 75	
<i>Pyracantha</i> , var. <i>Lelandi</i> . Leland's Evergreen Thorn. 2 ft.	75	
DAPHNE <i>Cneorum</i> . 3-year	75	\$6 00
EUONYMUS <i>radicans</i> and <i>variegata</i> . See Trailing Plants.		
<i>Japonica</i> . Japan <i>Euonymus</i> — 2 to 3 ft.	75	6 00
<i>Japonica</i> , var. <i>argentea</i> . Silver-leaved. 2 to 2½ ft.	75	6 00
<i>Japonica</i> , var. <i>aurea</i> . Golden-leaved. 1½ to 2 ft.	75	6 00
ILEX <i>crenata</i> . Japanese Holly. Box-leaved—		
1½ ft.	1 50	12 50
2 ft.	2 00	17 50
2½ ft.	3 50	32 50
3 ft.	5 00	40 00
<i>crenata</i> , var. <i>Fortunei</i> . Fortune's Holly—		
3½ to 4 ft.	3 50	32 50
4 to 4½ ft.	5 00	47 50
5 to 5½ ft.	\$5 to 7 50	
<i>crenata</i> , var. <i>latifolia</i> . Broad-leaved Japanese Holly—		
2½ to 3 ft.	2 00	17 50
3 to 3½ ft.	2 50	22 50
3½ to 4 ft.	3 50	32 50
4 to 6½ ft.	\$4 to 7 50	
<i>crenata</i> , var. <i>microphylla</i> . Small-leaved Japanese Holly—		
12 to 15 in. Bushy per 100 \$50..	1 00	8 50
15 to 18 in. Bushy per 100, \$60..	1 25	10 00
1½ to 2 ft. Bushy per 100, \$100..	1 75	15 00
2 to 2½ ft. per 100, \$175..	2 50	22 50
3 to 3½ ft. Heavy specimens \$3.50 to	5 00	
4 to 5½ ft. Heavy specimens \$7.50 to	12 50	
KALMIA <i>latifolia</i> . Mountain Laurel. 2 ft.	1 00	8 50
3 ft.	2 50	22 50
3 to 3½ ft.	3 00	27 50
1½ ft. Heavy clumps	1 50	12 50
2 ft. Heavy clumps	2 00	17 50
2½ ft. Heavy clumps	2 50	22 50
2½ to 3 ft. Heavy clumps	3 00	28 50
3 to 3½ ft. Heavy clumps	3 50	32 50
3½ to 4 ft. Heavy clumps	5 00	47 50
LAURELS. See <i>Cerasus Laurocerasus</i> .		
LEUCOTHOE <i>Cateshæi</i> . Drooping <i>Andromeda</i> —		
12 to 15 in. Clumps.... per 100, \$60..	1 00	8 50
15 to 18 in. Clumps.... per 100, \$75..	1 50	12 50
18 to 24 in. Clumps.... per 100, \$100..	1 75	15 00
MAHONIA <i>Aquifolium</i> . Holly-leaved—		
12 to 15 in. per 100, \$25..	50	4 00
15 to 18 in. Heavy per 100, \$35..	75	7 00
18 to 24 in. per 100, \$60..	1 00	9 00
24 to 30 in.	1 50	13 50
<i>Japonica</i> . Japanese Mahonia—		
1½ to 2 ft.	1 50	12 50
2 to 2½ ft.	2 50	18 50
2½ to 3 ft.	3 50	32 50
OSMANTHUS <i>ilicifolia</i> . 1½ to 2 ft.	2 00	18 50
2 to 2½ ft.	2 50	22 50



Rhododendrons at Andorra.

RHODODENDRONS

HYBRID VARIETIES — ANDORRA GROWN

RHODODENDRONS. Catawbiense Hybrids Assorted. Our selection of varieties—		Each	10
15 to 18 in.♦..per 100, \$80..	\$1 25	\$10 00	
1½ to 2 ft.♦..per 100, \$125..	1 50	13 50	
2 to 2½ ft.♦..per 100, \$200..	2 50	22 50	
<p>☛ A large stock of fine, heavy plants, 3 to 5 ft. Prices on application.</p>			
Abraham Lincoln. Rosy crimson—			
1½ to 2 ft.	1 75	15 00	
Album elegans. White—			
1½ to 2 ft.	1 50	12 50	
2 to 2½ ft.	2 00	17 50	
3 to 3½ ft.	3 50		
3½ to 5 ft.	\$3.50 to 10 00		
Album grandiflorum. White. 1½ to 2 ft.	1 50	12 50	
Anna Parsons. Red. 1½ ft.	1 50	12 50	
Atrosanguineum. Dark scarlet—			
1½ to 2 ft.	2 00	17 50	
Betsy Parsons. Reddish purple—			
4 to 4½ ft.	\$6 to 7 50		
Blandyanum. Rosy crimson. 1½ to 2 ft.	2 00	17 50	
2 to 2½ ft.	2 50		
2½ to 3 ft.	5 00		
3 to 4 ft. Specimens	\$5 to 15 00		
Boule de Neige. White. 1½ to 2 ft.	2 00	17 50	

PRICE LIST FOR FALL OF 1910

19

	Each	10
RHODODENDRONS, B. W. Elliott. Deep rose. 2 to 2½ ft.	\$2 50	
Candidissium. White. 1½ to 2 ft.	1 75	\$15 00
2 to 2½ ft.	2 00	17 50
Caractacus. Purplish crimson. 1½ to 2 ft.	2 00	17 50
2 to 2½ ft.	2 50	22 50
2½ to 3 ft.	\$3.50 to 5 00	
Charles Bagley. Bright red. 1½ to 2 ft.	2 00	17 50
2 to 2½ ft.	2 50	22 50
Charles Dickens. Scarlet. 1½ ft.	2 00	17 50
2 ft.	2 50	22 50
Delicatissimum. White. 1½ to 2 ft.	1 50	13 50
2 to 2½ ft.	2 50	22 50
2½ to 3 ft.	\$3 50 to 5 00	
Emily Parsons. 1½ to 2 ft.	2 50	22 50
Everestianum. Rosy lilac. 1½ ft.	1 75	15 00
2 to 2½ ft.	2 50	22 50
2½ ft.	3 50	32 50
General Grant. Red. 1½ to 2 ft.	2 00	17 50
2 to 2½ ft.	2 50	22 50
Giganteum. Rosy crimson. 1½ ft.	1 50	12 50
H. W. Sargent. Scarlet. 1½ to 2 ft.	2 00	17 50
2 to 2½ ft.	2 50	22 50
H. H. Hunnewell. Dark crimson—		
15 to 18 in.	2 00	17 50
J. Marshall Brooks. Scarlet. 1½ to 2 ft.	2 00	17 50
John Spencer. Rose. 1½ to 2 ft.	1 75	15 00
2 to 2½ ft.	2 00	17 50
John Walter. Rich crimson. 1½ ft.	2 00	17 50
2 ft.	2 50	22 50
2½ ft.	3 50	32 50
Kettledrum. Deep red. 1½ to 2 ft.	2 50	22 50
Lady Armstrong. Pale rose. 1½ to 2 ft. ..	2 00	17 50
2 to 2½ ft.	2 50	22 50
Lady Clermont. Rosy scarlet. 1½ to 2 ft.	2 00	17 50
4 to 4½ ft.	\$5.00 to 10 00	
Luciferum. Clear white. 1½ to 2 ft.	1 75	15 00
3 to 4½ ft.	\$5 to 10 00	
Madam Carvalho. White. 1½ to 2 ft.	1 75	15 00
Michael Waterer. Scarlet-crimson—		
2½ to 3 ft.	\$3.50 to 7 50	
Minnie. White. 3 to 3½ ft.	3 50	32 50
Mrs. Jno. Clutton. White. 1½ to 2 ft.	1 75	15 00
Mrs. Milner. Crimson. 1½ ft.	1 75	15 00
2 ft.	2 00	17 50
2½ ft.	3 50	
Old Port. Plum. 1½ ft.	1 50	13 50
2 to 2½ ft.	2 50	22 50
Parson's gloriosum. Blush. 1½ to 2 ft. ..	1 50	12 50
2½ to 3 ft.	2 50	22 50
3 to 3½ ft.	3 50	32 50
4 to 4½ ft.	\$5 to 7 50	
Parson's grandiflorum rubrum. Bright Pink—		
1½ to 2 ft.	2 00	17 50
2 to 2½ ft.	2 50	22 50
Perspicum. White.—		
3½ to 4 ft.	\$3.50 to 5 00	
4 to 5 ft.	\$5 to 7 50	
President Lincoln. Crimson.—		
1½ to 2 ft.	2 00	17 50
4 to 4½ ft.	\$5 to 10 00	
Purpureum crispum. Purple, crimped.—		
1½ to 2 ft.	1 75	15 00

ANDORRA NURSERIES

	Each	10
RHODODENDRONS, purpureum elegans. Purple. 1½ to 2 ft...	\$1 75	\$15 00
purpureum grandiflorum. Purple—		
1½ to 2 ft.	1 50	13 50
roseum elegans. Good rose. 1½ to 2 ft. ..	2 00	17 50
2 to 2½ ft.	2 50	22 50
2 to 2½ ft. Specimens	3 50	30 00
2½ to 3 ft. Specimens	5 00	47 50
3 to 5 ft. Specimens	\$7.50 to 25 00	
Sir John Seabright. Purple. 1½ to 2 ft...	1 75	15 00

NATIVE VARIETIES—ANDORRA GROWN

RHODODENDRON Catawbiense. 1½ to 2 ft. .. (per 100—\$80.)	\$1 25	\$10 00
2 to 2½ ft.	2 00	17 50
2½ to 3 ft.	\$2.50 to 3 50	
3 to 3½ ft. Specimens...♦..	\$3.50 to 5 00	
3½ to 4 ft. Specimens ..♦..	\$7.50 to 20 00	
maximum. Great Laurel. 1½ to 2 ft....	1 25	
1½ to 2 ft.	1 25	11 00
2 to 2½ ft.	2 00	17 50
2½ to 3 ft.	3 50	25 00
3 to 3½ ft.	4 00	37 50
3½ to 4 ft.	5 00	47 50
4 to 5 ft.	7 50	60 00

Collected Rhododendron maximum by the carload.

DWARF VARIETIES—ANDORRA GROWN

RHODODENDRON Hammondi. 1½ ft.	\$2 00	\$17 50
Hirsutum. 12 to 15 in.♦..	1 50	13 50
imbricata. 12 to 15 in.	1 50	13 50
myrtifolio. 1½ to 2 ft.	2 50	20 00
odoratum. Fragrant. 12 to 15 in.	2 00	17 50
15 to 18 in.	2 50	20 00
24 in.	3 00	25 00
precox. 12 to 15 in.	1 50	13 50
punctatum. Dotted. 15 to 18 in....♦..	1 50	13 50
18 to 24 in.♦..	2 50	20 00
Wilsonianum. 12 to 15 in.	1 75	15 00
YUCCA filamentosa. Adam's Needle. 3-yr.	35	2 00
4-yr.	50	3 00
Heavy clumps	\$1.50 to 2 50	

DECIDUOUS TREES

Measurements are given as follows: Height is taken before digging, from the surface of the ground to the top branches where they round off to form the top; diameter of stem, or caliper, is taken above the collar.

	Each	10
ACER campestre. European Cork Maple. 4 to 5 ft.	\$0 75	\$6 00
5 to 6 ft.	1 00	8 50
7 to 8 ft.	1 50	12 50
8 to 10 ft.	1 75	15 00
colchicum, var. rubrum. Red Colchicum Maple—		
12 to 14 ft.; 2½ to 3 in. cal.	3 00	27 50
14 to 16 ft.; 3 to 4 in. cal.	3 50	10 00



Straight Norway Maples in Wide Rows.

	Each	10	100
ACER dasycarpum. Silver Maple—			
12 to 14 ft.; 2 to 2½ in.	\$2 00	\$15 00	
12 to 14 ft.; 2½ to 3 in.	2 50	22 50	
12 to 14 ft.; 3 to 3½ in.	3 50	30 00	
4 to 6 in. Specimens	\$5 to 25 00		
A rapid grower for immediate effects.			
dasycarpum, var. Wierii laciniatum. Wier's			
Cut-leaved Silver Maple—			
10 to 12 ft.; 2 to 2½ in.	2 50	22 50	
12 to 14 ft.; 2½ in.	3 50	32 50	
12 to 14 ft.; 2½ to 3 in.	\$3.50 to 5 00		
Negundo. Ash-leaved Maple—			
10 to 12 ft.; 2 to 2½ in. Bushy.....	1 50	10 00	
12 to 14 ft.; 2½ to 3 in. Bushy.....	2 50	20 00	
12 to 14 ft.; 3 to 4 in.	\$3.50 to 5 00		
Pennsylvanicum. 6 to 7 ft.	1 50		
platanoides. Norway Maple—			
8 to 10 ft.; 1½ in.♦..	1 75	16 50	150 00
10 to 12 ft.; 1¾ to 2 in.....♦..	2 00	18 50	175 00
10 to 12 ft.; 2 to 2¼ in.♦..	2 50	22 50	200 00
12 ft.; 2¼ to 2½ in.♦..	3 00	27 50	225 00
12 to 14 ft.; 2½ to 2¾ in.♦..	3 50	30 00	250 00
12 to 14 ft.; 2¾ to 3 in.♦..	4 00	37 50	300 00
14 to 16 ft.; 3¼ to 3½ in.♦..	4 50	42 50	400 00
14 to 16 ft.; 3½ to 3¾ in.♦..	6 00	50 00	475 00
14 to 16 ft.; 3¾ to 4 in.♦..	7 50	60 00	550 00
14 to 16 ft.; 4 to 4½ in.	\$7.50 to 10 00		
14 to 16 ft.; 4½ to 8 in.	\$12.50 to 25 00		

SPECIMEN NORWAYS. 14 to 20 feet in height and of heavy caliper; clean, well headed. Prices on application.

	Each	10	100
ACER platanoides, var. purpurea. Schwedler's Purple			
Maple. 8 to 10 ft.; 1 $\frac{3}{4}$ to 2 in.....	\$2 50	\$22 50	
10 to 12 ft.; 2 $\frac{1}{2}$ to 2 $\frac{3}{4}$ in.	3 50	32 50	
12 to 14 ft.; 2 $\frac{3}{4}$ to 3 in.	4 00	37 50	
14 to 16 ft.; 3 $\frac{1}{2}$ to 4 in.....	\$5 to 7 50		
☛ 16 to 20 ft.; 5 to 10 in.	\$20 to 75 00		
Broad-headed specimen trees.			
platanoides, var. Reitenbachi. Reitenbach's			
Purple Maple. 8 to 10 ft.	2 00	17 50	
10 to 12 ft.; 2 $\frac{1}{2}$ to 2 $\frac{3}{4}$ in.	3 00		
pseudo-platanus. European Sycamore Maple—			
6 to 8 ft.	75	6 00	
8 to 10 ft.	1 50	12 50	
10 to 12 ft.; 2 to 2 $\frac{1}{2}$ in.	2 00	17 50	
12 to 14 ft.; 2 $\frac{1}{2}$ to 3 in.	2 50	22 50	
14 to 16 ft. Specimens.	\$5 to 25 00		
pseudo-platanus, var. purpurea. Purple Sycamore Maple. 8 to 10 ft.; 2 in.	2 00	17 50	
10 to 12 ft.; 2 $\frac{1}{2}$ in.	2 50	22 50	
12 to 14 ft.; 3 to 6 in.....	\$7.50 to 25 00		
Broad-headed specimen trees.			
rubrum. Red or Scarlet Maple. 6 to 7 ft... 1 00		8 50	
8 to 10 ft.; 1 $\frac{3}{4}$ to 2 in.	1 50	12 50	
10 to 12 ft.; 2 to 2 $\frac{1}{4}$ in.	2 00	17 50	
12 to 14 ft.; 2 $\frac{1}{2}$ to 3 $\frac{1}{2}$ in.	\$2.50 to 5 00		
saccharinum. Sugar Maple. 8 to 10 ft.... 1 50		10 00	
10 to 12 ft.; 1 $\frac{1}{4}$ to 1 $\frac{1}{2}$ in.	1 75	15 00	125 00
10 to 12 ft.; 1 $\frac{1}{2}$ to 1 $\frac{3}{4}$ in.	2 00	17 50	150 00
12 to 14 ft.; 2 to 2 $\frac{1}{4}$ in.	2 50	22 50	200 00
12 to 14 ft.; 2 $\frac{1}{2}$ to 2 $\frac{3}{4}$ in.	3 50	32 00	275 00
12 to 14 ft.; 2 $\frac{3}{4}$ to 3 in.	5 00	45 00	
☛ 14 to 16 ft.; 3 to 3 $\frac{1}{4}$ in.	\$5 to 10 00		
14 to 16 ft.; 3 $\frac{1}{2}$ to 4 in.	\$12.50 to 35 00		
Specimen low-branched trees of heavy caliper and good tops. Prices on application.			
spicatum. Mountain Maple. 2 to 3 ft. 50		4 00	
3 to 4 ft.	75	6 00	40 00
4 to 5 ft.	1 00	8 50	50 00
5 to 6 ft.	1 50	10 00	60 00
Tataricum, var. Ginnala. Tartarian Maple—			
2 ft.	50	3 50	
3 to 4 ft. Bushy... { FINE }	75	6 50	35 00
4 to 5 ft. Bushy... { FINE }	1 25	10 00	60 00
6 to 8 ft. Bushy.... { FINE }	1 00	9 00	50 00
☛ Most brilliant of the fall-coloring trees. Superb for mass planting.			

JAPANESE MAPLES

ACER polymorphum. 3 to 4 ft. Heavy.	2 50	22 50	
polymorphum, var. atropurpureum. Blood-leaved Japan Maple. 1 $\frac{1}{2}$ ft. ..♦..	1 50	13 50	
2 ft.♦..	2 50	22 50	
2 $\frac{1}{2}$ ft.♦..	3 50	30 00	
2 $\frac{1}{2}$ to 5 ft. Specimens, bushy and well furnished	\$7.50 to 25 00		

PRICE LIST FOR FALL OF 1910

	Each	10	100
ACER polymorphum, var. atropurpureum dissectum. Weeping Cut-leaf Blood-leaved—			
1½ ft.♦...\$2 50		\$22 50	
2 to 2½ ft. Specimens....♦...\$3.50 to	10 00		
polymorphum, var. aureum. Golden Japan Maple. 1½ to 2 ft.♦... 2 50		22 50	
2 to 2½ ft.♦... 3 50		32 50	
polymorphum, var. dissectum. Cut-leaf Weep- ing Japan Maple. 1½ ft.♦... 2 50		22 50	
2 to 2½ ft.♦...\$3.50 to	7 50		
polymorphum, var. scopendifolium rubrum. 2½ to 3 ft.\$3.50 to	7 50		
ÆSCULUS Hippocastanum. European Horse-chestnut—			
7 to 8 ft. 2 00		17 50	
7 to 8 ft.; 2 in. 2 50		22 50	
8 to 10 ft.; 2½ in.♦... 3 50		32 50	
10 to 12 ft.; 3 to 3½ in.\$5 to	10 00		
Specimens; 4 to 5 in. cal..\$12.50 to	25 00		
Hippocastanum, var. alba flore pleno— Double White-Flowered Horse-			
Chestnut. 8 to 9 ft.; 2 in. .. 2 50		22 50	
9 to 10 ft.; 2½ in. 3 50		32 50	
10 to 11 ft.; 3 in.♦...\$5 to	7 50		
11 to 12 ft.; 3¼ to 3½ in..\$7.50 to	10 00		
Specimens; 4 to 5 in.\$12.50 to	25 00		
Hippocastanum, var. Bujotii—			
10 to 12 ft.; 2½ to 3 in. ..♦...\$3.50 to	5 00		
10 to 12 ft.; 3 to 3½ in.♦...\$5 to	7 50		
Hippocastanum, var. rubicunda. Red- flowered Horse-Chestnut—			
8 to 10 ft.; 2 to 2¼ in. 2 50		22 50	
10 ft.; 2¼ to 2½ in. 3 50		32 50	
10 ft.; 2½ to 2¾ in. 4 00		37 50	
12 ft.; 3 to 4 in.♦...\$5 to	15 00		
parviflora. See Shrubs.			
AILANTHUS glandulosa. Ailanthus, or Tree of Heaven. 8 to 10 ft..... 1 25		10 00	
10 to 12 ft. 1 50		12 50	\$100 00
ALNUS glutinosa. European, or Black Alder—			
7 to 8 ft. 1 00		5 00	35 00
10 to 12 ft. 1 50		12 50	75 00
incana. 8 to 10 ft. 1 50		10 00	75 00
AMELANCHIER Botryapium. Dwarf Juneberry. See <i>Shrubs.</i>			
ANDROMEDA. See Oxydendron.			
ARALIA. Chinese Angelica Tree—			
elata, var. foliis argentea marginata.			
6 to 8 ft. 1 00			
8 to 10 ft. 1 50		13 50	
Japonica. 2 to 3 ft. 50		4 00	
6 to 8 ft. 1 00		8 00	
8 to 10 ft. 1 50			
pentaphylla; syn., Acanthopanax spinosa. <i>See Shrubs.</i>			
spinosa. 5 to 6 ft. 75			
9 to 10 ft. 1 50			

	Each	10	100
BETULA alba. European White Weeping Birch—			
6 to 8 ft.	\$1 25	\$10 00	
8 to 10 ft.	2 00		
10 to 12 ft.; 1½ to 2 in.	2 50		
12 to 14 ft.; 2 to 2½ in.	3 50		
alba, var. laciniata pendula. Weeping Cut-leaved White Birch. 6 to 7 ft.	1 50		
lenta. Sweet Birch. 5 to 6 ft.	1 00	7 50	
8 to 10 ft.	1 50	12 50	
lutea. Yellow Birch. 6 to 7 ft.	1 00	8 50	
7 to 8 ft.	1 50	12 50	
8 to 10 ft.; Specimens	1 50	13 50	
papyrifera. Paper, or Canoe Birch—			
7 to 8 ft.	1 25		
nigra; syn., rubra. Red Birch. 7 to 8 ft.	1 00	8 50	\$60 00
8 to 10 ft.	1 50	13 50	
10 to 12 ft.; 2½ to 3 in.	2 50	22 50	150 00
BROUSSONETIA papyrifera. Paper Mulberry—			
6 to 8 ft.	1 50	12 50	
CARPINUS Americana; syn., Caroliniana. American Hornbeam. 3 to 4 ft.	75	5 00	30 00
4 to 5 ft. Bushy	1 00	7 50	50 00
5 to 6 ft. Bushy	1 50	10 00	75 00
6 to 7 ft. Bushy	2 00	13 50	85 00
7 to 9 ft. Bushy	2 50	20 00	150 00
9 to 10 ft. Bushy	3 50	27 50	
Betulus. European Hornbeam. 2 to 3 ft.	35	3 00	
3 to 4 ft. Bushy	50	4 00	
4 to 5 ft. Bushy	75	6 00	40 00
5 to 6 ft. Bushy	1 50	13 50	75 00
6 to 7 ft. Bushy	2 00	18 50	100 00
8 to 10 ft. Bushy	3 50	30 00	
CARYA alba. (Hickory). 2 to 2½ ft.	1 00	7 50	
tomentosa. 3 to 4 ft.	1 50	10 00	
CASTANEA Americana. American Chestnut—			
7 to 8 ft.	1 00	7 50	
8 to 9 ft.	1 25	9 00	
9 to 10 ft.; 1½ to 2 in.	1 50	10 00	
10 to 12 ft.; 2 to 2½ in.	1 75	12 50	
12 to 14 ft.; 3 in.	2 00	17 50	
Japonica. Japan Chestnut. 4 to 5 ft..	1 00	7 50	
vesca. Spanish Chestnut. 4 to 5 ft..	1 00	7 50	
CATALPA bignonioides. 12 to 14 ft.	2 50	22 50	
bignonioides, var. aurea. Golden Catalpa—			
4 to 5 ft.	1 00	7 50	
Bungei. Bunge's Catalpa. Standards. 7ft.	3 50		
Kæmpferi. Japanese Catalpa. 6 to 8 ft.	1 50	12 50	
speciosa. Western Catalpa. 6 to 8 ft..	1 00	7 50	
8 to 10 ft.; 1½ to 2 in.	1 50	13 50	
CEDRELA Sinensis. Chinese Cedrela—			
8 to 10 ft.	1 50		

PRICE LIST FOR FALL OF 1910

	Each	10	100
CELTIS occidentalis. Nettle Tree. 6 to 7 ft.....	\$1 25	\$10 00	\$75 00
7 to 8 ft.	1 50	12 50	90 00
8 to 10 ft.	2 00	17 50	
CERASUS Padus. European Bird Cherry. 4 to 5 ft.	75	6 00	
serotina. Wild Black Cherry. 10 to 12 ft.	1 50	12 50	
Avium, var. alba plena, Double White-flowering Cherry. 5 to 6 ft....	1 50	13 50	
Avium, var. rosea plena. Double Pink-flowering Cherry. 4 to 6 ft....	1 50		
Avium, var. rosea pendula. Pink Weeping Japan Cherry. 7 ft., specimens....	5 00		
Sieboldi, var. rubra plena.. 4 to 5 ft....	1 50	12 50	
CERCIS Canadensis. Red Bud, American Judas—			
3 to 4 ft.	50	4 00	
4 to 5 ft.	75	6 00	
5 to 6 ft.	1 00	7 50	
6 to 8 ft.	1 50	10 00	60 00
8 to 10 ft.	1 75	12 50	85 00
Japonica. See <i>Shrubs</i> .			
CERCIDIPHYLLUM Japonicum. 5 to 6 ft.	1 50	12 50	100 00
7 to 8 ft.	2 00	17 50	
8 to 9 ft.	2 50	22 50	
CLADRASTIS tinctoria (<i>Virgilia lutea</i>). Yellow Wood. 6 to 8 ft.	1 50	13 50	100 00
8 to 10 ft.	2 00	17 50	150 00
CORNUS. See, also, <i>Shrubs</i> .			
florida. White Dogwood. 2 to 2½ ft... 50	4 00		
3½ to 4 ft.; very fine	1 00	7 50	
4 to 5 ft.; very fine	1 25	10 00	60 00
5 to 6 ft.; very fine	1 50	12 50	75 00
6 to 7 ft.; very fine	1 75	15 00	85 00
7 to 8 ft.; very fine	2 50	22 50	100 00
8 to 10 ft.; very fine	3 00	27 50	
Very low-branched, heavy stock.			
florida, var. flore rubro. Red-flowered Dogwood—			
4 to 5 ft. Bushy	3 50		
5 to 6 ft. Bushy	5 00		
6 to 8 ft. Bushy	7 50		
One of the most beautiful of ornamental trees, combining spring flowers, summer berries and brilliant autumn foliage.			
florida, var. pendula. Weeping Dogwood—			
7 to 10 ft. Rare	\$5 to 10	00	
CRATÆGUS Carrieri. 3 to 4 ft.	75		
4 to 5 ft.	1 00	7 50	
5 to 6 ft.	1 25	10 00	
6 to 7 ft.	1 50	12 50	
coccinea. 4 to 5 ft.	1 00	6 00	
6 to 7 ft.	1 50	12 50	
cordata. Washington Thorn—			
4 to 5 ft.	1 00	8 50	
6 to 8 ft. Specimens	5 00		
8 to 10 ft. Specimens	7 50		

ANDORRA NURSERIES

	Each	10	100
CRATÆGUS Crus-galli. Cockspur Thorn—			
3½ to 4 ft.	\$1 00	\$7 50	\$50 00
6 to 8 ft.	1 25	10 00	
8 to 10 ft.	1 50	13 50	
mollis. Scarlet Haw. 7 to 8 ft.	1 50	12 50	
Oxyacantha. English Hawthorn—			
5 to 6 ft.	75	5 00	
6 to 8 ft.	1 00	6 00	
Oxyacantha, var. alba flore pleno. Double White Hawthorn—			
3 to 4 ft.	1 00	7 50	
4 to 5 ft.	1 50	10 00	
Oxyacantha, var. coccinea flore pleno. Paul's Double Scarlet—			
4 to 6 ft.	1 00	9 00	
10 to 12 ft. Standards	5 00	45 00	
Oxyacantha, var. rosea flore pleno. Double Pink Hawthorn—			
4 to 5 ft.	1 50	10 00	
punctata. 5 to 6 ft.	1 00	6 00	
CYTISUS Laburnum. Golden Chain. 3 to 4 ft.	50	4 00	
4 to 5 ft.	75	6 00	
5 to 6 ft.	1 50	13 50	
DIOSPYROS Virginica. Persimmon—			
10 to 12 ft.	1 50	13 50	
FAGUS ferruginea. American Beech—			
6 to 8 ft.	\$3.50 to 5 00		
sylvatica. European Beech. 3 to 4 ft.	75	6 00	
4 to 5 ft.	1 00	7 50	
5 to 6 ft.	1 75	15 00	
6 to 7 ft.	3 50	32 50	
7 to 8 ft.	\$3.50 to 5 00		
8 to 10 ft. Specimens	\$5 to 15 00		
sylvatica, var. asplenifolia. Fern-like Beech—			
3 to 4 ft.	1 50		
4 to 5 ft.	2 50		
sylvatica, var. pendula. Weeping Beech—			
4 to 5 ft.	3 50		
6 to 7 ft.	5 00		
☛ 14 to 16 ft.; 2 to 3½ in. Speci- mens	\$15 to 25 00		
All recently transplanted.			
sylvatica, var. purpurea. Purple Beech—			
4 to 5 ft.	1 50	12 50	
5 to 6 ft.	2 50	22 50	
6 to 7 ft.	3 50	32 50	
7 to 8 ft.	5 00	47 50	
9 to 10 ft.	6 00	55 00	
11 to 12 ft.	7 50	70 00	
☛ 12 to 14 ft. Specimens	\$10 to 35 00		
8 to 16 ft. Sheared specimens.	\$10 to 35 00		
sylvatica, var. purpurea major. Large Leaf—			
5 to 6 ft.	2 50	22 50	
7 to 8 ft.	5 00	47 50	
9 to 10 ft.	6 00		
sylvatica, var. Riversi. Rivers' Blood-leaved Beech. 6 to 7 ft.	3 50		
7 to 8 ft.	5 00		
8 to 9 ft.	7 50		



An Avenue of Sweet Gums (Liquidambar), at Andorra.

	Each	10	100
FRAXINUS Americana. White Ash. 8 to 10 ft...	\$1 25	\$10 00	
10 to 12 ft.; 2 to 2½ in.	1 50	12 50	\$100 00
12 to 14 ft.; 2½ to 2¾ in.	2 50	22 50	
14 to 16 ft.; 2¾ to 3 in.	3 00	27 50	
14 to 16 ft.; 3 to 4 in....	\$4 to 5 00		
excelsior. European Ash—			
6 to 8 ft.	1 00		
8 to 10 ft.	1 50		
Ornus. Flowering Ash—			
8 to 10 ft.; heavy	\$2.50 to 3 50		
GLEDITSCHIA aquatica. Water Locust. 6 to 7 ft..	1 50	10 00	
7 to 8 ft.	2 00	15 00	
triacanthos. Honey Locust. 5 to 6 ft.	75	6 00	
8 to 10 ft.	1 50	12 50	
GLYPTOSTROBUS. See <i>Taxodium</i> .			
GYMNOCLADUS Canadensis. Kentucky Coffee Tree—			
7 to 8 ft.	2 50	20 00	135 00
JUGLANS nigra. Black Walnut. 2 to 2½ ft....	50	3 50	30 00
7 to 8 ft.	1 00	8 50	75 00
8 to 10 ft.	1 50	12 50	100 00
regia. English Walnut. 8 to 10 ft.; 1½			
to 2 in.	2 50		
10 to 12 ft.; 2 to 2½ in.	3 50		
KÆLREUTERIA paniculata. Varnish Tree—			
5 to 6 ft.	1 50	12 50	
6 to 8 ft.	2 50	22 50	
8 to 10 ft.	3 50	32 50	

ANDORRA NURSERIES

	Each	10	100
LARIX Europæa. European Larch. 5 to 6 ft. ...	\$1 00	\$7 50	
6 to 8 ft.	1 25	10 00	
8 to 10 ft.	1 50	13 50	\$85 00
leptolepsis. Japanese Larch. 6 to 8 ft. ..	1 25	10 00	
10 to 12 ft.	2 00	15 00	
LIQUIDAMBAR. Sweet Gum. 6 to 7 ft. Fine	1 50	12 50	85 00
7 to 8 ft.; 2½ in. Fine...♦..	2 50	22 50	
8 to 9 ft.; 2½ to 2¾ in. Fine.♦..	3 50	32 50	
10 to 12 ft.; 3 to 3½ in.....	5 00	45 00	
An excellent lot, specially prepared for avenue planting:			
8 to 10 ft.; 1½ to 2 in.....	2 00	17 50	150 00
10 to 12 ft.; 2 to 2½ in.....	2 50	20 00	175 00
LIRIODENDRON Tulipifera. Tulip Tree. 8 to 9 ft..	1 50	10 00	
9 to 10 ft.	1 75	16 50	
10 to 12 ft.; very heavy	2 00		
12 to 14 ft.; very heavy...♦..	2 50		
Tulipifera, var. fastigiata. 8 to 10 ft.	2 50		
MAGNOLIA, Native Sorts—			
acuminata. Cucumber Tree. 5 to 6 ft..	1 00	7 50	
glauca. Sweet or Swamp Magnolia—			
2 to 2½ ft.♦..	1 50		
grandiflora. Evergreen Magnolia—			
2 to 2½ ft.	2 50		
macrophylla. Great-leaved Magnolia—			
5 to 6 ft.♦..	3 50		
6 to 7 ft.♦..	5 00		
tripetala. Umbrella Tree. 6 to 8 ft... 1 25		9 00	75 00
8 to 10 ft.	1 50	12 50	100 00
10 to 12 ft.	2 00		
12 to 14 ft.	2 50		
Chinese Sorts—			
Alexandriana. 4 to 5 ft.♦..	3 50		
6 to 7 ft.♦..	7 50		
7 to 8 ft.♦..	10 00		
conspicua. White—			
3 to 3½ ft.♦..	3 50	32 50	
5 to 5½ ft.♦..	5 00	45 00	
Kobus. 2 to 2½ ft.	1 50		
3 to 3½ ft.	3 50		
Lennei Hybrid. Lenne's Magnolia—			
3½ to 4 ft.♦..	3 50		
4 to 6 ft.♦..	\$3.50 to 7 50		
Norbertiana Hybrid. Norbert's Magnolia—			
3 to 4 ft.♦..	3 50		
7 to 8 ft.♦..	10 00		
purpurea; syn., obovata. Purple Magnolia—			
4 to 5 ft.♦..	2 50		
5 to 6 ft.♦..	3 50		
Soulangeana Hybrid. Soulange's Magnolia—			
4 to 5 ft.♦..	3 50		
5 to 6 ft.♦..	\$5 to 7 50		
6 to 7 ft.♦..	10 00		
speciosa. 4½ to 5 ft....♦..	\$3.50 to 5 00		
stellata; syn., Halleana. Hall's Japanese Magnolia. 2 ft.♦..	2 50	22 50	
2½ ft.♦..	3 50	32 50	
superba alba. 4 to 5 ft....♦..	\$3.50 to 5 00		
7 to 8 ft.♦..	\$7.50 to 10 00		



An Avenue of "Andorra-grown" Oriental Planes. (See page 30).

	Each	10
MORUS alba. White Mulberry. 5 to 6 ft.	\$1 00	\$6 00
alba, var. Tatarica alba. White-fruited Russian Mulberry. 6 ft.	1 00	
alba, var. Tatarica rubra. Red Russian Mulberry. 6 ft.	1 00	
alba, var. Tatarica pendula. Teas' Weeping Mul- berry. 5 to 5½ ft.; 2-yr. heads	2 50	
NEGUNDO. See <i>Acer</i> .		
NYASSA sylvatica. Sour Gum. 5 to 6 ft.	2 50	
OSTRYA Virginica (Ironwood). 3 to 4 ft.	75	
OXYDENDRUM arboreum; syn., <i>Andromeda arborea.</i> Sorrel Tree. 2 to 3 ft.	1 00	9 00
3 to 4 ft.	1 50	13 50
4 to 5 ft.	2 00	18 50
5 to 6 ft.	2 50	22 50
6 to 7 ft.	3 00	27 50
7 to 8 ft.	3 50	
PARROTIA Persica. Persian Iron Tree. 5 to 6 ft.	2 50	
10 to 12 ft.	3 50	
PAULOWNIA imperialis. 10 to 12 ft.	3 50	
PERSICA vulgaris, var. alba plena. Double White-flowering Peach. 4 to 5 ft.	1 00	7 50
vulgaris, var. sanguinea plena. Double Red-flowering Peach. 4 to 5 ft.	1 00	7 50
PHELLODENDRON Amurense. Chinese Cork Tree— 8 to 10 ft.	1 50	
10 to 12 ft.	2 00	

	Each	10	100
PLATANUS occidentalis. American Buttonwood—			
8 to 10 ft.	\$1 00	\$8 50	
10 to 12 ft.; 1 $\frac{3}{4}$ to 2 in.	1 50	12 50	
orientalis. Oriental Plane, or European Buttonwood. 6 to 8 ft.	1 00	7 50	\$50 00
8 to 10 ft.; 1 $\frac{1}{4}$ to 1 $\frac{1}{2}$ in.	1 25	11 50	85 00
10 to 12 ft.; 1 $\frac{1}{2}$ to 1 $\frac{3}{4}$ in.	1 50	12 50	115 00
10 to 12 ft.; 1 $\frac{3}{4}$ to 2 in.	1 75	16 00	150 00
12 to 14 ft.; 2 $\frac{1}{2}$ to 3 in.	3 50	32 50	
14 ft.; 3 to 4 in. Specimens.	\$5 to 10 00		
POPULUS alba, var. Bolleana. Bolle's Poplar—			
8 to 10 ft.	1 50	13 50	
10 to 12 ft.	2 50	20 00	
12 to 14 ft.; 3 to 3 $\frac{1}{2}$ in.	3 50		
monilifera; syn., Carolinensis. Carolina Poplar. 8 to 10 ft.; 1 $\frac{1}{2}$ to 2 in..	1 00	7 50	
10 to 12 ft.; 2 to 2 $\frac{1}{2}$ in.	1 50	10 00	
12 to 14 ft.; 2 $\frac{1}{2}$ to 2 $\frac{3}{4}$ in.	2 50	22 50	
nigra, var. fastigiata. Lombardy Poplar—			
8 to 10 ft.; 1 $\frac{1}{2}$ to 2 in.	1 25	10 00	
10 to 12 ft.; 2 to 2 $\frac{1}{4}$ in.	1 50	13 50	125 00
10 to 12 ft.; 2 $\frac{1}{2}$ in.	2 00	18 50	150 00
Transplanted several times.			
PRUNUS. See, also, <i>Cerasus.</i>			
PRUNUS Pissardii. Purple Plum. 3 to 4 ft.	75	5 00	
triloba. Flowering Plum. 2 to 2 $\frac{1}{2}$ ft.	50	3 50	
PTELEA trifoliata. Hop Tree. 4 to 6 ft.	35	3 00	
6 to 7 ft.	50	4 50	30 00
7 to 9 ft.	75	5 00	
PTEROSTYRAX hispidum (<i>Halesia hispida</i>).			
8 to 10 ft.	1 50	12 50	
10 to 12 ft.	2 50	20 00	
PYRUS. See, also, <i>Shrubs.</i>			
atrosanguinea. 4 to 5 ft.	1 50	10 00	
baccata. Siberian Flowering Crab Apple—			
3 $\frac{1}{2}$ to 4 ft.	75	6 00	
coronaria. Sweet-scented Crab. 4 to 5 ft.	75	6 00	
floribunda. Flowering Crab. 3 $\frac{1}{2}$ to 4 ft..	1 00	7 50	
lensis, var. Bechtel. Bechtel's Double- flowering Crab. 3 to 4 ft. ..	1 50	12 50	
Parkmani; syn., Halliana. Parkman's Crab—			
3 $\frac{1}{2}$ to 4 ft.	1 00	7 50	
Scheideckeri (Double-flowered). 3 to 3 $\frac{1}{2}$ ft.	1 50	12 50	
spectabilis. Chinese Double-Flowering Crab—			
3 to 4 ft.	1 00	7 50	
spectabilis, var. alba flore pleno. Double Rose-flowering Crab. 3 to 4 ft..	1 00	7 50	
Toringo (Dwarf Crab). 4 to 5 ft.	1 25	10 00	
QUERCUS alba. White Oak. 5 to 6 ft.	1 25		
6 to 7 ft.	1 50		
7 to 8 ft.	1 75	16 00	
8 to 10 ft.	2 50	22 50	
10 to 12 ft.	3 50	32 50	
QUERCUS bicolor. Swamp White Oak—			
8 to 9 ft.; 1 $\frac{3}{4}$ to 2 in.	2 50	22 50	200 00
10 to 12 ft.; 2 $\frac{1}{2}$ to 2 $\frac{3}{4}$ in.	3 50	32 50	
12 to 14 ft. Specimens	\$5 to 10 00		
Cerris. Turkey Oak—			
6 to 8 ft.; 2 $\frac{1}{2}$ to 3 $\frac{1}{2}$ in.	\$3.50 to 5 00		

PRICE LIST FOR FALL OF 1910

	Each	10	100
QUERCUS coccinea. Scarlet Oak. 6 to 7 ft.	\$1 25	\$10 00	
7 to 8 ft.	1 50	13 50	\$125 00
8 to 9 ft.; 1½ to 2 in.	2 00	17 50	160 00
9 to 10 ft.; 2 to 2¼ in.	2 50	22 50	200 00
10 to 12 ft.; 2½ to 2¾ in....	\$2.75 to 5 00		
12 to 14 ft. Specimens ..	\$7.50 to 10 00		
imbricaria. Laurel Oak. 7 to 8 ft.	2 50		
8 to 10 ft.	3 50		
macrocarpa. Mossy Cup Oak—			
8 to 9 ft.; 1½ to 1¾ in.	2 00		
10 to 12 ft.; 2 to 2½ in.	2 50	22 50	
12 to 14 ft. Specimens	\$5 to 10 00		
palustris. Pin Oak—			
6 to 7 ft. Low-branched	1 00	8 50	
7 to 8 ft.; 1½ to 1¾ in. Low-branched	1 25	10 00	
8 to 9 ft.; 1¾ to 2 in. Low-branched.	1 50	13 50	
9 to 10 ft.; 2 to 2½ in. Low-branched	2 50	22 50	185 00
10 to 12 ft.; 2¾ to 3 in. Low-branched	3 50	30 00	275 00
10 to 12 ft.; 3 to 3½ in.	4 00	37 50	350 00
Extra heavy specimens. 3½ to 4½ in. cal., well-rooted and good tops, \$7.50 to 15 00			
pedunculata, var. Concordia. Golden Oak—			
6 to 8 ft.	\$2.50 to 3 50		
10 to 12 ft.	\$5 to 7 50		
Phellos. Willow Oak. 8 to 10 ft....	3 50	32 50	
Prinus. Rock Chestnut Oak. 7 to 8 ft..	1 25	10 00	
8 to 10 ft.	1 50	13 50	
10 to 12 ft.; 2 to 2¼ in.	2 00	18 50	150 00
10 to 12 ft.; 2½ to 2¾ in.	2 50	22 50	175 00
12 to 14 ft.; 3 to 4 in.	\$3.50 to 5 00		
Excellent for street planting.			
Robur. English Oak. 6 to 8 ft.; 2 in... 1 00	8 50		
8 to 10 ft.; 2 to 2¼ in.	1 50	12 50	
10 to 12 ft.; 2½ to 3 in.	2 50	20 00	
12 to 14 ft.; 3 to 3½ in.	3 50	32 50	
3½ to 4½ in. cal. Specimens..	\$5 to 10 00		
Robur, var. fastigiata. Pyramidal English Oak. 8 to 10 ft.	3 50	32 50	
10 to 12 ft.	5 00	40 00	
rubra. Red Oak. 7 to 8 ft....	1 50	13 50	
8 to 10 ft.; 2 to 2¼ in.	2 00	17 50	
10 to 12 ft.; 2½ to 2¾ in.	3 00	27 50	
12 to 14 ft. Specimens ..	\$3.50 to 10 00		
velutina, var. tinctoria. Black Oak—			
6 to 8 ft.	1 25	10 00	
8 to 10 ft.; 1¾ to 2 in.	1 75	15 00	125 00
10 to 12 ft.; 2 to 2¼ in.	2 00	18 50	150 00
12 to 14 ft.; 2½ to 2¾ in.	2 50	22 50	200 00
3 to 3½ in. Specimens	3 00	27 50	
RHUS glabra. Smooth Sumac. 4 to 5 ft....	50	4 00	35 00
5 to 6 ft.	75	6 00	50 00
7 to 8 ft.	1 00	8 50	75 00
8 to 10 ft.	1 50	12 50	85 00
glabra, var. laciniata. Cut-leaved Sumac—			
2 to 2½ ft.	75	5 00	40 00
2½ to 3 ft.	1 00		
Osbecki. 1½ to 2 ft.	50	4 00	
6 to 7 ft.	1 00	8 50	

	Each	10	100
RHUS typhina. Staghorn Sumac. 3 to 4 ft.	\$0 35	\$3 00	
5 to 6 ft.	50	4 00	\$30 00
6 to 8 ft.	75	6 00	50 00
8 to 10 ft.	1 00	8 50	60 00
SALISBURIA adiantifolia. Ginkgo, or Maidenhair			
Tree. 6 to 7 ft.	1 00	8 50	
7 to 8 ft.; 1½ to 2 in.	1 25	10 00	
8 to 9 ft.; 2 to 2½ in.	1 50	13 50	125 00
9 to 10 ft.; 2¼ to 2½ in.	2 00	17 50	150 00
10 to 12 ft.; 2½ in.	2 50	22 50	200 00
12 to 14 ft.; 2¾ to 3 in.	5 00	40 00	350 00
SALIX alba. White Willow. 5 to 6 ft.	75	5 00	
10 to 12 ft.	1 50	12 50	
Babylonica. Weeping Willow. 6 to 8 ft.	75	6 00	
8 to 10 ft.	1 00	8 50	
Babylonica, var. dolorosa. Wisconsin Weeping Willow. 8 to 10 ft. Heavy....	2 50	22 50	
caprea. Pussy Willow. 5 to 6 ft.	75	5 00	40 00
7 to 8 ft.	1 50	12 50	75 00
incana. Rosemary Willow. 3 to 4 ft.	50	4 00	35 00
4 to 5 ft.	75	6 00	50 00
lutea. Golden Willow. 8 to 10 ft.	1 50		
10 to 12 ft.; 3 to 3½ in.	2 50	22 50	
lutea, var. pendula. Golden Weeping Willow—			
5 to 6 ft.	1 00	7 50	50 00
10 to 12 ft.	2 50		
12 to 14 ft.	\$3.50 to 5 00		
pentandra. Laurel Leaf Willow. 6 to 7 ft.	1 00	7 50	
7 to 8 ft.	1 50	12 50	
vitellina, var. Britzensis. Salmon-barked Willow. 10 to 12 ft. Heavy....	2 50	22 50	
SOPHORA Japonica. Japanese Sophora—			
4½ to 5 ft.	1 50	12 50	
Wentworth. 7 to 8 ft.; 2 to 2½ in.	1 50	12 50	
Japonica, var. pendula. Weeping Sophora—			
7 to 8 ft. Specimens.....	5 00		
SORBUS Americana. American Mountain Ash—			
7 to 8 ft.	1 50		
aucuparia. European Mountain Ash—			
7 to 8 ft.	1 50		
aucuparia, var. fruticosa lutea. Yellow-fruited. 7 to 8 ft.	1 50		
aucuparia, var. quercifolia. Oak-leaved Mountain Ash. 6 to 7 ft.	1 50		
TAXODIUM distichum. Deciduous Cypress. 5 to 6 ft.	1 50	12 50	
TILIA Americana. American Linden, or Basswood—			
7 to 8 ft.; 1½ to 2 in.	1 50	12 50	
8 to 10 ft.; 2 to 2½ in.	2 50	22 50	
10 to 12 ft.; 2¼ to 2½ in.	3 50		
10 to 12 ft.; 2½ to 3 in.	\$4 to 5 00		
12 to 14 ft.; 3 to 4 in.	\$5 to 10 00		
argentea; syn., tomentosa. Silver-leaved Linden—		Each	10
6 to 8 ft.; 2 in.	\$1 75	\$15 00	
8 to 10 ft.; 2¼ to 2½ in.	2 50	22 50	
10 to 12 ft.; 2½ to 2¾ in.	3 50	32 50	

PRICE LIST FOR FALL OF 1910

33

	Each	10
TILIA platyphyllos. Large-leaved Linden—		
7 to 8 ft.; 1 $\frac{3}{4}$ to 2 in.	\$1 50	\$12 50
vulgaris; syn., Europæa. European Linden—		
8 to 10 ft.; 2 to 2 $\frac{1}{4}$ in.	1 75	15 00
10 to 12 ft.; 2 $\frac{1}{2}$ to 2 $\frac{3}{4}$ in.	2 50	22 50
12 to 14 ft.; 3 to 3 $\frac{1}{2}$ in.	\$3.50 to 7 50	
vulgaris, var. pyramidalis laciniata. Pyramidal Cut-leaf. 12 to 14 ft.; 3 $\frac{1}{2}$ in.	3 50	32 50
ULMUS Americana. American Elm—		
8 to 10 ft.; 1 $\frac{1}{2}$ to 1 $\frac{3}{4}$ in.	1 50	12 50
8 to 10 ft.; 1 $\frac{3}{4}$ to 2 in.	1 75	15 00
12 to 14 ft.; 2 to 2 $\frac{1}{4}$ in.	2 50	20 00
12 to 14 ft.; 2 $\frac{1}{4}$ to 2 $\frac{1}{2}$ in.	3 00	
12 to 14 ft.; 2 $\frac{1}{2}$ to 2 $\frac{3}{4}$ in.	3 50	
14 to 15 ft.; 3 to 6 in. Specimens	\$5 to 25 00	
campestris. English Elm. 8 to 10 ft.; 2 to 2 $\frac{1}{4}$ in....	1 50	13 50
10 to 12 ft.; 2 $\frac{1}{2}$ to 2 $\frac{3}{4}$ in.	2 75	25 00
12 to 14 ft.; 2 $\frac{3}{4}$ to 3 in.	3 50	32 50
Specimens. 3 to 4 in.	\$5 to 7 50	
campestris, var. latifolia; syn., major. Broad-leaved English Elm—		
12 to 14 ft.; 2 $\frac{1}{2}$ to 2 $\frac{3}{4}$ in.	2 75	
12 to 14 ft.; 2 $\frac{3}{4}$ to 3 in.	3 50	32 50
16 to 18 ft.; 3 to 5 in.	\$5 to 15 00	
campestris, var. Wheatley's (Cornish) Elm—		
10 to 12 ft.	2 50	22 50
12 to 14 ft.	3 50	32 50
scabra; syn., Dampieri; fastigate form—		
10 to 12 ft.; 2 $\frac{1}{2}$ to 3 in.	3 50	32 50
scabra; syn., montana. Scotch, or Wych Elm—		
8 to 10 ft.; 1 $\frac{1}{2}$ to 2 in.	1 50	
scabra, var. Huntingdoni. Huntingdon Elm—		
12 to 14 ft.; 3 to 3 $\frac{1}{4}$ in.	3 50	32 50
14 to 16 ft.; 3 $\frac{1}{4}$ to 3 $\frac{1}{2}$ in.	4 50	42 50
14 to 16 ft.; 3 $\frac{1}{2}$ to 4 in.	\$5 to 7 50	
scabra, var. pendula. Camperdown Elm—		
6 ft.	1 50	
scabra, var. purpurea. Purple Wych Elm—		
8 to 10 ft.; 1 $\frac{1}{2}$ to 2 in.	1 50	13 50
10 to 12 ft.; 2 to 2 $\frac{1}{4}$ in.	2 00	17 50
12 to 14 ft.; 3 to 3 $\frac{1}{2}$ in.	3 50	32 50

DECIDUOUS SHRUBS

	Each	10	100
ABELIA rupestris. 1 to 1 $\frac{1}{2}$ ft.	\$0 50	\$4 50	\$25 00
1 $\frac{1}{2}$ to 2 ft.	75	6 50	
2 to 2 $\frac{1}{2}$ ft.	1 00	7 50	
ACANTHOPANAX spinosa (Aralia pentaphylla)—			
1 $\frac{1}{2}$ ft.	25	2 00	15 00
4 to 5 ft.	35	3 00	25 00
ÆSCULUS parviflora; syn., Pavia macrostachya—			
2 ft.	1 00	8 50	75 00
2 $\frac{1}{2}$ ft.	1 50	13 50	100 00
2 $\frac{1}{2}$ to 3 ft.	2 00	17 50	
ALTHEA. See <i>Hibiscus.</i>			
AMELANCHIER Botryapium. 2 $\frac{1}{2}$ to 3 ft.	35	3 00	
3 to 4 ft.	50	4 00	30 00



Partial View of Nursery Grounds from Top of Main Nursery.

		Each	10	100
AMORPHA <i>canescens</i> .	2 ft.	\$0 35	\$2 50	\$15 00
	<i>fragrans</i> . 4½ to 5 ft.	35	3 00	25 00
	<i>fruticosa</i> . 2 to 3 ft.	25	2 00	
	4½ to 5 ft.	35	3 00	20 00
	6 to 7 ft.	50	4 00	25 00
AMYGDALUS (Almond).	See <i>Prunus</i> .			

NATIVE AZALEAS, ANDORRA GROWN

Clean, bushy, transplanted stock.

		Each	10	100
AZALEA <i>arborescens</i> .	Fragrant White Azalea—			
	12 to 15 in. Bushy clumps	\$1 00	\$9 00	
	15 to 18 in. Bushy clumps	1 50	13 50	\$125 00
	1½ to 2 ft. Bushy clumps	2 00	18 50	150 00
	2 to 2½ ft. Bushy clumps	2 50	22 50	200 00
	2½ to 3 ft. Bushy clumps	3 50	30 00	
	<i>calendulacea</i> . Flame Azalea. 12 to 15 in..	1 00	9 00	
	15 to 18 in. Bushy clumps	1 50	13 50	125 00
	18 to 24 in. Bushy clumps	1 75	15 00	135 00
	2 to 2½ ft. Bushy clumps	2 50	22 50	
	2½ to 4 ft.	\$3 50 to	5 00	
	<i>Canadensis</i> (<i>Rhodora</i>). 1 ft. Bushy....	1 00	8 50	75 00
	1½ to 2 ft.	2 00	18 50	150 00
	<i>nudiflora</i> . 12 to 15 in.	1 00	9 00	
	15 to 18 in. Clumps	1 50	13 50	115 00
	1½ to 2 ft. Bushy clumps	1 75	15 00	125 00
	2 to 2½ ft. Bushy clumps	2 50	22 50	
	<i>Vaseyi</i> . Southern Azalea. 12 to 15 in..	1 00	9 00	
	15 to 18 in.	1 50	13 50	
	1½ to 2 ft. Bushy clumps	2 00	18 50	150 00
	2 to 2½ ft. Bushy clumps	2 50	22 50	200 00
	2½ to 3 ft. Bushy clumps	3 50	30 00	
	<i>viscosa</i> . White Azalea—			
	15 to 18 in. Bushy clumps	1 50	13 50	115 00
	1½ to 2 ft. Bushy clumps	2 00	18 50	150 00
	2 to 2½ ft. Bushy clumps	2 50	22 50	175 00

MOLLIS and GHENT AZALEAS

	Each	10	100
AZALEA mollis. 1½ ft. Named sorts.....	\$1 25	\$10 00	\$90 00
2 ft. Bushy. Named sorts	1 50	13 50	125 00
2½ ft. Bushy. Named sorts	2 00	17 50	
1½ ft. Unnamed	1 00	9 00	85 00
2 ft. Unnamed	1 25	10 00	90 00
Pontica (Ghent). 1½ ft. Named sorts....	1 25	10 00	90 00
2 ft. Bushy. Named sorts	1 50	12 50	120 00
2½ to 3 ft. Bushy	2 50	22 50	
3 to 3½ ft. Bushy	\$2.50 to 3 50		
BACCHARIS halimifolia. Groundsel Shrub—			
2 to 2½ ft.	35	2 50	17 50
BENZOIN odoriferum. Spice Bush. 2 to 2½ ft....	35	3 00	
3 to 3½ ft.	50	4 00	35 00
3½ to 4 ft.	75	6 00	
BERBERIS (Barberry) Asiatica. 3 to 3½ ft....✦..	75	6 00	
Dulcis. 12 in.	50	4 00	35 00
ilicifolia. Holly-leaved. 1½ to 2 ft....	35	3 00	27 50
2 to 2½ ft.	50	4 00	35 00
2½ to 3 ft.	75	6 00	40 00
Japonica (not Mahonia). 2 to 2½ ft....	50	4 50	35 00
2½ to 3 ft.	75	5 00	40 00
Sinensis. Chinese Barberry. 2 to 2½ ft.	35		
2½ to 3 ft.; very heavy	50		
3 to 3½ ft.	75		
Thunbergii. 12 to 15 in.	25	1 75	12 50
15 to 18 in.	35	2 50	15 00
1½ ft.; broad and very heavy....	50	3 50	20 00
1½ to 2 ft.; broad and very heavy	60	4 50	25 00
2½ ft.; broad and very heavy....	75	6 00	50 00
3 to 3½ ft.; broad and very heavy	1 00	9 00	75 00
vulgaris. Common Barberry—			
2 to 2½ ft.	50	3 50	20 00
2½ to 3 ft.	60	5 00	25 00
3 to 3½ ft.	75	6 00	45 00
vulgaris, var. Amurensis. 2 to 2½ ft....	50	4 00	30 00
vulgaris, var. purpurea. 2 to 2½ ft....	35	3 00	17 50
2½ to 3 ft.	50	3 50	25 00
3 to 3½ ft.	60	4 00	35 00
3½ to 4 ft.	75	6 00	50 00
4 to 5 ft.	1 00	7 50	60 00
CALLICARPA purpurea. Beauty Fruit—			
3 to 4 ft.	75	6 00	35 00
CALYCANTHUS floridus. Allspice, or Sweet Shrub—			
3 to 3½ ft.	50	4 00	30 00
4 to 4½ ft.	75	6 00	35 00
CARAGANA arborescens. Siberian Pea—			
2½ to 3 ft.	25	2 00	17 50
3½ to 4 ft.	50	4 00	30 00
CARYOPTERIS Mastacanthus. Blue Spirea—			
1½ to 2 ft.	35	2 50	15 00

	Each	10	100
CEANOTHUS Americanus. Jersey Tea. 1½ to 2 ft..	\$0 25	\$2 00	
2 to 2½ ft.	35	3 00	
2½ to 3 ft.	50	4 00	
Americanus, var. Fendleri—			
1½ to 2 ft.★..	75		
CEPHALANTHUS occidentalis—			
2½ to 3 ft.	35	2 50	\$20 00
3½ to 4 ft.	50	3 00	25 00
4 to 5 ft.	75	4 00	30 00
CERCIS. See, also, <i>Deciduous Trees.</i>			
japonica. Japan Judas—			
2 to 3 ft.	75	5 00	
Exceptionally fine stock.			
CHIONANTHUS Virginica. White Fringe—			
2½ to 3 ft. Busby★..	50	4 50	
3 to 4 ft. Bushy★..	75	7 00	50 00
4 to 5 ft. Bushy★..	1 00	8 50	75 00
5 to 6 ft.★..	1 50	13 50	100 00
7 to 8 ft.★..	2 50	22 50	
CLETHRA alnifolia. Sweet Pepperbush—			
2 to 2½ ft.	35	2 50	17 50
2½ to 3 ft. Broad and bushy	50	3 00	20 00
3 to 3½ ft. Broad and bushy	60	4 00	
4 to 4½ ft. Busby	75		
COLUTEA arborescens. Bladder Senna —			
4 to 5 ft.	50	4 00	25 00
5 to 6 ft.	75	6 00	30 00
COMPTONIA asplenifolia. Sweet Fern. 1½ to 2 ft..	35	3 00	25 00
2 to 2½ ft.	50	4 00	30 00
CORCHORUS Japonicus. Single Globe Flower—			
2 to 2½ ft.	50	3 50	25 00
Japonica, fl. pl. (Double Kerria)—			
2 to 2½ ft.	50	3 50	25 00
Japonicus, var. variegata. (Variegated Leaves), 2 to 2½ ft.	50		
CORNUS. See, also, <i>Trees.</i>			
alba. Siberian Red-twigged Dogwood—			
1½ to 2 ft.	25	2 00	15 00
2½ to 3 ft.; very heavy	35	3 00	
3 to 3½ ft.; very heavy	50	4 00	25 00
3½ to 4 ft.; very heavy	75	6 00	30 00
5 to 6 ft.	1 00	7 50	
alba; syn., Siberica, var. aurea variegata—			
2 to 2½ ft.	50	4 00	
2½ to 3 ft.	75	5 00	
alba, var. elegantissima. Golden-leaved—			
3 to 3½ ft.	35	3 00	
3½ to 4 ft.	75	6 00	
alternifolia. 3 to 4 ft.	50	4 00	30 00
5 to 6 ft.	75	5 00	40 00
6 to 7 ft.	1 00	6 00	50 00
Kousa (Benthamia Japonica)—			
2 to 2½ ft.★..	1 00	8 50	
Mas. Cornelian Cherry. 1½ to 2 ft....	25	2 00	
2 to 2½ ft.	35	3 00	
2½ to 3 ft.	50	3 50	
4½ to 5 ft.; very heavy	75	6 00	35 00
5 to 6 ft.	1 00	7 50	50 00
6 to 10 ft. Specimens...★..\$1.50 to	2 50		

PRICE LIST FOR FALL OF 1910

	Each	10	100
CORNUS paniculata. 2½ to 3 ft.	\$0 35	\$3 00	
3 to 3½ ft.	50	4 00	
4 to 5 ft.	75	5 00	
5 to 6 ft.	1 00	7 50	
sanguinea. European Osier Dogwood—			
2 to 2½ ft. Heavy	25	2 00	\$15 00
3½ to 4 ft. Heavy	35	3 00	25 00
4 to 5 ft. Heavy	50	4 00	30 00
5 to 6 ft. Heavy	75	5 00	35 00
sericea. Silky Dogwood. 3 to 3½ ft. ...	35	3 00	20 00
3½ to 4 ft.	50	4 00	30 00
4 to 5 ft.	75	6 00	35 00
6 to 7 ft.	1 00	7 50	50 00
stolonifera. Native Red Osier—			
2½ to 3 ft.	35	3 00	20 00
3 to 3½ ft.	50	4 00	25 00
3½ to 4 ft.	60	5 00	30 00
4 to 5 ft.	75	6 00	35 00
6 to 7 ft.	1 00	7 50	50 00
stolonifera, var. aurea. Golden-barked—			
2 to 2½ ft.	35	3 00	20 00
2½ to 3 ft.	50	3 50	25 00
3 to 3½ ft.	75	5 00	35 00
CORYLUS Americana. American Hazel—			
3½ to 4 ft.	50	3 50	
Avellana, var. laciniata. Cut-leaved Hazel—			
1½ to 2 ft.	50	4 00	
maxima, var. purpurea. Purple Hazel—			
2½ to 3 ft.	35	3 00	20 00
3 to 3½ ft.	50	4 50	30 00
5½ to 6 ft.	1 00	7 50	60 00
COTONEASTER frigida, var. bacillaris. —			
2 to 2½ ft.	35		
4 to 4½ ft.	50		
CRATÆGUS. See <i>Trees.</i>			
CYDONIA Japonica. Japan Quince. 2 to 2½ ft....	35	3 00	
DESMODIUM penduliflorum. See <i>Lespedeza Sieboldi.</i>			
DEUTZIA candidissima (Double White). 2½ to 3 ft.	35	3 00	
3½ to 4 ft.	50	4 00	
5 to 6 ft.	75	5 00	
crenata. 5 to 6 ft.	75	6 00	40 00
crenata, var. Pride of Rochester—			
3½ to 4 ft.	50	3 50	
4 to 5 ft.	75	5 00	35 00
crenata, var. Waterer. 3½ to 4 ft.	50	3 50	25 00
4 to 5 ft.	60	4 00	30 00
5 to 6 ft.	75	6 00	35 00
crenata, var. Wellsi. 3 to 4 ft.	50	3 00	20 00
4 to 5 ft.	75	5 00	25 00
gracilis. Dwarf Deutzia—			
15 to 18 in.; very heavy	50	4 00	20 00
18 to 24 in.	75	6 00	30 00
24 to 30 in.	1 00	7 50	35 00
gracilis, var. carminea. 15 to 18 in.	35	3 00	20 00
18 to 24 in.	50	4 00	25 00
24 to 30 in.	75	6 00	35 00
36 to 40 in.	1 00	7 50	50 00

	Each	10	100
DEUTZIA gracilis , var. <i>rosea</i> . 2 to 2½ ft.	\$0 75	\$6 00	\$30 00
2½ to 3 ft.	1 00	7 50	35 00
Lemoinei . 2 to 2½ ft.; very heavy	35	3 00	20 00
3 to 3½ ft.; heavy	50	4 00	30 00
3½ to 4 ft.	75	5 00	35 00
4 to 5 ft.	1 00	7 50	50 00
Lemoinei , var. <i>compacta</i> . 2 to 2½ ft.	35	3 00	20 00
2½ to 3 ft.	50	4 00	25 00
3 to 3½ ft.	75	5 00	35 00
4 to 5 ft.	1 00	7 50	50 00
parviflora . 3 to 4 ft.	75	5 00	35 00
scabra . 3 to 3½ ft.	35	3 00	15 00
4 to 5 ft.	50	4 00	20 00
5 to 6 ft.	75	6 00	30 00
DIERVILLA (Weigela) florida , var. <i>amabilis</i> —			
3 to 3½ ft.	50	3 50	
6 to 7 ft.	75	6 00	40 00
florida ; syn., <i>rosea</i> . 2½ to 3 ft.	35	2 50	
3 to 4 ft.	50	4 00	
4 to 5 ft.	75	5 00	
florida , var. <i>candida</i> . 2 to 2½ ft.	35	3 00	
5 to 6 ft.	50	4 00	30 00
6 to 8 ft.	75	5 00	40 00
florida nana , var. <i>aurea variegata</i> —			
3 to 3½ ft.	50	4 00	30 00
5 to 6 ft.	75	6 00	40 00
florida , var. <i>Sieboldi alba</i> . 4 to 5 ft.	75	6 00	
floribunda Lavalleyi . 5 to 6 ft.	50	4 00	30 00
7 to 8 ft.	75	6 00	40 00
Japonica (syn., <i>hortensis</i>), var. <i>floribunda</i> . 4 to 5 ft.	50	4 00	25 00
5 to 6 ft.	75	5 00	
Japonica , var. <i>Eva Rathke</i> . 2 to 2½ ft. ♦ ..	35	3 00	20 00
2½ to 3 ft. ♦ ..	50	3 50	25 00
3 to 4 ft. ♦ ..	75	6 00	30 00
Japonica , var. <i>nivea</i> . White. 3 to 3½ ft.	50	4 00	
3½ to 4 ft.	75	5 00	
Japonica , var. <i>rubra</i> . 5 to 6 ft.	50	4 00	30 00
6 to 7 ft.	75	5 00	35 00
Grœnewegeni . 5 to 6 ft.	50	4 00	30 00
6 to 7 ft.	75	6 00	40 00
Grœnewegeni , var. <i>Mad. Contourier</i> . (Hybrid). 3 to 4 ft.	35	3 00	
4 to 5 ft.	50	4 00	25 00
5 to 6 ft.	75	5 00	30 00
Grœnewegeni , var. <i>Steltzneri</i> . 3½ to 4 ft.	50	4 00	25 00
4 to 4½ ft.	60	5 00	30 00
5 to 6 ft.	1 00	7 50	50 00
Grœnewegeni , var. <i>Van Houttei</i> —			
3 to 3½ ft.	35		
4 to 4½ ft.	50		
5 to 6 ft.	75	6 00	40 00
Verschaffelti . 3 to 4 ft.	35	3 00	
5 to 6 ft.	50	4 00	30 00
6 to 7 ft.	75	6 00	35 00
sessilifolia . 2½ to 3 ft.	25	2 00	
3 to 3½ ft.	50	3 50	25 00
4 to 5 ft.	75	5 00	35 00
trifida . 2 to 2½ ft.	35	3 00	20 00
2½ to 3 ft.	50	4 00	25 00

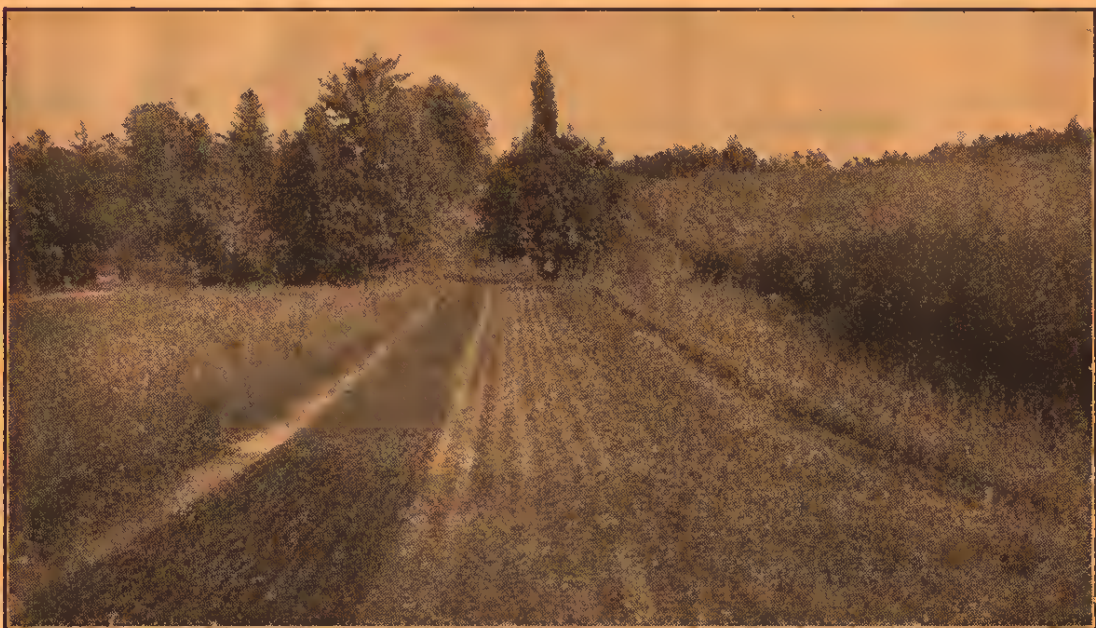
PRICE LIST FOR FALL OF 1910

	Each	10	100
ELÆAGNUS angustifolia. Oleaster. 2 to 2½ ft.....	\$0 35	\$3 00	
5 to 6 ft.	50	4 00	
6 to 8 ft.	75	6 00	
longipes; syn., edulis. Japanese Oleaster. 2 to 2½ ft.	35	3 00	
2½ to 3 ft. Bushy✦	50	4 00	\$25 00
3 to 4 ft. Bushy✦	1 00	6 00	30 00
4 to 5 ft. Bushy✦	1 50	10 00	50 00
5 to 6 ft.	2 00	17 50	
parvifolia. 6 to 7 ft.	1 00	7 50	
EUONYMUS alatus. Cork-barked. 2 to 2½ ft...✦	1 50	13 50	
2½ to 3 ft.✦	2 50	22 50	
3 to 3½ ft.✦	3 50	30 00	
One of the most ornamental of flowering and fruiting shrubs. Berries are bright carmine.			
Americana. Strawberry Bush—			
3 to 4 ft.	35	3 00	25 00
4 to 5 ft.	50	4 00	
Europæus. Spindle Tree. 4 to 5 ft. ..	50	3 50	25 00
5 to 6 ft.	75	4 00	30 00
EXOCHORDA grandiflora. Pearl Bush. 4 to 4½ ft..	50	3 50	30 00
4½ to 5 ft.	75	4 00	30 00
6 to 8 ft.; with ball 1	50	12 50	
FORSYTHIA (Golden Bell) Fortunei. 3 to 3½ ft. ...	35	3 00	20 00
3½ to 4 ft.	50	3 50	25 00
4 to 5 ft.; very heavy 1	75	4 00	30 00
5 to 6 ft.; very heavy 1	00	5 00	35 00
6 to 7 ft.; very heavy 1	50	12 50	75 00
Fortunei, var. aurea variegata. 2 to 3 ft.	75	6 00	
intermedia. 2 to 2½ ft.	35	2 50	20 00
3½ to 4 ft.; very heavy 1	50	4 00	25 00
4 to 5 ft.	75	5 00	30 00
5 to 6 ft.	1 00	7 50	40 00
suspensa. 3 to 3½ ft.	35	3 00	20 00
3½ to 4 ft.	50	4 00	25 00
4 to 5 ft.	75	6 00	30 00
5 to 7 ft.; very heavy 1	00	7 50	50 00
viridissima. 2 to 3 ft.	25	2 00	
3 to 4 ft.; very heavy; extra....	35	3 00	25 00
4 to 5 ft.; very heavy; extra....	50	4 00	30 00
5 to 6 ft.; very heavy; extra....	75	6 00	50 00
HALESIA tetraptera. 2½ to 3 ft.	50	4 00	
4 to 5 ft.	75	6 00	
HAMAMELIS Japonica. Japanese Witch Hazel—			
2 to 2½ ft.	35	3 00	25 00
2½ to 3 ft.	50	4 00	35 00
Virginiana. Witch Hazel. 4 to 5 ft... 1	50	4 00	35 00
5 to 6 ft.; heavy 1	75	6 00	50 00
6 to 7 ft.; heavy 1	00	7 50	60 00
HIBISCUS Syriacus. Althæa; Rose of Sharon—			
alba plena. 4 to 4½ ft.	50	4 00	25 00
Boule de Feu. 4 to 5 ft.	50	4 00	25 00
cœrulea plena. 4 to 4½ ft.	50	4 00	30 00
Comte de Flandre. 5 to 6 ft.	75	5 00	40 00
grandiflora superba. 4 to 4½ ft.	50	4 00	30 00
Jeanne d'Arc. 4½ to 5 ft.	50	4 00	25 00
5 to 6 ft.	75	6 00	40 00
Lady Stanley. 4 to 5 ft.	75	5 00	35 00

	Each	10	100
HIBISCUS purpureus folis argentea marginata—			
3 to 3½ ft.	\$0 35	\$3 00	\$20 00
4 to 4½ ft.	50	4 00	30 00
totus albus. 3 to 3½ ft.	50	4 00	25 00
3½ to 4 ft.	75	5 00	30 00
violacea (semi-plena). 4 to 5 ft.	50	4 00	35 00
HIPPOPHAE rhamnoides. See <i>Buckthorn</i> .			
2½ to 3 ft.	50	2 50	20 00
HYDRANGEA arborescens. 2½ to 3 ft.	50	4 00	30 00
3½ to 4 ft.	75	6 00	50 00
arborescens, var. grandiflora—			
3 to 4 ft.	75	6 00	50 00
Hortensis, var. Imperatrice Eugenie—			
1½ ft.; 4-in. pot	75		
Hortensis, var. Otaska. 3-year	75		
Hortensis, var. Japonica. 1 ft.	75		
paniculata. 4 to 5 ft.	35	3 00	
5 to 6 ft.; very heavy	50	4 00	35 00
6 to 7 ft.	75	6 00	40 00
paniculata grandiflora. 3 to 3½ ft.	50	4 00	25 00
3½ to 4 ft.	75	6 00	35 00
4 to 4½ ft.; extra heavy	1 00	7 50	50 00
4½ to 5 ft.; extra heavy	1 50	12 50	60 00
quercifolia. Oak-leaved—			
2 to 2½ ft.	1 00	8 50	75 00
HYPERICUM aureum. 3½ to 4 ft.	50	3 50	30 00
calcinum. Aaron's Beard. 1½ to 2 ft.	50	4 00	
hircinum. 2 to 2½ ft.	50	3 50	25 00
Moserianum hybridum. Gold-Flower—			
10 to 12 in.	50	2 50	
prolificum. 3 to 3½ ft.	50	3 50	25 00
4 to 4½ ft.	75	5 00	
ILEX Sieboldi. Red-fruited. 2½ to 3 ft.	1 50	13 50	
Sieboldi. White-fruited. 1½ to 2 ft.	1 50	13 50	
verticillata. Winter Berry. 1½ to 2 ft.	25	2 00	17 50
2 to 2½ ft.	35	3 00	25 00
2½ to 3 ft.	50	4 00	35 00
ITEA Virginica. 2 to 2½ ft.	50	3 00	25 00
3 to 4 ft.	75	6 00	40 00
JASMINUM nudiflorum. Yellow Jasmine—			
1½ to 2 ft.	50	3 50	
officinale. Hardy White Jasmine—			
2 to 2½ ft.	50	3 50	
KERRIA. See <i>Corchorus</i> .			
LESPEDEZA bicolor. 2 to 3 ft.	35	2 50	20 00
3 to 4 ft.	50	4 00	25 00
Sieboldi; syn., Desmodium Japonicum—			
Heavy clumps	35	3 00	
Sieboldi, var. alba. Heavy clumps ...	50		
LIGUSTRUM Amurense. Amoor Privet. 2 to 2½ ft.	35	3 00	
6 to 8 ft.	1 00	8 50	
8 to 9 ft.	\$1.50 to 2 50		
ciliatum. Sold by many for <i>Ibota</i> —			
3 to 3½ ft. Broad and heavy....	50	3 50	25 00
3½ to 4 ft. Broad and heavy....	60	4 00	30 00
4 to 5 ft. Broad and heavy....	75	5 00	35 00

PRICE LIST FOR FALL OF 1910

	Each	10	100
LIGUSTRUM <i>ibota</i> . The true upright form—			
2 to 2½ ft.	\$0 25	\$2 00	\$12 50
2½ to 3 ft.	35	3 00	15 00
3 to 3½ ft.	50	3 50	20 00
4 to 5 ft.; heavy	60	4 00	30 00
5 to 6 ft.	75	6 00	50 00
6 to 7 ft.	1 00	8 50	75 00
<i>ibota</i> . var. <i>Regelianum</i> . Regel's—			
1½ to 2 ft.; heavy	50	4 00	20 00
2½ to 3 ft.; heavy	75	6 00	25 00
4 to 4½ ft.	1 00	7 50	35 00
5 to 5½ ft.	1 25	10 00	60 00
<i>lucidum</i> . 2 to 2½ ft.	75	5 00	
<i>media</i> . 4 to 5 ft.	75	5 00	30 00
<i>ovalifolium</i> . California Privet—			
2 to 2½ ft.; bushy { 1000, \$40♦ }	25	1 00	7 50
2½ to 3 ft.; hushy { 1000, \$60♦ }	35	1 50	10 00
3 to 3½ ft.; hushy { 1000, \$75♦ }	50	2 50	15 00
3½ to 4 ft.; hushy { 1000, \$100♦ }	60	4 00	20 00
4 to 5 ft.; hushy	75	5 00	35 00
5 to 6 ft.; hushy	1 00		
Grand stock. All our Privet has been transplanted and cut back; is extra heavy, and will give immediate hedge effects.			
<i>Sinensis</i> . Chinese Privet. 2½ to 3 ft.	50	3 50	25 00
3½ to 4 ft.	75	4 00	
<i>vulgaris</i> . Common Privet. 3 to 4 ft.	35	3 00	25 00
4 to 5 ft.	50	4 00	30 00
LONICERA <i>fragrantissima</i> . Chinese Fragrant Bush			
Honeysuckle. 2½ to 3 ft.	25	2 00	15 00
3 to 4 ft.	35	3 00	25 00
4 to 5 ft.; heavy	50	4 00	35 00
5 to 6 ft.; heavy	75		



A Portion of the Propagating Grounds at Andorra.

	Each	10	100
LONICERA Morrowi. Japanese Bush Honeysuckle—			
2½ to 3 ft.	\$0 50	\$3 00	\$20 00
3½ to 4 ft.	75	5 00	35 00
4 to 5 ft.	1 00	6 00	40 00
Ruprechtiana. 2½ to 3 ft.	50	3 50	25 00
3 to 3½ ft.	75	5 00	35 00
Standishi. Standish's Honeysuckle—			
3 to 3½ ft.	75	6 00	
Tatarica, assorted. 3 to 3½ ft.	35	2 50	
3½ to 4 ft.	50	3 00	25 00
5 to 6 ft.	75	5 00	30 00
6 to 8 ft.; heavy	1 00	6 00	40 00
Tatarica (rubra). 3 to 3½ ft.	50	3 50	
6 to 7 ft.	75	5 00	40 00
Tatarica, var. alba. 2 to 2½ ft.	35	3 00	
3 to 4 ft.	50	3 50	30 00
4 to 5 ft.; heavy	75	6 00	40 00
Tatarica, var. bella albida. 3 to 4 ft.	50	4 00	25 00
4 to 5 ft.	75	5 00	30 00
5 to 6 ft.	1 00	7 50	35 00
Tatarica, var. gracilis. 3 to 4 ft.	50	4 00	25 00
4 to 5 ft.	75	6 00	30 00
Tatarica, var. Chrysanthera. 2 to 2½ ft.	35	3 00	15 00
4 to 5 ft.	50	3 50	30 00
5 to 6 ft.	75	5 00	35 00
Tatarica, var. splendens. 2 to 2½ ft.	35	3 00	
3 to 4 ft.	50	4 00	
LYCIUM Chinense. Matrimony Vine. 2 to 2½ ft.	35	2 50	15 00
2½ to 3 ft.	50	3 50	20 00
MYRICA cerifera. Wax Myrtle. 2 to 2½ ft.	35	3 00	25 00
2½ to 3 ft.	50	4 00	
cerifera, var. pumila. 1 to 1½ ft.	50	4 00	
PAVIA parviflora. See <i>Æsculus</i> , under Shrubs.			
PHILADELPHUS coronarius. Mock Orange—			
2 to 2½ ft.	35	3 00	
3 to 4 ft.	50	4 00	
4 to 5 ft.	75	6 00	40 00
coronarius, var. aureus. Golden Mock Orange. 3½ to 4 ft.	50	4 00	
coronarius, var. Avalanche—			
1½ to 2 ft.	50	4 00	
coronarius, var. primulæ florus—			
2½ to 3 ft.	75	5 00	
grandiflorus. 3 to 4 ft.	50	4 00	
4 to 5 ft.	75	6 00	30 00
5 to 6 ft.	1 00	7 50	40 00
6 to 8 ft.	1 50	12 50	60 00
Lemoinei. (Hybrid). 2 to 2½ ft.	35	3 00	
3 to 3½ ft.	50	4 00	25 00
Lemoinei, var. erectus. 3 to 3½ ft.	35	3 00	20 00
3½ to 4 ft.	50	4 00	30 00
Mt. Blanc. 2½ to 3 ft.	50	3 50	25 00
Zeyheri, var. speciosissimus—			
3½ to 4 ft.	50	4 00	25 00
4 to 5 ft.	75	6 00	35 00

PRICE LIST FOR FALL OF 1910

	Each	10	100
POTENTILLA fruticosa. Shrubby Cinquefoil—			
2 to 2½ ft.	\$0 35	\$3 00	\$20 00
2½ to 3 ft.	50	3 50	25 00
3 to 3½ ft.	75	4 00	
PRUNUS amygdalus communis. Flowering Almond—			
1½ to 2 ft.	75	5 00	
amygdalus communis, var. rosea—			
1½ to 2 ft.	75	5 00	
PYRUS arbutifolia. Chokeberry. 2½ to 3 ft.....	35	3 00	
3½ to 4 ft.	50	4 00	25 00
4 to 5 ft.	75	5 00	
floribunda, var. nigra. 3 to 3½ ft.	35	3 00	
3½ to 4 ft.	50	3 50	
RHAMNUS cathartica. Buckthorn. 3 to 4 ft.....	35	3 00	15 00
4 to 5 ft.	50	3 50	20 00
6 to 7 ft.	75	4 00	30 00
RHODOTYPUS kerrioides. White Kerria—			
2½ to 3 ft.	35	3 00	25 00
3½ to 4 ft.	50	4 00	
4 to 5 ft. Very heavy	75	6 00	40 00
5 to 6 ft. Very heavy	1 00	7 50	50 00
RHUS aromatica. Fragrant Sumac. 2 to 2½ ft...	50	4 00	
2½ to 3 ft.	75	6 00	40 00
3 to 3½ ft.	1 00	7 50	50 00
copallina. Shining Sumac. 2 to 2½ ft.....	35	3 00	25 00
2½ to 3 ft.	50	4 00	
4 to 5 ft.	75	6 00	
Cotinus. Mist, or Smoke Tree. 2 to 3 ft...	35	3 00	25 00
3½ to 4 ft.	50	4 00	
5 to 6 ft.	75	6 00	
6 to 8 ft.	1 00	7 50	40 00
Cotinus, var. atropurpurea. Purple Mist—			
2½ to 3 ft.	50	4 00	
3 to 3½ ft.	75	6 00	
6 to 7 ft.	1 50	12 50	
RIBES aureum. Golden Currant. 3½ to 4 ft.....	35	3 00	20 00
4 to 5 ft.	50	4 00	
Gordonianum. 2½ to 3 ft.	35	3 00	
ROBINIA hispida. Rose Acacia. 2½ to 3 ft.....	35	2 50	20 00
RUBUS Canadensis. 2 to 3 ft.	35	2 00	12 50
odoratus. 2½ to 3 ft.	25	2 00	12 50
3 to 4 ft.	35	3 00	15 00
SAMBUCUS Canadensis. 1½ to 2 ft.....	25	1 50	10 00
Melanocarpus. 5 to 6 ft.....	1 50	12 50	
nigra, var. aurea. Golden Elder—			
1½ to 2 ft.	50	3 50	15 00
4 to 5 ft. Very heavy	60	4 00	35 00
5 to 6 ft. Very heavy	75	5 00	40 00
nigra, var. laciniata. Cut-leaved Elder—			
2½ to 3 ft.	35		
3 to 4 ft.	50		
racemosa. Red-fruited—			
2 to 2½ ft.	50	3 00	15 00

	Each	10	100
SPIRÆA arguta. 3 to 3½ ft.	\$0 35	\$2 50	\$20 00
4 to 5 ft. Heavy	50	3 50	25 00
Billardii. 4 to 5 ft.	35	3 00	25 00
5 to 6 ft.	50	3 50	30 00
Bumalda. 2 ft.	35	3 00	
2½ ft. Heavy	50	4 00	
3 ft.	75	6 00	
Bumalda, var. Anthony Waterer—			
1½ to 2 ft.	25	2 00	
2 to 2½ ft. Heavy	35	3 00	20 00
2½ to 3 ft. Heavy	50	4 00	30 00
3 to 3½ ft. Heavy	75	6 00	
callosa. Fortune's Spirea. 5 to 6 ft....	50	3 50	30 00
callosa, var. alba. 2 to 2½ ft.....	35	3 00	20 00
3 to 3½ ft.	50	4 00	25 00
crispifolia; syn., bullata. 1 to 1½ ft.....	50	3 00	
Japanica, var. Fortunei rosea. 2 to 3 ft...	50	3 50	
Hyb. Margarite. 3 to 3½ ft.....	35	3 00	25 00
3½ to 4 ft.	50	4 00	30 00
opulifolia. 3 to 4 ft.	35	3 00	25 00
4 to 5 ft.	50	4 00	30 00
6 to 7 ft. Heavy	75	6 00	50 00
7 to 9 ft.	1 50	10 00	75 00
opulifolia, var. aurea. Golden-leaved—			
2 to 3 ft.	35	3 00	20 00
3 to 4 ft.	50	4 00	25 00
4 to 5 ft. Heavy	75	6 00	35 00
prunifolia flore pleno. Bridal Wreath—			
3 to 4 ft.	35		
Reevesiana. 3 to 3½ ft.	35	3 00	20 00
4 to 5 ft.	50	4 00	30 00
5 to 6 ft.	75	6 00	35 00
rotundifolia; syn., bracteata. 5 to 5½ ft... 1	00	7 50	
salisifolia. 2 to 3 ft.	35	2 00	15 00
sorbifolia. 3 to 4 ft.	50	3 50	30 00
Thunbergii. Thunberg's Spirea—			
2 to 2½ ft.	35	3 00	25 00
2½ to 3 ft. Very heavy	50	4 00	30 00
3 to 3½ ft. Very heavy	75	6 00	40 00
Van Houttei. 2½ to 3 ft.	35		
3 to 3½ ft. ..	50	4 00	
4 to 5 ft. ..	75	5 00	35 00
5 to 6 ft. ..	1 00	8 50	50 00
STAPHYLEA Colchica. Bladder Nut. 3 to 3½ ft...	35	3 00	
3½ to 4 ft.	50	4 00	35 00
4 to 5 ft.	75	6 00	40 00
STEPHANANDRA flexuosa. 2 to 2½ ft.	35	3 00	
2½ to 3 ft. Heavy	50	4 00	
3½ to 4 ft. Heavy	75	6 00	50 00
STYRAX Japonica. 3½ to 4 ft.	75	6 00	50 00
4 to 5 ft.	1 00	8 50	75 00
5 to 6 ft.	1 50	12 50	

PRICE LIST FOR FALL OF 1910

45

	Each	10	100
SYMPHORICARPUS racemosus. Snowberry—			
2 to 2½ ft.	\$0 35	\$3 00	
2½ to 3 ft.	50	3 50	
3 to 3½ ft.	75	5 00	\$30 00
vulgaris. Coral Berry—			
2 to 3 ft.	35	3 00	15 00
3 to 3½ ft.	50	4 00	20 00
3½ to 4 ft. Heavy	75	6 00	25 00
4 to 5 ft. Heavy	1 00	7 00	30 00
SYRINGA Chinensis; syn., Rothomagensis. Rouen			
Lilac. 3 to 3½ ft.	50	3 50	25 00
3½ to 4 ft.	75	5 00	35 00
Japonica. 6 to 7 ft.	1 50	12 50	75 00
Josikæa, 2½ to 3 ft.	1 00	7 50	
4 to 4½ ft.	1 50	12 50	
Josikæa, var. eximia. 4 to 5 ft.	1 00		
Josikæa, var. H. Zabel. 3 to 4 ft.	1 50	12 50	
Pekinensis. 3 to 4 ft.	75		
Persica. 4 to 4½ ft.	50	4 00	
Persica, var. alba. 3 to 3½ ft.	50	4 00	25 00
4 to 5 ft.	75	6 00	30 00
Persica, var. laciniata. 4 to 5 ft.	35	3 00	
villosa. 3 to 3½ ft.	50	4 00	35 00
5 to 6 ft. Specimens	1 50	12 50	100 00
villosa, var. Emodi. 1 to 1½ ft.	35	3 00	
vulgaris. Common Lilac. 2½ to 3 ft. ..	35	3 00	
3 to 3½ ft.	50	4 00	
4 to 4½ ft.; very heavy	2 50	22 50	
5 to 6 ft. ♦..\$2.50 to 3 50	3 50		
vulgaris alba. 2½ to 3 ft.	75	4 50	
3 to 3½ ft.	1 00	6 00	50 00
vulgaris, named varieties—			
Charles X. Single, reddish purple—			
2 to 2½ ft.	50	3 50	30 00
3 to 3½ ft.	75	6 00	
4 to 4½ ft.	1 25	10 00	
Frau Bertha Dammann. Single, white—			
3 to 3½ ft.	1 00	7 50	
La Tour d'Auvergne. Double, violet-purple. 4 to 4½ ft.	1 50	12 50	
Le Gaulois. Double, peach. 4 to 5 ft. ..	1 50	12 50	
Mad. Lemoine. Double, white—			
4 to 5 ft.	1 50	12 50	
Marie LeGraye. Single, white—			
2½ to 3 ft.	75	6 00	
3 to 3½ ft.	1 00	8 50	
4 to 4½ ft.	1 50	12 50	
Marc Micheli. Double, lilac-blue—			
3½ to 4 ft.	1 50	12 50	
Michael Buchner. Double, pale lilac—			
2½ to 3 ft.	75	6 00	
3½ to 4 ft.	1 50	12 50	
President Carnot. Double, light lilac—			
3 to 3½ ft.	1 00	8 50	
Rubra de Marley. Single, reddish purple—			
2 to 2½ ft.	50	4 00	
3 to 3½ ft.	1 00	7 50	60 00
4 to 4½ ft.	1 50	12 50	85 00
Senator Volland. Double, red—			
3 to 4 ft.	1 00	8 50	

ANDORRA NURSERIES

	Each	10	100
SYRINGA Souvenir de Ludwig Späth. Single red—			
3 to 3½ ft.	\$0 75	\$6 00	
3½ to 4 ft.	1 00	7 50	
4 to 4½ ft.	1 50	12 50	
TAMARIX Africana; syn., parviflora—			
3 to 4 ft.	35	3 00	
4 to 5 ft.	50	4 00	
5 to 6 ft.	75	5 00	
Gallica. 3 to 4 ft.	35	3 00	\$25 00
4 to 5 ft.	50	4 00	30 00
5 to 6 ft.	75	6 00	
Gallica, var. Indica. 5 to 6 ft.	50	4 00	30 00
6 to 7 ft.	75	5 00	35 00
Japonica plumosa. 2 to 3 ft.	35	3 00	
3 to 4 ft.	50	4 00	25 00
5 to 6 ft.	75	5 00	30 00
VACCINIUM corymbosum. Swamp Huckleberry—			
2½ to 3 ft.	50		
VIBURNUM acerifolium. 2 to 2½ ft.	50	3 00	20 00
2½ to 3 ft.	75	5 00	30 00
cassanoides. White Rod—			
3 to 3½ ft.	75	6 00	35 00
4 to 4½ ft.	1 00	7 50	50 00
dentatum. Arrow-wood. 2 to 2½ ft. ...	50	4 00	25 00
3½ to 4 ft.	75	6 00	30 00
4 to 5 ft.; heavy	1 00	8 50	40 00
5 to 6 ft.	1 50	12 50	75 00
Lantana. Wayfaring Tree—			
2½ to 3 ft.	35	3 00	25 00
3½ to 4 ft.; heavy	50	4 00	30 00
4 to 5 ft.; heavy	75	6 00	40 00
5 to 6 ft.; very heavy	1 00	8 50	60 00
Lentago. Sheep-berry. 4 to 5 ft.	50	4 00	30 00
5 to 6 ft.	75	6 00	40 00
7 to 8 ft.	1 50	12 50	75 00
molle. 1½ to 2 ft.	50	4 00	
4 to 5 ft.	75	6 00	
5 to 6 ft.	1 00	7 50	60 00
6 to 7 ft.	1 50	12 50	75 00
Opulus. High Cranberry Bush—			
1½ to 2 ft.	35	3 00	
2 to 2½ ft.	50	3 50	30 00
3 to 4 ft. Fine	50	4 00	35 00
4 to 5 ft. Fine	75	6 00	50 00
5 to 6 ft. Fine	1 00	8 50	75 00
Opulus, var. sterile. Guelder Rose—			
2 to 3 ft.	35	3 00	
3 to 3½ ft.	50	4 00	
4 to 5 ft.	75	6 00	40 00
5 to 6 ft.	1 00	7 50	50 00
plicatum. Japanese Snowball—			
2½ to 3 ft.	75	5 00	35 00
3 to 3½ ft.	1 00	7 50	60 00

PRICE LIST FOR FALL OF 1910

	Each	10	100
VIBURNUM plicatum, var. tomentosum. Single Japan			
Snowball. 2½ to 3 ft.	\$0 35	\$3 00	
3 to 3½ ft.	50	4 00	
4 to 5 ft.; extra fine	75	5 00	\$35 00
5 to 6 ft. Specimens. Fine	1 00	7 50	60 00
6 to 7 ft. Specimens. Fine	2 50	20 00	150 00
A beautiful shrub, deserving extensive planting.			
prunifolium. Black Haw—			
2 to 2½ ft.	35	3 00	
3 to 3½ ft.	50	4 50	
3½ to 4 ft.	75	6 00	
4 to 6 ft.	\$1 to 3 50		
Sieboldi. 1½ to 2 ft.	75	6 00	
2½ to 3 ft.	1 00	8 50	
3½ to 4 ft.	1 50	12 50	
VITEX Agnus-castus. Chaste Tree. 4 to 5 ft.	50	3 00	20 00
XANTHOCERAS sorbifolia. 2½ to 3 ft.	50		
3 to 3½ ft.	75	6 00	
3½ to 4 ft.	1 00	7 50	
XANTHORRHIZA apiifolia. Shrub Yellow Root—			
5 to 6 in. In clumps	35	2 50	15 00
6 to 8 in. In clumps	50	3 50	20 00
10 to 12 in. In clumps	75	5 00	35 00
12 to 18 in. In clumps	1 00	7 50	50 00

REEDS and GRASSES

	Each	10
ARUNDO Donax. Clumps	\$0 50	\$3 50
BAMBUSA Metake	50	3 50
ELYMUS glaucus	25	1 50
ERIANTHUS Ravennæ	50	3 50
EULALIA Japonica, and vars. variegata, gracillima univittata, zebrina. Clumps	50	3 50
FESTUCA glauca. 3-in. pots	25	1 50
PHALARIS arundinacea, var. variegata. Ribbon Grass	25	1 50
UNIOLA latifolia	25	1 50

VINES, CLIMBING and TRAILING PLANTS

	Each	10
ACTINIDIA polygama. 5-in. pots	\$0 50	\$3 50
AKEBIA quinata. From 5-in. pots	50	3 50
AMPELOPSIS quinquefolia. Virginia Creeper. 4-in. pots....	50	3 50
3-year, field-grown; heavy	25	2 00
quinquefolia, var. Engelmanni. 4-in. pots; heavy.	35	3 00
3-year, field grown; heavy	25	2 00
tricuspidata; syn., Veitchl. Japan, or Boston Ivy; 4-in. pots; heavy	35	3 00
2-year, field-grown; heavy..per 100, \$15..	25	2 00
ARISTOLOCHIA Sipho. Dutchman's Pipe Vine. 5-in. pots...	75	6 00
6-in. pots	1 00	
BIGNONIA grandiflora. 5-in. pots	35	3 00
1½ to 2 ft.; field-grown	35	2 00
radicans. Scarlet Trumpet Vine. 5-in. pots	35	3 00
2 to 3 ft.; field-grown	25	2 00

	Each	10
CELASTRUS scandens. False Bitter-sweet—		
2 to 3 ft.per 100, \$15..	\$0 50	\$3 50
3 to 5 ft.; heavy; field-grown	75	5 00
CLEMATIS coccinea. 4-in. pots	35	3 00
Flammula. Sweet Clematis. 4-in. pots	75	6 00
graveolens; syn., orientalis. 4-in. pots	35	3 00
Large-flowering varieties. —Fairy Queen, Gem, Henryi, Jackmani, Jackmani var. alba, Jeanne d'Arc, Duchess of Edinburgh, Ker- mesina, Lady Neville, Lilacina floribunda, Madame Van Houtte, Miss Bateman, Presi- dent	50	4 00
paniculata. 2-year; heavy	30	2 50
5-in. pots; fine	50	3 50
DOLICHOS. See <i>Pueraria</i> .		
EUONYMUS radicans. 1 ft.; field-grown	25	1 75
1½ to 2 ft.; field-grown	35	2 50
HEDERA Helix. English Ivy. 4-in. pots	25	2 00
LATHYRUS latifolius. Everlasting Pea.	35	2 50
LONICERA Japonica. Honeysuckle. 4-in. pots	35	2 50
3-year; field-grown	35	3 00
Japonica, var. brachypoda; syn., flexuosa. Field- grown	35	3 00
Japonica, var. aurea reticulata. 4-in. pots	35	3 00
Japonica, var. Chinensis. Purplish green foliage— 4-in. pots	25	2 00
Heavy, field-grown	35	3 00
Japonica, var. Halleana. 4-in. pots	25	2 00
5-in. pots	35	3 00
3-year old, field-grown	35	3 00
sempervirens, var. fuchsoides. Scarlet Trumpet— 5-in. pots	50	3 50
PERIPLOCA Græca. Silk Vine. Field-grown	35	3 00
5-in. pots	50	4 00
PUERARIA Thunbergiana; syn., Dolichos Japonicus. Kudzu Vine. In pots	1 00	7 50
TECOMA. See <i>Bignonia</i> .		
VITIS æstivalis. Summer Grape. 5-in. pots	75	6 00
heterophylla, var. variegata. 5-in. pots	75	6 00
Labrusca. Fox Grape. 4-in. pots	50	4 00
riparia. Frost Grape. 4-in. pots	50	3 50
WISTARIA Chinensis. Chinese Wistaria— 2 to 3 ft.; in large pots	1 50	12 50
3 to 4 ft.; field grown	1 00	7 50
4 to 6 ft.; field-grown	1.50 to 3 50	
Chinensis, var. alba. Field-grown. 3 to 4 ft.	1 50	12 50
4 to 6 ft.	2 50	22 50
6 to 8 ft.	3 50	32 50
frutescens. 3 to 4 ft.	1 00	
4 to 6 ft.	1.50 to 2 50	
magnifica. 5 to 6 ft.; field-grown	1.50 to 2 50	
multijuga. 2 to 3 ft.; field-grown	75	5 00
3 to 4 ft.; field-grown	1 50	12 50
4 to 6 ft.; field-grown	1.50 to 3 50	
multijuga, var. alba. Field-grown. 2 to 3 ft.	75	6 00
3 to 4 ft.	1 00	
4 to 6 ft.	1.50 to 3 50	

FRUIT DEPARTMENT

	Each	10
APPLES, Summer —Early Harvest, Golden Sweet, Red Astrachan, Summer Rambo, Sweet Bough, Benoin, Yellow Transparent.		
Autumn —Fall Pippin, Gravenstein, Maiden's Blush, Smokehouse, Wealthy.		
Winter —Baldwin, Belle-fleur, Fallawater, King of Tompkins County, Northern Spy, Rhode Island Greening, Styman's Winesap, York Imperial. 5 to 7 ft.; $\frac{3}{4}$ to 1 in. cal.	\$1 00	\$6 00
Crab —Hyslop, Large Red Siberian, Large Yellow Siberian, Transcendent. 5 to 7 ft.	1 00	6 00
CHERRIES, Sour (Dukes and Morellos) —Early Richmond, Empress Eugenie, May Duke, Late Duke, Montmorency. 5 to 6 ft.	1 50	10 00
Large Sweet (Hearts and Bigarreaus) —Black Tartarian. Governor Wood, Napoleon Bigarreau, Schmidt's Bigarreau, Windsor. 5 to 6 ft.	1 50	10 00
NUTS, American Sweet Chestnut. See under <i>Deciduous Trees</i> .		
Spanish Chestnut. See under <i>Deciduous Trees</i> .		
Hybrid Chestnut. Paragon, Numbo. 4 to 5 ft.	1 50	12 50
Japan Chestnut. 3 to 4 ft.	1 00	
Walnut, Black. See <i>Juglans nigra</i> , under <i>Deciduous Trees</i> .		
PEACHES —Belle of Georgia, Fitzgerald, Fox's Seedling, Crawford's Late, Elberta, Mountain Rose, Morris White, Oldmixon Free, Stump the World, Susquehanna, Troth's Early, Wheatland. 5 to 6 ft.per 100, \$30..	50	3 50
PEARS, Summer —Bartlett, Clapp's Favorite, Doyenne d'Ete.		
Autumn and Winter —Beurre d'Anjou, Buffum, Duchesse d'Angouleme, Howell, Kieffer's Hybrid, Lawrence, Rutter, Seckel, Sheldon, Worden-Seckel. 5 to 6 ft.	1 50	10 00
A few varieties, 6 to 8 ft.	2 00	15 00
PLUMS, Japanese —Abundance, Burbank, Chabot, Satsuma. 5 to 6 ft.	1 00	7 50
European —Giant Prune, Imperial Gage, Lombard.		
QUINCES —Champion, Orange. 3 to 4 ft.	75	6 00

SMALL FRUITS

	Each	10
BLACKBERRIES —Eldorado, Eric, Kittatinny, Rathbun, Snyder, Wilson Junior.....per 100, \$3..		\$0 50
CURRENTS, Red —Cherry, Fay's Prolific; White —White Grape; Black —Lee's Prolific	\$0 25	2 00
GOOSEBERRIES, Red —Houghton, Industry; Green —Downing, Smith's Improved	25	2 00
GRAPES, Black —Concord, Moore's Early, Worden; Red —Brighton, Catawba, Delaware; White —Green Mountain, Niagara, Pocklington. 2-year	25	2 00
A few varieties, extra heavy	50	3 00
RASPBERRIES, Black —Gregg; Red —Cuthbert, Columbian Ruby; Yellow —Golden Queen, per 100, \$3		50

Each 10

STRAWBERRIES, Early—Bederwood, Marshall; **Medium**—Bubach, Glen Mary, Sharpless, **Late**—Brandywine, Gandy, Runners, per 100, \$2; per 1,000, \$7.50. Potted plants, per 100, \$3 to \$4.

ESCULENT ROOTS

ASPARAGUS—Barr's Mammoth. Per 100, \$1.50; per 1,000, \$7.50.
RHUBARB—Best varieties. Per 10, \$1.50; per 100, \$10.

ROSES

N. B.—Potted unless noted. Special prices per hundred.

	Each	10
AUSTRIAN BRIERS —Harrison's Yellow and Persian Yellow..	\$0 40	\$3 50
SWEETBRIER —Rosa rubignosa	40	3 50
HYBRIDS Penzance Briers —Amy Robsart, Anne of Geierstein, Brenda, Flora McIvor, Lady Penzancee, Lord Penzancee, Meg Merrilies, Minna	50	4 50
BUSH —Blanda, Carolina, eanina, lueida, lueida var. alba, multiflora, nitida, rubrifolia, field-grown.....	35	3 00
CLIMBING —Baltimore Belle, The Dawson, Dorothy Perkins, Lady Gay, Prairie Queen	50	3 50
Setigera. Prairie Rose. 2 to 2½ ft.; field grown..	35	3 00
Ramblers —Crimson, White, Pink and Yellow, The Dawson (earmine)	40	3 50
EVERBLOOMING Hybrid Teas —Bessie Brown, creamy white; Betty. ruddy gold; Captain Christy, flesh; Caroline Testout, rose; Countess of Caledon, earmine; Duhesse of Albany, deep pink; Gladys Harkness, salmon-pink; Gruss an Teplitz, erimson; Kaiserine Auguste Victoria, primrose; Killarney, pink; La Francee, rose; Madame Ravary, yellow; Souvenir du President Carnot, flesh-rose; Viscountess Folkestone, creamy pink..	50	4 50
EVERBLOOMING, Miscellaneous —Clothilde Soupert (Polyantha), rosy white; etoile de Lyon (Tea), yellow; Francisca Kruger (Tea), yellow-peach; Francis Dubreuil (Tea), crimson; Harry Kirk, deep sulphur yellow; Maman Cochet (Tea), rosy white; Souvenir de la Malmaison (Bourbon), flesh; White Maman Cochet (Tea), white.....	50	4 50
HYBRID Perpetual —Alfred K. Williams, carmine-red; Baroness Rothschild, rose; Captain Hayward, earmine-erimson; Clio, flesh; Eugene Verdier, rose-flesh; Frau Karl Druschki, white; General Jaequeminot, scarlet; Lady Helen Stewart, crimson-searlet; Louis Van Houtte, red-erimson; Magna Charta, rose; Madame Gabriel Luizet, silvery pink; Margaret Diekson, white; Mrs. R. G. Sharman-Crawford, rose-pink; Mrs. John Laing, pink; Paul Neyron, deep rose; Prinee Camille de Rohan, deep erimson; Ulrich Brunner, cherry crimson.....	50	4 00
MOSS —Blanche Moreau, white; Crimson Globe, deep crimson; Zenobia, rose.....	50	4 00

RUGOSA ROSES

	Each	10	100
ROSA rugosa. 2 to 2½ ft.	\$0 35	\$3 00	\$20 00
2½ to 3 ft.	50	4 00	35 00
3 to 3½ ft.	75	6 00	50 00
rugosa, var. alba. 2 to 2½ ft.	50	4 00	25 00
2½ to 3 ft.	75	6 00	50 00
rugosa hybrids atropurpurea —Atropurpurea, Blanc Double de Coubert, Conrad F. Meyer, Madame Georges Bruant, Madam Charles Worth, Mrs. A. Waterer. Pot- grown	50	4 00	

WICHURAIANA ROSES

ROSA Wichuraiana. The Trailing Rose. 2 to 3 ft..	\$0 25	\$2 00	
2 to 3 ft. In 4-in. pots	35	3 00	\$25 00
hybrids —Evergreen Gem, Gardenia, Manda's Triumph, Pink Roamer, South Orange Perfection, Universal Favorite. In pots.	50	3 50	
SINGLE ROSES, Dickson's Hybrids —New Irish Beauty, Irish Glory, Irish Modesty, Irish Bright- ness	75	6 00	

HARDY HERBACEOUS PLANTS

	Each	10	100
ACHILLEA filipendulina (Noble Yarrow). July. Golden Yellow. 2 ft.....	\$0 15	\$1 25	\$10 00
millefolium roseum (Rosy Milfoil). July to September. Pink. 1½ ft..	15	1 25	
ptarmica (The Pearl). All summer. White. 2 ft.	15	1 25	10 00
tomentosum (Woolly Yarrow). June. Yellow. 1 ft.	25	2 00	
ACONITUM Fischeri (Monkshood). September and October. Blue. 3 ft.	35	2 50	15 00
Lycotonum (Wolf's Bane). June to September. Yellow. 3 ft.	35	2 50	
ACANTHUS mollis (Bear's Breech). August and September. Rose. 3 ft.	35	2 50	
AJUGA Genevensis. May. Bright Blue. 6 in.....	25	1 50	12 50
reptans rubra (Bugle). May. Purplish blue. 6 in.	25	1 50	12 50
ALTHÆA rosea (Hollyhoek). July. Various colors. 4 to 6 ft.	25	1 50	12 50
rosea, var. Allegheny Fringed	25	1 50	12 50
ALYSSUM rostratum , June and July. Golden Yel- low. 1 ft.	35	2 50	
saxatile compactum (Golden Tuft). May and June. Yellow. 1 ft.	25	1 50	12 50
ANCHUSA Italica, var. Dropmore. New (Alkanet). May and June. Blue. 3 to 4 ft...	75	6 00	
ANEMONE (Windflower) Japonica. September Red. 2 to 3 ft.	25	1 50	12 50
Japonica, var. alba. Fall. White. 2 to 3 ft.	25	1 50	12 50
Japonica, var. Queen Charlotte. Fall. Rose. 2 to 3 ft.	25	2 00	15 00
Japonica, var. Lady Ardilaun. Fall. White. 2 to 3 ft.	25	2 00	15 00



Partial view of Herbaceous Plantations

	Each	10	100
ANEMONE Japonica , var. Whirlwind. Fall. Pure white. 2 to 3 ft.....	\$0 25	\$2 00	\$15 00
Pennsylvanicum . June and July. White. 1 to 2 ft.	25	1 50	12 50
Pulsatilla (Pasque Flower). May. Violet-purple. 9 in.....	25	1 50	12 50
syvestris . May. Pure white. 1 to 1½ ft.....	25	1 50	12 50
ANTHEMIS tinctoria (Chamomile). June to September. Golden Yellow. 2 ft.....	25	1 50	10 00
AQUILEGIA baicalense . May to July. Blue and white. 18 in.....	25	1 50	12 50
Canadensis . (Common Columbine). May to July. Scarlet and Yellow. 1 to 2 ft.....	25	1 50	10 00
Chrysantha . May to August. Golden Yellow. 3 ft.	25	2 00	12 50
cærulea (Rocky Mountain Columbine). May to July. Blue. 18 in.....	25	2 00	12 50
flabellata , var. <i>nana alba</i> . April to June. White. 1 ft.....	25	2 00	
nivea grandiflora . April to June. White. 2 to 3 ft.....	25	2 00	12 50
vulgaris fl. pl. May to July. White to blue. 1½ to 2 ft.....	25	2 00	12 50
truncata . May and June. Scarlet, yellow-tipped. 2 ft.....	25	2 00	12 50
ARABIS alpina (Rock Cress). April and May. White. 4 in.....	25	1 50	10 00
alpina fl. pl. Double.....	35	2 50	
ARENARIA montana , var. <i>grandiflora</i> (Sandwort). May and June. White. 6 in.....	25	1 50	12 50

PRICE LIST FOR FALL OF 1910

53

	Each	10	100
ARMERIA <i>maritima</i> , var. alba (Thrift). Summer. White. 9 in.....	\$0 25	\$1 50	\$10 00
<i>maritima</i> , var. splendens . Summer Rose. 9 in.	25	1 50	12 50
ARTEMISIA <i>abrotanum</i> (Old Man). Silvery white foliage. 2 ft.....	25	1 50	10 00
<i>Stelleriana</i> (Old Woman). Silvery foliage. 2 ft.	25	1 50	10 00
ASCLEPIAS <i>tuberosa</i> (Butterfly Weed). July and August. Orange. 2 ft.....	25	1 50	10 00
ASTER <i>alpinus</i> . June and July. Purple. 9 in....	25	1 50	10 00
<i>Amellus elegans</i> . September and October. Blue. 1½ ft.....	25	1 50	10 00
ASTER (Michaelmas Daisy) <i>amethystinus</i> . September and October. Amethyst. 3 to 4 ft.....	25	1 50	10 00
<i>grandiflorus</i> . October and November. Violet-blue. 2 ft.....	35	2 50	20 00
Lady Trevelyan . September and October. White. 3 ft.....	25	1 50	10 00
Madonna . September and October. White. 4 ft.	25	1 50	10 00
Novæ Angliæ . September and October. Purple. 4 ft.....	25	1 50	10 00
Novæ Angliæ , var. rubra . September and October. Bright rose. 4 ft.....	25	1 50	10 00
<i>ptarmicoides</i> . August and September. White. 1½ ft.....	25	1 50	10 00
Robert Parker . September and October. Lavender. 4 ft.....	25	1 50	10 00
Tataricus . October and November. Purple. 5 ft.	25	1 50	10 00
Trinervius . October and November. Violet-purple. 2½ ft.....	25	1 50	10 00
White Queen . September and October. White. 4 ft.....	25	1 50	10 00
ASTILBE <i>Japonica</i> (Spirea). June. White. 1½ ft.	25	1 50	10 00
ASTRANTIA <i>major</i> (Masterwort). June and July. Pale pink. 1 ft.....	25	2 50	20 00
AUBRETIA <i>Hendersoni</i> (False Wall Cress). April. Purplish violet. 4 in.....	25	1 50	12 50
BAPTISIA <i>australis</i> (False Indigo). June and July. Dark blue. 2 ft.....	25	1 50	10 00
<i>tinctoria</i> . June and July. Bright yellow. 2 to 3 ft.....	25	1 50	10 00
BELEMCANDA <i>Chinensis</i> ; syn., Pardanthus . June. Orange-red. 4 ft.....	25	1 50	10 00
BELLIS <i>perennis</i> (English Daisy) May. White and pink. 6 to 8 in.....	25	1 50	10 00
BETONICA . See <i>Stachys</i> .			
BOCCONIA <i>cordata</i> (Plume Poppy). July and August. White. 5 ft.....	25	1 50	12 50
BOLTONIA <i>asterioides</i> (False Chamomile). August and September. White. 4 ft.....	25	1 50	10 00
<i>latisquama</i> . August and September. Light lilac. 4 ft.....	25	1 50	10 00
CALIMERIS <i>incisa</i> (Starwort). July to September. Light blue. 18 in.....	25	1 50	10 00

	Each	10	100
CALLIRHOË involucrata (Poppy Mallow). All summer. Rosy crimson. 1 ft.....	\$0 25	\$1 50	\$10 00
CAMPANULA Carpatica (Carpathian Harebell). June to September. Blue. 9 in.....	25	1 50	10 00
Carpatica, var. alba. June to September. White. 9 in.....	25	1 50	10 00
Mørheimi. May to July. White. 2 to 2½ ft..	35	2 50	
persicifolia (Peach Bells). June and July. Blue. 18 in.....	25	1 50	10 00
persicifolia alba. June and July. White. 18 in..	25	1 50	10 00
pyramidalis (Chimney Bellflower). August and September. Blue. 2 ft.....	25	1 50	10 00
CENTAUREA montana (Perennial Cornflower). June and July. Dark purple. 1½ ft.....	25	1 50	
CERASTIUM tomentosum. June and July. White. 6 in.....	25	1 50	12 50
CERATOSTIGMA plumbaginoides (Plumbago). October and November. Blue. 6 in.....	25	2 00	15 00
CHELONE Lyoni (Turtlehead). August and September. Rose-purple. 2 ft.....	35	2 50	
obliqua, var. alba (Shell-flower). August and September. White. 2 ft.....	35	2 50	
CHRYSANTHEMUM leucanthemum hybridum (Shasta Daisies). Alaska, California, Westralia. All summer. White. 2 ft.....	35	2 50	15 00
maximum, var. Triumph (Moonpenny Daisy). July to October. White. 2 ft.....	25	1 50	12 50
Nipponicum. September and October. White. 2 ft.	35	2 50	
Pompon Varieties. Fall. All colors. 1½ to 2 ft.	25	1 50	10 00
Pompon Varieties, Heavy Stock	25	2 00	15 00
uliginosum. September. White. 2½ ft.....	25	1 50	10 00
CHRYSOGONUM Virginianum (Golden Joint). June. Yellow. 1 ft.....	25	1 50	12 50
CHRYSOPSIS villosa (Golden Aster). September. Yellow. 2 ft.....	25	2 00	15 00
CIMICIFUGA acerinum. August and September. White. 2½ ft.....	35	2 50	
Dahurica (Bugbane). August and September. White. 2 to 3 ft.....	35	2 50	15 00
racemosa (Snakeroot). July. White. 3 to 5 ft.	25	1 50	12 50
CINERARIA. See <i>Artemisia</i> .			
CLEMATIS crispa (Leather-flower). June to September. Lavender. 3 to 4 ft.....	25	1 50	12 50
Davidiana. August and September. Blue. Fragrant. 3 ft.....	25	1 50	12 50
recta. June to August. White. Fragrant. 2 to 3 ft.....	25	1 50	12 50
CONOCLINIUM caelestinum (Mist-flower). September and October. Deep blue. 18 in.....	25	1 50	12 50
CONVALLARIA majalis (Lily-of-the-Valley). May and June. White. 6 to 9 in.....	25	2 00	15 00
COREOPSIS lanceolata (Tickseed). June to October. Golden yellow. 2 ft.....	15	1 25	10 00
CORONILLA varia (Crown Vetch). June and October. Pink. 1 to 2 ft.....	25	1 50	12 50

PRICE LIST FOR FALL OF 1910

55

	Each	10	100
DELPHINIUM Chinense (Larkspur). July to September. Blue. 1½ ft.....	\$0 25	\$1 50	\$10 00
Chinense, var. album. July to September. White. 1½ ft.	25	1 50	10 00
elatum (Bee Larkspur). June to August. Blue. 4 ft.....	25	1 50	10 00
formosum (Larkspur). June to September. Deep blue. 4 ft.....	25	1 50	10 00
DIANTHUS barbatus (Sweet William). May to July. Mixed colors. 1½ ft.	25	1 50	10 00
deltoides (Maiden Pink). June. Pink. 4 in..	25	1 50	10 00
latifolius. June. Red. 1 ft.....	25	1 50	10 00
plumarius (Hardy Pinks). May and June. 1 ft.	25	2 00	15 00
VARIETIES :			
Delicata. Rose, with fringed petals.			
Laura Wilmer. White, with maroon center.			
Her Majesty. White.			
Mrs. Sinkins. White.			
Stanislaus. Violet-rose, with crimson center.			
DICENTRA eximia (Seal-flower). June to August. Pink. 1 ft.....	25	1 50	10 00
spectabilis (Bleeding-heart). May and June. Pink. 2 to 3 ft.....	25	2 00	12 50
DICTAMNUS fraxinella (Gas Plant). June. Purple. 3 ft.....	35	2 50	15 00
fraxinella, var. alba. June. White. 3 ft....	35	2 50	15 00
DIGITALIS ambigua (Foxglove). July and August. Pale yellow. 3 ft.	25	2 00	15 00
purpurea (Common Foxglove). June and July. Mixed colors. 4 to 5 ft.....	25	1 50	10 00
purpurea, var. gloxiniaeflora. June and July. Mixed colors. 4 to 5 ft.....	25	1 50	10 00
DORONICUM Austriacum . April and May. Yellow. 2 ft.....	35	2 50	15 00
plantagineum, var. excelsum. April to June. Yellow. 2 ft.	35	2 50	15 00
ECHINACEA purpurea (Purple Cone-flower). July to September. Rosy purple. 3 ft.....	25	2 00	15 00
ERIGERON speciosus (Fleabane). June to August. Violet-blue. 1½ to 2 ft.....	25	2 00	15 00
ERYNGIUM amethystinum (Sea Holly). July to September. Amethyst-blue. 2 ft.....	35	2 50	
EUPATORIUM ageratoides (White Snakeroot). September and October. White. 3 ft.....	25	1 50	12 50
cœlestinum. Fall. Light blue. 2 ft.....	25	1 50	
EUPHORBIA corollata (Spurge). July to September. White. 1½ ft.....	25	1 50	12 50
FEVERFEW, Little Gem . June to October. White. 15 in.....	25	1 50	10 00
FUNKIA Fortunei (Day Lily). July to August. Blue. 1½ to 2 ft.....	25	1 50	12 50
ovata. July to August. Deep blue. 1½ to 2 ft.	25	1 50	12 50
subcordata, var. grandiflora. September. White. Fragrant. 2 ft.....	25	2 00	15 00
undulata, var. media picta variegata. July and August. Lilac. 1 ft.....	25	1 50	12 50

	Each	10	100
GAILLARDIA grandiflora (Blanket-flower). June to November. Yellow. 1½ ft.....	\$0 25	\$1 50	\$10 00
GALEGA officinalis (Goat's Rue). July and August. Blue. 2 ft.....	25	1 50	10 00
officinalis , var. alba . July and August. White. 2 ft.....	25	1 50	10 00
GERANIUM sanguineum (Cranesbill). June to September. Red. 1½ ft.....	25	1 50	
GEUM coccineum (Avens). June and July. Scarlet. 1½ ft.....	25	2 00	15 00
Heldreichi . June. Orange. 18 in.....	25	2 00	15 00
montanum . June and July. Yellow. 18 in....	25	2 00	15 00
GILLENIA trifoliata (Bowman's Root). Rose and white. July. 3 ft.....	35	2 50	
GYPSOPHILA paniculata (Baby's Breath). July. White. 2 to 3 ft.....	25	1 50	12 50
HELENIUM, pumilum (Sneezewort). July to October. Yellow. 1½ ft.....	25	1 50	10 00
autumnale , var. superbum . July to October. Yellow. 4 ft.....	25	1 50	10 00
grandicephalum , var. striatum . August to October. Orange. 3 ft.....	25	2 00	15 00
Hoopesi . All summer. Orange-yellow. 2 ft..	25	2 00	15 00
HELIANTHUS (Perennial Sunflowers) giganteus . August to October. Pale yellow. 6 to 10 ft.	25	1 50	10 00
Maximiliana . September. Deep yellow. 6 to 8 ft.	25	1 50	10 00
mollis . September and October. Golden yellow. 4 ft.....	25	1 50	10 00
multiflorus fl. pl. July and August. Golden yellow. 4 ft.	25	1 50	10 00
orgyalis . September and October. Golden yellow. 6 ft.	25	1 50	10 00
rigidus . July to October. Golden yellow. 3 ft.	25	1 50	10 00
rigidus , var. Miss Mellish . September and October. Golden yellow. 6 ft.....	25	1 50	10 00
rigidus , var. Wolly Dodd . September. Deep yellow. 3 ft.....	25	1 50	10 00
HELIOPSIS Pitcheriana . June to October. Orange-yellow. 3 ft.....	25	1 50	10 00
HELLEBORUS niger (Christmas Rose). March. White. 6 in.....	35	3 00	
niger , var. atrorubens . March. Purple. 9 in..	35	3 00	
HEMEROCALLIS Dumortieri (Yellow Day Lily). June and July. Orange-yellow. 2 ft.....	25	1 50	12 50
flava . June. Yellow. 2 ft.....	25	1 50	12 50
fulva (Tawny Day Lily). July and August. A tawny yellow. 2½ ft.....	25	1 50	12 50
fulva , var. Kwanso fl. pl. (Double Orange Lily). July and August. Coppery yellow. 2½ ft....	25	1 50	12 50
fulva , var. Thunbergii . August and September. Lemon-yellow. 2½ ft.	25	1 50	12 50
HEPATICA triloba (Liverleaf). April. White and blue. 6 in.	25	1 25	10 00
HEUCHERA sanguinea (Alumroot). June to September. Coral-red. 18 in.....	25	2 00	15 00
sanguinea , var. alba . June to September. White. 18 in.....	25	2 00	



A field of Japanese Iris at Andorra

	Each	10	100
HIBISCUS <i>militaris</i> . June to September. Buff-yellow.			
18 in.	\$0 25	\$2 00	
Moscheutos (Mallow). July to September.			
Rose. 5 ft.	25	1 50	\$10 00
Moscheutos , var. Crimson Eye . July to September. White. 5 ft.....	25	1 50	10 00
HOLLYHOCKS . See <i>Althæa rosea</i> .			
IBERIS <i>sempervirens</i> (Candytuft). April and May.			
White. 6 in.	25	1 50	10 00
<i>corifolia</i> . April and May. White. 9 in.....	25	1 50	10 00
INULA <i>Britannica</i> (Fleabane). July to September.			
Light yellow. 2 ft.....	25	1 50	12 50
IRIS . For Special Descriptive Lists, consult Calendar of Hardy Perennials.			
<i>atrovioacea</i> . May. Dark violet. 2 to 2½ ft..	35	3 00	
<i>cristata</i> . April and May. Light blue. 6 in..	25	1 50	12 50
<i>Florentina</i> . May. Tinted white. Fragrant. 1½ ft..	25	2 00	
<i>Germanica</i> . May. Named varieties. 1½ to 2½ ft.	25	1 50	10 00
<i>lævigata</i> ; syn., <i>Kæmpferi</i> (Japanese Iris). June and July. Our selection, all colors. 2½ to 4 ft.	25	2 00	15 00
Customer's selection♦	35	3 00	
<i>Pallida</i> , var. <i>Dalmatica</i> . June. Light blue. 3 ft.	35	3 00	25 00
<i>Pallida</i> , var. <i>speciosa</i> . June. Indigo-blue. 2 to 3 ft.....	35	3 00	25 00
<i>Pseudacorus</i> . June. Yellow. 2 to 3 ft.....	25	2 00	15 00
<i>pumila nova</i> . May. Various colors. 8 to 10 in.	25	1 50	12 50
<i>Sibirica</i> . May and June. Bright blue. 1½ ft.	25	1 50	10 00
<i>Sibirica</i> , var. <i>alba</i> . June. White. 2 ft. Rare.♦	35	3 00	25 00
<i>Sibirica</i> , var. <i>orientalis</i> . May. Deep blue. 1½ ft.	25	1 50	10 00
<i>tectorum</i> . May. Bright lilac. 1 ft.....	25	2 00	15 00

	Each	10	100
KNIPHOFIA aloides (Red-hot Poker). August and September. Crimson. 3 ft.....	\$0 25	\$1 50	\$12 50
obelisque. July and August. Saffron-yellow. 3 to 4 ft.....	35	2 50	15 00
Pfitzerii (Flame Flower). July to October. Orange-scarlet. 3 to 4 ft.....	35	2 50	15 00
LATHYRUS latifolius , var. albus (Hardy White Pea). Summer. Climbing.....	25	2 00	
latifolius , var. roseus . Summer. Rose. Climbing.	25	2 00	
latifolius , var. splendens . Summer. Climbing..	25	2 00	15 00
latifolius , var. Pink Beauty . Summer. Bright pink. Climbing	25	2 00	15 00
LAVENDULA spica (Lavender). 15 to 18 in.....	25	1 50	12 50
vera (Lavender). 15 to 18 in.....	25	1 50	12 50
LIATRIS graminifolia (Blazing Star). August and September. Rosy purple. 2 ft.....	25	1 50	12 50
pynostachya (Kansas Gay Feather). September. Rosy purple. 4 to 5 ft.....	25	1 50	12 50
spicata (Gay Feather). August and September. Deep purple. 3 to 4 ft.....	25	1 50	12 50
LILIUM Canadense (Meadow Lily). July. Shades of yellow. 2 to 4 ft.....	25	1 50	12 50
Philadelphicum (Wood Lily). July and August. Orange-scarlet. 2 to 4 ft.....	25	2 00	15 00
speciosum , var. roseum (Japan Lily). July and August. Rosy white. 2 to 4 ft.....	25	2 00	15 00
tigrinum (Tiger Lily). August. Salmon-red. 3 to 4 ft.....	25	1 50	12 50
LINUM Austriacum (Austrian Flax). June to August. Bluish purple. 18 in.....	25	1 75	
perenne (Perennial Flax). June to September. Clear blue. 18 in.....	25	1 75	
LOBELIA cardinalis (Cardinal Flower). August and September. Scarlet. 2 to 3 ft.....	25	1 50	12 50
syphilitica (Blue Lobelia). August and September. Deep blue. 2 ft.....	25	1 50	
LYCHNIS Chalcedonica (London Pride). July to September. Vermilion. 2 to 3 ft.....	25	1 50	12 50
coronaria (Rose Campion). June and July. Crimson. 1½ to 2 ft.....	25	1 25	10 00
coronaria , var. alba . June and July. White. 1½ to 2 ft.....	25	1 25	10 00
Haageana . June and July. Orange-scarlet. 1½ ft.	25	1 50	
vespertina , var. alba plena (White Campion). May to September. White. 1 ft.....	25	1 50	12 50
viscaria (Catchfly). June and July. Red. 1½ ft.	25	1 50	12 50
viscaria , var. splendens . (German Catchfly). June and July. Pink. 15 in.....	25	1 50	12 50
LYSIMACHIA clethroides (Loosestrife). July to September. White. 1½ ft.....	25	1 25	10 00
nummularia (Moneywort). June to August. Yellow. Creeping.....	25	1 50	10 00
LYTHRUM roseum superbum (Rose Loosestrife). July to September. Rose. 3 ft.....	25	1 50	12 50
MERTENSIA pulmonarioides (Virginia Cowslip). May and June. Blue. 2 ft.....	25	1 50	10 00

PRICE LIST FOR FALL OF 1910

59

	Each	10	100
MONARDA didyma (Oswego Tea). July and August. Scarlet. 2½ ft.....	\$0 25	\$1 50	\$10 00
didyma , var. Cambridge Searlet . July and August. Scarlet. 2 ft.....	25	1 50	10 00
didyma var. splendens . July and August. Crimson-scarlet. 2 ft.....	25	1 50	10 00
MYOSOTIS alpestris , var. Victoria . May and June. Light blue. 6 to 9 in.....	25	1 50	10 00
palustris (Forget-me-not). May and June. Light blue. Spreading.....	25	1 50	10 00
NEPETA glecoma , var. variegata (Ground Ivy). May. Purple. 6 in.....	25	1 50	10 00
ŒNOTHERA fruticosa , var. major (Sundrops). July. Yellow. 1½ ft.....	25	2 00	15 00
fruticosa , var. Youngi (Young's Primrose). June. Lemon. 1½ to 2 ft.....	25	1 50	12 50
Frazeri . June. Rich yellow. 1½ ft.....	25	2 00	15 00
Missouriensis (Large Evening Primrose). June and July. Yellow. 1 ft.....	25	2 00	15 00
speciosa (White Primrose). June and July. White. 1½ ft.....	25	1 50	10 00
OPHIOPOGON Jaburan , var. aureus variegatus (Snake's Beard). September. Blue. 6 in..	50	3 50	
PACHYSANDRA procumbens (Mountain Spurge). March to May. White or purple. Spreading.	25	1 50	12 50
terminalis . May and June. White. 8 in.....	25	1 50	12 50
PÆONIA . See our Calendar of Hardy Perennials for Special List.			
Chinensis, Double Varieties . Our selection, May and June	35	3 00	25 00
Chinensis, Heavy Clumps . Our selection.....	1 50	12 50	
Chinensis, Single Varieties . Our selection.....	35	3 00	25 00
corallina . May. Single. Reddish purple.....	35	3 00	25 00
Moutan (Tree Peony). May and June. Different colors	1 00	9 00	
officinalis , var. rubra plena . Early April. Double; deep crimson.....	50	4 00	35 00
officinalis , var. rosea plena . Early April. Double; pink.....	1 00	9 00	
tenuifolia . Early April. Single; deep maroon.	50	4 00	
tenuifolia , var. plena . Early April. Double; maroon	50	4 00	
triternata . April. Single. Bright red.....	35	3 00	25 00
PAPAVER bracteatum . June. Blood-red. 4 ft....	25	2 00	12 50
nudicaule (Iceland Poppy). All summer. Many colors. 1 ft.	25	1 50	10 00
orientale (Oriental Poppy). June. Orange-scarlet. 2 ft.	25	2 00	12 50
PARDANTHUS . See <i>Belemcanda</i> .			
PENTSTEMON barbatus , var. Torreyi (Torrey's Beard Tongue). June to August. Scarlet. 3 to 4 ft.....	25	1 50	10 00
grandiflorus . June to August. Purplish blue. 2 to 2½ ft.....	25	2 00	15 00
lævigatus , var. Digitalis . July and August. White. 3 ft.....	25	2 00	
ovatus . July and August. Purplish blue. 2 to 3 ft.....	25	2 00	

	Each	10	100
PHLOX <i>amœna</i> . May. Bright pink. 3 to 4 in.....	\$0 25	\$1 50	\$10 00
<i>Carolina</i> . May and June. Rosy red. 1 ft....	25	1 50	
<i>divaricata</i> (Wild Sweet William). May and June. Lavender. 1 ft.....	25	1 50	12 50
<i>paniculata</i> ; syn., <i>decussata</i> (Perennial Phlox). See the Calendar of Hardy Perennials for Special List. All colors.....	25	2 00	15 00
<i>subulata</i> (Mountain Pink). May and June. Rose. Creeping	25	1 50	10 00
<i>subulata</i> , var. <i>alba</i> . May and June. White. Creeping	25	1 50	10 00
<i>subulata</i> , var. <i>atropurpurea</i> . May and June. Purple. Creeping	25	1 50	
<i>subulata</i> , var. <i>lilacina</i> . May. Lilac. Creeping..	25	1 50	12 50
<i>subulata</i> , var. <i>Nelsoni</i> . May and June. Pure white. Creeping	25	1 50	10 00
<i>subulata</i> , var. <i>Model</i> . May and June. Rosy white. Creeping	25	1 50	10 00
PHYSOSTEGIA <i>Virginiana</i> (False Dragonhead). August. Deep rose. 3 ft.....	25	1 50	
<i>Virginiana</i> , var. <i>alba</i> . August. White. 3 ft..	25	1 50	10 00
<i>Virginiana</i> , var. <i>speciosa</i> . August. Pink. 3 ft.	25	1 50	10 00
PLATYCODON <i>grandiflorum</i> (Balloon-flower). July. Blue. 1½ ft.....	25	1 50	
<i>grandiflorum</i> , var. <i>album</i> . July. White. 1½ ft.	25	1 50	
<i>grandiflorum</i> , var. <i>Mariesi</i> . June to October. Blue. 1 ft.....	25	1 50	12 50
POLEMONIUM <i>cœruleum</i> (Jacob's Ladder). May to July. Deep blue. 1½ ft.....	25	2 00	15 00
<i>cœruleum</i> , var. <i>album</i> . May to July. White. 1½ to 2 ft.....	25	2 00	
PRIMULA <i>acaulis</i> (Primrose). May. Yellow. 6 to 9 in.....	25	1 50	12 50
<i>capitata</i> (Primrose). Deep lilac. 9 in.....	25	1 50	12 50
<i>suaveolens</i> (Cowslip). May. Yellow and orange. 1 ft.....	25	1 50	12 50
<i>veris</i> (Polyanthus). May. Yellow and orange-erimson. 6 to 9 in.....	25	1 50	12 50
<i>vulgaris</i> (English Primrose). May. Yellow. 6 to 9 in.....	25	1 50	12 50
PYRETHRUM <i>roseum</i> (Feverfew). June and July. White, pink and red. 1½ to 2 ft.....	25	1 50	10 00
<i>roseum</i> fl. pl. Named varieties. 1½ to 2 ft....	35	3 00	
RANUNCULUS <i>aconitifolius</i> fl. pl. (Crow's-foot). June. White. 1½ to 2 ft.....	25	1 50	
<i>acris</i> fl. pl. (Yellow Bachelor's Buttons). June. Yellow. 2 ft.....	25	1 50	
<i>repens</i> (Double Buttercup). May to July. Yellow. 1 ft.....	25	1 50	10 00
ROSMARINUS <i>officinalis</i> (Rosemary). Scented foliage	25	1 50	
RUDBECKIA <i>laciniata</i> , var. <i>Golden Glow</i> . July to September. Yellow. 8 ft.....	25	1 25	10 00
<i>Newmani</i> . August and September. Yellow. 1½ ft.	25	1 50	10 00
<i>nitida</i> (Cone-flower). August and September. Pale yellow, 5 ft.....	25	1 50	10 00

PRICE LIST FOR FALL OF 1910

61

	Each	10	100
SALVIA argentea. June. White, white foliage. 2 ft..	\$0 25	\$1 50	\$10 00
Caucasicum. July and August. Reddish purple.			
3 ft.	25	1 50	10 00
pratensis (Meadow-sage). June to September.			
Deep blue. 2 to 3 ft.....	25	1 50	10 00
SANGUINARIA Canadensis (Bloodroot). White.			
April. 6 in.....	25	1 50	10 00
SANTOLINA incana (Lavender Cotton). July.			
Deep yellow. 1 ft.....	25	1 50	10 00
SAXIFRAGA cordifolia (Rockfoil). April to June.			
Rosy purple. 15 in.....	25	2 00	15 00
SCABIOSA Caucasica (Mourning Bride). Lavender-blue. June. 15 to 18 in.....	35	2 50	15 00
SEDUM acre (Golden Moss). May and June. Yellow. Spreading	25	1 25	10 00
album. July. White. 4 to 6 in.....	25	1 25	10 00
Rhodiola. August. Light pink. 1 ft.....	25	1 25	10 00
sexangulare (Stonecrop). June and July. Yellow. 6 in.....	25	1 25	10 00
spectabile (Brilliant Stonecrop). September and October. Rose. 12 to 15 in.....	25	2 00	15 00
spectabile, var. atropurpurea. September and October. Purplish crimson. 15 in.....	25	2 00	15 00
telephoides. July and August. Pink. 1 ft...	25	2 00	15 00
SENECIO clivorum. Summer. Yellow. 3 ft.....	35	2 50	15 00
pulcher (Groundsel). July to October. Rosy purple. 1½ to 2 ft.....	25	1 50	
SILENE Pennsylvanicum (Wild Pink). April and May. Rose or white. 9 in.....	25	1 25	10 00
SMILACINA racemosa (False Solomon's Seal). April. White. 1½ ft.....	25	1 50	
SPIRÆA (Goat's Beard, or Meadowsweet) aruncus. June and July. White. 4 to 5 ft.....	35	2 50	15 00
filipendula fl. pl. June and July. White. 2 ft.	25	1 50	12 50
lobata. July. Pink. 3 to 4 ft.....	25	2 00	15 00
palmata. June and July. Deep crimson. 2 ft.	25	2 00	15 00
palmata, var. elegans. June and July. White; crimson anthers. 3 ft.....	25	2 00	
Ulmaria. June and July. White. 3 ft.....	25	2 00	
venusta. June and July. Deep pink. Fragrant. 3 ft.....	25	2 00	
STACHYS Betonica; syn., Betonica rosea. July and August. Rose. 1 ft.....	25	1 50	12 50
STATICE Tatarica (Sea Lavender). June to August. Red. 15 to 18 in.....	25	1 50	10 00
latifolia (Great Sea Lavender). July and August. Deep blue. 2 ft.....	25	1 50	10 00
STOKESIA cyanea (Stokes' Aster). July to October. Lavender. 1½ ft.....	25	2 00	15 00
cyanea, var. alba. July to October. White. 1½ ft.....	50	3 50	
TANACETUM globiferum (Tansy). August. Golden yellow. 3 ft.....	25	1 50	10 00

	Each	10	100
THALICTRUM adiantifolium (Meadow Rue). June. Yellow. 18 in.....	\$0 25	\$1 50	\$10 00
aquilegifolium (Feathered Columbine). June. White. 2 to 4 ft.....	25	1 50	
polyganum (Tall Rue). June. White. 3 to 4 ft.	25	1 50	
purpurascens . June to August. Purple. 3 to 4 ft.	25	1 50	
THERMOPSIS Caroliniana . June. Yellow. 3 to 4 ft.	25	1 50	
mollis . May to July. Yellow. 2 to 3 ft.....	25	1 50	
THYMUS montanus , var. coccineus (Scarlet Thyme). May. Bright red. 4 in.	25	1 50	
vulgaris (Common Thyme). May. Lilac. 1 to 2 ft.	25	1 25	
TRADESCANTIA Virginiana (Spiderwort). June to October. Purple. 2 ft.	25	1 50	12 50
Virginiana , var. alba . June and July. White. 2 ft.	25	1 50	12 50
TRILLIUM erectum (Wake Robin). March and April. Purple. 9 to 12 in.....	25	1 50	
grandiflorum (Wood Lily). March and April. White. 9 to 12 in.	25	1 50	
TROLLIUS Europæus (Globe-flower). May to August. Yellow. 2 ft.	25	1 50	12 50
VALERIANA coccinea (Valerian). June to October. Reddish. 2 ft.	25	1 50	10 00
officinalis (Hardy Heliotrope). June and July. Rose-pink. 2 ft.	25	1 50	10 00
rubra . June to October. Red. 2 ft.....	25	1 50	10 00
VERBASCUM Olympicum (Mullein). July to Sep- tember. Yellow. 6 ft.	25	1 50	12 50
VERNONIA Arkansana (Ironweed). August to Octo- ber. Red. 5 ft.	25	2 00	
Baldwini . August to October. Purple. 4 ft..	25	2 00	
VERONICA longifolia , var. rosea (Speedwell). July to October. Rose. 1½ ft.	25	1 50	
longifolia , var. subsessilis . August to Novem- ber. Deep blue. 1½ to 2 ft.	25	2 00	15 00
rupestris (Rock Speedwell). June and July. Blue Spreading	25	1 50	10 00
spicata . June to September. Bright blue. 1½ ft.	25	1 50	10 00
Virginica . August to September. White. 4 ft.	25	1 50	10 00
VINCA minor (Periwinkle). May. Bright blue. Spreading	25	1 50	10 00
VIOLA pedata , var. bicolor (Bird's-foot Violet). May. Purple and White. 4 in.....	25	1 50	12 50
Mixed	25	1 25	10 00

A CALENDAR OF PERENNIALS

This booklet, in a revised edition, with monthly lists, and special lists of Phlox, Iris, Peonies and Chrysanthemums, will be found valuable in arranging hardy gardens.

FERNS

- ADIANTUM pedatum** (Maidenhair Fern). 1 to 2 ft. Moist, shaded positions.
ASPIDIUM acrostichoides (Christmas Fern). 1 to 2 ft. Evergreen. Dry or moist soils in shady places.
Felix-mas (Male Fern). 2 ft. Semi-shaded positions, dry or moist soils.
Goldianum. 2 to 4 ft. Semi-shaded positions, dry or moist soils.
marginale. Evergreen. 1 to 2 ft. Shaded positions, dry or moist soils.
ASPLENIUM Filix-femina (Lady Fern). 2 to 3 ft. Open or shaded positions, in moist or dry soils.
BOTRYCHIUM Virginianum (Moonwort). 6 to 12 in. Shaded positions, moist or dry soils.
DICKSONIA punctilobula (Boulder Fern). 2 to 3 ft. For open positions; forms large plantations.
ONOCLEA sensibilis (Sensitive Fern). 1 to 2 ft. For open planting and wet soils.
Struthiopteris (Ostrich Fern). 2 to 4 ft. For open positions, dry or moist soils.
OSMUNDA gracilis (Flowering Fern). 2 to 4 ft. Open or shaded positions, and moist soils.
Claytoniana. 2 to 5 ft. For open plantings, dry or moist soils.
cinnamomea (Cinnamon Fern). 2 to 5 ft. For open or shaded positions, in wet soils.
WOODSIA obtusa. 6 to 12 in. Shady places, in moist soil.
WOODWARDIA angustifolia (Chain Fern). 1 ft. Open or shaded positions, in moist soils.
 The above varieties, 25 cts. each, \$2 per 10, \$15 per 100.
 The above collection, 15 varieties, \$3.
 100 in 5 varieties, our selection, \$12.50.

HEDGE PLANTS

We shall be pleased to name special prices for plants in quantity for hedging purposes.

EVERGREEN TREES

	SEE PAGE		SEE PAGE
Biota orientalis	4	Thuja occidentalis	13
Picea excelsa	7	occidentalis Wareana	14
Retinospora plumosa	10	Tsuga Canadensis	14
Retinospora plumosa aurea	11		

DECIDUOUS TREES

Carpinus Americana	24	Cratægus Oxyacantha	26
Betulus	24	Fagus sylvatica	26
Cratægus Crus-galli	26		

EVERGREEN SHRUBS

Azalea amœna	15	Ilex crenata microphylla	17
Buxus sempervirens	15	Mahonia aquifolia	17
sempervirens suffruticosa ...	16	Japonica	17

DECIDUOUS SHRUBS

Acanthopanax spinosa	33	Hippophae rhamnoides	40
Berberis Thunbergi and vulgaris .	35	Ligustrum Iboia, Regelianum,	
Elæagnus longipes	39	ovalifolium, vulgare	41
Forsythia viridissima	39	Lonicera Tatarica	42
Hibiscus Syriacus	39	Rhamnus cathartica	43

OUR CATALOGS

THE ANDORRA HANDBOOK. Planters who desire a complete descriptive list will be supplied with our Handbook of Trees and Plants for 50 cents, which will be credited upon their first purchase amounting to \$5.

ANDORRA'S HANDBOOK will serve as a standard guide, being up-to-date in nomenclature, and containing conservative descriptions of a vast list of trees and plants, with hints on planting, pruning and caring for them. It is illustrated and fully indexed.

PRICE-LISTS are issued semi-annually. Owing to our large output, and the changes in sizes of stock by reason of each season's growth, frequent revisions of the **PRICE-LIST** are necessary, to keep customers thoroughly posted on the stock we offer. You are always sure your order will be filled if you find the items in the current season's **PRICE-LIST**.

MORE SPECIALTIES, a booklet of 32 pages, describing and illustrating a large number of very choice things for the country home. A great help in deciding upon just the right thing to plant.

BEAUTIFUL LAWNS, BOOKLET No. 27. This little pamphlet treats of Lawn Fertilizing, and its eight pages should be carefully read by all interested in having a good lawn.

BOXWOOD, BOOKLET No. 28. For formal gardens and in connection with architectural effects, **BOXWOOD** is now absolutely necessary. This booklet shows the different forms we offer.

HINTS FOR SUCCESSFUL PLANTING, BOOKLET No. 30. Does not aim to cover every point that may arise, but it gives the principles in such a way that any one, by following its directions, can secure the best results.

A CALENDAR OF HARDY PERENNIALS, BOOKLET No. 33-26, with special lists of Iris, Phlox, Peonies and Chrysanthemums. This little booklet gives a complete list of Perennials, and shows in tabulated form their height, color, and months of bloom; invaluable to those planning herbaceous gardens.

MEASURING TREES AND SHRUBS

All trees and shrubs are measured as they stand in the Nursery before digging. In evergreen trees and in evergreen and deciduous shrubs the height is taken from the ground to the top of the plant.

Deciduous trees are measured from the ground to the top of the head, and the caliper or diameter of the trunk is taken above the collar. Measurements are expressed thus: 10 to 12 ft. (height), 2½ to 2¾ in. (caliper).

DEPARTMENTS

	PAGE		PAGE
Fertilizers	2	Vines and Climbing Plants.....	47
General Instructions and Terms...	3	Fruit and Small Fruits.....	49, 50
Evergreen Trees.....	4	Roses	50
Evergreen Shrubs.....	15	Herbaceous Plants.....	51
Deciduous Trees.....	20	Ferns	63
Deciduous Shrubs.....	33	Hedge Plants.....	63
Reeds and Grasses.....	47	Catalogs	64

INDEX

	PAGE		PAGE		PAGE
Annon's Beard.....	40	Baby's Breath.....	56	Catalpa	24
Abella	33	Baccharis	35	Ceanothus	36
Abies	4	Banhusa	47	Cedar	5, 7
Acanthus	51	Baptisia	53	Cedrela	24
Acanthopanax	33	Barberry	35	Cedrus	5
Acer	20-22	Basswood	32-33	Celastrus	47
Achillea	51	Beard Tongue.....	59	Celtis	25
Aconitum	51	Bear's Breech.....	51	Cephalanthus	36
Actinidia	47	Beauty-fruit	35	Cephalotaxus	5
Adam's Needle.....	20	Beech	26	Cerastium	54
Adiantum	63	Belemcanda	53	Cerasus	16, 25
Æsculus	23, 33	Bell-flower	54	Ceratostigma	54
Ailanthus	23	Bellis	53	Cercidiphyllum	25
Ajuga	51	Benzoin	35	Cercis	25, 36
Akebia	47	Berberis	35	Chamædaphne	16
Alder	23	Betonica. See Stachys.		Chamomile	52
Allspice, or Sweet Shrub	35	Betula	24	Chaste Tree.....	47
Alnus	23	Bignonia	47	Chelone	54
Althæa (see, also, III- biscus)	39, 40, 51	Balloo-flower	60	Cherries	49
Alum Root.....	56	Biota	4-5	Cherry	25
Alyssum	51	Birch	24	Chestnut	24, 49
Amelanchier	23, 33	Blittersweet	47	Chinese Angelica Tree.....	23
Amorpha	34	Black Alder.....	23	Chinese Arhorvitæ ...	5
Ampelopsis	47	Blackberries	49	Chinese Cork Tree.....	29
Amygdalus. See Prunus.		Black Hawth.....	47	Chionanthus	36
Anchusa	51	Black Walnut.....	27	Chokecherry	43
Andromeda (see, also, Oxydendrum)	15, 23	Bladder Nut	44	Christmas Rose.....	56
Anemone	51, 52	Bladder Senna.....	36	Chrysanthemum	54
Anthemis	52	Blanket-flower	55	Chrysogonum	54
Apples	49	Blazing Star.....	58	Chrysopsis	54
Aquilegia	52	Bleeding Heart.....	55	Cimicifuga	54
Arabis	52	Blue Spruce.....	35	Cineraria. See Arte- misia.	
Aralia	23	Bocconia	53	Cinquefoil	42
Arhorvitæ	4, 5, 13	Boltonia	53	Cladrastis	25
Arenaria	52	Botrychium	63	Clematis	48, 54
Aristolochia	57	Box	15-16	Clethra	36
Armeria	53	Bridal Wreath.....	44	Columbine	52, 62
Aronia. See Pyrus.		Broussonetia	24	Colutea	36
Arrow-wood	46	Buckthorn	43	Comptonia	36, 37
Artemesia	53	Butterfly Weed.....	53	Cone-flower	55, 60
Arundo	47	Buttonwood	30	Conoclinium	54
Asclepias	53	Buxus	15-16	Convallaria	54
Ash	27, 32	Calimeris	53	Coral Berry.....	44
Asparagus	50	Calliocalpa	35	Corechorus	36
Aspidium	63	Callirhoe	54	Coreopsis	54
Asplenium	63	Calycanthus	35	Cornus	25, 36, 37
Aster	53	Campanula	54	Corylus	37
Astilbe	53	Candytuft	57	Cotoneaster	16, 37
Astrantia	53	Caragana	35	Crab Apples	30
Aubrietia	53	Cardinal-flower	58	Cranberry Bush.....	46
Azalea	15, 34, 35	Carpinus	24	Cratægus	17, 25, 26
		Caryopteris	35	Cryptomeria	5
		Castanea	24	Cucumber Tree.....	28

	PAGE
Cupressus	12
Currant	43, 49
Cydouia	37
Cypress	9, 12, 32
Cytisu	27, 37
Daisy	53
Day Lily	55-56
Daphne	17
Deciduous Shrubs	33-47
Deciduous Trees	20-33
Delphinium	55
Desmodium. See Lespedeza	
Deutzia	37, 38
Diantbus	55
Dicentra	55
Dicksonia	63
Dictamnus	55
Diervilla	38
Digitalis	55
Diospyros	26
Dogwood	25, 36-37
Dolichos. See Pueraria.	
Doronicum	55
Dutchman's Pipe	47
Echinacea	55
Elæagnus	39
Elder	43
Elm	33
Elymus	47
English Primrose	60
English Ivy	48
Eriantbus	47
Erigeron	55
Eryngium	55
Esculent Roots	50
Eulalia	47
Euonymus	17, 39, 48
Eupatorium	55
Euphorbia	55
Evening Primrose	59
Evergreen Shrubs	15-20
Evergreen Thorn	17
Evergreen Trees	4-15
Everlasting Pea	48
Exochorda	39
Fagus	26
Ferns	63
Festuca	47
Feverfew	55, 60
Fir	4
Flame-flower	58
Flowering Almond	43
Flowering Crab	30
Forget-me-not	59
Forsythia	39
Foxgloves	55
Fox Grape	48
Fraxinus	27
Fruit	49
Funkia	55
Gaillardia	56
Galega	56
Gas Plant	55
Geranium	58
German Catchfly	56
Geum	56
Gillenia	56

	PAGE
Ginkgo	32
Gleditschia	27
Globe-flower	36
Goat's Beard	61
Gold-flower	40
Golden Bell	39
Golden Chain	26
Golden Tuft	51
Glyptostrobus. See Taxodium.	
Gooseberries	49
Grapes	48-49
Groundsel Shrub	35, 61
Guelder Rose	46
Gymnocladus	27
Gypsophila	56
Halesia	39
Hamamelis	39
Hardy Roses	50-51
Hawthorn	26
Hazel	37-39
Hedera	48
Hedge Plants	63
Helanium	56
Hellanthus	56
Heliopsis	56
Helleborus	56
Hemerocallis, or Day Lily	56
Henlock	14
Hepatica	56
Herbaceous Plants	51-62
Heubebera	56
Hibiscus	39, 40, 57
High Cranberry Bush	46
Hippophae	40
Holly	17
Hollyhocks (see, also, Althæa)	51
Honey Locust	27
Honeysuckle	41, 48
Hop Tree	30
Hornbeam	24
Horse-cbestnut	23
Hydrangea	40
Hypericum	40
Iberis	57
Ilex	5, 17, 40
Inula	57
Iris	57
Iron Weed	62
Itea	40
Jacob's Ladder	60
Japanese Maples	22-23
Japan, or Boston Ivy	27
Japan Cypress	9
Japan Judas	36
Japan Quince	37
Japanese Snowball	46
Jasmine	40
Jasminum	40
Jersey Tea	36
Judas Tree	25
Juglans	27
Juneberry	23
Juniperus	5-6-7
Kalmia	17
Kentucky Coffee Tree	27
Kerria. See Corchorus.	43

	PAGE
Kniphofia	58
Kœlreuteria	27
Kudzu Vine	48
Larch	27
Larix	27
Larkspur	55
Lathyrus	48, 58
Laurel	16-17
Lavandula	58
Lavender	58
Lavender-cotton	61
Lespedeza	40
Liatris	58
Ligustrum	40-41
Lilac	44
Lilium	58
Lily-of-the-valley	54
Linden	32-33
Linum	58
Liquidambar	28
Liriodendron	28
Liver Leaf	56
Libella	58
Locust	27, 32
London Pride	58
Lonicera	41, 42, 48
Loosestrife	58
Lychnis	58
Lycium	42
Lysimachia	58
Lythrum	58
Maclura	28
Magnolia	28
Mahonia	17
Maidenbair Tree	32
Maple	20-23
Matrimony Vine	42
Meadow Rue	61
Meadow Sweet	61
Mertensia	58
Mint-flower	54
Mist, or Smoke Tree	43
Mock Orange	42
Monarda	59
Moneywort	38
Monkshood	51
Morus	29
Mountain Ash	32
Mourning Bride	61
Mulberry	24, 29
Myosotis	59
Myrica	42
Negundo. See Acer Negundo.	
Nepeta	59
Nettle Tree	25
Nuts	49
Nyassa	29
Oak	30-31
Oenothera	59
Old Man	53
Old Woman	53
Oleaster	39
Onoclea	63
Ophiopogon	59
Oriental Plane	30
Oriental Poppy	59
Osage Orange	28
Osmanthus	17

PRICE LIST FOR FALL OF 1910

67

	PAGE		PAGE		PAGE
Osmunda	63	Ribbon Grass	47	Sweet Shrub	35
Oswego Tea, or Fra-		Ribes	43	Sycamore	30
grant Balm	59	Robinia	32, 43	Symphoricarpus	44
Oxydendrum	29	Rock Cress	52	Syringa	44
Paeonia	59	Rockfoil	61	Tanacetum	61
Pachysandra	59	Rose Acacia	43	Tamarix	46
Papaver	59	Rose Campion	58	Taxodium	32
Pardanthus. See Bel-		Rosemary	60	Taxus	11-12
emcanda.		Rose of Sharon	39, 40	Tecoma. See Bignonia.	
Parrotia	29	Roses	50-51	Thalietrum	62
Paulownia	29	Rosmarinus	60	Thermopsis	62
Pavia. See Æsculus.		Rosy Milfoil	51	Thorn	25-26
Peaches	29, 49	Rubus	43	Thorn, Evergreen	17
Pearl Bush	39	Rudbeckia	60	Thrift	53
Pears	49	Rugosa Roses	51	Thuya	13-14
Pentstemon	59	Salisburia	32	Thujaopsis	12
Periploca	48	Salix	32	Thymus	62
Periwinkle	62	Salvia	61	Tickseed	54
Persian Iron Tree	29	Sambucus	43	Tiger Lily	58
Persica	29	Sandwort	52	Tilia	32-33
Persimmon	26	Sanguinaria	61	Tradescantia	62
Phalaris	47	Santolina	61	Tree of Heaven	23
Phellodendron	29	Saxifraga	61	Trillium	62
Philadelphus	42	Scotch Broom	37	Trollius	62
Phillyrea	17	Scabiosa	61	Trumpet Vine	47
Phlox	60	Sciadopitys	11	Tsuga	14
Physostegia	60	Sea Buckthorn	40	Tulip Tree	28
Picea	7-8	Sea Holly	55	Ulmus	33
Pine	8-9, 11	Sea Lavender	61	Umbrella Tree	28
Pinks	60	Senecio	61	Vaccinium	46
Pinus	8-9	Sedum	61	Valeriana	62
Plane	30	Sheepsberry	46	Valerian	62
Platanus	30	Shrub Yellow Root	47	Varnish Tree	27
Platycodon	60	Shrubby Cinquefoil	42	Verbascum	62
Plumbago	54	Silene	61	Vernonia	62
Plums	49	Silk Vine	48	Veronica	62
Podocarpus	9	Small Fruits	49	Viburnum	46-47
Polemonium	60	Smilacina	61	Vinca	62
Poplar	30	Snakeroot	55	Vines and Climbing	
Populus	30	Snowball	46	Plants	47, 48
Poppy	53, 59	Snowberry	44	Viola	62
Potentilla	42	Sophora	32	Virgilia.	25
Primrose	59-60	Sorbus	32	Virginia Creeper	47
Primula	60	Speedwell	62	Vitex	47
Privet	40-41	Spice Bush	35	Vitis	48
Prunus. See, also,		Spiderwort	62	Walnut	27-49
Cerastus	30, 42	Spindle Tree	39	Wax Myrtle	42
Pseudotsuga	9	Spiræa	43, 44, 53, 61	Wayfaring Tree	46
Ptelea	30	Spruce	7, 8, 9	Weigela	38
Pterostyrax	30	Stachys	61	White Fringe	36
Pueraria	48	Staphylea	44	White Rod	46
Purple Mist	43	Statice	61	Wolf's-bane	51
Pyrethrum	60	Stephanandra	45	Willow	32
Pyrus	30, 42	Stokesia	61	Windflower	51-52
Quercus	30, 31	Stokes' Aster	61	Winola	47
Quince	37, 49	Stonecrop	61	Winter Berry	40
Ranunculus	60	Strawberries	50	Wistaria	48
Raspberries	50	Strawberry Bush	39	Witch Hazel	39
Red Bud, or Judas	25	Styrax	44	Woodsia	63
Reeds and Grasses	47	Sumae	31-32, 43	Woodwardia	63
Retinospora	9-11	Sunflower	56	Xanthoceras	47
Rhamnus	43	Swamp Huckleberry	46	Xanthorrhiza	47
Rhododendron	18	Sweet Fern	36	Yarrow	51
Rhodotypus	43	Sweet Gum	28	Yellow Wood	25
Rhubarb	50	Sweet William	54, 60	Yew	5, 9, 11, 12
Rhus	31-32, 43	Sweet Pepper Bush	36	Yucca	20

Plant for Immediate Effect

Not for Future Generations

Start with large stock—it has taken years of special preparation to grow such Trees and Shrubs as we offer you.

We have done the long waiting—you can secure at once specimens that will give immediate and permanent results.

AS AN EXAMPLE

Note in this Price-List, page 21, Norway Maples, 14 to 20 ft. in height with trunks 4 to 10 in. in diameter. Specimen trees with broad tops and a system of fibrous roots that makes transplanting successful—trees that are sure to grow. Such trees simply “make your place.”

AN IMPORTANT POINT

These specimen Trees and Shrubs are Andorra-Grown—they are here at our Nurseries where you may inspect them and reserve such as suit your purpose.

ANDORRA-GROWN MEANS QUALITY
QUALITY IN TREES MEANS SUCCESSFUL PLANTING