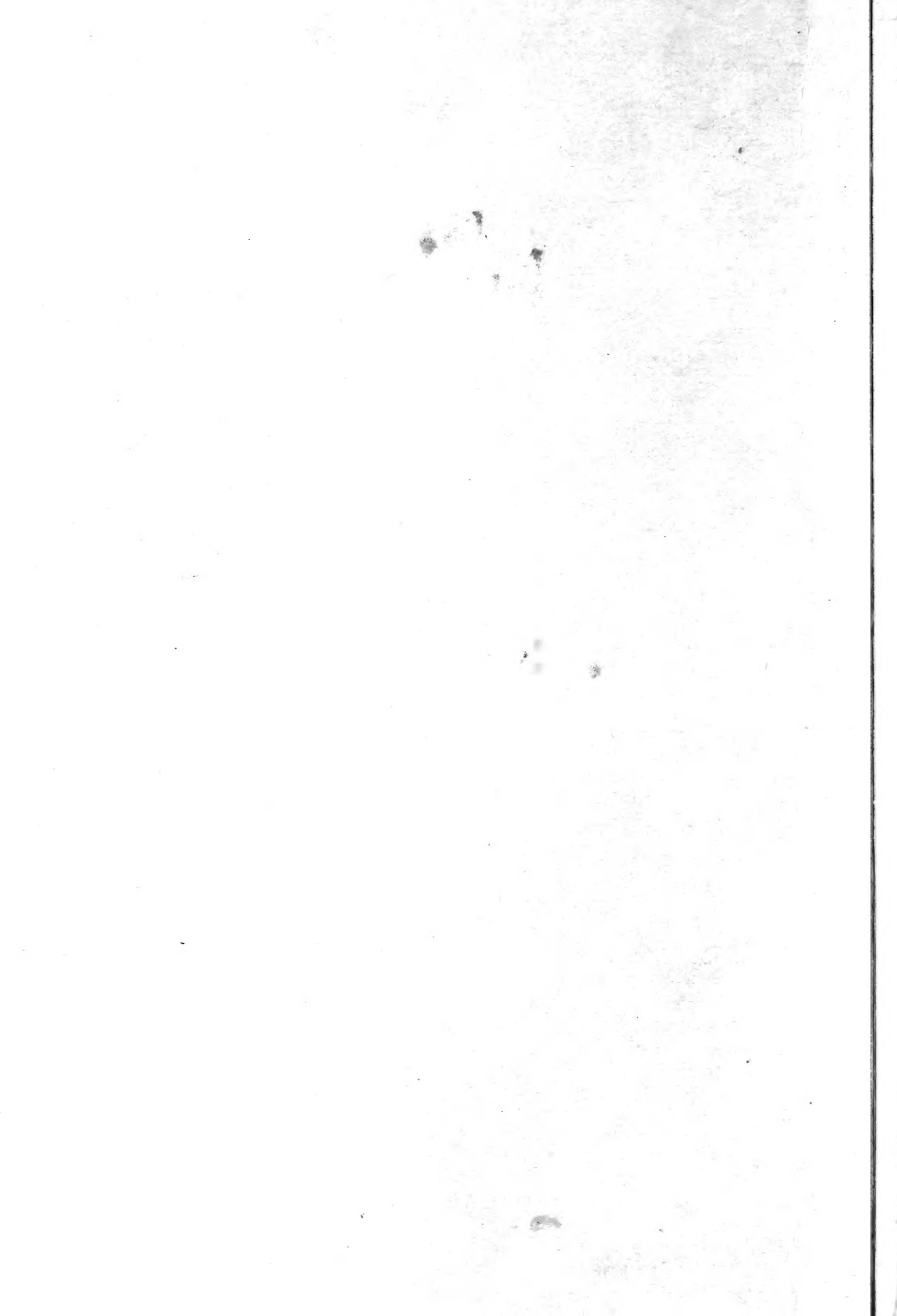


Historic, archived document

Do not assume content reflects current scientific knowledge, policies, or practices.



CATALOGUE

FOR

1861,

OF

FRUIT AND ORNAMENTAL

TREES,

FLOWERING SHRUBS, ETC.,

CULTIVATED AND FOR SALE BY

WILLIAM REID,

AT HIS NURSERIES,

ELIZABETHTOWN, N. J.

NEW YORK:

PRINTED BY C. A. ALVORD,

15 VANDEWATER STREET,

1861.

PREFACE.

THE proprietor, in offering his new Catalogue, would beg leave to state, that since publishing the last edition there have been a number of new Fruits, as well as Ornamental Trees, added to his collection, including a number of new Evergreens, which are now for sale, and under propagation. He would also observe, that since he commenced business, now nearly thirty years, no expense has been spared in procuring all the new varieties of Fruits that were likely to be of value, also Ornamental Trees, making the collection at present one of the most extensive, for variety and healthy grown plants, in the United States. The home grounds contain about forty acres, closely cultivated, and under a fine state of cultivation. The soil is what is termed a heavy loam, all thoroughly under-drained and subsoiled, producing strong, vigorous-rooted plants, which transplant with much less risk than those grown on light sandy soils. Specimen Orchards have also been planted of all the different kinds of fruits, containing upwards of one thousand varieties; a great many of them having been planted in 1845, are now in fine bearing condition, which gives an opportunity to judge of their qualities, as well as proving their correctness to name. The proprietor would also beg leave to say that there shall be nothing wanting on his part, so far as practical experience and strict personal attention to all the different departments connected with the business go, to insure punctuality and correctness in the execution of orders, and in the packing and forwarding of Trees to all parts of the United States.

N. B.—The Nurseries are easy of access from New York, almost every hour of the day, by the New Jersey Railroad, foot of Cortlandt st., or the Elizabethport Ferry, from Pier No. 2 North River, arriving at Elizabethtown in one hour, the depot being within five minutes' walk of the Nursery.

The Nursery grounds being always kept in good order, nurserymen, amateurs, and others interested in the cultivation of fruits, &c., are respectfully invited to visit them in the growing season.

Orders by mail, addressed to the proprietor, or left at the Nursery, will receive prompt attention, and will be delivered in New York free of charge, or forwarded by whatever conveyance the parties ordering may designate; they will, however, after delivery into the hands of the forwarders, be at the risk of the purchaser.

APPLES.

25 CENTS EACH.

NAME.	WHEN RIPE.	NAME.	WHEN RIPE.
Alexander.....	Sept. Oct.	Monstrous Pippin.....	Nov. Jan.
Astrachan, White.....	August.	Moose Apple.....	Oct. Dec.
" Red.....	August.	Michael Henry Pippin...	Nov. March.
Beauty of Kent.....	Oct. Nov.	Monmouth Pippin.....	Nov. March.
Benoni.....	August.	Mother Apple.....	
Black or Red Gilliflower..	Nov. Jan.	Minister.....	Oct. Dec.
Belle-Fleur, Yellow.....	Nov. Feb.	Newark King.....	Oct. Jan.
Baldwin.....	Nov. April.	Newtown Pippin.....	Dec. April.
Bough, Sweet.....	August.	Northern Spy.....	Nov. Jan.
Blenheim Pippin.....	Nov. Dec.	Ortley.....	Dec. Jan.
Black Crab.....	Nov. Dec.	Pearmain, Summer.....	August.
Belle et Bonne.....		" Winter.....	Nov. Jan.
Belmont.....	Oct. Nov.	" Blue.....	Nov. Jan.
Coleman.....		Porter.....	Aug. Sept.
Chandler.....	Nov. Dec.	Pennock.....	Nov. Jan.
Cumberland Spice.....	Nov. Jan.	Pumpkin Sweet.....	Oct. Nov.
Cranberry.....	Nov. Dec.	President.....	Nov. Dec.
Cayuga Red Streak.....	Oct. Nov.	Peck's Pleasant.....	Nov. Jan.
Danvers Winter Sweet...	Nov. March.	Pound Royal.....	Dec. April.
Domine.....	Nov. March.	Pomme Royal.....	Sept. Oct.
Dutch Codling.....	Aug. Sept.	Primate.....	Aug. Sept.
Drap d'Or.....	Sept. Oct.	Red Streak.....	Nov. Jan.
Dutch Mignonne.....	Nov. Dec.	Reinette du Canada.....	Nov. Jan.
Duchess of Oldenburgh..	Sept. Oct.	Rhode Island Greening..	Nov. March.
Devonshire Quarrendon..	August.	Ribston Pippin.....	Nov. Oct.
Early Joe.....	Sept.	Roxbury Russet.....	Nov. March.
Fall Pippin.....	Sept. Dec.	Roman Stem.....	Oct. Jan.
Fall Harvey.....	Oct. Nov.	Rambo.....	Nov. Jan.
Fameuse.....	Oct. Nov.	Red Canada.....	Dec. Jan.
Foxley Crab.....	Sept.	Republican Pippin.....	Sept. Oct.
Gravenstein.....	Oct. Nov.	Rebecca.....	Sept.
Golden Reinette.....	Nov. Dec.	Scarlet Nonpareil.....	Nov. Dec.
Granny Winkle.....	Nov. Dec.	Seek-no-Further.....	Nov. Jan.
Gilpin.....	Dec. March.	Summer Rose.....	July, Aug.
Golden Sweet.....	Sept.	Swaar.....	Nov. March.
Hawthornden.....	Sept. Oct.	Spitzenburgh, Esopus...	Nov. March.
Hubbardston Nonsuch...	Nov. Jan.	Summer Queen.....	Aug. Sept.
Hartford Sweet.....	Dec. March.	Summer Rambour.....	Aug. Sept.
Holland Pippin.....	Sept.	St. Lawrence.....	Sept. Oct.
Hawley.....		Siberian Crab.....	Aug. Sept.
Harrison.....	Nov. March.	Smoke-House.....	Nov. Dec.
Juneating, Red, or Early Strawberry.....	August.	Tolman's Sweet.....	Nov. March.
Jonathan.....	Nov. Feb.	Tetofsky.....	August.
Jersey Sweeting.....	Aug. Sept.	Tower of Glamis.....	Dec. March.
Jewett's Red.....		Tewksbury Winter Blush	
Keswick Codling.....	Aug. Sept.	Tompkins Co. King.....	
Kilham Hill.....	Oct. Nov.	Vandevere.....	Dec. Feb.
Lady Apple.....	Nov. Feb.	Victuals and Drink.....	Sept. Oct.
Ladies' Sweeting.....	Nov. Feb.	Wellington.....	Nov. Jan.
Maiden's Blush.....	Aug. Sept.	Wine.....	Oct. Jan.
Mela Carla.....	Nov. Dec.	Winesap.....	Nov. March.
Menagère.....	Oct. Nov.	Winter Strawberry.....	Oct. Nov.
Moore's Sweet.....		Worcester Sweet Russet.	Oct. Jan.
		Yellow Harvest.....	

The following varieties are recommended for orchard and general planting, and are cultivated in larger quantities than many other kinds on the list, viz.:

Baldwin, Rhode Island Greening, Roxbury Russet, Esopus Spitzenburgh, Northern Spy, Yellow Belle-Fleur, Vandevere, Gravenstein, Maiden's Blush, Swaar, Hubbardston Nonsuch, Yellow Harvest, Red Juneating, Fall Pippin, Monmouth Pippin, &c.

Apples received from the South which are little known here, viz.: Berry, Buff, Desharoon, Julien, Summerour, Southern Golden Pippin, Mountain Pippin, Mingham, Mountain Wonder, &c.

A Collection of Dwarf Apple Trees, on the Paradise and Doucin stocks, consisting of all the leading varieties suitable for garden culture, being Dwarf, and coming into bearing early.

PEARS.

37½ CENTS EACH.

NAME.	WHEN RIPE.	NAME.	WHEN RIPE.
Abbot.....	Sept.	Beurré Kirtland.....	Nov.
Adams.....	Sept. Oct.	“ Derouineau.....	Oct. Nov.
Andrews.....	Sept.	“ Clairgeau.....	Sept. Oct.
Arbre Courbe.....	Oct. Nov.	“ Milet.....	Nov. Dec.
Ananas d'Été.....	Sept. Oct.	“ Hardy.....	Oct.
Amire Joannet.....	July.	“ Berckmans.....	Oct. Nov.
Augustine Lelieur.....	Oct. Nov.	“ St. Nicholas.....	Oct.
Alexander Lambre.....	Dec. Jan.	“ de Koning.....	Nov.
Albertine.....	August.	“ Bachelier.....	Oct. Nov.
Alexander Bivort.....	Dec. Jan.	“ Duhaume.....	Jan. Feb.
Bergamotte, Easter.....	Jan. March.	“ Burnieq.....	Oct. Nov.
“ Gansel's*.....	Oct. Nov.	“ Seringe.....	Sept.
“ Gansel's Late.....	Dec.	“ Bretonneau*.....	Feb. March.
“ de Parthenay.....	Jan. March.	“ Nantais.....	
“ d'Esperen.....	Dec. Jan.	Baronne de Mello.....	Oct.
“ Drouet.....	Jan. April.	Bon Gustave.....	Dec. Jan.
Benoist.....	Aug. Sept.	Barbancinet.....	Aug. Sept.
Beurré Diel.....	Nov. Dec.	Brandywine.....	Sept.
“ Easter.....	Jan. March.	Bon Chretien Fondante..	Oct.
“ d'Aremberg.....	Jan. Feb.	Bon Chretien, Williams',	
“ Gris.....	Sept. Oct.	or Bartlett.....	Sept. Oct.
“ Rans*.....	Jan. March.	Bloodgood.....	August.
“ Bronze.....	Oct. Nov.	Belle Pear.....	Dec. March.
“ Bosc*.....	Sept. Oct.	Belle et Bonne.....	Sept.
“ St. Nicholas.....	Sept.	Broom Park.....	Dec. Jan.
“ Capiaumont.....	Sept. Oct.	Bezi d'Esperen.....	Jan.
“ d'Amanlis.....	Sept. Oct.	Bonne de Zees.....	Sept.
“ Golden of Bilboa..	Sept. Oct.	Bezi de la Motte.....	Oct. Nov.
“ Colmar.....		Belle Lucrative.....	Sept. Oct.
“ Romain.....	Sept.	Bleecker's Meadow.....	Nov. Jan.
“ Haggerston.....	Aug.	Bon Chretien of Summer.	August.
“ Giffard.....	Aug.	“ Fondante.....	Sept. Oct.
“ Duvivier.....	Jan.	Buffum.....	Oct.
“ Langelier.....	Jan.	Calebasse d'Été.....	August.
“ de Keckingheim..	Nov.	Catherine Gardette.....	
“ Sterkmans.....	Oct. Nov.	Colmar Charnay.....	Jan. Feb.
“ Goubault.....	Aug. Sept.	“ d'Aremberg.....	Oct. Nov.
“ Superfin.....	Dec. Jan.	“ Autumn.....	Sept. Oct.
“ d'Anjou.....	Nov. Dec.	“ d'Hiver.....	Nov. Dec.
“ Robin.....	Sept.	Conseiller Ranwez.....	Nov.

NAME.	WHEN RIPE.	NAME.	WHEN RIPE.
Comte de Paris.....	Dec. Jan.	Hacon's Incomparable...	Nov. Dec.
Crassanne d'Hiver.....	Nov. Dec.	Henkel.....	Oct.
Comte Michaux.....	Oct. Nov.	Hessel.....	Aug. Sept.
Catinka.....	Sept. Oct.	Heathcot*.....	Sept. Oct.
Catillac.....	Dec. Jan.	Harvard.....	Aug. Sept.
Cabot.....	Sept. Oct.	Hericart.....	Sept.
Cushing.....	Sept. Oct.	Howell.....	Sept.
Comte de Lamy.....	Sept. Oct.	Henry IV.....	Sept.
Columbia.....	Nov. Dec.	Inconnue Van Mous.....	Nov. Dec.
Chelmsford.....	Oct.	Jalousie Fontenay Vendee	Aug. Sept.
Capsheaf.....	Oct. Nov.	Jargonelle.....	July, Aug.
Croft Castle.....	Oct.	Jalousie.....	Sept. Oct.
Cumberland.....	Sept. Oct.	Jamiette.....	Nov. Dec.
Chenille.....	August.	Josephine de Malines....	Dec. March.
Collins.....	Oct.	Jean de Witte.....	Dec. Jan.
Chancellor.....	Oct.	Jean de Baptist.....	Nov. Dec.
Delice de Charles.....	Nov. Dec.	Jules Bivort.....	Nov.
De Lamartine.....		Johonnet.....	Sept.
Désirée Cornelis.....	Aug. Sept.	Kingsessing.....	Oct.
Doyenné Blanc.....	Oct. Nov.	Knight's Monarch.....	Dec. Jan.
“ Gris.....	Oct. Nov.	Louise Bonne de Jersey..	Oct.
“ Goubalt.....	Dec.	Lewis.....	Dec. Jan.
“ Sieulle.....	Sept. Oct.	Lieut. Poitevin.....	
“ d'Été.....	July, Aug.	Lodge.....	Sept.
“ Boussock.....	Sept.	Lawrence.....	Oct. Nov.
“ du Comice.....	Nov. Dec.	Laura de Glymes.....	Sept. Oct.
“ d'Alençon.....	Feb. March.	Marechal de la Cour.....	Nov.
“ de Fais.....	Oct. Dec.	Madame Eliza.....	Nov.
Diller.....	Aug. Sept.	Madeline.....	July.
Duchesse de Berry d'Été	August.	Moccas.....	Dec.
Duc de Nemours.....	Oct. Nov.	Messire Jean.....	Nov. Dec.
Duchesse d'Angoulême..	Oct. Nov.	Moorefowl Egg.....	Sept. Oct.
Downing.....	Sept.	Mouthwater.....	Oct.
Dix*.....	Dec. Jan.	Marie Louise*.....	Sept. Oct.
Dearborn's Seedling.....	August.	Mignonne d'Hiver.....	Jan. Feb.
Dunmore.....	Sept. Oct.	Manning's Elizabeth.....	August.
Duc de Brabant.....	Oct. Nov.	Moyamensing.....	Sept.
Doctor Bouvier.....	Jan. March.	Melon de Nemour.....	
Elize d'Heyst.....	Jan. March.	Marechal Dillen.....	Oct. Nov.
Emilie d'Heyst.....	Oct.	Napoleon.....	Sept. Oct.
Epine Dumas.....	Oct. Nov.	Né plus Meuris*.....	Dec. March.
“ d'Été.....	August.	Nouveau Poiteau.....	Oct. Nov.
Early Catherine.....	July.	“ Simon Bouvier.....	Dec. March.
Echassery.....	Nov. Jan.	Onondago.....	Oct. Nov.
Flemish Beauty.....	Sept.	Oswego Beurré.....	Nov. Dec.
Franc Real, Summer.....	Aug. Sept.	Ott.....	Sept.
Fondante de Noel.....	Dec. Jan.	Osband's Summer.....	Sept.
“ de Malines.....	Jan. Feb.	Pratt.....	Sept.
Forelle or Trout.....	Nov. Dec.	Petre.....	Sept. Oct.
Fortunée.....	Dec. Jan.	Passe Colmar.....	Nov. Dec.
Fulton.....	Sept. Oct.	Paradise d'Automne*....	Sept.
Fondante du Comice.....	Sept. Oct.	Pinnes.....	Aug. Sept.
Figue d'Alençon.....	Dec.	Pius IX.....	Sept.
Grand Soliel.....	Nov. Dec.	Philadelphia.....	Oct.
Gustave de Bourgogne..		Philippe Delfosse.....	Dec. Jan.
Gratiolle of Jersey.....	Sept. Oct.	Prince Albert.....	Mar. April.
Grosse Calebasse.....	Nov. Dec.	Poire des Nonnes.....	
Gilogil.....	Nov. Dec.	Prevost.....	Dec. Jan.
Glout Moreau.....	Dec. Jan.	Roussellet Esperen.....	Sept.
His (Poiteau).....	Oct. Nov.	“ de Rheims.....	Sept.

NAME.	WHEN RIPE.	NAME.	WHEN RIPE.
Rousselet Stuttgart.....	Sept.	Theodore Van Mons.....	Nov.
Raymond.....	Sept. Oct.	Thompson.....	Oct. Nov.
Rostiezer.....	Aug. Sept.	Tyson.....	Sept.
Sheldon*.....	Oct. Nov.	Triomphe de Jodoigne...	Oct. Nov.
Souvenir d'Esperen*.....	Oct.	Urbaniste.....	Oct. Nov.
Soldat Laboureur.....	Oct. Nov.	Uvedale's St. Germain or Bell.....	Dec. March.
Surpass Fortunée.....	Oct. Nov.	Vicomte de Spoelberg...	Oct.
Susette de Bavay.....	Jan. April.	Van Assche.....	Oct. Nov.
St. Denis.....	August.	Vicar of Winkfield.....	Nov. Dec.
St. Germain.....	March.	Wilber.....	Nov.
Stevens's Genesee.....	Aug. Sept.	Windsor.....	August.
St. Ghislain*.....	Sept.	Winter Nelis.....	Nov. Dec.
St. Michael Archange....		Washington*.....	Aug. Sept.
Surpass Vergouleuse....	Sept. Oct.	Wilkinson.....	Oct. Nov.
Seckel.....	Sept. Oct.	Zephirin Gregoire.....	Dec. March.
Sterling.....	Sept.		

REMARKS.—Particular attention having been bestowed by the proprietor for a number of years past on the cultivation of the Pear, which is cultivated extensively on both Pear and Quince stocks, he respectfully invites dealers and those interested in the planting of Orchards to examine the Trees at the Nursery.

For Orchard planting the following kinds are cultivated extensively, viz.:

Madeline, Dearborn's Seedling, Tyson, Rostiezer, Bartlett, Belle Lucrative, Flemish Beauty, Louise Bonne de Jersey, Duchesse d'Angoulême, Beurré d'Anjou, Doyenné Boussock, Beurré Langelier, Andrews, Beurré Diel, Glout Morceau, Urbaniste, Vicar of Winkfield, Easter Beurré, Lawrence, Sheldon, &c., &c.

The following list contains a few of the kinds that are cultivated on the Quince stock, and can be furnished to dealers and planters by the quantity, viz.: Rostiezer, Dearborn's Seedling, Doyenné d'Été, Tyson, Stevens's Genesee, Duchesse d'Angoulême, Louise Bonne de Jersey, Beurré d'Anjou, Belle Lucrative, Beurré Superfin, Beurré Diel, Vicar of Winkfield, Beurré Langelier, Glout Morceau, White Doyenné, Columbia, Beurré d'Amanlis, Bergamotte d'Esperen, Bartlett, &c.

Those varieties marked thus () do not grow well on the Quince.*

PEARS.—NEW VARIETIES.

The following list of Pears having been lately introduced, and many of them not having yet been well tested as to quality, will be retained in the present list until further trial. Trees of nearly all of them can be furnished; some few of them have been in bearing, and some of them are likely to prove synonyms of those already known, and under cultivation.

Abbe Mongein,	Bartram,	Belle de l'Orient,
Amand,	Bergamotte Incomparable,	Bezi de Zoeterman,
Aglac Gregoire,	“ Heimbouurg,	Bergamotte Geeraerds,
Alexandrina,	Beurré Benner,	Beurré Koning,
Arlequin Musque,	“ Bonnell,	Charles Frederics,
Auguste Demarais,	“ Coit,	Charles Duvier,
“ Royer,	“ Gens,	Colmar Artoisinent,
Adelaide de Reives,	“ de Hoes,	“ Delahaut,
Avocat Allard,	“ Duval,	“ d'Hiver,
Abbe Edouard,	“ Hamacker,	“ de Metz,
Blanquet d'Esperen,	“ Mauxion,	Coloree d'Aout,
Belle Julie,	“ Noisette,	Commissaire Delmott,
Bois Napoleon,	“ Philip,	Coter,
Bezi Bosmans,	“ Printems,	Diller,
“ de Louvain,	“ Rouge,	Doctor Nelis,
“ de Quessoy d'Été,	“ Scheidweiller,	“ Lentier,
“ Garnier,	“ Strappartes,	Dumond Dumontier,

Dupuy, Charles,
 Early Dazalonia (Silliman)
 Eleonor Van Berkelaen,
 Emile Vivort,
 Esperen,
 Eugene Firthe,
 Felix de Liem,
 Ferdinand de Meister,
 Figue de Janvier,
 Florimont Parent,
 General Bosquet,
 " Lamoriciere,
 Girardin,
 Grasilin,
 Groose Colmar (Van Mons)
 Gustave Bivort,
 Hager,
 Hampton,
 Helen Gregorie,
 Henrietta,
 Henry Nicaise,
 Hericart de Thury,
 Hewes,
 Hosenshenck,
 Iris Gregorie,
 Jackson,
 Jolie Fille de Geest,
 Kirtland's Seedling,
 Kossuth,
 Laherard (Van Mons),
 La Juive,
 Leon,

Louis de Boulogne,
 Louis Dupont,
 Ma Croquante,
 Madame Durien,
 " Millet,
 Mariette de Millepieds,
 Maria de Nantes,
 Marie Wy,
 " Parent,
 Marmion,
 Minette,
 Merriam,
 Monseigneur Affre,
 New Fulvie,
 Niles,
 Omar Pacha,
 Parsonage,
 Passe Colmar d'Esperen,
 Pastoral,
 Paul Thielens,
 Philip Goes,
 Pocahontas,
 Poire Louis,
 " de Preicelly,
 " de Tongres,
 Princess de Wageltater,
 Pulsifer,
 Queen of Belgium,
 Reading,
 Reine des Precoces,
 Richards,

Retour de Rome,
 Roi de Rome,
 Rousselet de Coster,
 " de Janvier,
 " Edward,
 " Thaon,
 " Vanderveken,
 Regine, Van Mons,
 Roitelett,
 Rousselet Royal,
 Rouge de Vierge,
 Seal,
 Selleck,
 Seraphine Ovyn,
 Souverain du Printems,
 St. Vincent de Paul,
 Styer,
 Tea Pear,
 Triomph de la Pomologie,
 Ursula,
 Uwchlan,
 Vander Prette,
 " Mouth,
 Vauquelin,
 Vezouziere,
 Vineuse d'Esperen,
 William Prince,
 Wyatt No. 2,
 Zelia de Liem,
 Zephirin Louis,
 Zoar Beauty.

PLUMS.

37½ CENTS EACH.

NAME.	WHEN RIPE.	NAME.	WHEN RIPE.
Apricot.....	Aug.	Denniston's Red.....	b. of Sept.
Auburn.....	end of Aug.	" Superb.....	" "
Albany Beauty.....	Aug.	Duane's Purple.....	Aug.
Autumn Compote.....	Sept.	Diamond.....	b. of Sept.
Buel's Favorite.....	end of Aug.	Drap d'Or.....	b. of Aug.
Bleeker's Gage.....	" "	Denyer's Victoria.....	Aug.
Brevoort's Purple.....	" "	Early Violet.....	b. of Aug.
Blue Gage.....	Aug.	Fellenberg.....	Sept.
Bingham.....	Sept.	Fonday.....	Aug.
Bleeker's Red.....	end of Aug.	Frost Gage.....	Oct.
Columbia.....	" "	Guthrie's Apricot.....	Sept.
Cherry, Red fruited.....	end of July.	" Late Green.....	"
" Yellow fruited.....	" "	" Russet.....	Sept.
Cheston.....	end of July.	" Tay Bank.....	"
Cruger's Scarlet.....	end of Sept.	" Topaz.....	"
Coe's Golden Drop.....	" "	Green Gage.....	end of Aug.
Coe's Late Red.....	" "	Goliath.....	Aug.
Cooper's Red American..	b. of Sept.	Hulings' Superb.....	b. of Sept.
Catherine.....	end of Sept.	Isabella.....	end of Aug.
De Montfort.....	b. of Aug.	Ickworth Imperatrice....	end of Sept.
Dunmore.....	Sept.	Imperial Gage.....	end of Aug.
Damson, Blue.....	b. of Sept.	Jefferson.....	b. of Sept.

NAME.	WHEN RIPE.	NAME.	WHEN RIPE.
Judson.....	b. of Sept.	Perdrigon Violet Hatif..	b. of Aug.
Kirk's.....	end of Aug.	Prince of Wales, Chapman	
Knight's Green Drying..	" "	Queen Mother.....	b. of Sept.
Lawrence Gage.....	" "	Red Gage.....	end of Aug.
Lucomb's Nonsuch.....	Aug.	Royal Hatif.....	b. of Aug.
Magnum Bonum, White.	" "	Reine Claude de Bavay..	Sept.
" " Red.....	" "	" " October.....	
Mulberry.....	" "	River's Early, No. 1.....	end of July.
Mim's.....	end of Aug.	" " No. 2.....	" "
Monsieur grosse surpasse	Aug.	Large Orange.....	b. of Sept.
McLaughlin.....	" "	Scarlet Gage.....	" "
Nectarine.....	Aug.	Sharp's Emperor.....	Sept.
Orleans, Early.....	b. of Aug.	White Orleans.....	Aug.
Orleans, Smith's.....	" "	Washington, Bolmar's...	" "
Ottoman, Imperial.....	b. of Sept.	Wine Sour.....	b. of Sept.
Purple Gage.....	" "	Yellow Gage, Prince's...	end of Aug.
Precoce de Tours.....	b. of Aug.		

CHERRIES.

37½ CENTS EACH.

NAME.	WHEN RIPE.	NAME.	WHEN RIPE.
Augustine de Vigny.....	July.	Delicate.....	
Ansel's Heart.....	m. of June.	Doctor.....	
Belle d'Orleans.....	June.	Early White Heart.....	m. of June.
Belle Agathe.....	end of July.	Elton.....	end of June.
Bowyer's Heart.....	" "	Elk Horn.....	b. of July.
Bigarreau.....	b. of July.	Florence.....	end of June.
" Napoleon.....	" "	Gendeishein.....	
" Grosse Cœuret.....	end of June.	Gascoigne's Heart.....	m. of July.
" Savoy.....	b. of July.	Gov. Wood.....	m. of June.
" Cleveland.....	" "	Jacosot.....	
" Great.....	July.	Kentish Early.....	June.
" Rockport.....	" "	Knight's Early Black....	end of June.
Black Tartarian.....	end of June.	Late Duke.....	m. of July.
" Eagle.....	b. of July.	May Duke.....	m. of June.
" Heart.....	" "	" Holman's.....	end of June.
Butner's Black Heart....	July.	Morello, English.....	end of July.
" Late Morello....	end of July.	" Plumstone.....	
" Yellow.....	" "	Osecola.....	
Belle de Sceaux.....	b. of July.	Ohio Beauty.....	
" Magnifique.....	end of July.	Purple Griotte.....	b. of June.
" de Choisy.....	end of June.	Pie Cherry.....	b. of July.
Carnation.....	July.	Pontiac.....	
China Heart.....	" "	Reine Hortense.....	b. of July.
Coe's Transparent.....	end of June.	Rumsey's Morello.....	end of July.
Champagne.....	" "	Red Jacket.....	
Downton.....	end of June.	Tardive Van Mons.....	end of Aug.
Downer's Late Red.....	m. of July.		

REMARKS.—The following kinds are cultivated largely, and include the best kinds for general cultivation, viz.:

Belle d'Orleans, Bigarreau, Bigarreau Napoleon, Black Tartarian, Black Eagle, Black Heart, Belle de Choisy, English Carnation, Coe's Transparent, Downer's Late Red, Knight's Early Black, Early Kentish, May Duke, Purple Griotte, Reine Hortense, English Morello.

A collection of Cherries cultivated on the Mahaleb stock, suitable for Dwarfs.

PEACHES.

18½ CENTS EACH.

NAME.	WHEN RIPE.	NAME.	WHEN RIPE.
Acton Scot.....	b. of Aug.	Lagrange.....	Sept.
Admirable, Late.....	Sept.	Leopold the 1st.....	
Anger's large Purple....		Madeline de Coursen....	Sept.
Blood Peach.....	Sept.	Morris White.....	m. of Sept.
Bourdine.....		Mountaineer.....	Sept.
Barrington.....	Sept.	Monstrous de Doue....	
Bellegarde.....		Newington, Early.....	m. of Aug.
Belle de la Croix.....		Noblesse.....	b. of Aug.
Crawford's erl. Melocoton	b. of Sept.	Nonpareil.....	
" Late "	end of Sept.	Old Mixon Freestone....	end of Sept.
Cole's Early Red.....	end of Aug.	Old Mixon Cling.....	
Catherine.....	m. of Sept.	President.....	
Chancellor.....	Sept.	Princess Maria.....	Sept.
Coolidge's Favorite....	end of Aug.	Pucella de Malines.....	"
Druid Hill.....	Sept.	Precoce de Savage.....	
Early Sweet Water.....	b. of Aug.	Royal George.....	b. of Sept.
Early York.....	m. of Aug.	Red Rare Ripe.....	"
" Purple.....	end of Aug.	Rodman's Cling.....	Sept.
" Admirable.....	Aug.	Reine des Verges.....	"
" Tillotson.....	b. of Aug.	Smock Freestone.....	"
George 4th.....	end of Aug.	Spring Grove.....	"
Grosse Mignonne.....	"	Stump the World.....	
Gorgas.....		Susquehanna.....	
Hative de Ferriers.....	Aug.	Tippecanoe.....	Sept.
Late White Heath Cling.	Oct.	White Blossomed.....	"
Lemon Cling.....	Sept.	Weeping Ornamental, 50c	
Late Yellow Freestone..	"	White Rare Ripe.....	Sept.

A selection of Peaches for family use, and of superior flavor, will be made when desired. Also, for market, where size is more of an object than quality.

NECTARINES.

37½ CENTS EACH.

NAME.	WHEN RIPE.	NAME.	WHEN RIPE.
Duc du Telliers.....	b. of Sept.	Newington.....	end of Aug.
Fairchild's Early.....	b. of Aug.	Petersborough.....	
Golden.....	Sept.	Pitmaston Orange.....	b. of Sept.
Hunt's Tawny.....	Aug.	Red Roman.....	"
Miller's Elruge.....	end of Aug.	Stanwick.....	"
Murray.....	"	Violet Hative.....	b. of Aug.
New White.....	Aug.	Vermarsh.....	

RASPBERRIES.

\$1 00 PER DOZEN.

White Antwerp,
 Red "
 Fastolf,
 Franconia,
 Belle de Fontenay,

Bagley,
 Brincklé's Orange,
 White Globe,
 Purple Fruited (native),
 Red Cane (and other varieties.)

APRICOTS.

37½ CENTS EACH.

NAME.	WHEN RIPE.	NAME.	WHEN RIPE.
Ambrosia.....		Masculine.....	July.
Breda.....	b. of Aug.	Moorpark.....	b. of Aug.
Brussels.....		New Royal.....	
Dubois' Early.....	end of July.	Peach.....	b. of Aug.
Early Red.....	Aug.	Peach, Roman.....	
Hemskirk.....	end of July.	Royal Persian.....	
Large Red.....		Shipley.....	
Musch-musch.....		Turkey.....	m. of Aug.

QUINCES.

25 CENTS EACH.

Apple or Orange. | Portugal.

GOOSEBERRIES.

\$1 50 PER DOZEN.

Propagated from the best Scotch and Lancashire varieties.

BLACKBERRIES.

\$1 00 PER DOZEN, \$6 00 PER HUNDRED.

New Rochelle (or Lawton,) | Dorchester (or high bush.)

CURRANTS.

\$1 25 PER DOZEN.

White Grape,	Red Dutch,	Gondouin,	Long Bunched Red,
Red “	Champagne,	La Fertile,	May's Victoria,
White Dutch,	Cherry,	La Hative,	Versaillaise.

BLACK CURRANTS.

Black Naples, | Ogden's Black, | Old Black, | Green Fruited.

GRAPES.

Alabama.....	—	Isabella.....	\$0 25
Brincklé.....	\$0 50	Louisa.....	0 50
Bullitt or Taylor.....	—	Logan.....	0 50
Catawba.....	0 25	Manhattan.....	0 50
Concord.....	0 37½	Mary Ann.....	0 50
Clinton.....	0 25	Maxatawny.....	—
Cuyahoga.....	—	Norton's Seedling.....	0 37½
Diana.....	0 50	Ontario.....	—
Delaware.....	0 50	Rebecca.....	0 50
Elsinburg.....	0 25	Raabe.....	0 50
Early Amber.....	0 37½	Solomon's.....	—
Garrigues.....	0 37½	To-Kalon.....	0 37½
Hartford Prolific.....	0 37½	Union Village.....	0 50
Herbemont.....	0 50		

FOREIGN GRAPES FOR VINERIES.

Black Hamburg, | Bowood Muscat, | Golden Hamburg.

A number of new native Grapes have been brought into notice within the last year or two, and are at present under cultivation; but, as yet, little is known of their quality; some of them may prove valuable; and as soon as they are fruited, if worthy of cultivation, will be added to the present list.

Isabella, Catawba, Diana, Concord, Hartford Prolific, Rebecca, Delaware, and Clinton, are all well known, and are now nearly all getting into general cultivation. The following are new varieties:

Wilmington, Cuyahoga, Bullitt or Taylor, and Maxatawny. These are White Grapes, and promise well. The varieties of dark-colored Grapes lately introduced are so numerous that little can yet be said in relation to quality; many of them probably will be well adapted for vineyard culture.

STRAWBERRIES.

\$1 50 PER 100.

Boston Pine,
Hovey's Seedling,
Iowa,
Hooker,

McAvoy's Superior,
McAvoy's Extra Red,
Scotch Pine,
Longworth's Prolific,
Hericart de Thury,

Early Scarlet,
Walker's Seedling,
Wilson's Seedling,
Trollope's Victoria.

FILBERTS.

25 CENTS EACH.

Cob, | White, | Frizzled, | Prolific, | Red, | American.

MISCELLANEOUS FRUITS.

NAME.	PRICE.	NAME.	PRICE.
Spanish Chestnut.....	37½ cts.	Medlars.....	37½ cts.
Walnuts.....	37½ "	Service Tree.....	37½ "
Berberries.....	25 "	Figs, assorted varieties....	50 "

RHUBARB.

Best Varieties.....\$2 00 per dozen.

ASPARAGUS ROOTS.

One year old, \$5 per 1000.

Two years old, \$7 50 per 1000.

HEDGE PLANTS.

Honey Locust.....	\$7 50 to \$10	per 1000
Buckthorn.....	7 50 to 10	" 1000
Pyrus Japonica.....	10 00 to 15	" 100
American Arbor Vitæ, 12 to 15 in.....	6 00 to 8	" 100
" " 25 to 30 in.....	10 00 to 15	" 100
Chinese " 25 to 30 in.....	20	" 100

English Hawthorn	\$10 00 to \$20	per 1000
Washington Hawthorn.....	10 00 to 20	“ 1000
Privet.....	2 50	“ 100
White Cedar.....	5	“ 100
Red “.....	5	“ 100
Osage Orange.....	7 50 to 10	“ 1000
European Beech.....	5	“ 100
“ Hornbeam.....	5	“ 100
Althea.....	5	“ 100
Hemlock Spruce.....	5 00 to 10	“ 100
Norway “.....	5 00 to 10	“ 100

There is nothing that adds to the appearance of a country residence so much as a few good Hedges well kept. The Honey Locust for strong outside line fences, is one of the quickest growing plants, and perhaps one of the best for that purpose, being very hardy, and will grow in almost any kind of soil. This plant will be greatly improved in appearance by cutting at midsummer as well as in winter. Osage Orange, Buckthorn, and Privet, require cutting when young, twice through the course of the summer, to get them into proper shape. *Pyrus Japonica* also makes a beautiful hedge, and impregnable; when this is grown and properly cut, it makes a complete protection. For Evergreen Hedges, American Arbor Vitæ is no doubt one of the best plants. Red and White Cedar are sometimes used. Hemlock and Norway Spruce also make beautiful Hedges. The Norway Spruce is now being used for that purpose to a considerable extent. It is not, as has been supposed, difficult to keep in shape; it will stand cutting quite as well as the Arbor Vitæ, and makes a dense and beautiful Hedge. It also makes excellent screens for exposed places, and can be grown for this purpose with little or no cutting.

N. B.—Deciduous Hedge Plants, when first planted, ought always to be cut to within two inches of the ground. Evergreens, if properly planted, will not require any cutting except to make them all of a height on the top. There is, at the present time, over a mile of Hedges at the Elizabethtown Nursery, of various kinds of plants, where specimens can be seen of all sizes.

ORNAMENTAL TREES.

PRICES 37½ TO 50 CENTS EACH, EXCEPT THOSE MARKED *, \$1 EACH.

BOTANICAL NAMES.	COMMON NAMES.	REMARKS.
<i>Acer campestre</i>	English Maple.....	} All free growers, and well adapted for streets and lawns.
“ <i>saccharinum</i>	Sugar “.....	
“ <i>rubrum</i>	Scarlet “.....	
“ <i>dasyacarpum</i>	Silver leaved Maple.....	
“ <i>platanoides</i>	Norway “.....	
“ <i>pseudo platanus</i>	English Plane “.....	
“ <i>striatum</i>	Striped bark “.....	
“ <i>crispum</i>	Curled leaved “.....	
“ <i>Tartaricum</i>	Tartarian “.....	
“ <i>negundo</i>	Ash leaved “.....	
“ “ <i>var. variegata</i>	Variiegated leaved Maple.	
<i>Aesculus hippocastanum</i> ..	Horse Chestnut.....	
“ <i>pallida</i>	Ohio Buckeye.....	
“ <i>rubicunda</i>	Red Flowering.....	
<i>Ailantus glandulosa</i>	Chinese Ailantus†.....	† Well adapted for streets in large cities. Grows well in wet land.
<i>Alnus glutinosa</i>	English Alder.....	
“ <i>lævigata</i>	Shining leaved Alder.....	
“ <i>cordata</i>	Heart leaved “.....	
<i>Aralia spinosa</i>	Angelica.....	
<i>Annona glabra</i>	Custard Apple.....	
<i>Broussonetia papyrifera</i> ..	Paper Mulberry.....	

BOTANICAL NAMES.	COMMON NAMES.	REMARKS.
<i>Betula alba</i>	White Birch†.....	<p>† This species of Birch, when advanced in growth, is inclined to grow with drooping branches, making a very beautiful weeping tree, and being one of the earliest trees to leaf out in spring, makes it a very ornamental and desirable tree for a lawn. The cut leaved variety is also a fine lawn tree.</p> <p>All the species of Ash are robust, free growing trees, and those marked (*) are very ornamental.</p> <p>Very conspicuous planted as single trees on Lawns or Pleasure-Grounds, particularly the purple leaved varieties.</p> <p>‡ A beautiful tree, when left without pruning.</p> <p>§ Very large leaves when young.</p> <p>All the species of Poplar are quick growing trees, and well adapted for giving shelter and effect to new grounds destitute of trees, or bleak exposed situations.</p> <p>¶ The different species of Oaks make beautiful Lawn trees; the English is a rapid free growing tree, and holds its leaves late in the season; the Marsh or Pin Oak is also a rapid grower, and makes a fine Pyramidal tree; also, the Over-cup, White, and Chestnut, are all desirable trees.</p>
“ <i>populifolia</i>	Poplar leaved Birch.....	
“ <i>lutea</i>	Yellow “ “.....	
“ <i>Daurica</i>	Daurian “ “.....	
“ <i>incisa pendula</i>	Cut leav'd Weeping Birch*	
<i>Castanea Americana</i>	American Chestnut.....	
<i>Catalpa syriacæfolia</i>	Catalpa.....	
<i>Carya alba</i>	Shellbark Hickory.....	
<i>Fraxinus excelsior</i>	European Ash.....	
“ “ <i>var. pendula</i>	Weeping Ash*.....	
“ “ <i>var. aurea</i>	Gold Barked.....	
“ “ <i>var. folia argentea</i>	Silver leaved Ash.....	
“ <i>lenticifolia var. pendula</i>	Lentiscus Weeping Ash*.....	
“ <i>Americana</i>	White American Ash.....	
“ <i>nigra</i>	Black “ “.....	
“ <i>longifolia</i>	Long leaved “.....	
“ <i>pubescens</i>	Downy “.....	
“ <i>floribunda</i>	Profuse flowery “.....	
“ <i>ornus</i>	Flowering “.....	
<i>Fagus Americana</i>	American Beech.....	
“ <i>sylvatica</i>	European “.....	
“ <i>purpurea</i>	Purple leaved Beech.....	
“ <i>cuprea</i>	“ Copper “.....	
“ <i>incisa</i>	Ferned leaved “.....	
“ <i>pendula</i>	Weeping “ *.....	
<i>Gymnocladus Canadensis</i>	Kentucky Coffee Tree.....	
<i>Gleditschia triacanthos</i>	Three Thorned Acacia.....	
<i>Juglans nigra</i>	Black Walnut.....	
“ <i>regia</i>	Madeira Nut.....	
<i>Larix Europea</i>	European Larch†.....	
“ <i>Americana</i>	American “.....	
<i>Liquidamber styraciflua</i>	Sweet Gum.....	
<i>Liriodendron tulipifera</i>	Tulip Tree.....	
<i>Laurus sassafras</i>	Sassafras Tree.....	
<i>Ostrya virginica</i>	Hop Hornbeam.....	
“ <i>vulgaris</i>	European Hornbeam.....	
<i>Paulownia imperialis</i>	Chinese Paulownia§.....	
<i>Populus alba</i>	Silver leaved Abele.....	
“ <i>aureflia</i>	A new variety Silver Abele.....	
“ <i>dilatata</i>	Lombard Poplar.....	
“ <i>balsamifera</i>	Balsam “.....	
“ <i>canescens</i>	Gray “.....	
“ <i>angulata</i>	Carolina “.....	
“ <i>monilifera</i>	Virginia “.....	
“ <i>macrophylla</i>	Large leaved Poplar.....	
“ <i>pendula</i>	Weeping “.....	
“ <i>laurifolia</i>	Laurel leaved “.....	
“ <i>tremula</i>	Aspen “.....	
<i>Quercus cerris</i>	Turkey Oak¶.....	
“ <i>palustris</i>	Marsh “.....	
“ <i>bicolor</i>	Swamp White Oak.....	
“ <i>alba</i>	White “ “.....	
“ <i>robur</i>	English “ “.....	
“ <i>coccinea</i>	Scarlet “.....	
“ <i>macrocarpa</i>	Over-cup White Oak.....	
“ <i>phellos</i>	Willow “.....	
“ <i>tinctora</i>	Quercitron “.....	
<i>Robinia pseudacacia</i>	Common Locust.....	

BOTANICAL NAMES.	COMMON NAMES.	REMARKS.
<i>Robinia pendula</i>	Weeping Locust*	
<i>Salix Babylonica</i>	" Willow.....	
" <i>annularis</i>	Ring leaved Willow.....	
" <i>rubra</i>	Red Willow.....	
" <i>comewell</i>	Sea Side Willow†	† This species of Willow is a very rapid grower; a very desirable plant for making shelter in bleak, exposed places.
" <i>rosmarinifolia</i>	Rosemary leaved Willow.....	
<i>Salisburia adiantifolia</i>	Maiden Hair Tree*	
<i>Taxodium distichum</i>	American deciduous Cypress.....	
<i>Tilia platyphylla</i>	European Linden.....	
" <i>pendula</i>	Weeping ".....	
" <i>Americana</i>	American ".....	
" <i>rubra</i>	Red Twigged Linden.....	
<i>Prunus cerasus</i>	Common Black Mazzard Cherry†	† The first species being a very rapid grower, and growing to a large tree, is well adapted for ornamental ground. The Mahaleb grows freely, and makes a good second size tree, and holds its foliage very late.
<i>Prunus padus</i>	Bird Cherry.....	
" <i>mahaleb</i>	Austrian Cherry.....	
" <i>pendula</i>	Weeping ".....	
" <i>Virginiana</i>	Virginia Wild Cherry.....	
" <i>cerasus</i> flor. plen.	Dbl. flower'g Heart Cherry	
" <i>morella</i>	" Morello ".....	
<i>Ulmus Americana</i>	American Weeping Elm.....	} Fine shade trees, growing freely in any soil.
" <i>campestris</i>	English Elm.....	
" var. <i>folia argentea</i>	Silver leaved Elm.....	
" var. <i>folia purpurea</i>	Scotch or Wych Elm.....	
" var. <i>pendula</i>	Purple leaved ".....	
" var. <i>tuberosa</i>	Camperdown Weep'g Elm	
	Cork barked Elm.....	

SHRUBS AND DWARF ORNAMENTAL TREES.

25 CENTS EACH; WHEN NOTED *, 50 CENTS.

BOTANICAL NAMES.	COMMON NAMES.	REMARKS.
<i>Acacia julibrissin</i>	Silk Tree.....	
<i>Azalea pontica</i>	Yellow flowered Azalea...	
" in varieties.....	" ".....	
<i>Amygdalus nana</i>	Double flowering Almond	
" <i>persica</i> var. <i>camellia flora</i>	Camellia flowering Peach*	† The Weeping Peach, marked (†), was selected by me from a lot of seedling stocks a number of years ago, when at the Murray Hill Nursery, and when budded on stocks five or six feet high, makes a very desirable lawn tree.
" <i>persica</i> var. <i>dianthiflora</i>	Carnation " " *	
" <i>persica</i> var. <i>rosea sinensis</i>	Rose colored Chinese " *	
" <i>pers.</i> <i>flora pleno</i>	Double flowering ".....	
" " <i>rubra</i>	" " Red ".....	
" <i>pendula</i>	Weeping Peach, Reid's†	
<i>Amorpha fruticosa</i>	Indigo Shrub†	
<i>Annona triloba</i>	Custard Apple.....	
<i>Artemisia abrotanum</i>	Southern Wood.....	
<i>Berberis purpurea</i>	Purple leaved Berberry ..	† Pretty, early flowering shrub.
" <i>nepalensis</i>	Nepaul.....	
<i>Coronilla emerus</i>	Scorpion Senna.....	
<i>Calycanthus floridus</i>	Sweet Scented Shrub.....	
<i>Clethra alnifolia</i>	Alder leaved Clethra.....	

BOTANICAL NAMES.	COMMON NAMES.	REMARKS.
<i>Clethra acuminata</i>	Acuminate leaved.....	
<i>Cercis siliquastrum</i>	European Judas Tree.....	† A very beautiful,
“ <i>canadensis</i>	American “.....	early flowering dwarf
<i>Chionanthus virginica</i>	Virginia white fringe tree†	tree.
“ <i>maritima</i>	Narrow leaved “.....	‡ Fine hardy shrubs
<i>Colutea arborescens</i>	Yellow Bladder Senna.....	with delicate racemes of
<i>Cerasus Japonica flora</i>	Dwarf double flowering	white flowers.
<i>plena alba</i>	Japan Cherry.....	
<i>Cotoneaster acuminata</i>	Taper-leaved Cotoneaster.	
<i>Chimonanthus fragrans</i> ..	Sweet scented Chimonan-	
	<i>thus</i> *.....	
<i>Cornus florida</i>	White flowering Dogwood	
“ <i>sanguinea</i>	Red Twigged “.....	
“ <i>mascula</i>	Cornelian Cherry.....	
<i>Coronaria</i>	Myrtifolia.....	
<i>Cineraria maritima</i>	Sea Ragwort.....	
<i>Caragana arborea</i>	Pea Tree.....	Fine plants for shrub-
<i>Cytisus laburnum</i>	Laburnum.....	beries, and very ornamental.
“ <i>Parksii</i>	Parks, new.....	
“ <i>alpinus</i>	Scotch.....	
“ <i>scoparius</i>	Broom.....	
“ <i>capitatus</i>	Cluster flowering Cytissus	
<i>Cratægus oxycantha</i>	English Hawthorn.....	
“ “ <i>var. rub. pleno</i>	Double Red Hawthorn....	
“ “ <i>var. alba</i>	“ White “.....	
“ “ <i>rubra simplex</i>	Single Red “.....	The Hawthorns are
“ <i>grandiflora</i>	Great Flow'ring “.....	well adapted for single
“ <i>pyrifolium</i>	Pear leaved “.....	plants on Lawns, or in
“ <i>prunifolia</i>	Plum “.....	groups by themselves.
“ <i>nigra</i>	Black “.....	
<i>Celtis occidentalis</i>	Nettle Tree.....	
<i>Ceanothus Americana</i>	New Jersey Tea.....	
<i>Cephalanthus occidentalis</i> .	Button Bush.....	
<i>Deutzia gracilis</i>	Slender branched Deutzia	
“ <i>scabra</i>	Rough leaved “.....	
“ <i>corymbosa</i>	Corymbose Flowered “.....	Beautiful. No shrub-
“ <i>crenata Sieboldii</i> .	Crenate leaved “.....	bery ought to be without
“ <i>stamenia</i>	Long Stamened “.....	a few plants.
<i>Daphne mezereum</i>	Pink Mezereun.....	
“ <i>var. alba</i>	White Flower'g Mezereun	Early flowering dwarf
<i>Dirca palustris</i>	Leather Wood.....	shrubs.
<i>Diervilla Middendoriana</i> .		
<i>Euonymus Americana</i>	American Strawberry Tree	
“ <i>Europus</i>	European “.....	
<i>Fontanesia phillyræoides</i> ..	Phillyrea lea'd Fontanesia	
<i>Forsythia viridissima</i>	Green Forsythia§.....	§ A beautiful, early
“ <i>suspensa</i> *.....		flowering shrub, with
<i>Halesia tetraptera</i>	Snow-drop Tree, or Silver	bright yellow flowers.
	Bell.....	
“ <i>diptera</i>	“ “ Two Winged*.....	Both species are pretty
<i>Hibiscus Syriacus</i>	Althea frutex.....	flowering dwarf trees.
“ <i>alba varieg. plena</i>	Dbi. varieg. White Althea	
“ <i>rubra pleno</i>	“ Red “.....	
“ <i>folia variegatus</i> ..	Variiegated leaved “.....	
<i>Hippophae rhamnoides</i>	Sea Buckthorn.....	
<i>Hydrangea quercifolia</i>	Oak leaved.....	
“ <i>hortensis</i>	Garden Hydrangea 	
“ <i>arborescens</i>	Shrubby “.....	Flowers freely in any
“ <i>japonica</i>	Japan “.....	garden soil, the roots be-
“ <i>flora pleno</i>	Double “.....	ing quite hardy.

BOTANICAL NAMES.	COMMON NAMES.	REMARKS.
<i>Hydrangea folia variegata</i> .	Varieg. leaved Hydrangea	
<i>Hypericum kalmianum</i> ...	Kalmia leaved St. Johns-wort	
“ <i>hircinum</i>	Fetid.....	
“ <i>oblonga folio</i> ..		
<i>Indigofera dosua</i>	Dosua.....	
“ <i>floribunda</i>		
<i>Jasminum nudiflorum</i> ...	Naked Flowered Jasmin†	† A beautiful hardy, early flowering shrub.
“ <i>officinale</i>	White Sweet Scented Jasmin.....	
“ <i>ochroleucum</i>		
“ <i>arborescens</i> ...		
<i>Kerria Japonica</i>	Yellow Japan Globe Flow'r	
<i>Kolreuteria paniculata</i> ...	Chinese Kolreuteria.....	
<i>Laurus benzoin</i>	Spice Wood.....	
<i>Lycesteria formosa</i>	Beautiful Lycesteria.....	
<i>Lycium barbarum</i>	Matrimony Vine.....	
“ <i>Chinensis</i>	Box Thorn.....	
<i>Ligustrum vulgare</i>	Privet.....	
“ <i>Japonica</i>		} Neat flowering shrubs, well adapted for shrubbery.
“ <i>sempervirens</i> ..	Evergreen Privet.....	
“ <i>buxifolia</i>	Box leaved “.....	
“ <i>laurifolia</i>	Laurel leaved “.....	
“ <i>myrtifolia</i>	Myrtle leaved “.....	
“ <i>pyramidalis</i> ..	Pyramidal “.....	
<i>Maclura aurantiaca</i>	Osage Orange.....	
<i>Mespilus pyracantha</i>	Evergreen Thorn.....	
<i>Oxycoecus macrocarpus</i> ..	Large Fruited Cranberry.	
<i>Potentilla floribunda</i>	Profuse flowering.....	
“ <i>fruticosa</i>	Shrubby.....	† The best hardy shrubs in cultivation; also fine plants for ornamental hedges.
<i>Pyrus Japonica rubra</i>	Red fl'wr'd Japan Quince †	
“ <i>semi-pleno</i>	Var. sometimes semid'ble†	
“ <i>var. alba</i> ..	White “.....	
<i>Prunus triloba</i>	New Chinese Cherry*....	
<i>Philadelphus coronarius</i> ..	Sweet-scented Syringa... }	} All the Syringas are free growing shrubs, and most of the species being sweet scented, make them desirable for every garden and shrubbery.
“ <i>folia varieg</i> ..	Variiegated leaved “... }	
“ <i>grandiflora</i> ..	Great Flowering “... }	
“ <i>nepalensis</i> ..	Nepaul “... }	
“ <i>Gordoniana</i> ..	Gordon's “... }	
“ <i>flora pleno</i> ..	Double Flowering “... }	
“ <i>floribunda</i> ..	Profuse “... }	
“ <i>Mexicana</i> ...	Mexican “... }	
“ <i>speciosus</i> ...	Beautiful “... }	
<i>Prinos verticillata</i>	Red Winter Berry.....	
“ <i>nitidum</i>	Evergreen “.....	
<i>Rhus cotinus</i>	Venetian Sumac§.....	§ A very conspicuous and showy shrub.
<i>Eobinia hispida</i>	Rose Acacia.....	¶ A very beautiful flowering shrub.
“ <i>glutinosa</i>	Glutinous leaved Acacia ..	
<i>Ribes aurea</i>	Yellow Flow'ring Currant	} Rather tender.
“ <i>sanguinea</i>	Red “.....	
“ <i>fl. plena</i> ..	Double “.....	
“ <i>Beatonii</i>	Beaton's¶.....	
“ <i>niveum</i>	Snowy flow'r'd Gooseberry	
“ <i>uvacrispifolia</i>	Gooseberry leav'd Currant	
<i>Salisburia adiantifolia</i> ...	Japan Gink o Tree††.....	
<i>Shepherdia eleagnoides</i> ...	Silver leaved Shepherdia..	
<i>Staphelia trifoliata</i>	Three leaved Bladder Nut	
“ <i>pinnata</i>	Pinnate leaved.....	
<i>Saphora Japonica</i>	Japan Saphora*.....	
“ <i>var. pendula</i>	Weeping “ *.....	†† Curious foliage.

BOTANICAL NAMES.	COMMON NAMES.	REMARKS.
<i>Sorbus acuparia</i>	Mountain Ash†.....	† The several species of Mountain Ash, and its varieties, are very ornamental with their bright red berries through the fall, where they are not subject to the borer.
“ <i>variety fructu luteo.</i>	Yellow Berried.....	
“ <i>edulis.</i>	Eatable Fruited.....	
“ <i>vestita</i>	Silver leaved.....	
“ <i>Americana.</i>	American Mountain Ash.	
<i>Spiræa opulifolia.</i>	Guelder Rose Spiræa.....	
“ <i>tomentosa.</i>	Tomentose leaved “.....	
“ <i>rosea.</i>	Rose colored “.....	
“ <i>prunifolia.</i>	Plum leaved “.....	
“ <i>sorbifolia.</i>	Sorb leaved “.....	
“ <i>nepalensis.</i>	Nepaul Red Flowered Spiræa.....	
“ <i>eximia (new)</i>		
“ <i>flexuosa.</i>	Flexuose Branched Spiræa	
“ <i>ulmifolia.</i>	Elm leaved “.....	
“ <i>salicifolia.</i>	Willow leaved “.....	
“ <i>lævigata.</i>	Shining leaved “.....	
“ <i>incarnata.</i>	Flesh colored “.....	
“ <i>alpina.</i>	Dwarf Mountain	
“ <i>belle.</i>	Pink Flowering “.....	
“ <i>Reevesii.</i>	Reeves’ “.....	
“ <i>grandiflora.</i>	Great Flowering “.....	
“ <i>Lindleyana.</i>	Lindley’s “.....	
“ <i>arctica.</i>	Arctic “.....	
“ <i>Douglassii.</i>	Douglass “.....	
“ <i>callosa.</i>	Callous “.....	
“ <i>ærifolia.</i>	White Bean leaved “.....	
“ <i>nivea.</i>	White Flowered “.....	
“ <i>Reevesii floraplena</i>	Double Flowering Reeves’	
“ <i>Californica.</i>	Spiræa.....	
<i>Symphoria racemosa.</i>	California.....	All of the Spiræas are very desirable for shrubberies, some of them being in flower nearly all the summer. Reevesii and Prunifolia are very conspicuous, fine, hardy shrubs.
“ <i>glomerata.</i>	Snowberry.....	
<i>Syringa purpurea.</i>	Red Indian Currant.....	
“ <i>alba.</i>	Purple Lilac.....	
“ <i>Persica.</i>	White “.....	
“ <i>var. laciniata.</i>	Persian “.....	
“ <i>sinensis.</i>	Cut leaved Lilac.....	
“ <i>cerulea.</i>	Chinese or Siberian Lilac.	
“ <i>Charles 10th.</i>	Dark Blue “.....	
“ <i>Prince Noyter</i>	Charles 10th “.....	
<i>Sterculia platanifolia.</i>	Plane Tree leaved Sterculia.....	Lilacs being early flowering shrubs, are generally found in every shrubbery, and several of the new varieties are beautiful.
<i>Ptelia trifoliata.</i>	Hop Tree.....	
<i>Tamarix Germanica.</i>	German Tamarix.....	
“ <i>Indica.</i>	Indian “.....	
“ <i>Africana.</i>	African “.....	
<i>Virgilia lutea.</i>	Yellow Wood*.....	
<i>Viburnum oxycoccos.</i>	Cranberry Tree.....	
“ <i>opulus.</i>	Snow Ball.....	
“ <i>cotonifolium.</i>		
“ <i>pigmea.</i>		
<i>Vitex agnus castus.</i>	Chaste Tree.....	‡ A fine shrub, one of the most desirable in cultivation.
<i>Weigela rosea.</i>	Rose colored Weigela†.....	
“ <i>amabilis.</i>	Beautiful “.....	
<i>Zanthorhiza apifolia.</i>	Parsley leaved.....	

Some new shrubs, not included in this list, are under cultivation, but not yet ready for sale.

MAGNOLIAS.

BOTANICAL NAMES.	COMMON NAMES.	REMARKS.
Magnolia glauca.....	Sweet Scented Magnolia.....	The Magnolia family is one of the most attractive and beautiful tribe of plants we have in cultivation; not only the flowers are beautiful, but also the foliage, which is very conspicuous; they look well either by themselves or in groups.
“ tripetala.....	Umbrella Magnolia..	
“ macrophylla.....	Large leaved “ ..	
“ acuminata.....	Blue flowering “ ..	
“ auriculata.....	Ear leaved “ ..	
“ cordata.....	Heart leaved “ ..	
“ purpurea.....	Chinese Purple “ ..	
“ conspicua.....	“ White “ ..	
“ Soulangeana.....	Soulange's White and Purple.....	

ORNAMENTAL EVERGREEN TREES AND SHRUBS.

BOTANICAL NAMES.	COMMON NAMES.	REMARKS.	
	Prices, each		
Abies Archangelica.....\$1 00	* The Norway Spruce is one of the best of this tribe for general planting, and when large very picturesque.	
“ orientalis.....50		
“ alba.....	White Amer'n Spruce..50		
“ rubra.....	Red “ ..50		
“ Canadensis.....	Hemlock Spruce.....50		
“ excelsa.....	Norway “ ..50		
“ Douglassii.....	Douglass “ ..50 to 1 00		
“ morinda.....	Himalay “ ..50 to 1 00		
“ Menziesii.....	Menzie's “ ..1 00		
“ Jezoensis.....	Jezo Island “ ..		
“ clausbrasiliana.....	Dwarf “ ..50		
“ taxifolia.....	Yew leaved “ ..50	† A noble tree, similar in habit to the Norway. Rather tender when young.	
“ Whittmaniana.....	Whittman “ ..50 to 1 00		
Andromeda of sorts.....25		
Araucaria imbricata.....	Chili Pine.....1 00		
Arbutus unedo.....	Strawberry Tree..50 to 1 00		
Aucuba Japonica.....		
Azara integrifolia.....	Entire leaved Azara...25		
Berberis aquifolia.....	Holly leaved Berberry...25		‡ A beautiful hardy evergreen, and well adapted for planting in beds on grass, or single plants in shrubberies.
“ empetrifolia.....25		
“ Japonica.....50		
“ Bealii.....50		
“ dulcis.....	Sweet Berberry.....25		
“ Fortunii.....	Fortune's “ ..50		
“ dealbata.....	Silver leaved Berberry..50		
Buxus arborescens.....	Tree Box.....25 to 50	§ The Deodar Cedar, also Cedar of Lebanon and Silver Cedar, require a slight protection in severe winters, or shelter, by planting in clumps mixed with Norway Spruce, Scotch Fir, and other hardy evergreens; in this way they will succeed.	
“ var.....	“ Silver strip'd..25 to 50		
“ aurea.....	“ Gold “ ..25 to 50		
“ myrtifolia.....	“ Myrtle leav'd..25 to 50		
“ var. variegat. nova.....	“ new Sil. strip..25 to 50		
“ latifolia.....	“ br'd lea'd new25 to 50		
Cedrus Deodara.....	Deodar Cedar..50 to 1 00§		
“ Libani.....	Cedar of Lebanon..50 to §1§		
“ argentea.....	New Silver, or African Cedar.....50 to 1 00§		
Cupressus thyoides.....	White Cedar.....25		
“ var. varieg.....	Variieg. leaved Cypress..50		
“ ericoides.....	Heath leaved “ ..50		
“ stricta.....	Upright Cypress.....50		

BOTANICAL NAMES.	COMMON NAMES.	REMARKS.
Cupressus Lambertiana...	Lambert's Cypress... \$1 00	This beautiful tribe, the Cypress, although not all quite hardy in this latitude, may be grown to great perfection by taking them up the beginning of winter and bedding them in a frame, laying them flat, and covering them with board shutters without glass, and planting out again the first of May.
“ funebris.....	Funereal “50	
“ Lusitania.....	Cedar of Goa50	
“ Tournefortia.....	Spreading Cypress.....50	
“ tortuosa.....	Twisted “50	
“ thujafolia.....	Arbor Vitæ lea'd “1 00	
“ Corneyana.....50 to 1 00	
“ elegans.....	Elegant Cypress.....50 to 1 00	
“ Uhdeana.....	Uhdes “50 to 1 00	
“ macrocarpa.....	Large Fruited.....50 to 1 00	
“ Knightiana.....	Knight's.....50 to 1 00	
“ Whitleyana.....	Whitley's.....50 to 1 00	
“ Schonburghii.....	Schonburgh.....50 to 1 00	
“ Lawsonia.....	Lawson's.....50 to 1 00	
“ McNabiana.....	McNab's.....50 to 1 00	
“ Cashmeriana.....	Cashmere.....50 to 1 00	
Cerasus laurocerasus.....	English Laurel.....50	
“ Lusitania.....	Portugal “50	
“ Caroliniana.....	Carolina Wild Orange.....50	
Cotoneaster microphylla.....	Small lea'd Cotoneaster.....25	
“ arbutifolia.....	Arbutus leaved “25	
Cryptomeria Japonica.....	Great Japan Cedar.....50	
Callitris quadrivalvis.....	Four-valved Callitris, 50 to 1 00	
Chamæbatia foliolosa.....		
Desfontainea spinosa*.....		
Dacrydium Franklinii.....	Franklin's Dacrydium, 50 to 1 00	
Deeringia Amherstia.....		
“ var. variegata.....	Variegated leaved*.....	
Euonymus Japonica.....	Japan Euonymus.....25	
“ var. variegata.....	“ Silver striped do.....25	
“ var. aurea.....	“ Gold edged “25	
Eugenia ugni.....50	
Embothrium coccineum.....		
Frenela australis.....	Southern Frenela.....50 to \$1	
“ macrostachya.....	Long-eared “50 to 1	
“ Hugelii.....	Hugel's “50 to 1	
Fitzroya Patagonica.....50	
Glyptostrobus heterophyllus.....		
Ilex opaca.....	American Holly.....50	
“ aquifolium.....	Common Eng. Holly.....50	
“ “ var.....	“ Gold edged, var.....50	
“ thirty varieties.....	lately introduced.....	
Illicium floridanum.....	Aniseed Tree.....25	
Juniperus communis.....	Common Juniper.....50	
“ “ var. pendula.....	Weeping “50 to \$1	
“ echiniformis.....50	
“ pyriformis.....		
“ spherica.....		
“ Hibernica compressa.....		
“ recurva densa.....		
“ Hibernica.....	Irish Juniper.....50	
“ Suecica.....	Swedish “50	
“ flaccida.....	Flagging “1 00	
“ Canadensis.....	Traill's Canada Juniper.....50	
“ Sabina.....	Savin “50	
“ excelsa.....	Tall “\$1	

BOTANICAL NAMES.	COMMON NAMES.	REMARKS.
	Prices, each	
Juniperus Virginiana.....	Red Cedar Juniper.....	} Junipers are nearly all quite hardy, and have a fine appearance when planted in clumps, or as single specimens in shrubberies.
“ Cracovia.....	“ “.....	
“ Mexicana.....	Mexican “.....	
“ religiosa.....	Sacred “.....	
“ tetragona.....	“ “.....	
“ Bermudiana.....	Bermuda Cedar.....	
“ Phœnicia.....	Phœnician Juniper.....	
“ oxycedrus.....	Brown berried “.....	
“ Lycia.....	Lycian “.....	
“ Gossainthanea.....	Gossainthanian Juniper.....	
“ thujafera.....	Frankincense “.....	
“ Schollii.....	Scholl’s “.....	
“ oblonga.....	Long branched.....	
“ “ pendula.....	Weeping var.....	
“ Chinensis.....	Chinese.....	
“ flagelliformis.....	Slender branched.....	
“ Dealbata.....	West Indian.....	
“ repens.....	Carpet Juniper.....	
“ recurva.....	Recurved branched.....	
“ Tamariscifolia.....	Savin-like Juniper.....	
“ Squamata.....	Nepal “.....	
“ Bedfordiana.....	Himalayan “.....	
“ Longoidiana.....	Longoid’s.....	
“ tripertita.....	“ “.....	
“ Japonica.....	Japan “.....	
Kadsura Japonica.....	“ Kadsura.....	
Kalmia latifolia.....	Broad leaved.....	
“ glaucos.....	Glaucus.....	
“ angustifolia.....	Narrow.....	
Laurus nobilis.....	Sweet Bay.....	
“ regalis.....	Royal Laurel.....	
Olea fragrans.....	Sweet seen’d Olive.....	
“ ilicifolia.....	Holly leaved “.....	
Picea pectinata.....	English Silver Fir.....	
“ balsamea.....	Balsam Fir.....	
“ pindrow.....	Toothed “.....	
“ pinsapo.....	Pinsapo “.....	
“ Webbiana.....	Webb’s “.....	
“ amabilis*.....	Lovely Fir 2 yrs. Seed’g.....	
“ nobilis*.....	Noble “.....	
“ grandis.....	Great “.....	
“ Cephalonica.....	Cephalonian.....	
Pinus Taurica.....	Taurian Pine.....	
“ ponderosa.....	Heavy wooded Pine.....	
“ insignis*.....	Remarkable “.....	
“ Pyrenaica.....	Pyrenean “.....	
“ strobus.....	White or Weym’t’h Pine.....	
“ excelsa.....	Bohtan Pine.....	
“ sylvestris.....	Scotch “.....	
“ Austriaca.....	Black Austrian Pine.....	
“ laricio.....	Corsican “.....	
“ palustris.....	Long leaved “.....	
“ variabilis.....	Variable leaved “.....	
“ pinaster.....	Cluster Coned “.....	
“ rigido.....	Pitch “.....	
“ Gerardiana.....	Gerard’s “.....	
“ Cembra.....	Siberian Stone “.....	
“ pumilis.....	Dwarf “.....	
“ Lambertiana.....	Lambert’s.....	
“ tuberculata.....	Tuberculated.....	

* These are yet scarce, and cannot be furnished of a large size.

All the Pines enumerated here are hardy, except where noted*.

BOTANICAL NAMES.	COMMON NAMES.	REMARKS.
	Prices, each	
Podocarpus andina.....\$1 00	
Photinia serrulata.....	Serrated le'v'd Photinia.50	
Podocarpus Japonica....	Japan Podocarpus25	
Phyllocladus rhomboidales.....	Parsley leaved Phyllocladus.....1 00	
Pernettya floribunda.....	Profuse flowering Pernettya.....25	
Rhododendron maximum.	American Rose Bay...50	
“ catawbiense	Catawba “50	
“ Ponticum..	Purple “50	
“ hybrid var.	of Catawbiense, and other	sorts, assorted kinds, some
Rhamnus Hispanicus....	Spanish Buckthorn...25	of them with flower
Saxe-Gothæa conspicua..	Conspicuous Saxe - Gothea.....50 to 1 00	buds.....50 to \$1
Sequoi, or Washingtonia gigantea.....	The great Tree of California*.....1 00	
Skimmia Japonica.....	Japan Skimmia.....50	* This wonderful tree
Taxus baccata.....	English Yew.....50 to \$1	has stood in the open
“ var. stricta.....	Upright “50 to 1	ground here for several
“ Hibernica.....	Irish “50 to 1	winters, and seems to
“ Canadensis.....	Canada “50 to 1	be perfectly hardy—a
“ Fortunei.....	Fortune's “50 to 1	remarkably rapid growing
“ adpressa.....	Tardy growing.....50 to 1	tree.
“ elegantissima.....	Golden var. Yew..50 to 1	
“ Torreya.....	Torrey's Yew.....50 to 1	
“ Japonica.....	Japan “50 to 1	
Thuja dumosa.....		
“ occidentalis.....	Amer. Arbor Vita.25 to 50	
“ orientalis.....	Chinese “25 to 50	
“ plicata.....	Plicate “50	
“ Nepalensis.....	Nepaul “25 to 50	
“ Tartaricum.....	Tartarian “25 to 50	
“ filiformis.....	Weeping “\$1	
“ Libocedrus chilien- ses.....	Chilian “50 to \$1	
“ “ decurrens50 to 1	
“ Doneana.....	Don's “1	
“ gigantea.....	Gigantic “50 to 1	
“ Siberica.....	Siberian “25 to 50	
“ aurea.....	Golden “50 to \$1	
“ glauca.....	Glaucous “1	
“ Sinensis var. aurea striata.....	Gold Striped Chinese.. 1	
Thujopsis borealis.....	Northern.....1	
“ dolabrata.....		
Ulex Europea flora plena.	Double flowering Furze.25	
Widdringtonia juniperoides.....	Juniper like Widdringtonia.....50	

* This wonderful tree has stood in the open ground here for several winters, and seems to be perfectly hardy—a remarkably rapid growing tree.

These ought to be interspersed on lawns with other Evergreens; their habit of growth gives them a very pretty appearance.

VINES AND CREEPERS,

FOR PILLARS, ARBORS, WALLS, ETC.

BOTANICAL NAMES.	COMMON NAMES.	REMARKS.
	Prices, each	
Ampelopsis quinquefolia..	Virginia Creeper.....25	
Aristolochia siphon.....	Birthwo'h or Pipe Vine.50	
Bignonia radicans.....	Trumpet Creeper*25	* Rapid growers, and well adapted for covering a wall or trellis.

BOTANICAL NAMES.	COMMON NAMES.	REMARKS.
	Prices, each	
<i>Bignonia grandiflora</i>	Great Chinese Creeper.....	.25
" <i>capreolata</i>	Four leaved ".....	.25
<i>Celastrus scandens</i>	American Bitter Sweet.....	.25
<i>Clematis flammula</i>	Sweet scented Virgin's Bower.....	.25
" <i>glauca</i>	".....	.25
" <i>campanuliflora</i>	".....	.25
" <i>italica</i>	".....	.25
" <i>Siberica</i>	".....	.25
" <i>viticella rubra</i>	Red flowering†.....	.25
" " <i>purpurea</i>	Purple ".....	.25
<i>Glycine Sinensis</i>	Chinese Glycine†.....	.37½
" <i>frutescens</i>	American ".....	.37½
" <i>alba</i>	White ".....
" <i>violacea</i>	".....
<i>Hedera helix</i>	English Ivy.....	.18½
" <i>Hibernica</i>	Irish ".....	.18½
" <i>giant</i>	Large leaved Ivy.....	.18½
" <i>var. fol. aurea</i>	Gold edged ".....	.18½
" <i>variegata</i>	Variegated ".....	.18½
" <i>Algiers</i>	Algiers ".....	.18½
" <i>palmata</i>	Palmete leaved Ivy.....	.18½
<i>Periploca Græca</i>	Common Periploca.....	.25

† All pretty, delicate vines, and some of them very fragrant.

† One of the most hardy runners in cultivation; a plant of this when in full bloom surpasses all other vines that have yet been brought into notice; this may also be grown as a shrub by cutting back for several years.

Evergreen runners, and well adapted for running on a brick or stone wall, in shaded situations.

HONEYSUCKLES.

18½ CENTS EACH.

BOTANICAL NAMES.	COMMON NAMES.	REMARKS.
<i>Lonicera flexuosa</i>	Chinese Sweet Scented Evergreen Honeysuckle	
" <i>periclymenum</i>	English Woodbine ".....	
" <i>Belgicum</i>	Sweet scented monthly ".....	
" <i>Fraserii</i>	Yellow Trumpet ".....	
" <i>pubescens</i>	Orange flowered ".....	
" <i>sempervirens</i>	Red trumpet ".....	
" <i>Brownii</i>	Brown's orange red ".....	
" <i>coccinea</i>	Scarlet trumpet ".....	
" <i>floribunda</i>	Profuse flowering ".....	
" <i>superba</i>	Superb ".....	
" upright Tartarian in varieties.	Upright Tartarian red.....	
" <i>exylosteum</i>	English Fly.....	

PEONIES.

BOTANICAL NAMES.	COMMON NAMES.	REMARKS.
	Prices, each	
<i>Pæonia Montan</i>	Tree Peony.....	.50 to \$1
" <i>Humeii</i>	Large flowered Peony.....	.25
" <i>fragrans</i>	Rose scented ".....	.25
" <i>Whitleji</i>	Double White ".....	.25
" <i>humilis</i>	Dwarf ".....	.25
" <i>tenuifolia</i>	Fennel leaved ".....	.25
" <i>officinalis</i>	Common red ".....	.25

With many other varieties.

ROSES.

HYBRID CHINA AND HARDY GARDEN ROSES, 37½ CENTS EACH.

NAME.	DESCRIPTION.	NAME.	DESCRIPTION.
Aurora.....	bright crimson.	La Tourtereile.....	fine dove color.
Beautiful Bouquet.....	fine white.	Las Cases.....	bright rose.
Blairii.....	large blush.	Louis Philippe.....	fine rose.
Brennis.....	fine crimson.	Miralba.....	dark velvet.
Belle Theresa.....	dark velvet.	Madame Plantier.....	pure white.
Capt. Soulette.....	fine large pink.	One of the best hardy white roses.	
Ceresette.....	fine cherry red.	Reine de Belgic.....	rosy lilac.
Caroline Mignonne.		Triumph d'Abbyvill.	light crimson.
Coccard.....	fine double lilac.	Stadtholder sinensis.	fine blush.
Duc de Cazes.....	fine blush.	Victor Hugo.....	fine red.
General Thair.....	fine dark velvet.	Violet de Belgic.....	fine dark violet.
Great Western.....	crimson.	Wells' Cab'ge China.	blush.
George 4th (Rivers).....	dark purple crimson.	Wm. the Conqueror.	shaded crimson.

All of the aforesaid Roses are hardy, flower freely through the month of June, and many of them are very beautiful.

HYBRID PERPETUAL ROSES.

37½ CENTS EACH.

NAME.	DESCRIPTION.	NAME.	DESCRIPTION.
Adele Mauze.....	light blush.	La Gracieuse.....	
Augustine Mouchelet.	deep rose.	La Reine.....	rose, very large.
Baronne Prevost.....	a free bloomer, one of the best.	Lane.....	rosy lilac.
Caroline de Sansal.	fine blush.	Lady Fordwick.....	“ “
Comte de Paris.....	fine rosy purple.	Madame Trudeau.....	rose, very double.
Coronet.....	bright rose.	Madame Rivers.....	fine blush.
Comte de Montalivet		Madame Lamoriciere.	deep blush.
Duchesse de Mont-		Madame Laffay.....	fine rosy crimson.
morency.....	fine vivid rose.	Marquis de Bocella.	light blush.
Duchesse de Praslin.	blush.	Marquis d'Ailza.....	rosy crimson.
Duc d'Aumale.....	fine rosy purple.	Melainie Cornu.....	deep red.
Duchess of Suther-		Mrs. Elliot.....	rosy purple.
land.....	fine large blush.	Polybe.....	rosy lilac.
Enfant du Mont		Prince Albert.....	dark crimson.
Carmel.....	shaded crimson....	Triomphe de l'Ex-	
Edward Jesse.....	light red.....	position.....	rich rosy crimson.
Geant des Batailles.	brilliant crimson..	Rivers.....	reddish lilac.
Jacques Lafitte.....	shaded rose.....	Reine de Guillotier.	fine dark crimson.
Louis Bonaparte.....	large rosy lilac....	Sidonia.....	fine blush.
Lord Raglan.....	dark crimson.	Prince Leon.....	light rosy crimson.
Lady Alice Peel....		Wm. Griffith.....	rosy lilac.
		William Jesse.....	light crimson.

This class of Roses is well adapted for out-door cultivation, being quite as hardy as the common Garden Rose, and if well established on their own roots, will grow with as little trouble as the latter, and give a succession of flowers the whole season, while the weather remains mild. I would advise those who wish to have good permanent rose bushes of this class, to procure them all on their own roots if possible. Although budding is an easy method of increasing them, they are, nevertheless, far inferior.

BOURBON, TEA, AND BENGAL ROSES.

A few of the following varieties are cultivated for summer flowering.
37½ CENTS EACH.

NAME.	COLOR.	NAME.	COLOR.
Agrippina.....	dark crimson.	Souvenir de la Mal-	
Comte de Rombeteau.	crimson.	maison.....	large blush, one of the finest of this class.
Hermosa.....	blush, fine double.	Safrano.....	fine buff.
Henri Plantier.....	fine cherry red.	Queen.....	fine blush.
Louis Philippe.....	purple crimson.	White China.....	pure white.
La Pactol.....	yellow.		
Lady Channing.....	dark purple.		

MOSS ROSES.
50 CENTS EACH.

NAME.	COLOR.	NAME.	COLOR.
Common Red Moss. .		Princess Adelaide....	a very free bloomer, fine rosy blush—one of the best for general cultivation.
Duchess de Muranais.	white.		
Luxembourg Moss....	dark semi-double.		
Old White Moss.	blush white.		

A stock of the common Red Moss and Princess Adelaide at \$4 50 per dozen. Also a number of other kinds, some of them desirable to make up a variety, otherwise of little merit. The old Red and Princess Adelaide are two of the best.

NOISETTE, PRAIRIE, AND OTHER RUNNING ROSES,

Suitable for covering Arbors, Trellis, Fences, &c.

37½ CENTS EACH.

Aimée Vibert.....	pure white, free flowerer.	} Tender.
Lamarque.....	fine white, free grower.	
Solfataire.....	yellow, habit of Lamarque.	
Cloth of Gold.....	pure yellow.	
Belmonte.....	like the Daily, blooms freely.	
Double White Ayrshire.....	white cluster, rapid runner.	
Greville Rose.....	large clusters.	
Russell's Cottage.....	free flowerer.	
Purple Boursault.....	purple, vigorous grower.	
Blush ".....	double, " "	
Amadis ".....	crimson, very free bloomer.	
Inermis ".....	pink.	
The varieties of Boursault are rapid growers, and make a fine appearance when trained to poles; they come in bloom a little before the ordinary season of roses.		
Madame d'Arblay.....	white cluster.	
Champney Cluster.....	pink.	
Noisette Pink.....	free flowerer in summer.	
Multiflora.....	blush, a little tender.	
" var. Laura de Voost.....	hardy and fine.	
Double Red Sweet Briar.....		
Single ".....		
Prairie Queen*.....	fine, free, rapid grower.	
Baltimore Belle*.....	blush clusters.	
Superba*.....	pale blush.	
Perpetual Pink*.....		

* There are several other varieties of the Prairie; the Queen and Baltimore Belle are two of the best.

YELLOW ROSES.

Yellow Harrison.....	bright yellow
Yellow Persian.....	deep yellow.

The best season for removing trees from the Nursery is from the beginning of October until December, and in the spring from March to May; and, as regards the transplanting of trees, my own practice has been to transplant all hardy fruit and deciduous ornamental trees in the fall, when time would permit; otherwise, as early in the spring as the season and weather will allow.

The Proprietor will cheerfully give every information to beginners, and those who are unacquainted with fruits; and when the selection is left to himself, he will endeavor to select such kinds as will give satisfaction.

I N D E X .**FRUIT DEPARTMENT.**

	PAGE		PAGE
Apples.....	2	Miscellaneous Fruits.....	10
Apricots.....	9	Nectarines.....	3
Blackberries.....	9	Pears.....	3
Cherries.....	7	Plums.....	6
Currants.....	9	Peaches.....	8
Esculent roots.....	10	Quinces.....	9
Filberts.....	10	Raspberries.....	8
Gooseberries.....	9	Strawberries.....	10
Grapes.....	9		

ORNAMENTAL DEPARTMENT.

Deciduous Ornamental Trees.....	11	Ornamental Evergreen Trees, etc..	17
Hedge Plants.....	10, 11	Peonies.....	21
Honeysuckles.....	21	Shrub and Dwarf Ornamental	
Roses.....	22	Trees.....	13
Magnolias.....	17	Vines and Creepers.....	20

WHOLESALE PRICE LIST

FOR THE

Fall of 1860 and Spring of 1861,

OF

FRUIT TREES, &c.,

CULTIVATED AND FOR SALE BY

WILLIAM REID,

ELIZABETHTOWN, N. J.

FRUIT TREES.

APPLES— Per 100

Standards, Strong Headed Trees.....\$18 to \$20 00

PEARS—

Standards, on Pear Stocks, extra strong..... 33 00

Do. do. do. 2d Size Fine..... 30 00

Do. do. do. 3d do. 10 00

Dwarf or Pyramidal Pear Trees on Quince Stocks, well furnished with side branches, and well cut back the previous year.

1st Size, extra strong..... 25 00

2d do. do. 20 00

3d do. do. 10 00

PLUMS—

Standards, on Plum Stock..... 33 00

Do. on do. 30 00

CHERRIES—

Standards, Strong Headed Trees..... 30 00

Do. do. do. 2d Size..... 20 00

Do. do. do. 3d Size..... 15 00

Dwarfs, on Mahaleb Stock.....\$20 to 30 00

APRICOTS AND NECTARINES..... 20 to 25 00

PEACHES..... 10 00

QUINCES.....\$12 to 18 00

GOOSEBERRIES, assorted kinds..... 10 00

CURRANTS—

Red Dutch, &c..... 6 00

White Dutch..... 10 00

Also the following varieties:— Red Grape, White Grape, Champagne, May's Victoria, Long Bunched Red, Cherry, Goudouin, Black Currants, &c., per doz., \$1 25.

RASPBERRIES, assorted.....\$6 to 8 00

NEW ROCHELLE OR LAWTON BLACKBERRY..... 5 00

Dorchester..... 5 00

GRAPES—

Catawba.....\$15 to 20 00

Concord, two years old, \$5 per doz..... 30 to 40 00

Do. one year do. 25 to —

Clinton..... 15 to 20 00

Diana, \$6 per doz.

Delaware, \$6 per doz.

Hartford Prolific, \$4 per doz.

Isabella..... 15 to 20 00

Rebecca, \$6 per doz., or..... 45 00

STRAWBERRIES..... 1 50

(For List of Fruits see General Catalogue.)

ORNAMENTAL TREES.

ACER—

Per Doz. Per 100

English Maple.....\$3 to \$6 00 — —

Sugar.....10 to 12 feet..... 6 00 . 40 00

Do. 5 to 6 "..... 3 00 . 20 00

Silver.....10 to 12 "..... 4 50 . 33 00

Do. 8 to 10 "..... — . 25 00

English Plane..... 8 to 10 "..... 6 00 . 35 00

Do. do. 6 to 8 "..... — . 25 00

Norway Maple..... 6 to 8 "..... 4 50 . 30 00

ESCULUS—

Horse Chestnut..... 6 to 8 "..... 6 00 . 40 00

Do. do. 5 to 6 "..... — . 25 00

ALNUS—

English Alder..... 8 to 10 "..... 3 00 . 20 00

Do. do. 6 to 8 "..... — . 15 00

CATALPA..... 8 to 10 "..... — . 25 00

BETULA—

English Birch..... 6 to 8 "..... 4 00 . 30 00

Do. do. 5 to 6 "..... 3 00 . 20 00

Poplar Leaved..... 6 to 8 "..... 3 00 . 20 00

Do. do. 8 to 10 "..... 4 00 . 30 00

Yellow..... 6 to 8 "..... 3 00 . 20 00

Do. 8 to 10 "..... 4 00 . 30 00

FRAXINUS—

European Ash..... 8 to 10 "..... 4 00 . 25 00

LARIX—

English Larch..... 6 to 8 "..... 4 00 . 25 00

Do. do. 3 to 4 "..... — . 15 00

FAGUS—

Per Doz. Per 100

Beech..... 3 to 4 feet..... \$3 00 . \$20 00

Purple..... 6 00 . —

Fern leaved Beech..... 6 00 . —

GYMNOCLADUS—

Kentucky Coffee..... 4 to 5 "..... 3 00 . —

LIQUID AMBER—

Sweet Gum..... 4 to 5 "..... 4 00 . —

LIRIODENDRON—

Tulip Tree..... 6 to 8 "..... 4 00 . —

LAURUS—

Sassafras..... 6 to 8 "..... 4 00 . —

POPULUS—

Poplar, 6 varieties..... 8 to 10 "..... 3 00 . 20 00

QUERCUS—

English Oak..... 6 to 8 "..... — . 30 00

Do. do. 5 to 6 "..... 3 00 . 20 00

Turkey do..... 4 to 6 "..... 4 00 . —

ULMUS—

American Elm..... 8 to 10 "..... 4 50 . 33 00

English do..... 8 to 10 "..... 4 50 . 33 00

Scotch do..... 8 to 10 "..... 4 50 . 33 00

English cork barked, elm budded..... 4 50 . —

Dutch do. do. 4 50 . —

Purple leaved, do. 4 50 . —

WILLOW, WEEPING..... 18 00

SHRUBS.

	Per Doz.	Per 100		Per Doz.	Per 100
AMYGDALUS—Dwarf Dble. Flowering Almond	\$2 00	—	HALESIA DIPTERA	\$4 00	—
BERBERIS—Nepal Berberry	2 00	—	HYDRANGE—Quercifolia, oak leaved	3 00	—
CALYGANATHUS—Sweet Scented Shrub	3 00	—	White Bowered	3 00	—
CERCIS—Canadensis	2 00	—	Garden	3 00	—
CYTISSUS—Laburnum, assorted	2 00	—	JASMINE—White Garden Jasmine	2 00	—
CORNUS—White Flowering Dogwood	3 00	—	PYRUS—Japanica	2 00	15 00
Red Twigged do.	2 00	—	RHUS—Venetian Sumac	2 00	15 00
CEANOTHUS—New Jersey Tea	2 50	—	PHILADELPHUS—Syringa, assorted	2 00	15 00
DEUTZIA SCABRA	2 00	12 00	SPIREAS—Assorted, Reevesii, Prunifolia, &c.	2 00	12 00
Gracilis	\$2 to	3 00	SYRINGA—Lilacs, assorted	2 00	12 00
EUNYMIUS—Strawberry Tree	2 50	—	TAMARIX—Assorted	2 00	12 00
FORSYTHIA VIRIDISSIMA	2 00	12 00	VIBURNUM—Snow Ball	2 00	12 00
HIBISCUS—Double Althea, assorted	2 00	12 00	WEDGELA—Rosa	2 00	12 00
HALESIA TETRAPTERA	3 00	18 00	Amabilis	2 00	12 00

EVERGREENS.

	Per Doz.	Per 100	JUNIPERUS—CONTINUED	Per Doz.	Per 100
ABIES—Hemlock Spruce	2 to 3 feet	\$30 00	Do. Bedfordiana	3 to 6 00	—
Do. do.	1 to 2 "	10 00	Do. Tamariscifolia	3 00	—
Do. do.	6 to 12 in.	5 00	Do. Irish	2 to 3 feet	4 00
Himalay do.	18 to 24 in.	6 00	do.	18 in to 2 feet	3 00
Do. do.	12 to 18 in.	3 00	do.	12 in.	12 00
Do. do.	6 to 12 in.	12 00	do.	6 to 9 in.	6 00
Norway do. fine plants	5 to 6 feet	5 00	do. Swedish	18 in to 2 feet	4 00
Do. do. strong	4 to 5 "	30 00	do. do.	12 to 18 in.	3 00
Do. do.	3 to 4 "	25 00	do. do.	10 to 12 in.	18 00
Do. do.	2 to 3 "	10 00	do. do.	6 to 9 in.	10 00
Do. do.	1 to 2 "	5 00	do. Common	2 to 3 feet	25 00
Do. do. 6 to 12 in., per 1,000	\$20	3 00	do. do.	12 to 18 in.	2 00
Douglasii do.	6 to 12 in.	4 00	do. do.	6 to 9 in.	6 00
ARAUCARIA CHILI—Pine	12 to 18 in.	12 00	do. do. Var'pendula	12 to 18 in.	4 00
BERBERIS—Holly Leaved	2 00	12 00	do. Savin	5 to 8 3 to 6 00	—
Dulcis	3 00	—	PICEA—Balsam Fir	4 to 5 feet	6 00
BUXUS—Tree Box	18 to 24 in.	3 00	Do. do.	9 to 12 in.	6 00
Do. do.	12 to 18 in.	10 00	Do. Silver	2 to 3 feet	30 00
Do. variegated and other varieties	3 00	—	Do. do.	18 to 24 in.	25 00
CUPRESSUS—Thyoides White Cypress	2 to 3 ft.	25 00	Do. do.	6 to 9 in.	5 00
Do. variegated leaved do.	3 00	—	PINUS—Scotch Pine, fine	4 to 5 feet	30 00
Do. Heath leaved do.	4 00	—	Do. do.	3 to 4 feet	25 00
Do. do. do. small size	2 00	—	Do. do.	2 to 3 feet	10 00
Do. do. do. 4 to 6 in.	12 00	—	Do. do.	1 to 2 feet	5 00
Do. Upright do.	12 to 18 in.	3 00	Do. do. small and well established	\$20 per 1,000	—
Do. Funeral do.	12 to 18 in.	3 00	Do. Austrian Pine	3 to 4 feet	4 50
Do. Lawsoniana	6 to 9 in.	6 00	Do. do.	2 to 3 feet	3 00
CRYPTOMERIA—Japan Cedar	2 ft.	4 00	Do. do. small and well established	6 to 9 in.	5 00
CEDRUS—Deodar Cedar, strong, 5 feet, \$5 each			Do. Parula Pine	1 to 2 feet	4 00
Do. do.	2 to 3 feet	9 00	Do. Umbra do.	18 in to 2 feet	6 00
Do. do.	12 to 15 in.	4 00	Do. do. fine	12 in.	3 00
Do. Lebanon do. strong	12 00	—	Do. White do.	5 to 6 feet	35 00
Do. do. do. fine	12 to 18 in.	6 00	Do. do. do.	4 to 5 feet	25 00
Do. Silver do.	2 feet	12 00	Do. do. do.	3 to 4 feet	20 00
Do. do. do.	12 to 18 in.	6 00	Do. do. do.	9 to 12 in.	5 00
EUNYMIUS—Silver Edged, strong plants	3 00	18 00	Do. Excelsa do.	6 00	—
Do. Green do.	3 00	18 00	Do. Pinceps do.	12 in.	10 00
ILEX—American Holly	2 to 3 feet	6 00	THUJA—Plenae Arborvitae	\$3 to	6 00
Do. do.	12 to 18 in.	3 00	Do. Gigantea do.	3 to 6 00	—
English do.	\$3 to 6 00	—	Do. Decurrens do. (Libocedrus)	6 to 12 00	—
JUNIPERUS—Canadensis	3 00	—	Do. Chilian do.	do 30 to \$1 ea.	—
Do. Oblonga	\$3 to 4 00	—	Do. American do.	4 to 5 feet	35 00
Do. Chinensis	3 to 6 00	—	Do. do. do.	3 to 4 feet	25 00
Do. Repens	3 to 4 00	—	Do. do. do.	12 to 18 in.	6 00
Do. Recurva	3 to 4 00	—			
Do. Flagelliformis	3 to 6 00	—			
Do. Cracovia	3 to 6 00	—			

EVERGREENS—CONTINUED.

	Per Doz.	Per 100		Per Doz.	Per 100
THUJA—CONTINUED.			TAXUS—Yew, English, upright varieties...		
Do. Siberian, Arboretum.....	18 to 24 in.	\$3 00	Do. do. Irish.....	2 feet	6 00
Do. do. do.	6 in.	5 00	Do. do. do.	12 in.	3 00
Do. Nepal do. (Biota).....	18 to 24 in.	3 00	Do. do. do.	6 in.	12 00
Do. Tartarian do.	18 to 24 in.	3 00	Do. Fortuili.....		6 00
Do. Chinese do.	18 to 24 in.	3 00	Do. do. Faemina.....		6 00
Do. Golden do.	\$3 to 6 00	6 00	Do. Torreya.....		6 00
THUJOPSIS BOREALIS.....			Do. Elegantiissima, gold striped.....		6 00
TAXUS—Yew, English, large bushes, \$1 each.			WELLINGTONIA GIGANTEA.....		
Do. do. do. strong plants.....	6 00	6 00	SEEDLING FORREST TREES, viz: Ash, Beech, Larch, Birch, Oak, Alder, Maple, Hornbeam, Elms, &c., by the 100 or 1,000, at low prices.		
Do. do. do. smaller sizes, \$10 to \$20		per 100.			
Do. do. do.	6 to 12 in.	5 00			

The following articles are also grown extensively for the trade, viz:

HONEYSUCKLES.....	Per 100	\$12 00	PEAR—Strong.....	Per 1,000	\$15 to \$20 00
PRAIRIE and other RUNNING ROSES.....	20 00		HEDGE PLANTS.		
HYBRID PERPETUAL ROSES, on their own roots.....	25 00		OSAGE ORANGE.....	\$5 00 to \$7 50	
Do. CHINA do. and others.....	25 00		BUCKTHORN.....	7 00 to 10 00	
ADELAIDE MOSS do.	25 00		HONEY LOCUST.....	5 00 to 10 00	
Imported Pear and Quince Stocks, bedded one year.			PRIVET.....	\$2 50 per 100	20 00
QUINCE—Strong.....	Per 1,000	\$10 to \$15 00	PYRUS JAPONICA.....	\$7 50 to \$10 00 per 100	—

For a full list of Fruit and Ornamental Trees, Shrubs, Roses, &c., see general catalogue.

W. R. respectfully invites Nurserymen and dealers in Trees to visit the Nursery and examine his stock.

N. B. Trees will be carefully packed for shipping and inland transportation, and will be forwarded by whatever route or conveyance the parties may designate. They will, however, after being delivered into the hands of the forwarders, be at the risk of the purchaser.

