

## Historic, archived document

Do not assume content reflects current scientific knowledge, policies, or practices.



1919 Catalogue

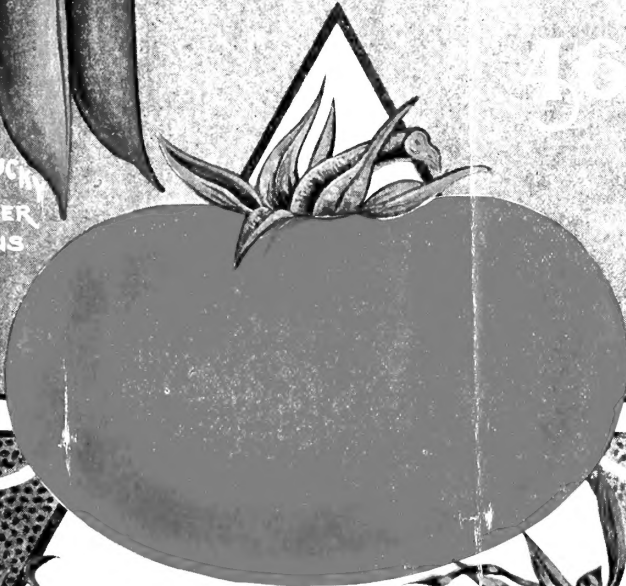
62.1

# ALEXANDER SEED CO.



KENTUCKY WONDER BEANS

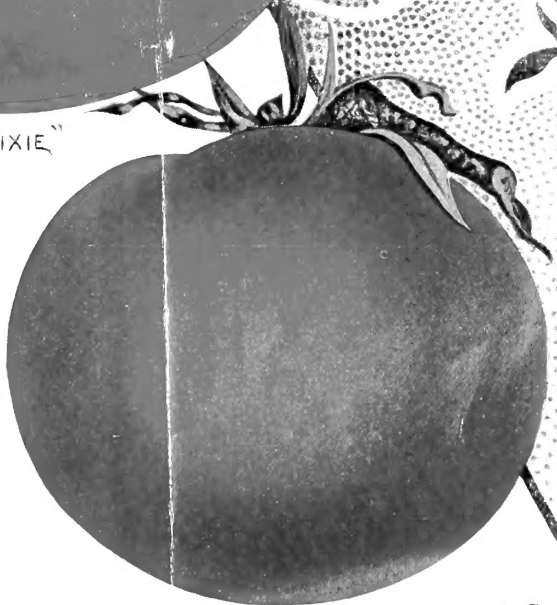
LIBRARY RECEIVED  
NOV 15 1919  
AUGUST 11, 1919



"The Dixie"



PONDEROSA



LIVINGSTON'S GLOBE

# Beautify Your Home

Plant Your Lawn in Early Spring—Alexander's Evergreen Mixture Will Keep Your Lawn Green During the Entire Year if Properly Cared For.



## Alexander's Evergreen Lawn Mixture

**A BEAUTIFUL FINE-LEAVED CLOSE-MATTING MIXTURE FOR THE SOUTH**

All the ten different grasses that go into this mixture have a distinct place and purpose, and are connecting links that make up the prettiest lawn imaginable. This is truly an evergreen mixture, and will be green year around if properly watered and cared for. The success and beauty of any lawn depends upon thorough and careful preparation of the seed bed, which is the determining factor in how well your lawn thrives and looks. The ground should first be spaded or plowed deeply, breaking up all clods of earth. Bone meal at the rate of 300 lbs. per acre should then be scattered over the broken surface. After this is scattered over, the clods should all be pulverized and the bone meal mixed in thoroughly with the soil. The Lawn Mixture is then ready to be applied. These seed should be liberally used—200 pounds to the acre, or 1 pound to 200 square feet being about the proper amount. The grass should be lightly covered by raking under. The ground will do best if rolled or tamped down so as to afford a close compact covering over the seed, which is essential to good germination.

Lawns should not be cut too early, and the first few cuttings should be light and not too close. The roots must be well established before cutting too close.

Regular and thorough waterings should be given when needed; light application of lime, Bone Meal, Nitrate of Soda, also Cotton Seed Meal, are beneficial as top dressings, and afford a continuance of food for the successful growth of the grass.

If you have a pretty lawn, your grass will absolutely require plentiful and often fertilizing.

Nitrate of Soda is a quick stimulator, and is not very lasting in effect, but is beneficial when applied at rate of about 50 lbs. to acre. Cotton Seed Meal, Bone Meal and Lime may be used in quantities from 200 to 300 lbs. per acre at each application.

With our Evergreen Grass and proper attention, you can place your house on a permanent green carpet.

**PRICE: Lb. 55c; 3 lbs. \$1.45, postpaid. Not prepaid, 100 lbs. at 45c per lb.**

## Alexander's Sunny South Lawn Mixture

**ESPECIALLY MADE UP FOR EXTREME SOUTHERN CONDITIONS, SUCH AS FLORIDA AND GULF COAST REGIONS, BUT DOES WELL ALL OVER THE SOUTH.**

Composed of Rye Grasses and other fine growing kinds that thrive well in mild winter climates, especially suited for sandy soils.

**Lb. 45c; 3 lbs. \$1.25, postpaid. Not prepaid, 100 lbs. at 35c per lb.**

### I N D E X

Artichokes .....	30	Cow Peas .....	29	Parsley .....	17
Asparagus .....	1	Cress .....	10	Parsnips .....	17
Beans, Bush .....	1	Cucumber .....	9	Peas, Garden .....	19
" Lima .....	3	Egg-Plant .....	10	Peanuts .....	30
" Wax .....	2	Endive .....	10	Pepper .....	21
Beets .....	4	Flower Seed .....	12	Potatoes .....	21
Beggar Weed .....	30	Goobers .....	30	Pumpkins .....	20
Broom Corn .....	30	Gourds .....	10	Radish .....	20
Buckwheat .....	30	Grazing Grasses .....	30	Rape .....	30
Cabbage .....	5	Herbs .....	14	Rice .....	30
Cantaloupe .....	13	Kaffir Corn .....	29	Sorghums .....	29
Carrot .....	6	Kale, or Borecole .....	10	Soy Beans .....	29
Cauliflower .....	6	Kohl-Rabi .....	10	Spinach .....	20
Celery .....	7	Lawn Grass .....	2d cover	Squash .....	20
Chicken Corn .....	29	Lettuce .....	11	Sunflower, Russian .....	30
Chufas .....	29	Millet .....	29	Tobacco .....	30
Collards .....	6	Mustard .....	11	Tomato .....	22
Corn, Field .....	31-32	Novelties .....	12	Turnips .....	23
and 3d cover .....		Oats .....	30	Velvet Beans .....	29
Corn Salad .....	10	Okra, or Gumbo .....	17	Vetch .....	30
Corn, Sweet .....	8	Onions .....	18	Watremelon .....	15
Cotton .....	24-28	Onion Sets .....	18		

# Special Seed for Spring and Summer Planting

**ALEXANDER'S VARIETIES ARE THE BEST AND THE PRICES ARE RIGHT**

Every time you order seeds or write to us, be sure and write your name, Post Office and State plainly. Hundreds of orders are delayed every year because the sender forgets to sign his name or give his Post Office address.

**Seeds Postpaid by Mail** Remember that the prices given in this list include delivery of all seeds by packet, ounce, quarter-pound, pound, pint or quart, except where noted. Send us the amount named in this catalogue, and we guarantee safe delivery by mail in these quantities.

**Liberal Premiums** Please bear in mind that on seeds in packets and ounces only (no quarter-pounds, pounds, pints or quarts), the purchaser may select 25 cents' worth extra on each dollar sent. This does not apply to orders for collections, prices of which are net. Please read carefully our Special Premium Offer on back of Order Sheet.

**Cost of Sending Money** In all cases where the order for seed amounts to one dollar or more, the cost of postoffice or express money order, or cost of registering the letters from places that are not money order offices, may be deducted from the amount of the order.

**Stamps** On orders of seeds where the amount is less than 50 cents, we will accept Parcel Post stamps in good condition (one-cent and two-cent stamps preferred) the same as cash, but we would ask those remitting stamps to wrap them in oiled paper, if possible, to prevent their sticking together or to the order.

**Special Express Rates** The express companies for years have given a special low rate on seed shipments. In 1914 the rates were revised on all commodities; seed, however, are still favored with the lowest rate, which is practically the same as the old rate and to some points lower than before; the average seems to be in favor of the customer. As a rule, 15 pounds may be shipped for 35 cents. Exact rate quoted on application.

**About Warranty** Alexander Seed Company gives no warranty, either express or implied, as to description, quality, productiveness or any other matter, of any seeds, bulbs or plants they send out, and will not be in any way responsible for the crop. If the purchaser does not accept the goods on these terms, they are at once to be returned, and any money that may have been paid for them will be refunded. Crops are dependent for success or failure on so many things besides seed that it is impossible for us to give any warranty or guarantee. This does not mean that we lack confidence in the seeds we sell, but we have no control over the seeds after they leave our house, especially so as to the methods of planting, cultivating and fertilizing, all of which are important factors in the success of any crop. If we should warrant or guarantee seeds in any way, we could be held responsible for the failure of the crop, regardless of cause, and this is a responsibility we cannot and will not accept. **No responsible seedsman gives any warranty.**



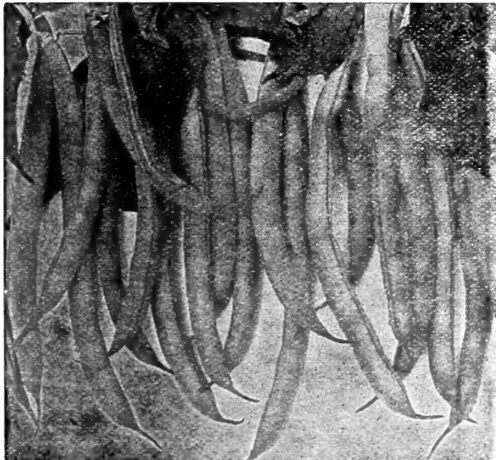
**Palmetto Asparagus.**

## VEGETABLE SEEDS

### ASPARAGUS

**Palmetto Asparagus Seed** The Palmetto, while an old variety, is beyond question the best variety for the South. Seed can be sown in either fall or spring, thinly in drills one foot apart. When well up, cultivate frequently and continue until the roots have grown for one year. In transplanting, put the roots 18 inches apart each way and 4 inches below the surface. Use your richest piece of ground and remember that you cannot use too much manure on Asparagus. Palmetto is earlier, a better yielder and more even and stronger in growth than many of the later introductions. **Pkt. 5c; oz. 15c; ¼lb. 30c; lb. 75c.**

### BEANS—Bush Varieties



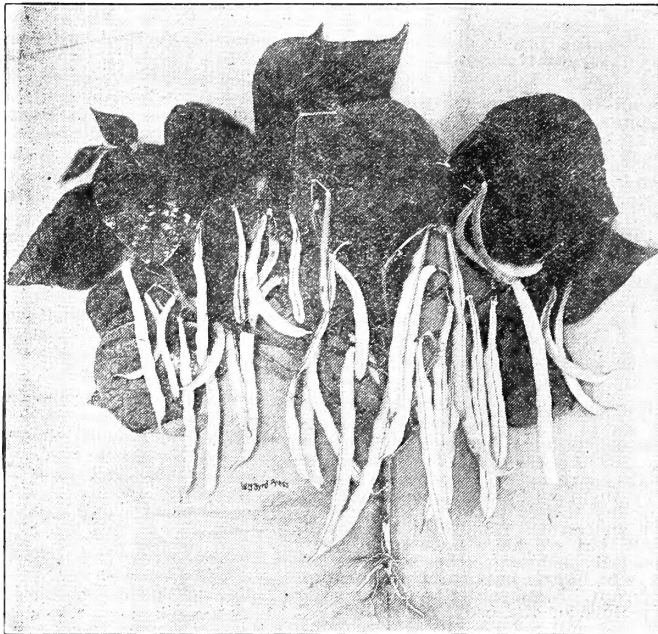
**Willson Liberty Bean.**

**Culture.**—In this latitude (Augusta) sow Bush Beans from March till September. Continuous crops may be grown through the entire summer. In Florida and along the Gulf Coast plantings may be made earlier, but Bush Beans will not grow well in that section during June, July and August, so that spring and fall plantings should be made. Sow in drills 18 inches to 2 feet apart, dropping a bean every 4 inches and covering 2 inches. Soil should be warm and moist for successful germination. When about to bloom draw the earth up around the stem. Keep the soil stirred frequently, and as fast as the beans mature pick them off if you want them to stay in bearing for a long time. **Quantity needed for planting—one pint for each 75 feet of row; about 1¼ bushels per acre.**

**A Big Home Garden** is the best and biggest money saver and the largest producer of money-saving food supplies you can have. Plant a good big home garden every year, and you will always be thankful. "Money saved is money earned."

**Wilson Liberty Bean** A strong, tall-growing bush variety suited to culture on poorest kind of land; will stand drought and heat exceptionally well; makes good green eating bean, and also fine for shell purposes. For use during winter does not remain edible in the snap stage very long, but for winter use is unexcelled. Good for soup, Boston baked beans, etc. The navy bean of the south. **Pkt. 10c; ½ pt. 25c; pt. 45c; qt. 75c, postpaid. Not prepaid, peck \$3.50; bushel \$14.00**

## Bush Varieties



Alexander's Early Red Valentine Beans.

on Alexander's strain to be the best that are grown. When you plant our strain you are sure of a vigorous growth, heavy bearing qualities and an abundance of finely flavored pods, well filled out and of excellent quality. **Pkt. 10c; ½ pt. 25c; pt. 45c; qt. 80c, postpaid. Not prepaid, peck \$4.25; bushel \$15.00.**

**Alexander's Excelsior Refugee** —This is one of the best and earliest green-podded sorts for spring planting. A vigorous grower and heavy producer of medium-sized, round, finely flavored beans. Holds up well off the ground and will withstand bad weather. making under adverse conditions when other kinds will fail. **Pkt. 10c; ½ pt. 25c; pt. 45c; qt. 80c, postpaid. Not prepaid, peck \$4.25; bushel \$15.00.**

**Improved Round-Pod Refugee** —About the same bean as the Excelsior Refugee only about ten days later in coming off. This is an immensely heavy yielding long shipping, and is fine for canning. **Pkt. 10c; ½ pt. 25c; pt. 45c; qt. 80c, postpaid. Not prepaid, peck \$4.25; bushel \$15.00.**

**Alexander's Longfellow** —This old variety resembles very closely the Valentine bean in shape, but being slightly longer and more slim, a fine table and market gardener's variety; good sure cropper. **Pkt. 10c; ½ pt. 25c; pt. 40c; qt. 75c, postpaid. Not prepaid, peck \$3.50; bushel \$14.00.**

## Wax-Podded Varieties—Bush

**Prolific Black Wax** —An extra-early prolific strain and very similar to the old German Black Wax. Small black-seeded kind that is a heavier bearer than the old original variety. This bean will give entire satisfaction for a prolific wax kind. **Pkt. 10c; ½ pt. 30c; pt. 50c; qt. 90c, postpaid. Not prepaid, bushel \$13.00.**

**Rust-Proof Golden Wax** —An excellent strain, rust-proof, fine flavored, and liked all over the South. **Pkt. 10c; ½ pt. 30c; pt. 50c; qt. 90c, postpaid. Not prepaid, bushel \$13.00.**

**Currie's Black Wax** —As near rust-proof as any variety can be. Makes pods about six inches long, beautiful golden color and a first-class shipping bean, well liked all over the South. **Pkt. 10c; ½ pt. 30c; pt. 50c; qt. 90c, postpaid. Not prepaid, bushel \$13.00.**

**New Pearl Wax** —An extra-early Valentine Wax Bean, with pure yellow wax pods; a fine variety for Florida growers; makes a good home or near-by market bean. **Pkt. 10c; ½ pt. 25c; pt. 45c; qt. 85c, postpaid. Not prepaid, peck \$4.50; bushel \$17.00.**

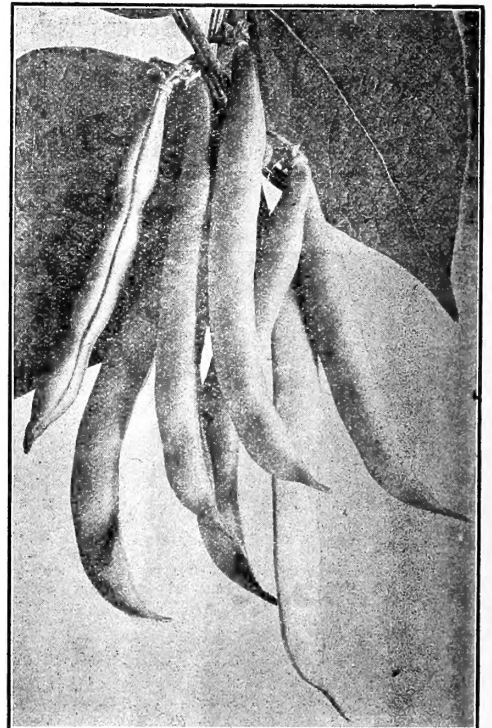
**Alexander's Stringless Green-Pod Bean** —The most delicious flavored bean grown. Remains tender for a long time, and is stringless during all stages of growth. A fine, brittle, crisp bean; very prolific, and a vigorous, strong grower. Comes into bearing about the same time as the Valentine, and continues to bear long after other bush kinds have stopped. This is one of the very best round-podded bush beans, and cannot be excelled for family gardens. **Pkt. 10c; ½ pt. 25c; pt. 45c; qt. 65c, postpaid. Not prepaid, peck \$4.00; bushel \$16.00.**

### Extra-Early Black Valentine

—A fine extra-early type of the Valentine Bean, is very resistant to cold and can be planted early and late; also resists heat well, making it a fine midsummer bean; stands shipping fine; is used for this purpose extensively, and is planted altogether in some sections for a shipping bean. Does not wilt quickly and retains its shape and flavor for a long time after being picked. **Pkt. 10c; ½ pt. 20c; pt. 35c; qt. 65c, postpaid. Not prepaid, peck \$4.00; bushel \$15.00.**

### Extra-Early Red Valentine

—This variety without doubt is the best known and most widely planted variety in the South, and for either market or home use always gives entire satisfaction. Caution should always be used in buying this stock of beans, as large quantities of cheap stocks are sold yearly that make flat tough, shucky pods. You can depend



Alexander's Stringless Green-Pod Beans.

THE MOST IMPORTANT FOOD  
CROPS FOR 1919

BEANS, PEAS, COLLARDS, CORN, TOMATOES,  
ONIONS, POTATOES AND SORGHUM  
FOR SYRUP

## Bush Lima Varieties

**Henderson's Bush Lima**—Smallest, but most prolific of all pure white bush varieties. Called the Bush Butter Bean of the South, being similar in appearance to the Sieva, or small pole lima, but of a true bush form. **Pkt. 10c; ½ pt. 25c; pt. 45c; qt. 80c; peck \$4.50; bushel \$16.50.**

**Jackson Wonder Bush Lima**—The most prolific of all bush limas, bearing from the earliest possible time until frost, and continually supplying quantities of delicious beans, which are bluish brown mottled in appearance. This bean will flourish in the driest weather. **Pkt. 10c; ½ pt. 30c; pt. 50c; qt. 90c, postpaid. Not prepaid, peck \$5.00; bushel \$18.50.**

**Fordhook Bush Lima**—This is generally conceded to be the best of all large bush limas, making large, roundish beans, pods clustering from four to eight on the stem. You will make a mistake if you do not include some of these fine beans in your garden this spring. **Pkt. 10c; ½ pt. 30c; pt. 50c; qt. 90c, postpaid.**



Kentucky Wonder, or Old Homestead.

### Burpee's Bush

**Lima**—A large, flat variety, bearing heavy crops late in the season. **Pkt. 10c; ½ pt. 30c; pt. 50c; qt. 90c, postpaid.**

## Pole, or Running Bean

### Kentucky Wonder

(Texas Prolific, or Old Homestead)—This excellent bean is known under all three of these names and is no doubt the best known and heaviest planted variety in existence today. Bears in about two months after planting and if closely picked will continue to bear until frost. Pods are large round and long, very meaty and tender. Will grow well in corn on moist land. You have no doubt grown this old favorite variety before and do not need to be told about it; but if you have not, do not let another planting season pass before trying this kind. **Pkt. 10c; ½ pt. 25c; pt. 45c; qt. 80c, postpaid. Not prepaid, peck \$4.50; bushel \$17.50.**

### Alexander's Genuine Cornfield Bean

—A fine late or October bean that will grow well in corn. This is a well-flavored genuine cornfield bean, making pods about six inches long, and a most prolific type of this bean. Seed are brownish-black mottled or striped. **Pkt. 10c; ½ pt. 25c; pt. 40c; qt. 75c, postpaid. Not prepaid, peck \$4.50; bushel \$17.50.**

### Golden Cluster Wax

—An excellent pole wax bean, sometimes called the Kentucky Wonder Wax. Makes large beans in clusters and is very prolific. The only pole wax bean of any merit. **Pkt. 10c; ½ pt. 30c; pt. 50c; qt. 90c, postpaid.**

### Creasback

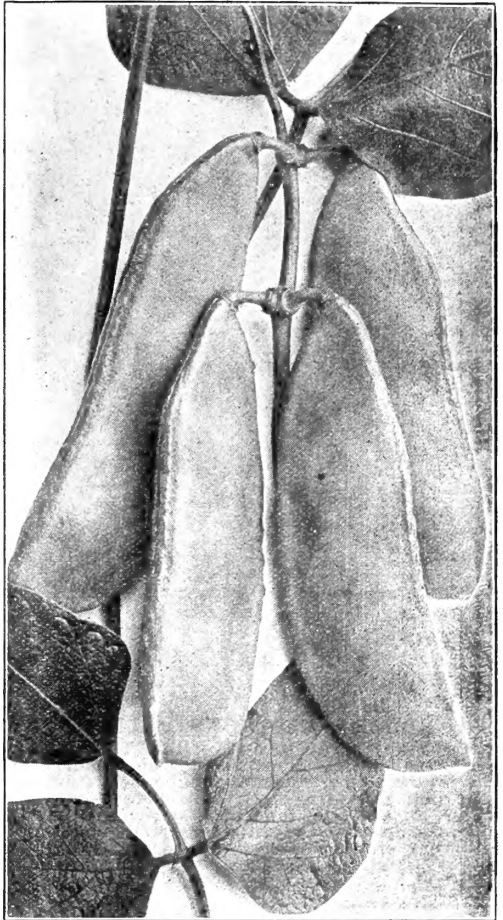
—Also known as Fat Horse. Small white seed that make fine shell beans for winter. Makes fine snaps. Grows well in corn. **Pkt. 10c; ½ pt. 25c; pt. 45c; qt. 80c, postpaid.**

## Pole Butter, or Lima Beans

**Sieva** (or Small White Pole Butter)—This is the best known pole bean planted in the South; is the most prolific bean of the lima grown. Will bear continually until frost, and makes a most excellent dry shell bean for winter use. **Pkt. 10c; ½ pt. 25c; pt. 45c; qt. 80c, postpaid. Not prepaid, peck \$4.50; bushel \$17.50.**

### Large White Lima

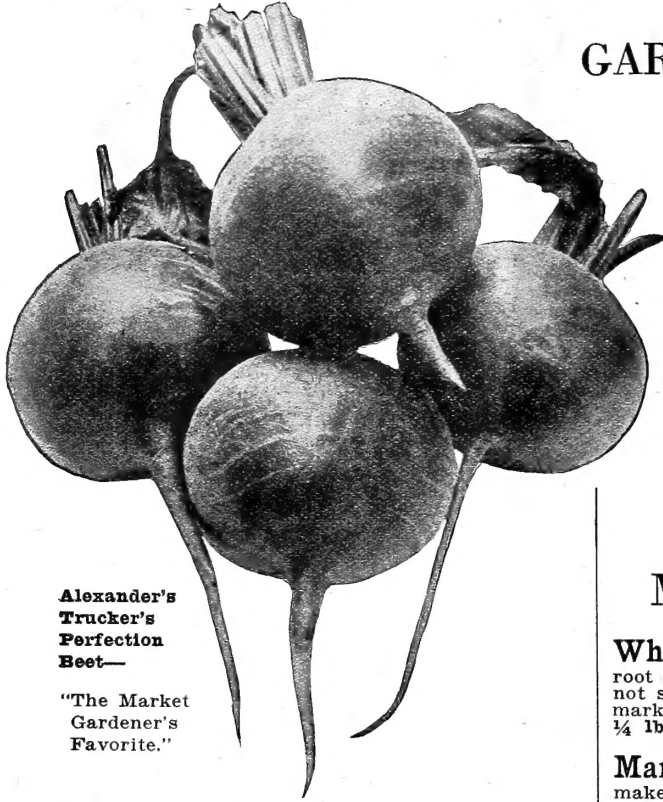
(or King of the Garden Lima)—A fine type of the large pole butter or lima bean, making enormous pods, well filled with beans of finest flavor. **Pkt. 10c; ½ pt. 25c; pt. 45c; qt. 80c, postpaid. Not prepaid, peck \$4.50; bushel \$17.50.**



Small White Pole Lima, or Carolina Sieva.

LARGE BUYERS SHOULD SEND LIST OF REQUIREMENTS FOR SPECIAL PRICES.

## GARDEN BEETS



Alexander's  
Trucker's  
Perfection  
Beet—

"The Market  
Gardener's  
Favorite."

## Alexander's Trucker's Perfection Beet

The market gardener's favorite. This is an extra early round deep blood red sweet tender beet, and one that we recommend without reservation to those that like an extra early beet. This variety has a small top, and in favorable seasons is in marketable size in six to seven weeks from planting. This is a very productive beet that is a good shipper and keeper. Pkt. 5c; oz. 20c;  $\frac{1}{4}$  lb. 60c; lb. \$1.75, postpaid.

**Crosby's Egyptian** Very early strain of the old standard Egyptian; small tops; good shape; popular with the truckers. Pkt. 5c; oz. 15c;  $\frac{1}{4}$  lb. 50c; lb. \$1.50, postpaid.

**Crimson Globe** Early, rich crimson; perfect globe; smooth and clean. Very attractive, and a general favorite. Pkt. 5c;  $\frac{1}{4}$  lb. 50c; lb. \$1.50, postpaid.

**Detroit Dark Red** A fine strain of Blood Turnip, but uniform in size, and smooth, medium size, rich, red color, tender, and remaining so for a long time. Good for both summer and fall use; one of the best for home use. Pkt. 5c; oz. 15c;  $\frac{1}{4}$  lb. 50c; lb. \$1.50, postpaid.

**Extra Early Eclipse** The most popular market beet. Globe shaped, dark and tender; very early. Pkt. 5c; oz. 15c;  $\frac{1}{4}$  lb. 50c; lb. \$1.50, postpaid.

**Edmand's Early Blood Turnip** Round, of good size; dark red; quality good; one of the best for main crop. Pkt. 5c; oz. 15c;  $\frac{1}{4}$  lb. 50c; lb. \$1.50, postpaid.

**Improved Early Blood Turnip** Dark red, smooth; uniform; a good variety for home use. Pkt. 5c; oz. 15c;  $\frac{1}{4}$  lb. 50c; lb. \$1.50, postpaid.

**Half-Long Smooth Blood** —A half-long variety of excellent flavor. Good sure cropper. Pkt. 5c; oz. 15c;  $\frac{1}{4}$  lb. 50c; lb. \$1.50, postpaid.

**Lentz Extra Early** —A fine market beet and a favorite with Florida growers. Ships well. A smooth, dark red, round beet making in about six to seven weeks. Pkt. 5c; oz. 15c;  $\frac{1}{4}$  lb. 50c; lb. \$1.50 postpaid.

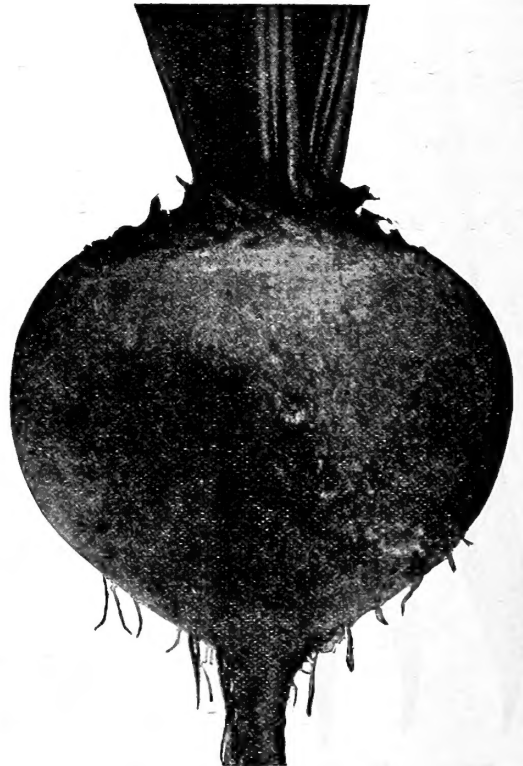
**Culture.**—Sow in rich, well-manured or fertilized ground, after same has been deeply plowed or spaded. Sow thinly in rows 18 inches to 2 feet. The seed are thick and the soil should be firmed or rolled after planting, providing the ground is dry or sandy. When 2 to 3 inches high thin out to 5 or 6 inches apart in the row. Young plants are superior to turnips and spinach for greens. In light, sandy soil cover seed 2 inches; in stiff clay not over 1 inch. One ounce to 50 feet of row; 6 to 8 lbs. per acre. Ready for use in 50 to 70 days, according to variety.

**Improved Long Blood Beet** — This is a long smooth beet, adapted to late plantings and fine for dry weather. Root extends well down into earth where moisture is available. Pkt. 5c; oz. 15c;  $\frac{1}{4}$  lb. 50c; lb. \$1.50, postpaid.

## Mangel, or Stock Beets

**White Sugar** Very hardy variety, producing large crops with little care. The root is very large and very rich in sugar, and while not sufficiently so for sugar purposes, it makes remarkably fine, rich food for stock. Pkt. 5c; oz. 15c;  $\frac{1}{4}$  lb. 45c; lb. \$1.40, postpaid.

**Mammoth Long Red Mangel** Very large long red; makes fine stock feed, high in sugar content; grows well all over South. Plant early and fertilize well and you will get abundance of feed. Pkt. 5c; oz. 15c;  $\frac{1}{4}$  lb. 45c; lb. \$1.40, postpaid.



Improved Early Blood Turnip.



# CABBAGE

**Culture.**—For the earliest setting in the spring set out in February or March plants which have been wintered over, either in cold frames or out of doors. For a succession sow the early varieties in hotbed or cold frame in January, February or early March. Later sow the early varieties out of doors in March or April. For winter cabbage sow in April, May or June, transplanting in July or August, to head up during the late fall and winter. Fall sowings, to make plants for setting out in the fall or earlier spring, should be made after September 20th; if sown earlier they will likely shoot to seed, especially the flat-headed kinds. Early varieties should be set 18 inches apart in 2½ to 3-foot rows; late varieties, being larger, should be set 2 feet apart in 3-foot rows. One ounce will produce about 2,000 plants; six ounces will make plants for an acre. Use good rich soil, plenty of manure and fertilizer; work frequently and deeply. Plant late crop in May.

**Insect Remedies.**—For flea-beetle in the seed bed, apply Slug Shot while the dew is on. For the green cabbage worm apply Slug Shot, or mix one ounce of Paris green to six pounds of flour or land plaster, and apply after a rain or when the dew is on the plants. For the terrapin or spotted cabbage bug, hand-picking is the only remedy. Mustard plants in the rows will draw the bugs from the cabbage, and the mustard can be pulled up and burned and the bugs destroyed.



Alexander's Perfected Early Jersey Wakefield.

## Alexander's Early Jersey Wakefield

—A gem of a little cabbage and a great favorite with home gardeners on account of its size; can be planted closer than large varieties, and its size makes it the best variety for back yard gardens where small amounts are wanted at one time. This is also a great favorite with market gardeners for an extra early crop. A good sure cropper. **Pkt. 10c; ½ oz. 45c; oz. 75c; ¼ lb. \$2.75; lb. \$3.50; postpaid.**

## Late Flat Dutch

—This is an old variety that is too well known for describing; an extra-fine late flat-head variety that always gives splendid results, and has many friends both among home gardeners and truckers. It is well to include this with your early cabbage for late crop. **Pkt. 10c; ½ oz. 35c; oz. 65c; ¼ lb. \$2.00; lb. \$7.00, postpaid.**

## Augusta Early Trucker

—In our Augusta Early Trucker we have the best large early flat-head cabbage ever offered for planting in the South, a variety which will not only give the most satisfactory results in "home gardens," but has proven of the greatest possible value to the market gardens of South Carolina, Georgia, Florida, Texas and other Southern States. It suits all seasons; in fact no cabbage we have ever seen approaches it in so many desirable qualities. Sown in spring, it makes the best summer crop. Sown in the late summer months, it makes a most desirable winter cabbage. Our illustration gives you a good idea of its shape and appearance. In size it is the most desirable for market, either local or for long-distance shipment. It stands summer heat and winter cold without injury, and is the heaviest yielder, the surest header and finest flavor of them all. We know of no cabbage that combines so nearly all the good qualities that a cabbage can have. Our advice to you is to plant the "Augusta Early Trucker." **Pkt. 10c; ½ oz. 40c; oz. 75c; ¼ lb. \$2.50; lb. \$8.00, postpaid.**

**Late Drumhead** —Another old standard variety that has held its popularity for years and is still well known and a largely planted kind; is a good solid hard header and good sure cropper. **Pkt. 10c; ½ oz. 35c; oz. 65c; ¼ lb. \$2.00; lb. \$7.00; postpaid.**

**Succession** —This is largely a market gardener's variety, and is used mostly in the South for shipping purposes; is a large flat top variety with good color and firmness, being about twice the size of most other large sorts; premier brand seed. **Pkt. 10c; ½ oz. 35c; oz. 65c; ¼ lb. \$2.00; lb. \$7.00; postpaid.**

**Charleston Wakefield** —This variety is just a little later and larger than the Early Jersey and is fine for following this crop; both cabbage are the same shape, the greatest difference being in the size. **Pkt. 10c; ½ oz. 40c; oz. 75c; ¼ lb. \$2.75; lb. \$3.50; postpaid.**

## Stein's Early Flat Dutch

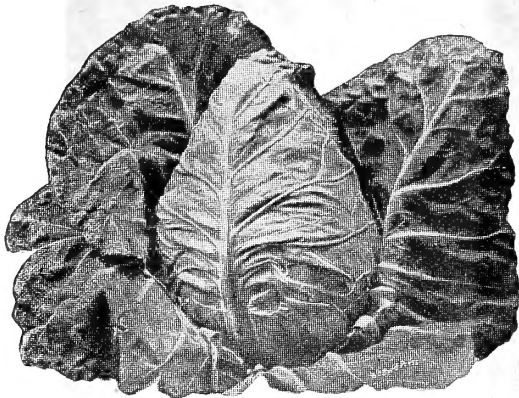
Most popular cabbage in South Texas and Gulf Coast sections for a market and shipping variety. A splendid strain of Flat Dutch, just a little later than the old-time Early Flat Dutch. Fine shipping variety for all sections. **Pkt. 10c; ½ oz. 35c; oz. 65c; ¼ lb. \$2.00; lb. \$7.50; postpaid.**

**Chinese Cabbage or Petai** —This is a fine variety, and has gained great popularity during the short time that it has been grown in this country. The cabbage has spoon-shaped leaves with large white mid-ribs; has somewhat of a celery flavor and will bleach out fine when the leaves are drawn together and tied. This is strictly a cool weather cabbage, and thrives best when planted in early spring or fall. **Pkt. 10c; oz. 50c; ¼ lb. \$1.50; lb. \$5.00.**

Crenshaw Co., Ala. June, 1917. — Send enclosed amount in Augusta Trucker Cabbage. Your seed are fine.—Jewell Eiland.



Alexander's Augusta Trucker Cabbage.



Extra-Early York.

**Extra-Early York** —This is a small, extra-early, heart-shaped cabbage, earlier than the Jersey Wakefield, one of the first to make. Makes fine firm small heads that are good sellers and a favorite with truckers for an extra-early crop. Pkt. 10c; ½ oz. 40c; oz. 75c; ¼ lb. \$2.00; lb. \$7.50, postpaid. Not prepaid, 5 lbs. at \$7.00.

**Early Winingstadt** —A second early to the York, same shape, but with few outer leaves. Comes just a few days before the Jersey Wakefield. Pkt. 10c; ½ oz. 40c; oz. 75c; ¼ lb. \$2.00; lb. \$7.50, postpaid. Not prepaid, 5 lbs. \$7.00.

**Drumhead Savoy** —A fine large-heading variety, with green crinkly leaves; a very pretty cabbage and a fine home-garden variety. Pkt. 10c; ½ oz. 40c; oz. 75c; ¼ lb. \$2.00; lb. \$7.50. Not prepaid, 5 lbs. \$7.00.

## ALEXANDER'S SELECTED CARROT SEED

-heard, or  
Guerende  
Carrot.

**Culture.**—Carrots deserve a more general cultivation in the South than they now have. The young, tender roots are excellent stewed or boiled, either alone or with meat, as well as for seasoning and flavoring soups. Sow 1 ounce of seed to 100 feet of row; about 3 pounds per acre. Sow seed in shallow drills in early spring when leaves are starting out. Make succession sowings about a month apart to give a continuous supply. When plants are well started, thin out to 4 inches apart in the row. Sow in rich or well-fertilized soil worked deep. Most varieties of carrot are deep-rooted. Soil should be prepared sufficiently deep so that the roots can penetrate without difficulty. Work often, keeping the ground free from weeds and grass. Make drills 16 to 18 inches apart for easy working. In Florida sow seed September to November. Ready to use in about 80 days.

**Chantenay** —This is a stump-rooted variety, the best of its class. A half-long sort, unexcelled in quality and productiveness; very uniform in growth; flesh deep golden orange color; roots 3 inches in diameter at top and about 5 inches in length, gradually tapering in symmetrical manner to the base. Pkt. 5c; oz. 20c; ¼ lb. 60c; lb. \$2.00, postpaid.

**Red St. Valery** —Roots smooth and regular in growth, of large size, from 10 to 12 inches in length, 2 to 3 inches in diameter at top, tapering gradually to a point. Rich, deep coloring and free from hard core. A favorite with our customers, especially in droughty sections. Pkt. 5c; oz. 20c; ¼ lb. 55c; lb. \$1.75.

**Half-Long Scarlet** —A favorite stump-rooted sort for both market gardeners and home use. Pkt. 5c; oz. 20c; ¼ lb. 50c; lb. \$1.50, postpaid.

**Danver's Intermediate** —Bright orange color, smooth finely formed; heaviest producer to the acre of any of the half-long varieties. Pkt. 5c; oz. 20c; ¼ lb. 50c; lb. \$1.50, postpaid.

**Oxheart, or Guerende** —The best of the short-rooted thick-formed carrots. Roots 3 inches wide at top, tapering to 2 inches in diameter at the bottom. Length about 5 to 6 inches. Roots very free from hard core and of finest quality for table use. Both skin and flesh are highly colored. Being very short, they are easily pulled from the ground, where the long sorts often have to be dug or plowed out in heavy soil. This is the carrot for you to plant this year. Easily grown and entirely satisfactory for home garden or market. Pkt. 5c; oz. 20c; ¼ lb. 55c; lb. \$1.75, postpaid.

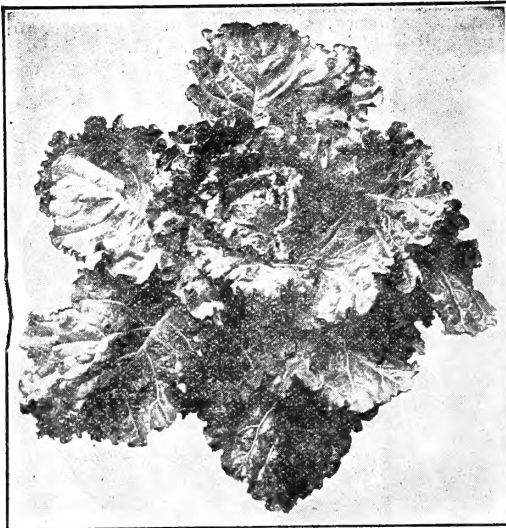
**Improved Long Orange** —Old, well-known variety. Roots long and of deep, rich orange color. Heaviest cropping table carrot and profitable to grow for stock feed as well. Pkt. 5c; oz. 20c; ¼ lb. 50c; lb. \$1.50 postpaid.

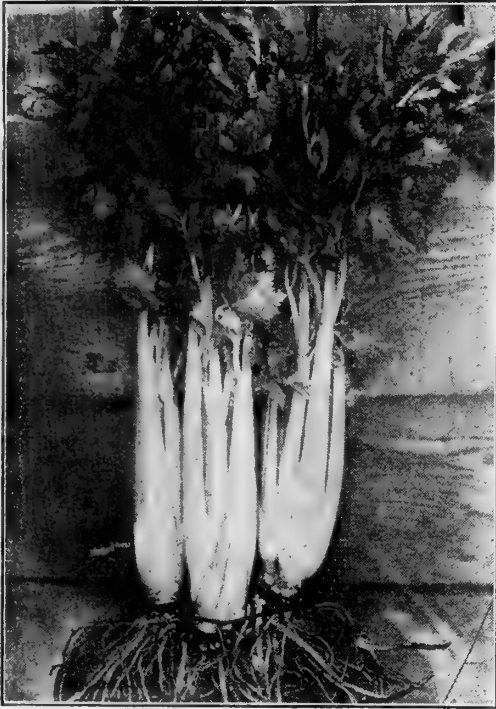
**Large White Belgian Carrot (For Stock Feed Only)** —The South is just beginning to appreciate the value of root crops for stock. Of these, the Belgian carrot is an immense cropper, having produced as high as 20 tons of roots per acre. Plant on land that has previously been cultivated and worked deeply. Pkt. 5c; oz. 15c; ¼ lb. 40c; lb. \$1.25.

## COLLARDS

An old-time standby for winter greens all over the South. Well adapted to every Southern State, and is a species of cabbage not only hardy, but a vigorous and continuous grower, producing a mass of leaves and later a fairly good head. Not in its best condition until touched by frost. Seed can be sown here from early spring up to October 1st. When plants are 6 inches high transplant to open ground, setting 2 feet apart in the row. Cultivate like cabbage. Sow one ounce of seed to 200 feet of row.

**Alexander's Improved White Cabbage Collard** —This is the finest, largest, quickest growing best flavored collard ever grown. It always brings the best price and the most profit because it so quickly makes a large, compact, tender growth. Makes the finest looking, quickest selling collard we have ever seen, the best of all for home or market use. This is the collard that will please everybody—the collard that everybody will soon be planting. The only collard to plant for profit. Price: Pkt. 5c; oz. 15c; ¼ lb. 35c; lb. \$1.00, postpaid.

Alexander's White Cabbage Collard  
(The Heading Variety).



Alexander's Perfected Golden Self-Blanching.

## CELERY

**Culture.**—First sowings are made in January, February and March in protected beds. When plants are about 4 inches high cut off tops to make stocky growth. Plants are transplanted from July to October. To grow fine celery you must have moist land highly fertilized. Some of the most successful celery growers use from one to two tons of fertilizer per acre. When plants are about four inches high set in double rows 6x10 inches, on beds 2 feet wide and 30 inches apart. One ton high-grade fertilizer should be applied ten days before the plants are set, and second application one month after setting, and then 200 pounds of nitrate of soda every ten days until celery is ready to board for blanching.

**Golden Self-Blanching** —This is the most popular with all Southern market gardeners, and is far superior to all other sorts. Compact in growth, large stalks, and a beautiful rich golden yellow. Crisp and tender and free from stringiness. Our Golden Self-Blanching Celery Seed is grown for us in France by the originator, and can be depended upon for great purity and exceeding fine quality. We do not recommend the American grown stock, as it usually proves very unsatisfactory for a marketing variety, being pithy and thoroughly unreliable in most cases. **Pkt. 25c; oz. \$1.00; ¼lb. \$3.50; lb. \$12.00; postpaid.**

**White Plume** —This is a magnificent type of the American grown celery. Is a white celery, whereas the Golden Self-Blanching is yellow. White Plume bleaches naturally without being boarded, and is a splendid variety for home use, but we do not recommend it for a marketing variety. **Pkt. 10c; oz. 35c; ¼lb. \$1.25; lb. \$4.00; postpaid.**

**Giant Pascal** —This is a fine variety, generally grown in the South for a late celery, and for fall or winter sowings is certainly one of the best. Makes large, thick, solid stalks, with a beautiful creamy heart. Blanches out nicely. **Pkt. 10c; oz. 40c; ¼ lb. \$1.25; lb. \$4.50.**

## CAULIFLOWER

One-Quarter Pound Seed Per Acre.

**Culture.**—Cauliflower, like cabbage, needs very rich soil and plenty of moisture. On account of the price of seed, we recommend starting plants in beds, where they can be taken care of. Cultivation, same as cabbage. Just as soon as there is any appearance of heading, draw the outer leaves over the head and tie with a soft string or use toothpicks to pin same. The half-barrel crate is used extensively for shipping this vegetable in.

We handle the very finest imported European-grown strain of the Early Snowball and are confident that there is no better that comes into the United States.

**Alexander's Early Snowball** —Beyond any question the best variety that can be planted in Florida for the market. **Pkt. 25c; oz. \$1.75; ¼lb. \$7.00; lb. \$25.00.**

**Autumn Giant** —A valuable home variety. The heads are large and white, remaining a long time fit for use. **Pkt. 10c; oz. 35c; ¼lb. \$1.25; lb. \$4.00.**

Hamilton Co., Texas, 1917.—Find enclosed \$1.75 for seed. I have planted a good many of your seed, and have always been highly pleased with them.—J. L. Johnson.

Charleston Co., Ga., April 27 1917.—Find enclosed order. I have been planting your seed for a long time, and find them all right. Have been telling my neighbors about them, and think you will get more orders.—Mrs. W. C. Greer.

Orangeburg Co., S. C., May 8, 1917.—Please forward enclosed order. I am just delighted with your seed. Never had such a fine garden before I began using your seed. Thank you for prompt service.—MRS. M. L. PAULIN.

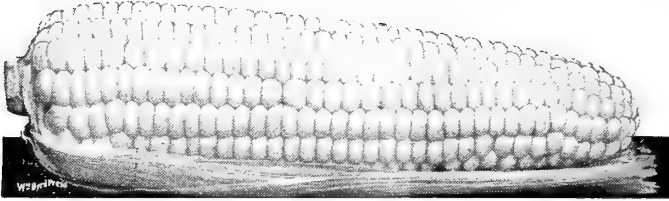


Alexander's Early Snowball Cauliflower.

**SLUG SHOT** kills bugs and worms on Garden Plants and is good for killing out any kind of leaf-eating insects. Also used for killing lice on poultry. Price: pound, 25c; 5 pounds, 65c, postpaid.

## CORN

## Alexander's Sweet and Roasting Ear Corn



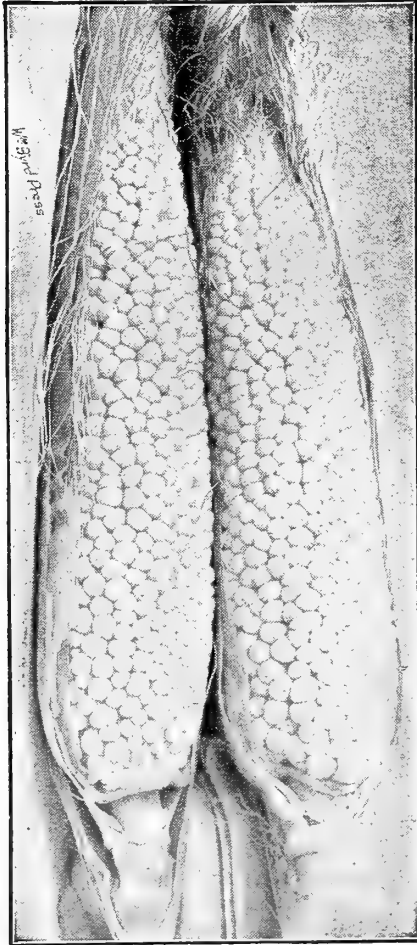
Adams Large Early.

**Snowflake** —A valuable variety for early roasting ears, making best quality. **Pkt. 10c; pt. 20c; qt. 40c, postpaid. Not prepaid, peck \$1.25; bushel \$4.25.**

**100-Day (or Extra-Early Yellow Dent)**—This is an extra-early variety that will come in way ahead of other yellow corns, making fine roasting ears and early feed. **Pkt. 10c; pt. 25c; qt. 45c, postpaid. Not prepaid, peck \$1.50; bushel \$5.00.**

**Adams Extra Early** —The earliest corn known, making nice small roasting ears. Should be planted in good rich soil with good cultivation, or will not make a very profitable crop. **Pkt. 10c; ½ pt. 20c; pt. 35c; qt. 65c, postpaid.**

**Adams Large Early** —About ten days later than Adams Extra-Early, making larger ears and better flavored. **Pkt. 10c; ½ pt. 20c; pt. 35c; qt. 65c, postpaid.**



Country Gentleman.

**Golden Bantam** —A superb yellow corn, having a flavor all of its own making two medium-sized ears well filled out. A fine early sweet corn. **Pkt. 10c; ½ pt. 20c; pt. 40c; qt. 75c, postpaid.**

**Country Gentleman**

—Makes two to three good ears of fine sugar corn, of the best quality of any of the sweet corns; a good sure cropper. **Pkt. 10c; ½ pt. 20c; pt. 35c; qt. 65c, postpaid.**



Golden Bantam Sweet Corn.

**Stowell's Evergreen** —A standard main-crop sweet corn, making two large ears of excellent quality. Retains its tenderness for a long time, making it a good shipper. **Pkt. 10c; ½ pt. 20c; pt. 35c; qt. 65c.**

**Black Mexican** —A late dark blue grained variety, of fine flavor. Is not subject to bud worm attacks or weevils to any extent. **Pkt. 10c; ½ pt. 20c; pt. 35c; qt. 65c, postpaid.**

**Mexican June Corn** —This is a superb late planting corn, especially suited for planting after grain. Will make during dry weather when other kinds are usually a failure. Makes good feed and fine late roasting ears. **Pkt. 10c; pt. 20c; qt. 40c, postpaid. Not prepaid, peck \$1.50; bushel \$4.50.**

**Hickory King** —A favorite deep-grained variety, fine for roasting ears; usually an eight-row corn, having a very small white cob about the size of one of the grains. **Pkt. 10c; pt. 25c; qt. 45c, postpaid. Not prepaid, peck \$1.25; bushel \$4.25.**

**White Rice Pop Corn** —A fine small white grained variety, planted extensively for feed and for popping purposes. **Pkt. 10c; lb. 35c, postpaid. Not prepaid, 25c per lb.**

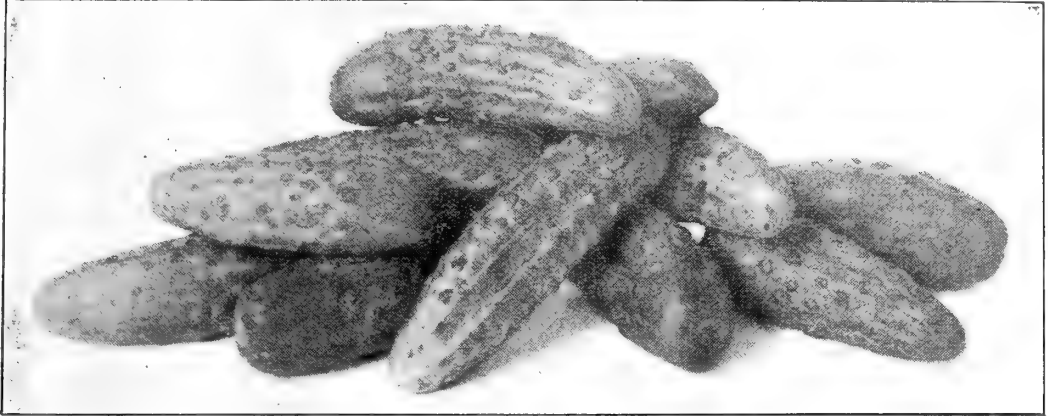
**Golden Queen Pop Corn** —A small yellow grained variety. **Pkt. 10c; lb. 35c, postpaid. Not prepaid, 25c per lb.**

Gregg County, Texas, February 5th.—A year ago I ordered a few seed from your house and found them superior to and more exactly as catalog stated than any house I have dealt with. I now want strawberry plants.—Mrs. T. G. Barker.

Madison County, Tenn., January 21st.—I am now in the grocery and trucking business. I am partial to your seed, as I have been dealing with you for ten years, and found you always honest in your dealing. Send catalog and wholesale price list.—F. B. Howlett.

## ALEXANDER'S CUCUMBER SEED

**Culture.**—Cucumbers are very tender, and should not be planted until all danger of frost is past and the ground becomes warm. If planted earlier than this they should be protected. Plant in hills 4 feet apart each way. Where well-rotted manure is obtainable work a large shovelful of it into each hill. Plant 8 to 10 seed in each hill, and when plants are well up and have rough leaves formed thin out to 4 in each hill. Cover seed  $\frac{1}{2}$  inch in clay and heavy soils and 1 inch in light or sandy soils. Soil which covers seed should be worked down fine, so that there are no clods or lumps in it. Keep plants well cultivated up to the time they begin to run; after that confine cultivation to pulling out any large weeds as they appear. Pick off the cucumbers as soon as large enough for use, for if left to ripen the plants soon cease bearing. In this latitude (Augusta) planting may be made in the spring; also in June, July and August for late summer and tall crops. In Florida and along the Gulf Coast, August and September planting are often profitable for late fall and early winter shipments. Quantity of seed required—One ounce to 60 hills; about two pounds per acre.



Alexander's Special Southern Pickle Cucumbers.

**Improved Long Green** —An old-time favorite in the South, making extra-long slim fruit that will hold color until well matured. A fine, nice brittle, well-flavored cucumber. Good for planting during all seasons of the year. **Pkt. 5c; oz. 20c;  $\frac{1}{4}$  lb. 50c; lb. \$1.50, postpaid.**

**Early Fortune** —A great favorite with Florida truckers, with fine dark green color holding this color for a long time. A favorite for shipping to Northern markets. Nice, plump, crisp cucumber, with all good features for both home and shipping purposes. **Pkt. 5c; oz. 20c;  $\frac{1}{4}$  lb. 35c; lb. \$1.25, postpaid.**

**Alexander's White Spine** —A deep dark cucumber that will hold its color for a long time. This makes it a desirable shipping variety, as the color last several days after reaching Northern markets. This is a very early sort, and with proper cultivation will produce all perfect specimens. Our strain will be found to be satisfactory for every purpose both for home garden and shipping. This cucumber will satisfy. **Pkt. 5c; oz. 20c;  $\frac{1}{4}$  lb. 35c; lb. \$1.35, postpaid.**

**Everbearing** —A fine cucumber, growing in bushy form, and a distinct kind from all others. The vine produces early, and continues to do so until very late. Full matured fruits may be seen on vine while still blossoming, but these should be picked when too old to eat. Small ones make excellent pickling cucumbers. **Pkt. 5c; oz. 20c;  $\frac{1}{4}$  lb. 35c; lb. \$1.35, postpaid.**

**Early Green Cluster** —Bearing in clusters of two and three. If fruit is picked will continue to bear throughout entire season. A fine deep green fruit. **Pkt. 5c; oz. 20c;  $\frac{1}{4}$  lb. 50c; lb. \$1.50.**

**Japanese Climbing** —This is a climbing variety, vines attaining twice the length of the ordinary sorts. These can be trained to climb on fences or trellises, which will save space where it is limited. Fine variety for small gardens and where only a few vines are wanted. **Pkt. 10c; oz. 30c;  $\frac{1}{4}$  lb. 60c; lb. \$1.75.**

**Alexander's Southern Pickle** —This variety has been grown and selected to produce numbers of small fruits just the proper size for pickling purposes, and when full grown are of a nice size for this purpose. This variety gives much better satisfaction than the use of immature fruits of other sorts. **Pkt. 10c;  $\frac{1}{2}$  oz. 20c;  $\frac{1}{4}$  lb. 40c; lb. \$1.50, postpaid.**

**Alexander's Seeds Are Always Satisfactory.**

Bibb Co., Ala., 1917.—Forward the enclosed order at earliest date and send new catalog. We have better results from your seed than any.—T. Frazier.

Hillsboro Co., Fla., January 29, 1917.—Send me your catalog. Have used your seed with good results and want more.—J. M. Hemminger.

Crisp Co., Ga., January 24, 1917.—Mail enclosed order for seed at once. I find your seed are the best is why I order from you.—Mrs. Eugenia Childree.

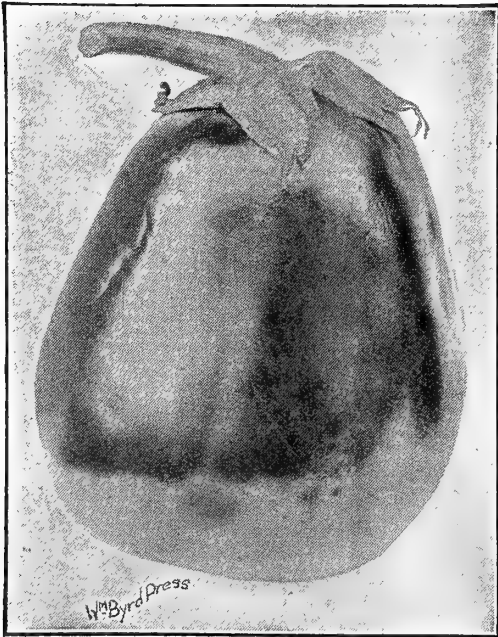


Alexander's Special Strain of White-Spine Cucumbers.

## ALEXANDER'S EGGPLANT SEED

**Culture.**—In the Lower South seed should be sown in hotbeds or frames in January or February. In the latitude of Augusta hotbeds should be started between February 15th and March 15th. Great care should be taken, as eggplant will not germinate freely in an average temperature less than 65 degrees. When plants have made the fourth or fifth pair of leaves they may be set in open ground, if danger of frost is past, placing them 3 feet apart each way. Cultivate often, keeping free from weeds and grass. In June and July seed can be planted in Florida for fall and early winter shipping crop. One 10-cent package of seed will furnish plants for about 200 feet of row. For market plantings use ½ pound of seed per acre. Matures in about 120 days.

**Alexander's Improved Large Purple Thornless Eggplant**—Standard variety for all parts of the South for home use or shipment. Fruits are splendidly and evenly colored with rich, dark purple and 90 per cent or more of the plants are thornless. In a properly cultivated crop, streaked or off-colored fruit is almost unknown. Plants are strong, vigorous growers, producing from 5 to 8 large fruits of dark, rich purple color. Earliest of large fruited varieties and always gives satisfaction under proper cultivation. The vigor and strength of this variety make it less subject to effect of "blight" and "dieback," which is so disastrous to this crop in many parts of Florida. Practically all seed houses list some so-called "Spineless Eggplant" and claim it to be absolutely free from spines, but such is not the case. All so-called spineless eggplants have some spines but Alexander's Improved has less than any. **Price:** Pkt. 10c; ½ oz. 30c; oz. 50c; ¼ lb. \$1.50, postpaid.

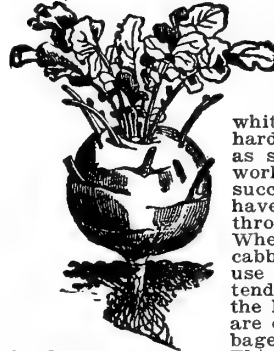


Alexander's Florida High Bush Eggplant.

**Black Beauty**—Nearly two weeks earlier than any other variety, producing large, thick, lustrous, purplish-black fruits of the finest quality. The fruits set freely and develop quickly. It holds its color exceptionally well. **Price:** Pkt. 10c; ½ oz. 30c; oz. 60c; ¼ lb. \$1.50.

**Florida High Bush**—Resists drought and wet weather to a wonderful degree on account of its strong upright growth, the fruits being held well off the ground. Very vigorous and productive, bearing very profusely its large purple fruits of fine shape and quality. An excellent shipper; commission men report they reach market in the best condition and command high prices. **Price:** Pkt. 10c; ½ oz. 30c; oz. 60c; ¼ lb. \$1.50.

## KOHL-RABI



### Early White

**Vienna**—Bulbs grow to the size of an apple when ready for use, and are of a pale whitish-green color. They are hardy and can be sown in drills as soon as the ground can be worked in the spring, and with successive sowings you can have nice tender bulbs all through the summer and fall. When well started set out as cabbage plants, and for table use gather bulbs while skin is tender. Boil, slice and cut off the hard lower portion. Bulbs are of very mild, delicate, cabbage-like flavor, most delicious. **Pkt. 10c; oz. 25c; ¼ lb. 90c; lb. \$3.00 postpaid.**

Early White Vienna  
Kohl-Rabi.

## CORN SALAD

**Large Green Cabbaging**—For spring salad or garnishing. Doesn't do well in hot weather so plant early as possible in spring. Ounce plants 30 feet of row. **Pkt. 5c; oz. 15c; ¼ lb. 50c, postpaid.**

## CRESS

### Extra Curled or Improved Pepper Grass

—This tastes the same as Water Cress, and is easily grown in spring, summer and fall. Make frequent plantings, as the plant soon runs to seed. **Pkt. 5c; oz. 15c; ¼ lb. 50c, postpaid.**

## ENDIVE

**Early Green Curled**—Drill shallowly in early spring and thin out or transplant in good soil. When nearly grown tie up or shade heads when dry for blanching. Finest and most wholesome for salads and of excellent flavor. Standard and most popular variety. **Pkt. 5c; oz. 25c; ¼ lb. 75c; lb. \$2.50.**

## GOURDS

	Pkt.	Oz.		Pkt.	Oz.
Nest Egg.....	10c	35c	Ornamental		
Dipper.....	10c	40c	Pomegranate..	10c	35c
Sugar Trough...	10c	35c	Mixed.....	10c	35c
Dish Cloth.....	10c	40c			

## KALE or BORECOLE

**Early Green Curled**—Also variously known as "Dwarf Curled Scotch," and "Siberian." This is the variety usually sown in the fall for spring use. It is rather low growing, with fine curled leaves of deep green color. The young leaves are tender and delicate in flavor. **Price,** Pkt. 5c; oz. 30c; ¼ lb. 75c; lb. \$2.50; postpaid.

**Tall Green Curled Scotch**—Tall growing, very ornamental variety. **Pkt. 5c; oz. 25c; ¼ lb. 65c; lb. \$2.00; postpaid.**



Early Green Curled Kale, or Borecole.

## LETTUCE

**Culture.**—Lettuce is easy to grow, but requires rich, moist soil, clean and thorough cultivation and plenty of water to give it that quick-growth on which depends its tenderness and flavor. They may be had at all seasons of the year. For a succession sow every three weeks. Sowings may be made in open ground early in the spring and the plants thinned out. For fall use, sow in July and August. Fall sowings of hardy kinds should be made in September; protect with straw or litter and they will head up in the spring, or transplant 9 inches apart under glass or canvas to head up in the winter. One ounce will produce about 1,500 plants; 3 pounds will make plants enough for an acre.

### Alexander's Big Boston

**Lettuce** —The cut shows a field of our Big Boston Lettuce. The heads of this variety are extremely firm and solid. This fine variety is grown exclusively in some sections for shipping purposes, and has given best of satisfaction. Inside bleached fine white; very crisp and nicely flavored. Favorite shipping lettuce. **Pkt. 10c; oz. 20c; ¼ lb. 50c; lb. \$1.50, postpaid. In quantity lots—5 lbs. or more, not prepaid, \$1.25 per lb.**



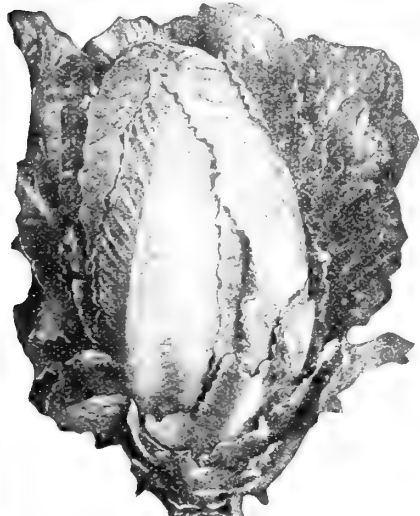
A Field of Alexander's Big Boston Lettuce.

**Grand Rapids** —Among the curled leaved lettuces there is no better for forcing, and it does splendidly outdoors if sown in the fall or early in spring. It does not form heads, but makes a large compact cluster crimped around the edges; crisp and tender. One of the easiest lettuces to grow under glass. **Pkt. 10c; oz. 20c; ¼ lb. 50c; lb. \$1.50, postpaid.**

**Romaine, or Cos Lettuce** —Trianon is by far the best of the Cos, or Romaine, varieties. These are becoming very popular; they have a distinct and pleasing flavor. The long, spoon-shaped leaves form oval-shaped heads, and are easily blanched by gathering the outer leaves at the top and loosely tying them with soft string several days before wanted for the table. **Pkt. 10c; oz. 25c; ¼ lb. 60c; lb. \$2.00, postpaid.**

**California Cream Butter** —Good for open ground planting at all seasons in the South. Fine variety for market gardeners and shippers. Heads large and solid, the inside bleaching to a beautiful cream yellow when properly grown. The pure strain of this variety can be distinguished by the small spots on the outer leaves. Our stock is strictly high grade and of the purest strain. **Pkt. 5c; oz. 20c; ¼ lb. 50c; lb. \$1.50, postpaid.**

**New York, or Wonderful** —A large-heading variety, making the largest growth of any lettuce; a fine solid variety both for home use and for shipping purposes. **Pkt. 5c; oz. 25c; ¼ lb. 60c; lb. \$2.00, postpaid.**



The Trianon Cos Lettuce.

**"Summer Success" Alexander's Special Hot Weather Lettuce.**—For a number of years we have felt that lettuce growers have wanted a sure-heading variety for hot weather, and we believe that we have the best lettuce in our "Summer Success" for this purpose. This variety forms large compact creamy white heads with the excellent flavor of the "Butter" lettuce, and is by far the best variety for late summer plantings. Lettuce thrives best in well manured and cultivated soil with plenty of moisture, and when these conditions are complied with you need not be without lettuce. **Pkt. 10c; oz. 25c; ¼ lb. 75c; lb. \$2.50.**

**Mignonette** —This is a superb small growing little lettuce, requiring very little space in the row, and might be called a Baby Boston Lettuce. Very desirable for individual use, as the size is just right for one person to eat altogether. **Pkt. 10c; oz. 20c; ¼ lb. 50c; lb. \$1.50, postpaid.**



Alexander's Summer Success, the Hot Weather Beater.

# MUSTARD

**Culture.**—Sow in any good garden soil thickly in drills 14 to 16 inches apart. Give good cultivation and keep free from weeds and grasses. Mustard leaves are large enough for salad in about four weeks from sowing, and may be cut. Sow seed from January to April and in early fall.

**Chinese Mustard** —We have sold this variety for years, and it has always given complete satisfaction. Leaves are about twice as large as those of the Southern Curled, and are smoother. Leaves remain tender and in condition for a long time. Pkt. 5c; oz. 15c; ¼ lb. 45c; lb. \$1.50, postpaid.

**Giant Southern Curled** —This is an old and well-known variety, used in the South for years. Is used for salads, like lettuce, and for boiling. Leaves are a beautiful green and are very crinkly or curled. Pkt. 5c; oz. 15c; ¼ lb. 45c; lb. \$1.50, postpaid.

**Ostrich Plume** —This is an extremely curled variety, of medium growth, making the finest quality salad. Pkt. 5c; oz. 15c; ¼ lb. 45c; lb. \$1.50, postpaid.

**White Mustard** —The seed of this variety are used for medicinal purposes and for making commercial mustard as sold by grocers; also used in pickling. Pkt. 5c; oz. 15c; ¼ lb. 45c; lb. \$1.50, postpaid.

**Elephant's Ear** —A large, smooth, thick-leaf variety, of fine flavor. Pkt. 5c; oz. 15c; ¼ lb. 45c; lb. \$1.50, postpaid.



Alexander's Chinese Mustard.

# FLOWER SEED FOR THE SOUTH

- Ageratum. Mixed.....05c
- Abronia, or Sand Verbena. Mixed colors.....10c
- Abutilon, or Flowering Maple. Mixed.....10c
- Alyssum, Sweet. White and fragrant.....05c
- Antirrhinum (Snap-Dragon). Finest mixed.....05c
- Ampelopsis (Boston Ivy). Rapid creeper, lovely green foliage.....05c
- Asters. Finest large flowering mixed.....10c
- Balsam (Lady Slipper). Fine mixed.....05c
- Balsam. Double rose flowering mixed.....10c
- Balsam Apple. Very ornamental climber.....10c
- Bellis (Double English Daisy). Finest mixed.....10c
- Burning Bush, Mexican—Kochia. Easily grown annual plant, very popular.....10c
- Candytuft (Iberis). Pure white, 5c; mixed colors 05c
- Carnations. Finest Double German mixed.....15c
- Carnation Marguerite. Everblooming Carnation, beginning to bloom in four months from seed.....10c
- Cannas. Large flowering French varieties.....10c
- Cobea Scandens. Beautiful climber from Mexico, with purple, bell-shaped flowers.....10c
- Celosia, or Cock's Comb. Mixed colors.....10c
- Coleus-Hybrid. Best Fancy Striped and Blotched Selections.....25c
- Cypress Vine. Splendid climber with fern-like foliage, scarlet and white flowers, mixed.....05c
- Cosmos. Free flowering annuals from Mexico, easily grown; white, pink, crimson, mixed.....05c
- Dianthus, or Garden Pinks.
  - Chinensis (Double China Pinks). Mixed.....05c
  - Lacinatus. Large single fringed, mixed.....05c
  - Imperialis. Double, large and showy, mixed.....05c
- Heliotrope. Always a favorite, grows in boxes or protected beds in our section, mixed.....10c
- Digitalis (Fox Glove). Beautiful plant and valuable for medicinal purposes. Mixed colors.....05c
- Forget-Me-Nots. Favorites everywhere for beds or borders, blue and white mixed.....05c
- Hollyhocks. Finest double mixed, all shades and colors. A splendid selection.....10c
- Jack Bean, Hyacinth Bean.....10c
- Japanese Morning Glories. Rapid climbers, growing 20 to 30 feet and covered with extra large, finely marked, striped and blotched flowers all through the season, mixed colors.....10c
- Japanese Hop. Rapid growing climber for porches or trellises, easily grown.....05c
- Lantana. Best French varieties. Grows anywhere in the South. Finest mixed colors.....10c
- Marvel of Peru (Four O'Clocks). Showy, free-flowering annuals. Mixed, all colors.....05c
- Marigold. Large African. Very fine flowering, growing 16 to 20 inches high. Mixed.....05c
- Mignonette. Delightfully fragrant.....05c
- Mixed Flower Garden. Made up of over a hundred varieties.....05c

- Moonflower or Evening Glory. Popular in the South as a climber and shade for porches, arbors and trellises. Enormous white flowers, open nights and cloudy days.....10c
- Moonflower, Heavenly Blue. Similar to the white, but has intense sky blue color.....10c
- Nasturtiums. No flower that you plant in the South will give you such entire satisfaction as our splendid mixture of Nasturtiums:
- Nasturtium, Dwarf Mixed. Finest possible selection of shades and colors. Ounce 20c.....05c
- Nasturtium, Tall Mixed. Same shades and colors as our Dwarf, but tall growing. Ounce 20c.....05c
- Pansies, Fine Mixed. The medium-sized flowers, fine selection of colors.....05c
- Pansy, Masterpiece. A giant curled Pansy with crimped and curled petals.....15c
- Pansy, Alexander's Premium. The finest Pansy mixture of all. Large size, finest colors.....25c
- Petunias, Single Mixed. Splendid bedding plants to bloom all Summer. Mixed colors.....05c
- Phlox Drummond. Earliest grown of all annual flowers. Finest shades and colors.....05c
- Poppies, Double and Single Mixed. Our fine mixture of named varieties of Poppies. Brilliant.....05c
- Poppy, California (Escholtzia). Sow early in the Spring; makes brilliant display. Packet, single, 5 cents; double.....05c
- Poppy, Orientale.....10c
- Poppy, Shirley.....05c
- Primrose—Chinese, Primula, Sinensis. Large, beautiful flowers.....05c
- Primrose, English Evening. Large, showy, fragrant flowers. Ounce 25 cents.....10c
- Pyrethrum. Bright yellow foliage, very popular for borders.....10c
- Ricinus (Castor Bean). Ornamental varieties for lawn and garden effects (ounce 30c).....10c
- Sweet Peas, Alexander's Superb Mixed. The best of all Sweet Pea mixtures in the country. Made up by us from the best named sorts. Pound \$1.25, postpaid; ¼ lb. 45c; ounce 15c.....05c
- Salvia (Scarlet Sage). Makes an intensely brilliant bedding plant for the South.....10c
- Stocks (Gillflower). Best mixture, makes immense amount, large, fragrant blooms.....10c
- Sunflower. Japanese Dwarf plant, beautiful for mid-summer garden.....10c
- Sweet William. Beautiful, free flowering perennial, double and single mixed.....10c
- Verbena. A favorite box and bedding plant with us. Fine mixed.....05c
- Vinca, or Madagascar Periwinkle. Desirable for open ground sowing. Mixed colors.....05c
- Zinnias. Showy and grow easily with little cultivation. Mixed shades and colors.....05c

# ORIENTAL SEED NOVELTIES

- JAPANESE TURNIP**
- Tennjoi.—Pkt. 10c; oz. 35c; ¼ lb. \$1.00, postpaid.
- Tokyo.—Pkt. 10c; oz. 35c; ¼ lb. \$1.00, postpaid.
- Tokyo Market.—Pkt. 10c; oz. 35c; ¼ lb. \$1, postpaid.
- NEBUKA, or JAPANESE ONION**
- Senju-Nebuka.—Pkt. 5c; oz. 50c, postpaid.
- Iwatsuki-Nebuka.—Pkt. 15c; oz. 50c, postpaid.
- CHINESE MUSTARD**
- Pkt. 5c; oz. 15c; ¼ lb. 45c; lb. \$1.50, postpaid.

- JAPANESE CUCUMBER**
- Japanese Climbing.—Pkt. 10c; oz. 30c, postpaid.
- JAPANESE RADISEH**
- Nerima Long or Mikado.—Pkt. 15c; oz. 50c, postpaid.
- Sakurajima, Mammoth of Japan.—Pkt. 15c; oz. 50c.
- JAPANESE SPINACH**
- Horenso.—Pkt. 15c; oz. 50, postpaid.
- JAPANESE SWISS CHARD**
- Fdanso, or Swiss Chard.—Pkt. 10c; oz. 35c, postpaid.



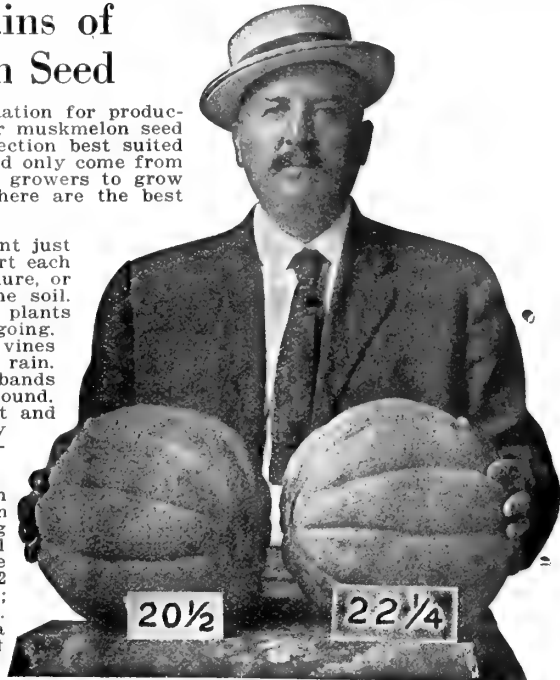
## Alexander's Perfected Strains of Cantaloupe and Muskmelon Seed

**Rocky Ford Colorado** —Has a world-wide reputation for producing the best cantaloupe or muskmelon seed grown. Climatic conditions and location makes this section best suited for the production of these seed, and to-day the best seed only come from this section. Each year we have the best Rocky Ford growers to grow our cantaloupe seed for us, and the varieties offered here are the best that money and experience can produce.

**Culture.**—Melons thrive best in light, rich soil. Plant just as soon as the ground is warm in hills 5 to 6 feet apart each way. In each hill apply a shovelful of well-rotted manure, or a handful of commercial fertilizer, well mixed with the soil. Plant about 12 seeds to each hill, and as soon as the plants are pretty well developed keep the hoe and cultivator going. Gradually thin out to 2 plants to the hill. When the vines begin to run freely stop cultivation, except after a heavy rain. A few hills for early use may be had by sowing in dirt bands in a hotbed and when warm enough transplant to open ground. Melon vines are subject to the same destructive insect and fungus foes as are cucumber and squash vines. Early and repeated spraying with Black Leaf 40 is always beneficial to these crops.

**The Nixon** —Our famous Augusta variety, which originated here and has for years been the favorite large cantaloupe in our city. Combining large size with finest flavor, it is one of the best of all cantaloupes. For years we have kept this melon pure by the most careful selection. Often weighs 8 to 12 pounds; is almost round shape; rough, deeply netted skin; thick meat of the richest possible flavor and sweetness. It is purely a Southern melon and has no equal for a main-crop melon in the South. Wherever known, it brings a fancy price in market. Seed supply limited

**Price:** Packet 10c; ounce 15c; ¼ pound 50c; pound \$1.75, postpaid.



**TWO OF OUR NIXON CANTALOUPE.**  
Grown by Mr. W. A. Couch, of Toccoa, Ga.

### Mammoth Cantaloupe Raised at Toccoa, Ga.

(From Augusta Chronicle)

"A cantaloupe weighing nineteen pounds was presented to the staff of The Chronicle last night by Mr. C. E. Brush, of the Alexander Seed Company. The melon was raised by Mr. W. A. Couch, of Toccoa, Ga., and was of the Alexander special selection of the Nixon variety.

"Unlike most large melons, the meat was as sweet and firm as the little melons. Mr. Brush said that it was the largest melon he had ever seen of that variety."

**Honey Dew** —The new melon is wonderful. There are not adjectives enough to fully describe its lingering, lasting, aromatic flavor; full of spicy sweetness, so perfectly blended in its juicy, mellow melting meat. You will have to eat one to fully realize and appreciate how far it is beyond your imagination of perfection. The

first that came to Augusta sold for a dollar apiece. **Price:** Pkt. 10c; oz. 25c; ¼ lb. 75c; lb. \$2.50.

Bulloch County, Ga., February 27, 1914.—Mail me your latest catalog. I always have better success by planting your seed. I need some of your **GENUINE ROCKY FORD CANTALOUPE** seed. Geo. W. DeBrosse.



**Alexander's Burrel Gem Pink-Meat Rocky Ford.**

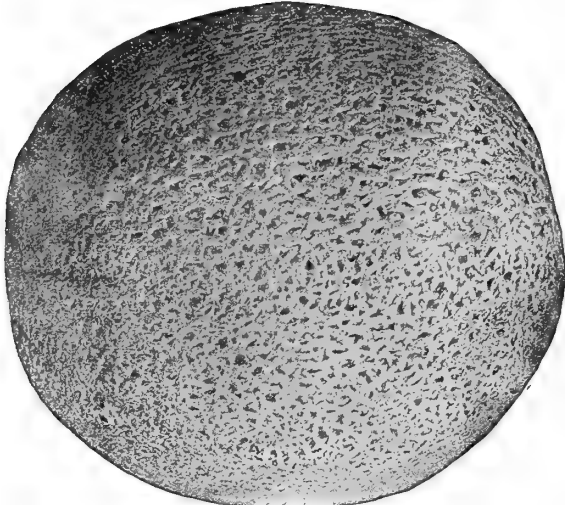
### Pink-Meated Rocky Ford (or Burrel Gem)

This melon has a variety of names, and is a good one for either shipping or home use. While meat or flesh is known as pink-meated," in color it is really an orange-yellow. These melons are heavy in weight, owing to the thick meat, which is firm and solid, more so than other varieties, and has become quite a favorite with many as a shipper. Netting is rather coarse and prominent as compared with other Rocky Ford strains, but it is an alright melon either for shipment or home use, and is growing in popularity every season. Seed cavity is exceedingly small, with thick, firm flesh or meat of the very best flavor. The only objection to this variety is a tendency to split at blossom end in rainy weather. **Genuine Rocky Ford. Colorado-grown seed.** Pkt. 10c; oz. 20c; ¼ lb. 50c; lb. \$1.75, postpaid; 10-lb. lots or over, not prepaid, \$1.50 per lb.

## Alexander's Perfected Rocky Ford

### TRUCKERS' STRAIN

This new strain of Rocky Ford of ours differs from all others in that it is solidly and deeply netted throughout. It is almost impossible to get any "slick" cantaloupes with this strain, so thoroughly and deeply it is netted. It has thick salmon flesh,



Alexander's Perfected Rocky Ford.

very small seed cavity and comparatively few seeds. Ripens evenly from stem to blossom, and is also the most regular in size and shape of all, the melons in a well-cultivated crop being almost as nearly alike as peas in a pod. If you are a cantaloupe shipper, you know that advantage. The illustration gives a fairly good idea of what might be expected from this Perfected Strain, but it really does not do the melon justice. We cannot recommend this strain of Rocky Ford too highly. For home garden it has no equal, and as a shipper it cannot be beat.

If you are extra particular about your cantaloupe crop plant our "Perfected Rocky Ford." This will give you cantaloupes exactly such as you want all through the season.

Packet 10c; ounce 20c; ¼ pound 40c; pound \$1.65, postpaid.

**Augusta Market** —This exceptionally fine melon was introduced by us in 1899. In this cantaloupe we get uniformly large-size melons of regular shape. Flesh of greenish-white color, granular in texture, well netted, and the rich, spicy, sweet flavor so desirable in cantaloupes, and so seldom found. You will find all the desirable qualities of the nutmeg class, combined with large size, in the Augusta Market. Melons weigh 8 to 12 pounds each, and the most delicious melon we ever tasted. Seed supply very limited. Pkt. 10c; oz. 25c; ¼ lb. 90c; lb. \$3.00, postpaid.

**Bush Cantaloupe** —The melon for the small garden as it can be grown as close as 3 feet apart. Makes a vigorous growth, bears a large number of fruits about the size, shape and fine flavor of the Jenny Lind. Allow only about half the fruits to ripen, as it is apt to bear too many. Pkt. 10c; oz. 25c; ¼ lb. 75c, postpaid.

**Large Hackensack** —An excellent large green-fleshed cantaloupe, fruits round and somewhat flattened, deep netted; flesh is green, thick and juicy. Pkt. 5c; oz. 20c; ¼ lb. 35c; lb. \$1.50.

**Rocky Ford Netted Gem** —No other cantaloupe finds such ready sale in the large markets; it is always in demand at good prices. Very uniform in size and quality, thickly netted, distinctly ribbed and firm fleshed. We grow our seeds in the famous Rocky Ford Valley, and from the very best type of the genuine Rocky Ford Cantaloupe. Pkt. 5c; oz. 15c; ¼ lb. 35c; lb. \$1.50.

## Our Banana Muskmelon

We have the true Banana Muskmelon with its fine banana-like flavor. Just think of melons 24 to 31 inches long! The Banana will grow and make on poorer land than any other variety and will stand summer sun without injury and furnish you melons long after all other varieties are gone. It should be in every home garden in the South, both for its fine eating qualities and for late use. Pkt. 10c; oz. 20c; ¼ lb. 45c; lb. \$1.75.

## HERBS

**Culture.**—Soil for Herbs should be carefully prepared and well cultivated, as the plants are, for the most part, delicate and easily choked out by weeds. Sow early in the spring in drills 16 to 18 inches apart and transplant as soon as plants are large enough.

**To Preserve Herbs.**—The plants should be cut when in bloom and wilted in the sun and thoroughly dried in the shade, and then kept in jars or bottles, in order to preserve their seasoning and medicinal qualities.

**ANISE.**—An annual, cultivated principally for its seeds which have a pleasant taste and smell. The leaves are also used for seasoning, garnishing and medicinal purposes. Pkt. 5c.

**BALM.**—A perennial, easily propagated by division of the roots or from seed. The leaf has a fragrant odor, somewhat similar to lemons, and is used for making balm tea for use in fevers and a pleasant beverage called "balm wine." Pkt. 5c.

**SWEET BASIL.**—A hardy annual from East Indies. The stems have a flavor somewhat similar to that of cloves, and it is used for flavoring soups and stews. Pkt. 5c.

**BOBAGE.**—A hardy annual, used as a pot herb, also for bee pasturage. The bruised leaves immersed in water give an agreeable flavor. Pkt. 5c.

**CARAWAY.**—Cultivated for its seeds, which are used in confectionery cakes, etc. The leaves are sometimes used in soups. Can be sown either in the spring or fall, but fall is the best, as the plants will give a large yield of seed the following season. Pkt. 5c.

**CATNIP, or CATMINT.**—A hardy perennial, well known as a valuable mild nerve for infants. Can be sown either in the fall or spring in drills 10 inches apart. Pkt. 10c.

**CORIANDER.**—A hardy annual, cultivated for its seed, which has an agreeable taste and is used in confectionery and to disguise the taste of medicine. Gather on a dry day, bruising the stems and leaves as little as possible, for when injured they have a disagreeable odor which they impart to the seed. Pkt. 5c.

**DILL.**—An annual, cultivated for its seed, which has an aromatic odor and a warm pungent taste. It is used for flavoring soups, stews and pickles, being particularly desirable for use in cucumber pickles, as it heightens the flavor. Pkt. 5c.

**SWEET FENNEL.**—A hardy perennial. Leaves are used in soups, fish sauces, garnishes and salads. Pkt. 5c.

**HOREHOUND.**—A perennial herb used in making cough syrup and lozengers. Pkt. 5c.

**LAVENDER.**—A hardy perennial, used to make lavender water or dried and used as a perfume for linen, etc. Should be picked before it comes dry. Pkt. 5c.

**SWEET MARJORAM.**—A perennial, the tender tops of which are used green for flavoring, but they may be cut and dried for winter use. Pkt. 5c.

**ROSEMARY.**—A hardy perennial for flavoring meats and soups and for medicinal purposes. Pkt. 10c.

**RUE.**—A hardy perennial, thriving on poor soil. Used medicinally and for roup in fowls. Pkt. 5c.

**SAGE.**—One of the most popular perennial herbs, possessing some medicinal properties, but used principally for flavoring and stuffing. Cut the leaves and tender shoots just before the plant is coming into flower and dry quickly in the shade. The plants will survive the winter and may be divided, when they will grow off and produce a second crop of superior quality. Pkt. 5c.

**SUMMER SAVORY.**—A hardy annual. The dried stems leaves and flowers are fine for flavoring dressings and soups. Pkt. 5c.

**THYME.**—A perennial, used both medicinally and for culinary purposes. The young leaves and tips are used for soups, stuffing and sauce, and a tea for nervous headache is made from the leaves. Sow early in the spring. Pkt. 10c; oz. 50c; ¼ lb. \$1.75.

**WORMWOOD.**—Tops and leaves, gathered and dried in July and August, when the plant is in flower, are used for aromatic and tonic purposes, and as a worm medicine; also kept in vinegar to apply to ulcers, sprains and bruises. Pkt. 5c.

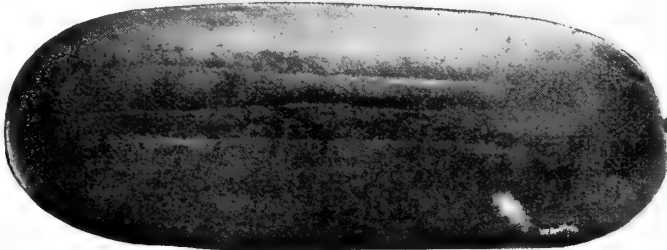
# ALEXANDER'S WATERMELON SEED

Southern Grown, Saved From Crops Planted for Seed Only—No Melons Sold or Shipped From Our Seed Crops

**Culture.**—Prepare hills 8 or 10 feet apart each way by working in thoroughly rotted manure, or poultry droppings—rich ground gives the plants a good start before insects attack them. When the ground is warm plant 6 or 8 seeds to the hill, covering an inch deep, and when well up thin out, leaving 3 strong plants to each hill. Do not grow near pumpkins and gourds. Use the same insect remedies as recommended for cantaloupes. One ounce will plant 30 hills; 3 pounds one acre.

**Be Sure to Spray** your melons with Bordeaux Mixture. It will both improve the yield and prevent diseases that are becoming prevalent in Southern melon fields.

**NOTE.**—Do not confuse our splendid Southern-grown melon seeds with those grown in the North and West. There is no comparison between them. Southern-grown seeds produce the sweetest and best melons it is possible to grow.



Alexander's Selected Watson Melon.

**Alexander's Selected Watson Melon** —This is the superb shipping melon of the South. Makes long green melon with thin, tough rind that stands shipping exceptionally well; flesh is bright red, sweet and as fine flavored as any melon grown. **Pkt. 10c; oz. 25c; ¼ lb. 45c; lb. \$1.25, postpaid.**

**Cole's Early** —This is the earliest melon grown. Makes a small melon, of good flavor with nice red meat, but does not reach the large size that later varieties do; but for early melons and ones to plant where seasons are short this melon fills the bill. **Pkt. 10c; oz. 20c; ¼ lb. 35c; lb. \$1.00, postpaid.**

**Jordan's Grey Monarch** —This is a superb long, grey, thin-rind melon; a fine keeper, with excellent flavor. **Pkt. 5c; oz. 20c; ¼ lb. 35c; lb. \$1.00, postpaid.**

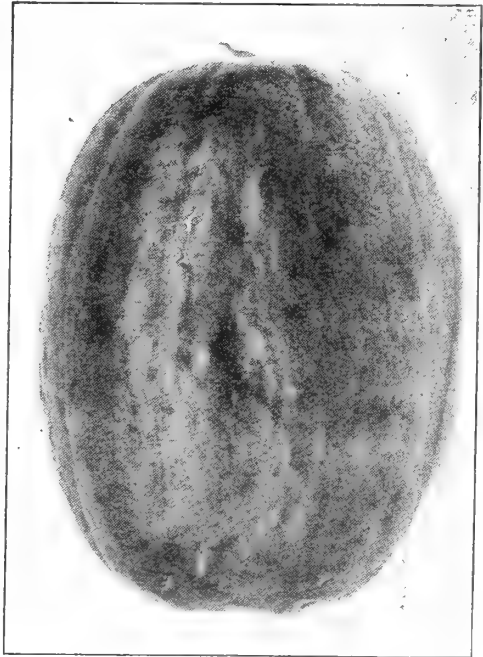
**Mountain Sweet** —This is an old-time favorite melon. Fruits are oblong, rind thin, meat fine flavored, bright red, very sweet and luscious. **Pkt. 5c; oz. 20c; ¼ lb. 45c; lb. \$1.00, postpaid.**

**Kleckley Sweet** —This is the most popular of the early melons, and has been a Southern favorite for a number of years. Flesh is very sweet and fine flavored; melons are oblong, dark green colored with thin rind. **Pkt. 10c; oz. 25c; ¼ lb. 45c; lb. \$1.25, postpaid.**

**Alexander's Augusta Rattlesnake** —This melon has put Georgia on the map as a melon-growing State, and no kind to-day is as well known as our particular strain of this variety. This melon grows to a very large size and our seed are selected from thirty-pound melons or ones weighing more. **Pkt. 10c; oz. 25c; ¼ lb. 45c; lb. \$1.25, postpaid.**

Forward by parcel post 2½ pounds Watson melon seed. I am making this purchase from you at the recommendation of certain growers in the Hempstead melon section of this State who have been thoroughly satisfied with the grade of seed furnished by you.—Frederick H. Blodgett, Texas Agricultural Experiment Station, Plant Pathologist and Physiologist in charge, February 16, 1915.

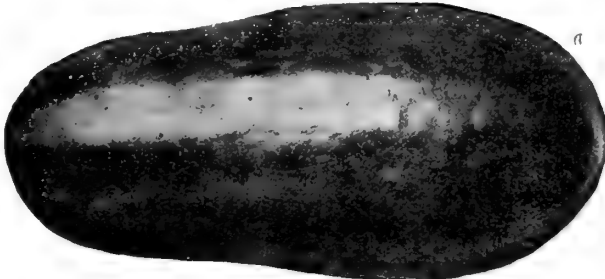
The above is more evidence of the good name and good reputation of Alexander's Good Seed and shows that the good quality is remembered long after price is forgotten. We use every possible means to fill each order so that it will help to bring more orders from the neighbors and friends of each customer. The quality and first-class service is the reason.



Cole's Early.

**Carolina Bradford** —This excellent melon is always planted after being once tried; is a fine home melon, but not much for shipping. Rind is dark green with darker stripes; flesh remarkably sweet and tender. **Pkt. 5c; oz. 20c; ¼ lb. 30c; lb. \$1.00, postpaid.**

**Tinker** —This is a fine home melon, of a very sweet flavor all of its own. Makes quickly and a very nice large melon. **Pkt. 5c; oz. 20c; ¼ lb. 30c; lb. \$1.00, postpaid.**  
Tillman County, Okla., March 25, 1914.—Find enclosed money order for your Watson melon seed. F. E. Lovejoy says your seed are ALL GOOD.—A. J. King.



Alexander's Tinker Melon.

## Alexander's Watermelon Seed Are the Finest in the World

We are situated right here in the very center of the best Watermelon lands of Georgia. The Augusta section and Alexander's Extra-Select Melon Seed made Georgia famous as a Watermelon-growing State. No other section produces such fine melons as this; nowhere does the seed reach such perfect development; nowhere are there melon growers that take such pride in careful selection to preserve the purity of strain as we do.

Now a word of caution about melon seed. Our seed is from crops grown exclusively for seed. Not a melon is sold or shipped from our fields. The fancy seed is saved only from large melons of perfect shape. You get the best that is possible to produce when you buy from us. It is our great specialty.

Don't be fooled into buying 'cheap' melon seed. There are tens of thousands of pounds of "cull" seed saved from Southern shipping crops every year—seed from the refuse melons. It is offered at from 25 to 50 cents per pound, but not a pound of it is fit to plant if you want good melons. We don't sell that kind of seed. We have none but the best seed that will make you good crops of large, perfect melons.



Alexander's Excell Melon, "The Great Shipper."

**Excell** —Many growers claim that this superb melon is even better for shipping than the Watson, which melon it closely resembles, having a thin, tough rind and reaching enormous sizes, average melons weighing around forty pounds. For a large or shipping melon you cannot go wrong in planting this highly recommended kind. **Pkt. 10c; oz. 25c; ¼ lb. 45c; lb. \$1.25, postpaid.**

**Alabama Sweet** —A very large and attractive oblong melon, of the type now in such demand, and the tough skin is a very dark green with still darker stripes. Very sweet and free from stringiness. Under good cultivation they will weigh up to fifty pounds. **Pkt. 10c; oz. 25c; ¼ lb. 45c; lb. \$1.25, postpaid.**

**Florida Favorite** —A splendid oblong early melon that stands shipping well, and its bright red juicy meat is deliciously sweet. **Pkt. 10c; oz. 25c; ¼ lb. 45c; lb. \$1.25, postpaid.**

**Halbert's Honey** —The sweetest of all watermelons. This is a new introduction that has broken all records for sweetness, and, as the name implies, is as sweet as honey. This melon has been thoroughly tested and found to be a good home or near-by market melon but is not the best of the shippers. Color is dark green with oblong shape. **Pkt. 10c; oz. 25c; ¼ lb. 45c; lb. \$1.25 postpaid.**



Halbert's Honey, "The King of the Sweets."

# ALEXANDER'S GEORGIA-GROWN OKRA SEED

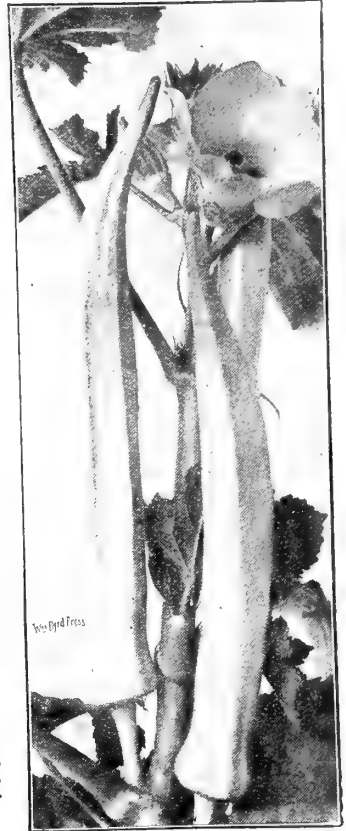
Our experience has been that Georgia can, and does, produce better Okra Seed than any other State, and that is exactly the reason why every pound of our Okra Seed is grown here now. Okra, or Gumbo, is a most healthful vegetable, and ought to be plentiful in every Southern garden. In our seed-growing work here in Georgia we have developed two splendid strains of the White Velvet and Perkin's Mammoth, both being far superior to what is offered under these names by other houses, and we are sure that seed of either of these two varieties will please you. Plant one ounce of seed to 50 feet of row; about 8 pounds per acre.

## White Velvet Okra

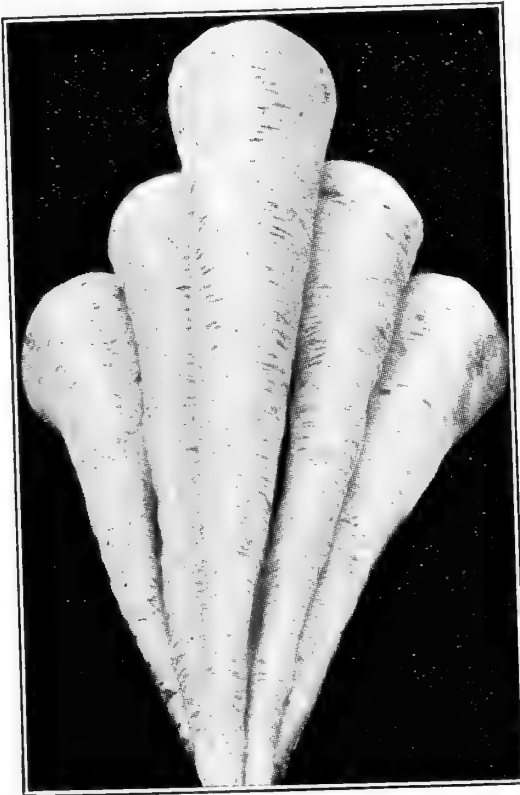
—A standard variety throughout the South for home use and local shipment. We have a specially fine, early, very round, smooth-podded strain of medium size, the pods being almost altogether free from ridges and is not prickly to the touch. This strain of the White Velvet we find to be the very best of all the white varieties. **Pkt. 5c; oz. 10c; ¼ lb. 20c; 1b. 60c, postpaid. Not prepaid, 10 lbs. \$4.50.**

## Perkin's Mammoth Long-Podded Okra

—This distinct green-podded Okra is by far the best variety for market and shipping purposes, being used by many Southern truckers almost exclusively for this purpose. The original strain as originally introduced has been greatly improved by us, and its productiveness is simply wonderful, the pods starting to shoot out within 3 or 4 inches from the bottom of the stalks, and the whole plant is covered with them to the height of a man's head (5 to 6 feet). Pods of an intensely dark green color, of unusual length, frequently 9 to 10 inches long. Are very slim and do not harden up as is usually the case with other varieties. **Pkt. 5c; oz. 10c; ¼ lb. 20c; 1b. 60c, postpaid. Not prepaid, 10 lbs. \$4.50.**



The White Velvet Okra.



Alexander's Hollow-Crown Parsnips.

## Dwarf Green

## Prolific Okra

—This is a very early prolific Okra, making short, thick pods; very tender, and a kind that does not get woody too quickly. **Pkt. 5c; oz. 10c; ¼ lb. 20c; 1b. 60c, postpaid.**

## PARSNIPS

**Culture.**—These seed should be sown in rows about two feet apart in the early spring and in early fall. One ounce of seed to 100-foot row.

## Alexander's Hollow Crown

—This is the best variety for the South, and is most generally used in this section. Makes a fine-flavored, sweet bulb with little tops. **Pkt. 5c; oz. 20c; ¼ lb. 50c; 1b. \$1.75, postpaid.**

## PARSLEY

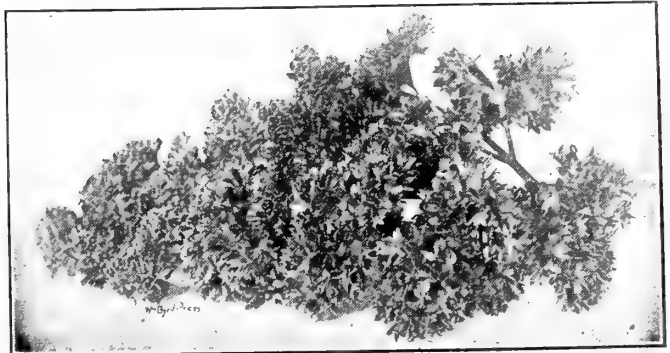
A fine garnishing plant. Easy to grow. Should be sown both in fall and early spring in thin drills about 15 inches apart. Can also be grown in pots for home use where the demand is light. Makes a fine market gardener's crop. Always a good demand for this from hotels and restaurants.

### Alexander's Special Double Curled Moss

—A fine strain, double curled, that makes about the best appearance of any variety. Easy to grow and the most popular kind. **Pkt. 5c; oz. 15c; ¼ lb. 50c; 1b. \$1.75, postpaid.**

### Plain-Leaved

—A fine hardy variety, excellent for seasoning, for which purpose it is mostly grown. **Pkt. 5c; oz. 15c; ¼ lb. 45c; 1b. \$1.50.**



Special Double Moss Curled Parsley.

# ONIONS

These Are Used the Year Around. Plant Enough to Supply Your Own Requirements and Have a Surplus to Sell. Why Buy Northern-Grown Onions When You Can Raise Your Own?



Alexander's Southport Globe Onions.

**Culture.**—For home use Onion Seed or Sets should be planted in any good garden soil just as early as the ground can be worked to advantage in the spring. Ground should be thoroughly broken, well fertilized or manured and then worked down very fine, all trash, clods or grass roots being removed. The use of Sets is absolutely unnecessary except as a matter of earliness. Where well-shaped, long-keeping, marketable onions are desired plant the seed instead of sets, as the seed makes much better onions in every respect. Sow 1 ounce of seed to 200 feet of row; 4 to 5 pounds per acre. Sets vary considerably in size, but the average will run about 1 pound of sets to 100 feet of row. Onions from seed will mature in 100 to 140 days, according to variety; from sets in from 80 to 100 days.

Cover seed in clay or heavy soils about 1/2 inch; in sandy soils 1 inch. If weather and soil is dry, firm the soil after planting; heavy or clay soils should not be firmed when wet. As soon as seed is well up begin a little surface cultivation, and keep this up every week or ten days. Never let grass and weeds get a start, for young onion plants choked with weeds or grass die down in the "set" size, and will have to be held over until the following fall. Cultivation (always shallow) should be kept up until bulbs are well formed and matured as indicated by the dying down or dropping over of the tops. When matured dig or plow up and store in a dry place, leaving tops on until you are ready to use or market them.

**Prizetaker** —This is a large yellow-skinned onion of the Spanish varieties; mild flavored; large globe-shaped variety; well liked by all growers who have tried it. Pkt. 10c; oz. 40c; 1/4 lb. \$1.00; lb. \$3.50, postpaid.

## Alexander's Southport Globe Onions

(Red, White and Yellow)—The most severe test of an onion is that which affects its keeping qualities. In this respect these globe onions will be found supreme. The difference of these respective sorts is mainly one of color. They all have the same shape, which is globular. When dry the neck entirely disappears. Price on Red, Yellow or Whites all the same: Pkt. 10c; oz. 40c; 1/4 lb. \$1.25; lb. \$4.50, postpaid.

## ONION SETS

**Reds, Whites and Yellows** —Our Sets are superior to the general run of onion sets, as they are selected and screened, leaving only the best and most uniform Sets. For private garden use the Sets save much labor, and the loss from diseases is greatly reduced over the loss by planting seed.

	Quart.	Peck.	Not Prepaid.
Yellow Onion Sets.....	40c	\$1.50	\$5.00
Red Onion Sets.....	40c	1.50	5.00
White Onion Sets.....	40c	1.50	5.50

Onion Sets are handled on a basis of 32 pounds to the bushel or 1 pound to the quart. All Sets we send out are properly crated to prevent loss or crushing while in transit.



Alexander's Selected Onion Sets—Red, White and Yellow.

**Alexander's Extra-Early Red** —This is the market gardener's favorite extra-early onion which is very desirable for green bunching. Produces a slightly flattened globe of good flavor, just a little hot. Pkt. 10c; oz. 40c; 1/4 lb. \$1.00; lb. \$3.50, postpaid.

**Yellow Danvers** —This is an old favorite variety, well known by all gardeners. Where only one onion is planted this one is usually selected; mild flavored; keeps well and is a good sure cropper. Pkt. 10c; oz. 40c; 1/4 lb. \$1.00; lb. \$3.50, postpaid.

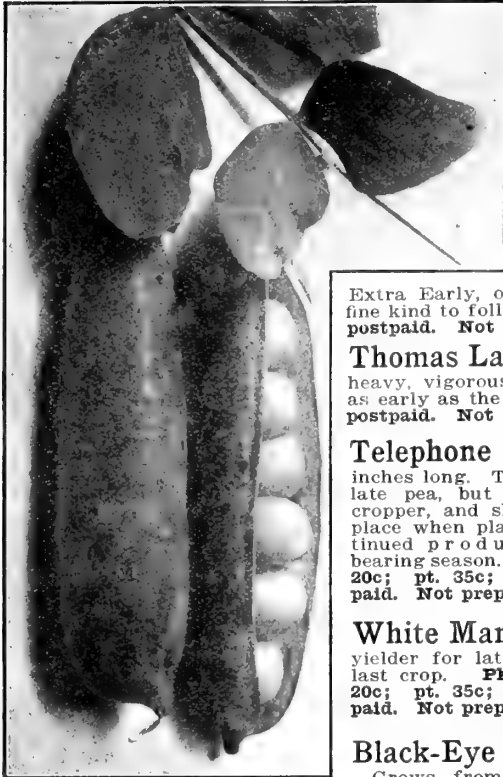
**White Multipliers** —Qt. 40c, postpaid. Not prepaid, peck \$1.25; bushel \$4.50.

**Louisiana Red Creole Onion** —A fine variety, used to a great extent in Louisiana; fine keeper and excellent flavor. Pkt. 10c; 1/2 oz. 30c; oz. 50c, postpaid.

# GARDEN, or ENGLISH PEAS

FOR SPRING PLANTING — BEST SOUTHERN VARIETIES

**Culture.**—Peas do best in a light, rich, loamy soil that has been liberally manured the previous season. Plant the smooth varieties as early as the ground can be worked. The wrinkled peas are not as hardy as the smooth kinds, and should be planted later; they are, however, sweeter and better flavored. For a succession plant every two weeks—as late as August for a late crop. The Marrowfat planted in November, December or January will come in just after the extra earlies. When grown for market peas are rarely staked; in small gardens grow in double rows 6 to 8 inches apart and stake with brush. They should be kept clean and the earth worked toward them two or three times during growth. One quart will plant 100 feet of drill; 1½ bushels for an acre.



Extra Early Alaska Peas.

20c; pt. 35c; qt. 60c, postpaid.

## Champion of England

Makes large, tender, luscious peas, pods about 3 inches long; very profuse bearer. **Pkt. 10c; ½ pt. 20c; pt. 35c; qt. 65c, postpaid. Not prepaid, peck \$3.00.**

## Bliss Everbearing

—Grows about 2 feet high, and is a good early sort. One of the most prolific and profuse bearers known; will continue to bear if pods are picked when ready to use—the longest bearer of any. **Pkt. 10c; ½ pt. 20c; pt. 35c; qt. 65c, postpaid. Not prepaid, peck \$3.00; bushel \$11.00.**

## Gradus, or Prosperity

—Vines grow about 3 feet high, producing uniformly large pods, about 4 inches long; very prolific bearer and good sure cropper. Recommended highly for earliness, quality and size. **Pkt. 10c; ½ pt. 20c; pt. 35c; qt. 65c, postpaid. Not prepaid, peck \$3.00; bushel \$11.00.**

## ALEXANDER'S MAMMOTH LUSCIOUS SUGAR PEA

**Dwarf and Tall** —We list two edible-podded kinds, the Dwarf Grey and the Tall Mammoth-Podded. When these peas have reached about half their mature size they are picked and cooked, pods and all, just as you would string snap beans. This is a most delightful dish. **Pkt. 10c; ½ pt. 25c; pt. 40c; qt. 75, postpaid.**

**WE FILL AND DELIVER EACH ORDER SO THAT IT WILL BRING MANY MORE—PLANTING ALEXANDER'S GOOD SEED IS CROP INSURANCE**

## First and Best

—Our best first early pea for the South, for either home use or for the market. This pea will excel where an extremely early pea is wanted. For years this pea has held the record for earliness and prolificness, being used to a large extent by Florida shippers. Will quite often bear in thirty days' time from planting. **Pkt. 10c; ½ pt. 20c; pt. 35c; qt. 65c, postpaid. Not prepaid, pk. \$3.00; bu. \$11.**

## Alaska Extra Early

—Next to First and Best, we consider this pea to be the best early pea planted. Bears in about five weeks. A splendid shipper and very prolific sort. **Pkt. 10c; ½ pt. 20c; pt. 35c; qt. 65c, postpaid. Not prepaid, peck \$3.00; bushel \$11.00.**

## Ameer, or Large-Podded Alaska

—Similar to the Alaska fine kind to follow the first earlies. **Pkt. 10c; ½ pt. 20c; pt. 35c; qt. 65c, postpaid. Not prepaid, peck \$3.00.**

## Thomas Laxton

—A heavy and reliable cropper, bearing uniform, long, straight green pods, with 6 to 8 peas; a heavy, vigorous grower, vines reaching a height of about 3 feet; almost as early as the extra-early kinds. **Pkt. 10c; ½ pt. 20c; pt. 35c; qt. 65c, postpaid. Not prepaid, peck \$3.00.**

## Telephone

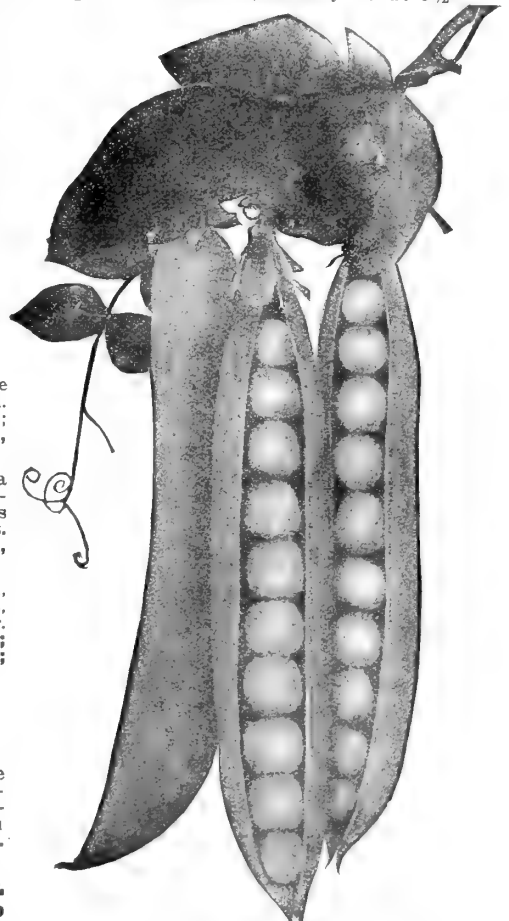
—One of the most productive of the large-podded wrinkled sorts; pods large and well filled, usually about 5½ inches long. This is a rather late pea, but a heavy sure cropper, and should have its place when planting for continued production during bearing season. **Pkt. 10c; ½ pt. 20c; pt. 35c; qt. 65c, postpaid. Not prepaid, peck \$3.00.**

## White Marrowfat

—A big yielder for late summer and last crop. **Pkt. 10c; ½ pt. 20c; pt. 35c; qt. 60c, postpaid. Not prepaid, peck \$2.75.**

## Black-Eye Marrowfat

—Grows from 3 to 5 feet high and an excellent variety for late crop. **Pkt. 10c; ½ pt. 20c; pt. 35c; qt. 60c, postpaid. Not prepaid, peck \$2.75.**



Improved Telephone Peas.

## PUMPKINS

These should be planted on every farm in the country. They make fine pies and are baker, making delicious dishes. Seed should be sown after danger of frost in spring, and can be planted in corn. One ounce of seed will plant about 20 hills. When planted alone hills should be about 8 to 10 feet each way.

**Japanese Pie** —A long-necked pumpkin, green and yellow-striped; a fine pie pumpkin. **Pkt. 5c; oz. 15c; ¼ lb. 35c; lb. \$1.00, postpaid.**

**Southern Field** —Famous old-time pumpkin; strong, vigorous grower. **Pkt. 5c; oz. 15c; ¼ lb. 35c; lb. 1.00, postpaid.**

**Jumbo** —The king of the mammoths; a large, round yellow pumpkin, attaining an enormous size. **Pkt. 10c; oz. 25c; ¼ lb. 40c; lb. \$1.25.**

**Large Cheese** —Old-time favorite and a good variety; bright orange color. **Pkt. 5c; oz. 15c; ¼ lb. 25c; lb. 35c.**



Alexander's "Rosy Gems" Radish.

## RADISH

For best results require a loose, rich, moist soil. Can be sown during all spring and summer and during early fall, the long varieties being best for summer plantings, as they reach moisture better than the turnip kinds.

**Early Long Scarlet** —Flesh very crisp and tender; bright scarlet color; long, tapering shape. **Pkt. 5c; oz. 20c; ¼ lb. 50c; lb. \$1.75, postpaid.**

**Long White Vienna, or Lady Finger** —A pure white, crisp radish of fine flavor; a choice variety. **Pkt. 5c; oz. 20c; ¼ lb. 50c; lb. \$1.75, postpaid.**

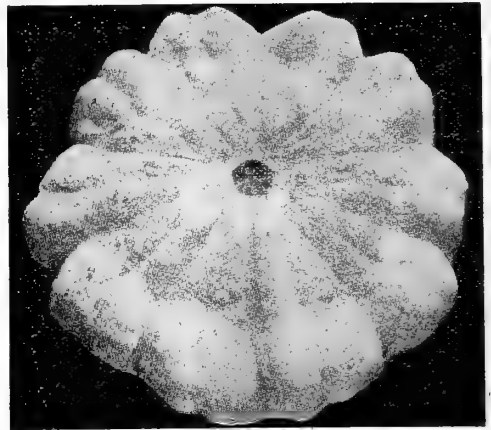
**French Breakfast** —A very tender half-long variety of fine flavor. **Pkt. 5c; oz. 20c; ¼ lb. 45c; lb. \$1.60, postpaid.**

**Rosy Gem** —A rosy-red, round, white-tipped radish; an extra-early sort of much flavor. **Pkt. 5c; oz. 20c; ¼ lb. 45c; lb. \$1.60.**

**Scarlet Button** —A favorite extra-early, red, round radish; quick grower. **Pkt. 5c; oz. 20c; ¼ lb. 45c; lb. \$1.60, postpaid.**

**Chinese Rose Winter** —A fine winter radish, most popular variety grown; deep scarlet, pure white inside flesh. **Pkt. 5c; oz. 20c; ¼ lb. 45c; lb. \$1.60, postpaid.**

**White Turnip** —An early, solid white turnip radish, fine flavor. **Pkt. 5c; oz. 20c; ¼ lb. 45c; lb. \$1.60, postpaid.**



Early White Bush Squash.

## SQUASH

Should not be planted until after frost and cold nights have passed. One ounce to 25 hills is about right. Plant in well-enriched soil and keep free from bugs.

**Mammoth White Bush** —A large white bush variety, scalloped edges, flat, and a greenish-white color; very fine. **Pkt. 5c; oz. 20c; ¼ lb. 45c; lb. \$1.75, postpaid.**

**Early White Bush** —Same as the Mammoth, only smaller and earlier. **Pkt. 5c; oz. 20c; ¼ lb. 45c; lb. \$1.75, postpaid.**

**Early Yellow Bush Crookneck** Same shape as the Yellow Summer Crookneck variety, growing in bush form. **Pkt. 5c; oz. 20c; ¼ lb. 45c; lb. \$1.75, postpaid.**

**Giant Summer Crookneck** —A fine large crookneck squash, very prolific and a good sure cropper. **Pkt. 5c; oz. 20c; ¼ lb. 50c; lb. \$1.85, postpaid.**

**Yellow Summer Crookneck** —Earlier than the Giant Crookneck, same shape, but smaller. **Pkt. 5c; oz. 20c; ¼ lb. 50c; lb. \$1.85, postpaid.**

**Boston Marrow Squash** —Running squash, planted in late summer for winter use same as pumpkins. **Pkt. 5c; oz. 15c; ¼ lb. 40c; lb. \$1.50, postpaid.**

## SPINACH

A fine spring salad. Grows best on thoroughly enriched soil. Soak seed in water overnight if planted in dry weather.

**Curled Norfolk Savoy** —A fine crinkley leaved variety, in much demand; makes very fine salad. **Pkt. 5c; oz. 15c; ¼ lb. 40c; lb. \$1.50, postpaid.**

**New Zealand Spinach** —The best summer variety, growing during all hot summer weather and dying down after frost; bears leaves in rosettes, which are picked off to be cooked. Will continue to produce all during season. **Pkt. 10c; oz. 25c; ¼ lb. 60c; lb. \$1.75, postpaid.**

**Ever-Ready** —A long-bearing spinach, lasting longer than any other kinds of this class. Makes regular thick, juicy spinach leaves. Makes early, late and for a long time. **Pkt. 5c; oz. 25c; ¼ lb. 60c; lb. \$1.75, postpaid.**



## IRISH POTATOES

THE MEAT-AND-BREAD VEGETABLE

Genuine Inspected Main-Grown Stock Only—  
Ready to Ship January and February

### Alexander's New Early Beauty

**Potato** —A new selection, first offered by us in 1910; has proven a wonderful winner of popularity with hundreds of our discriminating customers. **Beauty of appearance, quality of taste, prolificness of yield, earliness in the market, general vigor of growth and freedom from disease** have made it the most desirable of all varieties for the earliest spring crop, or for main crop, to fully mature and store for sale or home use until the next crop is made. Also for second or fall crop. The small potatoes from the spring crop may be profitable used. We said when first offering it: **It has good points that no other potato has, and if you plant it you will be satisfied in every way with it.** Pk. \$1.00; bu. \$3.50; 10-pk. bag \$9.00, not prepaid. Price subject to change without notice.

**Bliss Red Triumph** —A potato too well known for description. We have the genuine Maine-grown potatoes, grown by the best growers in the business; free from disease and the best to be had in every respect. Pk. 90c; bu. \$3.10; bag \$7.25. Price subject to change without notice.

**Irish Cobbler** —A fine, very prolific, oblong white potato; a well-known variety that is planted largely throughout the South. Pk. 85c; bu. \$2.75; bag \$6.75. Price subject to change. Write when ready to buy.



Alexander's Beauty Potatoes.

All potatoes may be shipped out in barrels paper-lined to prevent freezing at an additional cost of 35 cents per bag.

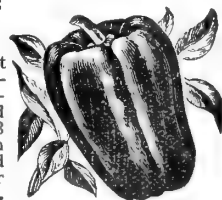
**Slug Shot** —Kills bugs and worms on garden plants and is good for killing out any kind of leaf-eating insects. Also used for killing lice on poultry. Pound 25c; 5 pounds, 65c, postpaid.

## ALEXANDER'S SELECTED PEPPERS

**Pimento Pepper** —A great mild-flavored variety, the favorite for salads. This is practically a new variety in our country, but one that has been grown in Spain for years, and from which the famous Spanish Pimento is made. The flavor is almost as mild as that of an apple; can be eaten raw, baked, stuffed or canned and used as a salad. The skin can be removed by scalding. This superb variety should be grown in every Southern garden, for it fills a place all its own that other peppers cannot do. Pimento is especially adapted to Georgia soils and conditions, and at this time large quantities are grown in this State for canning purposes. Also the best seed grown are produced here. Pkt. 10c; ½ oz. 35c; oz. 50c; ¼ lb. \$1.25; 1b. \$5.00, postpaid.

**Chinese Giant** —The fruits of this variety are mammoth, averaging 12 to 15 inches in circumference, and, notwithstanding the immense size, it is early and prolific; the stocky, well-branched plants, about 2 feet high, carry a large crop of most attractive peppers. The flesh is thick, tender, mild, sweet and unexcelled for use as salad or for stuffing for "Mangoes." When ripe the surface is of a brilliant, glossy scarlet. Pkt. 10c; ½ oz. 35c; oz. 50c; ¼ lb. \$1.50; 1b. \$5.00, postpaid.

**Ruby King** One of the most popular large-fruited peppers, bearing a liberal crop of large ruby-red fruits, 5 to 6 inches long by 3 to 4 inches in diameter; flesh exceedingly thick, sweet and mild. It is a favorite sort for use as salad, stuffing, etc. Pkt. 10c; ½ oz. 35c; oz. 50c; ¼ lb. \$1.50; 1b. \$5.00.

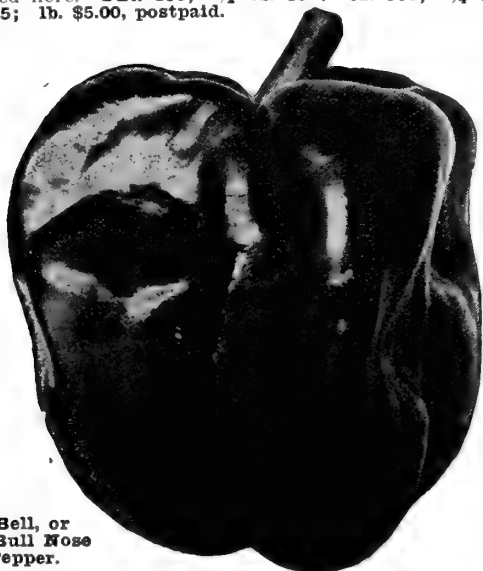


Ruby King.

**Ruby Giant** —A grand, large sweet pepper, growing to an extra-large size and very mild flavored; mild enough to be eaten raw. Flesh very thick and bright, Ruby-red when thoroughly ripened. A great favorite with market gardeners and truckers. Good for stuffing. Best seller grown. Pkt. 10c; ½ oz. 35c; oz. 50c; ¼ lb. \$1.50; 1b. \$5.00, postpaid.

**Long Red Cayenne** —Very hot; used for pickling while green and for seasoning when dry. A long, tapering variety. Pkt. 10c; ½ oz. 25c; oz. 40c; ¼ lb. \$1.25; 1b. \$3.50, postpaid.

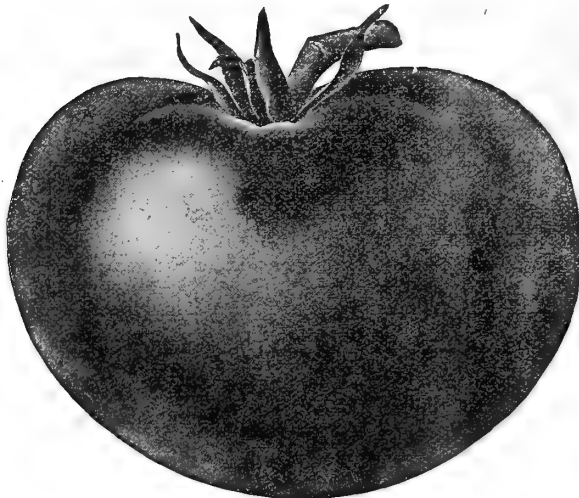
**Large Bell, or Bull Nose** —This is an old and well-thought-of standard variety both for home and market gardeners; is a good sure cropper; fruit is about 3 to 3½ inches long and 2 to 3 inches across; inclined to be a little hot. Pkt. 10c; ½ oz. 25c; oz. 40c; ¼ lb. \$1.25; 1b. \$3.50.



Bell, or Bull Nose Pepper.

## GOOD TOMATO SEED

Every year thousands of pounds of tomato seed are sold to unsuspecting buyers. These seed are left-overs from canning factories, and are absolutely worthless and undependable. Planting such seed is the usual cause of inferior fruit, blight and other diseases that the tomato grower is so often troubled with. All of our tomato seed are of the highest quality obtainable, selected from fruit that comes up to the standard requirements for perfect tomatoes. For forty-five years the tomato seed that this house has sold has been a voucher for high quality, purity and productiveness, and with our seed you cannot go wrong.



Alexander's Dixie Tomato.

**Alexander's Dixie Tomato** —A big, solid, meaty tomato, and is beyond question the best late or medium-crop tomato for home use, for near-by markets or for canning purposes. This tomato is all meat, and there is practically no waste in using it. **Pkt. 15c;** ½ oz. 30c; oz. 50c; ¼ lb. \$1.25; lb. \$5.00, postpaid.

**No. 1 Strain of Earliana Tomato** —In offering this strain to the market gardeners and truckers of the South we know that we are giving the best that money can buy. It is earlier than the old Earliana, producing larger tomatoes and more perfect fruit. **Pkt. 10c;** ½ oz. 20c; oz. 35c; ¼ lb. 90c; lb. \$3.00, postpaid.

### Alexander's Blight-Proof Tomato

—No chance to have your crop completely ruined by blight or die back if you use this valuable tomato. It is the nearest blight-proof of any tomato planted to-day, and will make good crops on infested land where other kinds would be a failure. Fruits large, red, solid, and a fine tomato in every respect. **Pkt. 15c;** ½ oz. 25c; oz. 50c; ¼ lb. \$1.25; lb. \$5.00.

**Great Southern Tomato** —A very prolific, strong-growing variety, double-jointed, fruiting well and making large, round, red tomatoes of best quality. Not very susceptible to wilt; a good main-crop tomato. **Pkt. 10c;** ½ oz. 20c; oz. 35c; ¼ lb. 90c; lb. \$3.00, postpaid.

**Early Acme** —A purplish, round, heavy-fruited tomato, with tough skin, and one of the best early sorts grown. Has few seed and very thick meat; a good canner. **Pkt. 5c;** ½ oz. 25c; oz. 45c; ¼ lb. \$1.00; lb. \$3.25, postpaid.

**Chalk's Early Jewel** —One of the best extra-early tomatoes; fruits are large for an early kind; seed cells small; solid and meaty; a good all-around early tomato that always pleases. **Pkt. 10c;** ½ oz. 25c; oz. 45c; ¼ lb. \$1.00; lb. \$3.50, postpaid.

**Matchless** —Is a well-named variety that has been known for years as being one of the best main-crop tomatoes. **Pkt. 5c;** ½ oz. 20c; oz. 35c; ¼ lb. 85c; lb. \$2.75, postpaid.

**Stone** —A great late-crop tomato; color bright red; a good shipper and a well-known variety. **Pkt. 10c;** ½ oz. 25c; oz. 45c; ¼ lb. 85c; lb. \$2.75, postpaid.

**Ponderosa Tomato** —The largest and best-known table variety planted to-day. Makes large, slightly flat fruit, red and very meaty; great slicing tomato. **Pkt. 10c;** ½ oz. 30c; oz. 50c; ¼ lb. \$1.00; lb. \$3.50, postpaid.

**Dwarf Champion** —A bushy sort, making fine fruit and self-supporting; good, quick producer. **Pkt. 10c;** oz. 25c; oz. 45c; ¼ lb. 85c; lb. \$3.25, postpaid.

**Redfield Beauty** —A great main-crop tomato, and one of the best canners planted; has high acid content, making it a good keeper when canned. **Pkt. 10c;** ½ oz. 30c; oz. 50c; ¼ lb. \$1.00; lb. \$3.50, postpaid.

**Golden Queen Tomato** —A bright yellow variety, and about the best yellow tomato planted; good for table use, canning and for all other purposes. **Pkt. 5c;** ½ oz. 20c; oz. 35c; ¼ lb. 0c; lb. \$3.00, postpaid.

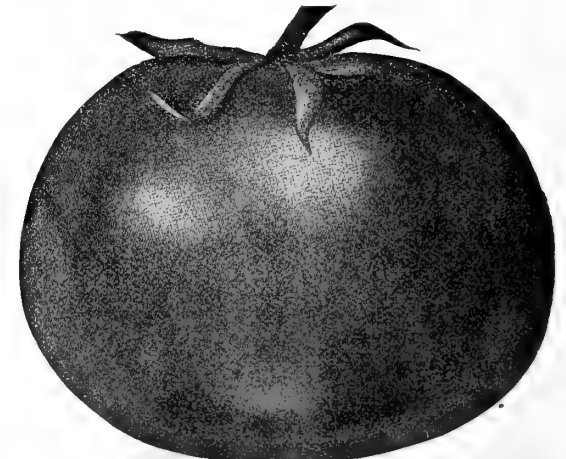
### YELLOW AND RED, PEACH, PLUM, PEAR AND CHERRY TOMATOES

Fine for pickling and preserving whole; also used extensively in soups. **Pkt. of either kind, 10c;** 3 for 25c; ½ oz. 25c; oz. 45c, postpaid.

"Safety First" in the garden or farm means planting ALEXANDER'S GOOD SEED. It means reducing your risk to the lowest notch. It means that you have taken no unnecessary risk in placing your order for seed. When you plant ALEXANDER'S GOOD SEED you have planted the best. It means you have taken out crop insurance, because they are strong, vital seed, pure and true. They grow, and grow right, because they are the best seed that grow selected for the South. :: :: :: ::

Columbia County, Ga., April 21, 116.—I just want to say something to you about the Dixie Tomato. It is the best I ever planted and is everything you claim for it and more. I planted a few in my garden last year; they grew from April until frost fell. They are certainly ever-bearing. Will surely recommend them to my friends. Your Early Jersey Wakefield Cabbage is the best cabbage I have ever found.—Elizabeth Carter.

New Hanover County, N. C., May 31, 1916.—Send your seed and plant catalog. I have planted your Dixie Tomato, and they are the best I ever saw. You can book me as one of your customers for anything in seed.—Louise E. Willis.



Early Acme Tomato.

# TURNIPS

**Long White Cow Horn** —A very productive, quick-growing turnip, of fine quality; fine-grained and very sweet; often used as soil improver and for stock feed. **Pkt. 5c; oz. 15c; ¼ lb. 50c; lb. \$1.50, postpaid.**

**Early White Flat Dutch** —A green-top, white, flat turnip; sweet and tender; one of the best for family gardens. **Pkt. 5c; oz. 15c; ¼ lb. 50c; lb. \$1.50, postpaid.**

**Purple-Top Strap Leaf** —A flat-top variety with good tops, fine for greens and good for bulbs; also very sweet and good grower. **Pkt. 5c; oz. 15c; ¼ lb. 50c; lb. \$1.50, postpaid.**

**White Milan Turnip** —These are without exception the best extra-early turnips, and cannot be excelled for fine flavor and good eating qualities. This is a flat, fine-grained variety, and the best turnip grown. **Pkt. 10c; oz. 20c; ¼ lb. 60c; lb. \$1.75, postpaid.**



**Purple-Top Strap Leaf.**

scarce this year, and prices are high, but the reliable quality is there just the same. **Pkt. 10c; oz. 20c; ¼ lb. 60c; lb. \$1.75.**

**Purple-Top Globe** —Makes large globe-shaped roots with purple top. A big yielder and fine for home use and the market. **Pkt. 5c; oz. 15c; ¼ lb. 50c; lb. \$1.75, postpaid.**

**Pomeranian White Globe** —Extra large, round, white, fine flavor; best for table use. **Pkt. 5c; oz. 15c; ¼ lb. 45c; lb. \$1.50, postpaid.**

**Southern Snow-White Globe** —A very superior white round-globe turnip; flesh firm and solid. **Pkt. 5c; oz. 15c; ¼ lb. 45c; lb. \$1.50, postpaid.**

**Extra-Early White Egg** —A quick-growing white egg-shaped variety with small tops; a fine early variety that always satisfies. **Pkt. 5c; oz. 15c; ¼ lb. 50c; lb. \$1.50, postpaid.**

Abbeyville County, S. C., May 11, 1917.—I am so well pleased with seed you sent me. Such good stands. Am sending you another dollar for order enclosed.—Nannie Mattison.

Oconee County, S. C., April 14, 1917.—Find enclosed \$1.50 for this order. I have been using Alexander's seeds for thirty years, with satisfactory results. I know where to get the best.—E. B. Ramsey.

Dorchester County, S. C., April 4, 1917.—Send me your seed catalogue. A friend of mine told me to write you and I would be benefitted.—Rev. G. W. Hill.



**Yellow Aberdeen Turnips.**

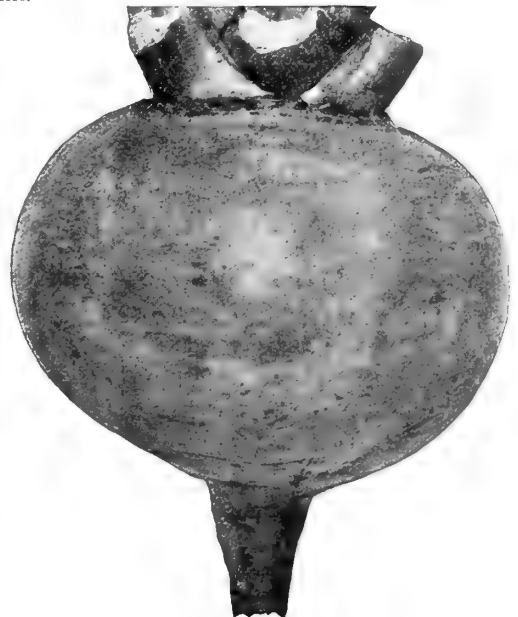
**Purple-Top Milan** —Same as the White, only with purple top. **Pkt. 10c; oz. 20c; ¼ lb. 60c; lb. \$1.75, postpaid.**

**Seven Top** —The great salad or greens variety. Makes an abundance of tops that make finest turnip salad. Very rank grower; bulbs are often large enough to eat, but this is primarily a salad variety; very hardy. **Pkt. 5c; oz. 10c; ¼ lb. 45c; lb. \$1.25, postpaid.**

**Yellow or Amber Globe** —A fine yellow-fleshed variety, round and very sweet; one of the best yellow kinds. **Pkt. 5c; oz. 15c; ¼ lb. 50c; lb. \$1.50, postpaid.**

**Yellow Purple-Top Aberdeen** —An old standard variety, well known and very popular; large yellow globe with purple top; fine keeper and good for stock feed. **Pkt. 5c; oz. 15c; ¼ lb. 50c; lb. \$1.50, postpaid.**

**Alexander's Imp'd Bon Air Rutabaga** —Genuine American-grown seed, the best for the South. This is a large purple-top yellow rutabaga that we have sold for years, and one that Southern planters recognize as being the best. Seed are very



**Snow White Globe.**

# The Best Upland Long Staple Cotton in the World is Alexander's Improved Early Prolific Long Staple

## The Earliest

Strongest, Longest Staple

Finest Quality Silky Fibre

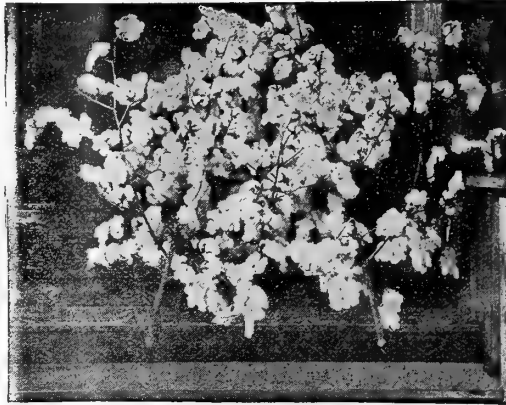
Vigorous, Healthy Plant

The Safest, Surest Crop  
Long Staple to Plant

The Most Wonderful Cotton  
of Its Class Ever Offered

It Holds Its Type and Does  
Not Run Out or Deteriorate  
Like Other Long Staple  
Cottons

You Will Be Sure to Be  
Pleased with the Profit



Makes the Largest Yield  
Per Acre

Turns Out the Largest  
Per Cent of Lint

Can Be Ginned Perfectly  
on Saw Gin

Easy to Sell

Sells For the Highest Price

Makes Bigger Profit Per  
Acre Side by Side with  
Short Staple or Sea Island  
Anywhere on Any Land  
From Florida to North  
Carolina

It Is Simply the Finest  
Ever Grown

Price of UPLAND LONG STAPLE SEED. Pound, 50c, postpaid. Not prepaid,  $\frac{1}{4}$  bushel, 75c; bushel, \$3.00.

We sold Mr. Nicholson 10 bushels of this seed January, 1916. He was so pleased with results he wrote us as follows:

Sept. 30, 1916.—"I have ten acres planted in your Long Staple Prize Winner Cotton and consider it the very best and most wonderful of all the long staple varieties. I have two acres, planted on April 12th, that will make one and one-half bales per acre; also an acre, planted May 23d, after wheat and vetch, that will make a bale. It is hard to say just what this cotton would do under favorable seasons. It lost less during the July rains and the August drought than any other of the five varieties I have planted. I find, also, that it is just as early as 'King' cotton, and is just the thing for boll weevil districts. I am shipping to Charleston and Baltimore and shall be pleased to advise in reference to price on receipt of sales."—W. L. Nicholson.

April 12, 1917.—Dill-Ball Co., of Charleston, who handled Mr. Nicholson's cotton, write him: "This cotton is a very beautiful extra staple; ran  $1\frac{1}{2}$  inch length. We sold for 38c a pound—the highest price that we sold any cotton for this season."

## CLEVELAND BIG BOLL COTTON

Four years ago we found a strain of this cotton that was better than any that we had ever seen before. We bought this stock of seed and have been improving it each year, and now offer the best strain of this excellent cotton that is on the market to-day. Price: Peck 75c; bushel \$2.50; 10 bushels at \$2.25 per bushel, not prepaid.

## Other Varieties of Cotton

We can supply first-class stocks of the following list, and offer only the best seed grown.

Kinds	Peck.	Bushel.
Improved King .....	\$0.75	\$2.50
Peterkin's Improved .....	.75	2.50
Russell's Big Boll .....	.75	2.50
Hite's Prolific .....	.75	2.50
Half and Half .....	1.00	3.00
Culpepper Big Boll .....	.75	2.50
Christopher's Big Boll .....	.75	2.50

## Famous Express Cotton

This is a remarkable new variety that has made good in every cotton State in the South. It is one of the quickest-maturing, heaviest-yielding staple cottons I know of. It has been the idea with a great many farmers of the South that it was impossible to get a staple cotton that would mature early enough to make under boll weevil conditions. EXPRESS COTTON has already dispelled this belief from the minds of thousands of farmers, and never before have I seen a variety of cotton meet with such general satisfaction. It resists boll weevils and disease, and contains 40 per cent lint.

Price of EXPRESS COTTON SEED. Peck 85c; bushel \$2.75; 10 bushels at \$2.50, not prepaid.

Mr. P. C. Mitchell, of Yazoo City, Miss., under date of October 11, 1915, says: "I plant no variety of cotton other than EXPRESS. It gives over 30 per cent lint, matures earlier than any other variety of cotton and makes right to top of stalk. My cotton was all open long before that of any of my neighbors. The bolls are medium size 5-lock. It is the most prolific cotton I know of. The foliage is very small and open, permitting the sun to penetrate. The staple is 13-16 full.

## Alexander's "90-Day," the Quick Crop Cotton "THE KING OF THE EARLIES"

In it are combined the most profitable qualities for making the largest profit from a late planted crop following grain, early vegetable or a winter hay crop to be cut in April and May, or to make the best paying crop in the northern cotton growing region and the boll weevil sections of Texas, Louisiana, and Mississippi. It has always been our ambition to offer a variety of cotton that would make a big profitable crop in the shortest time. We have studied this problem for years, carefully testing, experimenting, patiently selecting, planting and waiting for results.

NOW after years of the most scientific selection we have at last succeeded by combining in this cotton, among its many good qualities, two of the most valuable and so much desired by every up-to-date planter who wants to get the quickest and most profitable returns from his soil.

ALEXANDER'S 90-Day Cotton beats the boll weevil.

THESE TWO most desirable qualities so well combined in this new selection are "QUICKEST CROP" and a "BIG CROP." We think "90-DAY" the right name for it, because its "EXTRA EARLINESS" is its most desirable quality for many planters.

PRICE, POSTPAID: Pound 50c; 3 lbs. \$1.00. Express or Freight, peck 90c; bushel \$2.75; 10 bus. \$25.00. Not prepaid, 100 lbs. \$8.50.

## Alexander's Improved Tool Prolific Cotton Seed IS THE BEST SELECTION OF THIS VARIETY

This well-known and popular variety was first offered or introduced by the **Alexander Seed Co.**, the seed having been supplied by the originator. We have always supplied the best selected stock to be obtained in this section. **The crops grown from our triple selected stock seed, and from which this seed is saved, have excelled all others in yield, quality of staple and earliness.** This is due entirely to the fact that this triple selected stock seed is the most carefully bred and selected seed of **this variety** used for planting anywhere.

A splendid short staple cotton with many valuable points. It is a strong grower, matures quick, fruits until late in the season, has medium to large bolls, stalks of medium size. It roots deeply, resisting drought. **It is wonderfully prolific, and gins out 40 per cent lint of fine quality.** It is easily picked, yet does not blow or fall out easily. **It is the best poor land cotton.** On good land, with good fertilizing, it easily makes two bales per acre. **Prices:** Per pound postpaid, 35c; 3 lbs \$1.00. Peck, not prepaid, 75c; bushel \$2.50; 10-bushel lots or over, \$2.25 per bushel; 100 lbs. \$8.00.

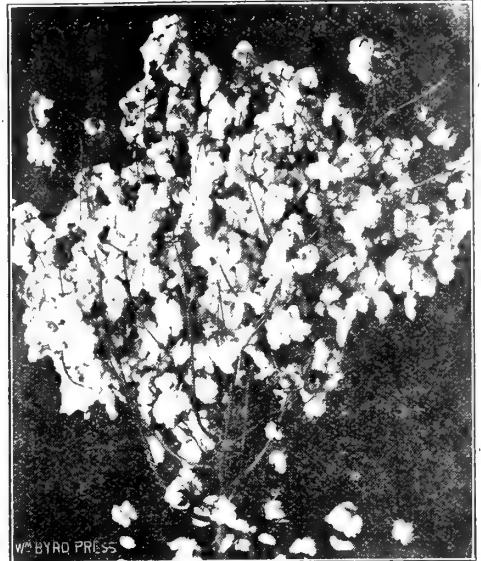
**TRIPLE SELECTED STOCK SEED of the TOOL VARIETY.** We have each year a demand for this special selection, but on account of reduced acreage have only a limited amount that we can spare. **Prices:** Pound, postpaid, 50c, or 1.50 a peck; \$5.00 a bushel, not prepaid.

Get our price in large quantity before buying.

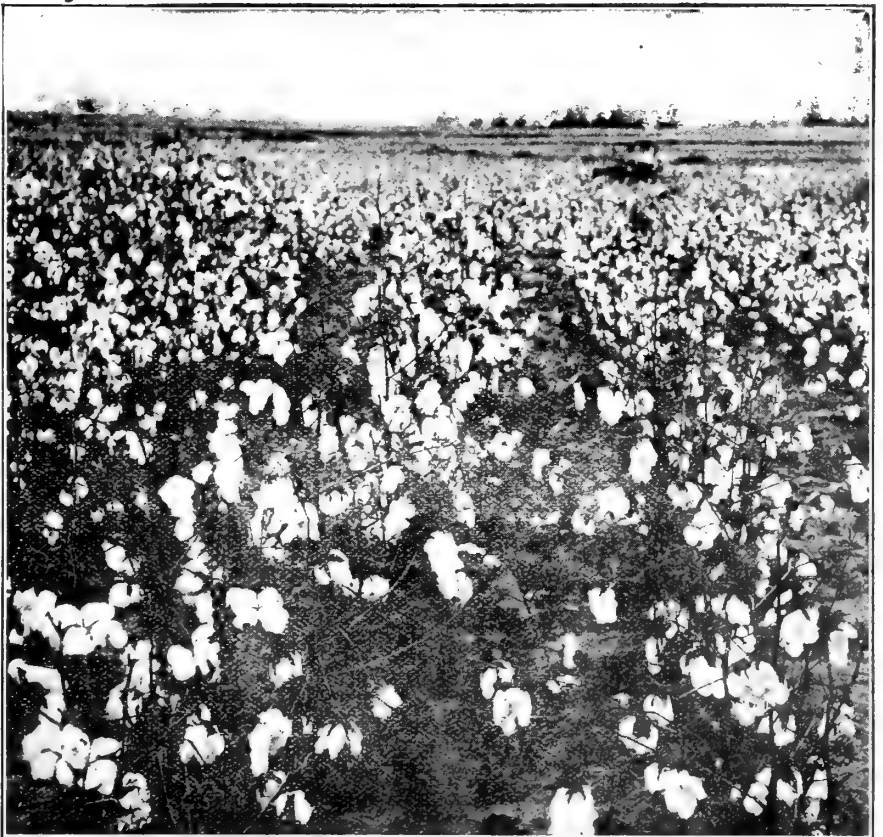
## Alexander's Dixie Wilt-Proof Cotton Will Save Your Cotton From Wilt and Weevil

No reason why you should lose all or a large part of your crop from wilt or "die back," for we now have a reliable selection that will make a crop in spite of these two damaging pests. The chief value of this selection is its wilt-proof or resistant nature, which has been brought out after several years of the most careful work selecting and breeding. We recognized long ago how badly a reliable selection of this kind was needed, and have given the matter of producing it our most careful attention. This is the second year that we have felt justified in offering it because we prefer to be sure before making a recommendation of this sort. The greatest of care has been used in its production, and you will find it the **earliest, most prolific, surest yielder, the best money maker to plant on wilt-infested land, as it beats both the wilt and the weevils.** No use planting a crop, then seeing half or more die back before the crop is made. We now have a limited quantity of this excellent WILT-

**PROOF SEED.** 1 lb. 50c, postpaid. 1/2 bus. \$1; bus. \$3; 5 bus. at \$2.85.



We Are Headquarters for the Original  
**GENUINE IMPROVED TOOL COTTON.**



A field of **ALEXANDER'S WILT-PROOF COTTON**, where over half the crop died the year before. This is the best Wilt-Proof Cotton for yield and profit we have ever seen.

# "EZY-MUNY" The Greatest Prize-Winning Extra-Early Big-Boll Cotton—"The Boll-Weevil Dodger"



**The Sure  
Crop — Big  
Boll, Extra Early,  
Very Prolific, Storm-  
Proof, Five-Lock  
"Ezy - Muny" Cotton.**

**YOUR IDEAL Cotton is this new selection of ours. If you had the time to go into all of the best cotton fields of the South and pick with your own hands the best you could find, this is without a doubt the very one that you would select. It was originated or propagated by an up-to-date farmer up in the Northern cotton belt where the seasons are short. The selection and breeding have been done from a very healthy and thrifty growing big boll variety, and has been so well developed that it will produce a more superior crop in every respect than any of the big boll type. This variety has been grown from the beginning on land free from disease. It was no easy task to develop this variety, but careful and patient work always brings the desired results when proper methods are used, and the reward obtained in the perfection of this new strain proves that it was worth all of the time and money spent in bringing it up to its present condition. In it you will find MORE OF THE MOST DESIRABLE qualities for an absolutely perfect variety of this class than you have ever seen. We have tested it in every possible way with other big boll varieties, both of the early and late types, and there is not one that has proven equal to it in a three years' test on dark, red-clay land of good quality, on stiff, gray pebble land with clay subsoil, on rich river bottom and sandy land. The results in all trials have been highly satisfactory.**

A friend of ours told us about this selection in 1908. We at once investigated it and found it to be just what we wanted. It cost us \$8.55 a bushel.

Big boll cottons are nearly always the most popular with pickers, and the only objection to planting them in some sections has been the length of time they require to make a crop. The main object in breeding this selection was to combine in it, besides earliness, the large well-shaped boll with 60 to 70 per cent of them five-lock, a medium-sized seed, with one-inch lint, of good strength and quality and turning out 38½ per cent to 40 per cent, 49 to 58 bolls making a pound. The open growth is also a great advantage in the BOLL WEEVIL section, and we

**A  
3¼  
BALE  
PER ACRE  
STALK OF  
"EZY-MUNY"  
COTTON.**

prefer open growth under all conditions. It makes a well-shaped stalk with numerous limbs, on which the bolls are well distributed. It has made a fine crop each of the four years we have grown it, showing very little tendency to shed during the long, hot, dry seasons it has gone through. However, this is largely due to the fact that all the land on which it has been grown has been deeply prepared and cultivated shallow. It has proven most valuable also on account of the ease with which it is picked. Hands can pick more and are sometimes willing to pick for less money than to pick small boll varieties. In selecting our pedigree planting stock the selection is made from individual stalks, which are tested for their rate of yield per acre, and unless they make a yield of at least 1,375 pounds lint per acre, or about 3¼ bales, the seed is not used. Every plant that comes up to that standard is used to grow seed for the next year's general crops, which have not fallen below an average of 590 pounds lint per acre. By this improved method of selecting only a part of the seed from high-yielding stalks, on four of our seed farms where this seed is grown on a total of 396 acres the low-yielding stalks are almost eliminated from the general or main crop. One of our renters followed his oats with this cotton, using only 200 pounds high-grade fertilizer per acre; average 435 pounds lint per acre on 15 acres. WE KNOW that you will like this selection better than any big boll cotton you have ever planted, or is now offered by any one.

**PRICE: Pound, postpaid, 40 cts.; 3 lbs. \$1.00. Not prepaid, peck 85 cts.; bushel \$2.75; 70 bushels \$25 00; 100 bushels \$225 00; 100 lbs. \$9.00. Ask for Special Price on Large Quantities.**

# "EZY-MUNY" (The Largest, Earliest, Most) BIG BOLL Prolific, Best Short Staple COTTON

SELLS FOR \$2.50 TO \$5.00 A BALE MORE THAN ORDINARY SHORT STAPLE, OR ½ TO 1 CENT A POUND MORE THAN ORDINARY. WHEN PROPERLY GRADED AS 11-16 TO 11-8 INCH STAPLE BRINGS 1 CENT A POUND MORE THAN 7-8 INCH STAPLE     ::     ::     ::     ::



Actual Size Boll of "Ezy Muny" Cotton

Mr. M. M. Chandler, Madison Co., Miss., bought 300 pounds "Ezy Muny" and writes he made a good crop with it, in spite of the boll weevil. He says: "It is certainly the best big boll short staple cotton I ever saw. It is really 1½ inches good."

**YOU LOSE MONEY ON EVERY BALE YOU GROW FROM THE ORDINARY MIXED UP RUN OF SEED     ::     ::**

You can see by this photograph of an Ezy Muny boll that it has an extra good quality of staple and holds well to the burr until picked. Seldom does it blow out or shed, yet it picks out quick and clean.

"ALEXANDER'S BIG BOLL 90-DAY" is what Mr. J. P. Head, of Bienville, La., calls it. He says: "I will get from the acre I planted 1,400 pounds seed cotton; unfavorable season caused sorry stand. It began opening about 95 days after planting. Used 200 pounds fertilizer on red gravel land, broken in April and planted 18th day of May. Believe, with favorable season, breaking land deep fall or winter and planting early in April, using 500 pounds fertilizer, I can make 1½ to 2 bales per acre, as it had open cotton little over 90 days after planting."

Limestone Co., Ala., Jan. 9, 1917.—Send me your 1917 Catalog. I bought of you last spring Ezy Muny Cotton seed. Made on 1½ 950 pounds lint. It sold for 1 cent a pound more than my other cotton. On one-half my lot got half a stand, still it doubled in yield any other cotton on my place. Please send quotations.—W. S. White.

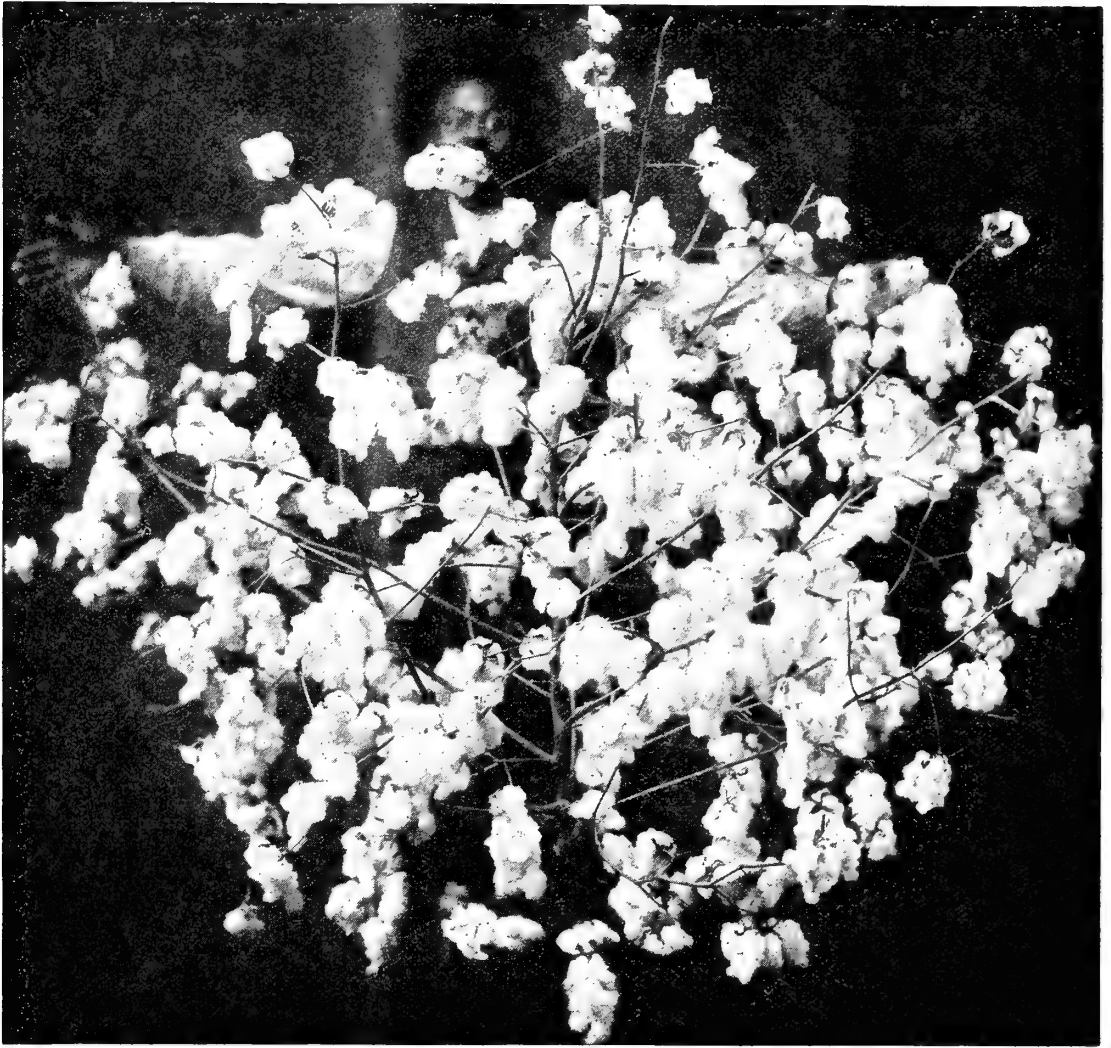
Independence Co., Ark.—Send me your Catalog. I ordered Ezy Muny Cotton from you last year and am pleased with it. From the 30 pounds I got 2 bales on hill land with only 80 pounds fertilizer. It is the best cotton I ever raised.—J. E. Vandiver.

Jeff Davis Co., Ga., Jan. 24, 1917.—The Ezy Muny Cotton I got from you last year about doubled any other kind I planted. Send Catalog and price on Spanish peanuts.—W. L. Beall.

Lowndes Co., Miss. March 5, 1917.—Find enclosed money order for 10 bushels Ezy Muny Cotton. Have been one of your customers for years. Hope this cotton will come up to your recommendation, like the Money Maker has. Thought I would try Ezy Muny this year. Could have bought seed from other parties, but I am a customer of yours and you have always sold me good seed.—H. L. Lawrence.

Mr. G. P. Whisenant, Union Grove, Fla., is highly pleased with results obtained from the seed he planted. He advises us: "I had 1,300 pounds seed cotton and got 510 pounds lint. It beat everything that has been to the gin this season, and they have ginned 460 bales. It will make a third more in the field than the Cook or any other variety I have seen. My cotton was green. If it had been dry it would have made more, but it is the best in this section, anyway. I think it should be called the "Alexander's Home Redeemer," because, if you plant and work it right, it will pay off the mortgage."

**The Best of Proof** is the word of the man who has bought, paid for and planted our seed; made a good crop and figured his profit. Our seed bring such good reports because they are always **GOOD SEED**. Above we have given you only a few of the many fine reports on this great cotton. We are very proud of the splendid results obtained from it. It is a pleasure to supply such good seed.



**"Money Maker"** —This wonderful cotton has an unrivaled record. It is so well known and universally liked wherever it has been planted that it seems almost unnecessary to more than mention the fact that we have now ready to ship to you a limited supply of select seed from a very fine but reduced acreage in 1918.

Each year we have hundreds of requests for our catalog similar to this one from Mr. Sutton:

Lawrence County, Miss.—Sirs: I have heard so much about the reliability of the Alexander Seed Company that I want a catalog, that we may know more about it.—D. S. Sutton.

It is therefore best to give a description of this splendid cotton for the benefit of those receiving our catalog for the first time.

We think that we have a right to justly feel very proud of the splendid and honorable record made by **Money Maker** since we first offered it from the crop of 1905. Twelve years before that the originator had started in to breed his cotton up to an ideal standard. He worked for a large, well-limbed stalk, shorter joints, three times as many bolls and large ones, together with longer and finer lint. He worked to produce a deep-rooted cotton to resist drought and storms and rust. The result—our "**Money Maker Cotton**" shown above, reproduced from a photograph of a stalk from our crop. It tells the story of what "**Money Maker**" does far better than words can. We have tested it in every condition of soil and climate in the cotton region. **Money Maker** has always been the best variety for sandy land. It is undoubtedly the best poor-land variety; it was originated on an ordinary gray-land farm, and will stand more dry weather and come through a long rainy season in better shape than any variety we have ever tried. It is about the only selection that will adapt itself at once to all conditions of soil and climate. It's an all-round sure-crop cotton everywhere, when you get the genuine seed direct from Alexander Seed Company. No other variety has been more carefully bred and selected than "**Money Maker.**" Plant it, and because our seed are strong and vigorous they come up quickly and grow right off. It quickly makes a strong, tough growth that will hold up a big crop of bolls without breaking down; blooms early and sets its fruit without delay. For this reason thousands of acres are planted with it every year in Mississippi, Louisiana and Texas, because it puts on a good crop always before the boll weevil can do any damage. It makes a good crop from bottom to top. Its roots go way down in the ground, and, no matter how dry the season, they get the moisture to develop with the smallest amount of shedding. **Money Maker** is the one you can depend on every year from the smallest to the largest crop. We have the evidence to prove every claim we have ever made. A small portion of this evidence has been published in previous catalogs. If you are going to plant cotton this year, plant good seed, the very best, the most productive, that you may get the largest possible yield per acre at the least possible cost. You will be safe with **Money Maker.** Remember the genuine improved seed is sold only under the brand and seal of ALEXANDER SEED COMPANY. Do not plant until you have seen **The Sign of Good Seed** on the package or bag from which you are planting. It is the surest sign for a successful crop.

We have no agents. Prices: Pound, postpaid, 40c; 5 pounds, \$1.00. Not prepaid, peck, \$1.00; bushel, \$2.75; 10 bushels, \$25.00; per 100 pounds, \$9.00.



HAY, FORAGE, STOCK FEED, AND FIELD SEEDS

Seed in this line are not quoted, as a rule, until just before planting season, as it is a hard matter to anticipate just prices on this class of seed. We are listing the varieties that we will handle, and ask that you write for prices before ready to order, when we will quote you best prices to be had on good stocks.

Soy Beans

**Mammoth Yellow** —The best variety for the South. Grows upright, like bush cow peas, producing well-filled pods of nutritious beans for any kind of stock feed and good for cooking purposes. Used like navy beans. Makes good oil, and is high in protein content, making it one of the best fattening beans grown. **Qt., postpaid, 40c. Peck \$1.25; bushel, about \$4.50.** Write for quantity prices.



Soy Beans.

Velvet Beans

**Extra-Early Speckled** —This variety is well known, having been planted all over the South for the past 3 or 4 years. We will offer highest grade re-cleaned stocks. We have our own electric cleaners and hulling machines, and you are assured of getting the best and purest stock to be had from us. **Qt., postpaid, 40c. Peck 75c; bushel, about \$3.00.** Write for quantity prices.

**Osceola** —A cross between the Chinese and Extra-Early Bean, with a slick pod, with very little stinging fuzz that causes so much trouble in picking; a very prolific bearer. **Qt., postpaid, 45c. Peck \$1.00; bushel, about \$3.75.** Write for quantity prices.

**Chinese Velvets** —A Medium maturing bean, coming off between the extra earlies and the old late Florida Bean; large white seed and enormous pods. **Qt., postpaid, 40c. Peck \$1.00; bushel, about \$3.75.** Write for quantity prices.

Cow Peas

We are in the center of the largest marketing section in the South for Cow Peas, and can at all times during season supply at best prices pure stocks of choice peas. Our electric cleaning machinery enables us to re-clean and grade these seed, so that we can put out the best to be had. Write us when ready to buy for prices on Clay, Irons, Brabhams, Whippoor-wills, Mixed and any other varieties wanted. **Price per quart, postpaid, on the above kinds, 40c.**

**Small White Lady Pea** —A fine table variety. **Pkt. 10c; ½ pt. 20c; pt. 35c; qt. 60c, postpaid.**

**Alexander's Filipino** —The best small sugar pea grown. **Pkt. 10c; ½ pt. 25c; pt. 45c; qt. 75c.**

**California Black Eye** —A great six-weeks two-crop pea. **Pkt. 10c; ½ pt. 20c; pt. 35c; qt. 60c, postpaid.**

Sorghums

**Texas Seeded Ribbon Cane Seed** —This is the finest of the syrup sorghum types, making unbelievable turn-outs of the finest clear syrup that is made to-day; the taste is just like that of the true ribbon cane syrup, keeping qualities as good and will always bring highest market prices. **Price, about 20c per lb.** Write for prices on lots.

**Early Amber** —The best feed sorghum. Makes highest grade feed, for silage, green feed or hay. Makes fine hay planted in connection with cow peas. **Lb., postpaid, 35c. Peck \$1.00; bushel \$3.75.**

**Orange Cane** —A dark syrup type of sorghum, with high sugar content. Planted for feed, but not as desirable as the Texas Seeded, as the stalk is much smaller. A good all-around cane for feed or syrup; a little later than the Amber variety. **Lb., postpaid, 35c. Peck \$1.00; bushel \$3.75.**

Kaffir Corn

**White Kaffir Corn** —This plant is a non-saccharine sorghum, making heads similar to those of the sorghums, well filled with small grain with food value similar to corn. Makes good fodder, good chicken and stock feed and good hay. **Lb., postpaid, 30c. About 12c per lb. in quantity lots.**

**Red Kaffir** —Similar to the White, only red in color; very much the same corn. **Lb., postpaid, 30c. About 12c per lb., in quantity lots.**

White Seeded Chicken Corn

A type of the Kaffir family, making a large spranged head filled with small white seed that makes the best chicken feed grown; very prolific, and will do well on any kind of soil. **Lb., postpaid, 40c. About 25c per lb. in quantity lots.**

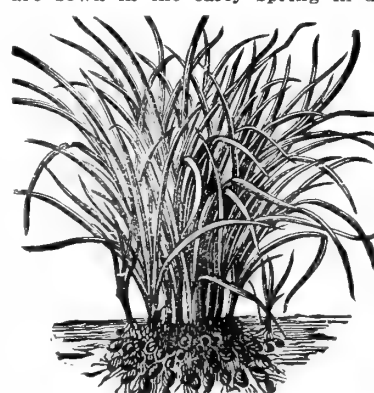
Millets

**Golden Millet (or Lately Called German)** —A fine hay millet planted for feed. Heads make fine chicken feed. Growth rank and a good cropper on poor land. **Lb., postpaid, 35c. Peck \$1.25; bushel \$4.50.** Write for prices on lots.

**Cat Tail, or Pearl Millet** —The best cut-and-come again millet grown; will come back up after being cut for green feed and will stand light grazings well; excellent feed for hogs, cows or chickens. **Lb., postpaid, 35c. 10 lbs., not prepaid, \$3.00.**

Chufas, or Earth Almond

This crop is the best hog fattener planted. Seed are sown in the early spring in drills and allowed to remain until about frost.



Chufas.

When nuts are matured hogs are turned in to root them up. There is no labor attached to harvesting this crop, and the fattening results are wonderful. Hogs should be finished off with a corn feed about 10 days before killing.

**Lb., postpaid, 35c; pk., \$2.00; bu. about \$6.50.**

Write for prices when ready to buy.



## Plant Oats This Spring

For the past two years a large percentage of fall-planted oats in our section have been damaged by cold weather, and about the only crops that have made to any advantage have been spring-planted seed. We offer for spring plantings the early varieties, such as **Fulghum, Burt** and **Re-cleaned Applers**, which do well planted early. The stocks that we offer are only the best to be had, and have been thoroughly re-cleaned and graded. Sacked in good bags.

**Fulghum** —The early, heavy, prolific oat, the favorite variety for Southern conditions. **Pk. 50c; bu. \$1.85, not prepaid.**

**Burt** —An old-time favorite spring oat, and about the earliest one grown; a fine grazing oat and a good grain producer; lighter than the Fulghum, not making quite as heavy an oat. **Pk. 50c; bu. \$1.50, not prepaid.**

**Appler** —The favorite old-time heavy oat, bearded and a fine rust-proof sure cropper. **Pk. 50c; bu. \$1.75, not prepaid.**

## Tobacco

	Pkt.	Oz.
Choice Havana	10c	50c
Sweet Oronoko, Chewing	5c	45c
Hester, Smoking	5c	45c
Samatra	10c	50c
Hyc	5c	45c
Yellow Pryor, Chewing	5c	45c

## Peanuts

**Small White Spanish** —The great commercial peanut of the South, producing large yields of fine, well-filled, small, pink-skinned nuts, making best hay and hog feed grown. This is the peanut to grow for stock, oil or hay. **Peck \$1.00; bushel \$3.75.**

### North Carolina, or Running Peanut

—Makes more hay than other kinds, and is a fine prolific nut. **Peck \$1.00; bushel \$3.50.**

**Valencia** —An extra large, red skinned variety; enormous yielder and used for all purposes. A fine eating peanut for parching. **Lb. 35c, postpaid. Not prepaid, peck \$1.25; bushel \$4.50;** crops for hay or feed. **Lb., postpaid, 35c. Peck \$1.50; bushel, about \$4.50.** Write for prices on lots.

## Japanese Buckwheat

A great bee plant, producing flowers in large clusters that afford fine bee pasturage. Seed make fine poultry feed, and plant is used for hay. Will make in about six weeks, so is one of the best catch crops for hay or feed. **Lb., postpaid, 35c.** Write for prices on lots.

## Hog Goobers

### Alexander's Genuine African Hog

**Goober** —Enormous yielder, easy to grow, does well on poor land; will make better on poor land than peanuts; makes one of the richest hog feeds. **Pkt. 15c; lb. 75c, postpaid.**

## Broom Corn

We can supply the Evergreen variety, which is a semi-tall kind, and the broom corn that has given the best results in the South. **Lb., postpaid, 25c. Not prepaid, peck 90c; bushel, about \$3.50.**

## Beggar Weed or Florida Clover

This is about the best summer legume for the extreme South, making a fine grazing or hay crop; very rank grower and doing well on poor land. **Lb., postpaid, 35c. Not prepaid, about 17c per lb.**

## Mammoth Russian Sunflower

The largest growing variety, does well on any good corn land, and is used extensively for growth on terraces; makes fine poultry and parrot feed. **Lb., postpaid, 35c. Not prepaid, about 15c per lb.**

## Rice

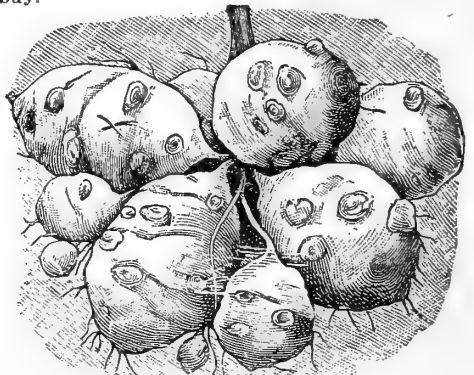
We list all kinds of Upland and Lowland varieties, and can supply highest grade stocks at a reasonable price. **Upland, Lowland, Carolina White and Blue Rose, 35c lb., postpaid; pk. 90c; bu. about \$3.50.** Write for prices on lots when ready to buy.

## Vetches

We have the regular Spring Vetch, or *Vicia Sativa*, and the Native, or Augusta Vetch. These legumes are regular money makers when planted in spring, and go well with grain crops of any kind. **Lb., postpaid, of either variety, 25c. Not prepaid, in lots, about 12c per lb.**

## Jerusalem Artichokes

To-day is one of the best hog feeds grown, putting hogs in fine shape for fattening. A very prolific producer, top growing something like sunflower plant, producing tubers in the ground. **Not prepaid, peck 85c; bushel \$3.00.** Write for prices when ready to buy.



Jerusalem Artichokes.

## Dwarf Essex Rape

The greatest green hog and poultry food planted to-day. Grows like turnips, only not making any bulbous root. Plant all the year around, with exception of hottest summer. **Lb., postpaid, 35c. Not prepaid, in lots of 10 lbs. or more, at 18c.**

## Sudan Grass

The great summer hay grass, well known and liked all over the South. **Lb. 35c, postpaid. In lots about 30c per lb.**

## Johnson Grass

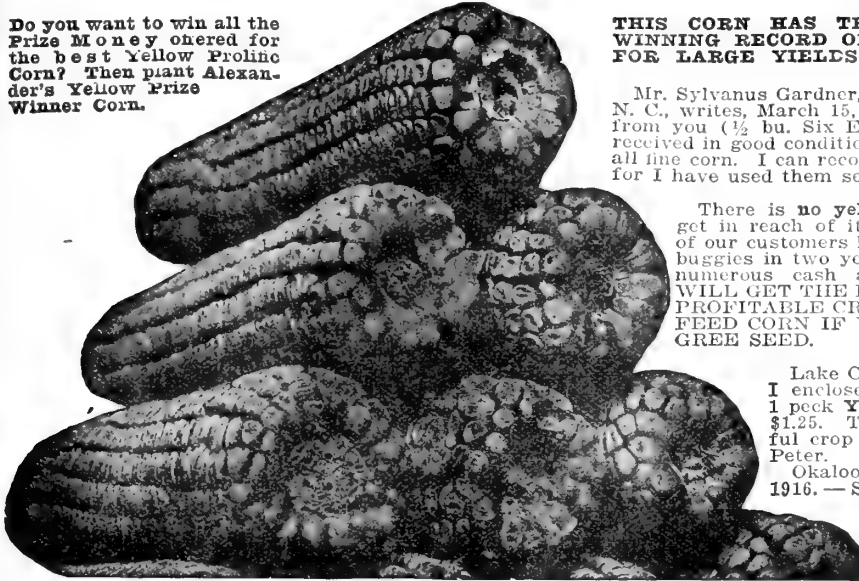
Makes a fine permanent hay grass that comes back each year. **Lb. 35c postpaid. Not prepaid, about 20c per lb.**

## Bermuda Grass

The best summer grazing grass known. Seed should be sown in early summer, usually in April, but is also sown later. **Lb., 75c, postpaid. In quantities, 60c per lb., not prepaid.**

# Alexander's Yellow Prize Winner Corn

Do you want to win all the Prize Money offered for the best Yellow Prolific Corn? Then plant Alexander's Yellow Prize Winner Corn.



**THIS CORN HAS THE GREATEST PRIZE-WINNING RECORD OF ANY YELLOW CORN FOR LARGE YIELDS AND PERFECT EARS**

Mr. Sylvanus Gardner, R. F. D. 6, Cleveland Co., N. C., writes, March 15, 1915: "The seed ordered from you (½ bu. Six Ear Corn and Melon seed) received in good condition. Am well pleased; it is all fine corn. I can recommend your seed heartily for I have used them seven years."

There is no yellow corn today that can get in reach of it as a prize winner. One of our customers has taken two \$75.00 prize buggies in two years, and others have won numerous cash and other prizes. **YOU WILL GET THE PRIZES AND GOOD, BIG, PROFITABLE CROPS OF RICH, YELLOW FEED CORN IF YOU PLANT OUR PEDIGREE SEED.**

Lake Co., Fla., March 11, 1916.—I enclose money order, including 1 peck **Yellow Prize Winner Corn**, \$1.25. This corn made a wonderful crop with us last year.—H. J. Peter.

Okaloosa Co., Fla., March 14, 1916.—Ship me two bushels of your **Yellow Prize Winner Corn**. I planted it last year and want to plant it again at once.—C. B. Ferdon.

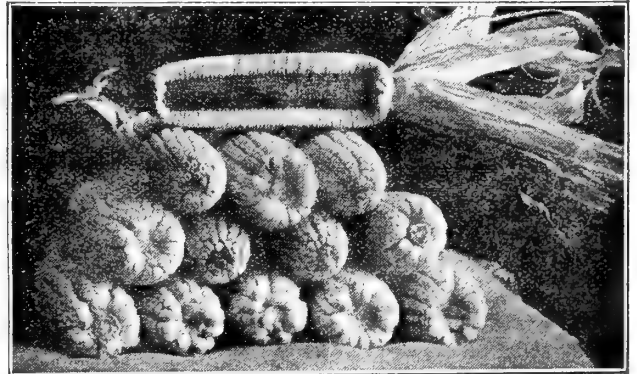
In 1910 we selected this corn for the best prolific Yellow Corn. Of all yellow corn grown in the South it showed the best record, and every year since it has proven its value in every way. We are pleased that the correctness of our judgment has been proven by the crops our customers have grown from this seed since then. Some have planted it early, others as late as June. The yields are uniformly satisfactory whenever planted. This corn is classed as a prolific type. Makes a good average sized ear, perfectly filled out from butt to tip, thus showing the result of careful breeding which was carried on by the propagator for a good many years. The small, red cob is covered with straight, even rows of beautiful yellow grain of rather a flinty quality, making it a splendid keeper, and especially valuable for feeding work stock, on account of its large percentage of protein or muscle building food. That yielding quality of this corn has been developed to a high point is proven by its many large yields at very low cost per bushel. The propagator average 93¼ bushels, actual weight shucked, on five acres. One of our customers in Burke County, Georgia, bought a peck for two dollars, planted it in May and made 225 bushels. Many others have reported splendid yields. It is a strong, vigorous grower, and will make a yield on uplands or river bottoms in proportion to the quality of the soil and cultivation. We have tested it thoroughly and now recommend it to you because we know it is the best yellow prolific corn ever produced in the South, and you know our recommendation is a practical guarantee of satisfaction.

**Price:** Pkt. 15c; ½ pt. 25c; pt. 40c; qt. 65c, postpaid. ½ pk. 90c; pk. \$1.50; bu. \$5.00, not prepaid.

## FARMERS' PRIDE CORN, THE 90 PER CENT CORN

Mr. W. D. Raley, Shelby Co., Ala., says: "I bought Farmers' Pride from you five years ago. Have got it mixed and want to start again with pure seed. Enclosed find \$1.00 for a peck." Mr. M. E. Shuler, Orangeburg Co., S. C., says: "Am so well pleased with your Farmers' Pride Corn that I must write you to say that I planted 15 acres in 1914 and made more corn per acre than I have ever made in my life." Many more have written the same. **FOR OVER 15 YEARS** this has been one of our standard and most popular varieties, and it continues to grow in popularity each year, because the seed we supply is such good seed for making crops of corn with a profit.

Jefferson County, Ala.—"Send your annual catalog. I want garden seed, also **FARMERS' PRIDE** and **SIX EAR** corn. Have several times bought seed from you and think your seed are the best," says Mr. A. G. Jordan.



**Alexander's Farmers' Pride Corn.**

Several Florida customers have made 60 to 80 bushels an acre. We call it 90 per cent corn, because the pedigree ears selected as stock seed weigh at least 15 ounces with a cob weighing not over 1½ to 1¾ ounces. Farmers' Pride runs 2 to 3 ears on each stalk, the ears being 7½ to 8½ inches in length, 14 to 20 rows deep, perfectly shaped grain. The roasting ears are deep grained and delicious. Makes the finest of meal and hominy, and ranks high in protein. Matures crop in 100 days and cures quickly. Is an excellent variety for dry seasons. Stalks of medium size, ears low down, and have heavy shuck. Stalk stands up fine in heavy winds and bad weather. Our pedigree seed will produce 126 bushels per acre. The years of careful selecting and weeding out of unproductive stalks has practically eliminated all barren stalks, so that **EVERY STALK IN THE FIELD MAKES CORN**. It is an extra fine variety, and we are sure that every one who has planted our seed has been well paid for the investment.

**PRICE:** Postpaid, pkt. 10c; pint 30c; quart 50c. Not prepaid, ½ peck 75c; peck \$1.25; ½ bushel \$2.35; bushel \$4.50.

# 141 Bushels an Acre

With Only \$6.00  
For Fertilizer  
PRIZE-WINNER

THE RECORD OF ALEXANDER'S BIG WHITE

This Is the Only Pure Thoroughbred Stock

Improved Shaw Corn

Bred up and grown in the South. Its pedigree runs back nearly fifty years. When we first offered the variety to our customers, a number of years ago, after carefully testing it, the seed was first-class for that period, and the crops produced were much above the average. At the same time we were not thoroughly satisfied with it, believing that it could still be improved in several points and the reproductive power of the seed strengthened by more scientific methods of improvement. Our work since then, combined with the enthusiastic and careful work of our grower, has produced wonderful results.

We have seen many varieties of Southern grown corn in all the Southern States, and are always searching for improvements.

We have paid fancy prices

for special selections of all

varieties that seem to have

any promise of being better

—we buy and try, yet up to

date we have never found a

selection of this great, big-eared

kind of corn that has

anywhere near come up to

our stock, planted on any

kind of soil, anywhere in

the South. The number of

years given to the selection

and improvement of this variety

could produce but one

result: a perfect type, which

is a strong, vigorous grower

and heavy yielder—the best

BIG WHITE corn now produced

in the South. It makes the

largest, most perfectly formed,

prize-winning ears, with the

largest per cent of grain of a

corn of this class, and keeps

well in the crib, until fed up.

It pays to plant the purest

pedigree stock you can get. This

is just that kind of seed, and

if you want to grow the biggest

ears this year and make a heavy

yield per acre, we advise placing

your order at once, for we have

always had a larger demand

than supply. Money is always

returned when pedigree stock

is sold, as there is no other

seed we can afford to send out

under our name. Our ears of

Shaw's Improved average 10 to

12 inches long, 18 to 20 rows

perfectly formed white grains

set firmly and deeply and

covering from butt to tip, many

ears making over 85% grain.

Makes large, strong stalk with

usually two good ears and an

immense amount of forage; is

deeply rooted and very storm

resistant. No variety of corn

anywhere is more carefully

handled than this. It is a

genuine thoroughbred and your

yield will be all that you could

desire if you get Alexander's

selection.

Note the comparison between an

average ear of our Shaw's and

the common corn, the kind that

makes 10 to 16 bushels per acre.

Length of ear of Shaw's is 12

inches; cob weighs 5½ ounces;

grain, 20½ ounces; total, 26

ounces, and measures nearly a

quart—almost three times as

much as common corn. This

corn planted in 3½-foot rows

and same distance in drill, will

give 3,536 hills per acre, and

with one average ear per

hill will make 79¼ bushels. It



Will always win the prize for the largest and most perfectly formed ears of corn.

We will give five dollars for the largest ear from 1918 crop.

12 Pedigree Seed Ears of our PRIZE-WINNING SHAW CORN. The ear ruler was 12 inches, and shelled a wooden quart measure level full.

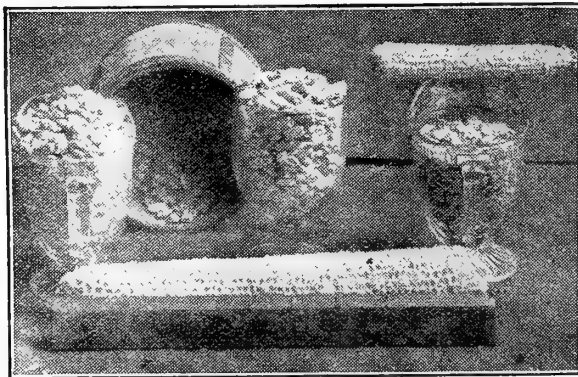
It makes the largest, most perfectly formed, prize-winning ears, with the largest per cent of grain of a corn of this class, and keeps well in the crib, until fed up.

It pays to plant the purest pedigree stock you can get. This is just that kind of seed, and if you want to grow the biggest ears this year and make a heavy yield per acre, we advise placing your order at once, for we have always had a larger demand than supply. Money is always returned when pedigree stock is sold, as there is no other seed we can afford to send out under our name. Our ears of Shaw's Improved average 10 to 12 inches long, 18 to 20 rows perfectly formed white grains set firmly and deeply and covering from butt to tip, many ears making over 85% grain. Makes large, strong stalk with usually two good ears and an immense amount of forage; is deeply rooted and very storm resistant. No variety of corn anywhere is more carefully handled than this. It is a genuine thoroughbred and your yield will be all that you could desire if you get Alexander's selection.

Note the comparison between an average ear of our Shaw's and the common corn, the kind that makes 10 to 16 bushels per acre. Length of ear of Shaw's is 12 inches; cob weighs 5½ ounces; grain, 20½ ounces; total, 26 ounces, and measures nearly a quart—almost three times as much as common corn. This corn planted in 3½-foot rows and same distance in drill, will give 3,536 hills per acre, and with one average ear per hill will make 79¼ bushels. It usually makes two good ears per stalk. It has a record yield of 133 bushels in regular crop. Five acres planted in this seed will make more and better corn than fifteen of the ordinary corn; the reason is: Most of the seed usually planted is not selected in the right way. You have too many barren stalks and nubbins. It will pay you to plant some of our Shaw Corn.

IMPROVED SHAW CORN.

COMMON CORN.



PRICE: Pkt. 10c; ½ pint 15c; pint 25c; postpaid. Quart 40c; peck \$1.25; bushel \$4.25, not prepaid.

Muscogee Co., Ga., May 8, 1917.—Find enclosed remittance for ½ bushel Six Ear Corn. I know from experience it is O. K. Have been planting it for some time. Am anxious to plant Shaw Improved. Send one peck of it. I already have 25 acres planted in your Six Ear Corn.—A. B. Norris.

Bienville Parish, La., March 27th.—“Find money order for ½ bushel SHAW IMPROVED CORN and FARMERS PRIDE; both are finest corn I've seen in my life and I am 53. I see I have made a mistake all my life planting seed from the crib; can make twice as much corn to the acre by planting your special corn seed.”—Geo. W. Sutton.

Shelby Co., Ala., April 9, 1917.—I have planted the four packets of seed corn (special collection). I believe it is the finest seed corn I ever saw.—Wm. F. Bell.

Anderson Co., Tex., Feb. 25th.—“Find enclosed money order for peck each, Improved Shaw and Yellow Frizewinner Corn. I have tried the Shaw here and know what it will do.”—J. P. Johnston.

## We Will Prove to You the Value

Six Ear .....	10
Shaw Improved .....	10
Yellow Prize-Winner .....	15
Farmer's Pride .....	10

of our pedigree corn seed by our Big 4 Special offer. One full-sized package of the BEST FOUR SELECTIONS OF CORN IN THE SOUTH.

45c worth, or 4 regular sized packets for 35c; postpaid.

PLANT A ROW OF EACH, WATCH RESULTS, AND YOU WILL BE CONVINCED THAT IT WILL PAY YOU TO PLANT ALL OF YOUR CROP IN OUR PEDIGREE CORN SEED NEXT YEAR.

# Alexander's Six-Ear—the Most Prolific



What our customers say, year after year, about **ALEXANDER'S SIX EAR CORN**, and the ever increasing demand for it, is sufficient to convince everybody that it is the best all-round, sure crop, money making corn for all lands and all purposes. We have made fine crops of it planted so late as June. It is good for early planting, also for late, and great for ensilage too. Be sure to plant it if you wish to be absolutely satisfied.

Jan. 22, 1917.—Quote me your price on 10 bushels Alexander's Six Ear Corn. Want corn just like I got of you six years ago. It is fine.—J. M. Pittman.

Jan. 22, 1917.—Find enclosed \$9.60 for seed ordered. Ship at once. Have tried your Six Ear Corn before, as my little brother made 133 bushels on one acre at cost of 23 cents a bushel. It's the best of all.—J. F. Matthews, Dale Co., Ala.

Arkansas, Dec. 26, 1916.—Send me latest catalog. I want a new supply of your Six Ear Corn; it is the best I have ever grown in this section.—R. F. Ellis.

Louisiana, April, 1917.—Find enclosed money order for Six Ear Corn. Send by express. Have planted this corn eight years, and find it superior to any other.—Fulton O'Quinn.

**This strictly Southern corn** of ours which has been carefully improved and selected for nearly twenty years, is grown **EXCLUSIVELY** for us from originator's pedigree seed stock which we always keep up to the **HIGHEST STANDARD OF PERFECTION**. The seed we offer you is the most carefully selected, most prolific strain of **ALL** prolific varieties. It is strong, healthy stock, full of vigor. No effort is spared each year to improve its yield by the most careful and up-to-date methods of breeding and selecting. The hundreds of high yield records at low cost per bushel that our pedigree seed has produced, the many valuable corn show records it has captured, and the prizes won have proven that the **breeding and improvement** of corn is of as much importance as in cattle and horses. You can buy an ordinary cow for from 20 to 50 dollars, but you cannot get a **PURE BRED**, with a pedigree and a first class hereditary record of milk and butter fat production for any such price. Some folks say "a pedigree is no good, and that heredity doesn't count for anything," but we have always noticed that those who believe the other way, and buy the best bred seed and stock, have the best farm and **make the most money out of farming**, with few exceptions. You will find this seed has been so well bred and selected that it contains the **reproductive power necessary** for growing a vigorous plant, to produce well developed ears of the best quality grain. In numbers of tests of average field run stock, used for feed, it has shelled out **60 to 62 pounds good sound grain**, from each 70 pounds of ear corn. Every year we have had to increase the acreage of this variety to keep up with the demand caused by the fine yields made from our seed. Though we have never had a crop failure, and only one slight shortage, our sales have increased so every year, that the supply has sometimes not been sufficient. We have had to return money on late orders some years. **One year recently we returned nearly four hundred dollars sent for this variety.** You can always depend on getting only **ALEXANDER'S PEDIGREE SEED** or your **MONEY BACK**. We recommend our Six Ear Corn to you without reserve.

It is highly recommended as a **POOR LAND CORN**, both for sandy and clay uplands, and about Augusta in the rich river bottom it has made the best yields ever known. The cob is small and white, the grains are deep and well filled out, making the grain fit around the cob close and solid. It is rich in protein, the moisture content is low, making it cure quickly in the field, thus preventing loss. The shuck also completely covers the ear, which keeps out both rain and insects. It makes from 4 to 8 ears per stalk, and we have seen 11 ears from one seed. It is a good keeper, being less troubled by weevils than any selection we have seen. It is almost equal to "Sweet or Sugar Corn" for roasting ears. A customer told us on October 30th that he had on the previous day enjoyed tender roasting ears from this variety planted in his garden. It roots deep, which accounts for it **always withstanding drought and making a good yield**. This also enables it to stand severe storms without blowing down. It now matures in about 110 days and has a record yield for clear net profit of about \$1,200, but this was done on a prize acre. It's the **surest cropping, best white corn** for you to plant on upland, or lowland, on rich land or poor, wherever corn will grow in the South. But you must have **Alexander's Genuine Pedigree Seed for Most Profitable Results**.

Hernando Co., Fla., Aug. 30, 1915.—"Send me catalog of your 'PRIZE WINNER' CORN 'SIX EAR.' A few days ago I saw some at a station in Pasco County; the agent had his office festooned with stalks; they had 6 to 9 good ears on each stalk. I never saw anything like it before. I want to plant some in January."—Mrs. Jessie Seale.

Monroe Co., Ala.—"I made 193 bushels of corn on one acre with your **SIX EAR** prolific; it can't be beat. I won \$25.00 prize."—J. C. Sawyer.

**ALEXANDER'S SIX-EAR CORN.**  
A Good Poor Land Corn.

**PRICE** Packet, 10 cts.; ½ pint, 20 cts.; pint, 30 cts.; quart, 45 cts.; postpaid. Peck, not prepaid, \$1.25; bushel, \$4.50.



# The Following Varieties Are the Best That Grow--- *Selected for the South*

These special selections are offered exclusively by the ALEXANDER SEED COMPANY, and you will find that they are the most reliable, most productive, and best money maker that you find to plant.

## ALEXANDER'S

Dixie Tomato

Earliana No. 1

Chalk's Early Jewel

Great Southern

Alexander's Watson Melon

1½ Inch Early Upland Long Staple

The one that makes a good crop  
ahead of the weevil.

Truckers' Perfection Beet

Augusta Truckers' Cabbage

Long Keeper Globe Onion

Famous Early Beauty Irish Potato

Filipino Table Pear

Sugar Syrup Sorghum

Triple Selected Tool Cotton Seed

90-Day Quick Crop

Ezy Muny

Money Maker

Alexander's Six-Ear Corn

Yellow Prize Winner Corn

The above list comprises the finest improved selections that have ever been offered, and should be planted on every farm and in every garden. They will pay you and pay you well.

See full description in catalog.

One thing to be remembered is that THE COST OF SEED PER ACRE IS THE SMALLEST EXPENSE of any crop, yet there is no part of the process of production that is more important than the selection of Good Seed—the very best. Alexander's are the best that grow. Selected for the South.

And that—

After you have planted ALEXANDER'S GOOD SEED in well prepared ground properly fertilized, you have done all that can be done to start your vegetable garden or field crops RIGHT, FOR MAKING THE BIGGEST AND BEST YIELD.

SO SEND US YOUR ORDER AT ONCE YOU WILL BE SATISFIED.

# Alexander Seed Co.

THE ALEXANDER SEED COMPANY gives no warranty, express or implied, as to Description, Quality, Productiveness, or any other matter of any Seeds, Bulbs or Plants they send out, and will not be in any way responsible for the crop. If the purchaser does not accept the goods on these terms, they are at once to be returned.

# SPECIAL QUOTATION SHEET

—FOR—

Truckers, Market Gardeners, Merchants or any purchasers of seed in large quantities. (Not for small family garden orders, as we offer special collections and premiums on these in catalog.) By filling out this sheet with the list of seeds you wish to purchase, you place yourself under no obligation to buy. Give us a complete list of ALL the seed you expect to plant; we will quote you the BEST POSSIBLE PRICE on the best seeds that grow, selected for the South.

Name..... || What Railroad are you on?.....  
P. O..... R. F. D. No. .... || What is the name of your Express Office?.....  
County..... State..... || What is your nearest Freight Station?.....

Please quote me your lowest price on the following seed. I shall need (about) the amount named of each variety. This is NOT an order for seed, only an inquiry for your best price and I am under NO obligations to buy.

QUANTITY	VARIETY	Leave This Space Blank	
If this sheet is not large enough for your list put other items on blank sheet			

The prices quoted are Free on Board at Augusta. The shipment would weigh about ..... pounds, and the Express Freight charges to your office would be about ..... We would advise you to have the order shipped by .....  
Thanking you and hoping to be favored, we are,  
**THE ALEXANDER SEED COMPANY, 911 Broad Street, AUGUSTA, GA.**

**Special Quotation No. ....**  
ALL QUOTATIONS without exception are made F. O. B. AUGUSTA cash with order, or half down, balance bill-lading attached, unless otherwise noted.  
**WHEN ORDERING, please refer to this SPECIAL OFFER giving date. Same is made for early acceptance only subject to goods being unsold on receipt of order.**

IT WILL BE TO YOUR ADVANTAGE TO FILL OUT AND SEND US THIS LIST AT ONCE.

WE WANT YOUR BUSINESS all the time and will give you THE RIGHT PRICE AND QUALITY to get it



Amount Rec'd \$----- Date Rec'd and Filled-----

No. ----- Filled by----- Checked by----- Shipped by-----

**ORDER SHEET FOR THE BEST SEEDS THAT GROW — Selected for the South**

# To ALEXANDER SEED COMPANY, Augusta, Georgia

Established 1873

Please forward the following Seeds, etc., by -----  
 (State whether by mail, express or freight)

Name ----- Post Office ----- County ----- R. F. D. No. ----- Box No. ----- State ----- Express Office { If Different } ----- { from P. O. } ----- Are You a Market Gardener? -----	Enclosed find ----- Dollars ----- Cents ----- <b>IMPORTANT</b> No matter how often you write us, <b>ALWAYS</b> give your NAME and ADDRESS in full. Always state how you want your order sent, whether by Mail or Express. Attach both Name and Price to each article or- dered. <b>ALWAYS WRITE YOUR</b> NAME PLAINLY, and before or- dering please read directions to cus- tomers in our catalog.
------------------------------------------------------------------------------------------------------------------------------------------------------------------------------------------------------	----------------------------------------------------------------------------------------------------------------------------------------------------------------------------------------------------------------------------------------------------------------------------------------------------------------------------------------------------------------------------------------------------------------------------------------

Quantity	DESCRIPTION OF VARIETIES WANTED	Dollars	Cents
<b>Amount Carried Forward</b>			

### SELECT YOUR OWN SEED PREMIUMS WHEN ORDERING

Twenty-five cents' worth of seeds in packets, half ounces or ounces, **FREE**, on each dollar's worth of seed ordered in packets, 1/2 ozs. and ounces (excepting cauliflower on ounces, and one-half ounces). For \$1.00 you can get seeds in packets, half ounces and ounces amounting to \$1.25. This twenty-five cents extra on each dollar does not apply to seeds ordered in packages of a quarter pound or over or on collections of any kind. **YOU** are to select the seeds wanted to be sent only with your order when asked for.

(OVER)



Please write your name and address here

From \_\_\_\_\_

P. O. \_\_\_\_\_ State \_\_\_\_\_

FOR SUCCESS  
WITH TOMATOES  
PLANT  
"DIXIE"

YOU WILL BE  
SATISFIED.

DELIVER TO



911 BROAD STREET

S-8

Send Money by Postoffice or Express  
Money Order. It's the Safest,  
Cheapest and Best Way.

PLANT  
THE "DIXIE"  
TOMATO

PLANT  
THE "DIXIE"  
TOMATO

WAYNE CO., GA., JAN. 18, '15.

I want to send you an order for my  
little farm, quote price on the inclosed list.

I have been buying garden seed from you off  
and on for TWENTY YEARS and your seed has  
always given satisfaction. (Signed) G. W. Stokes, D. D. S.

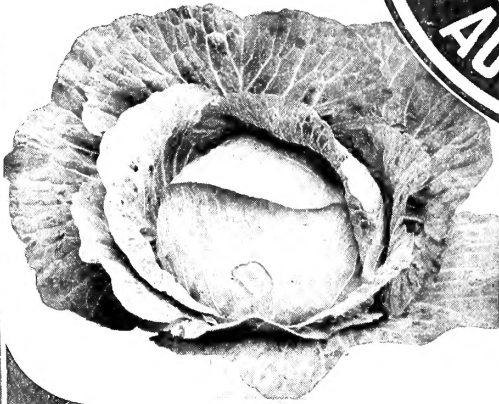
WE ADVISE YOU to plant ALEXANDER'S "DIXIE" TOMATO  
because it IS the BEST, MAIN CROP, ALL SEASONS, EVER-  
BEARING TOMATO for the south. It IS the one tomato that should  
be in every southern garden. It wil please you and pay you a profit.





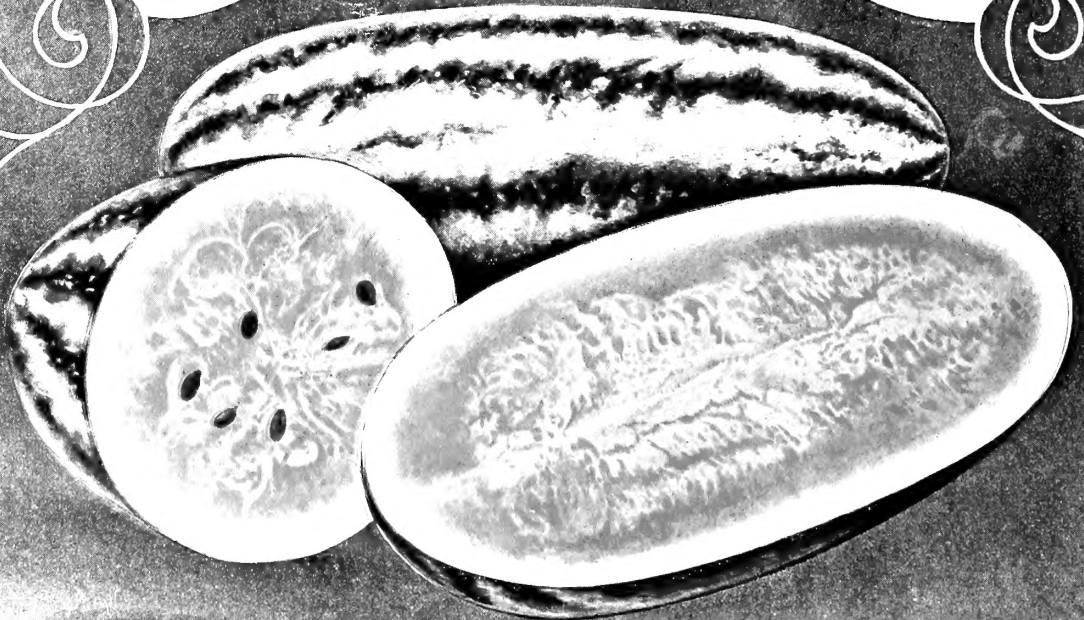
WAKEFIELD,  
EARLY  
JERSEY

AUGUSTA  
TRUCKER



STEIN'S EARLY  
FLAT DUTCH

CHARLESTON  
WAKEFIELD



THE AUGUSTA RATTLESNAKE, DELICIOUS ALL THE WAY THROUGH