

## Historic, archived document

Do not assume content reflects current scientific knowledge, policies, or practices.



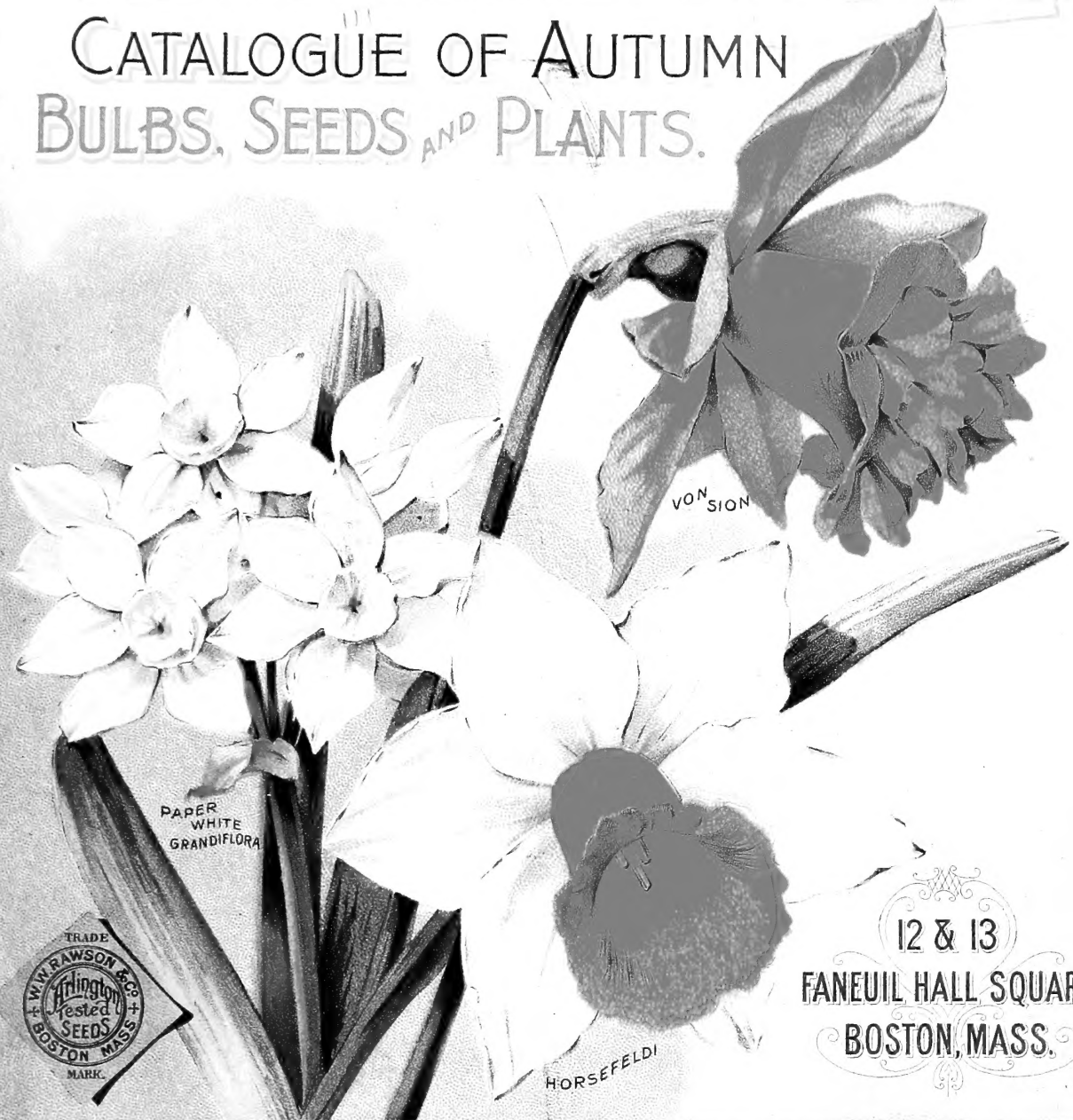
62.57

Bulb Yearbook

1900

# W.W. Rawson & Co.

## CATALOGUE OF AUTUMN BULBS, SEEDS AND PLANTS.



PAPER  
WHITE  
GRANDIFLORA

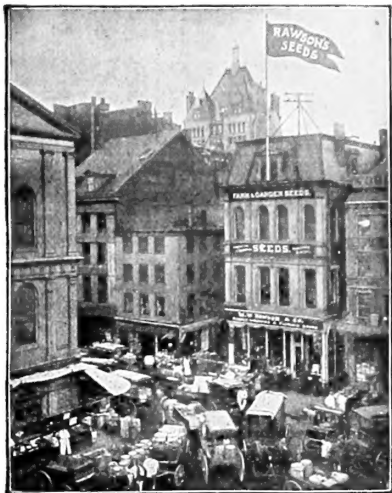
VON  
SION

HORSEFELDI



12 & 13  
FANEUIL HALL SQUARE  
BOSTON, MASS.





# W. W. Rawson & Co.

Is the only firm in Boston doing an exclusive business in

## SEEDS, BULBS AND PLANTS...

With a Salesroom on the Ground Floor.

THE BEST OF FACILITIES FOR SHOWING GOODS.

*GREENHOUSES AT ARLINGTON, where we grow the plants we sell.*

**TELEPHONES:**

Store . . . . . 2345 Boston  
Greenhouses and Residence } . . . . . 15-2 Arlington  
Market Gardens . . . . . 15-3 Arlington

**OUR STORE** situated directly opposite the Old Faneuil Hall, just at the beginning of the market district, is of easy access from Washington or State Street without going through the crowded part of the market, so objectionable to many of our lady customers especially.

### NO CLASS OF FLOWERING PLANTS

are easier to grow and surer to bloom than those produced by bulbs, whether grown in pots or boxes in the houses during the winter, or planted in the open ground for early spring blooming, the simplest culture being awarded by vigorous growth and abundant flowers.

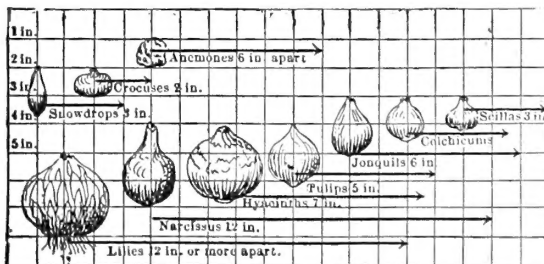
**Crocus, Scillias, Snowdrops**, if planted in the fall in sunny locations will in the spring produce their fine colored flowers usually before the snow is gone from the more secluded spots in early March; and during April and May the same beds may be made brilliant and charming by the lovely **Hyacinths, Tulips, Daffodils**, etc., which make a display of floral beauty rarely equalled.

For **Out-of-Doors Planting** the sooner after the first of October the bulbs are in the ground the better will be the results in the flowering when spring comes.

**Shipments** can be made in September with nearly all the bulbs, except a few sorts that are not sufficiently matured, and which cannot be shipped until November. Among the late sorts we mention the following; viz., **Iris Kämpferi, Lily of the Valley, Lilies**. When orders for these are included with orders for earlier sorts, it is our custom to forward such as are ready, and make a separate shipment of the later sorts. Should our customers prefer to have us make but one shipment, we will hold all and send when later bulbs are received.

**FREE DELIVERY** on bulbs to all parts of the United States at single and dozen prices quoted, except where noted.

**DEPTH BULBS SHOULD BE PLANTED.**



To answer the many inquiries regarding the planting of bulbs, the above chart has been carefully prepared to illustrate not only the depth but distance apart the bulbs should be planted.



**Oxalis.** See page 17.

### HOW TO SEND YOUR ORDER. IT IS IMPORTANT.

Orders from Unknown correspondents must be accompanied by cash to amount of order, or satisfactory Boston references.

**How to Send Money.** We will be responsible for money when sent to us by Postoffice Order, Bank Draft, Express Money Order or Registered Letter.

**Post-office Order** costs for any amount to \$2.50, 3 cents; over \$2.50 to \$5, 5 cents; over \$5 to \$10, 8 cents; over \$10 to \$20, 10 cents; over \$20 to \$30, 12 cents; over \$30 to \$40, 15 cents; over \$40 to \$50, 18 cents; \$50 to \$60, 20 cents.

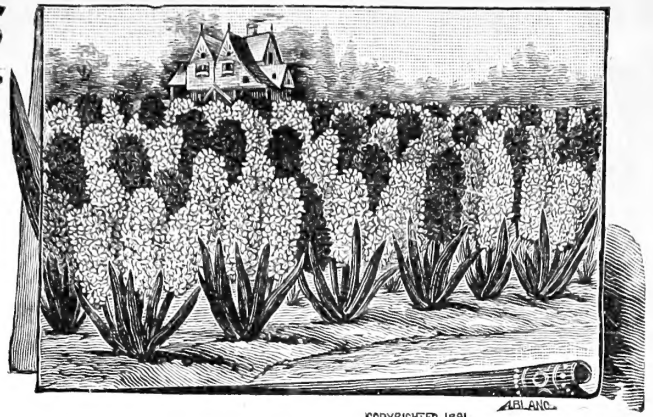
**Express Money Orders** are issued by express companies at their agencies, and cost for amounts not over \$5, 5 cents; \$10, 8 cents; \$20, 10 cents; \$30, 12 cents; \$40, 15 cents.

**Registered Letters.** Every postmaster is required to register any letter on payment of 8 cents extra postage. Bills, coins or stamps can be safely sent this way. (We accept postage stamps as cash.)

**The Cost of Remitting** (if by the above methods) on all orders over \$1 may be deducted from the amount sent; thus our store is practically placed at your door.

# HYACINTHS

**GARDEN CULTURE** First see that your ground is properly spaded and plenty of stable manure or fertilizer put on. Plant in any good garden soil about Oct. 1, and place the bulbs about six inches apart and four inches below the surface, if in light, sandy soil, and if heavy, clayey soil, four inches is better. After the ground has frozen one or two inches, cover with old leaves about six inches, and be sure that at least a foot either side of bed is covered. If leaves are not convenient, cover with anything you have and place boards over to keep from blowing away. In the spring, on the approach of warm weather, the covering should be gradually removed, as the plants will be above ground before the frost is out of unprotected places. To guard against injury from late frosts, a covering of some sort should be in readiness to put on. The size of your flower will depend largely on the richness of the soil.



COPYRIGHTED 1891. APLANC.

## CULTURE IN POTS

There is no bulb that is more easily managed or gives better satisfaction when grown in pots than the hyacinth. Select solid bulbs without regard to size for this purpose, and place a single bulb in a five-inch pot filled with any good potting soil; a light, rich soil is preferable; remove a small quantity from the center, and place the bulb in firmly, but do not have the soil hard beneath it, leaving about one-third of the bulb visible. After potting, give them a good watering and set away in some cool, dark place, and cover six or eight inches with soil or coal ashes, that the moisture may be retained and the frost or heat excluded. Leave in this condition until Dec. 1, and then for a succession of blooms, bring to the light some every two weeks, bearing in mind that they should not be placed directly in the sun at first, as they will need several days to get acclimated to the new atmosphere. The bulbs should be selected and potted as early as possible to obtain the best results.

## CULTURE IN GLASSES

For this purpose select the largest and heaviest bulbs and place in the glasses filled with water enough to just touch the bulb, then place the glass in a cool, dark place until the roots touch the bottom of the glasses, then bring to light, bearing in mind that they never should be placed where the full rays of the sun would come direct on the glass, as it would have a tendency to warm the water to a degree which would injure the roots and produce an inferior flower. The window-sash is the worst place that one can put them. Always select single-flowering varieties for the best results.

# MIXED HYACINTHS

... FOR THE GARDEN ...

## IN SEPARATE COLORS.

When an effective display alone is the object, the following will answer every purpose. These are well developed bulbs of good size, selected from the named varieties, so that each color embraces many shades. Blue, for instance, dark and purple; red, rose, blush, etc.; white, colored eye, shaded, etc.

Hyacinths by the dozen are delivered free in the United States. By the hundred purchaser pays transit.

SINGLE.				DOUBLE.			
	Each	Doz.	100		Each	Doz.	100
Red and Rose, mixed, all shades	\$0 08	\$0 75	\$4 75	Red and Rose, mixed, all shades	\$0 08	\$0 75	\$4 75
Blue, " " "	0 08	0 75	4 75	Blue, " " "	0 08	0 75	4 75
White, " " "	0 08	0 75	4 75	White, " " "	0 08	0 75	4 75
Yellow, " " "	0 08	0 75	4 75	Yellow, " " "	0 08	0 75	4 75
All Colors, " " "	0 08	0 75	4 75	All Colors, " " "	0 08	0 75	4 75

# SPECIAL BEDDING HYACINTHS

WITH NAMES, OUR SELECTION.

Hyacinths under this heading are selected from named bulbs. They are of the same age as the fancy-named Hyacinths on pages 2 and 3 and will average as large as those often sold as first size named by some dealers, and are offered in this way where special effect is desired in separate colors with names. All being of one shade of color and all blooming at one time, they are of great value for forcing or bedding out.

SINGLE				PRICES.				DOUBLE				
	Each	Doz.	100	Delivered free.		Buyer paying transit.			Each	Doz.	100	
Dark Red				Each	Doz.	100	Each	Doz.	100	Dark Red		
Light Pink				\$0 10	\$1 00	\$6 75	\$0 08	\$0 85	\$6 50	Light Pink		
Pure White										Pure White		
Blush										Blush		
Dark Blue										Dark Blue		
Light										Light		
Yellow										Yellow		



# Choice N A M E D H Y A C I N T H S

FROM this class of Hyacinths the best blooms are obtained, as the largest and best bulbs are selected. They are not ordinary sized bulbs, but extra large, selected for use where size of bloom is wanted, for forcing in pots during the winter, or grown in glasses. In this way they make very suitable ornaments for the parlor or sitting-room, and can be grown very successfully.

	Each	Doz.	100
PRICES, delivered free, . . .	\$0 15	\$1 50	\$11 00
“ purchaser paying transit, 12	1 25	10 00	

3 of one variety sold at dozen rate, 25 at 100 rate, your selection, from any of the following varieties or on pages 2 and 3.

## RED and ROSE.

Amy, very dark red, fine spike.  
 Baron van Thuyll, rose, fine spike.  
 Charles Dickens, dark rose, *extra fine*.  
 Cosmos, dark rose, clear center.  
 Eliza, deep red.  
 Fabiola, fine rose, large spike.  
 Garibaldi, brilliant red, *very fine*.  
 General Pelissier, dark red, very early.  
 Gertrude, fine red, good spike.  
 Gigantea, pink, extra large spike.  
 Homerus, very early, dark rose.  
 Josephine, orange red, early, *very fine*.  
 L'Adorable, light, rosy red.  
 L'Incomparable, fine brilliant, *extra fine*.  
 Lord Macaulay, dark rose, extra large bells.  
 Maria Cornelia, early, bright rose.  
 Moreno, beautiful pink, very large truss, good forcing variety.  
 Norma, pink, extra large bells, early.  
 Robert Steiger, deep red, good spike.  
 Roi des Belges, bright scarlet, large truss, very early.  
 Von Schiller, deep salmon pink, striped with crimson.  
 Excellent for florists.

## BLUE.

Baron van Thuyll, bright blue, compact spike.  
 Charles Dickens, porcelain blue, shaded with purple, excellent spike.  
 Czar Peter, light porcelain blue, extra fine spike.  
 Grand Lilac, lilac, fine truss and bells.  
 Grand Maitre, deep porcelain, extra large spike.  
 King of the Blue, dark indigo blue, extra.  
 La Prouse, clear porcelain blue.  
 Leonidas, dark sky blue, handsome spike, early.  
 Lord Derby, fine porcelain blue, large bells and truss.  
 Marie, dark blue, large spike.  
 Orondatus, light porcelain blue, very early.  
 Pineman, deep porcelain, large bells, immense truss, extra fine.  
 Porcelain Scepter, porcelain blue.  
 Prince of Wales, dark blue, with white eye.  
 Queen of the Blues, light blue, fine large bells.  
 Regulus, light blue, large bells and spike.  
 Sir Henry Buckley, black, extra early, large spike.  
 William I., early, very dark, glittering.

## ❁ SINGLE HYACINTHS — CONTINUED ❁

### WHITE and BLUSH WHITE.

Alba Superbissima, pure white, fine truss.  
 Albertine, very early, pure white.  
 Baron van Thuyll, pure white, large truss, early.  
 Blanchard, pure white, extra long spike.  
 Grandeur a Merveille, rosy white, extra.  
 Hercules, blush white, early.  
 La Franchise, waxy white, large bells.  
 La Grandesse, pure white, large bells, *extra fine*.  
 L'Innocence, pure white, *extra large bells*.  
 Lord Gray, blush white, very early.  
 Madame van der Hoop, pure white, large bells.  
 Mammoth, rosy white, *extra large bells*.  
 Maria Stuart, pure white, good spike, *extra quality*.  
 Mina, pure white, *extra large bells*.  
 Mont Blanc, pure white, *extra large bells, splendid*.

### WHITE and BLUSH WHITE — Continued.

Queen Victoria, pure white, large bells.  
 Snowball, pure snow white, fine large truss. *The finest of all the whites*.  
 Voltaire, pale blush white, extra fine.

### YELLOW.

Alida Jacoba, bright canary yellow.  
 Bird of Paradise, pure yellow, compact spike, one of the finest yellows.  
 Duc de Malakoff, orange yellow, early.  
 Ida, bright primrose, extra fine spike.  
 King of the Yellows, pure yellow, large bells.  
 Koning van Holland, orange yellow, early.  
 La Pluie d'Or, light yellow.  
 L'or d'Australie, clear yellow, large fine spike.

## ❁ DOUBLE HYACINTHS ❁

### RED and ROSE.

Acteur, dark rose, large bells.  
 Alida Catharina, satiny rose, early.  
 Bouquet Royal, dark center, very fine rose.  
 Bouquet Tendre, dark red, early.  
 Grootvorst, fine rose, large bells.  
 Lord Wellington, rose, extra large bells, early.  
 Noble par Merite, deep rose, extra good spike, very early.  
 Princesse Royale, red and purple center.  
 Prince of Orange, dark rose, fine spike, semi-double.  
 Regina Victoria, salmon rose, early, good spike.

### BLUE.

Bloksberg, light blue, good truss.  
 Charles Dickens, dark, extra large bells.  
 Garrick, dark, extra large spike, early.  
 Laurens Koster, fine dark blue, extra large bells, the finest double blue.  
 Lord Raglan, dark and black center, large bells.  
 Lord Wellington, dark blue, striped with lilac.  
 Othello, very dark blue.  
 Pasquin, light porcelain, with dark center.  
 Prince Saxe Weimar, dark blue, shaded violet, large semi-double bells, very early.  
 Van Speyk, porcelain blue, large truss and bells.

### WHITE.

Anna Maria, with purple center, early.  
 Bouquet Royal, pure white.  
 Duchesse de Bedford, pure white, extra large.  
 Flevu, pure white, late.  
 Jenny Lind, white, with purplish center.  
 La Tour d'Auvergne, early pure white, extra large spike.  
 La Virginite, white, with red center.  
 Non Plus Ultra, white, with purple eye, fine spike.  
 Passe Virgo, early, with red center.  
 Prince of Waterloo, pure waxy white, with rose center, fine truss of large bells, early.  
 Sceptre d'Or, pure white, orange center.

### YELLOW.

Bouquet d'Orange, dark orange, semi-double.  
 Goethe, sulphur yellow, good spike, early.  
 Jaune Supreme, dark yellow, large bells.  
 Ophir d'Or, pure yellow.  
 William III., yellow, with red center, fine compact spike.

A bed 7 feet square of Hyacinths, arranged like illustration, planted 7 inches apart, would take 38 bulbs for each division, or 150 bulbs in all; or if planted 6 inches apart, 50 bulbs for each division, or 200 bulbs in all.

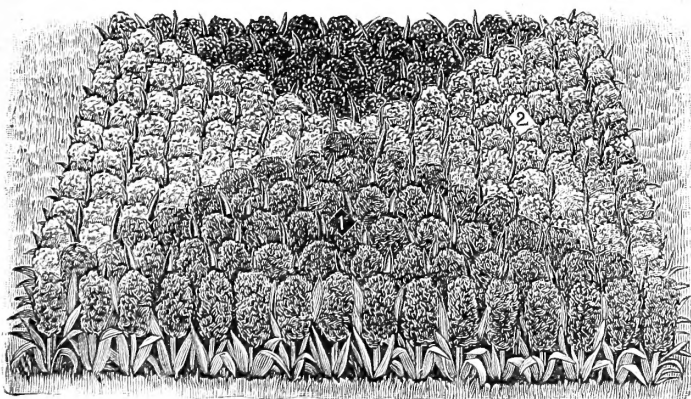
Choice of the following colors: Red, crimson, white, pink, light blue, dark blue and yellow.

Price of the 150 bulbs . . . \$7.50  
 " " 200 " . . . 10.00  
 Purchaser paying transit.

A bed 15 feet in circumference or 5 feet across, if planted 6 inches apart, requires 100 hyacinths; if 7 inches apart, 84 hyacinths.

Arranged in circles of 5 rows around the bed, planted 6 inches apart, the first center row would require 9 bulbs, 2d row 14, 3d row 20, 4th row 25, 5th or outside row 32.

If planted 7 inches apart, the first center row would require 8 bulbs, 2d row 12, 3d row 17, 4th row 21, 5th or outside row 26.



**Bed of Hyacinths.**

Choice of colors: Red, crimson, white, pink, light blue, dark blue and yellow.  
 Price of 100 Hyacinths . . . \$5.00 } Purchaser to pay transit.  
 " " 84 " . . . 4.25 }

# ROMAN HYACINTHS

This beautiful and valuable variety, if planted early in September and gently forced, will bloom in November, or their flowering may be retarded until Christmas by keeping them in a cool place. By successive plantings they may be had in bloom until March, being thus very useful for florists. The flowers, which are smaller than the ordinary Hyacinth, are produced in great profusion, each bulb throwing up three or four spikes of delicately-scented, clear, white blossoms. For a good effect, from three to five bulbs should be planted in a medium-sized pot.

At single and dozen price, delivered free in United States.

By the hundred purchaser pays transit.

	Each.	Doz.	100
Pure White, 1st size . . . . .	\$0 04	\$0 40	\$2 75
" " extra large bulbs . . . . .	05	50	3 00
Dark Rose . . . . .	05	40	2 50
Light Pink . . . . .	05	40	2 50
Light Blue . . . . .	05	40	2 50

## WHITE ITALIAN OR PARISIAN.

On account of the profusion of bloom, fragrant and graceful spikes, they are extensively grown by the florists for the winter flower markets. Blooming a little later than the Roman Hyacinth, they are useful for a succession of flowers.

5 cents each; 50 cents per dozen.  
40 cents per dozen; \$2.75 per 100,  
purchaser paying transit.



Roman Hyacinth.



Dutch Roman Hyacinth.

## Miniature, or Dutch Roman Hyacinths.

Price, 5 cents each; 40 cents per dozen, delivered free;  
or, 35 cents per dozen; \$2.75 per 100, purchaser paying transit.

For growing in pots, pans or boxes for winter flowering they are grown with excellent satisfaction. The flowers are smaller than the ordinary Hyacinths; each bulb will produce several spikes of flowers; if planted early may be had in flower at Christmas. Ten or twelve bulbs are planted in earthen pans eight or nine inches across. When several of these pans are filled and put away they can be brought to light at different times and thus have a continuous bloom.

White, Pink, Crimson, Blue or mixed colors.



## GRAPE HYACINTHS.

An extremely pretty family of flowers, sometimes called "Blue Lily of the Valley"; entirely hardy, they will adapt themselves to the soil and situation as naturally as grass. A few bulbs will rapidly increase and produce each spring a mass of lovely bloom. For winter blooming they give great satisfaction; a few bulbs planted in a five-inch pot and treated the same as Hyacinths will produce a lovely potful of flowers.

Blue, 2 bulbs for 5c.; per doz., 15c.; per 100, \$0.75  
White, 3 " " 10c.; " " 20c.; " 100, 1.00

**MUSK** An old and much esteemed sort; pretty flowers, exceedingly fragrant, with a musk-like scent; entirely hardy. 5c. each; \$1.50 per doz.



Feathered Hyacinth.

**FEATHERED** It is a very curious plant, and well worthy of culture in pots as an odd and interesting flower; is entirely hardy. The color is deep blue, tinged with red. 3 for 10c.; 25c. doz.; \$1.50 per 100.

## HYACINTHUS CANDICANS.

### Summer Flowering White Giant Hyacinth.

This is a magnificent Yucca-like, hardy plant, producing in July and August a flower-stem from three to four feet high, surmounted by a grand spike of numerous pendant, bell-shaped, snow-white flowers.

Each, 5c.; per doz., 50c. Postage 2c. per bulb.



# TULIPS

Early

Single

Flower-  
ing



FOR the ornamentation of the conservatory and sitting-room during the winter and spring months, the Tulip stands unrivalled, both as regards its rich and diversified colors, easy culture and accommodating habits. Like the Hyacinth, it will thrive in almost any soil or situation, and under almost any circumstances.

For out-of-doors, plant in October and November, and even in December, should the weather be open and favorable, about 4 to 6 inches apart, according to the size of the bulbs; the crown of the bulbs should be 3 or 4 inches under the surface. The same soil, etc., as for Hyacinths will suit them well. They should be protected during severe weather by branches of evergreen, or covering of straw or leaves about 3 inches thick.

Tulips are delivered free in the United States at the single and dozen price, but by the hundred purchaser pays transit.

Those marked D grow about 6 to 7 inches. Those marked M grow about 8 to 9 inches. Those marked T grow 10 inches.

**White.**

Doz. 100

D Jacht van Delft, fine white.....	\$0 20	\$1 25
D Joost van Vondel, pure white, largest and finest white Tulips in existence. 15c. each	1 50	
M L'Immaculee, pure white, very early and fine, excellent for forcing.....	20	1 25
M La Reine (Queen Victoria), white, slightly tinted rose, excellent for bedding or forcing.....	30	1 75
T Pottebaker, White, pure white, fine, large and showy.....	35	2 25
M Snowball, pure white.....	25	1 50

**Yellow.**

M Canary Bird, clear, rich golden-yellow, excellent for early forcing.....	30	2 00
M Chrysolora, golden-yellow, extra fine, is the best yellow Tulip for out-doors.....	30	2 00
M Mon Tresor, pure golden-yellow, a grand variety.....	40	2 50
M Ophir d'Or, a large flower of deep, rich yellow, the finest yellow grown.....	40	2 50
T Pottebaker, Yellow, bright canary yellow	50	2 00
D Yellow Prince, bright yellow, scenting like Tea Roses, is one of the best yellow Tulips for forcing.....	30	2 00
M King of the Yellows, very deep golden-yellow, extra fine.....	50	4 00

**Orange.**

D Brutus, bright orange-crimson, with small golden margin, very showy.....	20	1 00
D Duc d'Orange, beautiful yellow and orange.....	20	1 25
M Duchesse de Parma, bronzy-crimson, banded yellow.....	20	1 25
T Prince of Austria, glittering orange-scarlet, fine for forcing, sweet-scented...	50	3 25
T Thomas Moore, orange.....	30	2 00

**Red and Rose.**

Doz. 100

M Eldorado, brilliant red, splendid for forcing.....	\$0 35	\$2 25
D Proserpine, very fine, glossy, crimson-pink, large Tulip. This very striking variety is unique in color, forces easily, may be had in bloom in December.....	40	2 75
D Rose Gris de Lin, very fine, bright pink. This is the best of all pinks.....	35	2 25
D Rosa Mundi, white, shaded with deep rose	25	1 75
D Rose Luisante, deep rose, extra fine.....	60	4 50
M Le Matelas, very bright rose, with white centre, exceedingly handsome.....	1 00	7 00
D Rose Aplatie, delicate rose, tinted with white.....	75	5 00

**Dark Red and Violet.**

D Bacchus, very dark red.....	30	1 75
M Dusart, dark scarlet, a grand flower, very robust, unsurpassed for beds.....	40	2 50
M Moucheron, very dark crimson.....	50	3 00
D Purple Crown, dark purplish red.....	30	1 75
D Van der Neer, the finest of all violets, extra large flower.....	25	1 50
D Van Berghen, deep cherry red.....	50	3 00
D Wouwerman, violet, very large flower, beautiful color.....	25	1 50
M President Lincoln, very dark clear violet	35	2 25

**TULIPS, Early Single Flowering—Continued.**

**Scarlet and Crimson.**

	Doz.	100
<i>D Artus</i> , scarlet, fine bold flower for forcing	\$0 20	\$1 25
<i>D Belle Alliance</i> , brilliant scarlet, large flower, sweet scented	25	1 50
<i>M Crimson King</i> , bright crimson, easily forced	20	1 00
<i>T Pottebaker</i> , Scarlet, bright scarlet, very large and fine flower	25	1 50
<i>D Rembrandt</i> , scarlet, early, large, superb	35	2 00
<i>D Vermilion, Brilliant</i> , glossy, bright vermilion, magnificent, extra fine for pots and bedding	60	3 50

**Red and Yellow.**

<i>D Bizard Pronkert</i> , red, with yellow	25	1 25
<i>T Keizer-Kroon</i> , red, with broad yellow edge, large and exceedingly effective. The Best	25	1 75
<i>D Duc de Berlin</i> , red and yellow	35	2 25

**Variegated.**

	Doz.	100
<i>Yellow and Red, White and Red</i>		
<i>D Bride of Haarlem</i> , red and white, striped; one of the finest in cultivation	\$0 60	\$4 50
<i>M Couleur Ponceau</i> , rosy crimson and white	20	1 25
<i>D Cottage Maid</i> , white, bordered with pink	35	2 00
<i>M Grootmeester van Maltha</i> , dark crimson, feathered white	35	2 00
<i>D Joost van Vondel</i> , deep cherry-red, with white pencillings, one of the largest Tulips	25	1 50
<i>D Standard Royal Silver</i> , white, feathered with rosy crimson, very fine	30	1 75

**EARLY SINGLE TULIPS IN MIXTURE.**

	Doz.	100	1000
Single, special mixed, in shades of red	\$0 25	\$1 25	\$10 00
" " " " " white	25	1 25	10 00
" " " " " yellow	25	1 50	10 00
" " " " all colors	20	1 00	9 00
" fine	15	90	8 00
Arlington, finest mixed, from named sorts	30	2 00	17 00

**Extra Early Duc Van Tholl.**

Very early blooming, is especially adapted for pot culture, grows 6 to 7 in. high.

	Doz.	100
Single Red, bordered with yellow	\$0 20	\$1 00
Double Red, very double, red and yellow	20	1 00
Gold Striped, new, beautiful	20	1 00
Rose, satiny rose	\$0 30	\$1 75
Scarlet, brilliant scarlet	20	1 25
Vermilion, very brilliant	25	1 50
Yellow, bright yellow	40	2 50
White, clear white, fine	35	2 00

**LATE FLOWERING SINGLE TULIPS.**

In some locations these are known as the "May-flowering Tulip," and closely follow the season of the early single sorts. They are largely cultivated on account of their individual beauty, being possessed of great variation of form and color, the latter being rich and distinct. A few of these ought to be in every collection, as their stately form never fails to attract attention.

<b>Darwin.</b> These new late-flowering Tulips have attracted much attention in the past few years, and have been a success wherever grown and exhibited at Horticultural shows, both in this country and Europe. The flowers are single, of elegant form, and exceedingly bright colors	Doz.	100
	\$0 30	\$2 00
<b>Breeders.</b> These late-flowering Tulips have immense flowers of solid colors, such as scarlet, crimson, violet, etc., choice mixed	30	2 00
<b>Bizarres,</b> grand and rich flowers of perfect shape, having a yellow ground color, painted, feathered, or striped with crimson, purple or white, choicest mixed varieties	25	1 25
<b>Byblomens,</b> magnificent flowers, the perfection of form, have a white ground color, with beautiful stripes and markings of crimson, pink and scarlet or rose; mixed varieties	25	1 50



**Greigi Tulip.**

<b>Gesneriana Hortensis,</b> the tallest, largest flowered and showiest of all Tulips for bedding out in masses, it deserves to be largely grown. Height, two to three feet. Flowers of enormous size on strong, graceful stems, and the most durable of all Tulips, as it holds its beautiful color and keeps perfect several weeks, flowering in May. Color, rich crimson scarlet, with glittering blue-black center	Doz.	100
	\$0 25	\$1 75
<b>Golden Crown.</b> Pure yellow, crimson border, pointed petals	25	1 50

<b>Golden Eagle.</b> Pure yellow	30	2 00
<b>Isabella.</b> Very dark rose	35	2 50
<b>May Blossom.</b> Pure white, striped and variegated with rose; a large flower, very showy	75	5 00
<b>Picotee.</b> (Maiden's Blush.) Pinkish white, petals are pointed and reflexed, are beautifully margined on the edges	50	3 50
<b>Royal White.</b> A grand pure white, makes an elegant contrast with the reds, yellows and purples	75	5 00
<b>Finest Mixed Varieties</b>	20	1 25

**Various Species Odd and Novel Tulips.**

<b>Cornuta</b> (Chinese), yellow striped, red petals like spiral horns, curiously twisted	Each	Doz.
	\$0 05	\$0 40
<b>Elegans</b> , rich carmine, splendid	07	60
<b>Greigi</b> (The Queen of Tulips) flowers very large, of brilliant orange-scarlet, bottom of the cup deep black. Anthers pure yellow and exceedingly handsome. Foliage oddly spotted with maroon. (See cut.)	25	1 50

<b>Florentina</b> (Sweet Scented), clear yellow, excellent for pot or garden culture. The flowers emit the odor of violets. \$2 per 100	Each	Doz.
	\$0 05	\$0 30
<b>Oculus Solis</b> (Sun's Eye), fiery red, with black center or eye, beautiful and showy	05	50
<b>Retroflexa</b> , clear yellow, petals long and pointed and gracefully recurved	07	75
<b>Viridiflora</b> , immense flowers of green, with white margin	05	40

**Parrot or Dragon Tulips. (See Last Page of Cover.)**

The Parrot Tulip has a singularly picturesque appearance, the flowers are large and the colors brilliant, so that when planted in flower borders they produce a striking effect.

<b>Constantinople</b> , red, streaked with orange	Doz.	100
	\$0 30	\$2 00
<b>Luteo</b> , yellow	30	2 00
<b>Markgraaf</b> , yellow and orange	30	2 00
<b>Monstre Rouge</b> , large red, late; the finest of all Parrot Tulips. Each, 15 cents	Doz.	100
	\$1 00	
<b>Perfecta</b> , yellow, spotted red	30	\$2 00
<b>Finest Mixed Varieties</b>	30	1 75

# TULIPS, EARLY DOUBLE FLOWERING.

## Shades of Red and Rose.

	Doz.	100
D <i>Arabella</i> , early rich carmine rose.....	\$0 35	\$2 25
T <i>Couronne de Roses (Crown of Roses)</i> , a magnificent Tulip of a rich dark satiny-rose carmine color, shaded cerise, large and very double.....	60	4 25
D <i>Duc van Tholl</i> , red and yellow, dwarf, very early.....	20	1 50
D <i>Murillo</i> , beautiful pink and white, the best double pink for forcing.....	50	3 75
D <i>Purple Crown</i> , dark crimson, maroon, velvety and fine.....	25	1 50
T <i>Rosina</i> , splendid rosy pink.....	35	2 50
M <i>Salvator Rosa</i> , splendid early, deep rose.....	60	4 50

## White.

M <i>Alba Maxima</i> , a pure white.....	35	2 00
D <i>La Candeur</i> , pure white, very full and large.....	20	1 25
D <i>Rose Blanche</i> , extra fine large white, slightly tinted rose.....	30	1 75

## Yellow.

M <i>Couronne d'Or</i> , (Crown of Gold) deep orange-yellow. The best double yellow Tulip for forcing.....	65	4 50
D <i>Tournesol</i> , bright golden-yellow, very large and showy, fine for forcing.....	60	4 25

## Scarlet and Crimson.

	Doz.	100
M <i>Imperateur Rubrorum</i> , rich crimson-scarlet, the finest of all scarlets.....	\$0 35	\$2 50
D <i>Lady Grandison</i> , early, deep scarlet, excellent for bedding.....	35	2 00
<i>Prince of Wales</i> , a magnificent Tulip, very brilliant scarlet.....	1 25	9 00
M <i>Rex Rubrorum</i> , bright crimson-scarlet, very large and showy.....	35	2 00

## Variegated.

D <i>Duke of York</i> , dark crimson, bordered silvery white.....	25	1 50
M <i>Gloria Solis</i> , very large, scarlet, deeply edged with bright yellow.....	25	1 50
D <i>Helianthus</i> , yellow and scarlet, extra fine	35	2 00
D <i>Le Blason</i> , a beautiful variety, of delicate rose, shaded and striped with white.....	35	2 00
D <i>Tournesol</i> , bright red and yellow. The best double Tulip for forcing.....	35	2 50
D <i>Titian</i> , dark crimson-scarlet, edged with golden-yellow, very fine.....	25	1 50

## EARLY DOUBLE TULIPS IN MIXTURE.

	Doz.	100	1000
Choice Mixed, in shades of red.....	\$0 25	\$1 25	\$10 00
" " " " " white.....	25	1 25	10 00
" " " " " yellow.....	25	1 50	10 00
" " " " " all colors... ..	20	1 00	9 00
Arlington, finest Mixed, from named sorts	30	2 00	17 00

## LATE DOUBLE TULIPS.

T <i>Belle Alliance</i> , white, feathered with crimson.....	\$0 30	\$1 75
M <i>Mariage de ma Fille</i> , large magnificent variety, white, crimson striped, one of the finest late Double Tulips.....	50	3 00
M <i>Paony Red</i> , very deep red, yellow stripe..	25	1 50
D <i>Paony Gold</i> , yellow.....	30	1 75

T <i>Blue Flag</i> , violet blue, very distinct, tall and late.....	\$0 30	\$1 50
D <i>Yellow Rose</i> , splendid golden yellow, very large flower and showy, fine for forcing, sweet scented.....	25	1 75
Late Double Tulips in extra fine mixed varieties.....	20	1 00

## TULIPS IN BEDS.

The Bulbs we supply are not the common mixed, but selected from the named varieties and put in at a reduced price.

For the convenience of our customers we have given the number of bulbs required for a few of the most popular sized beds. A bed 7 feet square of Tulips arranged in four colors similar to the Hyacinth bed on page 4 would require 68 bulbs for each division, if planted 5 inches apart, or 272 bulbs in all.

Choice of the following colors: Red, crimson, white and pink, white, yellow.

Price for the 272 Bulbs, \$4, purchaser paying transit.

A bed 18 feet in circumference or 6 feet across, if planted 5 inches apart and divided in 4 parts, required a total of 200 bulbs, or 50 bulbs for each division.

Choice of the following colors: Red, crimson, white and pink, pure white or yellow. Price for the 200 Bulbs, \$3, purchaser paying transit.

# CROCUS THE FIRST FLOWERS OF SPRING.

Crocus bulbs we deliver free in the United States at dozen and 100 price.

This, as is well known, is one of our earliest spring flowers, and producing, as all the varieties do, dense masses of rich colored blossoms, and is beyond question the most effective of its season, and can hardly be too liberally planted in every garden. The more thickly they are planted the greater is the effect produced. With ordinary care, the Crocus will bloom freely in any sitting-room window.

Culture in Pots, Vases, Baskets, etc. For pot culture use good, rich, sandy soil, and secure perfect drainage, a liberal supply of water being necessary during the blooming season. Planted in china bowls, saucers, etc., filled with moss or sand, drainage is unnecessary; but on no account should the moss or sand ever be allowed to get dry. Treatment same as recommended for Hyacinths in sand or moss.

## Choice Named Varieties Dutch Crocus.

	Doz.	100
Albion, extra fine, striped.....	\$0 12	\$0 75
Baron Brunow, bright purple, free blooming.....	12	75
Carolina Chisholm, splendid, white.....	12	75
La Majestueuse, striped, variegated.....	12	75
David Rizzio, dark purple.....	12	75
Mont Blanc, magnificent, large, white.....	12	75
Madame Mina, light-blue striped.....	12	75
Mammoth Yellow.....	12	75
Non Plus Ultra, purple, with white top.....	12	75
Prince Albert, purple.....	12	75
Queen Victoria, white.....	12	75
Sir Walter Scott, white, striped with purple, finest of all striped Crocus.....	12	75
Mixed, from above varieties.....	10	70



Crocus.

MIXED CROCUS. Blue, Striped, White and Yellow, 10 cents per doz.; 50 cents per 100; \$4 per 1,000. All colors, mixed, 10 cents per doz.; 40 cents per 100; \$3.50 per 1,000.

We will deliver anywhere in the United States one dozen each of the above 12 varieties of Crocus for \$1.35.

# NARCISSUS...

## ...OR DAFFODILS

THE Narcissus has more points of real merit than any other hardy plant, and until recently the possibilities of this family have not been brought out. The florists now use these in large quantities. They are equally well adapted for the conservatory, sitting-room or flower-garden, so that however limited the collection of plants may be, if there is not in it a fair proportion of this delightful flower it will be deficient of a most essential ornament. The culture is the same as the Hyacinth. See page 3.

We deliver in the United States all Narcissus free at single and dozen price. By the hundred purchaser pays transit.

### ☉ SINGLE FLOWERED ☉

#### ALL YELLOW VARIETIES

	Each..	Doz.	100
<b>Ard Righ (Irish King)</b> A magnificent daffodil; pure yellow; trumpet deep yellow, widely reflexed and fringed.....	\$0 10	\$1 00	\$6 00
<b>Barri Conspicua.</b> Canary yellow, with deep golden cup, richly edged with orange scarlet. The finest of yellow varieties.....	10	85	5 00
<b>Cynosure.</b> Light yellow, with deep yellow broad cup; extra large flowers about 3½ inches across. An excellent variety for either forcing or open ground culture..	04	25	1 50
<b>Emperor.</b> Entire flower of the richest yellow, trumpet of immense size. Excellent for cutting. One of the finest daffodils in cultivation.....	12	1 25	8 00
<b>Figaro.</b> Lemon yellow; cup deep rich golden yellow edged with redish orange. A splendid variety.....	04	30	2 00
<b>Golden Spur.</b> One of the grandest daffodils, with extra large, bold, rich yellow flowers, foliage very broad and striking. It is of unusually robust habit and unsurpassed for gardens, pots or forcing..	10	1 00	6 00
<b>Henry Irving.</b> A magnificent flower, with long, beautifully frilled trumpet, nearly two inches wide at the mouth, of rich golden yellow color. The petals of the perianth are very wide, overlapping, color bright yellow; a most perfect flower and received a first-class certificate.....	10	1 00	6 00
<b>Incomparable.</b> Large primrose perianth, sulphur crown.....	2 for 5 cents	25	1 50
<b>Maximus, or Hale's Beaten Gold.</b> Very large flower of rich yellow, remarkable for an elegantly twisted perianth; trumpet deep golden, large and well flanged,	10	1 00	6 00
<b>Obvallaris, the famous "Tenby Daffodil."</b> Elegantly formed medium-sized flower of rich yellow; one of the earliest and best for forcing.....	05	50	3 50
<b>Rugilobus.</b> Similar to the "Emperor," but earlier and smaller flower.....	05	60	4 00
<b>Sir Watkin (Welsh Giant Daffodils).</b> The largest variety grown. These immense flowers sometimes measure 5 inches in diameter. Perianth rich sulphur, very broad and imbricated. Cup large and deep yellow, tinted with orange.....	12	1 25	8 00



PRINCEPS.

	Each.	Doz.	100
<b>Trumpet Major.</b> Flower large and almost of a uniform deep golden; highly prized as an early forcing sort.....	3 for 10 cents	\$0 30	\$2 00

#### YELLOW AND WHITE VARIETIES

<b>Duchess of Brabant.</b> Petals white with yellow trumpet; a popular variety.....	\$0 05	40	2 50
<b>Empress.</b> A beautiful large variety. Perianth white and of great substance, trumpet rich yellow. A rare beauty...	12	1 25	8 00
<b>Grandee.</b> One of the largest flowers, with broad, snow-white petals and a rich yellow trumpet beautifully imbricated. It is a grand flower.....	12	1 25	8 00
<b>Horsfield, (the Queen of the Daffodils).</b> Very large flowers of pure white, with rich yellow trumpet. Very stately and beautiful, and one of the most elegant for ladies' corsage wear. This magnificent flower was raised by a Lancashire weaver, John Horsfield, and it has made him famous.....	08	85	5 00
<b>Nelsoni.</b> Very large flowers. Perianth of creamy white, with broad and fluted golden yellow cups. Excellent for cutting.....	15	1 50	10 00
<b>Princeps.</b> One of the most popular winter flowering and forcing varieties grown; flowers large, perianth sulphur, with an immense rich yellow trumpet, 3 for 10c.	30	2 00	
<b>Pseudo. ("Lent Lily.")</b> Petals white with yellow trumpet. Early and sweet-scented. Excellent for borders.....	04	30	2 00
<b>Scoticus (the Garland Lily), or "large flowering Lent Lily."</b> Perianth white, trumpet yellow, full and elegantly flanged. Splendid for forcing.....	05	50	3 50
<b>Stella.</b> A popular early variety. Perianth white and slightly twisted, with distinct yellow trumpet. Very beautiful. 3 for 10c.	25	1 50	

#### ALL WHITE VARIETIES

<b>Leedsi.</b> Silvery white perianth, primrose cup, passing to white. One of the best	04	30	2 00
<b>Mrs. Langtry.</b> Very large flowers with white petals. White crown, bordered slightly with yellow, making a conspicuous and at the same time exceedingly beautiful flower.....	20	2 00	

The entire collection of Narcissus on this page, 23 varieties, delivered anywhere in United States for \$1.65.

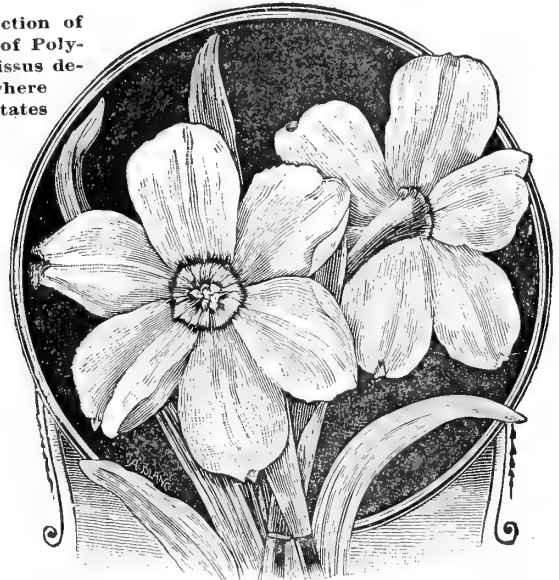
## POLYANTHUS NARCISSUS



POLYANTHUS NARCISSUS.

	Each.	Doz.	100.
<b>Bathurst.</b> Yellow.....	\$0 08	\$0 60	\$4 00
<b>Bazelman Major.</b> Extra large, white and yellow; the largest and finest of all the Polyanthus Narcissus.....	20	2 00	15 00
<b>Gloriosa.</b> Pure white, with primrose-colored cup; immense truss. Very early. Excellent for forcing.....	05	40	3 00
<b>Grand Monarque.</b> Flowers large white, with lemon yellow cup. Can be grown in water with very good success.....	05	40	3 00
<b>Grand Soliel d'Or.</b> A great favorite for bedding. Rich yellow, with orange-red cup. Very handsome.....	05	40	3 00
<b>Newton.</b> A very free bloomer. Yellow, with orange cup.....	05	40	3 00
<b>Paper White Grandiflora.</b> Pure white individual flowers; very large. Is very early and excellent for forcing.....	05	25	1 50
<b>Roman.</b> White, with double citron-colored cups. Early and one of the best for forcing.....	05	20	1 25
<b>Staten-General.</b> Creamy-white, with yellow cup.....	05	35	2 50
<b>White Pearl.</b> Pure white satiny flowers; very large truss.....	08	50	4 00
<b>Mixed</b> .....	03	30	2 00

The collection of 10 varieties of Polyanthus Narcissus delivered anywhere in United States for 60 cents.



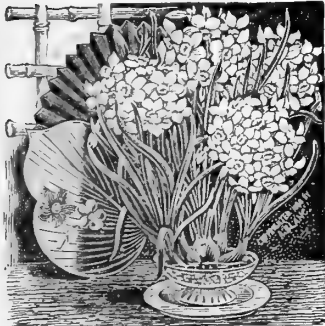
NARCISSUS POETICUS ORNATUS.

## Hoop Petticoat Narcissus

	Each.	Doz.	100.
<b>Bulbocodium.</b> The flowers are rich, golden yellow and exceedingly pretty. It is excellent for pot culture as well as edgings, and will bear from six to ten flowers to each bulb.....	\$0 10	\$1 00	\$7 00
<b>Clusii (Monophyllus).</b> Very early blooming flowers, pure white. If potted in September these will bloom at Christmas.....	05	75	5 00

## True Poet Daffodils

	Doz.	100.	1000.
<b>Poeticus (the True Poet's Narcissus.)</b> Pure white flowers, with orange cup, edged with crimson; splendid for cut flowers.....	2 for 5 cents.	\$0 15	\$0 75 \$6 00



CHINESE NARCISSUS.

	Each.	Doz.	100.
<b>Poeticus Ornatus.</b> (See cut.) The improved "Poeticus," large, beautifully formed, pure white flowers with saffron cup tinged with rosy scarlet, a magnificent cut flower; very early.....	3 for 10 cents	\$0 25	\$1 50

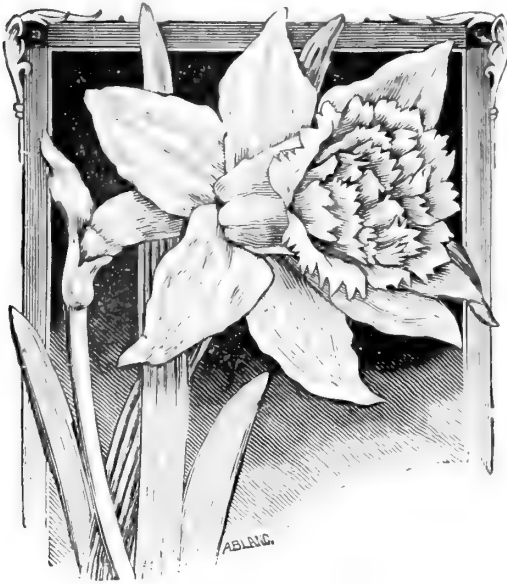
## CHINESE NARCISSUS (Sacred Lily of China)

The "Shui Sin Far," "Joss Flower," or "Flower of the Gods," etc., as it is called by the Celestials, is a variety of Narcissus, easily grown and blooms freely, bearing a very sweet-scented flower of silvery-white, with golden-yellow cups.

Use shallow dishes about three inches deep, into which put about one inch of gravel. Set the bulbs on this and fill in with small stones, to keep them upright, and keep the dish full of water. It is not necessary to put the bulbs in the dark, but if kept shaded until the leaves begin to grow better results may be obtained. Although they will succeed in any ordinary room, it is necessary for them to be kept away from gas, as it causes the flowers to blast.

Price 12 cents each; \$1.25 per dozen. If by express 10 cents each; \$1.00 per dozen.

The entire collection of Narcissus on this page, 15 varieties, delivered anywhere in United States for \$1.00



VON SION.

**PRICE OF JONQUILS.**

	Doz.	100.
Campanelli, very large, rich-yellow flowers, four to six on a stem; excellent for forcing.....	2	\$0 20
Single (sweet-scented), golden yellow; a well-known favorite.....	2	5 75
Double (sweet-scented), deep golden-yellow flowers, exceedingly fragrant; excellent for forcing....	6	3 50
Rugulosus ( <i>The Giant Jonquil</i> ), very large yellow and fragrant.....	3	1 25

**... AGAPANTHUS ...**

(The Great African Lily.) Ready in November.

These are noble ornaments on lawns, in pots or tubs, on terraces or piazzas, or for the decoration of the greenhouse. Foliage luxuriant and graceful; flowers borne in clusters of twenty to thirty and measure fully a foot across. The flower stalks frequently attain a height of three feet, the flowers opening in succession for a long period during the summer and autumn.

	Each.	Doz.
Umbellatus, old favorite; flowers bright blue.....	\$0 20	\$2 00
Alba, pure white.....	25	2 50
Folis Vire. Large blue flower, variegated foliage.....	35	3 50



**NARCISSUS DOUBLE GARDEN (DAFFODILS)**

All bulbs are delivered free in the United States at the single and dozen prices.

Under this head are some remarkably showy, sweet-scented, spring flowering favorites, which are especially deserving of notice on account of their easy culture, early flowering and generally effective appearance.

	Each.	Doz.	100.
Albo pleno odorato, pure white, double, very fragrant.....	3	\$0 25	\$1 25
Incomparable ( <i>Butter and Eggs</i> ), yellow and orange. (See cut.).....	3	25	1 25
Orange Phoenix, orange and buff.....	\$0 05	40	3 00
Sulphur Crown, very double, silvery-white and sulphur.....	15	1 25	8 50

**VON SION. Telamonius Plenus.** This is the grand old "Double" yellow Daffodil, and should be in every garden. Fine for massing; also one of the very best for house culture in pots. Large double, yellow trumpet flowers. The most extensively grown of all the daffodils by the florists for forcing.

3 for 12 cents; 35 cents per dozen; \$2.50 per 100.

**VON SION. Double Nosed Bulbs.** These are larger bulbs, which will produce two or three flowering spikes. 6 cents each; 60 cents per dozen; \$3 per 100.

Fine mixed varieties, 3 for 10 cents; 25 per dozen; \$1 per 100.

**... JONQUILS ...**

Excellent for early blooming, charming large golden and deliciously odoriferous flowers, freely produced; of the finest effect either in the garden, greenhouse or conservatory. See cut.



NARCISSUS INCOMPARABLE.

**ALSTROMERIA** (*Peruvian Lily*). Very robust and abundant blooming, with large lily-like flowers of great beauty, borne in clusters during the summer. They are especially adapted for cutting, being of much substance and lasting in perfection for a long time. Excellent for pot culture. Two to four feet. Mixed varieties (ready in November), 10 cents each; \$1.00 per dozen.

**ANOMATHEAC CRUENTA** The profusion with which the bright rosy-carmine flowers are borne and the long period they continue in flower make them very popular. Excellent for pot culture or blooming out of doors, although in the latitude of New England they need protection. Height 3/4 feet. 3 for 10 cents; 20 cents per doz.; \$1.00 per 100.

**ANTHOLYZA** resembles somewhat the Gladiolus. In New England they are not hardy, but can be grown in cold frames or planted out in the spring—flowering from July to September. The tall spikes of blooms render them very effective for grouping in beds or shrubberies. The scarlet, black, green, etc., flowers make them very effective. 10 cents each; \$0.60 per dozen.

## ALLIUMS

Are grown extensively for their ornamental qualities, being hardy, showy, and blooming for a considerable length of time.

**Allium Neapolitanum** (see cut) is amongst the earliest and grandest of winter bloomers. Its flower stems are 2 inches high, supporting a large cluster of delicate white starry flowers; sure to bloom splendidly in any window. 3 for 10 cents; 20 cents per dozen; \$1.00 per 100.

**Moly (Golden Allium)**, perfectly hardy, growing one foot high and covered with large clusters of golden flowers. Most desirable for the garden. 3 for 10 cents; 20 cents per dozen; \$1.00 per 100.

## AMARYLLIS

A beautiful class of plants, with large, drooping, bell-shaped, lily-like flowers, varying in color from the richest crimson to pure white, striped with crimson or scarlet. They are of the easiest possible culture, and few flowers give a better return in the shape of lasting and showy bloom for the limited amount of labor involved in their cultivation. With a very small stock of bulbs they can be had in flower at almost any season of the year by starting them in succession. A compost consisting of equal parts of good turfy loam, leaf-mould, well-decayed manure and sharp sand answers best. From the time they are started, water



BELLADONNA MAJOR.

**Johnsonii**, a very popular sort, and one of the best of the Amaryllis for general culture; large flowers of fine crimson color, striped with white. 35 cents each; 3 for \$1.00, postpaid. \$4.00 per dozen.

**Vittata**. These magnificent varieties produce a free supply of flowers of the most striking tints, and are justly esteemed the most beautiful of the Amaryllis family. We offer red or white ground hybrids, all beautifully striped and flaked, 75 cents each.

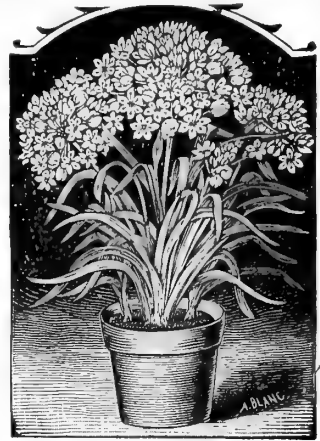
## VALLOTA PURPUREA

(Scarborough Lily.)

(See cut.) This plant is closely allied to and was at one time recognized as a member of the Amaryllis family. It is evergreen and one of the most beautiful and desirable plants grown, producing large, crimson-scarlet, lily-like flowers in heads of five or six blooms each, which remain a long time in perfection. Large bulbs, if kept growing, will flower several times during the year. As easily cultivated as the Calla Lily. Price, 30 cents each; \$3.50 per dozen.

**C. L. ALLEN'S NEW BOOK ON BULBS.** Handsomely Illustrated, Cloth, 12mo. Price, Postpaid, \$2.00.

This is the most practical, inexpensive work on Bulbs and Tuberous-rooted plants we have seen. It gives their history, description, methods of propagation, and complete directions for their successful culture in the garden, dwelling and greenhouse.



ALLIUM NEAPOLITANUM.

should be given very carefully, and not in too great quantities. When the foliage begins to decay, water should be gradually withheld until it has quite died down, when the bulbs may be stored away (in the pots), in any dry, cool place, safe from frost, until their flowering season comes again. The evergreen varieties, which do not die down, should be kept in a growing state, and shifted into larger pots as they require it.

**Amaryllis (Zephyranthes) atamasco.** Pink and white, variable, showy for border, 3 for 10 cents; 35 cents per dozen.

**Equestre (Barbadoes) Lily.** Broad petals of a soft salmon-scarlet color, marked in the center with white bars, which radiate from the white throat. 15 cents each; \$1.50 per dozen.

**Formosissima (Jacobaeen Lily).** Beautiful trumpet-shaped flower of a rich, dark scarlet; free blooming; forces well, and can be grown in water like Hyacinth. 10 cents each; \$1.00 per dozen.

## BELLADONNA MAJOR.

(Belladonna Lily.)

(See cut.) This is an autumn-blooming variety of great beauty and fragrance; color, delicate white, flushed and tipped with rose. The spikes grow from 2 to 3 feet high, and bear from six to ten flowers. 15 cents each; \$1.50 per dozen.





ANEMONE FULGENS.

# ANEMONES \*

This highly ornamental class of easily cultivated hardy plants is becoming better known and more popular each succeeding year, and should occupy a conspicuous place in every garden. They are well adapted for either pot or border culture, and are unsurpassed for variety and richness of color. Plant in October or November, or as soon as the ground can be worked in the spring, and during winter protect with straw or leaves.

**Double Poppy Flowered.** (*Coronaria fl. pl.*) The flowers of this class are very double, and are surrounded at the base with large guard petals resembling a double Hollyhock. For cutting purposes they are grand, and we know of no class of plants with more gorgeous colors, two or three colors usually being blended in the flowers of each variety. Mixed colors, 3 for 12 cents; 25 cents per dozen; \$1.50 per 100.

**Single Poppy Flowered.** (*Coronaria.*) These handsome Single Anemones have large, beautiful, saucer-shaped, poppy-like blossoms, and during mild seasons, or in sheltered situations, are flowering continuously throughout the winter, spring and early summer. Mixed colors, 3 for 12 cents; 20 cents per dozen; \$1.00 per 100.

**Fulgens.** (See cut.) The rich, dazzling scarlet flowers and light, elegant growth, render it the most attractive flower of spring. It is invaluable for cutting, as it lasts a long time in water. 3 for 12 cents; 30 cents per dozen; \$2.00 per 100.

**Fulgens fl. pl.** A double flowering of the above. 5 cents each; 40 cents per dozen. \$3.00 per 100.

## HARDY JAPANESE ANEMONE.

The large cup-shaped flowers are exceedingly attractive and numerous, remaining beautiful until frost. Grows from two to three feet high. Cannot be too highly recommended for fall blooming.

<i>Japonica Alba</i> , large, pure white .....	Each. \$0 20	Doz. \$2 00
<i>Japonica Rosea</i> , pink .....	20	2 00
<i>Whirlwind</i> , large, semi-double flowers .....	25	2 50



# ARUM OR DRAGON FLOWER.

The Arums are remarkable and handsome plants, with fine foliage and curious inflorescence, more or less enclosed in a hooded spathe, which is generally richly colored and marked. They are hardy, and easily grown in any soil.

**A. Sanctum** (*Black Calla*) is strictly a winter bloomer, and will bloom no other time. Its flowers are enormous, fully a foot in length; color, clear coal black, so intense that it really shows a brilliancy, and as may well be imagined, it is a flower of the most striking oddity and beauty. The bulbs are large and should be potted in the fall, and when growth commences set in a window. After blooming the foliage will die down and the bulb should be kept dry for planting again in the fall. (See cut.) Price of large flowering bulbs, 15 cents each; \$1.50 per dozen.

**A. Dracuncululus** (*Dragon Arum*). (See cut on first page.) Flowers one foot long, purple, red and black, blue; stem beautifully marbled, leaves handsome, resembling a small palm; a rapid grower, making a curious and ornamental pot plant. 15 cents each; \$1.50 per dozen.



ARUM SANCTUM (BLACK CALLA).

# CALLAS

**White** (*Ethiopia*). The well-known Calla Lily is one of the best plants for parlor culture. Its growth is stately, the flower showy, exceedingly fragrant, and freely produced. A commendable feature is that it effectually resists all the injurious effect which gas and furnace heat generally inflict on our floral pets. The requisites for successful culture are rich soil, plenty of water and pot room. Extra large, 25 cents each; \$2.50 per dozen.

**Black Calla** (*Arum Sanctum*), is strictly a winter bloomer, and will bloom no other time. Its flowers are enormous, fully a foot in length; color, clear coal-black, so intense that it really shows a brilliancy, and as may well be imagined, it is a flower of the most striking oddity and beauty. The bulbs are large and should be potted in the fall, and when growth commences set in a window. After blooming the foliage will die down and the bulb should be kept dry for planting again in the fall. (See cut.) Price of large flowering bulbs, 15 cents each; \$1.50 per dozen.

**Little Gem.** (See cut.) Dwarf; grows 10 to 15 inches high, and almost constantly in bloom. 15 cents each; \$1.50 per dozen.

**Spotted Leaf Calla** (*Richardia Alba Maculata*). This plant is always ornamental, even when not in flower, the dark green leaves being beautifully spotted with white; in other respects the plant is the same as the old favorite white Calla, excepting being of a smaller habit. In addition to its usefulness as a pot plant it makes a fine thing for planting in the garden in the summer, being very effective. 15 cents each; \$1.50 per dozen.



LITTLE GEM CALLA AND CALLA ETHIOPICA.





Brodiaea.

## BABIANA.

The flowers are of rich self-colors, varying in color from the richest carmine to the brightest blue in the same flower. The leaves are of dark green covered with downy hair. Not hardy in New England, but will live when protected by cold-frame. Five or six bulbs in a five-inch pot make a very attractive pot plant. Mixed varieties, 5 cts. each; 40 cents per dozen, \$3 per 100.



Babiana.

## BRODIAEA.

The flowers are borne on stems one to two feet high, in clusters of red, white or blue tubular flowers. Easily forced. Can be grown in greenhouse or cold-frame. If planted out in spring in clumps or masses, they flower very freely in June or July.

Mixed varieties, 3 for 10 cts.; 30 cents per dozen.

## COLCHICUM OR AUTUMN FLOWERING CROCUS.

*Colchicum Autumnale (Meadow Saffron).* The flowers comprise many shades of white, purple, rose, striped, etc., coming in bloom in the autumn. Make very effective and handsome hardy plants, especially for borders. Mixed sorts, 5 cents each; 50 cents per dozen.

## CROWN IMPERIALS.

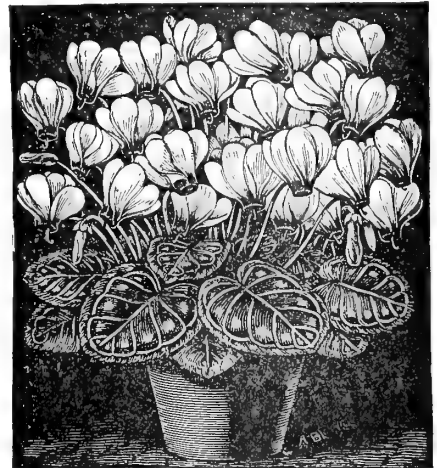
We might say much in praise of this old-fashioned spring blooming plant, with its cluster of pendant bell-shaped flowers surmounted with a tuft of green leaves, but it is well known. Excellent for borders and shrubberies.

	Each.	Doz.
Aurora, orange-red.....	\$0 15	\$1 75
Crown upon Crown, several whorls of flowers, one above the other.....	20	2 00
Single Red.....	20	2 00
Single Yellow, very large.....	20	2 00
Sulpherino, orange, slightly striped red.....	25	2 50
Mixed.....	12	1 25

## CYCLAMEN, GIANT.

Among the many floral pets that enliven our homes throughout the winter and early spring none are more charming than the Cyclamen. Its neatness of foliage and flower, its brilliant and varied colors, and its duration of bloom, render it desirable for parlor culture. Plant during September and October in a mixture of turfy loam, leaf-mould and sand, in equal parts. Do not cover the bulb, merely press it into the soil, and give a slight watering. Keep them shaded, and water sparingly until they start growing; then treat as other house plants.

Rose, Dark Red, Pure White, Price of any of 3 varieties, 25 cents each, or \$2.50 per doz., or the set of 3 for 90 cents. Giganteum Mixed, 20 cents each; \$2 per dozen.



Cyclamen.

## CHIONODOXA. "Glory of the Snow."

A valuable, hardy, early-flowering bulb, producing spikes of lovely azure blue flowers, with pure white centers. Those who know *SCILLA SIBERICA* will need no further description of this beautiful plant when we say the flowers and spikes are more than twice the size of that little gem.

**Luciliae.** (See cut.) Flowers of a brilliant sky-blue color, with white center. 3 for 10 cents; 25 cents per dozen; \$1.25 per 100.

**Sardensis.** A beautiful deep blue flower. 3 for 10 cents; 25 cents per dozen; \$1.25 per 100.

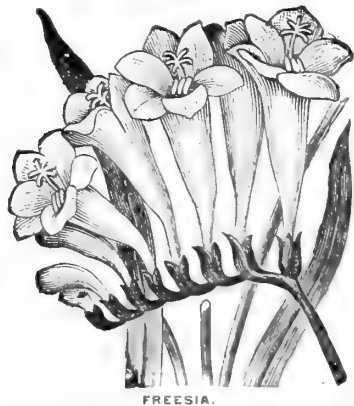
**Gigantea.** (New.) This new variety differs from all others of the family by its unusually large flowers of soft lavender blue, with a conspicuous white center. It is perfectly hardy, and when grown in the house for winter flowering, it makes a beautiful effect. 3 for 10 cents; 30 cents per dozen; \$1.50 per 100.

## ERYTHRONIUM GRANDIFLORA. "Dog's Tooth Violet."

Although called "Dog's Tooth Violet," it does not in any way resemble a violet. Is perfectly hardy, and succeeds best in moist soil or in partial shade. They succeed finely grown in pots for flowering in the winter months. The flowers are yellow, and borne on stems from 12 to 18 inches high, with six to twelve flowers on a stem. 3 for 10 cents; 30 cents per dozen.



Chionodoxa Luciliae.



FREESIA.

**DECENTRA, or Bleeding Heart.**

Ready in November. Has dark green foliage and long drooping racemes of pink and white heart-shaped flowers. One of the most ornamental of spring flowering shrubs. 15 cents each; \$1.50 per dozen.

**FUNKIAS. Day Lilies.**

This handsome, hardy, bulbous plant makes a very attractive appearance when planted in clumps or masses, as the pure white and fragrant flowers are borne on stout stems above the bold, luxuriant foliage, and make an exceedingly striking effect.

**Subcordata Grandiflora.** Milky-white flower, nearly four inches across. Fragrant. 15 cents each; \$1.50 per dozen.

**Variiegata.** Very fine fall blooming plant; leaves green and white, flowers purplish lilac. 15 cents each; \$1.50 per dozen.

**... FREESIA ...**

For graceful beauty and exquisite fragrance, this important introduction rivals many an old-time favorite as a plant for parlor culture, for which it is particularly adapted. The flowers are borne on a slender, branching scape, somewhat spreading. The perfume is delicious, differing from the majority of strongly-perfumed flowers in that it is never objectionable. The culture is simple. The bulbs should be potted from August to November in any good soil of a sandy texture; water sufficient should be given to soak through, after which but sparingly until beginning to grow rapidly; then water freely and place in a sunny, temperate position, either in the house or conservatory. (See cut.)

**RefRACTa alba,** clear white, with yellow blotch on lower petal. 2 for 5 cents; 15 cents per dozen; 75 cents per 100; extra large bulbs, 3 for 10 cents; 25 cents per dozen; 75 cents per 100.

**FRITILLARIA.** One of the earliest of spring flowers and remarkably showy. Many of the varieties are richly marked in spots and stripes, others regularly checked. All are of the easiest culture, and are exceedingly pretty when grown in clump in the border. They are invaluable for pot culture. **Finest mixed varieties.** 3 for 10c.; 35c. per doz.

**GLADIOLUS.** Early flowering, hardy varieties. For autumn planting or winter forcing. These beautiful, early flowering Gladiolus are greatly prized on account of their blooming in June and July, if planted in the autumn in dry soil and protected with a covering of about six inches of straw, leaves or litter. (Ready in November.)

**The Bride (Colvilli alba),** a most beautiful, pure-white variety; an excellent forcing quality. 2 for 5c.; 20c. per doz.

**Mixed, early flowering, hardy.** 2 for 5c.; 25c. per doz.; \$1.25 per 100.

**HELLEBOROUS.** The Christmas, or Lenten Rose. This most beautiful class of hardy herbaceous plants grows in almost any situation very freely, blooming early in the spring, and if grown in the house or in frames will bloom during the Christmas holidays, and will continue during the winter.

**Nigre.** (See cut.) The true Christmas Rose, a great favorite for the house culture, producing as it does flowers in great profusion that are pure waxy white. 25c. each; \$2.50 per doz.



HELLEBOROUS NIGRE.

**IRIS. (Fleur-de-Lis.)**

Ready about the first of November.

**JAPAN IRIS. Kempteri.** Descriptions cannot in any way do justice to the magnificence of this Iris. They are unsurpassed. Let the weather be ever so severe they are not in the least affected. The prevailing colors are from deepest black-purple through various shades of blue, to the purest white. The individual flowers are of great size and heavy texture, flowering from the middle of June to the end of July.

**Finest Named Varieties,** 20c. each, \$2.00 per doz.  
**Finest Mixed Varieties,** 15c. " 1.25 " \$6.50 per 100.

**GERMAN IRIS.** They are perfectly hardy, thrive anywhere, grow and bloom luxuriantly, particularly if plentifully supplied with water, or if planted in moist situations or on the banks of ponds, etc.

**Germanica Finest Mixed,** 10c. each; \$1 per doz.; \$6 per 100.

**SPANISH IRIS.** Dwarf species, of great value for forcing. If planted out of doors put in well drained land and give some protection for winter.

**Alexander van Humboldt.** Dark blue . \$0.03 \$0.25 \$1.50

**British Queen.** A very large, pure-white flower . . . . . .03 .25 1.50

**Chrysolora.** Very early and extra large flower, bright yellow . . . . . .03 .25 1.50

**William the Third.** The best dark yellow. . . . . .03 .25 1.50

**Finest Mixed Varieties** . . . . . .02 .15 .85

**VARIOUS SORTS OF IRIS.**

**Histroides.** Large, light-blue, spotted flowers, 20c. each; \$2 per doz.

**Gatesi.** An exceedingly large flower, silver grey and violet, very beautiful, 50c. each.

**Iberica.** Pale lilac and purple, 20c. each; \$2 per doz.

**Florentina.** Violet shaded with blue, with a yellow band. Fragrant. 6c. each; 50c. per doz.; \$3 per 100.

**Reticulata.** Violet spotted with white, yellow and black. Fragrant. Extra early. 20c. each; \$2 per doz.

**Susiana (Mourning Bride).** Blush tinted, netted with dark lines, a remarkable looking and exceedingly handsome flower; succeeds well in pots, 20c. each; \$2 doz.

**Sindjarensis.** Light blue flowers, 25c. each; \$3.00 per doz.

**English Iris, Finest Mixed,** 3 for 10c.; 25c. doz.; \$1.50 per 100.

**Mont Blanc.** Very large, pure white flowers, 5c. each; 50c. doz.; \$3 100.



JAPAN IRIS.



## GENERAL LIST OF LILIES...

...Embracing all the Most Desirable Varieties

**F**OLLOWING the description of each, we have indicated the height and time of flowering. None of the varieties will be ready for shipment until the last of October, except *L. Harrisii*, *Candidum* and *Longiflorum*, which are ready in September.

- Auratum** (*Golden-Banded Queen of Lilies*). This magnificent variety has become one of the standard favorites of the flower garden, and is considered by many the finest of all Lilies. The immense blooms, measuring nearly a foot in width when fully expanded, are produced in great profusion, and are deliciously fragrant. First size bulbs, 25c. each; \$2.50 per doz. Second size, 15c. each; \$1.50 per doz. (2 to 5 feet.) June to October.
- Brownii**. A magnificent variety, with fine large foliage; flowers very large, fine white inside, purple outside. The stamens are a rich chocolate color. 35 cents each; \$3.50 per dozen.
- Canadense**. Our bell-shaped native Lily; drooping yellow and red flowers. 10 cents each; \$1.00 per dozen.
- Canadense rubrum**. Vigorous grower; flower rich dark-red. 15 cents each; \$1.25 per dozen. (3 feet.) July.
- Candidum**. The well-known hardy Easter Lily; snow-white, fragrant blossoms; one of the best varieties for forcing, or for garden culture, and an established favorite. 12 cents each; \$1.25 per dozen. (3 to 4 feet.) June.
- Chalcedonicum**. Intensely scarlet recurved blossoms, resembling a Turk's cap. 50c. each; \$5.00 per doz. (3 feet.) June.
- Colchicum**. Rich citron-color, spotted with black. 60 cents each; \$6.00 per dozen. (2 feet.) July.
- Croceum**. Large flowers of beautiful golden, slightly tinted scarlet. 15 cents each; \$1.50 per dozen. (3 to 6 feet.) July.
- Elegans Erectum**. Flowers erect and borne in clusters; orange, spotted scarlet. Very hardy. 15 cents each; \$1.50 per dozen. (1½ feet.) June and July.

- Elegans Incomparable**. A deep ox-blood crimson, slightly spotted with black. Very free and easily grown. 20c. each; \$2 per dozen.
- Excelsum** (*Isabellinum*). The stately form, beauty of color and delightful fragrance of this variety have made it a great favorite wherever known. It grows from 5 to 6 feet high; flowers of a delicate light-buff color. 40c. each; \$4 per doz. (4 to 6 feet.) June and July.
- Giganteum**. A magnificent variety of giant growth and very distinct. Color, cream-white with purple throat. Frequently bears 12 to 15 large flowers, 5 to 6 inches long, on stems 6 to 10 feet high. Mammoth bulbs, \$2 each. July.

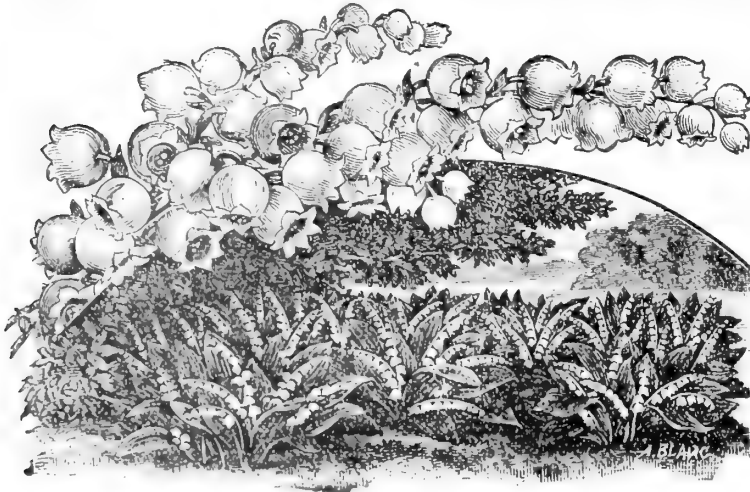
### LILIU HARRISII (*The True Bermuda Lily*).

The flowers are large, trumpet-shaped, pure waxy white, symmetrically formed, as beautiful and chaste as anything can be imagined, lasting from ten days to two weeks. The ends of the petals are recurved, giving it a very graceful appearance. Its fragrance is delightful. 1st size, 25 cents each; \$2.50 per dozen; 2d size, 15 cents each; \$1.50 per dozen.

- Kramerii**. One of the most lovely of all known Lilies, slender waving stems, about two feet high, with large flowers of a most beautiful rose color. 25 cents each.
- Lancifolium Album**. Pure white, and very fragrant. 20 cents each; \$2.00 per dozen.
- Melpomene**. Very large flowers of rich blood-crimson, heavily spotted. 25 cents each; \$2.50 per dozen.
- punctatum**. White, spotted and suffused with light rose. 40 cents each; \$4.00 per dozen.
- roseum**. White, spotted with rose. 15 cents each; \$1.50 per dozen.
- rubrum**. Rose, spotted with crimson. 15 cents each; \$1.50 per dozen.
- Leichtlinii**. A beautiful Japanese species, of neat and elegant habit; the flowers are pure canary-yellow, with crimson spots. 50 cents each. (3 to 5 feet.) August.
- LONGIFLORUM**. The well-known beautiful, snow-white fragrant Lily; fine for forcing, and handsome in the garden. 15 cents each; \$1.50 per dozen. Extra large, 25 cents each; \$2.50 per dozen. (1½ to 2 feet.) June and July.
- Martagon** (*Turk's Cap*). Purple. 20 cents each; \$2.00 per dozen. (2 feet.) June and July.
- Superbum**. The best of our native varieties; when grown in rich soil will frequently reach a height of 6 feet, and will produce upwards of thirty flowers of a yellowish-red color. 15 cents each; \$1.50 per dozen. July.
- Tigrinum** (*Tiger Lily*). Orange-salmon, spotted black. 10 cents each; \$1.00 per dozen. (3 to 5 feet.)
- Tigrinum, fl. pl.** (*Double Tiger Lily*). This is a plant of stately habit, growing from 4 to 6 feet high; foliage dark green, very long, bearing an immense number of double, bright orange-red flowers, spotted with black. 15 cents each; \$1.50 per dozen. (3 to 5 feet.) August.
- Tigrenum Splendens** (*Improved Tiger Lily*). Very large flowers, orange-red, spotted with black. Stems a polished black. 15 cents each; \$1.50 per dozen. (3 to 5 feet.) August.
- Tenuifolium**. One of the most charming of all Lilies. Perfectly hardy, and grow very easily; fiery, scarlet flowers. 25 cents each; \$2.50 per dozen. (1 to 2 feet.) June and July.

# LILY OF THE VALLEY.

(CONVALLARIA MAJALIS.) Ready for delivery in November.



LILY OF THE VALLEY.

A well-known, charming, late spring flowering plant, producing racemes of white flowers, which effuse a pleasing and delicious odor, and render it a universal favorite. Being of dwarf habit, with a profusion of deep green foliage, and flourishing well in shady places, where few other plants will succeed, it is sought after by all who love beautiful flowers. It grows well in pots, and in midwinter its beautiful racemes of snowy flowers are ever welcome. For pot culture the selected "flowering pips" are best to use, and moisture is indispensable. To encourage the development of flower and foliage simultaneously, some growers invert a flower-pot over the crowns until some progress in growth has been made, after which the plants are removed to a less shady situation. During the whole period of growth abundance of water must be given.

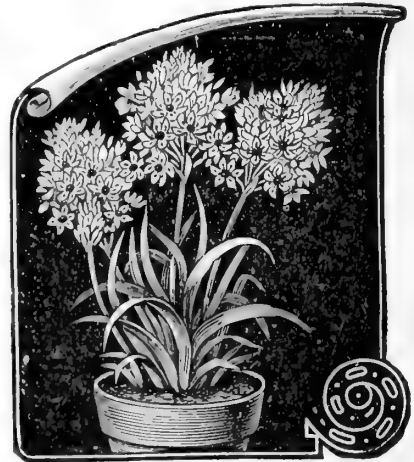
**FLOWERING PIPS, selected.**

Per dozen.....	\$0 25
Per bundle of 25 Pips,	50
Per 100 .....	1 50
By mail .....	1 75

**IXIAS** Are admirably adapted for pot culture in the house; several bulbs can be placed in a seven-inch pot or pan. They should, unlike other bulbs, be potted rather firmly, and as early as possible; place in a dry, cool place like Hyacinths; until the flower spikes appear, little water is needed; then, however, keep pretty moist, and give them full light and air. After flowering, gradually open, and when ready shake out and store in paper bags until next autumn, or the bulbs can remain in the soil, which should be kept dry.

**Finest Mixed.** 2 for 5 cents; 20 cents per dozen; \$1.00 per 100.

**ORNITHOGALUM.** A Splendid Winter-flowering Bulb. Sure to Bloom. Arabicum. (See cut) This magnificent winter-blooming bulb from Arabia gives great satisfaction. The bulbs are large and solid, somewhat resembling Hyacinths; the leaves are long, narrow and graceful; flower-stalks are thrown up to a height of 18 or 20 inches, and produce immense clusters of pearly-white flowers, each having a jet-black center. This distinct character, together with the durability of flowers, makes this grand novelty the best winter bloomer now offered. Bulbs can be planted in four-inch pots, and given the same culture as Hyacinths. If planted in open ground, they should be given slight protection. Price of bulbs sure to bloom, 5 cents each; 40 cents per dozen; \$2.00 per 100.



ORNITHOGALUM ARABICUM.

**MADEIRA VINES.** The Vine is a popular and favorite tuberous rooted climbing plant, with racemes of feathery white flowers, very fragrant. It will grow anywhere, but does best in a warm, sunny location. There is nothing in the way of a climbing plant for the house that is more satisfactory than the Madeira Vine. It is not hardy. 5 cents each; 50 cents per dozen.

**LACHENALIAS.** These are early spring-flowering bulbs, more especially adapted for greenhouse or winter-garden culture. The spotted foliage and spikes of brilliant flowers make them exceptionally striking. They are of the easiest culture and can be had in bloom by Christmas if desired. If grown in cold frame should be protected from frost.

**Pendula.** (See cut.) Flowers bright red, tipped with green and yellow. Very strong grower and handsome. 20 cents each; \$2.00 per dozen.

**MONTBRETIA.** Fire) **Crocsmiaeflora.** This is destined to hold a high place among summer-flowering bulbs as soon as it is more widely known. Very floriferous, bearing lovely spikes of star-like flowers, an inch or more across, which continue in bloom for months. Color, intense orange-scarlet. If left undisturbed and mulched to protect in the coldest sections in winter, they form luxuriant clumps. 3 for 10 cents; 35 cents per dozen; \$2.00 per 100.

**NERINE.** Nerine Sarniensis. Sometimes called the "Guernsey Lily" and "Japanese Spider Lily." In Japan it is perfectly hardy, but for this climate we would recommend thorough protection against frost. It is better adapted for house pot-plant. It sends up flower stalks 9 to 12 inches, which are crowned with umbels of bright-red flowers, with long, curved stamens, giving it an unusually graceful and attractive appearance. 20 cents each; \$2.00 per dozen.



LACHENALIAS.

# OXALIS...

A GENUS of very pretty, neat-growing plants, elegant in foliage and bloom, the latter being produced in great profusion and embracing a wide range of colors. They are the best bulbs we know of for growing in pots for window decoration, their dwarf and spreading habit rendering them specially desirable. They are of the easiest possible culture; may be planted at any time, and if good, rich soil is used, will do well without a great deal of attention.

**Bermuda Buttercup**, greatly improved selection from *Oxalis Cernua*, grown in the congenial soil and climate of Bermuda until the bulbs have attained great strength, producing bulbs, plants and flowers larger and more luxuriant than the common variety. It is one of the finest of winter-flowering plants for pot culture, of strong, luxuriant growth; one bulb is sufficient for a 6 or 8-inch pot. The great profusion of bloom produced in uninterrupted abundance for weeks is astonishing. The flowers are of the purest bright buttercup yellow. Well-grown plants have produced as high as 70 flower-stems at one time, and over 100 flower-stems in one season. 3 for 10 cents; 35 cents per doz.; \$2.50 per 100.



BUTTERCUP OXALIS.

	Doz.	100
Alba, pure white.....	3 for 10c.	\$0 25 \$2 00
Bowll, bright crimson, very large..	"	35 2 05
Cernua, double.....	"	50 3 50
Deppee, light crimson.....	"	20 2 00
Rosea, rose.....	"	25 2 00
Fine Mixed.....	"	20 1 50
Mammoth White.....	"	35 2 50
Rose.....	"	35 2 50

# PUSCHKINIA

**Compacta.** A perfectly hardy bulbous plant of great beauty; its numerous light blue flowers spring up from the center of its peculiar shaped leaves. Especially recommend for edging or borders, flowering in April and May. 3 for 10 cents; 35 cents per doz.; \$2.50 per 100.

# PÆONIES DOUBLE HARDY HERBACEOUS.

FOR the past few years the Pæony has seemingly taken new life, and is now receiving more attention both in this country and Europe, which it richly deserves. With the introduction of new varieties from China and Japan, and by hybridizing these varieties with our own best sorts, new varieties have been obtained, which for beauty of form, elegance of color, and delicious fragrance, almost rival the rose, the carnation, and the water-lily. The Pæony is thus far free from all insects and diseases, and is perfectly hardy in all situations.

If by mail add 6c. each bulb for postage.



	Each	Doz.
Pæony, double white	\$0 50	\$5 00
In ten named varieties with names,		4 50
Pæony, double red	35	3 50
In ten named varieties with names,		3 00
Pæony, double rose	40	4 00
In ten named varieties with names,		3 50
Pæony, double mixed varieties,	25	2 50
Pæony Tenuifolia, double bright crimson	30	3 00

## TREE PÆONY.

Hardy and more in the form of a shrub, with single or double flowers, enormous size and charming colors, from white to deep crimson. Each \$1 to \$2.

If by mail add 10c. for postage.

### HERBACEOUS PÆONIES.

**TRITOMA (Red Hot Poker or) Uvaria Grandiflora.** For planting in clumps or among shrubbery it is one of the grandest of all plants. The flowers are yellow and red, borne on stately stalks, making an effective display from August to frost. Hardy, with slight protection. 35 cts. each; \$2 per doz.

**SNOWDROPS.** There is nothing more beautiful than the little drooping blossoms of this modest flower. It gets along with almost any ordinary treatment, but by planting them here and there on the lawn a beautiful effect is secured, when their graceful snowy bells appear nestling in the grass in the early days of opening spring. They may also be grown in baskets or pots, for which purpose the double variety is the best.

**Double flowering.** 3 for 10 cents; 25 cents doz.; \$1.75 per 100. **Single flowering.** 3 for 5 cents; 15 cents doz.; \$1 per 100. **ELWESH (The Giant Snowdrops).** This is the largest and earliest of all the Snowdrops; flowers almost three times the size of the ordinary variety. Very desirable for forcing; slightly fragrant. 3 for 10 cts.; 15 cts. doz.; \$1 per 100.

**SPARAXIS.** This exceedingly handsome class of flowers is well adapted for winter blooming in the house. They require the same treatment as Ixias; in fact, bulbs of each can be grown in the same pot with splendid effect. Sparaxis bear large, somewhat cup-shaped flowers, which well display the rare and beautiful combinations of color seen in this family. **Finest Mixed,** 2 for 5 cents; 20 cents per dozen; \$1.25 per 100.



**..RANUNCULUS..**

**A**MONG dwarf flowers these are unrivalled for lovely form and bright and attractive colors, ranging through gorgeous shades of white, crimson, yellow, purple, and black, many of them being beautifully marked with other shades. They flower profusely in pots in the house, or if grown in frames, in the spring. (See cut.)

**Turban Mixed.** Pæony formed flowers, large and early, vivid colors, 2 for 5 cents; 20 cents per dozen; \$1.00 per 100.

**Giant French Mixed,** remarkably vigorous growers, with immense and gorgeous flowers. 2 for 5 cents; 20 cents per dozen; \$1.00 per 100.

**Double Persian Mixed, Camellia** or rose-shaped flowers, very double, rich variety of colors. 2 for 5 cents; 20 cents per dozen; \$1.00 per 100.

**TRITELEIA.** Uniflora. This is a perfectly hardy little gem, doing equally well in pots or planted in the flower border; it will grow in any soil, and produces an abundance of lily-shaped, violet-tinted, white flowers, which emit a fine Primrose perfume. Five or six bulbs grown in a six-inch pot make quite a picture when in flower. 2 for 5 cents; 15 cents per dozen; 80 cents per 100.

**TRITONIA.** Exceedingly bright and free-blooming bulbous plants, highly valuable for both garden and pot culture. The bulb should be grown in pots in a cool frame during winter, and they can either be brought in the conservatory towards spring for blooming, or can be transferred to the open ground in May for summer blooming, or the bulbs can be kept dormant and planted out in May, like Gladiolus, and then be lifted in autumn for winter blooming.

Mixed Colors, 3 for 10 cents; 30 cents per dozen; \$2 per 100.

**TROPÆOLUM.** Splendid, slender, rapid-growing, graceful plants for wire, globe and trellis-work. When planted in pots, use a light, rich soil, with plenty of drainage. **Jaratti,** scarlet, yellow and black, 15 cents each; \$1.50 per dozen.

**SPIRÆA, or Astilbe.** (Ready in November.) **Japonica.** The flowers are borne in large, feathery panicles of white, and last a long time in bloom. Large quantities are forced by florists, though a perfectly hardy herbaceous plant. This is undoubtedly one of the most beautiful and graceful subjects grown, its foliage and flowers combined making it one of the finest gems for winter and spring decoration in the house and conservatory. (See cut.) 10 cents each; \$1 per dozen; \$5 per 100; postage, 10 cents per root extra.



**SPIRÆA JAPONICA.**

**Japonica Grandiflora.** New, large flowering. The flowers are very large, of the purest white, and stand well above the foliage in charming, airy sprays. Perfectly hardy, and unsurpassed for forcing. *Silver Medal Award by Massachusetts Horticultural Society.* 15 cents each; \$1.50 per dozen. Postage, 10 cents per root extra.

**SCILLA.** They are all quite hardy and adapted for cultivation in the open ground, and they are also very suitable for growing in pots. The flowers are borne in spikes of from six to twelve blooms each, the individual, bell-like blossoms being gracefully pendant.

**Campanulata,** white, 10c. .25 \$1.50  
 " blue " .25 1.50  
 " rose " .25 1.50  
**Siberica or Praecox,** a perfect gem, flowers rich-est metallic blue, very dwarf, hardy, excellent with Crocus snowdrops... 3 for 5 cents \$0 15 \$1 00  
**Bifolia,** beautiful bright blue... 3 for 10 cents 20 1 25

**SPRING SNOWFLAKE (Leucejum Vernum.)** Flowers similar to monster Snowdrops, and have the fragrance of the Violet, blooms early in the spring, with white blossoms, tipped green. 3 for 10 cents; 30 cents per dozen; \$2 per 100.

**WINTER ACONITE (Eranthus Hyemalus.)** Their golden blossoms form a striking contrast to the pure white Snowdrop. Spring Snowflake, and the lovely blue Scillias and Chionodoxa, perfectly hardy, is also an excellent pot plant. 3 for 10 cents; 25 cents per dozen; \$1.50 per 100.



**SCILLA.**

**CHOICE FLOWER SEEDS FOR FALL SOWING.**

	Per Pkt.		Per Pkt.		Per Pkt.
Campanula, Blue.....	\$0 05	Hollyhocks, Double Mixed.....	\$0 10	Pansy, Special Mixture.....	\$0 15
Candytuft, White Rocket.....	05	Forget-me-not, Fine Mixed.....	05	" Fine Mixed.....	10
Carnation Pink, Double Mixed..	25	Daisy, Choice Mixed.....	10	Primula, Arlington Prize Strain.	40
Calendula, Meteor.....	05	Gloxinia, Hybrid.....	25	Stocks, Flower-Market, pure white.....	15
" Prince of Orange.....	05	Mignonette, Defiance.....	10	Sweet William, Finest Mixed....	10
Cyclamen, Persecum Giganteum..	40	Pansy, Bliss.....	25		

For other varieties of Flower Seeds see our Seed Catalogue. Mailed on application.

# BULB COLLECTIONS *If by mail add 10 cents per doz.*

*These collections are put up ready for delivery and varieties cannot be changed.*

Selection of 12 Hyacinths for pots, with names, \$1; 12 Hyacinths for pots, choice varieties, with names, \$1.50.  
 " 25 Hyacinths in 12 choice sorts, with names, \$2; 25 Hyacinths in 25 choice sorts, with names, \$3.

## Collection of Bulbs especially recommended for House Culture.

Price \$1.25. *If by mail add 15c. for postage.*

- |                          |                        |
|--------------------------|------------------------|
| 6 White Roman Hyacinths. | 12 Crocus.             |
| 3 Dutch Hyacinths.       | 6 Jonquil Campernelle. |
| 6 Single Tulips.         | 6 Freesia.             |
| 6 Double Tulips.         | 6 Spanish Iris.        |
| 3 Narcissus Von Sion     | 3 Allium Neapolitanum. |
| 3 Narcissus Polyanthus.  |                        |

## Collection of Hardy Bulbs for Outdoor Culture.

150 Bulbs in all, of the following varieties.

Price \$2.50. *If by mail add 25c. for postage.*

- |             |                 |
|-------------|-----------------|
| Hyacinths.  | Crocus.         |
| Anemone.    | Crown Imperial. |
| Ranunculus. | Iris.           |
| Chinodoxa.  | Narcissus.      |
| Puschkinia. | Scilla.         |
| Tulips.     | Snowdrops.      |

# HARDY ROSES FOR FALL PLANTING.

Ready about Oct. 1.

WE have an exceptionally fine lot of Hardy Roses two and three years old, grown on Manetti stock, and if planted this fall will give a good crop of blooms next season. The plants are all large, strong rooted, and must be forwarded by express.

We have a large variety of Hardy Roses which we are unable to give the names of on account of space. We can supply almost any variety.

Our selection of kinds, 35 cents each; \$3.00 per doz.

Your selection of kinds, 40 cents each; \$3.50 per doz.

- Able Carriere.** Velvety crimson, very bright center.  
**Alfred Colombe.** Rich red, very fragrant.  
**Anna de Diesbach.** Lovely carmine, large, double, very free bloomer.  
**Baron de Rothschild.** Bright, rosy crimson.  
**Baroness de Rothschild.** Light pink, often deepening to rose.  
**Captain Christy.** Delicate flesh, rosy center, medium size.  
**Duke of Edinburgh.** Bright crimson, large and double.  
**Fisher Holmes.** Crimson-scarlet, perfect form, free bloomer.  
**General Jacqueminot.** Brilliant crimson.  
**Gloire Lyonnaise.** Creamy white, shading to lemon in center.  
**Jules Margotten.** Carmine rose, free bloomer.  
**La France.** Silvery rose, changing to pink, very fragrant.  
**Magna Charta.** Pink, suffused carmine.  
**Mrs. John Laing.** Soft pink, large and fine.  
**Mme. Gabriel Luizet.** A grand pink, much used for forcing.  
**Paul Neyron.** Deep rose, the largest variety.  
**Persian Yellow.** Yellow, the deepest yellow rose.  
**Prince Camille de Rohan.** Deep velvety crimson.  
**Ulrich Brunner.** Cherry red, a grand variety.

### RAMBLER CLIMBING ROSES, 50 cents each.

The Crimson, Pink, White and Yellow.



PRINCE CAMILLE DE ROHAN.

# STRAWBERRIES



No. 1, Parent Plant. No. 3, Rooted Layers. No. 2, Pot-Grown Plant.

**SAINT JOSEPH.** A new French sort bearing abundantly throughout the season berries of medium size, bright vermilion, of delicious flavor; not unlike the Alpine strawberry in this respect.

Pot-grown, per doz., \$1.00; per 100, \$5.00.

**THE MARSHALL** is the largest strawberry ever exhibited, and has taken more first prizes since its introduction than any other strawberry ever exhibited in the Horticultural Society's rooms at Boston.

**POT-GROWN STRAWBERRY PLANTS.** Ready by the dozen and 100 after Aug. 1, and by the 1,000 after Aug. 10. Layer plants will not be ready generally till Sept. 1, except in a few cases.

We fill orders for them as fast as possible.

Those marked (P) are pistillate, and will not fruit alone but should be placed near some perfect flowered variety.

Price, 50 cents per doz.; \$2.50 per 100; \$20 per 1,000.

**SAMPLE.** Large fruit of fine flavor and color.

**NICK OHMER.** Second early, glossy, dark red, excellent flavor.

**CLYDE.** A large, even-shaped berry, rather light color.

**BRANDYWINE.** Of excellent quality, large, conical shape.

**GLEN MARY.** Deep, rich crimson, firm, solid and of high quality.

### In layer plants about Sept. 1, at these prices.

	Per doz.	100	1,000		Per doz.	100	1,000		Per doz.	100	1,000
Brandywine	\$0 30	\$1 50	\$6 00	Crescent (P)	\$0 30	\$1 00	\$4 00	Lovett's Early	\$0 30	\$1 00	\$5 00
Belmont	30	1 50	6 00	Gandy	30	1 00	5 00	Marshall	30	1 50	6 00
Beverly	30	1 00	5 00	Haverland (P)	30	1 00	5 00	Sharpless	30	1 00	5 00
Bubach No. 5 (P)	30	1 00	5 00	Parker Earle	30	1 50	6 00	Mary (P)	30	1 50	6 00
Clyde	30	1 50	7 00	Enormous	30	1 50	6 00	Nick Ohmer	30	1 00	6 00

# PLANTS FOR HOUSE DECORATION

DIRECT FROM OUR GREENHOUSES AT  
ARLINGTON.

**How to Send Money.** Remittances can be made in current bank bills, post-office orders, registered letters, or by drafts on New York and Boston. Post-office orders are preferable to all others, as there is no possibility of loss; but when these cannot be obtained registered letters are sure to reach their destination.

**We Will Guarantee** The safe arrival of all plants sent by express. We would earnestly request our customers, on receipt of goods, to notify us at once if they have received any injury in transit, using special care to, in every case, give us a list of what was injured, that we can replace them. When received in good condition, our responsibility ceases. All plants not sent by express are at the risk of the purchaser.

## COCOS WEDDELIANA.

The most elegant and graceful of all the smaller Palms. Its slender, erect stems are freely furnished with its gracefully arching leaves, made up of innumerable long, narrow pinnae or segments of a rich green color. The Cocos are admirable for fern dishes, as they are of slow growth and maintain their beauty for a long time. (See cut.) 3-inch pots, 12 inches high, 50 cents each; 4-inch pots, 15 inches high, \$1.00 each.



COCOS WEDDELIANA.

## ASPARAGUS SPRENGERI.

(See cut.) A beautiful new variety of this graceful class of plants, especially useful to grow as a pot plant for house decoration or for planting in hanging baskets, where it makes a graceful drooping plant with branches or fronds, 4 to 5 feet in length, of a rich shade of green; a useful plant for cutting for decorating as it retains its freshness for weeks after being cut. It is easily managed and will grow in almost any position. 25 cents each; \$2.50 per dozen.

## Aspidistra Lurida Variegata.

A beautiful plant, with large, lance-shaped leaves, finely variegated with clear, cream-colored stripes. An elegant window or conservatory plant of the easiest culture. \$1.00 each.

## CROTONS. Assorted.

Gorgeously colored foliage plants, suitable for warm conservatories and greenhouses. 50 cents and \$1.00 each.

## CAMELIA JAPONICA.

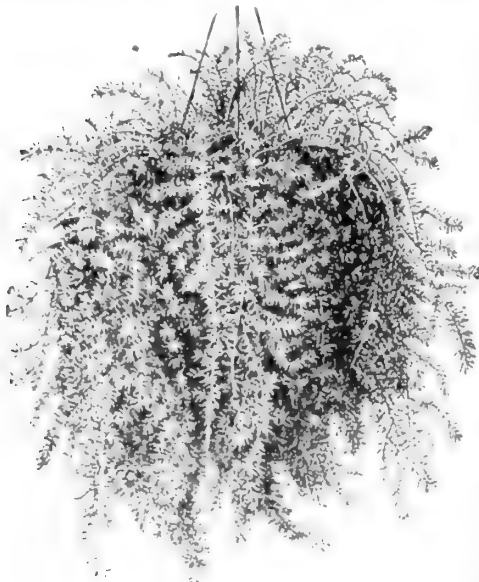
We offer splendid plants of these bushy, well-grown specimens; all in splendid health, and of thrifty, clean growth. The varieties are the best, and embrace double white, double pink, double red and double variegated. Price, 1st size, \$1.00 each.

## BEGONIAS, in Variety.

We have a large collection of all the leading sorts, both the flowering and foliage sorts. 25 and 50 cents each; \$2.50 and \$3.50 per dozen.



CHINESE AZALEA.



ASPARAGUS SPRENGERI.

## ASPARAGUS PLUMOSUS NANUS.

One of the handsomest of our foliage plants. The leaves are a bright green, are gracefully arched, and are as finely woven as the finest silken mesh; their lasting qualities when cut, are remarkable. Strong plants, 25 cents each; \$2.50 per dozen.

## AZALEA. Chinese Azalea.

Beautiful plants for window or conservatory decoration. Few plants reward the cultivator more liberally with bloom than these. The plants we offer are fine, shapely specimens, with well-formed heads of the best and most distinct kinds, and even when not in flower are fine decorative plants. Our collection comprises the cream of the best Continental establishments; all the sizes offered will flower freely in proper season. Strong plants by express.

1st size, 14-16 inch heads..... \$1.50 each; \$15.00 per dozen.  
2d size, 12-14 inch heads... 1.00 each; 10.00 per dozen.  
3d size, 10-12 inch heads..... .75 each; 7.50 per dozen.



**ARAUCARIA EXCELSA. Norfolk Island Pine.**

Various names have been suggested for this grand plant to properly convey to the mind the appearance of it. Some have called it the "Christmas Tree Palm," from its resemblance to a Christmas tree; others have called it the "Star Palm," because the leaves are arranged to form a perfect star, but no descriptive name can give any adequate idea of its beauty. It has deep green, feathery foliage, arranged in whorls, rising one above the other, at regular distances; its symmetry of form, grace and beauty of foliage are unequalled in the vegetable kingdom. It is easily grown in the house and is highly ornamental. (See cut.) Extra fine plants, 24 to 30 inches high, \$3.00 each; 15 to 18 inches high, \$2.00 each.



**ARAUCARIA EXCELSA.**

very best plants for table or parlor decoration;

**DRACÆNA.**

**Indivisa** (The fountain palm). An excellent contrast when used with palms and other decorative plants in the house, and in this respect is unsurpassed for hardiness. 50 cents and \$1.00 each.

**Terminialis.** A splendid plant for house and window decoration, with bright, tropical-looking foliage of rich crimson color, beautifully marked with white and pink in well-developed plants. Good-sized plants for 50 cents each.

**FICUS.**

**Ficus Elastica.** The well-known India-rubber tree, one of the



**FICUS ELASTICA.**

most useful of our ornamental foliage plants; excellent for the center of vases and baskets, or grown as a single specimen; for in or out-door decoration. \$1.00 to \$2.00 each.

**GREVILLEA ROBUSTA.**

(The Australian Silk Tree.)

A magnificent plant for decorative purposes, quicker growing than a Palm, and equally effective; of easy growth; finely cut foliage, rivalling a rare Fern. The young growing leaves are a light bronze color, the tips being covered with soft down, closely resembling raw silk, hence the name, "Silk Tree." In its native place it attains magnificent proportions and produces an abundance of bright, orange-colored flowers. The leaves are fine for design, so fern-like and not liable to wilt. No collection complete without it. 25 cents each; larger size, 50 cents.

**PANDANUS. Screw Pine.**

**Pandanus Utilis.** Also called Screw Pine from the arrangement of the leaves on the stem. This is one of the most useful of our ornamental foliage plants; excellent for the center of vases and baskets, or grown as a single specimen; for in or out-door decoration. \$1.00 to \$2.00 each.

**Veitchi.** This is one of the most attractive of decorative plants. The leaves are light green, beautifully marked with broad stripes and bands of pure white, and gracefully curved. \$1.00 to \$3.00.

**PALMS**

Palms are now indispensable in all decorations, whether for apartments, conservatories, or for tropical bedding in summer. The large demand for the past few years has induced us to considerably increase our facilities for growing this class of stock. The varieties enumerated below are those best adapted for house culture.

**KENTIAS.**

The Kentias, both Belmoreana and Fosteriana, are the hardiest in cultivation, and give better satisfaction as a house plant than any other varieties. They are of slow growth, and are not affected by the dust and dry atmosphere of the house, and were we to select one Palm only, it certainly would be a Kentia. The two varieties are of similar appearance, the former being dwarfer and more spreading, and the latter is of stronger growth, with broader, heavier foliage.

**ARECA LUTESCENS.**

This majestic Palm is thought by many to be without a peer for strength and elegance. 50 cents each for 4-inch pots; \$1.00 each for 5-inch pots; larger size, \$2.00.

**KENTIA BELMOREANA.**

- 4-inch pots, 5 to 6 leaves, 15 inches.....\$1.00 each.
- 5-inch pots, 6 leaves, 20 to 22 inches..... 1.50 each.
- 6-inch pots, 6 leaves, 24 to 30 inches..... 2.50 each.

**LATANIA BORBONICA.**

Chinese Fan Palm. This popular variety is too well known to require description. We grow them at Arlington.

- 5-inch-pots, 6 leaves, 15 inches high .....\$1.00 each.
- 6-inch pots, 6 leaves, 20 inches high..... 1.50 each.

**Phoenix Reclinata.** A strong-growing form of the Date Palm, with dark green, glossy foliage; a most desirable variety.

- 5-inch pots, 15 inches high .....\$1.00 each.
- 6-inch pots, 24 inches high ..... 1.50 each.
- 7-inch pots, 30 inches high ..... 2.00 each.



**KENTIA BELMOREANA.**



**NEPHROLEPIS EXALTATA BOSTONENSIS.**

**FERNS**

**Adiantum Cuneatum.** A very beautiful and graceful fern, its delicate fronds being much used in cut flower. 25 cents to 50 cents each.

**Nephrolepis Exaltata Bostonensis.** A really graceful fern, multiplying very fast in throwing out vines on which grow several plants again. Per plant, 25 cents; 3 for 50 cents; large plants, from 50 cents to \$2.50 each.

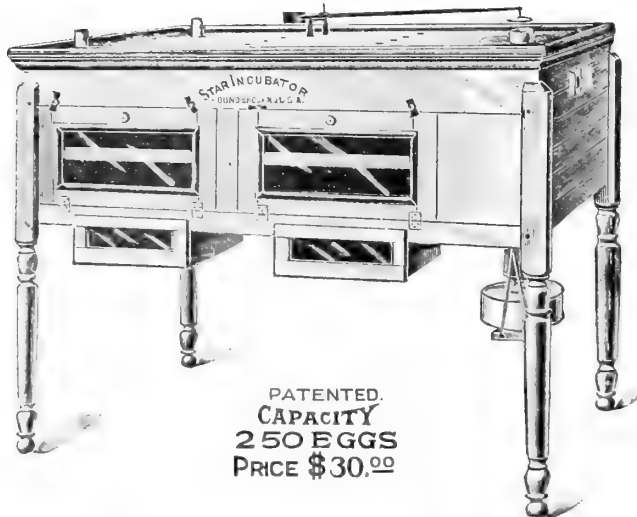
**Nephrolepis Davalleoides Furcans.** A beautiful and distinct crested variety, with numerous arching fronds, 3 to 4 feet long. 50 cents to \$2.00.

**Davallia Stricta.** One of the finest of the ferns for pots and fern pans; fronds of strong texture and of a beautiful shade of green. 25 cents to 50 cents.



**LATANIA BORBONICA.**

# POULTRY SUPPLIES



## THE STAR INCUBATOR.

The Up-to-date Incubator.

The heater or radiator in the Star Incubator is placed in the egg-chamber directly over the eggs and is heated by the lamp hanging under the incubator. Connection is made between the lamp and heater by means of a flue which passes upward from the lamp to radiator. The heat after leaving the lamp enters the heater, through which it passes three times before it escapes. In this manner every particle of heat is utilized and every part of the egg-chamber heated to the same degree. Regardless of what may be the existing conditions in the room or cellar where the incubator is located, whether it be very damp even to water standing on the floor or whether it be very dry, by the time the air has come in contact with the heat-flue entirely surrounding it and in the same manner passing across the radiator, it always will be dry and warm when it is discharged into the egg-chamber.

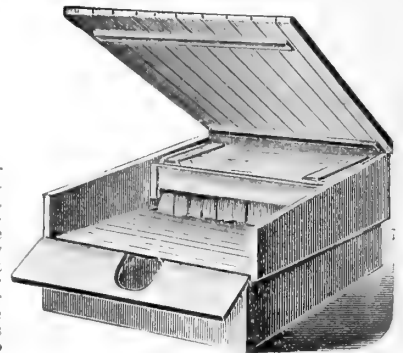
No artificial moisture needed. Air is warm and dry; egg-chamber is perfectly ventilated. No cold corners and no cold drafts to strike eggs. In the Star Incubator we have simplicity, accuracy and no guess-work. Prices from \$19 to \$37.

**The Lincoln Hatcher.** This small, convenient machine is made especially for those who wish to produce a limited number of chicks by artificial methods. It has the same system of ventilation and regulation as our other method, also the nursery under the egg-tray.

60 Egg, Single Case.....	\$6.00
60 " Double ".....	8.00
120 " Single ".....	10.00
120 " Double ".....	13.00

**Brooders.** Both indoor and outdoor, made in the latest improved methods of heating. Price from \$5.00 to \$16.00

**Special Catalogue** of incubators and brooders sent on application. There is information in this that every poultry raiser wants. Write us.



Outdoor Brooder. \$5.00.

**Animal Meal.** A specially prepared, egg-producing food for fowls. Made from fresh meat and fresh bones, carefully selected, dried, and ground to a sweet meal. 5 lbs., 25c.; 10-lb. bags, 40c.; 25-lb. bags, 75c.; 50-lb. bags, \$1.25; 100-lb. bags, \$2.25.

**American Poultry Food.** Ground wheat, corn, oats and barley, kiln-roasted. 5-lb. bags, 25c.; 10-lb. bags, 40c.; 50-lb. bags, 85c.; 100-lbs., \$1.50; 500 lbs., \$7.

**Boiled Bone, Blood and Meal.** Per 100 lbs., \$2.25.

**Bone Meal for Cattle.** Made from carefully selected bone reduced to a meal. White, clean and perfectly sweet. 5 lbs., 25c.; 10 lbs., 40c.; 25 lbs., 75c.; 50 lbs., \$1.25; 100-lb. bags, \$2.25.

**Bone Meal, Ordinary.** When ordering, please state kind wanted. 5 lbs., 25c.; 10 lbs., 35c.; 25 lbs., 65c.; 50 lbs., \$1; 100-lb. bags, \$2.

**Chicken Food, Fidelity.** Is pronounced by experienced poultrymen to be the best food on the market for starting growth in chicks and keeping them in health. 1-lb. pkg., 10c.; 3-lb. pkg., 25c.; per 100 lbs., \$4.

**Cut Clover Hay.** 5 lbs., 25c.; 10 lbs., 40c.; 25 lbs., 65c.; 50 lbs., \$1; 100 lbs., \$2.

**Clover Meal, Pioneer.** Is clover hay ground to a fine meal, in an especially designed machine to a meal fine as middlings. It is the best winter egg food. 5 lbs., 25c.; 10 lbs., 40c.; 25 lbs., 65c.; 50 lbs., \$1; 100 lbs., \$2.

**Cracked Bone.** 5 lbs., 25c.; 25 lbs., \$1; 100 lbs., \$2.25.

**Chicken Food, Greene's.** This food is made from selected grains of the first quality, and is especially prepared as a ration on which chickens may be raised with the best possible results. 5 lbs., 20c.; 50 lbs., \$1.25; 100 lbs., \$2.

**Charcoal.** It keeps the crop sweet, and as a regulator for the bowels, no better or simpler remedy has yet been discovered. **Granulated** for use in open dishes, 1 lb., 7c.; per 100, \$5.50. **Powdered** for use in mash, 1 lb., 6c.; per 100, \$4.50.

**Conkey's Roup Cure.** It is simply put in drinking-water and the chicken takes its own medicine. It prevents colds and is unequalled for Canker, especially in pigeons. One 50-cent package makes 25 gallons of medicine. Price, 50c.

**Grit for Hens,** or smaller size for chickens. 5 lbs., 10c.; 10 lbs., 15c.; 25 lbs., 35c.; 50 lbs., 60c.; 100 lbs., 75c.

**Fish Meal or Desiccated Fish.** Containing the fish and fish bones, steamed and dried, and then ground to a fine meal. 5 lbs., 25c.; 10 lbs., 40c.; 25 lbs., 75c.; 50 lbs., \$1.25; 100 lbs., \$2.25; ton, \$40.

**Ground Beef Scraps.** Prepared from carefully selected scraps, and ground to the proper fineness. 10 lbs., 35c.; 50 lbs., \$1.25; 100 lbs., \$2.25.

**Ground Oyster Shells.** Prepared from oyster shells thoroughly washed, dried and made sweet. 5 lbs., 10c.; 25 lbs., 30c.; 100 lbs., 65c.; bbl. of 350 lbs., \$2.

**Pratt's Poultry Food.** A poultry regulator, absolutely pure, makes larger fowl, quickens the growth of young chicks, prevents and cures all poultry diseases. Makes hens lay. 1 lb., 25c.; 5 lbs., 60c.; 12-lb. bag, \$1.25.

**Sheridan's Condition Powder.** Well recommended by all leading, poultry dealers. 4-oz. pkg., 25c.; 2 1/4-lb. can, \$1; mailing 15c. per lb.

**Shelled Oats.** \$2 per 100 lbs.

**Wheat.** \$1.75 to \$2 per 100 lbs.

**Wheat Screenings.** \$1.25 to \$1.75 per 100 lbs., according to quality.

### PIGEON FOOD.

**Canada Field Peas.** Per qt., 10c.; pk., 50c.; bu., \$1.25.

**Barley.** Per qt., 10c.; pk., 30c.; bu., 90c.

**Buckwheat.** For Pigeons and young poultry. Per qt., 10c.; pkg., 30c.; bu., 90c.

**Hemp Seed.** Used largely for feeding birds and pigeons. Per lb., 10c.; 10 lbs., 60c.; 100 lbs., \$4.

**Rust's Havens Climax Condition Powder.** Cure for Gapes, Fowl-Cholera, Animal Diseases, etc. 13-oz. box, 25c.; by mail, 40c.; 32-oz. box, 50c.; by mail, 85c.; 5-lb. box, \$1; 8-lb. box, \$1.50; 20-lb. box, \$3.50. These three sizes are too large for mailing, but can be sent by express or freight.

**Rust's Havens Roup Pills.** Box of 50 Pills, 25c.; box of 250 Pills, \$1. Mailed on receipt of price.

**Rust's Egg Producer.** 1-lb. box, 25c.; by mail, 44c.; 2 1/2-lb. box, 50c.; by mail, 94c.; 6-lb. box, \$1; 10-lb. box, \$1.50; 25-lb. box, \$3.50. These three sizes are too large for mailing, but can be sent by express or freight.

**POULTRY SUPPLIES—CONTINUED.**

**LEE'S LICE KILLER.** Saves labor, saves expense, saves time, and saves the fowl and hogs. Where freedom from vermin means hours spent in dusting, dipping, or greasing, fowl and animals on the average farm and poultry-ranch are seldom free from lice and mites. Try our Lee's Lice Killer; test it thoroughly, and if you do not find it to be as represented by us, we will refund your money. Don't expect a quart to do the work of a gallon. Don't expect a little dab here and there to renovate a large poultry-house that may have been infested for years with mites and other vermin. Use it honestly and with a mixture of common sense, and you will say, with others, that the can of Lee's Lice Killer was the best investment you ever made. 1 qt., 30c.; 2 qts., 50c.; 4 qts., 75c.; 5 gals., \$3.

**Death to Lice.** (Lambert's) 15-oz. box, 25c.; by mail, 40c.; 3-lb. pkg., 50c.; by mail, \$1; 100-oz. pkg., \$1.

**Tobacco Dust.** An exceedingly fine powder. Valuable as an insecticide. Per lb., 5c. net; per 100 lbs., \$2.50.

**Tobacco Stems.** Used to mix with nest material, fumigating, etc. Per lb., 5c.; per bale, \$1.50, net.

**P. D. Q. Flea Powder and Disinfectant.** Destroy Fleas, Lice and Vermin on Dogs, Cats and all kinds of Animals. Poultry, Plants, etc. It also prevents the eggs of Vermin from hatching, and stops breeding. 25c. per pkg.

**DRINKING FOUNTS.**

**Rawson's Galvanized.** 2-qt., 35c.; 4-qt., 50c.; 8-qt., 75c.

**Earthenware.** 1-qt., 20c.; 2-qt., 30c.; 3-qt., 40c.; 4-qt., 50c.

**Sanitary.** 1-gal., 50c.; 2-gal., 85c.

**Nest Eggs.** Medicated, 10c. each; per doz., \$1. Porcelain, 5c. each; per doz., 25c.

**Wire Nests.** Strong, clean, 35c. each.

**Caponizing Set.** Full directions for use. Price, in velvet-lined case, \$2.75, delivered anywhere in the United States. In plain case, \$2.50.

**Gape Worm Extractor.** Price, 25c.

**French Poultry Killing Knife.** This knife is of the finest tempered steel. Price, 50c.

**Poultry Marker.** Used to punch web between toes. Price, 25c.

**Climax Leg Bands.** In different sizes from 1/2 inch to 1 1/2 inch. Price, 25c. per doz.; \$1.75 per 100.

**Aluminum Leg Bands.** Numbered or lettered. Per doz., 30c.; per 100, \$2.

**Mann's Swinging Feed-Tray.** Is 6 1/2 inches wide, 3 inches deep, and 18-27-36 inches long. It is made in one piece of galvanized iron. Can be screwed to side of building, or can be screwed to overhead board or timber. Always holds tray in correct position. Is equally useful for water or feed. 18-in., \$1; 27-in., \$1.25; 36-in., \$1.50.

**Sanitary Swinging Feed-Tray.** Always holds tray in correct position. Is equally useful for water or feed. \$1.25 each.

**Standard Bone Cutters.** Automatic feed and stop cutters, with balance wheel for hand use. The two cylinders are horizontal, fitted to a cutter plate with the corrugated knives, each revolution producing six cuts. No. 9, for bench use, capacity 20 to 30 lbs. an hour, \$ 8 50  
 " 8, with legs, " 20 " 30 " " 10 00  
 " 6, " " " 30 " 50 " " 15 00  
 " 3, " " " 60 " 70 " " 17 00

**Perfect Egg Carrier.** 12-doz. carrier... 1 75  
 6-doz. carrier.....\$1 25 16-doz. " ... 2 00  
 9-doz. " ..... 1 50 30-doz. " ... 2 50

**Gardner Egg Carrier.** 1 doz. 10c. each; 2 doz. 20c. each.

**Thermometers.**  
 • Standard tin case, 8-in., each 40c.; 10-in., each 55c.;  
 Common tin case, 8-in., each 20c.; 10-in., each 25c.

**GARDEN REQUISITES.**

**Bellows, Woodason's Vaporizing.** This throws a spray as fine as mist, rendering the use of strong solutions of kerosene, fir-tree oil, tobacco soap and poisonous fluids perfectly safe on tender-foliaged plants, killing the insects without burning the leaves; it also forces the fluids into every crevice. Price, large size, \$2; small size (for house use), \$1.25.

**Fumigators.** For smoking greenhouses; self-acting, and may be left with perfect safety; all the materials consumed and gives off a dense smoke; made of extra heavy galvanized iron.



**BOSTON.**  
 No. 1. 20 in. high, holds 1/2 bu. stems \$3 50  
 " 2. 24 " " " 3/4 " " 4 00  
 " 3. 28 " " " 1 " " 4 50

**EUREKA.**  
 No. 1. 12 in. high, holds, 1/2 pk. stems 1 20  
 " 2. 16 " " " 1 " " 2 00  
 " 3. 20 " " " 1 1/2 " " 2 50  
 " 4. 24 " " " 2 " " 3 50

**Glazing Points, Van Reyepers, mailed, per M.... \$0 75**  
 " **Pincers, for above, mailed..... 12**  
 " **Tool, mailed..... 12**

**Hyacinth Glasses** in three colors—blue, green and purple. 15 cents each; \$1.50 per doz.

**Hot Bed Mats, straw, 3x6 feet..... 1 25**  
 " **Straw, 6x6 feet, regular size..... 1 50**  
 " **Burlap, 76x76 in., lined with wool and cotton waste, per doz., \$12.00..... 1 25**  
 " **Sash, 3/4 in., 3x6 in., unglazed..... 1 10**  
 " **Glazed and painted..... 2 50**

**Insecticides** of all the leading kinds always on hand.

**Jardiniere**, in sizes to hold from 5 in. to 8 in. standard pot. Prices from 40 cts. to \$1.50 each  
**Labels.** Wooden garden labels are put up in packages of 100. Pot, plant and tree labels in packages of 500.

	Plain, per M.	Painted per M.
<b>Labels, Garden, 8 in.</b>	\$0 40	\$3 50
" 12 "	40	4 50
" <b>Pot, 3 1/2 "</b>	10	50
" 4 "	15	60
" 5 "	20	70
" 6 "	25	85
" <b>Tree, 3 1/2 " iron wired,</b>	1 00	1 25
" 3 1/2 " cop'r	1 50	1 75
<b>Mastica.</b> Prepared white lead and putty, 1 gal..	1 25	
" <b>Machine for applying above.....</b>	1 00	

**Plant Sprinkler.** Rubber, straight neck, 1/2 pint size, 50 cents; 3/4 pint, 60 cents; 1 pint, 80 cents.  
 " Rubber, angle-neck, 1/2 pint, 60 cents; 3/4 pint, 70 cents; 1 pint, 90 cents (postage 10 cts. extra)  
 " **Goldman's Atomizer..... \$0 40**

**Plant Tubs, Cedar.** Made of white cedar, and bound with extra heavy iron hoops. Drop handles. Substantial iron legs. Removable perforated bottom, painted green.

OUTSIDE DIAM.	LENGTH OF STAVE.	
No. 3. 21 inch	18 inch	3 50
" 4. 19 1/2 "	16 "	3 00
" 5. 18 "	10 "	2 50
" 6. 16 1/2 "	13 "	2 25
" 7. 15 "	11 "	2 00
" 8. 14 "	10 "	1 75

**Plant Tubs, Oak.** Natural wood finish.  
 12 inch. 11 inch, \$1 00 18 inch 15 inch, 1 85  
 14 " 12 " 1 25 20 " 17 " 2 25  
 16 " 13 " 1 50 24 " 20 " 2 50

**Pots.** Sizes and shapes as adopted and recommended by the Society of American Florists.

Pots.		Saucers.	
IN.	EACH.	PER DOZ.	PER 100
2 1/2	\$0 02	\$0 12	\$0 80
3	02	17	1 00
4	03	25	1 60
5	04	45	2 90
6	06	65	4 25
7	09	1 00	7 20
8	12	1 25	9 45
9	15	1 65	13 50
10	25	2 40	17 00
11	30	3 25	22 50
12	40	4 25	30 00

Bulb or Seed Pans.		EACH.
Round, 6 in., per dozen,	\$0.65.....	\$0 07
" 8 "	.....	10
" 10 "	1.55.....	15
" 12 "	2.15.....	20
Square, 6x6 "	.....	20
" 8x8 "	2.50.....	25
" 10x10 "	3.00.....	30
" 12x12 "	4.00.....	40

Pot Saucer.		per M.
Wood fibre, 4 1/2 in., doz.,	\$0 70.....	06
" 6 "	80.....	07
" 8 "	90.....	08
" 10 "	1 05.....	10
" 12 "	1 20.....	12
" 13 "	1 40.....	15

**Rolling Stands** for heavy plants, made of wood fibre.  
 14 inch, each, \$0 75 18 inch, each, \$1.00  
 16 " " .85 20 " " 1.25





# W. W. RAWSON & CO., 12 and 13 Faneuil Hall Square, Boston, Mass.

QUANTITY.	NUMBER OR NAMES.	PRICE.	DOLS. CENTS.	QUANTITY.	NUMBER OR NAMES.	PRICE.	DOLS. CENTS.

REMARKS.

---



---



---



---



---



---



---



---



---



---



Residence of Mr. J. B. Cornish, Wollaston, Mass. This lawn was sown with Arlington Lawn Seed in 1890.

*If the Arlington Lawn Seed is sown this autumn it will produce an excellent growth early next spring.*

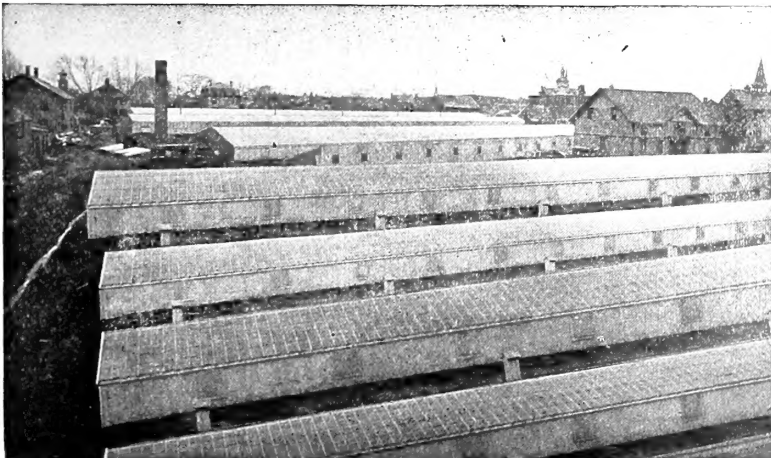
### RAWSON'S ARLINGTON LAWN SEED

is a Mixture of Extra Recleaned Seeds. It has been the aim of this firm to obtain the best mixture of grasses for lawns. The result has been many trials of the different varieties, many changes in our mixtures, as our experience has taught us from time to time, and to-day we are confident that **Rawson's Arlington Lawn Seed** is the best that can be had for obtaining a **beautiful deep green color** in a short time from planting and retaining the same **during the season**. It has no tendency to grow in clumps or stools, as we have allowed no grasses of this nature to be in the mixture. **The Rawson's Arlington Lawn Seed** is made up from **extra recleaned seeds of the close growing varieties**. We have taken special care that no light or slow-growing varieties be included in this mixture, so that when the seed is sown, if the ground is in proper shape, **it will start at once and in a few days look green**.

The **Arlington Lawn Seed** being free from chaff starts at **once before the weeds**. This alone is worth more than the price of seed to anyone seeding a new lawn. It requires less seed to sow the lawn, weighs 32 lbs. to the bush. 1 qt. will sow 600 sq. ft., 30c. 2 qts. will sow 1,300 sq. ft., 55c. 4 qts. will sow 2,700 sq. ft., \$1. 8 qts. will sow 5,400 sq. ft., \$2. 2 bush., or 64 lbs., will sow 1 acre. Price per bush., \$7.50.

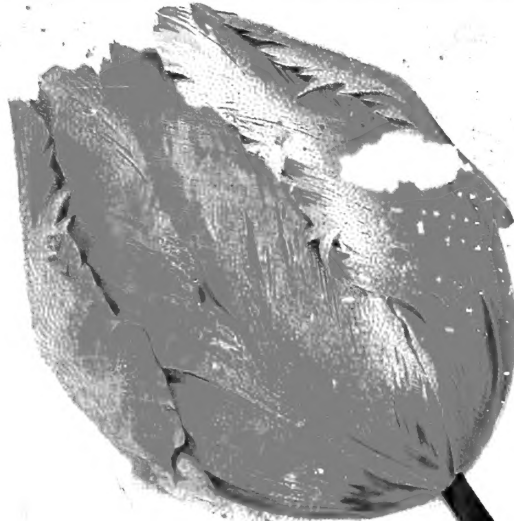
### RAWSON'S VELVET LAWN GRASS MIXTURE.

This mixture has been sold by us for the past sixteen years and has always given satisfaction; it is composed of fine growing grasses. Many of these fine growing varieties, it is well known, have light seed which is almost impossible to obtain free from some chaff, and it is somewhat longer in germinating, but when once above ground, if properly managed, will produce a fine *velvety lawn* and permanent sod. Weighs 16 lbs. to bush. 1 qt. will sow 300 sq. ft., 20c. 2 qts. will sow 650 sq. ft., 35c. 4 qts. will sow 1,350 sq. ft., 65c. 8 qts. will sow 2,700 sq. ft., \$1. Sow 4 bush., or 64 lbs., to the acre. Price per bush., \$4.



A Partial View of our Greenhouses.

The photograph represented here shows only eight of the twenty-five greenhouses at Arlington. Giving, as it does, only a partial view, one can readily imagine the extent of our plant and the facilities we have at Arlington to conduct our plant business. During the winter we use all of these houses in growing vegetables and flowering plants. Many of them are used for growing lettuce and cucumbers. You will notice in the distance, between the last two houses, six electric light poles on which are six large arc lights; these are used at night for forcing the growth of lettuce. We grow the New Hothouse Lettuce, plain leaf, also Rawson's crumpled leaf, introduced by us, which are especially adapted for growing inside. Rawson's White Spine Cucumber is the only variety we grow inside.—W. W. Rawson & Co.



PARROT



YELLOW PRINCE



POTTEBAKER WHITE



POTTEBAKER SCARLET



LA REINE



KEIZER-KROON



MURILLO

**THE ARLINGTON COLLECTION**  
Seven Grand Tulips, we offer one of each variety for 30¢, six of each variety for \$1.50 or one dozen of each variety all with name, for \$2.25 postage paid.