

E

~~DE~~

K
O

COL.

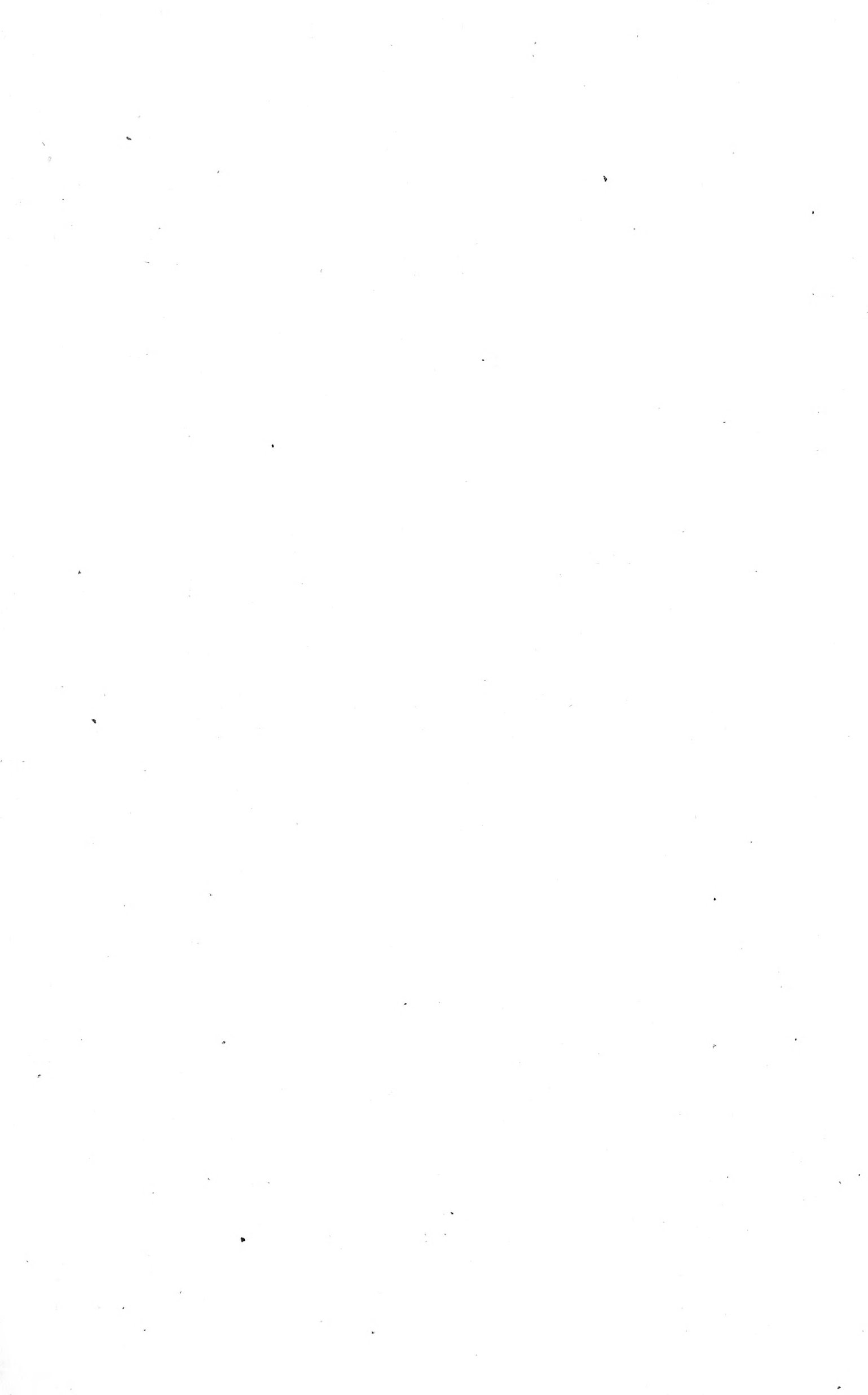
S.33e

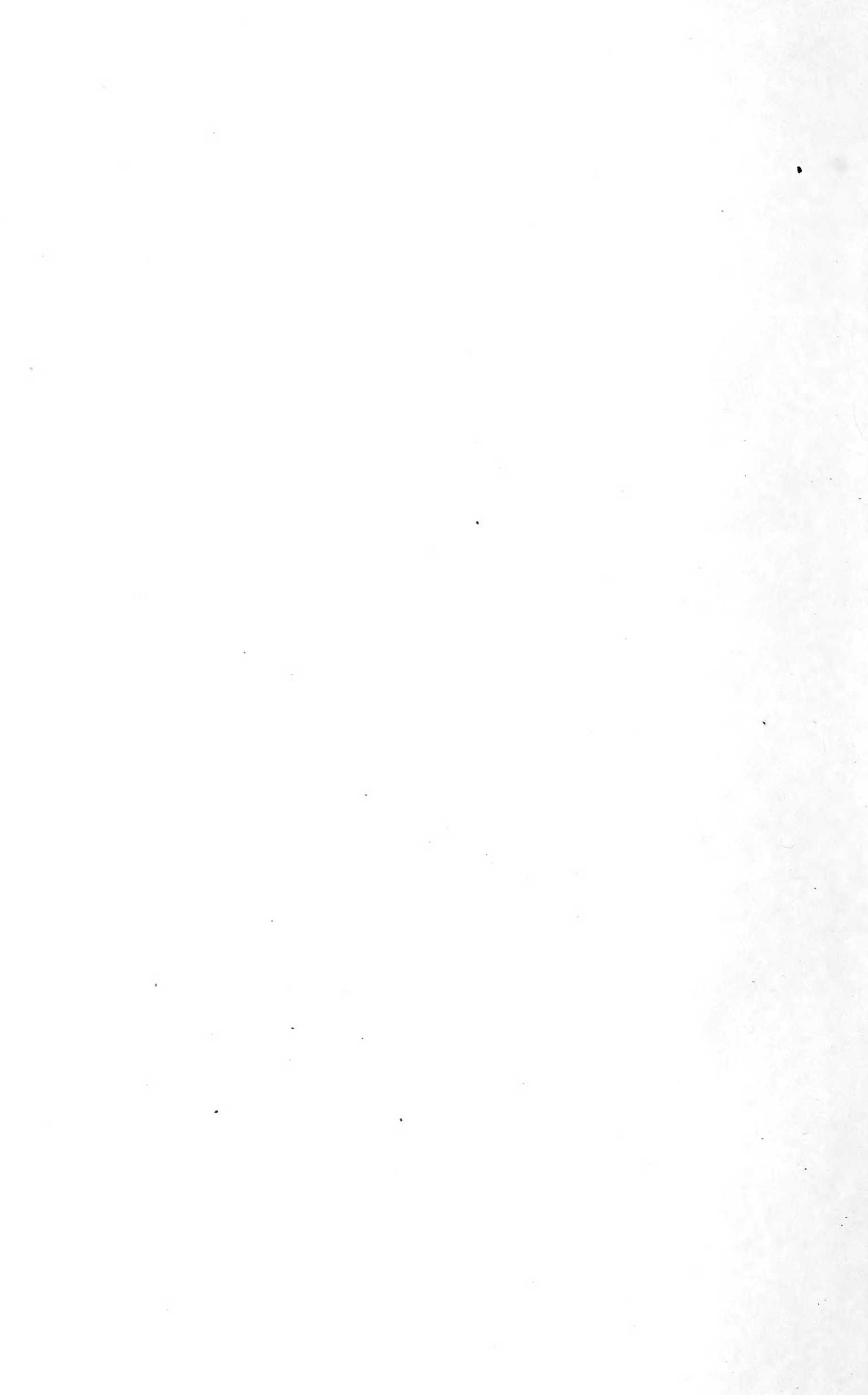


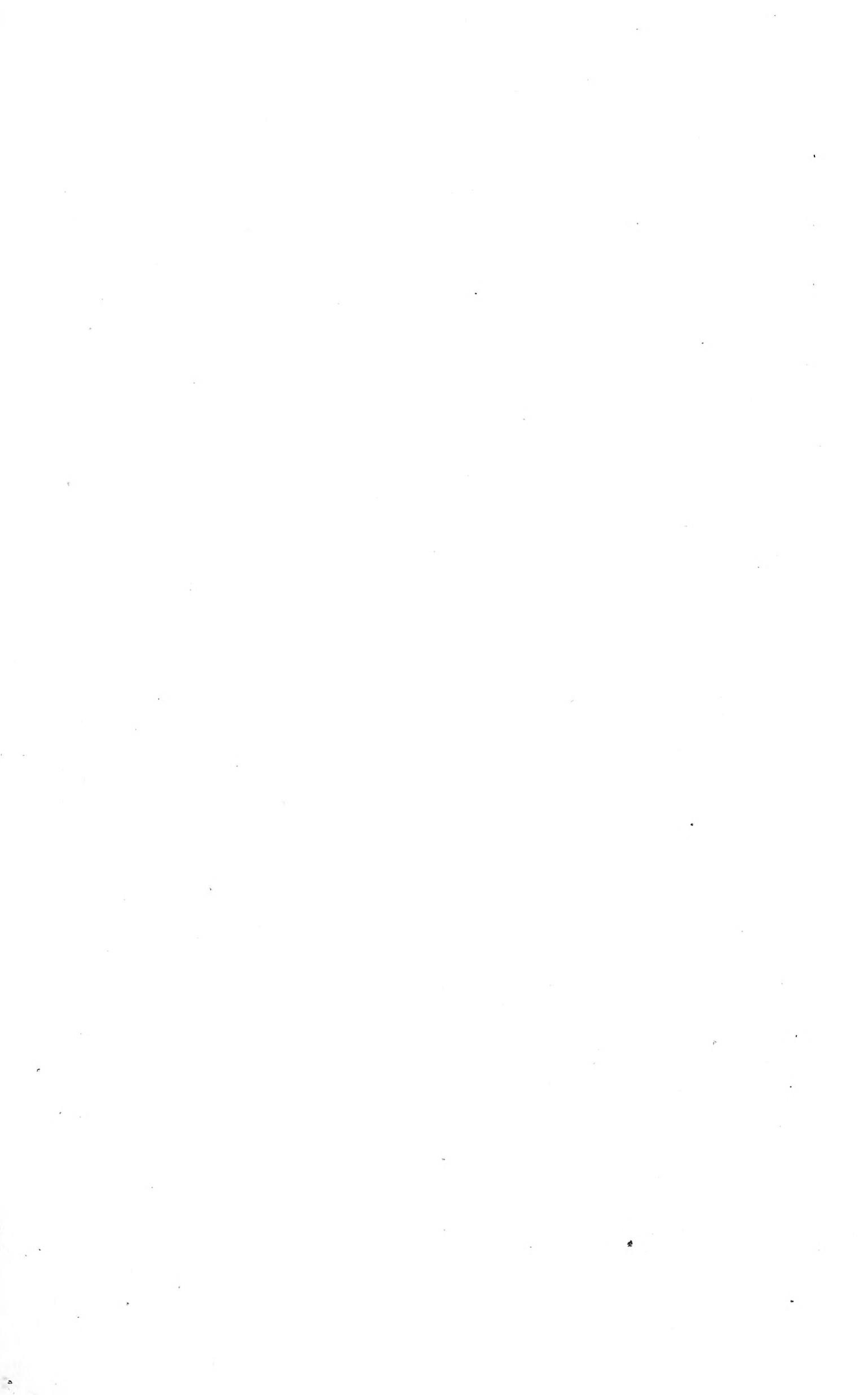
Natural History Museum Library



000017876







Price 1s. 6d.; or printed on one side of the paper
for labels, 2s. 6d.

CATALOGUE

OF

BRITISH COLEOPTERA

BY

D. SHARP, M.A., F.R.S., &c.

AND

W. W. FOWLER, M.A., &c.



LONDON

L. REEVE & CO.

Publishers to the Home, Colonial, and Indian Governments

6 HENRIETTA STREET, COVENT GARDEN

1893

CATALOGUE

OF

BRITISH COLEOPTERA

BY

D. SHARP, M.A., F.R.S., ETC.

AND

W. W. FOWLER, M.A., ETC.



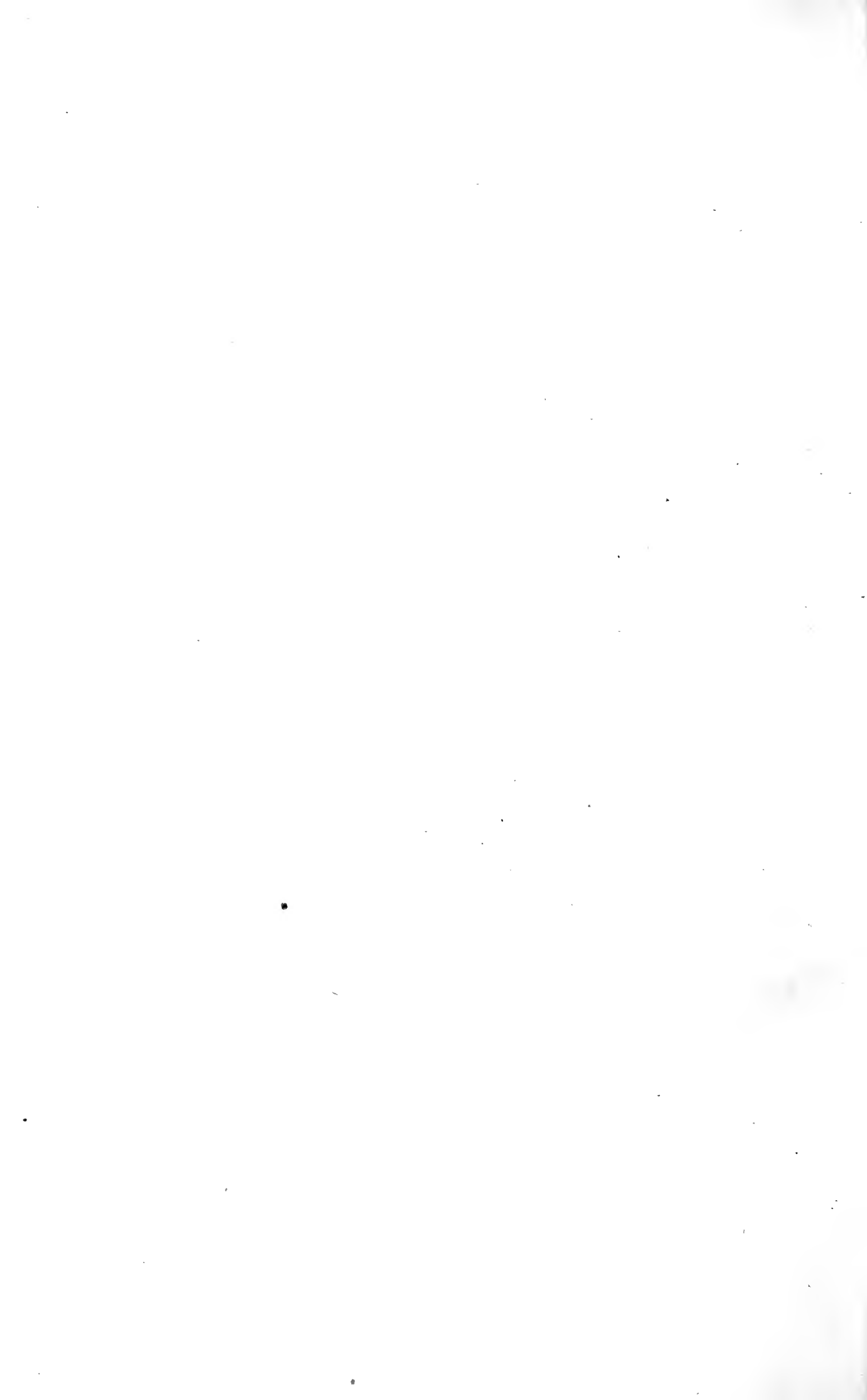
LONDON

L. REEVE & CO.

Publishers to the Home, Colonial, and Indian Governments

6 HENRIETTA STREET, COVENT GARDEN

[1893



BRITISH COLEOPTERA.

CICINDELIDÆ.

Cicindela, L.

- 1 campestris, L.
v. funebris, Sturm.
- 2 sylvatica, L.
- 3 hybrida, L.
- 4 maritima, Dej.
- 5 germanica, L.

CARABIDÆ.

CYCHRINA

Cychnus, F.

- 1 rostratus, L.

CARABINA.

Carabus, auct.

- 1 intricatus, L.
- 2 catenulatus, Scop.
- 3 nemoralis, Müll.
- 4 glabratus, Payk.
- 5 violaceus, L.
v. exasperatus, Duft.
- 6 clathratus, L.
- 7 nitens, L.
- 8 granulatus, L.
- 9 monilis, F.
v. consitus, Panz.
- 10 arvensis, F.

Calosoma, Weber.

- 1 inquisitor, L.
- 2 sycophanta, L.

NOTIOPHILINA.

Notiophilus, Dum.

- 1 biguttatus, F.
- 2 substriatus, Wat.
- 3 4-punctatus Dej.
- 4 aquaticus, L.
- 5 palustris, Duft.
- 6 rufipes, Curt.

NEBRIINA.

Leistus, Fröh.

- 1 spinibarbis, F.
- 2 montanus, Steph.
- 3 fulvibarbis, Dej.
- 4 ferrugineus, L.
- 5 rufescens, F.

Nebria, Latr.

- 1 complanata, L.
- 2 livida, F.
- 3 brevicollis, F.
- 4 gyllenhali, Sch.

Pelophila, Dej.

- 1 borealis, Payk.

ELAPHRINA.

Blethisa, Bon.

- 1 multipunctata, L.

Elaphrus, F.

- 1 riparius, L.
- 2 cupreus, Duft.
- 3 uliginosus, F.
- 4 lapponicus, Gyll.

LORICERINA.

Loricera, Latr.

- 1 pilicornis, F.

SCARITINA.

Clivina, Latr.

- 1 fossor, L.
- 2 collaris, Herbst.

Dyschirius, Bon.

- 1 thoracicus, Rossi.
- 2 obscurus, Gyll.
- + 3 impunctipennis, Daws.
- 4 politus, Dej.
- 5 nitidus, Dej.
- 6 extensus, Putz.
elongatulus, Daws.
- 7 angustatus, Putz.
- + 8 jejunos, Daws.
- 9 salinus, Schaum.
- 9 æneus, Dej.
- 10 globosus, Herbst.

BROSCINA.

Miscodera, Esch.

- 1 arctica, Payk.

Brosicus, Panz.

- 1 cephalotes, L.

PANAGÆINA.

Panagæus, Latr.

- 1 crux-major, L.
- 2 quadripustulatus, Str.

LICININA.

Badister, Clairv.

1 unipustulatus, Bon.

2 bipustulatus, F.

3 sodalis, Duft.

humeralis, Bon.

+ 4 peltatus, Panz.

Licinus, Latr.

1 silphoides, F.

2 depressus, Payk.

CALLISTINA.

Callistus, Bon.

1 lunatus, F.

CHLÆNIINA.

Chlænius, Bon.

1 vestitus, Payk.

2 schrankii, Duft.

3 nigricornis, F.

v. melanocornis, Dej.

4 holosericeus, F.

OODINA.

Oodes, Bon.

1 helopioides, F.

STENOLOPHINA.

Stenolophus, Dej.

1 teutonus, Schr.

2 skrimshiranus, Steph.

+ 3 elegans, Dej.

4 vespertinus, Panz.

Acupalpus, Latr.

1 flavicollis, Sturm.

2 dorsalis, F.

gyllenhali, Thoms.

3 exiguus, Dej.

v. luridus, Dej.

4 brunnipes, Sturm.

5 meridianus, L.

6 consputus, Duft.

Bradycellus, Er.

1 placidus, Gyll.

2 cognatus, Gyll.

3 distinctus, Dej.

4 verbasci, Duft.

5 harpalinus, Dej.

6 collaris, Payk.

7 similis, Dej.

HARPALINA.

Harpalus, Latr.

1 sabulicola, Panz.

2 obscurus, F.

3 rotundicollis, Fairm.

obscurus, Daws.

4 punctatulus, Duft.

5 azureus, F.

6 cordatus, Duft.

7 rupicola, Sturm.

8 puncticollis, Payk.

parallelus, Brit. Cat.

9 rectangulus, Thoms.

puncticollis, Bedel.

10 rufibarbis, F.

brevicollis, Thoms.

11 ruficornis, F.

12 æneus, F.

proteus, Payk.

13 calceatus, Sturm.

14 consentaneus, Dej.

attenuatus, Steph.

15 tenebrosus, Dej.

16 rubripes, Duft.

17 discoideus, F.

18 cupreus, Dej.

19 caspius, Stev.

20 latus, L.

v. metallescens, Rye.

21 quadripunctatus, Dej.

+ 22 melancholicus, Dej.

23 tardus, Panz.

24 servus, Duft.

25 anxius, Duft.

26 serripes, Sch.

27 ignavus, Duft.

honestus, Duft.

28 neglectus, Dej.

29 picipennis, Duft.

vernalis, F.

ANISODACTYLINA.

Dichirotrichus, Duv.

1 obsoletus, Dej.

2 pubescens, Payk.

Scybalicus, Schaum.

1 oblongiusculus, Dej.

Anisodactylus, Dej.

1 binotatus, F.

v. spurcaticornis, Dej.

v. atricornis, Steph.

2 pœciloides, Steph.

Diachromus, Er.

1 germanus, Er.

ZABRINA.

Zabrus, Clairv.

1 gibbus, F.

piger, Daws.

PTEROSTICHINA.

Stomis, Clairv.

1 pumicatus, Panz.

Platyderus, Steph.

1 ruficollis, Marsh.

Pterostichus, auct.

1 cupreus, L.

v. affinis, Sturm.

2 versicolor, Sturm.

3 dimidiatus, Ol.

4 lepidus, F.

5 madidus, F.

6 æthiops, Panz.

7 oblongo-punctatus, F.

8 vitreus, Dej.

- 9 parumpunctatus, Ger.
 cristatus, Duft.
- 10 aterrimus, Payk.
- 11 niger, Schall.
- 12 vulgaris, L.
 melanarius, Ill.
- 13 anthracinus, Ill.
- 14 nigrita, F.
- 15 gracilis, Dej.
- 16 minor, Gyll.
- 17 strenuus, Panz.
 erythropus, Marsh.
- 18 diligens, Sturm.
 strenuus, Daws.
- 19 picimanus, Duft.
- 20 inaequalis, Marsh.
- 21 vernalis, Gyll.
- 22 striola, F.
- AMARINA.
- Amara**, Bon.
- 1 fulva, Dej.
- 2 apricaria, Sturm.
- 3 consularis, Duft.
- 4 spinipes, auct.
 aulica, Panz.
- 5 convexiuscula, Marsh.
- 6 alpina, F.
- 7 patricia, Duft.
- 8 infima, Duft.
- 9 rufocincta, Dej.
- 10 bifrons, Gyll.
 livida, F.
- 11 fusca, Dej.
- 12 quenselii, Sch.

- 13 ovata, F.
- 14 similata, Gyll.
- 15 acuminata, Payk.
- 16 nitida, Sturm.
- 17 tibialis, Payk.
- 18 lunicollis, Schiod.
- 19 curta, Dej.
- 20 spreta, Dej.
- 21 familiaris, Duft.
- 22 lucida, Duft.
- 23 trivialis, Gyll.
- 24 communis, Panz.
- 25 continua, Thoms.
 v. convexior, Steph.
- 26 strenua, Zimm.
- 27 plebeia, Gyll.

ANCHOMENINA.

Calathus, Bon.

- 1 cisteloides, Panz.
- 2 fuscus, F.
- 3 flavipes, Fourc.
- 4 mollis, Marsh.
- 5 melanocephalus, L.

† v. nubigena, Hal.

- 6 micropterus, Duft.
- 7 piceus, Marsh.

Taphria, Bon.

- 1 nivalis, Panz.

Pristonychus, Dej.

- 1 terricola, Herbst.

Sphodrus, Clairv.

- 1 leucophthalmus, L.

Anchomenus, Er.

- 1 angusticollis, F.
 junceus, Scop.

- 2 dorsalis, Müll.

- prasinus, Thunb.

- 3 albipes, F.

- 4 oblongus, Sturm.

- 5 livens, Gyll.

- 6 marginatus, L.

- 7 sexpunctatus, L.

- 8 ericeti, Panz.

- 9 sahlbergi, Chaud.

- 10 parumpunctatus, F.
 laevis, Müll.

- 11 gracilipes, Duft.

- 12 atratus, Duft.

- 13 viduus, Panz.

- v. moestus, Duft.

- 14 versutus, Gyll.

- 15 micans, Nic.

- 16 scitulus, Dej.

- 17 fuliginosus, Panz.

- 18 gracilis, Gyll.

- 19 piceus, L.

- 20 thoreyi, Dej.

- 21 puellus, Dej.

Olisthopus, Dej.

- 1 rotundatus, Payk.

BEMBIDIINA.

Tachys, Schaum.

- 1 focki, Hum.

- 2 scutellaris, Germ.

- 3 bistriatus, Duft.

Lymnæum, Steph.

- 1 nigropiceum, Marsh.

Cillenus, Sam.

- † 1 lateralis, Sam.

Bembidium, auct.

- 1 rufescens, Guér.

- 2 quinquestriatum, Gyll.

- 3 obtusum, Sturm.

- 4 guttula, F.

- 5 mannerheimi, Sahl.

- 6 biguttatum, F.

- 7 riparium, Ol.

- 8 æneum, Germ.
 9 fumigatum, Duft.
 10 assimile, Gyll.
 + 11 clarki, Daws.
 12 sturmi, Panz.
 13 articulatum, Panz.
 14 doris, Panz.
 15 minimum, F.
 16 normannum, Dej.
 + 17 schüppeli, Dej.
 18 gilvipes, Sturm.
 19 lampros, Herbst.
 v. velox, Er.
 20 nigricorne, Gyll.
 21 tibiale, Duft.
 22 atrocæruleum, Steph.
 23 decorum, Panz.
 24 nitidulum, Marsh.
 brunnipes, Sturm.
 25 affine, Steph.
 26 monticola, Sturm.
 + 27 stomoides, Dej.
 28 quadriguttatum, F.
 29 quadripustulatum, Dej.
 30 quadrimaculatum, Gyll.
 31 lunatum, Duft.
 32 testaceum, Duft.
 33 concinnum, Steph.
 34 femoratum, Sturm.
 35 bruxellense, Wesm.
 36 saxatile, Gyll.
 37 anglicanum, Sharp.
 38 littorale, Ol.
 + 39 fluviatile, Dej.
 40 pallidipenne, Ill.
 41 bipunctatum, L.
 42 punctulatum, Drap.

- 43 prasinum, Duft.
 44 ephippium, Marsh.
 45 flammulatum, Clairv.
 46 varium, Ol.
 ustulatum, Sturm.
 47 adustum, Schaum.
 rupestre, Daws.
 + 48 obliquum, Sturm.
 49 paludosum, Panz.

Tachypus, Lac.

- 1 pallipes, Duft.
 2 flavipes, L.

TRECHINA.**Perileptus, Schaum.**

- 1 areolatus, Creutz.

Aëpus, Sam.

- 1 marinus, Ström.
 2 robinii, Lab.

Trechus, Clairv.

- 1 discus, F.
 2 micros, Herbst.
 3 longicornis, Sturm.
 + 4 lapidosus, Daws.
 5 rubens, F.
 6 minutus, F.
 v. obtusus, Er.

- 7 rivularis, Gyll.

- 8 secalis, Payk.

Patrobus, Dej.

- 1 excavatus, Payk.
 2 assimilis, Chaud.
 3 septentrionis, Dej.

Pogonus, Dej.

- 1 luridipennis, Germ.
 2 littoralis, Duft.
 3 chalceus, Marsh.

MASOREINA.**Masoreus, Dej.**

- 1 wetterhalii, Gyll.

CYMINDINA.**Cymindis, Latr.**

- 1 axillaris, F.
 2 vaporariorum, L.

ODACANTHINA.**Odacantha, Payk.**

- 1 melanura, Payk.

LEBINA.**Lebia, Latr.**

- 1 cyanocephala, L.
 2 chlorocephala, Hoff.
 v. chrysocephala, Mots.?
 3 crux-minor, L.
 4 turcica, F.

Aëtophorus, Schm.-Goeb.

- 1 imperialis, Germ.

Demetrius, Bon.

- 1 unipunctatus, Germ.
 monostigma, Sam.
 2 atricapillus, L.

Dromius, Bon.

- 1 longiceps, Dej.
 2 linearis, Ol.
 3 agilis, F.
 4 meridionalis, Dej.
 5 quadrimaculatus, L.
 6 quadrinotatus, Panz.
 7 quadrisignatus, Dej.
 8 melanocephalus, Dej.
 9 nigriventris, Thoms.
 10 sigma, Rossi.
 11 vectensis, Rye.

Blechrus, Mots.

- 1 maurus, Sturm.

Metabletus, Schm.-Goeb.

- 1 foveola, Gyll.
 2 truncatellus, L.
 3 obscuro-guttatus, Duft.

Lionychus, Wiss.

- 1 quadrillum, Duft.

POLYSTICHINA.

Polystichus, Bon.

- 1 vittatus, Brull.

DRYPTINA.

Drypta, F.

- 1 dentata, Rossi.

BRACHININA.

Brachinus, Weber.

- 1 crepitans, L.

HALIPLIDÆ.

Brychius, Thoms.

- 1 elevatus, Panz.

Haliphus, Latr.

- 1 obliquus, F.
 2 confinis, Steph.
 v. varius, Bold.
 3 mucronatus, Steph.
 4 flavicollis, Sturm.
 5 fulvus, F.
 6 variegatus, Sturm.
 7 cinereus, Aubé.
 8 ruficollis, De G.
 9 fluviatilis, Aubé.
 10 striatus, Sharp.
 11 lineatocollis, Marsh.
- Cnemidotus**, Ill.
 1 impressus, F.
 cæsus, Duft.

PELOBIIDÆ.

Pelobius, Schön.

- 1 tardus, Herbst.

DYTISCIDÆ.

NOTERINA.

Noterus, Clairv.

- 1 clavicornis, De G.
 2 sparsus, Marsh.
 capricornis, Herbst?

LACCOPHILINA.

Laccophilus, Leach.

- 1 interruptus, Panz.

minutus, Er.

2 obscurus, Panz.

hyalinus, De G.

3 variegatus, Germ.

HYDROPORINA.

Hydrovatus, Mots.

1 clypealis, Sharp.

Bidessus, Sharp.

- 1 unistriatus, Schr.
 2 minutissimus, Germ.
 3 geminus, F.

Hyphydrus, Ill.

1 ovatus, L.

Cœlambus, Thoms.

- 1 versicolor, Schall.
 reticulatus, F.
 2 quinquelineatus, Zett.
 3 inæqualis, F.
 4 decoratus, Gyll.
 5 confluent, F.
 6 novemlineatus, Steph.
 7 parallelogrammus, Ahr.
 8 impressopunctatus, Sch.
 picipes, F.

Deronectes, Sharp.

- 1 latus, Steph.
 2 assimilis, Payk.
 3 depressus, F.
 4 12-pustulatus, F.
 5 griseo-striatus, De G.

Hydroporus, Clairv.

- 1 pictus, F.
 2 granularis, L.
 3 flavipes, Ol.
 4 lepidus, Ol.
 5 rivalis, Gyll.
 6 septentrionalis, Gyll.
 7 davisii, Curt.
 8 halensis, F.
 9 dorsalis, F.
 10 lineatus, F.

11 scalesianus, Steph.

12 neglectus, Schaum.

13 tristis, Payk.

14 umbrosus, Gyll.

15 angustatus, Sturm.

16 gyllenhali, Schiöd.

17 morio, Dej.

atriceps, Crotch.

18 vittula, Er.

19 palustris, L.

20 incognitus, Sharp.

21 erythrocephalus, J.

22 rufifrons, Duft.

23 longulus, Muls.

celatus, Clark.

24 longicornis, Sharp.

25 melanarius, Sturm.

v. monticola, Sharp.

26 memnonius, Nic.

27 obscurus, Sturm.

28 nigrita, F.

29 discretus, Fairm.

30 pubescens, Gyll.

melanocephalus, Marsh.?

31 planus, F.

32 lituratus, F.

33 marginatus, Duft.

34 ferrugineus, Steph.

35 obsoletus, Aubé.

36 oblongus, Steph.

DYTISCINA.

Agabus, Leach.

- 1 guttatus, Payk.
 2 biguttatus, Ol.
 nitidus, F.
 * 3 paludosus, F.
 4 brunneus, F.
 5 uliginosus, L.
 6 affinis, Payk.
 7 unguicularis, Thoms
 8 didymus, Ol.
 9 congener, Payk.

- 10 nebulosus, Forst.
 11 conspersus, Marsh
 12 striolatus, Gyll.
 13 femoralis, Payk
 14 abbreviatus, F.
 undulatus, Schr
 15 arcticus, Payk.
 16 sturmii, Gyll.
 17 chalconotus, Panz.
 18 melanarius, Aubé.
 tarsatus, Zett.
 19 bipustulatus, L.
 v. solieri, Aubé.
Platambus, Thoms.
 1 maculatus, L.
 v. pulchellus, Heer
Ilybius, Er.
 1 fuliginosus, F.
 2 fenestratus, F.
 3 ater, De G.
 4 obscurus, Marsh.
 v. sexdentatus, Schiodte.
 5 subæneus, Er.
 6 guttiger, Gyll.
 7 ænescens, Thoms.
Copelatus, Er.
 1 agilis, F.
Rhantus, Lac.
 1 grapii, Gyll.
 2 exoletus, Forst.
 3 pulverosus, Steph.
 4 notatus, Berg.
 5 bistriatus, Berg.
 6 adpersus, F.
Colymbetes, Clairv.
 1 fuscus, L.
Dytiscus, L.
 1 punctulatus, F.
 2 marginalis, L.
 3 circumflexus, F.
 4 circumcinctus, Ahr.
 5 lapponicus, Gyll.

- 6 dimidiatus, Berg.
Hydaticus, Leach.
 1 transversalis, Berg.
 2 seminiger, De G.
 hybneri, F.
Acilius, Leach.
 1 sulcatus, L.
 v. scoticus, Curt.
 2 fasciatus, De G.
 canaliculatus, Nic.
Graphoderes, Esch
 1 cinereus, L.

GYRINIDÆ.

- Gyrinus**, Geoff.
 1 minutus, F.
 2 urinator, Ill.
 3 suffriani, Scriba.
 4 colymbus, Er.
 caspius, Sharp.
 5 striolatus, Fowler.
 caspius, Reg. pars.
 6 natator, Scop.
 mergus, Ahr.
 7 elongatus, Aubé.
 8 bicolor, Payk.
 9 marinus, Gyll.
 10 opacus, Sahl.
Orectochilus, Lac.
 1 villosus, Müll.

HYDROPHILIDÆ.

HYDROPHILINA.

- Hydrophilus**, auct.
 1 piceus, L.
Hydrous, auct.
 1 caraboides, L.
Hydrobius, Leach.
 1 fuscipes, L.
 v. æneus, Sol.
 2 picicrus, Thoms.
 3 oblongus, Herbst.

- Paracymus**, Thoms.
 1 nigroæneus, Sahl.
Anacæna, Thoms.
 1 globulus, Payk.
 2 limbata, F.
 variabilis, Sharp.
 3 bipustulata, Steph.
Philydrus, Sol.
 1 testaceus, F.
 2 maritimus, Thoms.
 3 nigricans, Zett.
 4 melanocephalus, Ol.
 5 minutus, F.
 marginellus, Muls.
 6 coarctatus, Gredl.
 v. suturalis, Sharp.
Cymbiodyta, Bed.
 1 ovalis, Thoms.
 marginellus, F.
Enochrus, Thoms.
 1 bicolor, Gyll.
Helochares, Muls
 1 lividus, Forst.
 2 punctatus, Sharp.
Laccobius, Er.
 1 sinuatus, Mots.
 nigriceps, Thoms.
 2 alutaceus, Thoms.
 3 minutus, L.
 4 bipunctatus, F.
Berosus, Leach.
 1 spinosus, Stev.
 2 signaticollis, Charp.
 3 luridus, L.
 4 affinis, Brull.
Limnebius, Leach.
 1 truncatellus, Thoms.
 2 papposus, Muls.
 3 nitidus, Marsh.
 4 picinus, Marsh.
Chætarthria, Steph.
 1 seminulum, Herbst.

HELOPHORINA.

Spercheus, Kug

1 emarginatus, Schall.

Helophorus, F.

- 1 rugosus, Ol.
 2 nubilus, F.
 3 intermedius, Muls.
 4 aquaticus, L.
 v. æqualis, Thoms
 5 dorsalis, Marsh.
 6 æneipennis, Thoms.
 v. planicollis, Thoms.
 v. strigifrons, Thoms.
 v. crenatus, Rey
 7 laticollis, Thoms.
 8 mulsanti, Rye.
 9 affinis, Marsh.
 griseus, Thoms.
 10 brevicollis, Thoms
 granularis, L.
 11 brevipalpis, Bedel.
 granularis, Thoms.
 12 arvernicus, Muls.
 13 nanus, Sturm.
 14 tuberculatus, Gyll.
Hydrochus, Leach.
 1 brevis, Herbst.
 2 elongatus, Schall
 3 carinatus, Germ.
 4 angustatus, Germ.
Henicocerus, Steph.
 1 exsculptus, Germ.
Ocfhebius, Leach.
 1 margipallens, Latr.
 2 poweri, Rye.
 3 marinus, Payk.
 4 pygmæus, F.
 5 bicolor, Germ.
 6 rufimarginatus, Steph.
 7 auriculatus, Rey.
 8 exaratus, Muls.
 9 æneus, Steph.

10 æratus, Steph.

nanus, Steph.

11 punctatus, Steph.

Hydræna, Kug.

- 1 testacea, Curt.
 2 palustris, Er.
 3 riparia, Kug.
 4 nigrita, Germ.
 5 angustata, Sturm.
 6 gracilis, Germ.
 7 atricapilla, Wat.
 8 pygmæa, Wat.
 9 pulchella, Germ.

SPHÆRIDIINA.

Cyclonotum, Er.

1 orbiculare, F.

Sphæridium, F.

- 1 scarabæoides, F.
 2 bipustulatum, F.
 v. marginatum, F.
 v. semistriatum, Cast.

Cercyon, Leach

- 1 littoralis, Gyll.
 2 depressus, Steph.
 3 hæmorrhous, Gyll
 4 hæmorrhoidalis, Herbst.
 5 obsoletus, Gyll.
 6 aquaticus, Muls.
 7 flavipes, F.
 8 lateralis, Marsh.
 9 melanocephalus, L.
 10 unipunctatus, L.
 11 quisquilius, L.
 12 nigriceps, Marsh.
 13 pygmæus, Ill.
 14 terminatus, Marsh.
 15 analis, Payk.
 16 lugubris, Payk.
 17 granarius, Er.
 18 minutus, Muls.

Megasternum, Muls.

1 boletophagum, Marsh.

Cryptopleurum, Muls.

1 atomarium, F.

STAPHYLINIDÆ.

ALEOCHARINA.

Homœusa, Kr.

1 acuminata, Märk.

Aleochara, Grav.

- 1 ruficornis, Grav.
 2 fuscipes, F.
 3 lata, Grav.
 4 brevipennis, Grav.
 v. fumata, Grav
 5 tristis, Grav.
 6 bipunctata, Ol.
 7 cuniculorum, Kr.
 8 maculata, Bris.
 9 lanuginosa, Grav.
 10 lygæa, Kr.

11 villosa, Mann.

12 mœsta, Grav.

13 mycetophaga, Kr.

14 mœrens, Gyll.
fungivora, Sharp.15 brunneipennis, Kr
lugubris, Aubé.

16 nitida, Grav.

v. bilineata, Gyll.

17 morion, Grav.

18 spadicea, Er.

v. procera, Er.

19 grisea, Kr.

20 algarum, Faur.

21 obscurella, Er.

Microglossa, Kr.

1 suturalis, Sahl

2 marginalis, Gyll.

3 pulla, Gyll.

4 nidicola, Fairm.

5 gentilis, Märk.

Oxypoda, auct.

1 spectabilis, Märk

- 2 longipes, Muls.
 3 lividipennis, Mann.
 4 vittata, Märk.
 5 opaca, Grav.
 6 alternans, Grav.
 7 exoleta, Er.
 8 verecunda, Sharp.
 9 edinensis, Sharp.
 10 lentula, Er.
 11 umbrata, Grav.
 12 pectita, Sharp.
 13 nigrina, Wat.
 14 exigua, Er.
 15 mutata, Sharp.
 16 longiuscula, Er.
 17 rupicola, Rye.
 18 formiceticola, Märk.
 19 recondita, Kr.
 20 hæmorrhœa, Mann.
 21 amœna, Fairm.
 22 waterhousei, Rye.
 23 soror, Thoms.
 24 annularis, Sahl.
 25 brachyptera, Steph.
 26 tarda, Sharp.
 27 misella, Er.
- Thiasophila**, Kr.
 1 angulata, Er.
 2 inquilina, Märk.
 kirbyi, Jans.
- Ischnoglossa**, Kr.
 1 proluxa, Grav.
 rufopicea, Kr.
 2 corticina, Er.
- Ocyusa**, Kr.
 1 incrassata, Kr.
 2 hibernica, Rye.
 3 maura, Er.
 4 picina, Aubé.
- Phlœopora**, Er.
 1 reptans, Grav.
 2 corticalis, Grav.
- Ocalea**, Er.
 1 castanea, Er.
 2 latipennis, Sharp.
 3 badia, Er.
- Ilyobates**, Kr.
 1 nigricollis, Payk.
 2 propinquus, Aubé,
 3 forticornis, Lac.
 4 glabriventris, Rye.
- Calodera**, Mann.
 1 nigrita, Mann.
 2 riparia, Er.
 3 æthiops, Grav.
 4 rubens, Er.
 5 umbrosa, Er.
- Chilopora**, Kr.
 1 longitarsis, Steph.
 2 rubicunda, Er.
- Dinarda**, Mann.
 1 märkeli, Kies.
 2 dentata, Grav.
- Atemeles**, Steph.
 1 emarginatus, Payk.
 2 paradoxus, Grav.
- Myrmedonia**, Er.
 1 haworthi, Steph.
 2 collaris, Payk.
 3 limbata, Payk.
 4 funesta, Grav.
 5 humeralis, Grav.
 6 cognata, Märk.
 7 lugens, Grav.
 8 laticollis, Märk.
 9 plicata, Er.
- Astilbus**, Dillw.
 1 canaliculatus, F.
- Callicerus**, Grav.
 1 obscurus, Grav.
 2 rigidicornis, Er.
- Thamiaræa**, Thoms.
 1 cinnamomea, Grav.
- 2 hospita, Märk.
- Notothecta**, Thoms.
 1 flavipes, Grav.
 2 confusa, Märk.
 3 anceps, Er.
- Alianta**, Thoms.
 1 incana, Er.
 2 plumbea, Wat.
- Homalota**, auct.
 1 currax, Kr.
 2 languida, Er.
 3 insecta, Thoms.
 4 pavens, Er.
 5 eichoffi, Scriba.
 6 cambrica, Woll.
 7 planifrons, Wat.
 8 gregaria, Er.
- 9 eximia, Sharp.
 10 fragilis, Kr.
 11 longula, Heer.
 12 delicatula, Sharp.
 13 subtilissima, Kr.
- 14 littorea, Sharp.
 15 imbecilla, Wat.
 16 luteipes, Er.
 17 fallax, Kr.
- 18 luridipennis, Mann.
 19 gyllenhali, Thoms.
 londinensis, Sharp.
 20 hygrotopora, Kr.
 21 elongatula, Grav.
 22 volans, Scrib.
 23 clavipes, Sharp.
 24 tibialis, Heer.
- 25 vestita, Grav.
 26 nitidula, Kr.
 27 alpestris, Heer.
 v. nitidiuscula, Sharp.

- 8 oblongiuscula, Sharp. 63 gemina, Er. 96 sodalis, Er.
 9 silvicola, Fuss. 64 curtipennis, Sharp. 97 humeralis, Kr.
 10 vicina, Steph. 65 vilis, Er. 98 clancula, Er.
 11 crassicornis, Sharp. 66 laticeps, Thoms. atrata, Kr.
 12 pagana, Er. difficilis, Bris. 99 gagatina, Baudi.
 13 graminicola, Gyll. 67 analis, Grav. 100 divisa, Märk.
 14 halobrectha, Sharp. 68 decipiens, Sharp. v. angulata, Blatch.
 15 puncticeps, Thoms. 69 cavifrons, Sharp. 101 nigricornis, Thoms.
 algæ, Hardy 70 simillima, Sharp. 102 ravilla, Er.
 16 princeps, Sharp. 71 soror, Kr. angusticollis, Thoms.
 17 occulta, Er. 72 exilis, Er. 103 palustris, Kies.
 18 fungivora, Thoms. 73 pallens, Redt. 104 corvina, Thoms.
 19 picipes, Thoms. 74 palleola, Er. 105 puberula, Sharp.
 20 excellens, Kr. 75 validiuscula, Kr. 106 atomaria, Kr.
 21 monticola, Thoms. 76 parallela, Mann. 107 perexigua, Sharp.
 22 subglabra, Sharp. 77 depressa, Gyll. 108 *scapularis, Sahl.
 23 nigella, Er. 78 hepatica, Er. 109 subterranea, Muls.
 24 æquata, Er. 79 exarata, Sharp. 110 dilaticornis, Kr.
 25 angustula, Gyll. 80 aquatica, Thoms. 111 testaceipes, Heer.
 26 linearis, Grav. subænea, Sharp. 112 oblita, Er.
 27 pilicornis, Thoms. 81 æneicollis, Sharp. 113 autumnalis, Er.
 28 debilis, Er. 82 xanthoptera, Steph. 114 sericea, Muls.
 29 fallaciosa, Sharp. 83 incognita, Sharp. 115 subtilis, Scriba.
 30 deformis, Kr. 84 valida, Kr. 116 indiscreta, Sharp.
 31 casula, Er. 85 euryptera, Steph. 117 indubia, Sharp.
 32 circellaris, Grav. succicola, Thoms. 118 mortuorum, Thoms.
 33 elegantula, Bris. 86 trinitata, Kr. 119 atricolor, Sharp.
 34 rufo-testacea, Kr. 87 hybrida, Sharp. 120 inquinula, Grav.
 35 hypogæa, Rey. 88 xanthopus, Thoms. 121 nigra, Kr.
 egregia, Rye. 89 triangulum, Kr. 122 hodierna, Sharp.
 36 splendens, Kr. 90 fungicola, Thoms. 123 germana, Sharp.
 37 ægra, Heer. 91 ignobilis, Sharp. 124 celata, Er.
 38 immersa, Heer. 92 diversa, Sharp. 125 sordidula, Er.
 39 cuspidata, Er. 93 boletobia, Thoms. 126 canescens, Sharp.
 40 cribriceps, Sharp. 94 liturata, Steph. 127 cauta, Er.
 nigritula, Gyll. parva, auct.
 41 eremita, Rye. 95 coriaria, Kr. 128 villosula, Kr.
 42 aubei, Bris. 129 setigera, Sharp.

- 130 *lævana*, Muls. 5 *umbratica*, Er.
 131 *cinnamoptera*, Thoms. 6 *atra*, Grav.
 132 *fuscipes*, Heer.
 fimorum, Bris.
 133 *macrocera*, Thoms. 7 *concolor*, Er.
 Xenusa, Rey.
 1 *uvida*, Er.
 2 *sulcata*, Kies.
 134 *atramentaria*, Gyll. **Borboropora**, Kr.
 135 *cadaverina*, Bris. 1 *kraatzi*, Fuss.
 136 *marcida*, Er. **Falagria**, Steph.
 137 *intermedia*, Thoms. 1 *sulcata*, Payk.
 138 *longicornis*, Grav. 2 *sulcatula*, Grav.
 139 *consanguinea*, Epp. 3 *thoracica*, Curt.
 4 *obscura*, Grav.
 140 *sordida*, Marsh. **Autalia**, Steph.
 melanaria, Sharp. 1 *impressa*, Ol.
 141 *testudinea*, Er. 2 *rivularis*, Grav.
 142 *aterrima*, Grav. 3 *puncticollis*, Sharp.
 143 *pygmæa*, Grav. **Encephalus**, Westw.
 144 *muscorum*, Bris. 1 *complicans*, Westw.
 145 *pilosiventris*, Thoms. **Brachida**, Rey.
 1 *notha*, Er.
 146 *laticollis*, Steph. **Gyrophæna**, Mann.
 fusca, auct. 1 *pulchella*, Heer.
 147 *subsINUATA* Er. 2 *affinis*, Mann.
 148 *montivagans*, Woll. 3 *poweri*, Crotch.
 149 *sharpi*, Rye. 4 *gentilis*, Er.
 150 *orbata*, Er. 5 *nana*, Payk.
 151 *fungi*, Grav. 6 *fasciata*, Marsh.
 v. dubia, Sharp. 7 *minima*, Er.
 v. clientula, Er. 8 *lævipennis*, Kr.
 152 *orphana*, Er. 9 *lucidula*, Er.
 153 *cribrata*, Kr. 10 *manca*, Er.
 11 *strictula*, Er.
Schistoglossa, Er. **Agaricochara**, Kr.
 1 *viduata*, Er. 1 *lævicollis*, Kr.
Gnypeta, Thoms. **Placusa**, Er.
 1 *labilis*, Er. 1 *pumilio*, Grav.
 2 *cœrulea*, Sahl. 2 *complanata*, Er.
 3 *infima*, Er.
 4 *denticulata*, Sharp.
Tachyusa, Er. **Epipeda**, Muls.
 1 *constricta*, Er. 1 *plana*, Gyll.
 2 *coarctata*, Er.
 3 *scitula*, Er.
 4 *flavitaris*, Sahl.
- Silusa**, Er.
 1 *rubiginosa*, Er.
Euryusa, Er.
 1 *laticollis*, Heer.
Leptusa, Kr.
 1 *analis*, Gyll.
 2 *fumida*, Er.
Sipalia, Rey.
 1 *ruficollis*, Er.
 2 *testacea*, Bris.
Bolitochara, Mann.
 1 *lucida*, Grav.
 2 *lunulata*, Payk.
 3 *bella*, Märk.
 4 *obliqua*, Er.
Actocharis, Jans.
 1 *readingi*, Sharp.
Arena, Fauv.
 1 *octavii*, Fauv.
Phytosus, Curt.
 1 *spinifer*, Curt.
 2 *balticus*, Kr.
Diglossa, Hal.
 1 *mersa*, Hal.
 2 *submarina*, Fairm.
Hygronoma, Er.
 1 *dimidiata*, Grav.
Oligota, Mann.
 1 *inflata*, Mann.
 2 *parva*, Kr.
 3 *pusillima*, Grav.
 4 *atomaria*, Er.
 5 *punctulata*, Heer.
 ruficornis, Sharp.
 6 *granaria*, Er.
 7 *flavicornis*, Lac.
 8 *apicata*, Er.
Myllæna, Er.
 1 *dubia*, Grav.
 2 *intermedia*, Er.
 3 *minuta*, Grav.
 4 *masoni*, Matth.

- 5 gracilicornis, Fairm.
6 fowleri, Matth.
7 kraatzi, Sharp.
8 elongata, Matth.
9 græca, Kr.
0 gracilis, Matth.
1 infuscata, Matth.
v. minima, Kr.
2 brevicornis, Matth.
- Gymnusa**, Grav.
1 brevicollis, Payk.
2 variegata, Kies.
- Deinopsis**, Matth.
1 erosa, Steph.
- TACHYPORINA.
- Hypocypus**, Mann.
1 longicornis, Payk.
2 læviusculus, Mann.
3 ovulum, Heer.
pygmæus, Kr.
4 seminulum, Er.
5 punctum, Mots.
6 apicalis, Bris.
7 discoideus, Er.
- Conosoma**, Kr.
1 littoreum, L.
2 pubescens, Grav.
3 immaculatum, Steph.
4 pedicularium, Grav.
5 lividum, Er.
6 bipunctatum, Grav.
- Tachyporus**, Grav.
1 obtusus, L.
v. nitidicollis, Steph.
2 formosus, Matth.
3 solutus, Er.
4 pallidus, Sharp.
5 chrysomelinus, L.
6 humerosus, Er.
7 tersus, Er.
8 hypnorum, F.
v. meridionalis, Fairm.
- 9 pusillus, Grav.
10 brunneus, F.
11 transversalis, Grav.
- Lamprinus**, Heer.
1 saginatus, Grav.
- Cilea**, Duv.
1 silphoides, L.
- Tachinus**, Grav.
1 flavipes, F.
2 rufipennis, Gyll.
3 humeralis, Grav.
4 proximus, Kr.
5 pallipes, Grav.
6 frigidus, Er.
7 scapularis, Steph.
8 bipustulatus, F.
9 rufipes, L.
10 subterraneus, L.
v. bicolor, Grav.
11 marginellus, F.
12 laticollis, Grav.
13 collaris, Grav.
14 elongatus, Gyll.
- Megacronus**, Thoms
1 cingulatus, Mann.
2 analis, F.
3 inclinans, Grav.
4 formosus, Grav.
- Bryoporus**, Kr.
1 rugipennis, Pand.
2 castaneus, Hardy
hardyi, Crotch.
3 cernuus, Grav.
- Bolitobius**, Steph.
1 lunulatus, L.
atricapillus, F.
2 tri-notatus, Er.
3 exoletus, Er.
4 pygmæus, F.
- Mycetoporus**, Mann.
1 lucidus, Er.
2 splendens, Marsh.
- 3 punctus, Gyll.
4 lepidus, Grav.
5 longulus, Mann.
6 nanus, Er.
7 monticola, Fowler.
tenuis, Sharp's Cat *nez*
Rey.
8 angularis, Rey.
reyi, Pand.
9 clavicornis, Steph.
v. forticornis, Fauv.
10 splendidus, Grav.
11 longicornis, Kr.
- Habrocerus**, Er.
1 capillaricornis, Grav.
- TRICHOPHYINA.
- Trichophya**, Mann.
1 pilicornis, Gyll.
- STAPHYLININA.
- Acylophorus**, Nord.
1 glabricollis, Boisd.
- Euryporus**, Er.
1 picipes, Payk.
- Heterothops**, Steph.
1 binotata, Er.
2 prævia, Er.
3 dissimilis, Grav.
4 quadripunctula, Gyll.
- Velleius**, Mann.
1 dilatatus, F.
- Quedius**, Leach.
1 longicornis, Kr.
2 microps, Grav.
* chrysurus, Kies.
3 ventralis, Ar.
truncicola, Fairm.
4 lateralis, Grav.
5 mesomelinus, Marsh
v. fagei, Thoms.
6 fulgidus, F.
7 puncticollis, Thoms.

- 8 brevicornis, Thoms.
 9 cruentus, Ol.
 10 xanthopus, Er.
 11 scitus, Grav.
 12 cinctus, Payk.
 impressus, Panz.
 13 brevis, Er.
- 14 fuliginosus, Grav.
 15 tristis, Grav.
 16 molochinus, Grav.
- 17 picipes, Mann.
 18 nigriceps, Kr.
 19 fumatus, Steph.
 peltatus, Er.
 20 maurorufus, Grav.
 21 umbrinus, Er.
 22 suturalis, Kies.
 23 scintillans, Grav.
- 24 auricomus, Kies.
 25 rufipes, Grav.
 26 attenuatus, Gyll.
 v. picipennis, Heer.
 27 semiæneus, Steph.
 28 fulvicollis, Steph.
 29 boops, Grav.
- Quedionuchus**, Sharp.
 1 lævigatus, Gyll.
- Creophilus**, Mann.
 1 maxillosus, L.
 v. ciliaris, Steph.
- Emus**, Curt.
 1 hirtus, L.
- Leistotrophus**, Perty.
 1 nebulosus, F.
 2 murinus, L.
- Staphylinus**, auct.
 1 pubescens, De G.
 2 fulvipes, Scop.
 3 stercorarius, Ol.
- 4 latebricola, Grav.
 5 erythropterus, L.
 6 cæsareus, Ceder.
- Ocypus**, Er.
 1 olens, Müll.
 2 similis, F.
 3 cyaneus, Payk.
 4 brunnipes, F.
 5 fuscatus, Grav.
 6 cupreus, Rossi.
 7 pedator, Grav.
 8 ater, Grav.
 9 morio, Grav.
 10 compressus, Marsh.
- Philonthus**, Curt.
 1 splendens, F.
 2 intermedius, Boisd.
 3 laminatus, Creutz.
- 4 æneus, Rossi.
 5 proximus, Kr.
 succicola, Thoms.
 6 addendus, Sharp.
 7 carbonarius, Gyll.
 8 atratus, Grav.
 9 scutatus, Er.
 10 decorus, Grav.
 11 politus, F.
 12 lucens, Er.
 13 varius, Gyll.
 v. bimaculatus, Grav.
 14 marginatus, F.
 15 lepidus, Grav.
 16 albipes, Grav.
 17 cephalotes, Grav.
 18 nigriventris, Thoms.
 19 fimetarius, Grav.
 20 sordidus, Grav.
 21 fuscus, Grav.
- 22 ebeninus, Grav.
 v. corruscus, Grav.
- 23 corvinus, Er.
 24 fumigatus, Er.
 25 debilis, Grav.
 26 sanguinolentus, Grav.
 27 cruentatus, Gmel.
 28 longicornis, Steph.
 scybalarius, Nord.
 29 varians, Payk.
 30 agilis, Grav.
 31 vernalis, Grav.
 32 ventralis, Grav.
 33 discoideus, Grav.
 34 quisquiliarius, Gyll.
 v. dimidiatus, Er.
 35 splendidulus, Grav.
 36 thermarum, Aubé.
- 37 nigrita, Nord.
 38 fumarius, Grav.
 39 micans, Grav.
 40 astutus, Er.
 41 nigritulus, Grav.
 42 trossulus, Nord.
 43 fulvipes, F.
 44 pullus, Nord.
- 45 punctus, Grav.
 46 puella, Nord.
- Cafius**, Steph.
 1 cicatricosus, Er.
 2 fucicola, Curt.
 3 xantholoma, Grav.
 v. variolosus, Sharp.
 4 sericeus, Holme.
- Actobius**, Fauv.
 1 cinerascens, Grav.
 2 signaticornis, Rey.
 3 villosulus, Steph.
 4 procerulus, Grav.
 5 prolixus, Er.
- Xantholinus**, Serv.
 1 fulgidus, F.

- 2 glabratus, Grav.
 3 punctulatus, Payk.
 4 ochraceus, Gyll.
 5 atratus, Heer.
 6 glaber, Nord.
 7 tricolor, F.
 8 distans, Kr.
 9 linearis, Ol.
 10 longiventris, Heer.
- Nudobius**, Thoms.
 1 lentus, Grav.
- Leptacinus**, Er.
 1 parumpunctatus, Gyll.
 2 batychnus, Gyll.
 3 linearis, Grav.
 4 formicetorum, Märk.
- Baptolinus**, Kr.
 1 alternans, Grav.
- Othius**, Steph.
 1 fulvipennis, F.
 2 læviusculus, Steph.
 3 melanocephalus, Grav.
 4 myrmecophilus, Kies.
- PÆDERINA.
- Lathrobium**, Grav.
 1 elongatum, L.
 2 boreale, Hoch.
 3 fulvipenne, Grav.
 4 rufipenne, Gyll.
 5 angustatum, Lac.
 6 brunnipes, F.
 7 longulum, Grav.
 8 punctatum, Zett.
 9 atripalpe, Sharp.
 10 filiforme, Grav.
 11 quadratum, Payk.
 12 terminatum, Grav.
 v. immaculatum, Fowler.
 13 pallidum, Nord.
 v. jansonii, Crotch.
 14 multipunctum, Grav.
 15 augusticollis, Lac.
- Achenium**, Curt.
 1 depressum, Grav.
 2 humile, Nic.
- Cryptobium**, Mann.
 1 glaberrimum, Herbst.
 fracticorne, Payk.
- Stilicium**, Latr.
 1 fragilis, Grav.
 2 rufipes, Germ.
 3 orbiculatum, Er.
 4 simile, Er.
 5 subtile, Er.
 6 affine, Er.
 7 geniculatum, Er.
- Scopæus**, Er.
 1 erichsonii, Kol.
 2 rubidus, Rey.
 ryei, Woll.
 3 sulcicollis, Steph.
 4 cognatus, Rey.
- Medon**, Steph.
 1 castaneus, Grav.
 2 pocofer, Payk.
 maritimus, Aubé.
 3 dilutus, Er.
 4 piceus, Kr.
 5 brunneus, Er.
 6 fuscus, Mann.
 7 ripicola, Kr.
 8 apicalis, Kr.
 9 propinquus, Bris.
 10 melanocephalus, F.
 11 obsoletus, Nord.
- Lithocharis**, Lac.
 1 ochracea, Grav.
- Sunius**, Steph.
 1 filiformis, Latr.
 2 intermedius, Er.
 3 diversus, Aubé.
 4 angustatus, Payk.
- Pæderus**, F.
 1 littoralis, Grav.
- 2 riparius, L.
 3 fuscipes, Curt.
 4 caligatus, Er.
- EVÆSTHETINA.
- Evæsthetus**, Grav.
 1 scaber, Thoms.
 2 ruficapillus, Lac.
 3 læviusculus, Mann.
- STENINA.
- Dianous**, Curt.
 1 cœrulescens, Gyll.
- Stenus**, Latr.
 1 biguttatus, L.
 2 bipunctatus, Er.
 3 guttula, Müll.
 4 bimaculatus, Gyll.
 5 asphaltinus, Er.
 6 junco, F.
 7 ater, Mann.
 8 longitarsis, Thoms.
 9 guynemeri, Duv.
 10 proditor, Er.
 11 speculator, Er.
 12 providus, Er.
 v. rogeri, Kr.
 13 lustrator, Er.
 14 buphthalmus, Grav.
 15 melanopus, Marsh.
 16 incrassatus, Er.
 17 melanarius, Steph.
 cinerascens, Er.
 18 incanus, Er.
 19 morio, Grav.
 20 atratulus, Er.
 21 canaliculatus, Gyll'.
 22 nitens, Steph.
 æmulus, Er.
 23 pusillus, Er.
 24 exiguus, Er.
 25 fuscipes, Grav.
 26 circularis, Grav.

- 27 vafellus, Er.
 28 declaratus, Er.
 29 crassus, Steph.
 crassiventris, Thoms.
 v. littoralis, Thoms.
 30 opticus, Grav.
 31 carbonarius, Gyll.
 32 argus, Grav.
 33 nigrutilus, Gyll.
 34 brunnipes, Steph.
 unicolor, Er.
 35 subæneus, Ev.
 gonymelas, Steph.
 36 ossium, Steph.
 impressipennis, Duv.
 37 fuscicornis, Er.
 38 glacialis, Heer.
 39 geniculatus, Grav.
 40 palustris, Er.
 41 impressus, Germ.
 42 ærosus, Er.
 annulatus, Crotch.
 43 erichsoni, Rye.
 44 pallipes, Grav.
 45 flavipes, Steph.
 filum, Er.
 46 pubescens, Steph.
 47 binotatus, Ljun.
 48 canescens, Ros.
 major, Rey.
 49 pallitarsis, Steph.
 v. niveus, Fauv.
 50 bifoveolatus, Gyll.
 51 nitidiusculus, Steph.
 tempestivus, Er.
 52 picipennis, Er.
 53 picipes, Steph.
 rusticus, Er.
 54 foveicollis, Kr.
 brevicornis, Sharp's Cat.
 55 kiesenwetteri, Ros.
- 56 cicindeloides, Grav.
 57 similis, Herbst.
 58 solutus, Er.
 59 tarsalis, Ljun.
 60 paganus, Er.
 61 latifrons, Er.
 62 oscillator, Rye.
 63 fornicatus, Steph.
- OXYPORINA.
- Oxyporus**, F.
 1 rufus, L.
- OXYTELINA.
- Bledius**, Mann.
 1 taurus, Germ.
 2 spectabilis, Kr.
 3 tricornis, Herbst.
 4 unicornis, Germ.
 5 bicornis, Germ.
 6 arenarius, Payk.
 7 pallipes, Grav.
 8 fuscipes, Rye.
 9 subterraneus, Er.
 10 longulus, Er.
 11 fracticornis, Payk.
 12 femoralis, Gyll.
 13 opacus, Block.
 14 atricapillus, Germ.
 15 crassicollis, Lac.
 16 dissimilis, Er.
 v. nigricans, Er.
 17 erraticus, Er.
- Platystethus**, Mann.
 1 arenarius, Fourc.
 2 cornutus, Gyll.
 3 capito, Heer.
 4 nodifrons, Sahl.
 5 nitens, Sahl.
- Oxytelus**, Grav.
 1 rugosus, Grav.
 v. terrestris, Lac.
 2 insecatus, Grav.
 3 fulvipes, Er.
- 4 sculptus, Grav.
 5 laqueatus, Marsh.
 6 piceus, L.
 7 inustus, Grav.
 8 sculpturatus, Grav.
 9 maritimus, Thoms.
 10 nitidulus, Grav.
 11 complanatus, Er.
 12 clypeonitens, Pand.
 speculifrons, Rye.
 13 speculifrons, Kr.
 14 tetracarinatus, Block.
 15 fairmairei, Pand.
- Haploderus**, Steph.
 1 cœlatus, Grav.
- Ancyrophorus**, Kr.
 1 omalinus, Er.
 2 aureus, Fauv.
 longipennis, Wat.
- Trogophlœus**, Mann.
 1 arcuatus, Steph.
 2 bilineatus, Steph.
 3 rivularis, Mots.
 bilineatus, Er.
 4 elongatulus, Er.
 5 fuliginosus, Grav.
 6 foveolatus, Sahl.
 7 corticinus, Grav.
 8 halophilus, Kies.
 9 pusillus, Grav.
 10 tenellus, Er.
 11 subtilis, Er.
- Thinobius**, Kies.
 1 major, Kr.
 2 linearis, Kr.
 3 brunneipennis, Kr.
 4 longipennis, Heer.
 5 brevipennis, Kies.
- Syntomium**, Er.
 1 æneum, Müll.
- Coprophilus**, Kr.
 1 striatulus, F.

Acrognathus, Er.
 1 mandibularis, Gyll.
Compsochilus, Kr.
 1 palpalis, Er.

OMALIINA.

Deleaster, Er.
 1 dichrous, Grav.
 v. leachii, Curt.
Anthophagus, Grav.
 1 testaceus, Grav.
 2 alpinus, Payk.
Geodromicus, Redt.
 1 nigrita, Müll.
 2 globulicollis, Mann.
Lesteva, Kr.
 1 longelytrata, Goeze.
 2 sharpi, Rye.
 3 pubescens, Mann.
 4 sicala, Er.
 punctata, Brit. Cat.
 5 punctata, Er.
 muscorum, Duv.

Acidota, Steph.
 1 crenata, F.
 2 cruentata, Mann.
 v. ferruginea, Er.

Olophrum, Er.
 1 piceum, Gyll.
 2 fuscum, Grav.
 3 consimile, Gyll.

Lathrimæum, Er.
 1 atrocephalum, Gyll.
 2 unicolor, Steph.

Deliphrum, Er.
 1 tectum, Payk.
 2 crenatum, Grav.

Arpedium, Er.
 1 brachypterum, Grav.

Micralymma, Westw.
 1 brevipenne, Gyll.

Philorhinum, Kr.

1 sordidum, Steph.
 humile, Er.
Eudectus, Redt.
 1 whitei, Sharp.
Coryphium, Steph.
 1 angusticolle, Steph.
Omalium, auct.
 1 rivulare, Payk.
 2 rugulipenne, Rye.
 3 læviusculum, Gyll.
 4 septentrionis, Thoms.
 5 riparium, Thoms.
 6 allardi, Fairm.
 7 exiguum, Gyll.
 8 oxyacanthæ, Grav.
 9 excavatum, Steph.
 fossulatum, Er.
 10 cæsum, Grav.
 11 nigriceps, Kies.
 12 pusillum, Grav.
 13 punctipenne, Thoms.
 14 monilicorne, Gyll.
 15 rufipes, Fourc.
 florale, Payk.
 v. nigrum, Grav.
 16 salicis, Gyll.
 17 vile, Er.
 v. heeri, Rey.
 18 brevicorne, Er.
 19 gracilicorne, Fairm.
 20 iopterum, Steph.
 21 planum, Payk.
 22 pineti, Thoms.
 23 concinnum, Marsh.
 24 deplanatum, Gyll.
 25 testaceum, Er.
 26 striatum, Grav.
Hapalaræa, Thoms.
 1 pygmæa, Gyll.

Acrulia, Thoms.

1 inflata, Gyll.

Eusphalerum, Kr.

1 primulæ, Steph.
Anthobium, Steph.
 1 minutum, F.
 2 lapponicum, Mann.
 3 ophthalmicum, Payk.
 4 torquatum, Marsh.
 5 sorbi, Gyll.

PROTEININA.

Proteinus, Latr.
 1 ovalis, Steph.
 brevicollis, Er.
 2 brachypterus, F.
 3 macropterus, Gyll.
 4 atomarius, Er.
Megarthus, Steph.
 1 denticollis, Beck.
 2 affinis, Mill.
 3 depressus, Lac.
 4 sinuatocollis, Lac.
 5 hemipterus, Ill.

Phlæobium, Lac.
 1 clypeatum, Müll.

PHLÆOCHARINA.

Phlæocharis, Mann.
 1 subtilissima, Mann.
Pseudopsis, Newm.
 1 sulcata, Newm.

PIESTINA.

Prognatha, Latr.
 1 quadricornis, Lac.

PSELAPHIDÆ.

PSELAPHINA.

Pselaphus, Herbst.
 + 1 heisei, Herbst.
 + 2 dresdensis, Herbst.
Tychus, Leach.
 + 1 niger, Payk.
Bythinus, Leach.
 1 glabratus, Rye

- + 2 puncticollis, Denny.
- 3 validus, Aubé.
- + 4 bulbifer, Reich.
- + 5 curtisi, Denny.
- + 6 securiger, Reich.
- + 7 burrelli, Denny.

Batrisus, Aubé.

- 1 venustus, Reich.

Bryaxis, Saulcy.

- + 1 sanguinea, L.
- 2 waterhousei, Rye.
- + 3 fossulata, Reich.
v. rufescens, Reich.
- 4 helferi, Schmidt.
- 5 cotus, Saulcy.
lefebvrei, Sharp.
- + 6 hæmatica, Reich.
- + 7 juncorum, Leach.
- + 8 impressa, Panz.

Trichonyx, Chaud.

- 1 markeli, Aubé.
- 2 sulcicollis, Reich.

Trimium, Aubé.

- + 1 brevicorne, Reich.
♀ brevipenne, Chaud.

Bibloporus, Thoms.

- + 1 bicolor, Denny.

Euplectus, Leach.

- + 1 kunzei, Aubé.
- 2 duponti, Aubé.
- 3 punctatus, Muls.
- + 4 karsteni, Reich.
- + 5 signatus, Reich.
- + 6 nanus, Reich.
- + kirbyi, Wat.
- + 7 sanguineus, Denny.
- 8 piceus, Mots.
nigricans, Chaud.
- 9 nubigena, Reitt.
- 10 ambiguus, Reich.
- 11 minutissimus, Aubé.

CLAVIGERINA.**Claviger**, Preyss.

- 1 testaceus, Preyss.
- + foveolatus, Müll.

SCYDMÆNIDÆ.**Neuraphes**, Thoms.

- + 1 elongatulus, Müll.
- 2 angulatus, Müll.
- 3 rubicundus, Muls.
- 4 carinatus, Muls.
- + 5 sparshalli, Denny.
v. minutus, Chaud.
pumilio, Schaum.
- 6 longicollis, Mots.
præteritus, Rye.

Scydmænus, auct.

- 1 godarti, Latr.
- + 2 scutellaris, Müll.
- + 3 collaris, Müll.
- + 4 pusillus, Müll.
- 5 poweri, Fowler.
- 6 exilis, Er.

Euconnus, Thoms.

- + 1 denticornis, Müll.
- + 2 hirticollis, Ill.
- 3 fimetarius, Chaud.
- 4 nanus, Schaum.

Eumicrus, auct.

- + 1 tarsatus, Müll.
- 2 rufus, Müll.

Eutheia, Steph.

- 1 scydmænoides, Steph.
- 2 clavata, Reitter.
- 3 schaumii, Kies.
- 4 plicata, Gyll.

Cephennium, Müll.

- + 1 thoracicum, Müll.

LEPTINIDÆ.**Leptinus**, Müll.

- 1 testaceus, Müll.

SILPHIDÆ.**CLAMBINA.****Calyptomeres**, Redt.

- 1 dubius, Marsh.

Clambus, Fisch.

- 1 pubescens, Redt.
- 2 armadillo, De G.
- 3 minutus, Sturm.

ANISOTOMINA.**Agathidium**, Ill.

- 1 nigripenne, Kug.
- 2 atrum, Payk.
- 3 seminulum, L.
- 4 lævigatum, Er.
- 5 marginatum, Sturm.
- 6 confusum, Bris.
- 7 varians, Beck.
- 8 convexum, Sharp.
- 9 rotundatum, Gyll.
- 10 nigrinum, Sturm.
v. staphylæum, Gyll.
- 11 rhinoceros, Sharp.

Amphicyllis, Er.

- 1 globus, F.
v. ferrugineum, Sturm.

Liodes, auct.

- 1 humeralis, Kug.
- 2 glabra, Kug.
- 3 castanea, Herbst.
- 4 orbicularis, Herbst.

Cyrtusa, Er.

- 1 minuta, Ahr.
- 2 pauxilla, Schmidt.

Anisotoma, auct.

- 1 cinnamomea, Er.
- 2 oblonga, Er.
grandis, Fairm.
- 3 picea, Ill.
- 4 dubia, Kug.
v. bicolor, Schmidt.
v. longipes, Schmidt.

- 5 obesa, Schmidt.
 6 badia, Sturm.
 7 similata, Rye.
 8 scita, Er.
 9 ovalis, Schmidt.
 10 brunnea, Sturm.
 11 clavicornis, Rye.
 12 punctulata, Gyll.
 litura, Steph.
 13 calcarata, Er.
 14 curvipes, Schmidt.
 macropus, Rye.
 15 rubiginosa, Schmidt.
 16 nigrita, Schmidt.
 17 silesiaca, Kr.
 18 curta, Fairm.
 19 lunicollis, Rye.
 20 triepkei, Schmidt.
 21 pallens, Sturm.
 22 rugosa, Sahlb.
 23 parvula, Sahlb.
 24 ciliaris, Schmidt.
 25 furva, Er.

Colenis, Er.

- 1 dentipes, Gyll.

Agaricophagus, Schmidt.

- 1 cephalotes, Schmidt.
 2 conformis, Er.

Hydnobius, Schmidt.

- 1 perrisi, Fairm.
 2 punctatissimus, Steph.
 3 punctatus, Sturm.
 4 strigosus, Schmidt.

Triarthron, Märk.

- 1 märkeli, Schmidt.

SILPHINA.**Necrophorus, auct.**

- 1 germanicus, L.
 2 humator, F.
 3 mortuorum, F.
 4 vestigator, Heer.

- 5 ruspator, Er.
 v. microcephalus, Thoms.
 6 interruptus, Steph.
 v. gallicus, Duv.
 7 vespillo, L.

Necrodes, Wilkin.

- 1 littoralis, L.

Silpha, auct.

- 1 tristis, Ill.
 2 nigrita, Creutz.
 3 obscura, L.
 4 quadripunctata, L.
 5 reticulata, F.
 6 opaca, L.
 7 thoracica, L.
 8 rugosa, L.
 9 sinuata, F.
 10 dispar, Herbst.
 11 lævigata, F.
 12 atrata, L.
 v. brunnea, Herbst.
 v. subrotundata, Steph.

CHOLEVINA.**Choleva, auct.**

- 1 angustata, F.
 sturmi, Bris.
 2 cisteloides, Fröhl.
 3 intermedia, Kr.
 4 spadicea, Sturm.
 5 agilis, Ill.
 6 velox, Spence.
 7 wilkini, Spence.
 8 anisotomoides, Spence.

- 9 fusca, Panz.
 10 nigricans, Spence.
 11 longula, Kell.
 12 coracina, Kell.
 13 morio, F.
 14 grandicollis, Er.
 15 nigrita, Er.

- 16 tristis, Panz.
 17 kirbyi, Spence.
 18 chrysomeloides, Panz.
 19 fumata, Spence.
 20 watsoni, Spence.

- 21 colonoides, Kr.

Ptomaphagus, Hellw.

- 1 sericeus, F.
 2 varicornis, Ros.

Colon, Herbst.

- 1 viennense, Herbst.
 2 serripes, Sahl.
 3 puncticolle, Kr.
 4 angulare, Er.
 5 microps, Czwal.
 6 rufescens, Kr.
 7 dentipes, Sahl.
 v. zebei, Kr.
 v. barnevillei, Latr.
 8 brunneum, Latr.
 9 appendiculatum, Sahl.
 10 calcaratum, Er.
 11 denticulatum, Kr.
 12 latum, Kr.

Bathyscia, Schiödte.

- 1 wollastoni, Jans.

SYNTELIIDÆ.**Sphærites, Duft.**

- 1 glabratus, F.

HISTERIDÆ.**Hister, L.**

- 1 quadrimaculatus, L.
 2 unicolor, L.
 3 merdarius, Hoff.
 4 cadaverinus, Hoff.
 5 succicola, Thoms.
 6 stercorarius, Hoff.
 7 purpurascens, Herbst.

- 8 marginatus, Er.
 9 neglectus, Germ.
 10 carbonarius, Ill.
 11 bissexstriatus, F.
 12 12-striatus, Schr.
 v. 14-striatus, Gyll.
 13 bimaculatus, L.
Carcinops, Mars.
 1 minima, Aubé.
 2 14-striata, Steph.
Paromalus, Er.
 1 flavicornis, Herbst.
 2 parallelopipedus, Herbst.
Hetærius, Er.
 1 sesquicornis, Preys.
 ferrugineus, Ol.
Dendrophilus, Leach.
 1 punctatus, Herbst.
 2 pygmæus, L.
Myrmetes, Mars.
 1 piceus, Payk.
Gnathoncus, Duv.
 1 nannetensis, Mars.
 2 punctulatus, Thoms.
Saprinus, Er.
 1 nitidulus, Payk.
 2 æneus, F.
 3 immundus, Gyll.
 4 virescens, Payk.
 5 quadristriatus, Hoff.
 6 metallicus, Herbst.
 7 rugifrons, Payk.
 8 maritimus, Steph.
Teretrius, Er.
 1 picipes, F.
Plegaderus, Er.
 1 dissectus, Er.
Abræus, Leach.
 1 globosus, Hoff.
 2 granulum, Er.
Acritus, Leach.
 1 punctum, Aubé.
 2 minutus, Herbst.
 3 nigricornis, Hoff.
Onthophilus, Leach.
 1 sulcatus, F.
 2 striatus, F.
- SCAPHIDIIDÆ.**
- Scaphidium**, Ol.
 1 quadrimaculatum, Ol.
Scaphisoma, Leach.
 1 agaricinum, L.
 2 boleti, Panz.
 3 assimile, Er.
- TRICHOPTERYGIDÆ**
- Pteryx**, Matth.
 1 suturalis, Heer.
Actinopteryx, Matth.
 1 fucicola, All.
Ptinella, Mots.
 1 testacea, Heer.
 proteus, Matth.
 2 maria, Matth.
 3 denticollis, Fairm.
 4 britannica, Matth.
 5 aptera, Guer.
 6 angustula, Gill.
 7 tenella, Er.
Trichopteryx, Kirby.
 1 saræ, Matth.
 2 championis, Matth.
 3 thoracica, Matth.
 4 atomaria, De G.
 5 brevicornis, Mots.
 6 convexiuscula, Mots.
 7 anthracina, Matth.
 8 fratercula, Matth.
 9 grandicollis, Mann.
 10 lata, Mots.
 11 cantiana, Matth.
 12 fascicularis, Herbst.
 13 lætitia, Matth.
- 14 seminitens, Matth.
 15 attenuata, Gill.
 16 volans, Mots.
 17 sericans, Heer.
 18 brevis, Mots.
 19 bovina, Mots.
 20 brevipennis, Er.
 21 kirbyi, Matth.
 22 longicornis, Mann.
 23 edithia, Matth.
 24 longula, Matth.
 25 picicornis, Mann.
 26 carbonaria, Matth.
 27 jansoni, Matth.
 28 montandonii, All.
 29 rivularis, All.
 30 guerinii, All.
 31 obscæna, Woll.
 32 fuscula, Matth.
 33 waterhousei, Matth.
 34 chevrolati, All.
 35 suffocata, Hal.
 36 dispar, Matth.
 37 ambigua, Matth.
 38 poweri, Matth.
 39 variolosa, Muls.
Smicrus, Matth.
 1 filicornis, Fairm.
Microptilium, Matth.
 1 pulchellum, All.
Nephanes, Thoms.
 1 titan, Newm.
Ptilium, Er.
 1 kunzei, Heer.
 2 brevicolle, Matth.
 3 rugulosum, All.
 4 spencei, All.
 5 marginatum, Aubé.
 6 caledonicum, Sharp.
 7 cæsum, Er.
 8 affine, Er.
 9 exaratum, All.

- 10 myrmecophilum, All.
 11 insigne, Matth.
 12 foveolatum, All.
 13 halidayi, Matth.
Millidium, Mots.
 1 trisulcatum, Aubé
Actidium, Matth.
 1 coaretatum, Hal.
 2 concolor, Sharp.
Euryptilium, Matth.
 1 saxonicum, Gill.
Nossidium, Er.
 1 pilosellum, Marsh.
Ptenidium, Er.
 1 punctatum, Gyll.
 2 fuscicorne, Er.
 3 nitidum, Heer.
 pusillum, Gill.
 4 lævigatum, Gyll.
 5 evanescens, Marsh.
 apicale, Er.
 6 atomaroides, Mots.
 7 wankowiezii, Matth.
 intermedium, Wank.
 8 kraatzi, Matth.
 9 formicetorum, Kr.
 10 turgidum, Thoms.
 11 gressneri, Er.

SPHÆRIIDÆ.

- Sphærius**, Matth.
 1 acaroides, Matth.

CORYLOPHIDÆ.

- Orthoperus**, Steph.
 1 kluki, Wank.
 2 brunnipes, Gyll.
 3 mundus, Matth.
 4 corticalis, Redt.
 5 punctatulus, Matth.
 6 atomus, Gyll.
 7 coriaceus, Rey.

- 8 atomarius, Heer.
Corylophus, Steph.
 1 cassidioides, Marsh.
 2 sublævipennis, Duv.
Sericoderus, Steph.
 1 lateralis, Gyll.
Sacium, Lec.
 1 pusillum, Gyll.

COCCINELLIDÆ.

- Subcoccinella**, Huber.
 1 24-punctata, L.
 globosa, Schneid.
Hippodamia, Muls.
 1 13-punctata, L.
 2 variegata, Goeze.
 mutabilis, Scriba.
Anisosticta, Dup.
 1 19-punctata, L.
Adalia, Muls.
 1 obliterateda, L.
 v. fenestrata, Weise.
 2 bothnica, Payk.
 v. crucifera, Weise.
 3 bipunctata, L.
Mysia, Muls.
 1 oblongoguttata, L.
Anatis, Muls.
 1 ocellata, L.

- Coccinella**, auct.
 1 10-punctata, L.
 variabilis, Ill.
 2 hieroglyphica, L.
 3 11-punctata, L.
 4 5-punctata, L.
 5 7-punctata, L.
 6 distincta, Fald.
 labilis, Muls.

- Halyzia**, Muls.
 1 12-guttata, Poda.
 2 16-guttata, L.
 3 14-guttata, L.

- 4 18-guttata, L.
 5 conglobata, L.
 14-punctata, L.
 6 22-punctata, L.
Micraspis, Redt.
 1 16-punctata, L.
 v. 12-punctata, L.
Hyperaspis, Redt.
 1 reppensis, Herbst.
Scymnus, Kug.
 1 pulchellus, Herbst.
 2 redtenbacheri, Muls.
 ? mulsanti, Wät.
 3 nigrinus, Kug.
 4 pygmæus, Fourc.
 rubromaculatus, Goeze.
 5 frontalis, F.
 6 arcuatus, Rossi.
 7 suturalis, Thunb.
 discoideus, Ill.
 v. limbatus, Steph.
 8 lividus, Bold.
 9 testaceus, Mots.
 v. scutellaris, Muls.
 10 hæmorrhoidalis, Herbst.
 11 capitatus, F.
 12 ater, Kug.
 13 minimus, Rossi.
Platynaspis, Redt.
 1 luteorubra, Goeze.
 villosa, Fourc.
Chilocorus, Leach.
 1 similis, Rossi.
 renipustulatus, Scriba.
 2 bipustulatus, Ill.
Exochomus, Redt.
 1 quadripustulatus, L.
Rhizobius, Steph.
 1 litura, F.
Coccidula, Kug.
 1 rufa, Herbst.
 2 scutellata, Herbst.

ENDOMYCHIDÆ.**Symbiotes**, Redt.1 *latus*, Redt.**Mycetæa**, Steph.1 *hirta*, Marsh.**Alexia**, Steph.1 *pilifera*, Müll.**Lycoperdina**, Latr.1 *bovistæ*, F.**Endomychus**, Panz.1 *coccineus*, L.**EROTYLIDÆ.****Dacne**, Latr.1 *humeralis*, F.2 *ruffrons*, F.**Triplax**, Payk.1 *russica*, L.2 *ænea*, Schall.3 *Iacordairei*, Cr.**Cyrtotriplax**, Crotch.1 *bipustulata*, F.**PHALACRIDÆ.****Phalacrus**, Payk.1 *corruscus*, Payk.v. *humberti*, Tourn.2 *brisouti*, Rye.3 *championi*, Guill.*brunnipes*, Brit. Cat.4 *substriatus*, Gyll.5 *caricis*, Sturm.**Olibrus**, Er.1 *corticalis*, Panz.2 *æneus*, F.3 *bicolor*, F.*liquidus*, Brit. Cat.4 *particeps*, Muls.*affinis*, Sturm.5 *flavicornis*, Sturm.*helveticus*, Rye.6 *millefolii*, Payk.7 *pygmæus*, Sturm.**Eustilbus**, Sharp.1 *testaceus*, Panz.*consimilis*, Marsh.2 *atomarius*, L.*piceus*, Steph.3 *oblongus*, Er.**MICROPEPLIDÆ.****Micropeplus**, Latr.1 *porcatus*, Payk.2 *staphylinoides*, Marsh.3 *margaritæ*, Duv.4 *tesserula*, Curt.**NITIDULIDÆ.****Brachypterus**, Kug.1 *gravidus*, Ill.2 *pubescens*, Er.3 *urticæ*, F.**Cercus**, Latr.1 *pedicularius*, L.2 *bipustulatus*, Payk.3 *rufilabris*, Latr.**Carpophilus**, Leach.1 *hemipterus*, L.2 *mutilatus*, Er.**Epuræa**, Er.1 *decemguttata*, F.2 *diffusa*, Bris.3 *æstiva*, L.4 *melina*, Er.5 *silacea*, Er.6 *oblonga*, Herbst.7 *longula*, Er.8 *florea*, Er.9 *deleta*, Er.10 *immunda*, Er.11 *parvula*, Sturm.12 *obsoleta*, F.13 *variegata*, Herbst.14 *neglecta*, Sturm.15 *pusilla*, Er.16 *angustula*, Er.**Omosiphora**, Reitt.1 *limbata*, F.**Micrurula**, Reitt.1 *melanocephala*, Marsh.**Nitidula**, F.1 *bipustulata*, L.2 *rufipes*, L.3 *quadripustulata*, F.**Soronia**, Er.1 *punctatissima*, Ill.2 *grisea*, L.**Amphotis**, Er.1 *marginata*, Er.**Omosita**, Er.1 *depressa*, L.2 *colon*, L.3 *discoidea*, F.**Thalycra**, Er.1 *sericea*, Sturm.**Pocadius**, Er.1 *ferrugineus*, F.**Pria**, Kirby.1 *dulcamaræ*, Scop.**Meligethes**, Kirby.1 *rufipes*, Gyll.2 *lumbaris*, Sturm.3 *fulvipes*, Bris.4 *subrugosus*, Gyll.5 *coracinus*, Sturm.6 *corvinus*, Er.7 *æneus*, F.v. *cæruleus*, Steph.8 *viridescens*, F.9 *difficilis*, Heer.10 *kunzei*, Er.11 *morosus*, Er.12 *memnonius*, Er.13 *ochropus*, Sturm.14 *brunnicornis*, Sturm.15 *viduatus*, Sturm.16 *pedicularius*, Gyll.17 *bidens*, Bris.18 *umbrosus*, Sturm.19 *incanus*, Sturm.

COLYDIIDÆ.

- 20 *ovatus*, Sturm.
 21 *flavipes*, Sturm.
 22 *picipes*, Sturm.
 23 *rotundicollis*, Bris.
 24 *symphyti*, Heer.
 25 *nanus*, Er.
 marrubii, Bris.
 26 *serripes*, Gyll.
 27 *murinus*, Er.
 seniculus, Er.
 v. planiusculus, Er.
 28 *lugubris*, Sturm.
 v. gagatinus, Er.
 29 *obscurus*, Er.
 ♂ *palmatus*, Er.
 30 *erythropus*, Gyll.
 31 *bidentatus*, Bris.
 32 *exilis*, Sturm.
 33 *brevis*, Sturm.
 v. mutabilis, Ros.
 pictus, Rye.
 34 *solidus*, Sturm.

Cychramus, Kug.

- 1 *luteus*, F.
 fungicola, Heer.

Cryptarcha, Shuck.

- 1 *strigata*, F.
 2 *imperialis*, F.

Ips, F.

- 1 *quadriguttata*, F.
 2 *quadripunctata*, Herbst.
 3 *quadripustulata*, L.

Pityophagus, Shuck.

- 1 *ferrugineus*, F.

Aglenus, Er.

- 1 *brunneus*, Gyll.

Colydium, F.

- 1 *elongatum*, F.

Teredus, Shuck.

- 1 *nitidus*, F.

Oxylæmus, Er.

- 1 *cylindricus*, Panz.
 2 *variolosus*, Duft.
 cæsus, Er.

Orthocerus, Latr.

- 1 *muticus*, L.

Endophlæus, Er.

- 1 *spinulosus*, Latr.

Ditoma, auct.

- 1 *crenata*, F.

Synchita, Hellw.

- 1 *juglandis*, F.
 v. mediolanensis, Brit. Cat.

Cicones, Curt.

- 1 *variegatus*, Hellw.

Langelandia, Aubé.

- 1 *anophthalma*, Aubé.

Cerylon, Latr.

- 1 *histeroides*, F.
 v. longicolle, Reitt.
 2 *fagi*, Bris.
 v. excavatum, Fowler.
 3 *ferrugineum*, Steph.
 angustatum, Er.
 4 *deplanatum*, Gyll.

Murmidius, Leach.

- 1 *ovalis*, Beck.

6 *ferrugineus*, Payk.

7 *nitidulus*, F.

8 *dispar*, Gyll.

9 *bipustulatus*, F.

10 *politus*, Hellw.

11 *cæruleipennis*, Sahl.

Pediacus, Shuck.

- 1 *dermestoides*, F.
 2 *depressus*, Herbst.

Læmophlæus, Er.

- 1 *bimaculatus*, Payk.
 2 *duplicatus*, Waltl.
 3 *pusillus*, Schön.
 4 *ferrugineus*, Steph.
 5 *ater*, Ol.
 6 *clematidis*, Er.

Dendrophagus, Schön.

- 1 *crenatus*, Payk.

Brontes, F.

- 1 *planatus*, L.
 v. pallens, F.

Psammœchus, Latr.

- 1 *bipunctatus*, F.

Hypocoprus, Mots.

- 1 *latridioides*, Mots.

Nausibius, Redt.

- 1 *dentatus*, Marsh.

Silvanus, Latr.

- 1 *surinamensis*, L.
 2 *unidentatus*, F.
 3 *bidentatus*, F.
 4 *similis*, Er.

Cathartus, Reiche.

- 1 *advena*, Waltl.

TROGOSITIDÆ.**Nemosoma**, Latr.

- 1 *elongatum*, L.

Tenebrioides, Pill.

- 1 *mauritanicus*, L.

Thymalus, Latr.

- 1 *limbatus*, F.

CUCUJIDÆ.**Rhizophagus**, Herbst.

- 1 *cribratus*, Gyll.
 2 *depressus*, F.
 3 *perforatus*, Er.
 4 *parallelocollis*, Er.
 5 *oblongocollis*, Blatch.

MONOTOMIDÆ.**Monotoma**, Herbst.

- 1 *conicicollis*, Aubé.
 angusticollis, auct.
 2 *formicetorum*, Thoms.
 3 *spenicollis*, Aubé.
 4 *brevicollis*, Aubé.

- 5 picipes, Herbst.
 6 quadricollis, Aubé.
 7 rufa, Redt.
 8 sub-4-foveolata, Wat.
 9 longicollis, Gyll.

LATHRIDIIDÆ.**Holoparamecus**, Curt.

- 1 caularum, Aubé.
 2 depressus, Curt.
 singularis, Beck.

Anommatus, Wesm.

- 1 12-striatus, Müll.

Lathridius, Herbst.

- 1 lardarius, De Geer.
 2 angulatus, Humm.

Coninomus, Thoms.

- 1 nodifer, Westw.
 2 constrictus, Humm.
 3 carinatus, Gyll.

Enicmus, Thoms.

- 1 minutus, L.
 2 transversus, Ol.
 3 rugosus, Herbst.
 4 testaceus, Steph.
 5 brevicornis, Mann.
 carbonarius, Mann.

Cartodere, Thoms.

- 1 ruficollis, Marsh.
 2 elongata, Curt.
 3 filiformis, Gyll.
 4 filum, Aubé.

Corticaria, Marsh.

- 1 pubescens, Gyll.
 2 crenulata, Gyll.
 3 denticulata, Gyll.
 4 serrata, Payk.
 5 umbilicata, Beck.
 cylindrica, Mann.
 6 fulva, Com.
 7 obscura, Bris.
 8 elongata, Humm.

- 9 fenestralis, L.
 rufula, Zett.

Melanophthalma, Mots.

- 1 gibbosa, Herbst.
 2 transversalis, Gyll.
 v. wollastoni, Wat.
 3 fuscula, Humm.
 4 similata, Gyll.
 5 fulvipes, Com.
 curta, Woll.

CRYPTOPHAGIDÆ.**Diphyllus**, Steph.

- 1 lunatus, F.

Diplocœlus, Guér.

- 1 fagi, Guér.

Telmatophilus, Heer.

- 1 sparganii, Ahr.
 2 caricis, Ol.
 3 typhæ, Fall.
 4 schönherri, Gyll.
 5 brevicollis, Aubé.

Antherophagus, Latr.

- 1 nigricornis, F.
 2 pallens, Gyll.
 3 silaceus, Herbst.

Cryptophagus, Herbst.

- 1 lycoperdi, Herbst.
 2 schmidti, Sturm.
 3 setulosus, Sturm.
 4 pilosus, Gyll.
 5 punctipennis, Bris.
 6 ruficornis, Steph.
 7 populi, Payk.
 8 saginatus, Sturm.
 9 umbratus, Er.
 10 scanicus, L.
 v. patruelis, Sturm.
 11 badius, Sturm.

- 12 validus, Kr.

- 13 dentatus, Herbst.

- 14 cylindrus, Kies.
 parallelus, Bris.

- 15 distinguendus, Sturm.

- 16 acutangulus, Gyll.

- 17 fumatus, Gyll.

- 18 cellaris, Scop.

- 19 affinis, Sturm.

- 20 pubescens, Sturm.

- 21 bicolor, Sturm.

Micrambe, Thoms.

- 1 vini, Panz.
 2 abietis, Payk.

Henoticus, Thoms.

- 1 serratus, Gyll.

Paramecosoma, Curt.

- 1 melanocephalum,
 Herbst.

Myrmecoxenus, Chevr.

- 1 vaporariorum, Guér.

Cænoscelis, Thoms.

- 1 ferruginea, Sahl.

Atomaria, Steph.

- 1 diluta, Er.
 2 fimetarii, Herbst.
 3 fumata, Er.
 4 barani, Bris.
 5 nigriventris, Steph.
 nana, Er.
 6 umbrina, Er.
 7 wollastoni, Sharp.
 8 linearis, Steph.
 9 elongatula, Er.
 10 longicornis, Thoms.
 11 badia, Er.
 12 fuscipes, Gyll.
 13 peltata, Kr.

- 14 nigripennis, Payk.
 15 divisa, Rye.
 16 munda, Er.
 17 impressa, Er.
 18 fuscata, Schön.
 19 atra, Herbst.
 20 pusilla, Payk.
 21 atricapilla, Steph.
 22 berolinensis, Kr.
 23 basalis, Er.
 24 rhenana, Kr.
 25 mesomelas, Herbst.
 26 gutta, Steph.
 27 gibbula, Er.
 hislopi, Woll.
 28 apicalis, Er.
 29 analis, Er.
 30 ruficornis, Marsh.
 31 versicolor, Er.

Ephistemus, Westw.

- 1 globosus, Waltl.
 2 gyrinoides, Marsh.
 v. globulus? Payk.
 v. dimidiatus, Sturm.
 v. dubia, Fowler.

MYCETOPHAGIDÆ.**Typhæa**, Curt.

- 1 fumata, L.

Triphyllus, Latr.

- 1 suturalis, F.
 2 punctatus, F.

Litargus, Er.

- 1 bifasciatus, F.

Mycetophagus, Hellw.

- 1 quadripustulatus, L.
 2 piceus, F.
 3 atomarius, F.
 4 populi, F.
 5 quadriguttatus, Müll.
 6 multipunctatus, Hellw.
 7 fulvicollis, F.

BYTURIDÆ.**Byturus**, Latr.

- 1 sambuci, Scop.
 2 tomentosus, F.

DERMESTIDÆ.**Dermestes**, L.

- 1 vulpinus, F.
 2 frischii, Kug.
 3 murinus, L.
 4 undulatus, Brahm.
 5 lardarius, L.

Attagenus, Latr.

- 1 pello, L.

Megatoma, Herbst.

- 1 undata, Er.

Tiresias, Steph.

- 1 serra, F.

Anthrenus, Geoff.

- 1 scrophulariæ, L.
 2 pimpinellæ, F.
 3 varius, F.
 4 musæorum, L.
 5 claviger, Er.

Trinodes Latr.

- 1 hirtus, F.

BYRRHIDÆ.**Syncalypta**, Dillw.

- 1 spinosa, Rossi.
 2 setigera, Ill.
 3 hirsuta, Sharp.

Byrrhus, auct.

- 1 pilula, L.
 v. dennyi, Steph.
 2 fasciatus, F.
 3 dorsalis, F.
 4 murinus, F.

Cytilus, auct.

- 1 varius, F.

Morychus, Er.

- 1 æneus, F.

Simplocaria, Marsh.

- 1 semistriata, F.

Limnichus, Latr.

- 1 pygmæus, Sturm.

Aspidiphorus, Latr.

- 1 orbiculatus, Gyll.

GEORYSSIDÆ.**Georyssus**, Latr.

- 1 pygmæus, F.

PARNIDÆ.**Elmis**, Latr.

- 1 æneus, Müll.
 2 volkmari, Panz.
 3 parallelopipedus, Müll.
 4 subviolaceus, Müll.
 5 cupreus, Müll.
 6 nitens, Müll.

Limnius, Müll.

- 1 tuberculatus, Müll.
 2 rivularis, Ros.
 3 troglodytes, Gyll.

Macronychus, Müll.

- 1 quadrituberculatus, Müll.

Potaminus, Sturm.

- 1 substriatus, Müll.

Parnus, F.

- 1 prolifericornis, F.
 2 auriculatus, Panz.
 3 algiricus, Lucas.
 striatellus, Fairm.
 4 nitidulus, Heer.

HETERO CERIDÆ.**Heterocerus**, F.

- 1 flexuosus, Steph.
 2 salinus, Kies.
 v. rectus, Wat.
 3 femoralis, Kies.
 4 marginatus, F.
 5 lævigatus, Panz.
 6 britannicus, Kuw.
 7 obsoletus, Curt.

8 pulchellus, Kies.

9 fuscus, Kies.

LUCANIDÆ.

Lucanus, L.

1 cervus, L.

Dorcus, McL.

1 parallelopipedus, L.

Sinodendron, F.

1 cylindricum, L.

SCARABÆIDÆ.

COPRINA.

Copris, Geoff.

1 lunaris, L.

Onthophagus, Latr.

1 taurus, L.

2 nutans, F.

3 ovatus, L.

4 cœnobita, Herbst.

5 vacca, L.

6 fracticornis, Payk.

7 nuchicornis, L.

Aphodius, Ill.

1 erraticus, L.

2 subterraneus, L.

3 fossor, L.

4 hæmorrhoidalis, L.

5 fœtens, F.

6 fimetarius, L.

7 scybalarius, F.

8 ater, De G.

9 constans, Duft.

10 granarius, L.

11 nitidulus, F.

12 sordidus, F.

13 rufescens, F.

14 lapponum, Gyll.

15 fœtidus, F.

16 putridus, Sturm.

17 nemoralis, Er.

18 plagiatus, L.

19 lividus, Ol.

20 porcus, F.

21 scrofa, F.

22 tristis, Panz.

23 pusillus, Herbst.

24 quadrimaculatus, L.

25 merdarius, F.

26 inquinatus, F.

27 tessulatus, Payk.

28 conspurcatus, L.

29 sticticus, Panz.

30 consputus, Cr.

31 punctato-sulcatus, Stm.

32 prodromus, Brahm.

33 contaminatus, Herbst.

34 obliteratedus, Panz.

35 zenkeri, Germ.

36 luridus, F.

37 rufipes, L.

38 depressus, Kug.

Plagiogonus, Muls.

1 arenarius, Ol.

Heptaulacus, Muls.

1 sus, Herbst.

2 testudinarius, F.

3 villosus, Gyll.

Oxyomus, Lap.

1 porcatus, F.

Ammœcius, Muls.

1 brevis, Er.

Rhyssemus, Muls.

1 germanus, L.

Psammobius, Heer.

1 cæsus, Panz,

2 sulcicollis, Ill.

3 porcicollis, Ill.

Ægialia, Latr.

1 sabuleti, Payk.

2 arenaria, F.

3 rufa, F.

Odontæus, Klug.

1 mobilicornis, F.

Geotrupes, Latr.

1 typhœus, L.

2 spiniger, Marsh.

3 stercorarius, L.

4 mutator, Marsh.

5 sylvaticus, Panz.

6 vernalis, L.

7 pyrenæus, Charp.

Trox, L.

1 sabulosus, L.

2 hispidus, Laich.

3 scaber, L.

MELOLONTHINA.

Hoplia, Ill.

1 philanthus, Füss.

Homaloplia, Steph.

1 ruricola, F.

Serica, McL.

1 brunnea, L.

Rhizotrogus, Latr.

1 solstitialis, L.

2 ochraceus, Knoch.

Melolontha, F.

1 vulgaris, F.

2 hippocastani, F.

RUTELINA.

Phyllopertha, Kirby.

1 horticola, L.

Anomala, Sam.

1 frischii, F.

CETONIINA.

Cetonia, F.

1 aurata, L.

2 floricola, Herbst.

Gnorimus, F.

1 variabilis, L.

2 nobilis, L.

Trichius, F.

1 fasciatus, L.

2 abdominalis, Mén.

BUPRESTIDÆ.**Anthaxia**, Esch.

1 nitidula, L.

Agrilus, Sol.

1 biguttatus, F.

2 sinuatus, Ol.

3 laticornis, Ill.

4 angustulus, Ill.

5 viridis, L.

Aphanisticus, Latr.

1 pusillus, Ol.

Trachys, F.

1 minuta, L.

2 pumila, Ill.

3 troglodytes, Gyll.

THROSCIDÆ.**Throscus**, Latr.

1 dermestoides, L.

2 carinifrons, Bonv.

3 elateroides, Heer.

4 obtusus, Curt.

EUCNEMIDÆ.**Melasis**, Ol.

1 buprestoides, L.

Eucnemis, Ahr.

1 capucina, Ahr.

Microrrhagus, Esch.

1 pygmæus, F.

ELATERIDÆ.**Lacon**, Lap.

1 murinus, L.

Cardiophorus, Esch.

1 asellus, Er.

2 equiseti, Herbst.

Cryptohypnus, Esch.

1 maritimus, Curt.

2 riparius, F.

3 sabulicola, Boh.

4 pulchellus, L.

5 quadripustulatus, F.

6 dermestoides, Herbst.

7 quadriguttatus, Lap.

Elater, L.

1 sanguineus, L.

2 lythropterus, Germ.

3 præustus, F.

v. coccinatus, Rye.

? pomonæ, Steph.

4 sanguinolentus, Schr.

5 miniatus, Gorham.

pomonæ, Brit. Cat.

6 pomorum, Herbst.

7 elongatulus, Ol.

8 balteatus, L.

9 tristis, L.

10 nigrinus, Payk.

11 æthiops, Lac.

Ischnodes, Germ.

1 sanguinicollis, Panz.

Megapenthes, Kies.

1 lugens, Redt.

2 tibialis, Lac.

Ludius, Latr.

1 ferrugineus, L.

Melanotus, Esch.

1 punctolineatus, Pel.

2 rufipes, Herbst.

v. castanipes, Payk.

Athous, Esch.

1 rhombeus, Ol.

2 niger, L.

3 undulatus, De G.

4 longicollis, Ol.

5 difformis, Lac.

6 hæmorrhoidalis, F.

7 vittatus, F.

8 subfuscus, Müll.

Limonius, Esch.

1 cylindricus, Payk.

2 minutus, L.

Sericosomus, Redt.

1 brunneus, L.

fugax, F.

Synaptus, Esch.

1 filiformis, F.

Adrastus, Esch.

1 limbatus, F.

2 pusillus, F.

Agriotes, Esch.

1 sputator, L.

2 obscurus, L.

3 lineatus, L.

4 sordidus, Ill.

5 sobrinus, Kies.

6 pallidulus, Ill.

Dolopius, Esch.

1 marginatus, L.

Corymbites, Latr.

1 castaneus, L.

2 pectinicornis, L.

3 cupreus, F.

v. æruginosus, F.

4 tessellatus, F.

5 quercus, Gyll.

v. ochropterus, Steph.

6 holosericeus, F.

7 æneus, L.

8 metallicus, Payk.

9 impressus, F.

10 bipustulatus, L.

Campylus, Fisch.

1 linearis, L.

DASCILLIDÆ.**Dascillus**, Latr.

1 cervinus, L.

Helodes, Latr.

1 minuta, L.

2 marginata, F.

Microcara, Thoms.

1 livida, F.

v. bohemani, Mann.

Cyphon, Payk.

1 coarctatus, Payk.

♀ fuscicornis, Thoms.

2 nitidulus, Thoms.

♀ pallidiventris, Thoms.
 3 variabilis, Thunb.
 4 punctipennis, Sharp.
 5 pallidulus, Boh.
 6 padi, L.

Prionocyphon, Redt.

1 sericornis, Müll.

Hydrocyphon, Redt.

1 deflexicollis, Müll.

Scirtes, Ill.

1 hemisphaericus, L.

2 orbicularis, Panz.

Eubria, Germ.

1 palustris, Germ.

MALACODERMIDÆ.**Lycina.****Eros, Newm.**

1 aurora, Herbst.

Pyropterus, Muls.

1 affinis, Payk.

Platycis, Thoms.

1 minutus, F.

Lampyrina.**Lampyris, L.**

1 noctiluca, L.

Phosphænus, Lap.

1 hemipterus, Geoff.

Drilina.**Drilus, Ol.**

1 flavescens, Rossi.

Telephorina.**Silis, Latr.**

1 ruficollis, F.

Podabrus, Westw.

1 alpinus, Payk.

Ancistronycha, Märk.

1 abdominalis, F.

Telephorus, Schæff.

1 fuscus, L.

2 rusticus, Fall.

3 lividus, L.

v. dispar, F.

4 pellucidus, F.

5 nigricans, Müll.

v. discoideus, Steph.

6 obscurus, L.

7 lituratus, F.

8 darwinianus, Sharp.

9 figuratus, Mann.

v. scoticus, Sharp.

10 bicolor, F.

11 hæmorrhoidalis, F.

12 oralis, Germ.

lateralis, L. ?

13 paludosus, Fall.

14 flavilabris, Fall.

15 thoracicus, Ol.

Rhagonycha, Esch.

1 unicolor, Curt.

translucidus, Brit. Cat.

2 fuscicornis, Ol.

3 fulva, Scop.

4 testacea, L.

5 limbata, Thoms.

6 pallida, F.

7 elongata, Fall.

Malthinus, Latr.

1 punctatus, Fourc.

2 fasciatus, Ol.

3 balteatus, Suff.

4 frontalis, Marsh.

Malthodes, Kies.

1 marginatus, Latr.

2 mysticus, Kies.

3 flavoguttatus, Kies.

4 guttifer, Kies.

5 dispar, Germ.

6 pellucidus, Kies.

7 minimus, L.

sanguinolentus, Fall.

8 fibulatus, Kies.

9 misellus, Kies.

10 nigellus, Kies.

11 atomus, Thoms.

Melyrina.**Malachius, F.**

1 æneus, L.

2 bipustulatus, L.

3 viridis, F.

4 marginellus, Ol.

♂ bispinosus, Curt.

Axinotarsus, Mots.

1 pulicarius, F.

2 ruficollis, Ol.

Anthocomus, Er.

1 rufus, Herbst.

sanguinolentus, F.

2 fasciatus, L.

3 terminatus, Men.

Dasytes, Payk.

1 flavipes, F.

plumbeus, Müll.

2 oculatus, Kies.

3 ærosus, Kies.

plumbeus, Muls.

plumbeo-niger, Goeze.

4 niger, L.

Psilothrix, Redt.

1 nobilis, Ill.

Dolichosoma, Steph.

1 lineare, Rossi.

Haplocnemus, Steph.

1 impressus, Marsh.

2 nigricornis, F.

Phlæophilus, Steph.

1 edwardsi, Steph.

Cleridæ.**Tillus, Ol.**

1 elongatus, L.

2 unifasciatus, F.

Opilo, Latr.

1 mollis, L.

Tarsostenus, Spin.

1 univittatus, Rossi.

Thanasimus, Latr.

1 formicarius, L.

Necrobia Latr.

1 ruficollis, F.

2 violacea, L.

3 rufipes, De G.

Corynetes, Herbst.

1 cœruleus, De G.

LYMEXYLONIDÆ**Hylecœtus**, Latr.

1 dermestoides, L.

♂ proboscideus, F.

Lymexylon, F.

1 navale, L.

PTINIDÆ.

PTININA.

Ptinus, auct.

1 germanus, F.

2 sexpunctatus, Panz.

3 lichenum, Marsh.

4 fur, L.

5 subpilosus, Müll.

Niptus, Boield.

1 hololeucus, Fald.

2 crenatus, F.

Hedobia, Sturm.

1 imperialis, L.

Mezium, Curt.

1 affine, Boield.

Gibbium, Scop.

1 scotias, F.

ANOBIINA.

Dryophilus, Chev.

1 pusillus, Gyll.

2 anobioides, Chev.

Priobium, Mots.

1 castaneum, F.

Anobium, auct.

1 denticolle, Panz.

2 domesticum, Fourc.

3 fulvicorne, Sturm.

4 paniceum, L.

Xestobium, Mots.

1 tessellatum, F.

Ernobius, Thoms.

1 mollis, L.

2 abietis, F.

3 nigrinus, Sturm.

Ptilinus, Geoff.

1 pectinicornis, L.

Ochina, Steph.

1 hederæ, Müll.

Xyletinus, Latr.

1 ater, Panz.

Lasioderma, Steph.

1 serricorne, F.

Cœnocara, Thoms.

1 bovistæ, Hoff.

Dorcatoma, Thoms.

1 chrysomelina, Sturm.

2 flavicornis, F.

Anitys, Thoms.

1 rubens, Hoff.

BOSTRICHIDÆ.**Dinoderus**, Steph.

1 substriatus, Payk.

Rhizopertha, Steph.

1 pusilla, F.

Bostrichus, Geoff.

1 capucinus, L.

LYCTIDÆ.**Lyctus**, F.

1 canaliculatus, F.

2 brunneus, Steph.

SPHINDIDÆ.**Sphindus**, Chev.

1 dubius, Gyll.

CISSIDÆ.**Cis**, Latr.

1 boleti, Scop.

v. rugulosus, Mell.

2 villosulus, Marsh.

3 micans, F.

4 hispidus, Payk.

5 bidentatus, Ol.

6 alni, Gyll.

7 nitidus, Herbst.

8 Jacquemarti, Mell.

9 lineatocribratus, Mell.

10 elongatulus, Gyll.

11 punctulatus, Gyll.

12 pygmæus, Marsh.

13 festivus, Panz.

14 vestitus, Mell.

15 fuscatus, Mell.

16 bilamellatus, Wood.

Rhopalodontus, Mell.

1 perforatus, Ol.

2 fronticornis, Panz.

Ennearthron, Mell.

1 affine, Gyll.

2 cornutum, Gyll.

Octotemnus, Mell.

1 glabriculus, Gyll.

CERAMBYCIDÆ.

PRIONINA.

Prionus, Geoff.

1 coriarius, L.

CERAMBYCINA

Aromia, Serv.

1 moschata, L.

Aseum, Esch.

1 striatum, L.

Hylotrupes, Serv.

1 bajulus, L.

Callidium, F.

1 violaceum, L.

2 variabile, L.

- 3 alni, L.
4 sanguineum, L.
Clytus, Laich.
1 arcuatus, L.
2 arietis, L.
3 mysticus, L.
Gracilia, Serv.
1 minuta, F.
pygmæa, F.
Obrium, Latr.
1 cantharinum, L.
Molorchus, F.
1 minor, L.
2 umbellatarum, L.
minimus, Scop.
Rhagium, F.
1 inquisitor, F.
2 indagator, Gyll.
3 bifasciatum, F.
Toxotus, Serv.
1 meridianus, Panz.
Pachyta, Serv.
1 cerambyciformis, Schr.
octomaculata, F.
2 sexmaculata, L.
3 collaris, L.
Anoplodera, Muls.
1 sexguttata, F.
Leptura, L.
1 rufa, Brull.
2 scutellata, F.
3 sanguinolenta, L.
4 fulva, De G.
5 livida, F.
Strangalia, Serv.
1 aurulenta, F.
2 quadrifasciata, L.
3 revestita, L.
4 armata, Herbst.
5 attenuata, L.
6 nigra, L.
7 melanura, L.
- Grammoptera**, Serv.
1 tabacicolor, De G.
lævis, F.
2 analis, Panz.
3 ruficornis, F.
4 præusta, F.
ustulata, Schall.
LAMIINA.
Acanthocinus, Steph.
2 ædilis, L.
Leiopus, Serv.
1 nebulosus, L.
Pogonochærus, Latr.
1 fasciculatus, De G.
2 bidentatus, Thoms.
hispidus, Brit. Cat.
3 dentatus, Fourc.
hispidus, Schr.
Lamia, F.
1 textor, L.
Monochammus, Latr.
1 sartor, F.
2 sutor, L.
Mesosa, Serv.
1 nubila, Ol.
Agapanthia, Serv.
1 lineatocollis, Don.
Saperda, F.
1 carcharias, L.
2 scalaris, L.
3 populnea, L.
Tetrops, Steph.
1 præusta, L.
Stenostola, Muls.
1 ferrea, Schr.
Phytœcia, Muls.
1 cylindrica, L.
Oberea, Muls.
1 oculata, L.
BRUCHIDÆ.
Bruchus, auct.
1 pectinicornis, L.
- 2 cisti, F.
3 canus, Germ.
4 pisi, L.
5 rufimanus, Boh.
6 affinis, Fröhl.
7 atomarius, L.
seminarius, auct.
8 luteicornis, Ill.
9 rufipes, Herbst.
nubilus, Boh.
10 viciæ, Ol.
11 loti, Payk.
12 lentis, Boh.
13 villosus, F.
ater, Marsh.
- CHRYSEMELIDÆ.
EUPODA.
Orsodacna, Latr.
1 cerasi, L.
2 lineola, Panz.
nigriceps, Brit. Cat.
v. humeralis, Latr.
Donacia, F.
1 crassipes, F.
2 dentata, Hoppe.
3 versicolorea, Brahm.
bidens, Ol.
4 sparganii, Ahr.
5 dentipes, F.
6 limbata, Panz.
lemnæ, F.
7 bicolora, Zsch.
sagittariæ, F.
8 obscura, Gyll.
9 thalassina, Germ.
10 impressa, Payk.
11 simplex, F.
linearis, Hoppe.
12 vulgaris, Zsch.
typhæ, Ahr.
13 clavipes, F.

- menyanthidis, Gyll.
 14 semicuprea, Panz.
 simplex, F.
 15 cinerea, Herbst.
 hydrochæridis, F.
 16 sericea, L.
 17 discolor, Panz.
 comari, Suffr.
 18 braccata, Scop.
 nigra, F.
 19 affinis, Kunze.

Hæmonia, Curt.

- 1 curtisi, Lac.
 2 appendiculata, Panz.
 equiseti, F.

Zeugophora, Kunze.

- 1 subspinosa, F.
 2 flavicollis, Marsh.
 3 turneri, Power.

Lema, F.

- 1 cyanella, L.
 puncticollis, Curt.
 2 lichenis, Voet.
 cyanella, Suffr.
 3 erichsoni, Suffr.
 4 melanopa, L.

Crioceris, Geoff.

- 1 lilii, Scop.
 merdigera, F. *nec* L.
 2 duodecim-punctata, L.
 3 asparagi, L.

CAMPTOSOMATA.**Labidostomis**, Lac.

- 1 tridentata, L.

Clythra, Laich.

- 1 quadripunctata, L.

Cryptocephalus, Geoff.

- 1 primarius, Har.
 imperialis, F.
 2 coryli, L.
 3 sexpunctatus, L.

- 4 bipunctatus, L.
 v. lineola, F.
 5 biguttatus, Scop.
 bipustulatus, F.
 6 aureolus, Suffr.
 7 hypochæridis, L.
 8 ochrostoma, Har.
 nitidulus, Gyll.
 9 punctiger, Payk.
 10 parvulus, Müll.
 fulcratus, Germ.
 11 decemmaculatus, L.
 decempunctatus, L.
 v. bothnicus, L.
 12 moræi, L.
 13 bilineatus, L.
 v. armeniacus, Fald.
 14 fulvus, Goeze.
 minutus, F.
 15 pusillus, F.
 16 labiatus, L.
 17 querceti, Suffr.
 18 exiguus, Schneid.
 wasastjernæ, Gyll.
 19 frontalis, Marsh.

CYCLICA.**Lamprosoma**, Kirby.

- 1 concolor, Sturm.

Timarcha, Latr.

- 1 tenebricosa, F.
 lævigata, Duft.
 2 violaceonigra, De G.
 coriaria, Laich.

Chrysomela, L.

- 1 sanguinolenta, L.
 2 marginalis, Duft.
 distinguenda, Steph.
 3 marginata, L.
 4 banksi, F.
 5 staphylea, L.
 v. sharpi, Fowler.

- 6 polita, L.
 7 orichalcia, Müll.
 lamina, F.
 v. hobsoni, Steph.
 8 hæmoptera, L.
 9 varians, Schall.
 10 goettingensis, L.
 11 graminis, L.
 12 menthrasti, Suffr.
 13 fastuosa, Scop.
 14 cerealis, L.

15 didymata, Scriba.

16 hyperici, Forst.

Melasoma, Steph.

- 1 æneum, L.
 2 populi, L.
 3 longicolle, Suffr.
 tremulæ, Steph.

Phytodecta, Kirby.

- 1 rufipes, De G.
 2 viminalis, L.
 3 olivacea, Forst.
 v. flavicans, F.
 v. litura, F.
 v. nigricans, Weise.
 4 pallida, L.

Gastroidea, Hope.

- 1 viridula, De G.
 raphani, F.
 2 polygوني, L.

Plagiodera, Redt.

- 1 versicolora, Laich.
 armoraciæ, L.

Phaedon, Latr.

- 1 tumidulus, Germ.
 2 armoraciæ, L.
 betulæ, auct.
 3 cochleariæ, F.
 4 concinnus, Steph.

Phyllodecta, Kirby.

- 1 vulgatissima, L.
 2 cavifrons, Thoms.

- 3 vitellinae, L.
- Hydrothassa**, Thoms.
- 1 aucta, F.
- 2 marginella, L.
- 3 hannoverana, F.
- Prasocuris**, Latr.
- 1 junci, Brahm.
- beccabungæ, Ill.
- 2 phellandrii, L.
- Agelastica**, Redt.
- 1 alni, L.
- Phyllobrotica**, Redt.
- 1 quadrimaculata, L.
- Luperus**, Geoff.
- 1 nigrofasciatus, Goeze.
- circumfusus, Marsh.
- 2 rufipes, Scop.
- betulinus, Fourc.
- 3 flavipes, L.
- Lochmæa**, Weise.
- 1 capreae, L.
- 2 suturalis, Thoms.
- 3 cratægi, Forst.
- sanguinea, F.
- Galerucella**, Crotch.
- 1 viburni, Payk.
- 2 nymphææ, L.
- 3 sagittariae, Gyll.
- 4 lineola, F.
- 5 calmariensis, L.
- 6 tenella, L.
- Adimonia**, Laich.
- 1 tanaceti, L.
- 2 celandica, Boh.
- villæ, W.C.
- Sermyla**, Chap.
- 1 halensis, L.
- Longitarsus**, Latr.
- 1 niger, Koch.
- 2 pulex, Schr.
- obliteratus, Ros.
- 3 anchusæ, Payk.
- 4 ater, F.
- parvulus, Payk.
- 5 absinthii, Kuts.
- 6 holsaticus, L.
- 7 quadriguttatus, Pont.
- quadripustulatus, F.
- 8 dorsalis, F.
- 9 castaneus, Duft.
- 10 luridus, Scop.
- 11 brunneus, Duft.
- 12 fuscus, Kuts.
- 13 agilis, Rye.
- 14 suturellus, Duft.
- v. fuscicollis, Steph.
- 15 atricillus, L.
- 16 patruelis, All.
- 17 melanocephalus, All.
- 18 atriceps, Kuts.
- 19 distinguendus, Rye.
- 20 suturalis, Marsh.
- 21 nasturtii, F.
- 22 piciceps, Steph.
- foudrasi, Crotch.
- 23 lycopi, Foudr.
- 24 abdominalis, Duft.
- 25 membranaceus, Foudr.
- teucris, All.
- 26 ballotæ, Marsh.
- 27 waterhousei, Kuts.
- pratensis, Panz.
- 28 ferrugineus, Foudr.
- 29 cerinus, Foudr.
- 30 flavicornis, Steph.
- 31 femoralis, Marsh.
- exoletus, L.
- 32 pusillus, Gyll.
- 33 reichei, All.
- 34 medicaginis, All.
- 35 tabidus, F.
- verbasci, Panz.
- v. thapsi, Marsh.
- 36 jacobææ, Wat.
- tabidus, Ol.
- v. rufescens, Fowler.
- 37 rutilus, Ill.
- 38 ochroleucus, Marsh.
- 39 gracilis, Kuts.
- v. poweri, All.
- 40 lævis, Duft.
- 41 pellucidus, Foudr.
- Haltica**, Geoff.
- 1 tamaricis, Schr.
- 2 lythri, Aubé.
- 3 ericeti, All.
- longicollis, Brit. coll.
- 4 coryli, Brit. coll.
- 5 oleracea, L.
- v. nigra, Weise.
- 6 palustris, Weise.
- 7 pusilla, Duft.
- v. montana, Foudr.
- Hermæophaga**, Foudr.
- 1 mercurialis, F.
- Phyllotreta**, Foudr.
- 1 nodicornis, Marsh.
- 2 nigripes, F.
- lepidii, Koch.
- 3 consobrina, Curt.
- melæna, auct.
- 4 punctulata, Marsh.
- 5 atra, Payk.
- 6 cruciferae, Goeze.
- obscura, Ill.
- 7 vittula, Redt.
- 8 undulata, Kuts.
- 9 nemorum, L.
- 10 flexuosa, Ill.
- 11 ochripes, Curt.
- 12 sinuata, Steph.
- 13 tetrastigma, Com.
- 14 exclamationis, Thunb.
- brassicæ, F.
- Aphthona**, Chevr.
- 1 lutescens, Gyll.

- 2 *nigriceps*, Redt.
 3 *nonstriata*, Goeze.
 cœrulea, Payk.
 4 *venustula*, Kuts.
 5 *atrocœrulea*, Steph.
 cyanella, Redt.
 6 *virescens*, Foudr.
 hilaris, Steph.
 7 *atrátula*, All.
 8 *herbigrada*, Curt.
 v. lævicollis, Rey.
Batophila, Foudr.
 1 *rubi*, Payk.
 2 *ærata*, Marsh.
Sphæroderma, Steph.
 1 *testaceum*, F.
 2 *cardui*, Gyll.
Apteropeda, Redt.
 1 *orbiculata*, Marsh.
 graminis, Koch.
 2 *globosa*, Ill.
 3 *splendida*, All.
Mniophila, Steph.
 1 *muscorum*, Koch.
Podagrica, Foudr.
 1 *fuscipes*, L.
 2 *fuscicornis*, L.
Mantura, Steph.
 1 *rustica*, L.
 v. suturalis, Weise.
 2 *chrysanthem*i, Koch.
 *v. crotch*i, All.
 3 *obtusata*, Gyll.
 4 *matthewsi*, Curt.
Ochrosis, Foudr.
 1 *salicariæ*, Payk.
Crepidodera, Chev.
 1 *transversa*, Marsh.
 2 *ferruginea*, Scop.
 3 *rufipes*, L.
 4 *ventralis*, Ill.
 5 *nitidula*, L.
 6 *helxines*, L.
 7 *chloris*, Foudr.
 8 *aurata*, Marsh.
 9 *smaragdina*, Foudr.
Hippuriphila, Foudr.
 1 *modeeri*, L.
Epitrix, Foudr.
 1 *pubescens*, Koch.
 v. ferruginea, Weise.
 2 *atropæ*, Foudr.
Chætocnema, Steph.
 1 *subcœrulea*, Kuts.
 2 *aridula*, Gyll.
 3 *confusa*, Boh.
 4 *hortensis*, Fourc.
 aridella, Payk.
 5 *sahlbergi*, Gyll.
Plectroscelis, Redt.
 1 *concinna*, Marsh.
Psylliodes, Latr.
 1 *attenuata*, Koch.
 2 *chrysocephala*, L.
 v. anglica, F.
 v. nucea, Ill.
 3 *cyanoptera*, Ill.
 4 *luridipennis*, Kuts.
 5 *napi*, Koch.
 6 *cuprea*, Koch.
 cupromitens, Forst.
 7 *instabilis*, Foudr.
 8 *affinis*, Payk.
 9 *marcida*, Ill.
 10 *dulcamaræ*, Koch.
 11 *chalcomera*, Ill.
 12 *hyoscyami*, L.
 13 *luteola*, Müll.
 14 *picinæ*, Marsh.

CRYPTOSOMATA.
Cassida, L.
 1 *murræa*, L.
 2 *fastuosa*, Schall.
 vittata, F.
 3 *nebulosa*, L.
 4 *vibex*, F.
 dersalis, Herbst.
 5 *sanguinolenta*, F.
 6 *chloris*, Suffr.
 7 *vittata*, Vill.
 oblonga, Ill.
 8 *nobilis*, L.
 9 *subferruginea*, Schr.
 ferruginea, F.
 10 *flaveola*, Thunb.
 obsoleta, Ill.
 11 *equestris*, F.
 12 *viridis*, F.
 13 *hemisphærica*, Herbst.

TENEBRIONIDÆ.
Blaps, F.
 1 *mortisaga*, L.
 2 *mucronata*, Latr.
 3 *similis*, Latr.
Crypticus, Latr.
 1 *quisquilius*, L.
Heliopathes, Muls.
 1 *gibbus*, F.
Opatrum, F.
 1 *sabulosum*, Gyll.
Microzoum, Redt.
 1 *tibiale*, F.
Phaleria, Latr.
 1 *cadaverina*, F.
Bolitophagus, Ill.
 1 *reticulatus*, L.
Heledona, Latr.
 1 *agaricola*, F.
Diaperis, Geoff.
 1 *boleti*, L.
Platydema, Lap.
 1 *dytiscoides*, Rossi.
 violaceum, F.

Scaphidema, Redt.

- 1 metallicum, F.
- æneum, Payk.

Alphitophagus, Steph.

- 1 quadripustulatus, Steph.

Tenebrio, L.

- 1 molitor, L.
- 2 obscurus, F.

Alphitobius, Steph.

- 1 diaperinus, Panz.
- 2 piceus, Ol.

Gnathocerus, Thun.

- 1 cornutus, F.

Tribolium, Macl.

- 1 ferrugineum, F.
- 2 confusum, Duv.

Palorus, Duv.

- 1 melinus, Herbst.
- depressus, F.

Hypophlœus, Hellw.

- 1 castaneus, F.
- 2 bicolor, Ol.

Helops, F.

- 1 cœruleus, L.
- 2 pallidus, Curt.
- 3 striatus, Fourc.

CISTELIDÆ.**Cistela**, F.

- 1 luperus, Herbst.
- fulvipes, F.
- v. ferruginea, F.

2 ceramboides, L.

3 murina, L.

Eryx, Steph.

- 1 ater, F.

Mycetochares, Latr.

- 1 bipustulata, Ill.

Cteniopus, Sol.

- 1 sulphureus, L.
- ♂ v. bicolor, F.

Omoplus, Sol.

- 1 armeriæ, Curt.

LAGRIIDÆ.**Lagria**, F.

- 1 hirta, L.

MELANDRYIDÆ.**Tetratoma**, F.

- 1 fungorum, F.
- 2 desmaresti, Latr.
- 3 ancora, F.

Orchesia, Latr.

- 1 micans, Panz.
- picea, Herbst.

Clinocara, Thoms.

- 1 tetratoma, Thoms.
- minor, Walk.
- 2 undulata, Kr.

Hallomenus, Panz.

- 1 humeralis, Panz.

Conopalpus, Gyll.

- 1 testaceus, Ol.
- v. vigorsi, Steph.

Melandrya, F.

- 1 caraboides, L.
- 2 dubia, Schall.
- canaliculata, F.

Anisoxya, Muls.

- 1 fuscata, Ill.

Abdera, Steph.

- 1 quadrifasciata, Steph.
- 2 bifasciata, Marsh.
- 3 triguttata, Gyll.
- 4 flexuosa, Payk.

Phlœotrya, Steph.

- 1 rufipes, Gyll.
- stephensi, Duv.

Xylita, Payk.

- 1 lævigata, Hel.

Zilora, Muls.

- 1 ferruginea, Payk.

Hypulus, Payk.

- 1 quercinus, Quens.

Osphya, Ill.

- 1 bipunctata, F.

PYTHIDÆ.**Pytho** F.

- 1 depressus, L.

Salpingus, Gyll.

- 1 castaneus, Panz.
- 2 æratus, Müll.
- 3 ater, Payk.
- 4 mutilatus, Beck.
- 5 foveolatus, Ljungh.

Lissodema, Curt.

- 1 quadripustulata, Marsh.
- 2 cursor, Gyll.
- heyatum, Redt.

Rhinosimus, Latr.

- 1 ruficollis, L.
- 2 viridipennis, Steph.
- 3 planirostris, F.

Mycterus, Clairv.

- 1 curculionoides, F.

OEDEMERIDÆ.**Oedemera**, Ol.

- 1 nobilis, Scop.
- 2 lurida, Marsh.

Oncomera, Steph.

- 1 femorata, F.

Nacerdes, Schmidt.

- 1 melanura, Schmidt.

Ischnomera, Steph.

- 1 cœrulea, L.
- 2 sanguinicollis, F.

PYROCHROIDÆ.**Pyrochroa**, Geoff.

- 1 coccinea, L.
- 2 serraticornis, Scop.
- rubens, Schall.
- 3 pectinicornis, L.

SCRAPTIIDÆ.**Scraptia**, Latr.

- 1 dubia, Ol.
- fusca, Latr.
- 2 fuscula, Müll.
- minuta, Muls.

MORDELLIDÆ.**Tomoxia**, Costa.

- 1 biguttata, Gyll.

Mordella, L.

- 1 fasciata, F.
- 2 aculeata, L.

Mordellistena, Costa.

- 1 abdominalis, F.
- 2 humeralis, L.
- v. lateralis, Ol.
- 3 brunnea, F.
- 4 pumila, Gyll.
- 5 brevicauda, Boh.
- 6 parvula, Gyll.
- v. inæqualis, Muls.

Anaspis, Geoff.

- 1 frontalis, L.
- 2 garneysi, Fowler.
- 3 septentrionalis, Champ.
- 4 pulicaria, Costa.
- forcipata, Muls.
- 5 rufilabris, Gyll.
- 6 melanostoma, Costa.
- monilicornis, Muls.
- 7 geoffroyi, Müll.
- fasciata, Först.
- 8 ruficollis, F.
- 9 flava, L.
- v. thoracica, L.
- 10 subtestacea, Steph.
- 11 maculata, Fourc.
- melanopa, Forst.

RHIPIDOPHORIDÆ.**Metœcus**, Gerst.

- 1 paradoxus, L.
- ♂ v. apicalis, Grall.

ANTHICIDÆ.**Notoxus**, Geoff.

- 1 monoceros, L.

Anthicus, Payk.

- 1 humilis, Germ.
- 2 salinus, Crotch.
- 3 floralis, L.
- v. quisquilius, Thoms.
- 4 instabilis, Schmidt.
- 5 angustatus, Curt.
- 6 scoticus, Rye.
- 7 tristis, Schmidt.
- v. schaumii, Woll.

8 antherinus, L.

9 bimaçulatus, Ill.

XYLOPHILIDÆ.**Xylophilus**, Latr.

- 1 populneus, F.
- boleti, Marsh.
- 2 brevicornis, Perris.
- 3 oculatus, Gyll.
- pygmæus, Muls.

MELOÏDÆ.**Meloë**, L.

- 1 proscarabæus, L.
- v. cyaneus, Muls.
- 2 violaceus, Marsh.
- 3 autumnalis, Ol.
- 4 cicatricosus, Leach.
- 5 variegatus, Don.
- 6 rugosus, Marsh.
- 7 brevicollis, Panz.

Sitaris, Latr.

- 1 muralis, Forst.

Lytta, F.

- 1 vesicatoria, L.

ANTHRIBIDÆ.**Brachytarsus**, Schön.

- 1 fasciatus, Forst.
- scabrosus, F.
- 2 varius, F.

Anthribus, auct.

- 1 albinus, L.

Platyrhinus, Clairv.

- 1 latirostris, F.

Tropideres, Schön.

- 1 albirostris, Herbst.
- 2 niveirostris, F.
- 3 sepicola, F.

Choragus, Kirby.

- 1 sheppardi, Kirby.

CURCULIONIDÆ.**ATTELABINA.****Apoderus**, Ol.

- 1 coryli, L.

Attelabus, L.

- 1 curculionoides, L.

RHINOMACERINA.**Rhinomacer**, F.

- 1 attelaboides, F.

RHYNCHITINA.**Byctiscus**, Thoms.

- 1 betuleti, F.
- 2 populi, L.

Rhynchites, Schneid.

- 1 auratus, Scop.
- 2 bacchus, L.
- 3 cupreus, L.
- 4 æquatus, L.
- 5 æneovirens, Marsh.
- 6 cœruleus, De G.
- conicus, Ill.
- 7 minutus, Herbst.
- germanicus, auct.
- 8 interpunctatus, Steph.
- alliariæ, Brit. Cat.

- 9 pauxillus, Germ.
 10 nanus, Payk.
 11 uncinatus, Thoms.
 12 sericeus, Herbst.
 ophthalmicus, Steph.
 13 pubescens, F.
Deporaüs, Leach.
 1 megacephalus, Germ.
 2 betulæ, L.
- APIONINA.
- Apion, Herbst.**
 1 pomonæ, F.
 2 opeticum, Bach
 3 craccæ, L.
 4 cerdo, Thoms.
 5 subulatum, Kirby.
 6 ulicis, Forst.
 7 genistæ, Kirby.
 8 fuscirostre, F.
 9 malvæ, F.
 10 urticarium, Herbst.
 vernale, F.
 11 miniatum, Germ.
 12 cruentatum, Walt.
 13 hæmatodes, Kirby.
 frumentarium, Payk.
 14 rubens, Steph.
 15 sanguineum, De G.
 16 pallipes, Kirby.
 17 semivittatum, Gyll.
 germari, Walt.
 18 rufirostre, F.
 19 vicinæ, Payk.
 20 difforme, Germ.
 21 dissimile, Germ.
 22 varipes, Germ.
 23 lævicolle, Kirby.
- 24 schönherri, Boh.
 25 apricans, Herbst.
 fagi, Kirby.
 26 bohemani, Thoms.
 ononidis, Gyll.
 27 trifolii, L.
 28 ryei, Blkn.
 29 dichroum, Bedel.
 flavipes, Brit. Cat.
 30 nigritarse, Kirby.
 31 confluens, Kirby.
 32 stolidum, Germ.
 33 sorbi, F.
 34 hookeri, Kirby.
 35 æneum, F.
 36 radiolus, Kirby.
 37 onopordi, Kirby.
 38 carduorum, Kirby.
 39 lævigatum, Kirby.
 40 flavimanum, Gyll.
 41 annulipes, Wenck.
 42 vicinum, Kirby.
 43 atomarium, Kirby.
 44 minimum, Herbst.
 45 virens, Herbst.
 46 astragali, Payk.
 47 punctigerum, Payk.
 48 pisi, F.
 49 æthiops, Herbst.
 50 ebeninum, Kirby.
 51 filirostre, Kirby.
 52 striatum, Kirby.
- 53 immune, Kirby.
 54 ononis, Kirby.
 55 spencei, Kirby.
 56 ervi, Kirby.
 57 vorax, Herbst.
 58 gyllenhali, Kirby.
 59 unicolor, Kirby.
 platalea, Germ.
 60 meliloti, Kirby
 61 scutellare, Kirby.
 62 livescerum, Gyll.
 63 waltoni, Steph.
 64 loti, Kirby.
 65 seniculum, Kirby.
 66 tenue, Kirby.
 67 simile, Kirby.
 68 pubescens, Kirby.
 69 curtisi, Walt.
 70 limonii, Kirby.
 71 sedi, Germ.
 72 marchicum, Herbst.
 73 affine, Kirby.
 74 violaceum, Kirby.
 75 hydrolapathi, Kirby.
 76 humile, Germ.
- OTIORRHYNCHINA.
- Otiorrhynchus, Germ.**
 1 tenebricosus, Herbst.
 2 fuscipes, Walt.
 3 morio, F.
 v. ebeninus, Schön.
 4 atroapterus, De G.
 5 blandus, Gyll.
 monticola, Walt.
 6 maurus, Gyll.
 7 raucus, F.

- 8 scabrosus, Marsh.
 9 ligneus, Ol.
 10 septentrionis, Herbst.
 11 picipes, F.
 12 sulcatus, F.
 13 ligustici, L.
 14 rugifrons, Gyll.
 15 ovatus, L.
 16 muscorum, Bris.

Peritelus, Germ.

- 1 griseus, Ol.

Trachyphlœus, Germ.

- 1 myrmecophilus, Seidl.
 2 aristatus, Gyll.
 3 squamulatus, Ol.
 4 scaber, L.
 5 scabriculus, L.
 6 laticollis, Boh.
 7 spinimanus, Germ.
 8 alternans, Gyll.

Cathormiocerus, Schön.

- 1 socius, Boh.
 2 maritimus, Rye.

Cænopsis, Bach.

- 1 fissirostris, Walt.
 2 waltoni, Schön.

Strophosomus, Schön.

- 1 coryli, F.
 2 capitatus, De G.
 obesus, Marsh.
 3 fulvicornis, Walt.
 4 retusus, Marsh.
 5 faber, Herbst.
 6 lateralis, Payk.
 limbatus, F.

Exomias, Bedel.

- 1 araneiformis, Schr.
 brunnipes, Ol.
 2 pellucidus, Boh.

Omius, Schön.

- 1 mollinus, Boh.
 bohemani, Zett.

Brachysomus, Steph.

- 1 echinatus, Bonsd.
 2 hirtus, Boh.
 setulosus, Boh.

Sciaphilus, Steph.

- 1 muricatus, F.

Tropiphorus, Schön.

- 1 carinatus, Müll.
 2 tomentosus, Marsh.
 mercurialis, Brit. Cat.
 3 obtusus, Bonsd.

Barypeithes, Duv.

- 1 sulcifrons, Boh.

Liophlœus, Germ.

- 1 nubilus, F.

Metallites, Germ.

- 1 marginatus, Steph.
 iris, Ol.

Polydrusus, Germ.

- 1 micans, F.
 2 sericeus, Schall.
 3 tereticollis, De G.
 undatus, F.
 4 pterygomalis, Boh.
 5 flavipes, De G.
 6 planifrons, Gyll.
 7 cervinus, L.
 8 chrysomela, Ol.
 9 confluens, Steph.

Phyllobius, Schön.

- 1 oblongus, L.
 2 calcaratus, F.
 glaucus, Scop.
 3 urticæ, De G.
 alneti, F.
 4 pyri, L.
 5 argentatus, L.
 6 maculicornis, Germ.
 v. cinereus, Fowler.
 7 pomonæ, Ol.
 v. cinereipennis, Gyll.

- 8 viridiæris, Laich.
 uniformis, Marsh.
 9 viridicollis, F.

Tanymecus, Schön.

- 1 palliatus, F.

Philopedon, Steph.

- 1 geminatus, F.

Atactogenus, Tourn.

- 1 exaratus, Marsh.

Barynotus, Germ.

- 1 obscurus, F.
 2 schönherri, Zett.
 3 elevatus, Marsh.
 mœrens, auct.

Alophus, Schön:

- 1 triguttatus, F.

CURCULIONINA.

Sitones, Schön.

- 1 griseus, F.
 2 cambricus, Steph
 v. cinerascens, Fahr.
 3 regensteinensis, Herbst.
 4 waterhousei, Walt.
 5 crinitus, Herbst.
 6 lineellus, Gyll.
 7 tibialis, Herbst.
 8 brevicollis, Schön.
 9 hispidulus, F.
 10 humeralis, Steph.
 11 meliloti, Walt.
 12 flavescens, Marsh.
 v. longicollis, Fahr.
 13 puncticollis, Steph.
 14 suturalis, Steph.
 15 ononidis, Sharp.
 16 lineatus, L.
 17 sulcifrons, Thunb.

Gronops, Schön.

- 1 lunatus, L.

Limobius, Schön.

- 1 dissimilis, Herbst.
 2 mixtus, Boh.

Hypera, Germ.

- 1 punctata, F.
- 2 fasciculata, Herbst.
- 3 arundinis, Payk.
- 4 rumicis, L.
- 5 pollux, F.
- 6 alternans, Steph.
julini, Sahl.
- 7 polygona, L.
- 8 tigrina, Boh.
- 9 elongata, Payk.
- 10 suspiciosa, Herbst.
- 11 variabilis, Herbst.
- 12 murina, F.
- 13 plantaginis, De G.
- 14 meles, F.
- 15 trilineata, Marsh.
- 16 nigrirostris, F.
v. ononidis, Stev.

Rhinocyllus, Germ.

- 1 latirostris, Latr.

Cleonus, Schön.

- 1 sulcirostris, L.
- 2 albidus, F.
- 3 nebulosus, L.

Lixus, F.

- 1 paraplecticus, L.
- 2 algius, L.
angustatus, F.
- 3 bicolor, Ol.
- 4 filiformis, F.

Larinus, Germ.

- 1 carlinae, Ol.

Lepyrus, Schön.

- 1 binotatus, Payk.
capucinus, Schall.

Liosoma, Steph.

- 1 ovatum, Clairv.
v. collaris, Rye.
- 2 oblongulum, Boh.
- 3 troglodytes, Rye.

Liparus, Ol.

- 1 coronatus, Goeze.
- 2 germanus, L.

Hylobius, Schön.

- 1 abietis, L.

Plinthus, Germ.

- 1 caliginosus, F.

Pissodes, Germ.

- 1 pini, L.
- 2 notatus, F.

Trachodes, Germ.

- 1 hispidus, L.

Orchestes, Ill.

- 1 quercus, L.
- 2 scutellaris, Gyll.
v. semirufus, Gyll.
- 3 alni, L.
v. ferrugineus, Marsh.
- 4 ilicis, F.
v. nigripes, Fowler.

- 5 sparsus, Fahr.

- 6 avellanæ, Don.

- 7 fagi, L.

- 8 pratensis, Germ.

- 9 rusci, Herbst.

- 10 iota, F.

- 11 stigma, Germ.

- 12 decoratus, Germ.

- 13 salicis, L.

- 14 saliceti, Payk.

Rhamphus, Clairv.

- 1 flavicornis, Clairv.

Orthocætes, Germ.

- 1 setiger, Beck.

Pseudostyphlus, Tourn.

- 1 pilumnus, Gyll.

Procas, Steph.

- 1 armillatus, F.
steveni, Gyll.
v. granulicollis, Walt

Pachytychius, Jekel.

- 1 hæmatocephalus, Gyll.

Grypidius, Steph.

- 1 equiseti, F.

Erirrhinus, Schön.

- 1 scirpi, F.
- 2 bimaculatus, F.
- 3 acridulus, L.
- 4 æthiops, F.

Thryogenes, Bedel.

- 1 festucæ, Herbst.
- 2 nereis, Payk.
- 3 scirrhosus, Gyll.

Dorytomus, Steph.

- 1 vorax, F.
- 2 tremulæ, F.
- 3 tortrix, L.
- 4 hirtipennis, Bedel.
tæniatus, Brit. Cat.
- 5 validirostris, Gyll.
- 6 maculatus, Marsh.
v. costirostris, Gyll.
v. silbermanni, Wenck.
- 7 affinis, Payk.

- 8 melanophthalmus, Payk.
v. agnathus, Boh.

- 9 pectoralis, Gyll.

- 10 salicinus, Gyll.

- 11 salicis, Walt.

- 12 majalis, Payk.

Smicronyx, Schön.

- 1 cæcus, Boh.
- 2 reichei, Gyll.
v. championis, Fowler.
- 3 jungermannia, Reich.
cicur, Gyll.

Tanysphyrus, Schön.

- 1 lemnæ, F.

Bagous, Schön.

- 1 alismatis, Marsh.
- 2 petro, Herbst.
- 3 cylindrus, Payk.
- 4 binodulus, Herbst
- 5 nodulosus, Gyll.

- 6 argillaceus, Gyll.
 inceratus, Brit. Coll.
- 7 limosus, Gyll.
 petrosus, Wat. Cat.
- 8 tempestivus, Herbst.
- 9 lutulosus, Gyll.
- 10 frit, Brit. Coll.
- 11 subcarinatus, Brit. Coll.
- 12 diglyptus, Boh.
- 13 brevis, Schön.
- 14 lutosus, Gyll.
- 15 glabrirostris, Herbst.
 lutulentus, Gyll.
 v. nigritarsis, Thoms.
- Anoplus**, Schön.
 1 plantaris, Naez.
 2 roboris, Suffr.
- Acalyptus**, Schön.
 1 carpini, F.
 v. rufipennis, Gyll.
- Elleschus**, Steph.
 1 bipunctatus, L.
 2 scanicus, Payk.
- Tychius**, Germ.
 1 quinquepunctatus, L.
 2 venustus, F.
 3 squamulatus, Gyll.
 4 schneideri, Herbst.
 lineatulus, Brit. Cat.
 5 meliloti, Steph.
 6 lineatulus, Steph.
 schneideri, Brit. Cat.
 7 junceus, Reich.
 curtus, Bris.
 8 tomentosus, Herbst.
 9 tibialis, Boh.
 10 pygmæus, Bris.
 brevicornis, Wat.
- Miccotrogus**, Schön.
 1 picirostris, F.
- Sibinia**, Schön.
 1 pellucens, Scop.
 cana, Herbst.
- 2 potentillæ, Germ.
- 3 arenariæ, Steph.
- 4 primita, Herbst.
- 5 sodalis, Germ.
- Miarus**, Steph.
 1 campanulæ, L.
 2 graminis, Gyll.
 3 plantarum, Germ.
- Gymnetron**, Schön.
 1 villosulus, Gyll.
 2 beccabungæ, L.
 v. veronicæ, Germ.
 3 melanarius, Germ.
 4 rostellum, Herbst.
 5 pascuorum, Gyll.
 6 labilis, Herbst.
 7 antirrhini, Payk.
 noctis, Brit. Cat.
 8 collinus, Gyll.
 9 linariæ, Panz.
- Mecinus**, Germ.
 1 pyraster, Herbst.
 2 circulatus, Marsh.
 3 collaris, Germ.
- Anthonomus**, Germ.
 1 ulmi, De G.
 2 rosinae, Des Gozis.
 3 pedicularius, L.
 4 chevrolati, Desbr.
 5 conspersus, Desbr.
 6 pomorum, L.
 7 varians, Payk.
 8 rubi, Herbst.
 9 comari, Crotch.
- Brachonyx**, Schön.
 1 pineti, Payk.
 indigena, Herbst.
- Nanophyes**, Schön.
 1 lythri, F.
 2 gracilis, Redt.
- Cionus**, Clairv.
 1 scrophulariæ, L.
- 2 tuberculosus, Scop.
 verbasci, F.
- 3 thapsus, F.
 similis, Müll.
- 4 hortulanus, Marsh.
- 5 blattariæ, F.
- 6 pulchellus, Herbst.
- Orobitis**, Germ.
 1 cyaneus, L.
- Cryptorrhynchus**, Ill.
 1 lapathi, L.
- Acalles**, Steph.
 1 roboris, Curt.
 2 ptinoides, Marsh.
 3 turbatus, Boh.
 misellus, Boh.
- Mononychus**, Schön.
 1 pseudacori, F.
- Cœliodes**, Schön.
 1 rubicundus, Herbst.
 2 quercus, F.
 3 ruber, Marsh.
 4 erythroleucus, Gmel.
 subrufus, Herbst.
 5 cardui, Herbst.
 fuliginosus, Marsh.
 6 quadrimaculatus, L.
 7 geranii, Payk.
 8 exiguus, Ol.
- Poophagus**, Schön.
 1 sisymbrii, F.
 2 nasturtii, Germ.
- Ceuthorrhynchus**, Duv.
 1 assimilis, Payk.
 2 syrites, Germ.
 3 setosus, Boh.
 4 constrictus, Marsh.
 5 cochleariæ, Gyll.
 6 ericæ, Gyll.
 7 erysimi, F.
 v. chloropterus, Steph.
 8 contractus, Marsh.
 v. pallipes Crotch.

- 9 cyanipennis, Germ.
 10 chalybæus, Germ.
 11 hirtulus, Germ.
 12 suturellus, Gyll.
 13 pilosellus, Gyll.
 14 quadridens, Panz.
 15 geographicus, Goeze,
 echii, F.
 16 pollinarius, Forst.
 17 viduatus, Gyll.
 18 angulosus, Boh.
 19 picitarsis, Gyll.
 tarsalis, Boh.
 20 pleurostigma, Marsh.
 sulcicollis, Gyll.
 21 alliarie, Bris.
 22 rapæ, Gyll.
 23 verrucatus, Gyll.
 biguttatus, Boh.
 24 resedæ, Marsh.
 25 punctiger, Gyll.
 26 marginatus, Payk.
 27 urticæ, Boh.
 28 rugulosus, Herbst.
 29 melanostictus, Marsh.
 30 asperifoliarum, Gyll.
 31 arcuatus, Herbst.
 32 euphorbiæ, Bris.
 crux, Wat. Cat.
 33 chrysanthemi, Germ.
 campestris, Gyll.
 34 triangulum, Boh.
 vicinus, Kr.
 35 litura, F.
 36 trimaculatus, F.
- Ceuthorrhynchidius,**
 Duv.
 1 floralis, Payk.
 2 hepaticus, Gyll.
 3 pyrrorhynchus, Marsh.
 4 pulvinatus, Gyll.
 5 nigrinus, Marsh.
- 6 melanarius, Steph.
 7 posthumus, Germ.
 pumilio, Gyll.
 8 terminatus, Herbst.
 9 horridus, F.
 spinosus, Goeze.
 10 distinctus, Bris.
 11 quercicola, Payk.
 versicolor, Bris.
 v. crotchi, Bris.
 12 mixtus, Muls.
 nigroterminatus, Woll.
 13 troglodytes, F.
 14 chevrolati, Bris.
 minimus, Walt. ?
 15 rufulus, Duf.
 frontalis, Bris.
 16 dawsoni, Bris.
- Tapinotus,** Schön.
 1 sellatus, F.
- Rhytidosomus,** Schön.
 1 globulus, Herbst.
- Amalus,** Schön.
 1 hæmorrhous, Herbst.
 scortillum, Herbst.
- Rhinoncus,** Steph.
 1 pericarpus, L.
 2 gramineus, Herbst.
 inconspicuous, auct.
 3 perpendicularis, Reich
 subfasciatus, Gyll.
 4 castor, F.
 5 bruchoides, Herbst.
 6 denticollis, Gyll.
- Eubrychius,** Thoms.
 1 velatus, Beck.
- Litodactylus,** Redt.
 1 leucogaster, Marsh.
- Phytobius,** Schmidt,
 1 comari, Herbst.
 2 waltoni, Boh
- 3 quadrituberculatus, F.
 4 canaliculatus, Fahr.
 5 quadricornis, Gyll.
 6 quadrinodosus, Gyll.
- Limnobaris,** Bedel.
 1 T-album, L.
- Baris,** Germ.
 1 laticollis, Marsh.
 glabra, Herbst.
 2 picicornis, Marsh.
 abrotani, Germ.
 3 lepidii, Germ.
 4 chlorizans, Germ.
 5 analis, Ol.
 6 scolopacea, Germ.
- Balaninus,** Germ.
 1 venosus, Grav.
 glandium, Brit. Cat.
 2 nucum, L.
 3 turbatus, Gyll.
 tessellatus, auct.
 4 betulæ, Steph.
 cerasorum, Herbst.
 5 rubidus, Gyll.
 betulæ, Desbr.
 6 villosus, F.
 7 salicivorus, Payk.
 brassicæ, Brit. Cat.
 8 pyrrhoceras, Marsh.
- Magdalis,** Germ.
 1 phlegmatica, Herbst.
 2 duplicata, Germ.
 3 violacea, L.
 heydeni, Desb.
 4 carbonaria, L.
 5 armigera, Fourc.
 atramentaria, Marsh.
 6 cerasi, L.
 7 pruni, L.
 8 barbicornis, Latr.

CALANDRINA.

Calandra, Clairv.

- 1 granaria, L.
- 2 oryzæ, L.

COSSONINA.

Pentarthrum, Woll.

- 1 huttoni, Woll.

Cossonus, Clairv.

- 1 ferrugineus, Clairv.

Rhopalomesites, Woll.

- 1 tardyi, Curt.

Rhyncolus, Steph.

- 1 lignarius, Marsh.
- cylindrirostris, Ol.
- 2 gracilis, Ros.
- 3 ater, L.
- chloropus, F.

Stereocorynes, Woll.

- 1 truncorum, Germ.

Caulotrypis, Woll.

- 1 æneopiceus, Boh.

Codiosoma, Bedel.

- 1 spadix, Herbst.

SCOLYTIDÆ.

Scolytus, Müll.

- 1 ratzeburgi, Jans.
- 2 destructor, Ol.
- 3 pruni, Ratz.
- 4 intricatus, Ratz.
- 5 rugulosus, Ratz.
- 6 multistriatus, Marsh.

Hylastes, Er.

- 1 ater, Payk.

1 cunicularius, Er.

3 opacus, Er.

4 angustatus, Herbst.

5 palliatus, Gyll.

Hylastinus, Bedel.

- 1 obscurus, Marsh.
- trifolii, Müll.

Hylesinus, F.

- 1 crenatus, F.
- 2 oleiperda, F.
- 3 fraxini, Panz.
- 4 vittatus, F.

Myelophilus, Eich.

- 1 piniperda, L.
- 2 minor, Hart.

Cissophagus, Chap.

- 1 hederæ, Schmidt.

Xylechinus, Chap.

- 1 pilosus, Ratz.

Phlæophthorus, Müll.

- 1 rhododactylus, Marsh.

Polygraphus, Er.

- 1 pubescens, Bach.

Cryphalus, Er.

- 1 binodulus, Ratz.
- 2 granulatus, Ratz.
- 3 tiliæ, Panz.
- 4 abietis, Ratz.
- 5 piceæ, Ratz.
- 6 fagi, Nord.

Pityophthorus, Eich.

- 1 lichtensteinii, Ratz.
- 2 pubescens, Marsh.
- micrographus, Brit. Cat.

Xylocleptes, Ferr.

- 1 bispinus, Duft.

Dryocætes, Eich.

- 1 autographus, Ratz.
- 2 villosus, F.
- 3 alni, Georg.
- marshami, Rye.
- 4 coryli, Perris.

Taphrorychus, Eich.

- 1 bicolor, Herbst.
- bulmerinequi, Kol. ?

Tomicus, Latr.

- 1 sexdentatus, Börn.
- stenographus, Duft.
- 2 typographus, L.
- 3 acuminatus, Gyll.
- 4 laricis, F.
- 5 nigritus, Gyll.

Pityogenes, Bedel.

- 1 chalcographus, L.
- 2 bidentatus, Herbst.
- bidens, F.
- v. quadridens, Hart.

Trypodendron, Steph.

- 1 domesticum, L.
- 2 quercus, Eich.
- 3 lineatum, Er.

Xyleborus, Eich.

- 1 dispar, F.
- 2 dryographus, Ratz.
- 3 saxeseni, Ratz.

Platypus, Herbst.

- 1 cylindras, F.

ABNORMAL COLEOPTERA.

STYLOPIDÆ.

Stylops, Kirby.

- 1 melittæ, Kirby.

Elenchus, Curt.

- 1 tenuicornis, Kirby.

Halictophagus, Dale.

- 1 curtisii, Dale.

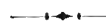
INTRODUCED SPECIES.

Carabus auratus, L.	Attagenus verbasci, auct.	Cerambyx heros, Scop.
Trogophlœus spinicollis,	Hadrotoma nigripes, F.	Cerambyx cerdo, L.
Rye.	Polyphylla fullo, F.	Latheticus oryzæ, Wat.
Carpophilus sexpustulatus,	Agriotes pilosus, Panz.	Serropalpus striatus, Schall.
F.	Ptinus latro, F.	Eusomus ovulum, Ill.
Nitidula flexuosa, F.	Ptinus pilosus, Müll.	Hypothenemus eruditus,
Attagenus megatoma, F.	Ptinus brunneus, Duft.	Westw.

DOUBTFUL SPECIES.

Carabus convexus, F.	Hister sinuatus, Ill.	Trichodes alvearius, F.
Acupalpus derelictus,	Lathridius angusticollis,	Trichodes apiarius, L.
Daws.	Humm.	Leptura virens, L.
Harpalus griseus, Panz.	Enicmus consimilis, Mann.	Clythra læviuscula, Ratz.
Harpalus luteicornis, Duft.	Cryptophagus fuscicornis,	Cryptocephalus violaceus,
Harpalus sulphuripes.	Sturm.	Laich.
Germ.	Cryptophagus subfu-	Cryptocephalus vittatus, F.
Amara ingenua, Duft.	matus, Kr.	Phytodecta affinis, Gyll.
Anchomenus quadripunc-	Parnus lutulentus, Er.	Otiorrhynchus ambiguus,
tatus, De G.	Heterocerus arenarius,	Schön.
Tachys parvulus, Dej.	Kies.	Cleonus glaucus, F.
Tachys quadrisignatus,	Heterocerus sericans, Kies.	Cleonus ophthalmicus, Rossi
Duft.	Platycerus caraboides, L.	Lixus iridis, Ol.
Brachinus sclopeta, F.	Aphodius melanostictus	Lixus turbatus, Gyll.
Brachinus explodens, Duft.	Schmidt.	Orchestes loniceræ, Herbst.
Cybister roeseli, Füss.	Geotrupes foveatus, Marsh.	Tychius polylineatus, Germ.
Aleochara inconspicua.	Cerophytum elateroides, L.	Miarus micros, Germ.
Aubé.	Cardiophorus ruficollis, Er.	Anthonemus britannus.
Stenus shepherdii, Crotch.	Cardiophorus thoracicus,	Walt.
Cephennium intermedium,	Er.	Cionus olens, F.
Aubé.	Cardiophorus rufipes,	Ceuthorrhynchus sutur-
Exochomus auritus, Scriba.	Fourc.	alis, F.
Hister quadrinotatus,	Limonius parvulus, Panz.	Ceuthorrhynchus rotun-
Scriba.	Psilothrix protensus, Gené.	datus, Bris.

I N D E X.



	PAGE		PAGE		PAGE
ABDERA	32	Alphitobius	32	Apoderus	33
Abræus	18	Alphitophagus	32	Apteropeda	31
Acalles	37	Amalus	38	Arena	10
Acalyptus	37	Amara	3	Aromia	27
Acanthocinus	28	Ammœcius	24	Arpedium	15
Achenium	13	Amphicyllis	16	Asemum	27
Acidota	15	Amphotis	20	Aspidiphorus	23
Acilius	6	Anacæna	6	Astilbus	8
Acritus	18	Anaspis	33	Atactogenus	35
Acrognathus	15	Anatis	19	Atemeles	8
Acrulia	15	Anchomenus	3	Athous	25
Actocharis	10	Ancistronycha	26	Atomaria	22
Actidium	19	Ancyrophorus	14	Attagenus	23
Actinopteryx	18	Anisodactylus	2	Attelabus	33
Actobius	12	Anisosticta	19	Autalia	10
Acupalpus	2	Anisotoma	16	Axinotarsus	26
Acylophorus	11	Anisoxya	32		
Adalia	19	Anitys	27	BADISTER	2
Adimonia	30	Anobium	27	Bagous	36
Adrastus	25	Anomala	24	Balaninus	38
Ægialia	24	Anommatus	22	Baptolinus	13
Aëpus	4	Anoplodera	28	Baris	38
Ætophorus	4	Anoplus	37	Barynotus	35
Agabus	5	Anthaxia	25	Barypeithes	35
Agapanthia	28	Antherophagus	22	Bathyscia	17
Agaricochara	10	Anthicus	33	Batophila	31
Agaricophagus	17	Anthobium	15	Batrisus	16
Agathidium	16	Anthocomus	26	Bembidium	3
Agelastica	30	Anthonomus	37	Berosus	6
Aglenus	21	Anthophagus	15	Bibloporus	16
Agrilus	25	Anthrenus	23	Bidessus	5
Agriotes	25	Anthribus	33	Blaps	31
Aleochara	7	Aphanisticus	25	Blechrus	4
Alexia	20	Aphodius	24	Bledius	14
Alianta	8	Aphthona	30	Blethisa	1
Alophus	35	Apion	34	Bolitobius	11

	PAGE		PAGE		PAGE
Bolitochara	10	Chætarthria	6	Cryphalus	39
Bolitophagus	31	Chætocnema	31	Cryptarcha	21
Borboropora	10	Chilocorus	19	Crypticus	31
Bostrichus	27	Chilopora	8	Cryptobium	13
Brachida	10	Chlænienus	2	Cryptocephalus	29
Brachinus	5	Choleva	17	Cryptohypnus	25
Brachonyx	37	Choragus	33	Cryptophagus	22
Brachysomus	35	Chrysomela	29	Cryptopleurum	7
Brachypterus	20	Cicindela	1	Cryptorrhynchus	37
Brachytarsus	33	Cicones	21	Cteniopus	32
Bradycellus	2	Cilea	11	Cychramus	21
Brontes	21	Cillenius	3	Cychrus	1
Brosicus	1	Cionus	37	Cyclonotum	7
Bruchus	28	Cis	27	Cymbiodyta	6
Bryaxis	16	Cissophagus	39	Cymindis	4
Brychius	5	Cistela	32	Cyphon	25
Bryoporus	14	Clambus	16	Cyrtotriplax	20
Byctiscus	33	Claviger	16	Cyrtusa	16
Byrrhus	23	Cleonus	36	Cytilus	23
Bythinus	15	Clinocara	32		
Byturus	23	Clivina	1	DACNE	20
		Clythra	29	Dascillus	25
CÆNOSCELIS	22	Clytus	28	Dasytes	26
Cænopsis	35	Cnemidotus	5	Deinopsis	11
Cafius	12	Coccidula	19	Deleaster	15
Calandra	39	Coccinella	19	Deliphrum	15
Calathus	3	Codiosoma	39	Demetrius	4
Callicerus	8	Cœlambus	5	Dendrophagus	21
Callidium	27	Cœliodes	37	Dendrophilus	18
Callistus	2	Cœnocara	27	Deporaus	33
Calodera	8	Colenis	17	Dermestes	23
Calosoma	1	Colon	17	Deronectes	5
Calyptromerus	16	Colydium	21	Diachromus	2
Campylus	25	Colymbetes	6	Dianous	13
Carabus	1	Compsochilus	15	Diaperis	31
Carcinops	18	Coninomus	22	Dichirotrichus	2
Cardiophorus	25	Conopalpus	32	Diglossa	10
Carpophilus	20	Conosoma	11	Dinarda	8
Cartodere	22	Copelatus	6	Dinoderus	27
Cassida	31	Copris	24	Diphyllus	22
Cathartus	21	Coprophilus	14	Diplocœlus	22
Cathormiocerus	35	Corticaria	22	Ditoma	21
Caulotrypis	39	Corylophus	19	Dolichosoma	26
Cephennium	16	Corymbites	25	Dolopius	25
Cercus	20	Corynetes	27	Donacia	28
Cercyon	7	Coryphium	15	Dorcatoma	27
Cerylon	21	Cossonus	39	Dorcus	24
Cetonia	24	Creophilus	12	Dorytomus	36
Ceuthorrhynchidius	38	Crepidodera	31	Drilus	26
Ceuthorrhynchus	37	Crioceris	29	Dromius	4

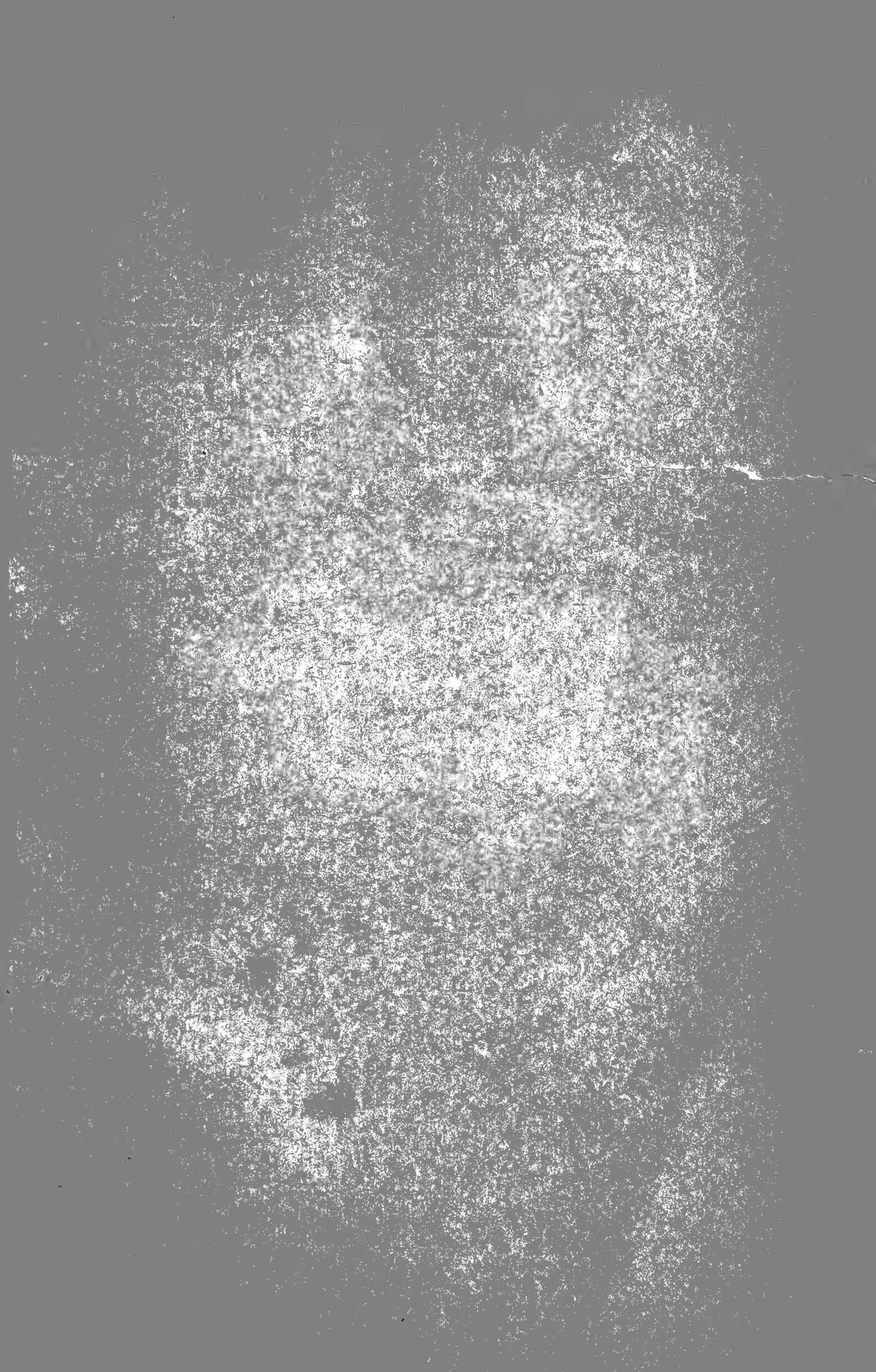
	PAGE		PAGE		PAGE
Dryocætes	39	Gnathocerus	32	Hydrobius	6
Dryophilus	27	Gnathoncus	18	Hydrochus	7
Drypta	5 4	Gnorimus	24	Hydrocyphon	26
Dyschirius	1	Gnypeta	10	Hydrophilus	6
Dytiscus	6	Gracilia	28	Hydroporus	5
ELAPHRUS	1	Grammoptera	28	Hydrothassa	30
Elater	25	Graphoderes	6	Hydrous	6
Elenchus	39	Gronops	35	Hydrovatus	5
Elleschus	37	Grypidius	36	Hygronoma	10
Elmis	23	Gymnetron	37	Hylastes	39
Emus	12	Gymnusa	11	Hylastinus	39
Encephalus	10	Gyrinus	6	Hylecætus	27
Endomychus	20	Gyrophæna	10	Hylesinus	39
Endophilæus	21	HABROCERUS	11	Hylobius	36
Enicmus	22	Hæmonia	29	Hylotrupes	27
Ennearthron	27	Halictophagus	39	Hypera	36
Enochrus	6	Haliphus	5	Hyperaspis	19
Ephistemus	22	Hallomenus	32	Hyphydrus	5
Epipeda	10	Haltica	30	Hypocopus	21
Epitrix	31	Halyzia	19	Hypocyptus	11
Epuræa	20	Hapalaræa	15	Hypophlæus	32
Erirrhinus	36	Haplocnemus	26	Hypulus	32
Ernobius	27	Haploderus	14	ILYBIUS	6
Eros	26	Harpalus	2	Ilyobates	8
Eryx	32	Hedobia	27	Ips	21
Eubria	26	Heledona	31	Ischnodes	25
Eubrychius	38	Heliopathes	31	Ischnoglossa	8
Eucnemis	25	Helochares	6	Ischnomera	32
Euconnus	16	Helodes	25	LABIDOSTOMIS	29
Eudectus	15	Helophorus	7	Laccobius	6
Eumicrus	16	Helops	32	Laccophilus	5
Euplectus	16	Henicocerus	7	Lacon	25
Euryporus	11	Henoticus	22	Lamophlæus	21
Euryptilium	19	Heptaulacus	24	Lagria	32
Euryusa	10	Hermæophaga	30	Lamia	23
Eusphalerum	15	Hetærius	18	Lamprinus	11
Eustilbus	20	Heterocerus	23	Lamprosoma	29
Eutheia	16	Heterothops	11	Lampyrus	26
Evæsthetus	13	Hippodamia	19	Langelandia	21
Exochomus	19	Hippuruphila	31	Larinus	36
Exomias	35	Hister	17	Lasioderma	27
FALAGRIA	10	Holoparamecus	22	Lathridius	22
GALERUCELLA	30	Homalopia	24	Lathrimæum	15
Gastroidea	29	Homalota	8	Lathrobium	13
Geodromicus	15	Homœusa	7	Lebia	4
Georyssus	23	Hoplia	24	Leiopus	28
Geotrupes	24	Hydaticus	6	Leistotrophus	12
Gibbium	27	Hydnobius	17	Leistus	1
		Hydræna	7		

	PAGE		PAGE		PAGE
Lema	29	Melandrya	32	Nausibius	21
Leptacinus	13	Melanophthalma	22	Nebria	1
Leptinus	16	Melanotus	25	Necrobia	27
Leptura	28	Melasis	25	Necrodes	17
Leptusa	10	Melasoma	29	Necrophorus	17
Lepyrus	36	Meligethes	20	Nemosoma	21
Lesteva	15	Meloë	33	Nephanes	18
Licinus	2	Melolontha	24	Neuraphes	16
Limnebius	6	Mesosa	28	Niptus	27
Limnichus	23	Metabletus	4	Nitidula	20
Limnius	23	Metallites	35	Nossidium ,	19
Limnobaris	38	Metœcus	33	Noterus	5
Limobius	35	Mezium	27	Notiophilus	1
Limonius	25	Miarus	37	Notothecta	8
Liodes	16	Miccotrogus	37	Notoxus	33
Lionychus	4	Micralymma	15	Nudobius	13
Liophlœus	35	Micrambe	22		
Liosoma	36	Micraspis	19	OBEREA	28
Liparus	36	Microcara	25	Obrium	28
Lissodema	32	Microglossa	7	Ocalea	8
Litargus	23	Micropeplus	20	Ochina	27
Lithocharis	13	Microptilium	18	Ochrosis	31
Litodactylus	38	Microrrhagus	25	Octhebius	7
Lixus	36	Microzoum	31	Octotemnus	27
Lochmæa	30	Micrurula	20	Ocypus	12
Longitarsus	30	Millidium	19	Ocyusa	8
Loricera	1	Miscodera	1	Odacantha	4
Lucanus	24	Mniophila	31	Odontæus	24
Ludius	25	Molorchus	28	Œdemera	32
Luperus	30	Monochammus	28	Olibrus	20
Lycoperdina	20	Mononychus	37	Oligota	10
Lyctus	27	Monotoma	21	Olisthopus	3
Lymexylon	27	Mordella	33	Olophrum	15
Lymnæum	3	Mordellistena	33	Omalium	15
Lytta	33	Morychus	23	Omiæ	35
		Murmidius	21	Omophilus	32
MACRONYCHUS	23	Mycetæa	20	Omosiphora	20
Magdalis	38	Mycetochares	32	Omosita	20
Malachius	26	Mycetophagus	23	Oncomera	32
Malthinus	26	Mycetoporus	11	Onthophagus	24
Malthodes	26	Mycterus	32	Onthophilus	18
Mantura	31	Myelophilus	39	Oodes	2
Masoreus	4	Myllæna	10	Opatrum	31
Mecinus	37	Myrmecoxenus	22	Opilo	26
Medon	13	Myrmedonia	8	Orchesia	32
Megacronus	11	Myrmetes	18	Orchestes	36
Megapenthes	25	Mysia	19	Orectochilus	6
Megarthritis	15			Orobitis	37
Megasternum	7	NACERDES	32	Orsodacna	28
Megatoma	23	Nanophyes	37	Orthochætus	36

	PAGE		PAGE		PAGE
Orthocerus	21	Phytosus	10	Ptinella	18
Orthoperus	19	Pissodes	36	Ptinus	27
Osphya	32	Pityogenes	39	Ptomaphagus	17
Othius	13	Pityophagus	21	Pyrochroa	32
Otiorrhynchus	34	Pityophthorus	39	Pyropterus	26
Oxylæmus	21	Placusa	10	Pytho	32
Oxyomus	24	Plagiodera	29	QUEDIONUCHUS	12
Oxypoda	7	Plagiogonus	24	Quedius	11
Oxyporus	14	Platambus	6	RHAGIUM	28
Oxytelus	14	Platycis	26	Rhagonycha	26
Oxytherea	29	Platydema	31	Rhamphus	36
PACHYTA	28	Platyderus	2	Rhantus	6
Pachytychius	36	Platynaspis	19	Rhinocyllus	36
Pæderus	13	Platypus	39	Rhinomacer	33
Palorus	32	Platyrrhinus	33	Rhinoncus	38
Panagæus	1	Platystethus	14	Rhinosimus	32
Paracymus	6	Plectroscelis	31	Rhizobius	19
Paramecosoma	22	Plegaderus	18	Rhizopertha	27
Parnus	23	Plinthus	36	Rhizophagus	21
Paromalus	18	Pocadius	20	Rhizotrogus	24
Patrobus	4	Podabrus	26	Rhopalodontus	27
Pediacus	21	Podagrica	31	Rhopalomesites	39
Pelobius	5	Pogonochærus	28	Rhynchites	33
Pelophila	1	Pogonus	4	Rhyncolus	39
Pentarthrum	39	Polydrusus	35	Rhyssemus	24
Perileptus	4	Polygraphus	39	Rhytidosomus	38
Peritelus	35	Polystichus	5	SACIUM	19
Phædon	29	Poophagus	37	Salpingus	32
Phalacrus	20	Potaminus	23	Saperda	28
Phalera	31	Prasocuris	30	Saprinus	18
Philydrus	6	Pria	20	Scaphidema	32
Philonthus	12	Priobium	27	Scaphidium	18
Philopeton	35	Prionocyphon	26	Scaphisoma	18
Philorhinum	15	Prionus	27	Schistoglossa	10
Phlæobium	15	Pristonychus	3	Sciaphilus	35
Phlæocharis	15	Procas	36	Scirtes	26
Phlæophilus	26	Prognatha	15	Scolytus	39
Phlæophthorus	39	Proteinus	15	Scopæus	13
Phlæopora	8	Psammobius	24	Scraptia	33
Phlæotrya	32	Psammœchus	21	Scybalicus	2
Phosphænus	26	Pselaphus	15	Scydmaenus	16
Phyllobius	35	Pseudopsis	15	Scymnus	19
Phyllobrotica	30	Pseudostyphlus	36	Serica	24
Phyllodecta	29	Psilothrix	26	Sericoderus	19
Phyllopertha	24	Psylliodes	31	Sericosomus	25
Phyllotreta	30	Ptenidium	19	Sermyla	30
Phytobius	38	Pterostichus	2	Sibinia	37
Phytodecta	29	Pteryx	18	Silis	26
Phytœcia	28	Ptilinus	27		
		Ptilium	18		

	PAGE		PAGE		PAGE
Silpha	17	TACHINUS	11	Trachys	25
Silusa	10	Tachyporus	11	Trechus	4
Silvanus	21	Tachypus	4	Triarthron	17
Simplocaria	23	Tachys	3	Tribolium	31
Sinodendron	24	Tachyusa	10	Trichius	24
Sipalia	10	Tanymecus	35	Trichonyx	16
Sitaris	33	Tanysphyrus	36	Trichophya	11
Sitones	35	Taphria	3	Trichopteryx	18
Smicronyx	36	Taphrorychus	39	Trimium	11
Smicrus	18	Tapinotus	38	Trinodes	23
Soronia	20	Tarsostenus	27	Triphyllus	23
Spercheus	7	Telephorus	26	Triplax	20
Sphæridium	7	Telmatophilus	22	Trogophlœus	14
Sphærites	17	Tenebrio	32	Tropideres	33
Sphærius	19	Tenebrioides	21	Tropiphorus	35
Sphæroderma	31	Teredus	21	Trox	21
Sphindus	27	Teretrius	18	Trypodendron	39
Sphodrus	3	Tetratoma	32	Tychius	37
Staphylinus	12	Tetrops	28	Tychus	15
Stenolophus	2	Thalycra	20	Typhæa	23
Stenostola	28	Thamiaræa	8	VELLEIUS	11
Stenus	13	Thanasimus	27	XANTHOLINUS	12
Stereocorynes	39	Thiasophila	8	Xenusa	10
Stilicus	13	Thinobius	14	Xestobium	27
Stomis	2	Throscus	25	Xyleborus	39
Strangalia	28	Thryogenes	36	Xylechinus	39
Strophosomus	35	Thymalus	21	Xyletinus	27
Stylops	39	Tillus	26	Xylita	32
Subcoccinella	19	Timarcha	29	Xylocleptes	39
Sunius	13	Tiresias	23	Xylophilus	33
Symbiotes	20	Tomicus	39	ZABRUS	2
Synaptus	25	Tomoxia	33	Zeugophora	29
Syncalypta	23	Toxotus	28	Zilora	32
Synchita	21	Trachodes	36		
Syntomium	14	Trachyphlœus	35		





WORKS ON ENTOMOLOGY.

- The Hemiptera Heteroptera of the British Islands.** By EDWARD SAUNDERS, F.L.S. Small Edition, with a Structural Plate, 14s. Large Edition, with 31 Coloured Plates, 48s. net.
- The Coleoptera of the British Islands.** By the Rev. Canon FOWLER, M.A., F.L.S. Complete in 5 vols. Small Edition with 2 Structural Plates, £4. Large Edition, with 180 Coloured Plates, £14 net.
- The Butterflies of Europe.** Illustrated and described by HENRY CHARLES LANG, M.D., F.L.S., &c. Complete in Two Vols., Super-royal 8vo, with 82 Coloured Plates, containing upwards of 900 Figures, £3 18s.
- The Lepidoptera of Ceylon.** By F. MOORE, F.L.S. Complete in Three Vols., Medium 4to, with 215 Coloured Plates. Cloth, gilt tops, £21 12s. Published under the auspices of the Government of Ceylon.
- British Insects. A Familiar Description of the Form, Structure, Habits, and Transformations of Insects.** By E. F. STAVELEY, Author of "British Spiders." 16 Coloured Plates, and Numerous Wood Engravings, 14s.
- British Beetles; an Introduction to the Study of our Indigenous Coleoptera.** By E. C. RYE. New Edition, revised and in part re-written by the Rev. Canon FOWLER, M.A. 16 Coloured Plates, and Wood Engravings, 10s. 6d.
- British Bees; an Introduction to the Study of the Natural History and Economy of the Bees indigenous to the British Isles.** By W. E. SHUCKARD. 16 Coloured Plates, and Woodcuts of Dissections, 10s. 6d.
- British Butterflies and Moths; an Introduction to the Study of our Native Lepidoptera.** By H. T. STANTON. 16 Coloured Plates, and Wood Engravings, 10s. 6d.
- British Spiders; an Introduction to the Study of the Araneidæ found in Great Britain and Ireland.** By E. F. STAVELEY. 16 Coloured Plates, and 44 Wood Engravings, 10s. 6d.
- Harvesting Ants and Trap-door Spiders; Notes and Observations on their Habits and Dwellings.** By J. T. MOGGRIDGE, F.L.S. With a SUPPLEMENT of 160 pp., and 8 additional Plates, 17s. The Supplement separately, cloth, 7s. 6d.
- The Structure and Life History of the Cockroach (*Periplaneta Orientalis*).** An Introduction to the Study of Insects. By L. C. MIALL, Professor of Biology in the Yorkshire College, Leeds, and ALFRED DENNY, Lecturer on Biology in the Firth College, Sheffield. 125 Woodcuts, 7s. 6d.
- Curtis's British Entomology. Illustrations and Descriptions of the Genera of Insects found in Great Britain and Ireland, containing Coloured Figures from Nature, of the most rare and beautiful Species, and in many instances, upon the plants on which they are found.** Eight Vols., Royal 8vo, 770 Coloured Plates, £28. Or in Separate Monographs.
- "Curtis's Entomology," which Cuvier pronounced to have "reached the ultimatum of perfection," is still the standard work on the Genera of British Insects. The Figures, executed by the author himself with wonderful minuteness and accuracy, have never been surpassed, even if equalled. The price at which the work was originally published was £43 16s.

IN COURSE OF PUBLICATION.

- The Lepidoptera of the British Islands.** By C. G. BARRETT, F.E.S. In Monthly Parts, with Coloured Plates, 5s.
- Lepidoptera Indica.** By F. MOORE, F.L.S. 4to, in Parts, with Coloured Plates, 15s.
- The Hymenoptera Aculeata of the British Islands.** By EDWARD SAUNDERS, F.L.S.

L. REEVE & CO., 6 HENRIETTA STREET, COVENT GARDEN.









e/o

