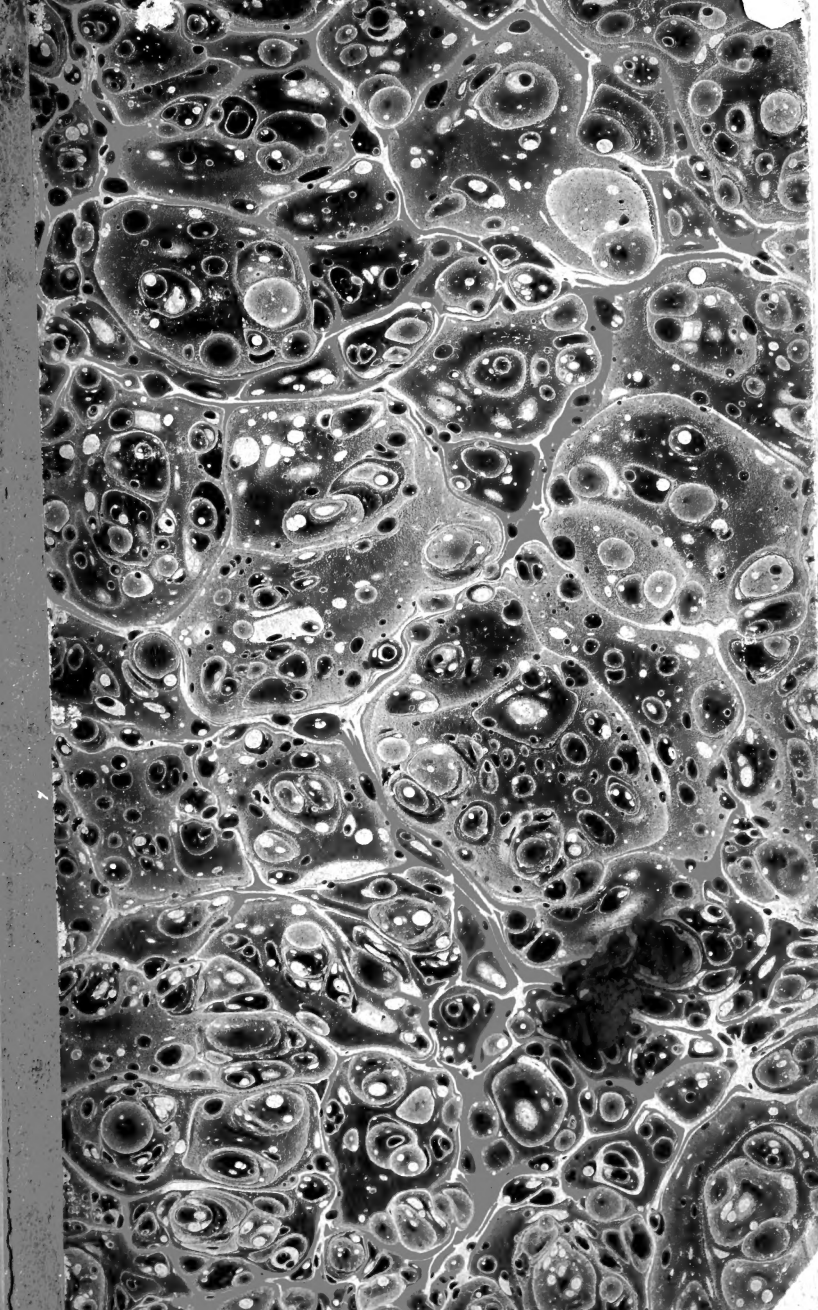


Historic, archived document

Do not assume content reflects current scientific knowledge, policies, or practices.



1000

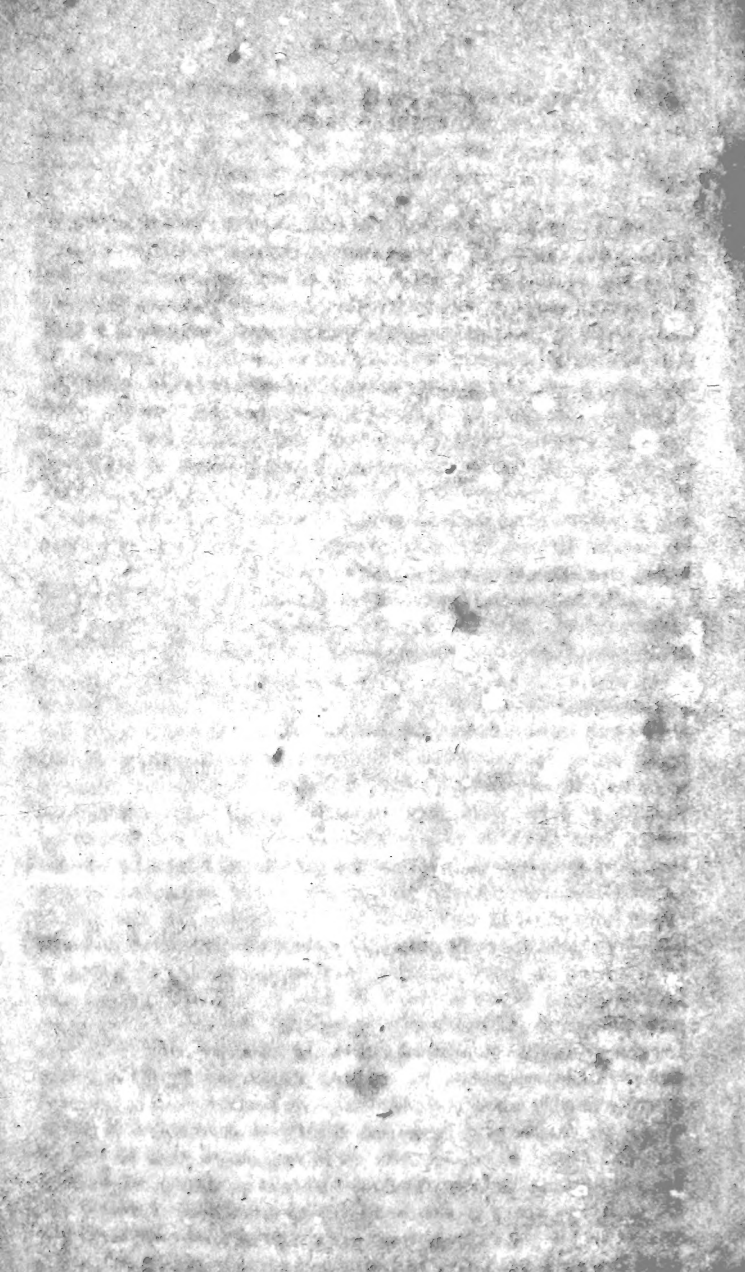
Library, U. S. Department of Agriculture,
Washington, D. C.

62.61

1827?







REMARKS.

THE Trees, Shrubs, and Plants, contained in the annexed Catalogue, can be packed in such manner as to be transported at any season of the year; and all orders from a distance receive the same pointed attention as if the persons desiring them were present to make their selections; information will also be freely imparted with regard to the best means of culture, &c.; and the packages will be shipped to any port designated. Remittances can be made by draft on any city from Portland to New-Orleans. In the transmission of plants to foreign countries, and to the various ports of the Union, New-York possesses decided advantages, regular packets being established with a great number of places, both at home and abroad, and her general facilities of intercourse being so enlarged and increasing.

In offering to the public this Catalogue, the Proprietor cannot refrain from calling the attention of amateurs to the numerous highly interesting trees and plants which it contains, and many of which are found in no other collection in our country. These have, in many instances, been attended with such expenses in their importation, that had a desire for profit *alone* animated the Proprietor, he would not have been so ardent in obtaining them: but desirous that our country should at least hold that rank in her botanic collections which she does in every other respect, and influenced by that zeal which ever inspires the votaries of Flora, he has incurred disbursements to an amount never hazarded by any other individual in our country. The prices of the plants newly imported are regulated by their absolute *cost*, and will be lessened as their culture may be attended with more or less success; many of those of less recent introduction are now placed at prices much reduced. An establishment so extensive as this, cannot of course be conducted without immense disbursements, in making which the Proprietor has greatly to rely upon the patronage he may receive in the sale of its productions. It is his desire to introduce into our country every Tree, Shrub, or Plant, which may be useful in the various departments of national industry, as well as those which serve to gratify our pleasures alone: and it remains now to be tested, whether the success which shall attend the very extensive importations already made, will war-

rant their continuance on the same expensive scale. Comprising, as this garden does, an extent of more than 30 acres, *compactly filled*, with the very extensive range of Green-Houses, which contain above 20,000 plants in pots, and being surpassed, or equalled, by few even of those which have received in foreign countries the patronage of Royalty, the Proprietor's most anxious desire has been to give to his establishment the character of a *National Institution*; and, animated by those feelings, which all seem concentrated in the "*pride of country*," he relies on that country to aid in its advancement.

Orders from a distance can be transmitted through an agent, or *direct* by mail or otherwise, and the various demands will be executed with that accuracy and despatch which characterize the general transactions of the establishment.

N. B. Distinct Catalogues and Publications relative to the establishment may be obtained of the different agents, or by application to the Proprietor, as follow.

The four first mentioned being distributed *gratis*.

No. 1. Fruit and Hardy Ornamental Trees, Shrubs, and Plants.

No. 2. Bulbous and Tuberous Rooted Plants.

No. 3. Green-House Trees, Shrubs, and Plants.

No. 4. American Indigenous Trees, Shrubs, and Plants.

No. 5. A Short Treatise on the Culture of Trees and Plants generally, price \$ 1, and this sum transmitted, post paid, to the author, will insure its prompt remission, which can be done by mail at a trifling expense.

Nos. 1, 2, 3, and 4, ready for delivery. No. 5 in the press, and will be published speedily.

Mr. Prince expects also to be shortly able to announce the publication of the first part of his work on American Horticulture, which will be issued in four parts.



MEMORANDUM

TO : [Illegible]

FROM : [Illegible]

SUBJECT : [Illegible]

[Illegible]

[Illegible]

[Illegible]

[Illegible]

[Illegible]

[Illegible]

[Illegible]

[Illegible]

[Illegible]

[Illegible]

CATALOGUE

OF

*Green-House Shrubs, Vines, Herbaceous Plants, and
Bulbous Roots,*

CULTIVATED AND FOR SALE AT THE

LINNEAN BOTANIC GARDEN,

FLUSHING, Long-Island, near New-York.

WILLIAM PRINCE, Proprietor,

C. M. of the Linnæan Society of Paris, of the Horticultural Society of London, and of the Imperial Society of the Georgofili at Florence, &c.

Nearly all of the following will thrive in a comfortable sitting-room during the winter—they are in either pots or boxes, and the prices are inclusive. It will be perceived that immense acquisitions have been made to the Green-House department, and great perspicuity and attention have been bestowed in order to select the most beautiful and interesting; and in doing this, the proprietor has rather consulted the aggrandisement and extension of the establishment, than a particular regard for pecuniary benefit to himself; and very many of the plants have been purchased at an expense of from one to five guineas each. The collection will also be found extremely rich in Chinese and Japan plants. Those which have no prices attached to them, will not be for sale until the autumn of 1827.

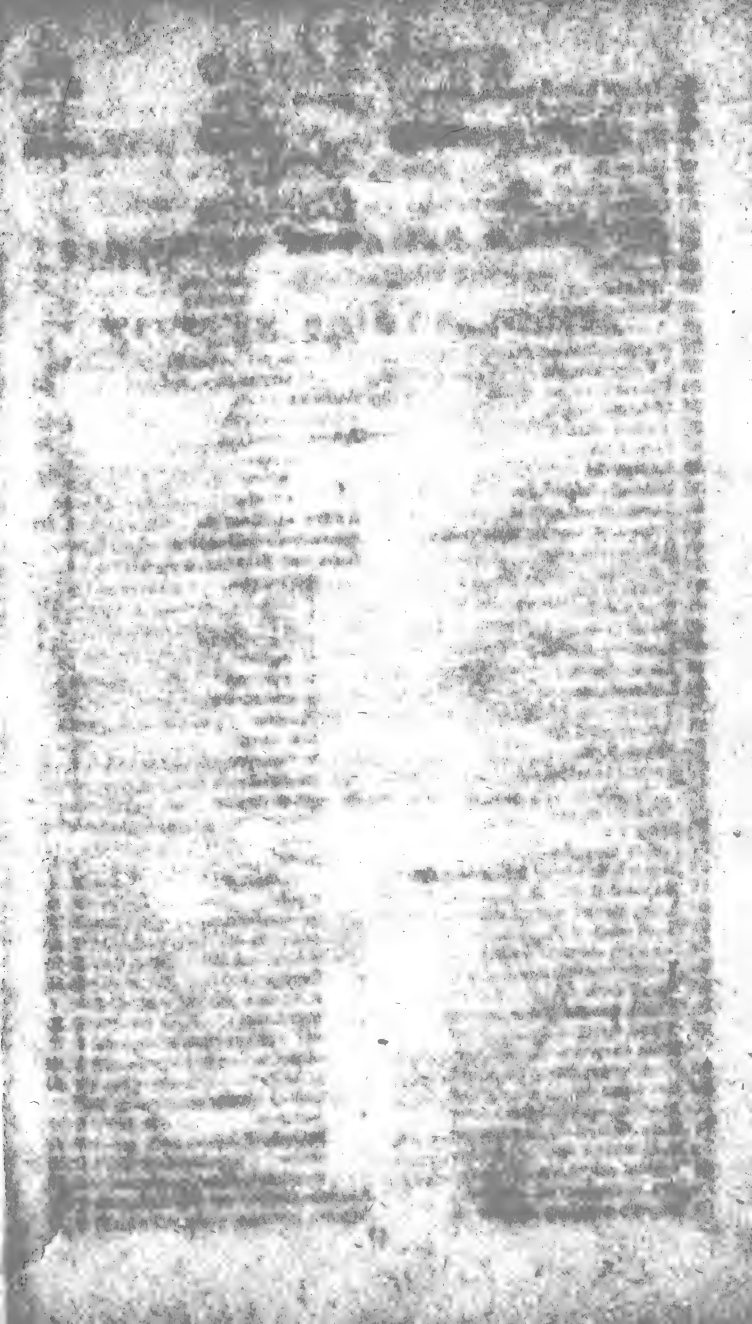
N. B. Those checked thus,* though generally cultivated as Green-House Plants, will stand the winters of the Middle States in the open air, and a very large proportion of the others will support the winters of the Southern States.

		Each.
		\$ cts.
1 Maple leaved abroma	Abroma augusta	2
2 Jamaica liquorice	Abrus precatorius	1
3 Prickly leaved acacia	Acacia armata	1
4 White flowered do.	peregrina	1
5 Broad podded do.	latisiliqua	
6 Delicate do.	pulchella	1
7 Double headed do.	stricta	1
8 Glaucous do.	glauca, <i>vel Mimosa</i>	1
9 Two spiked superb do.	lophanta	1 50
10 Whorl leaved do.	verticillata	1
11 Smooth do.	Julibrissin	75
12 Many flowered do.	floribunda	1 50
13 Downy do.	tomentosa	1
14 Sponge tree, or <i>Appopanax</i>	farnesiana	1
15 Prickly fruited do.	acanthocarpa	1
16 Illinois do.	brachyloba	50
17 Cape do.	capensis	
18 Vera Cruz do.	houstoni	2

Library, U. S. Department of Agriculture,

Washington, D. C.

		Each. S. cts.
19 Yellow haired acacia, <i>beautiful</i>	Acacia longifolia	1
20 Myrtle leaved do.	myrtifolia	1 50
21 Hairy stemmed do. <i>beautiful</i>	pubescens	3
22 Soft leaved achania	Achania mollis	1
23 Hairy do. do.	pilosa	1
24 True maiden hair	Adiantum capillus veneris	
25 Chinese air plant	Aerides odoratum	3
26 African blue lily	Agapanthus umbellatus	1 50
27 Lesser do.	minor, <i>vel praeox</i>	1 50
28 Least do.	minima	1 50
29 Whitish do.	subalba	2
30 Striped leaved do.	<i>fol. var.</i>	2
31 American century aloe	Agave americana	75
32 Striped leaved do.	<i>v. fol. striato</i>	1
33 *Virginian do.	virginica	50
34 Chinese sweet aglaia	Aglaia odorata	
35 Oriental bugle	Ajuga orientalis	1 50
36 Tallest albuca	Albuca altissima	75
37 Great do.	major	1
38 Lesser do.	minor	1
39 Riband striped do.	vittata	1
40 Sarmentose alettris	Alettris sarmentosa	1 50
41 Superb cathartic allamanda	Allamanda cathartica	3
42 Soccoitrine aloe	Aloe soccoctrina	1
43 Partridge breast do.	variegata	1
44 Cushion do.	retusa	75
45 Tongue do.	lingua	75
46 Pearl tongue do.	margaritifera	75
47 Lesser pearl do.	<i>v. minor</i>	1
48 Least do. do.	<i>v. minima</i>	1
49 Cobweb do.	arachnoides	1
50 Two coloured do.	discolor	1
51 Attenuated do.	attenuata	1
52 Warted do.	verrucosa	1
53 Spotted leaved do.	maculata	1
54 Tree do.	arborescens	1
55 Triangular do.	viscosa	1
56 Soap do.	saponaria	
57 Great soap do.	pieta	1 50
58 Superb flowered hedgehog do.	humilis	3
59 Expanded do.	rigida	1
60 Long sword leaved do.	acinacifolia	1 50
61 Keel shaped do	carinata	1 50
62 Smooth stemmed do.	diehotoma	1 50
63 Yellow spined do.	flavispina	1 50
64 Small dark do.	mirabilis	1
65 Thick tongue do.	nigricans	1 50
66 Broad spotted do.	obliqua	1
67 Dark soap do.	obscura	1 50
68 Proliferous do.	prolifera	1 50
69 Greenish do.	pseudovirens	1
70 Narrow spotted do.	pulehra	1
71 Rasp leaved do.	radula	1
72 Saw leaved do.	serra	1
73 Yellow mitre do.	zanthacantha	1 50
74 Orange coloured alonsoa	Alonsoa scutifolia, <i>vel Hemimeris</i>	1
75 Superb nodding alpinia	Alpinia mutans	1



The first part of the document discusses the importance of maintaining accurate records of all transactions. It emphasizes that every entry should be clearly documented and verified. The text continues to describe various methods for ensuring the integrity of the data, including regular audits and cross-checking of entries.

In the second section, the author details the specific procedures for handling discrepancies. It is noted that any inconsistencies should be investigated immediately and resolved through a transparent process. The document provides a step-by-step guide for identifying the source of errors and implementing corrective measures to prevent future occurrences.

The final portion of the text addresses the role of technology in modern record-keeping. It highlights how digital tools can enhance efficiency and reduce the risk of human error. However, it also stresses the need for robust security protocols to protect sensitive information from unauthorized access or loss.

		Each.
		\$. cts.
76 Dwarf alpinia	Alpinia, sp.?	1
77 Peruvian spotted alstrœmeria	Alstrœmeria pelegrina	1 50
78 White flowered do.	v. <i>alba</i>	
79 Striped flowered do.	ligtu	2
80 Climbing do.	salsilla	2
81 Red flowered do.	simsii, <i>vel pulchella</i>	
82 St. Martin's tricoloured do.	Martini, <i>vel tricolor</i>	
83 Rock alyssum of Crete	Alyssum saxatile	75
84 Superb riband striped amaryllis	Amaryllis vittata	1 50
85 Belladonna major do.	belladonna	75
86 Barbadoes do.	{ equestris } { <i>braziliensis</i> }	2
87 Double flowering do.	v. <i>pleno</i>	3
88 Mexican do.	reginæ	1 50
89 Saffron coloured do.	crocata	4
90 Curled flowered do.	{ <i>crispa</i> } { <i>strumaria</i> }	50
91 Chinese golden do.	aurea	2
92 Purple cape do.	purpurea	1
93 Winged do.	alata	2
94 Striped flowering do.	johnsoni	3
95 Fothergill's splendid do.	curvifolia	4
96 Snowdrop leaved do.	radiata	5
97 Net flowered do.	reticulata	4
98 Gigantic do. <i>very splendid</i>	gigantea	15
99 Oriental do.	orientalis	5
100 Yucca flowered do.	ornata	6
101 Splendid do.	spectabilis	5
102 Dwarf do.	pumilio	1
103 Delicate do.	tabulare	2
104 Ceylon do.	zeylandica	3
105 Powdered do.	pulverulenta	3
106 Charming do.	blanda	
107 Green flowered do.	calyptrata	6
108 Cape do.	capensis	5
109 Coronet do.	coronata	
110 Jacobea scarlet do.	formosissima	37
111 Dwarf do.	humilis	1 50
112 Long leaved rose do.	longifolia <i>roseo</i>	1
113 Long leaved white do.	v. <i>albo</i>	1
114 Vermilion do.	miniata	2
115 Parrot like do.	psittacina	6
116 Revolute do.	revoluta	5
117 Fiery do.	rutila	2
118 Superb striped leaved do.	striatifolia	4
119 Guernsey lily do.	sarniensis	1
120 Waved flowered do.	undulata	50
121 Changeable do. do.	atamasco	25
122 Rough amorphia	Amorpha scabra	2
123 Cashew nut	Anacardium occidentale	2
124 Cobweb houseleek	Anacampseros arachnoides	1
125 Thready do.	filamentosa	1
126 Great flowered pimpernel	Anagallis fruticosa	1
127 Fetid bean trefoil	Anagyris foetida	1
128 Chinese andromeda	Andromeda sinensis	
129 Irony leaved do.	ferruginea	2
130 Many flowered do.	floribunda	

131	Stiff leaved andromeda	<i>Andromeda rigida</i>	
132	Lemon grass	<i>Andropogon schœnanthus</i>	1
133	Anemone—see page 89	<i>Anemone</i>	
134	Spotted air plant	<i>Angræcum maculatum</i>	2
135	Brazilian custard apple	<i>Anona guanabaucais</i>	2
136	Sour sop do.	<i>muricata</i>	2
137	Cherimolli do.	<i>cherimolia</i>	2
138	Shining leaved do.	<i>palustris</i>	2
139	Rinyon	<i>sp.?</i>	2
140	Ethiopian autholyza, or scarlet } <i>tuberosa</i>	<i>Antholyza æthiopica</i>	1
141	Tube flowered do.	<i>tubulosa</i>	1
142	Scarlet do.	<i>cardinalis</i>	1
143	Narrow leaved do.	<i>angustifolia</i>	1
144	Orange coloured do.	<i>aurantiaca</i>	1
145	Great orange do.	<i>v. major</i>	1
146	Minor rose coloured do.	<i>minor, roseo</i>	1
147	red do.	<i>v. rubro</i>	1
148	Scarlet do.	<i>cunonia</i>	1
149	Solitary flowered do.	<i>uniflora</i>	1
150	Pretty do.	<i>preciosa</i>	1
151	Red do.	<i>rubro</i>	1
152	Jupiter's beard	<i>Anthyllis barba-jovis</i>	1
153	Hermannia leaved do.	<i>hermanniæ</i>	1
154	European strawberry tree	<i>Arbutus unedo</i>	1
155	Double flowering do.	<i>v. pleno</i>	2
156	Red flowering do.	<i>v. rubro</i>	
157	Curled leaved do.	<i>v. crispa</i>	
158	Entire do. do.	<i>v. integrifolia</i>	
159	Double narrow leaved do.	<i>v. angustifolia pl.</i>	
160	Willow leaved do.	<i>v. salicifolia</i>	
161	Canary Island do.	<i>canariensis</i>	3
162	Serrated do.	<i>serratifolia</i>	
163	Alpine do.	<i>alpina</i>	
164	Levant do.	<i>andrachne</i>	
165	Rough leaved aretotis	<i>Arctotis aspera</i>	1
166	Yellow do.	<i>aureola</i>	1 50
167	Spotted do.	<i>maculata</i>	
168	Chinese ardisia	<i>Ardisia crenata</i>	1
169	Red flowered do.	<i>colorata</i>	
170	Umbel flowered do.	<i>umbellata</i>	
171	Superb blue aristeia	<i>Aristea cyanea</i>	
172	Glaucous aristolochia	<i>Aristolochia glauca</i>	2
173	Brazilian do.	<i>sp. Brazil</i>	2
174	Chili shining aristotelia	<i>Aristolochia macqui</i>	2
175	Striped leaved do.	<i>fol. var.</i>	
176	Silvery leaved wormwood	<i>Artemesia argentea</i>	1
177	Chinese do.	<i>sinensis</i>	1
178	True bread fruit	<i>Artocarpus incisa</i>	10
179	Nut bearing do.	<i>nucifera</i>	10
180	*Spotted arum	<i>Arum maculatum</i>	1
181	Corsican do	<i>corsicum</i>	1
182	*Grass leaved do.	<i>tenuifolium</i>	1
183	Friar's cowl	<i>arisarum</i>	1 50
184	Striped European reed	<i>Arundo donax, fol. var.</i>	1
185	African swallow wort	<i>Asclepias fruticosa</i>	1
186	Curacao superb do.	<i>curassavica</i>	1

Faint, illegible text in the left column, possibly bleed-through from the reverse side of the page.

Faint, illegible text in the right column, possibly bleed-through from the reverse side of the page.

1
2
3
4
5
6
7
8
9
10
11
12
13
14
15
16
17
18
19
20
21
22
23
24
25
26
27
28
29
30
31
32
33
34
35
36
37
38
39
40
41
42
43
44
45
46
47
48
49
50

		Each.
		\$. cts.
187 White Curocoa swallow wort	<i>Asclepias, v. alba</i>	1
188 Narrow leaved do.	linearis	1
189 Florida shrubby do.	matelea, <i>vel salicifolia</i>	1 50
190 Superb do.	formosus	1
191 Florida new do.	floridana <i>nova</i>	2
192 Georgian sweet do.	suaveolens	2
193 hybrid do.	hybrida	1
194 Tall shield fern	<i>Aspidium exaltatum</i>	1
195 Upright spleenwort	<i>Asplenium elatum</i>	1
196 *Inula leaved aster	<i>Aster inuloides</i>	2
197 Wallich's splendid astrapes	<i>Astrapea wallichi</i>	
198 Hairy athanasia	<i>Athanasia capitata</i>	1
199 Cape atragene	<i>Atragene capensis</i>	3
200 Purslane tree	<i>Atriplex halimus</i>	1
201 *Japan gold dust tree	<i>Aucuba japonica</i>	1
202 Chinese red flowering azalea	<i>Azalea indica</i>	3
203 Double purple do.	<i>v. purpurea pl.</i>	4
204 White do.	<i>v. alba</i>	
205 Double yellow do.	<i>v. lutea pl.</i>	
206 Blue do.	<i>v. cerulea</i>	
207 Elegant do.	sinensis	10
208 Babiana, 8 species	<i>Babiana, 8 sp.</i>	each 1
209 Peruvian baccharis	<i>Baccharis ivœfolia</i>	1
210 Narrow leaved do.	angustifolia	2
211 Nondescript do.	sp. ?	2
212 Close flowered do.	glomeruliflora	2
213 Bamboo cane	<i>Bambusa arundinacea</i>	3
214 Rattan do.	dichotoma	3
215 Serrated banksia	<i>Banksia serrata</i>	5
216 Long leaved do.	oblongifolia	5
217 Van Dieman's Land do.	australis	5
218 Sea side do.	littoralis	5
219 Spiny leaved do.	spinulosa	5
220 Broad leaved do. and <i>many others</i>	latifolia, &c. &c.	5
221 Chinese bæckia	<i>Bæckia frutescens</i>	
222 Solitary flowered baptisia	<i>Baptisia uniflora</i>	1 50
223 Perfoliate do.	perfoliata	
224 Madder leaved bauera	<i>Bauera rubioides</i>	
225 Forked leaved ebony	<i>Bauhinia forficata</i>	3
226 Climbing do.	scandens	2
227 Variegated do.	variegata	2
228 Splendid New-Holland beaufortia	<i>Beaufortia decussata</i>	5
229 Chinese two coloured begonia	<i>Begonia evansiana</i>	75
230 Hairy leaved do.	hirsuta, &c.	1
231 Sweet scented do.	odorata	1
232 Silver spotted do. <i>beautiful</i>	argyrostigma	1 50
233 *Daisy—see page 55	<i>Bellis</i>	
234 *Lewis Rocky Mountain holly	<i>Berberis aquifolium</i>	25
235 Nepal barberry	aristata	5
236 Pinnated leaved do.	pinnata, <i>vel fascicularis</i>	
237 Norfolk-Island trumpet flower	<i>Bignonia pandora</i>	1
238 Ash leaved do.	chelonioides	2
239 Hooked do.	uncata	3
240 *Two leaved do.	crucigera	50
241 Equinoctial do.	æquinoctialis	2
242 Jamaica purple flowering do.	purpurea	5
243 Heart leaved anatto, a dye	<i>Bixa orellana</i>	2

	Each- S. ets.
244 Chinese splendid bletia	1 50
245 hyacinthine do.	1
246 Purple flowered do.	1
247 Pale flowered Chinese do.	1
248 Tall West-India do.	1
249 Chinese bocconia	1 50
250 Privet leaved borya	1
251 Florida do.	1
252 Mexican scarlet bouvardia	1
253 Large flowered do.	2
254 Changeable do.	2
255 Yellow pine apple	1
256 Orange coloured do.	3
257 Striped leaved do.	1
258 Upright leaved do.	2 50
259 Broad leaved do.	3
260 Brunia, <i>many species</i>	3
261 American brunsfelsia	5
262 Many flowered brunsvigia	6
263 Red margined do.	5
264 Sickle leaved do.	20
265 Josephine's do.	8
266 Ciliated do.	1
267 Large calyxed air plant	1 50
268 Bastard cedar	1
269 Japan bumalda	1
270 Boxthorn leaved bumelia	1
271 Silvery do. do.	1 50
272 Reclined do. do.	1 50
273 Woolly do. do.	1 50
274 Rush leaved Buonapartia	10
275 Yellow flowering buphthalmum	1
276 Chili globe flower	1
277 Shrubby hare's ear	1
278 Flowering rush	1
279 Minor-a box tree	75
280 Chinese box	75
281 Jointed cacalia	75
282 Creeping cereus	75 ets. to 1
283 Great night blooming do.	1 to 2
284 Melon thistle	50 ets. to 75
285 Yellow spined Indian fig	1
286 Purple superb do.	1 50
287 Cochineal do.	1
288 Undulated do.	75
289 Triangular do.	1
290 Four angled do.	1
291 Splendid do.	2 to 3
292 Florida do.	1
293 Turk's cap do.	5 to 5
294 Brazilian do.	2
295 Cylindrical do.	2
296 Brittle jointed Missouri do.	1 50
297 Six angled do.	2
298 Long's Arkansa do.	2
299 Missouri do.	1 50
Bletia tankervillæ, <i>v. Limodorum</i>	1 50
hyacinthina	1
florida	1
pallida	1
verecunda	1
Bocconia cordata	1 50
Borya ligustrina	1
porulosa	1
{ Bouvardia triphylla, <i>vel Houstonia coccinea</i>	1
<i>v. pubescens</i>	2
versicolor	1
Bromelia ananas	1
<i>v. fulva?</i>	3
<i>v. fol. var.</i>	1
karatas	2 50
pinguin	3
Brunia, sp.	3
Brunsfelsia americana	5
Brunsvigia multiflora	6
marginata	5
falcata	20
Josephinæ	8
ciliaris	1
Bryophyllum calycinum	1 50
Bubroma gauzuma	1
Bumalda trifoliata	1
Bumelia lycioides	1
chrysophylloides	1 50
reclinata	1 50
lanuginosa	10
Buonapartia juncea	1
Buphthalmum frutescens	1
Buddleia globosa	1
Bupleurum fruticosum	1
Butomus umbellatus	75
Buxus balericius	75
chinensis	75
Cacalia articulata	75
Cactus flagelliformis	75 ets. to 1
grandiflorus	1 to 2
mammillaris	50 ets. to 75
tuna	1
speciosus	1 50
cochenillifer	1
undulatus	75
triangularis	1
tetragonus	1
speciosissimus	2 to 3
pes corvi	1
melocactus	5 to 5
braziliensis	2
cylindricus	2
fragilis	1 50
hexangularis	2
Longi, <i>sp. nova</i>	2
missouriensis	1 50





		Each \$. cts.
300 Barbadoes gooseberry	Cactus pereskia, 2 var.	1
301 Full spined cactus	phyllanthus	1 50
302 Many spined Missouri do.	polyacanthos	1 50
303 Small Missouri do.	pusillus	1 50
304 Waved short spined do.	repandus	1
305 Cluster spined do.	spinossissimus	1 50
306 Truncated do.	truncatus	2
307 Nondescript do.	sp. <i>Arkansa</i>	2
308 Braziletto wood	Cæsalpina paniculata	2
309 Two coloured arum	{ Caladium bicolor, <i>vel arum pic-</i> <i>tum</i>	2 to 3
310 Esculent do.	esculentum	1
311 Auriculate leaved do.	<i>v. auriculatum</i>	1
312 Sagittate leaved do.	sagittæfolium	1 50
313 Violet stalked do.	violaceum	2
314 Ethiopian fragrant lily	Calla Ethiopica	1
315 Chinese callicarpa	Callicarpa chinensis	2
316 Bermuda mulberry	americana	1
317 Oval leaved callistachys	Callistachys ovata	1
318 Four cleft calothamnus	Calothamnus quadrifida	3
319 Chinese yellow calycanthus	{ Calycanthus præcox <i>lutea, vel</i> <i>chimonanthus</i>	1 50
320 Do. white do.	<i>v. albo</i>	2
321 Large flowering do.	grandiflorus	5

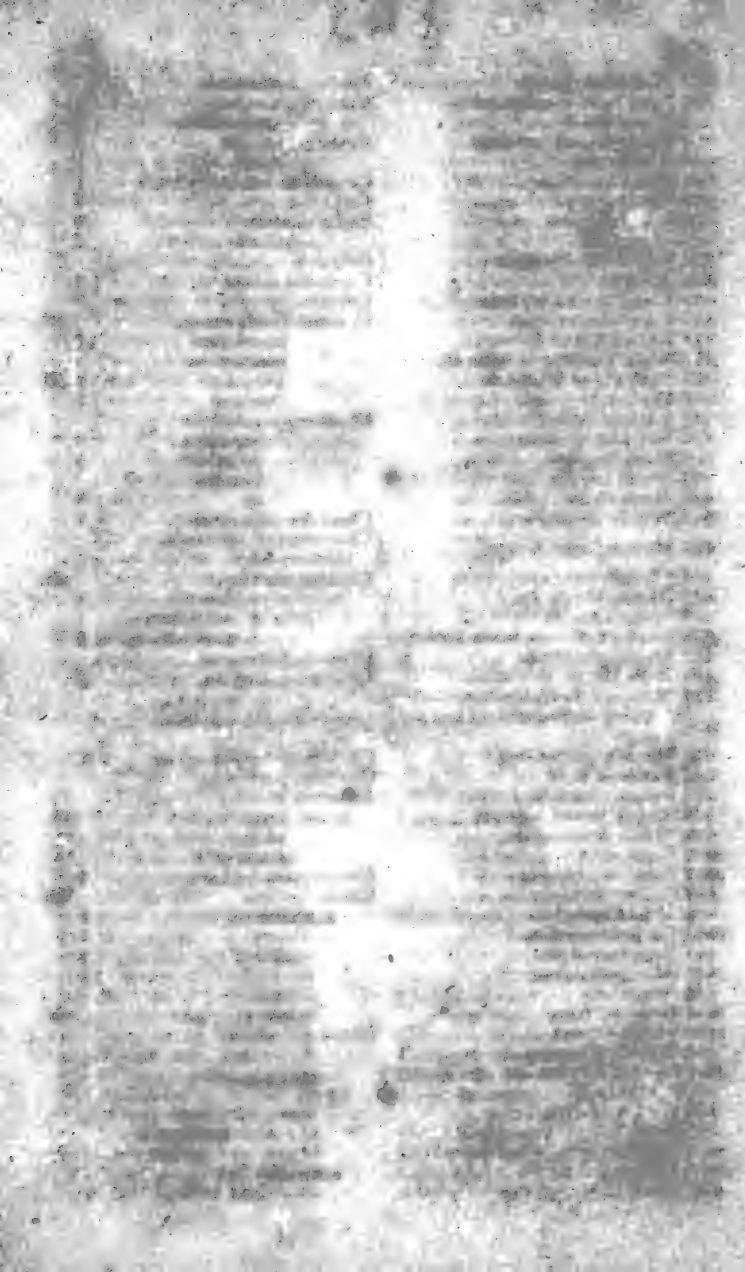
The following collection of Camellias comprises all the newest varieties, many of which are very remarkable for their splendour. Those priced at \$25, cost the proprietor *five guineas each*; and many others from three to four guineas. The present prices will be gradually lessened as the plants are increased; but, owing to the universal admiration which this plant has received, and its requiring so little care, and enduring without injury a great degree of cold, the demand has hitherto been very great. The proprietor has at all times very large quantities to supply wholesale orders.

322 Single red camellia, or <i>Japan rose</i>	Camellia japonica	2
323 Semidouble red do.	<i>expansa</i>	\$4 to 5
324 Double red do.	<i>rubro pleno</i>	4 to 5
325 Single white fragrant do.	<i>albo simplici</i>	6 to 8
326 Double white do.	<i>albo pleno</i>	4 to 5
327 Double pink, or <i>middlemist do.</i>	<i>carnea</i>	4 to 5
328 Double striped do.	<i>variegata</i>	4 to 5
329 Double crimson do.	<i>atrorubens</i>	5 to 6
330 Purple anemone flowered, or } <i>warratah do.</i>	<i>anemoniflora</i>	5 to 6
331 Pomponé, or <i>Kew blush do.</i>	<i>mutabilis</i>	5 to 6
332 Red pæony flowered do.	<i>pæoniæflora</i>	5 to 6
333 Buff, <i>maiden's blush</i> , or <i>Hume's</i> } <i>blush do.</i>	<i>flavescens</i>	5 to 6
334 Fragrant myrtle leaved do.	<i>myrtifolia</i>	5 to 6
335 Blotched leaved do.	<i>maculata</i>	8
336 Lady Banks's tea leaved do.	<i>sasanqua</i>	5 to 6
337 Double blush do. do.	<i>v. rosea pleno</i>	15 to 20
338 White pæony flowered do.	<i>Welbankiana</i>	15
339 Lady Campbell's do.	<i>rubricaulis</i>	10
340 Starry, or <i>six angled do.</i>	<i>hexangularis</i>	12
341 Long leaved do.	<i>longifolia</i>	5
342 Scarlet do.	<i>coccinea</i>	8 to 10

		ach.	S. cts.
343 Shell flowered camellia	Camellia cochiflora		10
344 Axillary flowered do.	axillaris, <i>sp. nova</i>		20
345 Fringed white do.	fimbriata		20
346 Single oil bearing do.	oleifera, <i>sp. nova</i>		10
347 Large nerved do.	crassinervis		12
348 Variegated anemone flowered do.	anemoniflora <i>striata</i>		25
349 Knight's do. do. do.	<i>v. Knightii</i>		
350 White do. do. do.	<i>v. alba</i>		25
351 Aiton's large single red do.	Aitoni		20
352 Holyhock flowered do.	althæiflora		25
353 Aucuba leaved do.	aucubæfolia		12
354 Blush waratah do.	blanda		
355 Chandler's striped waratah do.	Chandleri		25
356 Coral flowered do.	corallina		25
357 Coronet do. do.	coronata		6
358 Carnation waratah do.	dianthiflora		25
359 Small flowered do.	euryoides, <i>sp. nova</i>		
360 Cluster flowered do.	florida		25
361 Fulgent do do.	fulgens		
362 Greville's red do.	Grevilli		6
363 Gloria mundi do.	gloria mundi		25
364 Large flowering do.	grandiflora		12
365 Dwarf do.	humilis		
366 Splendid flowered do.	insignis		25
367 Lady Long's do.	involuta		15
368 Nepaul do.	Kissi, <i>sp. nova</i>		
369 China rose do.	rosa sinensis		25
370 Ross's superb do.	Rossi		25
371 Spatulate do.	spatulata		12
372 Large stamened do.	staminea		
373 Pink waratah do.	waratah <i>rosea</i>		
374 Wood's superb do.	Woodsii		
375 Broad leaved cameraria	Cameraria latifolia		
376 Canary bell flower	Canarina campanula		2
377 Scarlet flowering Indian shot	Canna indica		75
378 Striped leaved do.	<i>v. fol. var.</i>		2
379 Yellow flowering do.	fiscida		1
380 Esculent do.	esculenta		1
381 Glaucous do.	glauca		1
382 New Georgian do.	<i>sp. nova</i>		2
383 Scarlet do.	coccinea		1 50
384 Chinese spreading do.	patens		1
385 Oriental do.	orientalis		1
386 Peruvian nodding do.	iridiflora		2
387 African do.	africana <i>nova</i>		1 50
388 Scarlet cantua	Cantua coccinea		1
389 Caper tree	Capparis spinosa		2 to 3
390 Thornless do.	<i>v. inermis</i>		3
391 Bird pepper	Capsicum baccatum		50
392 Shrubby do.	frutescens		1
393 Superb carolinea	Carolinea princeps		6
394 Corymbose flowering cassia	Cassia corymbosa		1 50
395 Chinese do.	chinensis		2
396 Sylvan do.	riparia		1
397 Six leaved do.	bicapsularis		1
398 Mexican do.	mexicana?		1 50
399 Nondescript do.	<i>sp.?</i>		1 50

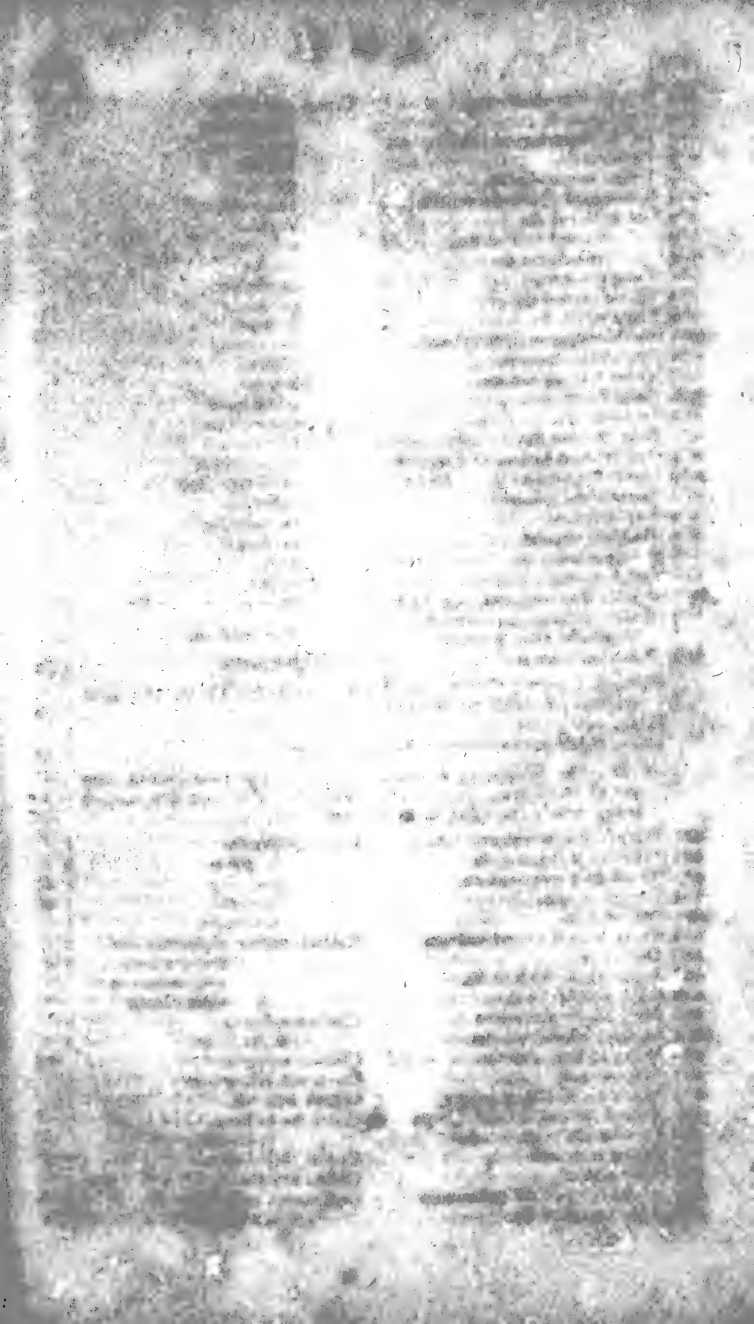
1. The first part of the document
describes the general principles
of the organization and its
purpose. It is intended to
provide a clear and concise
summary of the main points
of the report. The following
sections will discuss the
specific details of the project
and the results of the
investigation. The first part
of the document describes the
general principles of the
organization and its purpose.
It is intended to provide a
clear and concise summary of
the main points of the report.
The following sections will
discuss the specific details of
the project and the results of
the investigation.

2. The second part of the document
describes the specific details of
the project and the results of
the investigation. It is intended
to provide a clear and concise
summary of the main points of
the report. The following
sections will discuss the
specific details of the project
and the results of the
investigation. The second part
of the document describes the
specific details of the project
and the results of the
investigation. It is intended
to provide a clear and concise
summary of the main points of
the report. The following
sections will discuss the
specific details of the project
and the results of the
investigation.



		Each \$. cts.
400	Hottentot cherry	Cassine maurocena 3
401	Cork barked casuarina	Casuarina torulosa 1
402	Horse tail do.	equisetifolia 1
403	Broad leaved catesbæa	Catesbæa latifolia 3
404	Thorny do.	spinosa 3
405	Small leaved ceanothus	Ceanothus microphyllus 1
406	Baccharis leaved celjia	Celjia baccharis 1
407	Chinese nettle tree	Celtis sinensis 2
408	Nepal do.	nepalensis 2
409	Heath-like ceratiola	Ceratiola ericoides
410	St. John's bread	Ceratonia siliqua 3
411	Linear leaved cerbera	Cerbera thevetia 3
412	Fetid cestrum	Cestrum fetidissimum 50
413	Laurel leaved do.	laurifolium 1
414	Night smelling jasmine do.	nocturnum 1
415	Chi'i willow leaved do.	parqui 1 50
416	Day smelling do.	diurnum 1
417	Cabbage palm	Chamærops palmetto
418	Saw leaved do.	serrulata 3
419	Hedgehog do.	hystrix 5
420	Dwarf fan do.	humilis
421	Havanna do.	sp. 6
422	Woolly chaptalia	Chaptalia tomentosa 1
423	Mexican hand flower	{ Cheirostemon platanoides, vel chiranthodendron
424	*Wallflower	Cheiranthus cheiri 50
425	Double bloody do.	v. pleno 1
426	Semidouble do.	v. semipleno 1
427	Stock gillyflower, many varieties	incanus 50 cts. to 1
428	Shrubby chironia	Chironia frutescens
429	Holly leaved chorizema	Chorizema ilicifolia 1
430	*Chinese chrysanthemum— <i>for</i> <i>thirty splendid varieties see</i> <i>page 52</i>	{ Chrysanthemum indicum
431	Shrubby golden locks	Chrysocoma coma-aurea 1
432	Peruvian bark	Cinchona peruviana
433	Purple canary aster	Ciferaria cruenta 75
434	Silvery leaved ragwort	maritima 75
435	White flowered do.	alba
436	Cape aster	amelloides
437	Cape cissampelos	Cissampelos capensis 1
438	Cretan cistus	Cistus creticus 75
439	White leaved do.	albidus 1
440	Curled leaved do.	crispus 1
441	Sage leaved do.	salvifolius 1
442	Montpelier do.	monspeliensis 1
443	Superb do.	formosus
444	Gum do. &c.	ladaniferus, &c. 1 50
445	Seville orange	Citrus aurantium
446	Double flowering do.	flore pleno
447	Hermaphrodite do. or <i>horned</i> <i>begarade</i>	cornutum
448	Gold striped do.	aureo variegato
449	Silver striped do.	argenteo variegato
450	Silver striped curled leaved do.	argen. var. crispa
451	Willow leaved do.	salicifolia
452	Silver striped willow leaved do.	salicifolia varieg. 5

		Each. S. cts.
453 Myrtle leaved orange	<i>Citrus myrtifolia</i>	
454 Bergamot do.	<i>aromatica</i>	
455 St. Salvador sweet seedless do.	<i>pyriformis</i>	5
456 Turkish do.	<i>lunata</i>	
457 Violet begarade do.	<i>violacea</i>	
458 Red cored Malta sweet do.	<i>sanguineus</i>	5
459 China sweet do.	<i>sinensis</i>	
460 curled leaved do.	<i>crispum</i>	
461 mandarin do.	<i>nobilis</i>	
462 Tangiers do.	<i>tanjierano</i>	5
463 Three leaved do.	<i>trifoliata</i>	
464 Very spiny do.	<i>hystrix</i>	
465 Shaddock, monstrous fruit	<i>decumana</i>	
466 Forbidden fruit do.	<i>Adami</i>	
467 Short Lisbon lemon	<i>limon</i>	
468 Long Sicily do.	<i>oblongata</i>	
469 Imperial do.	<i>imperialis</i>	
470 Pear shaped do.	<i>pyriformis</i>	
471 Red fruited lemon of Ponsino	<i>sanguineus</i>	
472 Gold striped do.	<i>aureo striato</i>	5
473 Monstrous lemon	<i>tuberosa</i>	
474 Sweet lemon	<i>margarita</i>	5
475 Madeira citron	<i>medica</i>	
476 Palermo solid do.	<i>var.</i>	
477 Cedra citron	<i>cedra</i>	
478 Double flowering do.	<i>flore pleno</i>	5
479 Madras citron, has weighed in } England four pounds }	<i>v. monstrosa</i>	5
480 West-India lime	<i>limonella</i>	3 50
Orange, Lemon, Citron, Shaddock, and Lime Trees, one year inoculated, (except those priced)		
Ditto, two years do.		3
Ditto, three years do. in a bearing state		3 50
<i>N. B. The Oranges, Lemons, &c. are in pots or boxes, and are of good size, except Nos. 456, 474, 478, and 479, which being newly introduced, are of small size.</i>		
481 *Great Japan virgin's bower	<i>Clematis florida</i>	1
482 *Double flowering do.	<i>v. pleno</i>	2
483 Minorca evergreen do.	<i>calycina</i>	1 50
484 Evergreen do.	<i>cirrhusa</i>	1 50
485 Oriental do.	<i>orientalis</i>	1
486 Short leaved clerodendrum	<i>Clerodendrum siphonanthus</i>	3
487 Downy do.	<i>tomentosum</i>	5
488 Japan three forked do.	<i>trichotomum</i>	
489 Chinese scarlet do.	<i>squamatum</i>	
490 Madeira tree clethra	<i>Clethra arborea</i>	3
491 Striped leaved do. do.	<i>v. fol. var.</i>	3
492 Wing leaved clitoria	<i>Clitoria ternatea</i>	75
493 Widow wail	<i>Cneorum tricoccon</i>	1
494 Mexican climbing cobæa	<i>Cobæa scandens</i>	1
495 Round leaved sea-side grape	<i>Coccoloba uvifera</i>	5
496 Downy do. do.	<i>pubescentis</i>	
497 Cocoa nut tree	<i>Cocos nucifera</i>	25
498 Coffee tree	<i>Coffea arabica</i>	2 to 3
499 Tuberos rooted collinsonia	<i>Collinsonia tuberosa</i>	1
500 Anise scented do.	<i>anisata</i>	



The first part of the document discusses the importance of maintaining accurate records of all transactions. It emphasizes that every entry should be supported by a valid receipt or invoice. This ensures transparency and allows for easy verification of the data.

In the second section, the author details the various methods used to collect and analyze the data. This includes both manual and automated processes. The manual process involves reviewing each entry individually, while the automated process uses software to identify patterns and anomalies.

The third section describes the results of the analysis. It shows that there are several areas where the data is inconsistent or incomplete. These areas need to be investigated further to determine the cause of the discrepancies.

Finally, the document concludes with a list of recommendations. These include implementing stricter controls over data entry, improving the accuracy of the automated systems, and conducting regular audits to catch any errors early on.

		Each \$. cts.
501 Nondescript collinsonia	Collinsonia, sp. Mexico	2
502 *Scarlet cape bladder senna	Colutea frutescens	50
503 Superb scarlet combretum	Combretum purpureum	5
504 South American aracacha	Conium aracacha	
505 Japan Solomon's seal	Convallaria japonica	1
506 Tuberos convolvulus	Convolvulus batatas, 3 var.	50
507 Shrubby silvery leaved do.	eneorum	1
508 Scarlet flowered do.	coccineus	5
509 Superb palmated do.	pentedactylus	3
510 Splendid do.	splendens	2
511 Variegated do.	variegatus	2
512 Hoary leaved shrubby do.	sp.?	3
513 Purple flowered do.	sp.?	2
514 Yellow do. do.	sp.?	2
515 Noysu do.	sp.?	2
516 Carolina flea bane	Conyza pycnostachya	50
517 Chinese wampee tree	Cookia punctata	5
518 Superb cordia	Cordia sebestena	5
519 Mexican coreopsis	Coreopsis, sp. Mexico	2
520 Yellow glaucous coronilla	Coronilla glauca	50
521 Rush leaved do.	juncea	1
522 Nine do. do.	valentina	1
523 Coronet do.	coronata	1
524 White flowered correa	Corræa alba	1
525 Greenish flowered do.	viridiflora	2
526 Splendid red do.	speciosa	3
527 Rusty leaved do.	rufa	
528 Neat flowered do.	pulchella	
529 Round leaved cape navelwort	Cotyledon orbiculata	50
530 Scarlet flowered do.	coccinea	1
531 Chinese hawthorn	Cratægus glabra	2
532 Acute leaved crassula	Crassula acutifolia	1
533 White flowering do.	lactea	1
534 Splendid scarlet do. do.	coccinea	1
535 Lance leaved do.	falcata	1
536 Variegated flowered do.	versicolor	1
537 Superb flowered do.	obliqua	2
538 Perfoliate leaved do.	perfoliata	2
539 Sickle do. do.	falcata	1 50
540 Houseleek do. do.	obvallata	1 50
541 Diminutive do.	miniata	1
542 Ovate leaved do.	sp.?	1
543 Round fruited calabash tree	Crescentia cucurbitana	8
544 Long leaved crinum	Crinum longifolium	1 50
545 Upright do.	strictum	2
546 Bush coloured do.	erubescens	2
547 American do.	americanum	1 50
548 Do. do. red anthers	v. antheræ rubra	2
549 Do. do. white do.	v. antheræ alba	2
550 Chinese do.	asiaticum	3
551 Splendid do.	speciosum	
552 Magnificent do.	amabile	
553 Broad leaved sweet do.	sp. Brazil	5
554 Beautiful variegated croton	Croton variegatum	3
555 Narrow leaved do.	angustifolium	2
556 Painted do. do.	pictum	
557 Willow leaved crowea	Crowea saligna	

558 Tawny crotalaria	<i>Crotalaria fulva</i>	1
559 Cretan evergreen cypress	<i>Cupressus sempervirens</i>	1
560 Cedar of Goa	<i>lusitanica</i>	3
561 Sago palm	<i>Cycas revoluta</i>	3
562 Broad leaved cycas	<i>cercinalis</i>	75
563 Persian red cyclamen	<i>Cyclamen persicum</i>	1
564 Do. white do.	<i>v. albo</i>	1
565 Do. white and red do.	<i>v. albo intus rubro</i>	1
566 Sweet scented do.	<i>v. odoratum</i>	1
567 Round leaved spring do.	<i>coum</i>	1
568 *White autumnal do.	<i>europæum</i>	1
569 *Red do. do.	<i>v. roseo</i>	1
570 Ivy leaved do. do.	<i>hederæfolium, &c.</i>	1 50
571 *Japan scarlet flowered quince	{ <i>Cydonia japonica, vel pyrus ja-</i>	1
	<i>ponica</i>	1 50
572 *Semidouble do. do.	<i>v. semiplena</i>	1
573 *White do. do.	<i>v. alba</i>	1
574 Aloe leaved cymbidium	<i>Cymbidium aloifolium</i>	2
575 Chinese do.	<i>sinense</i>	2
576 Sword leaved do.	<i>ensifolium</i>	1
577 *Esculent rush nut	<i>Cyperus esculentus</i>	1
578 Narrow leaved cyrtanthus	<i>Cyrtanthus angustifolius</i>	6
579 Oblique leaved do.	<i>obliquus</i>	

Single Dahlias.

50 cts. except those priced.

580 Dark purple dahlia	<i>Dahlia superflua</i>	
581 Pale do.	<i>v. pallida</i>	
582 Dwarf do.	<i>v. nana</i>	
583 Lilac coloured	<i>v. lilacina</i>	75
584 Velvet crimson	<i>v. atrorubra</i>	
585 Brown	<i>v. fulva</i>	
586 Dark red	<i>v. rubra</i>	
587 Bright red	<i>v. fulgida</i>	75
588 Rose coloured	<i>v. rosea</i>	
589 Yellow	<i>v. flava</i>	75
590 Orange coloured	<i>v. aurantia</i>	75
591 Scarlet	<i>v. coccinea</i>	1
592 Bright scarlet	<i>v. fulgens</i>	1
593 White	<i>v. alba</i>	1
594 Lake coloured	<i>var.</i>	75

Double Dahlias.

\$1 each, except those priced.

595 Double orange dahlia	<i>Dahlia, v. aurantia, pl.</i>	
596 Superb do.	<i>v. aur. superba</i>	
597 Ornament of Flora, orange	<i>v.</i>	
598 Amateur's favourite, orange	<i>v.</i>	
599 King Aza, orange	<i>v.</i>	
600 Amelia, orange	<i>v. nova</i>	1 50
601 Orange flag	<i>v. nova</i>	1 50
602 Prince William, orange and flesh- coloured	<i>v. fulva</i>	
603 Brunette	<i>regalis</i>	
604 Royal olive	<i>v. speciosa</i>	
605 Royal purple		





		Each. \$. cts.
606 Unrivalled purple dahlia	Dahlia, <i>v. purpurea splendens</i>	2
607 Favourite do.	<i>superba</i>	
608 Dwarf lilac	<i>humilis</i>	
609 Blackish purple	<i>nigra</i>	1 50
610 Obscure do.	<i>obscura</i>	1 50
611 King of the purples	<i>regalis</i>	
612 Triumphant purple	<i>triumphales</i>	
613 Purple violet	<i>violacea</i>	
614 Van Mons, <i>purple</i>	<i>v.</i>	
615 Julianne, <i>purple</i>	<i>v.</i>	
616 Voltaire, <i>purple</i>	<i>v.</i>	
617 Morison, <i>dark purple</i>	<i>v. nova</i>	1 50
618 Nankin coloured	<i>v. aurea</i>	
619 Rose do.	<i>v. rosea</i>	
620 Superb rose	<i>v. rosea superba</i>	1 50
621 Van Doeveren, <i>light red</i>	<i>v. rosea pallida</i>	1 50
622 Rose sanspareille	<i>v. rosea incomparabilis</i>	1 50
623 Triumph of Louvin, <i>rose</i>	<i>v.</i>	
624 Cherry coloured	<i>v.</i>	
625 Pure white	<i>v. alba</i>	1 50
626 Royal agate, <i>whitish</i>	<i>agate royale</i>	
627 Imperial do.	<i>imperialis</i>	
628 Magnificent do.	<i>magnificens</i>	
629 Grand Alexander, <i>agate</i>	<i>superba</i>	1 50
630 Favourite red	<i>rubra elegans</i>	
631 Petit aimable, <i>red</i>	<i>minima</i>	
632 L'honneur d'Anvers, <i>red</i>	<i>v.</i>	
633 Prince Charles, <i>red</i>	<i>v.</i>	
634 Incomparable red	<i>incomparabilis</i>	1 50
635 Semidouble red	<i>multiflora</i>	
636 Deep crimson	<i>v. ardens</i>	
637 Dwarf do.	<i>v. atrorubro nana</i>	
638 Royal do.	<i>superba</i>	
639 Elegant do.	<i>elegans</i>	1 50
640 Dark do.	<i>atrorubens</i>	
641 Elizabeth, <i>crimson extra</i>	<i>v.</i>	2 50
642 Orange and flesh coloured	<i>v. bicolor</i>	
643 Yellow and do.	<i>superba</i>	
644 Black	<i>v. nigra</i>	2
645 Copper coloured	<i>v. cuprea</i>	
646 Henry Fourth, <i>copper coloured</i>	<i>v.</i>	
647 Velvet lilac	<i>v. lilacina</i>	
648 New lilac	<i>crispa</i>	
649 Lilac rayed	<i>striata</i>	1 50
650 Sulphur coloured	<i>sulphurea</i>	
651 Great do.	<i>grandiflora</i>	
652 Scarlet	<i>v. coccinea</i>	2
653 Eclipse, <i>scarlet</i>	<i>superba</i>	3
654 Violet rayed	<i>v. pulchra striata</i>	2
655 Great flowered lilac	<i>grandiflora lilacina</i>	
656 Great flowered purple	<i>atropurpurea</i>	
657 Triumphant	<i>triumphalis</i>	
658 New triumphant	<i>nova</i>	
659 Dwarf violet	<i>formosa pumila</i>	1 50
660 Superb do.	<i>violacea pallida</i>	1 50
661 Washington, <i>purple violet</i>	<i>purpurea</i>	
662 Lady Banks, <i>violet</i>	<i>v. nova</i>	1 50

663 Capucim, violet	Dahlia, v.	
664 Flora's favourite, violet	v.	
665 Yellow	lutea	
666 Dwarf yellow	v. lutea pumila	1 50
667 Oldenbarneweld, yellow	v. lutea bicolor	
668 Domheer, yellow	v. nova	1 50
669 Yellowish	luteola	
670 Sultan, tall red	sultana	
671 Belvedere, aurora extra	crocea	2
672 Campbell	v.	
673 Delicate	pallida	
674 Flora pompadour	v. velutina	
675 Dodoneus, superb violet	v. velutina superba	2
676 Tournafort, extra fine dark	v. obscura	2
677 Robust dalbergia	Dalbergia robusta	2
678 Fragrant Indian daphne	Daphne odora	1 to 2
679 Silver striped do.	v. argen. striato	3
680 *Trailing do.	cneorum	1 50
681 *Silver striped trailing do.	v. argen. striato	3
682 *Gold striped do. do.	v. aureo varieg.	
683 *Olive leaved do.	oleæfolia	2
684 *Evergreen spurge laurel	laureola	1 to 2
685 *Flax leaved daphne	gnidium	2
686 *Pontic twin flowered do.	pontica	1 to 2
687 *Silver striped do. do.	v. fol. varieg.	
688 *Hairy do.	collina	2
689 *Alpine do.	alpina	2
690 *Silvery leaved do. beautiful	tartonraira	3
691 *Siberian do.	altaica	3
692 *Neapolitan do.	napolitana	3
693 *Spanish smooth leaved do.	thymelæa	
694 Great Peruvian datura	Datura arborea	1
695 Creeping decumaria	Decumaria sarmentosa	75
696 Smaller do.	barbara	1
697 Blue flowered dianella	Dianella cerulea	1
698 New-Holland do.	divaricata	1
699 *Carnation, see page 51	Dianthus caryophyllus	
700 Syrian shrubby pink	fruticosus	
701 Splendid Indian dillenia	Dillenia speciosa	12
702 Chinese rough fruited leechee	Dimocarpus litchi	
703 Loose paniced dimocarpus	longan	
704 Yam	Dioscorea sativa	1
705 Venus's fly trap	Diosma muscipula	75
706 Heath leaved diosma	Diosma alba	1
707 Rough leaved doodia	Doodia aspera	1
708 Contrajerva root	Dorstenia contrajerva	1 50
709 Chinese purple dragon tree	Dracæna ferrea	3
710 Balm of Gilead	Dracocephalum canariense	50
711 Smooth duranta	Duranta plumieri	2
712 Cretan ebony	Ebenus cretica	2
713 Great flowering echites	Echites grandiflora	
714 Carolina do.	diformis	1
715 Laurel leaved do.	sp. Brazil	2
716 Large flowered edwardsia	Edwardsia grandiflora, v. sophora	2
717 Small leaved do.	microphylla	
718 Diminutive do.	minima	
719 Golden leaved do.	chrysophylla	



1
2
3
4
5
6
7
8
9
10
11
12
13
14
15
16
17
18
19
20
21
22
23
24
25
26
27
28
29
30
31
32
33
34
35
36
37
38
39
40
41
42
43
44
45
46
47
48
49
50
51
52
53
54
55
56
57
58
59
60
61
62
63
64
65
66
67
68
69
70
71
72
73
74
75
76
77
78
79
80
81
82
83
84
85
86
87
88
89
90
91
92
93
94
95
96
97
98
99
100

1
2
3
4
5
6
7
8
9
10
11
12
13
14
15
16
17
18
19
20
21
22
23
24
25
26
27
28
29
30
31
32
33
34
35
36
37
38
39
40
41
42
43
44
45
46
47
48
49
50
51
52
53
54
55
56
57
58
59
60
61
62
63
64
65
66
67
68
69
70
71
72
73
74
75
76
77
78
79
80
81
82
83
84
85
86
87
88
89
90
91
92
93
94
95
96
97
98
99
100

	Each, \$. cts.
720 Eastern oleaster	2
721 Carolina elytraria	1
722 Chinese enkianthus	
723 Great flowered epacris	3 to 4
724 Undulated epidendrum	2
725 Many species of do.	
726 Blue flowered eranthemum	1
727 Mediterranean heath	1
728 Honeywort do.	3
729 Sparrowwort do.	1
730 Pubescent do.	1
731 Scotch red do. or heather	1
732 Do. white do.	1
733 Double flowering do.	1 50
734 Cross leaved heath	1
735 White do. do.	1
736 White Portugal hairy do.	1
737 Purple do. do.	1
738 Many flowering summer do.	1
739 Red do. do.	
740 Dwarf early flowering do.	1
741 Verticillate flowered do.	2
742 Madeira tree do.	1
743 Three flowered do.	2
744 Arbutus flowered do.	2
745 Black tipped do.	1
746 Gray fine leaved do.	1
747 White flowered do. do.	1
748 Purple do. do.	1
749 Dark purple flowered do.	1
750 Red Cornish do.	1
751 Pale coloured do. do.	1
752 White do. do.	1
753 Garland do.	2
754 Apple flowered do.	2
755 Clustered do.	2
756 Hispid do.	1 50
757 Delicate do.	2
758 Regerminating do.	2
759 Portugal umbelled do.	1
760 Spanish do.	1
761 Red flowered do. do.	1
762 Broom, or green flowered do.	1
763 Portugal upright do.	1
764 Diminutive do.	1
765 Bristly branched do.	1
766 Serrulated do.	1
767 Variegated leaved do.	
768 Fox tail do.	2
769 Calycined do.	2
770 Downy headed do.	2
771 Conical do.	2
772 Cluster flowered do.	2
773 Painted do.	2
774 Green do.	2
775 Great yellow flowered do.	4
776 Imbricated do.	
Eleagnus orientalis	
Elytraria virgata	1
Enkianthus quinque flora	
Epacris grandiflora	3 to 4
Epidendrum undulatum	2
sp.	
Eranthemum pulchellum	1
Erica mediterranea	1
cerinthoides	3
passerina	1
pubescens	1
vulgaris, or calluna	1
v. alba	1
v. plena	1 50
tetralix	1
v. alba	1
ciliaris	1
v. purpurea	1
multiflora	1
v. rubra	
herbacea	1
verticillata	2
arborea	1
triflora	2
baccans	2
nigrita	1
cinerea	1
v. alba	1
v. purpurea	1
v. atropurpurea	1
vagens	1
v. pallida	1
v. alba	1
persoluta	2
pomifera	2
aggregata	2
hispidula	1 50
gracilis	2
regerminans	2
umbellata	1
australis	1
v. rubra	1
scoparia	1
stricta	1
minima	1
hispidula	1
serrulata	1
vulgaris, v. fol. var.	
alopencuroides	2
calycina	2
capitata	2
conica	2
fascicularis	2
fucata	2
gelida	2
grandiflora	4
imbricata	

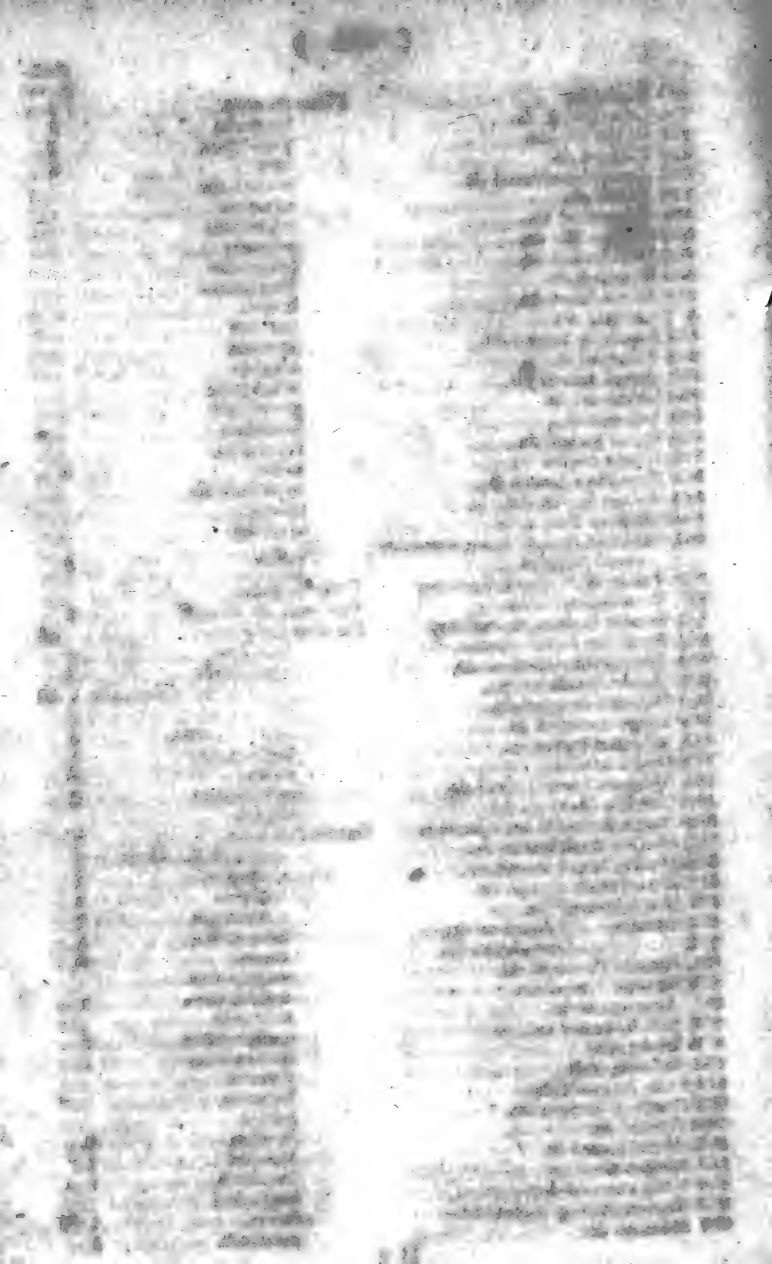
		Each. S. cts.
777 Pearl flowered heath	<i>Erica margaritacea</i>	2
778 Honey bearing do.	<i>mellifera</i>	
779 African many flowered do.	<i>multiflora africana</i>	1
780 Many umbelled do.	<i>multi-umbellata</i>	2
781 Black tipped do.	<i>nigrita</i>	1 50
782 Small bracted do.	<i>nudiflora</i>	2
783 Rose scented do.	<i>odora-rosea</i>	
784 Plukenet's do.	<i>plukenetiana</i>	2
785 Swelled flowered do.	<i>pregnans</i>	2
786 Phylica-like do.	<i>phylicoides</i>	2
787 Slender yellow flowered do.	<i>tenuiflora</i>	2
788 Porcelain do.	<i>ventricosa</i>	
789 Tremulous do.	<i>vestita</i>	
790 Villous do.	<i>villosa</i>	2
791 Glammy do.	<i>viscaria</i>	2
792 Japan loquat, or mespilus	{ <i>Eriobotrya japonica, vel mespi-</i>	
	<i>lus japonica</i>	2 to 3
793 Coral plant	<i>Erythrina herbacea</i>	1
794 Smooth leaved coral tree	<i>coraliodendron</i>	5
795 Cape do.	<i>caffra</i>	5
796 Cock's comb do.	<i>crista galli</i>	
797 Oval leaved do.	<i>ovalifolia</i>	5
798 South-American do.	<i>sp. ?</i>	5
799 New-Holland peppermint tree	<i>Eucalyptus piperita</i>	1 50
800 Willow leaved gum eucalyptus	<i>salicifolia</i>	2
801 Blotched leaved eucomis	<i>Eucomis punctata</i>	1
802 Striped leaved do.	<i>striata</i>	1 50
803 Tongue leaved do.	<i>regia</i>	2
804 Solitary flowered eugenia	<i>Eugenia uniflora</i>	2
805 Rose apple	<i>jambos</i>	2
806 Watery do.	<i>aquea</i>	
807 Malay apple	<i>malaccensis</i>	
808 Laurel leaved eugenia	<i>laurifolia</i>	
809 Large fruited do.	<i>macrocarpa</i>	
810 Brazil thick leaved do.	<i>sp. Brazil</i>	2
811 Japan strawberry tree	<i>Euonymus japonicus</i>	
812 Honey flowered eupatorium	<i>Eupatorium melliflora</i>	1 50
813 Mexican do.	<i>sp. Mexico</i>	1 50
814 Naked euphorbia	<i>Euphorbia cereiformis</i>	1
815 Large variegated do.	<i>variegata major</i>	1 50
816 Small do. do.	<i>minor</i>	1 50
817 Medusa's head do.	<i>caput Medusæ</i>	1
818 Striped almond leaved do.	<i>amygdalifolia, fol. var.</i>	
819 Scarlet flowered do.	<i>punicea</i>	2
820 Myrtle leaved eutaxia	<i>Eutaxia myrtifolia</i>	
821 Japan ash leaved fagara	<i>Fagara pterota</i>	
822 Chinese sweetest do.	<i>odoratissima</i>	
823 Chinese trailing falkia	<i>Falkia repens</i>	3
824 Mexican tyger flower	<i>Feraria tygridia</i>	50 cts. to 1
825 Crisp flowered do.	<i>undulata</i>	1
826 Branching do.	<i>antherosa</i>	
827 Chinese trailing fig	<i>Ficus stipulata</i>	1
828 Ferrugineous Indian fig	<i>australis</i>	2
829 Religious do. do.	<i>religiosa</i>	3
830 Bengal do. do.	<i>bengalensis</i>	5
831 India rubber tree	<i>elastica</i>	5 to 5
832 Sacred banyan of India	<i>indica</i>	5

THE UNIVERSITY OF CHICAGO LIBRARY

100 EAST EAST

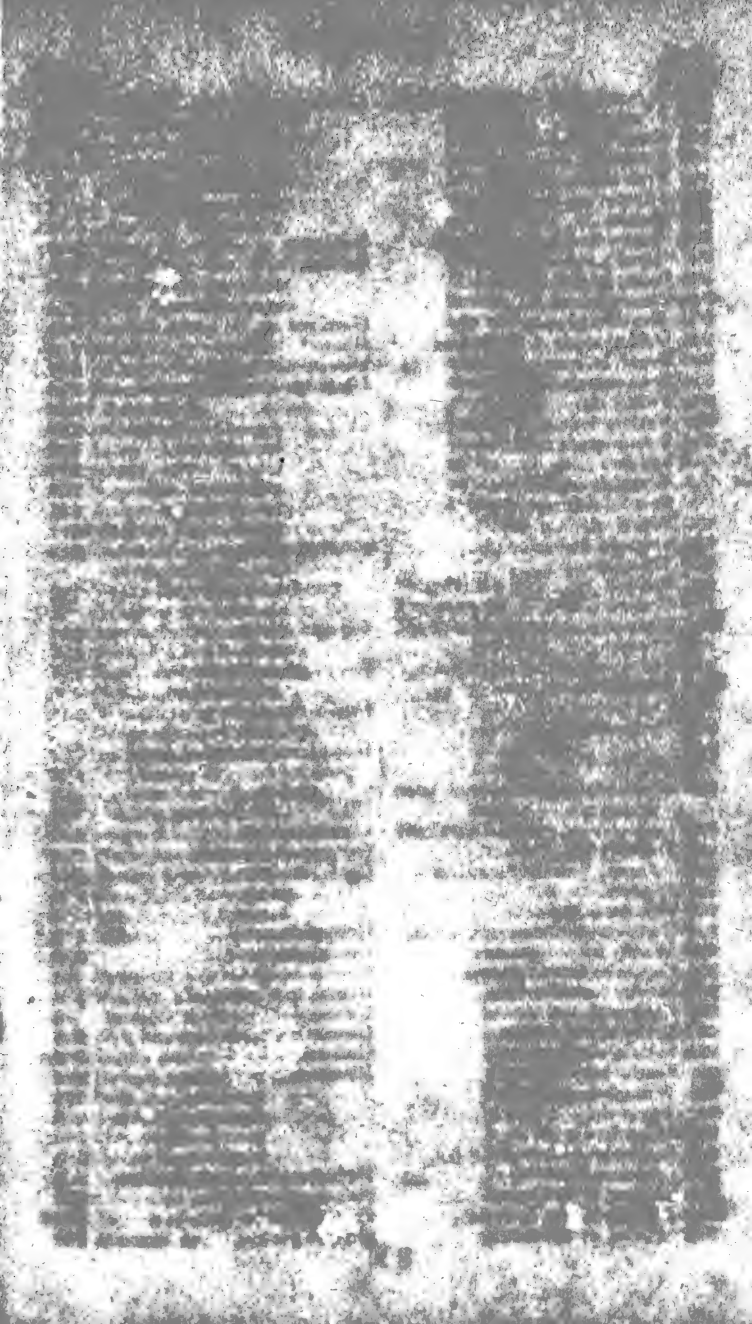
CHICAGO, ILL.

1950



		Each \$. cts.
833 Bushy fig	<i>Ficus dumosa</i>	5
834 Long leaved do.	longifolia	5
835 Poplar do. do.	populifolia	3
836 Elegant do.	vestita	6
837 Acuminate leaved do.	acuminata	
838 Water do.	aquatica	
839 Asperated do.	asperima	
840 Orange like do.	aurantia	
841 Oval leaved do.	benjamina	
842 Brazilian do.	braziliensis	
843 Sierra Leon do.	brassia	
844 Caudate do.	caudata	
845 Leathery leaved do.	coriacea	
846 Elliptical do.	elliptica	
847 Rough leaved do.	exasperata	
848 Clustered do.	glomerata	
849 Infected do.	infectoria	
850 Spear leaved do.	lanceolata	
851 Glossy leaved do.	nitida	5
852 Nymphaea leaved do.	nymphaefolia	
853 Retuse leaved do.	retusa	
854 Mistletoe leaved do.	viscifolia	
855 Common fig tree, <i>many varieties</i> } —see page 26	carica	1
856 Yellow flowering strawberry	<i>Fragaria indica</i>	
857 Brazilian ash tree	<i>Fraxinus, sp. Brazili</i>	5
858 Scarlet fuchsia, or <i>ear drop</i>	<i>Fuchsia coccinea</i>	50
859 Boxthorn leaved fuchsia	lycioides	2
860 Changeable coloured do.	excorticata	3
861 Slender branched do.	gracilis, <i>vel decussata</i>	1 50
862 Delicate twigged do.	tenella	2
863 Large crowned do.	macrostemma	3
864 Serrated leaved do.	serratifolia	3
865 Oval leaved do.	ovata	3
866 Mexican laurel leaved do.	arborescens	5
867 Colvill's Mexican do.	virgata	
868 Single flowered cape jasmine	<i>Gardenia florida</i>	2
869 Double small leaved do.	<i>v. pleno</i>	\$1 50 cts. to 2
870 Double broad leaved do.	<i>v. major</i>	2
871 Dwarf trailing cape do.	radicans	2
872 Star flowered do.	thunbergia	3 to 5
873 Chinese small flowered do.	micranthus	5
874 crimson tipped do.	amæna	6
875 Spotted flowered do.	rothmannia	
876 Narrow leaved do.	angustifolia	5
877 Attenuated do.	attenuata	
878 Bell flowered do.	campanulata	5
879 Bushy do.	dumetorum	
880 Branching do.	dumosa	
881 India fragrant do.	fragrans	
882 South-American do.	genipa	
883 Hybrid do.	hybrida	4
884 Broad leaved do.	latifolia	5
885 Long leaved do.	longiflora	5
886 Long thorned do.	longispina	
887 Superb shining leaved do.	lucida	4 50
888 Mexican do.	mexicana	5

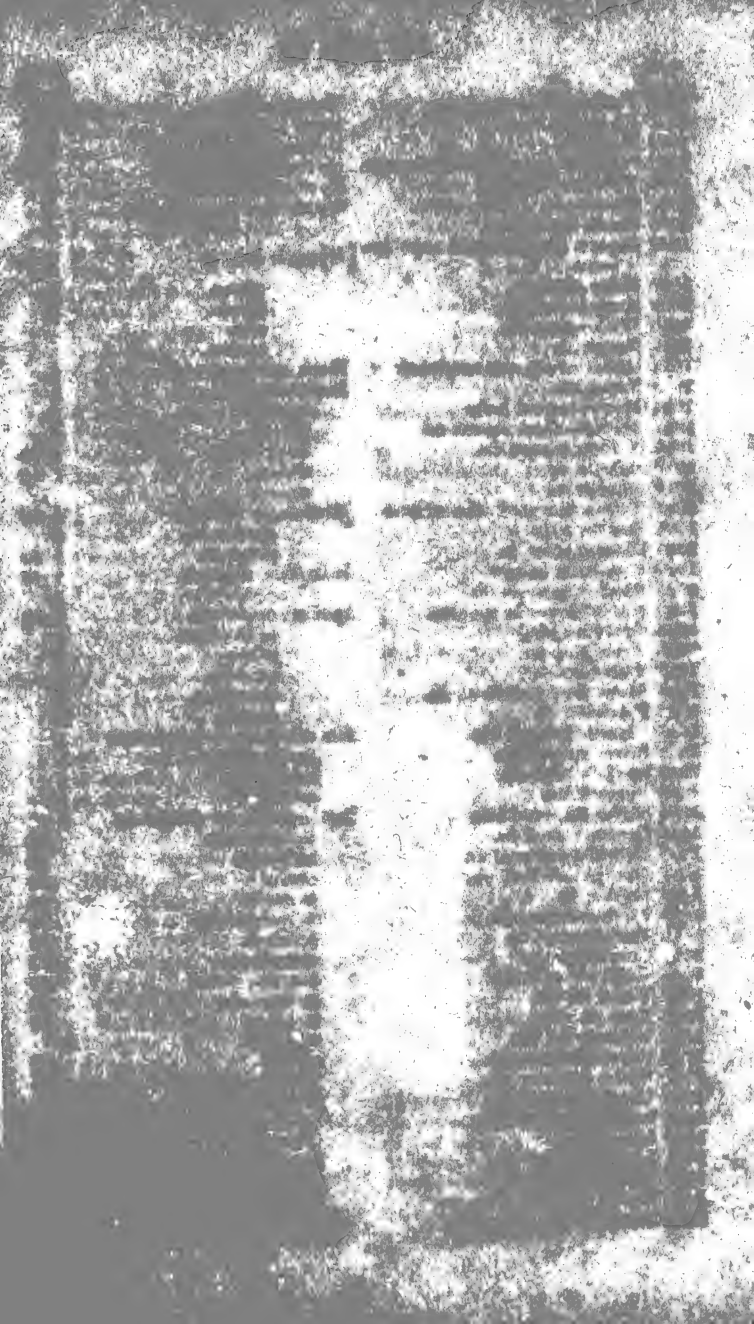
		Each. S. ets.
889	Obtuse leaved jasmine	
890	Prickly do.	
891	Round leaved do.	
892	Rough do. do.	
893	Four thorned do.	
894	Theobroma leaved do.	
895	Marsh do.	
896	Cluster flowered gærtneria	
897	*Dyer's broom, &c.	
898	Hoary leaved broom	
899	Canary-Island do.	
900	Mexican gentian	
901	Golden apple of Barbadoes	
902	Brazil bulbous gesneria	
903	Rose coloured gladiolus	
904	Yellow do.	
905	Narrow leaved red do.	
906	Two spotted do.	
907	Sad flowering do.	
908	Watson's superb do.	
909	Spotted flowered do.	
910	Superb gloriosa	
911	Splendid flowering gloxinia	
912	White do.	
913	Spotted do.	
914	Hairy do.	
915	Chinese shrubby glycine	
916	Upright do.	
917	Golden clustered gnaphalium	
918	Great flowered do.	
919	Flax leaved gnidia	
920	Pine leaved do.	
921	Auricula tree	
922	Mexican black flowered gonolobus	
923	Lotus leaved goodia	
924	Loblolly bay	
925	Splendid flowering gorteria	
926	Peacock do.	
927	Intermediate do.	
928	Cotton tree of South-America	
929	Woolly leaved gouania	
930	Cape elm leaved grewia	
931	Downy leaved grislea	
932	Gum guaicum	
933	Branching guatteria	
934	India nicker tree	
935	Scarlet blood flower	
936	White hæmanthus	
937	Tyger do.	
938	Many flowering do.	
939	Scarlet wave leaved do. &c.	
940	Common logwood	
941	Gibbose leaved hakea	
942	African shining halleria	
943	*Poetic, or classic ivy	
	Gardenia obtusifolia	
	randia	5
	rotundifolia	5
	scabra	5
	tetracantha	5
	theobromæfolia	5
	uliginosa	
	Gærtnera racemosa	3
	Genista tinctoria	1
	candicans	1
	canariensis	1
	Gentiana sp. Mexico	2
	Genus?	3
	Gesneria bulbosa	2
	Gladiolus africanus <i>roseo</i>	1
	<i>luteo</i>	1
	<i>angustifolia rubro</i>	1
	<i>bimaculatus</i>	1
	<i>triste</i>	1
	<i>watsonius</i>	1
	<i>maculatus</i>	1
	Gloriosa superba	6 to 10
	Gloxinia speciosa	2
	<i>alba</i>	
	<i>maculata</i>	
	<i>hirsuta</i>	
	Glycine sinensis	4
	<i>erecta</i>	1
	Gnaphalium glomeratum?	1
	<i>grandiflorum</i>	1 50
	Gnidia simplex	1
	<i>pinitolia</i>	2
	{ Gomphocarpus arborescens, vel	
	<i>asclepias</i>	1
	Gonolobus niger	2
	Goodia lotifolia	2
	Gordonia lasianthus	1
	Gorteria rigens	1
	<i>pavonia</i>	1
	<i>intermedia</i>	
	Gossypium arboreum	3
	Gouania tomentosa	3
	Grewia occidentalis	
	Grislea tomentosa	3
	Guaicum officinale	
	Guatteria virgata	3
	Guilandina bonducella	3
	Hæmanthus coccineus	3
	<i>albiflorus</i>	4
	<i>tigrinus</i>	4
	<i>multiflorus</i>	5
	<i>puniceus</i>	2
	Hæmatoxylon campechianum	5
	Hakea gibbosa, &c.	2
	Halleria lucida	1
	Hedera poetica	1

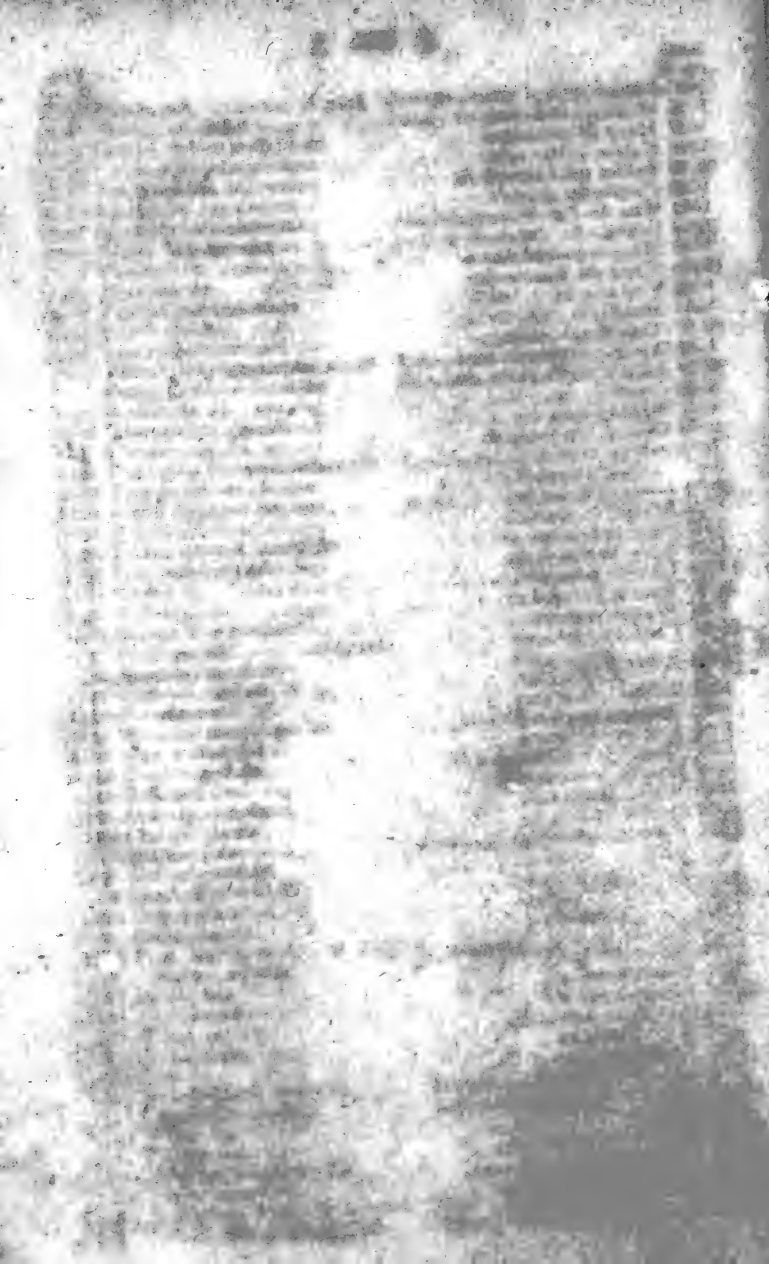




		Each. s. cts.
944 Garland flower	<i>Hedychium coronarium</i>	1
945 Acuminate leaved do.	acuminatum	
946 Narrow leaved scarlet do.	angustifolium	
947 Orange coloured do.	aurantiacum	3
948 Flesh do. do.	carneum	
949 Scarlet Nepaul do.	coccineum	1 50
950 Elliptic do.	ellipticum	
951 Buff do.	flavescens	
952 Yellow do.	flavum	3
953 Gardner's Nepaul do.	gardnerianum	2
954 Woolly do.	heteromallum	
955 Long leaved do.	longifolium	2
956 Greatest do.	maximum	2
957 Spike flowered do.	spicatum	
958 Thyrsse flowered do.	thyrsiflorum	
959 Triangular stalked hedysarum	<i>Hedysarum triquetrum</i>	1
960 Vascillating, or moving plant	gyrans	1
961 Mexican helenium	<i>Helenium mexicanum</i>	2
962 Delicate helianthemum	<i>Helianthemum coris</i>	75
963 Umbel flowering do.	umbellatum	75
964 Changeable do.	mutabile	1
965 Parrot's beak heliconia	<i>Heliconia psittacorum</i>	
966 Peruvian heliotrope	<i>Heliotropium peruvianum</i>	1
967 Large flowered do.	grandiflorum	1
968 Hybrid new do.	hybridum	1 50
969 Japan white day lily	<i>Hemerocallis japonica</i>	1
970 Chinese fan do.	disticha	1
971 Horse radish tree	<i>Hesperanthera moringa</i>	3
972 Twining yellow hibbertia	<i>Hibbertia volubilis</i>	2
973 Chinese changeable hibiscus	<i>Hibiscus mutabilis</i>	2
974 double changeable do.	v. pleno	4
975 single rose do.	rosa sinensis	3
976 single white do. do.	v. albo simp.	
977 double crimson do.	v. rubro pl.	2 to 3
978 rose do	roseo pleno	3
979 variegated do:	variegato pleno	3 to 4
980 buff do.	flavo pleno	3 to 4
981 superb bright yellow do.	v. luteo pleno	5
982 Chinese palmated do.	manihot	2
983 Great flowering do.	grandiflorus	1
984 India musk okro do.	abeimoschus	2
985 Malabar rose do.	rosa malabarica	
986 Mexican red rose tree do.	arboreus	5
987 Hairy do.	hictus	2
988 Mexican white rose tree do.	sp. ?	5
989 Scarlet flowering do.	speciosus	1
990 Scabrous do.	scaber	1
991 Surat do.	surattensis	1
992 Shrubby yellow do.	sp. ?	1 50
993 Manchineel tree	<i>Hippomane mancinella</i>	5
994 Clustered homalium	<i>Homalium racemosum</i>	3
995 Sweet leaved hopea	<i>Hopea tinctoria</i>	2
996 Sweet Japan hovenia	<i>Hovenia dulcis</i>	3.
997 Chinese splendid hoya	<i>Hoya carnosa</i>	1
998 large leaved do.	crassifolia	
999 lance leaved do.	lanceolata	

		Each. \$. cts.
1000 Pott's new hoya	Hoya pottsii	
1001 Elegant humea	Humea elegans	2
1002 Hybanthus	Hybanthus sp.?	2
1003 *Chinese changeable hydrangea	Hydrangea hortensis	62
1004 Two leaved locust tree	Hymenæa courbaril	3
1005 Chinese St. John's wort	Hypericum monogynum	1
1006 Heath leaved do.	coris	1
1007 Superb star flowered cape hy- poxis	Hypoxis stellata	1 50
1008 Hairy cape do.	villosa	1
1009 Rush leaved do.	juncea	1
1010 White cape do.	alba	
1011 Rough do.	scabra	
1012 Italian evergreen candytuft	Iberis sempervirens	1
1013 Yapan tea	Ilex vomitoria	1
1014 Myrtle leaved holly	cassine	1
1015 Madeira thick leaved do.	perado	2
1016 Narrow leaved do.	angustifolia	1 50
1017 Dahoon do.	dahoon	1 50
1018 African do.	crocea	
1019 Yellow flowered aniseed tree	Illicium parviflorum	1 50
1020 Red do. <i>superb</i>	floridanum	2
1021 Chinese anise do.	anisatum	1 50
1022 East-India indigo	Indigofera tinctoria	1 50
1023 South-American do.	sp.?	1
1024 Umbel flowered ipomæa	Ipomæa umbellata	1 50
1025 Georgian jalap	maerorhiza	1
1026 True jalap do.	jalapa	2
1027 Tuberous do.	tuberosa	2
1028 Many flowered white do.	multiflora	2
1029 Palmated do.	digitata	2
1030 Chinese fringed iris	Iris chinensis, <i>vel fimbriata</i>	1
1031 Silver striped do.	fætiddissima, <i>fól. var.</i>	1
1032 Snake's head do.	tuberosa	50 cts. to 1
1033 Peacock iris	pavonia	50 cts. to 1
1034 Salver flowered ixia	Ixia aristata, <i>atropurpurea</i>	1
1035 Crocus leaved do.	bulbocodium	50
1036 Celestial coloured do.	cælestina	50
1037 Orange coloured do.	conica	50
1038 Golden do.	<i>v. aurea</i>	50
1039 Flesh coloured do.	<i>v. carmosina</i>	50
1040 Early scarlet do.	coccinea	50
1041 Corymbose do.	corymbosa	50
1042 Golden crocus do.	erocata, <i>aurea</i>	50
1043 Violet do. do.	<i>v. violacea</i>	50
1044 Rose do. do.	<i>v. rosea</i>	50
1045 Vitreous do. do.	<i>v. vitrea</i>	1
1046 Erect flowered do.	erecta	50
1047 Violet flexuose do.	flexuosa <i>violacea</i>	75
1048 Great flowered do.	grandiflora	1
1049 Scarlet hyalina do.	hyalina, <i>coccinea</i>	75
1050 Limated do.	lineatus	50
1051 Long flowered do.	longiflora	50
1052 Blue spotted do.	maculata, <i>cerulea</i>	50
1053 Green do. do.	<i>v. viridis</i>	1
1054 Small do. do.	<i>v. minor</i>	50





		Each. \$. cts.
1055 Golden spotted Ixia	<i>Ixia, v. aurea</i>	75
1056 Monadelphous do.	monadelphia	75
1057 Many flowered do.	multiflora	50
1058 Nubian do.	nubiensis	50
1059 Scarlet palm leaved do.	<i>palmæfolia coccinea</i>	50
1060 Purple do. do.	<i>v. purpurea</i>	50
1061 Blue do. do.	<i>v. cerulea</i>	75
1062 Sulphur do. do.	<i>v. sulphurea</i>	75
1063 Many branched do.	polystachya	75
1064 White do. do.	<i>v. alba</i>	75
1065 Violet do. do.	<i>v. violacea</i>	50
1066 Squalid do.	squalida	50
1067 Tube flowered do.	tubiflora	50
1068 Acuminate leaved ixora	<i>Ixora acuminata</i>	
1069 India white flowered do.	alba	
1070 ——— tree do.	arborea	
1071 Stem clasping do.	bandhuca	
1072 Chinese charming do.	blanda	5
1073 ——— scarlet do.	coccinea	4
1074 ——— congested do.	congesta	
1075 ——— saffron coloured do.	crocata	
1076 Wedge leaved do.	cuneifolia	
1077 Fulgent or glossy do.	fulgens	5
1078 Great flowering do.	grandiflora	5
1079 Chinese flesh coloured do.	incarnata	
1080 Rose coloured do.	rosea	4
1081 Wave leaved do.	undulata	
1082 Catalonian jasmine	<i>Jasminum grandiflorum</i>	1
1083 Lance leaved do.	{ <i>glaucum, vel lanceo-</i>	
1084 Yellow Indian do.	latum	1
1085 Azorian, or <i>Madeira do.</i>	odoratissimum	1
1086 Striped azorian do.	azoricum	1
1087 *Nepal yellow flowered do.	<i>v. fol. var.</i>	
1088 Slender branched do.	revolutum	1
1089 White Arabian do.	gracile	1
1090 Double do. do.	sambac	1
1091 Duke of Tuscany's large double } do. }	<i>v. pleno</i>	2 to 3
	toseanum, <i>vel trifol-</i>	
	liatum	5
1092 Hairy Indian do.	{ <i>hirsutum, vel multi-</i>	
1093 Thick leaved do.	florum	2
1094 Chinese variable leaved do.	coriaceum	2
1095 Auriculate leaved do.	paniculatum	3
1096 Laurel leaved do.	auriculatum	2
1097 Loudon's new do.	laurifolium	3
1098 Java three nerved do.	loudonianum	2
1099 Wave leaved do.	trinervium	2
1100 Acute three leaved do.	undulatum	2
1101 Society-Island do.	flexile	2
1102 Semidouble officinal do.	simplicifolium	3
1103 Broad leaved do.	officinale <i>pleno</i>	
1104 Narrow leaved do.	latifolium	
1105 Bell shaped do.	angustifolium	
1106 Twisting do.	campanulatum	
1107 Multifid leaved jatropa	tortuosum	
1108 Scarlet jasmin	<i>Jatropa multifida</i>	4
	<i>pandurefolia</i>	5

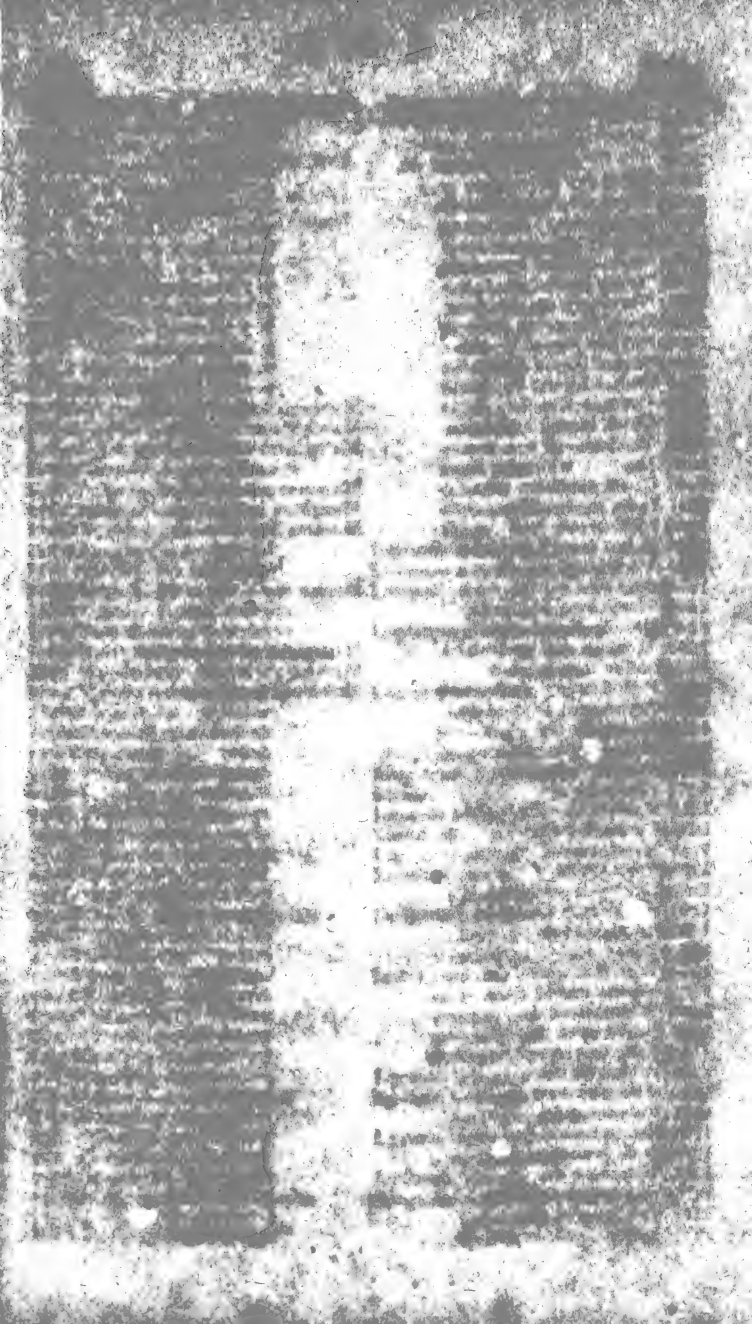
		Each. S. cts.
1109 Physic nut	Jatropha curcaa	3 to 4
1110 Phœnicean cedar	Juniperus phœnicia	1
1111 Spanish brown berried do.	oxycedrus	1
1112 Chinese juniper	chinensis	2
1113 Bermuda do.	bermudiana	1 50
1114 Lycian do.	lycia	1
1115 Great flowered jussieua	Jussieua grandiflora	3
1116 White Malabar nut	Justicia alhatoda	75
1118 Panicked do.	paniculata	2
1119 Peruvian do.	peruviana	1 50
1120 Painted leaved justicia	picta	5
1121 Green do. do.	v. viridis	3
1122 Scarlet flowered do.	coccinea	1 50
1123 Round rooted galangale	Kæmpferia rotunda	3
1124 Dingy flowered kennedia	Kennedia rubicunda	1 50
1125 Scarlet do. do.	coceinea	1
1126 Two spotted do.	bimaculata	
1127 Chinese new do.	chinensis?	2
1128 Pendulous flowered lachenalia	Lachenalia pendula	2
1129 Tricoloured do.	tricolor	2
1130 Green flowered do.	viridis	50
1131 Yellow do. do.	flava	1
1132 Yellow spotted leaved do.	v. maculata	1
1133 Four coloured do.	quadricolor	2
1134 Orchis do.	orchioides	2 50
1135 Yellowish do.	luteola	1 50
1136 Cluster flowered do.	racemosa	2
1137 Fragrant do.	fragrans	2 50
1138 Narrow leaved do.	angustifolia	1 50
1139 Contaminated do.	contaminata	1 50
1140 Pale flowered do.	pallida	2
1141 Blue and purple do. &c.	purpurea ceruleo	3
1142 Rose coloured do.	rosea	
1143 Cowl leaved do.	bifolia	
1144 Reflexed do.	reflexa	
1145 Stoloniferous dq.	stolonifera	
1146 Changeable do.	mutabilis	
1147 Blistered do.	pustulata	
1148 Self coloured do.	unicolor	
1149 Sessile flowered do.	sessiliflora	
1150 Dotted flowered do.	rubida	2 50
1151 Purple do. do.	purpurea	2
1152 Pink lagerstræmia, or crape } myrtle, superb }	Lagerstræmia indica	1
1153 Purple do.	v. purpurea	1
1154 Crimson do.	v. atrorubra	1 50
1155 White do.	alba	3
1156 Splendid do.	reginæ	5
1157 New do.	munchausia	3
1158 New-Holland lambertia	Lambertia formosa	
1159 Changeable lantana	Lantana camara	75
1160 White do.	nivea	1
1161 Prickly do.	aculeata	75
1162 Balm leaved purple do.	melissæfolia	75
1163 Three leaved do.	trifolia	75
1164 Acute leaved do.	acutifolia	1
1165 Levant winged laserpitium	Laserpitium triquetrum	1 50



<p>1. The first part of the document discusses the importance of maintaining accurate records of all transactions.</p> <p>2. It is essential to ensure that all entries are made in a timely and accurate manner.</p> <p>3. The second part of the document outlines the various methods used to collect and analyze data.</p> <p>4. These methods include both qualitative and quantitative approaches, each with its own strengths and weaknesses.</p> <p>5. The third part of the document provides a detailed overview of the results of the study.</p> <p>6. The findings indicate that there is a significant correlation between the variables being studied.</p> <p>7. This correlation suggests that the factors being examined are closely related and may influence each other.</p> <p>8. The final part of the document discusses the implications of these findings and offers suggestions for further research.</p> <p>9. It is recommended that future studies should explore the underlying mechanisms of the observed relationships.</p> <p>10. In conclusion, the study has provided valuable insights into the complex relationships between the variables under investigation.</p>	<p>The following table summarizes the key findings of the study:</p> <table border="1"> <thead> <tr> <th>Variable</th> <th>Mean</th> <th>Standard Deviation</th> </tr> </thead> <tbody> <tr> <td>Variable A</td> <td>12.5</td> <td>3.2</td> </tr> <tr> <td>Variable B</td> <td>18.7</td> <td>4.1</td> </tr> <tr> <td>Variable C</td> <td>25.3</td> <td>5.5</td> </tr> </tbody> </table> <p>The data shows a clear upward trend in the values of the variables, indicating a positive relationship between them.</p>	Variable	Mean	Standard Deviation	Variable A	12.5	3.2	Variable B	18.7	4.1	Variable C	25.3	5.5
Variable	Mean	Standard Deviation											
Variable A	12.5	3.2											
Variable B	18.7	4.1											
Variable C	25.3	5.5											

		Each. \$ cts.
1166 European sweet bay, or <i>Apollo's</i> <i>laurel</i>	<i>Laurus nobilis</i>	75 cts. to 1
1167 Narrow leaved do.	<i>v. angustifolia</i>	1
1168 Variegated leaved do.	<i>v. fol. varieg.</i>	
1169 Oval leaved do.	<i>v. ovata</i>	1
1170 Undulated do. do.	<i>v. undulata</i>	1
1171 Flexuose do.	<i>geniculata</i>	1
1172 Cinnamon tree	<i>cinnamomum</i>	15
1173 Royal bay	<i>indica</i>	3
1174 Camphor tree	<i>camphora</i>	5
1175 Carolina red bay	<i>caroliniensis</i>	1
1176 Alligator pear	<i>persea</i>	3
1177 True cassia tree	<i>cassia</i>	5
1178 Molucca cinnamon	<i>culilaban</i>	5
1179 Snowy bay	<i>nivea</i>	
1180 Shining leaved do.	<i>nitida</i>	
1181 Catesby's do.	<i>catesbæi</i>	
1182 Japan glaucous do.	<i>glauca</i>	
1183 Chinese clustered do.	<i>aggregata</i>	
1184 Delicate branched do.	<i>gracilis</i>	
1185 Jamaica cogwood do.	<i>chloroxylon</i>	
1186 Madeira do.	<i>fætens</i>	
1187 Fragrant lavender	<i>Lavendula dentata</i>	50
1188 Shrubby sea lavatera	<i>Lavatera maritima</i>	50
1189 Mignonette tree	<i>Lawsonia inermis</i>	2
1190 Thorny do. do.	<i>spinosa</i>	2
1191 New-Zealand tea	<i>Leptospermum scoparium</i>	1
1192 Berry fruited leptospermum	<i>baccatum</i>	1
1193 Nondescript do.	<i>sp. nova</i>	1
1194 Vanilla scented liatris	<i>Liatris odoratissima</i>	75
1195 Elegant do.	<i>elegans</i>	50
1196 Paniced do.	<i>paniculata</i>	1
1197 Sphæroid do.	<i>sphæroidea</i>	50
1198 *Wax tree of China	<i>Ligustrum japonicum</i>	2
1199 Lily, <i>see page 87</i>	<i>Lilium</i>	
1200 Trifoliate limonia	<i>Limonia trifoliata</i>	
1201 Shrubby flax	<i>Linum sp.</i>	1
1202 Globe flowered liparia	<i>Liparia sphærica</i>	
1203 *Fulgent lobelia	<i>Lobelia fulgens</i>	1
1204 *Splendid do.	<i>splendens</i>	1
1205 *Japan yellow honeysuckle	<i>Lonicera japonica</i>	1
1206 *Chinese do.	<i>flexuosa, vel sinensis</i>	2
1207 Minorea do.	<i>implexa</i>	1 50
1208 Dark flowered lotus	<i>Lotus jacobæus</i>	1
1209 New-Holland do.	<i>australis</i>	1
1210 *Erect do.	<i>erectus</i>	50
1211 *Trailing do.	<i>procumbens</i>	50
1212 Hairy leaved do.	<i>hirsutus</i>	1
1213 Shrubby lupin	<i>Lupinus arboreus</i>	1
1214 Chinese coronet lychnis	<i>Lychnis coronata</i>	50
1215 Peruvian box thorn	<i>boerhavianum</i>	1 50
1216 *Chinese do.	<i>Lycium trevianum</i>	2
1217 Carolina do.	<i>carolinianum</i>	1
1218 Mexican lythrum	<i>Lythrum alatum</i>	
1219 *Chinese purple magnolia	<i>Magnolia obovata, vel purpurea</i>	2
1220 * chandelier do.	<i>{ conspicua, vel yu- lan</i>	3 to 4

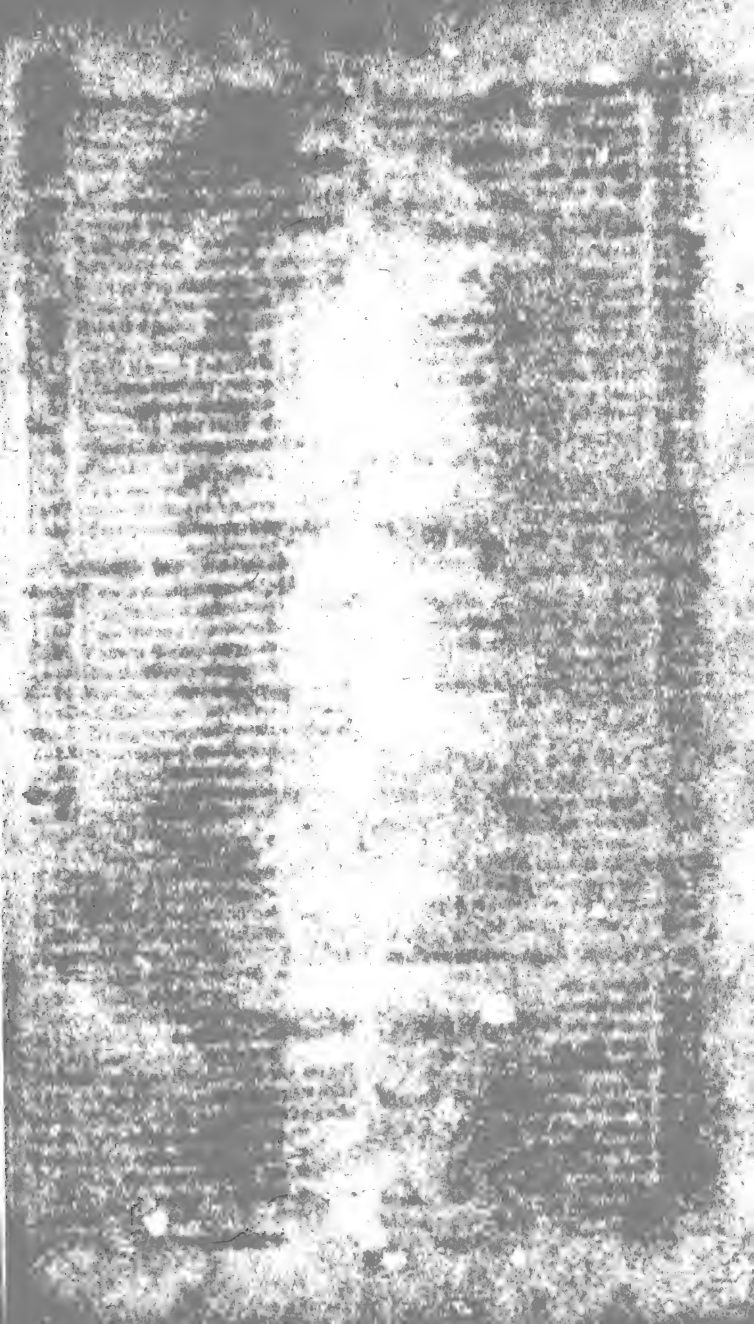
		Each S. cts.	
1221	Chinese olive coloured magnolia	Magnolia fuscata	2 to 3
1222	small flowered do.	<i>v. annonæfolia</i>	3 to 4
1223	dwarf do.	pumila	2
1224	slender branched do.	gracilis	6
1225	Small ear leaved do.	pyramidata	5
1226	Thompson's splendid do.	thompsoniana	10
1227	Striped do.	striata	
1228	Largest do.	maxima	
1229	*Great laurel leaved do.	grandiflora	1
1230	*Irony leaved do.	<i>v. ferruginea</i>	3
1231	*Exmouth do. do.	<i>v. exoniensis</i>	3
1232	Early flowering do.	<i>v. præcox</i>	3
1233	Narrow leaved do. do.	<i>v. angustifolia</i>	
1234	Curled leaved do. do.	<i>v. crispa</i>	5
1235	Obtuse leaved do. do.	<i>v. obtusifolia</i>	5
1236	Cut leaved mahernia	Mahernia incisa	1
1237	Thick leaved malpighia	Malpighia crassifolia	2
1238	Mexican red rose tree	Malva arborea rosea?	4
1239	Do. white do. do.	<i>v. alba?</i>	4
1240	Great mammee tree	Mammea americana	8
1241	India mango tree	Mangifera indica	4 to 5
1242	India arrow root	Maranta arundinacea	2
1243	Zebra leaved maranta	zebrina	5
1244	Variegated do. do.	variegata	
1245	Brazilian marica	Marica northiana	2
1246	Martinique iris	martinicensis	1
1247	Blue flowered do.	cerulea	2
1248	Mexican red maurandia	Maurandia semperflorens	1
1249	Italian tree medick	Medicago arborea	50
1250	Pale flowered maleleuca	Melaleuca armillaris	3
1251	Permanent cupped do.	calycina	3
1252	Decussate do.	decussata	3
1253	Dense leaved do.	densa	2
1254	Diosma leaved do.	diosmæfolia	
1255	Bushy do	dumosa	
1256	Epacris like do.	epacridæa	
1257	Euphorbia like do.	euphorbioides	
1258	Heath leaved do.	ericæfolia	2
1259	Splendid do.	fulgens	3
1260	Genista leaved do.	genistifolia	
1261	Hypericum leaved do. beautiful	hypericifolia	2
1262	Imbricated do.	imbricata	3
1263	Hoary do.	incana	3
1264	Toad flax leaved do.	linariifolia	3
1265	Myrtle leaved do.	myrtifolia	3
1266	Whin leaved do.	nodosa	3
1267	Oval leaved do.	ovalifolia	
1268	Long leaved red do.	paludosa	3
1269	Pendulous do.	pendulina	
1270	Neat flowered do.	pulchella	3
1271	Pubescent do.	pubescens	2
1272	Rough leaved do.	scabra	
1273	Scaly branched do.	squamea	
1274	Squarrose do.	squarrosa	
1275	Styphelia leaved do.	stypheloides	3
1276	Four angled do.	tetragona	
1277	Yellow spear leaved do	thymifolia	

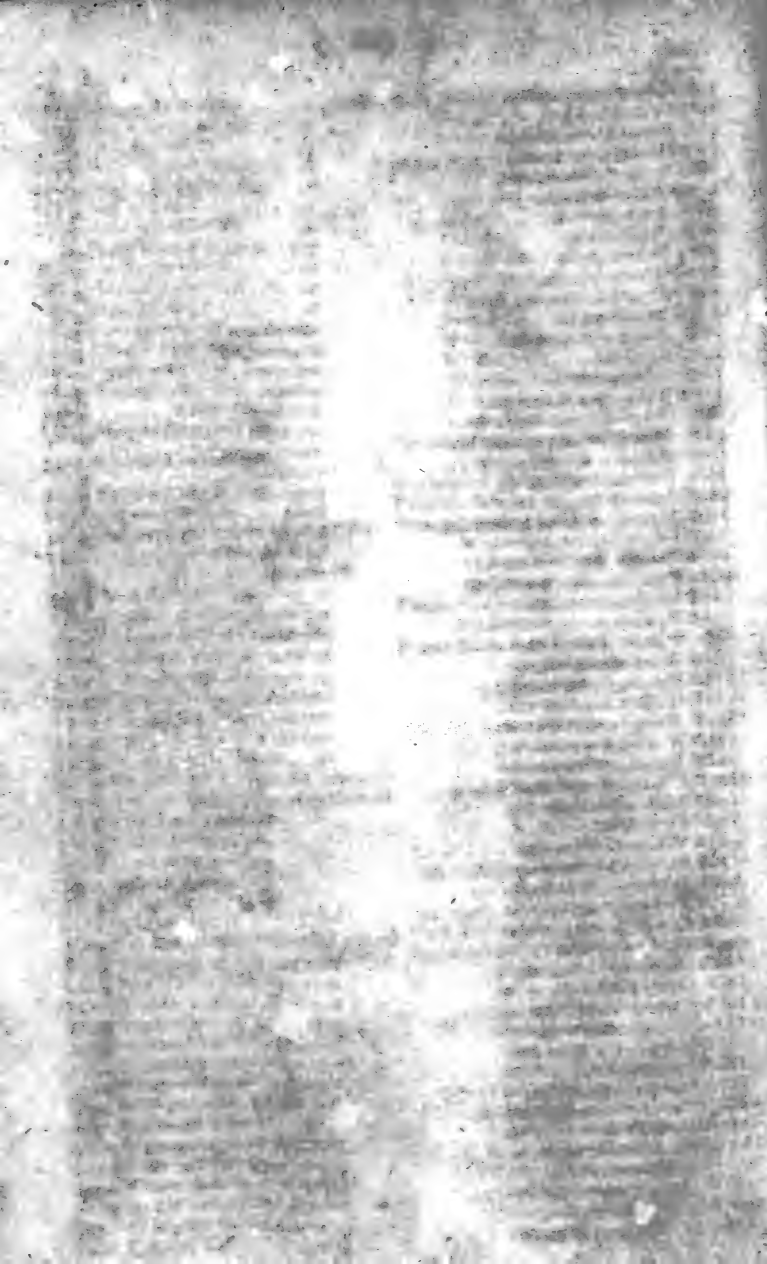




		Each.
		\$. cts.
1278 Branching melaleuca	Melaleuca virgata	3
1279 Rush leaved cape melanthium	Melanthium junceum	2
1280 Nepal melastoma	Melastoma nepalensis	2
1281 Cinnamon leaved black straw- berry tree	malabathrica	2 to 3
1282 Great honey flower	Melianthus major	1
1283 Smooth leaved fig marygold	Mesembryanthemum glabrum	50
1284 Bearded do.	barbatum	50
1285 Splendid do.	spectabile	75
1286 Scimitar leaved do.	acinæiforme	75
1287 Two coloured fig do.	bicolorum	1
1288 Broad tongue do.	linguæforme	1
1289 Slender tongue do.	angustum	75
1290 Delta leaved do.	deltoides	75
1291 Glittering do.	micans	50
1292 Great flowered do.	grandiflorum	75
1293 Bland do. do.	blandum	1
1294 Rose coloured do.	roseum	1
1295 White flowered do.	album	1
1296 Tournefort's do.	tournefortiæ	1
1297 Open do. do.	inlandens, &c &c.	1
1298 Rough leaved metrosideros	Metrosideros hispida	3
1299 Superb spear leaved do.	{ lanceolata, <i>vel ci-</i> { trina	2
1300 Linear leaved do.	linearis	2
1301 Long leaved do.	longifolia	3
1302 Pine leaved do.	pinifolia	3
1303 Willow leaved do.	saligna	2
1304 White flowered do.	v. alba	4
1305 Frequent flowering do.	semperflorens	
1306 Splendid do.	speciosa	4
1307 India iron wood	vera	
1308 Orbiculate micranthemum	Micranthemum orbiculatum	1
1309 Georgia cane or reed	Miegia macrosperma	1
1310 Vera Cruz sensitive tree	Mimosa pigra	1 50
1311 Many spiked do.	polystachya	1 50
1312 Rough do.	asperata	1
1313 Circassian bean tree	formosa	1 50
1314 Shrubby sensitive do.	sensitiva	2
1315 Large flowering do.	grandiflora	2
1316 Splendid do.	speciosa	2
1317 Panicle do.	leucocephala	2
1318 Small seeded do.	microcarpa	2
1319 Nilotic do.	nilotica	2
1320 Twining do	sp.	2
1321 Orange coloured monkey flower	Mimulus glutinosus	1
1322 Splendid monsonia	Monsonia speciosa	2
1323 Hairy leaved do.	filia, <i>vel pilosa</i>	3
1324 Broad do. do.	lobata	3
1325 Sword leaved moræa	Moræa iridioides	1
1326 Trident petaled do.	tricuspis	1
1327 Yellow flowered do.	v. lutea	
1328 Rose coloured do.	communis	1
1329 Spanish nut	sisyriuchium	
1330 Dyer's fustic	Morus tinctoria	
1331 Banana tree	Musa sapientum	3 to 5
1332 Scarlet flowered musa	coccinea	2 to 3

		Each. S. cts.
1333 Plantain of India	<i>Musa paradisiaca</i>	5
1334 Rose coloured musa	<i>rosacea</i>	3
1335 Superb do.	<i>superba</i>	
1336 Pubescent mussænda	<i>Mussænda pubescens</i>	5
1337 Chinese do.	<i>chinensis</i>	
1338 Buck wheat tree	<i>Mylocarium ligustrinum</i>	2
1339 Azorian myrtle	<i>Myrica faya</i>	1 50
1340 Oak leaved cape myrtle	<i>capensis</i>	1 50
1341 African do.	<i>Myrsine africana</i>	
1342 Common Roman do.	<i>Myrtus communis</i>	50
1343 Orange leaved do.	<i>boetica</i>	1
1344 Broad leaved Dutch do.	<i>belgica</i>	1
1345 Double flowering do.	<i>v. pleno</i>	1
1346 Italian upright do.	<i>italica</i>	75
1347 Silver striped do. do.	<i>v. argen. varieg.</i>	1
1348 Gold striped do. do.	<i>v. aureo varieg.</i>	2
1349 Involute leaved do.	<i>v. involuta</i>	
1350 Portugal do.	<i>lusitanica</i>	1
1351 Three leaved Jew's, or box } leaved do.	<i>tarentina</i>	1
1352 Bird's nest do.	<i>tenuifolia</i>	1
1353 Rosemary leaved do.	<i>mucronata</i>	1
1354 Chinese red flowered do.	<i>tomentosa</i>	5
1355 New-Holland do.	{ <i>australis, vel eugenia</i> <i>australis</i>	1 50
1356 True pimento, or allspice	<i>pimenta</i>	10
1357 Globe berried myrtle	<i>disticha</i>	3
1358 West-India bushy do.	<i>dumosa</i>	3
1359 Fragrant do.	<i>fragrans</i>	
1360 Chinese garden nandina	<i>Nandina domestica</i>	1 50
1361 Splendid neottia	<i>Neottia speciosa</i>	
1362 Single red oleander	<i>Nerium oleander</i>	50
1363 white do.	<i>v. album</i>	1
1364 flesh coloured do.	<i>v. carneum</i>	1
1365 pale yellow do.	<i>v. luteum</i>	1 50
1366 Double variegated do.	<i>v. variegatum</i>	1
1367 Double splendid do. or Vanilla } scented	<i>v. splendens</i>	1
1368 Gold striped leaved do.	<i>v. fol. varieg.</i>	2
1369 New double white do.	<i>v. album plena</i>	5
1370 Double flesh coloured do.	<i>v. carneum plena</i>	3
1371 Small flowered do.	<i>v. parviflorum</i>	2
1372 Chinese double white nerium	{ <i>coronarium, vel taber-</i> <i>næmontana</i>	2
1373 Dyer's do.	<i>tinctorium</i>	
1374 Scarlet do.	<i>coccineum</i>	
1375 Cerulean flowered nymphæa	<i>Nymphæa cerulea</i>	
1376 Red do. do.	<i>rubra</i>	
1377 Ogeche lime	<i>Nyssa candicans</i>	
1378 Proliferous œdera	<i>œdera prolifera</i>	
1379 Common European olive	<i>Olea europæa</i>	1 50
1380 Long leaved do. do.	<i>v. longifolia</i>	1 50
1381 Broad leaved do. do.	<i>v. latifolia</i>	1 50
1382 Box leaved do. do.	<i>v. burifolia</i>	2
1383 Twisted leaved do. do.	<i>v. obliqua</i>	2
1384 Blanquet do.	<i>v.</i>	2





		Each.
		. cts.
1385 Bouquettier olive	<i>Olea, v.</i>	2
1386 Verdale do.	<i>v.</i>	2
1387 Gros boutignan do.	<i>v.</i>	2
1388 Burruquet do.	<i>v.</i>	2
1389 Gros redounaac do.	<i>v.</i>	2
1390 Aglandaou do.	<i>v.</i>	2
1391 Vermillon do.	<i>v.</i>	2
1392 Negron do.	<i>v.</i>	2
1393 Selounen do.	<i>v.</i>	2
1394 Grossarme do.	<i>v.</i>	2
1395 Le pas à bouquet do.	<i>v.</i>	2
1396 American do.	<i>americana</i>	1
1397 Narrow leaved do.	<i>angustifolia</i>	1
1398 Tree do.	<i>arborea</i>	
1399 Asiatic do.	<i>asiatica</i>	3
1400 Italian box leaved do.	<i>luxifolia</i>	1 50
1401 Cape of Good Hope do.	<i>capensis</i>	2
1402 Mauritius emarginate do.	<i>emarginata</i>	
1403 Madeira laurel leaved do.	<i>excelsa</i>	3
1404 Chinese fragrant do.	<i>fragrans</i>	2
1405 Smooth leaved do.	<i>lævis</i>	
1406 Mauritius lance leaved do.	<i>lancea</i>	3
1407 Broad leaved do.	<i>latifolia</i>	
1408 Twiggy do.	<i>media</i>	1
1409 Gold blotched leaved do.	<i>v. fol. var.</i>	1 50
1410 Myrtle leaved do.	<i>myrtifolia</i>	
1411 Pendulous do.	<i>pendula</i>	
1412 Oblique leaved do.	<i>obliqua</i>	2
1413 Quadrangular do.	<i>quadrangularis</i>	
1414 Rosemary leaved do.	<i>rosmarinifolia</i>	2
1415 Holly leaved do.	<i>spinosa, vel ilicifolia</i>	1
1416 Wave leaved cape do.	<i>undulata</i>	3
1417 Warted cape do.	<i>verrucosa</i>	2
1418 Taurian onosma	<i>Onosma taurica</i>	1
1419 Ciliated star of Bethlehem	<i>Ornithogalum ciliatum</i>	1
1420 Milk white cape do.	<i>lacteum</i>	1
1421 Golden do.	<i>aureum</i>	2
1422 White Arabian do.	<i>arabicum</i>	1
1423 Striped leaved long spiked do.	<i>caudatum, fol. var.</i>	1 50
1424 White umbelled cape do.	<i>sp.?</i>	1
<i>For other species see page 92</i>		
1425 Cloven leaved oxalis	<i>Oxalis bifurca</i>	1
1426 Goat's foot do.	<i>caprina</i>	1
1427 Drooping yellow do.	<i>cernua</i>	1
1428 Double do. do.	<i>v. pleno</i>	
1429 Convex leaved do.	<i>convexula</i>	1
1430 Wedge leaved do.	<i>cuneata</i>	1
1431 Copper coloured do.	<i>cupræa</i>	1
1432 Elongated do.	<i>elongata</i>	1
1433 Fan leaved do.	<i>flabellifolia</i>	75
1434 Narrow leaved yellow do.	<i>flava</i>	75
1435 Shrubby do.	<i>fruticosa?</i>	1
1436 Great flowered do.	<i>grandiflora</i>	1
1437 Hairy stalked do.	<i>hirta</i>	50
1438 Tooth stamened do.	<i>hirtella</i>	1
1439 Flesh coloured do.	<i>incarnata</i>	75
1440 Woolly leaved do.	<i>lanata</i>	

		Each. S. cts.
1441 Mauritius oxalis	<i>Oxalis mauritiana</i>	1
1442 Many flowered do.	<i>multiflora</i>	1
1443 Five leaved do.	<i>pentaphylla</i>	1
1444 Many leaved do.	<i>polyphylla</i>	1
1445 Purple flowered do.	<i>purpurea</i>	50
1446 Stiff leaved do.	<i>rigidula</i>	1
1447 Rose coloured do.	<i>rosacea</i>	50
1448 Branching red do.	<i>rubella</i>	75
1449 Sessile leaved do.	<i>sessilifolia</i>	50
1450 Beautiful do.	<i>speciosa</i>	1
1451 Slender do.	<i>tenella</i>	1
1452 Fine leaved do.	<i>tenuifolia</i>	1
1453 Four leaved do.	<i>tetraphylla</i>	75
1454 Nondescript do.	<i>tridachylis</i>	1
1455 Variable red do.	<i>variabilis rubra</i>	1
1456 white do.	<i>v. alba</i>	1
1457 Striped flowered do.	<i>versicolor</i>	50
1458 Splendid oxyanthus	{ <i>Oxyanthus speciosus, vel garde-</i> <i>nia tubiflora</i>	
1459 Shrubby oxylobium	<i>Oxylobium frutescens</i>	
1460 Chinese pæderia	<i>Pæderia fætida</i>	3
1461 Chinese purple sweet tree pæony	<i>Pæonia moutan banksii</i>	5
1462 rose coloured do.	<i>v. rosea</i>	15
1463 white and purple do.	<i>v. papaveracea</i>	20 to 25
1464 New Chinese do.	<i>var. nova</i>	25
1465 Prickly ginseng	<i>Panax aculeatum</i>	2
1466 Chinese true shrubby do.	<i>fruticosum</i>	3
1467 *Sea pancratium	<i>Pancratium maritimum</i>	75
1468 Carolina do.	<i>carolinianum</i>	1
1469 Illyrian do.	<i>illyricum</i>	1
1470 Fan leaved do.	<i>littorale</i>	2
1471 Caribbean do.	<i>caribæum</i>	2
1472 Heart leaved do.	<i>amboinense</i>	2
1473 Mexican do.	<i>mexicanum</i>	1
1474 Tall do. do.	<i>v. altissima</i>	2
1475 Large crowned do.	<i>rotatum</i>	1
1476 Tall do. do.	<i>v. altissima</i>	2
1477 Ceylon do.	<i>zeylandicum</i>	1
1478 Splendid do.	<i>speciosum?</i>	5
1479 Brazilian sweet do.	<i>fragrans?</i>	5
1480 August do.	<i>augustum</i>	3
1481 Prickly parkinsonia	<i>Parkinsonia aculeata</i>	1
1482 Adiantum leaved passion flower	<i>Passiflora adiantifolia</i>	2
1483 Splendid scarlet do.	<i>alata</i>	2
1484 Narrow leaved do. do.	<i>v. angustifolia</i>	
1485 Superb do. do.	<i>v. superba</i>	
1486 Scarlet hybrid do.	<i>alato-cerulea</i>	
1487 White flowered do.	<i>alba</i>	1
1488 Whitish flowered do.	<i>albida</i>	1 50
1489 Orange coloured do.	<i>aurantia</i>	1 50
1490 Common blue do.	<i>cærulea</i>	75
1491 Blue and scarlet do.	<i>cæruleo-racemosa</i>	2
1492 Blue and red do.	<i>cæruleo-rubra</i>	2
1493 Blue and flesh coloured do.	<i>cæruleo-incarnata</i>	2
1494 Dwarf hybrid do.	<i>cæruleo-nana</i>	2
1495 Pale blue do.	<i>cæruleo-pallida</i>	2
1496 Chinese do.	<i>chinensis</i>	



1
2
3
4
5
6
7
8
9
10
11
12
13
14
15
16
17
18
19
20
21
22
23
24
25
26
27
28
29
30
31
32
33
34
35
36
37
38
39
40
41
42
43
44
45
46
47
48
49
50
51
52
53
54
55
56
57
58
59
60
61
62
63
64
65
66
67
68
69
70
71
72
73
74
75
76
77
78
79
80
81
82
83
84
85
86
87
88
89
90
91
92
93
94
95
96
97
98
99
100

		Each. s. cts.
1497	Ciliated passion flower	2
1498	Chinese hybrid do.	
1499	Copper coloured do.	
1500	Digitate leaved do.	2
1501	Two coloured do.	2
1502	Brazil eatable do.	1 50
1503	Fætid do.	2
1504	Palmate leaved do.	1 50
1505	Glaucous leaved do.	2
1506	Ivy leaved do.	
1507	Green flowered do.	
1508	Hairy do.	1 50
1509	Silky leaved do.	2
1510	Flesh coloured do.	
1511	Blush and blue do.	
1512	Laurel leaved do.	2
1513	Mexican ligulate do.	3
1514	Crescent leaved do.	2
1515	Yellow flowered do.	75
1516	Apple fruited do.	
1517	Diminutive do.	
1518	Mucronate do.	
1519	Various formed do.	2
1520	Ocellated do.	2
1521	Newman's do.	
1522	Linear lobed do.	
1523	Pale flowered do.	2
1524	Purple palmated do.	1
1525	Curled flowered do.	1 50
1526	Peduncle flowered do.	2
1527	Georgia peltate leaved do.	2
1528	Perfoliate leaved do.	
1529	Painted do.	
1530	Pictured do.	
1531	Superb scarlet do.	2
1532	Dotted leaved do.	2
1533	Square stalked do.	2
1534	Scarlet cluster flowered do.	2
1535	Red fruited do.	2
1536	Saw leaved do.	
1537	Notched leaved do.	2
1538	Cork barked do.	2
1539	Trifurcate do.	
1540	Tuberous rooted do.	2
1541	Bat winged do.	
1542	Largest granadilla do.	3
1543	Caraccas do.	2
1544	Superb Indian pavetta	5
1545	Bitten leaved pavonia	1
1546	Phœnicean pentapetes	75
1547	Sweet scented pergularia	3
1548	Missouri quamash	5
1549	India snail flower	2
1550	Sage leaved phlomis	1
1551	Orange coloured do.	1
1552	Ferrugineous do.	1
1553	Turkey date	3
	<i>Passiflora ciliata</i>	
	colvillii	
	cupræa	
	digitata	2
	discolor	2
	edulis	1 50
	fætida	2
	filamentosa	1 50
	glauca	2
	hederacea	
	heterophylla	1 50
	hirsuta	1 50
	holosericea	2
	incarnata	75
	incarnato-cerulea	2
	laurifolia	2
	ligularis	3
	lunata	2
	lutea	75
	maliformis	
	minima	
	mucronata	
	multiformis	2
	murucuja	2
	newmannii	
	normalis	
	pallida	2
	palmata	1
	pedata	1 50
	pedunculata	2
	peltata	2
	perfoliata	
	picta	
	picturata	
	princeps	2
	punctata	2
	quadrangularis	2
	racemosa	2
	rubra	2
	serrata	
	serratifolia	2
	suberosa	2
	trifurcata	
	tuberosa	2
	vespertilio	
	sp. major	3
	sp. caraccas	2
	<i>Pavetta indica, vel ixora pavetta</i>	5
	<i>Pavonia præmorsa</i>	1
	<i>Pentapetes phœnicea</i>	75
	<i>Pergularia odoratissima</i>	3
	<i>Phalangium quamash</i>	5
	<i>Phaseolus caracalla</i>	2
	<i>Phlomis fruticosa</i>	1
	leonurus	1
	ferruginea	1
	<i>Phoenix dactylifera</i>	3

		Each. 8. cts.	
1554 New-Zealand flax	Phormium tenax	1	
1555 Heath leaved phylica	Phylica ericoides	1	
1556 Feathered do.	plumosa	1	
1557 Rosemary leaved do.	rosmarinifolia	1	
1558 Mexican cluster winter cherry	Physalis somnifera	1	
1559 Rose coloured pimelea	Pimelea rosea	1	
1560 Georgia bark tree	Pinckneya pubescens	2	
1561 Canary Island pine	Pinus canariensis	2	
1562 New-Holland do.	australis	2	
1563 Black pepper	Piper nigrum	2 to 3	
1564 Official pistachia nut	Pistachia officinarum	2	
1565 Mastick tree	lentiscus	2	
1566 Turpentine do.	terebinthus	2	
1567 Brazil piteairnia	Piteairnia, <i>sp. S. America</i>	3	
1568 Chinese fragrant pittosporum	Pittosporum tobira	1	
1569 Wave leaved do.	undulatum	1	
1570 Striped do. do.	<i>v. fol. var.</i>		
1571 Leathery leaved do.	coriaceum	3	
1572 Greenish flowered do.	viridiflorum	2	
1573 Downy leaved do.	revolutum	2	
1574 Broad do. do.	latifolium	3	
1575 Rusty do. do.	ferrugineum	3	
1576 Cape do.	capensis	3	
1577 Yellowish do.	fulvum		
1578 Small leaved do.	tenuifolium		
1579 Mauritius do.	mauritianum	3	
1580 Rose coloured leadwort	Plumbago rosea	1	
1581 Ceylon white flowered do.	zeylandica	1	
1582 Cape purple do. do. <i>superb</i>	capensis	1	
1583 Splendid white plumeria	Plumeria alba	3	
1584 Do. red do.	rubra	5	
1585 Silvery storax leaved podalyria	Podalyria styracifolia	1	
1586 Chinese yew	Podocarpus elongatus	2	
1587 Red Barbadoes flower fence	Poinciana pulcherrima	1 50	
1588 Yellow do. do.	<i>v. lutea</i>	2	
1589 Tuberose, <i>see page 94</i>	Polyanthes tuberosa		
1590 Myrtle leaved polygala	Polygala myrtifolia	1 50	
1591 Beautiful do.	speciosa	1 50	
1592 Dwarf box leaved do.	chamæbuxus, &c.	1 50	
1593 Golden polypodium	Polypodium aureum	1	
1594 West-India do.	sp.	1	
1595 Petalless pomaderris	Pomaderris apetela	1	
1596 Dwarf custard apple	Porcelia pygmaea	2	
1597 Small flowered do.	parviflora	2	
1598 Great flowered do.	grandiflora		
1599 Great flowering portlandia	Portlandia grandiflora	5	
1600 Lance leaved pothos	Pothos lanceolata	1	
1601 *Auricula	Primula auricula	50 cts. to 1	
1602 *Polyanthus			polyanthus
1603 *Primrose			vulgaris, &c.
1604 Chinese primrose, <i>beautiful</i>	sinensis	1 to 2	
1605 Cape silver leaved protea	Protea argentea	5	
1606 Cone bearing do.	conifera	5	
1607 Smooth leaved do.	levisianus		
1608 Long flowered do.	longiflora		
1609 Long leaved do.	longifolia	5	
1610 Honey bearing do.	melifera	5	





		Each. \$. cts.
1611 Spreading protea	Protea patens	
1612 Plume flowered do.	plumosa	5
1613 Feathered do.	total	5
1614 Splendid do.	speciosa nigra	5
1615 Strobile bearing do.	strobilina	5
1616 English laurel	Prunus lauro-cerasus	1
1617 Striped do.	v. fol. varieg.	1
1618 Portugal do.	lusitanica	1
1619 Carolina wild orange	carolinensis	1
1620 Striped Portugal do.	v. fol. var.	2
1621 Barbadoes plum	barbadensis	3
1622 Texas dwarf do.	sp. nova	5
1623 Pear shaped guava	Psidium pyriferum	2 to 3
1624 Chinese do.	chinese	5
1625 Yellow Chinese do.	cattleyanum	
1626 Prickly psoralea	Psoralea aculeata	75
1627 Wing leaved do.	pinnata	1
1628 Stripe flowered do.	glandulosa	1
1629 Spike flowered do.	spicata	1
1630 Many branched do.	multicaulis	1
1631 Georgian do.	sp. Georgia	5
1632 Orange leaved psycotria	Psycotria citrifolia?	3
1633 Wave leaved do.	undulata	3
1634 West-India pteris	Pteris plumerii	1
1635 Hastate fern brake	hastata	1
1636 Elegant do.	elegans	1
1637 Maple leaved pterospermum	Pterospermum acerifolium	2
1638 Fruit bearing pomegranate	Punica granatum	1
1639 Large Malta do.	melitensis	1 50
1640 Sweet fruited do.	dulcis	2
1641 Acid fruited do.	acida	2
1642 Double crimson do.	rubra plena	50 cts. to 1
1643 New great double do.	plena major	2
1644 White flowered do.	alba	1
1645 Double white do.	plena	2
1646 Yellow do. do.	v. flava	1
1647 Dwarf profuse do. do.	nana	75
1648 *Ranunculus, see pages 58 & 89	Ranunculus	
1649 Broad leaved alaternus	Rhamnus alaternus	75
1650 Blotched leaved do.	maculatus	1
1651 Silver striped do.	laciniatus arg. var.	1
1652 Gold blotched do.	v. aureis	
1653 Broad leaved buckthorn	latifolius	1
1654 Tea buckthorn of China	theezans	2
1655 Red stamened raphiolepis	{ Raphiolepis rubra, vel crata-	
	gus indica	3
1656 South-American rhexia	Rhexia, sp. S. America	2
1657 Nepal mountain rhododendron	Rhododendron montanum	5 to 10
1658 tree do.	arboreum	5 to 10
1659 Algarvian do.	algarvensis	
1660 Dauric do.	dauricum	3
1661 Catawba scarlet do.	catawbiense	3 to 5
1662 Irony leaved do.	ferruginum	2
1663 Yellow flowered do.	chrysanthum	5
1664 Azalea like do.	azaloides	3
1665 Thyme leaved do.	chamæcistus	
1666 Hairy do.	hirsutum	1 50

1667 Striped leaved hairy rhododen- dron	} Rhododendron, <i>v. fol. var.</i>		
1668 Hybrid do.		hybridum	4
1669 Myrtle leaved do.		myrtifolium	4
1670 Mount Caucasus do.		caucasicum	5
1671 Pontic purple do.		ponticum	1
1672 ——— white do.		<i>v. album</i>	2
1673 ——— double do.		<i>v. pleno</i>	3
1674 ——— distorted do.		<i>coartortum</i>	2
1675 ——— narrow leaved do.		<i>angustifolium</i>	2
1676 ——— cassine leaved do.		<i>cassinifolium</i>	2
1677 ——— frondose do.		<i>frondosum</i>	2
1678 ——— intermediate do.		<i>intermedium</i>	2
1679 ——— kalmia leaved do.		<i>kalmifolium</i>	2
1680 ——— large leaved do.		<i>macrophyllum</i>	3
1681 ——— obtuse leaved do.		<i>obtusum</i>	2
1682 ——— ovate leaved do.		<i>ovatum</i>	2
1683 ——— rose coloured do.		<i>roseum</i>	2
1684 ——— willow leaved do.		<i>salicifolium</i>	2
1685 ——— silver edged do.		<i>fol. marginatis</i>	2
1686 ——— gold striped do.		<i>fol. aureis</i>	2
1687 ——— silver do. do.		<i>fol. argenteis</i>	2
1688 ——— reddish do.		<i>rubrescens</i>	
1689 Catesby's Georgian do.		<i>catesbaei</i>	
1690 Chinese red lac	<i>Rhus succedanum</i>		5
1691 Shining cape sumach	<i>lucidum</i>		1
1692 Willow leaved do.	<i>viminale</i>		1
1693 Nepal do.	<i>nepalensis</i>		2
1694 Buon upas of Java	<i>javanicum</i>		5
1695 Louisiana sumach	<i>quinqueloba</i> ?		2
1696 Scarlet fruited rivina	<i>Rivina laevis</i>		1
1697 American rontedeletia	<i>Rontedeletia americana</i>		3
1698 Rosemary	<i>Rosmarinus officinalis</i>		50
1699 Silver striped do.	<i>argen. var.</i>		1
1700 Double rose leaved bramble	<i>Rubus rosæfolius, pl.</i>		50
1701 Splendid ruellia	<i>Ruellia formosa</i>		2
1702 Two flowered do.	<i>biflora</i> ?		2
1703 Hybrid do.	<i>hybrida</i> ?		2

CHINA ROSES.

Most of which are monthly, or everblooming.

[The kinds marked thus †, will bear our winters without protection. Those priced are now for sale—those not priced will be for sale in the fall of 1827.]

1704 †Single China rose	<i>Rosa indica</i>		1
1705 †Double red, or daily do.	<i>pallida</i>		50
1706 †Hamilton dark do.	<i>maxima</i>		50
1707 †Hundred leaved sweetscent. do.	<i>odorata</i>		1 50
1708 †Semidouble purple do.	<i>purpurea</i>		1
1709 †Crimson and white do.	<i>bicolor</i>		1
1710 †Striped flowered do.	<i>striata</i>		1 50
1711 †Golden striped bark do. <i>very</i> } <i>curious</i>	<i>aurea</i>		2
1712 †Large China do.	<i>major</i>		1 50
1713 †Dwarf, or pompone do. <i>very</i> } <i>small and delicate</i>	<i>minor</i>		75

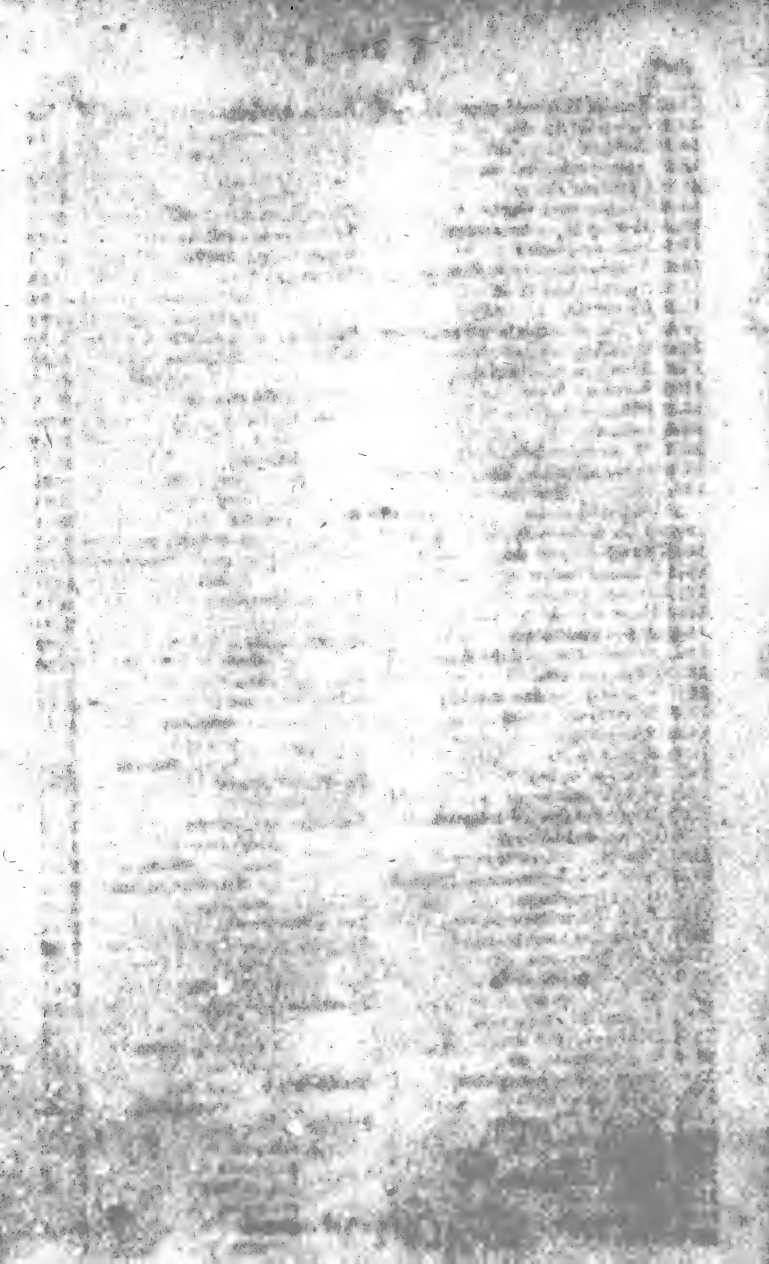


1
2
3
4
5
6
7
8
9
10
11
12
13
14
15
16
17
18
19
20
21
22
23
24
25
26
27
28
29
30
31
32
33
34
35
36
37
38
39
40
41
42
43
44
45
46
47
48
49
50
51
52
53
54
55
56
57
58
59
60
61
62
63
64
65
66
67
68
69
70
71
72
73
74
75
76
77
78
79
80
81
82
83
84
85
86
87
88
89
90
91
92
93
94
95
96
97
98
99
100

		Each. s. ets.
1714 †Whitish rose	<i>Rosa subalba</i>	2
1715 †Maiden's blush do.	<i>albiflora</i>	2
1716 †Dark purple do.	<i>atropurpurea</i>	1 50
1717 †Splendid new do.	<i>speciosa</i>	2
1718 †Willow leaved do.	<i>salicifolia</i>	1
1719 †Hybrid do.	<i>hybrida</i>	1 50
1720 †New hybrid do.	<i>nova</i>	2
1721 †Bluish do. <i>variegated</i>	<i>cerulea</i>	1
1722 Terneaux do.	<i>terneauxi</i>	2
1723 †Tea scented do. <i>of exquisite</i> <i>fragrance</i> }	<i>odorata</i>	2
1724 Purple tea-scented do.	<i>v. purpurea</i>	2
1725 Yellow do. do.	<i>v. lutea</i>	
1726 American do. do.	<i>v. americana</i>	2
1727 Single tea-scented do.	<i>simplici</i>	1 50
1728 †Climbing do.	<i>scandens</i>	2
1729 †Thornless do.	<i>duplex inermis</i>	2
1730 †Roxelane do.	<i>nova var.</i>	2
1731 †Zulmé do.	<i>nova var.</i>	2
1732 †Bourduge do.	<i>nova var.</i>	2
1733 †Melanie	<i>nova var.</i>	2
1734 †Countess of Fresnel	<i>nova var.</i>	2
1735 Dutchess of Dino	<i>nova var.</i>	2
1736 ——— of Parma	<i>nova var.</i>	2
1737 Princess Therese	<i>nova var.</i>	2
1738 Grandval	<i>nova var.</i>	2
1739 Azelie	<i>nova var.</i>	2
1740 Baroness Amelie	<i>nova var.</i>	2
1741 †Belle de plaisance	<i>nova var.</i>	2
1742 †La renommé	<i>nova var.</i>	2
1743 Carolina hybrid do.	<i>carolina</i>	2
1744 Chaussé do.	<i>chaussé</i>	2
1745 Celestial do.	<i>caelestis</i>	
1746 Profuse do.	<i>florida</i>	2
1747 Gigantic do.	<i>gigantea</i>	2
1748 Gorge pigeon do.	<i>v. nova</i>	2
1749 Fiery do.	<i>ignescens</i>	
1750 Imperial do.	<i>imperialis</i>	
1751 Magnificent do.	<i>magnifica</i>	2
1752 Monstrous do.	<i>monstrosa</i>	2
1753 Musk do.	<i>moschata</i>	
1754 Dark do.	<i>obscura</i>	2
1755 Neat do.	<i>pulchella</i>	
1756 Chinese sweet briar do.	<i>rubiginosa</i>	
1757 Velvet do.	<i>velutina</i>	
1758 Single velvet do.	<i>semperflorens</i>	1
1759 Double velvet, or Otabeite do.	<i>atrorubens</i>	50
1760 †Deep crimson, or <i>anemone-</i> <i>flowered do.</i> }	<i>sanguinea</i>	75
1761 †Flesh-coloured do.	<i>carnosina</i>	1 50
1762 †Elegant do.	<i>elegans</i>	2
1763 Blackish purple do.	<i>v. atronigra</i>	2
1764 Little favourite do.	<i>minima</i>	2
1765 Single white do.	<i>albida simpligi</i>	
1766 Belle de Monza	<i>nova var.</i>	2
1767 Miss Lawrence's do. <i>the smallest</i> <i>and most delicate of all roses</i> }	<i>lawrencia</i>	2

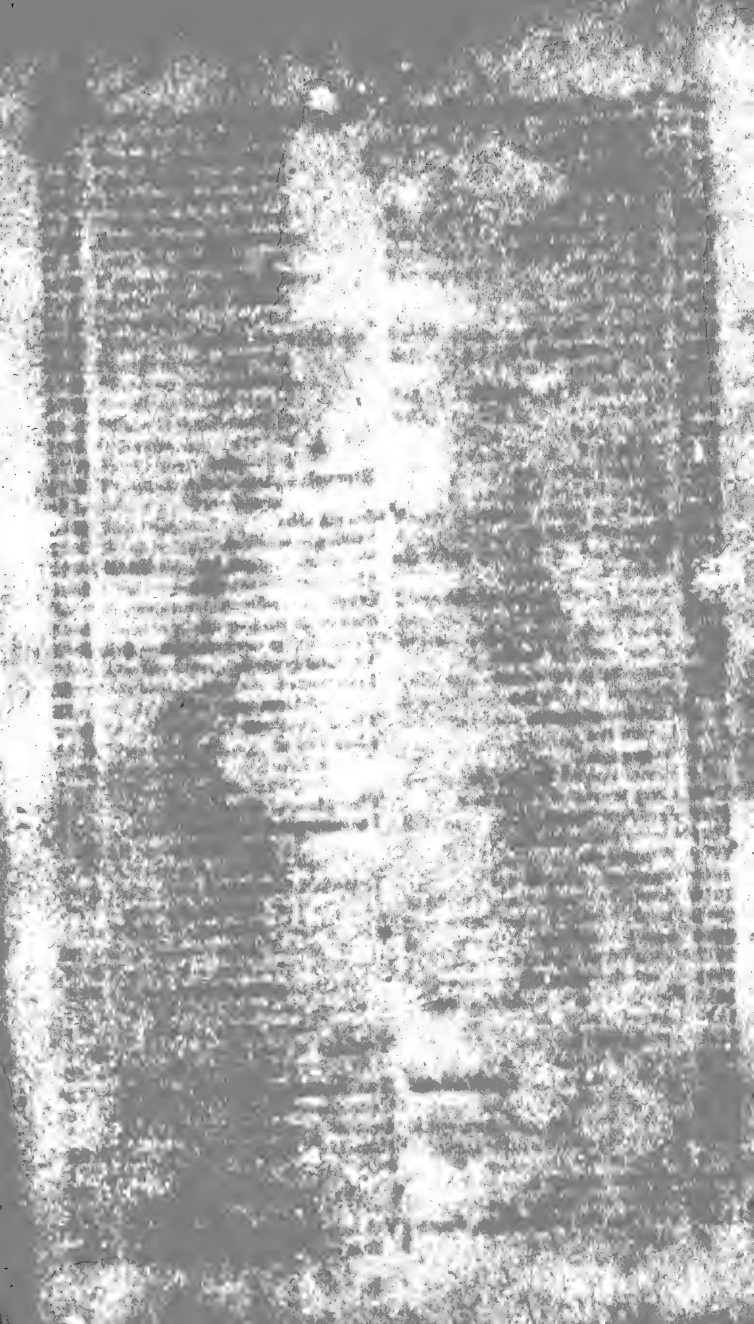
		Each. s. cts.
1768 Double lawrencia rose	<i>Rosa lawrancia, v. pleno</i>	2
1769 Lord Macartney's white do.	<i>bracteata</i>	1
1770 True Macartney's do.	<i>v. vera</i>	2
1771 Three leaved do.	<i>sinica</i>	1
1772 †Greville's superb do. <i>produc-</i> <i>ing flowers of every shade,</i> <i>from white to dark purple,</i> <i>on the same plant</i> }	<i>grevillii</i>	5
1773 †Lady Banks' double white evergreen multiflora, <i>new</i> <i>and superb</i> }	<i>banksiæ</i>	3
1774 Yellow multiflora do. <i>evergreen</i>	<i>v. lutea</i>	
1775 †Roxburg's single white multi- flora do. }	<i>roxburgii</i>	2
1776 Invulcrated do.	<i>invulcrata</i>	2
1777 †Boursaultian do.	<i>boursaulti</i>	2
1778 †Fraser's do.	<i>fraseri</i>	2
1779 Hyacinthine do.	<i>hyacinthina</i>	
1780 Common multiflora do.	<i>multiflora</i>	75
1781 New purple do. do.	<i>v. purpurea</i>	3
1782 New white do. do.	<i>v. alba</i>	2
1783 Scarlet do. do.	<i>v. coccinea</i>	2
1784 Dwarf do. do.	<i>v. humilis</i>	2
1785 Knight's bichonia do.	<i>bichonia</i>	1 50
1786 ——— resplendent do.	<i>resplendens</i>	1 50
1787 ——— regent rose	<i>regalis</i>	1 50
1788 ——— morduersa do.	<i>morduersa</i>	2
1789 ——— animating do. <i>very sweet</i>	<i>v.</i>	2
1790 ——— invincible do.	<i>v.</i>	1 50
1791 ——— grand brilliant do.	<i>v.</i>	1 50
1792 ——— exuberant do.	<i>v.</i>	1 50
1793 Gossam. than do.	<i>sp. nova</i>	
1794 Herbert's do.	<i>herberti</i>	2
1795 Mauritius do.	<i>mauritiana</i>	2
1796 Michigan do.	<i>sp. nova</i>	
1797 †Nepal do.	<i>napalensis</i>	2
1798 Champney's blush cluster do.	<i>champneyana</i>	1
1799 Double blush noisette, <i>superb</i> } <i>cluster</i> }	<i>noisette</i>	1 50
1800 Double red do.	<i>v. rubra</i>	2
1801 Grey centre do.	<i>v. cœur gris</i>	
1802 Single blush do.	<i>v. simplici</i>	1
1803 Herbemont's new hybrid do.	<i>herbemonti</i>	2
1804 Diminutive leaved do.	<i>microphylla</i>	5
1805 Single white musk do.	<i>moschata</i>	75
1806 Double do. do.	<i>v. pleno</i>	75
1807 Dwarf do. do.	<i>v. minor</i>	2
1808 Snowy do.	<i> nivea</i>	
1809 Mexican montezuma do.	<i>montezuma</i>	
1810 White Nepal do.	<i>lyelli</i>	
1811 Long's Arkansa do.	<i>longi</i>	3
1812 Climbing laurel	<i>Ruscus androgynus</i>	1 50
1813 Alexandrian classic laurel	<i>racemosus</i>	1 50
1814 Double leaved butcher's broom	<i>hypoglossum</i>	1
1815 Thick leaved Italian do.	<i>hypophyllum</i>	1
1816 Lesser palm	<i>Sabal adansoni</i>	3
1817 Sugar cane	<i>Saccharum officinarum</i>	2





		Each.
		\$. cts.
1818 Scarlet flowered sage	<i>Salvia coccinea</i>	50
1819 Splendid do. do.	splendens	75
1820 Narrow leaved do.	angustifolia	1
1821 Azure coloured do.	azurea	50
1822 Cerulean do.	mexicana	1
1823 Guinea sansevieria	Sansevieria guineensis	2
1824 Downy lavender-cotton	Santolina tomentosa	50
1825 India soapberry	Sapindus saponaria	1
1826 Yellow side-saddle flower	Sarracenia flava	50
1827 Spotted leaved do.	variolaris	75
1828 Parrot do.	psittacina	75
1829 *Chinese strawberry saxifrage	Saxifraga sarmentosa	50
1830 Brazilian schinus	Schinus terebinthinus	1 50
1831 Mexican beautiful do.	sp. ?	3
1832 Sensitive biar	Schrankia uncinata	2
1833 Official squill	Scilla maritima	1
1834 India do.	indica	1 50
1835 Wave leaved do.	undulata	2
1836 Peruvian white do.	peruviana, albo	75
1837 Do. blue do.	v. ceruleo	75
1838 Splendid scotia	Scotia speciosa	3
1839 Tree houseleek	Sempervivum arboreum	1
1840 Silver striped do.	argen. varieg.	2
1841 Ciliated do.	ciliatum	1
1842 Japan senecio	Senecio speciosus	
1843 Cape septas	Septas capensis	2
1844 Japan box thorn	Serissa fatida	50
1845 Double flowered do. do.	v. pleno	50
1846 Mexican sida	Sida mexicana?	1
1847 Shrubby Sicilian catchfly	Silene fruticosa	1
1848 Striped star grass	Sisyrinchium striatum	1
1849 Spreading do.	laxum	1
1850 Bermuda do.	bermudianum	1
1851 Chinese smilax	Smilax chinensis	1
1852 Rough do.	aspera	1
1853 Beautiful fruited solanum	Solanum fasciatum	1
1854 Oleander leaved do.	neriifolium	1
1855 Madeira winter cherry	pseudocapsicum	1
1856 New South-American potatoe	sp. South-America	2
1857 Downy sophora	Sophora tomentosa	2
1858 Rush leaved Sowerbæa	Sowerbæa juncea	2
1859 Great flowered sparaxis	Sparaxis grandiflora	1 50
1860 Tricoloured do.	tricolor	
1861 African sparmannia	Sparmannia africana	1
1862 Spanish broom	Spartium junceum	75
1863 Double do. do.	v. pleno	
1864 Double Scotch do.	scoparium pleno	
1865 Striped leaved do.	v. fol. var.	
1866 Arabian stachytarpheta	Stachytarpheta arabica	1 50
1867 Changeable do.	mutabilis	1 50
1868 Variegated stapelia	Stapelia variegata	75
1869 Three pointed do.	trisulea	1
1870 Beautiful do.	pulchella	1
1871 Great flowered do.	grandiflora	1
1872 Spotted do.	maculosa	1
1873 Glaucous do.	glauca	1
1874 Dewy do.	irrorata	1

		Each S. cts.
1875 Warty flowered stapelia	<i>Stapelia verrucosa</i>	1
1876 Spreading do.	<i>divaricata</i>	1
1877 Wrinkled do.	<i>rugosa</i>	1
1878 Painted do.	<i>picta</i>	1
1879 Shield do.	<i>clypeata</i>	1
1880 Toad like do.	<i>bufonia</i>	1
1881 White haired do:	<i>econinna</i>	1
1882 Fern leaved do.	<i>asplenifolia</i>	1
1883 Ciliated do.	<i>ciliata</i>	1
1884 Lobate do.	<i>lobata</i>	1
1885 Hairy do.	<i>hirsuta</i>	1
1886 Large orb'd do.	<i>orbicularis</i>	1
1887 Sweet scented do.	<i>odorata</i>	1 50
1888 Pale flowered do.	<i>pallida</i>	1
1889 Revolute flowered do.	<i>revoluta</i>	1
1890 Elegant do.	<i>elegans</i>	1
1891 Radiated do.	<i>radiata</i>	1
1892 Cushioned do.	<i>pulvinata</i>	1
1893 Chinese stercolea	<i>Sterculea platanifolia</i>	1
1894 Maple leaved do.	<i>acerifolia?</i>	3
1895 Mexican white stevia	<i>Stevia alba</i>	2
1896 Chinese tallow tree	<i>Stillingia sebifera</i>	1
1897 Queen's strelitz, <i>very splendid</i>	<i>Strelitzia reginae</i>	10 to 15
1898 Sensitive styliidium	<i>Styliidium frutescens</i>	1
1899 Three flowered styphelia	<i>Styphelia triflora</i>	
1900 Mahogany tree	<i>Swietenia mahagoni</i>	5
1901 West-India tamarind	<i>Tamarindus occidentalis</i>	1 to 2
1902 Teak wood of India	<i>Tectona grandis</i>	
1903 Shrub by germander	<i>Teucrium fruticosum</i>	50
1904 Spanish cat-thyme	<i>marum</i>	75
1905 Carolinian thalia	<i>Thalia dealbata</i>	1
1906 Green tea	<i>Thea viridis</i>	3
1907 Bohea tea	<i>bohea</i>	3
1908 Broad leaved Bohea do.	<i>latifolia</i>	
1909 Long leaved theophrasta	<i>Theophrasta longifolia</i>	
1910 Fragrant thunbergia	<i>Thunbergia fragrans</i>	
1911 Great flowered do.	<i>grandiflora</i>	3
1912 Winged do.	<i>alata</i>	
1913 Bartram's tillandsia	<i>Tillandsia bartramii</i>	1
1914 Hispid tournefortia	<i>Tournefortia hispida</i>	
1915 Purple leaved tradescantia	<i>Tradescantia discolor</i>	
1916 Rose coloured spiderwort	<i>rosea</i>	50
1917 Splendid scarlet trevirana	<i>Trevirana coccinea</i>	5
1918 Great flowered triumfetta	<i>Triumfetta grandiflora?</i>	1
1919 Pittosporum leaved tristania	<i>Tristania conferta</i>	
1920 Laurel leaved do.	<i>laurina</i>	
1921 Great cape tritoma	<i>Tritoma uvaria</i>	3
1922 Lesser do.	<i>media</i>	1 50
1923 *Heliotrope scented colt's foot	<i>Tussilago fragrans</i>	50
1924 European furze	<i>Ulex europæus</i>	50
1925 Splendid urania	<i>Urania speciosa</i>	
1926 Chinese urena	<i>Urena lobata</i>	1 50
1927 Snowy nettle	<i>Urtica nivea</i>	
1928 Sweetest uvaria	<i>Uvaria odoratissima</i>	
1929 Chinese uvularia	<i>Uvularis sinensis</i>	1
1930 Green leaved veltheimia, <i>beau- tiful</i>	<i>Veltheimia veridifolia, vel ale- tris capensis</i>	1 50





		Each S. cts.
1931 Lemon scented verbena	<i>Verbena triphylla</i>	75 cts. to 1
1932 Laurustinus	<i>Viburnum tinus</i>	75 cts. to 1
1933 Shining leaved do.	<i>lucidum</i>	75 cts. to 1
1934 Silver striped do.	<i>v. arg. var.</i>	1
1935 Gold do. do.	<i>v. aur. var.</i>	2
1936 Upright hairy do.	<i>hirtum vel strictum</i>	1
1937 Large leaved do.	<i>rugosum</i>	5
1938 Chinese sweetest do.	{ <i>odoratissimum, vel chloranthus in- conspicuus</i>	3
1939 Scarlet Madagascar periwinkle	<i>Vinca rosea</i>	50 cts. to 75
1940 White do. do.	<i>v. alba</i>	75
1941 Pompono do.	<i>pomponia</i>	
1942 *Fragrant double blue violet	<i>Viola odoratissima</i>	50
1943 * double purple violet	<i>v. purpurea</i>	50
1944 * double white do.	<i>alba plena</i>	1
1945 Shrubby violet	<i>arborescens</i>	
1946 Fugacious visseuxia	<i>Visseuxia fugax</i>	
1947 Double Japan volkameria	<i>Volkameria japonica</i>	75 cts. to 1
1948 Paniced Wachendorfia	<i>Wachendorfia paniculata</i>	
1949 Thyrsse flowered do.	<i>thyrsiflora</i>	1
1950 Hairy do.	<i>hirsuta</i>	1 50
1951 Red pyramidal watsonia	<i>Watsonia rosea</i>	1
1952 White do. do.	<i>rosea alba</i>	1 50
1953 Dazzling do.	<i>fulgens</i>	1 50
1954 New-Holland westringia	<i>Westringia rosmarinacea</i>	1
1955 Fulgent eternal flower	<i>Xeranthemum fulgidum</i>	1
1956 Great flowered do.	<i>grandiflorum</i>	1
1957 Sea side laurel	<i>Xylophylla latifolia</i>	2
1958 *Adam's needle	<i>Yucca gloriosa</i>	1
1959 Recurved leaved do.	<i>recurvifolia</i>	2
1960 Narrow leaved do.	<i>draconis</i>	2
1961 Striped leaved do.	<i>folio variegato</i>	4
1962 *Narrow leaved do.	<i>angustifolia</i>	2
1963 Crenulate do.	<i>crenulata</i>	
1964 Aloe do. do.	<i>aloifolia</i>	1
1965 Striped aloe leaved do.	<i>aloifolia, fol. var.</i>	
1966 Entire leaved zamia	<i>Zamia integrifolia</i>	
1967 Common ginger	<i>Zinziber officinale</i>	1
1968 Fiddle leaved do.	<i>panduratus</i>	1 50
1969 Yellow flowered do.	<i>chrysanthum</i>	1 50
1970 Chinese zizyphus	<i>Zizyphus sinensis</i>	2
1971 East-India do.	<i>jujuba</i>	2
1972 Egyptian lotus	<i>lotus</i>	2

GERANIUMS, or the Family of GERANIACEÆ.

N. B. The larger proportion of the following have been selected from coloured engravings, in Mr. Sweet's splendid work on Geraniums, and consists of the most superb varieties which are figured in that publication,—they are consequently offered to the public as a collection which cannot be surpassed in any country.

1973 Pennyroyal, or rasp leaved geranium	} <i>Pelargonium radula</i>	50	
1974 Otto of rose scented do.		<i>v. odorata</i>	50
1975 Superb striped do.		<i>v. fol. varieg.</i>	2

		Each. S. ets.
1976 Dwarf rose scented geranium	Pelargonium, <i>v. minor</i>	50
1977 Crimson horse-shoe, or <i>bouquet</i> <i>do.</i>	} zonale	50
1978 Scarlet <i>do. do.</i>		<i>v. coccinea</i>
1979 Plain leaved scarlet <i>do. do.</i>	<i>v. fol. concolor</i>	50
1980 Double scarlet <i>do. do.</i>	<i>v. pleno</i>	1 50
1981 Flame coloured <i>do. do.</i>	<i>v. flammea</i>	75
1982 Flesh coloured <i>do. do.</i>	<i>v. carnea</i>	50
1983 White <i>do.</i>	<i>v. alba</i>	75
1984 Silver edged <i>do. do.</i>	<i>v. fol. marginata</i>	50
1985 Blucher <i>do.</i>	<i>var.</i>	1
1986 Bath scarlet <i>do.</i>	<i>var.</i>	75
1987 Great mallow leaved <i>do.</i>	<i>macrophyllum</i>	1
1988 Scarlet flowering <i>do.</i>	<i>inquinans</i>	50
1989 Bright scarlet <i>do.</i>	<i>v. coccinea</i>	50
1990 Silver striped <i>do. do.</i>	<i>v. fol. argen.</i>	50
1991 Gold striped <i>do. do.</i>	<i>v. fol. aureo</i>	1
1992 Birch leaved <i>do.</i>	<i>betulinum</i>	50
1993 Small <i>do.</i>	<i>minor</i>	50
1994 Heart leaved <i>do.</i>	<i>cordatum</i>	75
1995 Splendid <i>do.</i>	<i>speciosum</i>	1
1996 Nutmeg scented <i>do.</i>	<i>fragrans</i>	50
1997 Apple scented <i>do.</i>	<i>odoratissimum</i>	50
1998 Balm scented <i>do.</i>	<i>vitifolium</i>	50
1999 Palmated balm <i>do.</i>	<i>v. palmatum</i>	50
2000 Rose scented <i>do.</i>	<i>capitatum</i>	50
2001 Great flowering <i>do.</i>	<i>grandiflorum</i>	75
2002 Oak leaved <i>do.</i>	<i>quercifolium</i>	50
2003 Fair Helen <i>do.</i>	<i>v. minima</i>	75
2004 Velvet leaved, or <i>peppermint</i> <i>scented do.</i>	} <i>tomentosum</i>	75
2005 Purple flowered ivy leaved <i>do.</i>		<i>peltatum</i>
2006 White flowering <i>do. do.</i>	<i>album</i>	1
2007 Striped ivy leaved <i>do.</i>	<i>fol. varieg.</i>	2
2008 Citron, or <i>bergamot scented do.</i>	<i>citriodorum</i>	75
2009 Sorrel leaved <i>do.</i>	<i>acetosum</i>	50
2010 Forman's large white <i>do.</i>	<i>formanum</i>	1
2011 Viscous leaved <i>do.</i>	<i>viscosum</i>	50
2012 Scentless dwarf <i>do.</i>	<i>inodorum</i>	75
2013 Gooseberry leaved <i>do.</i>	<i>grossularoides</i>	50
2014 Magnificent <i>do.</i>	<i>magnificens</i>	1
2015 English Washington <i>do.</i>	<i>washingtoni</i>	1
2016 American <i>do. do.</i>		75
2017 Desirable <i>do.</i>	<i>optabile</i>	1
2018 Princess Charlotte's <i>do.</i>	<i>principissæ</i>	1
2019 Burnished <i>do.</i>	<i>ardens</i>	75
2020 Night smelling <i>do.</i>	<i>triste</i>	1
2021 Ladies mantle leaved <i>do.</i>	<i>alchemilloides</i>	50
2022 Strawberry <i>do.</i>	<i>fragaroides</i>	50
2023 Glutinous <i>do.</i>	<i>glutinosum</i>	50
2024 Banbury's <i>do.</i>	<i>banburiense</i>	75
2025 Cleopatra's <i>do.</i>	<i>cleopatrium</i>	1
2026 Triumphant <i>do.</i>	<i>triumphans</i>	1
2027 Prince Regent <i>do.</i>	<i>regium</i>	1
2028 August flowering <i>do.</i>	<i>augustum</i>	1
2029 Rowena <i>do.</i>	<i>rowanii</i>	75
2030 Hooded leaved <i>do.</i>	<i>cucullatum</i>	75



		E. cl. s. cts.
2086	Dark petaled geranium	2
2087	Various leaved do.	2
2088	Prominent nerved do.	2
2089	Comely do.	2
2090	Broad petaled do.	2
2091	Close leaved, or Lavalette's do.	2
2092	Zig-zag stalked do.	2
2093	Rival do.	2
2094	Dark brown do.	2
2095	Rose brilliant do.	2
2096	Davey's fairy queen do.	2
2097	Balm leaved do.	2
2098	Tyrian purple do.	3
2099	Smith's splendid do.	3
2100	Greasy leaved do.	2
2101	Countess of Cork's do.	2
2102	Mrs. Beadon's do.	2
2103	Perfumed do.	2
2104	Mr. Well's superb scarlet do.	3
2105	Self-coloured do.	2
2106	Bailey's do.	3
2107	Neat, or Rosetta do.	2
2108	Robinson's splendid do.	3
2109	Davey's superb do.	2
2110	Oblate leaved do.	2 50
2111	Distant petaled splendid do.	2
2112	Shield leaved do.	2
2113	Kutusoff's do.	2
2114	Dennis's do.	2
2115	Many nerved do.	2
2116	Ornate do.	2
2117	Select do.	2
2118	Cloth leaved do.	2
2119	Jenkinson's do.	2
2120	Pretty do.	2
2121	Brown's do.	2
2122	Dark purple do.	2
2123	Miss Newsham's do.	2
2124	Hoare's Fair Rosamond do.	2
2125	Breeze's do.	2
2126	Splendid villose do.	3
2127	Mrs. Fairlie's do.	2
2128	Small branched do.	2
2129	Broad lobed superb scarlet do.	3
2130	Elegant do.	3
2131	Mrs. Sweet's do.	3
2132	Lady Broughton's do.	4
2133	Colville's do.	3
2134	Upright do.	3
2135	Chrysanthemum leaved do.	5
2136	Young's do.	3
2137	Jonquill scented do.	3
2138	Duchess of Beaufort's do.	3
2139	Decked do.	3
2140	Fringed yellow flowered hoarca	1 50
2141	Nodding do.	1 50
2142	Fumitory flowered do.	1 50

Pelargonium

obscurum

difforme

nervosum

concinnum

platypetalon

coactatum

flexuosum

æmulum

atrofusum

calycinum

striatum

melissinum

tyrianthinum

smithii

pinguifolium

boylæ

beadonii

cosmianum

wellsianum

concolor

baileyianum

bellulum

robinsoni

daveyanum

oblatum

paucidentatum

scutatum

adulterinum

denuisianum

multinerve

ornatum

eximium

pannifolium

jenkinsonia

lepidum

brownii

atropurpurenm

newshamianum

hoareanum

brecesiasum

villosum

fairlieæ

ramulosum

latifolium

elegans

mattocksianum

broughtoniæ

colvillii

erectum

chrysanthemifolium

youngii

jonquillinum

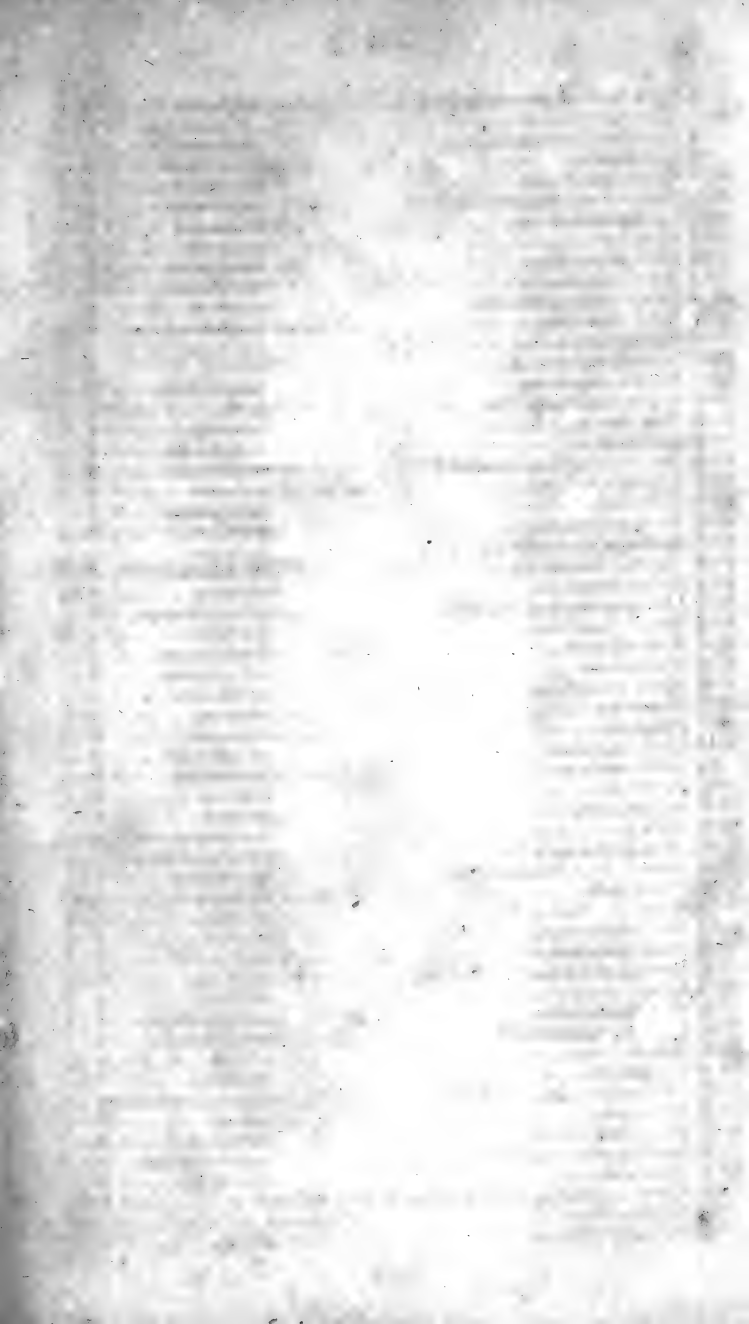
beaufortianum

comptum

Hoarea radicata

nutans

corydaliflora





		Each. \$. cts.
2143 Elegant flowered hoarea	Hoarea elegans	2 50
2144 Black do. do.	melanantha	1 50
2145 Dark crimson do.	atrosanguinea	2 50
2146 Wax flowered ciconium	Ciconium cerinum	2
2147 Hybrid do.	hybridum	1 50
2148 Orange coloured netted do.	reticulatum	2 50
2149 Downy leaved campylea	Campylea blattaria	1 50
2150 Hoary do. do.	cana	1 50
2151 Silky do. do.	holoseracea	2
2152 Cunila leaved erodium	Erodium cunilifolium	2
2153 Bur parsley leaved do.	caucalifolium	2 50
2154 Flesh coloured do.	incarnatum	2 50
2155 Tall wart flower	Phytamanthes elatus	2
2156 Tricoloured do.	{ tricolor, <i>vel pelargo-</i> { <i>nium tricolor</i>	2
2157 Italian tuberous geranium	Geranium tuberosum	1
2158 Wallich's Nepal do.	wallichianum	1 50
2159 Iberian blue do.	anemonefolium	75
2160 Sulphur coloured dimacria	Dimacria sulphurea	1 50
2161 Holyhock leaved isopetalum, <i>very curious</i>	} Isopetalum cotyledonis	3
2162 Quinate leaved yellow Jenkin- sonia	} Jenkinsonia quinata	2
2163 Pendulous branched do.	pendula	2









