

## Historic, archived document

Do not assume content reflects current scientific knowledge, policies, or practices.



No. 2.

February, 1872.

CATALOGUE

OF

Greenhouse, Bedding

And New Plants,

CULTIVATED AND FOR SALE

AT THE

Fruitland Nurseries,

AUGUSTA, GA.

P. J. BERCKMANS, Proprietor.

AUGUSTA, GA.:

JAS. L. GOW, BOOK AND JOB PRINTER.

1872.



**NOTE** It will facilitate the dispatch of business if with each order the *name* and *address* are written distinctly and in full. We are continually receiving letters where this is neglected, and we are obliged to retain the order until we hear again from the writer. Except in cases of urgency, orders are executed in rotation as received. Unknown correspondents will please remit a sufficient amount to cover their order; when this is omitted, goods will be sent only to the amount of their remittance. Should the remittance exceed the amount of goods ordered, the balance will be returned to the purchaser with the goods.

# P. J. BERCKMANS' ORDER SHEET,

Taken from Catalogue No. 2 for 1872.

Date, ..... 1872.

AMOUNT ENCLOSED—

Post Office Order, \$ .....  
Draft, - - \$ .....  
Cash, - - \$ .....

For which send the following List of Articles by ..... to the address of

Name, .....  
Post Office, .....  
County, .....  
State, .....

No. of Plants.

Names of Plants.

Price.

No. of Plants.

Names of Plants.

Price.

# TO OUR PATRONS.

---

With sincere thanks to our numerous kind friends, whose patronage has been so liberally bestowed upon us for many years past, we again present the annual edition of our Spring Catalogue, and beg to assure them, and all others who may favor us with their orders, that no efforts shall be spared to merit a continuance of their favors.

The Greenhouse Department of our establishment has been much enlarged of late, and as our facilities for producing large quantities of healthy Plants have also been increased by improved labor-saving arrangements in our propagating, we are enabled to offer a very extensive stock of the most desirable classes of Plants at very low prices, competing successfully with any establishment North, as a perusal of our prices will show.

In this Catalogue are offered such Plants as are really desirable to the amateur, whether they are intended for adorning the flower gardens or for house culture. We always keep up with any novelty that appears, and can, therefore, practically speak of their merits, or failure to come up to their expected anticipations. Many novelties which are highly commended in European and Northern Catalogues, are unsuited to our climate, or have been unduly puffed; these we discard from our list, and trust the following collections of plants will be found as represented, as they have been carefully selected, and no inferior variety admitted therein.

## ORDERS.

Customers will confer a particular favor by using the accompanying "Order Sheet." This will greatly facilitate the dispatch of business, and insure the more correct filling of orders. We particularly request our friends to write their orders separate from the body of the letter.

## PACKING.

Plants are packed with the utmost care, so as to insure their safe carriage to most distant points of the Southwest. Out of nearly twelve hundred packages shipped during last year, scarcely a complaint was received, while hundreds of letters from every section of the country conveyed satisfaction of the fine condition of plants on arrival. Orders netting *ten dollars* will be packed free of charge. Small orders are packed in boxes, for which a charge of 50 cents is made.

## TERMS.

Cash with the order, or C. O. D. by express, unless expressly agreed otherwise. In sending C. O. D., the collecting charges are added to amount of invoice. Our prices are too low to allow us to deviate from this rule.

## FORWARDING.

Bedding Plants should, in all possible cases, be ordered by Express, as rapid carriage is of the utmost importance. There is no economy in the differences of charges between *Express* and ordinary Railroad freight lines. We guarantee every Plant to be in perfect healthy condition when leaving our hands; *but after a proper shipment, all losses resulting from delays are at the risk of purchaser.*

## FILLING ORDERS.

Orders are filled as soon after reception as practicable, seldom later than three or four days. Should certain varieties of Plants ordered be exhausted

at the time the order is received, or if they are not in proper shipping condition, the order will only be filled so far as our assortment will allow. We *never substitute unless fully authorized*. Patrons are respectfully requested to state if substitution is allowed should Plants first ordered be exhausted.

#### REMITTANCES.

Preferred in drafts on New York or Augusta, payable to our order, or wherever convenient, and for sums of \$50 and under, by Post Office orders. Money sent through mail is in all cases at sender's risk. When Post Office orders cannot be procured, send the money in a registered letter, advising us by same mail of remittance.

#### SMALL ORDERS.

The new Postage Law authorizes the sending by mail of seeds, bulbs, plants, etc., at the rate of two cents for every four ounces in weight, the weight of the package not to exceed four pounds. Bulbs, seeds and small plants will be sent by mail, if preferred by the purchaser, upon receipt of the amount of the order, postage paid. No order sent by mail if for less than one dollar.

#### ATTENTION TO CUSTOMERS.

It is our earnest desire that all the requirements and directions of our customers be scrupulously attended to by our assistants, and we practice the utmost personal supervision, to see that it is carried out. We would, therefore, respectfully request that we be informed if at any time there is cause of dissatisfaction, that we may have it rectified at the earliest possible moment.

Patrons unacquainted with the different varieties of Plants would be more advantageously supplied if, in giving their orders, they would state the object they wish to effect, and leave the selection to us. This will doubtless prove more satisfactory than if made by themselves, as it is no easy matter to judge of the merits of varieties by reading descriptions. When selections are left to us, patrons may rely upon receiving the best Plants and best varieties.

#### CARE OF PLANTS WHEN RECEIVED.

The Plants should be potted in a size larger pot than that they have been grown in, placed in a common cold frame or greenhouse, if possible, until they begin to grow freely. Shade and water must be used as needed. If the Plants are required merely for the border, they can be placed in permanent place on receipt, if the weather is somewhat cloudy; but in general it is preferable to allow the Plants to recuperate from the effect of the packing and carriage, by being kept in a shady place for a few days.

Plants are forwarded without pots. This is a saving of expressage to the buyer, and plants carry safer than when packed in pots.

#### CATALOGUES.

The following Catalogues will be mailed free on application:

No. 1. DESCRIPTIVE CATALOGUE of Fruit Trees, Grape Vines, Strawberry Plants, Evergreens, Roses, Flowering Shrubs, issued about August 15th.

No. 2. SPRING CATALOGUE of Dahlias, Bedding and Greenhouse Plants, etc., issued March 1st.

No. 3. WHOLESALE CATALOGUE for Nurserymen and Dealers, issued in July.

Address: P. J. BERCKMANS, Augusta, Ga.



## New Plants Untested by us.

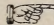
- AMARANTHUS SALICIFOLIUS**—(Ready May 1st), said to be a most splendid variety, of symmetrical growth, foliage brilliant bronze, crimson and orange; height, two to three feet. 50c. each.
- AGERATUM WHITE TOM THUMB**—A Dwarf-growing plant, seldom exceeding six inches in height; flowers produced in great profusion during the entire season; color, bluish white. 50c. each.
- AGERATUM LASCEUXII**—A new variety, with rose or pale pink-colored flowers; free bloomer. 50c.
- BOUVARDBIA DAVIDSONII**—A white winter-blooming variety, of a favorite class. 50c.
- EUPATORIUM RIPARIUM**—Another valuable winter flowering plant, blooming from December to March; flowers pure white, in corymbs three inches in diameter. 50c.
- LAGERSTREMBIA ALBA**—White Crape Myrtle. We make no comments of this most welcome novelty. It has been sought after for years, and at last is found. We have not seen the flowers, but as it comes from a most reliable source, feel confident that it will be as represented. \$1.50 each for plants in 3 inch pots.
- VERBENAS**—New set, of 1872, of Mr. Peter Henderson. 40 cents each; \$4 50 per doz. Ready April 1st.
- GERANIUM**—Variegated, rose-scented. \$1. Ready April 1st.

## SELECT BEDDING PLANTS.

This class comprises Plants suitable for the summer decoration of flower gardens. Several varieties are also very desirable for greenhouse and parlor collections. Those marked with an asterisk (\*) are perfectly hardy in this climate, and require no protection, although several kinds whose stems die off in the fall, but whose roots remain alive, are much benefitted by a slight covering of leaves or litter during the winter.

The most suitable seasons to plant these varieties is from the time that spring frosts cease, and until June, providing the weather is suitable.

We grow several varieties in large quantities, and offer them at very low rates when ordered by the 100 or 1,000.

 The prices quoted are for plants grown in two and three inch pots, and of the ordinary shipping size. Larger specimens at proportionately increased prices. Price, 20c. each; \$2 per dozen, unless otherwise noted.

\***ACHILLEA**—Free bloomer, dwarf; suitable for rock work or baskets.

Millefolia Rubra, red.

Tomentosa, yellow.

**ACHYRANTHUS**—Plants of great value for massing, or ribbon borders, by their brilliant foliage.

Aureus reticulatus, light green foliage, marked with gold and crimson.

Acuminata, violet crimson foliage, robust grower.

Lindenii, foliage deep blood red, veined lighter, most distinct and valuable; the best of its class. For planting in alternate rows with other foliage plants, it has no superior.

- Verschaffeltii, bright violet crimson; fine bedder. A Lindenii and Verschaffeltii per 100, \$10.
- \*AGAVE—(Century plant.)  
 Americana, green; small plants, 25c.; large, 50c. to \$1.  
 Variegata, variegated. 50c.
- ALTERNANTHERA—Dwarf, bushy habit; growth from six to twelve inches; foliage purple, yellow, pink, etc.; especially effective for ribbon borders. \$10 per 100.  
 Amœna, yellow, brown and rose.  
 Amabile, brown, red and yellow.  
 Parychoides, green, crimson and straw color.  
 Spatulata, carmine and green, foliage long.  
 Versicolor, rose and deep crimson, foliage broad.
- \*ALOYSIA—Lemon Verbena, lemon-scented foliage. Small, 25c.; large, 50c.
- AGERATUM—Perpetual bloomer, flowers pale blue; if potted in fall will continue blooming all winter.
- \*ARTEMISIA STELLARIS—Foliage silvery white, dwarf, compact growth; excellent for ribbon borders. \$10 for 100.
- \*AKEBIA QUINNATA—A large climbing plant of rapid growth. 25c.
- \*ANEMONE JAPONICA—Quite hardy, but thrives best in a moist, shady place. Two varieties, *Red* and *Honorine Jobert* white. 25c.
- \*BAMBUSA JAPONICA VARIEGATA—Dwarf variegated cane, very neat; fine for rock work; requires rich, moist soil. 25c.
- BOUVARDIA—Most effective bedding as well as winter-blooming plants; almost continuous bloomers—strong plants. 25c. each.  
 Hogarth, crimson.  
 Laura, rose.  
 Leiantha, scarlet.  
 Elegans, crimson.  
 Jasminoides, white.  
 Vreelandii, white.
- \*CANNA—Indian Shot, ornamental foliage plants, several varieties; flowers yellow, orange, crimson, etc.
- \*CARNATIONS—Monthly or tree; very valuable and continuous bloomers during the summer and winter; twenty varieties, all colors. Small plants, 25c.; large, 50c.
- CESTRUM—Free blooming shrubs. 25 to 50c.  
 Aurantiacum, orange; fine for conservatory.  
 Parqui, night-blooming Jasmin; very fragrant at night.
- CENTAUREA GYMNOCARPA—A most striking and valuable bedding plant; foliage silvery grey, beautiful; strictly a first-class plant. 25c.
- CENTAUREA CANDIDA—Foliage silvery white; requires shade; a good plant.
- \*CINERARIA MARITIMA—"Dusty Miller;" foliage silvery white; fine plant for ribbon borders, in connection with Althernantera and Achyranthus. \$10 per 100.
- COBEA SCANDENS—Rapid-growing climber; flowers bluish purple. 25c.
- CUPHEA PLATYCENTRA—Most profuse bloomer; flowers tubular, red, tipped black and white; very desirable plant.  
 Danielsiana, flowers purple.  
 Strigulosa, flowers red-tipped, yellow and purple.

**COLEUS**—A class well entitled to the first position as ornamental foliaged plants; the colors vary from the deepest crimson to maroon, bronze, golden yellow, with various colored markings; very thrifty and indispensable in any flower garden, whether as single plants or for massing in groups; should not be sent until end of March, as they are susceptible of being injured by cold weather. Our collection embraces all the varieties of merit. Many of the importations of 1870 have been discarded, being superseded by newer and much superior varieties.

**GOLDEN COLEUS**—*Aurea Marginata*, purple, yellow edge.

Albert Victor, purplish red, broad yellow margin.

Beauty of Widmore, red, green and yellow edge.

Lasciniata, yellow and crimson, deeply cut leaf.

Her Majesty, deep purple red, narrow-beaded gold edge.

Princess Louise, crimson scarlet, broad yellow edge.

Princess of Wales, deep purple red, blotched, narrow gold edge.

Queen Victoria, bronzy crimson, broad yellow margin.

Setting Sun, red crimson centre, bright yellow edge.

Beauty of St. John's Wood, crimson, yellow edge; leaves laciniate.

The above section is remarkably beautiful; the varieties stand the sun well, and as a bedding plant unsurpassed. \$10 per 100.

**DARK OR VELVET COLEUS**—Beauty, deep crimson and green.

Columbia, green and purple.

Charm, deep brown.

Gem, deep brown and green.

Glow Worm, claret crimson; very distinct.

Marshallii, purple and green margin.

Spangle, green-veined crimson.

Verschaffeltii, velvety crimson; finest bedder. 20c. each; \$2 per dozen; \$10 per 100.

\***CHRYSANTHEMUMS**—Indispensable for fall blooming; a very large collection of one hundred varieties, including all the varieties of merit of last year; all colors. Three classes: 1st, Large Flowering; 2d, Lilliputian, or very small flowering; 3d, Japanese, with flowers of immense size. 20c. each; \$2 per dozen.

\***CHRYSANTHEMUM LASCINIATUM**—Japanese fringe flower; pure white, petals very neatly fringed; an excellent winter bloomer, and exquisite for bouquets. By pinching first flower buds as they appear, the plant can be had in bloom until January in the conservatory. 20c. each; \$2 per dozen.

**CHRYSANTHEMUM**—New Japanese, with large flowers of most unique shape and brilliant colors; very distinct and desirable; twelve varieties.

**DAHLIAS**—Our collection comprises nearly two hundred extra selected varieties, embracing every shade of red, yellow, brown, white, lilac, purple, deepest maroon, variegated and tipped, together with the Lilliput or Bouquet varieties, a class now much esteemed. Dahlias should be planted out as late as possible, in order to prevent the plants from flowering during the dry summer months, their best season of flowering being September and October. If the plants have been allowed to exhaust themselves by profuse blooming during the summer, no fine flowers can be expected at their proper blooming season. Dry roots

can be furnished until the first of May at 25c. each; \$2 50 per dozen. Fifty varieties; our choice, \$10; strong plants from spring cuttings at \$2 per dozen.

\*GAZANIA—Showy plants, flowers yellow or orange, with brown or black band.

## GERANIUMS.

ZONALE OR HORSE SHOE—Very desirable bedding plants, withstanding our dryest summers, and furnishing a continuous harvest of flowers.

We do not give a list of varieties of this class, as the favorites of one season are often superceded by improved kinds the next year. Our collection is very extensive, and numbers upwards of one hundred and fifty varieties. Of these we have selected about thirty of the best. The colors embrace scarlet, crimson, pink, salmon, pure white, with all intermediate shades. Price, 20c. each; \$2 per dozen; \$12 per 100, including the best varieties of last year.

SILVER, GOLD, BRONZE AND TRICOLOR—With foliage of exquisite markings, and very desirable for house culture; unsuited to open ground. 50c. each.

TRICOLOR—MRS. POLLOCK—Leaves green, bronze, crimson, zone and yellow margin; unsuited for bedding out; exquisite variety for pot culture, the best of its class. 50c. each.

DOUBLE—Nearly all of very vigorous growth and luxuriant foliage; stand our dryest weather to perfection; desirable as bedding or pot plants.

Although a large number of varieties are annually brought to notice, there is in general too much *sameness* of color and habit. The following are distinct and good:

Andrew Henderson, dark scarlet.

Ascendency, light rose. 50c.

Emile Lemoine, deep pink. 50c.

Gloire de Nancy, carmine ruby, very good.

Capitaine l'Hermite, rose-tinted amaranth.

Mme Lemoine, bright rosy pink, extra. 50c.

Marie Lemoine, pink, dwarf. 50c.

Marie Crousse.

Imperatrice Eugenie, beautiful pink. 50c.

Mme Rose Charmeux, deep scarlet, dwarf.

Le Vesuve, scarlet. 50c.

Jeanne de St. Maur, vermillion. 50c.

Mme de St. Paul, light vermillion. 50c.

Price, 25c. each, except where noted. Twelve varieties, our choice, \$2.50.

Best new varieties of 1871 at \$1 each, ready April 1st.

Beaute Poitevine—Consul—Conseiller Ragon.

Marie Elizabeth—Mme Rudolph Abel—Mme Hock.

Mme Bondet—Mr. Froedel—Miss M. C. Saul.

Villedé Nancy—Sunshine.

- HYBRID PERPETUAL—A new section, having in most varieties fragrant leaves and perpetual flowering; the flowers are in the style of Pelargoniums, combining several colors, with blotches, etc. Ten varieties. 25c. each; \$2 50 per dozen.
- SCENTED—Apple. 50c.  
 Dr. Livingstone. 20c.  
 Lemon. 25c.  
 Oak-leaved, two varieties. 20c.  
 Nutmeg. 25c.  
 Pennyroyal. 20c.  
 Rose Scented, two varieties. 20c.  
 Little Pet (new). 50c.
- \*GLADIOLUS—Bulbs of easy culture.  
 Fine named varieties, 25c. each.  
 Finest named varieties, 50 to 75c. each.  
 Unnamed, in good mixture, \$2 per dozen; can be planted in succession from March until May, thereby lengthening the blooming season.
- \*GYNERIUM ARGENTEUM—Pampas Grass, a most ornamental plant, with silvery plume-like spikes of flowers; very hardy, and thrives in any ordinary rich soil. 50c.
- \*GYNERIUM RUBRUM—A new variety, with reddish flowers; has not as yet blossomed here. \$1 each.
- \*GNAPHALIUM TOMENTOSUM—Foliage silvery white; promises well as a bedding plant. 25c.
- FERDINANDA EMINENS—Foliage luxuriant; plant attains a height of eight to ten feet in a single season; very attractive in a lawn as single specimen. 50c.
- HELIOTROPE—Universal favorite; flowers very fragrant, of various shades of bluish purple; excellent for bedding out or for pot culture as winter bloomers. Ten varieties.
- HEDYCHIUM—Tall-growing plants, resembling the Canna; requires to be taken up in fall and roots kept from frost.  
 Coronarium, flowers pale yellow. 50c.  
 Gardnerianum, flowers yellow. 50c.
- \*IBERIS SEMPERVIRENS—Neat dwarf, hardy shrub, with pure white flowers; fine winter bloomer, if kept in the house.
- \*IPEMEA SELOWII—A tuberous climbing plant, flowers pink, convolvulus-shaped; perennial.
- HYDRANGEA HORTENSIS—25 and 50c., according to size.  
 “ IMPERATRICE EUGENIE—New. 50c.
- KONIGA VARIEGATA—Dwarf variegated plant, resembling sweet alysum, free bloomers, flowers white.
- LANTANA—Very desirable class of plants; continually in flower from May until frost; flowers generally of two colors; excellent hedgers. Fifteen varieties.
- \*LILIUM AURATUM—Japan Golden Lily, a great acquisition; flowers from ten to twelve inches in diameter; white spotted carmine, with a rich broad gold band upon each petal; very fragrant; large flowering bulbs. \$1 each; second size, 50c. each.

- \*LILIUM LANCIFOLIUM—Japan Lily.  
 “ “ White, 50 to 75c.  
 “ “ Red, 25 to 50c
- MONTANAO HERACLEIFOLIA—A new ornamental plant of rapid growth; foliage large and distinct; grows ten feet. 50c.
- \*NIREMBERGIA GRACILIS—Profuse blooming plant; flowers pale blue.  
 “ RIVULARIS—Creeping; fine for baskets; quite new; flowers white.
- NERIUM—Oleander.  
 Splendens, double rose. 25 and 50c.  
 Album Maximum, double white; new. 50c.  
 Grandiflorum Plœnum, new double rose. 50c.  
 Splendens Coccinea, new double red. 50c.
- PLUMBAGO CAPENSIS—An excellent plant, almost continuous bloomer; flowers pale blue. 25c.
- PELARGONIUMS—A section of genus Geranium. Flowers generally of two colors, with different markings and blotches; succeed well as bedding plants. Fifty varieties, from 25 to 50c. each, or \$2 50 to \$5 per dozen, according to size.
- PANSIES—Best named French Fancy. 25c. each; \$2.50 per dozen.  
 \*PANSIES—Seedlings of best English varieties. \$1 50 per dozen.
- \*PETUNIA—Most valuable for our climate; continuous bloomers, and hardy. Very best double varieties, 20c. each; \$2 per dozen. Very best single varieties, 20c. each; \$2 per dozen.
- PETUNIA—Mrs. PICKENS. This truly magnificent new double variety originated in our grounds, and surpasses so far all the best older varieties introduced. Color, purple carmine, of unusual brilliancy, with large white blotches, very double and of immense size; foliage and growth very luxuriant. Competent judges pronounced it last summer, when contrasted with some thirty varieties, (considered the best in cultivation,) as surpassing them all in size, beauty and vigor of growth.
- \*PYRETHRUM—Double white feverfew, a most valuable bedding plant; perpetual bloomer. 20c.  
 \*Golden Feather; foliage golden yellow, very fine. 25c.
- PENSTEMON—A very desirable class of plants, of comparatively recent introduction, very hardy; flowers shaded and mottled, and of all shades of white, blue, scarlet, crimson and pink; continuous bloomers.
- PHLOX—Perennial, free blooming and hardy plants, well adapted for bedding; all colors, from pure white to dark crimson, with darker or lighter centres, striped, etc. Fifty varieties.
- PINKS—Carnation; several fine varieties; colors white, red, pink, striped, spotted. Small plants, 25c.; large, 50 to 75c.  
 Paisley, dwarfier than Carnation; flowers of various shades; clove-scented. 25c.  
 Mule, or Hybrid Pinks; excellent bloomers in winter or summer; white, crimson, rose. 25c.; \$2 per dozen.  
 Most Welcome, a variety of Paisley Pink; most profuse winter bloomer; flowers white, with crimson band. 25c.
- \*RHYNOSPERMUM JASMINOIDES—An evergreen climber; flowers white, very fragrant; quite hardy. 50c.

- SALVIA—A popular class of plants; should be in every collection.  
Splendens, scarlet; best for bedding.  
Involucrata, pink.  
Skinnerii, crimson; fine winter bloomer. Also, the following:  
Eriocalix, Fulgens, Grahams, Cacaliæfolia, Romeriana, Canthanoides, etc.
- \*SEDUM—In variety; fine for ribbons or edging in flower garden or rock work.
- \*SOLANUM CAPSICASTRUM—Jerusalem Cherry; dwarf bush, covered during winter with bright scarlet berries; fine for winter decoration.
- \*STACHYS LANATA—Leaves downy white, good bedder; excellent to plant in ribbon borders with Coleus and Althernantera. \$5 per 100.
- \*TRITOMA—Very showy plants; flower spikes from ten to twelve inches; deep orange and yellow; constant bloomer; perfectly hardy. 25c.
- TIGRIDIA—Tiger or shell flowers, orange and scarlet, spotted brown; very showy. Bulbs. 25c. each.
- \*TUBERÔSES—Double white, very fragrant. Large bulbs. 15c. each. \$1 per dozen.
- VERBENA—Our collection of this universal favorite is very select, and comprises all the best varieties of this and former years. Colors white, red, scarlet, crimson, blue, with all intermediate shades, variegated, spotted, etc. 20c.; \$2 per dozen. New varieties of Mr. Peter Henderson for 1872. 40c. each; \$4 50 per dozen. (These will be ready April 1st.)
- VERONICA—Summer flowering plants; flowers blue and white. 50c.
- \*VINCA PERIWINKLE—Blue, rosea, variegated. 25c.
- \*VIOLETS—Sweet scented.  
Double Blue Neapolitan. 20c. each; \$2 per dozen.  
Double White Neapolitan. 20c.
- WIGANDIA CARACASSANA—A new plant, growing ten feet in a single season; leaves very large, of bright green; very striking in a lawn or flower garden. 50c.

## GREENHOUSE PLANTS.

This class is intended to be cultivated under glass, or in the house, although several varieties are effective bedding plants.

**ABUTILON**—Vigorous growing plants, almost perpetual bloomers; flowers bell shaped. 25c.

Album, white.

Adolphe Beranger.

Striatum, orange striped crimson; good bedder.

Marmoratum.

Duc de Malakoff.

Santana, flowers very large, crimson, extra fine.

Thompsonii, new, leaves mottled gold, extra.

Vexillarium or Mesopotamicum, scarlet and yellow; fine for trailing on pillars.

**ACACIA**—Several varieties at from 25c. to \$1.

**ACHIMENES**—Small tuberous plants; free bloomers for the conservatory in the summer. 25c. each; \$2 50 per dozen.

**ADAMEA VERSICOLOR**—Panicle of flowers, white tinted lilac. 25c.

**ÆSCHYNNANTHUS BOSCHIANUS**—Flowers orange red. 50c.

**AGAPANTHUS UMBELLATUS**—African Lily, blue. 50c. to \$1.

**ALLAMANDA CATHARTICA**—Flowers yellow, profuse bloomer. 25 to 50c.

**ALLAMANDA HENDERSONII**—Flowers orange yellow, tinged brown, new. \$1.

**ASCLEPIAS CURASAVICA**—Flowers orange. 25c.

**ADATHIOTA**—Cydonæfolia; fine greenhouse shrub; flowers white, spotted purple. 50c.

Vesica, flowers white, fragrant. 50c.

**ALPINA NUTANS**—Flowers white, striped, yellow and red. 50c.

**AZALEA**—Hardy shrubs, but well worth a place in conservatory. Twenty-five varieties. Plants with buds from 25c. to \$1.

**BASELLA VAR**—A shrubby species of the Madeira Vine; leaves finely variegated. 25c.

**BEGONIA**—Succulent, soft-wooded plants; foliage beautifully variegated and marked; require sandy soil, plenty of pot room, shade, and copious watering while growing. Our selection of this desirable class is very select, and comprises all the best varieties. Small plants in 3 inch pots, 30c.; \$3 per dozen; larger size, 50c.; \$5 per dozen.

The following varieties are excellent winter bloomers:

Fuchsioides, flowers red.

Multiflora Hybrida, flowers pink.

Nitida Alba, flowers white. 50c.

Semperflorens, flowers white.

Saundersii, flowers red, very desirable. Price, except when noted, 25c.;

\$2 per dozen.

**BELEPORONA OBLONGATA**—Flowers scarlet. 25c.



- BLETA TANKERVILLÆ**--Orchid; flowers white and brown; blooms in spring, a showy plant. Blooming size, \$1; small plants, 50c.
- BRUGMANSIA OR DATURA SUAVOLENS**--Tree Datura; flowers very long, white, sweet-scented; good bedder. 25c.
- BIGNONIA**--Venusta; climber, rich orange. 25c.  
Censis, orange; quite bushy. 25 to 50c.
- CALADIUM**--Leaves beautifully veined, spotted and marked, of every imaginable color, one of the finest genus of plants for greenhouse or in moist situations; perfect gems. The dry roots should be preserved in sand during winter and again potted in February. Twenty varieties, 50c. to \$2 each. Collections of twelve varieties for \$6.
- CALCEOLARIA**--Beautiful blooming plants from spring until fall; require rich loam and shade; several varieties of different colors. 30c. each.
- CALLA ETHIOPICA**--Lily of the Nile, white trumpet-shaped flower. 50c.  
Nana, a dwarf variety, both as to growth and size of flower. 50c.
- CENTRADENIA**--Dwarf, soft-wooded plants, foliage dark green and red.  
Winter bloomers for conservatory.  
Rosea, Floribunda and Grandiflora. 25c.
- CACTUS**--Several varieties of Cereus, Opuntia, Epiphillum, etc. 50c. to \$1.
- CYPRIPEDIUM INSIGNE**--Orchid, flowers yellowish, spotted purple.  
Winter bloomer. \$1.
- CISSUS DISCOLOR**--Climber, foliage beautiful, crimson, white and green. 25c.
- COLUMNEA SCHIEDEANA**--Soft-wooded greenhouse plant, with singularly shaped flowers. 50c.
- CITRUS**--The orange tribe, fine plants, from 50c. to \$3.  
Chinese Dwarf, Havana Sweet, Maltese Blood, Mandarin, St. Michaels, etc.
- CLERODENDRON BALFOURII**--A climbing plant of exquisite appearance. Flowers bright scarlet, encased in a bag-like calyx of pure white, very desirable. 50c.
- CHORÓZEMA VARIUM**--Most desirable winter-blooming plant, flowers pea-shaped, orange and purple, continues in bloom for several weeks. 50c.
- DRACÆNA**--Dragon tree, foliage crimson and brown, of easy culture for the conservatory. From 50c. to \$2.
- DAPHNE INDICA**--Sweet-scented Daphne. 75c. to \$1 50.
- ERANTHEMUM COOPERII**--Leaves deeply serrated, gray, flowers white and green, blotched crimson. 50c.
- ERANTHEMUM PULCHELLUM**--Flowers blue. 25c.
- EUPATORIUM**--Winter-blooming plants of easy culture, flowers white. 25c.
- EUPHORBIA SPLENDENS**--A thorny shrub with bright red flowers, continuous bloomer. 50c.
- ECHITES NUTANS**--Climber of easy culture. 50c.
- ECHEVERIA**--Soft-wooded plants with bright flowers. 50c. to \$1.
- EUPHORBIA JACQUINCEFLORA**--Flowers bright orange, fine winter bloomer. 50c.
- FICUS REPENS**--A climber, good for walls or rock work. 25c.
- FUCHSIA**--Ladies' eardrop, a very popular class of plants. Our protracted summers are unfavorable to their growth, and but few varieties will

- stand the hot weather. Valuable for spring flowers. 30c. each; \$3 per dozen.
- FERNS AND LYCOPODIUMS—A fine collection, at from 25c. to \$1 each. Twelve varieties, \$2 50.
- FITTONIA ARGYRONEURA—A low-growing hothouse plant, with leaves exquisitely veined with silver, a perfect gem. 25c.
- FITTONIA VERSCHAFFELTII—New, of large growth, with bright rose-veined leaves, exquisite. 25c.
- FITTONIA GIGANTEA—New, the largest of its class, leaves veined with pale pink. 25c.
- GLOXINIAS—Most desirable plants for summer decorations of green-houses. These are low-growing bulbous rooted plants, and thrive best in a partially shaded part of the house. Tubers may be potted in February or March. Flowers vary in color from red, blue, to white, with all the intermediate shades. Keep roots dry in winter. Price for flowering tubers, 30c. each; \$3 per dozen; price for plants started in pots, 50c.; \$5 per dozen.
- GESNERIA—Tuberous plants, with velvety foliage, and free bloomers. Price per tuber, 30c.; price for plants started, 50c.
- GESNERIA OXONIENSIS—Foliage crimson, velvety, very distinct. 50c.
- GOLDFUSSIA ANISOPHYLLIA—Flowers lilac; good bloomer. 25c.
- HABROTHAMNUS ELEGANS—Flowers tubular carmine, of easy culture; constant bloomer. 25c.
- HIBISCUS SINENSIS—Chinese, double red; yellow, single red; most effective shrub; constant bloomers, and very desirable. Small plants, 25c.; large, 50c.
- HOYA CARNOSA—Wax plant; climber. 25c.; large size, 50c.
- HOYA BELLA—Climber; distinct from above. 50c.
- HETEROCENTRON—Good winter bloomers; alba, white; rosea, pink. 25c. each.
- IIARDENBERGIA—Greenhouse climber. 25c.
- HIBISCUS COOPERII—Foliage tricolor. 50c.
- ISOLEPIS GRACILIS—An elegant grass-like plant, suitable for hanging baskets. 25c.
- JASMINUMS—Fragrant flowering shrubs.  
Sambac, Arabian Jasmin, flowers white. 50c.  
Grand Duc of Tuscany, very double white. 50c.  
Officinalis, climber; flowers white. 25c.
- JUSTICIA—Winter-blooming plants.  
Carnea, pink. 25c.  
Nervosa, blue. 25c.
- LIBONIA FLORIBUNDA—A neat greenhouse shrub, flowers orange and scarlet; free winter bloomer. 30c.
- LOPEZEA ROSEA—Pink flower, very neat; winter bloomer. 25c.
- LYCOPODIUMS—Of varieties for rock work and hanging baskets, from 25 to 50c.
- LIGULARIA KEMFÆRI ARGENTEA—Beautiful variegated leaves; resembles the Farfugium Grande, but much superior to it. 50c.
- LOPHOSPERMUM SCANDENS—Rapid growing climber, flowers pink. 25c.

- LYSIMACHIA NUMMULARIA—A well known plant, suitable for hanging baskets. 25c.
- MANETTIA—Climber, with tubular flowers. 25c.  
Bicolor, red and yellow.  
Cordata, red, resembles cuphea; very desirable and hardy.
- MARANTA—Fine foliage, hothouse plants. 50c.; large size, \$1.  
Bicolor, green and crimson.  
Porteana, green and purple.  
Zebrina, green, striped, dark green.
- MAHERNIA ODORATA—Flowers yellow, fragrant; fine for baskets. 25c.
- MIMULUS MOSCHATUS—Musk plant; dwarf, with strong odor of musk. 25c.
- MELASTOMA ELEGANS—Beautiful hothouse plant; winter bloomer; flowers purple. 50c.
- MEYENIA ERECTA—Dwarf shrub; flowers violet. 25c.; large size, 50c.  
“ “ Alba, flowers white. 25c.
- MURRAYA EXOTICA—A rare shrub of the orange tribe; flowers white, very fragrant. \$1 to \$2.
- MYRSOPHILLUM ASPARAGOIDES—Rapid grower and fine house climber. 25c.
- ORNITHOGALUM CAUDATUM—Bulbous plants; flowers green and white. 50c.
- PENTAS CARNEA—Profuse bloomer; flowers pink. 25c.
- PLUMBAGO CAPENSIS—An excellent plant; almost continuous bloomer; flowers light blue; a fine bedding plant, and for winter decoration. 25c.
- PLUMBAGO ROSEA—Flowers pink. 25c.
- PANICUM VARIEGATUM—A variegated grass of creeping habit; fine for baskets or vases. 25c.
- PASSIFLORA**—Climbing plants of great beauty.  
Braziliensis, red and blue. 50c.  
Decaisneana, blue. 50c.  
Kermesina, crimson. 50c.  
Trifasciata, foliage with three broad light stripes. 50c.
- PILEA MUSCOSA—Artillery plant; exceedingly curious; flowers very small, emitting a puff of smoke on opening. 25c.
- PRIMULA SINENSIS—Chinese Primroses; fine seedlings of different shades of colors. 50c.
- PLEROMA BENTHAMIANA—Flowers purple; winter bloomer. 50c.
- PYCHNOSTACHYS URTICIFOLIUS—Winter bloomer; flowers light blue. 25c.
- POTHUS ARGYREA—Foliage marbled white, trailing habit. 50c.
- PERESKIA—Plants allied to the Cactæ; flowers white, pink, etc. 50c.
- ROGERIA—Winter-blooming shrub; flowers pink. 50c.
- RONDELETIA—Profuse flowering plant; flowers scarlet. 25c.
- RUSSELLIA JUNCEA—Foliage resembling the bulrush; flowers scarlet; very neat and desirable. 50c.
- ROCHEA FALCATA—Flowers scarlet; fragrant. 50c.
- RUELLIA ANISOPHYLLA—Flowers light lilac; good winter bloomer. 25c.
- RUELLIA FORMOSA—Flowers deep scarlet. 25c.

- REINECKA CARNEA VARIEGATA—A plant resembling the ribbon grass; very neat and desirable, of dwarf habit. 25c.
- RICHIARDIA ALBA MACULATA—A bulbous plant of the Calla tribe, with beautiful spotted leaves; flowers shaped like those of the Calla; pure white; bulbs need to be kept dry and from frost during winter. 50c. each.
- SOILYA HETEROPHYLLA—Climber, with blue flowers. 50c.
- SCUTTELLARIA—Flowers on terminal spikes; bloom during spring; fine for house culture. 50c. each.  
 Pulchella, rosy scarlet.  
 Purpurea, rosy purple.  
 Mocciana, scarlet.
- SOLANDRA GRANDIFLORA—Flowers white, tubular. 50c.
- SCHIZOSTYLUS COCCINEA—An excellent winter-blooming plant, resembling the Gladiolus; flowers crimson. 50c.
- STEVIA—A popular winter-blooming plant; flowers white. 25 and 50c.
- STAPELIA—Curiously shaped and colored flowers; soft-wooded house plants of easy culture. 25 and 50c.
- SANCHEZIA NOBILIS VARIEGATA—Leaves twelve inches long, of intense green, veined with golden yellow; one of the finest new foliage house plants. \$1.
- TABERNAMONTANA CORONARIUS—Evergreen shrub, flowers white, very fragrant, resembling the Grand Duke Jasmin. 50c.
- TECOMA JASMINOIDES—Handsome climbing shrub; flowers white and carmine centre. 50c.
- TORENIA ASIATICA—Flowers blue; very desirable. 25c.
- TRADESCANTIA ZEBRINA—Foliage striped; valuable for baskets and rock work. 25c.
- TRADESCANTIA WARSCEWIZII—Green. 25c.
- TASCONIA—Excellent climbers and profuse bloomers, allied to Passiflora. 50c.
- TASCONIA LÆVIS—Crimson.  
 “ VAN VOLXEMII—Light crimson.
- THUNBERGIA LAURIFOLIA—Climber; flower pale blue. 50c.  
 “ FRAGRANS—Climber; flowers white. 50c.
- THYRSACANTHUS RUTILANS—Flowers crimson, very graceful. 50c.
- TRYCIRTUS HIRTUS—A new Japanese plant, flowers in the fall; color lilac, marbled white; require shade; keep roots dry in winter. 25c.

## RUSTIC BASKETS.

Full assortment of various and elegant new patterns.

Hanging Baskets, from \$2 50 to \$5.

Rustic Stands from \$7 50 to \$20.

Wire Baskets, from 50c. to \$3.

---

## SPECIAL COLLECTIONS OF PLANTS.

Many persons unacquainted with the most desirable classes of plants often are at a loss what to order to ornament their flower gardens. For the convenience of such persons, we will send collections, composed of the most suitable plants, at from \$5 to \$20, and upwards. These we guarantee to give satisfaction, if the selection is left to us, and the utmost liberality will be observed in the quantity as well as quality. One hundred plants for bedding out, at our selection, for \$10. This collection comprises choice varieties of all the most desirable classes.

---

## FLOWER SEEDS.

For several years past we have sent out large quantities of home-grown seeds. These have given such general satisfaction that we have increased our culture of such varieties as are best adapted to our climate. We offer the following select list, which is, however, more limited than many of our customers may desire, but comprise varieties that succeed in our latitude. Some varieties are imported from reliable growers, but the bulk is grown in our grounds.

PRICE--10c. per packet, except where noted; 20 fine varieties, our selection, \$1; 20 very choice varieties, our selection, \$2; 50 fine varieties, our selection, \$3.

*Ageratum Mexicanum*--Blue *Ageratum*.

*Althea Rosea*--Hollyhocks from prize flowers. 25c.

*Alyssum Maritimum*--Sweet *Alyssum*. 5c.

*Amaranthus Tricolor*--Joseph's Coat. 5c.

*Antirrhinum*--Snap Dragon from named flowers.

*Aquilegia*--Columbine.

*Argemone Mexicana*--Mexican Thistle. 5c.

*Aster Chinensis*--Chinese Aster. 5c.

*Balsamina*--Balsams, double mixed. 5c.

*Balsamina*--Smith's Prize, extra. 25c.

*Balsamina*--Camellia-flowered. 10c.

*Cacalia*--Tassel Flower. 5c.

*Calliopsis*--Coreopsis. 5c.

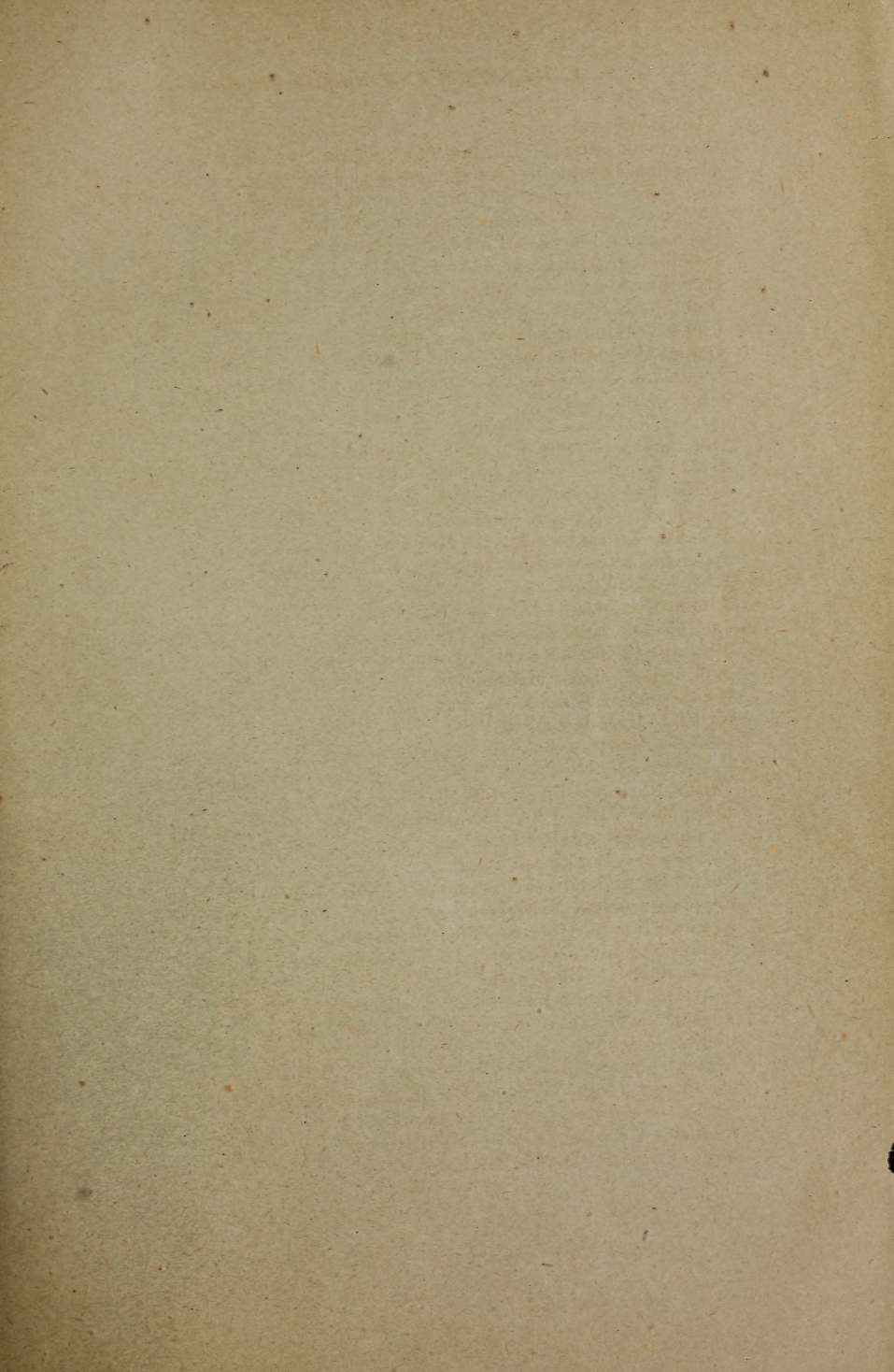
*Canna*--Indian shot, from named varieties.

*Campanula*--Canterbury Bell, mixed.

*Celosia Cristata*--Cockscombs, extra fine, from selected flowers.

*Chrysanthemum Tricolor*--Annual *Chrysanthemums*. 5c.

- Clarkia—Clarkia mixed.  
 Convolvulus Major—Morning glory, in variety. 5c.  
 Clianthus Dampierii—Australian Glory Pea. 25c.  
 Cucurbita—Ornamental Gourds, several varieties.  
 Cypress Vine—White and crimson. Each 5c.  
 Delphinium Sinensis—Larkspur, Chinese.  
 Delphinium—Larkspur, Dwarf Rocket.  
 Dianthus Sinensis—Chinese Pink. 5c.  
 Dianthus Barbatus—Sweet Williams, from select flowers. 5c.  
 Dianthus Heddewigii—Japan Fringed Pink.  
 Datura Wrightii—Large Sweet Datura.  
 Eschscholtzia Californica—California Poppy, mixed. 5c.  
 Gilia—Gilia. 5c.  
 Gaillardia Picta—Gaillardia. 5c.  
 Gomphrena Globosa—Bachelor Buttons. 5c.  
 Helichrysum—Everlasting flowers.  
 Helianthus—Dwarf Double Sun flower. 5c.  
 Helianthus—Russian Mammoth. 5c.  
 Hibiscus Africanus—African Hibiscus. 5c.  
 Ipomœa Limbata—Blue Ipomea, climber. 10c.  
 Iberis—Candytuft. 5c.  
 Linum Coccineum—Scarlet Flax.  
 Lupinus—Annual Lupins. 5c.  
 Mirabilis Jalapa—Marvel of Peru, extra fine. 5c.  
 Maurandia—Mixed Maurandia.  
 Nasturtium—Dwarf Nasturtium.  
 Nigella—Love in a Mist.  
 Pansy—Fancy or Belgian, imported. 50c.  
 Papaver—Double Poppy. 5c.  
 Perilla Nankinensis—Purple Perilla. 5c.  
 Penstemon—Mixed hybrid varieties. 25c.  
 Petunia—Extra select blotched. 25c.  
 Portulacca—Portulacca. 5c.  
 Phlox Drummondii—Drummond's Phlox. 5c.  
 Reseda Odorata—Mignonette. 5c.  
 Reseda Odorata Arborea—Tree Mignonette. 10c.  
 Ricinus Sanguineus—Scarlet Palmachrista. 5c.  
 Salvia Fulgens—Red Sage. 10c.  
 Sanvitalia Procumbens—Dwarf Sanvitalia.  
 Schizanthus Retusus—Schizanthus mixed. 10c.  
 Silene—Catchfly. 5c.  
 Tagetes—Marigold. 5c.  
 Thunbergia Alata—Winged Thunbergia, climber.  
 Verbena—Verbena from select flowers. 25c.  
 Whitlavia Grandiflora—Blue Whitlavia.  
 Zinnia Elegans—Double Zinnia.



# Farmer & Gardener

A SEMI-MONTHLY JOURNAL OF

Horticulture, Agriculture and Rural Life,

Published at Augusta, Georgia,

ON 10<sup>TH</sup> AND 25<sup>TH</sup> OF EACH MONTH.

P. J. BERCKMANS, - - - Horticultural Editor,  
ASSISTED BY ABLE SOUTHERN WRITERS.

BOUND COPIES OF VOLUME No. 1 FOR SALE--PRICE, \$2.00.

THE OBJECT OF THIS PUBLICATION IS TO DISSEMINATE, IN A POPULAR FORM,  
TRUSTWORTHY INFORMATION ON THE SUBJECTS UPON WHICH IT  
TREATS, AND ESPECIALLY ADAPTED TO OUR

SOUTHERN CLIMATE.

SUBSCRIPTION--ONE DOLLAR PER ANNUM.

*Correspondence and Queries shall receive attention. Business Communications and Subscriptions should be addressed to*

E. H. GRAY, Publisher,  
AUGUSTA, GA.