



FI/83

(DEVH I)

ROYAL BOTANIC GARDEN	
NO.	13403
...	FI/83
LOC.
Date	15.1.65
EDINBURGH.	

FIS\83
WOODFORDE, J.
Catalogue of the ind
DEVH1 aa

6/2/01

ROYAL
BOTANIC
GARDEN
EDINBURGH



in v.c. 83

Digitized by the Internet Archive
in 2012 with funding from
Royal Botanic Garden Edinburgh

P. Wilson 1879

No 86

13+03



CATALOGUE

OF THE

INDIGENOUS

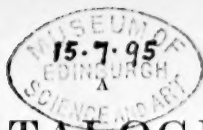
PHENOGRAMIC PLANTS, &c.

16

THE ...

...

...



DL.4.

CATALOGUE
OF THE
INDIGENOUS
PHENOGRAMIC PLANTS,

GROWING IN THE
NEIGHBOURHOOD OF EDINBURGH;

AND OF

CERTAIN SPECIES OF THE CLASS

CRYPTOGAMIA :

WITH REFERENCE TO THEIR LOCALITIES.

BY JAMES WOODFORDE, Esq.

*Brevi cadentia hæcce
Brevem docentne vitam?
Sint curæ ; eritque longa.*

EDINBURGH :
PRINTED FOR JOHN CARFRAE,
MEDICAL BOOKSELLER, NO. 3, DRUMMOND STREET ;
AND LONGMAN, HURST, REES, ORME, BROWN, & GREEN,
LONDON.

MDCCCXXIV.

FIS\83
WOODFORDE, J.
Catalogue of the ind
DEVH1 aa

EDINBURGH:
Printed by John Brewster,
11, Society.

TO

ROBERT GRAHAM, M.D., F.R.S.E.,

MEMBER OF THE WERNERIAN NATURAL HISTORY SOCIETY, &c.

PROFESSOR OF BOTANY

IN THE

UNIVERSITY OF EDINBURGH,

THE FOLLOWING PAGES

ARE INSCRIBED,

AS A

TRIFLING TESTIMONY OF THE UNFEIGNED RESPECT,

WITH WHICH HE IS REGARDED BY

THE AUTHOR.

P R E F A C E.

THE object proposed in the publication of this book, is to present a list of the plants growing in the vicinity of Edinburgh, and to point out the places in which they are commonly found.

The inconvenience I experienced, at the commencement of my botanical studies, from the want of some assistance of this kind, disposed me to wish that the difficulties by which my own progress was embarrassed, might not be suffered to retard the advancement of those, who might follow in the same course. To this end the present attempt is made; which, however unskilfully planned, or imperfectly executed, may prove in some degree, useful to those for whose help it is intended.

I do not fear that this undertaking will be imputed to me as unnecessary or presumptuous : the information, which it communicates, is obviously required ; and the only other book, from which it may be procured, is too large to admit of the supposition, that the author designed it for the pocket. We do not therefore pursue a common object ; and, consequently, I feel no apprehension that I shall be charged with the vanity of venturing a competition. From the ability with which Dr. Greville has accomplished his work, I do not doubt that it will obtain a good name ; and I have no difficulty in believing, that it will be found abundantly adequate to any purpose, for which it may have been written :— but that purpose is not mine.

It may be proper to make a few observations respecting the materials of the following pages, and the mode in which they have been disposed ; that the plan, which has been adopted, may be better understood, and that I may offer some vindication of its occasional departure from the common arrangement.

As the practice of calling the same plant by different names, is often productive of considerable inconvenience to the younger student, I have provided against any difficulty of this kind, by stating

the synonyms in every instance in which Smith, and Hooker, and Greville, have not employed the same appellations.

The genus *Chara* has been removed from the class *Cryptogamia*, in which it is placed by Hooker and Greville, to the class *Monandria*, to which it is assigned by Smith; not, indeed, that I consider this arrangement more accurate, but because the other would be less useful.

The genus *Callitriche* I have referred to the same class, because the flowers are, for the most part, hermaphrodite, at least in the specimens that I have seen.

Of the class *Cryptogamia*, I have thought it right to insert a few orders, of which the plants are such, that they cannot fail to attract the attention, and awaken the interest of the student.

Some of the plants omitted by Greville, are supplied from Maughan's Catalogue, in the first volume of the Wernerian Transactions. To these I have added a few species, that have not been noticed by any preceding writer, as productions of the neighbourhood to which my account is restricted. I have presented specimens of these plants to Dr. Graham, and, excepting a few of them, to Dr. Greville.

Most of the plants comprehended in the following enumeration, are produced within ten miles of Edinburgh, all of them within twenty; and, with the exception of such as are included in parentheses, have been found and examined by myself. With regard to the size of the volume, as the end, for which it is designed, requires that it be portable, it is accordingly small; and, perhaps, might form no unsuitable appendix to Smith's *Compendium Floræ Britannicæ*.

I regret that I could not avail myself of the improvements, exhibited in Sir James Smith's English Flora; as the sheets of this book were in the printer's hands, before I had an opportunity of seeing it.

I cannot conclude without acknowledging my obligations to Dr. Graham, for the encouragement and assistance, with which he has favoured me; and, at the same time, I hold myself indebted, in some measure, to the publications, to which I have already referred.

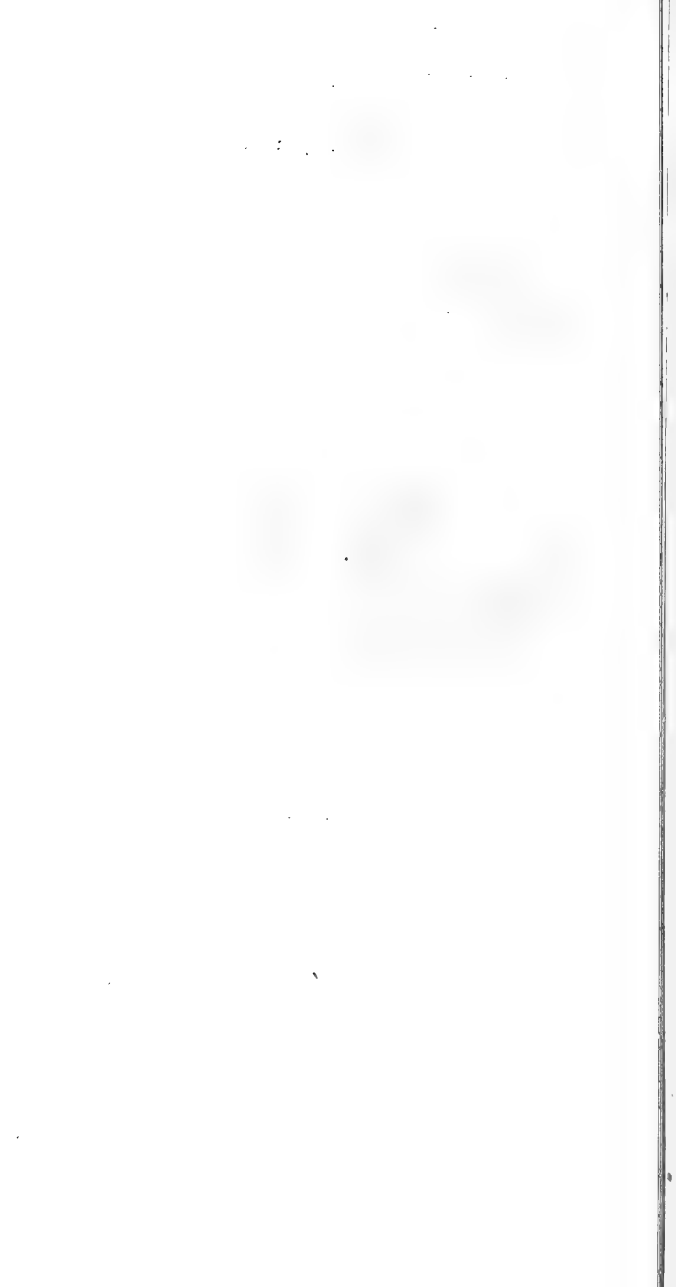
Whatever may be the defects of this trifling compilation, I hope I may be allowed to claim that indulgence, which is always conceded to good

motives and anxious diligence ; and I trust that those, who may see no merit in what has been done, will recognize it in what has been attempted ; for surely no one will contemn the desire, however vainly cherished, of facilitating the acquisition of a science, which is every where loved, and valued, and cultivated—which, as it informs the understanding, improves the heart, and enlarges the boundary of harmless and rational enjoyment.

J. W.

ARGYLE SQUARE,

April 12, 1824.



A

CATALOGUE

OF THE

INDIGENOUS PHENOGAMIC PLANTS, &c.

MONANDRIA MONOGYNIA.

1. *Salicornia herbacea*, Morrison's Haven, near Prestons; (Aberlady Bay and Links, abundantly; Inverkeithing Bay.)
2. *Hippuris vulgaris*, Duddingston Loch; Guillon Loch; (Ditch near Luffness; Lochend.)
3. *Chara flexilis*, (Ditches at Ravelrig Toll; in a ditch by the Flint-mill near Musselburgh, and in a pond at Powderhall; Kinghorn Loch.)
4. *Ch. translucens*, (Ditches about Edinburgh and Kinghorn.)
5. *Ch. vulgaris*, (Glassmont Marshes; Ditches on the south side of Duddingston Loch, plentiful.)
6. *Ch. hispida*, (Guillon Loch; Ditches at Glassmont, Fifeshire.)

A

MONANDRIA DIGYNIA.

7. *Callitriche aquatica*, Lochend and Duddingston Loch ; Pools on the Pentland Hills, &c. &c.

DIANDRIA MONOGYNIA.

8. *Ligustrum vulgare*, Banks of the Water of Leith, near Currie ; (Private road to the sea-side from near Mutton-hole.)
9. *Fraxinus excelsior*, Rosslyn, Collington and Auchindinny Woods, &c. &c.
10. *Circea Lutetiana*, Rosslyn and Braid Woods ; (Newbattle, Auchindinny and Granton Woods ; Corstorphine Hill.)
11. *C. alpina*, (West side of Arthur's Seat.)
12. *Veronica serpyllifolia*, King's Park ; Field near Craigmillar Castle, &c. &c.
13. *V. scutellata*, Duddingston Loch ; Hunter's Bog, in the King's Park ; Braid Hill Marshes ; (Marshes near North Queensferry ; Marsh east-side of Arthur's Seat.)
14. *V. Anagallis*, Guillon Loch ; Duddingston Loch ; (Ditches at Mutton-hole ; Ditch by the Farm-house of Blackford ; Burntisland.)
15. *V. Beccabunga*, Duddingston Loch ; Ditches in King's Park, &c. &c.
16. *V. officinalis*, King's Park ; Salisbury Craigs ; Roman Camp above Newbattle ; Newbattle Woods, &c. &c.
17. *V. montana*, Arniston and Dalhousie Woods ; Rosslyn Woods, near Hawthornden ; (Lugton Woods ; Newbattle Woods, abundantly ; Mavisbank ; by the river side about one mile and a half above Lasswade.)
18. *V. Chamædrys*, Salisbury Craigs ; Rosslyn, Auchindinny, and Arniston Woods ; Mavisbank, &c. &c.

19. *V. agrestis*, Field near Newhaven; Slateford; King's Park; Braid Hill, &c. &c.
20. *V. arvensis*, On a wall near Merchiston Castle; and frequent on walls and in barren pastures near Edinburgh.
21. *V. hederifolia*, King's Park; Field near Libberton Church; Blackford Hill; Fields about Merchiston Castle, &c. &c.
22. *Pinguicula vulgaris*, Hunter's Bog, in the King's Park; Marshes on the Pentland Hills; and Ravelrig Bog.
23. *Utricularia vulgaris*, (Guillon Loch, abundant; Marsh near Ravelrig Toll.)
24. *U. minor*, (Peat-pits in the moss at Ravelrig Toll; Marshes on the Pentland-Hills, near Currie.)
25. *Salvia verbenaca*, Salisbury Craigs; Burntisland; near Pettycur; (Banks entering Kirkcaldy from Dysart; Corstorphine Hill; on a bank near Kinghorn.)
26. *Lemna trisulca*, Duddingston Loch and Lochend, abundant.
27. *L. minor*, Duddingston Loch; Lochend, &c. &c.
28. *L. gibba*, (Lochend and Duddingston Loch.)

DIANDRIA DIGYNIA.

29. *Anthoxanthum odoratum*, Rosslyn and Auchindunny Woods; Caroline Park; Braid Hill, &c. &c.



TRIANDRIA MONOGYNIA.

30. *Valeriana rubra*, (Old wa^ls at Inverleith.)
31. *V. officinalis*, Salisbury Craigs; Arthur's Seat; Rocks about half a mile from Habbie's How, on the Pentland Hills; Water of Leith, near St. Bernard's Well; (Figget Whins.)

32. *V. pyrenaica*, Collington Woods ; (Abercorn Woods.)
33. *V. dioica*, In a Bog between Newbattle and the Roman Camp ; (Bogs to the westward of Borthwick Castle ; Linlithgow ; Pentland Hills, near Currie.)
34. *Fedia olitoria*, *Valeriana locusta*, *Sm. Fl. Brit.*, Salisbury Craigs ; Arthur's Seat ; Blackford Hill, &c.
35. *F. dentata*, *Valeriana dentata*, *Sm. Fl. Brit.*, (Near Crossgate Toll, three miles south of Musselburgh ; Water of Leith, and Field near Kirkcaldy ; Fields between Newhaven and Caroline Park, &c.)
36. *Iris Pseudacorus*, Duddingston Loch ; Rosslyn Woods, by the river side, midway to Lasswade ; south end of Lochend, &c.
37. *Schoenus nigricans*, (Bog near Anstruther.)
38. *S. compressus*, (Near Borthwick Castle.)
39. *S. rufus*, Guillon Loch ; Aberlady Bay ; (Dunbar ; on the coast two miles east of South Queensferry.)
40. *Scirpus cæspitosus*, King's Park ; (Braid Hill ; Pentland Hills ; Ravelrig Toll Moss ; Hunter's Bog, &c. &c.)
41. *Sc. pauciflorus*, Hunter's Bog ; (Leith Links ; Pentland Hills.)
42. *Sc. palustris*, Lochend ; Duddingston Loch ; Braid and Pentland Hills.
 Var. β . *Sc. multicaulis* of Smith, (Pentland Hills.)
43. *Sc. acicularis*, (About a mile north-west from Lasswade.)
44. *Sc. fluitans*, (Ravelrig Toll Moss ; Braid Hill Marshes ; Marsh on Dunearn Hill.)
45. *Sc. lacustris*, Lochend ; (Marsh and old willow grounds, half-way between Duddingston and Portobello.)
46. *Sc. setaceus*, By the sides of streams on the Pentland Hills ; (King's Park.)
47. *Sc. maritimus*, (Stream-side near Luffness.)
48. *Sc. sylvaticus*, By the river side between Rosslyn and Hawthornden ; (Near Rosslyn Castle ; by the side of Gogar Burn.)

49. *Eriophorum vaginatum*, Pentland Hills ; Dalmahoy Hill, and Ravelrig Bog ; (Very abundant on the Pentlands near Currie, and west of Habbie's How.)
50. *E. angustifolium*, Pentland Hills ; Ravelrig Bog ; (Marsh between Portobello and Duddingston.)
51. *E. polystachion*, Pentland Hills.
52. *Nardus stricta*, Braid and Pentland Hills ; sides of Ravelrig Bog.

TRIANDRIA DIGYNIA.

53. *Alopecurus pratensis*, King's Park, &c.
54. *A. geniculatus*, Duddingston Loch ; Braid Hill Marshes, and Ditches in the King's Park, &c.
55. *Phalaris canariensis*. I found a solitary specimen of this plant near Duddingston, July 1822.
56. *Ph. arundinacea*, Duddingston Loch ; Lochend, &c. &c.
57. *Phleum pratense*, King's Park ; Fields under the Pentland Hills, &c.
58. *P. arenarium*, Near Burntisland ; (Near Prestonpans ; Between Pettycur and Kirkaldy.)
59. *Milium effusum*, (Rosslyn and Newbattle Woods.)
60. *Agrostis Spica venti*, (Rosslyn Woods.)
61. *Ag. canina*, King's Park ; Braid Hill, &c.
62. *Ag. vulgaris*, King's Park, &c.
 Var. β . *Ag. canina* of Withering, (Pentland Hills.)
 Var. γ . *Ag. pumila* of Lightfoot, (Pentland Hills ; Burntsfield Links ; North Queensferry.)
63. *Ag. alba*, Braid Hill ; (Near Newhaven.)
64. *Arundo arenaria*, Sea-shore near Caroline Park ; between Burntisland and Pettycur ; between Caroline Park and Cramond ; (Portobello and Musselburgh Figget Whins ; near South Queensferry.)

65. *A. Phragmites*, Lochend and Duddingston Loch, &c.
66. *Holcus avenaceus*, Salisbury Craigs ; Arthur's Seat ; Braid, Rosslyn, Auchindinny, and Arniston Woods, &c.
67. *H. mollis*, Auchindinny Woods ; by the side of a little stream between Lasswade and Mavisbank ; (Was very abundant in a bog at the south end of the field out of which the New Botanic Garden has since been formed.—DR. GRAHAM. The Meadows ; waste ground near Canonmills Loch.)
68. *H. lanatus*, King's Park ; Braid Hill, &c. &c.
69. *Aira cristata*, Arthur's Seat ; (Debris of Salisbury Craigs ; Calton Hill ; summit of Corstorphine Hill.)
70. *A. aquatica*, In a stream near Gosford ; Guillon Loch ; (Ditches in the Meadows, Edinburgh, especially in that on the east side of the centre walk ; Ditch on the west side of Lochend, and at the margin of the Loch itself ; Duddingston Loch.)
71. *A. cæspitosa*, Braid Hill Marshes ; Marshes on the Pentland Hills ; Rosslyn and Auchindinny Woods, &c.
72. *A. flexuosa*, (King's Park, Blackford, Braid, and Pentland Hills.)
73. *A. caryophyllea*, Debris on the south-west side of Salisbury Craigs ; Arthur's Seat, &c.
74. *A. præcox*, South-west side of Salisbury Craigs ; Arthur's Seat ; Wall about a mile from Ravelrig Toll ; Braid Hill, &c.
75. *Melica nutans*, By the path-side between Rosslyn and Hawthornden, plentiful.
76. *M. uniflora*, Rosslyn, Collington and Newbattle Woods, &c. &c.
77. *M. cærulea*, By the path-side in Rosslyn Woods, near Hawthornden ; (Pentland Hills, and Ravelrig Toll Moss.)
78. *Poa aquatica*, (At Bonnington Bridge, on the banks of the Water of Leith ; by the same stream, about a quarter of a mile below Canonmills Bridge.)

79. *P. fluitans*, Braid Hill Marshes; King's Park; Arnistoun Woods; (The Meadows.)
80. *P. maritima*, (Sea-side at Caroline Park; and forming nearly the whole pasture in the salt marshes at Aberlady Bay; about Kirkaldy, at the west end near the Bridge.)
81. *P. rigida*, Salisbury Craigs; Rocks in King's Park; (Blackford Hill; Road-side from Edinburgh to Haddington, near Drummore, and on walls about Burntisland; Coast of Fife.)
82. *P. compressa*, Walls about the King's Park; Walls near St. Leonards; Debris of Salisbury Craigs, &c.
83. *P. trivialis*, King's Park, &c.
84. *P. pratensis*, King's Park; Braid Hill, &c. &c.
 Var. β . *minor* of Hooker, (Sea-shore near Kirkaldy.)
85. *P. annua*, King's Park, &c.
86. *P. nemoralis*, (Rosslyn Woods.)
87. *P. decumbens*, Pentland Hills; (Near Burntisland; Arthur's Seat; Braid Hills; Coast of Fife.)
88. *Briza media*, Rosslyn Woods; Pentland Hills; Hunter's Bog, &c. &c.
89. *Dactylis glomerata*, Salisbury Craigs, King's Park, &c. &c.
90. *Cynosurus cristatus*, King's Park; Braid and Pentland Hills, &c. I found a viviparous specimen of this plant in the King's Park, October 1823.
91. *Festuca ovina*, Braid and Pentland Hills, &c.
 Var. β . *F. vivipara* of Smith, (Arthur's Seat.)
92. *F. duriuscula*, Shore near Aberlady.
 Var. β . *F. rubra* of Smith, (Shores and islands of the Forth.)
93. *F. bromoides*, (Wall-top north of Ravelston, plentifully; frequent on walls about Edinburgh; on the wall by the road-side about half a mile west of Slateford.)
94. *F. myurus*, (Near North Queensferry, on the hill by the road leading to Inverkeithing.)

95. *F. gigantea*, (Rosslyn Woods.)
96. *F. loliacea*, Hunter's Bog ; (At the back of Edinburgh Castle ; Marshy Meadow at the foot of Salisbury Craigs ; Hope Park. It grows on each side of the Walk, on the south side, upper division, or west-end.)
97. *F. pratensis*, King's Park, &c.
98. *F. elatior*, Near Caroline Park ; (River bank at Rosslyn.)
99. *Bromus pinnatus*, (Near North Queensferry.)
100. *B. sylvaticus*, Rosslyn, Auchindinny and Arniston Woods ; (Corstorphine Hill.)
101. *B. secalinus*, (Near Rosslyn.)
102. *B. velutinus*, (Fields behind the Botanic Garden in Leith Walk ; between Edinburgh and Newhaven.)
103. *B. mollis*, Salisbury Craigs ; King's Park, &c. &c.
104. *B. racemosus*, (North of Edinburgh ; Caroline Park.)
105. *B. erectus*, (King's Park ; below Salisbury Craigs ; between Pettycur and Kirkaldy.)
106. *B. asper*, Rosslyn, Auchindinny, Dalhousie and Arniston Woods.
107. *B. sterilis*, King's Park ; Newhaven, &c.
108. *B. diandrus*, (About Edinburgh, not common.)
109. *Avena strigosa*, (Meadowbank.)
110. *A. pubescens*, Arthur's Seat ; Salisbury Craigs ; (Shores of the Frith ; very abundant about North Queensferry, a little to the eastward.)
111. *A. pratensis*, (King's Park ; Salisbury Craigs ; North Queensferry.)
112. *A. flavescens*, Salisbury Craigs, Braid, Blackford and Pentland Hills, &c.
113. *Triticum junceum*, Shore at Caroline and Granton Parks ; between Burntisland and Pettycur ; (Near Portobello and Musselburgh.)
114. *T. repens*, Salisbury Craigs, &c. &c.
115. *T. caninum*, Between Caroline Park and Cramond ; roadside between Libberton and Lasswade, and frequent between the latter place and Dalhousie ;

(Borders of fields between Edinburgh and the coast, both east and west.)

116. *T. loliaceum*, near Burntisland and Pettycur; (Walls of Caroline Park, but rare; Rocks east of Granton; Shore at Portobello, common.)
117. *Lolium perenne*, King's Park, &c.
118. *Hordeum murinum*, Calton Hill; Salisbury Craigs, &c. &c.
119. *H. pratense*, (East point of Salisbury Craigs, very rare.)
120. *Rotbellea incurvata*, Musselburgh Links.
 Var. β . *R. filiformis*, (Salt Marshes near Aberlady.)

TRIANDRIA TRIGYNIA.

121. *Montia fontana*, (On the summit of Salisbury Craigs, and on the whole bank from the summit; in the Hunter's Bog, at the base of Arthur's Seat.)



TETRANDRIA MONOGYNIA.

122. *Dipsacus sylvestris*, Pentland Hills, west of Collington; Inchcolm; (south side of Duddingston Loch.)
123. *Scabiosa succisa*, Pentland Hills; Ravelrig Bog; Hunter's Bog, &c.
124. *S. arvensis*, On the banks of the Water of Leith, above St. Bernard's Well; Debris of Salisbury Craigs; (Corn-fields about Newhaven and Caroline Park.)
125. *Sherardia arvensis*, King's Park; Salisbury Craigs; Hills at Burntisland and North Queensferry; Braid Hill; Caroline Park, &c.
126. *Asperula odorata*, Rosslyn, Auchindinny and Collington Woods; (Salisbury Craigs; Braid Hermitage.)
127. *Galium verum*, Rosslyn Woods; King's Park; Calton Hill, &c. (Road-side about 200 yards on the Edin-

- burgh side of Braid Hermitage Gate, and about Blackford and Braid Hill.
128. *G. cruciatum*, Salisbury Craigs; Arthur's Seat; Blackford Hill; Rosslyn Woods, &c.
129. *G. palustre*, Duddingston Loch; Pentland Hills; Lochend, &c.
130. *G. saxatile*, Braid Hill; Pentland Hills; Arthur's Seat; Rosslyn and Ravelrig Woods, &c.
131. *G. erectum*, (Fish-wife's Causeway, near Portobello.)
132. *G. pusillum*, Habbie's How, on the Pentland Hills.
133. *G. Mollugo*, By the side of the South Esk, opposite Dalhousie Castle; (Near Dreghorn; by the road side at Four-mile Hill, between Corstorphine and Kirkliston.)
134. *G. Aparine*, King's Park, &c.
135. *Plantago major*, King's Park, &c.
136. *P. media*, Roman Camp above Newbattle; (Road-side between Inveresk and Pathhead, 9 miles south-east from Edinburgh.)
137. *P. lanceolata*, King's Park, &c.
138. *P. maritima*, Rocks between Caroline and Granton Parks, between Pettycur and Kirkcaldy; Inchcolm; (Cramond Island, and on the other Islands of the Forth.)
139. *P. Coronopus*, Burntisland; Fisherrow and Musselburgh Links, &c.
140. *Epimedium alpinum*, (Hunter's Tryste.) Has been long sought for by Botanists in this station, but in vain.
141. *Cornus sanguinea*, Woods near Ravelrig Toll.
142. *C. suecica*, (Pentland Hills,) very rare, if to be found at all, in this station.
143. *Parietaria officinalis*, Craigmillar Castle; ruins of Inchcolm; Burntisland; Walls by the Water of Leith, near Canonmills.
144. *Alchemilla vulgaris*, King's Park; Rosslyn Woods; banks of the Water of Leith, &c.

145. *A. arvensis*, Fields between Newhaven and Caroline Park; Wall-tops under the Pentland Hills, &c.

TETRANDRIA TETRAGYNIA.

146. *Ilex aquifolia*, Rosslyn Woods; (Road leading from Craigleith Quarries.)
147. *Potamogeton natans*, Mutton-hole; streams on the Pentland Hills; Braid Hill marshes; Lochend; marsh near Auchindinny, by the road side; Water pits at Corstorphine Hill.
148. *P. fluitans*, Streams on the Pentland Hills.
149. *P. densum*, Ditch at the foot of Arthur's Seat, near Hunter's Bog; (Corstorphine Hill; Ditches on the right hand side of the walk going down the Meadows, near Edinburgh.)
150. *P. lucens*, (Bog's Mill, near Slateford; Lochend, abundant.)
151. *P. crispum*, Lochend and Duddingston Loch.
152. *P. pusillum*, (In a ditch close by the Flint Mill at Musselburgh.)
153. *P. pectinatum*, (Lochend and Duddingston Loch.)
154. *Ruppia maritima*, Salt water pools on Guillon Links, and Aberlady Bay.
155. *Sagina procumbens*, King's Park; Fisherrow and Musselburgh Links.
156. *S. maritima*, (Near the wet-dock at Leith; Queens-ferry, and near Edinburgh.)

 PENTANDRIA MONOGYNIA.

157. *Myosotis sylvatica*, Rosslyn and Arniston Woods; King's Park, &c.
158. *M. palustris*, King's Park; Duddingston Loch; Rosslyn Woods; Hope Park, &c.

159. *M. arvensis*, King's Park, &c.
160. *M. versicolor*, (King's Park, especially on the bank at the left hand side going towards Duddingston from St. Leonards; side of Duddingston Loch.)
161. *Lithospermum officinale*, (Arniston Woods; among the ruins of Rosslyn Castle; under the west side of Salisbury Craigs.)
162. *L. arvense*, Fields near Newhaven and Caroline Park; in fields on the left hand side of the road going to Dalkeith; Field between Portobello and Duddingston; Salisbury Craigs, &c.
163. *L. maritimum*, *Pulmonaria maritima*, *Sm. Fl. Brit.* (Near Seafield Tower, Fifeshire.)
164. *Anchusa sempervirens*, Craigmillar Castle; on the banks of the Water of Leith, about 2 miles above Currie; (Dean Bank, near the village of the Water of Leith.)
165. *Cynoglossum officinale*, Burntisland and Kinghorn; Inchcolm; Gosford; Guillon Links; (Rosslyn Castle; rough bank by the sea-shore mid-way between Burntisland and Pettycur.)
166. *Pulmonaria officinalis*, Arniston Woods, abundant, and with a white flower; (Banks of the North Esk, near Kevock-mill.)
167. *Symphytum officinale*, (Near Mutton-hole; (Water of Leith, opposite St. Bernard's Well; Craigcrook.)
168. *S. tuberosum*, Banks of the North Esk, between Mavisbank and Lasswade; Collington Woods; Slateford; (Woodhall; opposite the New Well at the Water of Leith.)
169. *Borago officinalis*, (On rubbish at Burntisland; Debris of Salisbury Craigs.)
170. *Asperugo procumbens*, (Guillon Links.)
171. *Lycopsis arvensis*, By the side of the walk in the King's Park, leading to Duddingston Loch; Guillon Links; under a wall on entering Lasswade, &c.
172. *Echium vulgare*, Salisbury Craigs; Inchcolm; Rocks near Aberdour; Kirkaldy and Kinghorn; Loch-

end; (With a white flower on hills behind Burntisland; with flowers streaked red and white on Arthur's Seat.)

173. *Primula vulgaris*, Rosslyn and Collington Woods; (Granton and Auchindinny Woods; Braid Hermitage; King's Park.)
174. *P. veris*, On rocks near the summit of Arthur's Seat; Salisbury Craigs; Rosslyn Woods; (Caroline Park; Sandy-fields near Prestonpans; Shore near Kinghorn.)
175. *P. elatior*, (Collington Woods; Sea-coast between North Queensferry and Inverkeithing; Woods about Starley Burn, near Burntisland, abundantly.)
176. *P. farinosa*, (Boggy ground above Woodhouselee.)
177. *Menyanthes trifoliata*, Hunter's Bog; Bog east side of Arthur's Seat; Duddingston Loch; Braid Hill marshes; Pentland Hills; Marsh about a mile from Lasswade towards Rosslyn, &c.
178. *Lysimachia thyrsoiflora*, (Duddingston Loch.)
179. *L. Nemorum*, Rosslyn and Auchindinny Woods, Mavisbank, &c.
180. *Anagallis arvensis*, Corn-fields near Burntisland; Fields close to Caroline Park; Fields under the Braid Hills, &c.
181. *A. tenella*, Hunter's Bog; (Marshy ground on the banks of the Esk, near Inveresk; Guillon Links; Queensferry.)
182. *Convolvulus arvensis*; Field near Cockenzie; Hills behind Pettycur; (Piershill Barracks, and near Lochend; Kirkaldy abundant, especially towards the sea-shore; Fields about Leith Links; River side below Canonmills; Road-side east from Canonmills; Road sides about Newhaven.)
183. *C. Sepium*, Road-side leading from Newbattle to the Roman Camp; (Hedge by the road-side leading from the Abbey Hill to Leith; Road to Newhaven by Pilrig.)
184. *Polemonium caruleum*, (Sea-coast two miles east of

- South Queensferry, growing with *Arundo arenaria* ; Arniston Woods ; Blackford Hill.)
185. *Campanula rotundifolia*, Arthur's Seat ; Salisbury Craigs, &c.
186. *C. latifolia*, Rosslyn and Collington Woods.
187. *C. rapunculoides*, In a corn-field at the foot of Braid Hill, towards Edinburgh ; (Corn-fields two miles north-west from Kirkaldy.)
188. *C. glomerata*, Hills behind Pettycur ; Links near Gosford ; (Steep banks on the sea-shore between Pettycur and Kinghorn, but nearest the latter.)
189. *Viola hirta*, (Bank near the Toll at North Queensferry ; Blackford Hill, and Links between Cockenzie and Gosford ; Guillon Links ; Auchtertool Linn, Fifeshire.)
190. *V. odorata*, Bank near Rosslyn Chapel ; Bank about a mile beyond Collington, towards Currie ; (Bank near Slateford aqueduct ; Collington Woods.)
191. *V. palustris*, Ravelrig Bog ; In a marsh half-way between the turnpike on the Auchindinny road to Rosslyn ; (Pentland Hills ; Rosslyn Woods ; King's Park.)
192. *V. canina*, King's Park ; Braid Hill ; Blackford Hill, &c.
193. *V. tricolor*, Corn-fields, near Braid Hill, &c.
194. *V. lutea*, Arthur's Seat ; Braid, Blackford and Pentland Hills ; Dalmahoy Hill ; (Corstorphine Hills.)
195. *Verbascum Thapsus*, Blackford Hill ; (Between East and West Weems, Fifeshire.)
196. *V. nigrum*, (Near Bogle Hill, east of Cockenzie ; Links between Seaton and Gosford ; Banks of the river Esk, opposite coal pits, and at Borthwick Castle.)
197. *Hyosциamus niger*, Debris of Salisbury Craigs ; Fields by the sea-shore, between Prestonpans and Cockenzie ; Aberlady and Guillon Links ; Shore between Burntisland and Aberdour Woods ; (East side of Lochend.)

198. *Atropa Belladonna*, (Sea-side, immediately west of the waggon-road from Limekilns; on Inchcolm, and near the ruins of Borthwick Castle; near Crombie Point, Fifeshire.)
199. *Solanum Dulcamara*, Rosslyn Woods; Water of Leith, near Georgie; (at the end of Dalkeith, nearest to Edinburgh; Banks of the Esk above Musselburgh; between Burntisland and Starley Burn; Banks of the river below Lasswade.)
200. *Erythræa Centaurium*, *Chironia Centaurium*, *Sm. Fl. Brit.* Rosslyn and Auchindinny Woods; Guillon Links; (Black Jock's Hill, near Burntisland; Dalhousie Castle; Dunearn Hill; Hill at North Queensferry, plentiful.)
201. *E. pulchella*, *Chironia pulchella*, *Sm. Fl. Brit.* (Near Guillon Links.)
202. *E. littoralis*, *Chironia littoralis*, *Sm. Fl. Brit.* (Guillon Links.)
203. *Samolus Valerandi*, (Limekilns, Fifeshire; Guillon Links; South Queensferry; Links near St. Germans.)
204. *Lonicera Caprifolium*, Collington Woods; (Corstorphine Hill.)
205. *L. Periclymenum*, Rocks in King's Park; Rosslyn and Collington Woods, &c.
206. *Euonymus europæus*, Among the rocks on the south side of Salisbury Craigs; near St. Anthony's Well in King's Park; (Near Craigmillar Castle.)
207. *Ribes nigrum*, (Auchindinny Woods.)
208. *R. Grossularia*, Rosslyn Chapel; (King's Park.)
209. *Hedera helix*, King's Park; Ruins of Rosslyn Chapel, &c.
210. *Glaux maritima*, Fisherrow and Musselburgh Links; Guillon Links and Aberlady Bay; (North Queensferry; about Burntisland and Pettycur.)
211. *Vinca minor*, Rosslyn and Arniston Woods; (Auchindinny and Collington Woods.)

212. *V. major*, Collington Woods ; (Arniston Woods, and Dundas Hill.)

PENTANDRIA DIGYNIA.

213. *Chenopodium maritimum*, Morrison's Haven ; (Inverkeithing ; Aberlady Bay.)
214. *Ch. olidum*, (Fisherrow Links and Race Course, Musselburgh.)
215. *Ch. Bonus Henricus*, Near Stockbridge ; King's Park ; near the Bridge at Collington ; Road-side near Merchiston Castle, &c.
216. *Ch. urbicum*, (Rubbish and waste places near towns.)
217. *Ch. rubrum*, (West side of the Earthen Mound, Edinburgh ; Restalrig.)
218. *Ch. hybridum*, (Cultivated fields about Edinburgh.)
219. *Ch. album*, (Waste places, common.)
220. *Beta maritima*, (Opposite Gosford Gate ; Sea-shore near Kirkcaldy ; near Cramond.)
221. *Salsola Kali*, Between Caroline and Granton Parks ; (Inchcolm ; about Musselburgh.)
222. *Ulmus campestris*, Hedges and woods about Edinburgh.
223. *U. montana*, The Meadow walks.
224. *Cuscuta europæa*, (On flax in a field near Musselburgh.)
225. *Gentiana amarella*, Roman Camp, above Newbattle ; Links to the east of Cockenzie ; (East side of Arthur's Seat ; Guillon Links.)
226. *G. campestris*, Hills at North Queensferry ; Links to the east of Cockenzie ; (Hills between Pettycur and Burntisland ; King's Park and Pentland Hills.)
227. *Eryngium maritimum*, Fisherrow and Musselburgh Links ; (Largo Bay.)
228. *Hydrocotyle vulgaris*, Marshes on the Braid and Pentland Hills ; King's Park ; Duddingston Loch ; Lochend, &c.

229. *Sanicula europæa*, Collington, Rosslyn, and Auchindinny Woods; (Braid Hermitage; Arniston Woods; Corstorphine Hill; King's Park; Granton Woods.)
230. *Crithmum maritimum*, (Islands in the Frith of Forth; not now to be found.)
231. *Cenanthe fistulosa*, (Between Inverkeithing and North Queensferry.)
232. *C. crocata*, Stream-side between Seaton and Gosford; (Near Limekilns; River-bank near Lasswade.)
233. *Sison inundatum*, *Hydrocotyle inundata*, *Sm. Fl. Brit.*; Braid-Hill Marshes; (Ditches by the roadside near Auchindinny; Marsh on the left-hand side of the road between Aberdour and Inverkeithing.)
234. *Bunium Bulbocastanum*, Rosslyn Woods, &c.
235. *Conium maculatum*, King's Park, &c.
236. *Selinum palustre*, *Thysselinum palustre*, *Grev. Fl. Edin.*; (Marsh near Collington.)
237. *Ligusticum scoticum*, Coast at North Queensferry; near Kinghorn; (Back of the Glass-works at Leith; Coast of Fife between East and West Weems.)
238. *Peucedanum Silaus*, In a marsh between Newbattle and the Roman Camp; (Borders of Corn-fields near Oxenford Castle.)
239. *Angelica sylvestris*, Marshes on the Pentland Hills; Rosslyn and Auchindinny Woods; (King's Park; Corstorphine Hill; Granton Woods.)
240. *Sium latifolium*, (Duddingston Loch.)
241. *S. angustifolium*, Duddingston Loch.
242. *S. nodiflorum*, (Hope Park.)
243. *S. repens*, Pools at Guillon Links; (Near Edinburgh; Banks of a Pond at Fisherrow.)
244. *Heracleum Sphondylium*, King's Park, &c.
 Var. β . *angustifolium*, (King's Park: Woods near Kirkliston.)

245. *Phellandrium aquaticum*, (Ditches near Corstorphine Hill.)
246. *Æthusa Cynapium*, Salisbury Craigs, &c.
247. *Cicuta virosa*, Lochend.
248. *Imperatoria Ostruthium*, (Near Borthwick Castle.)
249. *Chærophylum odoratum*, Hook. Fl. Scot.; *Scandix odorata*, Sm. Fl. Brit.; *Myrrhis odorata*, Grev. Fl. Edin.; Near Mavisbank; by the Water of Leith, two miles above Currie; (Arniston Woods; foot of the Castle Bank, to the north-east; under the wall of Caroline Park, close to the sea.)
250. *Ch. aureum*, *Myrrhis aurea*, Grev. Fl. Edin.; (Near Corstorphine.)
251. *Ch. sylvestre*, Water of Leith, &c.
252. *Ch. temulentum*, King's Park, &c.
253. *Apium graveolens*, Ditches behind Musselburgh.
254. *A. Petroselinum*, Salisbury Craigs; Craigmillar Castle; (Old walls at Inverleith; on an old wall at Coltbridge; and by the road-side between Collington and Dreghorn.)
255. *Carum Carui*, (Rocks on the west side of the Castle; between Newhall and South Queensferry, and near the village of Abercorn.)
256. *Pimpinella Saxifraga*, Salisbury Craigs; Arthur's Seat; Blackford Hill, &c.
257. *Ægopodium Podagraria*, King's Park; Water of Leith; (Right hand side of, and within the gate of the entrance to Braid Hermitage.)
258. *Smyrnum Olusatrum*, Craigmillar Castle; (Sea-shore below the old Castle of Ravensheugh, between Dysart and Kirkaldy; by the side of a rivulet at Kinghorn; and Dirleton Castle.)
259. *Caucalis Anthriscus*, *Torilis Anthriscus*, Grev. Fl. Edin.; Salisbury Craigs; King's Park, &c.
260. *C. nodosa*, *Torilis nodosa*, Grev. Fl. Edin.; (Bank below Salisbury Craigs, towards Duddingston Loch, and by the road-side leading from Drum-

more to Preston. It grows immediately under the basaltic columns on the path-side to Duddingston, and at the foot of the wall which supports the path.)

261. *Daucus Carota*, Hedges near Duddingston; Salisbury Craigs; Road-sides about Libberton Church; by the borders of fields near Dalhousie; (Abundantly between Milburn Tower and the road to Lanark.)
262. *Anthriscus vulgaris*, *Scandix Anthriscus*, *Sm. Fl. Brit.*; Salisbury Craigs; King's Park; and road-sides near Edinburgh.
263. *Scandix Pecten Veneris*, *Scandix Pecten*, *Grev. Fl. Edin.*; Corn-fields near Caroline Park; Fields near Libberton Church, &c.

PENTANDRIA TRIGYNIA.

264. *Viburnum Lantana*, Rosslyn Woods.
265. *V. Opulus*, Rosslyn and Auchindinny Woods.
266. *Sambucus Ebulus*, (In a field by the road leading from Edinburgh to Dalkeith, a little beyond Newington; south bank of the Water of Leith; near Inverkeithing.)
267. *S. nigra*, King's Park, &c.

PENTANDRIA TETRAGYNIA.

268. *Parnassia palustris*, Hunter's Bog; Ravelrig Bog; Pentland Hills; Guillon Links.

PENTANDRIA PENTAGYNIA.

269. *Statice Armeria*, Inchcolm; Inchkeith; Rocks near Caroline Park; Fisherrow Links. It is very frequent on the coast, and sometimes with white flowers; (Summit of Arthur's Seat.)
270. *Linum usitatissimum*, Fields near Currie, &c.

271. *L. catharticum*, King's Park; between Pettycur and
and Burntisland; Caroline Park; Dalmahoy Hill.

PENTANDRIA HEXAGYNIA.

272. *Drosera rotundifolia*, Marshes on the Pentland Hills;
Ravelrig Toll Moss; Marsh on the Hills at North
Queensferry.

HEXANDRIA MONOGYNIA.

273. *Galanthus nivalis*, (Arniston Woods.)
274. *Narcissus Pseudo-Narcissus*, By the side of a wood on
the Corstorphine Hill; (Meadows in the neigh-
bourhood of Culross.)
275. *Allium carinatum*. I found a single specimen of this
plant on the south bank of the Water of Leith,
above Currie, July 1822.
276. *A. vineale*, Salisbury Craigs; (Shore east of King-
horn; Craiglockhart.)
277. *A. oleraceum*, (Near St. David's.)
278. *A. ursinum*, Rosslyn, Auchindinny, Collington, and
Newbattle Woods; (King's Park; Arniston
Woods.)
279. *Ornithogalum luteum*, (Auchertool Linn; Fifeshire.)
280. *Hyacinthus non-scriptus*, *Scilla nutans*, *Sm. Fl. Brit.*;
Collington and Rosslyn Woods; Arthur's Seat;
Braid Hill; a variety with flesh-coloured flowers
midway between Mavisbank and Lasswade, by the
river side; (Coryton Woods, and on the south side
of the river opposite Lugton Wood, by Dalkeith;
Craigleith Quarry; Salisbury Craigs.)
281. *Narthecium ossifragum*, Ravelrig Toll Moss; Pent-
land Hills, near Currie; (Bog on the hill above
North Queensferry.)

282. *Asparagus officinalis*, (Links near Gosford.)
283. *Convallaria majalis*, Collington and Arniston Woods.
284. *Juncus glaucus*, (Leith Links ; Pentland Hills.)
285. *J. effusus*, Rosslyn and Auchindinny Woods, &c.
286. *J. conglomeratus*, Rosslyn Woods ; Lochend, &c.
287. *J. squarrosus*, Braid Hill ; Pentland Hills, above Swanston Wood, &c.
288. *J. bulbosus*, Guillon Loch ; near South Queensferry ; (By the sea-side between Granton and Cramond.)
289. *J. bufonius*, Hunter's Bog ; Pentland Hills ; Marsh near Newbattle, &c.
290. *J. uliginosus*, Marshes on the Braid and Pentland Hills ; Ravelrig Bog.
291. *J. acutiflorus*, Duddingston Loch, &c.
292. *J. lampocarpus*, Braid Hill Marshes ; Duddingston Loch ; (Abercorn Park.)
293. *J. obtusiflorus*, (Ditches in Abercorn Park, near the lower fish-pond, abundant.)
294. *Luzula maxima*, *Juncus sylvaticus*, *Sm. Fl. Brit.* ; Rosslyn and Collington Woods ; Pentland Hills, above Swanston Wood ; Auchindinny, Braid, and Arniston Woods.
295. *L. pilosa*, *Juncus pilosus*, *Sm. Fl. Brit.* ; Rosslyn, Auchindinny, and Arniston Woods ; (Newbattle Woods.)
296. *L. campestris*, *Juncus campestris*, *Sm. Fl. Brit.* ; King's Park ; Braid Hill ; near Craigmillar Castle ; Pentland Hills.
297. *Berberis vulgaris*, Collington Woods ; (Road-side near Queensferry.)
298. *Peplis Portula*, Braid-Hill Marshes ; (Pentland Hills.)

HEXANDRIA TRIGYNIA.

299. *Rumex crispus*, King's Park, &c.
300. *R. sanguineus*, Lochend ; (King's Park ; Abercorn Woods.)

301. *R. acutus*, King's Park, &c.
 302. *R. obtusifolius*, King's Park, &c.
 303. *R. maritimus*, (Burntisland ; and between Kinghorn and Pettycur.)
 304. *R. Acetosa*, King's Park, &c.
 305. *R. Acetosella*, Braid and Pentland Hills ; Arthur's Seat ; Shore near Newhaven, &c.
 306. *Triglochin palustre*, Hunter's Bog ; Pentland Hills ; behind Pettycur ; Marsh between Rosslyn and Lasswade, &c.
 307. *T. maritimum*, Guillon and Aberlady Links ; (Inverkeithing Bay ; about Queensferry.)
 308. *Alisma Plantago*, Lochend and Duddingston Loch ; (Marsh between Duddingston and Portobello.)
 309. *A. ranunculoides*, Duddingston Loch ; Hunter's Bog ; (Near Burntisland.)



OCTANDRIA MONOGYNIA.

310. *Epilobium angustifolium*, Habbie's How ; in a field by the road-side to Newhaven from the Queensferry Road ; (Collington and Abercorn Woods ; Rosslyn and Auchindinny Woods.)
 311. *E. hirsutum*, Banks of the Water of Leith ; Banks of a stream running between the Braid and Blackford Hills ; Auchindinny Woods ; Duddingston Loch.
 312. *E. parviflorum*, Water of Leith ; (Aberlady Links, near Luffness ; Old pits in a field east of the road leading from Dean Bridge to Caroline Park.)
 313. *E. palustre*, Duddingston Loch ; Lochend ; Braid and Pentland Hills.
 314. *E. tetragonum*, Duddingston Loch, &c.
 315. *E. montanum*, King's Park ; Braid and Blackford Hills, &c. Sometimes with a white flower.

316. *Vaccinium Myrtillus*, Rosslyn and Auchindinny Woods ; Arthur's Seat ; Braid and Pentland Hills.
317. *V. Vitis Idæa*, Pentland Hills, above Swanston Woods. I found this plant in January 1824.
318. *V. Oxycoccus*, Marsh on the Pentland Hills, behind Currie ; (West side of Otterston Loch, Fifeshire.)
319. *Erica cinerea*, Arthur's Seat ; Rosslyn Woods and Pentland Hills.
320. *E. Tetralix*, Ravelrig Bog, Pentland Hills.
321. *Calluna vulgaris*, *Erica vulgaris*, *Sm. Fl. Brit.* Arthur's Seat ; Pentland Hills ; Rosslyn Woods, &c.
322. *Daphne Laureola*, Rosslyn, Dalhousie, and Collington Woods, &c.
323. *Acer Pseudo-Platanus* ; Rosslyn, Arniston, and Auchindinny Woods, &c.
324. *A. campestre*, (Newbattle Woods ; North side of Hope Park ; a little wood at North Queensferry ; among the rocks by the shore at North Queenferry.)

OCTANDRIA TRIGYNIA.

325. *Polygonum Bistorta*, Rosslyn Woods ; (Marshy ground at Roseburn, near Coltbridge ; and banks of the North Esk, near Kevock-mill.)
326. *P. amphibium*, Duddingston Loch ; Lochend, &c.
327. *P. Persicaria*, King's Park ; Lochend, &c.
328. *P. lapathifolium*, King's Park, &c.
329. *P. Hydropiper*, (Burntsfield Links.)
330. *P. aviculare*, King's Park, &c.
331. *P. Convolvulus*, Corn-fields near Caroline Park ; Corn-fields near Burntisland, &c.
332. *P. Fagopyrum*, Arniston Woods.

OCTANDRIA TETRAGYNIA.

333. *Paris quadrifolia*, (Wood about a mile south of Newbattle, near Dalkeith; in a wood on the banks of the Water of Leith, near Currie.)
334. *Adoxa Moschatellina*, Bank near the Inn at Rosslyn; by the river side, between Rosslyn and Lasswade; Water of Leith, about two miles above Currie; Wood near the Paper-mill at Collington; (Opposite the bleachfield, Rosslyn; Braid Burn; Bank opposite Melville Castle; Arniston Woods, and at Craiglockhart.)


 ENNEANDRIA HEXAGYNIA.

335. *Butomus umbellatus*, Duddingston Loch.


 DECANDRIA MONOGYNIA.

336. *Pyrola rotundifolia*, (Auchindinny and Rosslyn Woods.
337. *P. minor*, Wood halfway between the turnpike on the Auchindinny road to Rosslyn; Woods near Ravelrig Toll; Ravelrig Toll Moss, among the Willows; Roman Camp; (Auchindinny Woods, and at Newhall; Rosslyn Woods, and woods above South Queensferry.)

DECANDRIA DIGYNIA.

338. *Chrysosplenium alternifolium*, On wet rocks opposite Hawthornden; Banks of a small stream near the New Bridge in Rosslyn Woods; Banks of the Water of Leith, about two miles above Currie;

(Arniston and Auchindinny Woods ; Newbattle Woods ; Bilston Burn ; St. Bernard's Well.)

339. *Ch. oppositifolium*, Collington, Rosslyn, and Auchindinny Woods ; Water of Leith, near St. Bernard's Well ; Braid Burn, near the House, &c.
340. *Saxifraga umbrosa*, Rosslyn, Collington, and Auchindinny Woods ; (Corstorphine Hill ; Banks of a stream above Newbattle.)
341. *S. granulata*, Arthur's Seat, and Salisbury Craigs ; Rosslyn and Auchindinny Woods ; (Pentland Hills ; North Queensferry ; Braid and Blackford Hills, and at Craiglockhart.)
342. *S. tridactylites*, Stony ground above the west end of Duddingston Loch ; Links a little to the east of Cockenzie ; (Top of a wall immediately surrounding Craiglockhart, and on the rock itself ; Walls near Kirkaldy.)
343. *S. hypnoides*, Arthur's Seat ; Habbie's How ; (Dalmahoy Hill.)
344. *Scleranthus annuus*, North Queensferry ; Lasswade ; (Wall-tops between Corstorphine and Kirkliston.)
345. *Saponaria officinalis*, (Between Dean and Ravelston ; near Rosslyn Chapel ; banks of the Esk, above Coal-pits ; and side of the mill-lead opposite to the Old Bridge at Musselburgh ; behind Burntisland.)
346. *Dianthus barbatus*, Rosslyn Woods ; (Banks of the Water of Leith, between Coltbridge and Saughtonhall ; Collington Woods ; near Maleny.)
347. *D. deltoides*, Banks of Lochend ; Blackford Hill ; King's Park ; Pentland Hills.
 Var. β . *D. glaucus* of *Lightfoot*, &c. In the King's Park.

DECANDRIA TRIGYNIA.

348. *Silene inflata*, King's Park ; Road-side towards Craigmillar Castle from Duddingston Loch, &c.
 Var. β . *Silene maritima* of *Smith*, Inchkeith ; Inchcolm ; Cramond Island ; Pettycur and

Kinghorn ; Rocks near Caroline Park ;
Shore west of Kirkaldy ; (North Queens-
ferry.)

349. *S. nutans*, (Hills near North Queensferry.)
350. *Stellaria Nemorum*, Rosslyn, Arniston and (New-
battle Woods.)
351. *S. media*, King's Park, &c. &c.
352. *S. holostea*, Blackford Hill ; Salisbury Craigs ; Ar-
thur's Seat, &c.
353. *S. graminea*, Arthur's Seat ; Blackford Hill ; Fields
near Newhaven, &c.
354. *S. glauca*, Duddingston Loch ; (Lochend.)
355. *S. uliginosa*, Water of Leith ; Hunter's Bog, &c. &c.
356. *Arenaria peploides*, *Adenarium Peploides*, *Grev. Fl.*
Ed. ; Leith Sands ; between Newhaven and Caro-
line Park ; Fisherrow and Musselburgh Links, &c.
357. *A. trinervis*, Bank near Lasswade Church ; Banks of
the South Esk, opposite Dalhousie Castle ; Col-
lington and Rosslyn Woods ; (Mavisbank ; New-
battle Woods ; Kinleith ; Hedges near Redhall.)
358. *A. serpyllifolia*, Salisbury Craigs ; Arthur's Seat ;
Pettycur and Burntisland ; Blackford Hill, &c.
359. *A. verna*, Salisbury Craigs ; Arthur's Seat, and Black-
ford Hill.
360. *A. tenuifolia*, (Cramond Island ; near Pettycur Har-
bour.)
361. *A. rubra*, Fisherrow and Musselburgh Links ; Petty-
cur and Burntisland.
362. *A. marina*, Morrison's Haven, near Prestonpans ;
Aberlady Links ; (Inverkeithing and Queensferry.)

DECANDRIA PENTAGYNIA.

363. *Sedum Telephium*, Hedge-banks near Rosslyn ;
Hedges between Mavisbank and Lasswade ; (In-
verkeithing.)
364. *S. dasyphyllum*, (Collington Woods.)

365. *S. villosum*, By the sides of rivulets on the Pentland Hills ; (Near Linlithgow.)
366. *S. acre*, Salisbury Craigs ; Arthur's Seat, &c.
367. *S. reflexum*, (Field near Inverkeithing, growing in a dry stony soil ; Walls about Craigcrook ; Ravelston ; House-tops in the village of Preston.)
368. *Oxalis Acetosella*, King's Park ; Rosslyn, Collington and Arniston Woods. In the latter place with beautiful purple flowers, near the Bridge.
369. *Agrostemma Githago*, Corn-fields on the Rosslyn road, just beyond Libberton Church ; Field near Merchiston Castle, &c.
370. *Lychnis Flos-Cuculi*, Duddingston Loch ; Hunter's Bog ; Marsh half-way between Rosslyn and Lasswade, &c.
371. *L. Viscaria*, Basaltic columns in the King's Park ; Blackford Hill ; (Rocks by Braid Hermitage ; Dundas Hill.)
372. *L. dioica*, with red flowers ; In the King's Park ; Road-sides about Edinburgh, &c.
With white flowers ; Near Caroline Park ; Salisbury Craigs, &c.
373. *Cerastium vulgatum*, Arthur's Seat ; very common in dry ground in the neighbourhood. I found specimens of this plant, however, in a marsh half-way between the turnpike on the Auchindinny road to Rosslyn.
374. *C. viscosum*, Salisbury Craigs ; Arthur's Seat ; Braid Hill, &c.
375. *C. semidecandrum*, Arthur's Seat ; Walls about the King's Park, &c.
376. *C. tetrandrum*, Fisherrow Links ; Arthur's Seat ; Braid Hill ; Caltou Hill ; (Inchkeith ; Inchcolm ; near Prestonpans ; Isle of May.)
377. *C. arvense*, Guillon Links, abundant.
378. *Spergula arvensis*, Braid Hills, &c.
379. *S. nodosa*, Hunter's Bog ; Marshes on the Pentland

Hills; (Duddingston Loch; South Queensferry; Cockenzie Downs; near Luffness.)

380. *S. subulata*, On a wall near Ravelrig Toll; Hills to the west of North Queensferry, near the turnpike.

DODECANDRIA MONOGYNIA.

381. *Asarum europæum*, (West Binny, near Linlithgow.)

DODECANDRIA DIGYNIA.

382. *Agrimonia Eupatoria*, Fields near Stockbridge; Pentland Hills; King's Park, &c.

DODECANDRIA TRIGYNIA.

383. *Reseda Luteola*, Inchcolm; near Rosslyn Castle; Blackford Hill; Lasswade; Bank of the Canal, near Slateford Aqueduct; Shore near Kinghorn; Burntisland; (About Dysart; Craigleith; On coal refuse between Edinburgh and Dalkeith.)
384. *R. lutea*, Hills between Pettycur and Burntisland; (Near Kirkaldy; near Raith; Debris of Salisbury Craigs.)
385. *Euphorbia exigua*, Corn-fields west of the Roman Camp; Fields about Burntisland; (Field at the marl-pit near Mutton-hole; near Crossgate Toll; near Musselburgh; Fields north of Carlowrie; Field near St. Germain's.)
386. *E. Cyparissias*, (Collington Woods.)
387. *E. Esula*, (Wood near a rivulet at Abercorn, thirteen miles west of Edinburgh; near Gladsmuir Kirk, in a lane leading from the Haddington road to Elvingston; and in a Field near West Pilton, seven miles north-west from Edinburgh.)

388. *E. Peplus*, Fisherrow Links ; Corn-fields between Edinburgh and Newhaven, &c.
 389. *E. helioscopia*, King's Park ; Water of Leith ; Fields under the Pentland Hills, &c.

DODECANDRIA DODECAGYNIA.

390. *Sempervivum Tectorum*, On a house-top opposite the Inn at Lasswade ; Houses near Mutton-hole, &c.



ICOSANDRIA MONOGYNIA.

391. *Prunus Padus*, Rosslyn and Collington Woods ; (Banks of Bevelaw Burn ; Auchindinny and Arniston Woods.)
 392. *P. Cerasus*, Rosslyn and Collington Woods ; opposite Melville Castle ; Arniston Woods ; (Banks of the Water of Leith near Woodhall.)
 393. *P. domestica*, Craigmillar Castle ; Collington Woods.
 394. *P. insititia*, (Pentland Hills.)
 395. *P. spinosa*, Salisbury Craigs ; Arthur's Seat ; Pentland Hills, &c.

ICOSANDRIA PENTAGYNIA.

396. *Cratægus Oxyacantha*, *Mespilus Oxyacantha*, *Sm. Fl. Brit.* ; Rosslyn Woods, &c. &c.
 397. *Pyrus Malus*, Rosslyn Woods ; and in a wood near Ravelrig Toll.
 398. *P. aucuparia*, Rocks on the Pentland Hills, near Habbie's How ; Rosslyn, Arniston, Auchindinny and Collington Woods ; (Corstorphine Hill ; Inchcolm.

399. *P. Aria*, Rocks in the King's Park, near the Powder Magazine; Wood on the Dalkeith road; Wood near Craiglockhart.
400. *Spiræa salicifolia*, Arniston Woods; (Craigiehall and Cramond Bridge.)
401. *S. Filipendula*, Hills at North Queensferry; Hills south-west of Arthur's Seat; (Debris of Salisbury Craigs.)
402. *S. Ulmaria*, Rosslyn and Auchindinny Woods; Banks of the Water of Leith, &c.

ICOSANDRIA POYLGYNIA.

403. *Rosa spinosissima*, Arthur's Seat; Links near Cockenzie, (with the petals red at the base); Hills above North Queensferry; (Road-sides between Duddingston and Musselburgh.)
404. *R. Sabini*, (Thickets and mountainous places.)
 Var. β . *Doniana*, (Banks of the Water of Leith, near Collington.)
405. *R. tomentosa*, (Woods, brakes, and waste places.)
 Var. *a. vera*, (Sea-side between Caroline Park and Cramond.)
 Var. β , *mollis*, (Between Ravelston Wood and Edinburgh.)
406. *R. rubiginosa*, Between Mavisbank and Lasswade, &c.
 Var. *a. vulgaris*, (Sea-side between Caroline Park and Cramond; Hedges about Redhall.)
 Var. γ . *inodora*, (Near Edinburgh.)
407. *R. canina*, Blackford Hill; Rosslyn Woods, &c.
408. *R. arvensis*, King's Park; Links between Cockenzie and Gosford.
409. *Rubus idæus*, Salisbury Craigs; Arthur's Seat; Borders of fields under the Pentland Hills; Rosslyn, Granton, and Auchindinny Woods; (Arniston Woods; Corstorphine Hill.)

410. *R. cæsius*, Between Dalkeith and Pathhead, nine miles from Edinburgh.
411. *R. corylifolius*, Arthur's Seat ; Rosslyn Woods ; (Auchindinny Woods ; near Craigmack ; Granton Woods, by the sea-side.)
412. *R. fruticosus*, Rosslyn and Collington Woods, &c.
413. *R. saxatilis*, (Rosslyn Woods ; Pentland Hills, near Collington.)
414. *R. Chamænorus*, (Top of the eastern Cairn Hill, one of the Pentlands.)
415. *Fragaria vesca*, Rosslyn and Collington Woods, &c.
416. *Potentilla Fragaria*, *Fragaria sterilis*, *Sm. Fl. Brit.* ; King's Park ; Rosslyn Woods, &c.
417. *P. argentea*, (Craig Brae, near Dundas Castle ; Blackford Hill and Binny Craig.)
418. *P. verna*, South-west side of Arthur's Seat ; Rocks and walls at Craigmack ; (Hills about North Queensferry.)
419. *P. reptans*, In a Field near Craigmillar Castle ; Road-side between Gosford and Aberlady ; (Links and road-sides east of Musselburgh ; Road leading up to Craigmillar Castle, immediately after leaving the main road to Dalkeith, by Prestonfield.)
420. *P. anserina*, Salisbury Craigs ; Arthur's Seat, &c.
421. *Tormentilla officinalis*, *Potentilla Tormentilla*, *Grev. Fl. Edin.* ; Arthur's Seat ; Rosslyn Woods ; Braid and Pentland Hills, &c.
422. *T. reptans*, *Potentilla procumbens*, *Grev. Fl. Edin.* ; Near Pettycur ; (Near Kirkaldy.)
423. *Geum urbanum*, Salisbury Craigs ; Arthur's Seat ; Water of Leith, &c.
424. *G. rivale*, Rosslyn, Auchindinny, Arniston, and Collington Woods ; Water of Leith, near Slateford ; Habbie's How ; Newbattle Woods.
 Var. β . of Smith ; *Geum intermedium* of *Withering* ; (Collington Woods, and on the Banks of the Esk, above Newbattle.)

A variety of the *G. rivale*, with proliferous flowers, occurs occasionally in Collington Woods.

425. *Comarum palustre*, Hunter's Bog; In a marsh on the east side of Arthur's Seat; Duddingston Loch; Braid Hill Marshes; Pentland Hills; Ravelrig Bog.



POLYANDRIA MONOGYNIA.

426. *Chelidonium majus*, (Ruins of Corstorphine Castle; between the eight mile-stone and Cockenzie, on the Haddington road from Edinburgh.)
427. *Glaucium luteum*, (Near Queensferry; near Rosythe Castle; Gravelly Bed of the Water of Leith, beyond Coltbridge; Sandy shores near Gosford and North Queensferry.)
428. *Papaver Argemone*, Arthur's Seat; Field near Newhaven; Field near to the New Botanic Garden; (Road-sides about Lasswade.)
429. *P. dubium*, King's Park, &c.
430. *P. Rhœas*, Salisbury Craigs, &c.
431. *P. cambricum*, Banks of the Water of Leith, near Woodhall; (Braid Woods.)
432. *Nymphæa alba*, (Lochend.)
433. *Nuphar lutea*, Lochend.
434. *Tilia europæa*, Braid Woods, &c. &c.
435. *Cistus Helianthemum*, *Helianthemum vulgare*, *Grev. Fl. Edin.*; Arthur's Seat; Blackford Hill; Pentland Hills.

POLYANDRIA PENTAGYNIA.

436. *Aquilegia vulgaris*, Granton, Dalhousie, and Collington Woods; (Newbattle Woods.)

437. *Stratiotes aloides*, Duddingston Loch.

POLYANDRIA POLYGYNIA.

438. *Anemone nemorosa*, Rosslyn and Collington Woods ; Braid Hill.
439. *Clematis Vitalba*, By the bridge near to the Palace in Dalkeith Park ; (Collington Woods.)
440. *Thalictrum minus*, Sea-shore between Caroline Park and Cramond ; North Queensferry ; (Coast west of Kirkaldy.)
441. *T. majus*, Hills at North Queensferry.
442. *T. flavum*, (At North Queensferry.)
443. *Ranunculus aquatilis*, Lochend ; Duddingston Loch, &c. &c.
444. *R. hederaceus*, Ditch in the King's Park, near the Duke's Walk ; Marsh between Rosslyn and Lasswade ; (Road-side near Mordun.)
445. *R. Lingua*, Duddingston Loch.
446. *R. Flammula*, Duddingston Loch ; Lochend ; Marshes on the Braid Hill, &c.
447. *R. auricomus*, Rosslyn and Auchindinny Woods ; Road-side near Dalhousie Castle ; (Newbattle Woods ; River banks, opposite Lugton Woods, near Dalkeith ; Habbie's How.)
448. *R. sceleratus*, Duddingston Loch ; Ditches in the Meadows ; Lochend.
449. *R. acris*, Salisbury Craigs, &c. &c.
450. *R. repens*, Salisbury Craigs, &c. &c.
451. *R. bulbosus*, Salisbury Craigs ; Arthur's Seat ; Hills at North Queensferry.
452. *R. hirsutus*, (Pentland Hills.)
453. *R. arvensis*, (Corn-field near Stockbridge.)
454. *R. Ficaria*, *Ficaria ranunculoides*, *Grev. Fl. Edin.* Blackford Hill ; Salisbury Craigs ; Banks of the Water of Leith, &c.

455. *Trollius europæus*, Banks of the Water of Leith, opposite Newmill, above Currie; (Meadow ground south of Ravelrig Toll; near Borthwick Castle; Lugton Woods; Woods at Mid-Calder.)
456. *Caltha palustris*, Duddingston Loch, &c. &c.
Var. β , *radicans* of Smith, Pentland Hills.
457. *Helleborus viridis*, (Wall-top near Lasswade.)
458. *H. fœtidus*, (Between Anstruther and Kepply.)



DIDYNAMIA GYMNOSPERMIA.

459. *Ajuga reptans*, Rosslyn and Auchindinny Woods; (A variety with white flowers at Aberdour.)
460. *Teucrium Scorodonia*, Arthur's Seat; Salisbury Craigs; Rosslyn Woods; Pentland Hills; Burntisland.
461. *Mentha piperita*, (Near Edinburgh.)
462. *M. hirsuta*, Duddingston Loch, &c. &c.
463. *M. rubra*, (Musselburgh.)
464. *M. arvensis*, Braid Hill; Fields near Newhaven and Collington; Corn-fields about Craigcroock.
365. *M. Pulegium*, (Sides of springs on the Pentland Hills.)
466. *Glechoma hederacea*, Salisbury Craigs; Arthur's Seat; Under a wall near Lasswade; (Newbattle Woods.)
467. *Lamium album*, King's Park, &c. &c.
468. *L. purpureum*, Arthur's Seat, &c. &c.²³ (Also with a white flower.)
469. *L. incisum*, In a field near Newhaven; (Road-side between Merchiston Castle and Collington.)
470. *L. amplexicaule*, Under a wall by the road-side beyond Libberton Church, towards Lasswade; near Mavisbank; (Edge of Corn-fields at the northern base of

Braid Hill ; Road-side between Merchiston Castle and Collington.)

471. *Galeopsis Ladanum*, Roman Camp above Newbattle ; (Road-side near Oxenford Castle ; and at Cross-Gate Toll.)
472. *G. Tetrahit*, King's Park ; Lochend ; Water of Leith, &c.
473. *G. versicolor*, Lasswade ; Lochend ; Edge of Duddingston Loch ; Corn-fields under Braid Hill.
474. *Betonica officinalis*, (Collington and Auchindinny Woods.)
475. *Stachys sylvatica*, Blackford Hill ; King's Park ; Water of Leith, near St. Bernard's well ; Rosslyn Woods.
476. *S. ambigua*, Fields near Lasswade ; Habbie's How on the Pentland Hills ; Fields under the Pentland Hills ; Fields in Auchindinny Woods.
477. *S. palustris*, Duddingston Loch ; Rosslyn Woods ; (Ditches by the road-side, south-west of Caroline Park.)
478. *S. arvensis*, South-east side of the Pentland Hills ; Hills at North Queensferry ; (Regent Road.)
479. *Ballota nigra*, (North side of Duddingston Loch ; same place with white flowers ; (Side of a lane behind Aberlady.)
480. *Marrubium vulgare*, (Burntisland ; Fisherrow and Guillon Links ; Long Niddry ; Inchcolm ; Road-side near Warrender House.)
481. *Leonurus Cardiaca*, (In a shady walk behind Fisherrow, and in Collington Woods.)
482. *Clinopodium vulgare*, Salisbury Craigs ; Arthur's Seat ; Burntisland, &c.
483. *Origanum vulgare*, Near Burntisland ; at the entrance of the woods at Aberdour on the Burntisland side ; (Banks of the Water of Leith.)
484. *Thymus Serpyllum*, King's Park, and with a white flower ; Braid and Pentland Hills, &c.

485. *Scutellaria galericulata*, (Marsh near Dundas Hill.)
 486. *Prunella vulgaris*, King's Park, Rosslyn Wood, &c.

DIDYNAMIA ANGIOSPERMIA.

487. *Bartsia Odontites*, Field near the aqueduct at Slateford, &c.
 488. *Euphrasia officinalis*, King's Park ; Braid, Blackford, and Pentland Hills ; Caroline Park, &c.
 489. *Rhinanthus Crista Galli*, Fields under Blackford and Braid Hills ; Edges of Duddingston Loch ; Rosslyn Woods, &c.
 490. *Melampyrum pratense*, Rosslyn and Auchindinny Woods.
 491. *Lathræa Squammaria*, Wood opposite Melville Castle, near Lasswade, growing under beech trees along with the *Mercurialis perennis* ; Arniston and Dalhousie Woods ; (Mavisbank, near Lasswade ; Woods between Auchindinny and Rosslyn ; Banks of the Esk, near Kevock-Mill,)
 492. *Pedicularis palustris*, Duddingston and Guillon Lochs ; Marshes on the Pentland Hills, &c.
 493. *P. sylvatica*, Ravelrig Bog ; Pentland Hills, behind Currie ; Roman Camp, &c.
 494. *Antirrhinum Cymbalaria*, Debris of Salisbury Craigs ; Wall near Newhaven ; (New road to Portobello ; Trinity Mains.)
 495. *A. repens*, (Banks of the Esk, above Musselburgh.)
 496. *A. Linaria*, Banks of the Water of Leith, near St. Bernard's Well ; Salisbury Craigs ; Road-side from Jock's Lodge to Duddingston ; (Where the road to Stirling turns off from the Glasgow road ; Banks of the Canal near Slateford ; Wood near the Pentland Hills ; between Stockbridge and Caroline Park.)
 497. *A. majus*, Craigmillar Castle and Rosslyn Castle.
 498. *Scrophularia nodosa*, King's Park ; Fields on the

Queensferry road, and fields near Stockbridge ;
near St. Bernard's Well, &c. (Inchcolm.)

499. *S. aquatica*, By the side of a stream near Burntisland ;
(Gogar Burn, and by a rivulet near the entrance to
Hopetoun House.)
500. *S. vernalis*, (Old walls near Hatton.)
501. *Digitalis purpurea*, Blackford Hill ; Craigleith Quarries ;
at both these places with white flowers ; Braid
Hill.
502. *Verbena officinalis*, (Without the gates of Inverkeith-
ing.)
503. *Orobanche major*, (Upon the Buck of Burntisland.)
504. *O. rubra*, (Near Seafield Tower, between Kirkcaldy
and Kinghorn.)

TETRADYNAMIA SILICULOSA.

505. *Cakile maritima*, *Bunias Cakile*, *Sm. Fl. Brit.* Leith
Sands ; between Newhaven and Caroline Park,
&c.
506. *Coronopus Ruellii*, Burntisland and Seton Harbour ;
(Road-side west of Tobago Street, Edinburgh ;
Musselburgh.)
507. *Thlaspi arvense*, Corn-fields at North Queensferry ;
Corn-fields between Burntisland and North Queens-
ferry ; Figget Whins and Corn-fields near Edin-
burgh.)
508. *Thlaspi Bursa-Pastoris*, King's Park ; Walls about
Edinburgh, &c. &c.
509. *Lepidium latifolium*, (By the Castle of Weems, in
Fifeshire.)
510. *L. campestre*, On the north bank of the Water of
Leith, near St. Bernard's Well.

511. *L. hirtum*, (Woods near Rosslyn ; in a Corn-field at Bell's Mills.)
512. *Cochlearia officinalis*, Inchkeith ; Inchcolm ; Cramond Island ; all along the shore from Burntisland to Aberdour ; Sea-shore between Granton Wood and Cramond ; Fisherrow and Musselburgh Links.
513. *C. Danica*, (At Burntisland and Cramond Island, in the Frith of Forth.)
514. *C. Armoracia*, (In a Field near Craigcrook ; Duddingston Loch.)
515. *Subularia aquatica*, (Otterston Loch, Fifeshire ?)
516. *Draba verna*, Salisbury Craigs ; Arthur's Seat ; Braid and Blackford Hills, &c.
517. *Draba muralis*, (In a field behind the Old Botanic Garden ; and near Bellevue.
518. *Camelina sativa*, *Alyssum sativum*, *Sm. Fl. Brit.* (Near Inverkeithing, and on the Calton Hill.

TETRADYNAMIA SILIQUOSA.

519. *Cardamine amara*, Marsh about a mile west from Lasswade ; Water of Leith, near St. Bernard's Well ; (Near Bell's Mill and Kevock-Mill ; Banks of the Esk, above Dalkeith.)
520. *C. pratensis*, Duddingston Loch ; Water of Leith in many places ; Marsh about a mile west from Lasswade ; Moist fields near Edinburgh very common, (Flowers sometimes double in the wild state.)
521. *C. hirsuta*, King's Park ; Rosslyn Woods ; Burntisland ; Water of Leith, &c.
522. *Arabis thaliana*, Salisbury Craigs and Arthur's Seat ; near St. Anthony's Chapel in the King's Park ; Hills behind Pettycur and Burntisland.
523. *A. hirsuta*, *Turritis hirsuta*, *Sm. Fl. Brit.* Near the Basaltic Columns in the King's Park, and at Habbie's How on the Pentland Hills ; Salisbury Craigs.

524. *Barbarea vulgaris*, *Erysimum Barbarea*, *Sm. Fl. Brit.*
Banks of the Water of Leith near Stockbridge ;
(Road-side south of Dalkeith ; and on the banks of
the Esk ; Coast of Fife.)
525. *B. præcox*, *Erysimum præcox*, *Sm. Fl. Brit.* In the
bed of the Water of Leith, near St. Bernard's
Well.
526. *Nasturtium officinale*, *Sisymbrium Nasturtium*, *Sm. Fl.*
Brit. Duddingston Loch ; Guillon Loch ; Ditches
in the Meadows, near Edinburgh, &c.
527. *N. terrestre*, *Hook. Fl. Scot.* *Sisymbrium terrestre*,
Sm. Fl. Brit. *Nasturtium palustre*, *Grev. Fl.*
Edin. Figgat Whins ; (Kinghorn Loch.)
528. *N. amphibium*, *Sisymbrium amphibium*, *Sm. Fl. Brit.*
(Duddingston Loch.)
529. *Sisymbrium officinale*, *Erysimum officinale*, *Sm. Fl.*
Brit. (Salisbury Craigs ; Arthur's Seat ; Water of
Leith ; Road-sides near Edinburgh, &c.)
530. *S. Sophia*, Banks of the Water of Leith in many places
between Stockbridge and Canonmills Bridge ;
(Road-side from Canonmills to Trinity ; on Gos-
ford Links ; Musselburgh.)
531. *Erysimum Alliaria*, Banks of the Water of Leith ;
Salisbury Craigs and Arthur's Seat, &c.
532. *Cheiranthus fruticosus*, *Cheiranthus Cheiri*, *Grev.*
Fl. Edin. Ruins of Rosslyn Castle ; Ruins of an
old house in Auchindinny Woods ; King's Park,
and Salisbury Craigs.
533. *Hesperis matronalis*, *Hesperis inodora*, *Sm. Fl. Brit.*
Debris of Salisbury Craigs ; (Banks of Glencorse ;
Collington and Auchindinny Woods ; Banks below
Arthur's Seat ; Banks of the Water of Leith.)
534. *Brassica Napus* ; (Rocks behind Edinburgh Castle.)
535. *B. Rapa*, (Rocks behind Edinburgh Castle.)
536. *B. oleracea*, In many places on Inchcolm ; Inchkeith.
537. *B. campestris*, (By the side of the road leading from
Leith to Queensferry, near Bangholm.)

538. *Sinapis arvensis*, Water of Leith ; Braid Hills ; King's Park, &c. &c.
539. *S. alba*, (In corn-fields about Edinburgh, not unfrequent.)
540. *S. tenuifolia*, Hook. FL. Scot. *Sisymbrium tenuifolium*, Sm. Fl. Brit. *Dyplotaxis tenuifolia*, Grev. Fl. Edin. (Coast of Fife, at St. David's ; and coast between Burntisland and North Queensferry.)
541. *Raphanus Raphanistrum*, Banks of the Water of Leith ; Corn-fields about Edinburgh, &c.



MONADELPHIA PENTANDRIA.

542. *Erodium cicutarium*, Salisbury Craigs, and Arthur's Seat, especially towards Duddingston Loch ; Fisherrow and Musselburgh Links ; Leith Links, &c. (Leith Links, with purple flowers only ; on the south-side of Arthur's Seat, by the foot-road to Duddingston, chiefly with whitish flowers.)
543. *E. moschatum*, (Near Prestonpans.)

MONADELPHIA DECANDRIA.

544. *Geranium sanguineum*, Salisbury Craigs ; Arthur's Seat ; Sea-shore at Gosford-Gate, near Aberlady, abundantly ; (On both sides of the Frith of Forth.)
545. *G. pratense*, Debris of Salisbury Craigs ; Water of Leith near Stockbridge, &c.
546. *G. sylvaticum*, Collington, Arniston, Rosslyn and Auchindinny Woods ; (In the former with white flowers.)
547. *G. phæum*, (Collington Woods ; Near Linlithgow, and in Granton Woods.)
548. *G. pyrenaicum*, King's Park ; Near Craigmillar Castle ;

(Near Bell's Mills. In a lane leading from the south-east part of Edinburgh to the King's Park, abundantly.)

549. *G. rotundifolium*, (Arthur's Seat ; east side of Mason's Garden, near North Merchiston.)
550. *G. molle*, Salisbury Craigs ; King's Park ; Corn-fields near Edinburgh, &c.
551. *G. lucidum*, Arthur's Seat ; North Queensferry ; (A little north of Burntisland, and at Craiglockhart.)
552. *G. robertianum*, Salisbury Craigs ; Arthur's Seat ; Fields near Edinburgh, frequent, (sometimes with white flowers.)
553. *G. columbinum*, South side of Dalmahoy Hill, above Ravelrig Bog ; (King's Park ; Road-side near North Queensferry.)
554. *G. dissectum*, Near the village of Duddingston ; Fields between Duddingston and Portobello ; King's Park ; Banks of the Water of Leith, near Stock-bridge ; (The Meadows, and fields about Loch end.)
555. *G. pusillum*, Fisherrow and Musselburgh Links ; and (Arthur's Seat.)

MONADELPHIA POLYANDRIA.

556. *Malva sylvestris*, Salisbury Craigs ; Arthur's Seat ; Borders of fields about Edinburgh, &c.
557. *M. rotundifolia*, Fisherrow Links ; near Burntisland, and Prestonpans.
558. *M. moschata*, In a field by the road-side from Edinburgh to Lasswade ; (Near Inverkeithing.)
559. *Lavatera arborea*, (Inchgarvie and Mykrick Inch, and on the Basse Island in the Frith of Forth.)

DIADELPHIA HEXANDRIA.

560. *Fumaria officinalis*, Salisbury Craigs; Banks of the Water of Leith; Corn-fields about Edinburgh, frequent.
561. *F. capreolata*, In a field near the new Botanic Garden; in fields near Craigmillar Castle; Salisbury Craigs, &c. (About Red-hall, four miles from Edinburgh.)
562. *F. claviculata*, *Corydalis claviculata*, *Grev. Fl. Edin.* Ravelston Quarry; Woods near Aberdour.

DIADELPHIA OCTANDRIA.

563. *Polygala vulgaris*, Salisbury Craigs; Arthur's Seat; Rosslyn Woods: Hills behind Pettycur; Roman Camp above Newbattle. In the latter place, the flowers vary in every gradation of shade, from white to purple.

DIADELPHIA DECANDRIA.

564. *Genistas coparia*, *Spartium scoparium*, *Sm. Fl. Brit.*, Braid and Pentland Hills; Rosslyn and Auchindinny Woods, &c.
565. *G. tinctoria*, (Pentland Hills.)
366. *G. anglica*, (Pentland Hills.)
567. *Ulex europæus*, Arthur's Seat; Braid and Pentland Hills; Roman Camp, &c.
568. *U. nanus*, (Pentland Hills.)
569. *Ononis arvensis*, King's Park; Pentland Hills; on Fisherrow Links; in the latter place, I have observed this plant quite thorny.
570. *Anthyllis vulneraria*, Arthur's Seat.
571. *Orobus tuberosus*, Salisbury Craigs; Arthur's Seat; Rosslyn Woods, &c.

572. *O. sylvaticus*, (Woods near Currie.)
573. *Lathyrus pratensis*, Fields under the Pentland Hills ; Hedges by the road-side leading to Currie ; Rosslyn Woods, &c.
574. *L. sylvestris*, Debris of Salisbury Craigs, on the north-side.
575. *Vicia sylvatica*, Debris of Salisbury Craigs ; (and Collington Woods.)
576. *V. Cracca*, Salisbury Craigs ; Arthur's Seat ; and in Fields near Edinburgh.
577. *V. sativa*, Common in the King's Park, and on Dalmahoy Hill ; Corn-fields near Edinburgh, &c.
578. *V. lathyroides*, Arthur's Seat ; Blackford Hill ; Fields east of Portobello, near the sea ; Hills behind Burntisland ; (Leith gravel-pit, and Dalmahoy Hill.)
579. *V. lutea*, (Sea-side west of North Queensferry.)
580. *V. sepium*, Banks of the Water of Leith, near Stockbridge ; Debris of Salisbury Craigs ; (Rosslyn and Auchindinny Woods, &c. ; (Sometimes varying with white flowers.)
581. *Ervum hirsutum*, Salisbury Craigs ; Arthur's Seat ; Blackford Hill, &c.
582. *Ornithopus perpusillus*, (North Queensferry ; in a field near Maitland Bridge.
583. *Astragalus uralensis*, (Hills to the west of North Queensferry ; with a white flower in the same place.)
584. *A. hypoglottis*, King's Park, near Duddingston Loch ; Hills at North Queensferry ; all along the coast from Prestonpans to Gosford ; Guillon Links ; (Musselburgh Sands ; near Granton, on the coast ; with a white flower, and a foot high, a little to the west of Kirkaldy, by the sea-side.)
585. *A. glycyphyllos*, On rocks west of North Queensferry, abundantly ; (Coryton Woods ; Banks of the Water of Leith, between Coltbridge and Saughton-

hall; also in many places on the coast between Nether Cramond and South Queensferry.)

586. *Trifolium officinale*, Hills behind Burntisland; (Near Drummond Lodge; Aberlady Links.)
587. *T. ornithopodioides*, (In a Field near Maitland Bridge, between Edinburgh and Musselburgh; Fisherrow and Musselburgh Links; Figget Whins.)
588. *T. repens*, Salisbury Craigs; Arthur's Seat; Blackford Hill, &c. &c.
589. *T. pratense*, Salisbury Craigs; Arthur's Seat; in Meadows, near Edinburgh, abundantly.
590. *T. medium*, Salisbury Craigs; by the sides of Fields between Dalhousie and the Roman Camp; (Roadsides near Libberton.)
591. *T. arvense*, Salisbury Craigs; Arthur's Seat; Blackford and Braid Hill, &c.
592. *T. scabrum*, King's Park; (On dry soils by the seashore near Edinburgh.)
593. *T. striatum*, King's Park, especially near Duddingston Loch, and near the basaltic columns; (Banks facing the sea at North Queensferry, plentiful.)
594. *T. fragiferum*, (Links near Cockenzie; Leith Links; and Aberlady Bay.)
595. *T. procumbens*, Salisbury Craigs; Arthur's Seat; Blackford Hill, &c.
596. *T. filiforme*, King's Park; Salisbury Craigs, &c.
597. *Lotus corniculatus*, Salisbury Craigs; Arthur's Seat; Blackford Hill, &c.
598. *L. major*, King's Park; Rosslyn Woods; Fields under the Pentland Hills, &c.
599. *Medicago sativa*, (Figget Whins.)
600. *M. lupulina*, King's Park; Fields by the road-side leading from Libberton to Lasswade; (Quarry beyond Slateford.)

 POLYADELPHIA POLYANDRIA.

601. *Hypericum humifusum*, Rosslyn and Auchindinny Woods; Pentland Hills; by the sides of Bilston Burn; (Dalmahoy Hill; Lasswade; Road-sides and Fields about Rosslyn.)
602. *H. quadrangulum*, Wet woods near Currie; Rosslyn and Auchindinny Woods; Stream-side near Burntisland; (and in a ditch by Blackford Farm-house.)
603. *H. perforatum*, Water of Leith, above Stockbridge; Rosslyn Woods; Sea-shore between Kinghorn and Kirkaldy; (King's Park, and Corstorphine Hill.)
604. *H. hirsutum*, Rosslyn Woods; (Collington Woods; Shore near Kinghorn; and at Burntisland.)
605. *H. pulchrum*, Pentland Hills, and road-side leading to them from Hunter's Tryste; Rosslyn Woods; (Braid Hill and King's Park.)

 SYNGENESIA

POLYGAMIA ÆQUALIS.

606. *Tragopogon pratensis*, Banks of the Water of Leith, between Coltbridge and Saughton-Hall; Salisbury Craigs; Burntisland; Cockenzie; Beach at Caroline Park; King's Park.
607. *Sonchus palustris*, (Lochend.)
608. *S. arvensis*, Fields near the Aqueduct at Slateford; Fields near Libberton Church; and in Corn-fields near Burntisland, &c.
609. *S. oleraceus*, Salisbury Craigs; Arthur's Seat, &c. (Sometimes with white flowers.)
610. *Lactuca virosa*, Below the Basaltic Columns in the King's Park.

611. *Leontodon Taraxacum*, King's Park; and in waste places about Edinburgh, common.
612. *L. palustre*, Marshes on the Pentland Hills; Ravelrig Toll Moss; Marsh a mile west of Lasswade; (Road-side near Arniston.)
613. *Apargia hispida*, King's Park; (River-side at Rosslyn.)
614. *A. hirta*, (North Queensferry.)
615. *A. autumnalis*, King's Park; Pentland Hills, in many situations, &c.
616. *Hieracium Pilosella*, Near Mavisbank; Salisbury Craigs; Arthur's Seat; Pentland Hills; near Burntisland; (Bank a mile beyond Corstorphine, on the road to Kirkliston.)
617. *H. Lawsoni*, On the rocks to the westward of North Queensferry, just above the turnpike; (Shady places, almost on a level with the sea, between Pettycur and Burntisland.)
618. *H. murorum*, Salisbury Craigs and Arthur's Seat; Pentland Hills; Rosslyn Woods, and Hills at North Queensferry, &c.
619. *H. sylvaticum*, Habbie's How, on the Pentland Hills; (Arthur's Seat; and Braid Hill.)
620. *H. paludosum*, Arniston Woods, by the banks of the South Esk, at Temple, about a mile above Arniston; (Rosslyn Woods, abundantly.)
621. *H. prenanthoides*, (Near Cramond Bridge.)
622. *H. sabaudum*, Rosslyn, Auchindinny, Arniston, Collington and Dalhousie Woods.
623. *Crepis tectorum*, Salisbury Craigs; Arthur's Seat; &c. &c.
624. *Hypochæris radicata*, Salisbury Craigs and Arthur's Seat; Rosslyn Woods; Pentland Hills; Links to the eastward of Prestonpans, &c.
625. *Lapsana communis*, King's Park; Craigmillar Castle, &c. &c.

626. *Cichorium Intybus*, (Debris of Salisbury Craigs ; and in a field near Foxhall.)
627. *Arctium Lappa*, Salisbury Craigs ; Lochend, &c. &c.
628. *Carduus nutans*, In a field east of Cockenzie ; Fisherrow Links ; (West Pans ; behind Edinburgh Castle ; and on the coast about Aberlady, abundantly.)
629. *C. acanthoides*, King's Park ; (North Queensferry ; and about Portobello. It varies sometimes with a white flower.)
630. *C. tenuiflorus*, Sea-shore near Musselburgh ; Fisherrow Links ; (By the road-side at the bottom of Pitt Street.)
631. *C. marianus*, King's Park, near Duddingston Loch ; (West side of the Castle Rock ; at Burntisland ; between Kinghorn and Kirkaldy.)
632. *Cnicus lanceolatus*, Borders of Fields near Rosslyn, and Arniston Woods ; Road-sides about Edinburgh, &c.
633. *Cn. palustris*, Marshes on the Pentland Hills ; Moist places in Rosslyn Woods ; Marsh behind Craighlockhart, &c. Pretty frequent with white flowers.
634. *Cn. arvensis*, Salisbury Craigs ; Arthur's Seat ; Cornfields and road-sides about Edinburgh, very abundant.
635. *Cn. eriophorus*, (By the road-side near Oxenford Castle, and Chesterhall ; Sea-side between Blackness and Queensferry.)
636. *Cn. heterophyllus*, (Rosslyn and Auchindinny Woods ; Pentland Hills, near Currie.)
637. *Onopordon Acanthium*, Sea-shore beyond Prestonpans ; (Weems, Fifeshire ; between Limekilns and Charlestown ; near Cockenzie ; Links at Port-Seton ; near Musselburgh.)
638. *Bidens cernua*, (Lochend, near the House ; and Duddingston Loch.)

639. *Eupatorium cannabinum*, Rosslyn Woods ; Lasswade ; to the westward of Burntisland, near the woods of Aberdour ; (Among rocks below Kinghorn.)

SYNGENESIA

POLYGAMIA SUPERFLUA.

640. *Artemisia maritima*, By Guillon Loch ; (Banks of the Peffer Burn, near Aberlady ; Banks of a stream at Luffness Mill.)
641. *A. gallica*, In similar situations to the last. Along with the preceding at Peffer Burn, and St. Mary's Isle.
642. *A. Absinthium*, In many places on Inchcolm ; also about Burntisland and North Queensferry ; (About Aberlady.)
643. *A. vulgaris*, Banks of the Water of Leith, and borders of fields near the aqueduct at Slateford ; Braid Hill ; Near Hunter's Tryste, &c.
644. *Gnaphalium dioicum*, Hills above North Queensferry ; (Arthur's Seat ; and Dalmahoy Hill ; Pentland Hills.)
645. *G. sylvaticum*, In a field under Rosslyn Chapel ; Road-side between Burntisland and North Queensferry.
 Var. β . *Gnaphalium rectum* of Smith, On the Pentland Hills behind Currie, and also above Swanston Wood, (Figget Whins.)
646. *G. uliginosum*, By the sides of streams and marshes on the Pentland Hills, &c.
647. *G. minimum*, Figget Whins ; King's Park, by the road-side leading from St. Leonard's Hill to Duddingston ; (Blackford Hill ; and abundantly on Musselburgh Race-Ground.)
648. *G. germanicum*, Arthur's Seat and Blackford Hill ; in a field on the left hand side of the road from Edinburgh to Lasswade.

649. *Tussilago Farfara*, Banks of the Water of Leith abundantly; Banks of the North Esk, in Rosslyn Woods; and by the borders of fields near Craigmillar Castle.
650. *T. Petasites*, Banks of the Water of Leith; and banks of the North and South Esk, &c.
651. *Senecio vulgaris*, Salisbury Craigs; Arthur's Seat; and abundant in every waste and neglected place about Edinburgh.
652. *S. viscosus*, Calton Hill; Blackford Hill; Salisbury Craigs and Arthur's Seat; (At Dysart; near Newhaven; Figget Whins.)
653. *S. lividus*, On the Pentland Hills, near the new Reservoir at Crawley; and also on the south side of Blackford Hill.
654. *S. sylvaticus*, Coast between Burntisland and Aberdeen; and on the south side of Blackford Hill, abundant; (Figget Whins.)
655. *S. Jacobæa*, King's Park; Rosslyn Woods; Pentland Hills, &c.
656. *S. aquaticus*, In a marsh mid-way between Rosslyn and Lasswade; Duddingston Loch; Marsh near Auchindinny, &c.
657. *Aster Tripolium*, Morrison's Haven near Portobello; (Sea mill-dam, Burntisland Bay; Inverkeithing Bay and Aberlady Bay.)
658. *Solidago Virgaurea*, Near the Water-fall at Habbie's How, on the Pentland Hills; Rocks at Burntisland; (Collington and Rosslyn Woods.)
659. *Doronicum Pardalianches*, (Rosslyn and Collington Woods.)
660. *Bellis perennis*, King's Park, very abundant every where.
661. *Chrysanthemum Leucanthemum*, Salisbury Craigs; Arthur's Seat, &c. &c.
662. *Ch. segetum*, Corn-fields near Burntisland; Road-side between Burntisland and Inverkeithing; Corn-fields

- around North Queensferry, plentifully; and in a field near Prestonpans.
663. *Pyrethrum Parthenium*, On a wall between Mavisbank and Lasswade; Pettycur; (Restalrig, and in a lane near Aberlady.)
664. *P. inodorum*, Salisbury Craigs; Arthur's Seat, and fields near Edinburgh, abundantly.
665. *P. maritimum*, (On Inchcolm, abundantly.)
666. *Matricaria Chamomilla*, Debris of Salisbury Craigs; Arthur's Seat; and Corn-fields near Edinburgh.
667. *Anthemis arvensis*, In a lane near Lasswade; (Lanes on the north side of Linlithgow; Rosslyn Woods, and lanes about Rosslyn.)
668. *A. Cotula*, (Near Gibbet Toll; Road-sides about Rosslyn.)
669. *Achillea Ptarmica*, Pentland Hills, in many places; Ravelrig Toll Moss; Marsh near Auchindinny; (King's Park, &c.)
670. *A. Millefolium*, Salisbury Craigs; Arthur's Seat, &c. &c.

SYNGENESIA

POLYGAMIA FRUSTRANEA.

671. *Centaurea nigra*, Salisbury Craigs; Arthur's Seat; Braid and Blackford Hill; Road-sides about Edinburgh; (Sometimes, though rarely, varying with white flowers.)
672. *C. Cyanus*, Cornfields near the aqueduct at Slateford; Corn-fields on the Rosslyn road, beyond Libberton Church, &c. &c.
673. *C. Scabiosa*, (Common in Fifeshire; Road-side between Guillon and Dirleton, in East Lothian; Corn-fields west of Largo; Near Aberlady.)

 GYNANDRIA MONANDRIA.

674. *Orchis Morio*, (Near Habbie's How, on the Pentland Hills.)
675. *O. mascula*, Banks of the Water of Leith above Currie; Auchindinny and Rosslyn Woods; Salisbury Craigs; (Hunter's Bog in the King's Park; Newbattle Woods; sometimes with white flowers.)
676. *O. latifolia*, Duddingston Loch; Hunter's Bog, in the King's Park; Ravelrig Bog; Marshes on the Pentland Hills; Marsh between Newbattle and the Roman Camp; Rosslyn Woods; (About Comely Bank.)
677. *O. maculata*, Duddingston Loch; Ravelrig Toll Moss; Marsh behind Craiglockhart; Marsh between Newbattle and the Roman Camp; sometimes with red flowers; (At Figget Whins, surrounded by seedling plants with undivided bulbs.)
678. *Gymnadenia conopsea*, *Orchis conopsea*, *Sm. Fl. Brit.*; Hills above North Queensferry, near the Turnpike; (In meadow ground to the south of Dalmahoy Hill, with white flowers.)
679. *Habenaria viridis*, *Satyrium viride*, *Sm. Fl. Brit.*; *Orchis viridis*, *Sm. Comp. Fl. Brit.*; Roman Camp above Newbattle; Small hillocks near Caroline Park Gate; (Cramond Island, in the Frith of Forth; by the upper Reservoir on the Pentland Hills; About Burntisland, and on Dunearn Hill; Pentland Hills, near Currie; Ravelrig Toll Moss; near St. Anthony's Chapel, in the King's Park.)
680. *H. albida*, *Satyrium albidum*, *Sm. Fl. Brit.*; *Orchis albida*, *Sm. Comp. Fl. Brit.* (Breich Water-side, south from Whitburn; A single plant found growing along with the preceding species, on the hills above North Queensferry.)
681. *H. bifolia*, *Orchis bifolia*, *Sm. Fl. Brit.*; Ravelrig Toll Moss; in many places on the Pentland Hills, par-

- particularly in a marsh about four miles west from Currie ; (About Auchindinny, and on Guillon Links.)
682. *Listera ovata*, *Ophrys ovata*, *Sm. Fl. Brit.* ; *L. ovata*, *Sm. Comp. Fl. Brit.* ; Ravelrig Toll Moss ; in a marsh between Newbattle and the Roman Camp ; Pentland Hills ; (Meadow ground to the south of Ravelrig Toll, and Swanston Wood.)
683. *L. cordata*, *Ophrys cordata*, *Sm. Fl. Brit.* ; *L. cordata*, *Sm. Comp. Fl. Brit.* ; Ravelrig Toll Moss, growing under the Willows ; (In a Fir-wood between Woodhouselee and the Bush, and on the Pentland Hills.)
684. *L. Nidus Avis*, *Ophrys Nidus Avis*, *Sm. Fl. Brit.* ; *Epipactis Nidus Avis*, *Sm. Comp. Fl. Brit.* ; Auchindinny and Dalhousie Woods ; (Banks of the North Esk, near Rosslyn.)
685. *Epipactis latifolia*, *Serapias latifolia*, *Sm. Fl. Brit.* ; *E. latifolia*, *Sm. Comp. Fl. Brit.* ; Dalhousie Woods near the bridge, and by the side of Bilston Burn.)
686. *E. palustris*, *Serapias palustris*, *Sm. Fl. Brit.* ; *E. palustris*, *Sm. Comp. Fl. Brit.* (In a field one mile east of Anstruther.)
687. *Corallorrhiza innata*, *Ophrys corallorrhiza*, *Sm. Fl. Brit.* ; *C. innata*, *Sm. Comp. Fl. Brit.* ; Peat-bog near Ravelrig Toll, among the willows.



MONÆCIA MONANDRIA.

688. *Zannichellia palustris*, (Lochend ; in a small pool near Luffness, East Lothian.)
689. *Zostera marina*, Sea-shore between Burntisland and Pettycur, abundantly ; (Black rocks at Leith.)

MONÆCIA TRIANDRIA.

690. *Typha latifolia*, (Lochend.)
691. *Sparganium ramosum*, Duddingston Loch ; Lochend ; Braid Hill Marshes, &c.
692. *S. simplex*, Ditches west of Corstorphine ; (And in a small lake on the summit of Dunearn Hill, Fifeshire.)
693. *S. natans*, Braid-Hill Marshes ; (Loch on Dunearn Hill ; Peat-pits on the south side of Dalmahoy Hill ; Pentland Hills, near Currie.)
694. *Carex dioica*, Ravelrig Toll Moss ; (Blackford Hill and Pentland Hills.)
695. *C. Davalliana*, (Near Crossgate Toll, three miles south of Musselburgh ; and by the side of Guillon Loch.)
696. *C. pulicaris*, Hunter's Bog, in the King's Park ; near the Water-fall at Habbie's How, on the Pentland Hills ; and Ravelrig Toll Moss.
697. *C. muricata*, (Marshes near Figget Whins ; Banks of Duddingston Loch.)
698. *C. vulpina*, Stream-side near Gosford ; between Pettycur and Kinghorn, on the sea-side, by a spring ; by the side of a stream near Luffness ; (Near Figget Whins.)
699. *C. paniculata*, Marshes on the Pentland Hills ; Marsh behind Craiglockhart ; (Woods behind the village of Newbattle.)
700. *C. teretiuscula*, (North Queensferry ; Marsh at the foot of Dundas Hill, near Kirkliston ; Pentland Hills ; Ravelrig Toll Moss.)
701. *C. arenaria*, Figget Whins ; between Caroline Park and Granton, on the sea-shore ; Fisherrow and Musselburgh Links ; Links to the east of Cockenzie, &c. &c.
702. *C. intermedia*, (Marsh between Portobello and Arthur's Seat ; Guillon Links ; Braid and Pentland

- Hills; Hunter's Bog, in the King's Park; and on the banks of Lochend.)
703. *C. stellulata*, Pentland Hills, south-west of Currie, and above Swanston Wood; King's Park, &c. &c.
704. *C. curta*, Ravelrig Toll Moss, about the willows; (North Queensferry; Pentland Hills, in many places.)
705. *C. ovalis*, Hunter's Bog, in the King's Park; Ravelrig Toll Moss; (Pentland Hills; and on the west side of Lochend.)
706. *C. remota*, Near Borthwick Castle; (Rosslyn and Auchindinny Woods.)
707. *C. axillaris*, (Banks of the North Esk, above Melville Castle.)
708. *C. pendula*, Rosslyn Woods, between the Castle and Hawthornden; Auchindinny Woods; (Banks of the North Esk, above Melville Castle; and in the Park at Dalkeith.)
709. *C. strigosa*, Arniston Woods.
710. *C. sylvatica*, Rosslyn, Auchindinny and Arniston Woods; in the latter place near the Garden Wall.
711. *C. pallescens*, (Ravelrig Toll Moss, and on the Pentland Hills, in many places.)
712. *C. flava*, Pentland Hills, and in the King's Park, abundantly; Braid and Blackford Hills.
713. *C. extensa*, (Sea-coast between Starley Burn and Aberdour.)
714. *C. distans*, (Pentland Hills, very plentiful; side of a stream near Luffness, East Lothian.)
715. *C. præcox*, Salisbury Craigs; Arthur's Seat; Braid, Blackford and Pentland Hills, &c.
716. *C. pilulifera*, (King's Park, and Bevelaw Burn; Braid Hill.)
717. *C. panicea*, Pentland Hills, above Swanston Wood; and Arthur's Seat, &c.
718. *C. recurva*, Pentland Hills; King's Park; Ravelrig Toll Moss; Rosslyn Woods; Duddingston Loch, &c.

719. *C. cæspitosa*, Ravelrig Toll Moss; Pentland Hills; Bog east of Arthur's Seat, &c.
720. *C. stricta*, Braid Hill Marshes; (Banks of the Water of Leith, above Currie; Marsh a little to the west of North Queensferry.)
721. *C. acuta*, On the south side of Duddingston Loch; (Rosslyn Woods.)
722. *C. paludosa*, Marshes in Arniston Woods, &c. &c.
723. *C. riparia*, (Marshes, and by pond-sides and rivers, common.)
724. *C. lævigata*, (Cardenden, four miles north-west from Kirkaldy.)
725. *C. ampullacea*, Duddingston Loch, and in Pools at Ravelrig Toll Moss; (Hunter's Bog; Meadow-bank; Marsh above North Queensferry; and on the Pentland Hills, frequent.)
726. *C. vesicaria*, Marshes on the Pentland Hills; Ravelrig Toll Moss, &c.
727. *C. hirta*, Duddingston Loch; and in the Hunter's Bog, in the King's Park; (Leith Links, and Corstorphine Hill.)
728. *C. filiformis*, (Ravelrig Toll Moss, in the watery spots; very plentiful towards the middle of the moss.)

MONÆCIA TETRANDRÍA.

729. *Littorella lacustris*, (In a Marsh on Dunearn Hill, Fifeshire; Pool on Guillon Links.)
730. *Alnus glutinosa*, *Betula Alnus*, *Sm. Fl. Brit.*; *A. glutinosa*, *Sm. Comp. Fl. Brit.*; Rosslyn and Auchindinny Woods, &c.
731. *Urtica urens*, Salisbury Craigs; Arthur's Seat; and by road-sides and waste places near Edinburgh, abundantly.
732. *U. dioica*, Debris of Salisbury Craigs; under walls, abundantly, near Edinburgh.

MONCECIA POLYANDRIA.

733. *Ceratophyllum demersum*, (Canonmills Loch, 1809, abundant.)
734. *Myriophyllum spicatum*, (Duddingston Loch, frequent.)
735. *Arum maculatum*, Dalhousie Woods, near the bridge; and Arniston Woods, abundantly; Banks of the Water of Leith, about two miles above Currie; (and at Bogs-Mill near Slateford.)
736. *Quercus Robur*, Rosslyn, Auchindinny, Collington and Arniston Woods.)
737. *Q. sessiliflora*, Rosslyn and Auchindinny Woods.
738. *Castanea vulgaris*, *Fagus Castanea*, Sm. Fl. Brit.; Collington Woods, and Woods at Aberdour; it is scarcely indigenous.
739. *Fagus sylvatica*, Rosslyn and Auchindinny Woods; the Meadows, &c.
740. *Betula alba*, Rosslyn, Auchindinny and Collington Woods, &c.
741. *Carpinus Betulus*, (Hedges about Rosslyn.)
742. *Corylus Avellana*, Rosslyn, Auchindinny and Collington Woods, &c.
743. *Pinus sylvestris*, Rosslyn Woods, &c.

DICECIA DIANDRIA.

744. *Salix Lambertiana*, (Banks of the Water of Leith, above Coltbridge; Banks of the Esk, above Musselburgh.)
745. *S. triandra*, (Near Craigcrook.)
746. *S. decipiens*, (Collington Woods.)

747. *S. Russelliana*, Common near Edinburgh ; and at Duddingston Loch.
748. *S. fragilis*, At Ravelrig Toll, (but less frequent about Edinburgh than the preceding.)
749. *S. pentandra*, (Banks of the Esk ; and Water of Leith, and at Ravelrig Toll ; Rosslyn Woods.)
750. *S. nigricans*, (Banks of the Esk ; Craigcrook.)
751. *S. arenaria*, (Collington Woods, rare.)
752. *S. repens*, Moors, heaths and bogs, common.
 Var. *a.* *S. repens* of Smith, (Drumshoreland Moor ; Ravelrig Toll Moss ; Pentland Hills.)
 Var. *β.* *S. fusca* of Smith, (Ravelrig Toll Moss.)
753. *S. cinerea*, Bogs south side of Dalmahoy Hill ; Rosslyn Woods.
754. *S. capræa*, Newbattle Woods ; and in woods and thickets about Edinburgh, common.
755. *S. acuminata*, (Banks of the Esk, near Musselburgh ; and in Collington Woods, by the river side.)
756. *S. mollissima*, (Banks of the Esk, above Musselburgh.)
757. *S. viminalis*, Very common ; Rosslyn, &c. &c.
758. *S. alba*, Rosslyn Woods, &c.

DICECIA TRIANDRIA.

759. *Empetrum nigrum*, Pentland Hills, above Swanston Wood, and also near Habbie's How, &c.

DICECIA TETRANDRIA.

760. *Hippophæ- rhamnoides*, (Sea-shore near Gosford, abundantly ; Road-side near Hales. DR. GRAHAM.)
761. *Myrica Gale*, Marshy ground between Aberdour and Inverkeithing, abundantly.

DICECIA PENTANDRIA.

762. *Humulus Lupulus*, Hedges near Duddingston.

DICECIA OCTANDRIA.

763. *Populus alba*, Habbie's How, on the Pentland Hills, &c.

764. *P. tremula*, Rosslyn Woods, &c.

765. *P. nigra*, Rosslyn Woods, &c. &c.

DICECIA ENNEANDRIA.

766. *Mercurialis perennis*, Debris of Salisbury Craigs; Woods opposite Melville Castle; Braid and Blackford Hills, &c. &c.

767. *M. annua*, (Burntisland.)

768. *Hydrocharis Morsus Ranæ*, (Ditches and lakes, rare.)

DICECIA MONADELPHIA.

769. *Juniperus communis*, Arthur's Seat; Pentland Hills, abundantly.



POLYGAMIA MONŒCIA.

770. *Atriplex portulacoides*, (Coast at Leith.)

771. *A. laciniata*, Shore between Newhaven and Caroline Park; Shore near Seafeld Baths; Fisherrow and Musselburgh Links; Inchcolm, &c.

772. *A. patula*, Salisbury Craigs; Corn-fields near Duddingston, and on Figget Whins, &c.

773. *A. angustifolia*, (Waste places, frequent.)

774. *A. littoralis*. (About Dysart Rock; east of Caroline Park; Guillon Loch.)



CRYPTOGAMIA EQUISETACEÆ.

775. *Equisetum arvense*, Bank on the left-hand side of the road entering Lasswade from Edinburgh; (Marionville; Coltbridge Field; near a marsh between Portobello and Duddingston.)

776. *E. fluviatile*, In wet places in Rosslyn, Arniston and Auchindinny Woods; (Lower end of Lasswade Paper-mill.)

777. *E. hyemale*, Wet places in Rosslyn and Collington Woods; Duddingston Loch; (Dalkeith, and between Mavisbank and Lasswade.)

778. *E. limosum*, East and north sides of Duddingston Loch; Ravelrig Toll Moss, abundant; in a marsh on the south side of Braid Hill; wet places in Rosslyn Woods, &c. &c.

779. *E. palustre*, Duddingston Loch and Lochend; Rosslyn Woods; Mutton-hole, &c. &c.

780. *E. sylvaticum*, Rosslyn Woods; by the road-side about half a mile east of Ravelrig Toll, abundant; Auchindinny Woods; (Braid Hermitage; and by the Lower Reservoir on the Pentland Hills.)

CRYPTOGAMIA MARSILIACEÆ.

781. *Pilularia globulifera*, In marshes on the Pentland Hills, about two miles south-west from Currie; (Braid Hill Marshes.)

CRYPTOGAMIA LYCOPODINEÆ.

782. *Lycopodium clavatum*, On the Pentland Hills, just above Swanston Wood ; and also on the same Hills, near the old reservoir.
783. *L. alpinum*, (Pentland Hills, not frequent.)
784. *L. Selaginoides*, Hunter's Bog, in the King's Park ; (Marshes on the Pentland Hills, not frequent ; Guillon Links.)
785. *L. Selago*, Rocks on the Pentland Hills ; immediately above Swanston Wood.

CRYPTOGAMIA FILICES.

786. *Ophioglossum vulgatum*, Shady places in Dalhousie Woods ; (Carlowrie ; Balmuto ; and in a field near Little Vantage.)
787. *Botrychium Lunaria*, *Osmunda Lunaria*, *Sm. Fl. Brit.* ; *B. Lunaria*, *Sm. Comp. Fl. Brit.* ; On the Roman Camp above Newbattle ; Caroline Park, near the signal-post, in tolerable abundance ; Dalhousie Woods ; (Craiglockhart ; Hills behind Pettycur Harbour, and also on the Pentland Hills, but rare.)
788. *Blechnum boreale*, Pentland Hills abundantly ; Rosslyn Woods ; Arniston Woods, &c. &c.
789. *Pteris crispa*, (Salisbury Craigs.) This is a very doubtful station.
790. *P. aquilina*, Pentland Hills abundant ; Road-side near Currie ; Rosslyn Woods ; Braid and Blackford Hills, &c. &c.
791. *Scolopendrium vulgare*, Roof of the Chapel at Rosslyn ; Sides of the shaft of an old coal-pit near Bilston Burn ; (In the mouth of a well in the garden, at Preston ; on rocks by the side of south Esk in Arniston Woods, near Roseberry Bridge ; Sides of

- an old coal-pit, near Newbattle Woods ; Rocks west from Swanston, Pentland Hills.)
792. *Asplenium septentrionale*, Basaltic Columns in the King's Park, and frequent in many other places in the King's Park ; Rocks on the south side of Blackford Hill, abundant ; (Braid Hermitage.)
793. *A. marinum*, (In the crevices of rocks on Inchcolm, in the Frith of Forth ; on rocks near Queensferry ; Coves at Weems, Fifeshire.)
794. *A. Trichomanes*, Salisbury Craigs ; Arthur's Seat ; Rocks near the Water-fall at Habbie's How, on the Pentland Hills ; Arniston Woods ; Rocks on the south side of Braid and Blackford Hills.)
795. *A. Ruta-muraria*, In the crevices of rocks in the King's Park ; Rocks at North Queensferry ; Rocks on the south side of Braid and Blackford Hills.
796. *A. Adiantum-nigrum*, Salisbury Craigs ; Arthur's Seat ; Rocks on the south side of Braid and Blackford Hills ; Rocks in Rosslyn and Arniston Woods ; Rocks to the west of North Queensferry.
797. *Aspidium fragile*, *Cyathea fragilis*, *Sm. Fl. Brit.* ; On wet rocks by the side of the south Esk, at Temple, about a mile above Arniston ; (Pentland Hills, occasionally.)
798. *Aspi. Felix fœmina*, Debris of Salisbury Craigs ; Rosslyn Woods ; Swanston ; Auchindinny, Arniston and Dalhousie Woods, &c. (Ravelston Wood.)
799. *Aspi. dilatatum*, Habbie's How, on the Pentland Hills ; Swanston, Rosslyn, Dalhousie, Auchindinny and Arniston Woods, abundant.
800. *Aspi. lobatum*, Rosslyn Woods, frequent ; Arniston and Dalhousie Woods, &c.
801. *Aspi. aculeatum*, Rosslyn, Arniston, and Dalhousie Woods, &c.
802. *Aspi. Filix mas*, Debris of Salisbury Craigs ; Rosslyn Woods ; in a wood on the south side of Blackford Hill ; Swanston, Rosslyn, Auchindinny, Dalhousie and Arniston Woods, &c.

803. *Aspi. Oreopteris*, Banks near Habbie's How, on the Pentland Hills; Pentland Hills, above Swanston Wood; Rosslyn Woods, near Hawthornden; (Arniston Woods, and on the banks of Bevelaw Burn.)
804. *Polypodium vulgare*, Salisbury Craigs; Arthur's Seat; Rosslyn Woods, and Pentland Hills, abundant; Wood on the south side of Blackford Hill; Arniston and Dalhousie Woods, &c.
805. *P. Phegopteris*, (Arniston Woods, and by the side of Bevelaw Burn.)
806. *P. Dryopteris*, (In a birch thicket near Logan House, on the Pentland Hills; Arniston, Rosslyn and Auchindinny Woods; and at Habbie's How, on the Pentland Hills.)

INDEX.

A.

	PAGE
ACER Pseudo Platanus, <i>Sycamore</i> ,	23
— campestre, <i>Common Maple</i> ,	23
ACHILLEA Ptarmica, <i>Sneeze-wort</i> ,	50
— Millefolium, <i>Common Yarrow</i> ,	50
ADOXA Moschatellina, <i>Tuberous Moschatel</i> ,	24
ÆGOPODIUM Podagraria, <i>Gout-weed</i> ,	18
ÆTHUSA Cynapium, <i>Fool's Parsley</i> ,	18
AGRIMONIA Eupatoria, <i>Agrimony</i> ,	28
AGROSTEMMA Githagø, <i>Corn Cockle</i> ,	27
AGROSTIS, Spica venti, <i>Silky Bent-grass</i> ,	5
— canina, <i>Brown Bent-grass</i> ,	5
— vulgaris, <i>Fine Bent-grass</i> ,	5
— alba, <i>Marsh Bent-grass</i> ,	5
AIRA cristata, <i>Crested Hair-grass</i> ,	6
— aquatica, <i>Water Hair-grass</i> ,	6
— cæspitosa, <i>Turfy Hair-grass</i> ,	6
— flexuosa, <i>Waved Hair-grass</i> ,	6
— caryophyllea, <i>Silver Hair-grass</i> ,	6
— præcox, <i>Early Hair-grass</i> ,	6
AJUGA reptans, <i>Common Bugle</i> ,	34
ALCHEMILLA vulgaris, <i>Common Lady's Mantle</i> ,	10
— arvensis, <i>Field Lady's Mantle, or Parsley Piert</i> ,	11
ALISMA Plantago, <i>Great Water Plantain</i> ,	22
— ranunculoides, <i>Lesser Water Plantain</i> ,	22

	PAGE
ALLIUM carinatum, <i>Mountain Garlic</i> ,	20
—— vineale, <i>Crow Garlic</i> ,	20
—— oleraceum, <i>Streaked Field-Garlick</i> ,	20
—— ursinum, <i>Broad-leaved Garlic, or Ramsons</i> ,	20
ALNUS glutinosa, <i>Common Alder</i> ,	55
ALOPECURUS pratensis, <i>Meadow Fox-tail grass</i> ,	5
—— geniculatus, <i>Floating Fox-tail grass</i> ,	5
ANAGALLIS arvensis, <i>Scarlet Pimpernel</i> ,	13
—— tenella, <i>Bog Pimpernel</i> ,	13
ANCHUSA, sempervirens, <i>Evergreen Alkanet</i> ,	12
ANEMONE nemorosa, <i>Wood Anemone</i> ,	33
ANGELICA sylvestris, <i>Wild Angelica</i> ,	17
ANTHEMIS arvensis, <i>Corn Chamomile</i> ,	50
—— Cotula, <i>Stinking Chamomile</i> ,	50
ANTHOXANTHUM odoratum, <i>Sweet-scented vernal Grass</i> ,	3
ANTHRISCUS vulgaris, <i>Common Anthriscus</i> ,	19
ANTHYLLIS vulneraria, <i>Kidney Vetch, or Lady's Finger</i> ,	42
ANTIRRHINUM Cymbalaria, <i>Ivy-leaved Toad-flax</i> ,	36
—— repens, <i>Creeping-rooted Toad-flax</i> ,	36
—— Linaria, <i>Yellow Toad-flax</i> ,	36
—— majus, <i>Great Snap Dragon</i> ,	36
APARGIA, hispida, <i>Rough Apargia</i> ,	46
—— hirta, <i>Deficient Apargia</i> ,	46
—— autumnalis, <i>Autumnal Apargia</i> ,	46
APIUM graveolens, <i>Smallage, or Wild Celery</i> ,	18
—— Petroselinum, <i>Common Parsley</i> ,	18
AQUILEGIA vulgaris, <i>Common Columbine</i> ,	32
ARABIS thaliana, <i>Common Wall-Cress</i> ,	38
—— hirsuta, <i>Hairy Tower Mustard</i> ,	38
ARCTIUM Lappa, <i>Common Burdock</i> ,	47
ARENARIA peploides, <i>Sea-side Sandwort</i> ,	26
—— trinervis, <i>Three-nerved Sandwort</i> ,	26
—— serpyllifolia, <i>Thyme-leaved Sandwort</i> ,	26
—— verna, <i>Spring Sandwort</i> ,	26
—— tenuifolia, <i>Fine-leaved Sandwort</i> ,	26
—— rubra, <i>Purple Sandwort</i> ,	26
—— marina, <i>Sea-side Purple Sandwort</i> ,	26
ARTEMISIA maritima, <i>Drooping-flowered Sea Wormwood</i> ,	48
—— gallica, <i>Upright-flowered Sea Wormwood</i> ,	48

ARTEMISIA Absinthium, <i>Common Wormwood</i> ,	48
—— vulgaris, <i>Mugwort</i> ,	48
ARUM maculatum, <i>Cuckoo Pint, or Wake Robin</i> ,	56
ARUNDO arenaria, <i>Sea-side Reed</i> ,	5
—— Phragmites, <i>Common Reed</i> ,	6
ASARUM europæum, <i>Asarabacca</i> ,	28
ASPARAGUS officinalis, <i>Common Asparagus</i> ,	21
ASPERUGO procumbens, <i>German Madwort</i> ,	12
ASPERULA odorata, <i>Sweet Woodruff</i> ,	9
ASPIDIUM fragile, <i>Brittle Fine-leaved Aspidium</i> ,	61
—— Filix foemina, <i>Female Shield-fern</i> ,	61
—— dilatatum, <i>Great crested Shield-fern</i> ,	61
—— lobatum, <i>Close leaved prickly Shield-fern</i> ,	61
—— aculeatum, <i>Common prickly Shield-fern</i> ,	61
—— Filix mas, <i>Male Shield-fern</i> ,	61
—— Oreopteris, <i>Heath Shield-fern</i> ,	62
ASPLENIUM septentrionale, <i>Forked Spleenwort</i> ,	61
—— marinum, <i>Sea Spleenwort</i> ,	61
—— Trichomanes, <i>Common Maidenhair Spleenwort</i> ,	61
—— Ruta-muraria, <i>Rue Maidenhair</i> ,	61
—— Adiantum nigrum, <i>Black Maidenhair Spleenwort</i> ,	61
ASTER Tripolium, <i>Sea Starwort</i> ,	49
ASTRAGALUS uralensis, <i>Hairy Mountain Milk-Vetch</i> ,	43
—— hypoglottis, <i>Purple Mountain Milk-Vetch</i> ,	43
—— glycyphyllos, <i>Sweet Milk-Vetch</i> ,	43
ATRIPLEX portulacoides, <i>Shrubby Orache, or Sea Purslane</i> ,	58
—— laciniata, <i>Frosted Sea Orache</i> ,	58
—— patula, <i>Spreading Halbert-leaved Orache</i> ,	58
—— angustifolia, <i>Spreading narrow-leaved Orache</i> ,	59
—— littoralis, <i>Grass-leaved Sea Orache</i> ,	59
ATROPA Belladonna, <i>Dwale, or Deadly Night-shade</i> ,	15
AVENA strigosa, <i>Bristle-pointed Oat</i> ,	8
—— pubescens, <i>Downy Oat-grass</i> ,	8
—— pratensis, <i>Narrow-leaved Oat-grass</i> ,	8
—— flavescens, <i>Yellow Oat-grass</i> ,	8

	PAGE
B.	
BALLOTA nigra, <i>Black Horehound</i> ,	35
BARBAREA vulgaris, <i>Bitter Winter-Cress</i> ,	39
—— præcox, <i>Early Winter-Cress</i> ,	39
BARTSIA Odontites, <i>Red Bartsia</i> ,	36
BELLIS perennis, <i>Common Daisy</i> ,	49
BERBERIS vulgaris, <i>Common Barberry</i> ,	21
BETA maritima, <i>Sea-side Beet</i> ,	16
BETONICA officinalis, <i>Wood Betony</i> ,	35
BETULA alba, <i>Common Birch</i> ,	56
BIDENS cernua, <i>Nodding Bur-Marigold</i> ,	47
BLECHNUM boreale, <i>Northern Blechnum</i> ,	60
BORAGO officinalis, <i>Common Borage</i> ,	12
BOTRYCHIUM Lunaria, <i>Moonwort</i> ,	60
BRASSICA Napus, <i>Wild Navew, or Cole-seed</i> ,	39
—— Rapa, <i>Turnip</i> ,	39
—— oleracea, <i>Sea Cabbage</i> ,	39
—— campestris, <i>Field Cabbage</i> ,	39
BRIZA media, <i>Common Quaking-grass</i> ,	7
BROMUS pinnatus, <i>Spiked Heath Brome-grass</i> ,	8
—— sylvaticus, <i>Slender Wood Brome-grass</i> ,	8
—— secalinus, <i>Smooth Rye Brome-grass</i> ,	8
—— velutinus, <i>Downy Rye Brome-grass</i> ,	8
—— mollis, <i>Soft Brome-grass</i> ,	8
—— racemosus, <i>Smooth Brome-grass</i> ,	8
—— erectus, <i>Upright Brome-grass</i> ,	8
—— asper, <i>Hairy Wood Brome-grass</i> ,	8
—— sterilis, <i>Barren Brome-grass</i> ,	8
—— diandrus, <i>Upright annual Brome-grass</i> ,	8
BUNIUM Bulbocastanum, <i>Common Earth-nut</i> ,	17
BUTOMUS umbellatus, <i>Flowering Rush</i> ,	24

C.

CAKILE maritima, <i>Sea Rocket</i> ,	37
CALLITRICHE aquatica, <i>Water Starwort</i> ,	2
CALLUNA vulgaris, <i>Common Ling</i> ,	23
CALTHA palustris, <i>Marsh Marigold</i> ,	34

	PAGE
CAMELINA sativa, <i>Gold of Pleasure</i> ,	38
CAMPANULA rotundifolia, <i>Round-leaved Bell-flower</i> ,	14
—— latifolia, <i>Spreading Bell-flower</i> ,	14
—— rapunculoides, <i>Creeping Bell-flower</i> ,	14
—— glomerata, <i>Clustered Bell-flower</i> ,	14
CARDAMINE amara, <i>Bitter Lady's Smock</i> ,	38
—— pratensis, <i>Common Lady's Smock</i> ,	38
—— hirsuta, <i>Hairy Lady's Smock</i> ,	38
CARDUUS nutans, <i>Musk Thistle</i> ,	47
—— acanthoides, <i>Wetted Thistle</i> ,	47
—— tenuiflorus, <i>Slender-flowered Thistle</i> ,	47
—— marianus, <i>Milk Thistle</i> ,	47
CAREX dioica, <i>Straight-fruited diœcious Carex</i> ,	53
—— Davalliana, <i>Recurved-fruited diœcious Carex</i> ,	53
—— pulicaris, <i>Flea Carex</i> ,	53
—— muricata, <i>Greater prickly Carex</i> ,	53
—— vulpina, <i>Great Carex</i> ,	53
—— paniculata, <i>Great paniced Carex</i> ,	53
—— teretiuscula, <i>Lesser paniced Carex</i> ,	53
—— arenaria, <i>Sea-side Carex</i> ,	53
—— intermedia, <i>Soft brown Carex</i> ,	53
—— stellulata, <i>Little prickly Carex</i> ,	54
—— curta, <i>White Carex</i> ,	54
—— ovalis, <i>Oval-spiked Carex</i> ,	54
—— remota, <i>Remote Carex</i> ,	54
—— axillaris, <i>Axillary Clustered Carex</i> ,	54
—— pendula, <i>Great pendulous Carex</i> ,	54
—— strigosa, <i>Loose pendulous Carex</i> ,	54
—— sylvatica, <i>Pendulous Wood Carex</i> ,	54
—— pallescens, <i>Pale Carex</i> ,	54
—— flava, <i>Yellow Carex</i> ,	54
—— extensa, <i>Long-bracteated Carex</i> ,	54
—— distans, <i>Distantly-spiked Carex</i> ,	54
—— præcox, <i>Vernal Carex</i> ,	54
—— pilulifera, <i>Round-fruited Carex</i> ,	54
—— panicea, <i>Pink-leaved Carex</i> ,	54
—— recurva, <i>Glaucous Heath Carex</i> ,	54
—— cæspitosa, <i>Tufted Bog Carex</i> ,	55
—— stricta, <i>Glaucous straight-leaved Carex</i> ,	55

	PAGE
CAREX acuta, <i>Slender-spiked Carex</i> ,	55
— paludosa, <i>Lesser Common Carex</i> ,	55
— riparia, <i>Great Common Carex</i> ,	55
— lævigata, <i>Smooth-stalked beaked Carex</i> ,	55
— ampullacea, <i>Small-fruited Bladder Carex</i> ,	55
— vesicaria, <i>Large-fruited Bladder Carex</i> ,	55
— hirta, <i>Hairy Carex</i> ,	55
— filiformis, <i>Slender-leaved Carex</i> ,	55
CARPINUS Betulus, <i>Hornbeam</i> ,	56
CARUM Carui, <i>Common Caraway</i> ,	18
CASTANEA vulgaris, <i>Spanish Chesnut-Tree</i> ,	56
CAUCALIS Anthriscus, <i>Upright Hedge Parsley</i> ,	18
— nodosa, <i>Knotted Hedge Parsley</i> ,	18
CENTAUREA nigra, <i>Black Knapweed</i> ,	50
— Cyanus, <i>Corn Blue-bottle</i> ,	50
— Scabiosa, <i>Greater Knapweed</i> ,	50
CERASTIUM vulgatum, <i>Broad-leaved Mouse-ear Chickweed</i> ,	27
— viscosum, <i>Narrow-leaved Mouse-ear Chickweed</i> ,	27
— semidecandrum, <i>Small Mouse-ear Chickweed</i> ,	27
— tetrandrum, <i>Tetrandrous Chickweed</i> ,	27
— arvense, <i>Field Chickweed</i> ,	27
CERATOPHYLLUM demersum, <i>Common Hornwort</i> ,	56
CHARA flexilis, <i>Smooth Chara</i> ,	1
— translucens, <i>Great Transparent Chara</i> ,	1
— vulgaris, <i>Common Chara</i> ,	1
— hispida, <i>Prickly Chara</i> ,	1
CHÆROPHYLLUM odoratum, <i>Sweet Cicely, Great Chervil</i> ,	18
— aureum, <i>Tawny-seeded Cow Parsley</i> ,	18
— sylvestre, <i>Smooth Cow Parsley</i> ,	18
— temulentum, <i>Rough Cow Parsley</i> ,	18
CHEIRANTHUS fruticosus, <i>Wild Wall-flower</i> ,	39
CHELIDONIUM majus, <i>Celadine</i> ,	32
CHENOPODIUM maritimum, <i>Sea-side Goosefoot</i> ,	16
— olidum, <i>Stinking Goosefoot</i> ,	16
— Bonus Henricus, <i>Perennial Goosefoot, or Good King Henry</i> ,	16
— urbicum, <i>Upright Goosefoot</i> ,	16
— rubrum, <i>Red Goosefoot</i> ,	16
— hybridum, <i>Maple-leaved Goosefoot</i> ,	16
— album, <i>White Goosefoot</i> ,	16

	PAGE
CHRYSANthemum Leucanthemum, <i>Great White Ox-eye</i> ,	49
————— segetum, <i>Corn Marigold</i> ,	49
CHRYSOSPLeNIUM alternifolium, <i>Alternate-leaved golden</i> <i>Saxifrage</i> ,	24
————— oppositifolium, <i>Common golden Saxifrage</i> ,	25
CICHORIUM Intybus, <i>Wild Succory</i> ,	47
CICUTA virosa, <i>Long-leaved Water-hemlock; Cowbane</i> ,	18
CIRCÆA Lutetiana, <i>Common Enchanter's Night-shade</i> ,	2
—— alpina, <i>Alpine Enchanter's Night-shade</i> ,	2
CISTUS Helianthemum, <i>Common Dwarf Cistus</i> ,	32
CLEMATIS Vitalba, <i>Traveller's Joy</i> ,	33
CLINOPODIUM vulgare, <i>Wild Basil</i> ,	35
CNICUS lanceolatus, <i>Spear Thistle</i> ,	47
—— palustris, <i>Marsh Thistle</i> ,	47
—— arvensis, <i>Creeping Thistle</i> ,	47
—— eriophorus, <i>Woolly-headed Thistle</i> ,	47
—— heterophyllus, <i>Melancholy Thistle</i> ,	47
COCHLEARIA officinalis, <i>Common Scurvy-grass</i> ,	38
—— Danica, <i>Danish Scurvy-grass</i> ,	38
—— Armoracia, <i>Horse-Radish</i> ,	38
COMARUM palustre, <i>Marsh Cinquefoil</i> ,	32
CONIUM maculatum, <i>Common Hemlock</i> ,	17
CONVALLARIA majalis, <i>Lily of the Valley</i> ,	21
CONVOLVULUS arvensis, <i>Small Bind-weed</i> ,	13
—— Sepium, <i>Great Bind-weed</i> ,	13
CORALLORRHIZA innata, <i>Spurless Coral-Root</i> ,	52
CORNUS sanguinea, <i>Wild Cornel-tree, or Dog-wood</i> ,	10
—— suecica, <i>Dwarf Cornel</i> ,	10
CORONOPUS Ruellii, <i>Swine's Cress</i> ,	37
CORYLUS Avellana, <i>Hazle-nut Tree</i> ,	56
CRATÆGUS Oxyacantha, <i>Hawthorn, or White Thorn</i> ,	29
CREPIS tectorum, <i>Smooth Hawk's-beard</i> ,	46
CRITHMUM maritimum, <i>Samphire</i> ,	17
CUSCUTA europæa, <i>Great Dodder</i> ,	16
CYNOGLOSSUM officinale, <i>Common Hound's Tongue</i> ,	12
CYNOSURUS cristatus, <i>Crested Dog's Tail-grass</i> ,	7

D.

DACTYLIS glomerata, <i>Rough Cock's Foot-grass</i> ,	7
DAPHNE Laureola, <i>Spurge Laurel</i> ,	23
DAUCUS Carota, <i>Wild Carrot</i> ,	19
DIANTHUS barbatus, <i>Sweet William</i> ,	25
—— deltoides, <i>Maiden Pink</i> ,	25
DIGITALIS purpurea, <i>Purple Foxglove</i> ,	37
DIPSACUS sylvestris, <i>Wild Teasel</i> ,	9
DORONICUM Pardalianches, <i>Great Leopard's-Bane</i> ,	49
DRABA verna, <i>Common Whitlow-grass</i> ,	38
—— muralis, <i>Speedwell-leaved Whitlow-grass</i> ,	38
DROSERA rotundifolia, <i>Round-leaved Sun-dew</i> ,	20

E.

ECHIUM vulgare, <i>Common Viper's Bugloss</i> ,	12
EMPETRUM nigrum, <i>Black Crake-berry</i> ,	57
EPILOBIUM angustifolium, <i>Rose-bay Willow-herb</i> ,	22
—— hirsutum, <i>Great Hairy Willow-herb</i> ,	22
—— parviflorum, <i>Small-flowered Hoary Willow-herb</i> ,	22
—— palustre, <i>Narrow-leaved Marsh Willow-herb</i> ,	22
—— tetragonum, <i>Square-stalked Willow-herb</i> ,	22
—— montanum, <i>Broad Smooth-leaved Willow-herb</i> ,	22
EPIMEDIUM alpinum, <i>Barren-wort</i> ,	10
EPIPACTIS latifolia, <i>Broad-leaved Helleborine</i> ,	52
—— palustris, <i>Marsh Helleborine</i> ,	52
EQUISETUM arvense, <i>Corn Horsetail</i> ,	59
—— fluviatile, <i>Great Water Horsetail</i> ,	59
—— hyemale, <i>Rough Horsetail</i> ,	59
—— limosum, <i>Smooth naked Horsetail</i> ,	59
—— palustre, <i>Marsh Horsetail</i> ,	59
—— sylvaticum, <i>Branched wood Horsetail</i> ,	59
ERICA cinerea, <i>Fine-leaved Heath</i> ,	23
—— Tetralix, <i>Cross-leaved Heath</i> ,	23
ERIOPHORUM vaginatum, <i>Hare's-tail Cotton-grass</i> ,	5
—— angustifolium, <i>Common Cotton-grass</i> ,	5

	PAGE
ERIOPHORUM polystachion, <i>Broad-leaved Cotton-grass</i> ,	5
ERODIUM cicutarium, <i>Hemlock-leaved Stork's-bill</i> ,	40
—— moschatum, <i>Musky Stork's-bill</i> ,	40
ERVUM hirsutum, <i>Hairy Tare</i> ,	43
ERYNGIUM maritimum, <i>Sea-side Eryngo</i> ,	16
ERYSIMUM Alliaria, <i>Garlic Hedge-Mustard</i> ,	39
ERYTHRÆA Centaurium, <i>Common Centaury</i> ,	15
—— pulchella, <i>Dwarf-branched Erythræa</i> ,	15
—— littoralis, <i>Dwarf Sea-side Erythræa</i> ,	15
EUONYMUS europæas, <i>Spindle Tree</i> ,	15
EUPATORIUM cannabinum, <i>Hemp Agrimony</i> ,	48
EUPHORBIA exigua, <i>Dwarf Spurge</i> ,	28
—— Cyparissias, <i>Cypress Spurge</i> ,	28
—— Esula, <i>Leafy-branched Spurge</i> ,	28
—— Peplus, <i>Petty Spurge</i> ,	29
—— Helioscopia, <i>Sun Spurge</i> ,	29
EUPHRASIA officinalis, <i>Eye-bright</i> ,	36

F.

FAGUS sylvatica, <i>Beech Tree</i> ,	56
FEDIA olitoria, <i>Corn-salad, or Lamb's Lettuce</i> ,	4
—— dentata, <i>Narrow-fruited Corn-salad</i> ,	4
FESTUCA ovina, <i>Sheep's Fescue-grass</i> ,	7
—— duriuscula, <i>Hard Fescue-grass</i> ,	7
—— bromoides, <i>Barren Fescue-grass</i> ,	7
—— myurus, <i>Wall Fescue-grass</i> ,	7
—— gigantea, <i>Tall Fescue-grass</i> ,	8
—— loliacea, <i>Spiked Fescue-grass</i> ,	8
—— pratensis, <i>Meadow Fescue-grass</i> ,	8
—— elatior, <i>Tall Fescue-grass</i> ,	8
FRAGARIA vesca, <i>Wood Strawberry</i> ,	31
FRAXINUS excelsior, <i>Common Ash</i> ,	2
FUMARIA officinalis, <i>Common Fumitory</i> ,	42
—— capreolata, <i>Ramping Fumitory</i> ,	42
—— claviculata, <i>Climbing Fumitory</i> ,	42

G.

GALANTHUS <i>nivalis</i> , <i>Snowdrop</i> ,	20
GALEOPSIS <i>Ladanum</i> , <i>Red Hemp-Nettle</i> ,	35
———— <i>Tetrahit</i> , <i>Common Hemp-Nettle</i> ,	35
———— <i>versicolor</i> , <i>Large-flowered Hemp-Nettle</i> ,	35
GALIUM <i>verum</i> , <i>Yellow Bed-straw</i> ,	9
———— <i>cruciatum</i> , <i>Crosswort</i> ,	10
———— <i>palustre</i> , <i>White Water Bed-straw</i> ,	10
———— <i>saxatile</i> , <i>Smooth Heath Bed-straw</i> ,	10
———— <i>erectum</i> , <i>Upright Bed-straw</i> ,	10
———— <i>pusillum</i> , <i>Least Bed-straw</i> ,	10
———— <i>Mollugo</i> , <i>Great Hedge Bed-straw</i> ,	10
———— <i>Aparine</i> , <i>Goose-grass, or Cleavers</i> ,	10
GENISTA <i>scoparia</i> , <i>Common Broom</i> ,	42
———— <i>tinctoria</i> , <i>Dyer's Green weed</i> ,	42
———— <i>anglica</i> , <i>Needle Furze</i> ,	42
GENTIANA <i>amarella</i> , <i>Autumnal Gentian</i> ,	16
———— <i>campestris</i> , <i>Field Gentian</i> ,	16
GERANIUM <i>sanguineum</i> , <i>Bloody Crane's-bill</i> ,	40
———— <i>pratense</i> , <i>Crow-foot-leaved Crane's-bill</i> ,	40
———— <i>sylvaticum</i> , <i>Wood Crane's-bill</i> ,	40
———— <i>phæum</i> , <i>Dusky Crane's-bill</i> ,	40
———— <i>pyrenaicum</i> , <i>Mountain Crane's-bill</i> ,	40
———— <i>rotundifolium</i> , <i>Round-leaved Crane's-bill</i> ,	41
———— <i>molle</i> , <i>Dove's-foot Crane's-bill</i> ,	41
———— <i>lucidum</i> , <i>Shining Crane's-bill</i> ,	41
———— <i>robertianum</i> , <i>Stinking Crane's-bill</i> ,	41
———— <i>columbinum</i> , <i>Long-stalked Crane's-bill</i> ,	41
———— <i>dissectum</i> , <i>Jagged-leaved Crane's-bill</i> ,	41
———— <i>pusillum</i> , <i>Small-flowered Crane's-bill</i> ,	41
GEUM <i>urbanum</i> , <i>Common Avens</i> ,	31
———— <i>rivale</i> , <i>Water Avens</i> ,	31
GLAUCIUM <i>luteum</i> , <i>Yellow Horned-Poppy</i> ,	32
GLAUX <i>maritima</i> , <i>Black Salt-wort</i> ,	15
GLECHOMA <i>hederacea</i> , <i>Ground Ivy</i> ,	34
GNAPHALIUM <i>dioicum</i> , <i>Mountain Cudweed</i> ,	48
———— <i>sylvaticum</i> , <i>Highland Cudweed</i> ,	48

	PAGE
GNAPHALIUM uliginosum, <i>Marsh Cudweed</i> ,	48
———— minimum, <i>Least Cudweed</i> ,	48
———— germanicum, <i>Common Cudweed</i> ,	48
GYMNADENIA conopsea, <i>Fragrant Gymnadenia</i> ,	51

H.

HABENARIA viridis, <i>Frog or Green Habenaria</i> ,	51
———— albida, <i>Small White Habenaria</i> ,	51
———— bifolia, <i>Butterfly Habenaria</i> ,	51
HEDERA Helix, <i>Common Ivy</i> ,	15
HELLEBORUS viridis, <i>Green Hellebore</i> ,	34
———— foetidus, <i>Stinking Hellebore</i> ,	34
HERACLEUM Sphondylium, <i>Common Cow-Parsonip</i> ,	17
HESPERIS matronalis, <i>Dame's Violet</i> ,	39
HIERACIUM Pilosella, <i>Mouse-ear Hawkweed</i> ,	46
———— Lawsoni, <i>Glaucous hairy Hawkweed</i> ,	46
———— murorum, <i>Wall Hawkweed</i> ,	46
———— sylvaticum, <i>Wood Hawkweed</i> ,	46
———— paludosum, <i>Suscorey-leaved Hawkweed</i> ,	46
———— prænanthoides, <i>Rough-bordered Hawkweed</i> ,	46
———— sabaudum, <i>Shrubby Hawkweed</i> ,	46
HIPPOPHAE rhamnoides, <i>Sallow-thorn, or Sea Buckthorn</i> ,	57
HIPPURIS vulgaris, <i>Mare's-tail</i> ,	1
HOLCUS avenaceus, <i>Oat-like Soft-grass</i> ,	6
———— mollis, <i>Creeping Soft-grass</i> ,	6
———— lanatus, <i>Meadow Soft-grass</i> ,	6
HORDEUM murinum, <i>Wall Barley</i> ,	9
———— pratense, <i>Meadow Barley</i> ,	9
HUMULUS Lupulus, <i>Common Hop</i> ,	58
HYACINTHUS non-scriptus, <i>Wild Hyacinth, or Hare-bell</i> ,	20
HYDROCHARIS Morsus Ranæ, <i>Common Frog-bit</i> ,	58
HYDROCOTYLE vulgaris, <i>Marsh Penny-wort; White-rot</i> ,	16
HYOSCYAMUS niger, <i>Common Henbane</i> ,	14
HYPERICUM humifusum, <i>Trailing St. John's Wort</i> ,	45
———— quadrangulum, <i>Square-stalked St. John's Wort</i> ,	45
———— perforatum, <i>Perforated St. John's Wort</i> ,	45
———— hirsutum, <i>Hairy St. John's Wort</i> ,	45

	PAGE
HYPERICUM pulchrum, <i>Small Upright St. John's Wort</i> ,	45
HYPOCHÆRIS radicata, <i>Long-rooted Cat's-ear</i> ,	46

I.

ILEX aquifolia, <i>Common Holly</i> ,	11
IMPERATORIA Ostruthium, <i>Masterwort</i> ,	18
IRIS Pseudacorus, <i>Yellow Water Iris</i> ,	4

J.

JUNCUS glaucus, <i>Common Hard Rush</i> ,	21
— effusus, <i>Soft Rush</i> ,	21
— conglomeratus, <i>Round-headed Rush</i> ,	21
— squarrosus, <i>Moss Rush ; Heath Rush</i> ,	21
— bulbosus, <i>Round-fruited Rush</i> ,	21
— bufonius, <i>Toad Rush</i> ,	21
— uliginosus, <i>Little Bulbous Rush</i> ,	21
— acutiflorus, <i>Sharp-flowered Rush</i> ,	21
— lampocarpus, <i>Shining-fruited Rush</i> ,	21
— obtusiflorus, <i>Blunt-flowered Rush</i> ,	21
JUNIPERUS communis, <i>Common Juniper</i> ,	58

L.

LACTUCA virosa, <i>Strong-scented Lettuce</i> ,	45
LAMIUM album, <i>White Dead-Nettle</i> ,	34
— purpureum, <i>Red Dead-Nettle</i> ,	34
— incisum, <i>Cut-leaved Dead-Nettle</i> ,	34
— amplexicaule, <i>Hen-bit Dead-Nettle</i> ,	34
LAPSANA communis, <i>Nipple-wort</i> ,	46
LATHRÆA Squammaria, <i>Greater Toothwort</i> ,	36
LATHYRUS pratensis, <i>Meadow Vetchling</i> ,	43
— sylvestris, <i>Narrow-leaved Everlasting Pea</i> ,	43
LAVATERA arborea, <i>Sea-side Tree-Mallow</i> ,	41
LEMNA trisulca, <i>Ivy-leaved Duckweed</i> ,	3

	PAGE
LEMNA minor, <i>Lesser Duckweed</i> ,	3
— gibba, <i>Gibbous Duckweed</i> ,	3
LEONTODON Taraxacum, <i>Dandelion</i> ,	46
— palustre, <i>Marsh Dandelion</i> ,	46
LEONURUS Cardiaca, <i>Motherwort</i> ,	35
LEPIDIUM latifolium, <i>Broad-leaved Pepperwort</i> ,	37
— campestre, <i>Hoary Field Pepperwort</i> ,	37
— hirtum, <i>Hairy Field Pepperwort</i> ,	38
LIGUSTICUM scoticum, <i>Scottish Lovage</i> ,	17
LIGUSTRUM vulgare, <i>Privet</i> ,	2
LINUM usitatissimum, <i>Common Flax</i> ,	19
— catharticum, <i>Purging Flax</i> ,	20
LISTERA ovata, <i>Common Twayblade</i> ,	52
— cordata, <i>Heart-leaved Twayblade</i> ,	52
— Nidus Avis, <i>Bird's-nest Listera</i> ,	52
LITHOSPERMUM officinale, <i>Common Gromwell</i> ,	12
— arvense, <i>Corn Gromwell</i> ,	12
— maritimum, <i>Sea Gromwell</i> ,	12
LITTORELLA lacustris, <i>Plantain Shoreweed</i> ,	55
LOLIUM perenne, <i>Perennial Darnel, or Rye-Grass</i> ,	9
LONICERA Caprifolium, <i>Pale Perfoliate Honeysuckle</i> ,	15
— Periclymenum, <i>Common Honeysuckle, or Woodbine</i> ,	15
LOTUS corniculatus, <i>Common Bird's-foot Trefoil</i> ,	44
— major, <i>Greater Bird's-foot Trefoil</i> ,	44
LUZULA maxima, <i>Great Hairy Wood-rush</i> ,	21
— pilosa, <i>Small Hairy Wood-rush</i> ,	21
— campestris, <i>Hairy Field-rush</i> ,	21
LYCHNIS Flos-Cuculi, <i>Meadow Lychnis, or Ragged Robin</i> ,	27
— Viscaria, <i>Red German Catchfly</i> ,	27
— dioica, <i>Red and White Campion</i> ,	27
LYCOPODIUM clavatum, <i>Common Club-moss</i> ,	60
— alpinum, <i>Alpine Club-moss</i> ,	60
— Selaginoides, <i>Prickly Club-moss</i> ,	60
— Selago, <i>Fir Club-moss</i> ,	60
LYCOPSIS arvensis, <i>Small Bugloss</i> ,	12
LYSIMACHIA thyrsoflora, <i>Tufted Loosetrife</i> ,	13
— Nemorum, <i>Yellow Pimpernel, or Wood Loosetrife</i> ,	13

M.

MALVA sylvestris, <i>Common Mallow</i> ,	41
— rotundifolia, <i>Dwarf Mallow</i> ,	41
— moschata, <i>Musk Mallow</i> ,	41
MARRUBIUM vulgare, <i>White Horehound</i> ,	35
MATRICARIA Chamomilla, <i>Wild Chamomile</i> ,	50
MEDICAGO lupulina, <i>Black Medick, or Nonsuch</i> ,	44
— sativa, <i>Purple Medick, or Lucerne</i> ,	44
MELAMPYRUM pratense, <i>Common Yellow Cow-wheat</i> ,	36
MELICA nutans, <i>Nodding, or Mountain Melic-grass</i> ,	6
— uniflora, <i>Wood Melic-grass</i> ,	6
— cærulea, <i>Purple Melic-grass</i> ,	6
MENTHA piperita, <i>Peppermint</i> ,	34
— hirsuta, <i>Hairy Water-mint</i> ,	34
— rubra, <i>Tall red Mint</i> ,	34
— arvensis, <i>Corn-Mint</i> ,	34
— Pulegium, <i>Pennyroyal</i> ,	34
MENYANTHES trifoliata, <i>Common Buckbean</i> ,	13
MERCURIALIS perennis, <i>Perennial Mercury</i> ,	58
— annua, <i>Annual Mercury</i> ,	58
MILIUM effusum, <i>Spreading Millet-grass</i> ,	5
MONTIA fontana, <i>Water Chickweed, or Blinks</i> ,	9
MYOSOTIS sylvatica, <i>Wood Scorpion-grass</i> ,	11
— palustris, <i>Water Scorpion-grass</i> ,	11
— arvensis, <i>Field Scorpion-grass</i> ,	12
— versicolor, <i>Yellow and Blue Scorpion-grass</i> ,	12
MYRICA Gale, <i>Sweet Gale, or Dutch Myrtle</i> ,	57
MYRIOPHYLLUM spicatum, <i>Spiked Water Milfoil</i> ,	56

N.

NARCISSUS Pseudo-Narcissus, <i>Common Daffodil</i> ,	20
NARDUS stricta, <i>Mat-grass</i> ,	4
NARTHECIUM ossifragum, <i>Lancashire Asphodel</i> ,	20
NASTURTIUM officinale, <i>Water-Cress</i> ,	39
— terrestre, <i>Marsh Nasturtium</i> ,	39

	PAGE
NASTURTIIUM amphibium, <i>Amphibious Nasturtium</i> , . . .	39
NUPHAR lutea, <i>Yellow Water-Lily</i> ,	32
NYMPHÆA alba, <i>White Water-Lily</i> ,	32

O.

GENANTHE fistulosa, <i>Common Water-Dropwort</i> , . . .	17
———— crocata, <i>Hemlock Water-Dropwort</i> ,	17
ONONIS arvensis, <i>Rest-harrow</i> ,	42
ONOPORDON Acanthium, <i>Cotton Thistle</i> ,	47
OPHIOGLOSSUM vulgatum, <i>Adder's Tongue</i> ,	60
ORCHIS Morio, <i>Meadow Orchis</i> ,	51
———— mascula, <i>Early Spotted Orchis</i> ,	51
———— latifolia, <i>Marsh Orchis</i> ,	51
———— maculata, <i>Spotted palmate Orchis</i> ,	51
ORIGANUM vulgare, <i>Common Marjoram</i> ,	35
ORNITHOGALUM luteum, <i>Yellow Star of Bethlehem</i> , . . .	20
ORNITHOPUS perpusillus, <i>Common Bird's-foot</i> ,	43
OROBANCHE major, <i>Greater Broom-Rape</i> ,	37
———— rubra, <i>Bed Broom-Rape</i> ,	37
OROBUS tuberosus, <i>Tuberous Orobus</i> ,	42
———— sylvaticus, <i>Wood Orobus, or Bitter Vetch</i> ,	43
OXALIS Acetosella, <i>Wood Sorrel</i> ,	27

P.

PAPAVER Argemone, <i>Long Prickly-headed Poppy</i> ,	32
———— dubium, <i>Long Smooth-headed Poppy</i> ,	32
———— Rhœas, <i>Common Red Poppy</i> ,	32
———— cambricum, <i>Yellow Poppy</i> ,	32
PARIETARIA officinalis, <i>Pellitory of the Wall</i> ,	10
PARIS quadrifolia, <i>Herb Paris</i> ,	24
PARNASSIA palustris, <i>Grass of Parnassus</i> ,	19
PEDICULARIS palustris, <i>Marsh Louse-wort</i> ,	36
———— sylvatica, <i>Common Dwarf Louse-wort</i> ,	36
PEPLIS Portula, <i>Water Purslane</i> ,	21
PEUCEDANUM Silaus, <i>Meadow Sulphur-wort</i> ,	17
PHALARIS canariensis, <i>Manūred Canary-grass</i> ,	5

	PAGE
PHALARIS arundinacea, <i>Reed Canary-grass</i> ,	5
PHELLANDRIUM aquaticum, <i>Water Hemlock</i> ,	18
PHLEUM pratense, <i>Common Cat's-tail-grass</i> ,	5
— arenarium, <i>Sea-side Cat's-tail-grass</i> ,	5
PILULARIA globulifera, <i>Pill-wort, or Pepper-grass</i> ,	59
PIMPINELLA Saxifraga, <i>Common Burnet Saxifrage</i> ,	18
PINGUICULA vulgaris, <i>Common Butterwort</i> ,	3
PINUS sylvestris, <i>Scotch Fir</i> ,	56
PLANTAGO major, <i>Greater Plantain</i> ,	10
— media, <i>Hoary Plantain</i> ,	10
— lanceolata, <i>Ribwort Plantain</i> ,	10
— maritima, <i>Sea-side Plantain</i> ,	10
— Coronopus, <i>Buck's-Horn Plantain</i> ,	10
POA aquatica, <i>Reed Meadow-grass</i> ,	6
— fluitans, <i>Floating Meadow-grass</i> ,	7
— maritima, <i>Creeping Sea Meadow-grass</i> ,	7
— rigida, <i>Hard Meadow-grass</i> ,	7
— compressa, <i>Creeping Meadow-grass</i> ,	7
— trivialis, <i>Roughish Meadow-grass</i> ,	7
— pratensis, <i>Smooth-stalked Meadow-grass</i> ,	7
— annua, <i>Annual Meadow-grass</i> ,	7
— nemoralis, <i>Wood Meadow-grass</i> ,	7
— decumbens, <i>Decumbent Meadow-grass</i> ,	7
POLEMONIUM cæruleum, <i>Jacob's Ladder</i> ,	13
POLYGALA vulgaris, <i>Milkwort</i> ,	42
POLYGONUM Bistorta, <i>Bistort, or Snakeweed</i> ,	23
— amphibium, <i>Amphibious Persicaria</i> ,	23
— Persicaria, <i>Spotted Persicaria</i> ,	23
— lapathifolium, <i>Pale-flowered Persicaria</i> ,	23
— Hydropiper, <i>Biting Persicaria</i> ,	23
— aviculare, <i>Knot-grass</i> ,	23
— Convolvulus, <i>Climbing Buck-Wheat</i> ,	23
— Fagopyrum, <i>Buck-Wheat</i> ,	23
POLYPODIUM vulgare, <i>Common Polypody</i> ,	62
— Phegopteris, <i>Pale Mountain Polypody</i> ,	62
— Dryopteris, <i>Three-branched Polypody</i> ,	62
POPULUS alba, <i>Great White Poplar, or Abele</i> ,	58
— tremula, <i>Aspen</i> ,	58
— nigra, <i>Black Poplar</i> ,	58

	PAGE
POTAMOGETON natans, <i>Broad-leaved Pond-weed</i> ,	11
——— fluitans, <i>Long-leaved Floating Pond-weed</i> ,	11
——— densum, <i>Close-leaved Pond-weed</i> ,	11
——— lucens, <i>Shining Pond-weed</i> ,	11
——— crispum, <i>Curled Pond-weed</i> ,	11
——— pusillum, <i>Small Pond-weed</i> ,	11
——— pectinatum, <i>Fennel-leaved Pond-weed</i> ,	11
POTENTILLA Fragaria, <i>Barren Strawberry</i> ,	31
——— argentea, <i>Hoary Cinquefoil</i> ,	31
——— verna, <i>Spring Cinquefoil</i> ,	31
——— reptans, <i>Common Creeping Cinquefoil</i> ,	31
——— anserina, <i>Silver-weed</i> ,	31
PRIMULA vulgaris, <i>Common Primrose</i> ,	13
——— veris, <i>Common Cowslip</i> ,	13
——— elatior, <i>Oxlip</i> ,	13
——— farinosa, <i>Bird's-eye Primrose</i> ,	13
PRUNELLA vulgaris, <i>Self-heal</i> ,	36
PRUNUS Padus, <i>Bird Cherry</i> ,	29
——— Cerasus, <i>Wild Cherry</i> ,	29
——— domestica, <i>Wild Plum-tree</i> ,	29
——— insititia, <i>Wild Bullace-tree</i> ,	29
——— spinosa, <i>Sloe-tree, or Black Thorn</i> ,	29
PTERIS crispa, <i>Curled Stone Fern</i> ,	60
——— aquilina, <i>Common Brakes; Brachens</i> ,	60
PULMONARIA officinalis, <i>Common Lungwort</i> ,	12
PYRETHRUM Parthenium, <i>Common Feverfew</i> ,	50
——— inodorum, <i>Scentless Feverfew</i> ,	50
——— maritimum, <i>Sea-side Feverfew</i> ,	50
PYROLA rotundifolia, <i>Round-leaved Winter-green</i> ,	24
——— minor, <i>Lesser Winter-green</i> ,	24
PYRUS Malus, <i>Crab-Apple</i> ,	29
——— aucuparia, <i>Mountain Ash, Quicken-tree, or Roan Tree</i> ,	29
——— Aria, <i>White Beam-tree</i> ,	30

Q.

QUERCUS Robur, <i>Common British Oak</i> ,	56
——— sessiliflora, <i>Sessile-fruited Oak</i> ,	56

R.

RANUNCULUS aquatilis, <i>Water Crowfoot</i> ,	33
—— hederaceus, <i>Ivy-leaved Crowfoot</i> ,	33
—— Flammula, <i>Lesser Spearwort</i> ,	33
—— Lingua, <i>Great Spearwort</i> ,	33
—— auricomus, <i>Wood Crowfoot</i> ,	33
—— sceleratus, <i>Celery-leaved Crowfoot</i> ,	33
—— acris, <i>Upright Meadow Crowfoot</i> ,	33
—— repens, <i>Creeping Crowfoot</i> ,	33
—— bulbosus, <i>Bulbous Crowfoot</i> ,	33
—— hirsutus, <i>Pale Hairy Crowfoot</i> ,	33
—— arvensis, <i>Corn Crowfoot</i> ,	33
—— Ficaria, <i>Pilewort</i> ,	33
RAPHANUS Raphanistrum, <i>Wild Raddish, or Jointed Charlock</i> ,	40
RESEDA Luteola, <i>Dyer's Weed</i> ,	28
—— lutea, <i>Wild Mignonette, or Base Rocket</i> ,	28
RHINANTHUS Crista Galli, <i>Yellow Rattle</i> ,	36
RIBES nigrum, <i>Black Currant</i> ,	15
—— Grossularia, <i>Rough Gooseberry</i> ,	15
ROSA spinosissima, <i>Burnet Rose</i> ,	30
—— Sabini, <i>Sabine's Rose</i> ,	30
—— tomentosa, <i>Downy-leaved Dog Rose</i> ,	30
—— rubiginosa, <i>Sweet-brier</i> ,	30
—— canina, <i>Dog Rose</i> ,	30
—— arvensis, <i>White Field Rose</i> ,	30
ROTBOLLIA incurvata, <i>Sea Hard-grass</i> ,	9
RUBUS idæus, <i>Raspberry</i> ,	30
—— cæsius, <i>Dew-berry</i> ,	31
—— corylifolius, <i>Hazle-leaved Bramble</i> ,	31
—— fruticosus, <i>Common Bramble</i> ,	31
—— saxatilis, <i>Stone Bramble</i> ,	31
—— Chamæmorus, <i>Cloudberry</i> ,	31
RUMEX crispus, <i>Curled Dock</i> ,	21
—— sanguineus, <i>Bloody-veined Dock</i> ,	21
—— acutus, <i>Sharp Dock</i> ,	22
—— obtusifolius, <i>Broad-leaved Dock</i> ,	22
—— maritimus, <i>Golden Dock</i> ,	22
—— Acetosa, <i>Common Sorrel</i> ,	22

	PAGE
RUMEX Acetosella, <i>Sheep's Sorrel</i> ,	22
RUPPIA maritima, <i>Sea Ruppia</i> ,	11
S.	
SAGINA procumbens, <i>Procumbent Pearlwort</i> ,	11
— maritima, <i>Sea Pearlwort</i> ,	11
SALICORNIA herbacea, <i>Jointed Glasswort</i> ,	1
SALIX Lambertiana, <i>Boyton Willow</i> ,	56
— triandra, <i>Short-leaved triandrous Willow</i> ,	56
— decipiens, <i>White Welch, or Varnished Willow</i> ,	56
— Russelliana, <i>Bedford Willow</i> ,	57
— fragilis, <i>Crack Willow</i> ,	57
— pentandra, <i>Pentandrous, or Sweet Bay Willow</i> ,	57
— nigricans, <i>Dark Broad-leaved Willow</i> ,	57
— arenaria, <i>Downy Mountain Willow</i> ,	57
— repens, <i>Dwarf Silky Willow</i> ,	57
— cinerea, <i>Grey Willow</i> ,	57
— capræa, <i>Great round-leaved Sallow</i> ,	57
— acuminata, <i>Long-leaved Sallow</i> ,	57
— mollissima, <i>Silky-leaved Willow</i> ,	57
— viminalis, <i>Common Osier</i> ,	57
— alba, <i>Common White Willow</i> ,	59
SALSOLA Kali, <i>Prickly Saltwort</i> ,	16
SALVIA verbenaca, <i>Wild English Clary</i> ,	3
SAMBUCUS Ebulus, <i>Dwarf Elder</i> ,	19
— nigra, <i>Common Elder</i> ,	19
SAMOLUS Valerandi, <i>Brook-weed, or Water Pimpernel</i> ,	15
SANICULA europæa, <i>Wood Sanicle</i> ,	17
SAPONARIA officinalis, <i>Soapwort</i> ,	25
SAXIFRAGA umbrosa, <i>London Pride</i> ,	25
— granulata, <i>White Saxifrage</i> ,	25
— tridactylites, <i>Rue-leaved Saxifrage</i> ,	25
— hypnoides, <i>Moss Saxifrage</i> ,	25
SCABIOSA succisa, <i>Devil's-bit Scabious</i> ,	9
— arvensis, <i>Field Scabious</i> ,	9
SCANDIX Pecten Veneris, <i>Needle-Chervil, or Venus's Comb</i> ,	19
SCHÆNUS nigricans, <i>Black-headed Bog-rush</i> ,	4

	PAGE
SCHÆNUS compressus, <i>Compressed Bog-rush</i> ,	4
—— rufus, <i>Brown Bog-rush</i> ,	4
SCIRPUS cæspitosus, <i>Scaly-stalked Club-rush</i> ,	4
—— pauciflorus, <i>Chocolate-headed Club-rush</i> ,	4
—— palustris, <i>Marsh Club-rush</i> ,	4
—— acicularis, <i>Least Club-rush</i> ,	4
—— fluitans, <i>Floating Club-rush</i> ,	4
—— lacustris, <i>Bull-rush</i> ,	4
—— setaceus, <i>Setaceous Club-rush</i> ,	4
—— maritimus, <i>Salt-marsh Club-rush</i> ,	4
—— sylvaticus, <i>Wood Club-rush</i> ,	4
SCLERANTHUS annuus, <i>Knawel</i> ,	25
SCOLOPENDRIUM vulgare, <i>Common Hart's-tongue</i> ,	60
SCROPHULARIA nodosa, <i>Knotty-rooted Figwort</i> ,	36
—— aquatica, <i>Water Figwort</i> ,	37
—— vernalis, <i>Yellow Figwort</i> ,	37
SCUTELLARIA galericulata, <i>Common Skull-cap</i> ,	36
SEDUM Telephium, <i>Orpine</i> ,	26
—— dasyphyllum, <i>Thick-leaved Stone-crop</i> ,	26
—— villosum, <i>Hairy Stone-crop</i> ,	27
—— acre, <i>Biting Stone-crop; Wall Pepper</i> ,	27
—— reflexum, <i>Yellow Stone-crop</i> ,	27
SELINUM palustre, <i>Marsh Milky Parsley</i> ,	17
SEMPERVIVUM Tectorum, <i>House Leek</i> ,	29
SENECIO vulgaris, <i>Common Groundsel</i> ,	49
—— viscosus, <i>Stinking Groundsel</i> ,	49
—— lividus, <i>Green scaled Groundsel</i> ,	49
—— sylvaticus, <i>Mountain Groundsel</i> ,	49
—— Jacobæa, <i>Common Ragwort</i> ,	49
—— aquaticus, <i>Marsh Ragwort</i> ,	49
SHERARDIA arvensis, <i>Blue Sherardia</i> ,	9
SILENE inflata, <i>Bladder Campion</i> ,	25
—— nutans, <i>Nottingham Catchfly</i> ,	26
SINAPIS arvensis, <i>Wild Mustard, or Charlock</i> ,	40
—— alba, <i>White Mustard</i> ,	40
—— tenuifolia, <i>Fine-leaved Mustard</i> ,	40
SISON inundatum, <i>Water Honewort</i> ,	17
SISYMBRIUM officinale, <i>Common Hedge Mustard</i> ,	39
—— Sophia, <i>Flix-weed</i> ,	39

	PAGE
SIUM latifolium, <i>Broad-leaved Water Parsnip</i> ,	17
— angustifolium, <i>Narrow-leaved Water Parsnip</i> ,	17
— nodiflorum, <i>Procumbent Water Parsnip</i> ,	17
— repens, <i>Creeping Water Parsnip</i> ,	17
SMYRNIUM Olusatrum, <i>Alexanders</i> ,	18
SOLANUM Dulcamara, <i>Woody Nightshade</i> ,	15
SOLIDAGO Virgaurea, <i>Common Golden-rod</i> ,	49
SONCHUS palustris, <i>Tall Marsh Sow-Thistle</i> ,	45
— — arvensis, <i>Corn Sow-Thistle</i> ,	45
— — oleraceus, <i>Common Sow-Thistle</i> ,	45
SPARGANIUM ramosum, <i>Branched Bur-reed</i> ,	53
— — simplex, <i>Simple upright Bur-reed</i> ,	53
— — natans, <i>Floating Bur-reed</i> ,	53
SPERGULA arvensis, <i>Corn Spurrey</i> ,	27
— — nodosa, <i>Knotted Spurrey</i> ,	27
— — subulata, <i>Awl-shaped Spurrey</i> ,	28
SPIRÆA salicifolia, <i>Willow-leaved Spiræa</i> ,	30
— — Filipendula, <i>Common Dropwort</i> ,	30
— — Ulmaria, <i>Meadow-sweet</i> ,	30
STACHYS sylvatica, <i>Hedge Woundwort</i> ,	35
— — ambigua, <i>Ambiguous Woundwort</i> ,	35
— — palustris, <i>Marsh Woundwort</i> ,	35
— — arvensis, <i>Corn Woundwort</i> ,	35
STATICE Armeria, <i>Thrift</i> ,	19
STELLARIA Nemorum, <i>Wood Stitchwort</i> ,	26
— — media, <i>Common Chickweed</i> ,	26
— — holostea, <i>Greater Stitchwort</i> ,	26
— — graminea, <i>Lesser Stitchwort</i> ,	26
— — glauca, <i>Glaucous Marsh Stitchwort</i> ,	26
— — uliginosa, <i>Bog Stitchwort</i> ,	26
STRATIOTES aloides, <i>Water Soldier</i> ,	33
SUBULARIA aquatica, <i>Awl-wort</i> ,	38
SYMPHYTUM officinale, <i>Common Comfrey</i> ,	12
— — tuberosum, <i>Tuberous-rooted Comfrey</i> ,	12

T.

TEUCRIUM Scorodonia, <i>Wood Sage</i> ,	34
THALICTRUM minus, <i>Lesser Meadow-Rue</i> ,	33

	PAGE
THALICTRUM majus, <i>Greater Meadow-Rue</i> ,	33
———— flavum, <i>Common Meadow-Rue</i> ,	33
THLASPI arvense, <i>Penny-Cress</i> ,	37
———— Bursa-Pastoris, <i>Common Shepherd's Purse</i> ,	37
THYMUS Serpyllum, <i>Wild Thyme</i> ,	35
TILIA europæa, <i>Lime, or Linden Tree</i> ,	32
TORMENTILLA officinalis, <i>Common Tormentil</i> ,	31
———— reptans, <i>Trailing Tormentil</i> ,	31
TRAGOPOGON pratensis, <i>Yellow Goat's-beard</i> ,	45
TRIFOLIUM officinale, <i>Common Melilot</i> ,	44
———— ornithopodioides, <i>Bird's-foot Trefoil</i> ,	44
———— repens, <i>White Trefoil, or Dutch Clover</i> ,	44
———— pratense, <i>Common Purple Clover</i> ,	44
———— medium, <i>Zigzag Trefoil</i> ,	44
———— arvense, <i>Hare's-foot Trefoil</i> ,	44
———— scabrum, <i>Rough Trefoil</i> ,	44
———— striatum, <i>Soft-knotted Trefoil</i> ,	44
———— fragiferum, <i>Strawberry-headed Trefoil</i> ,	44
———— procumbens, <i>Hop Trefoil</i> ,	44
———— filiforme, <i>Slender Yellow Trefoil</i> ,	44
TRIGLOCHIN palustre, <i>Marsh Arrow-grass</i> ,	22
———— maritimum, <i>Sea-side Arrow-grass</i> ,	22
TRITICUM junceum, <i>Sea-rushy Wheat-grass</i> ,	8
———— repens, <i>Creeping Wheat-grass, Couch, or Quitch-grass</i> ,	8
———— caninum, <i>Bearded Wheat-grass</i> ,	8
———— loliaceum, <i>Spiked Sea Wheat-grass</i> ,	9
TROLLIUS europæus, <i>Globe-flower</i> ,	34
TUSSILAGO Farfara, <i>Colt's-foot</i> ,	49
———— Petasites, <i>Common Butter-bur</i> ,	49
TYPHA latifolia, <i>Great Cat's-tail, or Reed-Mace</i> ,	53

U.

ULEX europæus, <i>Common Furze, or Whin</i> ,	42
———— nanus, <i>Dwarf Furze</i> ,	42
ULMUS campestris, <i>Common Elm</i> ,	16
———— montana, <i>Broad-leaved, or Wych-Elm</i> ,	16
URTICA urens, <i>Small Nettle</i> ,	55

	PAGE
URTICA dioica, <i>Great Nettle</i> ,	55
UTRICULARIA vulgaris, <i>Greater-hooded Milfoil</i> ,	3
————— minor, <i>Lesser-hooded Milfoil</i> ,	3

V.

VACCINIUM Myrtillus, <i>Bilberry, Blaeberry, or Whortle Berry</i> ,	23
————— Vitis Idæa, <i>Red Whortle Berry</i> ,	23
————— Oxycoccus, <i>Cranberry</i> ,	23
VALERIANA rubra, <i>Red Valerian</i> ,	3
————— officinalis, <i>Great wild Valerian</i> ,	3
————— pyrenaica, <i>Heart-leaved Valerian</i> ,	4
————— dioica, <i>Small Marsh Valerian</i> ,	4
VERBASCUM Thapsus, <i>Great Mullein</i> ,	14
————— nigrum, <i>Dark Mullein</i> ,	14
VERBENA officinalis, <i>Common Vervain</i> ,	37
VERONICA serpyllifolia, <i>Thyme-leaved, or Smooth Speedwell</i> ,	2
————— scutellata, <i>Marsh Speedwell</i> ,	2
————— Anagallis, <i>Water Speedwell</i> ,	2
————— Beccabunga, <i>Brooklime</i> ,	2
————— officinalis, <i>Common Speedwell</i> ,	2
————— montana, <i>Mountain Speedwell</i> ,	2
————— Chamædrys, <i>Germander Speedwell</i> ,	2
————— agrestis, <i>Procumbent Speedwell</i> ,	3
————— arvensis, <i>Wall Speedwell</i> ,	3
————— hederifolia, <i>Ivy-leaved Speedwell</i> ,	3
VIBURNUM Lantana, <i>Mealy Guelder-Rose, or Way-faring Tree</i> ,	19
————— Opulus, <i>Common Guelder-Rose, or Water Elder</i> ,	19
VICIA sylvatica, <i>Wood Vetch</i> ,	43
————— Cracca, <i>Tufted Vetch</i> ,	43
————— sativa, <i>Common Vetch</i> ,	43
————— lathyroides, <i>Spring Vetch</i> ,	43
————— lutea, <i>Rough-podded Yellow Vetch</i> ,	43
————— sepium, <i>Bush Vetch</i> ,	43
VINCA minor, <i>Lesser Periwinkle</i> ,	15
————— major, <i>Greater Periwinkle</i> ,	16
VIOLA hirta, <i>Hairy Violet</i> ,	14
————— odorata, <i>Sweet Violet</i> ,	14

	PAGE
VIOLA palustris, <i>Marsh Violet</i> ,	14
— canina, <i>Dog's Violet</i> ,	14
— tricolor, <i>Pansy Violet, or Heart's-ease</i> ,	14
— lutea, <i>Yellow Mountain Violet</i> ,	14

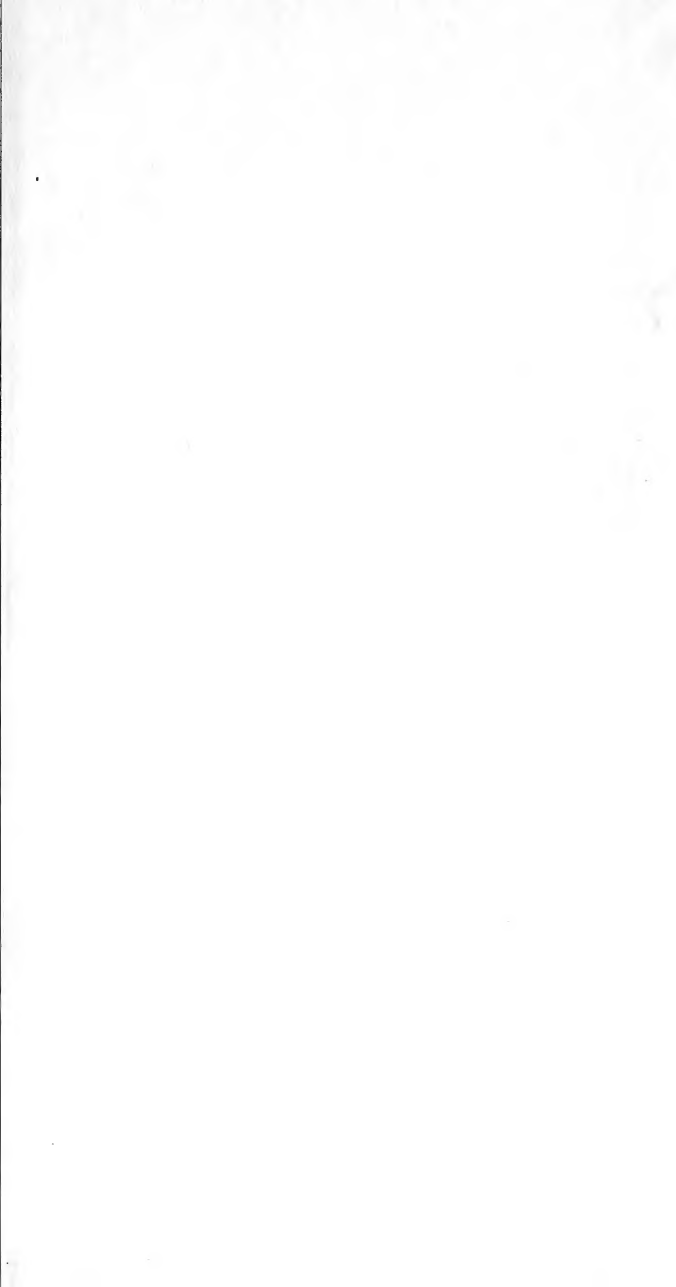
Z.

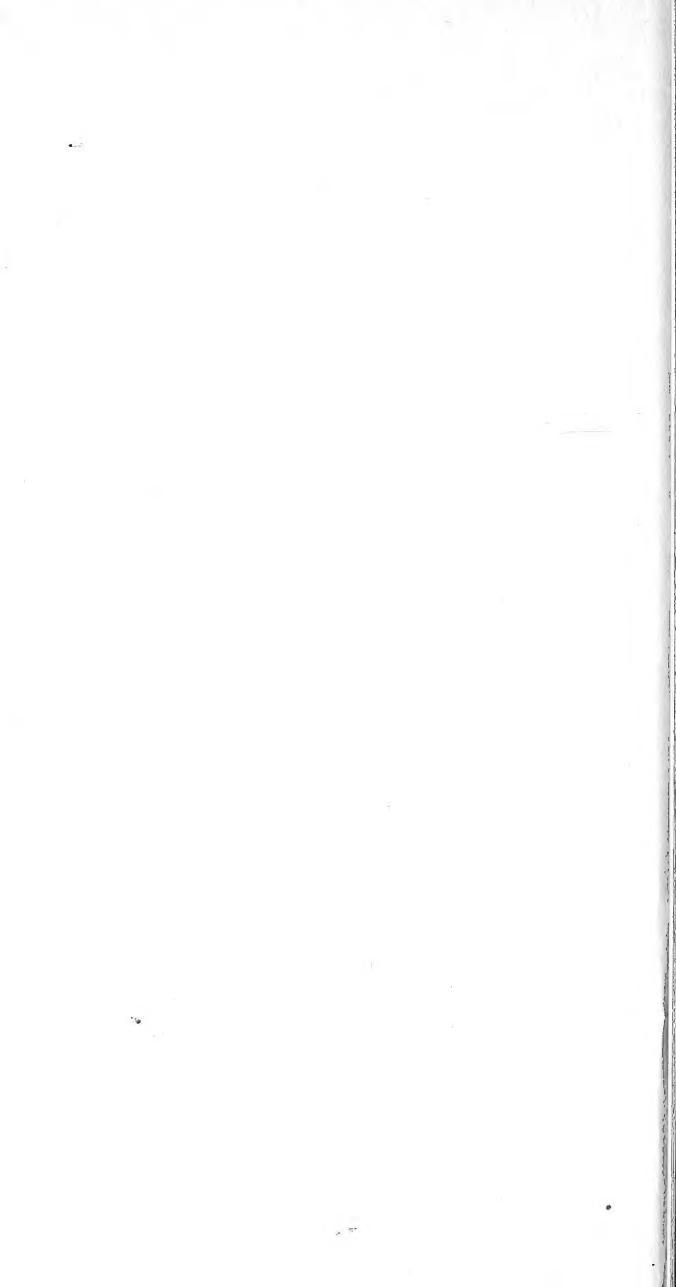
ZANNICHELLIA palustris, <i>Horned Pondweed</i> ,	52
ZOSTERA marina, <i>Common Grass-wrack</i> ,	52

THE END.

EDINBURGH:

Printed by John Brewster,
11, Society.





42403

