



UNIVERSITY OF
ILLINOIS LIBRARY
AT URBANA-CHAMPAIGN

GEOLOGY

OCT 24 1983

The person charging this material is responsible for its return to the library from which it was withdrawn on or before the **Latest Date** stamped below.

Theft, mutilation, and underlining of books are reasons for disciplinary action and may result in dismissal from the University.

To renew call Telephone Center, 333-8400

UNIVERSITY OF ILLINOIS LIBRARY AT URBANA-CHAMPAIGN

APR 18 1984

JUL 1 2003

MAR 26 2003

550.5

FI

7.13

no. 3

CATALOGUE OF TYPE SPECIMENS
IN
THE WALKER MUSEUM OF PALEONTOLOGY
AND
CHICAGO NATURAL HISTORY MUSEUM

RADIOLARIA AND EURYPTERIDA

MATTHEW H. NITECKI

FIELDIANA: GEOLOGY

VOLUME 13, NUMBER 3

Published by

CHICAGO NATURAL HISTORY MUSEUM

FEBRUARY 14, 1963

GEOLOGY LIBRARY



CATALOGUE OF TYPE SPECIMENS
IN
THE WALKER MUSEUM OF PALEONTOLOGY
AND
CHICAGO NATURAL HISTORY MUSEUM

RADIOLARIA AND EURYPTERIDA

MATTHEW H. NITECKI

Walker Museum of Paleontology

University of Chicago

FIELDIANA: GEOLOGY

VOLUME 13, NUMBER 3

Published by

CHICAGO NATURAL HISTORY MUSEUM

FEBRUARY 14, 1963

Edited by LILLIAN A. ROSS

Library of Congress Catalog Card Number: 63-12868

PRINTED IN THE UNITED STATES OF AMERICA
BY CHICAGO NATURAL HISTORY MUSEUM PRESS

0, 5
13
3

Geology

Type Specimens of Radiolaria and Eurypterida

RADIOLARIA

Introduction and Locality

This section of the catalogue of type specimens of invertebrate fossils in Walker Museum is devoted to the Radiolaria in the Aberdeen collection. Holotypes are designated here for species originally based on cotypes. Catalogue numbers were given to glass slides, some of which contain several species. Therefore the same number may identify more than one species. Two new names here proposed to replace homonyms were supplied by W. R. Riedel. For more detailed location of specimens on slides see Riedel and Foreman (1961). Walker Museum specimens are identified by the letters U.C.

Locality 55.—Fragments of the Santiago Chert Member of the Caballos Novaculites from the hogbacks lying 1½ miles east of Marathon, Texas.

Catalogue of Types

Acanthosphaera dodecaspinosa Aberdeen, 1940

Holotype: here designated, the specimen shown by Aberdeen, 1940: U.C. 44538 (fig. 2, pl. 21).

Referred specimens: the other specimens indicated as syntypes by Aberdeen, 1940: U.C. 44535 (fig. 15, pl. 21); U.C. 44548 (fig. 18, pl. 21).

Reference: Aberdeen, E., 1940, p. 137, pl. 21, fig. 2.

Stratigraphic position: Devonian(?) Santiago Chert of the Caballos formation. Locality 55.

Remarks: the same specimens cited by Riedel and Foreman (1961, p. 631).

Acanthosphaera grandispinosa Aberdeen, 1940

Holotype: by original designation, the specimen shown by Aberdeen, 1940: U.C. 44547 (fig. 19, pl. 21).

Reference: Aberdeen, E., 1940, p. 138, pl. 21, fig. 19.

Stratigraphic position: Devonian(?) Santiago Chert of the Caballos formation. Locality 55.

Remarks: the same specimen cited by Riedel and Foreman (1961, p. 631).

Acanthosphaera hirsuta Aberdeen, 1940

Holotype: by original designation, the specimen shown by Aberdeen, 1940: U.C. 44543 (fig. 12, pl. 21).

Reference: Aberdeen, E., 1940, p. 138, pl. 21, fig. 12.

Stratigraphic position: Devonian(?) Santiago Chert of the Caballos formation. Locality 55.

Remarks: the same specimen cited by Riedel and Foreman (1961, p. 631).

Acanthosphaera microspinosa Aberdeen, 1940

Holotype: by original designation, the specimen shown by Aberdeen, 1940: U.C. 44535 (fig. 21, pl. 20).

Reference: Aberdeen, E., 1940, p. 138, pl. 20, fig. 21.

Stratigraphic position: Devonian(?) Santiago Chert of the Caballos formation. Locality 55.

Remarks: the same specimen cited by Riedel and Foreman (1961, p. 631).

Astrophacus cingulatus Aberdeen, 1940

Holotype: by original designation, the specimen shown by Aberdeen, 1940: U.C. 44996 (fig. 15, pl. 20).

Reference: Aberdeen, E., 1940, p. 139, pl. 20, fig. 15.

Stratigraphic position: Devonian(?) Santiago Chert of the Caballos formation. Locality 55.

Remarks: the same specimen cited by Riedel and Foreman (1961, p. 631).

Carposphaera aberdeenae Riedel, nom. nov.

Remarks: to replace *Carposphaera magna* Aberdeen, 1940.

Carposphaera equalis Aberdeen, 1940

Holotype: here designated, the specimen shown by Aberdeen, 1940: U.C. 44532 (fig. 4, pl. 20).

Referred specimen: the specimen indicated as syntype by Aberdeen, 1940: U.C. 44535 (fig. 5, pl. 20).

Reference: Aberdeen, E., 1940, p. 133, pl. 20, fig. 4.

Stratigraphic position: Devonian(?) Santiago Chert of the Caballos formation. Locality 55.

Remarks: the same specimens cited, and the specimen U.C. 44491 figured by Riedel and Foreman (1961, pp. 629–630, text fig. 4).

***Carposphaera magna* Aberdeen, 1940**

Holotype: here designated, the specimen shown by Aberdeen, 1940: U.C. 44545 (fig. 4, pl. 21).

Referred specimen: the specimen indicated as syntype by Aberdeen, 1940: U.C. 44535 (fig. 10, pl. 21).

Reference: Aberdeen, E., 1940, p. 133, pl. 21, fig. 4.

Stratigraphic position: Devonian(?) Santiago Chert of the Caballos formation. Locality 55.

Remarks: the same specimens cited by Riedel and Foreman (1961, p. 629). Homonym of *Carposphaera magna* Rüst (1892, p. 136). New name: *Carposphaera aberdeenae* Riedel, nom. nov.

***Cenosphaera hexagonalis* Aberdeen, 1940**

Holotype: by original designation, the specimen shown by Aberdeen, 1940: U.C. 44999 (fig. 12, pl. 20).

Reference: Aberdeen, E., 1940, p. 133, pl. 20, fig. 12.

Stratigraphic position: Devonian(?) Santiago Chert of the Caballos formation. Locality 55.

Remarks: the same specimen cited, and the specimen U.C. 44494 figured by Riedel and Foreman (1961, p. 629, text fig. 3). Homonym of *Cenosphaera hexagonalis* Haeckel (1887, p. 62). New name: *Cenosphaera marathonensis* Riedel, nom. nov.

***Cenosphaera marathonensis* Riedel, nom. nov.**

Remarks: to replace *Cenosphaera hexagonalis* Aberdeen, 1940.

***Cenosphaera semiequalis* Aberdeen, 1940**

Holotype: here designated, the specimen shown by Aberdeen, 1940: U.C. 44538 (fig. 7, pl. 20).

Referred specimen: the other specimen indicated as syntype by Aberdeen, 1940: U.C. 44998 (fig. 8, pl. 20).

Reference: Aberdeen, E., 1940, p. 133, pl. 20, fig. 7.

Stratigraphic position: Devonian(?) Santiago Chert of the Caballos formation. Locality 55.

Remarks: the same specimens cited by Riedel and Foreman (1961, p. 629).

Cenosphaera variabilis Aberdeen, 1940

Holotype: here designated, the specimen shown by Aberdeen, 1940: U.C. 44496 (fig. 17, pl. 20).

Reference: Aberdeen, E., 1940, p. 133, pl. 20, fig. 17.

Stratigraphic position: Devonian(?) Santiago Chert of the Caballos formation. Locality 55.

Remarks: the same specimen cited and figured by Riedel and Foreman (1961, p. 629, text fig. 2).

Haliomma perfecta Aberdeen, 1940

Holotype: here designated, the specimen shown by Aberdeen, 1940: U.C. 44546 (fig. 20, pl. 20).

Reference: Aberdeen, E., 1940, pp. 138–139, pl. 20, fig. 20.

Stratigraphic position: Devonian(?) Santiago Chert of the Caballos formation. Locality 55.

Remarks: the same specimen cited by Riedel and Foreman (1961, p. 631).

Heliosphaera alternata Aberdeen, 1940

Holotype: by original designation, the specimen shown by Aberdeen, 1940: U.C. 44545 (fig. 22, pl. 20).

Reference: Aberdeen, E., 1940, p. 138, pl. 20, fig. 22.

Stratigraphic position: Devonian(?) Santiago Chert of the Caballos formation. Locality 55.

Remarks: the same specimen cited by Riedel and Foreman (1961, p. 631).

Heliosphaera macrospinosa Aberdeen, 1940

Holotype: by original designation, the specimen shown by Aberdeen, 1940: U.C. 44498 (fig. 14, pl. 20).

Reference: Aberdeen, E., 1940, p. 138, pl. 20, fig. 14.

Stratigraphic position: Devonian(?) Santiago Chert of the Caballos formation. Locality 55.

Remarks: the same specimen cited and figured by Riedel and Foreman (1961, p. 631, text fig. 7).

Hexalonche, sp. indet.

Referred specimen: the specimen shown by Aberdeen, 1940: U.C. 44997 (fig. 9, pl. 20).

Reference: Aberdeen, E., 1940, p. 137, pl. 20, fig. 9.

Stratigraphic position: Devonian(?) Santiago Chert of the Caballos formation. Locality 55.

Remarks: the same specimen cited by Riedel and Foreman (1961, p. 631).

Hexastylidium variatum Aberdeen, 1940

Holotype: by original designation, the specimen shown by Aberdeen, 1940: U.C. 44545 (fig. 14, pl. 21).

Reference: Aberdeen, E., 1940, p. 631, pl. 21, fig. 14.

Stratigraphic position: Devonian(?) Santiago Chert of the Caballos formation. Locality 55.

Remarks: the same specimen cited and figured by Riedel and Foreman (1961, p. 631, text fig. 6).

Hexastylus basiporosus Aberdeen, 1940

Holotype: here designated, the specimen shown by Aberdeen, 1940: U.C. 44546 (fig. 6, pl. 21).

Referred specimens: the other specimens indicated as syntypes by Aberdeen, 1940: U.C. 44542 (fig. 9, pl. 21); U.C. 44495 (fig. 13, pl. 21).

Reference: Aberdeen, E., 1940, p. 136, pl. 21, fig. 6.

Stratigraphic position: Devonian(?) Santiago Chert of the Caballos formation. Locality 55.

Remarks: the same specimens cited, and the specimen figured by Aberdeen, 1940 (fig. 13, pl. 21), and by Riedel and Foreman (1961, p. 631, text fig. 5).

Plegmosphaera spiculata Aberdeen, 1940

Holotype: by original designation, the specimen shown by Aberdeen, 1940: U.C. 44532 (fig. 3, pl. 21).

Reference: Aberdeen, E., 1940, p. 134, pl. 21, fig. 3.

Stratigraphic position: Devonian(?) Santiago Chert of the Caballos formation. Locality 55.

Remarks: the same specimen cited by Riedel and Foreman (1961, p. 630).

Rhodosphaera, sp. indet.

Referred specimen: the specimen shown by Aberdeen, 1940: U.C. 44547 (fig. 10, pl. 20).

Reference: Aberdeen, E., 1940, p. 134, pl. 20, fig. 10.

Stratigraphic position: Devonian(?) Santiago Chert of the Caballos formation. Locality 55.

Remarks: the same specimen cited by Riedel and Foreman (1961, p. 630).

Spongoplegma brevisphaera Aberdeen, 1940

Holotype: here designated, the specimen shown by Aberdeen, 1940: U.C. 44542 (fig. 17, pl. 21).

Reference: Aberdeen, E., 1940, p. 134, pl. 21, fig. 17.

Stratigraphic position: Devonian(?) Santiago Chert of the Caballos formation. Locality 55.

Remarks: the same specimen cited by Riedel and Foreman (1961, p. 630).

Spongoplegma longispinosa Aberdeen, 1940

Holotype: here designated, the specimen shown by Aberdeen, 1940: U.C. 44546 (fig. 6, pl. 20).

Referred specimen: the other specimen indicated as syntype by Aberdeen, 1940: U.C. 44998 (fig. 1, pl. 21).

Reference: Aberdeen, E., 1940, pp. 134-135, pl. 20, fig. 6.

Stratigraphic position: Devonian(?) Santiago Chert of the Caballos formation. Locality 55.

Remarks: the same specimens cited by Riedel and Foreman (1961, p. 630).

Staurodoras brevispinosa Aberdeen, 1940

Holotype: by original designation, the specimen shown by Aberdeen, 1940: U.C. 44546 (fig. 11, pl. 21).

Reference: Aberdeen, E., 1940, p. 136, pl. 21, fig. 11.

Stratigraphic position: Devonian(?) Santiago Chert of the Caballos formation. Locality 55.

Remarks: the same specimen cited by Riedel and Foreman (1961, p. 631).

Staurosphaera rotunda Aberdeen, 1940

Holotype: by original designation, the specimen shown by Aberdeen, 1940: U.C. 44548 (fig. 11, pl. 20).

Reference: Aberdeen, E., 1940, pp. 135–136, pl. 20, fig. 11.

Stratigraphic position: Devonian(?) Santiago Chert of the Caballos formation. Locality 55.

Remarks: the same specimen cited by Riedel and Foreman (1961, p. 631).

Staurostylus varispinatus Aberdeen, 1940

Holotype: by original designation, the specimen shown by Aberdeen, 1940: U.C. 44997 (fig. 19, pl. 20).

Reference: Aberdeen, E., 1940, p. 135, pl. 20, fig. 19.

Stratigraphic position: Devonian(?) Santiago Chert of the Caballos formation. Locality 55.

Remarks: the same specimen cited by Riedel and Foreman (1961, pp. 630–631).

Stylosphaera quasiobtusa Aberdeen, 1940

Holotype: here designated, the specimen shown by Aberdeen, 1940: U.C. 44544 (fig. 5, pl. 21).

Reference: Aberdeen, E., 1940, p. 135, pl. 21, fig. 5.

Stratigraphic position: Devonian(?) Santiago Chert of the Caballos formation. Locality 55.

Remarks: the same specimen cited by Riedel and Foreman (1961, p. 630).

Thalassicollidae, gen. et sp. indet.

Referred specimen: the specimen shown by Aberdeen, 1940: U.C. 44537 (fig. 1, pl. 20).

Reference: Aberdeen, E., 1940, pp. 132–133, pl. 20, fig. 1.

Stratigraphic position: Devonian(?) Santiago Chert of the Caballos formation. Locality 55.

Remarks: the same specimen cited by Riedel and Foreman (1961, p. 629).

Thecosphaera hexpenetrata Aberdeen, 1940

Holotype: by original designation, the specimen shown by Aberdeen, 1940: U.C. 44536 (fig. 16, pl. 21).

Reference: Aberdeen, E., 1940, p. 134, pl. 21, fig. 16.

Stratigraphic position: Devonian(?) Santiago Chert of the Caballos formation. Locality 55.

Remarks: the same specimen cited by Riedel and Foreman (1961, p. 630).

Xiphostylus inclinatus Aberdeen, 1940

Holotype: here designated, the specimen shown by Aberdeen, 1940: U.C. 44548 (fig. 7, pl. 21).

Referred specimen: the other specimen indicated as syntype by Aberdeen, 1940: U.C. 44494 (fig. 8, pl. 21).

Reference: Aberdeen, E., 1940, p. 135, pl. 21, fig. 7.

Stratigraphic position: Devonian(?) Santiago Chert of the Caballos formation. Locality 55.

Remarks: the same specimens cited by Riedel and Foreman (1961, p. 630).

EURYPTERIDA

Introduction and Localities

This section of the catalogue lists the type specimens of eurypterids in the custody of Walker Museum of Paleontology, the University of Chicago, and Chicago Natural History Museum. Walker Museum specimens are identified by the letters U.C.; the Chicago Natural History Museum specimens by letters P and PE.

Holotypes are designated for species if no prior selection has been made. Photographs are presented for specimens not adequately illustrated in previous publications.

Locality 56.—A large stone quarry in Monclova Township (S. $\frac{1}{2}$, sec. 29), Lucas County, Ohio, commonly known as the Holland Quarry. Operated for many years by the France Stone Company. Two miles north of the small village of Monclova, three miles south-

southwest of the town of Holland, and about ten miles west-southwest of the city of Toledo. The quarry has been abandoned and is partly filled with water.

Poorly bedded, brownish-black, compact shale directly above and directly below the Silurian-Devonian systemic contact.

Locality 57.—Eight feet and six inches below top of southeast end of Split Rock Quarry, Syracuse, New York.

Locality 58.—Decewville, Ontario, Canada.

Locality 59.—Kokomo, Indiana.

Locality 60.—Near Cannelton, Darlington township, Beaver County, Pennsylvania.

Locality 61.—Arenaceous shale at Rooker farm, Pithole City, Venango County, Pennsylvania.

Locality 62.—Tin Mill Race near Downton Castle, Herefordshire, Great Britain.

Locality 63.—Buffalo and adjacent area, New York.

Catalogue of Types

Adelophthalmus mansfieldi (C. E. Hall)

See *Dolichopterus Mansfieldi* C. E. Hall, 1877.

Adelophthalmus pennsylvanicus (C. E. Hall)

See *Eurypterus Pennsylvanicus* C. E. Hall, 1877.

Adelophthalmus potens (Hall)

See *Eurypterus potens* Hall, 1884.

Buffalopterus pustulosus (Hall)

Referred specimen: the specimen figured and cited by Kjellesvig-Waering and Heubusch, 1962: P654 (fig. 3, pl. 37).

Reference: Kjellesvig-Waering, E. N., and Heubusch, C. A., 1962, pp. 217–218, pl. 37, fig. 3.

Stratigraphic position: Silurian, Williamsville Dolomite of the Bertie formation. Locality 63.

Remarks: a nearly complete operculum.

Carcinosoma newlini (Claypole)

See *Eusarcus newlini* (Claypole).

Dolichopterus asperatus Kjellesvig-Waering, 1961

Holotype: by original designation, the specimen shown by Kjellesvig-Waering, 1961a: PE 5114 (fig. 45).

Referred specimens: the other specimens indicated as paratypes by Kjellesvig-Waering, 1961a: PE 5115 (fig. 46); PE 5116 (fig. 47); PE 5117 (fig. 44).

Reference: Kjellesvig-Waering, E. N., 1961a, pp. 88-91, fig. 45.

Stratigraphic position: Devonian, Holland Quarry Shale. Locality 56.

Remarks: PE 5114, PE 5115 and PE 5116 are paddles of swimming legs; PE 5117 is a partial prosoma.

Dolichopterus Mansfieldi C. E. Hall, 1877. Figure 18.

Holotype: here designated, the specimen described by Hall, C. E., 1877: U.C. 12298 (p. 621).

Referred specimens: the specimens figured and cited by Hall, J., 1884: U.C. 28358 (fig. 1, pl. 6); U.C. 12301 (fig. 2, pl. 4); U.C. 12302 (fig. 3, pl. 4); U.C. 12308 (fig. 2, pl. 8); U.C. 12305 (fig. 2, pl. 5); U.C. 12304 (fig. 7, pl. 4; figs. 11 and 17, pl. 5); U.C. 12306 (fig. 9, pl. 5); U.C. 12307 (fig. 1, pl. 7; fig. 1, pl. 8); U.C. 12299 (figs. 3-8, pl. 5); U.C. 12303 (figs. 4, 5, and 8, pl. 4; fig. 3, pl. 8; figs. 10 and 16, pl. 5); U.C. 12300 (fig. 1, pl. 4).

Figured by Clarke and Ruedemann, 1912, as text figs. 43 to 47 (p. 220).

Reference: Hall, C. E., 1877, pp. 621-622.

Stratigraphic position: Pennsylvanian, Allegheny River series, shale immediately below the Darlington cannel coal. Locality 60.

Remarks: Referred by Hall, J., 1884, to *Eurypterus mansfieldi* (C. E. Hall); by Clarke and Ruedemann, 1912, to *Eurypterus (Anthraconectes) mansfieldi* C. E. Hall; by Størmer, L., 1955, to *Lepidoderma mansfieldi* (C. E. Hall); by Kjellesvig-Waering, E. N., 1958, to *Adelophthalmus mansfieldi* (C. E. Hall).

Drepanopterus longicaudatus Clarke and Ruedemann, 1912

See *Stylonurus (Drepanopterus) longicaudatus* Clarke and Ruedemann, 1912.

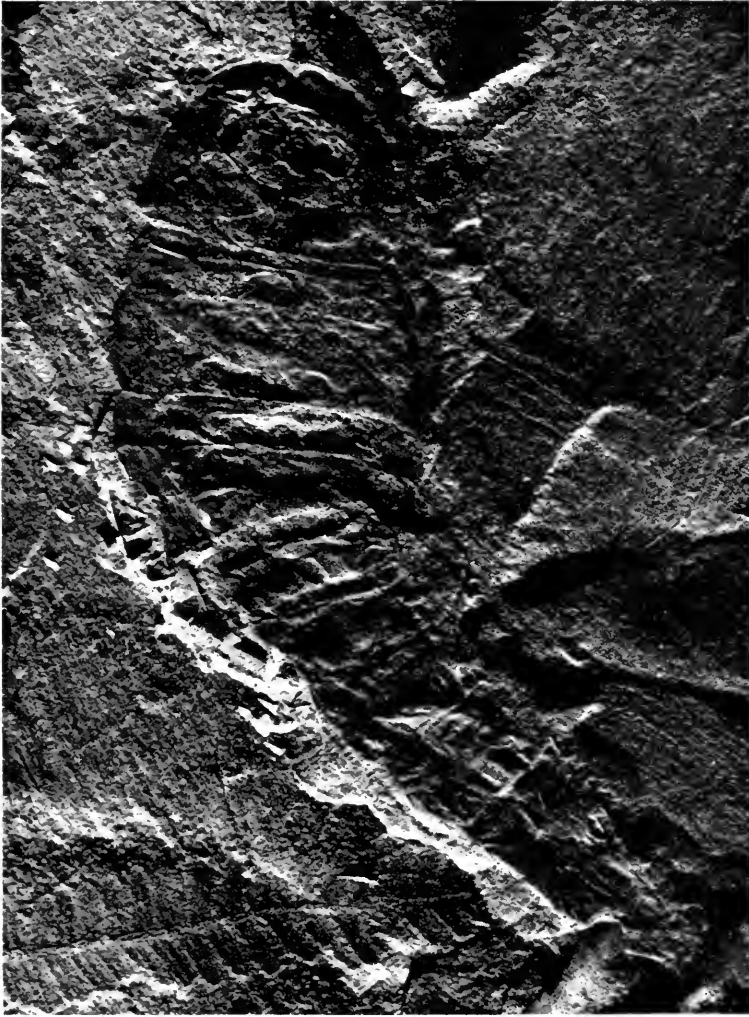


FIG. 18. *Dolichopterus Mansfieldi* C. E. Hall, 1877. Holotype: U.C. 12298.

Erettopterus (Erettopterus) spatulatus Kjellesvig-Waering, 1961

Referred specimens: the specimens cited and figured by Kjellesvig-Waering, 1961b: PE 4978 (fig. 6, pl. 94; cited on p. 822); PE 5124 (fig. 7, pl. 94, and fig. 34 on text fig. 3; cited on pp. 822 and 823).

Reference: Kjellesvig-Waering, E. N., 1961b, pp. 814, 822, 923.

Stratigraphic position: Silurian, Downtonian, Temeside (olive) Shale. Locality 62.

Erettopterus (Truncatiramus) gigas gigas (Salter)

Referred specimen: the specimen cited by Kjellesvig-Waering, 1961b: PE 4984 (p. 825).

Reference: Kjellesvig-Waering, E. N., 1961b, p. 825.

Stratigraphic position: Silurian, Downtonian, Temeside (olive) Shale. Locality 62.

Erieopterus microphthalmus microphthalmus (Hall)

Referred specimen: the specimen shown by Kjellesvig-Waering, 1958: PE 5125 (text fig. 11).

Reference: Kjellesvig-Waering, E. N., 1958, pp. 1119–1120, text fig. 11.

Stratigraphic position: Late Silurian, (Cayugan), Manlius Limestone (Olney Limestone float?). Locality 57.

Remarks: carbon imprint of entire dorsal surface, two inches long.

Eurypterus (Anthraconectes) mansfieldi C. E. Hall, 1877

See *Dolichopterus Mansfieldi* C. E. Hall, 1877.

Eurypterus potens J. Hall, 1884.

Eurypterus stylus J. Hall, 1884.

Eurypterus (Anthraconectes) pennsylvanicus C. E. Hall, 1877

See *Eurypterus Pennsylvanicus* C. E. Hall, 1877.

Eurypterus cephalaspis Salter, 1855

Referred specimen: the specimen shown by Kjellesvig-Waering, 1961b: PE 5124 (fig. 10, pl. 95; cited on pp. 826 and 827).

Reference: Kjellesvig-Waering, E. N., 1961b, pp. 826–827, pl. 95, fig. 10.

Stratigraphic position: Silurian, Downtonian, Temeside (olive) Shale. Locality 62.

Eurypterus kokomoensis Miller and Gurley, 1896

Holotype: here designated, the specimen shown by Miller and Gurley, 1896: U.C. 6638 (fig. 1, pl. 5).

Referred specimen: the specimen shown by Clarke and Ruedemann, 1912: U.C. 12909 (fig. 2, pl. 26).

Reference: Miller, S. A., and Gurley, W. F. E., 1896, pp. 90-91, pl. 5, fig. 1.

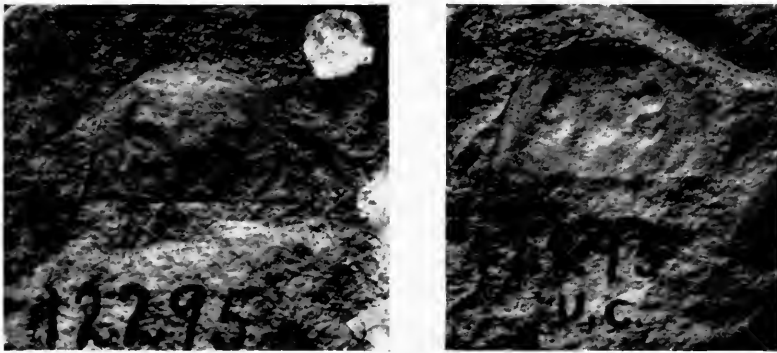


FIG. 19. *Eurypterus Pennsylvanicus* C. E. Hall, 1877. Holotype: U.C. 12295.

Stratigraphic position: Silurian, Kokomo Limestone formation.
Locality 59.

Remarks: specimen U.C. 6638 cited and figured by Clarke and Ruedemann, 1912, pp. 212-216, pl. 25, fig. 1. Referred by Clarke and Ruedemann, 1912, to *Eurypterus (Onychopterus) kokomoensis* Miller and Gurley, 1896; by Kjellesvig-Waering, 1948, to *Onychopterella kokomoensis* (Miller and Gurley).

***Eurypterus mansfieldi* (C. E. Hall)**

See *Dolichopterus Mansfieldi* C. E. Hall, 1877.

***Eurypterus (Onychopterus) kokomoensis* Miller and Gurley, 1896**

See *Eurypterus kokomoensis* Miller and Gurley, 1896.

***Eurypterus Pennsylvanicus* C. E. Hall, 1877. Figure 19.**

Holotype: here designated the specimen cited by Hall, C. E., 1877: U.C. 12295 (p. 621).

Reference: Hall, C. E., 1877, p. 621.

Stratigraphic position: Pennsylvanian, sandy shale overlying a sandstone equivalent to the Garland Conglomerate. Locality 61.

Remarks: cited and figured by Hall, J., 1884, p. 31, pl. 5, fig. 18.

Referred by Kjellesvig-Waering, 1958, to *Adelophthalmus*

pennsylvanicus (C. E. Hall); by Clarke and Ruedemann, 1912, to *Eurypterus (Anthraconectes) pennsylvanicus* C. E. Hall, 1877.

The holotype consists of a carapace and its counterpart.

Eurypterus potens Hall, 1884. Figure 20.

Holotype: here designated, the specimen shown by Hall, 1884: U.C. 12297 (fig. 10, pl. 4).

Referred specimen: the other specimen figured and cited by Hall, 1884: U.C. 51876 (fig. 9, pl. 4).

Reference: Hall, J., 1884, pp. 28, 29, 37, pl. 4, fig. 10.

Stratigraphic position: Pennsylvanian, Allegheny River series, shale immediately below the Darlington cannel coal. Locality 60.

Remarks: Hall, 1884, was not able to refer the specimens satisfactorily to genus and species. He interpreted the fossils as the fragments of the ectognaths. Clarke and Ruedemann, 1912, considered them apparently to be a portion of a sternite and a gnathobase, with ornamentation characteristic of *E. mansfieldi*. Referred by Clarke and Ruedemann, 1912, to *Eurypterus (Anthraconectes) mansfieldi* C. E. Hall; by Kjellesvig-Waering, 1958, to *Adelophthalmus potens* (Hall).

Eurypterus ranilarva Clarke and Ruedemann, 1912

Holotype: by original designation, the specimen shown by Clarke and Ruedemann, 1912: U.C. 12905 (fig. 7, pl. 17).

Referred specimens: the other specimens indicated as paratypes by Clarke and Ruedemann, 1912: U.C. 12907 (fig. 1, pl. 18); U.C. 12906, U.C. 12910 (fig. 2, pl. 18).

Reference: Clarke, J. M., and Ruedemann, R., 1912, pp. 208-211, pl. 17, fig. 7.

Stratigraphic position: Silurian, Kokomo Limestone formation. Locality 59.

Remarks: U.C. 12905, U.C. 12906, U.C. 12907 cited by Kjellesvig-Waering, 1948, p. 465. Referred by Kjellesvig-Waering, 1948, to *Onychopterella kokomoensis* (Miller and Gurley).

Eurypterus remipes lacustris Harlan, 1834

Referred specimen: the specimen cited by Kjellesvig-Waering, 1958: U.C. 28988 (pp. 1127-1129).

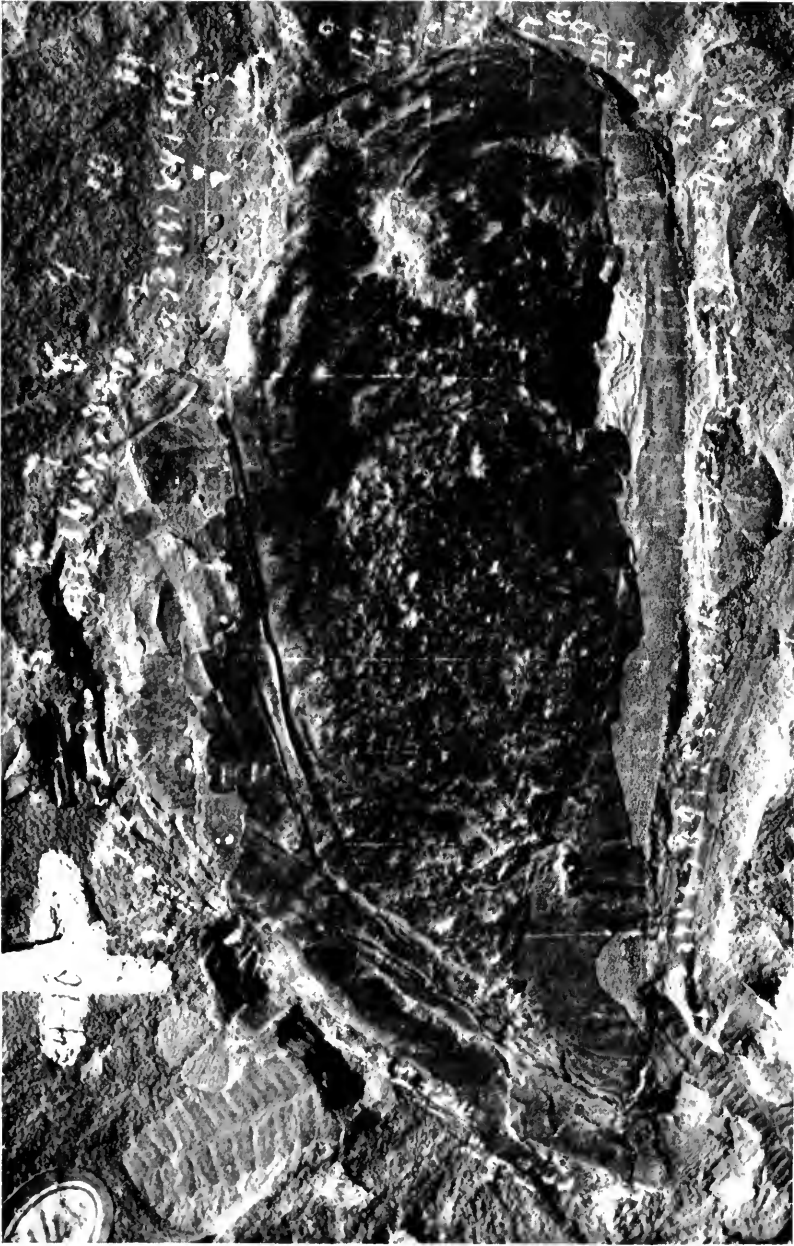


FIG. 20. *Eurypterus potens* Hall, 1884. Holotype: U.C. 12297.

Reference: Kjellesvig-Waering, E. N., 1958, pp. 1127–1129.

Stratigraphic position: Silurian, Williamsville Waterlime Member of the Bertie formation. Locality 58.

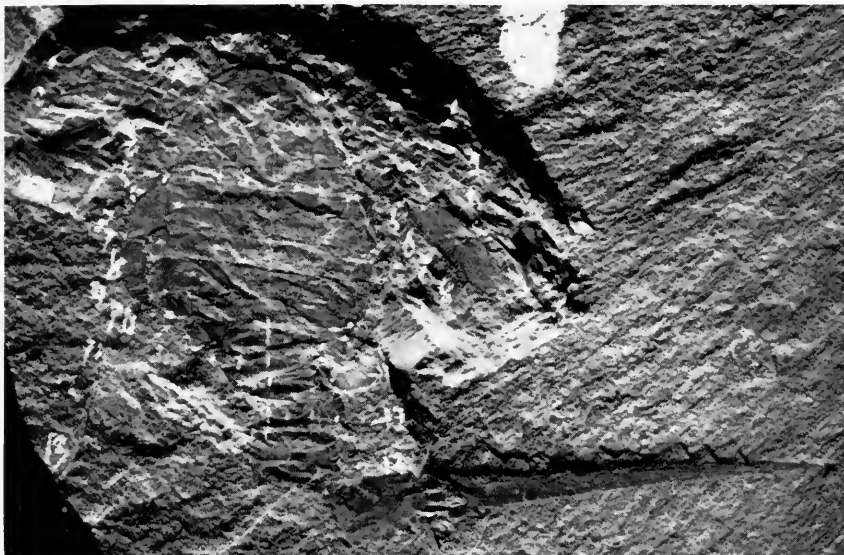


FIG. 21. *Eurypterus stylus* Hall, 1884. Holotype: U.C. 12296.

Remarks: nearly complete specimen, revealing details of dorsal and ventral sides.

***Eurypterus stylus* Hall, 1884. Figures 21–24.**

Holotype: here designated, the specimen shown by Hall, 1884: U.C. 12296 (fig. 14, pl. 5).

Referred specimens: the other specimens figured and cited by Hall, 1884: U.C. 51877 (fig. 12, pl. 5); U.C. 51878 (fig. 13, pl. 5); U.C. 51879 (fig. 15, pl. 5).

Reference: Hall, J., 1884, pp. 34–35, pl. 5, fig. 14.

Stratigraphic position: Pennsylvanian, Allegheny River series, shale immediately below the Darlington cannal coal. Locality 60.

Remarks: referred by Clarke and Ruedemann, 1912, to *Eurypterus (Anthraconectes) mansfieldi* C. E. Hall, 1877; by Kjellesvig Waering, 1958, to *Adelophthalmus mansfieldi* (C. E. Hall).

Eusarcus newlini (Claypole)

Referred specimens: the specimens shown by Clarke and Ruedemann, 1912: U.C. 12900 (fig. 1, pl. 37); U.C. 12902 (fig. 1, pl. 38); U.C. 12901 (cited on p. 245).

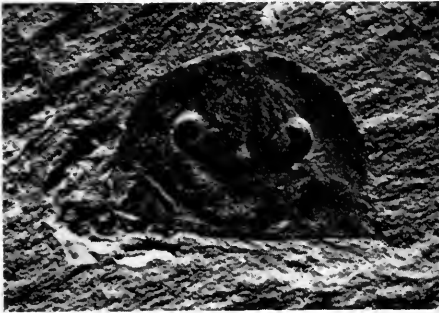


FIG. 22. *Eurypterus stylus* Hall, 1884. Referred specimen: U.C. 51877.

FIG. 23. *Eurypterus stylus* Hall, 1884. Referred specimen: U.C. 51878.



Reference: Clarke, J. M., and Ruedemann, R., 1912, pp. 245-253, pl. 37, fig. 1, pl. 38, fig. 1.

Stratigraphic position: Silurian, Kokomo Limestone formation.
Locality 59.

Remarks: U.C. 12900 is in two parts, both carbon impressions of entire animal. Referred by Størmer, 1955, to *Carcinosoma newlini* (Claypole).



FIG. 24. *Eurypterus stylus* Hall, 1884. Referred specimen: U.C. 51879.

Hughmilleria (Hughmilleria) banksii (Salter)

Referred specimen: the specimen cited by Kjellesvig-Waering, 1961b: PE 4981 (pp. 800, 801).

Reference: Kjellesvig-Waering, E. N., 1961b, pp. 800–801.

Stratigraphic position: Silurian, Downtonian, Temeside (olive) Shale. Locality 62.

Lepidoderma mansfieldi (C. E. Hall)

See *Dolichopterus Mansfieldi* C. E. Hall, 1877.

Onychopterella kokomoensis (Miller and Gurley)

See *Eurypterus ranilarva* Clarke and Ruedemann, 1912.

Eurypterus kokomoensis Miller and Gurley, 1896.

Pterygotus (Erettopterus) serratus Kjellesvig-Waering, 1961

Holotype: by original designation, the specimen shown by Kjellesvig-Waering, 1961a: PE 5104 (fig. 43).

Reference: Kjellesvig-Waering, E. N., 1961a, pp. 87–88, fig. 43.

Stratigraphic position: Devonian, Holland Quarry Shale. Locality 56.

Remarks: the specimen is a single, complete, well-preserved free ramus of the chelicera, broken into two parts.

Pterygotus (Pterygotus) carmani Kjellesvig-Waering, 1961

Holotype: by original designation, the specimen shown by Kjellesvig-Waering, 1961a: PE 5105 (fig. 35).

Referred specimens: the other specimens indicated as paratypes by Kjellesvig-Waering, 1961a: PE 5106 (fig. 36); PE 5107 (fig. 37); PE 5110 (fig. 39); PE 5109 (fig. 40); PE 5112 (fig. 41); PE 5118 (fig. 41, *a*); PE 5119, PE 5113, PE 5111 (fig. 42).

Reference: Kjellesvig-Waering, E. N., 1961a, pp. 81–87, fig. 35.

Stratigraphic position: Devonian, Holland Quarry Shale. Locality 56.

Remarks: the species is based on fragmentary material. PE 5105, PE 5106, PE 5107 are parts of chelicera; PE 5108*a* and *b*, PE 5109, PE 5111 and PE 5110 are parts of gnathobases of coxae of swimming legs; PE 5112*a* and *b* are metastoma; PE 5118 is part of a pretelson; PE 5119 is an eleventh tergite; PE 5113 is the gnathobase of the coxa of the walking leg.

Stylonurus (Drepanopterus) longicaudatus Clarke and Ruedemann, 1912

Holotype: by original designation, the specimen shown by Clarke and Ruedemann, 1912: U.C. 12903 (fig. 1, pl. 56).

Referred specimens: the other specimens indicated as paratypes by Clarke and Ruedemann, 1912: U.C. 12908 (fig. 3, pl. 25); U.C. 12904 (fig. 1, pl. 55).

Reference: Clarke, J. M., and Ruedemann, R., 1912, pp. 316-320, pl. 56, fig. 1.

Stratigraphic position: Silurian, Kokomo Limestone formation. Locality 59.

Remarks: Referred by Størmer, 1955, to *Drepanopterus longicaudatus* Clarke and Ruedemann, 1912.

Syntomopterus richardsoni Kjellesvig-Waering, 1961

Holotype: by original designation, the specimen shown by Kjellesvig-Waering, 1961a: PE 5120 (figs. 50, 51 and 53).

Referred specimens: the other specimens indicated as paratypes by Kjellesvig-Waering, 1961a: PE 5121, PE 5122, PE 5123 (figs. 48, 49, 52).

Reference: Kjellesvig-Waering, E. N., 1961a, pp. 93-97, figs. 50, 51, 53.

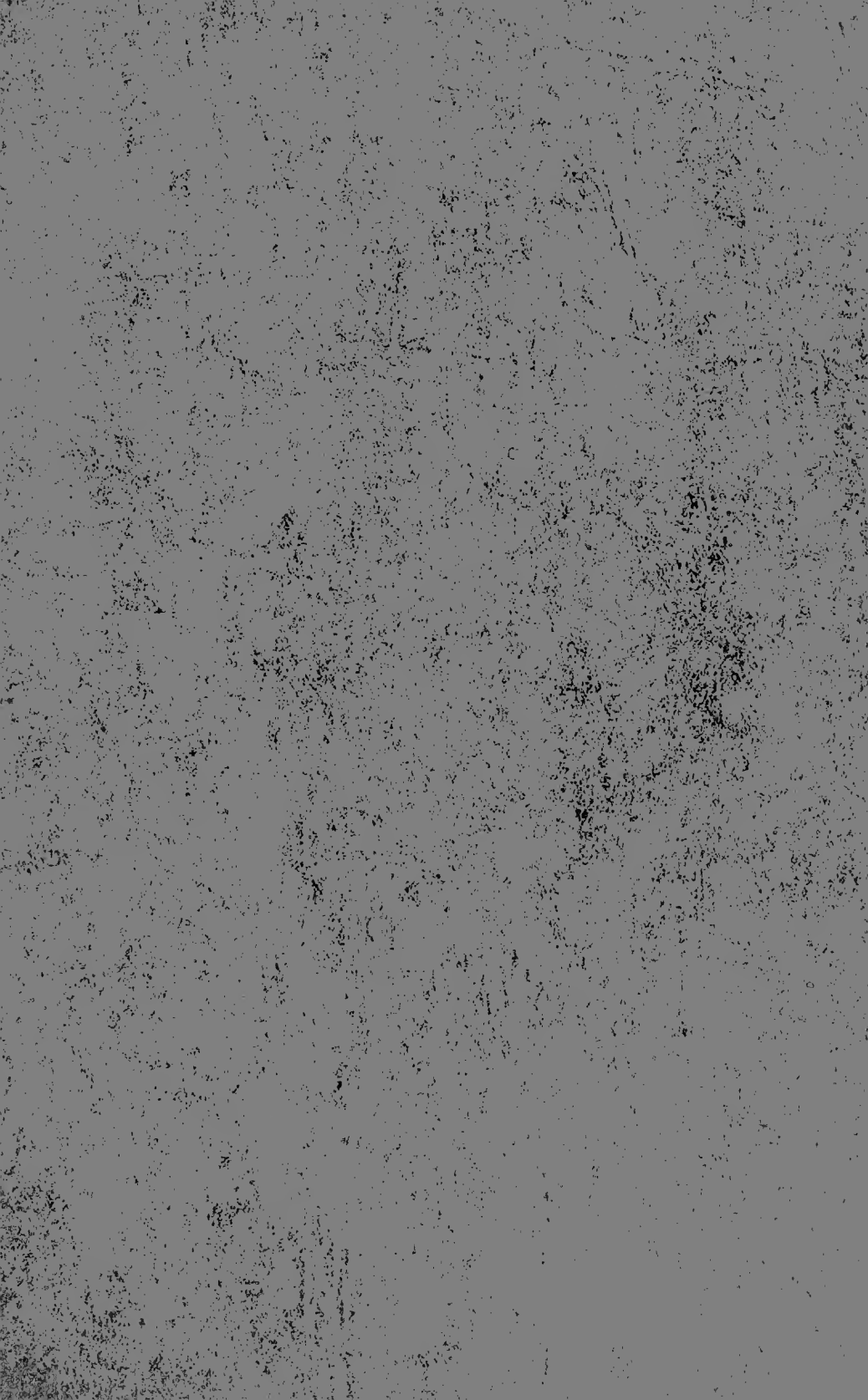
Stratigraphic position: Devonian, Holland Quarry Shale. Locality 56.

Remarks: PE 5120a and b, PE 5121 are parts of prosoma; PE 5122, PE 5123 (in two fragments) are fragments of the tergites.

REFERENCES

- ABERDEEN, E.
1940. Radiolarian fauna of the Caballos formation, Marathon Basin, Texas. *Jour. Pal.*, **14**: 127-139.
- CLARKE, J. M., and RUEDEMANN, R.
1912. The Eurypterida of New York. *Mem., N. Y. State Mus.*, **14**, 439 pp., 88 pls., 121 figs.
- HAECKEL, E.
1887. Report on the Radiolaria collected by H.M.S. *Challenger* during the years 1873-1876. Report of the scientific results of the voyage of H.M.S. *Challenger* during the years 1873-1876. **18**, pt. 1, Porulosa, pp. 1-888. London.
- HALL, C. E.
1877. Contribution to Paleontology from the Museum of the Second Geological Survey of Pennsylvania. *Proc. Amer. Phil. Soc.*, **16**: 621-622.
- HALL, J.
1884. Note on the Eurypteridae of the Devonian and Carboniferous formations of Pennsylvania. Report of Progress, PPP, 2nd Geol. Surv. Pennsylvania, pp. 23-39.
- KJELLESVIG-WAERING, E. N.
1948. Two new eurypterids from the Silurian of Indiana. *Jour. Pal.*, **22**: 465-472.
1958. The genera, species and subspecies of the family Eurypteridae, Burmeister, 1845. *Jour. Pal.*, **32**: 1107-1148.
1961a. Eurypterids of the Devonian Holland Quarry Shale of Ohio. *Fieldiana, Geol.*, **14**, no. 5, pp. 79-98.
1961b. The Silurian Eurypterida of the Welsh Borderland. *Jour. Pal.*, **35**: 789-835.
- KJELLESVIG-WAERING, E. N., and HEUBUSCH, C. A.
1962. Some Eurypterida from the Ordovician and Silurian of New York. *Jour. Pal.*, **36**: 211-221.
- MILLER, S. A., and GURLEY, W. F. E.
1896. New species of Echinodermata and a new crustacean from the Paleozoic rocks. *Bull. Illinois State Mus. Nat. Hist.*, **10**, 91 pp.
- RIEDEL, W. R., and FOREMAN, H. P.
1961. Type specimens of North American Paleozoic Radiolaria. *Jour. Pal.*, **35**: 628-632.
- RÜST, D.
1892. Beiträge zur Kenntniss der fossilen Radiolarien aus Gesteinen der Trias und der palaeozoischen Schichten. *Palaeontographica*, **38**: 107-200.
- STÖRMER, L.
1955. Merostomata. *In* Treatise on Invert. Paleo., part P. Arthropoda, **2**: P4-P41.





Publication 964





UNIVERSITY OF ILLINOIS-URBANA

550.5F1 C001
FIELDIANA. GEOLOGY CHGO
13 1961



3 0112 026616026