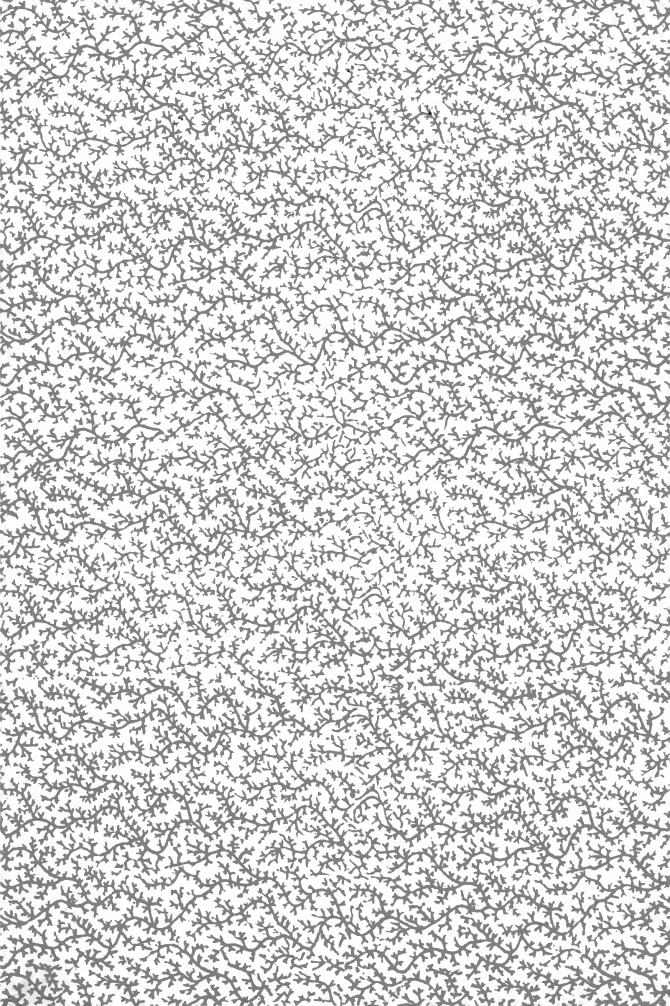
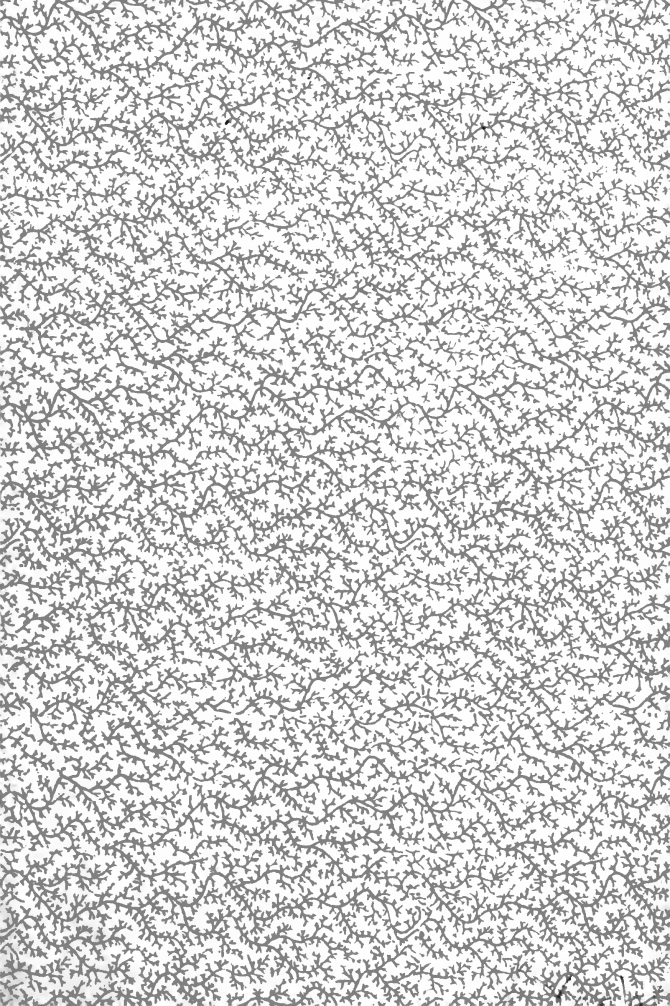


NYPL RESEARCH LIBRARIES



3 3433 08191021 2







Digitized by the Internet Archive
in 2008 with funding from
Microsoft Corporation



1931

★ I. F. Lachwood

SALE No. 937

654815

COLLECTION OF
MR. J. YOSHIY
OF KIOTO, JAPAN.



FIFTH AVENUE AUCTION ROOMS
INCORPORATED
333-341 FOURTH AVENUE
S. E. COR. 25TH STREET

W. H.
...

100
100

CATALOGUE

OF VALUABLE

Chinese and Japanese Antiquities

Chinese Rugs and Enamels, Chinese
and Japanese Porcelains, Jades, Crystals
and Snuff Bottles, Palace Screens,
Temple Carvings, Embroideries, Japan-
ese Armors and Matchlocks, Bronzes,
Lacquers Etc. : : : : : : : : : : :

ALSO A COLLECTION OF

OLD JAPANESE COLOR PRINTS, ALBUMS
BOOKS, PAINTINGS, ETC.

BELONGING TO

MR. JIROKICHI YOSHIY

A Native Expert and Collector of
KIOTO, JAPAN

To be sold without Reserve by order of the owner
AT THE

FIFTH AVENUE AUCTION ROOMS

333-341 Fourth Avenue, New York

ON THE AFTERNOONS OF

JANUARY 10TH, 11TH AND 12TH, 1907

AT TWO O'CLOCK

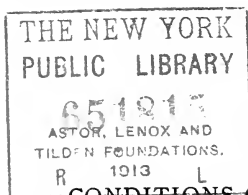
AND ON THE EVENING OF JANUARY 11TH

at Eight o'clock

THE SALE WILL BE CONDUCTED BY

MR. HENRY A. HARTMAN, AUCTIONEER

M. L. S.



CONDITIONS OF SALE.

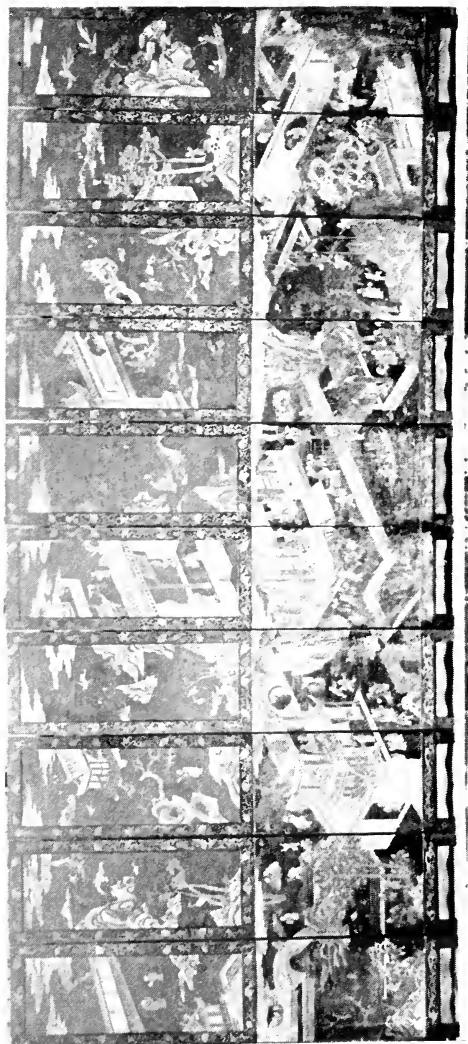
1. If there should be a dispute in regard to the bid between two or more buyers, the article shall be at once put up and resold.
2. Purchasers to give their names and places of residence and to pay a cash deposit of at least 25 per cent. of the purchase money—or the whole of the purchase money if required—in default of which the lot or lots so purchased to be immediately put up again and resold.
3. Bills payable in cash before delivery.
4. Bills must be sent for delivery of goods.
5. Goods to be removed at the expense and risk of the purchaser, on the morning following each day's sale, between nine and twelve o'clock, and the remainder of the purchase money to be absolutely paid.
6. Goods not removed on the morning following each day's sale, between nine and twelve o'clock, remain at the sole risk of the purchaser.
7. No claims allowed after the removal of goods.
8. Articles are exposed for examination and are sold without guaranty of any kind.
No goods delivered during the sale.
9. Our record of sales in all cases final.
10. Upon failure of complying with the above conditions, the money deposited in part payment shall be forfeited; all lots uncleared within the time aforesaid shall be resold by public or private sale, and the deficiency (if any) attending such re-sale shall be made good by the defaulter at the sale, together with all charges attending the same.

This condition is without prejudice to the right of the Auctioneer to enforce the contract made at this sale without such re-sale if he thinks fit.

HENRY A. HARTMAN,
Auctioneer



No. 700—GRAND K'ANG-HSI PALACE SCREEN. (FRONT VIEWS)



No 700—GRAND K'ANG-HSI PALACE SCREEN. (BACK VIEWS)

THE NEW YORK
PUBLIC LIBRARY
ASTOR, LENOX
TILDEN FOUNDATION

CATALOGUE

FIRST AFTERNOON'S SALE

Thursday, January 10th, 1906

AT TWO O'CLOCK, P. M.

1 **Child's Coat.**

Blue satin; with design of bats, flowers, etc., in blues, yellows and white. Silk lining.

Length, 32 inches.

2 **Mandarin's Robe.**

With dragons, waves, and bats brought out in gold and silk threads on a brown silk; blue sleeves; silk lining.

Length, 40 inches.

3 **Embroidered Panel.**

Design of baskets, flowers and fruits on a golden brown satin; embroidered blue border; lined.

Length, 72 inches; width, 20 inches.

3a Gold Embroidered Hanging.

Chinese figures and key patterns in colors on a red crape.

Length, 55½ inches; height, 21 inches.

4 Embroidered Hanging.

Old Chinese; flowers and vases in blues; lined.

Length, 76 inches; width, 31 inches.

5 Embroidered Hanging.

Chinese figure design in centre on a red satin; with brocaded borders and fringes; yellow silk lining.

5a Chinese Embroidery.

Floral patterns with black satin border; silk lined.

Length, 30 inches; width, 16½ inches.

6 Child's Coat (2 pieces).

Gold embroidery of medallions and flower patterns in blues and white on a red silk; blue silk lining.

Length, 24 inches.

7 Summer Coat.

Chinese silk gauze; pale pink with patterns of chrysanthemums and other flowers in blues and whites; lined.

Length, 38 inches.

8 Lady's Skirt.

Gold embroidered flowers on red satin; blue silk lining.

9 Lady's Embroidered Robe.

Chrysanthemums and peony flowers, butterflies, etc., in many colors on a blue silk; yellow silk lining.

Length, 44 inches.

10 Mandarin's Summer Gown.

Olive green "aya" silk with small figured flowers.

Length, 47 inches.

11 Lady's Embroidered Coat.

Blue crape; with embroidery of howo birds, flowers, bats, etc., in pink, green and other effects; black hems; blue silk lining.

Length, 25 inches.

12 Gold Embroidered Dress.

For child's wear; dragons, flowers, various symbolic figures and medallions in many colors on a red ground; blue silk lining.

Length, 27 inches.

13 Chinese Lady's Gown.

Blue satin; butterflies, flowers, fruits, etc., in colors.

Length, 35 inches.

14 Youth's Gown.

Embroidered medallions and sea views on a red satin; yellow silk lining.

Length, 27½ inches.

15 Chinese Gown.

Blue silk, with howo birds, peony flowers, butterflies and bats; lined.

Length, 45 inches.

16 Chinese Embroidered Gown.

Child's wear; embroidery of dragons, waves, cloud-forms, etc., on a brown silk.

Length, 28 inches.

17 Gold Embroidered Robe.

Dragons, waves and figure patterns in colors on a red satin; blue silk lining.

Length, 40 inches.

18 Lady's Embroidered Gown.

Blue satin, embroidered with bats, fruits and small flowers in varied shades and in gold and silk threads.

Length, 46 inches.

19 Lady's Gown.

Old Chinese rose color, with patterns of flowers and bats in blues and whites; silk lined.

Length, 46 inches.

20 Child's Embroidered Dress.

Steel grey; embroidered with fruits, flowers, insects, etc., in various shades; pink silk lining; fine workmanship.

Length, 27 inches.

21 Lady's Skirt.

Red satin; embroidered strips, with patterns of lotus, birds, peony flowers; black silk hemstitching; blue silk lining.

22 Mandarin's Robe.

Chinese "tsudaure" silk, blue shade woven with five-clawed dragons and sacred flaming balls and wave patterns in colors; blue sleeves; blue silk lining.

Length, 54 inches.

23 Chinese Silk Gown.

Red satin, with flowers, bats, etc., in blues; blue silk lining.

Length, 42 inches.

24 Antique Velvet Tapestry.

A rich brown shade, with small figured flowers in lighter colors; seventeenth century.

Length, 102½ inches; width, 46 inches.

25 Pair Small Rammas.

Chrysanthemums and birds; peony flowers and birds, carved and decorated in greens and gold colors.

Length, 21½ inches; width, 9½ inches.

26 Old Narrow Panel.

Carving of chrysanthemum flowers and stream with water plants; hand painted; black lacquered frame.

Length, 41½ inches; height, 3½ inches.

27 Small Narrow Panel.

Carved design of chrysanthemums in relief. Lacquer frame.

Length, 41 inches; width, 6 inches.

28 Small Round Panel.

Openwork carving of grapevines and small birds; painted frame.

Diameter, 17 inches.

29 Small Panel.

Carving of howo birds, done in free hand manner.

Length, 28 inches; height, 7 inches.

30 **Small Oblong Panel.**

Peony flowers with leaves, carved and decorated in colors; lacquer frame; seventeenth century.

31 **Antique Wood Carving.**

Subject: pine trees and pine needles in vigorous workmanship.

Length, 21 inches; height, 8½ inches.

32 **Pair Small Votive Panels.**

Containing image of Buddhist saint riding on floating lotus flowers among clouds; carved and painted in gilt lacquers; ornamented on back with gilt lacquer halo.

Height, 11½ inches; width, 5 inches, each.

33 **Temple Sutra Table.**

Front and side panels carved with figures, various flower patterns, and howo birds; top in brown lacquer; legs in gilt lacquers.

Length, 24½ inches; height, 8 inches; width, 12 inches.

34 Small Temple Table.

Red lacquer top; carved panel decoration of design of various flowers and birds and gilt lacquer painted; gracefully curved legs.

Length, 24 inches; height, $8\frac{1}{2}$ inches; width, 11 inches.

35 Old Carving.

An elephant, on back of which is placed a figure of seated Buddha in carved and lacquered decoration; seventeenth century.

Height, $10\frac{1}{2}$ inches.

36 Two Figures of "No" Dancers.

Dressed in gorgeous brocades, ornamented with lacquered hair ornaments and brass head dresses.

37 Old Panel.

Carving of angels playing with musical instrument among clouds, and gilded; black lacquer frame.

Length, $41\frac{1}{2}$ inches; height, 5 inches.

38 Old Panel.

Carving of angels and lotus spray in openwork and painted; black lacquer frame.

Length, $33\frac{1}{2}$ inches; height, 7 inches.

39 Small Carved Panel.

Solid wood carving of the long-tailed bird and pine, bamboo and plum trees; decorated lacquer frame.

Length, 20 inches; width, $12\frac{1}{2}$ inches.

40 Ramma.

Carved design of plum trees and nightingale and pine trees with panel decoration on latticework back; gilt lacquer frame.

Length, 60 inches; width, 13 inches.

41 Small Round Panel.

Carving of pine trees and small birds in openwork style; painted.

Diameter, $16\frac{1}{2}$ inches.

42 Round Ramma.

Carving of tsubaki flowers and small birds perching among branches; painted in colors; black frame.

Diameter, 18 inches.

43 Ramma.

Upright form; two deer and maple trees in openwork; lacquer frame.

Length, 29½ inches; width, 16½ inches.

44 Pair Old Doors.

Keyaki wood; carved with lotus and snails and painted in colors; bronze hikites.

Height, 14½ inches; width, 16½ inches, each.

45 Carved Panel.

Illustrated scene from the famous novel called Hakkenden. Fighting on the house roof, executed in spirited style.

Length, 32 inches; height, 9½ inches.

46 Old Temple Table.

Black lacquer top; peony flowers and leaves in high relief.

Length, $23\frac{1}{2}$ inches; width, $11\frac{1}{2}$ inches;
height, $7\frac{1}{2}$ inches.

47 Old Temple Table.

Brown lacquer top; lotus and peony carved on three side panels, and supported with graceful shaped legs, mounted with brass works.

Length, 25 inches; width, 13 inches; height, 10 inches.

48 Antique Priest Pedestals.

Six lion heads carved in bold style and painted; inner panels with decoration of key patterns and ornamented with red silk cushions.

49 Panel of Openwork.

Round; carving of owl perched on a frame, and flowers and leaves painted in colors.

Diameter, $17\frac{1}{2}$ inches.

50 Temple Panel.

Image of Jizo on lotus flower, painted in gold lacquer.

Height, 18 inches; width, 6 inches.

51 Old Kishiu Vase.

Known as "oniwa yaki," decorated with howo birds, peony flowers and conventional leaf pattern in purple, green, blue, and other tints; eighteenth century.

Height, 19 inches.

52 Jar.

Of early Ming; thickly glazed with gosu blue, painted with tsubaki flowers and leaves; four ring handles over shoulder.

Height, 10 inches.

53 Pair Candlesticks.

Ohi pottery; openworks on sides; fluted and incised decorations in green, purple and yellow; marks impressed.

Height, 12 inches.

54 **Vase with Handle.**

Mark of Ninsei; brocaded patterns about the neck; waves and crests decorations in gold, blue and reds.

Height, 10 inches.

55 **Old Korean Jar.**

Incised scrolls, flowers, etc., on a mottled green; five ring shaped handles; a rare piece.

Height, 12 inches.

56 **Old Imari Bottle.**

Panels of genroku dancing figures and dragons and tiger in relief; painted in blues, reds and gold.

Height, 12½ inches.

57 **Eleven Plates.**

Old Nabeshima; pigeons on cherry branches in blue and white.

Diameter, 8¼ inches.

58 **Twelve Plates.**

Old Nabeshima porcelains; waves and carps in a fine blue enamel.

Diameter, 5 inches.

59 Twelve Plates.

Old Nabeshima; peony flowers and leaves in fine blues.

Diameter, $8\frac{1}{2}$ inches.

60 Old Imari Plate.

Blue dragon in centre; borders of diapers and leafy scrolls.

Diameter, $12\frac{1}{2}$ inches.

61 Twelve Plates.

Old Nabeshima; iris flowers in a fine blue.

Diameter, $8\frac{1}{4}$ inches.

62 Twelve Plates.

Old Nabeshima; waters and carps in blue decoration.

Diameter, $7\frac{1}{4}$ inches.

63 Old Imari Jar.

Profuse painting of flowers and leaves done in a fine blue enamel; date about 1750 A. D.

Height, $19\frac{1}{2}$ inches.

64 **Temple Stand.**

Lacquer top chrysanthemums on front and side panels and in gilt lacquers; chrysanthemums and rivulet carved on lower frames.

Length, 25 inches; height, 13 inches; width, 13 inches.

65 **Carved Ornament.**

In Keyaki wood; design of Kirin carved in bold yet artistic workmanship.

Length, 27 inches; width, 12 inches.

66 **Narrow Ramma.**

Howo birds among pine trees carved and painted; lacquer frame.

Length, 47 inches; width, 7 inches.

67 **Small Panel.**

Cherry blossoms carved and decorated in colors and gold; lacquer frame.

Length, 38½ inches; width, 6 inches.

68 Pair Temple Hangings.

Lotus design at top; decorated in raised colors with peony flowers and birds with border decoration of cloud forms; the whole panels in imitation of old brocade hangings.

Height, $54\frac{3}{4}$ inches; width, $10\frac{1}{2}$ inches.

69 Pair Old Temple Hangings.

Dragon in centre; howo birds on side; and musical instrument on lower section in carved and painted decoration.

Height, 55 inches; width, $14\frac{1}{2}$ inches.

70 Temple Stand.

Carving of lotus flowers with leaves and stems and in gilt lacquers.

Height, $6\frac{1}{2}$ inches.

71 Carved Stand.

Gold lacquer lotus decoration on top.

Height, $6\frac{1}{2}$ inches.

72 Old Wood Carving.

Artistic design of an eagle and monkey brought out in relief. By Kogetsu. Signed.

73 Carved Dragon.

In articulated workmanship, with details skilfully executed.

Length, 31 inches.

74 Pair Temple Carvings.

Groups of three demons carved in a tsugewood by Kogetsu.

Height, 6 inches.

75 Figure of Nio.

Carved in tsugewood; representing the figure with a pair of sandals. Artist, Kogetsu. Signed.

Height, 5 inches.

76 Wood Carving.

Figure of a gama-sennin, with his companion toad. Artist, Kogetsu. Signed.

77 Temple Okimono.

Figures of "Nio" carved in Japanese tsugewood by Kogetsu. Signed. A clever piece of workmanship.

Height, 6 inches

78 Wood carving.

A lion and its cub executed in very skilful carving, partly colored.

Height, 8 inches.

79 Old Manuscript Box.

Yushoku pattern painted on top, with figures of court nobilities in gold and colors; a rare example.

Length, $8\frac{1}{2}$ inches; width, 10 inches.

80 Set of Three Sake Cups.

Red lacquer; pine, bamboo and plum tree decoration.

81 Set of Three Sake Cups.

Red lacquer; landscapes, waterfall, etc., painted in gold lacquer. Eighteenth century.

82 Set of Three Sake Cups.

In red lacquer, with gold lacquer paintings. Swallows on willow trees by Morikawa; Fujiyama and storks by Shozan; two sparrows by Kajikwa.

83 Pouch and Netsuke.

By Mitsu-kuni. Signed. Monkeys and peaches on the pouch; carved in relief. Ojime and netsuke also with monkey design.

84 Wooden Pouch (Tonkotsu).

Decorated with inlaid melons, leaves, etc., in mother-of-pearl and leads. Melon shaped netsuke; carved ojime.

Diameter, each $9\frac{1}{2}$ inches.

85 Two Portable Ink Wells (Yatate).

Horn and oxidized silver holders decorated with repousse scroll patterns and melon designs.

86 Small Lacquer Hand Drum.

Painting of dragon and tomoye crest; iron handle. ,

87 Bronze Pagoda.

Complete architectural structure, ornamented on four corners with pendants; folding doors on front parts, and surrounded by framework balcony, etc.; a fine example.

Height, 23 inches.

88 Gilded Bronze Censer.

In design of lotus, with a movable top in form of lotus pod and decorated with various Buddhistic emblems and Sanskrit characters.

Height, 8 inches.

89 Ancient Mirror.

From a Japanese Shinto temple, ornamented with a rich red silk cord; rare and valuable.

Diameter, 8 inches.

90 Gilded Bronze Vase.

Decoration of Kwannon and Buddhist saints; inside of the paneled sections wrought in relief; ring handles; fret patterns around the lip.

Height, 12½ inches.

91 Pair Gilded Iron Lanterns.

Openwork of scrolls of leaves; short supports at foot.

Height, 14½ inches.

92 **Pair Bronze Vases.**

Cloisonne enamel decoration of dragon; medallion patterns in colors; ring handles in design of birds; howo decoration around necks.

Height, 26 inches.

93 **Pair Bronze Candlesticks**

Coiling dragon decoration on the column and gilded.

Height, 18 inches.

94 **Pair Chinese Bronze Vases.**

Relief decoration of dragons and waves in spirited carving; handles in design of elephants' heads.

Height, 17½ inches.

95 **Old Temple Gong.**

Placed on a red lacquer stand with curved legs and railings; seventeenth century.

Diameter, 14 inches; complete height, 23½ inches.

96 Small Gong with Stand.

Sixteenth century; red lacquer stand, with gold lacquer decoration; silk cushion; Beater.

Diameter, $8\frac{1}{2}$ inches; height, with stand, $13\frac{1}{2}$ inches.

97 Four Old Temple Brass Plates.

For carrying flowers; openwork lotus design.

98 Chinese Gilded Bronze Censer.

Decoration of horse ranch and fields, engraved in relief; supported by three low legs.

Diameter, 4 inches; height, $3\frac{1}{2}$ inches.

99 Bronze Okimono.

An elephant and a tiger having a fight; well modeled pieces.

Length, 15 inches; height, 11 inches.

100 Bronze Tiger.

In reclining position.

Length, 18 inches; height, 6 inches.

101 Old Matchlock.

On barrel is depicted with a scene of the Ujigawa battle in silver and bronze inlay. Helmet decoration on the handle; a very rare piece.

Length, 51½ inches.

102 Old Matchlock.

Inlaid decoration of long armed monkeys and pine trees in silver and copper; on the wooden frame it is decorated with etched dragon design; fine old piece.

Length, 53 inches.

103 Old Matchlock.

Signed Matsudaira Mikawa no Kami; decorations of badges, dragons and cloud forms in silver and gold inlay.

Length, 47½ inches.

104 Old Matchlock.

Gold and silver inlaid dragon and cloud forms and badges on the barrel. Signed Tosa no Kami.

Length, 53 inches.

105 Rare Old Matchlock.

The iron barrel has decoration of inlaid dragon and cloud design; on wooden frame is brass plate with design of bamboo, pine and plum flowers, with a helmet decoration near fire cap.

Length, 51 inches.

106 Old Matchlock.

Silver and gilt decoration of dragons and cloud forms; inscribed on the barrel Dewa no Kami.

Length, 54 inches.

107 Old Matchlock.

Pine and storks on the barrel; dragons decoration on the frame and handle; rare piece.

Length, 51 inches.

108 Old Matchlock.

Signed Yamashiro no Kami on the barrel; badges and dragon inlaid in silver and gold.

Length, 48 inches.

109 Rare Old Matchlock.

Long, rounded barrel, with dragon in silver inlay; helmet design inlaid about the handle; on back of the frame is bronze plate decorated with cloud forms.

Length, 52 inches.

110 Old Matchlock.

Silver and copper inlaid dragon and cloud design on the barrel; inscribed Yamato no Kami.

Length, 41½ inches.

111 Small Four Panel Screen.

Panels contain a decoration of gourds, owls, tiger lilies, plum blossoms and birds carved and painted in colors; back lined with green gauze silk; the lower sections are painted with chrysanthemums and stream on both sides.

Height, 44½ inches; width, 11 inches.

112 Hanging Panel.

Solid keyaki wood; a bird perching on a branch of cherry tree, carved in bold style.

Length, 28 inches; width, 16 inches.

113 Old Temple Carving.

Polychrome design of howo birds covered with gilt and painted.

Length, $33\frac{1}{2}$ inches; width, $10\frac{1}{2}$ inches.

114 Small Oblong Panel.

Chrysanthemums, flowers and streamlet carved and decorated in colors; lacquer frame; seventeenth century.

Length, 42 inches; width, 6 inches.

115 Old Mask.

Of Tempei period; representing face of a demon; a very strong example.

116 Old Mask.

Of Tempei period; representing face of a tengu; a very rare work.

117 Old Door.

Made of Satsuma cedar; decorated with storks and bamboo in bold style; mounted with brass; black lacquer frames.

Height, 57 inches; width, $23\frac{1}{2}$ inches.

118 Pair Upright Panels.

Large chrysanthemum flowers, butterfly and a bird above, and rooster and chicken below in openwork carving and painted in colors; black lacquer frame.

Length, 62 inches; width, 21 inches.

119 Grand Lacquer Cabinet.

Black lacquer; four paneled doors in front contain carved decoration of dragon fly, birds and flowers, lotus, bamboo and pheasants, howo birds and chrysanthemums on upper sections; the sides are painted with ajisai flowers, birds and butterflies, etc.; inside there are three shelves, all finished in gilt lacquers.

Height, 69 inches; width, 39 inches;
depth, 20 inches.

120 Two Fold Screen.

Old Sugi wood; fine painting of willows and herons in greens and white on a back of gilt leather finish; decorated frames.

Height, 68 inches; width, 37 inches.

121 **Pair Okimonos.**

Images of Monju and Fugen bosatsu, riding on backs of Komainu and elephant, in elaborate carving and gilded; placed on brass mounted stands; rare old carvings; sixteenth century.

Height, 36½ inches.

122 **Old Seto Jar.**

Five clawed dragons and fire flowers in subdued blue on a celadon body.

Height, 18 inches.

123 **Two Pilgrim Bottles.**

Raised decoration of lattice and medallion patterns in a brown color.

Height, 10½ inches.

124 **Trumpet-Shaped Vase.**

Apple green type; raised centre band.

Height, 9 inches.

125 **Tall Korean Vase.**

Ornamented with handles on sides.

Height, 13 inches.

126 **Hanging Vase.**

Old Japanese pottery; in form of a boat; turquoise green glaze.

127 **Large Takatori Jardiniere.**

Thick brown and grey splashes with fret work pattern about neck.

Diameter, 13 inches; height, 13 inches.

128 **Pottery Covered Box.**

By Dohachi. Cherry blossoms and maple leaves in colors and in white enamels; green enamels inside.

Diameter, 9 inches.

129 **Flower Pot.**

Old satsuma pottery; grapes and squirrels painted in colors on a yellow body; with three low supports.

Diameter, 10 inches.

130 Large Jar with Cover.

Old Kutani of green glaze; howo birds on three panels with flower pattern on reserve parts in greens and other colors. Letter "Fuku" marked on bottom.

Height, 22½ inches.

131 Large Imari Jar with Cover.

Signed at base "Dai Nippon Kio Hambei;" decorations of procession of "tayu," during the Genroku era—men and women in gay costumes watching the paraders, all carefully painted in colors; old and rare piece.

Height, 30 inches.

132 Awata Pottery Vase.

By Tozan; painted with flowers in various enameled colors on a crackled glaze body.

Height, 8½ inches.

133 Old Seto Jar.

Blue dragon and cloud-forms decorated on a light blue ground.

Height, 8 inches.

134 **Old Imari Plate.**

Dragons, cloud-forms and waves in blues; bamboo, pines, and plum flowers on back.

Diameter, $13\frac{1}{2}$ inches.

135 **Plate.**

Of Chien-lung period; masses of chrysanthemum flowers and leaves in a rich blue.

Diameter, $13\frac{1}{2}$ inches.

136 **Old Imari Plate.**

Oblong; a map of Ancient Japan, sea-views and storks in fine blue.

Diameter, $17\frac{1}{2}$ inches.

137 **Old Imari Plate.**

Centre decoration of flowers and birds with border of bamboo and leaves and Karakusa.

Diameter, 18 inches.

138 Old Imari Plate.

Conventional form of sparrow and storks and awoye crset; leafy scrolls on back.

Diameter, 18½ inches.

139 Large Plaque.

Old Imari; a map of old Japan; Chinese junks and signs of zodiac, etc.

Diameter, 19 inches.

140 Old Imari Plate.

Decoration of figures, interiors, landscapes, etc.

Diameter, 19 inches.

141 Old Imari Plate.

Tiger and bamboo, flower garden and fence design in colors; Karakusa pattern on back.

Diameter, 19 inches.

142 Old Imari Plate.

Ascending carp and waterfall in blue; flowers on back.

Diameter, 17½ inches.

143 Temple Ramma.

Strong carved decoration of two angels amid cloud-forms; black lacquer frames with brass mounting.

Length, 44 inches; height, $9\frac{1}{2}$ inches.

144 Carved Ramma.

Solid wood with design of mandarin ducks and iris pool, carved and decorated in colors; lacquer frame.

Length, $28\frac{1}{2}$ inches; width, $13\frac{1}{2}$ inches.

145 Carved Ramma.

Artistic design of plum blossoms and nightingales done in bold carving; black lacquer frame.

Length, $38\frac{1}{2}$ inches; height, 12 inches.

146 Old Ramma.

Carving of a pair of ducks among lotus pool; black lacquer frame.

Height, $30\frac{1}{2}$ inches; length, 17 inches.

147 Temple Ramma.

Carved design of howo bird in centre, surrounded on both sides by bamboo and turtles; black lacquer frame; brass mountings.

Length, 50½ inches; height, 10 inches.

148 Small Four-Paneled Screen.

Main panels contain designs of plum trees and nightingales, grapes and squirrels, lotus and herons, and bamboo and storks; autumn grasses on lower sections on gilt back; awaye crests on back; metal mountings.

Height, 40 inches; width, each panel, 10 inches.

149 Pair Rammas.

Howo bird, surrounded by lotus and leaves and white parrots, painted in polychrome; lacquer frame.

Length, 35 inches; width, 13 inches.

150 Tall Hanging Panel.

Carved design of an eagle after sparrow executed in spirited workmanship; broad and heavy frames mounted with bronze hanger at the top.

Length, 55½ inches; width, 21 inches.

151 Arch-Shaped Panel.

Openwork carving of howo birds in lacquered frame.

Length, 39 inches; height, 7½ inches.

152 Narrow Ramma.

Carving of howo birds and pine trees painted in gold lacquer; lacquer frame.

Length, 47 inches; width, 6½ inches.

153 Pair Old Buddhist Panels.

Votive tablets, carved with a figure of Buddhist saint riding among the clouds and finished in gilt lacquers; seventeenth century.

Height, 18 inches; width, each, 7 inches.

154 Circular Panel.

Carving of lily and birds in openwork style; hand painted.

Diameter, $17\frac{1}{2}$ inches.

155 Old Temple Door.

Sugi wood, with carved decoration of herons, lotus and clouds and pool, and painted in colors on gold lacquer back; the reserved parts with chrysanthemums in white and colors.

Height, 59 inches; width, $22\frac{1}{2}$ inches.

156 Temple Wood Carving.

Antique Chinese specimen; sacred lotus in centre, fire symbols above and elephant beneath in bold relief and carefully treated in colors.

Height, $41\frac{1}{2}$ inches; width, $14\frac{1}{2}$ inches.

157 Two Fold Screen.

Three storks among pine forest carved in relief; black frames.

Height, 45 inches; width, each, 27 inches.

158 Two Fold Screen.

Artistic painting of bamboo grove and sparrows, carved and treated in various pigment; the reserved space mounted with black bands; the backs are decorated with flowers and vines; lacquer frames; brass mountings.

Height, $60\frac{1}{2}$ inches; width, each, $29\frac{1}{2}$ inches.

159 Carved Panel.

Design of chrysanthemum flowers in openwork, with black lacquer frame.

Length, $27\frac{1}{2}$ inches; width, $19\frac{1}{2}$ inches.

160 Pair Gilt Bronze Candlesticks.

In lotus design with leaves, stems and pods in outstretching finish.

Height, $19\frac{1}{2}$ inches.

161 Pair Suaka Bronze Candlesticks.

In design of lotus flowers, with leaves and pods in outstretching style.

Height, $19\frac{1}{2}$ inches.

162 **Pair Suaka Bronze Candlesticks.**

In design of lotus flowers with leaves and pods in outstretching style.

Height, 19½ inches.

163 **Pair Bronze Candlesticks.**

Decorated on the column with coiling dragon design.

Height, 22½ inches.

164 **Pair Bronze Candlesticks.**

Old Japanese openwork scroll pattern on column, top and base.

Height, 25½ inches.

165 **Pair Brass Kemans.**

Early sixteenth century; decorated with howo birds in repousse work, ornamented with five pendants.

166 **Pair Antique Temple Kemans.**

Probably sixteenth century. Contain figures of Kuanon in repousse work. Ornamented with 5 yoraku pendants to each. Very elaborate workmanship.

167 **Four Fold Brass Screen.**

For fireplace; repousse design of grapes, vines and leaves; lined with fine wire net.

Height, 24 inches; width of each fold, $9\frac{1}{2}$ inches.

168 **Hawthorn Ginger Jar with Cover.**

Blossoming branches and twigs of the prunus blossoms, with reserve of blues and with white relief.

Height, 12 inches.

169 **Chinese Porcelain Vase.**

Chien-lung; decorated with plum blossoms and birds on peach bloom colors.

Height, 14 inches.

170 **Ginger Jar with Cover.**

Powdered blue glaze.

Height, 10 inches.

171 **Pair Club-Shaped Vases.**

With "Rose du Barry" glaze; signed with seal marks on the bottom.

172 Jar with Cover.

Of Tao-Kuang period; green hawthorn with blossoms in white reserve closely painted.

Height, 12 inches.

173 Vase of Gourd Shape.

Chinese. Pomegranates in varied blues on coral reds. Teak stand.

Height, 8½ inches.

174 Club-Shaped Vase.

Yellow, with decoration of howo birds, peony flowers, butterflies, etc., in red purple, blues and green.

Height, 18 inches.

175 Small Jar.

With teakwood cover; blue decoration of garden scenes and figures; Chien-lung specimen.

Height, 6½ inches.

176 Beaker-Shaped Vase.

Panels of floral pattern, with reserves of blossoms in colors on a green body.

Height, 17½ inches.

177 Chien-Lung Bottle-Shaped Vase.

Rich ruri blue with dragons and bats decoration.

Height, 15½ inches.

178 Four Plates.

Old Chinese porcelain; with medallions of flowers and art objects over the borders. Chien-lung.

Diameter, 8 inches.

179 Chinese Porcelain Bowl.

Tao-kuang period; coral red reserves with decorations of flower patterns in white relief and greens, and Chinese inscriptions.

Diameter, 6½ inches.

180 Chinese Porcelain Bowl.

Chien-lung era; medallions of Chinese characters, with reserved parts of leafy scrolls in colors on a yellow body. Seal marks.

Diameter, $6\frac{1}{4}$ inches.

181 Chinese Bowl.

Kang-hsi porcelain; purple colored glaze of iridescent texture; teakwood stand.

Diameter, 7 inches; height, 6 inches.

182 Old Pottery Jar.

Ming specimen; diapers and panel designs and flowers in greens and yellows.

Height, 6 inches.

183 Chien-Lung Vase.

Of short neck with, spreading body covered with a fine liver colored glaze.

Height, 7 inches.

184 Celadon Vase.

Of Chien-lung period; fashioned after ancient Chinese bronze flower holder; archaic decoration; handles in form of animals.

Height, 14½ inches.

185 Bottle-Shaped Vase.

Chien-lung period; dog foo painted in peach bloom color. (Slight repair.)

Height, 16½ inches.

186 Two Chien-Lung Bowls.

Rich purple glaze, with incised dragons. Under glaze on one, and another with plain purple glaze.

Diameters, 9 inches and 9½ inches.

187 Slender-Shaped Vase.

Of Lan-yao-pien porcelain, with subdued tone; a rare old piece.

Height, 15½ inches.

188 Chinese Vase.

Slender necked; decoration of ducks
and lotus in colors. Chien-lung era.

Height, 9 inches.

189 Small-Necked Vase.

Of Chien-lung era; with chrysanthemums
in colors.

Height, 9 inches.

190 Blue and White Vase.

Of Yung-cheng; decoration of pine
trees and deer.

Height, 16 inches.

191 Vase of Slender Form.

Chinese; blue and white hawthorn with
white reliefs.

Height, 18 inches.

192 Large Jar.

Old Cochin Chinese pottery; splashes
of bluish white on a cracked body; orna-
mented on shoulder with four animal de-
signed ears.

Height, 18 inches.

193 Temple Lacquer Table.

Decoration of peony flowers on panels and on corners; gilt lacquer legs; brass mountings.

Length, 24 inches; height, 11 inches; width, $10\frac{1}{2}$ inches.

194 Temple Sutra Table.

Keyaki wood; side panels and upper front carved with lotus design; four legs with cross frames.

Height, $9\frac{1}{2}$ inches; length, $23\frac{1}{2}$ inches; width, 8 inches.

195 Temple Stand.

Carved and painted lotus design.

Height, 13 inches.

196 Red Lacquer Stand.

Round top; carved decoration of pine trees, branches and figure designs skilfully worked out; black lacquer edges.

Diameter, 9 inches; height, $4\frac{1}{2}$ inches.

197 **Keyaki Wood Stand.**

Round form; carved with three lions in solid piece.

198 **Old Temple Carving.**

In design of howo birds, painted in colors.

Length, 22½ inches; height, 13 inches.

199 **Round Ramma.**

Cherry blossoms and small birds carved in relief.

Diameter, 18 inches.

200 **Pair Temple Carvings.**

Pair sacred birds brought out in artistic carving, and ornamented with pendants with bells.

Height, 14 inches; width, 11 inches.

201 **Small Carved Panel.**

Design of streamlet and chrysanthemum flowers in high relief.

Length, 26 inches; height, 3 inches.

202 **Buddhist Temple Bell.**

Placed on a stand with dragon and lotus decoration and lacquered; has a beater and silk cushion.

203 **Two Antique Japanese Locks and Keys.**

One, iron, from the "Kitano" Shinto temple, in Kioto. Probably sixteenth century. Another, yellow bronze in form of a lobster.

Length, 12½ inches.

204 **Pair Old Iron Bridle Bits.**

Decoration of Kiri flowers; probably sixteenth century.

205 **Ten Plates.**

Old Imari; blue peony with border of panel patterns, fluted edges.

Diameter, 6½ inches.

206 **Ten Plates.**

Old Imari; landscapes, medallions, panel decoration, etc., in colors.

Diameter, 8 inches.

207 Ten Plates.

Old Imari; blue flower pattern in centre; border of howo birds and dragons within panels.

Diameter, $8\frac{1}{4}$ inches.

208 Ten Plates.

Old Imari; blue flower centre, and panel decorations in colors and gold.

Diameter, 9 inches.

209 Ten Plates.

Old Imari; landscapes, characters and howo birds in colors and gold.

Diameter, 7 inches.

210 Twelve Dishes.

High form; old Imari, with decoration of flowered panels and dragons in centre.

Height, 3 inches; diameter, $5\frac{1}{4}$ inches.

211 Old Imari Jar.

Figures of "genroku" dancers on three panels in colors, with reserve of blue flowers. Seventeenth century.

Height, 13½ inches.

212 Old Imari Jar.

Blue landscape painting on a crackled grey ground.

Height, 12 inches.

213 Fushimi Pottery Figure.

Of Japanese lady; modelling is of excellent execution and painted in colors.

Height, 20 inches.

214 Six-Sided Vase.

Old Cochin Chinese pottery; pale olive green and grey running glaze; carved stand.

Height, 13 inches.

215 Large Seto Jar.

Splash glazes in reddish browns and other colors.

Height, 24 inches.

216 Bottle-Shaped Vase.

Old Cochin Chinese; splashes of bluish green; ornamented with lizards.

Height, 14 inches.

217 Cabinet Vase.

Purple glaze.

Height, 6 inches.

218 Chinese Bottle.

Blue and white flower and butterfly decoration; spout on side.

Height, 8 inches.

219 Bottle.

Old Kutani; with peony flowers in red, blue and other colors on four sides.

Height, 9½ inches.

220 Old Imari Bottle.

Blue landscapes, and flower decoration;
sixteenth century specimen.

Height, 11½ inches.

221 Bottle.

Old Kiyomitsu pottery; landscapes in
blue color on a fine crackle body.

Height, 7 inches.

222 Old Pottery Vase.

Cochin Chinese; coated with a green
glaze.

Height, 9½ inches.

223 Cabinet Vase.

Bottle shaped, with purple glaze.

Height, 6 inches.

224 Chinese Vase.

“Clair de lune” glaze in subdued tone.

Height, 10 inches.

225 **Porcelain Vase.**

Chien-lung; purple glazed.

Height, 6½ inches.

226 **Old Foochow Vase.**

Slender form; ivory white glaze; handles in design of bats.

Height, 10 inches.

227 **Small Cabinet Vase.**

Bottle shaped; purple glaze.

Height, 6 inches.

228 **Bottle-Shaped Vase.**

Old "Agano" pottery; floral decoration on grey body.

Height, 13 inches.

229 **Old Chinese Cup.**

Blue and white fruits and character design.

Height, 4½ inches.

230 **Old Satsuma Vase.**

Decoration of tortoise shell color effect.

Height, 9½ inches.

- 231 Old Canton Galipod.
Dark purple glaze.
Height, 9½ inches
- 232 Old Jar.
Iron rust souffle glaze. (Repaired.)
Diameter, 8½ inches.
- 233 Antique Vase.
Cochin Chinese pottery, with raised lotus decoration in green enamel.
Height, 7½ inches.
- 234 Pottery Jug.
Old Banko ware; green glaze; handle in design of plum tree and spout in form of bamboo.
Height, 10½ inches.
- 235 Coral-Red Bowl.
Gold decoration of Chinese characters; blue color inside. Tao-kuang era.
Diameter, 9½ inches.

236 Kang-Hsi Plate.

Centre decoration of lotus patterns with borders of flowers.

Diameter, 8 inches.

237 Pair Chinese Covered Bowls.

Figures and inscriptions carefully executed in rich colors.

Diameter, $4\frac{1}{2}$ inches.

238 Chinese Covered Bowl.

Marks of Tao-kuang in red seal characters; fish and flower decorations.

Diameter, 4 inches.

239 Old Chinese Coupe.

Porcelain of Chien-Lung era; handle on side in design of a bat, decorated in red and penciled in gold; a fine old specimen.

240 Club-Shaped Vase.

Under glaze decoration of symbols and scrolls of leaves in blue and green colors.

Height, $17\frac{1}{2}$ inches.

241 **Cochin Chinese Jar.**

.Decoration of chrysanthemums, etched and painted in colors on a red ground.

Height, $8\frac{1}{2}$ inches.

242 **Old Pottery Bottle.**

Shidoro ware; with "tea leaf" glaze.

Height, 10 inches.

243 **Cabinet Pottery Vase.**

Old Foo-chow ware; with lizard at neck on an ivory white texture.

244 **Cochin Chinese Bottle.**

Ming period; pale grey and bluish white; with six panels in raised finish.

Height, 6 inches.

245 **Small Cabinet Vase.**

Coral red glaze.

Height, $3\frac{3}{4}$ inches.

246 Chinese Porcelain Dish.

Yung-ching; painted decoration of dragon in peach bloom.

Diameter, 5 inches.

247 Jar with Cover.

Old Cochin Chinese; with smooth surface covered with "tea-leaf" glaze.

Height, 6 inches.

248 Yellow Jar.

Old Cochin Chinese; brocaded decoration in relief.

Height, 5 inches.

249 Chinese Teapot.

Old pottery; side handle and spout; hand modeled with raised decoration in purple.

Height, 6½ inches.

SECOND AFTERNOON'S SALE
Friday, January 11th, 1907

AT TWO O'CLOCK, P. M.

250 **Bottle.**

With short neck, coated with a rich purple glaze; Chien-lung era; teakwood stand.

Height, 5½ inches.

251 **Cabinet Specimen.**

Small bottle of a purple glaze. Chien-lung era.

252 **Small Galipod.**

A rich "flambe" of red with splashes in blues.

Height, 6 inches.

253 **Cabinet Vase.**

Cucumber green, crackled body; Chien-lung specimen; teakwood stand.

254 **Small Vase.**

Chinese: trumpet-shaped, green crackled glaze.

Height, 5 inches.

255 **Small "Clair de Lune" Vase.**

Cabinet specimen; has carved teakwood stand.

256 **Small Vase.**

With narrowing neck; covered with a rich purple glaze.

Height, 5 inches.

257 **Small Bottle-Shaped Vase.**

Green glaze of a fine texture; teakwood stand.

Height, 7 inches.

258 **Cabinet Bottle-Shaped Vase.**

Old Chinese pottery; coated with a black glaze of oily texture and with iridescent effect; rare.

259 **Slender-Shaped Cabinet Vase.**

Pure white porcelain; has teakwood stand.

260 **Chinese Cabinet Vase.**

Bottle-shaped, covered with fine ruri blue glaze; Chien-Lung.

Height, $5\frac{1}{2}$ inches.

261 **Small Bottle.**

Of cucumber green glaze and of fine texture; a cabinet specimen.

262 **Small Cabinet Vase.**

Bottle-shaped, with yellow glaze, crackled; teakwood stand; Chien-lung specimen.

263 **Galipot Vase.**

Chien-lung specimen; with a fine liver colored glaze; teakwood stand.

Height, $7\frac{1}{2}$ inches.

264 Small Cabinet Vase.

Mustard yellow glaze, crackled body.

265 Small Galipot-Shaped Vase.

Rare Kang-hsi specimen; coated with a smooth subdued glaze of green color.

266 Small Cabinet Vase.

Bottle-shaped with a blue glaze.

267 Small Cabinet Vase.

"Mirror black" glaze; has a carved teakwood stand.

268 Small Chien-Lung Bottle.

Cabinet specimen; covered with a rich purple glaze.

269 Pair Small Vases.

In slender form, covered with cucumber green glaze; a cabinet specimen.

270 **Two Small Cabinet Vases.**

With long necks, covered with a mirror black glaze.

271 **Small Beaker-Shaped Vase.**

Cabinet specimen; imperial yellow glaze

272 **Small Vase.**

Mustard yellow glaze, with fine crackles; old Chinese.

Height, 6½ inches.

273 **Small Coupe.**

Coupe in form of a conch shell, with "Clair de lune" glaze; seal marks of Chien-lung era; teakwood stand.

274 **Small Square Censer.**

Pure white porcelain; raised decoration of deer, horses, storks and turtles. Carved teakwood stand.

Height, 3 inches.

275 Porcelain Coupe.

Robbins' egg glaze; double fish shaped;
Chien-lung era; teakwood stand.

276 Bottle-Shaped Cabinet Vase.

Blue and white decoration of bands and
cloud forms.

Height, 4 inches.

277 Coral-Red Jar.

Of Chien-lung era; decoration of pome-
granate in colors on a coral red body;
cabinet specimen.

278 Chinese Porcelain Cup.

Inside of panels painted with peony
flowers in pink and green on a yellow
body; teakwood stand; Yung-ching era.

Height, 4 inches.

279 Pair Covered Bowls.

Chia-cheng era; beautiful floral patterns
and Chinese characters in red, blue, green
and gold.

Diameters, $4\frac{1}{4}$ inches.

280 Tall Jar with Cover.

Panel decoration of flowers and birds in blue on white reserves; teakwood stand.

Height, 10½ inches.

281 Chien-Lung Porcelain Okimono.

A parrot perched on rock; painted in turquoise green.

Height, 8½ inches.

282 Pair Ming Porcelain Okimono.

With decorations of birds, flowers, etc., in raised ornamentation painted in green, blue, yellow, etc.

Height, 8 inches.

283 Pair Chien-Lung Komainu.

Glazed in green and yellow enamels.

Height, 8 inches.

284 Pair Ming Porcelain Okimono.

In form of dog foo; coated with yellow, blue, purple, green enamel colors.

Height, 8 inches.

285 Pair Ming Porcelain Okimonos.

In form of dog foo; glazed in colors of green, purple, etc.

Height, 8 inches.

286 Chien-Lung Porcelain Okimono.

In form of a dog foo; well modeled and glazed in blue.

Height, 9 inches.

287 Pair Dog Foes.

Chien-lung porcelain; decorated in green, purple and other colors.

Height, 7½ inches.

288 Pair Chien-Lung Porcelain Okimonos.

Two dog foos skilfully modeled and coated with a turquoise blue.

Height, 9½ inches.

289 Pair Small Water Holders.

Chinese; dog foo form; green glazed; cabinet specimens.

290 **Bottle.**

Turquoise blue; with fine crackled glaze; Chien-lung period.

Height, 17 inches.

291 **Double-Fish Shaped Vase.**

Old Chinese; pale celadon glaze; teak stand.

Height, 11 inches.

292 **Old Pottery Jar.**

Cochin Chinese; coated with splash glaze.

Height, 9 inches.

293 **Small-Necked Bottle.**

With "Clair de lune" glaze of light shade and smooth surface.

294 **Slender-Necked Vase.**

Chien-lung; with two shades of purples.

Height, 8½ inches.

295 **Deep Bowl.**

Fine old celadon glaze; having hall marks on the bottom; Chien-lung specimen.

Height, 5 inches.

296 **Bottle.**

Chinese; "Blue de Nanking" glaze. Chinese figures and landscapes.

Height, 16½ inches.

297 **Hawthorne Ginger Jar.**

With original cover; cobalt blue decoration of blossoming branches spread alternately upward and downward so as to display their white blossoms on blue background.

Height, 14 inches.

298 **Bottle-Shaped Vase.**

Of Chien-lung era; with "mazarine blue" color; has marks in seal characters.

Height, 12 inches.

299 Tall Vase.

Chinese; green hawthorn with blossoms and birds in white relief and purples.

Height, 18 inches.

300 Snuff Bottle.

Chien-lung; glass decorated with medallions of Chinese figures and palm leaves; handles on sides; blue stopper.

Height, 4 inches.

301 Snuff Bottle.

Peking glass; relief carving of dragon decoration in red; stopper of red color; Chien-lung period.

Height, $2\frac{3}{4}$ inches.

302 Snuff Bottle.

Composition of milk white texture, carved in relief with lotus flowers and leaves in purple color.

Height, $2\frac{1}{2}$ inches.

303 Snuff Bottle.

In Peking glass, decorated with medallions of Chinese characters in blue; with stopper; Chien-lung era.

Height, $2\frac{1}{2}$ inches.

304 Snuff Bottle.

Chien-lung; glass decorated on both sides with dragons; red colored stopper.

Height, $3\frac{1}{2}$ inches.

305 Snuff Bottle.

Glass, with carved decoration of crabs on one side and herons on the other; stopper; Chien-lung period.

Height, $2\frac{1}{2}$ inches.

306 Snuff Bottle.

Glass, with figure decoration in green on amber yellow stopper; Chien-lung era.

Height, $2\frac{1}{2}$ inches.

307 Snuff Bottle.

Glass, with decoration of dragon design in reddish color; Chien-lung era.

Height, $2\frac{3}{4}$ inches.

308 Snuff Bottle.

Chien-lung glass, blue decoration of bats and peaches carved in relief; stopper.

Height, 3 inches.

309 Snuff Bottle.

Chien-lung glass, carved in relief with lotus, fish and birds in red shade; stopper.

Height, 3 inches.

310 Snuff Bottle.

Chien-lung glass, with decoration of lotus flowers in blue shade; stopper.

Height, $2\frac{1}{2}$ inches.

311 Snuff Bottle.

Chien-lung glass, with carved decoration of figures and animals in relief; stopper.

Height, 3 inches.

312 Snuff Bottle.

In Peking glass of brown texture, decorated with Chinese figures and trees; yellow colored stopper; Chien-lung.

Height, $2\frac{1}{2}$ inches.

313 Snuff Bottle.

Chien-lung period, decoration of medallions of dragons and Chinese characters, with stopper.

Height, $2\frac{1}{2}$ inches.

314 Snuff Bottle.

Glass, in cameo cut; carved decoration of various flowers, plants and flower vases; stopper of red color; Chien-lung period.

Height, $2\frac{1}{2}$ inches.

315 Snuff Bottle.

Peking glass; landscapes and figure designs carved in red tint; stopper of blue color; Chien-lung period.

Height, $2\frac{1}{2}$ inches.

316 Snuff Bottle.

Chien-lung glass, with lizard decoration in blue shade; with stopper of red color.

Height, $2\frac{1}{4}$ inches.

317 Snuff Bottle.

Chien-lung glass, with intricate carving of Chinese boating scene; red colored stopper.

Height, $2\frac{3}{4}$ inches.

318 Snuff Bottle.

Peking glass; carved decoration of plum trees with blossoms in red shade; yellow stopper; Chien-lung period.

Height, $2\frac{1}{2}$ inches.

319 Snuff Bottle.

Chien-lung glass, with decoration of various fruits and animals in red effects; pink colored stopper.

Height, $2\frac{1}{2}$ inches.

320 Snuff Bottle.

Peking glass; designs of lotus, fish and birds carved in blue tint; red colored stopper; Chien-lung period.

Height, $2\frac{1}{2}$ inches.

321 Snuff Bottle.

Chien-lung glass, decorated with design of animals and various fruits in red effect; stopper.

Height, $2\frac{1}{2}$ inches.

322 Pair Gilt Bronze Candlesticks.

In lotus design with leaves, stems and pods in outstretching finish.

Height, $19\frac{1}{2}$ inches.

323 **Pair Suaka Bronze Candlesticks.**

In design of lotus flowers with leaves and pods in outstretching style.

Height, 19½ inches.

324 **Pair Bronze Candlesticks.**

Column with decoration of coiling dragon.

Height, 22½ inches.

325 **Pair Bronze Candlesticks.**

Old Japanese; spiral column, with openwork decoration.

Height, 27 inches.

326 **Small Bronze Censer.**

Decoration of lion in relief; green patina.

Height, 4½ inches.

327 **Bronze Stand.**

Representing pool and weeds on which are groups of herons; mounted with five small crystal balls; by Takusai; signed.

328 **Bronze Bottle.**

By Kanaya Gorosa; pierced maple decoration in red bronze with touches of pearl grey about the shoulder; specimen of graceful shape.

Height, 8½ inches.

329 **Two Bronze Cups and Saucers.**

With side handles, decorated with engraved dragon and cloud designs; Ming specimens.

330 **Bronze Incense Burner.**

Group of two standing cranes; seventeenth century.

Height, 19½ inches.

331 **Cloisonne Enamel Censer.**

Early Ming; in form of mandarin duck, colored in green, red and yellow tones; a fine workmanship.

332 **Small Bronze Censer.**

Openwork decoration of precious objects upon the cover and on the sides; seventeenth century.

Height, 2½ inches.

333 **Chinese Bronze Vase.**

Fire gilt; old "seuen-te" specimen; grapes and squirrels in carved workmanship; handles in form of butterfly; a fine example.

Height, 11½ inches.

334 **Bronze Flower Pot.**

By Seimin; signed and dated Bunsei era (1817); dragons in panels in relief.

Height, 10½ inches.

335 **Bronze Koro.**

Sentoku bronze patina, in form of a duck; a skilfully modeled example.

Height, 13 inches.

336 Bronze Okimono.

In form of an elephant.

Height, 7 inches; length, 10 inches.

337 Bronze Okimono.

In form of a tiger, partly inlaid with silver; representing its sleeping attitude; a very skilful modeling.

Height, 15 inches.

338 Bronze Okimono.

An elephant; well modeled piece.

Height, 10 inches; length, 14 inches.

339 Bronze Okimono.

An elephant with Chinese boy riding on its back; uncommonly artistic production.

Height, 10 inches; length, 12 inches.

340 Bronze Okimono.

A tiger in watching attitude; admirable modeling.

Length, 15 inches; height, 11 inches.

341 Bronze Okimono.

In design of an elephant.

Length, 16½ inches; height, 11½ inches.

342 Bronze Okimono.

In design of cow in lying down position, and made as incense burner; ornamented on back with saddle.

Length, 23 inches; height, 9 inches.

343 Bronze Spaniel.

In green patina; well modeled and finished.

Length, 15 inches; height, 20 inches.

344 Large Bronze Tiger.

Calling its companion in pleading mood. Has stand made of kuwa wood.

Length, 34 inches; height, 19½ inches.

345 Bronze Vase.

Oviform. Made by Takusai. Signed. Relief decoration of landscapes, wistaria groves, birds, etc., cast and chased; fine example.

Height, 22 inches.

346 Bronze Vase.

Oviform. Made by Takusai. Signed. Landscapes, bamboo groves, waterfall views in elaborate cast decoration.

Height, 22 inches.

347 Bottle-Shaped Vase.

Old Japanese; ornamented with lizards in relief. Signed Chika-akira (Maruki).

Height, 18 inches.

348 Tall Bronze Vase.

By Tatsuyasu. Signed. Relief decoration of coiling dragons on a dark brown body.

Height, 23 inches.

349 **Grand Bronze Temple Okimono.**

In design of dragon holding a sacred flaming ball, placed on a lotus flower and ornamented with tokko and two dragons. The lower parts with floral scrolls, water and dragons in relief work.

Total height, 63 inches.

350 **Pair Brass Lanterns.**

Globular; openwork of peony and leafy scrolls; seventeenth century.

Height, 18 inches.

351 **Temple Brass Lantern.**

Openwork decoration of Kiri crests and scrolls of leaves suspended with four bells.

Complete height, 27½ inches.

352 **Large Temple Brass Keman.**

Sixteenth century; bold repousse dragon decoration and howo birds and awoye crest. Has five pendants; ornamented with jewels.

353 Large Temple Hanging.

Brass, with repousse decoration of ho-wo birds; painted on back in colors; five ornamental pendants with kiri and awoye designs.

354 Large Gong with Stand.

Seventeenth century specimen; the stand with red lacquer and gold lacquer decoration.

Diameter, $15\frac{1}{2}$ inches; height, $26\frac{1}{2}$ inches.

355 Old Temple Gong.

Dated Genroku, fourth year (1691). Made by Jisaburo of Kioto. Signed. Placed on elaborately decorated antique stand; has stick and cushion; has exceedingly fine tone.

Diameter, 10 inches; height, complete, $18\frac{1}{2}$ inches.

355a Iron Helmet.

Of Keicho period; dated 1605. With sixty-two plates. By Masatsugu. Signed.

356 Gong with Stand.

Carved and painted lotus design on the stand; has a beater.

Diameter, 8 inches; height, 18 inches.

357 Old Cloisonne Enamel Vase.

Chinese specimen; lotus flowers, vines, etc., in colors on pale pink back.

Height, 10½ inches.

358 Cloisonne Enamel Censer.

Year marks of Chien-lung; curved handles and three low supports; decorated with lotus and scrolls of leaves.

Diameter, 10½ inches; height, 5½ inches.

359 Vase with Cover.

Chinese cloisonne enamel in gourd shape; dragons, cloud forms and lotus flowers in many colors. Chien-lung era.

360 Large Cloisonne Enamel Bowl.

Chien-lung period. Character "Longevity" inside; flowers and scrolls of leaves and bats in beautiful enamel colors; marks incised on bottom.

Diameter, 10½ inches.

361 Old Cloisonne Bowl.

Chien-lung era. Decorated with dragon design.

Diameter, 7 inches.

362 Pair Large Bowls.

Chien-lung cloisonne enamel; with lotus flowers and dragons inside and outside.

Diameter, 13½ inches.

363 Chinese Cloisonne Enamel Vase.

Six sided; flowers and Chinese symbolic designs in colors; Chien-Lung era.

Height, 15½ inches.

364 **Pair Chinese Cloisonne Enamel Vases.**

Tall form with narrow neck and wide top, decorated with dragons and cloud forms in colors on blue; Chien-Lung era.

Height, 24½ inches.

365 **Pair Cloisonne Enamel Candlesticks.**

Decorated with lotus flowers and leaves in various colors on bronze columns.

Height, 25 inches.

366 **Bronze Censer.**

Old Chinese colored bronze; Chinese sage riding on back of Kirin; painted in green, golden yellow; skilful modeling; Ming dynasty.

Height, 13½ inches.

367 **Chinese Colored Bronze Censer.**

Figure on back of Kirin, in incised and colored decoration.

Height, 8 inches.

368 Chinese Pewter Teapot.

Ming dynasty; etched fruits and flower decoration; spout and side handle.

Height, 11½ inches.

369 Chinese Pewter Wine Holder.

Etched decoration of birds, figures, etc. A lion ornament on cover; handle in form of plum tree; rare and old example.

Height, 9 inches.

370 Antique Pewter Teapot.

Early Ming; flat, with four sides; decorated with incised inscriptions and plants and flowers.

Height, 5½ inches; length, 5 inches; width 2¾ inches.

371 Carved Panel.

Howo birds among clouds, carved in high relief and painted.

Length, 44½ inches.

372 **Zashki Ramma.**

Chrysanthemum flowers in gold lacquer.
Black lacquer frame.

Length, 41 inches; width, 10 inches.

373 **Small Round Panel.**

Kingfisher and reeds carved in open-work style and painted.

Diameter, 17 inches.

374 **Gold Lacquer Panel.**

Arch shaped; lotus leaves and cloud forms painted in red lacquer.

Length, 35½ inches; height, 8 inches.

375 **Large Upright Panel.**

Carving of pheasant perching on a cherry branch with blossoms, and painted in varied pigments; black lacquer frame. The lower sections have chidori birds and rivulet.

Height, 53½ inches; width, 20 inches.

376 Two Fold Screen.

Old Satsuma cedar; bamboo, sparrows, chrysanthemums in greens and white; back painted with scene of children's play; brass mountings; black lacquer frame.
Height, 68 inches; width, each, 22 inches.

377 Pair Old Shrine Doors.

Sparrows among the bamboo grove and mass of chrysanthemum flowers and small birds, carved and painted in colors on gilt back; lacquer frame.

Length, 35 inches; width, each, 11½ inches.

378 Ornamental Carving.

Combat of dragon and tiger in spirited style and decorated in green, red and other colors.

Length, 34 inches; height, 10 inches.

379 Pair Zashiki Rammas.

Carving of fleur de lis and stream painted in green and white on small lattice work back; lacquer frame.

Height, 11½ inches; length, 33 inches.

380 Large Ramma.

Artist design of pair roosters among chrysanthemum garden, brought out in bold openwork carving and painted; red lacquer frame.

Length, $64\frac{3}{4}$ inches; height, 24 inches.

381 Four Fold Screen.

Openwork carving of iris flowers painted on lattice frame and lined on the back; lower sections have painting of sparrows and brass mounting on frame; decorated with maple leaves.

Height, 46 inches; width, $10\frac{1}{2}$ inches.

382 Carved Okimono

Figure of a hotei in skilful workmanship; painted in lacquers. By Tokei. Signed.

383 Thibetan Buddha.

Seated on a stand, cross-legged; carved and gilded; a fine old example.

384 Thibetan Buddha.

Seated on a stand, with crossed legs; ornamented with flowers; a fine old example.

385 Thibetan Buddha.

Seated; placed on a stand, carved and gilded; gilt halo on back; two elephants at side, and with attendant Buddha.

386 Statuette of Buddha.

In standing position, with a halo on back, placed on series of stands which are decorated with lotus, group of lions, and waves and rabbits, all beautifully carved and gilded; probably sixteenth century.

Height, 26 inches.

387 Old Lacquer Stand.

Peony flowers in mitsuda lacquer on top; carved panels on side, supported by four curved legs.

Height, 12½ inches; diameter, 11 inches.

388 Pair Temple Stands.

In design of lotus flowers in bunches, finished in gilt lacquer.

Height, 12 inches.

389 Antique Temple Table.

Black lacquer; front panels with two peony flowers; bronze mountings on corners, edges and around the legs; sixteenth century.

Length, $23\frac{1}{2}$ inches; height, $12\frac{1}{2}$ inches; width, 13 inches.

390 Old Temple Table.

Black lacquer top; carved decoration of lotus and streamlet on all panels and drawer front in elaborate finish.

Length, $32\frac{1}{2}$ inches; height, $17\frac{1}{2}$ inches; width, 13 inches.

391 Grand Temple Table.

Negoro lacquer top; willow trees and pines on front panels; chrysanthemum flowers on side panels, and upper and lower sections in high relief; brass mounting; sixteenth century.

Length, 63 inches; height, $34\frac{1}{2}$ inches; width, 20 inches.

392 **Grand Lacquer Cabinet.**

Four fold lattice doors, each containing various flowers, including wistaria, ajisai, and storks and other birds and various plants, etc.; the upper and lower sections with decoration of storks among cherry blossoms and pink flowers, etc., in colors and gilt lacquer. Two shelves inside in gilt lacquer; both sides are painted with peony, butterflies, birds, etc.

Height, 72 inches; width, 42 inches; depth,
19 inches.

393 **Daimio Matchlock.**

Inscribed on the barrel Ii-Kamon no Kami; with decoration of badges, dragons, and clouds in silver and gold; black lacquer handle.

Length, 41 inches.

394 **Daimio Matchlock.**

Inscribed Tosa no Kami on the barrel; black lacquer handles, with gold lacquer badge.

Length, 41 inches.

395 Old Matchlock.

Ascending carps and waterfall, in silver and gold inlays.

Length, 39½ inches.

396 Rare Old Matchlock.

Maple leaves, plum flowers, pine needles, etc., in silver and gold inlay; various badges on the handle; the other parts decorated with bamboo, pine trees, and plum blossoms.

Length, 42 inches.

397 Old Matchlock.

Signed "Matsudaira Tosa no Kami"; dragons and crests decorations in inlays of silver and gold.

Length, 28 inches.

398 Daimio Matchlock.

Chrysanthemums in silver and gilt inlay; badges of Kiri flowers on the handle in gold lacquer.

Length, 42 inches.

399 Old Matchlock

Signed "Matsudaira Hoki no Kami";
awoye crests and dragons in gold and silver inlay.

Length, 30 inches.

400 Old Matchlock.

Signed "Matsudaira Hiuga no Kami";
dragons and clouds in inlay of silver and gold; brass mountings on frame.

Length, 31 inches.

401 Daimio Matchlock

Black lacquer frame and handle; dragons and clouds in gold and silver inlay on the barrel. Signed Matsudaira Iwami no Kami. Crests printed in gold lacquer on the frame.

Length, 42 inches.

402 Daimio Matchlock.

Inscribed on the barrel Hiuga no Kami. Black lacquer handle with badges in gold; flowered medallions and crest design on the barrel.

Length, 40 inches.

403 Daimio Matchlock.

Grapevines and butterflies in silver and gilt inlay; badges of the owner. Black lacquer handle. Signed Satsuma no Kami.

Length, 39½ inches.

404 Daimio Matchlock.

Signatures inscribed in oblong panel, inlaid in silver; falcons, pine trees and sun emblems in silver and gilt inlay; fine silver band at the mouth; badges on frame and handle in silver inlay. Very rare and antique specimen.

Length, 38½ inches.

405 Daimio Matchlock.

Signed Matsudaira Mikawa no Kami. Silver and gold inlaid dragons and badges. Black lacquer handle.

Length, 42 inches.

406 Daimio Matchlock.

Dragons and cloud forms inlaid on the barrel in silver and gilt; black lacquer frame and handle; with badges in gold lacquer. Signed Idsumo no Kami.

Length, 41 inches.

407 Daimio Matchlock.

Pair howo birds and badges on the barrel and the handle. Signed Iga no Kami.

Length, 39½ inches.

408 Daimio Matchlock.

Name Matsudaira Hiuga no Kami signed on the barrel with badges of the owner and dragon flies, butterflies, etc.; black lacquer frame with gold lacquer badges.

Length, 37½ inches.

409 Daimio Matchlock.

Carps in silver and gold inlay; badges and signature of Matsudaira Yechizen no Kami on the barrel; wooden frame and handle.

Length, 43 inches.

410 Pair Ceremonial Bows and Arrows.

Consisting of 16 arrows and 1 bow, and 11 arrows and 1 bow, decorated and lacquered.

411 Old Mask.

Representing a dragon's face ornamented with beards, horns, etc., painted and gilded; a very curious specimen.

412 Old Helmet.

In rare leather work, decorated in colors with howo birds; gilt lining.

413 Twelve Plates.

Old Nabeshima; decoration of iris flowers in blues and white.

Diameter, $8\frac{1}{4}$ inches.

414 Twelve Plates.

Old Nabeshima porcelain; deep form; carps and waves decoration in a fine blue.

Diameter, 5 inches.

415 Ten Plates.

Old Imari; fluted edges with flower patterns and panel decorated border.

Diameter, $6\frac{1}{2}$ inches.

416 Ten Plates.

Old Imari; blue flower patterns, border of dragon and howo decoration.

Diameter, $8\frac{1}{4}$ inches.

417 Ten Plates.

Old Imari; fluted edges; panels and peony flowers in blue, red, and gold.

Diameter, 9 inches.

418 Ten Old Imari Plates.

Blue medallions in centre; flower patterns in borders in colors and gold.

Diameter, 9 inches.

419 Ten Old Imari Plates.

Blue medallions in centre; floral patterns on borders in gold and colors.

Diameter, 9 inches.

420 Ten Plates.

Old Imari; landscapes in centre; borders of fish and fret work patterns; decoration on back.

Diameter, 9 inches.

421 Ten Plates.

Old Imari; landscapes in centre; series of borders of fish and fret work design; decorated on back.

Diameter, 9 inches.

422 Ten Plates.

Old Nabeshima; carps and streams in fine blue.

Diameter, $7\frac{1}{4}$ inches.

423 Twelve Plates.

Old Nabeshima; decoration of peony flowers in fine blues.

Diameter, $8\frac{1}{2}$ inches.

424 Twelve Plates.

Old Nabeshima; shallow form; birds and tsubaki flowers in blues and white.

Diameter, $8\frac{1}{4}$ inches.

425 Nine Plates.

Old Nabeshima porcelain; decoration of fruits, blossoms etc., in blue, green and reds; blue peony flowers on back and comb patterns.

Diameter, $4\frac{1}{2}$ inches.

426 Ten Plates.

Old Nabeshima porcelain; peony flowers in centre and corners; blue decoration on back.

Diameter, 6 inches.

427 Twelve Dishes.

High form; old Imari; with paneled flower patterns in colors and gold.

Height, 3 inches; diameter, $5\frac{1}{4}$ inches.

428 Ten Plates.

Old Imari; landscape centre; floral border pattern in colors and gold; decorated back.

Diameter, $8\frac{1}{2}$ inches.

429 Ten Plates.

Old Imari; landscape centre, border of flowers, cloud forms, etc., in colors and gold.

Diameter, $8\frac{1}{2}$ inches.

430 Ten Plates.

Old Imari; medallions and landscapes and panel decoration of fret work in colors.

Diameter, 8 inches.

431 Ten Plates.

Old Imari; fluted edges; landscapes in colors.

Diameter, $7\frac{1}{4}$ inches.

432 **Ten Plates.**

Old Imari; fluted edges; landscapes in colors.

Diameter, $7\frac{1}{4}$ inches.

433 **Ten Plates.**

Old Imari; mark Yeiraku in centre; and landscapes and characters with howo birds in reds and gold.

Diameter, 7 inches.

434 **Large Imari Jar.**

Fan shaped panels in which are painted figures of the genroku women; the other parts with tanzaku and poem papers in varied colors and gold; fine old piece.

Height, 25 inches.

435 **Old Imari Jar.**

Flowers and flower baskets in typical Imari decoration; date about 1700 A. D.

Height, 14 inches.

436 Figure of "Fukurokuju" with Deer.

Old Hakata pottery; skilfully modeled specimen.

Height, 11 inches.

437 Okimono in Hakata Pottery.

A heron in standing attitude placed on a stand representing pool with waving water; slight repair.

Height, 14½ inches.

438 Figure of Japanese Lady.

Old Kakiyemon porcelain; patterns on dress in colors and modeling of figure are of skilful workmanship.

Height, 20 inches.

439 Two Temple Votive Tablets.

Figures of Buddhist saints standing upon a lotus pod in raised finish and painted in colors on a gold lacquer background; framed.

Length, 22½ inches; width, 9½ inches.

440 Arch-Shaped Ramma.

Peony flowers with leaves in gold lacquer; black lacquer frame.

Length, 40 inches; width, 11 inches.

441 Pair Antique Carved Rammas.

Ducks in centre, plum trees on right, and daffodils on the left in skilful execution and painted in colors; black lacquer frame.

Length, 35½ inches; height, 12 inches.

442 Upright Ramma.

Solid wood, carved with howo bird and cloud forms; painted in colors; dark wood frame.

Length, 29 inches; width, 16 inches.

443 Three Old Shrine Doors.

The upper panels contain carved decoration of birds and trees; the centre eight narrow ones, having design of various water plants in relief, painted in colors, the balance with flowers and plants; plain gold lacquer on back; brass mountings. Height, 46 inches; width, centre panel, 21

inches; side, each, 10½ inches.

444 **Small Panel.**

Pair Mandarin ducks in pond, executed in truly artistic style, and painted in colors.

Length, 20½ inches; width, 10 inches.

445 **Four-Fold Carved Screen.**

The four panels contain design of howo birds and kiri flowers, lions and peony flowers in pierced workmanship on gilt lacquer background; backs are painted with bamboo, birds, chrysanthemums, etc., in greens on dark ground; mounted with irons.

Height, 68 inches; width, each fold, 13 inches.

446 **Small Ramma.**

Angels playing musical instruments among clouds; lacquer frame.

Length, 39 inches; width, 8 inches.

447 **Upright Panel.**

Carving of ascending carp against a waterfall; black lacquer frame; gold lacquer inner trimming; seventeenth century.

Height, 39 inches; length, 10½ inches.

448 Lacquer Cabinet.

With three drawers with fly-door, painted in mitsuda lacquer with flowers and fan designs mounted with brass; a fine specimen of early eighteenth century.

Height, 10 inches; width, $12\frac{1}{2}$ inches; diameter, $8\frac{1}{2}$ inches.

449 Pair Lacquer Candlesticks.

Design of coiling dragon, painted in negro lacquers; seventeenth century.

Height, $25\frac{1}{2}$ inches.

450 Lacquer Wardrobe Box.

For court lady; decorated with peacock under cherry trees in raised lacquers of various tints; brass mountings; silk cords of purple colors.

Length, 37 inches; width, 20 inches; height, 11 inches.

451 **Decorated Hasamibako (Chest).**

Top covered with leather, decorated with kiri and chrysanthemums; sides are painted with iris flowers, inlaid with mother-of-pearl, leads and lacquers; kiri wood inside; seventeenth century.

Length, 20½ inches; height, 13 inches; width, 14½ inches.

452 **Hibachi.**

Old kiri wood; mother-of-pearl inlaid grasses and reeds; lined inside with copper.

Diameter, 17½ inches; height, 9 inches.

453 **Kiri Wood Hibachi.**

Waves and asazuma boats painted in gold lacquer, and inlaid in mother-of-pearl and leads; copper lined.

Height, 9½ inches; diameter, 12½ inches.

454 **Wood Carving.**

In tsuge; falcon and dragon at war, brought out in solid carving; by Nobut-suki.

Height, 10 inches.

455 **Okimono with Crystal Ball.**

An elephant on which is placed a crystal ball; elaborately decorated and ornamented with various jewels and inlaid in mother-of-pearl and lacquered.

Height, $8\frac{1}{2}$ inches.

456 **Small Ivory Elephant and Crystal Ball.**

Elaborately carved and incrustated with various beads of ivory and corals and placed on a teak stand.

Height, $3\frac{3}{4}$ inches.

457 **Pair Carved Ivory Okimonos.**

Two crystal balls placed on elephants, which are inlaid with various beads of ivory and corals and most elaborately carved.

Height, $3\frac{3}{4}$ inches.

458 **Carved Pouch and Netsuke.**

Group of numerous turtles, intricately carved by Tadakazu; signed.

459 Lacquer Lunch Case.

Painted in lacquer with rooster and weasel; has extra tray inside; by Zeshin; an artistic example.

460 Two Pocket Shrines.

Larger of the two contains image of "Kujaku mio-o" carefully carved and lacquered; the smaller with two images of Buddhist deities; the outer cases covered with rattan wicker work and have network silk bags.

461 Antique Pocket Shrine.

Containing an image of Rakan with two attendant deities, minutely carved and painted; the cover has floral pattern in colors.

462 Antique Pocket Shrine.

Containing three images of Buddhist disciples, viz., Hattara sonja, Handaka sonja, and Rakora sonja; all in exquisite carving and lacquered; the cover has wheel decoration in gold lacquer.

463 **Pair Carved Okimonos.**

Nios, with a pair of large sized sandals; by Kogetsu.

Height, 7 inches.

464 **Strings of Ojimes.**

Twenty-two specimens in iron, silver, gold, etc., and of various designs.

465 **Two Strings of Ojimes.**

Consisting of thirty-seven specimens in gold, silver, shakudo, shibuichi, etc., of various designs; some minutely carved and inlaid.

466 **String of Ojimes.**

Five hundred and fifty specimens in silver, bronze, nuts, gilt, shakudo, shibuichi, etc., of various designs and inlays.

467 **String of Ojimes.**

Five hundred specimens in bronzes, silver, nuts, and other metals, with various designs.

468 String of Ojimes.

Five hundred specimens in silver, bronzes, nuts, etc., with various designs and workmanship.

469 String of Ojimes.

Five hundred and fifty specimens in silver, gilt, shakudo, bronze, natural nuts, etc., of various designs and workmanship.

470 String of Beads.

Consisting of one hundred and eight specimens of white crystals of varied sizes.

471 String of Beads.

Consisting of one hundred and eight specimens of ambers, with two red beads, on green cords.

472 String of Beads.

Consisting of one hundred and eight specimens of ambers on green silk strings.

473 String of Beads.

Consisting of one hundred and eight specimens of white crystals on white silk cords with tassel.

474 String of Beads.

Consisting of one hundred and eight specimens of mother-of-pearl in purple color.

475 String of Beads.

One hundred and eight specimens of amber in yellow and greens.

476 Silver Koro.

Chrysanthemum decoration in cloisonne enamel, in browns, greens, pink and blue; three leaf-shaped legs; cover and handles similarly decorated; signed Takasaki.

Height, 6 inches.

477 **Small Silver Water Holder.**

Made to represent a "goban" (a checker board with boxes of stones), minutely etched and decorated. Signed with seal marks.

478 **Two Gilt Bronze Pipes.**

Butterflies and peony flowers in engraved workmanship; old Japanese specimens.

479 **Gilt Bronze Pipe.**

Old Japanese; dragons and clouds in bold relief on a background of fret work pattern; rare specimen.

480 **Pair Bronze Candlesticks.**

Dragon decoration around the column; gilded.

Height, 22½ inches.

481 **Pair Suaka Bronze Candlesticks.**

In design of lotus flowers, with leaves and pods in outstretching style.

Height, 19½ inches.

482 Three Fold Screen.

Panels contain carved decoration of roosters under cherry trees; on left panel with pheasant and peony, and on the right with cherry flowers and pheasant; lacquer frames in imitation of gilt leather finish.

Height, 50 inches; width of centre panel, $39\frac{1}{2}$ inches; side panel, each, 19 inches wide.

483 Small Four Fold Lattice Screen.

Blooming lily flowers in relief on centre sections of panels, backed with lattice frames; the lower sections contain chrysanthemum flowers in colors; lined with gauze; gold lacquer back.

Height, 52 inches; width, 12 inches.

484 Two Old Kiri Wood Doors.

Painting of white cranes in bamboo forest on one side, and wistaria, roosters and spaniel on the other; done in greens, white and other colors.

Height, $70\frac{1}{2}$ inches; width, $37\frac{1}{2}$ inches.

485 **Two Temple Doors (Karato).**

Main panels on the doors have carved decorations of lily, chrysanthemums, geese and reeds and lotus and bamboo, chrysanthemums, iris, butterflies, etc.; the upper sections with Buddhist symbolical design of wheels on ground of leafy scrolls; black lacquer mounted with brass work.

Height, 45 inches; width of each door, 15 inches.

486 **Six Fold Carved Screen.**

Old Chinese; the upper sections of six panels have decoration of birds and willow trees, bamboo and sparrows, etc.; the lower with Chinese figures, garden views, etc.; carved and painted in colors and gilt; the top and outer borders carved with fruit designs, gilded with lattice frame backs and in red lacquer borders. One of the most elaborate carved screens.

Height, 48½ inches; width, each fold, 8½ inches.

487 **Grand Lacquer Cabinet.**

With lattice framed doors with centre panel of flower shape, with birds and cherry blossoms; howo birds and storks on the upper panels; the lower sections contain chrysanthemums. Both sides are painted with wistaria, tsubaki flowers, birds, etc., in various colors. Brown lacquer on back. Inside is arranged with four shelves, all in gilt lacquer.

Height, $75\frac{1}{2}$ inches; width, 44 inches;
depth, $18\frac{1}{2}$ inches.

488 **Old Wood Carving.**

Circular shape; pair madarin ducks among reeds in openwork carving and painted.

Diameter, $17\frac{3}{4}$ inches.

489 **Antique Wood Carving.**

Subject: Dragons and fire flames in skilful execution.

Length, $20\frac{1}{2}$ inches

490 Pair Small Votive Panels.

Containing figure of Buddhist priest offering prayers; ornamented on back with a halo and standing upon a lotus and clouds; background of gilt lacquer, seventeenth century.

Height, 12 inches; width, each, $7\frac{1}{2}$ inches.

491 Carved Wood Ball.

Intricate carving of chrysanthemum flowers in various stages in openwork; ornamented with red silk tassels; a skilful workmanship.

492 Chinese Porcelain Mantel Ornament.

Mounted on carved teakwood stand and frame; decoration on the disk Chinese landscape in peach bloom color; specimen of Chien-lung period.

Total height, 19 inches.

493 Pair Hawthorne Ginger Jars.

With original cover; cobalt blue blossoms and buds with white relief on blue.

Height, 10 inches.

494 **Black Hawthorne Vase.**

Club shaped; pheasants and flowers in colors of purple and blue. (Repaired.)

Height, 18 inches.

495 **Bottle.**

Chien-lung period; with turquoise blue color.

Height, 13 inches.

496 **Beaker-Shaped Vase.**

Coral-red glaze of a rich and fine texture.

Height, 17½ inches.

497 **Chinese Vase.**

Chien-lung; mazarine blue.

Height, 14 inches.

498 **Vase.**

With slender neck; fine yellow glaze.

Height, 14 inches.

499 Ginger Jar with Original Cover.

Decoration of pheasants, peony and mokuren flowers in varied colors.

Height, 13½ inches.

500 Pair Covered Jars.

Chia-Ching period; dragons and fire flames and symbols painted in green enamel.

Height, 9½ inches.

501 Tall Black Hawthorne Vase.

Plum trees with full blossoms, birds, bamboo leaves and rocks in varied color effects, with reserves of purples and yellows; repaired.

Height, 28 inches.

502 Ginger Jar with Cover.

Hawthorne patterns in a rich blue with white reserves.

Height, 9½ inches.

503 Tall Vase of Chen-Lung Period.

Howo birds, bats, peony and pine trees in blue and white; leaf decoration about neck.

Height, 25½ inches.

504 Bottle-Shaped Vase.

Chen-Lung period; sea fight; Chinese figures and palaces decorated in peach-bloom colors.

Height, 13½ inches.

505 Pair Chinese Covered Jars.

Numerous Chinese characters in relief, painted in greens, purples and white.

Height, 14½ inches.

506 Cochin Chinese Jar.

Early Ming; scrolls of leaves, flowers, etc., in relief, painted in yellow and purple on green body; five ring-shaped ears.

Height, 12 inches.

507 Jar of Yung-Cheng Period.

Chinese domestic scenes in varied colors.

Height, $7\frac{1}{2}$ inches.

508 Chinese Porcelain Vase.

Tall slender form; panel decorations of Chinese domestic scenes and flowers and birds in colors and gold paints; teakwood stand.

Height, $9\frac{3}{4}$ inches.

509 Vase of Yung-Cheng Period.

Dragons and flaming clouds in purplish brown on white; signed with marks of Seuen-te.

Height, 19 inches.

510 Chinese Vase of Chen-Lung Period.

Art objects and symbols incised under glaze of pale blue.

Height, $14\frac{1}{2}$ inches.

511 Pair Chinese Bowls.

Blue decoration of fruits, both inside and out; Chien-lung specimens, although bearing marks of Ching-hwa.

Diameter, 8 inches.

512 Beaker-Shaped Vase.

Old Imari; flowers and basket decoration on two sides with chrysanthemums on reserve, inside at top painted with Yoraku design in typical Imari colors.

Height, 24 inches.

513 Large Jar with Cover.

Old Kutani; green glaze, howo birds on three panels, brocaded patterns in varied colors; the cover also decorated in panel style; letter "Fuku" on bottom.

Height, 22 inches.

514 Old Imari Jar.

Decoration of picnic party gazing at blossoms; panels of dragons and flowers in rich colors.

Height, 23 inches.

515 Vase.

Chien-lung period; signed; four sided, in "Rose de Berry" glaze; carved teakwood stand.

Height, 16 inches.

516 Bottle-Shaped Vase.

Chien-Lung; liver colored glaze; blue seal marks on bottom.

Height, 10½ inches.

517 Bottle-Shaped Vase.

Chien-lung; powdered blue type in lighter shade; teakwood stand.

Height, 10 inches.

518 Old Chinese Vase.

Foo-Chow pottery of ivory white texture.

Height, 12 inches.

519 Bottle-Shaped Vase.

Chien-lung specimen of a fine blue glaze of smooth surface.

Height, 10½ inches.

520 **Bottle-Shaped Vase.**

Decorated in imitation of a Cinnabar lacquer, with Chinese character design in relief; repaired; Chien-Lung.

Height, 9 inches.

521 **Old Chinese Vase.**

Lang-Yao glaze, slightly changing toward pale reddish blue at neck.

Height, 16 inches.

522 **Pottery Bottle.**

Early Ming dynasty; small neck, with spreading body and shoulder; crackled grey colored glaze; rare example.

Height, 12 inches.

523 **Bottle.**

Cochin Chinese, with green glaze, decorated with lizards around neck.

Height, 14 inches.

524 Galipot Vase.

Yung-Cheng porcelain; birds perching on branches; floral medallions in red and gold about shoulder.

Height, 8½ inches.

525 Gourd-Shaped Vase.

Chien-lung period; flower decoration in peach bloom glaze over a pale celadon body.

Height, 7 inches.

526 Chinese Bowl.

Kang-hsi pottery; small crackles in green glaze; with three low legs.

Diameter, 7 inches; height, 3½ inches.

527 Two Bowls.

Old Chinese blue and white.

528 Pair "Yung-Cheng" Bowls.

Blue and white scrolls and borders of lotus flowers inside and out.

Diameter, 7½ inches.

529 **Two Chinese Bowls.**

Chien-Lung; green glaze with iridescent effect.

Diameter, 7 inches.

530 **Old Celadon Jar with Cover.**

Chien-lung; ring shaped handles at side; seal mark of the period.

Height, 9 inches.

531 **Chinese Porcelain Vase.**

Chien-Lung; painted with flowers and plants, incised under white glaze.

Height, 9½ inches.

532 **Chinese Bowl.**

Chien-lung porcelain; seal marks; floral medallions in coral red, with gold scrolls of leaves.

Diameter, 7¼ inches.

533 Chinese Bowl.

Year marks of Chia-cheng; decoration of medallions, art objects, flowers, vases, etc.; the reserved space of flowered scrolls in colors on a yellow crackled glaze.

Diameter, 8½ inches.

534 Pair Bowls.

Of Chien-lung era; with fine yellow glaze; bearing seal marks of Chia-ting.

Diameter, 7 inches.

535 Six Chinese Porcelain Plates.

Chien-lung era; Chinese character design and floral scrolls in peach bloom color; blue lotus on back; seal marks on bottom.

Diameter, 6 inches.

536 Deep Bowl.

Sung; mottled blue glaze, with touches of purple.

Diameter, 6 inches.

537 Old Pottery Jar with Cover.

Cochin Chinese; yellow glaze, with raised leaf pattern about shoulder.

Height, 7 inches.

538 Two Bowls.

Chien-lung; imperial yellow glaze; thin sonorous porcelain; teakwood frame stand.

Height, 6 inches.

539 Small Cabinet Vase.

Purple glazed.

Height, 4½ inches.

988a Bottle-Shaped Vase.

Coated with a beautiful cherry-red glaze; Chien-Lung specimen.

Height, 12½ inches.

483a Apple-green Bottle.

Early Ming; green glaze of subdued tone, with large crackles; teakwood stand. (Repaired.)

Height, 6½ inches.

540 Old Satsuma Bottle.

Cylindrical shape; bamboo, pine, plum and chrysanthemum and butterflies painted in enamel colors on a crackled yellow glaze.

Height, 10 inches.

540 Old Satsuma Bottle.

Cylindrical shaped, with short neck; decorated with chrysanthemum flowers and butterflies in enamel colors.

Height, 9 inches.

541 Satsuma Vase.

Beautiful decoration of plum garden fence, bamboo and cloud forms in rich enamel colors painted on exceedingly fine crackled body.

Height, 14 $\frac{1}{4}$ inches.

542 Fine Satsuma Bottle.

Elaborate decoration of chrysanthemums, painted on six panels in gold, red, green, blue and other colors; inscriptions on bottom; made by Kintozan.

Height, 9 $\frac{1}{2}$ inches.

543 **Fine Satsuma Vase.**

Flock of white herons in relief, decorated on a body of ivory white glaze and pool underneath painted in blue; inscriptions on bottom.

Height, 24 inches.

544 **Imperial Yellow Bottle.**

Decorated with Dog Foo and cub, in brown color on yellow ground; Chien-lung specimen.

Height, 9 inches.

545 **Chinese Porcelain Vase.**

Tall slender form, decorated in fine colors with Chinese domestic scenes and garden views on one side, and mythological subject on the other.

Height, 23 inches.

546 **Chinese Dish.**

Flat, shallow form; coated with a fine liver color glaze; Chien-lung piece.

Diameter, 7 inches.

547 Rare Old Nabeshima Plaque.

Deep shape; decoration of peach trees, fruits, etc., and cherry blossoms in profusion, done in a fine blue enamel; peony flowers and brocaded patterns on back; uncommonly fine porcelain.

Diameter, $13\frac{1}{2}$ inches.

548 Old Imari Plate.

Lake Biwa.—Views of the Temple Ishiyama, a bridge and village in blue.

Diameter, $21\frac{1}{2}$ inches.

549 Old Imari Plate.

Views of the fifty-three places on Tokaido; leafy scrolls on back; Chia-ching mark on back.

Diameter, $19\frac{1}{2}$ inches.

550 Old Imari Plate.

Peony flowers in centre; children playing among cherry trees; one of the pieces specially made for the use of the Lord Nabeshima.

Diameter, $21\frac{1}{2}$ inches.

551 Pair Large Plaques.

Old Imari; eight famous views on the Lake Biwa with panel decoration; leafy scrolls on back.

Diameter, 20 inches.

552 Iron Breast Plate.

Antique Japanese; consisting of two side pieces and two side cross pieces; decorated with repousse works of dragon and wave designs in bold artistic execution. The typical Miochin style.

553 Lacquer Helmet.

Used by firemen of old Japan; elaborate decoration in various metals with dragons; hachimanza on the crown.

554 Iron Helmet.

Seventeenth century specimen; the Yazazu form, lacquered in red and brown colors; Mayedate in design of demon's face.

556 Old Iron Helmet.

With sixteen plates and ornamented on back with mailed bands. Seventeenth century.

557 Iron Helmet.

Of seventeenth century; twelve plates; decorated with hachimanza and side ornamentations.

558 Old Helmet.

In form of hotategai; with lacquered decoration. Seventeenth century.

559 Old Helmet.

Of seventeenth century; with thirty-two plates; mailed neck protectors.

560 Old Helmet.

Iron; yeboshi shaped; dragons and clouds in repousse and gilt painted; the mayedate of gilt lacquer. Seventeenth century.

561 Carved Wooden Mask.

Ancient Japanese specimen; vigorous workmanship of a demon's face. Sixteenth century.

562 Old Mempo.

Iron; signed Hiroyoshi; mailed ornamentation in front. Seventeenth century.

563 Old Iron Mask.

Repousse work, with badges on front. Sixteenth century.

THIRD AFTERNOON'S SALE
Saturday, January 12th, 1907

AT TWO O'CLOCK, P. M.

564 Snuff Bottle.

Agate; cameo cut decoration of pine trees and birds; blue glass stopper.

Height, $2\frac{1}{2}$ inches.

565 Snuff Bottle.

Agate; decorated with handles on both sides; pink colored stopper.

Height, $2\frac{3}{4}$ inches.

566 Snuff Bottle.

Crystal of fine texture; carved in form of a peach; chien-lung period.

Height, 2 inches.

567 Snuff Bottle.

Agate; melon shaped; carved with vines and melon.

Height, $2\frac{1}{4}$ inches.

568 Snuff Bottle.

Agate; decoration of marbled design; red coral stopper.

Height, $2\frac{1}{2}$ inches.

569 Snuff Bottle.

Amethyst stone; with decoration of small streaks inside of the bottle; Chienlung era.

Height, 2 inches.

570 Snuff Bottle.

Agate; carved decoration of lotus and other flowers, with coral stopper.

Height, $2\frac{3}{4}$ inches.

571 Snuff Bottle.

Carved crystal; decoration of floral designs on both sides; pink colored stopper.

Height, $3\frac{1}{4}$ inches.

572 Snuff Bottle.

Pure white crystal, with stopper; Chienlung.

Height, $3\frac{1}{4}$ inches.

573 Snuff Bottle.

Agate; horses and monkeys carved in relief; pink colored stopper.

Height, $2\frac{1}{4}$ inches.

574 Snuff Bottle.

Agate; bird perching on a tree on one side and horse under pine tree; pink colored stopper.

Height, $2\frac{1}{4}$ inches.

575 Snuff Bottle.

Indian agate; pine trees and horses carved in high relief; blue stopper; Chien-lung.

Height, $2\frac{1}{2}$ inches.

576 Snuff Bottle.

Agate; cameo cut decoration of pine trees and horses; green colored stopper.

Height, $2\frac{3}{4}$ inches.

577 Snuff Bottle

Agate; grains in flat carving on both sides; edges in relief; blue stopper.

Height, $2\frac{3}{4}$ inches.

578 Snuff Bottle.

Agate; lotus leaves and flowers in relief workmanship; blue colored stopper.

Height, $2\frac{1}{4}$ inches.

579 Snuff Bottle.

Agate; carved decoration of figures; pink colored stopper.

Height, $2\frac{1}{2}$ inches.

580 Snuff Bottle.

Indian agate; carving of horses in relief; wine colored stopper; Chien-lung.

Height, $2\frac{1}{2}$ inches.

581 Snuff Bottle.

Indian agate of brown texture; pine trees carved in high relief; pink colored stopper.

Height, $2\frac{3}{4}$ inches.

582 Snuff Bottle.

In milk-white texture, decorated in relief with lotus flowers; stopper; Chien-lung era.

Height, $2\frac{3}{4}$ inches.

583 Snuff Bottle.

Indian agate of amber yellow texture; boating scenes in relief decoration; stopper; Chien-lung.

Height, $2\frac{3}{4}$ inches.

584 Snuff Bottle.

Amethyst; carved in form of an egg plant; with stopper.

Height, 3 inches.

585 Snuff Bottle.

Agate; carving of howo birds in high relief; stopper of red color.

Height, $2\frac{3}{4}$ inches.

586 Snuff Bottle.

Indian agate; carved with monkey design on both sides; blue colored stopper; Chien-lung.

Height, $2\frac{1}{2}$ inches.

587 Snuff Bottle.

Agate; carved decoration of figures, pine trees and bats; yellow colored stopper.

Height, $2\frac{1}{4}$ inches.

588 Snuff Bottle.

Decoration, in imitation of grains of wood; Chien-lung period.

Height, 2 inches.

589 Snuff Bottle.

Agate; cameo cut; lions and bats in relief; brown colored stopper; Chien-lung.

Height, $2\frac{3}{4}$ inches.

590 Pair Gilt Bronze Candlesticks.

In lotus design with leaves, stems and pods in outstretching finish.

Height, $19\frac{1}{2}$ inches.

591 Pair Suaka Bronze Candlesticks.

In design of lotus flowers with leaves and pods in outstretching style.

Height, $19\frac{1}{2}$ inches.

592 Old Chinese Bronze Pot.

Fire gilt; tall graceful form; handles in scroll design; a very rare specimen.

Height, 9 inches.

593 Bronze Stand.

With crystal ball; in form of an elephant, decorated with engraved dragon design.

594 Garniture Set of Three Pieces.

Old Chinese gilded bronze; composed of a tripod, incense box, stick holder with pair of sticks and one ash decorator; all carved in relief with flowers on panels and on top of cover; teakwood and silk covered stands; unusually fine examples.

595 Bronze Paper Weight.

By Takusai; signed; the gama sennin resting upon a weathered board; very artist production.

Height, $2\frac{1}{2}$ inches; length, 6 inches.

596 Small Gong and Stand.

Very rare work of Kang-hsi era; has extremely fine and lasting sound; it is said that this gong was once used in the palace of Emperor Kang-hsi; stand with elaborate carved and gilded lacquers; a stick.

Diameter of gong, $3\frac{1}{2}$ inches; height (complete), $8\frac{1}{2}$ inches.

597 **Pair Tall Brass Wine Holders.**

With long spout and side handle; engraved decoration of landscapes, plum trees, etc., and etched scrolls on the reserved parts; very choice examples of early Ming dynasty.

Height, 13 inches.

598 **Chinese Pewter Teapot.**

Early Ming; with side handle and spout; etched scroll pattern and floral design; rare example.

Height, 16 inches.

599 **Antique Brass Censer.**

Early Ming; signed "Unkan-rin Ta Ming sei." Minutely engraved decoration of Kirin, cloud forms and fire flames on a strippled body; handles on side; cover with jade top; carved stand.

Height, 8 inches.

600 **Fine Old Temple Gong.**

Dated "Seventh year of Meiwa (1770) from the Temple Miotokuji." Has beautifully decorated lacquer stand, silk cushion and a beater; one of the finest toned gongs in the collection.

601 Old Gong With Stand.

Gilt decoration; carved lotus design on the stand, gilt and painted; beater inlaid with mother-of-pearl; silk cushion.

Diameter, 13 inches; height, 28 inches.

602 Bronze Elephant.

Made as an incense burner, upon which is placed a figure of Kuannon and decorated in colored bronze finish, and ornamented with jewels and beads.

Length, 19 inches; height, 21 inches.

603 Large Bronze Koro.

In form of an elephant with elaborately decorated saddle; a glass ball is placed on top of the bronze stand.

Length, 24½ inches; height, 24 inches.

604 Large Bronze Tiger.

In waiting position expecting companion.

Length, 45 inches; height, 26½ inches.

Bronze stand, length, 45½ inches; width, 15 inches.

605 Pair Bronze Garden Lamps.

Green patina; ornamented around the roof ends with six suspending bells; open-work decoration on the doors; dragon design around the column.

Height, 55½ inches.

606 Pair Gilt Bronze Candlesticks.

In lotus design with leaves, stems and pods in outstretching finish.

Height, 19½ inches.

607 Pair Gilt Bronze Candlesticks.

In lotus design with leaves, stems and pods in outstretching finish.

Height, 19½ inches.

608 Large Gong, with Stand.

Seventeenth century; black lacquer stand with gold lacquer decoration; silk cushion; has good lasting sound.

Diameter, 16½ inches.

Complete height, 32 inches.

609 Small Rug.

Medallions and small figures in dark red on a yellow back; border of key patterns.

Size, 50 inches by 30 inches.

610 Small Chinese Rug.

Purple medallions in centre on a light background; the border of key patterns.

Size, 28 inches by 48 inches.

611 Rug.

With butterflies and flowers on light background; blue border of key patterns.

Size, 62 inches by 30 inches.

612 Antique Chinese Rug.

Chinese characters in medallions and butterflies in yellow and brown; with border design of fretwork pattern.

Size, 76 inches by 43 inches.

613 Antique Chinese Rug.

Centre panel of flowered trees in red, yellow and purples, with border of key pattern.

Size, 70 inches by 40 inches.

614 Large Chinese Rug.

Floral medallions in centre; the reserved space with small flower design in red, blue, brown and a fine yellow back with key patterns on corners. Series of borders of flowers and key patterns.

Size, 100 inches by 68 inches.

615 Large Rug.

Old Chinese; centre panel of floral pattern on an old red back ground; series of borders of floral squares.

Length, 102 inches; width, 49 inches.

616 Old Chinese Rug.

Centre panel of medallions enclosed by floral patterns on yellow in old red color; the borders with design of floral medallions in blues on red.

Size, 80 inches by 60 inches.

617 Small Rug.

Medallions in centre with various symbols and flowers in blue; border of key patterns.

Size, 51 inches by 27 inches.

618 Small Rug.

Medallions in centre, with borders of red floral pattern.

Size, 51 inches by 30 inches.

619 Large Oblong Rug.

Old Chinese; centre panel of medallions in blue and other shades, with scroll patterns outside in yellows, reds, etc.; blue narrow border.

Length, 107 inches; width, 40 inches.

620 Small Rug.

Old Chinese; figures and flowers in colors on a red background; border of key patterns in blues.

Length, 60 inches; width, 30 inches.

621 Small Rug.

Blue floral medallions, mixed in red, pink and purple on a golden yellow back; border of key pattern.

Size, 73 inches by 35 inches.

622 Small Rug.

Animals and birds on centre panel on brown color background in shades of blues; with borders of key patterns.

Size, 69 inches by 33 inches.

623 Large Rug.

Old Chinese; centre of solid red, with borders of figured patterns in blues.

Size, 128 inches by 63 inches.

624 Large Antique Chinese Rugs.

Medallions of dragons in centre, surrounded by flowered branches and butterflies; series of borders of trees and flowers in blues; very uncommon weaving.

Size, 92 inches by 67 inches.

625 **Large Chinese Rug.**

Fine orange red colored body in centre ; with medallions surrounded by flowers, butterflies, etc. ; floral medallions on corners ; borders of leafy scrolls in blues and white with key patterns.

Size, 92 inches by 60 inches.

626 **Large Rug.**

Antique Chinese ; yellow centre, with a large panel design and corner ornaments of foliages and leaves in color, surrounded by wide borders of floral patterns in reds and other effects ; narrow inner border of diapers.

627 **Old Silk Rug.**

Chinese ; figured flowers in colors on a rose color back ; red border with small flowers ; a rare piece.

Size, 95 inches by 59 inches.

628 **Rug.**

Blue design of key pattern, with reserved space of figured medallions in red, blue and yellow ; floral design on the border.

Size, 64 inches by 41 inches.

629 **Small Antique Rug.**

Chinese; orange yellow centre, with floral medallions and border of key patterns.

Length, 56 inches; width, 27 inches.

630 **Rug.**

Medallion patterns in centre; flowers on corners, with a border of scroll patterns in blues.

Size, 50 inches by 25 inches.

631 **Large Chinese Rug.**

Red background with centre panel of floral medallions in varied colors; with borders of figured flower pattern on a blue ground.

Size, 105 inches by 63 inches.

632 **Large Chinese Rug.**

Of rare quality; conventional flower patterns and tree design in reds and blues on light background; series of borders with design of figured floral patterns. One of the most beautiful old rugs in this collection.

Size, 136 inches by 117 inches.

633 Large Rug.

Old Chinese; centre panel contains profusion of figured flowers on a red back; border of flower and key design in colors on a dark blue ground.

Size, 125 inches by 66 inches.

634 Small Chinese Rug.

Orange yellow and reds in centre, medallions of flowers and fruits; borders of floral scrolls and character designs; in blues and white; heavy piles.

Size, 60 inches by 30 inches.

635 Old Chinese Rug.

Oval shaped; medallions and wave patterns in blues, yellow and purple on a red background.

Size, 75 inches by 39 inches.

636 Antique Chinese Rug.

Trees and flowers in colors on a low toned red ground; with border of wave patterns.

Length, 86 inches; width, 60 inches.

637 Large Chinese Rug.

Figured flowers in yellows and blues on a red ground; series of borders with key patterns and scroll design.

Length, 134 inches; width, 70 inches.

638 Antique Cashmere Rug.

Three paneled decoration in centre, on blue, red and light ground, surrounded by series of borders with diapers and foliages.

Length, 86 inches; width, 49 inches.

639 Two Rugs.

Old Chinese; centre panel of art objects, pattern on a red border with white dots.

Size, 31 inches by 13 inches.

640 Two Rugs.

Old Chinese; centre panel of various art objects with border of white dots.

Size, 31 inches by 13 inches.

641 Two Rugs.

Old Chinese; art objects on a red back; border with small dots in white.

Size, 31 inches by 13 inches.

642 Four Small Rugs.

Old Chinese; small figured patterns of conventionalized diapers worked out in blues and white; narrow black border.

13 inches square.

643 Small Rug.

Centre panel with figured squares on light ground; border of flower patterns.

Size, 44 inches by 24 inches.

644 Antique Oriental Rug.

Centre panel contains diamond patterns in varied effects on a red body; outside with series of light-colored borders of diapers and arabesques.

Length, 60 inches; width, 40 inches.

Size, 140 inches by 106 inches.

645 Fine Old Chinese Rug.

Various flowers in profusion on centre panel produced in many colors, with border of medallions and floral and key patterns; fine silky piles; from Chinese Imperial Palace.

Size, 175 inches by 75 inches.

646 Large Chinese Rug.

Centre panel contains profusion of medallions of low toned effect in orange, yellow back; series of borders of patterns of flowers, key design, etc.

Size, 139 inches by 66 inches.

Size, 190 inches by 137 inches.

647 Magnificent Old Chinese Rug.

Of extraordinary size; the centre panel contains floral medallions and various trees in colors on fine red background; surrounded by series of borders of scrolls and wave designs in blues and other shades; one of the finest old rugs.

648 Superb Old Chinese Rug.

Of extraordinary size; floral medallions and trees in red, yellow and blues on a fine old red ground; surrounded by series of borders with waves and scroll patterns in blues and other shades; one of the finest old rugs.

Size, 190 inches by 137 inches.

649 Embroidered Hanging.

Old Chinese; design of squares, stripes, etc., with flowers and figures worked inside in colored silk; blue border; lined.

69 inches square.

650 Chinese Embroidered Hanging.

Nut brown shade with dragons and wave patterns; silk lining.

Length, 77 inches; width, 35 inches.

651 Old Shichijo.

Silk brocade, woven with design of cloud-forms, etc., on golden yellow silks in greens, reds and yellow colors; lined.

Length, 83 inches; width, 43 inches.

652 Two Brocade Covers.

Medallions of howo birds, and figured flowers, woven in yellow, red and other colored silks; lined.

Length, 58 inches; width, 43 inches.

653 Chinese Embroidery.

Temple hanging; small flowers, figures, etc., in varied shades on a light ground; lined.

Size, 80 inches square.

654 Embroidered Hanging.

Old Chinese; centre panel of figures and flowers embroidered and finished in patched needle works; blue border; lined.

86 inches square.

655 Gold Embroidered Gown.

Old rose color; dragons and sea-palaces and cloud forms; front decorated with embroidery; blue silk lining.

Length, 39 inches.

656 Youth's Garment.

Old Chinese; embroidery of dragons and wave patterns on a brown silk; blue silk lining.

Length, 34 inches.

657 Gold Embroidered Gown.

Dragons, peony flowers, waves and bats in many colors; yellow silk lining.

Length, 42 inches.

658 Embroidered Gown.

Blue silk, with patterns of gold embroidered dragons with fine claws, and flaming balls, waves and bats; blue silk lining.

Length, 40 inches.

659 Chinese Gold Embroidered Gown.

Dragons, figures and waves; blue silk lining.

Length, 40 inches.

660 Lady's Robe.

With furisode; white rinsu with design of tatsutagawa streams and floating maple leaves; red momi silk lining.

Length, 65 inches.

661 Lady's Gown.

Silk gauze of olive green shade; embroidery of seashore and sailboats; family crests; silk lined.

Length, 66 inches.

662 Lady's Wedding Gown.

White satin; embroidery of tortoise bamboo, pine trees and plum blossoms; red momi silk lining.

Length, 65 inches.

663 Lady's Kimono.

With furisode or long sleeves; embroidered with bamboo, pine and plum blossoms in various shades on a crimson red; silk lined.

Length, 65 inches.

664 Temple Altar Piece.

Shokko patterns in blues, reds, etc., and Arabesque design; silk lined.

Length, 85 inches; width, 47 inches.

665 Temple Altar Piece.

Rare old Karaori, with lined.

Length, 85 inches; width, 47 inches.

666 Old Chinese Embroidery.

Flowers; design brought out in various colored silks in form of radiating sun.

64 inches square.

667 Old Embroidery.

Chinese temple hanging; design of flowers, fruits, etc.; closely embroidered in various colors; blue borders; lined.

64 inches square.

668 Pair Old Panels.

Carving of pair howo birds and cloud-forms in skilful execution and painted in colors.

Length, 20½ inches; height, 6½ inches.

669 Pair Small Ramma.

Snow clad bamboo and peony flowers in storm; very realistic production.

Height, 13½ inches; width, 19½ inches.

670 Pair Small Rammas.

Solid wood carving of pheasant and chicks among bamboos, decorated in greens and other pigments; truly artistic example.

Length, 34½ inches; width, 11 inches.

671 Old Temple Wood Keman.

Medallion of howo bird in centre panel; surrounded by painting of leafy scroll in weathered tones.

Height, 24 inches; width, 17 inches.

672 Old Temple Panel.

Carved mask of "No" dancer, and brocade decorated in relief and painted in varied colors; wooden frame carved with dragon design, painted in colors on gilt back; inscribed with date of dedication, 1814 A. D.; name of donor, Takanashi Dembei; artist, Hokio.

Length, 25 inches; width, 16 inches.

673 Pair Zashiki Ramma.

Snow clad bamboo carved and painted in green and white on background of lattice frame; black lacquer frame; very artistic examples.

Length, 32½ inches; height, 11 inches.

674 Old Panel.

Solid wood carving of three cranes among bamboo grove in openwork style; lacquer frame with gilt inner borders; seventeenth century.

Length, 35 inches; width, 23 inches.

675 Four Temple Doors.

Keyaki wood; elaborate carving of chrysanthemums and lions, peony and howo birds on four doors and painted; back is of tamenuri lacquer, decorated with lotus and swallows in colors.

Height, 46 inches; width, each, 13½ inches.

676 Pair Carved Okimonos.

Elephants, ornamented on back with saddle in shape of lotus, elaborately carved and painted.

Height, 20½ inches.

677 Statuette of Buddha.

From a temple at Koyasan; beautifully carved with graceful flowing lines and folds of robes, merciful expression, all exquisitely painted in gold lacquer; on back is placed a halo with its carved decoration and figures; the statuette is placed on a stand of lotus design gilded and mounted with brass; date about fifteenth century.

Height, 41½ inches.

678 Temple Table.

Old Japanese; brown lacquer top, gilt lacquer panels, carved with birds and flowers.

Length, 19 inches; height, $8\frac{1}{2}$ inches;
width, $11\frac{1}{2}$ inches.

679 Carved Stand.

In design of lotus, with carving of a lion and finished in gold lacquer.

Height, $10\frac{1}{2}$ inches; diameter, 11 inches.

680 Magnificent Temple Table.

Panels of peony flowers in high relief in front and daffodils, chrysanthemums and ponds on side panels; the lower front with flowers and birds with legs in design of waves, carved and gilt; brass mounting.

Length, 42 inches; height, 17 inches;
width, 17 inches.

681 Pair Antique Kemans.

Figures of angels and lotus; pool in relief carving painted in colors; solid wood carved frames; seventeenth century.

Length, 24 inches; width, 21½ inches.

682 Old Wood Carving.

Pair pheasants perching on rocks, decorated in weathered effect; very artistic.

Length, 20½ inches; width, 12 inches.

683 Pair Upright Ramma.

Bold and artistic carving of bamboos with leaves and birds in dark green and white pigments; lacquer frames.

Length, 32½ inches; width, 11 inches.

684 Small Four Fold Lattice Screen.

Storks and bamboo in openwork carvings on centre sections on lattice framed back; the upper and lower panels contain diaper pattern carved from solid wood and in fine fretwork back; lined with gauze; very artistic workmanship.

Height, 53 inches; width, 13 inches each.

685 Pair Shrine Doors.

Howo birds carved on panel door; chrysanthemum flowers in narrower panels; centre panels contain design of lions and peony flowers; heron and bamboo in lower section; the upper panels have floating lotus flowers; all exquisitely carved and painted; black lacquer frame with gold mountings; early eighteenth century.

Height, $52\frac{1}{2}$ inches; width, $20\frac{1}{2}$ inches.

686 Pair Ramma.

Peacock and peahen carved on both sides and painted on a background of lattice frame pattern; lacquer frame.

Length, 35 inches; height, $14\frac{1}{2}$ inches.

687 Pair Ramma.

Peacock and peahen carved on both sides on lattice frame back; black lacquer frame.

Length, 35 inches; height, $14\frac{1}{2}$ inches.

688 Small Carved Panel.

Chrysanthemum flowers in windy storm, brought out in relief and painted in polychrome.

Height, 13 inches; width, 19 inches.

689 Small Panel.

Artistic carving of pheasant and plum trees, painted in colors.

Height, 12 inches; width, 18 inches.

690 Carved Panel.

White crane among bamboo trees and cloud forms in openwork.

Length, 34½ inches; width, 12 inches.

691 Arch Shaped Frieze.

Artistic carving of streamlet and floating mandarin ducks and waves with water wheels on the right hand side.

Length, 50 inches; height, 7 inches.

692 Pair Small Tea House Ramma.

Carving of snow clad bamboo on lattice frame back and painted in green and white.

Length, 33 inches; height, 11½ inches.

693 Pair Long Panels.

Solid wood carving of three cranes among the bamboo grove in openwork, decorated in greens and white; lacquer frames; work of real artistic taste and skill; seventeenth century.

Length, 34 inches; width, 9½ inches.

694 Antique Chest (Karahitsu).

Black lacquer with crests and leafy scrolls in gold lacquer; four short legs underneath; eighteenth century.

Length, 26 inches; width, 13 inches; height, 19 inches.

695 Lacquer Hasamibako (Chest).

Gold lacquer painting of plum blossoms, chrysanthemums and leafy scrolls, inlaid with mother-of-pearl; extra tray inside; badges of owner on sides; mounted with brass; seventeenth century.

Length, $23\frac{1}{2}$ inches; width, $15\frac{1}{2}$ inches; height, 15 inches.

696 Ancient Statuette.

Figure of Amida Buddha; seated on a lotus designed stand; flowing draperies, mobile hands and reposeful expression; are admirably executed with skilful hands; the stand with its various panels, corners and other details is elaborately decorated; from a temple in Koyasan, probably sixteenth century.

Height, 35 inches.

697 Superb Temple Stand.

Red lacquer top with numerous panels on front, carved with artistic design of birds in gilt lacquer; both end pieces in a design of bird; gracefully curved legs have Greek fret pattern; the sides also decorated with cloud forms, flowers and leaves; has extra lacquer board placed on top; probably early seventeenth century.

Length, 67 inches; height, 34 inches;
width, $22\frac{1}{2}$ inches.

698 Pair Brass Temple Hangings.

Various panels contain design of awoye crests, scrolls of peony flowers and lotus flowers in low relief workmanship; the centre panel has a mirror placed behind fly-door; a shelf for candlestick and a vase; below suspended with eight Yoraka ornaments; these are called "To-ban, or Marubata."

699 Three Antique Temple Panels

Containing elaborate design of three carved figures of Bodhisattvas in their various poses, richly painted in gold lacquer; the frames are of black lacquer and mounted with brass ornaments; the lower section of the panels have lotus design in gilt lacquer.

Each panel 51 inches high, 16½ inches wide.

700 Great K'ang-hsi Palace Screen.

Composed of ten folding wood panels, lacquered in black, the decoration brought out in various lacquer colors and by incision; the whole composition is a wonderful conception of remarkable skill and of technical accuracy; the scene represented on the screen depicts a spring-time festival in the gardens of an imperial palace. There is a fine sense of architectural proportion in all its details with various gates, steps, pavilion, where ladies and gentlemen of the court and their attendants are walking about, some performing before the Emperor—the terraces, garden tea

houses, the wall, the lake and arch-shaped bridge and views of parks beyond with galloping horses. It shows charming presentation of the activities of the time, place and occasion—almost innumerable numbers of male and female figures engaged with games and other recreations, indoors as well as outdoors—some dancing, playing music, boating on the lake, some riding on horse back. The back is the continued scenery, representing detached palace and garden kiosks and palace grounds, treated in similar manner as on the front. The upper sections of the panels, both front and back, contain great varieties of Chinese famous landscape views, flower studies, some objects of art, etc., in excellent colors on lacquer ground. It is seldom that so wonderful an example of decorated screen as this is brought to this country. It was executed during the best days of the great Kang-hsi period.

Total height, 7 feet, 5 inches; width of each panel, 19 inches.

701 Six Fold Chinese Screen.

Mounted with porcelain panels on carved teak frames, containing various flowers on upper panels; on second and third sections with howo birds and cloud-forms, storks, apple blossoms, lotus, pheasants, etc., on the lower two sections with dragons, butterflies, and other varieties executed in various colors, including green, purple, blue, etc., very elaborately decorated screen.

Height, 85½ inches; width, each fold, 18 inches.

702 Suit of Armor.

Complete; particularly fine example, because of presentation piece from imperial palace to a daimio of Tosa, and is work of Miochin; inscriptions read "Miochin Shikibu Munemasa; dated 11th year of Tenbun" (1542); iron mask is by Muneie; fine repousse of dragons on shoulder pieces; medallions of dragons on the breast plate; helmet has sixty plates; the Kuwagata by Goto Mitsujō; other parts, with detail of workmanship, are in perfect condition.

703 Suit of Armor.

Complete; by Miochin Munetsugu; dated 1533; the breast plate has design of Rashowon in repousse; helmet in iron with dragonfly Mayedate and gilt Kuwagata; large shoulder pieces, with repousse decoration; sleeves and arm pieces elaborately decorated with snails, etc., in repousse; the entire belongings are in fine condition; a magnificent example.

704 Old Matchlock.

Signed "Matsudaira Tosa no Kami;" dragons and cloud-forms in silver and gold inlays; gold lacquer crest on frame.

Length, 38 inches.

705 Daimio Matchlock.

Signed Matsudaira Hoki no Kami; dragons and cloud-forms in silver and gold inlay; black lacquer handle with badges in gold lacquer; incised crest at head of name plate.

Length, 42½ inches.

707 Daimio Matchlock.

Howo birds and dragons in silver and gold inlay; bears signature of Hoki and Kami on the barrel, and Matsudaira Osumi no Kami on lacquer handle in gold; extremely rare.

Length, 39½ inches.

708 Old Matchlock.

By Yoshiro; inlaid with dragons, waves, symbols; black lacquer frame with gold lacquer crest decoration and karakusa; etched brass mountings.

Length, 34½ inches.

708a Old Matchlock.

Signed Matsudaira Yawojuro. Dragons, cloud-forms and badges in silver and gold Damascene, copper bands around the mouth; one of the unique specimens.

Length,

709 Decorated Matchlock.

Signed "Hiuga no Kami;" dragons and awoye crests; signed on frame the owner's name, "Matsudaira Iwami no Kami;" black lacquer stand with badge, hollyhock and leafy scrolls in gold lacquer.

Length, 16½ inches.

710 Daimio Matchlock.

Extraordinary length; with names Idsumo no Kami signed on the barrel, decorated with dragons and clouds in silver and gold inlay; badges of owner; purple silk cords and tassels.

Length, 70 inches.

711 Daimio Matchlock.

Decoration of Buddhist disciple holding an incense bowl from which is issuing a dragon; black lacquer frame and stand, decorated with badges and kiri flowers; red silk cords with tassels; extraordinary specimen in dimension and heaviness.

Length, 38 inches.

712 **Daimio Matchlock.**

Signed Tamba no Kami; with owner's badges on the barrel; pair howo birds in silver and gilt inlay; black lacquer frame with gold lacquer badges.

Length, 41 inches.

713 **Daimio Matchlock.**

Signed Nakayama Dainagon; silver and gold inlaid howo birds; gold lacquer badges on black lacquer handle.

Length, 40 inches.

714 **Daimio Matchlock.**

Dragon decoration on the barrel; badges of Awoye leaves on handle in gold lacquer; silver bands ornamented around the mouth; signed Matsudaira Yamato no Kami.

Length, 42½ inches.

715 **Daimio Matchlock.**

Carps and waterfalls in silver and gilt inlay; badges on black lacquer handle.

Length, 39 inches.

716 Daimio Matchlock.

Dragonflies and butterflies in gilt and silver inlay; badges on the handle; signed Matsudaira Hoki no Kami.

Length, 37½ inches.

717 Antique Wooden Matchlock.

Lions and badges decorated on metal plates; etched peony pattern on handle; the awoye crest in cloisonne enamel; made by Yoshiro; rare piece.

Length, 26 inches.

718 Pair Grand Daimio Matchlocks.

Smaller of the two decorated with pair howo birds and ascending dragons and bearing names of Owari no Kami; the larger signed Noto no Kami; black lacquer frames and stand with gold lacquer badges of Kiri and Awoye; red silk cords and tassels.

Lengths, 41 inches and 42½ inches.

719 Old Matchlock.

Signed "Matsudaira Tosa no Kami;" silver inlaid dragons; the hollyhock badges and other crests in gold lacquer on black lacquer.

Length, 12½ inches.

720 Extraordinary Matchlock.

Signed "Hizen no Kami;" badges of the owner in gold lacquer; ascending dragons and descending howo birds in elaborate silver and gold inlay; black lacquer frame, and stand with crest decorations; red silk cords with tassels.

Length, 42 inches.

721 Matchlock.

Signed "Kai no Kami;" decorated on the barrel with inlaid dragons and badges; polished wooden frame and handle; a very rare piece.

Length, 43 inches.

722 **Daimio Matchlock.**

Dragon decoration, with badges in gold lacquer on handle; grape design in silver Damascene on the barrel; signed Higo no Kami.

Length, 38 inches.

723 **Grand Matchlock.**

Signed "Matsudaira Hitachi no Kami;" dated Tensho era (1573); dragons, crest and cloud-forms on the barrel; black lacquer frame, and stand with gold lacquer crests; red silk cords with tassels.

Length, 38 inches.

724 **Rare Old Matchlock.**

Howo birds and dragons in silver and gilt inlays; black lacquer frame and handle; unusually large barrel; signed, "Ii Kamon no Kami."

Length, 37 inches.

725 **Miniature Matchlock.**

Rare old Japanese specimen; silver and gold inlaid dragon decoration and badges of owner.

Length, 6 inches.

726 Large Matchlock.

Decoration of cranes and cloud-forms on the barrel in gilt and silver inlay; black lacquer handle; character "Yasu" inside of square in gold and silver letter; signed Ki-i no Kami.

Length, 39½ inches.

727 Daimio Matchlock.

Dragons and cloud-forms in inlays of gilt and silver; badge of the owner on the barrel; signed Matsudaira Yetchu no Kami.

Length, 43 inches.

728 Daimio Matchlock.

Butterflies and dragonflies on the barrel; the badges in silver inlay; signed Matsudaira Tosa no Kami.

Length, 38 inches.

729 Daimio Matchlock.

Dragons and crests in silver and gold inlay, badges on frame in gold lacquer; signed Tosa no Kami.

Length, 42½ inches.

730 **Daimio Matchlock.**

Dragon decoration on the barrel; badges on the handle; signed Matsudaira Omi no Kami.

Length, 41½ inches.

731 **Small Matchlock.**

Signed "Hoki no Kami;" dragons and cloud-forms in silver and gold; chased brass mountings on frame.

Length, 21 inches.

732 **Daimio Matchlock.**

Butterflies, grapevines and fruits, etc., in silver and gilt, inlay with badge of awoye on the barrel; signed Dewa no Kami.

Length, 40 inches.

733 **Youth's State Sword.**

Black lacquer scabbard; shark skin hilt; chased silver mountings; gold lacquer crests; menukis are of gilt work in design of kiri flowers; fine old sword; mounted on a black lacquer framed stand.

Blade, 18 inches.

734 **Short Sword.**

Blade, length $5\frac{3}{4}$ inches; black lacquer scabbard, ornamented with metal pieces representing the twelve zodiacal symbols; Shakudo Kodsuka with a blade.

735 **Pair Stirrups and Saddle.**

Gold lacquer; having signatures of Masayuki, the metal worker, and Teruaki, the lacquerer; decoration of waves and rocks in gold nashiji lacquer.

737 **Lacquer Judge's Fan.**

Gold lacquer painting of dragons and fire-flames on one side and sun and moon and seven stars on the other side on black ground; silver and gilt mounting; yellow silk cords and tassels; fine old specimen.

738 **Old Conch-Shell.**

Used in army of old Japan; covered with silk network case; extremely rare.

739 Gold Lacquer Lute (Biwa).

Known as "Satsuma Biwa;" beautifully painted with dragons and fire-flames and Kiri crests in gold lacquer; has flat-stick with lacquer decoration; a rare old example.

Length, 38 inches; width, 15 inches.

740 Lacquer Wine Holder.

In form of a shojo, holding a sake bottle; one of the most skilful modeling, with gold lacquer painting.

Height, 7½ inches.

741 Lacquer Wine Holder.

In form of a monkey with peach forming as spout, all beautifully painted in a rich lacquer of various shades; has a silver stopper; fine workmanship.

Height, 11 inches.

742 Gold Lacquer Okimono.

Six specimens consisting of a daruma, a hotei, a man seated, a tai fish, a large spaniel and a poodle dog, skilfully modeled and painted in fine gold lacquer. Eighteenth century.

743 Small Panels.

Artistic design of lotus and pool in openwork carving, painted in gold and dull green.

Length, $12\frac{1}{2}$ inches; width, $3\frac{1}{2}$ inches.

744 Pair Vases.

Peking enamel decoration of flowers around the neck and on center bands; the lower section with leaf points and various symbols in colors on a blue ground.

Height, 12 inches.

744a Pair Old Wooden Kemans.

Angel playing with a flute among floating cloud-forms, ornamented with pendant; yoraku with bells; sixteenth century.

Width, $13\frac{1}{2}$ inches; length, $12\frac{1}{2}$ inches.

745 Old Buddhist Votive Tablet.

Religious subject; four fabulous animals and lotus pod, decorated in relief and painted in subdued colors; probably fifteenth century.

Height, 19 inches; width, 12 inches.

746 Fan-shaped Panel.

Carvings of mandarin ducks among the reeds and rivulet in good workmanship and painted.

Length, $28\frac{1}{2}$ inches; height, 11 inches.

748 Enamel Plates.

Consisting of a large round plate and eight small dishes, painted in centre with Chinese landscape and figures and on back is decorated with beautiful plants, design in blues; Chien-lung specimens.

749 Enamel Plate.

Chien-lung; various fruits, and floral patterns and butterflies in colors on white enamel back, with series of borders in minute painting; dragon and cloud-forms on back.

Diameter, $6\frac{1}{4}$ inches.

750 **Pair Imperial Enamel Plates.**

Decorated with five-clawed dragons in centre, surrounded by borders of flowers and dragon designs painted in pretty colors on light ground; the year-marsk of Tao-kuang on bottom.

Diameter, $10\frac{1}{4}$ inches.

751 **Ginger Jar With Cover.**

Peking enamel; decorated with a "Rose de Berry" color, upon which is painted with flowers and grasses in colors and in gilt lacquer. Chien-lung era.

Height, 9 inches.

752 **Imperial Enamel Covered Bowl.**

Symbolic designs and flower patterns, vases and bats painted in pretty effects on turquoise blue ground; fine example of presentation piece.

Diameter, 9 inches.

753 Garniture Set of Three Pieces.

Two vases and a censer; decorated in enamel with domestic scene; inside of paneled section and Chinese figures treated in delicate color-painting; from the palace of Emperor Chien-lung.

Height of vases, 9 inches; height of censer, 7 inches.

754 Covered Box.

Peking enamel work; eight sided, decorated with landscapes on cover and floral patterns on sides in pretty enamel color on light ground.

Diameter, 12 inches.

755 Pair Peking Enamel Vases.

Decorated on four sides with floral pattern and symbolic character decoration in rich colors on a blue ground.

Height, 12½ inches.

756 Tea Cup With Tray.

Imperial set, made of Peking enamel, beautifully decorated with floral design and leafy scroll pattern in many colors on imperial yellow enamel ground. The set bears marks of Chien-lung period.

Height of cup, 3 inches.

Diameter of tray, 8 inches.

757 Imperial Wine Holder.

Peking enamel work of Chien-lung period; landscapes, animals, flowers and fruit decoration, painted in exquisite enamels within the panels; the cover and handle similarly embellished.

758 Pair Imperial Enamel Covered Bowls.

Beautiful flower decoration brought out in pretty colors on a yellow back.

Diameter, 4½ inches.

759 Imperial Enamel Bowl With Cover.

Out-door palace scene, most beautifully painted in pinks and other effects on green back; numerous figures of court nobles and ladies are minutely drawn; Chien-lung specimen.

Diameter, $10\frac{1}{2}$ inches.

760 Enamel Flower Pot.

Beautiful flower decoration on six sides painted in blue and gold colors on a deep purple ground; borders of leafy scrolls. Chien-lung.

Diameter, 11 inches; height, $7\frac{1}{2}$ inches.

761 Peking Enamel Plate.

Chien-lung; decorated with peony and plum flowers in centre with blue border decoration of leafy scrolls; back is of flower and fruit decoration.

Diameter, 8 inches.

762 Peking Enamel Plaque.

Decorated with roses and butterflies in fine colors on white ground; borders of yellows painted with flowers and leaves, interspersed with landscapes in four places; Chien-lung specimen.

Diameter, $12\frac{1}{4}$ inches.

763 Pair Peking Enamel Wine Holders.

Ancient sacrificial wine vessels, decorated with scrolls of leaves and Chinese characters of longevity in varied harmonious colors on a blue ground. Curved handle and long spout with a stopper on top. Chien-lung period.

Height, $17\frac{1}{2}$ inches.

764 Peking Enamel Vase.

Beaker-shaped; decorated with a hunting scene and landscapes on centre; flowers, and leaf patterns on upper and lower sections in exquisite color combinations on a pale blue. (Slight repair.)

Height, $13\frac{1}{2}$ inches.

765 Imperial Garniture of Three Pieces.

Two candlesticks and a tripod; decorated with flowers and bats and various symbols on the censer; various flowers, symbols, fish designs painted on the candlesticks in enamel colors; handsome examples of Chien-lung period.

Height of candlesticks, 19 inches.

766 Imperial Covered Box.

Peking enamel of Chien-lung period; scene from the Imperial Palace; life depicted in beautiful enamel colors, representing some games and performances witnessed by Royal audiences; symbolic designs and floral patterns all around the box in exquisite painting; one of the richest specimens.

Diameter, 14 inches.

767 Pair Peking Enamel Vases.

Six-sided; on each panel painted in beautiful enamel with small flowers and Chinese characters signifying "double joy;" handles on top in design of tree; specimens of Chien-lung era.

Height, 16½ inches.

768 Tall Enamel Vase.

Flaring opening; various fruit decoration on upper section, and symbols and flowers on main body painted in many colors; Chien-lung period.

Height, 16 inches.

769 Pair Flower Pots.

Six sided; enameled decoration of floral patterns inside of panels with borders of leaves and scrolls in gold and blue on purple back.

Diameter, 11 inches; height, 7½ inches.

770 Peking Enamel Covered Dish.

Contains eight small plates and one round dish, with decorations of Chinese characters, "Longevity," surrounded by bats, floral bands and other symbolic designs in pretty colors on a deep blue background, a choice example of Chien-lung era.

Diameter, 13½ inches.

770a Peking Enamel Covered Dish.

Contains eight small plates and one round dish; all decorated in pretty colors with character "Longevity," surrounded by various symbolic designs; a choice example of Chien-lung era.

Diameter, 13½ inches

771 Garniture of Three Pieces.

Peking enamels; two candlesticks and tripod censer; invested with a beautiful enamel decoration of flowered leaves and vines and various symbols and lotus flowers on a light background; specimens of exceptional quality. Chien-lung period.

Height of candlesticks, 18 inches;
height of censer, 16 inches.

772 Chinese Enameled Box.

Containing eight small dishes and one round dish in centre, decorated with closely painted figures, flowers, bats, and medallions of Chinese character, "Ju," or "Longevity," in many beautiful colors; Chien-lung era.

Diameter, 14 inches.

773 Pair Vases.

Cylindrical shaped; openwork decoration on four sides, with medallion pattern and painted with flowers in exquisite colors on yellow ground.

Height, 13 inches.

774 Imperial Enamel Food Box.

With eight compartments inside; landscapes on the cover and floral patterns on sides and interior; eight famous views painted on each of the eight dishes in exquisite colors; one of the rarest and oldest examples.

Diameter, 12 inches.

775 Pair Cloisonne Enamel Jars With Covers

Blue decoration of Hawthorne patterns and in various color effects; carved teakwood stand.

Height, 8 inches.

776 Chinese Cloisonne Enamel Vase.

Chien-lung era ; decoration of dragons and waves in varied colors on blue ground.

Height, 18½ inches.

777 Pilgrim Bottle-shaped Vase.

Cloisonne enamel of Ming ; chrysanthemums and leaves in reds, yellows, blue and greens ; handles of chased brass works ; fine example ; teakwood stand.

Height, 15 inches.

778 Pair Antique Chinese Wine Holders.

Champleve on bronze ; with handle at side in form of dragon ; decorated with lotus flowers in champleve ; inlaid with rich colorings of enamels. Chien-lung period. Rare example in the collection.

Height, 12½ inches.

779 Cloisonne-enamel Vase.

Old Chinese ; oviform, with ring handles decorated with dragon and sacred ball design in varied colors.

Height, 11 inches.

780 K'ang-hsi Jeweled Flower Holder.

Carved decoration of symbols and flowers on nine panels, ornamented with rings and bands of carved brass; inlaid with various jewels; placed on series of stands inlaid with stones of turquoise blue and rose colors. From Imperial palace.

Complete height, 10 inches; diameter, 7½ inches.

781 Chinese Tripad Censer.

Enamel on bronze; with openwork; cover of brass, ornamented with brass stopper and supported with animal-headed legs. Has engraved year marks of Ta ming Ching-tai (1450 A. D).

Height, 12 inches.

782 Cloisonne Enamel Vase.

Early Ming; ornamented with ring-handles and decorated with lotus flowers and leaves in reds, yellow, purple and blues.

Height, 17 inches.

783 Cloisonne-enamel Sacrificial Vessel.

Called "Yu" in Chinese, with cover and a handle on top; decoration of "hou-ten" faced animals and conventional leafy scrolls in many colors on a blue ground; chased brass mountings; fashioned after ancient Chinese bronze vessel; Chia-cheng period.

Height, 13 inches.

784 Brass Candlestand.

Old Chinese; raised and engraved wave design at base; top piece in design of lotus pod; ornamented at the base with blue stones.

Height, 12 inches.

785 Cloisonne Enamel Bowl.

Of Ming; inside and outside are decorated with lotus flowers.

Diameter, 7 inches.

786 Pair K'ang-hsi Cloisonne Enamel Trays.

Lotus in centre, surrounded by flowers and leaves in pink and white on a blue back: brass rimmed with fret-patterns around edges.

Diameter. $8 \times 6\frac{1}{2}$ inches.

787 Small Incense Holder.

Early Ming: cloisonne enamel with leafy scroll decoration in colors on a blue body: teakwood stand.

Height, 4 inches.

788 Four Dishes.

Peking enamels; landscapes and birds decoration in colors on light ground.

789 Two Covered Boxes.

Peking enamel decoration of Chinese interior scenes, minutely painted in varied colors.

Diameter, $3\frac{1}{2}$ inches.

790 Set of Enamel Plates.

One large plate and eight small dishes: painting of Chinese figures having a game of checker-board and scenes of various industrial lines. Carefully executed in many colors: blue flower decoration on back.

791 Small Jewel Box.

Oblong shaped: hawthorn, bamboo, and blossoms in a rich blue enamel color. Divided compartment inside. Chien-lung.

792 Pair Enamel Wine Holders.

With upright handle: decorated in sections with various flower designs and scrolls of leaves in pink, blue, violet, lavender and yellow: choice examples.

793 Pair Jars With Covers.

Peking enamel works, decorated with flowers, fruits, etc., in many colors on blue ground.

Height, 10 inches.

794 Four Small Dishes.

Peking enamels; with decoration of Chinese characters in center, surrounded by floral patterns in color, on a pink ground.

795 Pair Imperial Enamel Wine Holders.

With upright handles; paneled decoration of floral scrolls and leaves in alternate painting in pink, blue, lavender, violet and yellows; specimen of Chien-lung period.

796 Imperial Wine Holder.

Peking enamel, with upright handle decorated with Chinese figures, landscape within panels, with border design of leafy scrolls in colors on light back.

797 Enamel Covered Bowl.

Containing eight cups; all decorated with scrolls of leaves in blues and pink on light blue.

Diameter, 4 inches.

798 Six Small Plates.

Peking enamel works, decorated with Chinese art objects in many colors on a blue ground.

799 Ginger Jar With Cover.

Peking enamel, decorated on pink ground with design of fruits, bats, butterflies, etc., in various enamels. The cover has decoration of Chinese characters. Chien-lung era.

, Height, 9 inches.

800 Pair Jars With Covers.

Peking enamel works; butterflies, flowers and fruits in various tints on blue.

Height, 10 inches.

801 String of Beads.

Consisting of one hundred and eight specimens, including pink and white crystals.

802 String of Beads.

Consisting of one hundred and eight specimens, including Fei-tsui Jades, ambers, etc., etc.

803 String of Beads.

Consisting of one hundred and eight specimens of crystals on yellow silk strings with tassels.

804 String of Beads.

One hundred and eight specimens, including Fei-tsui jades, amethysts and ambers on silk cords.

805 Agate Beads.

Consisting of one hundred and eight yellow beads on string; rare specimens.

806 String of Beads.

Consisting of one hundred and eight specimens, including five jades, eight amethysts.

807 String of Beads.

One hundred and six specimens of mother-of-pearl in purple shade.

808 String of Beads.

Composed of one hundred and eight specimens, including jades, amber, peacock stones, etc., etc.

809 String of Beads.

Of one hundred and eight specimens, including amethysts, Fei-tsui jades, in reds and greens and other varieties; rare pieces.

810 Old Chinese Dagger.

Chien-lung; brass mountings and shark skin scabbard; blade has a decoration; has two chopsticks, one gimlet, three ivory picks, etc., all inserted in scabbard.

811 Old Chinese Dagger.

Chien-lung period; brass decorated scabbards with Jade mounted hilt, and ornamented with malachite stones on ends.

812 Old Chinese Cloisonne Enameled Dagger.

Decoration of flowers on scabbard; engraved brass mountings; a specimen of Ming era.

813 Jeweled Dagger.

Ming dynasty; the scabbard decorated with various designs of squares, inlaid with many stones; the hilt^s is of jade; ivory top on the scabbard with brass mountings.

814 Old Chinese Dagger.

Ming specimen; engraved brass mountings; with carved hilt; the blade has engraved decoration; scabbard is of cloisonne enamel.

815 Two Small Cups.

Chien-lung era; inside and out are of fine mazarine blue; teakwood stands.
Height, 4 inches; diameter, 3 inches.

816 Glass Vase.

Chien-lung; purple color with seal mark of four characters on bottom.

Height, 6 inches.

817 Glass Bottle.

Of Chien-lung period; raised band at centre of the body with yellow color of fine oily texture; engraved seal marks at the base.

818 Rare Glass Bottle.

Chien-lung era; of graceful shape, with blue color of fine texture; has carved seal marks at the base; teakwood stand.

Height, 11½ inches.

819 Small Vase.

Rock crystal in form of bunches of grapes with trunk of tree, showing various color effects of purple, blue, yellow, pale green, etc., etc.; early Ming era; very scarce; carved teakwood stand; height, 5½ inches.

820 Pair Carved Ivory Okimonos.

Elephants with two crystal balls, elaborately encrusted with variously colored ivory and coral beads and minutely carved; mounted on a teakwood stand.

Height, $4\frac{1}{2}$ inches.

821 Four Cups With Handles.

Pure white crystal, mounted on silk-covered stand; carved decoration of fruits, plants, etc., in low relief; Chien-lung.

822 Small Jade Vase.

With cover in flat, square form; leaves and Archaic patterns and dragon; teakwood stand.

Height, 4 inches.

823 Cabinet Jade Vase With Cover.

Flat, jar shaped; low relief of scroll pattern.

Height, $2\frac{1}{4}$ inches.

824 Small Jade Vase.

Cylindrical form; milk white texture; carved decoration of grapes, vines and fruits in artistic skill; has stand of carved teakwood; Ming specimen.

Complete, height 5½ inches.

825 Small Chinese Green Jade Okimono.

Fashioned after ancient Chinese bronze; cloud form and Archaic pattern; carved in relief on cover as well as on body; two ring handle, carved from solid single stone; has carved teakwood stand; specimen of Ming.

Complete height, 6 inches.

826 Remarkable Chinese Green Jade Box.

Fashioned after ancient Chinese bronze; decoration on cover and the body; carved with Archaic designs in relief; handles on sides in animal heads' design; placed on two elaborately carved teakwood stand; specimen of Ming.

Complete height, 12 inches.

827 **Small Jade Box.**

Milk-white texture with fine cutting.

Diameter, 2 inches.

828 **Jade Box.**

In form of a peach, with green tint.

829 **Small Jade Box.**

Milk-white texture with fine cutting.

Diameter, $1\frac{3}{4}$ inches.

830 **Small Jade Box.**

Cabinet specimen; milk white texture.

Diameter, 2 inches.

831 **Carved Jade Ornament.**

Dragon design; a cabinet specimen.

Length, $3\frac{1}{2}$ inches.

832 **Carved Ornaments.**

One, yellow agate, carved in form of a duck; another in jade, in form of a duck.

833 Carved Jade Ornament.

In form of a gourd with three small gourds; stand.

Height, $2\frac{1}{2}$ inches.

834 Two Chinese Jars.

Kang-hsi; cucumber green glaze.

Height, 7 and 8 inches.

835 Cabinet Vase.

Purple glaze; teakwood stand.

Height, $7\frac{1}{2}$ inches.

836 Porcelain Vase.

White hard paste; spreading body with slender neck, with band of incised decoration.

Height, $8\frac{1}{2}$ inches.

837 Small Vase.

Tall, slender form, coated with fine "ashes of roses" glaze; an excellent example.

Height, 6 inches.

838 **Small Vase.**

Robin's egg glaze; with handles of animal heads design; Chien-lung era.

Height, 6 inches.

839 **Bottle Shaped Vase.**

Cucumber green glazed; teakwood stand.

Height, 7 inches.

840 **Soft Paste Vase.**

Chien-lung; small cylindrical form, incised fret, plum blossoms on white ground.

Height, 5 inches.

841 **K'ang-hsi Vase.**

Of coral red glaze, with rim covered with metal; teakwood stand.

Height, 7 inches.

843 **Bottle Shaped Vase.**

Apple green glaze, rare Ming specimen, slightly repaired.

Height, 5 inches.

844 Jar and Cover.

Imperial yellow glaze of K'ang-hsi specimen.

Height, 12 inches.

845 Pair Imperial Yellow Vases.

Chien-lung era; marks of "Shintoku do sei" on bottom; mounted on silk covered stand and extra teakwood stand; a fine example.

Height, 6 inches.

846 Bottle-shaped Vase.

Chien-lung era; mazarine blue of light tone; teakwood stand.

Height, 10½ inches.

847 Turquoise Blue Vase.

Chien-lung era; a fine glazed surface with small crackles.

Height, 13½ inches.

848 **Bottle Shaped Vase.**

Chien-lung era; cherry-red glaze of extremely fine quality; teakwood stand.

Height, 12½ inches.

849 **Imperial Jar.**

Of K'ang-hsi era; covered with a fine purple glaze of even surface; one of the finest examples.

Height, 13½ inches.

850 **Tall "Kang-hsi" Vase.**

Crackled body with green glaze. (Slight imperfection at lip.)

Height, 24½ inches.

851 **Rare "Sung" Bowl.**

Pottery of light ivory colored texture; metal rimmed.

Diameter, 7½ inches.

852 Deep Bowl.

Sung; inside is decorated with purple dots on a blue ground.

Diameter, 8 inches.

853 Old Chinese Plaque.

Sung specimen; incised fish decoration and lotus flower in pale white.

Diameter, 12 inches.

854 Two K'ang-hsi Plates.

Covered with a rich purple glaze over decoration of dragons on both sides; year marks on back.

Diameter, 10 inches.

855. Two Chinese Bowls.

Kang-hsi; cucumber green glaze of fine texture.

Diameter, 5½ inches.

856 Small Cabinet Vase.

Cucumber green glaze.

Height, 4½ inches.

857 Bottle-shaped Vase.

Chien-lung era; purple colored glaze;
teakwood stand.

Height, 17 inches.

858 Vase.

Chien-lung; turquoise blue glaze;
teakwood stand.

Height, 12½ inches.

859 Large Bottle.

Mazarine blue of Chien-lung; blue
seal marks on bottom; teakwood stand.

Height, 19 inches.

860 Old Chinese Vase.

Chien-lung era; blue glaze, orna-
mented with animal headed handles.

Height, 15 inches.

861 Chinese Blue Jar.

Early Ming; has unusually fine ruri
blue glaze of low tone.

Height, 15 inches.

862 **Bottle Shaped Vase.**

Chien-lung period of powdered blue glaze, decorated with animal design; carved teakwood stand.

Height, 20 inches.

863 **Tall Yung-Cheng Vase.**

Birds and various flowers in pink, blue and green.

Height, 20 inches.

864 **Chinese Celadon Vase.**

Chien-lung specimen; blue landscapes in paneled sections; the reserves of incised scroll patterns; teakwood stand.

Height, 19 inches.

865 **Tripod Shaped Censer.**

From the imperial kiln; floral patterns in pink, blue, red and white on a blue ground; marks of Chia-ching in panel of front lip; teakwood stand.

Height, 10½ inches.

866 Yung-Ching Vase.

Medallions of flower patterns and scrolls of leaves in colors; the piece has marks of Ching-hwa; teakwood stand.

Height, 11 inches.

867 Bottle Shaped Vase.

Chia-chieng era; fruits, scrolls of leaves; Chinese characters, meaning double joy, painted in various tints; the year marks on bottom; teakwood stand.

Height, 16 inches.

868 Bowl With Cover.

Seal marks of Chia-cheng era; dragons carefully painted in colors and gold.

Diameter, $9\frac{1}{4}$ inches.

869 Pair Chinese Vases.

Yung-ching specimens; deer under pine-trees in fine blue enamel; fine old examples; teakwood stands.

Height, $9\frac{1}{2}$ inches.

870 Chinese Vase of Soft Paste.

Chien-lung specimen; blue decoration of Chinese domestic scenes and garden views; teakwood stand.

Height, 14 inches.

871 Vase.

Yung-ching period; landscapes and foliage minutely painted over the body; blue seal marks on bottom; stand.

Height, 18 inches.

872 Bottle of Yung-Cheng Period.

Gourd shaped; Chinese figures, signs of divination and birds in blue and white; the bottle has marks of Ching-hwa; one of the finest specimens; carved teakwood stand.

Height, 11 inches.

873 Blue and White Beaker.

Ming; leafy scrolls in centre; water scene and birds on the lower parts; incised bands above and below.

Height, 17½ inches.

874 Jar With Teakwood Cover.

Kang-hsi era; art-objects and panel decorations in a fine old blue with reserves of Lotus patterns; rare old piece.

Height, 11½ inches.

875 Beaker Shaped Vase.

Of Yung-ching era; vases and flowers painted in blues on blue ground; teakwood stand; a rare piece.

Height, 11 inches.

876 Large Blue and White Vase.

Of Chien-lung era; Lotus flowers and scrolls of leaves in blue; with bamboo designed handles over shoulder.

Height, 22 inches.

876A Large Imari Jar With Cover.

Procession of the Genroku women decorated inside of panels, the other parts with lions and peony in colors; the cover richly painted with panel design; fine old porcelain.

Height, 29 inches.

877 Ginger Jar With Cover.

Decoration of plum blossoms on a fine blue, marked to represent the cracking of ice, with teakwood stand.

Height, 13 inches.

878 Jar.

Chien-lung; flowers and scrolls of leaves in white relief on a blue ground; has teakwood stand.

Height, 7½ inches.

879 Vase.

Blue and white dragon and cloud-forms in low relief; Chien-lung; teakwood stand.

Height, 17 inches.

880 Sectional Box.

In three compartments; band of flower decorations in red with gold pencilings; blue enamel inside; figures and garden scenes on top.

Diameter, 4 inches; height, 3 inches.

881 Small Jar.

Yung-ching; peony flowers in red, green, blue, yellow and other effects; teakwood stand.

Height, 5½ inches.

882 Bottle-shaped Vase.

Chien-lung era; trees with blossoms and birds in many colors; choice example.

Height, 8 inches.

883. Two Covered Bowls.

Elaborately painted with art-objects and musical instruments, etc., in pink, blue and green; teakwood stand; Chien-lung period.

Height, 6 inches.

884 Writers' Brush Holder.

Double scroll-shaped; diaper-patterns in small executions in red and brown colors; bands of cords design in centre; Chien-lung era.

Height, 3¾ inches.

885 Pair Chinese Bowls.

Marks of Yung-Cheng era, decorated with medallions in varied colors.

Diameter, 4 inches.

886 Bottle of Cheng-Lung Period.

Peach-bloom colored dragons and floral scrolls; carved teakwood stand.

Height, 12 inches.

887 Pair Chinese Bowls.

K'ang-hsi; dragon design in green color on a yellow ground; six marks on bottom.

Diameter, 6 inches.

888 Pair K'ang-hsi Plates.

Yellow glaze; with decoration of five-clawed dragons and fire-flames in blue; year marks on the bottom; fine examples.

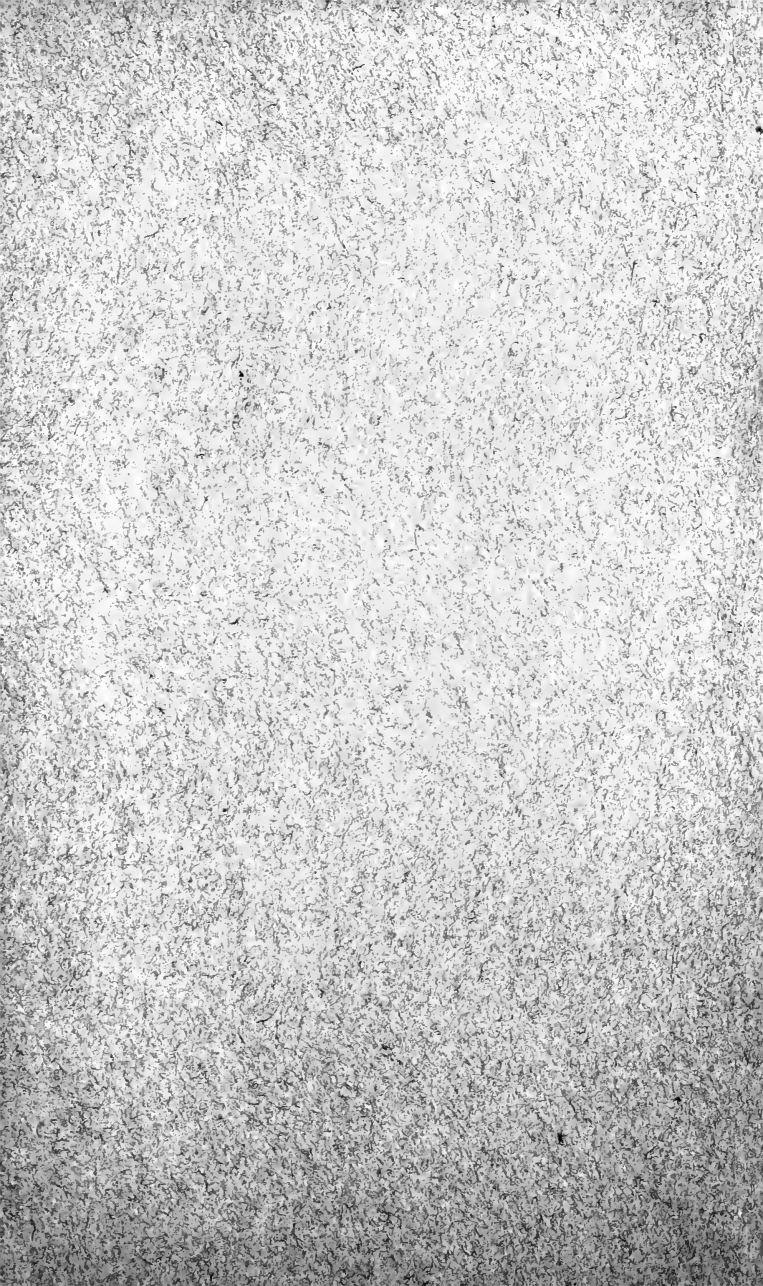
Diameter, 8 inches.

889 Ancient Chinese Pottery Vase.

Rare specimen of Han; shape representing at top "an umbrella" covering the cylindrical vase.

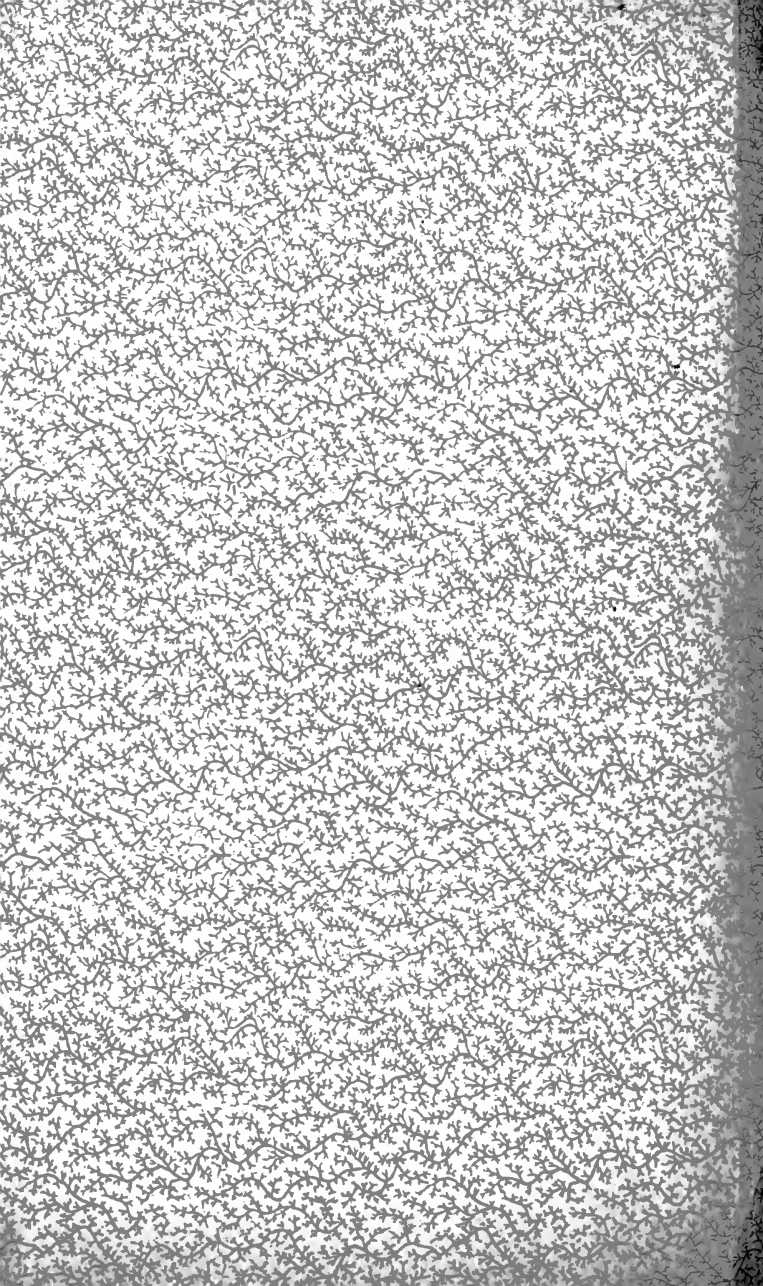
Height, 9½ inches.

HENRY A. HARTMAN,
Auctioneer.









NOV 19 1913

