

Historic, archived document

Do not assume content reflects current scientific knowledge, policies, or practices.

2.97

LYON & COBBE.



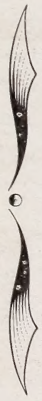
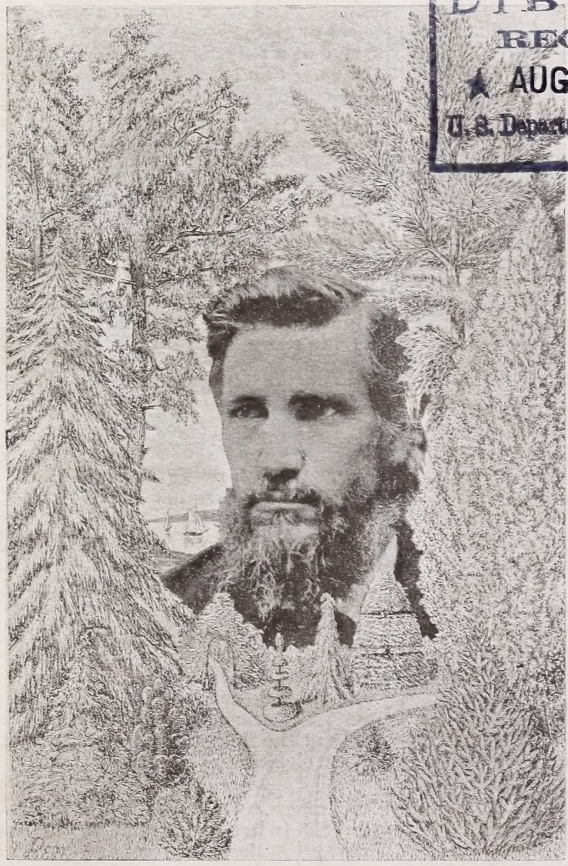
Catalogue and Price Lists,

OF

EVERGREEN NURSERIES.

LARGEST STOCK AND LARGEST ASSORTMENT OF EVERGREENS
- - - IN AMERICA. - - -

LIBRARY
RECEIVED
★ AUG 24 1923 ★
U. S. Department of Agriculture.



GEO. PINNEY, PROPRIETOR.
EVERGREEN, - DOOR CO., - WIS.
FOR FALL TRADE OF 1893.

READ AND HEED.

Terms: Cash with order, or C. O. D. On C. O. D. orders we *must* have a deposit with your Express Agent of one-fourth the amount of the bill. *Send his receipt for the deposit.*

No charge for boxing or cartage.

Write your letter on one sheet of paper, your order on another.

Write *plainly* the name of the article you want, giving number, size, and price in figures according to catalogue.

No order accepted for less than \$1.

Write your name, post office, state, Express office or station *very plainly*. We don't like to look at flourishes and guess at names.

Don't order one size of trees and send price of a smaller size.

Don't order any varieties or sizes not on the list.

Don't order trees to arrive at a specified time. We cannot control the running of arilroad trains. Send your order early enough and you will get them in time.

TO OLD CUSTOMERS.

We wish to hear from every customer who has honored us with an order. No effort will be spared to merit a continuance of your patronage, and we shall always strive to make your dealings with us both pleasant and profitable.

SHIPPING.

We make shipments by railroad from Green Bay, Wis., reaching all points in the west at the same rates of freight as is charged from Chicago, and usually making better time. To points east and south of Chicago the rates are a trifle more than from Chicago, and about two days longer time on the road.

Shipments usually go safely by freight.

The cost is considerably less on packages weighing fifty pounds or more, but on smaller packages, the charges by express are but little if any more than by freight.

Season for Shipping. Our shipping season—that is to commence *digging* and shipping—usually begins about April 15th, and continues until June 1st.

Early Shipment can be made from stock in our frost-proof cellars. By confining orders to stock marked with a (*) we can ship at any time directed until our supply is exhausted. Orders for winter shipments are packed in paper-lined packages, and every possible precaution taken to have the plants go through safely. Express or mail is safest for winter shipments.

Transportation. In furnishing trees, etc., at the prices in this list we wish it distinctly understood that we cannot be responsible for accidents of transportation. All articles after leaving the Nursery in good condition, are entirely at the risk of the purchaser. Except in cases of accidents, or gross carelessness, our packages will endure the longest journey safely.

Under ordinary circumstances, customers ought to receive their goods in from one to two weeks (when going out of this state) from date of shipment. One hundred miles per day is about the average movements of freight, and one day for each transfer from one road to another.

Executing Orders. We endeavor to execute all orders promptly and as nearly as possible in rotation as received. The shipping sea-

PRICE LISTS.

All seedlings of Evergreens not designated as "Wild" are grown from the seed in the Nursery. Fifty trees will be furnished at 100 rates, 500 at 1000 rates, and 5,000 at 10,000 rates. Don't order any sizes or varieties not named on these lists, and always specify the sizes just as given in the lists.

No order accepted for a less amount than \$1.00. Trees marked with an "*" are in cellar and can be shipped during the winter. No charge for boxes where cash is received before shipment is made.

EVERGREENS.

STANDARD SORTS, IN LARGE QUANTITIES.

VARIETIES.		Ea.	100	1000	10,000
*	ARBOR VITÆ, American, wild seedlings, 2 to 4 inches	15	\$ 1 00	\$ 7 50	
*	" " " " " " 4 to 8 inches	25	1 50	10 00	
*	" " " " " " 8 to 15 inches	40	3 00	25 00	
"	" " " " " " 15 to 24 in., extra	05	3 50	30 00	250 00
"	" " " " " " 2 to 3 ft., extra	15	10 00	75 00	
"	" " " " " " 3 to 5 ft., extra	30	20 00	150 00	
"	" " " " " " nursery seedlings, 3 to 4 inches	02	1 00	5 00	
"	" " " " " " 4 to 8 inch, extra	04	2 00	10 00	
"	" " " " " " 8 to 15 inch, extra	05	3 00	20 00	
"	" " " " " " transplanted, 4 to 8 inches	05	3 00	20 00	
*	" " " " " " 8 to 12 inches	06	4 00	30 00	
"	" " " " " " 12 to 20 inches	20	15 00		
*	" " " " " " Chinese, 3 to 5 inches, one year	02	1 50	10 00	
*	" " " " " " Compact, 2 to 3 inches one year	03	2 00		
*	" " " " " " 3 to 5 inches	04	3 00		
*	" " " " " " Golden, seedlings, 2 to 4 inches	02	1 50	10 00	75 00
"	" " " " " " 3 to 5 inches	03	2 00	15 00	
"	" " " " " " 4 to 8 inches	06	5 00	30 00	
"	" " " " " " 8 to 12 inches	15	10 00		
"	" " " " " " transplanted, 8 to 12 inches	20	15 00		
*	" " " " " " Variegated, 3 to 5 inches, one year	05	3 50	25 00	
"	" " " " " " Nootka Sound Giant, t'p'd, 4 to 8 inch.	10	7 50		
"	" " " " " " 8 to 12 inch	15	12 50		
"	" " " " " " 12 to 24 inch	30	25 00		
"	" " " " " " Weeping, 2 to 4 inches, one year	05	3 50		
"	" " " " " " CEDAR, Red, transplanted, 6 to 10 inches	10	5 00		
*	" " " " " " FIR, Balsam, wild seedlings, 2 to 4 inches	25	2 00	15 00	
*	" " " " " " 4 to 8 inches	35	3 00	25 00	
*	" " " " " " 8 to 12 inches, extra	03	1 50	10 00	75 00
"	" " " " " " 12 to 20 inches, extra	05	4 00	30 00	
"	" " " " " " 20 to 30 inches, extra	10	10 00	75 00	
"	" " " " " " nursery seedlings, 3 to 5 inches	02	1 50	10 00	
"	" " " " " " 4 to 8 inches, fine	03	2 00	15 00	
"	" " " " " " transplanted, 3 to 4 inches	03	2 00	15 00	
"	" " " " " " 4 to 8 inches, fine	05	3 00	20 00	
*	" " " " " " 8 to 12 inches, fine	10	5 00	35 00	300 00
"	" " " " " " 12 to 20 inches	15	10 00		
"	" " " " " " 20 to 30 inches	25			
"	" " " " " " Colorado Silver, seedlings, 3 to 4 inches	03	2 00	15 00	
"	" " " " " " 4 to 6 inches	08	5 00	35 00	
"	" " " " " " transplanted, 8 to 15 inches	50			
"	" " " " " " European Silver, seedlings, 2 to 4 inches	02	1 50	10 00	
"	" " " " " " transplanted, 4 to 8 inches	05	3 00		
"	" " " " " " 8 to 12 inches	10	6 00		
"	" " " " " " 12 to 18 inches	25	20 00		
"	" " " " " " JUNIPER, English, seedlings, 3 to 5 inches, one year	02	1 50	10 00	75 00
"	" " " " " " transplanted, 4 to 8 inches	05	3 50	25 00	
*	" " " " " " PINE, Austrian, seedlings, 3 to 4 inches	50	3 50	30 00	
*	" " " " " " 4 to 8 inches	02	1 50	10 00	75 00
*	" " " " " " 8 to 12 inches	05	2 50	20 00	150 00
"	" " " " " " transplanted, 3 to 6 inches	02	1 10	10 00	
"	" " " " " " 4 to 8 inches	03	2 00	15 00	
"	" " " " " " 8 to 12 inches	08	5 00		
"	" " " " " " 12 to 18 inches	15	10 00	75 00	
"	" " " " " " 18 to 24 inches	25	15 00		
"	" " " " " " Montana, seedlings, 2 to 4 inches	02	1 50	10 00	
"	" " " " " " transplanted, 4 to 8 inches	10	6 00	50 00	
"	" " " " " " 8 to 12 inches	15	10 00		
"	" " " " " " 10 to 15 inches	20	15 00		
*	" " " " " " Murray's, seedlings, 4 to 6 inches	05	3 00	20 00	150 00

STANDARD SORTS, IN LARGE QUANTITIES, CONTINUED.

VARIETIES.		Ea.	100	1000	10,000
*PINE, Murray's,	seedlings, 6 to 10 inches	07	4 00	30 00	250 00
"	transplanted, 4 to 6 inches	10	7 50	50 00	-----
"	Ponderosa, seedlings, 3 to 5 inches	05	3 50	20 00	150 00
"	Scopolorum, seedlings, 3 to 5 inches	02	1 50	10 00	75 00
"	" 4 to 6 inches	03	2 50	15 00	100 00
"	" 6 to 10 inches	05	4 00	30 00	250 00
"	transplanted, 4 to 6 inches	10	7 50	60 00	500 00
"	Scotch, transplanted, 3 to 5 inches	---	25	1 50	-----
"	seedlings, 4 to 8 inches	---	75	5 00	40 00
"	" 8 to 12 inches	03	1 50	10 00	85 00
"	transplanted, 4 to 8 inches	03	1 50	10 00	-----
"	" 8 to 12 inches	05	2 00	15 00	100 00
"	" 12 to 18 inches	07	5 00	40 00	350 00
"	" 18 to 24 inches	15	10 00	75 00	-----
"	" 2 to 3 feet	20	15 00	100 00	-----
"	Riga, transplanted, 1 to 1½ feet	15	10 00	-----	-----
"	White, seedlings, 3 to 5 inches	---	50	4 00	35 00
"	" 4 to 8 inches	03	1 50	10 00	75 00
"	transplanted, 3 to 6 inches	05	3 00	25 00	200 00
"	" 6 to 10 inches, extra	10	7 50	50 00	-----
SPRUCE, Black,	seedlings, 3 to 4 inches	---	75	5 00	40 00
"	" 4 to 6 inches	03	1 50	10 00	75 00
"	" 6 to 10 inches	05	3 00	20 00	150 00
"	transplanted, 3 to 4 inches	03	1 50	10 00	-----
"	Colorado Blue, seedlings, 2 to 4 inches	03	1 50	10 00	-----
"	" 4 to 6 inches	05	3 00	20 00	-----
"	transplanted, 4 to 6 inches	25	15 00	-----	-----
"	" 6 to 8 inches	30	-----	-----	-----
"	Hemlock, wild seedlings, 4 to 8 inches	---	50	4 00	35 00
"	" 8 to 15 inches	02	1 00	7 50	60 00
"	" 15 to 24 inches	03	1 50	10 00	75 00
"	" 2 to 3 feet	05	3 50	30 00	250 00
"	" 3 to 5 feet	15	12 50	100 00	750 00
"	transplanted, 4 to 8 inches	05	2 50	-----	-----
"	" 12 to 20 inches	25	-----	-----	-----
"	Mountain, transplanted, 4 to 8 inches	05	3 00	20 00	-----
"	" 8 to 12 inches	10	7 50	-----	-----
"	" 20 to 30 inches	50	-----	-----	-----
"	Norway, seedlings, 2 to 4 inches	---	25	1 00	7 50
"	" 3 to 5 inches	---	30	2 00	15 00
"	" 4 to 6 inches, extra	---	35	2 50	20 00
"	" 6 to 10 inches, extra	---	60	4 00	35 00
"	" 10 to 15 inches, extra	03	1 50	10 00	80 00
"	transplanted, 3 to 5 inches, extra	---	50	3 50	-----
"	" 4 to 8 inches, extra	02	75	6 00	50 00
"	" 8 to 12 inches, extra	05	3 00	20 00	175 00
"	" 12 to 20 inches, extra	15	10 00	75 00	650 00
"	" 20 to 30 inches	20	15 00	100 00	-----
"	White, seedlings, 3 to 6 inches	02	1 00	-----	-----
"	" 6 to 12 inches	08	5 00	-----	-----
"	" 12 to 15 inches	10	7 50	-----	-----
"	" 15 to 20 inches	15	10 00	75 00	-----
"	" 20 to 30 inches	20	15 00	100 00	-----
"	transplanted, 8 to 12 inches	12	10 00	-----	-----
"	" 12 to 15 inches	15	12 50	-----	-----
"	" 15 to 20 inches	20	15 00	-----	-----
"	" 20 to 30 inches, fine	25	-----	-----	-----
*YEW, English,	transplanted, 8 to 12 inches	30	20 00	-----	-----
"	American, seedlings, 4 to 8 inches	04	3 00	20 00	-----
"	" 8 to 12 inches	07	4 00	30 00	-----

RARE AND CHOICE VARIETIES.

(Only a limited supply in stock.)

Sorts marked with a "T" are not hardy in the Northern states. Those marked "HT" are hardy except in the most northern states. All others are supposed to be entirely hardy.

ABIES, Spruces, Firs, and Hemlocks.

	Each	10
Alba, aurea, golden leaves, white tipped, 12 inches	\$1 00	\$-----
" nivea, silvery white, 8 to 12 inches	75	-----
Alcockiana, 4 to 8 inches, HT	25	1 50
Brachteata, leaf-covered cones, 8 to 12 inches	75	6 00

RARE AND CHOICE VARIETIES, CONTINUED.		Each	10
Cephalonica, Cephalonian Silver Fir, 4 to 8 inches, T	10	75
" " " " 8 to 15 inches, T	15	1 25
Cilicica, Cilician Silver Fir, 4 to 6 inches, HT	15	1 00
Douglasi, Douglas Spruce, 4 to 8 inches	10	75
" " " " 8 to 15 inches	25	2 00
" " " " 15 to 24 inches	60	5 00
" <i>pendula</i> , Weeping Douglas Spruce, 2 feet	1 50	----
" <i>pendula</i> , Weeping Douglas Spruce, 4 to 8 inches	25	----
Englemanni, Engleman's Spruce, 2 to 4 inches	15	1 00
" " " " 4 to 8 inches	25	2 00
" " " " 15 to 24 inches	1 00	7 50
" <i>glauca</i> , Blue Spruce, 8 to 12 inches	50	4 00
Excelsa, <i>avrea</i> , Golden Norway Spruce, 2½ feet	1 50	----
" <i>clanbrasiliana</i> , Compact Dwarf Spruce, 2 feet	1 25	----
" <i>pygmaea</i> or <i>pumila</i> , very small Dwarf, 4 to 8 inches	15	1 00
" " " " 8 to 15 inches	35	----
" " " " 18 inches	75	----
" <i>glauca</i> , Blue Dwarf, 18 inches	1 25	----
" <i>monstrosa</i> , Awkward Branched Norway, 2 to 3 feet	1 50	----
" <i>Findonensis</i> , bronzy-yellow leaves, 8 to 15 inches	60	5 00
" <i>inverta</i> , Weeping Pyramidal Spruce, 4 to 8 inches	50	----
" " " " 18 inches	1 00	----
" " " " 2½ feet	2 00	----
" <i>pyramidalis</i> , pyramidal upright branches, 15 to 24 inches	75	5 00
" <i>pendula</i> , Weeping Norway Spruce, 8 to 12 inches	75	5 00
" <i>Remonti</i> , compact, conical, 4 to 8 inches	10	50
" " " " 8 to 15 inches	15	1 00
Frazerii, Frazer's Silver Fir, 3 to 6 inches	05	30
" " " " 15 to 24 inches	25	2 00
Grandis, Great " " 8 to 15 inches	50	----
" " " " 15 to 24 inches	1 00	----
Menziesii, Menzies's Spruce, 4 to 8 inches	15	1 25
" " " " 15 to 24 inches	60	5 00
Mertensiana, Merten's Hemlock, 4 to 8 inches	15	1 00
" " " " 2 to 3 feet	1 00	----
Nobilis, Noble Silver Fir, 4 to 8 inches	15	1 00
Nigra, <i>pumila</i> , Dwarf Black Spruce, 4 to 8 inches	05	----
" " " " 18 inches	75	----
Nordmaniana, Nordman's Silver Fir, 4 to 6 inches	05	40
" " " " 6 to 10 inches	15	1 00
Orientalis, Eastern Spruce, 2 to 4 inches	05	40
" " " " 4 to 8 inches	15	1 00
" " " " 15 to 24 inches	60	5 00
" " " " 30 inches	1 00	----
Pattoniana, Patton's Giant Hemlock, 3 to 5 inch	06	50
Parryana, <i>glauca</i> , Parry's Blue, 4 to 6 inches	10	75
" " " " 12 inches	1 00	----
" " " " 18 inches	1 50	----
Pectinata, <i>pendula</i> , Weeping Silver Fir, 8 to 15 inches, HT	15	1 00
" <i>pyramidalis</i> , Upright Silver Fir, 18 inches, HT	1 00	----
Pinsapo, Spanish Silver Fir, 4 to 8 inches, HT	10	50
" " " " 18 inches	1 00	----
*Polita, Japan Tiger-tail Spruce, 4 to 8 inches, HT	25	----
" " " " 18 inches	1 50	----
Sacchalinese, New Japanese Fir, 8 to 12 inches, HT	60	5 00
Schrenkiana, Obovate-coned Spruce, 10 to 14 inches	50	----
Sub-alpina, Table-land Spruce, 4 to 8 inches	10	75
Sibirica, Siberian Silver Fir, 3 to 6 inches	10	75
Smithiana, Himalayan Spruce, 8 to 15 inches	60	5 00
Veitchii, Japan Silver Fir, 12 to 18 inches, HT	1 00	----

ARAUCARIA.

*Imbricata, Chili Pine, 6 to 8 inches, HT	50	4 00
" " " " 18 inches	1 50	----

BIOTA, Eastern Arbor Vitæ. (All HT.)

Caucasica, Caucasian Arbor Vitæ, 18 to 24 inches	1 00	7 50
" " " " 3 feet	1 50	----
*Elegantissima, Elegant Arbor Vitæ, 8 to 12 inches	25	2 00
" " " " 2 feet	1 00	----
Filliformis, Fern-like Arbor Vitæ, 10 to 12 inches	30	2 50
Japonica, Japanese " " 8 to 12 inches	35	3 00
" <i>avrea variegata</i> , Golden Variegated Arbor Vitæ, 8 to 12 inches	50	4 00
Minima, <i>glauca</i> , Dwarf Blue Arbor Vitæ, 4 to 6 inches	35	2 50

CORRECTION SHEET.

The enclosed list may be used in making fall orders, by observing the following corrections.

ADD TO THE LIST THE FOLLOWING:

EVERGREENS.

	Ea.	100	1,000	10,000
Arbor Vitae, American, transplanted, 2 ft.	25	15 00	-----	-----
Arbor Vitae, Chinese Compact, transplanted, 3 to 5 in.	05	4 00	-----	-----
Arbor Vitae, Chinese Compact, transplanted, 8 to 12 in.	10	7 50	-----	-----
Arbor Vitae, Chinese Golden, transplanted, 3 to 5 in.	03	2 00	-----	-----
Fir, Balsam, transplanted, 2 to 3 ft.	25	20 00	-----	-----
Fir, Colorado Silver, transplanted, 6 to 8 in.	10	7 50	50 00	-----
Pine, Scopulorum, transplanted, 6 to 8 in.	10	7 50	50 00	400 00
Pine, Scopulorum, seedlings, 10 to 18 in.	10	7 50	50 00	400 00
Pine, Scotch, seedlings, 12 to 16 in.	05	3 50	20 00	-----
Pine, Scotch, transplanted, 3 to 4 ft.	25	20 00	150 00	-----
Pine, White, seedlings, 8 to 12 in.	05	4 50	40 00	350 00
Pine, White, transplanted, 10 to 15 in.	15	10 00	75 00	-----
Spruce, Mountain, transplanted, 12 to 20 in.	15	10 00	-----	-----

DECIDUOUS TREES.

Ash, American White, transplanted, 6 to 12 in.	25	50	2 00	15 00
Ash, American White, seedlings, 12 to 15 in.	25	50	2 00	-----
Ash, European, transplanted, 4 to 6 in.	25	50	2 00	15 00
Basswood, American, transplanted, 4 to 6 ft.	25	-----	-----	-----
Basswood, European, transplanted, 4 to 6 in.	02	1 00	7 50	-----
Beech, American, transplanted, 10 to 15 in.	02	1 00	7 50	-----
Beech, European, transplanted, 18 to 24 in.	10	7 50	-----	-----
Birch, American, transplanted, 8 to 15 in.	-----	50	3 00	-----
Catalpa, Speciosa, transplanted, 2 to 3 ft.	10	7 50	-----	-----
Catalpa, Speciosa, transplanted, 3 to 5 ft.	15	12 50	-----	-----
Chestnut, Spanish, transplanted, 4 to 8 in.	05	3 50	-----	-----
Coffee Tree, transplanted, 8 to 15 in.	10	7 50	-----	-----
Elm, American White, seedlings, 18 to 24 in.	03	1 50	10 00	-----
Larch, American, transplanted, 12 to 20 in.	05	2 50	20 00	-----
Larch, European, transplanted, 4 to 6 in.	02	1 50	10 00	-----
Larch, European, seedlings, 18 to 24 in.	03	2 00	15 00	-----
Locust, Black, seedlings, 2 to 3 ft.	05	3 50	-----	-----
Locust, Black, seedlings, 3 to 4 ft.	10	7 50	-----	-----
Locust, Honey, transplanted, 4 to 8 in.	03	2 00	15 00	125 00
Locust, Honey, transplanted, 15 to 24 in.	05	4 00	35 00	-----
Mountain Ash, American, transplanted, 12 to 20 in.	15	10 00	-----	-----
Mountain Ash, American, transplanted, 2 to 4 ft.	25	20 00	-----	-----
Mountain Ash, European, seedlings, 12 to 20 in.	02	1 50	12 50	-----
Mountain Ash, European, transplanted, 2 to 3 ft.	15	12 50	-----	-----
Oak, American Red, transplanted, 6 to 12 in.	10	7 50	50 00	-----
Poplar, Lombardy, transplanted, 15 to 24 in.	05	3 50	-----	-----
Poplar, Silver Leaf, transplanted, 6 to 8 ft.	25	20 00	-----	-----
Plane Tree, transplanted, 4 to 8 in.	02	1 50	12 50	-----
Walnut, Black, transplanted, 2 to 4 ft.	05	3 50	30 00	-----
Willow, Wisconsin Weeping, transplanted, 12 to 18 in.	05	3 50	-----	-----
Willow, Wisconsin Weeping, transplanted, 18 to 24 in.	10	7 50	-----	-----
Willow, Wisconsin Weeping, transplanted, 6 to 8 ft.	25	20 00	-----	-----
Apple, seedlings, 2 to 4 ft.	03	2 00	10 00	-----
Beech, Purple, transplanted, 2 to 3 ft.	20	15 00	-----	-----
Blackberry, Stones Hardy.	10	7 50	-----	-----
Filbert, English, 2 to 4 ft.	10	-----	-----	-----
Grape, Moores Early, 2 years	10	-----	-----	-----

STRIKE FROM THE LIST THE FOLLOWING:
EVERGREENS.

Arbor Vitae, Variegated,.....	3 to 5 inches
Arbor Vitae, Weeping,.....	2 to 4 "
Spruce, Black, seedlings,.....	6 to 10 "
Spruce, Hemlock, transplanted,.....	4 to 8 "
Spruce, White, transplanted,.....	8 to 12 "
Spruce, White, transplanted,.....	12 to 15 "

DECIDUOUS TREES.

Ailanthus,.....	all sizes.
Basswood, American, transplanted,.....	4 to 8 inches.
Basswood, European, seedlings,.....	4 to 6 "
Basswood, European, transplanted,.....	4 to 8 "
Basswood, European, transplanted,.....	8 to 12 "
Box Elder, seedlings,.....	4 to 8 "
Chestnut, Horse, transplanted,.....	6 to 12 "
Chestnut, Spanish, transplanted,.....	12 to 20 "
Maple, Norway, transplanted,.....	4 to 8 "
Maple, Soft Silver, transplanted,.....	8 to 12 "
Maple, Soft Silver, transplanted,.....	12 to 18 "
Maple, Soft Silver, seedlings,.....	18 to 24 and 12 to 18 "
Mulberry, Russian, transplanted,.....	12 to 15 "
Poplar, Lombardy, transplanted,.....	6 to 12 "
Plane Tree, American, transplanted,.....	2 to 4 feet.
Plane Tree, American, transplanted,.....	4 to 6 feet.
Tulip, transplanted,.....	3 to 5 inches.
Walnut, Black, transplanted,.....	8 to 15 "
Walnut, English, transplanted,.....	2 to 3 feet.
Box Dwarf,.....	
Buckthorn,.....	
Pear for budding,.....	
Serviceberry, European,.....	
Barberry, Evergreen,.....	
Daphne Laureola,.....	
Hydrangea, Thos. Hogg,.....	
Laurel, Mountain,.....	
Maiden Hair Tree,.....	3½ feet.
Oleander,.....	
Rose of Sharon,.....	
Snowball,.....	

RARE AND CHOICE VARIETIES, CONTINUED.

Each 10

Recurva, Weeping Juniper, 8 to 15 inches, HT	50	----
Revesiana, 12 to 18 inches	75	----
Sinensis, <i>femina</i> , Chinese Female Juniper, 12 to 18 inches, HT	1 25	----
" <i>mas</i> , Chinese Male Juniper, 8 to 15 inches, HT	75	6 00
" <i>aurca</i> , Chinese Golden Juniper, 8 to 15 inches, HT	1 00	----
" <i>argentea variegata</i> , White Variegated, 8 to 12 inches, HT	1 00	----
Schotti, Schott's Green Red Cedar, 8 to 15 inches	35	2 50
Suecica, Swedish Juniper, 4 to 8 inches	40	3 00

LARIX.

*Kämpferi, 4 to 8 inches	40	3 00
--------------------------	----	------

PINUS.

Brutia, Brutia's Pine, 20 to 30 inches	75	----
Cembra, Swiss Pine, 3 to 5 inches	10	75
*Densiflora, Japan Pine, 12 to 18 inches	75	----
Excelsa, Bhotan Weeping, 3 to 5 inches	10	50
" " " 6 to 10 inches	15	1 00
" " " 2 feet	1 00	----
Inops, Jersey Scrub Pine, 6 to 10 inches	60	5 00
Insignis, Oregon Pitch Pine, 4 to 8 inches	30	2 50
Pinea, Siberian Stone Pine, 8 to 12 inches	60	5 00
Rigida, Pitch Pine, 12 to 18 inches	15	1 00
Sylvestris, <i>Bavronensis</i> , Scotch Dwarf, 3 to 6 inches	35	2 50
" <i>Rigaensis</i> , Riga Pine, 12 to 18 inches	15	1 00
*Thunbergia, Thunberg's Japan, 12 to 15 inches	25	2 00
Tuberculata, Monterey Pine, 8 to 12 inches	50	----

PODOCARPUS.

Coreana, 4 to 8 inches HT	25	2 00
---------------------------	----	------

PRUMNOPYITIS.

*Elegans, 4 to 6 inches, HT	35	3 00
* " 15 to 20 inches	1 00	----

RETINOSPORA.

*Argentea, <i>variegata</i> , silver variegated, 4 to 6 inches	10	75
*Ericoides, Heath Japan Cypress, 9 to 10 inches	05	40
Filifera, thread branched, 4 to 8 inches, HT	10	75
" " " 8 to 12 inches	25	2 00
*Obtusa, Japan Cypress, 6 to 10 inches, HT	20	1 50
* " " 10 to 15 inches	30	2 00
" " " 2 feet	50	----
* " <i>aurca gracilis</i> , graceful golden, 4 to 8 inches	25	2 00
* " " " 12 to 18 inches	40	3 00
* " " " 18 to 24 inches	60	5 00
" " <i>nana</i> , dwarf golden, 3 to 6 inches	10	75
" <i>nana</i> , Dwarf Japan Cypress, 8 to 12 inches	25	2 00
" <i>stricta</i> , dwarf pyramid, 2 to 4 inches	10	----
Pisifera, pea-fruited, 6 to 8 inches, HT	20	1 50
" <i>nana</i> , pea-fruited, dwarf, 2 to 4 inches, HT	15	1 00
Plumosa, Plumed Japan Cypress, 8 to 12 inches	35	2 50
" <i>alba picta</i> , branches tipped with white, 4 to 8 inches	25	2 00
" " " 8 to 15 inches	50	4 00
" <i>argentea</i> , silver plumed, 4 to 8 inches	15	1 00
" " " 12 inches	50	4 00
* " <i>aurca</i> , golden plumed, 6 to 8 inches	15	1 25
" " <i>erecta</i> , Pyramidal, 4 to 8 inches	15	1 00
" " " 18 to 24 inches	60	5 00
Squarosa Veitchii, Veitch's Hardy, 4 to 8 inches	05	40
" " " 8 to 12 inches	25	2 00

SALISBURIA.

*Adiantifolia, Maiden Hair Tree, 6 to 12 inches, HT	10	50
---	----	----

SCIADOPITYS.

Verticillata, Japan Umbrella Pine, 4 to 6 inches, HT	50	----
--	----	------

SEQUOIA.

*Gigantea, Mammoth Tree of California, 4 to 6 inches, HT	10	75
* " " " 6 to 12 inches	30	2 50
" " " 2 feet	1 50	----
" <i>pendula</i> , weeping, Mammoth Tree of Cal., 12 inches, HT	1 50	----
Sempervirens, California Redwood, 2½ feet, T	1 00	----

RARE AND CHOICE VARIETIES, CONTINUED.

Each 10

TAXUS, Yew.

*Adpressa, Flat Head Yew, 20 to 30 inches, HT	1 00	----
* " " <i>stricta</i> , Erect Yew, 8 to 15 inches, HT	35	2 50
" " " " " 3 feet.....	75	----
Baccata, English Yew, 8 to 12 inches	30	2 20
* " " <i>Dovastonii</i> <i>Pendula</i> , Weeping Yew, 8 to 12 inches	30	2 50
* " " " <i>Pendula</i> , Weeping Yew, 2 feet	1 00	----
* " " <i>Elegantissima</i> , Elegant Yew, 4 to 8 inches.....	50	4 00
* " " <i>Fastigiata</i> , Irish Yew, 5 to 10 inches	20	1 50
* " " " <i>aurea</i> , Golden Irish Yew, 6 to 10 inches	20	----
* " " " <i>argentea</i> , Silver Irish Yew, 5 to 10 inches.....	20	1 50
* " " <i>fructea lutea</i> , Yellow-fruited Yew, 4 to 8 inches.....	35	2 50
* " " <i>variegata aurea</i> , Golden Variegated, 6 to 10 inches.....	25	1 50
" " " <i>argentea</i> , Silver Variegated, 2 feet	75	----
*Brevifolia, Great Northwestern Yew, 8 to 12 inches	50	----
*Imperialis, Imperial Yew, 8 to 12 inches, HT	30	2 50
*Washintonia, <i>aurea variegata</i> , Golden Variegated, 18 to 24 inches	75	----

THUYA, American Arbor Vitæ.

*Argentea, <i>variegata</i> , Columbian Arbor Vitæ, 8 to 12 inches, variegated..	75	6 00
" " " " " 18 inches, " ..	1 25	----
" " " " " 3 feet, " ..	2 00	----
Aurea, Compact Golden, 6 to 10 inches.....	20	1 50
Boothii, Booth's Dwarf, 10 to 12 inches	20	----
Elwangeriana, Tom Thumb Dwarf, 6 to 10 inches	40	----
Hoveyi, <i>globosa</i> , Hovey's Globe, 6 to 12 inches.....	50	----
Nana, <i>pendula</i> , Dwarf Weeping, 3 to 6 inches.....	15	1 25
" " " " " 8 to 12 inches.....	50	----
*Vervaneana, Golden Variegated, 12 to 18 inches.....	50	4 00
Wareana, Siberian, 18 to 24 inches	40	3 00
" " " " " 24 to 30 inches	60	3 00

THUIOPSIS, Japan Arbor Vitæ.

*Borealis, Nootka Sound Cypress, 8 to 15 inches	40	3 00
* " " <i>pendula</i> , Weeping Nootka Sound Cypress, 4 to 8 inches.....	25	1 50
*Dolobrata, <i>variegata</i> , Variegated White, 8 to 15 inches.....	50	4 00
" " <i>latavirens</i> , Dwarf Japan Arbor Vitæ, 4 to 8 inches.....	20	1 50

TORREYA, Pseudo-Yew.

*Myristica, Californian Nutmeg Tree, 6 to 8 inches, T.....	50	----
* " " <i>taxifolia</i> , Yew-leaved, 8 to 12 inches, T.....	1 00	----
*Nucifera, Florida Sharp-leaved, 4 to 8 inches, T.....	40	----

DECIDUOUS TREES

SMALL SEEDLINGS AT LOW PRICES,

SUITABLE FOR TREE CLAIMS AND FOREST CULTURE.

Varieties marked with an (*) are in cellar and can be sent at any time. *Don't you forget it*, no charge for boxes where cash is received before shipment. (See the next list for larger sizes.)

VARIETIES.	1,000	10,000	100,000
*ASH, Blue, seedlings, 4 to 8 inches	\$1 50	\$12 50	\$100 00
" " " " " 8 to 15 inches.....	2 50	20 00	150 00
" " " " " 15 to 24 inches	4 00	30 00	250 00
" " Am. White, 4 to 6 inches.....	1 00	8 00	70 00
" " " " " 6 to 12 inches.....	1 50	12 50	100 00
" " Europ. " 4 to 6 inches.....	1 50	12 50	----
BALM GILEAD, 15 to 24 inches	5 00	40 00	300 00
*Beech, Am. White, 4 to 8 inches.....	1 50	10 00	75 00
" " " " " 8 to 15 inches	3 50	30 00	250 00
BIRCH, Am. Black, 4 to 8 inches.....	1 50	10 00	75 00
" " " " " 8 to 15 inches	2 00	15 00	100 00
" " " " " 15 to 24 inches	3 00	25 00	200 00
" " " " " 2 to 3 feet	5 00	35 00	300 00
*BOX ELDER, 4 to 8 inches	1 50	12 50	----
*CATALPA, Japan Hybrid, 4 to 8 inches.....	2 50	20 00	150 00
" " " " " 8 to 15 inches.....	5 00	40 00	----
" " " " <i>Speciosa</i> , 4 to 8 inches.....	1 50	10 00	----
" " " " " 8 to 15 inches.....	2 00	15 00	----
CHERRY, Wild Red, 8 to 15 inches.....	3 50	25 00	200 00
* " " " " " 15 to 24 inches	5 00	40 00	350 00
* " " " " " 2 to 3 feet	7 50	50 00	400 00

	1,000	10,000	100,000
COTTONWOOD, White, 4 to 12 inches	1 00	7 50	60 00
“ Yellow, 4 to 12 inches	1 00	7 50	60 00
“ “ 8 to 15 inches	1 25	10 00	75 00
“ “ 12 to 24 inches	1 50	12 50	100 00
“ “ 2 to 3 feet	1 75	15 00	125 00
*ELM, American White, 4 to 6 inches	1 25	10 00	75 00
“ “ 6 to 10 inches	1 50	12 50	100 00
“ English, 4 to 6 inches	1 50	12 50	100 00
*LARCH, American, 4 to 8 inches	1 50	12 50	100 00
“ “ 8 to 15 inches	2 00	17 50	150 00
“ “ 15 to 24 inches	5 00	40 00	300 00
“ “ 2 to 3 feet	15 00	100 00	750 00
“ European, 4 to 8 inches	4 00	35 00	-----
“ “ 8 to 12 inches	7 50	50 00	-----
“ “ 12 to 18 inches	12 50	100 00	-----
*LOCUST, Black, 4 to 8 inches	2 50	20 00	-----
“ “ 8 to 12 inches	3 00	25 00	-----
“ “ 12 to 18 inches	4 00	35 00	-----
“ “ 18 to 24 inches	7 50	65 00	-----
“ Honey, 4 to 8 inches	5 00	45 00	-----
*MAPLE, Soft Silver, 8 to 12 inches	1 25	10 00	-----
“ “ 12 to 18 inches	2 50	20 00	-----
“ “ 18 to 24 inches	5 00	40 00	-----
“ Hard Sugar, 4 to 8 inches	50	4 00	35 00
“ “ 8 to 15 inches	3 50	30 00	-----
MULBERRY, Russian, 4 to 8 inches	1 50	12 50	-----
WILLOW, American White, 4 to 8 inches	1 00	7 50	60 00
“ “ 8 to 15 inches	1 50	12 50	100 00
“ “ 15 to 24 inches	2 00	15 00	125 00
“ “ 2 to 3 feet	5 00	40 00	300 00

FOR ORNAMENTAL AND GENERAL PLANTING.

DON'T YOU FORGET IT. No charge for boxes or packing where cash is received before shipment. Those marked with a star (*) are in cellar, and can be shipped at any time while the supply lasts. See preceding list for smaller sizes.

VARIETIES.	Ea.	100	1,000	10,000
AILANTHUS (Tree of Heaven), seedlings, 3 to 5 inches	50	3 00	-----
“ “ “ “ “ “ 5 to 8 inches	02	1 00	5 00	-----
* “ “ “ “ “ transplanted, 12 to 18 in	05	2 00	-----	-----
“ “ “ “ “ 18 to 24 in	08	5 00	-----	-----
“ “ “ “ “ 2 to 3 feet	10	-----	-----	-----
*ASH, Blue, transplanted, 6 to 12 inches	02	1 00	6 00	50 00
“ “ “ “ 2 to 3 feet	03	1 50	-----	-----
“ “ “ “ 3 to 4 feet	05	2 50	-----	-----
“ “ “ “ 4 to 6 feet	10	5 00	-----	-----
“ European, seedlings, 4 to 6 inches	25	1 50	12 50
“ “ “ “ 8 to 15 inches	05	3 00	20 00	-----
* “ Ornus, Flowering, seedlings, 4 to 8 inches	02	1 00	5 00	-----
“ “ “ “ 8 to 15 inches	05	3 00	-----	-----
BALM GILEAD, seedlings, 2 to 3 feet	03	1 50	10 00	75 00
“ “ “ “ 3 to 5 feet	05	3 50	25 00	200 00
“ “ “ “ 5 to 7 feet	10	8 00	75 00	-----
“ “ “ transplanted, 2 to 3 feet	05	4 00	-----	-----
* “ “ “ 3 to 5 feet	10	8 00	-----	-----
BASSWOOD, American, seedlings, 4 to 8 inches	02	1 00	5 00	40 00
“ “ “ “ 8 to 15 inches	03	1 50	10 00	75 00
“ “ “ “ 15 to 24 inches	05	2 50	20 00	175 00
“ “ “ “ 2 to 3 feet	10	5 00	40 00	-----
“ “ “ “ 3 to 5 feet	15	10 00	75 00	-----
“ “ “ “ 5 to 7 feet	25	20 00	-----	-----
* “ “ “ transplanted, 4 to 8 inches	03	1 50	10 00	-----
“ “ “ “ 8 to 12 inches	05	3 00	20 00	-----
“ European, seedlings, 4 to 6 inches	02	1 00	5 00	-----
“ “ “ transplanted, 4 to 8 inches	03	2 00	10 00	-----
* “ “ “ 6 to 12 inches	05	3 00	20 00	-----
“ “ “ “ 16 to 24 inches	10	7 50	50 00	-----
BEECH, American, seedlings, 15 to 24 inches	1 00	8 00	75 00
“ “ “ “ 2 to 3 feet	05	3 00	20 00	150 00
“ “ “ “ 3 to 5 feet	10	5 00	40 00	350 00
“ “ “ “ 5 to 7 feet	20	15 00	100 00	-----
“ “ “ transplanted, 6 to 10 inches	50	2 50	-----
“ European, “ 6 to 12 inches	02	1 00	5 00	-----
“ “ “ 12 to 18 inches	05	2 50	10 00	-----

VARIETIES.		Es.	100	1,000	10,000
BIRCH, American Black, seedlings, 3 to 5 feet		05	2 50	20 00	150 00
" " " " " " " " " " " "	5 to 7 feet	10	7 50	50 00	350 00
" " " " " " " " " " " "	White, same sizes and prices as Black				
" " " " " " " " " " " "	transplanted, 2 to 4 feet	10	5 00	45 00	
" " " " " " " " " " " "	" " " " " " " " " " " "	15	10 00		
" " " " " " " " " " " "	5 to 7 feet	15	10 00		
* " " " " " " " " " " " "	European, transplanted, 2 to 4 feet	10	5 00		
* " " " " " " " " " " " "	" " " " " " " " " " " "	15	10 00		
* " " " " " " " " " " " "	4 to 6 feet	15	10 00		
BOX ELDER, transplanted, 2 to 3 feet			5 00		
* BUTTERNUT, seedlings, 8 to 15 inches		05	2 00	15 00	
* " " " " " " " " " " " "	transplanted, 12 to 24 inches	15	10 00		
CATALPA, hardy seedlings, 2 to 3 feet		08	6 00	50 00	
" " " " " " " " " " " "	3 to 5 feet	15	12 50	100 00	
* CHERRY, Black, seedlings, 8 to 15 inches		03	1 50		
* " " " " " " " " " " " "	" " " " " " " " " " " "	05	2 00		
* " " " " " " " " " " " "	15 to 24 inches	05	2 00		
* " " " " " " " " " " " "	Choke, " " " " " " " " " " " "	03	1 50		
" " " " " " " " " " " "	" " " " " " " " " " " "	05	2 00		
" " " " " " " " " " " "	15 to 24 inches	05	2 00		
" " " " " " " " " " " "	Wild Red, seedlings, 8 to 18 inches	02	1 00	5 00	35 00
" " " " " " " " " " " "	" " " " " " " " " " " "	03	1 50	10 00	75 00
" " " " " " " " " " " "	" " " " " " " " " " " "	05	3 00	20 00	150 00
" " " " " " " " " " " "	2 to 3 feet	02	75	5 00	
" " " " " " " " " " " "	transplanted, 15 to 24 inches	05	1 50	10 00	
" " " " " " " " " " " "	" " " " " " " " " " " "	10	5 00	40 00	
" " " " " " " " " " " "	4 to 8 feet	15	10 00		
" " " " " " " " " " " "	6 to 8 feet	15	10 00		
* CHESTNUT, American, transplanted, 12 to 24 inches		05	3 00	20 00	
* " " " " " " " " " " " "	Horse, transplanted, 6 to 12 inches	05	4 00		
* " " " " " " " " " " " "	" " " " " " " " " " " "	15	10 00		
* " " " " " " " " " " " "	12 to 24 inches	10	5 00	40 00	
* " " " " " " " " " " " "	Spanish, transplanted, 12 to 20 inches	06	3 00	25 00	
* COFFEE TREE, seedlings, 6 to 10 inches		06	3 00	25 00	
" " " " " " " " " " " "	" " " " " " " " " " " "	06	4 00	30 00	
" " " " " " " " " " " "	8 to 12 inches	10	7 50		
" " " " " " " " " " " "	12 to 15 inches	03	1 50	10 00	
* ELM, American Rock, transplanted, 12 to 20 inches		03	1 50	10 00	
" " " " " " " " " " " "	White, seedlings, 12 to 18 inches		25	1 50	125 00
" " " " " " " " " " " "	English, seedlings, 4 to 8 inches	02	50	3 50	
" " " " " " " " " " " "	transplanted, 8 to 12 inches	03	1 00	5 00	
" " " " " " " " " " " "	12 to 18 inches		30	2 00	
" " " " " " " " " " " "	Scotch, or Wyck, seedlings, 4 to 8 inches	02	50	3 00	
* " " " " " " " " " " " "	transplanted, 6 to 10 inches	03	1 50	10 00	
* " " " " " " " " " " " "	" " " " " " " " " " " "		50	4 00	
" " " " " " " " " " " "	18 to 24 inches	02	1 00	6 00	
LARCH, American, seedlings, 2 to 3 feet		05	2 00	15 00	100 00
" " " " " " " " " " " "	" " " " " " " " " " " "	03	4 00	30 00	200 00
" " " " " " " " " " " "	3 to 5 feet	15	10 00	75 00	500 00
" " " " " " " " " " " "	5 to 7 feet	05	2 00	15 00	
" " " " " " " " " " " "	transplanted, 8 to 12 inches	05	2 00	15 00	
" " " " " " " " " " " "	" " " " " " " " " " " "	05	4 00	30 00	
" " " " " " " " " " " "	2 to 3 feet	12	10 00		
" " " " " " " " " " " "	3 to 4 feet	03	1 50	10 00	
" " " " " " " " " " " "	4 to 6 feet	03	1 50	10 00	
* " " " " " " " " " " " "	European, seedlings, 12 to 18 inches	10	5 00	40 00	
* " " " " " " " " " " " "	transplanted, 20 to 30 inches	15	10 00	100 00	
* " " " " " " " " " " " "	3 to 4 feet	02	60	4 00	35 00
* " " " " " " " " " " " "	18 to 24 inches	03	1 50	7 50	65 00
* " " " " " " " " " " " "	transplanted, 8 to 15 inches	03	1 50	10 00	
* " " " " " " " " " " " "	" " " " " " " " " " " "		3 00	25 00	
* " " " " " " " " " " " "	15 to 24 inches	03	1 50	10 00	
* " " " " " " " " " " " "	Honey, seedlings, 8 to 15 inches	05	2 00	15 00	
* " " " " " " " " " " " "	" " " " " " " " " " " "	05	2 50	20 00	
* " " " " " " " " " " " "	15 to 24 inches	05	2 50	20 00	
* " " " " " " " " " " " "	transplanted, 8 to 15 inches		75	5 00	
MAPLE, English, " " " " " " " " " " " "	6 to 12 inches		50	3 50	30 00
" " " " " " " " " " " "	Mountain, seedlings, 4 to 8 inches		75	5 00	35 00
" " " " " " " " " " " "	" " " " " " " " " " " "	02	1 00	7 50	60 00
" " " " " " " " " " " "	" " " " " " " " " " " "	03	1 50	12 50	100 00
" " " " " " " " " " " "	8 to 15 inches	05	2 50	20 00	
* " " " " " " " " " " " "	Norway, transplanted, 4 to 8 inches		35	2 50	
" " " " " " " " " " " "	" " " " " " " " " " " "		75	5 00	
" " " " " " " " " " " "	8 to 15 inches		35	2 50	20 00
" " " " " " " " " " " "	Soft Silver, seedlings, 12 to 18 inches		75	5 00	40 00
" " " " " " " " " " " "	" " " " " " " " " " " "	03	1 50	10 00	75 00
" " " " " " " " " " " "	18 to 24 inches		35	2 50	
" " " " " " " " " " " "	" " " " " " " " " " " "	02	75	5 00	
" " " " " " " " " " " "	2 to 3 feet	03	1 50	10 00	
" " " " " " " " " " " "	transplanted, 8 to 12 inches		1 50	10 00	
" " " " " " " " " " " "	" " " " " " " " " " " "	02	75	5 00	
" " " " " " " " " " " "	12 to 18 inches	03	1 50	10 00	
" " " " " " " " " " " "	18 to 24 inches	03	2 00	15 00	
" " " " " " " " " " " "	2 to 3 feet	10	5 00		
" " " " " " " " " " " "	Oregon, seedlings, 4 to 6 inches		50	3 50	30 00
* " " " " " " " " " " " "	Sugar Rock, Hard, seedlings, 8 to 15 inches		50	3 50	30 00
" " " " " " " " " " " "	" " " " " " " " " " " "	02	1 50	10 00	75 00
" " " " " " " " " " " "	15 to 24 inches				

LARGE TREES, FOR PARK AND STREET PLANTING, CONTINUED.
 VARIETIES.

	Each	100	1000
<i>Wild Cherry, Red Oak, Blue Ash, and Basswood.</i>			
Either variety, ¾ to 1 inch at butt.....	15	12 50	100 00
“ “ 1 to 1½ inch at butt.....	25	20 00	175 00
“ “ 1½ to 2½ inch at butt.....	75	60 00	500 00
“ “ 2½ to 3½ inch at butt.....	1 50	125 00	-----
<i>Lombardy Poplar, 2 to 2½ inch at butt.....</i>	75	60 00	-----
* <i>Catalpa, 1 to 1½ inch at butt.....</i>	25	20 00	-----

The above prices are for trees bundled and f. o. b. Carloads, packed in box car, or flat car boarded up, cost of lumber charged to purchaser of the trees, 25 per cent. discount from above prices.

A car load will be about 6,000 trees ¾ to 1 inch, 3,500 1 to 1½ inch, 2,000 1½ to 2½, and 1,000 2½ to 3½ inches at butt.

I will make special contracts to ship car loads to any part of the country, and prepay freight.

HEDGE AND BORDERING PLANTS.

VARIETIES.	Ea.	100	1,000	10,000
* BARBERRY , for hedges, seedlings, 4 to 8 inches.....	05	2 00	10 00	75 00
* “ “ “ “ 8 to 12 inches.....	10	8 00	40 00	-----
“ “ “ “ Evergreen, for hedges, transp., 4 to 8 inch.....	05	3 00	20 00	-----
* BLACK THORN , for hedges, transplanted, 2 to 3 feet.....	05	3 50	25 00	-----
BUCK THORN , “ “ “ “ 8 to 12 inches.....	75	5 00	-----	-----
* “ “ “ “ “ “ 12 to 20 inches.....	05	1 50	10 00	-----
* HAWTHORN , “ “ “ “ 15 to 24 inches.....	75	6 00	50 00	-----
* “ “ “ “ “ “ 2 to 3 feet.....	05	1 50	10 00	75 00
HONEY LOCUST , “ “ “ “ seedlings, 4 to 8 inches.....	75	5 00	45 00	-----
“ “ “ “ “ “ 8 to 15 inches.....	03	1 50	10 00	-----
“ “ “ “ “ “ 15 to 24 inch.....	05	2 00	15 00	-----
* “ “ “ “ “ “ transplanted, 8 to 15 inch.....	05	2 50	20 00	-----
* PRICKLY ASH , “ “ “ “ 2 feet.....	15	10 00	-----	-----
PRIVET , “ “ “ “ 8 to 12 inches.....	03	1 50	10 00	-----
* “ “ California “ “ 15 to 24 inches 10	6 00	50 00	-----	-----
* “ “ “ “ “ “ 2 to 3 feet.....	12	7 50	-----	-----
* ROSE , Dog (<i>Rosa Canina</i>), for hedges, 1 year.....	3 00	20 00	-----	-----
* “ “ “ “ 2 year.....	5 00	30 00	-----	-----
* “ “ Multiflora de Griffocrae, “ 2 year.....	5 00	35 00	-----	-----
* “ “ Sweet Briar, “ 1 year.....	5 00	35 00	-----	-----

The foregoing roses are all perfectly hardy, will stand any climate, making an impenetrable hedge of great beauty, both in blossom and when covered with fruit. Their value is not sufficiently appreciated.

	YARDS		
	1	10	100
BOX, Dwarf , for borders or edging. Price per yard of edging.....	15	1 25	10 00

EVERGREEN ORNAMENTAL HEDGES.

See prices of Evergreens, American Arbor Vitæ, Norway Spruce and Retinospora. Several other sorts make good hedges.

FRUIT TREES AND PLANTS.

Only the most hardy varieties of fruits can endure the rigors of our Northwestern winters. Thousands of Eastern and Southern trees are sold every year to the planters of the Northwest, and every winter as many thousands are killed. Many are killed the first winter, some live one or two years, very few three or four years, and on an average not more than one in a hundred live to give a peck of fruit. Yet when these trees are first received from the nursery they give the best of satisfaction. They are straight, thrifty, healthful and handsome. In the rich soil and warm vigorous climate of the East and South, larger trees can be grown in two years than I can grow in four years. When my trees are placed along side of these Southern trees, mine are called culls and theirs first-class; in three years mine are called first-class and theirs *dead trees*, although both may be the same variety of fruit. Theirs in the nursery made a rapid growth of soft wood unable to stand the hard freezing and thawing, while mine make a slower and harder growth, which will stand the severe Northern winters.

STOCKS FOR GRAFTING AND BUDDING.

VARIETIES.		100	1000	10,000
*APPLE, Crab, from seed of German Wild Crab, 4 to 8 inches...		50	4 00	30 00
" " " " " " " " 20 to 30 inches.		1 00	----	----
* " " " French, full of lateral fibre, best of all for whole root grafts, 4 to 8 inches.....		75	5 00	40 00
* " " " French, full of lateral fibre, best of all for whole root grafts, 8 to 12 inches.....		1 00	8 00	----
*CHERRY, for budding, Wild Red (See prices under heading "Small Seedlings.")				
" " Mahaleb, 4 to 8 inches.....		75	5 00	----
" " " " 6 to 12 inches.....		1 00	----	----
*PLUM, for budding, Black Thorny, 2 to 3 feet.....		3 00	25 00	----
* " " " " 3 to 5 feet.....		5 00	----	----
*PEAR, French stocks, for budding, 8 to 12 inches.....		1 25	10 50	----
* " " " " 12 to 18 inches.....		2 50	----	----

ROOT GRAFTS.

APPLE, select hardy varieties, grafted on whole roots of transplanted French Crab, well supplied with healthy fibres	1 00	7 50	60 00
" " ordinary piece root grafts.....	75	5 00	40 00
PEAR, two or three of the most hardy varieties, on whole roots of French seedlings transplanted.....	1 50	10 00	----

FRUIT TREES AND PLANTS.

VARIETIES.	Ea.	10	100	10 by Mail
APPLE TREES, the leading hardy varieties, 4 to 6 feet.....	20	1 50	12 50	----
CRAB APPLE TREES, the leading hardy varieties, 4 to 6 ft.....	20	1 50	12 50	----
CHERRY TREES, the leading hardy varieties, 4 to 6 feet.....	50	3 00	25 00	----
" " " Large Black, seedlings, 6 to 12 inches.....	15	1 00	----	----
PLUM " the leading hardy varieties, 4 to 6 feet.....	50	3 00	25 00	----
PEAR " Clapp's Favorite & Flemish Beauty, 4 to 6 feet	50	----	----	----
CURRENTS, *Cherry, Red Dutch, Imperial Red & Victoria, 2 yr	10	75	5 00	1 00
" *Glorie de Sablons,† striped fruit, 2 year.....	25	2 00	----	2 25
" Lee's Prolific, red, 2 year.....	15	1 25	----	1 50
" *Imperial, white, 2 year.....	20	1 50	----	1 75
" *Black Naples, and White Grape, 2 year.....	10	75	----	1 00
GOOSEBERRIES, *Ashton's Red† & Windham's Industry, 2 yr	25	2 00	----	2 25
" *White Eagle† and Yellow Amber,† 2 year.....	40	3 50	----	3 75
" Roaring Lion,† 2 year.....	50	4 50	----	4 75
DEWBERRY, Red Prolific.....	10	50	2 50	60
GRAPE, Concord, 1 year.....	10	75	5 00	90
" " " 2 year.....	15	1 25	----	1 50
* " Niagara White, 2 year.....	25	2 00	----	2 25
" Worden, best of all, 1 year.....	25	2 00	----	2 25
*BLACKBERRY, Early Harvest.....	10	75	5 00	90
RASPBERRY, *Turner Red, 1 year.....	10	50	4 00	65
" *Doolittle, 1 year.....	10	50	3 00	65
" *Taylor's Black, one year.....	25	----	----	----
" Red, native, one year.....	05	30	2 50	45
" *Ohio Black Cap, 1 year.....	10	50	----	65
" Wisconsin Black Cap, 2 year.....	15	1 25	----	1 50
" *Wonder of the Four Seasons,† red, 2 year.....	20	1 50	----	1 75
" " " " " " " " white, 2 year.....	25	2 00	----	2 25
STRAWBERRY, Wilson's and Crescent.....	--	15	1 00	20
" Old Iron Clad.....	--	20	1 50	25
SERVICEBERRY, Dwarf American (Juneberry), 3 to 4 feet.....	15	1 00	----	----
" European, 8 to 12 inches.....	15	1 00	7 50	1 25
BLUEBERRY, or Whortleberry, Dwarf, 1 foot.....	10	75	----	90
*CRANBERRY TREE, <i>Fiburnum Opulus</i> , 3 to 5 inches.....	02	25	2 00	30
" " " " " " " " divided clumps, 3 to 4 feet.....	25	----	----	----
* " " " Vines, cuttings.....	--	10	50	12
PIE PLANT, Cahoon's Mammoth.....	10	75	5 00	----
" " Linneas, per 1000 \$12.50.....	05	25	1 50	35
*ASPARAGUS, Conover's, per 1000 \$10.00.....	05	20	1 25	35
WINTERGREEN, per 1000 \$2.50.....	--	10	50	15

†I have imported plants of these Currants, Gooseberries and Raspberries from Europe. They are the most choice varieties of recent introduction in Germany and France, and without doubt will prove to be of great value in this country. Boxing free where cash comes before shipping.

ORNAMENTAL AND FLOWERING SHRUBS, CONTINUED.

VARIETIES.	Ea.	10	100	10 by Mail
ROSE OF SHARON, <i>Althea</i> , white, 10 to 18 inches.....	15	1 00	----	1 15
" " " " red, 10 to 18 inches.....	15	1 00	----	1 15
SNOWBALL, 5 to 6 feet.....	25	-----	-----	-----
*SNOWBERRY, seedlings, 4 to 8 inches.....	05	40	----	45
* " " " 12 inches.....	10	75	----	85
*SPIREA, assorted, 15 to 24 inches.....	10	75	5 00	-----
" " " 2 to 3 feet.....	25	1 50	10 00	-----
" " " 3 to 4 feet.....	30	2 00	15 00	-----
*SUMACH, <i>Rus glabra</i> , 10 to 18 inches.....	10	75	----	85
*WEIGELIA, assorted, <i>Frutescens</i> , 2 to 3 feet.....	10	75	----	-----
WITCH HAZEL, <i>Hammamelis</i> , 3 to 5 feet.....	25	2 00	----	-----

ROSES.

COMMON BLUSH, 2 years.....	15	1 00	----	1 10
CHINA, Eugenie Beauharnais-Amaranth, the buds beautiful when first unfolding, sometimes dying off blackish or crimson, large and very double, form cupped.....	50	4 00	----	4 10
" " " " Purple, the most abundant bloomer, 2 years.....	25	2 00	----	2 10
CLIMBING, Madame Plantier, fine, white, 2 year.....	30	2 50	----	2 70
" " " " Multiflora-de-Ferrieras, finest of all.....	50	4 00	----	4 20
" " " " Prairie Belle.....	25	4 00	----	4 20
" " " " Williams Evergreen.....	25	2 00	----	2 20
" " " " Polyantha, a great profusion of small flowers.....	25	2 00	----	2 20
GENERAL JACQUEMINOT, shining crimson, very rich and velvety, exceedingly brilliant and handsome; makes magnifi- cent buds, and is highly esteemed as one of the best and most desirable.....	30	2 50	----	2 60
MULTIFLORA DE GRIFFERAYE.....	25	2 00	15 00	2 20

CLIMBERS.

BITTER-SWEET, <i>Celastrus Scandens</i>	25	2 00	----	-----
CLEMATIS, Blue, 3 years.....	10	75	5 00	85
" " " " White, sweet scented, 3 years.....	10	75	5 00	85
" " " " Virgin's Bower.....	05	40	2 50	50
*CINNAMON VINE, <i>Dicorea Batalas</i> , or Chinese Yam, most vigorous of annual climbers.....	10	75	----	1 00
*IVY, Irish, 1 to 2 feet.....	10	75	----	-----
" " " " Japan, <i>Ampelopsis Veitchii</i> , 2 year.....	15	1 25	----	1 35
*TRUMPET CREEPER, <i>Bignonia</i>	15	1 25	----	-----
VIRGINIA CREEPER, <i>Ampelopsis quinquefolia</i>	25	2 00	----	-----
*WISTERIA, 2 year.....	25	2 00	----	-----

FLOWERING AND ORNAMENTAL PLANTS.

Orders amounting to \$1, at prices per single plant, will be sent free by mail.

VARIETIES.	Ea.	10	100	10 by Mail
ARBUTUS, Trailing, <i>Epigaea Repens</i>	10	75	5 00	80
CARNATION, or Clove Pink, Light Red and Dark Red.....	05	25	2 00	----
*DAHLIA, Budded Tubers, Large, Yellow and Lemon Yellow.....	02	10	50	----
" " " " Small Yellow.....	05	35	----	40
" " " " Large White and Small White.....	10	75	----	80
" " " " Large, Double, Red and Pink.....	15	1 00	----	1 05
" " " " " Maroon and Single Red.....	20	1 50	----	1 55
" " " " " Variegated, Crimson and White.....	25	2 00	----	2 00
" " " " " White and Pink Fringe.....	25	2 00	----	2 00
" " " " " All colors mixed.....	02	10	50	----
DAISIES, Pink and White mixed.....	02	25	1 50	30
*FERNS, Maiden Hair.....	10	75	----	85
* " " " " Evergreen, Cut-leaved, <i>Polypodium Vulgare</i>	25	2 00	----	2 10
* " " " " Half-Halbert, <i>Aspidium Acrostichoides</i>	25	2 00	----	2 10
Descriptive circulars, with instructions for growing the two last named Ferns, sent on application.				
FORGET-ME-NOTS.....	05	25	----	30
*FLOWER-DE-LUCE, purple, <i>Iris Versicolor</i>	10	75	----	80

FLOWERING AND ORNAMENTAL PLANTS, CONTINUED.

VARIETIES.	Ea.	10	100	10 by Mail
*GLADIOLUS, mixed colors	02	15	----	20
" White, Light Pink Centre	50	----	----	----
" Dark Pink, Striped Centre	25	2 00	----	----
" Cream and Pink Variegated	20	----	----	----
" Dark Red, Cream Centre	15	----	----	----
" Light Pink, Striped Centre	15	----	----	----
" Orange, Striped Centre	25	----	----	----
" Scarlet, Cream Centre	15	----	----	----
" Crimson and White Variegated	20	1 50	----	1 60
" Bright Red, Cream Centre	10	75	----	85
*GOLDEN ROD, Large, Full Flowered, <i>Solidago Gigantea</i>	25	2 00	10 00	2 10
HONEYSUCKLE, Common Blue Herbaceous	05	35	3 00	40
LADY SLIPPER, Yellow	05	25	----	30
" White	10	75	----	80
" Red	25	----	----	----
LARKSPUR, Blue and White Throat	03	20	----	25
*LILY, White Pond	25	2 00	----	2 25
* " Yellow Pond	10	----	----	----
PHLOX, Perennial, White	25	2 00	----	2 10
" Red and Pink	10	75	----	85
" Magenta	05	30	----	40
PEONA, all colors, Single and Double	25	2 00	----	----
PEA, Perennial, Purple Flowering, <i>Lathyrus Vanosus</i>	25	2 00	----	2 10
PANSIES, Assorted Mixed	05	25	----	30
PRINCESS PINE, <i>Chimaphila Umbellata</i>	05	25	----	30
*SARACENIA, Pitcher Plant or Side Saddle Flower	10	75	----	85
SWEET WILLIAM, all colors mixed, a gorgeous display	05	15	1 00	20
SNAP DRAGON, all colors mixed	05	15	1 00	20
YUCCA, tall spike of creamy flowers	10	75	5 00	80

RHODODENDRONS.

I have imported from Europe the following named sorts. They are all grafted 3 and 4 years, healthy, strong and of the colors indicated.

Rhododendrons do well in almost all situations, provided the soil is deep, cool and moist. Where these conditions do not exist naturally, they may be produced by digging out the soil four feet deep, filling in two feet with stones, sticks and rubbish, and finishing with good, light soil. The sorts offered are among the hardiest of all, standing our winters very well. It is, however, time well spent to fill in forest leaves about the plants for the winter. It keeps frost out of the ground, breaks the wind, and keeps the sun from the foliage, all of which benefits the plants at that period.

I have only a small number of each variety. If any variety is exhausted, orders will be filled with a color the nearest I have. *

	PRICES.	EACH	10
12 to 18 inch, with bloom buds		\$1 50	\$6 50
18 to 24 " " " "		2 00	9 00
2 to 3 feet, " " " "		2 50	11 00

- Albion, rosy red, spotted, large truss.
- Athene, white, with yellow blotch.
- Atrosanguineum, intense blood red.
- Beranger, white, with red and brown spots, large truss.
- Bylsianum, white center, with bright rose edge.
- Cunninghamii, white.
- Duc de Brabant, nearly white, black petals, yellowish, semi-double.
- Fastuosum, fiere pleno, lilac, immense trusses of double flowers, continues a long time in bloom.
- Geranoides, rose, dense black spots, fine.
- Iago, rosy crimson, large blotch of dark spots.

- John Waterer, scarlet, immense truss, superb.
- Lady Clermont, rose scarlet, intense black blotches.
- Lord Clyde, deep blood color, fine.
- Nero, fine dark rosy purple, extra fine.
- Onslowianum, delicate waxy blush, changing to white.
- Prince Albert, rich lake, first-rate.
- Rembrandt, finest purple, immense truss.
- Rosalie, deep crimson, purple.
- Schiller, bluish purple, dark spots.
- Towardii, rosy lilac, spotted, large truss.

DOLLAR LOTS, BY MAIL.

For \$1, cash or postage stamps, we will send by mail, postage paid, any one of the following items, or one-half of any two items, or one-third of any three items, or one-fourth of any four items. No order received for less than \$1, and no other divisions of items made. Nearly all varieties in cellar, and can be sent at any time desired.

Send 8 cents in stamps extra, and we will register the package, and guarantee its safe arrival.

EVERGREENS.

500 Arbor Vitæ, Am., seed'gs	2 to 4 in	200 Pine, White, seedlings...	3 to 5 in
250 " " " " "	4 to 8 in	100 " " " " "	4 to 8 in
150 " " " " "	8 to 15 in	30 " " " transp.....	4 to 8 in
50 " " " " transp.	4 to 8 in	15 " " " " " " " " " " "	8 to 12 in
50 " " " Chi., seed'gs	3 to 5 in	15 " " " " " " " " " " "	4 to 8 in
40 " " " " " " " " " " "	4 to 6 in	6 " " " " " " " " " " "	8 to 12 in
25 " " " " " " " " " " "	6 to 8 in	10 " " " " " " " " " " "	6 to 10 in
15 " " " " " " " " " " "	8 to 12 in	6 " " " " " " " " " " "	10 to 14 in
10 " " " " " " " " " " "	4 to 8 in	25 Spruce, Colorado Blue.....	2 to 4 in
6 " " " " " " " " " " "	8 to 12 in	15 " " " " " " " " " " "	4 to 6 in
20 " " " " " " " " " " "	3 to 5 in	75 " " " " " " " " " " "	4 to 6 in
250 Fir, Balsam, seedlings...	3 to 5 in	40 " " " " " " " " " " "	6 to 8 in
150 " " " " " " " " " " "	4 to 8 in	25 " " " " " " " " " " "	4 to 8 in
30 " " " " " " " " " " "	4 to 8 in	10 " " " " " " " " " " "	8 to 12 in
20 " " " " " " " " " " "	8 to 12 in	400 " " " " " " " " " " "	3 to 4 in
30 " " " " " " " " " " "	3 to 5 in	300 " " " " " " " " " " "	4 to 6 in
15 " " " " " " " " " " "	4 to 6 in	50 " " " " " " " " " " "	6 to 10 in
20 " " " " " " " " " " "	4 to 8 in	50 " " " " " " " " " " "	4 to 8 in
10 " " " " " " " " " " "	8 to 12 in	150 " " " " " " " " " " "	3 to 5 in
10 " " " " " " " " " " "	4 to 6 in	100 " " " " " " " " " " "	4 to 6 in
10 " " " " " " " " " " "	4 to 8 in	40 " " " " " " " " " " "	6 to 10 in
8 " " " " " " " " " " "	6 to 10 in	30 " " " " " " " " " " "	4 to 6 in
8 " " " " " " " " " " "	4 to 8 in	15 Retinospora.....	6 to 10 in
10 Maiden Hair Tree, transp.	6 to 12 in	5 Yew, English.....	8 to 12 in
150 Pine, Austrian, transp.....	3 to 5 in	5 " " " Golden.....	6 to 10 in
50 " " " " " " " " " " "	4 to 6 in	5 " " " Weeping.....	8 to 12 in
200 " " " " " " " " " " "	4 to 6 in	4 " " " Imperial.....	8 to 12 in
100 " " " " " " " " " " "	5 to 8 in	5 " " " Fortune's.....	8 to 12 in

DECIDUOUS.

500 Ash, White.....	4 to 6 in	100 Larch, European.....	4 to 8 in
200 " " " " " " " " " " "	6 to 12 in	50 " " " " " " " " " " "	8 to 12 in
500 " " " " " " " " " " "	4 to 6 in	100 Locust, Black.....	4 to 8 in
150 " " " " " " " " " " "	6 to 12 in	50 " " " " " " " " " " "	8 to 12 in
100 " " " " " " " " " " "	4 to 8 in	50 " " " " " " " " " " "	4 to 8 in
40 " " " " " " " " " " "	4 to 8 in	30 " " " " " " " " " " "	8 to 12 in
20 " " " " " " " " " " "	8 to 12 in	100 Maple, Norway.....	4 to 8 in
30 " " " " " " " " " " "	3 to 6 in	40 " " " " " " " " " " "	8 to 15 in
50 Basswood, Amer., transp.	4 to 8 in	1000 " " " " " " " " " " "	3 to 6 in
100 " " " " " " " " " " "	3 to 5 in	50 Mountain Ash, American.	4 to 8 in
75 " " " " " " " " " " "	4 to 8 in	25 " " " " " " " " " " "	8 to 12 in
40 " " " " " " " " " " "	6 to 12 in	40 " " " " " " " " " " "	4 to 8 in
400 Beech, American.....	4 to 6 in	20 " " " " " " " " " " "	8 to 12 in
100 " " " " " " " " " " "	6 to 12 in	400 Mulberry, Russian.....	4 to 6 in
500 Catalpa, Speciosa.....	3 to 8 in	40 Oak, European.....	4 to 8 in
200 " " " " " " " " " " "	8 to 15 in	20 " " " " " " " " " " "	4 to 8 in
200 " " " " " " " " " " "	4 to 8 in	40 French Pear, seedlings...	8 to 12 in
25 Chestnut, American.....	6 to 12 in	40 Privet.....	8 to 12 in
10 " " " " " " " " " " "	6 to 12 in	100 Sycamore.....	4 to 6 in
40 Cherry, Wild Black.....	8 to 15 in	20 Weeping Willow.....	8 to 15 in
25 Coffee Tree.....	6 to 10 in	10 European Holly.....	6 to 10 in
50 Elm, American.....	4 to 6 in	40 Filberts.....	6 to 12 in
20 " " " " " " " " " " "	6 to 12 in	10 Siberian Pea Tree.....	6 to 12 in
50 " " " " " " " " " " "	6 to 10 in	40 Roses, for hedge.....	4 to 8 in
50 Hickory.....	4 to 8 in	40 Dahlia Bulbs, assorted.	
400 Larch, American.....	4 to 8 in	10 Gladiola Bulbs, assorted.	
100 " " " " " " " " " " "	8 to 15 in	10 Yucca, 3 years.	

Any other variety named in this catalogue can be sent by mail if not over 15 inches high, by adding to the prices per 100, the postage named on page 4, except where rates per 10 are given in the lists.

PRICE LISTS OF TREE SEEDS.

EVERGREENS.

STANDARD SORTS IN GOOD SUPPLY.

Prices are by mail, post paid.

Many of the following can be supplied in ten pound lots. Prices given on application. Will make up ten cent packets of any of the following, when desired.

Damping-Off is one of the most serious obstacles to success, in growing Evergreens from seeds, and in this particular there is a great difference in the varieties.

Shade is necessary for nearly all varieties. The heat of the sun would soon wilt them down. As soon as the sun shines hot and the soil is very moist and the seedlings are closely covered, the *damping-off* is even worse. We have had whole beds consisting of hundreds of thousands of plants go down in a single afternoon. What they need is shade that keeps the sun off and still gives the plants plenty of air.

	1 oz.	¼ lb.	1 lb.		1 oz.	¼ lb.	1 lb.
Arbor Vitæ—				Pine—			
American	25	75	2 50	Austrian	25	75	2 50
Chinese	20	60	2 00	Montana	30	1 00	3 50
Compact	50	1 50	5 00	Scotch	25	75	2 50
Golden	40	1 25	4 00	Riga	1 00	---	---
Variegated	1 00	---	---	White	40	1 00	3 00
Nootka Sound Giant ..	1 00	3 00	10 00	Spruce—			
Cedar—				Black	1 00	---	---
Red, from Dakota.....	10	30	1 00	Hemlock.....	1 00	---	---
Fir—				Norway	15	50	1 50
Balsam	10	30	1 00	White	50	1 50	5 00
Colorado Silver.....	1 00	---	---	Yew—			
European Silver.....	10	25	75	English	40	1 00	3 00
Juniper—				American	1 00	---	---
English	10	20	50				

RARE AND CHOICE VARIETIES.

CAN BE SUPPLIED ONLY IN SMALL QUANTITIES.

Prices are by mail, post paid.

The botanical names only are given, and arranged to correspond with list of plants. Packets contain from one-sixteenth to one-fourth ounce, according to cost. A limited number of these varieties can be supplied by the pound. Prices given on application.

	1 pkg.	1 oz.		1 pkg.	1 oz.
Abies—			Biota—		
Ajanensis	30	---	Elegantissima	25	---
Alba	15	50	Ericoides	15	1 00
Alcockiana	25	---	Sinensis aurea variegata ..	10	1 00
Bracteata	30	---	Tartarica	10	25
Cephalonica	15	40	Cedrus—		
Cilicica	10	30	Atlantica	10	30
Concolor	15	50	Deodora	15	40
Douglasi	15	50	Libani	10	30
Engelmanni	30	---	Cephalotaxus—		
Fraseri	30	---	Drupacea	10	25
Grandis	25	---	Fortunei	10	25
Lasiocarpa	15	1 00	Chamaecyparis—		
Menziesii	15	---	Thuoides	05	50
Morinda	25	1 00	Cryptomeria—		
Mertensiana	25	---	Elegans	05	50
Nigra	15	1 00	Japonica	05	25
Nobilis	25	1 00	Lobbii Viridis	05	25
Nordmanniana	20	50	Cupressus—		
Orientalis	20	---	Lambertiana macrocarpa ..	10	50
Pattoniana	15	---	Lawsoniana	10	40
Pinsapo	10	25	Argentea	10	60
Polita	30	---	Excelsa	10	1 00
Sachalinensis	30	---	Fragrans	10	50
Sibirica	10	25	Funebris	10	25
Veitchii	30	---	Glauca	10	50
			" pendula	10	30
Araucaria—			Nutkaensis glauca	30	---
Excelsa, 10 seeds.....	50	---	Juniperus—		
Imbricata, 10 seeds.....	50	---	Bermudiana	10	50

RARE AND CHOICE VARIETIES TREE SEEDS, CONTINUED.

Juniperus —	1 pkg. 1 oz.	Retinospora —	1 pkg. 1 oz.
Communis pyramidalis	20 1 00	Filifera	25 ----
Cupressifolia	20 1 00	Leptoclada	40 ----
Chinensis	30 1 00	Obtusa	15 ----
Echinæformis	10 25	“ aurea gracilis	10 1 00
Excelsa	15 50	Pisifera	15 ----
Glauca	10 50	Plumosa	25 ----
Japonica	10 50	“ aurea	25 ----
Reevesiana	10 50	Squarosa Veitchii	30 ----
Repanda	20 1 00	Salisburia —	
Sabina	10 50	Adiantifolia, 10 seeds	10 ----
“ prostrata	10 50	Sciadopitys —	
Suecica	10 25	Verticillata, 50 seeds	10 ----
Virginiana pendula	30 60	Sequoia —	
“ pyramidalis	20 50	Gigantea	15 ----
Larix —		Sempervirens	20 50
Sibirica	10 1 00	Taxus —	
Kaempferi	15 ----	Adpressa	20 50
Pinus —		Baccata	10 25
Brutia	05	“ Erecta	30 1 00
Cembra	05 15	“ Dovostoni pendula	30 1 00
Densiflora	20 ----	“ Fastigiata	10 25
Excelsa bhotan	10 50	Thuja —	
“ peuce	20 1 00	Elwangeriana	25 ----
Halapensis	15 75	Plicata	25 ----
Inops	15 60	Vervæana	25 ----
Insignis	20 ----	Warreana	10 1 00
Rigida	20 1 00	Thuypopsis —	
Sylvestris rigaensis	10 50	Borealis	25 ----
Thunbergia	25 ----	Dolobrata	25 ----
Tuberculata	20 ----	“ variegata	30 ----
Podocarpus —		Torreya —	
Coreana, 10 seeds	10 ----	Myristica	10 50

In the case of a person trying a small quantity in a box, the best shade that can be devised is cotton cloth that is wet with cold water.

Little Evergreen Seedlings are the most delicate things imaginable. The stem is very succulent and tender.

DECIDUOUS TREES AND SHRUBS.

Prices are by mail, post paid. Special rates given for 10 lbs. or more.

	1 oz.	¼ lb.	1 lb.		1 oz.	¼ lb.	1 lb.
Ailanthus	05	15	40	Laurel-leaved	15	50	1 50
Alder, Com. European ..	10	25	75	Hornbeam	12	35	1 00
Ash,				Larch,			
American White	10	25	75	American	1 00	3 00	8 00
European	10	25	75	European	05	20	1 00
Ornus, flowering ²	10	25	75	Locust,			
Wafer, ptelia trifoliata ..	15	50	----	Black	05	15	40
Apple,				Honey	05	15	40
German Wood Crab	08	20	60	Maple, Norway	05	15	50
German Hardy Apple	05	15	50	Mountain Ash, Europ. ..	05	15	50
Barberry,				Mulberry, Russian	25	75	2 00
Common	10	25	75	Oak,			
Evergreen	25	75	----	Am. Red, +10 lbs. 50c	----	----	06
Basswood,				Europ. Red, +10 lbs. 50c	----	----	06
American	12	35	1 00	“ †White, 10 lbs. 75c	----	----	10
European, large leaf	05	20	60	Pear, best German seed ..	20	60	1 75
“ silver leaf	12	35	1 00	Pea Tree, Siberian	20	60	1 75
“ small leaf	05	20	60	Poplar, Lombardy	25	75	----
Birch,				Plane Tree,			
Black, American	20	50	----	American Sycamore ..	10	25	75
White,	20	50	----	European Sycamore ..	10	25	75
“ European	10	25	75	Privet,			
Catalpa, Speciosa	10	25	75	Common	05	15	50
Coffee Tree	05	15	40	California	15	50	1 50
Hawthorn, European ..	05	15	50	Rose, Dog, for hedges ..	05	15	50
Holly,				Tulip Tree,			
European	12	35	1 00	American Whitewood ..	12	35	1 00

†By freight or express, purchaser paying freight.

CHRISTMAS TREES AND DECORATIONS.

Do you want Xmas trees? If so, get them from the source of supply. If you have ever noticed that the trees ordinarily offered for sale on the market, you have observed the pale, sickly, faded look they have. We are where we can get the best of the stock, and send out only the "very best."

For several years we have had an Xmas Tree and Decoration Department, not as a makeshift, but as a regular branch of our nursery business, and take pride in sending out only stock that may help to maintain and increase our trade. For three or four years we have been sending out the native Blue Spruce, and they give better satisfaction than any other tree we send out. The branches are stiff and very strong, capable of supporting a heavy weight of gifts. They are often covered with a profusion of cones, adding greatly to their beauty.

Some people have become so accustomed to seeing the Balsam Fir used as an Xmas tree that they are loth to believe anything else can be used. We will furnish the Balsam Fir to customers when ordered.


PRICES.

2 to 3 feet high.....	Each.	\$ 05	Estimated weight per 100 trees	250 lbs.
3 to 5 " "	"	10	" " " " " "	500 lbs.
5 to 7 " "	"	20	" " " " " "	800 lbs.
7 to 9 " "	"	40	" " " " " "	1200 lbs.
9 to 12 " "	"	75	" " " " tree	20 lbs.
12 to 15 " "	"	1 50	" " " " " "	40 lbs.
15 to 20 " "	"	3 00	" " " " " "	75 lbs.

TERMS.

Cash must accompany all orders for less than ten dollars' worth.

Orders to the amount of ten dollars or more will be accepted from pastors or churches or business men having unexceptionable rating by the mercantile agencies, payable December 26th, or FIVE PER CENT. DISCOUNT for cash with the order.

 Sight draft, with exchange added, invariably made January 1st for all bills for Christmas trees past due.

Liberal discounts given on large orders.

To save freight charges it is well for families wanting Xmas trees to club together and send for them. This makes a great saving in freight, and the more there are in a bale the better, as they are not so apt to get broken on the way.

Please To Remember.—Order Early. Trees and twigs must be cut, bundled and shipped after the order is received. All orders should be on my books by the 1st day of December. None shipped after December 10th by freight, except at the risk of the purchaser, and no orders accepted after December 15th except to go by express. Orders for wreathing "made up" must be sent early enough so we can make it. We do not carry it in stock ready made.

EVERGREEN BOUGHS.

For decorating halls, streets, etc., for fairs, Fourth of July and other public occasions.

We have made a business for several years of furnishing boughs of several varieties of evergreens for decorating halls and streets for public occasions.

Prices.—We cut the boughs well furnished with leaves, from 12 to 30 inches in length, tie them in bundles weighing from 50 to 75 lbs., and furnish them at one dollar per bundle, f. o. b. here.

Carloads.—It is not uncommon for a carload to be used on some great occasions. Four years ago St. Louis used two carloads from here. Kansas City used a carload. We supplied the Corn Palace at Sioux City a carload last season, and expect to furnish several towns with carloads the coming summer. My price is Seventy Five Dollars for a carload, f. o. b. We get about 1500 bundles in a carload, or about ten or twelve thousand pounds.

Varieties.—Arbor Vitæ and Spruce are best adapted for outside decorations, but for ornamenting halls, Balsam Fir, White Pine and Hemlock are the most desirable, because of the delightful and refreshing balsamic aroma that is given off, relieving the sense of oppressive heat and foul air that is often felt in closely packed halls.

Evergreen Show Trees.—Large evergreens 6 to 8 feet high, for planting in tubs to set outside at the doors of halls, hotels, restaurants, etc., are furnished at 50 cents per tree, of several varieties.

These are dug with enough roots to enable them to stand secure in a tub. It is not expected that they will grow, but if well watered they will remain fresh and green for several months. They are tied in bundles with wet moss or straw over the roots to keep them fresh.

MISCELLANEOUS.

Cone Scales for Consumption and Catarrh.—We are occasionally asked for Cone Scales of Balsam Fir. It is claimed that a small quantity of these scales put loosely in a sack and placed upon the pillow at night, is of great benefit to those suffering from diseases of the throat and lungs. The balsamic aroma given out has a marked healing and soothing effect. This year we have saved these cone scales when cleaning out seed, and will furnish them to those wanting at: By express, per bushel, 75c.; by mail, per pound, 25c. (A bushel weighs about 12 pounds.)

To Prevent Moths.—Many persons scatter Arbor Vitæ Cones in small sacks of thin cloth, through their chests and among their robes and furs. The moth-miller will not stay where she gets the scent from Arbor Vitæ Cones. They are just as effective as tobacco and much more pleasant. I am saving the cones when thrashing out seeds this season, and will furnish them at the following prices: By express, per bushel, 50c.; by mail, per pound, 20c.

These Cones and Cone Scales can be packed and shipped with Trees and Seeds when desired.

White Pine and Balsam Fir Twigs and needles are often called for, wanted because of their pleasant aroma, for pillows, cushions, ornamental work, etc. The tips of the twigs clipped with their needles all on, the day they are shipped, and furnished per 100 lb, for \$2.50.

Bouquet Greens, or Lycopodium, furnished during the month of November each year, at: Per ton, \$70.00; per 100 lbs., f. o. b., \$5.00.

Wreathing made to order for halls and public occasions from evergreen boughs with diameter of 4 to 5 inches in lots of 10 yards and over at 10 cents per yard. Arbor Vitæ is best of all evergreens for this purpose, as it holds its leaves the longest time.

Pine Cones.—Not old and weather-beaten; but bright new cones, which we have opened and taken the seeds out. Desirable for ornament, cabinets, and various purposes. PINUS PONDEROSA, of the Rocky Mountains; Cones 3 to 5 inches long, and 3 to 4 inches in diameter, each 3c., 10 for 20c.

PEAT, FIBROUS OR ROTTED.

For Florists' use, single barrel \$1.00. 10 barrels \$5.00. Will use Peat, without charge, for packing roots of trees when requested. Write for prices on car loads.

LEAF MOLD.

For potting plants. Fresh gathered from the forest. Price per barrel, \$1.00.

SLUG SHOT.

AN INFALLIBLE INSECTICIDE.

WHAT IS SLUG SHOT?

SLUG SHOT is an inspalpable powder, a combination of insecticides, poisonous to insects preying upon vegetation, and withal an excellent fertilizer affecting nearly all classes of insect life, so that they either die or leave for parts unknown.

IT KILLS the Potato Bugs in all stages of their growth, but not the eggs.

IT KILLS the Black Fleas on Cabbage, Turnips, Beets, Radishes and Egg Plants. Apply by dusting over the plant.

IT KILLS the Cabbage Worm and also the currant and Gooseberry Worm. The Aphis or Green Fly on roses and other flowers.

HAS PREVENTED the ravages of the Bark Louse, Curculio and Canker Worm on Fruit Trees; has likewise been used around Beans, Melons, Squash, etc., to the detriment of the ravagas of the Cut Worms. Keeps the Striped Bugs from all vine crops.

HAMMOND SLUG SHOT, price per 5 lbs., 30c.; 10 lbs., 50c.; 50 lbs., \$2.25; 100 lbs., \$4.00; bbl., 230 lbs., loose in bulk, \$10.00.

EVERGREEN HEDGES.

Evergreen Hedges are getting to be very popular throughout the country, as they justly should. Nothing adds more to the beauty of a home than a tastefully trimmed Evergreen Hedge in front of the lawn, and a taller growing screen or hedge, dividing the lawn from neighbors or screening from view the back yard.

Probably, all things considered, there is no tree that equals the American Arbor Vitae for this purpose. It will bear the shears more patiently than any other evergreen we have. It may be plashed down and made so dense and solid that a chicken or a dog cannot get through it; and yet its very lowermost branches will retain their freshness and vigor for a very long period. By keeping the hedge cut down, it may be dwarfed to any height and spread desired, making the best tree for cemetery planting.

Its name, "Arbor Vitae" (*Tree of Life*) is no misnomer, as there is no evergreen more tenacious of life.

It is so very easy to grow and handle, and can be so safely transplanted in any soil and climate, and is so little affected by the extremes of dry and wet seasons, that it is a matter of surprise that Nurserymen should hold it at such high prices.

We have prepared ourselves to meet this growing demand, with a large stock of these trees, both seedlings and transplanted, and are annually planting a large amount of the seed, and transplanting the seedlings by the hundreds of thousands. By reference to the list it will be seen that we have put our prices so low that any man can afford to plant an Evergreen Hedge.

The only objection we have ever heard urged against the Arbor Vitae for hedges, is that the foliage turns to a greenish brown color during the winter months. On this account many persons prefer the Norway Spruce, which retains its fresh, green color, pretty well during the cold months. While the Norway Spruce possesses many qualities that recommend it as a hedge plant, it has one very objectionable feature. After the hedge has stood for some twenty or thirty years, and has been annually sheared to keep it within the bounds of hedges, the lower branches begin to die out, which greatly mars its beauty and value as a hedge;

The best sizes for planting hedges are 8 to 12 and 12 to 18 inches. These may be set out in single rows, about 8 to 10 inches apart, or in alternate double rows, about 12 to 15 inches apart, and the trees about the same distance apart in the rows. The ground should be well pulverized and the plants set pretty deep—some deeper than they stood in the nursery. Pour water about them profusely; and if the roots are dipped in muddy water and then brushed on the ground to cause the soil to adhere to the fibers, they will be better. As soon as planted mulch nearly to the tops with straw, and clip the ends of all long and straggling branches.

If seedlings are planted, the tops may be nearly covered with the straw mulching, or, which is better, shade the plants from the sun. There is no necessity for shading, only for one year; but the mulching may be continued for years, the longer the better.

In times of very dry weather the hedge should be watered thoroughly every evening.

Rocky Mountain Yellow Pine.

Pinus Ponderosa, var. *Scopulorum*, Englem.

We have been for several years giving this pine a thorough trial in our Nursery, and are fully convinced that it is one of the best Pines for planting, particularly in the dry regions of the West.

The tree as described by those who have seen it is tall and medium size. The branches grow somewhat upright, giving it the appearance of tall spires, or tall trees of Lombardy Poplar, when growing at a distance. The leaves are large and coarse, slightly twisted, larger and coarser than Scotch Pine, usually about the size of Austrian Pine. Sometimes there are three leaves in a sheath, and sometimes only two, usually mixed on the tree. Sometimes we find a tree in which nearly all the leaves are found in threes, and again, others nearly all in twos.

It is very easy to grow from seed, but the seeds are difficult to obtain and expensive. It grows rapidly and seems to be absolutely drought proof, and will stand any amount of freezing apparently. Ours in the Nursery the past winter stood in the open ground, fully exposed, with the thermometer from zero down to twenty below nearly every day for two months, and came out in the Spring looking brighter and fresher than ever.

It is a very rapid growing tree, growing fully as rapidly as the Scotch Pine, and apparently, the dryer the soil and atmosphere the faster it grows. The young seedlings have a most remarkable development of roots, as much ahead of the seedlings of the New Mexican Pinyon Pine as the Pinyon is ahead of the common White Pine. In a few weeks after the little seedlings have come up and got started they have roots from ten to fifteen inches long running straight down into the ground, making it very difficult to dig and get all the roots out even of one year seedlings. I am told that in Montana, where I get my seed, they grow in any kind of soil, either in the driest portions of the country or even upon the edges of swamps. Sometimes they are found in the heavy clay soil, sometimes in a light sandy soil, and they are seen in many instances growing out of the crevices of the rocks where apparently there is no soil. Of course, their long roots reach to some place where they can find soil and nourishment.

If transplanted early in the season they are one of the surest to live, but like all other Pines, if transplanted after the buds begin to push, many of them will die, but not as bad as others. In the Spring of '92 we planted a quantity after the new growth had pushed from three to five inches, and, of course, we were unable to get more than two-thirds of the roots. The new growth wilted down. Still fully sixty per cent. of them formed new buds on the old wood and are again ready for business this Spring. Scotch and Austrian Pine planted under the same circumstances were nearly a total failure. We have many thousands of the Scopulorum Pine that were transplanted early in the season before the new growth began to push, and there is not one in a thousand dead. Even whole beds are without a single dead tree. We have in our Nurseries now about half a million plants of different ages of these, and are making calculations on getting two or three hundred pounds of seed the coming Fall to put in next season.

In the localities where we get out seeds the trees do not seed only about once in five years; but we find the seeds two or three years old seem to grow just as well as those planted the same year they were collected. The indications now are for a good crop this season and we expect to largely increase our planting of them. We shall try to make a growing of this tree a speciality, believing it to be one of the most valuable for general planting, and by making it a speciality shall prepare ourselves to meet a large demand for them.

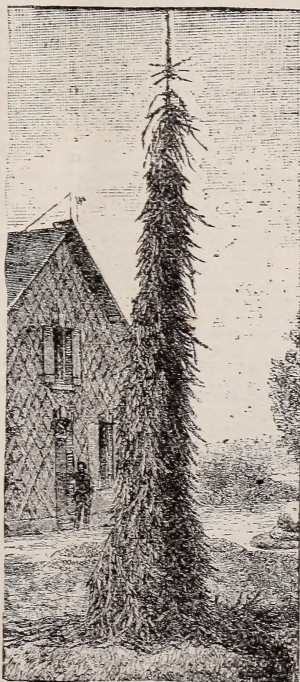
Abies Excelsa Inverta.

One of the most beautiful and desirable of the weeping evergreen trees is the *Abies excelsa inverta*. It is also called *Abies inverta pendula*.

With most weeping evergreen trees it is necessary to tie a leader up to a stick or other support to hold it upright, which must be continued until it has the desired height, after which the whole top of the tree will droop. This variety, on the contrary, carries an upright leader, the side branches only drooping. The top shoot grows up very straight and solid, while all the lateral branches droop along the trunk of the tree, the upper branches constantly drooping out over those below which forms a narrow, upright, solid pyramid, compact and of the prettiest possible aspect. Those near the ground do not cease to grow, but if undisturbed, will creep along the ground. But if they are cut back to allow them only to touch the ground they will thicken up near the stem of the tree and make the pyramid a little broader at the base, and more dense.

The annexed cut was made from a photograph taken of a specimen now growing in Europe which is about 25 feet high, and will convey a very correct idea of the tree. This, being a sport, or variety, of the Norway Spruce, is as hardy as the Norway Spruce itself, and will stand the winters in any part of America and anywhere the Norway Spruce will flourish, which is in nearly all parts of the United States, and, in fact, nearly all parts of the world, this beautiful weeping tree will also flourish. It is claimed that if the tips of the side branches be grafted on the root of the Norway Spruce it will grow for a leader after having been stayed in an upright position for two or three years. We have not had enough experience in growing it to vouch for this from our own knowledge. Our entire stock is grown from small plants imported from Europe which had already been grafted two years or more, and had got well started.

There is no finer or more desirable tree for cemetery planting, at the sides of gate-ways and at the corners of lots, surrounded by hedges, and also at the angles of walks and drives. It is beautiful and attractive upon the lawn or landscape.



Some Suggestions for Planting Small Evergreens.

Many people have considerable difficulty in planting small evergreens and making them live. This is particularly the case in the dry portions of the West. Occasionally people write us with bitter complaints about their trees not doing well, even *all* dying, which, when thoroughly sifted, amounts to a lack of information as to how they should be planted and treated.

First: A small evergreen removed and planted, whether it be a wild seedling, nursery seedling, or transplanted tree; and whether it is planted on the dry plains of the West, or in the moist climate of the East, is greatly benefited by being shaded. The leaves of an evergreen are constantly in a condition to give out moisture, and this moisture must be supplied by the roots. The more they are exposed to the sun, and the hotter the sun and the dryer the air, the greater will be the evaporation from the leaves, and the greater will be the demand upon the roots for moisture. Hence, the two general requirements are to furnish all the moisture needed by the roots, which are to a considerable extent dormant when first removed, and also to shut out the sun or retard the influence of the sun and the dry air upon the tops as much as possible. This can be done by shading, and the more closely they are shaded the better, and by abundant watering in case the weather is dry. Another source of damage to newly planted trees is the heat of the sun on the roots. Many varieties of evergreens grow where their roots are constantly cool and moist. Hence, it is important that the intense heat of the sun be shut off from the roots as much as practicable. Shade helps this, but a mulch of cut straw, or any fine material, goes much farther.

Wild seedling evergreens have usually grown mostly in the shade. They are more soft and tender. The pores of the leaves are more open, and they will evaporate moisture more rapidly under the heat of the sun, and not being supplied with an abundance of fiber roots to supply the moisture, they are in greater need of shade for protection than nursery seedlings, and the same relative conditions exist with nursery seedlings and transplanted trees. Nursery seedlings do not so strongly demand this protection as wild seedlings, and the transplanted seedlings demand it even less than the nursery seedlings. In fact, the transplanted seedlings are perfectly safe to plant out fully exposed to the sun in most parts of the country. That is, they will live, but would get a more vigorous start and do much better if shaded and protected in any part of the country.

HOW TO DO IT.

The next thing to settle is how this protection can be best given. The directions that we shall give will be particularly adapted to the West, where the greater part of the failures exist, and the same advice, if followed in the East, or the more moist portions of the country, whether it be East or South, will do no harm, even though there be little necessity for it in some cases.

First: Prepare a bed in the garden as fine as you would for planting onion seed; put the little seedlings in the bed, taking pains to get the roots stretched down as deep into the ground as possible, and plant them as close together as you can plant them, even so that they touch one another, the closer the better. Plant them as deep as you can without burying any of the leaves, unless they happen to have a very long bare stem. As a rule, plant them a little deeper than they stood in the nursery; pour on them an abundance of water when planted. Do not be sparing with it; put on enough to wash the fine soil well among the fibers and small roots, then put on a shading, laying the shading on poles or rails that lay just above the tops of the trees. This shading may consist of old boards, shingles, barrel staves, corn stalks, or anything that will shut out the rays of the sun, and still allow water to go through. Before shading put on the mulching, as directed, to keep the ground cool and moist. It would be well, in western Nebraska, Kansas, Indian Territory, Texas, and through most parts of Colorado and New Mexico—those regions where they have the hot dry winds—to plant on the south and west sides quite a wide plat of sorghum. Sorghum, is less affected by the hot winds than corn or broom corn, and will make a wind break that will mitigate very largely the heating, burning effect of the hot winds. With this treatment planters of evergreens may expect reasonable success.

The trees, of course, will not need this protection more than one year, when they can be removed and transplanted where it is desired they should grow; and they will by that time have become acclimated, so that they will need no shading, but should be mulched, particularly in the West, and should be watered in dry weather for a few years, till they get well established.

These directions are essential for planting wild evergreens in any part of the country; but in a climate similar to this, nursery seedlings and transplanted trees will need no protection whatever. But, we as said at the beginning, success will be more certain if they are given this protection.

OUR LOCATION

is on the peninsula 50 miles north of the City of Green Bay, one mile from the shore of Lake Michigan and 4 miles from the waters of Green Bay, on the main plateau of magnesian limestone.

OUR SOIL AND CLIMATE

is the home of the Evergreen. Here we can grow hardier healthier trees with better roots than any other place in America. We have in our nursery all varieties of soil—sandy loam and clay with impervious subsoil. A warm, dry, sandy ridge with gravel subsoil, and a low wet mucky soil. All classes of Evergreens can find here a congenial location.

OUR STOCK

embraces representatives of all branches of the Coniferae family. We draw upon all lands and all climates, selecting mostly those that are most hardy and most easily cultivated. We aim to sell mostly in small sizes, they are more easily handled, most sure to live, cost less and give better satisfaction to our patrons.

OUR FACILITIES

for filling orders promptly and cheap and quick transportation cannot be excelled. We ship by steamboat to Green Bay, Milwaukee, or Chicago, where our shipments are hauled at once to the railroad companies and make better time and at cheaper rates than can be realized by all rail.

OUR CUSTOMERS

are now found in all parts of the civilized world, and among the leading and wealthy citizens of our country. Our trees are found in most of the leading large parks of the country.



RESIDENCE -- ERECTED IN 1887.

∞ (WINTER SCENE.) ∞

Seed House in the distance, Cellar, Office and Packing House at the right and beyond the Seed House. 