

# **Historic, Archive Document**

Do not assume content reflects current scientific knowledge, policies, or practices



RECEIVED

U. S. Department of Agriculture

# CATALOGUE

\* AND \*

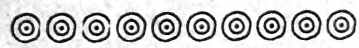
# PRICE LIST

\* OF THE \*

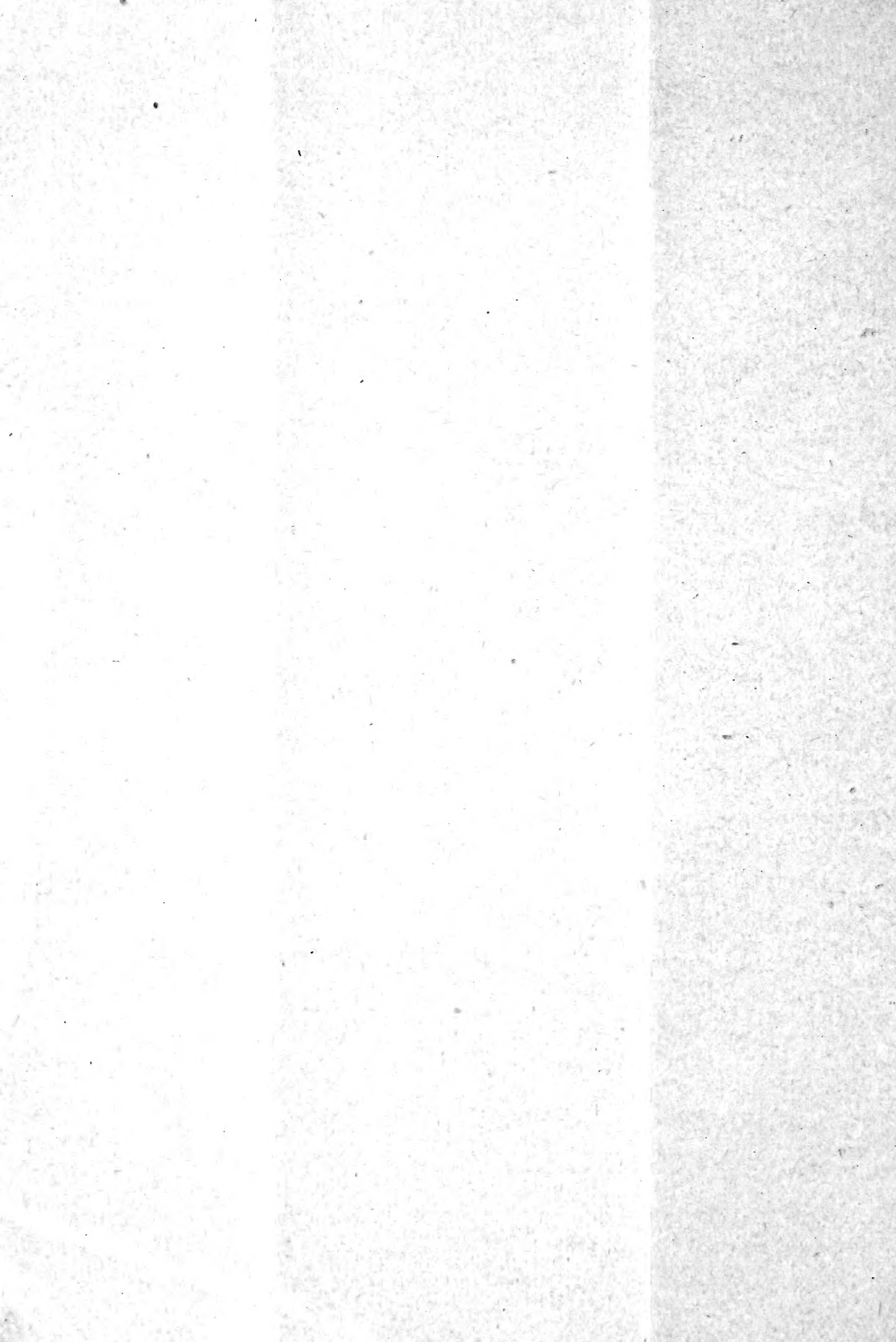
# EASTERN OREGON

# NURSERIES.

# UNION, OREGON.



UNION, OREGON:  
EASTERN OREGON PUBLISHING COMPANY, PRINTERS AND PUBLISHERS.  
1895.



# THE EASTERN OREGON NURSERIES, UNION, OREGON.

---

WHOLESALE AND RETAIL.

---

To Our Friends and Patrons.

WITH the issue of this Catalogue, we wish to express our thanks for the liberal patronage of the past and by honorable dealing and strict attention to business we hope to merit the favors of all old and many new customers. We aim to handle all stock in the best possible manner, realizing that GOOD STOCK, WELL DUG AND PACKED, is the best advertisement we can have. Our stock is large and our assortment is one of the best in the Northwest. Our prices are very low for good, first-class, healthy stock, properly grown and true to name.

Our nursery has been officially inspected and pronounced healthy and free from insect pests.

### Our Guarantee.

While we use the greatest care to have all trees and plants true to label, we will, on proper proof, replace all that prove untrue to name, free of charge, or refund the amount paid, but in no case, will we be liable for any sum greater than that received for such trees or plants.

Respectfully yours,

EASTERN OREGON NURSERIES.

### Directions for Ordering.

Order early, as it insures orders being filled more completely. Orders are filled in rotation.

When out of varieties ordered, we substitute others of equal or greater value unless instructed to the contrary. Write name and address plainly, giving name of postoffice and express office. Give full directions as to shipping, whether by express or freight. After goods are delivered at station or express office, they will be at the risk of purchaser. Any mistake of ours promptly rectified, but no claims for mistakes or errors will be allowed unless made within ten days from receipt of goods.

Terms are cash unless otherwise agreed upon. Send money

by bank draft, money order or registered letter. We make no charge for boxing or baling trees and plants or for cartage to station or express office.

### Notes on Planting.

The best authorities say, "plant small trees." In our own experience we also say it. Trees three to five feet in height are better supplied with fibrous roots, more of the roots are saved in digging, and such trees are checked less in transplanting. In fact these medium sized trees dig, pack, ship and plant better and come into bearing earlier than larger trees. Also the first cost is considerable less. Many people want large trees and then blame the nurseryman for their not growing. Do not plant any tree in sod or in an old orchard. Plant in well prepared land a trifle deeper than they stood in nursery and leaning slightly to the southwest. Cultivate as thoroughly as you do your garden, for say five years and then seed to clover. Trees cared for in this way will always pay and pay well. In all cases cut back trees severely and set very firmly, leaving a mulch of one or two inches of loose soil around the tree.

## A New Cherry!

### Grande Ronde.

Price, trees 3 to 5 feet, \$1.00 each, 6 for \$5.00.

Originated at Cove, Oregon, some years since. Tree a good grower, healthy, hardy and productive. Fruit large, averaging size of Tartarian, ripening about with May Duke. Color, jet black, meaty, firm, very rich, and fine quality.

Pronounced by good judges to be the best early shipping cherry. We own the entire stock of this magnificent cherry and trees can be had only of us.

Read a few of the many testimonials we have received from the best authorities in the United States.

Fort Valley, Ga. July 15, 1895.

Yours of the 6th also sample cherries received at the Connecticut office and re-mailed to me here. Cherries arrived in *perfect order* after their two long trips and it certainly is the most promising early shipping cherry I have yet seen. . . .

(Signed.) J. H. HALE.

Louisiana, Mo., July 11, 1895.

We thank you for your kind favor of July 6th. Cherries received yesterday, perfect order. Very fine quality for such a firm fleshed sort. Should be very valuable as a shipping cherry from all the Coast cherry regions.

(Signed.) STARK BROS. NURSERIES & ORCHARDS CO.

Per W. P. STARK, Secy. & Treas.

Bloomington, Ill., July 11, 1895.

\* \* \* Fruit resembling the Tartarian, flavor exquisite. Being hardy, an annual bearer and earlier than the Tartarian, we believe it merits an introduction to the public at large.

(Signed.) F. S. PHOENIX.

## Apples.

### General Assortment.

Prices: Trees 2 1/2 to 3 1/2 feet, 10 cts. each; per 100, \$8.  
 " 3 1/2 " 5 " 12 1/2 " " " \$10.  
 " 5 " 7 " 15 " " " \$12.50.

### Summer Apples.

Varieties starred (\*) are very hardy.

- \*RED ASTRACHAN, large, roundish flattened, deep crimson, good; Aug.
- \*DUCHESS OF OLDENBERG, medium to large, streaked and splashed with red, handsome and good, great and early bearer; Aug.
- EARLY HARVEST, large, roundish, yellow, medium grower and bearer; Aug.
- \*YELLOW TRANSPARENT, fruit pale yellow, roundish oblate, medium to large, good quality, early bearer, one of the best; July.
- RED JUNE, medium size, red, flesh white, tender, sub-acid, good; Aug.

### Autumn Apples.

- FALL QUEEN, large to very large, greenish striped dull red, productive; Oct.
- \*FAMEUSE, (Snow,) medium size, roundish, nearly covered with red, productive and of best quality; Oct. to Dec.
- BAILEY SWEET, large, roundish, striped with red, flesh yellow, rich and sweet; Oct.
- \*TOLOTOREFF, new Russian, very large, yellowish green, striped and splashed with red, good quality, great grower and bearer; Sept.-Oct.
- \*SWITZER, Russian, medium to large, handsome red, flesh white, tender and good; Sept.
- \*ST. LAWRENCE, large roundish, flattened, yellow streaked and splashed with red, often with blue bloom, mild sub-acid, productive; Sept.-Oct.
- \*GIDEON, from Minnesota, large, yellow, tree a great grower and bearer; Oct. and Nov.
- \*HAAS, large roundish, bright red, tree hardy and productive; Nov.
- FALL ORANGE, large round, yellowish green covered with brown dots, good; Oct. and Nov.
- GRAVENSTEIN, large oblong, yellow striped with light red, strong grower and fair bearer; Oct. to Dec.

### Early Winter.

- \*WEALTHY, large, yellow nearly covered with red, good, tree very productive; Nov. to Jan.
- \*UTTER'S RED, round, white striped with red, beautiful, good; Oct. to Jan.
- YELLOW BELLFLOWER, large, yellow, tender, juicy, sub-acid, fine; Nov. to Jan.
- MOTHER, medium roundish, yellow nearly covered light clear red, with

many darker shades, juicy, rich, quality best; Nov. to Jan.

DOMINIE, medium to large, skin greenish yellow, tree prolific and vigorous; Dec. to Mar.

GRIMES' GOLDEN, medium to large, roundish inclined to oblong, rich yellow, tree hardy and productive, of highest quality, one of the best; Dec. to Mar.

JONATHAN, medium, roundish, yellow nearly covered with bright red, moderate grower, great bearer, and of fine quality; Dec. to Mar.

TALLMAN SWEET, medium, pale yellow, rich, sweet, valuable; Dec.-Mar.

VANDEVERE, medium, yellow, rich sub-acid, good grower, early bearer; Dec. to Mar.

BALDWIN, large roundish, bright red, vigorous and productive; Dec. to Apr.

\*TWENTY OUNCE PIPPIN, large, greenish yellow, striped with red, free grower and productive, good market sort; Nov. to Jan.

KING, Tompkins Co., large, yellow, splashed and striped with red, vigorous and fairly productive; Dec. to Mar.

NORTHERN SPY, large, conical, skin greenish striped and shaded with purplish crimson, good quality, tardy bearer; Dec. to Apr.

\*PEWAUKEE, large, round, yellow nearly covered with bright red, good grower and bearer; Dec. to Mar.

\*SEEK-NO-FURTHER, (Westfield,) medium to large, yellowish, striped with red; Dec. to Mar.

BLUE PEARMAIN, large roundish, greenish yellow nearly covered with shades of red and heavy blue bloom, tardy but good bearer; Dec.-Mar.

ROME BEAUTY, large, yellow, striped with red, flesh juicy, rich, sub-acid; Dec. to Mar.

HIBERNAL, large greenish yellow striped with dull red, great bearer; Dec. to Feb.

TULEPEHOCKEN, large greenish, with red stripes, good grower and bearer; Dec. to Mar.

R. I. GREENING, large greenish yellow, tender, juicy, rich; Dec. to Mar.

ESOPUS SPITZENBERG, medium, yellow nearly covered with bright red, good; Dec. to Mar.

G. RUSSET, small conical, whitish with faint blush, fine quality; Dec.-Mar.

LADY SWEET, medium, yellow covered with rich red, sweet, good; Nov.-Mar.

### Late Winter.

\*MANN, large greenish, good, resembles R. I. Greening in fruit; Dec.-May.

SWAAR, large, rich yellow covered with brown dots, fine quality; Dec.-Apr.

ARKANSAS BLACK, medium to large, dark red almost black, quality good; Jan. to June.

MISSOURI PIPPIN, large oblong, bright red, handsome, an early and abundant bearer, good market sort; Jan. to Apr.

\*WALBRIDGE, medium greenish yellow striped with light red, good; Jan. to June.

WHITE WINTER PEARMAIN, medium to large oblong, yellowish, good; Jan. to May.

RAWLES JANET, medium roundish, greenish yellow striped red, very productive; Jan. to June.

\*BEN DAVIS, the great market apple; too well known to need a description; Jan. to June.

\*WILLOWTWIG, large green, dull red stripes, fine market sort; Jan.-July.

\*LAWVER, large flattish, bright red; Jan. to May.



- ENGLISH GOLDEN RUSSET, medium, pale green nearly covered with russet; Jan to May.  
 RED CHEEK PIPPIN, large, yellowish with red cheek; Dec. to May.  
 GANO, medium to large, yellow nearly covered with bright red, an early and great bearer, a fine market fruit; Jan. to May.

### New and Special Varieties.

Prices, except where noted:

Trees	2 1/2	to	3 1/2	feet,	15	cts.	each;	per	100,	\$12.50.
"	3 1/2	"	5	"	20	"	"	"	"	\$15.00.
"	5	"	7	"	25	"	"	"	"	\$20.00.

- BELL PIPPIN, very large, greenish yellow, striped with bright red; Dec-Feb.  
 YORK IMPERIAL, medium oblate, white shaded crimson, one of the best; Dec. to May.  
 \*WINDSOR CHIEF, medium, bright red, tree hardy and productive; Dec-Apr.  
 \*SCOTT'S WINTER, medium to large, conical, bright red, an early and profuse bearer; Jan. to June.  
 \*McMAHON'S WHITE, large, whitish, excellent, good grower and productive; Nov. to Jan.  
 \*NORTHWESTERN GREENING, large to very large, yellow sometimes with a blush, healthy, hardy and productive; Jan. to July. 2 1/2 to 4 feet, 35 cents; 4 to 6 feet, 50 cents.  
 SALOME, fruit resembles W. Seek-no-further but a better keeper; Jan-June.  
 \*LONGFIELD, medium size, roundish, white with a crimson cheek, fine quality, an early and great bearer, good; Nov. to Jan.  
 \*PRESIDENT SMITH, from Northern Wisconsin, large roundish, yellow overspread with bright red with small white dots, good; Nov. to Jan. 2 1/2 to 4 feet, 35 cents, 4 to 6 feet, 50 cents.  
 \*RED BETEGHEIMER, very large, yellow striped and splashed with purplish red, very handsome; Sept. and Oct.  
 MAMMOTH BLACK TWIG, (Paragon) large, bright red, very handsome, an early and great bearer, one of the coming apples; Dec. to May.  
 BABBITT, large, rich red, good quality, strong grower, productive, one of the best to plant for market; Jan. to May.  
 \*CASEY, one of the largest of all apples, greenish striped red; Nov. to Jan. 2 1/2 to 4 ft. 35 cts. 4 to 6 ft. 50 cts.  
 \*ALDEN, medium to large, yellow covered with bright red, good; Dec-Mar.  
 \*WOLF RIVER, large to very large, bright red, hardy and productive. This variety was one of Oregon's largest apples at the World's Fair. Dec. to Jan.  
 BRITISH COLUMBIA, medium to large, rich red, highly thought of in Western Oregon. Dec. to Apr. 2 1/2 to 4 ft. 35 cts. 4 to 6 ft. 50 cts.  
 NEWELL'S WINTER, resembles Swaar in appearance and quality of fruit. very productive; Dec. to Feb.

### Crab Apples.

Prices:	Trees	3	to	5	feet,	15	cents	each;	per	100,	\$10.00.
"	"	5	"	7	"	20	"	"	"	"	\$15.00.

- HYSLOP, very large, bright red, fine; Sept. and Oct.  
 MARTHA, large, beautiful, annual bearer; Sept. and Oct.  
 TRANSCENDENT, large, yellow with red cheek, handsome and good; Sept.

**SWEET RUSSET**, large, yellow russeted, very rich and sweet, almost equal to a pear in quality; Aug.

**WHITING**, very large, oblong, yellow striped red, very fine; Aug.

**GIBB**, very large, flatish, orange color, fine quality, best; Sept.

**SMITH**, resembles Whiting but earlier, very productive; Aug.

### Pears.

Prices, except otherwise noted:

Trees 2½ to 3½ feet, 15 cents each; \$12 per 100.

“ 3 1-2 to 4 “ 2yr. 20 cents each; \$15 per 100.

“ 4 to 6 feet, select 2yr. 25 cents each; \$20 per 100.

### Summer Varieties.

**WILDER EARLY**, medium size, greenish yellow with red cheek, excellent, about three weeks earlier than Bartlett. 3 to 4 feet, 35 cents each; 4 to 6 feet, 50 cents each.

**CLAPP'S FAVORITE**, very large, red cheek, productive; Aug.

**LAWSON**, medium to large, very early one of the handsomest of all pears; July. 3 to 4 feet, 35 cents each; 4 to 6 feet, 50 cents each.

**TYSON**, medium, yellow, brownish cheek, melting, rich, good; Aug.

**BRANDYWINE**, medium to large, greenish yellow, sweet, productive; Aug.

**BROCKWORTH PARK**, new, large and beautiful, resembles Bartlett in form and color; Aug. 3 to 4 feet, 35 cents; 4 to 6 feet, 50 cents each.

**BARTLETT**, large, splendid, well known; Aug.

### Autumn Varieties.

**FLEMISH BEAUTY**, large, beautiful, rich, juicy, fine, hardy everywhere; Oct

**HOWELL**, large, light yellow, red cheek, handsome and good; Sept.

**FREDERICK CLAPP**, medium to large, light yellow, best quality; Oct. and Nov. 3 to 4 feet, 35 cents; 4 to 6 feet, 50 cents each.

**SHELDON**, medium, greenish yellow shaded red, productive, fine; Oct.

**ONONDAGA**, (Swan's Orange) a large and highly flavored yellow pear, productive; Oct.

**SECKEL**, small, yellow, with brownish red cheek, of first quality; Oct-Nov.

**DUCHESS**, very large, greenish yellow streaked with russet, good; Oct-Nov.

**IDAHO**, very large, has been grown to weigh 23 ounces, color greenish yellow with russet spots, flavor rich and sprightly, originated at Lewiston, Idaho; Oct. and Nov.

**WHITE DOYENNE**, (Fall Butter) medium to large, flesh fine-grained, buttery rich; Oct. and Nov.

**VERMONT BEAUTY**, new, medium, yellow with carmine cheek, a beautiful pear and of finest quality. 3 to 4 feet, 50 cents each.

**LOUISE BONNE DE JERSEY**, large greenish yellow, bright red cheek, very productive; Oct.

### Winter Varieties.

**BEURRE DE ANJOU**, large, greenish sprinkled with russet, shaded dull crimson, flesh white, buttery, rich, very productive; Nov. to Jan.

**LAWRENCE**, medium, greenish yellow, good; Nov. to Jan.

**WINTER NELLIS**, medium, greenish russeted, flesh fine-grained, rich; Dec. and Jan.

✓ MT. VERNON, medium, light russet, reddish cheek; Dec.

✓ WINTER BARTLETT, new, resembles Bartlett, but keeps through winter, highly recommended. 3 to 4 feet, 50 cents each

## Peaches.

Prices, except where noted:

Trees 2½ to 3½ feet, 18 cts. each; per 100, \$12.50.

“ 3½ “ 5 “ 25 “ “ “ \$15.00.

✓ CHAMPION, large to very large, white with red blush, very early, hardy, prolific, freestone; 2½ to 3½ ft. 25 cts. 3½ to 5 ft. 35 cts.

✓ ALEXANDER, medium, greenish white, nearly covered with red, early.

✓ S. G. FRENCH, resembles Alexander but is much earlier, a very hardy tree.

✓ EY. CRAWFORD, one of the finest peaches, large, yellow flesh, free.

✓ LATE “ very large, yellow, fine, free.

✓ LEMON FREE, very large, lemon shape, excellent, free, tree very hardy.

✓ GLOBE, an improved Crawford Late.

✓ ELBERTA, the finest freestone, large, yellow, highly colored, tree hardy, early. 2½ to 3½ ft. 25 cents, 3½ to 5 ft. 35 cents.

✓ CROSBY, undoubtedly the hardiest peach of its class, medium to large, highly colored, fine, freestone, ripens just after Crawford's Ey. 2½ to 3½ ft. 25 cents, 3½ to 5 ft. 35 cents.

## Cherries.

Prices, unless otherwise noted:

Trees, 2½ to 3½ feet, 18 cents each, \$12.50 per 100.

“ 3½ “ 5 “ 25 “ “ “ \$15.00 “ “

✓ BLACK EAGLE, large black, tender, juicy, rich and high flavored, early.

✓ MAY DUKE, large, deep red, very juicy, fine, sub-acid.

✓ LATE DUKE, large, dark red, sub-acid, good.

✓ EARLY RICHMOND, medium, bright red, tart, best pie cherry.

✓ MONTMORENCY, large, red, acid, fine.

✓ BLACK TARTARIAN, large, black, very sweet, one of the best.

✓ NAPOLEON, (Royal Ann) very large, pale yellow with red cheek, very firm.

✓ BLACK REPUBLICAN, large, late, very firm.

✓ YELLOW SPANISH, large, light yellow, light red cheek, fine.

✓ BING, new, largest, black, very fine. 3½ to 5 feet 75 cents each.

✓ WINDSOR, new, large, brownish black, sweet, rich, good.

✓ BELLE MAGNIQUE, fruit large, bright red, firm, late, tart, productive. fine late variety.

## Plums.

Prices, except otherwise noted:

Trees, 2½ to 3½ feet, 12½ cents each, per 100 \$10.00.

“ 3½ “ 5 “ 15 “ “ “ “ \$12.50.

“ 5 “ 7 “ 2yr. 20 “ “ “ “ \$15.00.

✓ EY. GOLDEN DROP, small, sweet and very early.

✓ PEACH PLUM, very large, yellow and red, flesh coarse, free, good for drying, early.

✓ COLUMBIA, very large, dark purple, productive.

✓ WASHINGTON, large, yellow, productive and good.

✓ YELLOW EGG, very large, yellow, fine for canning.

- GREEN GAGE, small, greenish, best quality.  
 BRADSHAW, large, reddish purple, juicy, good.  
 WILD GOOSE, medium, bright cherry red.  
 DE SOTO, medium, yellow covered with bright red, very hardy.  
 LOMBARD, medium to large, violet purple, one of the best plums.  
 GUEII, large, purple, very productive. 3 to 5 feet, 35 cents.  
 SATSUMA, from Japan, very large, purplish crimson, flesh deep, very small pit. 3 to 5 feet, 35 cents.  
 BOTAN, (Abundance) also from Japan. Fruit large, yellow nearly covered with bright red, flesh yellow, rich, good. 3 to 5 ft. 35 cents.  
 BURBANK, the best of the Japan varieties. Large, cherry red, an early and profuse bearer. 3 to 5 feet 35 cents.

### Prunes.

Prices, except otherwise noted:

Trees,	2 to 3 feet,	10 cents each,	per 100	\$8.00.
"	3 " 4 "	12½ "	" " "	\$10.00.
"	4 " 6 "	15 "	" " "	\$12.50.

- ITALIAN, large, oval, purple, tree hardy and productive.  
 HUNGARIAN, (Pond's seedling) very large, violet red, one of the handsomest of all prunes.  
 PRUNE DE AGEN, medium size, dull purplish red, very sweet, very productive, one of the best.  
 SILVER PRUNE, (Coe's Golden Drop) very large, greenish yellow, rich and sweet, very productive.  
 HOLMAN PRUNE, large, yellow, excellent.  
 TENNANT, claimed by introducers to be larger and better than Italian. 3 to 4 feet 35 cents, 4 to 6 feet 50 cents.  
 PACIFIC, undoubtedly one of the coming prunes, fruit large, of best quality and makes a splendid dried prune. 3 to 4 ft. 35 cts. 4 to 6 ft. 50 cts.

### Apricots.

Trees,	2½ to 3½ feet,	20 cents each,	\$1.75 per 10.
"	3½ " 5 "	25 "	\$2.00 " "

- MOORPARK, large, yellow, red cheek, juicy, sweet and good.  
 ROYAL, large, yellow tinged with red, flesh firm, rich and sweet.  
 RUSSIAN, medium size, yellow, sweet and good, tree very hardy.

### Quinces.

Trees	2 to 3 feet,	20 cents,	\$1.75 per 10.
"	3 " 4 "	25 "	\$2.00 " "

- ORANGE, fruit large, roundish, slight neck, color yellow, the best.  
 MEECH'S PROLIFIC, fruit large, nearly round, productive.

### Grapes.

Prices, except where noted. Vines mailed free at single and 10 rates.

First-class 1-year vines 15 cents, per 10 \$1.25, per 100 \$8.00.

" 2-year " 20 " " \$1.50, " \$10.00.

- AGWAM, (Rog 15) large, red, rich aromatic flavor, early, keeps well.  
 AMBER QUEEN, new, dark red, early, fine quality.  
 BARRY, (Rog 43) black, bunch and berry very large, good.

- BEAUTY, new, red, bunch and berry medium, very good.  
 BRIGHTON, dark red, bunch large and long, sweet and of best quality.  
 CONCORD, black, bunch and berry large, succeeds everywhere.  
 DELEWARE, small, red, sweet and of best quality, vine hardy, productive.  
 DUCHESS, bunch large, berry medium, fine, good keeper.  
 EATON, new, black, bunch and berry very large, good. 50 cents each.  
 EMPIRE STATE, white and fine quality, ripens late.  
 HERBERT, black, bunch and berry very large, sweet and good.  
 JESSICA, small, very early, white.  
 LINDLEY, (Rog 9) medium to large in bunch and berry, vine vigorous, healthy and productive, early and one of the best.  
 MARTHA, white, in all respects a white Concord.  
 MASSASOIT, (Rog 3) bunch and berry very large, very early, good, light red.  
 MERRIMAC, (Rog 19) black, large in bunch and berry, productive.  
 MOORE'S EARLY, very early, black, bunch large, berries very large, ripens ten days before Concord.  
 MOORE'S DIAMOND, new white, bunch and berry large, quality fine, good grower and productive. 50 cents each.  
 NIAGARA, white, large, good quality, one of the best white grapes.  
 PRENTISS, greenish white, bunch and berry medium.  
 MOYER, new, very early, red, bunch and berry small. 50 cents each.  
 SALEM, red, bunch and berry medium to large, good.  
 TELEGRAPH, black, bunch large and compact, berries medium size.  
 VERGENNES, red, medium, good grower and bearer, splendid keeper.  
 WOODRUFF, red, bunch and berry very large, early, good. 35 cts. each.  
 WORDEN, will succeed where Concord does, is earlier and better.  
 WYOMING RED, very early, does well everywhere.  
 IONA, light red, of excellent quality.

### Strawberries.

Prices are, except where otherwise noted, 25 cents per 10, \$1.00 per 100, \$5.00 per 1000. Plants mailed free at 10 rates.

Our plants are neatly tied in bunches of 50 each, roots straightened out and labeled. Varieties marked P are pistillate or imperfect flowered and need a perfect flowered variety planted every third or fourth row.

PARKER EARLE, very productive, medium to large, long, bright, glossy fruit, firm and of good quality. This variety comes nearer being frost proof than any other we have.

MICHAEL'S EARLY, very early, fruit medium.

EUREKA, P, very large, firm, great grower and bearer.

GANDY, large, late, firm and good.

JESSIE, large, fine quality, rather soft.

BUBACH, P, very productive of very large berries, not very firm.

HAVERLAND, P, large, long, medium, firm fruit, a fine variety.

WARFIELD, P, medium to large, dark glossy red, firm, productive, profitable.

CLARK'S SEEDLING, (Hood River) medium to large, dark, firm, good shipper.

WILSON, medium, dark red, firm.

BURT, medium to large, dark red, firm, great grower.

ECLIPSE, P, large, conical, productive, good.

MANCHESTER, P, medium to large, moderately firm, very productive.

WOOLVERTON, from Canada, large, dark, glossy, firm, productive. 50 cents per 10, \$2.00 per 100.

PRINCESS, P, large, very productive, quite firm, fine.

SAUNDERS, large to very large, glossy, red, very productive. 50 cts. per 10, \$2 per 100.

WILLIAMS, large, bright red, very firm, productive. 50 cts. per 10, \$2 per 100.

BOMBA, medium, dark red, firm, profitable.

TIMBRELL, new, very productive, large roundish fruit of finest quality; for home use has no equal. 50 cts. per 10, \$2 per 100.

LEADER, large, dark red, firm, rich, good. 50 cts. per 10, \$2 per 100.

PIONEER, large, conical, bright red, moderately firm, early, very productive.

### Raspberries.

Prices, 50 cents per 10, \$2.00 per 100.

MARLBORO, red, large, firm, hardy and productive.

CUTHBERT, late, red, large and fine, very productive.

GOLDEN QUEEN, large, productive, fine quality.

SHAFFER'S COLOSSAL, very large, dark purple, fine for home use.

WINONA, early, black, hardy and very productive.

NEMEHA, large, late, firm, black, good in every way.

### Blackberries.

SNYDER, early, medium to large, sweet, hardy and productive. 50 cents per 10, \$2 per 100.

BRITON, large, late, very sweet, hardy; the best variety. 50 cents. per 10, \$3 per 100.

ERIE, largest size, nearly round, productive. 75 cts, per 10, \$4 per 100.

### Currants.

Prices, unless otherwise noted:

1-year 8 cents each, 60 cents per 10, \$4 per 100.

2-years 10 cents each, 75 cents per 10, \$6 per 100.

CHERRY, very large, bunches short, good grower, fairly productive.

IMPROVED RED DUTCH, large, long bunches, one of the best.

LONG BUNCH HOLLAND, large, late, very productive.

VICTORIA, bunches long, berries medium, good.

WHITE DUTCH, old, well known variety, sweet and good.

WHITE GRAPE, large and fine, best white.

LEE'S PROLIFIC, best black, large and productive.

FAY'S PROLIFIC, large, prolific, good. 25 cents each.

### Gooseberries.

Strong plants.

DOWNING, large, very productive, good quality, green. 15 cents each, \$1.25 per 10.

SMITH, medium to large, productive, good, yellowish. 15 cents each, \$1.25 per 10.

TRIUMPH, largest size, very productive, yellow. 25 cts. each, \$2 per 10.

INDUSTRY, very large, fairly productive, red. 25 cts. each, \$2 per 10.

### Asparagus.

One of the most delicious and easiest grown of all vegetables. Fifty

plants will make a nice bed for an ordinary family and once planted will last for years.

CONOVER'S COLOSSAL, 2 years, 50 cents per 12, \$2 per 100.

PALMETTO, 2 years, the best, 75 per 12, \$3 per 100.

### Rhubarb or Pieplant.

LINNEUS, large, early, tender, fine. 15 cents each, \$1 per 10.

CAHOON, immense stalk, late. 25 cents each.

### Ornamental Trees.

BIRCH, white, beautiful white bark, drooping foliage. 50 cents each.

BIRCH, Cutleaf Weeping, like above but has beautiful cut leaves. \$1.25 each.

ELMS, American White, one of the handsomest. 35 cents each.

BUTTERNUT, medium sized tree with beautiful foliage. 35 cents each.

WALNUT, resembles above but more upright. 25 cents each.

HORSE CHESTNUT, round headed compact tree, white flowers in spring. 50 cents each.

MAPLE, (Sugar) very fine form and foliage. 50 cents each.

MAPLE, (Silver Leaf) very rapid grower and handsome tree. 25 cts. each.

MOUNTAIN ASH, (European) fine hardy tree, covered in autumn with bright red berries. 35 cents each.

MOUNTAIN ASH, (Weeping.) A weeping variety of above. \$1 each.

RUSSIAN MULBERRY, handsome ornamental tree, beautiful cut leaves. 25 cents each.

RUSSIAN POPLARS AND WILLOWS, these are far superior to the older sorts in beauty and rapidity of growth, fine for wind break. 8 feet, 15 cents each.

AMERICAN ARBORVITÆ, one of the handsomest evergreens. 25 cts. each.

BALSAM FIR, regular symmetrical tree of conical form. 25 cents each.

NORWAY SPRUCE, valuable, hardy and easily transplanted. 25 cts. each.

WHITE SPRUCE, one of the handsomest of all evergreens. 25 cts. each.

### Flowering Shrubs.

PURPLE LEAF BERBERRY, beautiful purple leafed shrub, covered in autumn with bright red berries. 25 cents each.

LILAC, (Persian) small foliage, bright purple flowers. 25 cents each.

LILAC, (White) large white trusses of flowers. 25 cents each.

LILAC, (Purple) old well known variety, purple flowers. 25 cents each.

SPIRIAS, small shrubs of easy culture, several varieties. 25 cents each.

HYDRANGEA (Paniculata Grandiflora) one of the handsomest of shrubs, blooms in autumn, fine for the lawn. 50 cents each.

HONEYSUCKLE, vigorous shrub blooming in early spring. 25 cts. each.

SNOWBALL, well known shrub, white flowers in spring. 50 cents each.

WEIGELIA ROSEA, an elegant shrub, rose colored flowers in May. 35 cts.

DEUTZIAS, in several varieties, rose colored and white. 25 cents each.

JAPAN QUINCE, bright scarlet flowers in early spring, a beautiful shrub. 25 cents each.

FLOWERING ALMOND, budded on plum, makes a handsome shrub, no sprouting at the roots. 2 to 4 feet, 25 cents each.

### Climbing Vines.

CLEMATIS JACKMANI, flowers large, violet purple. \$1 each.

- CELASTRUS, (Bitter Sweet) a rapid grower with pretty red berries in autumn. 25 cents each.
- HONEYSUCKLE, (Varigated) handsome varigated foliage, flowers white. 25 cents each.
- HONEYSUCKLE, (Hall's Japan) nearly evergreen, flowers white. 25 cents each.
- HONEYSUCKLE, (Scarlet Trumpet) scarlet flowers all summer. 25 cents each.
- WISTARIA, flowers pale blue, fine climber. 50 cents each.
- AMPELOPSIS, (Virginia Creeper) rapid grower with scarlet foliage in autumn. 25 cents each.

### Roses.

Climbing, 35 cents each.

Our roses are all from open ground, two and three years old.

QUEEN OF THE PRAIRIE, bright rosy red.

BALTIMORE BELLE, pale blush.

SEVEN SISTERS.

GEM OF THE PRAIRIES.

### Hybrid Perpetuals and Others.

2 years, 25 cents each; 3 years, 35 cents each.

MAD. PLANTIER, pure white.

GEN. JACQUIMENOT, brilliant crimson.

GEN. WASHINGTON, bright crimson.

PAUL NEYRON, very large, clear rose.

MAGNA CHARTA, light rose.

LUXEMBURG, moss, light red, one of the best.

PRINCESS ADILAIDE, moss, pink.

LA FRANCE, light clear pink.

JOHN HOPPER, bright red.

BARON BOUSLETTEN, dark velvety crimson.

And many others.

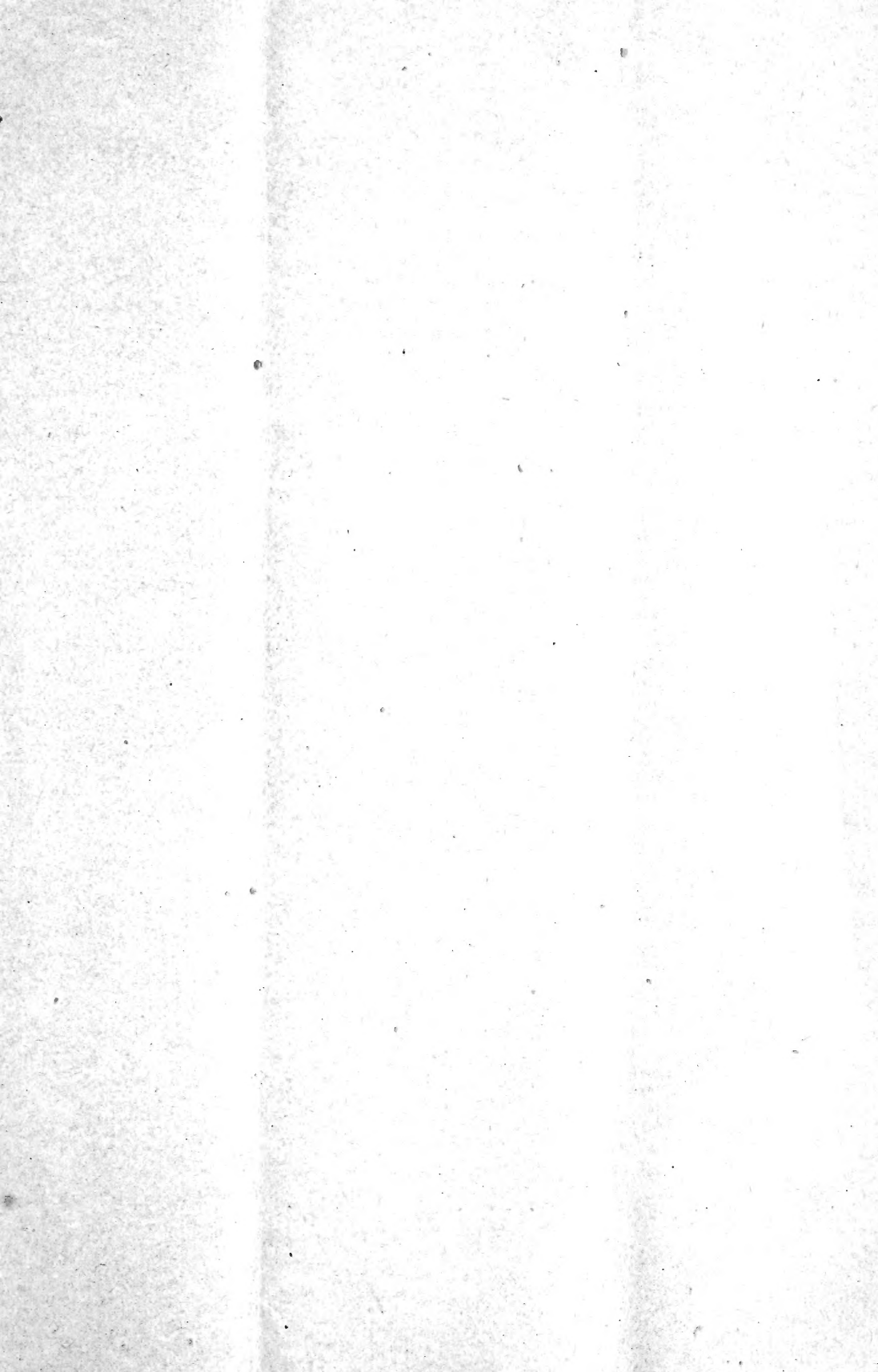
### Bulbs, Tubers, Etc.

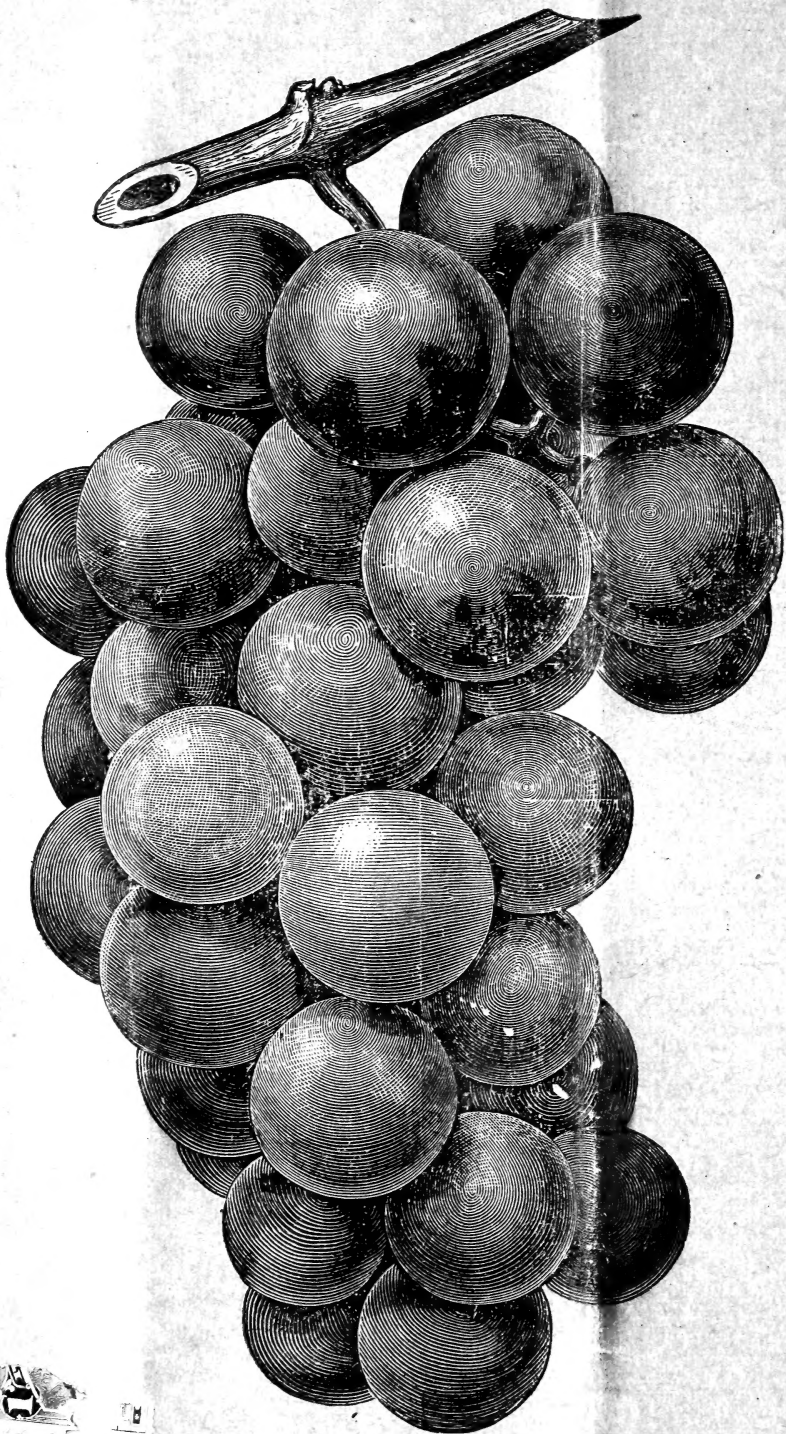
GLADIOLUS, these are among the most brilliant and showy of bulbous plants; plant in spring and take up in fall. 50 cents per 10.

TULIPS, plant in October or November, a fine collection. 25 cents per 10, \$2 per 100.

PANSIES, a fine collection, from the World's Fair prize flowers. 25 cents per 10, \$2 per 100.







Moore's Early.

Small logo or text in the bottom left corner, possibly a publisher's mark.