

## Historic, archived document

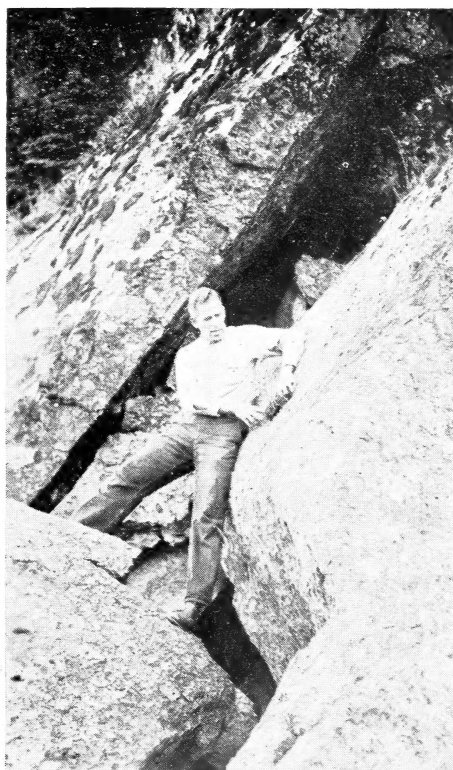
Do not assume content reflects current scientific knowledge, policies, or practices.



4/9pb  
10/5'8

#

1936  
CATALOGUE AND  
PRICE LIST



E. R. Mitchell, among cliffs of Gaspé Peninsula,  
examining a clump of *Saxifraga aizoon*.

**Mitchell Nurseries, Inc.**  
Barre, Vermont



## Terms of Business

---

Our terms are CASH WITH ORDER and our prices include packing, boxing, and delivery to our Post Office or Express Office.

DISCOUNTS—All orders received, with cash, from Jan. 1 to March 10 will be given a 10% discount on catalogue prices. All orders received between March 10 and April 10 with cash, will be given a 5% discount. After April 10 all catalogue prices are net.

UNLESS INSTRUCTED OTHERWISE, all orders will be shipped by express.

IF A CUSTOMER PREFERS TO HAVE AN ORDER SHIPPED BY PARCEL POST, the order will be shipped that way at the following cost which must be added to the amount of the order to cover the cost of postage and special packing necessary: to all points north of the Potomac River and east of Cleveland, Ohio, 10% extra; to all points west of Cleveland and east of the Mississippi River, 20% extra; to all points between the Mississippi River and the Rocky Mountains, 25% extra; to all points west of the Rocky Mountains, 30% extra. Purchaser pays all transportation charges.

WE GUARANTEE all of our stock to be true to name and to reach the customer alive and in good condition; but when received in good condition, our responsibility ceases. If not in good condition when received, complaint must be made within 5 days of the date of receipt of same. We cannot be held responsible for cultural failures.

PLANT INSURANCE—NO GUARANTEE, expressed or implied, is made that stock will grow, when not planted by us. As we have no control over after treatment or weather conditions, the purchaser must assume all risks after stock is received in good condition. On request, we insure stock for a specified period at a rate covering estimated hazard.

We guarantee for 6 months ALL PLANTINGS made by OUR MEN.

Make all Checks payable to MITCHELL NURSERIES, Inc.





## Evergreens

**ABIES balsamea, Balsam Fir:**—Grows to 50 ft. Extra hardy. 18-24 in., \$1.00; 2-3 ft., \$1.50; 3-4 ft., \$2.50

**A. balsamea glauca, Blue Balsam Fir:**—A beautiful blue Fir. 2-3 ft., \$4.00; 3-4 ft., \$5.00

**A. concolor, Concolor Fir:**—Grows to 70 ft. Beautiful blue foliage. 15-18 in., \$2.00; 2-3 ft., \$3.50; 5-6 ft., \$10.00

**A. veitchi, Veitch's Fir:**—Grows to 50 ft. 3-4 ft., \$4.00 each.

**JUNIPERUS canadensis, Common Juniper:**—Grows 3 ft. high, 8 ft. across. 18 to 24 in. across, \$1.00; 2-3 ft. across, \$2.00; 3-4 ft. across, \$3.00

**J. excelsa stricta, Greek Juniper:**—Grows to 8 ft. Compact pyramid with glaucous blue foliage of the needle type. 2 ft., \$2.00; 3 ft., \$4.00

**J. horizontalis Douglasii:**—A creeping Evergreen not over 6 in. high. 18-24 in. spread, \$1.00; 2-3 ft. spread, \$2.00

**J. Pfitzeriana, Pfitzer's Juniper:**—A favorite dwarf Evergreen. 18-24 in. spread, \$1.00; 2-3 ft. across, \$2.00; 3-4 ft. across, \$4.00

**J. plumosa depressa, Plumed Juniper:**—A creeping Juniper for the Rock Garden and steep banks. 18-24 in. spread, \$2.00 each.

**J. Sabina, Sabin Juniper:**—One of the best dwarf Evergreens. 1ft., \$1.00; 18-24 in., \$2.00; 2-3 ft., \$3.00

**J. squamati Meyeri, Meyer's Juniper:**—Grows to 3 ft. high. The bluest of Evergreens. 12-15 in., \$2.00; 18-24 in., \$5.00

**J. tamariscifolia, Tamarix Juniper:**—One of the best of the creeping Evergreens. 15-18 in., \$1.00; 18-24 in., \$2.00 each.

**PICEA alba, White Spruce:**—Grows to 90 ft. A fine Evergreen. 18-24 in., 75 cents; 2-3 ft., \$1.00; 3-4 ft., \$2.00; 4-5 ft., \$3.00; 7-8 ft., \$5.00

**P. excelsa, Norway Spruce:**—Grows to 80 ft. Fast growing. 24-30 in., \$1.00; 4-5 ft., \$2.00; 5-6 ft., \$3.00; 6-8 ft. \$5.00

**P. glauca conica, Alberta Spruce:**—A beautiful dwarf. 12-15 in., \$4.00

**P. pygmaea, Pygmy Spruce:**—A very dwarf variety. 12 in., \$3.00

**P. pungens glauca, Colorado Blue Spruce:**—Grows to 60 ft. Fine blue. 12-18 in., \$1.50; 2-3 ft., \$3.00; 3-4 ft., \$4.00

**P. pungens Kosteri:**—The finest Colorado Blue. Grows to 60 ft. 12-15 in., \$2.00; 15-18 in., \$3.00; 2 ft., \$5.00; 3 ft., \$9.00; 4 ft., \$15.00

**P. Engelmanni, Engelmann's Spruce:**—Grows to 90 ft. A fine blue Spruce. 12-15 in., \$1.50; 18-24 in., \$2.50



**PINUS montanus** Mughus, **Mugho Pine**:—Grows to 6 ft. A fine dwarf. 12-18 in. across, \$2.00; 18-24 in. across, \$3.00

**P. nigra**, **Austrian Pine**:—Grows to 100 ft. A massive Pine. 2-3 ft., \$1.50; 3-4 ft., \$3.00; 4-5 ft., \$5.00; 6-7 ft., \$8.00

**P. resinosa**, **Norway Pine**:—Grows to 90 ft. Very hardy. 4-5 ft., \$2.50; 6-8 ft., \$5.00; 8-10 ft., \$8.00; 10-12 ft., \$12.00

**P. strobus**, **White Pine**:—Grows to 80 ft. 2-3 ft., \$1.00; 4-6 ft., \$3.00; 6-8 ft., \$5.00

**PSEUDOTSUGA douglasii**, **Douglas Fir**:—Grows in the East to 40 ft. 18-24 in., \$1.00; 2-3 ft. \$1.50; 3-4 ft., \$3.00; 4-5 ft., \$4.00

**RETINOSPORA filifera**, **Thread-leaf Retinospora**:—Grows to 20 ft. Can be kept dwarf. 18-24 in., \$2.00; 2-3 ft., \$3.00; 3-4 ft., \$4.00

**R. plumosa**, **Green plumed Retinospora**:—Grows to 20 ft. 15-18 in., \$1.00; 18-24 in., \$2.00; 2-3 ft., \$3.00; 4-5 ft., \$5.00

**R. plumosa aurea**:—A yellowish-green form of the above. 15-18 in., \$1.00; 2-3 ft., \$2.50; 4-5 ft., \$5.00

**TAXUS cuspidata**, **Japanese Yew**:—Grows to 15 ft. Fine for shade. 15-18 in., \$1.50; 24-30 in., \$2.50; 3-4 ft. \$5.00

**T. cuspidata Hicksii**, **Hicks' Yew**:—Grows to 8 ft. A fine column. 12-18 in., \$2.00; 18-24 in. \$3.50

**T. cuspidata columnaris**, **Jap. Column Yew**:—Much like Hicks' Yew. Same prices.

**T. cuspidata nana**, **Dwarf Japanese Yew**:—A few fine specimens at \$5.00 to \$8.00

**TSUGA canadensis**, **American Hemlock**:—Grows to 80 ft. Can be kept low. 2-3 ft., \$2.00; 3-4 ft., \$3.00; 4-5 ft., \$5.00

**THUYA occidentalis**, **Common Arborvitae**:—Grows to 12 ft. high. 1½ to 2 ft., 75 cents; 2-3 ft., \$1.00; 3-4 ft., \$1.50; 4-5 ft., \$2.00; 6-7 ft., \$3.00

**Golden Arborvitae**:—A golden leaved form of the American Arborvitae. 2-3 ft., \$2.00; 3-4 ft., \$3.00

**Hovey's Arborvitae**:—Grows to 5 ft. A fine dwarf. 12-15 in., \$1.00; 18-24 in., \$2.50; 30-36 in., \$3.50; 4-5 ft., \$10.00

**Little Gem Arborvitae**:—Grows to 2 ft. A dense dwarf. 18-24 in., \$3.00

**Pyramidal Arborvitae**:—A close pyramid. Grows to 10 ft. 18-24 in., 75 cents; 2-3 ft., \$1.00; 3-4 ft., \$2.00; 4-5 ft., \$3.00. Larger trees priced on application.

**Globe Arborvitae**:—Grows to 3 ft. Always globe shaped. 18 in., \$2.00; 24-30 in., \$3.00; 30-36 in., \$4.00

**Siberian Arborvitae**:—Grows to 6 ft. A broad pyramid. 3-4 ft. \$4.00

**Tom Thumb Arborvitae**:—Never over 1 ft. high, spreads to 2 ft. across. 10-15 in. across, \$2.00; 18-24 in. across, \$3.00



## Ornamental Trees

**ACER dasycarpum, Silver Maple:**—Grows 60 to 70 ft. One of the fastest growing trees. Perfectly hardy. 9-12 ft., \$3.00 each.

**A. dasycarpum Weiri, Weir's Cut-leaf Weeping Maple:**—60-70 ft. A beautiful weeping Maple. 10-12 ft., \$5.00 each.

**A. platanoides, Norway Maple:**—60-70 ft. A slow growing Maple with dense, round head. 8-10 ft., \$4.00 each.

**A. platanoides Schwedleri, Schwedler's Maple:**—50-60 ft. A handsome Maple with bronzy-green leaves. 8-10 ft. \$5.00 each.

**A. rubrum, Red Maple:**—60-70 ft. One of our most beautiful Maples with very high autumn coloring. 10-12 ft., \$3.00 each.

**A. saccharum, Sugar Maple:**—60-80 ft. One of our largest and best shade trees. 10-12 ft., \$3.00 each.

**BETULA alba, European white Birch:**—A very fine tree. 8-10 ft., \$3.50

**B. alba laciniata, Cutleaf Weeping Birch:**—Grows to 40 ft. A most elegant weeping tree. 8-10 ft., \$4.00 each.

**B. papyrifera, Canoe Birch:**—Grows to 60 ft. This large white-barked Birch is one of the outstanding trees of the northland. 4-6 ft., \$1.00; 6-8 ft., \$1.50; 8-10 ft., \$2.50; 10-12 ft., \$3.50 each.

**CATALPA speciosa, Northwestern Catalpa:**—Grows to 50 ft. Large heart-shaped leaves with great drooping panicles of rose-colored flowers. 8-10 ft., \$3.00 each.

**CRATAEGUS monogyna alba, Double White Hawthorn:**—Grows to 18 ft. A fine little tree with large, double white flowers. 4 ft., \$1.50 each.

**FLAXINUS Americana, White Ash:**—Grows to 80 ft. A rapid growing large and perfectly hardy shade tree. 8-10 ft., \$2.00 each.

**LARIX laricina, American Larch:**—Grows to 50 ft. A beautiful fine-leaved symmetrical tree. Very hardy. 3-4 ft., \$1.00; 5-6 ft., \$2.00 each.

**MALUS (Flowering Crab):**—All are beautiful, hardy trees and can be grown anywhere.

**M. Arnoldini:**—One of the freest flowering. Deep red buds bursting into large white flowers. 4-5 ft. \$1.50 each.

**M. atrosanguinea**:—Grows to 20 ft. Glorious, brilliant carmine-colored flowers. 4-5 ft., \$2.00

**M. calicarpa**:—White flowers. The most beautiful bright-red fruit of any of the Crabs. 4-6 ft., \$2.00 each.

**M. Eleyi**:—Reddish foliage and dark purple flowers. An elegant tree. 4-5 ft., \$2.50 each.

**M. floribunda**:—A large tree. Rose-colored buds, opening to snow-white flowers. 4-6 ft., \$2.00 each.

**M. Parkmanni**:—A fine tree with deep pink bloom. 5-6 ft., \$3.00

**M. Bechtelli**:—A small tree, but the latest to bloom, with large, double, light pink flowers. 4-5 ft., \$2.00 each.

**M. Sargenti**:—A dwarf Malus to be used as a shrub. 3-4 ft., \$2.00 each.

**M. theifera**:—A fine variety with ropes of pure white flowers. 3-4 ft., \$1.50 each.

**MORUS tartaricus, Russian Mulberry**:—Grows to 18 ft. A small attractive tree bearing black, edible fruit. 6-8 ft., \$1.00 each.

**POPULUS niger, Lombardy Poplar**:—90 ft. A tall columnar tree much used in landscape work. 6-8 ft., \$1.00; 10 ft., \$2.00 each.

**PLATANUS americana, Sycamore**:—80 ft. A large widespreading tree with odd-colored bark. A fine shade tree. 7-8 ft., \$2.00

**QUERCUS rubra**:—A large, open-top Oak with brilliant scarlet coloring in the fall. 6-8 ft., \$3.00

**Q. palustris, Pin Oak**:—A beautiful rapid-growing Oak. 6 ft. trees, \$3.00

**ROBINIA pseudo acacia, Locust**:—70 ft. A rapid growing tree with showy racemes of white flowers. 6-8 ft., \$1.50

**SALIX dolcrosa, Wisconsin Weeping Willow**:—60 ft. A hardy Weeping Willow for cold climates. 6-8 ft. \$1.50

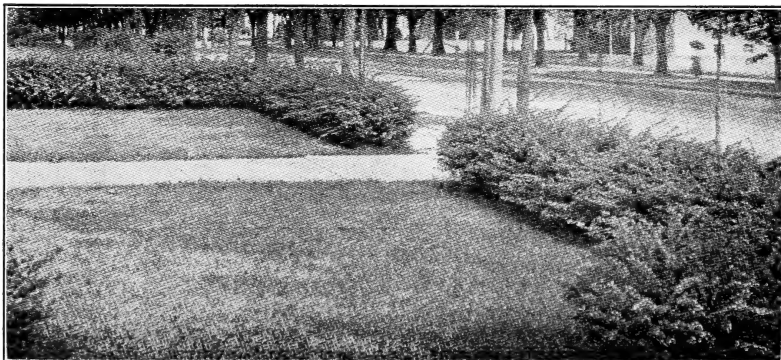
**S. pentandra, Laurel-leaved Willow**:—30 ft. A small rapidly growing tree. Has beautiful, very glossy, green foliage. 5-6 ft., \$1.00

**SORBUS aucuparia, European Mountain Ash**:—20 ft. A small tree, much admired for it's orange-red fruit in the fall. 8-10 ft., \$2.00

**TILIA Americana, Basswood**:—50-60 ft. A large round-headed shade tree. 8-10 ft. \$3.00, heavy, 10-12 ft. trees, \$4.00 each.

**ULMUS americana, American Elm**:—Grows to 90 ft. Our finest street shade tree. 8-10 ft., \$2.00

**U. pumila, Chinese Elm**:—Where a small tree is wanted, this is highly recommended. 6-8 ft., \$2.00 each.



## Shrubs

**AMELANCHIER canadensis, Shadbush:**—10-12 ft. One of the early blooming shrubs with large white blooms before the leaves appear. 3-4 ft., \$1.00 each.

**ARTEMISIA boreale, Russian Artemisia:**—A hardy shrub from Siberia with finely cut, aromatic greyish-green foliage. It is an attractive shrub, growing very quickly to 8 ft. in height. 6 ft., 75 cents

**ARONIA arbutifolia, Red Chokeberry:**—4-8 ft. White flowers in early spring, with bright red fruit in late summer and brilliant red foliage in the fall. 2-3 ft., 75 cents each.

**AZALEA calendulacea, Flame Azalea:**—The most conspicuous of all the Azaleas planted in the Arnold Arboretum, where it is planted in large masses. It varies in color but probably its name "Flame Azalea" is as descriptive as any attempt to describe the wonderful colors of this regal shrub. 15-18 in., \$3.00 each.

**A. rosea, Downy Azalea:**—A native pink Azalea with very fragrant flowers before the leaves appear. 18-24 in., \$3.00 each.

**A. vaseyi, Pinkshell Azalea:**—One of the most profuse bloomers of all the Azaleas, this shrub is a glorious mass of shell-pink flowers in late May before the leaves appear. Easy to grow. 15-18 in., \$3.00 each.

**A. viscosa, White Swamp Azalea:**—This is the latest of the Azaleas, blooming through July and August. Deliciously scented. Grows to 6 ft. 15-18 inch, \$2.00 each.

**A. mollis, Chinese Azalea:**—Flowers in shades of red, yellow and orange are produced in large clusters. Hardy here. 12-18 inch, \$3.00 each.

**BERBERIS thunbergii, Japanese Barberry:**—3-5 ft. For a low hedge here in New England, Japanese Barberry is undoubtedly our finest and most reliable shrub either for trimmed or untrimmed hedges; also for foundation or border planting. 15-18 in., 25c. \$2.50 for 12. \$20.00 per 100.

**B. Thunbergii atropurpurea, Red-leaved Japanese Barberry:**—3-5 ft. Similar in habit to the common Japanese Barberry. The foliage is bright red all the season. 12-15 inch, 50 cents each.

**B. vulgaris, Common Barberry:**—8-10 ft. A very graceful shrub when given plenty of room. Yellow flowers with masses of bright red fruit in fall and winter. 24-30 inch plants, 75 cents each.

**B. vulgaris atropurpurea, Purple-leaf Barberry:**—Similar to the above but reddish-purple foliage. 24-30 inch, 75 cents each.

**CARAGANA arborescens, Siberian Pea Tree:**—8-12 ft. A hardy and vigorous shrub from Siberia. Flowers yellow and pea-shaped. One of the best shrubs for the "Cold Country." 3-4 ft., 75 cents each.

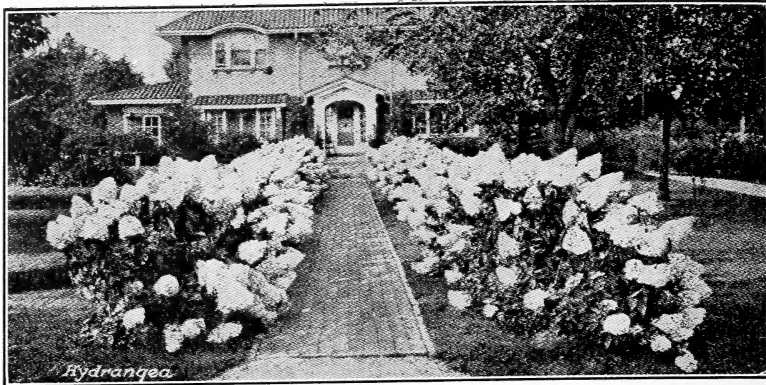
**CLETHRA alnifolia, Sweet Pepper Bush:**—3-6 ft. White fragrant flowers in erect paniced racemes from July to Sept. 2-3 ft., 75 cents each.

**CORNUS Spaethi, Spaeth's Variegated Cornus:**—A dwarf, spreading shrub, growing to 2 ft. high, with leaves variegated yellow and green. 2-3 ft. spread \$1.00; 3-4 ft. spread, \$1.50 each.

**C. Siberica, Coral Dogwood:**—6-8 ft. Planted for the winter effect of its bright red branches. 3 ft., 50 cents each.

**C. elegantissima variegata, Variegated Cornus:**—4-6 ft. One of the most beautiful shrubs. Leaves variegated light green and white, making it a beautiful shrub from early spring until late fall. 2-3 ft., \$1.00 each.

**C. Stolonifera lutea, Golden Twig Cornus:**—This Cornus has golden yellow bark and is a fine shrub to plant near C. Siberica for a contrast through the winter. 3-4 ft., 75 cents each.



**COTONEASTER racimifolia soongaria:**—This rare shrub from China, growing from 6 to 8 ft. high, has white hawthorn-like flowers in spring with great strings of bright red fruit in autumn. 3-4 ft., \$2.00 each.

**CYDONIA Japonica, Japanese Flowering Quince:**—4 ft. This shrub, with its beautiful scarlet flowers in late June, and its dark glossy green foliage makes an excellent shrub for the border. 2-3 ft., 75 cents each.

**DAPHNE mezereum:**—2-3 ft. Covered with a mass of lilac-pink flowers in earliest spring, blooming with the crocus. 15-18 in., \$1.00 each; \$10.00 per dozen.

**D. cneorum:**—See Broad Leaved Evergreens, Page 10.

**DEUTZIA gracillima rosea, Slender Pink Deutzia:**—A smaller Deutzia with many bright pink flowers in June. 18-24 in., 75 cents each.

**D. Lemoinei, Lemoine's Deutzia:**—A very fine Deutzia of medium height and covered in June with numerous white flowers. 75 cents each.

**ELEAGNUS angustifolia, Russian Olive:**—A very hardy, small, round-headed tree with grey foliage and handsome, edible, red fruit. 3 ft., 75 cents.

**EUONYMOUS alatus, Burning Bush:**—6-8 ft. This shrub is very beautiful in autumn with its scarlet foliage and mass of berries. 2-3 ft., \$1.00.

**E. alatus compacta:**—Somewhat more compact and generally smaller. 18-24 in., \$1.00 each.

**FORSYTHIA fortunei, Golden Bell:**—8-10 ft. A very early blooming shrub with bright yellow blossoms appearing before the leaves. We are on the northern limit of this shrub. 2-3 ft., 60 cents each.

**F. spectabilis, Showy Forsythia:**—Very free flowering with large golden flowers. None too hardy in the Cold Country. 3-4 ft., 75 cents each.

**HAMAMELIS vernalis, Vernal Witch-hazel:**—In mild winters this blossoms all winter long, the blossoms opening during mild days. After a severe winter, however, it does not blossom until late March. The flowers vary in color from yellow to deep maroon. Perfectly hardy. 12-18 in., 50 cents.

**HYDRANGEA, Hills of Snow:**—4-6 ft. An early blooming Hydrangea with enormous blooms of white flowers about a month earlier than Hydrangea P. G. 2 ft., 75 cents; extra large plants, \$1.00.

**H. P. G., Late Hydrangea:**—8-12 ft. The common late Hydrangea. 15-18 in., 50 cents; 2 ft., 75 cents; 3 ft., \$1.00 each.

**H. P. G., Tree Form:**—Same as above but grown with single stem in tree form. The bush is usually preferable. 3-4 ft., \$1.50 each.

**H. paniculata, Panicked Hydrangea:**—Grows 8 ft. Tall, erect branches with dark green foliage and long clusters of white flowers in early fall. Quite different from the Hydrangea P. G. 3 ft., \$1.00 each.

**HALESIA tetraptera, Great Silver-bell:**—10-12 ft. A small tree or can be grown as a large shrub. Dainty, white, bell-shaped flowers in May. 3-4 ft., \$1.50 each.

**ILEX verticillata, Winterberry:**—12 ft. Planted for the brilliant, bright berries with which the bush is loaded well into late winter. One of the best of berried shrubs. 18-24 in., 75 cents each.

**KOLKWITZIA amabilis, Beauty Bush:**—6-8 ft. This new shrub with its graceful branches and a multitude of pink flowers in late June, is being planted by everybody. 2 ft., 75 cents; 3 ft., \$1.00.



## Lilacs

**Common Purple:**—2-3 ft., 50 cents each. Clumps, 3-4 ft., \$1.00 each.

**Common White:**—Same price as common purple.

### Hybrid Lilacs on Their Own Roots.

**Belle de Nancy:**—Very large trusses of brilliant, satiny rose color, the center of each floret clear white. 2 ft., \$1.00; 3-4 ft., \$1.50.

**Charles X:**—Single, large loose truss; purplish red and strong grower. 3 ft., \$1.50; 4 ft., \$2.00.

**Congo:**—Single, wine-red. None better. 2-3 ft., \$1.25.

**Hugo Koster:**—Single flowers, very early flowering, with extra large pyramidal trusses of bluish-violet color. 2 ft., \$1.25 each.

**Japanese Tree Lilac:**—Makes a small tree up to 30 ft. high and is the latest Lilac to bloom. Can be grown as a bush or as a tree. 4 ft., \$1.50.

**Justi:**—Single, pale-blue. 2-3 ft., \$1.25.

**Persian:**—Comes into bloom after the common lilac is through blooming. Grows from 6 to 10 ft. with broad panicles of pale lilac. 3-4 ft., \$1.25.

**Souvenir de Ludwig Spaeth:**—Single flowers of dark purplish-red. One of the best dark lilacs. 2 ft., \$1.25; 3-4 ft., \$2.00; 4-5 ft., \$2.50.

**Marie LeGraye:**—The best single white lilac. 2-3 ft., \$1.25.

**Mme. Casimir Perier:**—Double, pearly white flowers. Late. 3 ft., \$1.50.

**Pascal:**—The best single mauve-colored lilac. 3-4 ft., \$2.00; 4-6 ft., \$2.50.

**Rouen:**—Single, violet blue. 3-4 ft., \$1.00.



**LIGUSTRUM Ibeta Mitchellii, Mitchell Privet:**—No privet had proved hardy in this section until we obtained this form of *L. Ibeta*, which is now recognized as the hardiest of all Privet. 3 ft. plants, **50 cents** each.

**LONICERA bella albida, White Bell Honeysuckle:**—8-10 ft. A beautiful upright bush Honeysuckle with white flowers in the spring and red berries in the fall. 6 ft., **\$1.00** each.

**L. Tartarica rosea, Pink Tartarian Honeysuckle:**—Grows to 10 ft. tall and is covered in the spring with a mass of pink flowers. 4-5 ft., **\$1.00** each.

**L. Korolkowi, Grey-leaved Honeysuckle:**—A lovely pink-flowering Honeysuckle with greyish-green foliage. A rare shrub. 4 ft., **\$1.50** each.

**Prunus Japonica, White Flowering Almond:**—A small, hardy shrub, that blooms very profusely in early spring, when each twig has the appearance of being covered with little double roses. 4 ft., **\$1.00** each.

**Pink Flowering Almond:**—Similar to the above except in color, which is clear pink. 3-4 ft., **\$1.00** each.

**Prunus triloba, Double Flowering Plum:**—One of the best shrubs to come to us from China. Large, double, rose-colored flowers early in the season. 3-4 ft., **\$1.00** each.

**Physocarpus opulifolius, Ninebark:**—A very fast-growing shrub, growing to 10 ft. high very quickly. Has racemes of creamy-white flowers in July. A good shrub for a tall screen. 4-5 ft., **75 cents** each.

**P. opulifolius aureus, Golden-leaved Ninebark:**—A golden-leaved form of the Ninebark. Must be given full sun. 4-5 ft., **\$1.00** each.

**Philadelphus Avalanche, Avalanche Syringa:**—One of the best of the Syringas; slender branches which, in bloom, are loaded with large creamy, highly fragrant flowers, making a very graceful bush. 3 ft., **\$1.00** each.

**P. coronarius, Fragrant Syringa:**—The old-fashioned Mock Orange. 3 ft., **50 cents** each; 4 ft., **75 cents** each; Extra large clumps, **\$2.00** each.

**P. coronarius aurea, Golden Syringa:**—A yellow-leaved variety, 2-3 ft. **\$1.00** each.

**P. virginalis, Virgin Syringa:**—Large, semi-double flowers. Pure white. A wonderful variety. 3 ft., **\$1.00** each; Extra fine plants, **\$1.25** each.

**P. Argentine, Argentine Syringa:**—Another fine hybrid Syringa with the largest flowers of all. 2-3 ft., **\$1.00** each.

**P. Manteau d'Hermine:**—One of the finest of the hybrid Syringas. Large creamy-white double flowers on a dwarf spreading bush. 18 in., **75 cents** each.

**Potentilla fruticosa montana:—Shrubby Cinquefoil:**—18 in. A dwarf mountain form of this fine Rock garden shrub. Large yellow flowers all summer. Greyish foliage. 12 in. plants, **75 cents** each.

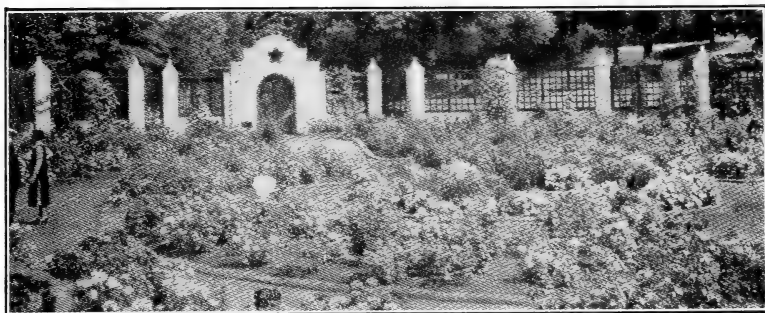
**Rhodora canadense, Rhodora:**—2-3 ft. This lovely plant is really an Azalea, being, like all other Azaleas, a deciduous Rhododendron. This native of the cold north, has beautiful purplish-rose colored flowers, appearing before the leaves. 15-18 in., **\$2.00** each.

**Rhus canadensis, Fragrant Sumach:**—A spreading shrub with clusters of small yellow flowers in early spring. The fragrant foliage takes on a dark crimson color in autumn. Used as a ground cover under trees at the Arnold Arboretum. 1½-2 ft., **50 cents** each; **\$4.50** for 10.

**Robinia hispida, Rose Acacia:**—4-5 ft. A low growing shrub with drooping clusters of bright pink flowers about July 1. 2-3 ft., **75 cents** each.

**Rubus odoratus, Flowering Raspberry:**—4-6 ft. This shrub, native of the northland, should be more generally planted with other shrubs. Leaves shaped like those of the Maple, but from 6 to 10 in. across and two inch pink-purple blooms all summer. 3-4 ft., **50 cents** each.





**Sambucus canadensis, Snowy Elder:**—6-10 ft. Handsome compound leaves and large corymbs of white flowers in June. Dark red edible berries in the fall. 2-3 ft., 50 cents each.

**S. aurea, Golden Elder:**—A golden-leaved form of the European Elder. 3-4 ft., 75 cents each.

**Salix Siberica, Ural Mt. Willow:**—10-15 ft. A new hedge plant from Siberia, with light olive-green foliage and very dense habit when kept trimmed. Planted two ft. between each plant, it makes a dense hedge up to 8 ft. high. 3-4 ft., 50 cents each; \$5.00 per dozen; \$40.00 per 100.

**Spirea Anthony Waterer:**—A valuable variety of Spirea with bright crimson blooms in late summer. It is of dwarf, dense growth, seldom exceeding two feet in height. Very popular. Large clumps, 75 cents each.

**Spirea arguta:**—Quite similar to *S. Thunbergii*, but a trifle taller, and should be used in the colder sections in preference to that well-known variety. 2-3 ft., 75 cents each; 3-4 ft., \$1.00 each.

**S. trichocarpa, Spirea Korean:**—A new shrub highly recommended by the Arnold Arboretum for the colder sections of our country, and classes as equal, if not superior to the popular Bridal Wreath, and coming into bloom nearly a month after that variety has passed. 4 ft., \$1.00 each.

**Spirea Van Houtte, Bridal Wreath:**—The grandest of all Spireas. 2-3 ft., 50 cents each; 3-4 ft., 75 cents each; 4-5 ft., \$1.00 each.

**Spirea Thunbergii:**—A very graceful Spirea with light-green feathery foliage. Blooms a week before the "Bridal Wreath" and is then a mass of white. One of the best shrubs. 3-4 ft., 50 cents each.

**Spirea prunifolia, Double Bridal Wreath:**—4-5 ft. Covered in early spring with great quantities of small double white flowers, clustered along the stems. 2-3 ft., 75 cents each; 4 ft., \$1.00 each.

**Spirea Henryi:**—One of the finest large shrubs in existence. Grows to 12 ft. high and is covered with great plumes of white flowers in mid-July. 4-6 ft., \$1.00 each.

**S. callosa rosea, Pink Chinese Spirea:**—A very pretty shrub about 3 ft. tall with pretty rose-colored flowers in late summer. 2-3 ft., 75 cents each.

**Symphoricarpos chenaulti:**—A new Snowberry originating at the Arnold Arboretum. The thickly clustered small fruits are red with minute pale dots, one side whitish with red dots. 2 ft., 50 cents each.

**S. racemosa, Snowberry:**—4-5 ft. This very popular shrub is grown for the white berries that stay on the bush well into the winter. 2-3 ft., 50 cents each; 4 ft., 75 cents each.

**S. vulgaris, Coralberry:**—3-4 ft. Grown for the red berries that hang from the branches in winter. 2-3 ft., 50 cents each.

**Viburnum dentatum, Arrow wood:**—5-10 ft. A nice shrub with white flowers and good bright green foliage, changing to dark red in fall, with dark purple berries in clusters well into winter. 4-5 ft., 75 cents each.

**V. opulus, European High Bush Cranberry:**—5-6 ft. Quite similar to the American High Bush Cranberry. 3-4 ft., 75 cents each.

**Viburnum Americana, High Bush Cranberry:**—8-15 ft. One of our finest shrubs; white flowers in large clusters, followed by great quantities of bright crimson fruit. Should be in every garden. 2-3 ft., 75 cents each; 3-4 ft., \$1.00 each.

**V. Carlesi, Mayflower Viburnum:**—A slow growing and rare Viburnum from eastern Asia. Flowers have color and fragrance of the Trailing Arbutus. 18-24 in., \$2.00 each.

**V. lantana, Wayfaring Tree:**—12-15 ft. This tall shrub has masses of white flowers in early June with red berries turning to black in the fall. 2-3 ft., 75 cents each.

**V. opulus sterile, Common Snowball:**—5-10 ft. This old fashioned shrub is always popular. Snowy-white flowers in globular clusters. 2-3 ft., 75 cents each; 3-4 ft. \$1.00 each.

**V. tomentosum plicatum, Japanese Snowball:**—The best of the Snowballs. 2-3 ft., \$1.00 each.

**V. lentago, Nannyberry:**—A tall-growing Viburnum with shiny leaves, fragrant creamy-white flowers in July and clusters of black berries in the fall. 3 ft., 75 cents each.

**Viburnum cassinoides, Withe-rod:**—A beautiful shrub, growing to 8 ft., with creamy-white heads of flowers in July, followed by red fruit which gradually turns black as it ages. 2-3 ft., 75 cents each.

**Zanthorhiza apiifolia, Yellow Root:**—12-15 in. A low growing shrub with beautiful divided deep green foliage which changes to a deep yellow in the fall. Has plum-colored, heart-shaped flowers in May. Is used as a ground cover with trees and taller shrubs at the Arnold Arboretum. Large plants, 50 cents each; \$4.50 for 10.

**Weigela rosea:**—This beautiful shrub is not recommended north of Mass. Lives in Vermont, but gives few flowers. 2 ft., 60 cents each.

## Broad Leaved Evergreen Shrubs

**Daphne cneorum:**—18 in. high. This evergreen shrub often spreads to 3 ft. across, and is covered with intensely fragrant rose-pink flowers in early spring and again in the fall. 15-18 in. spread, \$2.00 each; \$20.00 per doz.

**Ilex glabra:**—Bushy evergreen shrub with rich, green shiny foliage and black fruit in the fall. 18-24 in. clumps, \$2.00

**Kalmia latifolia, Mountain Laurel:**—Grows 8-12 ft. Dark green, shiny foliage with beautiful pink flowers in large clusters, in June. Large clumps 2 ft. high, \$3.00 each.

**Leucothoe catesbaei, Drooping Andromeda:**—3-4 ft. Graceful, drooping branches of heavy glossy green foliage and delicate, creamy-white flowers in late spring. Good in shade. Clumps 18-24 in., \$3.00 each.

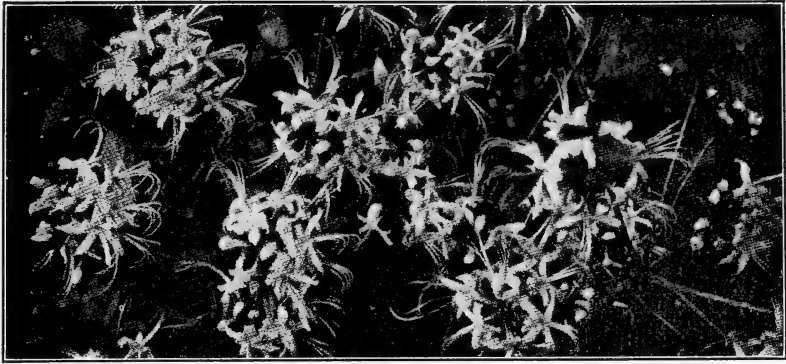
**Pachistima canbyi:**—A small evergreen shrub with small dark-red flowers. Fine for the Rock Garden. 75 cents each.

**Pieris floribunda, Mountain Andromeda:**—A beautiful broad-leaved evergreen shrub; low spreading growth with dark green, glossy foliage, and beautiful Lily of the Valley-like flowers, held well above the foliage. 15-18 in., \$3.50 each; 18-24 in., \$5.00 each.

**Rhododendron catawbiense:**—Large lilac-rose flowers. About the hardiest of Rhododendrons, excepting Lapponicum. 18-24 in., \$3.50 each.

**R. carolinianum:**—Bright pink flowers in good sized clusters in spring. 18-24 in., \$3.00 each.

**R. maximum:**—Immense rose colored heads in early July. 18-24 in. \$3.00 each.



## Climbing Vines

**Ampelopsis tricuspidata, Boston Ivy:**—A beautiful vine, but scarcely hardy in this section. All right south of Mass. 50 cents each.

**A. quinquefolia, Woodbine:**—This native vine is one of the best for all New England. Very rapid growing, perfectly hardy, and a mass of deepest green all summer and a brilliant scarlet in the fall. 50 cents each.

**A. quinquefolia var. Engelmannii, Engelmann's Ivy:**—Quite similar to woodbine, but does not require wire or other support. 50 cents each.

**Aristolochia siphon, Dutchman's Pipe:**—Where a heavy dense vine is wanted, this hardy vine is one of the best. Has extra large round dark green leaves. \$1.50 each.

**Akebia quinata, Five-leaf Akebia:**—A dainty beautiful vine with purple flowers in May. Leaves deep green. 75 cents each.

**Celastrus scandens, Bitter-sweet:**—This excellent vine is noted for its showy orange-red berries in fall and early winter. 75 cents each.

**Clematis Jackmanni:**—The large flowered purple Clematis, with flowers 5 or 6 in. across. Slow to start but perfectly hardy. \$1.50 each.

**C. paniculata, Japanese Virgin's Bower:**—A strong vine with small green foliage and pure white fragrant flowers. 50 cents each.

**C. Virginiana, Virgin's Bower:**—One of the hardiest, with a host of white flowers in summer and long hairy-seed pods in the fall. Should be planted more. 50 cents each.

**Euonymus radicans, Winter Creeper:**—A low-growing evergreen vine for low walls and Rock Gardens. 50 cents each; \$5.00 per doz.

**E. radicans vegetus, Big-leaf Winter Creeper:**—A beautiful vine with larger leaves than the above. Same price.

**E. radicans colorata, Bronze Winter Creeper:**—Quite like the above excepting the fall and winter color of the leaves, which turn to a beautiful bronze. Same price.

**Lonicera variegata, Variegated Honeysuckle:**—One of the loveliest of the variegated vines. Foliage white and green with white blossoms. Not a rank grower in this climate. 50 cents each.

**Lonicera, Scarlet Trumpet Honeysuckle:**—Large showy, scarlet flowers. Very rank growing and handsome. 75 cents each.

**Lycium barbarum, Matrimony Vine:**—A shrubby climber from Japan, with purple flowers in summer followed by bright red berries in the fall. 75 cents each.

**Polygonum auberti, Silver Lace Vine:**—A strong growing hardy vine, with dainty, white flowers in feathery sprays. \$1.00 each.

---

---

**Ironclad**  
**Extra**  
**Hardy**  
**Roses**

---

---



These are Cold Country Roses selected for their hardiness. They will grow anywhere that a rose can grow. All have been thoroughly tried out here in this nursery and can be depended on for hardiness.

**Agnes:**—A yellow Rugosa hybrid originating in Canada. Large, light-yellow, double blooms in spring. \$1.00 each.

**Cabbage Rose:**—This old-fashioned, large double pink rose is a fine rose for the Cold Country. 50 cents each.

**Belle Poitevine:**—Large flowers of lavender-pink in large trusses all summer. 75 cents each.

**Blanc Double de Coubert:**—An excellent double, white Rugosa rose. Very hardy. 75 cents.

**F. J. Grootendorst:**—A cross between the Rugosa and the crimson Baby Rambler. It has the rugged bush and dark green, crinkly foliage of the Rugosa, with its hardiness, and the flowers of the Baby Rambler. It is a fine specimen shrub, and makes one of the best flowering hedges; blooms from June until heavy frost. 3-4 ft., \$1.00 each.

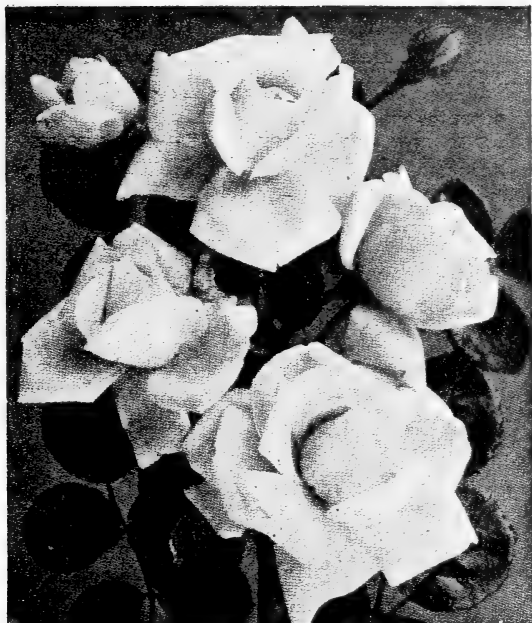
**Pink Grootendorst:**—Identical with the above except in color, which is a bright pink. \$1.00 each.

**Hansa:**—A tall shrub-like rose with large purplish-red double flowers throughout the summer. Hardy in Manitoba. 4 ft. plants, \$1.00 each.

**New Century:**—Large, double flowers of the Rugosa type, beautiful flesh pink with a deeper pink center. \$1.00 each.

**Harrison's Yellow:**—Fine double golden yellow flowers. \$1.00 each.

**Mme. Plantier:**—The old-fashioned double white rose of our grandmother's time. 75 cents each.



#### DR. VAN FLEET ROSE

**Moss Rose—Red:**—This old-fashioned rose is very hardy, and while the flowers cannot compare with other red roses, yet the buds with their mossy coverings are very pretty and very popular. 75 cents each.

**Moss Rose—White:**—Similar to above, except in color. Same price.

**Persian Yellow:**—Another old-fashioned rose still very popular, covered in June with medium-sized, double yellow roses. 75 cents each.

**Rugosa Rose:**—The large single red or white rose from Japan, with heavy dark green foliage. Either color. 50 cents each.

**Rose Hugonis:**—A rose to treat as a shrub. Very fine graceful foliage and large single yellow roses in earliest spring. 75 cents each.

**Wichuraiana Rose:**—A creeping Rose used for covering banks. Flowers single, white and borne in great profusion. 75 cents each.

#### HARDY CLIMBING AND RAMBLER ROSES

**American Pillar:**—Clusters of large single flowers with white centers and golden stamens. 75 cents each.

**Climbing American Beauty:**—Brilliant carmine flowers. 75 cents each.

**Crimson Rambler:**—The most popular red climber. 75 cents each.

**Dorothy Perkins:**—A beautiful soft shell pink, large profuse clusters. Undoubtedly the best pink climber for our cold climate. 75 cents each.

**White Dorothy:**—Like the above except in color which is pure white. 75 cents each.

**Dr. Van Fleet:**—A delicate flesh pink. Blossoms beautifully formed, very double, often 4 inches across. 75 cents each.

**Excelsa:**—Quite similar to Crimson Rambler. 75 cents each.

### CLIMBING ROSES (Continued)

**Mary Wallace:**—The outstanding large flowered pink climber. Very brilliant and invariably satisfactory. 75 cents each.

**Primrose:**—New hardy climber with primrose-yellow, double flowers in great profusion. \$1.00 each.

### HYBRID PERPETUAL ROSES

This class of roses is hardy in the greater part of New England, but requires some protection up here in the "Cold Country."

75 cents each.

**Gen. Jacqueminot:**—The popular Gen. Jack Rose, deep red, hardy and a mass of bloom in the early summer.

**Magna Charta:**—Bright pink, large, very double and hardy.

**Frau Karl Druschki:**—The finest white Hybrid-Perpetual rose in existence. Should be protected the same as the Hybrid-Teas.

### DWARF POLYANTHA OR BABY ROSES

The following varieties are hardy and need little protection. They form bushy specimens about 18 inches high and from early in the season until the frosts come produces large trusses of small flowers in great profusion.

All 75 cents each

**Ellen Poulsen:**—A most floriferous dark, brilliant pink; very sweetly scented.

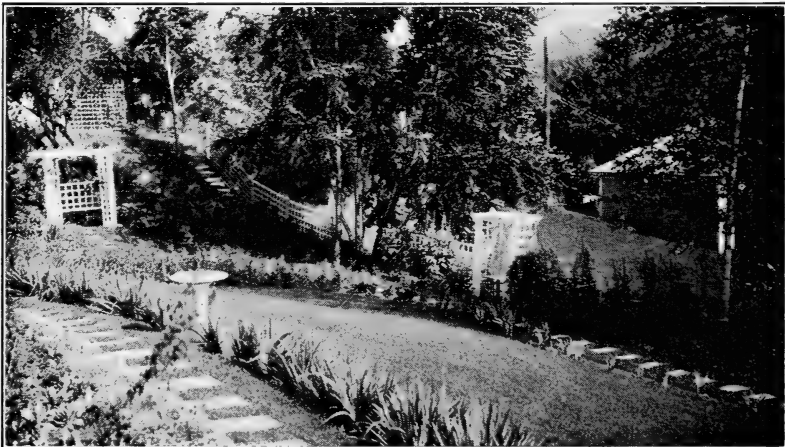
**Jeanne D'Arc:**—Snow white; the best white Baby Rambler.

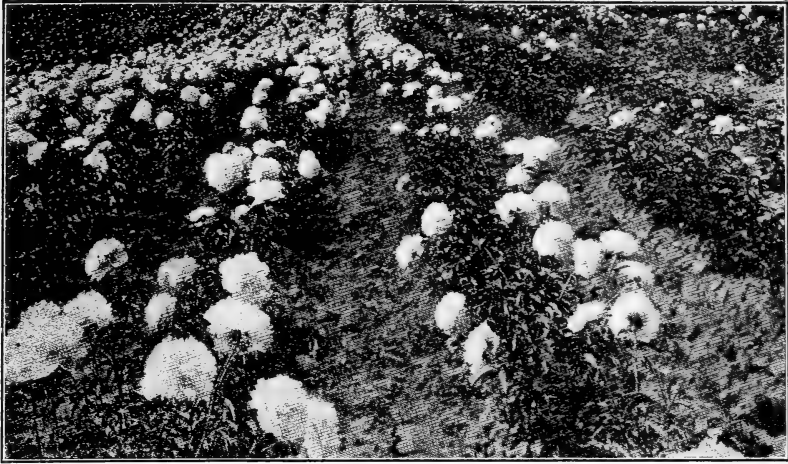
**Erna Teschendorff:**—Medium sized bright red, semi-double flowers on dwarf plants.

**Orleans:**—Of good size, flowers double, brilliant geranium-red with white center, very free and reliable.

**Lady Reading:**—A bright, light red sport of Ellen Poulsen, with all the good traits of that popular variety.

**Miss Edith Cavell:**—Bright crimson with white center. Flowers small in large clusters. Free bloomer.





## Peonies

The prices given below are for strong root divisions of from 2 to 4 strong buds. 2-year undivided roots at double the price. 5-year clumps at 4 times the prices given below.

	each.
<b>Altar Candles:</b> —Japanese type, pink petals, petaloids crimson.	\$1.00
<b>Albert Crousse:</b> —Large, shell-pink; a winner at Peony shows.	35 cts.
<b>Adolph Rousseau:</b> —Tall, early, rich velvety red.	50 cts.
<b>Alsace Lorraine:</b> —Called the Water-lily Peony. Creamy-white.	35 cts.
<b>Avalanche:</b> —An extra good, large double white Peony.	35 cts.
<b>Augustin d'Hour:</b> —A very good bright red.	25 cts.
<b>Aurora:</b> —Large, loose, baby-pink blooms; late.	35 cts.
<b>Claire Dubois:</b> —Large, rich satiny pink.	35 cts.
<b>Couronne d'Or:</b> —Fine, late white Peony.	25 cts.
<b>Dorchester:</b> —Very late. Hydrangea-pink.	35 cts.
<b>Edulis Superba:</b> —Very early; large, deep pink.	25 cts.
<b>Eugene Bigot:</b> —Very large, brilliant red.	50 cts.
<b>Eugenie Verdier:</b> —Hydrangea-pink, center flushed crimson	50 cts.
<b>Felix Crousse:</b> —Bright red, very reliable.	25 cts.
<b>Festiva Maxima:</b> —Standard early white, center flecked crimson.	25 cts.
<b>Georgiana Shaylor:</b> —Late, rose-pink. A top-notch.	50 cts.
<b>Grandiflora:</b> —Very late, large pink Peony.	35 cts.
<b>Jules Calot:</b> —A long season bloomer; very double, deep pink.	35 cts.
<b>June Day:</b> —A very large, deep pink Peony. A prize winner.	50 cts.
<b>Karl Rosenfield:</b> —One of the best dark velvety red Peonies.	50 cts.
<b>Le Cygne:</b> —White. Highest ranking Peony in existence.	\$1.50
<b>Marie Jacquin:</b> —Semi-double; delicate flesh tint.	35 cts.

<b>Marie Lemoine:</b> —Very late, large double white.	35 cts.
<b>Mikado:</b> —Japanese type; crimson; petaloids, crimson tipped yellow.	75 cts.
<b>Mme. Calot:</b> —Early, white tinted pink.	25 cts.
<b>Mme. de Verneville:</b> —The earliest white Peony; profuse bloomer.	25 cts.
<b>Mme. Emile Galle:</b> —Sea-shell pink with touches of lavender.	35 cts.
<b>Mme. de Vatry:</b> —Light pink with nearly white center.	35 cts.
<b>Mon. Jules Elie:</b> —One of the largest Peonies. Shades of pink.	35 cts.
<b>President Roosevelt:</b> —Dark red double Peony, late.	35 cts.
<b>Reine Hortense:</b> —One of the finest; soft pink.	50 cts.
<b>Sarah Bernhardt:</b> —One of the best; delicate shell pink.	50 cts.
<b>Scelange:</b> —Waxy-white with darker shades in center. None better.	75 cts.
<b>Therese:</b> —Highest ranking pink Peony.	\$1.00
<b>Walter Faxon:</b> —Salmon pink; an aristocrat.	75 cts.
<b>Mixed Pink Varieties:</b> —Sold only in large clumps 5 & 6 years old.	\$1.00



## German Hybrid Iris

<b>Afterglow:</b> —Delicate grayish-pink, shaded yellow in center.	each. 25 cts.
<b>Alcazar:</b> —One of the largest. Standard violet, falls purple.	25 cts.
<b>Allure:</b> —Canary yellow overlaid pink.	75 cts.
<b>Ambassadeur:</b> —Standards bronzy-violet, falls velvety black.	25 cts.
<b>Ann Page:</b> —A lovely Iris; wistaria-violet, almost sky-blue.	25 cts.
<b>Aphrodite:</b> —About the best violet-pink Iris.	25 cts.
<b>Autumn King:</b> —Purple flowers in spring and sometimes in fall.	35 cts.
<b>B. Y. Morrison:</b> —Standards lavender, falls purple, edged-lavender.	25 cts.



<b>Blue Boy:</b> —Dwarf, as near true blue as any Iris. Lovely.	25 cts.
<b>Bruno:</b> —Standards bronze, falls velvety red-purple.	50 cts.
<b>Cecil Minturn:</b> —One of the best of the pink Irises	25 cts.
<b>Cinnabar:</b> —A rich dark violet-purple.	35 cts.
<b>Citronella:</b> —Yellow standards. Falls washed chestnut or bay.	35 cts.
<b>Coppersmith:</b> —Velvety red with a copper sheen.	50 cts.
<b>Crimson Glow:</b> —Deep rose color.	25 cts.
<b>Crusader:</b> —Considered by many as the best dark blue.	25 cts.
<b>Eduard Michell:</b> —A large deep, wine-red, good.	25 cts.
<b>Elizabeth Egelberg:</b> —Very large, general effect mauve-pink.	50 cts.
<b>Elsinor:</b> —Primrose-yellow blended with pale purple.	50 cts.
<b>Flammenschwert:</b> —Standards yellow, falls chestnut-brown.	25 cts.
<b>Florentina alba:</b> —Early; Bluish-white, large flowers.	25 cts.
<b>Gay Hussar:</b> —Standards lemon, falls velvety oxblood red.	50 cts.
<b>Germaine Perthuis:</b> —The best violet-purple Iris.	35 cts.
<b>George Yeld:</b> —Standards apricot, falls rose-color edged buff.	35 cts.
<b>Glowing Embers:</b> —Standards violet, falls plum-purple.	35 cts.
<b>Gold Imperial:</b> —The best low priced yellow.	25 cts.
<b>Her Majesty:</b> —General effect rosy-pink, dwarf.	25 cts.
<b>Isoline:</b> —Standards lilac-pink, falls old rose; beautiful.	50 cts.
<b>King Karl:</b> —Standards apricot, falls ivory, both dotted maroon.	35 cts.
<b>Labor:</b> —General effect a rich red tone, large, uncommon.	50 cts.
<b>Lent A. Williamson:</b> —Very large, standards lavender, falls purple.	25 cts.
<b>Lohengrin:</b> —Uniform shade of cattleya-rose and lavender.	25 cts.
<b>Lord of June:</b> —None larger, soft lavender, an aristocrat.	35 cts.
<b>Majestic:</b> —Standards light lavender, falls velvety purple.	35 cts.
<b>Mildred Presby:</b> —Standards cream, falls velvety violet.	35 cts.
<b>Mme. Chobault:</b> —Amber and wine-red on a lemon colored ground	25 cts.



<b>Mme. Gaudichau:</b> —One of the best dark purples.	25 cts.
<b>Morning Splendor:</b> —A large, rich glowing red.	35 cts.
<b>Opera:</b> —Rich velvety reddish purple.	25 cts.
<b>Pallida Dalmatica:</b> —Clear lavender-blue, large and tall.	25 cts.
<b>Pioneer:</b> —One of the largest Purple Irises.	35 cts.
<b>Powhatan:</b> —Standards light violet, falls deep purple shaded red.	25 cts.
<b>Prospero:</b> —Standards pale lavender, falls red-purple, very large.	25 cts.
<b>Quaker Lady:</b> —Old gold and smoky lavender, good.	25 cts.
<b>Rajput:</b> —A large clear violet colored Iris.	25 cts.
<b>Reverie:</b> —Standards cream flushed pink, falls deep pink.	50 cts.
<b>Rhein Nixe:</b> —Standards white, falls violet edged with white.	25 cts.
<b>Romola:</b> —Standards pale lilac, falls velvety red-violet.	50 cts.
<b>Rose Madder:</b> —Name describes the color.	35 cts.
<b>Shekinah:</b> —Tall creamy yellow.	25 cts.
<b>Sherwin Wright:</b> —Dwarf, golden yellow.	25 cts.
<b>Taj Mahal:</b> —A fine white Iris.	25 cts.
<b>Tenebrae:</b> —Standards light violet, falls darker violet.	25 cts.
<b>Titan:</b> —General color violet-purple. A massive Iris.	35 cts.
<b>True Charm:</b> —White edged blue. An outstanding Iris.	25 cts.
<b>Vesper Gold:</b> —A rare shade of old gold.	50 cts.
<b>Wedgwood:</b> —One of the bluest of Irises.	35 cts.
<b>Zwannenburg:</b> —Standards olive-buff, falls the same washed old gold	35 cts.

#### OTHER IRIS SPECIES

	each
<b>Siberian blue:</b> —Grass-like foliage, deep blue flowers on 3 ft. stems	25 cts.
<b>Siberian Snow Queen:</b> —Like the above but white flowers.	25 cts.
<b>Siberian Emperor:</b> —A large variety with navy blue flowers.	25 cts.
<b>Iris pseudacorus:</b> —A tall, large specie with bright yellow flowers.	25 cts.
<b>Japanese Iris, Named Varieties:—</b>	
<b>Azure:</b> —Double, immense flower, color soft mauve.	50 cts.
<b>Bobby Sipe:</b> —Large, white feathered with violet.	50 cts.
<b>Catherine Perry:</b> —Double, blue overlaid rosy-red.	50 cts.
<b>Choseiden:</b> —Double, white with wide band of lilac.	50 cts.
<b>Eleanor Perry:</b> —Double, claret-red flushed white and blue.	50 cts.
<b>Gold Bound:</b> —Double, white with gold stripe through petals.	25 cts.
<b>Hannibal:</b> —Single, porcelain color veined rosy purple.	25 cts.
<b>Harris 71:</b> —Double, deep blue with purple shadings.	25 cts.
<b>Olympia:</b> —Single, rosy-pink and lavender blended.	\$1.00
<b>Pyramid:</b> —Double, deep blue suffused light blue.	35 cts.
<b>Snowbound:</b> —Single, large white.	35 cts.
<b>Talmanya:</b> —Single, ruffled, pale blue splashed darker blue.	50 cts.

# Phlox

Gardeners who know only the old-fashioned varieties of Phlox, do not know the possibilities of the newer varieties for landscape effects. They are all perfectly hardy, enduring our severe winters without protection, and when once planted they last a lifetime, if a little pains be taken to divide them every three or four years. Make the ground rich and plant the crowns even with the ground. This collection contains the best of the modern varieties.

25 cents each. \$2.50 per dozen.

**Annie Cook:**—A large light pink phlox.

**Antonin Mercie:**—White overlaid with light lilac, large.

**Beacon:**—A brilliant red similar to Prof. Went.

**Camillio Schneider:**—This variety is brilliant scarlet-red, always pure in color, with no tendency to fade. Medium height, large flowers and trusses. One of the best.

**Commander-in-Chief:**—Brilliant deep crimson-red with slightly darker eye. Extra rugged growth with enormous trusses of large flowers.

**Dawn:**—A beautiful blush pink, medium height.

**Europa:**—Large white flowers with a bright carmine eye, tall.

**Ethel Pritchard:**—We consider this the best phlox in existence. We have had individual flowers as large as a silver dollar, while the trusses are immense. Color, a beautiful mauve; in cloudy weather, almost blue.

**Frau Anton Buchner:**—A rich creamy-white blossom of extra large panicle and truss. Medium to tall.

**Iris:**—The nearest to the blue phlox yet produced. Same shade as the Iris Pallida damatica or the Gladiolus Geraldine Farrar. An outstanding variety that always attracts attention.

**Jules Sandeau:**—Large and free-flowering of a bright water-melon pink. Considered one of the best.

**Karl Forster:**—This new importation appears to be a fine phlox of quite a new shade. Its color is an orange-red with darker eye.

**Lavender Lady:**—Streaked lavender and white. Lavender effect when planted in a mass.

**Le Mahdi:**—One of the darkest of phloxes, deep and metallic red with a touch of purple.

**Milly von Hoboken:**—A large bright pink with a touch of lavender. New and beautiful.

**Miss Lingard:**—The earliest phlox, flowering about 3 weeks before other varieties. Never affected with red spider or rust. Pure white. No garden should be without this phlox.

**Mrs. Jenkins:**—Tall white phlox, rather late but very good.

**New Bird:**—Deep crimson-red with purple eye.

**Painted Lady:**—Silvery pink, shaded salmon, with bright red eye.

**Pantheon:**—Clear deep carmine-pink with faint halo.

**R. P. Struthers:**—Bright rosy-carmine with red eye. Never sunburns.

**Thor:**—A lively shade of deep salmon pink, with claret-red eye.

**W. C. Egan:**—Very large flowers of delicate lilac with large bright red eye. General effect in masses, a soft pink.

**Wanadis:**—Mottled white and mauve, with distinct red eye.

**Widar:**—Mauve with large white eye.

**For other Phlox Species, see Rock Garden Section.**



### DWARF ASTILBE

**America:**—A fine pale pink Astilbe with large heads; growing 18 inches tall.

**Gladstone:**—Unquestionably the finest dwarf white Astilbe to date.

**Gloria atropurpurea:**—A new variety with dark pink heads of large size. 24 inches tall.

**Queen Alexandra:**—One of the best light pinks. A favorite with florists.

**Rhineland:**—Crimson shaded salmon, a new and superb variety, 2 ft.

### TALL HYBRID ASTILBE

**Betsey Cuperus:**—A splendid new variety growing 5 ft. tall, with graceful drooping flower spikes 2 ft. long, each spike composed of a great number of flowers, white with a pink center.

**Ceres:**—This fine garden Astilbe grows about 3 ft. tall with beautiful feathery spikes of rosy lilac color.

**Gruno:**—New variety, light and graceful spikes; salmon-pink; 4 ft.

**Marguerite Van Rechteren:**—This plant grows about 5 ft. high. The flower stem itself has a length of over 3 ft. The very fine fringed flowers are bright red, tinged with dark-lilac.

**Meta Immink:**—4 ft. Splendid new variety from Holland, with dense long flower spikes of a delightful deep pink.

**Prof. Wielen:**—A new variety with large heads of small white flowers on long graceful stems.

**Rosea Maxima Grandis:**—4 ft. One of the best of the tall, deep pink varieties.

**Salland:**—A vigorous variety with fine red stems and crimson flowers in long heads. Often more than 6 ft. tall.

All Astilbe, 25 cents. Larger, very heavy plants in the fall, 35 cents.

### ACONITUM—(Monkshood)

**Aconitum Fischeri, Fischer's Monkshood:**—The dwarf of the race, growing scarcely 2 ft. tall. Very green foliage with fine sky-blue flowers in September. 35 cents each.

**A. Napellus, Early Monkshood:**—4-5 ft. This, the earliest of the Monkshood, blooms in July, with long spikes of bright blue flowers. 35 cents each.

## ACONITUM (Continued)

**A. Spark's Variety:**—4-5 ft. Quite different from the others, this Monkshood has large branching heads of dark blue flowers. We consider it the best of the family. Profuse bloomer in Aug. and Sept. 35 cents each.

**A. bicolor, Blue and White Monkshood:**—3-4 ft. This rare and beautiful plant would hardly be recognized as Monkshood. Clear white and blue, in bloom in early August, it is a beauty. 50 cents each.



## HARDY PERENNIAL ASTERS—(Michaelmas Daisies)

**Barr's Pink:**—5 ft. tall. The best and largest deep pink aster.

**Blushing Bride:**—2½ ft. tall. White with just a touch of pink.

**Capitaine:**—7 ft. tall. Blooms Oct. 15; white tinted lavender.

**Dick Ballard:**—2 ft. tall. Rose-color tinted lavender; free flowering.

**Liege:**—2 ft. Early, deep rose-pink. A mass of bloom in September.

**Mother-of-Pearl:**—3 ft. Large flowers mauve-pink at edges shaded white.

**Mons:**—Quite similar to Liege but later in season.

**New England superbum:**—5 ft. Very large flowers, bright violet-purple.

**October Dawn:**—3 ft. Large lilac-mauve flowers in late September.

**Queen Mary:**—4 ft. An improved Climax. The finest light blue Aster.

**Skyland's Queen:**—4 ft. Light blue; one of the best.

**Wcnder of Staffa:**—2 ft. Early, lavender-blue.

Above Perennial Asters All 25 cents each. \$2.00 per dozen.

## AQUILEGIA OR COLUMBINE

The Columbine is one of the most beautiful, elegant and graceful of all the hardy plants, not particular as to soil, will stand some shade, and during early summer delights the heart of the gardener.

**A. Canadensis, Common Wild Columbine:**—This familiar red and yellow Columbine is at home in sun or shade. An excellent rock garden plant, or fine for the front of the border.

Prices on these Perennials, except as noted, are 25 cents each; 3 alike for 60 cents; \$2.00 per dozen of one kind. Purchaser pays transportation charges.

## COLUMBINES (Continued)

**A. Chrysantha, Golden Spurred Columbine:**—One of the best of the Columbines. Yellow, long spurred and a fine cut flower. 2 ft. tall.

**A. Pink Hybrids:**—The popular pink Columbine. Every shade of pink found in these Columbines. 2 ft. tall.

**A. Coerula, Rocky Mt. Columbine:**—Visitors at our Nursery generally consider this to be the most beautiful of the Columbines. Large flowers in blue and white.

**Achillea filipendulina:**—Flat heads of brilliant yellow flowers on 3 ft. stems.

**A. ptarmica:**—2 ft. Small white flowers through the summer; good for cutting.

**Aegopodium podogaria:**—8-10 in. A fine plant for edging of beds. Has white and green variegated leaves. Not a rock garden plant.

**Agrostemma coronarius, Mullen Pink:**—30 in. The most brilliant red in the perennial garden. Gray foliage. An old-fashioned flower.

**A. Flos Jovis:**—Somewhat like the above, but with pink flowers.

**Amsonia salicifolia:**—A stout shrub-like plant, 2 ft. tall with light blue flowers in midsummer.

**Anchusa Barrelieri:**—2 ft. Masses of bright blue flowers on long stems in June. A more refined plant than the next. Both are good however.

**A. Italica, var. Dropmore:**—3-4 ft. An interesting border plant with pretty gentian-blue flowers in June. Good for cutting.

**Anemone canadensis:**—12 in. White flowers all summer; very hardy. Other varieties of Anemone in the Rock Garden section.

**Anthemis Kelway:**—2 ft. A very satisfactory perennial for poor soil with golden daisy-like flowers all summer.

**A. tinctora, Perry's Variety:**—An improved Anthemis with large bright yellow flowers in August.

**Artemisia lactifolia:**—A tall plant, 5 to 7 ft., with fine foliage and heads of small cream-colored flowers with a hawthorn-like fragrance in early fall.

**Asclepias tuberosa, Butter-fly Weed:**—A very attractive plant with brilliant orange-colored flowers in August. Plant in driest and hottest spot.

**Bocconia cordata:**—6-8 ft. Large tropical looking foliage surmounted by large feathery plumes of cream-colored flowers, fine for background.

**Boltonia latisquama:**—4-6 ft. A showy plant for the back of the border with aster-like flowers, pink, slightly tinted with lavender.

**B. asteroides:**—5-7 ft. A white variety of Boltonia. We consider this plant superior to any of the tall white asters for late fall bloom.

**Campanula alliariaefolia:**—2 ft. A Bellflower from Asia Minor with fine spikes of long, pendant, creamy-white flowers.

**C. carpathica, Carpathian Harebell, blue:**—One of the few plants that should be in every garden and also in the rock garden. Grows in compact tufts about 8 inches high with clear blue flowers on wiry stems. A mass of bloom from June to September. A great edging plant.

**C. carpathica, white:**—Like the above except in color, which is pure white. An equally good plant.

**C. glomerata:**—18 in. A Campanula that should be in every garden. In June and July, it has large close heads of deep blue flowers which are very effective.

**C. rapunculoides:**—2 ft. A Siberian bell-flower with bright blue bells in early July.

**C. trachelium**:—2 ft. Light-purple drooping flowers in August.

Other Campanulas may be found in the Rock Garden Section.

**Centaurea dealbata**:—24 in. Large and striking rose-pink flowers. July.

**C. Macrocephala**:—Large, thistle-like golden yellow flowers; useful for cutting and showy in borders. July and August. 3½ feet high.

**C. Montana, Perennial Cornflower**:—Grows 2 ft. high, bearing large, violet-blue flowers from July to September.

**Chelone Lyoni**:—3-4 ft. Lovely rose-pink flowers; fine in masses; mid-summer.

**Cimicifuga racemosa**:—Handsome shade-loving plants bearing, in July and August, long spikes of pure white flowers; 4 to 6 ft. high.

**Chrysanthemum, Barbara Cumming**:—One of the finest of the hardy "mums." Large flowers of bright yellow.

**C. Early Bronze**:—A very early and fine "mum" with medium sized flowers of a bronzy-yellow.

**C. Scotch Mum**:—Very early, perfectly hardy. White, ageing to pink.

**Convallaria majalis, Lily of the Valley**:—8-12 in. This lovely flower does best in shady places. Make the ground rich and give plenty of water.

Single plants, 3 for 25 cents, or 75 cents per doz., clumps, 60 cents.

**Coreopsis**:—A very attractive perennial with an abundance of large yellow, daisy-like flowers on long stems. Fine for cutting.

**Daphne cneorum**:—See page 10.

## DELPHINIUM

The Delphinium is truly an indispensable plant in every garden. Great improvement has been made with this plant. The new hybrid forms are a great improvement in size and shape and are in many different shades.

**Vulcan**:—A named Delphinium recognized as one of the best of the dark shades. Has enormous double flowers, outside petals plum color, inside petals dark copper color; extra long spike. Often grows 8 ft. high. Large clumps \$2.00 each.

**Mixed Hybrids**:—Mostly singles, large plants and a great improvement over common Delphiniums. Run of the field, 35 cents each. Selected plants 50 cents each.

**D. grandiflora, Chinese Delphinium**:—2 ft. A low-growing, much branched Delphinium with flowers of deep, clear blue, blooming all summer. 25 cents each. 3 for 60 cents. \$2.00 per dozen.

## DIANTHUS (Hardy Garden Pinks)

**Bristol Maid**:—We consider this new pink the best Hardy Pink yet produced; extra large, very double, and a lovely rose-pink color. Very free flowering and with a delightful clove fragrance. Don't miss it.

**Bristol Purity**:—Absolutely pure white, this new variety is an advance on the older white Hardy Pinks. Very double, very fragrant.

**D. barbatus**:—See Sweet William.

**D. Plumarius, Clove Pink**:—The old-fashioned Clove Pink is still one of the best garden flowers. Fragrant and very floriferous.

**D. caesius, Cheddar Pink**:—One of the best Pinks where given enough room, it will make a perfect circular cushion 2 feet in diameter and about 6 inches high completely covered with clear pink flowers, a beauty.

Other Dianthus species may be found in the Rock Garden Section.

**Dictamnus flaxinella**:—3 ft. A very showy border perennial having fragrant foliage and spikes of curious pink flowers in June. 35 cents.

**D. flaxinella alba**:—A white form of the above which is even more desirable in the garden. 35 cents.

**Digitalis ambigua**:—3 ft. A true perennial Foxglove, with soft yellow flowers marked with brown. Blooms in July.

Prices on these Perennials, except as noted, are 25 cents each; 3 alike for 60 cents; \$2.00 per dozen of one kind. Purchaser pays transportation charges.



**Dielytra spectabilis, Bleeding Heart:**—The old-fashioned Bleeding Heart with its long racemes of rosy-red, heart shaped flowers in early summer. Is still one of the best perennials in cultivation. 35 cents each.

Large Clumps, 50 cents each. \$5.00 per dozen.

**Dielytra eximia, Plumy Bleeding Heart:**—A low-growing variety with fern-like leaves, and rose-pink blooms all summer.

**Dodecatheon media, Shooting Star:**—2 ft. A pretty perennial from the Western prairies with rose-colored flowers in June.

**Doronicum plantagineum, Leopard's Bane:**—3 ft. The earliest daisy-like flower to bloom in the spring. The single flowers are produced on long stiff stems and resemble a yellow daisy with yellow center.

**Echinops ritro, Globe Thistle:**—3-4 ft. An interesting thistle-like plant, with large globular heads of deep metallic-blue flowers in late summer.

**Erigeron mecranthus, Purple Fleabane:**—2 ft. A fine hardy perennial, has large, light-purple, daisy-like flowers in July. Good for cutting.

**Eryngium planum, Sea Holly:**—3 ft. This is a prickly plant in every respect, the leaves are prickly, the flower head is surrounded with prickly bracts and the flower itself is like a thistle; colored light blue.

**Eupatorium fraseri, Fraser's white Ageratum:**—2 ft. A useful border plant with pyramidal spikes of white flowers in late summer.

**Filipendula hexapetala, Dropwort:**—3 ft. Large white flowers in August. An old garden favorite.



**F. rubra, Pink Queen of the Meadow:**—4-5 ft. Large deep-pink flowers held high above the foliage in August. A fine old perennial. 35 cents.

**Hardy Ferns:**—See page 31.

**Funkia subcordata grandiflora:**—Very large pure white lily-shaped fragrant flowers in August and September. 50 cents each.

**Funkia variegata, Variegated Funkia:**—This beautiful plant has foliage variegated white and green and about 6 inches high, making it a fine plant to edge beds with, also used in rock gardens; pretty blue flowers in July.

**Galega Hartlandi:**—24 in. Graceful plants with nice foliage and lavender pea shaped flowers in midsummer.

**Gaillardia Grandiflora, Blanket Flower:**—One of our most gorgeous perennials. Will succeed in any soil, the poorer the better. Large daisy-like flowers in crimson and gold. 2 ft. high.

**Gaillardia, Golden Gleam:**—The finest pure yellow Gaillardia yet produced. Extra large flowers of the purest yellow without any shading, borne on long stems. One of the best new perennials. 2 ft.

**Gypsophila paniculata, Baby's Breath:**—2 ft. Tiny, mist-like flowers that give grace and lightness to any bouquet.

**Gypsophila, Bristol Fairy:**—A wonderful improvement on the old Gypsophila, being much larger in plant and flower. A mass of small white flowers all summer. Much used by florists to give elegance and lightness to bouquets. 50 cents each.

**Helenium autumnale, Helen's Flower:**—One or more varieties of this perennial should be in every garden, as together with the Boltonia and the Hardy Asters, they give a wealth of flowers well into November. When all other flowers have succumbed to the frosts, then these flowers are in their glory. We offer the following varieties:

**Riverton Beauty:**—Rich lemon-yellow with black cone center. 4 ft.

**Rubrum:**—Rich terra-cotta color. 3-4 ft.

**Superbum:**—Golden-yellow. 5-6 ft.

**Helenium Hoopesii:**—2 ft. An early dwarf variety of Helen's Flower with clear rich yellow flowers in June. Extra good and not common.

### HEMEROCALLIS (Yellow Day Lilies)

The Day Lilies have always been very popular plants for the garden and in the last few years this popularity has greatly increased by the addition of many new hybrids. These Hybrids are generally much larger, some new shades have been evolved and the flowering season lengthened. There are no poor varieties in this genus.

**Apricot:**—2 ft. Large light orange flowers in May. 75 cents each.

**Bay State:**—4 ft. Large, glistening, pure yellow flowers in July. \$1.00

**Goldini:**—3 ft. Large, deep golden yellow flowers in early July. \$1.00

**Mrs. A. H. Austin:**—4 ft. Deep golden yellow flowers in August. \$1.00

**Margaret Perry:**—3 ft. Brilliant orange-scarlet in August. \$1.00

**Mrs. W. H. Wyman:**—3 ft. Pale glistening yellow in Aug.-Sept. \$1.00

**Hemerocallis Flava, Lemon Day Lily:**—Very fragrant lily-like flowers of light lemon color. Blooms in June and July. 3-4 ft.

**H. Fulva, Tawny Day Lily:**—Trumpet-shaped flowers of a neutral orange color with darker markings. Blooms in July and August. 3-4 ft.

**H. kwanso:**—Large, double flowered variety with rich golden bronze flowers. 3-4 ft.

**H. Thunbergii:**—Much like Flava but flowers a month later. 3-4 ft.

**Helianthemum mutabile, Rock Rose:**—See Rock Garden Section.

**Heuchera, Coral Bells:**—All varieties of this plant are lovely border perennials. See page 37.

Prices on these Perennials, except as noted, are 25 cents each; 3 alike for 60 cents; \$2.00 per dozen of one kind. Purchaser pays transportation charges.

**Heliopsis pitcheriana**:—A fine perennial growing about 4-5 ft. high and covered with large daisy-like flowers of purest yellow, all summer.

**Hibiscus moscheutos, Rose Mallow**:—6 ft. This is an attractive member of the Hollyhock family, bearing flowers often six inches wide and of various colors. Fine for bogs, though quite at home in good garden soil.

**Lavandula veris, Lavender**:—This is the true Sweet Lavender, and grows about 12 inches high; delightfully fragrant flowers in late summer.

**Liatris spicata, Kansas Gay Feather**:—A very conspicuous and attractive perennial which blooms in mid-summer with long narrow spikes of purple flowers which last a long time. 3 ft.

**L. pycnostachya**:—4-5 ft. Similar to above but grows taller.

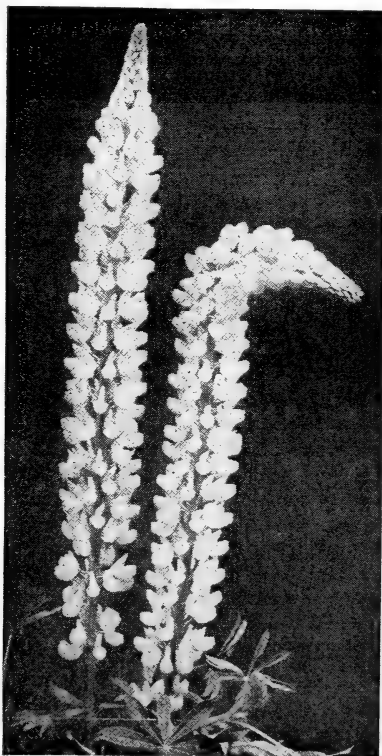
**L. scariosa**:—2-3 ft. Quite different from the Kansas Gayfeather, as it branches and the flowers are in small heads in large panicles. Blooms are rosy-lavender, in late summer.

**L. squarrosa, Blazing Star**:—18-24 inch. Similar to scariosa but hardly as good.

**Linum perenne, Blue Flax**:—12-18 in. Blue Flax is one of our loveliest perennials. The foliage and flowers are very delicate and airy and present the appearance of a small feathery bush. The flowers are lovely blue and come from May to heavy frosts. Good for both garden and rockery.

**Lobelia cardinalis, Cardinal Flower**:—1-4 ft. Handsome border plants that will thrive in any garden, but prefer a moist soil; do well in partial shade. Has brilliant scarlet flowers on long spikes in August.

**L. spiphilitica**:—2-3 ft. Similar to above excepting the color is blue.



**Lupines, Mixed English Hybrids:**—We have about 1500 of these plants all raised from seed of named varieties. They are large, fine plants in an infinite number of shades and are offered as they come at 35 cents each. \$3.00 per dozen. Your selection of these plants in bloom for 50 cents each.

**Lychnis Calcedonica, Maltese Cross:**—Heads of vivid scarlet flowers, blooming a long time. 3 ft. tall.

**L. viscaria splendens:**—A fine perennial growing about 15 inches tall with masses of bright flowers in mid-summer.

**L. viscaria splendens, fl. pl.:**—A double form of the above. 35 cents each.

**L. Flos Jovis:**—Grey foliage and pink flowers in mid-summer.

**Lysimachia punctata:**—18-24 in. An uncommon perennial with whorls of bright yellow flowers from August to frost.

**Lythrum salicaria roscum, Rose Loosestrife:**—A vigorous plant growing from 3 to 5 feet high, with spikes of rose-colored flowers from July to frost. Will grow anywhere.

**Malva moschata, Musk Mallow:**—A fine branching perennial growing about 2 feet high and covered with clear pink flowers about 2 inches in diameter all through the summer.

**M. moschata alba:**—A glistening white variety of the above.

**Mertensia Virginica, Virginia Bluebells:**—18 in. An early spring flowering perennial with tubular flowers of sky-blue fading to pink as they age. After flowering the plant dies down until the following spring.

**Monarda didyma, Bee-Balm:**—2-3 ft. Large brilliant scarlet blossoms from July to September. All the Bee-Balms should be grown in masses.

**M. fistulosa, Lavender Bee-Balm:**—2-3 ft. Lavender flowers in August.

**M. rosea, Cherry-red Bee-Balm:**—3-4 ft. A beautiful Bee-Balm when planted in large clumps. Rosy-red flowers in September.

**Mycosotis palustris, Everblooming Forget-me-not:**—A beautiful Forget-me-not for moist places, where it blooms all summer. Will do well in any good garden soil.

**Oenothera speciosa grandiflora, White Evening Primrose:**—Pure white flowers, 3 inches across in mid-summer. Grows 18 inches tall. A fine perennial.

**Pachysandra terminalis, Japanese Spurge:**—6-8 in. A ground cover, forming broad mats of bright green foliage that will grow in dense shade as well as in the sun. Use where you cannot grow grass.

**Pardanthus chinensis, Blackberry Lily:**—2-3 ft. Orange-colored, lily-like flowers in late summer, followed by seed pods which resemble blackberries. Foliage similar to Iris foliage.

**Pentstemon grandiflora:**—2 to 3 ft. About the best of the blue Pentstemons. Large light blue or lavender flowers in June.

**P. barbatus, Torreyi:**—3 ft. A very good perennial that can be used in either the formal garden or the rock garden. Stately and brilliant with their long loose panicles of scarlet flowers in late summer.

**P. digitalis, Foxglove Penstemon:**—18 in. As its name implies, it has a similarity to the foxglove. White flowers with purple throats. Blooms in July and August.

**P. tubiflorus:**—18 in. About the best white Pentstemon. Snow-white with black stamens.

**P. Watsoni:**—18 in. Large flowers of violet-blue.

**Physostegia Virginica, False Dragon Head:**—A very handsome mid-summer flowering perennial forming bushes 4 to 6 ft. tall, bearing spikes of delicate tubular flowers much like a gigantic heather. Color, soft pink.

**P. Alba:**—A white form of the above.

**P. Vivid:**—This new dwarf variety growing about 18 inches high, with large heads of very large flowers of deep pink, is an outstanding perennial and has little resemblance to the other Physostegias. It blooms in late summer and is one of the few new perennials that is worth while.

Prices on these Perennials, except as noted, are 25 cents each; 3 alike for 60 cents; \$2.00 per dozen of one kind. Purchaser pays transportation charges.

## Oriental Poppies

This gorgeous perennial should be planted in early spring or during its dormant period in August and September. The named varieties offered below are much superior to seedling plants.

**Duke of Teck:**—Large, light crimson.

**Goliath:**—Enormous blooms of brilliant scarlet.

**Joyce:**—Very choice, large, old rose color.

**Mrs. Perry:**—Salmon-pink; very fine.

**Olympia:**—The earliest; flame-color.

**Orange Queen:**—A lovely brilliant orange shade.

**Papaver nudicaule, Iceland Poppy:**—12-18 in. These lovely dwarf plants are of great value in the sunny border or Rock Garden. Their brilliant orange-yellow, white or pink flowers are produced all summer.

**Platycodon grandiflora, Balloon Flower:**—2-2½ ft. Neat, branched bushes of upright growth. Attractive blue flowers from July to October.

**P. Alba:**—A bluish-white form of the above.

**Polygonum bladschnomen:**—5-7 ft. A tall tropical looking perennial with creamy-white flowers. Good near a pool.

**Polyantha:**—See Primula, Rock Garden Plants.

**Pyrethrum ul'ginosum, Giant Daisy:**—3-5 ft. A good plant for the back of the border; large, white daisy-like flowers in August and September.

**Pyrethrum Hybridum, Painted Daisy:**—One of the most beautiful perennials bearing large daisy-like flowers all summer, ranging from white to deep red with yellow centers. Deep green finely cut foliage.

**Polemonium Coeruleum, Jacob's Ladder:**—This old-fashioned flower has erect stems of sky blue flowers, a foot or so tall and blooms in July and August.

**Rudbeckia Newmanni, Perennial Black-eyed Susan:**—A fine perennial with deep orange-yellow flowers on long, wiry stems. Blooms all summer.

**R. purpurea, Purple Cone Flower:**—A very attractive perennial with large, purple, daisy-like flowers on long stems. Blooms from July to October.

**Salvia azurea:**—4 ft. A fine autumn blooming perennial, covered in September with light blue flowers.

**S. patens:**—12 in. A small dark blue Salvia; blooms in August.

**Senecio clivorum:**—Very large leaves with an abundance of golden-yellow, 3 in. daisy-like flowers on 2 ft. stems. Grows still taller with larger flowers on moist soil. Properly placed it is a great perennial.

**Sedums:**—There are few places in the hardy garden that the dwarf sedums can be used. They are strictly rock garden plants and should be used there only. We offer below two varieties of tall sedum that are good both in the hardy garden and also the Rock Garden.

**Sedum spectabile:**—12-18 in. An erect growing Sedum with broad light green foliage and large heads of handsome rose-colored flowers in September.

**Sedum spectabile Brilliant:**—A rich colored form of the preceding with flowers of a bright amaranth-red.

**Shasta Daisy:**—Similar to our field daisy but much larger.

**Sidalcea candida, Greek Mallow:**—2-3 ft. Erect growing, more or less branching plants, producing their showy white flowers in July.

Prices on these Perennials, except as noted, are 25 cents each; 3 alike for 60 cents; \$2.00 per dozen of one kind. Purchaser pays transportation charges.

**S. Rose Queen:**—3-4 ft. A *Sidalcea* with beautiful rose-colored flowers.  
**Spiraea ulmaria fl. pl.:**—3 ft. Large plumes of double, creamy-white flowers in early summer.

**Stokesia cyanea, Stoke's Aster:**—18 in. A charming perennial, with handsome lavender-blue centaurea-like blooms all summer.

**Sweet William, Dianthus barbatus:**—We offer the 3 following varieties:

**Scarlet Beauty:**—Rich deep crimson.

**Holburn Glory:**—A large variety in many shades with distinct eye.

**Newport Pink:**—Watermelon pink or salmon rose.

**Statice latifolia:**—A valuable plant for either the border or the Rock Garden with tufts of green leaves, and immense candelabra-like heads, often 1½ to 2 ft. across of minute lavender flowers in August. These may be cut and dried for Winter bouquets.

**Thalictrum adiantifolium, Maidenhair Meadowrue:**—2-3 ft. A light airy plant with feathery yellow flowers.

**Thermopsis caroliniana:**—3 ft. A showy plant with spikes of yellow flowers resembling Lupines.

**Tradescantia Virginica, Spiderwort:**—2 ft. This old-fashioned flower produces a succession of blue flowers all summer.

**Tradescantia rosea:**—Smaller than the above with rich rose-colored blooms.

**Trollius ledebouri, Golden Queen:**—3-4 ft. This new Globe Flower recently imported from England, is unquestionably a great advance over the older varieties, being much larger, more sturdy and giving many more flowers during a longer period of bloom. It will be rare for some time. **50 cents each.**

**Uvularia grandiflora, Large Bellwort:**—A very graceful plant from 12 to 18 in. high with many drooping lily-like flowers in June.

**Valeriana officinalis, Hardy Garden Heliotrope:**—3-5 ft. Produces showy heads of rose-tinted white flowers, during July and August, with delicious Heliotrope odor.

**Veronica Amethystina:**—A dwarf perennial with beautiful spikes of gentian-blue flowers in July. Grows about 15 in. high.

**Veronica Gentianoides:**—A beautiful variety growing about a foot tall covered in July with large flowers, palest blue edged deep blue.

**Veronica teucrium:**—A fine Veronica for edging of beds or the Rock Garden. Grows 10 in. and gives a wealth of blue flowers in June.

**Veronica spicata:**—2-3 ft. A fine border plant with spikes of deep-blue flowers in mid-summer.

**Veronica Virginica, alba:**—4 ft. A beautiful plant, white flowers with yellow anthers, in long graceful spikes, with metallic green foliage in whorls.

**Veronica longifolia subsessilis:**—2 ft. A native of Japan with very heavy foliage and brilliant dark blue flowers. The latest of the Veronicas to bloom. September. **35 cents each; 3 for 90 cents.**

**For Violas see Page 40.**

**Yucca Filamentosa, Spanish Bayonet:**—4 ft. Among hardy ornamental foliage and flowering plants, this is near the head. Its broad sword-like foliage and tall spikes of creamy-white flowers in late summer make it a very effective plant in many positions in any garden.

**Extra large plants, \$1.00 each.**

**Prices on these Perennials, except as noted, are 25 cents each; 3 alike for 60 cents; \$2.00 per dozen of one kind. Purchaser pays transportation charges.**

# Lilies

**Lilium Auratum, Gold Banded Japan Lily:**—A very popular Lily, yet one of the most unreliable. Perhaps it succeeds with you, perhaps it does not. You will never know until you try. When well grown, it is about the finest thing in Lilies. Well worth trying. Enormous flowers. Color, white with a central golden band and numerous spots of deep purple.

Price 50 cents each. \$5.00 per dozen.

**L. bulbiferum:**—Deep orange-red flowers arranged in umbels with little bulblets in the axils of the leaves. Rare and good. 75 cents each.

**L. canadensis:**—2-4 ft. Yellow nodding flowers all sprinkled over with purple dots. A very nice Lily. 25 cents each; \$2.00 per doz.

**L. candidum, Madonna Lily:**—Handsome, large, fragrant, pure white, flowers. This popular lily is easy to grow. Always plant in the month of September, as the bulb must make a growth of leaves before winter. This variety is never set in the spring. 25 cents each; \$2.50 per doz.

**L. croceum:**—Golden yellow. A very fine lily. 50 cents each.

**L. dahuricum:**—One of the most reliable and hardy lilies. The flowers are reddish yellow and of good size, and the plant, with age, attains a height of 3 to 4 ft. in good soil. 35 cents each; \$3.50 per doz.

**L. elegans Orange:**—A vigorous orange-colored lily about 18 in. tall. June. 35 cents each; 3 for 90 cents; \$3.00 per doz.

**L. elegans alutacium:**—A dwarf variety for the Rock Garden. In most soils it is less than 1 foot high with large buff-orange flowers. 35 cents each; 3 for 90 cents; \$3.00 per doz.

**L. Grayi, Gray's Lily:**—3-4 ft. Small red flowers with maroon spots. Fine for shady places. 25 cents each; \$2.00 per doz.

**L. Henryi:**—A strong growing lily of clear orange color. 50 cents each.

**L. maculatum, Hanson's Lily:**—3 ft. A rare Japanese lily of reddish-orange color and petals very thick and durable. 50 cents each.

**L. Regale, Regal Lily:**—Undoubtedly the finest all-around hardy lily in cultivation. Grows 3 to 4 ft. tall, with extra long, trumpet-like flowers of lovely shade of baby-pink on the outside and a clear white on the inside, shading to a lemon color, deep in the throat. 25 cents each; \$2.50 per doz.

**L. speciosum album:**—The speciosums are the most important of all the Japanese lilies, are easy to grow, and always satisfactory. The white Speciosum here offered has extra large pure white flowers with a greenish band running through the center of each petal. 50 cents each; \$5.00 per doz.

**L. speciosum rubrum:**—A very popular variety; rosy-white heavily spotted with rich crimson. 50 cents each; \$5.00 per doz.

**L. Superbum, Turk's Cap Lily:**—One of our finest native lilies. Will grow in any good garden soil, but it is at its best in moist soil, where it will reach 6 to 7 ft. and bear 40 flowers to the stem. Color, bright orange with black to purple spots. 25 cents each; \$2.00 per doz.

**L. tigrinum, Tiger Lily:**—Large bright orange-red flowers spotted with black in the throat. Although old, yet it is a very handsome lily. 25 cents each; \$2.00 per doz.

**L. tigrinum fl. pl., Double Tiger Lily:**—A double variety of the above. 35 cents each; \$3.00 per doz.

**L. tenuifolium, Siberian Coral Lily:**—A small slender growing Lily, not more than 18 in. high, with bright scarlet flowers and incurved petals. One of the prettiest little Lilies in cultivation. Early June. 12 to 18 in. 35 cents each; \$3.50 per doz.

**L. umbellatum grandiflorum, European Umbel Lily:**—A very showy lily, easily cultivated. Its large flowers in June are beautiful orange colored shading to red. 35 cents each.

**L. Willmottiae, Willmott's Lily:**—A rare Chinese Lily that is perfectly at home in New England. Grows to 5 ft., brilliant orange-red flowers, the recurved petals freely dotted with brownish spots. 75 cents each.

## Ferns

Hardy ferns are becoming very popular and we are offering the 12 best species of the larger ferns native to the Green Mountains. The smaller varieties for the Rock Garden will be found on page 40.

- Adiantum pedatum (Maidenhair):**—One of the best for shade.  
**Athyrium angustum (Lady Fern):**—Very graceful, requires shade.  
**Athyrium acrostichoides (Silver Spleenwort):**—Not common. Shade.  
**Cystopteris bulbifera:**—Shade or sun. Very graceful.  
**Dennstaedtia punctilobia (Hay scented Fern):**—Sun or shade.  
**Osmunda Claytoniana (Interrupted Fern):**—Sun or shade.  
**Osmunda regalis (Regal Fern):**—Damp soil in full sun.  
**Osmunda cinnamomea (Cinnamon Fern):**—Sun or light shade.  
**Pteris nodulosa (Ostrich Fern):**—Sun or light shade.  
**Thelypteris Goldiana (Goldie's Fern):**—Shade. Very rare. 50 cents each.  
**Thelypteris marginale (Marginal Shield Fern):**—Shade.  
**Thelypteris spinulosa intermedia (Fancy Fern):**—Shade.  
Excepting Goldie's Fern, all the above are 25 cents each; 3 for 50 cents; \$1.50 per dozen.

### BEDDING AND ANNUAL FLOWERING PLANTS

We offer the following varieties at the uniform price of 40 cents per dozen, nicely packed in moss and post paid. Price at the Greenhouse, 25 cents per dozen. No order for shipment accepted for less than \$1.00.

**Asters in the following colors:**—Azure-blue, deep crimson, deep rose, lavender, purple, rose-pink, shell-pink, pure white and mixed.

**Bedding Petunias in the following varieties:**—Balcony Blue, Balcony Rose, Balcony White, Balcony Crimson, General Dobbs, Howard's Star, Rose of Heaven, Rosy Morn, Snowball, Violet Queen and mixed colors.

**Also:**—Ageratum, African Blue Daisy, Calendula, Royal Sweet Sultans, Annual Chrysanthemums, Clarkia, Cosmos, Annual Larkspur, Blue Lace Flower, Trailing Lobelia, African Marigolds, French Marigold, Nicotiana, Phlox Drummondii, Annual Pinks, Salpiglossis, Salvia, Mourning Bride, Straw Flowers, Stocks, Snapdragons and Godetia.

**Zinnias:**—50 cents per dozen.

### WE ALSO OFFER THE FOLLOWING POTTED PLANTS:—

**Geraniums:**—In full bloom from 4 inch pots in the following colors: Dark red, light red, salmon pink, bright pink, white with pink edging, and pure white. All 25 cents each; \$2.00 per dozen at the Greenhouse or delivered in Barre City. \$3.00 per dozen when packed for express shipment.

**Heliotrope:**—From 3½ inch pots. 25 cents each.

**Vincas:**—From 4 inch pots. 25 cents each.

**Standard Lantana:**—Red and orange, 3 inch pots. 25 cents each.

**German or Parlor Ivy:**—4 inch pots. 25 cents each.



## Apples

**Cortland:**—A late keeping McIntosh.

**Delicious:**—A very high quality winter apple. The quality is so high and the tree so hardy that one or two trees should be in every orchard.

**Duchess of Oldenburg:**—Very hardy, an early bearer, season a little later than Yellow Transparent; size, medium to large; color, yellow, streaked with red; flesh, white and juicy.

**Fameuse:**—A medium sized red apple of high quality. White flesh, hardy and an early bearer.

**McIntosh:**—In my estimation McIntosh and Cortland stand on the pinnacle of apple quality. McIntosh is an early bearer and hardy but is very susceptible to scab. It must be sprayed or dusted to get No. 1 apples.

**Northern Spy:**—One of the finest apples in existence; extra large, a good keeper; both a cooking and a dessert apple. It's only drawback is, it is slow coming into bearing.

**Red Astrachan:**—A large crimson, extra early apple. Fine eating and by many is thought to be our best summer apple.

**Roxbury Russet:**—An old-fashioned apple of good quality, keeping until June. A good home orchard variety.

**Wealthy:**—One of our finest apples which will keep in a common cellar until Christmas. Begins to bear at 3 to 4 years from planting, is a heavy bearer of handsome red, medium-sized apples.

**Winter Banana:**—Yellow with a bright red cheek; hardy, early bearer; very long keeper.

**Northwestern Greening:**—Quite similar to R. I. Greening; not quite as high quality, but much hardier. Should be grown where the R. I. Greening is not hardy.

**Tolman Sweet:**—An old variety, noted for it's keeping quality. A sweet apple that is good in early spring.

**Yellow Transparent:**—Our earliest good eating apple, very hardy, yellow when ripe, flavor excellent; size, medium to large; bears very early, often the second year after planting.

**Transcendent Crab:**—One of the best red crabs. Season, early fall.

**Hyslop Crab:**—A fine crab, later than the Transcendent.

All Apple Trees, 5 to 7 feet tall.

Prices of all Apple Trees, \$1.00 each; \$10.00 per doz.; extra large trees \$1.50



## Cherries

The sour cherry is the only practical cherry for this Northern Country as our winters are quite too cold for any variety of sweet cherry. We have tested more than 20 varieties of sour cherries and the 3 below are the best for the Cold Country.

**Montmorency**:—The principal variety planted by the large commercial orchards. A heavy bearer of large, bright red, good quality cherries, mid-season, dependable. Trees 4 to 5 ft. tall, \$1.00 each; \$10.00 per doz.

**English Morello**:—A late, very dark red cherry; quality good. Never injured by the cold. A crop every year is assured. For points north of us, we recommend the Morello. 5 to 6 ft., \$1.00 each; \$10.00 per doz.

**Dyehouse**:—A fine mid-season very dark red sour cherry, noted for its hardiness. Trees 5 to 6 ft. tall, \$1.00 each; \$10.00 per doz.

## Plums

We are offering the varieties of plums that have proved to be the best here in the cold country. We especially recommend the two varieties that originated in Minnesota for the colder sections of New England.

**Bradshaw**:—An European plum of high quality, very large, reddish-purple, and one of the few European plums that will stand the climate of the "Cold Country". It has done well with us. 6-7 ft. trees, \$1.00 each.

**Burbank**:—One of the best of the Japanese Plums. Makes a wide spreading tree and is inclined to overbear. Should be thinned when the fruit sets too heavy. We recommend it for all but the colder parts of New England. Medium sized deep red fruit of good quality. \$1.00 each.

**Underwood**:—A new plum originating at the Minn. Fruit Breeding Farm from which we obtained 5 of the first trees sent out by that station. They have been fruiting 6 years and for this section we consider it the best plum in existence. The tree is large and spreading, vigorous and healthy. The fruit is large, very early, very fine quality, deep red in color and good for market or home use. \$1.25 each.

**Monitor**:—An equally fine plum and the fit companion to Underwood. This is also a Minnesota origination. It is about 2 weeks later than Underwood, much the same color, very large, fine quality. We certainly recommend it highly. \$1.25 each.

Always plant two or more varieties of Plums together, to insure cross pollenization, which is necessary to get good crops of Plums.

## Gooseberries

**Downing**:—The old reliable market variety, light green, sweet and good, a tremendous cropper, much larger than the Houghton. 25 cents each.

## Currants

One of the easiest of the small fruits to grow and will last a lifetime. Will grow on any soil but does best on moist soils. The soil cannot be too rich for currants. All Currants are strong 2-year plants; all 25 cents each.

**Perfection**:—Red. The most popular variety. Produces in great profusion, large long clusters of very bright red berries, mild, splendid quality.

**White Grape**:—The finest white currant, much sweeter than any red variety. Large bunches of fair sized berries.

Currant and Gooseberry plants sold only in New England. U. S. Blister Rust Quarantine Regulations.

## Grapes

**Beta:**—The hardiest grape in cultivation; black, early, small berry, but large clusters.

**Diamond (Moore's Diamond):**—An extra good, early white grape of the finest quality. Large bunches.

**Lucile:**—A very early red grape with large berries and good sized clusters; suited to the North.

**Moore's Early:**—We grow fine grapes here at the Mitchell Nurseries and the surest croppers are Moore's Early and Beta. These are the grapes for the "Cold Country." Moore's Early is a fine black grape of good quality, better than Concord; medium sized bunch and berry, and eminently hardy.

**Worden:**—Similar to Concord, but much earlier; hardy.

All grape vines are two year vines and the price of all is 25 cents each.

## Raspberries

**Cuthbert:**—The finest quality red raspberry. The canes are very thrifty and with good care attain large size. The berries are large. Very pretty and of the highest flavor. A shortcake made of Cuthbert red raspberries is fit for a king. A good shipper and a favorite in the market. 50 cents per doz.; \$1.00 for 25; \$3.00 for 100; \$20.00 for 1000.

**June:**—The earliest raspberry and one of the best. It is a larger berry and a better shipper than Cuthbert and the only berry that has beaten it for yield here is the Latham. After trying many varieties of red raspberries, we believe that all but June, Cuthbert and Latham should be scrapped. \$1.00 per doz.; \$1.75 for 25; \$5.00 for 100; \$45.00 for 1000.

**Latham:**—Considered in Minn. as the greatest creation of the mammoth Minn. Fruit Breeding Station. Very hardy, very large, later than Cuthbert and almost an everbearer. Test plots in different places by Conn. Agricultural College, as reported by Prof. Darrow of that College, gave Latham as the heaviest yielder in every case, with Cuthbert a close second. Has made good everywhere. 50 cents per doz.; \$1.00 for 25; \$3.00 for 100; \$20.00 for 1000.

**Golden Queen:**—A high quality raspberry, identical with Cuthbert, except in color, which is a rich golden yellow. Price same as June.

**Plum Farmer:**—The most popular black Raspberry. Large, early and fine quality. Plants, \$1.00 per doz.; \$1.75 for 25; \$5.00 for 100.

## Blackberries

**Snyder:**—The hardiest blackberry in existence. Medium-sized berries, very sweet and a reliable cropper. If you have trouble with winter-killing of blackberries, try Snyder. It is the "Cold Country" Blackberry. 75 cents per doz.; \$1.25 for 25; \$4.00 for 100.

## Strawberries

**Howard 17 (Perfect):**—This is probably more largely planted and talked about than any other variety at present. Nothing but praise is spoken for it everywhere, and on a great variety of soils. The plants are large and healthy. Blossoms perfect and rich with pollen. The berries begin to ripen early and continue a long time and hold up in size. It is firm, color a light red. It is the great business strawberry of today, and should be planted by every grower. 80 cents for 50; \$1.50 for 100; \$6.00 for 500; \$10.00 for 1000.

# Rock Garden Plants

We grow one of the largest and best collections of Rock Garden Plants in America. As these plants are described in our free Rock Garden Catalogue, no description is given here. You may order them from this catalogue, as the names and prices correspond with those in the Rock Garden Catalogue.

The high quality of our plants was shown at the annual show of the American Rock Garden Society, held May 16-17, 1935 in Cincinnati, Ohio. We made two entries; a collection of 25 Saxifrages and a collection of 24 rare Alpines, native to North America. These plants traveled 800 miles by express, and then won first prize in each class, against strong competition.

The more than 700 varieties listed below have been collected from all over the world and represent the finest varieties in cultivation.

<i>Acena glauca</i> .....	25c.	<i>Anthemis Sancta-Johannis</i> .....	35c.
" <i>microphylla</i> .....	35c.	<i>Anthericum liliiago</i> .....	25c.
" <i>sanguisorbae</i> .....	35c.	<i>Aquilegia canadensis</i> .....	25c.
<i>Achillea millefolium rosea</i> .....	25c.	" <i>coerulea</i> .....	25c.
" <i>nana</i> .....	25c.	" <i>chrysantha</i> .....	25c.
" <i>sericea</i> .....	25c.	" <i>Farquahar's Pink</i> .....	25c.
" <i>siberica</i> .....	25c.	" <i>flabellata nana</i> .....	25c.
" <i>tomentosum</i> .....	25c.	" <i>oxysepala</i> .....	25c.
" <i>umbellatum</i> .....	35c.	" <i>pyrenaica</i> .....	25c.
<i>Actinea herbacea</i> .....	35c.	<i>Arabis aubrietoides</i> .....	35c.
<i>Aethionema pulchellum</i> .....	25c.	" <i>alpina</i> .....	25c.
" <i>Warley's Rose</i> .....	50c.	" <i>alpina fl. pl.</i> .....	35c.
<i>Ajuga brockbankii</i> .....	25c.	" <i>albida rosea</i> .....	35c.
" <i>repens</i> .....	25c.	" <i>albida variegata</i> .....	50c.
" <i>variegata</i> .....	25c.	" <i>Kellereri</i> .....	35c.
<i>Allium cyaneum</i> .....	25c.	" <i>procurens</i> .....	35c.
" <i>cyaneum purpureum</i> .....	25c.	" <i>sturyi</i> .....	25c.
" <i>pulchellum</i> .....	25c.	<i>Arenaria caespitosa</i> .....	25c.
" <i>stellatum</i> .....	25c.	" <i>laricifolia</i> .....	35c.
" <i>thibeticum</i> .....	25c.	" <i>montana</i> .....	25c.
<i>Alyssum argenteum</i> .....	25c.	" <i>stricta</i> .....	25c.
" <i>compactum</i> .....	25c.	<i>Armeria alpina</i> .....	35c.
" <i>citrinum</i> .....	25c.	" <i>Bee's Ruby</i> .....	50c.
" <i>idaeum</i> .....	25c.	" <i>caespitosa</i> .....	50c.
" <i>montanum</i> .....	25c.	" <i>formosa</i> .....	25c.
" <i>rostratum</i> .....	25c.	" <i>lauchiana</i> .....	25c.
" <i>serpyllifolium</i> .....	35c.	" <i>setacea</i> .....	25c.
" <i>spinosum</i> .....	35c.	<i>Arnica mollis</i> .....	75c.
<i>Anemone canadensis</i> .....	25c.	<i>Artemisia abrotanum</i> .....	25c.
" <i>fulgens</i> .....	50c.	" <i>frigida</i> .....	25c.
" <i>patens nuttalliana</i> .....	25c.	" <i>glacialis</i> .....	35c.
" <i>pulsatilla</i> .....	35c.	" <i>muttelina</i> .....	35c.
" <i>pulsatilla alba</i> .....	50c.	" <i>Silver King</i> .....	25c.
" <i>pulsatilla rubra</i> .....	50c.	" <i>Stelleriana</i> .....	25c.
" <i>sylvestris</i> .....	35c.	<i>Arisaena triphyllum</i> .....	25c.
" <i>vernalis</i> .....	75c.	<i>Asarum canadense</i> .....	25c.
<i>Anchusa barrelieri</i> .....	25c.	<i>Asperula cynanchica</i> .....	35c.
" <i>myosotidiflora</i> .....	25c.	<i>Aster alpinus</i> .....	25c.
<i>Androsace chumbyi</i> .....	35c.	" <i>alpinus albus</i> .....	25c.
" <i>laggeri</i> .....	50c.	" <i>canbyi</i> .....	25c.
" <i>lanuginosa</i> .....	50c.	" <i>Farreri</i> .....	40c.
" <i>lanuginosa leichtlini</i> .....	50c.	" <i>Forrestii</i> .....	35c.
" <i>primuloides</i> .....	35c.	" <i>Goliath</i> .....	25c.
" <i>sarmentosa</i> .....	35c.	" <i>linariifolius</i> .....	25c.
" <i>sempervivoides</i> .....	50c.	" <i>subcoeruleus</i> .....	25c.
<i>Antennaria dioica</i> .....	25c.	" <i>Townsendii</i> .....	25c.
" <i>rodantha</i> .....	25c.		

## ROCK GARDEN PLANTS (Continued)

NEW DWARF HYBRID ASTERS	
Countess of Dudley .....	25c.
Lady Henry Maddocks .....	25c.
Marjorie .....	25c.
Remembrance .....	25c.
Victor .....	25c.
Astilbe "Perkio" .....	75c.
" "Peter Pan" .....	75c.
" simplicifolia .....	25c.
Aubrietia, mixed hybrids .....	25c.
" Crimson King .....	50c.
" Lavender Beauty .....	50c.
" Lissadel Pink .....	50c.
" Rose Queen .....	50c.
" Dr. Mules .....	75c.
" variegata .....	50c.
Bellis coerulescens .....	35c.
" perennis .....	25c.
Bellium minutum .....	25c.
Boykinia Jamesi .....	50c.
Brunella webbiana .....	25c.
Calamintha alpina .....	25c.
Callirhoe involucrata .....	25c.
Calluna vulgaris .....	50c.
" vulgaris alba minor .....	50c.
" compacta .....	75c.
" hirsuta .....	50c.
" monstrosa .....	50c.
" rubra .....	75c.
Cactus opuntia gracilis .....	25c.
" opuntia Rafinesqui .....	25c.
" Rockery Gem .....	25c.
" Grey Beauty .....	25c.
Campanula abietina .....	25c.
" alliariaefolia .....	25c.
" bellardi miranda .....	25c.
" barbata .....	25c.
" carpathica .....	25c.
" carpathica alba .....	25c.
" carpathica "Exquisite" .....	75c.
" carpathica pallida .....	50c.
" Collina .....	50c.
" fenestrellata .....	35c.
" garganica .....	35c.
" glomerata .....	25c.
" glomerata acaulis .....	25c.
" istriaca .....	35c.
" Olympica .....	25c.
" persicifolia .....	35c.
" poscharskyanum .....	35c.
" pusilla .....	25c.
" pusilla alba .....	35c.
" pulla .....	35c.
" raddeana .....	35c.
" rotundifolia .....	25c.
" rotundifolia Purple Gem .....	50c.
" saxifraga .....	35c.
" sarmatica .....	35c.
" Tommassiniana .....	50c.
" trachelium .....	25c.
" turbinata, mixed .....	25c.
Cerastium tomentosum .....	25c.
Chamaemelon oreades .....	35c.
" Tschihatcheffi .....	35c.
Chiogenes hispidula .....	25c.
Chrysogonum virginianum .....	25c.
Chrysanthemum arcticum .....	25c.
" alpinum .....	50c.
" Amelia .....	35c.
" Mawii .....	35c.
" Scotch Mum .....	25c.
Convallaria majalis .....	25c.
Cornus canadensis .....	25c.
Corydalis lutea .....	35c.
" ochroleuca .....	50c.
Coronilla cappadocica .....	25c.
Cotoneaster horizontalis .....	\$1.00
Cotula squalida .....	25c.
Clintonia borealis .....	25c.
Coptis trifolia .....	25c.
Cypripedium acaule .....	25c.
" pubescens .....	50c.
" spectabile .....	50c.
Dalibarda repens .....	25c.
Daphne cneorum .....	\$1.50
Diapensia lapponica .....	\$1.00
Dianthus alpinus .....	25c.
" arenarius .....	25c.
" arvensis .....	25c.
" Beatrix .....	35c.
" caesius .....	25c.
" caesius fl. pl. .....	35c.
" cruentus .....	25c.
" deltoides .....	25c.
" graniticus .....	25c.
" Knappi .....	35c.
" neglectus .....	35c.
" neglectus Roysii .....	50c.
" petraeus .....	35c.
" plumarius .....	25c.
" seguieri .....	35c.
" stawkianus .....	35c.
" sternbergii .....	25c.
" subacaulis .....	50c.
" sundermanni .....	35c.
" sylvestris frigidus .....	25c.
" Bristol Maid .....	25c.
" Bristol Purity .....	25c.
" Furst Bismarek .....	25c.
Dicentra eximia .....	25c.
Dodecatheon Cusickii .....	\$1.00
" hugerii .....	50c.
" media .....	25c.
" pauciflorum .....	35c.
Douglasia laevigata .....	50c.
" montana .....	\$1.00
Draba aizoides .....	35c.
" arabisans .....	35c.
" dedeana .....	35c.
" fladzinensis .....	25c.
" repens .....	25c.
Edryanthus dalmaticus .....	50c.
Epigaea repens .....	50c.
Epilobium hectori .....	35c.

## ROCK GARDEN PLANTS (Continued)

Epimedium nivium .....	35c.	Helianthemum mutabile .....	25c.
" sulphureum .....	35c.	" Fire Ball .....	35c.
Erica (all varieties canceled)		" Yellow Beauty .....	25c.
Empetrum nigrum .....	50c.	Helleborus niger .....	\$1.00
Erigeron alpinum .....	25c.	Hepatica acutiloba .....	25c.
" compositus .....	35c.	" acutiloba alba .....	25c.
" divergens .....	35c.	" triloba .....	25c.
" hyssopifolius .....	35c.	Herniaria glabra .....	25c.
" macranthus .....	25c.	Heuchera brizoides .....	25c.
" mucronatus .....	35c.	" sanguinea .....	25c.
" speciosus .....	25c.	" Rosamonde .....	25c.
Erinus alpinus .....	25c.	" le Perle .....	25c.
" alpinus albus .....	25c.	" Pluie de Feu .....	35c.
Eriogonum ovalifolium .....	35c.	Hieracium villosum .....	50c.
Eriophyllum lanatum .....	25c.	Hippocrepis cosmosa .....	35c.
Erodium amanum .....	50c.	Houstonia coerulea .....	25c.
" chamaedroides .....	50c.	" longifolia .....	25c.
" corsicum .....	50c.	" serpyllifolia .....	25c.
" macradanum .....	50c.	Hutchinsia alpina .....	35c.
Erysimum pulchellum .....	25c.	Hypericum coris .....	35c.
" purpureum .....	35c.	" fragile .....	25c.
Euphorbia cyparissus .....	25c.	" reptans .....	35c.
" myrsinites .....	25c.	Hypoxis erecta .....	25c.
" polychroma .....	35c.	Hypsella reptans .....	35c.
Euonymus colorata .....	50c.	Iberis sempervirens .....	25c.
" radicans .....	50c.	" tenoreana .....	25c.
" radicans vegetus .....	50c.	Inula ensifolia .....	25c.
Festuca glauca .....	25c.	" royleana .....	25c.
Funkia variegata .....	25c.	Iris arenaria .....	50c.
Gentiana acaulis .....	\$1.00	" cristata .....	25c.
" andrewsii .....	25c.	" cristata alba .....	\$1.00
" cruciata .....	25c.	" dichotoma .....	75c.
" Farreri .....	\$1.00	" gracilipes .....	75c.
" fetisowii .....	50c.	" missouriensis .....	\$1.00
" Purdumii .....	75c.	" pumila .....	25c.
" septemfida .....	50c.	" pumila alba .....	25c.
" Sino-ornata .....	75c.	" pumila lutea .....	25c.
Genista horrida .....	\$1.00	" pumila Lobelia .....	25c.
" pilosa .....	50c.	" reticulata .....	50c.
" prostrata .....	50c.	" setosa gaspensis .....	50c.
" radiata .....	\$1.00	" verna .....	25c.
Geranium endressi .....	50c.	Jasione perennis .....	25c.
" ibericum .....	35c.	Kalmia polifolia .....	50c.
" lancastriense .....	50c.	Lamium maculatum .....	25c.
" maculatum .....	25c.	Lavandula veris .....	25c.
" pylzowianum .....	50c.	" Munstead .....	25c.
" pretense .....	25c.	Ledum groenlandicum .....	75c.
" sanguineum .....	25c.	Leontopodium alpinum .....	25c.
Geum borissi .....	25c.	Leucocrocinum montanum .....	25c.
" Heldreichi .....	25c.	Lewisia Howelli .....	50c.
" Leonard's variety .....	35c.	" rediviva .....	35c.
" Pecki .....	50c.	Liatris halleri .....	25c.
" sibericum .....	25c.	Linaria alpina .....	35c.
Gillenia trifoliata .....	35c.	" pallida .....	25c.
Globularia bellidifolia .....	35c.	" pallida alba .....	25c.
" cordifolia .....	25c.	Linum alpinum .....	35c.
Goodyea repens .....	25c.	" narbonneense .....	50c.
Gormaniana Watsoni .....	35c.	" perenne .....	25c.
Gypsophila cerastoides .....	25c.	" tenuifolium .....	50c.
" repens .....	25c.	Loiseleuria procumbens .....	\$1.00
" repens rosea .....	35c.	Lotus corniculatus .....	25c.
Helianthemum croceum .....	25c.	" corniculatus fl. pl. ....	35c.

ROCK GARDEN PLANTS (Continued)

Lupinus confertus .....	75c.	Phyteuma nigrum .....	35c.
Lychnis alpina .....	25c.	" Scheutzeri .....	35c.
" haageana .....	25c.	Pinguicula vulgaris .....	35c.
" Flos-Jovis .....	25c.	Platycodon mariesii .....	25c.
" Flos-Jovis alpina .....	35c.	Polemonium humile .....	25c.
" viscaria .....	25c.	" mellitum .....	\$1.00
" viscaria fl. pl. ....	35c.	" repens .....	25c.
Lysimachia nummularia .....	25c.	Polygala paucifolia .....	25c.
Mazus repens .....	25c.	Polygonum affini .....	35c.
Mentha requieni .....	25c.	" vacciniifolium .....	50c.
Mertensia pubescens .....	50c.	" viviparum .....	25c.
" speciosa .....	50c.	Potentilla anserina .....	25c.
" virginica .....	25c.	" fruticosa montana .....	75c.
Mitchella repens .....	25c.	" nitida .....	75c.
Mysotis alpestris .....	25c.	" pyrenaica .....	25c.
" palustris .....	25c.	" tonguei .....	75c.
Nepeta hederacea .....	25c.	" tridentata .....	25c.
" mussini .....	25c.	" verna aurea .....	25c.
" Souv. Andre Chaudron ..	35c.	Primula acaulis .....	25c.
Nierembergia rivularis .....	35c.	" lilaciana fl. pl. ....	75c.
Oenothera missouriensis .....	25c.	" auricula alpina .....	50c.
" speciosa .....	25c.	" beesiana .....	25c.
Omphalodes cappadocica .....	50c.	" cashmeriana .....	25c.
" verna .....	35c.	" clusiana .....	75c.
Ononis rotundifolia .....	50c.	" cortusoides .....	25c.
Onosma tauricum .....	\$1.00	" denticulata alba .....	50c.
Orchis spectabilis .....	50c.	" Hose-in-hose .....	25c.
Ornithogalum umbellatum .....	25c.	" farinosa gaspensis .....	50c.
Orobus verna .....	35c.	" frondosa .....	35c.
Pachistima canbyi .....	50c.	" Japonica .....	35c.
Papaver alpina .....	25c.	" Julie H. Purpurkissen ..	50c.
" nudicaule .....	25c.	" mistassinica .....	75c.
Parnassia caroliniana montana	25c.	" mistassinica alba .....	\$1.00
Paronychia argyrocoma .....	\$1.00	" nivalis .....	50c.
Pentstemon albidus .....	25c.	" polyantha .....	25c.
" Cardwellii .....	50c.	" pulverulenta .....	50c.
" Crandallii .....	50c.	" veris .....	25c.
" humilis .....	25c.	Pulmonaria saccharata .....	35c.
" menziezi .....	50c.	Ramondia pyrenaica .....	\$1.00
" procerus .....	25c.	Ranunculus repens .....	25c.
" pubescens .....	25c.	" repens fl. pl. ....	25c.
" repicola .....	75c.	Rosa rouletti .....	50c.
" roezli .....	25c.	Ruta patavina .....	25c.
" scouleri .....	35c.	Rydbergia grandiflora .....	35c.
" Watsoni .....	50c.	Sanguinaria canadensis .....	25c.
Phlox amoena .....	25c.	Saponaria caespitosa .....	50c.
" bifida .....	25c.	" ocymoides .....	25c.
" divaricata .....	25c.	Salix Uva-Ursi .....	75c.
" divaricata laphami .....	25c.	Salvia patens .....	25c.
" Douglasii .....	35c.	Santolina incana .....	25c.
" muscoides .....	50c.	Satureya montana .....	35c.
" ovata .....	25c.	Saxifraga aizoon .....	25c.
" pilosa .....	25c.	" aizoon balkana .....	25c.
" stolonifera .....	25c.	" aizoon densa .....	35c.
" subulata alba .....	25c.	" aizoon "Gaspé Gold" ..	\$1.00
" subulata atropurpurea ..	25c.	" aizoon hainoldii .....	25c.
" subulata Brittoni .....	25c.	" aizoon lutea .....	50c.
" subulata Blue Hill .....	25c.	" aizoon rosea .....	25c.
" subulata G. F. Wilson ..	25c.	" baldensis .....	75c.
" subulata The Bride .....	25c.	" hosti .....	25c.
" subulata Vivid .....	25c.	" Icelandica .....	75c.
Phyllodoce coerulea .....	\$1.00	" cochlearis .....	75c.

## ROCK GARDEN PLANTS (Continued)

Saxifraga lingulata bellardi	.....35c.	Sedum Kamschaticum	.....25c.
" latoscana	.....50c.	" " variegatum	.....25c.
" longifolia hybrid	.....75c.	" lydimum	.....25c.
" macnabiana	.....25c.	" magellense	.....35c.
" pectinata	.....50c.	" middendorffianum	.....25c.
" pyramidalis	.....35c.	" monregalense	.....75c.
" bathoniensis	.....35c.	" nevii	.....25c.
" caespitosa	.....50c.	" oreganum	.....35c.
" decipiens alba	.....25c.	" pulchellum	.....50c.
" decipiens rosea	.....35c.	" radiatum	.....25c.
" hupnoides	.....25c.	" reflexum	.....25c.
" hupnoides Kingii	.....50c.	" roanense	.....50c.
" sanguinea superba	.....35c.	" roseum	.....50c.
" trifurcata	.....25c.	" sarmentosum	.....25c.
" H. S. Stokes	.....35c.	" spectabile	.....25c.
" apiculata	.....50c.	" " brilliant	.....25c.
" burseriana	.....\$1.00	" Sieboldi	.....25c.
" burseriana sulphurea	.....75c.	" stolonifera	.....25c.
" Elizabethae	.....50c.	" spurium coccineum	.....25c.
" faldonside	.....\$1.00	" stenopetalum	.....35c.
" Ferdinand Coburgi	.....50c.	" ternatum	.....25c.
" Irvingii	.....\$1.25	Sempervivum admontensis	.....25c.
" juniperifolia	.....75c.	" acuminatum	.....25c.
" marginata	.....50c.	" atroviolaceum	.....50c.
" Pauline	.....75c.	" arachnoideum	.....25c.
" petraschii	.....75c.	" arenarium	.....25c.
" Primrose Bee	.....75c.	" braunii	.....25c.
" ochroleuca	.....50c.	" blandum	.....25c.
" Baisolettii	.....\$1.00	" calcareum	.....25c.
" Marie Therese	.....\$1.00	" cornutum	.....25c.
" montenegrina	.....\$1.00	" Fanconetti	.....25c.
" aizoides	.....75c.	" fimbriatum	.....25c.
" Andrewsii	.....50c.	" Havana	.....25c.
" granulata	.....35c.	" Hildebrandti	.....25c.
" magasea	.....35c.	" Histoni	.....50c.
" oppositifolia	.....\$1.00	" Huteri	.....35c.
" virginiensis	.....25c.	" Kochii	.....35c.
Scutellaria alpina	.....35c.	" longifolia	.....25c.
" baikalensis	.....35c.	" montana	.....25c.
" Indica-japonica	.....35c.	" pallidum	.....25c.
Sedum acre	.....25c.	" Purdy's 60-2	.....25c.
" acre minus	.....25c.	" " 80-1	.....25c.
" alboroseum	.....35c.	" rubicundum hybrid	.....50c.
" album	.....25c.	" soboliferum	.....25c.
" altissimum	.....25c.	" Stansfieldi	.....75c.
" anglicum minus	.....25c.	" triste	.....50c.
" anopetalum	.....25c.	" tectorum	.....25c.
" arboreum	.....25c.	Silene acaulis	.....25c.
" balticum	.....35c.	" alpestris	.....25c.
" brevifolium	.....25c.	" maritima	.....25c.
" dasiphyllum	.....25c.	" pennsylvanica	.....50c.
" divergens	.....25c.	" schafta	.....25c.
" douglasii	.....35c.	" Wherryi	.....\$1.00
" Ellacombianum	.....25c.	" virginica	.....25c.
" eversii	.....25c.	Smilacina stellata	.....25c.
" Fabaria	.....35c.	" racemosa	.....25c.
" Forsterianum (rupestre)	.....25c.	Solidago cutleri	.....35c.
" gypsocolon	.....75c.	Spirea decumbens	.....50c.
" hispanicum	.....25c.	Stachys alpina	.....25c.
" hybridum	.....35c.	" corsica	.....35c.
" intermedium	.....35c.	Statice auriculaefolia	.....50c.
		" latifolia	.....25c.

## ROCK GARDEN PLANTS (Continued)

Statices incana nana .....25c.	Veronica armenia .....50c.
" tartarica .....25c.	" chamaedrys .....25c.
Stokesia cyanea .....25c.	" corymbosa .....25c.
Stellaria graminea .....25c.	" filiformis .....25c.
Synthyris rotundifolia .....35c.	" fruticulosa .....25c.
Talinum calycinum .....25c.	" gentianoides .....25c.
Teucrium chamaedrys .....25c.	" incana .....25c.
Thymus azoricus .....25c.	" multifida .....25c.
" balticum .....35c.	" orchidea .....35c.
" citriodorus aureus .....25c.	" orientalis .....25c.
" ericaefolia .....50c.	" pectinata rosea .....25c.
" herba-baronne .....35c.	" repens .....25c.
" lanuginosa .....25c.	" rupestris .....25c.
" micans .....35c.	"     " nana .....25c.
" serpyllum .....25c.	" saturejoides .....25c.
"     " Annie Hall .....50c.	" teucrium .....25c.
"     " album .....25c.	Vinca minor .....25c.
"     " coccineum .....25c.	"     " aurea .....25c.
Tradescantia brevicaulis .....25c.	Viola canadensis .....25c.
Trillium erectum .....25c.	" conspersa .....25c.
" grandiflorum .....25c.	" cuculata .....25c.
" luteum .....50c.	" Jersey Gem .....25c.
" nivale .....35c.	" lutea .....25c.
" ovatum .....50c.	" pedata .....25c.
" undulatum .....25c.	"     " bicolor .....35c.
Tunica saxifraga .....25c.	" pubescens .....25c.
"     " fl. pl. ....35c.	" rotundifolia .....25c.
Tiarella cordifolia .....25c.	Violet, Confederate .....25c.
Vaccinium Vitis-idaea-minus .....75c.	" large white .....25c.
Veronica amethystina .....25c.	

## ROCK GARDEN FERNS

Maidenhair Fern .....25c.	Purple Cliff Brake .....35c.
Ebony Spleenwort .....25c.	Rock Polypody Fern .....25c.
Maidenhair Spleenwort .....35c.	Christmas Fern .....25c.
Green Spleenwort .....75c.	Braun's Holly Fern .....50c.
Chielanthes lanosa .....25c.	Rusty Woodsia Fern .....25c.
Bulbet bladder Fern .....25c.	Oregon Woodsia Fern .....75c.
Fragile Fern .....25c.	Larger Ferns, page 31.

## ROCK GARDEN BULBS FOR FALL PLANTING

Bulbocodium conspicuous .....doz. \$2.50	Fritillaria pudicea .....doz. \$2.50
Chionodoxa Lucilae .....40c.	Galanthus elwesi .....50c.
" sardensis .....40c.	Muscari, Heavenly blue .....50c.
Crocus Albion .....40c.	" botryoides .....50c.
" Pallas .....40c.	Scilla excelsior .....40c.
" mixed .....40c.	" rosea .....40c.
Eranthus hyemalis .....40c.	" siberica .....40c.
Erythronium albidum .....\$1.00	Tulipa Clusiana .....60c.
" californicum .....\$1.00	" Eichleri .....75c.
" citrinum .....\$1.00	" Kaufmanniana .....\$1.00
" grandiflorum .....\$1.00	" Marjoletti .....75c.
" Hendersonii .....\$1.00	" Prestans .....\$1.25
Fritillaria meleagris .....50c.	" Sylvestris .....75c.

## LILIES FOR THE ROCK GARDEN

L. elegans "Orange" .....each 35c.	L. canadensis .....each 25c.
L. elegans alutacium .....35c.	L. tenuifolium .....35c.
L. bulbiferum .....75c.	





## Landscape Department

---

We are in a position to do all kinds of landscape work for our patrons and will, upon request, consult with you, develop on paper your own ideas or suggest a plan to you for any type of planting you may have in mind. This applies to a simple planting along the border, or house foundation, rock gardens, the landscaping of a large estate or the grounds about a public building. We will give you estimates of labor costs, plants and other material necessary to carry out these plans.

For small drawings no charge will be made if we do the planting; for larger and more elaborate drawings a charge of from \$5.00 to \$50.00 is made for the drawing.

Where we do the work, a charge of \$10.00 per day, plus traveling costs, is charged for the services of Mr. J. E. Mitchell, and a charge of \$5.00 per day for other workmen from the Nursery, all time to count from the time workman leaves the nursery to the time he gets back again. Where the job is a small one, a competent workman will be sent, and as our work is guaranteed, and our men will set 3 plants while the ordinary laborer is setting one, it will be found to be true economy to have us do your planting. We do not guarantee our plants to live when planted by any but our own workmen.

In the past, many plans for gardens and grounds in this section, made by landscape architects living south of us, have included plant material quite unsuited to this cold climate. WE KNOW the plants and trees for the "Cold Country," and no plants or shrubs are indicated on our landscape plans, that are not suited to the climate where the planting is to be made. We are sure we can please you in this department, and the small cost of landscaping your home will surprise you; and in this day of beautiful homes, it seems quite appropriate to say, "It is never a home until it is planted."

We go all over New England in this Landscape work. No job is too large or too small, and our prices are reasonable. The many Rock Gardens constructed by us throughout New England are among the best in the East.



A view in the Rock Garden at the Mitchell Nurseries

## How to get to Mitchell Nurseries

---

Arriving in Barre City, inquire for either Merchant Street or Maple Avenue. Take either one, as they come together just outside the City, and go straight one mile until you come to where the road forks, with a schoolhouse in the fork, take the right hand road, go straight one mile from the schoolhouse, and you will see the Nursery on the hill to the left, go straight ahead and take the first left hand turn and you are at New England's Coldest Nursery.

---

We are always glad to welcome visitors at our Nursery, which is situated 3 miles from Barre, Vermont, near the Barre Country Club.

You can here select your plants and take them home with you or have them sent by express or mail.

We have many varieties, in small quantities, not listed in this catalogue, we have nearly as many varieties of Rock Plants, not listed, as we have in our catalogue list.

A large Rock Garden with proper background of evergreens, shrubs and tall perennials is one of the interesting features of the Nursery.