

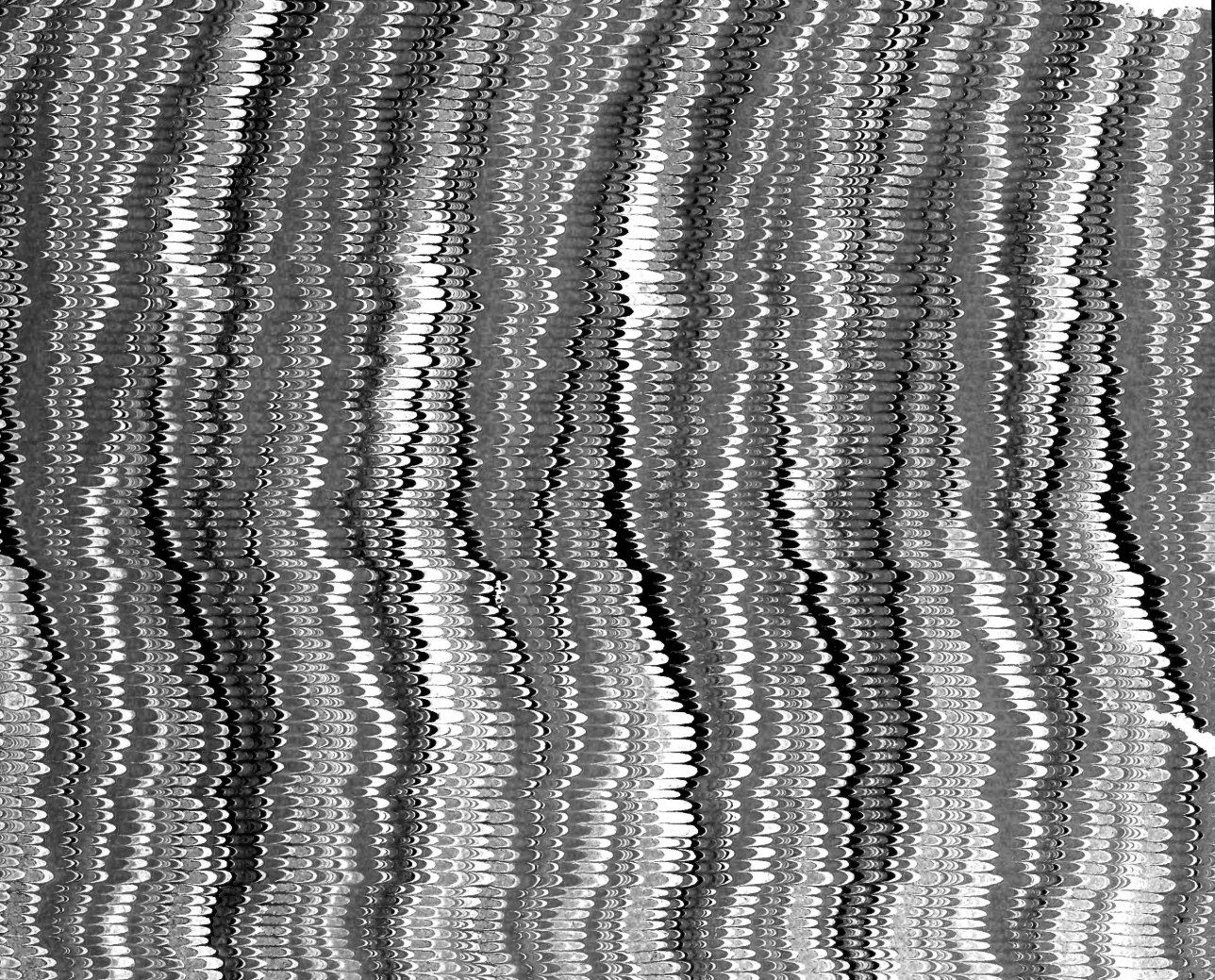
SB
483
N55A7

LIBRARY OF CONGRESS.

Chap. Copyright De.

Shelf 227

UNITED STATES OF AMERICA.





111

Central Park



Central Park

Geographical

CENTRAL PARK

NEW YORK

14
9378

*Joseph
A. Wittmann*

From Original Negatives by the Albertype Company



COPYRIGHT
MAY 5 1894
CITY OF NEW YORK
1938

✓
Copyright, 1892, by A. Wittmann, 67 & 69 Spring Street, New York.

+

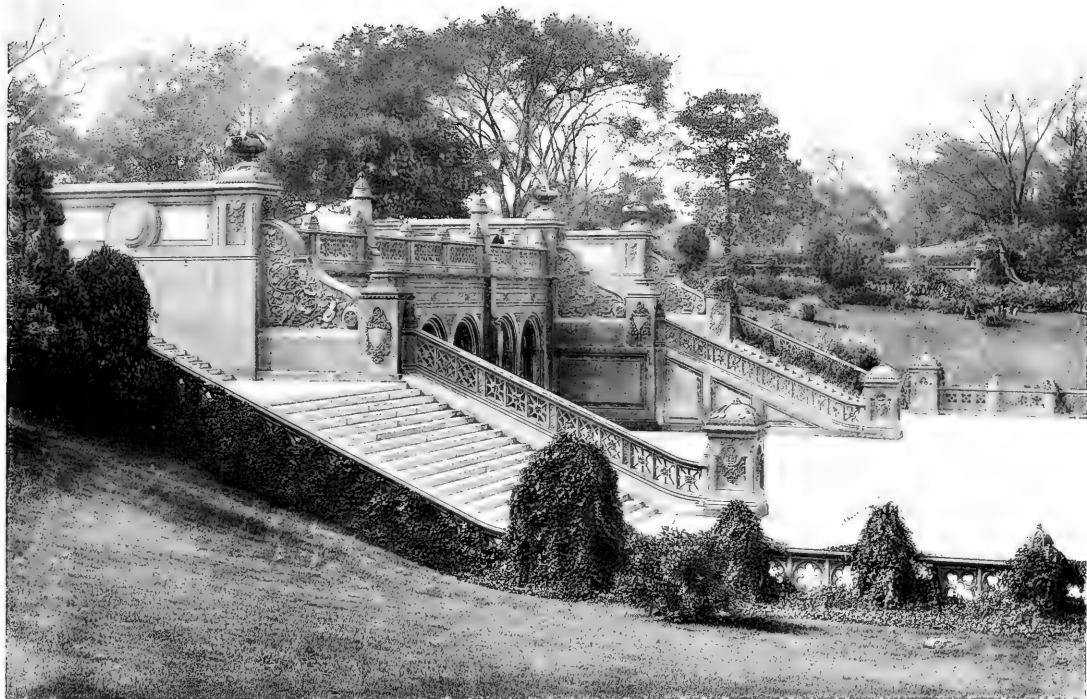
SR483
N55A7



Synagogue Beth-EI, 5th Avenue and 76th Street

LAKE AND BOAT HOUSE.





THE TERRACE





BRIDGE—LOWER POND.





DRIVE IN PARK.





THE OBELISK (CLEOPATRA'S NEEDLE).





METROPOLITAN MUSEUM OF ART





OLD ARSENAL—ZOOLOGICAL GARDEN.





BEETHOVEN STATUE.





BETHESDA FOUNTAIN.





THE MALL.





LAKE VIEW FROM SCHILLER STATUE, Central Park



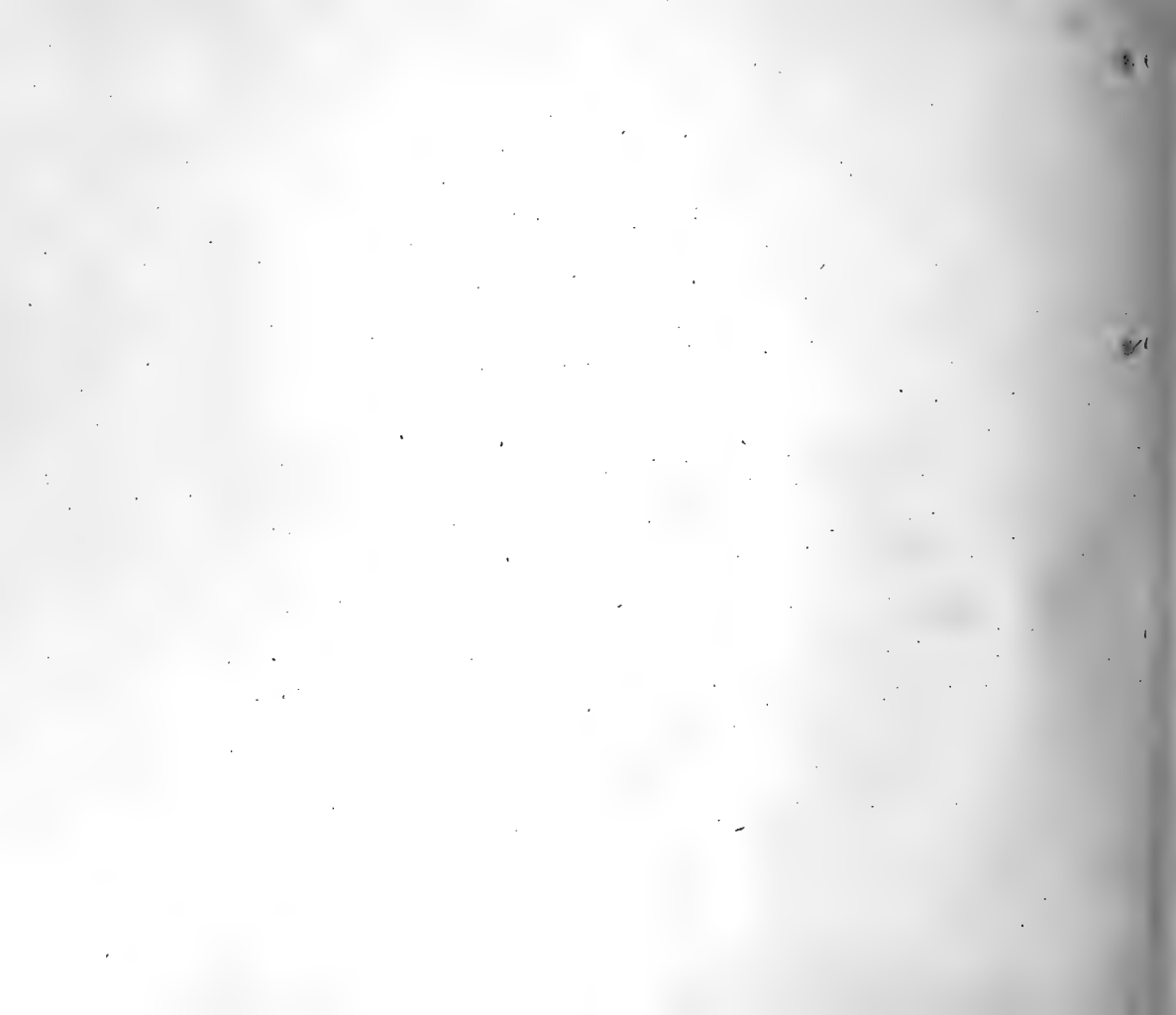


Lake and Bow Bridge. Cent.



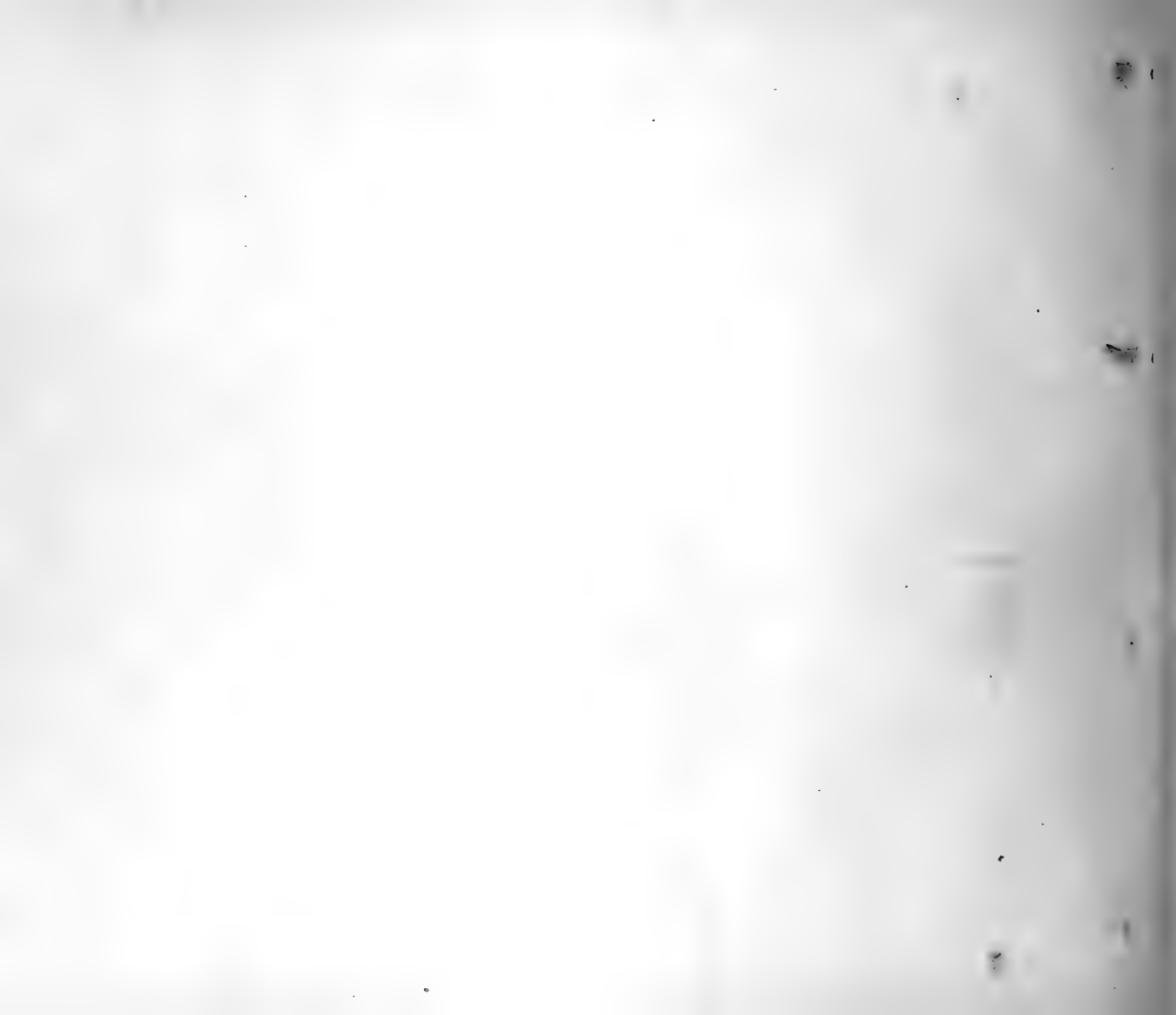


THE HIPPOPOTAMUS CAGE.





THE BELVIDERE





JAPANESE POINT—NEAR WEBSTER STATUE.



The FAVORIER

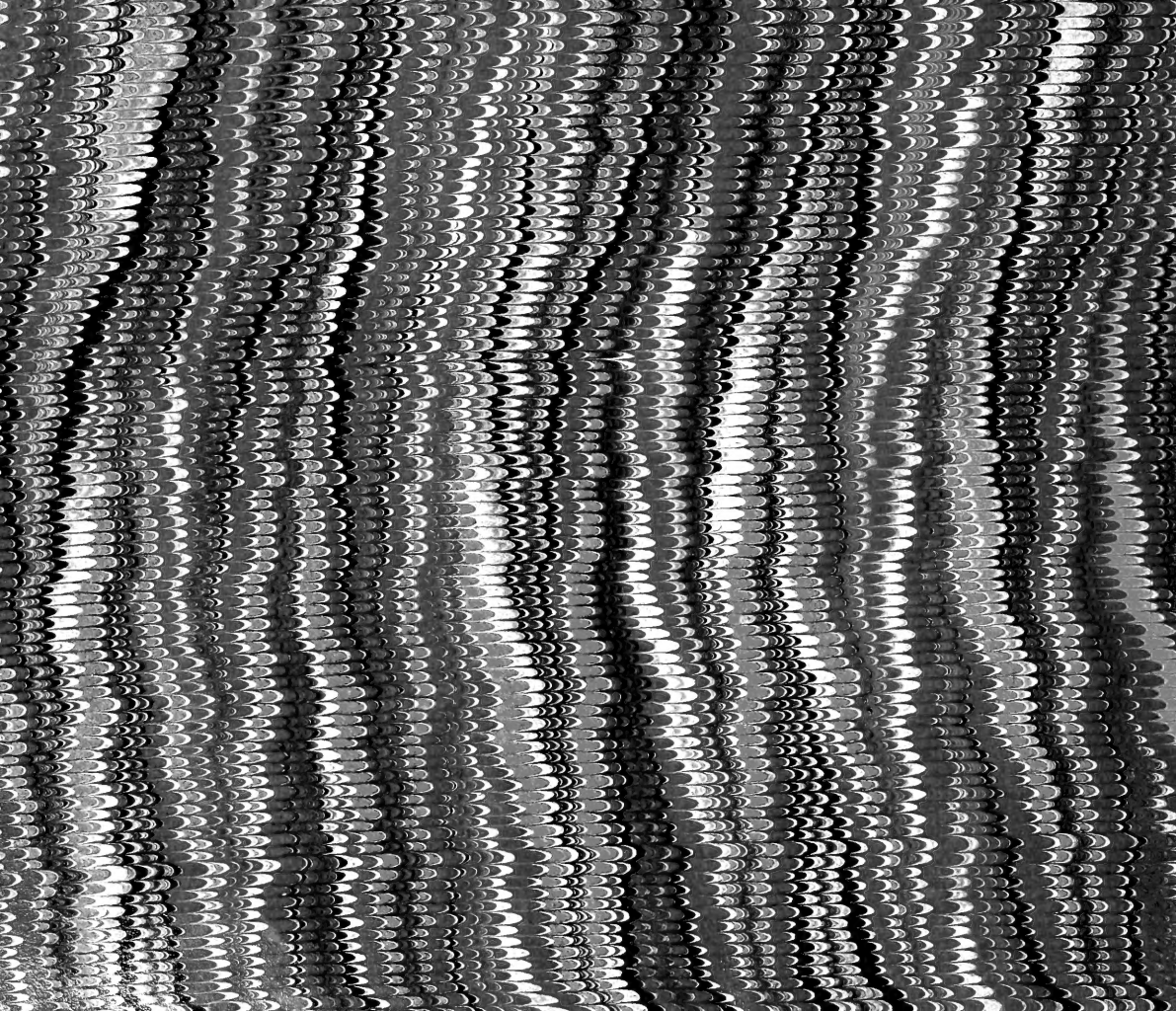
The Dakota Apartment House

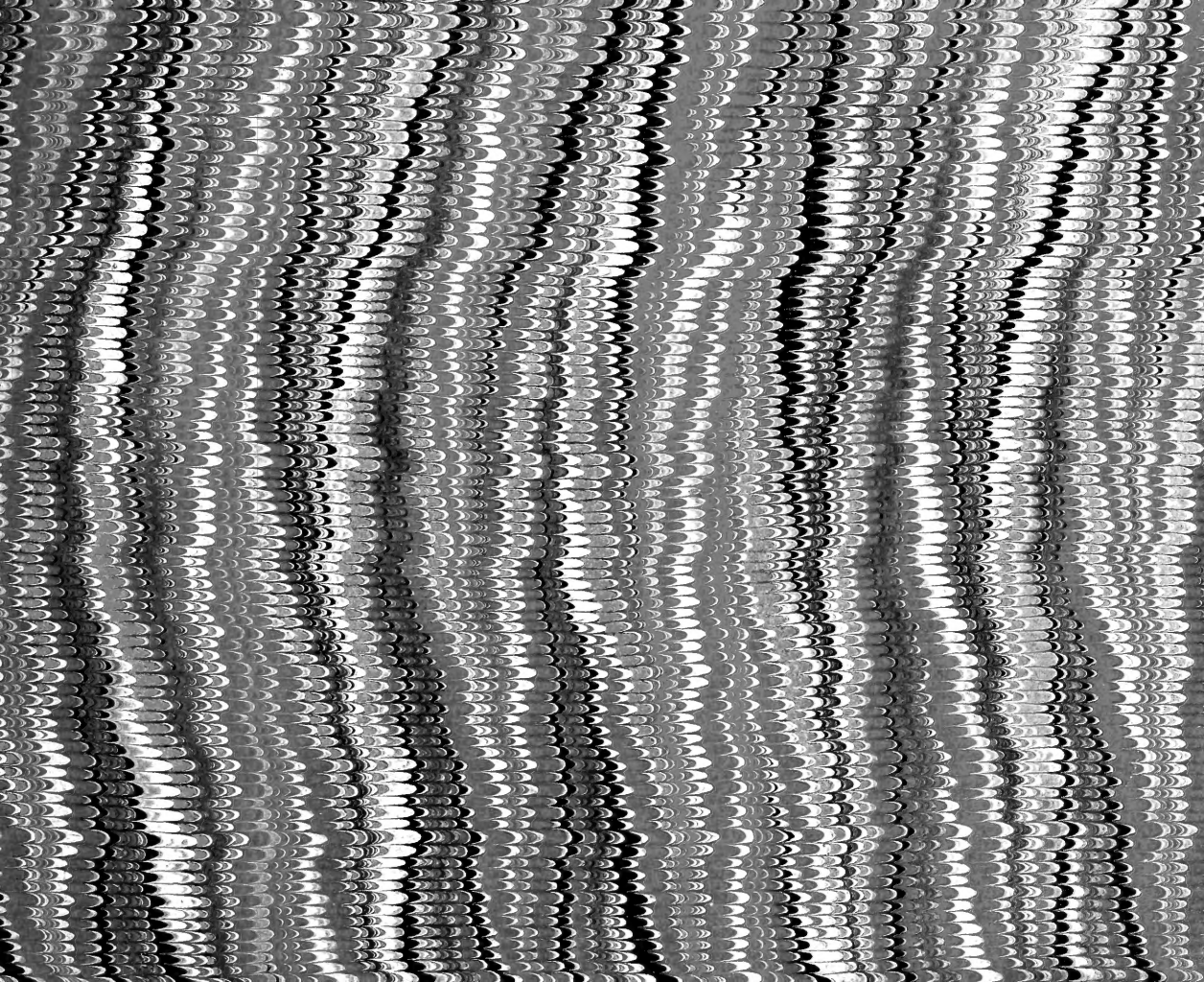
DRIVE NEAR WEBSTER STATUE (COURTESY)



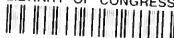








LIBRARY OF CONGRESS



0 021 486 482 4