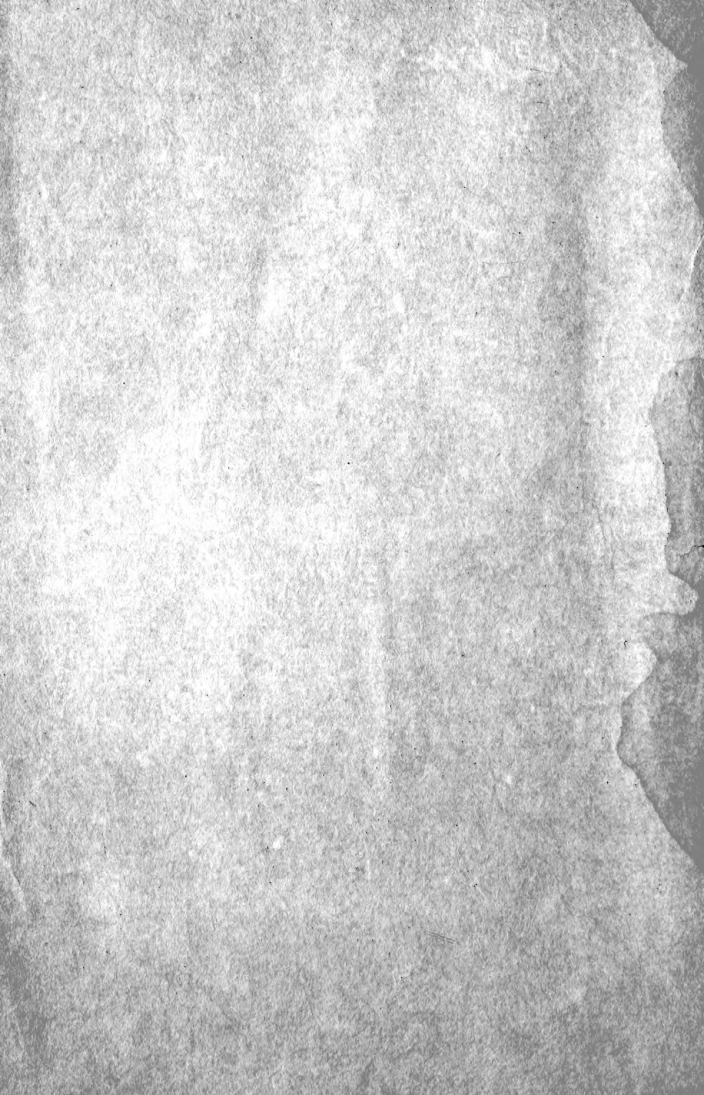
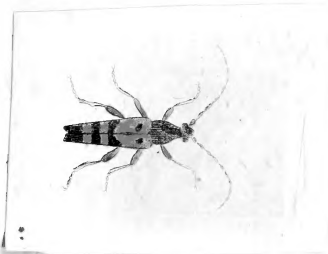


A  
1850



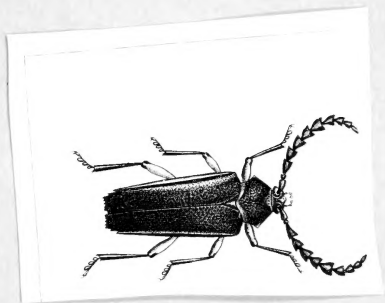
At. Ent. no 73. pl. 1. fig. 16.

Leptura, ohvi

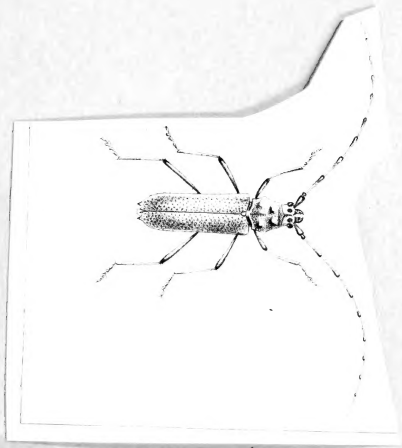


596  
C4  
42  
1400  
Box 2  
RB  
Ent.











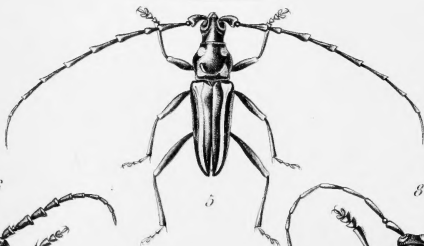




3



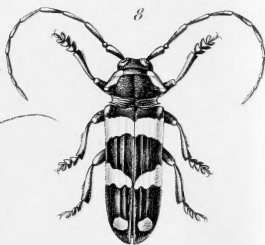
4



5



6



8



7

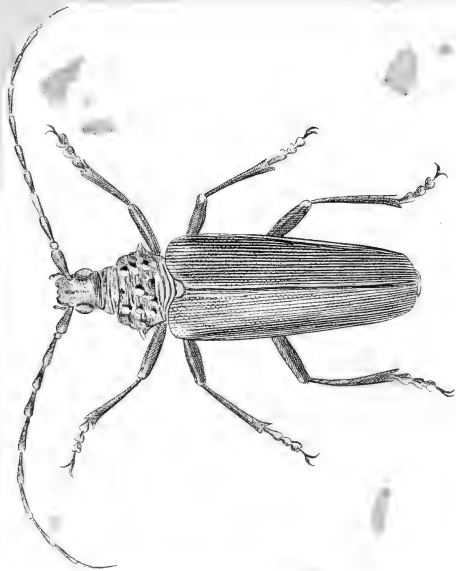
Wapler del et p!

Ann. For. 1858

Rebuffet sc

- |                                   |  |
|-----------------------------------|--|
| 1. <i>Cicindela Cherubini.</i>    | 5. <i>Psychohemus Troberti.</i>          |
| 2. <i>Lachenus ? rugatifrons.</i> | 6. <i>Desmocerus aurcipennis</i>         |
| 3. <i>Mallonia albo-signata.</i>  | 7. <i>Tragiechoschema gracilicornis.</i> |
| 4. <i>Pachystola texata.</i>      | 8. <i>Trogoccephala formosa.</i>         |



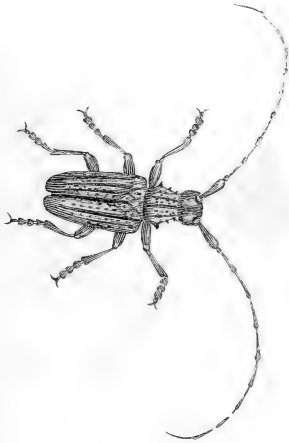






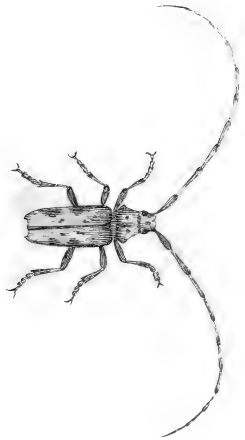
1



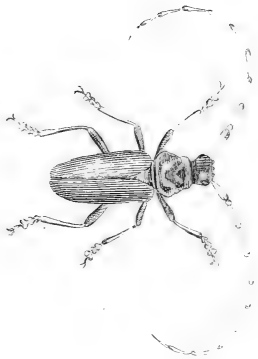








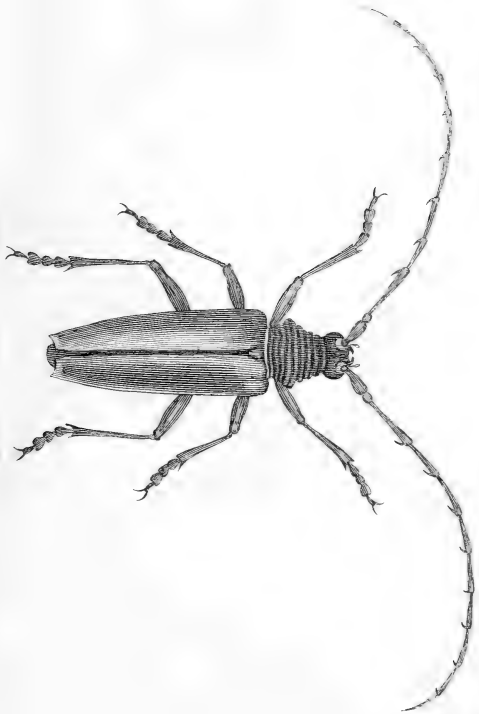






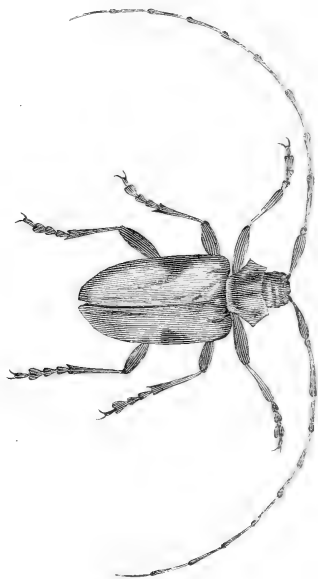








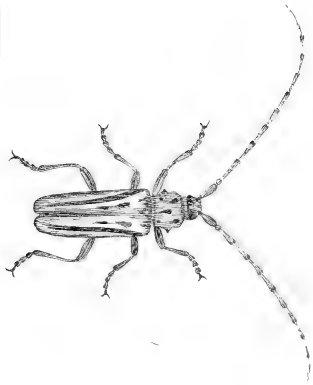




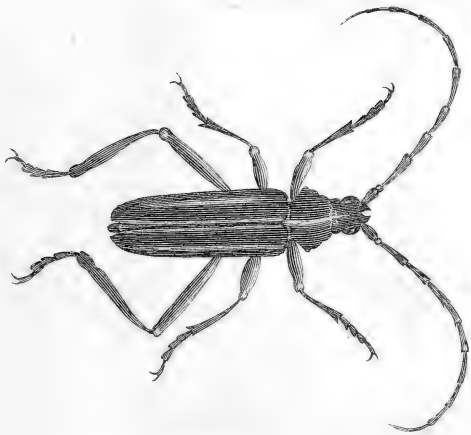






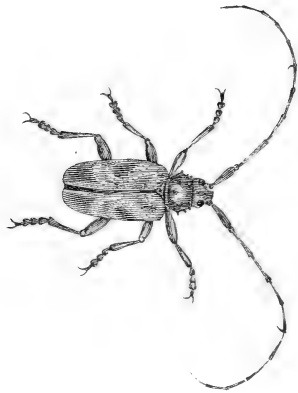




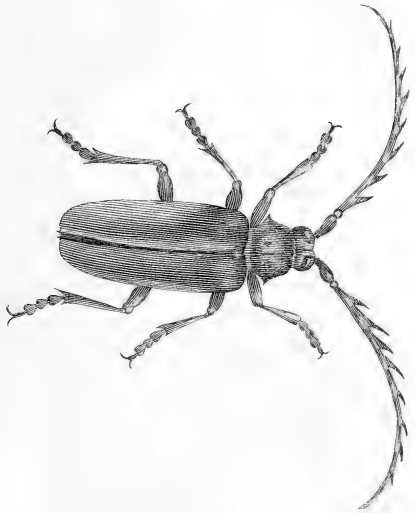




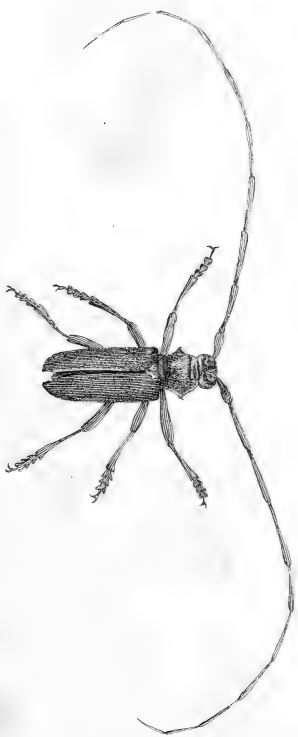




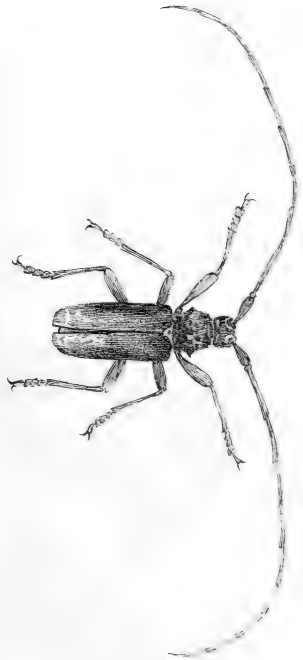






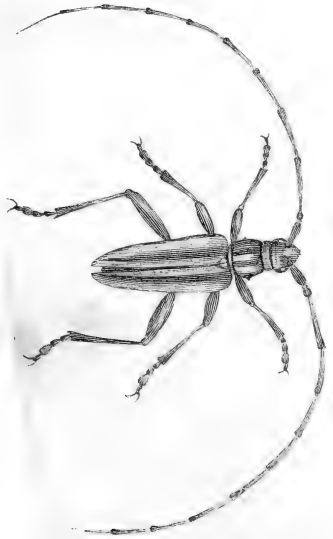




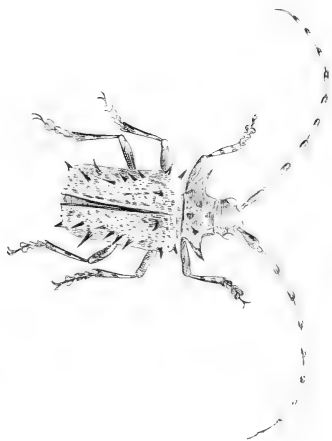








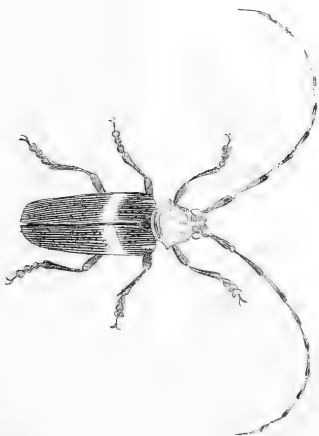
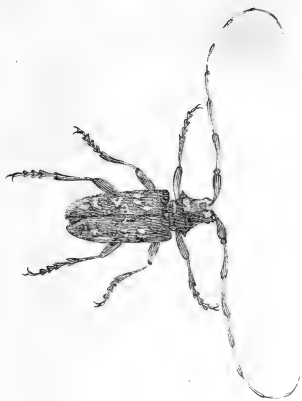










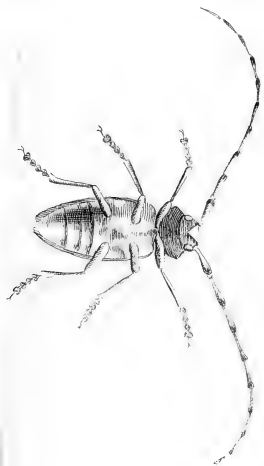
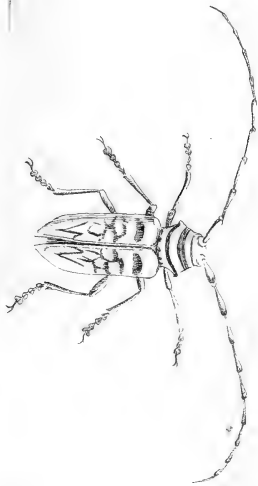








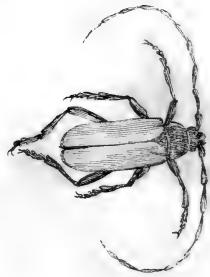










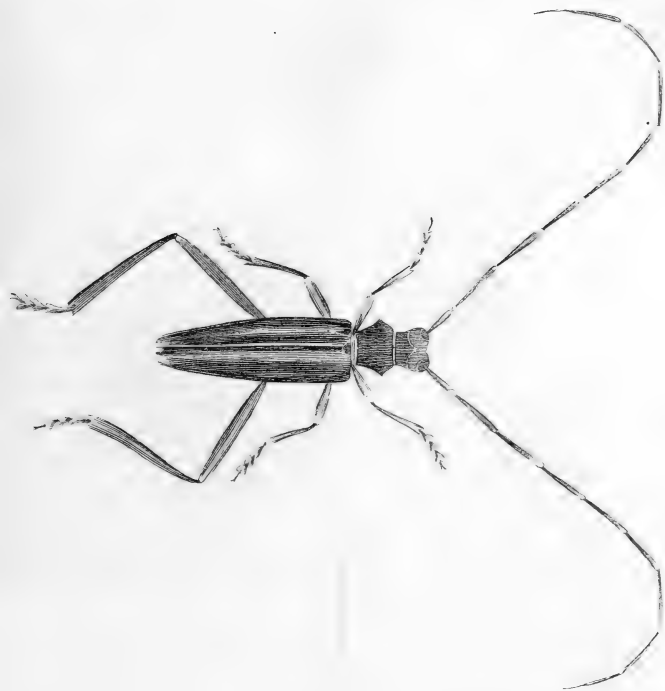








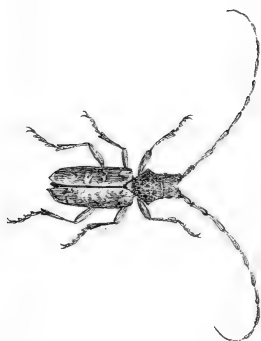














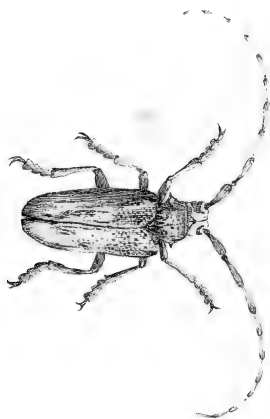




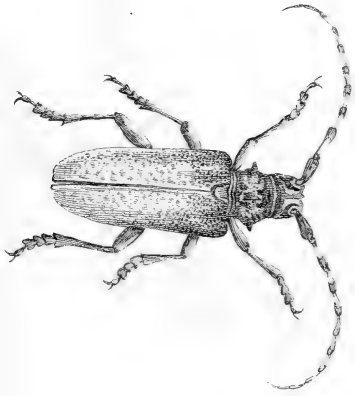






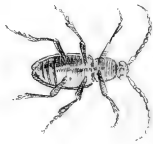




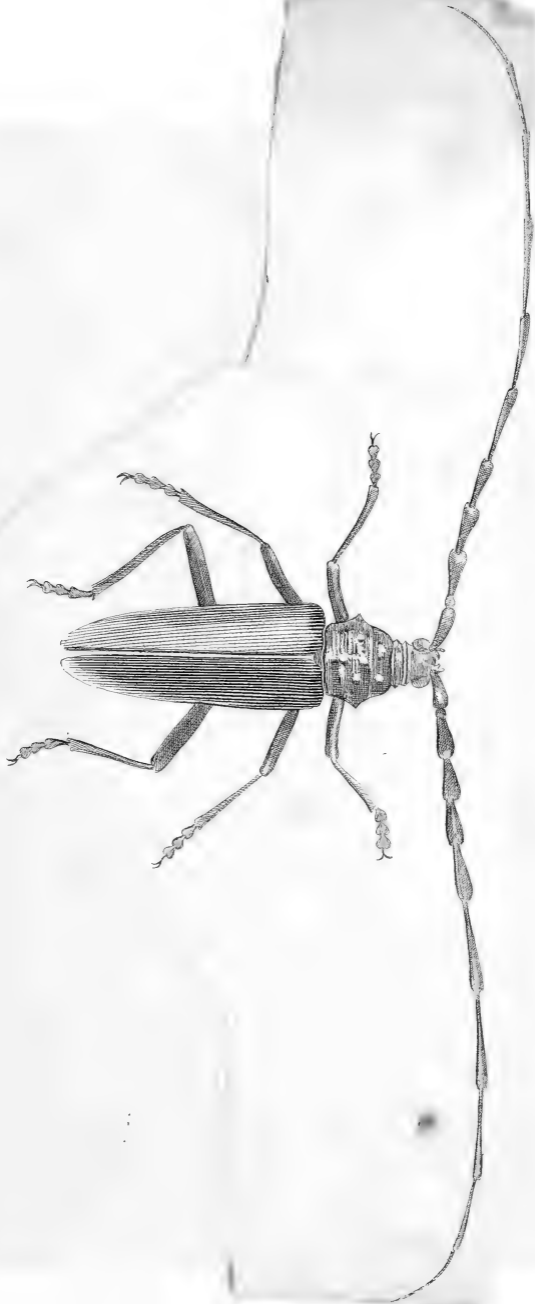




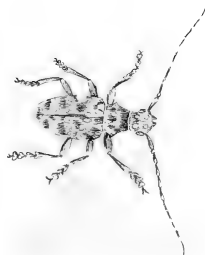




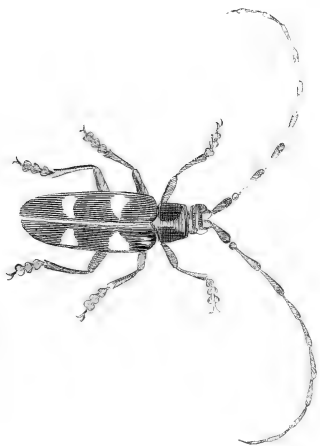






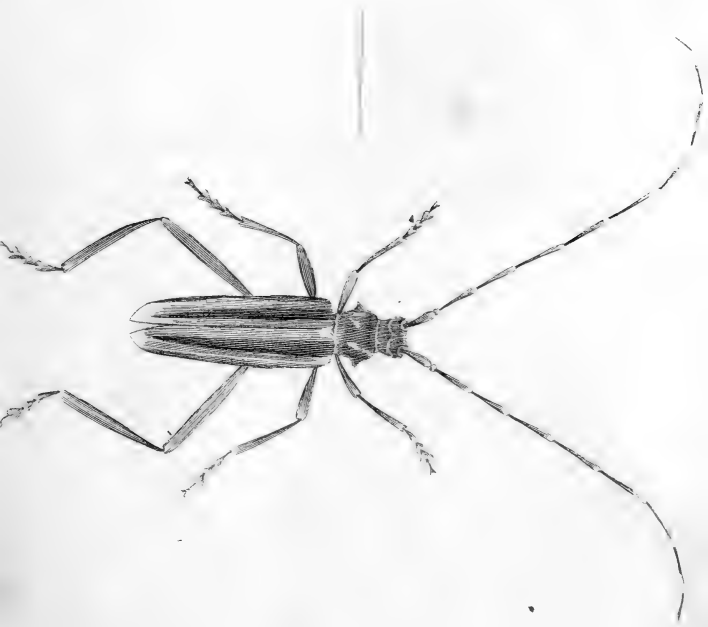




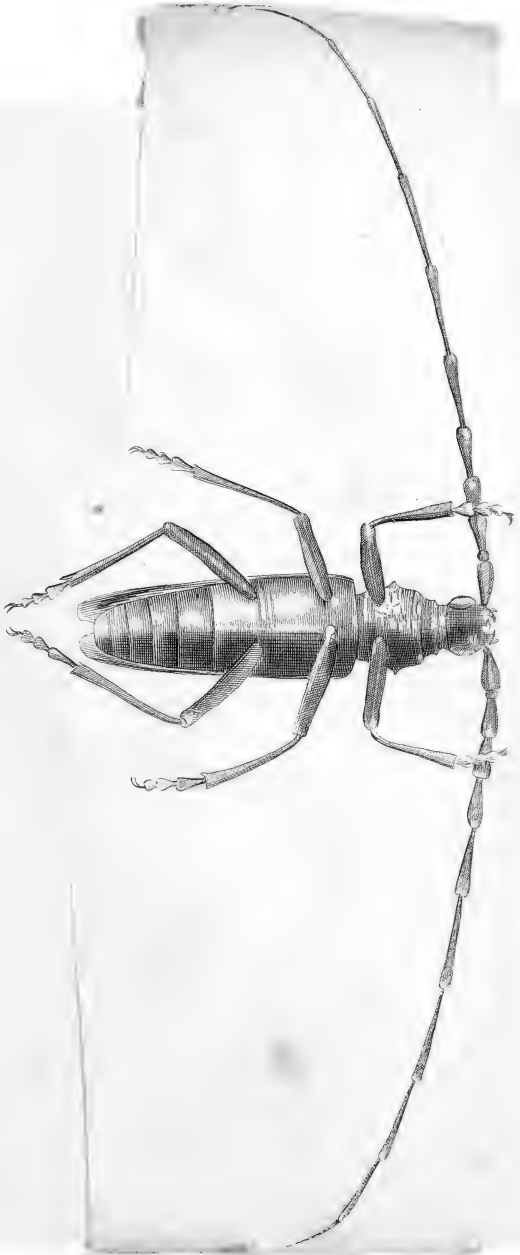








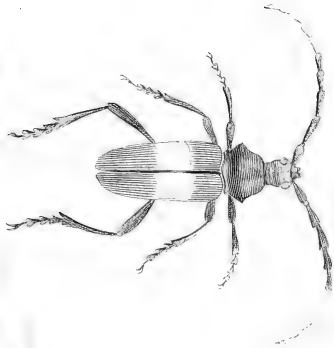
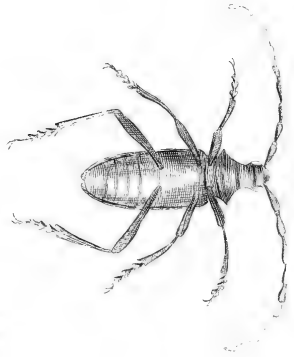






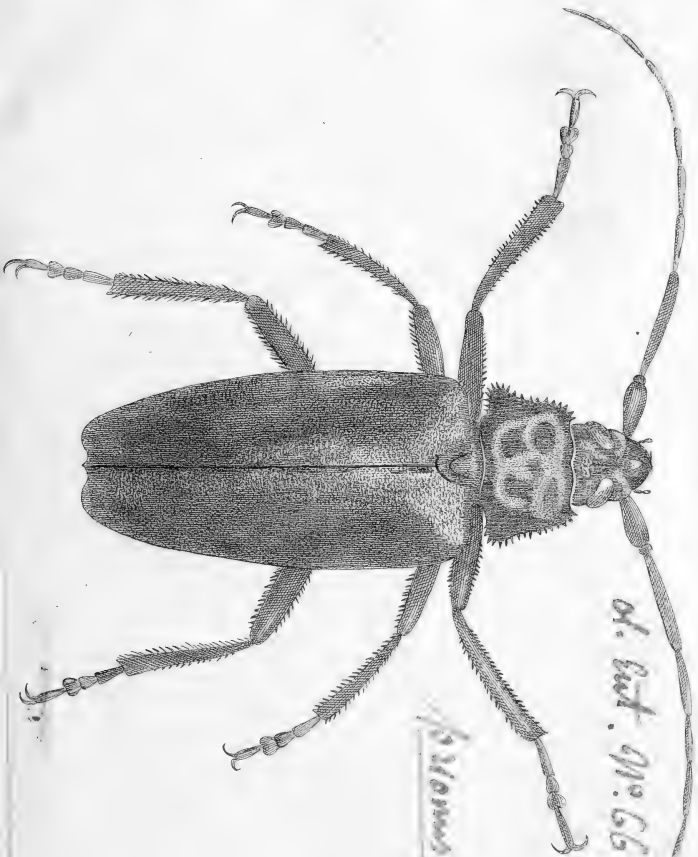












At. Ent. 910. 66. Pl. 10. Fig. 26.

Stenomus Serripes  
olvi



















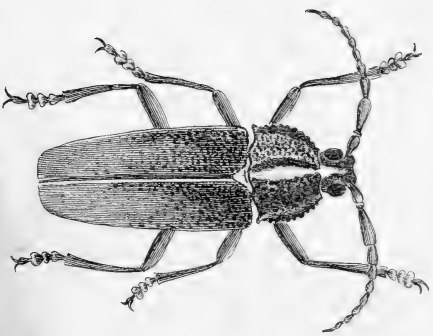
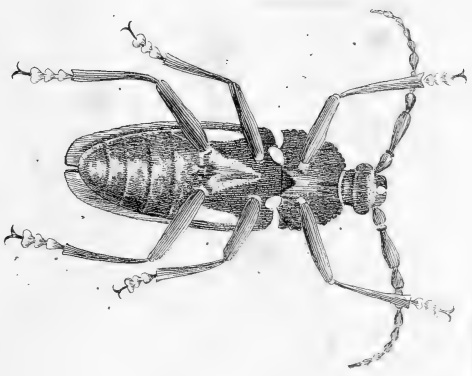




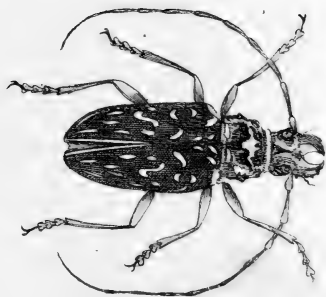
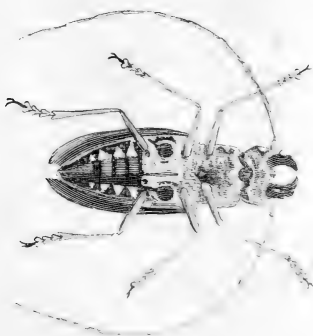


Uris. Ent. 91. 66.

Fig. 32 a - b.  
*Puumas carnificator* Uris.













57









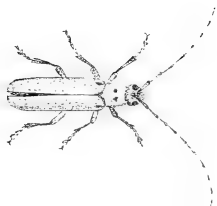








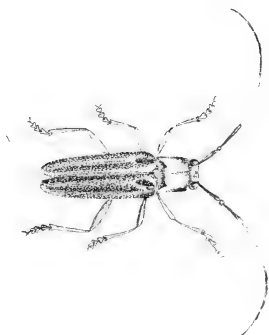










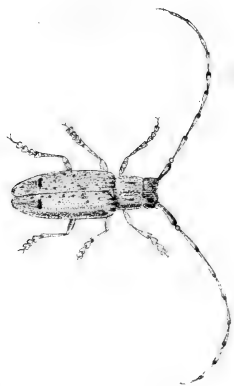




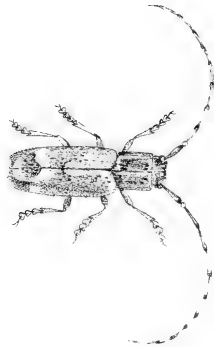




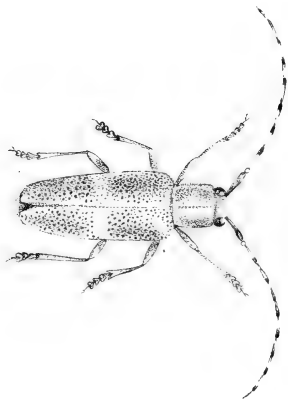




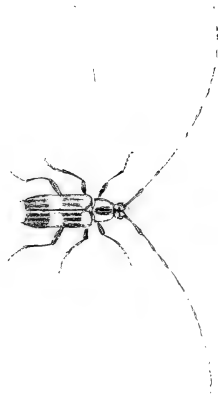






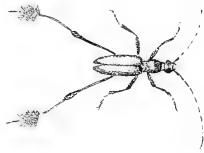




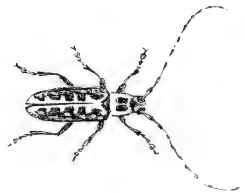
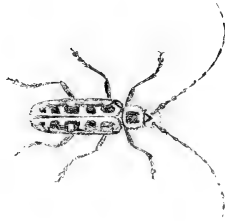




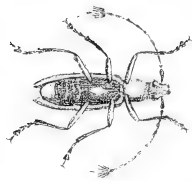
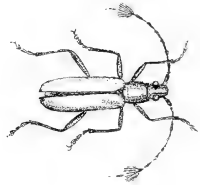










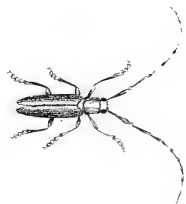








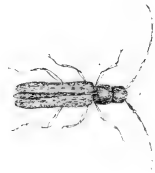














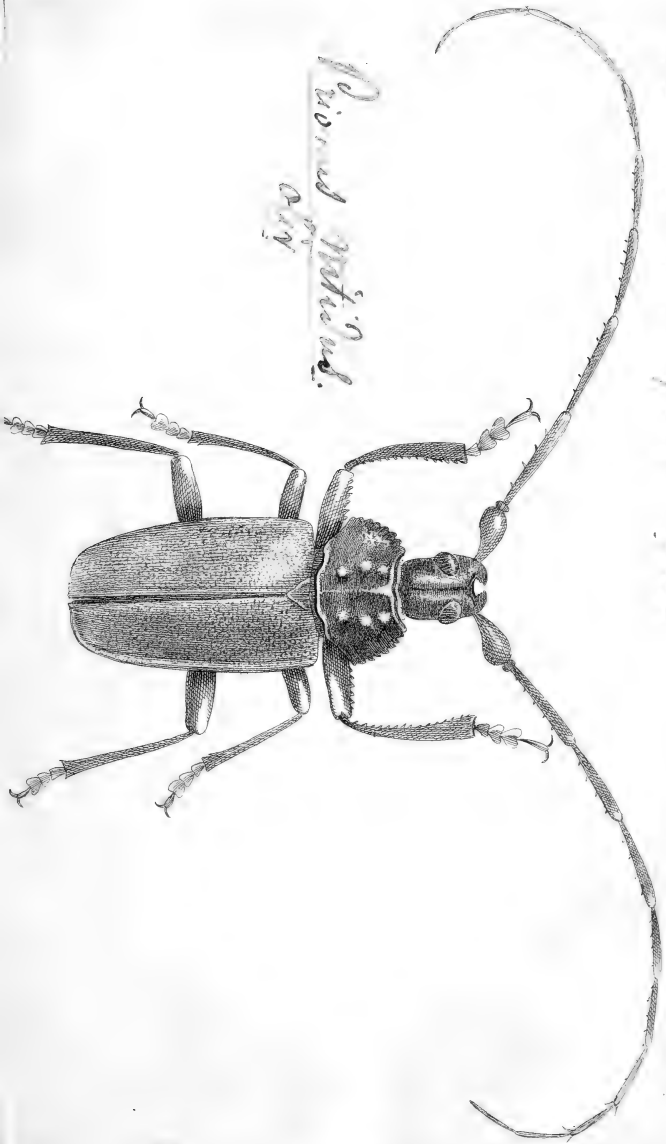






Elis. Ent. 910 65. Pl. N. No. 48.

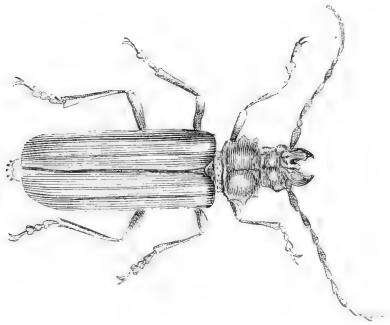
*Picornus notatus*  
Oliv.





Chis. Hist. No 65  
1819. 6

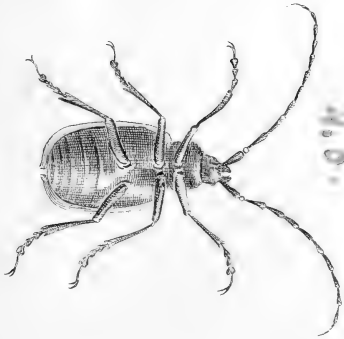
Passana cylindrica  
Chis.



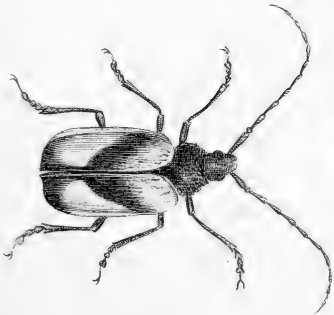


1855. Dec. 10. 65. (M. 1. 19) 4 a. 8

4. 6.



4. 7.

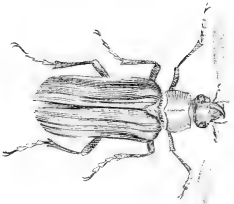


*Hyomen. bifasciatus* 65



1878. Oct. 21: 56 pl. 1. fig. 5

*Phyllophaga*

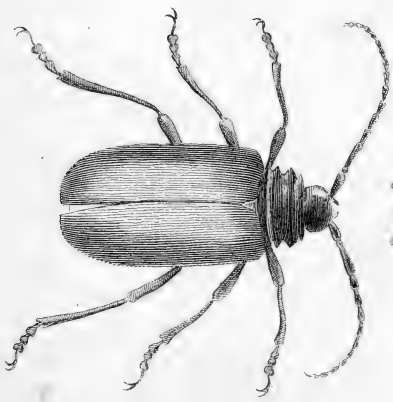




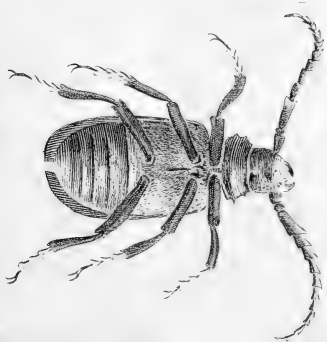


Bliv. Ent. Mus. G. G. pl. 1. 2. 3.

*Phytoecia*



10.



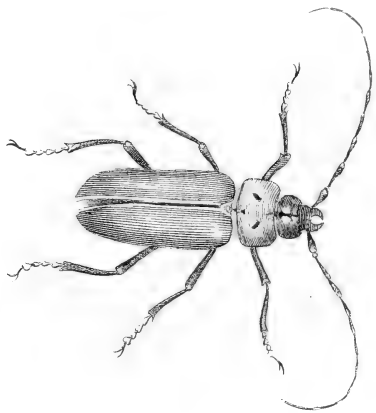
11.



Oliv. Ent. 1866.  
M. fig. 7.

*Pteronotus obscurus*

Oliv.





Plumier: *Arctostaphylos* *puberula* Mill. *Arctostaphylos* *puberula* Mill. *Arctostaphylos* *puberula* Mill. *Arctostaphylos* *puberula* Mill.

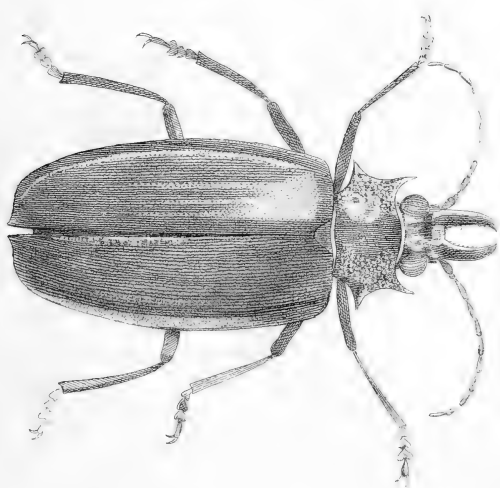


214





Sci. Ent. no. 65. Pl. 12. fig 45



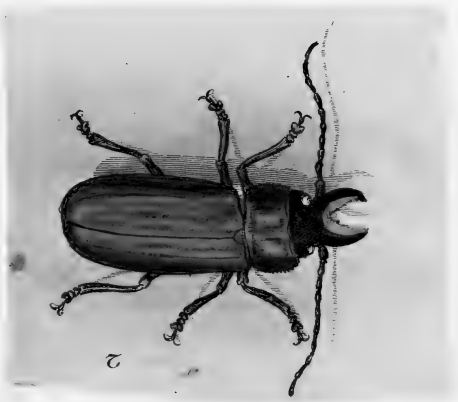
*Picornus*  
*luculentus* Oliv.





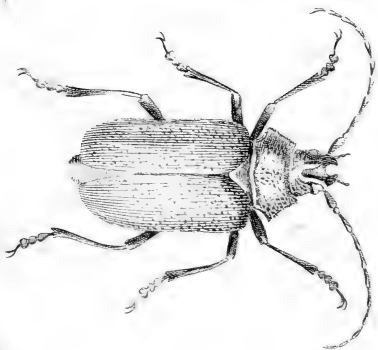
*Pisum*.  
*Cylindricum*? *oliv.*

Carb. of 1844





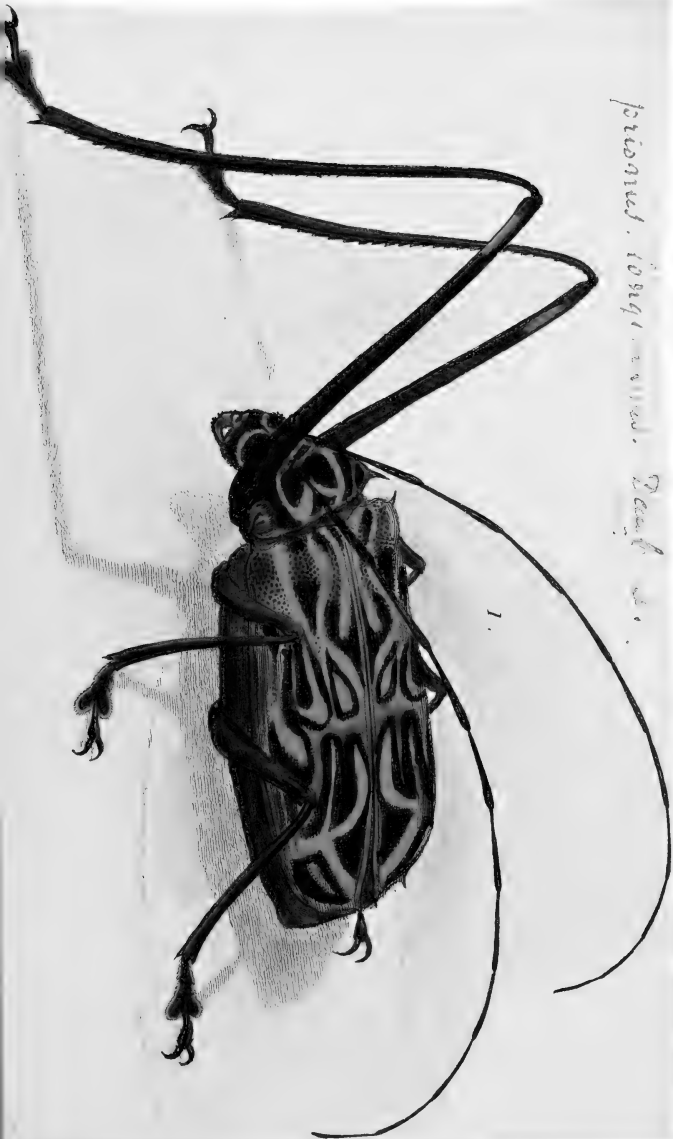
Chrys. lat. var. n. pl. 1. fig. 2.



Chrys. lat. var. n.  
pl. 1.



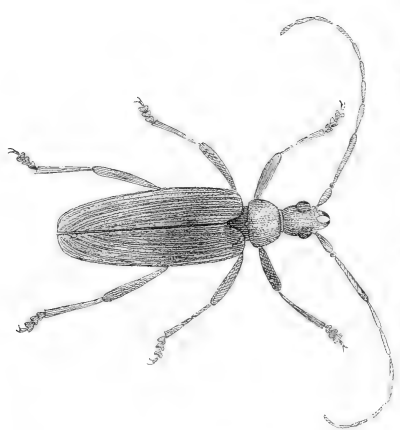
*Pteromalus longicornis*. Geoff. d.



1.



Clay. Nat. no. 16. Pl. in fig. 17.

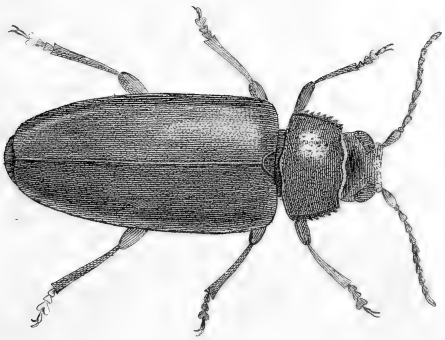


*Phaenocarpa*  
1817.





Olvi. Ent. 910. 66. pl. 12. fig. 48.

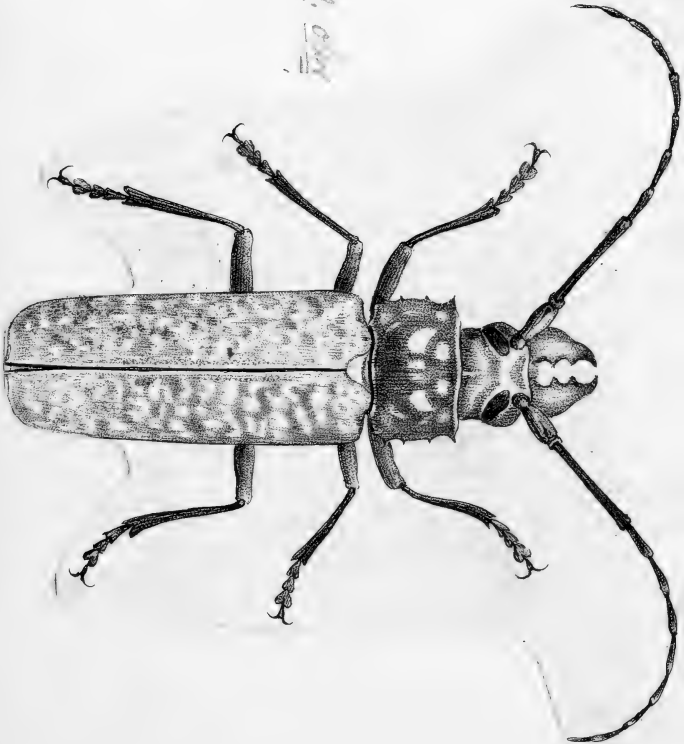


*Cerambyx melanocephalus*  
Oliv.

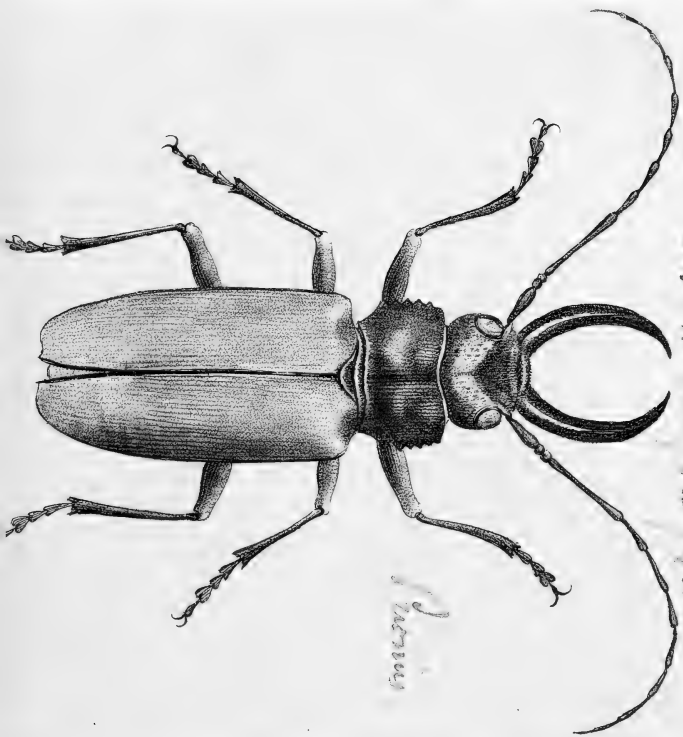


Ohio. Ent. 9126.  
pl. 8. fig. 26.

Trinoma Sevicus. Ohio







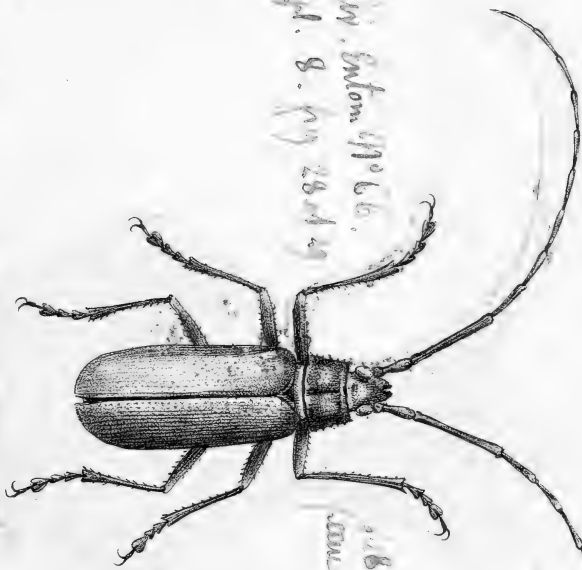
21. Ent. No. 18. 18. 11.

*Pernix*

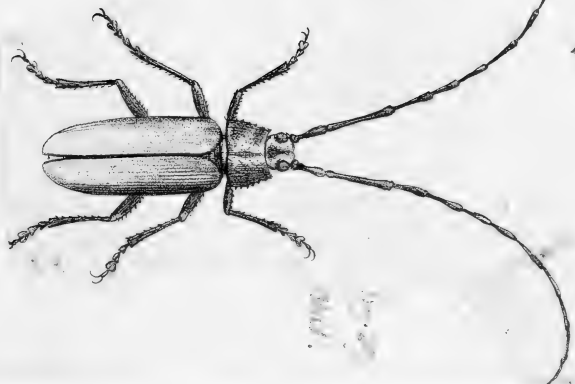
*Eschsch.*  
21. 3



Oliv. Entom. 1796. 6.  
p. 8. fig. 28. d. 1.



178.  
Ceram.



179.  
Ceram.

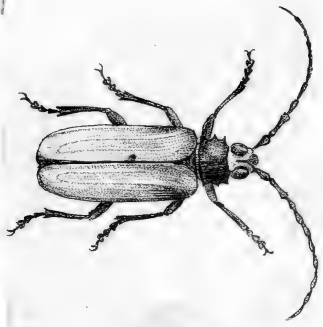
*Cerambyx*, *Callidula*, *Myrmica*





Chin. Nat. Hist. 11065.  
pl. 8. fig. 27

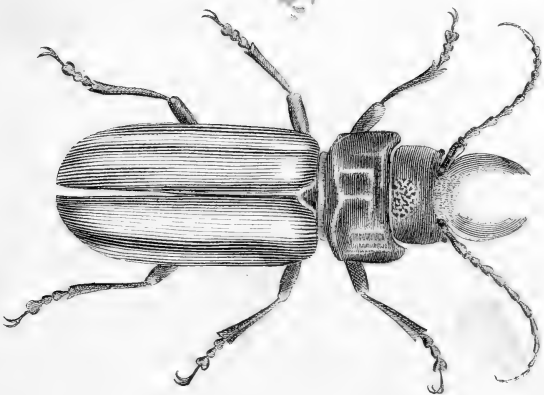
Chin. Nat. Hist. Sulcatus olig.





Ohio Ent. No. 55.  
Pl. 1. fig. 3.

*Prionus quercivorus* ~~var.~~







*Pisoma giganteus* etc

March 1841

2



