


**PFEIFFER COLLEGE**

**1986**





Digitized by the Internet Archive  
in 2012 with funding from  
University of North Carolina at Chapel Hill

<http://archive.org/details/chimes1986pfei>







PFEIFFER COLLEGE  
CHIMES

19




86

MISENHEIMER, NC  
VOLUME XXXI

# CONTENTS

Campus Life	18
Events	32
Clubs	60
Sports	84
Faculty	112
Dorms	132
Classes	150
Ads	192





You pack up all your valuables and head for a place called Misenheimer. And whether you hail from a large metropolitan area or some small town (which requires an explanation of its geographic location each time you mention it) you are an integral part of the Pfeiffer community.

What do you find here? Friends, a social life, a beautiful campus, a good education, a family atmosphere, freedom? Life at Pfeiffer is a lot of things. It is continuous transformation . . . sometimes gradual, or abrupt, or subtle, but always inevitable.

Whether you come from Japan, New Jersey, Zambia, Maryland, Florida, Indiana, Canada, North Carolina, or, any of the other locations represented at Pfeiffer, you bring with you cultural and individual differences that make Pfeiffer-College what it is.

PFEIFFER  
COLLEGE











































NEW JERSEY  
234  
1066-BDY  
NEW YORK

Virginia  
ILLINOIS  
YFT  
380  
DEC 1985



CONNECTICUT  
815  
MARYLAND  
V 21485  
MICK

MASSACHUSETTS  
MSB-690  
1985

FLORIDA  
UUA 789  
SEP 1986  
MISSISSIPPI

INDIANA  
WANDER  
64W2709  
APR 1986

US LIFE CAMPUS LIFE CA



CAMPUS LIFE CAMPUS LIFE





# Orientation





Orientation week of 1985 began on Sunday, August 25. Heading the Committee were Beth Moss, Chairperson; Wade Atkins and Colletta Bryce, Assistant Chairpersons. The members of the committee helped the incoming students to settle into their new environment.

Throughout the afternoon, students and parents became acquainted with Pfeiffer College through special sessions during which both faculty members and students described life at Pfeiffer College. Sunday night Pfeiffer's newest members were treated to a special variety show featuring the college's many talented students and faculty members. During the remainder of the week, various campus organizations sponsored such special activities as dances, a pool party, a mini concert, a trip to Carowinds, and a film festival. The traditional reception for the new students at President and Mrs. West's home was held Wednesday night.



# A Time For



# Every Day Things





# A Time For Food





# And Conversation



**A  
Time  
For  
Friends**







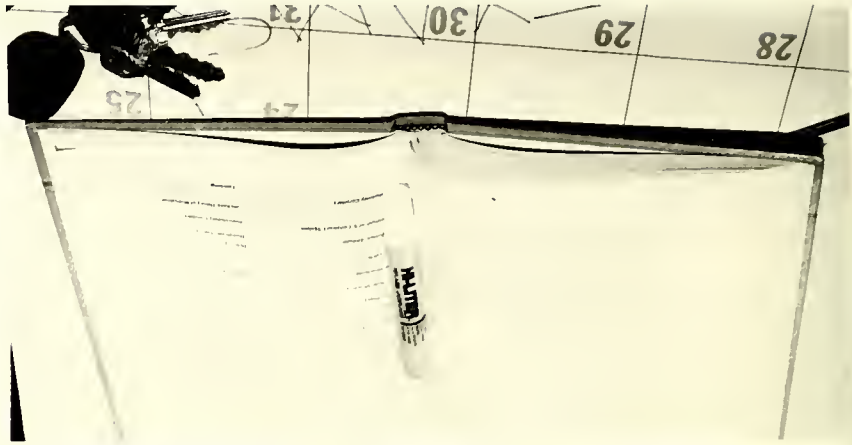




# A Time For Fun!!



# A Time For Class And Study







Campus life incorporates a lot of things into one's college experience. Events may be small, such as going to do laundry or major, such as studying for a test to help you attain your goals in education.

Campus life experiences are what make your college memories. At Pfeiffer the closeness of friends and teachers allow for the development of lasting impressions.



EVENTS EVENTS EVENTS EV



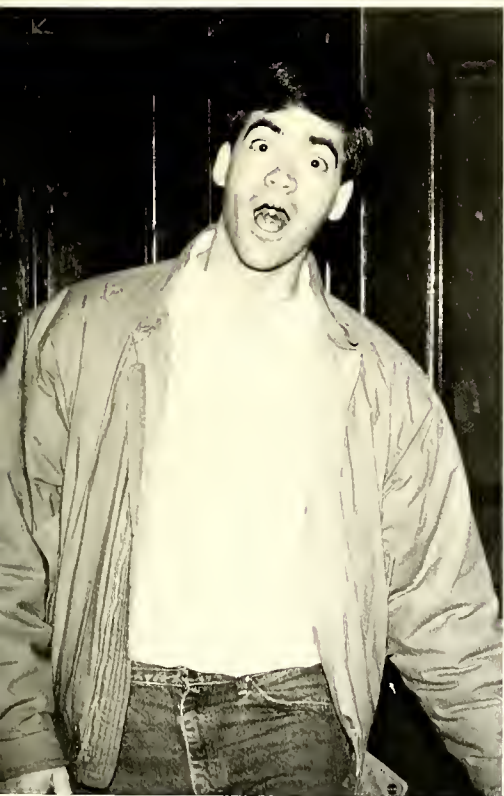


EVENTS EVENTS EVENTS EV









## A Time to Celebrate the Old with the New



Mark Honecker and Bridgette Poplin are all smiles over Bridgette's selection as Homecoming Queen.

Just Clowning Around.

Homecoming 1985 took place during the weekend of October 4-6. Pfeiffer students were offered a full schedule of extra-curricular activities. On Friday night, students were treated to a special concert featuring Dan Seals, formerly of England Dan and John Ford Coley. Later on that night, "Psycho," Alfred Hitchcock's popular thriller, was shown. On Saturday morning a student-sponsored carnival was set up on the front lawn of the women's side of campus. Other Homecoming festivities of that day included an Alumni Awards and Recognition Ceremony, a student-sponsored Homecoming dance featuring the music of "The Entertainers." On Sunday, a special "campus" skate was offered at Pfeiffer during which students could skate free all day throughout the campus. To wrap up the festivities, supper on Sunday was held at Gibson Lake.







Look Mom no hands!



Heidi Heidi Ho and away she goes!



A student tries his skill on the ladder.



Trish and the little Red Corvette are followed by the rest of the homecoming court.





Put on a happy face.



The overall view of the festivities.



No one told me I'd have to take this much abuse.





The Pfeiffer Falcon arouses the crowd's attention.

Rev. Joyce in the tub.



Marion Pagano and her merry men.



Good Cookie!



# GIVE BLOOD

the life you save  
may be your own



You may let go now. Let Go! . . . Let GO!



Since you were such a good boy you'll get a sticker.



Questions! Questions! And more Questions!



Give until it hurts!

During the months of October and February the faculty and community helped Pfeiffer give the Gift of Life. There were quite a few first time donors to give blood but the majority of life came from veteran donors.

This worthwhile event was under the leadership of Nancy Cramer, along with the SGA office. Both played an extremely important part in the organization and publicity for the blood drive. All of those who gave, and those who couldn't due to minor complications were greatly appreciated.



Lying down on the job.

# GHOSTS GOBLINS<sup>and</sup> PFEIFFER



Smurf Attack!



Chris says, "Relax don't do it!"



Anyone for a Hershey's kiss?





# CUB Does It Again







Oregon, New York, West Virginia, Washington, D.C., Ohio, Virginia, Florida, California, Pennsylvania, and North Carolina are where they came from and Pfeiffer College is where they came to. What for? To perform, to entertain. Just as Pfeiffer's students hailed from all over, these performers did also. Students were offered musical and comical entertainment. The CUB concerts offered students chances to sit back and relax and sometimes even to become involved in the show.

## Entertainment Credit

The Cultural program at Pfeiffer College the year '85-'86 expanded to new educational events for students and faculty. Speakers from all over the country appeared to enlighten us with their ideas and knowledge. The programs have not only benefited Pfeiffer academically but have broadened us individually.









# THE CHRISTMAS SPIRIT



Williamsburg Christmas is an annual tradition of Pfeiffer campus. During this holiday weekend, both the faculty and students are brought together by this Christmas decorating. Each building is beautifully decorated with freshly cut greenery while Christmas carols can be heard throughout the campus. When night falls the freshly cut greenery, bright red ribbons, and lighted candles bring a silent hush. This natural, non-commercial celebration brings to life the true meaning of Christmas and fills the air with an immense joy and love for others.







Happy Days  
are  
Here Again





A night of romance and entertainment was in the air on Valentine's night, February 14. Pfeiffer's Old Gym was turned into a ballroom of dancing and laughter. The night will be remembered by all who took part in the special occasion.





October 9-12, A.R. Gurney's *The Dining Room* played to sell-out audiences. The performers portrayed a wide array of characters in this humorous satire of American life. Pfeiffer's presentation featured Mildred Davis, Barry Lyons, Greg Nielson, Dexter Ramey, Kendall Wright, and Dawn Yankowski. Assistant Professor of theatre, Jim Veenstra, directed the production with the assistance of students Jeff Norville and Janet Helmer.



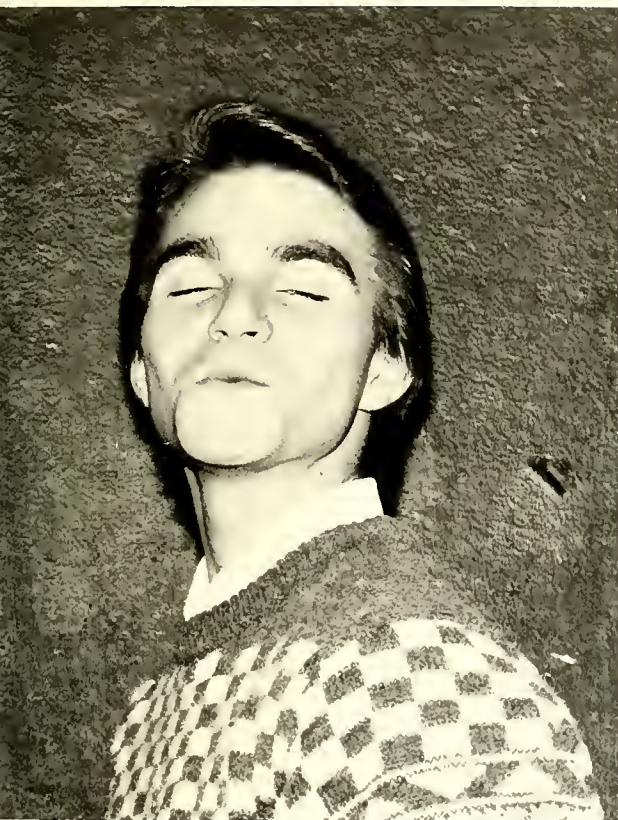
## The Dining Room





## The Fantastiks

Pfeiffer's annual spring musical was "The Fantasticks," off-Broadway's longest running musical. Members of the cast, which carried the performance to Spirit Square, were Phyllis Piano, Rodney Webb, Dexter Ramey, James Morgan, Joseph Judge, Greg Nielson, Laurie Gaynor, and Debbie Santiago. Jim Veenstra with the assistance of Serena Johnson served as director. Edith Hook, visiting artist, provided a carnival or circus atmosphere with her set design.





THE DIARY OF ADAM AND EVE

BY

Mark Twain

Directed by Dexter M. Ramey

Adam ..... Joseph Judge  
Eve ..... Phyllis Piano  
God ..... Richard H. Brewer

## After The Fall

Directed by Janet Helmer  
Cast of Barry Lyons and Dawn Yankowski  
Stage Manager ... Mariea Ays  
Lighting ... Mike Lucas and Jeff Norville  
Stage Technician ... Bruce Thomas  
House Managers ... Greg Nielson  
Terri Stephenson



Pfeiffer Theatre  
presents  
**Of Mice and Men**



The play starred James H. Magruder as George, Jeffery B. Norville as Lennie, Erik Berg as The Boss, Bruce Thomas as Candy, James W. Nicholson as Curley, Debbie Santiago as

Curley's wife, Kevin Greenway as Slim, Rob Trahan as Carlson and Sonny as Candy's dog. The play was enjoyed by all and considered a huge success.



## Do You Remember . . .

Aprilfest weekend consisted of many enjoyable activities. During the week there were many spirited events, such as Western Night, Variety Show and many other SGA sponsored activities. The weekend brought Aprilfest Dance,

Lunch at the lake and fun and games. The weekend ended with Rick Kelley and his music. On the whole, everyone enjoyed and had fun the weekend of Aprilfest.







# A Night Of Fun







## A Day In The Sun





# Graduation

It's

Only

The

Beginning







**BS CLUBS CLUBS CLUBS CLUBS**



CLUBS CLUBS CLUBS CL





# Student Government Association



The Student Government Association was outstanding in 1985-86. This year has brought about many new programs and activities which will grow and generate well into the future of Pfeiffer College. Some of these activities included: The Inter Club Council Dinner during orientation, a Student Leadership workshop, Representation at the National Conference in Washington, D.C., Foreign Students Night, a Platform Night for the Candidates running for elections, Receptions for the Faculty and Board of Trustees; planning, organizing and funding for freshmen orientation; providing funds at Homecoming and Aprilfest weekends; and most of all emphasizing the importance of student involvement. The Executive Council worked very hard this year and their contributions to Pfeiffer will be remembered for years to come. SGA was a team working together with Self Esteem.

# College Union Board



The College Union Board provides entertainment for the students at Pfeiffer. Besides the numerous mini concerts, movies, dances, etc., the CUB made improvements in the appearance of the student center lounge.



# Association of Men Students



The Association of Men Students represents and furthers the interest of the men students and serves as a medium for presenting the men's opinions to student government councils, faculty, administration and trustees.

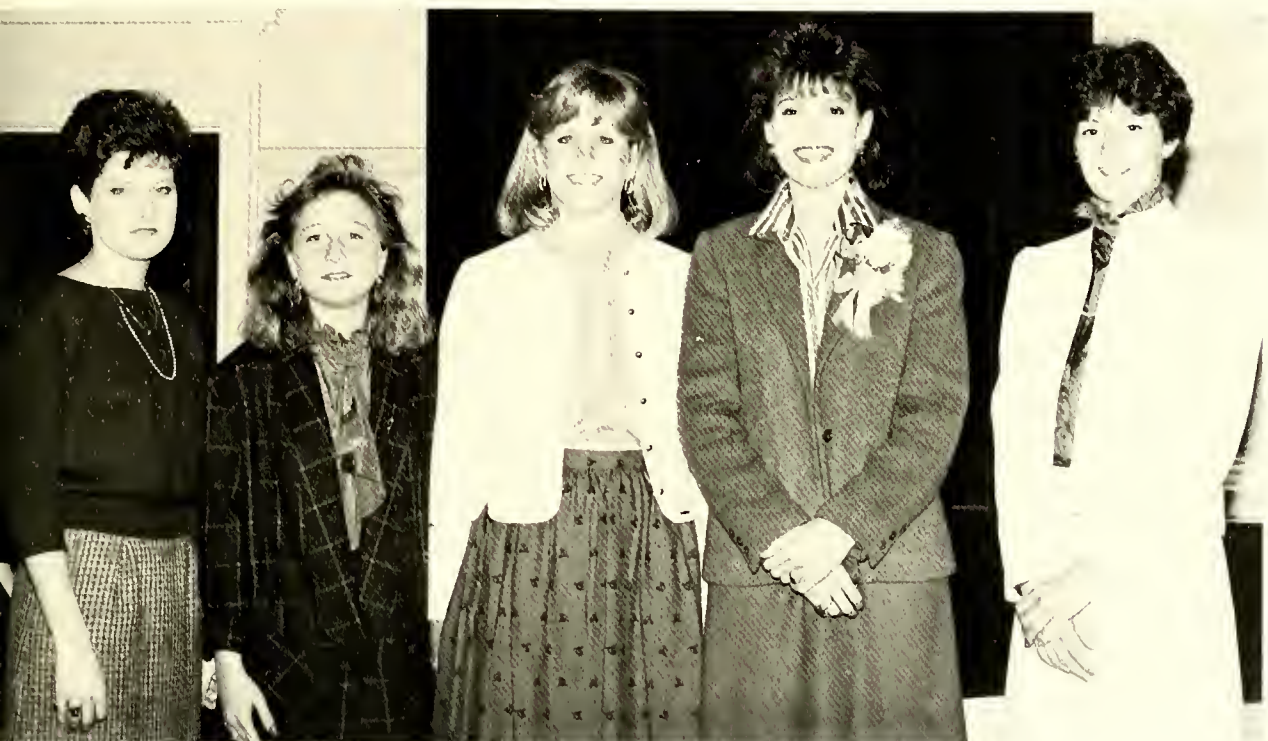
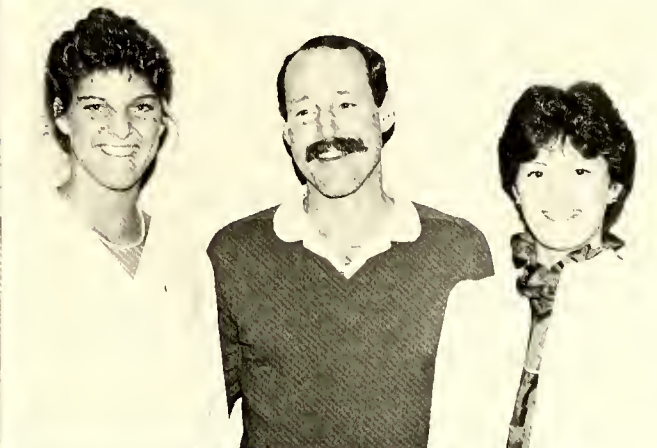
The AMS is governed by the Executive Council which carries out the business and projects of the organization, enacts legislation to solve problems, and keeps communications open on campus.

Contributions to Pfeiffer include vacuums, ice machines, senior gifts, Lake project fund, and Constitution revisions.

# Association of Women Students



The Association of Women Students is an organization composed of all the female students on the Pfeiffer campus. It is responsible for the planning of such activities as The Big Sister/Little Sister program, the Halloween Dance, Winterfestival, and etc. This year, the AWS achieved many goals, but as always, there are more things to be done. The AWS has and will continue to fulfill the needs of Pfeiffer College, and especially the Pfeiffer Women.





# Religious Life Council



**Baptist Student Union**

**Catholic Campus Ministry**



# Christian Education Fellowship





# American Guild of Organists



# Music Educators National Conference



# Engineering Club



# Math Club





## Rho Alpha



## Pfeiffer Playmakers



# Communications Council



# Psychology Club





# Symphonic Choir



# Concert Choir



The Pfeiffer College Concert Choir consisting of 37 members is Pfeiffer's most active student music organization. They annually go on tour during the Fall and Spring semesters. The choir toured England and Western Europe in May.



# Wind Ensemble



# Handbell Choir



## Chamber Singers



## Jazz Ensemble





# Chapel Choir



# Aldersgate Choir



## Chess Club



## Fellowship of Christian Athletes





# The Pfeiffer News



*The Pfeiffer News* is the student newspaper at Pfeiffer College. For the first time in many years, *The Pfeiffer News* began weekly distribution during the 85-86 school year. The newspaper has had a more significant presence on campus, and has become more involved with student, faculty, and administrative affairs. Not merely a bulletin board for posting messages, *The Pfeiffer News* has truly become a news paper.

# The Chimes



Co-editors:  
 Tammy Gilmore  
 Libby Hall

Staff:

Sara Alspaugh  
 Eddie Amoon  
 Wade Atkins  
 Lynn McCann  
 Maria Ays  
 Dena Bates  
 Albert Billings  
 Hope Beachum  
 Laurie Gaynor

Rebecca Luebehusen  
 Katie Marshall  
 Elizabeth Matthews  
 Randy Sloan  
 Jim Barbee  
 Leigh Stogner  
 Robin Wallace  
 Patsy Willoughby  
 Tammy Willoughby

Denise Kocher

Photographers:

Bobby Bean  
 Don Coggins  
 Alison Erdman  
 Lisa McPeak  
 Hiroshi Myagi  
 Jeff Strader

Advisor: Debbie Estes

Photographer Editor: Jeri Veenstra



# The Phoenix



"The Phoenix" is the literary magazine of Pfeiffer College. Published bi-annually, "The Phoenix" is representative of the best poetry, prose, art work and photography of the Pfeiffer Community. "The Phoenix" staff reads and judges the work submitted, does layout and assembles and distributes the magazine.

# Honor Board



## Women's Honor Board



## Men's Honor Board





**Sophomore  
Class  
Officers**



Laurie Gaynor, Mildred Davis, and  
Brandalyn Grier

**Junior  
Class  
Officers**



Mike Lucas, Kendall Wright, and  
Dexter Ramey





**SPORTS SPORTS SPORTS SP**



**SPORTS SPORTS SPORTS S**









# 1985 Soccer Team



Meeting: Joe Acqui, Craig Chaffinch, Marty Edwards, Mike Gillette, Carlos Ristorcelli, Steve Whitehurst, Fred Franke, Mark Baliff, Matt Vollmar, Rob Donovan, Matt Biedermann. Standing: Coach Mel Mahler, Dave Engel, Bill Grace, Sean Kerrigan, Prescott Carbash, Pat Cleary, Julian Domenech, Roland McCullough, Frank Pustay, Demetrius Marlowe, Will Sponholtz, Brent Eckberg, Will Rousseau, Julian Machimbarrena, Chris Penland, P.J. Dorsey, Doug Miller, Trainer Kevin Allran. Not Pictured: Will Gillis.





## STICKS DOWN, good season.

Coming into the 1985-86 season with a very young team, fourth year coach Nancy Ingram brought a lot of optimism along with her vast coaching ability. This highly talented and spirited team worked and lived more closely than any other team on which she had played according to senior captain Kathy Wolf. The talent expressed itself when 6 out of

7 team members who tried out made All Deep South Tournament Team. Missy Johnstone, Team Captain Debbie Finch, Jodi Richardson, Donna Berger, Andrea Mollahan made the Tournament Team. Jean Hudock lead the team with the most shut outs and most saves at goalie. Jodi Richardson, Sandy Becker, and Kim Bartosz had the most

goals for the season with a 8, 6, and 1 overall record.

Losing only three players to graduation and having two to transfer, leaves the team feeling very positive about next season as they look forward to continuing the winning tradition at Pfeiffer.







1



2



3

Opposite Page: (Clockwise from upper left)  
 1. Sandy Becker is wiped out as the referee looks on.  
 2. Missy Johnstone attacks the Defense.  
 3. Debbie Finch gets down to work.  
 4. Kim Bartzos gives the ball a whack.

This page:  
 1. Debbie Finch lines up a shot.  
 2. Debbie Finch sets her mind and stick to getting the job done.  
 3. Missy Johnstone sets up a play as Diane Hernberg looks on.



Front Row: Missy Johnstone, Diane Hernberg, Chris Masser, Caroline Pysher, Monica Skevnick. Second Row: Donna Ring, Jodi Richardson, Kim Bartzos, Debbie Finch, Maureen Whalen, Kelly Johnstone. Back Row: Jean Hudock, Andrea Mollahan, Sandy Becker, Debby Hornby, Kathy Wolf, Angela Mollahan, Donna Berger.



# Spikers take 'em to the limit.



1



2



The 1985 Lady Falcons Volleyball team faced a tough season, posting an overall record of 4-11. Although the Pfeiffer squad lacked experience and height, by the end of the season they were holding their own against their opposition. Displaying their height of ability, the Lady Falcons rallied to beat Elon in the first round of the NAIA District Playoffs.

1. Fran Lavelle concentrates on serving for a winner.
2. Coach Ken Brown discusses strategy with Susan Lawing.



Kneeling: Wendy Tucker, Laurie Gaynor, Lori Peterson, Susan Lawing, Wendy Bogle, Sheila Lowry. Standing: Coach Ken Brown, Denise Hemler, Fran Lavelle, Nancy Coleman, Donna Wolf, Amy Trogdon.

# Cross Country . . . The Building Year



During the 1986-87 athletic year Pfeiffer College added a new team sport to its roster of varsity sports. With a lot of enthusiasm in the beginning for this team sport, Coach Tom Childress looked forward to a great rookie season for this new team. But as the season wore on only three out of the twelve original runners were left to run the course for the remainder of the year. This created problems for the team; they needed five runners to compete. Because of the small numbers of runners on the team the three who did run, Jeff Childress, Tim Bridges and Troy Waller, competed at invitational meets as individuals. Our hats are off to these three hardworking young men and to Coach Tom Childress. Better luck next year!





# Swimmers Ride the Waves.

The Lady Falcon Swim Team consisted of seven freshmen and three letterman swimmers. They started off slow but moved right in to the swing of things with a 5 and 5 record despite their numerous injuries.

Lady Falcons were coached for the first time by a Pfeiffer student Bob Cristella. Freshman swimmer Kim Fowler commented that, "It must be hard working with peers but Bob Cristella stuck with us and pushed us through the season." Early in the season Amy Mathiason, Lisa McPeak, Lynda Henschel and Amy Kaspert broke the school record for the 200 medley relay set five years ago and qualified themselves for Nationals. Amy Mathiason also broke the school record in the 100 breaststroke. Also going to Nationals was Pam Baran in the 100 breaststroke and 50 free style.

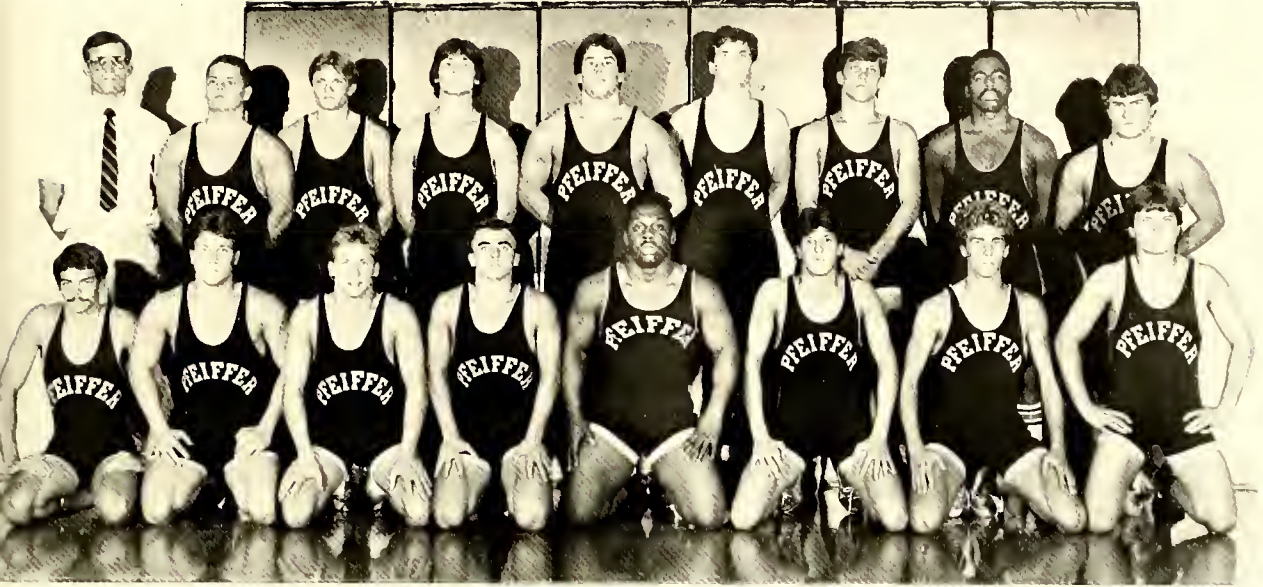


(Left) Coach Bob yelling as usual.  
 (Above) Regina off to a good start.  
 (Below) Kirsten after a hard race.

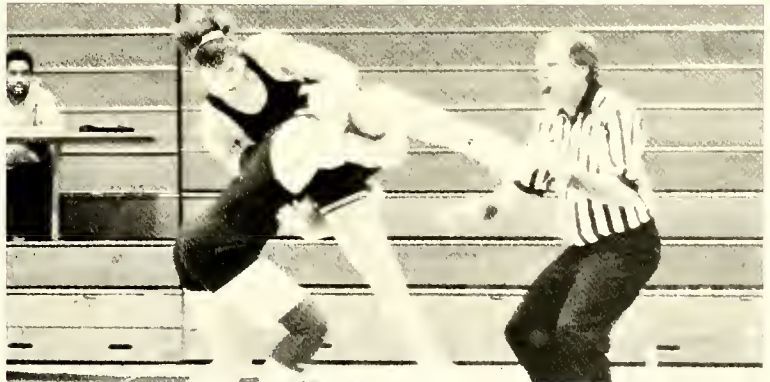
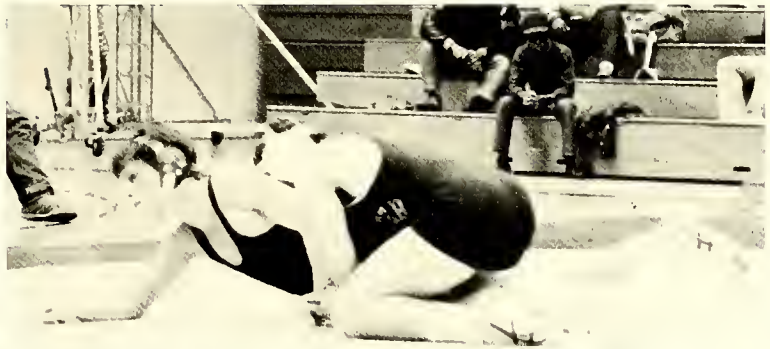


Bottom: Kim Fowler, Jill Gasperini, Amy Mathiason, Kirsten Switter, Lisa McPeak. Top: Lynda Henschel, Lou Ann Holtzclaw, Pam Baran, Monica DeCoursey, Amy Kaspert, Regina Hoffman and Mike Fitzgerald. Not pictured: Cathy Bond and Bob Cristella, student assistant coach.

# Grapplers Win Pins.



Bottom: Warren Davis, Jamie Gigantelli, Eric Beck, Jay Howard, Reinhardt Gray, Tim Sanders, Brent Eckberg, Bryon Maluvac. Top: Coach Richard Johnson, Rick Jones, Jeff Jones, Ken Drummond, Brent Mule, Chuck Zang, Rob Darpino, Lee Andrews, Mike Coffey. Not Pictured: Ken Drummond, Keith Howell.



The 85-86 wrestlers were 5-12-1. They had 4 letterman this season, Lee Andrews, Jay Howard, Reinhardt Gray, and Jeff Jones, and were led by Coach Richard Johnson.



# Women's Basketball . . .

The 1985-86 Lady Falcons Basketball Team showed surprising results. A young team of seven freshmen and Coach MaryAnn Sunbury, first time coach for the Lady Falcons, finished with a 10-12 record. Picked not to finish better than seventh by preseason writers, the Lady Falcons devoted much of their time to practicing skills and strategy to finish fourth in the NAIA Carolinas Conference.

Jill Nelson, the Falcons only loss to graduation, was high scorer for the year, but close behind her was Denise Hemler, a sophomore. Jill Nelson also represented Pfeiffer on the All-Conference team.



This page:

1. Jill Nelson puts the ball up in traffic.
2. B.B. Morrison on a fast break.
3. Donna Wolf looks for a rebound.
4. Lady Falcons score two more.

Opposite page:

1. Jill Nelson just misses the ball.
2. Assistant Coach Barry Ballard.
3. Martha Trotter struggles to get the ball in bounds.
4. Sheila Lowry jumps for the ball.





1



2



3



4



Team Members — Front Row: Amy Trogdon, Martha Trotter, Angie Little, Barbara Morrison, Debbie Finch, Sheila Lowry. Back Row: Karen Ravert, Nancy Coleman, Donna Wolf, Jill Nelson, Jonnie Nicodemus, Denise Hemler, and Coach MaryAnn Sunbury.



# Pfeiffer Basketball





Dazzles the crowd.



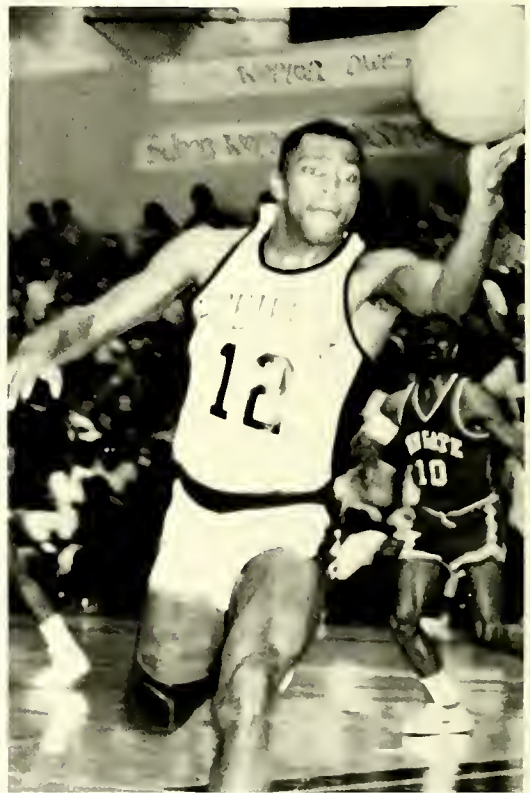


15<sup>th</sup> ANATIONALLY  
1979

SEASON



The 85-86 Pfeiffer Falcons started the season by winning the WBTV Carolina Classic by defeating Winthrop and finishing the Tournament with a 3-0 record. This year's team saw a lot of new faces. There were eight freshmen, two juniors, and three seniors, with only three returning lettermen — Cordes, Davis, and Moody. Led by head Coach John Lentz and Asst. Coach Walt Frye, the team finished with a 15-13 season record.





Standing (left to right): Larry Durrett — Sports Information Director, Todd Walker, Matthew Smith, Brian McIntyre, Craig Cordes, Jack Perry, Chris Collins, and Coach John Lentz. Seated: Mike Moody, Mark Lemieux, Clifton Lynch, Tony Davis, Brian Pieroni, and Darren Lassiter.



## Falcons Take It To The Hoop!

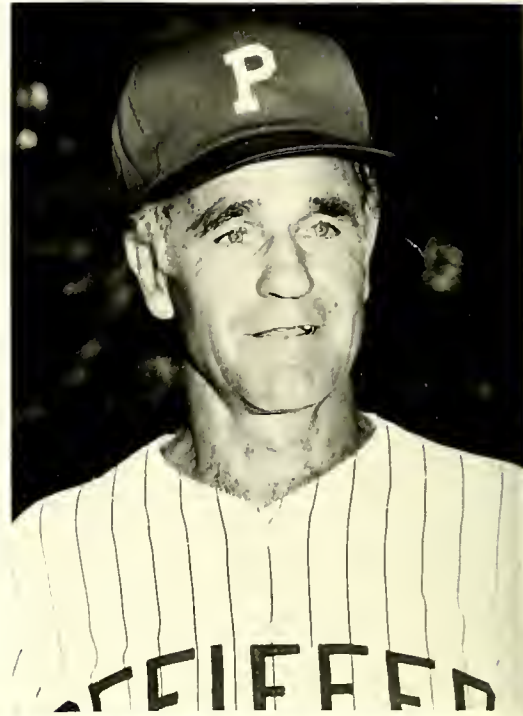




# Baseball . . . On the stick

Coach Joe Ferebee came into his 30th season with high hopes of bringing home to Pfeiffer a conference championship in baseball. With the leadership of his seniors and the willingness of his freshmen to learn, Coach Ferebee soon molded a quality team out of better-than-average-players. The team wrapped up the season with an overall record which met and passed everyone's expectations for this relatively young team.

Right: Coach Joe Ferebee. Team Members: Front Row: Neil McElroy, Mark Ford, Sean Waddell, Coach Ferebee, Robert Church, Mike Waddell, Warren Williams, Phil Smith. Second row: Glen Manochio, Scott Irby, Monty Sherrill, Johnny Meadows, Scott Morgan, Chad Kanipe, David Hollingsworth, Scott Connor. Back Row: Joe Clarke, Tim Pulliam, Jimmy Maness, Craig Cordes, Jack Perry, Greg Peck, David Welker, Mike Moody.



1. Mark Ford warms up his arm.
2. Pfeiffer goes for the tag.
3. John Devilbiss takes some batting practice.
4. Pfeiffer gives the ball a whack.



2

3

4



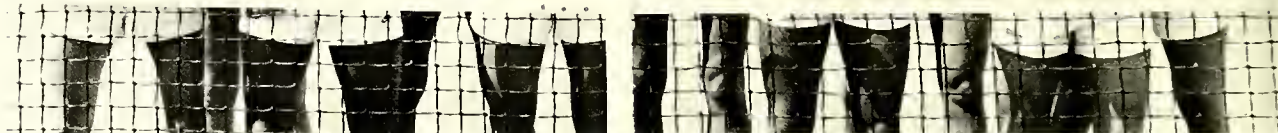
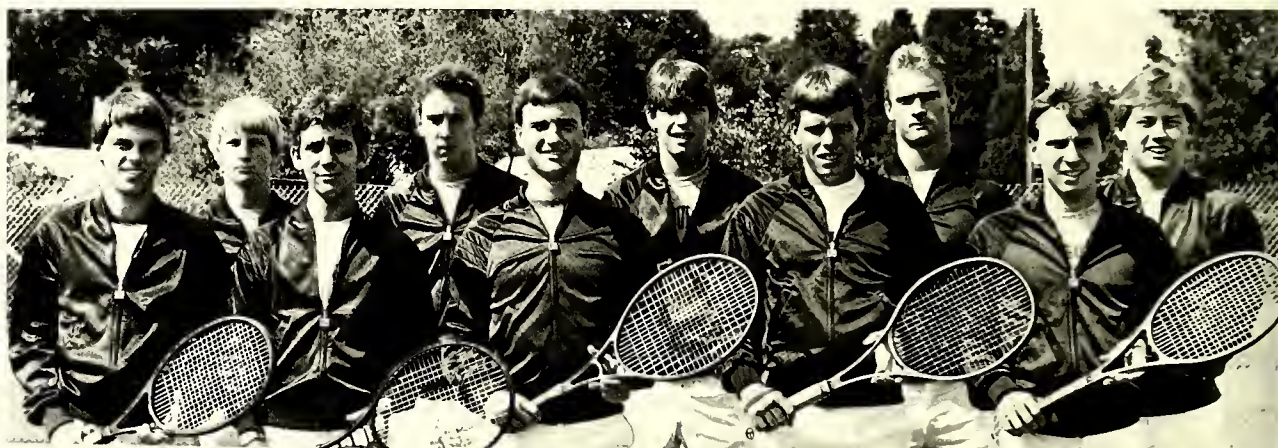
# Men go Five Sets

Coach Tom Childress brought a young club of six newcomers, and four returners out to the Pfeiffer tennis courts this season. Only two of the four returners will be lost to graduation, they are David Smith and Brent Elwood. Elwood represented Pfeiffer well in the number one position and will be sorely missed. As for the rest of the team, they had a good showing for the season also finishing with a record of 11 wins and 9 losses. Coach Childress looks forward to next season to see what his young talent will have to offer then.



1. Coach Tom Childress.
2. Greg Caccia uses his backhand.
3. Brent Elwood smashes one home.
4. David Smith's face shows his concentration.

Team Members: Jeff Childress, Hugh Grey, Todd Sarmiento, Jon Neblitt, David Smith, Greg Caccia, Brent Elwood, Mike Ollari, Scott Hopkins, and Rod Hatfield.



# Women's Tennis racks up

Coach MaryAnn Sunbury came out with high hopes for her small but talented netters. In Sunbury's first year, she saw the Pfeiffer ladies rack up a season record of wins and loses. Because of losing only one senior to graduation, LouAnne Holtzclaw, Coach Sunbury is looking forward to next season.



Team Members: Front Row: LouAnne Holtzclaw, Sheila Shuping. Back Row: Patti Goodman, Wendy Butensky, and Jill Gasperini. Not Pictured: Monica Skevnik and Deanna Lewis.



Patty Goodman uses her forearm for a winner.



Wendy Butensky uses her power drive.



Coach MaryAnn Sunbury.





The Lady Falcons finished second in the Carolinas Conference, with a conference record of 9 and 5 and second in the district with a record of 8 and 2. The team also finished second in the Catawba Kick-off tournament. Coach Jack Ingram also led his Lady Falcons to a second place finish in the State Tournament. The team came in fourth in the National Tournament.



# Lady Falcons Pull A Winning Season

1985-86 Softball Team

<i>name</i>	<i>number</i>
Angie Little	2
Kim Bartosz	3
Emily Baker	4
Jean Hudock	5
Audra Moretz	7
Jody Richardson	8
Lisa Peterson	9
Kim Stanley	10
Donna Ring	11
Missy Johnston	12
Martha Trotter	13
Denise Heller	14
Lee Ann Oehler	15
Debbie Finch	17
Jennifer Street	18
Tammy Blalock	19
Donna Berger	20
Karen Ravert	21
Michelle Causby	22
Carla Davis	23
Barbara Morrison	24



Head Coach: Jack Ingram  
 Asst. Coach: Jac Trotter  
 Managers: Kris Henry and Fran Lavelle





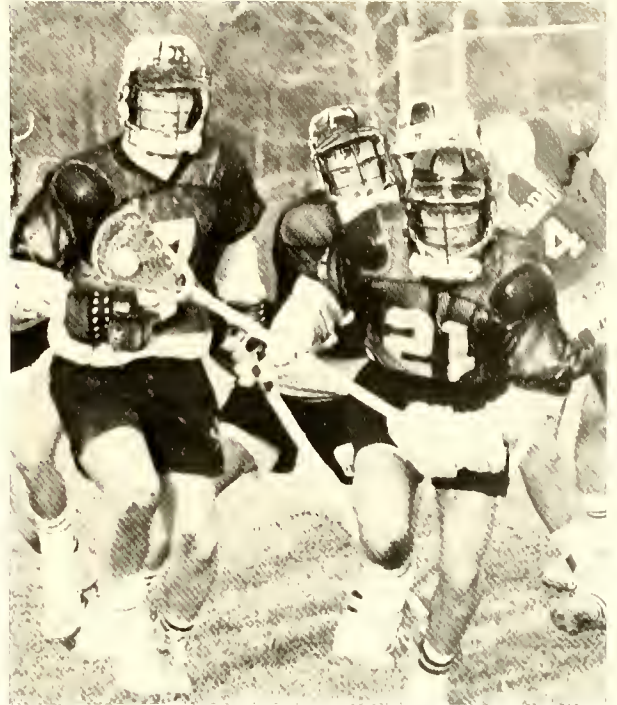


Although not ranked this year, and plagued by injuries, the Pfeiffer lacrosse players brought home a winning 10-3 season. Beating 6th ranked team, Guilford, early in the season, had Pfeiffer fans looking toward seeing the war eagles in the playoffs. Only three losses stopped Pfeiffer from the NCAA playoffs, but next year the war eagles will dominate all teams!





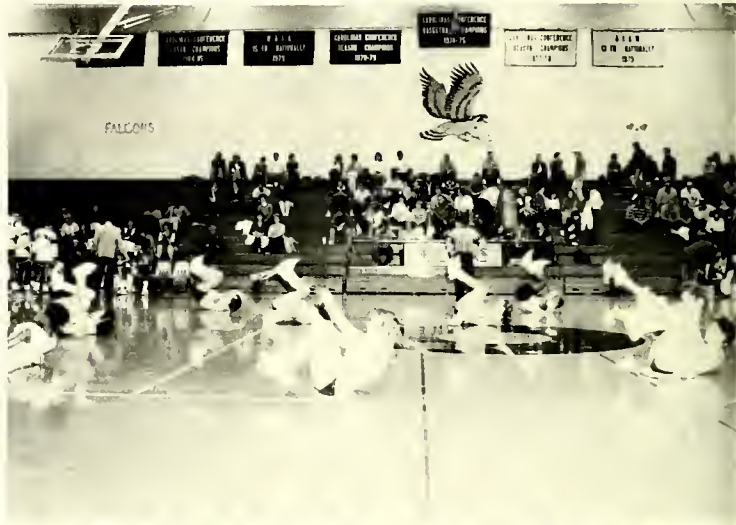
# WAR Eagle Lacrosse



Bottom: John Diproffio, Craig Chaffinch, Marc DiLonardo, Al McMinn, Chris Squier, Matt Biedermann. First Row: Jim Duhamel, Lenny Rinaldi, Robert Rutemiller, Bobby Dick, Julian Domenech, James Kierman, Dennis Closterman. Second Row: Greg Leubehusen, Gary McGinness, Darryl Green, Bo Turner, Mike Cerino, Bob Cristello. Third Row: Eddie Jones, Peter McGinness, Tom Mills, Robert Guglielmo, Gilles Michaud. Top: Asst. Coach Randy Mills, Doug Miller, Will Gillis, Eric Meddaugh, Head Coach Mel Mahler. Not Pictured: Robert Watson, Bret Mule', Steve Whitehurst, Mike Fitzgerald, Craig Majid.



# Enthusiasm Rolls On . . .



Pep and enthusiasm from the stands led our athletes to many victories. Our cheerleaders made sure that the enthusiasm soared. Their dedication and spirit kept our athletes going when the chips were down. Accompanied by the "Oh so famous" mascot, Freddy Falcon, the cheerleaders put in long hours of practice and work to help Pfeiffer move toward a winning season. Led by captain, Kelly Blanchette and advisor, Angie Lefler, the cheerleaders remain #1 in our book. Long hours of practice, making posters, and cheering paid off for the Pfeiffer College Cheerleaders.



First Row: Kathy Mahan, Margie McMoore. Second Row: Darryl Green, Valerie Baldwin, Kelly Blanchette, Jill Gasperini, and Jimmy Player.

# Trainers Wrap-Up



Whether our athletes were injured or just needed a pat on the back, the Athletic Trainers were always there. The Athletic Trainers spent a great deal of time working with athletes in all sports. From sprained ankles to broken bones, the Trainers took great pride in helping our athletes. Not only did they work with injuries after the fact, but also with preventive measures. Without our Athletic Trainers, many athletes would have been bench warmers throughout the season.

First Row: Roger Lyons, Kevin Allran, Chris Furr. Second Row: Kathy Richardson, Amanda Thomann, Kim Stanley, Lori Howell, Ken Brown



# Sports Banquet



# Pfeiffer Sports — A Continuing Tradition



**Golf Team**





TY FACULTY FACULTY FACULTY F



FACULTY FACULTY FACUL







Dr. Cameron West  
President and Professor of Political  
Science



Dr. James Olliver  
Executive Vice President and Title III Coordinator  
(above left)

Dr. J. Michael Riemann  
Acting Dean of the College and Professor of Chemistry  
(above right)

Dr. Tom Westcott  
Vice President for Student Affairs and Associate Professor  
of Psychology (lower left)



Richard Brewer  
Mame Boren Spence Professor of Music and Director of Choral Music



Marvin Burke  
Associate Professor of Music



Melva Burke  
Associate Professor of Elementary Education



Anne Byrd  
Associate Professor of Social Work



Susan Carmichael  
Professor of Christian Education and Director of Christian Education Programs



Steve Dial  
Professor of Biology and Head of the Department of Biology



Dayton Estes  
Professor of German



Robert Gehner  
Assistant Professor of Music



Jack Ingram  
Director of Physical Education and Sports Management, Head Women's Softball Coach, and Assistant Director of Athletics





Juanita Kruse  
Assistant Professor of His-  
tory



Jean B. Mobley  
Professor of Mathematics  
and Head of the Department  
of Mathematics



Elaine Parker  
Assistant Professor of En-  
glish



Delmas Petrea  
Associate Professor of  
Mathematics







Philip Pharr  
Professor of Religion and  
Chairperson of the Division of  
Humanities

David Rilling  
Assistant Professor of Business  
and Assistant to the President for  
Special Projects

Harold Stephenson  
Professor of Physics



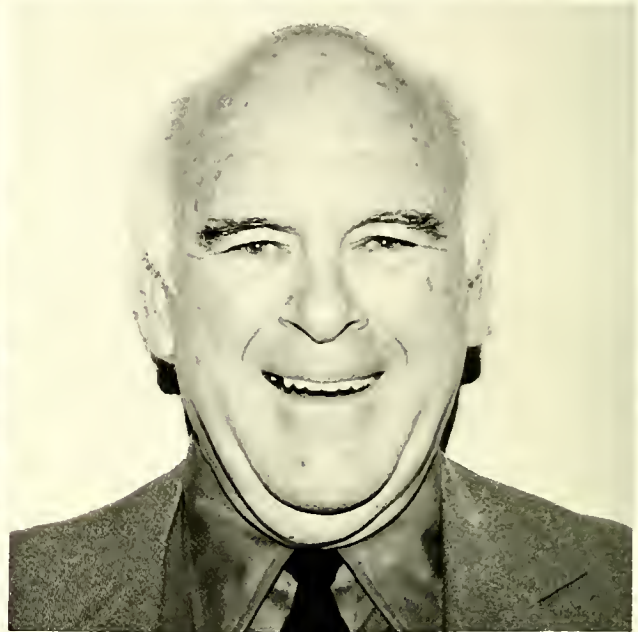


James Veenstra  
Assistant Professor of Theater

Patrick White  
Associate Professor of English  
and Head of the English Department









Sharon Bard  
Director of Auxiliary Ser-  
vices



George Dolch  
Part-time Associate Profes-  
sor of Christian Education  
and Campus Minister



Barbara Dombey  
Secretary to the CAP Center



Jahala Efir  
Secretary to the Develop-  
ment Office



Debbie Estes  
Director of Publications and  
Public Relations



Wanda Farmer  
Director of Alumni Affairs



Colleen Ferebee  
Assistant Director of Admis-  
sions



Jeanette Goodman  
Director of the Computer  
Center





**Jeanine Halverson**  
Director of Campus Activities

**Ken Holshouser**  
Registrar and Associate  
Professor of Business  
Administration

**Martha Holshouser**  
Assistant Registrar



**Brenda Huneycutt**  
Computer Data Technician

**Karen Hyder**  
Assistant to the Director of  
Cooperative Education

**Stephan Johanus**  
Assistant of Campus  
Ministry





David Joyce  
Director of Institutional  
Advancement



Elizabeth Kesterson  
Assistant Director of the  
Learning Center and In-  
structor of Reading



Nicholas Lefko  
Professor of Emeritus of  
Health, P.E. and Recreation



Bebe Leitch  
Director of Student Health  
Services





Cindy Loflin  
Assistant — Print Shop and  
Mail Room

Elsie Lowder  
Administrative Secretary/  
Admission Word Process-  
ing

Diane Martin  
Correspondence Secret-  
ary/Word Processing



Ruby Mason  
Director of Financial Aid

Donna Miller  
Junior Programmer

Randy Mills  
Admissions Counselor





Dorothy Minear  
Director of Learning Center  
and Instructor of Math/Student Skills

Gale Misenheimer  
Administrative Secretary to the President

Donna Mooney  
Medical Assistant



Theresa Newman  
Secretary, Office of Student Affairs

Marian Pagano  
Associate Dean of Student Affairs

Frances Parnell  
Receptionist/Switchboard Operator



Richard Redman  
Financial Aid Counselor

Ophelia Ridenhour  
Circulation Department Head

Janice Royall  
Admissions Counselor







**Katrina Sells**  
Receptionist/Switchboard  
Operator

**Roger Sims**  
Director of Admissions

**Pam Smith**  
Administrative Secretary/  
Bookkeeper Title III Office



**Nadeen Thompson**  
Director of Professional  
Support Services and  
Assistant Professor of  
Education

**Shelia Thompson**  
Accounts Payable Super-  
visor

**Cathy Underwood**  
Receptionist — Health Ser-  
vices





Jeri Veenstra  
Assistant to Director of Public Relations



Lee Wallace  
Director of Cooperative Education



Jane York  
Licensed Practical Nurse,  
Health Service



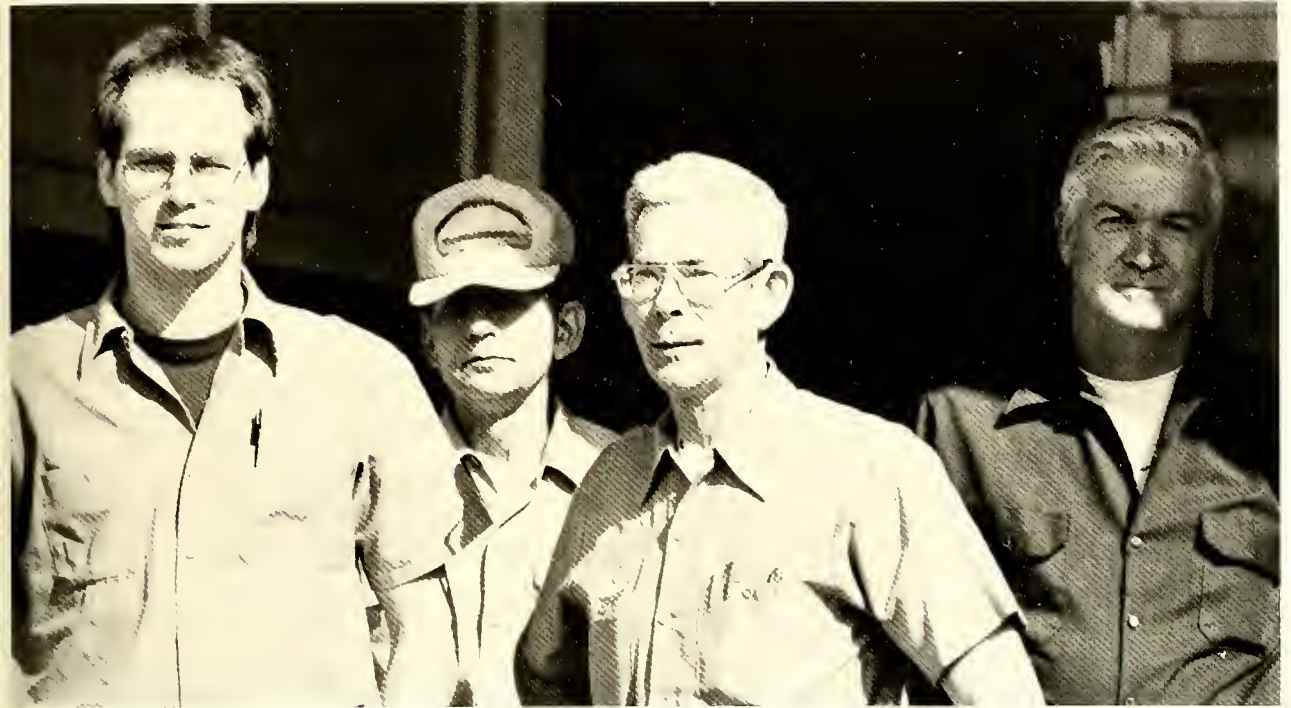
## Security



## Environmental



**Maintenance**



**Food Service**





RMS DORMS DORMS DO



RMS DORMS DORMS DORMS DOR





*Eline Hall*





# Cline Dorm







# Ervin Dorm





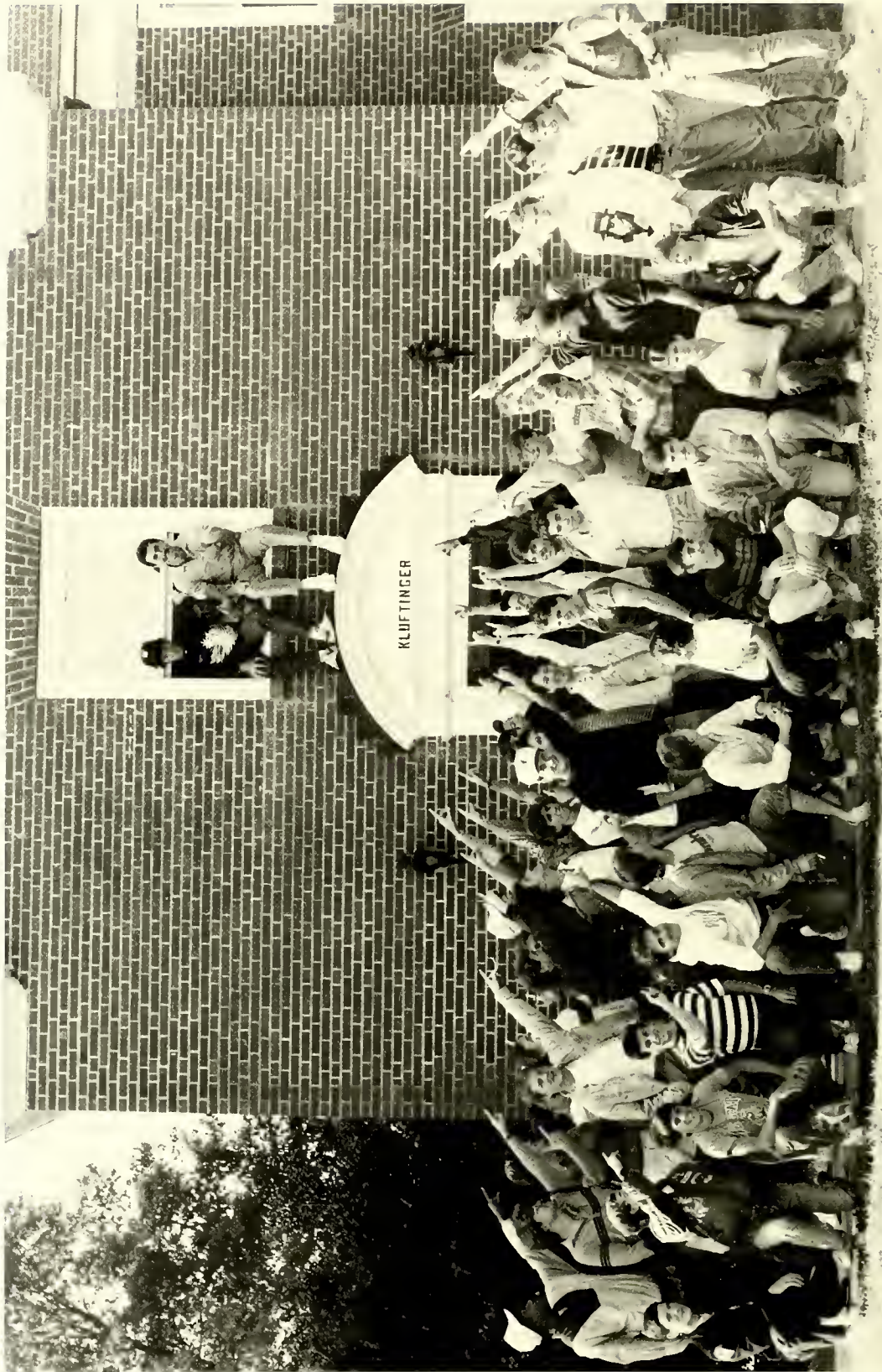




# Foote Dorm









# Kluftinger Dorm









# Merner Dorm









# Plyler Dorm









# Rowe Dorm







# Vaughn Dorm





WASHINGTON  
HALL





# Washington Dorm





**SES CLASSES CLASSES**



**CLASSES CLASSES CLASS**





# Senior



**Most School Spirited**  
Sam Misenheimer and Colletta Bryce Law



**Most Athletic**  
Kathy Wolf and Craig Cordes



**Best Looking**  
Rebecca Thomason and Steve Tomberlin



**Most Dependable**  
Sam Misenheimer and Kathy Wolf

# Superlatives



**Most Likely to Succeed**  
Greg Wells and Colletta Bryce Law



**Best Dressed**  
Steve Tomberlin and Sherri Davis



**Best All Around**  
Sam Misenheimer and Kathy Wolf



**Biggest Partiers**  
Roland McCullough and Laura Jenkins





**Wittiest**  
Sandy Holland and Chris Dial



**Most Talented**  
Craig Cordes and Susan Diller



**Most Gullible**  
Prescott Barbash and Beth Moss



**Friendliest**  
Sam Misenheimer and Brigitte Poplin



**Most Popular**  
Sam Misenheimer and Brigette Poplin



**Biggest Heartbreakers**  
Tom Randolph and Brigette Poplin



**Most Talkative**  
Greg Wells and Dena Bates





Joseph K. Acqui, Jr., Business Administration/Economics  
Varsity Soccer  
Monrovia, Liberia



Kevin O'Donovan Askew, Sociology  
Miami, Fla.



Valerie Baldwin, Physical Education  
Trustee Scholarship 1-4, Athletic Scholarship 1,2,4,  
Dean's list 2,3, F.C.A. 1-3, Bible study 4, South  
Pacific 3  
Millville, NJ



Barry Richard Ballard, Business Administration  
VP, President — Kappa Chi, Chairman — Elections  
committee, Who's Who committee, Senate, RLC  
General Council  
Charlotte, NC



Prescott N. Barbash, Business Administration  
Soccer 1-4, AMS — Treasurer 4  
Alexandria, VA



Maxine Thomas Barnes, Accounting



Dena Cheryline Bates, Early Childhood Education  
President's Award 3, Trustee Scholarship 4, JB  
Cornelius Scholarship 4, AWS — Treasurer 4, CUB  
— Film Coordinator 4, Chimes 3,4, Aldersgate Choir  
4, Admissions Assistant 4, Orientation Team,  
Communications Council 3, VP Cline.  
Albemarle, NC

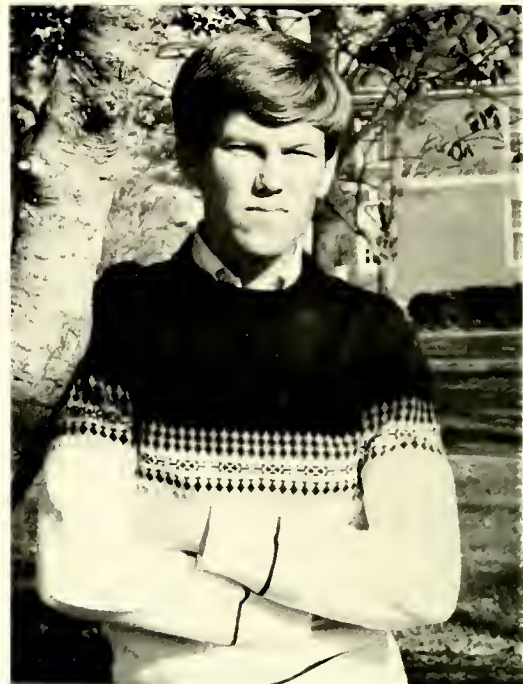


Eric Berg





Bobby Ray Bean, Accounting



Thomas Edward Brindle, Mathematics



Donald Wayne Bissell, Christian Education  
Baptist Student Union 1, Christian Education Fellowship 2  
Lumberton, NC



Teresa Wanda Brown, Accounting  
Letite Pate Whitehead Scholarship 2,3,4, President's  
Scholarship 2,3,4  
Rockwell, NC



Kimberly Jurney Childers, Early Childhood Education  
Frustee Scholarship, Day Student Organization



John William Devilbiss, Sports Management  
Dean's list, Baseball 3,4, Wrestling 3  
Misenheimer, NC

Phillip Scott Smith, History/Social Studies



Donald Grey Coggins, JR, Business Administration/  
Economics, Yearbook 4  
Froy, NC





Leslie Vanessa Colston, Sociology



Sherri Annette Davis, Arts Administration  
President's Scholarship 1, Junior Class Council 3  
Cline President 3, AWS President 4, Executive  
Council 4, Symphonic Choir 1-4, Concert Choir 2,3,4  
Orientation Committee 4  
Charlotte, NC



Lisa Marie Domby, Business Administration

Margaret Hathcock Dennis, Accounting





William Brent Elwood, Computer Informational Systems, minor — Business Administration  
Dean's list, Varsity Tennis 1-4, Co-Captain 3,4, Most Valuable Player 3, AMS Treasurer 3, Board of Appeals 2,3, Chief Justice 4  
Mt. Pleasant, NC



Edward Clarke Goodman, History  
Who's Who, AMS 3,4 — President 4, History Club 1-4, SGA — Executive Council 4, Student Senate 4, Wind Ensemble, Stage Band 1,2, Freshmen Counselor 2, Resident Director 3,4  
Misenheimer, NC



Craig Jeffrey Cordes, Sports Management  
All-Conference, All-District, All-American 3,4, Varsity Basketball 1-4, Baseball 2-4, Golf 3,4  
Albemarle, NC



Susan Annette Diller, Music  
Trustee 3,4, AJ Fletcher 2-4, Keyboard Scholarship 4, Who's Who 4, Dean's List 3, Women's Judicial Board 3,4, Chief Justice 4, AGO 2, Concert Choir 2-4, Secretary 4, Symphonic Choir 2-4, Secretary 4, Chamber Singers 2,3, Aldersgate 2-4  
Chambersburg, PA

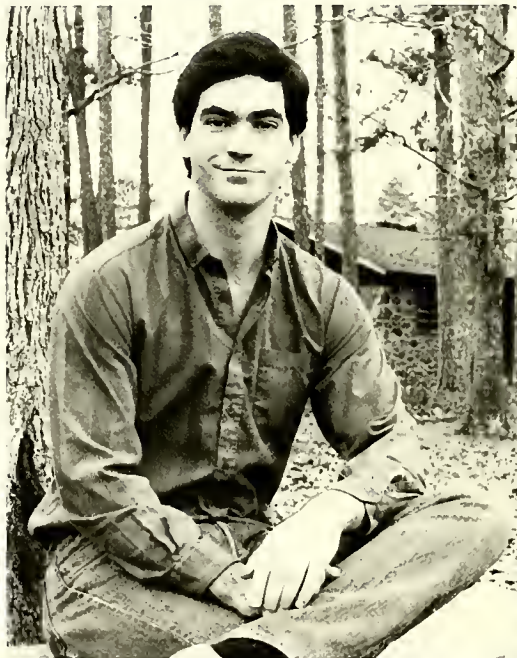




Kimberly Arey Glackin, Intermediate Education/Early Childhood Education  
RLC Treasurer 2,3, Judicial Board 2-4  
Misenheimer, NC



Alisa Joy Helms, Computer Information Systems Trustee Scholarship 1-3, Junior Scholastic Award 2  
Bishop L. Scott Allen Scholarship 1-3, Chief Junior Marshal 3, Chimes 1, Phoenix 2  
Marshville, NC



Jeffrey Clark Hinson, Computer Information Systems Trustee Scholarship 1-4, History Bowl Scholarship 1-4, Dean's List, 1-3, Symphonic Choir 1-4, Concert Choir 1-4, Aldersgate Choir 1  
Monroe, NC



Robin Lynn Helms, Early Childhood Education  
Intermediate Education



Sandy Rhodes Holland, Christian Education/Church Music — Voice  
Grace Foncanon Brewer Memorial 2-4, Mary C. Anderson Scholarship 4, Who's Who 4, West Side Story 2, Oklahoma 1, South Pacific 3, Concert Choir 1-4, Symphonic Choir 1-4, Chamber Singers 2-4, N.A.T.S. 1  
Morristown, TN

Keith Howell, Business Administration/Economics  
Trustee Scholarship 2-4, Wrestling 4, House Council, President Chess Club 3,4, VP Foote Dorm 4  
Boone, NC



Laura Anne Jenkins, Early Childhood Education



Jeralyn Berfonda Johnson, Sociology  
Black Alliance 1-4, Secretary 3  
Kannapolis, NC





Denise Kocher, Psychology  
Phoenix 4, Chimes 4, Pfeiffer News 4, Psychology Club 4  
Torrimar Guayabo, Puerto Rico



Kenneth L. Jones, Law Enforcement Corrections  
Resident Advisor 4  
Charlotte, NC



Colletta Bryce Law, Business Administration  
Varsity Tennis, Cheerleading, President Black Alliance  
Charlotte, NC



Roland McCullough, Criminal Justice  
President's Scholarship 1-4, Athletic Scholarship 1-4, Varsity  
Soccer 1-4, Captain 4, President Indoor Soccer Club 4  
Delanco, NJ

Stephen Wayne Richardson, Business Administration



Samuel Wayne Misenheimer, Criminal Justice/  
Sociology  
President's Scholarship 4, Who's Who Club, Execu-  
tive Council, SGA — President, Secretary Class  
President 2-4, Dorm Counselor  
Charlotte, NC



Terry Lynn Moore, Sociology  
Senate 1,2, Men's Judicial Board 2, Kappa Chi  
Monroe, NC (back left)

William Robert Lynn, Religion  
Trustee Scholarship 3,4, Kappa Kai  
Harrisburg, NC (back right)

Phillip Wayne Park, Religion  
(front left)

Gary Michael Duncan, Religion  
Kappa Chi  
Gold Hill, NC (front right)



Daniel Waverly Moore, Religion



Jeff Morris, Computer Information Systems/  
English

Lisa Kluge, Accounting



James Edgar Morgan, English



Chris Tandy Dial, Chemistry

Asst. Sports Info. Director 1,2, Field hockey stats 1-4, Baseball stats, 1,2, Basketball stats 1,2, Basketball stats 1,2, Secretary/Treasurer of ACS 3,4, CUB — Secretary, 4 — Treasurer 4, As You Like It 2  
Misenheimer, NC

Timothy Roland Bridges, Chemistry/Mathematics

Harris Academic Scholarship 1-4, Cross-Country 4, Men's Swim Club 2,3, CUB 1-4, Secretary 3, American Chemical Society, VP 3, President 4, West Side Story 2, Dorm President 2  
Charlotte, NC

Kimberly Dawn Moser, Chemistry

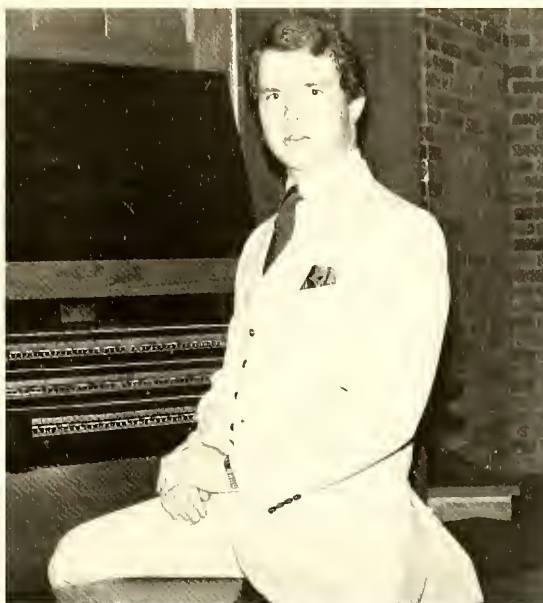
J.B. Cornelius 2-4, Athletic Trainer 2, Softball Manager 1, Chimes 1, American Chemical Society 2-4  
Thomasville, NC



Larry Newman, Law Enforcement, minor  
— Sociology  
FCA 3,4, Chimes 3, NC Criminal Justice  
Educators, 3,4  
Hendersonville, NC



Grace Norris, Christian Education/  
Religion



Lee Edwin Northcutt, Music/Business Administration  
A.J. Fletcher, McRoy Memorial Church Music Award  
3,4, AGO President, Treasurer — Concert Choir,  
Symphonic Choir, Chapel Organist 3  
Wadesboro, NC

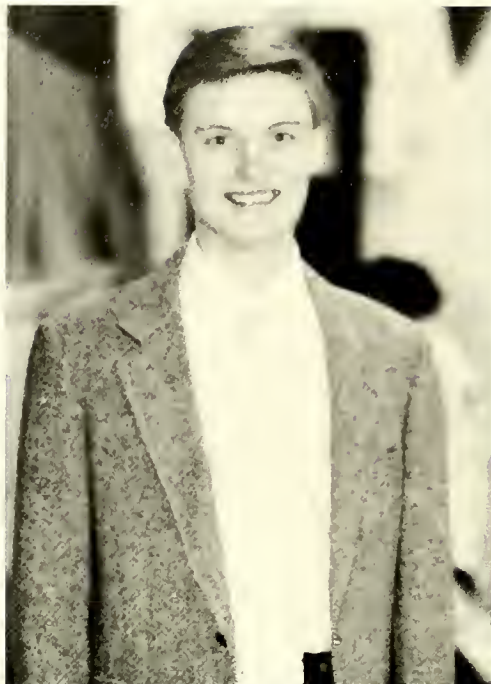


Sharon Elise Putnal, Social Work  
Kannapolis, NC



Brigitte Renee Poplin, English Writing w/Concentration  
in Marketing  
Who's Who, Senate, Women's Judicial Board, CUB,  
Dorm President, AWS, Phoenix, Resident Advisor 4  
Oakboro, NC





Craig Lane Rairden, Sports Management  
Special Olympics 3, YMCA  
— Internship 4  
Salisbury, NC

Alexia Cheree Russell, Education — Early Childhood  
and Intermediate  
President's Scholarship, Day Student Association —  
Chairperson 3  
Denton, NC



Kimberly Annette Strickland, Business Administration, minor — Music  
MENC, Chapel Choir 1-3, President's Scholarship 1-5, T.B. and Mary Neal  
Dixson Scholarship, House Council, Tutor 5, Hall Representative  
Winston-Salem, NC

Steven Howard Tomberlin, Accounting  
Trustee Scholarship 1-4, Junior Marshall  
Dean's List 1-4, Who's Who, Varsity  
Baseball, SGA Treasurer 4, Men's Judicial  
Board, Campus Honor Board, Executive  
Council, Senate 4, Resident Director 3,4,  
Counselor 2, Dorm Secretary 2  
Midland, NC

David Lendell Smith, Accounting  
Athletic Scholarship 1-4, Academic  
President's Scholarship 1-4, Varsity  
Tennis 1-4, Captain 4, Class President 1  
V.P., Class 2, V.P. of AMS 3, Men's Judi-  
cial Board 4, Resident Assistant



Rebecca Lea Thomason, Psychology  
Psychology Club 3, Secretary 4, Homecoming  
Representative 3,4  
Kernersville, NC



David Marvel Welker, Business/Economics  
Varsity Baseball 1-4, Secretary Men's Judicial  
Board 3, Chief Justice 4, Hall Representative 1  
Belcamp, MD



Pamela Blue Whitley, Business Administration, minor  
— Economics  
The Phoenix 4, Fellowship of Christian Athletes 1,2  
Albemarle, NC



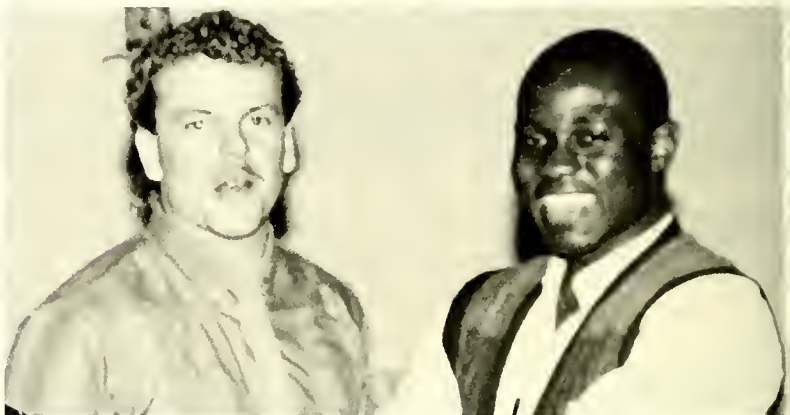
Sherry Belinda Wilkie, Business Administration  
Concord, NC

Edward Scott Winfield, Criminal Justice  
LaPlata, MD



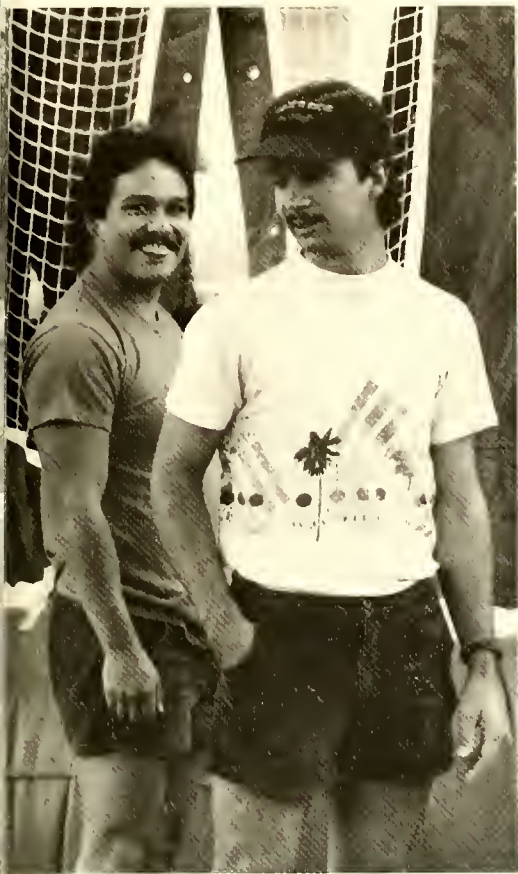


Katherine Ann Wolf, Mathematics/Secondary Education  
Field Hockey 1-4, Captain 3, Swim Team 3,  
Order of the Sundial, Dean's List, CUB, RLC,  
Who's Who, Executive Council  
Ogdensburg, NJ



Galan E. Chaney, Law Enforcement  
Matthews, NC







# Juniors

Wendy Agee  
Kevin Allran  
Sara Alspaugh  
Eddie Amoon



Lee Andrews  
Lisa Argersinger  
Wade Atkins  
Pam Brown



Diane Becker  
Sandy Becker  
Donna Benge  
Matt Biedermann



John Branin  
Scott Burris  
Bill Carter  
Eric Cavanaugh



Craig Chaffinch





Kathy Childress  
 Marti Clemmer  
 Tamra Clontz  
 Ann Cole



Nancy Cranmer  
 Sherri Craven  
 Lisa Crumpler  
 Kim Dalton



Tony Davis  
 Sonya Dial  
 Marc DiLonardo  
 Jim Duhamel



Leslye Dykes  
 Scott Earnhardt  
 David Eason  
 Walter Eaton



Tina Edmiston



Laurie Edwards  
Nelda Fisher  
Frank Foster  
Mark Fraser



Kevin Gilland  
Janet Helmer  
Louanne Holtzclaw  
Emiko Honda



Heidi Honecker  
Scott Hopkins  
Marguerite Hutchison  
Janey Ivey



Joe Judge  
Renee Jones  
Kim Johnson  
Jack Kelley



Sean Kerrigan





Angie Kirk  
 Sheila Lowry  
 Jeanina Maness  
 Elizabeth Matthews



Renee McCallum  
 Lydia McCord  
 Marybeth McDaniel  
 Mitch Moretz



Hiroshi Miyagi  
 Richard Moffitt  
 Steve Norris  
 Carolyn Neill



Izumi Ohta  
 Todd Peeler  
 Lori Peeler  
 Phyllis Piano



Joe Poteat



David Powell  
 Carolyn Pysher  
 Ann Queen  
 Lance Rairden



Dexter Ramey  
 Kathy Richardson  
 Carlos Ristorcelli  
 Kim Robinson



Penny Ronan  
 Tom Ruge  
 Don Russell  
 Ken Russell



Steve Shelton  
 Shelia Shuping  
 Randy Sloan  
 Jenny Smith



Jera Smith  
 Michele Smith  
 Patty Smith  
 Chris Squier





Kim Stanley  
Anita Stiller  
Chris Taylor  
Wendy Tucker



Karoline Watson  
Kim Whipple  
Patsy Willoughby  
Leah Williams



Patrice Williams  
Warren Williams





# Sophomores

Patricia Baker  
Mark Baliff  
Barbara Barnard  
Jean Basden



Hope Beachum  
Lisa Blalock  
Layne Bullard  
Jennifer Cashwell



Connie Cecil  
Michael Cerino  
Anne Cole  
Nancy Coleman



Kenneth Costello  
Barry Davis





Mildred Davis  
Cara Earley



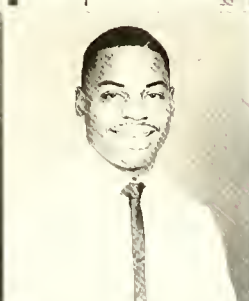
Brent Eckberg  
Alison Erdman  
Debbie Finch  
Harrison Finklea



Christopher Ford  
Nicole Garver  
Laurie Gaynor  
Michael Gillett



Tammy Gilmore  
Patti Goodman



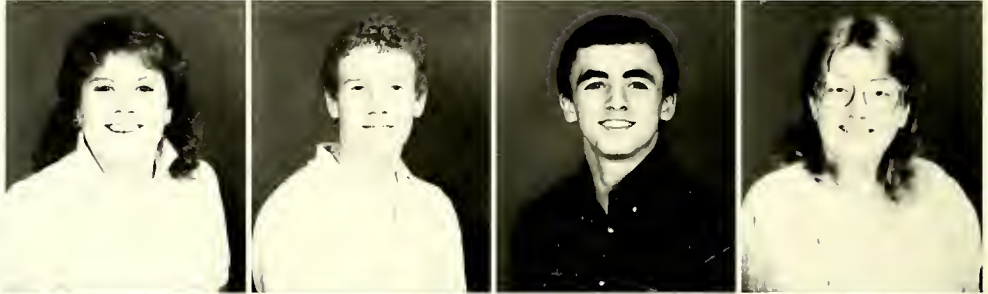
Tamara Goodwin  
Darryl Green



Libby Hall  
 Andre Harris  
 Thomas Hartsell  
 Denise Hemler



Diane Hernberg  
 Frederick Hoffman  
 Jay Howard  
 Lorri Howell



Brenda Hurlocker  
 Melisa Isenhour  
 Kathy Jaudon  
 Diane Jones



Barbara Joyce  
 Amy Kaspert





Sandy Landis  
Frances Lavelle



Susan Lawing  
Michelle Lee  
George Leonard  
Angie Little



Catherine Marshall  
Todd Mauldin  
Margie McMoore  
Joy Miller



Susan Misenheimer  
Audra Moretz



Larry Morgan  
Beth Morrison



Karen Myers  
 Bonnie Nicodemus  
 Christine Nystedt  
 Gregory Peck



Lisa Peterson  
 Ruth Phelps  
 Colette Phifer  
 Frank Pustay, Jr.



Julie Rector  
 Robert Rutemiller  
 Roxanne Schneider  
 Crystal Smith



Micki Smith  
 Herbert Sparks





Lisa Story  
Jennifer Street



Anna Tatsis  
Dean Vernon  
Marie Warlick  
Scott Watson



Debbie Watwood  
Lee Williams  
David Witton  
Jay Wroe



David Zalinsky



John and Rob toast to the good times ahead.

"Are you still on the phone, Margie?"

Garrett rides away!

Stacia smiles for the camera.

"three . . ."

Lisa tries to work in the freshmen lounge.

# FRESHMEN





Mia Ayes  
Emily Baker  
Teresa Baptist  
Penny Barkley



Brian Beaver  
Karyn Berkley  
Donna Berger  
Albert Billings



Andrew Billings  
Tammy Blalock  
Leonard Britt  
John Burke



Sharon Byrd  
Michelle Causby  
Steve Cauthen  
Scott Clontz



Christopher Collins  
Audra Culp  
Waron Davis  
Paul Dorsey



Thomas Edwards  
 Walter Emmerling  
 Lisa Erikson  
 Lisa Ewers



Kristen Ferrari  
 Myra Fisher  
 Mark Ford  
 Teresa Furr



Jill Gasperini  
 Mat Gerrald  
 Lem Hames  
 Margie Harvey



Harriet Hicks  
 Melissa Hinson  
 Deborah Hornby  
 JeanMarie Hudock



Michael Hughes  
 Carl Isenhour  
 Julianne Jennings  
 Serena Johnson





Richard Jones  
Nabih Adnan Kadki  
Chad Kanipe  
Annette Klutz



Cleo, Deanna and  
Michelle study out-  
side the library.



Darren Lassiter  
Angela Leak  
Deanna Lewis  
Kevin Long



Rebecca Luebehusen  
Kevin Lyons  
Roger Lyons  
Andrea Mallohan



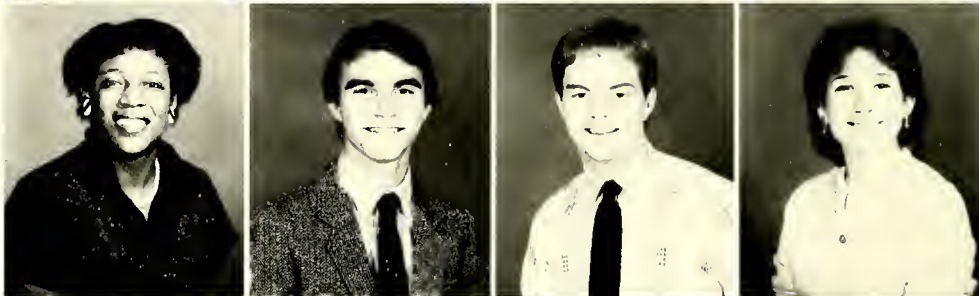
Angela Mallohan  
 Amy Mathiason  
 Lynn McCann  
 Lisa McPeak



Paula McWethy  
 Michelle Milstead  
 Sherry Moore  
 Debbie Morris



Barbara Morrison  
 Gregory Neilson  
 Chris Perland  
 Lori Peterson



Zeb Pipkin  
 Jimmy Player  
 Melissa Price  
 Leslie Pridgen



Gwen Pyron  
 Diana Reynolds  
 Jody Richardson  
 Diane Richardson





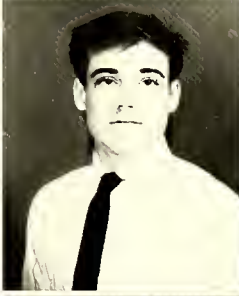
David Rilling  
Margeret Salmon  
Debbie Santiago  
Sharlina Sells



Monica Skevnik  
Chuck Stanton



Terri Stephenson  
Kirsten Switter



Frank Tansky  
Joey Tamamo  
Jeff Taylor  
Amanda Jo Thomann



Raymond B. Thomas  
Ashley Thompson  
Amy Troddon  
Brenda Valder



Veronica Valencourt  
 Jeff Waldrop  
 Robin Wallace  
 Kristin Warnock



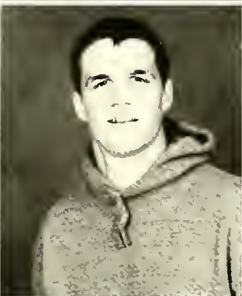
David Warshaw  
 Donna Washington  
 Paul Wetterall  
 Dolores Whilden



Tammy Willoughby  
 Mark Woodard  
 Patti Wyar  
 Dawn Marie Yankowski



Chuck Zang

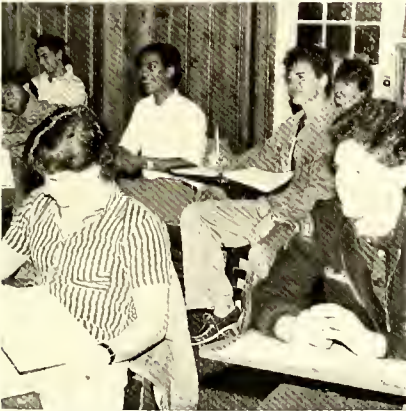


Serge looks onward at the sup.



Bobbie and Cleo pay close attention in class.





Melissa and DemmiJo enjoy Homecoming festivities.

"Hey guys, what's up?"

Freshmen pay close attention in Psych. class.

A normal day in the Pfeiffer cafeteria.

Jill sits "comfortably" in acting class.



DS ADS ADS ADS ADS AD

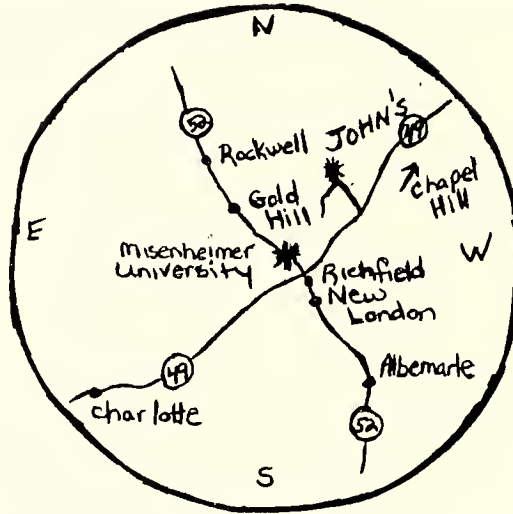


S ADS ADS ADS ADS ADS





Are  
you  
Pu  
ZZ  
L  
ed



About  
what's  
around  
Pfeiffer . . .

. . . is there anything???

Compliments of:  
**SUNSET MOTEL**



46 Units — 8 Efficiency Apts — Pool — Air  
Conditioning & Heating — Truck Parking — Phones  
— Color Cable Remote Control TV — Movies via  
Satellite — Water Beds — Queen Beds — King  
Beds — All Extra Long Beds

PHONE  
704/982-8194

ASDY & ANDY  
Your Hosts

For our appreciation for support in the past and hope  
for more business in the future.

## You have a Personal Banker™ at Wachovia

Only one bank in North  
Carolina assigns one banker the  
total responsibility for your  
account.

Only one bank trains that  
banker to help you with all your  
needs, from loans to checking to  
certificates of deposit.

Only one bank gives you  
the name and telephone number  
of your own Personal Banker.

Only one bank. Wachovia.

**Wachovia**  
Bank & Trust

(704) 982-9898

**Party Lines, Etc.**  
One-Stop Party Shop

JACKIE BURPEAU

1000 N. First Street  
Albemarle, NC 28001

COMPLIMENTS OF:



Quenby Mall  
Albemarle, N.C.

Call or stop by and check our everyday low prices

*Generic drugs*



*can save you money*

Revco  
Delco Plaza  
983-2193

Revco  
Eastgate  
983-5162



**B.B. EXXON SERVICE  
CENTER**

Gas — Oils — Tires — Accessories

"Pleasing You, Pleases Us"

NC Hwy. 49  
M.G. Roseman, Jr.

Richfield, NC 28137  
Phone 463-7543

**STONY GAP FISHHOUSE INC.**

Seafood Buffet  
Albemarle, N.C.

982-2559

Seating 750

(704) 982-2137



**HARWOOD'S  
FLORIST, INC.**

1108 NORWOOD ROAD  
P. O. BOX 878  
ALBEMARLE, N. C. 28002-0878

CLAUDE HARWOOD, A.I.F.D.







INTERSTATE BOLT & SUPPLY CO., INC.  
FASTENERS FOR EVERY NEED  
DIAL 704-872-9546  
NC 1-800-222-1416

FRED RIGGS

1129 W. FRONT STREET  
STATESVILLE, N.C. 28677

## OLAN MILLS/SCHOOL DIVISION SCHOLASTIC SERVICES, INC.

236 Church Street  
Concord, N.C. 28025  
1-704-786-7615

Lanny Pigg  
Chip Harris  
Carol Allison  
Everette Pigg  
Norma Sanko



*Heart of* **ALBEMARLE  
MOTEL.**

& RESTAURANT  
*Downtown*  
SOUTH AND FIRST STREETS  
P.O. Box 399

TELEPHONE 704/982-9151

ALBEMARLE, NORTH CAROLINA 28002

JAMES PATEL  
MANAGER



- Diamonds • Engraving • Watches
- Watch Repair

QUALITY GIFTS  
FOR EVERY OCCASION



Open Friday & Saturday  
Nights until 9:00 PM

QUENBY MALL, ALBEMARLE, N.C.  
982-9821

**Bank  
When You  
Want  
With  
First  
Union's  
24-Hour  
Mini Bank®**

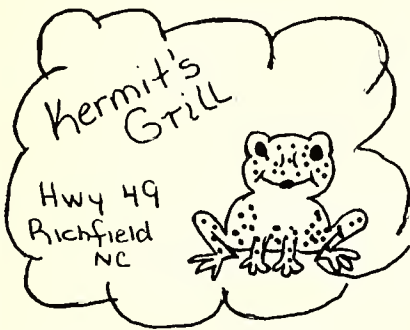
Make deposits, cash withdrawals, payments, transfers from one account to another, or check your balance 24 hours a day, 365 days a year.

**FIRST UNION**  
Member FDIC

- Steaks • Fresh Seafood • Short Orders •

Proudly Serving You!

Open 24 Hours



The Home Of The "Big K"

Kermit & Edith Kern,  
Owners

- Barbeque • Salads • Carry-Outs

• Breakfast Served Anytime • Sandwiches

Plate Lunches • Home Made Biscuits & Desserts •

Compliments of:

HAVE YOU DRIVEN  
A FORD . . .  
LATELY?



"WHERE TO BUY THEM"

LUM'S FORD INC 738 Hwy 27 E . . . 982-1122

**WABZ** FM 101

**W  
W  
X  
AM  
1010**

Radio Station WABZ, Inc.  
WABZ - WWWX

P.O. Box 608  
Albemarle, North Carolina . . . 28001



704/982-1010



**DOUG'S GARAGE**

*Service For All Vehicles  
Foreign and Domestic*

**Custom Cleaning For Your Auto**

**10% Student & Faculty Discount With I.D.**

Corner of Ashe and Snuggs  
Albemarle, N.C.

**982-3684**

**CALL FOR APPOINTMENT**



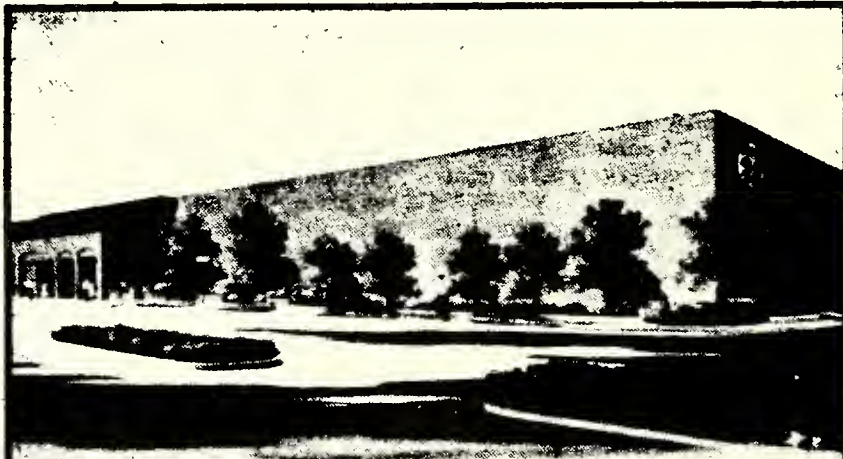
# FIRST<sup>1</sup>BANK

A Full Service Bank

*First Bank Is The Bank You Can  
Depend On And Trust.*

**We Now Have Four Locations To Conveniently Serve Stanly County:  
2 Branches In Albemarle (Eastgate and Highway 52 North);  
1 Branch In Locust; and 1 Branch At The Intersection Of Hwy. 52 & Hwy. 49 At  
Richfield.**

Member FDIC and an  
Equal Housing Lender



*Belk*

**Store Hours: Monday through Saturday  
10 a.m. to 9 p.m.;  
Sunday 1-5:30 p.m.**

Ronda Andrews (Owner)  
Sue Forte  
Barber-Stylist

Albemarle Plaza Barber & Beauty Shop

Albemarle Plaza  
Albemarle, N.C. 28001

Dianne Smith Lefler  
Nancy Callicutt  
Cosmetologist

Suntana Sun System  
"The Year 'Round Tan"

(704) 982-4022  
Open Tues.-Sat. 8:30 to 5:30  
8:30 to 3:00

## THE HEADQUARTERS

Darrell Hatley  
Jerri Lynn Barrier  
Specializing In Precision Cuts And Perms

Hwy. 52 At Pfeiffer College

(Across From Post Office And Laundromat)

Monday—By Appointment  
Tues., Thurs. And Fri.—8-5:30  
Saturday—7-12 Noon  
Closed Wednesday

**463-7742**

## NORTH STANLY FLORIST

*All Occasion Florist*

BADIN RD., NEW LONDON  
**463-7561**



**DIANES**

DIANE HARTLEY  
(704) 982-4121

P O Box 463  
Albemarle Plaza — Hwy 24-27  
Albemarle, NC 28001



Albemarle Plaza  
— Beside U-Rent  
Albemarle, N.C. 28001  
982-2322

Hours: Mon.-Sat. 10am-7pm

**DOMINICK'S**  
Restaurant

SPAGHETTI - PIZZA  
BUFFET - SALAD BAR

**982-8400**

RT. 52 — K-MART PLAZA

**SUB  
SHOP**

JERSEY SUBS -  
PHILLY STEAK SUBS  
MEATBALL SUBS -  
MUSHROOM STEAK SUBS

**982-SUBS**

RT. 52 - Across From Honda





## *College Union Board — Pfeiffer College*

Chairman — Heidi Honecker  
Vice Chairman — Bill Carter  
Treasurer — Laurie Gaynor  
Secretary — Larry Morgan

### Entertainment

Coordinator — Jenny Smith  
Film Coordinator — Micki Smith  
Publicity Coordinator — Amy Kaspert  
Technical Coordinators — Larry Morgan  
Bill Carter

Members At Large — Kathy Wolf  
Chris Dial  
Dena Bates  
Lou Anne  
Holtzclaw  
Jack Kelly  
Mike Gillette

### Senior

Representatives — Tim Bridges  
Bridgette Poplin  
Sam Misenheimer

### Junior

Representatives — Cathy Bond  
Greg Wells  
Kathy Richardson

### Sophomore

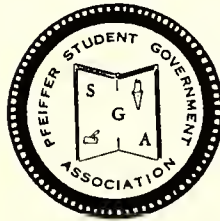
Representatives — Jennifer Street  
Alison Erdman

### Freshman

Representatives — Frank Tansky

"WORKING TOGETHER"  
Means Student Involvement!

Congratulations  
to the  
Class of 1986  
from the



## *Student Government Association*

### Executive Council

President — Sam Misenheimer  
Vice Pre. — Heidi Honecker  
Secretary — Nancy Cranmer  
Treasurer — Steve Tomberlin  
Assoc. of Men Students Pre. — Clarke

Goodman  
Assoc. of Women Students Pre. — Sherri  
Davis  
Religious Life Council — Kendall Wright  
Executive Coordinator — Jenny Smith

### Senators

Julianne Jennings — Rowe Dorm  
Bruce Thomas — Klufflinger Dorm  
Ann Queen — Merner Dorm  
Diane Hernberg — Cline Dorm  
Micki Smith — Washington Dorm  
Kenneth Russell — Foote Dorm  
Steve Shelton — Ervin Dorm  
Mike Lucas — Ervin Dorm

Kevin Allran — Vaughn Dorm  
David Efird — Day Student  
Audra Culp — Day Student  
Lem Haynes — Plyer Dorm  
Wendy Tucker — Cline Dorm  
Pat Willoughby — Merner Dorm  
Brigitte Poplin — Rowe Dorm  
Gilles Yvon Michaud — Vaughn Dorm



# GOOD LUCK TO THE CLASS OF '86 FROM ASSOCIATION OF MEN STUDENTS

President  
Clarke Goodman

Vice President  
Mike Lucas

Turn out  
the  
lights . . .

. . . the  
party's  
over!!

Secretary  
Dexter Ramey

Treasurer  
Prescott Barbash

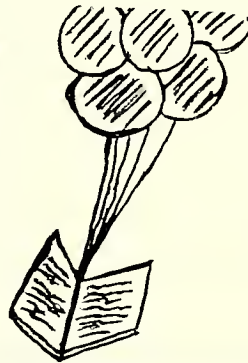


House of Presidents

Steve Strickland — David Christy — Grey Cook — Tony Ross — Demetrius Marlowe



Counseling  
Advising  
Placement



Third Right Merner:  
Raising Hell  
And Having Fun  
And Believe It Or Not  
We're Getting The Job Done

Roxanne, Sandy, Ruthe, Lisa,  
Alison, Renee, Nelda, Colette  
Darlene, and Laurie . . .



Good  
Luck!  
Class of '86

Kendall     Laura  
David        Marie



dining service

Best of Luck  
to the  
Class  
of  
1986

# PATRONS

- The Ascot Club
- Mr. & Mrs. Clint Billings
- Mr. & Mrs. Roy Douglas Clayton
- Dr. & Mrs. Robert Crowl
- The Arthur Domby Family
- Debbie Estes
- Mr. & Mrs. James H. Flynt
- Mr. & Mrs. Thomas J. Gaynor
- Mr. & Mrs. Malcolm L. Huneycutt
- Dr. Juanita Kruse
- Ms. Elaine Parker
- Mr. Toby Poplin
- Dr. & Mrs. Michael Riemann
- David and Nancy Rilling
- Mr. & Mrs. Lester Roberts
- Mr. Joel Roberts
- Professor Elizabeth Shaffer
- Dr. Bettie Starr
- Lee and Tanya Wallace
- Dr. & Mrs. Tom Westcott

## Memo

from: Marian F. Pagano  
Director of Counseling,  
Advising & Placement

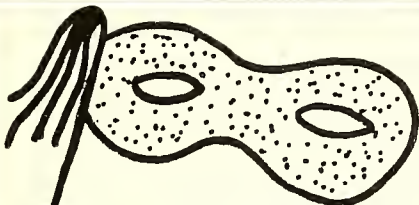
Best wishes to all my  
buddies!

I'll miss "y'all"



Marian

PFEIFFER COLLEGE • Misenheimer, N.C. 28109 • Dial 04/463-7343



Compliments  
of:

## Playmakers

- President — Dexter Ramey
- Vice President — Janet Helmer
- Secretary/Treasurer — Dawn Yankowski

'86

'86

CONGRATULATIONS

from  
the  
Development  
Office  
Staff

'86

'86

## Rho Alpha

AΨΩ PA

Best Wishes to the Class  
of '86

- Jeff Norville — Dexter Ramey — Janet Helmer
- (President) (Vice President) Secretary/Treasurer

Congratulations  
from

'86  
Staff

# Phoenix

Janet H. — Editor Janet I. — Asst. Editor

- Emiko Kim Becky
- James Don Denise
- Izumi Greg Kathy
- Bridgette Pam







Pfeiffer offers each individual a separate way of life — social, political, academic — whatever you choose. And the experiences and memories that you pile up while at Pfeiffer forever change who you are. Late night stops at Kermit's, John's, basketball games, laundry day, Homecoming, and many other things have left lasting impressions.

Personalities are not static; they do change. Pfeiffer attracts students from all over our world. Californians, Mississippians, Lybians . . . We all came to Pfeiffer to learn, grow and make the most of our potential. Together, we have become part of the Pfeiffer Community and will never be the same.













