

CHIMES



PFEIFFER GETS
THE
Personal Touch



Digitized by the Internet Archive
in 2012 with funding from
University of North Carolina at Chapel Hill

<http://archive.org/details/chimes1989pfei>

Pfeiffer College would like to dedicate this year-book to President Zane Eargle and our First Lady for the difference they bring with their personal touch.



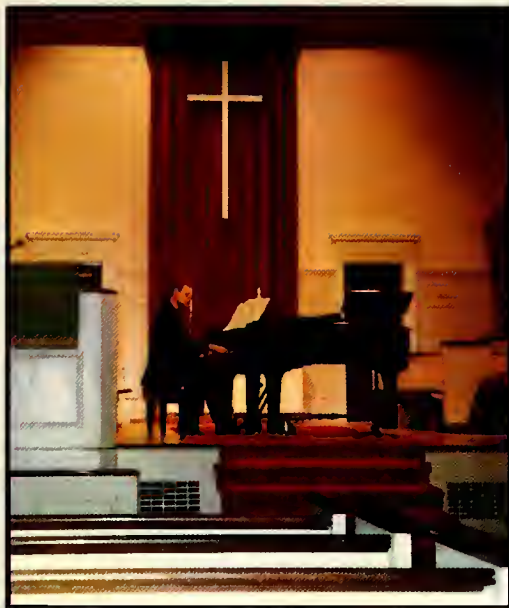
<i>Opening</i>	1- 16
<i>Events</i>	17- 38
<i>Faculty</i>	39- 48
<i>Seniors</i>	49- 62
<i>Underclassmen</i>	63- 72
<i>Current Events</i>	73- 82
<i>Sports</i>	83-104
<i>Campus Life</i>	105-122
<i>Organizations</i>	123-132
<i>Ads/Dorms</i>	133-144

GOING TO THE CHAPEL

Since the beginning of this school year, I have been a member of the Pfeiffer College chapel choir. Each Wednesday morning at ten o'clock the choir of mostly freshmen students sits in the choir loft during the worship service. My participation each week gives me an opportunity most students rarely get. My seat in the front of the chapel gives me a clear view of the congregation of students and faculty members that gather. From my vantage point and my many weeks of experience, I can now easily pick out several types of people in the crowd. This variety of people has provided me with entertainment at times when long-winded speakers would have otherwise put me to sleep.

The first type of people most easily recognized are the "Cozy Couples." These students are boyfriends and girlfriends who show up occasionally for an easy supplemental culture credit. I am sure they both need these credits, since they usually have better things to do at the other times sup credits are offered. "Cozy Couples" generally sit





away from other students, as if isolation from visitation at 10:00, so what better place to be together than chapel. Plus, they get credit for an hour of snuggling up together, whispering "sweet nothings" in each others ears, and occasionally looking, and maybe even, listening to the speaker. Besides, chapel provides a great atmosphere for "old-fashioned" hand holding and passing of love notes.

The second type of person is the "Desperate Senior." This student has waited until his senior year before realizing that the college is serious about sup credits being necessary for graduation from

Pfeiffer College. The "Desperate Senior" is a "regular" at each chapel service. Every week there are about fifteen people I can count on occupying seats near the back of the chapel. This person has perfected the "glazed look" to an art form. He generally looks straight ahead, but it is obvious he is not really seeing anything. If the chapel service is especially dull, the "Desperate Senior" may pull out the trick of falling asleep while keeping his head completely erect. The more inexperienced senior
(continued pg. 16)



PFEIFFER COLLEGE

Pictures may say a thousand words, but they still can't describe the Pfeiffer difference.











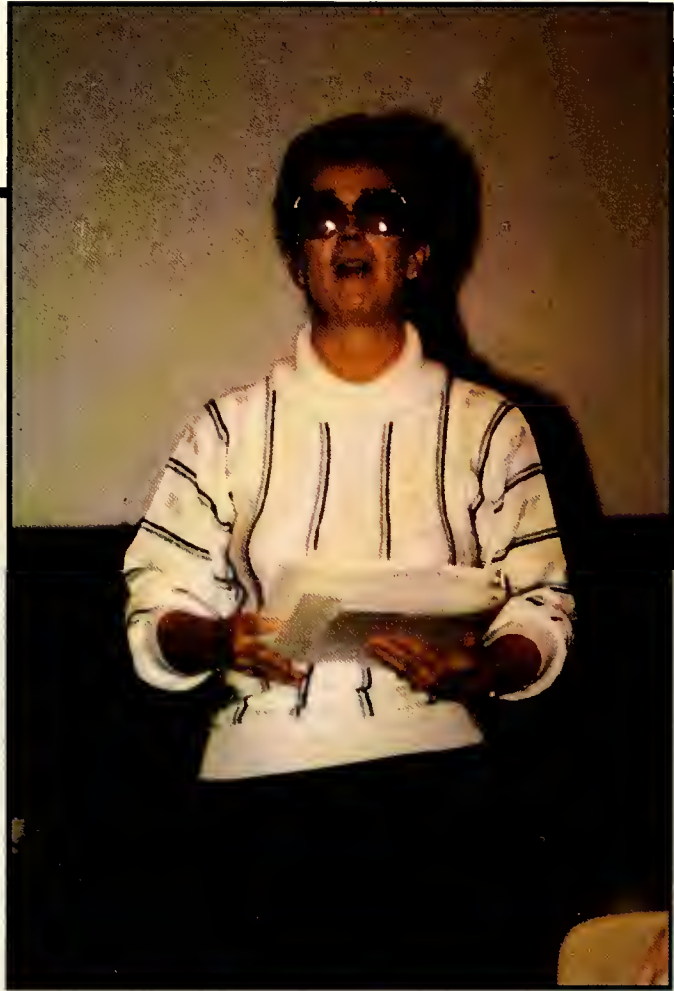
CLEARANCE 9'6"

















(continued from pg. 3)

may actually allow his chin to drop to his chest. This always brings a good-natured chuckle to my lips. The "Desperate Senior" has developed an attitude of such disinterest that most never hear a word preached.

The third type of the chapel-goers are the "Apathetic Athletes." I am not sure why so many athletes attend as often as they do. Due to time-consuming games and practices, they are probably short of sup credits and chapel is a fairly painless way to earn them. The coaches must have some influence on them as well. Of course, many athletes can also fall under the category of "Desperate Seniors" and even if they are not, they may easily be confused. For they, too, have the "glazed look." The athletes are not quite as serious about the weekly ritual as the seniors. Their energy level is somewhat higher. They can often be seen talking, laughing, and cutting up during the hour long service. Their attire is an identifiable characteristic. Many wear letter jackets, sweatpants, and teeshirts. From long hours of practice, athletes are usually good friends, therefore, most sit together in a group. The "Apathetic Athletes" are a surprisingly high percentage of the students in attendance each Wednesday.

A fourth type of person is the "Eager Freshman." As a freshman myself, I can usually identify these people. They are a motley group. These students are getting all the sup credits

they can, as early in their school careers as possible. They have yet to become jaded and are hoping to avoid being "Desperate Seniors." It appears from my seat that most freshmen try to listen to the speaker and on the most part, succeed, or at least do a good job of pretending. This is due in part to the fact that the newness of it all has not worn off yet. There are also the freshmen that still think that chapel can be used as a social hour. I am sure they will soon learn this is not true when they do not receive credit one morning.

A fifth type of person in attendance is the "Faithful Faculty." Several members of the Pfeiffer College faculty come each Wednesday to enjoy the worship service and support the Religious Life Council, which leads the service program. Their more advanced age is the most obvious characteristic of this group. They generally occupy the pews at the front of the crowd in attendance. These pews are still only about halfway from the back, since the students sit in the back as if to avoid the wrath of the speaker in the pulpit. The faculty members are by far the most attentive people in chapel. Rarely do I see any of them nodding off or conversing. Of course, they come purely by choice, not with the reward of a much needed sup credit. They seem to "want to be" there. I can tell them apart by their atten-

tiveness. As opposed to all other types present, with the exception of the "Faithful Faculty," these students appear to actually listen to the speaker. Another characteristic, which most other types do not have, is the "Wanna Be's" also sing the hymns. Only a scattering of the others ever sing. Most just stand with a dumb look on their face and, maybe, a hymnal opened before them. For whatever reason, the "Wanna Be's" come to worship in the name of God. It is refreshing to see some students in chapel that actually "want to be."

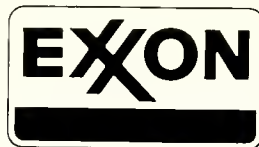
The six types of people I have described make up a large part of each Wednesday's congregation. Sometimes a new person will come and I am not quite able to peg him, but I always search out the "Cozy Couples," "Desperate Seniors," "Apathetic Athletes," "Eager Freshmen," "Faithful Faculty," and "Wanna Be's." I have come to learn their habits during the service. For me, chapel just would not be the same without them.

—Cathy Jo Compton

Gas — Oils
Tires — Accessories

"Pleasing You, Pleases Us"

M.G. Roseman, Jr.



NC Hwy. 49
Richfield, NC 28137

Phone 463-7543

**B. B. EXXON SERVICE
CENTER**



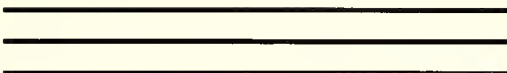
<i>Orientation</i>	<i>18-19</i>
<i>Homecoming</i>	<i>20-23</i>
<i>Thanks for The Memories</i>	<i>22-23</i>
<i>Strange Creatures</i>	<i>24-25</i>
<i>Christmas in November</i>	<i>26</i>
<i>Ritual to Cupid</i>	<i>27</i>
<i>Winterfest</i>	<i>28</i>
<i>We want to Take Your Blood</i>	<i>29</i>
<i>CUB—Keeps Pfeiffer Entertained</i>	<i>30</i>
<i>Star Search</i>	<i>31</i>
<i>Exit Stage Left</i>	<i>32-35</i>
<i>Aprilfest</i>	<i>36-37</i>
<i>The Moment of Truth</i>	<i>38</i>

FRESHMEN INVADE PFEIFFER

ORIENTATION

They came from everywhere to invade Pfeiffer College. Luckily, these freshmen creatures were of a peaceful nature and created new friendships with those they met. Through the events and activities sponsored by the orientation team, these freshmen gained experiences of new responsibility of being on their own.





Freshmen known as "fresh meat" are looked upon by the upperclassmen as new and challenging people to add to the Pfeiffer difference.

Homecoming

ANOTHER HARD LOSS FOR PFEIFFER

The Homecoming soccer game against Pembroke State proved to be a disappointing loss. Under the direction of a new coach, Tom Gill, the Falcons had high hopes for the game. Todd Church scored the first as well as the second goal, both of which were assisted by Rob Donovan. The third goal was believed to be scored by tri-captain, Will Rousseau (we're not sure). At half time, the Homecoming court was viewed for the first time. Everyone waited in anticipation for the dance that evening, when the Homecoming Queen would be announced. After the court was escorted off the field, the game continued and pushed into overtime with Rob Donovan scoring the final scoring for the Falcons. The final score was 7-4, denying the Falcons of a homecoming victory. When asked about the outcome of the game, Donovan replied, "the guys gave it their best try, but we're outclassed in the end."



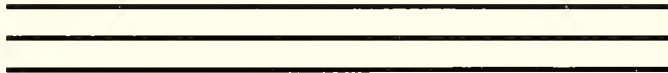


STUDENTS SAY FOR THE MEMORIES

In the fall of each year, students hustle about preparing the grounds and the events for Homecoming. Although the program of events remains similar it is the people who return that bring it a distinct uniqueness.

As always, many alumni return to visit old friends and to share memories. Old relationships are restored and many new friendships are made. Stories of "I remember when" float through the air and everyone is consumed by the homecoming spirit. When the activities draw to a close, both students as well as the alumni are thankful for this time together.

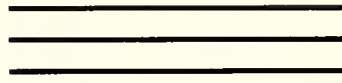




STRANGE CREATURES

Friday, October 28, seemed as though just another day. When the sun finally went down, the ghosts and the goonies came out. People cut loose and put on their most creative costume to win the contest that was sponsored by AMS and AWS at the lakehouse. Daisy Duck, otherwise known on campus as Donnette Eckberg won the funniest costume. Bernadette Podlaski was the most original with her portrayal of the midget. The scariest one of all proved to be Paul Kalody. Later, all of the strange creatures challenged each other to a limbo contest. Donna Hurley proved to be the most limber one present. The parties continue late into the night, with Washington holding a big bash that got everybody in the Halloween spirit. With spirits set high, some went out looking for the great Pumpkin, while some others simply drove around in the darkness. As the sun came up, these strange creatures went back into hiding.







CHRISTMAS IN NOVEMBER

WHY NOT?

In the last couple of weeks before Christmas break, Pfeiffer College comes alive with the holiday spirit. This is a time for us to come together as family, since we aren't together during Christmas. It begins early on Saturday morning with CUB cutting the greenery and RLC giving the materials to the building and dorm committees. All of this puts everyone in the Christmas spirit. Later in the week RLC gives a Christmas chapel service and presents a live manger scene. The whole campus is truly in the spirit for this last week before Christmas break.



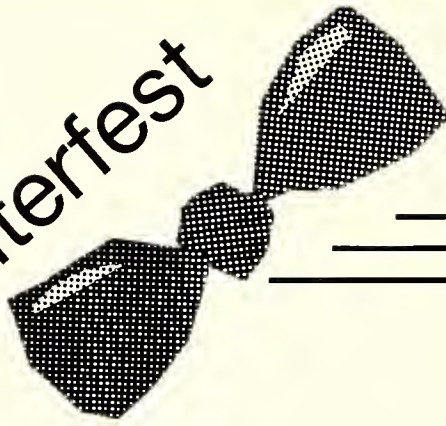
Ritual to Cupid



Beneath a starry February sky, Pfeiffer students gathered to praise the founder of love. Many of these students enjoyed a special "Surf and Turf" dinner served by the faculty in the cafeteria. Afterwards, these love-stricken men and women got dressed to the "tee" and assembled in the old gym which had been converted into a magical place of red and white.



Winterfest



The Powerful voice of Jane Powell kept everyone in high spirits throughout the evening. The dance began at nine o'clock but students were celebrating long before that. The anticipation of Cupid's arrival was felt by everyone. Winterfest '89 was definitely an evening full of romance and magic.



We want to take
your blood...



This year, as in past ones, there were two blood drives. This first was in November with 109 Pfeiffer people donating in Mitchell Gym. Although the goal was to get 100 units we received 85. The second blood drive was in February with 47 Pfeiffer people donating. We collected 37 units of blood. The dorms with the highest percentage of donors in February were given a pizza party sponsored by AMS/AWS. The dorms were Kluff, Washington, Ervin and Cline. The turnout in February was down compared to the blood drive in November. The students must have been snowed in.



FRIDAY NIGHT

LIVE

CUB KEEP PFEIFFER ENTERTAINED



Friday nights are excellent for entertainment on the Pfeiffer campus. The College Union Board provides a wide assortment of entertainment for all of those who are willing to watch. This entertainment provides students who are "burned out" from the stress of academics a chance to escape into the world of relaxation. Pfeiffer had several returning acts such as singer Mike Rayburn and keyboardist Rick Kelley as well as new acts such as the progressive band, the Regular Boys. Whether it is a comedian, a musician, or a magician, students can always find enjoyment in all CUB activities.



STARSEARCH '88

On November 4, 1988, CUB held Pfeiffer's first annual Lip Sync Contest. Entertainers such as Prince and Wham were seen performing in the student center that night, even the famous duo Simon and Garfunkel reunited to make an appearance. The crowd really enjoyed the show and it seemed that everyone agreed when Prince and Royal Bad (Lee Kelley, Dean McDaniel, and Michael Brumfield) were announced the winners. "Paradise By the Dashboard Light" (Todd Gambill, Josh Embree, and Jim Barbee) came in second place and Olivia Newton-John (Lisa R. Klutts) with John Travolta (Paul Kalody) brought in third.

"Tony Domenico was definitely one of the funniest people I have ever seen, and living in Cline that says a lot."

Lisa Kluttz



Exit
Stage
Left



In The Beginning was presented in its premiere as a "work in progress." The play was not a finished product and as seen in a revised version only months later at Concord's Old Courthouse Theatre. A play can only be tested for its worth and validity before a live audience. It was a boom to Pfeiffer Theatre to have held *In The Beginning* in trial test.





Home was written by a native from Burgaw, North Carolina, had a successful Broadway run, and was produced at Pfeiffer as a part of Black History Month. It tells the reminiscent story of Cephus Miles, a black farmer from the mythical Crossroads, North Carolina, during the turbulence of the 1950's-70's. Cephus' journey from his farm, through prison to the great Northern cities and return to his farm, reaches heroic proportions. **Home** is a play of longing, perfidy, fulfillment and redemption, worthy of note and consideration it celebrates.



*Pfeiffer Playmaker's and the Rho Alpha cast of Alpha Psi Omega were pleased to present this ever popular Neil Simon comedy as part of the celebration surrounding Pfeiffer's presidential inauguration. President and Mrs. (may we call them Zane and Joan?) Eargle have proved themselves active theatre supporters and the Playmakers felt compelled to offer this production as a note of thank you. The relative youth of the cast of **Barefoot** promises great strength in future productions. It should also be noted that the inspired poster and program design for this show were provided by Pfeiffer's own graphics department, headed by Kent Averill.*



UNSEEN but not FORGOTTEN Not featured pictorially were three other productions of note that flashed out Pfeiffer's theatre season. In October, as part of Religious Observance Week, a medieval mystery play, **The Woman Taken In Adultery**, was given in the Pfeiffer Chapel. In December, under the leadership of Gary Hampton, a totally student under-

taking occurred with the fabulous **Monty Python Review**. Last, but never the least, senior John Branin presented a dramatic adaptation of his own monologues to a standing room only crowd in the Pfeiffer Theater. Bravo and Kudos to all of the above. John Edward Goodnow, Director of Pfeiffer Theatre



The Telephone, a one-act comic opera, was presented as an offering for Pfeiffer's 1988 Homecoming celebration. It featured the new Pfeiffer Theatre Director, John Goodnow and Marilyn Wienand in the singing roles with accompaniment or musical direction by Karl Wienand. The Wienands are members of Pfeiffer's music faculty. **The Telephone** is an absurdist drama that has resulted in great laughter as Ben finds the only way he can propose to his phone-addicted girlfriend, Lucy, is to leave her apartment and call her from afar.

Aprilfest



Aprilfest was another fun time for everyone. The freshman class managed to fill us full of food, music and dance. Pres. and Mrs. Eargle once again showed their enthusiastic support by arriving on the scene to crown Tyler Lentz once again. This time for Aprilfest Queen.

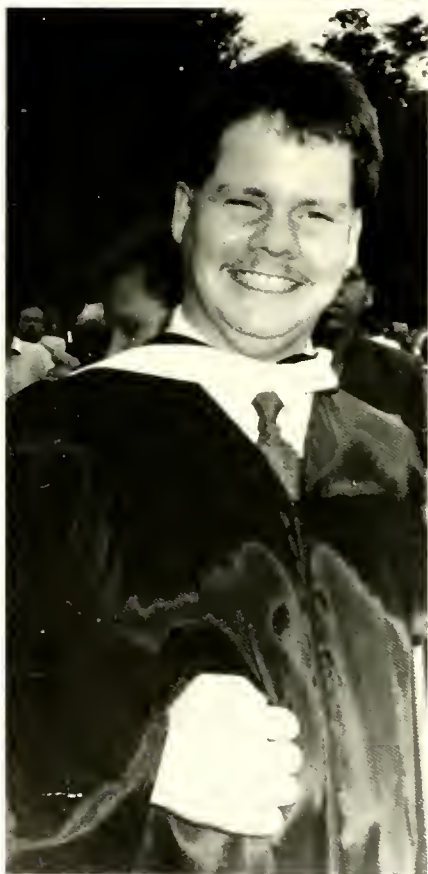




THE
MOMENT
OF

TRUTH

GRADUATION . . .
*The realization that you have
to find a job in order to exist!*





Faculty . . . 39-48



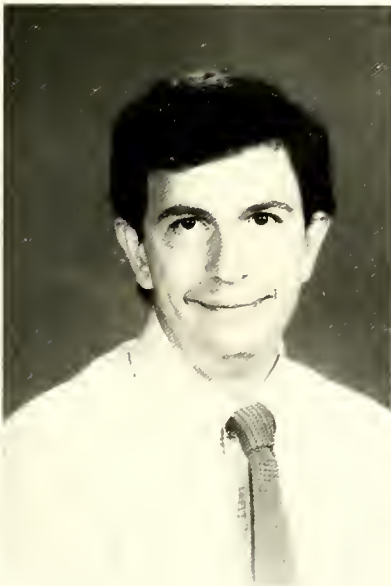
President Zane Eargle and First Lady Mrs. Zane Eargle



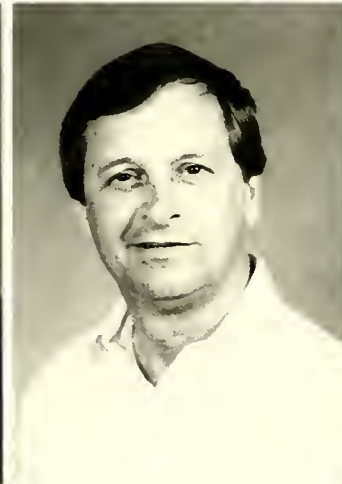
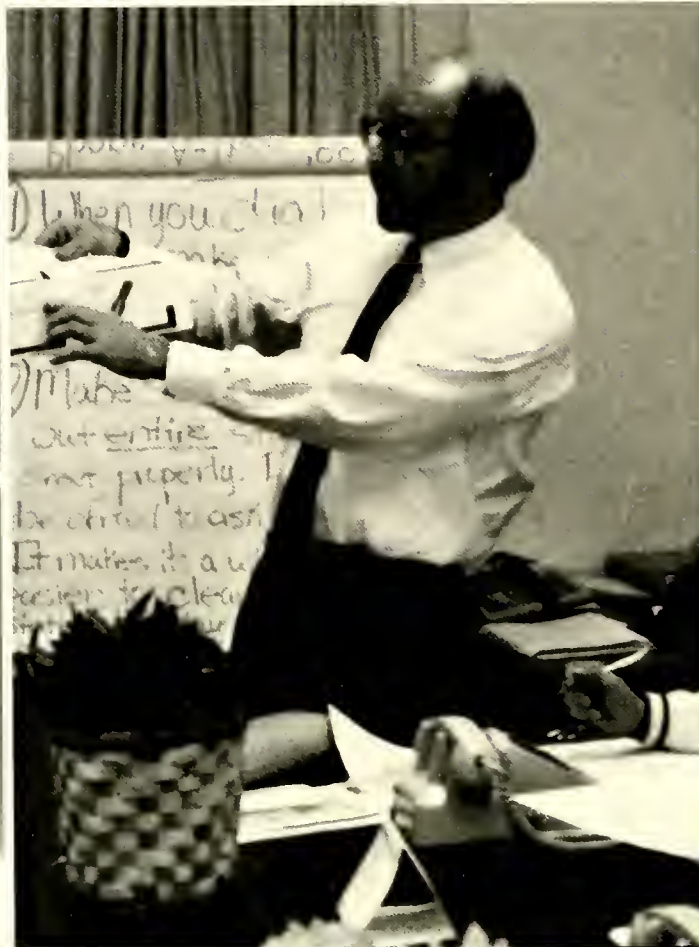
James Oliver
Executive
Vice President



Michael Riemann
Academic Dean
Professor
of Chemistry



Tom Westcott
Dean of Student Affairs
Professor
of Psychology



Jerry Armstrong
Counselor, Admissions and Financial Planning

Janette Barnes
Director of Purchasing, Mail and Receiving

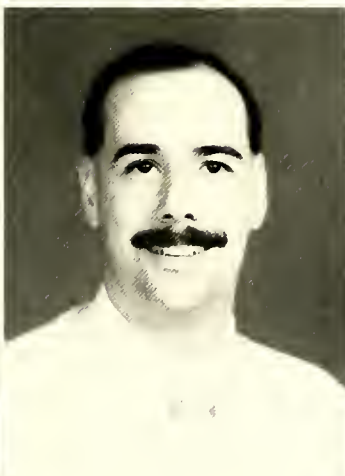
Barbara Bleau
Jefferson-Pilot Associate Professor of Management and Science Chairperson, Division of Business and Economics

Gerald E. Carpenter
Director of the Annual Fund/ Alumni Assistant

Thomas C. Childress
Director of Athletics and Assistant Professor of Health, Physical Education and Recreation

Jahala Dailey
Office Manager, Institutional Advancement

Steve C. Dial
Professor of Biology, Chairperson, Division of National Sciences, Head of Dept. of Biology
George Dolch
Part-time Associate Professor of Christian Education



Lawrence J. Durrett
Registrar and Associate Professor of History
Rita Earnhardt
Development Assistant
Joseph T. Echols
Professor of Chemistry and Head, Department of Chemistry and Physics

Brenda Efir
Secretary Admissions and Financial Planning/Word Processing Secretary
Melba W. Ferebee
Records and Registration
Paul G. Fowler
Director of Residential Life

Jeanette Goodman
Director of the Computer Center
Brenda Honeycutt
Computer Data Technician
David C. Joyce
Vice President for Institutional Advancement and Assistant Professor of Psychology

Juanita F. Kruse
Associate Professor of History
Cindy I. Loflin
Administrative Assistant to Physical Plant Director
Elsie Lowder
Administrative Secretary, Admissions and Financial Planning



Ruby B. Mason
Associate Director of Admissions and Financial Planning

Vickie Miller
Secretary, Admissions and Financial Planning

Gale Misenheimer
Administrative Secretary to the President

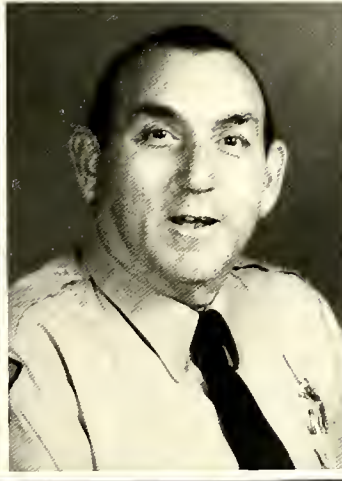
Jean B. Mobley
Professor of Mathematics and Head of the Department of Mathematics

Theresa P. Newman
Administrative Secretary to Vice President of Student Affairs

Frances H. Parnell
Receptionist/Switchboard Operator

C. Jay Pendleton
College Chaplain

Delmas H. Petrea
Professor of Mathematics

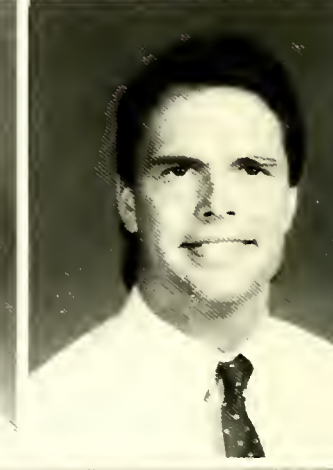
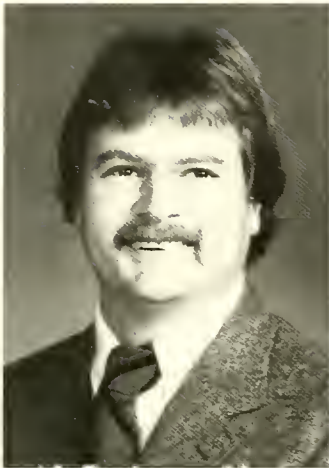


Philip A. Pharr
 Professor of Religion and
 Chairperson of the Division of
 Humanities
Eugene B. Pickler
 Part-time Associate Professor
 of Economics
Bobbie Player
 Secretary, Learning Center

Sheila Prevatte
 Director of Health Services

Les F. Roberts
 Director of Campus Security

Katrina H. Sells
 Receptionist/Switchboard Op-
 erator
Roger Sims
 Director of Admissions and Fi-
 nancial Planning
Pamela S. Smith
 Bookkeeper Title III Office



Thomas J. Smith
 Assistant Professor of Sports
 Medicine and Management,
 Head, Department of Sports
 Medicine and Management
Harold P. Stephenson
 Professor of Physics
Jim Sullivan
 Director, CAP Center

Sheila P. Thompson
 Accounts Payable
 Supervisor
Leo I. Tohill
 Assistant Professor of Com-
 puter Information Systems
Peggy Troutman
 Secretary, Health
 Services

Stella Lois Whitlock
 Clinical Teaching
 Faculty

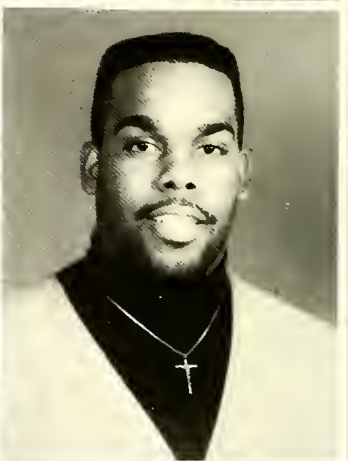
Marilyn Wienand
 Part-Time Assistant
 Professor of Music
Dirk Wilmoth
 Assistant Vice President for
 Budget and Planning
John York
 Counselor, Admissions and Fi-
 nancial Planning







Seniors . . . 49-62



EMILY JEAN BAKER
Sports Management/Business
Pres. Cameron West Academic Athletic
Honor Roll 3, 4; Softball Scholarship 1, 2, 3,
4; Gayle Cross Memorial Scholarship 1;
Dean's List — Spring 4; House Council
Vice-Pres. 4; Head of Softball Fund Raising
Committee; Softball starting pitcher 1, 2, 3,
4; Tennis starter 3; Intramural Basketball,
Tennis, Volleyball, Coached Softball.

PENNY RUTH BARKLEY
English Writing
DONNA BERGER
English Writing

TAMMY LYNN BLALOCK
Intermediate Education

JOHN HOWARD BRANIN
English Writing/Music
McCrary Church Music Scholarship 2; A. J.
Fletcher Music Scholarship 2; Trustee
Scholarship 2; Order of the Sundial 3, 4;
Who's Who 4; RLC Worship Committee 1,
2, 3, 4; Chairperson 2, 3, 4; Men's Judicial
Board 2, 3, 4; Secretary 3, 4; Chief Justice
4; Pfeiffer Review 3, 4; Editor 4; Chimes 3;
Pfeiffer News 3; Homecoming committee 3;
Baptist Student Union 1, 2; Communica-
tions Council 4; Alumni Phonathon 3; Play-
makers 3, 4; Rho Alpha Cast Alpha Psi
Omega 4; Intramural Bowling 4; Concert
Choir 1, 2, 3, 4; Symphonic Choir 1, 2, 3, 4;
Chamber Singers 2; Handbell Choir 2; Cha-
pel Choir 1; Aldersgate Choir 1; Treasurer of
Choral Organizations 2, 3; Plays: "Forum"
3, "Mime Vice" 3, "A Random Sample" 4,
"Living Nativity" 4; Matton's Grove U.M.
Church Choir 2, 3, 4.

LEONARD PAUL BRITT
Accounting/Computer Information
Systems
Honor Scholarship, Phi Delta Sigma; Junior
Scholastic Award; Addie Rhem Morris
Scholarship; Student Government Treas-
urer 3, 4; Honor Board 3, 4; Chief Justice 4;
Baptist Student Union 1, 2; Class Club 1;
Who's Who; Order of the Sundial; Account-
ing Tutor 3, 4.

WENDY SUE BUTENSKY
Sports Management
MAURY WESLEY CARLTON
Sports Management



ELIZABETH MICHELLE CAUBY

Criminal Justice Sociology
Basketball Scholarship; Softball Scholarship;
Resident Assistant; Softball 1, 2, 3, 4;
Basketball 1, 2, 3, 4.

JOHN KEITH CRISCO

Business Management
Student Senator 3, Dorm Vice-Pres. 3, 4;
Varsity Lacrosse.

JULIAN ABEL DOMENECH, JR.

Business Administration/Economics
Who's Who; Order of the Sundial 4; Athletic
Scholarship 2, 3, 4; AMS Dorm President 3;
AMS Vice-Pres. 4; Varsity Soccer 1, 2, 3, 4;
Varsity Lacrosse 1, 2, 3, 4; Resident Assis-
tant 4; Resident Director 4.

ROBERT JAMES DONOVAN

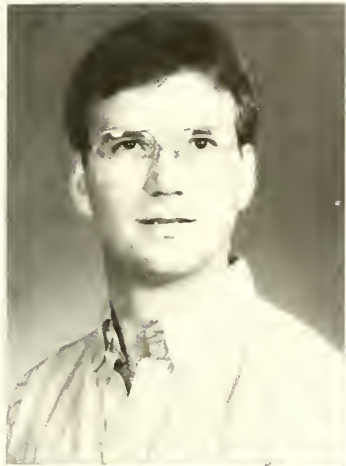
Accounting
Soccer Scholarships; Fire Marshall 1; Soc-
cer Captain 2, 3, 4; Intramurals 1, 2, 3, 4.

KEVIN EARL EVANS

Middle Grades Education (Concentra-
tion Science)
SNEA 1, 2, 3, 4; Intramurals 1, 2.

BETH ANN BERGERDING FOWLER

Christian Education



FREDERICK A. FRANKE
 Business Administration
ARTIE LEE FRANKLIN
 History
AMY DOLORES FRYE
 Religion

Troske Scholarship 1, 2, 3, 4; Phi Delta Sigma 3, 4; Dean's List 1, 2, 3, 4; Order of the Sundial 4, Who's Who 4; Baptist Student Union 1, 2; Religious Life Council 2, 3, 4; Kappa Chi 2, 3; Christian Educator's Fellowship 1, 2, 3; Volunteer Youth Director local church 3; Youth Director — Salisbury 4.

CHRISTOPHER ALLEN FURR
 Sports Management
S. TODD GAMBILL
 Sports Management
A. PATRICIA GOODMAN
 Middle Grades Education



TAMARA DARLENE GOODWIN
Music Education
KATHRYN ANNE HARTZOG
Sports Medicine
SHARLINA SELLS HONEYCUTT
Intermediate Education

MICHAEL THOMAS HOOD
Sports Medicine
AMS 2; Resident Assistant 2, 3, 4; House Council 1, 2; Baseball 1, 2; Intramurals 1, 2, 3, 4; Adult Fitness 1, 2, 3, 4.
BARBRA ANN HOWARD
Accounting
Phi Delta Sigma House Society 4; Trustee Scholarship 3, 4; J.B. Cornelius Scholarship 3, 4; Dean's List 3, 4; Wall Street Journal Award 4.

JEAN-MARIE KATERI HUDOCK
History
Academic Scholarship 1, 2, 3; Dean's List 2, 3; Field Hockey Scholarship 1, 2, 3, 4; Basketball 1; Swimming 2, 3; Field Hockey 1, 2, 3, 4; Softball 1, 2, 3, 4; Intramurals 1, 2, 3, 4; AWS 4; FCA 1, 2, 3, 4; History Club 1, 2, 3, 4; CUB 1, 2, 3, 4; CCM 1, 2, 3, 4; Who's Who 4; Order of the Sundial 1, 3, 4; MVP Catawba Kick-Off Tournament 4; All-Tournament District 26 4; N.E. Lefco Sportsmanship Award 4; Cameron West Athletic Honor Roll 3, 4.

EUGENE PHILLIP LAUER, JR.
Psychology
Colonel Joseph R. Fisher Scholarship, USMC 4; Chimes 4; Intramurals 3, 4; Officer Candidate School — USMC 3, 4.

ANGELA DENISE LEAK
Sociology
Charles L. Little Scholarship 4; Black Student Alliance 4; Senator 1; Student Advisory Chairperson 3; Fall Orientation 2, Alumni Phonathon volunteer 3; Club Admissions Ambassador 1; House Council.

TYLER RENE LENTZ
Business Administration/Finance
United Methodist Scholarship 2, 3, 4; Car-a-star Industries Scholarship 2, 3; Duke Power Scholarship 4; United Methodist Student Movement 2; Math Club 4; Admissions Ambassador 4; BSU 3; Junior Marshall; Homecoming and Aprilfest Court 4; Phonathon 3, 4.



CHRISTINE MASSER

Business Administration/Economics
Who's Who; Order of the Sundial 4; AWS
Treasurer 3; AWS Vice-Pres. 4; Resident
Assistant 3; Resident Director 4; Field Hockey
2, 4; Softball 3.

JANICE ROBERSON MISENHEIMER

Accounting

Duke Power; B.B. Parker Scholarship; J.B.
Cornelius Scholarship; Stanley County En-
dowed School; Harris, Henry and Mamie
End. Scholarship; Dean's List; National
Dean's List; Outstanding College Students
of America; K-2 Soccer Coach; Church
Educator; School Volunteer.

LISA ELLEN MITCHELL

Computer Information Systems
Hospitality Committee Aprilfest '89.



NATALIA MONTOYA

Music Education

Fire Marshall; Friends of Music Award 3; Blanche Coltrane Scholarship 2, 3, 4; A.J. Fletcher Music Scholarship 3, 4; Senator 4; Pfeiffer Review; Water Safety; Water Safety Instructor; Concert, Symphonic Hand Bell Choir.

SHERRY ANN MOOOE

Business Administration/Pre-Law Economics/History

J.B. Cornelius Scholarship 4; Admissions Assistant 2, 3, 4; College Union Board 3, 4; House Council 1; Alumni Phonathon 1, 2, 3, 4; Orientation 3; SGA 4; Intramurals 1; SGA Committee Chairperson; Phonathon Co-Chairperson.

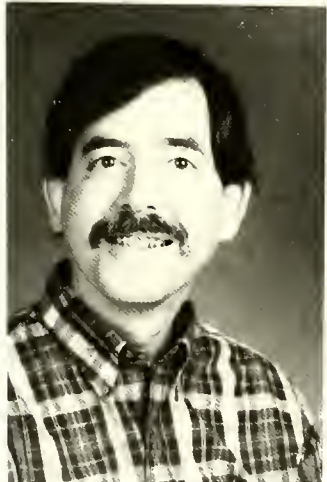
DAWN YANKOWSKI MORETZ

Early Childhood Education

BARBARA LORRAINE MORRISON

Sociology

Who's Who 4; Order of the Sundial 4; Dean's List 2, 3, 4; Jay McCollister Scholarship 4; Pfeiffer Women's Basketball Scholarship 1, 2, 3, 4; Las Amigas Scholarship 3; Pres. of Senior Class 4; Vice-Pres. of Junior Class 3; Chairperson of Cluture Credit Committee 4; Co-Chairperson of Academic Council 4; Sociology/Criminal Justice Club 4; Basketball 1, 2, 4; Volleyball 2; Softball 1, 2; Captain of Basketball Team 4; National Dean's List Student 4; United States Achievement Academy Basketball Awards Winner 3; Dr. Cameron West Honor Roll 3, 4.



SHARON MAJELLA MCCREA

English Writing
Trustee Scholarship; Fisher Family, BSA,
Pfeiffer Review; Health and Community
Services; Resident Assistant.

MYRTLE RENA MCGREGOR

Sociology
DOUGLAS EDWARD NEWCOMB, JR.

History

LEE ANN OEHLER

Sports Management/Sports Medicine
Academic scholarship 1, 2, 3, 4, 5; Dean's
List 3, 4, 5; Softball Scholarship 1, 2, 3, 4;
Basketball 1, 2; Softball 1, 2, 3, 4; Sports
Information Assistant 4, 5; All-Conference
Softball 2, 3, 4; All District Softball 2, 3, 4;
Team MVP Softball 2, 4.

MANOJ JAGDISH PATEL

Business Administration
Pfeiffer Phonathon Award; Intramurals
Softball, Phonathon.

**CHRISTOPHER MORAND PEN
LAND**

Sports Medicine
Athletic Scholarship, Soccer and Sports
Information 3, 4; Trustee Scholarship 1, 2,
3, 4; Johnston Foundation Scholarship 1, 2,
History Club 4; Phi Alpha Theta 4; Soccer 1,
2, 3, 4; Basketball Scorekeeper Men's 3, 4;
Baseball Public address Announcer 4;
Ass't. Sports Information Director 3, 4.

JAMES WILBURN PLAYER III

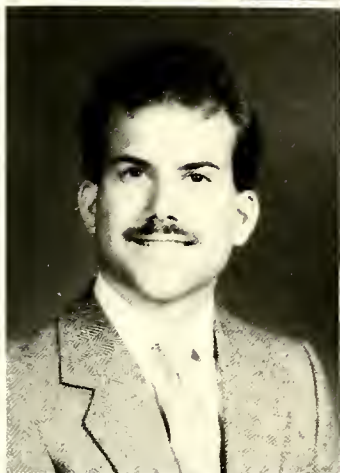
Christian Education
United Methodist Women, Bicentennial
Scholarship; UMC, Weaver Scholarship;
RLC, FCA, Kappa Chi, Pres., CEF, Pfeiffer
Cheerleader 1, Fire Dept. 2 yrs. Lieutenant.

GWENDOLYN DENICE PYRON

Accounting
Dean's List 1; Presidential Assistantship 1;
Trustee's Scholarship 2, 3, 4; Jr. Marshall 3,
Marshall 4; Playmakers 1; Symphonic
Choir 1, 2, 3, 4; Concert Choir 3, 4; Handbell
Choir 2, 3, 4; House Council 2, 31; Out-
standing College Students of America 4.

KAREN ELIZABETH RAVERT

Business Administration/Marketing
J.B. Cornelius Scholarship 3, 4; Playmak-
ers 3; Black Student Alliance 3; Vice Pres.
of BSA 4; AWS 3, 4; SGA Committee
Chairperson 4; Intramural Basketball 3;
Special Olympics Volunteer 4; Chapel
Choir 3; Phonathon.



D. NICOLE REYNOLDS

Accounting/Business Administration
Outstanding College Students of America
3, 4; J.B. Cornelius 1, 2, 3; Chairman
Placement Committee 4; Chair Awards and
Honors 4; Black Student Alliance 1, 2, 3, 4;
Cheerleader 2, 4; Chapel Choir 1; Volunteer
Special Olympics 2, 3; Pfeiffer News Busi-
ness Manager 1, 2, 3; House Council 1;
Phonathon 1, 2, 3.

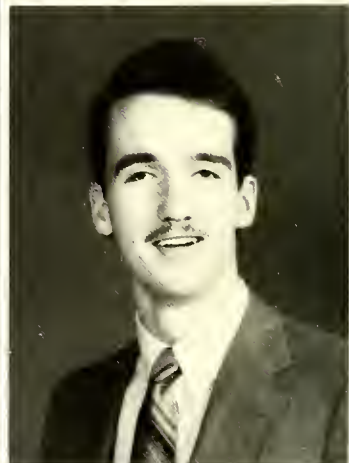
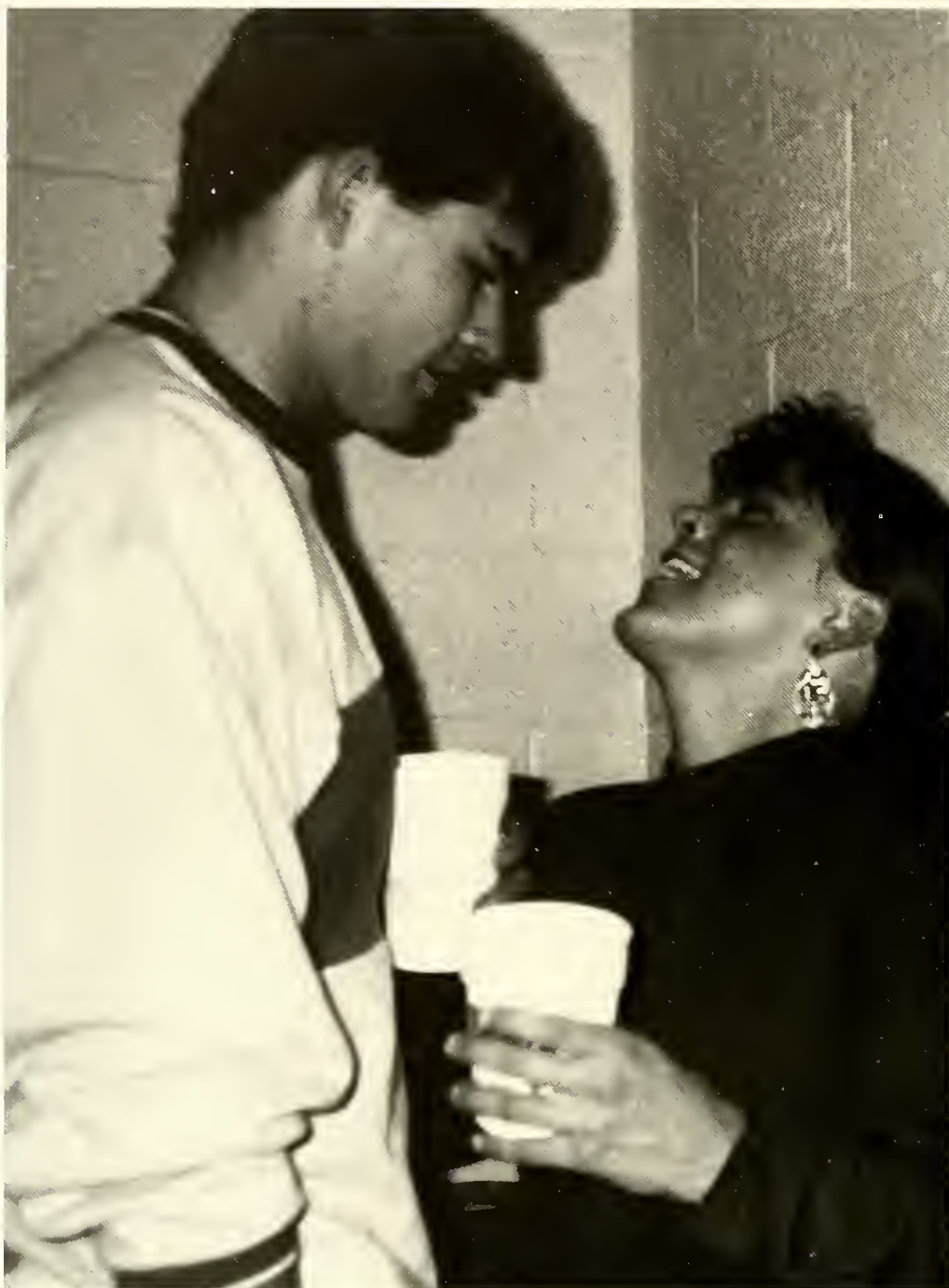
DAVID SIDNEY RILLING, JR.

Business Administration

BURTON ERNEST ROBERTSON

Sports Medicine

Athletic Training Scholarship 1, Presiden-
tial Scholarship 1; Joy Coland Dennis Me-
morial Scholarship 1; AMS 1; Student Sen-
ate 1, Student Athletic Trainer 2.



ROBERT GEORGE RUTEMILLER

Business Administration
J-Board 1; AMS 1; Lacrosse 3; Soccer 1.

MARK ALBERT SELLS

Criminal Justice
Cheerleading 4; Athletic Honor Roll, MVP
Cheerleading 4; Cheerleading 2, 3, 4; Cheer-
leading Captain, Intramurals 3.

MATTHEW WINFIELD SMITH

Accounting
Basketball Scholarship 1, 2, 3, 4; Dean's
List 2; AMS 1, 2, 3, 4; Basketball 1, 2, 3, 4;
Intramural Volleyball and Softball 1, 2, 3, 4;
Handbell Choir 3, 4; Captains Table 4; Ap-
peals Board 4.



LLOYD JEFFREY TAYLOR

Psychology

National Dean's List; Residence Assistant; Psychology Club; Judicial Board; Senator; Academics Tutor 1; Freshmen Orientation Team.

RAYMOND BRUCE THOMAS

Computer Information Systems

Playmakers 1, 2, 3, 4; Rho Alpha 4; FCA 1, 2, 4; Senator 1; Pfeiffer Review 2, 4; Pfeiffer News 3; "Of Mice and Men" 1; "The Crucible" 2; "Inherit the Wind" 3; "Barefoot In The Park" 4; "Woman Taken In Adultery" 4.

DAVID WILLIAM TILTON

Accounting

President Association of Men Students 4; SGA Executive Council 4; AMS Vice Pres. 3; SGA Orientation 4; Student Life Committee 4; Intramurals 1, 2, 3, 4.

AMY LYNNE TROGDON

Sports Management/Psychology

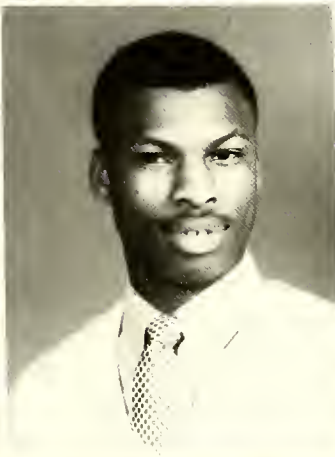
Basketball Scholarship 1, 2, 3, 4; Volleyball Team 1, 2, 3; Captain of Basketball Team 4; Senior Award; Scholarship Athletic Award; Dean's List 4; Dean's Cup Winning 2, 3, 4; Senator 2, Hall Representative 1, MVP Basketball 4; All Conference 4; Leading Scorer and Rebounder Basketball 4; Softball Intramural Champions 2, 3, 4; Volleyball Intramurals Champions 3, 4; Student Government 1, 2; Psychology 1, 2, 3, 4; Fellowship of Christian Athletics; Intramural Football Coach 1; Served on Senior Class Guest Speaker Selection Committee; Basketball Team 1, 2, 3, 4; Volleyball Team 1, 2, 3; Intramural Softball 1, 2, 3, 4; Intramural Volleyball 4; Intramural Arm Wrestling.



SHAUNA LYNN TURNER

Business Administration

First United Methodist Church Scholarship 1, 2, 3, 4; Myers Textile Foundation Scholarship 1, 2, 3, 4; Trustees Scholarship; Beth Boshamer Scholarship 3; Symphonic Choir 1, 2, 3; Concert Choir 1, 2, 3, 4; Treasurer 4; Women's Judicial Board 2, 4.



CLARENCE LEE UNDERWOOD

Accounting



VERONICA PARK VALENCOURT

Biology

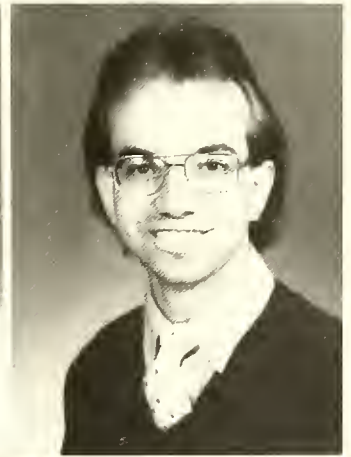
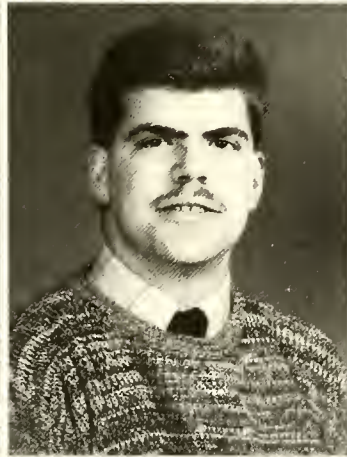
Johnston Foundation Scholarship 1, 2, 3, 4; J.B. Cornelius 1, 2, 3, 4; National Dean's List 3, 4; Trustee Scholarship 1, 2, 3, 4; Lethe Pate Whitehead 3; Dean's List 1, 2, 3, 4; Junior Marshall; Day Student Secretary 1; Biology Instructor for Summer Program for Academically Gifted Youth 4; Student Chapel Speaker Award 3; Peer Tutor 1, 2, 3, 4; Chapel Choir 2; Supplemental Instructor for Biology 3; PTA 1, 2, 3, 4; Wife 1, 2, 3, 4; Mother of 1, 2, 3, 4. (Biggest Accomplishment!)



DEAN ROBERT VERNON

Sports Management/Business Administration

N.E. Lefko Male Sportsmanship Award 3; Basketball Scholarship 3, 4; Outstanding College Students of America 3, 4; AMS Secretary 3, 4; Appeals Board 3; Chief Justice 4; Athletic Monogram Club Vice Pres. 3 and Pres. 4; Men's Basketball 1, 2, 3, 4; Intramurals 1, 2, 3, 4; Resident Assistant 3; Resident Director 4; Special Olympics Volunteer 1, 2, 3, 4; Senior Male "Best Dressed" 4; Who's Who of National College Students 4; The Order of the Sundial 4; FCA 3.



DEBORAH LYNN WATWOOD

Music Education/Church Music
 A.J. Fletcher Music Scholarship 1, 2, 3, 4;
 Friends of Music Scholarship 2; McCrory
 Church Music Scholarship 3; J.B. Cornelius
 Scholarship 1, 2, 3, 4; Handbell Choir 1, 2;
 Chamber Singers 2, 3; Chapel Choir 1;
 Concert Choir 1, 2, 3, 4, 5; Symphonic
 Choir 1, 2, 3, 4, 5; Baptist Student Union 2;
 Western NC Conference Scholarship; Trust-
 ee Scholarship from Starnes' Jewelers 1, 2,
 3, 4; MENC 1, 2, 3; SNEA 3, 5; Vice-pres.
 Concert Choir 5; "South Pacific" 1 (Accom-
 panist).

PAUL CHRISTIAN WETTERAU II

Accounting
 Dean's List 2, 4; Trustee Scholarship 2, 3, 4;
 Presidential Assistant 1; AMS Treasurer 4;
 AMS Executive Council 3; SGA Senator 4;
 Dorm President 3; Honor Board Member 4;
 Intramural Activities 1, 2, 3, 4; Laundromat
 Lease Committee (Student Representative)
 3.

DOLORES R. WILDEN

Mathematics/Chemistry
 Math Club 1, 2, 3, 4; ACS 3, 4; Worship
 Committee 1, 2, 3; House Council Hall
 Representative 1, 3; Intramural Basketball
 1; Softball 1; Intramural Backgammon 4;
 Phoniox 1; Pfeiffer Review 4; Crucible
 (Backstage) 2; Learning Center Tutor 2, 3, 4;
 Math Assistant 3, 4.

LEE SHAVER WILLIAMS

Business Administration/Economics



PATRICE SAYE WILLIAMS

Business Administration

Management Information Systems
Athletic Scholarship; President's Scholarship;
President's Assistantship; global Ministry
Scholarship; Fellowship of Christian
Athletes; United Methodist Student Movement
(Pres.) 3; Varsity Basketball 1, 2, 4;
Intramural Basketball and Softball.

CHRISTOPHER MARK WOODARD

Sports Management

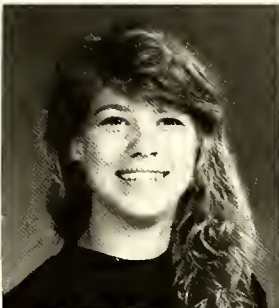
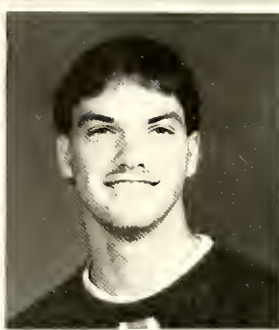
BARBARA LYNN YSUKO

Early Childhood Education

Outstanding College Students of America;
Who's Who; Order of the Sundial; Association
of Women Students (Pres.) 4; Secretary
3; Women's Judicial Board (Chief Justice 3,
4); Student National Education Association
2, 3, 4 (Vice Pres. 4); Student Government
Association (Executive Branch 3, 4).



Underclassmen . . . 63-72



Mickie Allen
Freshman
Lorie A. Allred
Freshman
Rena Anthony
Freshman
Diana Armeno
Freshman
Frank Armstrong
Junior

Steve Ayers
Sophomore
Terri Aylor
Sophomore
Kelli Baker
Sophomore
Tonya Baker
Freshman
Lori Ballard
Sophomore

Angie Beachum
Junior
Jill Bean
Sophomore

Barbara Becker
Sophomore
Cyndi Billings
Freshman

Kevin Blackburn
Sophomore
Kevin Bolin
Freshman



Jody Brooks
Freshman
Laurie Brown
Freshman
Susan Brown
Junior
Karlene Buhr
Junior
Roy Byers
Junior

Marc Corderro
Junior
Robert Carlton
Junior
Robert Carpenter
Sophomore
Steve Carpenter
Junior
Carroll Dale
Junior

Kelley Carter
Sophomore
Cleo Cassady
Junior
Gloria Castle
Sophomore
Barbara Cesare
Junior
Bryan Chambers
Sophomore

Scott Champion
Junior
Wyett Coloasure
Junior
Brenda Compton
Junior
Cathy Jo Compton
Freshman
Gayle Conard
Junior

Barbara Cotten
Sophomore
Laura Craven
Freshman
Faye Crump
Junior
Greta Crump
Junior
Steve Cumming
Sophomore



Matt Curette
 Sophomore
Lisa Custer
 Freshman
Amy Dagenhart
 Junior
Angela Danley
 Sophomore
Darrin Deese
 Sophomore

Greta Demchak
 Sophomore
Eric Diehl
 Freshman
Cathy Dierlam
 Sophomore
Wendy Donnelly
 Sophomore
Leonard Douglas
 Junior

Shannon Dunlap
 Sophomore
Bryan Easter
 Freshman
Lori Evans
 Sophomore

Donette Eckberg
 Junior
Kristen Eddy
 Freshman
Tyler Elam
 Sophomore

Vance Elliott
 Sophomore
Rob Enloe
 Junior
Lisa Eriksen
 Junior
Erin Fanelly
 Sophomore
Rhonda Earnhart
 Sophomore



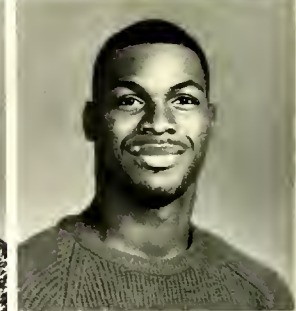
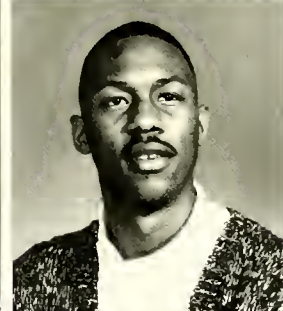
Angela Forrest
 Junior
Marcus Elam
 Sophomore
Hunter Fuller
 Junior
Tricia Fuerneisen
 Freshman
Rachel Gamage
 Sophomore

Jill Gilchrist
 Sophomore
Frank George
 Sophomore
Sandra George
 Freshman
Dawn Godfrey
 Sophomore
Ashley Goodnough
 Junior

Dave Goodwin
 Freshman
Beth Gore
 Freshman
Nita Grady
 Junior
Jeff Griffin
 Junior
Michelle Groves
 Junior

Susan Gwinner
 Sophomore
Melissa Hainley
 Sophomore
Kevin Harrell
 Sophomore
Jean Harris
 Freshman
Stuart Harris
 Freshman

Jay Hartley
 Sophomore
Julie Hatley
 Freshman
Lori Hedrick
 Junior
Maria Helfer
 Sophomore
Davina Hess
 Freshman



Lisa Hill
Sophomore
Fran Hinson
Junior

Brian Honeycutt
Sophomore
Lea Anne Honeycutt
Freshman

Rhonda Howell
Junior
Donna Hurley
Freshman
Lane Jarrell
Freshman
Vonda Jenkins
Junior
James Johnson
Junior

Hope Johnson
Sophomore
William Johnson
Junior
Forest Johnstone
Freshman
Kim Jones
Junior
Neil Jones
Freshman

Christi Joyner
Freshman
Lee Kelley
Junior
Barbara Kendall
Junior
Lisa Kluttz
Sophomore
Andrè Knox
Sophomore



Tim Koves
 Junior
Patricia Krause
 Sophomore
Thinh La
 Junior
Mark Labua
 Freshman
Linda Lambert
 Sophomore

Melissa Laser
 Freshman
Jeff Lee
 Freshman
Bill Lindoerfer
 Junior
Neil Lloyd
 Freshman
Marsha Long
 Sophomore

Lisa Love
 Junior
Carla Lowder
 Freshman
Kate Mackey
 Freshman

David Madliger
 Junior
Tomokazu Makayama
 Junior
Lori Mallalieu
 Sophomore

Tracy Martin
 Freshman
Erin McHugh
 Junior
Matt McKinney
 Freshman
Tim McKnight
 Junior
Sean McLean
 Junior



David Moses
Sophomore

Jency Miller
Junior

Michelle Miller
Freshman

Jennifer Mitchell
Freshman

Teresa Moore
Junior

Paula Morgan
Junior

Patches Morris
Sophomore

Laura Morrison
Sophomore

Craig Mutch
Freshman

Wesley Myers
Freshman

Jennifer Noblitt
Junior

Mickie Nolan
Freshman

Billy Olsen
Junior

Robert Opfer
Freshman

Julie Ousley
Sophomore

Julie Overton
Junior

Glenn Parsley
Freshman

Rann Paynter
Freshman

Donna Pierce
Sophomore

Julia Pinkerton
Sophomore

Bernadette Podlaski
Junior

James Poe
Freshman

Julie Poole
Junior

Chanyn Poovey
Sophomore

Anita Price
Sophomore



Michael Price
 Freshman
Carmel Puglisi
 Junior
Todd Rabineau
 Sophomore
Todd Rich
 Freshman
Matthew Robertson
 Junior

Christine Rodocker
 Freshman
Regina Rogers
 Junior
Le Ann Sasser
 Sophomore

Tammy Sawyer
 Junior
Kelly Seifest
 Sophomore
Dani Serracin
 Sophomore

Allison Servetnick
 Freshman
Stacy Shahan
 Freshman
Mark Shiflet
 Junior

Mary Shriner
 Junior
Denise Sikes
 Freshman
John Sokol
 Freshman



Tonya Springer
 Sophomore
James Steed
 Sophomore
John Steed
 Freshman
Andrea Stoker
 Junior
Mike Stoker
 Sophomore

Debbie Thomas
 Freshman
Cissy Thompson
 Junior
Laura Eberl
 Freshman
Michelle Vaughn
 Junior
Abey Vlahos
 Freshman

Winnie Wade
 Freshman
Kim M. Waln
 Junior
Robin Wallace
 Junior

Angela Watkins
 Sophomore
Jo Allen Weaver
 Junior
Barry Whitaker
 Freshman

Ann Whitner
 Junior
Marsh Williams
 Freshman
Paula Willis
 Junior
David Woodard
 Junior
Bob Wright
 Junior



WHAT'S CURRENT IN EVENTS



The summer of 1988 was hit with the worst drought in many years. Throughout the midwest, farmers watched helplessly as their crops went dry.

Hurricane Gilbert rose out of the Caribbean like a giant wind storm in late September. By the time it lost its hurricane status over northeastern Mexico, it had killed more than 300 people, left hundreds of thousands homeless and caused billions of dollars in damage to the Caribbean, Central America, Mexico and the United States.





It became an international effort of good will. Russians and American rescuers cut through the ice in Alaska to save two California gray whales. The whales were trapped in the ice for more than three weeks. News media from around the world converged on the tiny village of Barrow, Alaska, to cover the successful rescue.

Forest fires spread throughout the Western part of the country in the summer of 1988, destroying millions of acres of national parkland. The most heavily damaged was Yellowstone National Park.



The Democrats went to Atlanta in the summer of 1988, and decided on Michael Dukakis, the governor of Massachusetts, to be its candidate for President of the United States. He decided to pick Lloyd Bentsen, a senator from Texas, as his running mate.

Washington, Jan. 20 — BUSH SWORN IN AS PRESIDENT — President George Bush raises his right hand as he is sworn into office as the 41st president of the United States by Chief Justice William Rohnquist outside of the west front of the Capitol Friday. First Lady Barbara Bush holds the Bible for her husband. Former President Reagan is in background.





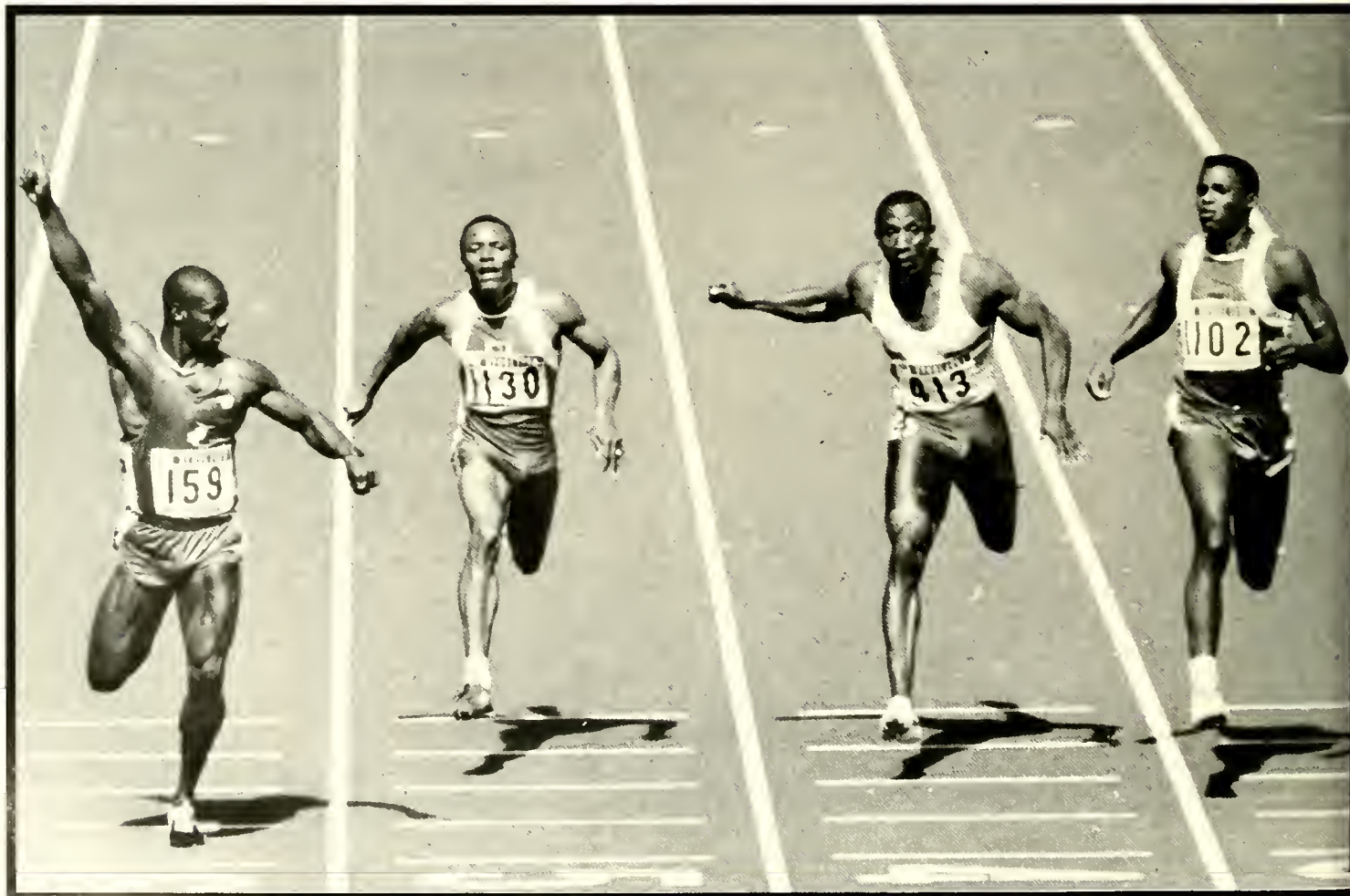
Vice President, George Bush after serving for eight years in the Ronald Reagan administration, got the unexpected nod at the Republican National Convention in New Orleans in the summer of 1988. His choice for running mate was unexpected Sen. Dan Quayle of Indiana. The public opinion polls showed that the inexperienced 41 year-old senator was not a popular choice.

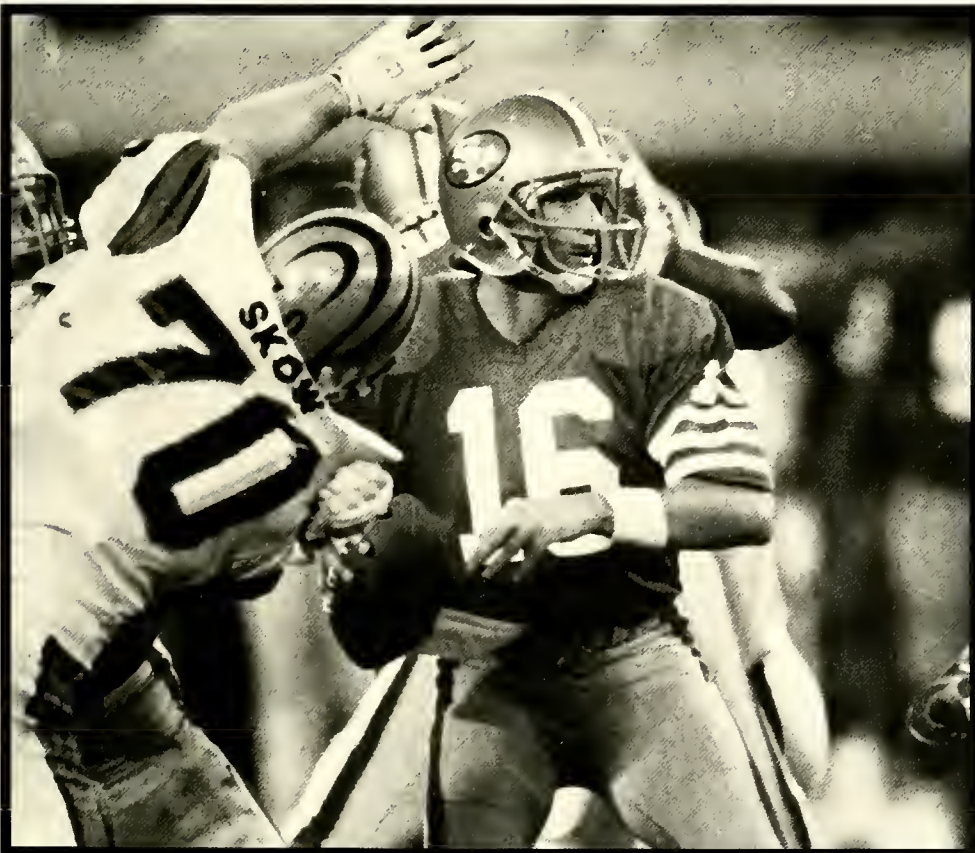
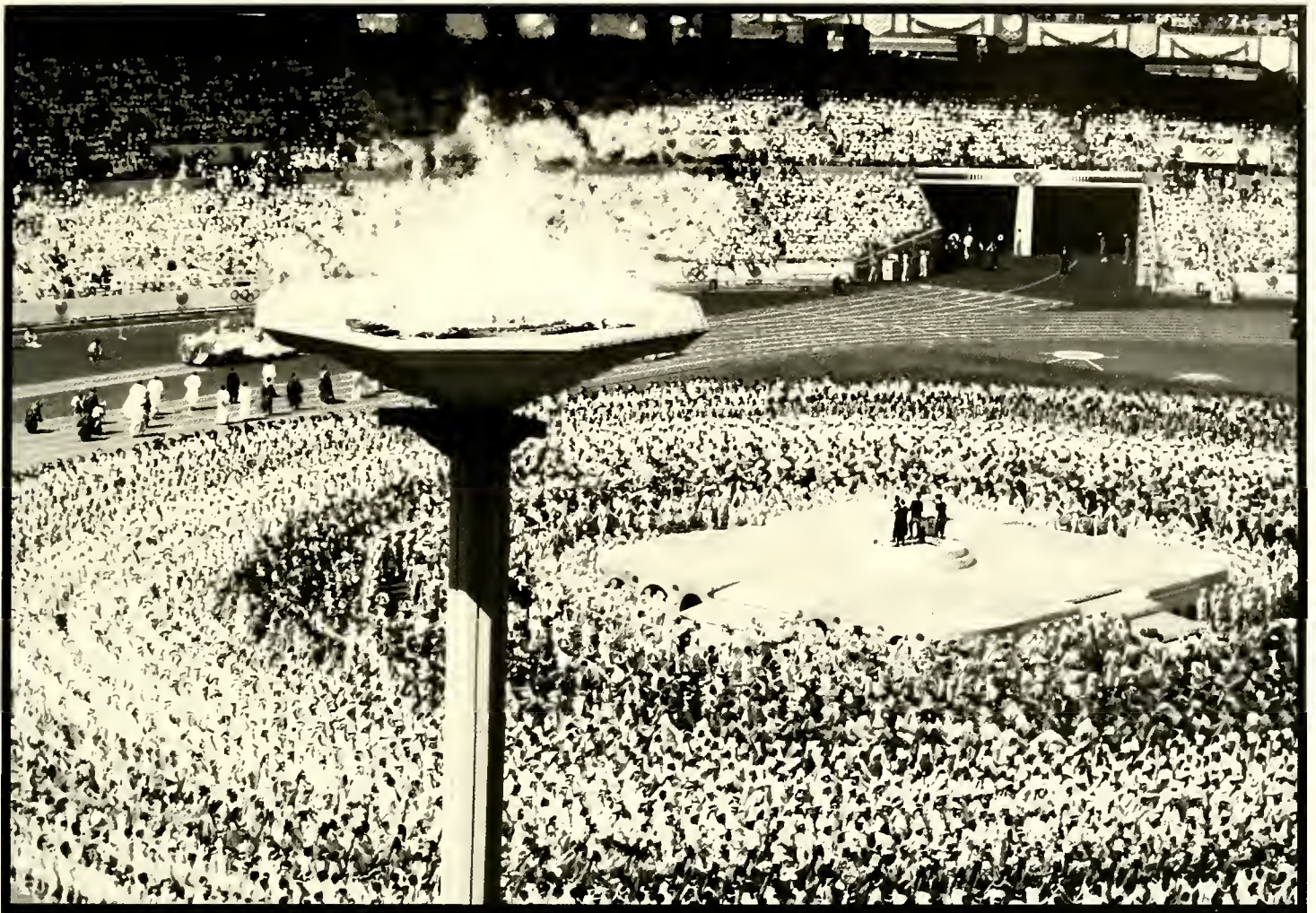
President Ronald Reagan and Soviet Leader Mikhail S. Gorbachev worked for several years to bring the two countries together. After a treaty was signed to eliminate certain nuclear weapons, 1988 was the year the efforts of these two leaders went into effect.



The World Series belonged to the Los Angeles Dodgers. The Dodgers captured their sixth World Series title in October with a 5-2 victory over the Oakland A's in the fifth game of the series.

Canadian Ben Johnson, left, looks over at arch rival Carl Lewis at the finish of the 100-meter race in the 1988 Summer Olympics at Seoul, South Korea. Johnson won the gold medal but was later disqualified after traces of an anabolic steroid was found in his system.





The 1988 Summer Olympics in Seoul, South Korea opened with a dramatic and dazzling ceremony. A colorful, three-hour spectacle mixing ancient Korean rituals with space-age technology kicked off 16 days of athletic competition.

Super Bowl Action with Joe Montana

It was one of the big marriages of the year. Heavyweight boxer Mike Tyson married actress Robin Givens. But the stormy marriage of the 22 year-old rich boxer and the 23 year-old beautiful actress lasted less than a year. She filed for divorce. But after being accused of marrying "Iron Mike" for his money, Ms. Givens said she wouldn't take a dime.

Gretchen Elizabeth Carlson erupted in tears as her name was announced as Miss America 1989. The 22 year-old Miss Minnesota, who planned to be a Harvard-trained lawyer, became the first classical violinist to win the Miss America crown.

The shuttle Discovery blasted into orbit in September, the first space flight since the shuttle Challenger mission ended tragically 73 seconds after liftoff on Jan. 28, 1988. The Discovery ended its successful four day, 1.6 million mile mission with a triumphant landing in Edwards Air Force Base in California.



ON THE LOCAL LEVEL

This year Pfeiffer College was honored to receive Dr. and Mrs. Zane Eargle as our president and first lady.



Dr. Eargle, on behalf of the student body you have astounded us from the beginning. You've greeted many of us by name and have even remembered our hometowns. We've seen your support through your attendance at our events. You and your wife have cheered us on at our games. You have prayed with us in chapel, and on several occasions you have even been seen eating with us in our cafeteria. You have made yourself known to us. We even know your hometown, Waxhaw. This personal relationship had brought us a new sense of pride for your position and for our college, and shortens the bridge between the students and administration.

We, as students, support your effort to enhance the big benefits of a small college: The close relationships with professors and personal attention in our subjects. We understand that your successes directly affect our professors and us. We believe that through your sincerity and dedication you will carry this college into the last part of the century. We wish you luck.

But for now, we are glad to be part of your first years at Pfeiffer. Again, we are thankful for your personal relationships with us. If we didn't know better we would call you Zane. But we do, so we will refer to you as Dr. Eargle.



BETTY CRISCO
MANAGER

QUENBY MALL
1000 N. 1ST ST.
ALBEMARLE, N.C. 28001
PHONE (704) 983-4102



Heilig-Meyers
FURNITURE

PIEDMONT DRY CLEANERS

1001 North Second Street

Cleaning, Pressing, Altering, Etc.
• Cold Storage • Rug Cleaning •
Shirts

STANDARD OFFICE EQUIPMENT COMPANY

982-0153

Open Mon.-Fri. 8 am to 5 pm

FREE DELIVERY

175 N. 2nd, Albemarle, NC

PARTY LINES, ETC.

One Stop Party Shop

Jackie Burbeau

1000 N. First Street
Albemarle, NC 28001

Albemarle Plaza
24 & 27 Bypass

(704) 982-9898

(704) 982-9786



Field Hockey	84
Soccer	85
Women's Tennis	86
Men's Tennis	87
Swimming	88
Golf	89
Baseball	90-91
Women's Basketball	92-93
Men's Basketball	94-95
Lacrosse	96-97
Softball	98-99
Cross Country	100
Volleyball	101
Cheerleading	102
Sports Information	103
Athletic Trainers	

FIELD HOCKEY



Andrea Pouliot, Kim Morcom, Greta Demchak, Janet Fowler, Erin McHugh, Paula Willis, Laura Anderson, Kelly Clatterbuck, Chris Masser, Jean Hudock, Donna Berger, Jody Richardson, Donna Hurley, (Coach: Nancy Ingram, Manager: Kelly Johnstone, Trainer: Carmel Puglisi).

Five members of the Pfeiffer team were named to the three Deep South squads. Junior, Erin McHugh was named to the first team. Sophomore Kim Morcom and Kelly Clatterbuck made the second team. Seniors Jody Richardson and Donna Berger earned spots on the third team.

The five Lady Falcons will be in Rockwell, Maryland as the Deep South squads play the South East Regionals. Players will be picked from competition to play at the national tournament in California.

The Lady Falcons ended their season with a 3-10-1 record. Club games are not included in this overall record.



SOCCER

The Pfeiffer Falcon Soccer Team had many ups and downs this season. They defeated Atlantic Christian College, Wingate and Gardner Webb with ties against Mars Hill and St. Andrews. The record however is not indicative of the Pfeiffer players. Besides five losses, Pfeiffer had a chance to win nine other games.

This year's squad loses five seniors all of who were starters for the past two or three years. These seniors include Rob Donovan, Chris Penland, Sam Roebuck, Will Rousseau, and Jay Wroe.



Dean Baddorf, Todd Herman, Tim Havert, Shawn Graeff, Scott Cerwonka, Steve Smith, Leigh Graeff, Mike Meriweather, Todd Church, Rob Donovan, Jim Dotsikas, Rob Murray, Jim Sokal, Chris Penland, Jay Wroe, Stu Harris, Terry Goble, Marc Michaud, Will Rousseau, Dave Weinberg, Alex Vlahos, Sam Roebuck, Jim Allison. Head Coach: Tom Gill Asst. Coach: Julian Domenech.

WOMEN'S TENNIS

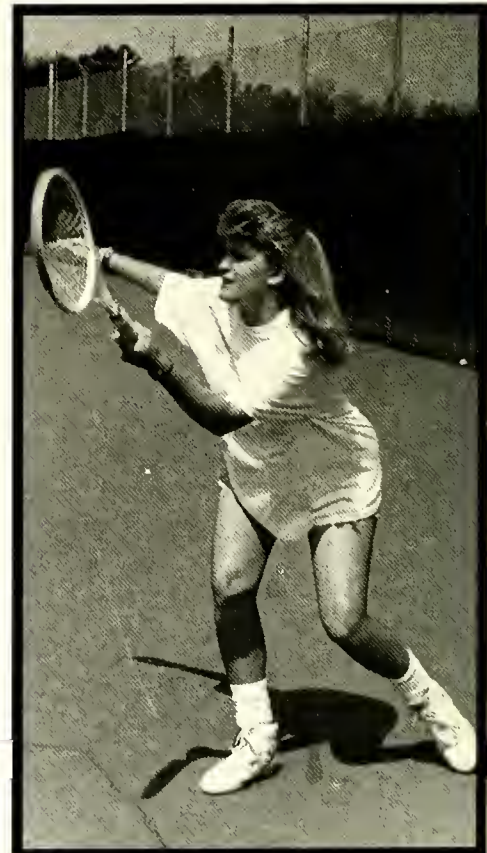
The Women's Tennis Team finished their most successful season in recent years, with a 10-2 record and a 3rd place conference finish.

Kim Jones, in the #5 singles position, won her flight at the conference tournament while Allison Servetnik and Wendy Butensky at the #2 and #4 positions finished 4th in their flight.

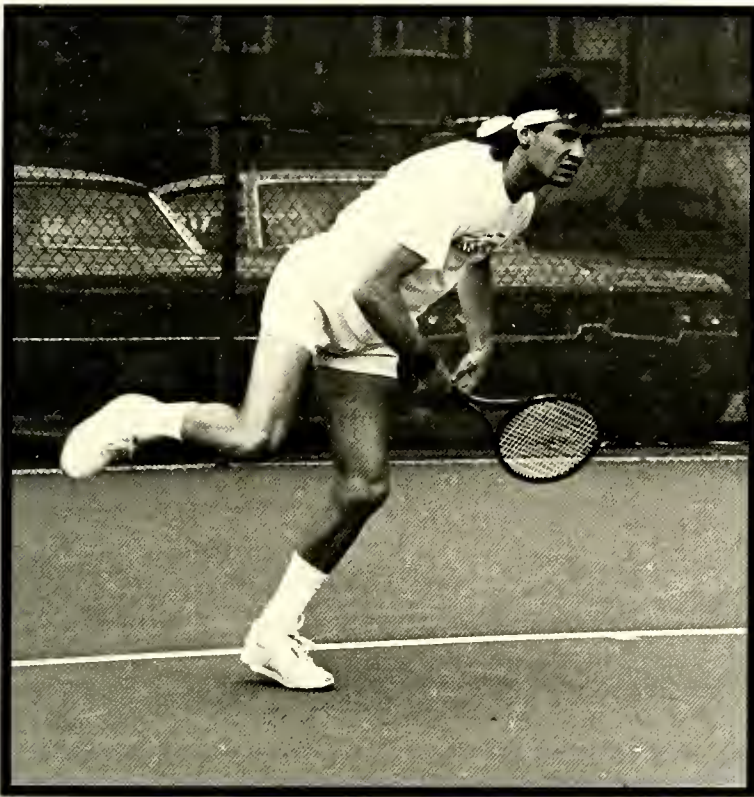
In District 26 play, Pfeiffer finished 5th out of 18 eligible schools.



Kelli Baker, Kim Westcott, Suzanne McCrary, Kim Jones, Wendy Butensky, Jill Gilchrist, Allison Servenif, Mary Ann Sunbury, (Coach).



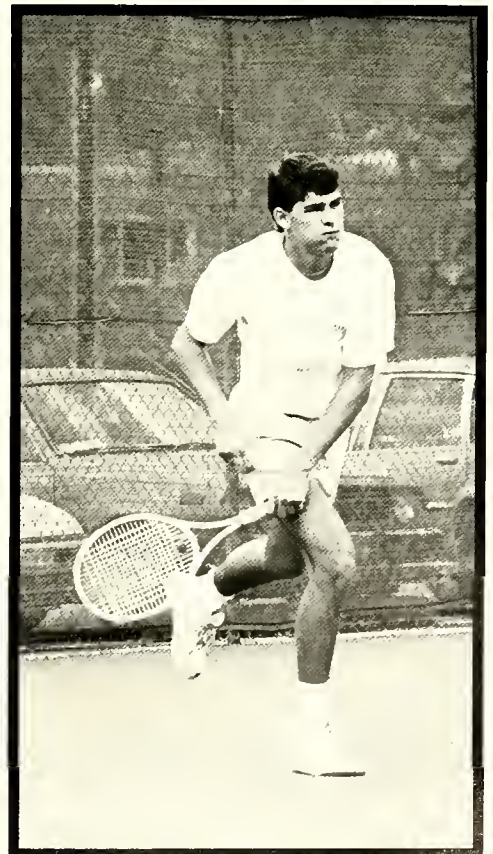
MEN'S TENNIS



"We face a most demanding schedule this year, remarked head coach, Tom Childress, and where we don't have as much depth as we have had in previous years, it will be important to keep everyone well and free from injury. Another key goal is to see our seniors obtain their youth fourth winning season."



Greg Caccia, Craig Mutch, Todd Sarmiento, Jon Neblett, Matt Curette, Marc Calderone, Matt Robertson, Head Coach: Tom Childress.



SWIMMING

Three women from the Pfeiffer College swim team are headed for the NAIA Nationals in Milwaukee, Wisconsin, to be held March 1st through March 5th.

Sophomore, Missy Chestnutt, of Raleigh, North Carolina, will swim in the 100 Fly with a qualifying time of 1:02.86. Junior, Erin McHugh, of Woodbury, New Jersey, will compete in two events qualifying both in the 50 Free with a time of 25:69 and in an optional event, the 100 breaststroke. Lisa Custer, from Sarasota, Florida, has qualified for three events after finishing up a brilliant freshman season. She qualified for the 500 Free with a time of 5:24.62 and for two optional events, 1650 Free and the 200 Fly.

"We are thrilled that these three young ladies will have the opportunity to represent themselves as well as Pfeiffer at the National events. They have worked hard for this honor and should, without a doubt, do well," commented swim coach, Chip Smith.



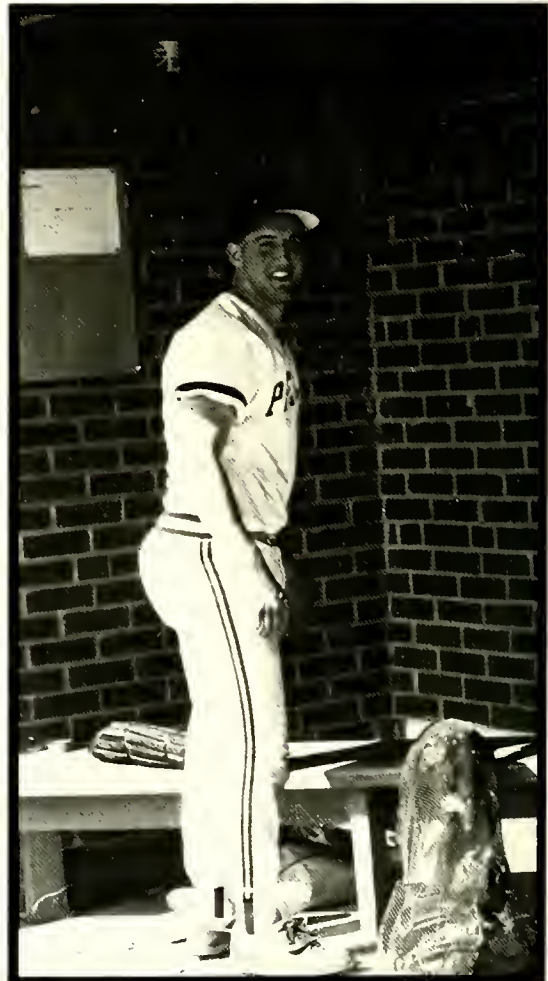


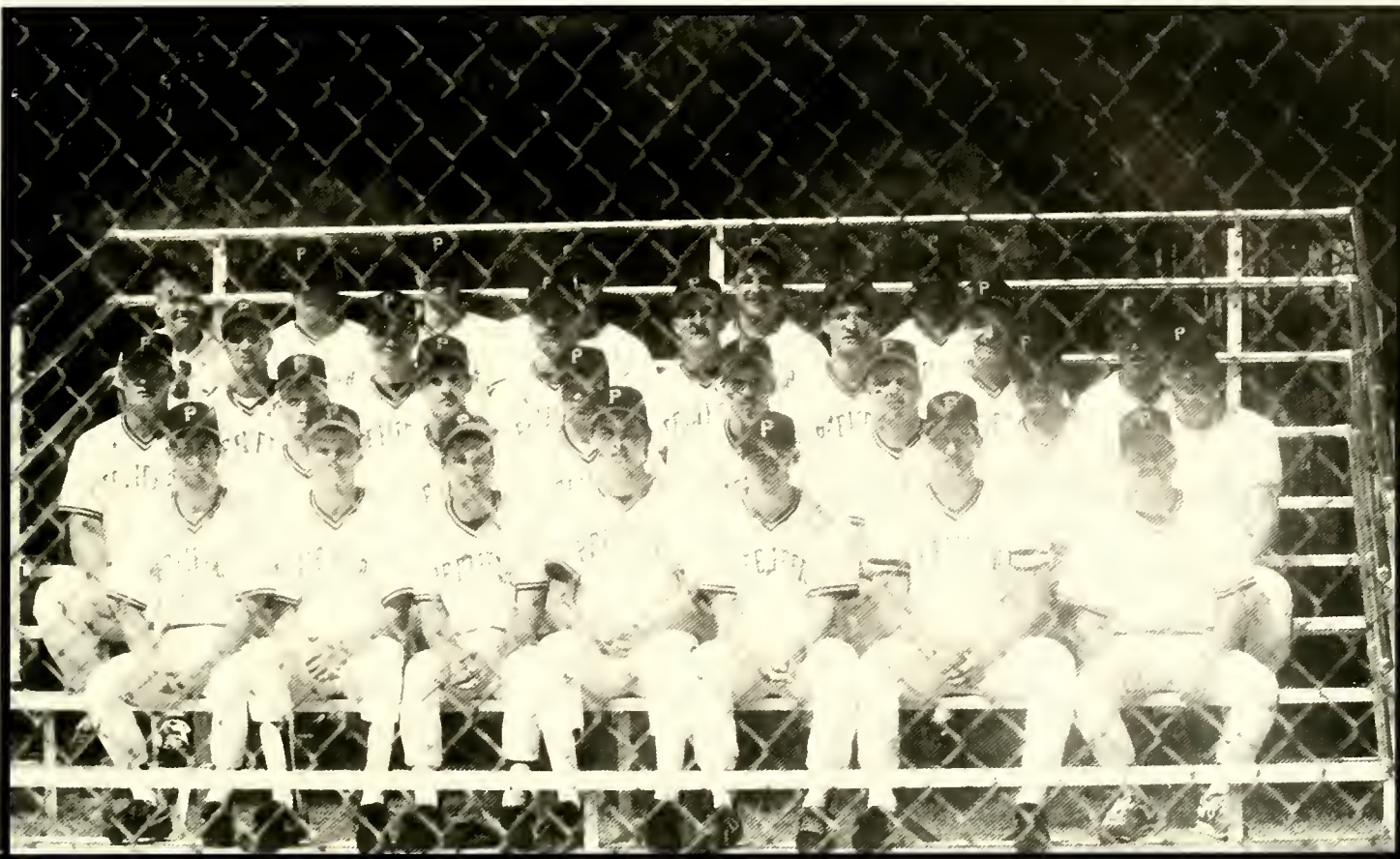
GOLF

After a brief introduction to competitive golf in the unofficial fall season, the Pfeiffer golf team is excited about the season. With only two upperclassmen on the team, the young Falcons have been working extremely hard to prepare for the season. Mitch Moretz, assistant pro at Piney Point Golf Club has added his expertise as Assistant Golf Coach for the squad.

The highlights of the schedule are the 18th Annual Intercollegiate Golf Tournament at Camp Lejeune and the District Tournament at Elkin. Coach Bobby Lutz said, "We are very fortunate to play at Camp Lejeune. It is one of the premier "invitation only" events in the Carolina and the competition is incredible. We are so very young, he continued, that it will be difficult for us to do extremely well, but the experience should help build the program. Our schedule should get us into a position to do our best in the District Tournament, he concluded."

BASEBALL





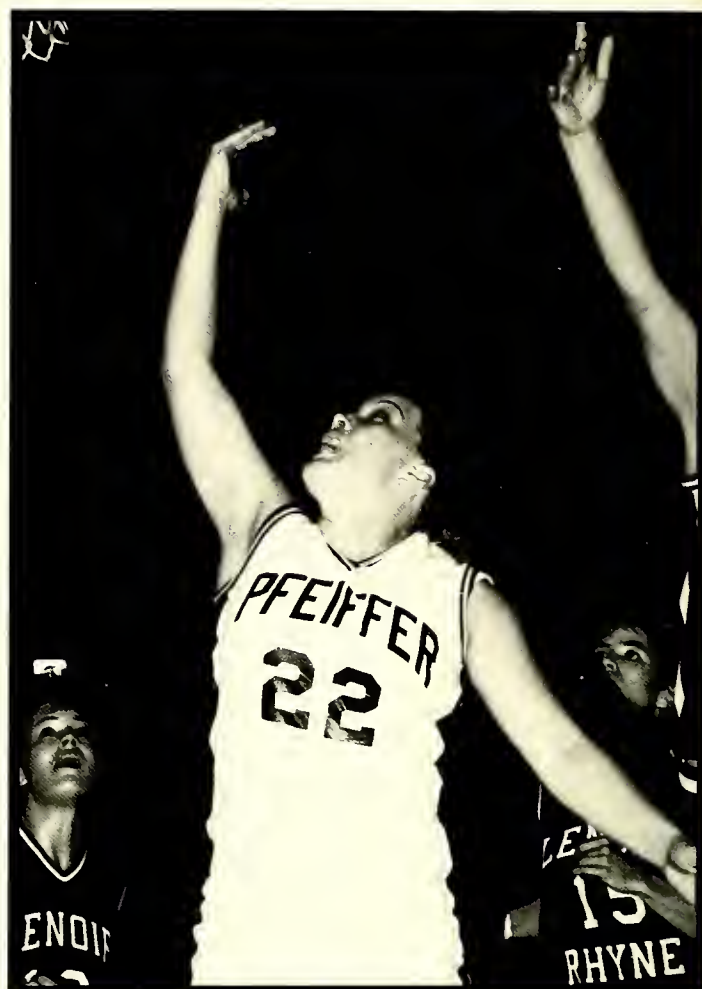
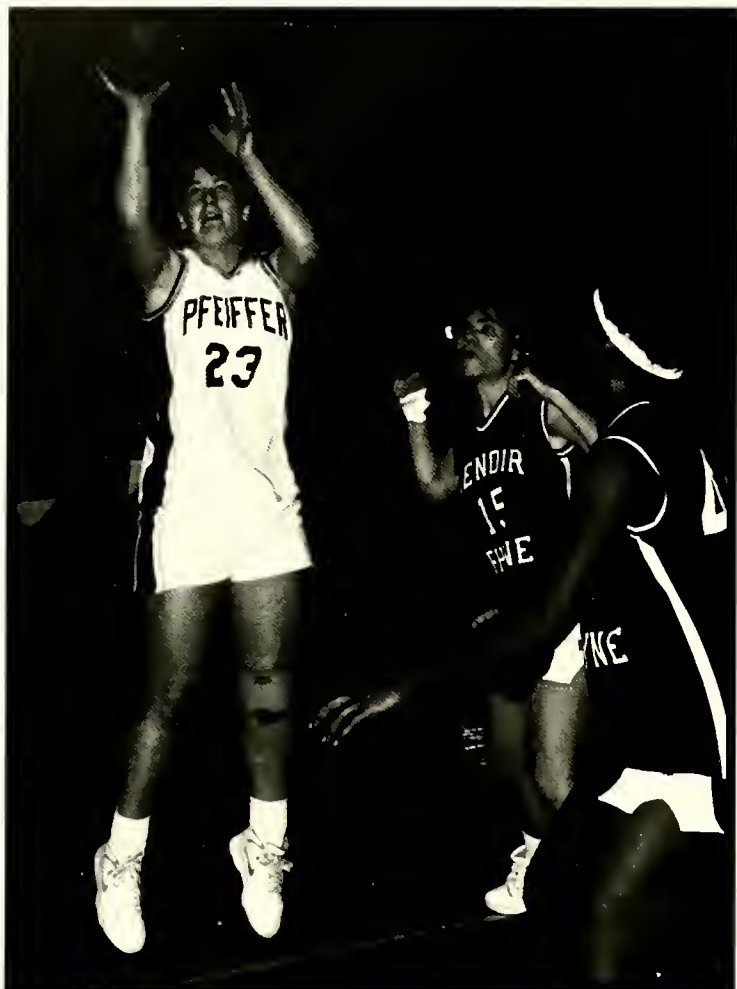
**BASEBALL ROSTER
1988-1989**



NO.	NAME	YR	B/T	POS.	HT	WT
34	Chuck Amodio	Fr.	S/R	OF	6'0	175
3	Frank Armstrong	Sr.	L/L	1B	5'11	155
10	Steve Ayers	So.	R/R	C	6'1	180
25	Bill Baggs	Fr.	L/R	OF	5'9	185
13	Tim Bagwell	So.	R/R	SS	5'11	175
26	Bill Bode	Fr.	R/R	C	5'10	180
1	Jeff Brinkley	Jr.	R/R	Inf	5'8	160
16	Micky Cook	Fr.	R/R	Inf	5'9	170
2	Darrin Deese	So.	R/R	Inf	5'7	155
20	Darrell Eggers	Fr.	R/R	P	6'0	170
15	Sam Flowers	So.	R/R	C	6'1	200
33	Brad Ford	Fr.	R/R	P	7'0	165
28	Nick Gallaccio	Fr.	R/R	1B	7'0	170
26	Jim Hartsell	Fr.	R/R	OF	5'7	165
12	Rusty Hauser	Fr.	R/R	Inf	5'10	155
29	Mike Jahkhah	Fr.	R/R	Inf	6,k	180
14	Chad Kanipe	Sr.	R/R	Inf	6'0	175
6	Andre Knox	So.	R/R	Of-P	5'11	170
9	Paul Kolody	Jr.	R/R	P-OF	5'11	170
18	David Lee	Fr.	L/L	P	5'11	170
4	Bill Lindoerfer	Jr.	S/R	C	5'9	175
5	George Loft	So.	S/R	OF	6'1	170
11	Chad McKinney	Fr.	R/R	SS	5'7	155
8	Tag Montague	So.	R/R	SS	5'8	170
22	Jim Nuttall	Fr.	R/R	C	6'0	175
7	Joel Petlick	Jr.	R/R	P	6'2	190
32	Jim Poplin	Fr.	R/R	C	6'1	175
24	Mike Price	Fr.	R/R	P	6'1	170
23	Jim Rogers	So.	L/R	1B	6'0	230
17	Mike Sigmon	Fr.	L/L	OF	5'9	170
21	Terry Spry	Fr.	R/R	P	6'2	175

HEAD COACH: Chip Smith
 ASST. COACH: Tim McKnight
 STATISTICIAN: Carla Lowder

WOMEN'S BASKETBALL



Congratulations to senior Amy Trogdon and sophomore Marsha Long for earning All-Conference honors and to senior Michelle Causby and freshman Laura Craven for earning All-Tournament honors for the Lady Falcons. Coach Mary Ann Sunbury's squad finished 5th in the Carolinas Conference race and advanced to the semi-finals before losing to eventual champion, Wingate.





Mary Ann Sunbury (Coach), Winnie Wade, Eugenia Sturgeis, Cathy Budd, Angie Reberio, Marsha Long, Andrea Nachtman, Denise Sikes, Amonda Bentley, Tony Davis (Ass. Coach), Deanna Brown, Kim Jones, Barbara Morrison, Amy Trogdon, Michelle Causby, Martha Trotter, Tammy Endicott, Laura Craven.

BASKETBALL

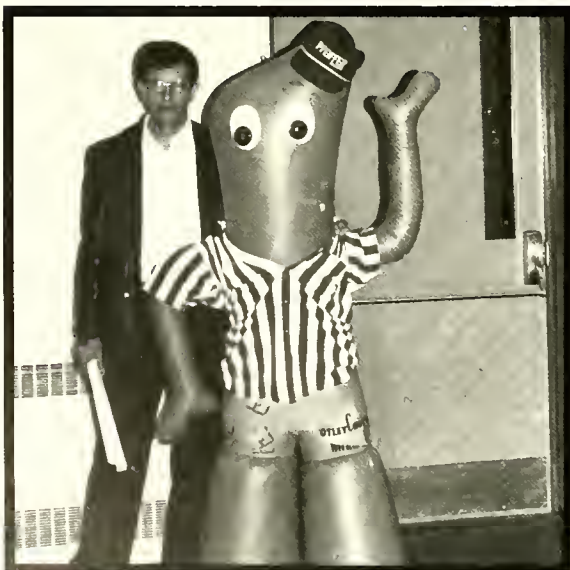
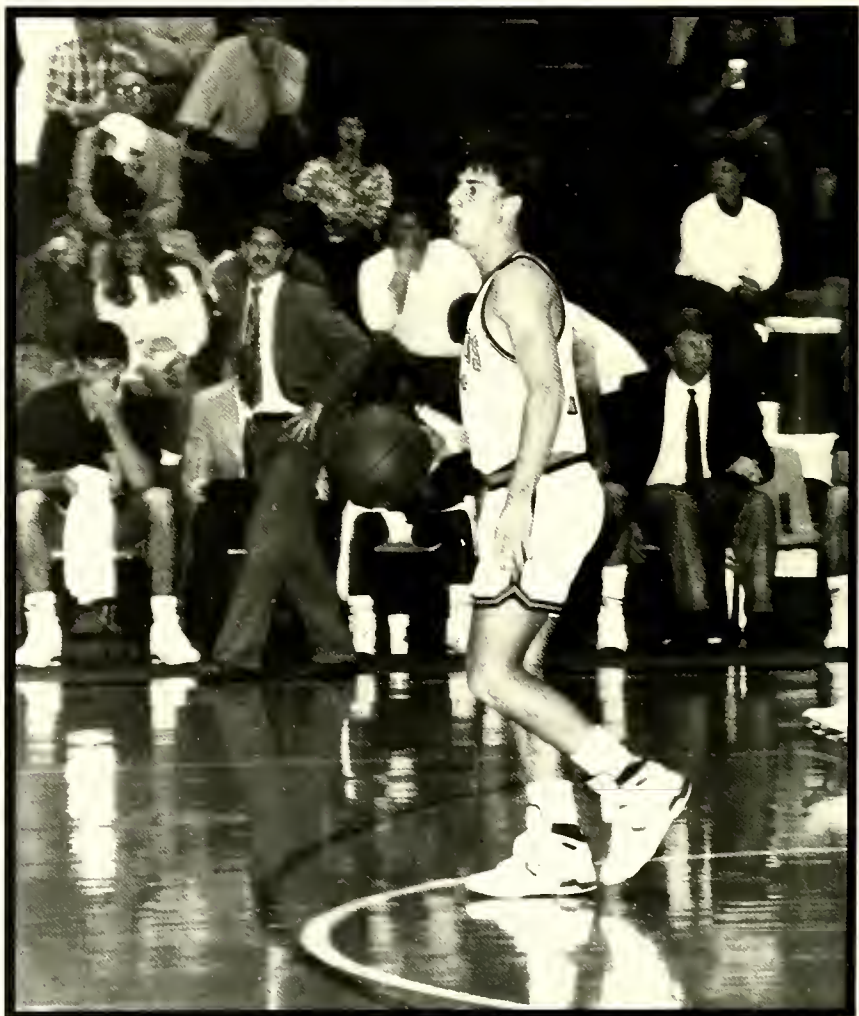
FALCONS RETURN TO PROMINENCE

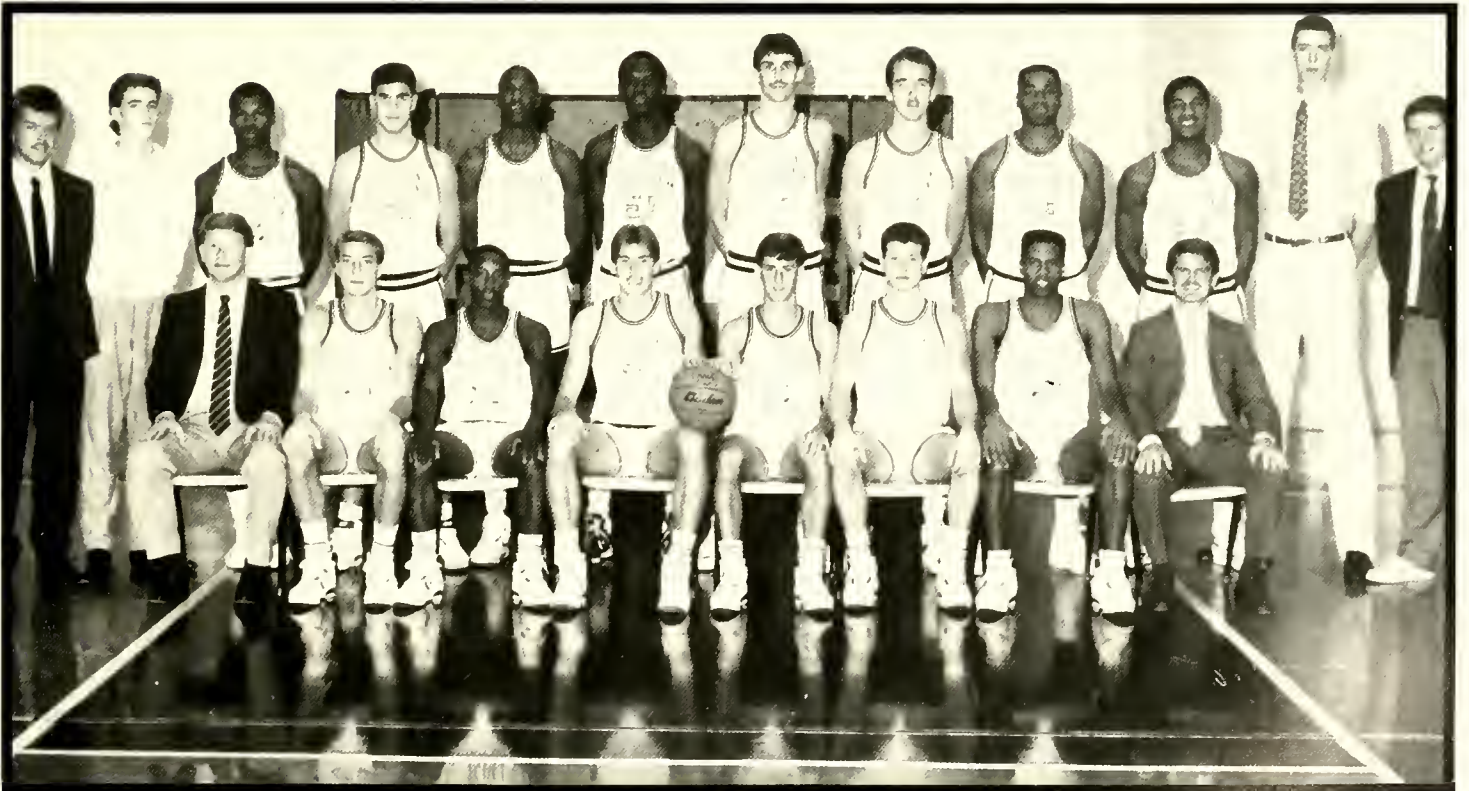
Three years ago, Bobby Lutz took over as the head coach of the Pfeiffer men's basketball team and a new era began.

The Falcons suffered through two tough seasons with a combined record of 15 wins to 35 losses but the third year was the year of return.

Picked by the experts to finish 8th in the league the

Falcons proved many wrong by finishing 4th. Led by seniors Clarence Underwood, Matt Smith, David Bennekin, and freshman sensation Tony Smith the Falcons posted their best record under Coach Lutz and proved to others that the Falcons are on their return to prominence. As Coach Lutz stated, "the best is yet to





Rob Enloe, Jon Love, Clarence Underwood, Baline Terrell, Neil Jones, Patrice Williams, Forrest Johnstone, Matt Smith, David Bennekin, Rodney Wilson, David Goodwin, Barry Whitaker, Dee Sasser, (Ass. Coach) James "Bo" Bryant, Tony Smith, Dean Vernon, Mark Shiflet, Chan LaRue, Marcus Elam, Bobby Lutz (Coach), David Davis (Ass. Coach).

LACROSSE



Coach Tom Gill, Chris Graham, Jeff Kandrfer, Jeff Davis, Tom Wanser, Dave Weinberg, Julian Domenech, Jim Allison, Ken McCafferty, John Sokal, John Coble, Ryan Hamaker, Jim Datsikas, Andrew Gurin, Chris Muncie, Marc Michaud, (Assistant Coach: Craig Majid).

Something new in Lacrosse this year is Head Coach, Tom Gill who has been an assistant at Cornell University, Hofstra and Duke Universities, while also being head coach at Soyosset High School and Fairleigh Dickinson University. Coach Gill has won three (3) league championships and two (2) ECAC championships while being runner-up two other times in his five (5) years at FDU. His overall coaching record is 62 wins and 31 losses. Also Assistant Coach Craig Majid is a Pfeiffer graduate. Craig played and coached in Australia for six (6) months. He will work with offense this year.





SOFTBALL

Optimism was the key word for the Pfeiffer Lady Falcon Softball Team. With the loss of several starters, there were several outcomes for the success or defeat of the '89 season. They faced much success in winning the Southern Hickory Championship game at Catawba College. To top that off six players were named to the all-tournament team. All in all, these new players really showed what they could do.



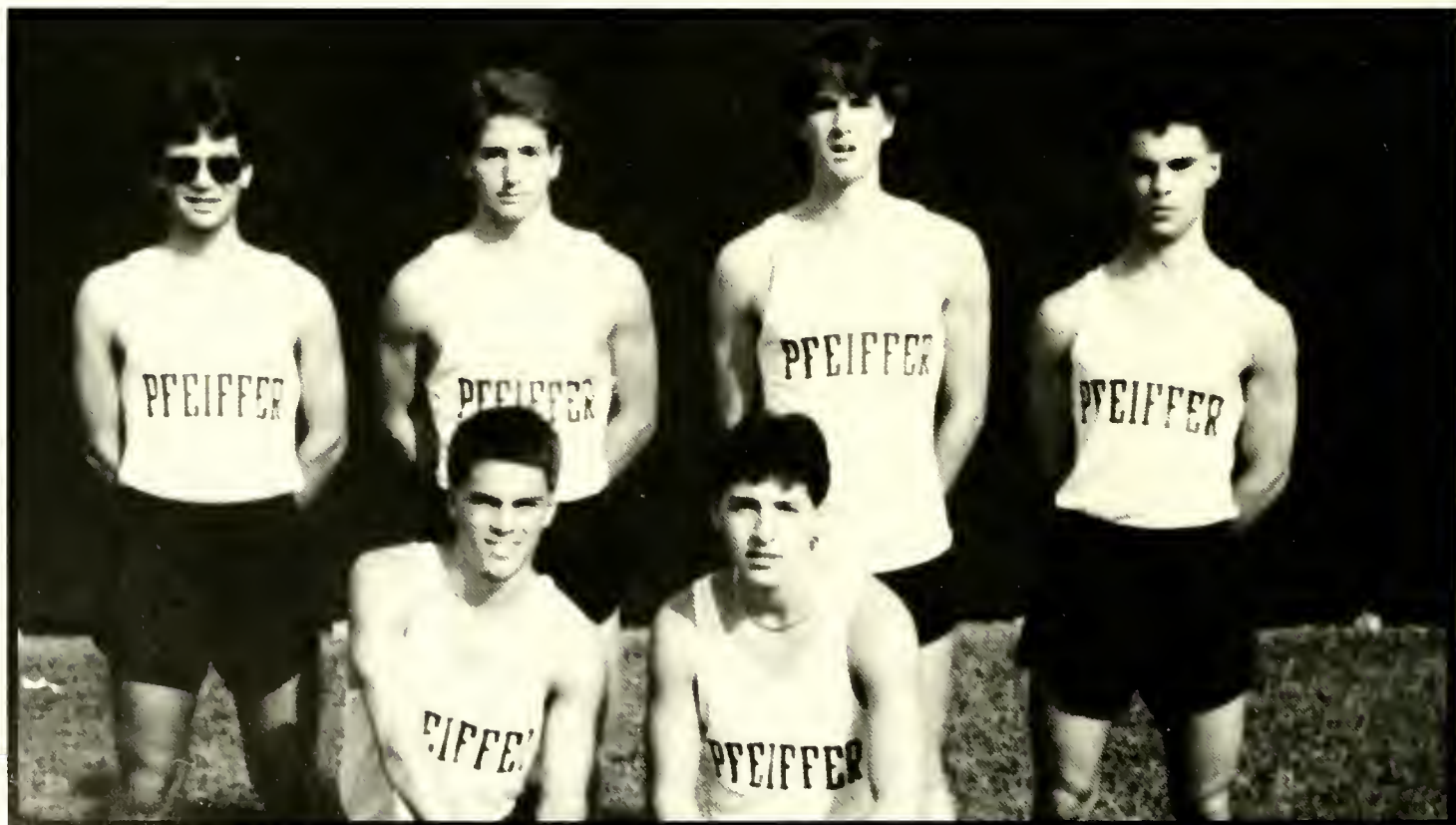
Dawn Tevepaugh, Laura Craven, Emily Baker, Laura Anderson, Jean Hudock, Leigh Stewart, Martha Trotter, Lou Ann Thomas, Jody Richardson, Deana Brown, Denise Sikes, Tammy Blalock, Patches Morris, Karen Ravert, Shelly Causby, Carla Davis, Head Coach: Jack Ingram Assistant Coach: Jack Trotter



CROSS COUNTRY



The Pfeiffer College Cross Country team enjoyed its most successful season ever. The Falcons went undefeated in duel and tri-meets and also won their first invitational meet ever, at the Belmont Abbey Invitational. The team also extended its winning streak to 11 over the the past two seasons.



Bryan Chambers, Rob Bumgardner, Bob Carpenter, Tim Koves, Jeff Childress, Scott Clawson, (Jack Ingram, Coach).

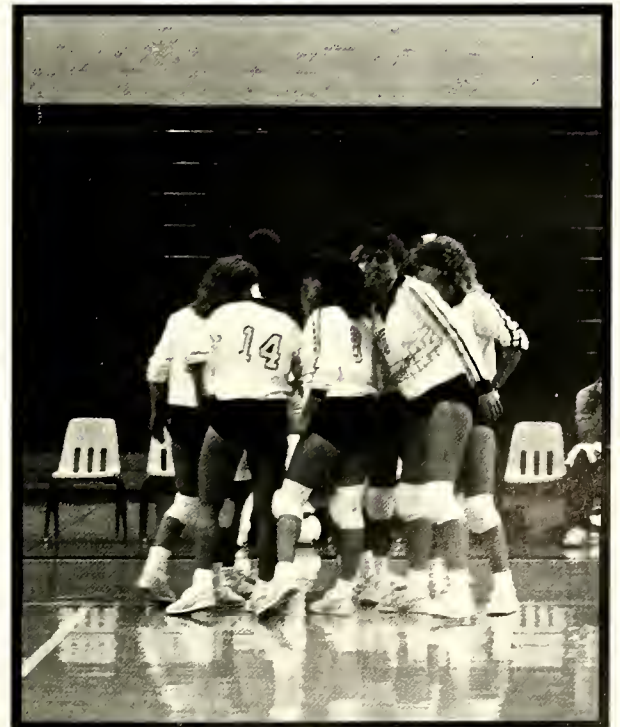
VOLLEYBALL



Jamie Beth Engstrom (Coach), Denise Sikes, Andrea Natchman, Angie Reberio, Jill Bean, Deana Brown, Jac Trotter, Susan Gwinner, Teresa Wagoner, Michelle Vaughn, Lou Ann Thomas, Patches Morris.



With an overall record of 4-11 for the season the Pfeiffer volleyball season would have seemed to be a real let down, but Assistant Volleyball Coach, Jac Trotter, viewed it a little differently. "If we look at the season in terms of wins and losses, then it was truly a disappointment, he explained. When we finished on October 28th we were a much more experienced team than when we began on September 8th."



CHEERLEADING

"It was a year of rebuilding" stated second year varsity cheerleader, Mike Westcott." Both the JV and Varsity squads had more male participation than years past and also more injuries which contributed to a hectic yet productive year ending with Mark Sells as MVP.

Vicki Allen, Brian Easter, Lisa Anderson, Jody Brooks, Dawn Forbes.



Hunter Fuller, Lenny Saia, Mark Sells, Mike Wescott, David Moses, Yon King, Donna Hurley, Elayne Thornberg, Tammy Sawyer, Beth Gore, Lisa Lisk, Nicky Reynolds.

SPORTS INFORMATION DIRECTORS

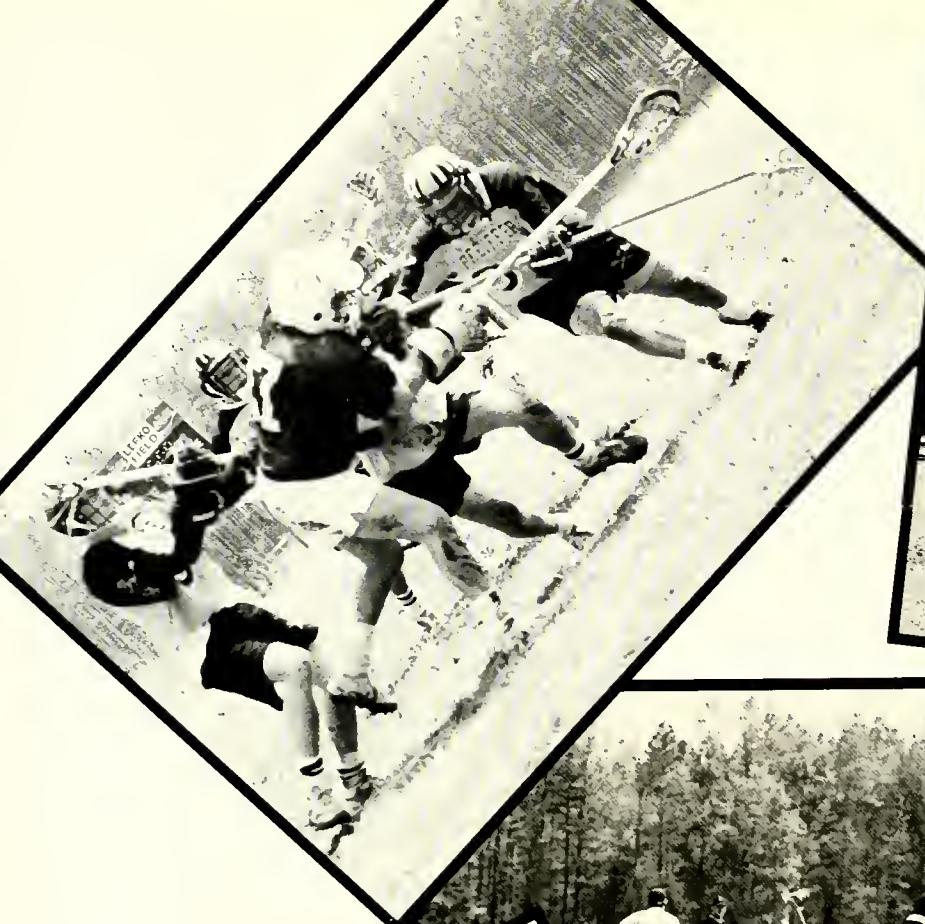


Carla Holland, Leigh Stewart, Chris Penland, Lea Ann Oehler, Jay Harley, Kelly Carter, Patches Morris.

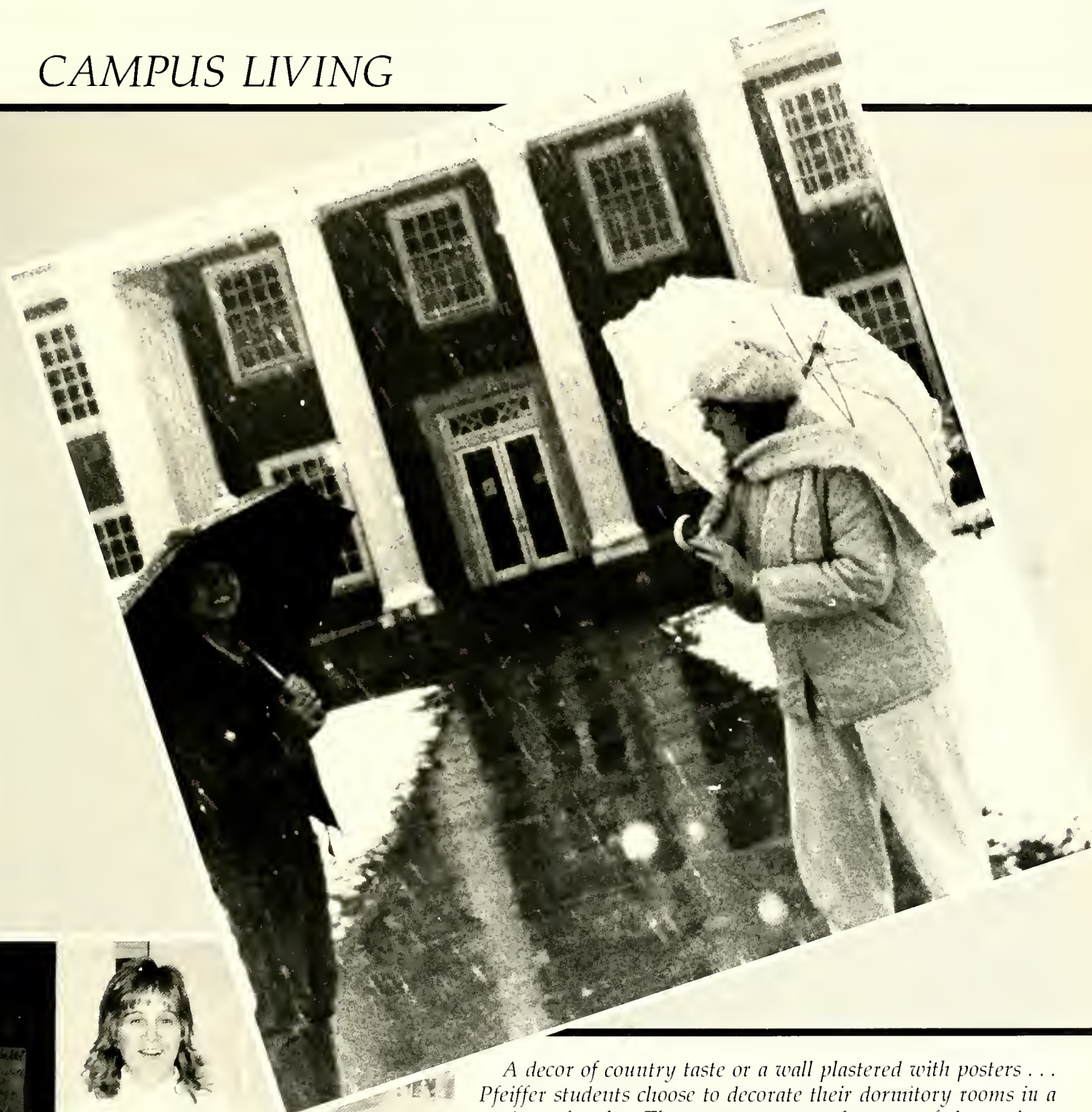
ATHLETIC TRAINERS



Steve Gordon, Lori Howell, Martin Travis, Carmel Puglisi, Robert Carlton, Kate Hartzog, Jody Richardson, Leigh Stewart, Michelle Groves, James Poe.



CAMPUS LIVING



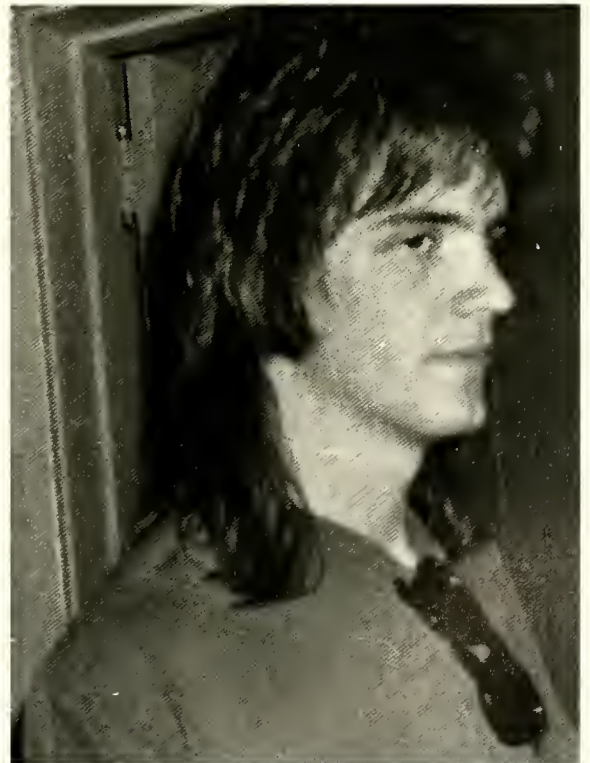
A decor of country taste or a wall plastered with posters . . . Pfeiffer students choose to decorate their dormitory rooms in a variety of styles. The room expresses the taste of the student. However, these tastes extend beyond dorm rooms and overflow into daily life of the student around campus. The variety of students, each with his own taste, creates the atmosphere of campus life, that is unique on each college campus. That is what makes Campus Living so great.



CAMPUS LIVING

It is a dull gray day during "Supp hour." Being one of the lucky ones that doesn't need every cultural event until graduation, you decide to go to the post office hoping for a letter. In the post office you find other "lucky ones" seeking letters from sweethearts and friends, care packages from grandmother, and money from Mom. As normal, all your box holds is air and cobwebs. Your outlook on life doesn't improve as you walk back to your dorm and rain begins to fall. However, don't lose hope. College life is not always so bad. Actually campus life can be exciting—just not today. Your mind begins to float to those times on campus that are better.

Living on campus is usually a large step toward freedom, especially for freshmen. Students are, sometimes for the first time, allowed to make decisions that effect their lives in the long run and immediately. Parents are not around to lay down rules or to provide encouragement. However, the taste of freedom can be
(continued on page 110)





PROHIBITION?

Quick! Think of a seven letter word that starts with an "A" and is a big part of weekend activities at Pfeiffer College.

If you said alcohol, you're exactly right. Weekends are party-time, and party-time means drinking. Although the college alcohol policy specifies that only beer, wine, or wine coolers are allowed to those students age twenty-one or older, we all know you can't have those delicious mixed drinks without some of the "harder stuff" like Vodka or Rum.

This year, the alcohol policy has been (or tried to be) strictly enforced. Students were given a copy of the alcohol policy and asked to read and obey it. However, it is evident this was not done by all. On a few occasions, specific floors of dorms and even entire dorms lost alcohol privileges for a period of time.

Could this be a current form of prohibition? No, just more policies made to be followed.





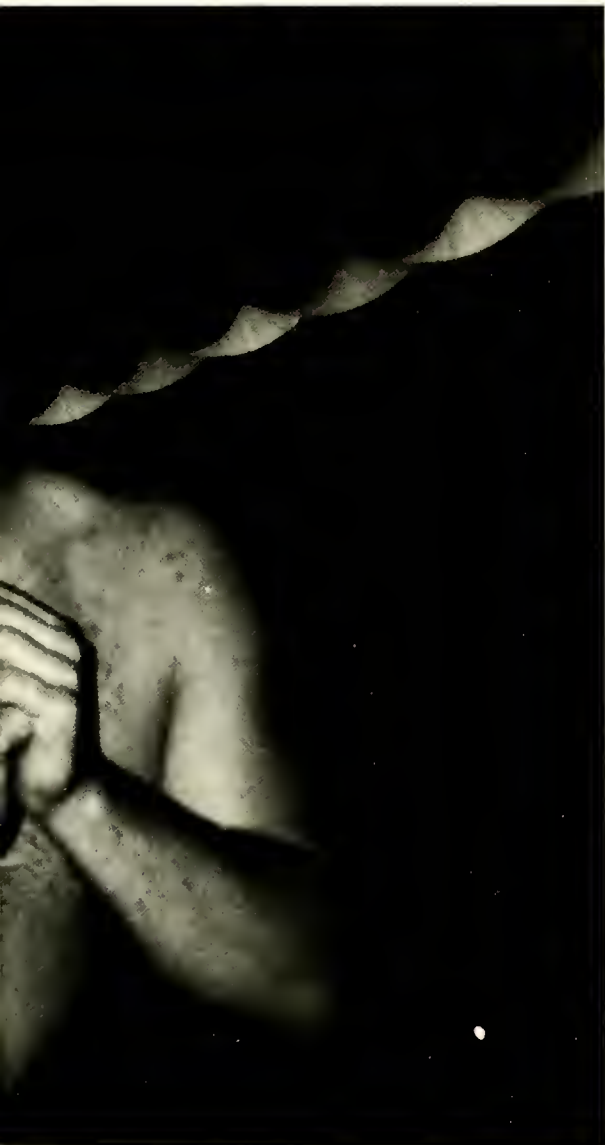
(continued from page 107)

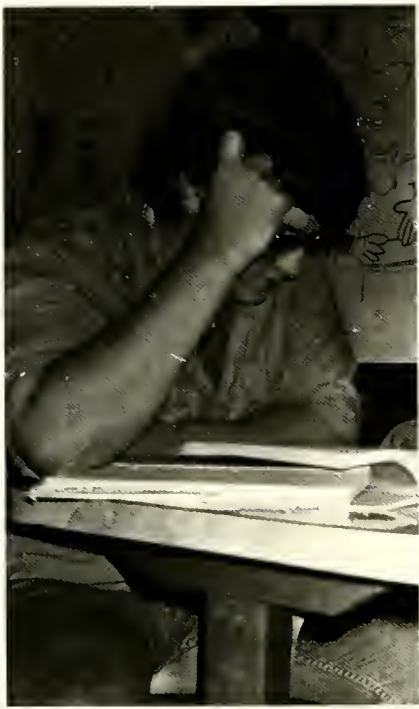
very nice and most always it outweighs the problems. One major decision and a part of college life is parties, and alcohol. One must make decisions on whether or not to imbibe alcohol and where personal limits exist. Foote and Cline are generally known as the party dorms. Going beyond these stereotypes one may realize that parties are found in every dorm.

There are other things not found in every dorm. One such object is a working ice machine. Several dorms must walk to neighboring dorms to

(continued on page 115)









LET'S GET PHYSICAL

Physical fitness has been a fad for several years now. Students at Pfeiffer are also into the trend of staying active and fit. Students work out in a variety of ways. Some students are athletes and stay fit because of practices and games. Other students choose to take part in intramural sports to keep active. Still others enjoy activities on their own such as bicycling, running, weight lifting, and walking. Despite the variety of ways, most Pfeiffer students do make an effort to get and stay physical.







(continued from page 110)

obtain ice.

Another problem of dorm life is the temperature of the dorms. It is obvious that everyone will not be pleased. However, there are times when the temperature is too hot or cold for the majority of students. There are also a few mornings without hot water.

Many changes have been made at Pfeiffer this year. The largest change is in the office of the president. Zane Eargle replaced Cameron West. The Eargles moved into the president's house in early September, and are seen actively about the campus. Tuition again rose, as did enrollment. Plyler was reopened to accommodate the increase in male

(continued on page 118)



SAFETY OR SORROW?

It's late at night and very dark. You have to get across campus all alone. Is it safe?

For the men, yes. But the ladies have a right to be worried. Area people looking for trouble have paid visits to the Pfeiffer Campus this year, only to be picked up by our Security Officers. The women's side of campus is well lit with the exception of the parking lot behind Merner and Rowe. But what about the men's side? The men may not feel they need lights, but they would aid the women who walk across the street after visitation.

All in all, our security guards do a great job. We owe Snake and his men for making us feel safe. Thanks guys!





(continued from page 115)

students. The increase also created problems in parking. The on-campus radio station, WSPC, went back on the air after five years.

One appearance change on campus was that several trees were cut down on the front lawn. The laundromat was remodeled, and change machines were installed. The cafeteria was painted and the setup was changed.

Despite the many changes, some things are always the same. Classes take up around 16 hours of a student's week. Outside of classes students must fit in studying between activities such as sports events, choir practices, theatre events, publications, and club activities that can take time. Students can be found throughout the day in the computer room and the library.

Friendships are an important part of college. Close ties develop between roommates, hallmates, dates, and friends from the opposite sex.

Campus life has many "ups and downs." It is a step between living at home under parent's rule and being
(continued on page 122)









WHERE DO WE GO NOW?

Have you ever had a really hot date, but had no place to take them? This is a common problem around Pfeiffer. Misenheimer offers few places that make for a nice date setting. However, some solutions may be found in nearby towns and cities.

Most dates consist of dinner and a movie. Students do stray from that norm to enjoy bowling, putt-putt golf, plays, and shopping.

Albermarle offers several restaurants, a movie theatre, a bowling alley, and a miniature golf course. Salisbury also offers these options with a larger variety of choices. Charlotte offers still more options such as clubs, and events at the Coliseum.

In the end, it doesn't matter where you go as long as you are with your someone special.



(continued from page 118)
out in "the real world." Greta Demchak agrees. She says,
"It's great living on campus! But it would be better if
Mom would still make your bed."





Of all that happens on the Pfeiffer College Campus, nothing brings people together more or helps get things done more effectively than the clubs and organizations. These groups range from student government to academic, and from publications to musical groups. These groups are usually lead by students instead of faculty or staff. These Social Circles help Pfeiffer to grow closer and to obtain goals.

Social Circle

clubs and organizations



**Some material in this section is adopted from the 1987-89 Pfeiffer Catalog.*



First row — Tonya Springer, Robin Wallace (editor) Second row — Melissa Delmar, Kristen Eddy, Davina Hess, Kelley Carter, Jennifer Mitchell Third row — Paul Lucas, Andy Langhorn, Sissy Thompson, and Linda Gibson.



The Chime's staff is responsible for producing the yearbook. The students take photographs, design graphics, draw layouts, write copy, and crop pictures. The group preserves the memories of the year to create a permanent record of all aspects of campus activity. Students may receive activity credit for their work.



The Pfeiffer News is a student publication. It reports campus news, offers opinions of students and others on a variety of topics, and provides a forum for reflections on student life, college affairs, and events beyond the campus. The students on staff must investigate stories, write copy, and fit copy on the page.



First row — , Lea Anne Honeycutt, Barbara Morrison Second row — John Fratoda, Tim Kimble (editor), and Lee Shaver.

PFEIFFER REVIEW



The Pfeiffer Review is the student publication of art and literature. All students and faculty are open to submit work to the Review. Students working on the Review examine submitted material and select the best works to be published. The book is printed in the spring.



First row — Vance Elliott, Ashley Goodnow Second row — Mike Plowman (Co-editor), Debbie Thomas, Rena McGregor, Ann Phillips, Natalia Motalya Third row — Charles Keller, Anita Price, Lori Evans, Deborah Jones Fourth row — John Branin (Co-editor), Bob Carpenter, and William Stacy.



First row — Beth Borgerding-Fowler, Robin Wallace, Shannon Poovey, Amy Frye Second row — Dave Tilton, Rob Enlowe, and Leonard Britt.



The Student Government Association (S.G.A.) provides Pfeiffer Students with a governing body that deals with their special needs, goals, and problems. The Executive Council of S.G.A. serves as the administrative body of the student government. These officers work very hard.

BSA Alliance

The Black Student Alliance is open to all students, but mainly addresses the needs of black students. This organization provides a voice for black students and promotes awareness of black culture among all students. The group sponsors different activities and decorates the library at Christmas.



First row — Nicole Watts, David Moses Second row — Nikki Renyolds, Rena McGregor, Teresa Moore Third row — Angela Leak, Lynn Blackshear, Michelle Renyolds Fourth row — Deborah Jones, Yolanda Rucker, Janet Fowler Fifth row — Sturgies Euginia, Otis Lyons, Yon King, Kevins Lyons, and Barbara Morrison.



First row — Erin Fanelly, Kevin Harrell, Laura Morrison Second row — Donna Pierce, Kelley Carter, Lori Evans, Lisa Love, David Madligar, Bruce Thomas Third row — Dawn Yankowski, Doug Leonard, John Goodnow, Glenn Parsley, and Anita Price.



PLAYMAKERS

The Playmakers are responsible for helping produce all works of the Pfeiffer Theatre. Students interested in the theatre arts share their talent and gain experience in the theatre. The group helped with a number of plays this year including *Barefoot in the Park* and *In the Beginning*.



First row — Todd Rabineau, John Sherman, Carmel Pulghisi, Micki Nolan, Jean Huddock, Kevin Harrell Second row — Lisa Blackwelder, Laura Anderson Third row — Brian Pfish Honeycutt, Kevi Blackburn

College



Union Board

The members of the College Union Board are the ones who keep us entertained on Friday nights. Every Friday, the CUB host entertainers ranging from comedians to hypnotists to singers. Concerts are free to everyone. CUB also helps with several dances.

$$\begin{array}{r} 2 \\ +2 \\ \hline 4 \end{array} \quad \begin{array}{r} 3 \\ -1 \\ \hline 2 \end{array} \quad \begin{array}{r} 5 \\ \times 2 \\ \hline 10 \end{array}$$

MATH CLUB

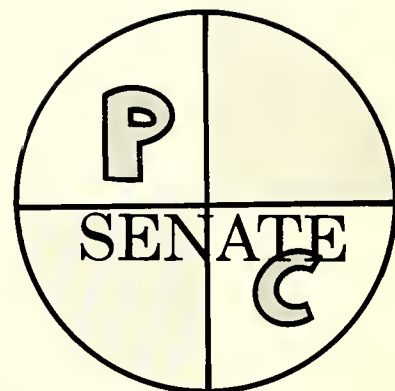
The Math Club is open to all students with an interest in Math. It is not required that you even be taking a math class. At club meetings students discuss math concepts, math related careers, and a number of math related subjects.



First row — Lisa Erikson, Brenda Compton, Tyler Lentz, Deatrice Starnes, Deloris Whildon Second row — Dr. Mobley, Kevin Blackburn, and Mr. Peatrea.



First row — Angie Leak, Gayle Conrad, Tammy Goodwin, Gaetane Michaud, Lisa Hill Second row — Bert Robinson, Brian Chambers, Davina Hess, Natalia Montaya, Sissy Thompson, Cathy Dierlam Third row — Paul Wettereau, Scott Champion, Tim Kimble, Rann Paynter, and Brian Honeycutt.



The Senate is the legislative body of the Student Government Association. This group deals with student concerns. It gives students an opportunity for leadership.

Senators are elected by popular elections. All dorms are represented. There are eight female and eight male members. Fees to support this are paid through student activity fees.



The Religious Life Council is a faculty and student groups with representatives from all the campus religious organizations. This group encourages religious worship, fellowship, study and service on the campus. This group sponsors the Brame Lecture Series and various other speakers. Membership is open to all students regardless of their religious affiliations.



First row — Jay Pendleton (Chaplin), Brenda Compton, Tyler Lentz, Amy Frye, Cathy Dierlam, Laurie Brown Second row — Jimmy Player, Rann Paynter, Kevin Blackburn, Jim Sullivan Third row — James Johnson, and Brian Honeycutt.

Association
of Men
Students



First row — George Loft, Burt Robinson Second row — Jullian Domenech, Dave Tilton, and Paul Wettereau.

Association

of A M S Men Students

The Association of Men Students is a branch of the Student Government Association. This group represents the special needs and interest of the men students. It helps to express the men's opinions and to encourage men to be involved in all facets of the campus.



First row — Chris Masser, Bobbi Yusko Second row — Carmel Pulglisi, Greta Crump Third row — Jean Hudock, Robin Wallace, and Lisa Parks.

Association

of A W S Women Students

The Association of Women Students is a branch of the Student Government Association. This group supports and expresses the special needs and interest of the women students. It conveys the women's opinions and encourages women to play an active role in campus activities.

Senior Officers 89

The Senior Class officers were involved with a number of money-making activities this year. They sold spirit links during Homecoming and they sold balloons for Valentine Day.



First row — Sherri Moore, Barbara Morrison, Dawn Yankowski, and Lynn Blackshear.



First row — Sissy Thompson, Tammy Sawyer, and Carmel Pulgisi.

Junior Officers 90

The Junior Class officers served as leaders to the Junior Class.



First row — Shannon Poovey, and Dani Serricin.

Sophomore Officers 91

The Sophomore Class officers served the campus by organizing and implementing the plans for Homecoming. They also raised money by raffling off a special dinner.

Freshman Officers 92

The Freshmen Class officers planned and decorated for Aprilfest. The theme for the dance was "A Walk in the Park". It was decorated with plants, balloon arches, and paintings.



First row — Yon King, Dawn Forbes, Jimmy Allison, and Glenn Parsley.



Chapel Choir

The Chapel Choir sings every Wednesday at Chapel services. A variety of choral literature, both sacred and secular, is performed. This group presents a special musical Chapel service during Williamsburg Christmas. The choir is under the direction of Dr. Karl Wienand. The choir is open to all students regardless of musical ability.

First row — Karl Wienand, Lee Anne Honeycutt, Jessica Hinson, Lucy Miller, Trisha Fuerneis
Second row — Eva McIntyre, Debbie Thomas, Tracy Martin Third row — Randy Brownlow, David Surrat, and George Minimi.

Symphonic



Choir

The Symphonic Choir performs two choral masterworks with an orchestra. The Christmas production was Handel's Messiah. The end of the year program consisted of the Requiem by John Rutter, and the Mass In "C" by Franz Schubert. The choir is open to all students by auditions. The director is Marvin Burke.



First row — Marvin Burke, Lisa Love, Erin Fanelly, Laura Morrison, Donna Pierce, Patty Krause, Lee Ann Honeycutt, Natalia Montoya, Lori Hedrick, Julie Overton, Vonda Jenkins Second row — Debbie Thomas, Maria Helfer, Amy Lagenhardt, Kim Dalton, Lisa Ewers, Tammy Goodwin, Shannon Dunlap, Fran Hinson, Goria Castle, Terisa Moore, Angela Danley, Debbie Watwood, Shawna Turner Third row — Randy Brownlow, Tim Kimble, Rod Fitzgerald, Tyler Elam, Rodney Webb, David Madliger, Glenn Griffith, George Minimi, Lee Kelley, John Branin, Eric Barefield, David Surrat, and Brian Chambers.



Friends are what are important in life. In the years ahead, we will look back and remember decorating for Aprilfest, working at a booth at Homecoming, attending a Religious Life Council Retreat, and other activities that involve our Social Circles.

Social Circle



ROWE

Susie Abulhawa
Tamara Alderman
Vicki Allen
Lorie Allred
Lisa Anderson
Renee Anthony
Diana Armeno
Melissa Badgett
Jackie Barcomb
Tonya Barker
Amonda Bentley
Jenny Berryman
Cindy Billings
Jody Brooks
Deanna Brown
Laurie Brown
Kelley Carter
Missy Chestnutt
Susan Cole
Carla Coleman
Cathy Jo Compton
Gayle Conard
Laura Craven
Lisa Custer
Kristen Eddy
Erin Flowers
Dawn Forbes
Tricia Fuerneisen
Linda Gibson
Beth Gore
Zeena Green
Michelle Groves
Jean Harris
Davina Hess
Jessica Hinson
Sandy Hodor
Lea Honeycutt
Tammy Howard
Donna Hurley
Lane Jarrell
Christi Joyner
Ronda Kepley
Melissa Laser
Carla Lowder
Kate Mackey
Tracy Martin



Suzanne Mccrary
Lucy Miller
Michelle Miller
Jennifer Mitchell
Sherry Moore
Andrea Nachtman
Micki Nolan
Julie Overton
Andrea Pouliot
Chriatine Prine
Chris Rodocker
Renee Sears
Paige Seme
Allison Servetnick
Stacey Ahahan
Denise Sikes
Tracy Stansill
Dawn Tevepaugh
Debbie Thomas
Lou Ann Thomas
Tami Tumblin
Wini Wade
Robin Wallace
Necole Watts
Kim Westcott
Wendy Whiteside
Kelli Williams
Marsha Williams
Rhonda Wilson

CLINE

Emily Baker
Teresa Baptist
Lisa Blackwelder
Patricia Cassady

Elisabeth Cook
Rachel Gamage
Susan Gwinner
Kathryn Hartzog
Lori Hedrick
Karen Holderfield
Lisa Jackman
Lisa Kluttz
Patricia Krause
Lisa Lisk
Barbara Morrison
Cynthia McCoy
Lisa Park
Margaret Pittman
Bernadette Podlaski
Melissa Price
Tammy Sawyer
Dani Serracin
Tonya Springer
Cissy Thompson
Kimberly Waln
Joallen Weaver
Ann Whitener
Bobbie Yusko

WASHINGTON

Laura Anderson
Teresa Aylor
Kelli Baker
Lori Ballard
Donna Berger
Karlene Buhr
Wendy Butensky
Dale Carroll
Elizabeth Causby
Barbara Cesare
Kelly Clatterbuck
Greta Crump
Angela Danley
Carla Davis
Cathy Dierlam
Wendy Donnelly
Yvette Easley
Donnette Eckberg
Caroline Gilchrist
Melissa Hainley
Jean Hudock
Julianne Jennings
Kim Jones
Marsha Long
Lori Mallalieu
Chris Masser
Patches Morris
Christine McClure
Erin McHugh
Lee Ann Oehler
Julie Ousley
Karen Ravert
Jody Richardson
Mary Shriner
Leigh Stewart






LONG'S
JEWELERS

- Diamonds
- Watches ● Watch Repair

QUALITY GIFTS
FOR EVERY OCCASION

Open Friday & Saturday
Nights until 9:00 PM

ALBEMARLE PLAZA, ALBEMARLE, N.C.

982-9821



Member FDIC

100%
Home Grown
Bank of Stanly

A Local Bank Owned By The People Who
Will Make It Grow

167 N. Second St., 710 N. First St.
and 800 Hwy. 24-27, Albemarle
983-6181

13 S. Main St., Norwood
474-3103

PATRONS

Jessica Pendleton

Juanita Kruse

Dr. Peg Sides

Dr. and Mrs.
George Dolch

DOUG'S GARAGE

Serve for All Vehicles
Your Import Specialist
Custom Cleaning for Your Auto
10% Student & Faculty Discount With I.D.
Corner of Ashe and Snuggs
Albemarle, N.C.
982-3684
Call for Appointment

GIFTS BALLOONS FOODS
CARDS PARTY SUPPLIES WRAP



Party Lines, Etc., Inc.

Highway 24-27 Bypass
Albemarle Plaza Mall
Albemarle, NC 28001

(704) 982-9786

JACKIE BURPEAU

ROGERS COUNTRY CORNER

Hwy. 49-52

463-1111

"Western Union Agent,
Checks Cashed"

Open Seven Days A Week
1 a.m. to 5 a.m.

FIRST¹BANK

Member FDIC and an Equal Housing Lender
A Full Service Bank

First Bank Is The Bank You Can
Depend On And Trust.

We Now Have Five Locations to Conveniently Serve Stanly County: 3 Branches in Albemarle, Eastgate, Highway 52 North, and Downtown; and 1 Branch at the Intersection of Hwy. 52 & Hwy. 49 at Richfield.

(704)463-7383
(704) 463-7384

RUBY C. FRALEY
Branch Manager

P.O. Box 6
Richfield, N.C. 28137



Amy Trogon
 Angela Watkins
 Paula Willis

MERNER

Jill Bean
 Barbara Becker
 Lynn Blackshear
 Tammy Blalock
 Gloria Castle
 Brenda Compton
 Amy Dagenhart
 Kimberly Dalton
 Carol Davis
 Sharon Davis
 Greta Demchak
 Shannon Dunlap
 Rhonda Earnhardt
 Lori Evans
 Erin Fanelly
 Nyra Fisher
 Janet Fowler
 Amy Frye
 Dawn Godfrey
 Ashley Goodnough
 Anita Grady
 Julie Hatley
 Maria Helfer
 Sandra Holmes
 Yayoi Ichikawa
 Samantha Jarrell
 Vonda Jenkins
 DeBorah Jones
 Barbara Joyca
 Patricia Krause
 Angela Leak
 Tyler Lentz

Lisa Love
 Rena McGregor
 Gaetane Michaud
 Natalia Montoya
 Teresa Moore
 Paula Morgan
 Laura Morrison
 Demmi Jo Murphy
 Jennifer Noblitt
 Anne Phillips
 Donna Pierce
 Julia Pinkerton
 Chanyn Poovey
 Anita Price
 Carmel Puglisi
 Gwendolyn Pyron
 Nicole Reynolds
 Michelle Reynolds
 Yolanda Rucker
 Kelly Seifert
 Michele Smith
 Sherri Spears
 Lisa Story
 Eugenia Sturgies
 Shauna Turner



Michelle Vaughn
 Deborah Watwood
 Delores Whilden
 Tammy Willoughby
 Dawn Yankowski
 Taki Yoshihashi

ERVIN

Scott Akins
 Mark Alford
 Jimmie Allison
 Chuck Amodio
 Frank Armstrong
 Dean Baddorf

Larry Donley
 Bryan Easter
 Sidney Farmer
 Rod Fitz
 Brad Ford
 John Furtado
 Nicholas Gallaccio
 Victor Gargano
 Lee Graeff
 Andrew Gurin
 Ryan Hamaker
 Stuart Harris
 James Hartsell
 Rusty Hauser



James Barrington
 Bill Bode
 Kevin Bolin
 Scott Brawley
 Andrew Brown
 Jeff Bura
 Raymond Campbell
 Scott Cerwonka
 Mickey Cooke
 Eric Diehl

Tim Havert
 Clyde Hedrick
 Alan Hensley
 Todd Herman
 Craig Horne
 Vernon Jacobs
 Mike Jahkhah
 Tree Johnstone
 Ted Jones
 Jeff Kandefer
 Yon Kink
 Tim Koves
 Channing Larue
 David Lee
 George Loft
 Jonathan Love
 Brent Lucas
 Matthew Maritsh
 Kenneth McCafferty
 Parrish McEwen



*College
Union Board:
The
Effective
Difference*



Chairpersons

1988-Jean Hudock

1989-Carmel Puglisi

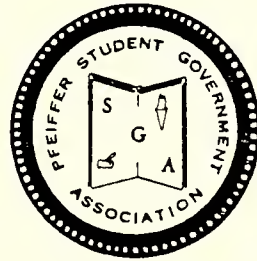
Board Members

John Sherman
Cathy Dierlam
Laura Anderson
Brian (Pfish) Honeycutt
Bob Carpenter
Tim Koves
Kevin Blackburn
Libby Hall

Glenn Parsley
Kevin Harrell
Lisa Hill
Todd Rabineau
Lisa Blackwelder
Micki Nolan
Cissy Thompson
Thin La

Paul Fowler — ADVISORS — Stan Anderson

Student Government Association



Congratulations To The Class of 1989

Robin Wallace — President
Rob Enloe — Vice-President
Leonard Britt — Treasurer
Chanyn Poovey — Secretary
Amy Frye — RLC
Bobbie Yusko — AWS
Dave Tilton — AMS
Beth Borgedine-Fowler
— Exec. Coordinator

SENATORS:
Jim Barbee
Bryan Chambers
Brian Honeycutt
Tim Kimble
Travis Powell
Burt Robertson
Paul Wetterau
Gayle Conard
Cathy Dierlam

Tamara Goodwin
Lisa Hill
Angela Leak
Gaetane Michaud
Cissy Thompson
Davina Hess
Rann Paynter
Natalia Montoya
Scott Champion

The ideals of this organization are:

To enable all students of Pfeiffer college to speak with a united voice;

To promote the highest standards of honor and integrity in all phases of college life;

To encourage students involvement in the best interests of students and Pfeiffer College;

To protect the rights of students in matters concerning administration, faculty, and other students;

To regulate all matters, which are not reserved to the jurisdiction of the administration, pertaining to the conduct of students;

To cooperate with the administration, faculty, and staff in promoting the interests of the individual; and

to advance the spirit of loyalty to Pfeiffer College.



Chad McKinney
 Robert Mcnaughton
 James Mechum
 Mike Meriwether
 George Minimi
 Craig Mutch
 Robert Opfer
 Glenn Parsley
 Rann Paynter
 James Poe
 Jimmy Poplin
 Glenn Redmond
 Todd Rich
 Lenny Saia
 Doug Wawyer
 Rudy Schmidt
 Michael Sigmon
 Tony Smith
 John Sokal
 William Stacey
 John Steed
 Sean Sullivan
 David Surratt
 Jeff Taylor
 Blaine Terrall
 Dean Vernon
 Alex Vlahos
 David Walter
 Barry Whitaker
 David Williams

PLYER

Bill Baggs
 Eric Barefield
 John Burke
 Jim Dotsikas
 Darrell Eggers
 Thomas Elworthy
 Cris Fair

Dave Goodwin
 Jeff Lee
 Neil Lloyd
 Marc Michaud
 Rob Murray
 Richard Nordman
 James Nuttall
 Lee Owings
 Mike Price
 Scott Rogers
 Terry Spry

FOOTE

William Bachtell
 Chris Batterman
 Kevin Blackburn
 Jeff Brinkley
 Greg Caccia
 Rob Carpenter
 Tom Carr
 Jeff Childress
 Lynn Coble
 Mark Cordeiro
 Jeff Crisco
 John Crisco
 Steven Cumming
 Julian Domenech
 Rob Donovan
 Walter Emmerling
 Sam Flowers
 Fred Franke
 Chris Furr
 Rob Guglielmo
 Gary Harrell
 Rod Hatfield
 Brian Honeycutt
 William Johnston
 Charles Kanipe

Mike Kirk
 Andy Langhorne
 Eugene Lauer
 Paul Lucas
 Lewis Montague
 Alan Nanney
 Jon Neblett
 Chris Penland
 Joel Petlick
 Burt Robertson
 Sam Roebuck
 Jimmy Rogers
 Will Rousseau
 Rob Rutemiller
 Tim Sanders
 Todd Sarmiento
 Mark Sells
 Dave Tilton
 Bo Turner
 Tommy Wanser
 Paul Wetterau
 Mark Woodard
 Dave Woodard
 Jay Wroe

VAUGHN

John Baker
 Jim Barbee
 John Branin
 Michael Brumfield
 Marc Calderone
 Craig Coble
 Jeff Davis
 Tony Davis
 Anthony Denino
 Tori Dial
 Tyler Elam
 Vance Elliot

John Embree
 Kenneth Faulkner
 Marc Fleming
 Hunter Fuller
 Todd Gambill
 Terry Gobble
 Shaen Greaff
 Christopher Graham
 Lem Hames
 Kevin Harrell
 Andre Harris
 Darrin Hunter
 James Johnson
 Philip Jones
 Charles Keller
 Lee Kelley
 Andre Knox
 Jonathan Liberty
 Bill Lindoerfer
 Otis Lyons
 Craig Majid
 Tommy Matthews
 Jamie McNeill
 Dave Moses
 Chris Muncie
 Ward O'Doherty
 Mike Ollari
 William Olsen
 Manoj Patel
 Jeffery Phillips
 Kendall Pittman
 Marc Prevatte
 Frank Pustay
 Charles Sharpe
 John Sherman
 Matthew Smith
 Matt Steed



BEST WISHES TO THE
GRADUATING CLASS
OF
1989
ASSOCIATION OF
WOMEN STUDENTS

EXECUTIVE COUNCIL

Bobbie Yusko — President
Christine Masser — Vice-President
Greta Crump — Secretary
Carmel Puglisi — Treasurer

DORM PRESIDENTS

Lisa Park — Cline
Anita Price — Merner
Robin Wallace — Rowe
Jean Huddock — Washington
Sheila Prevatte — Advisor

ASSOCIATION OF MEN STUDENTS



Congratulations to the Class of 1989

Executive Council:

David Tilton — President

Julian Domenech — Vice-President

Dean Vernon — Secretary

Paul Wetterau — Treasurer

Paul Fowler — Advisor

Dorm Presidents:

Burt Robertson — Foote

George Loft — Ervin

David Watts — Kluft

Bob Cristella — Vaughn

KLUFT

Frank Tansky
Glenn Tyler
Clarence Underwood
Todd Walker
Dave Weinberg
Mike Westcott
Jesse Williams
Patrice Williams
Rodney Wilson
Robert Wright
Richard Wyatt
Steven Ayers
Dave Bennekin
Leonard Britt
James Bryant
Timothy Buck
Robert Carlton
Bryan Chambers
Scott Champion
Michael Choplin
Scott Clontz
Wyett Colclasure

Matthew Curette
Darrin Deese
Marcus Elam
Rob Enloe
Artie Franklin
Ron Golden
Gary Hampton
Joseph Hartley
Micheal Hood
Tim Kinble
Dan Kimray
Carl Kodzai
Paul Kolody
Tim La
Mark Labua
Kevin Lyons
David Madliger
Matthew McKinney
Timothy McKnight
Sean McLean
Tomo Nakayama
Troy Pate
Todd Rabineau
Matthew Robertson

Mark Shiflet
Raymond Thomas
David Watts
Charles Wilcox
Lee Williams

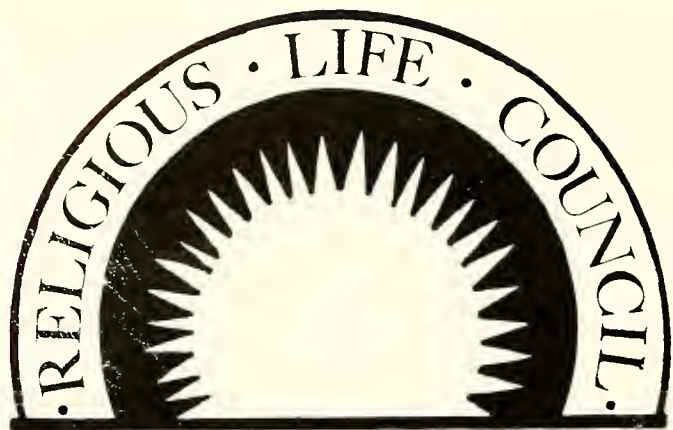


Belk

Belk — Albemarle Plaza

Highway 24-27

Albemarle, North Carolina



— R · L · C —
PFEIFFER COLLEGE

RLC – There's always
something new
under the
sun.

Congratulations to
the Class of '89
From RLC Executive
Council:

1988-1989

Amy Frye — President
Joallen Weaver — Vice-President
Brian Honeycutt — Secretary
Cathy Dierlam — Treasurer

1989-1990

Cathy Dierlam — President
Rann Paynter — Vice-President
Eric Barefield — Secretary
Brenda Compton — Treasurer

Jay Pendleton — Advisor

