

# Chimes 1990





The Advancement Office



Digitized by the Internet Archive  
in 2012 with funding from  
University of North Carolina at Chapel Hill

<http://archive.org/details/chimes1990pfei>





# CHAMES

*Pfeiffer College*

*Misenheimer, NC*

*Volume 35*

*1990*

*Rann Paynter, editor*

*Laura Morrison, assistant editor*

*Dr. Peg Sides, advisor*



"Where is Pfeiffer College?"  
"It's in Misenheimer."  
"Where?"  
"Misenheimer."  
"Where is that?"  
"Oh, it is just up the road from Richfield."  
"Huh?"  
"It's less than an hour from Charlotte."  
"OHHH."

If we could only receive five dollars in financial aid everytime we have such a conversation.

But really, where and what is Pfeiffer College?

Pfeiffer is located less than an hour from Charlotte in a tiny place called Misenheimer. The local landmarks are Roger's Country Store, the U. S. Post Office and the laundromat. It is a quiet place, yet often bustling with college activities.

Pfeiffer is a four-year institution, affiliated with the United Methodist Church. It emphasizes personal development through a learning community.

Yet these facts do not tell us what Pfeiffer is really all about. Pfeiffer is small, so small that you know practically everyone, and everyone knows you — and sometimes everything about you. There are friendly, caring feelings in the air. Students are thought of as individuals, not as statistics. The faculty are willing to go out of their way to help students in their work. The administration and staff want to provide the best education possible in this comfortable setting. The supporters — friends, parents, alumni, and donors — give to the college to ensure that our tuition costs do not skyrocket.

All of these people are bound together in a common love for Pfeiffer College and those within, which certainly makes it a very special place indeed.



Paul Fowler, Director of Student Activities

What were you going to say Robin?

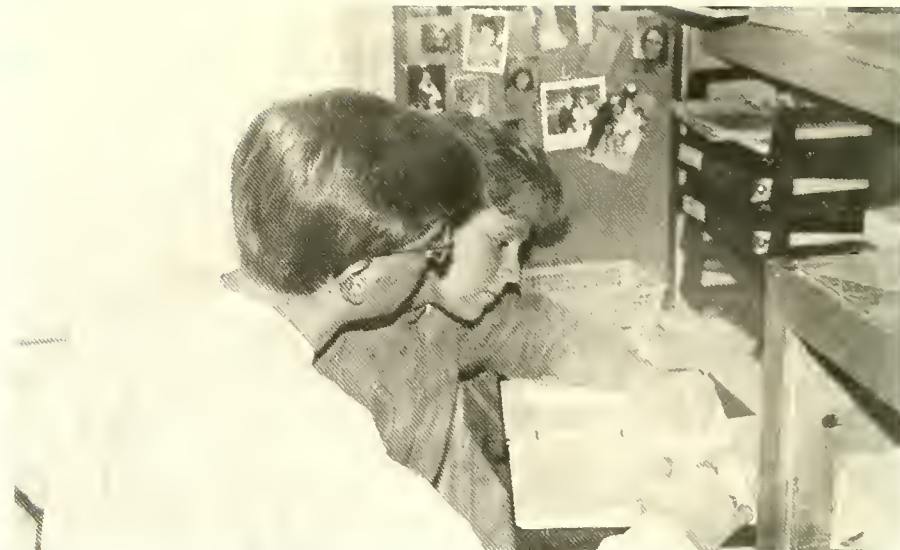


Is Jay Pendleton headed for the Chapel?



Hey Matt Curette, why are you taking a shower with all your clothes on?





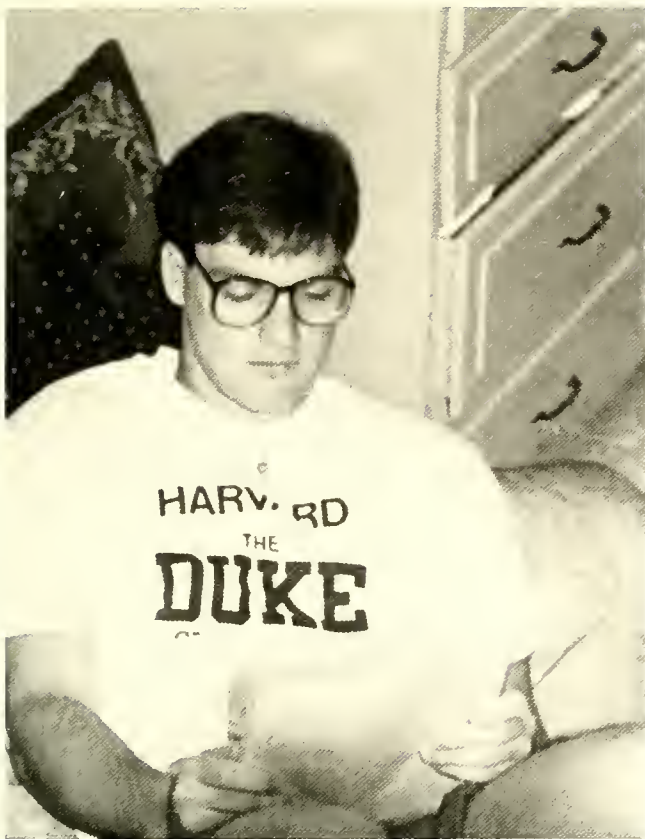
Rann Paynter and Jody Brooks team up to study for Dr. Haesloop's Bio-lab test.

Loving that cafeteria food are Pfish Honeycutt and Steve-O Cumming.



Alicia Wilkinson's momentary lapse of peace and tranquility.





Steve Ayers is studying? Quick — someone send a copy of this picture to his mother!



Mickie Nolan — what a woman!

Pfeiffer alumnae Amy Frye and Tyler Lentz.







Watch out for the SNAKE!!!



Tree Johnstone, Dani Serracin, Lisa Klutz, and Sean Graeff.

Wonder who is sitting across from Dean Riemann?







Allison Servetnick holds up a wall.

Kelli Williams and Susan Aluhawa are just hanging around and feeling groovy.

It seems that an RD's job is never done. Here, Robin Wallace has to install a light bulb in her dorm's parlor.









Opposite page: Linda Gibson, please don't suck your thumb!

Cathy Hamilton, Dean Childress, and Snake enjoy a morning chat.



Tonya Springer is the queen of this Cline party.





Rann Paynter, Yolanda Rucker, and Marcus Elam enjoy the exam breakfast sponsored by the Student Affairs office.

James "Macho" Johnson can't wait to get some caffeine.





Jody Brooks, whatcha got there in the cup?



Julie Ousley and Chris Smith cram hard in the peace and quiet that is found only in the library.





Branson Jones, Chairman, Pfeiffer Board of Trustees.

Paul Fowler and wife Beth, stop to talk with "the hand."







Mrs. Theresa Newman,  
here's your page!



It seems as if Marcus Elam is losing his lunch.

Rob McNaughton enjoys a facial every now and then.







Mrs. Newman with two of her favorite people, Lori Evans and Robin Wallace.



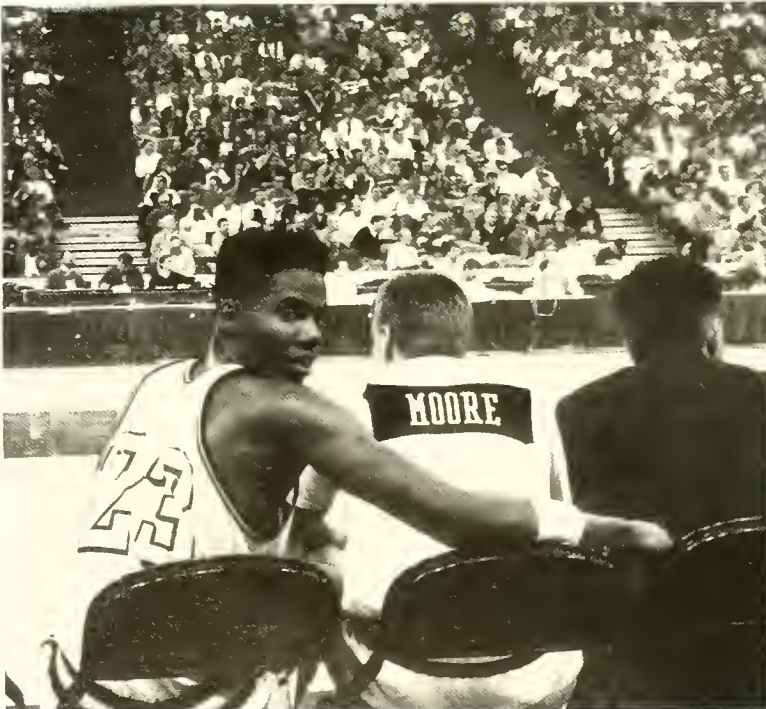
Mrs. Joan Eargle. at home.

# KANSAS CITY . . .

Pfeiffer Pfanatics Janice Lutz, Darrell Bryant, Alice (Ma) Shiflet, Lisa Blackwelder. Row 2: Claude (Pa) Shiflet, Rann Paynter and Jody Brooks.

Below right. Coach Bob Lutz's most devoted fans, Natalie and Janet.

Marcus Elam scans the crowd for familiar faces while Avery Moore and Rob Enloe watch the game with great intensity.



This year, our Men's Basketball team qualified to play in the NAIA National Tournament in Kansas City, Missouri. The campus was electric with enthusiasm and excitement when everyone learned of their accomplishment. Since the Tournament was to be played during spring break, students made plans to attend. Flight and hotel reservations were made, cars were fueled up and off went the team and devoted fans.

The team and some of the fans were fortunate to fly out. Others piled into cars and drove nineteen hours to KC.

Going into the tournament with a ranking of

twenty third, caused some to wonder if we could make it past the first round against George Fox. However we did defeat this team, 97-73.

Excitement was building for the Falcons in Kansas City! (Also, back in Misenheimer where staff members had parties while listening to the game on the radio.) The coaches and players seemed optimistic about the next game.

On Thursday, March 16, we defeated Indiana University Perdue University at Indianapolis 91-86. The atmosphere in Kemper

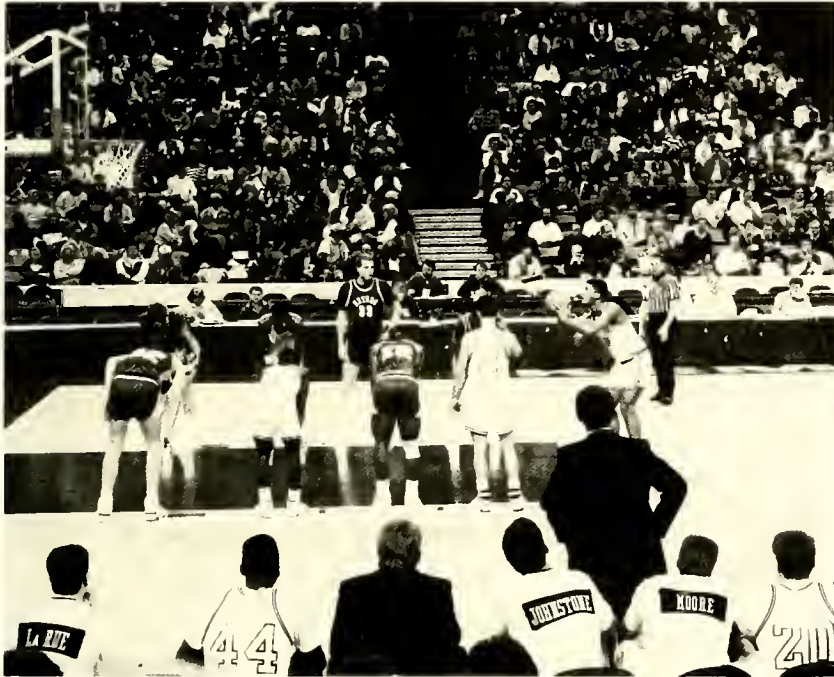
Arena was indescribable. Although the Pfeiffer following numbered less than thirty, they made more noise than all of Foote dorm.

The third round was the final one for the Falcons. Defeated by David Lipscomb 125-83, the team headed back to Misenheimer.

Although we did not go all the way in the tournament, we did advance our ranking to ninth in the nation. This is a great accomplishment, we are very proud of our team. "WAY TO BE!"



# HERE WE COME!!



Above left: Rodney Wilson goes for a foul shot. (Notice that the people sitting in the background would probably fill Merner Gym.)

Above: Pfeiffer Trustees Keith Crisco and Thad Woodard try to hear what's going to happen next.

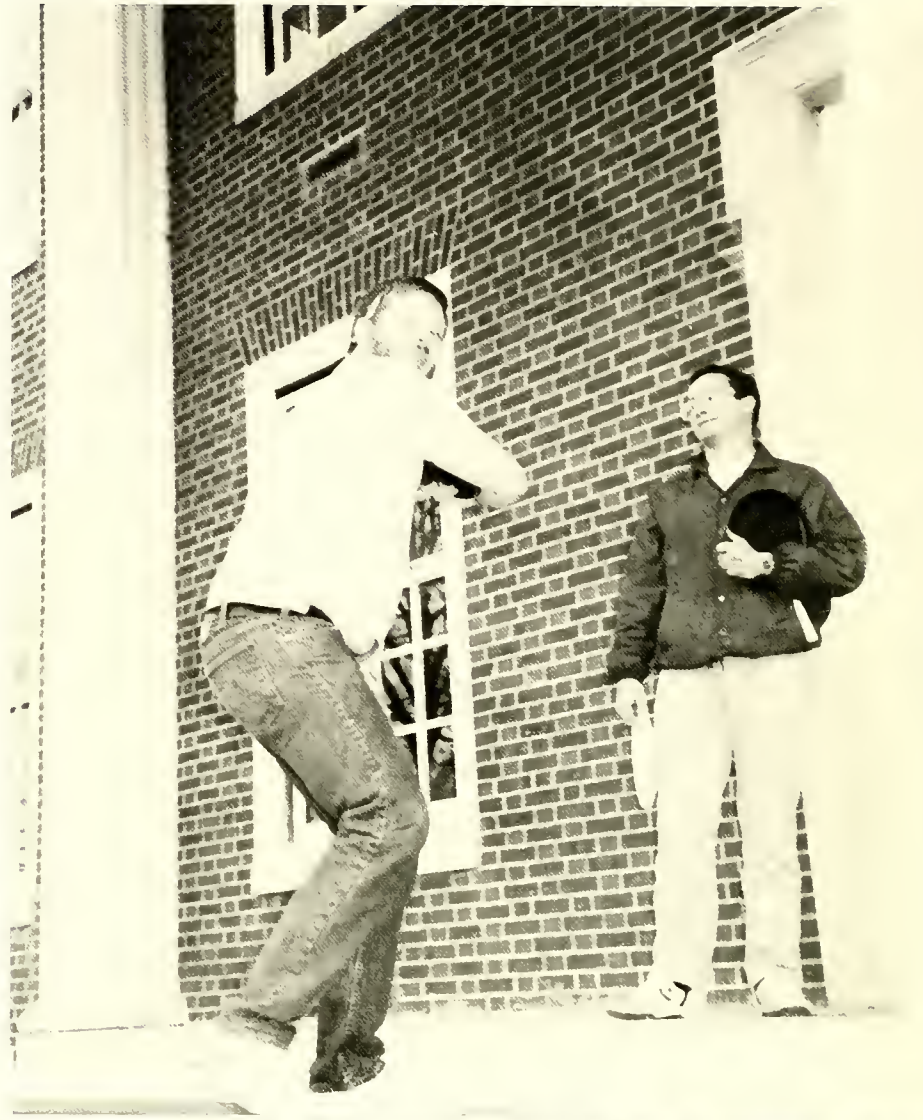


Left: The team did have a few free minutes to spend time with friends who had come to KC. Shown here are (kneeling) Jody Brooks, Tree Johnstone, (standing) Scott Champion, Neil Jones, Rann Paynter, Mark Shiflet, Steve Ayers, Rodney Wilson, Lisa Blackwelder, Bo Bryant, Marcus Elam, and Erin Flowers.

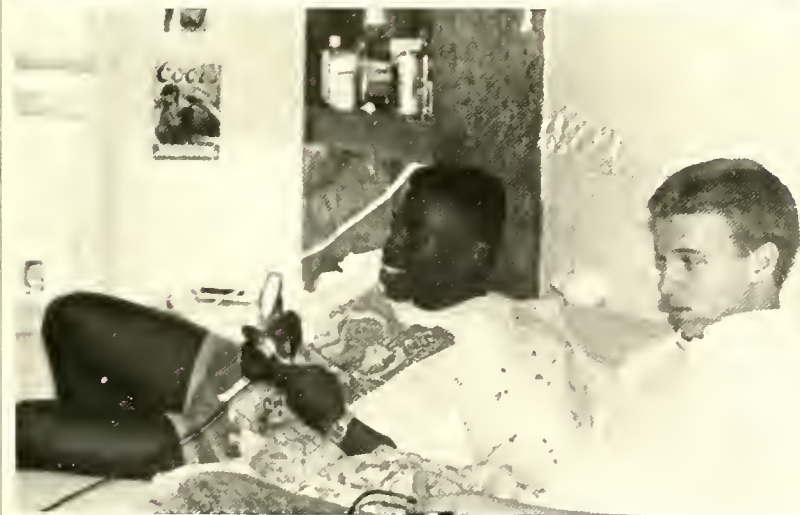
Pfeiffer time out.



# CAMPUS LIFE







"What is there to do in Misenheimer?" How many times have we been asked this question? How many times have we responded by saying, "Nothing?" We know that we sometimes have to find things to do here, yet other times there's lots to do. Spending time with friends, renting a movie, going for a walk down by

the lake, or playing volleyball are a few things that we like to do. We also enjoy participating in the Military Mail Call or in things like the Lip Sync Contest or working together as a community for projects including blood drives and hurricane cleanups.

Due to the size of the "bustling metropolis" in which we live, we know just about

everyone we meet when crossing the campus. It is most probably that everyone you meet will say hello and most will know your name. Freshmen tend to be a bit intimidated by our friendliness at first, yet by mid-semester they realize that it is just another special part of being here at Pfeiffer.



# HURRICANE HUGO

On September 22, 1989, the worst hurricane to hit North Carolina in fifty years left our campus "a little windblown."

A miniature army of volunteers (students, faculty, and administrators) worked diligently to restore order after the storm moved on.





# BLOOD DRIVE



Workers from the Red Cross converged on our campus, collecting over seventy-five pints of blood in a single day!

Gloria Byrd makes a sacrifice for science.

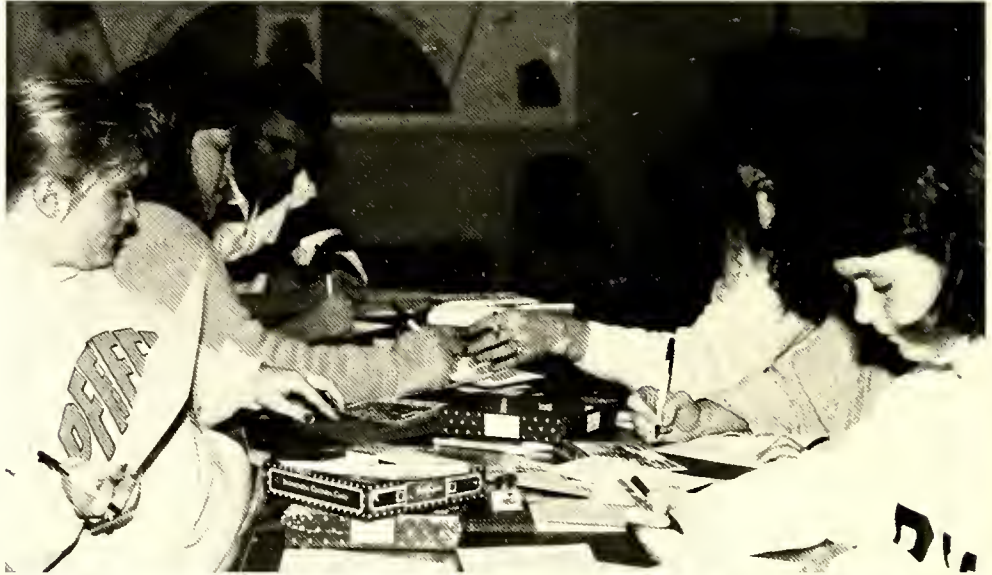


Lori Higgins gets her hemoglobin checked.

Another unidentified victim . . .

# Military Mail Call

Greta Crump, Pam Carter, Darrick Scott and Cathy Dierlam race to see who can write the most Christmas cards in an hour.



Linda Gibson, Jill Pridemore, and Kelli Williams find it more comfortable to work on the sofa.



Pam Carter, Erin Flowers, Lisa Love, and Darrick Scott continue to work diligently. This work paid off, Pfeiffer's Student Government Association sent more cards to our men and women in the military services than did any other institution in the state.





# I.M.P.A.C.T.



Dr. Eargle, Leo Tohill, Jim Gullledge, Elsie Lowder and Jim Sullivan join in to clean up Highway 52.



Leo Tohill, Jim Gullledge, and Jim Sullivan go down at the same time. IMPACT means Involvement Means Pfeiffer and Community Together.



Searching for new identities through lip-syncing are  
 (from below counterclockwise): Craig Mutch, John  
 Valentine, Tricia Schofield, Glen Parsley, Jud  
 Embree, Dana Lemmons, Tory Dial, Lee Kelley,  
 John Steed, Matt Steed and Jennifer Faller.





# CUB Lip-Sync Contest



# Basketball Pep Rally



Jeff Pinder with the Team's NAIA award.



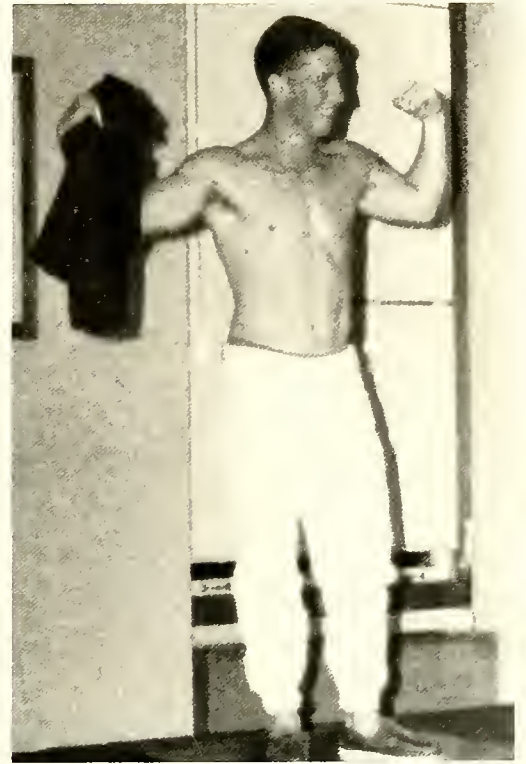
Coach Bob Lutz says a few words.



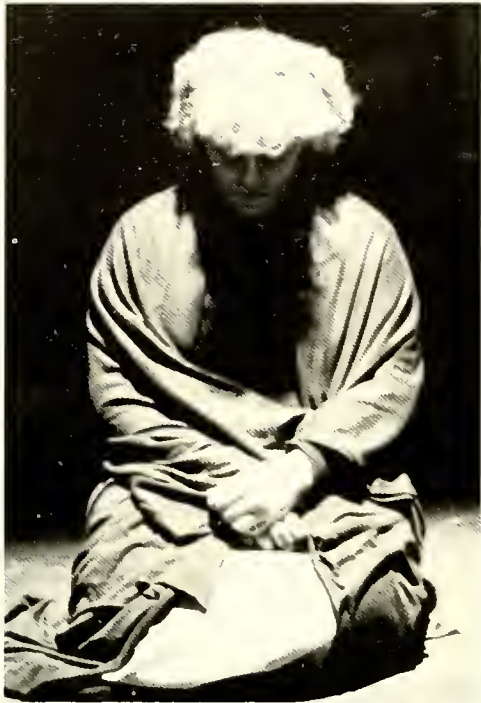
Jeff Pinder "unveils" the award.



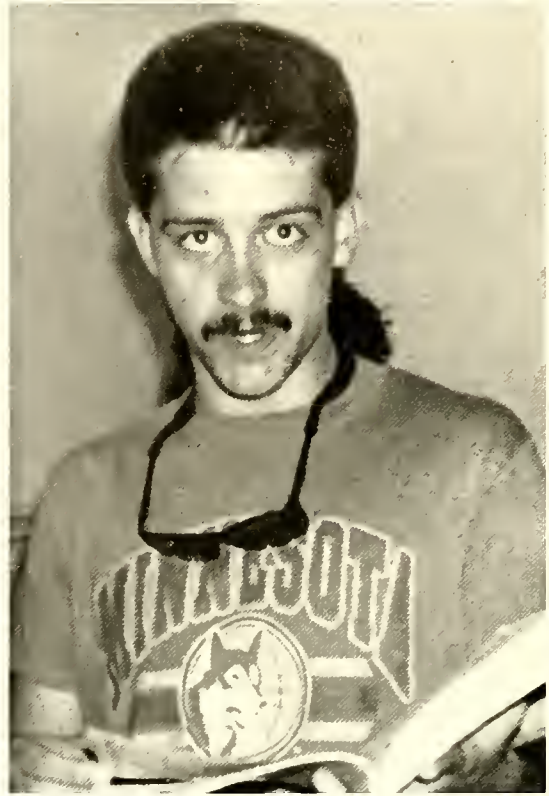
# Slave Auction



Mason Masters tries to persuade Cindy Billings to bid on him (above left). Dave Weinberg as Hulk Hogan (above). Mason Masters with his admiring fans (far left). Trevor Fitzgibbon (left).









Jody Brooks, Matt Curette, and Steve Ayers pose  
for this special shot!



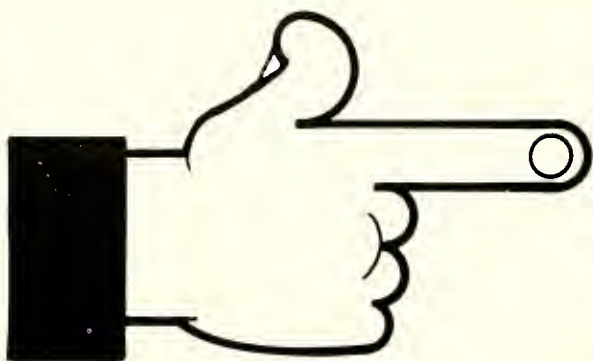




Renee Sears and Linda Gibson, two girls from Maryland, just chillin'.

Rusty Hauser and Josh Embree share a cool drink between volleyball matches.





## HAPPENINGS

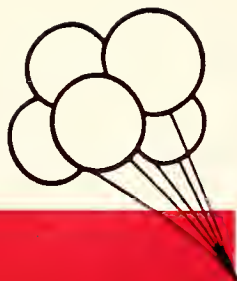
**P**feiffer is definitely someplace special. This year, Pfeiffer offered an abundance of events and activities that made it difficult for students not to get involved. The theatre showcased several productions, displaying the talent of our students. Other events that we have been involved in — either planning or participating in — have been Homecoming, Winterfest, Aprilfest and Halloween. Also, the College Union Board has brought many entertainers to our campus, making Friday nights in Misenheimer bearable.







# ORIENTATION



Member of the 1989 Orientation Team are Row 1: Todd Rabineau, Kim Westcott, Gary Harrell, Row 2: Tyler Elam, Davina Hess, Tonya Springer, Carmel Puglisi. Row 3: Ward O'Doherty, Terry Sprye, Jay Hartley, Neil Lloyd, Jeff Lee, Lynn Coble, Mike Westcott, Vonda Jenkins, Kevin Blackburn.



Scott Champion, Barbara Becker, and Cathy Dierlam give away free drinks, courtesy of SGA.





For most of us, the first day of college is one of the most frightening experiences of our lives. It means the first time really being away from home and from our parents and friends. Yet, change is a part of life, and college is a big change in our lives. Going to college may be frightening, but given time, once friends are made, college can be very exciting and enjoyable. During Orientation week, many different activities take place in order to encourage everyone to get acquainted with the campus and with each other. Some of the orientation activities include: playfare, Pfeiffer-fest and of course the much dreaded entrance examinations.

Above: Rob Enloe, Mike Westcott, Bob Wright, and Hunter Fuller admire James Johnson's designer country bumpkin outfit. Below: Greta Crump is ecstatic over the fact that George Loft has his arm around her while Marc Calderone looks on.



Orientation members **finally** get a short break after a most hectic morning.



Richie Ball, Are you coming or going?



Brad Brown and others anxiously register.





New students get their first taste of Pfeiffer Pfood and still decide to attend.



Belinda Belk and family smile after moving in to Rowe.





# HOME COMING



Dr. and Mrs. Zane Eargle, Pfeiffer's Pfirst Couple, were grandmasters of the parade.



Lenny Saia and Cindy McCoy hold on for dear life as they speed through the parade route.





Meredith Johnson holds tightly onto Townsend Smith.



On your mark, get set, run like bats outta \*!!\*\*!



Randy Lyons and Tara Westbrook cruise campus in a little blue Corvette.



If only someone would throw that pie at Rob Enloe.



H

omecoming "89" was an exciting all day event. The excitement began with the carnival held on the front lawn. Different booths were set up by various clubs and organizations on campus. Some of these included a ball toss by the Outing Club, a button sale by SGA, and a putting green by AMS. There was also a 5K Homecoming run starting and finishing at Merner Gym.

Following the carnival and run, came the parade. Black Student Alliance, Religious Life Council, along with the Homecoming Court were but a few of the participants in the parade.

The Dance started at nine in the evening and was held in the cafeteria. Beat the Clock, a top 40's band, provided music. Robin Wallace and Frank Tansky were crowned Homecoming Queen and King respectively. The Sophomore Class decorated the cafeteria for this gala event and did an outstanding job.



Above: The decorations were lovely. Below: "What's in your cup, Greta Crump?" (with friends).

Steve-O Cumming needs to XYZPDQ!







Kenny Faulkner is all smiles with Paige Seme at his side.

Alicia Wilkinson and Rob Enloe (above). (Below) Rann Paynter and Renee Anthony seem to be having the time of their lives.

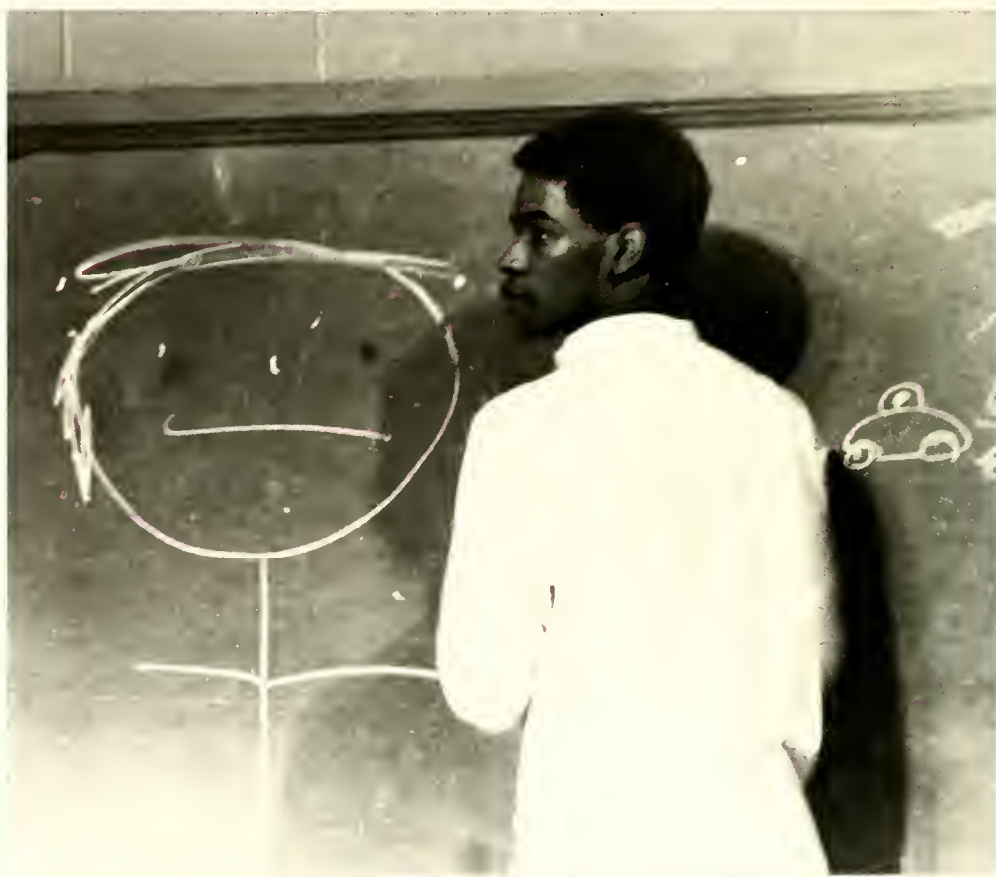




# COLLEGE UNION BOARD



Above: Comedians Open Season made Pfeiffer students laugh like hyenas! Below: Kevin Harrell draws his big head brother.







A

big "thank you" goes out to the College Union Board for all the Friday night comedians, singers, hypnotists, magicians and movies that made this year quite eventful.

At Homecoming, Tom Deluca captivated the audience by hypnotizing some willing students, while Craig Karges stunned the audience with his magic.

Whatever Friday night CUB event you attended you most likely enjoyed it.



Marc Calderone makes sure that Kevin Harrell and others do not lose control and slip out.

Dave Rudolf sang like a redneck from Kalamozoo!



# HALLOWEEN



Above: Mickie Nolan and Rann Paynter, those wild cavepeople, have to chill out and act normal when with Brenda Compton. Below: Debbie and Angie dress as babies — typifying all freshmen.







Matt Robertson the referee, Matt Curette the geek, Steve Ayers — another geek, and Rann Paynter the caveman.

Jody Brooks the baseball player with her geek-man Steve Ayers.



Costumes, costumes, costumes! Halloween is always an interesting and eventful weekend here at Pfeiffer. The costumes this year ranged from Pippi Longstocking to cavepeople to the traditional ghosts and goblins. It seems with each Halloween the costumes continue to become even more creative. This year there was a Halloween party in Washington dorm on Friday evening and the traditional dance on Saturday at the lakehouse sponsored by AMS and AWS.



# supps



Above: An Indian Medicine Man came during one supp hour — wonder if Sheila should worry about competition? Below: The Racial Forum sponsored by RLC.





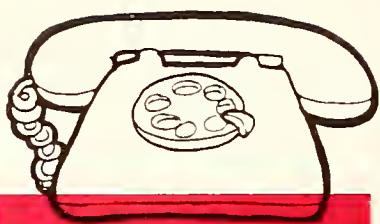


**T**he cultural program at Pfeiffer College allows the students to get an education in a variety of different areas. A number of speakers, musicians, and dancers speak and perform throughout the year in order to increase the students' cultural awareness. Movies, art shows, and concerts are also a part of this essential program. Many seniors held a majority in the audience this spring in order to acquire enough supp credits to graduate.

Above: Caddyshack chats with Mercury Morris. Below: Billy Mills, former Olympic star, delivered an inspiring message.

Dr. Eargle especially enjoyed dance lessons given by the African Dance Ensemble.





# PHONATHON



Belinda Belk (above), Vera Gebhardt and Rikki Ashley (below) ask parents for money for the food bar.



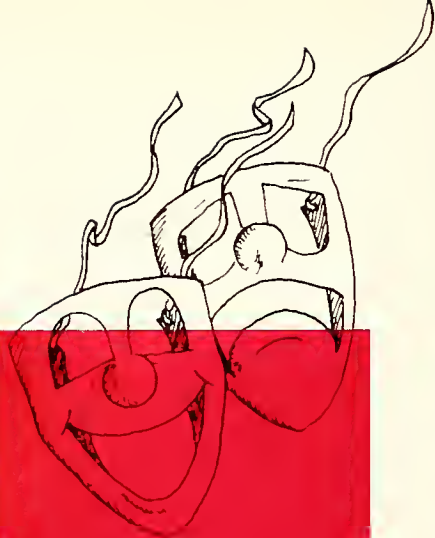




Clockwise from below: Carla Lowder, Chris Eddy, Samantha Jarrell, Melissa Laser, Jeff Jones, and Dani Serracin work diligently to raise money for the College.



**T**his year's Phonathon helped Pfeiffer reach the \$11 million goal of the Tradition and Vision Campaign. A portion of the money pledged was used to purchase the new hot and cold food bar in the cafeteria. Special thanks to all the students and staff who manned the phones and to all the wonderful people who contributed to the College.



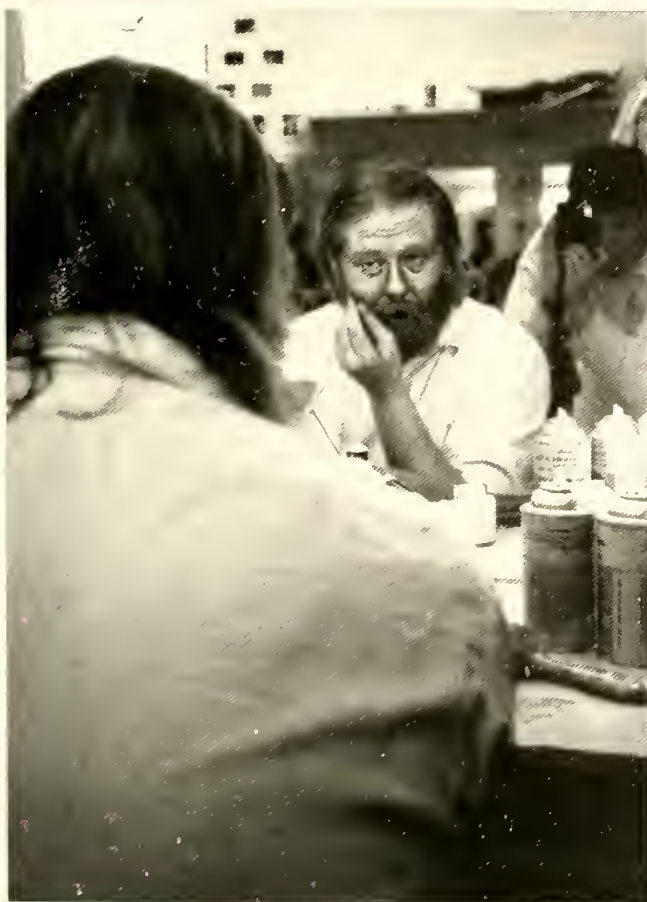
# THEATRE







The Pfeiffer Theatre performed several productions this year. Mother Courage, The Irish Trilogy — which included The Hawk's Well and Spreading the News, The Leader and End Game were productions presented this year. The productions have afforded the students at Pfeiffer the opportunity to not only showcase their talents but also for them to enjoy cultural events and to develop an appreciation for the theatre right here on our campus.







# WILLIAMSBURG CHRISTMAS



Above: Even the front gates are decorated during Williamsburg Christmas. Below: Who chased Marc Calderone up the tree?







Ho! Ho! Ho! Merry Christmas! It is that time of year again, time for eggnog, mistletoe, and Williamsburg Christmas! During this festive time, of this time is placed on decorating the campus in the traditional Williamsburg style. Fresh greenery, fruits, nuts, and MILES of red velvet ribbon are used to liven up Pfeiffer's buildings which brings the spirit of Christmas to the students during this hectic exam period.

Above: Santa's helper looks dumbfounded. Below: The Student Government Association decorated this tree in the Student Center. Below right: The guys in Foote could not find a ladder.







# WINTERFEST



Above: Everyone made it to the dance even though it was raining buckets outside. Below: Jessica Hinson and Matt Steed enjoy their surf and turf dinner.







Are you old enough to enter the Cline Cocktail Party?

The Winterfest Dance was the second major dance of this school year. Dinner before the dance was served in the cafeteria by Pfeiffer faculty and staff and was surf and turf. The dance began at nine o'clock in Mitchell Gymnasium, better known to us as the "old gym." Breaking away from the traditional band, CUB hired a disc jockey instead. This change was well accepted and enjoyed by everyone.

Dance man dance!





# APRIL FEST



Above: Tory Dial attempts to eat a bowl of ice cream in one mouthful. Below: Paul Fowler is ???







Above: Pull harder you guys! (Necole Watts, Moya Hawkins, Neil Jones) Below: Cindy Hopper has a new toy — how sweet.

A Fettucini brother made balloon animals for those who wanted one at the day at the lake.



It is springtime at Pfeiffer, time for Aprilfest week and all the fun and activities that come along with it. SGA sponsored a showing of the movie "Look Who's Talking" and CUB presented the comedy group "Open Season." The Pfeiffer Talent Show, an annual event, was also held during this week. Other activities included the RLC ice-cream social, the road rally, bed race, dance and a day at the lake.





# APRILFEST



Above: Julie Overton and escort Bryan Chambers are ecstatic when it is announced that she is Aprilfest Queen.  
Below: Brenda Compton looks so regal at the end of her table.







Left: Rebecca Smeilus and Tyler Elam. Middle: Shelly Litzenburg and Sean McLean. Right: Glenn Parsley with his unidentified dancing partner. Below: Marcus Elam and Teresa Moore.



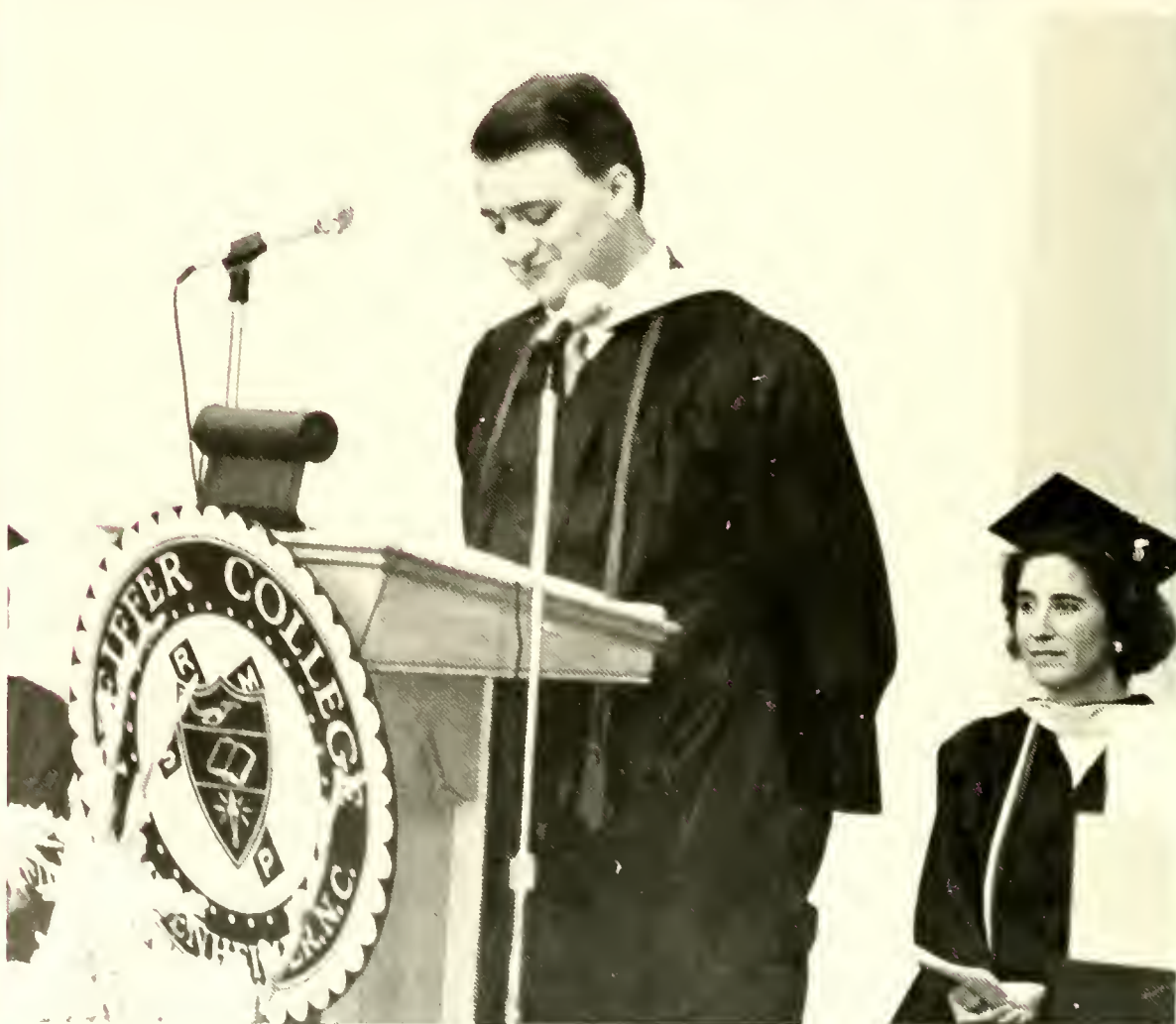
**O**n Saturday night, the Aprilfest Week came to a climax with a dance held in Merner Gymnasium. The theme was Stairway to Heaven. Julie Overton was crowned Aprilfest Queen 1990 by Dean Riemann.

# WE'RE OUTTA HERE!

May 12, 1990 was a very special day in the lives of those graduating from Pfeiffer College. At 10:30 when the Wind Ensemble began playing "Pomp and Circumstance," the Class of 1990 realized that a part of their lives had finally come to an end. Four years (for some more), of hard work, studies, and hope had drawn to a close. Those years of endurance had paid off and the Commencement exercises were about to begin.

Leading the processional were flag bearers Dani Serracin and Rann Paynter.

Senior Class Treasurer, Scott Champion welcomed everyone to graduation (r. Carmel Puglisi — class president).

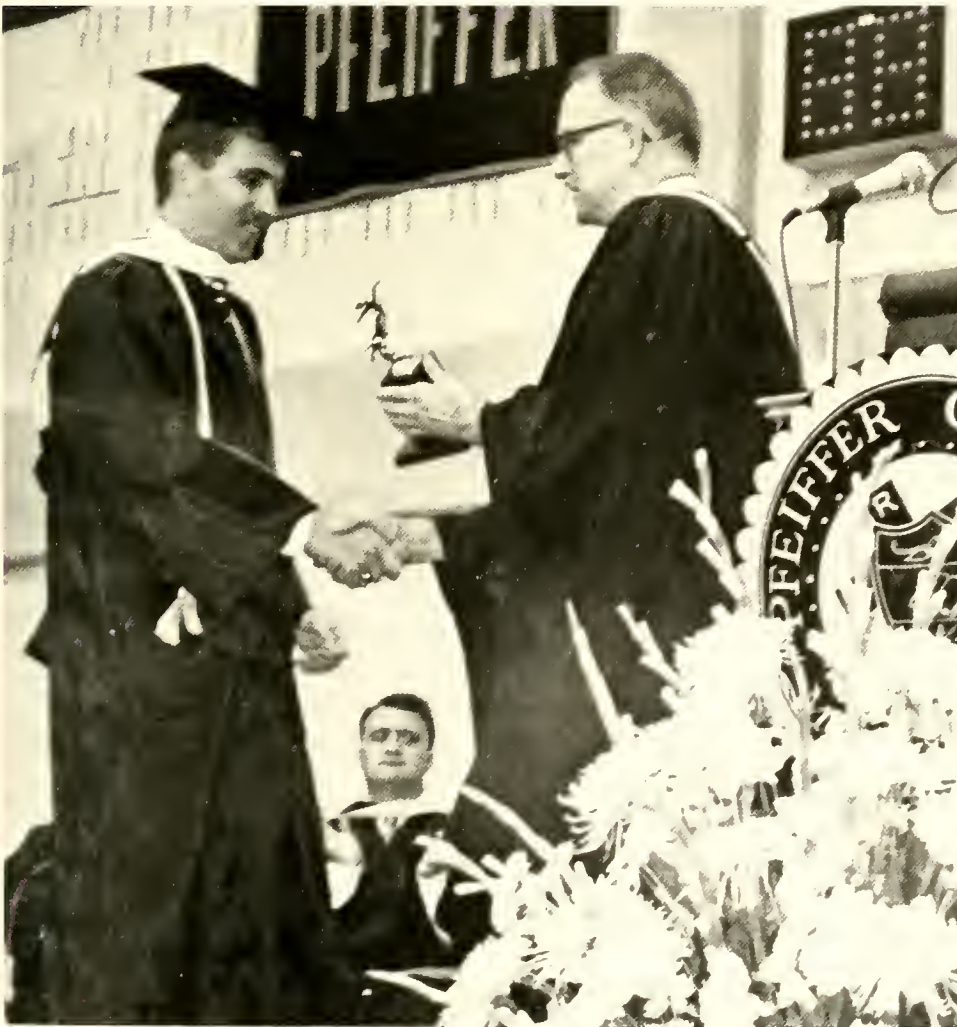




US Secretary of Labor, Mrs. Elizabeth Dole gave the commencement address.



Larry Durrett presents James Sterling Johnson the Pearl Walton Fisher Citizenship Trophy.



Kim Dalton actually graduated!

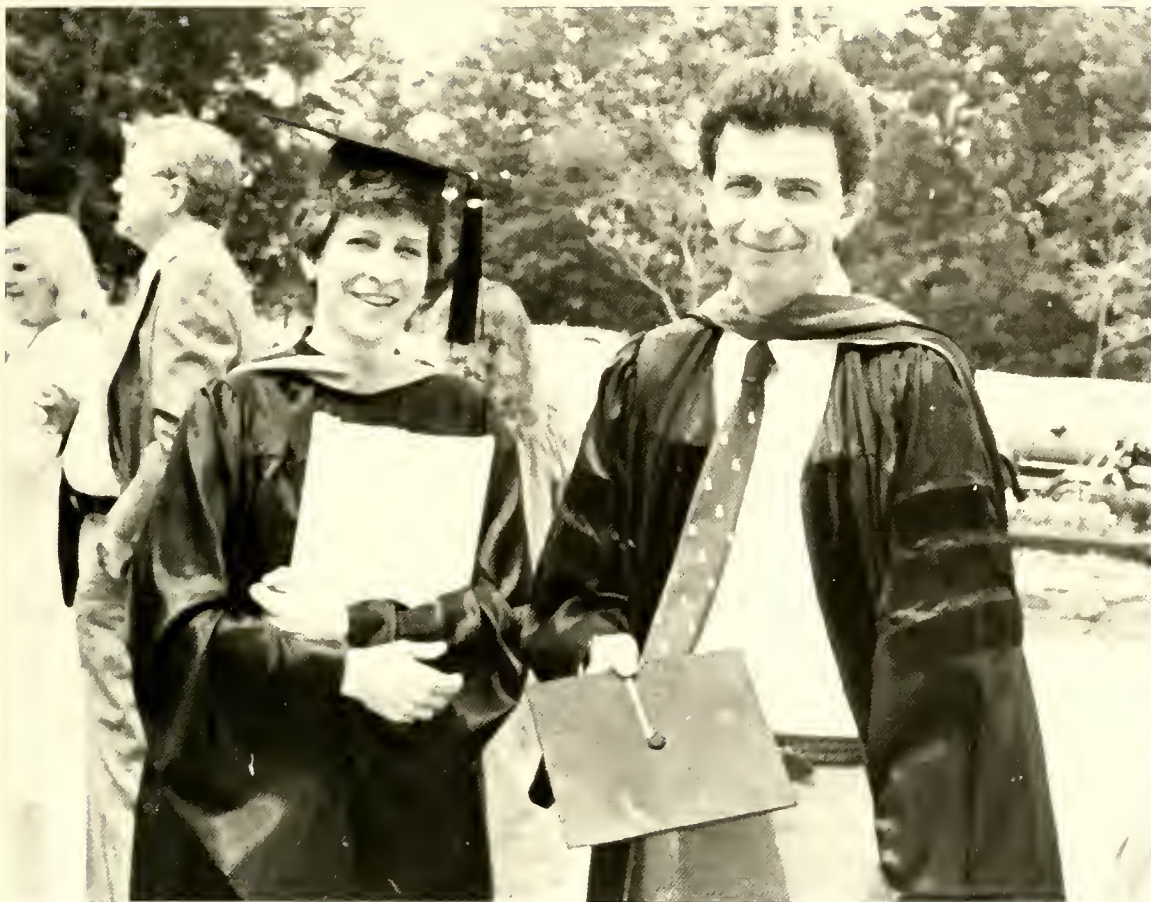




Right: Lisa Story is obviously a bit saddened about having to leave dear old Pfeiffer College. Below: Tim Koves, Frank Armstrong, and Bill Lindorfer discuss a reunion at Big O's.







Above: Dean of Students Tom Westcott with wife Pam who received her Masters of Business Administration. Left: This threesome, Mark Cordiero, Matt Robertson and Dave Woodard pause to plan a post graduation PARTY! Below: Brenda Compton flashes her well-known smile.



# ACTIVITIES

An abundance of clubs and organizations are open to students here on campus. Quite a few students are active in one or more, yet there are even more students who do not participate in what is offered. Everyone is encouraged to join a club or organization. Joining helps in making new friends, learning to communicate with others, building leadership skills and can make your stay at Pfeiffer very special indeed.









## Freshman Class Officers

President Trevor Fitzgibbon  
Vice-President Belinda Belk  
Secretary Dawn Hedrick  
Treasurer Katie Reilly

## Sophomore Class Officers

President Rann Paynter  
Vice-President Carla Lowder  
Secretary Renee Anthony  
Treasurer Glenn Parsley





## Junior Class Officers

President Dani Serracin  
Vice-President Lisa Hill  
Secretary Lori Evans  
Treasurer Erin Fanelly



## Senior Class of Officers

President Carmel Puglisi  
Vice-President Teresa Moore  
Secretary Gayle Conard  
Treasurer Scott Champion





Rob Enloe  
President



Brian Honeycutt  
Vice-president



Paige Seme  
Secretary



Dave Woodard  
Treasurer

## STUDENT GOVERNMENT ASSOCIATION

Row 1: Dawn Hedrick, Wendy Donnelly, Shannon Dunlap, Kelly Clatterbuck, Carol Davis, Susan Brown, Tara Darnell, Lynn Coble. Row 2: Jeff Jones, Mike Choplin, Kristin Eddy, Rann Paynter, Ian Manning, Jay Hartley, Todd Rabineau.



Scott Champion  
Executive Coordinator







# RELIGIOUS LIFE COUNCIL

The Religious Life Council is one of the most active groups on campus. Many students participate in the retreats, socials, forums and other activities sponsored by RLC. Officers for this year were: Cathy Dierlam, president; Rann Paynter, vice-president; Brenda Compton, treasurer, Eric Barefield, secretary; and Jay Pendleton and Jim Sullivan, advisors.







The AMS is a branch of the Student Government Association. It serves to represent and to further the special interests of the men students. It also serves as a medium for presenting the opinions of the men students to student government, faculty, and administration. The AMS promotes responsible action of the men students in all phases of campus life.

# Association of Men Students





# A. W. S.



The AWS, a branch of the Student Government Association, represents the special interests of the women students here at Pfeiffer. The AWS, through its influence and projects, assists women students in their development as educated, contributing members of society. A major responsibility of the AWS is to draft policies which govern women students and to encourage them to uphold them.





# WSPC

WSPC is our own Pfeiffer radio station. it provides the college community with music, news, information and opinions.



# Black Student Alliance

The BSA is an organization which provides a voice for black students on campus and works to make all students aware of black culture.

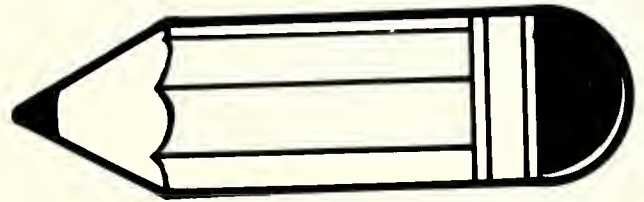




# The Pfeiffer Review



Row 1: Vickie Allen, row 2: Stacy Shahan, Lori Evans, Kevin Harrell, row 3: Jenny Berryman, Sandra George. Advisor Barbara Earnhardt is not pictured.



The Pfeiffer art and literary magazine is published in the spring of each school year. It recognizes and shares the creative and literary and artistic talents of the men and women of the College. Selections for the REVIEW are made by a student editorial board.

# College Union Board

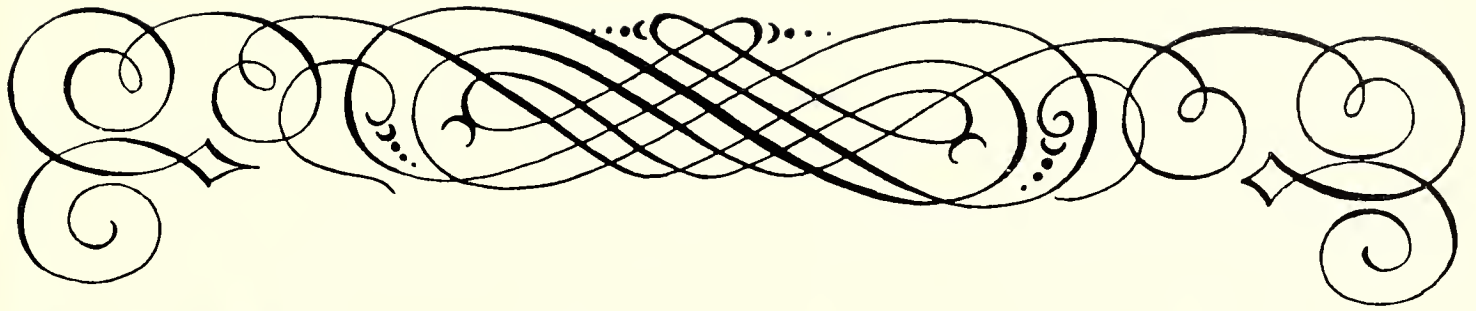


L to R: Bob Carpenter, Mike Malimo, Amy Frye — advisor, Kevin Blackburn, Cami Carpenter, Lisa Hill. Not pictured is Paul Fowler — advisor.

The College Union Board is a student organization which provides entertainment for the Pfeiffer community. The CUB brings comedians, singers, magicians, movies and bands to our campus for our enjoyment.



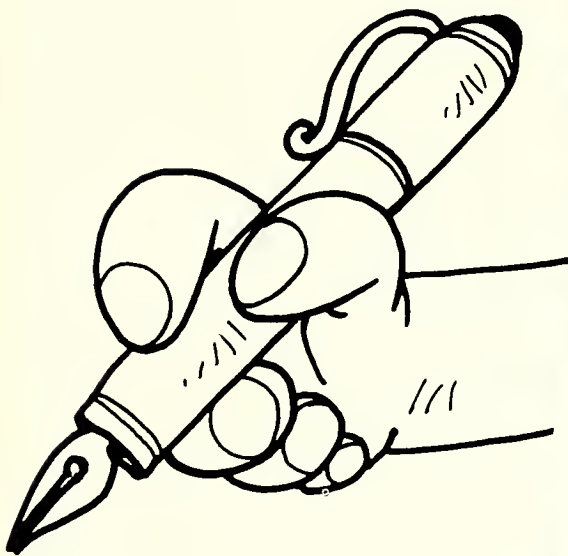




# PFEIFFER NEWS

The PFEIFFER NEWS is our campus newspaper written, edited and published by students. It reports campus and sometimes community news and contains editorials written by students or other interested persons. The paper took on a new look this year. Instead of being printed on newsprint, it was printed on white paper. This change gave the NEWS a fresher, cleaner appearance.

Row 1: John Furtado, Wes Myers, row 2: Celie Richardson (advisor), Tara Darnell, co-editors Susan Gwinner and Barbara Cotten, Cindy McCoy.





# Playmakers and Rho Alpha

Playmakers is an organization consisting of students who are interested in theatre. Members share their talents and gain experience in theatrical productions. This group is also responsible for decorating the administration building during Williamsburg Christmas.

Rho Alpha is the local chapter of the national dramatic honorary society. It encourages dramatic talent. Membership in the society is determined by dedication and excellence in theatrical productions.







# The Outing Club

The Outing Club, under the leadership of advisor Ann Tarlton, sponsors hikes and other outdoor activities. It also promotes environmental awareness and appreciation.



Row 1: Melissa Barnett, Paul Key, Ann Tarlton. Row 2: Joe Welch, Elizabeth Kaufman, Christine Hallet, Kristi Benchtold.



# HISTORY CLUB



Row 1: Vance Elliott, Becky Dorsett, Tom Bales, Ashley Goodnow, Bill Coram. Row 2: Juanita Kruse, Steve Wynn, Dawn Godfrey. Row 3: Eric Barefield, Mike Kirk, Cathy Dierlam, Eugene Earnhardt.





# PSYCHOLOGY CLUB



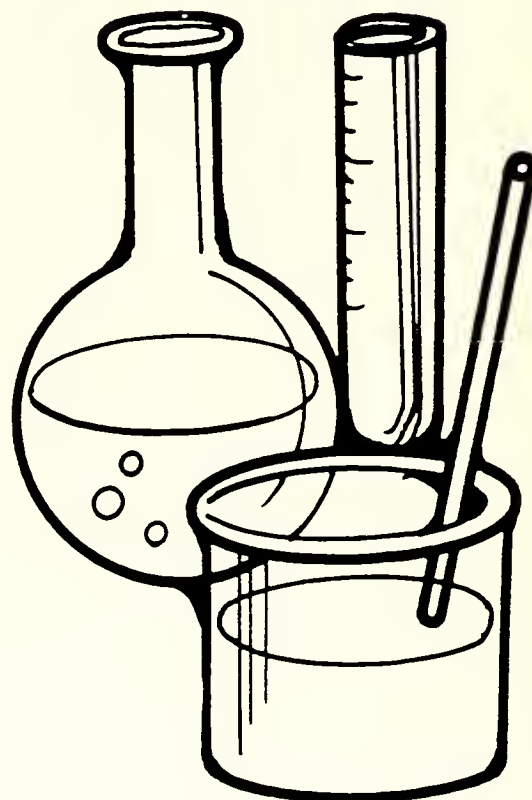
Row 1: Mike Owens, Glen Samalia, Dr. Betty Starr — advisor, Angie Permar, Thera Pass, Bill Bailey, Nicholas Boswell.  
Row 2: Dr. Edward Horne — advisor, Kyle Jones, Laura Eberl, Chris Muncie — president, Roy Byers — treasurer, Greg Caccia, Kevin Dalland, and Doug Nulty. Not pictured are Lisa Jackman — vice-president and Lori Hedrick — secretary.

# AMERICAN CHEMICAL SOCIETY



Row 1: Deatrice Stearns-Fraley, Dawn Forbes, Shari Davis, Lisa Hill. Row 2: Tory Dial, Thin La, Dr. Donald Jackman — advisor, Rod Thomas, Rodney Webb.

The ACS is a student controlled organization. Students develop a professional spirit, a pride in chemistry, and an awareness of the responsibilities and challenges of the modern chemist.

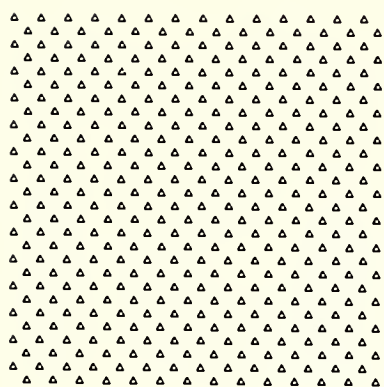




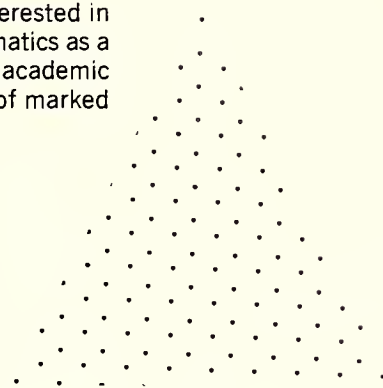
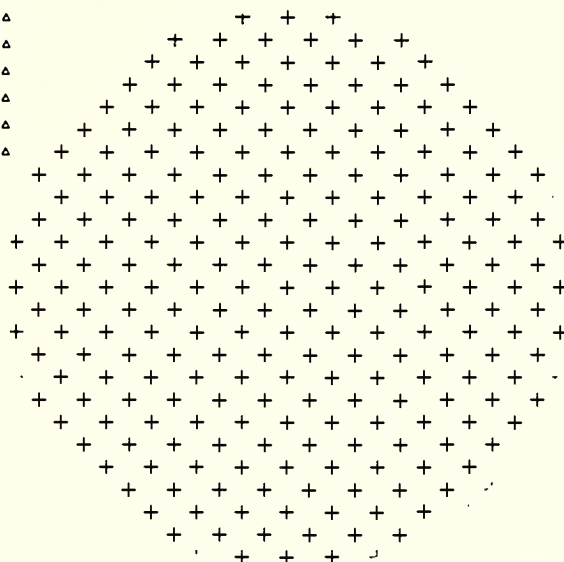
# MATH CLUB



Thin La, Delmas Petrea — advisor, Dr. King — advisor, Kevin Blackburn, Dawn Hedrick, Lisa Erickson.



The Math Club is open for membership to those interested in the field of mathematics or who are studying mathematics as a career option. The club meets monthly during the academic year to hear invited speakers and to plan activities of marked interest to the members.



# JUDICIAL BOARDS



MEN'S JUDICIAL BOARD. Seated: Dr. Edward Horne, Scott Champion — chief justice, Matt Robertson, Matt Curette. Standing: Hunter Fuller, Eric Barefield, Marcus Elam, Eric Diehl.

WOMEN'S JUDICIAL BOARD. (not pictured) Lori Hedrick — chief justice, Cathy Dierlam, Angela Danley, Anita Grady, Missy Chestnutt, Teresa Moore, Laurie Brown, Wendy Donnelly, Brenda Compton, Laura Craven.



# APPEALS BOARD



Seated: Nancy Henderson, Frank Armstrong, Eugenia Sturgies, Susan Brown. Standing: Bill Faggart, Tom Smith, Jay Hartley and Bo Bryant.

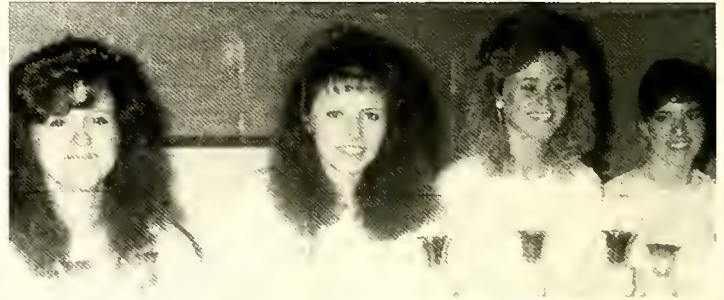


# MUSIC AT PFEIFFER

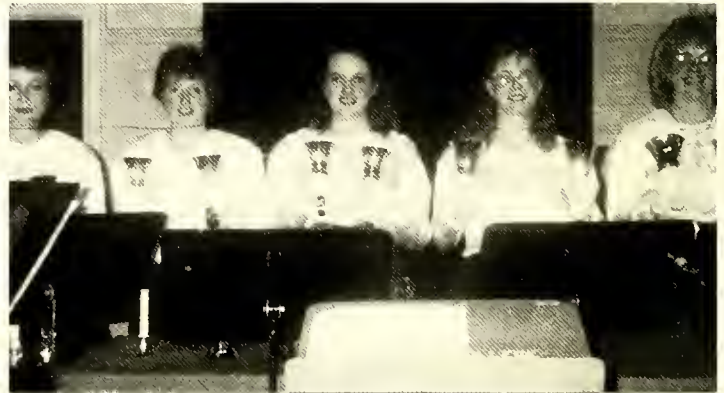
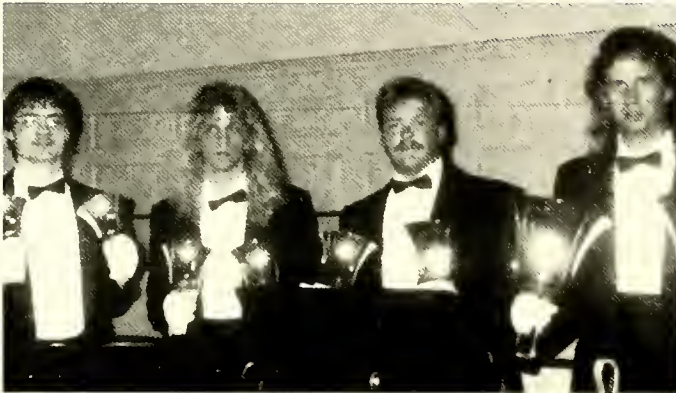
Pfeiffer College is known across the nation for its excellent music programs. Students may choose to join the Jazz Band, Handbell Choir, Chapel Choir, Symphonic Choir, or the Concert Choir.

Fran Hinson, Shannon Dunlap, Serena Johnson, LeeAnne Honeycutt and Tracey Martin.

Handbell members Patty Krause, Lucille Miller, Angela Danley, Barbara Cotten.



David Surratt, John Steed, Terry Hinson, Randy Brownlow.



Symphonic Choir members, Row 1: Laura Morrison, Erin Fanelly, Debbie Thomas, Amy Dagenhardt, Lucy Miller, Fran Hinson, Celie Richardson, Becky Dorsett. Row 2: Rachel Gamage, Deborah Gaddy, Sara Eaton, Janey Stoner, Rebecca Smeilus, Kristi Morton, Elaine Thornton. Row 3: Barbara Cotten, Angela Danley, Shannon Dunlap, LeeAnne Honeycutt, Teresa Moore. Row 4: Omed Negron-Perez, Randy Brownlow, Tyler Elam, Roger Davis, Buddy Jones, Tom Bales, Antonio Jordan, Keith Sampson, Lee Kelley, Bryan Chambers, John Valentine, David Surratt, David Madliger.







Chapel Choir Members are Row 1: Dr. Karl Wienand, Kay Honma, Rebecca Smeilus. Row 2: Krissy Morton, Diana Arm-eno, Janey Stoner. Row 3: Meredith Johnson, Carol Sossoman, Billy Olson. Row 4: Antonio Jordan, Keith Sampson.

Concert Choir Members are on Row 1: Mr. Martin Burke, Debbie Thomas, Sara Eatton, Barbar Cotton, Serea Johnson, Lucille Miller, Shannon Dunlap, Angela Danley, Teresa Moore. Row 2: Kim Dalton, Donna Pierce, Laura Morrison, Rachel Gammage, Erin Fanelly, Julie Overton, LeeAnn Honeycutt, Becky Dorsett. Row 3: Randy Brownlow, Tyler Elam, Omed Negron-Perez, Roger Davis, Antonio Jordan, Keith Sampson, Lee Kelley.





# PEOPLE

People. That's what Pfeiffer College is all about. People. There are over eight hundred of us who make up the student body. Faculty, administration and staff make the numbers go even higher. Who are we? Where are we from? Why are we here? Who knows?

We come together into a melting pot, some might say a saucepan, in Misenheimer, North Carolina. We bring our cultures, our customs, our traditions, our likes, our dislikes, our hopes, our fears and our dreams in search of our futures. Will we, the special people who have chosen Pfeiffer, find them?







# PFEIFFER'S PFIRST COUPLE

## Zane and Joan Eargle



Dr. and Mrs. Eargle go over plans for upcoming events on campus.

Dr. Eargle, while in his office, exemplifies Pfeiffer's "Open Door Tradition." He always greets students with a smile and knows most by name. He enjoys chatting with students about their classes or happenings around campus or about life in general. He also enjoys telling the stories behind the various paperweights which are found through his office.







Connie Alley  
Education



Sharon Bard  
Auxiliary Services



John Branin  
Admissions Counselor



Melva Burke  
Education



Anne Byrd  
Sociology



Gerald Carpenter  
Vice-Pres. for Advancement



Betty Crook  
Director of Special Events



Jahala Dailey  
Advancement



Steve Dial  
Biology





George Dolch  
Christian Education



Paul Fowler  
Student Activities



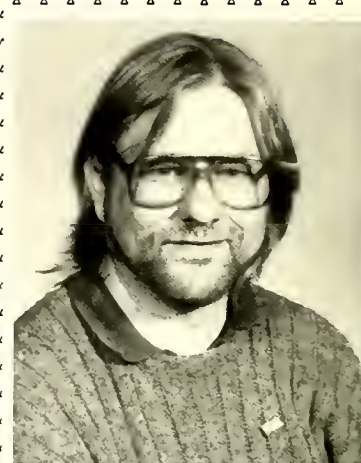
Amy Frye  
Admissions Counselor



Vera Gebhardt  
Alumni Director



Jeanette Goodman  
Computer Center



John Goodnow  
Theatre Director



Brenda Honeycutt  
Computer Center



Steve Iglehart  
Romance Languages



Donald Jackman  
Chemistry





Eric Johnson  
Campus Physician



Juanita Kruse  
History



Elsie Lowder  
Admissions Director



Horace Maness  
Religion



Ruby Mason  
Financial Aid



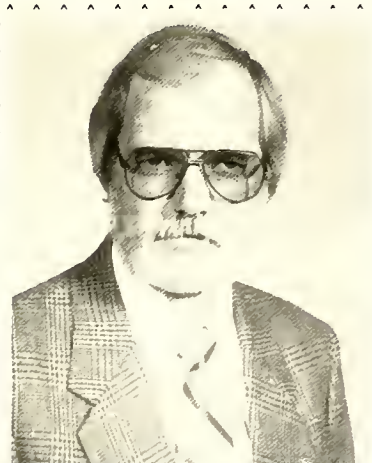
Vickie Miller  
Financial Aid



Gale Misenheimer  
President's Office



Ruth Moose  
Reference Librarian



James Morton  
Business





Thesesa Newman  
Student Affairs



Connie Peacock  
Word Processing



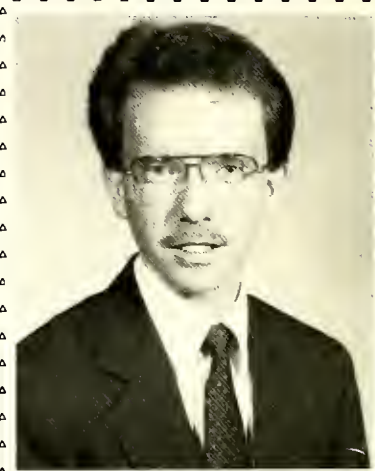
Jay Pendleton  
College Chaplain



Philip Pharr  
Religion



Sheila Prevatte  
Health Services



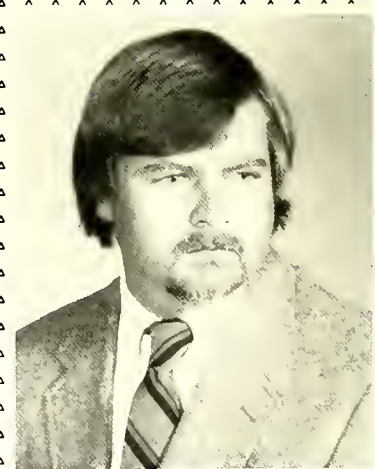
Richard Redman  
Financial Aid



Ophelia Ridenhour  
Librarian



Margaret Sides  
English



Thomas Smith  
Sports Medicine





Harold Stephenson  
Physics



James Sullivan  
CAP Center Director



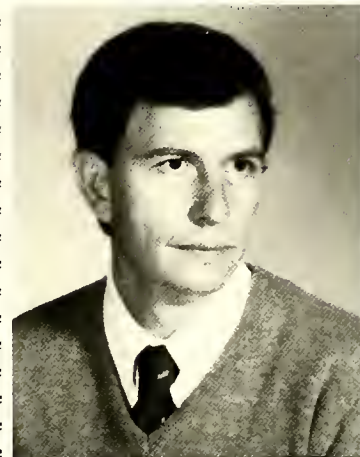
Ann Tarlton  
Public Relations



Sheila Thompson  
Accounts Payable



Sandra Washburn  
Mathematics



Thomas Westcott  
Dean of Student Affairs



Dirk Wilmoth  
Vice-Pres. for Financial Affairs



Norman Wilson  
Librarian



Yaemsiri King  
Mathematics

# FRESHMEN



The girls of Rowe Second Main prepare to attend the first social event of the year, the President's Reception for new students.

The reception was well attended and enjoyed by all. Those students pictured here are Shannon Goodnight, Meredith Johnson, Marc Calderone, and Tom Calbough.







John Ahrens



Keith Anderson



Rikki Ashley



William Bailey



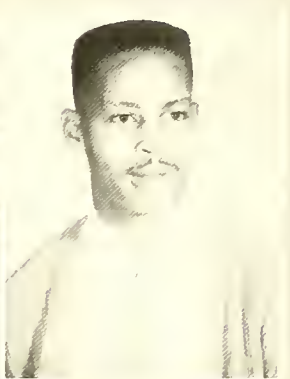
Rob Ballard



Belinda Belk



Cricket Faulkner and Jeff Bunting enjoy parading through the front side of campus.



Frederick Bennett



Lisa Blalock



Nick Boswell



Deborah Bowen



Ty Brewer



Jeff Bunting

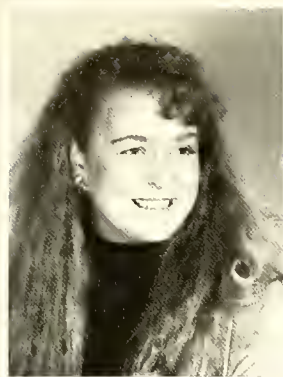


Scott Cain



Camie Carpenter





Paula Carpenter



Tamara Carpenter



Eric Crews



Graham Cassidy



Shannon Culler



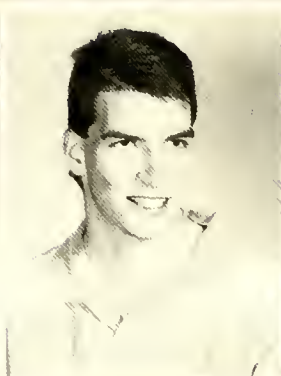
Kevin Dalland



Roger Davis



Pattie Davis



Rich Dorsey



Gregory Dowling



Christine Dyvig



Brian Eanes



Stephanie Efird



Julie is "STUMPed" on history!



Edward Eggleston



Judd Embree



Jenny Faina





Cricket Faulkner



Satoshi Fiujita



Alonna Furr



Debra Gaddy



Lisa Goodwin



Jeannie Hackett



John Valentine and Julie Hinson, WHY WON'T YOU WAVE???



Amy Hahn



Moya Hawkins



Dawn Hedrick



Teresa Henderson



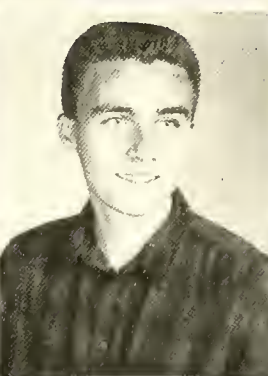
Lori Higgins



David Hinson



Fumiko Honma



David Hopkins



Cindy Hopper

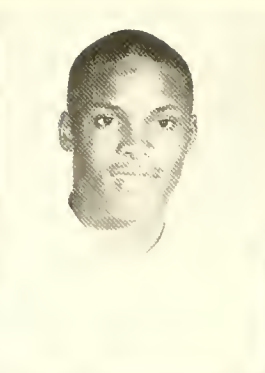


Susan Hubbard





Leigh Hudspeth



Shawn Ijames



Eddie Ivey



Julian Jackson



Jeff Jones



Kathleen Jones



Antonio Jordan



Shannon Jordan



Jessica Kearns



Deborah Kimball



Rich Kunopka



Tammy Lefler



Jen Faller and Tricia Schofield "like the cars that go boom!"



Dena Lemons



Steve Lewis



Rachelle Litzenburg

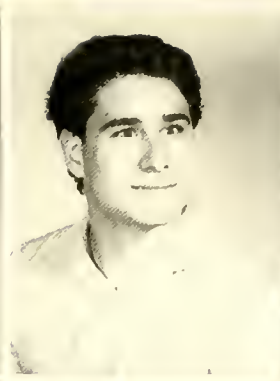


Eric Loftin





Rachel Majkut



Michael Mallimo



Kirk Marino



Shannon May



Angela Miller



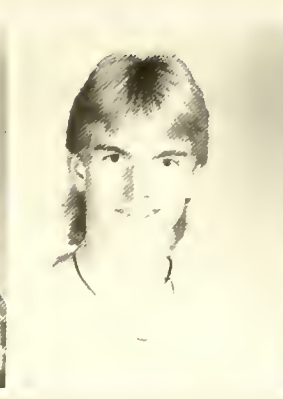
Dwayne Millner



Avery Moore



Emiko Moriwaki



Scott Morton



Sandra Moyer



Butch Mullis



Just taking a break.



Dawn McGahee



Michelle Newnam



Doug Nulty



Aaron Obermyer



Thera Pass



Anjanette Permar



Jason Petrea



Charlotte Downer



Travis Rabineau



Christopher Ray



Derek Remon



Katie Reilly



Franklin Reynolds



David Rigby



Keith Sampson



Shannon Sandahl



Tricia Schofield



Darrick Scott



Aren't we CUTE? (Matt Murphy, Tom Westcott, Tom Claybough)



Chris Sharik



Jamie Simpson



Chris Smith





Derek Smith



Townsend Smith



Alita Snider



Shari Spriggs



Jeff Stribling



Joshua Stringer



John Summey



Ramelle Swann



Eleanor Thide



Lori Timm



Todd Turner



John Valentine



Jimmy Walker



Joseph Welch



Patrick White



Alicia Wilkinson



Jimmy Williams



Angela Witham



Shannon White tries to cool her room with a window fan (unsuccessfully).





Susie Abulhawa



Lorie Allred



Lisa Anderson



Renee Anthony



Cynthia Billings



Kevin Bolin



Jody Brooks



Deana Brown



Laurie Brown



Pam Carter

*Sophomores*





Susan Cole



Mickey Cooke



Laura Craven



Lisa Custer



Eric Diehl



Bryan Easter



Kristen Eddy



Erin Flowers



Tricia Fuerneisen



Sandra George

Renee Anthony and Rann Paynter are riding high as sophomore class representatives during the Homecoming Parade.





Beth Gore



Julie Hatley



Davina Hess



Lea Anne Honeycutt



Donna Hurley



Yayoi Ichikawa



Lane Jarrell



Tree Johnson



Christi Joyner



Melissa Laser



Todd Rich and Jean Harris are going for that 4.0 GPA.

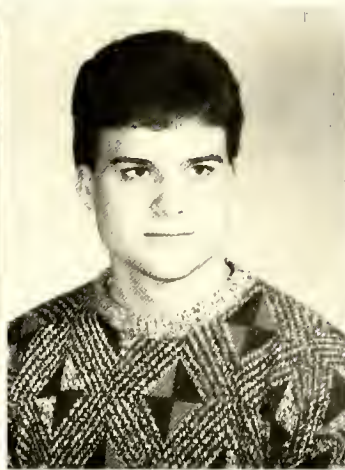




Carla Lowder



Chad McKinney



Matt McKinney



Marc Michaud



Jennifer Mitchell



Craig Mutch



Andrea Nachtman



Millicent Nolan



Ward O'Doherty



Sherry Olsen

Caddyshack (Ward O'Doherty) takes time out after a rough day.





Glenn Parsley struts his stuff at the Pfeiffer Lip Sync Contest to music by Wham.



Glenn Parsley



Rann Paynter



Jill Pridemore



Sonya Rabon



Richard Reid



Christine Rodocker



Stacy Shahan



Denise Sikes



Beth Smith



James Steed





Lyle Taylor



Dawn Tevepaugh



Deborah Thomas



Lou Ann Thomas



Julie Varnadore



Alexander Vlahos



Winnie Wade



Necole Watts



Kim Westcott



Barry Whitaker, Jr.



Kelli Williams



Marsha Williams

# Juniors



Steve Ayers



Terri Aylor



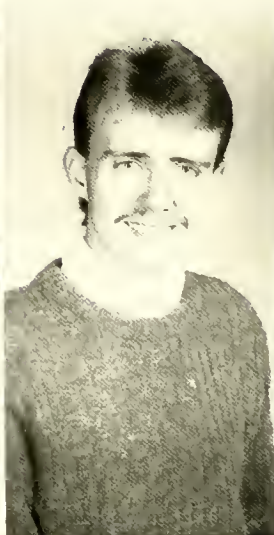
Tom Bales



Eric Barefield



Barbara Becker



Kevin Blackburn



Ann Blackberry



Lisa Blackwelder



Bo Bryant



Lee Bunting



Anita Burns



Bob Carpenter





Kelley Carter



Bryan Chambers



Scott Clontz



Craig Coble



Barbara Cotten



Steve Cumming



Matt Curette



Angela Danley



Carol Davis



Torin Dial



Cathy Dierlam



Wendy Donnelly



Rebecca Dorsett



Barry Ellison



Shannon Dunlap



Rhonda Earnhardt



Marcus Elam



Vance Elliott



Josh Embree



Lori Evans



Erin Fanelly



Rachel Gamage



Frank George



Dawn Godfrey



Susan Gwinner



Marie Hefler



Lisa Hill



Satoko Hirose



Brian Honeycutt



Rhonda Howell





Danny Hunt



Lisa Jackman



Samantha Jarrell



Hope Johnson



Wayne Jones



Lee Kelley



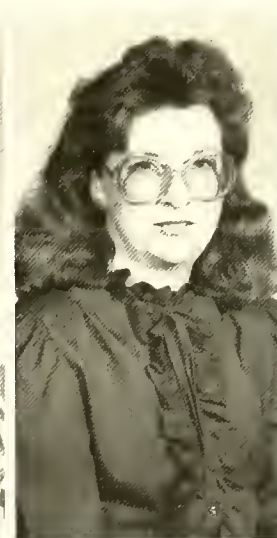
Dan Kimray



Tod Kinlaw



Lisa Kluttz



Lynn Lamb



Linda Lambert



George Loft



Marsha Long



Melissa Magann



Lori Mallalieu

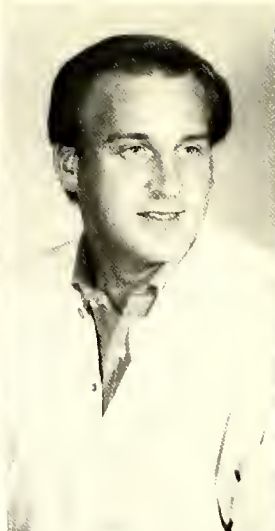




Christy McClure



Laura Morrison



John Mullis



Chris Muncie



Lillian Owens



Donna Pierce



Jeffrey Pinder



Anita Price



Todd Rabineau



Jody Reid



Regina Rogers



Yolanda Rucker



Kelly Seifert



Paige Seme



Dani Serracin





Tonya Springer



Kim Wain



Angela Watkins



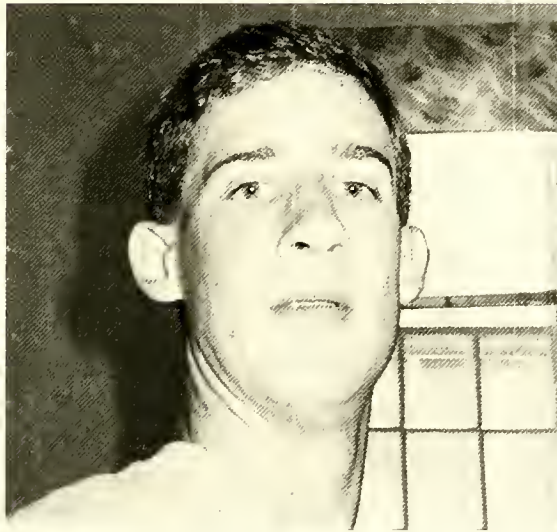
Amy Jo Young



Victor Young



Stephen Zuah



Don't ever leave a camera unattended because Brian "PFISH" Honeycutt is bound to find it!

Erin Fanelly lights a candle for ?!\*?\*

Antonio Jordan, Yolanda Rucker, Eugenia Sturgies and Lynn Blackshear dancing their way to the student center.



# Seniors



James Alexander  
Business Administration



Laura Anderson  
Psychology



Kathy Archer  
Early Childhood Education



Frank Armstrong  
Sports Medicine



Teresa Baptist  
Biology



Angela Beachum  
Intermediate Education





Kelley Bigger  
Early Childhood Education



Lynn Blackshear  
Early Childhood Education



Paula Brown  
Early Childhood Education



Susan Brown  
Computer Information Systems  
Business Administration



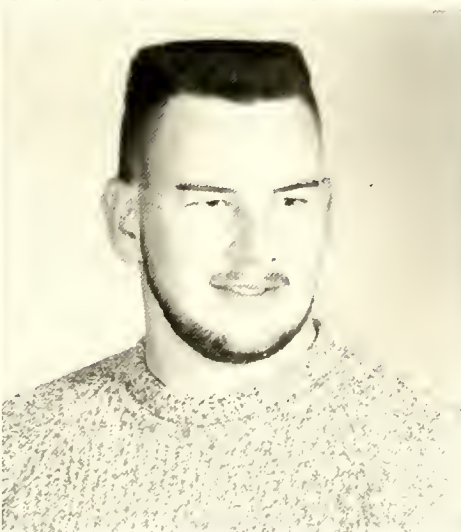
Karlene Buhr  
Business Administration  
Accounting



Marcell Buie  
Computer Information Systems



Roy Byers  
Psychology

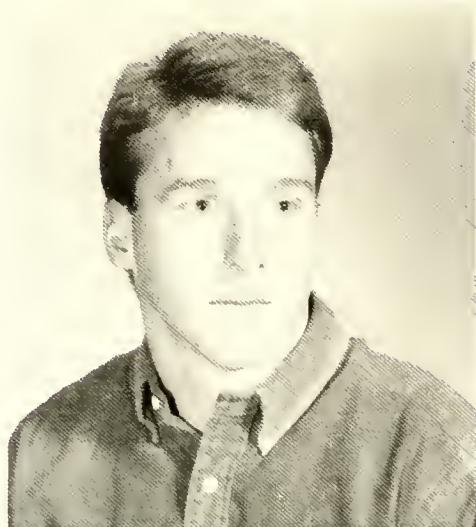


Robert Carlton  
Sports Medicine

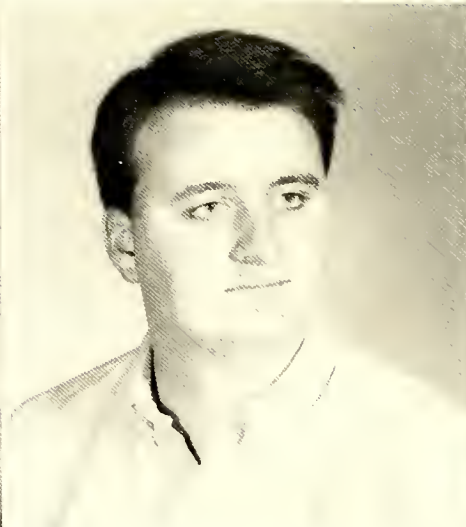


Carrol Carpenter  
Middle Grade Education





Steve Carpenter  
Accounting



Scott Champion  
Economics



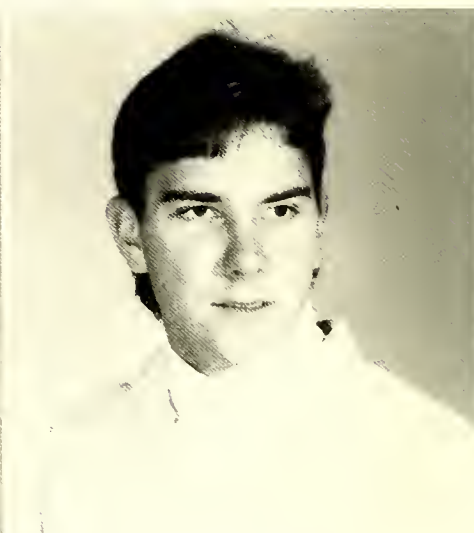
Kelly Clatterbuck  
Physical Education



Brenda Compton  
Computer Information Systems



Gayle Conard  
Criminal Justice  
Sociology



Mark Cordeiro  
Sports Management



Faye Crump  
Intermediate Education



Greta Crump  
History



Amy Dagenhart  
Music Education





Kimberly Dalton  
Music Education



Tara Dial  
Biology  
Mathematics



Lisa Eriksen  
Mathematics



Stephen Gantt  
Religion



Ashley Goodnough  
History



Anita Grady  
Early Childhood Education



Bruce Gwyn  
Religion



Deborah Haslach  
Special Education



Frances Hinson  
Music



Vonda Jenkins  
Criminal Justice  
Sociology



Bill Johnston  
Computer Information Systems



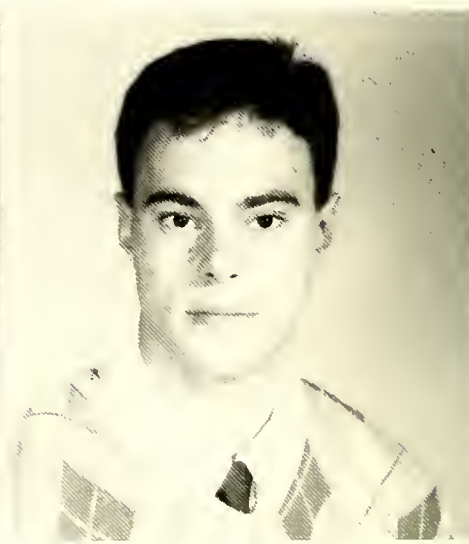
Kim Jones  
Sports Medicine



Barbara Kendall  
Computer Information Systems



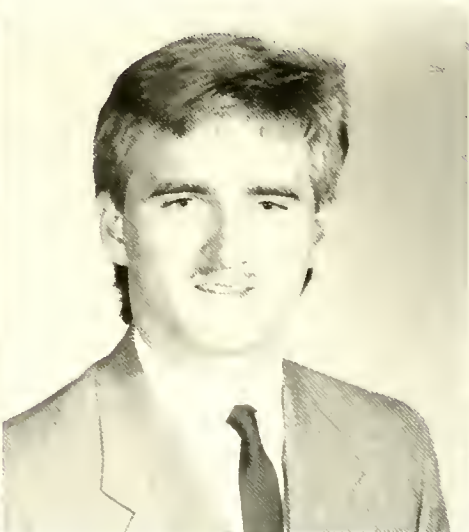
Timothy Kimble  
English Writing



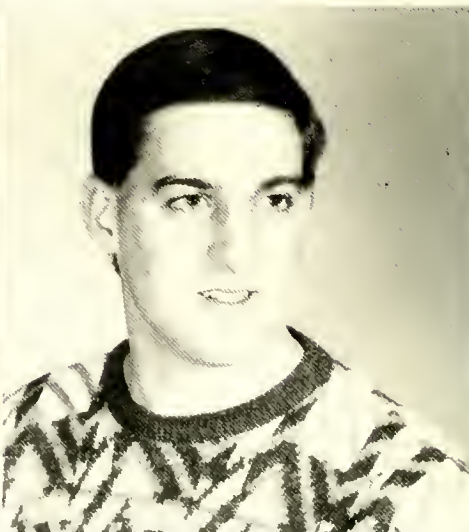
Tim Koves  
Chemistry



Thinh Duc La  
Chemistry



Doug Leonard  
Economics



Bill Lindorfer  
Computer Information Systems





Lori Little  
Early Childhood Education



Lisa Love  
Business Administration



Erin McHugh  
Sociology



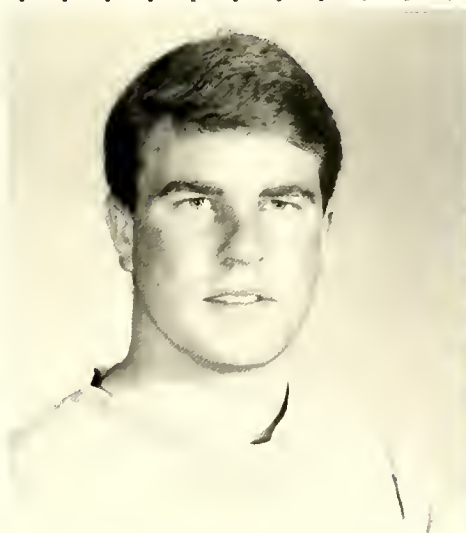
Sean McLean  
Engineering Studies  
Mathematics



Tim McKnight  
Criminal Justice  
Sociology



Gaetane Michaud  
Biology



Corey Misenheimer  
Business Administration



Teresa Moore  
Music



Lucy Nelson  
Early Childhood Education



Jennifer Noblitt  
Business Administration



Billy Olsen  
Christian Education



Julie Overton  
Early Childhood Education



Troy Pate  
Business Administration



Julie Poole  
English Literature



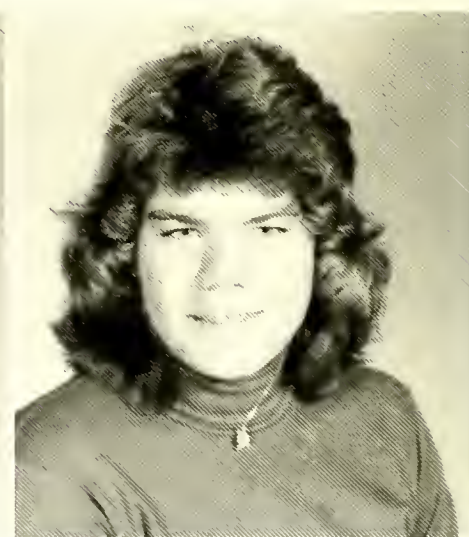
Carmel Puglisi  
Sports Medicine



Matt Robertson  
Sports Management



Mark Shiflet  
Sports Management



Mary Shriner  
Special Education





Trina Skidmore  
Early Childhood Education



Lucinda Smith  
Early Childhood Education



Carol Sossamon  
Education



Jency Speight  
Early Childhood Education



Leigh Stuart  
Sports Medicine



Andrea Stoker  
Business Administration



Michael Struminger  
Business Administration



Cissy Thompson  
Psychology  
Business Administration



Michelle Vaughan  
Sports Management





Robin Wallace  
Early Childhood Education



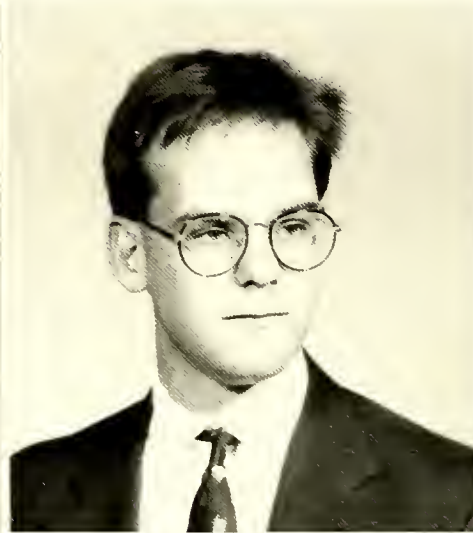
Kecia West  
History



Paul Whitley  
Criminal Justice



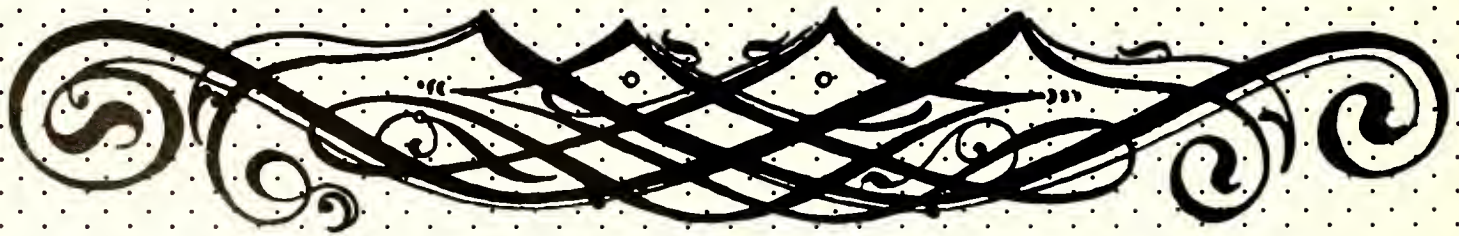
Paula Willis  
Physical Education



Dave Woodard  
Business Administration  
Economics



Steve Wynn  
History





# SENIOR SUPERLATIVES



**MOST ATHLETIC**  
Mark Shiflet and Eugenia Sturges



**BIGGEST HEARTBREAKER**  
Mark Cordiero and Michelle Vaughan



**WITTIEST**  
Carmel Puglisi and Chuck Sharpe





**MOST TALENTED**  
David Madlinger and Teresa Moore



**BEST LOOKING**  
Mark Shiflet and Erin McHugh



**Friendliest**  
Brenda Compton and Hunter Fuller





**MOST LIKELY TO SUCCEED**

Carmel Puglisi and Dave Woodard

Not Pictured

**BEST ALL AROUND**

James Johnson and Martha Trotter

**BEST DRESSED**

James Johnson and Kelly Clatterbuck

**MOST TALKATIVE**

Gaetane Michaud and Scott Champion

# SENIOR DIRECTORY

**James Robert Alexander.** Trustee Scholarship 4; Dean's List 3, 4.

**Frank Chester Armstrong.** Student-Athlete Honor Roll, 4; Athletic Scholarship, 2, 3, 4; Father Carl Del Guidice Scholarship, 4; Baseball, 2, 3, 4; Honor Board, 3, 4; Resident Assistant, 3; Resident Director, 4; Outstanding College Students of America, 4.

**Teresa Baptist.** RLC, 1; WSPC advertising manager, 4.

**Angela Carpenter Beachum.** United Methodist Bicentennial Scholarship, 1, 3; Presidential Scholarship, 1; JB Cornelius Scholarship, 4; Board of Appeals, 2.

**Susan Ellen Brown.** Math Club, 4; Computer Club, 4; Outing Club, 4; Senate, 4; Honor Board, 4; Phonathon, 4.

**Karlene Kimberly Buhr.** Trustee Scholarship, 2, 3; CHIMES, 3; Intramurals, 3, 4; PFEIFFER NEWS, 2; Phonathon, 1; Homecoming Court, 3; Aprilfest Court, 2.

**Marcell Hogan Buie.** Trustee Scholarship, 1, 2, 3, 4; Phi Delta Sigma, 4.

**Gregory Caccia.** MVP-Tennis, 4; Baseball, 4.

**James Robert Carlton.** Jr. Athletic Trainer Scholarship, 3, 4; Athletic Trainer, 3, 4; AMS, 4; Communications Council, 4; WSPC, 4; Dorm President, 4; Intramurals, 3, 4.

**Carrol Francisa Carpenter.** Trustee Scholarship, 2, 3, 4; NC Prospective Teachers Scholarship, 3, 4; State Employee Scholarship, 3; NCAE-Mary Morrow Scholarship, 4; Dean's List, 3, 4; Junior Marshal, 3.

**Joseph Scott Champion.** Hillard and Dwight Harrelson Scholarship, 3; Trustee Scholarship, 1, 2, 3, 4; Golf, 3; Senator, 3; SGA Executive coordinator, 4; Judicial Board, 2, 3; Chief justice, 4; Band, 1, 2; Senate Affairs Comm. Chr., 3.

**Kelly Lynne Clatterbuck.** Field Hockey Scholarship, 1, 2, 3, 4; senate, 4.

**Brenda Faye Compton.** Lettie Pate Whitehead Scholarship, 1, 2, 3, 4; Presidential Award, 1; Math Club, 1, 2, 3, 4; RLC treasurer, 4; Admissions Ambassador, 3; Alcohol Awareness Committee, 4.

**Gayle E. Conard.** Rho Alpha, 4; College Union Board, 1, 2; Admissions Assistant, 3; Senior Class Secretary, 4; Board of Appeals, 4; Senate, 3.

**Mark Cordeiro.** Tennis Athletic Scholarship, 1, 2; AMS Vice-President, 4; International Students Organization, 1, 2, 3, 4.

**Greta Lynn Crump.** PC Endowed Scholarship, 3; Outstanding College Students of America, 3, 4; Intramurals, 1, 2, 3, 4; House Council, 1, 2; AWS Secretary, 3; AWS President, 4; Homecoming Chairperson, 3; Student Life Committee, 4; Orientation Committee, 2, 3; History Club, 2, 3, 4.

**Tara Lee Dial.** Dean's List, 4; PFEIFFER NEWS, 4.

**Lisa Elaine Eriksen.** Trustee Scholarship, 2; JB Cornelius Scholarship, 4; Engineering Club, 1; Engineering Club President, 2; Math Club, 1, 2, 3, 4; Orientation Committee, 2; CUB, 2; Sophomore Class Secretary, 2; AWS, 4.

**Angela Cotton Forrest.** Trustee Scholarship, 3, 4; Junior Marshal, 3; JB Cornelius Scholarship, 4; Symphonic Choir, 2; Outstanding College Students of America, 4; National Dean's List, 4.

**Stephen Gary Gantt.** S. Ray Lowder Scholarship, 3.

**Anita Myers Grady.** Intramurals, 3; SNEA, 2, 3, 4; Publicity, 3; FCA, 3; Homecoming Court, 1; Aprilfest Court, 1.



**Kimberly Michelle Jones.** Tennis Scholarship, 1, 2, 3, 4; Basketball Scholarship, 4; Trustee Scholarship, 1, 2, 3, 4; Tennis MVP, 1; Dean's List, 1, 2, 3, 4; Junior Marshall, 3; Willie and Elizabeth Walser Scholarship, 3; Basketball, 1, 2, 3, 4; Tennis, 1, 2, 3, 4; AWS, 2, 4; Phi Delta Sigma, 4; Who's Who/ Order of the Sundail, 3; Dorm President, 2, 4; Volvo/Scholar Athlete Award, 3.

**Timothy Paul Kimble.** AJ Fletcher Scholarship, 1, 2; Trustee's Scholarship, 2, 3, 4; Dean's List, 4; WSPC General Manager, 4; SGA, 3, 4; AMS President, 4; PFEIFFER NEWS, 2, 3; Rho Alpha, 4; Jazz Band, 1, 2, 3, 4.

**Timothy Robert Koves.** Dean's List, 1, 2, 3, 4; Johnston Foundation Scholarship, 1, 2, 3, 4; Admissions Assistant, 2, 3, 4; Supplemental Instructor for Dept. of Chemistry, 3, 4; Cross Country, 1, 2, 3, 4.

**Thin Duc La.** Trustee Scholarship, 1, 2, 3, 4; Marshal, 3; James M. Johnston Scholarship, 2, 3, 4; Dean's List, 1, 2, 3, 4; ACS President, 4; Math Club, President, 3.

**Warren Douglas Leonard.** Trustee Scholarship, 4; Charles A. Reap Scholarship, 4; Intramurals, 2, 3, 4; Phonathon; RLC, 4.

**William Joseph Lindoerfer.** Baseball Scholarship, 4; Hicks Academic Scholarship, 4; Baseball, 1, 2, 3, 4, Dorm President, 1; AMS, 1; Resident Director, 3, 4.

**Lisa Marie Love.** Playmakers, 1, 2, 3, 4; Rho Alpha, 4; Concert Choir, 3, 4.

**Sean Michael McLean.** President's Award, 1; Trustee Scholarship, 2; Intramurals, 1, 4; Lacrosse, 1; Engineering Club, 1, 2; Catholic Campus Ministry, 1, 2, 3, 4; CHIMES, 4; PGE, 1, 2, 3, 4.

**Gaetane Celine Michaud.** President's Assistantship, 2; Smith Family Scholarship, 3, 4; CUB, 3; ACS, 2, 3, 4; Executive Coordinator (SGA), 3; Senator, 4; Resident Assistant, 3, 4.

**Teresa Annette Moore.** AJ Fletcher Scholarship, 4; William Lewis Mem. Scholarship, 4; Lettie Pate Whitehead Scholarship, 4; Betty Parker Mem. Scholarship, 4; Black Student Alliance president, 4; Judicial board, 4; Symphonic Choir, 4; Concert Choir, 3; Handbell Choir, 1; Vice-President House Council, 3; Senior Class Vice-President, 4; Chapel Choir, 4; Homecoming Representative, 2, 4.

**Julie Ann Overton.** President's Assistantship Scholarship, 1; President SNEA, 4; SNEA Secretary, 3; Symphonic Choir, 4; Concert Choir, 4; Honor Board, 3 — Secretary, 4 — Chief Justice; Resident assistant, 3; Resident Director, 4; Aprilfest Court, 2; Homecoming Court, 4.

**Troy Wendell Pate, III.** Dean's List, 3; Intramurals, 3, 4; Resident Assistant, 4.

**Carmel Maria Puglisi.** MVP-Athletic Training, 3; Athletic Training Scholarship, 1, 2, 3, 4; Trustee Scholarship, 1, 2, 3, 4; JB Cornelius Scholarship, 2, 3, 4; Athletic Training, 1, 2, 3, 4; CUB, 1, 2, 3, 4; AWS Vice-President, 3, 4; CCM, 1, Orientation, 2, 3, 4; SGA Election Chairperson, 2, 3; Class Treasurer, 3; Class President, 4; Dean's List, 1, 3, 4; Who's Who/Order of the Sundial, 3, 4; Athletic Honor Roll, 2, 3, 4.

**Mary Elizabeth Shriner.** Swimming, 1, 4; SNEA, 3, 4.

**Jency Miller Speight.** Dean's List, 4; Outstanding College Students of America, 4; National Dean's List, 4; SNEA, 4; CHIMES, 4.

**Andrea Leigh Stoker.** Dean's List, 4; Ben C. Russell Memorial Scholarship, 1, 2, 3, 4; Fieldcrest/Cannon Scholarship, 1, 2, 3, 4; CHIMES, 3, 4.

**Virginia Ann Thompson.** Class treasurer, 1; Psychology Club, 1, 3; Class Secretary, 3; Senate, 3, 4; AWS, 4; House Council, 4; CUB, 3, 4; Music Scholarship, 1; Homecoming Committee, 2, 4; CHIMES, 1, 2, 3.

**Jack Donald Wallace, Jr.** National Methodist Student Scholarship, 1, 2, 3, 4; Kappa Chi, 1, 2, 3, 4; FCA, 1, 2; UMSM, 2.

**Paul Luther Whitley.** Dean's List, 3.

**Paula Evette Willis.** PFEIFFER NEWS, 1; Trustee Scholarship, 3, 4; Dean's List, 4; Field Hockey, 1; Intramurals, 1, 2, 3, 4.

**Michael David Woodard.** Trustee Scholarship, 1, 2, 3, 4; Charles L. Little Scholarship, 3, 4; W. Bryan Moore Scholarship, 2, 3, 4; AMS Treasurer, 4; Senator, 4; SGA Treasurer, 4; Dean's List Banquet Committee Chairman, 4.

#### SENIORS NOT PICTURED

Dan Morris Baker  
John Alan Baker  
Victoria Lee Balfrey  
Grover W. Barnes  
Jeffrey Clyde Brinkley  
Joy Yvette Burris  
Gregory William Caccia  
Charlene Dee Carlton  
J. Lynn Coble  
Douglas Erwin Cody  
Doris Holt Coleman  
Amy Elizabeth Culp  
Leslie Ann Culp  
Jeffrey Richard Davis  
Marty Bowles Dennis  
Cheryl Mount Dorsey  
Robert Stanley Enloe, Jr.  
Lisa Anne Ewers  
Anne Richardson Faulkenberry  
Kenneth Douglas Faulkner  
Myra Jeannine Fisher  
Angela Cotton Forrest  
Catherine Ritch Francis  
W. Hunter Fuller  
David Alan Griffin  
Jeffrey Edward Griffin  
Bruce Lawson Gwyn  
Barbara Gentry Hardister  
Lori Ellen Hedrick  
Brenda Kay Hepler

Rhonda Morris Howell  
Yayoi Ichikawa  
Elisabeth Diane Jackman  
Judith J. Johnson  
James Sterling Johnson  
Colleen Conroy Jones  
Ruth E. Julian  
Christopher Scott Kern  
Robert O'Neal King  
Michael Moore Kirk  
Paul Brian Kolody  
Lynn Hardister Lamb  
Mark David Lassiter  
Kevin Joseph Long  
Karen Weaver Lowder  
Kevin Lamone Lyons  
David Michael Mdaliger  
Paula Renee Morgan  
Demmi Jo Murphy  
Monica Little Nance  
Michael T. Owens  
Lisa Kimberly Park  
Maria Shaw Payne  
Joel Petlick  
Reginald Holmes Pharr  
Jeffrey Earl Phillips  
Melissa Sue Price  
Jody Lynn Richardson  
Cynthia Casey Robertson  
Charles Harvey Sharpe  
Catrina Leigh Small-Nash  
Mary Summers Smith  
Timothy Clayton Smith  
Carol Rogers Sossamon  
Sherri Ann Spears  
Janice Brown Stokes  
Eugenia Rochelle Sturgies  
Eva Marie McIntyre Suggs  
Jackie Brondell Trotter  
Martha Berndt Trotter  
Jack Donald Wallace, Jr.  
JoAllen Weaver  
Rodney Wilburn Webb  
David Marc Weinberg  
Tamara Joan Willoughby  
Patricia Ann Wyar  
W. Richard Wyatt





Lori Little flashes that terrific smile!

Carmel Puglisi, president of the Class of 1990, makes herself available whenever needed. Here she is helping to decorate Washington Dorm.



Tersa Moore sang her heart out at the annual talent show — and won second place.

Greta Crump, Pfish Honeycutt, Chuck Sharpe, Tim Koves and Mike Kirk were very willing to participate in this year's alcohol awareness program in which the effects of alcohol on motor reflexes was measured.







Senior Brenda Compton lends advice to Rann Paynter who is but a sophomore.



JoAllen Weaver steadies herself while attaching a red velvet bow to the window ornamentation of the Pfeiffer College Art Gallery.







# Dorm Life



*A major aspect of campus life is the time spent in the dorms. It seems a bit scary at first, moving in with total strangers, yet by second semester many hall-mates are the best of friends. Many hours are spent in the dorm studying, partying, watching television, and of course sleeping. The time spent in the dorms helps in making Pfeiffer a very special place.*

# Merner



Kim Williams  
 Heather Harkey  
 Yolanda Rucker  
 Janet Fowler  
 Eugenia Sturgies  
 Rachel Gamage  
 Sandy Hodor  
 Lynn Blackshear  
 Julie Overton  
 Marsha Williams  
 Vonda Jenkins  
 Lorie Allred  
 Christie Joyner  
 Melissa Magann  
 Myra Fisher  
 Ashley Goodnough  
 Anita Price  
 Millicent Nolan  
 Teresa Moore  
 Stacy Shanan  
 Missy Chestnutt

Kelly Seifert  
 Barbara Becker  
 Brenda Compton  
 Lori Evans  
 Debra Gaddy  
 Jean Harris  
 Teresa Wagner  
 Shannon Dunlap  
 Kim Dalton  
 Amy Dagenhart  
 Jennifer Mitchell  
 Tracy Martin  
 Dani Serracin  
 Missy Badgett  
 Dawn Godfrey  
 Lori Little  
 Sherri Spears  
 Yayoi Ichikawa  
 Laurie Brown  
 Kay Honma  
 Sandra George  
 Anita Grady  
 Julie Hatley  
 Paula Morgan  
 Nicole Watts  
 Serena Johnson  
 Susan Albulhawa  
 Satoko Hirosawa  
 Vicki Allen  
 Lea Anne Honeycutt  
 Rhonda Earnhardt  
 Emiko Moriwaki  
 Jill Pridemore  
 Kelli Williams  
 Michelle Miller  
 Jenny Berryman  
 Gayle Conard  
 Linda Gibson  
 Renee Sears  
 Diana Armeno  
 Jessica Hinson  
 Lucille Miller  
 Sarah Eaton  
 Christine Prine  
 Laura Craven



Tamara Carpenter  
 Ramelle Swann  
 Kimberly Westcott  
 Rikki Ashley  
 Alicia Wilkinson  
 Lisa Goodwin  
 Shannon Jordan  
 Deborah Bowen  
 Anjanette Pernar  
 Robin Wallace  
 Leigh Hudspeth  
 Jenny Faina  
 Angela Witham  
 Christine Dyrig  
 Eleanore Thide  
 Deborah Kimball  
 Lisa Custer  
 Melissa Barnett  
 Christine Hallett  
 Kristin Bechtold  
 Elizabeth Kaufman  
 Lynn Hautau  
 Vicky Odom  
 Amy Davis  
 Shannon White  
 Shannon Goodnight  
 Meredith Johnson  
 Patricia Davis  
 Dana Lemons  
 Cami Carpenter  
 Sharon Davis  
 Belinda Belk  
 Paula Carpenter  
 Dawn McGahee  
 Janie Stoner  
 Rachelle Litzenburg  
 Angela Miller  
 Erin Flowers  
 Lori Higgins  
 Laura Clay  
 Lori Timm  
 Dawn Hedrick  
 Moya Hawkins  
 Shari Spriggs  
 Janice Jackson  
 Robin Lynn  
 Michelle Page  
 Shannon Sandahl  
 Sherri Little  
 Kelly Specht  
 Shannon Culler  
 Winifred Wade  
 Andrea Nachtman  
 Susan Hubbard  
 Jessica Kearns  
 Shannon May  
 Kathleen Reilly  
 Rebecca Smeilus  
 Julie Stump  
 Jennifer Faller

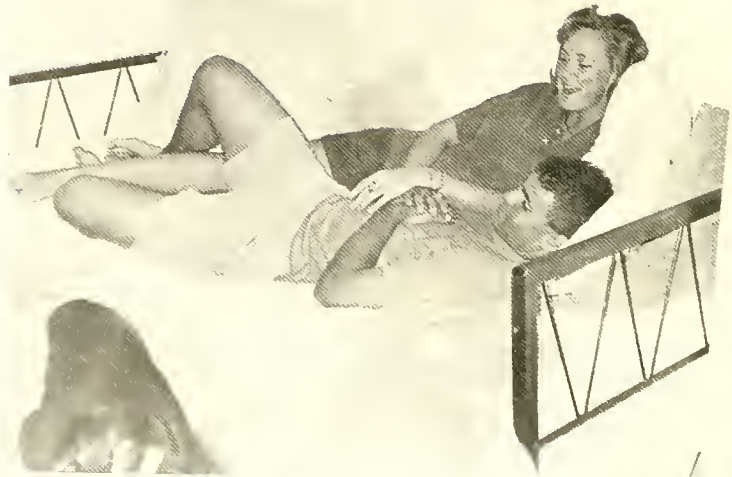
# Rowe



Kathleen Jones  
 Sandra Richardson  
 Cynthia Hopper  
 Rachel Majkut  
 Jennifer Byrne  
 Tara Darnell  
 Jeanette Hackett  
 Melissa Catton  
 Paige Seme  
 Daisy Barrios  
 Tracy Reaves  
 Melody Midgett  
 Thera Pass  
 Tricia Schofield  
 Pamela Eller  
 Jane Hanham  
 Wendy Welch  
 Greta Whitacre  
 Christina Morton  
 Sandra Moyer  
 Lisa Blackwelder  
 Karen Kruse  
 Terri Tuten  
 Teresa Henderson



# Eline



Erin Fannelly  
 Donna Pierce  
 Tricia Fnerneisen  
 Debbie Thomas  
 Lisa Love  
 Karen Holderfield  
 Melissa Martin  
 Pam Carter  
 Carol Davis  
 Lisa Park  
 Ann Whitner  
 Donna Hrley  
 Julia Pinkerton  
 Snsan Gwinner  
 Cissy Thompson  
 Tonya Springer  
 Carla Louder  
 Lane Jarrell  
 Kim Wahn  
 Kristen Eddy  
 Renne Anthony  
 Beth Gore  
 Cindy Billings  
 Melissa Laser  
 Anita Burns  
 Patricia MacDonald  
 Teresa Baptist  
 Melissa Price  
 Samantha Jarrell  
 Kelley Carter





# Washington

*Carmel Puglisi  
 Mary Shriner  
 Wendy Donnelly  
 Lori Mallalieu  
 Dawn Tecepaugh  
 Christy McClure  
 Lisa Jackman  
 Kelly Clatterbuck  
 Erin McHugh  
 Barbara Cotten  
 Angela Dauley  
 Teresa Aylor  
 Julie Ousley  
 Angela Watkins  
 Denise Sikes  
 Cathy Dierlam  
 Leigh Stewart  
 Gaetane Michaud  
 Jody Richardson  
 Karlene Bulr  
 Deana Brown  
 Jody Brooks  
 Tangela Grambling  
 Greta Crump  
 Kim Jones  
 Cindy McCoy  
 Chris Rodocker  
 Laura Richardson  
 Paula Willis  
 Andrea Pouliot  
 Allison Sercentuick  
 Kelli Baker  
 Laura Eberl  
 Glorcyu Shakford  
 Patty Wyar  
 Yvette Easley  
 Jeanne Reed  
 Amy Young  
 Marsha Long  
 Lou Ann Thomas  
 Greta Demchak*



# Ervin

Roger Davis  
Julian Jackson  
Richard James  
Scott Smith  
Mike Mallino  
Christopher Ray  
Patrick White  
Scott Cain  
Ty Wallace  
Alex Vlahos  
Travis Rabineau  
Neil Kluttz  
Tyler Brewer  
Graham Cassidy  
Jeff Stont  
Eric Herriu  
Jeff Jones  
Bill Rogers  
Eric Baxter  
Matt Murphy  
Peter Carson  
Tom Ohliger  
Trevor Fitzgibbon  
Ralph Goodwin  
Craig Coble  
Dewayne Miller  
Satoshi Fujita  
Ladd Lancaster  
Tim Koves  
Kirk Mariuo  
George Welch  
Marc Calderone  
Richard Dorsey  
Todd Turner  
David Elliot  
Scott Robert  
Judd Embree  
Dee Reynolds  
Mike Mullen

Jamie Simpson  
Ian Manning  
Alex Domenech  
Mason Masters  
Scott Helton  
Kevin Dalland  
Brett Whittington  
Joe DeBono  
Doug Nulty  
Tom Clabontgh  
David Kearus  
David Rigby  
Corey Efird  
Robert Jones  
Keith Anderson  
Greg Venable  
Chad Miller  
Geoffrey Olivieri  
Eric Loftin  
Jeffrey Stribling  
Nicholas Boswell  
Jeff Bura  
Aaron Obermayer  
James Williams  
Shaunon Jordau  
Darrick Scott  
John Gordon  
John Valentine  
Bill Bailey  
Chris Sharik  
George Loft



# Hyler

Brian Honeycutt  
Fred Bennett  
Acery Moore  
Brad Brown  
Antonio Jordan  
Keith Sampson  
James Walker  
Brian Vernon  
Hunter Fuller  
Daniel Thomas  
Eddie Ivey  
Randall Lyons  
Clay Thurman  
Shawn Ijames  
Glenn Samala  
Kyle Jones  
Matt Walton  
Stephen Znah  
Marcus Bynum  
Tom Smith  
Jason Riggs  
Steven Lewis  
Eric Crews



# Football



Matt Robertson  
 Mark Cordeiro  
 David Woodard  
 Eric Barefield  
 Wayne Jones  
 Tod Kinlaw  
 Lane Young  
 Bob Carpenter  
 Jeff Pinder  
 Sam Flowers  
 Jimmy Rogers  
 William Baggs  
 Jeff Brinkley  
 Paul Kolody  
 Joel Petlick  
 Lee Graeff  
 John Sokal  
 Nick Gallaccio  
 Kenny Faulkner  
 Chuck Sharpe  
 Ward O'Doherty  
 Lynn Coble  
 Josh Embree  
 Steve Cumming  
 Ron Bowen  
 Eric DeHart  
 Jimmy Dotsikas  
 James Johnson  
 Rusty Hauser  
 David Lee  
 Mike Sigmon  
 Jeff Kandefer  
 Robert Murray  
 Chuck Amodio  
 Ruddy Schmidt  
 Robert Ballard  
 Craig Mutch  
 Mickey Cooke  
 Chad McKinney  
 Frank Armstrong

Scott Champion  
 Rob Enloe  
 Jay Hartley  
 Todd Rabineau  
 Mark Harris  
 Chan LaRue  
 Bo Bryant  
 Mark Shiflet  
 Mike Choplin



# Laughlin

Jim Allison  
 Rob McNaughton  
 Jesse Williams  
 Trevor Hayward  
 James Long  
 Scott Akins  
 Brent Lucas  
 Stephen Lee  
 Bill Barnes  
 Glenn Parsley  
 Richard Nordman  
 Tim Randolph  
 Tom Elworthy  
 Lyle Taylor  
 Tom Wanser  
 Doug Sawyer  
 Chip Franklin  
 Rick Campbell  
 Jeff Phillips  
 Lenny Saia  
 John Ahrens  
 Bill Lindorfer  
 Jeff Chrisco  
 Jamie McNeill  
 Arthur Wallace  
 Marc Prevette  
 Kevin Harrell  
 Hamed Negron-Perez  
 Sean Sullivan  
 Mike Westcott  
 Robert Finch  
 Matt McKinney  
 Clinton Cox  
 Riley Justice  
 Richard Reid  
 Jeff Davis  
 Chris Muncie  
 Vance Elliot  
 Dave Weinberg  
 Shawn Graeff  
 Marc Michand  
 Alan Hensley  
 Norris James



Darrell Eggers  
 James Nuttall  
 John Byrd  
 Buddy Jones  
 William Bode  
 Todd Rich  
 Bryan Easter  
 Paul Maynie  
 Lee Kelley  
 James Barrington  
 John Furtado  
 John Steed  
 Yon King  
 Matt Steed  
 Tom Bales  
 Tory Dial  
 Phillip Jones  
 Robert Wright  
 Mark Alford  
 Larry Donley  
 James Hartsell  
 Craig Horne



# Kluftinger

James Poe  
Lewis Fleming  
Jimmy Poplin  
Marcus Elam  
Forrest Johnstone  
Neil Jones  
Neil Willooughby  
Tony Smith  
Andre Knox  
Kevin Lyons  
Tyler Elam  
Darrell Greene  
Matt Curette  
Steve Ayers  
Rann Paynter  
Kevin Bolin  
Barry Whitaker  
Ed Hom  
Lee Owings  
Tim La  
Bill Johnston  
Sean McLean  
Gary Hampton  
Tim Kimble  
Jeff Lee  
BJ Stacey  
Tee Pate  
David Madliger  
Robert Carlton  
Eric Diehl  
Mike Price  
Terry Spry  
Scott Clontz  
Bryan Chambers  
Billy Olsen  
Kevin Blackburn  
Todd Herman  
Glenn Redmond  
David Surratt  
Mike Kirk









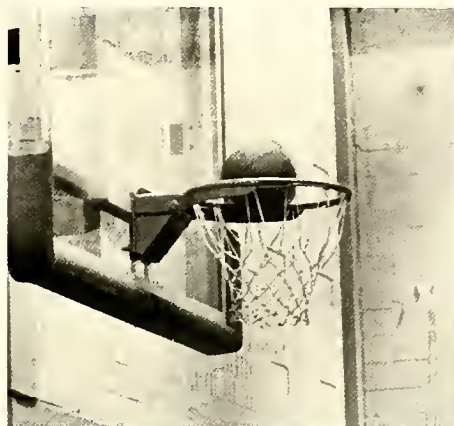
## ATHLETICS







There are a great number of students who attend Pfeiffer and participate in our athletic program. These students participate in one or more of the thirteen programs which are available here. They are: men's and women's basketball, men's and women's tennis, cross country, golf, lacrosse, soccer, field hockey, softball, baseball, swimming and volleyball. This variety of sporting events brings visitors, family, and friends to our campus thus giving a great deal of recognition to the school — all of which helps in making Pfeiffer Someplace Special.





# SOCCER



Row 1: Marc Michaud, Jim Dotiskas, Marc Calderone, John Sokal, Mason Masters, John Valentine, Clay Thurman, Judd Embree. Row 2: Lee Graeff, Sean Graeff, Scott Cerwonka, Richard Brewer, Dave Weinberg, Alex Vlahos, Darren Dissler, Patrick White, Alex Domenech, Dee Reynolds, Stu Harris. Row 3: Coach Julian Domenech, Coach Will Rousseau, Todd Herman, Karl Kissinger, Richard Dorsey, Kirk Marino, Rob Murray, Tommy Matthews, Todd Turner, Coach Tom Gill.



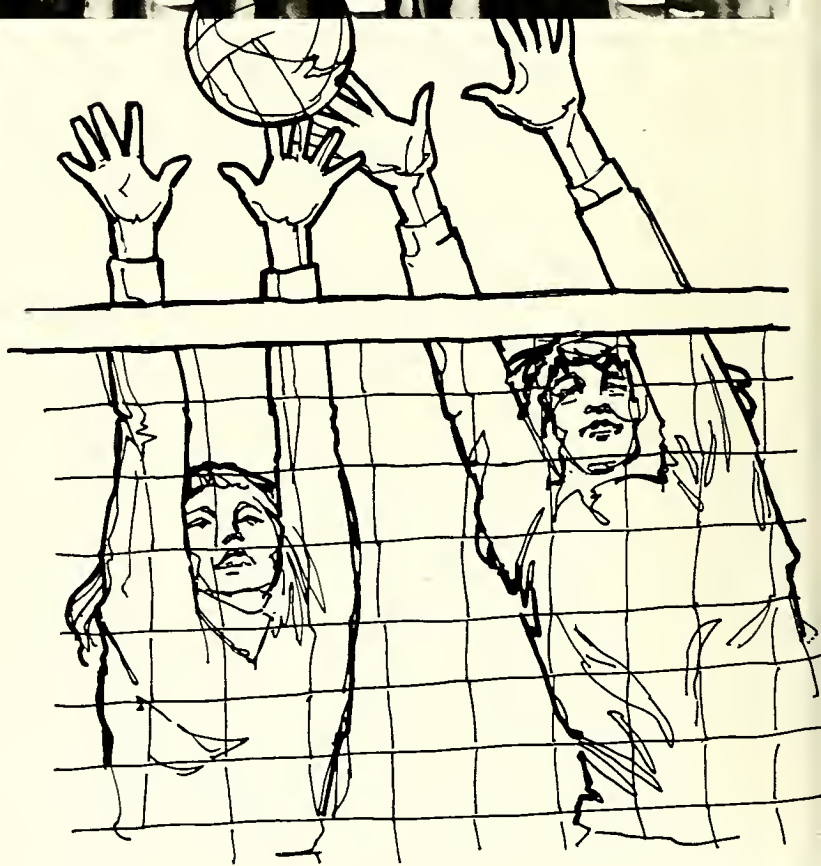




# VOLLEYBALL



Row 1: Missy Gatton, Tricia Wagner, Lou Ann Thomas, Michelle Vaughan, Terri Tuten, Lori Timm. Row 2: Coach Jack Trotter, Julie Stump, Tara Westbrook, Andrea Nachtman, Denise Sikes, Daisy Barrios, Beth Smith, Coach John York, Susan Gwinner.





# FIELD HOCKEY



Row 1: Donna Hurley, Jennifer Faller, Laura Anderson, Erin McHugh, Kelly Clatterbuck, Laura Clay, Cindy Kayle, Tricia Schofield. Row 2: Jody Richardson, Jeanette Hackett, Rachel Majkut, Greta Demchak, Paige Seme, Christine Eddy, Janet Fowler, Jennifer Byrne, Jeannie Reid, Thera Pass, Coach Nancy Ingram.





# SWIMMING



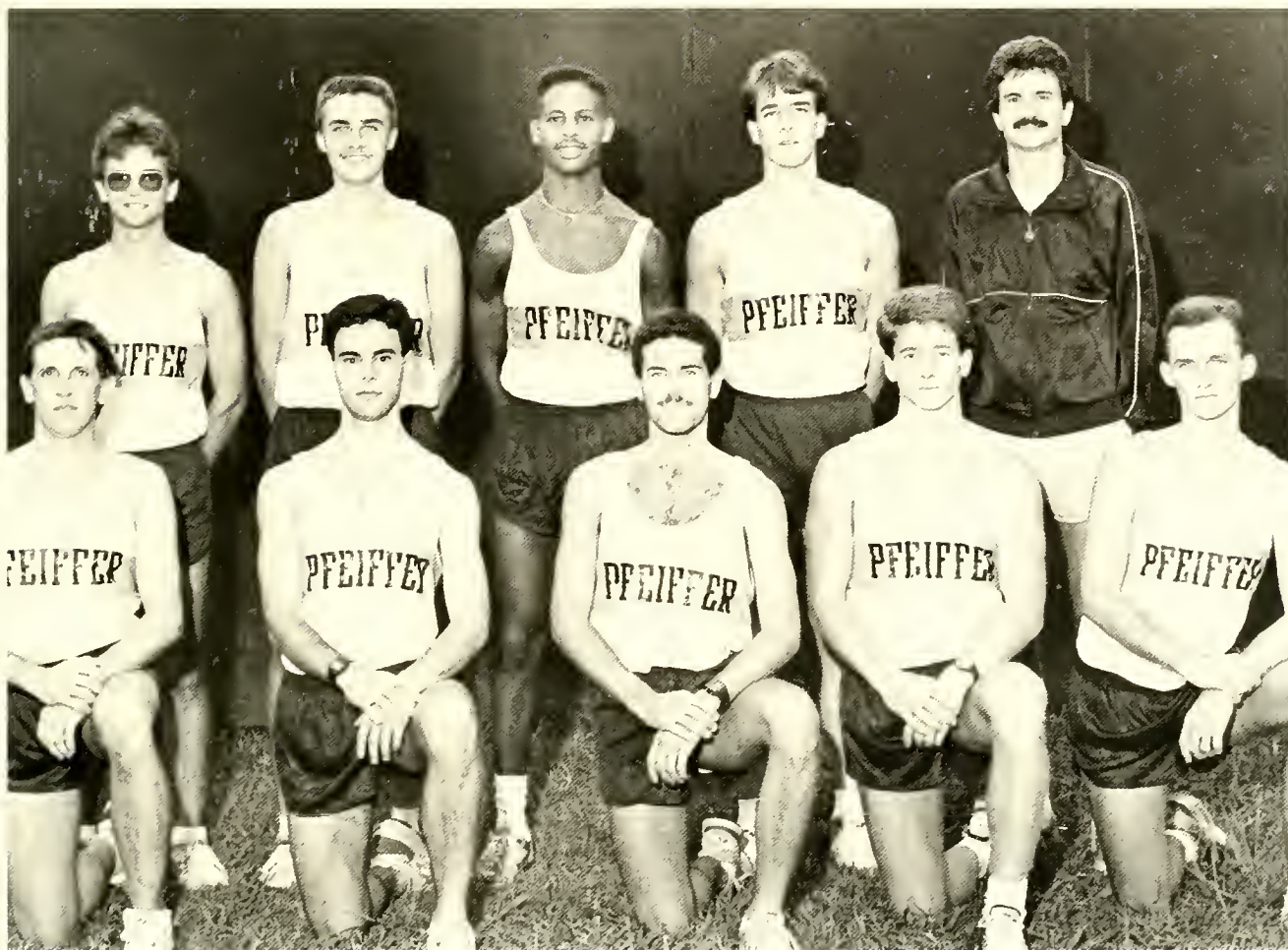
Row 1: Mesa Shriner, Paige Seme, Laua Ebrel, Missy Chestnutt, Lisa Custer, Erin McHugh. Row 2: Michelle Newnam, Shannon Sandahl, Moya Hawkins, Michelle Odoms, Teri Tuten.

Townsend Smith, trainer, checks the swimming schedule while team members watch the meet with great interest.





# CROSS COUNTRY



Row 1: Bobby Miller, Tim Koves, Jeff Jones, Rob Bumgarner, Alex Taylor. Row 2: Bryan Chambers, David Hopkins, Fred Bennett, Bob Carpenter, Coach Rob Murray.

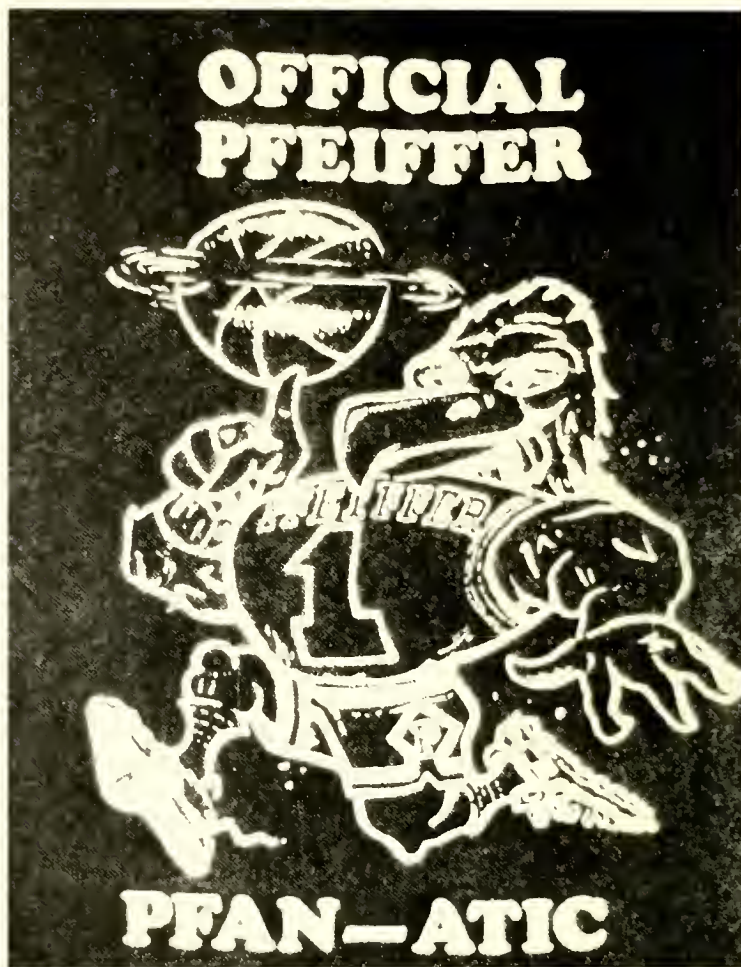


# PFEIFFER CHEERLEADERS

The Cheerleading Squad are the biggest Pfanatics of all!

Below: Captain Jody Brooks and partner Steve Ayers practice stunts before the game.

Below right: Tammy Carpenter and Michael Mallimo lead the year's newest cheer: "We say black, you say gold . . ."



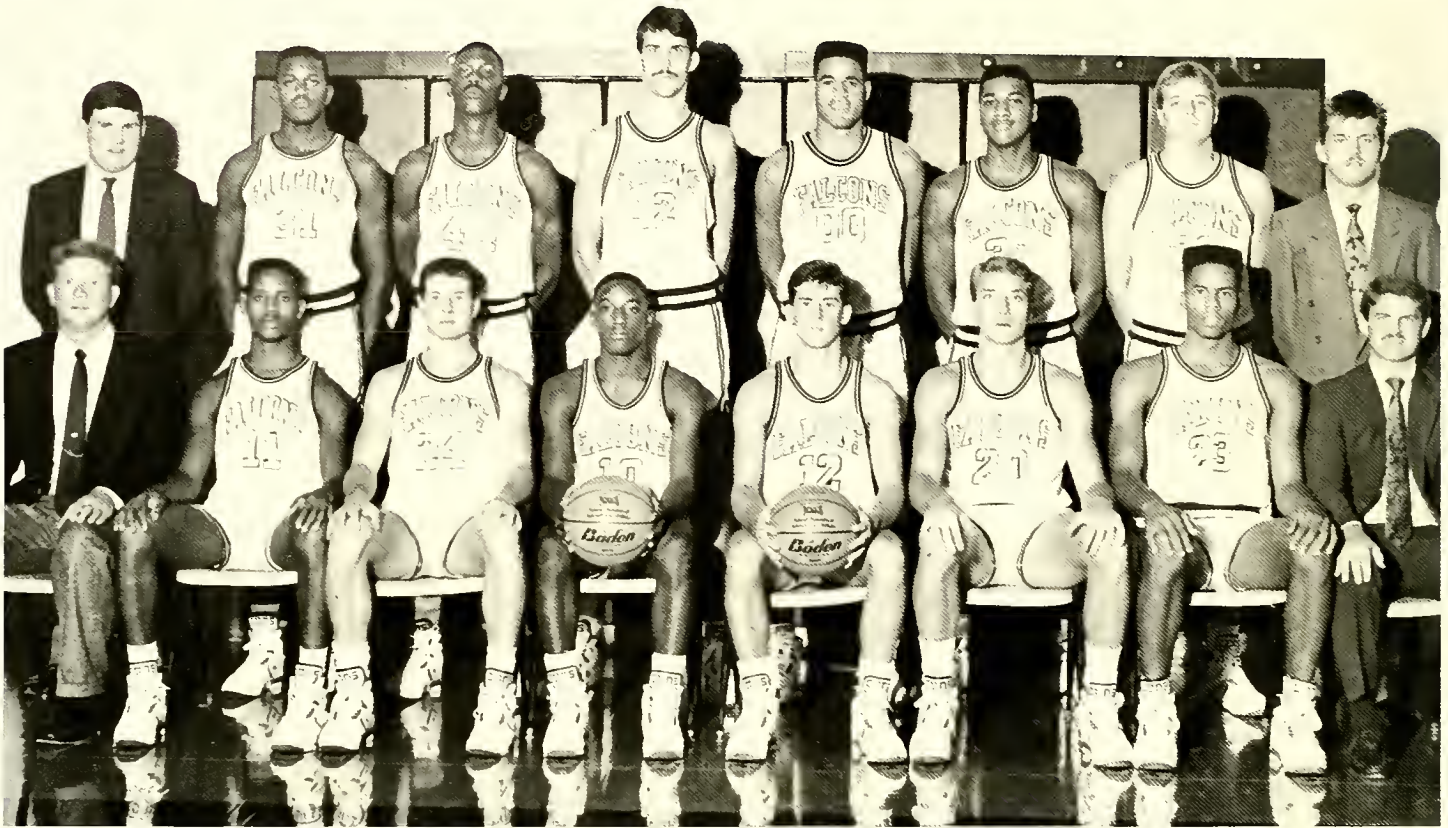




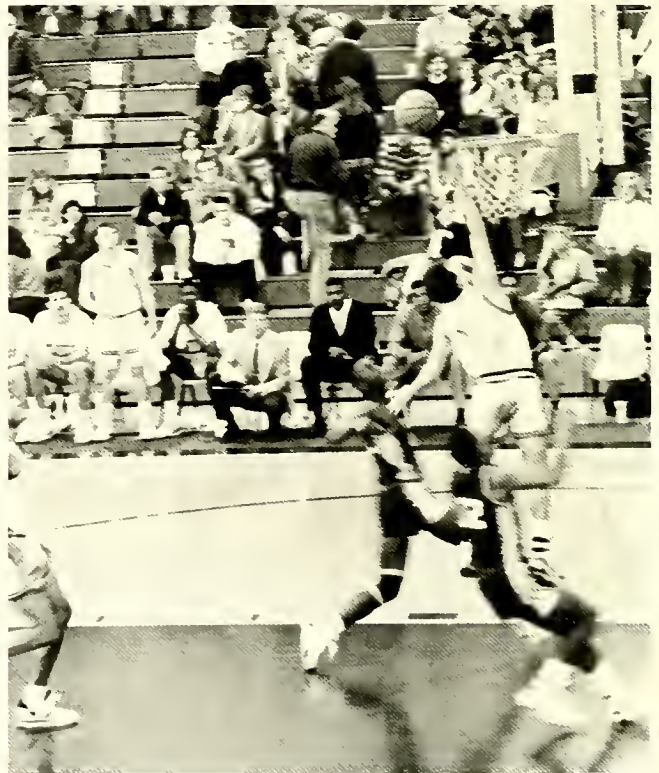
Members of this year's squad were: Yolanda Rucker, Karen Kruse, Lane Jarrell, Eddie Ivey, Michael Mallimo, Steve Ayers, Tammy Carpenter, Jody Brooks, Rikki Ashley and Mike Westcott.



# MEN'S BASKETBALL



Row 1: Coach Dee Sasser, Fred Bennett, Chan LaRue, Rony Smith, Mark Shiflet, Bo Bryant, Marcus Elam, Coach Bob Lutz. Row 2: Trainer Barry Whitaker, Brad Brown, Neil Jones, Tree Johnstone, Jeff Pinder, Rodney Wilson, Avery Moore, Trainer Rob Enloe.



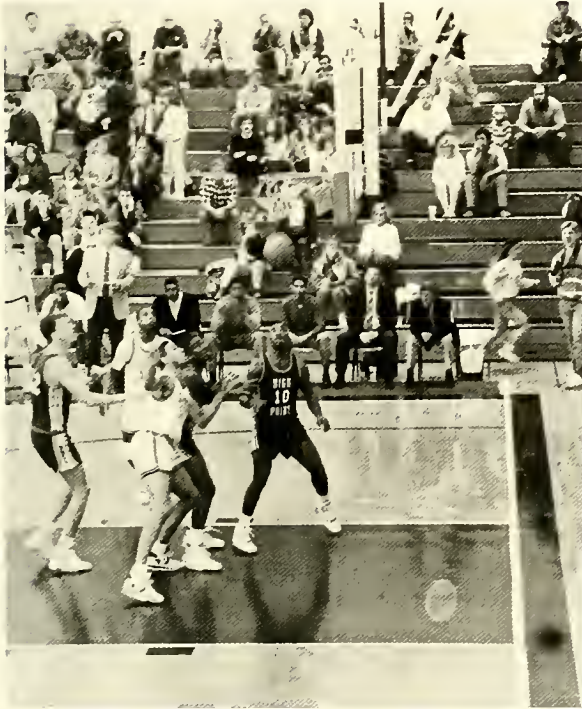












# WOMEN'S BASKETBALL



Row 1: Winnie Wade, Laura Craven, Eugenia Sturgies, Kim Jones, Necole Watts, Lou Ann Thomas. Row 2: Amonda Bentley, Janet Fowler, Kathleen Jones, Marsha Long, Jeannie Reid, Denise Sikes, Manager Laura Anderson.

---

---

---

---





CONFERENCE  
CHAMPIONS  
1984-85

.379

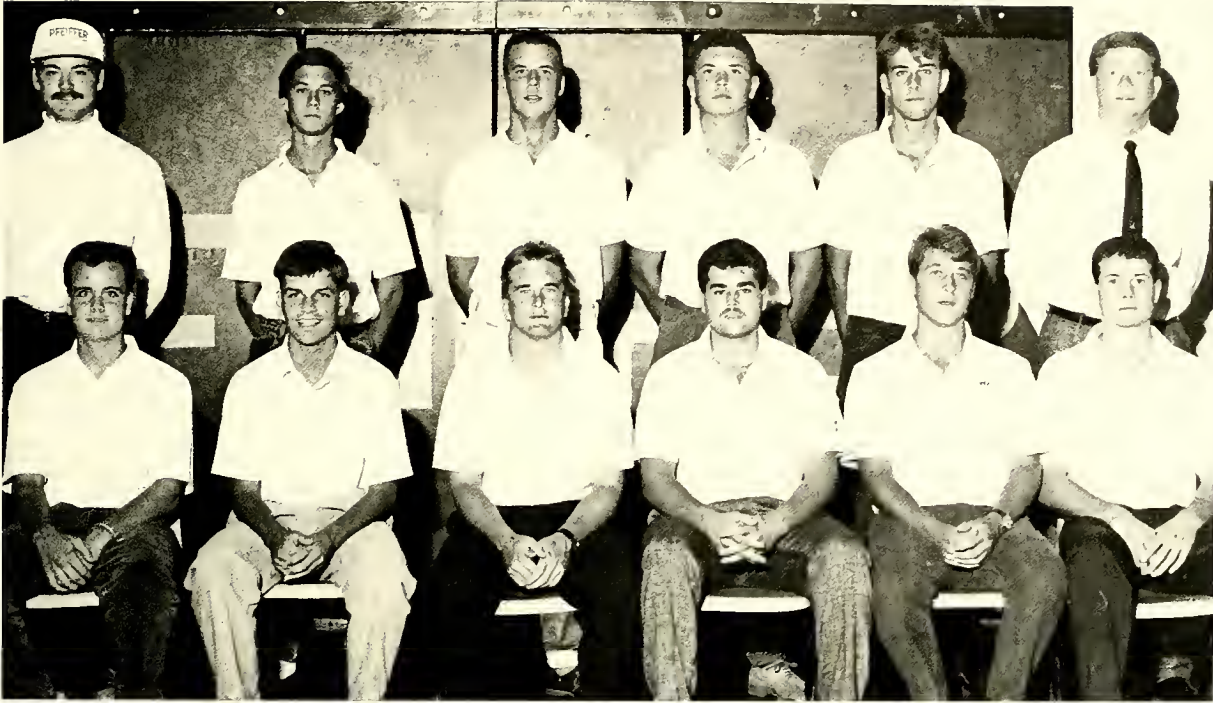
CAROLINAS CONFERENCE  
SEASON

CAROLINAS CONFERENCE  
BASKETBALL CHAMPIONS  
1974-75



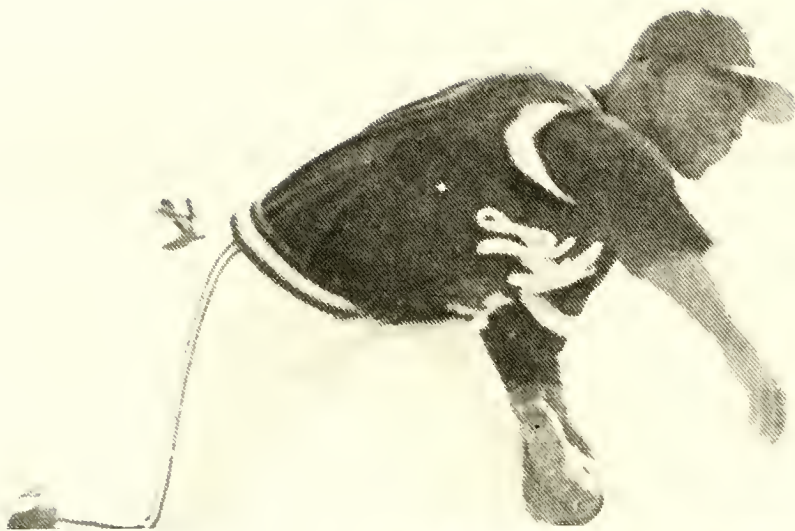


# GOLF



Row 1: James Lydon, Steve Cumming, Mark Harris, Glen Tyler, Doug Sawyer, Chan LaRue. Row 2: Ward O'Dohery, Chip York, Ruddy Schmidt, Larry Donley, Mark Alford, Coach Dee Sasser.



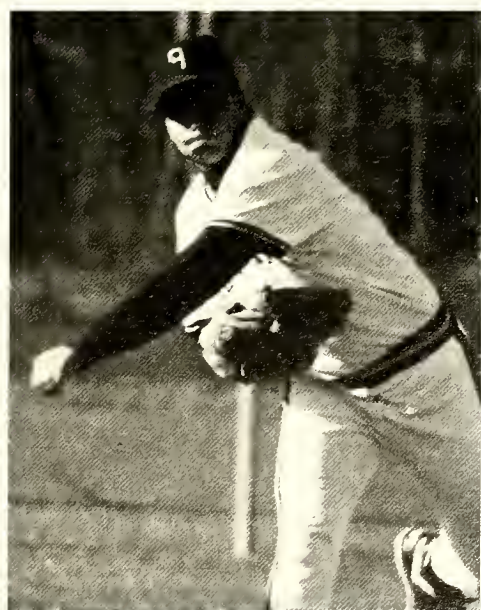






# BASEBALL

(Clockwise from below) Paul Kolody throws it home. Sam Flowers catches Paul's throw. Sam and Jeff Brinkley talk about the next play. No one can out pitch Andre Knox. The unidentified Pfeiffer batter puts it over the fence.



# SOFTBALL



Row 1: Denise Sikes, Cynthia Kayle, Lou Ann Thomas, Melissa Magann, Leigh Stuart. Row 2: Greta Demchak, Jody Richardson, Dawn Tevepaugh, Daisy Barrios, Laura Anderson. Row 3: Lori Timm, Julie Stump, Missy Gatton, Coach Jack Ingram.







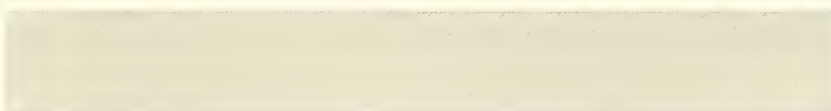


# LACROSSE

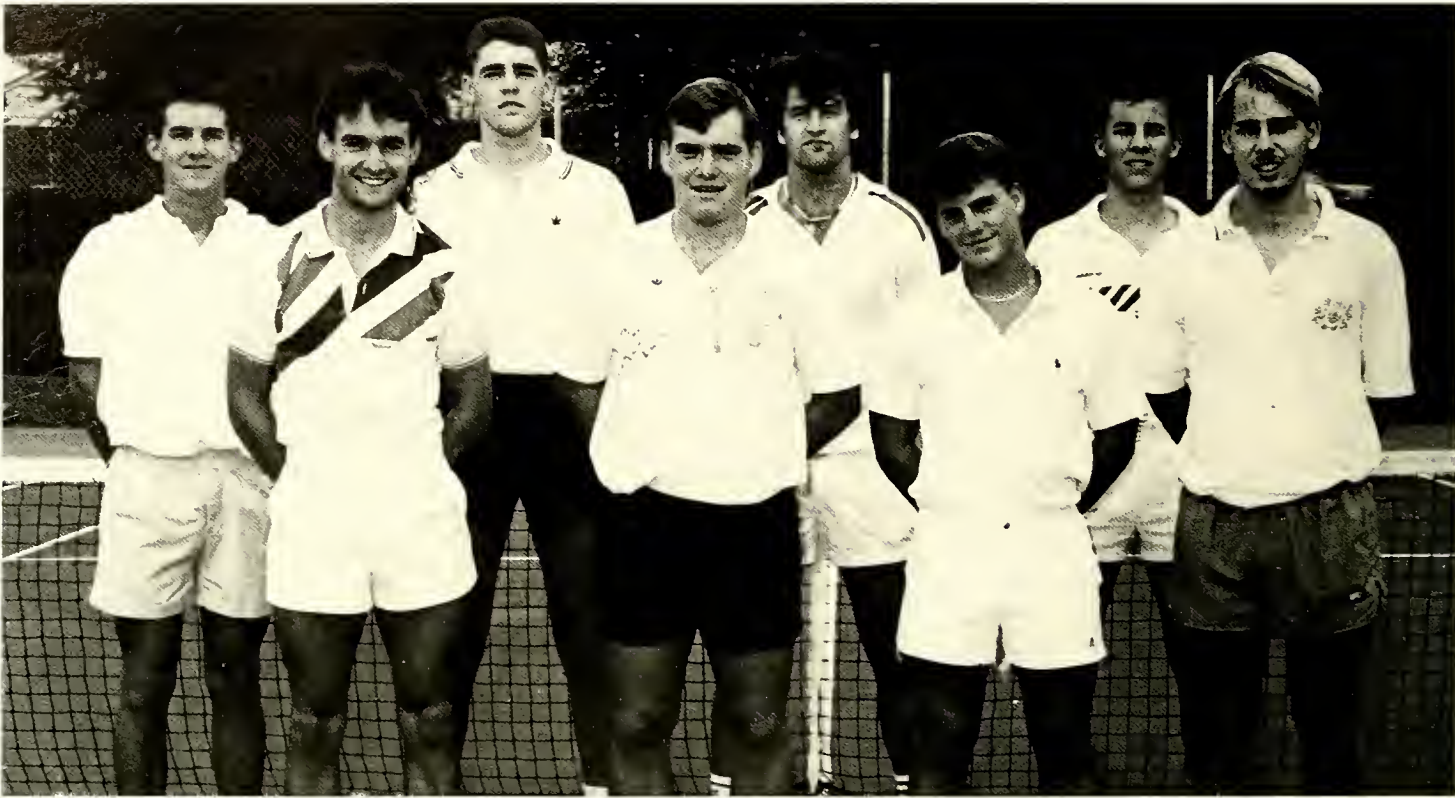


Row 1: Mason Masters, Aaron Obermyer, Doug Nulty, Lynn Coble, Ralph Goodwin, Vernon Jacobs, Matt Murphy, Mike Panagakos, George Welch. Row 2: Chris Muncie, Joe DeBono, Kevin Dalland, Trevor Fitzgibbon, Jim Dotskas, Jim Little, Dave Weinberg, Tom Wanser, Marc Michaud, Terrance Stuen. Row 3: Coach Tom Gill, Jeff Kandefer, Tommy Ohliger, Dan Davis, Chris Smith, Rodney Thomas, John Doe, Tommy Matthews, Ian Manning, Jason Riggs.





# MEN'S TENNIS



Matt Robertson, Craig Mutch, David Hunt, Rob Elliott, Trevor Hayward, Matt Curette, Scott Roberts, James Barrington.

---

---

---

---



# WOMEN'S TENNIS



Kneeling: Kelli Baker, Allison Servetnick, Amy Fisher. Row 2: Patricia MacDonald, Kim Westcott, Jill Gilchrist, Kim Jones.

---

---

---

---

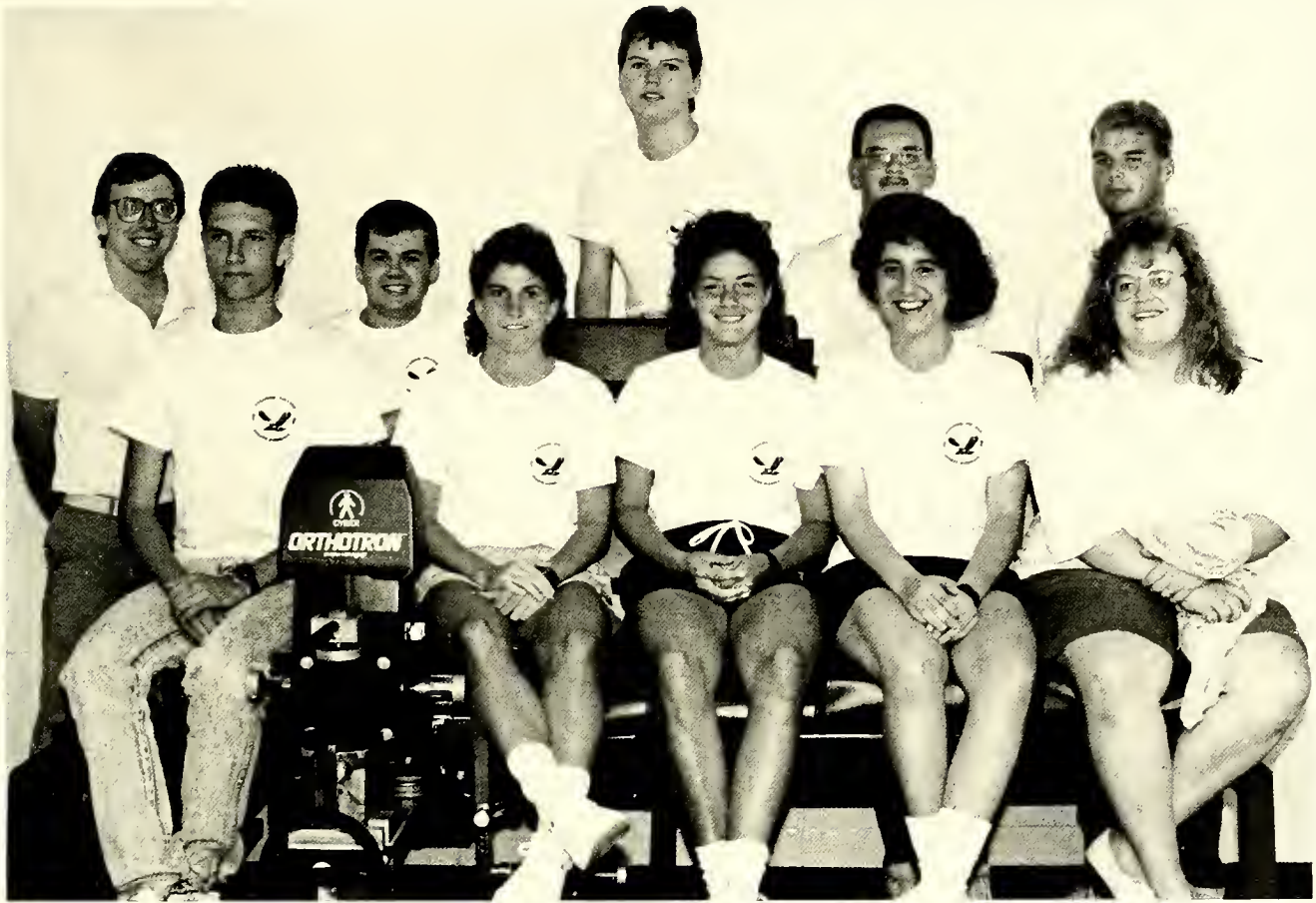
# SPORTS INFORMATION DIRECTORS



Seated: Carla Lowder, Lisa Blalock, Trekeyta Easley. Standing: Todd Rich, Jay Hartley, Mike Kondraci, Tim Haniffee.



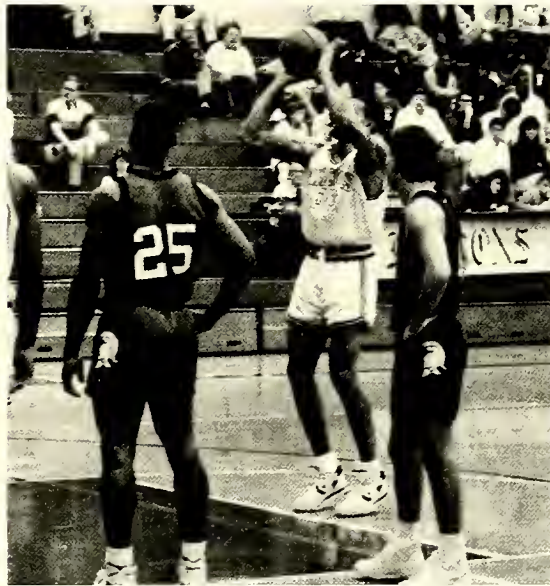
# ATHLETIC TRAINERS



Row 1: Darren Dissler, Leigh Stuart, Jody Richardson, Carmel Puglisi, Greta Whitacre. Row 2: Marty Travis, James Poe, Jean Harris, Robert Carlton, Richie Ball.







# Advertising Contract

Please publish our ad in the 1990 CHIMES  
according to the following specifications:

SIZE OF AD — ☒ Full page ☐ 1/2 page ☐ 1/4 page ☐ 1/8 page  
☐ Other size

PAYMENT — ☒ Cash \$ 100.00 ☐ Check \$ \_\_\_\_\_ (No. \_\_\_\_\_)  
☐ Invoice \$ \_\_\_\_\_ Date of Invoice \_\_\_\_\_

ADVERTISER (print) A Friend SCHOOL (print) Pfeiffer College  
ADDRESS any street ADDRESS Box 1  
CITY any place STATE NC ZIP 28109  
PHONE unlisted PHONE 704 463 1360 ext 2573  
? DATE 5/16/90

ADVERTISER SIGNATURE \_\_\_\_\_ DATE \_\_\_\_\_ SCHOOL SALES REP \_\_\_\_\_ DATE \_\_\_\_\_

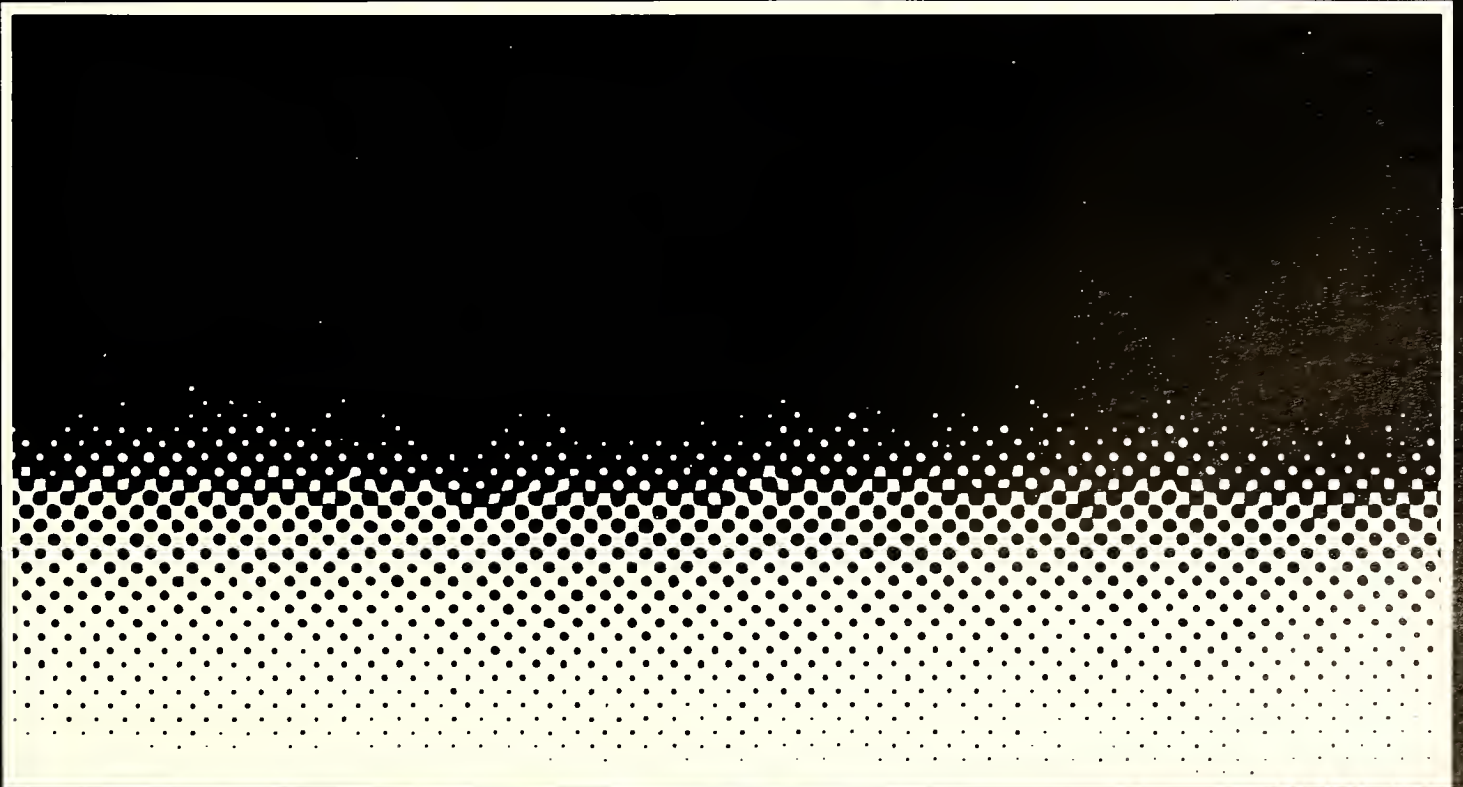
**CHECK ONE** ☐ Use same ad as last year ☐ Same as last year (changes noted below)  
☐ Layout & Copy attached ☐ Layout & copy to be picked up  
☐ Rough layout below.

**Congratulations  
to the  
Class of 1990**



# ADVERTISEMENTS

the CHIMES  
would like to  
express its deepest  
THANKS  
to those who have  
supported the 1990 edition



# FIRST<sup>1</sup>BANK

Member FDIC and an Equal Housing Lender  
A Full Service Bank

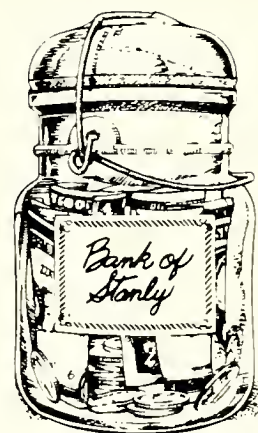
**First Bank Is The Bank You Can  
Depend On And Trust.**

We Now Have Five Locations to Conveniently Serve Stanly County: 3 Branches in Albemarle, Eastgate, Highway 52 North, and Downtown; 1 Branch in Locust; and 1 Branch at the Intersection of Hwy. 52 & Hwy. 49 at Richfield.

(704) 463-7383  
(704) 463-7384

RUBY C. FRALEY  
Branch Manager

P.O. Box 6  
Richfield, N.C. 28137



Member FDIC

**100%**  
**Home Grown**  
**Bank of Stanly**

P.O. Box 338, Albemarle, NC 28002-0338  
704-983-6181

**A Local Bank Owned By The People Who  
Will Make It Grow.**



# **JIMBO's**

**of**

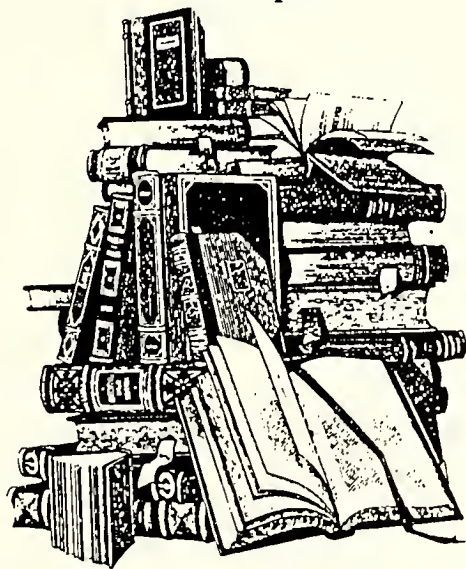
## **Pfeiffer College**

### **The Place to Meet and Eat**



## **THE COLLEGE BOOK STORE**

*Open Monday through Friday  
9 a.m. to 4 p.m.*



## **YOUR PFEIFFER PHONE SERVICE**

We eliminated the middle man and reduced costs to you!

- Free local Service
- \$20 long distance authorization code

**Telecommunications Office**  
*Basement of Administration Building*

**OFFICE HOURS:**  
Monday through Friday  
8:30 to 2:30

Dial 2000 then 2026  
Anytime . . . Day or Night.



- Diamonds • Engraving
- Watches • Watch Repair

QUALITY GIFTS FOR EVERY OCCASION

Open Friday & Saturday  
Nights until 9:00 PM

Albemarle Plaza, Albemarle, N.C.  
982-9821



## PEANUTS

Hwy. 52 • Goldhill, NC

Thank you for your support

Monte Blackwood  
President

(704) 279-7268



# 1989-1990 Association of Women Students

Greta Crump — President

Carmel Puglisi — Vice-President

Christy McClure — Treasurer

Janet Fowler — Secretary

Gayle Conard

Kim Jones

Cissy Thompson

Robin Wallace



. . . Never Forget Pfeiffer was Founded by a WOMAN . . .



GIFTS  
BALLOONS  
FOODS



CARDS  
PARTY SUPPLIES  
WRAP

### ***Party Lines, Etc., Inc.***

Highway 24-27 Bypass  
Albemarle Plaza Mall  
Albemarle, NC 28001

(704) 982-9786

JACKIE BURPEAU



## **H. W. CULP LUMBER CO.**

SOUTHERN YELLOW PINE

Office and Plant  
Box 235  
New London, N. C. 28127  
Area Code 704-Phone 463-7311

1456 N. 1st Street

US Hwy. 52 North

Albemarle

704-983-1813



**Pfeiffer College**  
**Student**  
**Government**  
**Association**

We Want to Know . . .

And . . .

We Want to be

**KNOWN!!!**

Congratulations!

# Belk

Albemarle Plaza



Albemarle Plaza  
Highway 24-27 Bypass East  
Albemarle, North Carolina  
704/983-1178



America's Favorite Store  
**Kmart**  
*the Saving Place*

Congratulations to  
the Class of 1990  
Good Luck!!

**Association  
of Men Students**



SPECIALIZING IN  
CUTS, PERMS & COLOR



THERMA-FUSE  
HAIRCARE PRODUCTS

## HEADQUARTERS

LOC. PFEIFFER COLLEGE CAMPUS  
HWY. 52 N - MISENHEIMER, N.C. - 463-7742

*"Your One-Stop Family Hairservice"*

DARRELL HATLEY  
OWNER-BARBER/STYLIST

HAZEL MISENHEIMER  
HAIRSTYLIST



## SUNNYBROOK FARMS, INC.

Richfield, North Carolina  
28137







Congratulations to the  
Class of '90 from

**INDUSTRIAL FEDERAL  
SAVINGS BANK**

107 West Center Street  
Lexington, NC

"House Finance Specialists  
since 1929"

"Quality Repair Service"

**LATON'S BODY SHOP**

502 Concord Rd.  
Albemarle, N. C. 28001  
Rayvon Laton, Owner  
Phone: 704/982-8711





Good Luck and  
Best Wishes to the  
Class of 1990  
from  
**The CHIMES staff**

Brad Hatley

Joe N. Calloway

**CALLOWAY & ASSOCIATES**

Individual & Group  
Life, Health, Disability  
Annuities

Retirement Planning

(704) 982-2704

PO Box 1224  
Albemarle, NC 28002



*dining service*

Best of Luck  
to the  
Class  
of  
1990





1989-90 has been a year filled with new beginnings for my daughter, Belinda Belk. This year she took her first major steps on her long journey in life. I hope she will continue to excel in her choice career.

Love ya,

**Mother and family**

**Joy Belk**







# **PATRONS**

**Bobby, Janet and Natalie Lutz**

**Arlie Higgins**

**Linda Gibson**

**Shannan Sandahl**

**Greg Dowling**

**Diana Armeno**

**Mr. and Mrs. David A. Mitchell**

**Dr. and Mrs. Zane Eargle**

**Mr. and Mrs. Lysle Misenheimer**

**Ken and Elsie Lowder**

**Colletta Bryce**

**Millicent Nolan**

**Amy Frye**

**Dean R. Vernon**

**Vickie S. Miller**

**N. Jerry Armstrong**

**Vera Gebhardt '75**

**gerald E. Carpenter**

**Betty Crook**

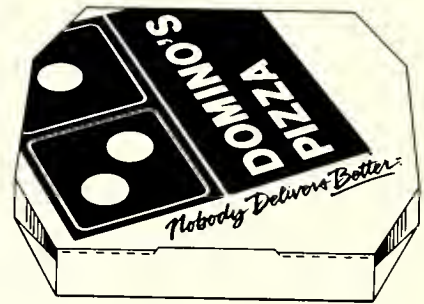


**Ann Blackmore Key**  
**Melba and Joe Ferebee**  
**Joan Maillet**  
**Paul and Beth Fowler**  
**Theresa Newman**  
**James Sterling Johnson**  
**Mr. and Mrs. Les "Snake" Roberts**  
**Dean Westcott**  
**Jay Pendleton and Jessica**  
**Peggy Troutman**  
**Dr. Jim Sullivan**  
**Leo Tohill and Irene Komor**  
**Mary Stallings**  
**Mr. and Mrs. Bud Goodman**  
**Janette Barnes**  
**Eugene and Janet Pickler**  
**Ruby K. Morris**  
**Frances Barnes**



Steve Ayers  
and  
Rann Paynter  
Authorized Dealers

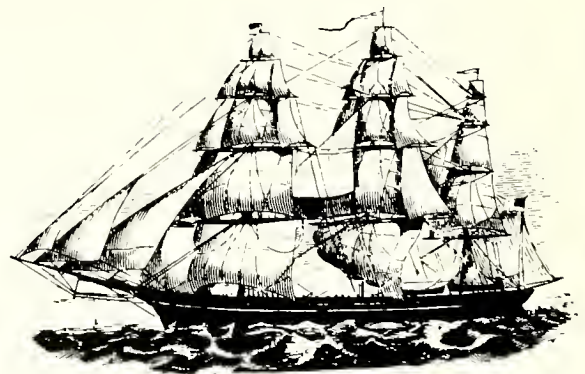
Misenheimer, NC



**DOMINO'S  
PIZZA  
DELIVERS  
FREE**



When Making Vacation Plans  
don't forget about  
**EARGLE EXPRESS CRUISES**  
"We specialize in trips around Gibson Lake."







# LINGERIE

Located  
in the old  
Greystone Inn  
Adjacent  
to the  
Pfeiffer Campus

M  
a  
d  
e  
  
i  
n  
  
M  
i  
s  
e  
n  
h  
e  
i  
m  
e  
r



Brenda Faye Compton  
Owner and Manager

OCT  
NC

• First in Flight •

90 NC  
440222

PFEIFFER

NORTH CAROLINA

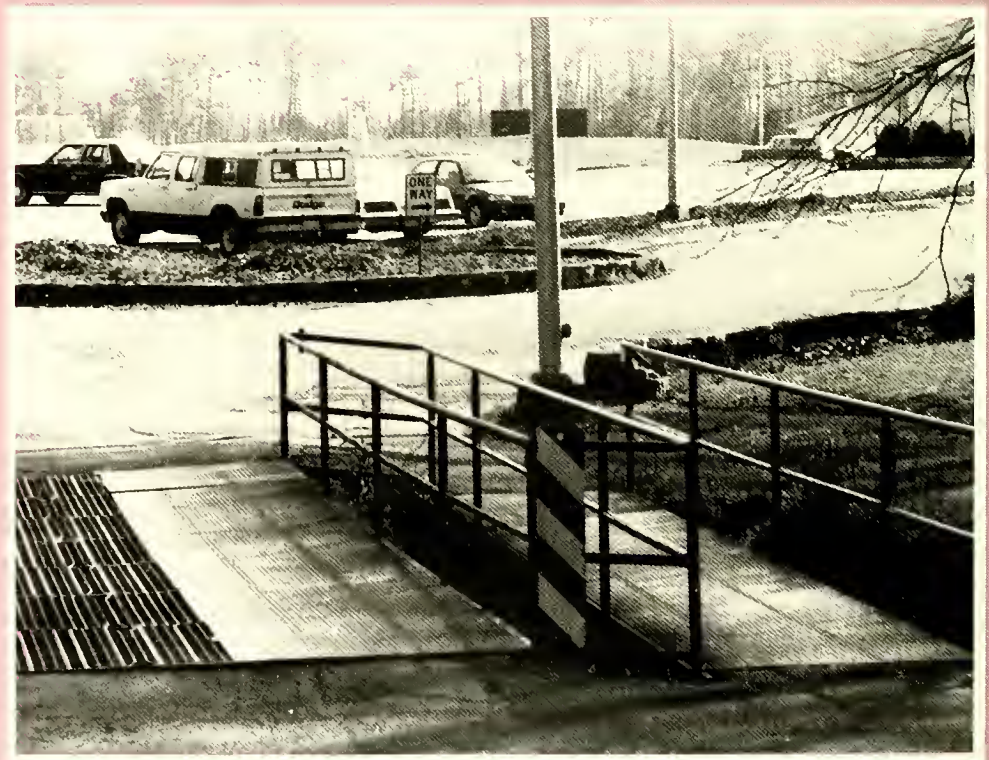


# JUST LOOK AROUND

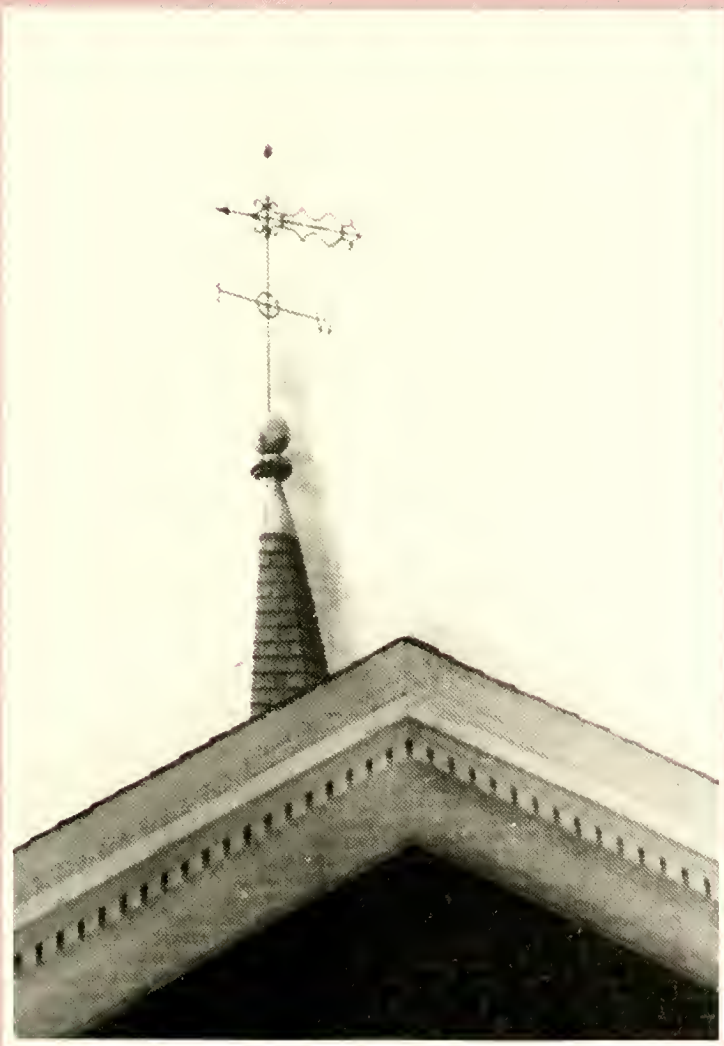
Often, we as students here at Pfeiffer do not take time out to look around and notice and appreciate our surroundings. When we do we sometimes complain about the chipped paint or overgrown weeds. Although our campus is not perfect, it is *our campus*. The buildings, the railroad tracks and the bridges all

come together to add to our lives here at Pfeiffer. Some of our buildings may need a new coat of paint, the train may create unwanted noise pollution and the bridge does tend to bounce as you drive over it, yet they are special to us. Without them what would Pfeiffer College be like?



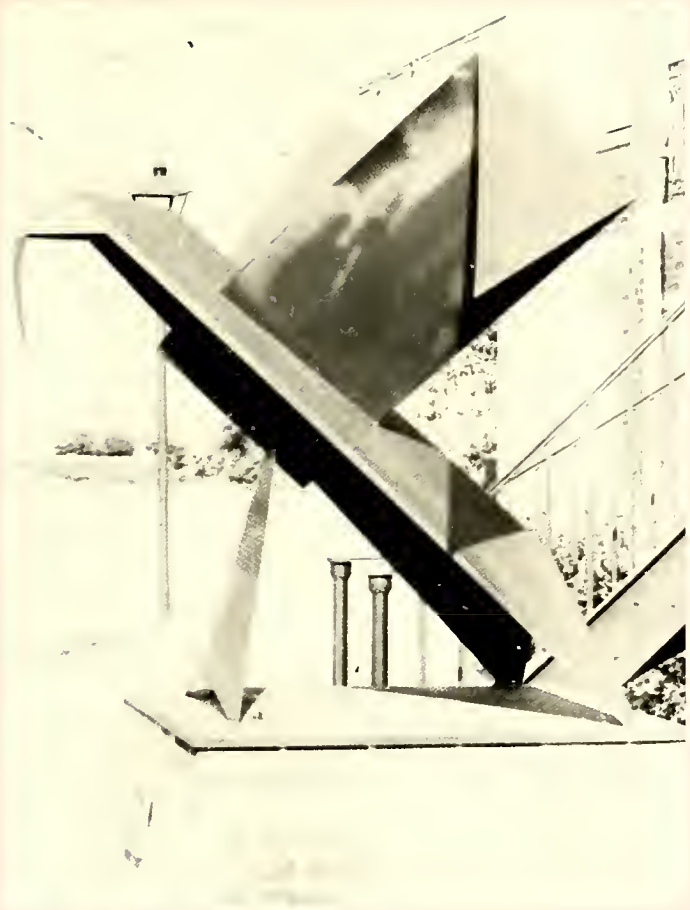


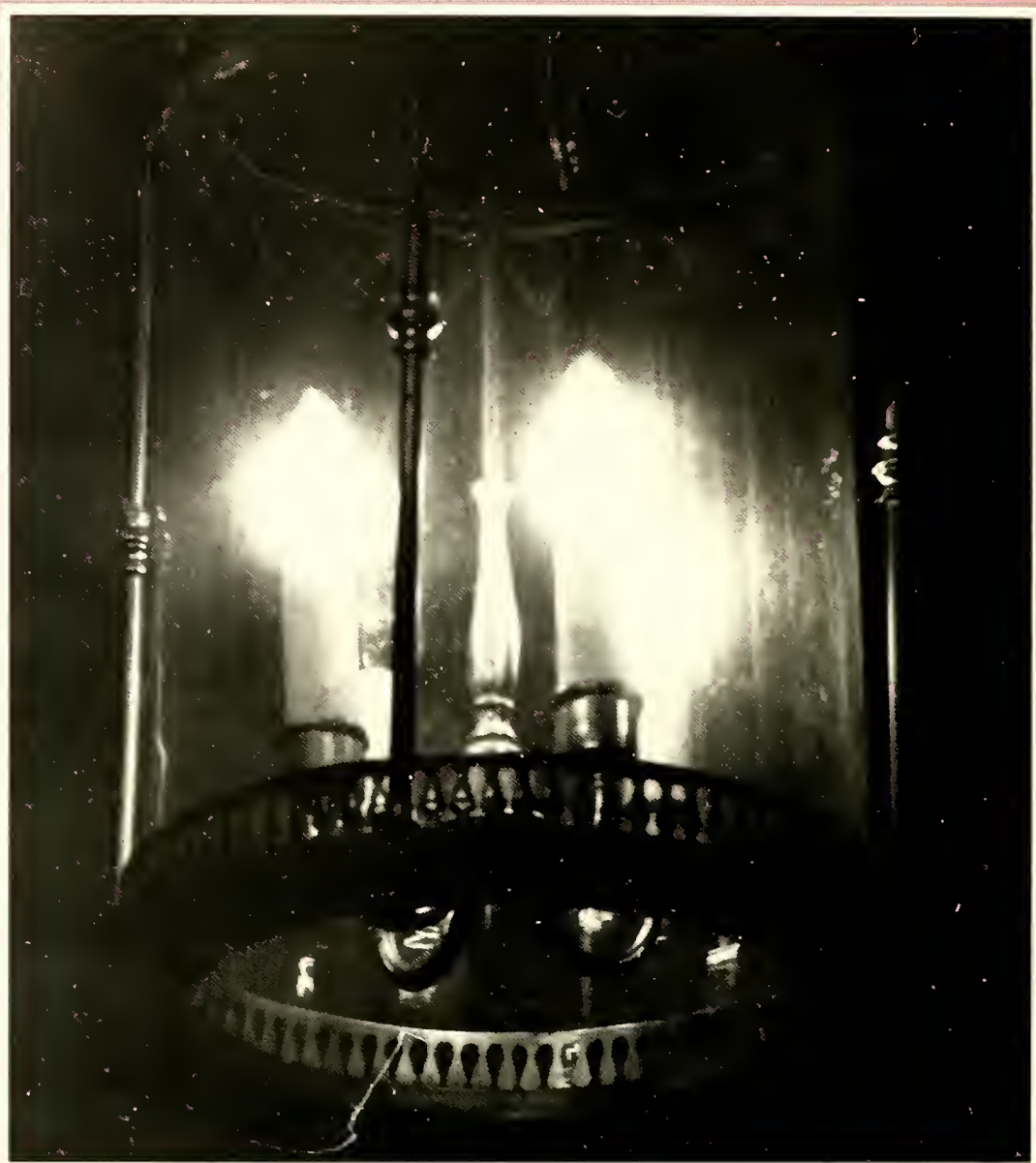


















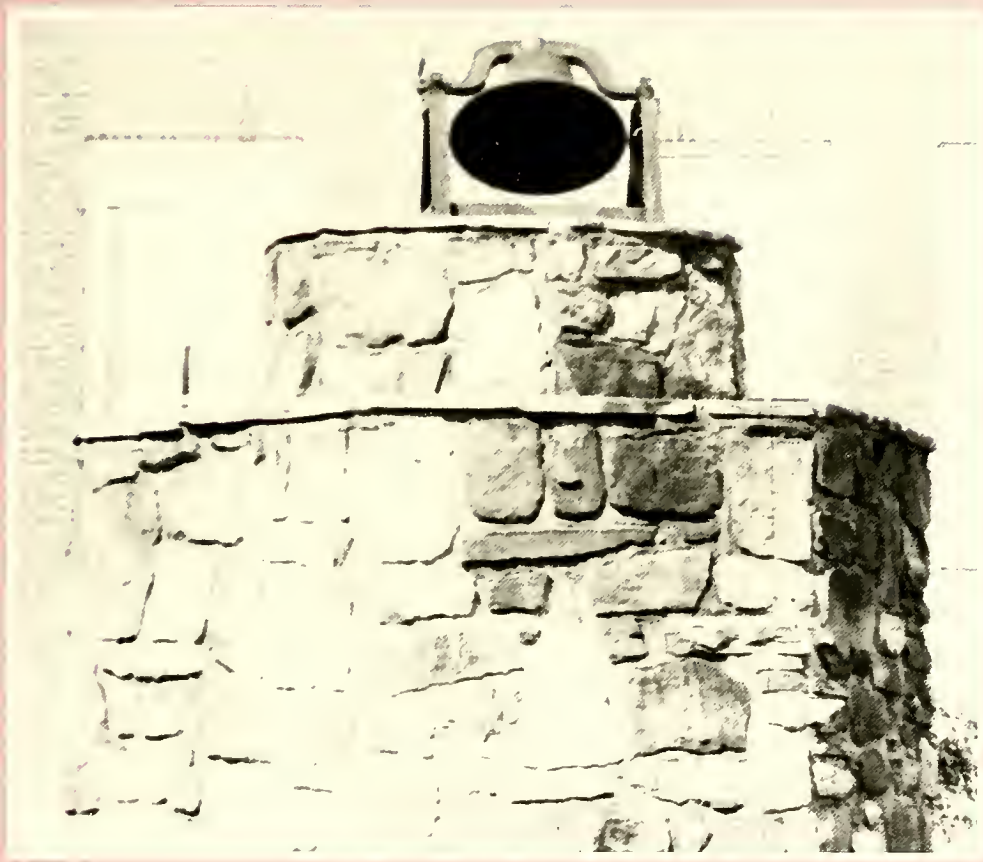


















# CHIMES Staff

Row 1: Dr. Peg Sides, Angela Miller, Belinda Belk, Laura Morrison, Kelli Williams. Row 2: Cindy Hopper, Dawn Hedrick, Sean Sullivan, Kristy Hatley, Linda Lambert, Renee Sears. Row 3: Rann Paynter, Sean McLean, Joe Welch, Christine Hallet, Chad Miller.



Sean Sullivan spent countless hours in the darkroom.







Kelli Williams and Renee Sears  
work diligently to finish the  
events section of the CHIMES.



Dr. Peg Sides, Advisor



Laura Morrison, Assistant Editor

This year has been very hectic for the Chimes staff. We actually have two stoffs -- a fall and then a spring. This complete change in staff adds variety yet it also tends to cause delays in meeting deadlines.

Through Fall, the stoffs have worked hard and I am very proud of and grateful to them.

I would like to thank everyone who helped in making this, the 1990 edition, possible!

I would like to thank my assistant editor, Laura Morrison for her continued hard work on this publication. Also, Dr. Peg Sides, our advisor who put a great deal of faith and trust in me. A very special thank you goes to Paul Fowler. Throughout the year Paul gave advice and suggestions that I could not have done without.

This year has been an adventure for me. Serving as editor has been challenging, demanding, heart-wrenching and satisfying all at once. I am proud to have served the college in this capacity. I encourage each of you to contribute to the Chimes staff.

*Rann Paynter*  
Editor  
1990













