

Howards

10

5

4

Presented by
Professor and Mrs.
M. Eugene Williams



Whitaker Library

CHOWAN COLLEGE
MURFREESBORO, NORTH CAROLINA



Digitized by the Internet Archive
in 2010 with funding from
University of North Carolina at Chapel Hill

<http://www.archive.org/details/chowanoka1954murf>



THE NINETEEN FIFTY-FOUR

C

H

O



W



A

N

Gloria Cox
Editor-In-Chief

James Earl Taylor
Business Manager

L. Robert Grogan
Advisor

O

K

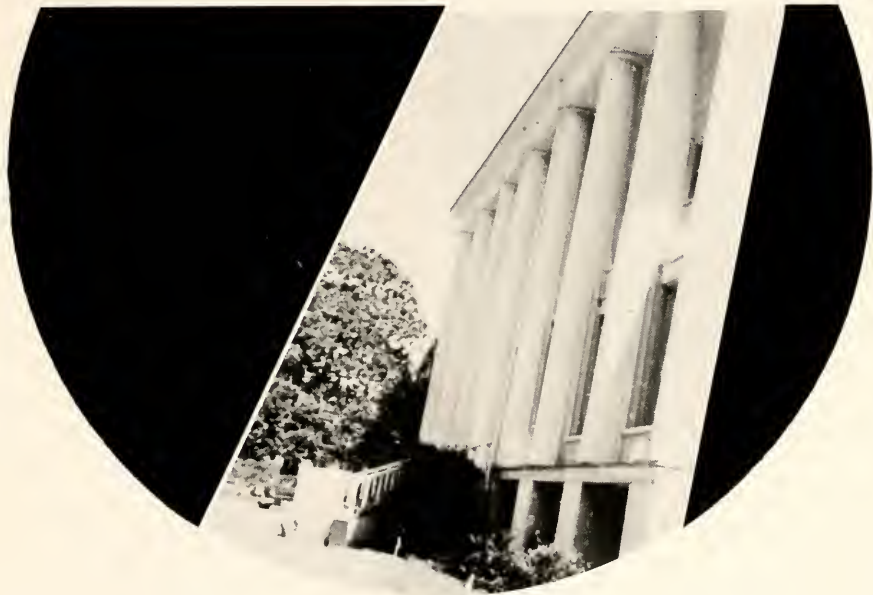


A



The Columns

THE CHOWANOKA 1954



Chowan College

Murfreesboro, N. C.

presented by the STUDENT BODY



Memory Lane . . . For us this well worn path from the college to town was just that. Was this light the one that failed to burn at the right time?

The newest building on our campus is the home of the Graphic Arts Department which was erected in 1953.



Looking from the Columns in the late afternoon, the campus provides a majestic view of the creative power of God.



In the afternoons this path to town was a long weary chore, but at night the distance became surprisingly short. Note the space in the center under the Oak Tree where the grass is worn--we wonder why!

The Old Bell still calls Chow-anians to classes, to meals, and peals forth in the night when the Braves return from a successful scalping party.



Hurrying to early morning classes are Carmen Vence, Lawrence Lane, Joan Burt, and Buster Winborne.



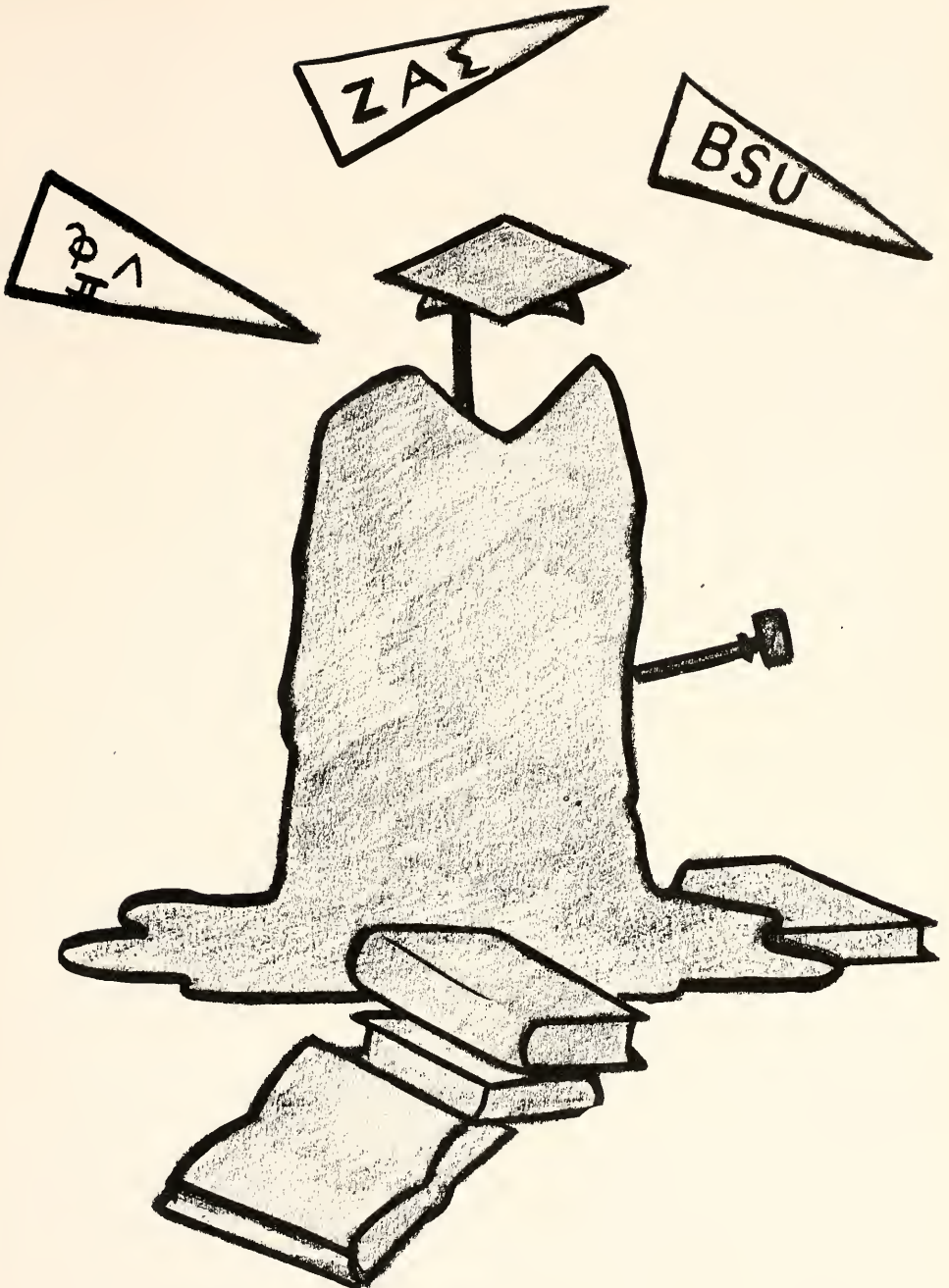
Dedication



With sincere devotion, the CHOWANOKA staff pays tribute to one of the most beloved members of the Chowan College faculty. In the short span of three years she has earned the respect and admiration of students and faculty alike. In her classroom the Holy Scriptures open as a new world when she reveals Old Testament literature and life, the life of Christ, and the life and letters of Paul. But, throughout she has taught us the principles of Christian ethics and in her daily life she has demonstrated them.

Besides her work with youth on the campus, she has reared two fine children of her own and has been a motivating force in the successful public life of her husband, who is now President of Chowan College. A tireless worker at school, at church, in the community, and at home, she depicts a zeal we wish we might acquire. And, when our spirits reach a low ebb we are sure to find in our adviser the encouragement necessary to make life "liveable" again. We appreciate the honesty and sincerity of her counsel and her trust in our endeavor.

The loyalty, faithfulness, and integrity revealed in her quiet power and Christian love compel us to dedicate this 1954 CHOWANOKA to Daisy Lou Mixon, Head of the Department of Bible.



Activities



OFFICERS OF THE STUDENT GOVERNMENT are Betty Reinhardt, Secretary; Claude Ivey, Vice-President; Hilliard Greene, President; Dan Page, Freshman Class President; Mildred Mizelle, Treasurer. Not pictured: Gene Williams, Sophomore Class President.



Hilliard Greene
President

The Student Government

Many words would be necessary to describe the position of the Student Council on the Chowan campus, for the Council "rocked along" while the Joint Council sought to establish a more workable system of government. This is not an appropriate space in which to extoll the virtues of the government or to cite faults. However, the members of the Council worked diligently throughout the year, striving for a workable type of government. Though not much could be shown for the year's operation, that which was done will have a great deal of effect upon the next constitution to be drawn, the next council to convene, the philosophy of student government, and the necessity for student-faculty cooperation.

The Judiciaries, under the Student Council, performed the greatest part of government. Because of overlapping authority invested in the Judiciaries many of the functions of the Student Council were absorbed.

Council inactivity, necessitated by the Faculty Committee on Student Government, had two effects. The faculty and students realized the dire need of rapport. Faculty and students who had expressed little concern actively participated in discussions. The Council hopes that the effect of the discussions will promote a good form of government on the Chowan campus.



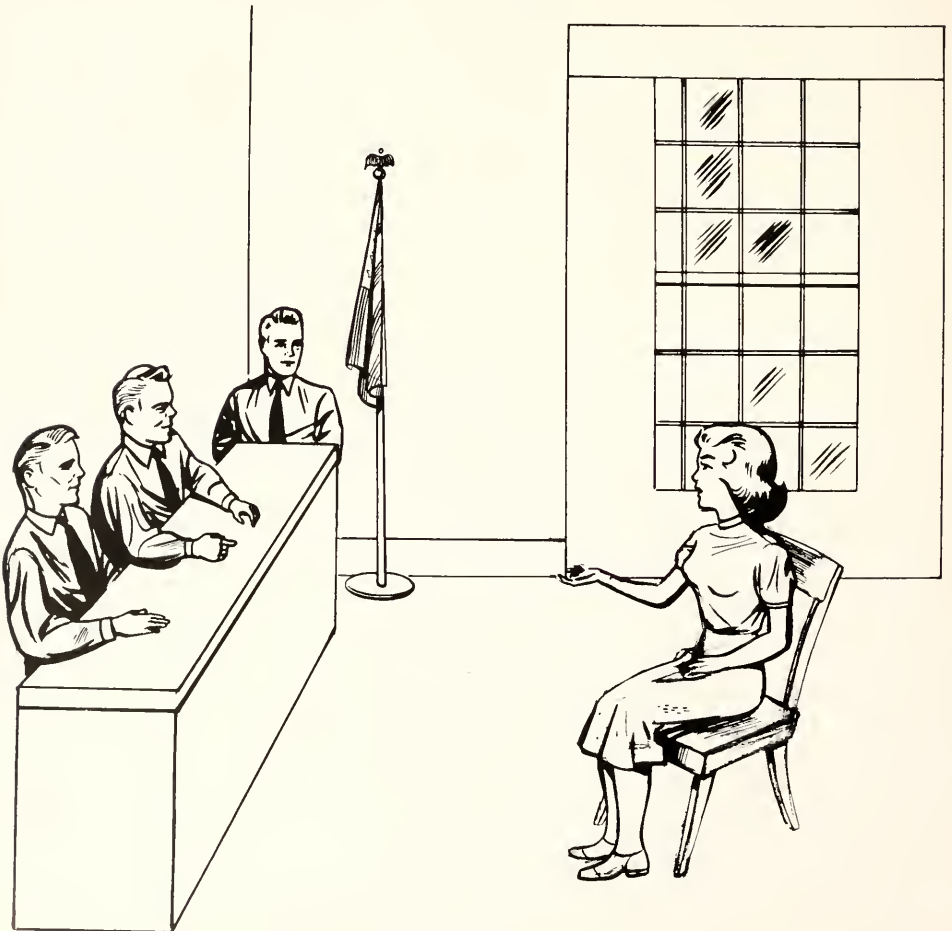
THE STUDENT COUNCIL. First row: William Carter, Betty Reinhardt, Judy Boyd, Mildred Mizell, Gloria Cox, Claude Ivey, Keith Roberts; second row, Charles Middleton, Dan Page, Bobby Alligood, Gene Williams, Hilliard Greene, Eugene Herring, Charles Fulcher.



The Judiciaries

The Judiciaries are composed of men and women from the student body. They are selected by the members of the Student Government Council, and the chairman of the Judiciary serves on the Council. The Judiciary, a "Supreme Court" under the Student Council, is responsible for seeing that the rules and regulations of the Handbook are enforced.

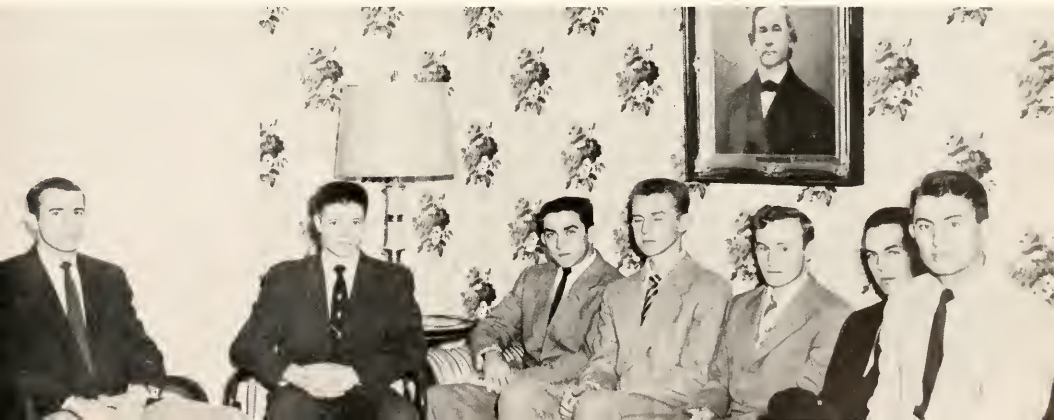
The officers of the Judiciary are a chairman and a secretary. The chairman presides over all meetings and casts the deciding vote in case of a tie. The secretary keeps a permanent record of all meetings, of the unexcused absences occurring at the last Judiciary, and sends any necessary notices for the Judiciary.





WOMEN'S JUDICIARY Seated; Joyce Parker; Judy Boyd, Chairman; Faye Barkley; standing: Mary Lou Harker; Nell Davis; Jessie Lee Davis.

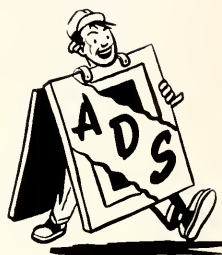
MEN'S JUDICIARY Gene Williams, Chairman; Vance White; Buster Winborne; J. D. Tilley; James Earl Taylor; Tommy Howard; Charles Paul. Not pictured: Branch McDaniel.



THE 1954



Gloria Cox, Editor; James Earl Taylor, Business Manager.



THE BUSINESS STAFF leaves the campus in search of ads. Caught by the camera are J. D. Tilley, James Earl Taylor, Eugene Herring, Shelton Asbell, Mildred Wheeler, Bessie Smith.



CHOWANOKA

This yearbook staff presents this book to you as a guide in years to come as you reflect back over the happy days spent within these hallowed walls. It is our aim to bring to mind the friendships, accomplishments, and the happy moments. Through the years may it be a reminder of your experiences at Chowan.



Betty Reinhardt, Associate Editor, and Betty Ruth Boyd, Organization Editor, ramble through the files in search of material.

THE EDITORIAL STAFF works industriously to meet deadlines. Seated, Pat Holt, Barbara Thorne, Ella Jane Smith, Lottie Bonney, Frances McDaniel; standing, Myra Phelps, Margie Pritchard, Barbara Edwards, Sue Godwin, Don Thomas.





Charles R. Fulcher
Editor 1954 Chowanian



A COMPLETED JOB. Joe Carter and Vincent Godfrey survey the finished product while Judy English prepares copy.

THE FIRST STEP in the printing of a newspaper is typesetting. Shown below are Bobby Baggett and James Earl Taylor.



THE CHOWANIAN

The Graphic Arts Department set a precedent this year. THE CHOWANIAN, the official college newspaper, rolled off the presses early in October even before all of the equipment in the shop had been serviced, cleaned and located. Thus, the first paper had been printed by the students in the college shop.

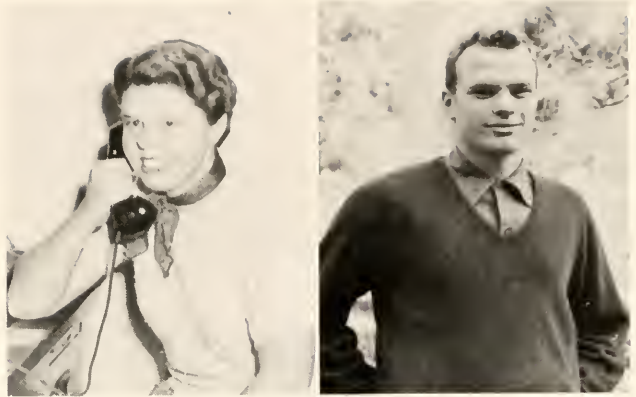
A small staff of student printers did a majority of the work--writing, rewriting, headline writing, linotype operation, proofreading, make-up, press operation, circulation. Charles Fulcher, CHOWANIAN editor-in-chief, supervised the entire process with John McSweeney, head of the department and adviser, instructing. Even the limited number of assistants did not require changing the deadlines. Charles sought editorial assistance in every department of the college. The organizations cooperated, the students helped, the offices gave information. But, most of the cooperation had to be forced, Charles will vouch. Nevertheless, "The paper will be out on time" proved a true statement.

News stories, features, editorials, sports were departmentalized in a format somewhat larger than the tabloid. Pictures brought life to the printed material. The big news story revealed the Board of Trustees action approving the construction of a new men's dormitory. The big sports story probably appeared under the head "Braves Trounce Pfeiffer Panthers 120 to 86."

The reporters, editors, make-up men and others concerned with the publication realize that the work done this year will greatly affect that done in the future. With this idea in mind, the staff has been diligently working and always striving for a better paper. And, though the work has been hard, the staff feels that remuneration resulted in the paper's popularity and the part it played in integrating activities and events.

Winston Parsons
Associate Editor

Judy English
Business Manager

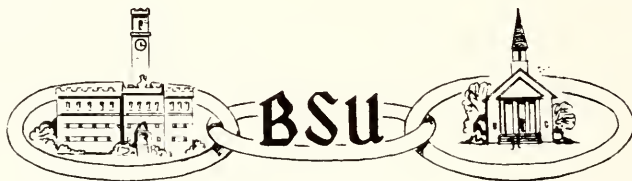


THE STAFF OF THE CHOWANIAN. First row: Judy English, Wesley Cannon, Barbara Thorne, Lottie Bonney; second row, Joel Smith, Bessie Smith, Pat Holt, Vincent Godfrey; third row, Charles Fulchner, Branch McDaniel, Winston Parsons, Bobby Stephenson, Bobby Baggett, James Earl Taylor.





THE EXECUTIVE COUNCIL meets weekly to plan B. S. U. activities. Seated, James Stewart, Mildred Mizell; second row, Joe Lang, James Earl Taylor, Mary Lou Harker, Miss Frances White, Jessie Lee Davis, Gloria Cox, Vincent Godfrey; third row, Eugene Herring, Charles Paul, Dan Page.



The Spirit Of B. S. U.

In our halls of learning Christ you did instill,
 With His truth eternal you our hearts did fill.
 Now we're ever eager goodly works to do;
 In your service use us, Spirit of B. S. U.
 In the midst of classes Christ we shall proclaim,
 Lift our fellow students in the Saviour's name;
 To the church we'll bind them, show them life anew,
 With the strength you give us, Spirit of B. S. U.
 We are all one body, tho' from east and west,
 We would serve the Master, put us to the test.
 Thus with hearts united sin we shall subdue
 With His love unfailing, Spirit of B. S. U.

. . . Mosely

It is the purpose of the B. S. U. by way of Christian guidance and activity among the students on this campus to bring about close relationships between the college and the churches of this community. I sincerely hope that the BSU'ers on Chowan College Campus have made life for you Christian: pleasant, happy, unselfish, and unerring. May the love of God encompass all so long as we shall live on this earth.

James Stewart
President

It has been interesting to observe the growth of the Baptist Student Union this year. Through its unit organizations it has proved a great blessing to the campus and to the local church. I consider it a peculiar honor in being the adviser of this group of Christian students, and I pray for its continued blessings.

Frances E. White
Adviser



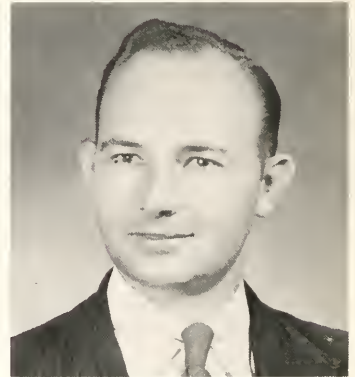
THE B. S. U. First row, Rosalyn Hamill, Ethelene Simpkins, Anne Long, Barbara Thorne, Mary Lou Harker, Mildred Mizelle, Rev. Warren Taylor, Frances McDaniel, Pat Guthrie, Miss Frances White, Marilyn Turner, Jessie Lee Davis; Second row, John Gatling, Dan Page, James Stewart, Charles Middleton, Vincent Godfrey, Fannie Mae Davis, Ella Jane Smith, Mildred Wheeler, Lula Pearl White, Gladys Williams, Joe Lang, James Earl Taylor; third row, Charles Paul, Shelton Asbell, Sue Godwin.



Dan Page, Charles Middleton, John Gatling, Charles Paul, William Carter, Rudolph Morris, Vincent Godfrey, Joshua Wallace, Joe Lang.

Ministerial Association

The Ministerial Association, composed of ministerial students at Chowan, met regularly with well-planned programs. Seeking to promote a spiritual atmosphere on the campus, the association cooperated with all religious activities. Some of its members held pastorates, and others did supply work in the churches of the area.



William Carter
President

Y. W. A.

The Young Woman's Auxiliary is the missionary organization for girls between the ages of 16 and 25 in the churches of the Southern Baptist Convention. Its purpose is "to develop young women in worldwide mission activity".



Seated, first row: Anne Long, Pat Guthrie, Mildred Mizell-Secretary, Mary Lou Harker-Vice President, Rosalyn Hamill, Ethelene Simpkins-Treasurer, Tommie Ruth Worrell, Judy Boyd, Barbara Edwards; second row: Joyce Miller, Miss Dorothy Dacus-Adviser, Barbara Thorne, Ella Jane Smith, Imogene Finch, Marilyn Joyner, Margie Pritchard, Marilyn Boston, Pat Holt. standing: Gloria Cox-President, Phyllis Coley, Betty Flythe, Eva Wrenn Williams, Jessie Lee Davis, Fannie Mae Davis, Jean Sykes, Lula Pearl White, Judy English, Frances McDaniel, Sue Godwin, Betty Ruth Boyd, Mildred Wheeler, Pauline Hardee, Willie Lou Holloman, Myra Phelps.



Dean Of Women's Office Staff

Seated, Rosalyn Hamill, Ethelene Simpkins, Barbara Thorne, Mildred Wheeler, Betty Lou Reinhardt; standing, Miss Addie Mae Cooke-Dean, Mrs. O. C. Kennedy-Assistant Dean.



Library Staff

Seated, Pauline Hardee, Miss Dorothy Dacus-Librarian; standing, Pat Holt, Vincent Godfrey, Bobby Vann.



The Glee Club

THE GLEE CLUB OFFICERS.
Seated, Polly Condrey, Secretary; Marilyn Joyner, Treasurer. Standing, Keith Roberts, Vice-President; Margie Pritchard, Reporter; Bobby Alligood, President.

"GO TELL IT ON THE MOUNTAIN, OVER THE HILL AND EVERYWHERE." So sang the Chowan College Glee Club over a wide territory in Eastern North Carolina and Virginia, representing the college in church and school gatherings as far and as wide as busy schedules would possibly permit.

At the beginning of this school year there was rejoicing at the sight of a private place for Glee Club rehearsals in the newly conditioned Fine Arts Building. Day by day saw growth, however, until the group overflowed its practice quarters and the fifty-six strong took to the auditorium.

The second quarter was high-lighted by a Christmas program in which the Glee Club was joined by twenty community singers to give a service of carols and oratorio excerpts. Basketball thinned the ranks about this time. This led to the formation of two new groups; the Chowan Singers, a group of twenty-four mixed voices, and the Vocal Ensemble for thirty girls.

These groups, with the Men's Chorus, united their singing forces in the spring for a festival of jollity.



THE CHOWAN COLLEGE GLEE CLUB. First row, Ward, Williams, White, Granda, Taylor, Middleton, Gatling, Boyd, Hamil, Holloman; second row, Rainey, Williams, Pritchard, Allgood, White, Lang, Roberts, Finch, Godwin, Hardee, McDaniel, Long; third row, Thorne, Joyner, Vence, Stewart, Tilley, Greene, Udvarnoki, Fawcett, Williams, Worrell, Harker, Turner, Parker; fourth row, Bonney, Condrey, Simpkins, Millar, Guthrie, Phelps, Davis, Cox. Mrs. Rose Pool, Director; Miss Virginia McQueen, Pianist.



Nancy Rainey, Glee Club Soloist, whose lilting soprano added grace and charm to the vocal group.

Sing We Now . . .

THE GIRLS TRIO rendered beautiful selections. Pictured here are Pat Guthrie, Nancy Rainey, Anne Long.



THE MEN'S CHORUS sang a capella on many occasions. Front row, Hosea Granda, Keith Roberts, D. C. Williams, Joe Lang, Charles Middleton, John Gatling, Billy Finch; second row, James Stewart, Bobby Alligood, J. D. Tilley, Hilliard Greene, Gene Udvarnoki, Meredith White, James Earl Taylor, Frank Fawcett, Charles Middleton.





Charles Middleton
President

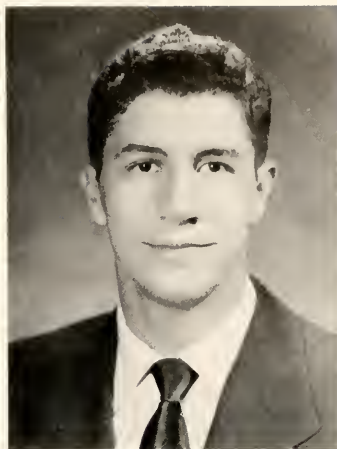
Phi Lambda Pi



Seated, Charles Middleton, Frances McDaniel, Judy English, Mr. Robert Grogan; first row: James Earl Taylor, Marilyn Joyner, Betty Ruth Boyd, Rosalyn Hamill, Barbara Thorne, Pat Guthrie, Anne Long, Marilyn Boston, John Gatling; second row, Eva Wrenn Williams, Phyllis Coley, Mary Lou Harker, Mildred Mizell, Sue Godwin, Joe Lang, Mildred Wheeler, Pat Holt, Barbara Edwards, Bessie Smith.



Zeta Alpha Sigma



Eugene Herring
President

First row, Claude Ivey, Eugene Herring, Miss Virginia Powell, Billy Finch, Bobby Baggett, Winston Parsons;
second row, Charles Fulcher, Charles Stephenson, Marshall Whitehurst, Bobby Vann, Don Thomas.



Around The Campus



"On the plains of Carolina"



What's this we are looking at?



Pitter PAT



Miss Judiciary



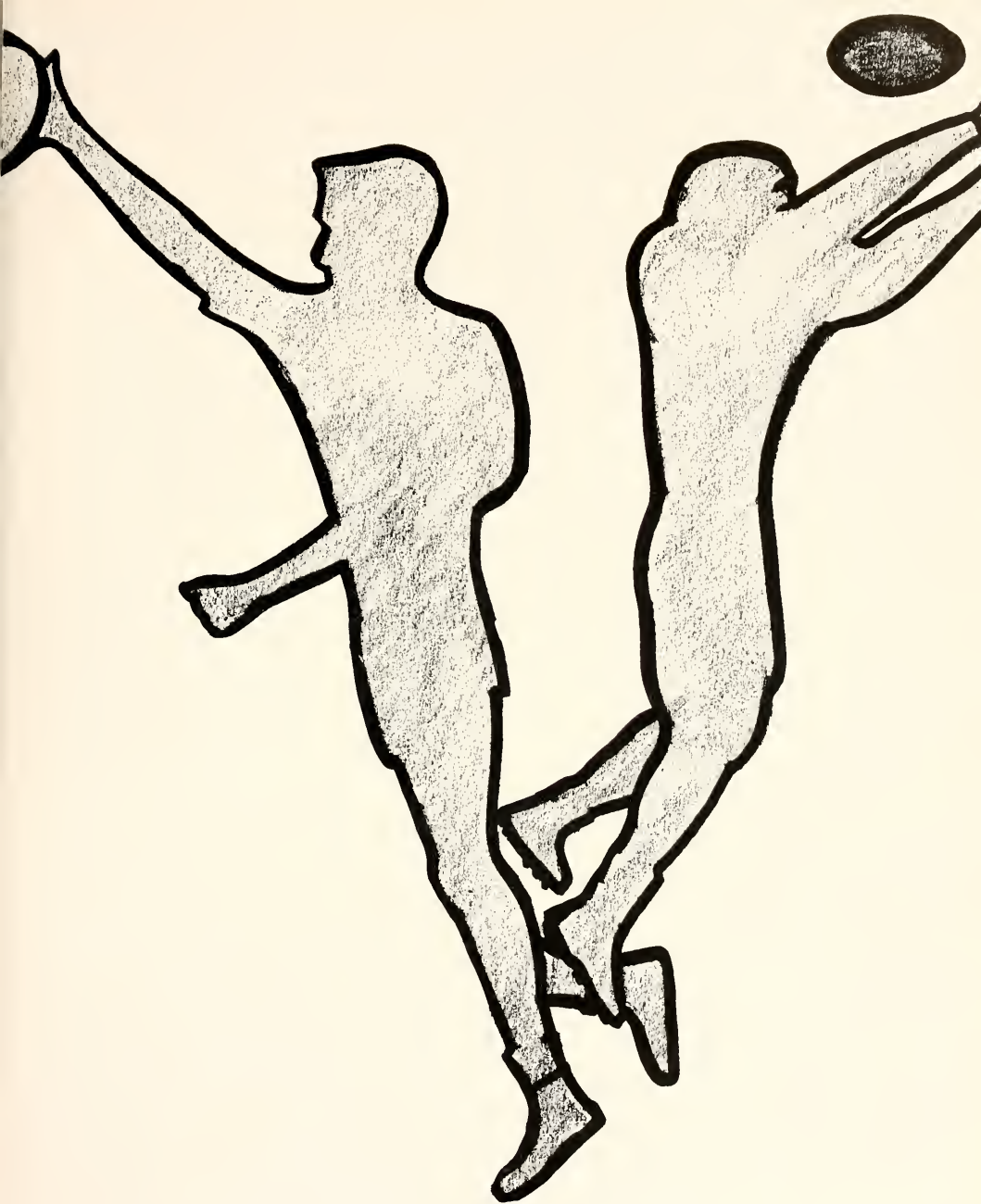
Afraid to jump?

Another misplaced Virginian



Woman of the World





ATHLETICS



HERBERT THOMAS APPENZELLER
Physical Education Director and Head
Coach.

Athletics

Football-Basketball Baseball-Intramurals



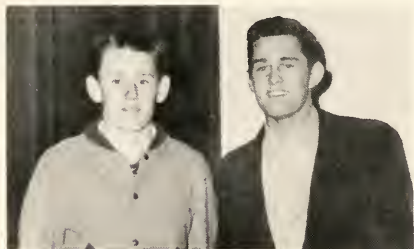
The athletic department of the college has grown by leaps and bounds in the last few years. When the college was reopened the Braves were directed by Melvin Layten, who is now at Wake Forest. Coach Layten deserves considerable praise because he had to start from scratch and build his teams, plus his whole athletic department. Herb Appenzeller, a graduate of Wake Forest and a tail-back under "Pea-head" Walker, took over the infant college at the beginning of its third year. Since that time the athletic teams have shown considerable improvement each year and the football team had its first undefeated season this year. The hardwood team enjoyed a successful season last year and did equally well this year. The 1954 Chowanoka salutes Coach Herb Appenzeller, Coach Vaughan Fowler, and the boys who have participated in these intercollegiate sports and says, "Congratulations on a job well done".

VAUGHAN DASHWOOD FOWLER
Assistant Coach





THE CHEERLEADERS. Phyllis Underwood, Florence Tucker, Nancy Taylor, Pat Guthrie, Chief; Margie Pritchard, Elsie Takesian, Marilyn Joyner, Gloria Cox.



Two boys always seen at the football games were Managers Joel Smith and Bobby Baggett.

Cheering the Braves on Homecoming Day.



Competently managing the basketball team were Lewis Lane and Alvin Johnson.



First row, Joel Smith, Dan Page, Sam Evans, Charles Goodrich, John Phillips, Billy Faulk, Billy Joe Dickens, Wesley Cannon, Keith Roberts, Frank Fawcett; second row, Bobby Baggett, Luegray White, Gene Williams, Ronnie Luck, Hugh Nash, Watson McKeel, Bobby Alligood, Charles Harris, Billy Jones, Ted Roberts, Winston Parsons; third row: Coach Fowler, Branch McDaniel, Bryan Smith, Joe Butler, Travis Barden, Claude Ivey, Maynard Leonard, Lloyd Williams, Eddie Barnes, Billy Rodgers, Coach Appenzeller.

Football



Bobby Alligood, fullback, was Captain of the 1954 football team.

Watson McKeel was first string quarterback for the Braves.





Gene Williams, halfback, was leading scorer and ground gainer.



Frank Fawcett played a speedy game at halfback.

Braves 0 - Gardener-Webb 0

September 28-The Chowan College football team showed that it was going to be a power to reckon with as the Braves played Gardner-Webb, last year's conference champions and winner of the "Golden Isle Bowl" game in Georgia, in the season's opener on a rain-soaked field. The Braves penetrated the 10-yard line twice but the Gardner-Webb line stood up and held. In the line Dave Smith and Ted Roberts were outstanding. The running of Gene Williams, Watson McKeel, and Frank Fawcett drew praise from the coach.



Billy Jones, tackle, kept the whole team full of pep.

Braves 25 - Portsmouth Marines 14

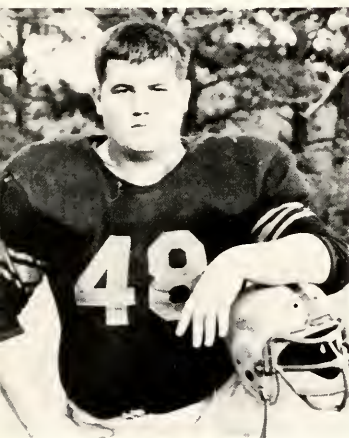
October 3-The heavily favored Portsmouth Marines struck paydirt on a 70 yard pass early in the game, but a pass from quarterback Watson McKeel to halfback Gene Williams put Chowan back in the game. Faulk's attempted conversion went wide. Chowan scored next as fullback Bobby Alligood plunged over from the 3 yard line. The extra point again was no good. Frank Fawcett scored and Faulk's conversion was good. The Braves led the game by a 19-7 score. The Marines scored for the second time, but Williams went over for Chowan.



Ronnie Luck was a mountain in the center of the line.



Dave Smith, end, showed his ability as a pass receiver.



Charles "Fats" Harris, guard, was a stone wall on defense.



"Big Al" White was a freshman tackle and a rugged blocker.

Braves 52 - Newport News Apprentice School 6

October 10-Homecoming Day was a great success as seven backs and one lineman shared in the scoring as the Braves massacred a helpless Newport News Apprentice School team. Billy Joe Dickens, Claude Ivey, Bobby Alligood, Frank Fawcett, Gene Williams, Sam Evans, Wesley Cannon, and center Ronnie Luck all scored a touchdown. The entire line was terrific in the victory.

Braves 0 - Hargraves Academy 0

October 17-The Braves ran into more trouble than was anticipated as a much lighter Hargraves team fought all the way to gain a tie. The Braves threatened twice by moving inside the Hargraves 10 yard line, but they could never go all the way as the Hargraves line would stand up to the challenge. First string quarterback Watson McKeel did not see action due to injuries and neither did 240 pound Travis Barden. Claude Ivey was recuperating from a bad case of flu and was out of the game.

Braves 21 - Mars Hill 19

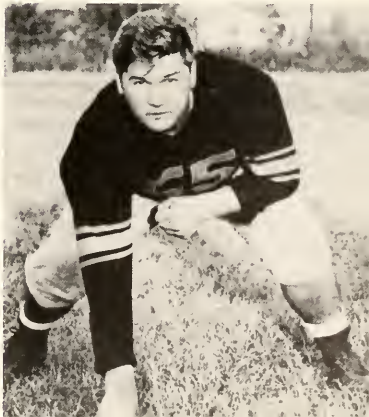
November 14-The Chowan College Braves closed out their regular season with an impressive 21 to 19 victory over a good Mars Hill team for the first undefeated season in Chowan history. Smokey Williams kicked off for Chowan and Douglas returned the kick to the Mars Hill 40-yard line. After a series of downs which advanced the ball nine yards, Mars Hill punted to the Chowan three. The Braves showed power as they quickly marched downfield with Frank Fawcett climaxing the drive going over from the five. However, the touchdown was called back because of a holding penalty and Chowan was penalized back to the 20. Quarterback Watson McKeel gave the ball to halfback Billy Joe Dickens on an end sweep and he romped the 20 yards to the goal for the touchdown. Nick Theodorakis booted the extra point and Chowan led 7 to 0. The Braves threatened to make a runaway of the game as they scored next with Billy Joe Dickens sweeping his own right end for 25 yards and his second touchdown of the night. The toe of Nick Theodorakis again proved true and Chowan led 14 to 0. Mars Hill struck back on a 40 yard pass play to Odom who lateraled to Douglass and he went the remaining yardage for the touchdown. Quarterback Schlevenger passed to Odom for the extra point. The half ended with Chowan ahead 14 to 7. Both teams fought hard through a scoreless third quarter with neither team threatening to score. The fourth quarter was fast and exciting as Quarterback Schlevenger hit Odom with a 20 yard pass good for a touchdown. The try for the extra point failed and Chowan led 14 to 13. The Chowan team scored their final touchdown midway the fourth quarter as Quarterback McKeel hit Tuffy Parsons with a pass on the seven-yard line and he took it on to paydirt. Theodorakis converted and Chowan led 21 to 13. The Mountain Lions roared back for another touchdown on a pass from Schlevenger to Odom but the extra point again failed and Chowan had its first undefeated season in history. Braves 21, Lions 19.



Hugh Nash proved his worth at end.



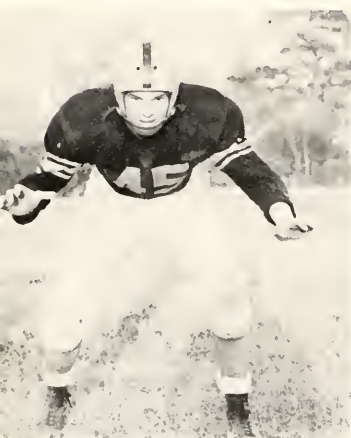
Ted Roberts, guard, was a power on defense.



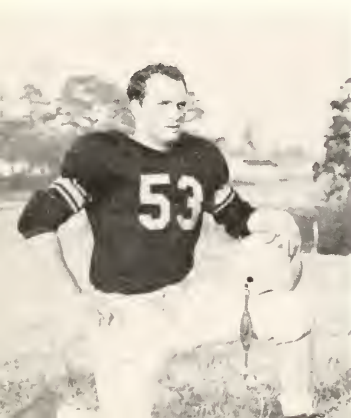
Joe Butler, guard, was backed up by 215 pounds of determination.



Billy Joe Dickens was a speedy halfback for the Braves.



Winston Parsons, end, saw a lot of action after Adcock's injury.



Travis Barden, tackle, was heaviest man on the squad.

BOBBY ALLIGOOD . . . Washington . . . 202 lbs. .
 "Gater" . . . Go, boy! . . . Caruso . . . TRAVIS
 BARDEN . . . 240 lbs. . . New Bern . . . Fresh-
 man . . . "Shad" . . . JOE BUTLER . . . "Joe Buck"
 . . . 215 lbs. . . Brain . . . Elizabeth City . .
 BILLY JOE DICKENS . . . Fuquay Springs . . . 145
 lbs. FRANK FAWCETT . . . "Yank" . . . Laconia,
 N. H. The South shall live again! . . . "Spigot" . . .
 CHARLES HARRIS . . . Private Eye for AMC . . .
 "Fats" . . . Washington . . . Little Black Book . . .
 BILLY JONES . . . 215 lbs. . . Washington . . .
 "Where's Faye? . . . Little notes from the Presi-
 dent's office . . . "Jonesey" . . . RONNIE LUCK . . .
 a Virginian . . . Carry me back . . . WATSON MC-
 KEEL . . . 165 lbs. . . "Heartbreaker" . . . Wil-
 liamston . . . "Mac" . . . HUGH NASH . . . Plymouth
 . . . "Ding Dong" . . . Rehearsal . . . WINSTON
 PARSON . . . Norfolk . . . Who's Who??? 165 lbs.
 . . . TED ROBERTS . . . "Mr. Cool" . . . Wendell
 . . . A gone cat! . . . DAVE SMITH . . . In the army
 now . . . a Fuquay boy . . . LUEGRAY WHITE . . .
 Nose . . . Colerain . . . "Big Al" . . . 230 lbs. . .
 GENE WILLIAMS . . . "Preacher" . . . Rocky Mount
 . . . "Got it made" . . . Mars Hill



First row: Branch McDaniel, Bryan Smith, Dan Page, Smokey Williams, John Phillips, Billy Rogers, Maynard Leonard.
Second row: Charles Goodrich, Sam Evans, Claude Ivey, Billy Faulk.

First row: Claude Ivey, Travis "Shad" Barden, Keith Roberts, Maynard Leonard, Joe Butler, Eddie Barnes, Smokey Williams.
Second row: Billy Joe Dickens, Sam Evans, Wesley Cannon, Billy Faulk.



The Goober Bowl



Goober Bowl Queen

Miss Margie Pritchard of Ahoskie was chosen Queen of the 1953 Goober Bowl to reign over the days activities.

N. C. State Freshman 38 - Chowan 0

In the sixth annual Goober Bowl the North Carolina State Freshman defeated the Chowan College Braves by an overwhelming score of 38 - 0. The Braves, undefeated in regular season play, were outclassed by the eleven from State College but played an admirable game. Coach Herb Appenzeller's boys showed good sportsmanship and a fine spirit throughout the game.

Guard--Joe Butler, Half Back--Frank Fawcett, Fullback--Claude Ivey, Center--Ronnie Luck, End--Tuffy Parson, Fullback--Bobby Alligood.

Junior Varsity Football

The Chowan College Junior Varsity football team ended its 1953 season unsuccessfully on October 23 with a blistering defeat at the hands of a strong Hopewell Virginia High School eleven. The Little Braves supporting an overall season record of one win, three losses and one tie, gained their single victory over Edenton by a score of 19-0.

The Little Braves suffered losses at the hands of Hertford High School of the Albemarle Conference, New Bern of the Northeastern Conference, and Hopewell, Virginia state Champs for several years. They hold a 0-0 tie with Norfolk Catholic High School.

The Braves played rugged ball, but errors proved their downfall. Outstanding on offense were Billy Faulk and Billy Joe Dickens while Ted Roberts showed up nicely on defense.

THE LITTLE BRAVES. Front row, Kencoff, Barnes, Page, Williams, Luck, Rodgers, Lane, Phillips; second row, Dickens, Cannon, McDaniel, Parsons, Faulk, Evans, Smith, Wetherington.



Basketball



CHOWAN BRAVES, First row, Bobby Davenport, Roy Futrell, Edward Griffin, Kenneth Haswell, Hilliard Greene, Bobby Liverman; Second row, John Lewis, Phillip Ray, Aubrey Edwards, Vance White, Don Lucas, Bill Buckley.



FIGHTING BRAVES, Vance White, Kenneth "Goose" Haswell, Hilliard Greene, Roy Futrell, Aubrey Edwards.

Bill Buckley
Guard

Bobby Davenport
Forward





Hilliard Greene
Most Valuable Player in Junior College Conference and Captain of All-Star team, 1953.

Braves Lose to A. C. C.

Chowan College cage team lost their first game of the season to a fired up Atlantic Christian JV team Friday night, November 20. Chowan started with a flash and dominated the score until the fourth quarter. A. C. C. sparked by the fine shooting of Charles Hester went out front in the fourth quarter and ran the score up to nine points ahead of Chowan. Chowan came back to cut the score to two points with only 50 second left and then never regained possession of the ball again. High scorer for Chowan was Bill Buckley with 23, and Hilliard Greene with 18. Hester was with 24 for A. C. C. Starting for Chowan were Hilliard Greene, center; Roy Futrell, forward; Bill Buckley, forward; Vance White, guard; and Edward Griffin, guard.

Vance White
Forward



Kenneth "Goose" Haswell
Forward



Aubrey Edwards
Guard



Buster Winborne
Guard



Roy Futrell
Forward



SIX RETURNING LETTERMEN wear Chowan blue and white. They are kneeling, Buster Winborne, Aubrey Edwards, Vance White; standing, Roy Futrell, Kenneth Haswell, Hilliard Greene.





1953 BASEBALL TEAM. First row, Kenneth Haswell, Buster Winborne, Billy Lee, John Broadwell, Federal Mizelle, Joe Butler; second row, Coach Appenzeller, Frank Gibson, Aubrey Edwards, C. E. Thomas, Bobby Jones, Henry Kitchings, Billy Jones; third row, Coach Fowler, Martin Domokos, C. E. Alligood, Hilliard Greene, Bobby Alligood, Watson McKeel.

Baseball



WAITING THEIR TURN AT BAT are Billy Lee, Joe Butler, and Watson McKeel.



COMING IN HOME. Federal Mizelle scores for the Braves.

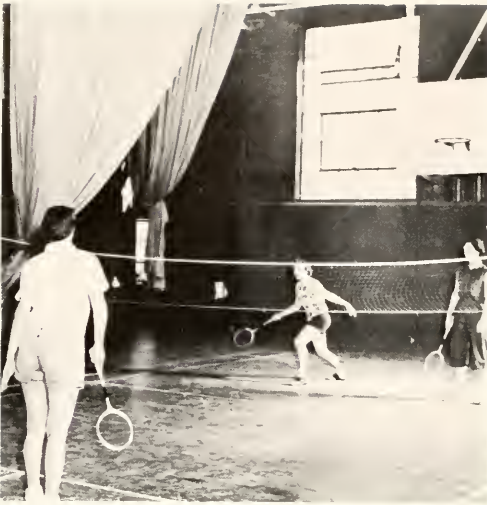
A HIT to left field brings Kenneth Haswell a home run.

PITCHING for the Braves are Woody Mizelle, Bobby Alligood, C.E. Alligood, and Troy Perry.



Intramural

All Of
Will Be



Enjoying a game of badminton are Willie Lou Holloman, Rosalyn Hamill, Ella Jane Smith.

Real living is taking an active interest in the people and world around us. Our intramurals provided opportunities for us to develop a love for clean competitive sports. These extracurricular activities added a spice to our lives which we all needed and loved; but in reality they made a small part of our living together.

Barbara Edwards serves in a tennis match while J. D. Tilley waits for the return.

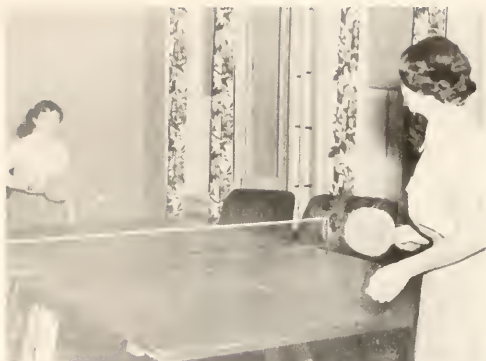


Sports

These
Memories



These campus beauties ready for a dip in the pool are: Barbara Edwards, Marilyn Joyner, Sue Godwin, Ethelene Simpkins, Barbara Thorne, Judy Boyd.



Girls and boys enjoy ping pong in their respective lounges. Barbara Thorne, Pauline Hardee (above), "Fats" Harris, and Joe Butler (below) play exciting games.





BATHING BEAUTIES. Barbara Edwards and Marilyn Joyner take time out for swimming.



A PRO. Nick Theodorakis in position for a homer.



RELAXING after a basketball game are L-ora Holland, Sue Godwin, Jean Parker, Pauline Hardee, Rosalyn Hamill, Anne Long.



GIRLS PHYS, ED, class enjoys a game of basketball, Fannie Mae Davis, Barbara Thorne, Elsie Takesian, and Jean Parker warm up before play begins.

BOSTON AT THE BAT. Professor Robert Boston takes his turn at bat while pretty Pat Guthrie waits for the pitch.



IN THE GAME, Pauline Hardee, Leora Holland, Anne Long, and Rosalyn Hamill watch as Betty Sue Godwin tries to prevent Jean Parker's scoring.



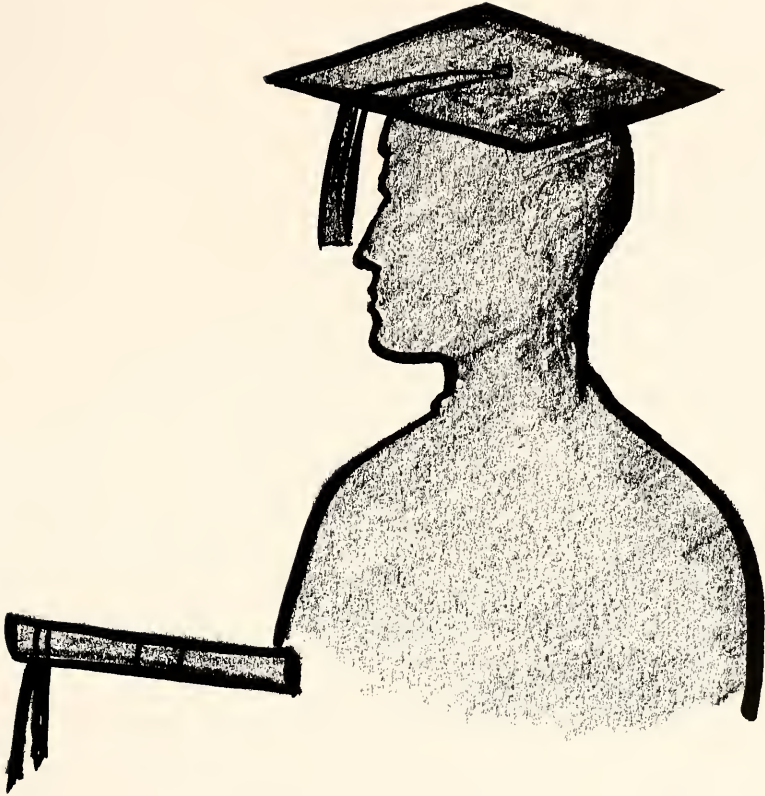
Horseback Riding



Learning to groom the horses is a part of the horseback riding course. Shown at work are Barbara Thorne and Eva Wrenn Williams while Judy English, instructor, observes.

Spending a Saturday morning at the stables are Eva Wrenn Williams, Barbara Thorne, Judy English, Barbara Edwards.





FACULTY



DR. FOREST ORION MIXON, B. A., Th.M., Ph.D., President. Under his capable direction, Chowan College has seen growth which is unexcelled in its glorious history.



REV. OSCAR CREECH, B.A., Th.B., Associate to the President. He has been a great influence on the campus.

To These We Owe Our Gratitude



MISS ADDIE MAE COOKE, B.A.,
Dean of Women

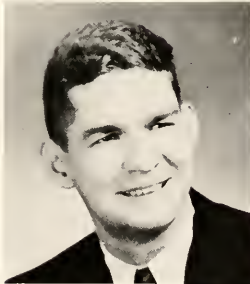


MR. ROBERT GROGAN, B.A., M. Ed.,
Dean of Instruction, Department of English



DR. JOSEPH I. REECE, B.A., M.A., Ph.D.,
Dean of Men, Department of Mathematics

They walk with us . . .

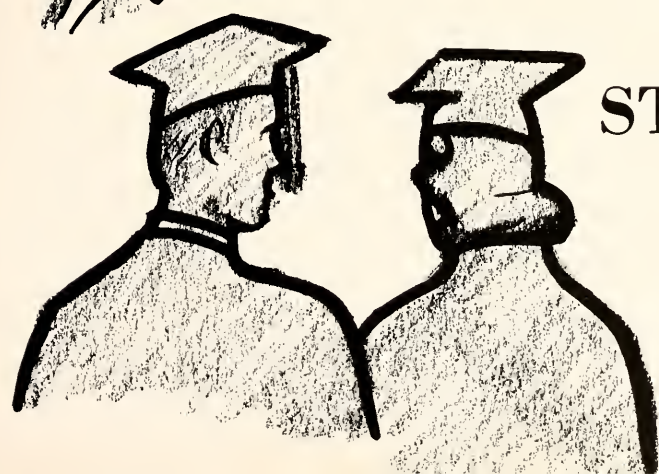


First row: MISS ARELIA ADAMS, Bursar and Business Manager; MR. HERBERT APPENZELLER, B.A., M.A., Departments of Physical Education and Latin; MRS. MARGARET APPENZELLER, B.A., Department of Physical Education. Second row: MR. ELTON ASKEW, Custodian; MRS. GENEVA BOSTON, Secretary; MR. ROBERT O. BOSTON, B.S., M.S. (C. and B.A.), Department of Business. Third row: MISS DOROTHY ANN DACUS, B.A., Librarian; MR. DAN G. HARRIS, B.S., Department of Science; MRS. BEATRICE KEELER, A.B., M.S., Department of Business; MRS. MARY KENNEDY, B.L., Assistant to Dean of Women.

Our Faculty.



First row: MISS VIRGINIA McQUEEN, A.B., M.A., Department of Music; MR. JOHN McSWEENEY, Master Printer, Department of Graphic Arts; MRS. DAISY LOU MIXON, B.A., B.R.E., M.R.E., Department of Religious Education. Second row: MRS. ROSE GOODWIN POOL, Diploma in Music, M.R.E., Department of Music; MISS VIRGINIA POWELL, B.S., Department of Business; MISS FRANCES WHITE, B.A., B.M.T., M.R.E., Department of English. Third row: MRS. FRANCES WILLIAMS, B.S., Department of Physical Education; MR. MARION EUGENE WILLIAMS, B.A., M.A., Department of French and English; MR. MILLIS B. WRIGHT, B.S., Department of Agriculture; DR. BELA UDVARNOKI, Th.M., Ph.D., Department of Social Science; MRS. J. F. BEAMAN, Dietician, not pictured.



STUDENTS

Freshmen



Elbert Brantley Adcock
Howard Travis Barden
Faye Barkley



Eddie Barnes
Marilyn Jean Boston
Betty Ruth Boyd



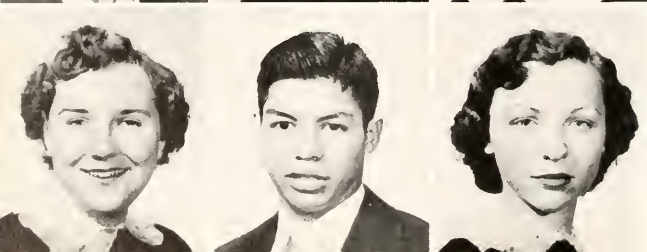
Wesley Cannon
Billy Civils
Phyllis Ann Coley



Gwen Lee Cooper
Geoffrey Cratch Jr.
Earnie Clark



Herman Earl Davidson, Jr.
Fannie Mae Davis
Jessie Lee Davis



Marjorie Davis
Paul De La Cruz
Sara Doughtie

Barbara Ann Edwards
Linda Eure
Samuel G. Evans



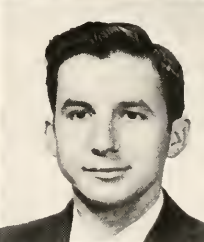
Billy Faulk
Barbara Felton
Billy Finch



Betty Flythe
John D. Gatling
Betty Sue Godwin



Adelfa Gonzalez
Joe Granda
Edward Griffin



Patricia Guthrie
Rosalyn Hamill
Pauline Hardee

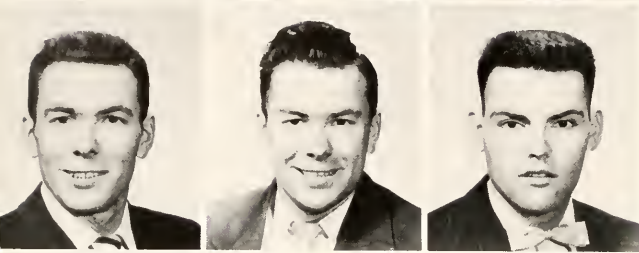


Nell Patsy Hoggard
Willie Lou Holloman
Patricia Ann Holt





Thoman Woody Howard
Alvin Keith Johnson
Marilyn Joyner



Lawrence Lane
Lewis Lane
John Lewis



Anne Long
Curtis Franklin McManus, Jr.
Joyce Miller



Luther Rudolph Morris
Billey Allen Murray
Carl E. Odom



Katherine Winifred Odom
Daniel Page
Jane Linda Parker

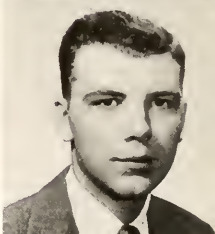
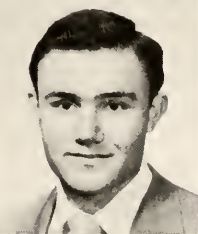


Jean Carol Parker
Winston Brooks Parsons
Charles L. Paul

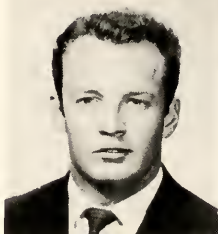
Troy Perry
John Phillips
Helen Ray Pratt



Marjorie Leigh Pritchard
John Phillips Ray
Donald Franklin Reid



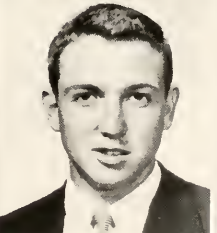
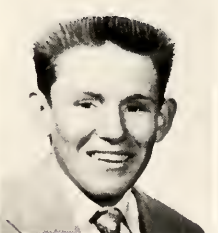
Ted Roberts
Jean Rogerson
Wilhemina Ruiz



Ethelene Simpkins
Ella Jane Smith
Bryan Smith, Jr.



Joel Maurice Smith
Charles Joel Stephenson
Rebecca Jean Sykes



Walter Sykes
Elsie Takesian
Nancy Catherine Taylor

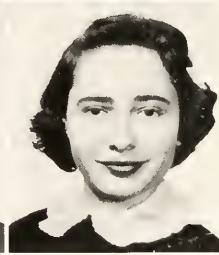
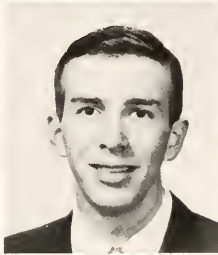




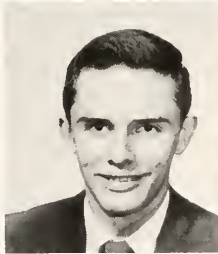
Nick Theodorakis
Don Thomas
Barbara Jean Thorne



Jame D. Tilley
Marilyn Turner
Gene Udvarnoki



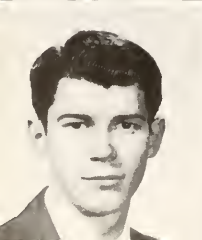
Phyllis Rebecca Underwood
Robert E. Vann
Carmen Vence



Phyllis Wrae Ward
Joel C. Wetherington
Mildred Wheeler



Lula Pearl White
Josh Wallace
Meredith White



Marshall E. Whitehurst
Eva Wrenn Williams
Gladys Williams

D. C. Williams
 Tommie Ruth Worrell
 Branch McDaniel



Kathleen Stilley
 Ann Brown
 Myra Lynn Phelps



Luegray White



Class Officers



Winston Parsons
 Reporter

Don Page
 President

D. C. Williams
 Vice-President

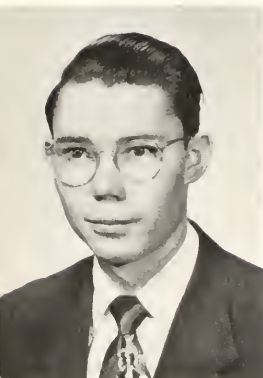
Anne Long
 Secretary

Sophomores

CLYDE ENNIS ALLIGOOD, Baseball 1, 2; Class Treasurer 2.



ROBERT JORDAN ALLIGOOD, Football 1, 2; Captain 2; Baseball 1, 2; Glee Club 1, 2; President 2; Men's Judiciary 1; Student Council 2.



SHELTON ASBELL, B. S. U. 1, 2; Officer 1, 2; Chowanian Staff 1, 2; Chowanoka Staff 2; Postmaster 1; Student Store Manager 2; Phi Lambda Pi 2.

ROBERT EARL BAGGETT, Phi Lambda Pi 1; Chowanian Staff 1, 2; Manager Football 2; Zeta Alpha Sigma 2; Dramatics 1.



DONALD BLOWE

JUDY BETH BOYD, Sock and Buskin Club 1; Women's Judiciary 1; Chairman 2; Student Council 2; Postmistress 2; Y. W. A. 2, Officer 2.



NANCY BROWN, Phi Lambda Pi 1, 2; Glee Club 1; Sock and Buskin Club 1.



WILLIAM BURKETT.



JOE BUTLER, Football 1, 2; Co-captain 1; Baseball 1, 2; Student Council 1, Vice-President 2; Monogram Club 1, 2; Phi Lambda Pi 1.



MARY PAULA CONDREY, Glee Club 1, Officer 2; Future Teachers 1; Miss Future Teacher 1; Basketball Queen's Court 1; Marshal 1; Superlative 2.



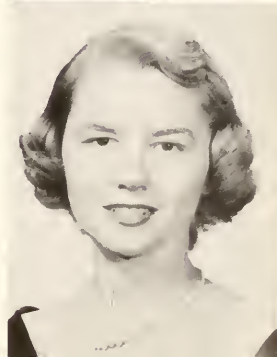
INEZ CARTER, Marshal 1.



ROBERT CARTER.



WILLIAM E. CARTER, Student Council 1, 2; Ministerial Alliance 1, 2, President 1, 2.



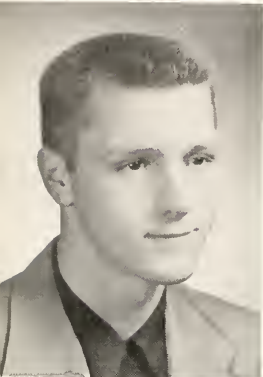
GLORIA COX, Class Secretary 1, 2; Student Council 1, 2; Chowanoka Editor 2; Y. W. A. 1, President 2; Chowanika Editor 1; Who's Who 1; Cheerleader 1; Glee Club 1, 2; B. S. U. 2; Basketball Queen's Court 1; Mixon-Creech Best All Round Student Award 1.



CHARLES DAVIS, Ministerial Alliance 1, 2; Who's Who 1; Superlative 2.



NELL DAVIS, Who's Who 1; Judiciary 2; Chief Marshall 1; Superlative 2.



AUBREY EDWARDS, Basketball 1, 2; Baseball 1, 2.



JULIA MARGARET ENGLISH, Phi Lambda Pi 1, 2; Y. W. A. Officer 1, 2; Student Instructor 1, 2; Annual Staff 2; Superlative 2; Chowanian Business Manager 2; Freshman Class Officer 1.



FRANK FAWCETT, Football 1, 2; Glee Club 1, 2; J. V. Basketball 1; Intramurals 2; Sock and Buskin Club 1; Dramatics 1.



IMOGENE FINCH, Phi Lambda Pi 1; Glee Club 1; Sock and Buskin Club 1; B. S. U. 1, Officer 1; Y. W. A. 1, Officer 2.



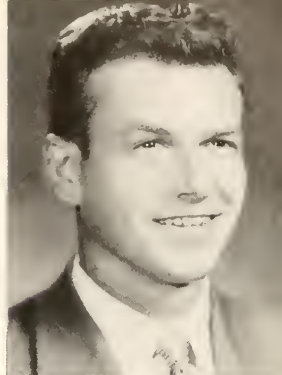
CHARLES FULCHER, Chowanian Editor 2; B. S. U. 1; Zeta Alpha Sigma 1, 2; Sock and Buskin Club 1; Chowanian Staff 1; Basketball Publicity Manager 1, 2; Glee Club 1, 2; Dramatics 1; Student Council 2.



VINCENT LEE GODFREY, Ministerial Alliance 1, 2, Officer 1, 2; Glee Club 1; Phi Lambda Pi 1; B. S. U. 1, 2; Officer 2; Library Assistant 1, 2.



HILLIARD GREENE, Student Government President 1, 2; Chairman Men's Judiciary 1; Glee Club 1, 2; Baseball 1; Football 1, 2; Basketball 1, 2; Student instructor in Graphic Arts 1; Edwin P. Brown Athletic Award 1; Who's Who 1.



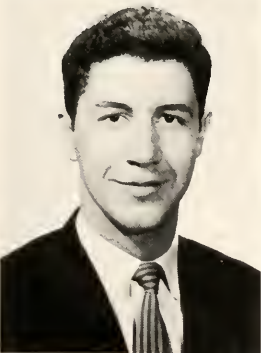
LONNIE HARDEN, Phi Lambda Pi 1, Officer 1; Student Store Manager 1.



MARY LOU HARKER, B. S. U. 1, Treasurer 2; Y. W. A. 1, Vice-President 2; Phi Lambda Pi 2; Women's Judiciary 2; Glee Club 2.



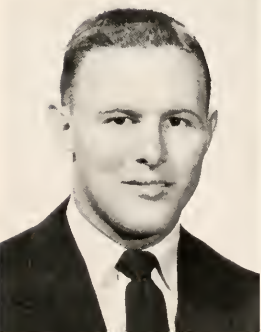
CHARLES HARRIS, Football 1, 2; Monogram Club 1, 2.



EUGENE HERRING, Football 1; Glee Club 1, 2; Chowanoka Staff 1, 2, Business Manager 1; Sock and Buskin Club 1; B. S. U. 1, Officer 2; Student Government 2; President Zeta Alpha Sigma 2.



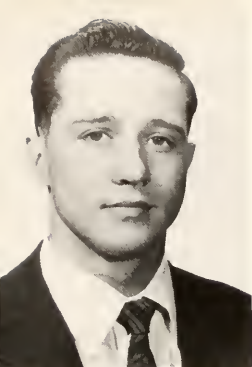
ENOS LANNING HOLLOMAN, Phi Lambda Pi 1, 2; Glee Club 1, 2.



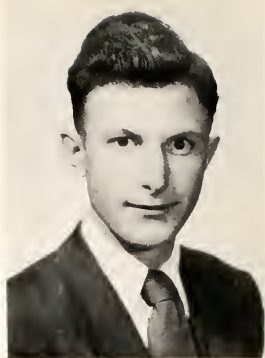
CLAUDE IVEY, Football 1, 2; Class President 1; Student Council 1, Vice-President 2; Zeta Alpha Sigma 2; J. V. Basketball 1.



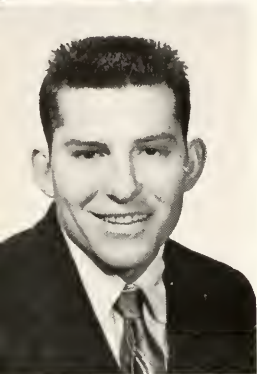
BILLY JONES, Football 1, 2; Baseball 1, 2; Glee Club 1, 2; Zeta Alpha Sigma 1; Future Teachers 1, 2.



BOBBY JONES. Zeta Alpha Sigma 1; Baseball 1; Basketball 1.



JOE LANG. Glee Club 1, 2; Phi Lambda Pi 1, 2; Ministerial Alliance 1, 2; B. S. U. 1, 2.



BILLY LEE. Baseball 1, 2; Basketball 1.



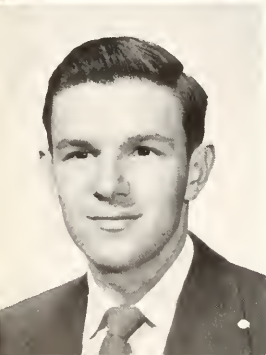
MAYNARD LEONARD. Football 1, 2.



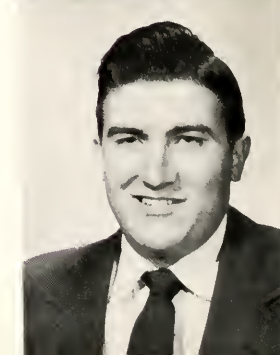
FRANCES McDANIEL. Phi Lambda Pi 1, Secretary 2; Y. W. A. 1, 2; B. S. U. 2; Chowanoka Staff 1, 2; Glee Club 2; Dramatics 1.



WATSON McKEEL. Football 1, 2; Basketball 1, 2; Baseball 1; Monogram Club 1; Chowanian Staff 1.



CHARLES MIDDLETON. B. S. U. 1, 2, President 1; Glee Club 2; Swimming Team 1; Phi Lambda Pi Vice-President 1, President 2; Ministerial Alliance 1, 2, Vice-President 1; Student Council 2; Football 2; Glee Club President 1; Baseball Manager 2.

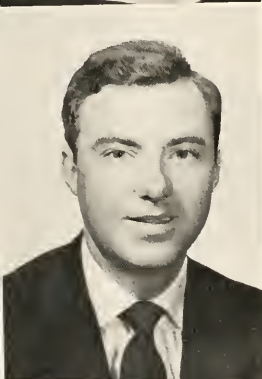
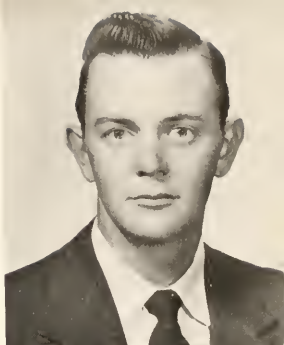


FEDERAL MIZELLE. Baseball 1, 2.



MILDRED MIZELL. B. S. U. 1, Secretary 2; Phi Lambda Pi 1, 2; Student Council Treasurer 2; Y. W. A. 1, Secretary 2.

WOODROW MIZELLE. Baseball 1; Zeta Alpha Sigma 1, 2; Monogram Club 1, 2.



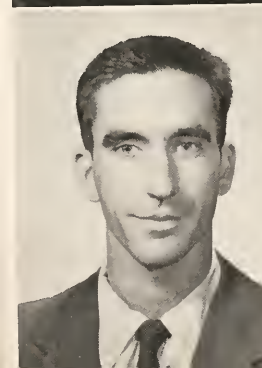
LAWRENCE WOOD MYERS. Zeta Alpha Sigma 1.

JOYCE ANN PARKER. Chowanian Staff 1; Glee Club 1, 2; Women's Judiciary 1, Secretary 2.



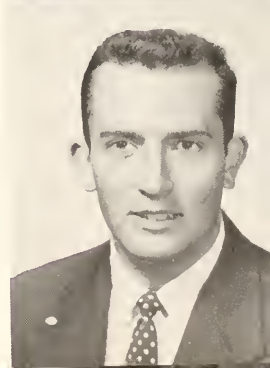
NANCY RAINEY. Phi Lambda Pi 1; Glee Club 1, 2; Sock and Buskin Club 1; Y. W. A. 1, 2; Who's Who 1; Herbert Daniel Music Award 1.

BETTY LOU REINHARDT. Student Council Secretary 2; Chowanoka Associate Editor 2; Sock and Buskin Club 1; Marshall 1; Chowanian Business Manager 1.



CLARENCE REVELLE.

KEITH ROBERTS. Football 1, 2; Glee Club 1, 2; Class Officer 1; Phi Lambda Pi 2; Student Council 2; Men's Judiciary 1; Swimming Club 1, 2; Horse Trainer 2.





LOTTIE MARIE ROSS. Glee Club 1, 2; Y. W. A. 1; Future Teachers Librarian 1; Chowanian Staff 1, 2; Chowanoka Staff 1, 2; B. S. U. 2; Dramatics 2.



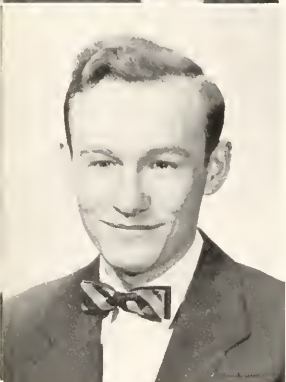
BESSIE LEE SMITH. Sock and Buskin Club 1; Phi Lambda Pi 1, 2; Y. W. A. 1; Chowanian Staff 1, 2; Chowanoka Staff 2; Marshal 1, Dramatics 1.



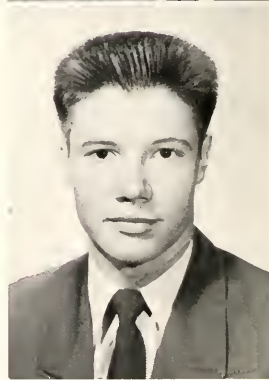
JAMES STEWART. B. S. U. Vice - President 1, President 2; Who's Who 1; Sock and Buskin Club 1; Glee Club 1, 2; Phi Lambda Pi 1.



WILLIAM STRADLEY. Football 1; Intramurals 1.



JAMES EARL TAYLOR. Chowanian Staff 1, 2; Sock and Buskin Club 1; Dramatics 1; Glee Club 1, 2; Chowanoka Business Manager 2; B. S. U. 1, 2; Phi Lambda Pi 1, 2; Men's Judiciary 1, Secretary 2.



VANCE WHITE. Basketball 1, 2; Men's Judiciary 1, 2; Superlative 2.



WILLIAM WARWICK WINBORNE III. Basketball 1, 2; Men's Judiciary 1, 2; Football 1; Baseball 1; Student Council 1.



GENE WILLIAMS. Campbell College 1; B. S. U. 1, 2; Ministerial Alliance 1, 2; Class President 1, 2; Football 2; J. V. Basketball 2; Superlative 2.



Class Officers

C. E. Alligood, Treasurer; Gene Williams, President; Bobby Alligood, Vice-President; Gloria Cox, Secretary.

Outstanding Sophomores

Bobby Alligood

Judy English



Outstanding

Hilliard Greene

Polly Condrey



Charles Davis

Nell Davis





Sophomores

Gene Williams

Gloria Cox

Vance White
Betty Reinhardt





Taken by surprise Our campus covered with snow
Two from Colerain . . . A pretty pose . . . Eli, my little darling!



Cafeteria Staff





After hours.

The Ravine in the snow. A scene of beauty rarely visited by the students.



The "Cashmere Kid" rides again!



"Somebody bad stole the wedding bell."



Those two hour labs we spent in this building, Whew! . . . We came this-a-way! . . . Imogene without her man! . . . Which twin has the Toni? . . . "Goose" drives for a lay up . . . Who's the big one?





"Off to the Goober Bowl--With two of her children"



"Smiling store keeper"



"Orchids to Pat for ad gathering"

THANKS TO THE BUSINESS STAFF FOR THEIR FINE WORK.



"Dizzy Marilyn?"

Congratulations to the Business Staff of
**THE CHOWANOKA
HOLLOMON'S HOSTEL**
Murfreesboro, N. C.
Phone 3451



"In the cool of the evening"

THE BUSINESS MANAGER

"Our Five Gaited rider"

"Time out from drawing ads for organ practice"



"Cashmere Kid"



The Future Of This Nation Lies In Its
Young Men and Women and Its
Natural Resources.

CAMP MANUFACTURING COMPANY

Franklin, Virginia

Congratulations to All
W. H. BASNIGHT
& COMPANY

Wholesale Distributors

Ahoskie, North Carolina

NICHOLSON
PHARMACY, INC.

Drugs and Prescriptions

Murfreesboro, N. C.

Telephone 2121

W. A. TAYLOE

General Merchandise
Fertilizer and Feed
Everything for the farm and home.

Aulander, N. C.

HOGGARD BROS.

Quality Merchandise
At reasonable prices.

Aulander

North Carolina

Best Wishes from
CASABLANCA
SPAGHETTI HOUSE, INC.
The House of Fine Foods

Murfreesboro, N. C.

Compliments
of

CONWAY LIVESTOCK CO.

Conway

N. C.

Smiling "king and queen" of hearts and their runner ups.



"King and Queen of Hearts" and Court.

CLIFTON A. DAVIS

General Mdse.
Ginner and Buyer of Cotton
Dealer in High Grade Coal

Conway

N. C.

Compliments of

J. M. WHITE JR.

Boykins, Virginia

Best Wishes

HILL CHEVROLET COMPANY

Murfreesboro, N. C.

*"A Happy and Prosperous Future
to Each of You"*

Broocke Drug Co.

Boykins, Va.

E. R. Willoughby, Dist.

GARDNER'S DAIRY PRODUCTS

Murfreesboro, N. C.

Phone 4612

Congratulations to the Graduating Class from

**RIVERSIDE MANUFACTURING
COMPANY**

Murfreesboro, North Carolina

Brown & Parker – Operators

**Red Apple Service Station
And
Riverside Store**

Murfreesboro

North Carolina

Roanoke Valley Oil Co.

**Distributors of
Richfield Products**

Murfreesboro

North Carolina

**Roanoke – Chowan
Gas Sales, Inc.**

Rulane Gas Service

Telephone 3121

Murfreesboro

North Carolina

Northeastern Oil Co., Inc.

**Distributors
Sinclair Products
Firestone Tires, Tubes**

**Murfreesboro, N. C.
Plants in Winton – Weldon
Telephone 3121**

Compliments of

Mrs. Robert Shields
Scotland Neck, N. C.

Agent for:
North American Assurance Co.,
Richmond, Va.

The staff of the 1954 Chowanoka expresses appreciation to BRANCH MCDANIEL for his untiring efforts in taking and developing many of the pictures used in this yearbook.



*Compliments
of*

Ahoskie Department Store

Ahoskie

North Carolina

Best Wishes

**SEVERN
PEANUT COMPANY, INC.**
Shellers; Virginia Peanuts

Phone 3551

Severn

North Carolina

In Ahoskie It's

Belk-Tyler Co.
"The shopping center"

Ahoskie

North Carolina

Compliments of

**WESTERN AUTO
ASSOCIATE STORE**

Murfreesboro

North Carolina

Compliments of

BEN FRANKLIN STORE
5, 10, 25¢, and up
Locally owned - Nationally Known

Murfreesboro

N. C.

Best Wishes

**DRAPER
BUILDING SUPPLY CO.**

Boykins

Virginia

*Compliments
of*

MEHERRIN VALLEY BANK

Boykins, Virginia

E. B. LASSITER
Established 1883

**Manufacturer of
Kiln Dried North Carolina Pine
Rough and Dressed**

Telephone 3116
Res. Telephone 3117
Potecasi, N. C.

*Compliments
of*

**MOONLIGHT
INTERPRISE, INC.**

Murfreesboro

N. C.

Best Wishes

FASHION SHOP
Smart Apparel

Ahoskie

N. C.

Congratulations to all

WALTER-BOONE DRUG CO.

Sodas, prescription, and
fountain service.

Ahoskie

N. C.

*Compliments
of*

**WESTERN AUTO
ASSO. STORE**

Rich Square

N. C.

**Compliments of the following
merchants of Murfreesboro.**

DAY'S DEPARTMENT STORE
THE FASHION CENTER
MRS. OLA A. CHITTY
C. W. BURROUGHS
THE EVANS COMPANY
JENKINS APPLIANCE CO.
MURFREESBORO APPLIANCE CO.
NELL'S FLORIST
A FRIEND
A FRIEND

**Compliments of the following
merchants of Ahoskie.**

AHOSKIE MOTOR COMPANY
A FRIEND
BURDEN SPORTING GOODS
ESKIMO DRIVE-IN

**Compliments of the following
merchants of Conway.**

G. M. EURE
CLAUDE DeLOUCH
EDWARDS FURNITURE CO., INC.
A FRIEND
"YOUR CANDY MAN"

Compliments of

DR. PEPPER BOTTLING CO., INC.

Roanoke Rapids, N. C.

BRIDGERS BROS. HARDWARE

Jackson, N. C.

R. T. LASSITER

Boykins, Va.

WHITE HARDWARE CO.

Boykins, Va.

"Kiss me Baby"



"Ella getting her head full of knowledge"

**CHAS. H. JENKINS
& COMPANY**

Buick - Olds - Pontiac
Cadillac
G. M. C. Trucks

Serving the motorist for
over 41 years.

Aulander, N. C.
Ahoskie, N. C.

Best Wishes from

**CHARLES L. REVELLE
& SONS**

Cotton - Grain - Feeds

Murfreesboro, North Carolina

Congratulations from

THE FARMERS BANK

F. D. I. C.

Murfreesboro, North Carolina

Compliments of

**BARNES-SAWYER INC.
GROCERY COMPANY,**

Wholesale
Heavy and Fancy Groceries

Ahoskie, North Carolina

