

Chowanoka

1956



**CHOWAN COLLEGE LIBRARY
MURFREESBORO, N. C.**

Whitaker Library
Chowan College
Do not take from library.

College Library

**CHOWAN COLLEGE LIBRARY
MURFREESBORO, N. C.**

Whitaker Library
Chowan College
Do not take from library



Digitized by the Internet Archive
in 2010 with funding from
University of North Carolina at Chapel Hill

<http://www.archive.org/details/chowanoka1956murf>

The

CHOWANOKA

1956

Presented

By the

Sophomore

Class

Editor —

Johnny Hill

Associate Editor — Robert Mulder

Business Managers — Sally Moore
Bobby Liverman



*On the plains of Carolina neath the sky so blue
stands our noble Alma Mater glorious to view.*



With her classic walls and columns looks she proudly down.



Reared against the arch of heaven with the stars for crown.



By Meherrin's rippling waters where the sunbeams play,



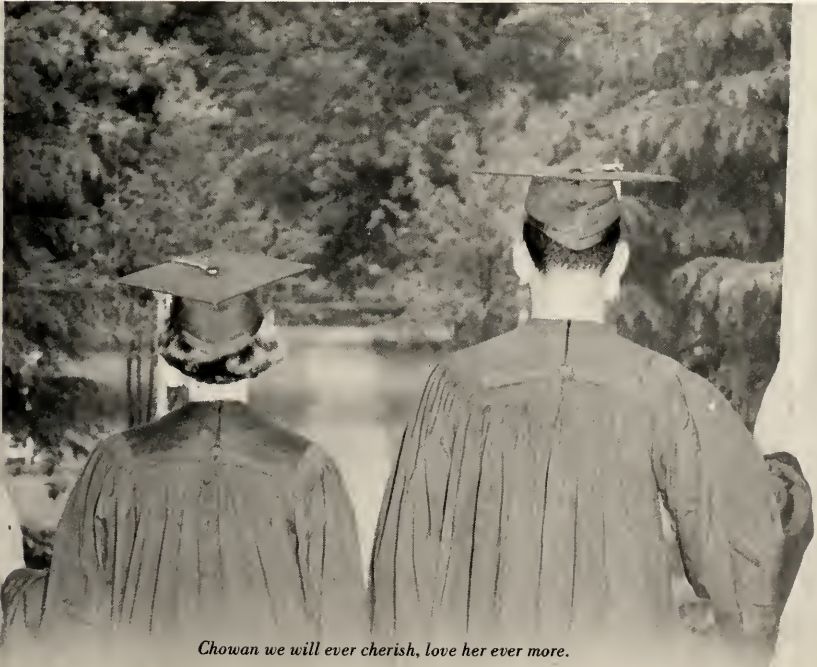
we, her loyal sons and daughters,



pledge our love for aye.



Pledge to her God grant his blessing, may he give rich store.



Chowan we will ever cherish, love her ever more.



D
E
D
I
C
A
T
I
O
N

"And gladly would he learn and gladly teach." This quote from Chaucer echoes with praise although its words are few. In these golden words is contained a picture of the man whom we honor in the dedication of this yearbook—a man who has poured out on many Chowan students his store of knowledge, his moral and physical support, and most of all, his genuine interest in their problems no matter how small or how large they might have been. He has been a tireless worker, a sympathetic listener, and a wise counselor. To him has fallen the gigantic task of setting up and supervising the entire academic system of our school. Often beset with the problems of too few teachers for our growing student body, tangled schedules, and overloaded classes he has conquered these adversities and has given the students more academic opportunities. Even with this responsibility he has found time to enrich our lives in his English literature classes. Not content with all this, he has served as faculty advisor to the yearbook staff. His advice and assistance have played a major role in the presentation of this yearbook. To such a man we of *The Chowanoka* dedicate our book.

L. Robert Grogan

ADMINISTRATION





F. O. MIXON
PRESIDENT



ROSS CADLE
VICE-PRESIDENT



OSCAR CREECH
ASSOCIATE TO PRESIDENT



L. ROBERT GROGAN
REGISTRAR AND DEAN OF INSTRUCTION



MISS MARIE SMITHWICH
DEAN OF WOMEN



MISS ARELIA ADAMS
BURSAR



MRS. SYBIL GRIMES
ASSISTANT TO THE DEAN OF WOMEN, NURSE



MRS. ESTELLE THIGPEN
SECRETARY TO PRESIDENT

MRS. HOWARD W. HUGHES
SECRETARY

MRS. J. F. BEAMAN
DIETICIAN



MRS. L. S. LEE
SECRETARY TO REGISTRAR
(Not Shown)



JACK VAUGHN
SUPERINTENDENT
OF BUILDINGS



"MIKE" AND "FLODY"
MAINTENANCE



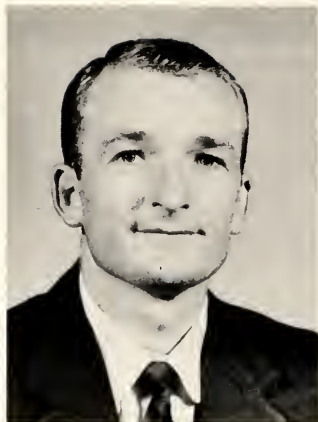
FACULTY





HERBERT THOMAS
APPENZELLER

Latin; Chairman, Department of
Physical Education; Director of
Athletics. B.A., Wake Forest Col-
lege, M.A., Ibid.



JAMES WILLIAM BRISSON
Chairman, Department of Music. B.A.,
Wake Forest College. M.M., Cincinnati
Conservatory of Music.



DOROTHY ANN DACUS
Librarian. B.A., Texas State Col-
lege for Women. Graduate Study,
University of North Carolina.



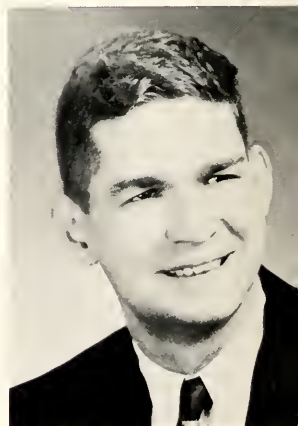
NELLIE RHEA GARDNER

Department of Business Education.
B.S., East Carolina College.



OTIS LEE GASTON

Department of Business Education.
B.S.C., Georgia Institute of Technology.
Graduate Study, Ibid.



DAN G. HARRIS

Chairman, Department of Science
and Mathematics. B.S., University
of North Carolina. M. Ed., Ibid.



FRANKFORD MILAM JOHNSON
 Department of Science and Mathematics. B.S., East Carolina College. M.A., Ibid.



BEATRICE C. KEELER
 Business Education. B.A., Union University. M.S. in Ed., University of Tennessee. Graduate Study, University of Missouri, George Peabody College.



JOHN McSWEENEY
 Chairman, Department of Graphic Arts. University of Pennsylvania, Temple University. Master Printer.



DAISY LOU MIXON
 Chairman, Department of Religion. B.A., Winthrop College. B. RE., Carver School of Missions and Social Work. M. RE., Ibid.



STELLA RUTH MIZELL
 Mathematics. A.B., Women's College of U.N.C. Graduate Study, University of North Carolina.



JOHN DANIEL PARKER
 Chairman, Department of Agriculture. B.S., North Carolina State College.



WILLIAM BERRY SOWELL
Department of Graphic Arts,
Chowan College.



BELA UDVARNOKI
Chairman, Department of Social Science.
Undergraduate work, University of Budapest, Hungary; University of Hamburg, Germany; Graduate work at University of Chicago (Summer term); Th.M., Ph.D., Southern Baptist Theological Seminary, Louisville, Ky.



FRANCES ELIZABETH WHITE
Department of English. B.A., Radford College. B.M.T., Carver School of Missions and Social Work. M.R.E., General Assembly's Training School.



MARION EUGENE WILLIAMS
Chairman, Department of Modern Language; English. B.A., University of Richmond. M.A., Duke University. Premier Degree, L'Universite de Dijon, France.

CARL G. BICKERS, JR.
Chairman, Department of Business Education. B.A., Wake Forest College.
(Not Shown)

PAUL VERNON DAVIS, JR.
Department of Physical Education. B.S., Wake Forest College. M.A., East Carolina College.
(Not Shown)



BARBARA JOAN YOUNG
Department of Music. B.M., Shorter College. M.M., Cincinnati Conservatory of Music.

THE SCHOOLS





Scatter! We may be having an atomic explosion.

Liberal Arts

The liberal arts department here gives instruction leading to a two year terminal course or to transfer to another college. It also offers work in Pre-Engineering, Pre-Forestry, and Pre-Nursing. We are very fortunate to be one of the few junior colleges in the state to have an indoor pool. This has greatly aided the physical education program. The new science building will be a most welcome addition to the program.



Gosh! This English is cracking me up.



We really enjoyed that heated pool.
This looks like Mr. Appenzeller's swim class.



Signing up for algebra was one of my weak moments.



Our new science building will add greatly to this department next year.



Looks like we had better board up all the windows.

B
U
S
I
N
E
S
S

Hey, this shorthand lab was plenty rough.



The business department is one of the most popular divisions on campus. Its primary function is to train students to go straight into the business world either through a one year course or a more thorough two year general business course. It also offers two year transfer courses.

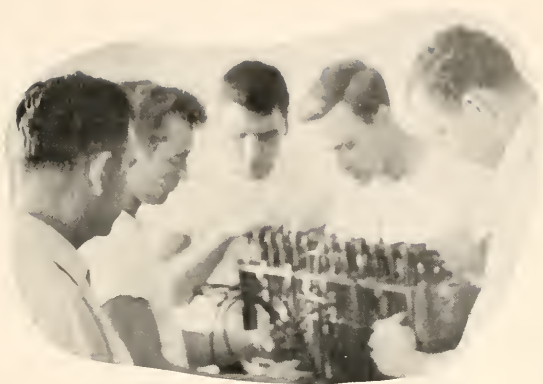


This machine has just too many buttons.

It looks like business math was a crip.
(Oh, yeah!)



Vocational Arts



Hey, you guys, are you fixing that motor
or are you tearing it to pieces?



Do you think we will ever learn?



There surely are a lot of little wheels in there.

The vocational arts department was originally the agriculture department, but it was changed this year to give a more diversified field. Pictured on this page is just one of the skills taught here. Besides motor repair, furniture repair, and landscaping were offered.

Graphic Arts

Our graphic arts is one of the best to be found in the South. As fast as our young men and women graduate, a position is waiting to be filled. The graduates of the school have been receiving praise from employers all over the state. One year certificates are given in linotype, and teletype. Two year certificates are given in graphic arts.

Guess what the linotype operators are always supposed to do.



First you have to send and receive the news. That is where the teletype operators come in.



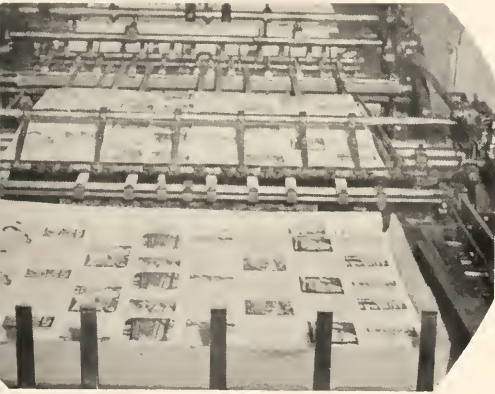
Ink smudged hands set up the type.



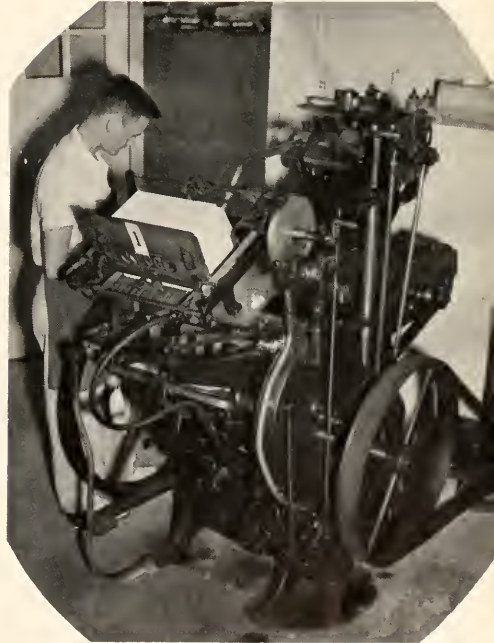
We decided to beautify our department.



The girls pitched in and threw *some* paint.



At last—the finished product.



There was many a piece of material to go through this machine.

The Daniel School of Music



Don't you just love to practice music!

The Daniel School of Music offers students beginning courses in theory as well as applied music. This school trains students who are planning to transfer to senior colleges to pursue a Bachelor of Music degree.

The College Glee Club gives students opportunity to train in group singing with the chance of singing before large audiences on their regular Spring tours. Similarly does the Chowan Male Chorus which was organized this year and appeared on several occasions.

The recently purchased Baldwin "5" organ is available for students who wish to study organ. Voice is also taught at the college.

Instruments of the orchestra and Band are taught to those interested in this field. Students with considerable training in this field aid in the teaching of instruments. A small band was organized this year and played at several Basketball games.

The extension department of the Daniel School of music grows each year with a number of special students coming to the college each week to study voice, piano and organ.

The men warm up their voices.



SOPHOMORES



Officers

President	Walter Sykes
Vice-President	Carol Bradely
Secretary	Nancy Barden
Treasurer	Paul de la Cruz
Social Chairman	Herman Clark

In Retrospect :

When we entered Chowan in the fall of 1954, there were over 150 of us from the Carolinas, Virginia, Florida, Alabama, Pennsylvania, and Cuba. The football players among us were the first to arrive, but soon the whole group was here—taking tests! What a welcome that was! Soon, though, we had settled down to the quarter system routine. We elected our officers and chose Miss Young as class sponsor.

Winter sped by, and suddenly Freshman-Sophomore time was upon us. We hurried and scurried and finally, not a moment too soon, we were ready. After a delicious meal in the cafeteria we adjourned to the gymnasium which was beautifully decorated in a carnival theme. We shall never forget Mr. Boston and his "ad libs." Parting in June was sad, but in no time we were together again in the fall. This year our number had been cut to approximately 90 proud sophomores. There were parties and shows, concerts and recitals. We took them all in, and then graduation was upon us. After hearing Governor Hodges on Friday morning, most of us left for home. We shall miss our many companions, whose friendship we value among our most cherished possessions.



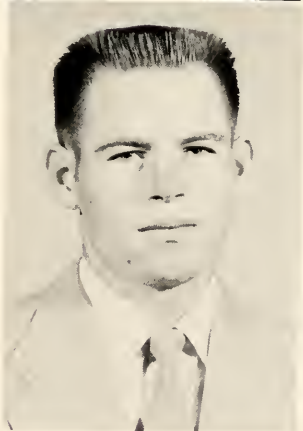
NANCY RAWLS BARDEN
 Robersonville, N.C.
 Business
 Chowanoka 1,2; President Women's
 Judiciary 2; Y.W.A. 1; Glee Club 1;
 Marshall 1; Class Secretary 2.

MARY ALICE BELL
 Suffolk, Va.
 Business
 Chowanian 1; Chowanoka 2; Cheerleader
 2; Glee Club 2; Monogram Club 2.



SHIRLEY BLIZZARD
 Richlands, N.C.
 Liberal Arts
 Y.W.A. 1; President 2; B.S.U. 1;
 Executive Council 2; B.T.U. 1;
 Junior Leader 2; Chowania 1; Glee
 Club 1; Spanish Club 1.

CHARLES T. BRIDGES
 Waynesville, N.C.
 Graphic Arts



SAMUEL DONALD BOYETTE
 Zebulon, N.C.
 Business
 Men's Judiciary 2; Men's Chorus 2; Base-
 ball 2.

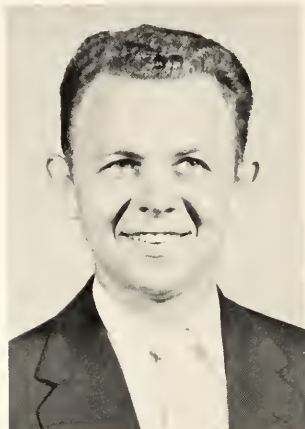
FOREST BROUGHTON, JR.
 Rolesville, N.C.
 Graphic Arts



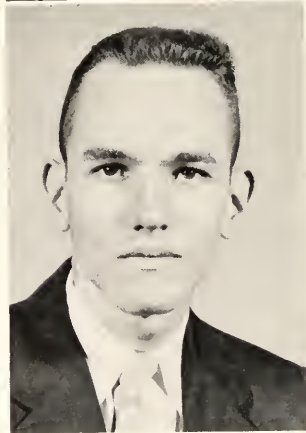


CARROLL ANN BRADLEY
 Jackson, N.C.
 Business
 Phi Lambda Pi 1,2; Glee Club 1;
 Y.W.A. 1,2.

HAROLD F. BROWN, JR.
 Hamlet, N.C.
 Graphic Arts
 Chowanian 1; Football Manager; Mono-
 gram Club 1; Men's Judiciary 1; Chowan-
 oka 1.



IRENE BURT
 Swansboro, N.C.
 Liberal Arts
 Y.W.A. 1,2; Chowanian 1,2; Glee
 Club 2; B.S.U. 1,2.



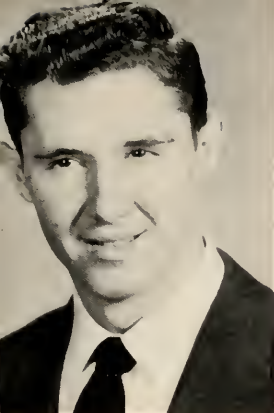
DAN CAPPS
 Rocky Mount, N.C.
 Liberal Arts
 Phi Lambda Pi 2.

EDWARD R. CHAPLIN
 Emporia, Va.
 Liberal Arts
 Football 1,2; Monogram Club 1,2.



TOYÉ ANN CARTER
 Flushing, N.Y.
 B.T.U. 1,2; B.S.U. 1,2; Y.W.A. 1,2;
 Vice-President Women's Judiciary
 2; Chowanian 1; Spanish 1.





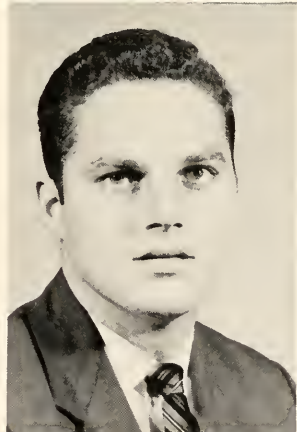
GLENN FREDERICK CLACK
Rockingham, N.C.
Liberal Arts
Football 1.



HERMAN ALFRED CLARK
Victoria, Va.
Business
Football 1.2; Monogram Club 1.2; President 2.

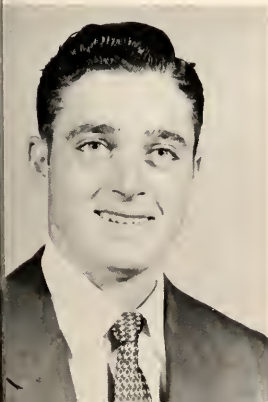


WILDON B. CRADDOCK
Manns Harbor, N.C.
Business
Men's Chorus 2.



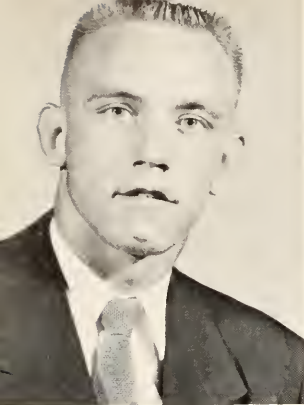
JOHN W. CHENSHAW
Victoria, Va.
Liberal Arts
Football 1.2; Baseball 1.2; Monogram Club 1.2.

JEAN GALLOWAY
George, N.C.
Liberal Arts
B.S.U. 1, President 2; Y. W. A. 1.2.



GARLAND DEAN CRENSHAW
Victoria, Va.
Liberal Arts
Zeta Alpha Sigma 1.





CARROLL DANIELS

Colerain, N.C.

Liberal Arts

Football 1,2; J.V. Basketball 1;
Monogram 1,2.



ANNIE MAE DAUGHTRY

Woodland, N.C.

Music

Y.W.A. 1,2; B.S.U. Greater Council 1,
Pianist 2; Boots and Saddle Club 1; Span-
ish Club 1.

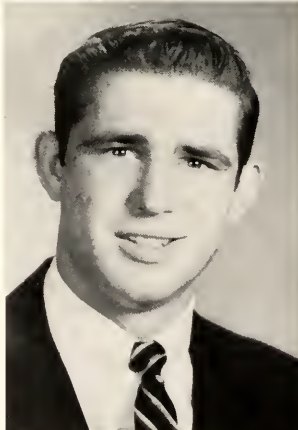


CAROLYN JONES DAVIS

Severn, N.C.

Music

Women's Judiciary 1; Y.W.A. 1;
B.S.U. Greater Council 1; Glee
Club 1,2; Chowanian Staff 1; Cheer-
leader 2; Band 2; Chowanoka Staff
2; Monogram Club 2; Chowan Ora-
toria Society 1.

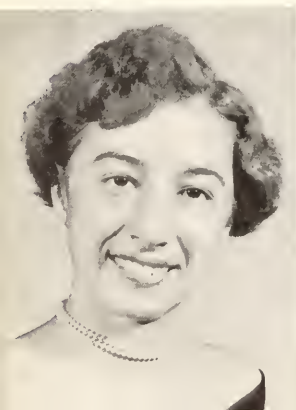


FRANK M DENNIS

Spartanburg, S.C.

Graphic Arts

Chowanian Staff 1,2.



TOYE ANN CARTER

Flushing, N.Y.

B.T.U. 1,2; B.S.U. 1,2; Y.W.A. 1,2;
Vice-President Women's Judiciary
2; Chowanian 1; Spanish 1.

DON DEATON
Portsmouth, Virginia
Liberal Arts
Football 1,2; Monogram 1,2.

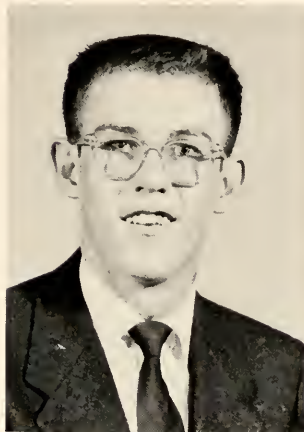




VIRGINIA DRAKE
Pinetops, N.C.
Graphic Arts

Chowanian Staff 1,2; Women's
Judiciary 1; B.S.U. Secretary 2;
Y.W.A. 1, Program Chairman 2.

DONALD R. EACHO
Hampton, Va.
Liberal Arts
Randolph-Macon 1; Glee Club 2.



MAHLON B. EPPS
Roanoke Rapids, N.C.
Business
Men's Judiciary 2.

PATSY GAYE FUTRELLE
Murfreesboro, N.C.
Business

Cheerleader 1, Head Cheerleader
2; Glee Club 1,2; B.S.U. 1; Mono-
gram Club 1,2; Queen of Junior
College Basketball Tournament 2.



ROY W. EVANS
Hertford, N.C.
Graphic Arts

JEAN GALLOWAY
George, N.C.
Liberal Arts
B.S.U. 1, President 2; Y.W.A. 1,2.

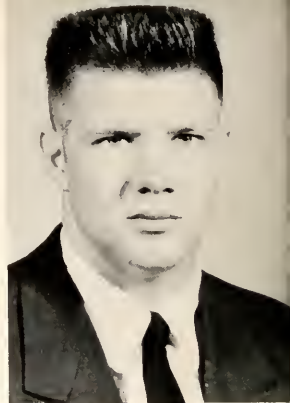




GORDON GAY
Victoria, Va.
Business
Football 1,2; Monogram Club 1,2.



JAMES H. GRAVELY
Mt. Airy, N.C.
Liberal Arts
Football 1,2; Basketball 1; Monogram 1,
Vice-President 2.



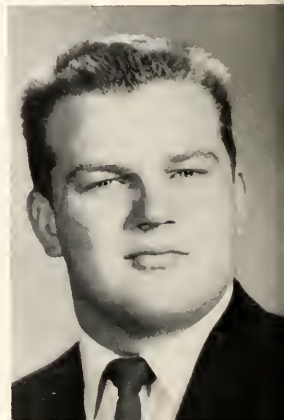
CARLTON GUTHRIE
Stovall, N.C.
Business
Phi Lambda Phi 1,2.

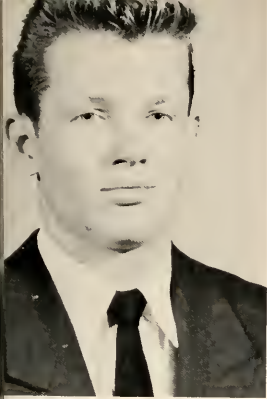


MARTHA HARCUM
Franklin, Va.
Business
Blue-field College 1; Y.W.A. 1,2; Chowan-
oka 2; Phi Lambda Pi 2; B.S.U. Greater
Council 2.

ROBERT HARRINGTON
Rich Square, N.C.
Liberal Arts

F. JOSEPH HARRIS
Washington, N.C.
Liberal Arts
Chowanian 1; Zeta Alpha Sigma 1;
Phi Lambda Pi 1, President 2;
Glee Club 2; Band 2.



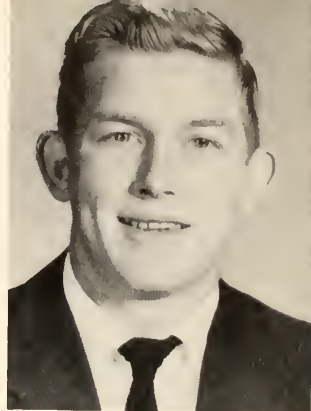


JOHNNY F. HILL

Murfreesboro, N.C.

Liberal Arts

Football 1; Baseball 1; Monogram 1.2;
Men's Chorus 2; Chowanoka 1, Editor 2;
Chief Marshall 1; Life Saving Instructor
2; Freshman Class President.



EDWARD HODGES

Norfolk, Va.

Liberal Arts

Football 1,2; Glee Club 1,2; Chow-
anian 1; Band 2; Monogram 1.2;
Men's Chorus 2; Mgr. Baseball 2;
Chowanoka 2.

RICHARD W. HARRIS, JR.
Oxford, N.C.
Business
Phi Lambda Pi 1,2; Baseball 1,2.



ESTHER JOHNSON

Rose Hill, N.C.

Business

R.P.I. 1.

HARRY JONES

Ebony, Va.

Business



LEORA HOLLAND

White Oaks, N.C.

Liberal Arts

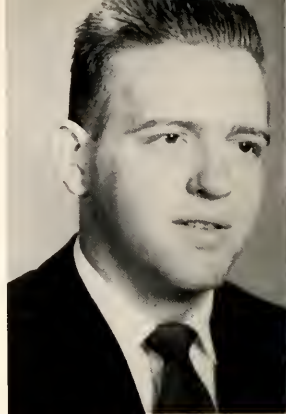
Phi Lambda Pi 1,2; Chowanoka 1,2; Glee
Club 1,2; Y.W.A. 1,2; B.S.U. 1,2.



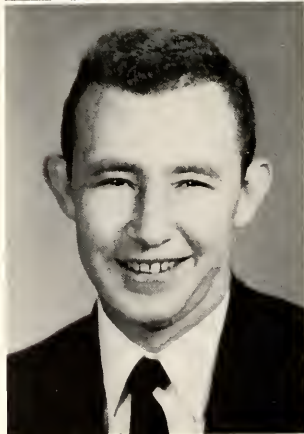


LEE ROY JONES
Nashville, N.C.
Graphic Arts

VASSAR JONES
Harrellsville, N.C.
Liberal Arts
Ministerial Alliance 1.



ROBERT BRETT LIVERMAN
Murfreesboro, N.C.
Business
Glee Club 1; Chowanoka 2; Spanish Club 1.



EDWARD K. MEADOR
Victoria, Va.
Business
Football 1,2; Monogram 1,2; Baseball 1,2.

ROBERT MESSER
Roanoke Rapids, N.C.
Business



ELSA BEATRIZ MIRANDA
Las Villos, Cuba
Business
Spanish Club 1; Glee Club 2.





NOEMI MIRANDA

Cruces, Cuba

Business

Spanish Club 1; Glee Club 2.

KENNETH MIZELL

Roanoke Rapids, N.C.

Business

Football 1,2; Monogram 1,2; Baseball 1;
Zeta Alpha Sigma 2; Men's Chorus 2;
Men's Judiciary 2.

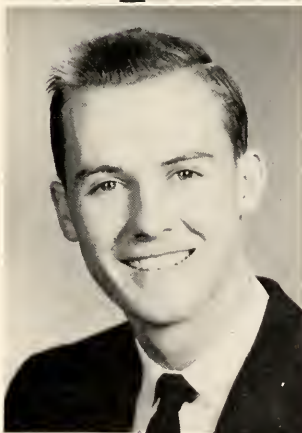


ROBERT G. MULDER, JR.

Potocasi, N.C.

Music

Chowanian Editor 1; Glee Club
1,2; Chowanoka Associate Editor
2; Phi Lambda Pi 2; Band 2;
Chowan Oratorio Society 1,2;
B.S.U. Greater Council 1, Execu-
tive Council 2; Marshall 1.



RICHARD PADGETT

Hartsell, Ala.

Liberal Arts

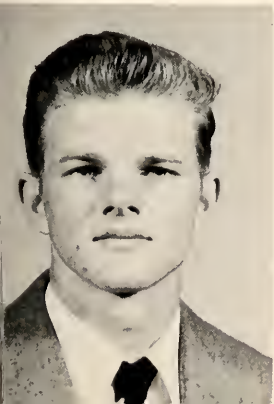
Basketball 1; Baseball 1,2; Foot-
ball 1,2; Monogram 1,2.

BOBBY S. PARTIN

Angier, N.C.

Liberal Arts

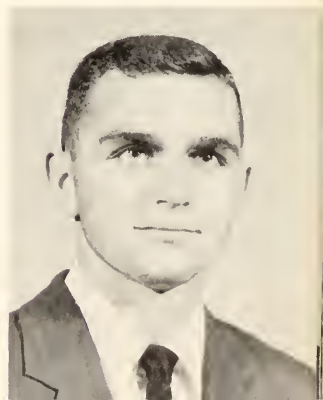
Football 1; Monogram Club 1.

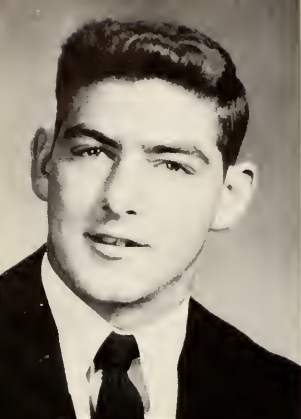


CARROLL NORTHCUTT

Trap, N.C.

Business



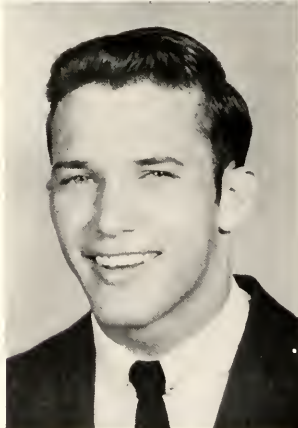


AL McDONALD PIERCE
Ahoskie, N.C.
Football 1,2; Monogram 1,2.

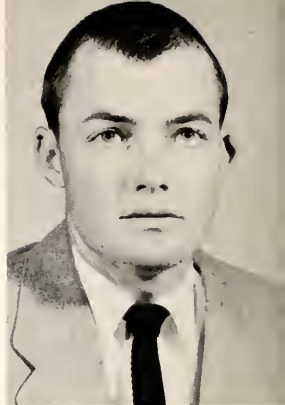
TED ROBERTS
Wendell, N.C.
Liberal Arts
Football 1,2; Monogram Club 1,2.



LEONARD L. PULLEY
Pleasant Hill, N.C.
Liberal Arts
Marshall 1.



BENJAMIN C. RICH
Rockingham, N.C.
Liberal Arts
Football 1,2; Monogram 1,2; Baseball 2.



TED GAY PULLEY
Rolesville, N.C.
Business
Baseball 1,2; Monogram 1,2; Foot-
ball Mgr. 2.

TED ROLLINS
Selma, N.C.
Liberal Arts
Football 1,2; Monogram 1,2; Span-
ish Club 1.



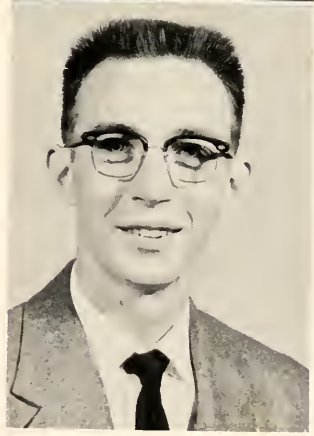


NANCY ROUNTREE
 Hobbsville, N.C.
 Business
 Peace College 1; Chowanoka 2;
 Women's Judiciary President 2.

CHARLES H. STOKES
 New Bern, N.C.
 Liberal Arts
 Phi Lambda Pi 1,2; B.S.U. Vice-President
 2; Chowanian Associate Editor 1.



GLADYS MELERO STOKES
 Camaguey, Cuba
 Business
 Chowanian 1; Spanish Club Vice-
 President 1; Y.W.A. 1.



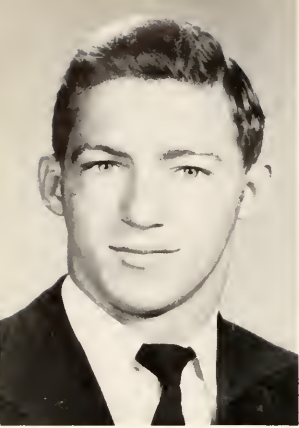
RONALD E. SUMNER
 Woodland, N.C.
 Graphic Arts

WALTER M. SYKES
 Haw River, N.C.
 Business
 Football Mgr. 1,2; Phi Lambda Pi
 1; Glee Club 1; Monogram 1,2.

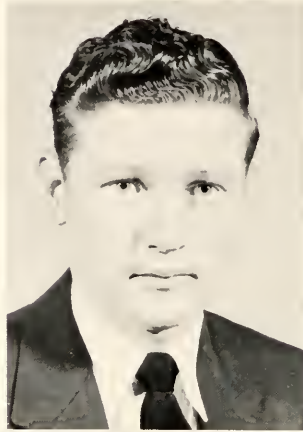


KELTON L. STONE
 Nashville, N. C.
 Graphic Arts

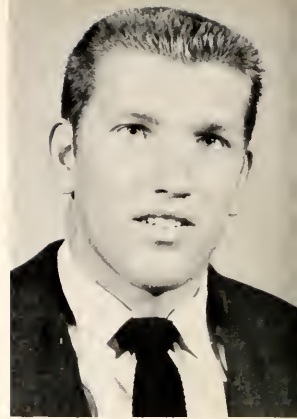




WILLIAM H. TAYLOR
Chocowinity, N.C.
Graphic Arts



MILTON TAYLOR
Reidsville, N.C.
Liberal Arts
Baseball Mgr. 2.



DONALD M. TAYLOR
Raleigh, N.C.
Business
Football 1,2; Basketball 1,2; Baseball 1; Monogram 1,2.



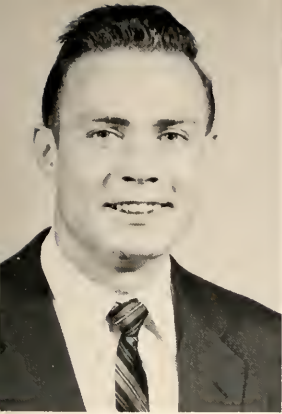
JUNE DALE TUCKER
Moyock, N.C.
Graphic Arts
East Carolina 1; Phi Lambda Pi 1,2; Monogram Club 2.



WILLIAM L. WARREN
Raleigh, N.C.
Graphic Arts
Basketball 1; Monogram 1,2;
Chowanoka 1.

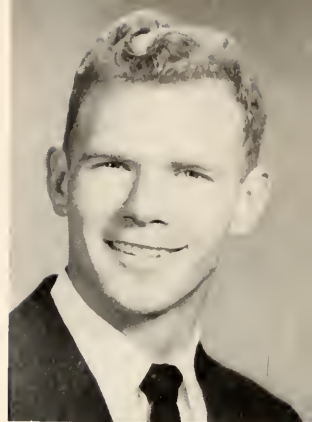


JOHN E. WARREN
Rocky Mount, N.C.
Liberal Arts
East Carolina 1; Football 2; Monogram 2; Men's Chorus 2; Glee Club 2.



WALTER A. WARD, JR.
Corapeake, N.C.
Business
Phi Lambda Pi Vice-President 2.

ELIZABETH WARRICK
Jackson, N.C.
Liberal Arts
B.S.U. 1,2; Y.W.A. 1,2; Women's Judiciary
1,2; Chowanian 1; Glee Club 1.



LARRY J. WILLIAMS
Norfolk, Va.
Business

LOUISE WIMBISH
Portsmouth, Va.
Graphic Arts
R.P.I. 1; Phi Lambda Pi 2; Band 2;
Chowanoka 2.



ROCHELLE WORRELL
Marfreesboro, N.C.
Business
Longwood College 1.

EARL WRIGHT
Vanceboro, N.C.
Business
Football 1,2; Baseball 1,2; Mono-
gram 1,2.



Outstanding

Sophomores

Each year the sophomore class elects from their number five women and five men, who, in the opinion of the majority, have contributed most to the life of the student body in both work and play. The characteristics which were considered were leadership, friendliness, industry, participation in the various campus areas, neatness, and good citizenship. The balloting was extremely close, and the ten high candidates are pictured on this and the following two pages.

HERMAN CLARK

CAROLYN DAVIS



OUTSTANDING



ROBERT MULDER

SHIRLEY BLIZZARD

CAROL BRADLEY

BEN RICH



SOPHOMORES

OUTSTANDING



PATSY FUTRELL

JIM GRAVELY

JOHNNY HILL

NANCY RAWLS BARDEN



SOPHOMORES

FRESHMEN



O F F I C E R S



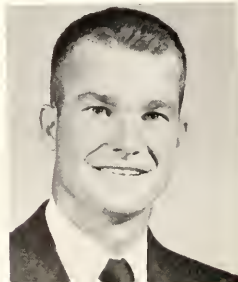
LEFT TO RIGHT: Ada Barnes, Social Chairman; Leroy Trevathan, Vice-President; Pat Davis, Secretary-Treasurer; Oscar Harrell, President.

There were approximately 150 of us that entered as Freshmen here at Chowan in the fall of 1955. We elected our class officers and chose Miss Barbara Young as class sponsor. In February we sponsored a talent show to raise funds for the Freshman-Sophomore banquet. The banquet was held May 5 in the gymnasium with "Club 56" as the theme.

JO ALLEN
Henderson, N.C.



BILLY ALLSBROOK
Williamston, N.C.

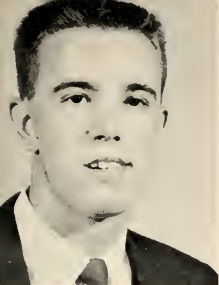


ADA BARNES
Conway, N.C.

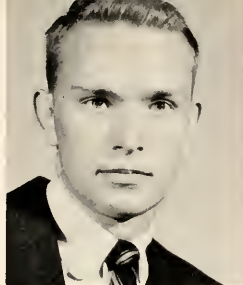


PATSY BAILEY
COMO, N.C.





JOSEPH CARROLL BLOWE
Ahoskie, N.C.



JACK CODY BOWLING
Covington, Va.



GRACIE MAVIS BOYD
Plymouth, N.C.



WILTON DREXEL BRADSHAW
Chuckatuck, Va.



NANCY CAROLYN BROWN
Jackson, N.C.



SHIRLEY LUCILLE BRYANT
Sedley, Va.



EMORY ETHERIDGE BYRUM
Portsmouth, Va.



BOBBIE JEANE BUNCH
Hobbsville, N.C.



BETSY ROSS CADLE
Murfreesboro, N.C.



WILLIAM B. CHITTY
Murfreesboro, N.C.



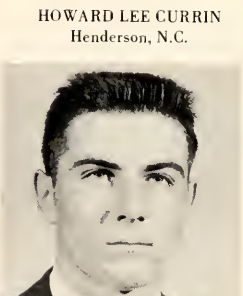
ROBIN CLAIR
Norfolk, Va.



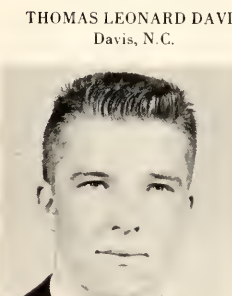
MARY LOU COWAN
Windsor, N.C.



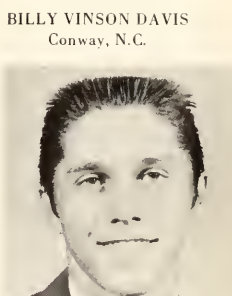
ELLEN HAYES CRAWLEY
Jackson, N.C.



HOWARD LEE CURRIN
Henderson, N.C.



THOMAS LEONARD DAVIS
Davis, N.C.



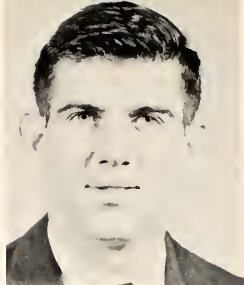
BILLY VINSON DAVIS
Conway, N.C.



MARSHALL WAYNE DAVIS
Branchville, Va.



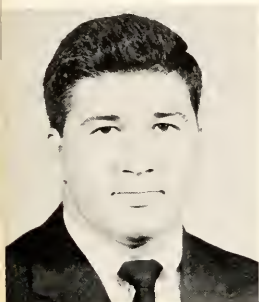
PATRICIA ANN DAVIS
Evergreen, N.C.



JAMES THOMAS DIXON, JR.
Elizabeth City, N.C.



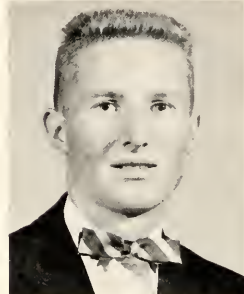
DONALD CRAIG DOWNING
Atkinson, N.C.



RALPH NORMAN DUFFIE
South Boston, Va.



BERYL ANN EASON
Sunbury, N.C.



CLAUDE HOLLOWELL EURE
Hobbsville, N.C.



AUDREY McCAULEY FLETCHER
Rockville, Va.



JOE MARSHALL FRANCIS
Conway, N.C.



VERA KATHERINE FUTRELL
Conway, N.C.



BASIL LEE FUTRELL
Savern, N.C.



MILTON EARL FUTRELL
Conway, N.C.



SHELIA GIBSON
Hatteras, N.C.



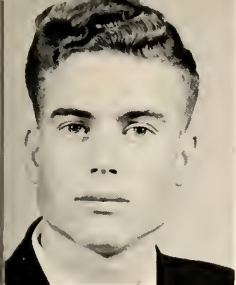
JAMES W. GLOVER
Nashville, N.C.



LYNWOOD MACKIE GRICE
Wake Forest, N.C.



JOHN ROGER GRIFFIN
Murfreesboro, N.C.



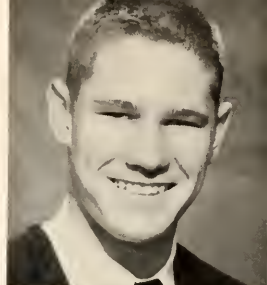
OSCAR MILTON HARRELL
Hobbsville, N.C.



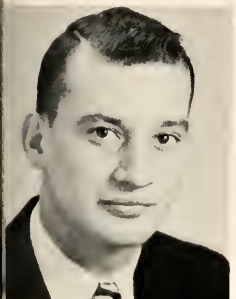
SHIRLEY SUE HARKER
New Bern, N.C.



CAROLYN PATRICIA HOLLOWELL
Hobbsville, N.C.



JEFFERSON E. HOWIE III
Norfolk, Va.



HOWARD WAYNE HUGHES
Henderson, N.C.



SHELBY JEAN IVEY
Gumberry, N.C.



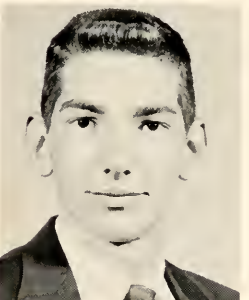
CAROLYN DELORES JACKSON
Gates, N.C.



WILLIAM DANIEL JACKSON
Wake Forest, N.C.



RANDOLPH CHARLES JERNIGAN
Ahoskie, N.C.



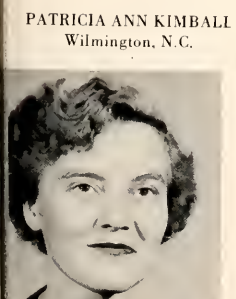
LOUIS C. JOHNSON
Pendleton, N.C.



EARL JOHNSON
Tarboro, N.C.



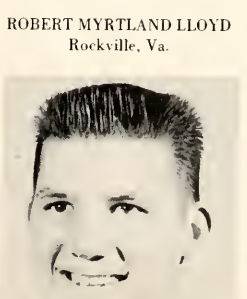
LEWIS MARSHALL KEARNEY
Wake Forest, N.C.



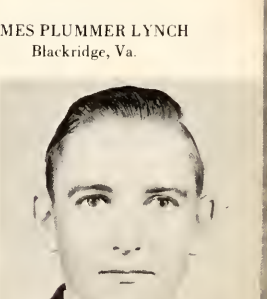
PATRICIA ANN KIMBALL
Wilmington, N.C.



EDITH HINES LIVERMAN
Murfreesboro, N.C.



ROBERT MYRTLELAND LLOYD
Rockville, Va.



JAMES PLUMMER LYNCH
Blackridge, Va.



NELL ROBERTSON MARTIN
Jackson, N.C.



JAMES R. McDANIEL
Woodland, N.C.



FRANK THOMAS MCGHEE
Henderson, N.C.



SNOWDEN C. MILLS, JR.
Edenton, N.C.



ELIZABETH ROSE MILLS
Maysville, N.C.



WILLIAM W. MOONEYHAM
Raleigh, N.C.



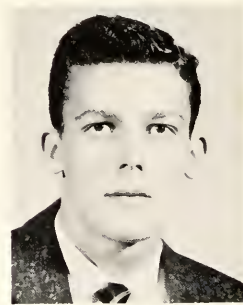
SALLY PARKER MOORE
Ahoskie, N.C.



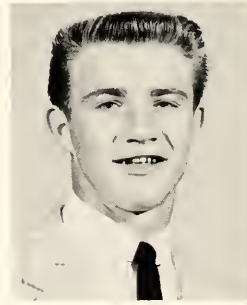
JOHN JOSEPH NICHOLSON, JR.
Macon, N.C.



MARY VAUGHAN NIXON
Hobbsville, N.C.



WILLIAM C. OLIVER
Burlington, N.C.



CHARLES LESTER PAKE
Beaufort, N.C.



EDGAR FRANKLIN PARKER
Pendleton, N.C.



SARAH VIRGINIA PARKER
Conway, N.C.



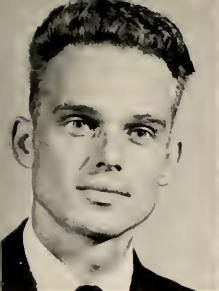
DIANE KENNEY PHILLIPS
Murfreesboro, N.C.



BETTELU PIGOT
Franklin, Va.



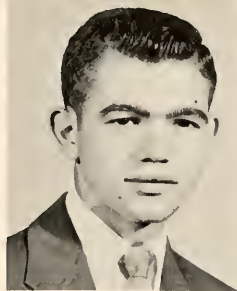
SHELBY JEAN PITTMAN
Belcross, N.C.



JOHN G. POWELL
Nashville, N.C.



ROBERT ODELL PRITCHETT, JR.
Reidsville, N.C.



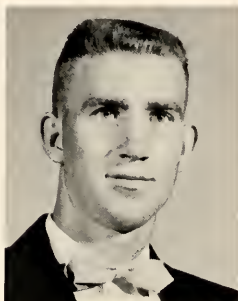
WILLIE KERMITTE PUCKETTE
Spring Hope, N.C.



SARAH FRANCES RANKIN
Gastonia, N.C.



MARION ROSE RICKS
Boykins, Va.



FRED NORMAN RIDDICK
Hobbsville, N.C.



BOBBY DEAN ROBERTS
Bayside, Va.



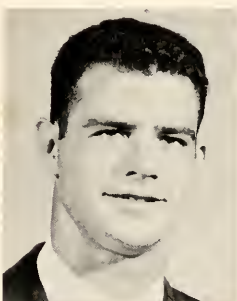
CARLTON LEE ROBERSON
Robersonville, N.C.



CHARLES ROBERT ROSE
Portsmouth, Va.



WILLIAM CARLTON ROSS
Ahoskie, N.C.



WADE PRESTON SALMON
Raleigh, N.C.



SANFORD M. EDWARDS
Spring Hope, N.C.



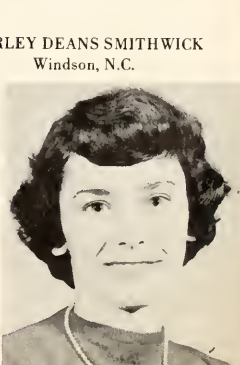
LYMAN H. SHEPPARD, JR.
Washington, N.C.



ROSE MARIE SHERIDAN
Kelford, N.C.



JAMES ALBERT SMITH
Turkey, N.C.



SHIRLEY DEANS SMITHWICK
Windson, N.C.



JANET JUNE SNOWDEN
Currituck, N.C.



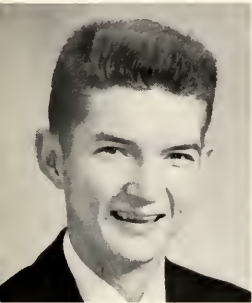
HENRY BERRY SOWELL
Pageland, S.C.



LOUIS T. STOKES
Savannah, Georgia



NORMA LEE STRANGE
Greensboro, N.C.



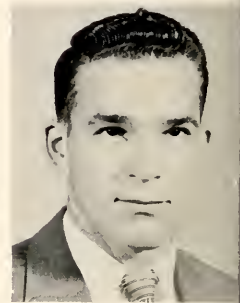
ALBERT LINEBERRY SUMNER
Winton, N.C.



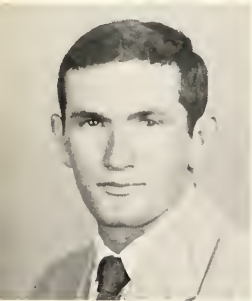
ROY LEE THROWER
Raleigh, N.C.



LEROY TREVATHAN
Zebulon, N.C.



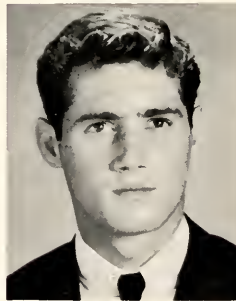
SHELTON JACKSON TURNER
Castalia, N.C.



LLOYD W. WALKER
Manteo, N.C.



BARBARA JEAN WEBB
Madison, N.C.



HAROLD HAINES WILLIS, JR.
Beaufort, N.C.



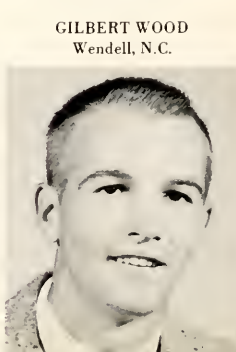
BETSY C. WILLOUGHBY
Conway, N.C.



DERL GRAY WINSLOW
Belvidere, N.C.



PAUL W. WISE
Portsmouth, Va.



GILBERT WOOD
Wendell, N.C.



WILLIAM F. WORRELL, JR.
Como, N.C.

ACTIVITIES



Women's Judiciary



OFFICERS: Nancy Rountree, President; Elizabeth Warrick, Secretary-Treasurer; Toye Carter, Vice-President.



LEFT TO RIGHT: Betsy Cadle, Pat Kimball, Toye Carter, Nancy Rountree, Pat Davis, Elizabeth Warrick.

The Women's Judiciary is the governing body for the women students on our campus. Monitors are stationed on each hall to maintain quiet during study time and to preserve order throughout the night. Rules, drawn up by the women themselves, are posted and enforced by the Judiciary. But the work of this organization is not all of a "don't do this" nature. An April Fool party was one of the outstanding features sponsored by the Judiciary.

Men's Judiciary



LEFT TO RIGHT: Emory Byrum, President; Ed Chaplin, Vice-President; Donald Boyette, Secretary.

The Men's Judiciary is a form of Student Government whereby members of the men student body elect members among themselves to serve on a council for discipline and order in the dorm, cabins, and on the campus. The leaders in this council are chosen each year at the close of the year to serve for the coming year.

This year the Men's Judiciary is composed of seven men of the Student body. It is headed by Emory Byrum. A representative is chosen for each floor of the new dorm, and a representative from each cabin.

*LEFT TO RIGHT: FRONT ROW—*Walter Ward, Donald Boyette, Ed Chaplin, Paul Blake. *SECOND ROW—* Pat Jordan, Ted Rollins, Emory Byrum.



Greater Council

B. S. U.



LEFT TO RIGHT: FRONT ROW—Annie Mae Daughtry, Toye Carter, Jean Gallo-way, Irene Burt, Virginia Drake. *SECOND ROW*—Elizabeth Warrick, Shirley Blizzard, Charles Stokes, Pat Davis, Miss Frances White, ADVISOR.

The Baptist Student Union is the all inclusive religious organization on the campus. Any Baptist or member of a Baptist sponsored organization is automatically a member of the B.S.U. The organization sends representatives to the state convention each year and also has a strong delegation at Ridgecrest each summer. The organization this year sponsored the Queen of Hearts Contest and Valentine Party.

SOCIAL COMMITTEE



LEFT TO RIGHT: FRONT ROW—Pat Kimball, Irene Burt. *SECOND ROW*—Jo Allen, Toye Carter, Pat Davis. *THIRD ROW*—Martha Harcum, Louise Wim-bish, Clarice Galloway.

PUBLICITY COMMITTEE. LEFT TO RIGHT:
Sally Moore, Nell Martin, Elizabeth Warrick,
Katherine Futrell, Sara Rankin.



Greater Council



LEFT TO RIGHT: FIRST ROW—Mavis Boyd, Annie Mae Daughtry, Toye Carter, Jean Galloway, Irene Burt, Virginia Drake, Norma Strange. **SECOND ROW**—Mary Lois Edwards, Sally Moore, Elizabeth Warrick, Shirley Blizzard, Charles

Stokes, Pat Davis, Jo Allen, Rose Marie Sheridan. **THIRD ROW**—Clarice Galloway, Nell Martin, Pat Kimball, Katherine Futrell, Virginia Parker, Marty Harcom, Louise Wimbish.



SEATED: MUSIC COMMITTEE—**LEFT TO RIGHT:** Rose Marie Sheridan, Annie Mae Daughtry, Virginia Parker. **STANDING: DEVOTIONAL COMMITTEE**—**LEFT TO RIGHT:** Mavis Boyd, Mary Lois Edwards, Shirley Blizzard, Pat Kimball, Norma Strange.



*LEFT TO RIGHT: SEATED—LeRoy Travathan, Carlton Roberson, Wayne Davis. STAND-
ING—Emory Byrum, Lyman Sheppard, Louis Stokes.*

OSCAR HARRELL
PRESIDENT

Ministerial Alliance

OSCAR CREECH
ADVISOR

Under the sponsorship of Mr. Oscar Creech, advisor, and Oscar Harrell, president, the Ministerial Alliance has had a successful year. The organization is composed of students planning to study the ministry. The bi-monthly meetings usually held in Dr. Mixon's office are composed of lectures by both Dr. Mixon and Rev. Creech. In these lectures the ministerial students learn of problems they will face and how to best overcome them. They learn how to outline and present sermons and other valuable information which comes from experienced preachers.

On several occasions they have participated in the daily chapel services and also over the "Chowan College Hour," a weekly presentation of radio station W.R.C.S. on Sunday morning. Besides having preaching engagements occasionally the ministerial students pay a weekly visit to the prison farm in Ahoskie where they preach and witness to the prisoners there. The men in this organization are: Oscar Harrell, Emory Byrum, Louis Stokes, Lyman Sheppard, Wayne Davis, LeRoy Travathan, and Carlton Roberson.

Activities

Council



SEATED LEFT TO RIGHT: Ada Barnes, Virginia Parker, Robin Clair, Patsy Futrelle, Dean Smithwick, Miss White, Miss Young.
STANDING: Herman Clark, Boh Mulder. NOT SHOWN: Ed Chaplin, Mr. Brisson, Oscar Harrell, Toye Carter, Emory Byrum.

The Activities Council is composed of representatives from each of the various campus clubs and organizations plus faculty advisors. Its purpose is to promote recreational programs for the student body and to correlate all our campus meetings and activities. The Christmas Party and May Day were sponsored by the Activities Council.

Y.
W.
A.



LEFT TO RIGHT: Mary Lois Edwards, Vice-President; Shirley Blizard, President; Mrs. Ross Cadle, advisor; Clarice Galloway, Secretary; Elizabeth Warrick, Treasurer.

The Y.W.A.'s met every first and third Thursday nights. Programs were given in chapel and vespers observing Home Mission and Foreign Mission weeks. The girls took a program to the missionary society at the Murfreesboro Baptist Church after which the society entertained them. A study course on Indians was taught by Mrs. Craig Revelle. Goals were set for the Lottie Moon Christmas Offering and the Annie Armstrong Offering. The goals were met and passed.

STANDING: Annie Mae Daughtry, Elizabeth Warrick, Elsa Miranda, Noemi Miranda, Mary Lois Edwards, Pat Davis, Lucile Bryant, Jo Allen.

LEFT TO RIGHT, SEATED: Nell Martin, Betsy Cadle, Shirley Harker, Rose Marie Sheridan, Clarice Galloway, Shirley Blizard, Mrs. Ross Cadle, Norma Strange, Sally Moore, Nancy Brown, Mavis Boyd, Virginia Parker, Katherine Futrell.



T H E B A N D



LEFT TO RIGHT: SEATED—Carolyn Davis, Ed Hodges, Bob Mulder, Raymond Tice, Louise Wimbish, Don Eacho. *STANDING*—Joe Harris, W. F. Worrell.

The Chowan College Band was the newest project of the music department at the beginning of this year. The student-organized group was directed by Mr. Brission of the Daniels School of Music and had fifteen members, including three high school students from Murfreesboro. At several basketball games the band played selections at the half.

Those members of the student body who played in the band were: drums—Ed Hodges; clarinet—Bob Mulder, Otis Darden; saxophone—Louise Wimbish, Raymond Tice, Don Eacho; baritone—S. F. Duncan; trumpet—Joe Harris, W. F. Worrell, Billy Allsbrook, Dick Harris; piano—Carolyn Davis.

The high school students who played with the band were: Bucky Wise, Lewis Cleveland, and Newsome Williams.

Glee Club



LEFT TO RIGHT: FRONT ROW—Mary Alice Bell, Mavis Boyd, Robin Clair, Katherine Futrell, Naomi Miranda, Elsa Miranda, Norma Strange. *SECOND ROW*—Annie Mae Daughtry, Patsy Futrell, Edithe Liverman, Mary Lois Edwards,

Nell Martin, Betsy Cadle, Virginia Parker, Irene Burt, Pat Kimball. *THIRD ROW*—Bob Mulder, Maylon Epps, Lyman Sheppard, Wayne Davis, Bobby Harrington, Ed Hodges.



JAMES BRISSION
DIRECTOR

The Chowan College Glee Club had in its total enrollment 54 members this year. The group made two appearances during the first two months of this school year. The first trip was to the Rocky Hock Baptist Church where they sang for the Chowan Association meeting in their annual convention. At a similar meeting in Woodland, where the West-Chowan Association was holding their annual convention, they rendered special music. The Glee Club was guest for lunch at each of these meetings. During the second semester the Glee Club appeared in Chapel and sang for the Commencement Sermon.

The officers of the Chowan Glee Club as elected during first semester were: President, Bob Mulder; Vice-President, Leora Holland; Secretary-Reporter, Norma Strange.



CAROLYN DAVIS
ACCOMPANIST

The newest development in the music department at Chowan was the organization of a Men's Chorus at the beginning of the second semester. The group was organized and directed by Mr. Jim Brisson, head of the Music Department.

The Men's Chorus made several appearances during this second semester. They presented a short program of music in Chapel on April 12. They sang for the Ladies Club at this organization's meeting at the Red Apple Restaurant. The second Sunday in May found the Chorus on the Chowan College Hour, a weekly presentation of W.R.C.S. radio station in Ahoskie. Special music was rendered by the men for the Graduation Exercises.

M
E
N'
S
C
H
O
R
U
S



LEFT TO RIGHT: FRONT ROW—Bobby Harrington, Ed Hodges, James Lynch, Lyman Sheppard. SECOND ROW—Bob Mulder, Wayne Davis, Harry Jones, Ike Gay. THIRD

ROW—Kenneth Mizell, Billy Chitty, Maylon Epps, Al Pierce. NOT SHOWN—Ted Rollins, Herman Clark, Johnny Warren.

Phi Lambda Pi



LEFT TO RIGHT; SEATED—Marty Harcom, Jo Allen, Sally Moore, Pat Davis, Margaret Curles. *STANDING*—Beryl Eason, Louise Wimbish, Joe Harris, Robin

Clair, Nancy Rountree, June Tucker, Barbara Webb, Carol Bradley.

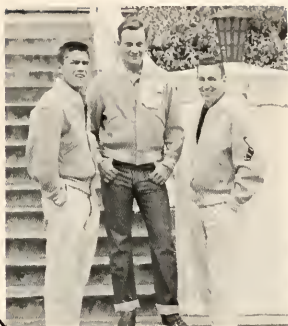
**PRESIDENT
JOE HARRIS**



The Phi Lambda Pi was the only literary society on the campus this year. The organization sponsored trips to Scotland Neck to go roller skating there. The members were in charge of the decorations for the Christmas party. Some of the purposes of the society were to promote social activities on the campus, to discuss literary trends, and to train its members in parliamentary procedure.

Officers: Joe Harris, President; Walter Ward, Vice-President; Carol Bradley, Secretary; June Tucker, Treasurer; Robin Clair, Social Chairman; and Miss Marie Smithwick, Advisor.

Block "C" Club



OFFICERS: Jim Gravely, Vice-President; Herman Clark, President; Johnny Hill, Secretary-Treasurer.

The Block "C" Club was founded last year, and during its second year was composed of thirty of the monogram winners plus the eight cheerleaders who were honorary members. The club presents beautiful jackets to its members and sponsors an annual athletic awards dinner each spring. This year under the leadership of the sponsor, Coach Appenzeller, the club held a most impressive banquet. Awards were given to each sports participant, and special awards were given to captain, co-captains, and several outstanding athletes who made all-star teams. Albert Vaughan received the most valuable player award.



LEFT TO RIGHT: FRONT ROW—Earl Johnson, Ed Hodges, Mary Alice Bell, June Tucker, Ada Barnes, Patsy Futrelle, Carolyn Davis, Robin Clair, All Pierce, Johnny Warren. *SECOND ROW*—Jack Crenshaw, J. W. Glover, Jim Gravely, Al Vaughan, Ike Gay, Ted Pulley, Harold Brown, Martin Domoikos, Daryl Allen. *THIRD ROW*—Ed Chaplin, Ed Meador,

Paul Blake, Ben Rich, Don Deaton, Bobby Lloyd, Rob Roberts, Aubrey Fletcher, Bill Oliver. *FOURTH ROW*: Carroll Daniels, Ted Tollins, Roger Byrd, Herman Clark, Johnny Hill. *NOT SHOWN*—Betsy Willoughby, Sara Rankin, Earl Wright, Hardin Wood, Donnie Taylor.

THE CHOWANIAN

Published monthly by the students of Chowan College, Murfreesboro, N. C., a standard Junior College controlled by the North Carolina Baptist State Convention and founded in 1848.

"The Heart of Christian Education is
the Education of the Heart."

Editor Joe McLean
News Editor Bob Mulder
Sports Editor Marty Domokos
Business Manager Norma Lee Strange
Cartoonist Kathrine Futrell
Photographer John Arthur Griffin
Advertising Manager Mike Dennis
Reporters: Nancy Brown, Jimmy Dixon, Irene Burt, Virginia Drake, Betsy Cadle, Lynn Grice, Elizabeth Warwick, and Sarah Rankin.

SEATED: Joe McLean, Editor. *STANDING: LEFT TO RIGHT*—Nancy Brown, Norma Strange, Sara Rankin, Bobby Pritchett, Betsy Cadle, Lynn Grice, Irene Burt, Martin Domokos, Mike Dennis, Virginia Drake.





Editor McLean has a desk full of work.

Editor Joe McLean and his staff worked hard to give the student body an interesting, informative newspaper this year. They even got out an "Extra" in the fall on our red-hot football team. A small school newspaper is one of the greatest challenges we know. We believe that our news hounds did an outstanding job the first semester and for the first part of the spring session. But the outside world called Editor McLean to work as Editor of the near-by "Northampton County News." We missed our papers this spring, but we applaud the newspaper staff for a "job well done."



"Katherine's Kartoons" added a lot to the "Chowanian."



Virginia and Sara had plenty of copy to proofread.



LEFT TO RIGHT: SEATED—Johnny Hill, Rose Marie Sheridan, Ada Barnes, Virginia Parker, Bob Mulder. *STANDING*—Carolyn Davis, Mary Alice Bell, Robin Clair, Marty Harcum.

Katherine Futrell, Sally Moore, Betty Mills, Louise Wimbish. NOT SHOWN—Nancy Rountree, Bobby Liverman, Nancy Barden, Ed Hodges, Martin Domokos.

Chowanoka Staff

Our sole purpose has been to publish a book which will keep alive our memories of our days here at Chowan. We have put a lot of work and sweat into this book of pictures and composition. We hope that whenever you pick up this annual that you will fondly look in retrospect upon all your adventures and friends of Alma Mater—Chowan College.

Without the splendid work of John Roger Griffin and Norman Dean, our yearbook photographers, this annual would have not been possible. Thanks to everyone who helped.

Katherine Futrell, Advertising Layout and Copy;
Marty Harcum, Features Editor.



Carolyn Davis, Activities; Betty Mills, Assistant Editor; Louise Wimbish, Activities Editor.





Ada Barnes, Copy; Virginia Parker, Copy.

Ed Hodges, Sports Editor.



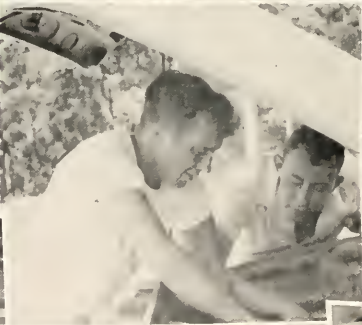
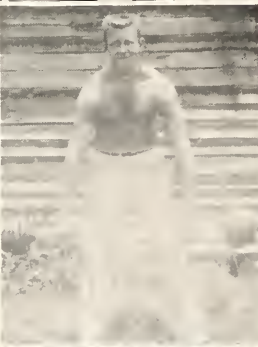
Rose Marie Sheridan, Copy; Robin Clair, Classes; Mary Alice Bell, Class Editor.



Sally Moore, Business Manager.



Johnny Hill, Editor; Bob Mulder, Associate Editor.



SPORTS





HOWAN

h
e
e
r
l
e
a
d
e
r
s

We'er with you TEAM

So FIGHT!!!

We'll win that game

tonight! FIGHT!!!



PATSY

FUTRELL, Chief



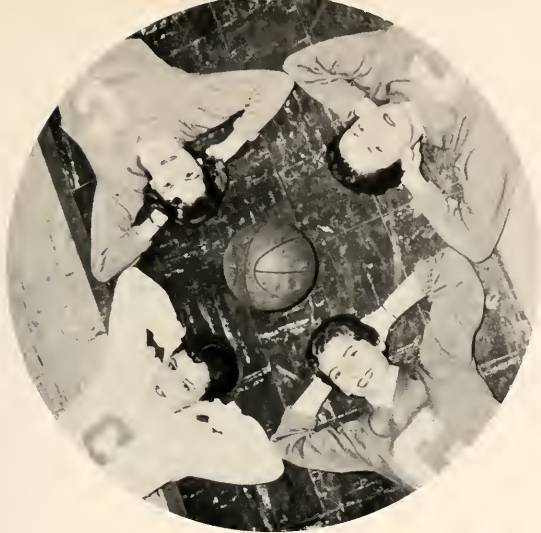
CAROLYN

DAVIS



SARAH

RANKIN



Beginning lower left and reading clockwise: Futrell, Barnes, Willoughby, Davis.



ADA
BARNES



BETSY
WILLOUGHBY



ROBIN
CLAIR



MARY ALICE
BELL



JUNE
TUCKER

Bell

Rankin

Tucker

Clair





LEFT TO RIGHT: FRONT ROW—Manager Harold Brown, Paul Blake, Ted Rollins, Emmett Wadford, Jack Crenshaw, Al Pierce, John Warren, Herman Clark, Daryl Allen, Fletcher Baker, Ed Meador, Jim Gravely. *SECOND ROW*—Manager Walter Sykes, Sam Cuttler, Ben Rich, Bill Mooneyham, Joe Honeycutt, Donnie Taylor, Judson Eure, Harding Wood, Ed Chaplin, Albert Vaughan, Don Deaton, Dick Padgett. *THIRD ROW*—Ed Hodges, Willie Puckette, Wade Salmon, Paul

Basket Bowl Champs



Coach Appenzeller gives instructions.

BRAVES



55

Williamson, Joe Dickerson, Charles Pake, Al Greene, Lloyd Walker, Ike Gay, Harold Willis, Shelton Turner, Rob Roberts, Asst. Coach Paul Davis. *FOURTH ROW*—Earl Wright, J. D. McGowan, J. C. Young, Glenn Stroud, Jeff Howie, Billy Allbrook, Carroll Daniels, David Day, Pete Fischer, Howard Hughes, Ralph Duffie, Publicity, Manager Martin Domokos, Coach Herb Appenzeller.

Ruritan Bowl Champs

COACH DAVIS





JUDSON EURE—Tackle



IKE GAY—Guard



D
A
R
Y
L
A
L
L
E
N
—
C
e
n
t
e
r

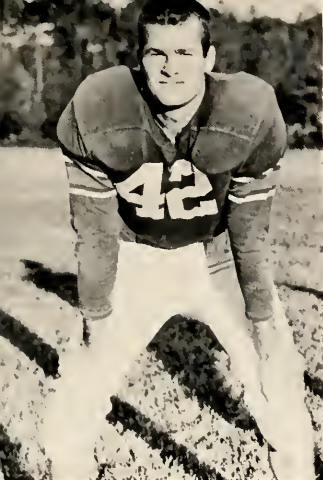


EARL RIGHT—Back

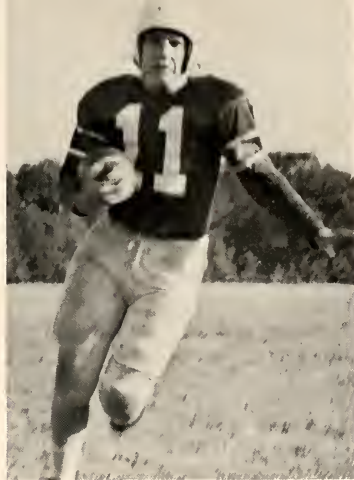


GLENN STROUD—Back

The story of the 1955 edition of the Chowan Braves is one of spirit, victory, and pride. Coaches Herb Appenzeller and Paul Davis turned out one of the finest squads in the history of Chowan. It is a story of a small junior college eleven which never knew when to throw in the towel even against gigantic odds. Possible defeat was turned into victory by the spirit to win. This is their story.



BILLY ALLSBROOK—End



DONNIE TAYLOR—Back



JOE DICKERSON—Guard

CHOWAN 21 BALTIMORE COLLEGE 0

The young Braves aggregation made their season's debut against the speedy Baltimore College Red Devils. The Braves presented a diversified running and passing attack in their first victory. They saw John Warren, Jack Crenshaw, and Harding Wood score the touchdowns.

CHOWAN 25 ELON JAYVEES 14

Jack Crenshaw, Al Pierce, John Warren, and a hard defensive line took the steam out of Elon College and enabled the Braves to storm from behind for a 25-14 victory. Ted Rollins and Ben Rich were outstanding in the line as they stopped the big Elon pack cold for no gain.



D
A
V
I
D

D
A
Y
—
G
u
a
r
d



T
E
D

R
O
L
L
I
N
S
—
T
a
c
k
l
e



ED HODGES—Guard



AL GREENE—Back



WILLIE PUCKETT—Back



LLOYD WALKER—Center



HOWARD HUGHES—Guard

CHOWAN 19 FORK UNION 13

The inspired Braves, paced by the bull-like rushes of freshman halfback, John Warren, ran rough-shod over their arch rivals, the Fork Union Cadets, in the second annual Basket Bowl game played at Murfreesboro.

CHOWAN 25 WESLEY 6

Albert Vaughan scooted 78 yards with a punt return, and Jack Crenshaw went 65 yards with another punt as Chowan defeated Wesley College of Delaware, 25-6, in a game played in the driving rain at Ahoskie. Herman Clark passed 22 yards to Jim Gravely for a touch down that was only the beginning of many more to follow throughout their victorious season.

CHOWAN 40 UNIVERSITY OF RICHMOND B's 26

A magnificent Chowan football team entered the game on the crest of a five-game winning streak and displayed a flashy offense that completely outclassed Richmond in every department. The Braves scored two touchdowns with less than five minutes gone in the first period. John Warren, Albert Vaughn and Jim Gravelly scored the six touchdowns for Chowan.

J
I
M
G
R
A
V
E
L
L
Y
—
E
n
d



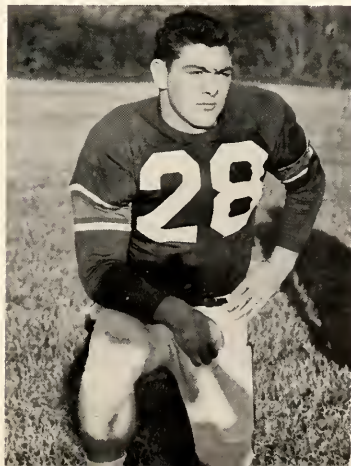
B
I
L
L
M
O
N
E
Y
H
A
N
—
T
a
c
k
l
e



CHARLIE PAKE—Tackle



CO-CAPTAIN
AL PIERCE—Back



JOE HONEYCUTT—Tackle





ED MEADOR—Tackle



CARROLL DANIELS—End



HAROLD WILLIS—Back

CHOWAN 26 NEWPORT NEWS APPRENTICE 7

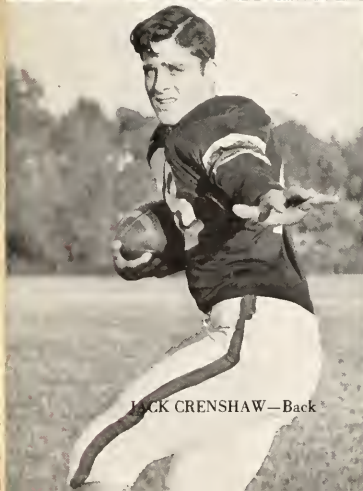
In a game dominated almost entirely by dazzling offensive play of both teams, Chowan scored their sixth victory before an overflow crowd at Cradock, Virginia. The Braves started off with a bang as they drove to pay dirt early in the first period on an 81 yard pass and run play from Herman Clark to Albert Vaughan. Donnie Deaton sparked the victory on his brilliant defensive play.

CHOWAN 32 HARGRAVES MILITARY ACADEMY 7

The Braves loosened up their legs for this one and displayed before their many fans a devastating land attack, paced by the scampering of Al Pierce, Paul Blake, John Warren, and Al Vaughn, along with a brutal defense led by Ben Rich and Darly Allen.

DON DEATON—Back

ED CHAPLIN—Guard



JACK CRENSHAW—Back





SAM CUTLER—End



PAUL BLAKE—End

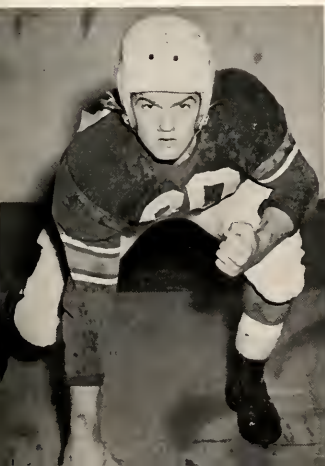


HERMAN CLARK—Back

BULLIS 18 CHOWAN 7

The story of the Bullis game is one of heartbreaking bad breaks for the Braves. A series of bad breaks proved disastrous to the Braves as they saw their seven game winning streak broken in a game played at Silver Springs, Maryland.

EMMETT WADFORD—Guard



ROB ROBERTS—End



AL VAUGHAN—Back





JEFF HOWIE—End



HARDING WOOD—Back

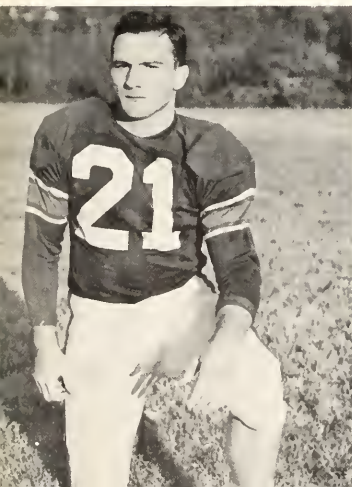


FLETCHER BAKER—Guard

CHOWAN 38 FERRUM 6

The Braves ended up their great season with an impressive 38 to 6 victory over Ferrum College in a game that saw John Warren and Jack Crenshaw both reel off spectacular dashes to enter the scoring column. Al Pierce, Earl Wright, and Willie Puckett scored the others.

JOHN WARREN—Back



CO-CAPTAIN
BEN RICH—Center



DICK PADGETT—End





J. D. McGOWAN—Back



PAUL WILLIAMSON—Tackle



SHELTON TURNER—Back

At the climax of their fine record Herman Clark, Jim Gravely, Jack Crenshaw, and Ben Rich were selected on the All-State Junior College Team. John Warren, Al Pierce, Ted Rollins, Joe Dickerson, and Fletcher Baker received honorable mention. Clark and Gravely made All-American teams. John Warren set two school records this year. His 14 touchdowns and 1009 yards rushing both were entered in Chowan's record books.

WADE SALMON—End



PETE FISHER—Back



J. C. YOUNG—Back



T
O
U
R
N
E
Y

R
U
N
N
E
R
-
U
P
S



LEFT TO RIGHT: FRONT ROW—Paul Blake, Albert Vaughan, Al Green, Donnie Taylor, J. W. Glover, Earl Johnson. *SECOND ROW*—Bill Oliver, Rob Roberts,

Roger Byrd, Ollie Yates, Bobby Lloyd, Aubrey Fletcher. *NOT SHOWN*—Milton Futrell, Gilbert Wood.



COACH APPENZELLER

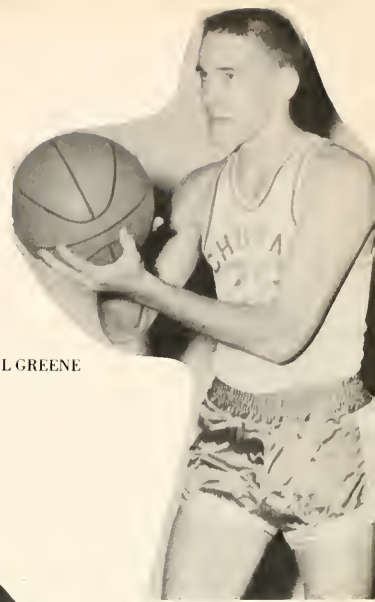
CAPTAIN
J. W. GLOVER



When Coach Appenzeller and his hopeful basketball charges started practice for this season's hardwood wars, observers noted that the entire team with one exception was composed of first year men. When the season was completed, everyone who had followed the Braves was proud of their scrap, hustle, and sportsmanship. This style of rugged play earned for the Braves the runner-up spot in the conference tourney at Wilmington and right to represent our conference in the district playoffs against a strong North Greenville Junior College five. Our Braves were defeated, but nobody changed their mind about a great Braves team, and nobody forgot a terrific season. Hats off to the 1956 basketball Braves!



BOBBY LLOYD



AL GREENE



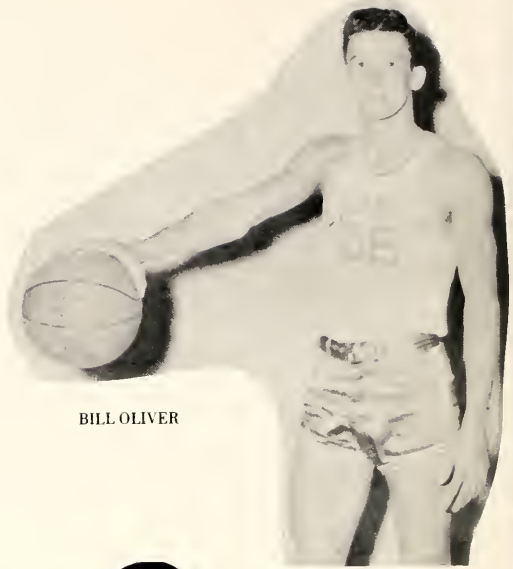
EARL JOHNSON



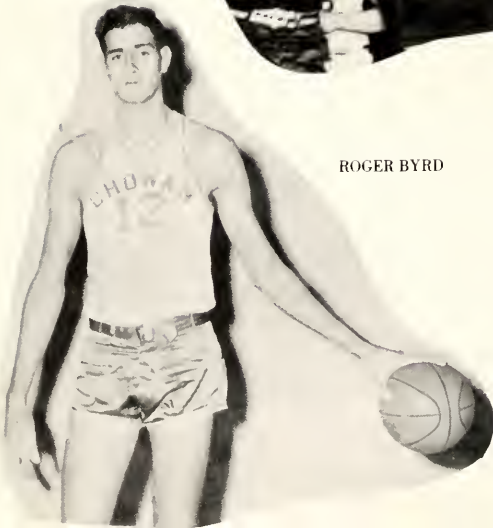
AUBREY FLETCHER



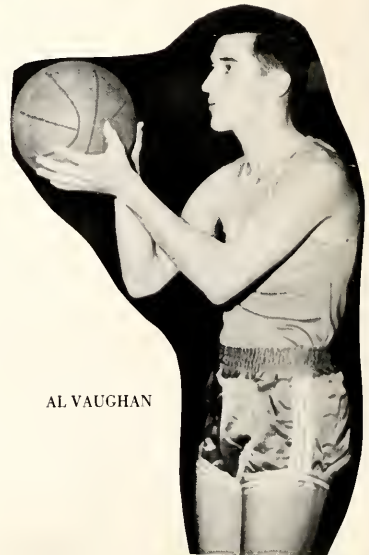
BILL OLIVER



ROGER BYRD



AL VAUGHAN





GILBERT WOOD



ROB ROBERTS



PAUL BLAKE

DONNIE TAYLOR



OLLIE YATES





BILL SOWELL
COACH

STARTERS (LEFT TO RIGHT) Joe Dickerson, Dick Padgett,
Billy Warren, Louis Kearney, Earl Wright.



J. V. Basketball

LEFT TO RIGHT: FRONT ROW—Forrest Broughton, Bill Jackson, Dink Partin, Earl Wright, Louis
Kearney, Billy Warren. SECOND ROW—Joe Dickerson, Daryl Allen, Bill Mooneyham, Dick Padgett,
Sam Cutler, Ted Pulley.





Here comes "Boogie."



Get the lead out.



Gee! He looks tough.

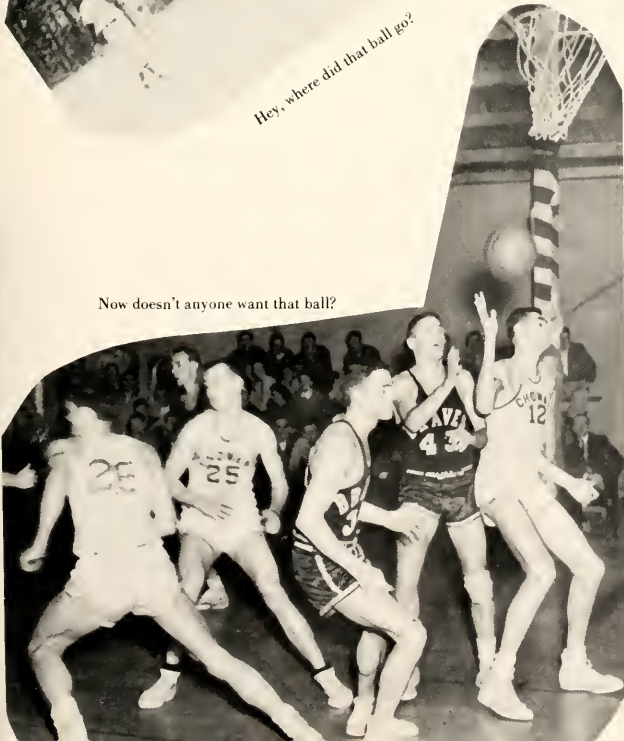


Hey, where did that ball go?



It's a hit.

Now doesn't anyone want that ball?



Scorekeeper or loafer?



Baseball



LEFT TO RIGHT: FRONT ROW—Earl Wright, Al. Vaughan, Harding Wood, Gilbert Wood, Daryl Allen, Earl Johnson. *SECOND ROW*—Ed. Norris, Ted Pulley, Lyn. Grice, Billy

Jackson, Don. Boyette, Carlton Hall. *THIRD ROW*—Mgr. Red Taylor, Ollie Yeates, Lewis Kearney, Ed. Meador, Dick Harris, Coach Paul Davis.

The Braves warming-up.



Allen hits the dirt.



ALLEN



WRIGHT



HALL



Waiting to take the field

VAUGHAN



KEARNEY



WOOD



King and Queen of Hearts



KING CHARLES and QUEEN JO

The B.S.U. sponsored the Valentine contest this year. Jo Allen and Charles Stokes were the winners in a campus-wide contest. Patsy Futrell and Jim Gravely were runners-up. Each organization on campus sponsored a candidate, and these were voted on by the students. The winners were crowned at a Valentine Party.



Heart warming music.

FRONT ROW: LEFT TO RIGHT—Bill Mooneyhan, Robin Clair, Ben Rich, Virginia Parker, Jack Crenshaw, Rochelle Worrell,

Sara Rankin, Joe Honeycutt, Tove Carter, Joe Harris. **TOP ROW:** Patsy Futrell, King Charles Stokes, Queen Jo Allen, Jim Gravely.





QUEEN AND HER COURT: *LEFT TO RIGHT*—Virginia Drake, Mary Lois Edwards, Jo Allen, Carolyn Davis, Maid of Honor, Jim Gravely, Escort, Randy Whitley, Crown Bearer, Queen Patsy Futrell, Noemi Miranda, Robin Clair, Rochelle Worrell.

M D A Y

The Activities Council sponsored the May Day this year. Four girls represented the Sophomore Class and three girls were from the Freshman Class. The student body voted on the four Sophomore girls with the high vote getter to be crowned Queen of May. Miss Patsy Futrell won the election. Runner-up Carolyn Davis was Maid of Honor. Jim Gravely was selected by the Queen to be her escort. Randy Whitley of Murfreesboro served as Crown Bearer.

Mayor Vann crowns the Queen.



Queen Patsy and her escort.



Graduation

Governor Luther Hodges spoke of North Carolina and education at the 1956 Graduation Exercises held at Chowan College on Friday morning June 1. The Governor cited the important work of the church related colleges in his message to the graduating class. He asked the graduates to think of North Carolina when they formed their plans for the future.

Portraits of Rufus J. Green, who gave the college \$40,000 last year to go toward the erection of a science building, and his mother Mrs. Oliva Parker Green, who was a graduate of Chowan College, were unveiled and presented to the college.



GOVERNOR HODGES

Marshalls

LEFT TO RIGHT: SEATED—Jo Allen, Sally Moore (Chief), Katherine Futrell. *STANDING*—S. F. Duncan, Shelton Turner.



Awards

BEST ATHLETE	Albert Vaughan
CITIZENSHIP	Mary Alice Bell
BEST ALL ROUND	Herman Clark
MUSIC SCHOLARSHIP	Virginia Parker
OUTSTANDING RELIGIOUS CONTRIBUTION	Shirley Blizzard
OUTSTANDING STUDENT IN GRAPHIC ARTS	Charles Bridges
HIGHEST SCHOLASTIC AVERAGE	Johnny Hill





ADVERTISEMENTS



Congratulations to the Graduating Class From

RIVERSIDE MANUFACTURING COMPANY

Murfreesboro, North Carolina

Northeastern Oil Co., Inc.

Distributors

Sinclair Products
Firestone Tires, Tubes

Plants in Winton — Weldon

ROANOKE-CHOWAN
GAS SALES, INC.

RULANE GAS SERVICE

Phone 3121

Murfreesboro

North Carolina

ROANOKE VALLEY
OIL CO.

— Distributors of —

RICHFIELD PRODUCTS

Murfreesboro

North Carolina

BROWN & PARKER
Operators

RED APPLE SERVICE
STATION AND RIVERSIDE
STORE

Murfreesboro

North Carolina

Compliments of

**VAUGHAN AND COMPANY
BANKERS**

Established 1886

A Member of the Federal Deposit
Insurance Corp.

Franklin

Virginia

Congratulations From

THE FARMERS BANK

F.D.I.C.

Murfreesboro, North Carolina

Save on your Drug Needs

— at —

COPELAND DRUG CO.

Prescription Specialist

Ahoskie

North Carolina

Compliments of

BEN FRANKLIN STORE

5, 10, 25¢ and up

Locally Owned — Nationally Known

Murfreesboro

North Carolina

Compliments of

SEVERN PEANUT CO., INC.

Shellers: Virginia Peanuts
Sepco Brand Seed Peanuts

Severn

North Carolina

Compliments of

**BARNES-SAWYER INC.
GROCERY COMPANY**

Ahoskie

North Carolina

**MERCHANTS AND
FARMERS BANK**

Resources Over Four Million

FRANKLIN

VIRGINIA

Member Federal
Deposit Insurance Corporation

Compliments of

**R. G. COOKE MOTOR
COMPANY**

Chrysler—Plymouth Dealer

Aulander

North Carolina

Compliments of the following
merchants of
Franklin and Conway

CONWAY LIVESTOCK CO.

THORNTON AND LIVESAY

**BRISTOW INSURANCE
CORPORATION**

Best Wishes

AHOSKIE DEPARTMENT STORE

Ahoskie

North Carolina

In Ahoskie It's

BELK-TYLER CO.

"THE SHOPPING CENTER"

Ahoskie

North Carolina

NICHOLSON
PHARMACY, INC.

Headquarters for
Your Drug and
Cosmetic Needs

Murfreesboro

North Carolina

Compliments of the following
merchants of Ahoskie

WHEDBEE FURNITURE CO.

AHOSKIE MOTOR COMPANY

FARMER'S HARDWARE CO.

AHOSKIE WHOLESALE CO.

Best Wishes

MANHATTEN CAFE

Ahoskie

North Carolina

Compliments of

PLANTERS NATIONAL BANK
& TRUST CO.

"The Bank of Personal Service"

Member — Federal Reserve System
Federal Deposit Insurance Corp.

Ahoskie

North Carolina

Compliments of

MEHERRIN VALLEY BANK



Boykins

Virginia

Compliments of

R-C MOTORS

your
Roanoke Chowan Mercury Dealer

Phone 3378

Ahoskie

North Carolina

Congratulations From

BANK OF AHOSKIE

Two Offices
In Ahoskie

Branch in
Aulander

R. H. UNDERWOOD

ESSO

Murfreesboro, North Carolina

PURE FOOD STORE

"Meat makes the meal
Meet us for Meats"

Murfreesboro

North Carolina

Compliments of

HOGGARD BROS.

Do Paint With Du Pont

Aulander

North Carolina

Compliments of the Following Merchants
of Murfreesboro

UNDERWOOD BARBER SHOP

PEEBLES-KIMBRELL CO., INC.

DUKE'S BEAUTY PARLOR

THE EVANS CO.

WHITLEY'S TEXACO SERVICE

PASTIME GRILL

Best Wishes

HILL CHEVROLET COMPANY

Murfreesboro

North Carolina

<p>Compliments of</p> <p>WALKER-BOONE DRUG CO.</p> <p>PRESCRIPTIONS</p> <p>Phone 3217</p> <p>Ahoskie North Carolina</p>	<p>CHAS. L. REVELLE & SONS</p> <p>Murfreesboro, North Carolina</p>
<p>E. R. WILLOUGHBY Distributor</p> <p>GARDNER'S DAIRY PRODUCTS</p> <p>Murfreesboro North Carolina</p> <p>559-6 470-1</p>	<p>It Pays to Sell With . . .</p> <p>FARMERS' TOBACCO WAREHOUSE</p> <p>Nos. 1, 2, 3</p> <p>Ahoskie North Carolina</p>
<p>Compliments of</p> <p>HARRELLSVILLE LUMBER CO.</p> <p>Ahoskie North Carolina</p>	<p>Compliments of</p> <p>A FRIEND</p>
<p>PLANTERS HARDWARE COMPANY</p> <p>Hardware and Building Supplies Farm Machinery</p> <p>Murfreesboro, N. C.</p>	<p>WHEDBEE EQUIPMENT CO.</p> <p>"Farmall Tractors"</p> <p>WHEDBEE-BRITTON HARDWARE CO.</p> <p>"Sherwin Williams Paints"</p> <p>Ahoskie North Carolina</p>

Compliments of the following

Merchants of Murfreesboro

MURFREESBORO APPLIANCE CO.

CENTER PLUMBING & APPLIANCE
CO.

JENKINS APPLIANCE CO.

MEHERRIN PONTIAC CO.

WESTERN AUTO ASSOCIATE
STORE

VANN'S RED AND WHITE STORE

THE TIDEWATER NEWS

Dominant Weekly serving Tidewater Virginia
Reaching 23,538 people — 5,117 families

Franklin, Virginia

Whitaker Library²
Chowen College
Do not take from library

**CHOWAN COLLEGE LIBRARY
MURFREESBORO, N. C.**

Whitaker Library
Chowan College
Do not take from library



AMERICAN YEARBOOK
COMPANY
CHICAGO, ILL. U.S.A.