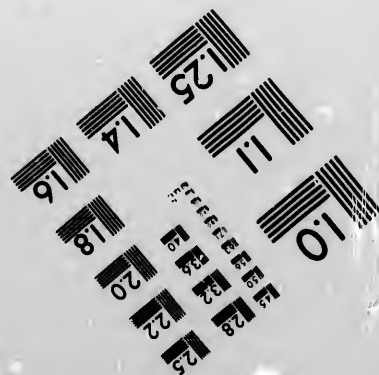
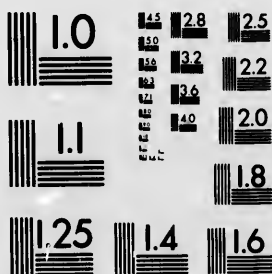


**IMAGE EVALUATION
TEST TARGET (MT-3)**



**CIHM/ICMH
Microfiche
Series.**

**CIHM/ICMH
Collection de
microfiches.**



Canadian Institute for Historical Microreproductions

Institut canadien de microreproductions historiques

1980

Technical Notes / Notes techniques

The Institute has attempted to obtain the best original copy available for filming. Physical features of this copy which may alter any of the images in the reproduction are checked below.

L'institut a microfilmé le meilleur exemplaire qu'il lui a été possible de se procurer. Certains défauts susceptibles de nuire à la qualité de la reproduction sont notés ci-dessous.

- | | |
|---|---|
| <input type="checkbox"/> Coloured covers/
Couvertures de couleur | <input type="checkbox"/> Coloured pages/
Pages de couleur |
| <input type="checkbox"/> Coloured maps/
Cartes géographiques en couleur | <input type="checkbox"/> Coloured plates/
Planches en couleur |
| <input type="checkbox"/> Pages discoloured, stained or foxed/
Pages décolorées, tachetées ou piquées | <input checked="" type="checkbox"/> Show through/
Transparence |
| <input type="checkbox"/> Tight binding (may cause shadows or
distortion along interior margin)/
Reliure serré (peut causer de l'ombre ou
de la distortion le long de la marge
intérieure) | <input type="checkbox"/> Pages damaged/
Pages endommagées |
| <input type="checkbox"/> Additional comments/
Commentaires supplémentaires | |
-

Bibliographic Notes / Notes bibliographiques

- | | |
|--|---|
| <input type="checkbox"/> Only edition available/
Seule édition disponible | <input type="checkbox"/> Pagination incorrect/
Erreurs de pagination |
| <input type="checkbox"/> Bound with other material/
Relié avec d'autres documents | <input type="checkbox"/> Pages missing/
Des pages manquent |
| <input type="checkbox"/> Cover title missing/
Le titre de couverture manque | <input type="checkbox"/> Maps missing/
Des cartes géographiques manquent |
| <input type="checkbox"/> Plates missing/
Des planches manquent | |
| <input type="checkbox"/> Additional comments/
Commentaires supplémentaires | |

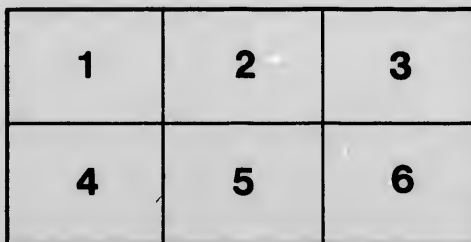
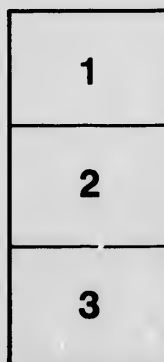
The images appearing here are the best quality possible considering the condition and legibility of the original copy and in keeping with the filming contract specifications.

The last recorded frame on each microfiche shall contain the symbol \rightarrow (meaning "CONTINUED"), or the symbol ∇ (meaning "END"), whichever applies.

The original copy was borrowed from, and filmed with, the kind consent of the following institution:

Library,
National Museums of Canada

Maps or plates too large to be entirely included in one exposure are filmed beginning in the upper left hand corner, left to right and top to bottom, as many frames as required. The following diagrams illustrate the method:



Les images suivantes ont été reproduites avec le plus grand soin, compte tenu de la condition et de la netteté de l'exemplaire filmé, et en conformité avec les conditions du contrat de filmage.

Un des symboles suivants apparaîtra sur la dernière image de chaque microfiche, selon le cas: le symbole \rightarrow signifie "A SUIVRE", le symbole ∇ signifie "FIN".

L'exemplaire filmé fut reproduit grâce à la générosité de l'établissement prêteur suivant :

Bibliothèque,
Musées Nationaux du Canada

Les cartes ou les planches trop grandes pour être reproduites en un seul cliché sont filmées à partir de l'angle supérieure gauche, de gauche à droite et de haut en bas, en prenant le nombre d'images nécessaire. Le diagramme suivant illustre la méthode :

(Reprinted from BULLETIN OF THE TORREY BOTANICAL CLUB, May, 1888.)

Flora Temiscouatensis.

During the early part of last September my labors in connection with the Geological Survey of Canada took me into that very charming and delightfully picturesque district surrounding

Lake Temiscouata, in the Province of Quebec, Canada, where I was enabled, during a few leisure moments, to jot down lists of the easily recognized and common forms of plants occurring there and to obtain a collection of specimens unknown to me, or of rare occurrence, for study and determination. On returning from the field last October, these lists and the plants mentioned were submitted to Prof. Macoun, the Dominion Botanist, who very kindly revised the one and identified the others. I feel under great obligation to Prof. Macoun therefor.

In the November issue of this BULLETIN Mr. Northrop published an interesting paper giving a "catalogue" of the plants collected by him in Temiscouata County, from the shores of the Saint Lawrence on the north to Edmunston and Grand Falls, New Brunswick, on the south. Having recently compared Mr. Northrop's lists with mine I find that his lists contain a large number of species which were not contained in my completed list which made my "Flora Temiscouatensis." But I find also that a goodly number of species are comprised in mine which it may not be deemed out of place to present now. These additional species were all collected and recorded from the shores of Lake Temiscouata, of the Tuladi River and of Tuladi Lake, as also the other species contained in my lists, also contained in Mr. Northrop's "Catalogue" which it is needless here to repeat.

Clematis Virginiana, L.

Actæa alba, Bigelow (in fruit).

Anemone Pennsylvanica, L.

Nymphaea microphylla, Pers.

Capsella bursa-pastoris (L.), Mœnch.

Oxalis corniculata, L., var. *stricta* (L.), Sav.

Acer Pennsylvanicum, L.

Negundo aceroides, Mœnch (introduced).

Rhus toxicodendron, L. (climbing or trailing variety.)

Lathyrus palustris, L.

Cratægus sp. (a form with small orange-yellow fruit).

Epilobium coloratum, Muhl.

Cicuta maculata ? L.

Lonicera ciliata, Muhl.

Viburnum acerifolium, L.

- Solidago latifolia*, L.
S. lanccolata, Ait.
S. rugosa, Mill.
Aster acuminatus, Michx.
A. cordifolius, L.
Cnicus lanceolatus (L.), Willd.
C. muticus (Michx.), Pursh.
Gnaphalium decurrens, Ives.
Prenanthes altissima, L.
Taraxacum officinale, Weber.
Chiogenes hispidula (L.), Torrey and Gray.
Pyrola secunda, L.
P. rotundifolia, L., v. *asarifolia* (Michx.), Hooker.
Plantago major, L.
Trientalis Americana (Pers.), Pursh, (in fruit).
Lycopus Virginicus, L.
Polygonum Persicaria, L.
P. amphibium, L.
Alnus incana (L.), Willd.
Habenaria Hookeriana, Torrey.
Cypripedium acaule, Ait.
Trillium erythrocarpum, Michx.
Smilacina racemosa (L.), Desf.
Pinus Strobis, L.
P. resinosa, Ait.
Picea alba, Link.
Abies balsamea (L.), Miller.
Larix Americana, Michx.
Pteris aquilina, L.
Onoclea Struthiopteris, Hoffm.
O. sensibilis, L.

NOTE.—The following interesting species were also collected by the writer, but at Rimouski, on the south shore of the Saint Lawrence. *Viola tricolor*, *Erodium cicutarium*, *Matricaria inodora*, *Salsola Kali*, *Cakile Americana*, *Mertensia maritima*, *Achillæa Ptarmica*, besides others of more common occurrence.

Geological Survey of Canada,
Ottawa, Canada.

HENRY M. AMI,
Cor. Mem. Torr. Bot. Club.

INVENTORY
1976 / 1977
INVENTAIRE