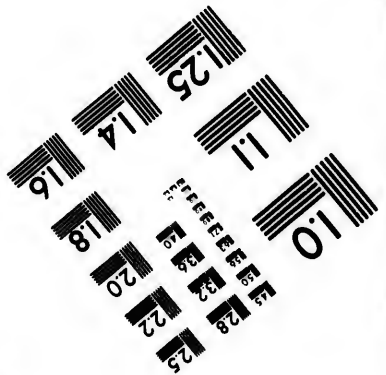
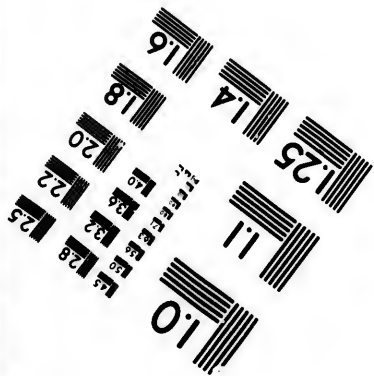
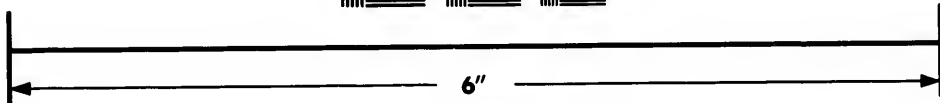
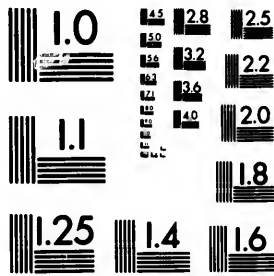


**IMAGE EVALUATION  
TEST TARGET (MT-3)**



**Photographic  
Sciences  
Corporation**

23 WEST MAIN STREET  
WEBSTER, N.Y. 14580  
(716) 872-4503

**CIHM/ICMH  
Microfiche  
Series.**

**CIHM/ICMH  
Collection de  
microfiches.**



**Canadian Institute for Historical Microreproductions / Institut canadien de microreproductions historiques**

**© 1982**

Technical and Bibliographic Notes/Notes techniques et bibliographiques

The Institute has attempted to obtain the best original copy available for filming. Features of this copy which may be bibliographically unique, which may alter any of the images in the reproduction, or which may significantly change the usual method of filming, are checked below.

L'Institut a microfilmé le meilleur exemplaire qu'il lui a été possible de se procurer. Les détails de cet exemplaire qui sont peut-être uniques du point de vue bibliographique, qui peuvent modifier une image reproduite, ou qui peuvent exiger une modification dans la méthode normale de filmage sont indiqués ci-dessous.

- Coloured covers/  
Couverture de couleur
- Covers damaged/  
Couverture endommagée
- Covers restored and/or laminated/  
Couverture restaurée et/ou pelliculée
- Cover title missing/  
Le titre de couverture manque
- Coloured maps/  
Cartes géographiques en couleur
- Coloured ink (i.e. other than blue or black)/  
Encre de couleur (i.e. autre que bleue ou noire)
- Coloured plates and/or illustrations/  
Planches et/ou illustrations en couleur
- Bound with other material/  
Relié avec d'autres documents
- Tight binding may cause shadows or distortion  
along interior margin/  
La reliure serrée peut causer de l'ombre ou de la  
distortion le long de la marge intérieure
- Blank leaves added during restoration may  
appear within the text. Whenever possible, these  
have been omitted from filming/  
Il se peut que certaines pages blanches ajoutées  
lors d'une restauration apparaissent dans le texte,  
mais, lorsque cela était possible, ces pages n'ont  
pas été filmées.
- Additional comments:/  
Commentaires supplémentaires:

- Coloured pages/  
Pages de couleur
- Pages damaged/  
Pages endommagées
- Pages restored and/or laminated/  
Pages restaurées et/ou pelliculées
- Pages discoloured, stained or foxed/  
Pages décolorées, tachetées ou piquées
- Pages detached/  
Pages détachées
- Showthrough/  
Transparence
- Quality of print varies/  
Qualité inégale de l'impression
- Includes supplementary material/  
Comprend du matériel supplémentaire
- Only edition available/  
Seule édition disponible
- Pages wholly or partially obscured by errata  
slips, tissues, etc., have been refilmed to  
ensure the best possible image/  
Les pages totalement ou partiellement  
obscurcies par un feuillet d'errata, une pelure,  
etc., ont été filmées à nouveau de façon à  
obtenir la meilleure image possible.

This item is filmed at the reduction ratio checked below/  
Ce document est filmé au taux de réduction indiqué ci-dessous.

10X	14X	18X	22X	26X	30X
<input type="checkbox"/>	<input type="checkbox"/>	<input type="checkbox"/>	<input checked="" type="checkbox"/>	<input type="checkbox"/>	<input type="checkbox"/>
12X	16X	20X	24X	28X	32X

The copy filmed here has been reproduced thanks to the generosity of:

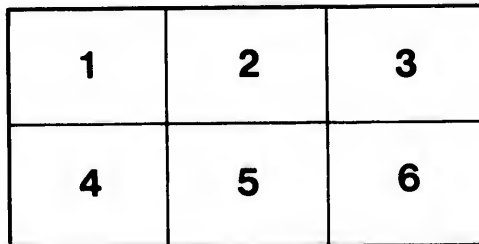
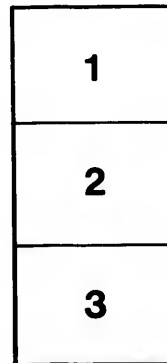
National Library of Canada

The images appearing here are the best quality possible considering the condition and legibility of the original copy and in keeping with the filming contract specifications.

Original copies in printed paper covers are filmed beginning with the front cover and ending on the last page with a printed or illustrated impression, or the back cover when appropriate. All other original copies are filmed beginning on the first page with a printed or illustrated impression, and ending on the last page with a printed or illustrated impression.

The last recorded frame on each microfiche shall contain the symbol  $\rightarrow$  (meaning "CONTINUED"), or the symbol  $\nabla$  (meaning "END"), whichever applies.

Maps, plates, charts, etc., may be filmed at different reduction ratios. Those too large to be entirely included in one exposure are filmed beginning in the upper left hand corner, left to right and top to bottom, as many frames as required. The following diagrams illustrate the method:



L'exemplaire filmé fut reproduit grâce à la générosité de:

Bibliothèque nationale du Canada

Les images suivantes ont été reproduites avec le plus grand soin, compte tenu de la condition et de la netteté de l'exemplaire filmé, et en conformité avec les conditions du contrat de filmage.

Les exemplaires originaux dont la couverture en papier est imprimée sont filmés en commençant par le premier plat et en terminant soit par la dernière page qui comporte une empreinte d'impression ou d'illustration, soit par le second plat, selon le cas. Tous les autres exemplaires originaux sont filmés en commençant par la première page qui comporte une empreinte d'impression ou d'illustration et en terminant par la dernière page qui comporte une telle empreinte.

Un des symboles suivants apparaîtra sur la dernière image de chaque microfiche, selon le cas: le symbole  $\rightarrow$  signifie "A SUIVRE", le symbole  $\nabla$  signifie "FIN".

Les cartes, planches, tableaux, etc., peuvent être filmés à des taux de réduction différents. Lorsque le document est trop grand pour être reproduit en un seul cliché, il est filmé à partir de l'angle supérieur gauche, de gauche à droite, et de haut en bas, en prenant le nombre d'images nécessaire. Les diagrammes suivants illustrent la méthode.

ils  
du  
diffier  
ne  
age

ata

elure,  
à

32X

60  
7

# FOREST PRESERVATION IN CANADA

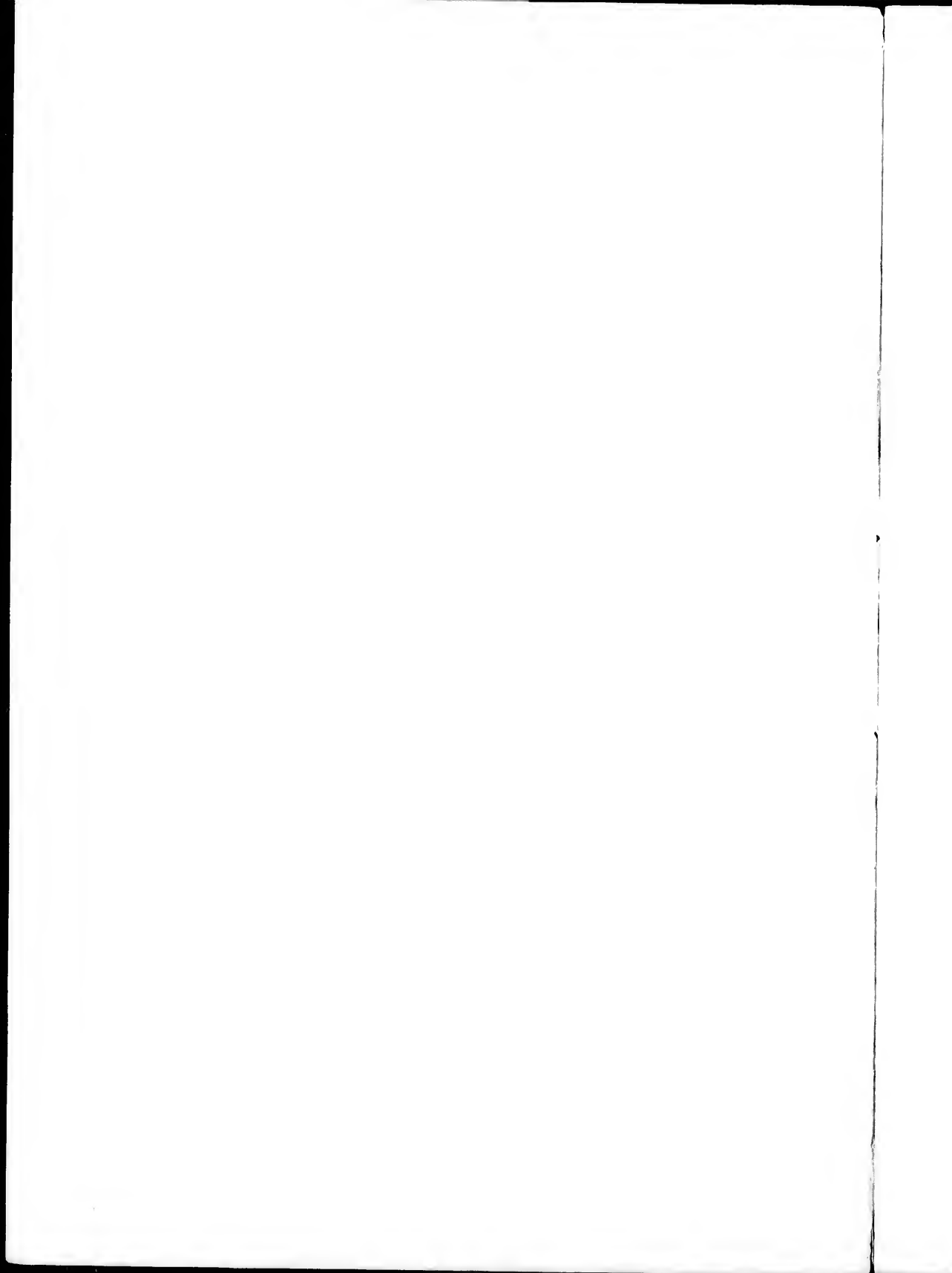
BY  
A. T. DRUMMOND.

---

PRINTED IN ADVANCE OF THE REPORT OF THE ANNUAL MEETING  
AT BOSTON OF THE AMERICAN FORESTRY CONGRESS.

---

MONTREAL :  
"WITNESS" PRINTING HOUSE, ST. JAMES STREET.  
1885.



### *FOREST PRESERVATION IN CANADA.*

Each of the Provinces comprising the Dominion of Canada, excepting Manitoba, has control of its own crown lands, and hence it is difficult to secure one uniform series of measures for the protection of the timber upon these crown lands. Circumstances are different in each Province. In British Columbia, the forests are largely yet untouched, excepting along the Pacific Coast, and there is thus the opportunity still there of carefully conserving the forests, so that they may be a continued source of revenue, instead of allowing fires and the lumberman's axe to have unrestricted sway among them. Between the Rocky Mountains and the boundaries of Ontario it is rather a question of how far forests are to be created, as the country is chiefly open prairie. In Ontario and Quebec, along the streams which fall into the Georgian Bay, and at the sources of the Ottawa, St. Maurice and other great rivers and their tributaries, there is still a considerable area of White and Red Pine, but the trees are of diminished size compared with the splendid trunks common on the Ottawa twenty years ago. The lumbermen are fast approaching the northern limits of the growth of these trees. In Ontario, the provincial finances are in good condition, and the Government there, can, if it will, readily curtail its revenues from timber and timber limits, in order to prevent waste of its crown lands, and to preserve them in condition to yield revenues to the Government and profit to the lumbermen who may work them in years in the future. In the Province of Quebec there is more difficulty in dealing with the question, as the Province has a very heavy funded debt, the interest of which, in addition to ordinary expenditure, has had to be provided for, and as a consequence every

possible source of revenue has been made available to the utmost. New Brunswick has still some forests of Pine and Spruce, but the area is, compared with the Ontario and Quebec forests, relatively small, whilst Nova Scotia has, on the whole, but little timber of good merchantable size left, and has correspondingly less interest in the question of forest preservation. The crown lands are under Dominion control only in Manitoba and the North-West Territories, and some steps have been taken to preserve what timber exists there.

As is well known, the system prevails in Canada of leasing from year to year large areas of crown lands under the name of timber berths or timber limits, at an annual rental per square mile. Though the lease is from year to year, yet by custom it is understood that as long as the rent is paid, the lessee may continue in possession indefinitely until he has cut off all the timber he desires. Sometimes the holder is merely a speculator; at other times he is a lumberman, who is keeping the limits in reserve for future working, and thus, frequently, large unworked areas are tied up from year to year by parties who have a quasi right to continue this under the original lease. This makes it difficult to apply new regulations to limits already under lease. Sections of country not yet under lease—and considerable new tracts have in Ontario been rendered accessible by the Canadian Pacific Railway—are in a different position, and governments can readily lay down rules for their future working as timber limits.

Germany, France, Sweden and India have their forests cared for under more or less stringent regulations, and even the small Province of Cape Colony in South Africa has its Forestry Department, under Government control, and is doing a good work that should put us to shame. The forests there are being arranged for scientific working, the fundamental principle being, the conservator says, that the cutting shall not exceed the growth. Why should we in America with a splendid heritage in the pine forests of Maine, Quebec, Ontario, Michigan and Wisconsin have been so prodigal and reckless, and have shown so little farsightedness, as to have gone on from year to year for half a century past allowing this heritage to be diminished gradually in value without even an attempt to prevent it! How often are we blind to the future! The Cape Colony Report for 1884 very well puts it that the policy should be pursued of setting our



faces against forest destruction as firmly as other moral evils are faced. Further than this, with us here, each State and each Province has an interest in the action which its neighbouring State or Province takes or neglects to take on this question. Our great rivers have often their fountain heads, or the fountain heads of their tributaries, in one or more States or Provinces, and then course their way to the great lakes, or the sea, through other States or Provinces. Have not those whose lands along the route are watered by these rivers, the cities, towns and villages which are scattered along their banks, and the public which makes use of the steamboats and other craft which ply upon their surface, an undeniable interest in seeing that these waterways are not impaired by the burning or cutting away of the forests at these fountain heads? It is the province of every State to legislate for itself, or to withhold legislation, but in this case, the neighbouring States have a clear right to ask that their waterways and water supplies shall not be impaired or cut off by its neglect to provide proper legislation or proper oversight.

The remedial measures which I would suggest with a view to the preservation and renewal of our forests are in some respects equally applicable to the United States and to Canada.

The leases of timber areas I would restrict to definite periods of five or at most seven years, and when the lease expired, the particular area covered by it should have a rest of say twenty-five years, to allow of the young trees attaining merchantable value. The effect of this would be to largely check speculation in timber limits, and would give ample time to *bona fide* lumbermen to get out all large sized timber. It should be incumbent on each lessee to show his *bona fides* by erecting a mill within a given time either at or convenient to the limits, unless he has a special permit to work the limits for square timber.

The timber limits themselves should be restricted in size to about fifty square miles. This is now done in Manitoba by the Dominion Government. The parcelling out of the timber country into definite, limited areas would enable each Government to more systematically carry out the system of alternate leases and rests for the forests.

The production of square timber should be discouraged, on account of the great waste of material in forming the square log, and because of the additional food for forest fires which this waste material creates.

The cutting on crown lands of trees under twelve inches at the stump should be punishable by a heavy fine, which would be easily collectable at the mills when the drives of logs come down after the spring freshets. This would have the effect of preserving the younger trees until they attained a merchantable size.

The starting of forest fires should be made criminal. Nineteen-twentieths of the forest fires are preventable. There is no reason why camp fires should not be put out, and the knowledge that to allow them to spread was punished by imprisonment, would quickly make camp parties careful, more especially if every member of each party were made responsible.

Not only in the forests which have been cut over by the lumbermen, but wherever fires have swept through areas of crown lands not specially suitable or available for settlement, resowing or replanting should take place. Where burned areas are left to themselves, trees of a less desirable kind almost invariably spring up. How to effect this resowing and replanting economically is a question of some importance. It can be done in part by the forest rangers hereafter referred to, but, I think, that as a condition of every lease of timber limits, it should be made incumbent on the lessee either to pay a given sum per square mile of territory included in his lease towards the expenses of the Forestry Department of the Government, or that he should actually plant and care for a young tree for every trunk he fells. This would not be an expensive proceeding. It would involve the cultivation of one or perhaps two acres as a forest nursery, and the subsequent setting out of the young trees, and to this might be added the duty of collecting and sowing through the forest, of seeds of desirable kinds of trees. When it is remembered that each forester in Cape Colony is expected, without assistance, to annually raise 40,000 young trees, and that his duties involve the transplanting of these to the burned and other districts within his section, it will be observed that the task thus proposed to be imposed on the American lumberman is not formidable.

Lastly, each Government, in the case of Provinces still possessing forest areas of importance, should organize a Forestry Department in connection with the management of its crown lands. The objects of the Department would be :

*First.* The general preservation of the forests from fires, and from deterioration by improper working.

*Second.* The replanting of the crown forests where burned or exhausted.

*Third.* The encouragement of tree-planting by land owners generally, and the dissemination of information about trees and tree culture.

There should be a Superintendent of Woods and Forests, whose duties should be organization, general supervision and frequent inspection. Under him would be forest rangers or foresters, who would have given districts in which they would reside, and for the oversight of which they would be responsible:—their duties being to prevent encroachment by lumbermen on unleased crown lands; to see that small trees were not cut; to investigate the cause of every fire happening within their districts, and punish the guilty parties, for which purpose they should have certain magisterial powers; to raise in a small plantation young trees for replanting the burned districts; and to collect and sow the seeds of desirable kinds of trees. Each forester would probably require the aid of an assistant. The administration of the department need not be expensive, and whilst the expense could be readily met by a small tax per square mile of timber limits under lease, or per thousand feet of lumber sawn, or cubic feet of square timber produced, the saving annually of timber trees from forest fires would alone pay the cost of the department for many years.

MONTREAL, Oct., 1885.

