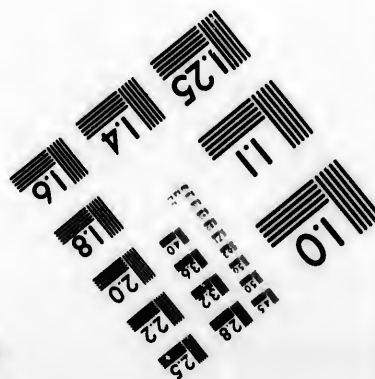
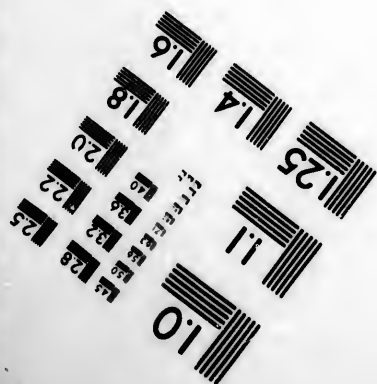
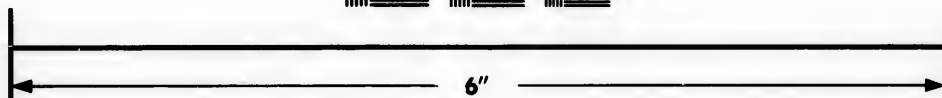
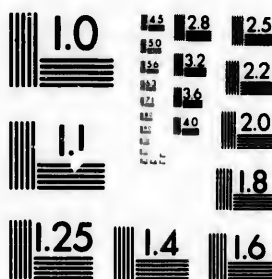


**IMAGE EVALUATION
TEST TARGET (MT-3)**



**Photographic
Sciences
Corporation**

23 WEST MAIN STREET
WEBSTER, N.Y. 14580
(716) 872-4503

Can

1.5 1.8 2.2 2.5
2.0 2.2 2.5
2.8 3.0 3.2 3.5
3.8 4.0 4.2 4.5
4.8 5.0 5.2 5.5
5.8 6.0 6.2 6.5
6.8 7.0 7.2 7.5
7.8 8.0 8.2 8.5
8.8 9.0 9.2 9.5
9.8 10.0 10.2 10.5

01

**CIHM/ICMH
Microfiche
Series.**

**CIHM/ICMH
Collection de
microfiches.**



Canadian Institute for Historical Microreproductions

Institut canadien de microreproductions historiques

1980

Technical and Bibliographic Notes/Notes techniques et bibliographiques

The Institute has attempted to obtain the best original copy available for filming. Features of this copy which may be bibliographically unique, which may alter any of the images in the reproduction, or which may significantly change the usual method of filming, are checked below.

L'Institut a microfilmé le meilleur exemplaire qu'il lui a été possible de se procurer. Les détails de cet exemplaire qui sont peut-être uniques du point de vue bibliographique, qui peuvent modifier une image reproduite, ou qui peuvent exiger une modification dans la méthode normale de filmage sont indiqués ci-dessous.

- Coloured covers/
Couverture de couleur
- Covers damaged/
Couverture endommagée
- Covers restored and/or laminated/
Couverture restaurée et/ou pelliculée
- Cover title missing/
Le titre de couverture manque
- Coloured maps/
Cartes géographiques en couleur
- Coloured ink (i.e. other than blue or black)/
Encre de couleur (i.e. autre que bleue ou noire)
- Coloured plates and/or illustrations/
Planches et/ou illustrations en couleur
- Bound with other material/
Relié avec d'autres documents
- Tight binding may cause shadows or distortion along interior margin/
La reliure serrée peut causer de l'ombre ou de la distortion le long de la marge intérieure
- Blank leaves added during restoration may appear within the text. Whenever possible, these have been omitted from filming/
Il se peut que certaines pages blanches ajoutées lors d'une restauration apparaissent dans le texte, mais, lorsque cela était possible, ces pages n'ont pas été filmées.
- Additional comments:/
Commentaires supplémentaires:

- Coloured pages/
Pages de couleur
- Pages damaged/
Pages endommagées
- Pages restored and/or laminated/
Pages restaurées et/ou pelliculées
- Pages discoloured, stained or foxed/
Pages décolorées, tachetées ou piquées
- Pages detached/
Pages détachées
- Showthrough/
Transparence
- Quality of print varies/
Qualité inégale de l'impression
- Includes supplementary material/
Comprend du matériel supplémentaire
- Only edition available/
Seule édition disponible
- Pages wholly or partially obscured by errata slips, tissues, etc., have been refilmed to ensure the best possible image/
Les pages totalement ou partiellement obscurcies par un feuillet d'errata, une pelure, etc., ont été filmées à nouveau de façon à obtenir la meilleure image possible.

This item is filmed at the reduction ratio checked below/
Ce document est filmé au taux de réduction indiqué ci-dessous.

10X	14X	18X	22X	26X	30X
<input type="checkbox"/>	<input type="checkbox"/>	<input type="checkbox"/>	<input checked="" type="checkbox"/>	<input type="checkbox"/>	<input type="checkbox"/>
12X	16X	20X	24X	28X	32X

The copy filmed here has been reproduced thanks to the generosity of:

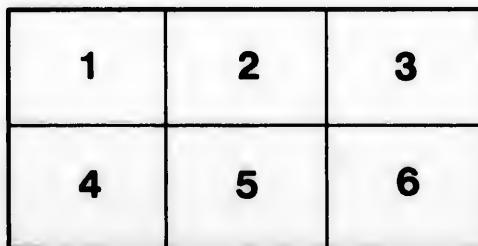
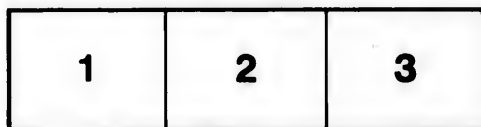
Library,
Geological Survey of Canada

The images appearing here are the best quality possible considering the condition and legibility of the original copy and in keeping with the filming contract specifications.

Original copies in printed paper covers are filmed beginning with the front cover and ending on the last page with a printed or illustrated impression, or the back cover when appropriate. All other original copies are filmed beginning on the first page with a printed or illustrated impression, and ending on the last page with a printed or illustrated impression.

The last recorded frame on each microfiche shall contain the symbol \rightarrow (meaning "CONTINUED"), or the symbol ∇ (meaning "END"), whichever applies.

Maps, plates, charts, etc., may be filmed at different reduction ratios. Those too large to be entirely included in one exposure are filmed beginning in the upper left hand corner, left to right and top to bottom, as many frames as required. The following diagrams illustrate the method:



L'exemplaire filmé fut reproduit grâce à la générosité de:

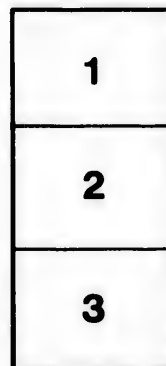
Bibliothèque,
Commission Géologique du Canada

Les images suivantes ont été reproduites avec le plus grand soin, compte tenu de la condition et de la netteté de l'exemplaire filmé, et en conformité avec les conditions du contrat de filmage.

Les exemplaires originaux dont la couverture en papier est imprimée sont filmés en commençant par le premier plat et en terminant soit par la dernière page qui comporte une empreinte d'impression ou d'illustration, soit par le second plat, selon le cas. Tous les autres exemplaires originaux sont filmés en commençant par la première page qui comporte une empreinte d'impression ou d'illustration et en terminant par la dernière page qui comporte une telle empreinte.

Un des symboles suivants apparaîtra sur la dernière image de chaque microfiche, selon le cas: le symbole \rightarrow signifie "A SUIVRE", le symbole ∇ signifie "FIN".

Les cartes, planches, tableaux, etc., peuvent être filmés à des taux de réduction différents. Lorsque le document est trop grand pour être reproduit en un seul cliché, il est filmé à partir de l'angle supérieur gauche, de gauche à droite, et de haut en bas, en prenant le nombre d'images nécessaire. Les diagrammes suivants illustrent la méthode.



[From the QUARTERLY JOURNAL of the GEOLOGICAL SOCIETY for
November 1867.]

ON THE
DISCOVERY
OF A
NEW PULMONATE MOLLUSK
IN THE
COAL-FORMATION OF NOVA SCOTIA.

BY
J. W. DAWSON, LL.D., F.R.S., F.G.S.

WITH A DESCRIPTION OF THE SPECIES,
BY
PHILIP P. CARPENTER, M.D.

coal 1
grey s
no. 3
order

H
H

S
S

S
G
S

In d
gularly
especia
places
found.
obscure
Sphen
sigilla
Sigilla
stated
with v
muddy
One
species
and in
in the p
been th
aminat
was ab
crushed
vetusta
Philip
Pupa
scriptio

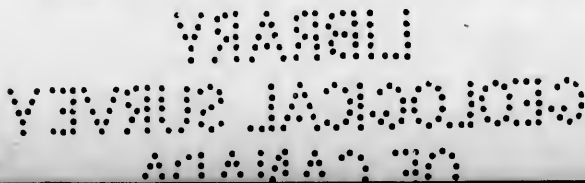
" C.
fractibu
terdum
circa p

On the DISCOVERY of a NEW PULMONATE MOLLUSK [*Zonites* (*Conulus**) *priscus*, *Cpr.*] in the COAL-FORMATION of NOVA SCOTIA. By J. W. DAWSON, LL.D., F.R.S., F.G.S. With a DESCRIPTION of the SPECIES; by PHILIP P. CARPENTER, M.D.

THE little shell to which the following description refers was found last summer in the course of excavations made under my direction in the bed in Subdivision VIII. of the Joggins Section, between coals no. 37 and no. 38 of Logan's sectional list, already referred to in previous papers † as containing great numbers of shells of *Pupa vetusta*. This bed is 1217 feet below that in which *Pupa vetusta* was originally discovered in trunks of erect *Sigillariæ*, and about 42 feet below

* *Conulus*, Fitz., 1833 (= *Trochiscus*, Held., 1837, non Sly.; = *Petasia*, Beck, 1837; = *Perforatella*, Schlüt.), is a subgenus of *Zonites*, Montf. (non Leach, Gray), according to Messrs. Adams, 'Genera of Recent Shells,' vol. ii. p. 116, and their follower Chenu, 'Manual de Conch. et de Paléont.', vol. i. p. 422. Those who do not care to enter into the modern divisions of the land-shells, may quote the species as a *Zonites*—or even, speaking loosely, as a *Helix*.

† Quart. Journ. Geol. Soc., Feb. 1862, and May 1866, p. 121.



coal no. 37*, or nearly in the middle of the band of reddish and grey sandstones and shales intervening between coals no. 37 and no. 38. Its immediate associations are as follows, in descending order:—

	ft.	in.
Hard reddish shale with ironstone nodules	4	0
Pupa-bed, a variable layer, in some places of grey indurated clay, with a tendency to concretionary structure, in other parts laminated and carbonaceous with remains of plants	0	3
Shale, mottled, arenaceous	0	8
Sandstone, hard calcareous, light chocolate, weathering rusty	1	0
Shale, chocolate and mottled	2	8
Grey sandstone	0	6
Shale, chocolate and mottled	5	0
	14	1

In digging into the bed, I found that the shells of *Pupa* are irregularly disposed in nests, and are in some spots very abundant, especially in the argillaceous and nodular parts, while in other places, and especially in the more carbonaceous portions, none were found. In the last-mentioned parts of the bed, there are numerous obscure vegetable remains, especially leaves of *Cordaites*, leaflets of *Sphenopteris*, and *Trigonocarpa*, apparently of the same species (*T. sigillariæ*) found with Pupæ in the original repository in the erect *Sigillariæ*. The appearances were such as to confirm the impression, stated in a previous paper, that the land-shells were drifted along with vegetable matter by some quiet stream, and deposited on the muddy bottom of shallow water.

One object in excavating the bed was to ascertain if any other species of land-animal than *Pupa vetusta* could be obtained from it; and in the first instance the result appeared purely negative, except in the presence of minute fragments of bone, and of what might have been the chitinous integument of insects. On a more careful examination of the large quantity of fragments of *Pupa* obtained, I was able to select a few small specimens, all of them more or less crushed, which seemed to differ materially from the young of *Pupa vetusta* in form and surface-markings. On submitting these to Dr. Philip P. Carpenter he at once recognized their distinctness from *Pupa vetusta*, and has kindly furnished me with the following description and note on the affinities of the species.

Zonites (Conulus) priscus, Cpr.

“C. t. parvâ, tenuissimâ, parum elevatâ; nucleo minimo; anfractibus iv., subplanatis, omnino tenuissime rugoso-striolatis, interdum rugulis incrementi magis conspicuis, suturis parum impressis; circa peripheriam angustatâ, vix subangulatâ; basi concavâ, ut

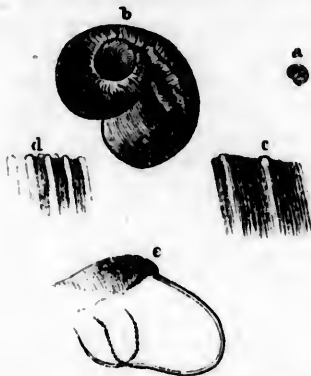
* Incorrectly stated as 12 feet in the paper last mentioned.

Zonites
Nova
With a
D.
found
ection
n coals
n pre-
etusta.
origin-
below
r, Beck,
Leach,
16, and
Those
y quote

supra striolatâ, umbilico majore; aperturâ subovali, satis regulariter excavatâ; labro simplici. Long. circ. 1 poll., div. circ. 130°.

“Hab. In stratis carboniferis Acadix, Dawson.”

Zonites (Conulus) priscus, Carpenter.



a. Natural size.

b. Magnified.

c. Portion of surface highly magnified.

d. Portion of the surface of *Pupa vetusta*, highly magnified.

e. Fragment of *Zonites (Conulus) priscus*, showing lip; the dotted lines indicate a portion of the columella (crushed) and the umbilicus.

“A few specimens only of this shell were found, in company with numerous individuals of *Pupa vetusta*, Dawson, from which species it differs in form, sculpture, nuclear whirl, and texture. *Pupa vetusta* closely resembles the living race of small Pupæ, and seems to have been (for its size) solid, and coarsely sculptured parallel to the axis. The present species has a different colour, though in the same matrix, and seems to have been an extremely thin shell, of a horny (though not glossy) texture, like the British *Helix (Conulus) fusca* and similar species. The markings consist of rather irregular striolæ with occasional coarser ridges of growth, somewhat slanting toward the periphery, which is rather flattened though not angular. The base is concave, similarly sculptured, and gradually curving into a rather large umbilicus. At least such is the inference from the only portion that has been cleared from the matrix. The nuclear part in this shell is much smaller than in *Pupa vetusta*. In the Pupa the first whirl is large and swollen, the next suddenly assumes the normal cylindrical form; and it is not until the end of the third whirl that the normal sculpture is developed. In the present species the growth, form, texture, and sculpture of the shell appear nearly uniform from the beginning.

“It is difficult to state exactly what was the original shape, as even in the most perfect specimen the body-whirl is broken; but it was probably like *Paryphanta Caffra*, Fér., on an extremely small scale. It might possibly rank with *Hygromia*, or, with the living American species *minuscula* and *exigua*, under *Pseudohyalina*, Morse.

[June 19,
regulariter
0°.

1867.]

It is, however, until better specimens attest its true relationships, placed with *fusca* in the group *Conulus*, which (according to Messrs. Adams, Gen. ii. p. 116) is a subgenus of *Zonites*.

“ It is probable that there is a third species among the fragments which have been found; presenting a shape more resembling the *H. conulus*, and other trochiform snails. It would be premature, however, to venture on a description until more perfect specimens have been obtained.”

Conulus) *priscus*
dotted lines
the columella
bilicus.

many with
ch species
e. *Pupa*
seems to
del to the
the same
of a horny
Conulus) *fusca*
irregular
t slanting
angular.
ving into
n the only
ar part in
Pupa the
umes the
ird whirl
pecies the
arly uni-

shape, as
a; but it
ely small
he living
a, Morse.