



1
9
4
9

CLEMMEMORIES

Best of luck to
Sweet kid
Almond
"Lia"

Best wishes to the
sweetest girl in
Clemmons School
(M. D. Johnson)

To a very sweet girl
Lalaya Spumelle
"B"

Best of wishes
To a nice girl
Shelley Talley

Best of Luck always
May God bless you
as always
Mark & Sharon

Best of Good Luck
From your pit
Halter
Jim Knight

Lots of luck to a very sweet
and true friend.

Love,
Tanya Quinn

Best wishes
Lalaya Spumelle

Good Luck
L. Cobble

Lots of luck
to a sweet girl.
Lois Williams

Lots of luck
to you.

Love,
Emma
Phillips

Best of Luck
to a nice girl.

Sam Phillips



Digitized by the Internet Archive
in 2019 with funding from
North Carolina Digital Heritage Center

<https://archive.org/details/clemmemories19491949clem>



THESE ARE THE
MEMORIES WE CHERISH

FOREWORD

WE'VE TRIED TO GIVE YOU ON EVERY PAGE
YOUR DEAREST MEM'RY KEYS:
SO WE THE SENIORS OF '49
DO LEAVE



CLEMMEMORIES

FACULTY



T. Ray Gibbs MR. T. RAY GIBBS
Principal
Western Carolina Teachers College, Cullowhee, N. C.
University of North Carolina, Chapel Hill, N. C.



GEORGE T. MOODY
Wofford College, Spartanburg, S. C., English and French

MRS. SYBLE SMITH
Winthrop College, Rock Hill, S. C., Physical Education



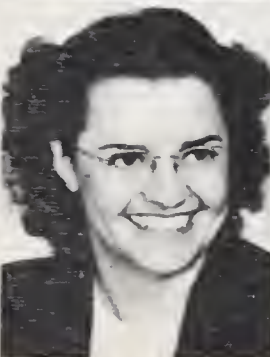
MR. L. O. CROTTS
N. C. State College, Raleigh, N. C., Agriculture and Shop

MRS. MARGARET BRENDLE
Lander College, Greenwood, S. C., Commerce



MRS. ALICE BOVENDER
Meredith College, Raleigh, N. C., Mathematics and Latin

MR. CHARLES O. GILES
Wake Forest College, Wake Forest, N. C., English and History



MISS ORA MCHAN
East Carolina Teachers College, Greenville, N. C.
University of Tennessee, Nashville, Tenn., Home Economics

MRS. WYNONA BUTNER
Western Carolina Teachers College, Cullowhee, N. C., Science



DEDICATION

For his interest in us individually and collectively, for his inspiring belief in us, for his sympathetic understanding of our problems and his willingness to help us, we the Senior Class of 1949 dedicate this issue of CLEMMEMORIES with grateful appreciation and love to one who has long been both teacher and friend—

GEORGE T. MOODY

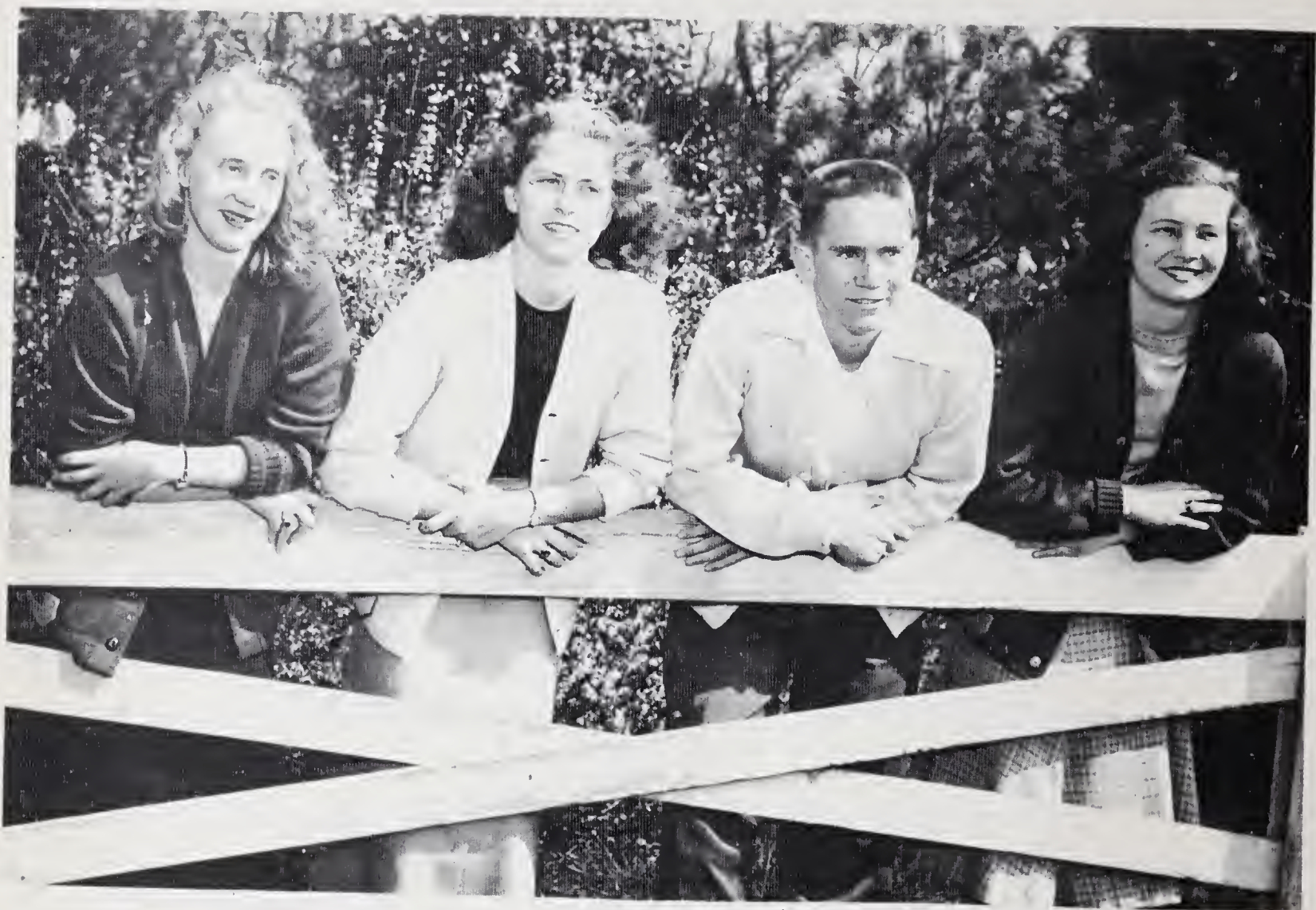
CLASS POEM

"School days, school days,
Good old golden rule days."
This chant will long be remembered
By the class of '49;
Our hearts will backward be turning
To our dear, immortal shrine.
In the elementary wing we'll pause
And think what brats we've been,
And we'll wonder why we were so loved
By our dear teachers then.
We'll wonder if the kids still play
The very same games we did;
We'll wonder if they have yet found
The places where we hid.
Our hearts will return to the dirt pile,
The swings, the bars, and all;
And we'll wonder why we're still healthy
After that dreadful fall.
Then back our hearts will turn as we
Remember our faltering reading;
And we know now, as we didn't know then,
The patience our teacher was needing.
We didn't want to grow up, of course,
But we knew it just had to be done.
Since everyone seemed to think we should.
We decided to mean while have fun.
We abandoned our pigtails, and lengthened our shirts,
Did our hair up in shining curls~~
Till our dear little boy friends,
Now wearing long pants,
Started thinking of us girls.
Then came that crucial moment,
And it comes in all students' careers,
When we were high school freshmen~~
We were really up into years.
Our remembering hearts return as we
Hear the naive freshmen tell
Of the half-grown up parties they have~~
Oh, our own were simply swell!
Basketball, football, and baseball~
They soon began taking up time.
Some of us even were scholars,
Which suited our parents just fine.
Languages, science, algebra,
And essay-writing, too~~~~
How do our teachers all think we can
Find time for all we do?
After all, we're high school freshmen;
We're dating quiet steadily now.
A date and homework together~~
I just can not figure out how.
And next we were tenth-graders.
We were really on the ball~~
But we still admired seniors
When we passed by them in the hall.
Then back we'll turn and pause
As we stood in that dignified place~~
The Junior class, no less;
We were really setting a pace:
Our Junior-Senior Prom, our play,
Really quite an eventful year.
It looks as if we might impress
Some of the people who watch us here.

And now, at last, we are seniors;
We're sad, yet joyful, all the time.
As we look back, we all think that
It's been a short and happy climb.
We're really quite youthful, you know;
We have our future in store.
But longingly our hearts will turn back
And we'll remember some more.
I suppose it's a typical story;
It happens all the time.
But for this class, it's really special~~
THE CLASS OF '49.



CLASSES



SENIORS CLASS OFFICERS

TREASURER—SARAH HOWARD

SECRETARY—BETTY LOU LEWIS

PRESIDENT—ELMER ALLEN

VICE PRESIDENT—ANN SNYDER



MOTTO: "The end crowns the work."

FLOWER: Sweet Peas

COLORS: Pink and Green

MASCOTS:

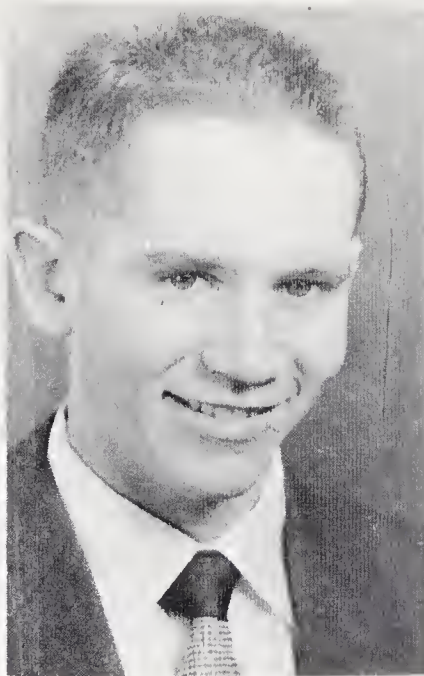
Pamela Kimel and Dennis "Butch" Hendrix

SENIORS

ELMER LEE ALLEN, JR.

*We think that Elmer's quite a boy;
Our president, our pride and joy.*

President of Class 4; Football 3, 4; Basketball 2; Cheerleader 4; Key Club 4; Commercial Club 3; Junior Play 3; Marshal 3; Band 1, 2, 3; Annual Staff 4; French Club 3; Chatterbox Staff 3, 4; Senior Superlative 4; Faculty Citizenship Award 4.



ALBERT ATWOOD

*A very studious guy is he;
A grand success he'll most likely be.*

Baseball 1; F. F. A. 2, 3, 4; Secretary of F. F. A. 4; Safety Patrol Captain 4; Key Club 4; French Club 3, 4; President of French Club 3; Student Council 4; Reporter of Student Council 4; Senior Superlative 4.

BARBARA JEAN BECKNER

*A quiet, dependable gal is she;
As true a good friend as there'd ever be.*

F. H. A. 1, 2, 3, 4; Secretary of F. H. A. 3; Glee Club 1, 2, 3, 4; Historian 4; French Club 3, 4; Junior Play 3; Hall Monitor 3; Assistant Brownie Leader 2; Junior Home-makers Degree 4; Student Teacher 4.



HELEN BILLINGS

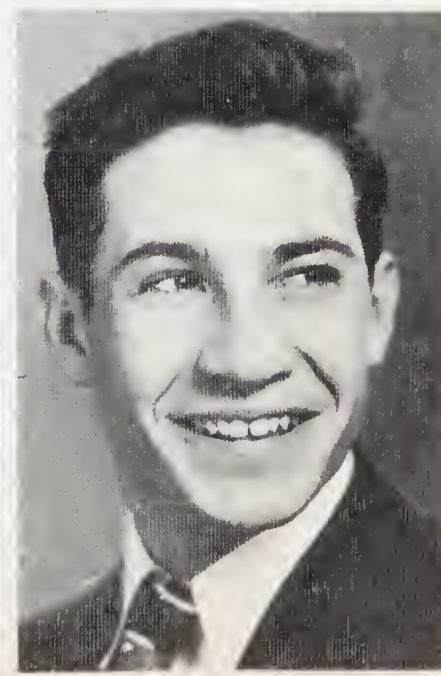
*Nice and quiet, tactful and sweet;
Here is one who ne'er can be beat.*

Librarian 3, 4; Glee Club 4; Commercial Club 3, 4; Student Teacher 4.

EUGENE BOLES

*A very good job of speaking does he;
An excellent politician he'll be.*

Football 3; Commercial Club 3; French Club 3; Key Club 4; Speaking Contest Winner 3; F. F. A. 1, 2.



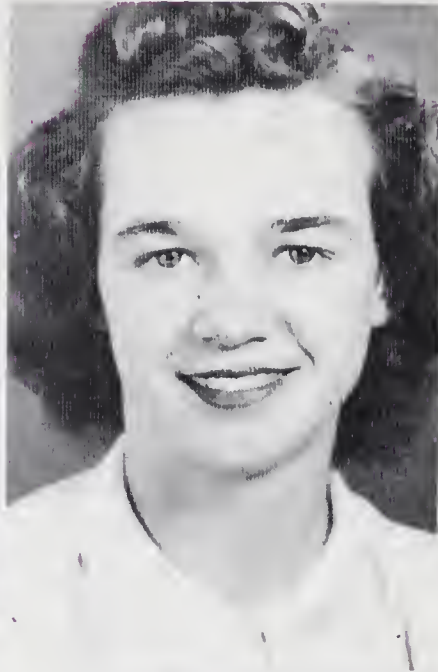
MARVIN EVERETT BUTCHER

*He's most athletic, best all around;
A fine outstanding boy, we have found.*

Basketball 1, 2, 3, 4; Baseball 2, 3, 4; Football 3, 4; Captain Basketball Team 3, 4; French Club 3; Commercial Club 3; Honor Roll 1; Class President 2; Annual Staff 4; Superlative 4; Key Club 4.

SENIORS

*Beah "Kushy"
Mildred Cheek*



MILDRED CHEEK

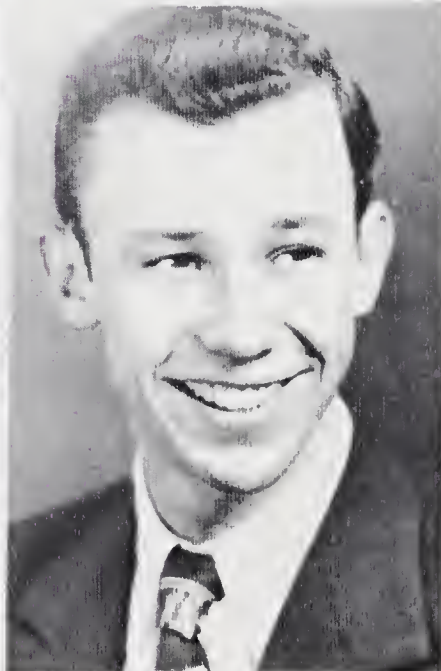
*A beauty, our class says by its vote;
She'll make a pretty nurse, we do note.*

Captain of Basketball Team 4; Softball 1, 2, 3, 4; Senior Superlative 4; F. H. A. 2, 3; French Club 3; Commercial Club 3; Glee Club 1, 2, 3, 4; Vice President of Glee Club 4.

BEULAH MARCELEEN COOK

*For this slender song-bird we give three cheers,
For she sings with laughter and sings with tears.*

F. H. A. 2, 3, 4; Commercial Club 3, 4; Glee Club 2, 3, 4; Junior Homemakers Degree 4; Student Teacher 4.



JULIA ANN CREASY

*Ralph's most important in her life;
Soon she will be his loving wife.*

Safety Patrol 3; F. H. A. 2, 3; Glee Club 1, 2, 3, 4; Basketball 4; Softball 1, 2, 4; Junior Play 3; French Club 3; Commercial Club 4; Song Writer 4.

JOE BROCK ELLIS

*If he has his choice,
Joe Brock'll take Lois.*

Bus Driver 2, 3, 4; Art Club 2; Key Club 4; Treasurer of Chatterbox 4; Commercial Club 3, 4; Annual Staff 4; Senior Superlative 4; French Club 3; Junior Play 3; Testator 4.



ESTELLE FOSTER

*She chases the blues away with her wit,
She gave to the English prof quite a fit.*

First Aider 1, 2, 3, 4; French Club 3; Speaking Contest 3; Glee Club 4; Librarian 4; Hall Monitor 4; Student Teacher 4.

MILTON HARRISON FOSTER

*A quiet fellow—he's O. K.;
We like him better every day.*

F. F. A. 1, 2, 3, 4; F. F. A. Treasurer 4.

SENIORS

FANNIE EMMA GRANT

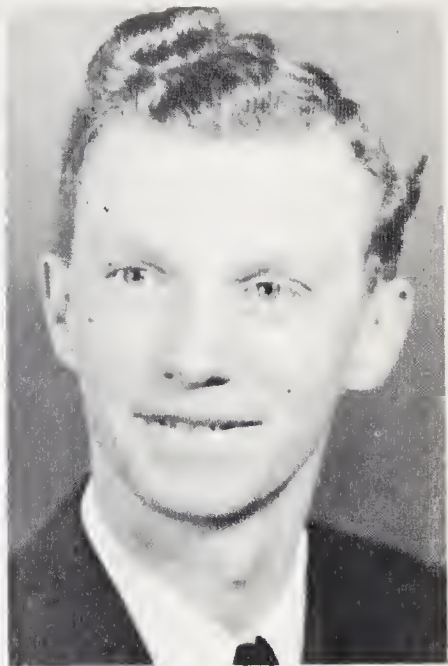
*Our magazine gal, our dependable pal,
Forget her? Believe me, we just never shall.*

F. H. A. 1, 2, 3; Commercial Club 3; Senior Superlative 4; F. H. A. Treasurer 4; Hall Monitor 3; Student Teacher 4.

JOHN GREEN

*Where's red hair, there's temper, we often hear said,
But it has not been found in this quiet redhead.*

F. F. A. 1, 2, 3, 4; President of F. F. A. 3, 4; Commercial Club 4.



JEAN HAUSER

*She's our "Jeanie with the light brown hair,"
And she's certainly a lady fair.*

F. H. A. 2; Commercial Club 3, 4; Vice President of F. H. A. 3; Glee Club 1, 2, 3; Chatterbox Staff 4; Basketball 4; Softball 2, 3, 4; First Aider 1, 2, 3, 4; Secretary of Class 1; Band 3; Office Assistant 4; Junior Home-maker Degree 4.

PEGGY HENDRIX

*Her contagious laughter, her merry note
Will forever win from her friends a vote.*

French Club 3; Glee Club 4; Librarian 3, 4; Hall Monitor 4; Student Teacher 4.



BETTY LOU HOLDER

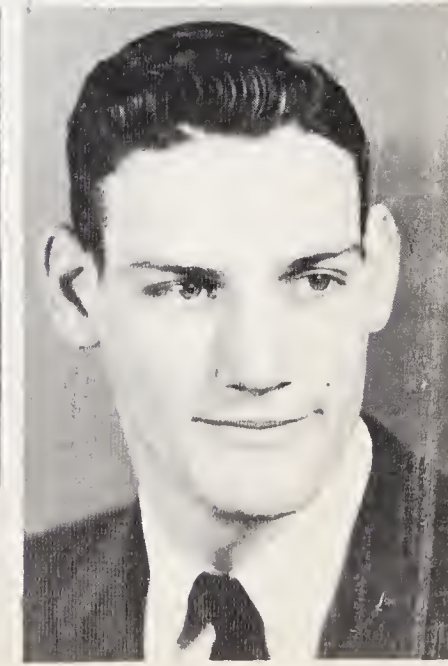
*With her ready satire, and many a pun;
She has always given us lots of good fun.*

Glee Club 1, 2, 3, 4; F. H. A. 2, 3; French Club 3; Pianist for F. H. A. 3; Hall Monitor 4; Softball 4.

JACK HOLTON

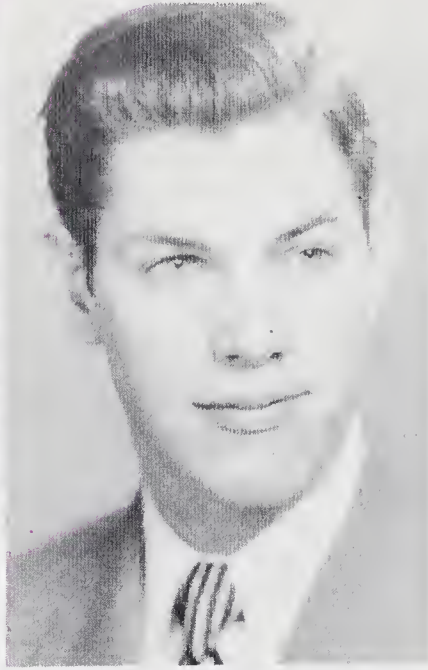
*Our tall, lean, and lanky "nature
boy." In clean, simple life he finds
joy.*

F.F.A. 4; Boy Scouts 1,2.



SENIORS

*Best of Luck to a swell girl
Sincerely
Sarah Howard*



SARAH HOWARD

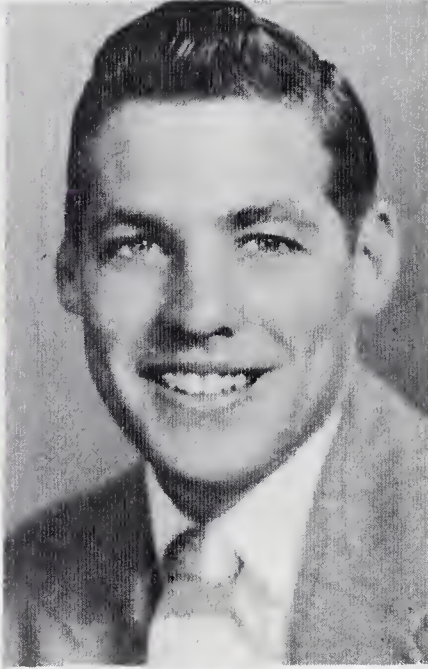
*Best all around and well loved we know
Some say that Jim is her steady beau.*

Basketball 2, 3, 4; Softball 1, 2, 3, 4; Secretary of Class 4; Treasurer of Class 1, 2, 3; Senior Superlative 4; Glee Club 1, 2, 3, 4; French Club 3; Feature Editor of Annual 4; Honor Roll 1; Member of F. H. A. 2, 3; Secretary of F. H. A. 2; Hall Monitor 4; Testator 4.

TOMMY HOWARD

*Most popular basketball player is he,
And he can make hookshots much better than thee.*

Class President 1, 3; Vice President of Key Club 4; Glee Club 1, 2; Commercial Club 3, 4; French Club 3; Business Manager of Chatterbox 4; Art Club 2; Marshal 3; Honor Roll 1; Senior Superlative 4; Basketball 1, 2, 3, 4; Baseball 1, 2, 3, 4; Most Valuable Basketball Player 2; County All-Star Basketball Team 1, 2, 3; Journal-Sentinel All Star Team 3; Football 3; Cheerleader 3.



*Best of Luck to
a swell guy
sub Mechum*

BETTY LOU LEWIS

*Her heart remains in Chapel Hill;
'Cause that is where you'll find her Bill.*

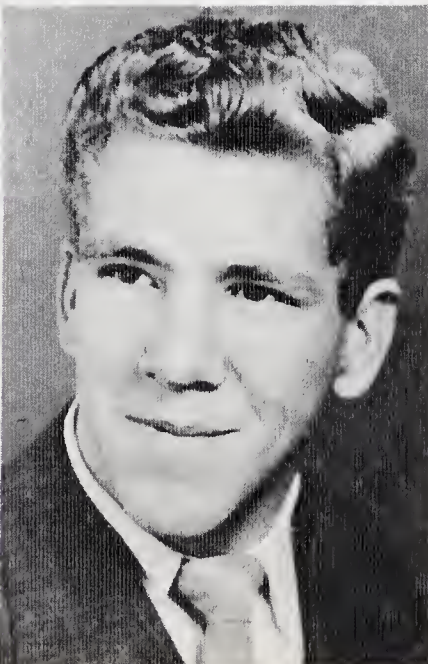
President of F. H. A. 4; Basketball 1, 2, 3, 4; Softball 1, 2, 3, 4; Glee Club 1, 2, 3, 4; French Club 3, 4; Secretary of Class 4; Marshal 3; Senior Superlative 4; Perfect Attendance 1, 2, 3, 4; Honor Roll 4; Junior Homemakers' Degree 4.

RONALD MECHUM

*He's friendly and saucy, an o.k. guy;
He isn't too bold, but he isn't shy.*

F. F. A. 1, 2, 3; Commercial Club 4; Glee Club 2, 3; Football 3, 4; All State Football Player 4; Baseball 2, 3, 4; Basketball 2, 3, 4; Chatterbox Staff 4; Boy Scouts 1, 2.

*Best wishes
to a swell girl.
Betty Lewis*



CAROLYN MCINTYRE

*An athlete and wit is this "Cowboy",
We'll always remember her with joy.*

Basketball 2, 4; Softball 2, 4; Annual Staff 4; Band 2 4; Glee Club 1, 2; Safety Patrol 2; F. H. A. 1; Treasurer Science Club 2.

NORMAN MILLER

*Nice bunk of man, as cute as they come;
Seems Ann has him right under her thumb.*

Baseball 1, 2, 3, 4; Football 3, 4, Co-Captain 4; Basketball 4; Commercial Club 3, 4; Vice President of Commercial Club 3, 4; Glee Club 1, 2; Key Club 4; F. F. A. 1, 2, Reporter 2; All State Football Player 4; Production Manager of Chatterbox 4; Office Assistant 4.

SENIORS

DORETHERA MOTSINGER

*She's happy-go-lucky and well we do know it,
There's always a song in the heart of our poet.*

President of Class 2; F. H. A. 2, 3; Junior Marshal 3;
Vice President of French Club 3; Secretary of Student
Council 3; President of Library Council 3, 4; Junior Play
3; Annual Staff 4; Senior Superlative 4; Glee Club 1, 4,
Secretary of Glee Club 4; Class Day Officer 4.

JOSEPHINE MULLIS

*A very studious girl is she;
A grand success she'll most likely be.*

Glee Club 4; Commercial Club 4; Senior Superlative 4.



*Best of luck to you,
Ann in all that you do.
I'm sure you will make a fine
student as you go into high school.*

BETTY LOU OVERBY

*Our most athletic girl, we see;
A homemaker she soon will be.*

Basketball 1, 2, 3, 4; Softball 1, 2, 3, 4; Most Valuable
Basketball Player 1; Most Valuable Softball Player 3;
President of F. H. A. 2, 3; Glee Club 1, 2; President of
Student Council 4; Class Officer 3; Senior Superlative 4;
Chief Marshal 3; Commercial Club 4; French Club 3;
Safety Patrol 3; Junior Homemaker's Degree 4.

AUBREY M. PARROTT, JR.

*Our dear cheerleader, he makes hearts throb;
We also like his twin brother Bob.*

Commercial Club 3; French Club 3; Cheerleader 4;
Bus Driver 4.



CHARLES R. PARROTT

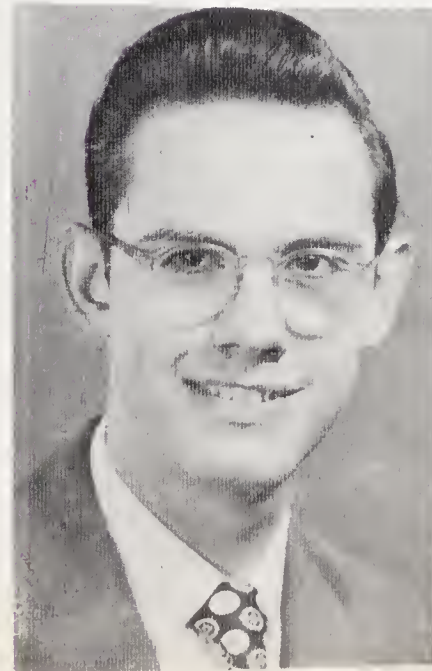
*Our dear cheerleader, he gives a thrill;
We also like his twin brother Bill.*

Commercial Club 3; French Club 3; Cheerleader 4;
Perfect Attendance 3.

EMMA PHILLIPS

*Our Civitan winner, our office girl, too;
A good citizen she'll remain, we bet you.*

Assistant Editor of Chatterbox 4; Annual Staff 4; Soft-
ball 1, 2, 3, 4; Glee Club 2, 3; Commercial Club 3, 4;
Office Assistant 4.



SENIORS



LOU ELLA REDMON

*We will never forget her spirit so blithe,
For she has such a happy outlook on life.*
Beauty Queen 3; Music 1, 2, 3, 4.

GEORGE REED, JR.

*Of all the friendly, nice young pests,
It seems to me we like him best.*
Glee Club 1, 2, 4; F. F. A. 4; Safety Patrol 4.



RUDINE ROBERTSON

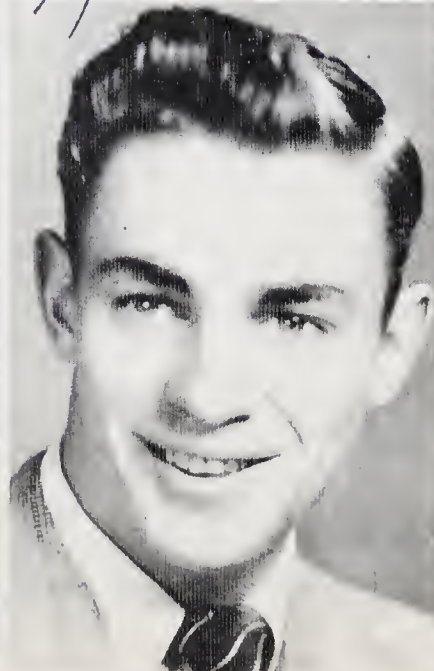
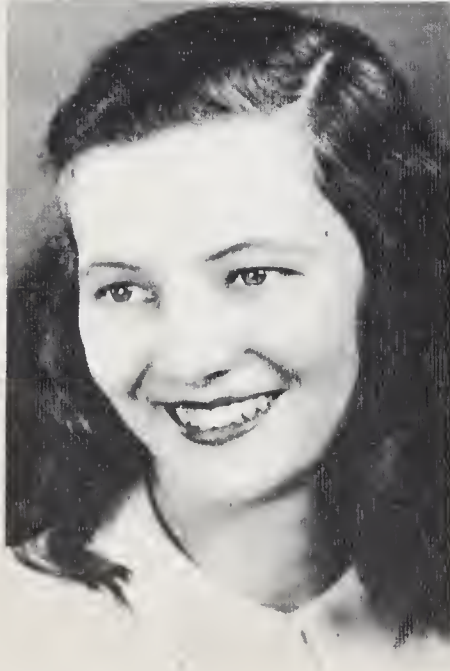
*An O. K. gal from top to shoes,
But love forever gives her blues.*

F. H. A. 2, 3, 4; Secretary and Treasurer of Class
Glee Club 1, 2, 4; Junior Play 3; 4-H Club 1, 2; Libr
Council 3, 4; Red Cross Representative 1.

BETTE JO SATTERFIELD

*She has lots of vitality, lots of pep;
Our most popular girl is considered hep.*

F. H. A. 2, 3, 4; Commercial Club 3, 4; President
Commercial Club 4; Assistant Editor of Chatterbox
Editor in Chief of Chatterbox 4; Class Editor of Annu
4; Senior Superlative 4; Cheerleader 1, 2, 3; Chief Che
leader 2, 3; Softball 1; Office Assistant 4.



ANN SNYDER

*Our valedictorian, quite a girl;
To each one of us, she's a priceless pearl.*

Basketball 2, 3, 4; Softball 1, 2, 3, 4; Commercial Cl
3; French Club 3; F. H. A. 2, 3, 4; Perfect Attendan
1, 2, 3, 4; Annual Staff 4; Class Officer 4; Junior Hom
maker's Degree 4; Most Valuable Basketball Player
Valedictorian 4.

JAMES KENNETH STALEY

*With this new attraction there came a smooth line;
As our biggest flirt, he is really fine.*
Senior Superlative 4; Football 4; Glee Club 4.

SENIORS

ELIZABETH TODD

*Most talented in the music field,
She'll go quite far with her charm to wield.*

Basketball 1, 2; Softball 1, 2, 3, 4; Cheerleader 4;
French Club 3; Commercial Club 3; F. H. A. 2, 3; Band
3; Senior Superlative 4; Annual Staff 4; P.-T. A. Speaking
Contest Winner 2.

MAXINE TODD

*A dark-eyed blonde, she's quite a cutie;
As student teacher, she did her duty.*

Glee Club 4; Commercial Club 3, 4; Student Teacher 4.



BOBBY WARNER

*He's the neatest, so well dressed;
Mildred thinks he's quite the best.*

F. F. A. 1, 2, 3, 4; Commercial Club 4; Football 4;
Basketball 1, 2, 3, 4; Glee Club 1, 2; Senior Superlative
4; Vice President F. F. A. 3; Chief Marshal 3.

BERNARD S. WEINSTOCK

*Our Yankee guy, a character quite;
We wish him luck and power and might.*

Student Council 3; Science Club 3.



FRED WELFARE

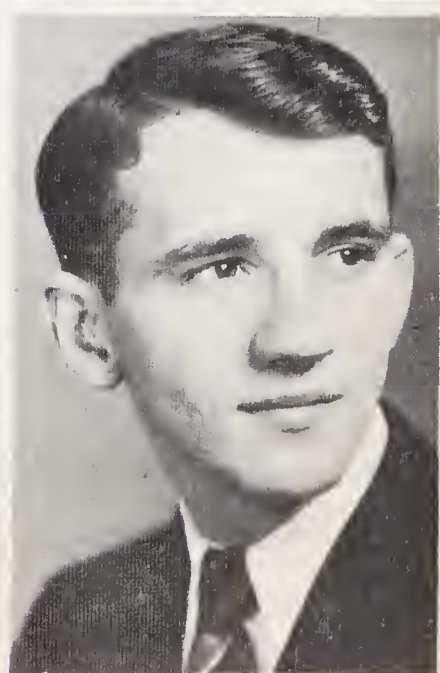
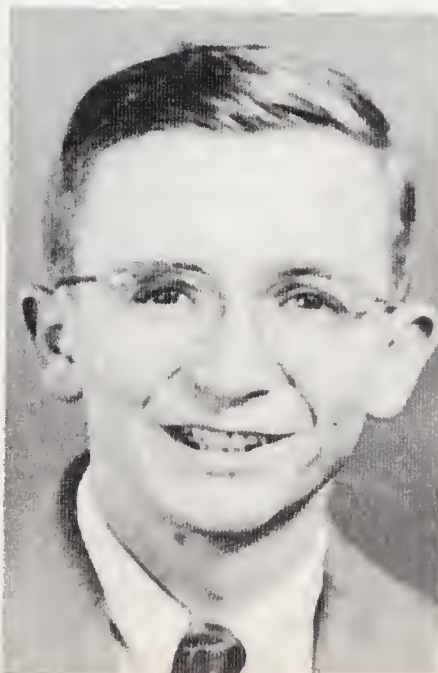
*A witty and friendly intelligent guy,
He's one Lady Luck will just never pass by.*

Glee Club 2, 3, 4; Football 3, 4; Junior Play 3; Key
Club President 4; Commercial Club 4; Honor Roll 1;
Science Club 3.

JOHN CARSON WELLS

*Our best looking guy, you know;
By popular vote, 'tis so.*

Key Club 4; F. F. A. 1; Football 1, 3; Vice President
of Class 3; Manager Football 4; Bus Driver 3, 4; Senior
Superlative 4.



SENIORS



LOIS WILLIAMS

*She's our friendliest wit, you know,
And she's really fond of Joe.*

Basketball 2, 3, 4; Softball 1, 2, 3, 4; Commercial Club 3, 4; French Club 3; Chatterbox Staff 4; F. H. A. 2, 3; Glee Club 1, 2, 3, 4; Annual Staff 4; Senior Superlative 4; Office Assistant 4; Honor Roll 1.

MELVIN WOODFORD

*He passed the N. R. O. T. C. Test, we heard;
When he is an admiral, we'll send the word.*

Science Club 3; Boy Scouts 1, 2, 3, 4.



HILDA CAROLYN WOOSLEY

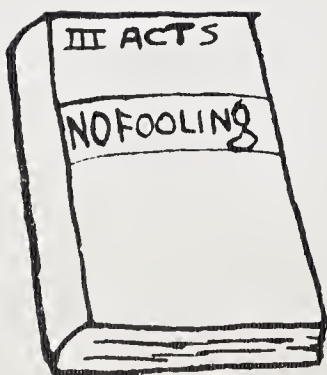
*This tall and slender blonde is quite a beauty,
And giving us first aid was her main duty.*

First Aider 1, 2, 3, 4; Commercial Club 3, 4; Student Teacher 4; F. H. A. 2, 3; French Club 3.

ROMA LEE WOOSLEY

*Our neatest girl and barrels of fun;
And she's a whiz at getting work done.*

Honor Roll 1, 2, 3, 4; Editor in Chief of Annual 4; Class Reporter 3, 4; Secretary and Treasurer of Commercial Club 3, 4; F. H. A. 2, 3, 4; Glee Club 1, 2, 3; Safety Patrol 4; Senior Superlative 4; Basketball 2, 3, 4; Softball 2, 3, 4; Junior Homemaker's Degree 4; Secretary French Club 3; Annual Fashion Show Winner 2; Office Assistant 1, 4; F. H. A. Historian 3; Salutatorian 4.



"Remember the Junior Play and the Junior and Senior Banquet?"



LAST WILL AND TESTAMENT

We, the Senior Class of 1949 of Clemmons High School, Clemmons, North Carolina, being of sound mind and body, having successfully brought to a close our High School career, at this time of graduation do hereby present our last will and testament.

ARTICLE I

To Mr. T. Ray Gibbs, our principal, we express in deep appreciation our many thanks for a Senior year that has been filled with happiness and pleasant memories.

To our teachers, we leave our sincere thanks for the many wonderful things they have done for us. We express our deepest sympathy for the loss they will suffer at our departure.

ARTICLE II

To the class of 1950, we leave, as is the usual custom, our front seats in the auditorium, also the right to be presented a diploma at the end of next year.

To the Sophomores, we leave our understanding minds and ability to work together.

To the Freshmen, we leave our patience for the years to follow.

To the Sub-Freshmen, we leave our deepest sympathy!

ARTICLE III

I, Elmer Allen, Jr., do leave my ability to fall in and out of love to Donald Craver.

I, Albert Atwood, do bequeath my curly hair to Tommy Brewer.

I, Barbara Beckner, do leave my sweet disposition to Jennie Essex.

I, Eugene Boles, do will my nickname "Beef" to Billy Hayes.

I, Marvin Butcher, do leave my ability to play basketball to Clarence Tedder.

I, Mildred Cheek, do leave my title as Beauty Queen to Bobbie Todd.

I, Marceleen Cook, do give my place on the bus to Bobby Nelson.

I, Julia Ann Creasy, do leave my singing ability to Hazel Robertson.

We, Estelle Foster, Jean Hauser, and Hilda Woosley, do will without reluctance our First Aid Room to Ruth Beck.

I, Milton Foster, do leave my drawing ability to Pete Morefield.

I, Fannie Emma Grant, do will my hospital bed to Jackie Reid.

I, John Green, do leave my beautiful red hair to Faye Teague.

I, Peggy Hendrix, do will my silly giggles to Sam Phelps.

I, Betty Lou Holder, do leave my big mouth to Billy Tesh.

I, Jack Holton, do leave my tall, lanky frame to H. E. May.

I, Sarah Howard, do leave all my love to Jim Hall

LAST WILL AND TESTAMENT (Continued)

I, Tommy Howard, do leave my ability to miss school and my continuous absences from class to Jim Alspaugh.

We, Betty Lewis and Betty Overby, do graciously leave our ability to play basketball to Marie Spaugh.

I, Carolyn McIntyre, do bequeath with regret my "tomboyish" ways to Ferald Grey Pilcher.

We, Ronald Mechum and Buster Miller, do leave our ability to get along with Mrs. Brendle to David Reed.

We, Dorothea Motsinger and Rudine Robertson, do leave our happy-go-lucky ways to Norma Jane Cumby.

We, Josephine Mullis, Maxine Todd and Helen Billings, do reverently leave our timid and quiet ways to Ellen Cooper.

We, Bill and Bob Parrott, do leave our wittiness and stupidity to Glenn Johnson.

We, Emma Phillips and Lois Williams, do respectfully leave our place in the office to Donald Tise.

I, Louella Redmond, do leave my beautiful hair to Ruby Porter.

We, George Reed and Fred Welfare, do leave our ability to tell jokes to Thurmond Chappel.

I, Bette Jo Satterfield, do will my ability to drive a convertible to Richard Vogler.

I, Kenneth Staley, do leave my flirty ways with all the girls to Raymond Vogler.

I, Ann Snyder, do leave my ability to make A's to Bill Barney.

I, Elizabeth Todd, do bequeath my place as cheerleader to Helen Hayes.

We, Bobby Warner and Roma Lee Woosley, do will our neatness to P. H. Grant.

I, Bernard Weinstock, do bequeath my ability to debate to Robert McIntyre.

I, John Wells, do leave myself to Jackie Hooker.

I, Joe Brock Ellis, do gladly leave my grey hair and my bus to Joe Lowder.

I, Melvin Woodford, do will my businesslike ways to Darrell Everhart.



The Class Song

JULIA CREASY

*Farewell all of you Classmates;
Farewell all you teachers, too.
School-days are ending fast;
Farewell dear Clemmons School.*

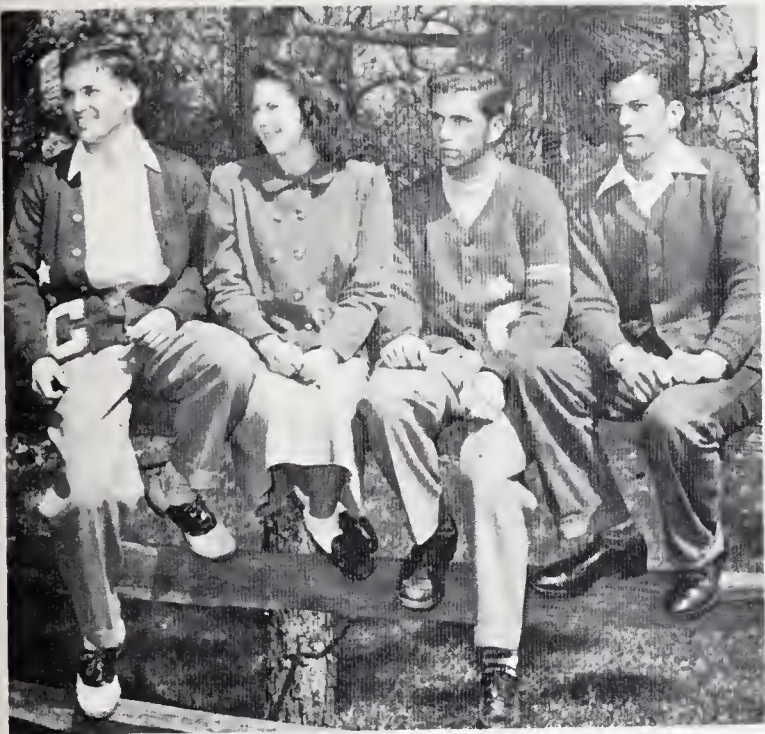
*It is time we were leaving;
We are going to miss you all.
Good luck to all the Juniors
Who will take our place next fall.*

*We'll use the knowledge that we have
To make our dreams come true...
As we look back in later years
With happy thoughts of you.*

*Now the twelve years have ended,
We'll move out with a sigh.*

*But there's one place that we won't forget...
It's dear old Clemmons High.*

JUNIORS

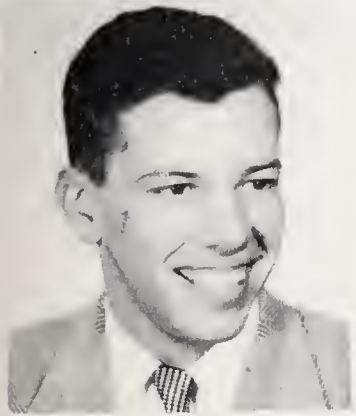


CLASS OFFICERS

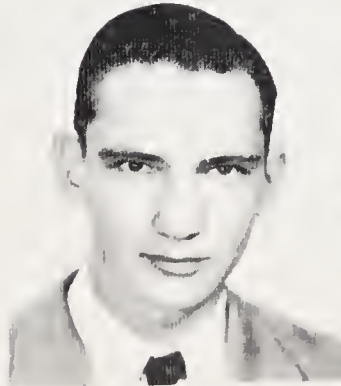
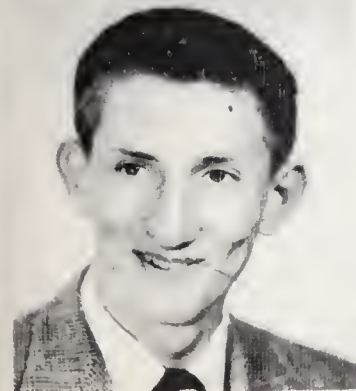
President Jim Hall
 Secretary Jennie Essex
 Vice President Raymond Vogler
 Treasurer Jim Alspaugh

MARSHALS

| | |
|-----------------|--------------|
| Jackie Hooker | Ellen Cooper |
| Clarence Tedder | Jim Hall |
| H. E. May | Ruth Beck |

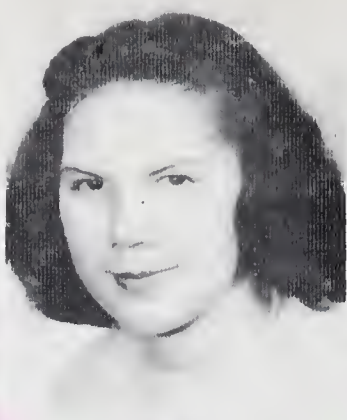


Jim Alspaugh
 Bill Barney
 Ruth Beck



Tommy Brewer
 Thurmond Chappell
 Ellen Cooper

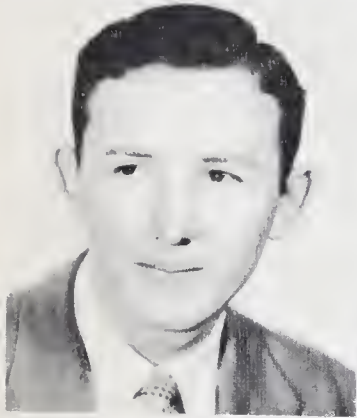
JUNIORS



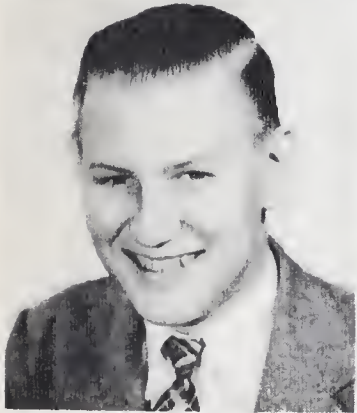
Donald Craver
Norma Jane Cumb
Jennie Essex

Norma Jane Cumb

*Best Luck
Best Wishes
Jim*

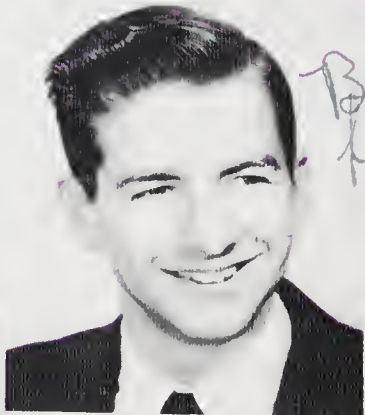
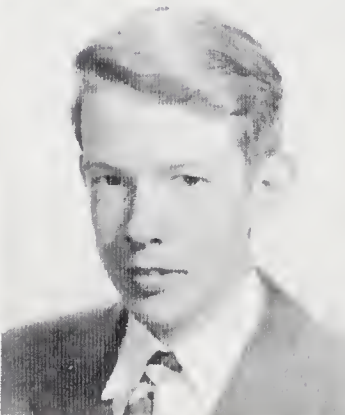


Darrell Everhart
Pery Grant
Jimmy Hall



Bill Hayes
Helen Hayes
Jackie Hooker

*Best Wishes!
"Jackie"*



Glenn L. Johnson
Joe Lowder
H. E. May

*Best of Luck to a
glad E. May*



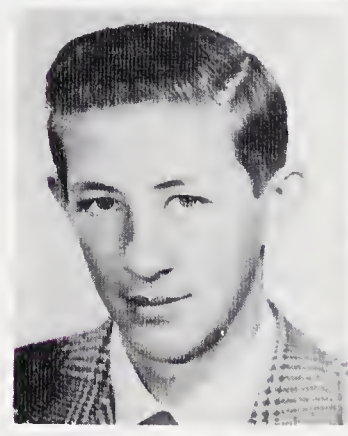
Robert M. McIntyre
Pete Morefield
Bobby Nelson

JUNIORS

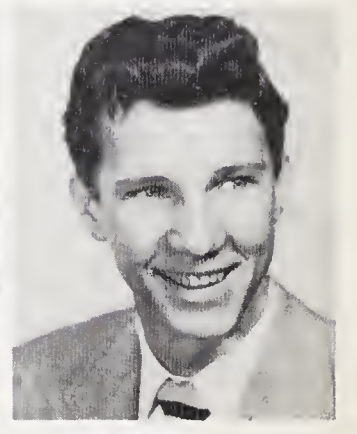
Sam Phelps
Ferald Grey Pilcher
Ruby Porter



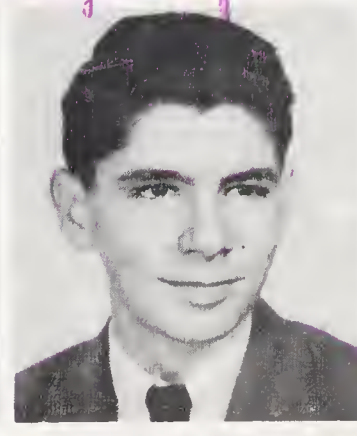
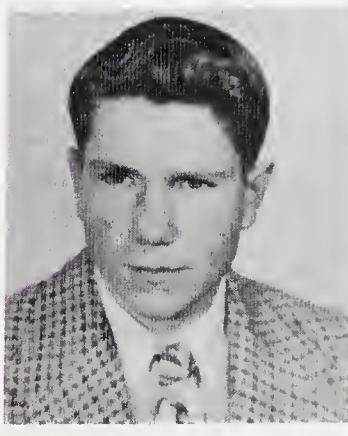
David Reed
Jackie Reid
Hazel V. Robertson



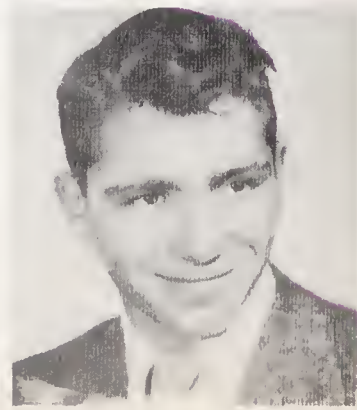
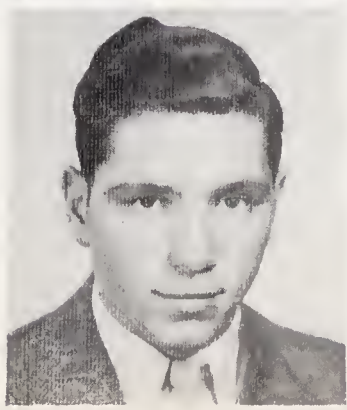
Marie Spagh
Fay Teague
Clarence Tedder



Billy Tesh
Donald Tise
Bobbie Todd



Raymond Vogler
Richard Vogler





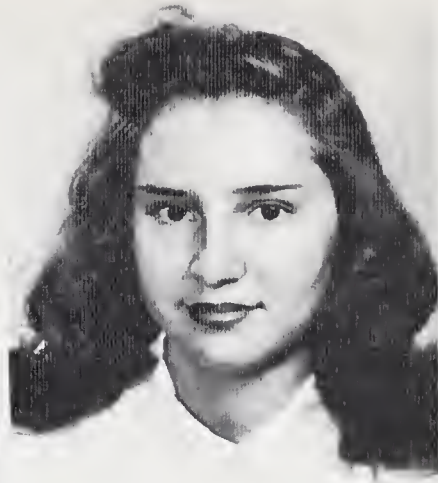
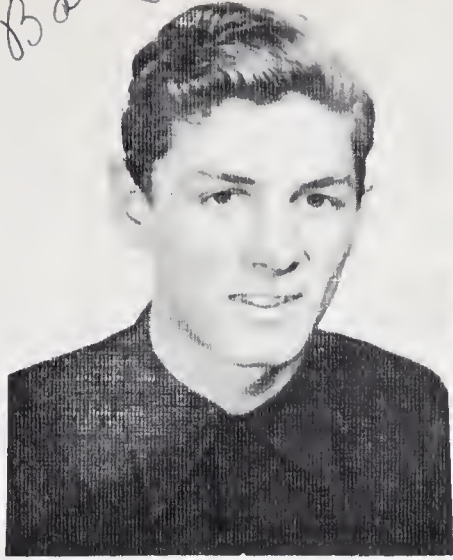
President Dallas Cundiff
 Vice President Verna Ketner

SOPHOMORES



First Row: Mrs. Margaret Brendle, teacher; Jimmy Brewer, Lear Butcher, Peggy Sue Hogue, Dorothy Bryant, Mildred Charles, Frances Crotts, Margaret Charles, Herbert Dory, and Dallas Cundiff. Second Row: Nancy Craver, Maxine Harper, Nancy Boner, Donna Edwards, Nanette Creasy, Billie Sue Cumby, Jimmy Craver, Charles Flora, and Lorenza Clinard. Third Row: Leon Chappell, Larry Hart, Frank Ellis, Bobby Cheek, Jimmy Furches, Norman Bullard, Bill Brewer, Walter Craver, and Carl Davis. Wilburn Crater was absent when this picture was made.

Bobby Cheek



Secretary Bobby Cheek
Treasurer Joyce Ann Smith

SOPHOMORES



First Row: Mr. George T. Moody, teacher; Nancy Lowder, Ruth Wilkinson, Patsy Talbert, Joyce Smith, Sue Scott, and Patty Thomas. Second Row: Raymond Reed, Sara Phelps, Colleen Maynard, Marilyn Woosley, Emma Lou Spagh, Betty Jean Wooten, Maureen Holton, Verna Ketner, and Ellen Sheets. Third Row: Teddy Lowe, Peggy Phelps, C. F. Spagh, Jr., Bobby Johnson, Max Satterfield, Cletus Shelton, Thurman Templeton, Mary Johnson, and Kenneth Porter. Don Reid and Marie Vaught were absent when this picture was made.



FRESHMEN

First Row: Roger Green, Billy Sides, Bobby Lane, Lonnie Clinard, Richard Sheets, Billy Woosley, Bobby Garbard, Buddy Jones. Second Row: Mrs. Wynona Butner, teacher; Oliver Woodford, Leo Cline, Bill Faircloth, Joe Butcher, Donald Williams, Gray Smith, Bill Long, Edgar Wood. Third Row: Bobby Barney, Elvin Shoaf, Leroy Harpe, Richard Meilstrup, Worth Griffith, Howard Hickman, Johnny Sloan, Jimmy Stewart. Roy Lee Cornatzer, Tommy Gabard and Bobby Hauser were absent when this picture was made.

First Row: Mary Nell James, Alma Shumate, Nancy Howard, Joann Nelson, Wilma Todd. Second Row: Betty Todd, Norma Lee Frye, Mae Phelps, Oneita Carter, Willa Jean Davis, Peggy Rights, Miss Ora McHan, Teacher. Third Row: Peggy Foster, Margie Smith, Dolores Sprinkle, Doris McCall, Doris Stone, Mittie Sue Sheets, Faye Spaug, Jane Cook. Fourth Row: Jean Pike, Ola Cockerham, Marilyn Johnson, Audrey Church, Betty Higgins, Nancy Quinn, Barbara Jean Crater.

Best wishes
for the future.
Sincerely
Smith



ELEMENTARY FACULTY

First Row: Miss Margarett Hayes, Miss Lois Coble, Mrs. Winnie Potts, Miss Barbara Speas, Mrs. T. Ray Gibbs, Miss Edoth Noble.

Second Row: Mrs. Ann L. Johnson, Mrs. Flossie Cook, Mrs. Nona Watkins, Mrs. Sarah T. Morton, Miss Anna Lena Cooper, Mrs. Harriet Moody.

Back Row: Mrs. Gertrude Crotts, Mrs. Grace T. McBrayer, Mrs. Frances S. Davis, Mr. Jack Smith, Mr. Homer Gabard.



EIGHTH GRADE

First Row: Richard Clinard, Tommy Miller, Bobby Gabard, Joanne Moody, Dorothy Boles, Dora Lee Smith, Dorothy Ellis, Shirley Duncan, Jane Canter, Frances Wooten. Second Row: Richard Hickman, Gladys Weinstock, Hutokah Lawson, Peggy Harper, Norma Jones, Clara Rachel Hardy, Gay Holton, Joan May, Patsy Parks, Dorothy Beckner. Third Row: Emma Davis, Melvin Shoaf, Earl Church, Harry Lee Wrights, Anthony Sides, Virginia Stewart, David Allen, Donald James, Bill Thomas, Jewell Foster, Peggy Hartely.

First Row: Leslie Frye, Floyd Bowman, Lloyd Spaugh, Betty Sue Harpe, Norma Woosley, Bonnie Hire, Joanne Hayes, Peggy Pople, Betty Lou Thomas, Joanne Todd. Second Row: Mrs. Crotts, teacher; Pete Hair, Jack Cumby, Lena Mae Lewis, Peggy Shore, Barbara Howard, Donna Jane Jones, Jane Brewer, Barbara Jean Hauser, Jean Worrell, Carolyn Hart, Marlene Scott. Third Row: Joanne Essex, Cornelia Allen, Lewis Palmer, Robert Kiger, Donald Smith, Bobby Miller, Gray Beckner, Mary Church, Charles Doby, Lowell Carter, Alphonso Hendrix, Peggy Dunn, Emily Atwood.



ATHLETICS

Clemmons Beats S. Pines



Bub Spaugh Tops Attack For Winners

Clemmons High's pass-happy Blues ended Southern Pines' rule of the six-man football roost with a spine-tingling 25-18 decision before 1,500 chilled partisans at Southside Park here last night to cop the first State crown officially recognized by North Carolina A. A. circles.

Featuring a fast-striking aerial attack against the ground power of the beefy Easterners, the Blues grabbed a quick 13-0 lead in the first two periods and then held the advantage despite the wildest third period witnessed in the local park since the sport was inaugurated two seasons ago.

Five touchdowns were packed into those brief 10 minutes that saw the four-time Eastern titlists threaten to turn the tide. But the

Blues came off the ropes with enough to survive.

Spaugh Is Star

The night's individual star was End C. F. (Bub) Spaugh, a glue-fingered pass receiver. He matched the Southern Pines total all by himself with two first-half tallies and another in the third chapter. He took pitches from Ronnie (The Rifle) Mechum for the first two and then wheeled 52 yards on an end-around for the third counter.

But he had plenty of assistance from a bevy of hard-running Clemmons backs who ground out 174 yards overland in addition to 166 through the air. Rusty Craver, Bus Miller and Ray Vogler got most of that.

Gary Mattox and Bill Baker handled most of the Southern

for Grid Title, 25-18



Front Row: C. F. Spaugh, Ronald Mechum, Elmer Allen, Norman Miller, Donald Craver, Raymond Vogler. Middle Row: John Wells, Manager; Jim Hall, Richard Vogler, Fred Welfare, Pete Morefield, Marvin Butcher, Bobby Warner; Bobby Nelson, Manager. Back Row: C. O. Giles, Coach; Bill Barney, Bobby Cheek, Kenneth Staley, Clarence Tedder, Jim Furches, Don Reid, T. Ray Gibbs, Coach.

Pines offensive chores with Baker as the defensive ace.

There was nothing routine about any of the scoring. Spaugh took a short Mechum heave and traveled 71 yards for the initial tally and went 19 on the same combination for the second.

Wild Scoring Spree

Three third-quarter plays saw the Blues score again on a 39-yard pitch, Mechum to Vogler, but Southern Pines cracked the ice moments later on Page's 57-yard pass catch from Mattox.

Baker intercepted Mechum's pass and went 50 yards for the second Eastern touchdown. Spaugh got it back on a 52-yard end-around to conclude the Clemmons scoring, but Southern Pines wasn't

through.

Taking the kickoff up to the 30, the Easterners went all the way on crashing bucks by Baker and Page's reverses. Baker went the last seven yards to glory.

The scoring ended right there, with pass interceptions and fumbles blunting the offensive efforts of both teams until the finish.

| Pos. | Clemmons | Southern Pines |
|---------|------------|----------------|
| LE..... | Moorefield | Arnette |
| C..... | Miller | Kaylor |
| RE..... | Spaugh | Baker |
| QB..... | Vogler | Page |
| HB..... | Craver | Dickerson |
| FB..... | Butcher | Mattox |

Score by periods:

| | | | | |
|----------------|---|---|----|------|
| Clemmons | 6 | 7 | 12 | 0-25 |
| Southern Pines | 0 | 0 | 18 | 0-18 |

Clemmons — Scoring touchdowns: Spaugh 3, Vogler. Point after touchdown: Miller (pass from Mechum). Southern Pines—Scoring touchdowns: Page, Baker 2.

Substitutions—Clemmons: Mechum, Allen, Warner, Hall; Southern Pines—Newton, Culler, Short, Adams, Copley.

BASKETBALL



Sarah Howard
Forward



Ann Snyder
Forward



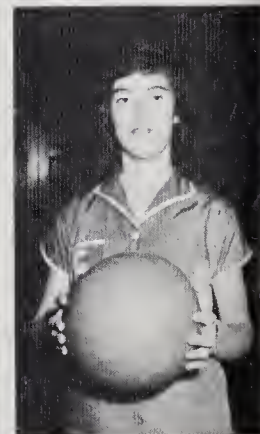
Roma Lee Woosley
Forward



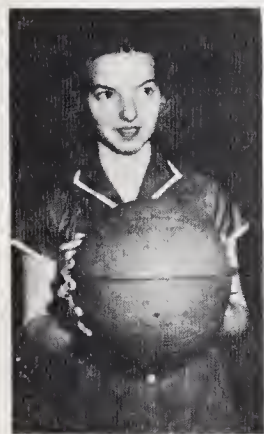
Betty Lou Lewis
Forward



Betty Lou Overby
Forward
Co-Captain



Nanette Creasy
Forward



Jean Hauser
Forward



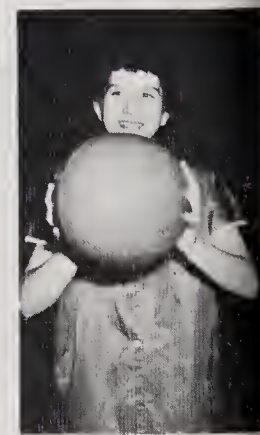
Lois Williams
Guard



Mildred Cheek
Guard
Co-Captain



Carolyn McIntyre
Guard



Jackie Reid
Guard



Maurine Holton
Guard



Ellen Cooper
Guard



Julia Ann Creasy
Guard



Peggy Phelps
Guard

BASKETBALL



Donald Craver
Guard
Co-Captain



Richard Vogler
Forward



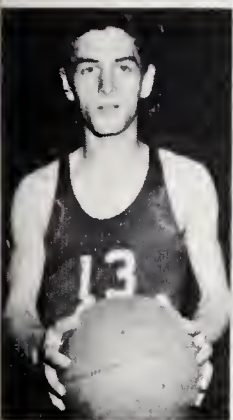
Tommy Howard
Center



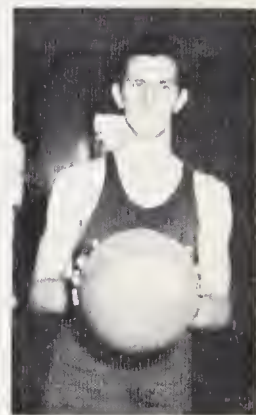
Raymond Vogler
Forward



Marvin Butcher
Guard
Co-Captain



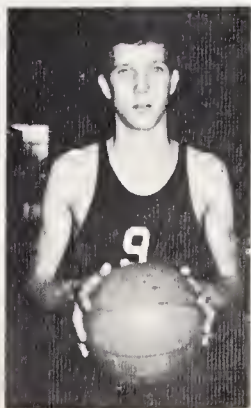
Bobby Cheek
Forward



Bobby Warner
Guard



Pete Morefield
Guard



Clarence Tedder
Forward



Joe Lowder
Center



Norman Miller
Forward



Ronald Mechum
Guard



BASEBALL

First Row: Raymond Vogler, Thurmond Chappell, Marvin Butcher, Richard Vogler, C. F. Spaugh, Ronald Mechum, Pete Morefield, Tommy Howard, Darrell Everhart, G. T. Moody, Coach. Second Row: Jim Furches, Jim Hall, Norman Miller, Tommy Brewer, Eugene Boles, Don Reid, Leroy Harpe, Norman Bullard, Donald Craver, Bobby Cheek, Jim Brewer.



SOFTBALL

First Row: Betty Lewis, Nanette Creasy, Betty Lou Holder, Betty Overby, Julia Ann Creay, Mildred Cheek, Sarah Howard, Maurine Holton, Lois Williams. Second Row: Mrs. Syble Smith, Coach; Jean Hauser, Emma Phillips, Roma Lee Woosley, Peggy Phelps, Nancy Quinn, Ann Snyder, Carolyn McIntyre, Margie Smith.

BASEBALL

C. F. Spaight
Pitcher



Norman Miller
Catcher



Tommy Howard
First Base



Raymond Vogler
Second Base



Marvin Butcher
Outfield



Richard Vogler
Third Base



Donald Craver
Shortstop



Jim Hall
Outfield



Ronald Mechum
Outfield



Jim Furches
Infield



Bobby Cheek
Catcher



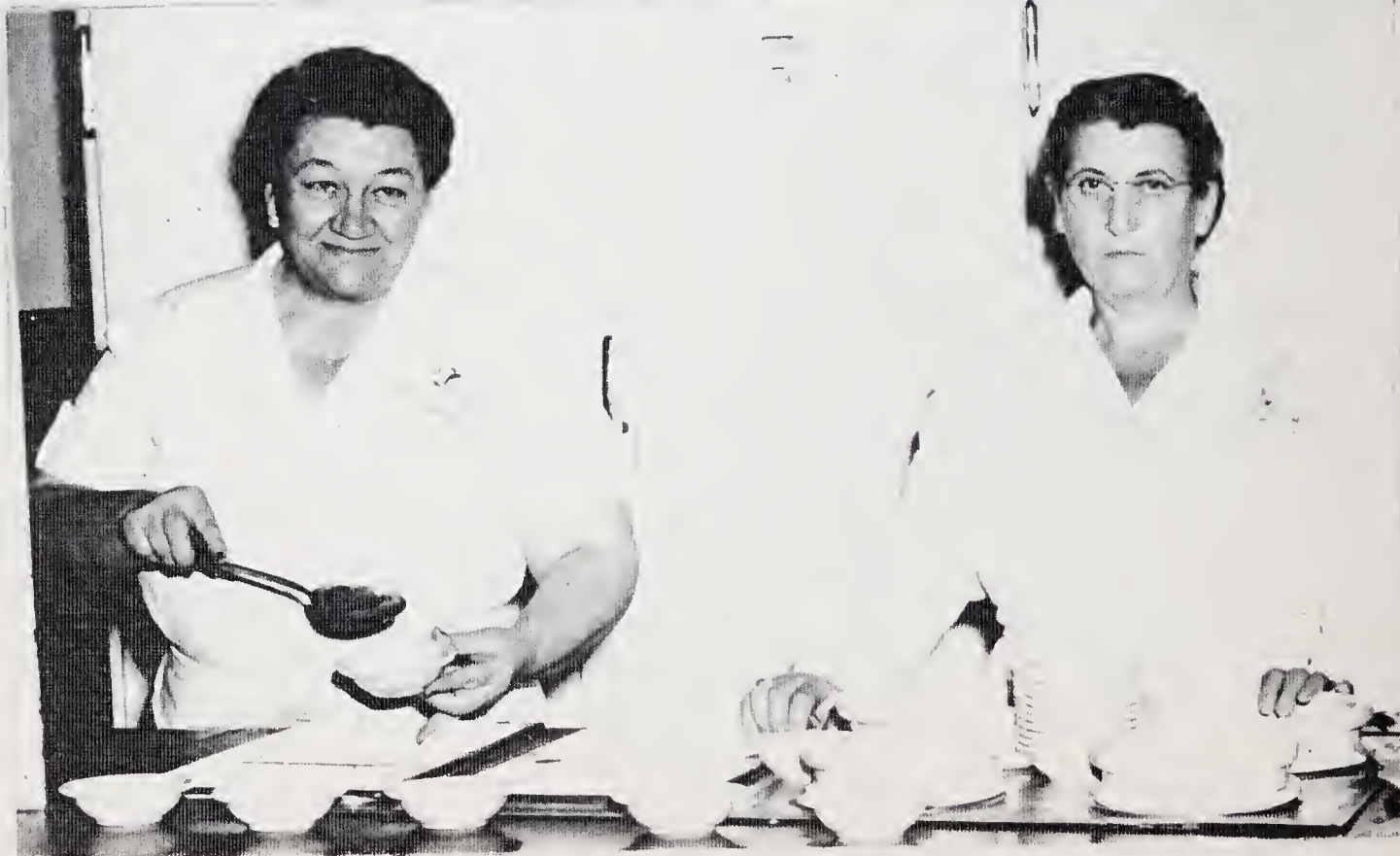
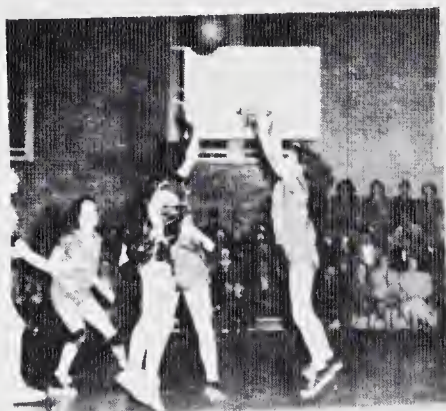
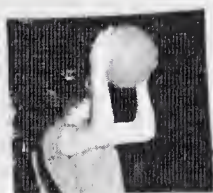
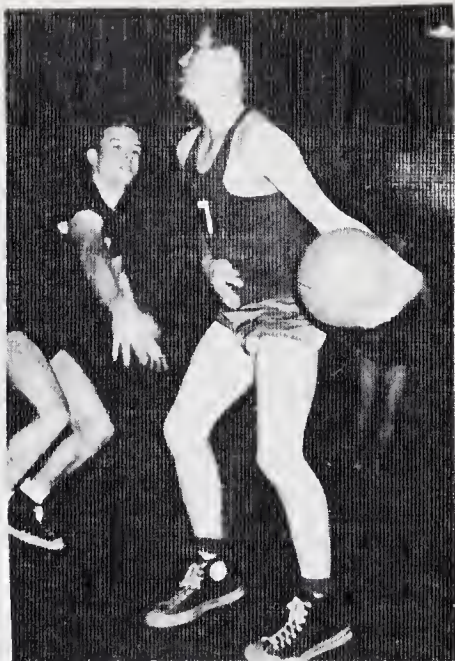
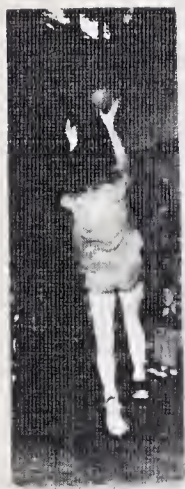
Tommy Brewer
Pitcher



Pete Morefield
Pitcher



Darrell Everhart
Pitcher



Ma Hampton and Mrs. Ashley
Directors of our favorite sport—Eating



ACTIVITIES



BAND

David Bowen, William Snyder, Oliver Woodford, Jack Cumby, H. E. May, Ruth Beck, Donald Smith, Emily Atwood, Peggy Shore, Nancy Quinn, Billy Woosley, Carolyn McIntyre, Joan May, Lloyd Spaugh, Jimmy Craver. Majorettes: Front Row: Jo Ann Nelson, Nancy Howard, Willa Jean Davis. Back Row: Jennie Essex, Marilyn Johnson, Betty Higgins, Peggy Sue Hogue.

BUS DRIVERS

Front Row: Bill Parrot, Raymond Vogler, H. E. May. Back Row: Jim Alspaugh, Joe Brock Ellis, John Wells, C. F. Spaugh.





COMMERCIAL CLASS

First Row: Mrs. Margaret Brendle, Advisor; Fred Welfare, Jackie Reid, Nancy Lowder, Bette Jo Satterfield, President; Lois Williams, Jean Hauser, Mildred Charles, Emma Phillips, Margaret Charles. Second Row: Roma Lee Woosley, Secretary and Treasurer; Nanette Creasy, Maureen Holton, Bobby Nelson, Helen Billings, Maxine Todd, Julia Ann Creasy, Raymond Reid, Josephine Mullis, Marceleen Cook. Third Row: Donald Craver, Norman Miller, Vice President; Raymond Vogler, Betty Lou Overby, Kenneth Porter, Billy Tesh, Bobby Cheek, Jim Hall, Richard Vogler. Back Row: Bobby Warner, Ronald Mechum, Tommy Howard, Hilda Woosley, Joe Brock Ellis, John Green, Tommy Brewer, Pete Morefield, David Reid.



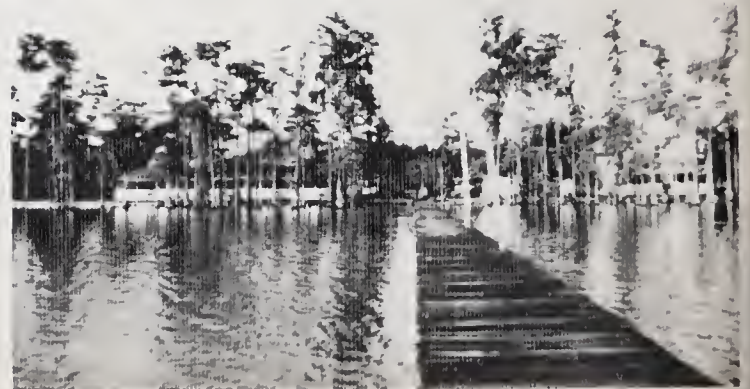
FFA

Albert Atwood, Leon Chapell, Milton Foster, Teddy Lowe, Thurmond Templeton, Bobby Warner, Jim Alspaugh, Bill Barney, Thurmond Chappell, Carl Davis, Darrell Everhart, Bill Hayes, Bobby Nelson, David Reid, Jr., Billy Tesh, Pete Morefield, Robert McIntyre, George Reid, Jr., Jimmy Brewer, Normond Bullard, Donald Craver, P. H. Grant, Bobby Johnson, Don Reid, Sam Phelps, Cletus Shelton, Max Satterifield, Bill Brewer, Walter Craver, Herbert Doty, Frank Elles, John Green, Jack Holton, C. F. Spaugh, Richard Vogler, Raymond Vogler.



FFA OFFICERS

| | |
|----------------------|---------------|
| President | John Green |
| Vice President | Sam Phelps |
| Secretary | Albert Atwood |
| Treasurer | Milton Foster |
| Reporter | Donald Craver |
| Advisor | L. O. Crotts |



SUMMER CAMP

F. H. A.

F.H.A.

Activities



Camp Life

Mother-Daughter Christmas Party

Participants in World's Festival for Friendship



School and Community Service



Camp Life—More Fun



On Route to Kansas City-First National

F. H. A. Convention.



Sunning at Camp



Meet Our Members



CHATTERBOX STAFF

Norman Miller and Elmer Allen. Ronald Mechum, Tommy Howard, Joe Brock Ellis, Bette Jo Satterfield, Mrs. Margaret Brendle, Advisor; Emma Phillips, Jean Hauser, Glenn Johnson, Betty Higgins, and Lois Williams.



STUDENT COUNCIL

Tim Furches, Jo Ann Nelson, Billy Woosley, Lena May Lewis, Albert Atwood, Norman Jones, Joe Bullins, Verna Ketner, William Creasy, H. E. May, Secretary; Joe Lowder, Vice President; Betty Overby, President.



THE KEY CLUB

Seated:

Marvin Butcher, Joe Brock Ellis, Tommy Howard, Vice President;
Joe Lowder, Sam Phelps, Albert Atwood, Dallas Cundiff, Treasurer;
Glenn Johnson, Secretary; Robert McIntyre, John Wells, H. E. May,
Elmer Allen, Norman Miller, Jimmy Hall.

Standing:

Mr. G. T. Moody, Faculty Advisor; Jimmy Craver, Wilburn Crater,
Fred Welfare, President.



GLEE CLUB

Joanne Todd, Mary Nell James, Cornelia Allen, Jo Ann Nelson, Lear Butcher, Peggy Sue Hogue, Nancy Howard, Donna Jane Jones, Carolyn Hart, Patty Thomas, Marie Vaught, Oneita Carter, Peggy Dunn, Joan May, Willa Jean Davis, Faye Spaugh, Mildred Cheek, Sue Scott, Joyce Smith, Helen Billings, Maxine Todd, Utoke Lawson, Julia Ann Creasy, Jewell Foster, Betty Higgins, Nancy Quinn, Jane Cook, Ola Cockerham, Barbara Crater, Billy Woosley, Barbara Beckner, Oliver Woodford, Bill Long, Gladys Weinstock, Maxine Harper, Dorethea Motsinger, Rudine Robertson, Josephine Mullis, Betty Lewis, Hazel Robertson, Larry Hart, Marceleen Cook, Verna Ketner, Betty Lou Holder, Nancy Craver, Marilyn Johnson, Glenn Johnson, Robert McIntyre, Betty Overby, Jim Furches, Fred Welfare, Lena Mae Lewis, Emily Atwood, Marlene Scott, Peggy Shore, Jo Ann Essex, Emma Davis, Eugene Boles, Kenneth Staley, Peggy Hartley, Sam Phelps, Bobbie Todd, Audrey Church, Billy Tesh, David Reed, Richard Vogler, Clarence Tedder, Edgar Wood, Donald Craver, Jackie Hooker, Jane Cumby, Ferald Pilcher, Joe Lowder, Bobbie Nelson, Pete Morefield, Thurmond Chappell, Sam Phelps, Bill Barney, and Darrell Everhart.



Director—Miss Barbara Speas

*Best of luck
Miss Speas*



PIANO PUPILS

First Row: Billy Williams, Carolyn Lowder, Peggy Ann Davis, Ann Gail Lewis, Glenda Wall, Patsy Ann Harpe, Kent Davis, Kay Spainhour. Second Row: Patsy Bingham, Etta Dunn, Bobbie Meilstrup, Sammy Richardson, Reva Cook, Sue Brewer, Marta Kimel. Third Row: Dianne Bingham, Arlene Lutz, Myrtle Morris, Joyce Craver, Lois Craver, Glenda Lineback, Norma Vogler, Ruby Hogue, George Ed Wilson, A. C. Vogler. Fourth Row: Billie Brewer, Jane Lowder, Rose Mary Shoaf, Betty Scott, Peggy Todd, Jackie Matlock, Doris Pople, Jeanette Lineback, Libby Bullard, Patsy Stewart. Fifth Row: Patty Thomas, Colleen Maynard, Oneita Carter, Jo Ann Nelson, Wilma Todd, Lena Mae Lewis, Dorothy Bryant, Barbara Hunter, Bonnie Hire, Betty Reed. Sixth Row: Joyce Ann Smith, Ferald Grey Pilcher, Dorothy Beckner, Patsy Parks, Nancy Howard, Peggy Sue Hogue, Cornelia Allen, Peggy Faye Rights, Jane Cook, Nancy Quinn. Absent when picture was taken: Lee Weisner and Joe Goodman.



Mrs. V. R. Woodford, Instructor



FIRST AIDERS
Hilda Woosley, Estelle Foster, Jean Hauser.

LIBRARIANS

Peggy Hendrix, Dorethea Motsinger, Bobbie Todd, Ruth Wilkinson, Estelle Foster, Ellen Sheets, Helen Billings, Miss Edoth Noble.



HALL MONITORS

Jo Ann Nelson, Hazel Robertson, Audrey Church, Betty Lou Holder, Dallas Cundiff, Nancy Quinn, Mar Nell James, Marie Vaught, Sarah Howard.

OFFICE STAFF

Bette Jo Satterfield, Jean Hauser, Roma Woosley, Emma Phillips, Lois Williams, Helen Hayes, Buster Miller.





Typists
Lois Williams
Emma Phillips



Photograph Editor
Elizabeth Todd

Sports Editors
Carolyn McIntyre, (seated)
Marvin Butcher



Class Editor
Bette Jo Satterfield

Editor in Chief
Roma Lee Woosley



Business Manager
Ann Snyder

Advertising Manager
Dorethea Motsinger



Art Editor
Joe Brock Ellis (seated)

Feature Editors
Elmer Allen
Sarah Howard

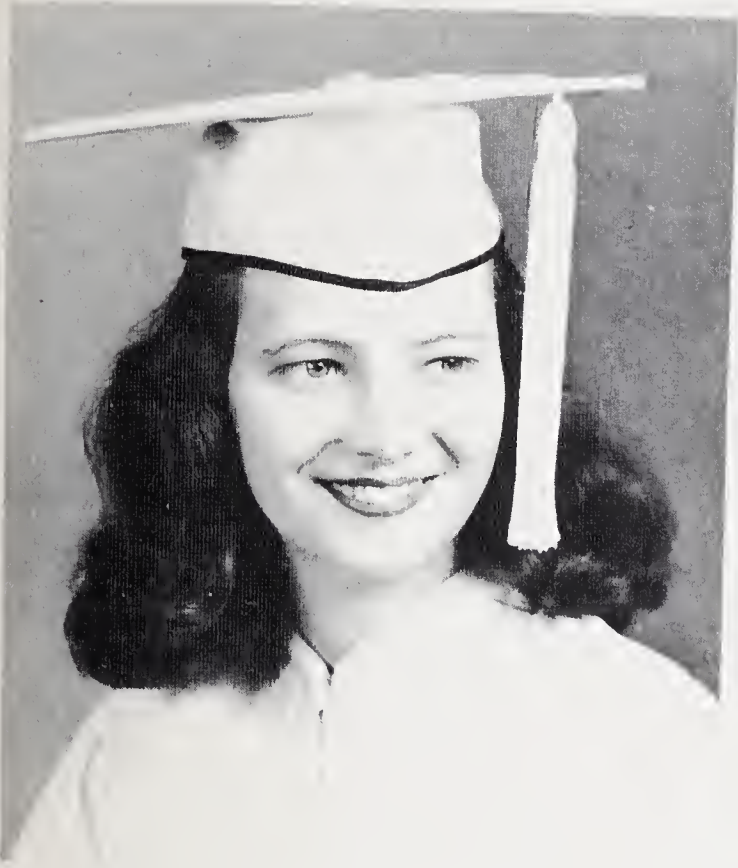
ANNUAL STAFF



SAFETY PATROL

First Row: Lloyd Bowman, Darrell Craft, Jack Cumby. Second Row: Roma Lee Woosley, George Reed, Charles Flora, Lorenza Clinard, Patsy Talbert. Third Row: Gray Smith, Albert Atwood, Captain; Joe Lowder, Leroy Harpe, Richard Meilstrup, Lowell Carter. Absent when picture was made: Max Satterfield and Joe Butcher.





ANN SNYDER
Valedictorian



ROMA LEE WOOSLEY
Salutatorian

FEATURES

SUPERLATIVES



BIGGEST FLIRTS
DORETHEA MOTSINGER
KENNETH STALEY

MOST TALENTED
ELIZABETH TODD
JOE BROCK ELLIS



SUPERLATIVES

MOST POPULAR
BETTE JO SATTERFIELD
TOMMY HOWARD



NEATEST
ROMA LEE WOOSLEY
BOBBY WARNER

SUPERLATIVES

MOST LIKELY TO SUCCEED
BETTY LOU LEWIS
JOHN WELLS



BEST ALL AROUND
SARAH HOWARD
MARVIN BUTCHER



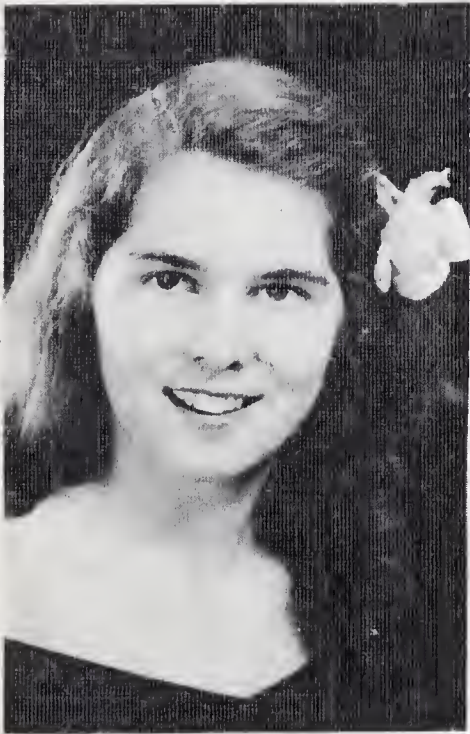
SUPERLATIVES

FRIENDLIEST
LOIS WILLIAMS
ELMER ALLEN



MOST DEPENDABLE
FANNIE EMMA GRANT
BOBBY WARNER

SUPERLATIVES



BEST LOOKING
MILDRED CHEEK

BEST LOOKING
JOHN WELLS

MOST ATHLETIC
BETTY LOU OVERBY
MARVIN BUTCHER

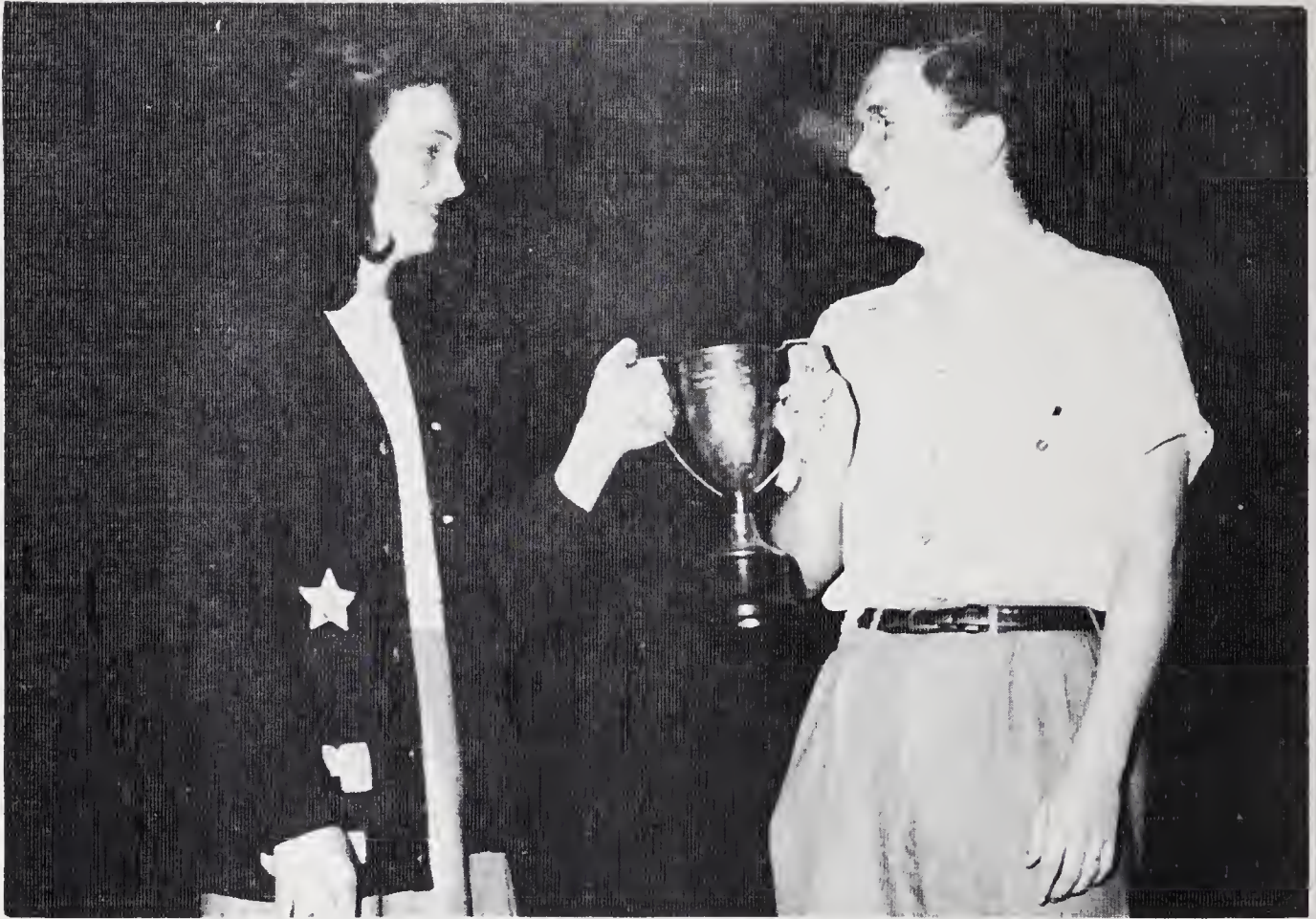


SUPERLATIVES

MOST STUDIOUS
JOSEPHINE MULLIS
ALBERT ATWOOD



WITTIEST
LOIS WILLIAMS
ELMER ALLEN



WINNERS

P.-T. A. Scholarship Award Winners: Ann Snyder and Fred Welfare.

Citizenship Award Winners: Emma Phillips and Elmer Allen.



CLASS DAY OFFICERS: Elmer Allen, Dorethea Motsinger, Julia Ann Creasy, Sarah Howard, Joe Brock Ellis, Barbara Beckner, John Wells and Elizabeth Todd.

Best wishes,
Doretha
Molinger



ADVERTISING

Compliments of

ARDEEN FARM

"AND THIS OUR LIFE, EXEMPT FROM PUBLIC HAUNT, FINDS TONGUES IN TREES, BOOKS IN RUNNING BROOKS
... SERMONS IN STONES AND GOOD IN EVERYTHING" FOREST of ARDEN. "AS YOU LIKE IT" Shakespeare

T. HOLT HAYWOOD

CLEMMONS, NORTH CAROLINA

Registered Guernseys

Proof for the _____ issue
of the

GUERNSEY BREEDERS' JOURNAL

PETERBOROUGH, N. H.

For Your Files.....

For Corrections.....

[This is a hand press proof and is intended to show layout and type but
does not represent the printing quality to be expected in the JOURNAL]

LET US SUPPLY YOUR SAND NEEDS

L.F.SPAUGH SAND DELIVERY

MAPLEWOOD FARM DAIRY

Phone 38848

Winston Salem

N. C.

**SHEETS AUTO TOP
& TRIM CO.**

UPHOLSTERING SERVICE

S. STRATFORD ROAD

Compliments of

GOBBLE'S BARBER SHOP

Hanes

N.C.

SHEET'S BABERCUE

COOKED RIGHT ————— SERVED RIGHT

SANDWICHES

CURB SERVICE

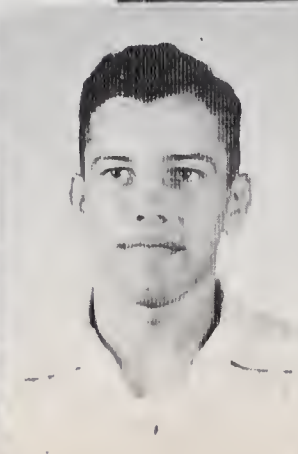
Phone 36215

CLEMMONS ROAD

SNAPSHOTS



JUNIORS SNAPSHOTS



FURCHES BROS

TOYS-PAINTS-FURNITURE HARDWARE

PHILCO & UNIVERSAL APPLIANCES

Phone 38252

Clemmons

N.C.

SHORTY'S GULF SERVICE

WASHING-WAXING-LUBRICATION-PARKING

Phone 31935

G.F.VAUGHT, Prop.

BILTMORE DAIRY FARMS

Phone 22555

S. STRATFORD RD.

CLEMMONS MILLING CO.

MANUFACTURER OF

SUPREME FEEDS

DEALER IN

FLOUR-SEEDS-DOG FOOD-LIME-FERTILIZER-MEAL-GRAIN

MOTAR MIX-ROOFING

WHOLESALE & RETAIL

Phone 21751

Clemmons

N.C.

SHUTT & BOWDEN

FIRESTONE DEALER

Phone 132

Mocksville N. C.

CRAVER'S CASH STORE

GROCERIES-MEATS

Clemmons N.C.

AUTO REPAIR

REPAIR SERVICE

SOUTH FORK GARAGE

FOSTER'S GROCERY

GROCERIES-MEATS

S. STRATFORD ROAD

Phone 43378

SOPHOMORES SNAPSHOTS



R.B.HENDRIX

GENERAL MERCHANDISE

Clemmons

N.C.

Compliments of

CLARENCE HOWARD & SON

GENERAL REPAIRING

Clemmons

N.C.

THOMAS MAYTAG CO.

WASHERS-RADIOS-RANGES-REFRIGERATORS

W.L. Thomas, Prop.

Phone 24552

CLEMMONS SERVICE

& GROCERY

GROCERIES

Phone 6924

Clemmons

N.C.

CLEMMONS BEAUTY SALON

Mrs. Eileen Wall

Phone 38828

DUNN'S LANDSCAPE SERVICE

EXPERT SERVICE

TREES-SHRUBBERY-LAWNS

GRADING-PAVING

Phone 32462

526 S. STRATFORD ROAD

CLEMMONS GARAGE

REPAIR SERVICE

Phone 38808

THE SHACK

Drinks-Ice Cream

S. STRATFORD ROAD

TAYLOR & COBBLE

GROCERY

GROCERIES-MEATS

Hanes

N.C.

LET ME HELP YOU SOLVE YOUR FINANCIAL PROBLEM

Are you interested in starting a systematic plan of savings?

Do you owe any unpaid balance on your home, or farm, you would want paid off in full in event of your death?

Would you like to have a life time income beginning at age 60 or 65?

Would you like to have a guarantee that your wife and children would receive a check each month, to cover all expenses should you be taken out of the picture before your youngest child reaches age 21?

Would you like a guarantee that your child, or children, will receive a college education whether you live or die?

IF SO, SEE

RAY D. SATTERFIELD, Spec. Rep.

LIFE & CASUALTY INS. CO.

Reynolds Bldg.

Home Phone 33902

Office Phone 21736

BINGHAM LUMBER CO.

BUILDING SUPPLIES

Clemmons

N.C.

CRATER'S COMMERCIAL REFRIGERATION

N.F.CRATER, OWNER

Phone 31034

A.P. WARNER

GENERAL MERCHANDISE

Clemmons RD.

LEROY'S HOBBY SHOP

TOYS & PARTS

Phone 32834

Clemmons Rd.

HILLCREST GOLF COURSE

Highway 158

J.T.Jones, Prop.

WESTWOOD

SERVICE STATION

Gas Plus Top Accessories

HIGHWAY 158

Contributions Were Received From

CLEMMONS TRIANGLE

&

HANES BEAUTY SALON

PATRONIZE OUR

ADVERTISERS

DAIRYLAND

ICE CREAM DRINKS

Edward Hall, Prop.



