



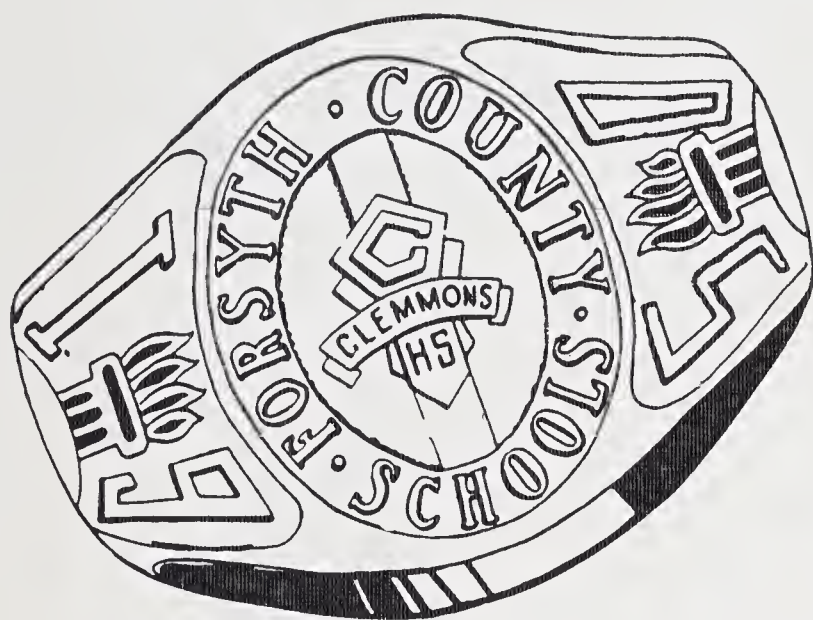
CLEMMEMORIES



Ann
Williams



Printed and Bound in The U. S. A. by
SCHOOL PRINTING SERVICE
CHARLOTTE, N. C.



Clemmemories

FOREWORD

This, the third volume of *Clemmemories*, is
published by the Senior Class of
Clemmons High School,
Clemmons, North Carolina
1950



IN THE BEGINNING

ALMA MATER

Come let us one and all our voices raise
To Clemmons School in loyalty and praise.
Within her walls, both joy and sorrow known
Have made her seem to us our very, very own.
Her colors blue and white will always be
An emblem of true faith and victory.
She has the rep, the pep, the dignity, dignity—

Rah! Rah! Rah!

Stand up and fight her battles to the end,
Upon our strong support her future bends,
And lead her on through years of sure success.
Her colors blue and white spell noble,—nobleness
She has the rep, the pep, the dignity;
She has the everlasting loyalty!
So here're three cheers to dear old Clemmons School, Clemmons School

Rah! Rah! Rah!



FACULTY



MR. POTTS
Principal
B.A., Wake Forest College
Wake Forest, N. C.
U. N. C.
Chapel Hill, N. C.



MRS. BOVENDER
A.B., Meredith College
Raleigh N. C.



MR. MOODY
A. B., Wofford College
Spartanburg, S. C.



MISS COOK
B.S., A. S. T. C.
Boone, N. C.



MISS McHAN
A.B., E. C. T. C.
Greenville, N. C.
University of Tennessee
Knoxville, Tennessee



MR. GILES
A.B., Wake Forest College
Wake Forest, N. C.



MRS. BUTNER
B.S., W. C. T. C.
Cullowhee, N. C.



MISS HOWARD
School Secretary



MRS. MICKEY
B.S., W. C. T. C.
Cullowhee, N. C.
U. N. C.
Chapel Hill, N. C.



MR. CROTTS
B.S., N. C. State
Raleigh, N. C.



MISS WHITAKER
A.B., High Point College
U. N. C.
Chapel Hill, N. C.
A. S. T. C.
Boone, N. C.



DEDICATION

To

MR. CHARLES O. GILES

who has helped us in our high school days to tackle all our difficulties and whom we will remember as an understanding teacher and an excellent coach, we the Senior of 1950 dedicate this issue of *Clemmemories*.

FAREWELL

We can't begin to tell you how much we'll miss you all,
With happy thoughts of you we'll leave today.
Farewell to all you Juniors who'll take our place next fall,
And to the teachers who have led our way.
And now to all you classmates whenever we're apart,
We wish for you much happiness in all the things you do.
So take the sweetest memories our class holds in its heart,
In later years we'll cherish them anew.
And now as we are leaving, we'll bid our fond farewells,
In caps and gowns of blue we'll end our day.
But we'll return again soon to hear the ringing bells,
To see others get to class without delay.
Now as the time draws closer we hate to think we're through,
And promise to be always true to our beloved school.
And now these twelve years have past we wish our best to you,
We will remember dear ole Clemmons School.

CLASSES





Donald Nelson. . . whose unwavering spirit prompts us to dedicate this Senior section of *Clemmemories* to him.

SENIORS



OFFICERS

Treasurer, RAYMOND VOGLER

Secretary, BILL BARNEY

Vice-President, JIM HALL

President, JOE LOWDER

SENIOR SNAPSHOTS



JIM ALSPAUGH
Christmas Pageant 4; Junior Play 3; Cattle Judging Team 1, 2, 4; Bus Driver 3, 4; F. F. A. 2, 3, 4; Treasurer of Class 3; Boy's Home Ec. Club 4; Perfect Attendance 1.

BILL BARNEY
Football 3; F. F. A. 4; Secretary of F. F. A. 4; Class Officer 4; Key Club 4; Commercial Club 3; Chatterbox Staff 4; Annual Staff 4; Class Historian 4; Student Council 4; Senior Superlative 4.



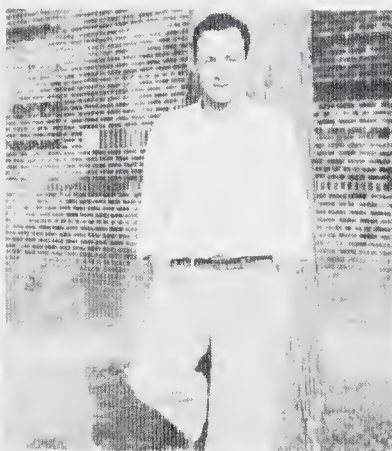
RUTH BECK
Christmas Pageant 4; F. H. A. 3, 4; Chorus 2; Student Council 4; Reynolds High School 1; Band 2, 3, Marshal 3; Senior Superlative 4; Vice-President of Student Council 4; Hall Monitor 2; Class Officer 2; Secretary of F. H. A. 4.

TOMMY BREWER
Football 2; Baseball 2, 3, 4; F. F. A. 4; Reynolds High School 1; French Club 3; Commercial Club 3; Junior Play 3; Senior Superlative 4; Class Day Officer 4.

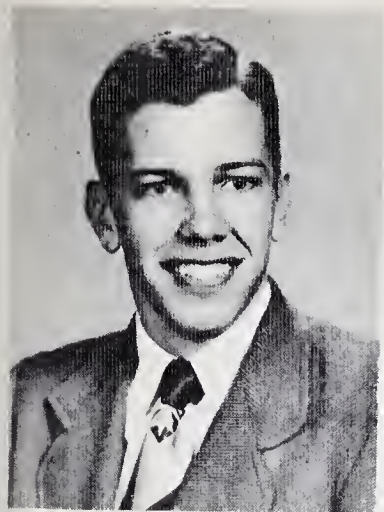


THURMOND CHAPPELL
Commercial Club 3; Chatterbox Staff 4; Baseball 2, 3, 4; Football 4; Basketball 2.

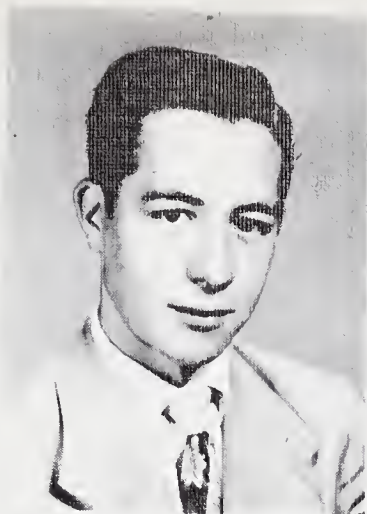
ELLEN COOPER
Marshal 3; F. H. A. 1; Commercial Club 1, 2; Glee Club 1, 2, 3, 4; Safety Patrol 2; Basketball 3, 4; Class Officer 2, 3; Senior Superlative 4; Editor of Annual 4; Softball 2; Junior Play 3; Christmas Pageant 2, 3, 4; Chatterbox Staff 3, 4.



DONALD CRAVER
Baseball 1, 2, 3, 4; Basketball 1, 2, 3, 4, Co-Captain Basketball 3; Football 2, 3, 4; All-County Football 2; All-State Football 3; Chorus 2; Commercial Club 3; Boy's Home Ec. Club 4; Christmas Pageant 4; F. F. A. 2, 3, 4; F. F. A. Reporter 3, 4; Senior Superlative 4.



JIM ALSPAUGH
Friendly, Independent, Capable



BILL BARNEY
Able, Sparkling, Neat



RUTH BECK
Musical, Neat, Dependable

SENIORS of '50

MOTTO:

Not finished...only beginning



TOMMY BREWER
Carefree, Casual, Jubilant



THURMOND CHAPPELL
Energetic, Co-operative, Good Natured



ELLEN COOPER
Witty, Friendly, Charming



DONALD CRAVER
Athletic, "Rusty," Loyal

SENIOR SNAPSHOTS



NORMA JANE CUMBY

F. H. A. 1, 2, 3; Christmas Pageant 4; Usher at Junior Play 3; Glee Club 1, 2; Senior Superlative 4; Stage Director for Fashion Show 3; Fashion Show 1, 2, 4.

JENNIE ESSEX

Senior Superlative 4; Annual Staff 4; Class Prophet 4; Christmas Pageant 4; Safety Patrol 4; Basketball 4; Junior Play 3; Major-ette 3; Commercial Club 2, 3; Softball 2, 4; Glee Club 1, 2; Class Officer 1, 2, 3; F. H. A. 1, 2, 3, 4; Honor Roll 1, 2, 3, 4.



DARRELL EVERHART

Baseball 2, 3, 4; Bus Driver 4; Chatterbox Staff 4; F. F. A. 3, 4; Commercial Club 3.

PERRY GRANT

Commercial Club 2; F. F. A. 2, 3, 4; Jr. Varsity Basketball 2; Key Club 4; Baseball 2; Safety Patrol 4; Dramatics 4; Printing 4; Senior Superlative 4; Annual Staff 4.



JIM HALL

Football 2, 3, 4; Baseball 2, 3, 4; Basketball 2; Cheerleader 2; Class Officer 2, 3, 4; Annual Staff 4; Senior Superlative 4; Key Club 3, 4; Commercial Club 3; Christmas Pageant 4; F. F. A. 4; Reynolds High School 1; Jr. Varsity Football and Basketball 1; Marshal 3; Boy's Home Ec. Club 4; Boy's Home Ec. Club Reporter 4; Junior Play 3; Hall Monitor 3; Honor Roll 3.

BILL HAYES

F. F. A. 3, 4; Commercial Club 2, 3; Chatterbox Staff 4; Basketball 2; Baseball 2.

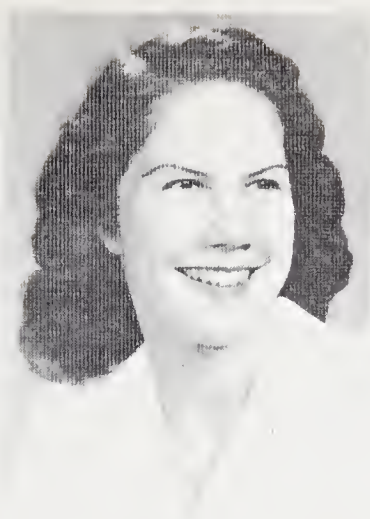


HELEN HAYES

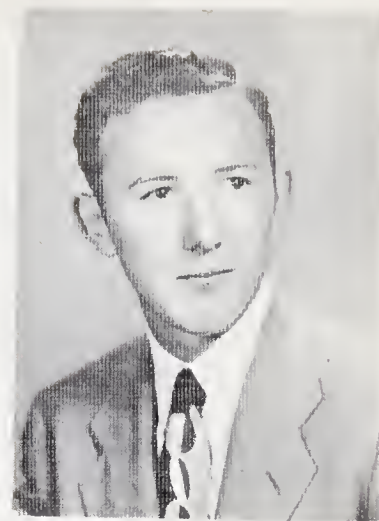
Office Assistant 3; Safety Patrol 4; Library Club 4; Junior Usher 3; Glee Club 1; Commercial Club 2, 3; Hall Monitor 3; News Editor on Chatterbox 4.



NORMA JANE CUMBY
Quiet, Sweet, Dependable



JENNIE ESSEX
Ambitious, Capable, Genial



DARRELL EVERHART
Contented, "Sleepy," Adaptable

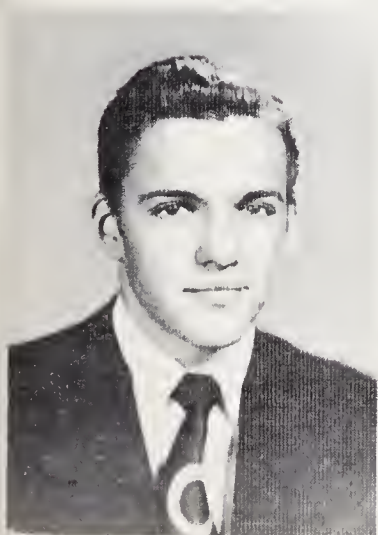
SENIORS of '50

COLORS:

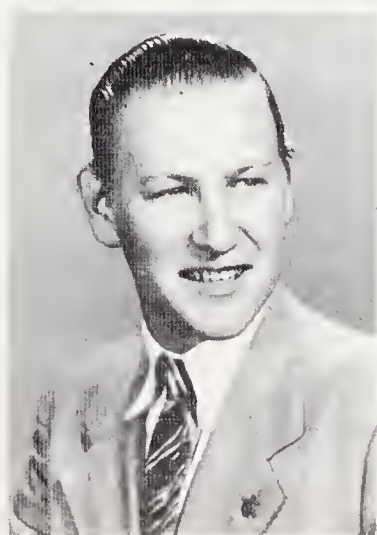
Blue and Gold



PERRY GRANT
Dependable, "Printer," Progressive



JIM HALL
Athletic, Good Natured, Popular



BILL HAYES
Faithful, "Fuzzy," Unconcerned



HELEN HAYES
Patient, Trustworthy, Talkative

SENIOR SNAPSHOTS

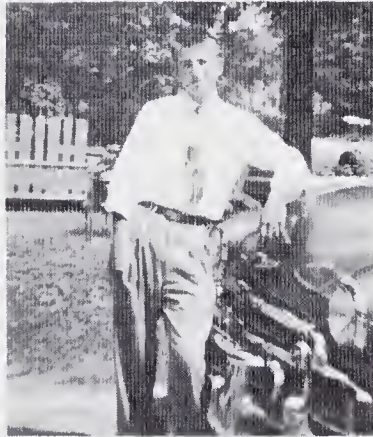


JACK HOLDER

Reynolds High School 1, 2, 3; Band 1, 3, 4; Dramatics Club 4; Football Manager 1, 2; Track Manager 2.

JACKIE HOOKER

Griffith High School 1, 2; Glee Club 1, 2, 3; Softball 1; Commercial Club 3; Marshal 3; Senior Superlative 4; F. H. A. 1, 2; Class Poet 4; Cheerleader 4; Hall Monitor 1, 2, 3; Student Teacher 1, 2; 4-H Club 1, 2;



JOE LOWDER

Basketball 1, 2, 3, 4; Football 4; All-State Football 4; Class President 4; Key Club 3, 4; Vice-President Key Club 4; F. F. A. 4; Treasurer of F. F. A. 4; Senior Superlative 4; Class Day Officer 4; French Club 2; Bus Driver 4; Safety Patrol 3; Annual Staff 4; Vice President Student Council 3; President Boy's Home Ec. Club 4; Co-Captain Basketball 4.

H. E. MAY, JR.

Key Club 3, 4; President Key Club 4; Student Council 2, 3, 4; President Student Council 4; F. F. A. 1, 2, 4; Chorus 4; Class Officer 1, 2; Annual Staff 4; Bus Driver 3, 4; Marshal 3; Christmas Pageant 2, 4; Band 1, 2, 3, 4; Senior Superlative 4; Commercial Club 2; Junior Play 3.



ROBERT MCINTYRE

Moving Picture Projector 2, 3; Key Club 3, 4; Dramatics Club 4; Cafeteria (cashier) 4; Chorus 3; Reynolds High School 1; Radio Program on WAIR 1.

PETE MOREFIELD

Football 3, 4; Baseball 1, 2, 3, 4; Commercial Club 3; Chorus 3; Boy's Home Ec. Club 4; Boy's Home Ec. Club Vice-President 4; Basketball 2, 3, 4; Class Officer 1, 2; Senior Superlative 4; F. F. A. 1, 2, 3, 4.



BOBBY NELSON

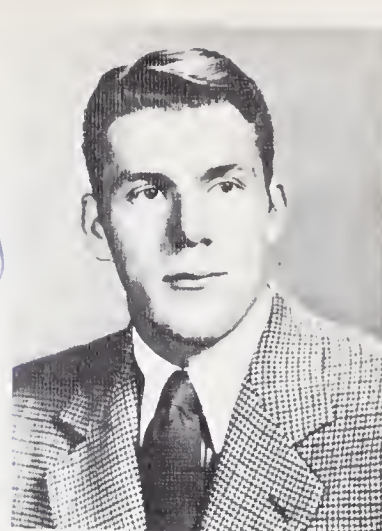
Manager of Football Team 3; F. F. A. 2, 3, 4; President F. F. A. 4; President Tri-County F. F. A. 4; Senior Superlative 4; Commercial Club 3; Bus Driver 4; Manager Basketball 3; Dairy Cattle Judging Team 2, 3, 4; Christmas Pageant 4; Boy's Home Ec. Club 4.



JACK HOLDER
Husky, Roaming, Willing



JACKIE HOOKER
Sparkling, "Pete," Cheerleading

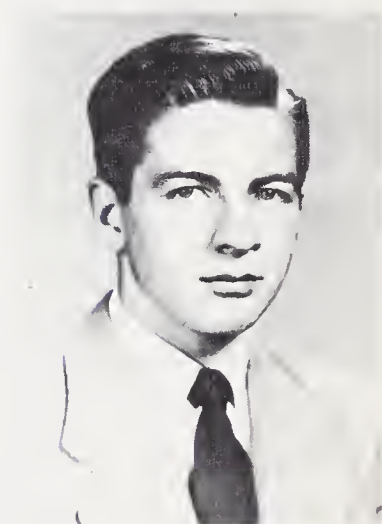


JOE LOWDER
Friendly, Dependable, Courteous

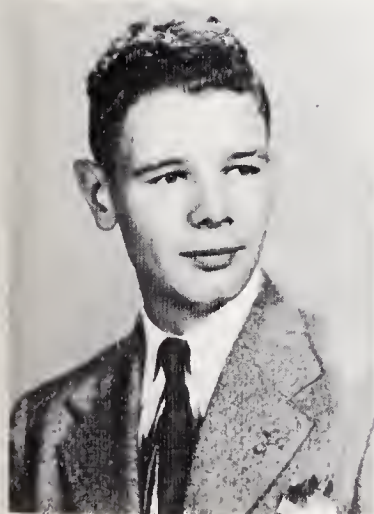
SENIORS of '50

FLOWER:

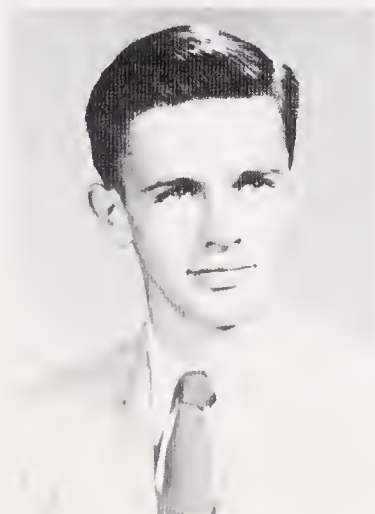
Yellow Rose



H. E. MAY, JR.
Executive, "Ruth," Dependable



ROBERT McINTYRE
Independent, "Scotland," Diligent



PETE MOREFIELD
Mischievous, Industrious, Determined



BOBBY NELSON
Leading, Energetic, Loyal

SENIOR SNAPSHOTS

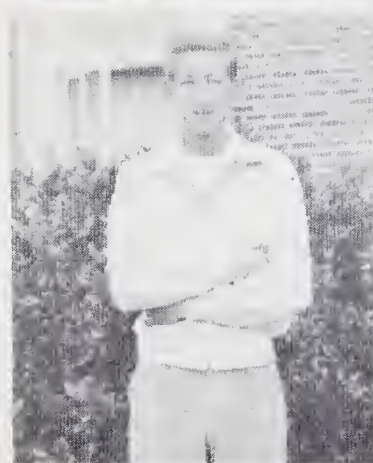


FERALD PILCHER

Glee Club 1, 2; F. H. A. 4; Junior Usher 3; Music 1, 2, 3; Commercial Club 2.

RUBY PORTER

Glee Club 1, 2; F. H. A. 2, 4; Junior Play 3; Senior Superlative 4; Class Day Officer (Giftorian) 4; Commercial Club 2; Class Officer 2.



DAVID REID

Boy's Home Ec. Club 4; Science Club 1; F. F. A. 3, 4; Commercial Club 3; Junior Varsity Basketball 2; Swine Judging Team 3.

JACKIE REID

Basketball 1, 2, 3, 4; Glee Club 1, 2; Junior Play 3; Commercial Club 3; Class Day Officer 4; Senior Superlative 4; Softball 1, 2, 3, 4.



HAZEL VIRGINIA ROBERTSON

F. H. A. 1, 2, 3, 4; National Project Chairman 3; Glee Club 1, 2, 3; Science Club 3; Library Club 2, 4; Annual Staff 4; Hall Monitor 3; Junior Homemaker's Degree 3; 4-H Club 1, 2; Current Events Club 2; Christmas Pageant 4.

MARIE SPAUGH

Glee Club 1, 2; F. H. A. 1, 2; Hall Monitor 3; Christmas Pageant 4; Librarian 2.



FAYE TEAGUE

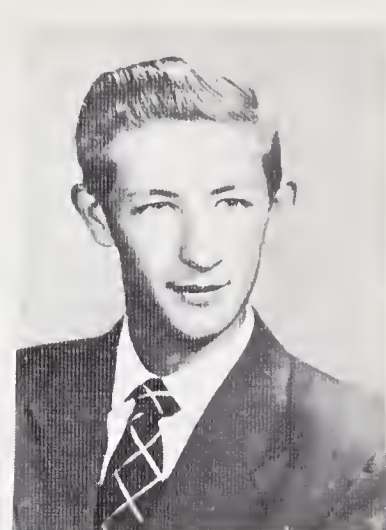
Speaking Contest 1, 3; Junior Play 3; Senior Superlative 4; Glee Club 1; Class Testator 4; Hall Monitor 3; Christmas Pageant 4; Office Assistant at South Fork 1; South Fork High School 1; Narrator for Fashion Show 4.



FERALD PILCHER
Domestic, Content, Gentle



RUBY PORTER
Studious, Charming, Determined



DAVID REID
Courteous, Fun Loving, Smiling

SENIORS of '50

JUNIOR PLAY:

"There Goes the Bride"



JACKIE REID
Athletic, Friendly, Mischievous



HAZEL ROBERTSON
Enthusiastic, Gay, Willing



MARIE SPAUGH
Earnest, Neighborly, Kindhearted



FAYE TEAGUE
Talented, Cute, Gay Spirited

SENIOR SNAPSHOTS



CLARENCE TEDDER

Sanford High School 1; Sports Club 1; Intramural Basketball 1; Commercial Club 2; Basketball 2, 3, 4; Football 3, 4; Baseball Manager 3, 4; Boy's Home Ec. Club 4; Science Club 1; Marshal 3; Christmas Pageant 4; Chorus 3; Safety Patrol 4; Key Club 4; F. F. A. 4.

BILLY TESH

F. F. A. 2, 3, 4; Commercial Club 2, 3; Scout 1, 2; Swine Judging Team 2, 3, 4; Boy's Home Ec. Club 4.



DONALD TISE

F. F. A. 4; Safety Patrol 4; Key Club 4; Dramatics Club 4; Commercial Club 3; Christmas Pageant 4; Junior Play 3; Class Prophet 4; Senior Superlative 4.

BOBBIE TODD

4-H Club 1, 2; Glee Club 1, 2, 3; Librarian 3; Commercial Club 2, 3; Senior Superlative 4; Editor in Chief of Chatterbox 4; Cheerleader 4; Junior Play 3; Jr. Varsity Basketball 1, 2.



RAYMOND VOGLER

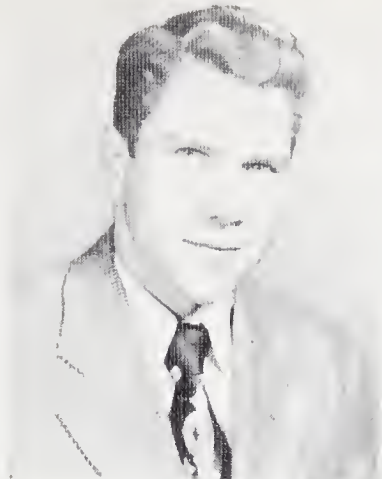
Football 2, 3, 4; Baseball 1, 2, 3, 4; Basketball 1, 2, 3, 4; Class Officer 3, 4; F. F. A. 2, 3, 4; Vice-President of F. F. A. 4; Bus Driver 2, 3, 4; Commercial Club 3; Glee Club 3; Junior Play 3; Senior Superlative 4; Christmas Pageant 4; All-State Baseball 2; All-County Basketball 3; All-County Football 4; Cattle Judging Team 4; Co-Captain Football 3, 4; Co-Captain Basketball 4; Treasurer Boy's Home Ec. Club 4; Class Day Officer 4; All-State Football 4.

RICHARD VOGLER

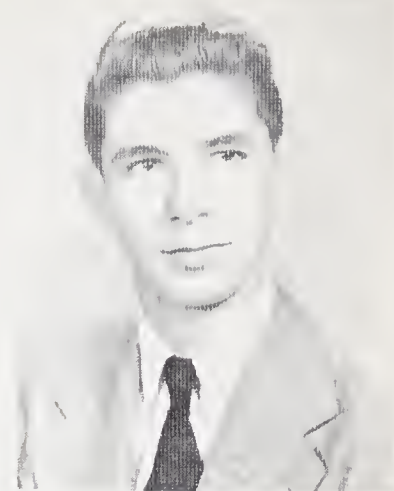
Football 2, 3, 4; Basketball 1, 2, 3, 4; Baseball 1, 2, 3, 4; All-County Football 2, 4; Co-Captain Football 4; Senior Superlative 4; F. F. A. 1, 2, 3, 4; Commercial Club 3; Christmas Pageant 4; Chorus 3; Boy's Home Ec. Club 4; All-State Football 4.



CLARENCE TEDDER
Lanky, Eager, "Heartthrob"



BILLY TESH
Dreaming, "Eddy," Agreeable



DONALD TISE
Reliant, Dignity, Confident

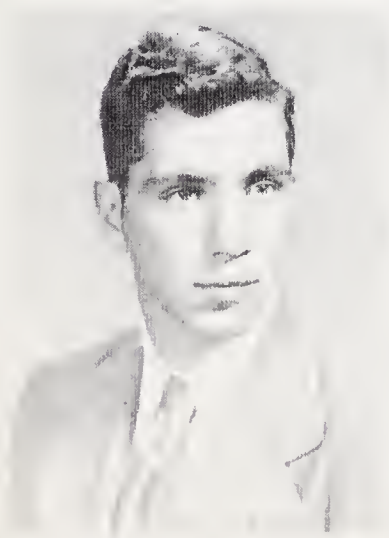
SENIORS of '50

JUNIOR-SENIOR THEME:

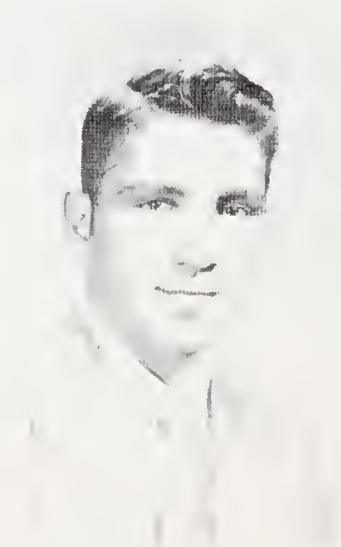
Hit Parade



BOBBIE TODD
Friendly, Cheerleading, Charming



RAYMOND VOGLER
Athletic, Twin, Innocent



RICHARD VOGLER
Athletic, Twin, Merry

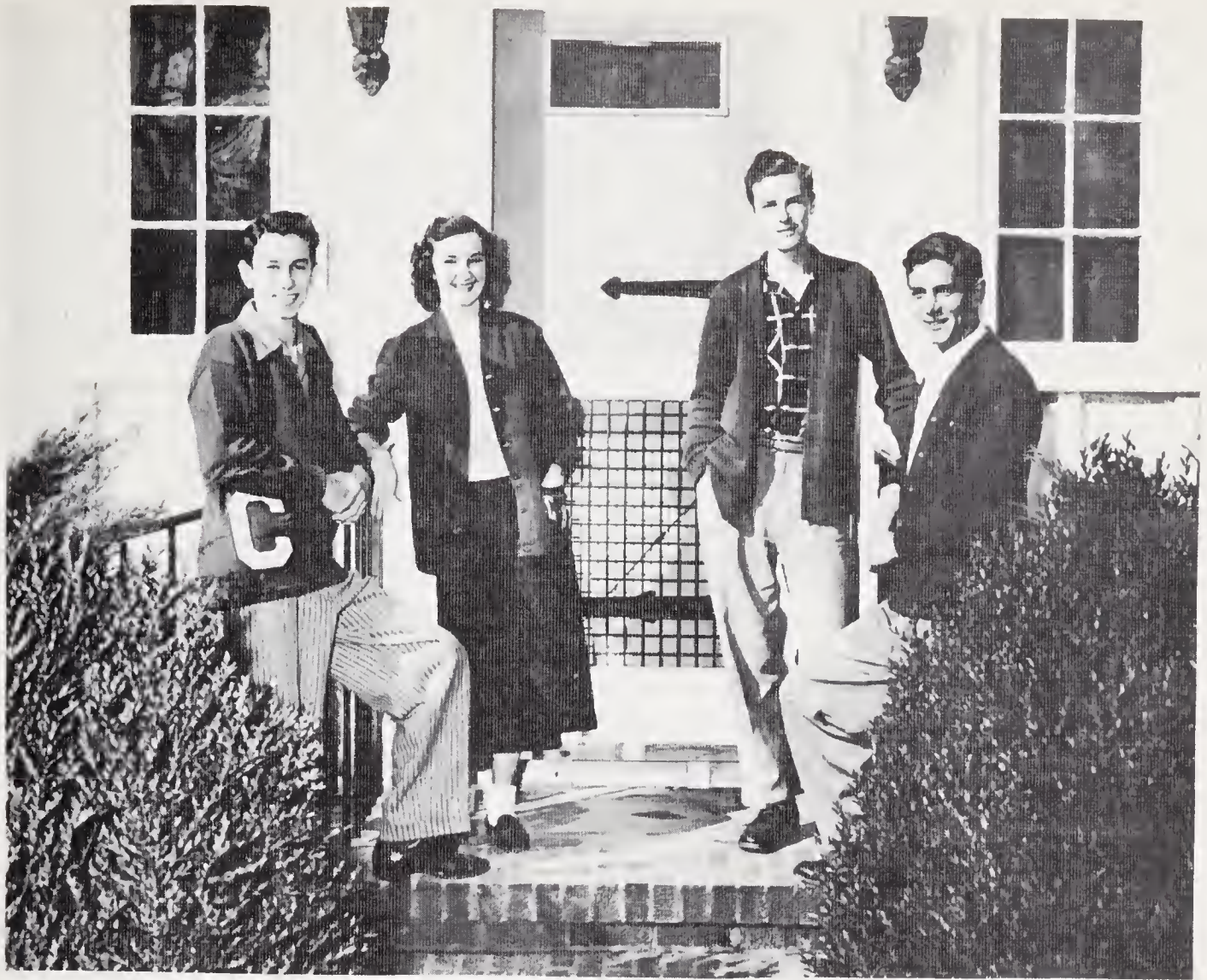


BETTY MILLER. . . .whose bright outlook on
the future has inspired us all.

To her, we dedicate our section of *Clemmemories*.

JUNIORS

JUNIORS



OFFICERS

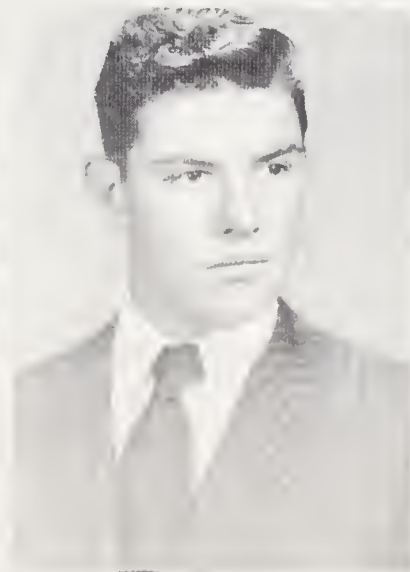
PATTY THOMAS, *Secretary*; DALLAS CUNDIFF, *Treasurer*

JIMMY FURCHES, *President*

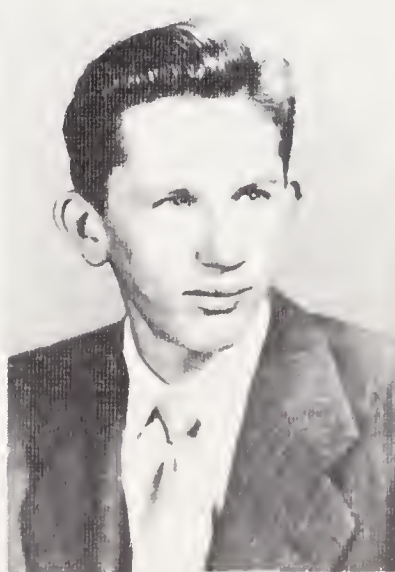
BOBBY CHEEK, *Vice-President*



Nancy Anne Boner



Bill Brewer

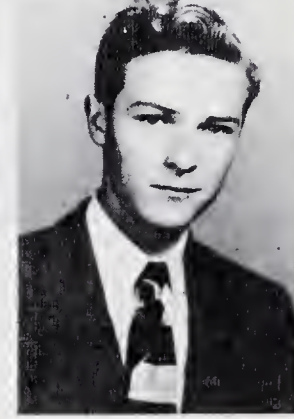
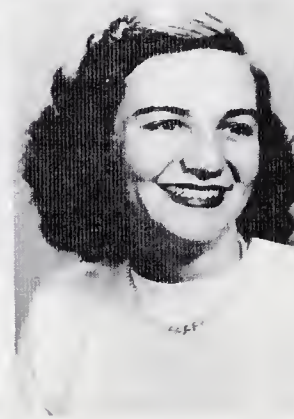
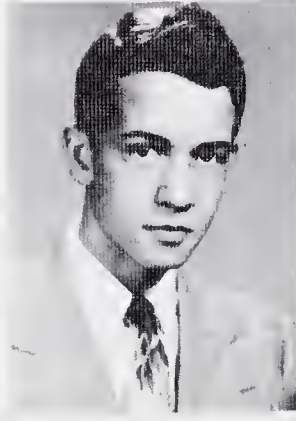
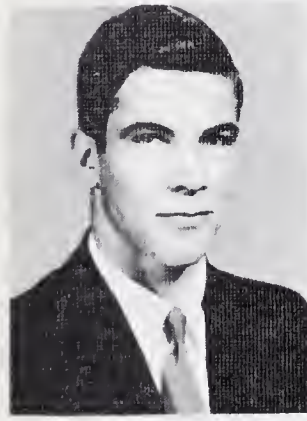
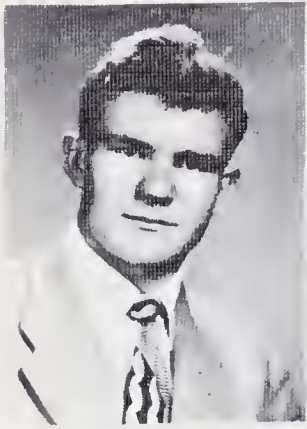


Jimmy Brewer



Dorothy Bryant

JUNIORS



Norman Bullard

Lear Butcher

Leon Chappell

Margaret Charles

Bobby Cheek

Lorenza Clinard

Wilburn Crater

Jimmy Craver

Nancy Craver

Walter Craver

Nanette Creasy

Frances Crotts

Billie Sue Cumby

Dallas Cundiff

Carl Davis

JUNIORS

Herbert Doty

Frank Miller Ellis

Charles Homer Flora

Jimmy Furches

Maxine Harper

James Larry Hart

Betty Jean Heath

Peggy Sue Hogue

Maureen Holton

Mary Elizabeth Johnson

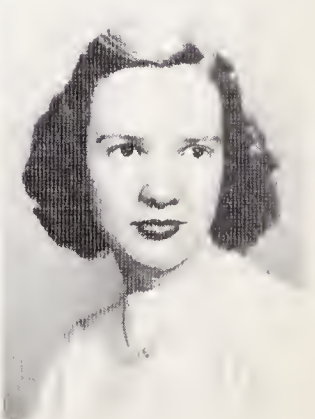
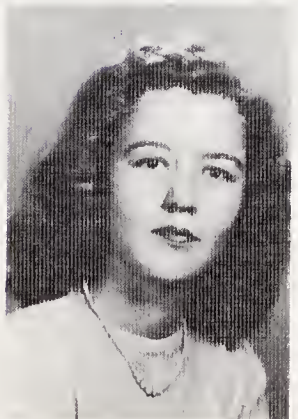
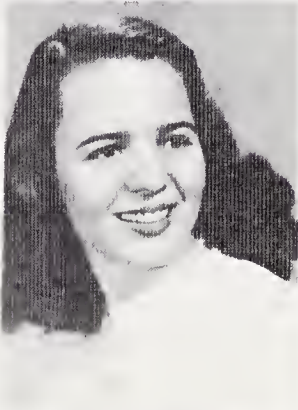
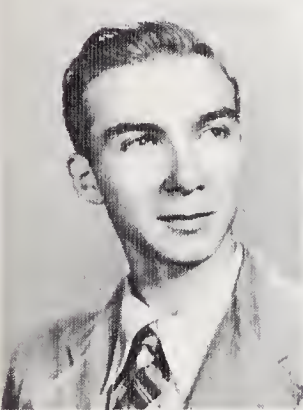
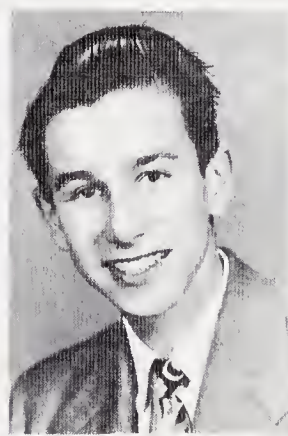
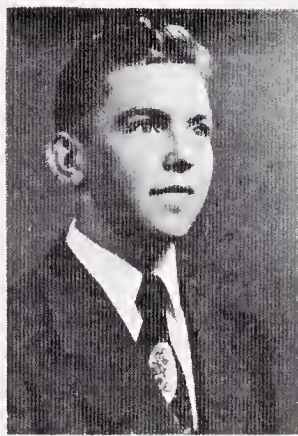
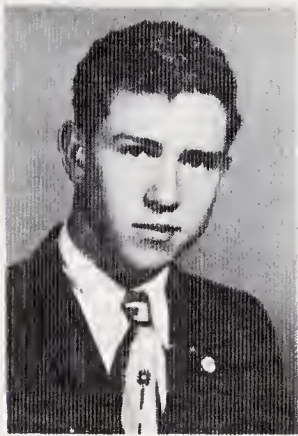
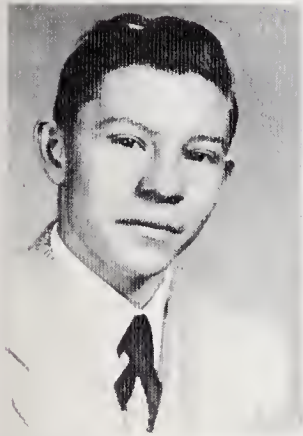
Verna Ketner

Nancy Lowder

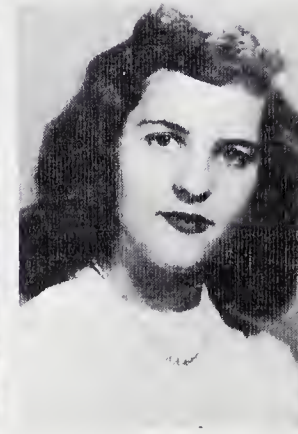
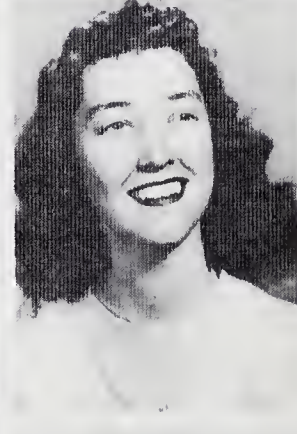
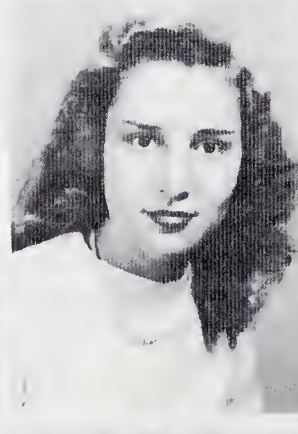
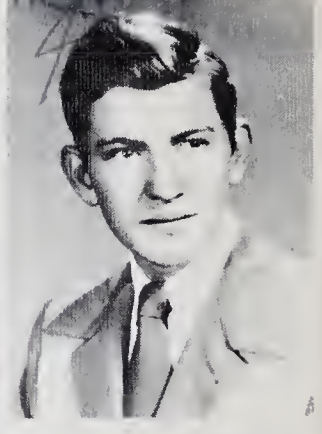
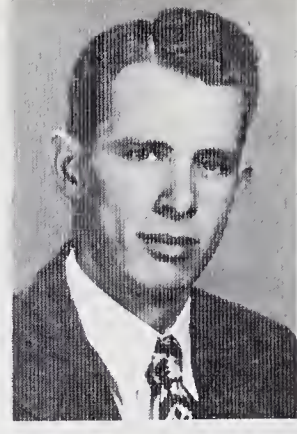
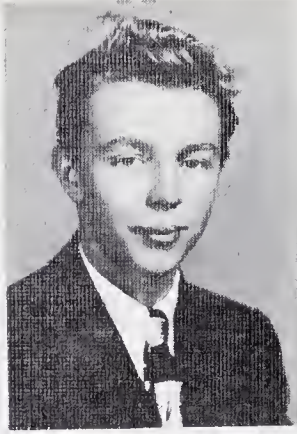
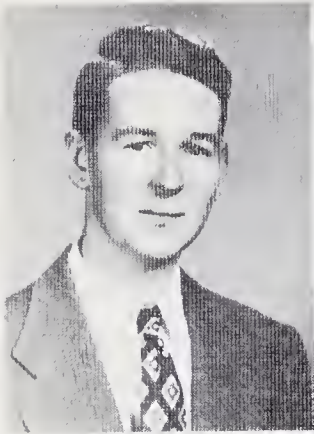
Colleene M. Maynard

Peggy Phelps

Sara Phelps



JUNIORS



Ray Phillips

Kenneth Porter

Raymond Reed

Don Reid

Max Satterfield

Emily Sue Scott

Cletus Shelton

Joyce Anne Smith

Patsy Lorraine Talbert

Patty Thomas

Marie Vaught

Marilyn L. Woosley

Betty Jean Wooten

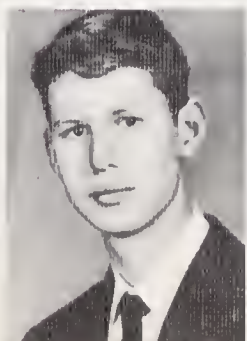


Officers: Jean Bodford, President; Bobby Barney, Treasurer; Donald Williams, Vice-President; Maggie Smith, Secretary.

SOPHOMORES

First Row: Jean Bodford, Marcella Byrd, Oneita Carter, Ola Cockerham, Jane Cook, Barbara Crater.

Second Row: Willa Jean Davis, Ted Dyson, Peggy Foster, Norma Lee Frye, Roger Green, Lavinia Griffith.



SOPHOMORES

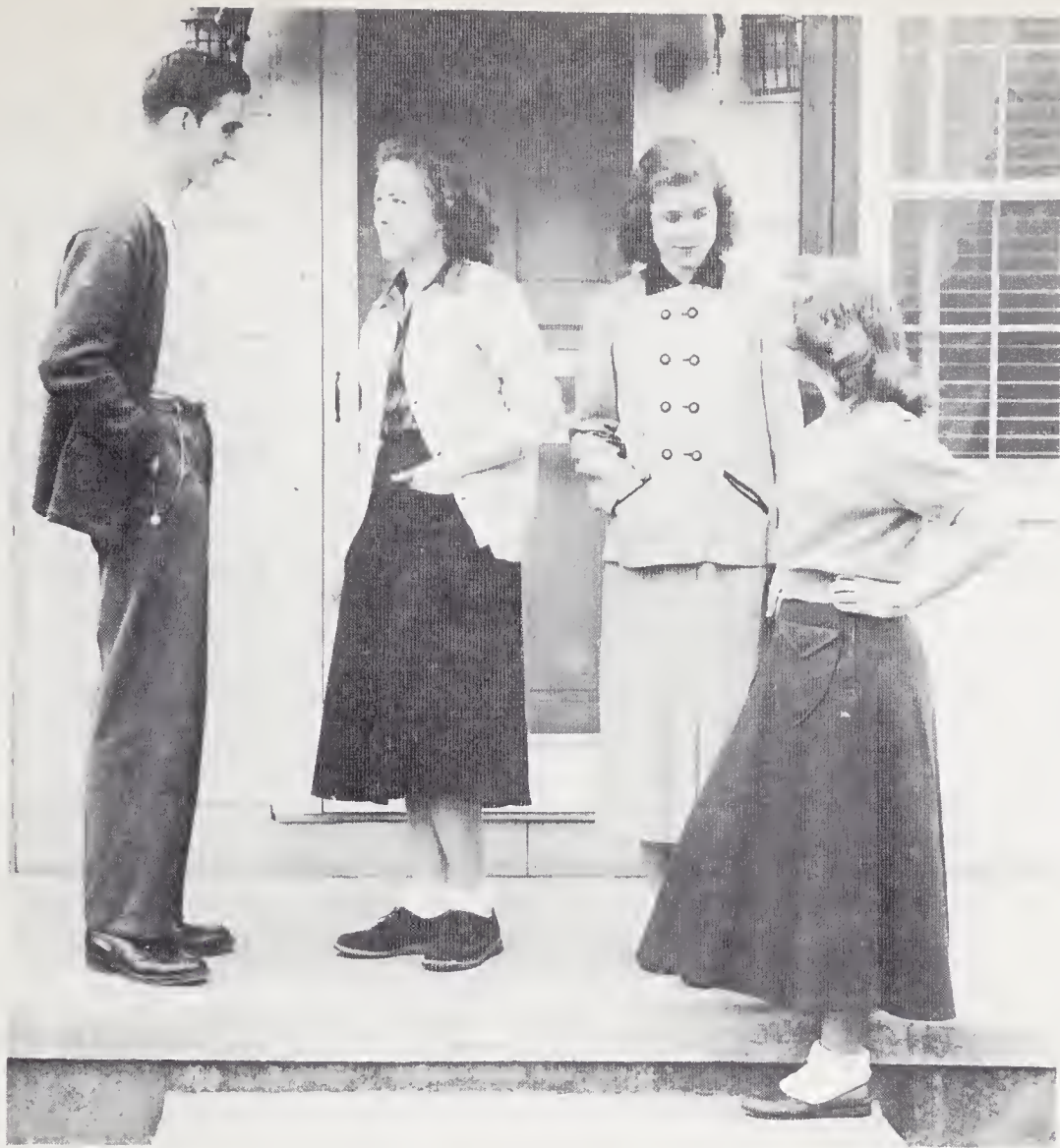


First Row: Worth Griffith, Betty Higgins, Nancy Howard, Marilyn Johnson, Buddy Jones, Max Kimel.

Second Row: Bill Long, Jo Ann Nelson, Mae Phelps, Jean Pike, Nancy Quinn, Peggy Rights.

Third Row: Alma Shumatz, Margie Smith, Fay Spaugh, Delores Sprinkle, Jimmy Stewart, Betty Todd.

Fourth Row: Wilma Todd, Donald Williams, Oliver Woodford, Billy Woosley.



*Officers, Section B: Bill Thomas, Jr., President; Peggy Dunn, Secretary.
Officers, Section M: Lena Mas Lewis, President; Peggy Shore, Secretary.
Vice Presidents: Marlene Scott, Jack Cumby.*

FRESHMEN

*First Row: Cornelia Allen, David Allen, Emily Atwood, Dorothy Beckner, Gray Beckner, Jane Brewer, Lowell Carter.
Second Row: Earl Church, Mary Church, Richard Clinard, Emma Davis, Shirley Duncan, Peggy Dunn, Jo Ann Essex.*



FRESHMEN



First Row: Jewell Foster, Leslie Frye, Bobby Wayne Gabard, Carolyn Hart, Betty Sue Harpe, Joanne Hayes, Barbara Jean Hauser.

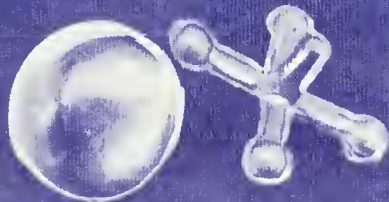
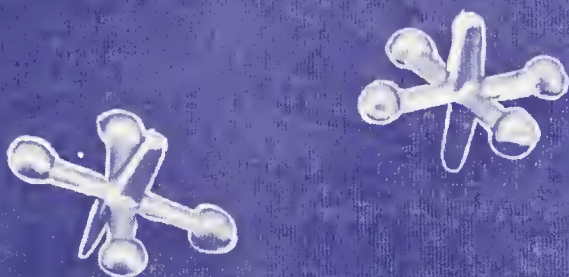
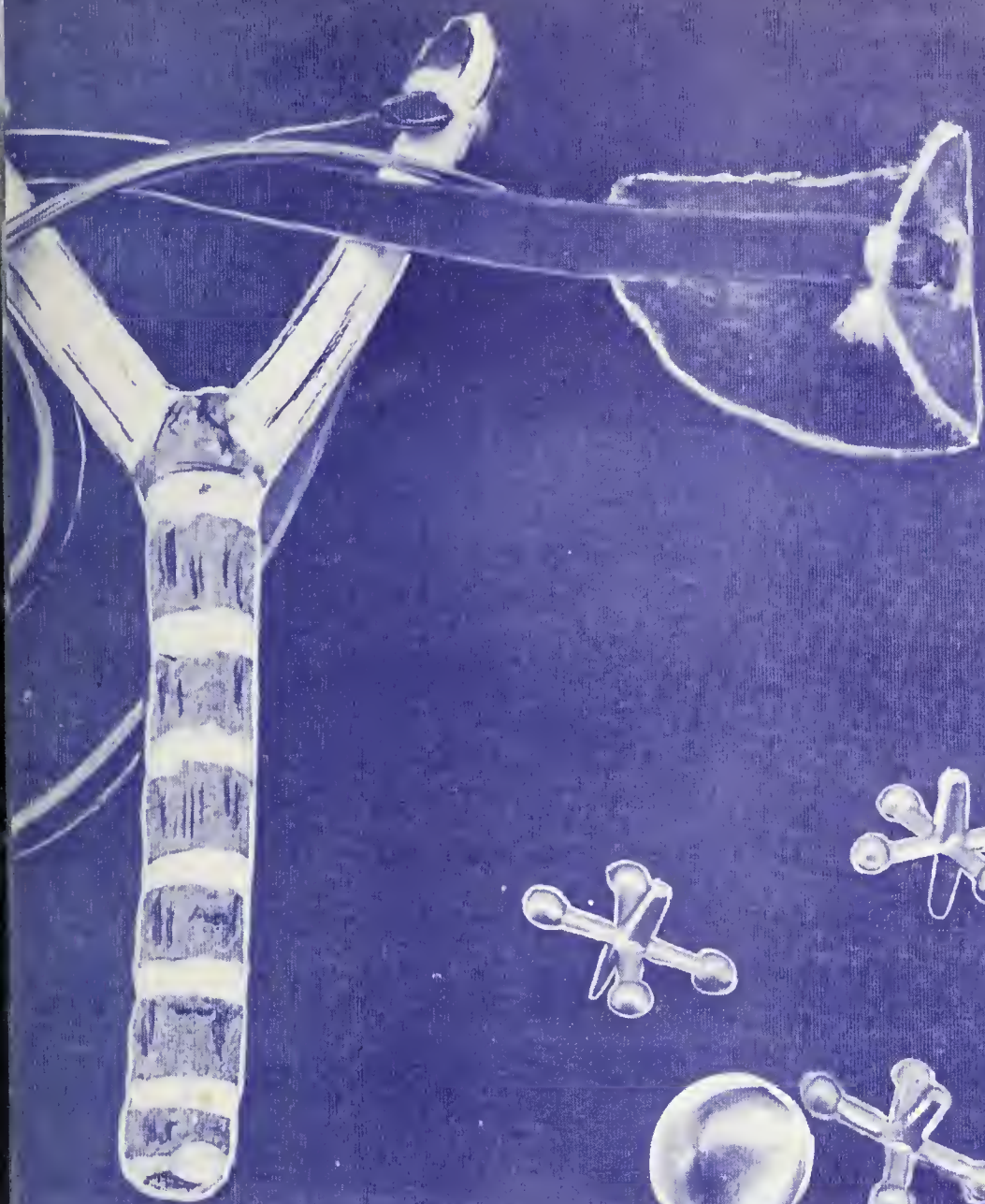
Second Row: Bonnie Hire, Gay Holton, Barbara Howard, Robert Ray Hutchins, Donna Jane Jones, Norma Jones, Robert Kiger.

Third Row: Lena Mae Lewis, Joan May, Bobby Miller, Tommy Miller, Patsy Parks, Peggy Pople, Delano Roberts.

Fourth Row: Bobby Russell, Marlene Scott, Peggy Ann Shore, Tony Sides, Dora Lee Smith, Loyd Spaugh, Bill Thomas.

Fifth Row: Betty Lou Thomas, Joanne Todd, Frances Wooten, Martha Jean Worrell.

ELEMENTARY





ELEMENTARY FACULTY

First Row, seated: Mrs. Grace T. McBrayer, Miss Peggy Gibson, Mrs. Flossie B. Cook, Miss Barbara Speas, Mrs. Ruth B. Poindexter, Miss Margarette A. Hayes, Miss Anne Wheless, Miss Edoth Noble.

Second Row: Miss Lois Coble, Mrs. Nora W. Watkins, Mrs. Harriet S. Moody, Mr. Jack Smith, Mrs. Gertrude S. Crotts, Mr. L. Billy Pope, Mrs. Frances S. Davis, Miss Anna Lena Cooper, Mrs. Sarah T. Morton, Mrs. Irene B. Lamm.

Ann, it has been a pleasure to have you in my classes this year. I do wish I could keep you, but you wouldn't like that. My very best wishes for success and happiness during your high school years.

Edoth Noble

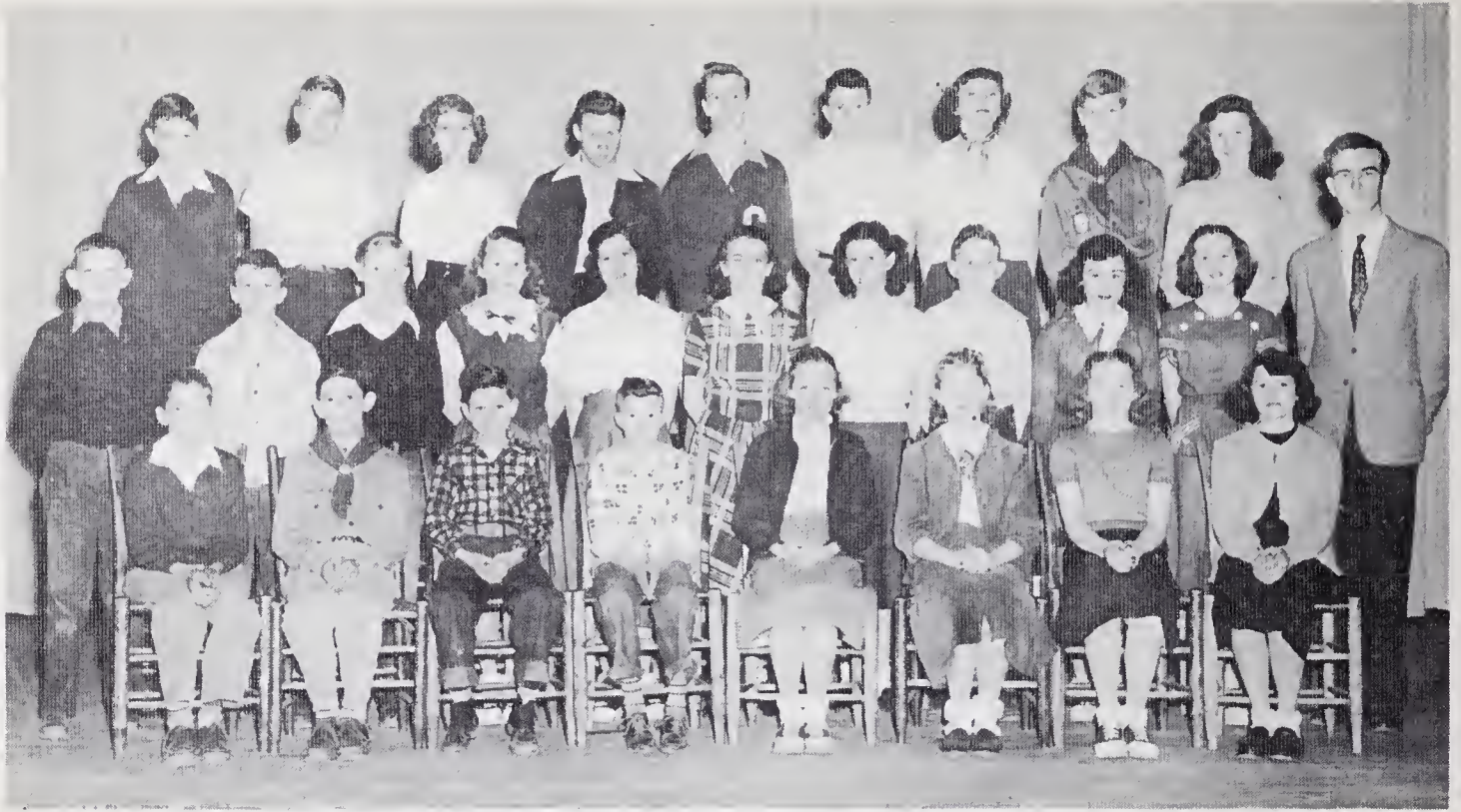


First Row: Betty Carolyn Scott, Stanley Dunn, Roy Wrights, Dean Matlock, William Creasy, Frank Beckner, Peggy Todd, Mary Charles. *Second Row:* Mrs. Crotts, Carolyn Kimel, Patsy Hendrix, Betty Rose Hayes, Bobby Keaton, Floyd Sides, William Ellis, Barbara Hunter, Maxine Setliff, Ina Grace Rattz, Sammy Smith. *Third Row:* Carolyn Miller, Terry Tesh, Shirley Poindexter, Walter Franklin, Garcie McCall, Wilson Wise, Faye Foster, Richard Boner, Joe Bullins.

EIGHTH GRADE



First Row: Jay Caudle, Ray Veach, Jerry Peoples, Bobby Cornwall, Gilbert Brandon, Sam Easily, Jimmy Knight, Clyde Hendrix. *Second Row:* Ellen Dennis, Ruth Stone, Martha Wishon, Joyce Church, Marvin Harpe, Dean Flora, Betty Reed, Harry Davis, Diane Sheek, Miss Noble. *Third Row:* Bill Beashures, Doris Pople, Nancy Moody, Pansy Sloan, Ann Williamson, Frances Beauchamp, Jackie Matlock.



First Row: Vance Hartley, Mickey Cumby, Buddy Kimel, Ralph Sides, Arlene Lutz, Jane Vaught, Maxine Flora, Annette Crater. Second Row: Charles Payne, Mike Parks, Douglas Brewer, Libby Bullard, Peggy Bingham, Ann Ashley, Colleen Peoples, Wayne Ellingham, Patty Stewart, Geraldine Scotts, L. B. Pope. Third Row: Dean Howard, Lee Weisner, Margaret Church, Marvin Ridings, Ernest Griffith, Herbert Tesh, Louise Harris, Joe Goodman, Shirley Craver.

SEVENTH GRADE



First Row: Shirley Wooten, Wilma Jones, Douglas Payne, Norma Vogler, Billie Brewer, Jimmy Smith, Alton Clinard, Donald Bodford. Second Row: Mr. Smith, Moody Bowers, Shirley Flynn, John Parks, Harvey Davis, Nancy Wrights, Joe Medford, William Snyder, Murrianne Linker, Jean Saunders, Jeanette Quinn, Tommy Isley. Third Row: Ted Steward, Ada Lou Boyer, Bessie Beauchamp, Jane Lowder, Ray Doty.



ELEMENTARY CHEERLEADERS

Shirley Flynn, Shirley Wooten, Vance Hartley, Murrianne Linker, Peggy Bingham.



ELEMENTARY STUDENT COUNCIL

Bottom Row: Joyce Tesh, Edward Brewer, Syble Todd, Dorris Lawson.

Second Row: Wilma Jones, Mrs. Poindexter, Faculty Advisor; Billie Brewer, Libby Bul-
lard.

Top Row: Patsy Brandon, Bill Brewer, James Martin, Joe Comby, Rebecca Pickett, Patsy
Woosley, Joel Steggal, Lynn Harper.

ELEMENTARY BASKETBALL TEAMS



Front Row: Ann Williamson, Betty Reid, Barbara Hunter, Carol Tise, Louise Harris, Shirley Craver, Jane Vaught, Jackie Matlock, Nancy Moody. *Back Row:* Betty Scott, Bessie Beauchamp, Dianne Sheek, Colleen Peoples, Coach Smith, Carell Jean Brown, Jane Lowder, Carolyn Kimel, Peggy Todd.



Front Row: William Creasy, Donald Bodford, Wilson Wise, Joe Bullins, Douglas Payne. *Second Row:* George Ed Wilson, Harry Caudle, Wiley Tuttle, Hurbert Tesh, Coach Jack Smith, Dewitt Falls, Terry Tesh, Harold Dean Howard, William Snyder.

FEATURES



SUPERLATIVES



Most Popular
Jim Hall
Ellen Cooper

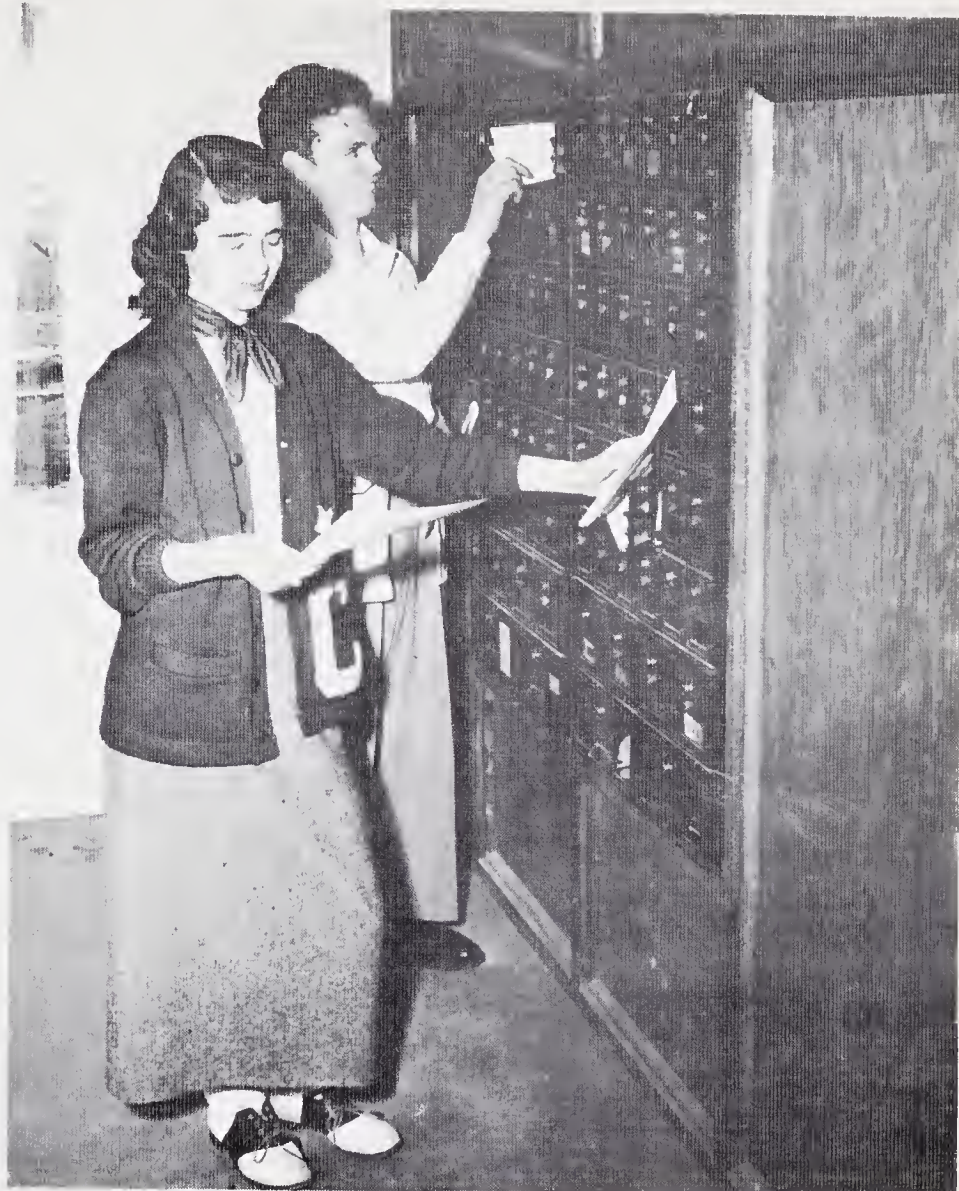


Wittiest
Tommy Brewer
Jackie Reed

SUPERLATIVES

Friendliest

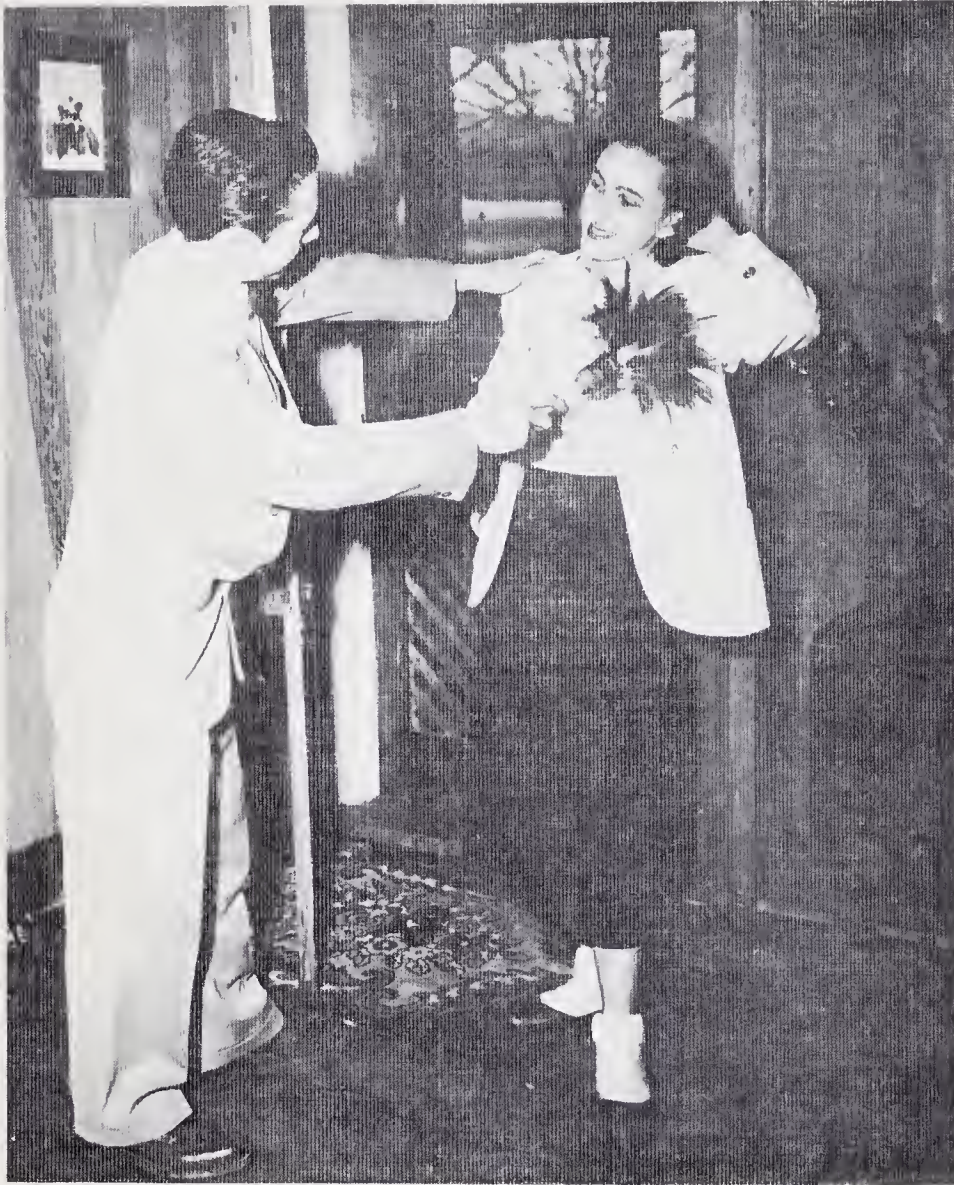
Bobby Nelson
Bobbie Todd



Most Talented Perry Grant Faye Teague



SUPERLATIVES



Neatest
Bill Barney
Ruth Beck



Most Dependable
Joe Lowder
Norma Jane Cumby

SUPERLATIVES

Most Likely To Succeed
H. E. May, Jr.
Jennie Essex



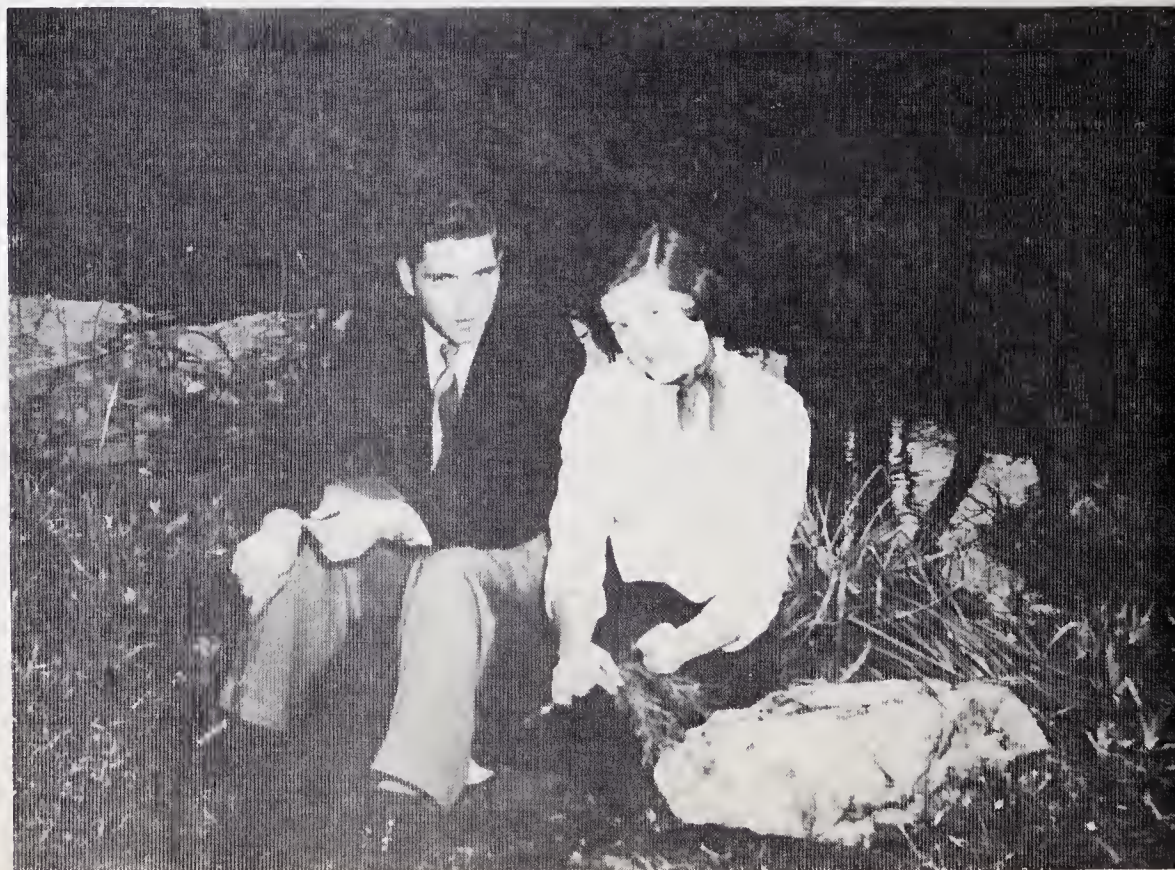
Biggest Flirt
Pete Morefield
Jackie Hooker



SUPERLATIVES



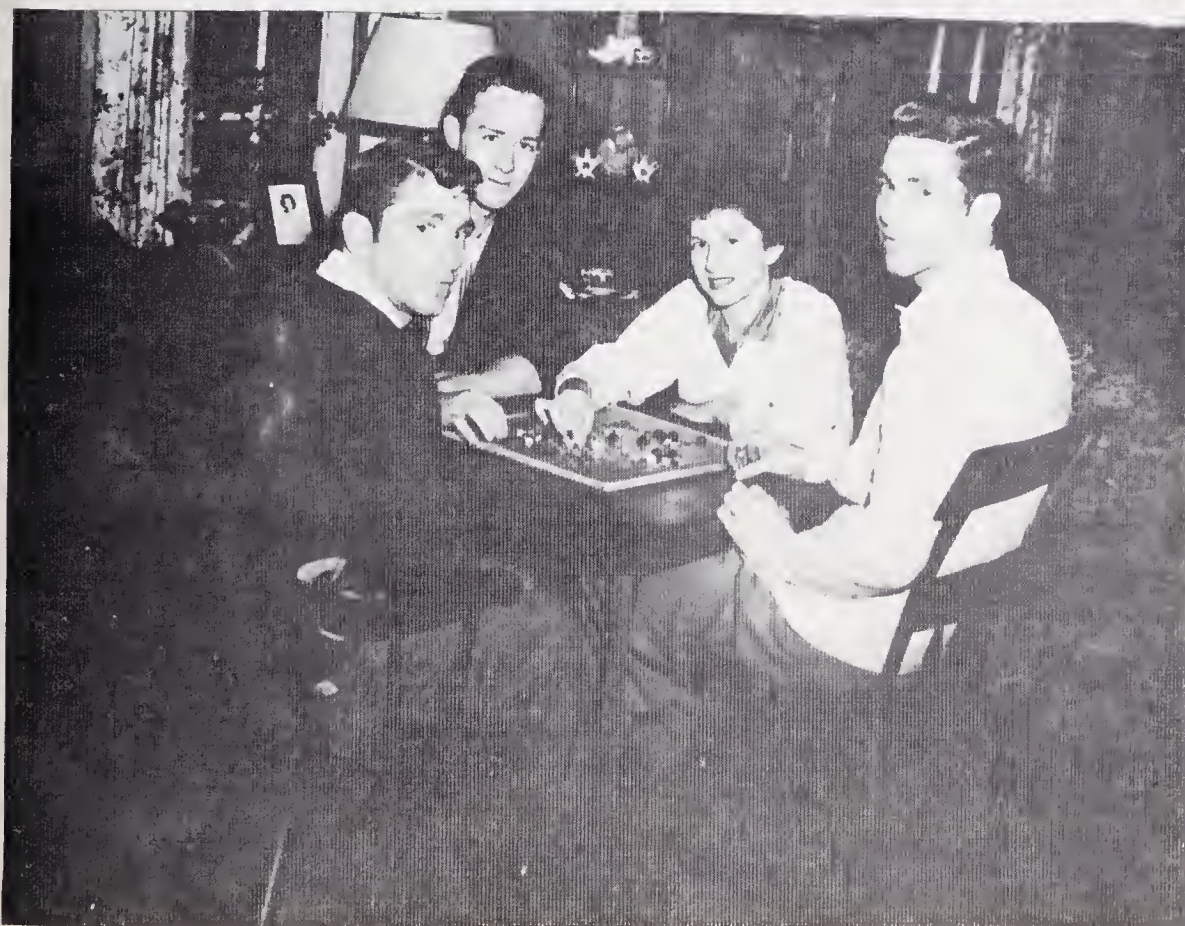
Most Studious
Donald Tise
Ruby Porter



Best Looking
Raymond Vogler
Ellen Cooper

SUPERLATIVES

Best All-Around
Joe Lowder
Ruth Beck



Most Athletic
Richard Vogler
Donald Craver
Jackie Reed
Raymond Vogler

FAREWELL TO CLEMMONS HI

The time is drawing nigh
That we must say goodbye
To each and every friend,
And everything within

The Walls of Clemmons Hi!

Our teachers, left behind,
We Seniors think are fine.
We know we'll miss each face
As others take our place

In dear old Clemmons Hi!

We open wide the door
To gain success galore;
So we are leaving you
Both sad and happy, too.

Farewell to Clemmons Hi!



CLASS DAY OFFICERS

Front Row: Bill Barney, Jennie Essex, Jackie Hooker, Faye Teague, Jackie Reed, Raymond Vogler, Ruth Beck, Ruby Porter, Donald Tise, Joe Lowder, Tommy Brewer, Ellen Cooper.

BABY SNAPS



1. Jackie H.; 2. Pete; 3. Ruth; 4. Bobby N.; 5. Bobbie T.; 6. P. H.; 7. Bill T.; 8. Hazel; 9. Joe; 10. Ruby; 11. Donald T.; 12. Robert; 13. Jennie; 14. Jim A.; 15. Norma Jane; 16. Helen; 17. David; 18. Rusty; 19. Marie; 20. Barney; 21. Ellen; 22. Richard & Raymond.

LAST WILL AND TESTAMENT

STATE OF NORTH CAROLINA COUNTY OF FORSYTH TOWNSHIP OF CLEMMONS CLEMMONS HIGH SCHOOL

Know ye by these presents that we the class of 1950 of Clemmons High School of Clemmons, North Carolina, do hereby make this our last will and testament.

ARTICLE I

Section 1. We, the Senior Class leave to Clemmons High School and to the Forsyth County School System, our appreciation for our educational opportunities that they have given.

Section 2. We, the Senior Class, do will and bequeath our senior privileges and responsibilities to the rising Senior Class.

ARTICLE II

Section 1. To our principal, Mr. Potts, best wishes for the coming years and our thanks for doing so much for our class and the school.

Section 2. To the faculty, our appreciation for their never-failing efforts to help us.

Section 3. To our parents we leave our many thanks for the opportunities and sacrifices they gave to us these twelve years.

ARTICLE III

Section 1. The Senior Class leaves to Mrs. Hampton and her helpers our gratitude for the good meals they prepared.

Section 2. We, the Seniors leave to the Sophomore class our ability to learn and participate in athletics.

Section 3. We, the Seniors leave to the incoming Freshmen some of the radiant beams of our faces, so there may be some brightness in the school in the future.

ARTICLE IV

Sec. 1. Jim Alspaugh in his will leaves his bus to Wilburn Crater.

Sec. 2. Bill Barney with his neat appearance to Jim Craver and Jim Brewer he doth will.

Sec. 3. Ruth Beck leaves all her intelligence to Jim Furches.

Sec. 4. Tommy Brewer wills himself to Betty Jean Wooten and even his curls.

Sec. 5. Thurmond Chappell wills his love and ability to play baseball to Norman Bullard.

Sec. 6. Ellen Cooper wills her popularity to Marie Vaught.

Sec. 7. Donald "Rusty" Craver wills his cute freckles to Charles Flora.

Sec. 8. Norma Jane Cumby bequeaths her quiet and gentle ways to Dorothy Bryant and Frances Crotts.

Sec. 9. Jennie Essex wills to Marilyn Woosley and Raymond Reed her position on the annual staff.

Sec. 10. Darrell Everhart with regret wills his sleeping pills to Carl Davis.

Sec. 11. P. H. Grant to Don Ried and Nancy Craver wills his printing press.

Sec. 12. Jim Hall with ability to get along with teachers, wills this to Ray Phillips and Frank Ellis.

Sec. 13. Bill Hayes doth leave his hair curlers to Bill Brewer and Bud Porter.

Sec. 14. Helen Hayes doth leave her substitute teaching to Patsy Talbert and Billie Sue Cumby.

Sec. 15. Jack Holder leaves his new Chevie to Larry Hart and Teddy Lowe. (Take good care of it boys!)

Sec. 16. Jackie Hooker willingly leaves her cheerleading ability to Joyce Smith.

Sec. 17. Joe Lowder with his dependability and quiet ways does leave this to Sara Phelps and Margaret Charles.

Sec. 18. H. E. May wills his position in the Student Council to Mary Johnson and Dallas Cundiff.

Sec. 19. Robert McIntyre leaves with Leon Chappell and Maureen Holton his job as cashier.

Sec. 20. Pete Morefield to Walter Craver and Nancy Boner doth bequeath his flirty ways.

Sec. 21. Bobby Nelson wills his outstanding work as a F. F. A. member to Thurmond Templeton.

Sec. 22. Ferald Grey Pilcher doth leave to Colleen Maynard her ability to drive a car.

Sec. 23. Ruby Porter wills to Patty Thomas her sweet smiles.

Sec. 24. David Reed leaves with Verna Ketner his undying love.

Sec. 25. Jackie Ried with much ability to play basketball leaves all this to Peggy Phelps and Nancy Lowder.

Sec. 26. Hazel Robertson with her ability to sew leaves this to Betty Jean Heath.

Sec. 27. Marie Spaugh wills her typewriter to Maxine Harper.

Sec. 28. Faye Teague with her talent does hereby leave it to Peggy Sue Hogue.

Sec. 29. Clarence Tedder wills his long lanky body to Herbert Doty and Johnnie Sloan.

Sec. 30. Bill Tesh bequeaths his ability to stay out of school to Max Satterfield.

Sec. 31. Donald Tise leaves to Sue Scott and Lorenza Clinard his studious ways.

Sec. 32. Bobbie Todd wills her place as editor of the Chatterbox to Lear Butcher.

Sec. 33. Raymond Vogler wills his athlecal ways to Nanette Creasy and Bobby Cheek.

Sec. 34. Richard Vogler wills his physique to Cletus Shelton.

MARSHALS

Betty Jean Heath
Nancy Lowder
Maxine Harper

Dallas Cundiff
Bobby Cheek
Jimmy Brewer



MASCOTS

Steven Dunn
Marlyn Lowder

CLASS PROPHECY

One cold December day as I sat by the fire, my thoughts turned to Clemmons School and my classmates who graduated with me back in 1950. Here we find Bobbie Todd and Jackie Hooker taking the place of the Cackle Sisters on the radio program "Hillbilly Jamboree." We also have some professionals—yes, you guessed it, professional ball players. Donald Craver is playing second base for the Boston Red Sox and Pete Morefield is pitching for the St. Louis Cardinals.

We also find two All-Southern Football players, Richard and Raymond Vogler. They have made All-Southern for two years now, playing for Southern Methodist. Seems as though someone has filled Doak Walker's place quite well.

Joe Lowder, after his thrilling days in business law class has become a lawyer and is running for the U. S. Senate.

Ruby Porter is quite a hit in a Broadway Musical as a singer and dancer. Jackie Reed is with a traveling road show and making use of her talents in Negro Minstrels.

And as my thoughts turn to Clarence Tedder, I see him in California judging beauty contests, and by the way, he's wearing glasses—Understand?

Donald Tise and Robert McIntyre are Navy Lieutenants. Both are getting paid for sailing to Hawaii, imagine anyone being paid to go there?

Marie Spaugh is spending most of her time in the kitchen and tending to her son, Clint, Jr.

Ferald Pilcher and Bobby Nelson are running a dairy farm and holding cattle shows in Kentucky.

Faye Teague has reached New York and will appear in her first play. She is to play the leading role with Thurmond Chappell, I never dreamed that he would be an actor. did you?

Ah, I just remembered my new Chevrolet, which I bought from the Clemmons Chevrolet dealer, Jack Holder.

From what I hear, Tommy Brewer is giving Fouty Flock a lot of competition in the stock car racing business, good luck Tom!

H. E. May finally accepted the appointment to Annapolis—graduated with honors, and is holding the position of Lt. Commander aboard the "Missouri."

Darrell Everhart, Bill Hayes, and Bill Barney have opened an ultra modern pool room and are all set to make their fortunes.

Hazel Robertson and Norma Jane Cumby are continuing their 4-H work as instructors. At present they are attending a convention in Raleigh.

Ellen Cooper was married in August after school was out and is residing in Charlottesville, Va.

And, oh yes, there's David Reed who has taken over as Agriculture teacher with Billy Tesh assisting him.

Helen Hayes seems to be doing all right as a typist at Pilot Life Insurance Co.

It seems Jim Alspaugh is making headway in the business world as assistant manager of the Lewisville Philco Appliance Store.

Apparently Ruth Beck was interested in Miss McHan's dress designing classes. She has become the fashion designer for Sax's Fifth Avenue.

P. H. Grant has lived up to the title the class gave him as Most Talented. He has continued his interest in aviation and is chief flight instructor at Pensacola.

All these memories have been pleasant but I guess I'll drop around to Hall's Super Drug Store, owned and operated by our old friend and classmate, Jim Hall.

Jennie Essex
Donald Tise

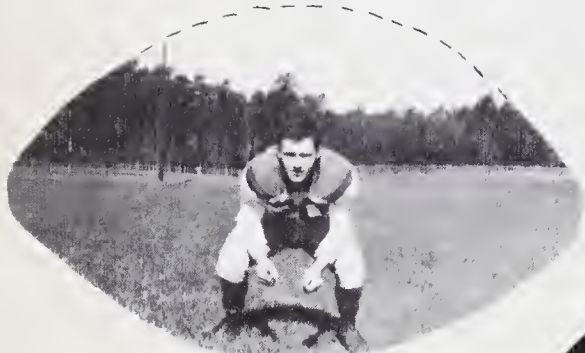
ATHLETICS



CLEMMONS WINS WESTERN CROWN AGAIN

DROPS STATE TITLE TO SOUTHERN PINES

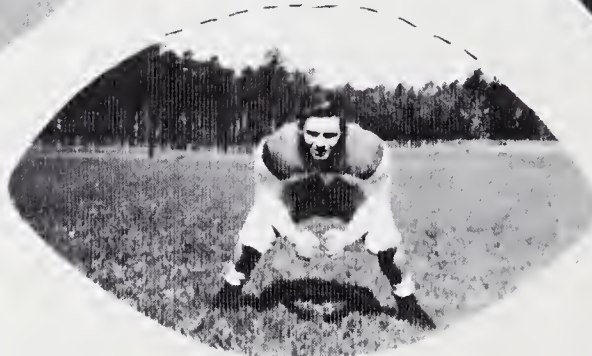
Rusty Craver
Hon. Mention



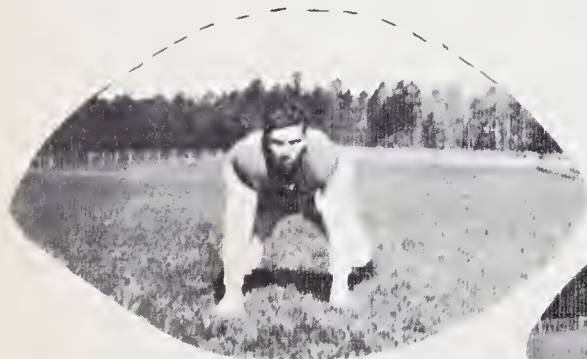
Richard Vogler
All State



Pete Morefield



Raymond Vogler
All State



Jim Hall
Hon. Mention



Joe Lowder
All State

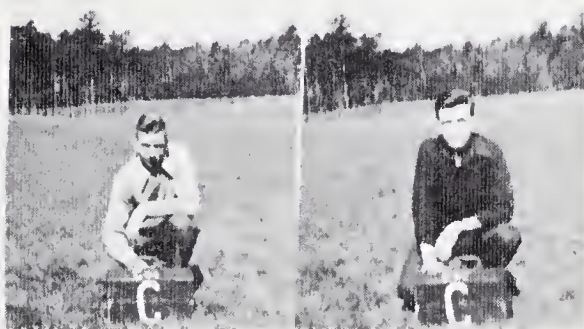
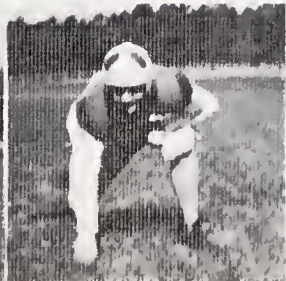




FOOTBALL TEAM

Raymond Vogler
Max Kimel
Howard Hickman
Lorenza Clinard
Herbert Doty
Joe Butcher
Teddy Lowe
Bobby Miller
Delano Roberts
Lowell Carter
Max Satterfield

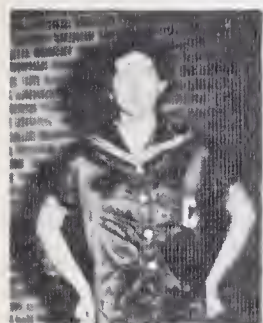
Rusty Craver
Richard Vogler
Joe Lowder
Pete Morefield
Jim Hall
Don Reid
Johnie Sloan
Bobby Cheek
Frank Ellis
Jim Furches
Robert Kiger



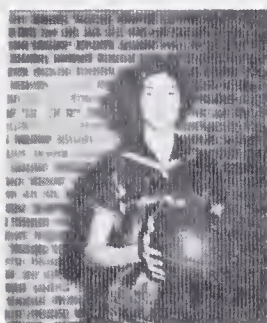
Oliver Woodford Jimmy Craver
Managers



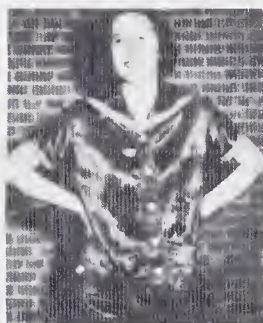
SEMI-FINAL CONTESTANTS



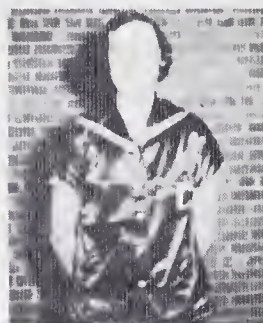
Jackie Reid



Nanette Creasy



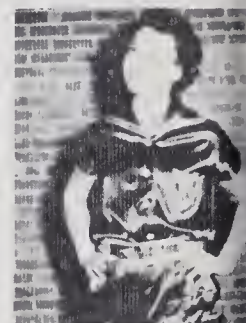
Ellen Cooper
Co-Captains



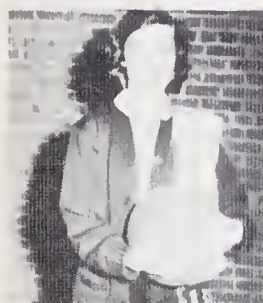
Peggy Phelps
Co-Captains



Jean Bodford



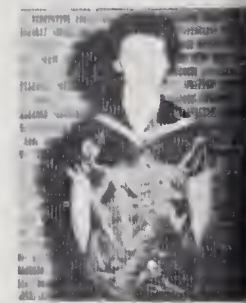
Mary Johnson



Patty Thomas, Mgr.



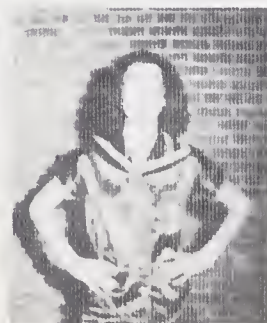
Coach Cook in Action



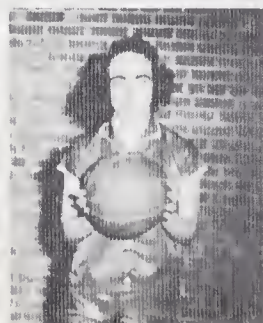
Colleen Maynard



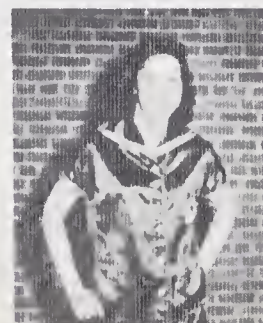
Peggy Rights



Nancy Lowder



Margie Smith



Jennie Essex



Betty Todd



Nancy Quinn



FORSYTH COUNTY CHAMPS



Donald Craver



Raymond Vogler
Co-Captain



Richard Vogler



Joe Lowder
Co-Captain



Clarence Tedder



Coach Giles



Pete Morefield



Bobby Cheek



Jimmy Furches



Jim Brewer



Thurmond Templeton



Herbert Doty

1949 BASEBALL CHAMPS



Front Row: Mr. George T. Moody, Coach; Jim Hall, Richard Vogler, Bobby Cheek, Jim Brewer, Don Reid, Raymond Vogler.
Second Row: Thurmond Chappell, Frank Ellis, Larry Hart, Max Kimel, Lorenza Clinard, Alphonzo Hendrix, Joe Butcher, Bill Thomas, Clarence Tedder.
Third Row: Jim Furches, Jimmy Stewart, Howard Hickman, Pete Morefield, Bobby Russell, Teddy Lowe, Bobby Miller.

BASEBALL

Raymond Vogler



Thurmond Chappell



Jim Hall



Jim Furches



Don Reid



hard Vogler



Max Kimel



Pete Morefield



Jim Brewer



Bobby Cheek



Coach Moody



Clarence Tedder





SOFTBALL PLAYERS

Front Row: Coach Cook, Wilma Todd, Oneita Carter, Betty Todd, Gay Holton, Norma Lee Fry, Joanne Todd, Jackie Reed.

Second Row: Peggy Rights, Margie Smith, Jean Bodford, Jennie Essex, Nancy Lowder, Shirley Duncan.

Third Row: Nanette Creasy, Mary Johnson, Hazel Robertson, Peggy Phelps, Jean Pike, Nancy Quinn.





JUNIOR VARSITY GIRLS

First Row: Shirley Duncan, Wilma Todd, Norma Lee Frye, Joan Todd, Patsy Parks, Lena Mae Lewis, Onita Carter, Barbara Howard.

Second Row: Jean Pike, Score Keeper; Norma Jones, Gay Holten, Miss Frances Cook, Coach; Betty Higgins, Jo-Anne Essex, Peggy Shore, Mgr.



FORSYTH JAYVEE CHAMPS

First Row: Donald Williams, Max Kimel, Howard Hickman, Wilson Wise, Alphonzo Hendrix.

Second Row: Joe Butcher, Bill Thomas, Mr. Giles, Coach; Jimmy Stewart, Robert Kiger.



CHEERLEADERS

Billy Woosley, Jackie Hooker, Lear Butcher, Nancy Howard, Marie Vaught, Bobby Russell.



MAJORETTES

Doris Pople, Joan Nelson, Jean World, Betty Higgins, Marilyn Johnson.

STUDYING
COUNCIL



ACTIVITIES





PIANO PUPILS



Mrs. V. R. Woodford
Instructor

Kneeling, left to right: Glenda Wall, Carroll Stegall, Kent Davis, Sybil Todd, Ruby Medford, Wanda Lea Lawson, Maxine Crim, Janet Jones, Marsha Watson, Jean Davis.

Seated, second row: A. C. Vogler, Peggy Ann Davis, Carolyn Lowder, Nancy Setleff, George Ed Wilson, Wilma Todd, Arlene Lutz, Ruby Hogue, Reva Cook, Jackie Todd, Joel Stegall, Barbara Sprinkle, Rosa Case, Etta Dunn, Ann Gail Lewis.

Third Row: Joyce Craver, Lois Craver, Rebecca Pickett, Dianne Bingham, Doris Pople, Bonnie Hire, Cornelia Allen, Nancy Quinn, Joe Goodman, Maxine Setliff, Glenda Lineback, Judy Ellingham, Jeanette Lineback, Peggy Todd, Janet Lowder.

Fourth Row: Oneita Carter, Patsy Jane Smith, Ann Spainhour, Betty Reed, Peggy Fay Rights, Jane Cook, Shirley Poindexter, Barbara Hunter, Jane Lowder, Jeanette Quinn, Peggy Sue Hogue, Dorothy Bryant, Bessie Beauchamp.



CHORUS

First Row: Marie Vaught, Patty Thomas, Ann Williamson, Betty Reed, Peggy Shore, Carolyn Kimel, Nancy Moody, Joan Nelson, Margaret Charles, Bud Scott, Jackie Matlock, Peggy Todd, Francis Beecham, Tommy Miller.

Second Row: Maxine Setliff, Barbara Howard, Jane Cook, Jewel Foster, Lena Mae Lewis, Ola Bockerham, Cornelia Allen, Barbara Hunter, Martha Wishon, Marcella Byrd, Coleen Maynard, Loyad Spaugl., Dianh Sheet.

Third Row: Miss Speas, Paul Church, Jo Ann Essex, Joan May, Faye Foster, Ted Dyson, Charles Flora, Shirley Pondexter, Billy Woosley, Robert Kiger, Terry Tesh, Betty Higgins, Nancy Quinn, Stanley Quinn.

Fourth Row: Maxine Harper, Jimmy Furches, Oliver Woodford, Donald James, Wilson Wise, Frank Ellis, Ellen Cooper, Kenneth Porter, Raymond Reed, Nancy Craver, Bill Long, Bill Thomas, Mary Church.



Miss Barbara Speas
Director



F. F. A.

First Row: Mr. Crotts, Tommy Gabard, Jerry Koontz, Pete Morefield, Bobby Nelson, Oliver Woodford, Raymond Reid, Herbert Doty, Roy Lee Cornatzer.

Second Row: Billy Hayes, Frank Ellis, Raymond Vogler, Bill Barney, Donald Craver, Richard Vogler, Joe Butcher, Bill Brewer, Max Kimel, Lester Frye, Jack Cumby, Roger Green, Bobby Barney.

Third Row: Daniel Bowers, Jim Alspaugh, Gray Beckner, Cletus Shelton, Donald Tise, Clarence Tedder, Thurmond Chappell, Don Reid, Bill Tesh, David Reed, Tommy Brewer, Elvin Shoaf.

CLEMMONS CHAPTER



F. F. A. OFFICERS

Donald Craver	Reporter
Raymond Vogler	Vice-President
Bobby Nelson	President
Mr. L. O. Crotts	Advisor
Bill Barney	Secretary
Herbert Doty	Watch Dog

FUTURE HOMEMAKERS OF AMERICA



LETTER OF GRATITUDE
from Germany for gifts sent for
World's Christmas Festival for
Friendship.



INITIATION



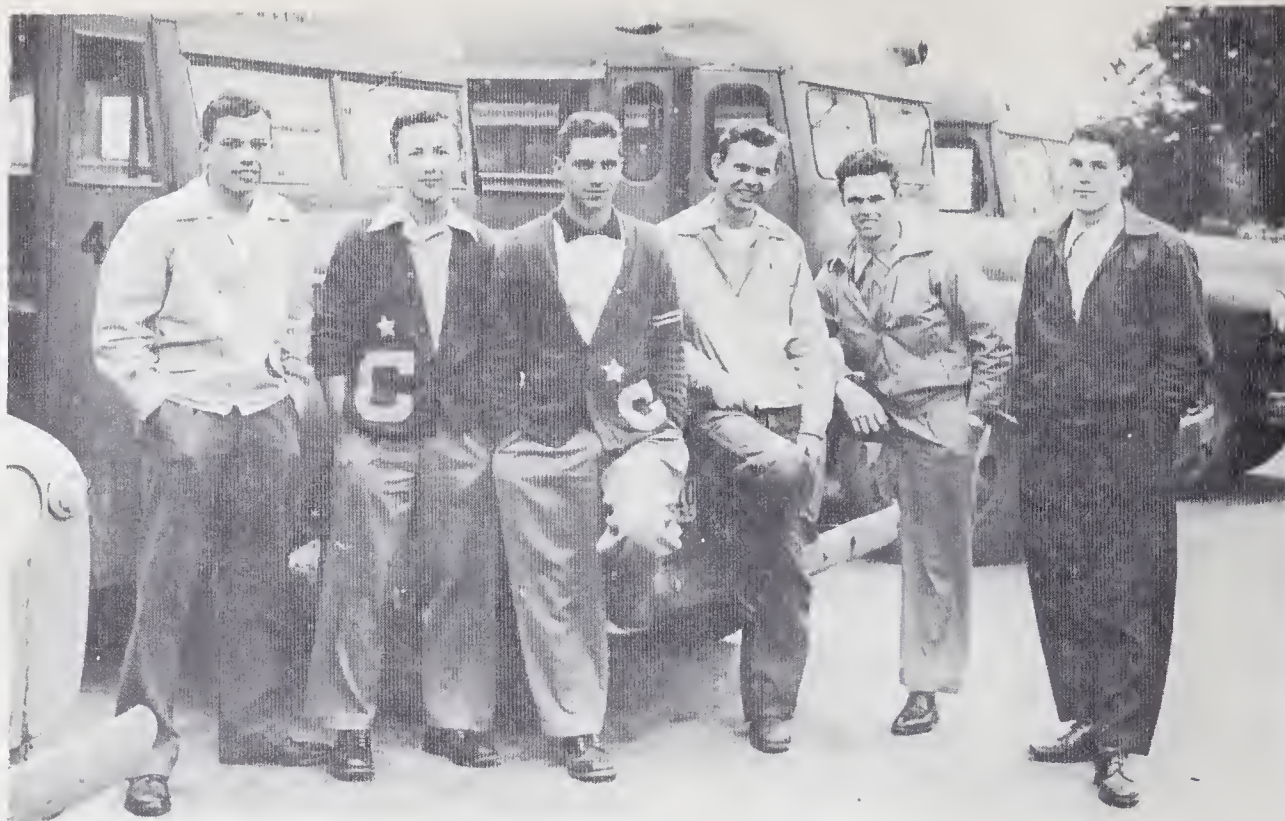
F. H. A., F. F. A., AND KEY CLUB BANQUET



ARRIVING AT DISTRICT RALLY



MOTHER-DAUGHTER CHRISTMAS PARTY



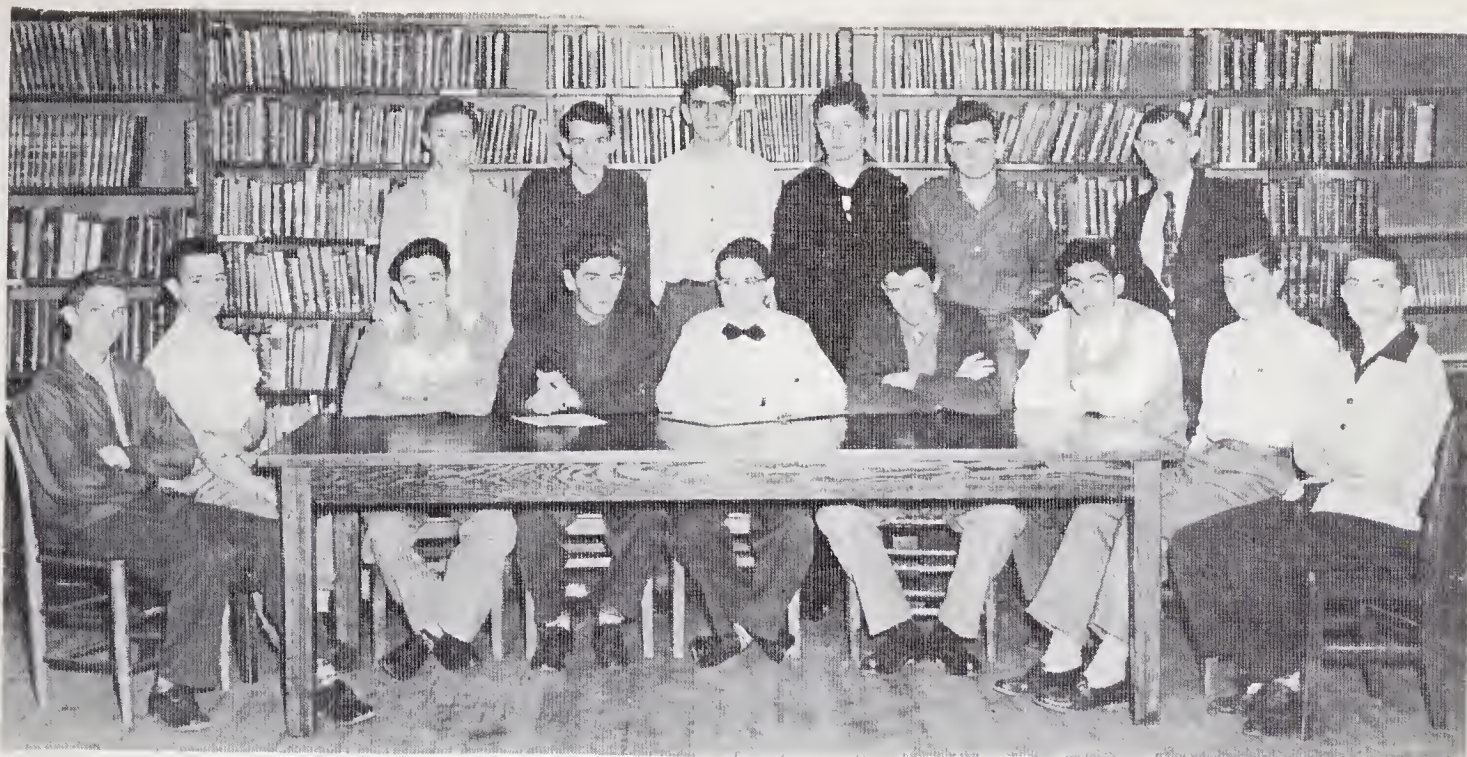
BUS DRIVERS

Jim Alspaugh, Darrell Everhart, Raymond Vogler, Roy Lee Cornatzer, Bobby Nelson, Jow Lowder.



BAND

Jack Holder, Patty Thomas, Nancy Quinn, William Snyder, Emily Atwood, Coleen Maynard, Richard Canter, Jack Cumby, Oliver Woodford, Ruth Green, Barbara Craver, Ann Carol Ellis, T. L. Griffith.



KEY CLUB

Front Row: Oliver Woodford, Bill Barney, Jimmy Furches, Bobby Cheek, Billy Woosley, Clarence Tedder, Howard Hickman, Bill Long, Charles Flora.
Back Row: Dallas Cundiff, Wilburn Crater, Donald Tise, Robert McIntyre, Jimmy Craver, Mr. Moody.



KEY CLUBBERS ATTENDING
CONVENTION AT HOTEL
ROBERT E. LEE



Jimmy Furches giving welcome address at the Carolinas' District Key Club Convention.

Charles Flora giving oratorical address at the Key Club Convention.



CAFETERIA STAFF

The Cafeteria Staff contributes health and happiness to the student body.





LIBRARY CLUB

Front Row: Helen Hayes, Oneita Carter, Dorothy Bryant, Nancy Boner, Emily Atwood, Dorothy Beckner, Hazel Roberson, Peggy Shore, Jane Cook, Joan May, Marilyn Woosley, Patsy Talbert.

Second Row: Patsy Parks, Norma Jones, Frances Crotts, Billie Sue Cumby, Nancy Howard, Betty Jean Wooten, Jo Anne Essex, Barbara Howard, Lena May Lewis.



MRS. CHARLES O. GILES

Our former advisor Mrs. Giles which gave us much inspiration we, the Library Club dedicate our page in the annual.



OFFICERS

Jane Cook	President
Joan May	Vice-President
Helen Hayes	Secretary
Jo Anne Essex	Asst. Sec.
Marilyn Woosley	Treasurer



FUN DURING TWIRP SEASON



S. S. SLOWBOAT, MAY 14, 1949



FIRST AIDERS

Peggy Dunn, Jo Anne Essex, Jean Pike, Ola Cockerham, Jo-Ann Nelson, Faye Spaugh, Mae Phelps, Joan May, Ruth Bick, Lena Mae Lewis.



BOY'S HOME ECONOMICS CLUB

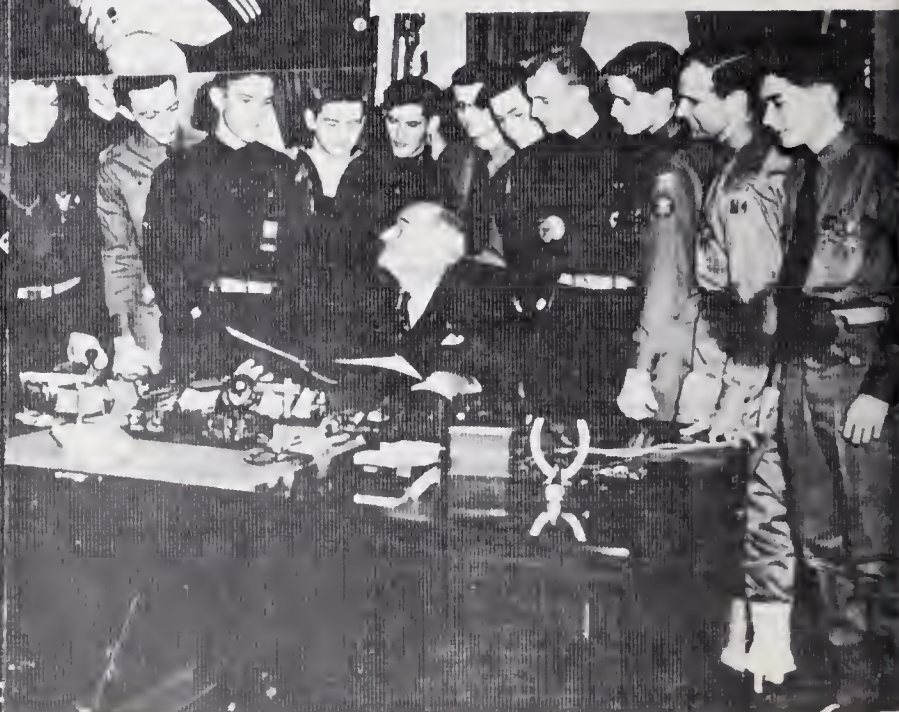
First Row: Richard Vogler, Roy Lee Cornatzer, Jim Alspaugh, Pete Morefield, Herbert Doty, Raymond Vogler.

Second Row: Frank Ellis, Bobby Nelson, Donald Craver, Tommy Brewer, Don Reid, Howard Hickman, Bill Long, Clarence Tedder, Bill Tesh, Joe Butcher, Miss Mchan, David Reed, Cletus Shelton.

MR. MAY GOES TO WASHINGTON



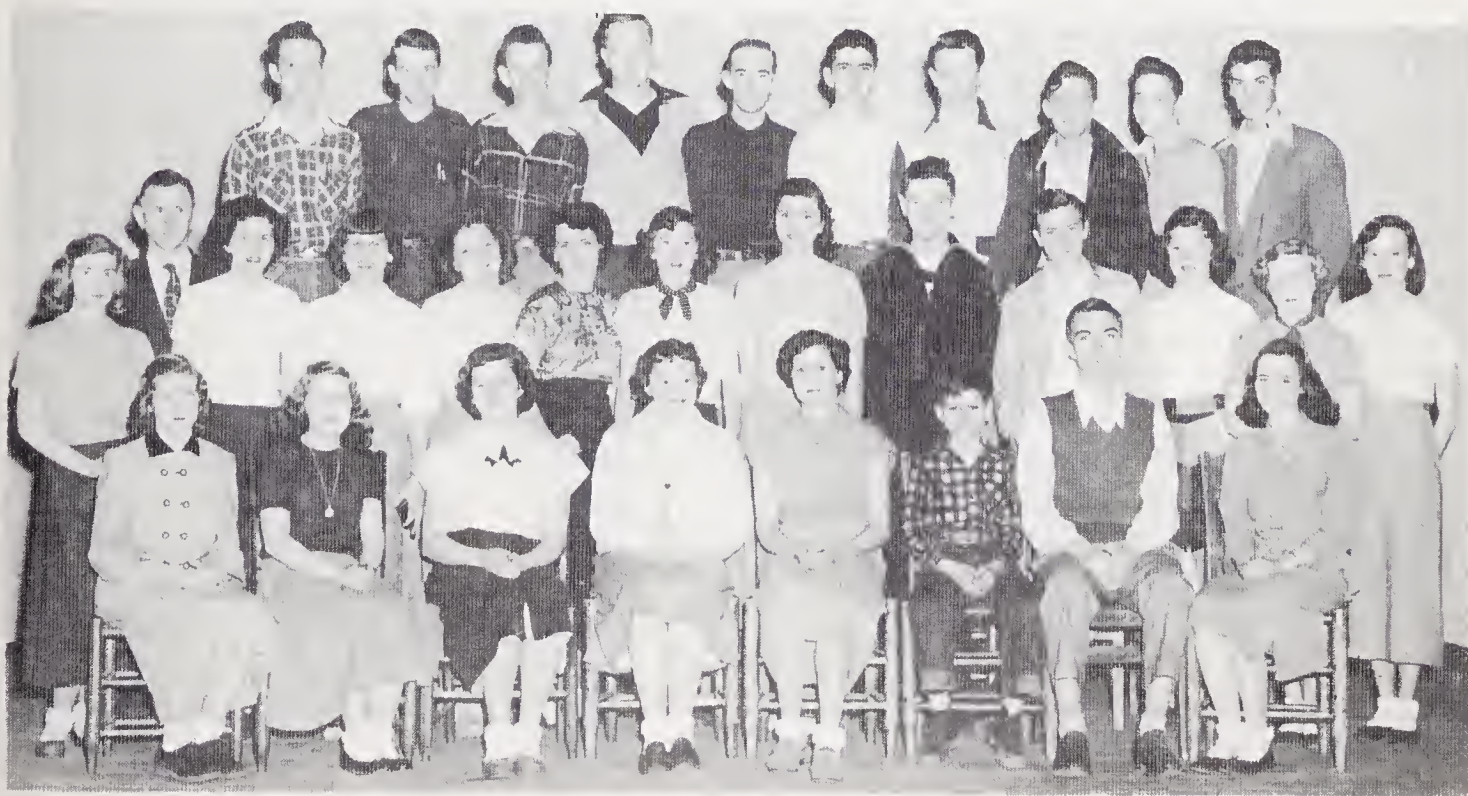
H. E., a Senior Sea Scout, was chosen to represent Region 6 in the Scout's "Report to the President" and at the 40th anniversary celebration of scouting.





SAFETY PATROL

Front Row: Sammy Smith, Lear Butcher, Jennie Essex, Robert Frye, William Creasy, Harvey Davis, Vance Hartley, Jean Hoots. *Back Row, left to right:* Mr. Billie Pope, Helen Hayes, Robert Green, Buddy Jones, Worth Griffith, Carol Tise, Gray Beckner, Mary Johnson, Charles Flora.



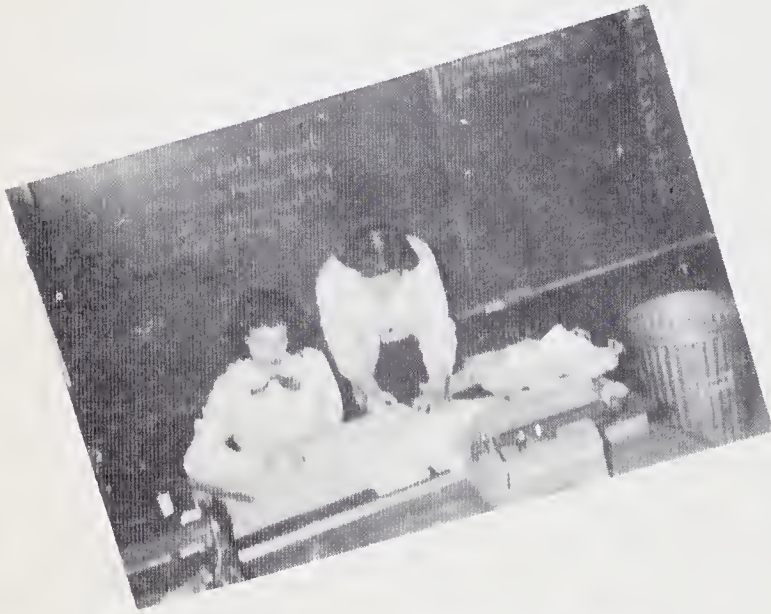
DRAMATICS

First Row: Lena Mae Lewis, Jo Ann Todd, Joan May, Marcella Byrd, Maurine Holten, Buddy Kimel, Larry Hart, Peggy Sue Hogue.
Second Row: Peggy Shore, Shirley Duncan, Gay Holten, Barbara Howard, Ola Cockersham, Hutokak Lawson, Mary Church, Robert McIntyre, Dallas Cundiff, Jo Anne Essex, Jo Anne Moody, Donna Jane Jones.
Third Row: Mr. Moody, Director; Anchomy Sides, Wilburn Crater, Elvin Shoaf, Jack Holder, Cletus Shelton, Donald Tise, Jimmy Stewart, Jerry Knoatz, Bobby Gabard, Melvin Shoaf.



CHATTERBOX STAFF

Thurmond Chappell, Mrs. Mickey, Darrell Everhart, Bill Hayes, Helen Hayes, Maurzen Holton, Bobbie Todd, Bill Barney, Ellen Cooper, Nanette Creasy.





STUDENT COUNCIL

Margie Smith, Bill Barney, Peggy Todd, Billy Woosley, Emily Atwood, Ruth Beck, Bobby Cheek, Leslie Fry, Lorenza Clinard, Nancy Moody.



H. E. MAY
President



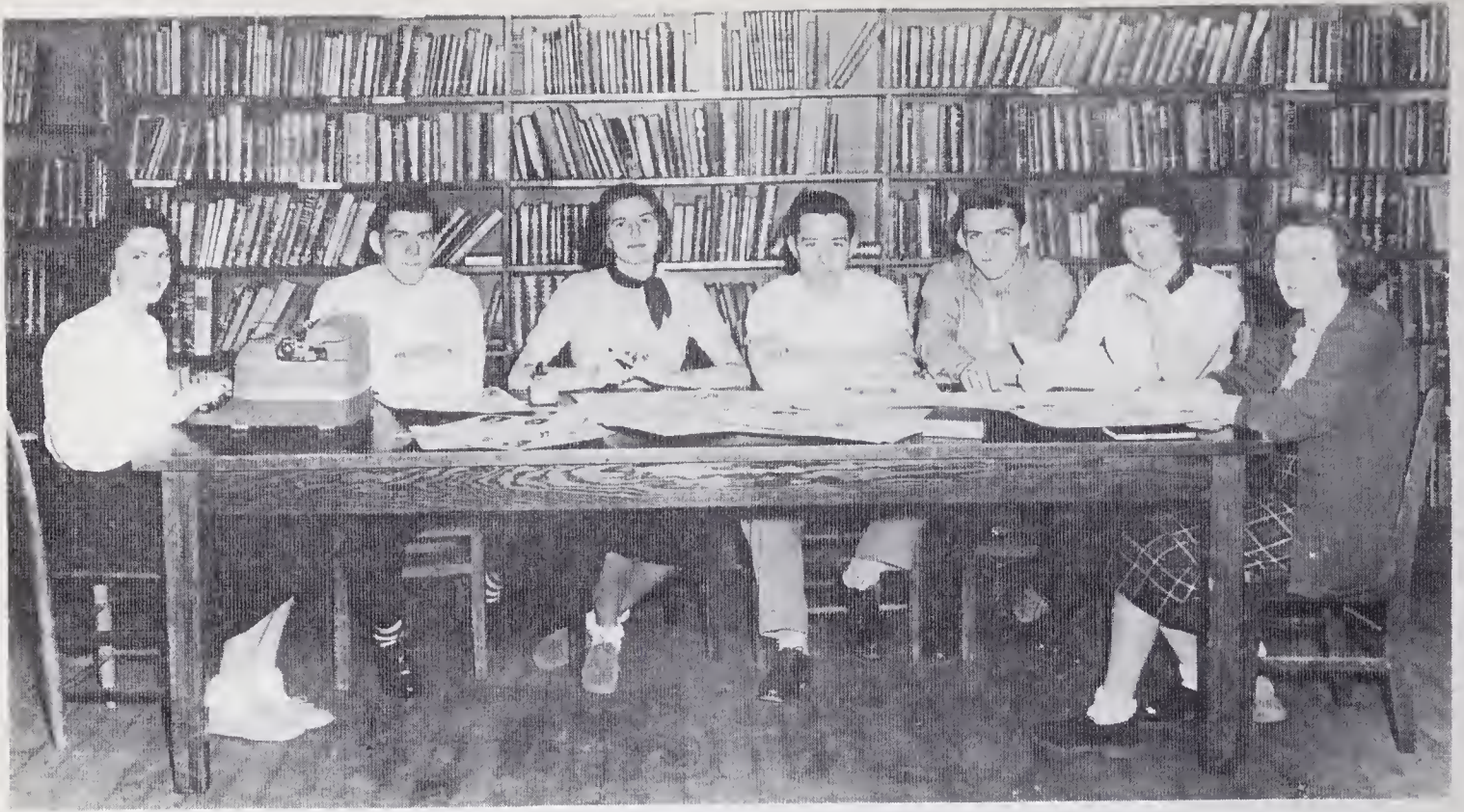
MIDDAY MUSICAL MATINEE



TWIRP SEASON

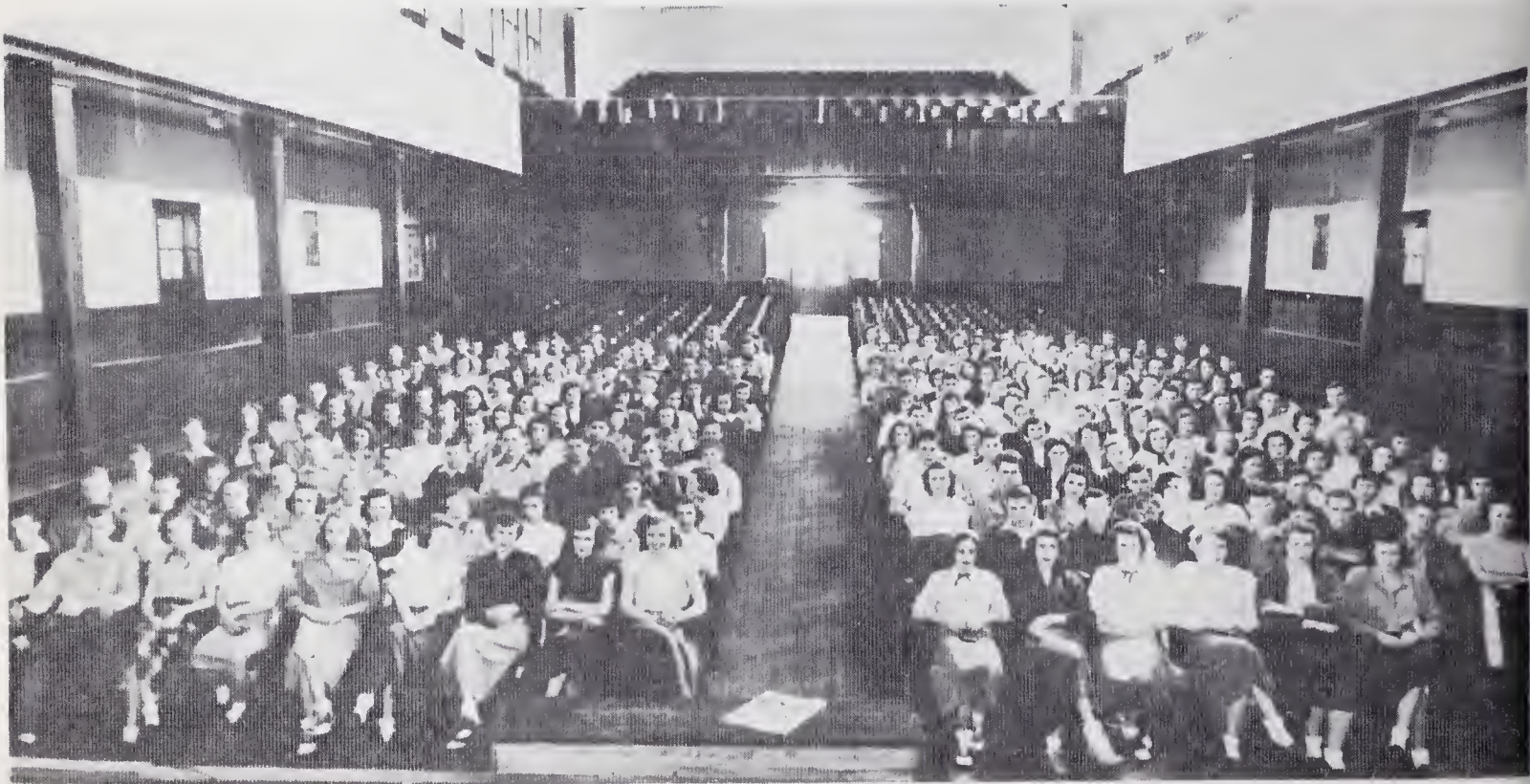


OFFICERS

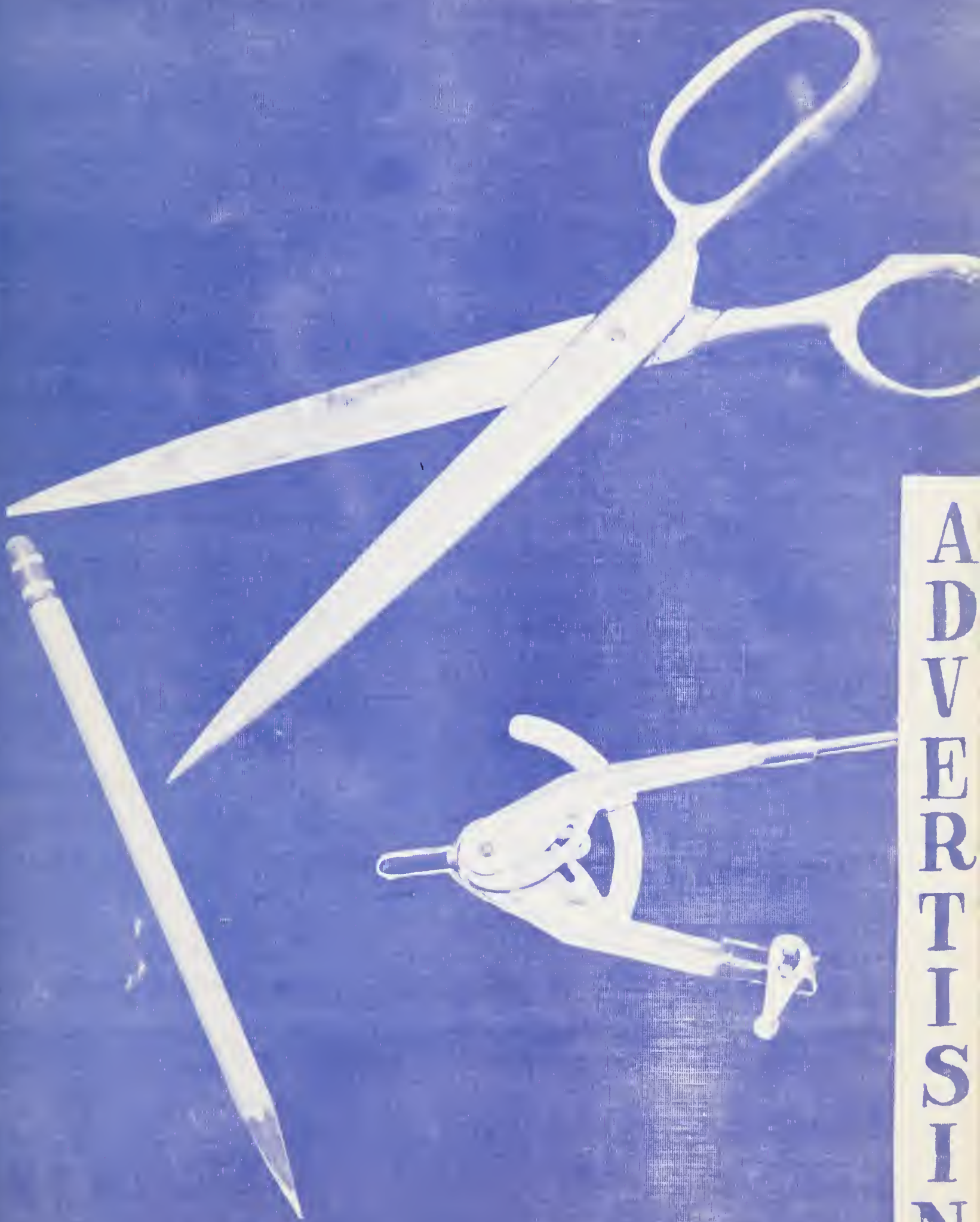


ANNUAL STAFF

Jennie Essex, Joe Lowder, Ellen Cooper, *Editor*; Bill Barney, Jim Hall, Jackie Reed, Hazel Robertson.



ASSEMBLY



ADVERTISING

HIATT'S, INC.

Dodge Cars . . . Plymouth Cars

Dodge Trucks

PHONE 6135

210 North Marshall Street

WINSTON-SALEM 1, N. C.

DOCK CHURCH'S

PURE OIL SERVICE

Gas and Oil, Groceries, Feed

Waughtown-Clemmons Road

WINSTON-SALEM, N. C.

PHONE 4-4997

FARMERS COOPERATIVE DAIRY

Grade "A" Dairy Products

Fresh From Our Own Farm

Visit Our Plant For Ice Cream and Milk Shakes



Phone 2-3475

1012 S. MARSHALL STREET

WINSTON-SALEM, N. C.

FURCHES BROTHERS HARDWARE

PAINTS — TOYS

HOUSEWARES — GIFTWARES

FURNITURE & APPLIANCES

“Quality Merchandise — Reasonably Priced”

Exclusive Agents For

SHERWIN-WILLIAMS PAINTS

PHILCO and UNIVERSAL APPLIANCES

Hours: 7:30 a.m. to 8:30 p.m. — Close 6:00 p.m. Saturday

Clemmons, North Carolina

Dial 3-8252

See Us First For
FREE ESTIMATES

on



**GUTTERING - SHEET METAL WORKS
BUILT UP AND GRAVEL ROOFING**

Phillip Carey Bonded Roofer

E. H. CLODFELTER
ROOFING & SHEET METAL COMPANY

Compliments of

TAYLOR OIL COMPANY

South Stratford Road

DIAL 3-4391

RICHFIELD OIL PRODUCTS,

Gasoline

KEROSENE . . . FUEL OIL.

Motor Oil

If you appreciate real comfort you'll want to

know why . . . more people buy

LENNOX

warm air heating systems than any other make!

—see—

PIEDMONT SHEET METAL COMPANY

Winston-Salem, North Carolina

c/o W. L. ROTHROCK, Owner

Your Certified Lennox Dealer

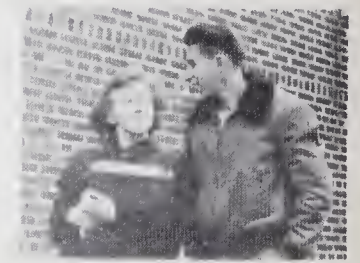
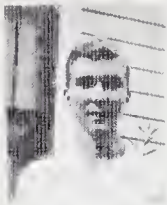
LENNOX world's largest manufacturers and engineers of warm air

heating systems.

SENIOR SNAPSHOTS



JUNIOR SNAPSHOTS



BILTMORE DAIRY FARMS



S. Statford Road

Phone 2-2555

K. H. TODD

Groceries — Meats

Gas and Oil

Flour and Feed

PHONE 4-9986

STANDARD DRUG CO.

504 North Trade Street

Phone 2-5042

WINSTON-SALEM, N. C.

GEORGE'S BAR-B-Q INN

1440 South Stratford Road

We Specialize In Toasted Hot Dogs and Pit Cooked Bar-B-Q

Milk Shakes, Ice Cream, other Toasted Sandwiches—Candies, Gas & Oil

Owners: G. W. and G. A. HICE

PHONE 3-3364

CURB SERVICE

A. P. WARNER

Purina Feed, Seed

Fertilizer, Limestone

Cement and Morter Cement

General Merchandise

Muddy Creek Siding

PHONE 3-2834

ROUTE 2

LEROY'S HOBBY SHOP

Model Airplanes, Racers

Boats, Engines and Parts

Baby Shoes Electoplated

In Bronze, Silver of Gold

PHONE 3-2834

CLEMMONS ROAD

CLEMMONS GARAGE

Expert Body and Repair Service.

Skilled Workmen

Call 4-8028 for Prompt Service

CLEMMONS, NORTH CAROLINA

Chester Byerly, Owner

DUNN'S

LANDSCAPE SERVICE.

Expert Service

Trees—Shrubbery—Lawns.

Grading—Paving

PHONE 3-2462

526 South Stratford Road

Compliments

FORSYTH FARM MACHINERY CO.

Dealers

John Deere Power

Farm Equipment

2607 North Liberty Street

Phone 2-3825

WINSTON-SALEM, N. C.

WESTWOOD

SERVICE STATION

Gasoline

Plus Top Accessories

also

Fountain Service

Highway 158

Phone 3-3514

R. B. HENDRIX

General Merchandise

Self-Service

PHONE 3-8829

Clemmons, North Carolina

CLEMMONS MILLING COMPANY

Manufacturers of

SUPREME FEEDS

Dealers in

FLOUR — SEEDS — DOG FOOD

LIME — FERTILIZER — MEAL — GRAIN

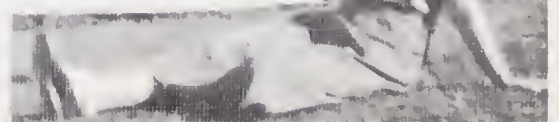
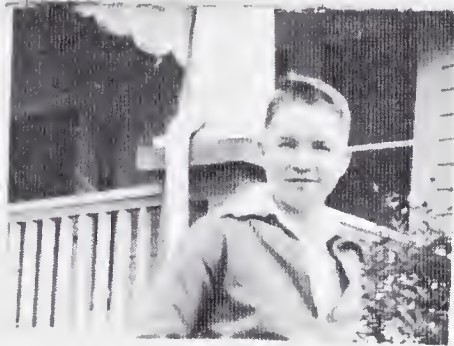
MORTAR MIX — ROOFING

Wholesale & Retail

PHONE 2-1751

CLEMMONS, N. C.

SOPHOMORE SNAPSHOTS



FRESHMEN SNAPSHOTS



THOMAS
MAYTAG CO.

2820 S. Main St.

Washers—Radios

Ranges—Refrigerators

W. L. Thomas, *Proprietor*

PHONE 2-4552

C. F. SPAUGH

SAND DELIVERY

Waughtown-Clemmons Road

PHONE 3-6326

HOWARD CRAVER CASH STORE

PHONE 3-8820

CLEMMONS, N. C.

CLEMMONS BEAUTY SHOP

Mrs. Eileen Wall, *owner and operator*, specializes in

PERMANENT WAVING

You are cordially invited to Clemmons Beauty Shop for your beauty
needs. Open evenings by appointment. Phone 3-8828

CLEMMONS, N. C.

Compliments of

ARDEN FARMS

T. Holt Haywood

T. Holt Haywood, Jr.

J. L. Quinn, *Manager*

CLEMMONS and ADVANCE, NORTH CAROLINA

Registered Guernseys, Hereford Cattle, Tamworth Swine

"And this our life exempt from public haunts, finds tongues in trees,

books in running brooks . . . sermons in stones and good in everything"

Forest of Arden "As You Like It"—Shakespeare

Compliments of
FIRESTONE STORE

Corner Fifth and Cherry

WINSTON-SALEM, N. C.

ACE CREDIT CLOTHING

Suits—Coats—Clothes for Rent

COURTEOUS SERVICE

Main Street Across from Square

WINSTON-SALEM, N. C.

Please

Patronize

Our

Advertisers

AUTOGRAPHS

Ann, I hope you
have happiness and success
always.
Valma Jones

With Love,
Nookie

Best Wishes
Jackie Reed

Good Luck
always.

Little Joe the
Golfer.

Dear Ann,
I have enjoyed knowing
you and I hope your
years in high school
are a great success and
filled with happiness
for you.

Best Wishes
always!

Barney

To a very sweet
little girl
Good luck and
happiness
Love Robert
Kugel

Much happiness
& success
Love
Donis Dople

Best of luck
to a very
nice girl
Joe Butcher

AUTOGRAPHS

hello to the
biggest flint
Ted Dyer

With all my love,
Kenneth Porter

To a sweet girl
Love Robert Dyer

a cute girl
like you will
have loads of fun
in the coming
years. Here everything
to you. Butte showing

Best wishes to
the sweetest
one of "Blondie" like
little known part
over every part

Good luck
to a cute
girl
Love
"Bob."

Best everything
to a swell girl!
May you stay that way.
always,
Nancy Moody
"Pink"

"Best Wishes"
Bob Russell

Best of luck
in future years.
Lowell Carter

Good luck to a
swell girl.
Love always,
"Ki"

Lots of luck
to a sweet girl!
Bobbie
Tobin

AUTOGRAPHS

Ann
We enjoyed
being with you.
Martha
Thiston

With Love
Harry Davis

Best of Luck to a fine girl,
Ronald James.

Much love
Clyde Hendrix

May happiness
be yours always.
Carl Davis

I wish you Luck
in everything you do.

Love always
Odele
Chell

Best of Luck
always & much
success.

Love ya.
J. A. Foster

To you you you
for you

Good luck to you
in everything you do.
With respect &
regards

Much happiness and
success to a fine girl.
Emily Howard

Love ya
Chas.
Chivard

Lots of love and
good luck to a darling
eighth grader —
Love ya,
Aunt Beak

AUTOGRAPHS

Best wishes
to a fine girl.
Billie Brewer

Lots of Love
to ya!
Frank
Beauchamps

Lots of Love
to ya!
Nancy Fry

Best wishes
& Good Luck
Always,
Betty Hayes

Best wishes and
good luck to
a very cute girl
Willburn Crater





