

1953



CLEMMEMORIES





Digitized by the Internet Archive  
in 2019 with funding from  
North Carolina Digital Heritage Center

<https://archive.org/details/clemmemories19531953clem>





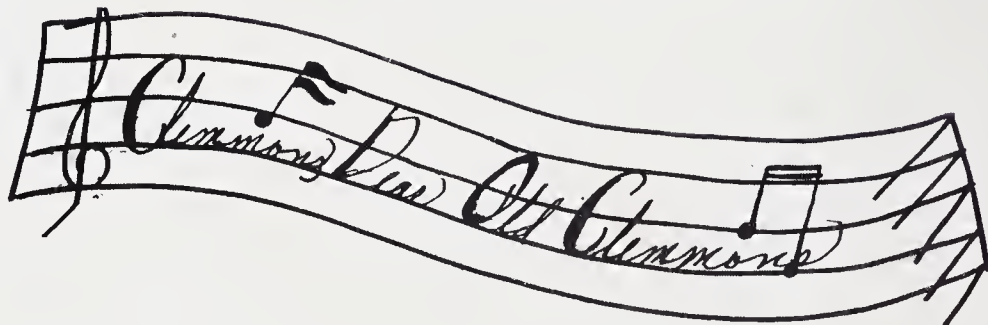


The 1953

# Clem memories



Presents





# The Staff



Carolyn Hart  
*Typist*



Emily Atwood  
*Activity Editor*



Peggy Shore  
*Elementary Editor*



Jean Worrell  
*Art Editor*



Norma Jones  
*Typist*



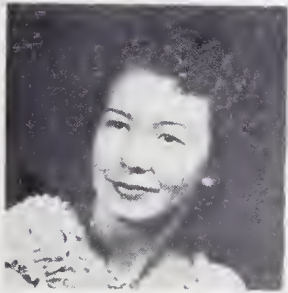
Peggy Dunn  
*Editor-in-Chief*



Jewell Foster  
*Associate Editor*



Jo Essex  
*Advertising Editor*



Cornelia Allen  
*Art Editor*



Donna Jones  
*Feature Editor*



Richard Hickman  
*Sports Editor*



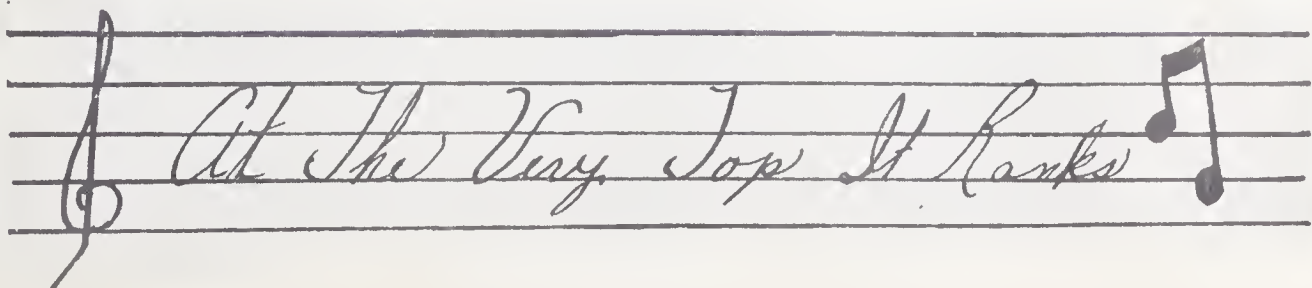
Marlene Scott  
*Sports Editor*



Betty Thomas  
*Circulation Manager*

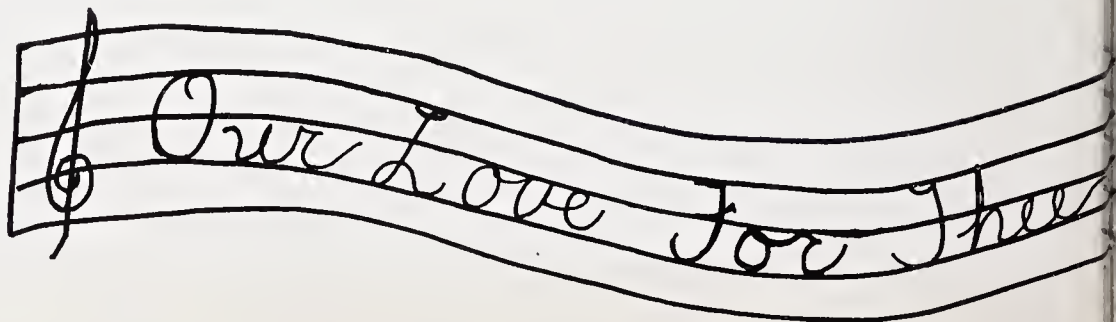


Jack Cumby  
*Photography Editor*



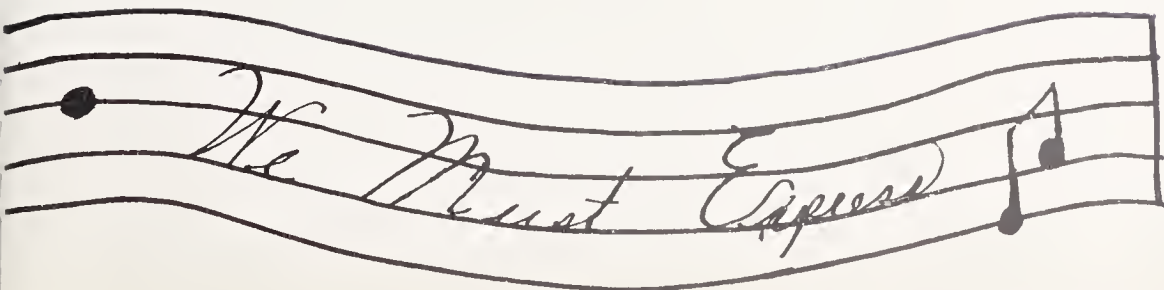
# DEDICATION

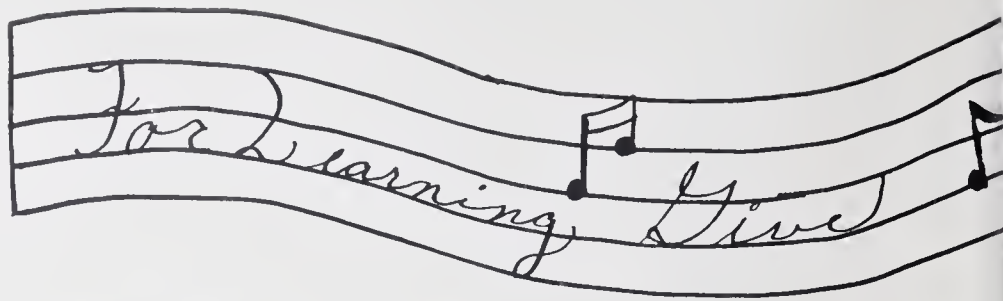
For your untiring efforts in the interest of progress for us, your desire to see us attain the true values in life; for being an understanding friend, wise counselor, and loyal leader; we, the Seniors of 1953, gratefully and proudly dedicate this 6th Edition of *Clemmemories* to you whom we all love and respect—MR. CHILTON.





# MR. ROBERT E. CHILTON





MR. ROBERT E. CHILTON  
*Principal*

B.S. Appalachian State  
Teachers College  
*English and Social Studies*  
M. Ed Pending U. N. C.



MR. WILLIAM F. MORGAN  
B.A. Wake Forest  
*English*  
M. Ed. U. N. C.



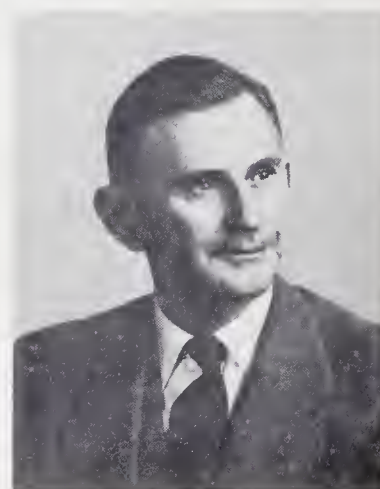
MISS FRANCES C. COOK  
B.S. Appalachian State  
Teachers College  
*Physical Education and Science*



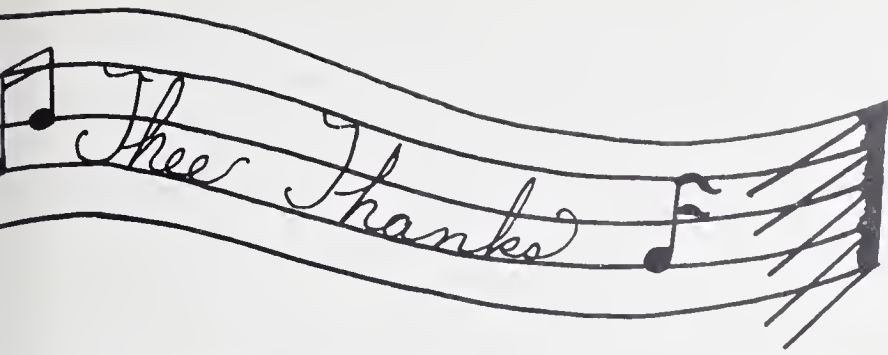
MR. JOHN D. HIATT  
B.S. Appalachian State  
Teachers College  
*Math and Science*



MRS. KATIE H. FELTON  
B.S. Appalachian State  
Teachers College  
*Business Education and  
Social Studies*



MR. GEORGE T. MOODY  
A.B. Wofford College  
*English and Foreign  
Language*



MRS. WYNONA A. BUTNER  
B.S. Western Carolina  
Teachers College  
*Science and Social Studies*



MR. LUTHER O. CROTTS  
B.A. N. C. State College  
*Agriculture*



MISS CATHERINE E. HUDSON  
B.S. W. C. U. N. C.  
*Home Economics and  
General Science*



MRS. ANNIE E. BROWER  
*Librarian*  
Graduate W. C. U. N. C.;  
U. N. C. and U. of California

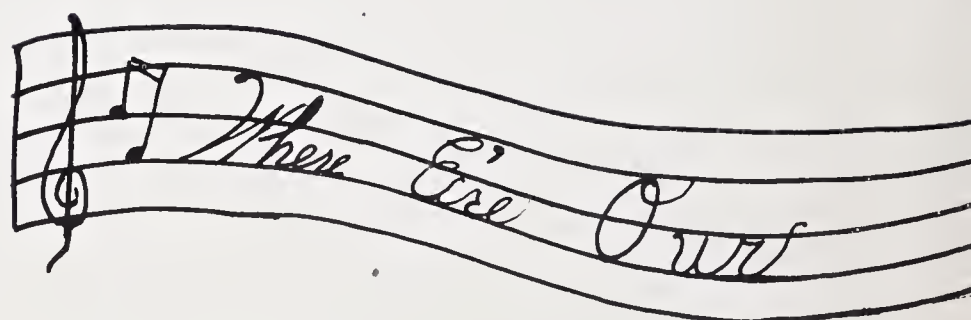


MRS. ANTHONY SIDES  
*Secretary*

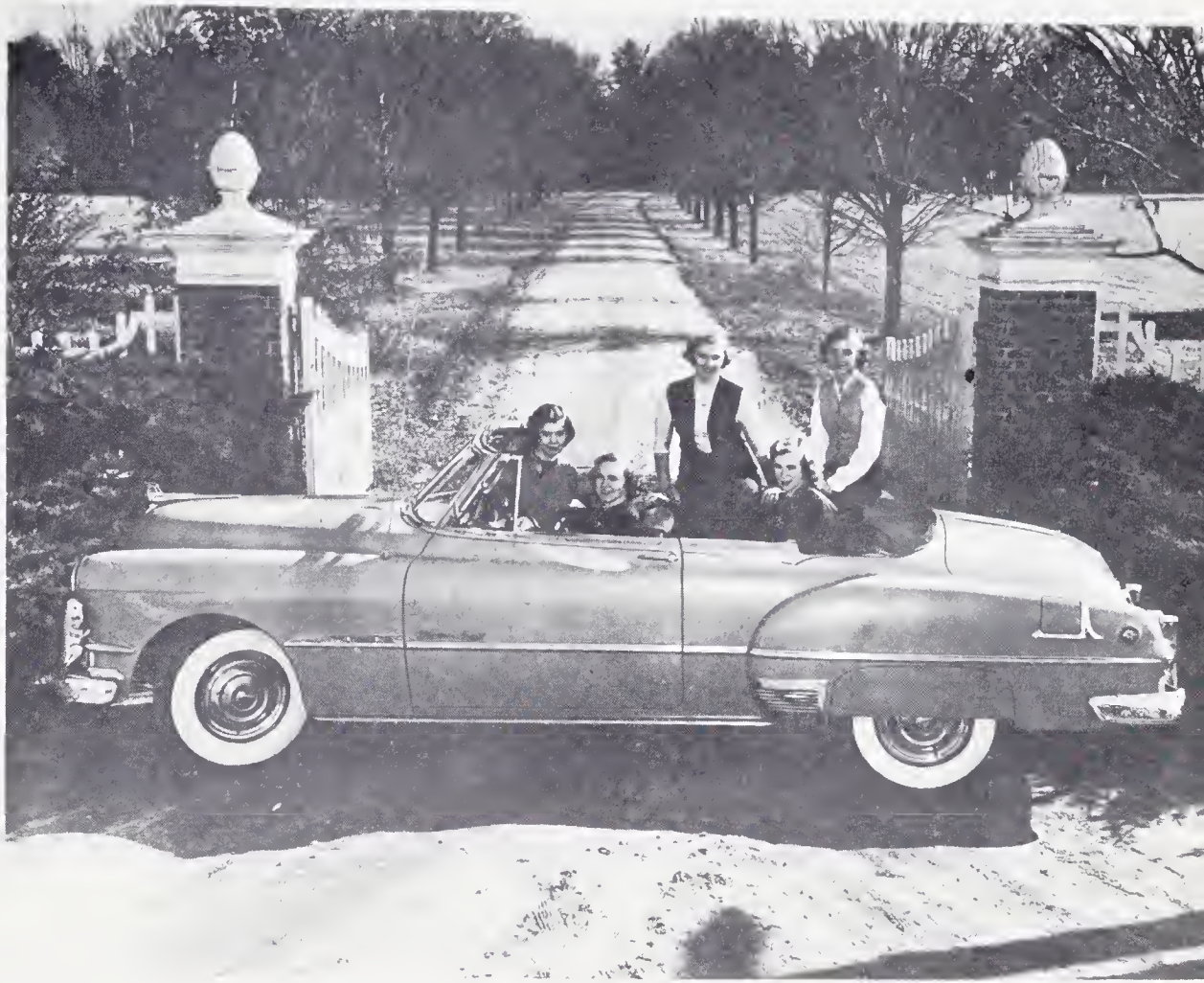


# BOOK ONE

*Classes*







*Paths May Lead Us*

## SENIORS



**CORNELIA BLANCHE ALLEN**

F.H.A. 1, 2, 3, 4; Library Club 3; Glee Club 1, 4; Basketball, J. V. 1, 2; Scouts 1, 2; Music 1, 2. Junior Play 3; Class Day officer 4; Superlative 4; CLEMMEMORIES 4; Art Club 3; Freedom Forum 4.

**DAVID ODELL ALLEN**

F.F.A. 1, 2, 3, 4; Sub Bus Driver 3; Fireman 4; CHATTERBOX 4; Bus Driver 4; Hi-Y 3; Baseball, J.V. 1.



**EMILY ALSPAUGH ATWOOD**

Student Council Secretary 1; F.H.A. 1, 2, 3, 4; Library Club 1, 2, 3, 4; President 3; Scout 1, 2, 3, 4, President 2; Fashion Show 1, 2; Junior Homemakers Degree 1; Chapter Degree 2; Honor Roll 3, 4; Chorus 4; Piano 4; CLEMMEMORIES 4; Christmas Pageant 4; Class Day officer 4; Manager Girls Basketball 4.

**BOBBY EUGENE BARNEY**



**DOROTHY ANN BECKNER**

Library Club 1, 2; Fashion Show 1, 2; F.H.A. 1, 2, 3, 4; Junior Homemakers Degree 1, Chapter Degree 2; Business Club 4; Superlative 4.

**RUTH JANE BREWER**

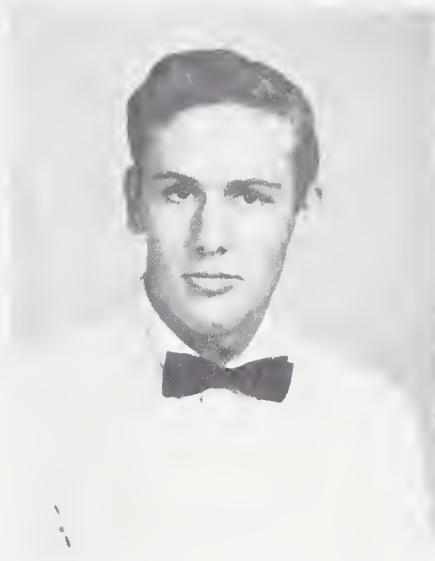
F.H.A. 2, 3, 4; Library Club 1; First Aiders 4; Fashion Show 1, 2.



## SENIORS

### LOWELL DEAN CARTER

Football 1, 2, 3; Baseball 2, 3, 4; Basketball, J.V. 2, Varsity 3, 4; Key Club 4; Hi-Y 4; Bus Driver 2, 3; Activity Bus 4; Fireman 1, 2, 3, 4; Christmas Pageant 4; Superlative 4; Marshall 3; Glee Club 4; Junior Play 3; Class Day officer 4.



### EARL VERNON CHURCH

Glee Club 1; F.F.A. 1, 2, 3; Football 1, 2, 3, 4.

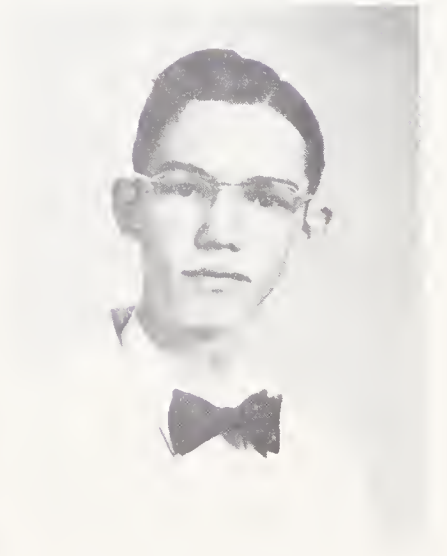


### MARY ELIZABETH CHURCH

F.H.A. 1, 2; Glee Club 1, 4; Fashion Show 1, 2; Perfect Attendance 2; CHATTER-BOX 4; Business Club 4; Safety Patrol 2; Dramatics Club 1.

### RICHARD GENE CLINARD

Safety Patrol 2; F.F.A. 2, 4; Football 2, 4; Hi-Y Club 3, 4; Photography Club 3; Baseball 4.



### HENRY JANE COX

Glee Club 1, 2, 3; Fashion Show 1, 2; 4-H Club 1; Safety Patrol 2; Library Club 3, 4.

### JACKSON ALFRED CUMBY

Marshall 3; Fire Squad 1, 2, 3, 4; Baseball Manager 2, 3; Bus Driver 3, 4; F.F.A. 1; Band 1, Chorus 4; CLEMMEMORIES 4.

## SENIORS



**PEGGY LOIS DUNN**

Class Officer 1, 2, 4; F.H.A. 1, 2, 3, 4; Library Club 2, 4; First Aider 1, 2, 3; Glee Club 4; Christmas Pageant 4; Fashion Show 1, 2; Freedom Forum 2, 4; Hall Monitor 3; Marshal 3; Superlative 4; Class Day officer 4; Editor-in-Chief CLEMMEMORIES 4.



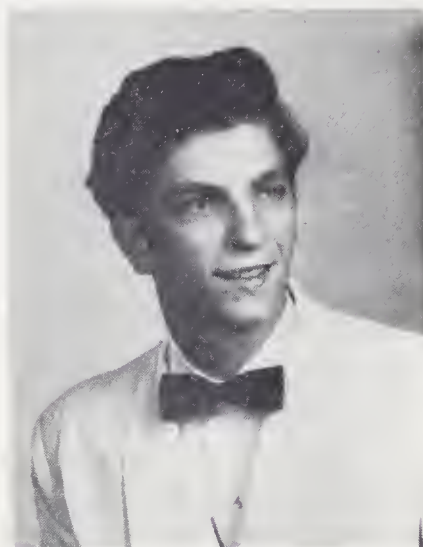
**JO ANN ESSEX**

Class Officer 4; Christmas Pageant 4; CLEMMEMORIES 4; Basketball 2, 3, 4; F.H.A. 1, 2, 3, 4; Library Club 1, 2, 3; Glee Club 1; CHATTERBOX 4; Business Club 4; Marshal 3; Bible Club 4; J. V. Basketball 1; Fashion Show 1, 2; Freedom Forum 3, 4.



**JEWELL MAE FOSTER**

F.H.A. 1, 2, 3; F.H.A. pianist 2; Safety Patrol 3; Secretary 3; Fashion Show 1, 2; Treasurer 4; Marshal 3; Chorus 1, 2, 4; Business Club 4; Editor-in-Chief CHATTERBOX; Associate Editor CLEMMEMORIES 4; Superlative 4; Honor Roll 2, 3, 4; Perfect Attendance 1; Christmas Pageant 4.



**LESLIE GRAY FRYE**

F.F.A. 1, 2; Delegate to State F.F.A. Convention 1, 2; Key Club 2, 3, 4; Secretary 4; Hi-Y 3, 4, President 4; Student Council 1, 4, President 4; CHATTERBOX 4; Glee Club 4; Christmas Pageant 3; Class Officer 3; Superlative 4; Chief Marshal 3; Photography Club 3; Fire Squad 1, 2, 3, 4.



**BOBBY WAYNE GABARD**

Safety Patrol 1; F.F.A. 2, 3, 4; Substitute Bus Driver 3; Bus Driver 4.



**PETER WESLEY HAIR**

Key Club 1, 2, 3, 4; F.F.A. 2, 3, President 3; Fire Squad 1, 2, 3, 4; Football 2, 4; Hi-Y 2, 3; Class Officer 2; Christmas Pageant 3, 4; Usher for Junior Play 3; Glee Club 4.



## SENIORS

### CAROLYN GRAY HART

F.H.A. 1, 2, 3, 4; CHATTERBOX 4; F.H.A. Officer 2, 3; Christmas Pageant 4; Glee Club 1; Hall Monitor 3; CLEMMEMORIES 4; Fashion Show 1, 2; Junior Homemakers Degree 2; Chapter Degree 3; Secretary of Senior Class 4; Perfect Attendance 1, 2, 3, 4; Usher Fashion Show 3.

### BARBARA JEAN HAUSER

F.H.A. 1, 4; Softball 1, 2; Basketball, J.V. 2; Basketball 4; CHATTERBOX 4; Bible Club 4; Score Keeper 3, 4; Business Club 4; Junior Homemakers Degree 1; Fashion Show 1, 2.



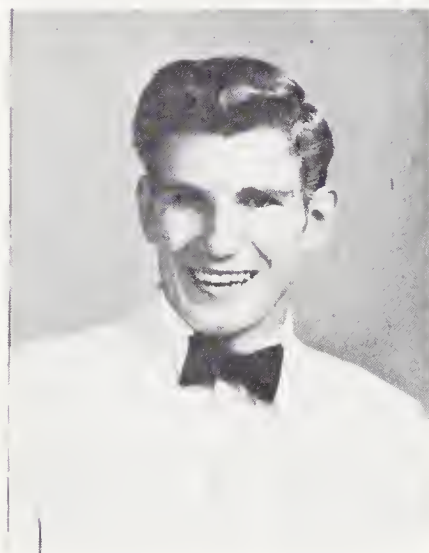
### JOANNE TERESA HAYES

F.H.A. 1, 2, 3, 4; Junior Homemakers Degree 1; Chapter Degree 2; Library Club 3, 4; President 4; Superlative 4; Fashion Show 1, 2; Student Teacher 1.



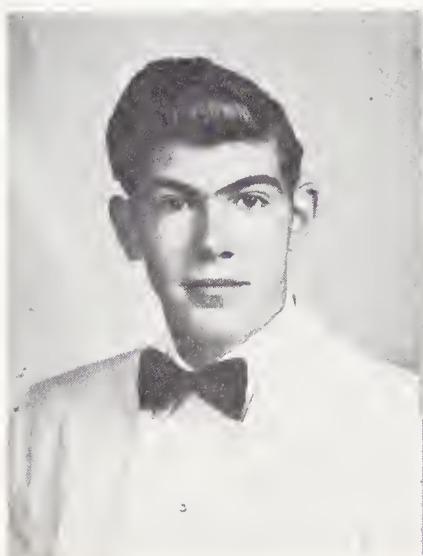
### BOBBY ALPHONSO HENDRIX

Vice President Student Council, 4; Key Club 2, 3, 4; CHATTERBOX 4; Hi-Y 2, 4; Photography Club 3; F.F.A. 2; Junior Play 3; Christmas Pageant 4; Fire Squad 1, 2, 3, 4; Basketball, J.V. 1; Basketball 2, 3, 4; Football 3, 4; Substitute Bus Driver 4.



### RICHARD FERMAN HICKMAN

Key Club 2, 3, 4; Class Day Officer; Basketball 3, 4; Superlative; Junior Usher; Baseball 3, 4; Hi-Y 2, 3, 4; Key Club Vice President 4; CLEMMEMORIES 4; Fire Department 3, 4; Captain of Junior Varsity Basketball 2; Christmas Pageant 3, 4; F.F.A. 2, 3, 4; Basketball Co-Captain 4; Hi-Y Vice President 4; Photography Club 3; Hi-Y Secretary 3; Football 2.

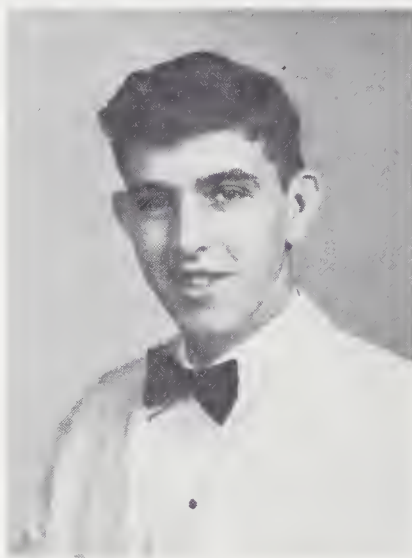


### BONNIE MARIE HIRE

Fashion Show 1, 2; Library Club 3, 4; Glee Club 3; 4-H 1.



## SENIORS



**GAY NITA HOLTON**

Varsity Softball 1, 2; Basketball J.V. 1; Basketball 2, 3, 4; Fashion Show 1; Narrator 2; Dramatic Club 1; Art Club 3; CHATTERBOX 4; Junior Play 3; F.H.A. 4; Business Club 4; Representative for Homecoming 4; Cheerleader 4; Freedom Forum 4; Superlative 4.

**FRED DONALD JAMES**

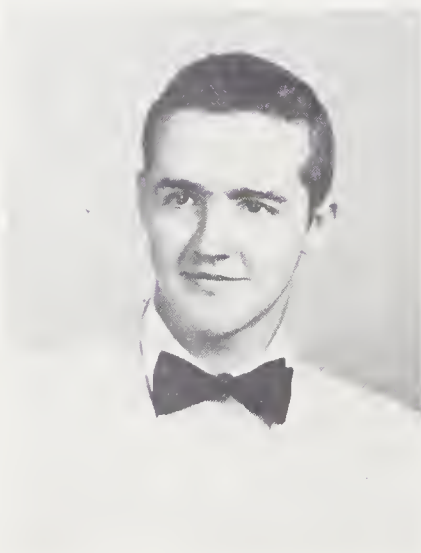


**DONNA JANE JONES**

Student Council 2; Safety Patrol 3; F.H.A. 2, 3, 4; Junior Play 3; CLEMMEMORIES 4; Christmas Pageant 4; Class Officer 2, 3; Class Day Officer 4; Bible Club 4; Business Club 4; Dramatic Club 2, 3; Fashion Show 1, 2.

**NORMA KATHERINE JONES**

Library Club 1; Fashion Show 1, 2; F.H.A. 1, 2, 3, 4; Junior Homemakers Degree 1; Chapter Degree 2; Basketball J.V. 1; Junior Usher 3; Bible Club 4; CHATTERBOX 4; President Business Club 4; Christmas Pageant 4; Superlative 4; CLEMMEMORIES 4.



**ROBERT BRYANT KIGER**

Key Club 3, President 4; Fire Department 2, 3, 4; Football Co-Captain 3, 4; Football 1, 2, 3, 4; Baseball 3, 4; Junior Play 3; Glee Club 1, 2; Basketball J.V. 1, 2; CHATTERBOX 4; CLEMMEMORIES 4; F.F.A. 1, 3, 4; President 4; Hi-Y 2, 3; Art Club 3; Dramatics 1; Christmas Pageant 4; Bus Driver 3, 4.

**HUTOKAH HOLTON LAWSON**

F.H.A. 1, 2; Dramatic Club 1; Library Club 3, 4; Girl Scouts 1; Glee Club 3; Fashion Show 1, 2.



## SENIORS

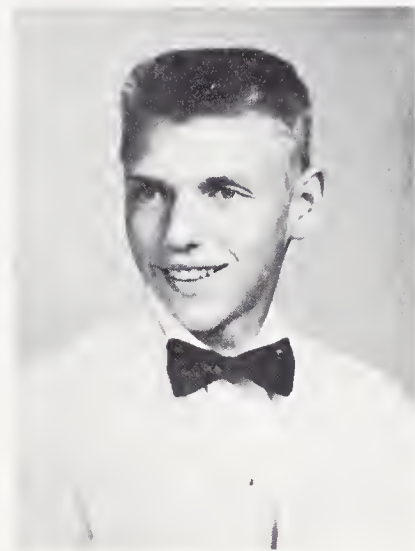
### LENA MAE LEWIS

Class President 1; Library Club 1, 2, 3; Dramatics Club 1; Fashion Show 1, 2; Glee Club 1, 2; F.H.A. 1, 2, 3, 4; Officer 3, 4; Junior Varsity Basketball 1; Varsity Basketball 2, 3, 4; Junior Play 3; Miss Clemmons Hi 3; Superlative 4; Class Day Officer 4; Christmas Pageant 4; Business Club 4; CHATTERBOX 4.



### BOE BY GRAY MILLER

F.F.A. 1, 2, 3, 4; Band 1; Football 1, 2, 3, 4; Basketball 1, 2; Baseball 1, 3, 4; Co-Captain Football team 3, 4; Halloween King 4.



### THOMAS CHARLES MILLER, JR.

Glee Club 1; Baseball 1, 2, 3, 4; Midget Football 1; F.F.A. 2, 3, 4; Football 2, 3, 4; Superlative 4; All-County Catcher 3.



### KATHERINE JOANNE MOODY

Fashion Show 1, 2; F.H.A. 1; Dramatics Club 1; Safety Patrol 2; Beauty Contestant 3; Glee Club 2, 3, 4; Junior Usher 3; President Bible Club 4; Superlative 4; Soloist Christmas Pageant 4.



### PATSY CAROLYN PARKS

Library Club 1; F.H.A. 1, 2, 3, 4; Junior Varsity Basketball 1, 2; Business Club 4; CHATTERBOX 4; Christmas Pageant 4; Fashion Show 1, 2; Junior Usher, Bible Club 4; Student Council 3; Miss Clemmons Hi 2.

### PEGGY FRANCES POPLE

F.H.A. 1, 2, 3, 4; Junior Homemakers Degree 1; Chapter Degree 2; Library Club 4; Student Council 4; Superlative 4; Honor Roll 1, 2, 3, 4; Perfect Attendance 1, 2; Toast at Junior-Senior Banquet 3; Hall Monitor 3; Christmas Pageant 4.



## SENIORS



**DELANO THOMAS ROBERTS**

F.F.A. 2, 3, 4; Football 1, 2, 3, 4; Fire Squad 3, 4.



**BENITA MARLENE SCOTT**

F.H.A. 1, 2, 3, 4, Officer 4; CHATTERBOX 4; Class Officer 1; CLEMMEMORIES 4; Hall Monitor 3; Junior Homemakers Degree 3; Fashion Show 1, 2; Usher Fashion Show 3; Christmas Pageant 4; Superlative 4; Class Day Officer 4; Chapter Degree 2; Junior Varsity 1.



**MELVIN SHOAF**

F.F.A. 1, 2, 3, 4; Junior Varsity Basketball 1, 2; F.F.A. Vice President 1; Dramatics Club 1; Hi-Y Club 1, 2; Substitute Bus Driver 1, 2; Safety Patrol 1, 2, 3; Bible Club 1; Christmas Pageant 1.



**PEGGY ANN SHORE**

Glee Club 1; Safety Patrol 2; Cheerleader 2, 3, 4, Chief 4; Class Officer 1, 4; CHATTERBOX 4; CLEMMEMORIES 4; F.H.A. 1, 2, 3, 4; Library Club 1, 2, 3, 4; Vice President 3; Fashion Show 1, 2; Dramatics Club 1; Superlative 4; Homecoming Attendant 4; Bible Club 4; Christmas Pageant 4; Junior Varsity 2.



**BILLY GRAY SIDES**

F.F.A. 1, 2, 3, 4; Boys Home Ec. 1; Glee Club 1; Judging Team 2; Football 2; Class Day Officer 4; Superlative 4.



**LLOYD SCOTT SPAUGH**

Football 3, 4; F.F.A. 3, 4; Glee Club 2, 3; Assistant Bus Driver 3, 4; Fire Squad 3, 4; Baseball 4; Superlative 4; Freedom Forum 4.



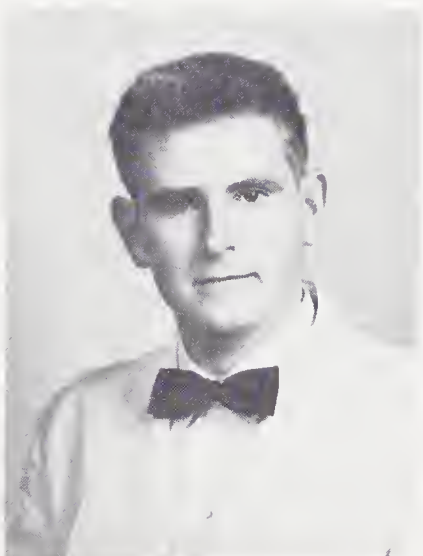
## SENIORS

**BETTY LOU THOMAS**

F.H.A. 2, 3, 4; CHATTERBOX 4; Hall Monitor 3; CLEMMEMORIES 4; Fashion Show 1, 2; Usher Fashion Show 3; Junior Homemakers Degree 1; Chapter Degree 2.



**WILLIAM LEE THOMAS, JR.**



**BOBBY GRAY TURNER**

F.F.A. 2, 3, 4; Hi-Y 2, 3, 4; Key Club 4; Superlative 4.



**NORMA JANE WOOSLEY**

Class Day Officer 4; Fashion Show 1, 2.



**MARY FRANCES WOOTEN**

F.H.A. 4; Bible Club 4; Business Club 4; Fashion Show 1, 2; Junior Play 3; Dramatics Club 3; Art Club 3; Superlative 4; Cheerleader 2, 3, 4.

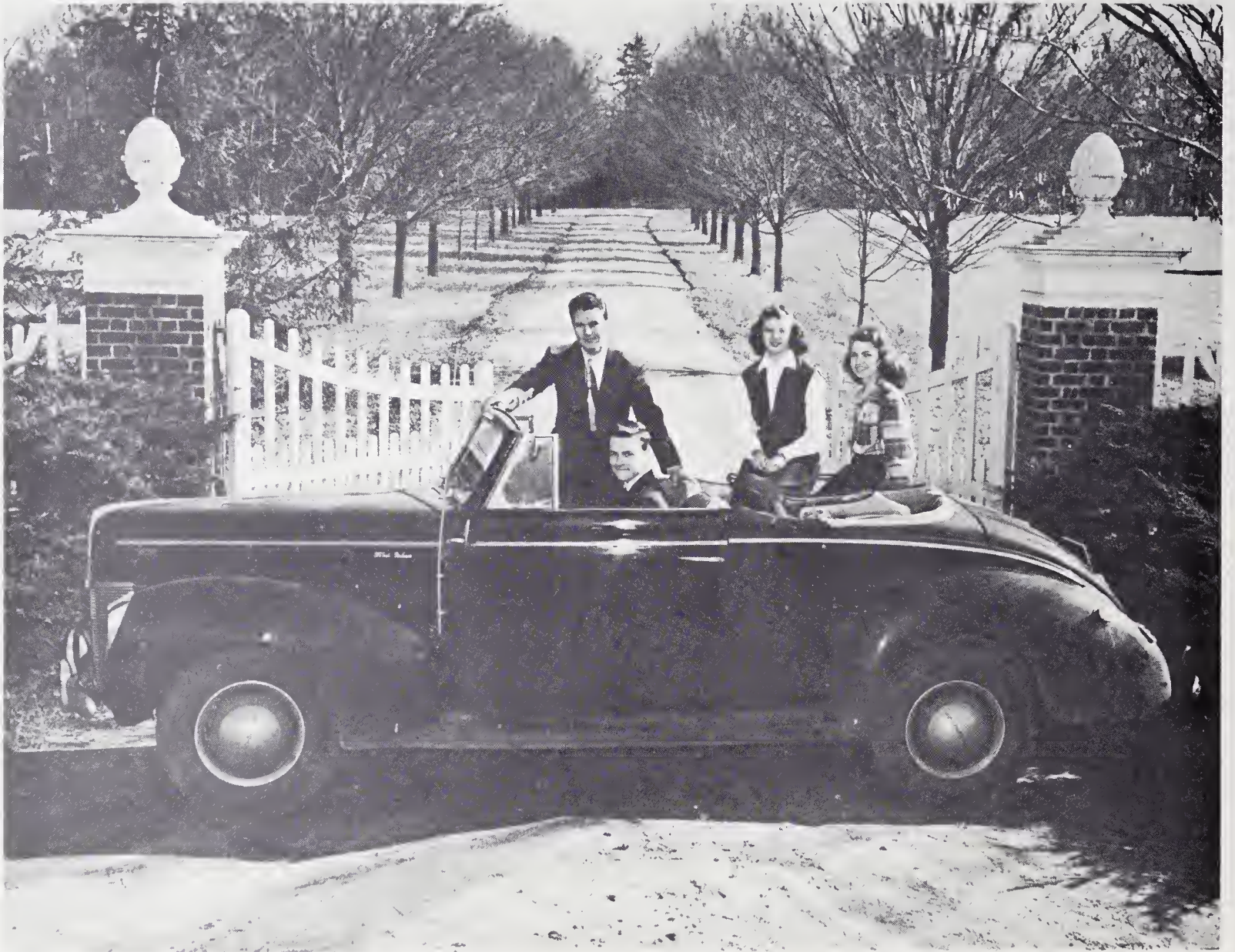


**MARTHA JEAN WORRELL**

F.H.A. 1, 4; Junior Homemakers Degree 1; 4-H Club 1, 2; Speaking Contest 1; Fashion Show 1, 2; Majorette 1; Basketball J.V. 2; Safety Patrol 2; Glee Club 3, 4; Library Club 4; Superlative 4; Class Day Officer 4; CHATTERBOX 4; CLEMMEMORIES 4; Soloist in Christmas Pageant 4.



# We Are The Officers



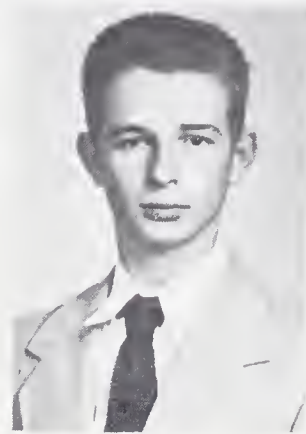
## Class Of '54

Sam Easley .....	President
Jay Caudle .....	Vice President
Peggy Todd .....	Secretary
Betty Scott .....	Treasurer



# JUNIORS

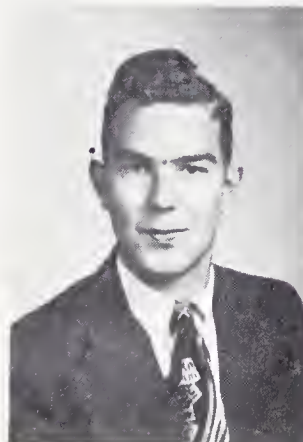
Frances Beauchamp  
Bill Beshears  
Carolyn Billings



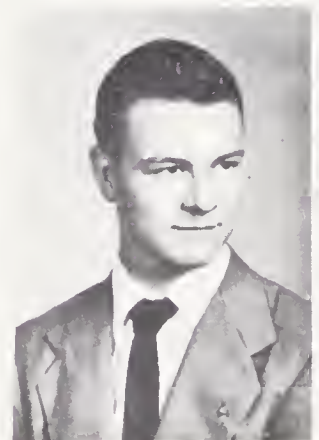
Dewey Bodenhamer  
Joe Bullins  
Jay Caudle



Mary Charles  
Bill Cheek  
Odell Cheek

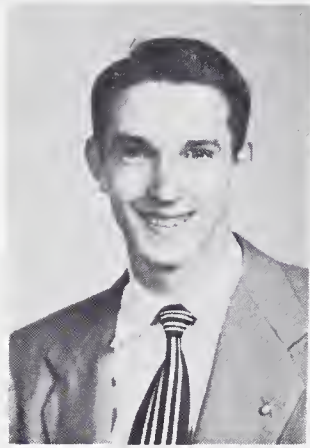
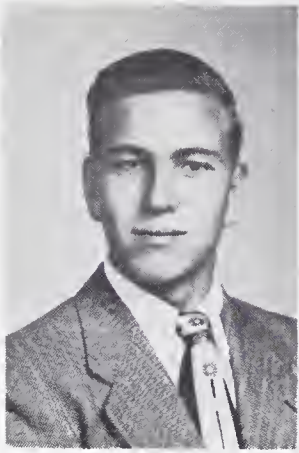


Joyce Church  
William Creasy  
Sam Easley





## JUNIORS



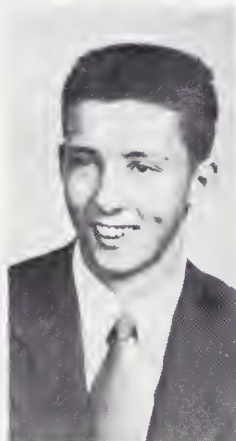
William Ellis  
Dean Flora  
Betty Hayes



Patsy Hendrix  
Barbara Hunter  
Carolyn Kimel



Jimmy Knight  
Jackie Matlock  
Carolyn Miller



Nancy Moody  
Jerry Peoples  
Shirley Poindexter  
Doris Pople

# JUNIORS

Ina Grace Ratz  
Betty Reid  
Betty Carolyn Scott



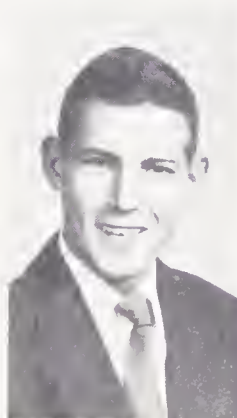
Maxine Setliff  
Dianne Sheek  
James Sloan



Sammy Smith  
Shirley Smith  
Peggy Todd

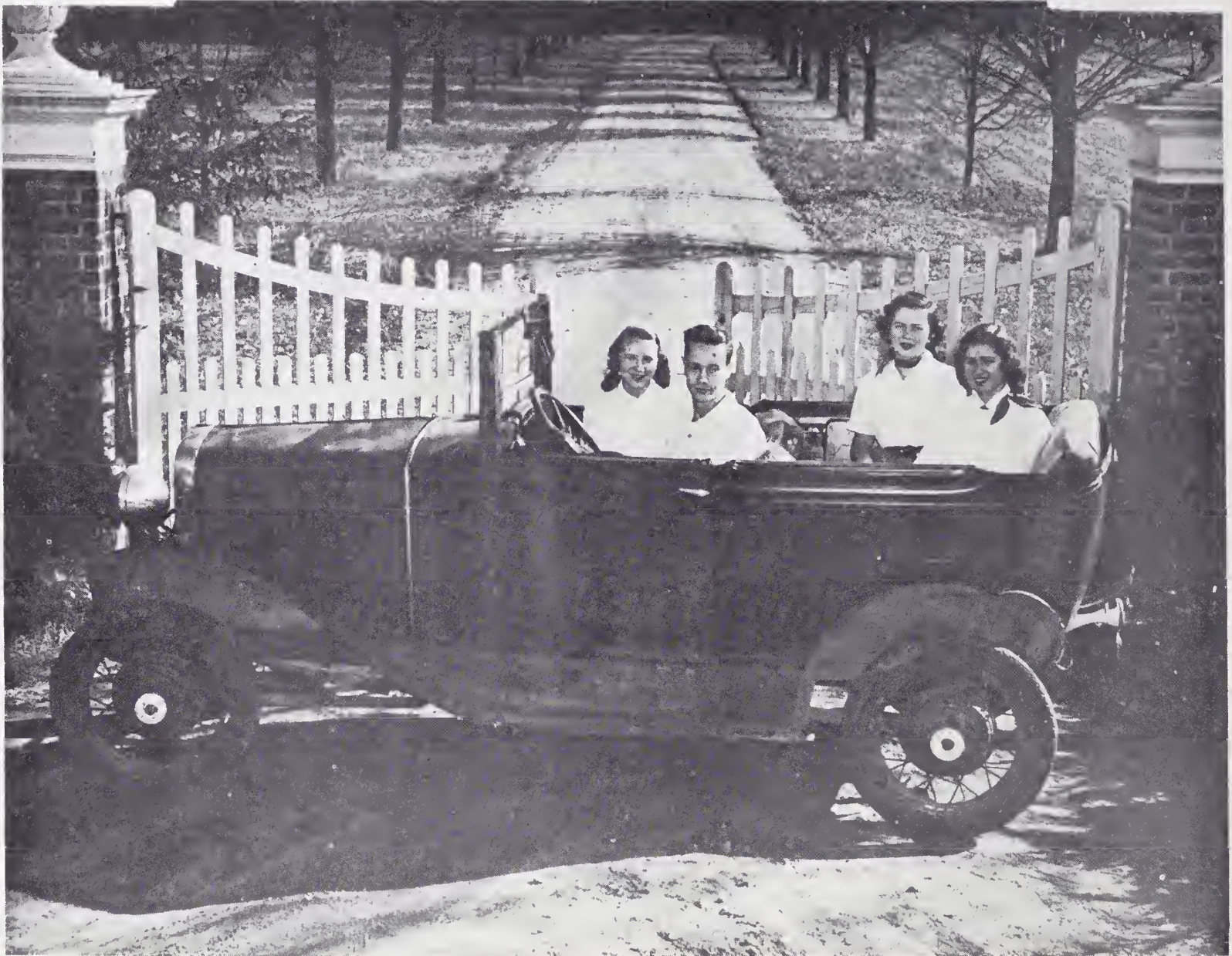


Anne Williamson  
Wilson Wise  
Martha Wishon  
Jean Butner





# We Are The Officers



## Class Of '55

Harry Caudle .....	President
Libby Bullard .....	Vice President
Peggy Bingham .....	Secretary
Wilma Jones .....	Treasurer

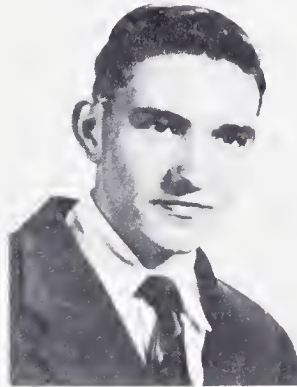


# SOPHOMORES

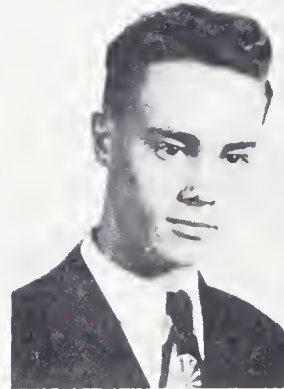
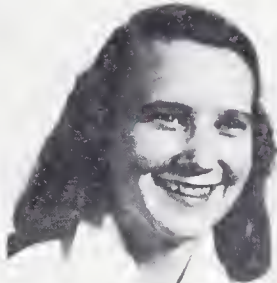
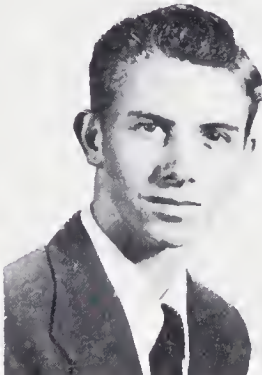
Anne Ashley  
Bessie Beauchamp  
Peggy Bingham  
Kenneth Blakely



Donald Bodford  
Ada Lou Boyer  
Bill Brandon  
Billie Brewer



Douglas Brewer  
Libby Bullard  
Harry Caudle  
Margaret Church



Annette Crater  
Paul Crotts  
Mickey Cumby  
Peggy Douthit



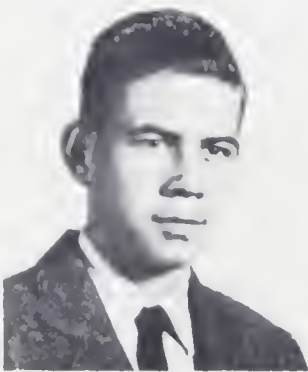
# SOPHOMORES



Wayne Ellingham  
Maxine Flora  
Shirley Flynn  
Bernice Griffith



George Hair  
Louise Harris  
Vance Hartley  
Bobby Hellard



Tommy Isley  
Wilma Jones  
S. R. Kimel, Jr.  
Murriane Linker



Gene Livengood  
Jane Lowder  
Arlene Lutz  
Mike Parks



# SOPHOMORES

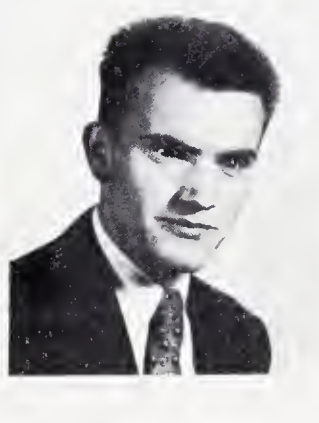
Charles Payne  
Coleen Peoples  
Jeanette Quinn  
Marvin Ridings



Gearldine Scott  
Rosemary Shoaf  
Ralph Sides  
William Snyder



Patty Stewart  
Eugene Templeton  
Carol Tise  
Janie Vaught



Rose Nell Wall  
Lee Weisner  
Shirley Wooten  
Nancy Wrights







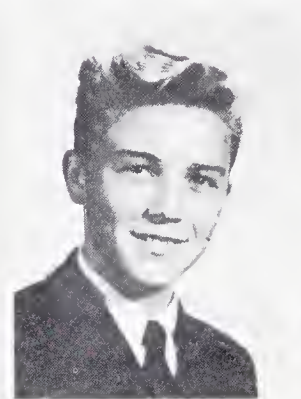


## FRESHMEN

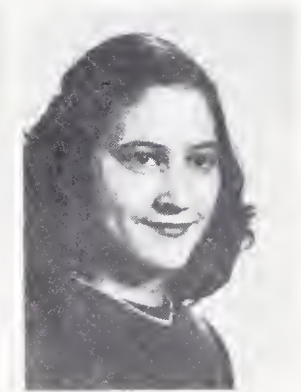
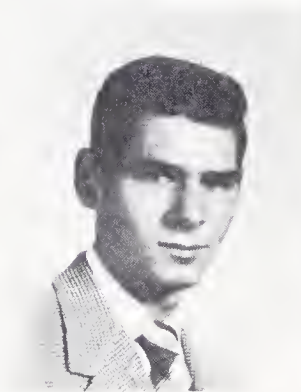
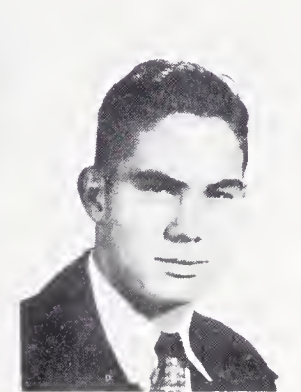
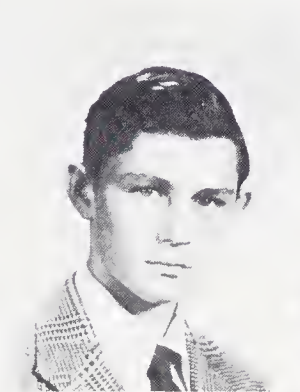
Betty Angel  
Diane Bingham  
D. C. Blakley  
Barbara Bodsford



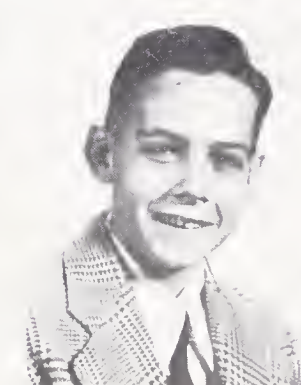
Carolyn Bodsford  
Elizabeth Bodsford  
Emmette Bolt  
Gay Brewer



Richard Canter  
C. L. Cheek  
Rex Cheek  
Margaret Cornwall



Barbara Craver  
Joe Cumby  
Parke Davis  
Ann Carol Ellis





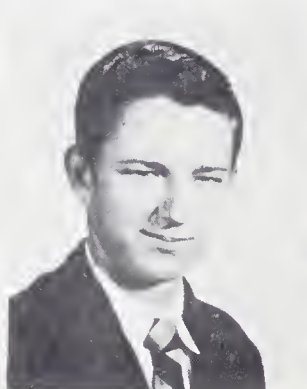
## FRESHMEN



Evelyn Ellis  
Norman Foster  
Betty Gann  
Ruth Green



Marvin Harpe  
Carol Hayes  
Jennie Hellard  
Jimmy Higgins



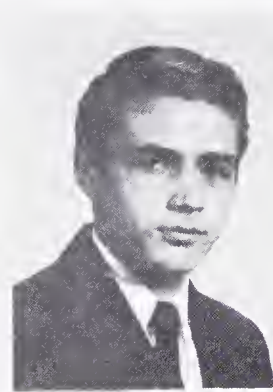
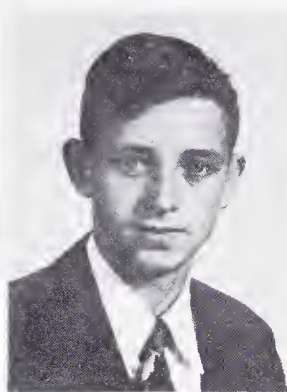
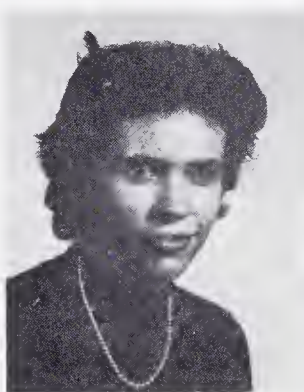
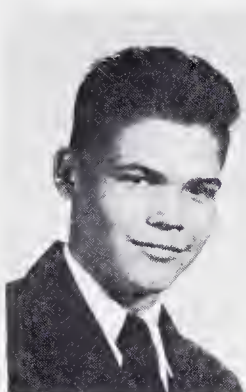
Shirley Holton  
Jack Jones  
Jeanette Lineback  
Tommy Mahannah



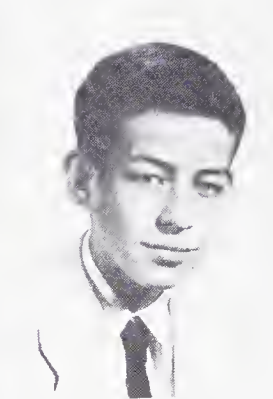
Sammy Marshall  
Donald Mendenhall  
Betty Myers

# FRESHMEN

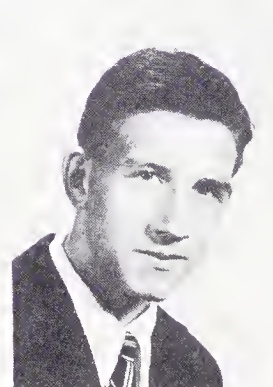
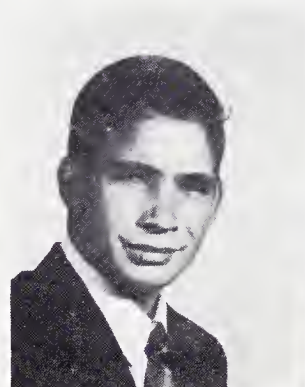
Tommy McClamrock  
Grace Myers  
Jesse Parks  
Wayne Pfaff



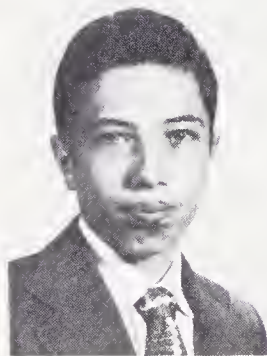
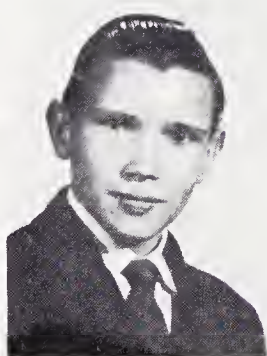
Ann Phelps  
Rebecca Pickett  
Roger Powell  
Jack Reed



Gerald Sheets  
Edna Sloan  
Jackie Smothers  
Thomas Tate



Ellis Welch  
George Wilson  
Iris Woosley






# BOOK TWO

## Features





Foot Steps Fall 



# LAST WILL AND TESTAMENT

State of North Carolina  
County of Forsyth  
Township of Clemmons  
Clemmons High School

We the Senior Class of 1953 do hereby leave to the students of Clemmons High School, our last will and testament.

## ARTICLE I

Section 1. We, the Senior Class do leave to Clemmons School our best wishes for, a successful future.

Section 2. We, the Senior Class do leave to the rising Senior Class our ability to act dignified on all occasions.

## ARTICLE II

Section 1. To our principal, Mr. Chilton, we leave our complete gratitude for the patience and leadership he has shown us.

Section 2. To the faculty, our greatest appreciation for the wisdom, guidance and understanding given us during the past.

## ARTICLE III

Section 1. The Senior Class leaves to the Sophomore Class our ability to hold orderly class meetings.

Section 2. We the Seniors leave to the Freshman Class our neatness and good looks.

Section 3. The Seniors leave to the rising Freshman Class all of our high school text books.

## ARTICLE IV

Section 1. To the Cafeteria Staff the Senior Class leaves our thanks for the best meals ever.

Section 2. We, the Seniors leave to the maids and janitor our deepest appreciation for the fine up keep of our school.

## ARTICLE V

Section 1. To our understanding teachers, Miss Cook and Mr. Hiatt, we leave our sincere love and appreciation.

## ARTICLE VI

Section 1. Jean Hauser leaves her position as scorekeeper to Ruth Stone.

Section 2. Bill Sides bequeaths his quiet ways to Robert Hutchens.

Section 3. David Allen wills his ability to run the mimeograph machine to Bill Beshears.

Section 4. Alphonso Hendrix leaves his romantic singing voice to Jay Caudle.

Section 5. Jane Cox and Hutokah Lawson bequeath their late hours in town to Patsy Hendrix.

Section 6. Cornelia Allen leaves her latest book, "How to Get Along With Your Boyfriend," to Carolyn Kimel.

Section 7. Earl Church wills his way of speaking out in class to Nancy Moody.

Section 8. Bill Thomas leaves his sunlamp to Jimmy Knight.

Section 9. Tommy Miller leaves his good driving habits to Dean Flora.

Section 10. Richard Hickman leaves his long, lanky body to Stanley Dunn and Roy Wrights.

Section 11. Jack Cumby bequeaths his photography equipment to Sam Easley.

Section 12. Emily Atwood wills her soft voice to Carolyn Miller.

Section 13. Delano Roberts leaves his themes in shop to Odell Cheek.

Section 14. Bobby Miller leaves his lovely hair to Jerry "Crew Cut" Peoples.

Section 15. Gay Holton bequeaths her outstanding ability to play basketball to Shirley Poindexter.

- Section 16. Jean Worrell wills her talents to Maxine Setliff.
- Section 17. Pete Hair leaves his dependable and cute car to Dewey Bodenhamer.
- Section 18. Mary Church bequeaths her height to Jackie Matlock for playing basketball.
- Section 19. Bobby Gabard and Lloyd Spaugh leave their love for sleeping in class to Frank Beckner.
- Section 20. Peggy Shore to Anne Williamson bequeaths her position as chief of the cheerleaders.
- Section 21. Jane Brewer and Dot Beckner will their "knack" for getting engaged to Frances Beauchamp.
- Section 22. Donna Jane Jones to Peggy Todd bequeaths her very shy ways.
- Section 23. Robert Kiger wills his presidency in the Key club to Joe Bullins, Jr.
- Section 24. Bobby Barney, with regret, leaves his cue stick to Wilson Wise.
- Section 25. Lowell Carter to Richard Boner wills his romantic ways and thoughts.
- Section 26. Patsy Parks leaves her ability to go steady to Carolyn Billings.
- Section 27. Carolyn Hart bequeaths her attendance ticket to all-night singings to Martha Wishon.
- Section 28. Marlene Scott leaves her summer vacations at the beach to Barbara Hunter.
- Section 29. Bobby Turner wills his very flirty ways to James Sloan.
- Section 30. Jewell Foster and Joanne Hayes leave their small stature to Betty Scott.
- Section 31. Joanne Moody bequeaths her sweet smile to Sammy Smith.
- Section 32. Peggy Dunn and Jo Ann Essex leave their books and studious ways to Dean Matlock in hopes of getting them used.
- Section 33. Leslie Frye to Betty Hayes wills his black hair.
- Section 34. Richard Clinard leaves his football uniform to Gilbert Brandon.
- Section 35. Peggy Poole bequeaths her business in the Student Council to Dianne Sheek.
- Section 36. Norma Jones bequeaths her good grades and typewriter to Doris Pople.
- Section 37. Norma Woosley leaves her bangs to Mary Charles.
- Section 38. Donald James with hopes of luck leaves his ability to miss school to Bill Cheek.
- Section 39. Bonnie Hire bequeaths her Ford to William Ellis.
- Section 40. Melvin Shoaf wills his good pitching arm to William Creasy to use in the State Championship game.
- Section 41. Frances Wooten leaves all her giggles in English to Betty Reed.
- Section 42. Lena Mae Lewis bequeaths her neat appearance to Joyce Church and Ina Ratz.
- Section 43. Betty Thomas wills her ambition to be a seamstress to Jean Butner and Shirley Smith.

*Flower*  
Sweet Peas

*Color*  
Green and Pink

*MOTTO*  
"The end crowns the work"



## CLASS HISTORY

The year of 1941 is one that would well be forgotten by our first grade teachers, Mrs. Watkins and Mrs. Davis, and our principal, Mr. Rondthaler; for being dragged into the room by their happy mothers, who would be free from them for the larger part of the day, were: Emily Atwood with her long curls; Dorothy Beckner, bashful and shy; Gilbert Bandon, tall and lanky and Lloyd Bowman, little but loud. Along came Mary Church in her short dress, Richard Clinard with a black eye, Jane Cox with tears in her eyes; Jack Cumby in his little Lord Fauntleroy suit and Paul Crotts with his hair in his eyes. We next saw Shirley Duncan with her sparkling black hair, Peggy Dunn with much enthusiasm, Jo Ann Essex carrying her baby doll and Dewitt Falls with his skinned knees. Next came Leslie Frye, the girls' dream; Faye Foster with pig tails, Bobby Gabard with great eagerness—to fight, Carolyn Hart, falling out of her desk, and Barbara Hauser with an apple for the teacher. In came Alphonso Hendrix minus his good looks, Patsy Hendrix with her poodle cut, Richard Hickman making eyes at the girls, Bonnie Hire with a big bow in her hair and Gay Holton with her boyish ways. Who did we see next, but Barbara Howard with her freckles, Donald James shooting spit-wads, Donna Jane Jones with her long hair, Norma Jones holding hands with the boys, Hutokah Lawson, tall and skinny and Lena Mae Lewis with her girlish curls? In walked Dean Matlock with his ambition to play on the dirt pile, Tommy Miller with his crew cut, Joanne Moody with her white curls, Patsy Parks in her frilly dress and Marlene Scott crying for her little sister. Greeting us at the door were Peggy Shore short and cute, Floyd Sides, a bundle of dynamite, Lloyd Spaugh with a toy hot rod for the dirt pile and Terry Tesh with his curly hair. A few minutes later in walked Betty Lou Thomas, hanging on to mama's skirt, Wiley Tuttle in his short pants, Bill Thomas with his eyes full of mischief, Lee Weisner with his Little Moron jokes, Jean Worrell with her beautiful singing voice, Ray Veach with his mischievous ways and Shirley Barney with her pig tails. We next saw Billy Bean and Sammy Bean playing tag, Bobby Bodenhamer and Orville Bowman with their baseball and gloves, George Robertson and Hannah Logan with not much to say and Franklin Martin, Mabel Satterfield, Janet Sharpe and Jimmy Sheets who weren't too thrilled about school. Next came Nancy Canter, Columbus Case and Lloyd Wrights who were very quiet. Ernest Griffith, Peggy Tysinger and Joanne Todd were busy getting acquainted. Charles Hauser, Edna Whisenhunt and Ellen Holmes were the last to arrive.

In the second grade our teachers were Mrs. Watkins and Mrs. Davis. Those lucky children who joined us this year were: David Allen, Dorothy Boles, Dean Flora, Nancy Frye, Clyde Hendrix, Jean Smothers, Wayne Ryans, Gray Smith, Arthur Spaugh, Dorothy Ellis, Charles Hicks, Corbitt Hodges, Jr. and Joe Holder.

Those joining us in the third grade were: Jane Brewer, Joanne Hayes, Ina Grace Ratz, Delano Roberts, Norma Woosley, Wilson Wise, Billy Burrus, Vernon Kiger, Paul Leagins, Donald Shew, Mildred Nance, James Styles and Richard Henderson. Our teachers were Miss Cooper and Mrs. Young.

In the fourth grade our teachers were Miss Cooper and Mrs. Young. Those joining us were: Gray Beckner, Joe Bullins, Earl Church, Robert Kiger, Buddy Boger, Albert Mathews, Dewey McBride, Bobby Cornwall, Sammy Lou Eskridge, Mamie Whisenhunt and Mary Shew.

In the fifth grade our teachers were Mrs. Bassett and Mrs. Potts and our new principal, Mr. Gibbs. Those joining us this year were: Cornelia Allen, Lowell Carter, Emma Davis, Melvin Shoaf, Roy Wrights, Nellie Kiger, Sarah Davis, Nina Settle, Virginia Stewart, Nancy Jane Canter, Garner Foster and Peggy Hartley.

Our sixth grade teachers were Mrs. Potts and Miss Coble. Those joining us were: Maurice Shoemaker, Betty Jo Dickens and Peggy Harper.

Mr. Radcliff and Mr. Wishon were our seventh grade teachers. This year, we began to feel more grown-up and realized that our high school days were approaching. Among those joining us were: Jewell Foster, Peggy Pople Jean Worrell, returning after being with us in the first grade; Frances Wooten, David Alexander, Bobby Barney, Joanne Bodenhamer, Betty Jo Bowman, Carlene Brendle, Donald Bullins, Tommy Bryan, Earl Dean Lowe, Joan May, Ruby Sloan, Peggy Nelson, Lewis Palmer, Juanita Phillips, Dora Lee Smith, Betty Jo Carter, Billy Cheek, Shirley Coe, Edith Tilley, Clara Rachel Hardy, Annie Katherine Whisenhunt, Elizabeth Wilkinson, Gladys Weinstock and Hester Hodges.

In the eighth grade, we were allowed some of the high school privileges and obtained a feeling of dignity. Our teachers were Miss Noble and Mrs. Crotts. Those joining us were: Pete Hair, Betty Sue Harpe, Hazel McClamrock, Curtis Wimbish, Bob Russell and Kenneth Motsinger.

In the fall of '49 we began our high school education under the direction of Miss McHan and Mrs. Butner and Mr. Potts, our new principal. Our class officers were:

Section M	Section B
President—Lena Mae Lewis	President—Bill Thomas
Vice President—Marlene Scott	Vice President—Jack Cumby
Secretary—Peggy Shore	Secretary—Peggy Dunn

Those who joined us in our Freshman year were: Robert Hutchens, Jerry Koontz, Darlene Nichols, Donald Smith and Ivan Hayes.

This was our first year to attend the Tri Banquet, which was a big thrill to all of us.

When we returned to school for our Sophomore year, we found we had a new principal, Mr. Lester. Our homeroom teachers were Mr. Ostrander and Mr. Giles. Our class officers were:

President—Pete Hair	Secretary—Peggy Dunn
Vice President—Donna Jane Jones	Treasurer—Emma Davis

Those who joined us this year were: Claude Hicks and Bobby Turner.

Our Junior year was jammed and packed with activities. Our homeroom teachers were Mrs. Newsom and Mr. Moody. In December, we presented our Junior play, "Strained Relations," which was a big success. Then on April the eleventh, we were host to the Seniors at the Junior and Senior Banquet, which was held on the Balinese Roof in the Robert E. Lee Hotel. Our theme, "A Night in Hawaii," was carried out by the use of leis, palm trees, tropical fruit and canoes.

Our class officers were:

President—Bill Thomas	Secretary—Jewell Foster
Vice President—Leslie Frye	Treasurer—Donna Jane Jones

Bill Sides was the only one who joined us this year.

At last the fall of '52 has rolled around and we have reached the top. It has been a long and hard struggle, but we have finally succeeded. We were very happy when we returned to meet our new principal, Mr. Robert Chilton, who has helped us make this year a happy and successful one. Our homeroom teachers were Miss Cook and Mr. Hiatt.

Those who have finally attained the honor of being a Senior are: Cornelia Allen, David Allen, Emily Atwood, Bob Barney, Dorothy Beckner, Jane Brewer, Lowell Carter, Earl Church, Mary Church, Richard Clinard, Jane Cox, Jack Cumby, Peggy Dunn, Jo Ann Essex, Leslie Frye, Jewell Foster, Bobby Gabard, Pete Hair, Carolyn Hart, Barbara Hauser, Joanne Hayes, Alphonso Hendrix, Richard Hickman, Bonnie Hire, Gay Holton, Donald James, Donna Jane Jones, Norma Jones, Robert Kiger, Hutokah Lawson, Lena Mae Lewis, Bobby Miller, Tommy Miller, Joanne Moody, Patsy Parks, Peggy Pople, Delano Roberts, Marlene Scott, Melvin Shoaf, Peggy Shore, Bill Sides, Lloyd Spaugh, Betty Lou Thomas, Bill Thomas, Bobby Turner, Norma Woosley, Frances Wooten, and Jean Worrell.

Our Senior Class officers are:

President—Peggy Dunn	Secretary—Carolyn Hart
Vice President—Jo Ann Essex	Treasurer—Jewell Foster

We published the sixth edition of Clemmemories with Peggy Dunn as editor and Jewell Foster as associate editor. Then came our Senior Play, Junior and Senior Banquet and last, but not least—graduation.

At last we are reaching our long-awaited goal. But with sad hearts we are leaving "dear ole Clemmons." To our principal and teachers we say thank you in our humblest ways for all you have done for us. We fully realize that we could not have reached this goal without your help and encouragement.

And so as we leave, we want to wish each and everyone of you the best of luck and success in everything for which you strive.

Sincerely,

EMILY ATWOOD  
LOWELL CARTER



## CLASS PROPHECY

Palm trees are gently swaying in the breeze, the moon is just coming up over the Atlantic Ocean, and all the Class of 1953 is decked out in their best garb for the grand opening of Bob Barney's night club, "The Fluted Plume," in swank Palm Beach, Florida. His vocalist, making a hit with everyone is none other than Hutokah Lawson.

From Texas comes Bill Sides and Tommy Miller who are now the owners of a five million acre bull ranch, "The Spiked Steer."

Upon questioning Earl Church, who looks very dignified in a tuxedo, we find he is head librarian at Clemmons University Library.

Lloyd Spaugh, here for the grand opening, has become a world famous architect and contractor. He built the new club for a fabulous sum of only \$20,000,000.

Taking a vacation from playing professional football with the "Whizzer-Dizzers" is Delano Roberts. Donald James has been coach of the never fail team for seven years.

Sitting at a ringside table with his leading lady, Bonnie Hire, is our handsome young friend Bill Thomas, now a Hollywood star.

Chatting with old classmates is Alphonso Hendrix, who owns the first only "cat's" apparel shop in Clemmons. His model, dressed in the latest fashion, is Lowell Carter.

Cornelia Allen, who is now head psychiatrist at Clemmons Hospital for Mentally Ill Canine Pets, is sitting at a corner table with her head nurse Lena Mae Lewis.

Sitting with them is Gay Holton, now running a marriage broker agency and her secretary, David Allen. Gay says the business is really thriving.

Looking lovely as ever is Peggy Shore, who recently opened a school "Young Lovers." One of her classes is "It Takes Two to Tango." Chatting with her are two pupils of the school, Joanne Hayes and Carolyn Hart.

To no one's surprise, Jack Cumby is now chief of Clemmons Fire Department. Jack's assistant, Bob Turner, is here with him.

The grand opening has also brought down Richard Hickman and Melvin Shoaf, who are playing professional basketball with the Clemmons Globe Trotters.

Grouped at a table for six we find Emily Atwood and Peggy Pople, who are the first and only lady jet pilots in the U. S., Leslie Frye who is now importing orchids from Brazil and donated corsages for all the ladies tonight, and Marlene Scott, Jewell Foster, and Betty Lou Thomas, who gave up their positions at Hanes Hosiery to explore the unknown regions and tribes of headhunters along the Amazon River.

Norma Jones, who now has her own program on television giving advice on teenage problems, is talking over the business with her sponsor, Richard Clinard, President of "Gumpy Wumpy Candy Co."

From New York City we find Barbara Hauser, now head sports writer for the New York Times, and Donna Jones, who has become a concert pianist and will appear in Carnegie Hall for the fifth time next week.

Jean Worrell and her manager, Bob Gabard, are here in Palm Beach on vacation after Jean's successful appearance on Broadway.

At another ringside table sits JoAnn Essex, who gave up her position as star guard with Hanes Hosiery to get married, and Colonel Bob Miller now a lifetime army man.

The terrace overlooking the Atlantic is quite crowded tonight. Frances Wooten, now the most famous woman stock car driver in the South, is discussing tomorrow's race with one of her competitors, Mary Church.

Pete Hair, in the usual western boots, and now owner of a famous race track in Wyoming, just walked in with his lovely secretary, Joanne Moody. Joanne says their plane was grounded in St. Louis, making them late for the grand event.

Paying close attention to the band, whose director is Robert Kiger, are Jane Brewer and Norma Woosley, who are now top fashion designers in New York City.

Telling them of all the exciting experiences in the Wild West Rodeo are Patsy Parks and Dorothy Beckner. These two have just returned from Canada, where they are audiences of thousands.

At another corner table we find Peggy Dunn, who has just returned from Africa where she made a collection of tribal music and dances, chatting with Jane Cox. Jane will be the star for Peggy's new movie, portraying her findings.

The grand opening has been a gala event, bringing all the class together for the first time in ten years. It's getting late, though, and Bob plans to have a breakfast party, so that means the class of '53 will once more have to say goodbye and each go his separate way down the road of life.

BILL SIDES  
PEGGY DUNN,  
Prophets.

## FAREWELL

Our days of school are almost gone.  
We look back with sigh  
To all the happiness we've known,  
As our last days draw nigh.

We've had to work and strive to reach  
The goal we are to gain.  
But now, within our hearts we know  
Our work was not in vain.

We have but one request to make  
Of those who still remain:  
Love and keep our school and bring  
Only honor to her name.

So now, we bid our last farewell;  
And with each tear that falls,  
We end our dream which first began  
Within thy cherished walls.

*By:*

JEWELL FOSTER  
NORMA WOOSLEY

## CLASS SONG

The time has come for us to go,  
and so we'd like to say;  
We thank thee dear Clemmons School  
in every kind of way.

The years have passed and we must leave;  
but though we part from you,  
We leave thee with happy hearts,  
filled with a promise true.

To all our teachers, kind and true,  
may we express to each one  
The greatfulness in our hearts  
for all the good you've done.

Though we leave thee Clemmons School  
and from thee ever part,  
You will remain a memory  
we cherish in our hearts.

*By:*

JEAN WORRELL  
DONNA JANE JONES





Betty Carolyn Scott  
Martha Wishon  
Shirley Poindexter

## MARSHALS

Jerry Peoples  
Jay Caudle  
Sam Easley



Judy Burke

## MASCOTS

Lee Livengood





### CLASS DAY OFFICERS

Seated: Lena Mae Lewis, Marlene Scott.  
 First row: Jean Worrell, Emily Atwood, Lowell Carter.  
 Second row: Richard Hickman, Donna Jane Jones, Norma Woolsley, Jewell Foster,  
 Seated: Peggy Pople, Peggy Shore.



### KIDS DAY

Seated: Peggy Pople, Peggy Shore.  
 Standing: Tommy Miller, Jane Brewer, Frances Wooten, Bill Sides.

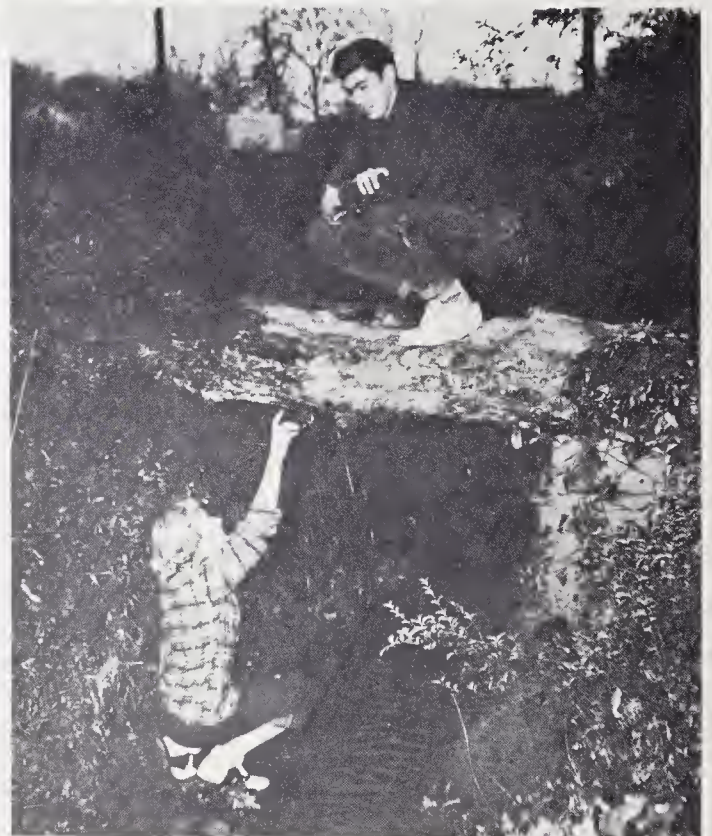


SUPERLATIVES



PEGGY DUNN  
ROBERT KIGER  
*Most Likely to Succeed*

JOANNE MOODY  
RICHARD HICKMAN  
*Most Dependable*



# SUPERLATIVES

PETE HAIR  
MARLENE SCOTT  
*Most Popular*



BOBBY TURNER  
DOROTHY BECKNER  
*Best Sports*



SUPERLATIVES



JEWELL FOSTER  
RICHARD HICKMAN  
*Most Versatile*

PEGGY DUNN  
LOWELL CARTER  
*Best All Around*



SUPERLATIVES

LESLIE FRYE  
PEGGY POPE  
*Most Studious*



BOBBY TURNER  
JOANNE HAYES  
*Quietest*





BILL SIDES  
FRANCES WOOTEN  
*Wittiest*

PEGGY SHORE  
TOMMY MILLER  
*Cutest*



SUPERLATIVES

LLOYD SPAUGH  
CORNELIA ALLEN  
*Biggest Flirt*



NORMA JONES  
ALPHONSO HENDRIX  
*Best Looking*



SUPERLATIVES



BILL THOMAS  
LENA MAE LEWIS  
*Neatest*



LOWELL CARTER  
MARLENE SCOTT  
*Friendliest*

SUPERLATIVES

JEAN WORRELL  
ROBERT KIGER  
*Most Talented*



GAY HOLTON  
ALPHONSO HENDRIX  
*Most Athletic*



# THEN

# AND

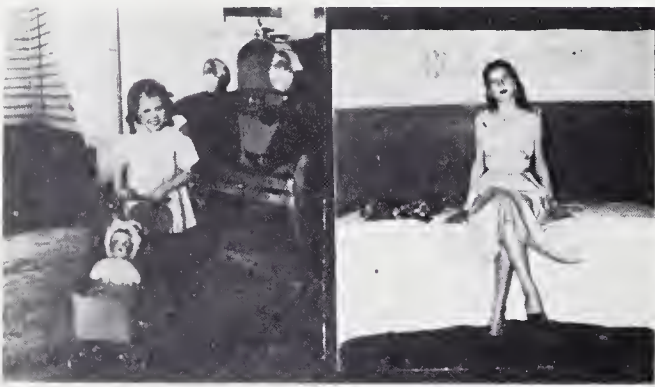
# NOW



A scholar good and true.



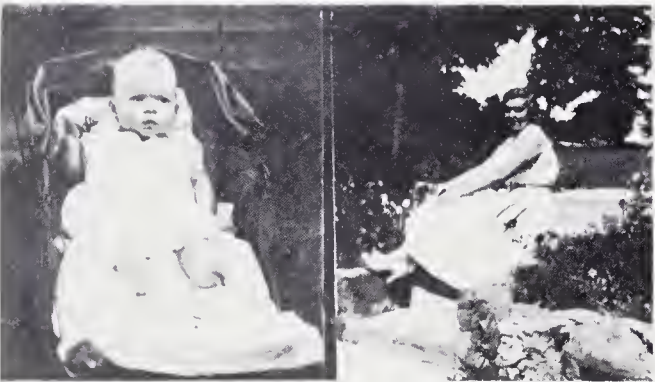
A smile costs nothing but creates much.



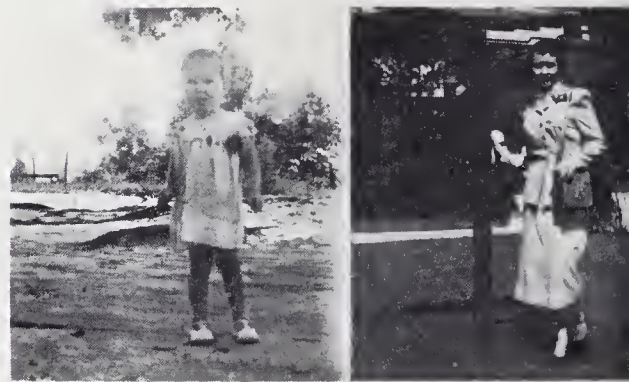
A pretty girl is like a melody.



Once a friend, always a friend.



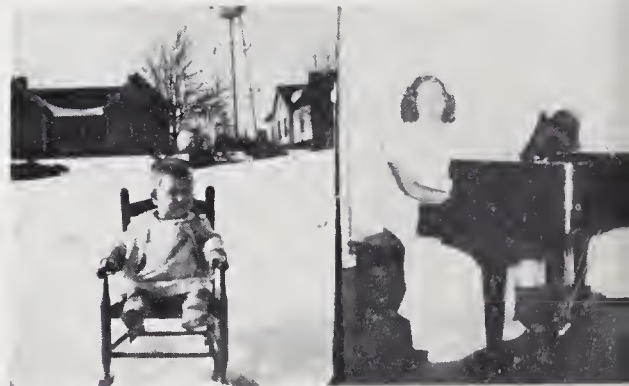
Playing well the game of life.



A spirit of laughing sunshine.



Happy-go-lucky.



Silence is deep as eternity; speech is shallow as time.



# THEN AND NOW



He takes everything with a smile.



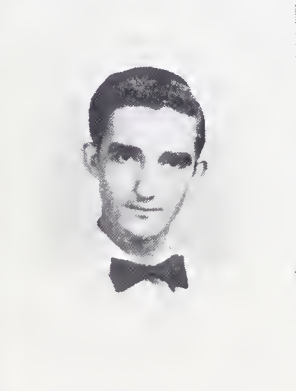
Rugged individualism.



His wit will see his through.



Footloose and fancy free.



I love life.



Sweet is the word for you.



A fine outstanding boy is he.



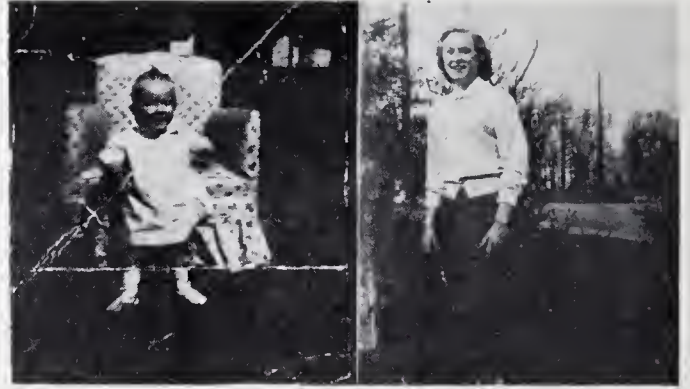
Take it easy.



# THEN AND NOW



Love is a beautiful thing.



Sweet and lovely.



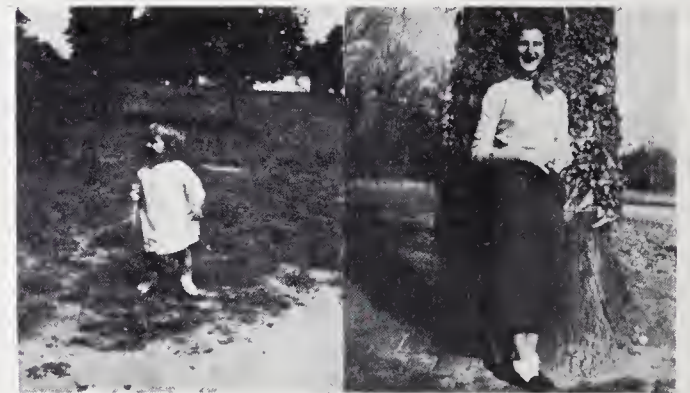
Rich in good works.



Charm strikes the sight, merit wins the soul.



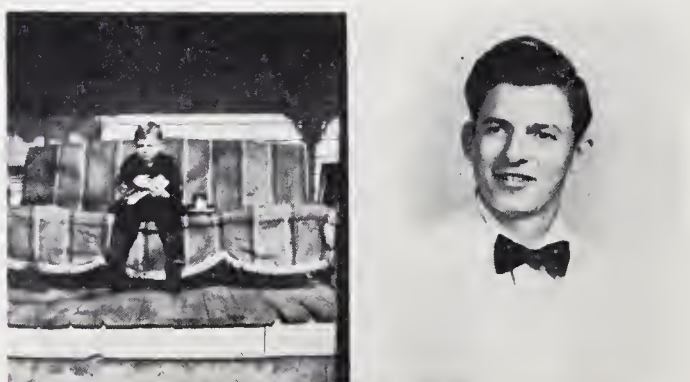
The quiet mind is richer than a crown.



A joy to know.



If we deal fairly, we shall find that we have won.



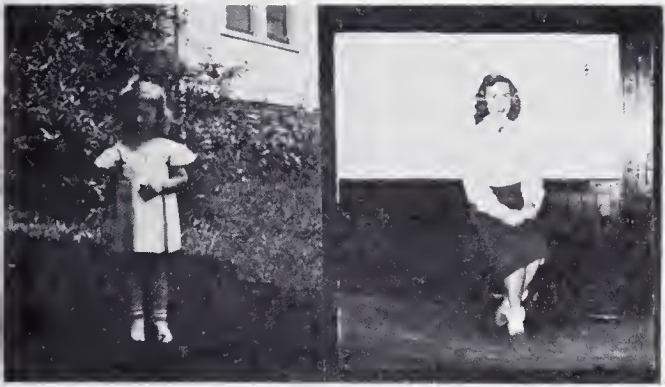
Success begins with a fellow's will.



# THEN

# AND

# NOW



Forever warm and winning in her ways.



A regular guy—straight and true.



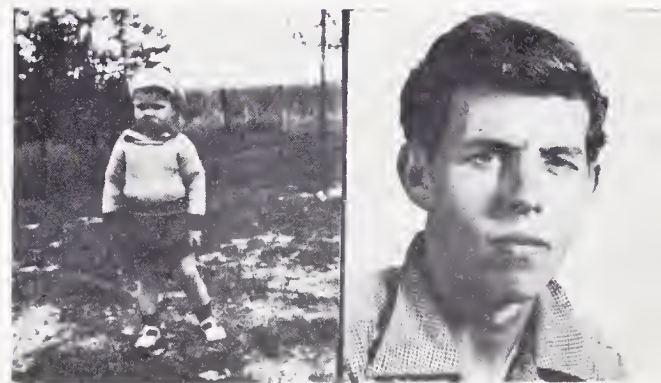
An easy going guy whom we all like.



Wit and humor.



It's the set of the soul that determines the goal.



It's good to be merry.



It is good to live and learn.



Great actions speak great minds.



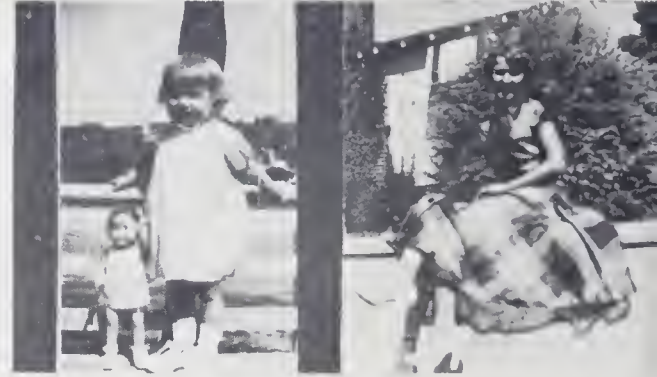
# THEN

# AND

# NOW



Nothing is impossible to a willing heart.



Her heart is as true as steel.



Charming way, winning smile.



He knows what he wants.



And he shall excel even among the greatest of men.



Friendliness makes happiness.



One love have I.



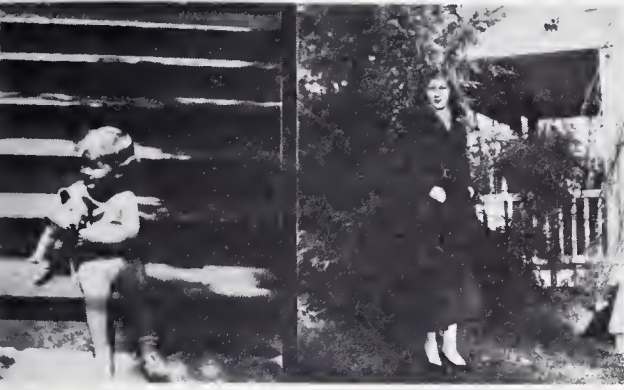
Delightful to know.



# THEN

# AND

# NOW



My heart sings with joy.



Men of few words are the best men.



I ain't lazy, I'm just dreaming.



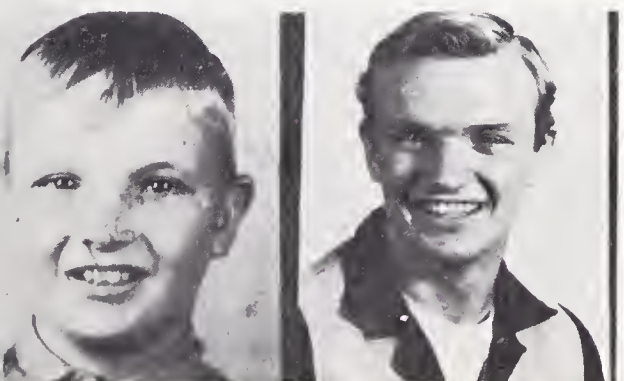
Who grows quietly will grow strongly.



Nice to have around.



Such a man in truth am I.

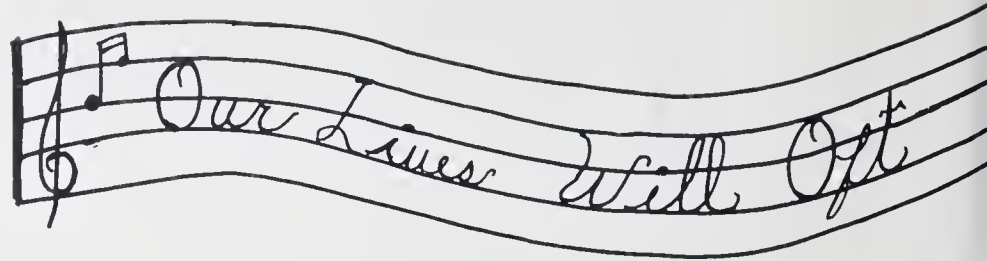


O 'tis excellent to have a giant's strength.



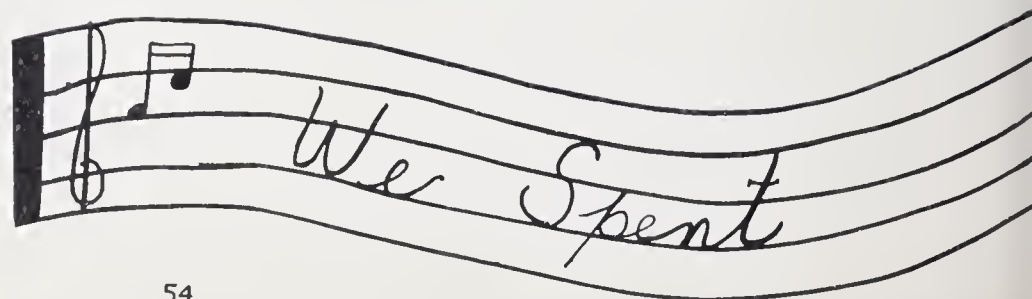
Life is a sweet and joyful thing.





# BOOK THREE

## Activities



Reflect The Days



Within Thy Walls





## HIGH SCHOOL STUDENT COUNCIL

Left to right: Angela Beshears, Jay Caudle, William Snyder, Sam Easley, Alphonso Hendrix, Mr. Morgan, Advisor; Peggy Pople, Norman Foster, Diane Bingham, Leslie Frye.

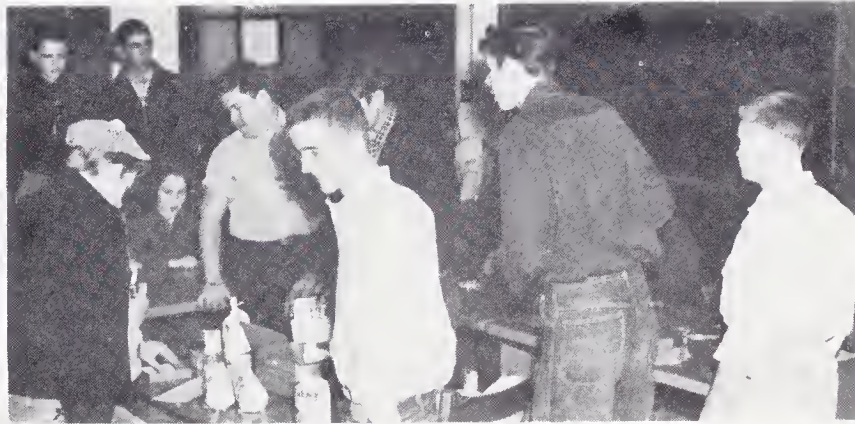






## KEY CLUB

First Row: Lowell Carter, Jerry Peoples, Richard Hickman, Robert Kiger, Leslie Frye, Bobby Turner, S. R. Kimel Jr.  
 Second Row: James Sloan, George Hair, Pete Hair, Alphonso Hendrix, William Snyder, Sam Easley, Jay Caudle, Mr. Moody, Advisor.







### F.H.A.

First Row: Miss Hudson, Emily Atwood, Marlene Scott, Billie Brewer, Peggy Bingham, Barbara Hunter, Betty Scott, Lena Mae Lewis, Peggy Todd, Doris Pople, Shirley Flynn, Arlene Lutz, Nancy Moody.  
 Second Row: Shirley Holton, Jean Worrell, Frances Wooten, Janie Vaught, Gay Brewer, Wilma Jones, Elizabeth Bodsford, Peggy Shore, Peggy Poole, Carolyn Bodsford, Rebecca Pickett, Evelyn Ellis, Dorothy Beckner, Barbara Craver.  
 Third Row: Sammy Smith, Jeanette Quinn, Ada Lou Boyer, Shirley Wooten, Gay Holton, Jackie Smothers, Ann Williamson, Diane Sheek, Betty Reid, Grace Myers, Norma Vogler.  
 Fourth Row: Peggy Dunn, Ina Grace Ratz, Murriane Linker, Rosemary Shoaf, Bessie Beauchamp, Diane Bingham, Jane Brewer, Shirley Poindexter, Martha Wishon, Jeanette Leinback, Donna Jones, Patsy Parks, Jane Lowder, Carol Tise.  
 Fifth Row: Carolyn Hart, Betty Lou Thomas, Louise Harris, Colleen Peoples, Jean Hauser, Ann Phelps, Betty Angel, Ruth Green, Ann Ashley, Catherine Douthit, Ann Carol Ellis, Norma Jones, Jo Ann Essex, Rose Nell Wall.

### OFFICERS

Lena Mae Lewis .....	<i>President</i>
Peggy Todd .....	<i>Vice President</i>
Betty Carolyn Scott .....	<i>Secretary</i>
Billie Brewer .....	<i>Treasurer</i>

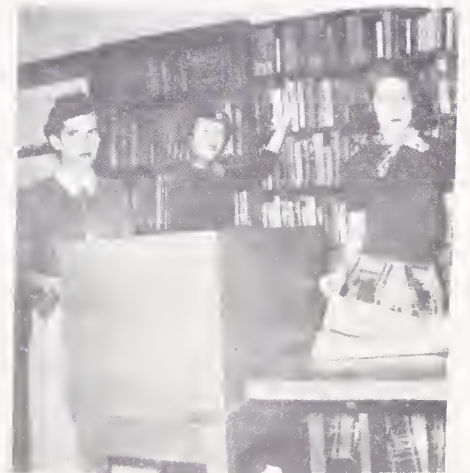






## LIBRARY CLUB

First Row: Wilma Jones, Joanne Hayes, Doris Pople, Emily Atwood.  
 Second Row: Peggy Shore, Grace Myers, Peggy Pople.  
 Third Row: Peggy Dunn, Mrs. Brower, Advisor; Bonnie Hire, Carolyn Kimel, Patsy Hendrix, Murriane Linker, Margaret Church, Jane Cox, Hutokah Lawson, Jean Worrell, Ina Grace Ratz, Barbara Craver, Jeanette Leinback.







## CHATTERBOX STAFF

David Allen, Lena Mae Lewis, Marlene Scott, Mrs. Felton, Advisor; Betty Lou Thomas, Robert Kiger, Peggy Shore, Mary Church, Patsy Parks, Jean Worrell, Alphonso Hendrix, Leslie Frye, Norma Jones, Jewell Foster, Jo Ann Essex, Barbara Hauser, Gay Holton.







### F.F.A.

First Row: Bobby Turner, Wayne Ellingham, Douglas Brewer, Melvin Shoaf, Robert Kiger, Lloyd Spaugh, Joe Bullins, Bill Beashers, Frank Beckner.

Second Row: David Allen, Richard Clinard, Charles Payne, Jimmy Smith, Ralph Sides, Robert Hutchens, Paul Crotts, Bobby Keaton, Joe Medford, Bill Brandon, Kenneth Blakely.

Third Row: Mickey Cumby, Earl Church, Bobby Miller, Marvin Ridings, Delano Roberts, Dean Flora, Bill Cheek, Eugene Templeton, Bill Thomas Mr. L. O. Crotts, Advisor.

Fourth Row: Norma Foster, Gilbert Brandon, Gene Livengood, Bobby Hellard, Richard Hickman, Lee Weisner, Bobby Gabard.



### BUSINESS CLUB

First Row: Donna Jane Jones, Betty Reed, Jo Ann Essex, Norma Jones.

Second Row: Lena Mae Lewis, Martha Wishon, Patsy Parks, Frances Wooten.

Third Row: Shirley Poindexter, Jean Hauser, Mary Church.

Fourth Row: Jewell Foster, Mrs. Felton, Advisor; Gay Holton.





## BIBLE CLUB

First Row: Carol Tise, Ruth Stone, Joe Bullins, Bernice Griffith, Jenny Hellard.  
 Second Row: Frances Wooten, Peggy Shore, Jack Reed, Ruth Green, Norma Vogler, Margaret Charles, Nancy Wrights.  
 Third Row: Melvin Shoaf, Bobby Hellard, Mrs. Garvey, Jo Ann Essex, Barbara Hauser, Norma Jones, Maxine Setliff, Donna Jones, Patsy Parks, Geraldine Scott, Rose Nell Wall, Betty Angel, Norman Foster.



## HI-Y

First Row: Alphonso Hendrix, Buddy Kimel, Richard Hickman, Leslie Frye, Donald Bodford, William Snyder, Lowell Carter.  
 Second Row: Thomas Tate, Wayne Pfaff, Richard Clinard, Wilson Wise, Terry Tesh, Mike Parks, Harry Caudle, Roger Powell, Kenneth Harpe, Eugene Templeton, Tommy Mahannah.  
 Third Row: Mr. Hiatt, Advisor; Ralph Griffith, Sammy Marshall, George Hair, Alton Clinard, Ellis Welch, Vance Hartley, Jack Reed, George Ed Wilson, Norman Foster.  
 Fourth Row: Richard Canter, Gerald Sheets, Charles Payne, Jessie Parks, William Creasy, Tommy Isely, Jimmy Higgins.





## FIRST AIDERS

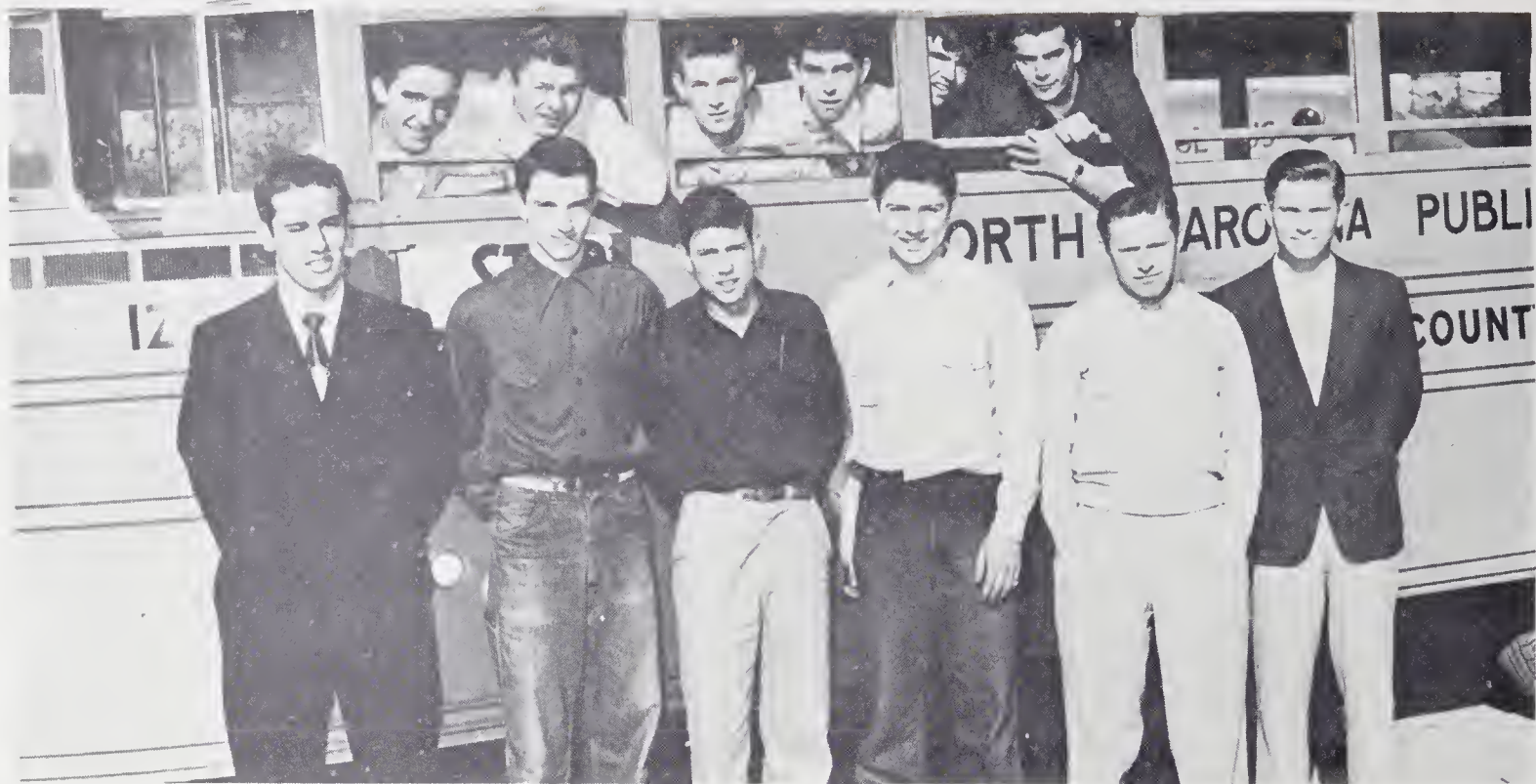
Carol Tise, Shirley Flynn, Doris Pople, Jane Brewer.



## FIRE SQUAD

First Row: Jack Cumby, Richard Hickman, Lowell Carter, Robert Kiger, Jerry Peoples, Wilson Wise, James Sloan, Alphonso Hendrix, Lloyd Spaugh.  
 Second Row: Frank Beckner, David Allen, Delano Roberts, Leslie Frye, Pete Hair.





## BUS DRIVERS

First Row: Lowell Carter, Dean Flora, Paul Crotts, Bobby Gabard, Joe Bullins, David Allen.

Second Row: Bill Thomas, Lloyd Spaugh, Wilson Wise, Donald James, Bobby Keaton, Melvin Shoaf. Not pictured: Jack Cumby.



## SAFETY PATROL

First Row: Jean Tise, Jeanette Johnson, Sammy Marshal, Frank Lustig, Terry Culler, Donald Carter, Kent Davis, Wilson Sparks.

Second Row: Patti Hooker, Ruby Hogue, Donnie Drane, Pledger Keaton, Douglas Gobble, Norman Staley, Kenneth Easter, Glenda Sheets, Carolyn Lowder, Jack Todd.

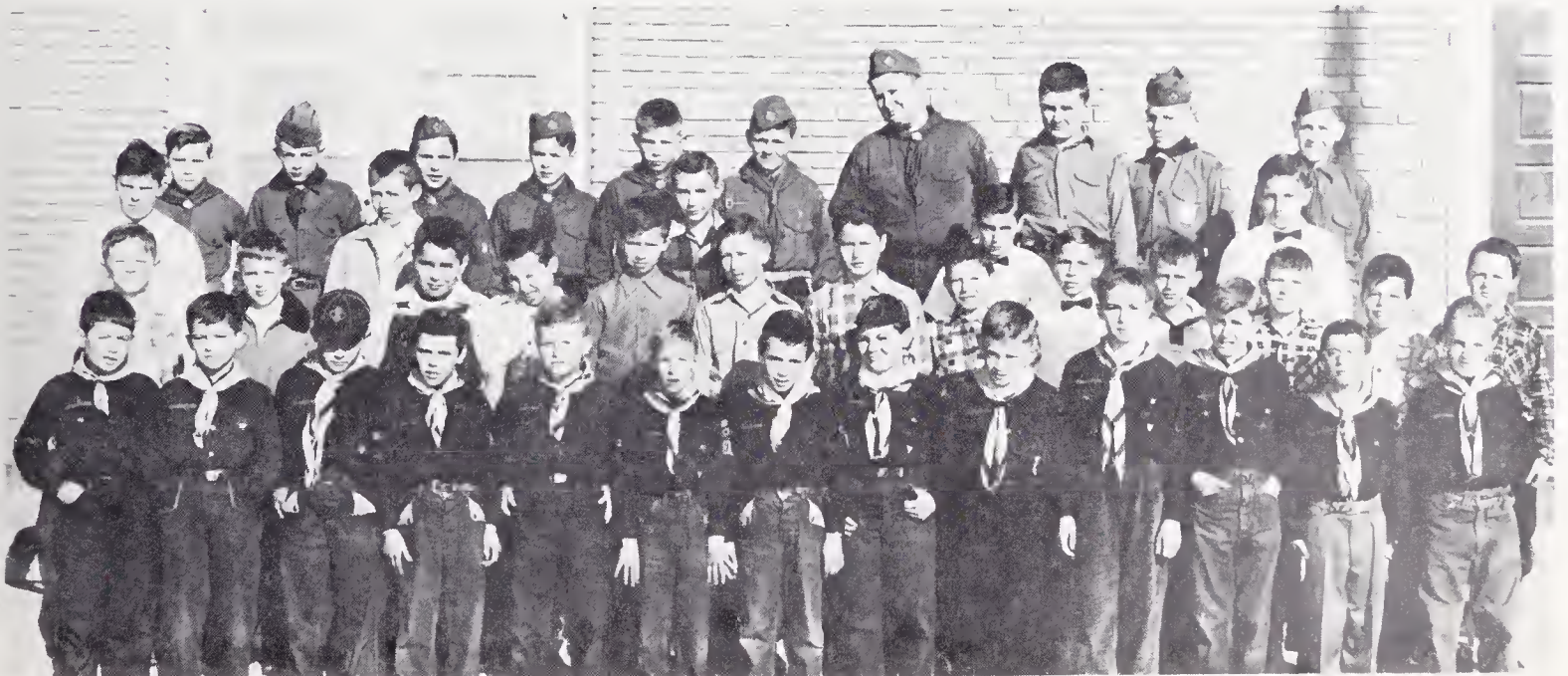
Third Row: Jimmy Smith, Jimmy Doby, Jack Reed, Billy Wafford, Jimmy Berrier, L. J. Beckner, Joe Brewer, Tommy Shutt, Mr. Leith.



## GIRL SCOUTS



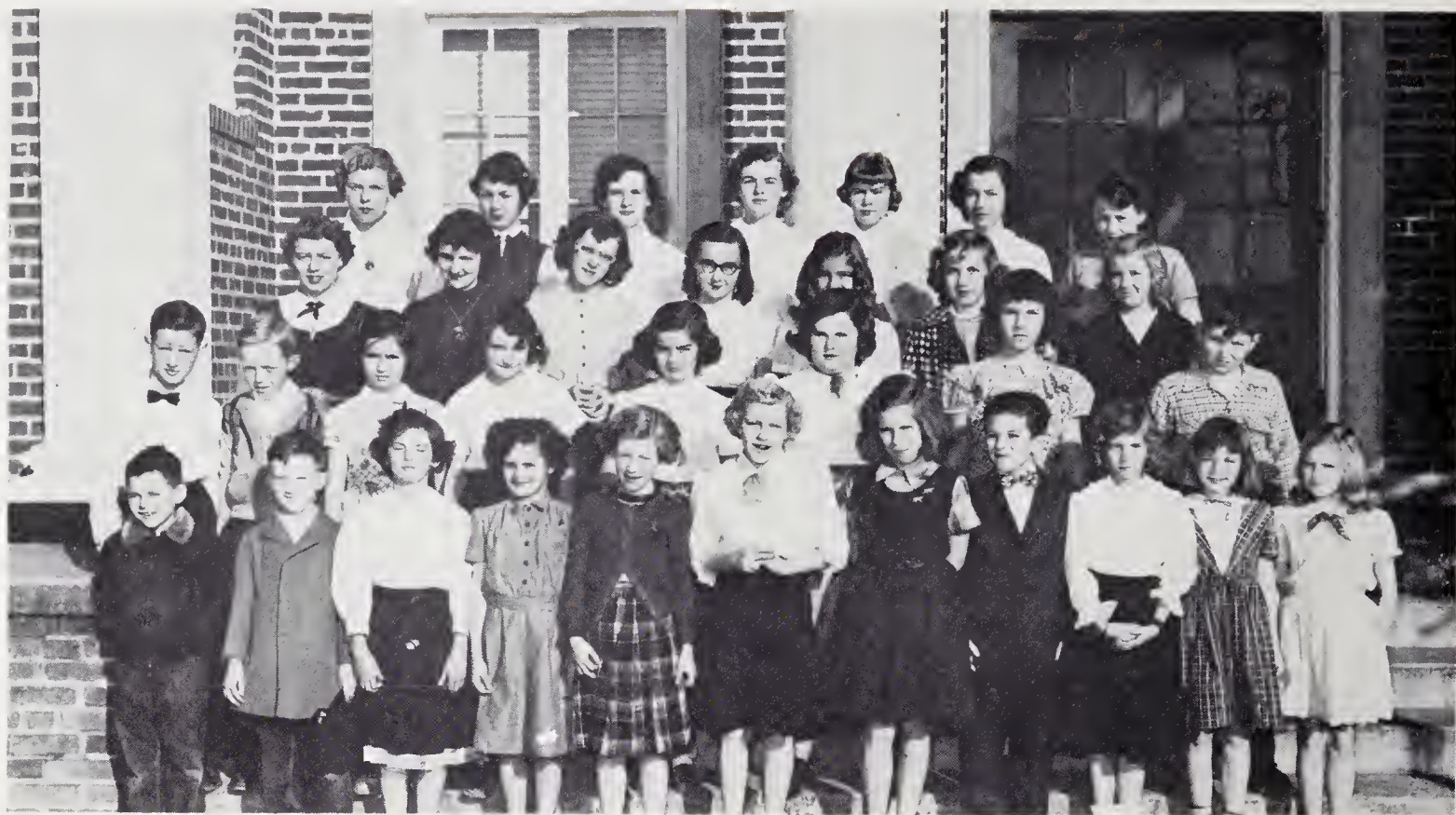
First Row: B. Brewer, J. Easter, F. Vaugh, D. Douthit, M. Dennie, L. Harper, S. Wells, J. Lutz, Robertson, M. Brewer.  
 Second Row: S. Wells, C. Stilley, J. Frye, M. Calloway, J. Tesh, M. Jones, S. Lanier, J. Crater, B. Pegram.  
 Third Row: A. Lewis, J. Turner, G. Vogler, K. Spainhour, N. Vest, S. Todd, A. Lowder, J. Jones, J. Todd, B. Allen.  
 Fourth Row: C. Pickett, L. Lowder, A. Ellis, D. Bingham, J. Quinn, M. Church, P. Bingham, M. Linker, A. Lutz.  
 Fifth Row: L. Howard, D. Sheek, N. Moody, B. Hunter, A. Williamson, E. Atwood, J. Ellingham, J. Lowder.



## BOY SCOUTS

First Row: K. Essex, B. Brewer, J. Hunter, W. Cornatzer, J. Boyd, J. Shore, W. Cornatzer, L. Watkins, T. Moody, C. Furches, S. Lewis, N. Hogue, J. Todd.  
 Second Row: B. Nifong, E. Brewer, N. Hauser, L. Long, D. Easter, P. Jones, E. Templeton, G. Griffin, T. Todd, D. Crater, C. Cook, B. Pegram, J. Lowder.  
 Third Row: D. Gobble, T. Lutz, S. Marshall, G. Dinkens, P. Holton.  
 Fourth Row: D. Drane, B. Brewer, C. Cornatzer, R. Spach, I. Williamson, M. Dunn, J. Roberts, J. Doley, N. Staley, F. Lustig.





## PIANO PUPILS

First row: Stevie Dunn, Butch Hendrix, Jackie Kennedy, Mary Dennis, Nancy Davis, Jeanie Davis, Carol Cumbo, Terry Culler, Jane Frye, Jane Crater, Darlene Hickman.

Second row: Melvin Chappell, Kent Davis, Eva Church, Ruth Church, Betty Jo Allen, Linda Berrier, Maxine Crim, J. Dodd Linker.

Third row: Arlene Lutz, Diane Bingham, Ann Carol Ellis, Rebecca Pickett, Wanda Petty, Sybil Todd, Martha Lawson.

Fourth row: Emily Atwood, Barbara Hunter, Glenda Leinback, Judy Ellingham, Carolyn Lowder, Reva Cook, Sue Brewer.



MRS. BILL DONAHOO  
*Piano Instructor*

We are glad to have had as our piano instructor Mrs. Donahoo, who is a graduate of Salem College. The piano students feel it has been a privilege to have studied under her guidance. We hope she will remain in our school for many years.





## HIGH SCHOOL CHORUS

First Row: Edna Sloan, Gaynell Myers, Nancy Vaught, Ruby Moody, Donna Lou Jones, Rebecca Pickett, Mary Lou Smith, Nancy Setliff.

Second Row: Barbara Craver, Linda Howard, Lois Craver, Frances Clinard, Angela Beshears, Carolyn Bodsford, Jackie Smothers.

Third Row: Evelyn Ellis, Kay Spainhour, Ruby Hogue, Judy Ellingham, Peggy Dunn, Glenda Leinback, Joyce Craver, Joanne Moody.

Fourth Row: Jean Worrell, Jewell Foster, Jean Tise, Mary Church, Margaret Cornwall, Diane Bingham, Emily Atwood.

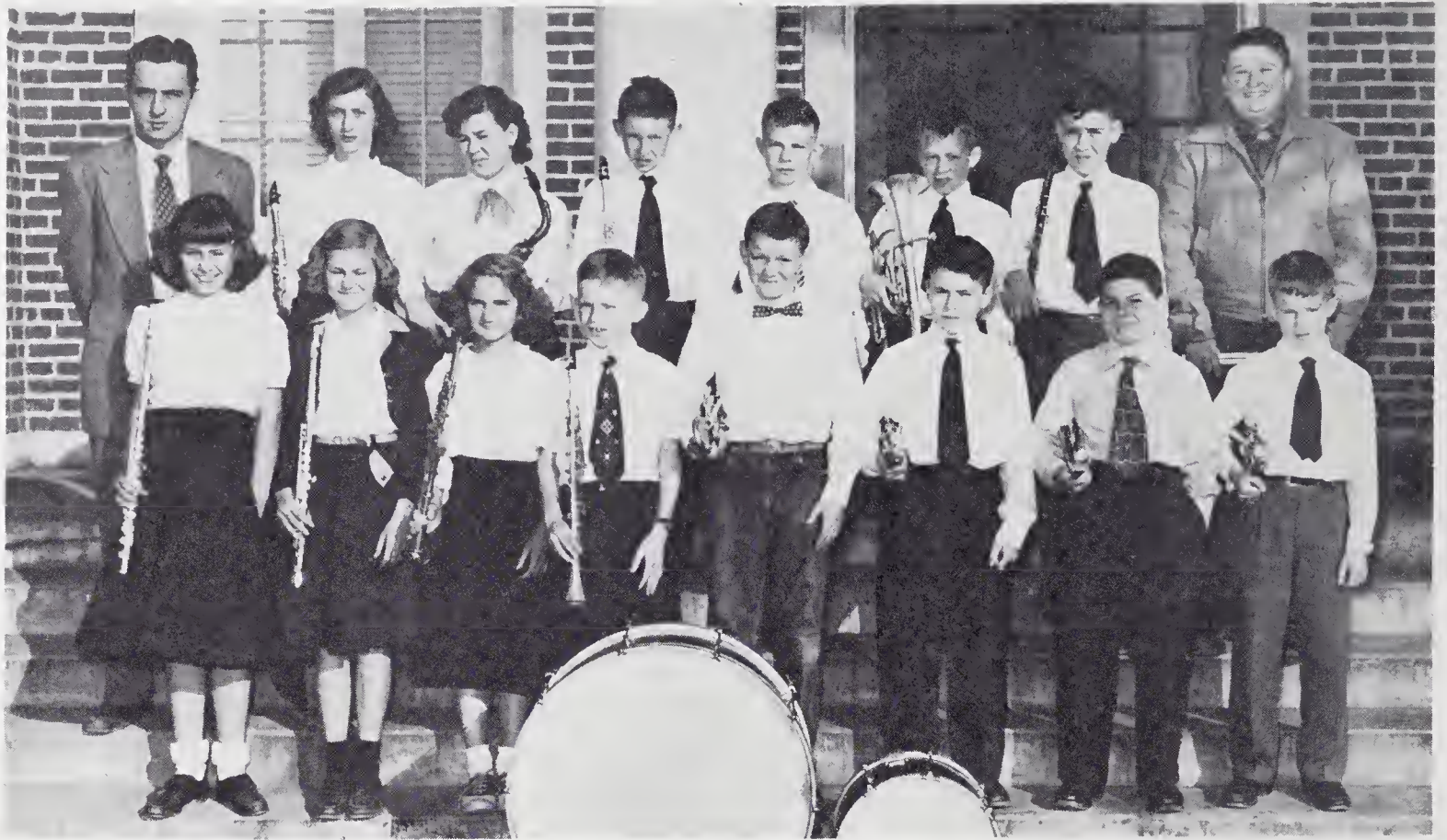
Fifth Row: Lowell Carter, Pete Hair, Leslie Frye, Donald James, Jack Cumby.

Another year has passed with Mrs. Orrell as the director of our Chorus. We want to express to her our appreciation for her time spent with us. She has been a great inspiration to those who have studied under her.

MRS. HERMAN ORRELL  
*Chorus Instructor*







## BAND

First Row: Brenda Wagoner, Sandy Smith, Alice Griffith, Thomas Moody, Mickey Dunn, R. L. Spach, Lindy Watkins, Edward Brewer.  
 Second Row: Mr. Ray, Ruth Green, Jackie Smothers, T. L. Griffith, Ervin Williamson, Tony Lutz, Frank Lustig, Jackie Roberts.



## CAFETERIA STAFF

Mrs. Nelson, Mrs. Berrier, Mrs. Satterfield, Mrs. Watson, "Ma" Hampton, Mrs. Mock, Betty Whisenhunt.





## ELEMENTARY STUDENT COUNCIL

First Row: Mr. Leith, Alton Jones, Bill Brewer, Jane Todd, Reva Cook, Miss Noble.  
 Second Row: Linda Jones, Carolyn Furches, Cathy Wells, Harold White, Frankie Vaught.  
 Third Row: Dan Brewer, Terry Caudle, Clay Furches, James Britt, Linda Berrier, Georgia Marshall, Diane Beckner, Tommy Craver.



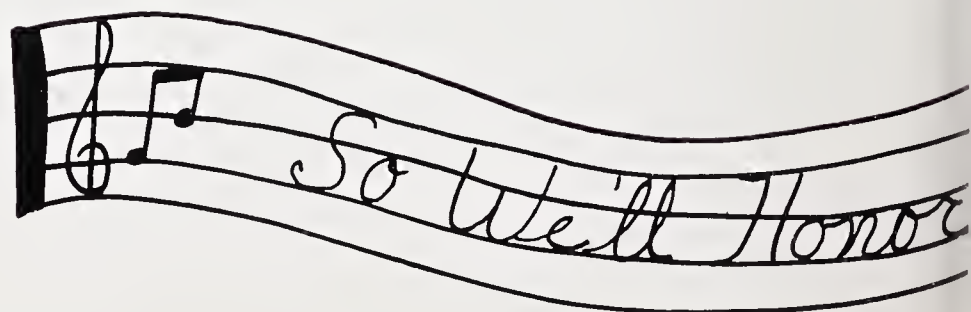
## ELEMENTARY CHORUS

First Row: M. Walker, R. Sprinkle, D. Todd, R. Spach, D. Gobble, L. Davis, J. Sapp, S. Stewart, G. Dinkins.  
 Second Row: M. Medford, M. Cox, M. Huff, N. Vest, L. Burke, A. Griffith, P. Landreth, B. Tise, J. Kennedy, J. Turner, C. Lawson, J. Davis, J. Frye.  
 Third Row: S. Davis, W. Petty, G. Vogler, J. Johnson, J. Holeman, B. Allen, P. Daniels, B. Tesh, L. Brandon, L. Lowder R. Church, J. Preston, J. Cornatzer.  
 Fourth Row: N. McClamrock, J. Brewer, K. Spainhour, P. Drane, A. Lewis, P. Bingham, C. Johnson, P. Lambeth, P. Jones.  
 Fifth Row: J. Johnson, G. Wall, J. Smith, M. Lowder, A. Lowder, S. Todd, J. Todd, J. Jones, J. Bodford, B. Stewart L. Holton, M. Dunn.  
 Sixth Row: J. McClamrock, C. Lowder, N. Angel, M. Davis, S. Brewer, K. Franklin, F. Harris, C. Pickett, R. Cook, D. Jones B. Whisenhunt, R. Miller.  
 Seventh Row: L. Brandon, G. Jones, N. Staley, B. Williams, F. Lustig, R. Lambeth, J. Berrier, G. Brewer.



# BOOK FOUR

*Athletics*





*Three, Cherish Memories*



'52-53

# The Blues



## CO-CAPTAINS

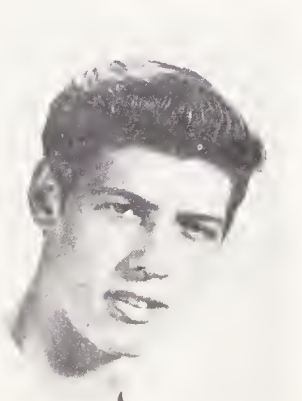
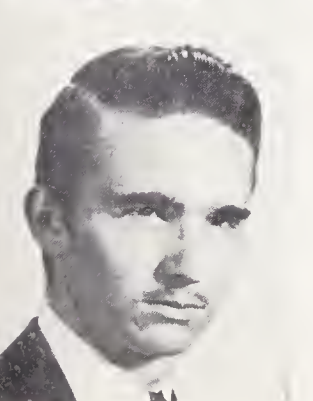
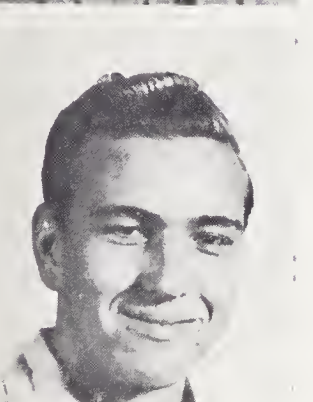
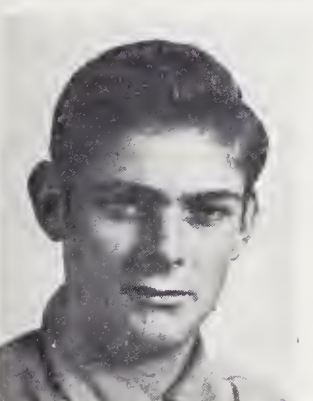
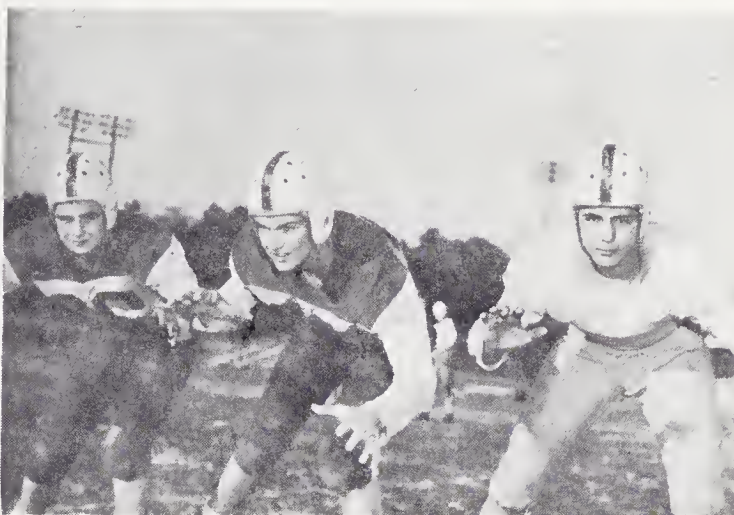
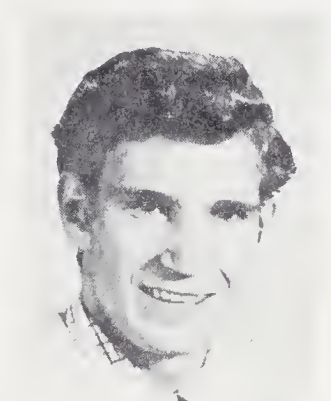
Robert Kiger and Bobby Miller

Seated: Richard Clinard, Mike Parks, Wayne Pfaff, Alphonso Hendrix, Delano Roberts, Lloyd Spaugh, Odell Cheek, Pete Hair.  
Standing: Mr. Ostrander, George Hair, William Snyder, Gene Livengood, Earl Church, Bill Cheek, Bobby Miller, William Creasy, Robert Kiger.



FOOTBALL

SNAPSHOTS





52.53

# The Blues



## CO-CAPTAINS

Jo Ann Essex, Lena Mae Lewis

First Row: Arlene Lutz, Shirley Wooten, Gay Holton, Barbara Tuttle, Diane Sheek, Jackie Matlock, Betty Carolyn Scott.  
Standing: Miss Cook, Jane Lowder, Jean Butner, Carol Tise, Barbara Hauser, Betty Reed, Emily Atwood, Manager.



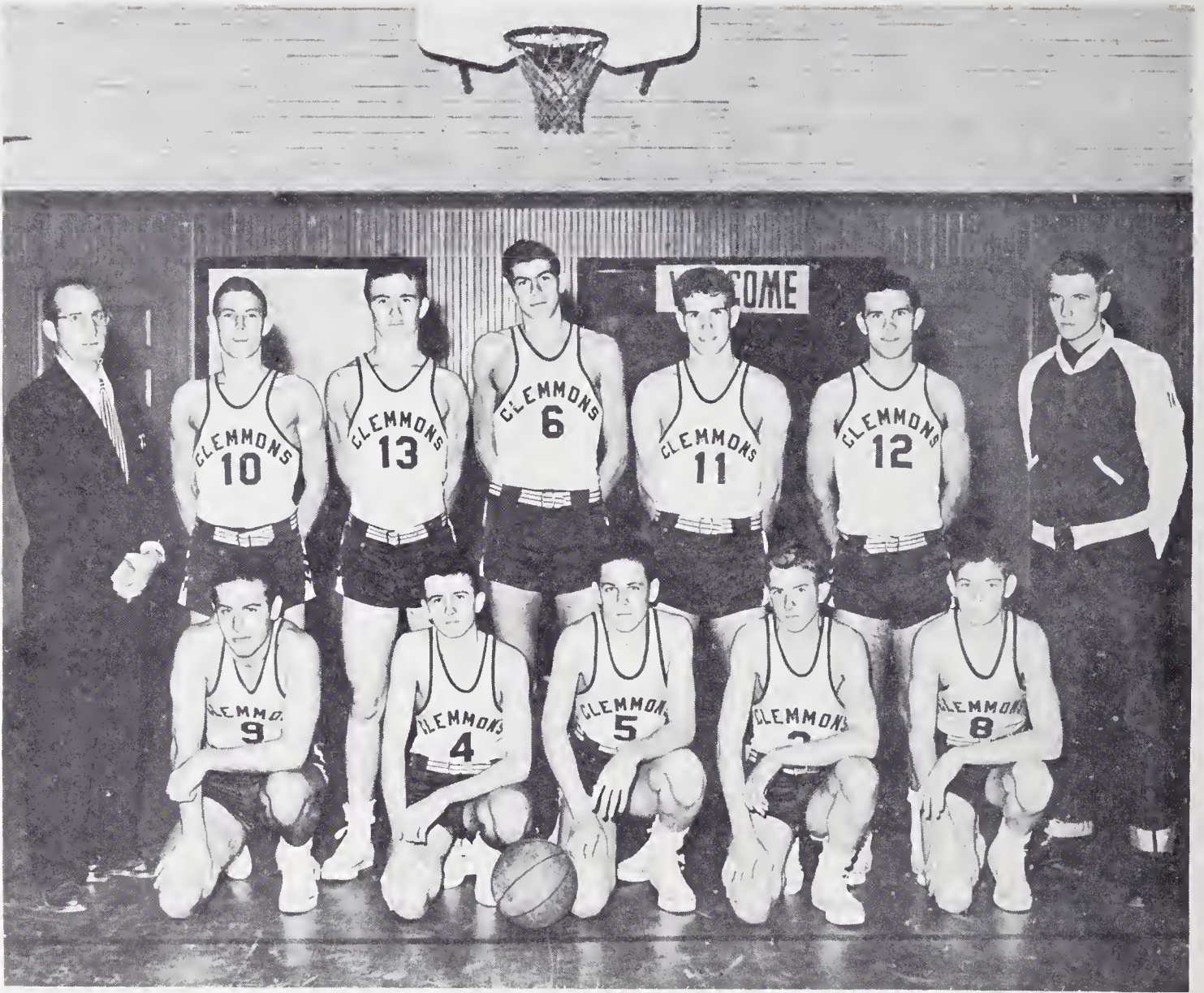
BASKETBALL SNAPSHOTS





52-53

# The Blues



## CO-CAPTAINS

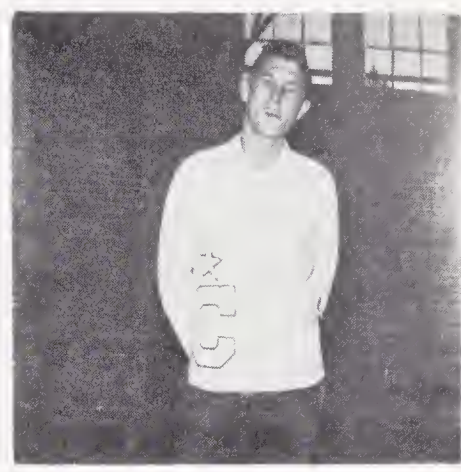
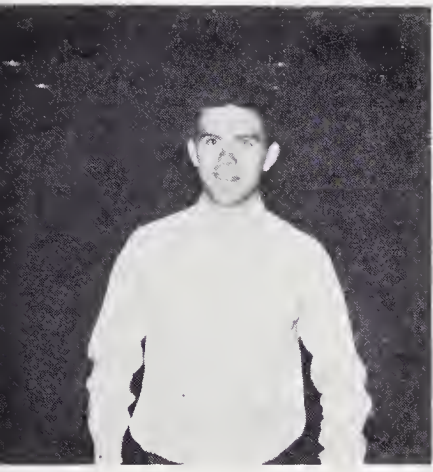
Wilson Wise and Richard Hickman

First Row: Lowell Carter, Mike Parks, Donald Bodford, Douglas Brewer, William Creasy.

Second Row: Mr. Ostrander, Coach, Wilson Wise, Gene Livengood, Richard Hickman, Alphonso Hendrix, Odell Cheek, Lee Weisner, Manager.



BASKETBALL SNAPSHOTS





'52-53

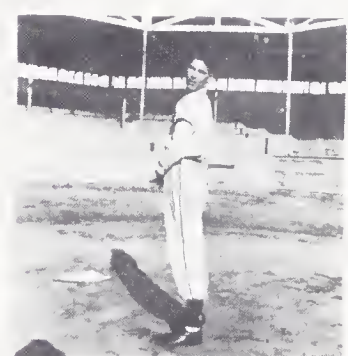
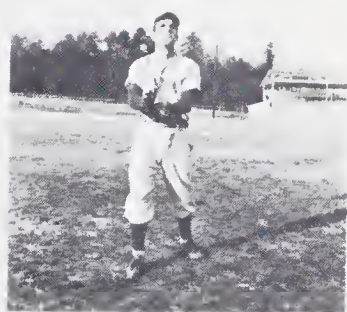
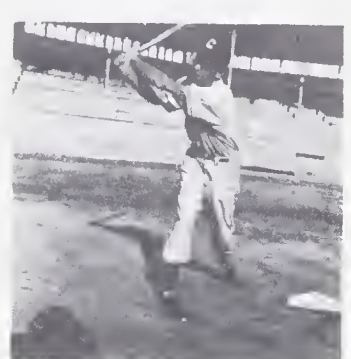
## The Blues



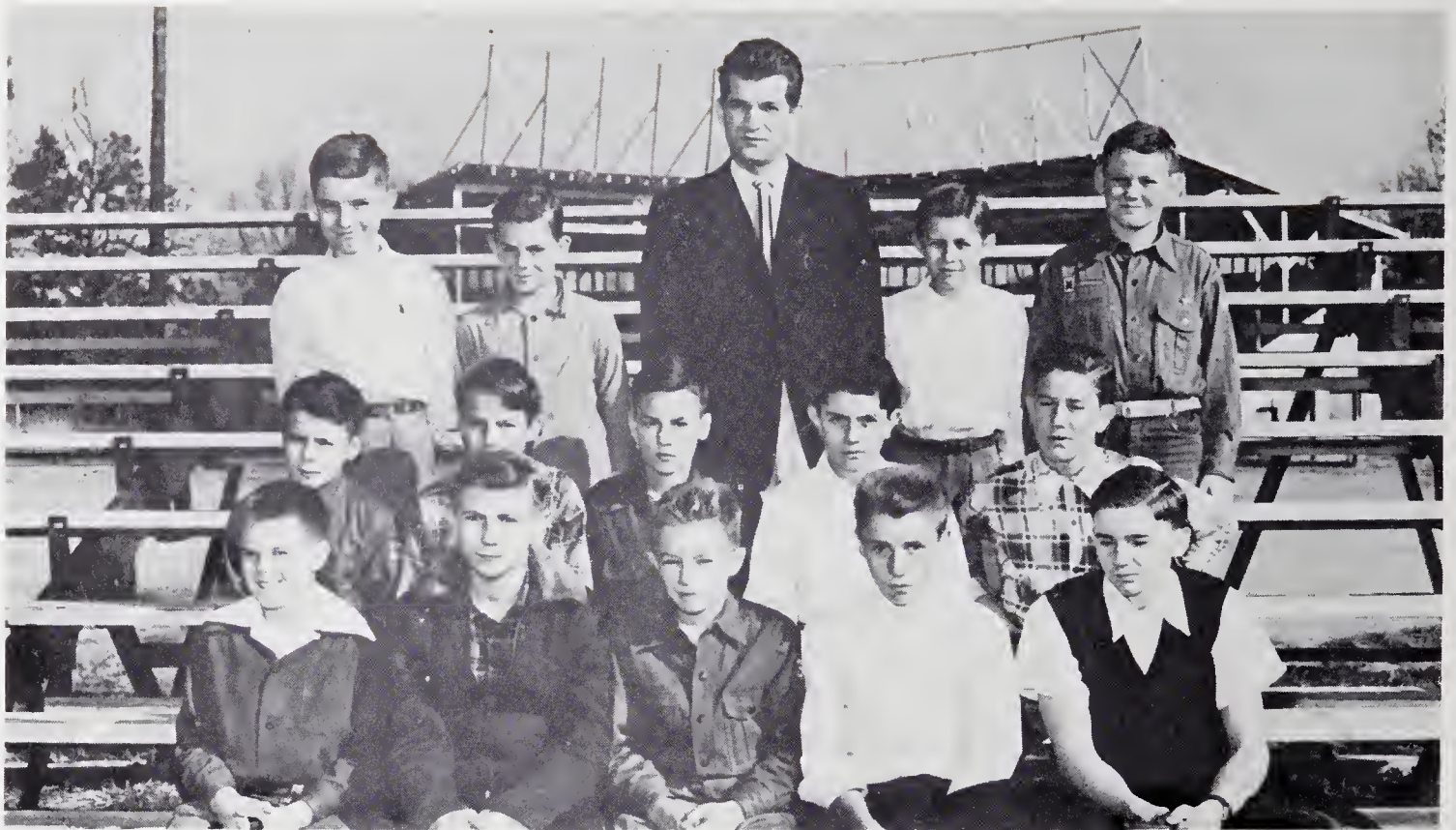
Seated: Richard Clinard, Joe Bullins, Wilson Wise, Tommy Miller, Odell Cheek, Jerry Peoples, Rex Cheek, James Sloan, Gene Livengood.  
Standing: Mr. Moody, Coach; Tommy Mahannah, William Creasy, Lloyd Spaug, Richard Hickman, Harry Caudle, Donald Bodford, Mike Parks, Jack Jones.



BASEBALL      SNAPSHOTS







### MIDGET FOOTBALL

First row: Alton Jones, Gene Hoots, Bill Brewer, Raymond Miller, Jim Martin.  
 Second row: R. L. Spach, Eddie Meadows, David Caudle, Grady Brewer, James Britt.  
 Third row: Billy Williams, Henry Lee Beckner, Mr. Leith, Jimmy Sapp, Mickey Dunn.



### JUNIOR VARSITY BASKETBALL

First row: Mickey Cumby, Vance Hartley, Jesse Parks, Alton Clinard, S. R. Kimel, Jr., Tommy Mahannah.  
 Second row: Roger Powell, William Snyder, James Sloan, Harry Caudle, Tommy Isley, Jack Jones.





CHEERLEADERS



# BOOK FIVE

*Elementary*





*Praises Long*



ELEMENTARY FACULTY



Mrs. C. M. Settle



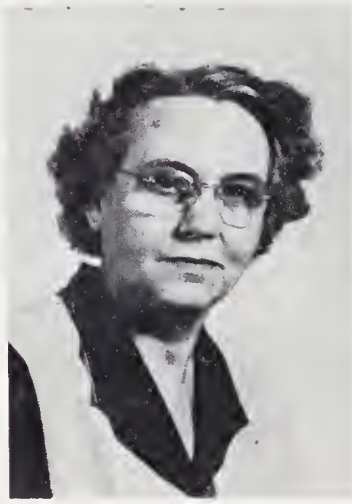
Mrs. Eugene Naylor



Mrs. Nona W. Watkins



Miss Margarette Hayes



Mrs. Bynum Davis



Miss Jean Frans



Mrs. M. N. McBrayer



Mrs. J. G. Horton



Mrs. Alfred H. Garvey

# ELEMENTARY FACULTY



Mrs. E. M. Darnell



Mrs. Von Allen Weed



Mrs. G. T. Moody



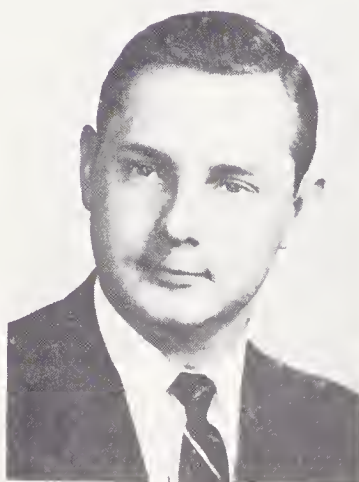
Mr. Charles M. Leith



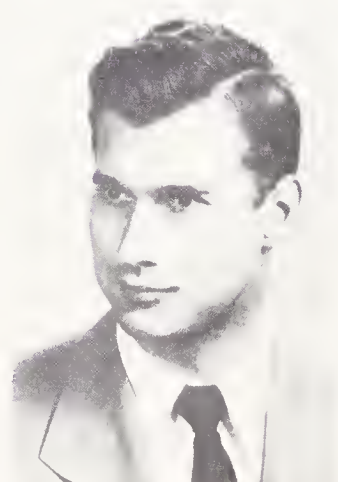
Miss Edoth Noble



Mrs. Luther O. Crotts



Mr. E. M. Darnell



Mr. Hugh Snow



## EIGHTH GRADE



Patsy Woosley  
Don Poplin  
Gene Hoots  
Lee Brandon  
JoAnn Howard



Grady Brewer  
Tommy Shutt  
Raymond Miller  
Charlie Binkley  
Dorothy Worrell



Angie Beshears  
Nancy Vaught  
Helen Stanley  
Betty Hull  
Patsy Worrell



Catherine Stanley  
Jeanette Johnson  
Patti Hooker  
Jackie Todd  
Raymond Shumate



George Jones  
Wayne Myers  
Glenda Sheets  
Doris Crater  
Betty Whisenhunt



Jean Tise  
Ruby Hogue  
Ann Spainhour  
Patsy Smith  
Ruby Moody



Peggy Davis  
Jean Hair

# EIGHTH GRADE

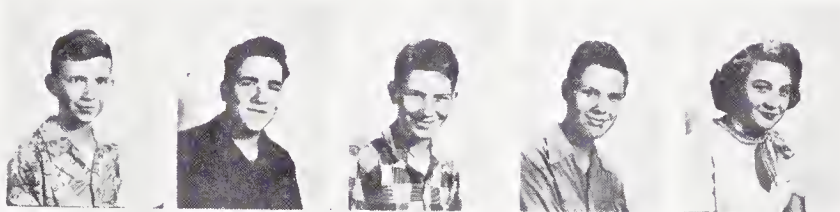
Floyd Cox  
Ray Kiger  
Eddie Meadows  
Ralph Bolt  
Bobby Livengood



T. L. Griffith  
Charles Parker  
Allen Blakeley  
Allen Wrights  
Charles Binkley



Alvin Shore  
Billy Smith  
Jimmy Cline  
Billy Wofford  
Joanne Parrish



Lillie Belle Keaton  
Mary Lou Smith  
Myrtle Morris  
Doris Dentiste  
Peggy Craver



Janet Lowder  
Linda Howard  
Donna Lou Jones  
Judy Ellingham  
Evelyn Smothers



Gaynelle Myers  
Frances Clinard  
Joyce Craver  
Nancy Setliff  
Glenda Lineback



Lois Craver





## SEVENTH GRADE



Thurman Jones  
Billy Heath  
Kenneth Easter  
H. M. Boyer  
Jimmy Sapp  
James Martin



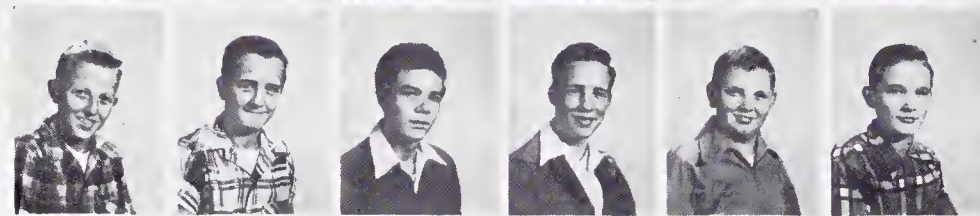
Rosa Case  
Shirley Tuttle  
Shirley Edwards  
Nancy Angel  
Dorothy Jones  
Janice Bodsford



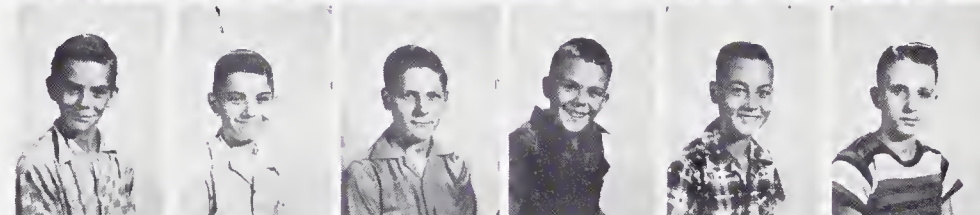
Carolyn Johnson  
Ann Gail Lewis  
Paula Drene  
Barbara Stewart  
Reva Cook  
Lawrence Ellis



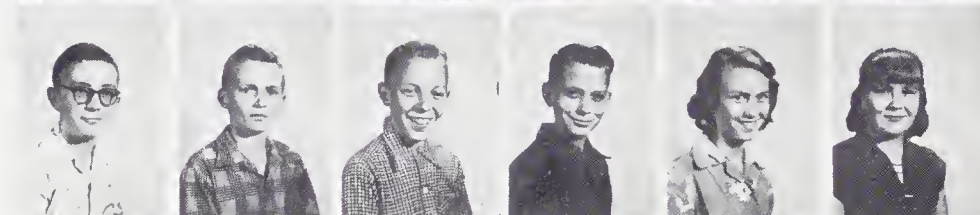
James Nelson  
L. J. Beckner  
Douglas Gobble  
Clifton Burke  
Kent Davis  
Robert Smith



Joe Brewer  
Wilfred Doby  
Carl Dean Edwards  
Bill Hauser  
Jimmy Berrier  
Larry Brandon



Henry Lee Beckner  
Billy Williams  
Gene Isom  
Alton Jones  
David Caudle  
Robert Lambeth



Harold Stewart  
Wilson Sparks  
Norman Staley  
Johnny Boyer  
Faye Harris  
Carolyn Pickett



Joan McClamrock  
Suzanne Davis  
Glenda Wall  
Katherine Franklin  
Sue Brewer  
Jane Smith



Mona Davis  
Carolyn Lowder  
Glenn Phelps

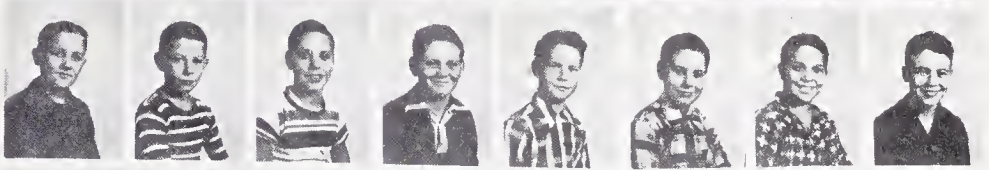


## SIXTH GRADE

Larry Long, Donald Crater,  
Johnny Weisner, Harold Parker,  
Perry Jones, Theodore Todd,  
Johnny Moore, James Myers.



Leon Holton, Gene Griffith,  
Went Conatzer, Mickey Dunn,  
Earnest Templeton, Lawrence Davis,  
Ronald Sprinkle, R. L. Spach.



Terry Caudle, Arley Lane,  
Donald Todd, Benny Harris,  
Frank Lustig, Jimmy Angel,  
Jane Cornwell, Kay Spainhour.



Jane Brewer, Juanita Johnson,  
Ozell Sloan, Nancy Vest,  
Nancy McClamrock, Kay Boner,  
Bonnie Motsinger, Jasper Spagh.



George Phelps, Bobby Higgins,  
Wayne Sparks, Dale Kimel,  
George Charles, Steve Foster,  
Terry Culler, Travis Foster.



Jerry Teague, Terry Teague,  
Dick Cox, Tony Lutz,  
Ervin Williamson, Pledger Keaton,  
Edward Brewer, Don Livengood.



Donnie Drane, Lon Livengood,  
Daniel Smith, Louise Bolt,  
Shirley Stanley, Phenie Lamberth,  
Libby Burke, Daphine Phelps.



Brenda Wagoner, Betty Jo Allen,  
Alice Griffith, Melba Cox,  
Judy Tucker, Martha Huff,  
Ann Lowder, Janet Jones.



Jane Todd, Sybil Todd, Wanda Lawson.





## FIFTH GRADE



Lonnie Lawson, Norman Craver,  
Troy Foster, Reid Phelps,  
Melvin Walker, Henry Talbert.



Sherrill Stewart, Thomas Davis,

Gerald Dinkins, Roy Keaton,  
Leon Phillips, Bruce Britt.

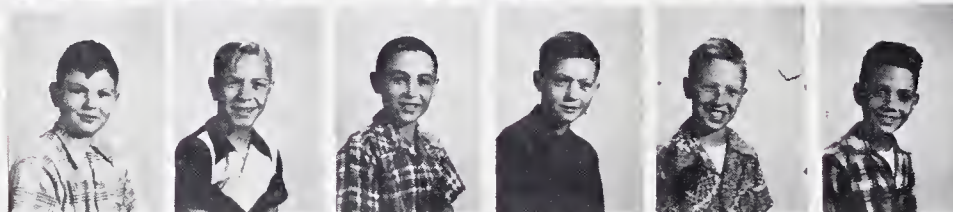


Annie Whisenhunt, Faye Bodsford,  
Wanda Petty, Jane Frye,

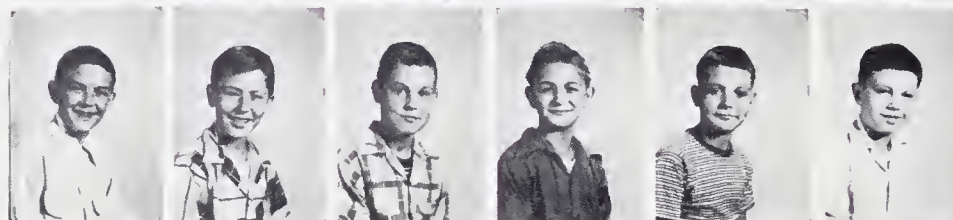
Jean Davis, Judy Turner.



Mary Lowder, Mary Sue Medford,  
Glenda Vogler, Judy Holloman,  
Linda Lowder, Billy Scott.



J. Dodd Linker, Wayne Petty,  
Delane Parrish, Larry Crater,  
Dan Brewer, Terry Hellard.



Derris Foster, Paul Lee Jones,  
Jerry Cornatzer, Jackie Boyer,  
Gene Vest, Bobby Simmons.



Ted Dentiste, Kenneth Smith,  
Richard Sink, Connie Lawson,  
Charlotte Charles, Becky Tise.



Eugenia Howard, Patricia Lambeth,  
Barbara Dunn, Patty Preston,  
Eva Tysinger, Brenda Tesh.



Doris Lawson, Lucy Brandon,  
Pat Daniels, Jackie Sue Kinnedy,  
Ruth Church.



# FOURTH GRADE

Leslie Stone  
Bubby Dunn  
Kenneth Tate  
Jimmy Meachum  
N. W. Hogue



Ronnie Myers  
Ralph Johnson  
Thomas Smith  
Wayne Harris  
Linda Berrier



Maxine Crim  
Darlene Hickman  
Reba Flynn  
Libby Sloan  
Bonnie Sink



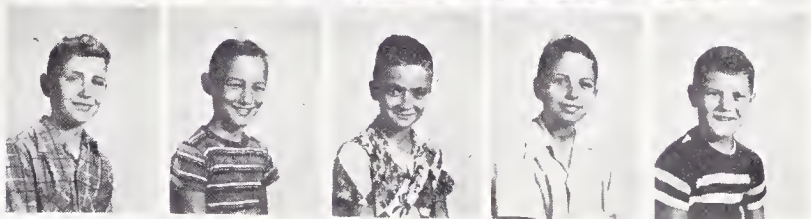
Zana Mendenhall  
Brenda Edwards  
Brenda Bodford  
Wanda Bodford  
Joyce Tesh



Johnny Winters  
Jack Todd  
Butch Ashley  
Frankie Todd  
Jack Talbert



Steve Lewis  
Billy Walker  
Harold Shore  
Larry Shutt  
Philip Holton



Johnny Lowder  
Miriam Jones  
Judy Preston  
Ernestine Brewer  
Marie Binkley



Peggy Whisenhunt  
Chuck Sheek  
Bobby Brewer  
Clay Furches  
Joanne Miller



Betty Rice





# FOURTH GRADE



Gene Wrights  
Barbara Parker  
Lindsay Watkins  
Larry Talbert

Carl Cook



Lynn Harper  
Carol Jones  
Cleo Beckner  
Billy Nifong

Lois Ellis



Inez Doby  
Thomas Moody  
Linda Brandon  
Ethel Griffith

Patsv Shoaf



Jimmy Boyd  
Wood Cornatzer  
Jake Foster  
William Smothers

Bobby Pegram



Jerry Shore  
Freddie Moody  
Clifford Lambeth  
John Myers

Harley Smith



Lonnie Hepler  
David Pickett  
Eva Church  
Nora Jean Hayes

Dianne Douthit



Nancy Phelps  
Nancy Davis  
Mary Catherine Essex  
Becky Drane

Judy Teague



Georgia Marshall  
Evona Stanley  
Sandy Smith  
Carolyn Kimel



## THIRD GRADE

Charles Flinchum  
 Tim Stewart  
 Charlie Gray Doby  
 Norman Hauser  
 Steve Doby  
 Mary Dennis



Gay Anders  
 Marian Lashmit  
 Tommy Shore  
 Gray Griffith  
 Judy Lutz  
 Mary Martin



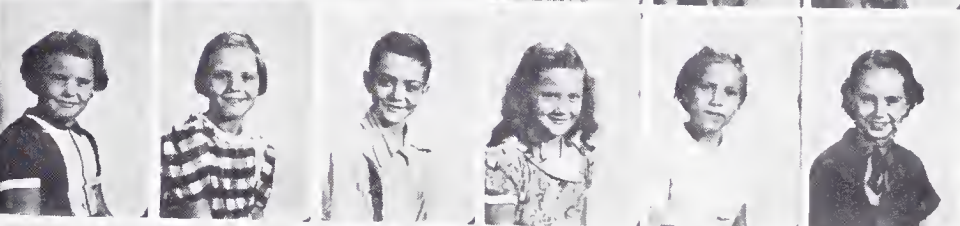
Sue Lanier  
 Betty Binkley  
 Lenora Lee Gearren  
 Shirley Myers  
 Bobby Wood  
 Jerry Scott



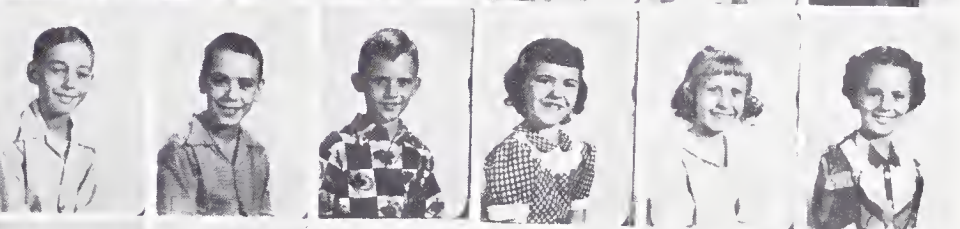
Frank Long  
 Bertha Smothers  
 Joann Turner  
 Phyllis Griffith  
 Frankie Vaught  
 Emily Ketner



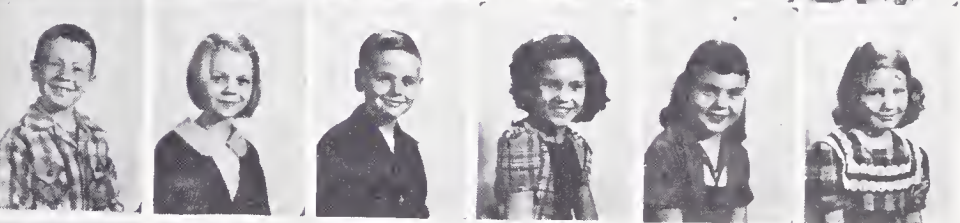
Frances Todd  
 Doris Lambeth  
 Robert Heffner  
 Mary Ellen Robertson  
 Katherine Stewart  
 Sandra Winters



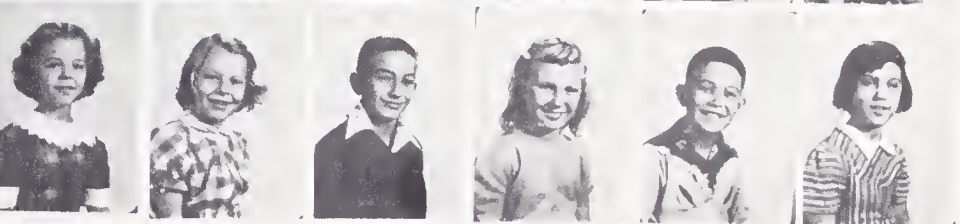
Steve Blakely  
 Charles Cornatzer  
 John Thomas Shoaf  
 Donna Davis  
 Geraldine Blakely  
 Barbara Angel



David Brewer  
 Jane Wood  
 Stewart Clinard  
 Carolyn Craver  
 Annie Boyd  
 Barbara Engledee



Sue Meadows  
 Becky Boyer  
 Wade Vogler  
 Martha Calloway  
 Kermit Essex  
 Ester Lee Cline



Bob Brewer  
 Jane Crater  
 Peggy Smith





## SECOND GRADE



Carol Stilley, Judy Easter,  
Barbara Lewis, Betty Lou Wilson,  
Rebecca Sides, Jane Lineback,  
Betty Jean Lewis.



Evelyn Holder, Bonnie Howard,  
Brenda Howard, Jeraldine Vogler,  
Sharon Wells, Brenda Phelps,  
Sandra Bodford



Roger Hockaday, Gerald Vogler,  
John Hix, Joe Stanley,  
Johnny Keaton, Grant Parrish,  
Jesse Medford.



Leonard Hayes, Roger Sink,  
Tiffin Drane, Ronnie McDaniel,  
William London, Harold White,  
Charles Vest.



Lonnie McDaniel, Kenneth Beckner,  
Paul Wagoner, Charles Wooten,  
Calvin Segraves, Richard Crater,  
Johnny Miller.



Donald Cumby, Burton Boner,  
Faye Davis, Janet Woosley,  
Miriam Brewer, Una Bell Cook,  
Joan Bodford.



Barbara Pegram, Wendell Spainhour,  
Fred Sink, Albert Smith, Roger Davis,  
Leroy Ellis, Elton White.



Bobby Drane, Tim Snow, Bobby Poplin,  
Billy Frye, Harrison Spaugh,  
Robert London, Lynn White.



Jimmy Parish, Jimmy Hunter,  
Faye Hunter, Roxie Anne Jester,  
Rita Craver, Elizabeth Hepler,  
Edith Myers.

# FIRST GRADE

Betty Brewer, Marie Moody,  
Cheryl Nifong, Shirley Parker,  
Annice Binkley, Phoebe Lineback,  
Michael White.



Wayne Davis, Linnie Mathis,  
Tommy Carver, Michael White,  
Robert Smith, June Todd, Linda Shutt.



Dianne Landreth, Billie Gay Gabard,  
Phyllis Byerly, Nancy Sue Blakely,  
Judy Angel, Vivian Doby, Wilma Bolt.



Cindy Doty, Loretta Boyer, Betty Allgood,  
Samie Eidson, Carolyn Furches,  
Bobby Gearren, Bing Creasy.



Dennis Hendrix, Wayne Brandon,  
Steve Bingham, David Binkley,  
Michael Cumbo, Bobby Brandon,  
Jerry Farmer.



Tony Blakely, Stan Bingham, Steve Dunn,  
Steve Cornwell, Kay Myers,  
LeNora Poplin, Carma Lustig.



Cynthia Jones, Mary Lee Myers,  
Fay Legains, Vickie Miller,  
Frankye Pickett, Kathy Wells,  
Charles Tysinger.



Richard Vest, Charles Miller,  
Tommy Maynard, Wayne Jones,  
Jerald James, Terry Lee Keaton,  
Roger Isom.



Elwood Flinchum, Dennis Snow,  
Troy Spaugh, Barry Quinn, Billy Parrish,  
Jerry Tise, Terry Tuttle.



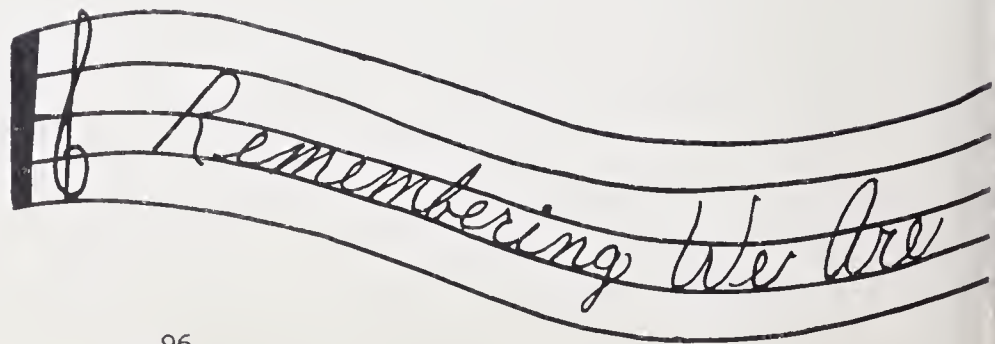
Billy Meadows.





# BOOK SIX

## Advertisements





*A Part Of Thee*



# Homecoming 1952



Peggy Shore, Senior Attendant  
Lee Weisner, Escort



Ann Williamson, Junior Attendant  
Bobby Barney, Escort



Peggy Bingham, Queen  
Dewey Bodenhamer, Escort



"Homecoming" Dance



"Crowning of Queen"



Alumni



Preparing for Parade



The Parade

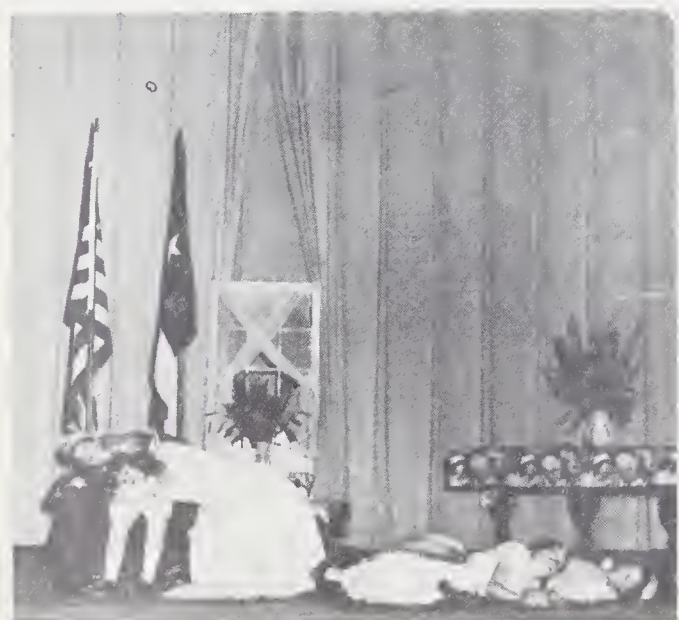
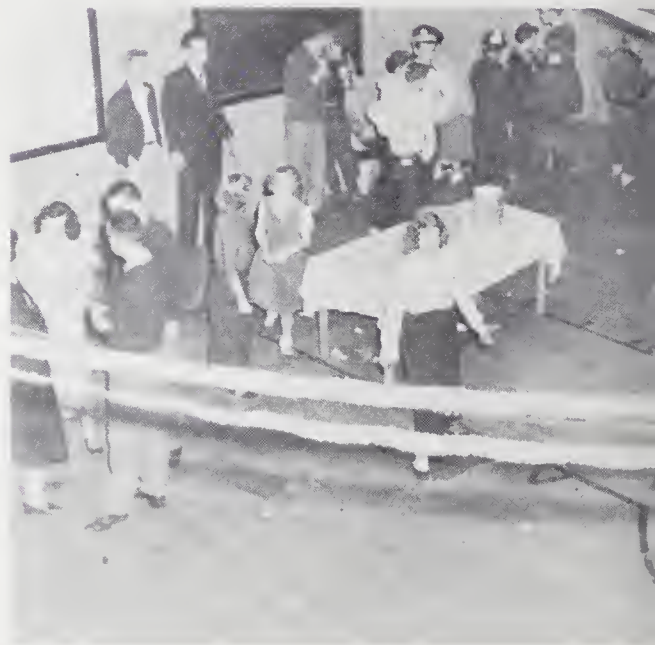


# SNAPSHOTS





SNAPSHOTS













Home Furnishers Since 1885

Sixth  
and  
Liberty  
Street



Phone 2-5118

Winston Salem, N. C.

## CLEMMONS MILLING COMPANY

★  
*Manufacturers of*  
SUPREME FEEDS  
*Dealers in*

Flour - Seeds - Dog Food - Lime - Fertilizer

Meal - Grain - Mortar Mix - Cement - Roofing

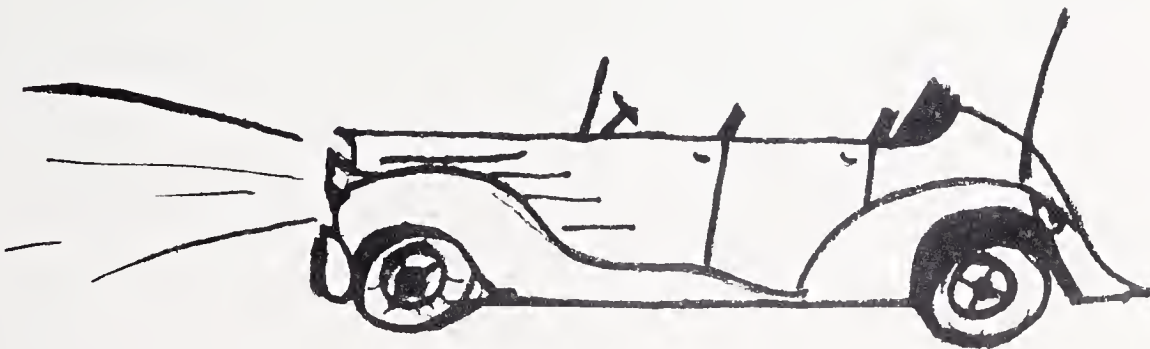
PHONE 2-1751

CLEMMONS, N. C.

## H. & S. MOTOR TUNE UP SERVICE

Generator-Carburetor Repairing

*Expert Motor Tune Up Service*



Cliff Hampton -- Hub Shore

1016 N. Liberty

Phone 3-2213



COCA-COLA BOTTLING CO., INC.



WINSTON-SALEM, N. C.

WESTWOOD  
FABRIC SHOPPE



Yard Goods — Dress Material  
Dan River — Fruit-of-the-Loom  
Spring Maid — Indian Head  
Notions and Accessories



Clemmons Highway

PHONE 3-3514

WESTWOOD  
SERVICE STATION

Gas - Oil

Auto Accessories



CLEMMONS, HIGHWAY

Phone 3-3514

*Compliments of*



PEPSI COLA BOTTLING CO.  
OF  
WINSTON SALEM  
INC.



**FURCHES BROTHERS  
HARDWARE**

HARDWARE      FURNITURE  
PAINTS — TOYS   APPLIANCES

*"For Bargain Purchases It's Frank Furches"*

*Exclusive Agents For*  
SHERWIN-WILLIAMS PAINTS  
PHILCO and UNIVERSAL  
APPLIANCES

Hours: 7:00 to 7:00

Close 6:00  
Wed. & Sat.

Dial 3-8252

Clemmons, North Carolina

**FRANK PARKS  
and  
C. I. HOWARD**



Plaster Contractors  
New Plastering  
and  
Repair Work



Phone 4-1925

CLEMMONS, NORTH CAROLINA

**SHORE EROS. PURE OIL SERVICE**

Washing - Waxing - Lubrication

Tires Recapped - Auto Accessories

**Be sure  with Pure**

Phone 22337

1500 W. First St.

WINSTON-SALEM, N. C.

A. P. WARNER

PURINA CHOWS

FERTILIZER

SEED

CEMENT & MORTAR CEMENT

Phone 3-2834



Clemmons Road

C. W. Warner

Phone 8042

WARNER'S USED CARS

NEW HOUSE TRAILERS

We Finance



Trade for Anything

Clemmons Road



*Congratulations Graduates*

WINSTON-SALEM AUTOMOBILE AND TRUCK DEALERS  
ASSOCIATION



VOGLER SERVICE

Funeral Directors — Ambulance Service

*Dependable Service Since 1858*

Dial 6101 — Frank Vogler and Sons

WINSTON-SALEM, NORTH CAROLINA



N. F. CRATER REFRIGERATION COMPANY



Sales — Service



1432 South Stratford Road

Phones 3-5447 or 6682

WINSTON-SALEM, NORTH CAROLINA

## DUNN LANDSCAPE SERVICE



*Beautifying Is Our Job*

FREE ESTIMATES

Trees - Shrubbery - Lawns

Grading - Concrete Paving

526 S. Stratford Rd.

3-2462

## L. B. PRICE MERCANTILE COMPANY



"Always has openings for energetic Bible Boys such as Leslie Frye,  
Terry Tesh and Robert Kiger."

For Further Information Contact L. B. PRICE MERCANTILE COMPANY, Phone 2-1465

## ANDREWS PHARMACY

PRESCRIPTIONS

1308 South Hawthorne Road

Winston-Salem, N. C.

PHONE 3-1679

Your nearest Pharmacy. Bring your prescriptions to us where they will  
be filled by pharmacist of long experience. A complete drug store.

Next to Whitney Furniture Store



## WILSON'S FLOWER SHOP

Corsages                      Funeral Designs  
Cut Flowers                  Special Designs  
Weddings                      Potted Plants

Dish Gardens  
Pansy Plants

Flowers for all occasions  
We Deliver

Mr. and Mrs. George Wilson, owners

CLEMMONS, NORTH CAROLINA

Telephone 4-5924

## C. L. HENDRIX & SON

PLASTERING CONTRACTORS

- Good Work
- At Fair Price

CLEMMONS, NORTH CAROLINA

Phone 3-8833 or 4-1966

Call Day or Night

## WHITNEY FURNITURE COMPANY, INC.

BEAUTIFUL FURNITURE  
at  
Reasonable Prices



EXPECT  
TO  
PAY LESS

EXPECT  
TO  
PAY LESS

Open 'til 9:00

1302 South Hawthorne Road

## CLEMMONS BEAUTY SHOP

Mrs. Eileen Wall, *owner and operator*, specializes in

PERMANENT WAVING

You are cordially invited to Clemmons Beauty Shop for your beauty needs. Open evenings by appointment. . . . . Phone 3-8828

CLEMMONS, N. C.

## STABLER PONTIAC CO.

For Super Automobile Service

- Mechanical
- Paint
- Front End
- Upholstery
- Body
- Wrecker Service



YES — BETTER AND  
FASTER WORK FOR  
LESS MONEY—  
THAT'S A FACT

The South's Finest Dealership

D. N. HIRE

"WES" LIVENGOOD

## HIRE-LIVENGOOD FURNITURE CO.

*"Complete Home Furnishings at Economical Prices"*

1514 South Hawthorne Road

Winston-Salem, N. C.

Phone 2-4439

## DOCK CHURCH'S PURE OIL SERVICE

GAS AND OIL, GROCERIES, FEED

Waughtown-Clemmons Road

Phone 4-4997

Winston-Salem, N. C.



Compliments of

## HILLCREST GOLF COURSE



Located Between  
Winston-Salem and Clemmons



Bill Jones, Proprietor

PHONE 7570

*Compliments of*

## GOBBLES

BARBER SHOP



Highway 158

## SHEETS BAR-B-QUE

Pit Cooked Bar-B-Que  
All Kinds of Sandwiches



SERVE PARTIES

CLEMMONS, NORTH CAROLINA

Phone 3-6215

## BINGHAM

## LUMBER COMPANY

MANUFACTURERS  
and  
WHOLESALEERS

Phone 51624

ROUTE 2

WINSTON-SALEM,

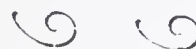
CLEMMONS, N. C.

CHARLES E. TALTON



Commercial Photographer

SIDES GARAGE  
and  
BODY SHOP



*Wrecks Our Specialty*

2215 Glenn Avenue  
Winston-Salem, N. C.  
Phone 4-8651



The Senior Class wishes to express their appreciation to MISS FRANCES COOK for devoting her time and efforts to the preparation of this sixth edition of CLEMMEMORIES. We feel that without her guidance and patience it would not have been possible to edit this annual. We say thank you, from the bottom of our hearts.



## MULLIS APPLIANCE CO.

ELECTRICAL APPLIANCES  
AND REPAIRS

Waughtown Street      Telephone 3-3118

WINSTON-SALEM, N. C.,

Kleer Kleen Furnaces and Quaker  
Oil Heaters

Gibson Ranges, Home Freezers,  
and Refrigerators

Zenith Televisions and Radios

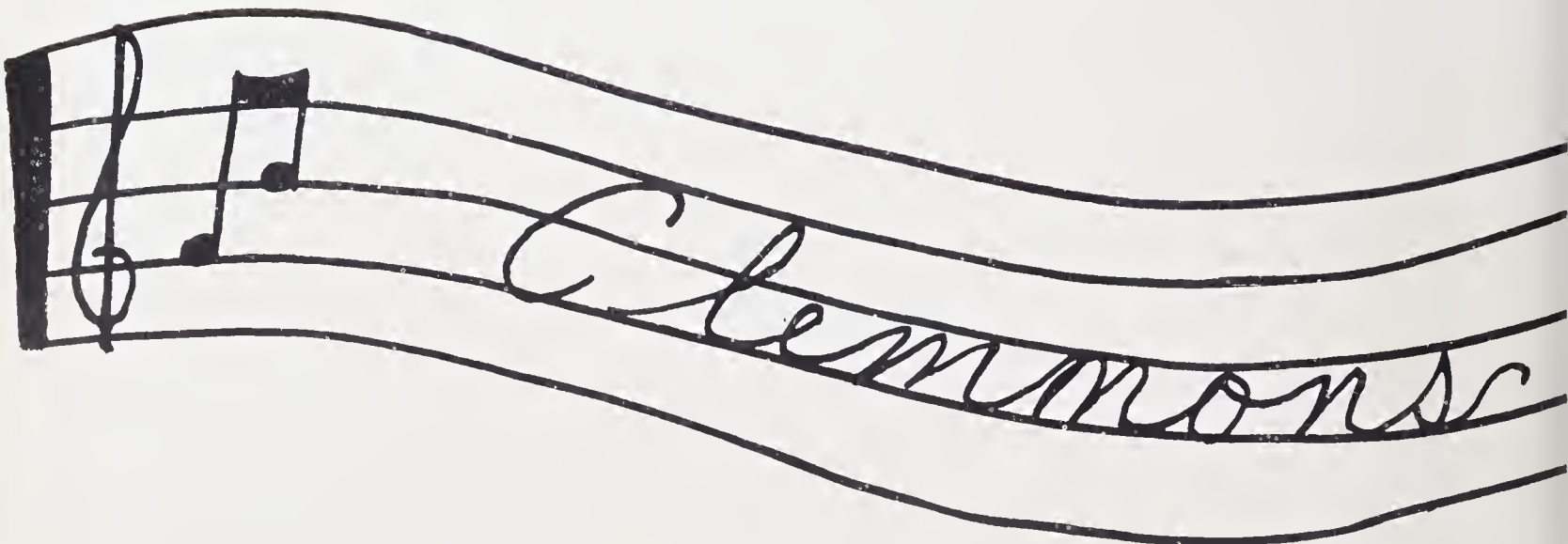
Maytag Washers and Ironers

COMPLETE APPLIANCE STORE AND  
SERVICE DEPARTMENT

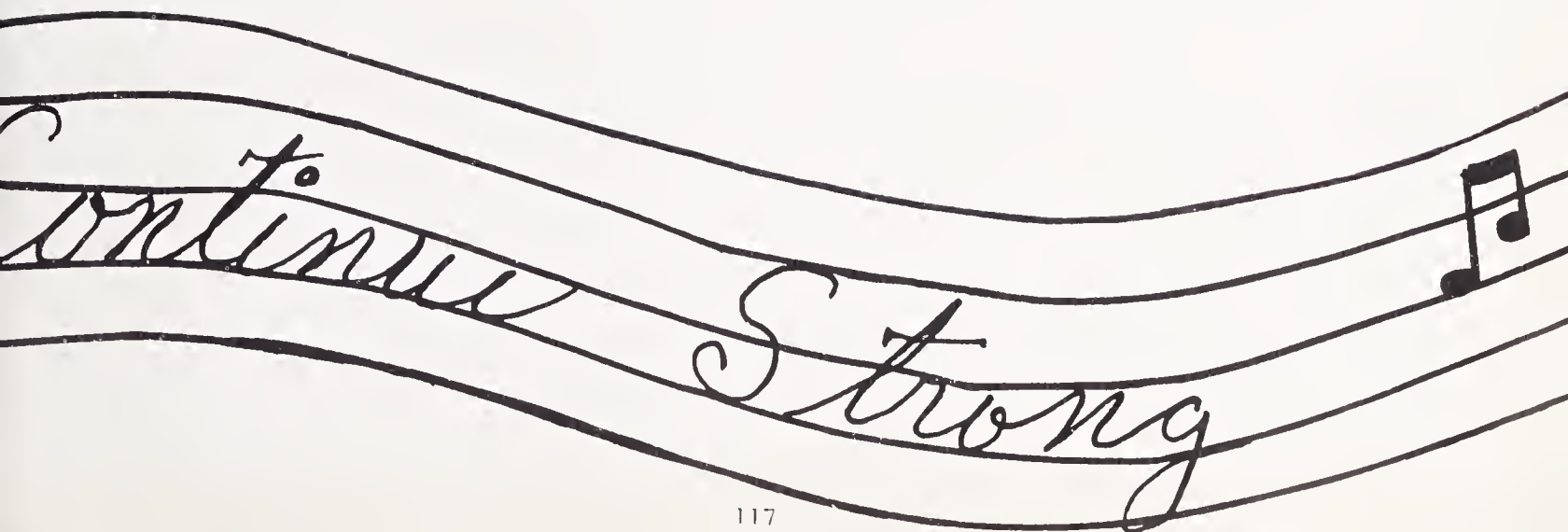
# Autographs



# Autographs



# Autographs





# AUTOGRAPHS

# AUTOGRAPHS



# AUTOGRAPHS











