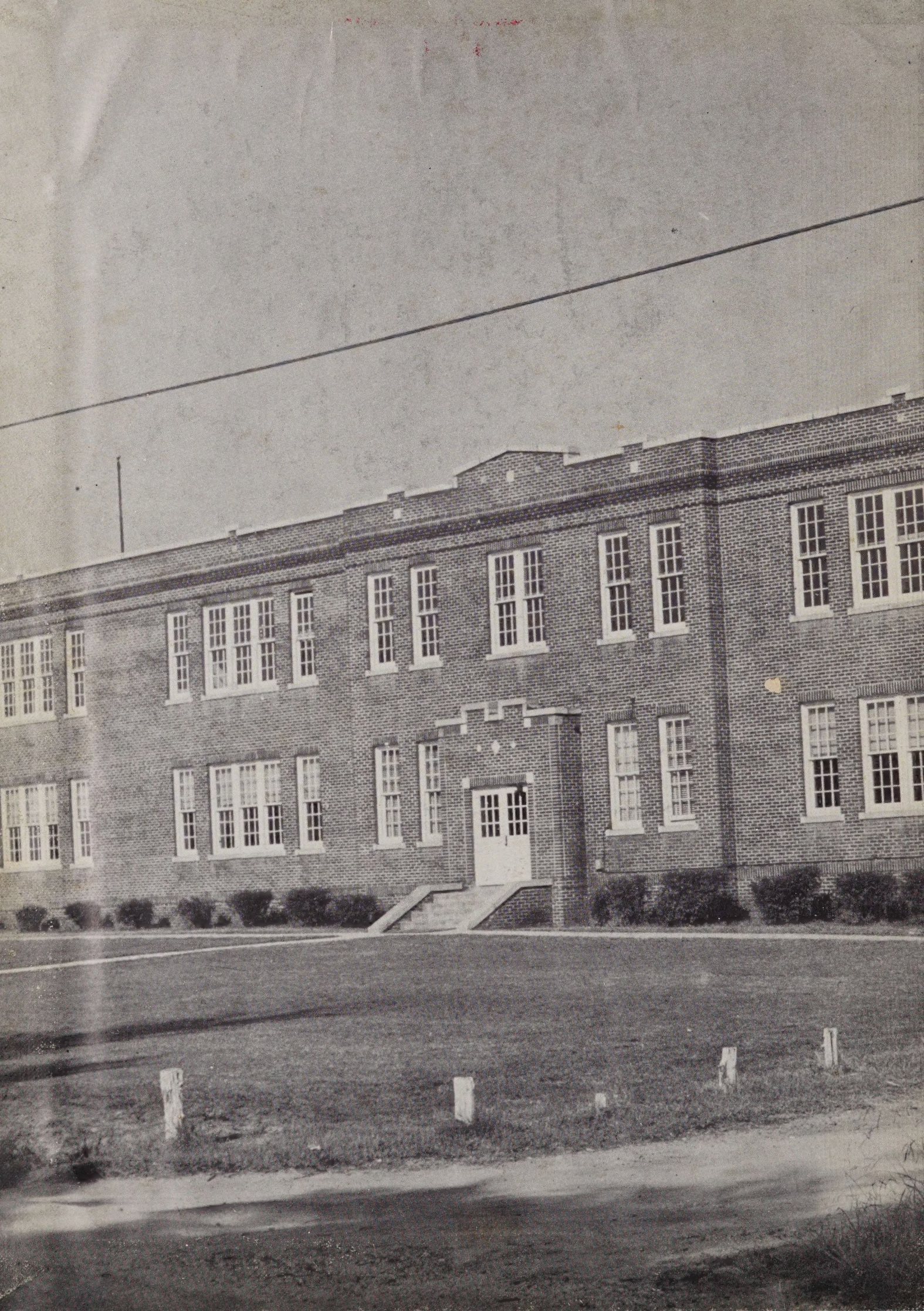
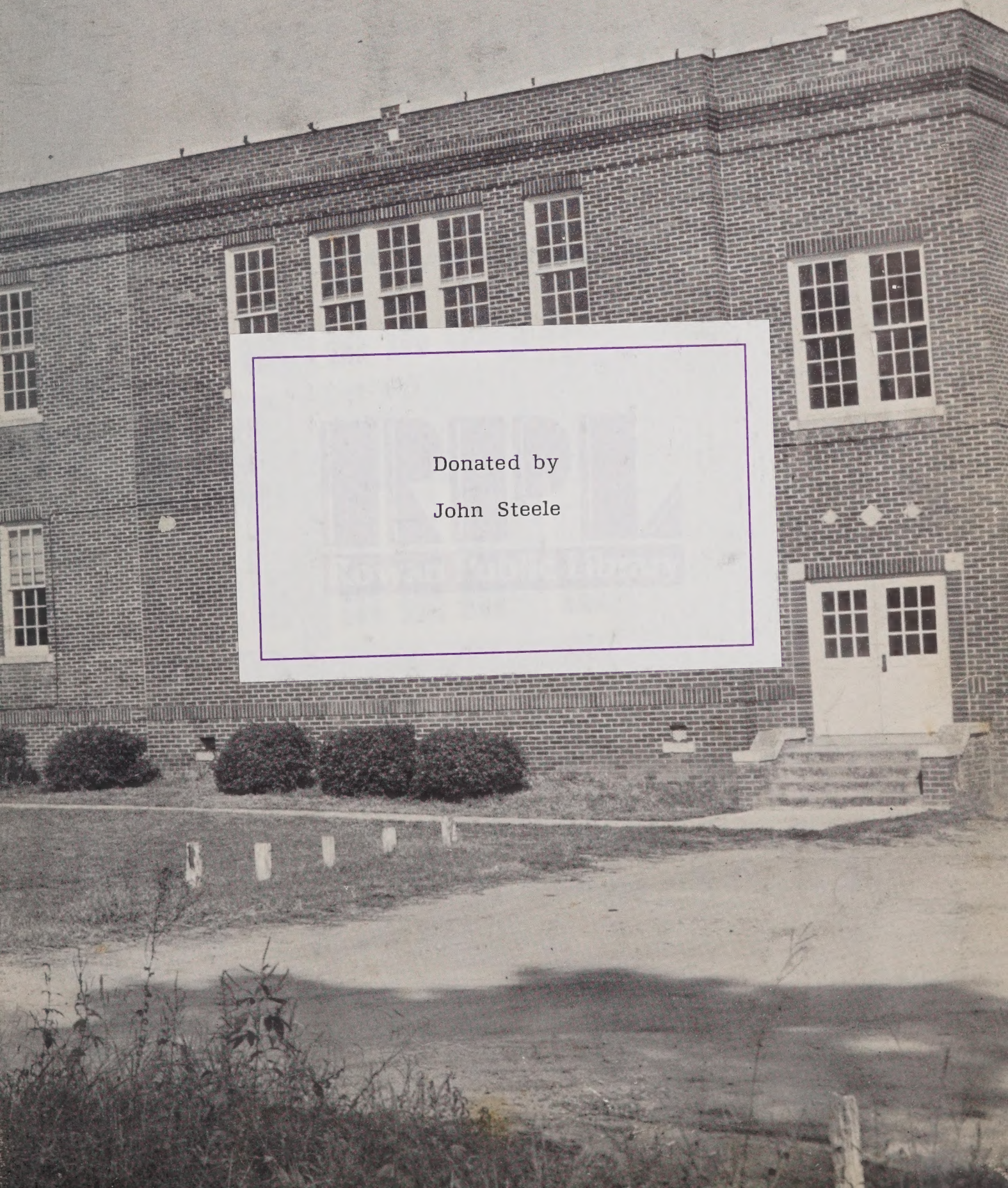




THE CLEVANA

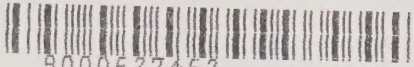




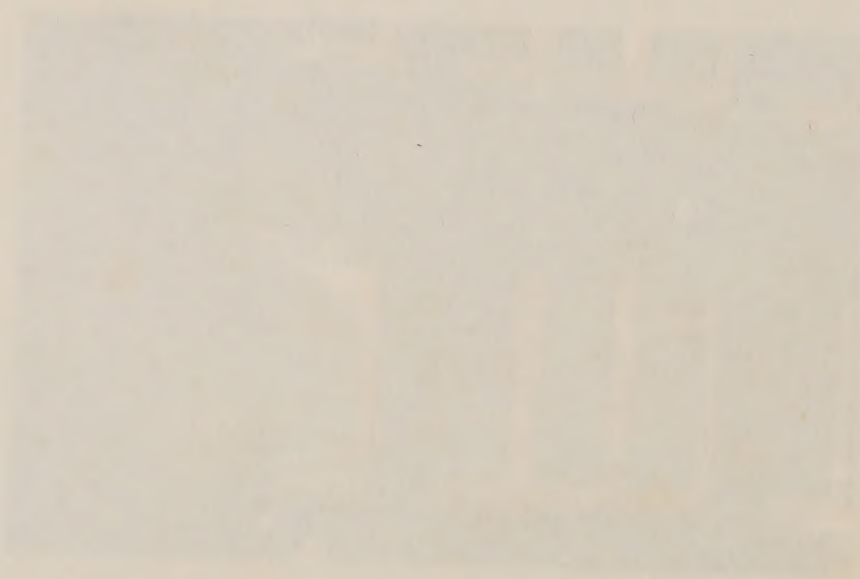
Donated by
John Steele

c.i 52

Clevana.



9000627462





THE CLEVANA

of

Nineteen Fifty-Two

VOLUME VI

Published by

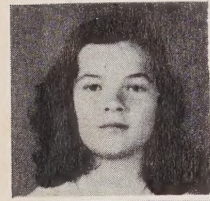
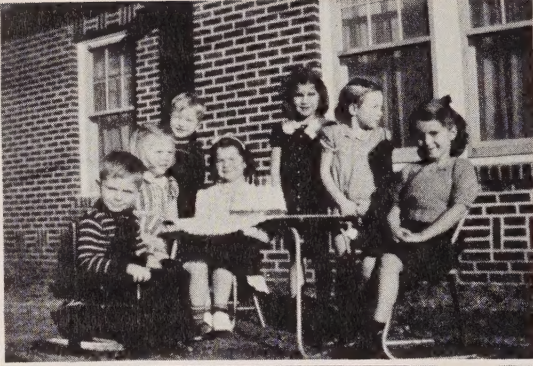
THE SENIOR CLASS
of

CLEVELAND HIGH SCHOOL

Cleveland, North Carolina



ROWAN PUBLIC LIBRARY
SALISBURY, N. C.



Dedication



MRS. CARL PRICE

In appreciation for her unmeasurable help, patience, time and effort as our advisor during the past two years, we, the Seniors of 1952, proudly dedicate this Clevana to Mrs. Carl Price.



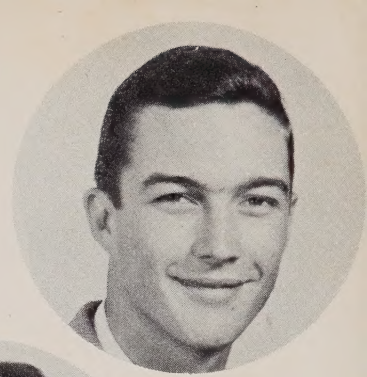
MR. BEN BATTLE

For his tireless effort in keeping the school straight, his extreme interest in each and every student, and his helpful chats in time of doubt, we, the Seniors of 1952, leave to our principal our undying thanks and devotion.

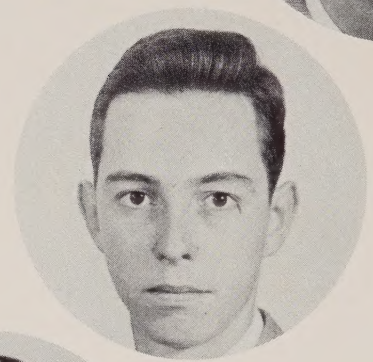




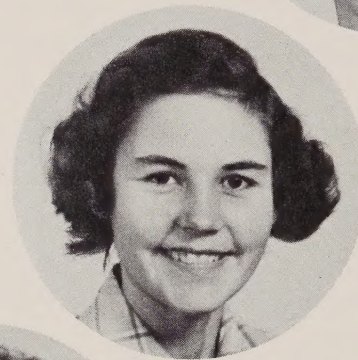
MRS. CARL PRICE
Advisor



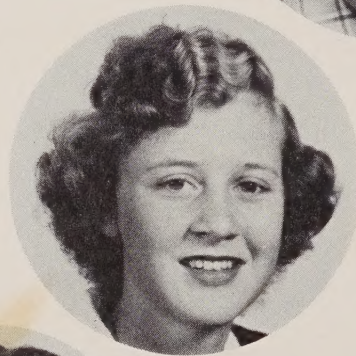
SAMMY TEMPLE
Business Manager



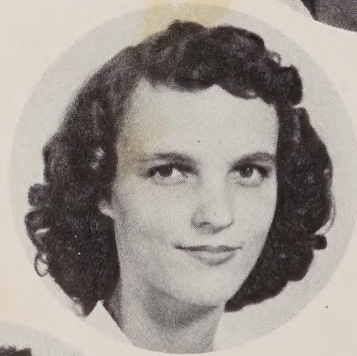
JOHNNY LIPPARD
Class Editor



JOYCE ANN BARBER
Asst. Class Editor



NELLIE WOOTEN
Circulation Manager
and Typist



LOUISE CHRISTY
Co-Art Editor



LUCILLE PARKER
Co-Art Editor



FRANCES MILLER
Proof Reader

Annual

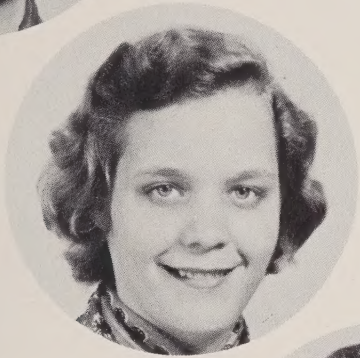




BETTY GRAY
Assistant Business
Manager



FRANCES ANDERSON
Editor in Chief



LOUISE DAVIS
Photography Editor



GERALDINE BARBER
Asst. Photography
Editor

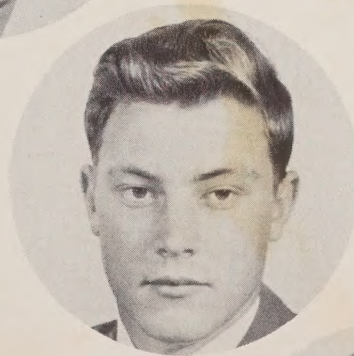


BONNIE GOODMAN
Junior Editor

GLORIA BARRINGER
Girls' Sports
Editor



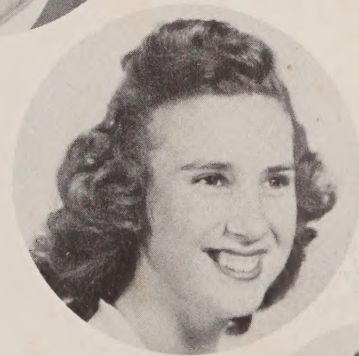
KENNETH KYLES
Boys' Sports
Editor



Staff



JOYCE GRAHAM
Typist



VERA WITTY
Secretary-Treasurer

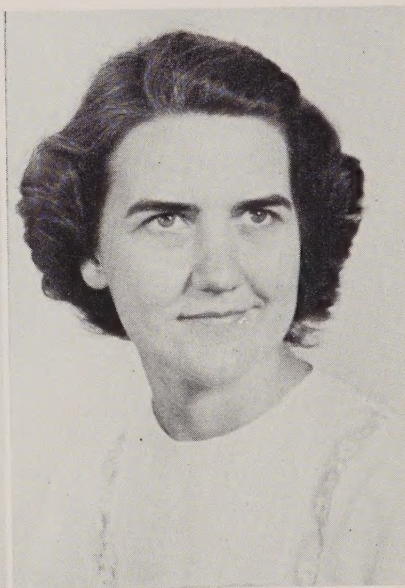




Principal

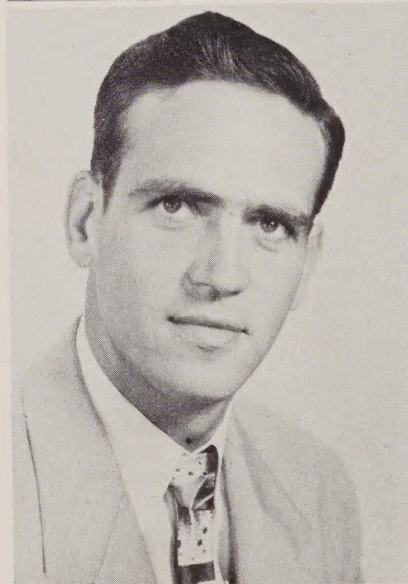
BEN H. BATTLE
B.S. Degree, Math
W.C.T.C.
M.A. Degree
Teachers College
Columbia University

MRS. GENELDA P. PRICE
Catawba College
B.S. Degree, Commercial
Senior Class Advisor



MRS. NITA P. WAGONER
Lenoir-Rhyne College
A.B. Degree, English
Junior Class Advisor

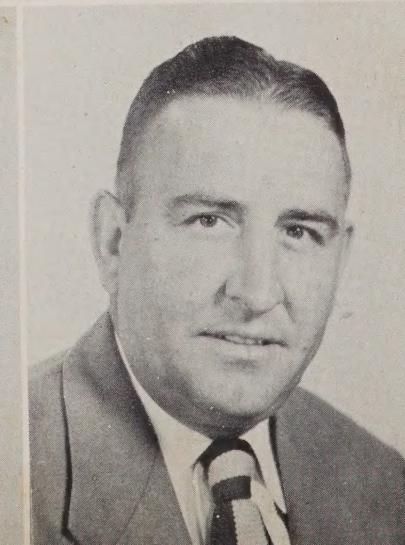
EMMETT FEIMSTER
B.S. Degree, Phys. Ed.
W.C.T.C.
Sophomore Advisor



CARL W. PRICE
Catawba College
A.B. Degree, Science
Freshman Class Advisor

*Best of Luck Always
May Success and
Happiness be
yours
Carl W. Price*

DOROTHY E. CLODFELTER
W.C.U.N.C., B.S. Degree
Home Economics



T. E. HENDREN
N. C. State
A.B. Degree
Agriculture

HIGH
SCHOOL
TEACHERS



Elementary Faculty

SARAH JULIA HALL
B.S. Degree, Primary Education
Appalachian State Teachers College
First Grade

Sarah Julia Hall

VIRGINIA COWAN KNOX
A. B. Degree
Catawba College
Third Grade

Virginia Cowan Knox



LEONA GABRIEL
B.S. Degree, Grammar Gr. Ed.
W.C.T.C.
Fourth Grade

MRS. EULALIA W. STEELE
A.B. Degree, Primary Education
Maryville College
Fifth Grade



*Best of luck
Always in an
attitude of
service to you*

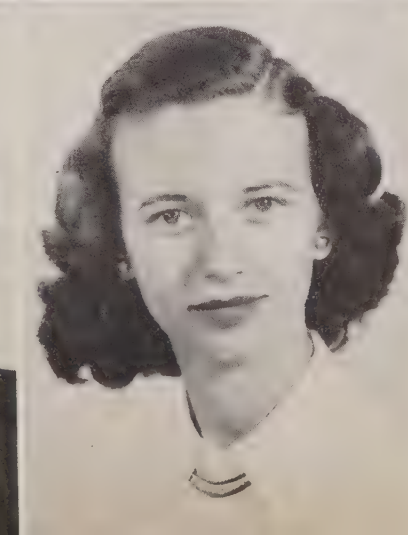
MRS. NELL B. TAYLOR
B.S. Degree, Education
Asheville College
Sixth Grade

MRS. RUTH M. YOUNG
A.B. Degree, Mathematics
Furman University
Seventh Grade

*May success and happiness
be yours, Merrill Battle*

MRS. MERRILL HORNE BATTLE
A. B. Degree, Science
Lenoir Rhyne College
Eighth Grade

MOLLY GRIGGS
W.C.U.N.C.
Piano and Glee Club



Not Pictured:
ORA WADE
B.S. Degree, Ele. Ed.
Western Kentucky State College
Second Grade



SENIORS



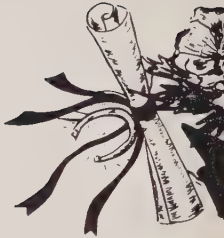
President-----Sammy Temple
Vice-President-----Betty Gray
Secretary-----Geraldine Barber
Treasurer-----Nellie Wooten

Senior Class



FRANCES LEE ANDERSON

Editor of Annual 4; Beta Club 2, 3, Vice President 4; F.H.A. 3, Secretary 4; Marshal 3; Homecoming Attendant 4; Glee Club 1, 2, 3, 4; Asst. Editor of Annual 3; Waitress Jr. Sr. Prom 2; Office Staff 3; Dramatics 3.



GERALDINE MYERS BARBER
"Deanie"

Class Secretary 4; Les Acteurs Club 3, 4; Monogram Club 2, Secretary 4; Homecoming Attendant 2; 4-H Club 1, Vice President 2; Glee Club 1, 2; Basketball 1, 2; Journalism Club 1; Dramatics Club 1, 2; Asst. Photography Ed. of Annual 4; F.H.A. 1, 2, 4.



JOYCE ANN BARBER

Glee Club 1, 2, 3, 4; F.H.A. 1, 2, 2, 4; Office Staff 3; Annual Staff 4.



GLORIA STUART BARRINGER
"Gogie"

Basketball 3, 4; Sports Ed. of Annual 4; Journalism Club 1; Monogram Club 4.



LOUISE PARKER CHRISTY
"Twin"

Glee Club 1; Dramatics Club 1; Photography Club 3; Art Editor of Annual 4.



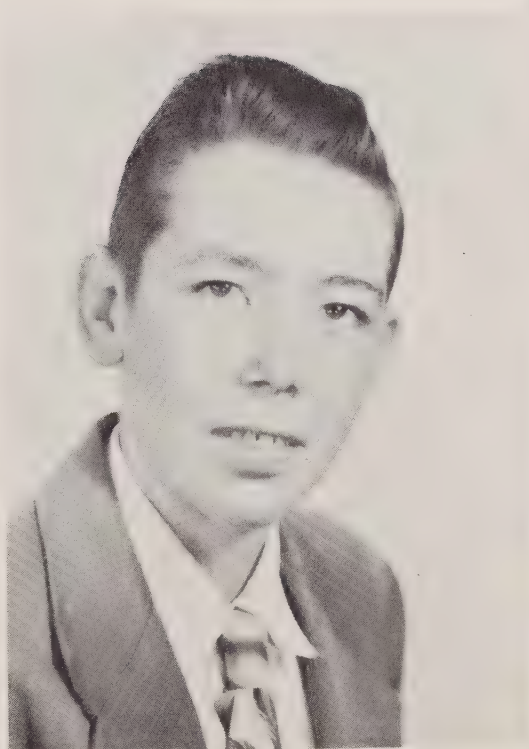
MARVIN BOBBY CLINE

Football 3, 4; Baseball Manager 1, 2, 3, 4; Monogram Club 3; Soldier at Arms 4; 4-H Club 1, 2, 3; Glee Club 2; Science Club 1, 2; Photography Club 3; F.F.A. 1, 2, 3, President 4.



JAMES WILTON COOLEY

F.F.A. 1, 2, 4; Monogram 3, 4; Photography 3; Science 1, 2, 3; Baseball Manager 2; Bus Driver 4; Football Manager 3.



MARY LOUISE DAVIS

St. Agatha Academy 1, 2; F.H.A. 3, 4; Glee Club President 3, 4; Cheerleader 4; Dramatics Club 3; Class Secretary 3; Office Staff 4; Photography Ed. of Annual 4.

GEORGE WILSON GARDNER, JR.
"Chunk"

F.F.A. 1, 2; Reporter 3, 4; Pep Club 3; Glee Club 3; Radio Club 2; Football 3.



JOYCE BERLYN GRAHAM
"Joycie"

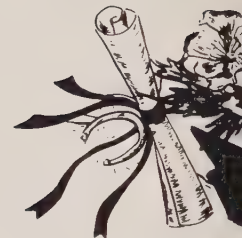
F.H.A. 1, Secretary 2; Office Staff 1, 2, 3; Annual Staff 4; Waitress Jr. -Sr. Prom 1; Journalism Club 1; Basketball Manager 1.

Senior Class



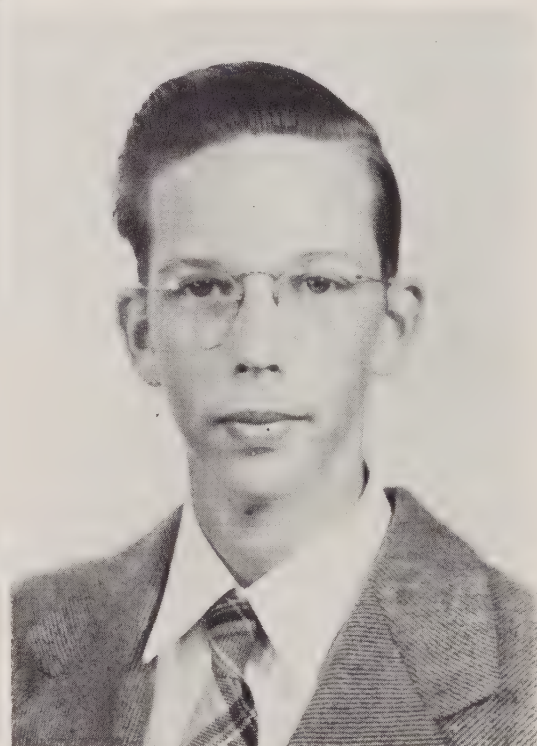
BETTY JANE GRAY

Beta Club 2, 3, Secretary 4; Asst. Bus. Mgr. of Annual 4; Glee Club 1, 4, Pianist 2, 3; F. H. A. County Secretary 3, President of Club and County Vice-President 4; Chief Marshal 3; Junior Glee Club Pianist 1, 2; Class Vice-President 4; Class Poet 4; Homecoming Queen 4.



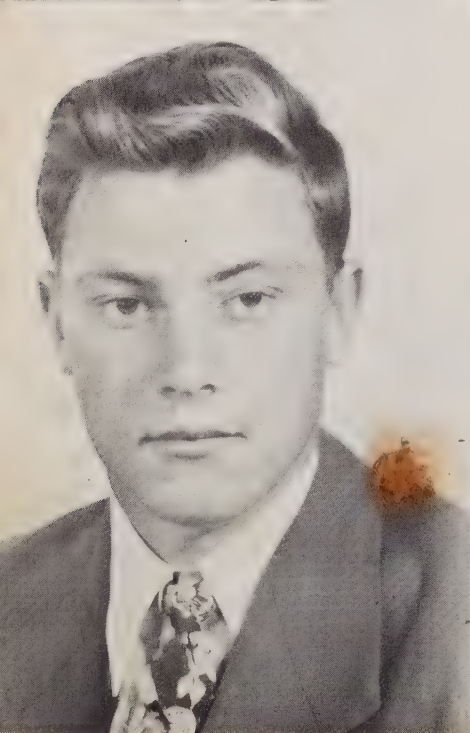
CHARLES HENRY HAMILTON
"Charlie"

Football 1, 2, 3, Co-Captain 4; Basketball 2, 3, 4; Beta Club 2, 3, 4; Class Secretary 1; Class Treasurer 2; Class President 3; Monogram Club 3, President 4; Marshal 3; Glee Club 1, 2; Class Statistician 4.



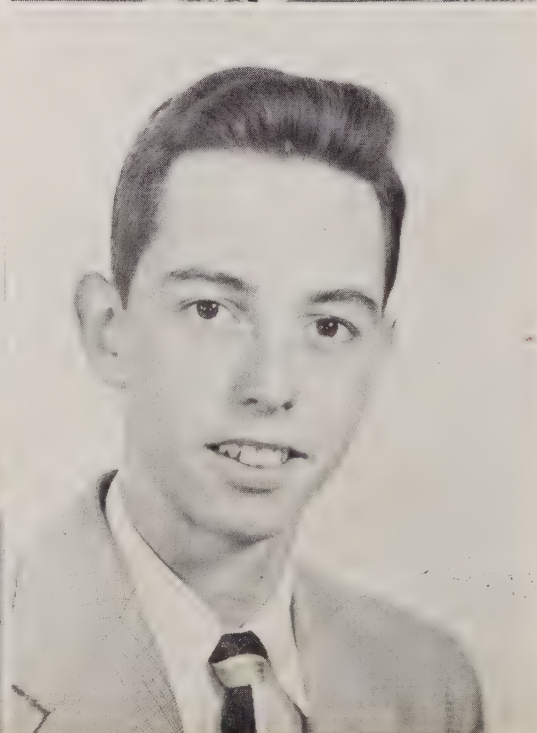
BENJAMIN LEE KEPLEY
"Bennie"

Pep Club 3; Science Club 1, 2; Photography Club 3; Radio Club 1; Sr. 4-H 1, 2, 3.



KENNETH KERRY KYLES
"Ken"

Football 1, 2, 3, Co-Captain 4; Basketball 2, 3, 4; Sr. 4-H 1; F. F. A. 1, 2; Treasurer 3, Reporter 4; Monogram 2, 3, 4; Class Treasurer 1; Annual Staff 4.



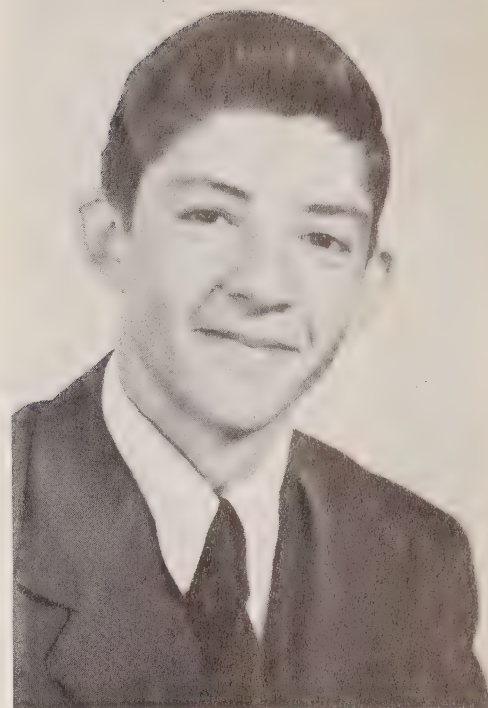
JOHN HENDERSON LIPPARD, JR.
"Johnny"

Baseball 2, 3; Football 4; F. F. A. 1, 2; Sr. 4-H 1; Monogram Club 3, 4; Class Editor of Annual 4.



WALTER RALPH LIPPARD
"Walt"

F.F.A. 1,2, Secretary 3, Treasurer 4; Basketball 3; Les Acteurs Club 4; Bus Driver 3; Photography Club 3; Marshal 3.



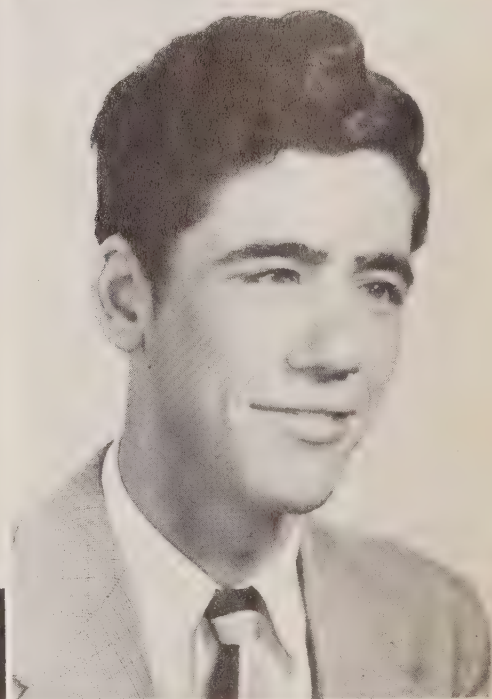
MARY FRANCES MILLER
"Fran"

Harding High School, Charlotte, N. C. 1,2,3; French Club 3; Cleveland F.H.A. 4; Class Day Testator; Annual Staff 4.



WILLIAM BENJAMIN MYERS, JR.
"Bill"

Woodleaf School 1,2,3; Cheerleader 2; Glee Club 2; Class Treasurer 2; Cleveland Glee Club 3; Baseball 3.



ETHEL LUCILLE PARKER
"Twin"

Glee Club 1; Dramatic Club 1; Photography Club 3; Annual Staff Art Editor 4.

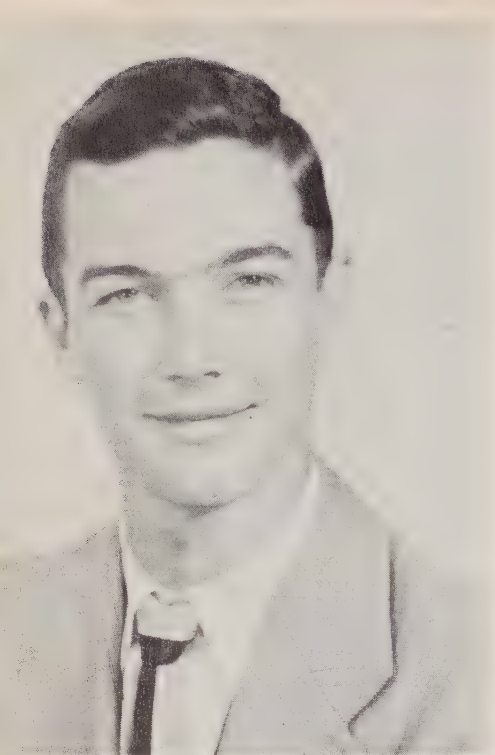


THOMAS LEVI STEELE
"Tom"

F.F.A. 1,2,3, Secretary 4; Pep Club 2.



Senior Class Of 1952



WILLIAM SAMUEL TEMPLE
"Sam"

Beta Club 2, 3, 4, President 4;
Basketball 2; Class President 1, 4;
Class Treasurer 2, 3; Bus Driver 3, 4;
Safety Patrol 1, 2; Glee Club 2, 3, 4;
Science Club President 2; Photography
Club President 3; Chief Marshal 2;
Bus. Mgr. of Annual 4; Class Prophet 4.



VERA MAE WITTY
"Sissy"

F. H. A. 3, 4; Cheerleader 4; Dra-
matics Club 2; Pep Club 3; Sec. and
Treasurer of Annual 4; Office Staff 4.



NELLIE ELIZABETH WOOTEN
"Nellie"

Beta Club 2, 3, 4; Treasurer 4;
Glee Club 1, 2, 3, 4; Dramatics Club 1;
Class Vice-President 3; Class Treas-
urer 4; Homecoming Attendant 3;
Photography Club 3, Sec. -Treas. 3;
Circulation Mgr. and Typist for Annual
4; Librarian 2, 3, 4; Marshal 3; Best
Citizen of Jr. Class Award 3.

Mascots

TOMMY HENDREN

KAY SMITH





Prophet
SAMMY TEMPLE

Class Day Officers

Class Flower



Class Colors

Red and White



Statistician
CHARLES HAMILTON

Class Motto

'Not at the top, but Climbing''

Testator
FRANCES MILLER

Poet
BETTY GRAY

Historian
NELLIE WOOTEN



Class History

Only four years ago in 1948 we began our journey toward a goal--high school graduation. As Freshmen we were eager to undertake this new phase of our lives. Setting out with Miss Carol Erwin as our guide, this proved to be a successful year after we got accustomed to traveling the rough road. The officers for this year were: President, Sammy Temple; Vice-President, Charles Hamilton; Secretary, Gilbert Archie; Treasurer, Kenneth Kyles.

The second lap of our journey began with Miss Erwin again as our guide. Sammy Temple, Betty Gray, Charles Hamilton, Frances Anderson, and Nellie Wooten were invited to join the Beta Club. Our class officers were: President, Gilbert Archie; Vice-President, Dwight Barringer; Secretary, Charles Hamilton; Treasurer, Sammy Temple. This, indeed, was a big year, but there was more traveling before we reached the goal.

In our Junior year, we continued our journey with Charles Hamilton, President; Nellie Wooten, Vice-President; Sammy Temple, Treasurer and Louise Davis, Secretary as our leaders. Under the supervision of Mrs. Carl Price, our class advisor, we gave the Junior play which was entitled FULLER'S FORTUNE. Members of the cast included: Walter Lippard, Sammy Temple, Betty Gray, Nellie Wooten, Charles Hamilton, Vera Witty, Louise Davis and Bobby Cline. Two other spots of interest on this lap of our journey were the Junior-Senior Prom on May 4 and our trip to Washington, D. C. We were joined by two travelers in this wonderful year. They were Louise Davis and Bill Myers. Junior Marshals were Betty Gray and Sammy Temple, chiefs, Nellie Wooten, Frances Anderson, Charles Hamilton, and Walter Lippard.

At last we were near the end of our journey. Our leaders for the last lap were: Sammy Temple, President; Betty Gray, Vice-President; Geraldine Barber, Secretary; and Nellie Wooten, Treasurer. We were lucky to have again as our advisor, Mrs. Price. Another traveler joined us, Frances Miller. There were many tasks for us to perform in our Senior year. The most important was publishing the sixth edition of THE CLEVANA. As the end drew near, we were the same eager, determined students that we had been as freshmen.

At last we have reached the end of this journey and we have earned our rewards- the diplomas. We shall always cherish the many memories of our school days.

We can never fully express our appreciation to our parents, teachers and friends who guided and helped us to travel this journey to the goal of graduation. May we repay them in part by proving that we are worthy of their efforts and sacrifices, as we, the 1952 Senior Class of Cleveland High School go to face the future of countless journeys.



Class Prophecy

Nellie Elizabeth Wooten,
HISTORIAN

The whine of a siren interrupted my thoughts, and I found I was the victim. Pulling my shrubby truck over on the shoulder of the road and switching off the engine, I waited. What in the world had I done to deserve such a fate on this beautiful May morning in the year 1962. Alibis for all kinds of lawless deeds were running through my mind as a husky patrolman sauntered up and planted his foot on the running board. Inquiringly, I looked into his face, which seemed to be familiar. Then he smiled and asked how I was. Why, he was an old classmate from Cleveland High, Bobby Cline. He invited me to his squad car in which Charles Hamilton sat fiddling with his .38. After greetings, we started recalling our school days and what had happened to the Seniors of '52.



It seems we have really sent our share of musicians into the world. Johnny Lippard, concert violinist, and piano accompanist, Betty Gray, are making great fame. Between seasons Johnny plays guitar for a jive band while Betty pounds out boogie woogie. Louise Davis is a success as a television singing star. It didn't surprise me to find that Vera Witty is comedian assistant to Louise. Joyce Graham and Gloria Barringer have combined talents and are running a school for popular dancing.

Bobby and Charles told me that Frances Anderson is holding down the job of Head Nurse at Rowan Memorial Hospital while Joyce Ann Barber is raising guinea pigs for hospital research.

Bennie Kepley is a railroad executive with a secretary, Nellie Wooten, who plans to quit to spend more time at home, and with her Home Demonstration Club of which Geraldine Barber is the president. Children couldn't stop Geraldine in her great work there. Thomas Steele and Pete Snider, two enterprising farmers are doing some chauffeuring and escorting to these meetings, too.

George Gardner finally persuaded Walter Lippard that the Nash is best and that he should become a partner in the G & L Motor Co.

Bill Myers' latest rank in the Air Force was that of captain. Anyone would work with him.

Football and Kenneth Kyles couldn't be separated, so Kenneth is helping the Washington Red Sox bruise up their foes while Frances Miller watches admiringly by television. She is the prettiest waitress in the finest restaurant in town, which is owned and operated by Wilton Cooley whose appetite never failed him.

Last, but by far not least, I find that the twins, Louise Christy and Lucille Parker are embarrassing the finest designers and artists with their beautiful work.

"You write the ticket, Charles."

That did it. This was the end of a wonderful chat about our big family, the Class of '52, who have successfully emerged into the world and contributed their talents to mankind.

Sammy Temple,
PROPHET

Class Statistics

According to a recent nation-wide survey, I find that there are still twenty-three members in the 1952 Senior Class of Cleveland High School. It is composed of twelve girls and eleven boys, which makes it almost even at election time.

The girls, who are trying to watch their girlish figures, have an average weight of 117 pounds. The boys' average weight is 147 pounds which is all muscle except for about 145 pounds.

The girls' average height is five feet and five inches, while the boys' is five feet and eight inches, and I do believe it would be a great deal more if they didn't sit so much.

The girls' average age is seventeen and a half years while the boys' is seventeen years. This seems to prove the fact that the boys are somewhat smarter in school than the girls. All the Seniors are just as dumb as they look except Joyce Graham and Walter Lippard; nobody can be that dumb.

In the shoe business, I find that Kerry Kyles is very successful with a size eleven shoe. The boys' average shoe size is nine, however, even with Kerry's number eleven. The girls' average shoe size is a mere six and a half.

The main ambition of the Senior Class is to get married. Gloria Barringer wants to be a famous movie star (maybe Tarzan's ape). Sammy Temple aspires to becoming a magician (he hopes that someday he will be able to walk down a street and turn into a drugstore).

The favorite branch of service is the Navy, but the boys really prefer the boy scouts.

Bing Crosby ranks high with the girls as their favorite crooner and Grandpa Jones and Gabby Hayes with the boys. The favorite songs are "Way up in North Carolina" and "Rye Whiskey."

On Sunday morning, you will find most of the Seniors at Lutheran churches.

Although the dignified Senior Class has as its favorite actress and actor June Allyson and John Wayne, we would rather see Mrs. Wagoner's "Les Acteurs" perform.

The favorite man teacher for the boys is Mr. Hendren and the woman teacher is Mrs. Wagoner. (It pays to like the English teacher.) Mr. and Mrs. Price are the favorite teachers for the girls.

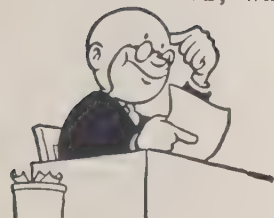
On the romantic side of life, we find most of the girls except Betty Gray, Frances Anderson, and Joyce Ann Barber think they are in love. The only boy who would admit being in love was Thomas Levi Steele.

The favorite food of the Seniors is soup! As for the best dessert, they seem to think ice cream and cake top the list.

This brings to a close the statistics of the 1952 Class of Cleveland High School. When we have graduated or become too old to go to school, we will look back at these statistics and fondly recall old times and old classmates.

Witnesses:
I. C. Red
U. R. Black
I. O. You

Charles Henry Hamilton,
STATISTICIAN



Last Will And Testament

As we, the senior class of 1952, turn in our books and bid farewell, we wish to bestow on our successors a few of our most valued possessions; we hereby declare this to be our last will and testament.

ARTICLE I

To Our Parents

We leave our undying love and thankfulness, for it was they who made it possible for us to have a fine education. We thank them, too, for understanding when we needed it.

ARTICLE II

To Our Principal and Teachers

We wish to express our appreciation for the capable advice and leadership rendered us throughout the past years, and also our thanks to them for being such good pals.

ARTICLE III

To the Rising Seniors

We leave the job of making an annual, soliciting ads, and enduring twelfth grade English with the hope that they enjoy it every bit as much as we did.

ARTICLE IV

To the Individuals

I, Frances Anderson, will and bequeath my position as editor of the annual to Bonnie Goodman.

I, Joyce Ann Barber, will my bashfulness to Jo Hendrix.

I, Geraldine Myers Barber, will my teasing ways to anyone who enjoys teasing as much as I do.

I, Gloria Barringer, leave my ability to be different to Betty Albright, who is always agreeable.

I, Louise Parker Christy, will and bequeath my ability to get married to "Dink" Barringer who seems awfully anxious.

I, Bobby Cline, will my ability to type nineteen words a minute to Barbara Jean Lyerly.

I, Wilton Cooley, will my bus to any boy who is willing to get up on cold mornings and travel that long road to Cleveland.

I, Louise Davis, will fifty pounds of my physique (figure) to Mr. Battle.

I, George Gardner, leave my faithful English seat to "Butterball" Fink.

I, Joyce Graham, will my favorite phrase, "I'll be glad when Friday comes," to Betty Cashion.

I, Betty Gray, will and bequeath my curly hair to Jo Hendrix.

I, Charles Hamilton, will my superior knowledge of bookkeeping to Lois Smith, because she seems to have the stamina to withstand it.

I, Bennie Kepley, will my quietness to Virginia Davis, who I think needs it.

I, Kenneth Kyles, will my ability to blush, especially around girls, to Eddie Pennell.

I, Johnny Lippard, will my ability as a violinist to Joseph Mowery.

I, Walter Lippard, leave my false teeth to anyone who needs them worse than I do.

I, Frances Miller, will all my troubles to Lois Poteat, who never seems to have any of her own.

I, Bill Myers, will my ability to secure excuses from Mr. Battle to Paul Temple.

I, Lucille Parker, will my artistic ability to Lois Smith, provided she takes advantage of it.

I, Thomas Steele, leave my bookkeeping book to any unsuspecting person who thinks he can endure it better than I.

I, Sammy Temple, will and bequeath bus number eight to Jimmy Kyles, because I want him to know what it is like to drive a bus with Virginia Davis as a passenger.

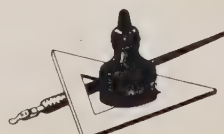
I, Vera Witty, leave my jokes, wise-cracks, and ability to have fun to Betty Robinson.

I, Nellie Wooten, will my intelligence to Billy Somers, because he needs it worse than I do.

We, the senior class, do hereby will and bequeath our advisor, Mrs. Carl Price, to any group who might be lucky enough to get her.

Witnessed by:
Sammy Temple
Betty Gray

Signed: Frances Miller,
Testator



Our Prayer

Dear Father, We come to Thee,
Thankful for all Thy love and care,
Thankful thou art near to us
As to young people everywhere.

We thank Thee for Thy guiding hand,
Which has led us all the way
Through each confusing problem
To this, our Graduation Day.

Without Thy help we know that we
Could not have gained our goal.
Our troubles You all understood
And gently soothed each anxious soul.

Sometimes it was through teachers,
Gentle, understanding, kind--
Or through ever loving parents--
That You straightened each mixed-up mind.

We ask Thee, Father, to continue
As in the days gone by,
To guide, correct, and lead us
As to adulthood we draw nigh.

Help us give without hope of gaining,
Trying always to do the right,
Through our faith give hope to others
Who are fumbling in a hopeless night.

May our fondness for each other live
Though we never meet again.
Though ways may part, help each of us
To live a useful, wholesome life--Amen.

Betty Gray





Once Upon

Frances Miller
 Bobby Cline
 Nellie Wooten
 Louise Davis
 Geraldine Barber
 Wilton Cooley
 Bennie Kepley
 Thomas Steele
 Kenneth Kyles
 Louise Christy
 Lucille Parker
 Mrs. Price
 Betty Gray



A Time

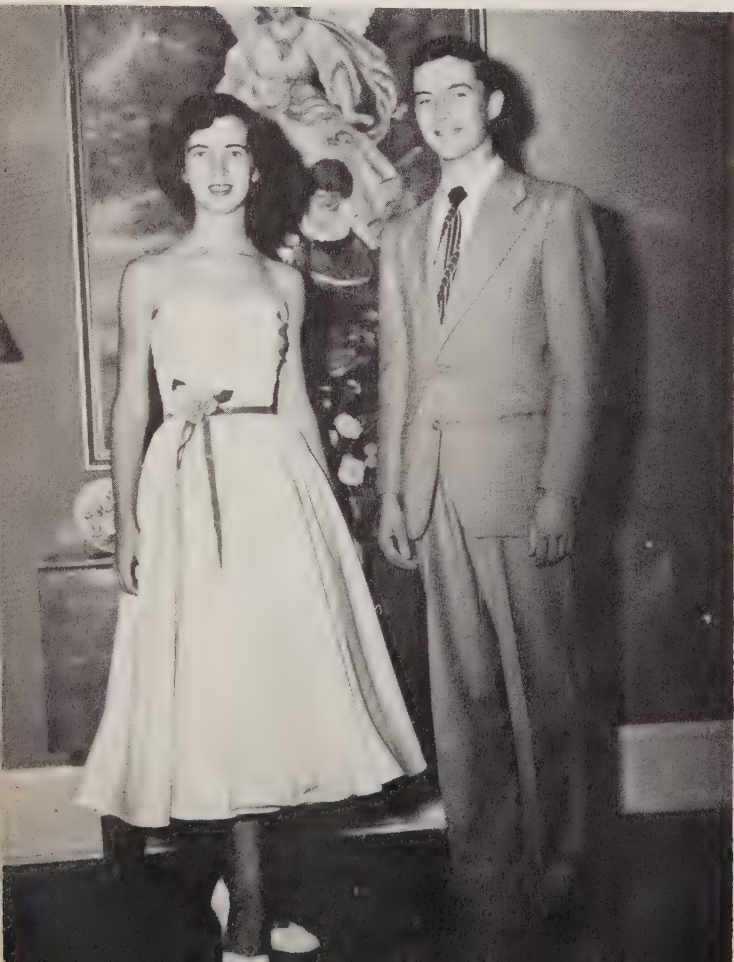
- Betty Gray
- Frances Anderson
- Walter Lippard
- Geraldine Barber
- George Gardner
- Charles Hamilton
- Nellie Wooten
- Joyce Graham
- Thomas Steele
- Joyce Ann Barber
- Vera Witty
- Johnny Lippard





BEST DRESSED
Frances Miller
Bobby Cline

BEST LOOKING
Geraldine Barber
Sammy Temple



BEST-ALL-AROUND
Betty Gray
Sammy Temple

FRIENDLIEST
Louise Davis
Bobby Cline



S
U
P
E
R
L
A
T
I
V
E
S



MOST TALENTED
Betty Gray
Johnny Lippard

MOST POPULAR
Louise Davis
Bill Myers



CUTEST
Frances Anderson
Bobby Cline

MOST PERSONALITY
Geraldine Barber
Sammy Temple

S
U
P
E
R
L
A
T
I
V
E
S





MOST ATHLETIC
Gloria Barringer
Kenneth Kyles

MOST DEPENDABLE
Louise Christy
Lucille Parker
Sammy Temple



MOST INTELLIGENT
Nellie Wooten
Sammy Temple

MOST LIKELY TO SUCCEED
Betty Gray
Sammy Temple

**S
U
P
E
R
L
A
T
I
V
E
S**



UNDERCLASSMEN FAVORITES



Freshman Class

SARAH BROWN
EDWIN BEEKER

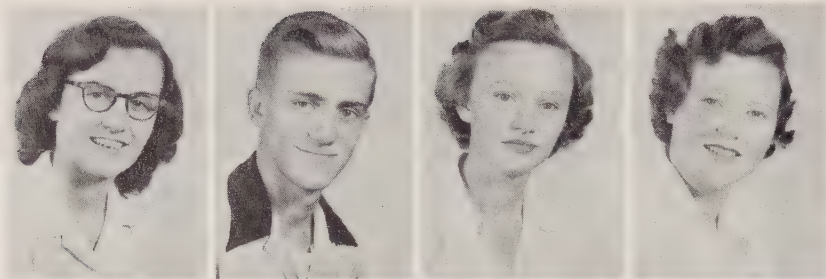
Junior Class

IRENE WILHELM
JACK GALLIHER

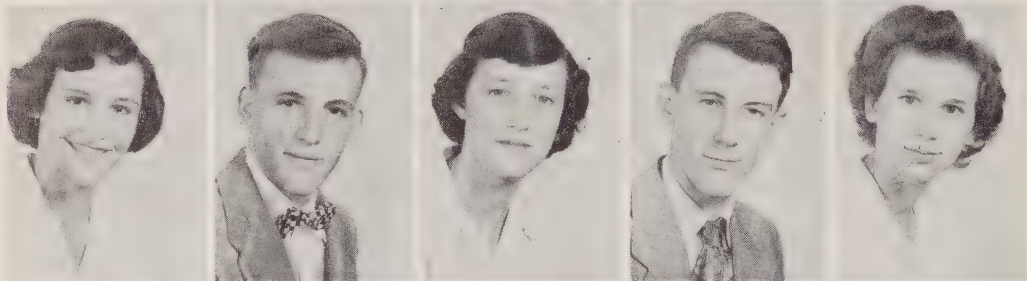
Sophomore Class

BETTY LOU ARCHIE
JERRY FINK

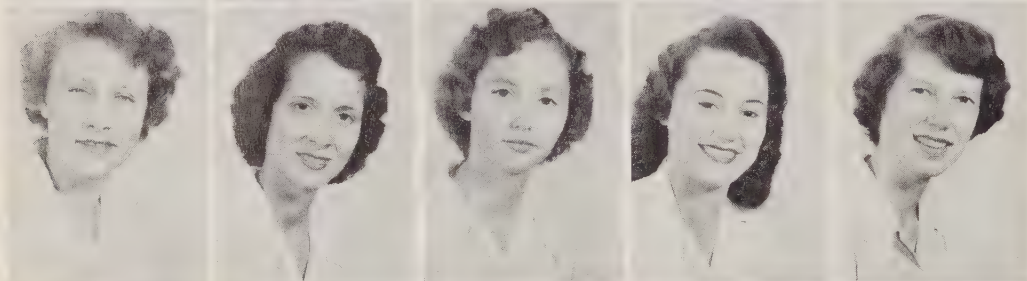
Junior Class



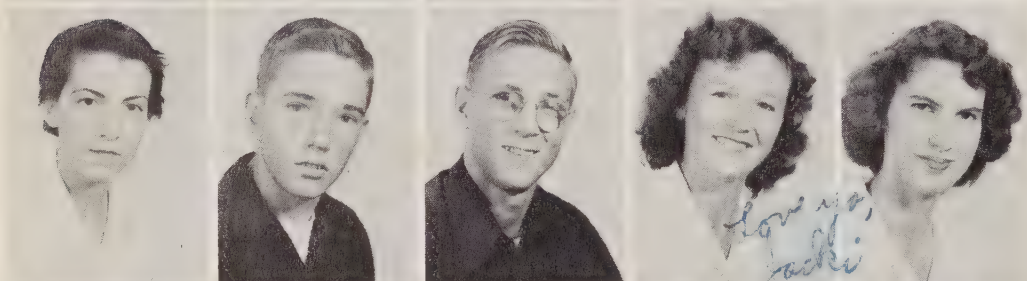
BONNIE GOODMAN: President
 JACK GALLIHER: Vice-President
 DOROTHY CAMPBELL: Secretary
 ANN POWLAS: Treasurer



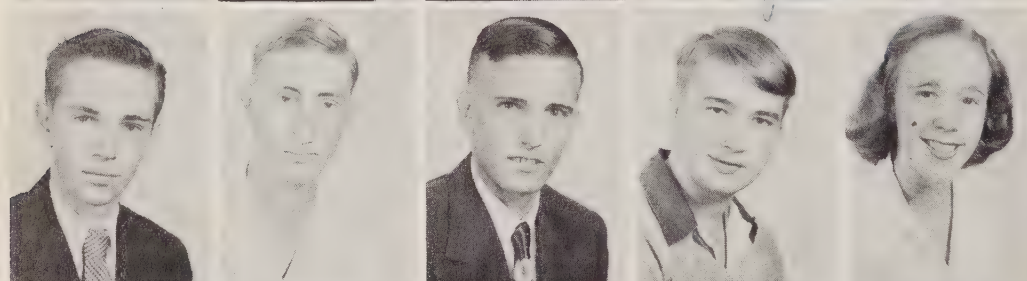
BETTY ALBRIGHT
 HARRY ALBRIGHT
 BETTY CASHION
 JERRY CAUBLE
 BETTY LOU DILLON



PEGGY GATTON
 PEGGY GENTLE
 BETTY GRAHAM
 RUBY GRAHAM
 WILLIE MAE GRAHAM



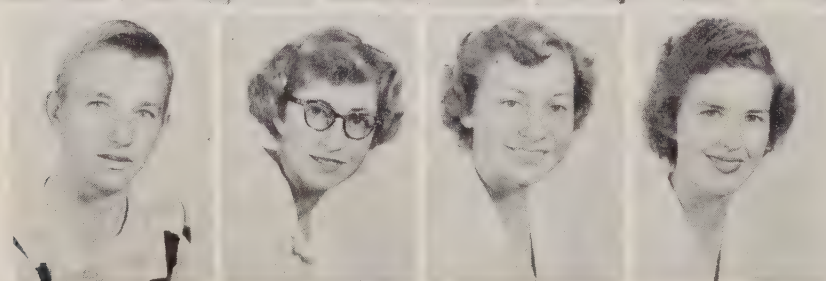
JO HENDRIX
 HARRY HIPPI
 PHILIP KEPLEY
 JACQUELINE LLOYD
 BARBARA JEAN LYERLY



BILLY MOORE
 JOSEPH MOWERY
 CARLTON MYERS
 EDDIE PENNELL
 PHYLLIS MYERS



MARY ALICE PHIFER
 SARAH PINKSTON
 WILMA PLYLER
 RUTH POWLAS
 IVA LEE REDMAN

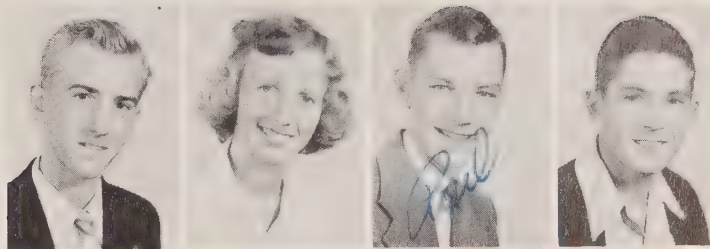


GERALD SHOAF
 LOIS SMITH
 KATHRYN STEELE
 ELIZABETH WENSIL

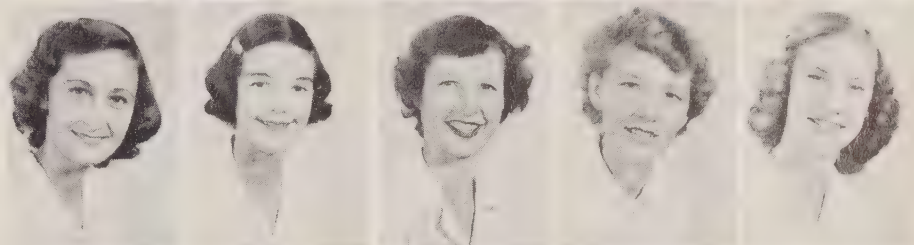
Not Pictured:
 IRENE WILHELM
 NORA LEE BEAVER

Sophomore Class

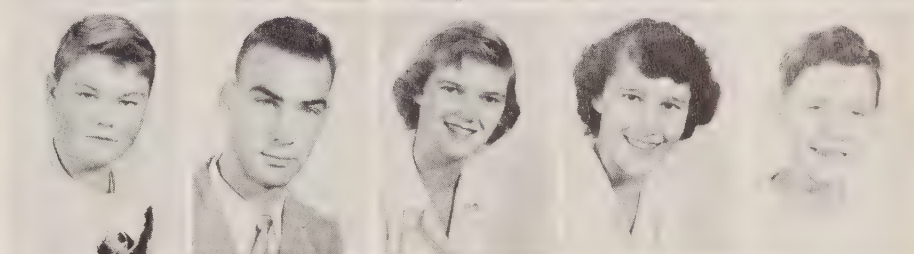
JERRY FINK: President
 ROSELYN SNYDER: Vice-President
 PAUL TEMPLE: Secretary
 GEORGE HIPPE: Treasurer



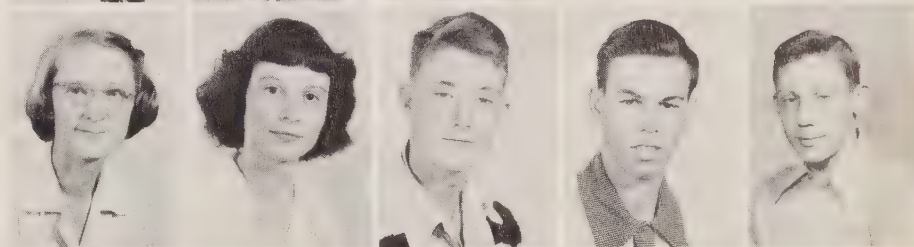
BETTY LOU ARCHIE
 BECKY BARBER
 NELLIE BARRINGER
 VIRGINIA DAVIS
 BARBARA ELLER



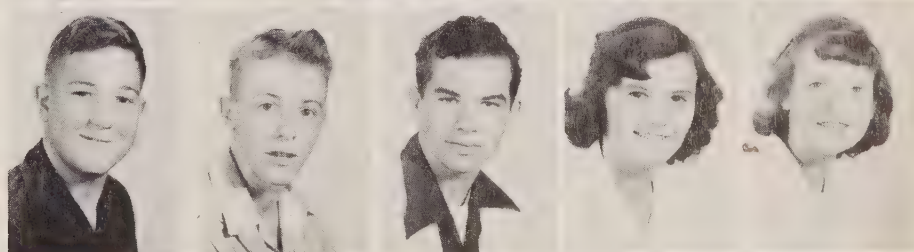
RICHARD FINK
 PAUL FOSTER
 MARY FRANCES GRAHAM
 LORENE HAMILTON
 BILLY JOE HARTSELL



GENELDA KEPLEY
 SHIRLEY KETCHIE
 JIMMY KYLES
 DON McCOY
 DENNIS McDANIEL



WORTH MULLIS
 RAY MYERS
 BUDDY PARRIS
 LOIS POTEAT
 JUNE POWLAS



PHYLLIS ROSEMAN
 LAWRENCE ROTHROCK
 PATSY ROWLAND
 RUTH RUXTON
 MILDRED SHUPING



BILLY SOMERS
 LUDIE THIGPEN
 BARBARA WILHELM
 JAMES WILLIAMS
 BOBBY WITTY



STEPHEN WUAMETT

Not Pictured:
 DOROTHY NESBIT
 JACK WOOTEN



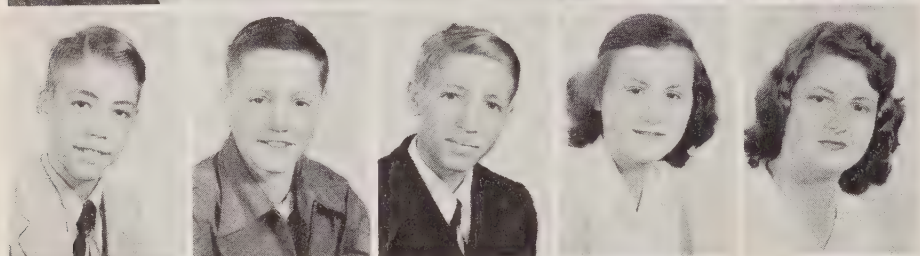
Freshman Class



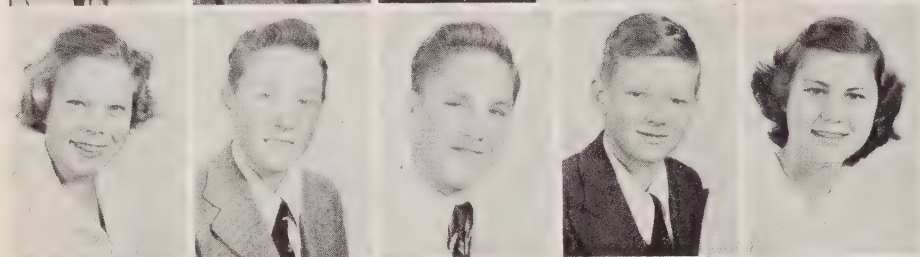
SARAH BROWN: President
 DORIS GRAHAM: Vice-President
 SUE RUSSELL: Secretary
 ANNIE LAURA HALL: Treasurer



BILLY ALLEN
 BETTY LOU ANDERSON
 WANDA BEAVER
 WAYNE BEAVER
 EDWIN BEEKER



BOBBY CORRELL
 RALPH CHRISTY
 WAYNE COBB
 CLARA SYKES GRAHAM
 BETTY KENNEDY



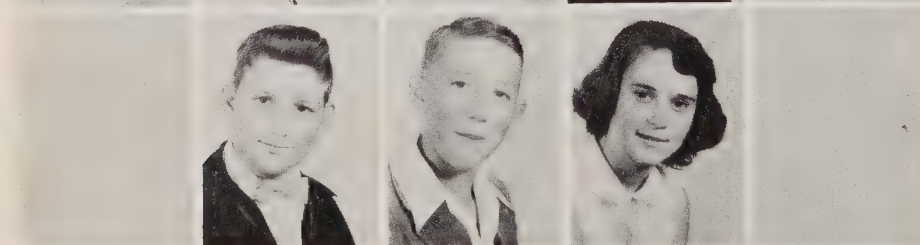
DOLORES KEPLEY
 DAVID LANIER
 FOREST LLOYD
 JIMMY McINTOSH
 MARTHA JANE PHIFER



LORENE POTEAT
 SAM REDMAN
 BETTY ROBINSON
 TOMMY ROBINSON
 MARGARET ROSEMAN



MARIE RUMPLE
 CAROL SHOAF
 LAURA ANN SHUPING
 NORMAN SHUPING
 MARY SUE SNELL



BOBBY SOMERS
 TOMMY THOMPSON
 LUCY WILLIAMS

Not Pictured:
 JEANNETTE DAVIS,
 DOROTHY HANNON
 KATHLEEN TAYLOR

HOMECOMING 1952



MARGARET ROSEMAN
Freshman Attendant



BETTY GRAY
Queen



FRANCES ANDERSON
Senior Attendant



FRANCES GRAHAM
Sophomore Attendant



DOROTHY CAMPBELL
Junior Attendant

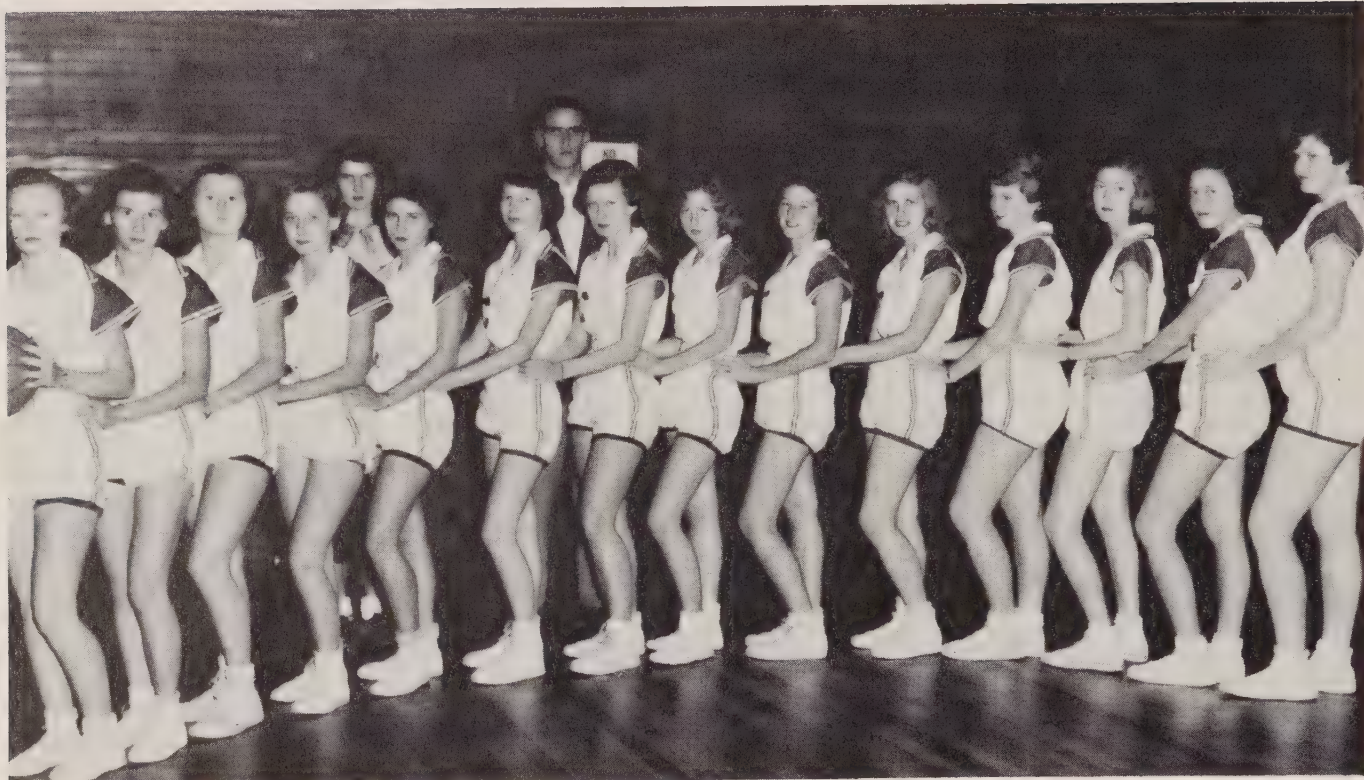


Football Team Of '51



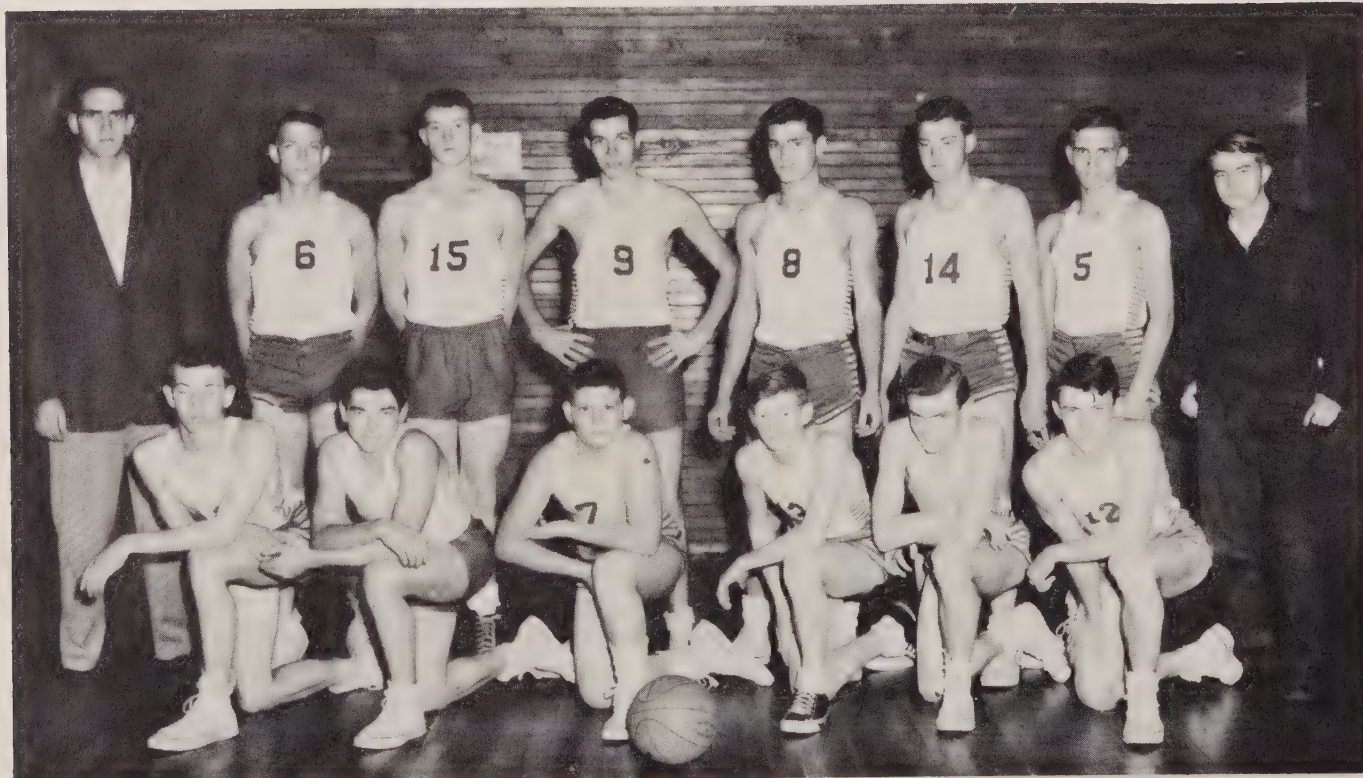
First Row: Bill Somers, Kenneth Kyles, Eddie Pennell, Johnny Lippard, Philip Kepley, Bobby Somers, Harry Albright, Second Row: Ralph Christy, Jerry Cauble, Jimmie Kyles, Charles Hamilton, Bill Moore, Bobby Cline, Coach Femister.

Girls' Basketball



First Row, L-R: Dot Campbell, Betty Dillon, Clara Sykes Graham, Kathryn Steele, Jeanette Davis, Willie Mae Graham, Irene Wilhelm, Roselyn Snyder, Sarah Pinkston, Gloria Barringer, Sarah Brown, Barbara Eller, Betty Cashion, Phyllis Roseman. Second Row, L-R: Barbara Jean Lyerly (manager), Mr. Feimster (coach). Not Pictured: Mary Alice Phifer.

Boys' Basketball



First Row, L-R: Billy Moore, Edwin Beeker, Bobby Somers, Jimmie McIntosh, Jack Galliher, Jerry Cauble. Second Row, L-R: Mr. Feimster (coach), Philip Kepley, Jimmie Kyles, Bobby Witty, Charles Hamilton, Carlton Myers, Eddie Pennell (manager). Not Pictured: Bill Somers.

Cheer Leaders

Chief Cheer Leader

JEANNETTE DAVIS



MARY FRANCES GRAHAM

LOIS SMITH

VERA WITTY

ANNIE LAURA
HALL

BETTY KENNEDY

LOUISE DAVIS

Monogram Club



First Row, L-R: Geraldine Barber-Secretary, Charles Hamilton-President, Coach Femister-Advisor, Carlton Myers-Vice-President, Bobby Cline-Sgt. at Arms, Dot Campbell-Treasurer. Second Row, L-R: Jo Hendrix, Harry Hipp, Jerry Cauble, Barbara Jean Lyerly, Betty Cashion, Irene Wilhelm, Peggy Gentle, Mary Frances Graham, Lois Smith, Katheryn Steele, Gloria Barringer. Third Row, L-R: Gerald Shoaf, Philip Kepley, Johnny Lippard, Jack Galliher, Wilton Cooley, Kenneth Kyles, Bill Somers, Billy Moore, Eddie Pennell.

Bus Drivers



L-R: Johnny Lippard, Billy Somers, Sammy Temple, Thomas Steele, Billy Moore, Wilton Cooley, Paul Foster.

Future Farmers Of America



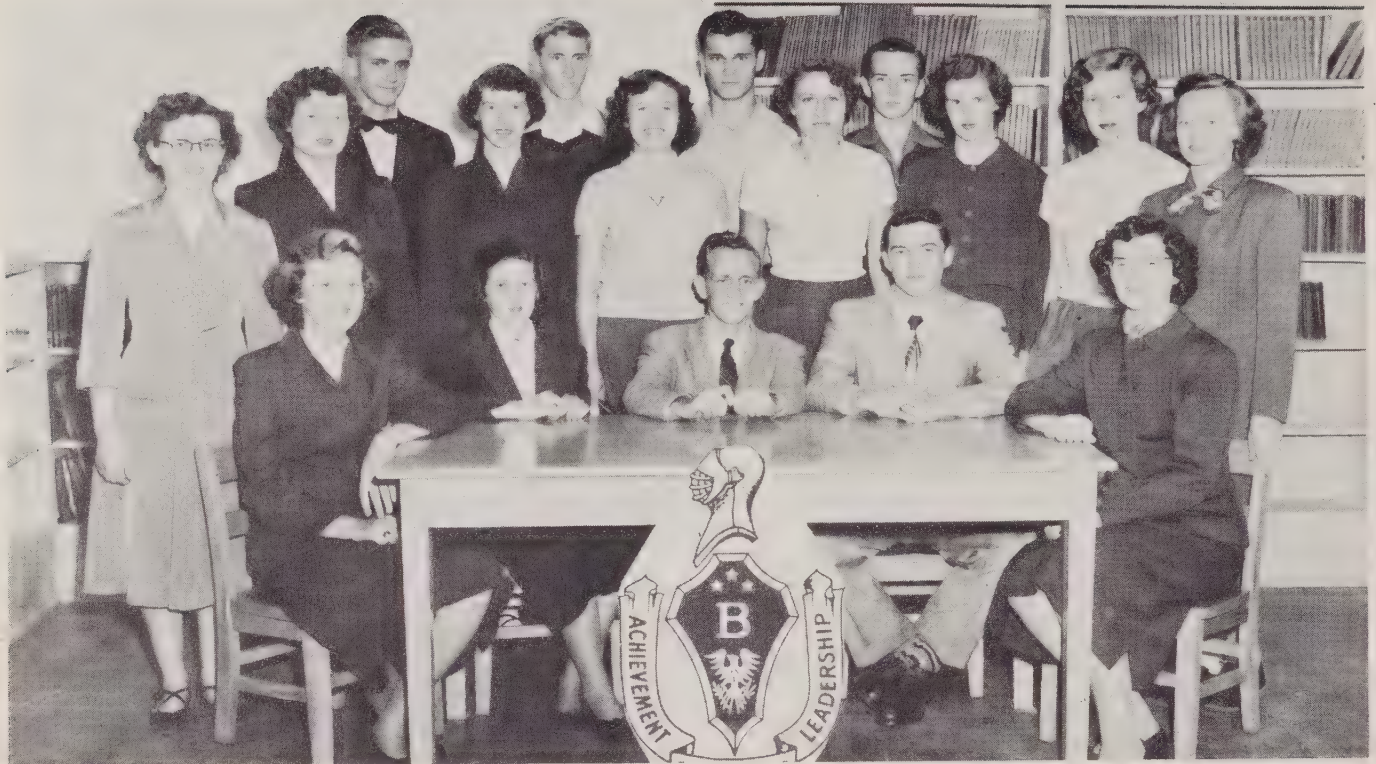
First Row, L-R: Philip Kepley-Vice-President, Bobby Cline-President, Kenneth Kyles, Sam Redman, Tommy Robinson, Bobby Somers, Jimmy McIntosh, Walter Lippard-Treasurer, Thomas Steele-Secretary, Mr. Hendren-Advisor. Second Row, L-R: Ray Myers, Harry Hipp, George Gardner, Wayne Cobb, Richard Fink, Edwin Beeker. Third Row, L-R: Dennis McDaniel, Gerald Shoaf, George Hipp, David Lanier, Wayne Beaver, Norman Shuping. Fourth Row, L-R: Worth Mullis, Harry Albright, Tommy Thompson, Bobby Correll, Billy Hartsell. Fifth Row, L-R: Forrest Lloyd, Jimmy Kyles, Lawrence Rothrock, Wilton Cooley, Ludie Thigpen, Jack Wooten. Sixth Row, L-R: Ralph Christy, Joe Mowery, Steve Wuamett, Paul Foster, Jerry Fink, Buddy Paris, Billy Allen.

Future Homemakers Of America



First Row, L-R: Miss Dorothy Clodfelter-Advisor, Dot Campbell-Treasurer, Hendrix, Goodman, Shuping, Barber, Poteat, Frances Anderson-Secretary, Myers, Anderson. Second Row, L-R: Barber, Hall, Roseman, Miller, Barringer, Wilhelm, Ketchie, Powlas, Davis. Third Row, L-R: Ruxton, Shoaf, Redman, Graham, Beaver, Poteat. Fourth Row, L-R: Smith, Robinson, Dillon, Witty, Barber, Barringer. Fifth Row, L-R: Graham, Graham, Shuping, Powlas, Kepley, Graham. Sixth Row, L-R: Cashion, Kennedy, Steele, Graham, Albright, Rowland. Seventh Row, L-R: Lyerly, Wensil, Russell, Kepley, Snyder, Davis, Snell. Eighth Row, L-R: Eller, Roseman, Plyler, Pinkston, Phifer, Gentle. Ninth Row, L-R: Irene Wilhelm-Vice-President, Brown, Archie, Betty Gray-President.

Beta Club



Seated, L-R: Nellie Wooten-Treasurer, Frances Anderson-Vice-President, Mr. Battle-Advisor, Sammy Temple-President, Betty Gray-Secretary. Standing, First Row, L-R: Bonnie Goodman, Anne Powlas, Willie Mae Graham, Jacqueline Lloyd, Peggy Gatton, Elizabeth Ann Wensil, Irene Wilhelm, Dot Campbell. Second Row, L-R: Jack Galligher, Joe Mowery, Charles Hamilton, Billy Moore.

Les Acteurs



L-R: Geraldine Barber, Willie Mae Graham, Bonnie Goodman, Jimmy Kyles, Anne Powlas, Lois Smith, Jack Galligher, Dot Campbell, Jo Hendrix, Betty Gray, Mrs. Wagoner, Kathryn Steele, Paul Temple.

Librarians



L-R: Laura Ann Shuping, Iva Lee Redman, Phyllis Roseman, Mrs. Carl Price, Phyllis Myers, Nellie Wooten.

Glee Club



Front Row, L-R: Miss Griggs-Director, Barber, Hall, Shuping, Hendrix, Barber, Goodman, Poteat, Anderson, Myers, Anderson. Second Row, L-R: Steele, Roseman, Ruxton, Barringer, Powlas, Davis, Wilhelm. Third Row, L-R: Redman, Campbell, Moore, Barringer, Smith, Graham, Beaver, Fourth Row, L-R: Taylor, Graham, Graham, Rowland, Kepley, Dillon, Powlas. Fifth Row, L-R: Graham, Plyler, Phifer, Pinkston, Gray, Davis, Kepley, Snell. Sixth Row, L-R Albright, Cashion, Roseman, Eller, Gentle, Archie. Seventh Row, L-R: Wilhelm, Lippard, Lyerly, Wooten, Temple, Temple.

Senior 4 H Club



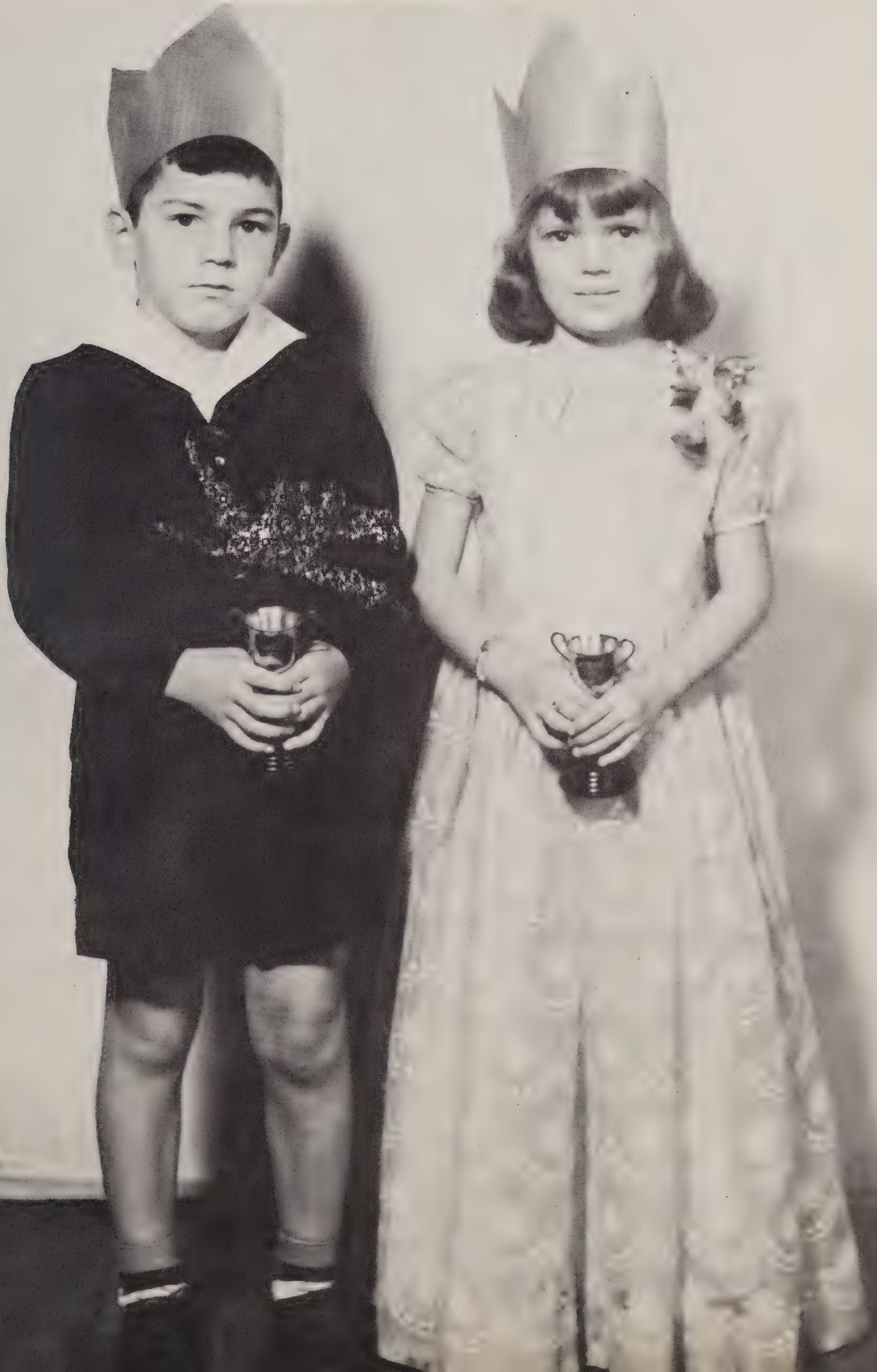
First Row, L-R (Kneeling): Lois Poteat-Song Leader, Genelda Keply-President, June Powlas-Program Chairman. Second Row, L-R: Myers, Barber, Goodman, Hendrix, Wilhelm, Barringer, Redman. Third Row, L-R: Dillon, Graham, Beaver, Smith, Graham, Barringer, Albright. Fourth Row, L-R: Taylor, Snell, Powlas, Steele, Graham, Graham. Fifth Row, L-R: Rowland, Snider, Plyer, Brown, Wilhelm. Sixth Row, L-R: Barbara Eller, Phyllis Roseman. Not Pictured: Jerry Cauble-Vice-President, Shirley Redman-Secretary, Paul Temple-Program Chairman.

Junior 4 H Club



First Row, L-R: Mary Jane Moore-Reporter, Anita Dillon-Co-Program Chairman, Carol Dillon-Secretary, Arlene Davis-Co-Song Leader, Carolyn Steele-President, Bobby Cashion-Vice-President, J. C. Cobb-Co-Program Chairman, Clyde Lippard-Co-Song Leader. Second Row, L-R: Ruple, Wright, Dillon, Wilhelm, Wright, Beck, Beck. Third Row, L-R: Lyerly, Lloyd, Graham, Beaver, Haire, Hodge, Ketchie, Phifer. Fourth Row, L-R: Plyler, Hendren, McCoy, Swanson, Faust, Lanier, Summit. Fifth Row, L-R: Swicgood, Campbell, Graham, Campbell, White, Leckie, Wuamett. Sixth Row, L-R: Graham, Dean, Roland, Ruple, Kyles, Graham, Dillon. Seventh Row, L-R: Shoaf, Binkley, Somers, Myers, Kennedy, Gentle. Eighth Row, L-R: Bumgarner, Barringer, Holder, Brown, Steele. Ninth Row, L-R: Myers, Steele.

ELEMENTARY



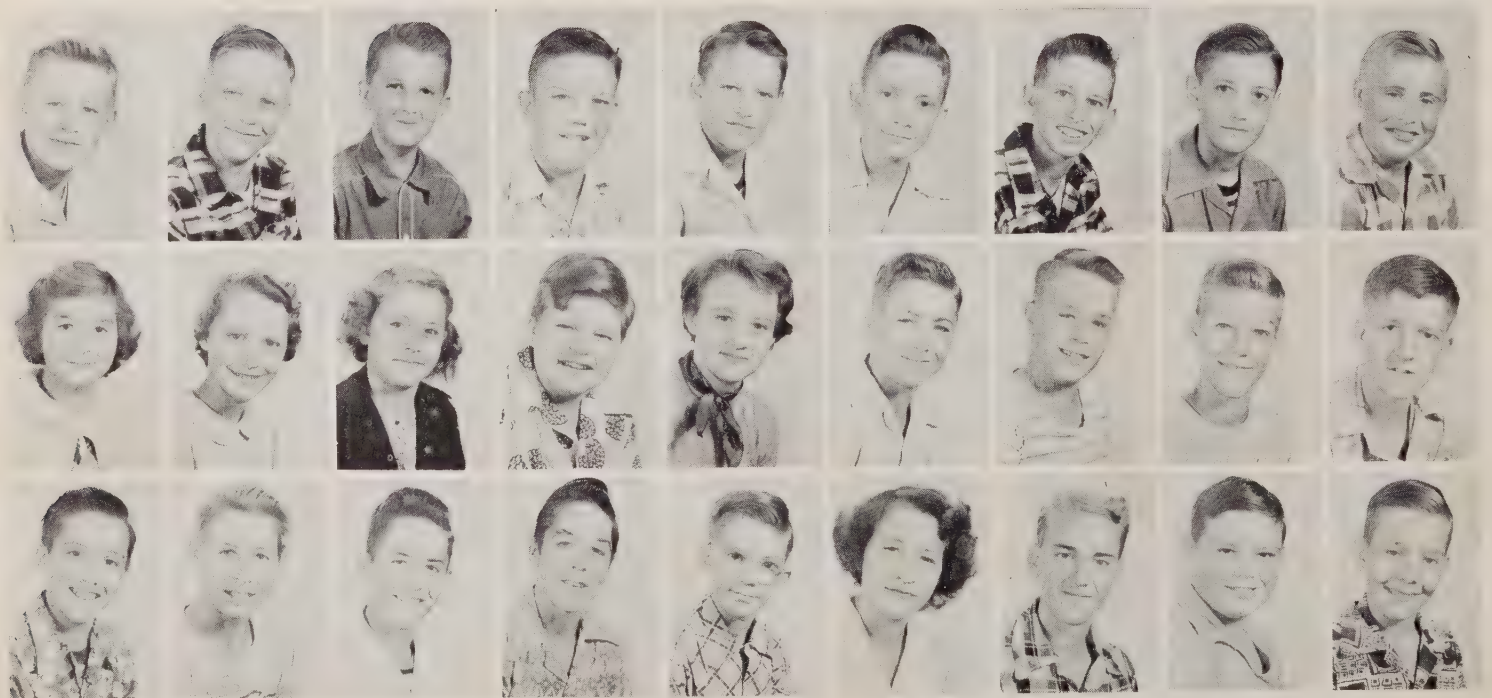
Bollinger
Nell
Rosie

Eighth Grade



Joel Barringer, Waitzel Beaver, Rosa Nell Bollinger, Charles Brown, Kenneth Burton, Bobby Cashion, Jack Clendenin, Wayne Cline, Arlene Davis, Carol Dillon, Douglas Gentle, Irene Hodges, Jackie Hodges, George McCoy, Doris McDaniel, Mary Ruth Rumble, Fred Snyder, Carolyn Steele, Locke Steele, John Wilhelm, Roy Williams, Betty Witherspoon. Not Pictured: Gay Lanier, Frank Graham, Martha Steele, Lois Hamilton, Rosie Lee Fox, Robert Fox.

Seventh Grade



John Allen, Bennie Beeker, Jimmy Brown, Jimmy Bumgarner, Jimmy Campbell, Lester Cannon, Keith Dillon, Philip Fink, Buford Graham, Martha Graham, Sue Graham, Myrtle Haire, Bobbie Hodge, Nancy Holder, Gary Lloyd, John Martin, Cody Myers, Clark Plyler, Dick Redman, Tommy Redman, John Henry Robinson, Kenneth Rowland, Eugene Rumble, Virginia Shoaf, Billy Shuemaker, Charles Steele, Bob Williams. Not Pictured: Faye Barringer, Loretta Dean, Myrtle Kyles, Joe Snyder.

Sixth Grade

*Not Pictured
to a Nice
High Five
Pete*



Faye Beaver, Roy Beck, Ann Burton, J. C. Cobb, Anita Dillon, Johnny Faust, Harry Hartsell, Peggy Hodge, Joyce Kennedy, Jerry McCoy, Donna McDaniel, Reid Newland, Jr., Burette Parker, Tommy Parker, Bonnie Plyler, Joyce Rumble, Larry Wright. Not Pictured: Carl Gaines, Leroy Hannon, Tony Myers, Roy Swanson.

Fifth Grade



Kay Ann Beck, Martha Binkley, Peggy Brown, Fred Campbell, Elaine Dillon, Allen Faust, Alice Graham, John Graham, Myrna Jean Hendren, John Holder, Carolyn Ketchie, Ray Ketchie, Linda Lanier, Billy Leckie, Clyde Lippard, Carol Lloyd, Wayne Lyerly, Mary Jane Moore, Leila Phifer, Quinton Roberts, Sandra Somers, Patricia Summit, Judy Swicegood, Richard White, Larry Wilhelm, Phillip Wright, Bill Wua-mett. Not Pictured: James Cline, Howard Taylor.

Fourth Grade



Annette Rumples, Larry Beaver, Nettie Faye Bollinger, Mary Lee Cline, Ruth Cline, Tommy Dillon, Sylvia Finger, Ann Graham, Tommy Graham, Wayne Hall, Maude Henley, Wesley Henley, Ruth Hodge, Dewey McDaniel, Melton Padgette, Harold Lee Paris, Bill Parker, Gene Parker, Harold Shoaf, Homer Shue, Sylvia Thompson, Lowell Turman, Norvell Turman, Annie Louise Wilhelm. Not Pictured: Freddy Lee Fox, Paul Gains, Billy Ray Graham, J. W. Graham, Carol Hannon.

Third Grade



Denny Anderson, Linda Beaver, Mary Jane Bollinger, James Brown, Eddie Davis, Richard Dillon, Doris Finger, Jim Fox, Jane Graham, Ralph Graham, Richard Graham, Betty Eugenia Hannon, Nancy Hartsell, Granville Jenkins, Brenda Ketchie, Kenneth Kluttz, Edward Lanier, Harry Lippard, Joyce Lloyd, Donald Lyerly, Stanley McCoy, Jim Newland, Allen Phifer, Floyd Poole, George Redman, Hubert Rumples, Billy Ed Russell, Thomas Shoaf, Donald Steele, Jean Steele, John Steele, Gerald Swicegood, Dewey Turman, Barbara Ward. Not Pictured: Everette Cloer, Bernice Graham, Mary Sue Moore, Billy Wayne Taylor.

Second Grade

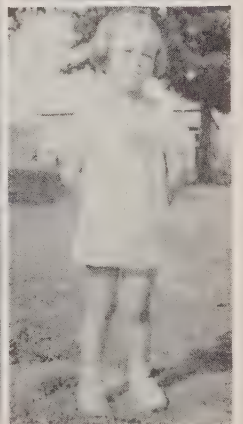


Gary W. Agner, John Bollinger, Arthur Brown, Mary Jane Bumgarner, William Cline, Joyce Ann Dagenhart, George A. Dean, Patricia Dillon, Glenda Faust, Marvin Finger, Ann Hall, Earl Hannon, Franklin Hartsell, Phyllis Hartsell, Willie Sue Hodge, Harry Holder, George R. Houston, Wayne Klutz, Patricia Kurfees, Lanier Lowery, Delmar McDaniel, Marilynn Moore, Nancy Parker, Bessie Poole, Judy Ruffy, Jones Steele, James Summitt, Richard Lee Watson, Robert Lee Wilhelm. Not Pictured: Frank Hair.

First Grade



Billy Allen, Linda Barney, Margaret Beaver, Judy Beck, Nancy Beeker, Richard Brown, Walter Cline, Nettie Ann Fox, Edward Graham, Robert Graham, Paul Hall, Kenneth Holder, John Benson Huffer, Pamela Kennedy, Elizabeth Kurfees, Peggy Lloyd, John Arthur Lumpkin, Johnny Naile, Marvin Poole, Libby Shoe, Virginia Smith, Betty Ruth Steele, Wanda Steele. Not Pictured: Patsy Brown, Raymond Gaines, Donald Graham, Margaret Worth McKay, Robert Padgett.



CHEVROLET



24 Hour Service

RANEY MOTOR CO.

Phone 633--634

Salisbury North Carolina

CUSTOM BUILT QUALITY
VENETIAN BLINDS

Orders individually measured
and installed
with factory-to-you prices.

**Salisbury Venetian Blind
Mfg. Co.**

Phone 4319

Statesville Road

Salisbury North Carolina

EDWIN EARLE

Office and School Supplies

Salisbury North Carolina

MOONEY'S

Foot Long Hot Dogs
Sandwiches of kinds Milkshakes
Open 6 A.M. to 12 P. M.
Near Catawba College

Statesville Road
Salisbury North Carolina

Compliments of

Purcell's Drug Stores

Salisbury
Statesville
Albermarle

McCANLESS MOTOR CO.

Dodge and Plymouth Cars
Dodge Job-Rated Trucks
Sales and Service

Salisbury North Carolina

*Compliments
of*

WAGONER SUPPLY CO.

Salisbury North Carolina

*Compliments
of*

**PET DAIRY PRODUCTS
CO.**

Salisbury North Carolina

Compliments of

**JIMMY BLACKWELDER'S
BAR B. Q.**

"Best Always"

1624 West Innes St.

Salisbury North Carolina

BEST WISHES

TO

CLASS OF '52

ROWAN PRINTING CO.

Salisbury North Carolina

E. T. KEPLEY

Grocery and Beauty Shop

Highway No. 70

Route 6 Phone 4432-J

Salisbury North Carolina

CHARLES T. KLUTTZ

Plumbing-Heating

Oil-O-Matic Heating System

114 W. Fisher St.

Salisbury North Carolina

Foil Motor Company, Inc.

Chrysler--Plymouth
Sales & Service

211 E. Innes Street
Phone 2217

Salisbury North Carolina

Compliments of

Evening and Sunday Post

8 Full Pages of Colored Comics
Every Sunday

Salisbury North Carolina

Compliments of

Brady Printing Company

Printing - Office Supplies

Phone 3274
120 West Broad Street

Statesville North Carolina

Park Avenue Groceries

1403 Park Ave. Phone 322-J
2632 Park Ave. Phone 524

J. A. Myers - W. H. Beaver
Props.

WE DELIVER

Fancy and Staple Groceries
Native and Western Meats

Salisbury North Carolina

OWEN, INC.

210 E. Innes St.

All types General Electric
gas and oil heating equipment

We Install
Phone 318

Salisbury North Carolina

Cleveland Drug Co.

Drugs Sundries

and

Gifts

Cleveland North Carolina

Compliments of

GEORGE W. BAME

BARBER

NORTH CAROLINA

The Most Complete Gin in This Vicinity

WE SOLICIT YOUR BUSINESS

Compliments of

Hardin Electric, Inc.

General Electric Dealer

316 N. Main

Salisbury

North Carolina

Compliments of

Rustin's Furniture Co.

Salisbury

North Carolina

Phils Family Shoe Store

Fine Shoes for the Entire Family

The Gold Shop

Ladies Wearing Apparel
Salisbury-Newton-Hickory
Lenoir-Lancaster-Concord

Thomasville

North Carolina

SUPERIOR OIL COMPANY

DISTRIBUTORS OF

Superior Petroleum Products

Phone 4557

Salisbury

North Carolina

Compliments of

Johnston Furniture Co.

Phone 4308

Statesville

North Carolina

Havilland China Spode China

Gorham Silver

Nationally Advertised Lines
Merchandise to suit your needs

Visit our "Brides Room"

Leonard's Jewelers

108 S. Center St.

Statesville

North Carolina

FULLER BRUSHES

For All Your Fuller Brush
Needs Call or Write

ROBERT HORN

114 S. Patterson St.

Statesville

North Carolina

Compliments of

RAMSEY'S

Statesville

North Carolina

THOMPSON VENEER CO.

WE ARE ALWAYS IN THE MARKET FOR GOOD
POPLAR AND GUM LOGS

*Compliments
of*

BELK HARRY CO.

Salisbury

North Carolina

ROWAN DAIRY

Grade A

Pasteurized-Homogenized

Dairy Products

At Your Home--At Your Store

Phone 4520

Salisbury

North Carolina

GLENN WILHELM

Fresh Meats - Vegetables
Staple & Fancy Groceries
We Buy Eggs & Poultry

Phone 4281

Cleveland North Carolina

Compliments of

Milton N. McLaughlin

Compliments of

Salvage Furniture Co.

MRS. G. A. HUNTER
MRS. W. W. REDMAN

Compliments of

CRESS & SONS

Fine Men Clothes

Salisbury North Carolina

Salisbury Sporting Goods

Everything for the Sportsman
BICYCLES - WHIZZERS

Phone 690

Salisbury North Carolina

Bottom View Guernsey Farm

Golden Guernsey Milk
Harold E. Myers & Sons
Owners

Cleveland North Carolina

Compliments of

Kennedy's Service

Phone 2251

Cleveland North Carolina

J. J. Leab Service Station

General Merchandise

GAS - OIL

COLD DRINKS

Highway 70

Phone 2821

Barber

North Carolina

J. H. Steele's & Sons

"Business goes where invited-
Remains where well treated"

PHONE 4446

ROUTE 2

Cleveland

North Carolina

Appliances, Inc.

G. E. Appliances

Complete Service on
Appliances-Radio-Television
Phone 4141 - 217 1/2 S. Center St.

Statesville

North Carolina

**Watts and White Machinery
Company**

Massy Haris Tractors-Implements

Case Tractors-Implements

DeLavel Milkers

Phone 7512

1021 W. Front St.

Statesville

North Carolina

HAL PARIS

Painting & Decorating

Phone 4171

Cleveland

North Carolina

Compliments of

Norman Ingle Jeweler

Salisbury North Carolina

HEFNER'S CAFE

'When In Statesville Eat
At Hefner's

Minor Hefner & Anderson Nash
Owners

Statesville North Carolina

Compliments of

COBB'S SERVICE CENTER

GAS - OIL - GROCERIES - MEATS

Phone 2239

Milford Hills North Carolina

OAKES MOTOR CO. INC.

1413 South Main Street

Phone 2347

Salisbury North Carolina

R. M. MOORE

Groceries & General Merchandise
Country Produce Bought & Sold
Ice and Coal
Phone 2321

Cleveland North Carolina

Compliments of

SALEEBY DIST. CO.

Wholesale Fruits

Salisbury North Carolina

Cleveland Electrical Co.

Everything Electric
Plumbing Supplies
Sales & Service

Lawson P. Boland, Prop.

Phone 4262

WASHERS-RANGES
REFRIGERATORS-FURNITURE

Hardiman & Son., Inc.

The Cut-Rate Furniture Store

Corner Innes and Lee Streets
Telephone 1042

Salisbury North Carolina

Compliments of

**Peoples Loan and Savings
Bank**

Salisbury North Carolina

Mills Electric Shop

House Wiring, Factory Wiring,
Farm Wiring, Full Line Small
Appliance & Lighting Fixtures

Statesville North Carolina

Compliments of



Salisbury North Carolina

Compliments of

**NEWSOM
JEWELERS**

104 South Main Salisbury

Complete Music Department

**Bunch Furniture Company
Incorporated**

Statesville's Oldest Furniture
Store
Phone 6712 - Music Dept. 5341

Statesville North Carolina

Compliments of

JEAN'S BEAUTY SHOP

In Wallace Building

Salisbury North Carolina

Plants Shrubbery Trees Lawns

E. S. TEMPLE

Landscape Gardener
Milford Hills
Salisbury, N. C.

“Its’ Not A Home
Until It’s Planted”

**Salisbury Cut-Rate
Furniture Co.**

L. C. Kluttz - H. S. Melton
Owners

129 E. Innes St. Phone 1099

Salisbury North Carolina

**Sherrill-White Shoe Co.
Incorporated**

Dealer in the Best of Shoe
and Gents’ Furnishings

Telephone 7441

Statesville North Carolina

SHERRILL LUMBER CO.

Complete Building Service

Phone 4319

Statesville North Carolina

**Lazenby-Montgomery
Hardware Company**

Hardware - Paints - Implements

Statesville North Carolina

Compliments of

IREDELL F C X CO.

Statesville North Carolina

Compliments of

Auto Parts and Electric Co.

Auto Parts and Electric Co.

215 North Center St.

Statesville North Carolina

Compliments of

**J. F. Duncan Heating &
Plumbing**

Statesville North Carolina

A. K. PHIFER

BEST COTTON MARKET
IN THE VICINITY

Phone 2261

Cleveland

North Carolina

TRAILWAYS

RIDE ALWAYS
THROUGH ROUTES
FROM

CLEVELAND TO ASHEVILLE
CLEVELAND TO KNOXVILLE
CLEVELAND TO NASHVILLE
CLEVELAND TO MEMPHIS
CLEVELAND TO CHATTANOOGA
CLEVELAND TO BIRMINGHAM
CLEVELAND TO RALEIGH

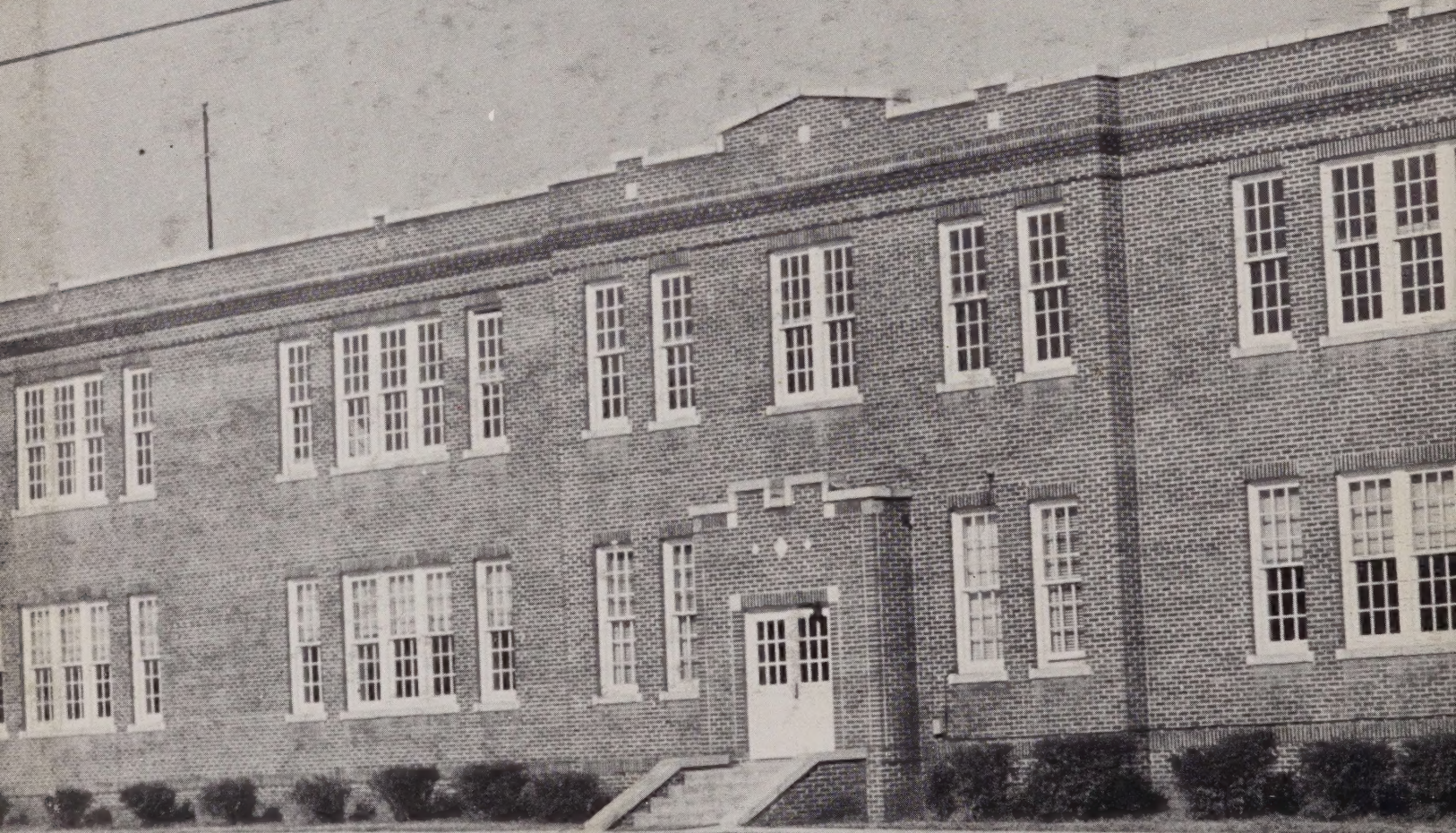
Only one change to
DALLAS-ARMARILLO-CHICAGO

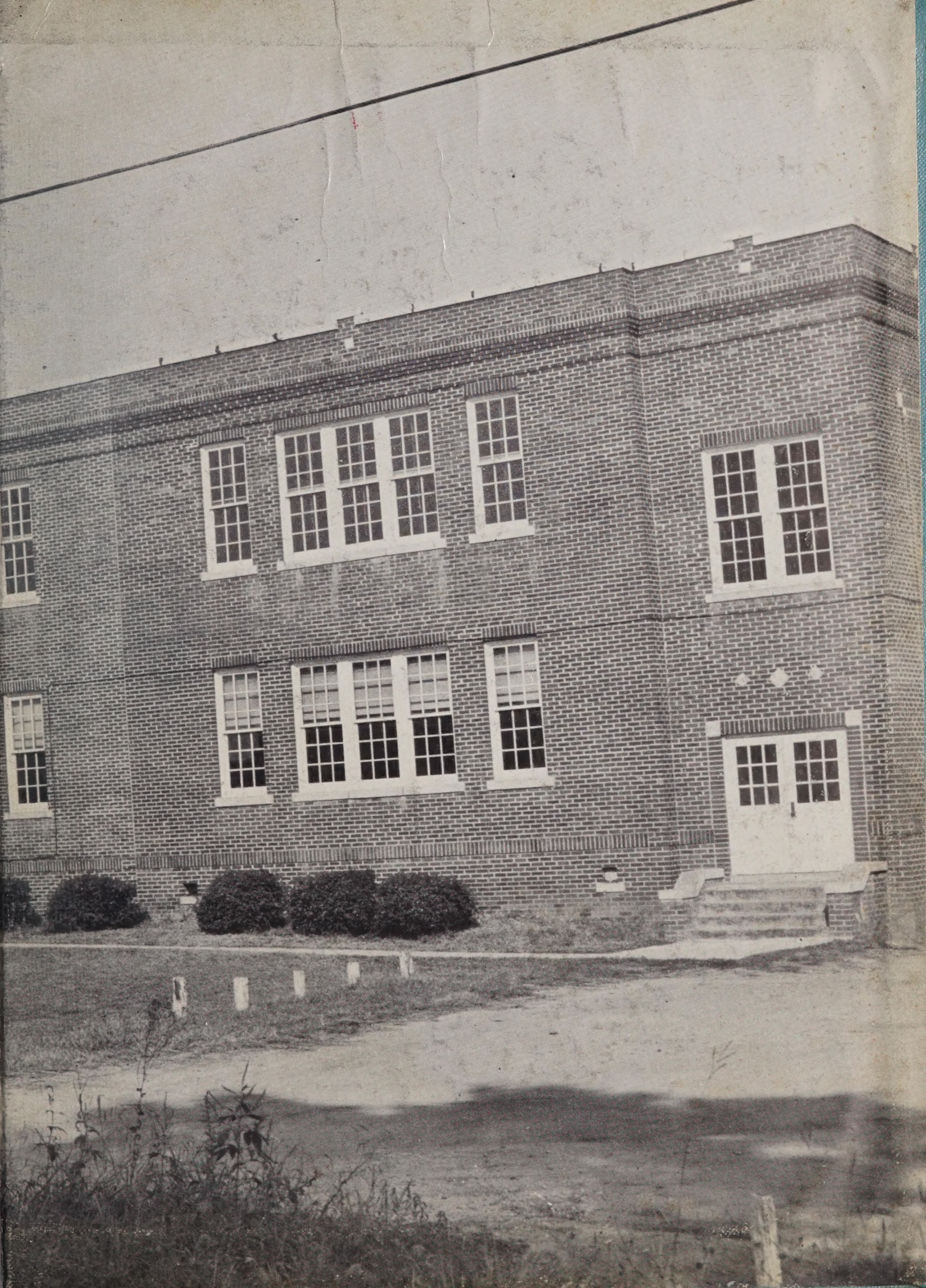
Charter Trips A Specialty

Queen City Trailways
CHARLOTTE, NORTH CAROLINA

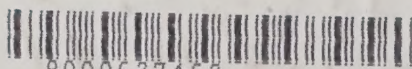
Autographs

ROWAN PUBLIC LIBRARY
SALISBURY, N. C.





HEADQUARTERS



900062746Z

