

The

1
9
4
2



Cocoon

For Reference

Not to be taken from this room



Digitized by the Internet Archive
in 2013

<http://archive.org/details/cocoon19421942char>

THE 1942

Cocoon

Published by

THE SENIOR CLASS

OF

The Charles L. Coon High School

WILSON, NORTH CAROLINA

FOREWORD

WE offer this initial edition of the COCOON as the first annual to be published by the Charles L. Coon High School since 1931. In arranging it we have made no attempt to carry out a theme, but have tried simply to record an interesting and complete pictorial history of the students and activities of the year 1941-42. We hope that the success of this first COCOON will warrant its continued publication in ensuing years.





DEDICATED

To

Miss Cox

*An untiring, devoted, and inspiring influence
on young people for the past fifty years in
the schools of North Carolina—we dedicate
this book.*

ADMINISTRATION



J. M. HOUGH
Principal
Charles L. Coon High School



S. G. CHAPPELL
Superintendent
Wilson Public Schools

ADVISERS

GLADYS HALE

Dean of Girls

Editorial Adviser 1942 COCOON



G. S. WILLARD

Dean of Boys

Business Adviser 1942 COCOON



FACULTY

MARGARET ASHTON
Librarian

LEON BROGDEN
Physical Education

JESSIE MAE BROOKS
English

THOMAS GLENN DUNEVENT
English

DONAHUE BRYANT
Social Science

MILDRED HARRISON BULLARD
Home Economics

RUTH PAGE BUNCH
Science

CAROLYN CARMICHAEL
Spanish

EULALIE COX
Latin

MARY ELIZABETH CRAWFORD
Home Economics

IRVIN DICKENS
Physical Education

ROSCOE A. ELLER
Director of Music

ADA N. FELTON
Commercial Education

SARA WILEY DICKSON
Commercial Education

DOROTHY D. EAGLES
English



ALBERTA LAMM
Mathematics

CYRUS F. LEE
History and Mathematics

HELEN GILL
Chemistry

HILDA GODWIN
English

GENEVA HIGHFILL
English

RICHARD HOYLE
Physical Education

GLADYS HALE
Coordinator, Distributive Education

M. L. MCCLIMON
Industrial Arts



HATTIE NOBLE
Mathematics

RUTH J. SKINNER
English

GREVILDA C. NORMAN
Social Science

J. T. UNDERWOOD
Mathematics

MARGARET ROGERS
English

GEORGE S. WILLARD, JR.
Director of Vocational Education

FLORENCE MAYERBURG
General Mathematics

MARY ELIZABETH WOODARD
French

MABEL SMITH
Physical Education

MARY DOUGLASS HORTON
Secretary to Principal

REBECCA ROSS
Commercial Education

JOHN K. WOOTEN
Physical Education

CLARK G. SHREVE
Social Science

CORAL BLACKBURN
Social Science
(No Picture)



SENIOR OFFICERS

LOIS WEBB
Sgt.-at-Arms

ALTA KELLOGG
Vice-President

EDYTHE BATCHELOR
Treasurer

BILL WELLS
President

EVELYN WEBB
Secretary

CLASS FLOWER: *Rose.*

CLASS COLORS: *Red and White.*

MOTTO: *Nothing is Sweeter Than the Light of Truth.*

MASCOTS

MATILDA WOODARD

BILL SHARPE, III



THE 1942

JULIA WEST ABBITT

Glee Club (2); Home Room President (2); Vice-President (3); Basketball (2, 3, 4); Carnival Queen Court (3); President Etiquette Club (3); Entertainment Committee of Carnival (4).

EDNA EARLE ASKEW

Band (2); Radiogram Club (3); G. A. A. (4); Marionette Club (1).

BENJAMIN C. BARBEE, JR.

Junior Basketball (2, 3); Junior Football (2); Varsity Basketball (4, 5); Varsity Football (3, 4, 5); Dramatic Club (2, 3, 4); Secretary-Treasurer D. O. Club (5); Treasurer Student Body (5); Monogram Club (5); Senior Superlative—Best All-Round.

MARIE HINTON BARNES

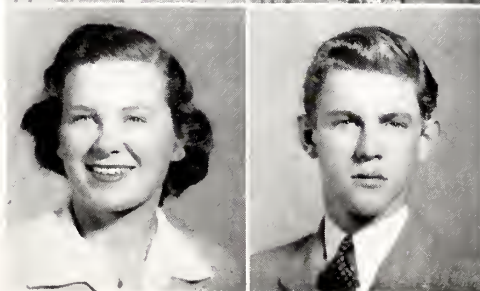
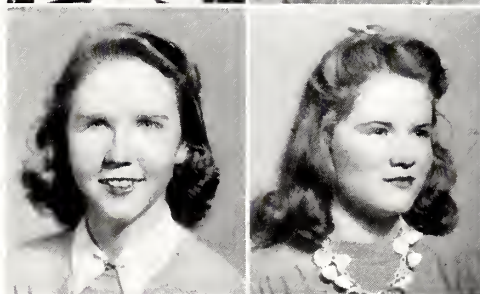
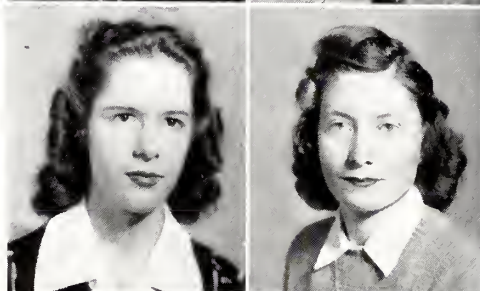
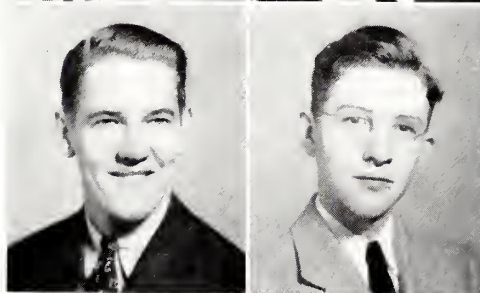
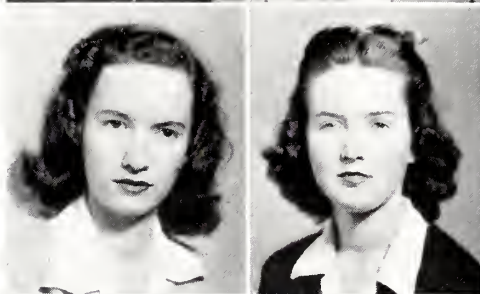
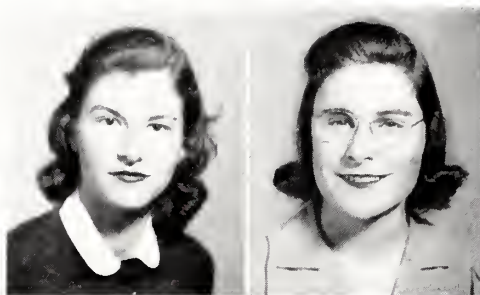
Glee Club (4, 5); Herft Jones Typing Medal (4); Basketball (3); Art Club (1); Dramatic Club (3); Commercial Club (4).

VIDETTE SAVAGE BASS

President Home Room (5); Vice-President (4); Carnival Committee (4, 5); Served at Junior-Senior Banquet (2); Committee for Junior-Senior Prom (3); Dramatic Club (2); Personality Club (3); Art Club (4); Senior Superlative—Most Dependable.

DOROTHY GREY BELL

Art Club (1); G. A. A. (2); Science Club (3); Shorthand Club (4); Vice-President of Service Club (5).



SENIORS

CATHERINE HURLEY ANTHONY

Radiogram Club (5); Staff (5); Basketball (1, 2); Softball (1, 2); Secretary-Treasurer Home Economics Club (2); Glee Club (2).

GERALDINE BANKS

G. A. A. (2); Home Economics Club (3); Served at Junior-Senior Banquet (2); Shorthand Club (4); D. O. Club (5).

JOHN L. BARNES

Stamp Club (1); Dramatics Club (2); Manual Arts Club (3); Student Council (4); Science Club (5); Monitor (3).

MILDRED ESTELLE BARNES

Home Economics Club (1); Glee Club (5).

EDYTHE MARIE BATCHELOR

Glee Club (2, 3); Home Economics Club (4); Home Room President (5); Secretary of Typing Club (5); Treasurer of Senior Class (5).

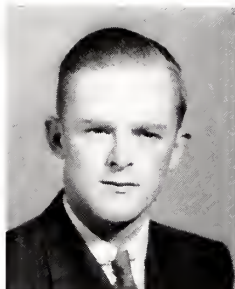
GEORGE ERICK BELL, JR.

Photography Club (2); Science Club (4); Business Staff of Cocom (5); Ways and Means Committee of Senior Class (5); Honor Citizenship Club (3); Color-Bearer for Band (4, 5); Senior Superlative—Best Looking.

THE 1942

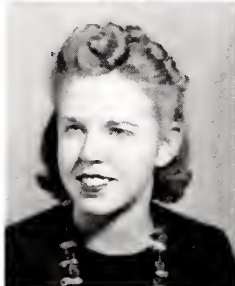
WADE SINES BOYETTE

Band (2, 3, 4, 5); President Photography Club (3); Glee Club (5); Creative Writing Club (5).



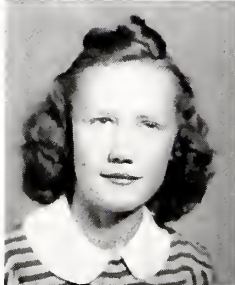
EDITH MARIE BRANTLEY

Home Economics Club (2); G. A. A. (1); Drum Majorette Club (3); Won Trip to Washington for Citizenship (4); Service Club (5).



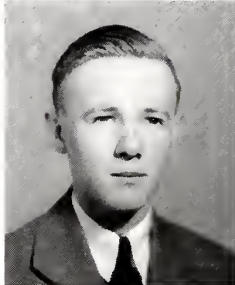
SARAH LEIGH BRITT

Glee Club (3, 4, 5); Creative Writing Club (3, 4); Song Leader for Home Room (5).



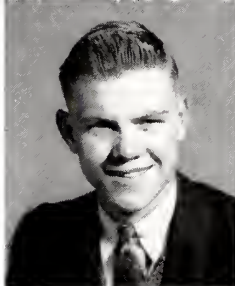
THURMAN SEAY BROOKS

Home Room President (1, 2, 3); Vice-President (4); Sergeant-at-Arms (5); Vice-President Class (1); Band (3, 4, 5); Debating (1, 2, 3, 5); Photography Club (1, 2); President Honor Citizenship Club (4); Ways and Means Committee (4); Co-Business Manager *Radiogram* (3); Representative to State Student Council Congress (4); Dramatics (4); Marshal (3, 4); Stunt Night (4); Editorial Staff of *Cocoon* (5); Senior Superlative—Best Student; Monitor (2, 3); President Student Body (5).



JAMES CAMPBELL

Art Club (2, 3); B. A. A. (5).



MABEL CARTER

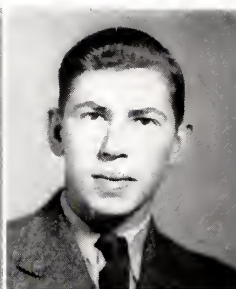
Glee Club (1); G. A. A. (2); Hobby Club (4); 4-H Club (5).



SENIORS

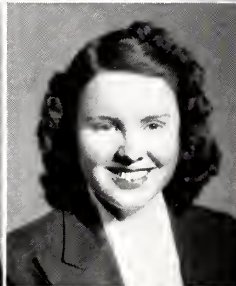
ARTHUR CLYDE BRANNON, JR.

Junior Football (1); Photography Club (2); Band (1, 2, 3, 4); D. O. Club (4, 5).



EVELYN BRASWELL

Glee Club (2, 3, 4, 5).



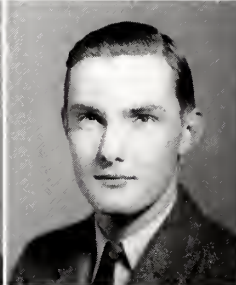
DORIS MAE BROWN

G. A. A. (2, 3, 4, 5); Basketball (3, 4); *Radiogram* Reporter (4); Nature Study Club (2); Glee Club (5).



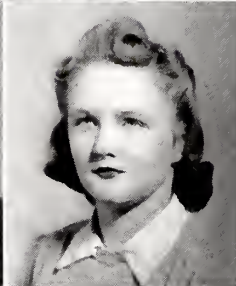
WILLIAM JOSEPH BUNN

B. A. A. (1); Monitor (2); Vice-President Home Room (3); D. O. Club (4, 5).



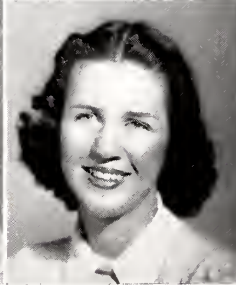
EDITH ANN CANADY

Home Economics Club (2); Glee Club (3); Hobby Club (4); 4-H Club (5).



CAROLYN C. CARUTHERS

Assistant Manager Junior Carnival (3); Served at Junior-Senior Banquet (2); G. A. A. (2); Monitor (2); Art Club (3); Junior-Senior Prom Committee (3); Cheerleader (4, 5); Stunt Night (4); Senior Carnival (4); Basketball (4); Co-Manager (4); Business Staff *Radiogram* (5); Winner of Defense Essay Contest (5); Dramatic Club (5); Senior Superlative—Best Citizen (5); Co-Writer of Class Prophecy (5).



THE 1942

LOIS VIRGINIA CLARKE

Home Economics Club (1); Served at Junior-Senior Banquet (2); Junior-Senior Prom Committee (3); Stunt Night Committee (3); Creative Writing Club (4); *Radiogram* Staff (5).

GUY OFFLEY COX

Archery Club (1); Photography Club (2, 3); D. O. Club (3, 4); President of Commercial Club (5); *Radiogram* Photographer (5); Editorial Staff of *Cocoon* (5); Track Team (3); Senior Superlative—Most Talented.

ROYCE JOHNSON CRAWLEY

Band (1, 2, 3, 4, 5); All-State Band (3, 4); Band Club (2, 3, 4, 5); Glee Club (4).

SUSAN SPEIGHT DARDEN

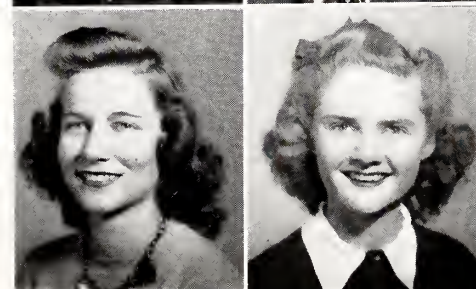
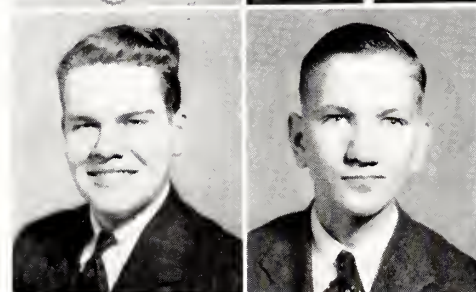
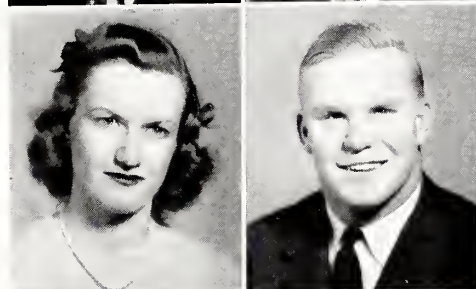
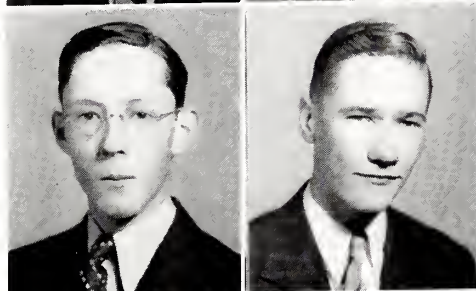
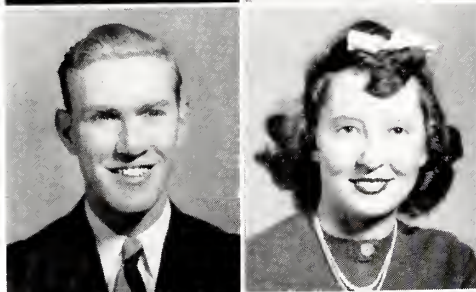
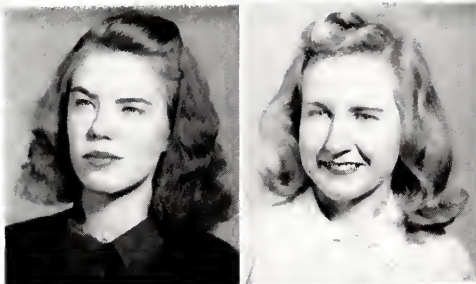
President of Junior Dramatic Club (2); Basketball (3, 4); Treasurer of Class (3); Secretary of Class (4); Chairman of Ways and Means Committee (5); Served at Junior-Senior Banquet (2); Senior Superlative—Best All-Round; Carnival Queen Court (3); Cheerleader (3, 4), Head Cheerleader (5); Secretary Student Body (5); Glee Club (3); Marshal (3, 4); G. A. A. (2); May Day (2); Editorial Staff of *Cocoon* (5); Monitor (2, 3, 4); Carnival Committee (3); Stunt Night (4); Class Song Committee (5); Co-Manager Senior Store (5).

AUBREY BUTLER DIXON

Art Club (2); Science Club (4); Band (4); Spanish Club (5).

REBA DRIVER

Radiogram Reporter (3); Etiquette Club (4); Student Council (3); Dramatics (5); Glee Club (4, 5); Basketball (3).



SENIORS

EVA CATHERINE CORBETT

Marionette Club (2); Journalism Club (3); Co-Editor *Radiogram* (5); Hobby Club (4).

MARGIE JANE CRAWLEY

Glee Club (1, 2, 3, 4, 5); Personality Club (5); Basketball (3); Home Economics Tea.

CHARLES CURLIN

Hiking Club (3); Archery Club (4); D. O. Club (5).

JAMES WILLIAM DAVIS

Junior Football (1), Varsity Football (2, 3, 4, 5); Junior Baseball (1, 2), Varsity Baseball (3, 4, 5); Co-Captain Football Team (5); Most Valuable Player Award (5); Citizenship Club (4); Citizenship Medal (4); Vice-President Home Room (5); President Monogram Club (5); Business Staff of *Cocoon* (5); Co-Captain of North-South All-Star Game (5); All-State Football Team (5); All-Southern Football Team (5).

JOHN A. DRIVER

Chemistry Club (5); Photography Club (4); Concession Assistant at Games (5).

LEE WOODARD EDMUNDSON

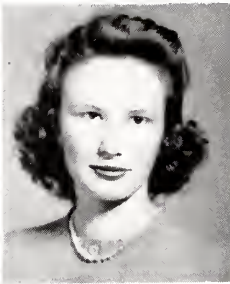
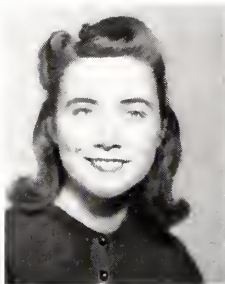
Carnival Committee (4); Student Council (4); Dramatic Club (4); *Radiogram* Staff (5); Co-Author of Class History (5); Journalism Club.

THE 1942

SENIORS

MOLLY ADELINE ETHERIDGE

Art Club (2); G. A. A. (3),
Bookkeeping Club (4).

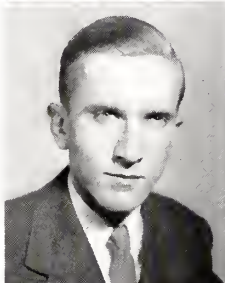


ELSIE ELAINE EZELL

Dramatic Club (3); Personality
Club (5); Glee Club (5); Attendant
to Carnival Queen (5); Stunt
Night (4); Commencement Commit-
tee (5); Radiogram Staff (5).

GRADY BARNES FARMER

Astronomy Club (1); B. A. A.
(2); D. E. Club (5).

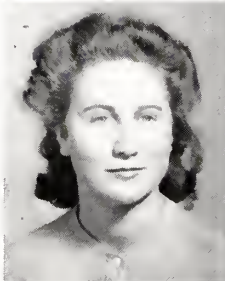


ELSIE MARIE FERRELL

Soccer Club (2); Commercial Club
(4, 5); Served at Junior-Senior Ban-
quet (3).

JOYCE FERRELL

Home Economics Club (3); Book-
keeping Club (5).

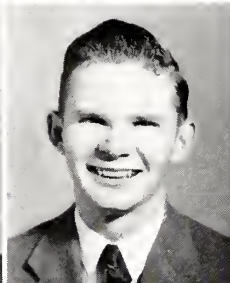
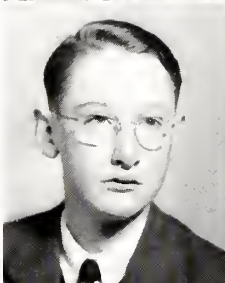


ANNIE LOIS FLORA

Art Club (1, 2); Home Economics
Club (3, 4); Bookkeeping Club (5).

ALEC PARKER FLOWERS

Band (2, 3, 4).

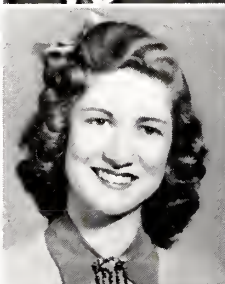


HUGH FLOWERS, JR.

Junior Baseball (3), Varsity
Baseball (4); Junior-Senior Prom
Committee (3); Dramatic Club Play
(4); Junior Carnival (3); Junior
Football (3).

PEGGY FOSTER

Glee Club (5); Band (3, 4); Na-
ture Club (1); Junior Dramatic
Club (2); Senior Dramatic Club
(5); Radiogram Club (5); Com-
mencement Committee (5); Attendant
for Carnival Queen (4); Senior
Superlative—Wittiest.

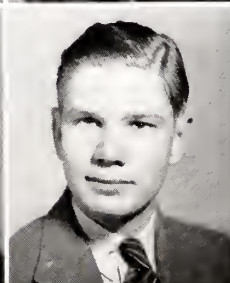
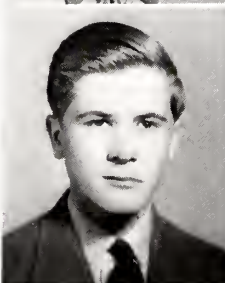


ELEANOR JEAN FRITZ

Basketball (2, 3, 4, 5), Captain
(5); Dramatic Club (4); Radiogram
Staff (4); President of Home Room
(5); Student Council (5); Cheer-
leader (4, 5); Carnival Committee
(4, 5); Business Manager of
Cocoon (5); Co-Author of "Last
Will and Testament" (5); Senior
Superlative—Most Athletic.

JOHN H. GARDNER

Junior Football (1); Radiogram
Reporter (2); Stamp Club (1);
President of D. O. Club (5).



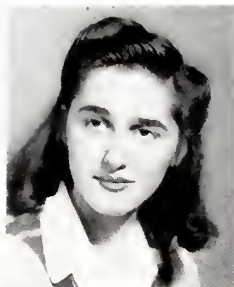
MAJOR MILTON GARTRELL

Glee Club (2); Band (3, 4);
Band Club (4); D. O. Club (5).

THE 1942

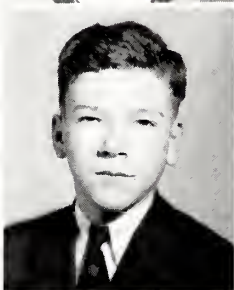
JULIA GLIARMIS

Home Economics Club (1); Stunt Night (2); Glee Club (3, 4); Carnival Committee (3); Monitor (3); Debate Club (4).



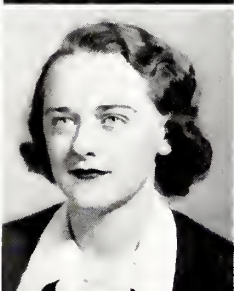
COMANN GOLD

Vice-President of Home Room (1, 5), Secretary (5); Band (3, 4, 5); Eastern All-Star Band (4); Senior Superlative—Wittiest.



BETSY CLARK HANCOCK

Monitor (3); Carnival Committee (4, 5); Secretary Home Room (4); Glee Club (3); Dramatics Club (4, 5).



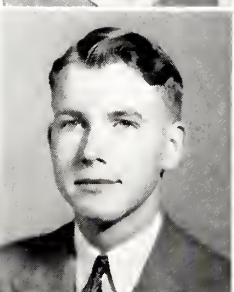
LOUISE PATRICIA HAWKINS

Glee Club (3, 4, 5); Home Economics Club (4); Library Club (4).



HOWARD EGBERT HERRING

Science Club (1); Home Room President (1), Vice-President (2); B. A. A. (2); Citizenship Club (3); Junior-Senior Prom Committee (3); Student Council (4).



HELEN RUTH HINNANT

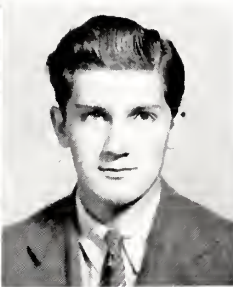
Home Economics Club (1); Glee Club (2); Hiking Club (2); G. A. A. (4); Home Room President (1).



SENIORS

RICHARD GLIARMIS

Junior Football (1, 2, 3, 4); Varsity Baseball (4); Ticket Office for Athletic Games (4); Carnival Committee (5).



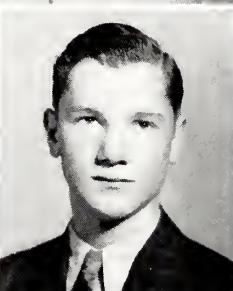
EDNA GREY HAGAN

Home Economics Club (2).



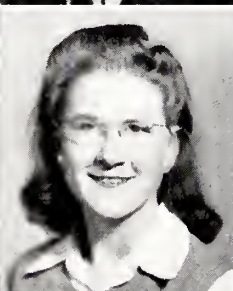
FLOYD VERNON HAWKINS

Glee Club (4).



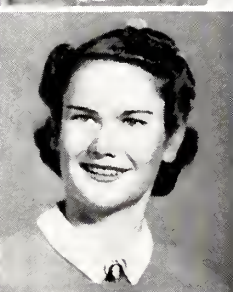
FLORENCE E. HENDERSON

Home Economics Club (2); Glee Club (1, 2, 4); Library Club (3, 4).



THELMA LOUISE HERRING

Home Economics Club (2); G. A. A. (2, 3); Glee Club (2, 3); 4-H Club (4); Carnival Committee (3); Hiking Club (2); Library Work (2, 3).



WILLIAM S. HINTON

Photography Club (1); Band (2, 3, 4, 5); Band Club (4); D. O. Club (5); B. A. A. (3); Monitor (3); Carnival Committee (4), Senior Concession Assistant (4).



THE 1942

BETTY ELIZABETH HOLLOMAN

Library Club (5); G. A. A. (4); Art Club (1).

MARY LOUISE IKNER

Glee Club (1, 2); G. A. A. (1); Home Economics Club (3); Secretary Home Room (3); D. O. Club (5).

HELEN ANDERSON JOMP

Glee Club (1); Served at Junior-Senior Banquet (2); Home Economics Club (3); *Radiogram* Staff (4).

EDWARD GREY JOYNER, JR.

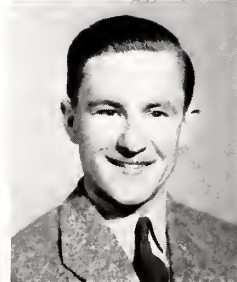
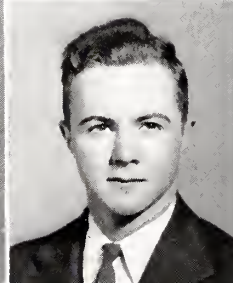
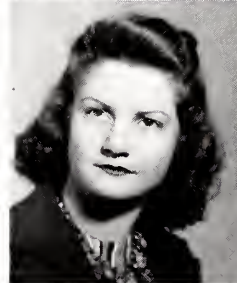
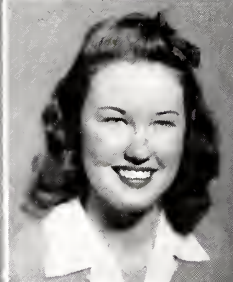
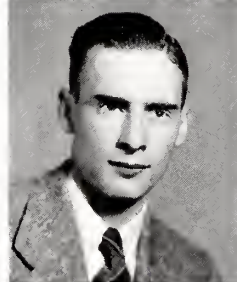
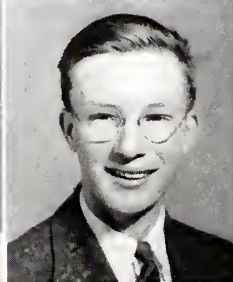
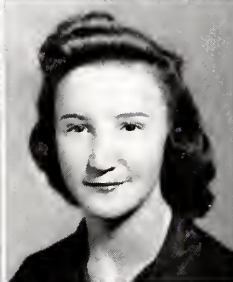
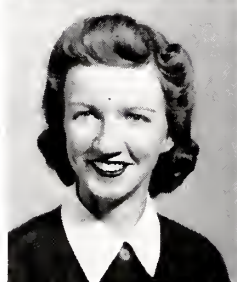
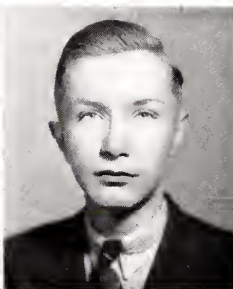
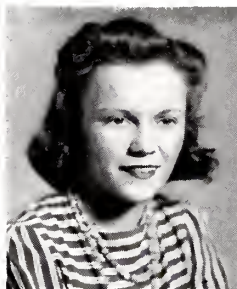
Class Vice-President (2, 4); Monitor (2, 3); Student Council (2, 3); Junior Football (2, 3); Junior Basketball (2, 3); Junior Baseball (3); Bird Study Club (2); B. A. A. (3); Journalism Club (4); State Student Council Convention (3); Junior-Senior Prom Committee (3); Senior Play (4); Stunt Night (4); Senior Concession Assistant (4); Co-Editor of *Radiogram* (4); Sports Editor (5); Reporter (4, 5); Representative to Columbia and Chapel Hill Scholastic Press Conventions (4); D. O. Banquet Committee (5); Co-Manager of Senior Store (5); Editor-in-Chief of *Cocoon* (5); Senior Superlative—Most Dependable; Class Poet (5).

ALBRA CHRISTINE LAMM

Home Economics Club (3); Glee Club (4, 5); Secretary of 4-H Club (5); Library Work (4, 5).

JAKE LAMM

President of Home Room (3); Skating Club (2); Glee Club (4); Monitor (2, 3); Carnival (4); Dramatic Club (5).



SENIORS

HARRY SWARTZ HOOKS

Bookkeeping Club (4); Nature Club (3).

EVELYN IVES

G. A. A. (1, 2), Vice-President (3); Historian of 4-H Club (5); *Radiogram* Staff (5).

DANIEL A. JORDAN

B. A. A. (3); D. O. Club (4).

ALTA BOYCE KELLOGG

Dance Committee (4); Served at Junior-Senior Banquet (2); Carnival Committee (3); Secretary of Citizenship Club (5); Vice-President of Senior Class (5); Basketball (5); Vice-President of Home Room (5); Secretary (4); Stunt Night Committee (4); Etiquette Club (4).

CHARLES RANSOM LAMM

B. A. A. (3); D. O. Club (5).

JAMES CARSON LAMM

Varsity Football (2, 3, 4, 5), Co-Captain (5); Monogram Club (5); Glee Club (5); Varsity Baseball (3).

THE 1942

JOSEPHINE LAMM

D. E. Club (4); Home Economics Club (2); G. A. A. (1); Basketball (2, 3).

RAYMOND LANE

Band (3, 4, 5); Radiogram Staff (4); Student Council (5).

BETTY JANE LEDFORD

Home Economics Club (3); Typing Club (4); D. E. Club (5).

RICHARD TILLEY LLEWELLYN

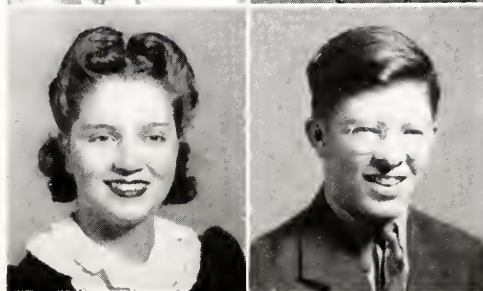
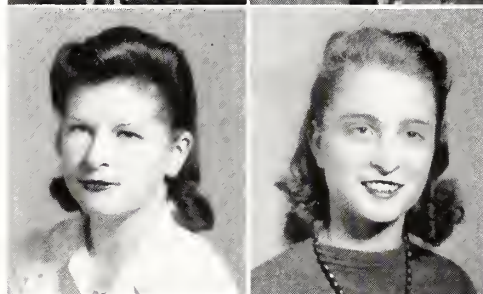
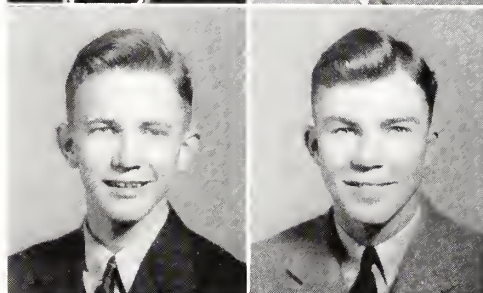
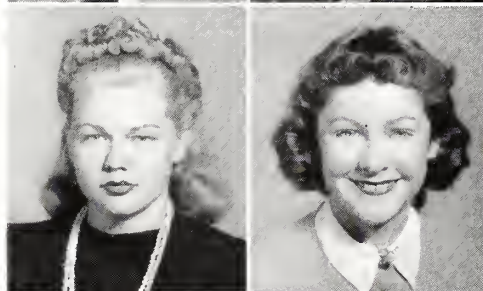
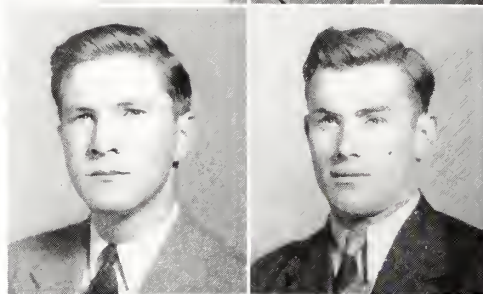
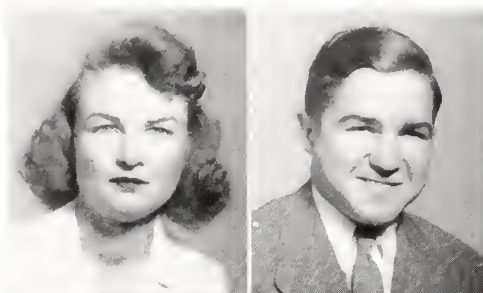
President Home Room (1); Junior Baseball (3); Junior Football (2); Manager Football Team (3, 4); Junior Basketball (2, 3, 4); Varsity Basketball (5); Monogram Club (5); B. A. A. (3), President (4).

JOSIE MALPASS

Served at Junior-Senior Banquet (3).

NANCY WYNETA MALPASS

Glee Club (1, 2, 3); G. A. A. (3); Library Club (4); Home Economics Club (2).



SENIORS

ALBERT KERMIT LAMM

B. A. A. (1, 2); Marionette Club (2); D. E. Club (5); Junior Football (4).

LYMAN W. LAUGHINGHOUSE

Art Club (1, 2); Junior Football (1, 2, 3); Varsity Football (4, 5); Junior Baseball (1, 2), Varsity Baseball (3, 4, 5); All-Conference Football Team (5); All-Eastern Football Team (5); D. O. Club (5); Monogram Club (5).

ELSIE RAY LEWIS

Glee Club (1); Dramatic Club (2); Served at Junior-Senior Banquet (2); Travelers Club (2); Commercial Club (4); Radiogram Staff (4); Representative to Columbia Journalism Convention, New York (4).

PAUL BISHOP LYLES

Marshal (3, 4); Junior Football (2, 3); Junior Basketball (3, 4); Varsity Basketball (3, 4); Junior Baseball (4); Varsity Baseball (4, 5); Vice-President Monogram Club (5); Business Staff of Cocoon (5); Ways and Means Committee (4, 5); Junior-Senior Prom Committee (4, 5); Sports Editor Radiogram (5); Monitor (2, 3); Senior Store (5).

MARGUERITE L. MALPASS

Secretary-Treasurer Science Club (1); Served at Junior-Senior Banquet (2); Shorthand Club (4); Service Club (5).

WILLIAM EDDIE MALPASS

Spanish Club (5); B. A. A. (3).

THE 1942

CLIFTON MATTHEWS

Bookkeeping Club (4); B. A. A. (1, 3); Carnival Committee (3); Stunt Night (2); Typing Club (2); Monitor (2).

GERTIE MEACOMBS

Bookkeeping Club (4).

JACK WILSON MYLUM

Football (1, 2, 3); Baseball (3); Track Team (3); D. O. Club (5).

NEDRA ROSE NEWTON

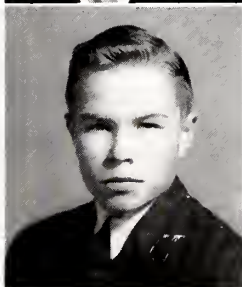
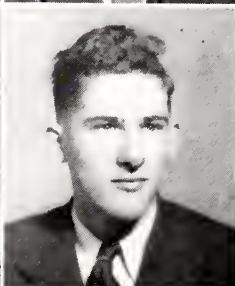
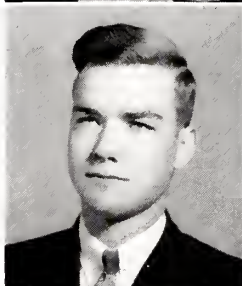
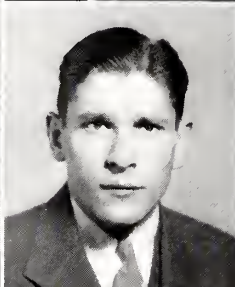
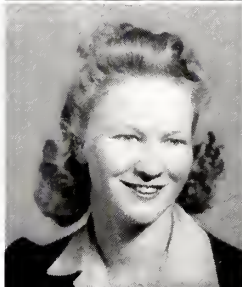
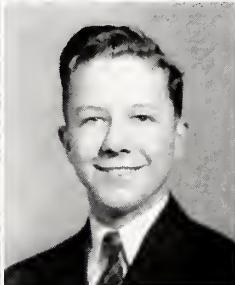
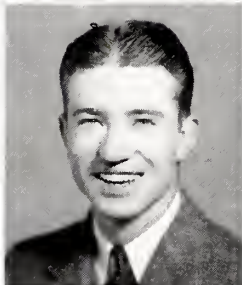
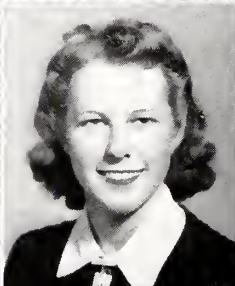
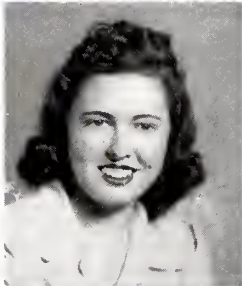
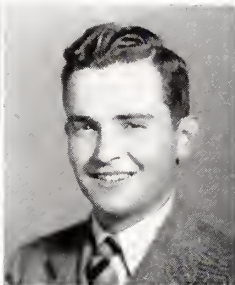
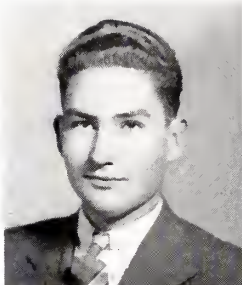
Home Economics Club (1); Glee Club (2, 4); Personality Club (4).

ALBERT OETTINGER

Home Room President (3); Junior-Senior Prom Committee (3); Student Council (4); Citizenship Club (5).

ERWIN PAGE

President Home Room (2); Junior Basketball (3).



SENIORS

WILLIAM EDWARD MAYO

Astronomy Club (1); Radiogram Staff (5); Business Staff of Cocoon (5); Ways and Means Committee (5); D. O. Club (4, 5).

CATHERINE BINNS MOSS

Glee Club (1); G. A. A. (2); Home Economics Club (3); Dramatic Club (4); Vice-President of D. E. Club (5); Band (2, 3, 4, 5).

TALMADGE NARRON

Paul Green Society (2); Vice-President (4); Citizenship Club (5).

CHARLES THOMAS NOULLES

Junior Basketball (2), Varsity Basketball (3, 4, 5), Captain (5); Varsity Football (2, 3, 4, 5); Track (3); Secretary-Treasurer of Monogram Club (5); All-State and All-Conference Football Teams (4, 5); Glee Club (3); D. O. Club (5).

ARNOLD KERMIT OWENS

B. A. A. (1, 2); Debating (2, 3, 4).

GEORGIA MAE PEARSON

Glee Club (2, 3); Home Economics Club (3); G. A. A. (2).

THE 1942

SENIORS

MARTHA ELIZABETH PEELE

Band (1, 2, 3, 4); Marionette Club (1); Marshal (2, 3); Served at Junior-Senior Prom (2); Dramatic Club (2); Junior-Senior Prom Committee (3); Carnival Committee (3); Radiogram Club (3); Stunt Night (2); Motto Committee Chairman (4); Student Council (4); Debate Team (4); Senior Superlative—Best Student; Editorial Staff of Cocoon (4); Radiogram Reporter (3).



MARGARET PITTMAN

Secretary-Treasurer of D. E. Club (5).

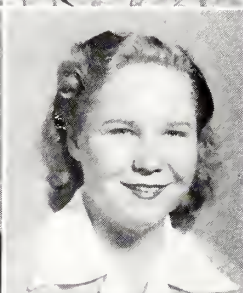
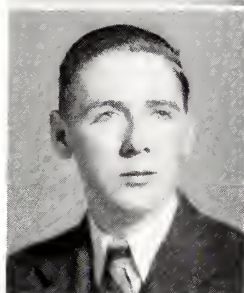


DOROTHY MAE POOLE

President of D. E. Club (5); Study Club (5).

SARAH ELIZABETH PITTMAN

Dramatic Club (3, 4, 5); Chairman of Color-Flower Committee (5); Carnival Committee (3, 4); Glee Club (3, 4, 5); G. A. A. (1, 2); Radiogram Staff (4, 5); Stunt Night (4).

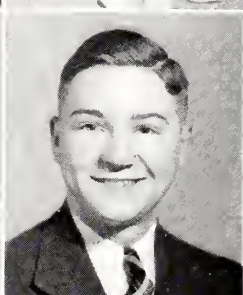
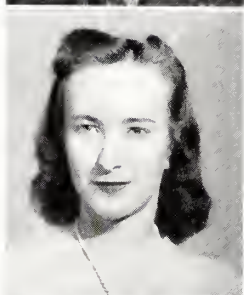


CELIA CLYDE RACKLEY

Band (1, 2, 3, 4); Stamp Club (1); Carnival Committee (4); President of Band Committee (4); Monitor (2).

WADE PRIDGEN

History Club (1); Band Club (3); French Club (4); Radiogram Reporter (4).

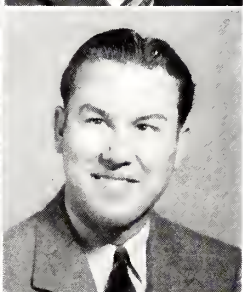
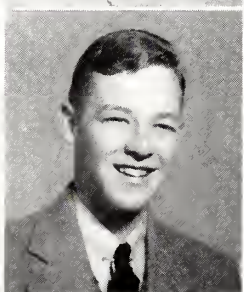


HENRY MOORE ROGERS

Junior Football (2, 3); Junior Basketball (2, 3); Tennis (4, 5), Captain Tennis Team (5); Photography Club (2, 3); Dramatic Club (5); Science Club (1); Stunt Night (4); B. A. A. (4).

MYRTLE RAPER

Served at Junior-Senior Banquet (2); Student Council (5); Glee Club (3).

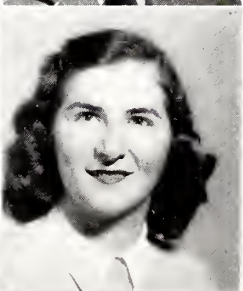
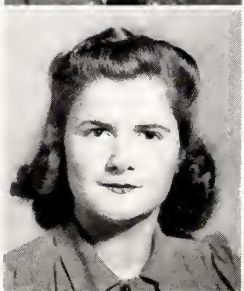


AUBREY SHINGLETON

D. O. Club (4, 5), Vice-President (5); Skating Club (3).

THOMAS WOODARD RUFFIN

Band (3, 4, 5); Home Room Treasurer (4); Band Club (4); D. O. Club (5).



MARJORIE LEE SMITH

Commercial Club (4); Personality Club (5).

PENELOPE SOUFAS

Citizenship Club (3); Typing Club (4); Carnival Committee (4).

THE 1942

ELIZABETH W. STALLINGS

Glee Club Accompanist (1, 2, 3, 4); Band (2, 3); Expression Club (2, 3); Radiogram Club (4); Radiogram Reporter (4, 5); Won High School Music Medal (4); Glee Club Cantata (2, 3, 4); Operetta (3, 4); Carnival Committee (3, 4); Secretary Home Room (4); Music Club (4); Secretary Glee Club (4); Class Song (4); Senior Superlative—Most Talented (4).

HULDAH BLANCHE STALLINGS

Glee Club (5).

JAMES ANTHONY SURACI

Photography Club (1, 2); Science Club (3); D. E. Club (4).

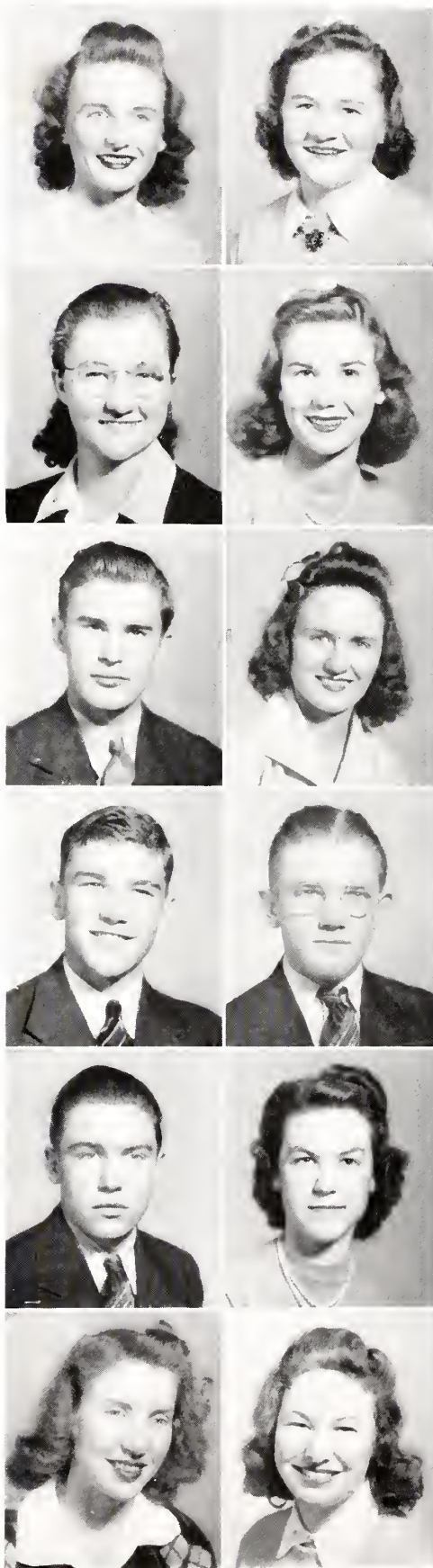
ROBERT TAYLOR

LEE ROY WILFORD THOMAS

B. A. A. (4); Vice-President of Home Room (3); Junior Football (2).

EDYTHE HERRING THOMPSON

Hobby Club (1); G. A. A. (2) Glee Club (3).



SENIORS

HAZELINE STALLINGS

Debating (4); G. A. A. (2).

BETTY STRICKLAND

G. A. A. (2); Glee Club (3); Monitor (2, 3, 4); Served at Junior-Senior Banquet (2); Carnival Committee (4); Citizenship Club (4); President of Home Room (4); Secretary - Treasurer (2); Stunt Night (4); Debate Team (5); President of Debate Club (5); Business Staff of Cocoon (5); Co-Author of "Last Will and Testament" (5); Radiogram Reporter (5); Photography Club (1).

BERTIE TAYLOR

G. A. A. (1); Home Economics Club (2); Secretary-Treasurer of Bookkeeping Club (4).

MARVIN LESTER TEEL

Science Club (1); Hiking Club (2); B. A. A. (3); D. E. Club (4).

MARY ELIZABETH THOMAS

Photography Club (1); Hobby Club (4); Citizenship Club (5); President of Home Room (4); Served at Junior-Senior Banquet (2); Stunt Night (4); Mascot Committee (5); Business Staff of Cocoon (5); Monitor (2, 3).

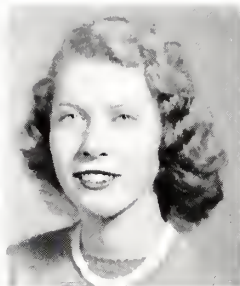
MARJORIE THOMPSON

Dramatic Club (1); Home Economics Club (2); Glee Club (3, 4).

THE 1942

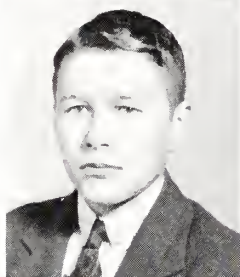
JOSIE CHAPMAN TOMLINSON

Served Junior-Senior Banquet (2); Home Economics Club (1); Dramatic Club (4, 5); Stunt Night (1).



RANDOLPH UZZELL

Marionette Club (1); Physical Education Club (2, 3, 4); Book-keeping Club (5); Senior Concession Assistant (5).



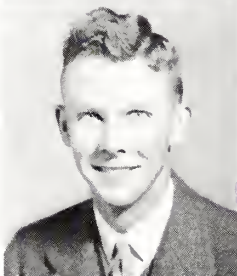
MARGARET LEE WALKER

Travelers' Club (2); Dramatic Club (3); Hiking Club (4); Hobby Club (5).



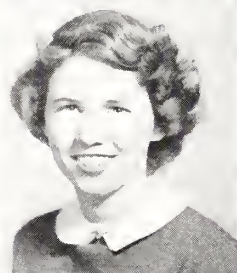
NEEDHAM H. WATSON, JR.

Basketball (2, 3, 4); Football (2, 3), Assistant Manager (2); Baseball (2); Sports Editor of *Radiogram* (4); President of Boys' Physical Education Club; Vice-President of Home Room (4), President (3); Manager Baseball Team (2, 3); Carnival Committee (4); Glee Club (5); Monogram Club (5).



FLORA MCNEILL WEBB

President Home Room (2, 3), Reporter (3); Cheerleader (4); Decorating Committee Junior-Senior Prom (3); Editorial Staff of Coccoon (5); President of Writing Club (4); Chairman of Mascot Committee (4); Carnival Committee (3, 4).



ANNIE EVELYN WELLONS

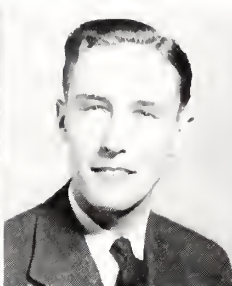
Basketball (4); Glee Club (3); Dramatics Club (4); D. E. Club (5).



SENIORS

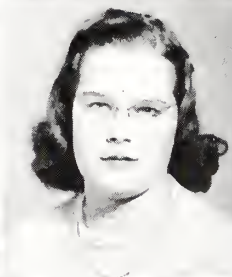
ROBERT L. TOMLINSON, JR.

Band (3, 4, 5); B. A. A. (2); Science Club (3); President of Home Room (3, 4); Motto Committee (4); Drum Major (4, 5); Citizenship Club (4); Class Song Committee (4).



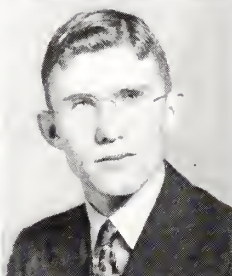
SUSAN FRANCES VICK

Served Junior-Senior Banquet (2); Chairman Ticket Committee Sampling Party (4).



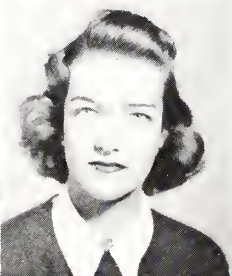
DOANE HERRING WARREN

Student Council (4, 5); Monitor (3).



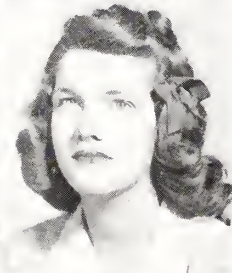
EVELYN LINDSAY WEBB

President Home Room (1, 4), Secretary (5); Served Junior-Senior Banquet (3); G. A. A. (2); Decorating Committee Junior-Senior Banquet (4); Carnival Decorating Committee (3); Citizenship Club (4); Cheerleader (4, 5); Stunt Night (4); Secretary Senior Class (5); Editorial Staff of Coccoon (5); Monitor (3, 4); Business Staff of *Radiogram* (5); Mascot Committee (5); Miss Merrie Christmas (5); President Hobby Club (5); Dramatic Club (3); Sampling Party Committee (4); Senior Superlative - Most Popular.



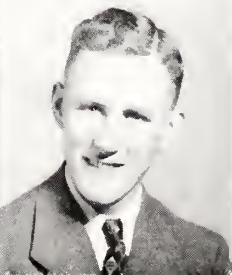
LOIS MILDRED WEBB

President Home Room (1), Vice-President (2, 3); G. A. A. (2); Basketball (2); Dramatic Club (2); Stunt Night (3); Student Council (3); Citizenship Club (4); Sergeant-at-Arms of Senior Class; Co-Author of Class History (4); *Radiogram* Staff (4); Glee Club (2, 3); Monitor (1, 2).



WILLIAM MILES WELLS, JR.

Monitor (3); Junior Football (2, 3); Junior Basketball (2, 3); B. A. A. (2); Stamp Club (3); *Radiogram* Club (4); President of Dramatic Club (5); Varsity Football (4, 5); Varsity Basketball (3, 4); Home Room *Radiogram* Reporter (3); President of Home Room (5); Carnival Committee (4); President of Senior Class (5); Senior Superlative - Most Popular; *Radiogram* Staff (5).



THE 1942

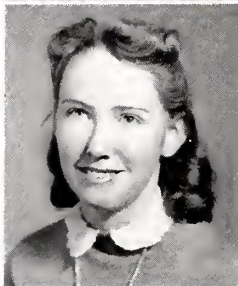
BILLY ELLEN WHEELER

Commercial Club (3).



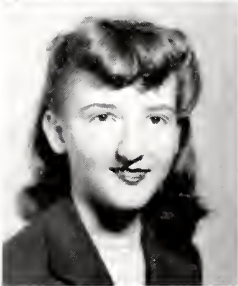
LOUISE WILLIAMS

Soccer Club (2); Hiking Club (3); Commercial Club (4, 5); Office Worker (4, 5).



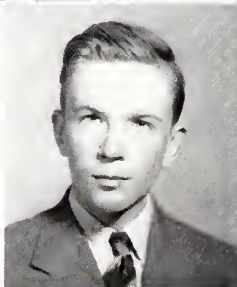
FRANCES NICKOLAS WOOLER

Hobby Club (3); French Club (4).



WILLIAM B. YOUNG

Citizenship Club (3).



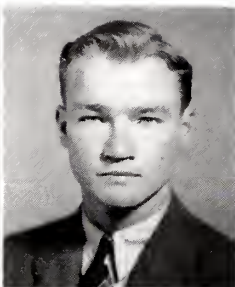
NO PICTURE

MARJORIE SHEARIN
ADELAIDE WEAVER

SENIORS

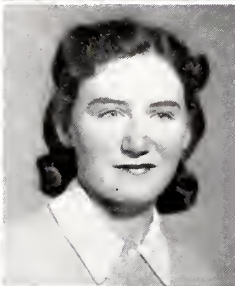
WALLACE LEE WHITLEY

B. A. A. (3); D. O. Club (5).



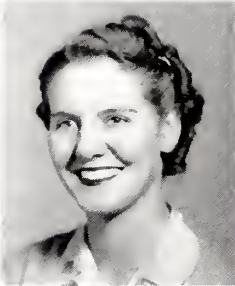
PAULINE WILLIAMS

Hiking Club (5); Glee Club (4); Commercial Club (5).



ELIZABETH OPHELIA WOOTEN

Home Economics Club (2); May Day (2); Dramatic Club (3); Glee Club (4); Sampling Party Committee (4); Hobby Club (4).



CLASS POEM, 1942

The poets liken man's life to a path
Winding through the land of Time,
Intertwining with the paths of others
'Til all vanish into the sublime.

A few short years ago our pathways met
And at this very place converged.
Paths of strangers, friends, and teachers
Here into one broad highway merged.

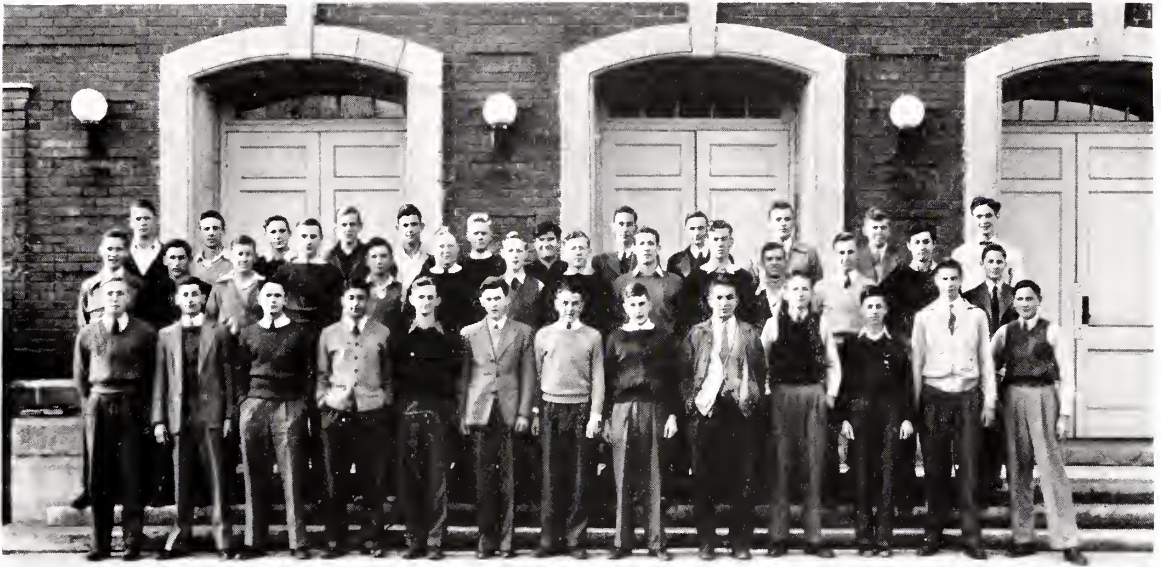
Together we've traversed this highway
Through these teeming years of happy days,
Preparing for the day we'd leave it
For the trails which we ourselves must blaze.

Now we stand at the parting of the ways.
Be not sad—all paths sometime must part,
Leaving but mem'ries of dear companions
Treasured in the traveler's heart.

Now we must choose our separate pathways
And follow them to their unknown ends,
But each path will be the brighter
For having known this school, these friends.

—EDWARD JOYNER, JR.

ELEVENTH GRADE BOYS



Ray Andrews
George Bailey
Kirby Barnes
Howard Beaman
Paul Bisette
Ernest Bradley
Joseph Bunch
Bobby Clark
George Clark
Wilbur Combs
Marvin Curlin
George Davis
Don Dempsey
Bobby Dew
Joe Downing
Wallace Edwards
Jimmy Ellis
Frank Farmer

Eric Felton
Wilbrey Flowers
Manny Fulghum
Earl Gay
Burt Gillette
James Grainger
Carl Hackney
R. R. Hawkins
Walter Horne
Bill Hughes
Eugene Ives
H. F. Kelly
Bobby Kirkland
Robert Lamm
Wade Lamm
Jimmy Lane
Joe McGeady

Billy Mears
Sammy Morrill
J. T. Noe
Warren Page
Howard Phillips
Bruce Poole
Edmund Porter
Ed Poythress
Steve Sakas
Albert Saleeby
Bill Short
Billy Simms
Frank Smiley
Teddy Thomas
Bruce Tyson
Jack White
William Wiggins
Charles Zrakas

ELEVENTH GRADE GIRLS

Charlotte Anderson

Christine Barnes

Blanche Boyette

Evelyn Boyette

Eleanor Cannon

Nancy Clark

Marjorie Crisp

Helen Davis

Nancy Dickens

Dorothy Dillon

Valentine Evans

Kitty Farmer

Celeste Gold

Mary Hunter Hackney

Sarah Harrell

Maria Hicks

Glyn High

Grace Holliday

Gertrude Lewis

Marjorie Little

Catherine Mathis

Helen Millender

Jean Moss

Marjorie Newsome

Melba Peele

Frances Petree

Winifred Petty

Mildred Pittman

Frances Reedy

Dorothy Ricks

Flossie Lee Speight

Betty Ruth Tomlinson

Lenne Van Slyke

Gaynell Wallace

Mary Frances Walton

Reid Wells

Hazel Wellans

Florence Williams

Evelyn Winborne

Alma Woodard



TENTH GRADE BOYS



Tommy Banks
Grady Barnes
Wade Barnes
Wiley Barnes
Harold Beaman
Billy Beamon
Clayton Beamon
John Byrd
Huron Cooper
Bobby Eagles
Frank Ellis
Charles Felton
Jimmy Fulghum
Nickie Gliarmis
J. C. Glover
Roland Grady
Dan Griffin
Hubert Holley

Wick Hudson
Harvey Jones
Ernest Jordan
Tommy Liles
Romeo Markham
Jimmy Martin
Jimmy McGeady
Cliff Morgan
Frank Jerry Morris
Harvey Murphy
Thad Narron
Bob Overman
Jack Overman
Erick Owens
Bill Page
Joe Patterson
Calvin Pierce
Van Robertson

Fred Saleeby
Willie Gray Sasser
Melvin Smiley
Edward Smith
Jack Smith
Will Carr Smith
Jimmie Snypes
Rupert Stott
Pete Taylor
Jim Teachey
Fletcher Teel
Garvis Thompson
George Thompson
Bobby Townsend
J. D. Thorne
Connor Vick
John Webb
Bill Winstead

TENTH GRADE GIRLS

Helen Anthony
Marjorie Ballard
Elsie Barefoot
Margaret Barnes
Virginia Barnes
Thelma Bradberry
Ann Branch
Betty Brannon
Joyce Brewer
Frances Bridgers
Alice Brinkley
Doris Buchanan
Mae Buchanan
Mary Lou Davis
Annie Mae Dickerson
Daisy Driver
Eleanor Dixon
Melba Eason
Barbara Ann Eatman
Esther Etheridge
Mary Etheridge
Jean Gardner

Betsy Glover
Elizabeth Graves
Mae Sharpe Griffin
Virginia Ann Gunn
Helen Harris
Alice Herring
Rebecca Herring
Margaret Horne
Mary Helen James
Zora Johnson
Elizabeth Jones
Edith Rae Jordan
Myrtle Laubert
Ernestine Lewis
Ruby Lucas
Sarah Lucas
Dorothy Mattox
Theresa McGeady
Alberta Mercer
Helen Miller
Grace Moyer
Lois Mumford

Rosamond Murad
Doris Page
Nellie May Parker
Barbara Pelton
Frances Phillips
Dorothy Quick
Hilda Gray Riley
Ollie Gray Rose
Naomi Sauter
Mary Scott
Carolyn Shackleford
Mary Glenn Slater
Jacqueline Speight
Margaret Starling
Margaret Thompson
Peggy Turner
Josie Walton
Katie Wheeler
Grace Whitley
Mary Ella Whitley
Geraldine Williamson
Edith Williford



NINTH GRADE BOYS



Leonard Amerson

Joe Anderson

William Bailey

Julian Barker

Boise Barnes

Sam Barnes

Troy Barnes

Walter Barnes

Ephriam Batts

Mac Bissette

Jim Blount

Bobby Boswell

Bobby Alton Boswell

Donahue Bottoms

Charles Boyette

Joseph Braswell

Bobby Brooks

Willie Brown

Joe Cagle, Jr.

James Cannon

Cecil Church

Jay Clark

James Corbett

Earl Corrington

Joe Cox

Robert Daniels

Henry Davis

James Deans

William Deans

Randall De Keyzer

Robert Drake

Roy Early

Hugh Eatman

Charles Ellis

J. T. Elmore

Wilbur Etheridge

Roy Evans

Bennett Flowers

Mac Gold

Ralph Gardner

Lee Gliarmis

Dick Gregory

Leonard Griffin

Morrison Griffin

Charles Harper

Jim Hartis

Thomas Haynes

Edward High

Cecil Hinnant

Ollin Hinnant

J. L. Pearson

Winniett Peters

Manley Pierce

Edgar Price

Harvey Ruffin

George Saleeby

Glaucus Smiley

Lester Starling

Horace Stott

John Turner

Larry Turner

Williard Vick

Will Warren

William Warren

Russell Watson

J. L. White

Graham Wilkerson

Fred Williams

Tommy Williamson

Clarence Winstead

Randolph Whitley

Cal Woodard

Marvin Woodard

NINTH GRADE GIRLS

Reba Baker
 Jacqueline Barnes
 Alene Bass
 Daphne Batts
 Florence Bunn
 Pauline Carter
 Hattie Cary
 Magdeline Creech
 Thelma Davis
 Betsy Dempsey
 Magdeline Dilda
 Pauline Dilda
 Geraldine Dillon
 Andrea Downing
 Betsy Draughn
 Blanche Driver
 Barbara Edwards
 Martha Evans
 Ruby M. Ferrell
 Mary Ellen Fulghum

Mary Ruth Goss
 Georgia Hagan
 Jonna Hawkins
 Sally Hayes
 Donna Horton
 Dorothy Lamm
 Mildred Lamm
 Ruth Lamm
 Frances Langley
 Elizabeth Leach
 Daisy Lee
 Edna Massey
 Jean Moore
 Mary Moskos
 Elizabeth Myatt
 Margaret Nixon
 Jeanette Norton
 Margaret Owens
 Lela Page
 Rose Marie Parker
 Dorothy Pierce

Ethel Pittman
 Dorothy Pridgen
 Oretha Pridgen
 Evelyn Raper
 Jean Riley
 Betsy Schaum
 Elsie Ray Smith
 Jean Strickland
 Elizabeth Suraci
 Dollie Taylor
 Edna Earle Taylor
 Virginia Taylor
 Alene Thorne
 Dorothy Waters
 Ida Ruth Webb
 Marion Webb
 Ruth Whalen
 Hilda Williams
 Dorothy Winstead
 Dorothy Woodard



EIGHTH GRADE BOYS



Gene Allgood
Charles Anthony
Alvin Barnes
Don Barnes
James Ray Barnes
Billy Barefoot
Harry Bateman
G. R. Batts
Charles Beaman
Harvey Boswell
James T. Boswell
Tom Boswell
Earl Bradbury
Val Brooks
Tad Bruton
Fred Bullington
George Burden
Holloway Burgess
Sid Clark
Deedie Collins
Davey Cooper
Lynn Cooper
John A. Corbett
John E. Corbett
Wiley Corbett
Curtis Curlen
William Cox
John Davis
Chris de Keyzer
Eugene Dilda
Harold Dillon

Randolph Eatmon
Bobby Lee Ellen
A. J. Etheridge
Douglas Ferrell
H. F. Flowers, Jr.
John Dail Gill
Steve Gliarmis
Bobby Hackney
Jimmy Hayes
Thomas Ray Hayes
Robert Holland
Harper Holliday
Joe M. Horton
Roderick Hughes
James Ikner
Bobby Johnson
Edward Jones
Roland Kelly
James King
Gene Lamm
Eugene Leone, Jr.
Jack Lewis
Robert Lewis
Marshall Long
Millard Mantooth
James Matthews
Bernard Mattox
George Meeks
Billy Miller
Milton Moore

Forrest Moore
Tom Moore
Vernon Morton
James Mumford
Robert Overman
Irvin Page
Clarence Parsons
Robert Pierce
William Poole
Alton Pridgen
Edward Rabil
Edwin Raper
Malory Rivenbark
Norwood Rivenbark
Herman Ruffin
Wade Saleeby
Ferebee Shaw
Archie Skinner
Thorpe Smith
Thomas Speight
R. A. Stancil
James Strickland
M. W. Sutton
Sidney Turner
Wilmar Worrel
Archibald Webb
James White
Douglas Whitley
Carl Williams
Pete Winborne
Alton Woodard

EIGHTH GRADE GIRLS

Marie Abernathy
Isabel Anderson
Annie Bailey
Barbara Banks
Hildred Barnes
Collette Bartholemew
Barbara Beaman
Barbara Anne Boole
Mavis Boyette
Connie Bridgers
Joyce Buchannan
Mildred Bunn
Edna Rae Carter
Doris Davis
Katherine Davis
Julia Dew
Glynn Dickens
Daisy Dixon
Audrey Downing
Marion Driver
Mabel Ellis
Osalie Ellis
Nancy Ezell
Emily Felton
Marjorie Gardner
Helen Grimsley
Dorothy Hagan
Dorothy Harrell

Sadie Ray Harrison
Ruth Hathaway
Marie Hawkins
Betty Lou Hodges
Elizabeth Holford
Mabel Holmes
Virginia Holloman
Lydia James
Brownie Jones
Juanita Jones
Marjorie Jones
Martina Johnson
Blanche Jordan
Frances Joyner
Dorothy King
Jean Lester
Joyce Lewis
Mary Frances Llewellyn
Nancy Lucas
Rebecca McGimsey
Sarah Mintz
Cora Moore
Alma Morton Moore
Florence Morrill
Ethel Mosely
Helen Moskas
Mary Lou Moss
Dorothy Musha
Doris Page

Marcelle Page
Myrtle Paris
Bess Parris
Mary Ellen Raper
Margaret Rawlings
Reba Ross
Mildred Ruffin
Helen Saleeby
Shuler Smith
Doris Snipes
Inez Spence
Mary Gray Strickland
Peggy Swinson
Nina Taylor
Katherine Thomas
Sadie Thomas
Elizabeth Tomlinson
Mary Tyson
Sarah Walston
Dolores Watson
Rose Marie Webb
Helen Wheeler
Ester Whitley
Edith Wiggs
Cora Wilcox
Marjorie Winstead
Inez Winstead
Sara Ann Williams



SEVENTH GRADE



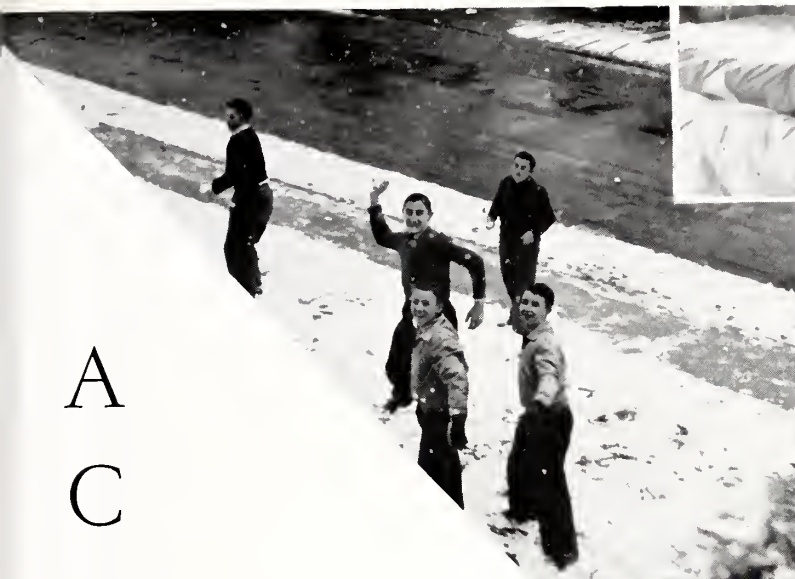
BOYS

D. A. Baker	William Burden	Ernest Horne	Bobby Smith
Bill Barbour	Carl Collins	Sanford Johnson	James Smith
Billy Barnes	Edward Crowder	Dickie Johnson	Spurgeon Speight
George Barnes	Hoover Davis	Jesse Joyner	George Spirtos
Joseph Barnes	Everett Eatmon	Joe Joyner	Wesley Starling
Rudolph Barnes	Norwood Faison	Eugene Millard	Clyde Sullivan
Ransom Batts	Billy Farmer	Wade Moore	Sydney Switzer
William Benton	Walter Furlong	George Moskos	Vernon Thompson
Carl Bottoms	James Hathaway	Elbert Moye	William Vick
William Boykin	Nathan Hawkins	Nickie Noulles	Jerry Watkins
Alton Brooks	Charles Haynes	Robert Paschall	Alvin Williams
Sidney Brooks	Gordon Herman	Roy Ramsey	Marvin Winstead
Billy Brown	Clyde Henley	Donald Riley	William Whitfield
J. B. Bryant	L. B. High	Roy Shealey	Jimmy Zrakas
	Rudolph Hinton	Robert Shipp	

GIRLS

Peggy Anderson	June Davis	Beverly Johnston	Elgie Renfro
Christine Baker	Jean Dew	Nancy Johnston	Betty Lou Riley
Ulelya Barnes	Grace Edwards	Sarah Karnes	Rebecca Riley
Marzella Batts	Ella Etheridge	Pauline Lewis	Lois Stallings
Joyce Beaman	Alma Fields	Peggy Mason	Barbara Taylor
Martha Boyette	Nancy Griffin	Ruby Lee McLean	Sue Whitehead
Frances Brantley	Virginia Harrell	Evelyn Page	Mary Whitley
Dorothy Broadwell	Lorene Hawley	Frances Page	Ruth Whitley
Christine Carter	Mildred Horne	Hilda Poole	Thelma Williford
Marilda Cox	Rose Marie Humphrey	Mary Lee Price	Margaret Winstead
			Miriam Winstead

ACTIVITIES



SENIOR



Best Looking

BETTY STRICKLAND
ERICK BELL

Best Citizens

CHRISSIE CARUTHERS
ALBERT OETTINGER

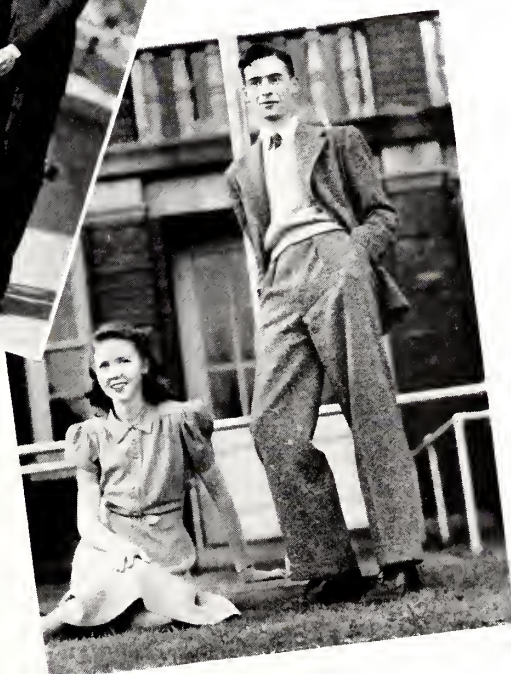
Most Popular

EVELYN WEBB
BILL WELLS

Most Athletic

JEAN FRITZ
BILL DAVIS

SUPERLATIVES



Best All Round

SUSAN DARDEN
B. C. BARBEE

Most Talented

ELIZABETH STALLINGS
GUY COX

Best Students

ELIZABETH PEELE
THURMAN BROOKS

Wittiest

PEGGY FOSTER
COMANN GOLD

Most Dependable

VIDETTE BASS
ED JOYNER

CLASS HISTORY OF 1942

Let us look back into the past five years to an early September morn in 1937, when we, the class of 1942, were first introduced to Charles L. Coon High School. We were hardly able to acknowledge the introduction we were so young, with all the characteristics of small children—shy, awkward, and starry-eyed. Gazing at the older students, we wondered how they always managed to find their classes so easily and their places in the lunch line without being mangled. Indeed, that was a memorable day, the initiation of a new adventure. We may not recognize it as such now, for our days have been too full; but in later years we'll recall it as the beginning of "the good ole' days." So much for the future; history is past events.

As seventh graders, we called ourselves sub-freshmen. (Sub-freshmen sounded almost like freshmen.) Naturally our presence made the noise in the halls resemble a slight blitzkrieg for the first week. (Incidentally, ours was the largest seventh grade in the history of the school.) Soon we learned there were three floors to the building; the extensive halls condensed themselves, or perhaps our eyes regained their perspective. The year slid by, but not before we had overcome "crowd fright"; for we showed the upper classmen what interesting chapel programs we could give. We, too, had representatives in the Student Council. And thus the first candle of our new course melted away.

In the fall of 1938 we freshmen recalled with sympathy the little sub-freshmen. Now we were officially high school students and ready to enter into everything with full swing. Many of us had our places on junior athletic teams. "Music makes merry!" And so it does. Were we not proud to have our classmates in the school band? During that year some of our elder sisters, who now remain with us that they might graduate from the twelfth grade, served at the Junior-Senior Banquet. Home economics broadened its realm by becoming a required subject for all eighth grade girls. Seamstresses and cooks were the girls. Young carpenters were the boys, for manual training had made them such. With our approaching third birthday, our second candle gave its departing flicker.

Our third candlelight service took place when we answered to the name of "Silly Sophs." Not to be overcome by the loss of Mr. S. G. Chappell, we achieved much under the able leadership of Mr. Z. B. Vance. Yes, we "Silly Sophs" attained a more serious attitude when examinations made their debut into our school's curriculum. Physical education was offered to all of us. Many of us entertained at the Junior-Senior Prom, which took the place of the hitherto Junior-Senior Banquet. Our school spirit grew stronger as we grew more interested in extra-curricular activities.

Three candles had burned their course, and in the fall of 1940 we lighted our fourth. Our junior year began with Mr. J. M. Hough as principal. We sent members to the newly organized Honor Citizenship Club. We sponsored the Junior Carnival with superb confidence that it would be a success. Our hopes were fulfilled; and thus, in honor of our elder brothers and sisters, the Seniors, we were hosts at the prom. Our athletically inclined boys and girls had pulled themselves up to varsity positions, but only through perseverance. This year we had our own class meetings with our elected officers officiating.

The fourth candle's glimmer faded, leaving a flame only strong enough to start a fifth burning. Came the fall of 1941, we had a new title, "Dignified Seniors." Our last year has been filled with both work and play.

By our endless efforts, permission for an annual—the first in twelve years—was granted. The Senior Carnival and Stunt Night helped to provide funds for the cause.

This has been by far the most outstanding time of our high school years. World War number two was declared and many of us saw our friends and former school mates join the armed forces of Uncle Sam. Our hearts grew heavy as we practiced taking shelter at air raid warnings. But with the heaviness came the determination that the "American Way" should prevail. We pledged ourselves to the Defense Program and the work of the Red Cross.

The last bit of tallow on our fifth candle is melting. The wick sputters and it is growing dark, but we are not afraid of the darkness. During the last five years we have rounded the first turn in the path of our destiny. Our going has not been so smooth; we have stumbled many times, but never has the fall been so severe that we could not rise again and forge ahead. May each attain the goal of a worthy ambition!

To those teachers who made our candles burn more brightly, and to the senior sponsors, the graduating class owes an untold debt. We shall carry with us their good wishes and many fond memories of Charles L. Coon High School.

Actually, our high school career is over; sentimentally, it will never end.

Respectfully submitted,

LEE EDMUNDSON—LOIS WEBB

LAST WILL AND TESTAMENT

With our hearts full of sorrow, we, the seniors of the 1942 graduating class of the Charles L. Coon High School, regretfully admit that the time has come for us to bid our last farewell to the alma mater we all love so dearly. We shall never forget the things that were taught us during the happiest four years of our lives. Before departing we wish to leave with you one remembrance—our LAST WILL AND TESTAMENT.

To our teachers we wish to leave our everlasting gratitude for bringing us through thick and thin; and to Mr. Hough, the head of our little family, for being the swellest leader we could ever hope for.

To our fine school we leave our memories and pray that we'll not be forgotten too soon.

Guy Cox bequeaths his photograph album to the library to remind future students of the good ole' days.

Alta "Bugs" Kellogg wills her hair-do to all the other little glamour gals in C. L. C. H. S.

Lois Clark leaves her flare for writing themes to a very needy soul, Jimmy McGeady.

Reba Driver leaves George Bailey. We guess this is the only way we'll ever get them apart.

To Roland Grady, Lee Edmundson leaves her dare-devil driving. Folks, this is a general warning—Stay out of the street!!!

Bet Hancock bequeaths that "out of the band-box look" to Sarah Harrell.

Elsie Ezell leaves Nancy. Our deepest sympathy to the teachers. Mabel Carter leaves her first name *Mabel* to Gaynell Wallace. (Hey, Mabel!)

To Alice Brinkley, Catherine Miller leaves her way of flitting around the halls.

Elsie Marie Ferrell and Harry Hooks leave their studiousness to Brantley Aycock and Steve Sakas, although from the looks of things, they won't need it.

Doane Warren bequeaths his broad shoulders and manly countenance to Ed High.

J. C. Lamm leaves his ability to lead the boys to victory over Rocky Mount to Bill Wiggins and Wilbrey Flowers.

Doris Brown and Evelyn Ives leave that tomboyish air to Ida Ruth Webb and Ruth Hathaway, knowing that it won't die down.

Bill Bunn wills his beautiful voice to all the other little radio announcers that may be scattered around in our fair school.

Wade Boyette and Sarah Leigh Britt leave their Glee Club romance to future song birds.

James Campbell and "Pie" Gardner bequeath their ability to catch the out-of-town girls to Frank Farmer.

Geraldine Banks leaves her stenographic ability to Carlton Ellis hoping that eventually he will put it to some use.

Jack Mylum leaves the school in one piece. Isn't that wonderful? Charlie Curlin and John Driver bequeath their quietness to Buster Bullington. Not that he needs it, of course!

Royce and Margie Crawley leave their musical knowledge to Teddy Thomas and the rest of the junior band.

Charlie Noulles leaves his ability to play basketball to Joe Fulghum.

Catherine Corbett and Elsie Ray Lewis will their journalistic ability to next year's women of the press.

"Peanut" Hinton leaves his loyalty to Uncle Sam to J. T. Noe. Susan Darden bequeaths her influence over Mr. Underwood to some unfortunate Trig, student next year.

Molly Etheridge leaves her baseball ability to Wilbrey Flowers. "Bee" Lyles wills his spectacular "hook shots" to "Shorty" Morton.

Comann Gold bequeaths his cow bell to Banks Mebane to ring at next year's football games.

Evelyn Webb leaves her way with all the coaches to Sarah Walton.

Marguerite Malpass, Marjorie Thompson, and Evelyn Braswell will their shyness to Eddie Rahil.

Lyman Laughinghouse and Peggy Foster leave their fun and good nature to Miss Brooks' next year's English Class, when they tackle Shakespeare and Chaucer.

Christine Lamm, Thelma Herring, and Bertie Taylor bequeath their good nature to Peggy Turner.

Henry Rogers leaves his weight lifting ability (?) to "Ham" Lucas and Bill Wiggins.

B. C. Barhee leaves all his traits of a natural born comedian to Frances Petree.

Thurman Brooks bequeaths his love for a good hot argument to Joe Chesson . . . and to Roy Early, he leaves all of his clarinet squeaks.

Sarah Pittman wills her level-headedness and calm manner to Grace "Jitterbug" Holliday.

Elizabeth Stallings leaves her ability to "make the notes fly" to "Ham" Lucas.

We leave to Nancy Clark, Betsy Thomas' winning way with "Zorro."

Clifton Mathews wills all of his problem school-bus children to next year's drivers.

Hulda Stallings, Josephine Lamm, and Edythe Thompson leave their "easy going" manner to Hilda Williams.

Dick Llewellyn leaves his interest in Wimpy's to "Greasy" Salechy.

Evelyn Wellons, Josie Tomlinson, and Sue Vick bequeath their timidity to Wick Hudson.

Anthony Suraci wills his alertness in class to Carlton Ellis.

Needham Watson wills his way of "love 'em and leave 'em" to Jim Brown.

Margaret Walker bequeaths her height to Glen High.

Elizabeth Peele leaves the "A's" on her report card to Coach Brogden to be distributed among all the boys on the athletic teams.

Howard Herring leaves his sweet smiles and glances to little "Strick."

Mary Louise Ikner and Elizabeth Wooten desire that their efficiency and dependability be left to Lee Fulford.

Zeb Lane wills his unique method of selling hot dogs to Jack White.

Jake Lamm, Dick Gliarmis, and Grady Farmer leave their big smiles to all those nervous students during exam week.

Betty Jane Ledford wills her blonde hair to Rosamond Murad. Albert Oettinger wills his dignified airs to Joe Joyner.

Talmadge Narron and Kermit Owens bequeath their speaking ability to Mr. Lee's future debating students.

Will Young leaves his hunting skill to Celeste Gold. (Poor little sparrows.)

"Zorro" Flowers wills his winning personality to Robert Drake . . . and he leaves his walking cane to start a fire with on the first cold morning next year.

"Essie" Barnes leaves his well-worn map of Cavalier Terrace to Jack Overman.

To Barbara Edwards, Hazeline Stallings and Billy Wheeler leave their quiet and subtle ways.

"Slop" Wells wills his Casanova ways to J. D. Thorne. Good Luck, J. D.!

Catherine Moss and Arthur Brannon leave their success in D. E. and D. O. to next year's flock.

"Gid" Uzzell leaves all of his tenth grade girls to Simon Lawrence and Jimmy Lamm.

Cecelia Rackley wills her trumpet playing to Charlie Kelly. Maybe he'll be able to toot a little louder now.

To Laurelle Stallings, Patsy Hawkins leaves her ability to hit those high notes.

Aubrey Shingleton leaves his job of burying people to whoever wants it.

Viadette Bass and Lois Webb will their dry wit to Betsy Dempsey and Daisy Dixon.

Edythe Batchelor bequeaths her cute figure and personality to Brownie Jones.

That ability to lead a mean Conga, Julia Albitt leaves to Alpha Jones.

Jean Fritz wills her technique of catching the college boys to Kitty Farmer.

Myrtle Raper leaves her secretarial skill as an example for next year's business students.

Bobby Tomlinson leaves his limber legs to all the up and coming jitterbugs.

Flora Webb leaves her winning way to next year's football team.

Billy "Ace" Mayo leaves his job as right-hand man to Mr. Underwood to anyone who dares to take it.

Warren Page bequeaths his "dropsies" and breakage fee in chemistry to "Gabe" Felton, and Bobby Clark.

Edna Askew leaves those bright brown eyes to Reba Rose.

Mildred Barnes, Penelope Soufas, Helen Jump, Betty Holloman and Lois Flora add their quietness to John Webb's already abundant supply.

Marie Barnes, Helen Hinnant and Pauline Williams leave their quiet ways to Mr. Underwood's sixth period geometry class. Somebody should have done that last year.

Ed Joyner bequeaths his love for beautiful girls in black satin evening dresses to Carl Hackney.

Milton Gartrell leaves his ability to get around to Wade Barnes and George Thompson.

Edith Brantley and Marjorie Smith bequeath their magpie traits to Margaret Barnes.

Wade Pridgen leaves his familiar drawl to Romeo Markham.

Aubrey Dixon leaves his laziness to Don Dempsey, not that he needs it.

Alec Flowers leaves the tooting of his clarinet to his younger brother, H. F.

Charles Lamm leaves his curly hair to Garvis Thompson.

We leave Betty Strickland's versatility to Helen Harris.

Edna Hagan and Wyneta Malpass will their pleasing smiles to Robert Lamm.

Kermit Lamm and Billy Malpass bequeath their love for a good time to Jack Townsend.

Erwin Page and Wallace Lee Whitley will their good sportsmanship to Bobby Hackney and Jack Kirkland.

Lester Teel leaves his ability to get along with the teachers to Albert Salechy.

Erick Bell wills his "Mr. Esquire" look to Jimmy Ellis.

Florence Henderson leaves her position in the library to Gertrude Lewis.

Tommy Ruffin wills to Paul Bisette his drums. Believe me, he needs two.

Chrissie Caruthers wills her surplus of originality and her loud shoe strings to Mary Glen Slater.

Josie Malpass, Dorothy Bell, and Nedra Newton bequeath their sweetness to Clayton Beamon.

Bill Davis leaves all the glory of a great football career to the tradition of the famous Davis brothers.

Georgia Pearson, Margaret Pittman, and Frances Wooler will their vivaciousness to Mac Bisette.

Dorothy Poole desires to leave her pleasing sales girl personality to Dorothy Dillon.

Louise Williams wills her pleasing attitude to the girls in the service club next year.

Daniel Jordan, Lee Roy Thomas, and Iotress Joyner leave their bashful look to Cal Woodard.

Joyce Ferrell, Adelaide Weaver, Gertie Meacombs, and Julia Gliarmis divide their quietness among Miss Ashton's library periods.

We feel sure that this will make Miss Ashton very happy.

Warren Woodard leaves his way of "loping" down the hall to Burt Gillette.

Floyd Hawkins and Robert Taylor leave their memories of first period English class to Bobby Townsend.

In witness whereof, we, the graduation class of 1942 do hereto set our hand and seal this, the fifth day of June, nineteen hundred and forty-two.

Signed: BETTY STRICKLAND, JEAN FRITZ, *Testators.*



EDWARD GREY JOYNER, JR.
Editor-in-Chief

1942

EDITORIAL STAFF

FLORA WEBB
ELIZABETH PEELE

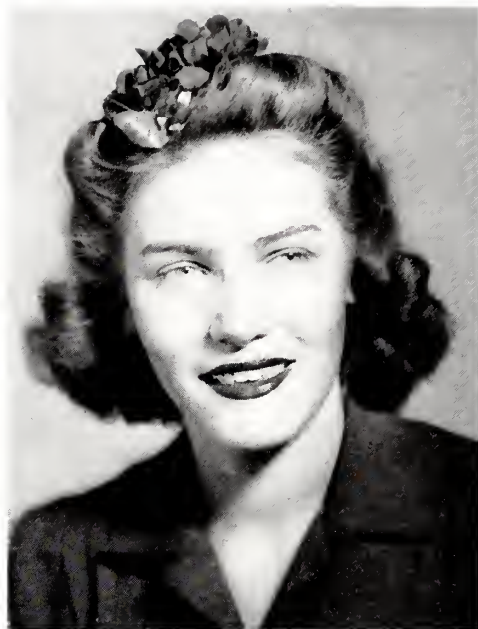
EDWARD JOYNER
B. C. BARBEE

THURMAN BROOKS
SUSAN DARDEN

EVELYN WEBB
GUY COX



COCOON



ELEANOR JEAN FRITZ
Business Manager

BUSINESS STAFF

BILLY MAYO
JEAN FRITZ

BISHOP LYLES
BETSY THOMAS
BETTY STRICKLAND

BILL DAVIS
ERICK BELL



STUDENT COUNCIL



Bottom row, left to right: Betsy Glover, Jean Fritz, Thurman Brooks, Susan Darden, Myrtle Raper, Marjorie Little, Elizabeth Peele, Mary Glenn Slater, Marie Hawkins, Banks Mebane, Dorothy Harrell.

Middle row: Bobby Kirkland, Howard Herring, Simon Lawrence, Jim Blount, R. H. Boswell, Mac Bissette, Buster Bullington, Daisy Dixon, Frances Whitley, Connor Vick.

Third row: Mr. Bryant, adviser, John Webb, B. C. Barbee, and Doane Warren.

Dorothy Dillon, Glynn High, Ruth Whalen, Marian Driver, and Dick Hackney not present when picture was taken.

OFFICERS

THURMAN BROOKS	<i>President</i>
BOBBY KIRKLAND	<i>Vice-President</i>
SUSAN DARDEN	<i>Secretary</i>
B. C. BARBEE	<i>Treasurer</i>
DOANE WARREN	<i>Sergeant-at-Arms</i>

RADIOGRAM STAFF

Bottom row, left to right: Evelyn Ives, Helen Jomp, Lee Edmundson, Sarah Pittman, Lois Clark, Catherine Anthony, Catherine Corbett, Betty Ham, Celeste Gold, Chrissie Caruthers.

Top row: Elsie Ezell, Bill Wells, Peggy Foster, Bishop Lyles, Evelyn Webb, Billy Mayo, Lois Webb.

CATHERINE CORBETT	Co-Editor
CELESTE GOLD	Co-Editor
GLENN DUNEVENT	Adviser

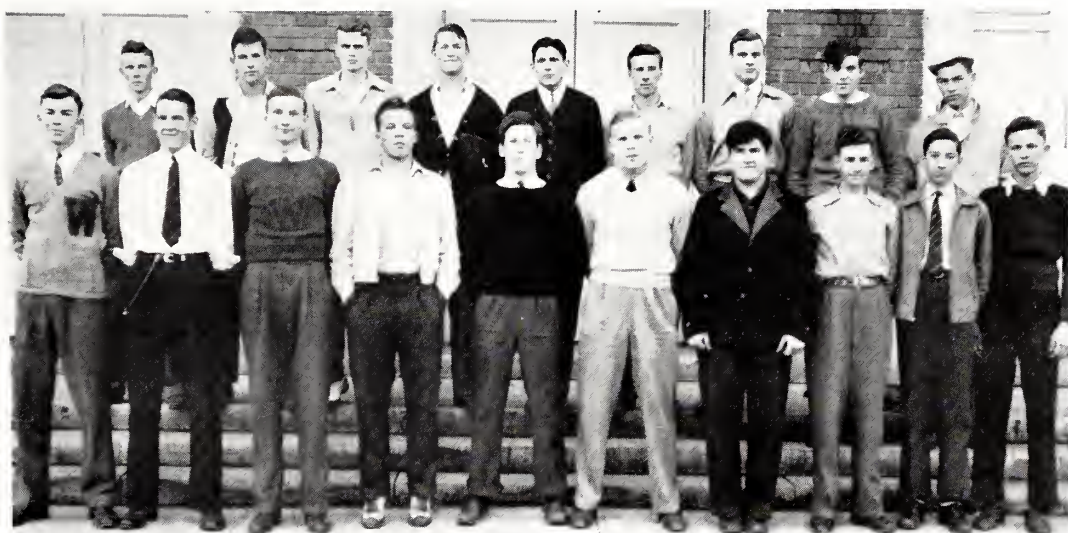


SENIOR HONOR CITIZENSHIP CLUB



JUNIOR HONOR CITIZENSHIP CLUB

MONOGRAM CLUB



DEBATING CLUB



DRAMATICS CLUB

Bottom row, left to right: Reba Driver, Betsy Hancock, Alpha Jones, Isabel Anderson, Carolyn Shackelford, Virginia Harrison, Mary Helen James, Anne Branch, Elizabeth Myatt, Frances Reedy, Sarah Pittman, Helen Harris, Roland Grady.

Middle row: George Bailey, Margaret Rogers, Jimmy Lane, Chrissie Caruthers, Henry Rogers, Virginia Gunn, Josie Tomlinson, Nickie Gliarmis, Jack White, Jimmy Snipes.

Back row: Nancy Lucas, Betsy Schaum, Bill Wells, Jean Strickland, Peggy Foster, Sid Barnes, Willie Gray Sasser, Jack Townsend, Hal Hutcherson, Bill Byrd.

OFFICERS

BILL WELLS	<i>President</i>
WILLIE GRAY SASSER	<i>Vice-President</i>
JEAN STRICKLAND	<i>Program Chairman</i>
MARGARET ROGERS	<i>Director</i>

WRITERS CLUB



SENIOR STORE MANAGERS

PERSONALITY CLUB



SPANISH CLUB



GLEE CLUB

R. A. ELLER, *Director*

ELIZABETH STALLINGS, *Pianist*

Front row: Tommy Liles, George Thompson, Bill Lucas, Wade Boyette, Talmadge Narron, George Bailey, Reba Driver, Grace Moye, Thelma Davis, Reba Baker, Martina Johnson, Mildred Bunn, Doris Brown, Pauline Dilda, Florence Henderson, Needra Newton, Frances Godwin.

Second row: Pete Taylor, Eugene Ives, Cecil Church, Richard Gliarmis, Lennes Van Slyke, Peggy Foster, Arline Lamm, Josie Malpass, Hulda Stallings, Evelyne Braswell, Nettie Mae Parker, Adelaide Weaver, Patsy Hawkins.

Third row: Betsy Glover, Margaret Barnes, Dorothy King, Geneva Winstead, Mavis Batchelor, Dorothy Winstead, Madline Dilda, Dorothy Pearson, Jeanette Norton, Johnna Fay Hawkins, Sadie Thomas, Lois Munford, Esther Etheridge, Marjorie Thompson, Virginia Jones, Rose Marie Parker.

Fourth row: Mildred Barnes, Dorothy Ferrell, Bobby Banks, Hazel Collier, Margaret Owens, Dorothy Pridgen, Mary Evelyn Raper, Pauline Carter, Mabel Holmes, Sarah Weaver, Thelma Bradberry, Helen Millinder, Sarah Leigh Britt, Sarah Pittman, Marjorie Crawley, Elsie Ezell, Marie Barnes.

DISTRIBUTIVE EDUCATION CLUB



COMMERCIAL CLUB

DIVERSIFIED OCCUPATIONS CLUB



Bottom row, left to right: G. S. Willard, Charles Lamm, Milton Gartrell, Wallace Whitley, Mary Louise Ikner, Geraldine Banks, Tommy Ruffin, John Gardner, Lyman Laughinghouse, Edward Joyner, James Granger.

Top row: B. C. Barbee, Bill Bunn, Frank Smiley, Edward Poythress, Dan Jordan, Charles Noulles, Aubrey Shingleton, Jack Mylum, Billy Mayo.

OFFICERS

JOHN GARDNER	<i>President</i>
AUBREY SHINGLETON	<i>Vice-President</i>
B. C. BARBEE	<i>Secretary-Treasurer</i>
EDWARD JOYNER	<i>Reporter</i>

GIRLS' ATHLETIC ASSOCIATION



Bottom row, left to right: Miss Mabel Smith, Rebecca Herring, Ruth Hathaway, Ruth Lamm, Hilda Williams, Blanche Jordan, Ethel Moseley, Jeanette Norton, Alene Thorne, Dorothy Lamm, Ruby Ferrell, Lydia James.

Top row: Reba Rose, Cora Elizabeth Moore, Melba Eason, Dorothy Mattox, Earnestine Lewis, Florence Bunn, Helen Hinnant, Virginia Taylor, Jean Gardner, Dorothy Rackley, Edna Askew, Lauradell Davis.

OFFICERS

DOROTHY MATTOX	<i>President</i>
LYDIA JAMES	<i>Secretary</i>

BOYS' HOBBY CLUB



GIRLS' HOBBY CLUB

JUNIOR BAND

Bottom row: Don Barnes, Dorothy Woodard, James Hathaway, Holloway Burgess, Gordon Hearne, Annie Ruth Bailey, H. F. Flowers.

Second row: Ruth Whalen, Grace Flowers, Joyce Lewis, Marjorie Winstead.

Third row: Sid Brooks, Robert Drake, Joe Chesson, Helen Miller, Albert Oettinger, Alton Batts, Billy Barefoot, Walter Furlong, Tommy Williams, Sidney Switzer, D. C. Braswell, Wade Lee Moore, Wick Hudson, Joe Joyner, Billy Farmer, Jimmy Zrackas, George Spirtous, Ossie Lee Ellis.

Top row: J. L. White, Jimmy Corbett, Olin Hinnant, Earl Carnican, Harvey Boswell, T. P. Thomas, Mr. Eller, Gene Allgood, Vernon Thompson, Joe Cagel, Billy Barnes, Jesse Joyner.





BAND

BOB TOMLINSON, *Drum Major*

Drum Majorettes

FRANCES PETREE
FRANCES REEDY

KITTYE FARMER
CELESTE GOLD

ALPHA JONES
ELEANOR CANNON

First row, left to right: Jimmie Martin, Bill Short, Roy Early, Thurman Brooks, J. L. Pearson, Rupert Stott, Dan Griffin, Mac Gold, Val Brooks, Archie Webb.

Second row: Charles Boyette, William Warren, Peggy Swinson, John Webb, Alec Flowers, Charlie Kelly, Don Dempsey, Jimmie Lane, Raymond Lane, Julian Barker, Cecelia Rackley, Harvey Murphy, Will Warren, Joe Davis Patterson, Earl Gay, Sammie Morrell, Bob Taylor.

Third row: Mary Ellen Fulghum, Betty Brannon, Betty Goss, Curtiss Pearson, James Cannon, Comann Gold, Stuart Giles, Wade Boyette, Bill Ezzell, Jack Kirkland, Robert Paschall, Banks Mebane, John Byrd, Bernard Mattox, Wade Pridgen, Bobby Dew.

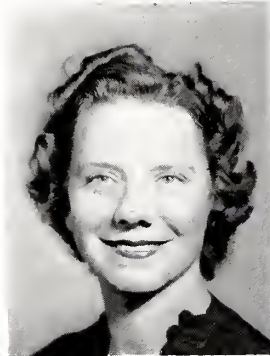
Fourth row: Dorothy Rackley, Jean Gardner, Elizabeth Peele, Edmund Porter, Tommy Ruffin, Ruby Lucas, Bob Kirkland, Frank Farmer, R. A. Eller, Director, Teddy Thomas, William Bailey, Sid Barnes, Jimmie McGeady, Jimmie Snipes, Robert Lamm.

SNAPS



SNAPS





COACHES

IRVIN DICKENS

LEON BROGDEN

DICK HOYLE

MABEL SMITH

CHEERLEADERS

CHRISSIE CARUTHERS, FLORA WEBB, NANCY CLARK,
SUSAN DARDEN, chief, JEAN FRITZ, MARIA HICKS, EVELYN WEBB.



FOOTBALL TEAM

BILL DAVIS, J. C. LAMM, *Co-Captains*

Bottom row: Tommy Liles, Manager, Walter Horne, Marvin Curlin, Bobby Clark, Bill Wells, Henry Davis, Oakley Beland, Joe Downing, Bobby Kirkland, James Cannon, Manager.

Middle row: Charles Zrakas, B. C. Barbee, George Clark, Clifford Morgan, Lyman Laughinghouse, Charlie Noulles, Bill Wiggins, Bobby Brooks, J. T. Noe, Wilbur Combs.

Top row: Eric Felton, Edward Morton, Jim Brown, George Davis, Bill Davis, J. C. Lamm, Wilbrey Flowers, Don Dempsey, Bill Lucas, Warren Woodard, Manny Fulghum.

BOYS' BASKETBALL TEAM



CHARLIE NOULLES, *Captain*

Front row, left to right: Managers—James Cannon and Tommy Liles.

Second row: Dick Llewellyn, Bishop Lyles, B. C. Barbee, Captain, Charlie Noulles, George Davis, Ed Morton, Manny Fulghum, Don Dempsey.

Third row: Frank Ellis, Horace Overman, Wade Barnes, George Clark, J. D. Thorne, Jim Brown.

Back row: Henry Davis, Billy Beamon, Needham Watson, Steve Sakas, Frank Hayes, Bill Wells, Warren Woodard.

GIRLS' BASKETBALL TEAM



JEAN FRITZ, *Captain*

Front row, left to right: Alta Kellogg, Ida Ruth Webb, Lois Mumford, Barbara Edwards, Jean Fritz, Elsie Smith.

Second row: Grace Holliday, Geraldine Dillon, Lennes Van Slyke, Dorothy Dillon, Ruth Lamm, Rebecca Herring.

Brown Oil Company, Inc.

Distributors

PURE OIL PRODUCTS

PHONE 2500—4201



"Be Sure With Pure"

*Filling Prescriptions is the Most Important
Part of Our Business*



Two Stores in Wilson

114 East Nash Street

132 S. Goldsboro Street

Compliments of

JOHN N. HACKNEY

INSURANCE AND REAL ESTATE



112 W. Nash Street

Phone 2011

BARNES - HARRELL CO.

BOTTLERS OF

Coca-Cola
TRADE MARK
REGISTERED

"You Trust Its Quality"

Compliments of

JIM BARNES ('23)

WILSON PETROLEUM CO.

PHONE 3448

AMOCO

HUDSON DISTRIBUTOR

Sales and Service — Repairs to All Cars

Bear Wheel Aligner and Balancer

LOVELACE MOTOR CO.

313 E. Barnes Street

Wilson, N. C.

"The Men's Shop"

ARROW SHIRTS

KNOX HATS

HOWARD ADKINS, INC.

BOSTONIAN SHOES

FASHION PARK CLOTHES

F L O W E R S
For All Occasions



STARR, THE FLORIST

Dial 2108

Flowers By Wire Anywhere

P E A C O C K
T I R E C O .

Compliments of

MOSS & CO.

"Treat People Right"

WILSON - NORTH CAROLINA



NATIONAL BANK OF WILSON

WILSON, N. C.

Member Federal Deposit Insurance Corporation

EFIRD'S DEPARTMENT STORE

*Correct Merchandise
At Low Prices*



Compliments of

**DAVIS AUTO
COMPANY**

202 E. GREEN ST.

Dial 2983




Compliments of

**BRANCH
BANKING
& TRUST
COMPANY**



*Member Federal
Deposit Insurance
Corporation*

DR. PEPPER PICKS YOUR ENERGY UP!



**ENJOY LIFE MORE
AT 10... 2 and 4!**

6 BOTTLES FOR 25¢
plus deposit



DR. PEPPER BOTTLING CO. . . . Wilson, N. C.

WILSON TOBACCO COMPANY

INCORPORATED

...Dealers In...

Leaf Tobacco Strips, Scraps and Stems

Samples Submitted on Request

WILSON, N. C.

Compliments of

**BARNES
MOTOR & PARTS
COMPANY**

WILSON, N. C.

IT PAYS
TO SHOP
AT

**PENNEY'S
J. C. PENNEY Co., INC.**

WILSON, N. C.

Compliments of
SOUTHERN TOBACCO CO.

See the New Junior
Department at

OETTINGERS

*The
Dependable
Store*

●
WILSON, N. C.

Compliments of
**EASTERN
MOTOR SALES
INC.**

●
CHEVROLET AND
OLDSMOBILE

Sales and Service

WHITEHEAD & ANDERSON, INC.

WILSON, N. C., U. S. A.

—*Bright Tobacco*—

Commission Merchants and Exporters

BRANCH PLANT . . . LUMBERTON, N. C.

R. E. TOWNSEND & CO.

REAL ESTATE . . . INSURANCE
RENTALS . . . BONDS

121 S. Goldsboro Street

Wilson, N. C.

CAROLINA LAUNDRY

DRY CLEANERS — RUG CLEANERS — STORAGE VAULT

Your Patronage Is Appreciated

PHONE 2164



WILSON, N. C.

"The Fashion Center For Thrifty Women"

EDWARD J. O'BRIEN & CO.

Leaf Tobacco Brokers

815-817 West Main Street

Louisville, Ky.

BALTIMORE OFFICE: WILSON, N. C., OFFICE: LEXINGTON OFFICE:
Light & Lombard Sts. 501-503 Goldsboro St. 1016-1024 S. Broadway

REX SHOE SHOP

TELEPHONE 3571

105 S. Goldsboro

*We Call For and
Deliver*

WM. HINES BARBER SHOP

130 S. Goldsboro St.

WILSON, N. C.

WHITLEY JEWELRY COMPANY

JEWELRY — DIAMONDS

*All Kinds of Repairing, Watches
and Musical Instruments*

MUSICAL INSTRUMENTS

Columbia, Victor, Bluebird

Okeh Records

SHEET MUSIC

WIMPY'S BILLIARD PARLOR

The best spot in town for clean
recreation, soft drinks of any kind,
sandwiches, tobaccos, ice cream,
etc. WE DELIVER — DIAL 4134.

*The Friendly Place Where
Friends Meet*

Compliments of

BRUCE LAMM

"Styled Men's Wear"

B. A. BARNES

COTTON AND

FERTILIZER

W. M. WIGGINS & COMPANY

PLUMBING AND HEATING
CONTRACTORS

Wilson, N. C.

Compliments of

WILSON BAKERY

25 Years of Service

Dial 2769

*We Invite You To Do Your
Shopping For
DRESSES, COATS, MILLINERY
at*

THE LONDON SHOP

105 S. Tarboro Street
WILSON, N. C.

Exclusive But Not Expensive

Compliments of

**CLARK
HARDWARE
COMPANY**

General Supply Store

INCORPORATED

FERTILIZER, IMPLEMENTS,
FEED STUFF, HARDWARE,
GROCERIES, DRY GOODS

WILSON, N. C.

HUNT FUNERAL HOME

Ambulance Service

WILSON STANTONSBURG
Dial 3149 Dial 2381

Sponsors

WILSON COUNTY MUTUAL
BURIAL ASSOCIATION

Compliments of

HOTEL CHERRY

WILSON, N. C.

W. E. BARNES, *Manager*

Insurance and Real Estate

"INCORPORATED 1907"

**WILSON INSURANCE &
REALTY COMPANY**

GEO. T. STRONACH, JR., *Sec.-Treas.*

Compliments of

Wilson Hardware Co.
"Count House in Front of Us"

WILSON, N. C.

Compliments of

**DRAKE
THEATRE**

**INDEPENDENT
ICE & FUEL CO.**

Herring Ave.

ICE COAL

Phones 2186—2187

WILLIAMS LUMBER CO.

LUMBER AND BUILDING
MATERIAL

*"We Sell Everything to
Build Anything."*

Phone 2222

WEST END GROCERY

Fancy Groceries - Fresh Meats
Fruits - Produce

Dial 3151 West Nash St.

Free Delivery

**DILDY
HARDWARE CO.**

BUILDING MATERIAL
PAINTS, PLUMBING AND
ELECTRICAL SUPPLIES

**THOMAS-
YELVERTON CO.**

Better Furniture

24-Hr. Ambulance Service

DIAL 3121

OUR SUPERIOR CLEANING SERVICE
*is the finest available. Our skilled
craftsmen will keep your wardrobe
always looking its best.*

**PARAMOUNT
CLEANERS**

Dial 3041
WILSON, N. C.

Compliments of

**MOSS BICYCLE
SHOP**

**WILSON DRUG
COMPANY**

Nunnally's Candy

SHEAFFER'S FOUNTAIN
PENS

DANIEL AND SMITH

RALEIGH, N. C.



Official Photographers 1942 COCOON

WILSON'S FINEST

ELLEN'S, INC.

*Exclusive Ladies'
Wear*

Compliments of

STADIEM'S
LADIES' SHOP



Compliments of

**FAIRFIELD
DAIRY PRODUCTS, INC.**

*"Locally Owned and Operated
to Serve the Citizens of
Wilson."*

PHONE 3232

MILK . . . ICE CREAM



BEST WISHES TO THE
GRADUATING CLASS OF '42
CHAS. L. COON HIGH SCHOOL

— From —

BELK - TYLER COMPANY

"Wilson's New Shopping Center"



WILSON COUNTY PUBLIC LIBRARY



3 9939 00328 3383

