

COLONEL  
1977

**7530-00-222-3521**

**FEDERAL SUPPLY SERVICE**

(GPO)



Daily activities DGK

San Diego 1.0  
LP 3.1  
LA 1.1  
LA 1.1  
NZP 1.5

2oz water  
1 tbs SMA (yellow)  
1 tsp Sustagen (white)

72.9  
49.5  

---

22.9

6  
77.0  
57.7  

---

19.3



Sully furred at birth  
but sparse fur on  
~~the~~ venter with  
belly naked.

Tail sparsely furred—  
no distinguishing  
characters.

Colonel Ezekiel  
Atlas Drummond

Leontogathrus rosalia

10 July 77 - ♂ 102061

born to 67-H x 67-M

Found on floor of cage @ 0730.

Attempts to return him to  
to parents did not succeed.

Could not cling. Attempted  
retrievals by both parents.

wght ~ 49.5 g

10 AM Fed ~ 10 drops 10%  
dextrose. Regurgitated  
some during feeding.  
Stimulated to urinate + def.

w/ moist cotton.

During feeding exhibited  
gape response several times.

Vocalized when put down.

Used Deinhardt nipple

In Incubator 86°F

12:15 PM Fed @ 0.4 cc

1/2 ~~simlac~~ <sup>simlac</sup> + 1/2 10% dextrose

lapped well - little

vocalizing, urinated +  
defecated.

Using Deinhardt Nipple

~ 1400 Showed several minutes of  
hiccups.

fed  
@  
4cc  
total



1430 Took @ .45 cc  
simlac ~~in~~ in hypodermic  
syringe + Preemie feeding  
tube - Fed drop by drop  
as usual.  
Few vocalizations.  
Taken home -

1700 - Took .70 cc simlac.  
chirped once during feeding  
defecate - feces black +  
toothpasty  
clings better  
SNEEZED!  
let play with preemie  
feeding tube

1900 - urinate, defecate; feces  
black, toothpasty. Fed w/ syringe  
& preemie feeding tube took  
.6 cc SIMILAC

2200 1.0 cc Simlac with Preemie  
tube: urinates; seems  
stronger  
In aquarium with water heating

pad. Temp ~90°F. Humid.  
Head shake.

0030 0.8 cc Simlac  
urinated + defecated  
profusely  
still clinging  
inappropriately -  
can hold head up -  
no vocalizations

11 July 77 Day 2

0630 1.0 cc Simlac  
did not try to induce urination

Σ = 6.4 cc } 0845 0.8 cc Simlac  
had defecated on fur piece  
independently. Feces  
yellowish but still firm.

10:30 A few short chirps.

11 AM

WEIGHT 48.1g



11:00 0.7 cc Similac  
clinging response still  
poor.  
Loud chirp when finished  
& did not ~~B~~ want further  
food. used Dunhardt  
nipple

13:05 Begins chirping softly.

13:10 Fed 1.0 cc Similac  
single loud chirp when  
it was full. Used Dunhardt

16:00 1.1 cc Similac  
stim. to wren + def.  
used Dunhardt

19:00 - .9 cc Similac w/ Dunhardt  
nipple

22:45 - 1.4 cc Similac - Dunhardt  
nipple. Very eager to  
eat. No vocalizations.

Still not clinging  
properly.

12 July 77 Day 3

0800 1.0 cc Similac

0745 1.1 cc Similac  
Took milk well -  
Had defecated + had  
some feces stuck to  
body. Looks OK.

Σ =  
9.65  
cc

0940 .65 cc SMA +  
Sustagen form

Formula 1 Tbls. SMA dry  
1 tsp Sustagen 203 H<sub>2</sub>O

12:30 Umbilicus has fallen off.

Fed 1.1 cc SMA + Sustagen formula  
defecated at stimulation  
provided with golden mother  
surrogate,

Weight after feeding 48.8g.



14:30 1.0 cc SMA + Sust.  
defecated w/ stimulation

Feeding eagerly in  
2-3 bursts w/ intervals  
in between.

Q-tips end used for  
clinging to prevent  
injury to palm of hand.

Is able to left head  
but cannot easily right  
itself because of  
clenched fists.

17:05 - defecated w/ stimulation  
1.2 of SMA + Sustiger  
urinated upon stimulation  
is now holding cotton  
swabs in hands.

1900 - much more alert!  
lifts head well... eyes  
open. uses tail for balance  
when stroked on head & back  
will lift head & arch neck.

took 1.4 cc SMA + Sust.  
urinate - defecate w/ stimulation

Fists are loosening...  
curls tail when balancing  
or resting.

clinging better to  
orange shag.

2130 Ate 1.2 cc SMA + Sustagen  
using Deunhardt nipple

clinging abilities further  
improved!

23:45 ~ 1.0 cc SMA -  
Deunhardt nipple.

Tail twinning much more  
common. Did not urinate or defecate  
from stimulation.



~~Photograph~~ A

13 July 77 - Day 4  $\Sigma = 10.7cc$

0730 AM - Fed eagerly  
1.4 cc Deunhardt nipple  
No vocalizations.

0945 - 1.0 cc  
urin + def w/ stim.  
Feces yellow-brown +  
firm

12:00 noon 0.8 cc SMA + Sust.

K. Green records voco. during weighing.

1500 hrs wght before feed 49.3g

1.5 cc  
Fed eagerly SMA + Sust formula  
A (New batch!)

no urin + def. with stimulation

1715 1.7 cc SMA + Sust.  
urin + def with stim.

Frequent tail curling.

Being kept in a aquarium  
at home with ~~heater~~ heating  
pad (when necessary)

1945 Fed 1.6 cc SMA + Sustagen  
in 3 batches -  
did not stimulate to urin or def.

2200 Fed 1.4 cc SMA + Sust.  
Deunhardt nip.

3 stages.

urinated on hand before feed  
had already defecated.  
Attempting to pull nipple into mouth.  
curling tail into body when  
tail straightened.

12 midnight 1.3 cc SMA + Sust.  
did not urinate or def.  
curled into fetal position +  
went to sleep in my hand.  
Responding well to loud noise +  
bright light.

tail curling pronounced.

Fists difficult to  
unclasp

Fist clenching easing.

Little vocalizing.

Can cling, but doesn't unless

fists are attached to fur. long fur  
better.



14 July 77: Day 5  $\Sigma = 11.4 \text{cc}$

0800 1.6 cc SMA + Sust.  
no def. or urin. with stimulation.

10:00 Def. independently.

~~11:00~~ 11:00 AM 1.4 cc SMA + Sust.  
fell asleep before end.  
Clinging well to orange  
shag.

13:15 wght 51.6g measurements  
Photographs | Super 8 |  
L. Dorsey | Hooge |

15:00 2.1 cc SMA + Sust  
Would not urin/def.  
spending time curled up  
in fetal position with  
tail curled forward over head.

1730 1.7 SMA + Sust  
def. no urin feces yellow-brown  
+ firm.  
Cheeped 3x during feed.

clearly examining nipple  
by olfaction — not obvious  
sniffing in head movements  
but slight head waving up + down.  
Searching movements.

1945 1.5 SMA + Sust (new formula)  
no urin/def with stim.  
got hiccups at end - lasted @ 5 min.

2215 1.8 SMA + Sust.

urinated when picked up +  
during feeding - did not def.  
when stimulated.

24:00 1.3 cc SMA + Sust.  
def w/ stim. : feces toothpaste +  
yellow brown  
hiccuped after feeding (?)

becoming more alert when picked up.  
Scanning movements with head.  
(How much can it see ??)

Measurements	
TL	22.5 cm
HR	10.0
Tail	12.5
head	2.36
ear <sup>length</sup>	1.8 cm
ear width	1.4
hand	3.0
foot	3.4 cm



15 July 77 - Day 6  $\Sigma = 13.0 \text{ cc}$

0800 hrs 1.4 cc formula  
hiccupping after 1st phase of  
feed. No urin/def w/ stim.

Still ly curled up in fetal  
position when resting  
Clearly showing searching  
movements for nipple.

0940 hrs 0.5 cc SMA + Sust  
no urin/def. w/ stim.

1215 Had urin. + def in incubator  
4 fecal pellets, brown + firm

Chirped 2x during 1st  
phase of feed before  
concentrated feeding  
initiated.

1.0 cc SMA + Sust.

1430 wght (diff scale) 51.6

1430 1.6 cc SMA + Sust

1700 hrs 1.9 cc SMA + Sust  
no urin/def w/ stim.  
no vocal.  
attempted sk at initiation  
of feeding bout

Hoage & Super 8 film

1945 2cc SMA + Sust.  
no urin/def.  
strong sk attempts.

2200 2cc SMA + Sust  
no urin/def w/ stim.

2400 Fed 2cc SMA + Sust.  
Fed eagerly + finished  
quickly.  
Periodic sneezing which  
seems common after feed.  
Would not urin/def w/ stim.



16 July 77 Day 7  $\Sigma = 13.9 \text{cc}$

0820 hrs 2.2 cc SMA + Sust.

1040 hrs 1.7 cc SMA + Sustagen  
(new batch formula)

Before feeding: att. sk on nipple  
several times before he  
began lapping. Alert +  
olfactory examination  
of my hand.

Hiccupped after 1st phase  
feeding. Several yawns during  
hiccupping episode.

1320 1.7 cc SMA + Sust.  
did not urinate or def.  
Have not seen any feces  $\Rightarrow$   
all day.

16:30 2.3 cc SMA + Sust.  
did not def or urinate.  
in car

18:45 Fed @ 2.2 cc SMA + Sust.  
in Dulles airport.  
defecated with stimulation -  
brown firm feces.  
Fed well.

2140 Fed @ 1.7 cc SMA + Sust  
in car - no urin or def

2345 Had defecated independently.

Before feeding developed hiccups.

Hands loosening somewhat -  
opens + clasps them periodically  
alert all during feeding:  
looking around. Lifts head well when lying.  
urinated profusely while cleaning him

2.1 cc Sust + SMA (new batch form)

Still keeping feet clasped + crossed.  
Tail curled up over body.  
Fetal position. Keeping both elbows +  
legs flexed - legs occasionally  
extended during feeding.



17 July 77 Day 8  $\Sigma = 14.9\text{cc}$

0830 AM 2.0 cc SMA + Sust.  
Urinated after feeding.

11:20 AM 2.5cc formula

11:40 AM Wght 56.6g

1:20 PM urin with stim.

2:00 PM 2.5cc form.

CRC

4:00 PM 1.8 cc Sust + SMA  
urinated during feed.

7 PM 2.5 cc Sust / SMA  
no urin / def.

9:10 PM 1.8 cc Sust / SMA

defecated prior to feeding  
very actively seeking, biting  
at nipple. So alert  
that is difficult to initiate  
feeding (lapping) response.

Hands occasionally unclasped  
especially right hand.  
Legs more often stretched.  
Feet unclasped.

11:10 PM / 1.8 cc Sust + SMA  
no urin or def w/ stim.



CRC

18 July 77

Day 9

$\Sigma = 15.9cc$

0800 hrs

2.5cc Sust + SMA

(new formula)

had defecated during night.

did not urin/def with stimulation

observed to scratch head with hindfoot.

Ear pinna erect.

1000 hrs

2cc Sust + SMA

10-12 noon had defecated -

1230 hrs

2cc Sust + SMA

defecated between 1-3 PM.

300 PM

2.5cc SMA + Sust

~~defecated between 1-3 PM~~

600 PM

2.5cc SMA + Sust

Prior to feeding - combination of infant rasps + chirps heard.

Animal able to hold head raised completely & rotate head to look around.

Left hand unclasped during feeding. Right still tightly

clasped. Feet unclasped & not crossed as much.

Tail curling during sleeping + resting, outstretched sometimes during feeding.

9 PM

2.2cc SMA + Sust.

chirps before feeding  
hindlimbs stretched during + after feeding

Allowed to sk briefly -

Sk response very strong!

Maintained at 78°F - 90°F for last few days - no incubator.

Seems to recognize my voice (or human sounds)

vocally responded to my voice when hungry.

10 PM showed sk movements towards legs when picked up while sleeping.

12 midnite - 2.2cc SMA + Sust

seems to be clasping properly w/ left but not right hand.

Spends less time in fetal position - more time in pre-quadrupedal position.



19 July 77 Day 10  $\Sigma = 19.9 \text{ cc}$   
~~SMA after~~

0800 hrs 2.5 cc Sust + SMA  
no voics or much activity  
before feed.  
hiccupped after feed.

1030 AM 2.0 cc Sust + SMA

defecated between 1100-1200 hrs

12:30 hrs. 3.0 cc SMA + Sust  
(new formula)

weight 56.7g before feeding

300-3:30 PM Super-8 Film Hoage  
Doosey - 35 mm stills.

330 PM Fed 3.0 cc formula

5:30 PM Fed 2.6 cc formula

7:30 PM Observed scratching  
head & shoulder w/ hindfoot

800 PM Fed 3.0 cc formula

1030 PM Fed 2.3 cc formula

1230 AM Fed 1.5 cc.



20 July 77 Day 11  $\Sigma = 17.8 \text{ cc}$

08:45 Fed 3 cc SMA + Sust.  
had defecated during night.

11:45 1.8 cc Then started  
hiccuping during burping  
Feeding terminated.

12:40 PM 1.5 cc SMA + Sust -  
(New batch formula)

3 PM 3.0 cc SMA + Sust.  
Prior to feeding - had head  
up, looking around,  
giving alternate chirps (trills)  
& rasps. Recorded by Green.

4:45 PM Wght 59.6 g

5:30 PM 3 cc SMA + Sust

8:00 PM - Prior to feeding:

picking head up, looking around,  
Able to right itself more easily  
although not immediately.

Using elbows + forearms to ~~tilt~~  
balance front part of body  
when lifting head. Most of  
shoulders as well as head lifted.  
Opening + shutting fore + hind feet  
for clasping.

Begins hiccuping prior to feed.  
In more outstretched position more  
often; tail not curled. Does  
not use hands or feet (open) for  
movement. Pushes forward using  
fists of hands.  
Testes not descended.

Fed 2.5 cc

11:00 PM - Fed 3.0 cc

~~12:45 AM - Fed 3.0 cc SMA + Sust~~



21 July 77 Day 12  $\Sigma = 19.4 \text{ cc}$

0840 AM 3cc SMA + Sust formula.

1100 AM Def. prior to feeding  
well-formed dark brown  
bolus - also urinated.

Fed 2.5 cc SMA + Sust.

140 PM Carried in pocket  
from 1 PM.

Fed 3.0 cc SMA + Sust  
Back in incubator after feeding

350 PM Wght 60.6  
animal infrequently in fetal  
position. Tail typically held  
straight back unless  
sleeping. Hindlegs not crossed  
but being held under body,  
i.e. almost in a quadrupedal  
position.

4 PM 2.9 cc SMA + Sust  
(new formula)

Prior to feeding side to side  
head movements - searching -  
Still has poor clinging ability,  
i.e. will not hold on to vertical  
surface for very long.

7 PM 3.0 cc

930 PM 3.0 cc

1130 PM 2.0 cc

Ly in crouch <sup>sphinx</sup> position  
occasionally

Extremely alert + eager to  
feed but cannot sit  
properly. Sometimes  
bites nipple.  
Fur on venter sparse but  
growing. Awake more often



22 July 77 Day 13  $\Sigma = 20.4$  cc

0830 3.0 cc SMA + Sust

0920 Observed defecating  
hunches over, raises base of  
tail. Feces well-formed  
boluses (2) - medium brown  
color

1030 2.4 cc SMA + Sust

1345 3.0 cc " "

Film by Hoage + stills - Dorsey

1700 3.0 cc

1815 wght 62.7g

vocalizing before feed | chirp + rasp.

20:00 3.0 cc SMA + Sust

22:00 3.0 cc SMA + Sust

Am able to induce scratch  
response by stimulation  
in shoulder region but  
scratch not coordinated.

1245 (midnite)

Feed 3.0 cc SMA + Sust

still will not cling for  
prolonged periods.  
Appears that hindfeet are  
clinging better than forefeet  
for long durations.

Prefers sleeping horizontally.

Is more active in cage, i.e.  
moving around fur.

Can right himself but  
squirms a lot



23 July 77

Day 14

$\Sigma 21.85$  cc

0900 hrs

3.0 cc SMA + Sust.

Some feces in cage from night.

1145 hrs

3.0 cc SMA + Sust.

1215

Placed in sock around neck - slept til 1:30

Urinated. Woke up - Put hands on edge of

1:30

pocket - to grip - seemed to enjoy. Pulled self completely out of pocket down to chest.\*

1:40

Hiccups for two minutes

Back in pocket looked very alert, interested in people walking around.

1:50

Vibrated a little with. Very alert active

1:55

Hiccups again - Back in terrarium.

Holding head up, moving around, chirping and squawking.

\* Relaxed hands when pulling self up -

Used eline as lever.

2:10

Squawking. Hungry?

2:15

Squawking - I lifted up so is sitting on hands balanced against "mother". Holds body vertically for about minute, looking around.

2:25

3.25 - 3.5 cc SMA + Sust.

2:40

Asleep in sock.

3:15 Urinated

$\Sigma = 21.85$

4:00 Urinated

4:45

2.45 cc SMA + Sust (mixed new batch)

Before feeding was alert & squawking. Showed interest in surroundings - When fed, showed definite sucking tendencies - Got hiccups after second half so didn't give additional.

After burping, very alert moving around in hand. Left hand inclosed and relaxed, right hand clenched. Raised upper half of body and pulled self up towards my hand so put next to ~~pocket~~ <sup>sock</sup> and crawled into pocket. Is still hungry -

Makes small purring sounds, which are different from snuffing, when nuzzling my hand.

6:15 Weight

62.6 grams. <sup>resping before</sup> feed

6:30 Urinated

7:15

3.25 cc SMA + Sust.

Hiccupping. Chirped and squawked for a while before, then slept. Began coming in sock still.

9:25

3.40 cc SMA + Sust.

Reaches for nipple and really appears to suck. Urinated after last part of feed.

Sleeps horizontally in sock also.

11:15

3.50 cc SMA + Sust.



24 July 1977

DAY 15

Σ 21.6 cc

1000 hrs. 3.0 cc SMA + sust.

1125 hrs Put in sock around neck

1300 hrs 3.00 cc SMA + sust. Chirped during 2<sup>nd</sup> pt.

Urinated after 1<sup>st</sup> 1.50 cc - seems to be a pattern

After finished second part, exhaled over my hand down onto towel in usual fetal position - Since hadn't defecated yet, moistened some cotton and rubbed ano-genital area.

Defecated. Feces solid + tan (1). Went to sleep in sock.

1400 hrs. 3.4 cc SMA + sust.

Urinated. Chirped before feeding. Hiccups afterwards - ~~He~~ Sucked for a few seconds - kept hand as usual clenched and tight clenched. Put in terrarium.

1600

2

Took out of terrarium brought to work in sock - was hungry squawking, then urinated. Could have been dead and car motion took fine - kept warm in hand until incubator heated up chirping + popping snuffing hand.

2

1615

Put in incubator - 80°

Measurements:

Tot. L. 24.3 Hd. L. 3.6 Hand 3.0  
Tail 13.3 Ear Width 1.4 Foot 3.4  
H-B 11.0 Ear Hgt 1.7

Wt. gain = 2.6 g  
Σ = 21.6 cc

1645 Drank 2.9 cc SMA + sust.

Was trembling during last part of feed. Snuffling sounds very audible. Chirped a lot during feeding. Seemed very alert. May have been chilled by cold room.

Placed in incubator inside sock - 80°

1700 hrs. Appears to be sleeping

1820 hrs Weight 65.9 g

Urinated - lost .7 g so weighs 65.2 g  
Seems O.K. snuffling still evident, Dura says doesn't sound bad.

1845 SMA - sust 3.5 cc

Hiccups before end of feed - to put on back and rubbed stomach - Seemed to enjoy - Anyway, no more hiccups. Then finished feed

Fell asleep in same position in my hand. Seems to go through several stages. Have noticed this in sock: (1) does gradually with eyes half closed, making suckling motions with mouth kneading gestures with hands; (2) eyes gradually close tightly, at which time he makes little chirps, nestles deeper into hand or sock, making snuffling + nodding sounds as tatts with head; (3) then is completely out and relaxed - quiet, and can even pick up and doesn't wake up.



STILL DAY 15

21:15 hrs 2.0 cc SMA and Sust. Hiccups, rubbed stomach + went away.

23:20 hrs. 2.8 cc SMA + Sust. Fell asleep twice when I tried to burp him, so don't force him.

25 July 77 DAY 16  $\Sigma$  23.05 cc

08:30 hrs. 3.75 cc SMA + Sust. Hiccups - Rubbed stomach + went away. Sucked about .25 cc himself. Made reaching movements with light hand - although still closed fist, for bottle. Carried to work in sock, then placed in incubator.

10:45 hrs. 3.25 cc SMA + Sust. Hiccups - Rubbed stomach - Urinated

11:40 Took out of incubator to show Bob ~~hair~~ hair elevation + flatter response on head. Didn't respond to stimulation by noise, sticking, waving, poking fingers close to eyes or head. Appears alert and curious but can't tell what is looking at, IF HE CAN SEE. Urinated in my hand. Incubator temp. 84°

12:55 hrs. Defecated - Two medium brown, solid

$\Sigma = 23.05 cc.$

13:00 hrs. 2.8 cc SMA + Sust. with difficulty. Although heat turned up, seems to get cold quickly

15:30 3.2 cc SMA + Sust. feeding interrupted by phone call - Sucking increases with each feed. Didn't finish till 4. Susan Kennedy looked at animal + tested responses. Response to light but not focusing or response to object close up - No response to clapping or snapping - Could it be that doesn't respond to low frequencies?

17:35 Wt 65.8 g.

18:15 3.4 cc SMA + Sust. Hiccups - Urinated

20:15 3.9 cc SMA + Sust. Drank most by himself. Picked on skinny artificial mother in terrarium. Urinated

23:15 2.75 cc SMA + Sust. Wanted more but didn't give because belly enlarged - Perhaps because refused to suck most of milk on own - ie may have taken in some air. Shows eling response at various angles on surrogate mother.



26 July 77 DAY 17

Σ 22.8 cc

0820 3.6 cc SMA + sust. Drank first bottle alone. Heccups after last feeding. Put back in terrarium.

1020 hrs 3.6 cc SMA + sust. Drank whole bottle on his own in one go. Urinated afterwards Heccups. Stayed on surrogate mother - some clinging. limbs spread out in more natural position, relaxed.

1245 hrs 3.6 cc SMA + sust. Urinated, defecated (solid - 2) through. Alert, clinging to surrogate mother.

1400 hrs Urinated

1445 hrs urinated - just a little

1510 hrs 2.0 cc SMA + sust. Didn't give more because didn't want to exercise on repeat stomach.

1420 Urinated

1720 Feces, 4 - formed, solid, odorless.

1730 3.0 cc SMA + sust

Fell asleep after 1st bottle. Vocalized before feeding.

1850 Urinated afterwards, wt. 67.1 g

WT = 67.1 g

Σ = 22.8 cc

1950 hrs 3.50 cc SMA + sust

Urinated. Squeezed while drinking. Wouldn't let snake afterwards. looks <sup>alertly</sup> around. Gaton discovered that if you turn him away from object of gaze, his pupils tries to follow - If object moves, no response. So maybe he can see!

2205 hrs Urinated. Wake up, vocalized. Scratched side - First time I've seen him do it on his own.

2215 hrs. 3.50 cc. SMA + sust.



27 July 77 DAY 18  $\Sigma = 25.0 \text{ cc}$

0745 hr 4.0 cc SMA + Sust  
Hiccups.

0815 hrs Put in incubator

0900-0930 Awake, looking up, head & chest raised on elbows, fists partially clenched - Grasped large + small surrogate mothers, crawled over to basket. Fell behind and was unable to pull self up, but when righted, remained sitting up. Mouthed wooden edge of towel rack around which fur arranged, repeatedly and with short claps of fur with feet and one hand. Efforts at trying to pull self up from side of surrogate mother appeared too much for muscle development, as yet. Tilted head or arms would tremble after each attempt. Moved around with upper part of body mostly erect for about 2 hr. Sometimes vocalized and opened mouth wide (gape?) Finally gave up and went to sleep on side. Note: Since he was fed at 7:15 shouldn't have been hungry but acted that way.   
 - Scratched with hind foot several times.

10:45 Scratching side of right left. contacting body. Raised elbow to get to ~~under~~ armpit during scratch. Clearly more alert + active + coordinated relative to 23rd July

Fed ~ 3.6 cc SMA + Sust.

Allowed to sk on own but swallowed too quickly. Sneezing sev'l times after feed. Gawned 3x during feed. Tilted head while gazing.

Exhibiting almost normal grasp + clutch by opening + shutting fists

1300 wakes up, alert, rasping + chirping, scratching, ~~but~~ looking around,

3.5 cc SMA + Sust. - rapid eager feeding  
 $\frac{1}{2}$  sk :  $\frac{1}{2}$  lap

1500 Awake, rasping, looking around, scratching,

1530 3.5 cc SMA + Sust  $\frac{1}{2}$  sk  $\frac{1}{2}$  lap

1730 67.7g

1740 3.5 cc  $\frac{1}{2}$  sk  $\frac{1}{2}$  lap

2015 3.4 cc SMA + Sust  
carried in sock (new formula)

2300 3.5 cc - sk most of bottle using nipple with larger hole holding head up when awake for  $\frac{1}{2}$  hr.



28 July 77 Day 19  $\Sigma = 24.6$  cc

0830 hrs 3.5 cc SMA + Sust -  
mainly sk.

11 15 3.5 cc SMA + Sust / mainly sk

1315 <sup>Super 8</sup> film + measurements  
Hoage -

showing grasp response  
head following my movements  
clinging ability

measurements

H-B	10.8	Tail L.	13.8	Ear Hgt	1.6	Hand	3.3
T.L.	24.7	Hd. L.	4.2	Ear Width	1.8	Foot	3.3

1330 3.5 cc SMA + Sust / mainly sk.

1600 3.5 cc SMA + Sust.

18:30 3.6 cc SMA + Sust.  $\frac{1}{2}$  sk:  $\frac{1}{2}$  lap  
Have been carrying around neck  
in sock.

2100 Had defecated - 3 boluses  
dark brown / hand in sock  
3.5 cc SMA + Sust.

2330 3.5 cc SMA + Sust  
mainly sk.

Being kept in  
aquarium at home:  
no extra heat

Comments: (1) Hands + feet becoming pigmented,  
are now grey-pink color (2) Fur on venter  
longer although still sparse (3) Animal  
hungrier at feeding, usually awakening 2 hrs  
after previous feed (4) Searching for nipple includes  
butting at nipple w/ side-to-side head movements  
(5) Shows proper grasping with hft; better  
than hands. (6) Frequent rasping  
when hungry. Occasional chirps/trills  
during feed (7) Yawn (gape) often  
follows from rasp (8) Can erect entire  
forequarters + gaze around. (9)  
Uses forefoot for scratching near rump  
(10) Hindfoot scratching coordinated + includes  
back of head, back, side, neck. (11) Follows  
movement + sound with head movements.



29 July 77 Day 20  $\Sigma = 27.7 \text{cc}$

0830 4.6 cc SMA + Sust.

1100 4.0 cc SMA + Sust (new batch)  
defecated & urinated before feed

1240 Wght 72.4 g

1330 4.0 cc SMA + Sust.

15:40 awake & squeaking in incubator

1600 4cc SMA + Sust.  
clinging well in incubator

1900 4cc SMA + Sust

21:15 3.9 cc SMA + Sust.

23:00 3.2 cc SMA + Sust.

hicups after feeding  
Comments: (A) gazing around frequently (B) clasp & unclasp w/ fore & hindlimbs (C) head tilt during gaze (D) resp more common during awake hungry period.

30 July 77 Day 21  $\Sigma = 31.6 \text{cc}$

12.7  
15.9  

---

31.6

0815 5.0 cc SMA + Sust.

1030 defecated brown firm bolus

Fed (10:30-11AM) 4.0 cc SMA + Sust (new batch)

and ~0.5 cc Gerbers rice cereal + milk formula

14:00 Fed 4.2 cc SMA + Sust.

midway in feed  
Wght 75.8 g

1630 4.5 cc SMA + Sust

1845 5.0 cc SMA + Sust.

21:30 5.0 cc SMA + Sust.

had defecated before feeding  
looser than usual  
(Gray wedding party + Redford bbq - lots of noise + people)

2345 3.9 cc SMA + Sust.

awake as long as there's noise + people - during Gray party + BBQ.



31 July 77 Day 22  $\Sigma = 29.8 \text{ cc}$   
 $\Sigma = 1.2 \text{ cc}$   
rice cereal

0915 5cc SMA + Sust  
(feces found in cage - hard + brown)

1145 4.9 cc SMA + Sust

Prior to feed making rasps.

Clasping + grasping perfected.

Can readjust position on  
fur surrogate.

Opening + closing fists  
frequently.

Defecates after feed -  
holds rump + tail slightly  
raised.

Can easily + regularly  
hold head raised +  
forequarters - But still  
using fists for support.

1300 Diarrhea noticed  
weight 76.2 gm

1340 Rasping - by on side scratching  
side with forefoot.

Down to 6 feeds/day

15:00 Fed 5.0 cc SMA + Sust  
(new formula) - diluted  
to 60% strength  
+ @ .5 cc Gerbers rice cereal  
Chirps + rasps during feed -  
didn't want to take cereal.

16:00 5.4 cc formula at  
80% strength

20:30 6.0 cc formula full  
strength

23:30 3.5 cc formula full  
strength

~ .7 cc cereal (Gerbers rice)  
taken from syringe

Has not defecated since 1300 hrs

Moving around considerable  
amount, readjusting position  
Awake much of the day between  
feeds. Sometimes using  
forefoot or hindfoot to  
cling to tail or own fur.



1 Aug 77 Day 23  $\Sigma = 31.4$  cc  
 $\Sigma = 1.4$  cereal

0815 Had defecated - feces firm  
6cc SMA + Sust full strength

1100 hrs. 4.0 cc SMA + Sust  
• 7cc Gerbers rice cereal

Green records voco.

1400 3.4 cc SMA + Sust  
(new formula)  
1.0 cc Gerbers cereal  
(rice) mixed with milk.  
Cereal taken more  
eagerly + efficiently.

1700 loose feces  
wght 77.7 before  
feed.

Fed 6.0 cc SMA + Sust.

1930 5cc SMA + Sust

2200 Had defecated - feces firm  
3.5 cc SMA + Sust

0030 3.5 cc SMA + Sust

Comments :

① Almost able to sit upright  
but still keeps fists clenched  
when holding forequarters  
raised. Hindfeet  
still occasionally crossed.  
Tail usually held straight  
out ~~off~~ behind.

② Has long bouts of grooming  
after a feed, including  
hft scratching  
alternating with scratching  
~~hft~~ rump with forefoot.

scratch reflex for several  
days



2 Aug 77 Day 24  $\Sigma = 25.2$  cc milk  
 $\Sigma = 3.4$  cc cereal

0900 - well formed feces in cage  
6.0 cc SMA + Sust.

when no longer hungry will  
begin gazing around +  
head shake when nipple put  
near mouth.

11:30 1.4 cc rice cereal mixed w/ milk  
4 cc milk formula  
defecated during feed.  
took cereal very well - bites  
at syringe when eating cereal.

13:25 81.0 gm Wght

1400 3.5 cc milk (new ~~form~~  
SMA + Sust batch formula)

1645 3.5 cc ~~new~~ SMA + Sust  
2.0 cc Gerbers rice  
cereal w/ milk formula

Photographs taken by D.K. + C.D.

Sibling in SMH was off today  
for 30" - 1 minute.

1945 5 cc SMA + Sust.  
Grooming bout after  
feed.

2200 Firm feces present.

2300 3.2 cc SMA + Sust

Incubator at office left off.

Comments:

- (1) while sitting upright holding  
shag w/ gave leverage  
~~clearly~~ clearly visually  
followed nipple as it  
approached + thrust forequarters  
& head forward to make contact.
- (2) when awake, commonly  
sits with forequarters  
raised + gazing around.
- (3) Grasping shag so well that  
he's difficult to extricate  
from shag.
- (4) Use pft more frequently to  
scratch belly, rump
- (5) Scratch reflex only when to  
stimulate ear.
- (6) Stretching movements when he wakes  
up. (7) May sleep with tail curled over  
head.



3 Aug 77 Day 25  $\Sigma = 28.5$

0900 6cc SMA + Sust.  
2 fecal boluses in cage

1130 AM 2.9 cc SMA + Sust  
2.0 cc Gerbers rice cereal

1230 Feces - hard-present

1400 6.0 cc SMA + Sust  
(new batch formula)

1645 Fed 6.0 cc SMA + Sust  
Hoage Super-8 filming

1800 Wght 86.7

1930 2.0 cc rice cereal + form.  
3.0 cc SMA + Sust

23:15 4.0 cc SMA + Sust.  
Incoops after feed -  
eating too fast

always chirps during rice cereal feed,  
bites syringe end, feeds sloppily.

4 Aug 77: Day 26  $\Sigma = 28.9$  cc milk

0800 5.2 cc SMA + Sust.  
defecated during feed

1030 1.5 cc Gerbers cereal / monkey chow / milk  
2.5 cc SMA + Sust  
occasionally gagging on cereal  
chow mixture

1155 wght 86.5 g

12:30 3.0 cc SMA + Sust -  
(new batch formula)

1530 1.2 cc Gerbers rice / monkey chow / milk mix  
4.0 cc SMA + Sust

1800 Actwely squirming around +  
squawking @ 2 hours after  
each feed.  
4.0 cc SMA + Sust  
doesn't seem as hungry but  
schedule off

From 1900 hrs on - awake +  
squawking.

20:30 5.4 cc SMA + Sust.  
23 15 4.8 cc " "  
scratching well with feet on  
belly.



5 Aug 77 Day 27  $E = 28.3$  SMA + Sust  
 $E = 2.8$  cc cereal  
 $E = 2.0$  cc applesauce

0830 AM 6cc SMA + Sust.  
Two fecal boluses in cage before feed.  
Also defecated right after feed.

Is almost able to lift hindquarters off ground with hindfeet. Is using hft to push body forward.

1100 AM

1.0 cc Gerbers rice  
(monkey chow etc)

4.5 cc formula milk

1330

1.0 cc cereal mix w/ chow  
4.0 cc SMA + Sust

15:30

3.0 cc SMA + Sust (new batch form)

1720

88.8g

1800

2.0 cc Gerbers applesauce <sup>no sugar</sup>  
3.0 cc SMA + Sust  
defecated (loose & light brown) during feed.

Frequent tail cleaning by

pulling tail between legs + attempting to rake it with forefeet  $\rightarrow$  (scratch)

Black starburst being obscured by center forehead growth of gold fur

2100

4cc SMA + Sust

.8cc Gerbers rice + chow + milk

defecated during feed - loose  
Feeding from syringe may be upsetting  $\rightarrow$  diarrhea

Able to drink milk from nipple with head up w/o being held in hand. Using hand to attempt to grab nipple during feed. Hands also used to hold tail during scratch.

Still cannot stand. Sitting upright all time when awake. Hft more often opened now when seated.

2400

3.8 cc Sust + SMA



6 Aug 77 Day 28  $\Sigma = 29.0$  cc SMA + Sust  
 $\Sigma = 4.7$  cereal  
 $\Sigma = 2.0$  cc applesauce

0900 5cc SMA + Sust  
firm feces present in cage

1130 1.7 cc rice cereal/chow/milk  
4.8 cc SMA + Sust

1400 defecated prior to feed - firm  
3.0 cc SMA + Sust  
1.0 cc rice cereal/chow/milk

1st seen pulling himself forward  
with forefeet as well as hindfeet.  
Chirping more frequently, although  
rasp common when hungry

able to hold his whole body upright  
when trying to walk quadrupedately  
but cannot walk

1645 Defecated before feed - firm  
1/2 cc cereal mixture  
5.0 cc milk  
initially ate cereal eagerly; then quit.

1930 Defecated before feed - loose  
0.8 cc cereal  
4.0 cc SMA + Sust

2200 2.0 cc Cerbers apple sauce  
3.2 cc SMA + Sust (new batch)

Not held in hand for almost  
all today's feedings

2400 4.0 cc SMA + Sust

Very active 1800 - 2100 hrs.

Fur grown in on throat,  
belly, feet. Tail fully  
furred.

Soles of feet + palms becoming  
more grey.

Grooming of all body parts  
fully coordinated.  
Autogrooming when waking up  
& after feed.



7 Aug 77 Day 29

$\Sigma = 25.0$  cc SMA + Sust  
 $\Sigma = 5.4$  cc cereal  
 $\Sigma = 3.0$  cc applesauce

0830 Feces present / firm

1.0 cc cereal

4.0 cc SMA + Sust

Defecated during + after feed (firm)

After feeding trying to stand +  
able to lift body off ground for  
@ a second by pulling forward  
w/ fft + pushing with hft.

1100 Feces present

1120 92.1 gm

1145 1.0 cc cereal

4.0 cc SMA + Sust.

245 1.2 cc cereal

4.0 cc SMA + Sust.

515 5.0 cc SMA + Sust

1.4 cc cereal

### Measurements

Tail 14.9 cm

Ear Hgt 1.6

Hand 3.0

HB 12.0

Ear width 2.0

Foot 3.4

Total length 27.5

800 PM

4.0 cc SMA + Sust

3.0 cc Applesauce

1100 PM

4.0 cc SMA + Sust

.8 cc cereal

Began to bite at small  
objects — see thing?

Took a large shit after  
feeding — toothpaste



8 Aug 77 Day 30

$\xi = 26.2$  SMA + Sust  
 $\xi = 6.3$  cereal  
 $\xi = 2.0$  cc applesauce

0900 1.5 cc cereal

5.0 cc SMA + Sust

feces present in cage

(3 boluses) + animal

defecated before + after

feed — feces dark + firm

1130

5.0 cc SMA + Sust

1.2 cc cereal

defecated prior to feed —

loose + green (with urination)

Green — vocs recording

1400

5.0 cc SMA + Sust

1.2 cc cereal

defecated during feed — loose

1530 Wgt 98.2 gm

1630

1.2 cc cereal

4.5 cc SMA + Sust

Mack Super-8

1930

2.0 cc applesauce

3.0 cc SMA + Sust

2130 Some very loose feces present

2230 Fed 1.2 cc cereal

3.7 cc SMA

Still trying to stand —  
improving



9 Aug 77 Day 31

$\Sigma = 28.9$  cc SMA + S

$\Sigma = 6.9$  cc cereal

$\Sigma = 3.0$  cc applesauce

0830 1.4 cc cereal  
5.0 cc SMA + Sust.

one fecal bolus present in cage  
defecated after feed - both firm

1100 0.8 cc cereal  
5.0 cc SMA + Sust (new batch)  
feces present - firm

1330 Loose feces present

1345 1.0 cc cereal  
5.0 cc SMA + Sust  
is alternating <sup>fore</sup> limbs when  
trying to walk -  
Can almost walk

Using hands to try + grab  
at things although  
doesn't have eye-motor  
coordination yet.

1530 Photos - stills - L. Dorsey  
outdoors; fast film

Wght 98.9g

1630 1.5 cc cereal  
5.2 cc SMA + Sust  
defecated before feed - firm

1930 3.0 cc applesauce  
3.5 cc SMA + Sust.

After feed chewed on piece of  
apple!  
Is able to stand + alternate  
limbs for walking altho  
can't walk more than 1-2  
steps. Grabbing at objects  
w/ hands.

Pouncing at objects  
Rasp voc. when hungry!

Able to stand on hind legs  
while holding self up by  
hands.  
Really moving around + exploring  
environment deliberately.

2300 5.2 cc SMA + Sust  
1.2 cc cereal (Cerberus rice +  
pulverized  
monkey chow)

fed last part of formula  
from a spoon!



10 Aug 77 Day 32 -  $\Sigma = 26.8$   
 $\Sigma = 8.1$   
 $\Sigma = 3.0$  cc apple sauce

0815 — one fecal bolus in cage,  
defecated twice more before feed — firm

• 5cc cereal  
6.0 cc SMA + Sust taken  
completely from spoon.

1000 Two more fecal boluses — firm

1030 Allowed to chew on piece of  
apple.

1115 2cc cereal  
5.2 cc SMA + Sust.  
Fed entirely from spoon.  
Defecated during feed / firm.

1400 2cc cereal +  
3.2 cc  
from spoon

1630 Wgt: 101.3g

Green recording

1700 ~1.6 cc cereal in formula  
4.0 cc milk

Able to climb up onto  
macramé swing mother.

2030 AM Fed 3.0 cc ~~apple sauce~~  
5.0 cc SMA + Sust.  
from spoon

0015 2.0 cc cereal  
3.4 cc SMA + Sust  
from spoon mainly  
Eating well from spoon.



11 Aug 77 Day 33  $\Sigma = 25.7$  cc milk  
 $\Sigma = 11.8$  cc cereal  
 $\Sigma = 1.8$  cc applesauce

0830 Defecated 4x before  
feeding, once after  
feeding

6.0 cc SMA + Sust.  
2.0 cc cereal (berbers rice  
monkey chow  
milk)

11:15 1.5 cc cereal  
4.0 ~~cc~~ cc SMA + Sust

1500 3.0 cc cereal  
4.0 cc SMA + Sust -  
new batch.

1700 weight 106.3

1800 1.8 cc applesauce  
4.8 cc mixed milk +  
 $\frac{1}{2}$  slice banana

2015 3.2 SMA + Sust  
2.8 cereal  
piece of apple before feed  
defecated firm but in quantity

Banana +  
apple eaten!

before feed - mummy tooth paste.

All meals from spoon except  
at end when from  
syringe

wobbly walking

2230  $\checkmark$  2.5 cc cereal  
2.7 cc SMA + Sust  
not very hungry



12 Aug 77 Day 34

$\Sigma = 22.9$  cc SMA + Sust

$\Sigma = 11.9$  cc cereals

$\Sigma = 0.5$  cc  
Gerbers pears

0830 AM 3.0 cc cereal  
4.0 cc SMA + Sust  
defecated 2x during feed  
appeared constipated.

1130 AM 3.0 ~~cc~~ cc milk  
2.8 cereal

245 PM ~ 6 cc milk (new batch)  
with marmoset chow  
mashed in  
0.5 cc mashed Gerbers  
pears

photos + Super-8  
Dorsey Mack

500 PM 1.5 cc cereal - HiPro Gerbers  
cereal alone  
3.2 ~~cc~~ cc milk - SMA + Sust

800 PM 2.4 cc cereal (Gerbers rice & chow)  
3.0 cc milk (SMA + Sust)

11:15 PM

2.2 cc Gerbers HiPro cereal  
3.7 cc SMA + Sust

Frequent pouncing in play

Still wobbly walking but  
with alternate foot  
movements

All feeds from spoon



$\Sigma = 29.2$  cc SMA + Sust

$\Sigma = 13.3$  cc cereal

13 Aug 77 Day 35  $\Sigma = 1.6$  cc Gerbers pears

10 00 AM 5 cc SMA + Sust,  
1.6 cc Gerbers pears

12 30 3.0 cc cereal (rice + monkey chow)  
mixed with banana

2.0 cc formula (SMA + Sust)

14 00 Wgt 107.4g

During weighing produced chirps. After, while Kennedy holding him produced 3 note long call or beginnings thereof.

Pounces now include both fore + hind limbs off ground.

Vocs now include loud chirp rasp, 3 note call (sometimes 2 syllables), purr.

Rasp usually 2 notes.

1445 3 cc Gerbers Hi Pro  
2.8 cc SMA + Sust  
+ 5.0 cc SMA + Sust  
(new batch)

1730 5.0 cc SMA + Sust  
2.8 Rice + monkey chow cereal

2000 5.2 cc SMA + Sust  
2.0 cc Hi Pro Gerbers cereal.

apple pieces eaten before feed  
Attempts to hold apple in hand + put in mouth.  
Feces this PM have been looser + greener

2330 2.5 cc Gerbers Hi Pro + monkey chow cereal  
4.2 cc SMA + Sust

pounced with ft + left off substrate  
exploratory behavior +  
play now common -  
pouncing mainly during play  
but manipulating objects with  
hands + mouth. Side to side gaze still  
common. Biting at objects.



14 Aug 77 Day 36

Σ 24.8 cc SMA + Sust

Σ 9.8 cc cereal

Σ 3.0 cc Gerbers pears

some apple  
piece banana

0845

2.8 cc cereal (HiPro + monkey chow)

4.4 cc SMA + Sust

defecated after feed - firm

1130

cereal 1.6

milk 3.2

defecated during + after feed

looser - toothpaste

Wght 1300 hrs — 113.0 g

1415

Independent feeding

Ate full slice of banana !!!

+ 4cc SMA + Sust - new batch.

1715

3cc HiPro + chow cereal

4.8 cc SMA + Sust.

20:15

3cc Gerbers pears

5.4 cc SMA + Sust

Prefers to eat pears out of syringe

Colonial is able to climb onto objects, eg elbows by standing on hind legs and pulling himself up with forelegs.

Walking with less wobble.

Follows objects with eyes eg human movement, fly.

1130 PM

2.4 cc cereal

3.0 cc milk



Σ 29.1 cc +  
Σ milk +  
cereal

15 Aug 77 Day 37 Σ 5cc pears

1/2 banana

0830

3cc Gerbers pears

2.2 cc cereal (HiPro + Chow)

2.0 cc milk

1130

2cc SMA + Sust

1.5 cc milk + marmoset diet

1/2 slice banana - self feeding

1345

5.5 cc SMA + Sust

(2.0 cc mixed with marmoset  
chow)

1700

5.0 cc SMA + Sust (new batch)  
mixed with Gerbers HiPro + Chow.

1900

Wght 116.3g

~~1900~~

2015

1.5 cc milk

4.4 cc milk + HiPro cereal

2340

2cc pears Gerbers

3.5 cc HiPro cereal + chow

1.2 cc milk



~~24th~~

16 Aug 77 Day 38  $\Sigma$  26.6 cc  
 $\Sigma$  2.2 Berbers pears

0830 2.2 cc SMA + Sust  
2.6 cc cereal  
1.7 cc pears

1145 Ate piece of ~~pears~~ banana  
on own in incubator (2-3g)  
4.6 cc milk with  
little marmoset chow  
in it.  
0.5 cc pears Berbers

2 15 3.2 milk  
2.2 Hi Pro cereal

4 30 Full piece of banana = ~ 3-4 g.  
while photographing  
Stills + Super - 8

5:10 PM weight 120.9

5:25 PM 5.4 cc milk + Hi Pro  
cereal

7 30 PM 2.6 cc milk +  
Hi Pro cereal  
bit of apple.

10:15 3.8 cc milk + cereal  
before ate considerable  
apple - self-feeding  
moves from piece to piece  
carries apple in mouth

~~is~~ Able to jump, climb up onto  
objects, pounce -  
pounces more than walks



17 Aug 77 Day 39  $\Sigma$ : 30.2 liquid  
+ cereal

0830 4.8 cc mixed cereal + milk  
2.0 cc pears

11:30 Mixed marmoset chow banana  
+ milk  
~~amt~~ amt eaten unclear

Then fed marmoset chow  
mixed with banana -  
fed on tongue depressor  
tried 2 mealworms,  
inside taken.

Repeated 3x during  
feed + urinated  
feces very firm.

When waking up occasionally  
produces 3-4 syllables  
of long call -

2:00 ② 5.5 cc milk + cereal  
① mixed banana + marmoset  
chow  
ate well from tongue  
depressor

4:00 PM 122 gms weight

Feces lately have been  
firm + yellow-brown  
probably banana.

4:30 PM Self feed of  $\frac{1}{3}$  banana +  $\frac{2}{3}$  marmoset  
chow, in incubator  
ate @ 1-2g.

Then ~ 5cc mixed milk, marm.  
chow, banana, + HiPro.  
Ate well.

Gained 2.7 gms from feeding.

7:30 PM Self feeding of several pieces of  
apple in incubator. Then  
~ 4cc milk + HiPro + chow  
+ 3.1 cc milk  
(new batch milk)

11:00 PM 3.0 cc pears from  
syringe  
2.8 cc milk + HiPro

Ability to pull himself onto object  
by pulling with forelegs + swing legs hind legs up  
is perfected.



18 Aug 77 Day 40

0815 3 cc thick cereal (HiPro + chow)  
with milk  
1.5 cc pears berries  
2.0 cc SMA + Sust  
defecated 4x during  
meal - All firm.

1130 5.8 cc milk + marmoset chow  
+ banana  
before milk, ate numerous  
small pieces of <sup>marmoset</sup> chow  
x

2-230 PM 3 mealworms (eagerly)  
several pieces of marmoset  
chow + banana  
5.2 cc milk + HiPro + monkey  
chow

3 PM 3.0 cc milk -

450 PM Wght 123.7g

600 PM 5.6 cc  
milk + cereal

8:40pm 5cc milk  
1/2 tsp cereal  
Ate all but a little cereal  
8:55pm several pieces of banana

1:30 AM  
1.6 cc milk - 1/2 tsp cereal  
Ate 3 cc of combinatn



5 feeds

14 Aug 77 Day 41

0900 2.4 cc milk (last)  
3.4 cc HiPro + chow + milk (1/6 cc milk, 1/2 tsp cereal)  
2.2 cc Gerbers pears

1145 2 mealworms  
1/2 tsp 2/3 marmoset chow + 1/3 banana  
4cc milk + 1/8 tsp Gerbers HiPro

defecates during + after meals  
feces extremely firm

Animal well coordinated;  
highly vocal when playing.  
Climbing, rolling <sup>side</sup> on back holding  
surrogate mother <sup>or macramé</sup>. Pouncing  
Usually sleeping to 11 AM -  
Most active hours 3-8 PM.

When playing chirps alternating  
with rasps.

Has nest box which he prefers  
to sleep in. Chewing wood.

Doesn't eat whole mealworm but  
~~spits~~ chews + spits out exoskeleton.

2:30 PM ~ 1/2 tsp (2/3 Science diet 1/3 Ban)  
3.8 cc (1/5 cc milk, 1/2 tsp cereal)  
SMA  
Sust + cereal  
2.2 cc SMA + Sust

5 PM 3 cc SMA + Sust + cereal  
(1/6 cc + 1/2 tsp)  
1/2 tsp Science + banana  
several pieces of apple.

6:20 PM Weight 125 gm.

8:30 PM piece of banana  
1/2 tsp Science diet + banana  
3 cc SMA + Sust with cereal  
(mixed batch milk)

Long Call heard when Colonel put  
to bed. Long Call seems to  
occur when isolated + tired.



20 Aug Day 42

0900 7.4 cc milk + cereal  
(12 cc milk + 1 tsp cereal)  
defecated 2x during feed

12 noon

1 tsp (3 marm. diet: 1 banana)  
3 mealworms  
? milk

3:30

1 tsp (3 marm diet: 1 ban)  
1/2 thin slice apple  
4 cc milk - drunk out of  
dish.

4:20 PM Wght 128.8

6:30

1:4 (Ban.: Science diet)  
Axe 1/3 tsp  
4.5 cc SMA + Sust.

9:10 PM

7 1/2 tsp <sup>4 marm diet:</sup> (Banana) (out of 1/4 tsp of 1 Ban: 4 die)  
5 cc milk + cereal (out of 1/2 tsp HPro + 9 cc milk)

12:15

8 cc milk w 1/4 teaspoon cereal  
2 1/2 mealworms  
1 1/2 tsp warm diet w 1 slice banana  
5 pieces apple (1cm x 1cm)

4:50

8 cc milk w 1/4 teaspoon cereal  
3 small pieces apple  
1 tsp warm diet w 1 slice banana  
4 mealworms

defecated twice after feed, during feed



21 Aug Day 43

10 AM 8cc / 11cc milk + 1 tsp Hi Pro cereal  
1/4 tsp of 4 Diet: 1 banana

12:30 PM 8cc milk  
1/4 tsp 4 Diet: 1 Banana

4 PM 4.8 cc milk  
1/2 tsp (4 Diet: 1 Banana)  
1/2 thin slice apple.

6 15 PM 4.5 cc milk + cereal mix  
1 tsp (3 Diet: 1 banana)

9 15 3/4 tsp (3 Diet: 1 banana)  
6 cc milk + Hi Pro cereal

22 Aug DAY 44

0900 7cc milk 1/2 tsp hi pro cereal  
1 banana + 1/2 tsp cereal, with warm diet  
left in cage.

12 15 8cc milk w/ 1/4 tsp cereal  
2 1/2 mealworms  
1 1/2 tsp warm diet w/ 1 slice banana  
4 pieces apple

( Ate some diet out of dish )  
1650 8 cc milk, 1/2 tsp cereal  
1 tsp warm diet w/ 1 slice banana  
4 mealworms

21 15 6cc milk w/ 1/4 cereal  
1 tsp warm diet w/ 1 very small slice banana  
1 piece apple -

Large call before ate after playing. Is reaching  
out to grasp more & more. Ate most of warm  
diet out of dish. Milk also.  
Defecated once during last feeding



23 Aug Day 45

4:00 2 mealworms  
1/2 tsp marm diet + 1/2 slice banana  
3 cc milk w/ 1/4 tsp cereal

Drank water from dish, took stills. Also forced mealworm and ate. Also stills of play.

1:15 Filmed 8 min of play, eating, drinking, locomoting.  
3/4 tsp marm diet  
1 slice banana - ate all by self from dish.  
1 slice apple  
5-6 cc milk w/ cereal  
5 mealworms.

Recorded vogs: play rasp, purr, long call, food chirps

4:00 pm Wt: 136.1 g. (I noticed that scale was not regulated properly. Could be that's why weight seemed low.)

5:30 1 tsp. marm diet w/ 1/2 tsp. banana.  
7 cc milk w/ cereal (won't eat cereal)  
Ate most diet from saucer. Drank milk from saucer.

10:15 1/5 tsp marm diet + 1 slice banana  
8 cc water  
2 cc orange juice (1/2 tsp)

24 AUGUST DAY 46

9:00 5 cc milk  
1/2-teaspoon marm diet  
3 slices apple  
1/4 tsp banana.

1 mealworm Defecated about 5 times during meal

11:00 drank large amount of water (8cc?) from dish and ate a little marm diet

2:00 1 tsp banana + 1 tsp marm diet  
5 mealworms  
1 1/2 cc orange juice + 9 cc water  
Drank water on own in cage.

5:00 Wt 134.5 - gained 10 g. after ate  
1/2 tsp marm diet - Ate some from plate alone.

1 1/2 slice banana -  
1 mealworm

8 cc milk. } ate some plain marm diet at table

7:00 2/3 tsp marm diet  
1 1/2 slice banana

2 cc orange juice  
4 cc water? from dish

10:15 2/3 tsp marm diet 1 1/2 slice banana  
5 cc milk from dish



AUGUST 25

DAY 47

9:15  $\frac{1}{2}$  tsp marm diet w/  $\frac{1}{2}$  teasp. banana  
5 cc milk - from dish  
4 meal worms.  
- Vomited milk first time <sup>then</sup> drank -

11:00 drinks water from dish on own.

11:15 ate piece of orange

12:15  $\frac{1}{2}$  tsp, marm diet  $\frac{1}{4}$  tsp, banana  
1 large piece apple.  
1 cc O.J., w/ 1 cc H<sub>2</sub>O  
3 meal worms.

2:00 Drank water on own. Took several very small  
pieces plain warm food  
Ate 1 meal worm.

Locomotion much more rapid. Climbing a little better.

Begs for food from oriented mouth.

Urinate frequently, probably because of drinking so  
much water - a new resource!

4:50 Wt. 139.3 grams.

5:15  $\frac{1}{2}$  tsp marm diet  $\frac{1}{4}$  banana.

6:00  $\frac{1}{2}$  tsp marm diet  $\frac{1}{2}$  tsp banana  
2 pieces orange  
1 piece apple.  
2 cc milk.

9:30  $\frac{1}{2}$  tsp, marm diet  $\frac{1}{4}$  banana slice  
7 $\frac{1}{2}$  cc milk.



AUG 26

DAY 48

9:15  $\frac{3}{4}$  tsp warm diet +  $\frac{1}{4}$  banana  
2cc Orange juice  
2cc Water  
Wont eat alone

11:45  $\frac{1}{4}$  tsp plain warm diet  
3 pieces banana ( $\frac{1}{2}$  tsp)  
2 pieces orange  
5 mealworms -

3:15 1 tsp warm diet  
 $\frac{1}{2}$  tsp banana  
6cc milk  
 $\frac{1}{2}$  piece orange apple  
Jumped into me several times today on own

5:15 Wt. 139.2 grams.  
Jumps in series of short low hops vs. few  
high hops -

5:30  $\frac{1}{2}$  tsp. warm diet  
 $\frac{1}{2}$  tsp. banana  
2cc orange juice  
9cc milk } vaulted  
4 mealworms }

8:00  $\frac{1}{2}$  tsp warm diet, 1 tsp. banana  
4 cc milk

10:15  $\frac{1}{2}$  tsp warm diet, 1 tsp. banana  
3 cc milk

Note: feeding voice sound like  
adult food chatter

August 27 Day 49

7:45 Was half awake. Not hungry at first - Wavy  
gag responses -  
8:00  $\frac{1}{3}$  tsp. warm diet, 1 tsp banana  
few drops OJ.

11:20  $\frac{3}{4}$  tsp warm diet +  $\frac{1}{2}$  tsp. banana  
1 small piece orange  
Little apple  
3 mealworms. 1:00 1 grape

2:00  $\frac{3}{4}$  tsp warm diet w/  $\frac{1}{2}$  tsp. banana  
1 meal worm  
1 piece orange  
Few bits apple  
 $\frac{1}{2}$  raisins

4:45  $\frac{2}{5}$  tsp warm diet  $\frac{3}{4}$  Banana  
3 raisins

6:00 Wt. 139.6 grams.

8:15 2 mealworms.

3:50 3 mealworms

7:20  $\frac{1}{2}$  tsp warm diet  $\frac{1}{2}$  banana  
1 tsp orange juice.

12:00  $\frac{1}{4}$  tsp warm diet  $\frac{1}{2}$  raisins  $\frac{1}{4}$  tsp banana



AUGUST 28 DAY 50

9:30  $\frac{2}{3}$  tsp warm diet  $\frac{1}{4}$  tsp milk,  
1 slice banana  
 $\frac{1}{2}$  tsp apple sauce.

11:45 3 mealworms

12:15  $\frac{3}{4}$  tsp warm diet 1 tsp banana  
1 tsp apple sauce  
1 small piece cheese.

3:00 2 raisins  
3 mealworms

4:00  $\frac{1}{2}$  tsp warm diet  
2 slices banana  
1 raisin

5:30  $\frac{1}{3}$  tsp warm diet + banana  
3 mealworms.

9:15  $\frac{3}{4}$  tsp warm diet  
1 tsp apple sauce  
1 tsp banana.  
4 mealworm pupae.

Seems to be gaining coordination. Moves more sure.  
Began climbing alone. Enjoys swinging in sock.  
Has begun making longer leaps across spaces.

AUGUST 29 DAY 51

9:45  $\frac{2}{3}$  tsp warm diet,  $\frac{1}{4}$  tsp apple sauce,  
 $\frac{1}{2}$  tsp. banana  
2 mealworms.

12:00  $\frac{3}{4}$  tsp warm diet  
2 mealworms - 1 tsp banana  
 $\frac{1}{2}$  tsp apple sauce.

FILMED FOR TV

2:00  $\frac{1}{4}$  tsp warm diet + banana  
4 mealworms -

3:00 TOOK MEASUREMENTS.

3:15 Climbed up to top of cage + on to branches  
for first time

3:40 wt. 141.2 grams.

4:00 Ate warm diet on his own.

5:00 Had audible trill in sock while climbing cage.

7:00 p.m.  $\frac{3}{4}$  tsp diet +  $\frac{1}{2}$  tsp BANANA  
5 RAISINS  
1 tsp BANANA  
chewed on some apple

10:00 p.m.  $\frac{1}{2}$  tsp diet +  $\frac{1}{4}$  tsp BANANA



August 30 Day 52

8:30-9:00 a.m.  $\frac{3}{4}$  tsp diet +  $\frac{1}{2}$  tsp BANANA  
3 small orange pieces  
2 RAISINS

11:20 a.m.  $\frac{1}{2}$  tsp diet +  $\frac{1}{2}$  tsp BANANA

12:30 p.m.  $\frac{1}{2}$  tsp diet +  $\frac{1}{2}$  tsp BANANA  
1 slice BANANA

$1\frac{1}{2}$  RAISINS  
 $\frac{1}{16}$  tsp orange juice

3:15 p.m. drinks water out of dish

4:00 p.m.  $\frac{1}{4}$  tsp diet + banana mixture (1:1)  
5 meal worms

4:20 p.m. wgt 144g

5:50 p.m.  $\frac{3}{4}$  tsp diet + banana mixture (1:1)  
1 raisin

8:00 p.m.  $\frac{3}{4}$  tsp diet + banana mixture (1:1)  
 $1\frac{1}{2}$  raisins  
1 slice banana

10:00 p.m. 2 raisins

GENERAL COMMENT - Animal is doing much better stepping  
at edge of platforms & not diving over.

August 31 Day 53

8:00 a.m.  $\frac{3}{4}$  tsp diet + banana mixture (1:1)  
1 tsp orange juice  
 $\frac{1}{2}$  piece of apple (small piece)

tries to hold apple bits in hand, but still can  
not hold onto them.

10:15 a.m.  $\frac{1}{8}$  tsp diet + banana mixture (1:1)  
4 bits of apple

12:00 (NOON)  $\frac{3}{4}$  tsp diet + banana mixture (1:1)  
4 meal worms  
2 raisins

1:30 p.m. 2 raisins

3:15  $\frac{1}{2}$  tsp diet + banana mixture  
 $\frac{3}{4}$  of 1 slice of peeled orange (1:1)  
2 mealworms

5:15  $\frac{1}{8}$  tsp diet + banana mix (1:1)

5:45  $\frac{1}{3}$  tsp diet + banana mix (1:1)  
4 bits of apple

7:45  $\frac{3}{4}$  tsp diet + banana mix (1:1)  
1 raisin  
2 bites orange

10:30 p.m. 1 slice banana (4 pieces)  
raisin



September 1, 1977 (Day 54)

8:30 a.m.  $\frac{1}{3}$  tspn diet + banana mix (1:1)  
1 tspn Orange juice

11:10 a.m.  $\frac{4}{5}$  tspn diet + banana mix (1:1)  
4 meal worms  
2 raisins  
3 bits of apple

2:00 p.m. wgt 142 g.

2:00 p.m.  $\frac{1}{4}$  tspn diet + banana mix (1:1)  
by 3:00 p.m. had eaten another  $\frac{1}{4}$  tsp in cage

3:00 p.m. Cage placed into Photo Rm - Cage will remain there from now on. Animals made molting vocalizations at cage + Cabnel (Ken recorded them). The Cabnel rasped which he does normally when alone in the cage.

3:45 p.m. 2 mealworms

4:45 p.m.  $\frac{1}{4}$  tsp diet +  $\frac{1}{4}$  tsp BANANA  
1 mealworm

7:15 p.m.  $\frac{1}{2}$  tsp diet +  $\frac{1}{2}$  tsp BANANA  
2 mealworms  
2 raisins

8:00 p.m. 1 mealworm, 1 small slice apple  
1 tsp BANANA

10:00 p.m.  $\frac{1}{4}$  tsp diet +  $\frac{1}{2}$  tsp BANANA, 3 mealworms

September 2, 1977 (Day 55)

8:15 a.m. 1 tspn diet + banana mix (1:1)  
1 tspn Orange juice  
3 raisins

12:00 (noon)  $\frac{2}{3}$  tspn diet + banana mix (1:1)

1:00 p.m. 6 bits apple  
5 mealworms

3:45 p.m.  $\frac{1}{2}$  tsp diet +  $\frac{1}{2}$  tsp BANANA  
2 slice BANANA  
 $\frac{3}{4}$  tsp O.J.

small slice of apple

6:30 p.m.  $\frac{3}{4}$  tsp diet +  $\frac{3}{4}$  tsp BANANA  
3 mealworms  
2 tsp O.J.  
1 slice BANANA

10:00 p.m.  $\frac{1}{2}$  tsp diet +  $\frac{1}{2}$  tsp BANANA  
2 mealworms



Sept. 3, 1977 Day 56

7:00 A.M.  $\frac{1}{2}$  tsp diet +  $\frac{1}{2}$  tsp BANANA  
(put in his cage)

9:00 A.M. 3 mealworms,  $\frac{1}{4}$  tsp. diet

10:10 A.M. Weight 143.9 g.

10-10:30 A.M. Play. While running about on floor, stops frequently and sits steadily upright on hindquarters - (feet/tail tripod)

12 noon to 1:30 P.M.  $\frac{1}{2}$  tsp banana  
about  $\frac{1}{2}$  tsp. diet/banana mix

1:30 P.M.  $\frac{1}{8}$  tsp. apple  
 $\frac{1}{2}$  tsp. orange slice  
5 raisins  
2 mealworms

3:00 P.M. 4 mealworms  
 $\frac{1}{2}$  tsp banana  
 $\frac{1}{8}$  tsp orange  
1 small apple bit

6:00 p.m.  $\frac{1}{2}$  tspn diet + banana mix (1:1)  
2 apple bits  
2 meal worms  
 $\frac{1}{4}$  slice of orange (peeled)

Over the last 4 days the Glonek's climbing ability has increased enormously.

If the surface is easily gripped (fabric) he can get up even a  $90^\circ$  incline.

His digits are getting stronger, and the coordination between his front + back feet is much better. This standing upright which Lynn reported is something that has just appeared over the last couple of days.

I also find it interesting that he defecates + urinates frequently during his feeding sessions. I've cleaned up as many as 5 firm feces during a 10 minute feeding, + usually he urinates 4 or 5 times also.

his mane is growing out around his head - his ears are not as visible.



September 4, 1977 Day 57

Let's sound the trumpets!

8:15 Eats  $\frac{3}{5}$  tspn diet alone  
 $\frac{1}{2}$  tspn banana  
3 raisins  
2 mealworms  
1 tspn orange juice

11:00  $\frac{3}{4}$  tsp warm diet  
1 tsp banana  
4 mealworms

1:00  $\frac{3}{4}$  tsp warm diet  
1 tsp banana

2:50 Film taken of locomotion 4 mealworms.

3:00  $\frac{1}{4}$  tsp warm diet  
4 mealworms

5:00 4 tsp warm diet  
 $\frac{1}{2}$  tsp banana

6:45 wt. 154.9 g. Shaking awareness of tail - Curls & scratches

7:15  $\frac{1}{4}$  tsp warm diet while sitting up.  
 $\frac{1}{4}$  " banana 4 mealworms

7:00  $\frac{1}{4}$  tsp warm diet  
 $\frac{1}{2}$  tsp banana  
6 mealworms.

5 SEPTEMBER

DAY 58

8:15 1 tsp warm diet Purr is turning into  
2 tsp banana squeals - Tail when  
4 1cm x 1cm pieces orange angry  
1 raisin  
5 mealworms

Vocalizes during defecation, sits up to urinate;

1:00  $\frac{1}{2}$  tsp warm diet + banana  
1 mealworm

12:00 2 mealworms,  $\frac{1}{8}$  tsp warm diet

1:00  $\frac{3}{4}$  tsp warm diet,  
 $\frac{1}{2}$  tsp banana

3:00 wt. 156.5 g.

4:00 Used hands to pick up and manipulate  
pellet

5:15  $\frac{3}{4}$  tsp diet w/ 1 tsp banana  
2 pieces orange  
8 mealworms

6: Raisins 6 nuts?

1:30  $\frac{1}{4}$  tsp warm diet + banana

1:30  $\frac{1}{2}$  tsp warm diet, banana  
8 mealworms



SEPT. 6 DAY 59

8:15 1 tsp OJ,

9:30 3/4 tsp warm diet

1 tsp banana

5 mealworms

12:00 3/4 tsp warm diet + banana

8 mealworms

2:00 1 tsp diet/banana mix (put in cage initially)

2 mealworms

1 raisin

WT 142 g

5:00 1/2 tsp diet

1 tsp banana

Photo'd manipulating leaf

7:00 3/4 tsp warm diet

1 tsp banana

2 mealworms

1 tsp OJ

1 raisin

"Test" vocalization very obvious several times when crane called (reached for outside). Was obviously nervous. Is starting to pull mealworms + food towards him in flight band.

9:30 3/4 tsp warm diet

1 tsp banana 9 mealworms

SEPT 7 DAY 60

9:00 1/2 tsp warm diet + banana

1 raisin which picked up

+ ate by himself

11 PM 1/2 tsp warm diet + banana

2:00 1/2 tsp warm diet

2 tsp banana

4 raisins

5:30 WT. 152.4 g

545 10 cc SMA + Sust.

9:00 PM 1/4 tsp chow (w/ banana)

3 raisins

1/2 tsp applesauce

7.0 cc SMA + Sust.



8 Sept 77 Day 61

0745 Would not eat main chow  
with milk. (Smelled bad)  
∴ 1/4 tsp applesauce Cerbers  
8.0 cc SMA + Sust.

11-1145 1/2 cricket  
small piece orange  
wouldn't eat chow  
wght 155g

1-2 PM - ate @ 1/2 tsp of  
main chow + banana (1:1)  
independently in cage.  
Very noisy. ~~Very~~

330 PM Fed several <sup>small</sup> pieces of apple  
Ate @ 1/4 tsp main chow + banana  
Added 8 cc SMA + Sust  
to ~~the~~ chow - Ate it  
eagerly.

615 PM @ 3/4 tsp chow + banana (1:1)  
Thin slice apple  
main chow fed by hand  
apple eaten alone.

940 PM 1/2 tsp chow + banana  
(4:1)

8 cc SMA + Sust.  
ate the chow more  
eagerly than previously  
but still had to be  
handfed.

Σ 1 1/4 tsp applesauce  
24 cc SMA + Sust.

2 tsp main chow + banana  
Thin slice 1/4 apple



9 Sept 77

Day 62

0830 AM Ate @ 1/4 tsp  
chow + banana (4:1)

Fed 6 mealworms  
did not take much chow, had  
to be handfed. Ate 2  
facal boluses + used  
feeding chirp before eating.

0945 hf + ate @ 1/2 tsp chow + ba

1115 AM Ate @ 1/3 tsp chow + banana  
(4:1)

Ate small piece orange  
1/4 grape, ~ 1/2 thin  
slice apple, 6cc milk

between 12-3 fed 1/2 tsp chow + banana  
3 long orange pieces  
some raisins

300 PM wouldn't eat chow, ate  
3 raisins

4:30 PM 16.7g weight

175  
33  
1

75  
67  
50  
1

630-730 PM ~ 1 tsp chow + banana (4:1)

5 mealworms

~~Apple slices~~

7 tsp applesauce + 2 drops

afidec

Chow handfed.

11 PM

ate minimal chow  
8cc SMA + Sust

Σ 2.1 tsp chow + banana  
6 mealworms

1 1/4 cc SMA + Sust

1/4 grape, 1/2 thin slice quarter  
apple  
6 raisins



10 Sept 77 Day 63

9-11 AM ate 1 tsp chow + banana (4:1)

12:30 PM @ 1/2 tsp chow + banana

1-2 PM @ 1 tsp chow + banana

2:45 PM @ 1/4 tsp chow + banana (4:1)

1/2 thin slice apple - 3 tiny orange pieces  
7 mealworms

6 PM 1/2 tsp chow + ban (4:1)  
1/2 tsp apple sauce  
8 mealworms  
8 cc milk

11 PM 3/4 tsp chow + banana (2:1)  
feces firm!

Σ = 4.0 tsp chow + banana  
1/2 thin slice apple  
15 mw 3 orange pieces  
8 cc SMA + Sust  
1/2 tsp applesauce

Σ = 4 3/4 tsp chow  
4 cc orange juice  
thin slice apple  
5 raisins  
8 cc milk  
1 tsp apple

11 Sept 77 Day 64

8:30 - 10 AM ate 1/2 tsp warm chow + banana (4:1)  
4 cc orange juice

10 AM @ 1/4 tsp chow.

< 12:30 ate another 1/4 tsp chow + banana

< 3 PM finished another 1/4 tsp chow

3:10 PM Fed thin slice orange + apple - cut up + 5 raisins

by 4:25 PM all apple eaten, only part of orange, some raisin.

5:45 - two tiny pieces of raw chicken liver.

< 7 PM @ 1/2 tsp chow + banana (4:1)

9 PM 8 cc milk  
1 tsp applesauce



12 Sept 77 Day 65

9AM ~ 2/3 tsp chow + banana (4:1)

0930 Wght 165g after AM feed + AM defecation.

< 10:15 2/3 tsp chow + banana  
7 mealworms

10:20 Given 1 tbs marmchow + banana (4:1)  
by 2:10 PM ate 1/2 tsp.

2:15 Fed 7 Thicker <sup>pieces</sup> of apple (from slice)  
4 thin orange pieces  
Immediately chirping + eating apple

3:30 1/2 tsp chow + banana given -  
still eating feces

Wght 177.2g

3:45 Defecated 3x in rapid  
succession. Last feces  
very loose. Anogen. rubbing seen.

3:55 Diarrhea - but active + eating -  
Swollen finger

Put in cage; began eating  
significant quantities of  
chow on own.

4:30 PM Finished 1/2 tsp chow  
given 1 hour ago.

6PM Given 1 tbs chow + banana  
Fed 3cc SMA + Sust w/  
drop abidex

Has not defecated since  
4 PM - Swollen finger  
(4th or left hand) is broken.

At home, fed + ate two  
small pieces of cooked chickens.

Fell asleep after eating +  
screaming

Σ 4 1/2 tsp chow  
7 mealworms  
4 pieces apple  
2 small pieces of cooked  
chicken

9:45 awake, ate 1 tsp chow  
1/2 tsp applesauce  
5cc SMA + Sust.



13 Sept 77 Day 66

0900 1 tsp marm chow + banana (4:1)  
some hard fed - swollen  
Left 4th digit still ~~black~~ - feces firm.

1100 Finished 1 tsp chow + banana  
fur looking scruffy + oily  
wght 179 g

11-1 ate ~ 1/2 tsp chow + banana

2:30 2 crickets  
1 mouse sup eaten rump  
first: immediately  
1/2 slice apple  
2 small pieces orange  
(Had finished apple by 5:30 PM)

3PM Colonel reintro'd SHH in cage

Ad ♂ comes in as well as  
~~the~~ older juv ♂,  
latter leaves. whole group  
begins mobbing vocs.

Older juv ♂ + father

locked in.

3:10 PM - Inf. hidden in nb in  
box. Adult ♂ continuing  
to examine cage + Inf.

Juv ♂ on ceiling - long  
loud chuck - whole vents  
by whole family -  
Separation?

New Cage?

315 - Colonel out of nb - constant  
rasping. Juv ♂ has stayed  
away. Several <sup>Ad.</sup> ♂ approaches

320 Door opened to all ~~the~~ family  
members access.

Ad ♂ stays close to small cage.  
Old ♀ + ♂  
enter, +

Ad ♀ + ♀ inf (on back)  
remain ~~in~~ <sup>in</sup> opposite cage  
from Colonel.

335 Inf off mother in 3rd cage.  
Ad ♂ enters cage with  
C. with food.

Older juv ♂ Arch. 3 X  
Inf back on mother  
cage 3.1



345 Order J ♀ + ♂ → enter →  
Ad ♂ → still in cage but  
no approaches

350 Col cage moved to center cage

Ad ♂ → appr. 2x.

Ad ♀ looks from Cage #3,

Juv ♂ → "Cage #1,

400 Juv ♂ → hanging around,  
and hesitantly appr. Colonel  
Cage. Ad ♂ → cage #1

Juv ♂ → on top of cage.

Other animals attending to him  
but not appr. Colonel freq.  
rasps.

404 Juv ♂ → appr., sniff →  
Other inf. still being  
carried.

410 PM Removed from SNA.  
Ad ♂ → attacks + bites  
Carol P. as she removes  
the cage.

720 PM Fed 1½ tsp chow + banana (4:1)

6 PM Ate @ ½ tsp plain chow

11 PM 1½ tsp chow + banana  
(4:1)

6cc SMA + Sust + 1 drop  
Abidec.

✓ = 6 tsp chow  
6cc SMA + Sust  
1 mouse pup  
2 crickets  
slice ¼ apple



14 Sept 77 Day 67

0900 Given 1 tbs plain marm. chow  
Ate small quant.  
Wght 176 g.

1215 - ~~Has only eaten @ Marm~~  
Ate @ ~~since 9 AM.~~  
1 tsp chow

1255 Given 3/4 tbs chow + ban.  
(4:1)  
Began eating eagerly.  
Ate @ 1 tsp

2 PM Taken to SMH with remainder  
of food + slice apple,  
6 raisins, <sup>piece</sup> banana  
Ate most of chow, raisins,  
apple, banana

5:15 Fed 1 tsp plain chow -  
ate @ 1/2 tsp

630 Ate @ 1/2 tsp chow + ban.

945 @ 1/2 tsp chow  
1 tsp apple sauce  
6cc milk + drop Abidec

15 Sept 77 Day 68

0830 @ 1/2 tsp Science diet  
0900 @ 1/2 tsp " "  
Wght 175 g.

10 00 Taken down to SMH +  
placed with 36-38 family  
group

Fed only Science Diet

330 PM Returned to ORR

Super-8 Film + stills  
Hoage Dorsey

Fed ~ 8 mealworm  
slice banana | ate  
" apple | eagerly  
" orange |  
(Wght 190 g after feed)

930 Fed @ 3/4 tbs  
marm chow + banana



16 Sept 77 Day 69

0830 Fed pieces of marm chow.  
Before feeding  
wght 186g.

900 - 1200 In small cage —  
in with 36-38 family group.

12 - 3 PM Isolated with  
family group

330 PM Fed 6 mms  
6 raisin  
small piece banana  
marm chow  
slice apple  
slice 1/4 orange

Ate raisins, mw, most apple  
banana — ate some  
chow beforehand.

Still purring + squeaking  
when picked up.

6 PM Fed chow @ 1 tsp chow + banana

11 PM Fed 1 tsp chow + banana  
mw

17 Sept 77 Day 70

0930 Fed plain chow. did not  
touch much

1230 - 315 At SMH in small  
cage with family group  
plain chow available

330 PM  
wght 183g

(while at SMH infant ♀  
examining cage)

18 Sept 77 Day 71

Feeding irregular but given  
more fruit as well as shrimp +  
crab - Taken to Annapolis.  
Ate shrimp + crab eagerly.



19 Sept 77 Day 72

0845 — 11:10 AM Marm chow alone

wght 11 10 AM 189 g

measured by Hoage

1130 AM Intro'd to 36-38 animals  
in cage. Calm + quiet,  
eating, playful. Other animals  
(2 older jms mainly) approach.

4:15 PM Brought back to ORR.  
Fed fruits etc.  
Had toothpaste feces during  
feed. Still eating feces.

Purrs recorded PM.

9:30 PM fed banana + chow  
mix (1:3)

typically  
C. falling asleep @ 7 PM  
+ awakening @ 9-10 PM

Observed exhibiting anogen  
lateral rub at 21:30 hours

20 Sept 77 Day 73

Marm. awakes + long calls at  
0745 — Typically awakes  
between 0730-0900 with series of  
long calls which turn into rasps.

10 AM Wght 188 g

Fed marm chow till ~ noon

Then marm chow +  $\frac{1}{4}$  banana  
1440 hrs hairless mouse fed  
Sec SMA + Sust + drop Abidec

1540 wght - 196 g

5:30 PM Ate @ 8 rasps, slice banana,  
 $\frac{1}{2}$  slice orange,  
another hairless mouse.

10:15 PM Last feed of day  
of chow,  $\frac{1}{4}$  banana, drop of milk  
ate eagerly.



21 Sept 77

Day 74

New behaviors:

- ① Carrying food away from food dish before eating it
- ② Play with orange stick: pouncing rolling on side, while soft squeaks.
- ③ Quietly climbs around in cage in office — only begins beginning rasp when other people enter office

0900 Marm chow fed.

After several defecations  
wght 189g

Fecal sample taken.

130 - 315 Introduced to  
Ad ♂, Ad ♀, Juv ♀, Inf ♀  
in two cages of 36-38.

Fed <sup>fruits</sup> while on there

Later fed on mwt,  
apple & small amt orange.

22 Sept 77 Day 75

0900 hrs wght 191g

introd to 36-38 (Ad ♂ Ad ♀ Juv ♀ Inf ♀)

between 1030 AM - 3:15 PM.

~~150~~ Infrequent interactions  
except with Inf ♀. Then  
mainly nose to nose

Fed 1600 hrs } fruits

Fed 1830 hrs }

Fed 2230 hrs (marm chow + ban)

23 Sept 77 Day 76

0900 192g.

In SMH between  
10:30 - 2:30 PM  
(with whole family)

24 Sept 77 Day 77

In SMH between  
12 - 3:30 PM  
(whole family)



25 Sept 77 Day 78

Intro'd to SMH family  
0930 hours.

Developmental progress

① Climbing abilities improving  
but ability is well behind  
sibling ♀ in 36-38.

Cannot jump long distances  
or use diagonal smooth  
thick branches.

② Still purring and squeaking  
when picked up.

③ Social behavior:  
Little interaction with  
family. ~~But~~ Sibling ♀  
occasionally approaches.

Still eating feces.

26 Sept 77 Day 79  
Left at SMH between 0800-1730  
hrs.  
Little interaction with  
family group.

Wght 5:30 PM - 199g

27 Sept - Day 80  
In SMH from 9-5  
Wght 5:30 PM 197g

28 Sept Day 81  
In SMH from 9-5:30.

Note alarm chirps towards  
flying birds + dogs.

~~31~~ 29, 30 Sept Day 82-83  
In SMH 8-530 PM  
Still eating shit



1 October 77 Day 84  
Wght 1300hrs  
196 grams  
(Kept home + in office)

2nd - 3rd - 4th Oct 77 Days 85-87  
In SMH day; at home at night.

5th 6th Oct - DOK out of town 88-89

7th October 77 Day 90  
0900 210 g.

12 Oct 77 0830 207g Day 95

13 Oct 77 Wght 196g  
after having fed 2 mice + some raw steak - Defecated profusely.

16 Oct 77 Day 99  
Fed cooked chicken which he liked.

When put in SMH, was approached and had his tail groomed by one triplet.

An older T approached + sniffed.

Colonel can now climb to top of branches.

19 Oct 77 Day 102  
Left overnight in SMH.  
Spending time in central cage nbs.

20 Oct 77

Wght 11:45 AM  
224g

Left overnight



Left overnight hereafter  
Initially sleeping in  
center nestbox and goes  
to center nestbox when keeper  
or person enters behind  
lines, and rasps.

by 25 Oct 77

Appears to be interacting with  
animals in 36-38 more.  
Twin seen nursing on  
21 Oct 77.

26 Oct 77 Wght 222 gm 11:30 AM  
Groomed + cleaned.

31 Oct 77 222 g 8:30 AM  
Appears cleaner, more active,  
Improved coordination on  
branches.

7 Nov 77 229 g 8:30 AM

14 Nov 77

Wght 11:30 AM (after  
AM feeding)

267 g

Looks fat, little feces  
accumulation on face (?)  
Coat a bit scruffy as  
usual.

23 Nov 77

8:30 AM

292 g

Still fat, clean, coat  
a little scruffy. Was  
observed being groomed  
by older juv. →

30 Nov 77

9:30 AM

293 g



5 Dec 0825 AM 297g

15 Dec 0825 AM 308g  
158 days - 22½ weeks

28 XI 0900 AM  
330 gm.  
171 days  
23

30 I 78 0900 AM

373g  
204 days

8 II 78 388 grams 213 days

24 II 78 397 gms  
still purrs when picked  
up.  
229 days

21 III 78 428 gm - squeaked and  
purred  
when picked up

21 III Has been observed with infant  
on back once for a few seconds.  
Still lacks adequate motor  
coordination.

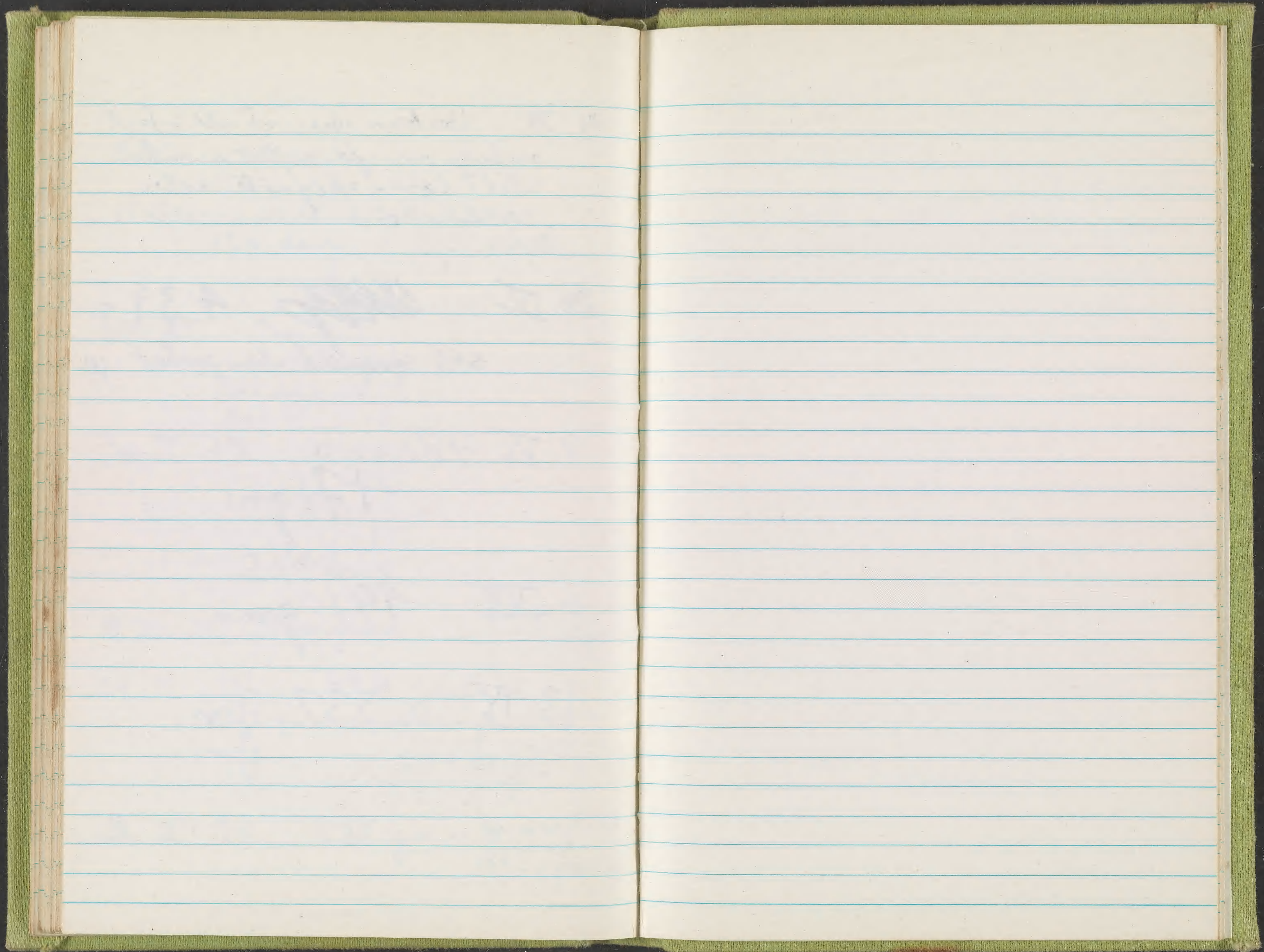
24 IV ~~439g~~ 439g  
still squeaked when picked up.

9 VI 78  
471 gms

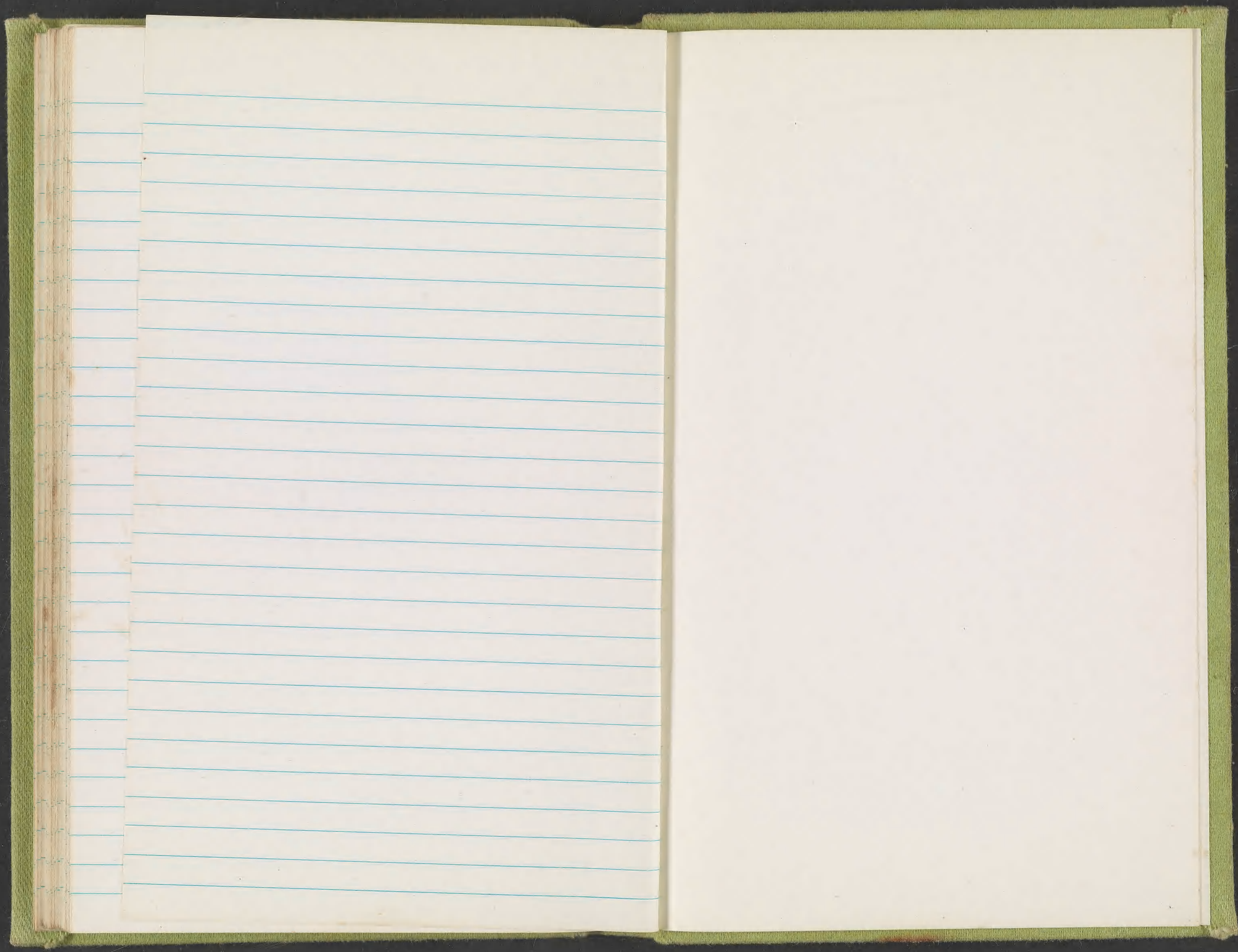
6 VII 491 gms

13 IX 537 gm











4cc cereal + 2 cc milk + 2cc milk

2.5cc cereal

1.5 cc milk

2.7 " "

12.2

12.8

25.0

2.0

4.7

8.00 cc

6.8

5.5

5

7.1

2 5.8

30.2

10 July - 15 Dec

22

31

30

31

30

14

9.5

10.4

19.9

29.8

22

7/158

14

18

4

3.0 cc cereal  
4.0 " milk

1.6cc

4 15 32.5

3 26 31.6

27 33.3

28 35.7

29 33.4

30 34.5

31 38.8

32 37.9

33 39.3

34 35.3

35 44.1

36 37.6

1/3

1/2

1/2

1/4

4 1/2 top.  
chow.



