

COLORED PLATES OF THE
BUTTERFLIES
OF THE WEST COAST



W. G. WRIGHT

57.8
W932

COLORED PLATES
OF THE
Butterflies of the West Coast
BEING
Actual Photographs, Life-size,
AND IN ALL
THEIR NATURAL COLORS.

BY

W. G. WRIGHT



222837

SAN BERNARDINO CALIFORNIA.

PRINTED FOR THE AUTHOR.

1907.

Copyright, 1905, by W. G. Wright.

ADVERTISEMENT.

Colored Plates of West Coast Butterflies.

These Colored Plates here following are **Sample Copies** of the plates which form the illustrations of "**The Butterflies of the West Coast,**" an exhaustive work by this same author, and these plates in sets are now offered as an abridgement of that book, as an advertisement of it, as the best possible substitute for the more costly book, and as a **First Book**, to interest students, and to lead them into the pleasant paths of the fascinating pursuit of butterfly knowledge.

These Plates are **actual photographs** of the real butterflies themselves, and are true in size, in form, and in color; and by these figures you will be enabled to identify the name and sex of most of the butterflies to be found anywhere on the entire West Coast of the United States.

By these Plates the student can gain a good general insight into the science of western butterflies, and then if he wishes to enter more fully into the charming study he can learn from the above-named book all that is now known about them anywhere.

The book named and these Plates form the **first and only works** ever published on Coast butterflies: the text of the book is full and complete, and it describes **every known butterfly** on the West Coast. It is most beautifully printed and bound in red buckram in the best modern style. The book and these plates are not an evanescent or temporary work: they are **for all time**; they can never become out of date, nor can they ever be superseded by any later publication.

The book "**The Butterflies of the West Coast,**" and this present **Book of Plates** are not kept on sale by any dealer, as the larger part of the books were burned in the great San Francisco fire, but can be obtained only from the Author,

W. C. Wright,

445 F Street,

San Bernardino, California.

PLATE 1

PARNASSIUS

- 1, Clodius.
- 2, Clarus.
- 3, Altanus.
- 4, Menetriesi.
- 5, Baldur.

N. B. The **Number**, and **a** indicate the Males.
The letters **b, c, d**, indicate the Females.

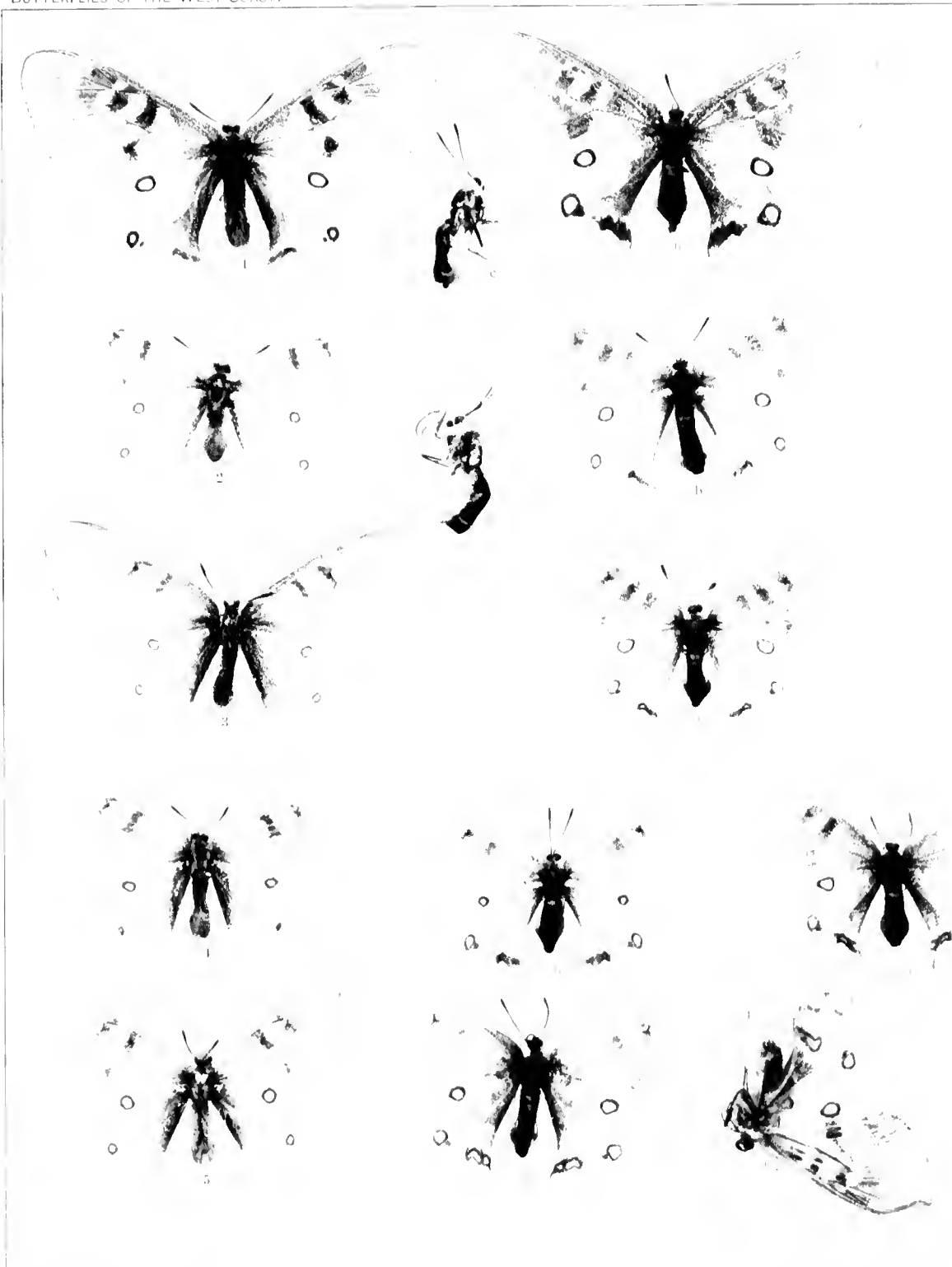


PLATE II

PARNASSIUS

- 6, Hermodur.
- 7, Smintheus.
- 8, Behri.
- 9, Sayi.
- 10, Niger, n. v.
- 13, Magnus, n. v.
- 14, Eversmanni.

N. B. The **Number**, and **a** indicate the Males.
The letters **b, c, d**, indicate the Females

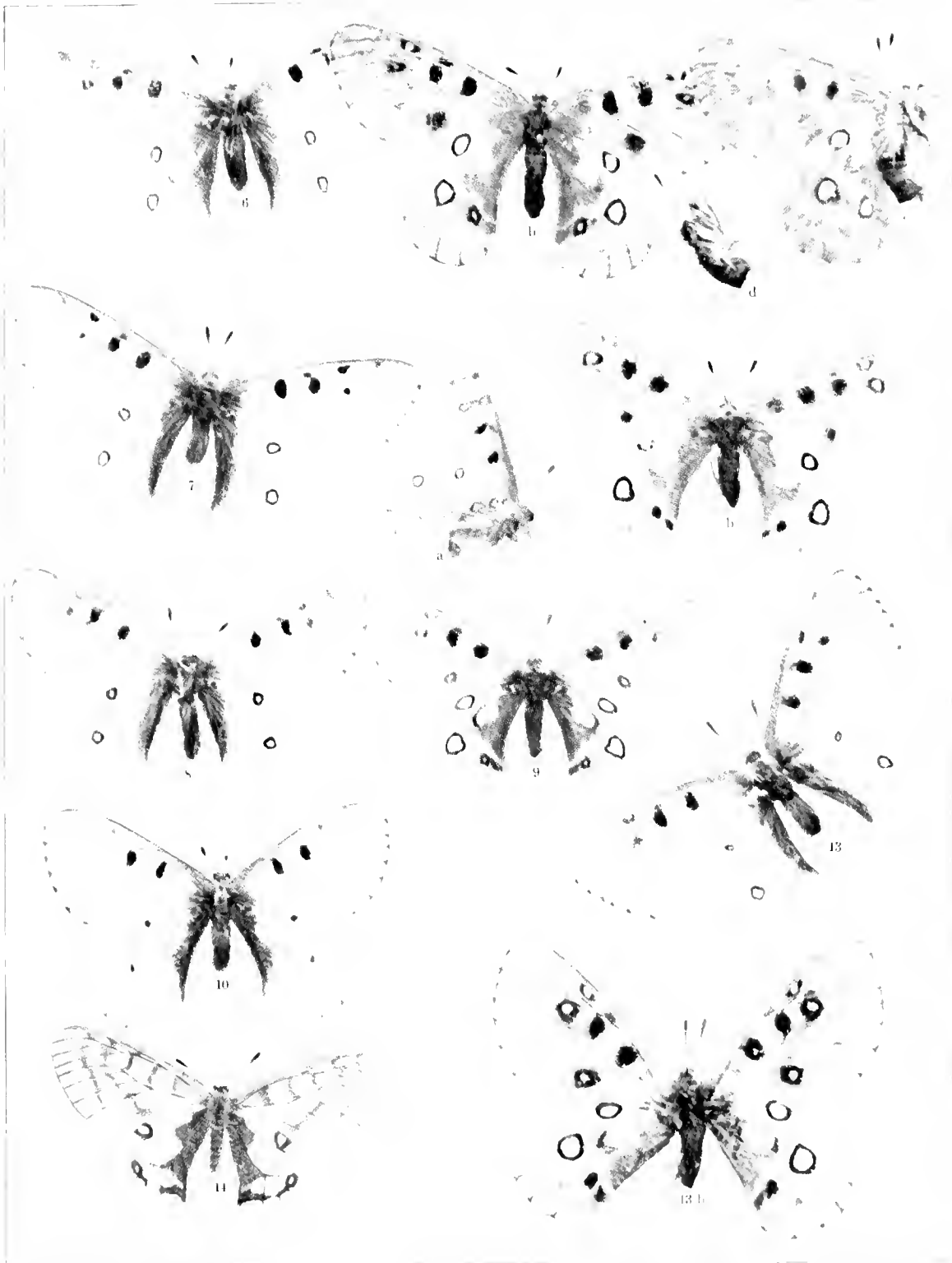


PLATE III

PAPILIO

- 16, *Damnus*.
- 17, *Erymedon*.
- 19, *Ratulus*.
- 20, *Arizonensis*.
- 24, *Zolicaon*.
- 25, *Colorado, n. s.*
- 26, *Oregonia*.

X-13. The *Number*, and *a* indicate the Males.
The letters *b, c, d*, indicate the Females.



PLATE IV

PAPILIO

- 27, Indra.
- 28, Pergamus.
- 29, Asterias.
- 30, Asteroides.
- 31, Philenor.

N. B. The **Number**, and **a** indicate the Males.
The letters **b, c, d**, indicate the Females.

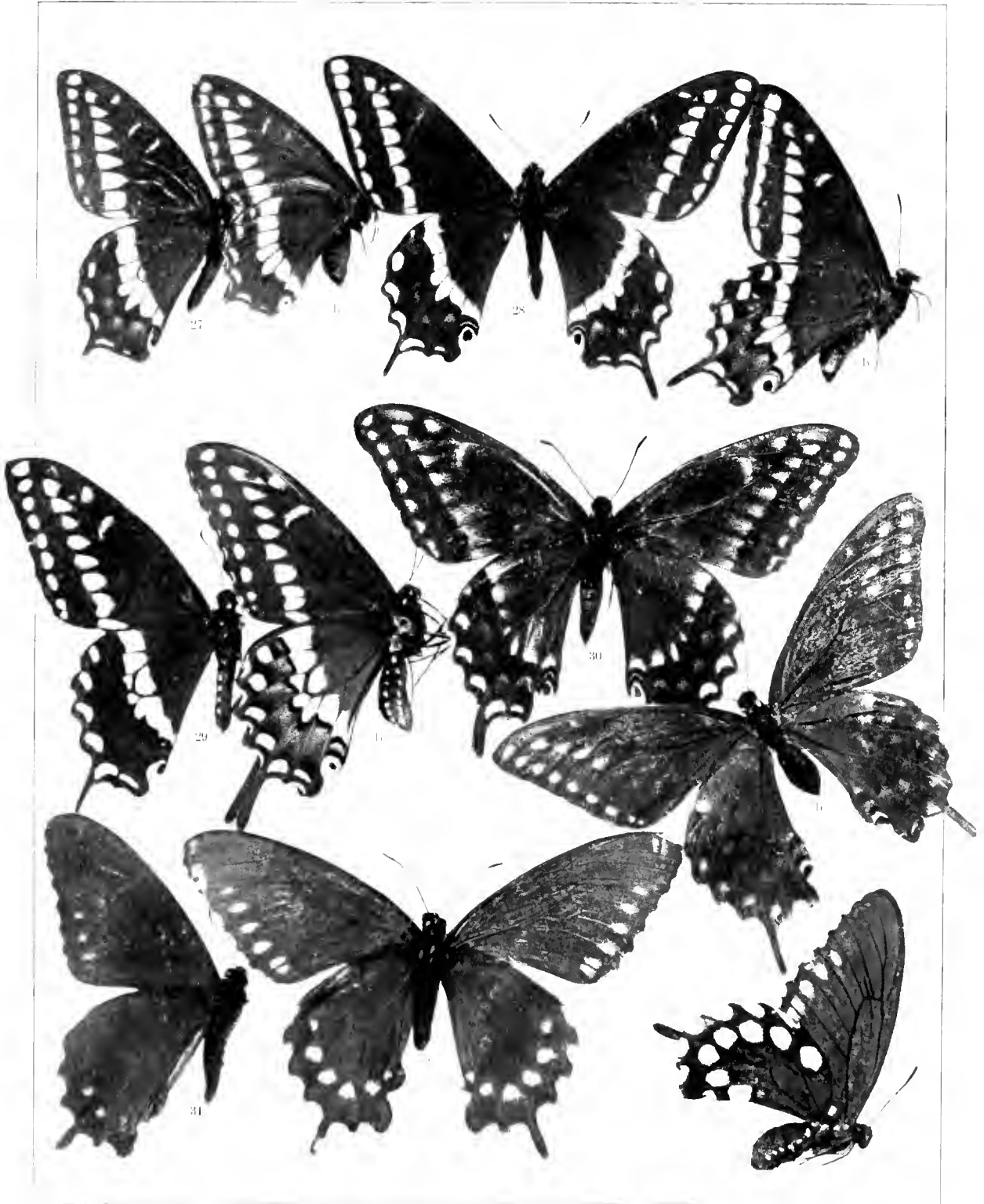


PLATE V

NEOPHLASIA

- 32, Menapia.
- 33, Suffusa.

PIERIS.

- 34, Beckoti.
- 35, Sisymbri.
- 36, Flava.
- 37, Nelsoni.
- 38, Occidentalis.
- 39, Calyce.
- 40, Protodice.
- 41, Vernalis.

N. B. The Number, and a indicate the Males.
The letters b, c, d, indicate the Females.

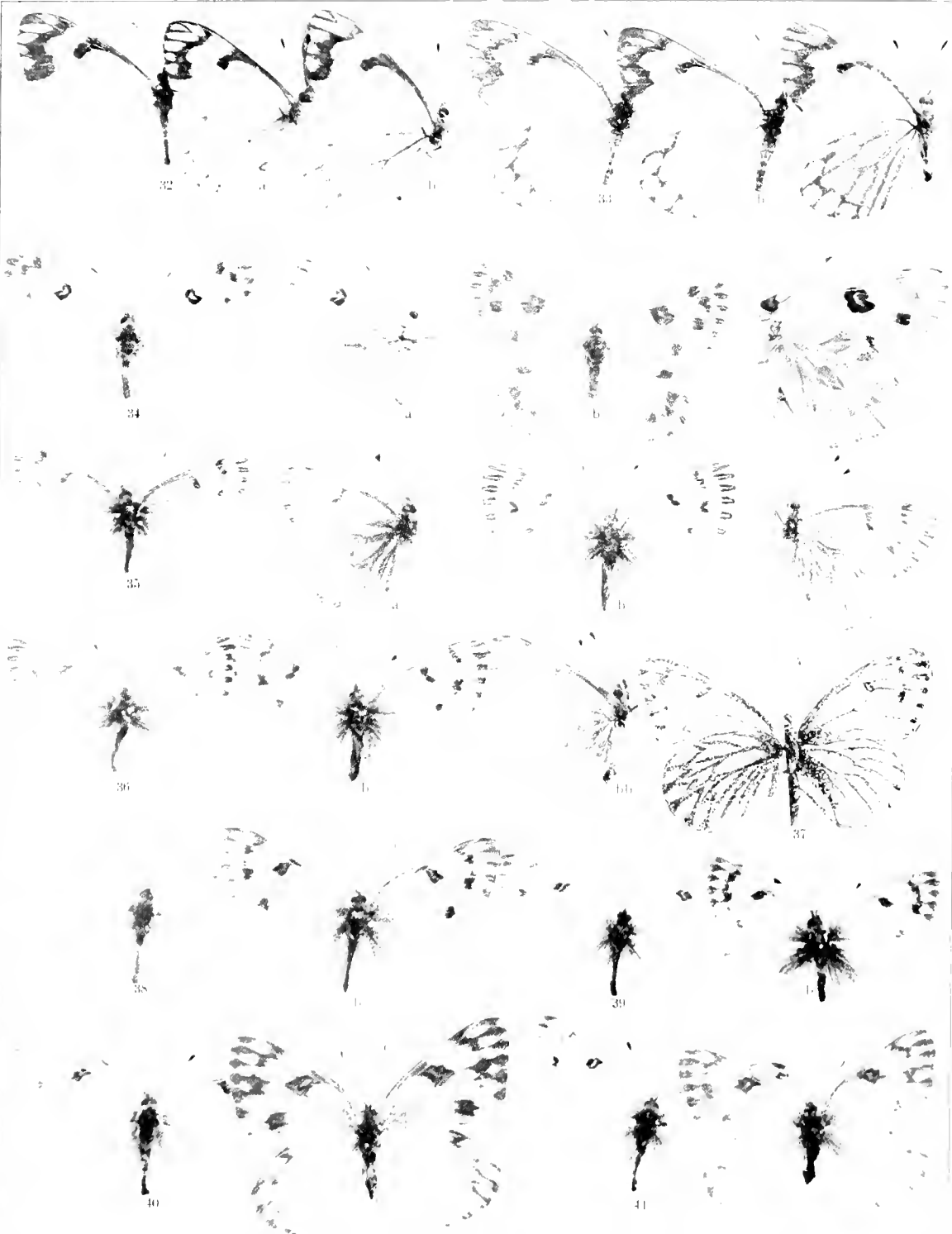


PLATE VI

PIERIS, Cont.

- 42, Bryonæ.
- 43, Hulda.
- 45, Venosa.
- 46, Pallida.
- 47, Castoria.
- 48, Rapæ.
- 51, Marginalis.

N. B. The **Number**, and **a** indicate the Males.
The letters **b, c, d**, indicate the Females.



42



a



b



bb



c



43



a



b



bb



c



45



a



b



c



cc



46



a



b



bb



c



47



a



b



c



48



b



bb



c



cc



51

PLATE VII

NATHALIS

52, Iole.

EUCHLOE

53, Lanceolata.

54, Crensa.

55, Hyantis.

56, Rosa.

57, Ausonides.

ANTHOCHARIS.

58, Cethura.

59, Morvisoni.

60, Deserti, n. v.

61, Gemtia.

N. B. The **Number**, and **a**, indicate the Males.
The letters **b**, **c**, **d**, indicate the Females.

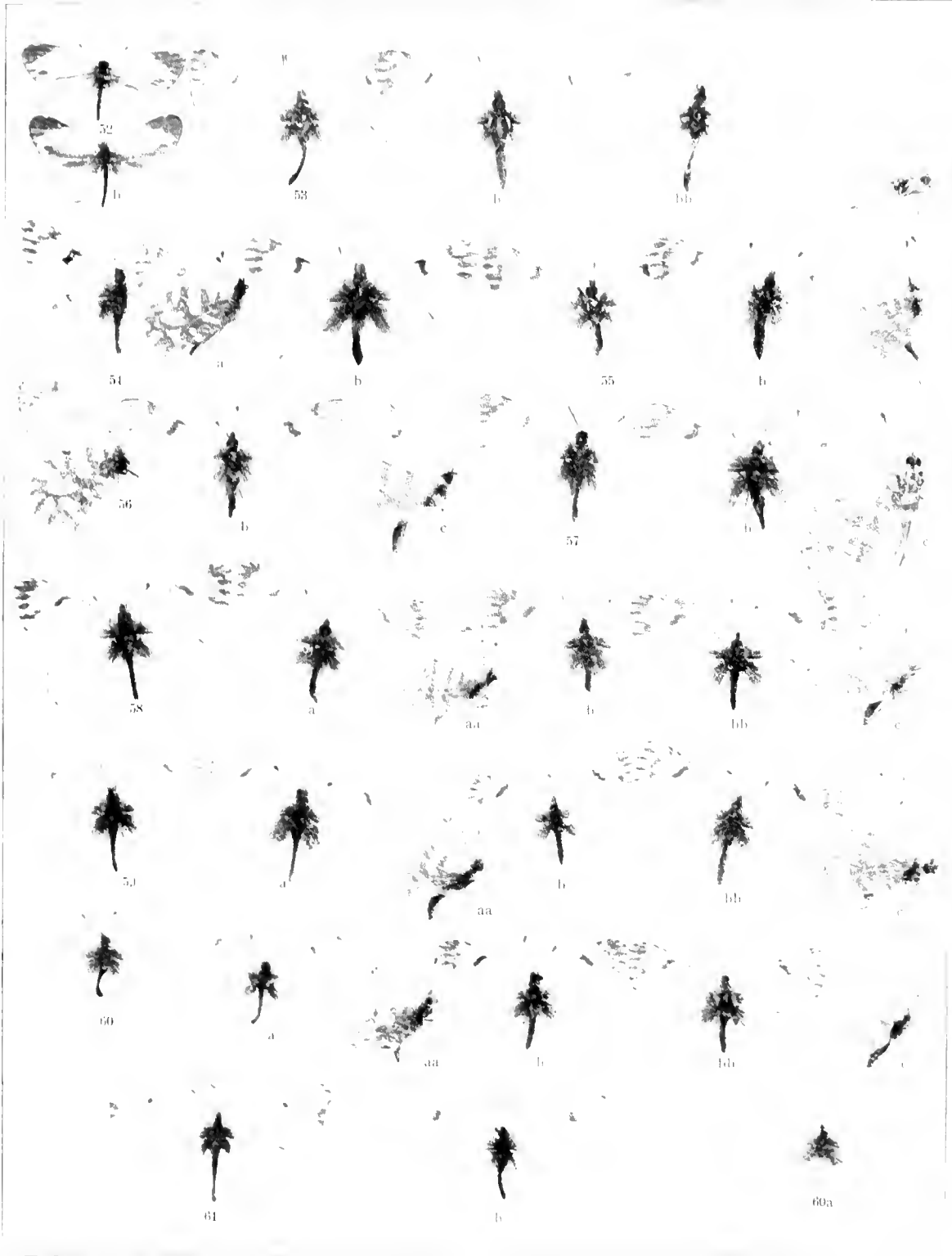


PLATE VIII

ANTHOCHARIS, Cont.

- 62, Reakirti.
- 63, Thoosa.
- 64, Julia.
- 65, Flora.
- 66, Sara.
- 67, Mollis, n. v.
- 68, Stella.
- 69, Fima.
- 70, Caliente, n. s.

N. P., The Number, and a indicate the Males.
The letters b, c, d, indicate the Females.



PLATE IX

CALLIBRYAS

71, Eubule.

71c, Sonne.

MEGANOSTOMA

72, Eurydice

73, Bernardino.

74, Amorpha.

75, Cesonia.

N. B. The **Number**, and **a** indicate the Males.
The letters **b, c, d**, indicate the Females.



PLATE X

COLIAS

- 76. Eurytheme.
- 77. Ariadne.
- 78. Keewadin.
- 83. Eriphyle.
- 84. Harfordi.
- 85. Barbara.

N. B. The **Number**, and **a** indicate the Males.
The letters **b, c, d**, indicate the Females.



PLATE XI

COLLAS, Cont.

86, Occidentalis.

87, Chrysomelas.

88, Alexandra.

89, Edwardsi.

90, Christina.

91, Astrae.

92, Emilia.

93, Scudleri.

94, Meadi.

96, Behri.

N. B. The **Number**, and **a** indicate the Males.
The letters **b, c, d**, indicate the Females.



PLATE XII

TERIAS

- 97, Nicippe.
- 98, Mexicana.

HELICONIA

- 99, Charitonia.

DANAIS

- 100, Plexippus.
- 101, Berenice.
- 102, Strigosa.

AGRAULIS

- 104, Vanille.

EUPTOIETA

- 105, Claudia.

ARGYNNIS

- 110, Leto.
- 111, Letis, n. v.

N. B. The **Number**, and **a**, indicate the Males;
The letters **b, c, d**, indicate the Females.

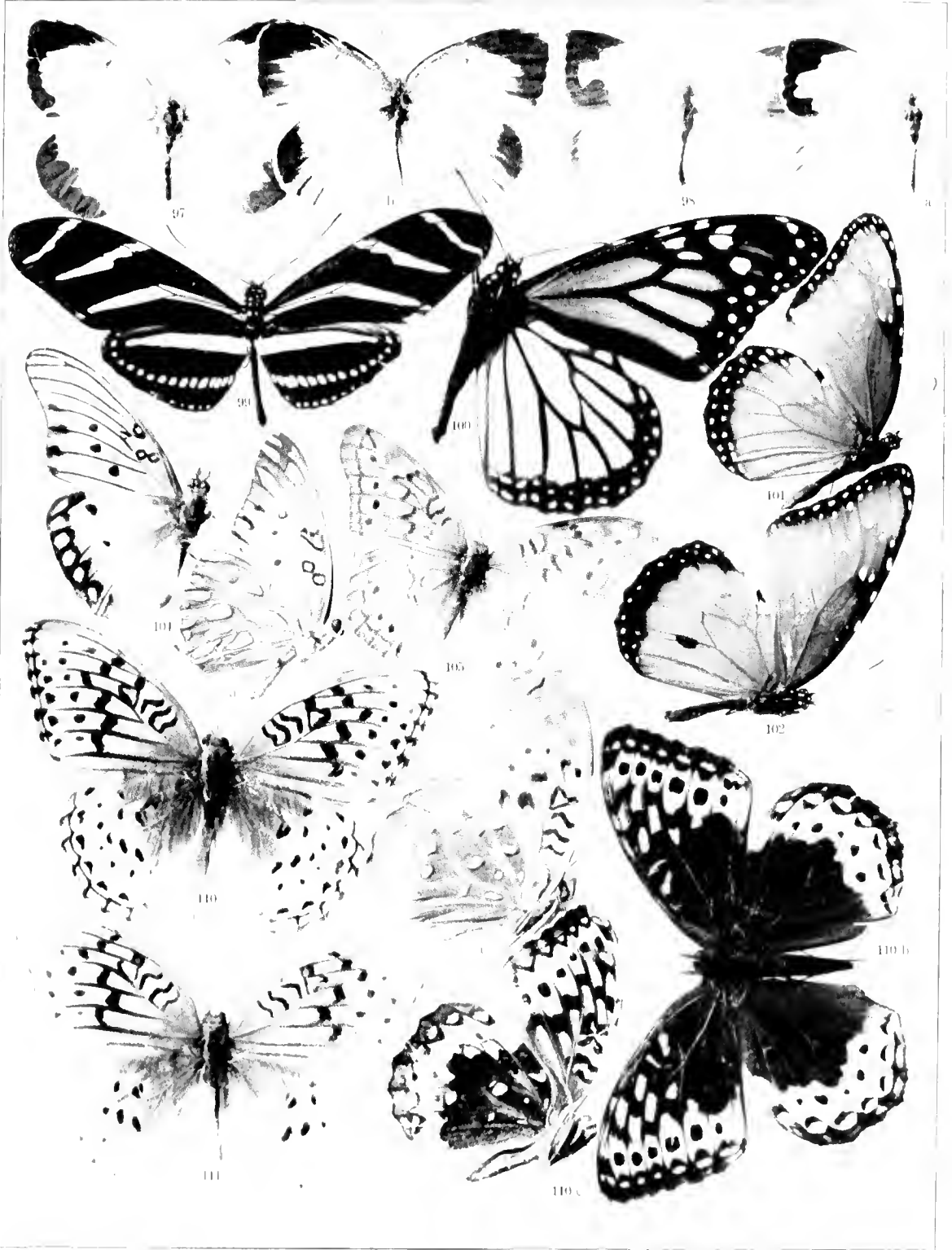


PLATE XIII

ARGYNNIS, Cont

112, Carpenteri.

113, Cypris.

114, Nanslean.

115, Hippolyta.

116, Oweni.

118, Hesperis.

119, Bremneri.

S. B. The Number, and **a**, indicate the Males.
The letters **b**, **c**, **d**, indicate the Females.

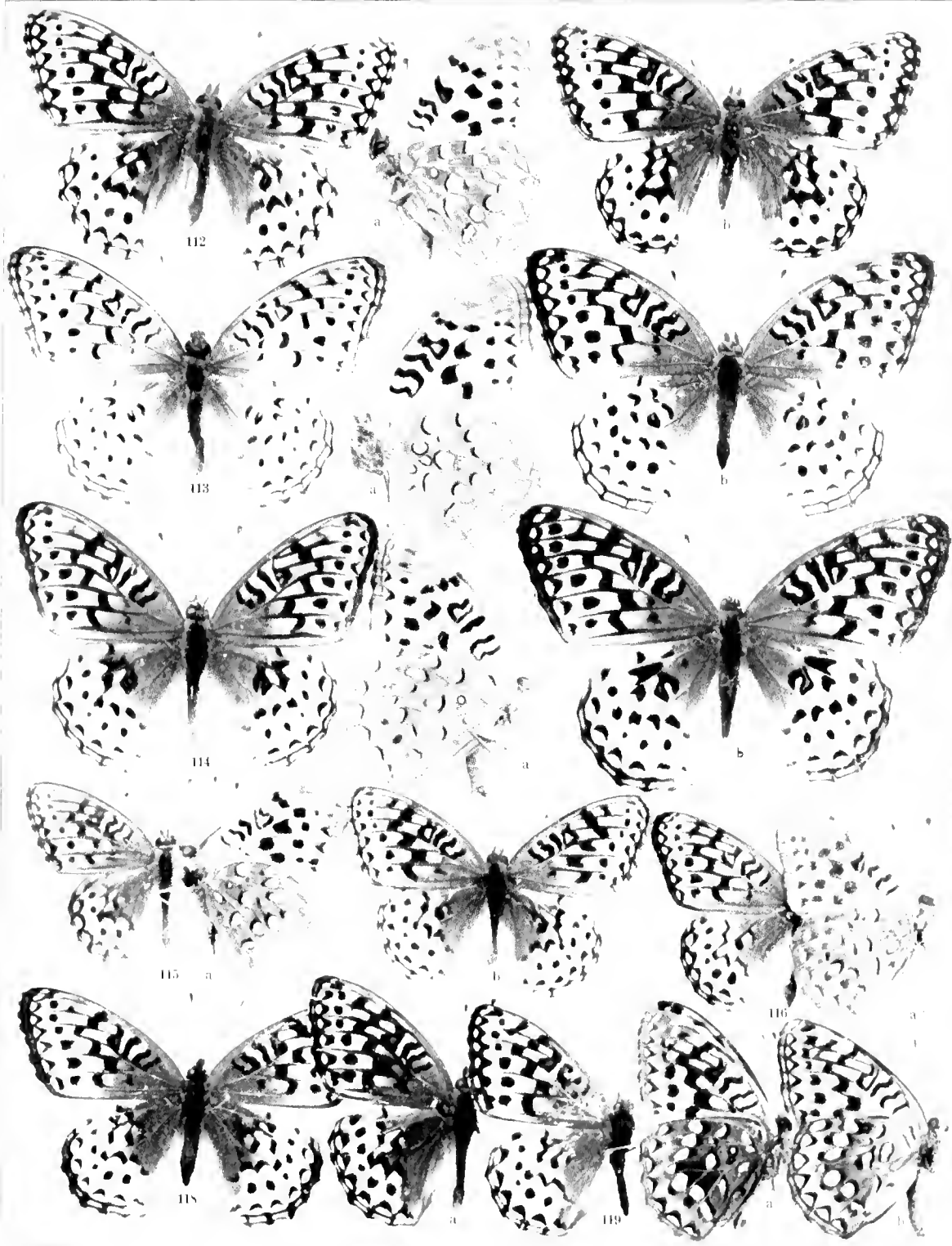


PLATE XIV

ARGYNNIS, Cont.

- 120, Zerene.
- 121, Hydaspe.
- 122, Monticola.
- 123, Purpurascens.
- 124, Rhodope.
- 125, Behrensi.
- 126, Coronis.
- 127, Callippe.

N. B. The **Number**, and **a** indicate the Males.
The letters **b, c, d**, indicate the Females.

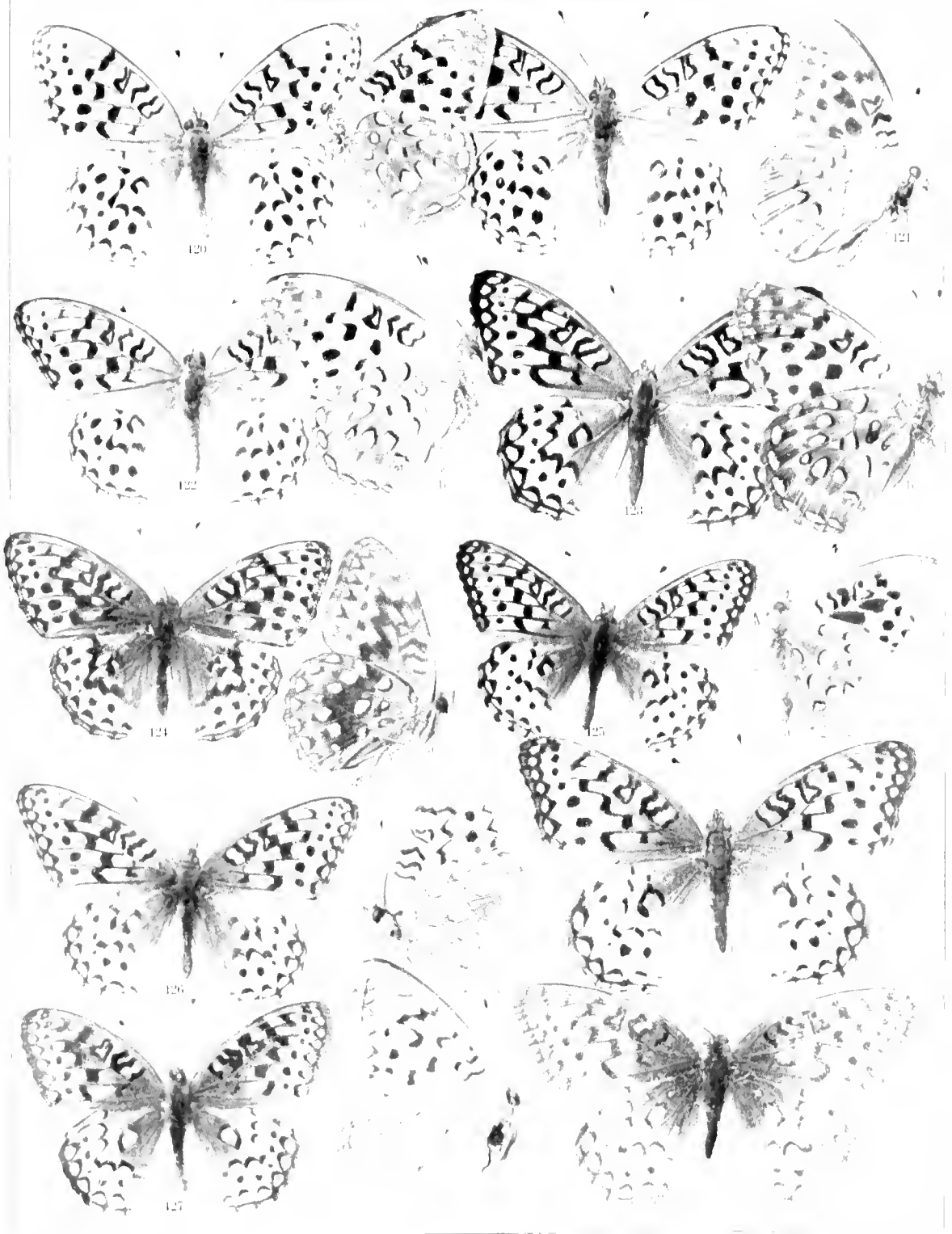


PLATE XV

ARGYNNIS, Cont.

- 128. Nevadensis.
- 129. Edwardsi.
- 130. Liliana.
- 131. Baroni.
- 132. Rupestris.
- 133. Laura.
- 134. Laurina, n.
- 135. Macaria.

N. B. The **Number**, and **a** indicate the **Males**;
The letters **b, c, d**, indicate the **Females**.

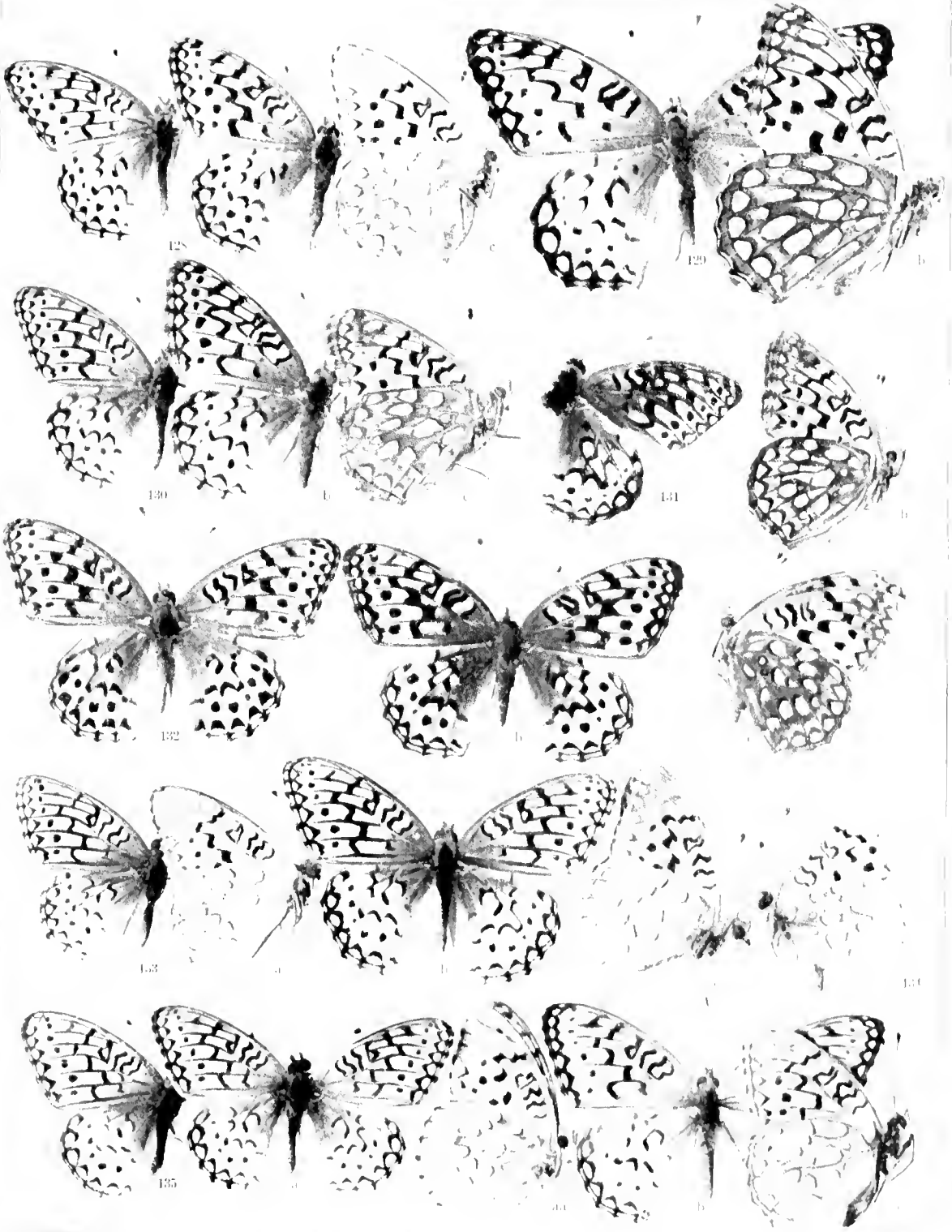


PLATE XVI

ARGYNNIS, Cont.

136, Semiramis.

137, Inornata.

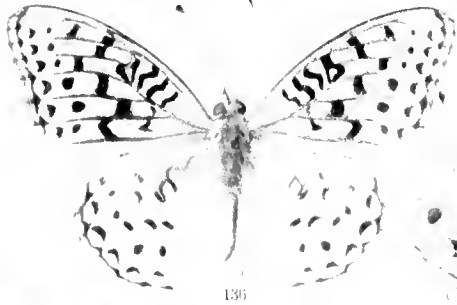
139, Adiante.

140, Eurynome.

141, Bischofli.

142, Montivaga.

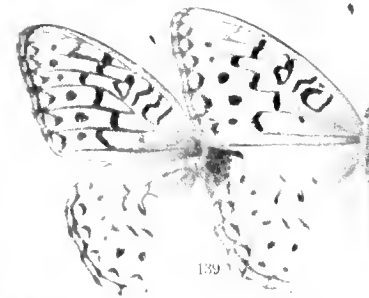
S. B. The **Number**, and **a** indicate the Males.
The letters **b, c, d**, indicate the Females.



136



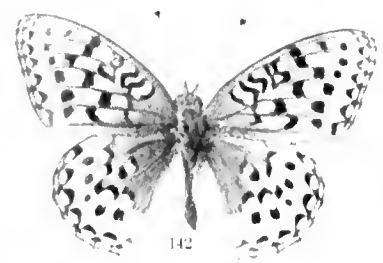
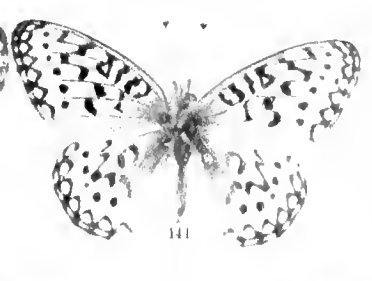
138



141



144



147



PLATE XVII

ARGYNNIS, Cont.

143, Arge.

144, Erinna.

145, Egleis.

BRENTNIS.

146, Myrina.

147, Triclaris.

148, Helena.

149, Freija.

150, Frigga.

151, Epithore.

152, Krenhild.

N. B. The **Number**, and **a** indicate the Males;
The letters **b, c, d**, indicate the Females.

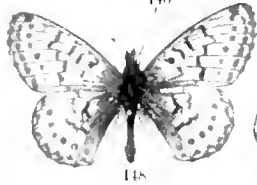
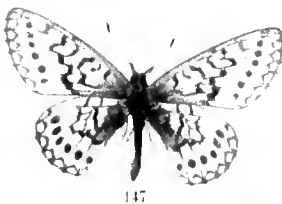
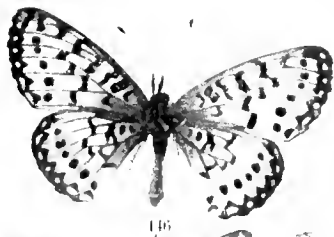
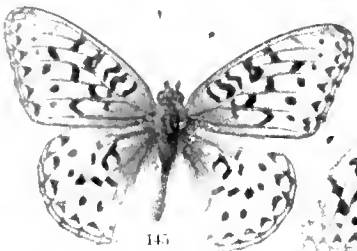
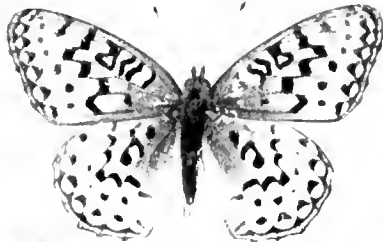
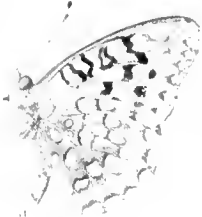
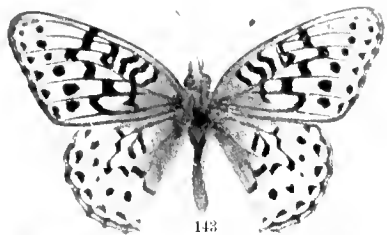


PLATE XVIII

MELITÆA

153, Cooperi.

154, Colon.

155, Quino.

156, Baroni.

157, Chalcedon.

158, Dwinelli.

159, McGlashani.

160, Olancha, n. s.

161, Editha.

162, Rubicunda.

163, Sierra, n. s.

164, Taylora.

N. B. The **Number**, and **a**, indicate the Males;
The letters **b, c, d**, indicate the Females

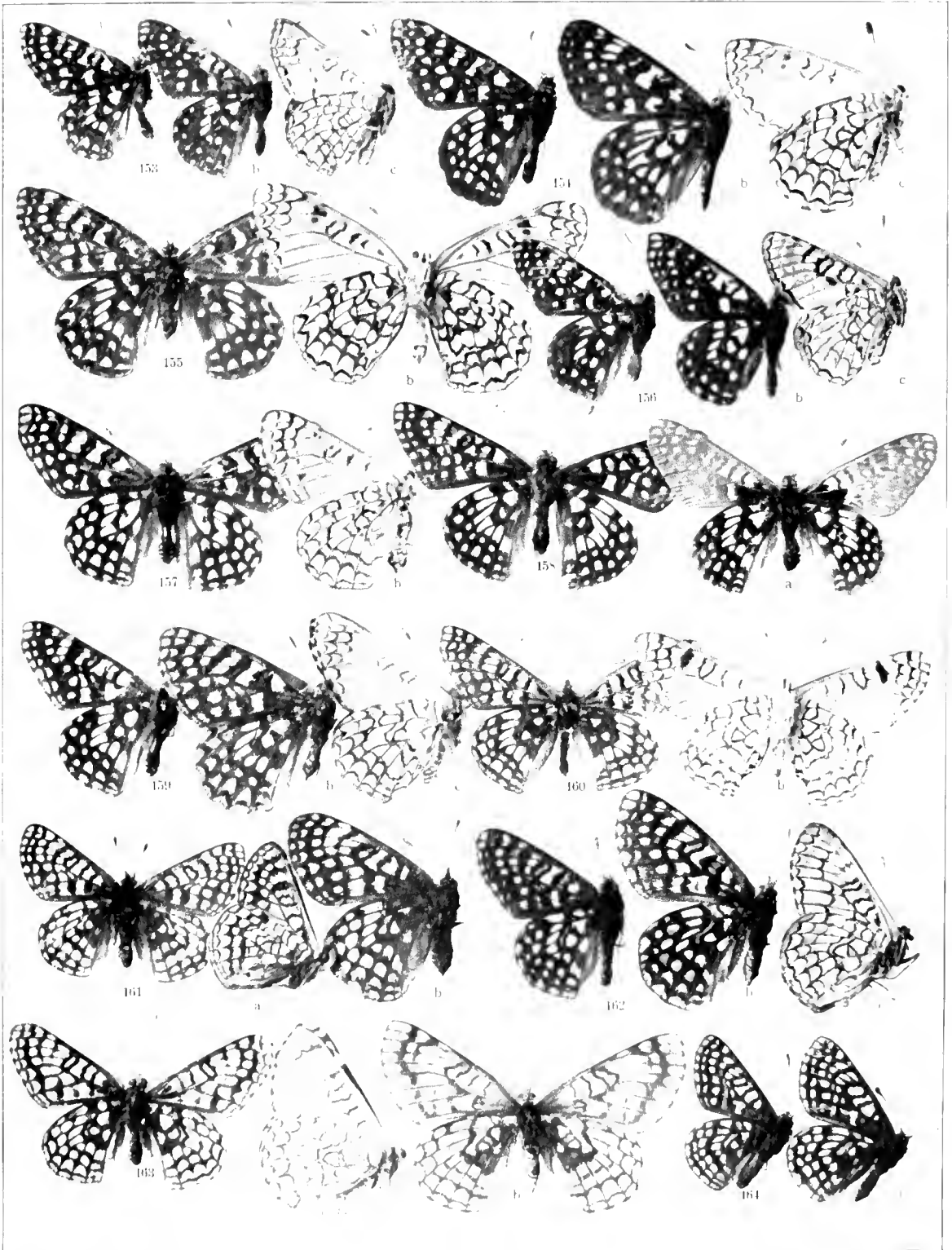


PLATE XIX

MELITÆA, Cont.

- 165, Anicia.
- 166, Wheeleri.
- 167, Brucei.
- 168, Beani.
- 169, Augusta.
- 170, Augustina, n. v.
- 171, Nubigena.
- 174, Gabbi.
- 175, Acastus.
- 176, Palla.
- 177, Whitneyi.
- 178, Eremita, n. s.
- 179, Hermesa, n. s.

N. B. The **Number**, and **a**, indicate the Males;
The letters **b, c, d**, indicate the Females.

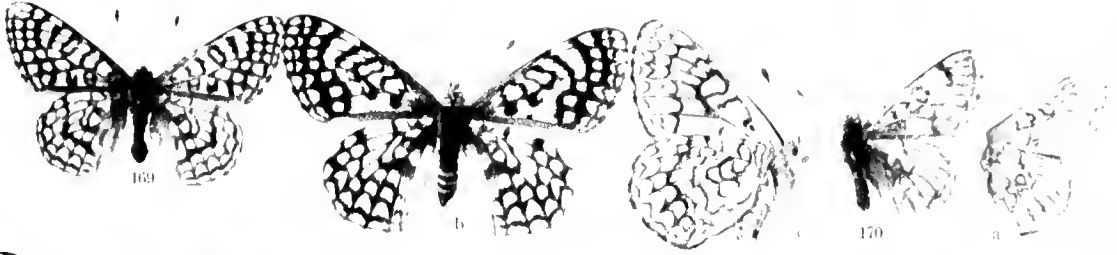


PLATE XX

MELITAEA, Cont.

- 180, Colonia, n. s.
- 181, Sabina, n. s.
- 182, Hoffmanni.
- 183, Abnorma, n. v.
- 184, Mirabilis, n. v.
- 185, Cyneas.
- 186, Leona, n. s.
- 187, Leanira.
- 188, Wrighti.
- 189, Cerrita, n. s.
- 191, Nympha.
- 192, Rolli.
- 193, Thekla.
- 194, Minuta.
- 195, Chara.
- 196, Perse.

N. B. The **N**umber, and **a** indicate the Males;
The letters **b, c, d**, indicate the Females.

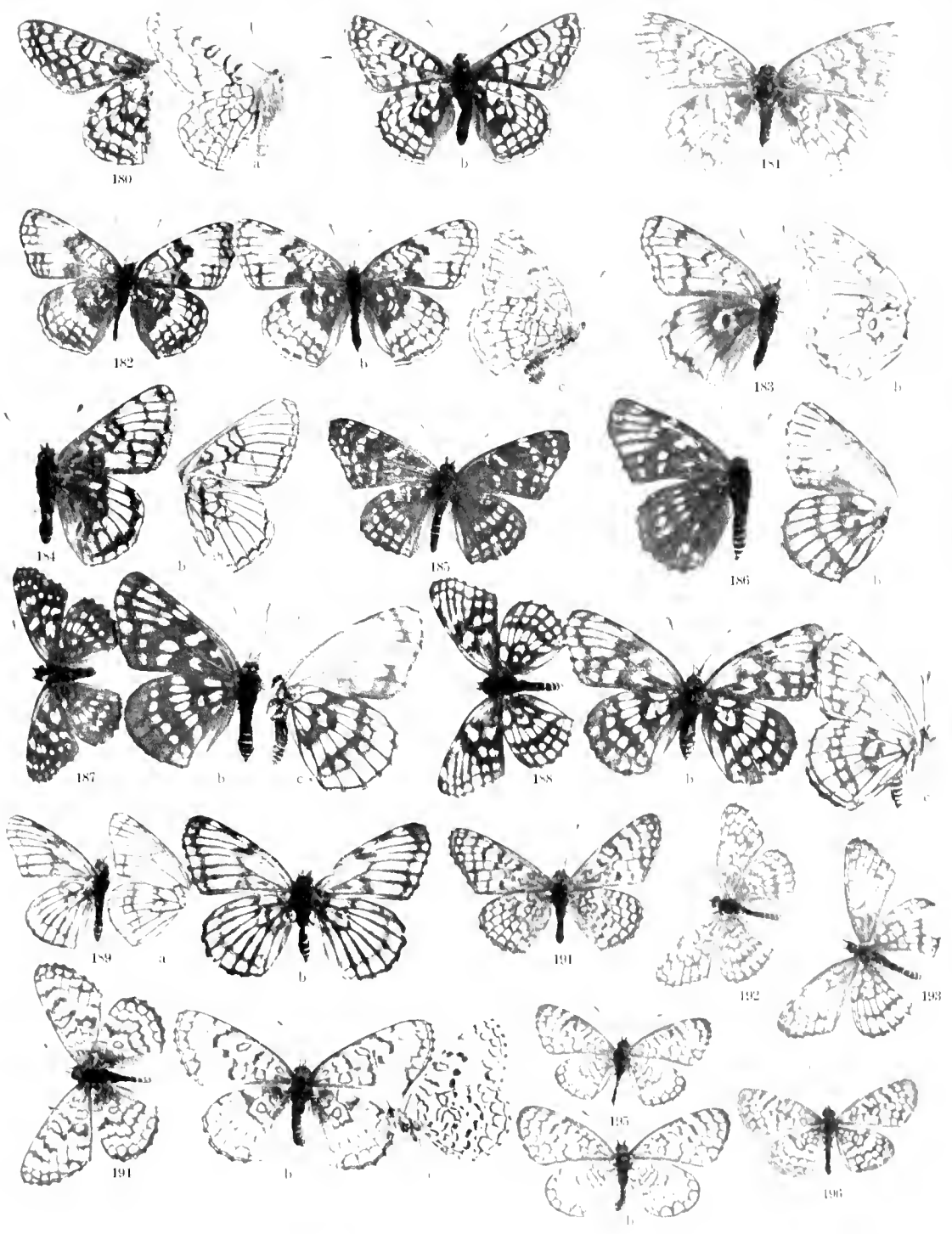


PLATE XXI

PHYCIODES

- 197, Nycotis.
- 198, Pascoensis, n. s.
- 199, Tharos.
- 200, Marcia.
- 201, Pratiensis.
- 202, Oseis.
- 203, Camillus.
- 204, Mylitta.
- 204a, Barnesi.
- 205, Montana.
- 206, Pieta.

ERESIA

- 207, Texana.

SYNCHLOE

- 208, Lacinia.
- 209, Crocule.
- 210, Rufescens.
- 211, Nigrescens.
- 212, Californica, n. s.

N. B. — The Number, and a, indicate the Males.
The letters b, c, d, indicate the Females.

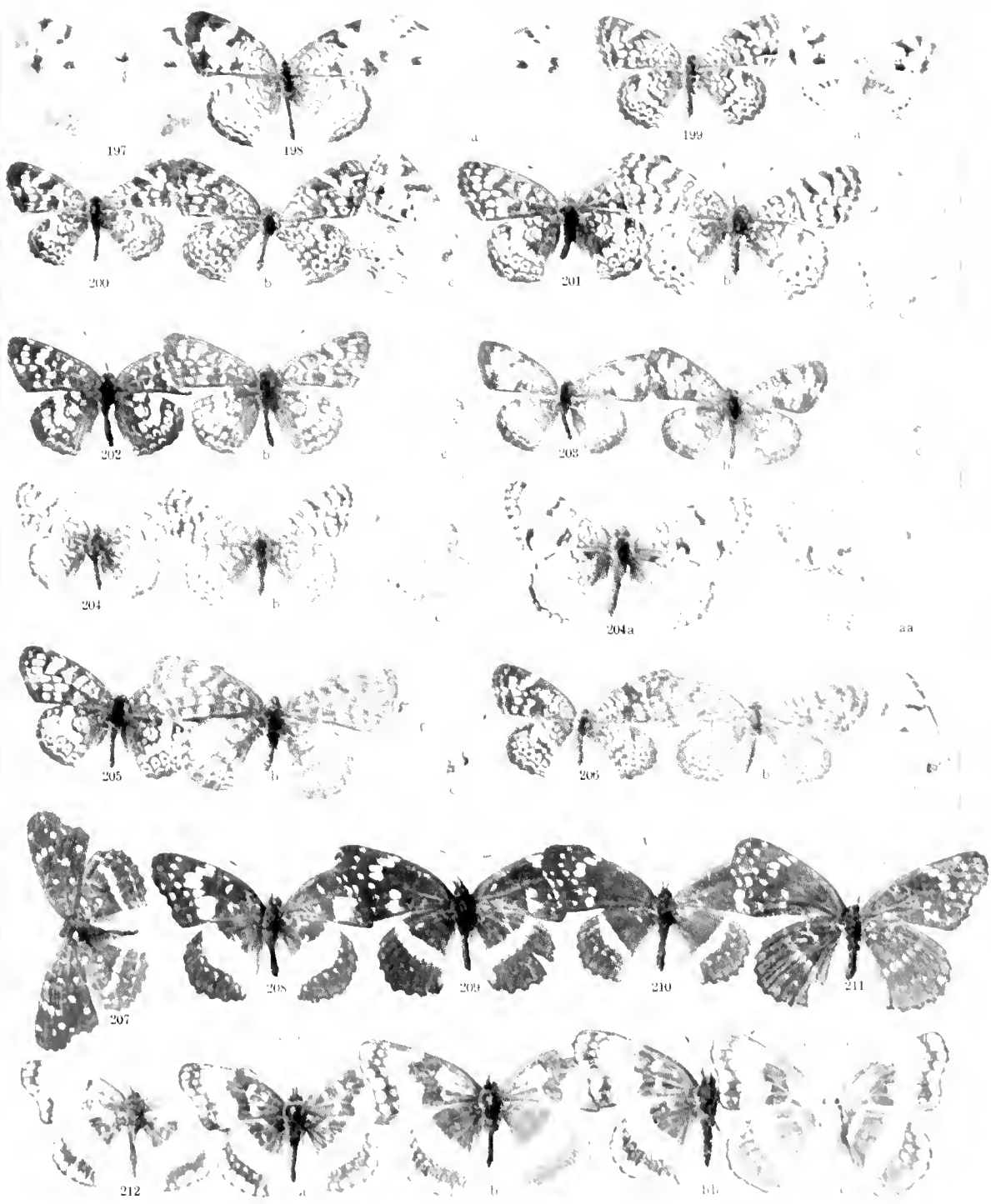


PLATE XXII

GRAPTA

- 213, Satyrus.
- 214, Marsyas.
- 215, Faunus.
- 216, Rusticus.
- 218, Zephyrus.
- 219, Gracilis.
- 220, Silenus.
- 221, Orcas.
- 222, Chrysoptera, n. s.

VANESSA

- 223, Antiopa.
- 225, Californica.
- 226, Miiberti.

PYRAMEIS

- 227, Atalanta.
- 228, Huntera.
- 229, Cardui.
- 231, Carye.

N. B. The **Number**, and **a**, indicate the Males;
The letters **b, c, d**, indicate the Females.

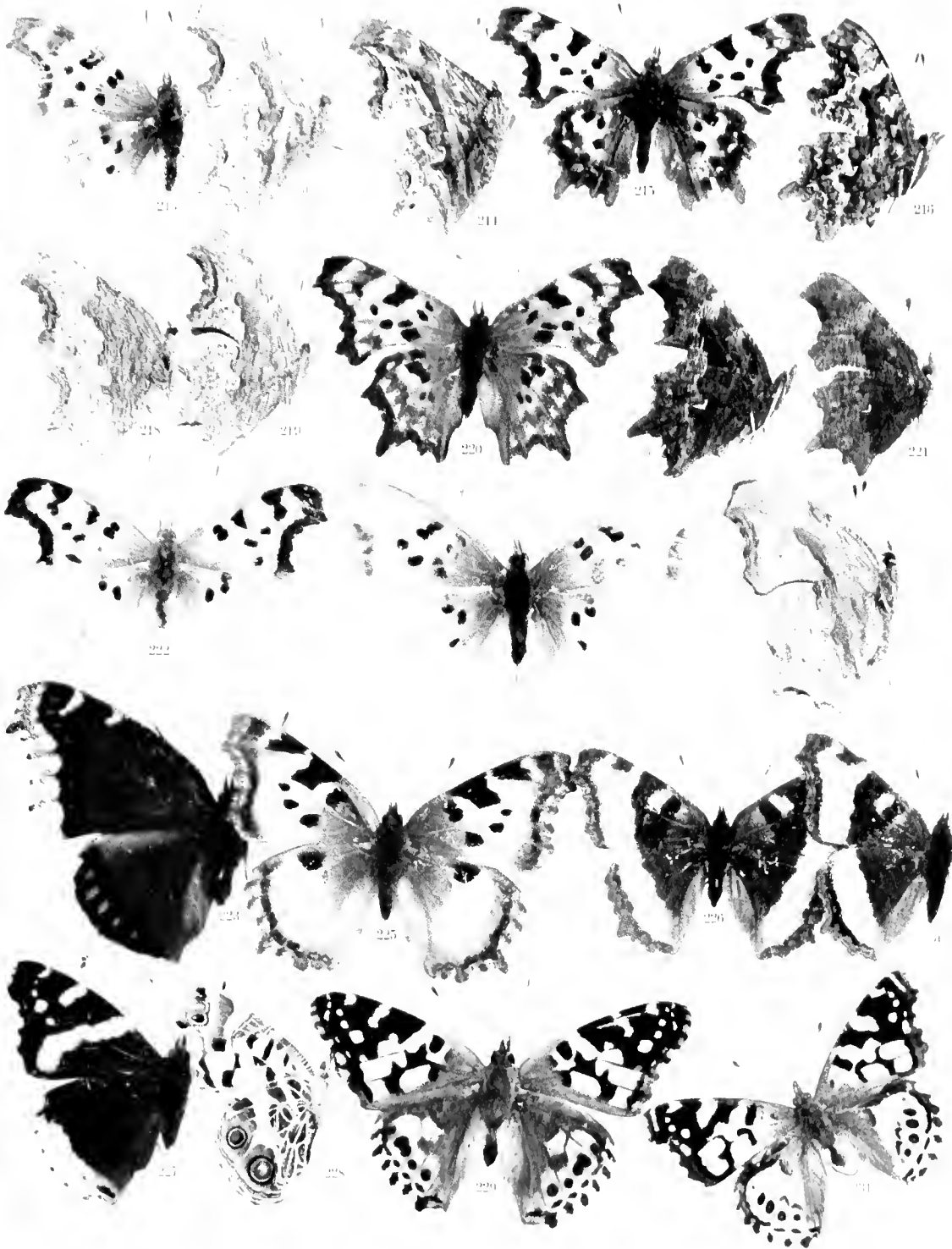


PLATE XXIII

JUNONIA

- 234, Genia.
- 235, Genoveva.

LIMENTIS.

- 237, Weidmeyerii.
- 239, Obsoleta.
- 240, Lorquini.

HETEROCHIROA

- 243, Californica.

APATURA

- 245, Celtis.
- 246, Leila.

PAPHIA

- 247, Andria.
- 247b, Morrisoni.

SATYRUS

- 249, Stephensi.
- 250, Gabbi.
- 251, Nephelo.

N. B. The **Number**, and **a**, indicate the Males.
The letters **b, c, d**, indicate the Females.

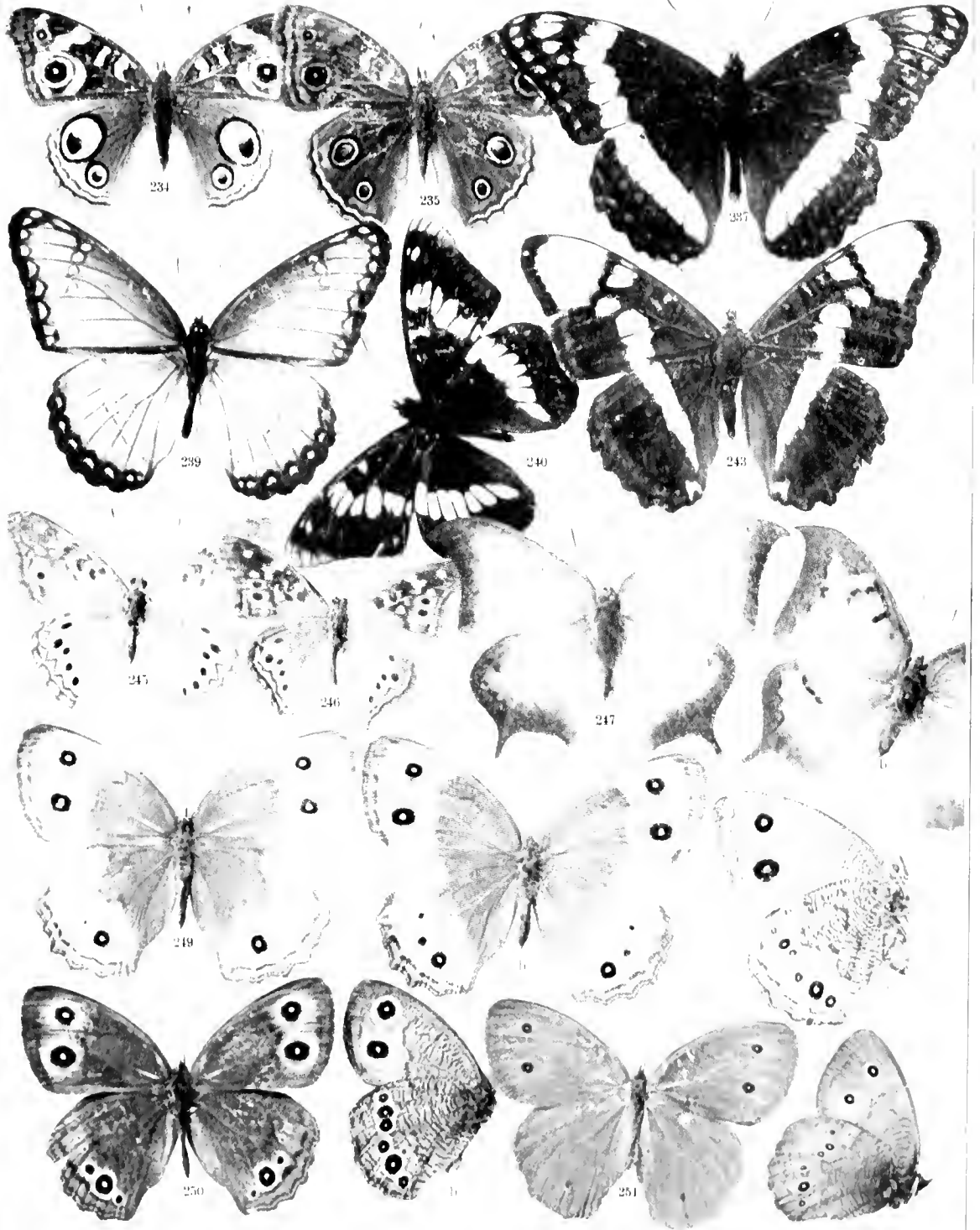


PLATE XXIV

SATYRUS, Cont.

- 252, Boopis.
- 253, Ariane.
- 254, Baroni.
- 255, Incana.
- 256, Cetus.
- 257, Paulus.
- 258, Charon.
- 259, Silvestris.

EREBIA

- 261, Callias.
- 262, Epipsodea.
- 263, Sofia.
- 264, Magdalena.

N. B. The **Number**, and **a** indicate the Males.
The letters **b, c, d**, indicate the Females

PLATE XXIV

SATYRUS, Cont.

252, Boopis.

253, Ariane.

254, Baroni.

255, Incana.

256, Cetus.

257, Paulus.

258, Charon.

259, Silvestris.

EREBIA

261, Callias.

262, Eppsodea.

263, Sofia.

264, Magdalena.

N. B. The **Number**, and **a** indicate the Males;
The letters **b, c, d**, indicate the Females

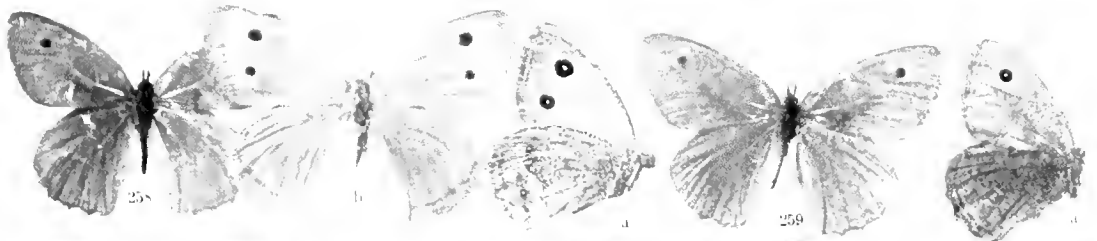
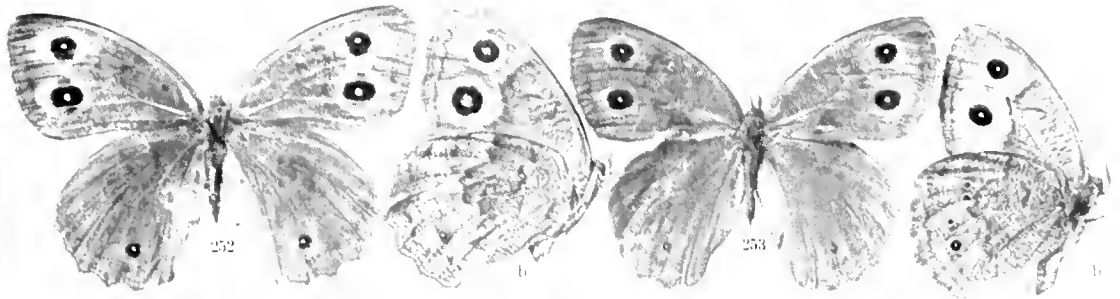


PLATE XXV

NEONYMPIA

266, Henshawi.

267, Haydeni.

268, Rubricata.

EPINEPHELE

269, Xicaque.

NEOMINOIS

270, Ridingsi.

271, Dionysius.

COENONYMPIA

272, Californica.

273, Galactinus.

274, Eryngi.

275, Ceres.

276, Pulla.

277, Kodiak.

278, Elko.

279, Inornata.

280, Ampelos.

281, Ochracea.

282, Brenda.

283, Pamphilius.

N. B. The *Number*, and *a*, indicate the Males.
The letters *b*, *c*, *d*, indicate the Females.

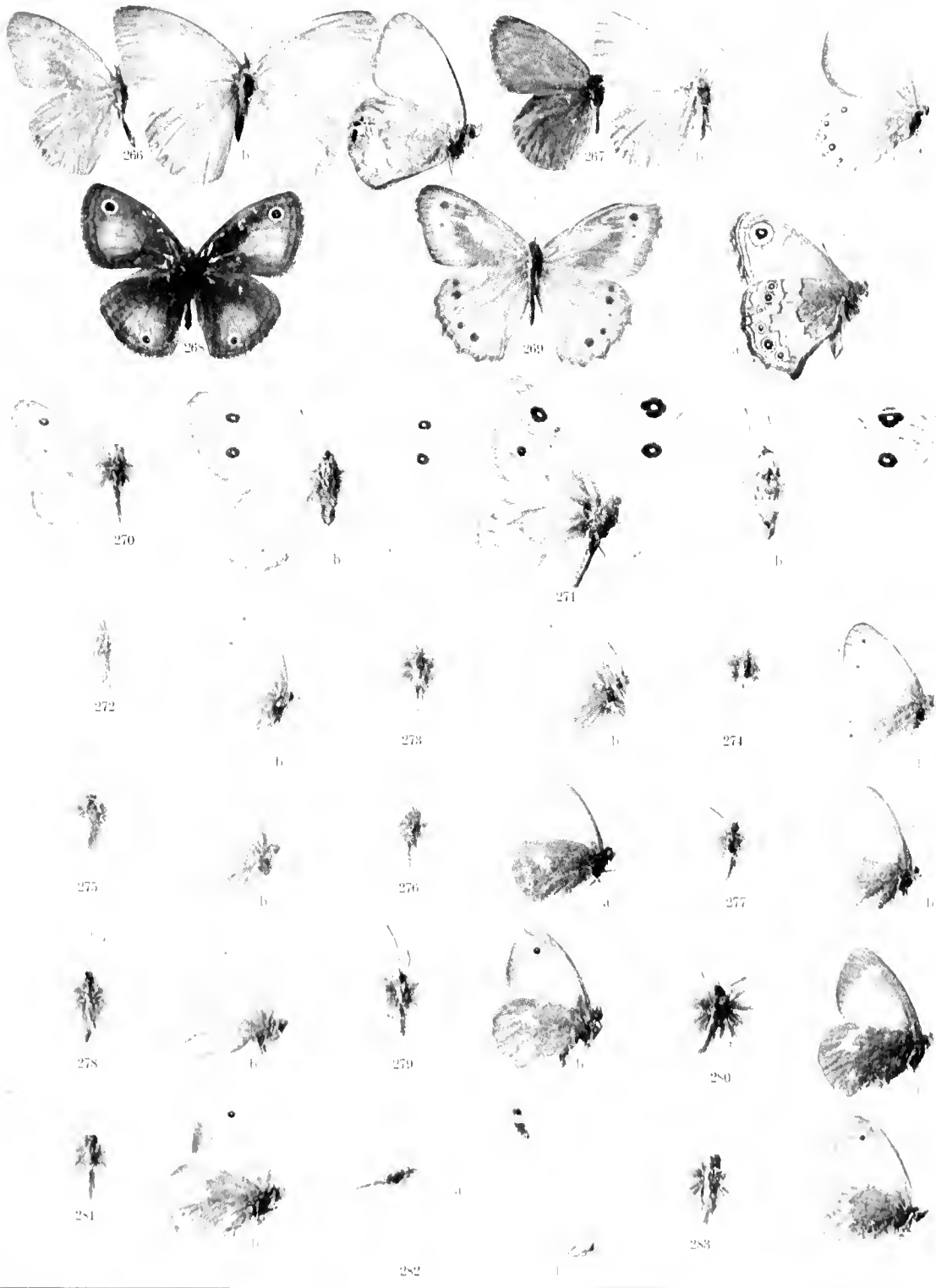


PLATE XXVI

CHRONOBAS

284, Gigas.

286, California.

287, Iduna.

288, Ivalda.

289, Uhleri.

290, Varuna.

291, Subhyalina.

292, Brucci.

N. B. The **Number**, and **a** indicate the Males;
The letters-**b, c, d**, indicate the Females.

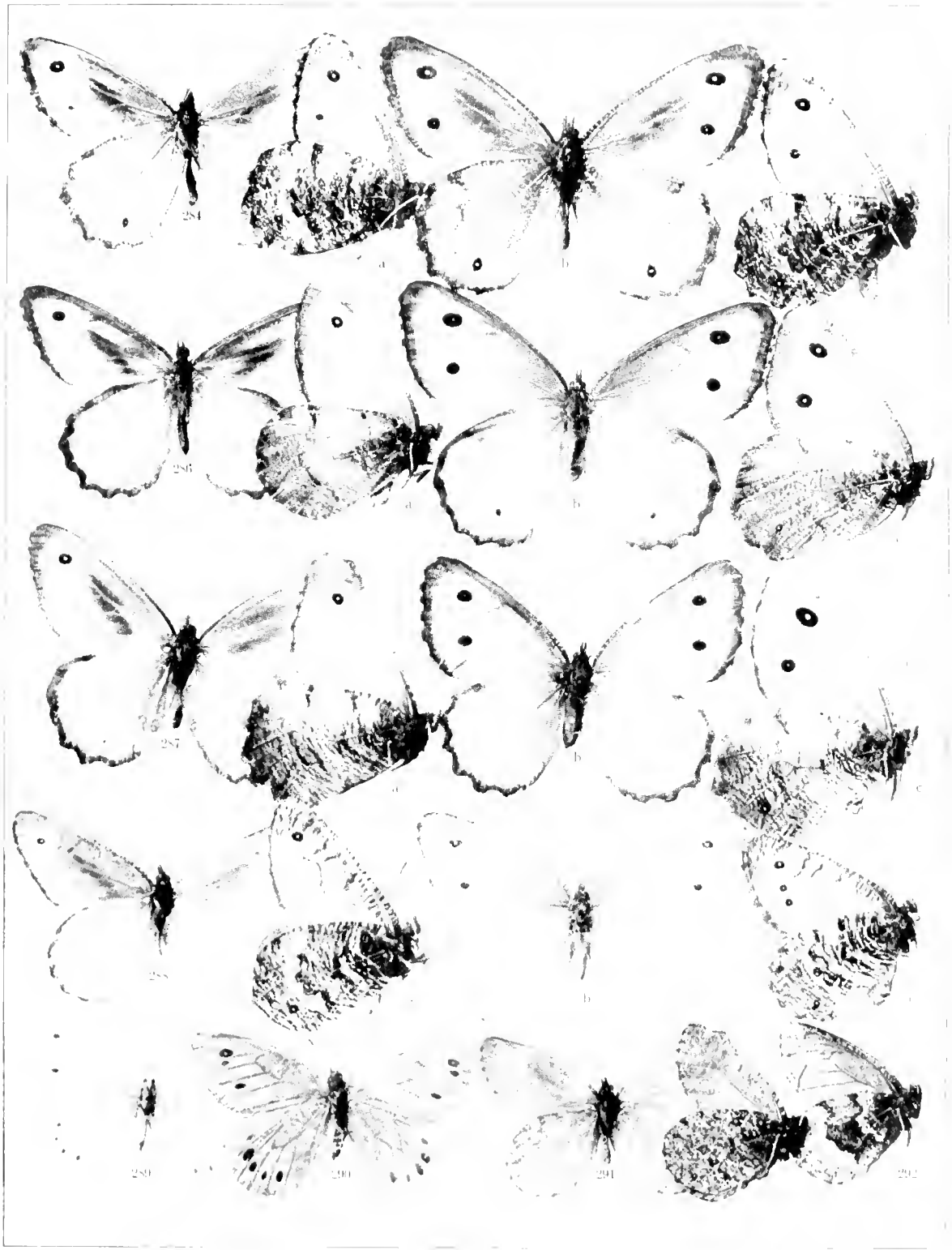


PLATE XXVII

LEMONIAS

- 294, Morino.
- 295, Cythera.
- 296, Virgulti.
- 297, Palmeri.
- 298, Nais.
- 299, Zela.
- 300, Cleis.

CALEPHELIS

- 301, Borealis.
- 302, Australis.
- 303, Nemesis.

ATLIDES

- 304, Crysalus.
- 306, Halesus.

THECLA

- 308, Melinus.
- 309, Californica.
- 310, Dryope.
- 311, Tacita.
- 314, Grumus.
- 316, Sepium.
- 318, Chalcis.
- 319, Nelsoni.
- 220, Exoleta.
- 321, Muiri.
- 322, Spinetorum.
- 323, Spadix.
- 324, Adenostomatis.

S. B. The **Number**, and **a**, indicate the Males;
The letters **b, c, d**, indicate the Females

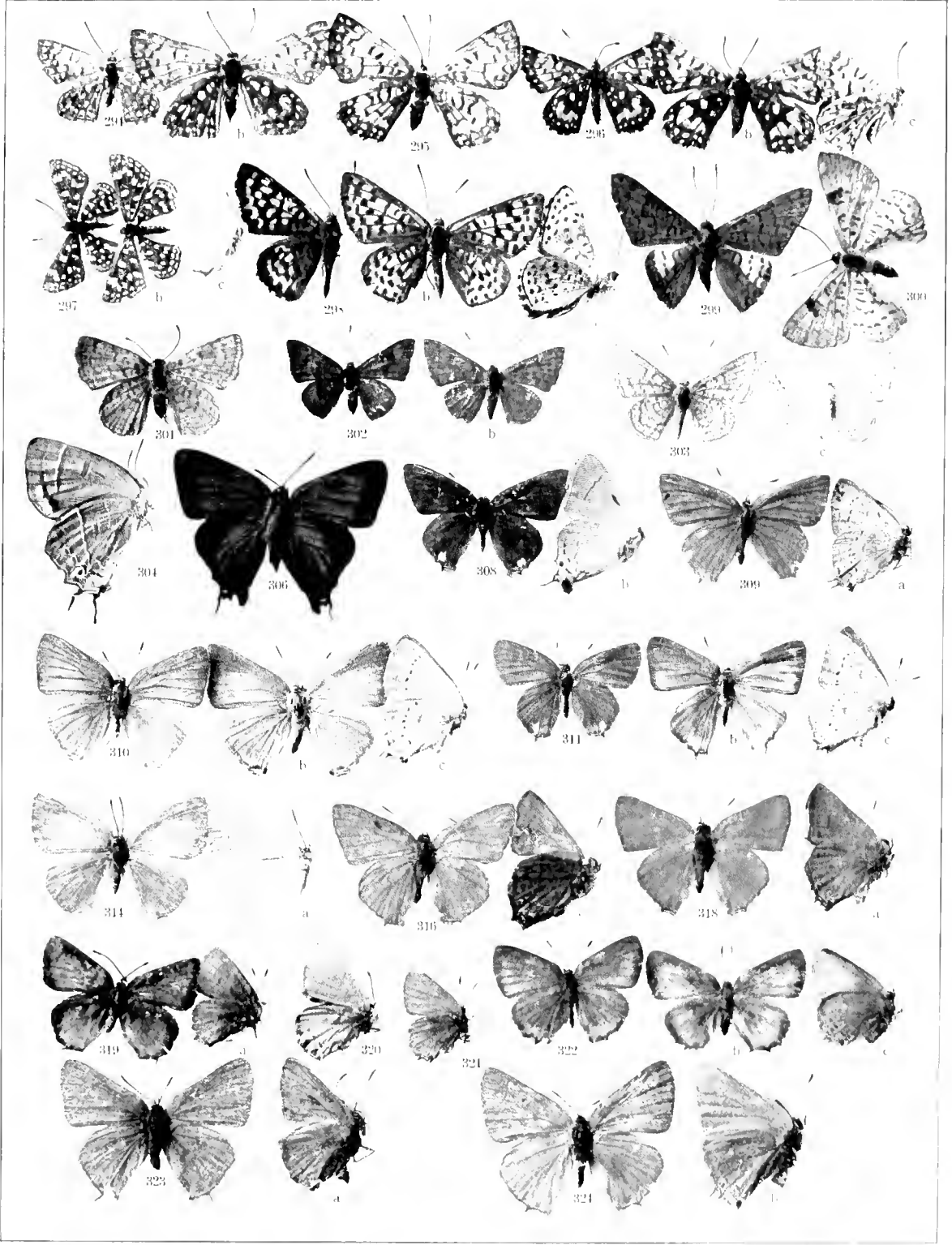


PLATE XXVIII

THECLA, Cont.

- 327, Ines.
- 328, Avalona, n. s.
- 329, Behri.
- 330, Froides.
- 331, Mossi.
- 333, Eryphon.
- 334, Niphon.
- 335, Dametorum.
- 336, Affinis.

CHRYSOPHANUS

- 338, Arota.
- 339, Virginensis.
- 341, Mariposa.
- 342, Xanthoides.
- 343, Gorgen.
- 345, Editha.
- 346, Zeroc.
- 347, Del Sud, n. s.
- 348, Helloides.
- 349, Dorcas.
- 351, Cupreus.
- 352, Rubidus.
- 353, Sirius.

N. B. The **Number**, and **a**, indicate the Males:
The letters **b**, **c**, **d**, indicate the Females.

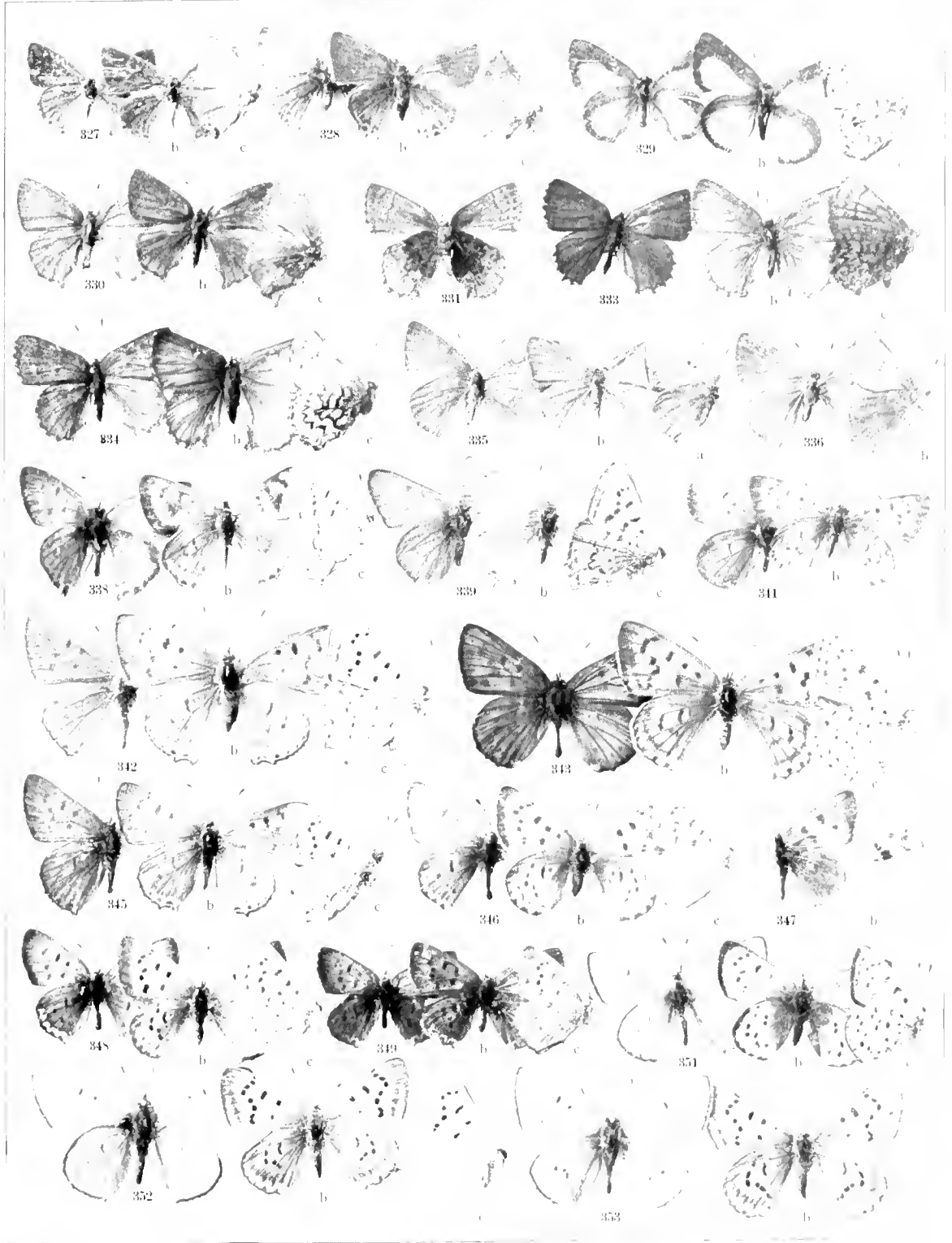


PLATE XXIX

LYCAENA

- 354, Fuliginosa.
- 355, Heteronea.
- 356, Clara.
- 357, Lycea.
- 358, Falla.
- 359, Pheres.
- 360, Icarioides.
- 361, Dædalus.
- 363, Sepiolus.
- 365, Kodiak.
- 367, Antiacis.
- 368, Belri.
- 369, Mertila.
- 370, Xerxes.
- 373, Sagittigera.
- 374, Sonorenis.
- 375, Podarce.
- 376, Enoptes.
- 378, Shasta.
- 379, Melissa.
- 380, Aemon.
- 381, Chlorina.
- 382, Melimona, n. v.
- 383, Lotis.
- 384, Anna.
- 385, Amyntula.

N. B. The **Number**, and **a**, indicate the Males;
The letters **b, c, d**, indicate the Females.

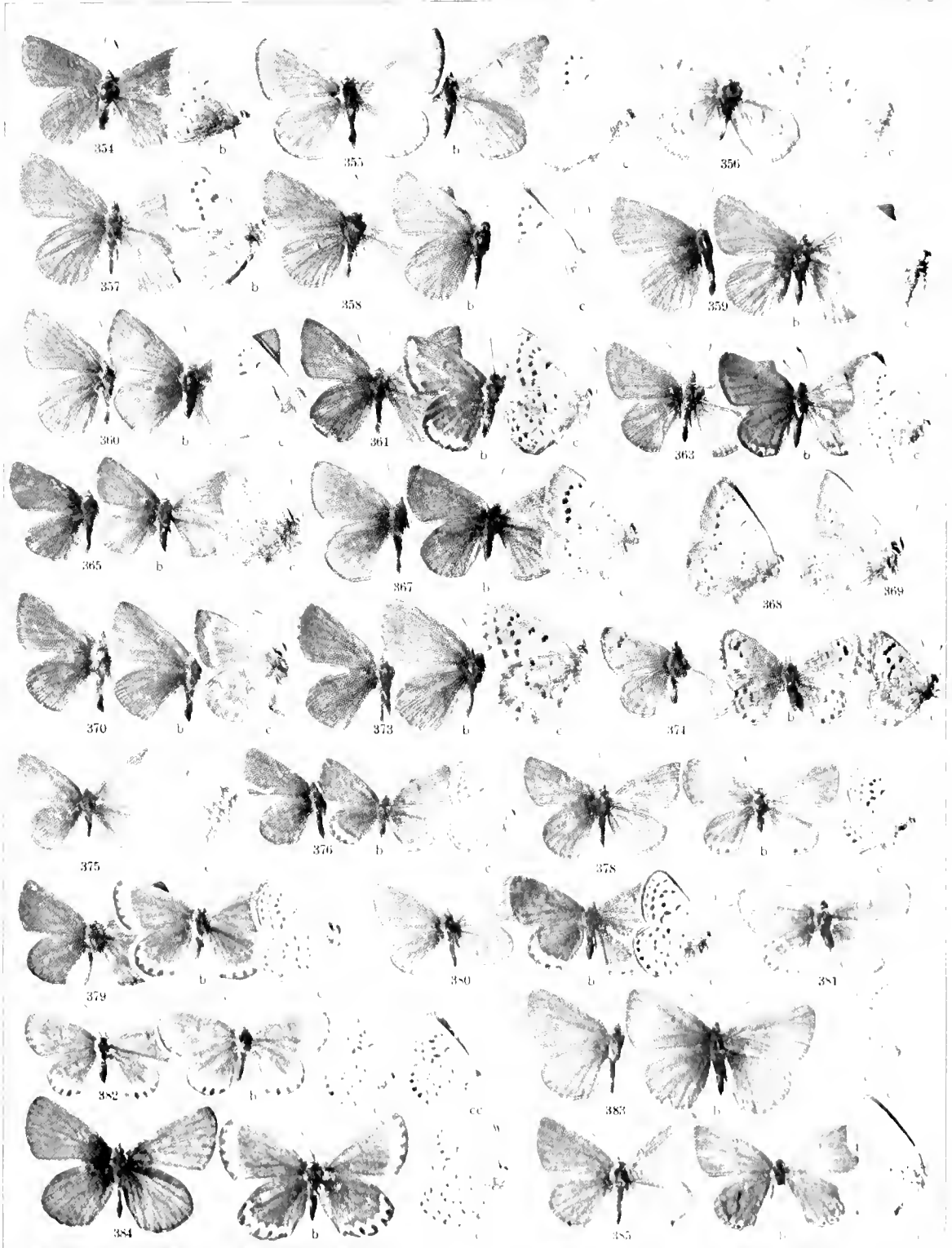


PLATE XXX

LYCENA, Cont.

- 390, Piasus.
- 391, Echo.
- 392, Arizonensis.
- 394, Isola.
- 397, Hamno.
- 399, Marina.
- 400, Sissona, n. s.
- 401, Astragala, n. s.
- 402, Exilis.
- 403, Isophthalma.

PHOLISORA

- 403a, Catullus.
- 406, Libya.
- 407, Alpheus.
- 408, Lena.

COPLEODES

- 409, Procris.
- 411, Candida.
- 412, Wrighti.
- 414, Eumus.

PAMPHILA

- 416, Ruricola.
- 417, Juba.
- 418, Viridis.
- 419, Manitoba.
- 420, Nevada.
- 421, Colorado.

N. B. The **Number**, and **a**, indicate the Males;
The letters **b, c, d**, indicate the Females

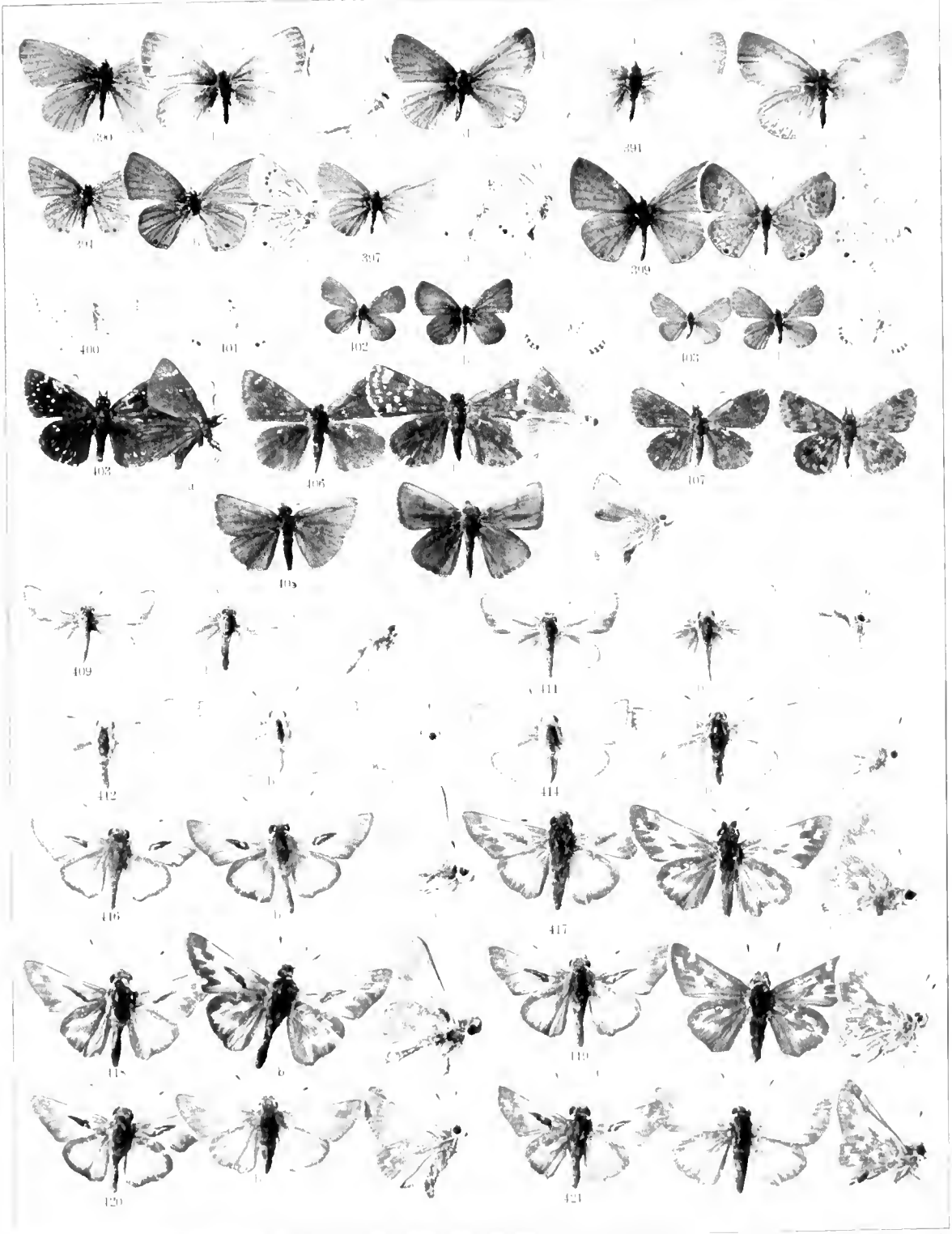


PLATE XXXI

PAMPHILA, Cont.

- 422, Idaho.
- 423, California.
- 424, Oregonia.
- 425, Sylvanoides.
- 426, Columbia.
- 430, Nemorum.
- 431, Agricola.
- 432, Milo.
- 433, Pratincola.
- 435, Campestris.
- 437, Brettus.
- 438, Brettoides.
- 440, Sabaleti.
- 441, Chispæ, n. s.
- 442, Vestris.
- 443, Bellus.
- 445, Nerens.
- 453, Melane.

AMRLYSCIRTES

- 454, Simius.
- 455, Nanno.

PYRGUS.

- 456, Ericetoma.
- 457, Tessellata.
- 459, Cæspitalis.
- 459, Scriptura.

N. B. The Number, and **a**, indicate the Males.
The letters **b**, **c**, **d**, indicate the Females.

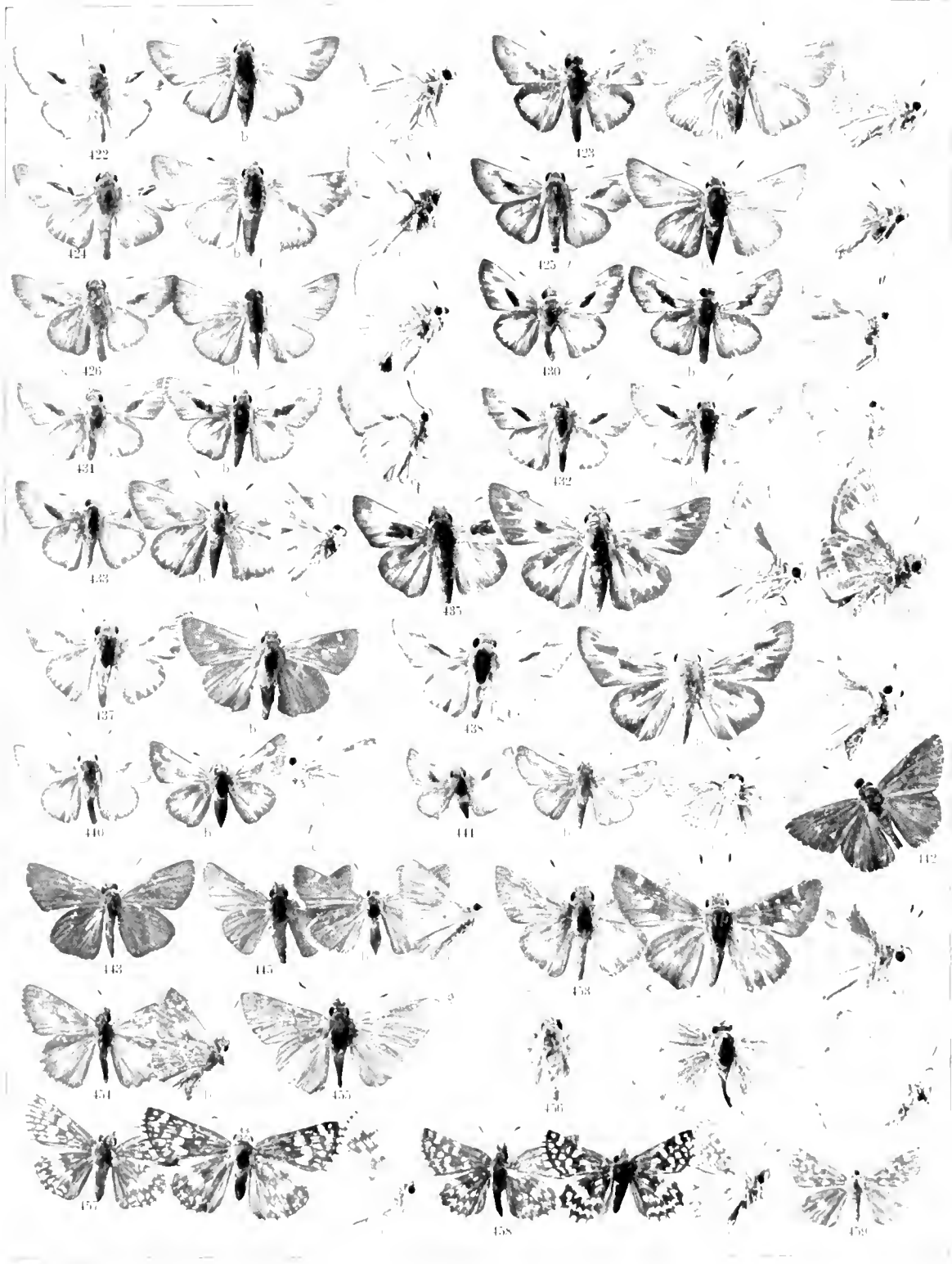


PLATE XXXII

NISONIADES

- 461, Persens.
- 462, Juvenalis.
- 463, Propertius.
- 464, Clitus.
- 468, Fumeralis.
- 469, Tristis.

EUDAMUS

- 471, Pylades.
- 472, Mexicana.
- 474, Tityrus.
- 477, Caius.
- 478, Emilia.
- 479, Python.
- 480, Lacustris, n. s.

PYRRHOPYGA

- 481, Araxes.
- 482, Cestus.

MEGATHYMUS

- 483, Neurogeni.

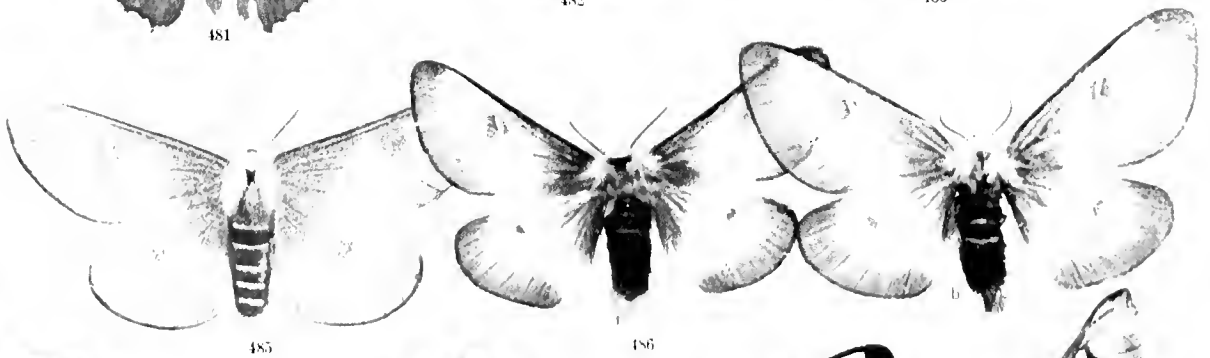
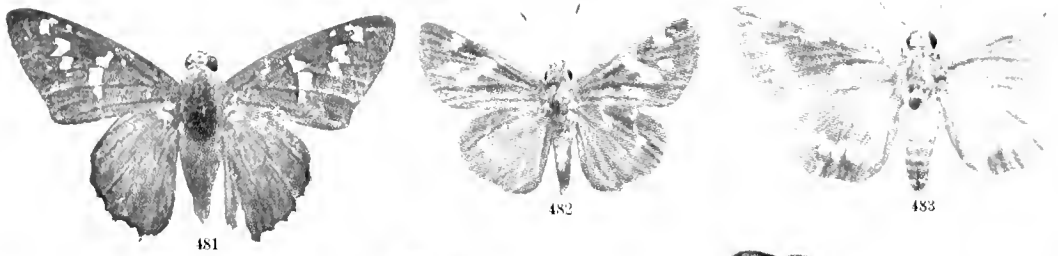
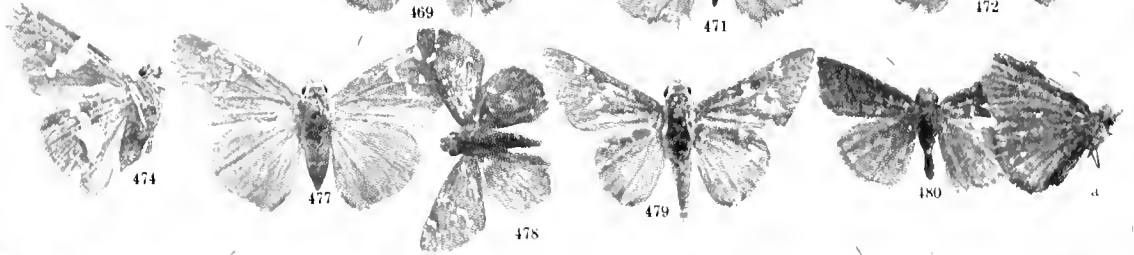
APPENDIX.—

Day-Flying Moths.

HEMILEUCA

- 485, Hemi, Nevadaensis.
- 486, Hemi, Californica.
- 487, Hemi, Electra.

N. B. The **Number**, and **a**, indicate the Males.
The letters **b, c, d**, indicate the Females.



INDEX

A

Abnorma, n. v., 183
 Acastus, 175
 Aemon, 380
 Adenostomatid, 324
 Adiante, 139
 Emilia, 478
 Afris, 336
 AGRAULIS, 104
 Agricola, 431
 Alexandra, 88
 Alpheus, 407
 Alaurus, 3
 AMBLYSCURTIS, 454
 Anophe, 74
 Anoplos, 280
 Amyntula, 385
 Andria, 247
 Anicia, 165
 Anna, 384
 ANTHOCHARIS, 58
 Antiacis, 267
 Antiope, 223
 APATURA, 245
 Araxes, 481
 Argo, 143
 ARGYNNIS, 110
 Ariadne, 77
 Ariane, 253
 Arizonensis, Pap., 20
 Arizonensis, Lye., 392
 Arota, 338
 Asterias, 29
 Asteroides, 30
 Astrae, 91
 Astragala, n. s., 401
 Atalanta, 227
 ATLIDDES, 304
 Augusta, 169
 Augustina, n. v., 170
 Ausonides, 57
 Australis, 392
 Avabona, n. s., 328

B

Babur, 5
 Barbara, 85
 Barnesi, 204a
 Baroni, Arg., 131
 Baroni, Melit., 156
 Baroni, Sat., 254
 Beau, 168
 Beckeri, 34
 Bohrensi, 125
 Bohri, Colias, 96
 Bohri, Lye., 308
 Bohri, Farnas., 8
 Bohri, Thecla, 329
 Bellus, 443

Berenice, 101
 Bernardino, 73
 Biscardi, 141
 Bili, 192
 Bopis, 252
 Borealis, 301
 Brenda, 282
 Bremneri, 119
 BREXTHIS, 146
 Bretoides, 438
 Bretius, 457
 Brucei, Chion., 292
 Brucei, Melit., 167
 Bryonia, 42

C

Casonia, 75
 Caspitolis, 458
 Caucas, 477
 CALBEHELLIS, 301
 Caliente, n. s., 79
 California, Penn., 423
 Cali orica, Chion., 286
 Californica, Ceno., 272
 Californica, Hemi., 489
 Californica, Het., 245
 Californica, n. s., Syn., 212
 Californica, Thec., 309
 Californica, Van., 225
 Callias, 261
 CALLIDRYAS, 71
 Callippe, 127
 Calyce, 39
 Camillus, 263
 Campestris, 335
 Candida, 411
 Cardai, 229
 Carpenteri, 112
 Carye, 231
 Castoria, 47
 Catulus, 403a
 Celtis, 245
 Ceres, 275
 Ceruta, n. s., 189
 Cestus, 482
 Cethura, 58
 Chalcedoni, 157
 Chancers, 318
 Chara, 199
 Charentonia, 99
 Charon, 258
 CHIONOBAS, 284
 Chispa, n. s., 441
 Chiorina, 381
 Christina, 99
 Chrysomelas, 87
 CHRYSOPTERANUS, 338
 Chrysoptera, n. s., 222
 Clara, 356

Clarins, 2
 Claudia, 105
 Clois, 300
 Clitus, 464
 Clodius, 1
 Conia, 234
 COENONYMPHIA, 272
 COLLIAS, 76
 Colon, 154
 Colonia, n. s., 180
 Colorado, 421
 Coloro, n. v., 25
 Columbia, 426
 Cooperi, 153
 COPEODES, 409
 Coronis, 126
 Creusa, 54
 Crocote, 209
 Crysalus, 304
 Cyprens, 351
 Cynceas, 185
 Cyprus, 113
 Cythera, 295

D

Dadalus, 361
 DANAIIS, 100
 Daurus, 16
 Day-flying Moths, 485
 Del Sid, n. s., 347
 Deserti, n. v., 60
 Dionysius, 271
 Doreas, 349
 Dryope, 310
 Drimotorum, 335
 Dwinelli, 158

E

Echo, 391
 Editha, Chrysoph., 345
 Editha, Melit., 161
 Edwardsi, Arg., 129
 Edwardsi, Col., 89
 Egleis, 145
 Electra, Hemi., 487
 Elko, 278
 Emilia, 92
 Enopes, 376
 EPINEHELE, 269
 Eppsodea, 262
 Epithore, 151
 EREBIA, 261
 Eremita, n. s., 178
 ERESIA, 267
 Ericetorum, 456
 Erinna, 144
 Eriphyle, 83
 Eryngi, 274
 Eryphon, 333
 Eubule, 71

EUCHLOE, 53
 EUDAMIUS, 471
 Eumus, 414
 EUTTOBETA, 105
 Eurydice, 72
 Eurymedon, 17
 Eurynome, 140
 Eurythome, 76
 Eversmanni, 14
 Exilis, 402
 Exoleta, 320

F

Faunus, 215
 Flava, 56
 Flora, 65
 Freija, 149
 Frigga, 150
 Fuliginosa, 354
 Fulla, 358
 Funeralis, 468

G

Gabbi, Melit., 174
 Gabbi, Sat., 250
 Galactinus, 273
 Genoveva, 235
 Genutia, 61
 Gieas, 284
 Gorgon, 343
 Gracilis, 219
 GRAPTA, 213
 Grunus, 314

H

Halesus, 396
 Hanno, 397
 Harfordi, 84
 Haydeni, 267
 Helena, 148
 HELICONIA, 99
 Heloides, 348
 HEMILEUCA, 485
 Henshawii, 266
 Hermodur, 6
 Hermosa, n. s., 179
 Hesperis, 118
 HETEROCHTYOA, 243
 Heteronea, 355
 Hippolyta, 115
 Hoffmanni, 182
 Hulda, 43
 Huntera, 228
 Hyantis, 55
 Hydaspes, 121

I

Icaroides, 360
 Idaho, 422
 Iduna, 287

Incana, 255
Indra, 27
Ines, 327
Inornata, Argy., 137
Inornata, Ceno., 279
Iole, 52
Iroides, 330
Isola, 394
Isophthalma, 403
Ivalda, 288

J

Juba, 417
Julia, 64
JUNONIA, 234
Juvenalis, 462

K

Keewaydin, 78
Kodiak, Ceno., 277
Kodiak, Lyc., 365
Kremhild, 152

L

Lacustra, n. s., End. 480
Lacmia, 208
Lanceolata, 53
Laura, 133
Laurina, n. v., 134
Leaira, 187
Leila, 246
LEMONIAS, 294
Lena, 408
Letis, n. v., 111
Leto, 110
Leona, n. s., 186
Libya, 406
Libiana, 130
LIMENITIS, 237
Lorquini, 240
Lotis, 383
LYCENA, 354
Lycea, 357

M

Macaria, 135
Magdalena, 264
Magnus, n. v., 13
Manitoba, 419
Marcia, 200
Marginalis, 51
Marina, 399
Mariposa, 341
Marsyas, 214
McGlashani, 159
Mead, 94
MEGANOSTOMA, 72
MEGATHYMUS, 483
Melane, 453
Melimona, n. v., 382
Melinus, 308
Melissa, 379
MELITAEA, 153
Menapia, 32
Menetriesi, 4

Mertila, 369
Mexicana, Eudam., 472
Mexicana, Terias, 98
Milberti, 226
Milo, 432
Minuta, 194
Mirabilis, n. v., 184
Mollis, n. v., 67
Montana, 205
Monticola, 122
Montivaga, 142
Morno, 294
Morrisoni, Antho., 59b
Morrisoni, Paph., 247
Mossi, 331
Muiri, 321
Mylitta, 204
Myrina, 146

N

Nais, 298
Nanno, 455
NATHALIS, 52
Nausicaa, 114
Nelsoni, Pieris, 37
Nelsoni, Thecla, 319
Nemesis, 303
Nemorum, 430
NEOMINOIS, 270
NEONYMPHA, 266
NEOPHASIA, 32
Nephele, 251
Nereus, 445
Neurogeni, 483
Nevada, 420
Nevadensis, 128
Nevadensis, Hemi., 485
Nicippe, 97
Niger, n. v., 10
Nigrescens, 211
Nippon, 334
NISONIADES, 461
Nubigena, 171
Nycteis, 197
Nymphia, 191

O

Obsoleta, 239
Occidentalis, Colias, 86
Occidentalis, Pieris, 38
Ochraea, 281
Oëtus, 256
Olancha, n. s., 160
Oreas, 221
Oregonia, Pam., 424
Oregonia, Papil., 26
Orseis, 202
Oweni, 116

P

Palla, 176
Pallida, 46
Palmeri, 297
PAMPHILA, 416
Pamphilus, 253
PAPIHA, 247

PAPILIO, 16
PARNASSIUS, 1
Pascoensis, n. v., 198
Paulus, 257
Pergamus, 28
Perse, 196
Persens, 461
Pheres, 359
Phitenor, 31
PHIOLISORA, 403a
PHYCLODES, 197
Piasus, 390
Picta, 206
PIERIS, 34
Pima, 69
Plexippus, 100
Podarce, 375
Pratensis, 201
Pratencola, 433
Procris, 409
Propertius, 463
Protodice, 40
Pulla, 276
Purpurascens, 123
Pylades, 471
PYRAMENS, 227
PYRGUS, 456
PYRRHOPYGA, 481
Pythion, 479

Q

Quino, 155

R

Rage, 48
Reakirti, 62
Rhodophe, 124
Ridingsi, 270
Rosa, 56
Rubicunda, 162
Rubidus, 352
Rubricata, 268
Rufescens, 210
Rupestris, 132
Ruricola, 416
Rusticus, 216
Rutulus, 19

S

Sabina n. s., 181
Sabuleti, 440
Sapiolus, 363
Sapium, 316
Sagittigera, 373
Sara, 66
SATYRUS, 249
Satyrus, 213
Savi, 9
Scriptura, 459
Scudleri, 93
Semiramis, 136
Semae, 71c
Shasta, 378
Sierra, n. s., 163
Silenus, 220

Silvestris, 259
Simius, 454
Sirius, 353
Sissona, n. s., 400
Sisymbri, 35
Sminthens, 7
Sofia, 263
Sonorensis, 374
Spadix, 323
Spinetorum, 322
Stella, 68
Stephensi, n. s., 249
Strigosa, 102
Subhyalina, 291
Suffusa, 33
Sylvanoides, 425
SYNCHLOE, 208

T

Tacita, 311
Taylora, 164
TERIAS, 97
Tessellata, 457
Texana, 207
Tharos, 199
THECLA, 308
Thekla, 193
Thoosa, 63
Tityrus, 474
Triclaris, 147
Tristis, 469

U

Ulderi, 289

V

VANESSA, 223
Vanille, 104
Varuna, 290
Venosa, 45
Vernalis, 41
Vestris, 442
Virginensis, 339
Virgulti, 296
Viridis, 418

W

Weidmeyer, 237
Wheeleri, 166
Whitneyi, 177
Wrighti, Cop., 412
Wrighti, Melit., 188

X

Xanthoides, 312
Xerxes, 370
Xicaque, 269

Z

Zela, 299
Zerene, 120
Zeroc, 346
Zephyrus, 218
Zoliceon, 24

(1407.)
West Street.

SMITHSONIAN INSTITUTION LIBRARIES



3 9088 00251254 9

shent Q1551 P2W62X

Colored plates of The butterflies of the