

Historic, archived document

Do not assume content reflects current scientific knowledge, policies, or practices.

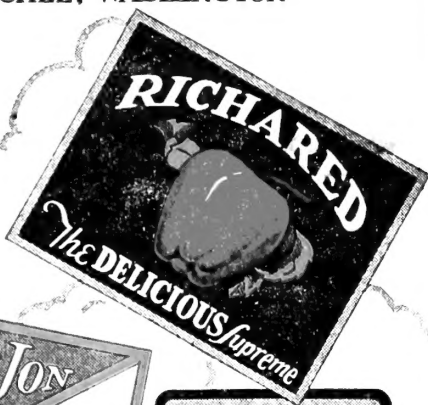


1935

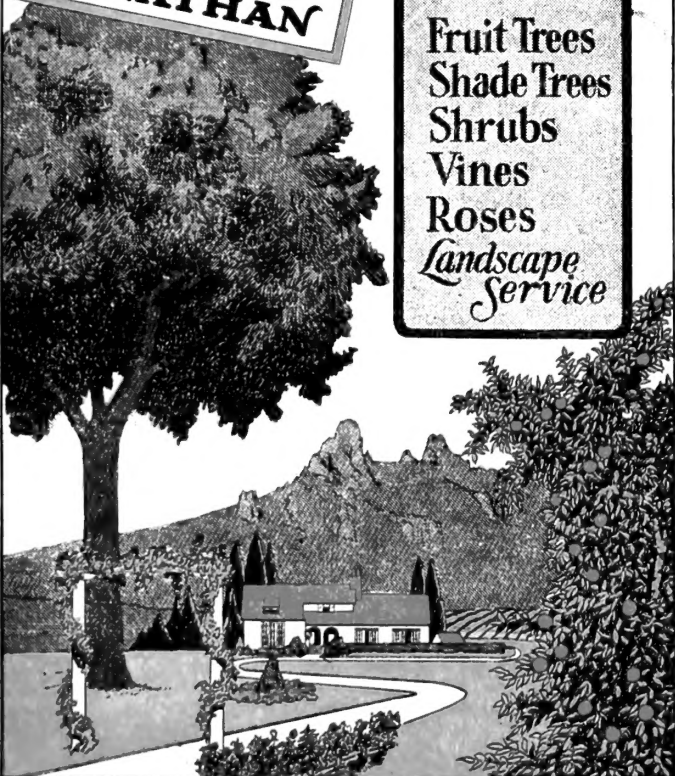
Columbia & Kanogan

NURSERY COMPANY

THE WENATCHEE NURSERIES
WENATCHEE, WASHINGTON



Everything
for the
Planter!
Fruit Trees
Shade Trees
Shrubs
Vines
Roses
Landscape
Service



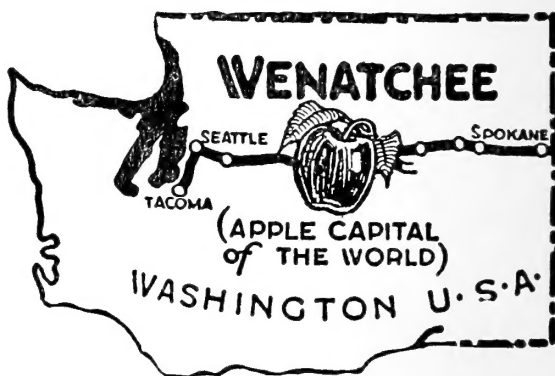
OUR 30th YEAR

In few lines of endeavor does the "personal element" count so much as in the nursery business.

The details of growing, grading, packing, and delivering nursery stock requires expert knowledge. Success is dependent upon personal judgment, personal supervision, and long experience. The business of propagating nursery stock is not an amateur's job.

Your patronage is solicited upon the basis of our ability to render dependable service and deliver real quality and value in stock. Our nursery organization through thirty years' experience in the nursery business at Wenatchee, Wash., is qualified and equipped to render such service.

Plant the best stock obtainable from the most reliable source. The first cost of good fruit trees becomes insignificant when measured in terms of profitable production over a period of years. Like thoroughbred livestock or thoroughbred poultry—good trees are far the most profitable and the best investment.



Wenatchee is practically the geographical center of the State of Washington. Good transportation facilities enable us to give excellent service in the delivery of nursery stock. We have a long growing season and rich soil. Our fall and winter season is sufficiently cold to thoroughly ripen and mature young nursery stock. This is an important consideration for every planter.

Wenatchee has been termed the "Apple Capital of the World". Here more apples are grown—and some of the finest)—than in any similar area in the world. Also a large variety of other deciduous fruits such as peaches, pears, plums, prunes, cherries, apricots, etc.

In 1906 when the C. & O. Nursery was founded, the total amount of fruit produced and shipped from North Central Washington was 60 cars. In one year the Wenatchee-Okanogan district shipped approximately 25,000 carloads. The major portion of this fruit was produced on trees from our nursery during the past thirty years. These splendid, productive orchards are our best references.



C. & O. Building, Wenatchee, Washington

This modern building houses our offices and nursery packing rooms.

General Information

Shipping Season: Our shipping season begins in the fall about October 25th, and continues until late spring. Where planting conditions are favorable and if customers request, we can make shipments in mid-winter.

Errors in Shipment: We strive to fill every order exactly as specified. The utmost care is exercised in the details of packing. However, if a mistake does occur we are always glad to rectify it. Check your order promptly on arrival. If anything is wrong **NOTIFY OUR OFFICE AT ONCE, STATING EXACTLY WHAT THE TROUBLE IS. GIVE STOCK GOOD CARE, AND DO NOT PLANT UNTIL YOU HEAR FROM US.**

PLANTING INSTRUCTIONS

Complete instructions are printed on the back of a shipping tag which will be attached to every box or bale.

MODERN NURSERY PACKING HOUSE

Our new nursery packing house is one of the most modern in the country. It has insulated wall and roof, with special forced-air ventilation throughout the building and special facilities for maintaining a cool temperature. This enables us to hold nursery stock dormant and in good condition for planting until late in the season, when trees out-of-doors are in full leaf. Here trees and plants are graded and prepared for shipment under the proper conditions, with every safeguard against exposure or damage.

USUAL DISTANCES FOR PLANTING

Apple.....	25 to 35 feet apart	
Pear.....	20 to 35 feet apart	
Sweet Cherry	25 to 40 feet apart	
Sour Cherry	} 16 to 24 ft. apart	
Plum.....		
Prune.....		
Apricot.....		
Peach.....		
Grapes.....	7 to 10 feet apart	
Currant.....	4 to 6 feet apart	
Gooseberry...	4 to 6 feet apart	
Raspberry	3 to 4 ft. by 5 to 7 ft.	
Blackberry	3 to 4 ft. by 5 to 7 ft.	

Number of Trees or Plants Required Per Acre—How to Estimate

Rule—Divide 43,560 (the number of square feet in an acre) by the number of square feet for each plant. The result is the number required for an acre.

Example—(Square system) Trees 20 by 25 feet apart; 20 times 25 equals 500 square feet; 43,560 divided by 500 equals 87 trees per acre.

If trees are planted on the Triangular System, 15 per cent more than for the Square System will be required.

Strawberry—Field culture, 1 to 1½ by 2½ to 3½ feet; garden culture, 1 to 2 feet.

We pay freight charges to customer's shipping point, and guarantee arrival in good condition.

A New Race of Red Apples

. . . . the Way to Better Apple Profits

The New Red Apples described in the following pages show the way to better apple profits for growers.

These new apples produce a much greater percentage of Extra Fancy fruit due to added color. Extra Fancy is the profit maker.

The Production Manager of the American Fruit Growers' Inc., speaking before the Washington State Horticultural Association, estimated that the additional red color resulting in increased Extra Fancy grade produced by three of these new varieties would result, under North Central Washington conditions, in an increased per-acre profit to the grower approximately as follows:

Richared Delicious—A per acre profit of \$630.00 instead of \$490.00—or a net increased profit of 28% per acre to the grower.

SeeandO Winesap: \$280.00 per acre profit as against \$210.00 per acre for the ordinary Winesap—or a net increased earning for the grower of 33%.

Blackjon: That Blackjon—due to earlier color and better shipping and keeping quality, would show a \$210.00 per acre profit, as against \$70.00 per acre average loss on common Jonathan—actually a difference of \$280.00 per acre in favor of Blackjon.

Selected : Tested : Proved

In the development of Richared Delicious, nineteen (19) separate and distinct strains of "red" Delicious were secured and tested. They were all different. Some had no merit—something lacking in SHAPE, COLOR, SIZE, KEEPING QUALITIES, etc.

Since the introduction of the Richared Delicious, another similar Delicious has been introduced by our company. The "Shotwell" Delicious. See Page 4 for its description.

Likewise in the development of Blackjon, SeeandO Red Rome, Blackmack, SeeandO Winesap, Blaxtayman—the most thorough tests were conducted over a long period of time—and each variety reproduced through successive generations. Each and everyone of these new varieties has been most carefully selected—most thoroughly tested—and conclusively proved as to merit.

A WORD OF CAUTION TO PLANTERS

Quality merchandise is often imitated. Various so-called "red" strains are being offered for sale. The antecedents of many such "strains" are indefinite—their merits uncertain. Very few, if any, have been submitted to the rigid tests and long periods of actual performance that has placed these new C. & O. red apples in front rank. Do not be satisfied with something represented "just as good as"—insist upon planting tested, proved varieties, sold under genuine trade-marked names.

These new varieties are being grown by the country's leading fruit growers. They are known and proved for quality and merit and have the endorsement of leading horticultural authorities everywhere.

RICHARED

TRADEMARK REG. U. S. PAT. OFF.

The DELICIOUS *Supreme*

RICHARED Delicious is the one improved strain of Delicious that is a "known quantity" and that HAS MADE GOOD.

Previous to its introduction by this Nursery in the year 1926, Richared had been submitted to rigid tests. It was selected as the most outstanding red strain of Delicious from a total of nineteen separate, distinct types that were tested.

Richared Delicious is the most highly developed, best colored, best keeping strain of Delicious grown. Richared is preferred for commercial orchards by leading apple growers.

Growers who have Richared Delicious in bearing are enthusiastic about its outstanding, early, cherry-red color, and its superior keeping qualities.

RICHARED GROWERS SAY:

BOLLINGER ORCHARDS, Methow, Wash—"In every way I am pleased with Richared. I feel safe in saying that I will get at least 25% more Extra Fancy Richared than of the old Delicious. I think the bright red of the Richared the most attractive of all red Delicious."

ROBERT L. McANALLY, Wenatchee, Wash.—"The Richared is all that you claim, a solid, bright ruby-red. They are large, beautiful, and full of flavor, and nearly all color Extra Fancy grade. On account of earlier color, which permits picking while firm and prime, they keep much better than ordinary delicious."

A. Z. WELLS, Wenatchee, Wash., (Owner of 300-acre orchard.)—"I have no hesitancy in saying that I consider the Richared Delicious the finest apple that grows. Not only is its deep, cherry red a color which must appeal to any buyer, but the flavor and characteristic shape of the Richared is fully equal, if not superior, to the old standard Delicious. I can consistently recommend your Richared Delicious as the best strain of Delicious I have ever seen."

"In the year of 1927 we planted several acres to RICHARED Delicious apples. In 1935 these trees had a crop of about 2300 boxes. In 1934 the crop was 4400 boxes.

"On all my sales of this fruit I have received premium prices for the RICHARED—over and above the prices of ordinary Delicious, of from twenty-five to thirty-five cents per box. In addition, my percentage of Extra Fancy grade has been much higher than would have been the case with the ordinary Delicious, while the percentage of C grade apples has been practically negligible.

"At the present time I have about three carloads of RICHARED Delicious in storage, and our regular cold storage reports show them in excellent condition—no breakdown whatever, thus allowing me to hold them for better prices while the riper common Delicious must be moved to market regardless of prices."

Very truly yours,
MARION K. AYRES,

The last paragraph should convince anyone to plant RICHARED if there were no other advantages.

Planters should be very cautious about planting a strain of Delicious sold merely as "Red Delicious." Numerous so-called "Red Delicious" are offered from various sources. Frequently such strains are of doubtful origin and have not been submitted to the rigid tests necessary to prove their worth.

RICHARED is a definitely proven strain of known merit. Planters purchasing genuine RICHARED trees bearing the trade-marked RICHARED label, may be assured of the finest, most highly developed, improved strain of Delicious obtainable.



A Different Solid-Red Delicious

The SHOTWELL differs from the RICHARED in that it colors earlier and darker. We especially recommend "SHOTWELL" for districts where it is hard or impossible to get average color with the common Delicious. We also recommend SHOTWELL for districts where very early color is a sales factor. Whereas the Richared Delicious colors a bright "cherry" red, the SHOTWELL colors a deep mahogany red.

It is an exclusive C. & O. introduction and the United States Government granted a plant patent on it. It is a true "Bud Sport" or mutation of the Delicious. The original tree has one main limb—on which the apples color much earlier and darker than the Delicious on the balance of the tree and on all adjoining trees. It has been thoroughly tested for many years and is a fixed type.

The Richared Delicious starts coloring with a blush-all-over-red, no stripes, while the Shotwell starts coloring with stripes which are scarcely visible in the highly colored finished apple although occasionally traces of striping can be seen.

The following letter from the manager of one of the Wenatchee valley's (Washington) largest orchards is proof of the early color:

"In the spring of 1928 I purchased from your Company, and planted 160 Shotwell Delicious trees. This year the trees are well loaded, and today (Aug. 28th) the apples will grade nearly 100% extra fancy for red color, whereas, but very few, if any, of our ordinary red Delicious apples have attained sufficient red color to grade extra fancy. The season's nearly a month earlier than usual, and our Shotwell Delicious, also our common red Delicious, are now sufficiently matured for picking.

"We will pick our Shotwell Delicious at once, but will wait as long as possible to pick the ordinary red Delicious, hoping that they will take on more color."

I Remain Yours Very Truly,
C. A. LEEDY,

Plant the SHOTWELL The Earliest Coloring Delicious

BLACKJON

PAT. APP. FOR TRADE MARK REG.

Blackjon is a new strain of Jonathan, identical in shape, size, productiveness, etc., with common Jonathan. But Blackjon colors earlier than common Jonathan—and colors approximately 98% Extra Fancy for color, as against approximately only 23% common Jonathan.

Because Blackjon colors earlier, it can be picked when in firm, prime condition, resulting in a better shipping apple and far better quality. Reaching the early markets it brings much better prices.

In an address before the Washington State Horticultural Association, the Production Manager of the American Fruit Growers, Inc., stated that returns over the last five year period showed a return for the first pool of Jonathans of 40c per box more money than for later Jonathans, and further remarked:

"We were very careful to observe the color of the Blackjon at the time of the closing of our first pool and were convinced that all of these apples could at that time have been marketed in the first pool."

WHAT OTHER AUTHORITIES SAY ABOUT BLACKJON

F. E. DeSELLEM, Pres. Wash. State Horticultural Assn.—"There is no question in my mind that this improved Jonathan is going to surpass the ordinary Jonathan, both as to earliness and improved color."

W. A. LUCE, Orchard Advisor, Earl Fruit Co.—"I believe this apple to be a real asset to the fruit industry of the Northwest."

A. R. CHASE, County Agent.—"This new sport would appear to be as valuable in improving our Jonathan variety as the red strain of Delicious has been in improving the latter variety."

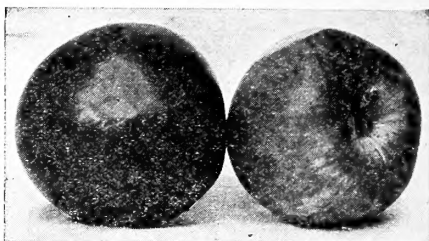
EARLY JONATHANS PAY—A prominent Wenatchee, Washington, Grower says: "Last season my Delicious crop averaged \$1.92 per box, but my EARLY combination Jonathans brought me \$2.08 per box. Had my Jonathans been Blackjon I could undoubtedly have gotten that price or more for my entire crop."

For early districts where early apples are profitable, Blackjon is recommended as the best in its class.

Ask for special Blackjon descriptive folder.
For prices of Blackjon trees, see price list
attached to inside front cover.



Prof. O. M. Morris, of the Horticultural Department, Washington State College, and A. T. Gossman, Pres. of the C. & O. Nursery Co., inspecting a 5-year old Richard Delicious tree loaded with 313 apples. Every apple Extra Fancy color.



SEEANDO Winesap WINESAP

"SeeAndO"

WINESAP

(Trade Mark Registered)

An Early-Coloring, Solid-Red Winesap—Colors over 40%
More Extra Fancy Grade
COLOR GRADES AT PICKING TIME

	Extra Fancy	Fancy	"C" Grade
SEEANDO WINESAP	94%	5%	1%
Common Winesap	52%	35%	13%

This new strain of Winesap has a much darker, also richer, and more brilliant red color than the common Winesap. It has **no stripes, colors earlier**, and nearly all apples color **Extra Fancy grade**—only a few **Fancy**, and scarcely any **C grade**. Upon actual check seventeen hundred and seventy-five (1,775) apples picked from one tree graded for color—94.1 per cent **Extra Fancy**; 5.2 per cent **Fancy**, and less than 1 per cent "C" grade.

It is a bud sport, or mutation, of the common Winesap, just as the Richared Delicious is a bud sport of the common Delicious—as the Red Rome of the common Rome Beauty—as the Black Ben of the Ben Davis, etc. SeeandO Winesap is identical with the Winesap in respect to quality, productiveness, flavor and in every respect, except as mentioned above. The tree, leaf, bark productiveness, etc., have not changed. SeeandO Winesap is a more perfect, more highly colored Winesap and because of **darker and earlier** color, and a much greater percentage of **Extra Fancy** grade for color, it will surely make more money for the grower.

The SeeandO Winesap was discovered in the Wenatchee Valley, Washington. It was brought to our attention by Mr. W. A. Luce, formerly Horticultural and Soils Investigator for Chelan County, and the State College of Washington, and later Orchard Adviser for the Earl Fruit Company. This remarkable new variety has been thoroughly investigated and tested by our Company. We have young trees bearing in our own orchard.

Mr. Leo C. Antles, Production Manager of the American Fruit Growers, Inc., has given SeeandO Winesap his endorsement, and has planted trees in his own large orchard along with several thousand **Richared Delicious**. In an address before a meeting of the Washington State Horticultural Association, Mr. Antles expressed the opinion that under North Central Washington orchard conditions, SeeandO Winesap would show an estimated earning of **\$280.00 per acre**—instead of \$210.00 for common Winesap—**or an increased earning of 33% to the grower**. This large increased profit Mr. Antles estimated would result through **SeeandO Winesap coloring 85% Extra Fancy** as against 55% Extra Fancy with ordinary Winesap.

Genuine SeeandO Winesap trees are obtainable only from this Nursery, and are sold under the trade-marked name "SeeandO" Winesap," which is assurance to our customers of genuine stock of this remarkable new strain.

(For prices see price sheet inside front cover.)

BLACKMACK

TRADE MARK

A Great NEW
All-Red Early
Coloring McIntosh

COLOR GRADES AT PICKING TIME

	Extra Fancy	Fancy	"C" Grade
BLACKMACK	84%	12%	3%
Common McIntosh	35%	46%	19%

McIntosh usually commands good prices, but due to its lack of color, and heavy drop at picking time, it has often been unprofitable for the grower. These objections have been overcome in the new **BLACKMACK**—a true McIntosh in quality, size, shape and flavor.

Blackmack originated in the Canadian Okanogan country. It colors earlier—and colors a solid **DEEP RED**—making it a better seller than ordinary McIntosh. Also far more profitable for the grower because a much larger percentage of the crop colors **Extra Fancy Grade**.

Blackmack colors approximately 84% Extra Fancy as compared with only 35% Extra Fancy produced by common McIntosh—and only about one-fourth as many Fancy, with practically no "C" Grade. Such a large increase in Extra Fancy color affords the planter of Blackmack profit possibilities with which ordinary McIntosh cannot compete.

Mr. Richard Simpson of British Columbia, a grower of both Blackmack and ordinary McIntosh, writes:

"On August 25th, I picked Blackmack apples for a special order. These apples averaged 90% EXTRA FANCY and 10% Fancy. On the same date the color of common McIntosh was only about 10% Extra Fancy, 20% Fancy and 70% C-Grade. The common McIntosh were growing right along side the Blackmack trees. The price for the Blackmack was considerably higher as they were in the early pool. Over the three-year period that the Blackmack trees have been in bearing, I have picked 80% and over Extra Fancy for color from August 25th to 30th."

Because Blackmack colors earlier, with a deeper red and vastly better color than common McIntosh, its harvest and shipping season is more in control of the grower. It brings better prices. Its earlier color which permits earlier picking, greatly reduces loss from windfalls. That is probably one of the most serious objections to common McIntosh. Early color makes possible the harvesting of Blackmack in prime, firm condition which makes for less loss from stem punctures.

We have conducted extensive and thorough tests of Blackmack. It has reproduced itself through successive generations, proving that it grows true to type in quality, size, shape, flavor and productiveness.

(For prices of Blackmack trees see price sheet inside front cover.)



BLACKMACK

MCINTOSH

Blackmack is identical with McIntosh in flavor, shape, size and productiveness—but produces over 45% more Extra Fancy Grade for color.

BLAXTAYMAN

TRADE MARK REG.

COLOR GRADES AT PICKING TIME

	Extra Fancy	Fancy	"C" Grade
BLAXTAYMAN	88%	9%	3%
Common Stayman	43%	41%	16%

Note the above Color Grades made at picking time, Blaxtaylorman nearly all color EXTRA FANCY grade—less than 50 per cent of ordinary Stayman color Extra Fancy.

BLAXTAYMAN is **DEEPER, RICHER, and DARKER RED**, than the ordinary Stayman. It colors earlier than the Stayman and without stripes—it is entirely lacking in that muddy, greenish color so characteristic of the ordinary Stayman.

Blaxtaylorman is a bud sport or mutation of the ordinary Stayman. The original tree was discovered several years ago in an orchard near Lake Chelan, Wash. This Blaxtaylorman variety has been carefully and thoroughly tested. Young trees, and top-grafted trees are bearing and producing the same beautiful all-over-solid-red apples as the original parent tree.

Blaxtaylorman can be picked earlier than common Stayman, eliminating loss from windfalls—a serious trouble with ordinary Stayman.

Blaxtaylorman keeps much better in storage. It does not scald. It has a tougher skin than the common Stayman and has never been known to "crack" on the tree.

"SeeAndO"

RED ROME

(Trade Mark Registered)

COLOR GRADES AT PICKING TIME

	Extra Fancy	Fancy	"C" Grade
SEEANDO RED ROME	84%	14%	2%
Common Rome Beauty	26%	61%	13%

The Rome Beauty as a rule, like the Stayman Winesap, does not have an attractive color. While Rome Beauty has always been recognized for its regular and heavy crops, a large percentage of the fruit has gone in the lower grades because of the impossibility of developing sufficient color. The SEEANDO Red Rome overcomes this objection with its high color and likewise high percentage of Extra Fancy Grade.

SEEANDO RED ROME—Like the famous RICHARD, BLACKJON, BLAXTAYMAN, and other brilliant red apples in our new race of red apples—developed from a bud sport or mutation of the common Rome Beauty.

The value of its attractive, brilliant red color was quickly recognized and appreciated. At this time SEEANDO RED ROME is taking the place of the ordinary Rome Beauty with all of our customers.

Commercial growers have found the Rome Beauty ideal as a filler in apple orchards, since the Rome is a very compact grower and bears as early as any apple variety we know. SEEANDO RED ROME is ideal for this purpose, since it embodies all the features of the ordinary Rome Beauty in respect to habits of growth, quality of fruit, etc.—besides a DEEP, BRILLIANT RED color that adds immensely to its market value. It is an excellent pollenizer for Delicious for which purpose it is frequently planted.



A Field of Yearling Apple Trees in the C. & O. Nurseries

APPLES

All fruit trees listed in approximate order of ripening. For prices, where not given, see slip attached to inside of front cover.

SUMMER VARIETIES

- Liveland Raspberry**—Earliest summer apple, pink blush striped, white flesh.
- Yellow Transparent**—Medium size, clear pale yellow, tart, good eating.
- Early Harvest**—Medium size, pale yellow, fine flavor.
- Red Astrachan**—Large, deep crimson, acid, juicy.
- Red June (Wilson's)**—Medium size, brilliant red, tart and juicy.

FALL VARIETIES

- Duchess**—Large, streaked, juicy and sweet.
- Jeffries**—Medium size, striped, juicy and sweet.
- Red Gravenstein**—Large, bright red, excellent quality.
- Wealthy**—Large, bright red, tart, very good.
- Wolf River**—Very large, red, spicy, juicy.
- Wagner**—Medium size, deep red, high flavor, juicy.
- Snow (Fameuse)**—Medium size, deep crimson, tart, good eating.

WINTER VARIETIES

- Winter Banana**—Large, yellow with blush, tart flavor.
- Yellow Bellflower**—Very large, yellow with blush, tart, juicy.
- Grimes Golden**—Medium size, golden yellow, good flavor.
- King David**—Medium, wine red, delicious flavor.
- McIntosh Red**—Medium size, red striped, rich, tart flavor.
- Blackmack**—Solid red, earlier, deeper color than McIntosh. (See page 7 for further description.)
- Jonathan**—Medium size, red striped, rich flavor, very good.
- Blackjon (Trade Mark Reg.)**—A great new Jonathan—early coloring, deep red. See page 5 for description. Ask for special Blackjon folder.
- Delicious (red, or common)**—Striped, excellent dessert apple.
- Richared (T. M. Reg) Delicious**—New double red Improved Delicious. Ask for special descriptive folder.
- Shotwell Delicious (U. S. Plant Pat. No. 90)**—Another Improved Delicious; colors earlier and darker than Richared. See page 4 for description.
- Rhode Island Greening**—Large, greenish yellow, juicy, excellent.
- Spokane Beauty**—Largest apple grown.
- Baldwin**—Large, deep red, juicy, tart.
- Northern Spy**—Large, yellow striped with red, rich and juicy.
- Golden Russet**—Medium size, dull russet, juicy and highly flavored.



Budding Crew at Work in C. & O. Nursery Fields in Early Summer

APPLES—(Continued)

- King**—Very large, yellow splashed with crimson, good in Western Washington.
- Rome Beauty**—Large, yellow striped with red, fine, juicy.
- SEEANDO Red Rome**—Darker color than common Rome Colors approximately 50% more Extra Fancy grade than common Rome. See page 8 for description.
- Chelan**—Wonderful golden winter apple. Long keeper.
- Spitzenberg**—Medium size, deep red, excellent flavor.
- White Winter Pearmain**—Large, pale yellow, fine flavor.
- Newtown Pippin**—Large, golden yellow, good quality.
- Arkansas Black**—Large, dark red, fair flavor, long keeper.
- Stayman Winesap**—Large, yellow splashed with red, tart, good quality.
- Blaxtayman (T. M. Reg.)**—New all red Stayman Winesap. See page 8 for description.
- Mammoth Black Twig**—Large, dark red, good keeper.
- Winesap (Common)**—Medium size, dark red, good keeper and producer.
- SEEANDO (T. M. Reg.) Winesap**—For description see page 6.
- Black Ben**—Large size, deep red, productive.

CRABAPPLES

- Transcendent**—Large, red and yellow striped, good eating and cooking.
- Hyslop**—Largest Crab, deep red, good keeper.
- Red Siberian**—Large cropper, red.
- Whitney No. 20**—Large, glossy, striped with carmine, juicy, pleasant flavor.

PEARS

- Sugar**—Small, sweet, good.
- Clapp's Favorite**—Large, resembles Bartlett, excellent flavor.
- Bartlett**—Large, golden yellow, juicy buttery.
- Flemish Beauty**—Large, juicy, rich, heavy bearer.
- Beurre d'Anjou**—Large, yellow with blush, good keeper.
- Doyenne du Comice**—Large, yellowish red, rich and juicy.
- Seckle**—Small, brownish green, highly flavored.
- Beurre Bosc**—Large, cinnamon russet, rich and juicy, productive.
- Keiffer**—Large, golden yellow, hardy, blight resistant.
- Beurre Easter**—Large, yellow with red cheek, juicy and sweet.
- Winter Nellis**—Medium size, yellow covered with russet, very fine.
- Winter Bartlett**—Large, resembles Bartlett.
- Old Home**—Blight resistant, for top working.

CHERRIES

CHERRY POLLENIZATION

It is no longer a theory, but a recognized fact, that sweet cherries, especially Bing, Lambert, and Royal Ann require pollenization from other varieties. Plant every tenth tree with some such variety as Black Tartarian, Black Republican, Waterhouse, Governor Wood, Centennial or Deacon. Proper pollenization has been known to double production.

Extensive research work has been conducted by Messrs. F. L. Overly and E. L. Overholser of the State College of Washington, to determine the relative effectiveness of various cherry varieties for pollenization purposes. Strains of certain varieties have been found more effective and efficient as pollenizers.

Experiments proved that not all cherry trees, even though of a pollenizing variety are dependable as pollenizers—but that some certain trees showed exceptional pollenization qualities.

We have given special attention to cherry pollenizers and have closely observed the results obtained in the experimental work referred to. Our cherry pollenizers are propagated direct from certified trees that were found, during the experiments referred to, to be the best strains of pollenizers available.

SWEET VARIETIES

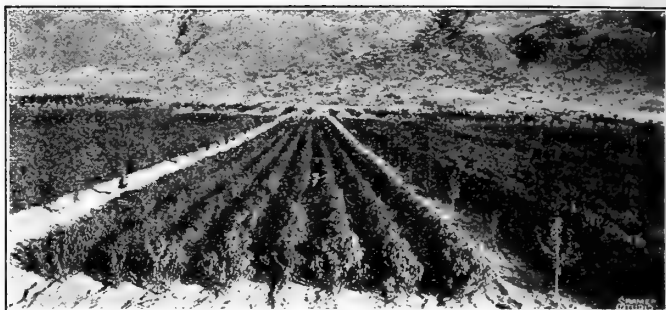
- Early Purple**—Small to medium, purple, juicy and sweet.
Black Tartarian—Large, purplish black, juicy and rich, pollenizer.
Governor Wood—Yellow, pollenizer.
Royal Ann—Large, pale yellow with red cheek, firm, juicy and sweet. In demand by canneries.
Centennial—Large, yellow, good pollenizer.
Long Stem Waterhouse—Medium, resembles Royal Ann, pollenizer.
Deacon—Large, black, good pollenizer.
Bing—Large, black, fine flavor, good shipper.
Black Republican—Large, shining black, good keeper and shipper, pollenizer.
Lambert—Large, dark purplish black, sweet, rich, fine flavor.

DUKES AND MORELLOS (Sour)

- Early Richmond**—Medium size, dark red, acid.
May Duke—Large, red, juicy and rich.
Montmorency—Large, red, "the kind the canneries want."
Late Duke—Large, light red, late and fine.
English Morello—Large, dark red, rich, juicy, acid, good canner.

PLUMS

- Climax**—Very large, heart-shaped, deep red, good shipper.
Shiro (Early Gold)—Very early, large, golden yellow, good.
Yellow Egg—Large, egg shaped, yellow, good canner.
Burbank—Large, cherry red, mottled with yellow, sweet, good shipper.
Maynard—Very large, nearly round, dull red, sweet.
Bradshaw—Large, dark red, flesh green, fine.
Simoni—Shape and color like tomato.
Yakima—Very large, egg-shaped, red, good shipper.
Peach Plum—Very large roundish, purple.
Damson—Small, roundish oval, dark purple, fine canner.
Imperial Gage—Small, round, greenish yellow, good canner.
Wickson—Large, dark red, sugary, fine shipper.
Satsuma—Large, nearly round, dark red flesh, small pit.
Compass—Hybrid, hardy, excellent flavor.



A Field of Yearling Peach Trees in the C. & O. Nursery

PRUNES

- Tragedy**—Medium size, dark purple, very rich and sweet, fine shipper.
- Sugar**—Large, dark purple, fine drier, contains almost 24 per cent sugar.
- Hungarian**—Large, dark red, juicy and sweet, good shipper.
- Petite (French)**—Medium size, egg shaped, purple, very sweet and fine.
- Double X French**—Larger than Petite.
- Silver**—Very large, late, green.
- Italian**—Medium size, oval, dark purple, sweet.

PEACHES

“F” denotes free-stone; “C” denotes cling-stone
 “S. C.” denotes semi-cling-stone.

- May Flower, S. C.**—Red all over, white flesh.
- Alexander, C.**—Medium size, greenish white with red blush.
- Hale's Early, S. C.**—Medium size, greenish white with red cheek.
- Golden Jubilee, F.**—Earliest good freestone. See page 15 for description.
- Triumph, F.**—Large, dark orange yellow.
- Arp. Beauty, F.**—Large, yellow with blush, delicious.
- Rochester, F.**—Hardy, good quality.
- Foster, F.**—Large, yellow with red cheek.
- Champion, F.**—Large, creamy with red cheek, very hardy.
- Early Elberta, F.**—Large, golden yellow, fine shipper.
- Early Crawford, F.**—Large, yellow, good quality.
- Slappy F.**—Large, deep yellow, good home canner.
- Muir, F.**—Large, deep yellow, very firm, best for drying.
- J. H. Hale, F.**—Very large, golden yellow, fine shipper.
- CANDOKA (U. S. Plant Pat. No. 51)**—The fuzzless peach.
 See page 14 for description.
- Elberta F.**—Very large, bright yellow, good shipper.
- Late Crawford, F.**—Very large, yellow with dark red cheek.
- Tuscan Cling, C.**—Very large, earliest cling, commercial canner.
- Heath Cling, C.**—Large, white flesh, canner.
- Lemon Cling, C.**—Large, light yellow, with vinous flavor.
- Orange Cling, C.**—Large, yellow with red cheek, rich vinous flavor, fine shipper.
- Miller Cling, C.**—Very large, very good, excellent.
- Indian Cling, C.**—Large, deep claret colored flesh.
- Phillips Cling, C.**—Large, yellow, small pit, fine commercial canner.
- Simmons, F.**—Large, firm, good late variety.
- Rio Oso Gem, F. (U. S. Plant Pat. No. 89)**—Best late variety.
 See page 16 for description.
- Salway, F.**—Large, yellow with red cheek, excellent.

NECTARINES

- Boston Red**—Large size, deep yellow with bright blush, sweet.
New White—Large, white with blush, good quality.
Quetta—Large, yellow-green, rich aroma, good quality.

APRICOTS

- RILAND (U. S. Plant Pat. No. 74)**—The Earliest Commercial apricot. For description see page 16.
Sofia—Large size, hardy, good quality, early.
Gilbert—Medium size, very early, good quality.
Yakimene—A Japanese apricot. Large, early, handsome.
Wenatchee—Very large, leading apricot of Wenatchee Valley. (Formerly called "Wenatchee Moorpark"). Name was recently changed to avoid confusing it with Moorpark.
Peach—Large, deep orange, highly flavored.
Royal—Medium size, dull yellow with orange cheek, good canner and drier.
Blenheim—Medium, oval, deep yellow, good canner.
Moorpark—Large, deep yellow blushed red, fine commercial variety.
Tilton—Medium, oval, fine flavor, fine for canning.
J. L. Budd—Russian, very hardy, delicious kernel.

QUINCES

- Champion**—Large, flesh cooks very tender.
Orange—Large, roundish, bright yellow, old favorite.
Pineapple—Large, apple shaped, flavor resembles pineapple.

GRAPES

AMERICAN VARIETIES (Hardy)

- Concord (Black)**—General favorite, hardy, productive.
Agawam (Red)—One of the best reds.
Campbell's Early (Black)—Large, sweet, juicy, good.
Delaware (Red)—Small, compact bunches, very sweet.
Niagara (White)—Good, called "White Concord."
Worden (Black)—Earlier and larger than Concord.
Moore's Early (Black)—Earlier than Concord, hardy.
Island Belle (Black)—Large, early, good west of Cascades.
Catawba (Red)—Large, the wine grape of Ohio.

EUROPEAN VARIETIES (Medium Hardy)

- Black Hamburg (Black)**—Large, a great favorite.
Muscat (White)—Muscat flavor, a raisin grape.
White Sweetwater (White)—Medium size, sweet, rich flavor.
Rose or Peru (Black)—Large bunch, firm flesh.
Thompson Seedless (White)—Small, sweet seedless, good drier.
Malaga (White)—Very large bunches, good shipper.
Flame Tokay (Red)—Large favorite.
Zinfandel (Black)—For making claret.
Alicante Bouschet—Sweet, bright red juice.
Ribier (Black)—Largest, new, very fine.

MISCELLANEOUS

	Each	Dozen	50	100	1000
Rhubarb	\$.30	\$3.50	\$8.00	\$15.00
Horseradish	.15	1.50	6.00	10.00
Asparagus	..	.75	1.75	3.00	\$15.00
Hop Vines	.35	3.50

CANDOKA PEACH

U.S. PLANT PAT. # 51

"THE FUZZLESS PEACH"

Delicious Flavor

Probably the most nearly perfect, yellow free-stone peach ever discovered. It has created a sensation from coast to coast wherever shown.

HISTORY AND DESCRIPTION OF THE CANDOKA PEACH

This remarkable peach originated as a chance seedling in an orchard near Tonasket, Washington. When inspecting the orchard in late August of the year 1927, one of the representatives of the Columbia & Okanogan Nursery Company, discovered the tree with a very heavy load of very large, gloriously red ripening fruit. The marvelous color of the fruit attracted his attention and while some distance from the tree, it appeared to be loaded with large, deep-red apples. The fruit not only had this intense deep red color wherever exposed to the sunlight, but the skin was exceptionally smooth, being nearly free of fuzz or down. It was found to have excellent flavor and to be so exceptionally firm that it would be a good shipper. It can be left on the tree until nearly tree ripened thus assuring the consumer a peach with a tree-ripe flavor. This is very important as most varieties of peaches must be picked green in order to withstand shipping. As a result, they often arrive on the market somewhat withered and with inferior flavor.

The nursery company obtained exclusive propagating rights and, after testing it thoroughly over a period of six years, obtained a Plant Patent. Many expert horticulturists, shippers and growers have seen the fruit on the trees, have observed its shipping qualities and have eaten the fruit. Without exception they have been loud in its praises.

To sum up, the Candoka peach has the following characteristics:

Color—Deep yellow to flaming red; this brilliant color is very striking.

Skin—Nearly as smooth as a nectarine; it has been described as "Fuzzless;"

Size—Very large, about the same as J. H. Hale;

Flavor—Excellent, sweet and pleasing, similar to the Hale but without the slightly bitter after taste of that variety;

Yellow Freestone—Exceptionally firm, almost as solid as a clingstone. It can be left on the tree until almost tree ripe before picking for shipment.

Shipping Qualities—The best we have observed in any free-stone peach;

Ripening Season—About the same as J. H. Hale.

Trees hardy. The original tree has withstood a spring frost that killed the blossoms on a J. H. Hale tree adjoining—whereas the Candoka bore a full crop. We believe it is the most valuable peach ever discovered.

PLANTS 340 CANDOKAS ON THE SHOWING OF THE FRUIT

DEWEY BOWMAN, Grower, Emmett, Idaho.—"I received the box of Candoka peaches and was very favorably impressed with them. They came through in fine shape. I showed them around to our local inspectors and growers and they all said they had never seen their equal for color and attractiveness. I planted 340 of them last spring and am very glad now that I did so."

GOLDEN JUBILEE

THE BEST EARLY-SEASON YELLOW FREESTONE PEACH

History And Description Of The Golden Jubilee

It is a "man made" peach. The New Jersey Experiment Station crossed the Greensboro (a very early white cling) with the Elberta. The Golden Jubilee was the result. It has taken the early season characteristics of the Greensboro together with the good qualities of the Elberta. It is a large, yellow freestone, with flavor superior to the Elberta. It is named Golden Jubilee, as the original tree bore its first crop of fruit in 1925—just fifty years after the founding of the New Jersey Experiment Station. Ripens a few days earlier than Carmen—a week earlier than Rochester and about one month earlier than Elberta or J. H. Hale. It reaches the northern markets **AHEAD** of **CALIFORNIA ELBERTA AND J. H. HALE**. The tree is as **HARDY** as **ROCHESTER**. The New Jersey Experiment Station highly recommends it. Its bulletin (1926-1927) says: "It is similar to the Elberta in tree habit and form and appearance of fruit. It is essentially an **EXTRA-EARLY ELBERTA**."

(1933) Arthur J. Farley, Horticulturist, New Jersey State College, writes: "The Golden Jubilee has been planted quite extensively in New Jersey and growers have found it very satisfactory. **IT IS SUPERIOR TO ELBERTA** in quality. It brought a **HIGHER PRICE THIS YEAR THAN ANY OTHER VARIETY** ripening at the same season, and our growers are very enthusiastic about it."

REPORTS FROM GROWERS AND DEALERS EAST AND WEST

From a New Jersey Grower: "The **GOLDEN JUBILEE** is much more richly colored than **ELBERTA**. Flavor excellent. **IT WILL TAKE THE PLACE OF ALL PEACHES WHICH RIPEN AT THE SAME TIME.**"

From Delaware: "The **GOLDEN JUBILEE** is of the Elberta type, more color, better flavor and more beautiful flesh. Sells well on market and has paid growers here more than any other variety."

From Virginia: "The **GOLDEN JUBILEE** is of excellent quality and the best peach we know of in its season."

From Washington: "Here are some records: 1931, shipped first Golden Jubilee July 11th; last, July 15th; sold for \$1.25 to \$1.00 (18 pound box); 1932 shipped first Golden Jubilee July 18th; last, July 24th, average selling price \$1.18. My six original trees, four years old, yielded 55 boxes and netted me nine dollars per tree. The Golden Jubilee ripens its crop evenly a feature which struck me very forcibly this summer. It ripens about 32 days ahead of Elberta."

From a Seattle Commission House: "We believe the **GOLDEN JUBILEE** will take the place of the California Elberta. The first shipment of Golden Jubilee peaches from Washington was here a few days before the California Elberta."

From a Seattle, Wash., Produce Publication, July 27, 1933: Arrival of a new variety of peach (**GOLDEN JUBILEE**) which promises to be an important factor in the early market for peaches aroused considerable interest among the trade. The initial delivery arrived here in excellent condition with the fruit showing exceptionally fine size, quality and color. The future of this peach appears good."

From the Country Gentleman Magazine, July, 1933—J. Sidney Cates: "Super Peaches—One of the most striking of these new quality varieties (**GOLDEN JUBILEE**) is a big yellow freestone which looks like Elberta though for quality I place it far above."

In our own orchards, Wenatchee, Washington, we have sixteen Golden Jubilee trees in bearing. Fruit ripens about a week earlier than Rochester. Larger than Elberta and much more attractive in appearance. Quality excellent, and in our opinion the very best early yellow freestone peach. We recommend it especially for the earlier districts.

RIO OSO GEM

(U. S. PLANT PATENT NO. 89)

A SUPER-QUALITY, LATE-SEASON PEACH

Ripens about two weeks later than J. H. Hale—same large size, more color, firmer and finer texture and better flavor. No other freestone peach of comparable quality available at that time.

ORIGIN

Discovered near Rio Oso, California, as a chance seedling. Its first fruiting was in 1926. The fruit was of such excellent quality and coming at a time when no good peaches were on the market, that the discoverer had grown and planted seventy-five trees. These trees produced in 1930 and in each successive season have borne heavy crops.

The set of the fruit each year has been extremely heavy, and has required heavy thinning—nine out of ten peaches being pulled off, to one that was allowed to remain, and under this radical thinning the trees have each year borne all the fruit they could carry.

DESCRIPTION

TREE. Tree is a very vigorous and upright grower. Wood is of well-toughened fibre; limbs are not easily broken and carry their load of fruit well. Tree bears young and is regularly productive, requiring annual thinning.

FRUIT. Rio Oso Gem is a perfect freestone; is of extremely large size, averaging in diameter from $2\frac{3}{4}$ to $3\frac{3}{4}$ inches measured from end to end. Shape is globular, slightly elongated, with a slight low ridge along the line of suture; almost free from fuzz.

The surface color of the peach is a brilliant dark crimson, shading out to a bright red, mottled with an orange yellow, orange yellow covering from one-third to two-thirds of the surface.

FLESH is a deep yellow, very fine grained, and of firm texture.

FLAVOR is excellent, rich, juicy and sweet—slightly spicy. With its large size, yellow flesh, fine grain, firm texture, excellent flavor and slight ridge on surface, it has some of the characteristics of Late Crawford. While in the surface color, red at the pit, and slightly spicy flavor, it has the characteristics of Tuscan Cling.

TEXTURE exceedingly firm and shipping quality good. Twenty-one boxes picked firm-ripe and shipped by open express, without refrigeration, from California to many nurserymen east of the Mississippi river, without exception, were reported as arriving in perfect condition.

MATURITY. Rio Oso Gem matures about two weeks after J. H. Hale. A careful test of comparative maturity of J. H. Hale on adjoining trees in the same orchard for three seasons showed each season Rio Oso Gem matured 12 to 15 days later than J. H. Hale.

Rio Oso Gem when mature hangs well on the tree.

RILAND

U. S. PLANT PAT. 74

APRICOT

U. S. Plant Patent
No. 74

THE EARLIEST COMMERCIAL APRICOT

This apricot, discovered and introduced by our company after years of testing, is entirely proven. It is of large size, being larger than Blenheim, Tilton, or Moorpark. It is globular shaped, a very attractive flaming red, shading to deep orange color. It ripens earlier than any other commercial variety, it is a heavy annual bearer, and trees often bear fruit next season after planting. The fruit is firm, of excellent quality, flesh apricot yellow, pit small. Shipping qualities excellent as it ripens evenly. Tree is hardy and a vigorous grower. This is one of the best, if not the very best early apricot. It will pay profits wherever apricots can be grown. Write for color illustrated descriptive literature.

RILAND SELLS for OVER 50 per cent MORE THAN OTHER

Apricots on Auction—August 30, 1933—"On July 12 we shipped a car of mixed fruit to Detroit, Michigan, and in this car were some Riland Apricots furnished and packed by ourselves.

"The car was sold on the Detroit auction and the Wenatchee Moorpark in the car which we had packed sold at \$1.10 to \$1.25, and your Riland Apricots sold for \$1.95. This was about seventy-five cents per crate higher than the regular Wenatchee Moorpark Apricots. Yours very truly, Wenatchee Produce Company." By (Signed) CONRAD ROSE.

"On July 3rd, I visited your orchards where you were picking Riland Apricots. I was favorably impressed with this new apricot.

"First: It is ready to pick about ten days ahead of the Wenatchee (formerly called Wenatchee Moorpark.) This means early market. It ripens evenly, making it easy to pick and pack and without culls. It is firm and will ship well. The color, brilliant red, shading to apricot yellow is very attractive. The flavor is pleasing and distinctive, making it an excellent apricot to eat out of hand as well as a good canner. In size it is larger than Moorpark, Tilton, or Blenheim. This is an important advantage. It bears heavily and the tree seems to be very hardy.

"I have had several years' experience handling apricots and I consider that you have an apricot in the Riland that will make money for the grower. If I were planting any cots, I would not hesitate to plant the Riland."

Yours very truly,

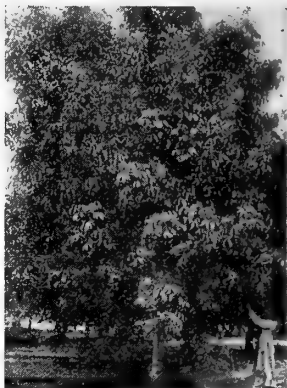
Independent Fruit Shippers
By E. SOLOMON,
Field Manager & Buyer.

Note:—The Independent Fruit Shippers operate the largest fruit cold storage plant in the world.

This wonderful early apricot is the first on the market and brings highest prices. Planted as "filler" trees with other fruits, the Riland, as it comes into bearing so early, will produce several crops (crops which will carry your orchard growing costs) before it is necessary to remove the "filler" trees.

ENGLISH WALNUTS CAN BE SUCCESSFULLY GROWN IN EASTERN WASHINGTON

Scattered throughout the fruit districts of central eastern Washington are to be found many fine, large English walnut trees, which regularly yield large crops of nuts of large size and excellent quality. Some of the trees are at least forty-five years old and are vigorous, hardy and healthy, and have never been seriously injured by the coldest winters. On the west shore of Lake Chelan, Washington, are several hundred old, bearing trees which have yielded many tons of excellent nuts. Near Orondo, Washington, is a grove of 150 trees many of which are over forty years old. They produce annually several tons of nuts which sell at from 25c to 35c per pound.



English Walnut
See and O English Walnut—very hardy, heavy bearer

We have long believed that among all these sturdy trees, could be found at least one that was worthy of introduction. After several years of careful investigation of the best trees, we have found one which we believe is a real discovery. It is in the Wenatchee Valley, and at this time (1935) is 41 years old. It has never suffered any serious winter injury and regularly produces good crops of very large, well shaped, thin shelled, plump kernelled nuts of good quality. Samples may be seen at our office.

Several of the other trees which were planted nearby and at the same time, have either died, or are not in a healthy condition, and those which have survived produce nuts which are inferior as to size and quality.

We have named the one particular tree above mentioned the **SEEANDO English Walnut**, and recommend that trees be planted in suitable locations.

ALMONDS

I. X. L.—Large, soft shell, bears heavily.

Nonpareil—Large, thin shell, one of the best.

Texas Prolific—Good quality, strong grower, excellent pollinizer.

WALNUTS

	Each	Dozen
Black Walnut (American) —3 to 4 feet.....	\$1.00	\$10.00
Black Walnut (American) —4 to 6 feet.....	1.25	12.50
Black Walnut (American) —6 to 8 feet.....	1.50	15.00
Butternut or White Walnut —6 to 8 feet.....	1.75	17.50
English Walnut, Franquette	} For prices, see slip attached to inside of front cover.	
English Walnut, SEEANDO (T. M.)		

(Described in detail above)

MISCELLANEOUS NUTS

	Each	Dozen
Chestnut (American Sweet) —4 to 6 feet.....	1.50	\$15.00
Chestnut (American Sweet) —6 to 8 feet.....	1.75	17.50
Chestnut (Spanish or Italian) —3 to 4 feet.....	1.50	15.00
Chestnut (Spanish or Italian) —4 to 6 feet.....	1.75	17.50
Hickory —2 to 3 feet.....	1.50	15.00
Pecan (budded) —2 to 3 feet.....	2.50	25.00
Filbert —3 to 4 feet.....	1.00	10.00

(See price sheet inside front cover for quantity prices on Filberts.)

BLACKBERRIES

- Evergreen**—Large, delicious, bears from July to November.
Lawton—Well known market variety.
Mercereau—Exceedingly hardy.
Mammoth—Rampant grower, trailing on ground, large.
Himalaya Giant—Vigorous grower, must be trained on trellis.
Snyder—Very hardy, an old favorite.
Rathbun—Strong, erect grower, compact bush, good.
Thornless—No thorns, good quality.

RASPBERRIES

- Cumberland (Black Cap)**—One of the best and largest of all Black Caps.
Gregg (Black Cap)—Good, old favorite.
Kansas (Black Cap)—Very hardy, good quality.
Cuthbert—Red, standard market variety.
Loudon (Red)—Mid-season, large fruit, good.
Columbian (Purple Cap)—Dark red, unexcelled for canning, jelly, jam.
Latham (Red)—New, disease resistant, very productive, hardy. Good shipper and canner.
St. Regis (Red)—Everbearing, fine quality.

LOGANBERRY

- Loganberry**—Very large fruit, strong grower, trailing vines.

DEWBERRY

- Lucretia**—Low growing, trailing, very large.
Youngberry—Recent introduction, fine cross between Loganberry and Dewberry.

GOOSEBERRY

- Josslyn**—Red.
Oregon Champion—Large, best commercial variety, free from mildew.
Pearl—Medium size, productive, hardy.

CURRANTS

- Cherry**—Red, large, good.
London Market—Dark red, hardy.
White Grape—Golden green, large.
Victoria Red (English)—Pale red, large.
Perfection—Finest and largest known.

STRAWBERRIES

(For spring delivery only)

25 per cent with order, balance C. O. D. express or parcel post. No order accepted for less than 25 of a variety.

STANDARD VARIETIES

- Clark Seedling (Hood River)**—Large, firm, good shipper.
Magoon—Hardy, good.
Marshal—Large, good canner.
Premier—Early, good quality, productive.

EVERBEARING VARIETIES

- Progressive**—Smaller than Superb, but better quality.
Mastodon—Largest, heavy bearer.

(For prices see Price Sheet inside front cover.)

"The trees arrived in good shape and I am well pleased with them."—Oakland, Calif.



Globe Locust—Make Beautiful Street Trees

The Globe Locust is a beautiful shade and ornamental tree recently introduced from Europe.

Its top forms a very dense, almost perfect globe shape, and without any pruning or trimming. Its foliage is the same as that of the well known Black Locust, and the leaves hold their bright color and will not shed until late in the fall when most trees have been bare for some time. The tree has no thorns, and but very few, if any seed pods. It is remarkably free from insects or disease, a rapid grower, and ultimately attains a spread of about twenty feet.

It is hardy, drought resistant and will thrive wherever the Black Locust grows. It is especially desirable where overhead telephone or telegraph wires make the taller trees impractical.

The few which have been planted in Wenatchee, (the oldest only about 9 years old) are beauties, and the wonderful compact globes are greatly admired.

Because of their uniform appearance, a whole avenue planted to Globe Locust makes a pleasing sight. Highly recommended for both eastern and western Washington.

For prices see page 22.

Siberian or Chinese Elm

(Ulmus Pumila)

Beautiful :: Hardy :: Fast Growing

For Quick Shade Plant This Tree!

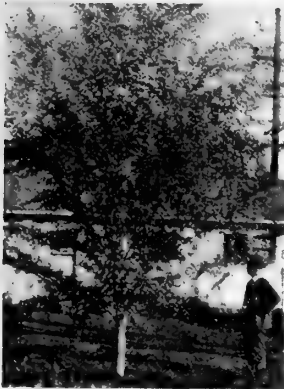
(See illustration, page 21)

The Siberian Elm (sometimes called Chinese Elm) was introduced from Northern China in 1908 by the U. S. Department of Agriculture.

In its native land the Siberian Elm has existed through centuries under the most adverse soil and climatic conditions. It is very hardy, extremely resistant to drought and alkali, and thrives in almost any kind of soil. It thrives in the northern states of Minnesota, the Dakotas, Montana, also in Eastern Washington, and has grown equally well in the hot arid regions of the southwest. It is remarkably free from plant diseases and insect pests.

Siberian Elm is a rapid grower. It is one of the first trees to leaf out in the spring and the last to shed its leaves in the fall.

In Philadelphia it was recorded that a nursery tree in six years grew to be 35 feet high, with a forty foot spread and 62 inches in circumference of the trunk.

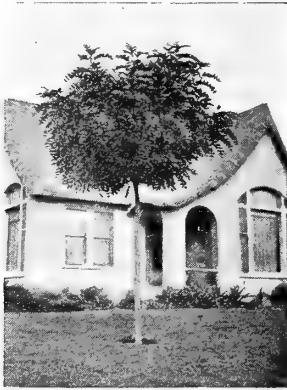


Siberian Elm
 Three years growth from a young nursery tree. Very rapid grower, hardy, and drought resistant

Japanese Flowering Cherry
 —at Washington, D. C.
 Kwanzan variety. Beautiful double pink

SHADE TREES

	Size	Each	Doz.
Ailanthus (Tree of Heaven)	6-8 ft.	1.00	10.00
	8-10 ft.	1.25	12.50
	10-12 ft.	1.75	17.50
Ash, White	6-8 ft.	1.00	10.00
Birch, European White	5-6 ft.	1.00	10.00
	6-8 ft.	1.25	12.50
	8-10 ft.	1.50	15.00
Box Elder	6-8 ft.	1.00	10.00
	8-10 ft.	1.25	12.50
	10-12 ft.	1.75	17.50
“.. Variegated	6-8 ft.	1.25	12.50
Catalpa, Western (Speciosa)	6-8 ft.	1.00	10.00
	8-10 ft.	1.25	12.50
	10-12 ft.	1.75	17.50
Catalpa Bungei (Umbrella)	5-6 ft.	2.00	20.00
	6-7 ft.	2.50	25.00
Cherry, Japanese Flowering (Kwanzan)	4-5 ft.	1.25	12.50
	5-6 ft.	1.75	17.50
	6-8 ft.	2.25	22.50
Crab, Flowering Bechtels	3-4 ft.	1.00	10.00
	4-5 ft.	1.25	12.50
	5-6 ft.	1.50	15.00
Carminc (Atrosanguinea)	4-5 ft.	1.25	12.50
Floribunda	4-5 ft.	1.25	12.50
Scheideckeri	4-5 ft.	1.25	12.50
Elm, American	6-8 ft.	\$1.00	\$10.00
	8-10 ft.	1.50	15.00
	10-12 ft.	2.00	15.00
Elm, Siberian or Chinese (Pumila)	5-6 ft.	.65	6.50
	6-8 ft.	.85	8.50
	8-10 ft.	1.25	12.50
	10-12 ft.	1.50	15.00
Elm, Cork Bark	4-5 ft.	1.50	15.00
Elm, Moline	6-8 ft.	1.25	12.50
	8-10 ft.	1.50	15.00
Elm, Vase	6-8 ft.	1.25	12.50
Hawthorn, Paul's Scarlet	5-6 ft.	1.25	12.50
	6-8 ft.	1.50	15.00
“ White	4-5 ft.	1.00	10.00



Globe Locust
A beautiful tree. Every yard should have them.

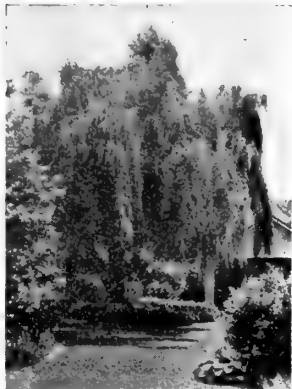
Variegated Box Elder
Very striking, almost white foliage.

	Size	Each	Doz.	100
Horsechestnut, White ..	3-4 ft.	\$1.25	\$12.50	\$
	4-5 ft.	1.50	15.00	
Linden, American	5-6 ft.	1.50	15.00	
	6-8 ft.	1.75	17.50	
Linden, European	5-6 ft.	1.50	15.00	
	6-8 ft.	1.75	17.50	
	8-10 ft.	2.25	22.50	
Locust, Black	5-6 ft.	.60	6.00	40.00
	6-8 ft.	.75	7.50	50.00
	8-10 ft.	1.00	10.00	65.00
	10-12 ft.	1.50	15.00	
	Cal. 2-2½ in.	2.50	25.00	
Locust, Globe	6 ft. Stem	2.50	25.00	
Locust, Honey	6-8 ft.	1.00	10.00	
	8-10 ft.	1.50	15.00	
Locust, Rose	6 ft. Stem	2.50	25.00	
Maple, Norway	5-6 ft.	.75	7.50	50.00
	6-8 ft.	1.00	10.00	65.00
	8-10 ft.	1.25	12.50	75.00
	10-12 ft.	1.75	20.00	
Maple, Schwedleri	5-6 ft.	1.00	10.00	
	6-8 ft.	1.25	12.50	
Maple, Silver or Soft...	8-10 ft.	1.75	17.50	
	6-8 ft.	1.00	10.00	
	8-10 ft.	1.50	15.00	
Maple, Sycamore	10-12 ft.	2.00	20.00	
	6-8 ft.	1.00	10.00	
Mountain Ash, European	8-10 ft.	1.50	15.00	
	6-8 ft.	1.25	12.50	
Mulberry, Russian	8-10 ft.	1.50	15.00	
	6-8 ft.	1.00	10.00	
	8-10 ft.	1.25	12.50	
Mulberry, American	10-12 ft.	1.75	17.50	
	6-8 ft.	1.25	12.50	
Poplar, Carolina	8-10 ft.	1.50	15.00	
	5-6 ft.	.50	5.00	35.00
	6-8 ft.	.75	7.50	50.00
Poplar, Lombardy	8-10 ft.	1.00	10.00	65.00
	10-12 ft.	1.50	15.00	



Flowering Crab

These beautiful trees deserve greater popularity. Illustration shows Scheideckeri, a pink, low-growing, dwarf variety. Some beautiful varieties grow taller, more erect.



Weeping Willow

A beautiful, graceful tree, rapid grower, hardy.

	Size	Each	Doz.
Poplar, Silver	6-8 ft.	1.00	10.00
	8-10 ft.	1.50	15.00
	10-12 ft.	2.00	20.00
Plum, Purpleleaf (Prunus Pissardi	3-4 ft.	.75	7.50
	4-5 ft.	1.00	10.00
	5-6 ft.	1.25	12.50
Russian Olive	5-6 ft.	1.00	10.00
	6-8 ft.	1.25	12.50
	8-10 ft.	1.75	17.50
Red Bud	6-8 ft.	1.50	15.00
	8-10 ft.	2.00	20.00
Siberian Pea Tree	6-8 ft.	1.00	10.00
Sycamore, European Plane	8-10 ft.	1.50	15.00
	10-12 ft.	2.00	20.00
Thorn (See Hawthorn)			
Tulip Tree	5-6 ft.	1.25	12.50
Walnut (See Nut Trees)			
Willow, Golden	5-6 ft.	.75	7.50
	6-8 ft.	\$1.00	\$10.00

WEeping TREES

Birch, Cutleaf Weeping.....	5-6 ft.	1.25	12.50
	6-8 ft.	1.75	17.50
	8-10 ft.	2.00	20.00
Cherry, Japanese Weeping			
Flowering	Stem 5-6 ft.	2.75	27.50
Elm, Camperdown			
Weeping	Stem 6 ft.	2.50	25.00
Mulberry, Weeping	Stem 5-6 ft.	2.50	25.00
Willow, Niobe	6-8 ft.	1.00	10.00
	8-10 ft.	1.25	12.50
Willow, Wisconsin	5-6 ft.	.75	7.50
	6-8 ft.	1.00	10.00

"I have the pleasure to tell you that the trees I bought from you last spring are growing very well."—Malans, Switzerland.

We pay freight charges to customer's shipping point, and guarantee arrival in good condition.



Forsythia
Blooms early, beautiful yellow



Japanese Weeping Flowering Cherry
Blooms early, single pink flowers.

EVERGREENS

Almost every landscape should have some Evergreens. They lend dignity, charm, and winter beauty not obtained with other types of plant material.

Our line includes many forms and shapes of Evergreens suited for a variety of uses:—low-growing dwarf types, trailing Evergreens, upright, pyramidal forms, etc. We will be pleased to recommend the right Evergreens for various uses.

Prices on Evergreens vary according to specimens and those selecting plants at our Nursery will be charged accordingly. Our Evergreens are carefully balled and burlapped and can be safely planted at any time, except during the heat of summer.

Evergreens are sold F. O. B. the Nursery, freight or express to be paid by the purchaser.

ARBORVITAE

VARIETY	Size	Each
American	2½-3 ft...	\$1.75
American	3-4 ft.	2.25
Berkman's Golden	12-15 in.	1.50
Berkman Golden	15-18 in.	2.00
Beverlyensis (Golden Columnar)	3½-4 ft.	3.50
Oriental	2½-3 ft.	2.25
Oriental	3-4 ft.	3.00
Oriental-trimmed specimens	4-8 ft. 4.00 to	10.00
Pyramidal	3-3½ ft.	2.50
Pyramidal	3½-4 ft.	3.50
Siberian (Wareana)	2-2½ ft.	2.50
Tom Thumb (Sheared Globes)	18-24 in.	2.50
Woodward's Globe	10-15 in.	1.50
Woodward's Globe	15-18 in.	2.00

ABIES (FIR)

Concolor (White)	3-3½ ft.	3.00
Concolor Specimens	4-6 ft.	\$3.50 to \$7.00

JUNIPER

Canadensis spreading	18-24 in.	1.75
Chinese Upright	3-4 ft.	3.00
Chinese Upright	4-5 ft.	3.75
Coast of Maine Creeping	18-24 in.	2.00
Irish Narrow Upright	3-3½ ft.	2.50
Koster's Spreading	2-2½ ft.	3.00
Pfizer Spreading	18-24 in.	2.00
Pfizer Spreading	2-2½ ft.	2.75



Wisteria

From this hardy, prolific bloomer, near Wenatchee, our stock is propagated.



Mock Orange
(*Philadelphus Virginal*)

Each

EVERGREENS—(Continued)

Sabina spreading	18-24 in.	2.00
Scopulorum (Silver Colorado Juniper)	2½-3 ft.	2.50
Spiny Greek (Excelsa Stricta) compact	15-18 in.	1.75
Tamariscifolia—creeping	15-18 in.	1.75
Virginiana (Eastern Red Cedar) Upright	2½-3 ft.	2.50
Virginiana	3-4 ft.	3.25
Virginiana	4-5 ft.	4.00
Virginiana, large specimens	5-9 ft.	5.00 to 12.00
Von Ehron—Broadly Spreading	3-3½ ft.	3.50
Waukegan—Creeping—Purple In Winter	18-24 in.	2.00
Obtusa (Hinoka Cypress)	3-4 ft.	3.25

PINES

Austrian Pine	3-4 ft.	2.25
Austrian Pine	4-5 ft.	3.25
Austrian Pine—large specimens	7-9 ft.	4.00 to 8.00
Scotch Pine	Same Price as Austrians	
Mugho Dwarf Globe Pine	15-18 in.	1.75
Mugho Dwarf Globe Pine	18-24 in.	2.50
Tanyesha Globosa (Japanese Table Pine)	18-24 in.	4.00

RETINOSPORA

Filifera (Thread Leaf)	2½-3 ft.	3.00
Filifera Aurea Nana	18-24 in.	2.50
Pisifera	3½-4 ft.	3.00
Plumosa	2½-3 ft.	2.25

SPRUCE

Colorado Blue	2-3 ft.	2.50
Colorado Blue	3-3½ ft.	4.00
Kosters Blue (grafted select)	3-3½ ft.	7.50
Norway Spruce	2-3 ft.	1.25
Nerway Spruce	3-4 ft.	1.75
Norway Spruce	4-5 ft.	2.50
Norway Spruce	5-6 ft.	3.50

Special quantity prices on Norway Spruce for windbreak planting on request.

BROADLEAF EVERGREENS

Cotoneaster Horizontalis	15-18 in.	1.25
Cotoneaster Humifusa trailing	15-18 in.	1.25
Daphne Cneorum	6-9 in.	.75
Ilex Crenata	2-2½ ft.	2.00
Mahonia (Oregon Grape)	15-18 in.	1.50
Pyracantha Lalandi	18-24 in.	1.50
Azalea Mollis, deciduous	15-18 in.	1.50

ORNAMENTAL SHRUBS

	Each	Dozen
Althea	.85	\$8.50
Almond, Pink Flowering	.85	8.50
Almond, White Flowering	.85	8.50
Barberry, Japanese (Thunbergii)	.50	\$5.00



PEONIES

No flower exceeds the Peony for beauty and profusion of blooms.
Hardy, easily grown.

SHRUBS—(Continued)

	Each	Doz.
Barberry, Red Leaved75	7.50
Beauty Bush (Kolkwitzia)75	7.50
Butterfly Bush75	7.50
Buckhorn75	7.50
Buttonbush75	7.50
Calycanthus75	7.50
Coralberry75	7.50
Deutzia, Crenata Rosea—pink75	7.50
Deutzia, Gracilis—white—dwarf75	7.50
Deutzia, Gracilis Rosea—pink—dwarf85	8.50
Deutzia, Lemoine—white75	7.50
Deutzia, Pride of Rochester—white75	7.50
Dogwood, Red Stem75	7.50
Dogwood, Yellow Twig75	7.50
Dogwood, Silky75	7.50
Dogwood (Cornelian Cherry)85	8.50
Elder, American75	7.50
Elder, Golden75	7.50
Euonymus, Corky Winged	1.00	10.00
Euonymus, European	1.00	10.00
Forsythia, Fortunei75	7.50
Forsythia, Intermedia75	7.50
Forsythia, Suspensa75	7.50
Fringe, Purple85	8.50
Honeysuckle, Frangrantissima75	7.50
Honeysuckle, Pink Tatarian75	7.50
Honeysuckle, White Tatarian75	7.50
Honeysuckle, Red Tatarian75	7.50
Hydrangea Arborescens75	7.50
Hydrangea, P. G.75	7.50
Jetbead (White Kerria)75	7.50
Kerria, Japanese—double yellow75	7.50
Lilac, common purple75	7.50
Lilac, common white75	7.50
Lilac, Persian75	7.50
Lilac, Chas. Jolly—double, purplish-red	1.00	10.00
Lilac, Chas. X—single, dark, lilac-red	1.00	10.00
Lilac, Ludwig Spaeth—single, dark purple	1.00	10.00
Lilac, Marie LeGraye—single, white	1.00	10.00
Lilac, Michael Beuchner—double, pale lilac	1.00	10.00
Lilac, Pres. Grevy—double, dark blue	1.00	10.00
Ninebark, Golden75	7.50
Philadelphus, (Mock Orange), Coronarius75	7.50
Philadelphus, Grandiflorus75	7.50
Philadelphus, Dwarf Golden	1.00	10.00
Philadelphus, Lemoine75	7.50



Spirea Anthony Waterer
Dwarf, height 15 to 20 inches,
red flowers, profuse bloomer



Group planting, C. & O. dis-
play grounds, Wenatchee

SHRUBS—(Continued)

	Each	Doz.
Philadelphus, Virginal85	8.50
Potentilla Fruticosa75	7.50
Prunus Triloba	3-4 ft. 1.00	10.00
	4-5 ft. 1.25	12.50
Quince, Japanese—dwarf75	7.50
Snowball (See Viburnum)		
Snowberry75	7.50
Spirea, Anthony Waterer75	7.50
Spirea, Arguta75	7.50
Spirea, Billardi75	7.50
Spirea, Callosa Rosea75	7.50
Spirea, Prunifolia85	8.50
Spirea, Thunbergi75	7.50
Spirea, Van Houtte75	7.50
Spirea, Serbaria Sorbifolia75	7.50
Stephenandra Flexuosa75	7.50
Sumac, Staghorn	1.00	10.00
Sumac, Cut Leaf	1.00	10.00
Tamarix, African75	7.50
Tamarix, Hispida75	7.50
Triloba (See Prunus Triloba)		
Viburnum, Dentatum (Arrow Wood)85	8.50
Viburnum, Lantana (Wayfaring Tree)85	8.50
Viburnum, Lentago (Nannyberry)85	8.50
Viburnum, Opulus (Highbush Cranberry)85	8.50
Viburnum, Opulus Sterilis (Common Snowball)85	8.50
Viburnum, Nana (Dwarf Cranberry Bush)75	7.50
Viburnum, Plicatum (Japanese Snowball)	1.00	10.00
Weigela, Eva Rathke—red85	8.50
Weigela, Floribunda—red85	8.50
Weigela, Rosea—pink75	7.50
Weigela, Variegated—dwarf—pink75	7.50

HEDGE PLANTS

VARIETY	Size	25	50	100
Arborvitae, American	15-18 in.	\$15.00	\$27.50	\$50.00
(Not balled)				
Barberry, Thunbergi	12-15 in.	5.00	8.00	15.00
Barberry, Thunbergi	15-18 in.	6.50	12.00	20.00
Privet, English	18-24 in.	4.00	7.00	12.50
Privet, English	2-3 ft.	5.00	8.50	15.00
Privet, English	3-4 ft.	7.00	12.00	22.00
Privet, Lodense (Dwarf)	9-12 in.	5.00	9.00	17.00
Spirea, Van Houtte	2-3 ft.	12.50	22.50	40.00
Spirea, Van Houtte	3-4 ft.	15.00	27.50	50.00
Spruce, Norway	12-18 in.	12.50	22.50	40.00
(Not balled). (For larger sizes see Evergreens)				

VINES AND CREEPERS

	Each
Clematis, Henryi—large, white	\$1.00
Clematis, Jackmani—large, purple	1.00
Clematis, Madame Ed Andre—large, red	1.00
Clematis, Ramona—large, blue	1.00
Clematis, Paniculata—white75
Dutchman's Pipe75
Honeysuckle, Dutch Fragrant75
Honeysuckle, Scarlet Trumpet75
Honeysuckle, Hall's Japan75
Trumpet Vine75
Ivy, Boston (Japan)75
Matrimony Vine75
Virginia Creeper (American Ivy)75
Wisteria—white	1.00
Wisteria—purple	1.00

ROSES

QUEEN OF FLOWERS

No other type of plant will so bountifully supply Beautiful Flowers and fragrance, from early summer until winter season, as the modern rose.

C. & O. Roses are two-year, field grown, budded on thrifty root stock. For blossoms the first summer, planters will find our sturdy Number One roses the most satisfactory to plant.

Roses like a good rich soil, with a fair amount of sunshine and plenty of water. A peat mulch is beneficial.

When planting, prune the tops back to about six inches. Dig holes large enough to spread the roots; pack the soil firmly about the roots. This is important. Water thoroughly, then hill up the plant, covering the top with soil or peat to prevent drying out. Keep the soil wet and be sure the water penetrates to the root level. Irrigation is better than sprinkling. When the foliage starts, gradually draw the soil or peat away from the stem.

NEW VARIETIES AND NOVELTIES

Winners of gold medals and certificates of merit in all the big Rose Shows of Europe and America.

Countess Vandal (U. S. Plant Patent No. 38) Hybrid Tea—long pointed bud, salmon pink with distinctive shadings of coppery bronze, suffused with soft gold, each\$1.00

Gov. Alfred E. Smith (U. S. Plant Patent No. 62) Artistic bud, large rose shaped like a "bomb" peony. A mixture of salmon and gold with a deeper tone on the outside of the petals. Sweetly fragrant and a free bloomer. Each\$1.50

Mary Hart (U. S. Plant Patent No. 8) A striking red sport of Talisman, velvety blood-red, prolific, the finest red for cutting. Each\$1.00

Souvenir (U. S. Plant Patent No. 25) A golden yellow Talisman, holds its color well, a prolific producer of fragrant flowers for cutting. Each\$1.25

Token (U. S. Plant Patent No. 95) Large ophelia shaped bud, a unique color—a glowing tone of sun-ripened apricot, free bloomer. Each\$1.50

Blaze Climber (U. S. Plant Patent No. 10) New hardy everblooming Scarlet Climber, like Pauls Scarlet, but will bloom on new and old wood, this will be recurrent when established. Each \$1.50

Golden Climber (Mrs. Arthur Curtiss James) (U. S. Plant Patent No. 28) New hardy yellow climber, with hybrid tea type of flowers, almost always solitary on long stems, a gorgeous sight when in bloom. Each \$2.00

New Dawn (U. S. Plant Patent No. 1) Everblooming Dr. W. Van Fleet. A climber that is a constant producer of delicate pink, fragrant flowers. Each \$1.00

ROSES---General List

(Dozen Rates: 12 Roses at ten times the each price.)

	Each
Angele Pernet H. T.—Vivid mandarin and yellow60
American Beauty—red—H. P.60
Betty Uprichard—orange—carmine60
Caledonia—H. T.—white60
Dame Edith Helen, H. T.—pink, excellent form, fragrant ..	.60
Duchess of Wellington—saffron—yellow—H. T.60
Etoile de France—velvety red—H. T.60
Etoile de Holland—brilliant red—H. T. One of the best ..	.60
Feu Joseph Looyman—yellow and apricot—H. T.60
Frau Karl Druschki—white—H. P.60
Gen. Jacqueminot—velvety crimson—H. P.60
Gen. McArthur—crimson—H. T.60
George Ahrends (Pink Druschki)—H. P.60
Irish Fireflame, H. T.—Single—orange copper60
Killarney White, H. T.—Splashed with pink, fragrant..	.60
Golden Ophelia—buff—H. T.—constant bloomer60
Gruss an Teplitz—fiery red—H. T.60
Hoosier Beauty—H. T.—velvety crimson60
J. J. L. Mock—silvery—pink—H. T.60
Kaiserin Augusta Victoria—white—H. T.60
Lady Hillingdon—apricot—yellow—T.60
Los Angeles—flame—pink—H. T.60
Mme. Caroline Testout—pink—H. T.60
Mme Edouard Herriott—(Daily Mail)—copper and flame—H. T.60
Mme. Butterfly—pink and gold—H. T.60
Mrs. E. P. Thom—H. T.—One of the best yellow60
Mrs. Aaron Ward—orange and yellow—H. T.60
Mme. Cecil Brunner—shell pink polyantha60
Ophelia—salmon—pink—H. T.60
Padre—coppery—scarlet—H. T.60
Paul Neyron—large, pink, thornless—H. P.60
Pink Radiance—H. T.60
President Hoover—pink, yellow, orange-scarlet— H. T.75
Prince Camille de Rohan—dark—red—H. T.60
Red Radiance—H. T.60
Rev. F. Page Roberts—Golden-yellow and red—H. T.60
Souvenir de Claudius Pernet—yellow—H. T.60
Sunburst—orange and copper—H. T.60
Tip Top (Baby Doll)—dwarf—pink and gold—P.60
Talisman—gold, apricot and old rose—H. T.75

CLIMBING ROSES

American Pillar—single, in large clusters—pink60
Climbing American Beauty—large, double, rosy60
Dorothy Perkins—double blooms in large clusters— Pink60
Dr. Van Fleet—Large, double bloom, flesh-pink— mildew-resistant60
Excelsa—Improved Crimson Rambler60
Mme. Gregorie Staechelin—shell pink60
Paul's Scarlet Climber—double blooms60
Silver Moon—large, semi-double blooms60
White Dorothy Perkins60

SHRUB ROSES

Austrian Copper—georgeous60
Conrad F. Myer—silver-pink60
F. J. Grootendorst—red60
Harrison's Yellow—old fashioned, double yellow60
Hugonis (Golden Rose of China)—single, yellow60

PEONIES

Peonies do best when planted in the fall, any time from September first until the ground freezes. Peonies grow best in well-drained garden soil and should be well fertilized.

Our Peonies are well developed, field grown roots which usually bloom the first season. The list of varieties has been carefully selected to include the best, moderately priced sorts.

(Dozen Rates—12 Peonies at ten times the each price)

VARIETY	Each
Duchess d'Nemours—sulphur white50
Duchess d'Orleans—light pink35
Duke of Wellington—white, creamy center35
Edulis Superba—bright pink early35
Felix Crousse—brilliant red.....	.60
Festiva Maxima—white, crimson flecked center60
Floral Treasure—pink, lighter center.....	.50
Ginette—flesh pink, salmon tints, fragrant	1.00
Golden Harvest—pink and gold50
James Kelway—flesh pink, very fragrant	1.00
La France—apple blossom pink, fragrant	2.00
Lafayette—salmon pink75
L'Eclatante—deep velvety crimson50
Mary Brand—outstanding deep crimson	1.50
Mons. Jules Elie—large shell pink	1.00
Mons. Martin Cahouzac—dark purple garnet	1.50
Mme. de Verneville—white, center carmine50
Officinalis Rubra—very early red75
Officinalis Rosea—very early pink75
Primavere—sulphur, nearest of yellow peony	1.50
Richard Carvel—fine early red, fragrant	1.50
Rubra Superba—dark red late60
Sarah Bernhardt—apple blossom pink	1.25
Van Dyke—multi colored peony60
Walter Faxon—clear pink—one of the best	2.00

IRIS

Iris are easy to grow thriving best in a well drained, good garden soil. They like a sunny location, but will do quite well when exposed to the sun half of the day. Keeping the Iris beds two or three inches above the surrounding soil, helps greatly in growth and drainage.

VARIETY	Each	Doz.
Ambassadeur—smoky, reddish violet	\$.60	\$6.00
Aurora—purple, lavender, pink35	3.50
Florentina—white, free bloomer35	3.50
Her Majesty—deep, rosy, lilac pink35	3.50
Honorabilis—Golden yellow and mahogaany brown35	3.50
Lohengrin—blue and violet35	3.50
Madame Chereau—white, violet blue margin35	3.50
Pallida Dalmatica—light blue35	3.50
Purple Prince—violet blue and dark purple ..	.35	3.50
Queen of May—lavender-pink, beautiful35	3.50

PERENNIAL PLANTS

Ask for special descriptive list.

"I am very much pleased with the trees you shipped me. They are really nicer than I expected."—Arlington, Wash.

We pay freight charges to customer's shipping point, and guarantee arrival in good condition.

TREE PROTECTORS

Protect young fruit trees from injury by Mice, Rabbits, Borers, Sunburn, with our Veneer Tree Protectors.

Thousands of these dependable tree protectors are in use in the orchards of Central Washington. The cost is insignificant, and they last for years.

They come rolled and ready to put on easily and quickly. Wires going entirely around the protector hold it securely in place.

They come in two sizes.



PRICES

SMALL—18 inches high, for trees up to about 2 inches in diameter.

25 or less	25 to 50	50 to 500	500 to 1000
Each	Each	Each	Each
5c	4c	3c	2½c

LARGE:

for trees up to about 4 inches in diameter.

Prices one cent more each, than above.

GRASS SEED

The first requirements of a good lawn are a good seed bed, plenty of good seed, and ample moisture at all times. It is imperative that a good thick stand of grass be secured as quickly as possible to withstand the summer heat.

We recommend one pound of grass seed to 200 square feet.

After extensive study of lawn grasses we have formulated our C. & O. Lawn Mixture which has proven satisfactory under all ordinary conditions, and we believe it as near fool-proof as any lawn seed can be.

We also mix lawn seed to suit special requirements of our customers.

Grass Seed Prices. Prices are f. o. b. Wenatchee, Wash.

C. & O. Lawn Mixture per pound\$.50
Kentucky Blue Grass, per pound50
Red Top, per pound50
White Dutch Clover, per pound60
Rhode Island Bent, per pound 1.50

SADDLE ROCK

The mountain appearing on the cover design of this book is an interesting landmark near Wenatchee. In the early days a certain type of Government pack saddle was often used by Indian squaws for riding purposes. Indians noting the resemblance of this mountain to the saddles used by the squaws named it "The Squaw Saddle." The mountain has since always been known by that name.

"The trees have been doing fine."—Brewster, Wash.

"The trees I received from you last fall made a fine growth."—Bellingham, Wash.

PEAT MOSS

Flowers, Plants and Lawns Need Peat Moss

REASONS WHY Peat Moss makes better gardens:

PEAT MOSS

- Adds organic matter contributing to the formation of humus.
- Makes the land more pliable—greatly improves general texture and condition of the soil.
- is nature's reservoir for both moisture and air as well as for plant foods. Peat Moss has many cells and acts much like a sponge in absorbing and holding moisture.

USES

- Can be used for general gardening.
- As a mulch about the roots of trees, shrubs and plants.
- Excellent for window boxes.
- Should be used around Evergreens as it supplies a desired acid reaction.
- Very necessary for Rhododendrons, Azaleas, and all ericaceous plants which require an acid soil. Should also be used liberally on surface of ground around such plants to keep the ground cool and moist.
- As a top dressing for new lawns there is nothing better than Peat Moss. Prevents grass seed from drying out and insures good germination. Prevents washing or blowing of soil after seeding. Serves as a protection to young tender grass and insures heavy uniform growth.
- As a top dressing to be raked into old lawns. Will help rejuvenate lawns and give greater moisture retaining qualities.

Peat Moss, while not a fertilizer, puts the soil in such condition that bacteria within the soil becomes active and makes plant food readily available to shrubs, flowers and other plant life.

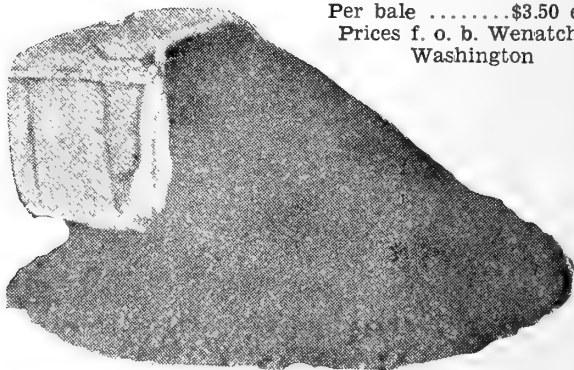
Do not confuse our Peat Moss with local bog-earth sometimes obtained from swamps. Our Peat Moss is imported by us direct from Germany. It is pure and free from foreign substances, tightly compressed in large bales. Each bale contains approximately 20 bushels of loose Peat Moss which will cover between 250 and 300 square feet, one inch deep.

(We use Peat Moss extensively in our own landscape display grounds at Wenatchee and will be pleased to demonstrate its use and value for the garden).

Ask or write for the following circulars telling how to use Peat Moss: "Peat Moss, Outline of its uses"; "Lawns that Live"; "Peat Moss for Your Garden."

Peat Moss Prices

Per bag	75c each
Per bale	\$3.50 each
Prices f. o. b. Wenatchee, Washington	



INDEX

	Page		Page
Apples	2 to 10 inclusive	Nectarines	13
Apricots	13-17	Nut Trees	18
Asparagus	13	Peaches	12-14-15-16
Blackberries	19	Pears	10
Crab Apples	10	Peat Moss	32
Cherries	11	Peonies	30
Currants	19	Plums	11
Dewberries	19	Prunes	12
Evergreens	24	Quince	13
Fertilizer Inside Back Cover		Raspberries	19
Globe Locust	20	Roses	28-29
Gooseberries	19	Rhubarb	13
Grapes	13	Shade Trees	21-22-23
Grass Seed	31	Shrubs	26-27
Hedge Plants	27	Siberian Elm	20
Hop Vines	13	Strawberries	19
Horseradish	13	Tree Protectors	31
Iris	30	Vines	28
Loganberries	19	Weeping Trees	23
		Youngberry	19

FERTILIZER . . .

We recommend **VIGORO**.

It is a complete fertilizer of proven value for garden, lawn, flowers, shrubs and trees.

The best way to keep your lawn, shrubs, and flowers in a good, green, thrifty condition, is to fertilize regularly with Vigoro according to instructions furnished with each package.

AMOUNT OF VIGORO TO USE

Standard Application—4 pounds to every 100 square feet (10 feet x 10 feet).

Light Application—2 pounds to every 100 square feet (10 feet x 10 feet).

Important—Vigoro must be applied evenly for best results.

HOW MUCH VIGORO DOES YOUR HOME NEED?

A lot 30 ft. x 125 ft. needs75 lbs. Vigoro
 A lot 50 ft. x 125 ft. needs150 lbs. Vigoro
 A lot 75 ft. x 150 ft. needs250 lbs. Vigoro
 A lot 100 ft. x 150 ft. needs350 lbs. Vigoro
 A lot 150 ft. x 150 ft. needs675 lbs. Vigoro
 (The amounts shown above are needed for one application. Deductions have been made for walks, garage, house, etc.)



For Gardening Success

VIGORO
Complete plant food

VIGORO is furnished in standard packages as follows:

- 5 lb pkg. 50c each
- 10 lb pkg. 85c each
- 25 lb pkg. \$1.50 ea.
- 50 lb pkg. \$2.50 ea.
- 100 lb pkg. \$4.00 ea.

Prices are f. o. b.

Wenatchee

PRICES FOR SPRING 1935

COLUMBIA & OKANOGAN NURSERY COMPANY

"THE WENATCHEE NURSERIES"
Wenatchee, Washington

WE PAY FREIGHT CHARGES (EVERGREENS EXCEPTED) TO ANY SHIPPING POINT WITHIN THE U. S. A. ON SMALL SHIPMENTS WE PAY EXPRESS OR MAIL CHARGES TO SHIPPING POINTS IN THE PACIFIC NORTHWEST, OR ONE-HALF THE EXPRESS OR MAIL CHARGES ELSEWHERE IN THE U. S. A. ON ALL ORDERS OF \$3.00 OR OVER.

This Supersedes All Previous Lists

APPLE except "RICHARED" DELICIOUS, "SHOTWELL" DELICIOUS, "BLACKJON", "BLAXTAYMAN", "BLACKMACK," "SEEANDO" RED ROME, "SEEANDO WINESAP"						
	Grade	Each	Each	Each	Each	Each
	4-6 ft.	.75	.60	.50	.40	.35
	3-4 ft.	.70	.55	.45	.35	.30
Extra Select Grade	5-7 ft.	.80	.65	.55	.45	.40
"RICHARED" DELICIOUS (Trade Mark Reg.)						
"SHOTWELL" DELICIOUS (U. S. Plant Pat. No. 90)						
	Grade	Each	Each	Each	Each	Each
BLACKJON (Trade Mark Reg.)	4-6 ft.	.90	.75	.60	.55	.50
BLAXTAYMAN (Trade Mark Reg.)	3-4 ft.	.85	.70	.55	.50	.45
BLACKMACK (Trade Mark Reg.)	3-4 ft.	.85	.70	.55	.50	.45
Extra Select Grade	5-7 ft.	1.00	.80	.65	.60	.55
SEEANDO RED ROME (Trade Mark Reg.)	4-6 ft.	.80	.65	.55	.45	.40
SEEANDO WINESAP (Trade Mark Reg.)	3-4 ft.	.75	.60	.50	.40	.35
Extra Select Grade	5-7 ft.	.85	.70	.60	.50	.45
PEACH, PEAR, PLUM, PRUNE, APRICOT (except Candoka, Golden Jubilee, Rio Oso Gem Peaches, and Riland Apricots.)						
	4-6 ft.	.75	.60	.50	.40	.35
	3-4 ft.	.70	.55	.45	.35	.30
Extra Select Grade	5-7 ft.	.80	.65	.55	.45	.40
CANDOKA PEACH (U. S. Plant Pat. No. 51)						
GOLDEN JUBILEE PEACH	4-6 ft.	1.00	.80	.65	.55	.50
RIO OSO GEM PEACH (U. S. Plant Pat. No. 89)	3-4 ft.	.90	.75	.60	.50	.45
RILAND APRICOT (U. S. Plant Pat. No. 74)	3-4 ft.				.60	
Extra Select Grade	5-7 ft.	1.10	.85	.70		.55
CHERRY, SWEET						
	4-6 ft.	.85	.75	.65	.55	.50
	3-4 ft.	.75	.65	.55	.45	.40
Extra Select Grade	5-7 ft.	1.00	.85	.75	.65	.60
CHERRY, SOUR						
	3 1/2-5 ft.	.85	.75	.65	.55	.50
	3 ft. up	.75	.65	.55	.45	.40
Extra Select Grade	4-6 ft.	1.00	.85	.75	.65	.60
ALMOND, NECTARINE, AND QUINCE						
	4-6 ft.	1.00	.85	.60	.55	.50
	3-4 ft.	.85	.65	.50	.45	.40
GRAPE, Concord						
		.35	.30	.25	.20	.15
Other Varieties		.40	.35	.30	.25	.22
CURRANT						
Perfection (Sell in)		.40	.35	.30	.25	.20
Other Varieties (Wen. Only)		.35	.30	.25	.20	.15
GOOSEBERRY,						
Oregon Champion (Sell in)		.35	.30	.25	.20	.15
Other Varieties (Wen. Only)		.40	.35	.30	.25	.20
FILBERT,						
	2-3 ft.	.75	.70	.65	.60	.55
ENGLISH WALNUT						
	6-8 ft.	1.50	1.35	1.25	1.10	1.00
	4-6 ft.	1.25	1.10	1.00	.85	.75
	3-4 ft.	1.00	.85	.75	.65	.60
English Walnuts, Grafted	6-8 ft.	2.50	2.25	2.15	2.00	1.75
	4-6 ft.	2.00	1.75			
	3-4 ft.	1.50	1.25			
YOUNGBERRY						
		.35	.30	.25	.20	.15
RASPBERRY,						
Columbian, St. Regis, Golden Queen and Latham		2.50	4.00	7.00	12.00	.08
Other Varieties		2.00	3.50	6.00	10.00	.06 1/2
BLACKBERRY,						
Thornless		3.50	7.00	12.50	20.00	.15
Other Varieties		2.50	4.00	7.00	12.00	.08
DEWBERRY AND LOGANBERRY						
		2.50	4.00	7.00	12.00	.08
STRAWBERRY,						
Everbearing Varieties			1.00	1.50	2.50	15.00
Standard Varieties			.75	1.25	2.00	10.00

500 trees take 5 per cent discount from 100 rate
1000 trees take 10 per cent discount from 100 rate
Ask for special prices on larger quantities

The quantity rate on orders for less than 100 FRUIT TREES, applies on total number of trees of a class, not on total number ordered of different classes. Example—6 Apple, 4 Peach, 2 Pear", do not make the "dozen" rate, but the "each" rate; or "25 Apple, 25 Pear", take the "25" rate, not the "50" rate, etc.

However all FRUIT TREES in an order take the same rate as the highest number of any one item. Example—"12 Apple, 2 Cherry, 1 Peach", the Peach and Cherry take the dozen rate the same as the Apple, or "100 Pear, 2 Cherry, 1 Peach," Cherry and Peach take the 100 rate same as the Pear.

The quantity rate on orders of 100 FRUIT TREES OR MORE, applies to the total number of all fruit trees in order.



IT'S NOT A
HOME
UNTIL IT'S
PLANTED

Your Home can be
BEAUTIFUL

LET US Help YOU Make IT SO

Landscaping the home grounds need not be expensive, nor require a life time to achieve. Careful planning and selecting of well grown, mature specimens of ORNAMENTAL TREES, EVERGREENS, SHRUBS, ROSES

and PERENNIALS, from our large stock will transform your yard into a pretty

GARDEN,

filled the very first summer with lots of Fragrant Blossoms.



USE the C. & O.

LANDSCAPE SERVICE

It is our business to make complete plans for large or small properties, estates and parks.

Our Landscape Department will gladly offer helpful suggestions to those desirous of selecting proper trees and shrubs for the right places.

You are invited to visit our Landscape Display Grounds adjacent to our Office and Packing House. Here you will find samples of our large stock of Evergreens, Ornamental Trees, Shrubs, Roses and Perennials.

Visit, or write us, regarding your Landscape Problems.

 **Columbia & Kanogan** 
NURSERY COMPANY

"THE WENATCHEE NURSERIES"

Second and Mission Streets Wenatche, Wash.