

CONESTOGAN

1951



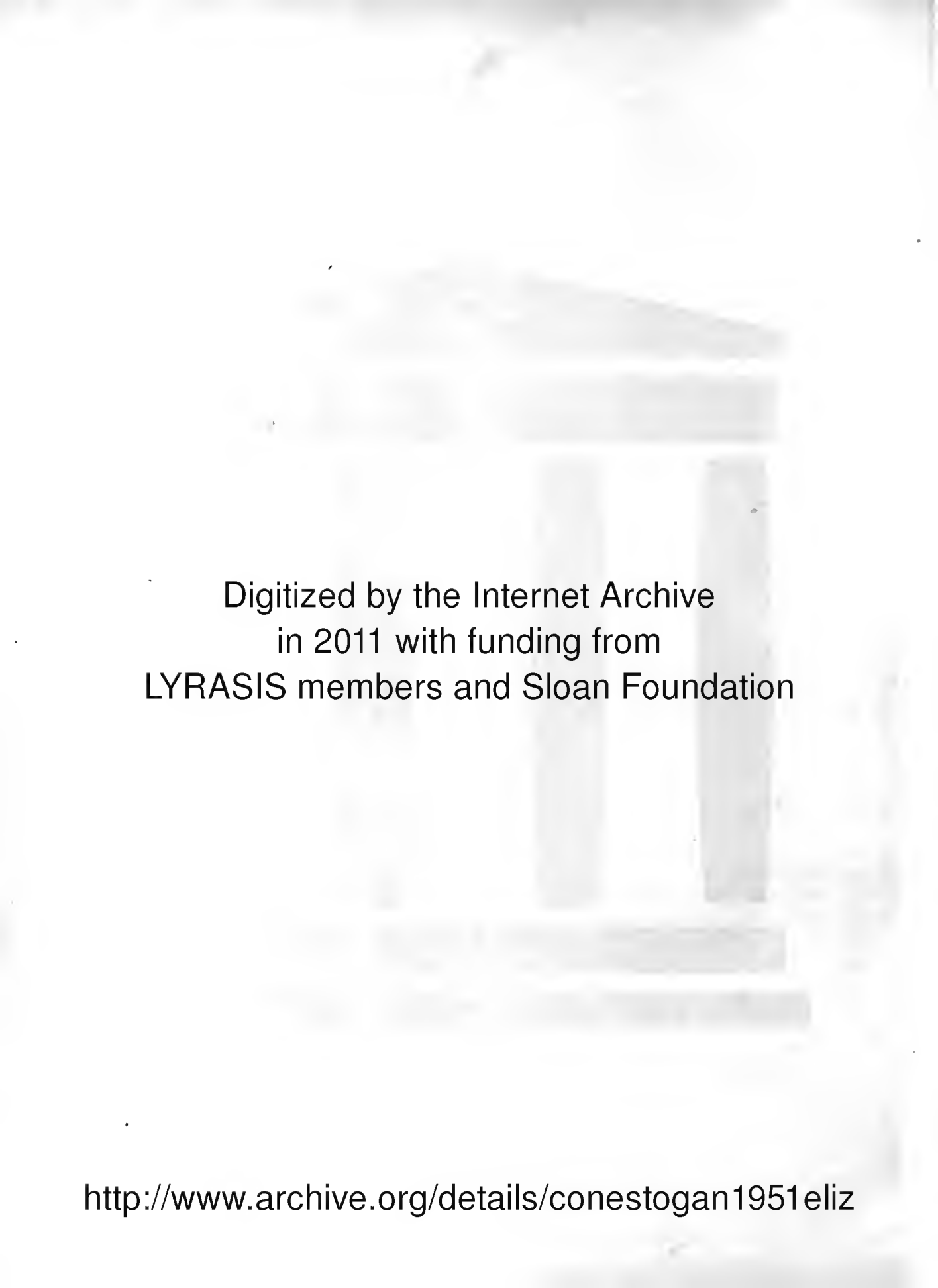
ZUC MEMORIAL LIBRARY
ELIZABETH COLLEGE
ELIZABETH, N.J.

REFERENCE
MATERIAL

FOR
LIBRARY
USE ONLY

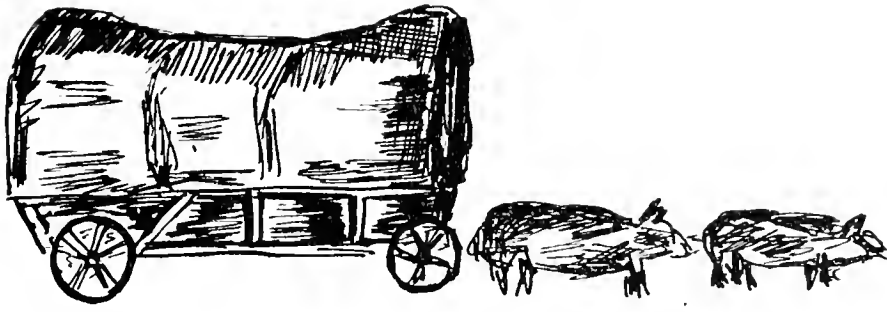
11/10/11
11/10/11
11/10/11





Digitized by the Internet Archive
in 2011 with funding from
LYRASIS members and Sloan Foundation

<http://www.archive.org/details/conestogan1951eliz>



The Conestogan,

formerly "The Etonian"



Marian Newcomer and Albert Seldomridge standing at cluster of lights in front of Alpha Hall.

THE CONESTOGAN



Presented by
THE STUDENT ASSOCIATION
Elizabethtown College
Elizabethtown, Pennsylvania

77



Courtesy: UNATIONS Lake Success, New York, July 7, 1950.

THE SECURITY COUNCIL AND THE KOREAN QUESTION

The conference room of the Security Council during the vote on the joint resolution introduced by France and United Kingdom, recommending a "unified command under the United Nations" for the unified forces fighting in Korea, and the authorization of the use of the United Nations flag by the designated Commander-in-Chief. The resolution is adopted by seven votes in favor, none against and three abstentions (Egypt, India, Yugoslavia).



In Dedication

"To save succeeding generations from the scourge of war" The unanimous hope of the fifty-one nations represented at the San Francisco Conference of the United Nations. . . . Still the hope of free men everywhere.

To maintain this peace. . . . The United States together with fifty-nine other nations now works through the United Nations.

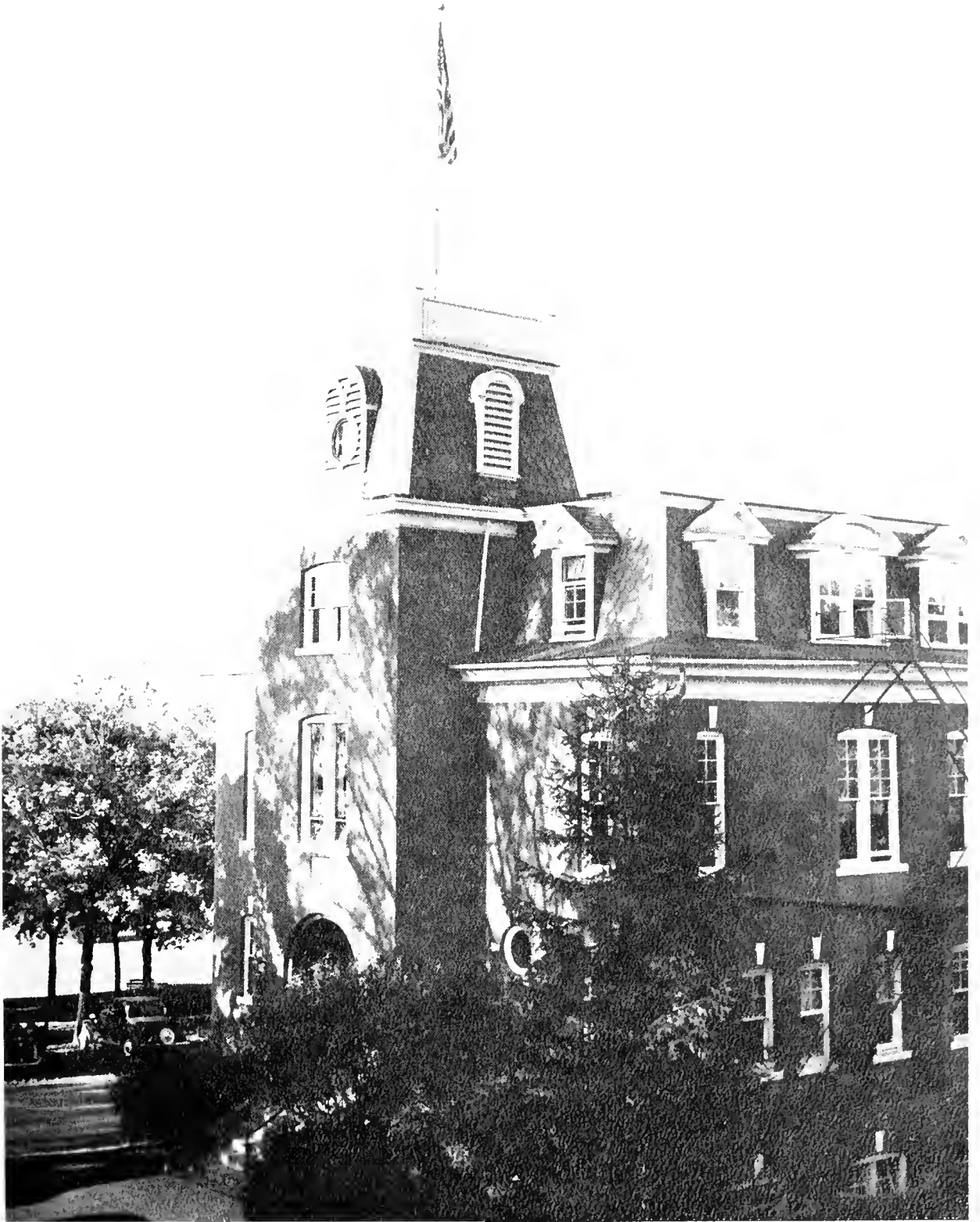
On July 7, 1950, Warren Austin, for the United States, accepted the responsibility placed upon his country by the United Nations. . . . Now thousands of Americans among whom are men and women of Elizabethtown College - Some in Korea - Serve in the United Nations Forces. . . . To these we gratefully offer in dedication this 1951 CONESTOGAN.



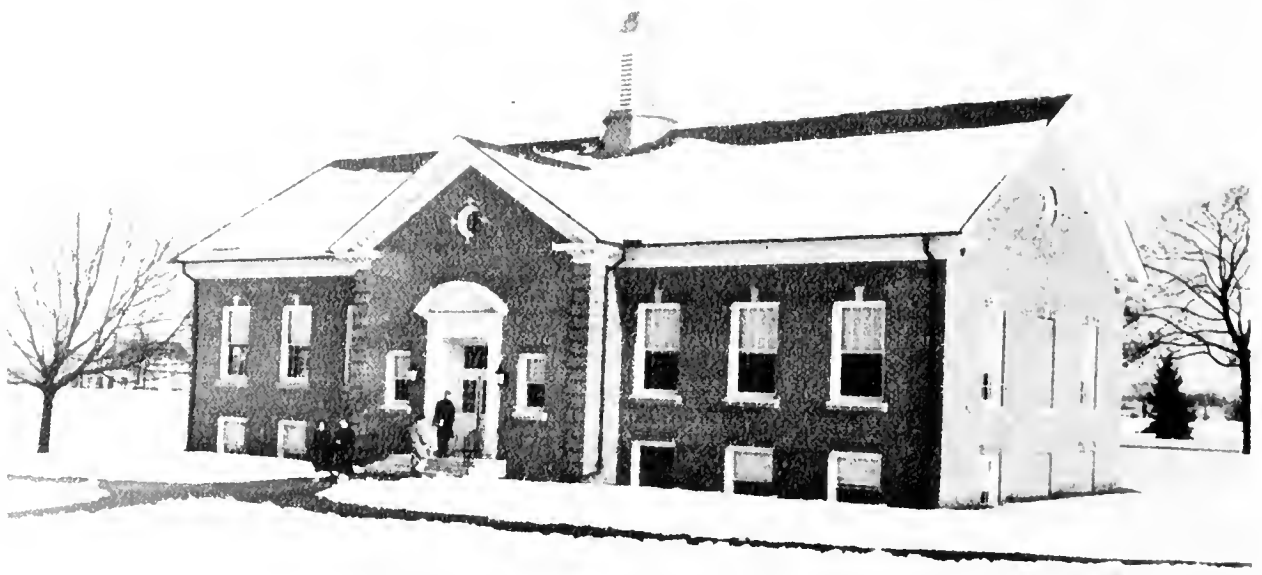
DRIVEWAY ENTRANCE FACING ORANGE STREET



SCIENCE BUILDING



MEMORIAL HALL



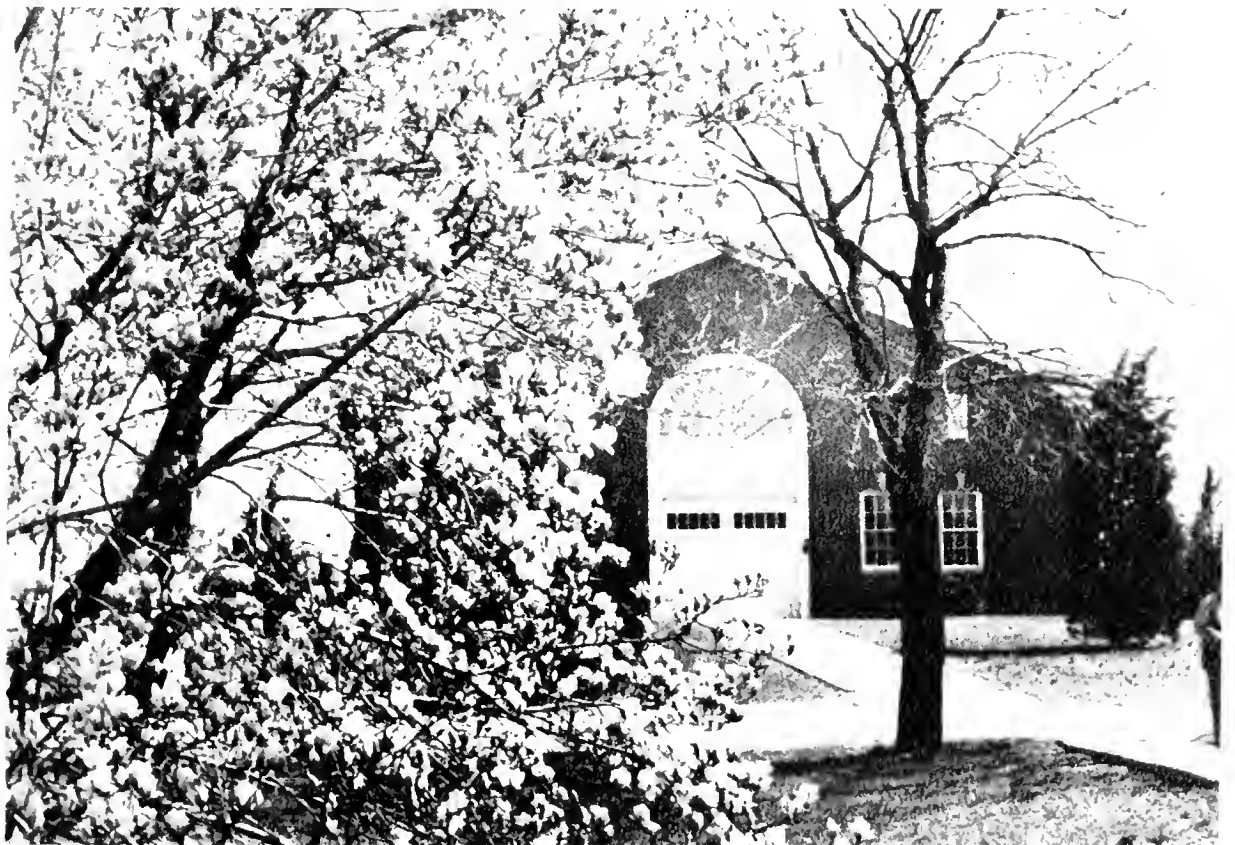
LIBRARY



FAIRVIEW HALL



ALPHA HALL



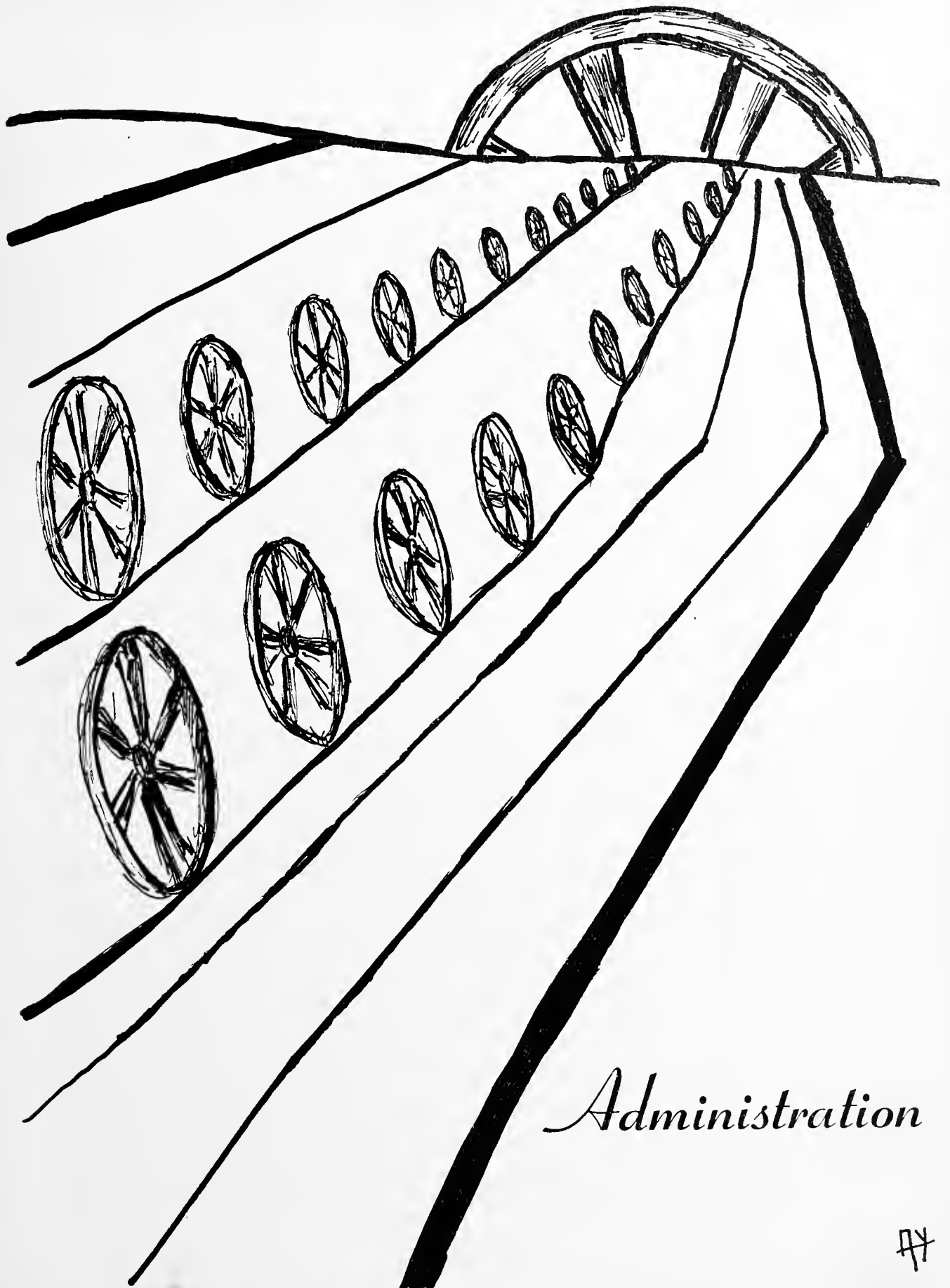
AUDITORIUM - GYMNASIUM



A CAPPELLA CHOIR ON MAY DAY



UNWINDING THE 1950 MAYPOLE.



Administration

AY

Administrative

Committee



A. C. BAUGHER, Ph. D.; LL. D.
President and Professor of Chemistry

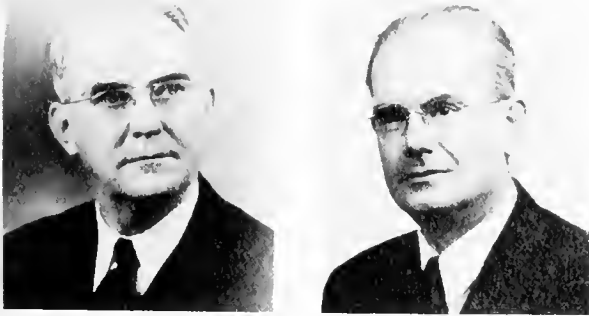


HENRY G. BUCHER, Ed. D.
Dean and Professor of Education



K. EZRA BUCHER, M. S.
Treasurer and Business Manager
Assistant Professor of
Business Education

Faculty



RALPH WIEST SCHLOSSER, Litt. D.
Professor of English

CHARLES S. APGAR, Ph. D.
Professor of Biology

O. F. STAMBAUGH, Ph. D.
Professor of Chemistry
FREDERICK C. NEUMANN, Ph. D.
Professor of Languages



ELMER B. HOOVER, M. Ed.
Associate Professor of Education
GALEN C. KILHEFNER, M. Ed.
Associate Professor of Sociology
and Psychology

CARL E. HELLMAN, M. Ed.
Associate Professor of Mathematics
and Physics

EPHRAIM GIBBEL MEYER, A. M.
Assistant Professor of Music
Assistant Librarian



Faculty

VERA R. HACKMAN, A. M.
Dean of Women

Assistant Professor of English

MAHLON H. HELLERICH, A. M.

Assistant Professor of History



M. ALICE SYLVESTER HEILMAN, B. S. L.
Librarian

EBY C. ESPENSHADE, M. Ed.
Associate Director of Admissions
Alumni Secretary



ROBERT F. ESHLEMAN, Ph. D.
Assistant Professor of Business Education
and Sociology

BESSIE D. APGAR, Ph. D.
Assistant Professor of Biology



IRA R. HERR, A. B.
Director of Athletics
Instructor in Physical Education



Faculty

W. DAVID ALBRIGHT, A. B.
Instructor in Music

GERTRUDE ROYER MEYER
Instructor in Piano



FRANK S. KUGLE, B. S.; C. P. A.
Instructor in Business Education

JOSEPH H. DODD, B. S.
Dean of Men
Instructor in Physical Education



EMMA R. ENGLE, A. B.
Assistant Dean of Women
Instructor in English

MARTHA MARTIN, A. B.
Instructor in Bible



KATHRYN HERR, A. B.
Instructor in French



Faculty



ELINOR B. NEUMANN, A. M.
Instructor in German

GALEN W. HERR, B. S.
Director of the Orchestra

HARRY M. BOOK, M. A.
Instructor in Art

HAROLD HUNT, B. S.
Instructor in Organ



HIRAM J. FRYSSINGER, M. A.
Instructor in Mathematics and
Physics

SAMUEL S. WENGER, L. L. B.
Special Lecturer in Law



CHARLES E. WEAVER, M. D.
Special Lecturer in Medical
Laboratory Technology



Faculty



ROBERT YOUNG, M. Ed.
Administrative Assistant



CARRIE ELLIS
Head of Fairview Hall



NEVIN ZUCK, S. T. M.
Advisor to Religious Activities

Faculty not Pictured

ELINOR HOLLIS, M. A.
Instructor in Business Education

CARL W. ZEIGLER, B. D.
Instructor in Bible



STANLEY VON NIEDA
Coach of Basketball



L. to R.: Shirley Heisey, Ruth Zimmerly, Jane Hopkins, Shirley Warfel, Secretaries.



Virginia Hixson and Phyllis Meyer working at switchboard.



Delores Olinger serving Ralph Stout, Mary Barley, Ronald Murphy in the college store.

They Also Serve . . .

Martha Bashore and Mrs. Pautz setting the tables.

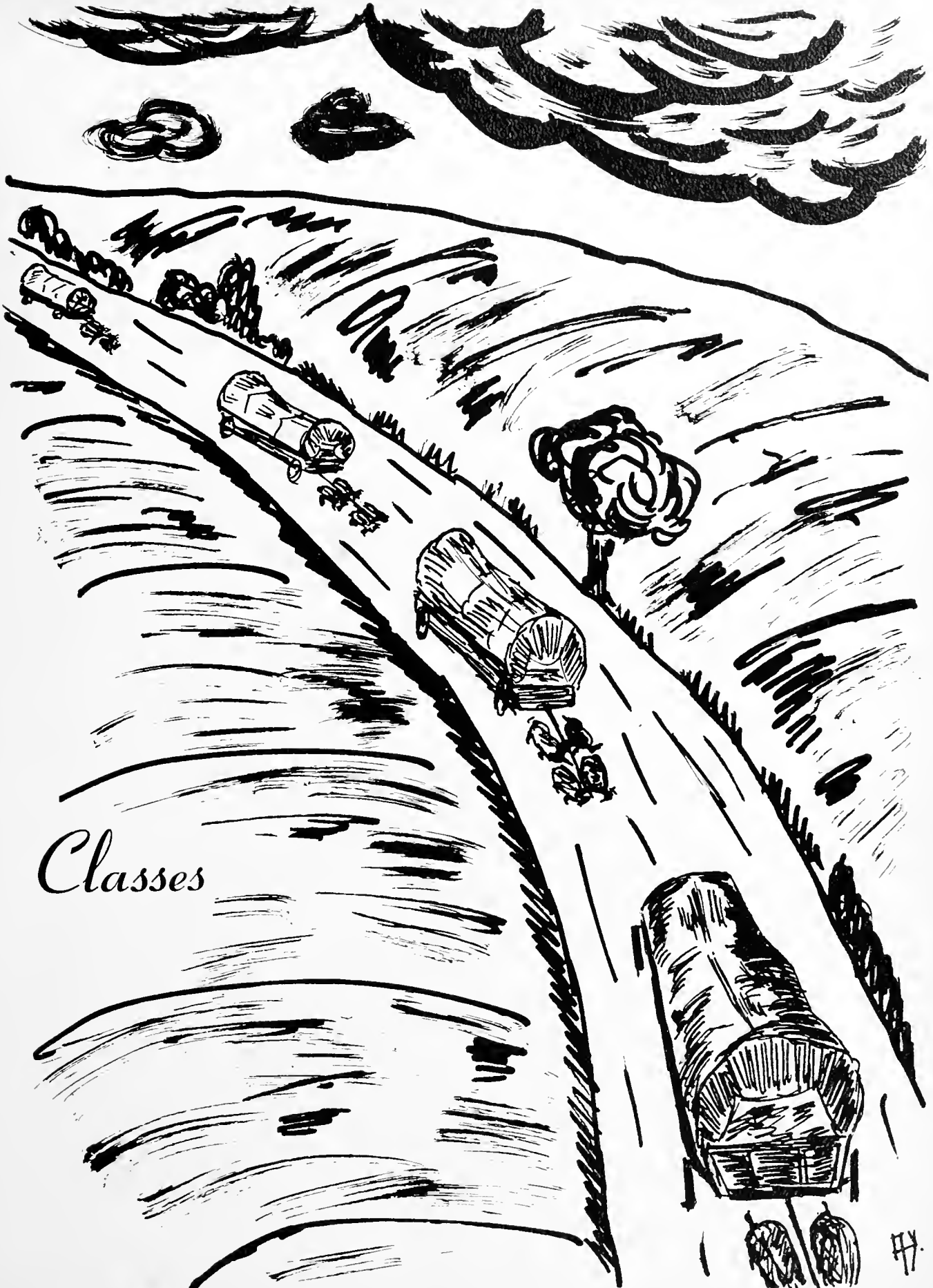


Mr. Craighead, Chef.



Mrs. Ishler and Mrs. Bomgardner preparing lunch.





Classes

Seniors



ROY ARMOLD
 Maytown . . . B. S. in Business Ad-
 ministration . . . Has two sons . . .
 Was prisoner of war in Germany during
 war . . . Baseball.



I. JEROME BAUKNIGHT
 Wilkes-Barre . . . B. S. in Science
 Medical School . . . Physician . . .
 Transfer from Kings College . . .
 U. S. Army during last war . . . First
 name is Isaiah.

MILDRED BECKER
 Bressler . . . B. S. in Education
 . . . Interested in teaching grade 2
 . . . Loves children . . . Teaches
 piano during summer . . . Likes the
 mice in Fairview



EARL BECKER
 Ephrata . . . B. S. in Business Ad-
 ministration . . . Commuting . . .
 Has one daughter . . . Served in air
 corps . . . Graduate of Bliss Electri-
 cal School, Washington, D. C.

Seniors

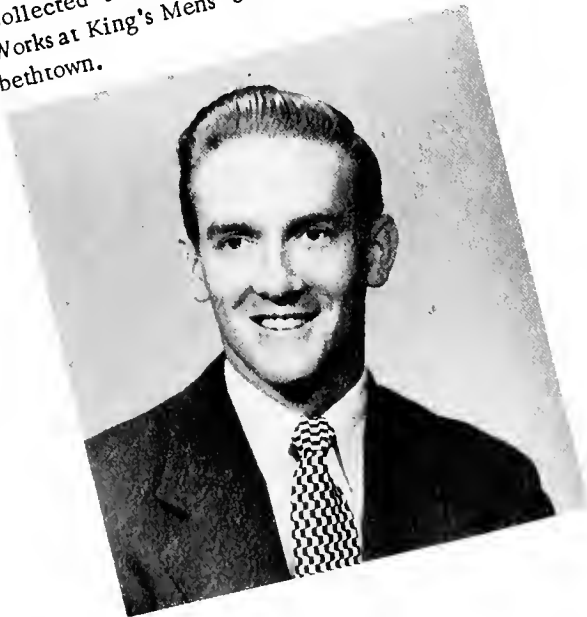


JAMES BENNETT
 Harrisburg . . . B. S. in Business
 Administration . . . On official board
 of his church . . . Active in the
 Church of God youth advance . . .
 U. S. Navy.



MARGARET BOSE
 Glen Rock . . . B. S. in Business
 Education . . . Expert Typist . . .
 Works in college store . . . Wears a
 diamond . . . Contagious laughter.

STANFORD COX
 Millersville . . . A. B. in Liberal
 Arts . . . Secondary Education . . .
 Collected shells on Okinawa . . .
 Works at King's Mens' Store in Eliza-
 bethtown.



GERALD BURDICK
 Elizabethtown . . . B. S. in Busi-
 ness Administration . . . Interested
 in salesmanship . . . Proud papa of a
 son . . . Irish . . . U. S. Army.

Seniors



ELIZABETH DENLINGER
Millersville . . . B. S. in Labora-
tory Technology . . . One of first
group to take three-year course . . .
St. Joseph's Hospital laboratory.



MRS. PATRICIA DONNELLY
Lancaster . . . A. B. in Liberal Arts
. . . English major . . . Mike's wife
. . . Rides in a Cadillac . . . Usually
on Dean's List.



ROBERT DETWILER
Oaks . . . B. S. in Business Admini-
stration . . . Enjoys hunting . . .
Veteran . . . Served in Korea in World
War II . . . Spent Christmas of '47
in Shanghai.

Seniors



BENJAMIN EBERSOLE
 Hershey . . . A. B. in Liberal Arts
 . . . Y.M.C.A. camp director during
 summer . . . Debater . . . Former
 president of the SCM in the
 Brethern Colleges of the U.S. . . .
 Served on deputation teams . . . A1-
 ways (?) on time.



ROBERT ENTERLINE
 Elizabethtown . . . B. S. in Science
 . . . Pre-dental . . . Golf devotee
 Lieutenant in France during the war
 . . . Served in the occupation forces
 of Germany 1946 - 1948.

JOYCE FOLEY
 Lancaster . . . B. S. in Science
 . . . Enrolled in Women's Medical
 College . . . General practitioner
 . . . Debating, student government
 . . . versatile student.



CHARMAINE FICKES
 York . . . B. S. in Education
 . . . Teach first grade . . . A re-
 liable committee chairman . . . A
 lover of art . . . Always willing to
 serve . . . Has twinkling eyes.

Seniors



GORDON FOSTER
 Wiconisco . . . A. B. in Liberal
 Arts . . . Social studies . . . Teacher
 and coach . . . Major in physical
 education . . . married . . . One
 son . . . Ex-G.I. . . . Like to teach
 in South America.



GLENN FREY
 Conestoga . . . A. B. in Liberal
 Arts . . . A teacher in secondary edu-
 cation . . . Active in Sunday School
 work . . . Dairyman in leisure hours.

ROBERT HAMMERS
 Stewartstown . . . B. S. in Busi-
 ness Administration . . . Devotes
 time to his rod and gun . . . North
 Hall proctor . . . Active in intra-
 murals.



LEONARD GRIMM
 Harrisburg . . . B. S. in Business
 Administration . . . Has a wife and
 daughter . . . A licensed pilot who
 loves to fly . . . U.S. Navy service
 in South Pacific, Philippines, New
 Guinea.

Seniors



R. DONALD HAVERSTICK
 East Petersburg . . . A. B. in Lib-
 eral Arts . . . Coaching and teach-
 ing . . . "Sticks" . . . Varsity basket-
 ball . . . Has one daughter.



S. RICHARD HEISEY
 Elizabethtown . . . B. S. in
 Science . . . Biological Research . . .
 Regular coffee drinker.

EARL HESS
 Lebanon . . . A. B. in Liberal Arts
 . . . "Little but mighty" . . . Ex-
 G.I. . . . Played baseball for team
 in Richmond, Va. . . . Varsity Base-
 ball and basketball.



CHARMAR HERSHEY
 Hershey . . . B. S. in Science
 . . . Chemistry major . . . Teaching
 or (?) . . . Sells Klein's chocolate
 bars in Hershey Park during summer
 . . . Loquacious . . . Interested in
 music . . . Cheerful.

Seniors



MARY HESS
Mt. Joy . . . B. S. in Education
. . . one-room school . . . artistic
Frequently on Dean's list . . . tells
stories well.



ARTHUR HIEPLER
Lancaster . . . A. B. in Liberal
Arts . . . Teaching in secondary field
. . . English major . . . Impressive
speaker in speech class . . . Drives
green convertible.

DARWIN HOLLINGER
Elizabethtown . . . B. S. in Science
Interest lies with the U.S. Weather
Bureau . . . Married . . . Collector
of rare coins.



FERN HOFFER
Colonial Park . . . B. S. in Edu-
cation . . . Teaching third grade . . .
Active in home church . . . Enthusi-
astic about practice teaching . . .
Pianist for orchestra.

Seniors



STANLEY HOOVER
 Lineboro, Md. . . . B. S. in
 Business Administration . . . Car-
 pentry work . . . Keeps informed
 on international affairs . . . Class
 treasurer.



JOHN KENDIG
 Salunga . . . B.S. in Science
 . . . Commuter . . . Chemistry
 research.

JOHN KIEHL
 Marietta . . . B.S. in Educa-
 tion . . . Elementary . . . Work-
 ing part-time at Hamilton Watch
 Company . . . Has a son and
 daughter . . . Quiet . . . In
 army three years.



STANLEY KETTERING
 Lebanon . . . B.S. in Business
 Administration . . . Works in
 father's garage . . . Varsity soc-
 cer . . . Member of 28th Division
 . . . Accountant . . . Graduate
 school.

Seniors



EDMUND KLING
Blairs Mills . . . B. S. in Business
Administration . . . U. S. Air Force
in Europe . . . Accountant.



WILLIAM LANDIS
Lancaster . . . B. S. in Science
. . . Medical school . . . physician
. . . Commuter.



HELEN KREIDER
Quarryville . . . B. S. in Educa-
tion . . . Elementary . . . Alto in
chapel choir . . . "Bonnie" . . .
Sports . . . Why does she use Temple
University book covers?

Seniors

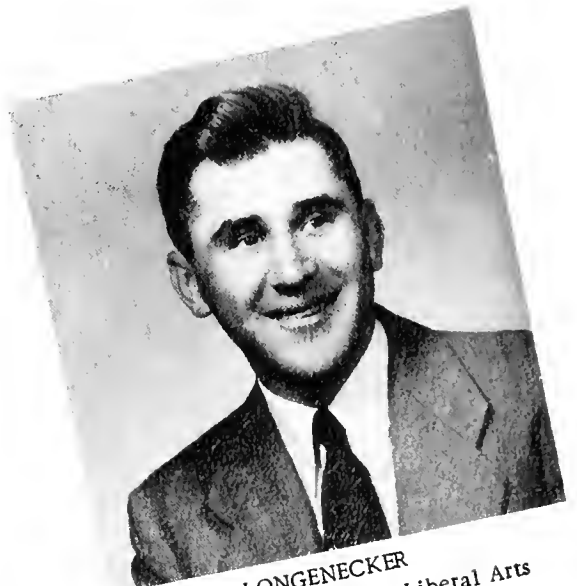
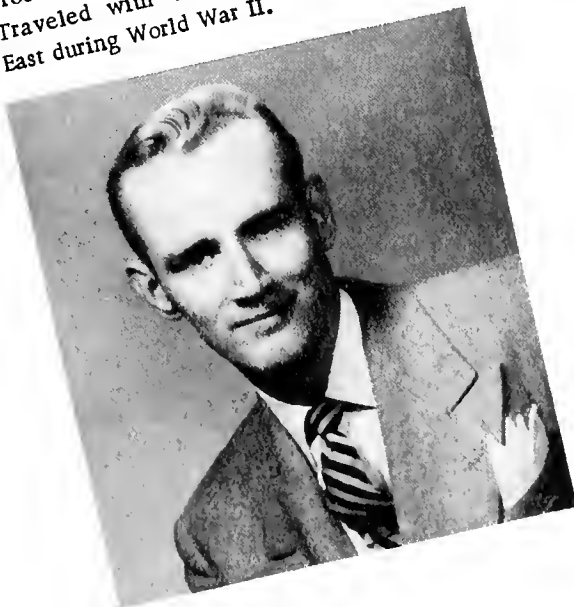


LUTHER LAWVER
 Parksburg . . . B. S. in Education
 . . . Pastor . . . Has daughter . . .
 Part-time painter . . . Originally from
 Reading . . . U. S. Army . . . In-
 terested in home mission.



RICHARD LONG
 York . . . B. S. in Education . . .
 Elementary . . . Drives red con-
 vertible . . . Good sense of humor
 . . . "Dr." Long.

HUGH MANIFOLD
 York . . . A. B. in Liberal Arts
 Proctor of South Hall . . . Poet . . .
 Traveled with U.S.O. show in Far
 East during World War II.



WILLIAM LONGENECKER
 Mt. Joy . . . A. B. in Liberal Arts
 . . . Pastor of church at Steven's Hill
 . . . Lives on farm . . . Deputation
 work.

Seniors



NANCY MATHIAS
Harrisburg . . . A. B. in Liberal
Arts . . . Social service . . . Soprano
soloist . . . Dorm parties, argyle
socks and gab fests.



MRS. CAROLE MECKLEY
Elizabethtown . . . A. B. in Lib-
eral Arts . . . Elementary . . . Ar-
tistic . . . Beautiful hair.

BARBARA NELSON
York . . . B. S. in Education . . .
Elementary . . . Song leader for
chapel . . . Seen often with a '50
graduate . . . Active in Sock and
Buskin.



ANNA MUDRINICH
Harrisburg . . . B. S. in Business
Education . . . Coffee fiend . . . Al
Jolson imitations . . . Room 306 -
Fairview - in red and yellow.

Seniors



PAULINE NISSLEY
 Manheim . . . B. S. in Education
 . . . Elementary . . . Chairman of
 S. C. M. program committee . . .
 Active . . . "I'm sleepy" . . . Drives
 a jeepster.



JOSEPH PROKOPCHAK
 Reading . . . B. S. in Education
 Elementary . . . Talented accordionist
 . . . Merry music in North Hall . . .
 Conservative . . . Interested in Crimi-
 nology . . . U. S. Air Corps . . .
 "Pork Chop".

LOIS RINEHART
 Waynesboro . . . A. B. in Liberal
 Arts . . . Social studies . . . Scout-
 ing . . . Enjoys walking in woods.



ROBERT REAM
 Harrisburg . . . B. S. in Science
 . . . Day Student . . . Mathematics.

Seniors

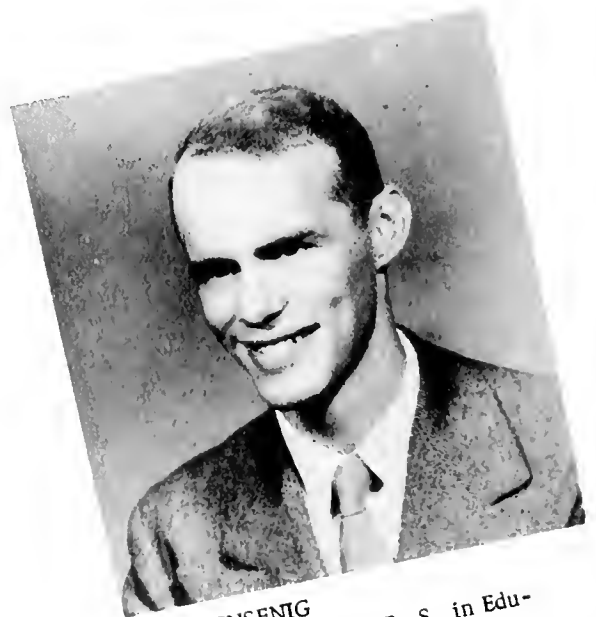


MARTIN RISSER
Elizabethtown . . . B. S. in Business Administration . . . In European theater of war.



LILLIAN RUTHERFORD
Bainbridge . . . B. S. in Education
Elementary . . . Day Student . . .
Drives a Packard . . . Welcomes stray
practice teachers . . . Transfer student.

HARRY SHUSTER
Philadelphia . . . A. B. in Liberal
Arts . . . Eastern Baptist Seminary
. . . Enjoys tennis and ping pong
. . . Has two churches.



PAUL SENSEMIG
East Petersburg . . . B. S. in Education . . . Elementary . . . Amateur
photographer . . . Poet.

Seniors



ARMON SNOWDEN
Bethlehem . . . A. B. in Liberal
Arts . . . Was summer pastor in Ala-
bama . . . Debater . . . Varied in-
terests in field of fine arts.



VIVIAN SNYDER
Florin . . . A. B. in Liberal Arts
. . . English and Social Studies . . .
Day Student . . . Editor of Conesto-
gan . . . Transferred from The King's
College, Delaware . . . Music.

MAURICE STAHLER
Highspire . . . B. S. in Science
. . . Teaching . . . Commuter.



EDWIN SPARKMAN
Steelton . . . A. B. in Liberal Arts
. . . Pastor of Baptist Church . . .
Originally a Texan . . . Two children
. . . Favors management rather than
labor.

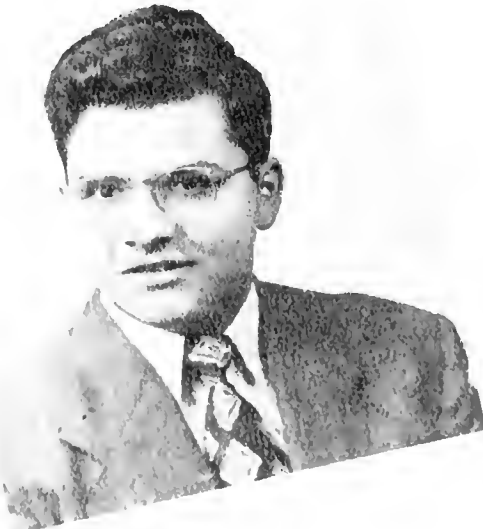
Seniors



GENE SWORDS
 Lancaster . . . B. S. in Education
 . . . Elementary . . . Bass soloist
 . . . Married . . . Night switchboard
 operator at State Crippled Childrens'
 Hospital.



ROBERT TRIMMER
 New Holland . . . B. S. in Science
 . . . Biology whiz . . . Tennis and
 ping pong . . . Class president for two
years.



JOHN THOMPSON
 Baltimore, Md. . . . B. S. in Edu-
 cation . . . Elementary . . . Served
 in Pacific area for two and one half
 years . . . Scout work in Elizabeth-
 town.

Seniors

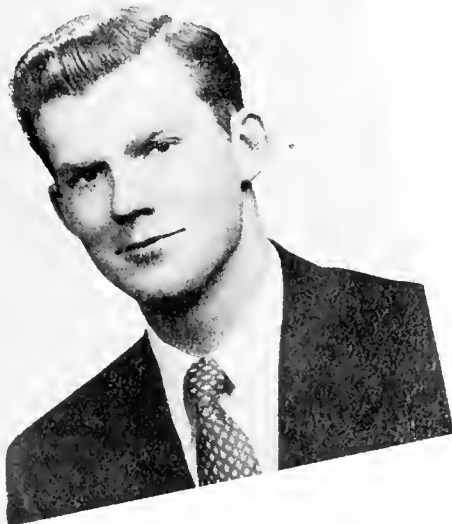


WILMER TRINKLE
Philadelphia . . . B. S. in Science
. . . Medical School . . . General
practitioner . . . "Iron out the wrinkle
with Trinkle" . . . President of Stu-
dent Association.



KENNETH WEAVER
Stevens . . . A. B. in Liberal Arts
. . . Eastern Baptist Seminary . . .
Pastor of church in Womelsdorf.

FREDERICK WILKINS
Elizabethtown . . . B. S. in Sci-
ence . . . Artist . . . Pennsylvania
Dutch themes . . . A future in
medicine.



PATRICIA WHITAKER
Conestoga . . . B. S. in Laboratory
Technology . . . St. Joseph's Hospital
. . . Good school spirit . . . Likes to
chew gum.



Seniors



HOWARD WITTE
 Manheim . . . A. B. in Liberal
 Arts . . . History . . . Day Student
 . . . Works in haberdashery . . .
 Sings tenor . . . Debater . . .
 Drives green Chevy . . . Hopes to
 enter Cornell.



J. IRVIN WENGER
 Palmyra . . . B. S. in Education
 . . . Secondary . . . Works at Her-
 shey Chocolate factory . . . Day
 Student.

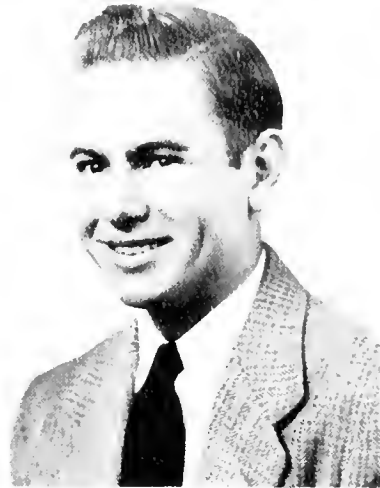
EARL ZIEGLER
 Myerstown . . . A. B. in Liberal
 Arts . . . Bethany Biblical Seminary
 . . . Generous with his automobile
 . . . Sings tenor.



ANDRE YON
 Paris, France . . . A. B. in Liberal
 Arts . . . Teaches French conver-
 sation . . . Art editor of Conestogan
 . . . Graduate work at University of
 Pennsylvania . . . tall, dark, and
 handsome.



Seniors



DALE HYLTON

Lancaster . . . A.B. in Liberal
Arts . . . Married . . . Southern
drawl . . . Originally from Willis,
Va. . . . Bethany Biblical Seminary.

Seniors not Pictured

CORA ANDERSON
Pittsburgh
B. S. in Education

MRS. JEAN FOUTS
Lancaster
A. B. in Liberal Arts

GILBERT GOTTSHALL
Lancaster
B. S. in Business Education

MERRILL GROSS
Harrisburg
B. S. in Business Administration

J. EARL HEISEY
Palmyra
B. S. in Education

CARL MARTIN
Harrisburg
B. S. in Business Administration

LILY MARTIN
Elizabethtown
B. S. in Education

PAUL MECKLEY
Elizabethtown
B. S. in Business Administration

MRS. ADA REIGLE
Palmyra
B. S. in Education

EARL ROHRBAUGH
Harrisburg
B. S. in Business Administration

MRS. MURIEL SAYLOR
Elizabethtown
B. S. in Education

HERBERT SMETHERS
Herndon
A. B. in Liberal Arts

RUSSEL WALTER
Biglerville
B. S. in Education

JOSEPH ZAVARICH
Lancaster
A. B. in Liberal Arts

Juniors



EUGENE ANDERSON
Carlisle



LOUISE BARTENSLAGER
New Freedom



JOHN BENDER
Harrisburg



TRYON BENNER
Thompstontown



EDWARD BRUNNER
Enhaut



JOHN BRUNNER
Enhaut



ANTHONY BRUSCIA
Hershey



DONALD CAMPBELL
Quakertown

Juniors



PAUL DAVIS
Phoenixville

MICHAEL DONNELLY
Lancaster



PEGGY EBERLY
Elizabethtown

RICHARD FARLEY
Harrisburg



WILLIAM FOSTER
Norwood

BERNICE GIBBLE
Myerstown



RICHARD GOSS
Lewistown

MRS. DOROTHY GOTTSALL
Lancaster



Juniors



JAMES GROSS
Dauphin



J. WILMER HEISEY
Mt. Joy



CHRISTINE HEWETT
Mechanicsburg



THOMAS KAY
Middletown



CARL KAUFMAN
New Cumberland



GRACE KEENY
New Freedom



THOMAS KINGREE
Smoketown

Juniors



L. FAYE KOONTZ
Clearville

DORIS KOPP
York New Salem



JOHN KREIDER
Mt. Joy

PAUL KRICK
Reamstown



RICHARD MARTIN
Mt. Joy

JAMES MEMINGER
Lancaster



CELIA ANN MILLER
Penryn

DAVID MILNE
York



Juniors



DAVID MYERS
Elizabethtown

JAMES OBETZ
Lancaster



DONALD REAM
Richlandtown

WILLIAM SCHNEIDER
Ventnor City, New Jersey



J. ALBERT SELDOMRIDGE
Lancaster

J. BURTON SHELLHAMMER
Steelton



MARY JANE SHULER
Harrisburg

J. EDWARD SMITH
Ephrata



Juniors

KATHERINE STRUMPFER
Philadelphia

C. GILBERT YOUNG
Telford

Juniors not Pictured

MRS. LEONA BISHOP
Elizabethtown

JOHN CONSLEY
York

MRS. JUNE DANIELS
Palmyra

GERALD FOSBENNER
Quakertown

ELIZABETH FROST
Lancaster

ELWOOD GRIMM
Elizabethtown

BEN HESS
Mt. Joy

LEE HORNBERGER
Hershey

JAMES LEBER
Dallastown

MRS. GLADYS MCGURK
York

DONALD REID
Middletown

WILBUR ROBERTSON
York

GWENDOLYN RODDY
Wynnewood

ISRAEL ROYER
Carlisle

CLIFFORD SCHOTT
Berlin, Maryland

MARY TISHOCK
Smoke Run

Sophomores



JEAN BAGENSTOSE
Shoemakersville



VICTOR BALLOU
Lancaster



DORIS ANN BARTRAM
Harrisburg



GORDON BAVER
Pennsburg



MARIANE BEANE
Paradise



JULIUS BELSER
Elizabethtown



DALE BERKHEIMER
York



ELSIE BOMGARDNER
Elizabethtown

Sophomores



LAURA MAE BOONE
Loganton



JOSEPHINE BOWMAN
Lebanon



RUTH BUCHER
Lebanon



ROBERT DAVIDSON
Philadelphia



JOHN DEAN
McClure



MIRIAM DOUPLE
West Lawn



WILLIAM ELLSWORTH
Stetlersville



WALTON EMIG
Spring Grove

Sophomores



JACK FICHTER
Pennsauken, New Jersey



MARTIN FORNEY
Elizabethtown



MRS. RACHEL FORRY
Hershey



DORIS FOX
Mount Pleasant



HAROLD GEIB
Manheim



CORA MAE GETTEL
Sebring, Florida



H. LAMAR GIBBLE
Manheim

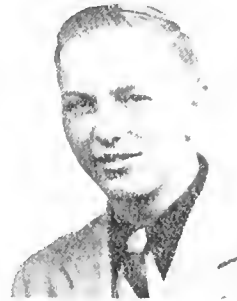


M. ARLENE GINGRICH
East Petersburg

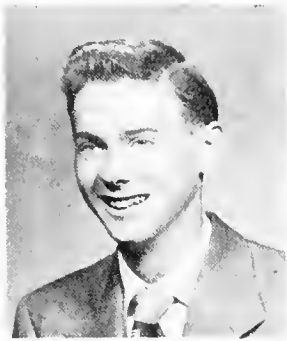
Sophomores



HARVEY GROFF, JR.
Salunga



GLENN HAMME
Spring Grove



WILLIAM HARLIN
Huntingdon



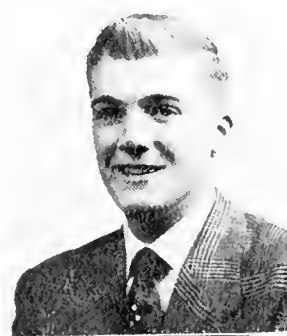
NANCY HEATWOLE
Palmyra



A. LUCILLE HEISEY
Lincoln



J. ROBERT HERR
Salunga



JAMES HIVNER
Elizabethtown



HENRY HOERNER
Elizabethtown

Sophomores



DANIEL HOOPERT
Mt. Joy



C. FREDERICK HORBACH
Ashland



MARSHALL HOUSE
Harrisburg



ARLENE KEENEY
Rehlersburg



WILLIAM KELL
Dallastown



NELSON KLINE
McClure



PHYLLIS KRATZ
Millville, New Jersey



JOHN KUGLE
York

Sophomores



CARLTON LEHMAN
Lebanon



MARTHA JANE LUTZ
Elizabethtown



JOHN MADEIRA
Harrisburg



FREDRICK MALMBORG
Manheim



WILBUR McKEAN
Mechanicsburg



JEAN MILLER
Lansdowne



MARY JEAN MILLER
Elizabethtown



WALTON MOYER
Telford

Sophomores



LUCY MUSSELMAN
Vernfield



DAVID NEWCOMER
Elizabethtown



BETTE PAXSON
Elizabethtown



JUNE RAMSBERGER
Middletown



FREDERICK RANCK
Kinzers



DOROTHY RITTER
Richlandtown



GERALD ROLAND
Elizabethtown



CHARLES ROTH
Lititz

Sophomores



JOYCE RUNK
Lineboro



PHYLLIS SAYLOR
Red Lion



NANCY SELDOMRIDGE
Lancaster



NANCY SHEAFFER
Chambersburg



ELLIS SHENK
Myerstown



LEONARD SHERTZER
Hummelstown



NEVIN SNADER
Akron



ANITA SWORDS
Lancaster

Sophomores



M. MARGARET WALZL
Lancaster



SHIRLEY WARNER
Hummelstown



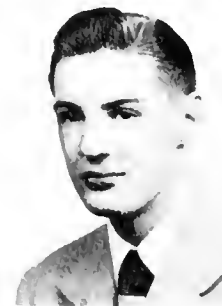
MARY ALICE WEICKSEL
Christiana



PAUL WELLIVER
Elizabethtown



ALAN WHITACRE
Ridgeley, W. Va.



DANIEL WHITACRE
Keyser, W. Va.



FREDERICK WILLIAMS
New Cumberland



DAVID WILSON
Mechanicsburg

Sophomores



CARLOS ZIEGLER
Lititz



LEVI ZIEGLER
Annville

Sophomores not Pictured

ROBERT ALLISON
Lancaster

RICHARD AULT
York

JOHN BOLTON
Harrisburg

MARILYN DEPPE
Lebanon

PHYLLIS DOUGHARTY
Landisville

DAVID EBERSOLE
Lancaster

STANLEY GRILL
Christiana

ELMER KUNKEL
East Berlin

ROBERT MILLER
Hellam

S. DAVID SHAFER
Hershey

CHRISTOPHER SIMPSON
Philadelphia

JAMES STOLTZFUS
Camp Hill

ISAAC STUDHOLM
Lykens

ROBERT ZIEGLER
Elizabethtown



ROBERT ALBRIGHT
Talmage



MARY BARLEY
Danville

PAUL BASHORE
Jonestown

WILLIAM BAUSMAN
Middletown



Freshmen

MARY ANN BECK
Hagerstown, Maryland

JULIA BENDER
Lebanon



NORMAN BOWERS
Landisville

MARY JANE BOYER
Lebanon





JAMES BRANDT
Elizabethtown



BARBARA ANNE BRENNER
Lancaster

JEAN BURKHART
Harrisburg



GLORIA CROUTHAMEL
Souderton



Freshmen

BARBARA DELSON
Harrisburg



SHIRLEY DIEHL
Schnecksville



LARRY ENDERS
Penbrook



GLENN FORNEY
Florin





LOIS FRANTZ
Lebanon



GEORGE FROST
Elizabethtown

GLORIA FUHRMAN
Lebanon



DALE GROFF
Lancaster

Freshmen

JOANNE GROFF
Lititz



RICHARD GUNDRUM
Harrisburg



RICHARD HACKMAN
Hummelstown



MARY JANE HOFFER
Mt. Joy



DAVID HOOVER
Lineboro, Maryland



POLLY ISGRIG
Cleona

MRS. ANITA KEENEY
Mt. Joy



MARK KEENEY
Mt. Joy



Freshmen

JOHN KEIPER
Pottstown



JAMES KLOCK
Herndon



DOLORES LANDIS
Hagerstown, Maryland



ELIZABETH LANDIS
Hagerstown, Maryland



C. PHYLLIS LONGENECKER
Lititz

E. VINTON LONGENECKER
Lebanon

MARIAN MEYER
Lebanon

WILLIAM MEYERS
New Freedom



Freshmen

CLARENCE MILLER
Hanover

LEROY MILLER
Lebanon



MARIAN MILLER
Manheim

RICHARD MILLER
Waynesboro





JOYCE MOORE
Paradise



CATHARINE MOYER
York

RONALD MURPHY
Harrisburg



THELMA NEIDLINGER
Pine Grove



Freshmen

MARIAN NEWCOMER
Salunga



MARY WILBERTA PAUL
Meyersdale



JAMES RAHN
Elizabethtown



GRETA REIMER
Manheim



HENRY REINER
Elizabethtown

JACK RHEN
Middletown

JEAN ROLAND
Elizabethtown

THOMAS RUOSS
Strasburg



Freshmen

PHYLLIS SHARP
Lebanon

A. DOROTHY SHEARER
Elizabethtown



NEIL SHOPE
Penbrook

GLEN SNOWDEN
Bethlehem



ROBERT SPRINGER
Elizabethtown



LORRAINE STEHMAN
Lititz

RALPH STOUT
Harrisburg

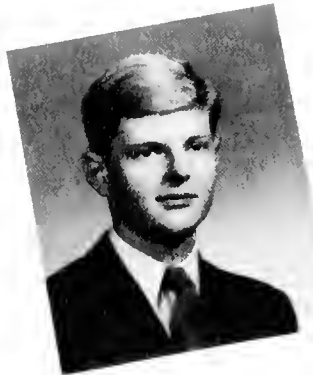
NANCY STUCKEY
Elizabethtown



Freshmen

ROLAND VON HENTIG
Berlin, Germany

JANE WALLER
Maytown



PAUL WECHTER
Lincoln

HAROLD WILSON, JR.
Cicero, Illinois



Freshmen not Pictured



SHIRLEY YOUNG
McClure

LEON ABEL
York
EDWARD BELLIS
Middletown
FRANCES BISHOP
Oberlin
RICHARD CASSEL
Hummelstown
JAY FREY
Elizabethtown
IRVIN GEBHART, JR.
Elizabethtown
PAUL GREINER
Elizabethtown
GEORGE KANOFF
Elizabethtown
HARRY KURZ
Philadelphia
GEORGE LUDWIG
New Holland
SAMUEL MAGARO
Harrisburg
LOUIS MALINOWSKI
Camden, N. J.
RICHARD McELRATH
Thompstontown
HAROLD MOWRER
Paradise
GEORGE PAUL
New Bloomfield
ROYDEN PRICE
Vernfield
JAY WALMER
Elizabethtown
GERALD WEAVER
Elizabethtown

KENNETH WITTLE
Elizabethtown

Special Students



MARTHA BASHORE
Rehresburg



SHIRLEY HEISEY
Mt. Joy



CHWAN CHANG YANG
Chungking, China



CHARLES WELLS
Elizabethtown

Not Pictured

DOLORES BOLLMAN
Elizabethtown
TRUMAN CASSEL, JR.
Hummelstown
CARL COPE
Palmyra
K. ELAINE FREY
Elizabethtown
DAVID GEORGE
Elizabethtown
WILLIAM HARE
Rheems
CHESTER HARTMAN
Middletown
MARY HEPSCHMIDT
Elizabethtown
WILBUR HORNAFIUS
Elizabethtown
GLADYS PAUL
Elizabethtown
MARCELLA POWERS
Elizabethtown
JUNE SHAPBELL
Elizabethtown
RALPH THOME
Mt. Joy
JEAN WEAVER
Elizabethtown



GEORGE WELLS
Elizabethtown

Activities



Student Government



STUDENT SENATE, L. to R.: James Meminger, Earl Ziegler, Ben Ebersole, Helen Kreider, Miss Hackman, Adviser, William Schneider, Wilmer Trinkle, Margaret Bose, Earl Hess, Mr. Dodd, Adviser, Michael Donnelly, Albert Sel-domridge, Israel Royer.



Scene of the Freshman-Sophomore Tug-of-War at Lake Placida.

Scene of the meetings: Student activities office.... Sponsors campus parties.... Faculty-student relations.... Red Cross blood-donor drive.... Student elections.... Freshman orientation.... Publishes "The Rudder".... The affairs and problems of the student body.

COMMITTEE ON MEN'S AFFAIRS
 STANDING: Mr. Joseph Dodd, Adviser,
 Julius Belser.
 SEATED, L. to R.: Harold Geib, Gil-
 bert Young, Donald Campbell, Robert
 Harlin.



The campaign for this year's officers.

Provisions of the new student
 constitution.....Planning dorms'
 social activities.....Christmas
 party in Alpha.....Making favors
Making democracy live.

COMMITTEE ON WOMEN'S AFFAIRS
 L. to R.: Carole Meckley, Shirley
 Warner, Barbara Nelson, Joyce
 Foley, Mary Hess, Doris Kopp.



Student Christian Movement



A typical Wednesday night.



The new chancel.

Fourteen cabinet members.....Enlarged membership.....Deputation groups.....Commission nights..... Halloween party..... "God-Let's find Him"--theme of S. C.M. conference at Bridgewater, Va.....Christmas party for underprivileged children..... "I believe"....Religious movies..... Morning devotions..... "The Secret Place"..... Spiritual emphasis week..... "Twirp Day"..... Vespers..... International Christian University project..... Spring retreat at Mt. Gretna..... Lutheran Student Association.



BACK, L. to R.: Helen Kreider, Gilbert Young, Walton Moyer, Christine Hewett, Julius Belser, Rev. Nevin Zuck, Doris Fox, Grace Keeny, Earl Ziegler.
FRONT, L. to R.: Albert Seldomridge, Louise Battenslager, Pauline Nissley, Ben Ebersole.

Santa Claus Albright makes some new friends.



L. S. A. meeting in Rev. Fetter's home.

Rueben and Rachel - 1950 version.



Deputation group ready to leave---
Girls' trio---Elsie Bomgardner, Doris
Fox, Cora Mae Gettel---Speaker Car-
los Ziegler.



Conestogan

EDITORIAL STAFF

L. to R.: William Kell, Fred Horbach,
Louise Bartenslager, John Dean, Charmaine
Fickes, Vivian Snyder, Andre Yon.



Busy staff meetings Election day to choose
new name Get more ads Any letters today
from Yearbook House? Begin writing copy
Picture schedules Return proofs Be on time
for group pictures Are division pages O.K. ? . . .
Dreaded deadlines Set-up dummy Long
hours of pasting Received Conestogans today . . .
Distribution tomorrow.



TYPISTS

L. to R.: Cora Mae Gettel, Margaret
Bose, Thomas Kay.



BUSINESS STAFF

L. to R.: Robert Hammers, Richard
Farley, Dale Berkheimer, Robert
Harlin.

David Newcomer and Glenn Forney checking
ads Peggy Walzl has solicited.

Etownian

PLANNING A FUTURE "ETOWNIAN"

L. to R.: J. Wilmer Heisey, Thomas Kay, Edward Smith, Gerald Fosbenner, Celia Miller, Editor, Gilbert Young.



Press conferences....Journalism class.....Visits to "The Chronicle" office.....Make-up committee..... "Use better word here".....Headline headaches..... Deadlines.....Copy reading.....Interviews.....Re-writing..... How to fill that extra space?..... After all this, another issue of "The Etownian" was in your hands.



A PRESS CONFERENCE WITH PRES. BAUGHER
L. to R.: Ben Ebersole, Carl Kaufman, Albert Seldomridge.

MAKE-UP COMMITTEE

L. to R.: Vivian Snyder, John Dean, Celia Miller, Earl Ziegler, Miss Hackman, Adviser.



David Newcomer and Walton Moyer addressing "Etownians".





Glen Snowden running over the scales for instructor, Mrs. Meyer.



CHAPEL CHOIR

L. to R.: Carlos Ziegler, Elsie Bomgardner, Shirley Young, John Keiper, Gene Swords, Lois Frantz, Gloria Fuhrman, Howard Wittel.



ENSEMBLE

Catharine Moyer, Fern Hoffer, Fred Horbach, Mariane Beane, Christine Hewett, Mr. Galen Herr, conductor.

ORGAN CLUB MEMBERS: Mary Jane Shuler, Anita Swords, Lois Frantz.



Music



A CAPPELLA CHOIR IN ACTION

A Cappella Choir.....
 Chapel Choirs....College-Community
 Chorus.....The Men of Song....Organ
 Club.....Orchestra.....Piano.....
 Long hours of practice.....Christmas
 concert.....New organ this year.....
 "King of Kings".....Sweet strains....
 Major and minor, flats and sharps.....
 Good exercise for vocal chords.....
 "Someone's off"..... Andante, pian-
 issimo, largo! Fitting new robes
 Choir trips second semester.



CHAPEL CHOIR

L. to R.: Nancy Mathias, Helen Kreider,
 David Myers, Earl Ziegler, Mr. Albright,
 Director; Gerald Fosbenner, Harry Shuster,
 Mary Jean Miller, Barbara Nelson.

THE MEN OF SONG

L. to R.: Gerald Fosbenner, Glenn Forney,
 Donald Ream, David Myers.



Social and Political Science Clubs



Fred Malmberg, David Ebersole,
Dr. Eshleman, Adviser; Harry Shuster.



Norman Bowèrs, Michael Donnelly, Edward
Smith planning the 1951 I. C. G. Conference.

Take a large measure of gregarious individuals
.....Add basic problems until psychological inter-
action becomes violent.....Observe behavior pat-
terns.....Allow to cool.....Notice a precipitation
of stresses and strains..... Problem (?)--to restore
equilibrium..... A job for social scientists!

Club organized in November....I. Wayne Keller
Illustrated talk on Mediterranean culture.....Plans
for trip to Lake Success, not a success.....Contacts
with social science alumni..... Round-table dis-
cussions on pertinent topics.

Democrat or Republican?... Election campaigns
.....Inter-collegiate Conference on Government at
Harrisburg....Propaganda....Heated discussions (?)
..... The Republican representative that almost
didn't arrive..... Soap box orations..... Prominent
placards..... Which will it be: Fine or Dilworth?
.....Fine.....Results of mock election.



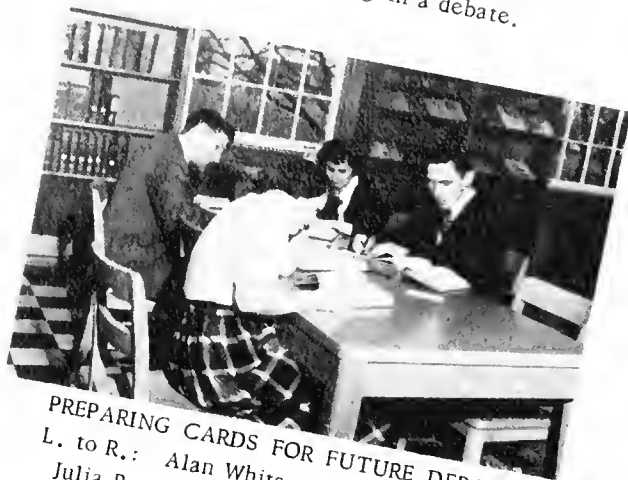
MOCK ELECTION CAMPAIGN

Debating Club

Resolved: That the Non-Communist Nations of the World Should Form a New International Organization. Argumentation and debate class. Hunting material in card catalog. Waiting for the right word to come along. Nervous tension on D-day (debate day). Reasoning logically. Rebuttals. The negative and affirmative.



Gerald Fosbenner participating in a debate.



PREPARING CARDS FOR FUTURE DEBATE
L. to R.: Alan Whitacre, Wilberta Paul,
Julia Bender, Walton Emig.



L. to R.: Shirley Diehl, Mr. Hellerich, Adviser;
Robert Allison, Roland von Hentig.

French and German Clubs



L. to R.: Gloria Crouthamel, Mrs. Neumann, Fred Horbach, Rut. Bucher.

Meetings in Mr. Neumann's home.....German readings..... folk games..... German songs..... Roland von Hentig, honorary member.....German church service.....Composers.....Records.



L. to R.: Roland von Hentig, Peggy Eberly, William Ellsworth, Dr. Frederick Neumann, Adviser; Mrs. Neumann, Richard Neumann.

French conversations..... Talks by Andre .. Pictures of Paris.....Movie.....Roller skating partyFirst Tuesday of each month.



L. to R.: Stanford Cox, Pauline Nissley, Mrs. Herr, Adviser: Nancy Shaeffer, Levi Ziegler.



International Relations Club

Books for Europe Forums Discussions led by foreign students on campus. . . . U. N. Day Model United Nations at Beaver College. . . . Interest course on parliamentary procedure.



L. to R.: Jerome Bauknight, Benjamin Ebersole, Burton Shellhammer, Armon Snowden.



FOREIGN STUDENTS

L. to R.: Roland von Hentig, Mrs. Anita Keeney, Andre Yon, Chwan Chang Yang.



L. to R.: William Foster, Gerald Burdick, Donald Campbell, Joyce Runk, Marilyn Deppe.

Comerciantes

Business students.....Ice Capades.....Membership drive..... Refreshments.....Future leaders in the business world....."Salesmanship", "Personnel Management", "Accounting Opportunities" NOMA Conference.



L. to R.: Margaret Bose, Richard Martin, William Schneider, Arlene Gingrich going to class in business building.



Phyllis Dougherty and Doris Kopp preparing to slip-sheet a mimeographed test.

L. to R.: William Landis, Marshall House,
Maurice Stahler, Charles Wells.



Phi Beta Chi



Dr. Apgar's forty winks at
Bower's Beach.

Fishing trip..... Former Sigma Kappa Xi.....
Hikes..... FilmsVisiting Amish home.....
Field tripsEntrance examination.....Painted
aprons and foreheads during Initiation week.....
Science: the sacred cow?.....The truth about the
Bunsen burner.... There goes the science building!

L. to R.: Robert Trimmer, James Obetz,
Mariane Beane, Dr. Charles Apgar,
Gilbert Young and a dissected *Felis
Libyca domestica*.



Sock and Buskin

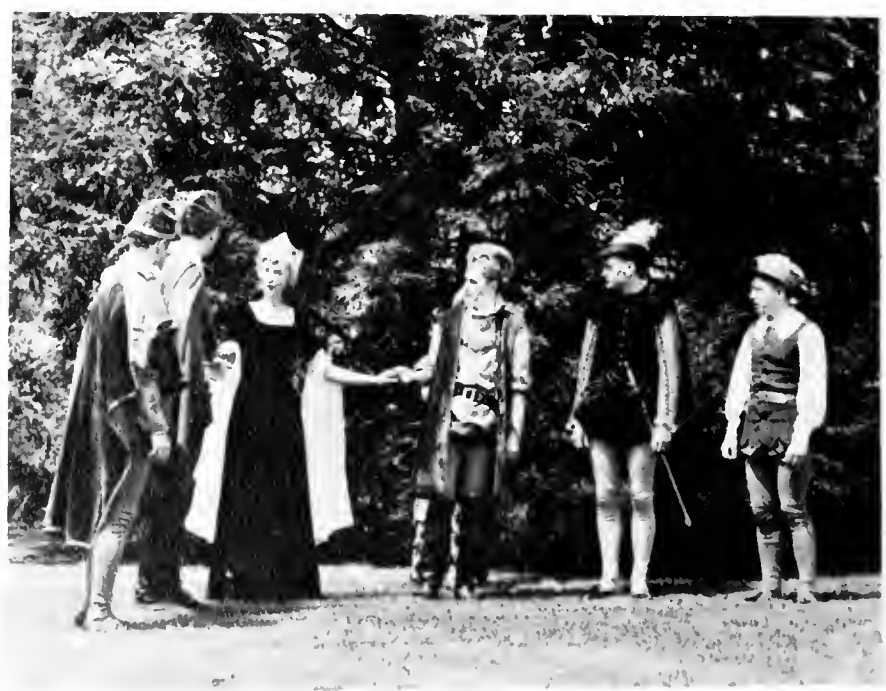


Pauline Nissley, Miss Hollis, Adviser; Jack Fichter, Barbara Nelson.

Lights..... Curtain..... Action..... Applause (?) Pantomimes.....One-act plays..... Student-faculty plays.....Miss Hollis, new director.....Initiation..... Point-system membership.....Student directors..... Impromptu plays "That Bernhardt touch".....Would Shakespeare approve?..... The flair for tragedy and comedy.



A pantomime starring Celia Miller.



"AS YOU LIKE IT"----MAY DAY 1950

Future Teachers of America



ROUND-TABLE DISCUSSION, L. to R.: Ben Ebersole, Fern Hoffer, Charmaine Fickes, Dr. Henry Bucher, Mildred Becker, Paul Sensenig.

New members....Round-table discussion on discipline.....Progressive education.....Filling out application forms.....Debates.....Practice teaching..... Observation.....N.E.A. Journals..... Conferences.....National education week....Project and merit system.....Professional placement bureau.....Socials.....Trip to the F.T.A. State Convention.



Student teacher, Joyce Foley, explains biological problem to two interested pupils.

John Thompson, Fern Hoffer, and Arthur Heipler filling out application forms.

Mr. Hoover conferring with Mary Hess.



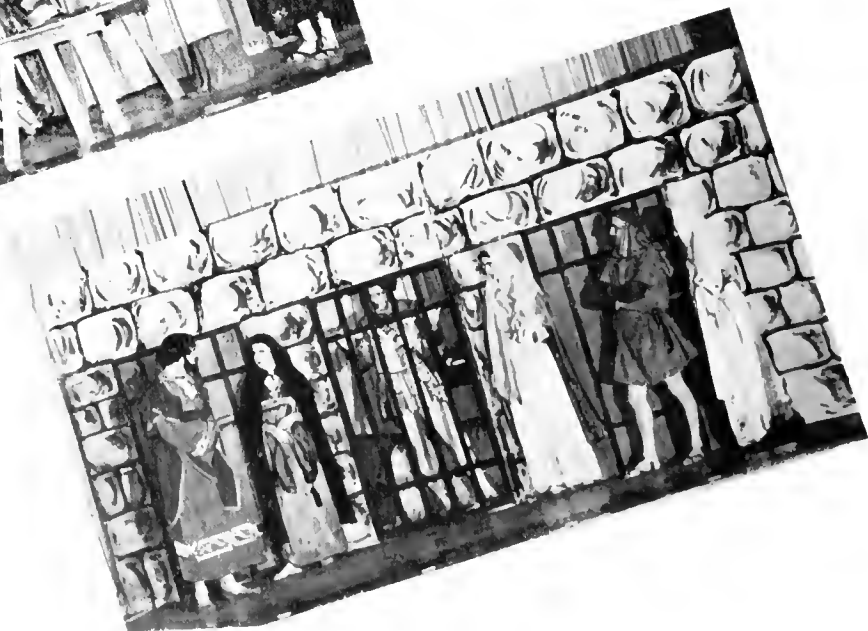
May Day—1950

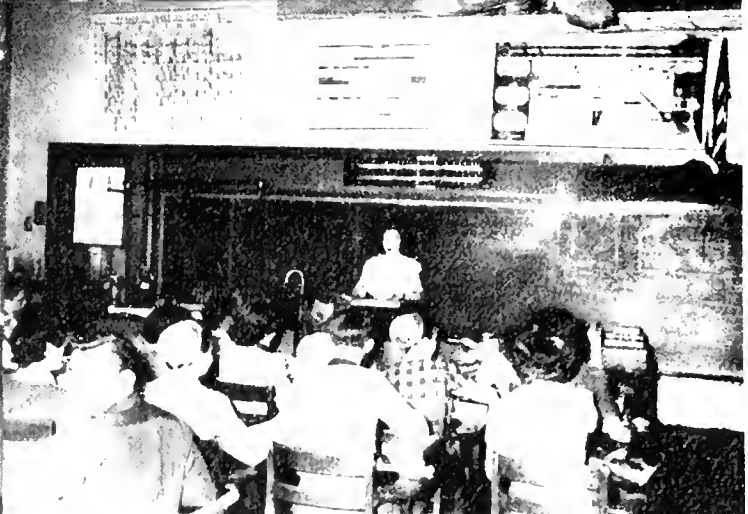


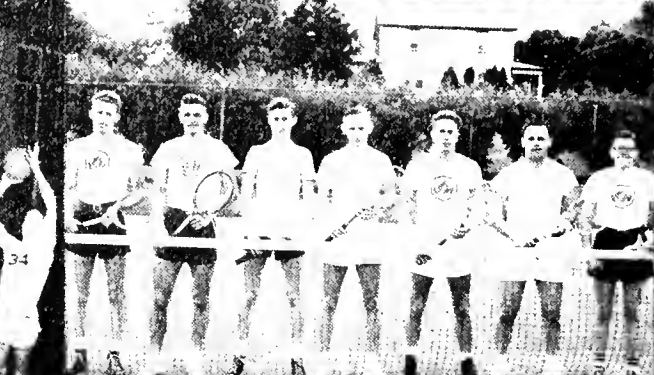
Commencement—1950



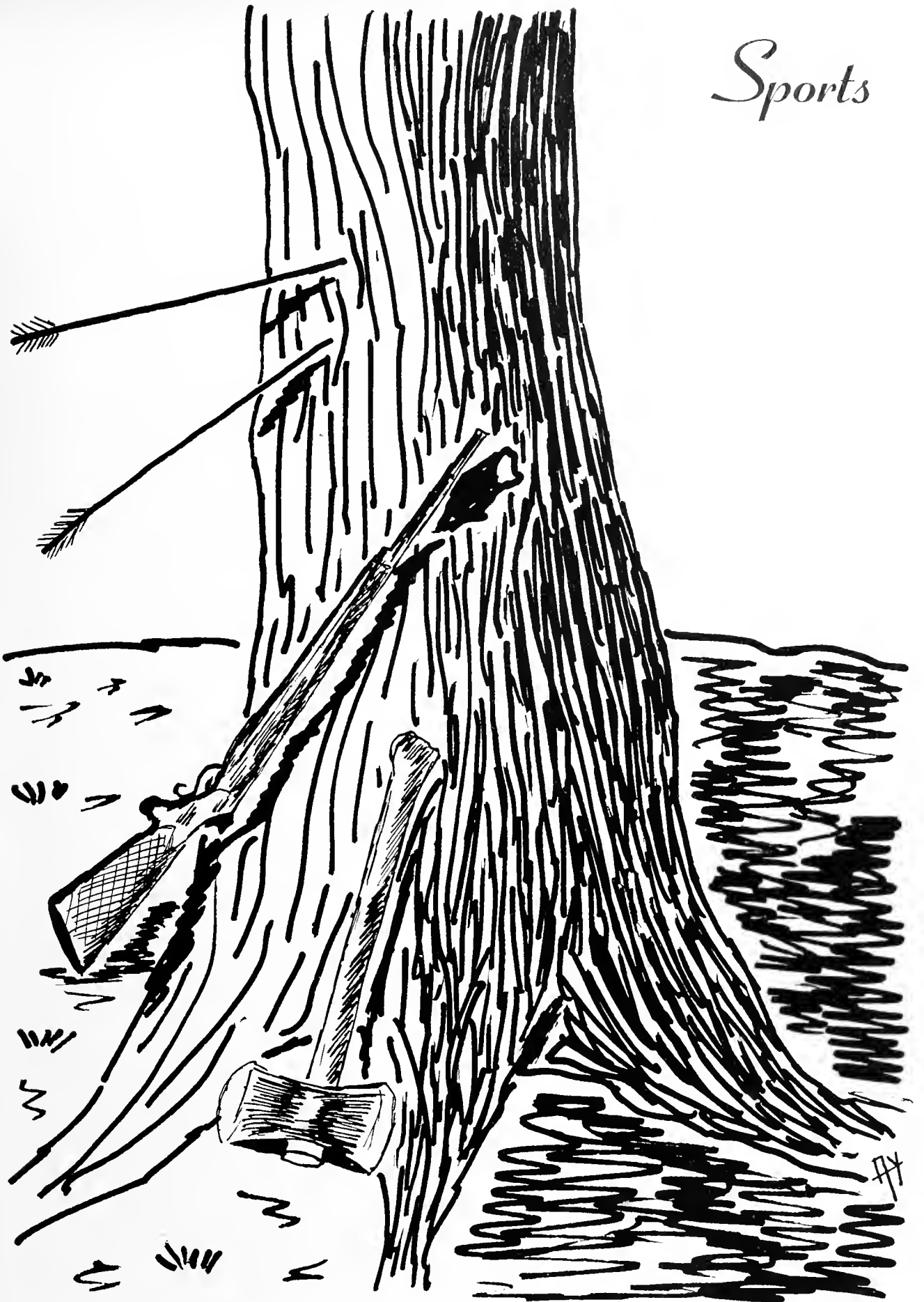
Library Dedication—1950

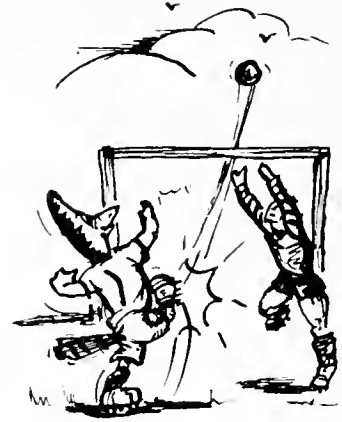






Sports





		E-town	- Opp.
Oct. 3	Kings.....	5	1
Oct. 7	Bloomsburg.....	1	4
Oct. 11	Towson.....	1	3
Oct. 14	University of Baltimore.....	0	4
Oct. 21	Lincoln.....	4	3
Oct. 28	Lincoln.....	3	2
Nov. 3	Lock Haven.....	1	4
Nov. 11	Towson.....	5	5

Soccer





CHEERLEADERS

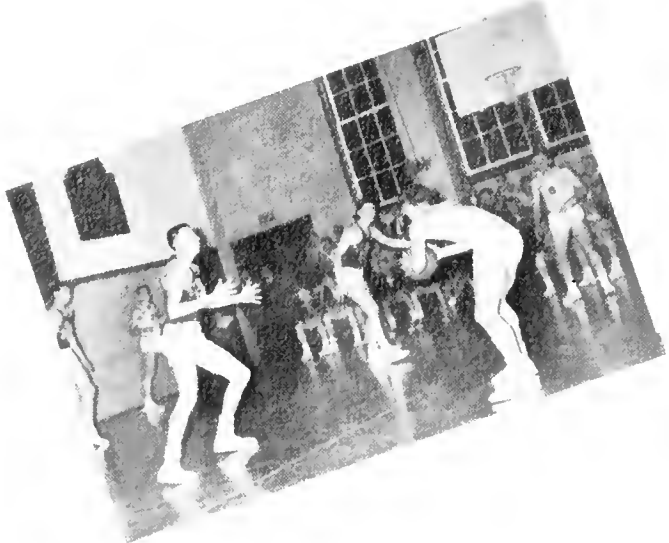


Members of the Varsity "E" club selling basketball programs.

The Bluebirds

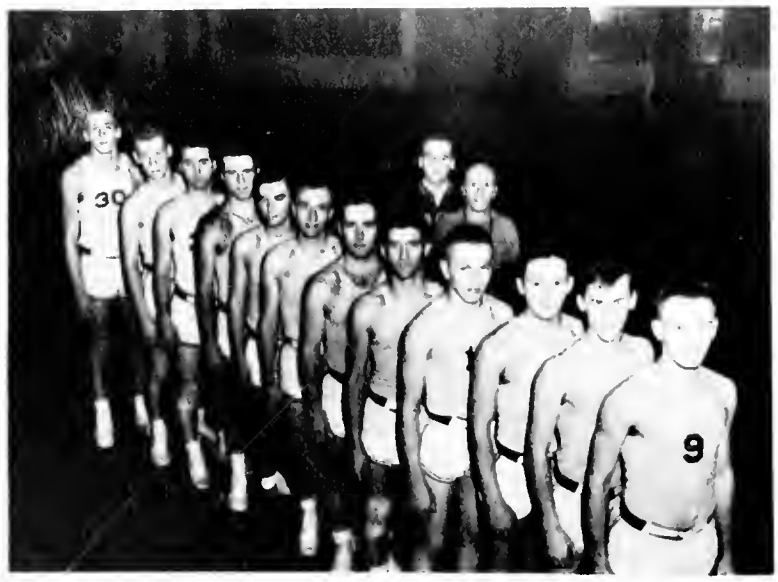
		E-town - Opp.	
Dec. 2	Kings College.....	60	28
Dec. 7	York Junior College.....	67	18
Jan. 20	Linden Hall.....	27	47
Feb. 6	Millersville	48	28
Feb. 9	Bridgewater	19	32
Feb. 16	Immaculata	11	41
Feb. 20	Lebanon Valley.....	33	36
Feb. 24	Bridgewater	24	30
Mar. 3	Lebanon Valley.....	24	42
Mar. 6	Millersville	29	32





J
A
Y
V
E
E
S

		E-Town - Opp.	
Dec.	6	Stevens.....	39 40
Dec.	9	Juniata.....	43 39
Dec.	12	Mt. St. Mary's.....	54 45
Jan.	6	Lebanon Valley.....	45 43
Jan.	11	Albright.....	60 44
Jan.	13	Susquehanna.....	56 44
Jan.	15	Ursinus.....	40 49
Jan.	20	Elizabethtown All-Stars.....	45 36
Jan.	26	Lincoln.....	37 39
Jan.	31	Millersville.....	43 66
Feb.	3	Dickinson.....	57 62
Feb.	7	Lincoln.....	46 60
Feb.	13	Lebanon Valley.....	58 32
Feb.	17	Juniata.....	61 60
Feb.	20	Mt. St. Mary's.....	64 51
Feb.	23	Millersville.....	62 60
Feb.	27	Dickinson.....	67 54
Mar.	3	Susquehanna.....	66 38





E-town - Opp.

Dec. 2	Kings (Delaware).....	58	51
Dec. 6	Phila. Tex. Ins.....	59	45
Dec. 9	Juniata	39	41
Dec. 12	Mt. St. Mary's	53	64
Dec. 15	Bridgewater	50	48
Jan. 4	Towson	63	37
Jan. 6	Lebanon Valley	72	67
Jan. 11	Albright	55	45
Jan. 13	Susquehanna.....	52	25
Jan. 15	Ursinus	56	58
Jan. 20	Lycoming	60	58
Jan. 26	Lincoln	49	61
Jan. 31	Millersville	53	62
Feb. 3	Dickinson	53	42
Feb. 9	Lycoming	48	89
Feb. 13	Lebanon Valley	71	59
Feb. 17	Juniata	57	47
Feb. 20	Mt. St. Mary's	38	72
Feb. 23	Millersville	46	45
Feb. 27	Dickinson	59	40
Mar. 3	Susquehanna.....	43	50
Mar. 7	St. Joseph's (Phila.).....	44	49
Mar. 5	Lincoln.....	59	53

V
A
R
S
I
T
Y



Bill Foster Scores again.



The jump-up.

Baseball

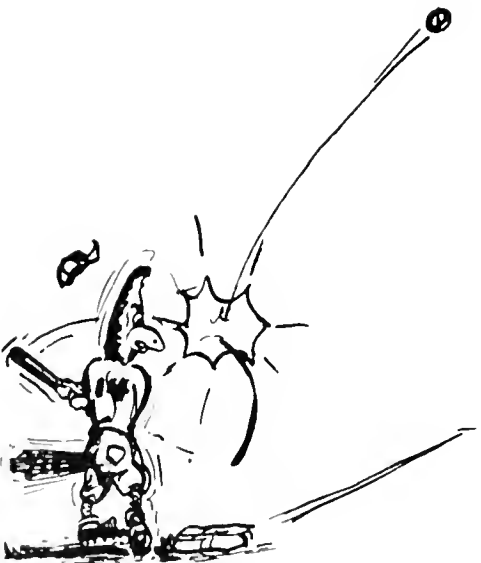


Earl Hess approaches third base.



SAFE!

		E-town - Opp.	
April	1	Millersville.....	7 12
April	3	Shepherd.....	8 9
April	12	P. M. C.....	11 5
April	22	Bridgewater.....	6 9
April	27	Albright.....	3 4
April	29	Juniata.....	4 7
May	2	Susquehanna.....	11 2
May	5	Albright.....	3 7
May	6	Lebanon Valley.....	2 15
May	9	Dickinson.....	5 17
May	11	Susquehanna.....	11 6
May	13	Lincoln.....	10 2
May	16	Lebanon Valley.....	2 4
May	17	Ursinus.....	0 4
May	20	Juniata.....	1 3
May	26	Shepherd.....	3 4
May	27	Towson.....	4 3



Track

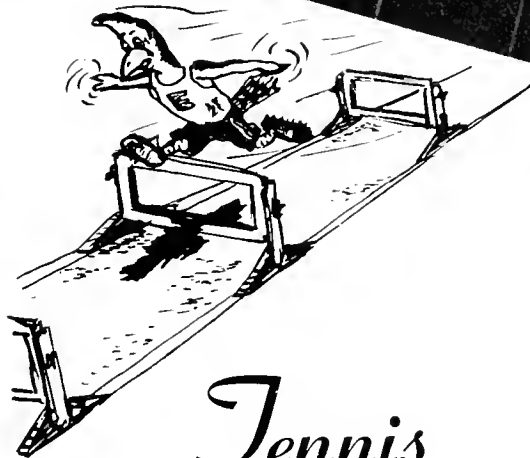
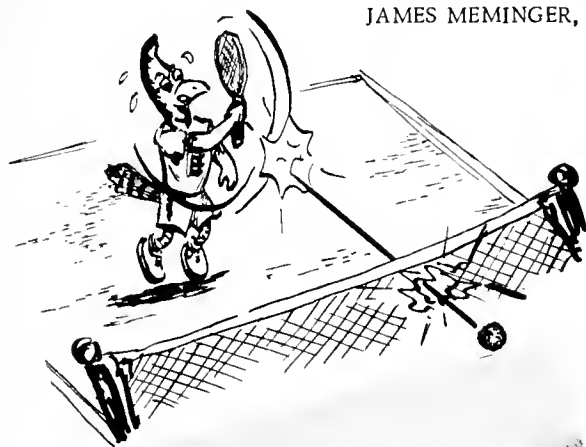
E-Town - Opp.

April 14	Albright	Rain	
April 19	Millersville	6	3
April 22	Millersville	Rain	
April 24	Dickinson	2	7
April 27	Albright	4	5
April 29	Juniata	5	4
May 2	Susquehanna	8	1
May 6	Ursinus	Rain	
May 9	Dickinson	0	7
May 11	Susquehanna	5	4
May 20	Juniata	8	1



L. to R.: William Schneider, James Meminger, Robert Harlin.

JAMES MEMINGER, Captain



Jennis

Entered Penn Relays.....First time in many years.....Finished in seventh place.

READY, SET, --

L. to R.: John Brunner, Armon Snowden, Andre Yon, Charles Roth.

ANDRE YON and JOHN BRUNNER.



D I R E C T O R Y

STUDENT SENATE

Pres.: Wilmer Trinkle
V. Pres.: Earl Hess
Sec.: Margaret Bose
Treas.: William Schneider
Senators: Michael Donnelly Israel Royer
 Benjamin Ebersole Albert Seldomridge
 Helen Kreider Earl Ziegler
 James Meminger
Advisers: Vera R. Hackman, Dean of Women
 Joseph H. Dodd, Dean of Men

COMMITTEE ON WOMEN'S AFFAIRS

Pres.: Joyce Foley
Sec.: Barbara Nelson
Other Members:
 Mary Hess Carole Meckley
 Doris Kopp Shirley Warner
Adviser: Vera R. Hackman, Dean of Women

COMMITTEE ON MEN'S AFFAIRS

Pres.: Gilbert Young
Sec.: Donald Campbell
Other Members:
 Julius Belser Robert Harlin
 Harold Geib Kenneth Weaver
Adviser: Joseph H. Dodd, Dean of Men

STUDENT CHRISTIAN MOVEMENT & CABINET

Pres.: Earl Ziegler
V. Pres.: Julius Belser
Sec.: Louise Bartenslager
Treas.: Albert Seldomridge
Adviser: Rev. Nevin H. Zuck
Cabinet Members:
 Ben Ebersole
 Doris Fox
 Christine Hewett
 Grace Keeny
 Helen Kreider
 Walton Moyer
 Pauline Nissley
 Nancy Sheaffer
 Gilbert Young

CONESTOGAN STAFF

Editor: Vivian Snyder
Ass't. Editor: John Dean
Art Editor: Andre Yon
Staff Members:
 Louise Bartenslager Thomas Kay
 Charmaine Fickes William Kell
 Fred Horbach Albert Seldomridge
Typists:
 Margaret Bose
 Cora Mae Gettel
Business Manager: Robert Hammers
Business Staff:
 Dale Berkheimer Robert Harlin
 Richard Farley David Newcomer
 Glenn Forney Margaret Walzl
Adviser: Vera R. Hackman

ETOWNIAN STAFF

Editor: Celia Miller
Ass't. Editor: John Dean
Business Manager: David Newcomer
Circulation Manager: Walton Moyer
Sports Editor: Carl Kaufman
Reporters:
 Benjamin Ebersole Edward Smith
 Gerald Fosbenner Armon Snowden
 J. Wilmer Heisey Vivian Snyder
 Thomas Kay Gilbert Young
 Hugh Manifold Earl Ziegler
 Albert Seldomridge
Adviser: Vera R. Hackman

SOCK & BUSKIN

Pres.: Barbara Nelson
V. Pres.: Pauline Nissley
Sec.: Louise Bartenslager
Treas.: Gilbert Young
Other Members:
 Leona Bishop Arlene Keeney
 Josephine Bowman Helen Kreider
 Walton Emig Celia Miller
 Benjamin Ebersole Israel Royer
 Jack Fichter Nancy Shaeffer
 Christine Hewett Armon Snowden
 Frederick Horbach Daniel Whitaker
Adviser: Elinor Hollis

D I R E C T O R Y

CLASS OF 1951

Pres.: Robert Trimmer
 V. Pres.: Earl Ziegler
 Sec.: Margaret Bose
 Treas.: Stanley Hoover

CLASS OF 1953

Pres.: C. Frederick Horbach
 V. Pres.: Fredrick Malmborg
 Sec.: Shirley Warner
 Treas.: Ellis Shenk

SOCIAL SCIENCE CLUB

Pres.: Harry Shuster
 V. Pres.: Armon Snowden
 Sec. -Treas.: Robert Herr

Other Members:

Julius Belser	Daniel Hoopert
J. R. Bennett	Stanley Kertering
John Brunner	Frederick Malmborg
Paul Davis	Hugh Manifold
David Ebersole	Nevin Snader
William Ellsworth	J. I. Wenger
Jack Fichter	

Adviser: Dr. R. F. Eshleman

LE CERCLE FRANCAIS

Pres.: Andre Yon
 V. Pres.: Levi Ziegler
 Sec.: Celia Miller
 Treas.: Henry Hoerner

Other Members:

Robert Allison	Carlton Lehman
Jerome Bauknight	Pauline Nissley
Tyron Benner	Nancy Sheaffer
Jack Bolton	Burton Shellhammer
Stanford Cox	Robert Springer
Nelson Kline	Roland von Hentig

Adviser: Kathryn Herr

PHI BETA CHI

Pres.: Robert Trimmer
 V. Pres.: Darwin Hollinger
 Sec. -Treas.: Katherine Strumpfer

Other Members:

Jean Bagenstose	Marshall House
Mariane Beane	William Landis
Tyron Benner	Walton Moyer
Peggy Eberly	James Obetz
Glenn Hamme	Ellis Shenk
Charmar Hershey	Alice Weicksel
Richard Heisey	Gilbert Young

Adviser: Dr. Charles Apgar

CLASS OF 1952

Pres.: James Meminger
 V. Pres.: Albert Seldomridge
 Sec.: Bernice Gibble
 Treas.: William Foster

CLASS OF 1954

Pres.: Glen Snowden
 V. Pres.: Ronald Murphy
 Sec.: Marian Miller
 Treas.: Glenn Forney

FUTURE TEACHERS OF AMERICA

Pres.: Israel Royer
 V. Pres.: William Kell
 Sec.: Dorothy Gottshall
 Treas.: Margaret Bose
 Other Members:

Leon Abel	Fern Hoffer
Eugene Anderson	Arlene Keeney
Roy Arnold	Grace Keeney
Louise Bartenslager	John Kiehl
Mildred Becker	Joan Kratz
Laura Mae Boone	Helen Kreider
John Brunner	Carole Meckley
Jean Burkhart	Celia Miller
Donald Campbell	Robert Miller
Stanford Cox	Anna Mudrinich
Peggy Eberly	Lucy Musselman
Benjamin Ebersole	Barbara Nelson
Jack Fichter	Pauline Nissley
Charmaine Fickes	Joseph Prokopchak
Joyce Foley	Lois Rinehart
Glenn Forney	Lillian Rutherford
William Foster	Paul Sensenig
Bernice Gibble	Burton Shellhammer
Richard Goss	Vivian Snyder
Donald Haverstick	Maurice Stahler
A. Lucille Heisey	John Thompson
Charmar Hershey	Russell Walter
Earl Hess	Shirley Warner
Mary Hess	Geore Wells
Christine Hewett	Daniel Whitacre
Henry Hoerner	Earl Ziegler

Adviser: Elmer B. Hoover

DEBATING CLUB

Debate Manager: Gerald Fosbenner

Adviser: Mahlon Hellerich

Resolved: That the Non-Communist Nations
 of the World Should Form a New
 International Organization.

Members:

Robert Allison	Stanley Grill
Julia Bender	Daniel Hoopert
Gloria Crouthamel	Wilberta Paul
Shirley Diehl	Donald Ream
Benjamin Ebersole	Armon Snowden
Walton Emig	Alan Whitacre
Gerald Fosbenner	Roland von Hentig

D I R E C T O R Y

A CAPPELLA CHOIR

SOPRANOS	TENORS
Elsie Bomgardner	Paul Bashore
Gloria Fuhrman	Glenn Forney
Cora Mae Gettle	David Myers
Lucille Heisey	Carlos Ziegler
Charmar Hershey	
Nancy Mathias	BASS
Marian Meyer	Gerald Fosbenner
Barbara Nelson	Harold Geib
	Lamar Gible
ALTOS	John Keiper
Lois Frantz	John Madeira
Nancy Heatwole	Leroy Miller
Bonnie Kreider	Donald Ream
Marian Miller	Ellis Shenk
Mary Jean Miller	
Anita Swords	
Shirley Young	

Director: David Albright

CHAPEL CHOIRS

Monday & Friday	Tuesday & Thursday
Gerald Fosbenner	Elsie Bomgardner
Helen Kreider	Glenn Forney
Nancy Mathias	Lois Frantz
Mary Jean Miller	Gloria Fuhrman
David Myers	John Keiper
Barbara Nelson	Gene Swords
Harry Shuster	Howard Wittel
Earl Ziegler	Shirley Young

MEN OF SONG

First Tenor: David Myers
 Second Tenor: Glenn Forney
 First Bass: Gerald Fosbenner
 Second Bass: Donald Ream

ORCHESTRA

Conductor: Prof. Galen Herr
 Members:

Paul Bashore	Janet Hollinger
Mariane Beane	C. Frederick Horbach
Walter Gingrich	Vinton Longenecker
S. Richard Heisey	Catharine Moyer
Christine Hewett	Walton Moyer
Fem Hoffer	Joseph Prokopchak

COMERCIANTES

Pres.: Robert Hammers
 V. Pres.: Gerald Burdick
 Sec.: Doris Kopp
 Treas.: Donald Campbell
 Other Members:
 William Bausman
 James Bennett
 Dale Berkheimer
 Margaret Bose
 Phyllis Dougherty
 Marian Douple
 Richard Farley
 Harold Geib
 Arlene Gingrich
 Stanley Hoover
 Adviser: Frank Kugle

Stanley Kettering
 E. Wade Kling
 Richard Martin
 Jean Miller
 Anna Mudrinich
 David Newcomer
 Martin Risser
 Joyce Runk
 William Schneider
 Paul Welliver

POLITICAL SCIENCE CLUB

Pres.: Michael Donnelly
 V. Pres.: Edward Smith
 Other Members:

Norman Bowers	Hugh Manifold
Robert Enterline	Martin Risser
Richard Heisey	Paul Sensenig
Earl Hess	Irvin Wenger
Wilbur Hornafius	Howard Wittel
Stanley Kettering	

INTERNATIONAL RELATIONS CLUB

Pres.: Armon Snowden
 V. Pres.: Benjamin Ebersole
 Sec. - Treas.: Albert Seldomridge
 Other Members:

Jerome Bauknight	Thelma Neidlinger
Gloria Crouthamel	Burton Shellhammer
William Ellsworth	Andre Yon
Roland von Hentig	Gilbert Young

Adviser: Mahlon Hellerich

GERMAN CLUB

Pres. Peggy Eberly
 V. Pres.: Frederick Horbach
 Sec.: Jean Bagenstose
 Treas.: William Ellsworth
 Other Members:

Ruth Bucher	Celia Miller
Gloria Crouthamel	Walton Moyer
George Frost	Roland von Hentig

Adviser: Frederick Neumann (honorary)

D I R E C T O R Y

VARSITY BASKETBALL

Members:

Jack Bolton F	James Meminger F
Edward Brunner C	Donald Reid F
John Brunner G	Israel Royer C
William Foster F	William Schneider G
Harry Kurz F	Gerald Weaver C
Carl Martin G	Harold Wilson G

Coach: Stanley von Nieda

JUNIOR VARSITY BASKETBALL

Members:

Robert Davidson F	Nelson Kline G
Larry Enders G	Carlton Lehman F
Gordon Foster C	Vinton Longenecker F
Stanley Grill G	Harold Mowrer G
Glenn Hamme F	Charles Roth F
Thomas Kingree G	Neil Shope F

Coach: Joseph H. Dodd

WOMEN'S VARSITY BASKETBALL

Members:

Jean Bagenstose F	Dolores Landis G
Mariane Beane G	Phyllis Saylor G
Cora Mae Gettel F	Nancy Stuckey F
Doris Kopp G	Shirley Warner F
Phyllis Kratz G	Alice Weicksel F
Helen Kreider F	Shirley Young G

Coach: Ira R. Herr

VARSITY SOCCER

Members:

Tyron Benner L	Nelson Kline HB
Richard Cassel L	Carlton Lehman L
William Foster G	Vinton Longenecker L
George Frost L	Richard McElrath HB
Jay Fry L	Frederick Malmborg L
Richard Gundrum L	Charles Roth L
Richard Hackman L	Israel Royer FB
Glenn Hamme FB	William Schneider L
Donald Haverstick HB	Albert Seldomridge FB
Henry Hoemer L	Christopher Simpson HB
Stanley Kettering FB	Nevin Snader FB
Thomas Kingree	Roland von Hentig L

Coach: Joseph H. Dodd
Student Manager: Harold Geib

VARSITY BASEBALL 1949-50

Members:

John Berger IF	Nelson Kline C
Jack Bolton C	Charles Koppenhaver P
Joseph Forney P	Carl Lehman OF
Gordon Foster OF	Carl Martin IF
Richard Goss OF	Matthew Meyer IF
Donald Haverstick IF	Charles Roth OF
Earl Hess IF	Thomas Ruoss P
William Kell OF	David Snavely OF
Thomas Kingree OF	Russell Walters P
	Carlos Ziegler IF

Coach: Ira R. Herr

Student Managers:

Harold Geib	William Kell
Leon Geib	

VARSITY TRACK 1949 - 50

Members:

Edward Brunner	Armon Snowden
John Brunner	Hartmut von Hentig
Charles Roth	Roland von Hentig
Edward Sarkisian	Andre Yon

Coach: Joseph H. Dodd

VARSITY TENNIS 1949 - 50

Captain: James Meminger

Other Members:

Bernard Grissinger	William Schneider
Robert Harlin	Jesse Sheetz
James Roberts	Harry Shuster

Coach: Ira R. Herr

VARSITY "E" CLUB

Pres.: Carl Martin

V. Pres.: Earl Hess

Sec.: Shirley Warner

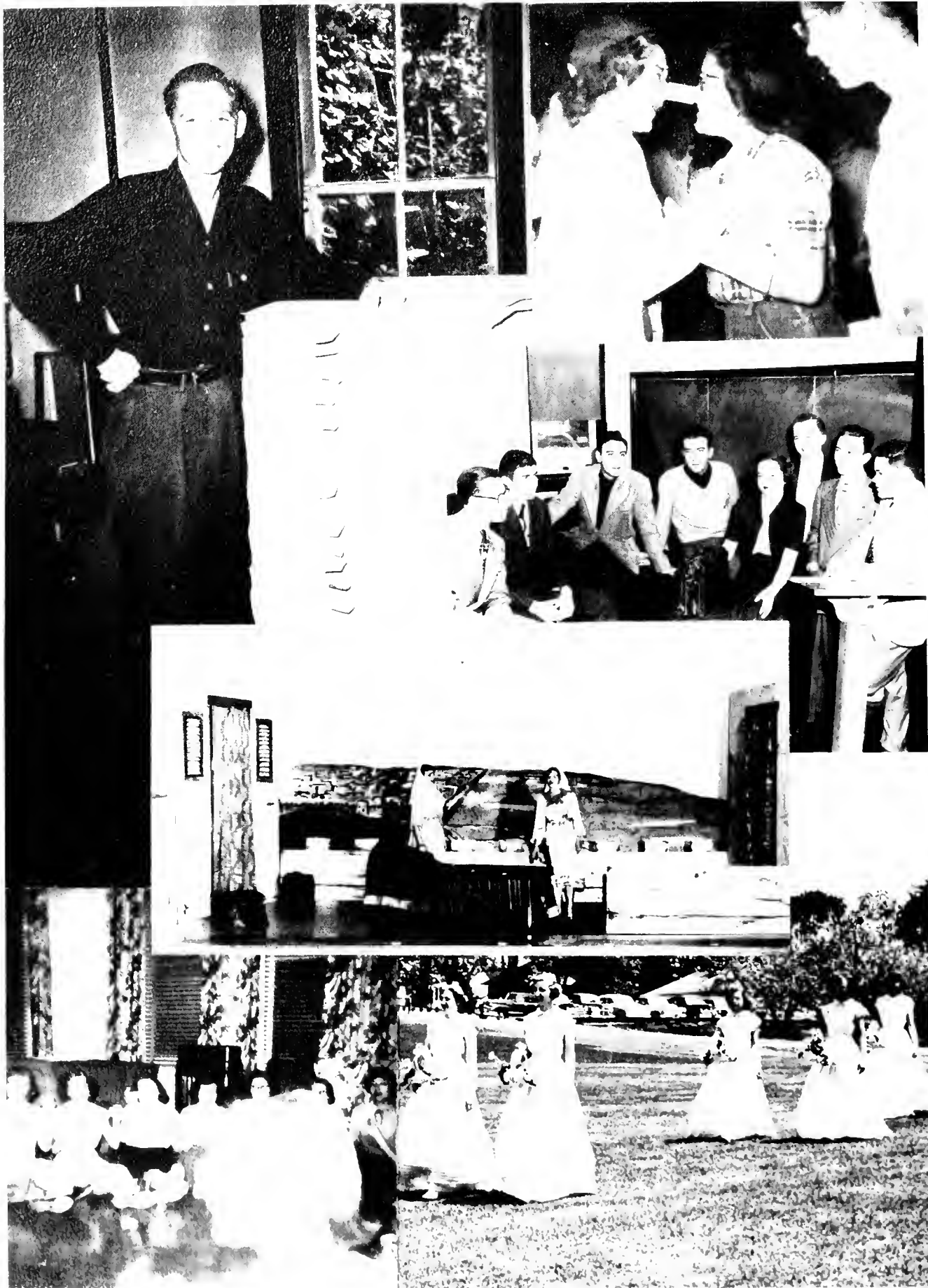
Treas.: William Foster

Other Members:

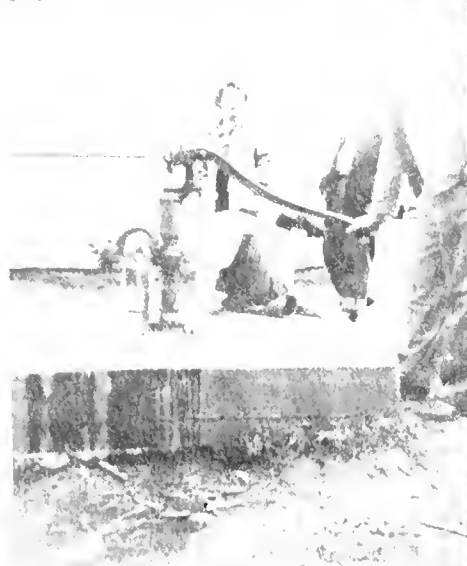
Jack Bolton	Nelson Kline
Margaret Bose	Doris Kopp
Edward Brunner	Helen Kreider
John Brunner	Carlton Lehman
Richard Goss	James Meminger
Donald Haverstick	William Schneider
William Kell	Harry Shuster

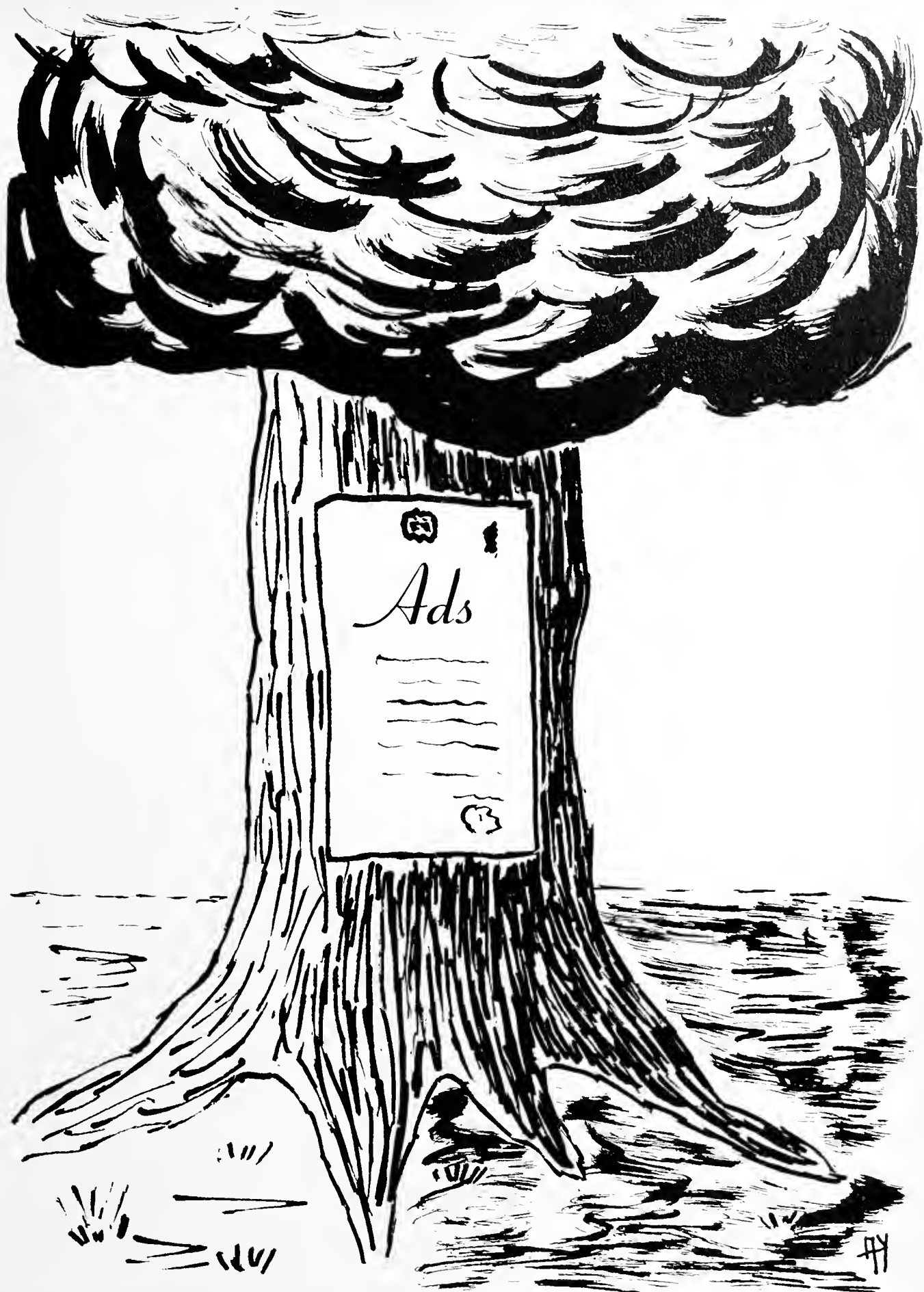
CHEERLEADERS

Jean Bagenstose	Marian Newcomer
Julia Bender	Jane Waller
Arlene Keeney	









Elizabethtown College

ELIZABETHTOWN, PA.

A Standard Co-educational College

Approved by Pennsylvania State Council on Education
Accredited by Middle States Association
Member of American Council on Education
Member of Association of American Colleges

GRANTING

A.B. and B.S. Degrees

IN

Liberal Arts

Science

Pre-professional Fields

Laboratory Technology Secretarial Science

Business Administration



Strong Faculty

Diversified Extra-Curricular Program

Delightful Location

Emphasizing the values of the small, Church-related College

For information write

President A. C. BAUGHER, Ph.D., LL.D.

S H E A R E R ' S

FURNITURE STORE

"The Largest Furniture Store Between
Lancaster and Harrisburg"

35-37 South Market St., Elizabethtown, Pa.
Phone: 12-W

Compliments of the

W. T. GRANT CO.

D. S. BAUM

Home-made Bologna - Dried Beef

R.F.D. 3 Phone: 540-J

ELIZABETHTOWN, PA.

KLEIN CHOCOLATE

COMPANY, INC.

Wishes the

Class of 1951 the Best

of Success and

Happiness

Always Shop and Meet Your Friends
at the Friendly

BEN FRANKLIN STORE

5c - 10c - \$1.00 and up

Self-Service Grocery Dept.
Elizabethtown, Pa.

LEAMAN'S TIRE SERVICE

Recapping
and
Vulcanizing

ELIZABETHTOWN, PA.

MYERS' MACHINE SHOP

119 N. Poplar Street

R. F. Myers, Mgr.

Compliments of

I C E L A N D, I n c.

Plee-zing

There's None Better

AUMENT BROS., INC.

Wholesale Distributors

227-231 North Prince Street
LANCASTER, PENNA.

Compliments

of

JOSEPH E. GREENBERG

Compliments of

ELIZABETHTOWN GARMENT
COMPANY

REINHOLD'S SUNOCO SERVICE

Lubrication : Washing

Tires : Tubes : Accessories

Phone: 9046-M

Elizabethtown, Pa.

Martin's

"Garden Spot"

Meat Products

Win Favor
by Quality and
Flavor

EZRA W. MARTIN CO.

R.F.D. No. 5 Lancaster, Pa.

W E N G E R ' S M I L L

"M. W." Feeds

RHEEMS, PENNA.

Phone: Elizabethtown 175

24 Hour Service

Phone: Elizabethtown 226

NEWCOMER'S SERVICE STATION

Richfield Gasoline

Richlube Motor Oils

Tires, Tubes, Batteries

ELIZABETHTOWN, PA.

THE HUBLEY MANUFACTURING CO.

LANCASTER, PA.

B I S H O P ' S S T U D I O

CONESTOGAN PHOTOGRAPHER

Dealer in Kodaks and Photographic Supplies

* * * * *

The Modern Studio with Years of Experience

* * * * *

ELIZABETHTOWN, PA.

T O N Y ' S

Specializing in Real Italian Spaghetti

Texas Hot Weiners * Virginia Baked Ham * Bar-B-Ques

DINNERS

Phone 34-J

LUNCHEONS

T H E C L A S S I C S H O P

Elizabethtown's Smartest Women's Shop

Compliments of

Your

GOOD GULF DEALER

For Finer, Fresher Foods
For Prompt and Courteous Service

GREINER BROS. FOOD STORE

on the square.

ELIZABETHTOWN, PA.

Phone: 267

Compliments of

RAY GUTSHALL'S

MEN'S STORE

Haberdashery

17 E. High St. Phone: 156-J

S. G. HERSHEY & SON

Department Store

Elizabethtown, Pa.

Compliments of

GARBER MOTOR COMPANY

Home of Ford Products

ELIZABETHTOWN, PA.

K I N G ' S

. . . For World Famous

ADAM HATS

South Market At
Forty-Four

D. H. MARTIN

CLOTHIER AND FURNISHER

Center Square

Elizabethtown, Pa.

BUCH
MANUFACTURING
COMPANY

Elizabethtown, Pa.

WEAVER BOOK STORE
BIBLES
CHURCH SUPPLIES

Religious Books --- New and Used
44 S. Duke St. Lancaster, Pa.

GUY'S BARBER SHOP

Market Square
Elizabethtown, Pa.

Kodaks Stationery

DORSHEIMER'S
"Center Square"

Sporting Goods Confectionery

PAXSON'S CUT RATE
Modern Soda Fountain
Dolly Madison Ice Cream

19 W. High Street
Elizabethtown, Pa.

Phone: 9222-W

H. S. RISSEY MOTORS

Oldsmobile - Pontiac - Cadillac
Sales - Service

Phone: 2-33 Elizabethtown, Pa.

Compliments of

B E Y E R ' S L I N O L E U M S T O R E

222 E. High Street
ELIZABETHTOWN, PA.

M U M P E R ' S D A I R Y

North Honover Street
ELIZABETHTOWN, PENNA.

Phone 263-W

VITAMIN "D" HOMOGENIZED MILK

Milk, Cream, Buttermilk, Orange Drink

Chocolate Drink

The
CHRISTIAN LIGHT PRESS
Book Store

Distributors of

RELIGIOUS MERCHANDISE

20 S. Market St., Elizabethtown, Pa.

HAMILTON

JEWELRY STORE

Diamonds & Watches

Center Square

Elizabethtown, Pa.

MILTON F. EBERLY

Furniture of Character
at Reasonable Prices

Route 3, Elizabethtown, Pa.

Phone: 540-R

Our Location Saves You Money

Compliments of

A. S. KREIDER

SHOE MANUFACTURING CO.

ELIZABETHTOWN, PA.

ELIZABETHTOWN BUILDING and SUPPLY CO.

Building Materials

General Contractors

341-351 W. Bainbridge Street

ELIZABETHTOWN, PENNA.

Phone 553

J. L. MECKLEY

Automatic Heating
Ventilating

Distributor of

The Amazing Winkler Low Pressure
Oil Burner
Burns All Types of Fuel Oil

Losch Stoker Boiler Units
Winkler Stokers

ELIZABETHTOWN, PENNA.

Phone: 414

DRINK
Coca-Cola
The pause that refreshes

RISSER'S RESTAURANT

Soda Fountain

All Electric Cooking

A Delightful Place to Eat

Elizabethtown, Penna.
Phone: 176

Compliments of

NEWCOMER'S

FIRESTONE STORE

Phone: 490
Elizabethtown, Penna.

GRACE C. BLOUGH

Ladies' Apparel

116 South Market Street

ELIZABETHTOWN, PENNA.

PHONE: 220-J

L. B. HERR & SON

STATIONERY
BOOKS
PRINTING
SCHOOL SUPPLIES
PORTABLE TYPEWRITERS

46-48 West King Street
LANCASTER, PA.

EPPLEY'S

Town Pharmacy

Moose Building

Elizabethtown, Penna.

BISCHOFF'S JEWELRY STORE

Watches, Diamonds
and
Jewelry

25 Center Square Elizabethtown, Pa.

ELIZABETHTOWN PLANING MILL

LUMBER---BUILDERS SUPPLIES---COAL

Phone: No.3

54 Brown Street

LANCASTER

BEVERAGE

DISTRIBUTORS

Pepsi Cola

Cloverdale Soft Drinks

615 East Mifflin, LANCASTER, PENNA.

ROTH'S FURNITURE STORE

Furniture of Character

206-210 South Market Street

Elizabethtown, Pa.

Phone: 84-R

CLEAR VIEW DINER

East of Elizabethtown on
Route 230

HOME COOKED MEALS

24-Hour Service

Try Our Chicken Steak and Turkey Steak

When You Think of Music

Think of

KIRK JOHNSON & CO.

MUSIC HOUSE

Serving the Musical Needs

of Lancaster Co.

for Over 65 Years

Compliments

of

L A N C A S T E R

S H O E

C O M P A N Y

ELIZABETHTOWN, PA.

Compliments of

THE
CONTINENTAL
PRESS

Educational Publishers

Elizabethtown, Pa.

Los Angeles, Calif.

Elgin, Ill.

Atlanta, Ga.

Dallas, Texas

To Be Sure...

Buy U N I O N J A C K Brand

High
Quality



Right
Price

Canned Foods

Distributed by

MILLER AND HARTMAN

Lancaster, Pa.

G R U B B & B R E N E M A N

COAL : FEED

ZARFOSS HARDWARE

On The Square

Elizabethtown, Pa.

Party Supplies

Kodaks

GEBHART'S
ART SHOP and BOOK STORE

26 W. High Street
Elizabethtown, Pa.

Gifts for All Occasions

Stationery Greeting Cards

Everyone
Yes,
Everyone



Likes

Densupremé
ICE CREAM



S. F. ULRICH, INC.

Buick
and
Chevrolet

Sales and Service

ELIZABETHTOWN, PENNA.

Phone: 21

A U N T S A L L Y ' S

K I T C H E N

"Come in and Sit Once"
in our
Penna. Dutch Atmosphere

BANQUETS A SPECIALTY

Phone: 13-R

Compliments of

B R O U C H T ' S M E A T

M A R K E T

429 East High Street

Phone: 14-R

THE EVANGELICAL PRESS

Printing : Electrotyping : Bookbinding

Third and Reily Streets

Harrisburg, Pa.

HERSHEY & GIBBEL

General Insurance



LITITZ, PA.

MOYER'S POTATO CHIPS

*For Sale At Your Local
Grocers*



"Among the best by test"

CLASSIC HOSIERY MILL, INC.

Manufacturers of
FULL-FASHIONED HOSIERY

ELIZABETHTOWN, PA.

GRIMM INSURANCE AGENCY

INSURANCE
For All Needs

119 S. Market St. Elizabethtown, Pa.
Phone: 64

Compliments

WIGGINS
CANDY & RESTAURANT

Lancaster - Harrisburg

See us when planning
your next banquet

Compliments of the
Savoy Shoe Co., Inc.

•
Makers of
**Fine Shoes For
Women**

•
ELIZABETHTOWN, PENNA.

LOUIS LEHRMAN & SON

Wholesale Food Distributors

110-122 S. Seventeenth St.

Harrisburg, Pa.

Office Equipment Co.

Friendly Service

202 Walnut St., HARRISBURG, PA.

—
*Office Designers
Commercial Stationers*

KELLER BROS.



BUFFALO SPRINGS, LEBANON CO., PA.

Phone: Schaefferstown 34

LITITZ, LANCASTER CO., PA.

Phone: 6-2121

MARTIN'S
RESTAURANT

featuring
DOLLY MADISON
ICE CREAM

2630 Walnut St. Harrisburg, Pa.

Compliments of

JAC. B. FISHER

Music and Appliance Store

•
22 E. High St.
Elizabethtown, Pa.

RCA-VICTOR—TELEVISION

R. H. FORNEY

Chrysler-Sales Plymouth



40 N. Market

Elizabethtown, Penna.

JOHN M. MILLER

Insurance Broker

ELIZETHTOWN, PA.

Compliments of

MUSSER FARMS

Dairy



COLUMBIA, PA.

Autographs

Autographs

Autographs







