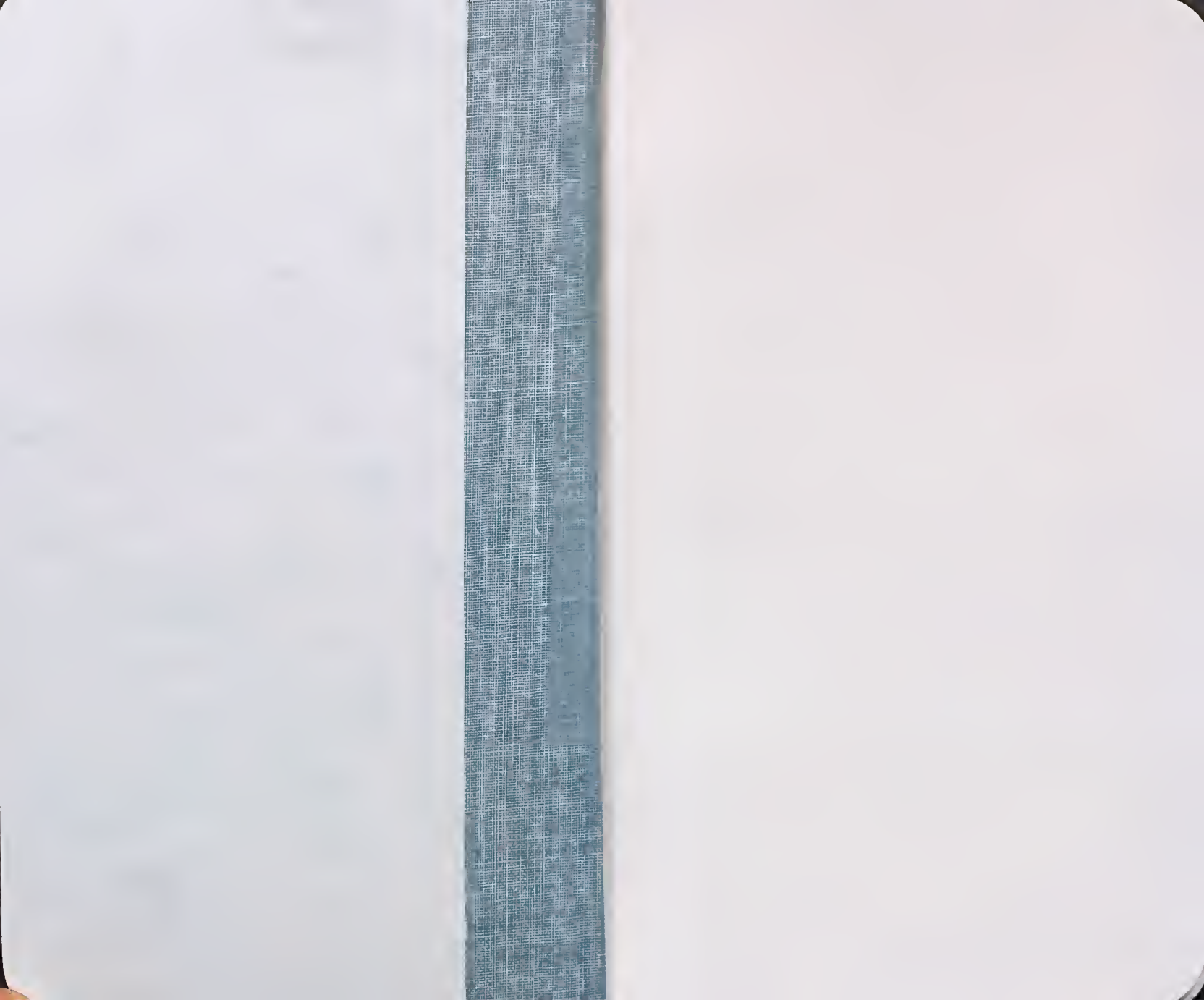


Vol. 144



Cuba
 P. Wilson nos. 9122-9134
 5, 110
 Province of Havana
 Museo central to Cuzimar

- 1 9122 *Cyperus* - vine 5 ft. for ...
 fruit ... - near Museo central
- 2 9123 *Compositae* - 3 ft. rays yellow
 many of them ...
- 3 9124 *Centrosema* - 1 ft. ...
- 4 9125 *Centrosema* - prostrate - near ...
- 5 9126 *Phytolacca* - ...
 On ... with ...
 ... near Museo central
- 6 9127 *Phytolacca* ...
 ...
- 7 9128 *Centrosema* ...
 ...
- 8 9129 *Centrosema* - 5' shrub 6 ft. ...
 ...
- 9 9130 5' shrub 5 ft. ...
 ...

¹⁰
✓9131 *Stachys simplex* - Shrub
of 2-3 feet purple - 5th
bracket of open places

¹¹
✓9132 *Mayaca tenifolia*
fruit orange, pointed,
5 ft - Shrub 6 ft. thick

¹²
✓9133 *Stigmaphyllon* - 5 ft
5 ft of 1/2 green & red

¹³
✓9134 *Centrosema* - Shrub 3 ft -
flowers pinkish white

¹⁴
✓9135 *Abutilon* - Shrub 5 ft

¹⁵
✓9136 *Impatiens* - 4 ft. side
shrub 2 ft

¹⁶
✓9137 *Stachys* - Shrub
5 ft. Open places in thicket

¹⁷
✓9138 *Impatiens* - Shrub 8 ft
in thicket

¹⁸
✓9139 *Cordia* - Shrub 9 ft
thicket - fls red.

¹⁹
✓9140 *Impatiens* 3 or 4 ft - Open
places in thicket

²⁰
✓9141 *Guettarda* - Shrub 7 ft.
In thicket 1 foot immature

²¹
✓9142 *Conoclinium*
Shrub 60 ft. Edge of thicket

²²
✓9143 *Vicia* - Shrub - fls white
Under thicket - roadside

²³
✓9144 *Impatiens* - fls purple
along roadside

²⁴
✓9145 *Centrosema* - Shrub 5 ft
fruit - purple - open places

²⁵
✓9146 *Centrosema* - Edge of thicket
in open

²⁶
✓9147 *Centrosema* - 4 ft. side
open

²⁷
✓9148 *Impatiens* - In small thicket
5 ft - under thicket

²⁸
✓9149 *Impatiens* - Along road -
Edge of thicket near open

²⁹
✓9150 *Impatiens*
in open - 5 ft - thicket edge

³⁰
✓9151 *Impatiens* - 4 ft. side
open

³¹
✓9152 *Impatiens* (Cora. Brit. Leg.)

³²
9153 *Centropogon* *...*
Very common in open field
+ *...* - shrub 5 1/2 ft.

³³
9154 *Cryptantha*
... *...*
Plants not collected

...
Rhacoma *...*
Suresua *...*
Stenochloa *...*
... *...*
... *...*
... *...*
... *...*
... *...*
... *...*

December 9, 1950

Guatemala & vicinity

³⁴
9155 *Cissua* - Thicket along
roadside - vine 3 m.

³⁵
9156 *Vigna* - vine 4 m. in
thicket

³⁶
91571 *Cyperus*
along stream

³⁷
9158 Grass - in field

³⁸
9159 *Pectis* - in field

³⁹
9160 Grass - " "

⁴⁰
9161 *Castanea* - in small stream

⁴¹
9162 *Mussaenda* - roadside

⁴²
9163 Grass - in field

Monte La Nueva Dec 9

⁴³
9164 *Leucaena* *...*?
under shrubs

⁴⁴
9165 *Erythroxylum* - shrub 2 m

⁴⁵
9166 *Melastoma* - vine 2 m. on
shrubs in thicket

⁴⁶
9167 *Schizopha*? shrub 3 m.
flowers red

⁴⁷
9168 *...* - tree 10 m.

⁴⁸
9169 *Panicum* - shrub 1 m.

⁴⁹
9170 *Amorpha* - shrub 3 m. - fls.
white

⁵⁰
9171 *Erythroxylum* - shrub 6 m

9172 Grass - on cliff

⁵¹
9173 *Buddleia* - fls. purple
among rocks - shrub 5 ft.

- 9174⁵³ Compositae - Shrub 8 ft.
Edge of cliff
- 9175⁵⁴ Grass - in thicket
- 9176⁵⁵ Shrub - 8 ft
- 9177⁵⁶ Rutaceae - Shrubs 3-5
m. tall - bark grayish - leaves
1-5-foliate, dark green
and glaucous above, pale
and dull beneath, compound
flowers apparently on
separate shrubs - pistillate
flowers green - Staminate
buds green - leaves alternate
- 9178⁵⁷ Zanthoxylum - Tree 2 m.
leaves dark green, shining
above
- 9179⁵⁸ Grass - open places in
thicket
- 9180⁵⁹ Compositae - Shrub 7 ft.
leaves shining above - white
beneath - fls old
- 9181⁶⁰ Jorjuzina - fls pale
yellow - Shrub 3 ft.

- 9182⁶¹ Euphorbiaceae - Shrub 3 ft.
Shrub opposite Coyuniar
along Limón-Turkey Route
from Puntas Grandas to
Sea coast, Dec. 12, 1910
- 9183⁶² Cestrum - Shrub 10 ft
flowers white - River bank
- 9184⁶³ Hyptis - roadside - fls. purple
- 9185⁶⁴ Varronia - Shrub 5 ft. roadside
flowers pure white
- 9186⁶⁵ Lantana - Shrub 3 ft. flowers
pale purple
- 9187⁶⁶ Grass - Roadside
- 9188⁶⁷ Sigesbeckia - flowers white
climber on bushes
- 9189⁶⁸ Verbena - rays yellow - 6 ft
- 9190⁶⁹ Grass - river bank
- 9191⁷⁰ Plectranthus - river bank
- 9192⁷¹ Ficus - Tree 10 m. along
river bank
- 9193⁷² Cucurbitaceae - in thicket fls
yellow
- 9194⁷³ Acalypha - Com on along roadside

⁷⁴
9195 - *Pilea* - Tree 7 m
along river

⁷⁵
9196 *Journefalia* - flowers white
roadside

⁷⁶
9197 *Lantana* - Shrub 2 ft.
flowers white -

⁷⁷
9198 *Delonix* - Common a
short distance back from
coast. Shrub 2 m

⁷⁸
9199 *Platygyne* - near coast
in thicket

Cajinas Aguacate from
town of Bahia Honda to *Banco Aguacate*
Dec. 11 412 1910

⁷⁹
9200 *Croton* - long pedicel

⁸⁰
9201 *Eugenia* " "

⁸¹
9202 *Hedyotis* - along stream

⁸²
9203 *Alphitonia* - Shrub 6 ft.
Near stream

⁸³
9204 *Ipomoea* - along stream

⁸⁴
9205 *Erobolus* - fls blue
hillside

⁸⁵
9206 *Acanthaceae* - hillside

⁸⁶
9207 Shrub 6 ft. - long stream

⁸⁷
9208 *Convolvulaceae* - on tree

⁸⁸
9209 *Jatropha* - Shrub 5 ft. fls
red

⁸⁹
9210 Grass - on bank of stream

⁹⁰
9211 *Malvaceae*? Shrub 8 ft.

⁹¹
9212 Shrub 8 ft.

⁹²
9213 *Rhacoma* - prostrate - hillside

⁹³
9214 *Chamaecrista* - Open field

⁹⁴
9215 Grass - Open field

⁹⁵
9216 *Chamaecrista* - Open field

⁹⁶
9217 *Hesperis* - on rock

⁹⁷
9218 *Convolvulaceae* - on tree

⁹⁸
9219 *Convolvulaceae* - Tree 30 ft.

⁹⁹
9220 *Convolvulaceae* - on tree

¹⁰⁰
9221 *Convolvulaceae* - on tree

¹⁰¹
9222 *Convolvulaceae* - on tree

¹⁰²
9223 *Convolvulaceae* - on tree

¹⁰³
9224 *Convolvulaceae* - on tree

¹⁰⁴
9225 *Convolvulaceae* - on tree

¹⁰⁵
9226 *Convolvulaceae* - on tree

¹⁰⁶
9227 *Convolvulaceae* - on tree

¹⁰⁷
9228 *Convolvulaceae* - on tree

- ¹⁰⁶ 9227 *Philanthus lucidus*
on cliff
- ¹⁰⁷ 9228 *Miconia* - on rock
- ¹⁰⁷ 9229 *Philanthus* *Megala*
on cliff
- ¹⁰⁹ 9230 *Salvia* - on cliff
- ¹¹⁰ 9231 *Alfandea* - on rock
on rocky hillside
- ¹¹¹ 9232 *Vanilla* - on cliff
- ¹¹² 9233 *Clusia* - Tree 2.5 ft.
- ¹¹³ 9234 *Cudrania* - *Prostrata*
Shrub 2 ft.
- ¹¹⁴ 9235 *Rubiacal* vine - along
roadside
- ¹¹⁵ 9236 *Pinus* - Tree 40 ft.
- ¹¹⁶ 9237 *Pernaventura* and *vicinitoga*
Prov. Pinar del Rio
- ¹¹⁶ 9237 *Melothria* - fls. yellow
in thicket.
- ¹¹⁷ 9238 *Grass* - along trail
- ¹¹⁸ 9239 *Asclepiadaceae* - vine
2 m - fls. greenish - yellow
in thicket

- ¹¹⁹ 9240 *Physalis* - fls. yellow with
a dark throat - along trail
- ¹²⁰ 9241 *Rabichanysia* - in thicket
- ¹²¹ 9242 *Lycopodium* - in thicket
- ¹²² 9243 *Grass* - along trail
- ¹²³ 9244 *Smilax mollis* - in thicket
- ¹²⁴ 9245 *Grass* - along trail
- ¹²⁵ 9246 *Smilax* *Horanensis* - in thicket
- ¹²⁶ 9247 *Grass* - 3 ft.
- ¹²⁷ 9248 *Mikania?* - in thicket
- ¹²⁸ 9249 *Grass* - Edge of thicket along
trail
- ¹²⁹ 9250 *Grass* - ^{var. *varians*} *Utrero*, near Entrance
to *King of Belin Honda*
- ¹³⁰ 9251 *Grass* - *prostrata*
- ¹³¹ 9252 *Grass* - *brigi* - *grass*
- ¹³² 9253 *Grass* - *in thicket*
- ¹³³ 9254 *Salvia* - *moist* *place* *on*
rock
- ¹³⁴ 9255 *Cordia* - fls. pale orange-
red - Shrub 10 ft

- ¹³⁵
 9256 *Lilophyton* - Sandy place
¹³⁶
 9257 *Conocarpus* - " "
¹³⁷
 9258 *Conocarpus* - Near bank in
 Sandy place
¹³⁸
 9259 *Heliconia* - Sandy place
 Near bank in open
 place
 Poor collecting
 Near Plaza de Armas
¹³⁹
 9260 *Miconia* - Sandy place
 in bank
¹⁴⁰
 9261 *Conocarpus* - Vine in open
¹⁴¹
 9262 *Heliconia* - Half grown
 in sandy place
¹⁴²
 9263 *Passiflora* - Shrub 2 ft. fls
 red
¹⁴³
 9264 *Conocarpus* - Vine 2 ft
¹⁴⁴
 9265 *Conocarpus* - Tree 15 ft.
¹⁴⁵
 9266 *Passiflora* - Shrub 2 ft.
¹⁴⁶
 9267 *Conocarpus* - Open place
¹⁴⁷
 9268 *Conocarpus* - Shrub 3 ft.

- ¹⁴⁷
 9269 *Heliconia* - Shrub 7 ft.
¹⁴⁹
 9270 *Conocarpus* - Near bank
¹⁵⁰
 9271 *Conocarpus* - Open place
 vicinity of River Armas,
 Dec 4
¹⁵¹
 9272 *Conocarpus* - In dry field
¹⁵²
 9273 *Conocarpus* - " " "
¹⁵³
 9274 *Conocarpus* - " " "
¹⁵⁴
 9275 *Conocarpus* - " " "
¹⁵⁵
 9276 *Conocarpus* - " " "
¹⁵⁶
 9277 *Conocarpus* - fls pink in
 sun
¹⁵⁷
 9278 *Conocarpus* - In sun
¹⁵⁸
 9279 *Conocarpus* - Roadside
 Rio San Miguel below Maln
¹⁵⁹
 9280 *Conocarpus* - along road
¹⁶⁰
 9281 *Conocarpus* - in basket
¹⁶¹
 9282 *Conocarpus* - Shrub 5 ft. fls
 red
¹⁶²
 9283 *Conocarpus* - Shrub of stream
¹⁶³
 9284 *Conocarpus* - near stream
¹⁶⁴
 9285 *Conocarpus* - On tree
¹⁶⁵
 9286 *Conocarpus* - in basket - fls
 red

¹⁶⁶ 9287 Tree 30 ft. - fls pale

¹⁶⁷ 9288 Tree 10 ft. fls white
Green
Eucalyptus?

¹⁶⁸ 9289 Tree 25 ft.

¹⁶⁹ 9290 Shrub - bank of
stream

¹⁷⁰ 9291 Piper - Shrub 6 ft. edge
of stream

¹⁷¹ 9292 Psychotria - Shrub 8 ft.

¹⁷² 9293 Myrsine? Shrub 3 ft.

¹⁷³ 9294 *?* Shrub 8 ft. -
Lillaceae

¹⁷⁴ 9295 Sida - Along trail. Creeping

¹⁷⁵ 9296 Gongalugania - fruit white
Shrub 4 ft. Bank of stream

¹⁷⁶ 9297 Amaranthaceae - Along trail
Open place

¹⁷⁷ 9298 Amaranth - Shrub 10 ft. fls
white

¹⁷⁸ 9299 Fern - On tree

¹⁷⁹ 9300 Erigeron - on rocks in
stream bed

¹⁸⁰ 9301 Hepatic - on rock near
stream

¹⁸¹ 9302 Shrub - fls purple on rocks
in bed of stream

¹⁸² 9303 Compositae - on rocks in
bed of stream; fls greenish

¹⁸³ 9304 Adiantum - bank of stream

¹⁸⁴ 9305 Xyris - " " "

¹⁸⁵ 9306 *?* - Shrub 6 ft. bank
of stream

¹⁸⁶ 9307 Roridula - Shrub 5 ft. fls
red

¹⁸⁷ 9308 Yucca - on rocks - near stream

¹⁸⁸ 9309 Shrub - 8 ft. fls white bank
of Rio San Miguel

¹⁸⁹ 9310 *?* - On rocks in
Rio San Miguel

¹⁹⁰ 9311 Tree 10 ft. fls white - bank
of Rio San Miguel

¹⁹¹ 9312 Sida - Shrub 4 ft. along
trail in rich soil

¹⁹² 9313 Tree 40 ft. - fls cream color
in woods

193

93x4 *...* - Shrub 3 ft.93x5 *...* - along
trail93x6 *...* - on tree trunk
along streamDec 16. Trail from Buenaventura
to San Juan de Buacamalla

93x7 Labiales - along trail

93x8 Small Cyperaceae - along trail

93x9 Cyperus - along trail

93x10 Grass - prostrate - along trail

93x11 Stegnophyllum - on bushes
along trail

93x12 Sida - Edge of trail

93x13 Euphorbia - on rock
in stream93x14 *...* - large vine - fruit
yellow

93x15 Fern - on bank of stream

93x16 Cyperaceae - along trail

93x17 *...* - bank of stream93x18 *...* - bank of stream208
93x19 Epilobium - on tree along

Stream

93x20 Fern - on bank of stream

93x21 *...* *...*
fls purplish - red.

93x22 Brassica - fruit black near base of hill

93x23 *...* - top of hill. leaves 6
inches broad - 2 - 2 1/2 ft. long93x24 *...* - Shrub 3-4 ft.

top of hill

93x25 *...* - on cactus - top of hill93x26 *...* Shrub 3 ft. fls red
side of hill93x27 Shrub - 10 ft. fruit not ripe
side of hill - near creek93x28 *...* - on pocket of rock93x29 *...* - Shrub 5 ft. * fruit
red.

93x30 Orchid - side of hill

93x31 *...* - on tree93x32 *...* - Tree 30 ft -

side of hill

93x33 Orchid - on tree

²²³
9344 ✓ *Sida* - Shrub 9 ft. - fruit
red

²²⁴
9345 ✓ Fern - on tree - side of hill

²²⁵
9346 ✓ *Amegris* - Side of hill
fls white Shrub 10 ft.

²²⁶
9347 ✓ Shrub 15 ft. - bulbous

²²⁷
9348 ✓ *Passiflora* - Climbing over
rocks

²²⁸
9349 ✓ Fern - on rocks

²²⁹
9350 ✓ *Euphorbiaceae* - Tree 20 ft.

²³⁰
9351 ✓ *Lichen* - on rocks

²³¹
9352 ✓ *Gymnocladia* - Tree 4 ft.
side of hill

²³²
9353 ✓ *Sida* - on tree
side of hill

²³³
9354 ✓ Fern - bank of stream near

²³⁴
9355 ✓ *Adiantum* - bank of
stream

²³⁵
9356 ✓ *Asclepias virida* - along road

²³⁶
9357 ✓ *Mitella* - " "

²³⁷
9358 ✓ *Conocladia* - 8 ft. " "

²³⁸
9359 ✓ Fern - Shrub 12 ft. " "

²³⁹
9360 ✓ *Ficus* - on log
Rio San Miguel from Guisca
Volador to Matamoros,
Dec. 17

²⁴⁰
9361 ✓ *Sida* - river bank

²⁴¹
9362 ✓ *Lamiaceae* - Tree 35 ft. river
bank

²⁴²
9363 ✓ *Sida* - river bank

²⁴³
9364 ✓ *Eugenia* - " "

²⁴⁴
9365 ✓ *Amegris* - " "

²⁴⁵
9366 ✓ *Chaptalia* - Shrub 5 ft. - fruit
dark purple - river bank

²⁴⁶
9367 ✓ *Chaptalia* - Shrub 12 ft.
bank of river rocks along road

²⁴⁷
9368 ✓ *Conocladia* - rocky bank

²⁴⁸
9369 ✓ *Conocladia* - In tufts - rocky plain
along river bank

²⁴⁹
9370 ✓ *Conocladia* - on rocks X

²⁵⁰
9371 ✓ *Conocladia* - on rocks

²⁵¹
9372 ✓ *Hydrocotyle* - " "

²⁵²
9373 ✓ *Sida* - Shrub 8 ft. - on
small island on river - fls yellowish

²⁵³
9374 ✓ *Sida* - Shrub 8 ft. - on
small island on river - fls yellowish
white

²⁵⁴
9375 *Sida* - on bank

²⁵⁵
9376 *Salix* - tree 18ft - on
small island in river

²⁵⁶
9377 *Afelia* - among rocks
along river - shaded places,
fls yellow

²⁵⁷
9378 *Bala* - on rocks in
river - common

²⁵⁸
9379 *Scrophulariaceae* - fls white
on rocks in river

²⁵⁹
9380 *Melastoma* - dry bank

²⁶⁰
9381 *Pseudopiptadenia* - on
dry bank

²⁶¹
9382 *Erythroxylum* - shrub 5ft.
dry bank - fruit young

²⁶²
9383 *Citrus spumosa* - tree
10ft

²⁶³
9384 *Palaquium* - shrub 3ft
buds red - back from river

²⁶⁴
9385 *Eupatorium* - shrub 2ft.
back in river

Bumantana and vicinity
Dec 18, 1910

²⁶⁵
9386 *Croton* - tree 40ft. along
stream

²⁶⁶
9387 *Tillandsia bulbosa* - on tree

²⁶⁷
9388 *Arnona* - tree 35ft. bank
gray - petals yellow or greenish
yellow - tubular

²⁶⁸
9389 *Guzmania* - on tree

²⁶⁹
9390 *Platygyne* - in thicket along
stream

²⁷⁰
9391 *Epidendrum* - on tree
tree 30ft - along stream

²⁷¹
9392 *Malvaceae*
9393 *Malva* - shrub 12ft
greenish yellow - along stream

²⁷²
9394 *Cassia* - along trail

²⁷³
9395 *Passiflora* - along stream

²⁷⁴
9396 *Melastoma* - fls pink along
trail

²⁷⁵
9397 *Melastoma* - along trail - fls yellow

²⁷⁶
9398 *Sida* - shrub 2 1/2 ft. along
trail

²⁷⁸
9399 *Cross* - *along forest*

²⁷⁹
9400 *Commelina nudiflora* -
open places - fls. blue

²⁸⁰
9401 *Sida* - *open places*
²⁸¹
9402 *Cross* - *along trail*

²⁸²
9403 *Melastomaceae* - *fls. yellow*
waste places

²⁸³
9404 *Cross* - *waste places*
Bukis Honda - hillside

Dec. 18, 1910.

²⁸⁴
9405 *Compositae* - *under shrubs*
on hillside

²⁸⁵
9406 *Melastomaceae* - *Shrub 2-3 ft.*
fruit red - hillside

²⁸⁶
9407 *Convolvulaceae* - *hillside*

²⁸⁷
9408 *Utricularia* - *Shrub 4-6 ft.*
fruit red

²⁸⁸
9409 *Rubiaceae* - *Shrub 6 ft.*
hillside

²⁸⁹
9410 *Utricularia* - *Shrub 5 ft.*
fruit, broad - orange yellow
hillside

290
9411 *Cross* - *under shrubs*

²⁹¹
9412 *Agrostaceae* - *Shrub 3 ft.*
white

²⁹²
9413 *Cross* - *6 ft.* - *hillside*

²⁹³
9414 *Utricularia* - *fls. green 5 ft.*
Shrub 19 (continued)

294
9415 *Gentianaceae* - *vine 18 inches*
to 2 ft. hillside

²⁹⁵
9416 *Coveria* - *fls. white*
hillside

296
9417 *Convolvulaceae* - *Shrub 2 ft.*
fls. ground white, white
rocky hillside

²⁹⁷
9418 *Convolvulaceae* - *fls. yellow*
fruit red - rocky hillside

²⁹⁸
9419 *Convolvulaceae* - *Shrub 2 ft.*
fls. purple white - rocky hillside

²⁹⁹
9420 *Convolvulaceae* - *edge of the road*
rocky hillside

300
9421 *Convolvulaceae* - *shaded places on*
rocky hillside

³⁰¹
9422 *Convolvulaceae* - *fls. yellow*
rocky hillside

- 302
9423 *Lantana* - Shrub
2 1/2 ft. - rocky hillside
- 303
9424 *Convolvulaceae* - along stream
- 304
9425 *Melastomaceae* - Shrub
10 ft. fls. white - hillside
thicket - narrow - shiny above,
dull beneath
- 305
9426 *Convolvulaceae* ? - 3 ft. - hillside
- 306
9427 *Rubiaceae* - fls. greenish
yellow - shrub 6 ft. - dark
dark green, shiny above
- 307
9428 *Lantana* - a rigid
shrub; 2 ft. - shiny above, dry
rocky hillside - 2 ft.
- 308
9429 *Sida* - plant 2-3 ft.
tall - hillside
- 309
9430 *Euphorbiaceae* - most places
on hillside, under shrubs
- 310
9431 *Celastraceae* - stem pale green
young, buds tipped with red -
climbing on tree
- 311
9432 *Convolvulaceae* - moist hillside
- 312
9433 *Melastomaceae* - shrub 3 ft.
along stream, shaded places

- 313
9434 *Convolvulaceae* - moist bank along
stream
- 314
9435 *Ficus* - tree 30 ft. -
shiny above
- 315
9436 *Convolvulaceae* - dry hillside
- 316
9437 *Convolvulaceae* - " "
- 317
9438 *Convolvulaceae* - " "
- 318
9439 Shrub 4 ft. fls. yellowish
green
- 319
9440 *Convolvulaceae* - in water
along trail
- 320
9441 Shrub 5 ft. - leaves shiny
above - hillside
- 321
9442 *Convolvulaceae* - rocky hillside
shrub 6 ft.
- 322
9443 *Convolvulaceae* - among rocks
Baccharis + *varan*
Wil. 20.
- 323
9444 Grass - along trail
- 324
9445 *Lantana* - tree 30 ft.
hillside
- 325
9446 *Boraginaceae* - open places
trail

- 326
 9447 Selena - along stream
 327
 9448 Passiflora - fruit red
 328
 9449 Euphorbia - on shrub
 along stream
 329
 9450 Echinacea - on shrub
 along stream
 Province of Navarra
 Dec. 22 Rio Almendras to
 Playa de Maricao
 330
 9451 Cestrum - Shrub 7ft. fl. white
 open place
 331
 9452 Sida - on shrub in
 thicket fruit red
 332
 9453 Acacia Farnesiana - open
 place - Shrub 5ft.
 333
 9454 Jacquinia - Shrub 2ft.
 fruit red - Coastal thicket
 334
 9455 Varronia - Coastal thicket
 335
 9456 Verbena - open place
 along trail - 4ft.
 336
 9457 Euphorbia - prostrate
 open place
 337
 9458 Schrepfia - fl. red
 Shrub 8ft. thicket
 338
 9459 Zaphala - fl. white - shaded
 place in thicket

- 339
 9460 Sesuvium - Shrub 6ft.
 fl. pale yellow - open place
 in thicket
 340
 9461 Alseodaphne - Shrub 6ft.
 edge of thicket
 341
 9462! Yucca glauca - Thicket 5ft.
 342
 9463 Conium maculatum - Tree
 12 ft. along trail in thicket
 343
 9464 Chrysophyllum sp. Shrub 8ft.
 thicket
 344
 9465 Erythroxylum - Shrub 5ft.
 Edge of thicket
 345
 9466 Cross - Edge of thicket
 346
 9467 Selena " " "
 347
 9468 Copacum - open place in thicket
 348
 9469 Amaranthus spinosus open
 place
 349
 9470 Verbena - open place
 along trail
 350
 9471 Convolvulus - open place
 351
 9472 Convolvulus - Thicket
 Shrub 8ft.
 352
 9473 Papilionaceae - 3 ft.
 open place along trail

³⁵³
9474 Malvaceae - 3 ft. along
trail in thicket
³⁵⁴
9475 *Impatiens* - open place, 2 ft
³⁵⁵
9476 *Solanum* - 4 ft. - open
place

³⁵⁶
9477 *Amyris* - Shrub 8 ft -
thicket

³⁵⁷
9478 *Cassia* - hill near
Amondale, Peru

³⁵⁸
9479 *Compositae* - bank near

³⁵⁹
9480 *Lantana* - Shrub 2 ft.
rock place near river -

³⁶⁰
9481 *Compositae* - open place
Very common

³⁶¹
9482 *Lantana* - open place, 2 ft.

Dec. 23 (continued)

³⁶²
9483 *Compositae* - open place

³⁶³
9484 *Eupatorium* - thicket

³⁶⁴
9485 *Jurcynya* - leaves 4-6 ft
long - 5-6 inches in broad.

Common in coastal thicket

³⁶⁵
9486 *Micrologis* - in dense thicket

³⁶⁶
9487 *Cyperus* - in pockets of rock -
shaded place

³⁶⁷
9488 Grass - shaded place

³⁶⁸
9489 *Zanthoxylum Fagaya* - very common
in coastal thicket - Shrub 6 ft.

³⁶⁹
9490 *Physalis* - Shady place in
dense thicket.

³⁷⁰
9491 *Compositae* - fls pale purple -
coastal sands

³⁷¹
9492 *Atalapha* cut - Shrub 6 ft. - thicket

³⁷²
9493 *Crotalaria lucida* - Shrub 3 ft. "

³⁷³
9494 *Cassia* - open place - in
thicket

³⁷⁴
9495 *Malvaceae* - Shrub 3 ft -
edge of thicket

³⁷⁵
9496 *Cyperus* - shaded place in
thicket

³⁷⁶
9497 Grass - open place

³⁷⁷
9498 *Flourey* ? 7 ft - fruit white -
coastal thicket

³⁷⁸
9499 *Phacoma* - prostrate - open place

³⁷⁹
9500 *Antennaria* - common near coast

³⁸⁰
9501 Shrub 8 ft - thicket

- ³⁸¹
9502 Grass - open places
in thicket
- ³⁸²
9503 Cappara - shrub 7 ft. in
dense thicket
- ³⁸³
9504 Physalis - fls yellow
with a dark eye - open places
- ³⁸⁴
9505 Amaranthaceae - on
rocks
- ³⁸⁵
9506 Solanum - prostrate -
open places
- ³⁸⁶
9507 Amaranthus crassipes
prostrate - in sands near coast
- ³⁸⁷
9508 Platygynis - open places
- ³⁸⁸
9509 Evolvulus - prostrate - open
places
- ³⁸⁹
9510 Acanthaceae - prostrate
near coast
- ³⁹⁰
9511 Euphorbia - prostrate -
sandy soil near coast
- ³⁹¹
9512 Trumpetia - open places
in thicket
- ³⁹²
9513 Amaranthaceae - roadside
in sand soil

Mono Cattle to Cojimar Dec. 25

- ³⁹³
9514 Acaia - in dense thicket
filamentous cream color
- ³⁹⁴
9515 Banana - shrub 3 ft. in
thicket
- ³⁹⁵
9516 Physalis - fls purplish and
green - subglobose - roadside
ditch - branches horizontal
- ³⁹⁶
9517 Corn cladia - very common
in open places
- ³⁹⁷
9518 Ficus - Tree 20 ft.
thicket
- ³⁹⁸
9519 Canella - shrub 7 ft - edge
of thicket
- ³⁹⁹
9520 Asclepiadaceae - vine
3 m. - in thicket
- ⁴⁰⁰
9521? Sponoxia - climbing vine
shrubs - fls yellow
- ⁴⁰¹
9522 Evolvulus - roadside path
near La Habana
- ⁴⁰²
9523 Boerhaavia - roadside path
near La Habana
- ⁴⁰³
9524 Phytolacca? vine 2 m.
fls - ground white in thicket

Coastal thicket between
Rio Cozimar and Playa de
Bocuarana Dec 26

- ⁴⁶⁴ 9525 Euphorbiaceae - Shrub 6
ft. near coast
- ⁴⁶⁵ 9526 Amphilala - Shrub
4 ft. near coast
- ⁴⁶⁶ 9527 *Sporobolus* - Shady sandy
place in thicket
- ⁴⁶⁷ 9528 *Heliconia* - Sandy place
- ⁴⁶⁸ 9529 *Phyllanthus* " "
- ⁴⁶⁹ 9530 *C. sp.* " "
- ⁴⁷⁰ 9531 Grass " "
- ⁴⁷¹ 9532 *Euphorbia* " "
- ⁴⁷² prostrate
- ⁴⁷³ 9533 Vine (small) fls white
Shady sandy place
- ⁴⁷⁴ 9534 Grass - Sandy place
- ⁴⁷⁵ 9535 *Cyperus* - Open sandy
place forming clump
- ⁴⁷⁶ 9536 *Conium maculatum* - plant
12 ft. X in dense thicket
- ⁴⁷⁷ 9537 Grass - Shrub 6 ft. - in
dense thicket

- ⁴¹⁷ 9538 *Bursera* - Sandy place
in thicket
- ⁴¹⁸ 9539 *Pectis* - Sandy place in
thicket open
- ⁴¹⁹ 9540 *Euphorbia* - Sandy place
- ⁴²⁰ 9541 *Cyperus* - prostrate -
open sandy place
- ⁴²¹ 9542 *Amphis* - Shrub 8 ft. - thicket
- ⁴²² 9543 *Agave* - leaves 5-6 ft.
long 5-8 inches broad - in
thicket
- ⁴²³ 9544 *Pithecolobium* - fls greenish
white - without odor - plant 9 ft
in thicket
- ⁴²⁴ 9545 *Lantana* - Shrub 3 ft. -
fls pinkish white - edge of
thicket
- ⁴²⁵ 9546 *Desmodium* - along trail
away from coast
- Monte La Mota Dec 26
- ⁴²⁶ 9547 *Scaevola* - along trail in
sandy place
- ⁴²⁷ 9548 *Muntingia* - Shrub 3 ft. fls
pinkish - open field

⁴²⁸
9549 Rutaceae - shrub up to
15 ft. - petals greenish. Stamens
5, filaments green, anthers
yellow. Lvs alternate
dark green and lustrous
above, pale beneath
Along road from Puntarenas
Cajon - near Cajon Muñiz

⁴²⁹
9550 *Bryonia grandis*?
Used for food, also as medicine
Natural

Dec 27 Laguna Castellana.

⁴³⁰
9551 *Cyperus* - near side of
Laguna

⁴³¹
9552 *Vernonia* - moist place -

⁴³²
9553 Compositae - ditch

⁴³³
9554 *Pithecolobium prostratum* -
Shore lagoon

⁴³⁴
9555 *Eragrostis* - prostrate -

⁴³⁵
9556 *Solanum* - Shrub 2-4 ft. in

⁴³⁶
9557 Malvaceae - 2-3 ft. - in
moist place - fl. pink

⁴³⁷
9558 Grass - wet place

⁴³⁸
9559 Asclepiadaceae - fls white
in bucket

⁴³⁹
9560 Grass - shady place

⁴⁴⁰
9561 *Cassia* - shrub 3 ft
Shore of lagoon

⁴⁴¹
9562 Grass - in water

⁴⁴²
9563 *Persea* - in "

⁴⁴³
9564 *Sida* - moist place

⁴⁴⁴
9565 *Eriostroma* - Shrub

⁴⁴⁵
9566 *Cyperaceae* - moist place

⁴⁴⁶
9567 Grass - wet place

⁴⁴⁷
9568 *Emilia* - moist place

⁴⁴⁸
9569 *Mimosa* - moist place

Dec 28

Laguna Ariguacaba, Prov.

⁴⁴⁹
9570 *Utricularia* - common in

1-2 ft of water - flowers:

Standard & lip pale yellow, the
face yellow spotted with
fine yellow middle brown.

⁴⁵⁰
9571 *Convolvulaceae* - fls yellow
in water

451

95/12 Nymphaea - deep water
And in shallow water - very

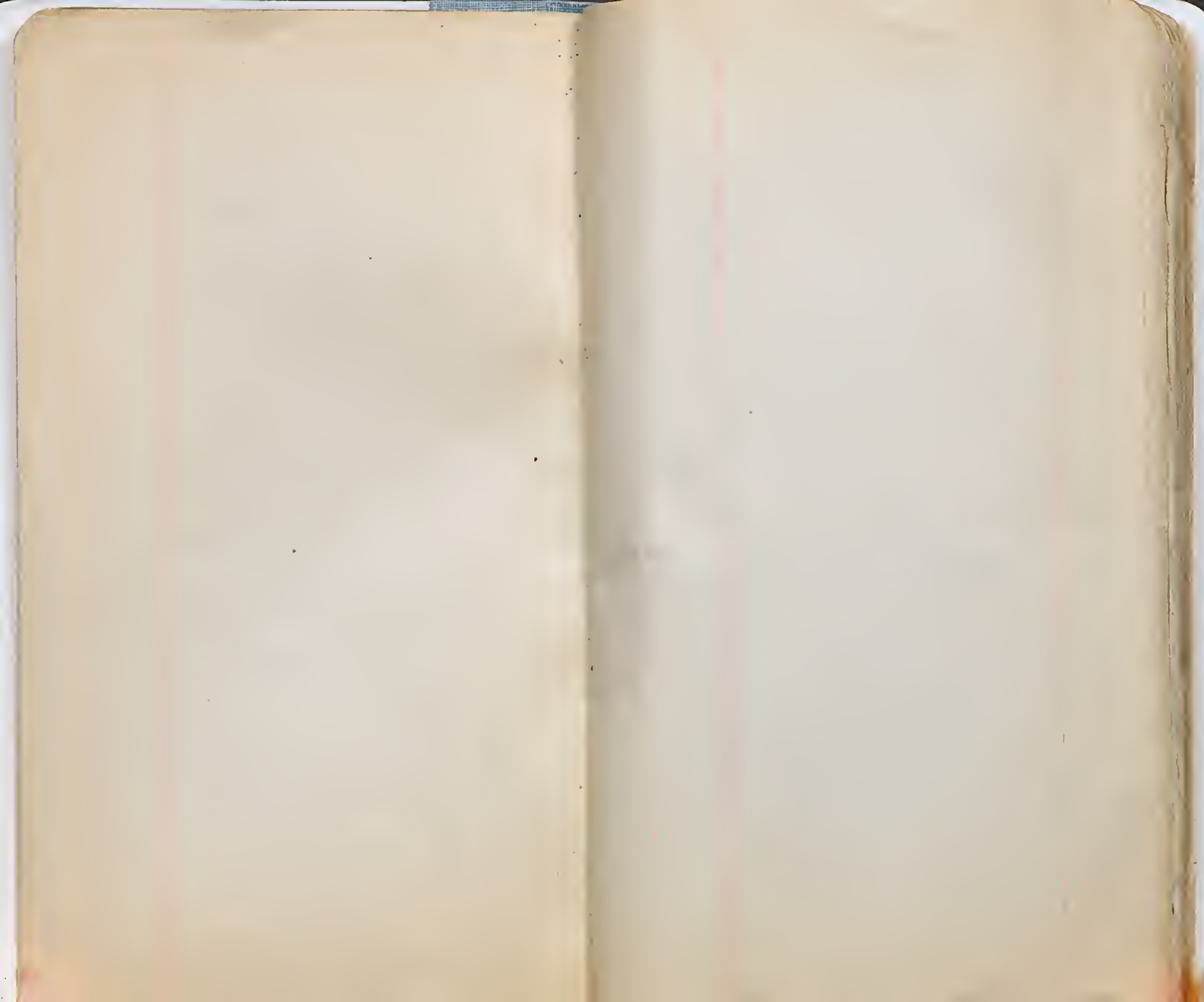
common

452

95/13 Cabomba - in clear water

453

95/14 Proserpaca - in wa





Conservation work performed
1987-1988. NY State
Conservation/Preservation
Discretionary Grant.



