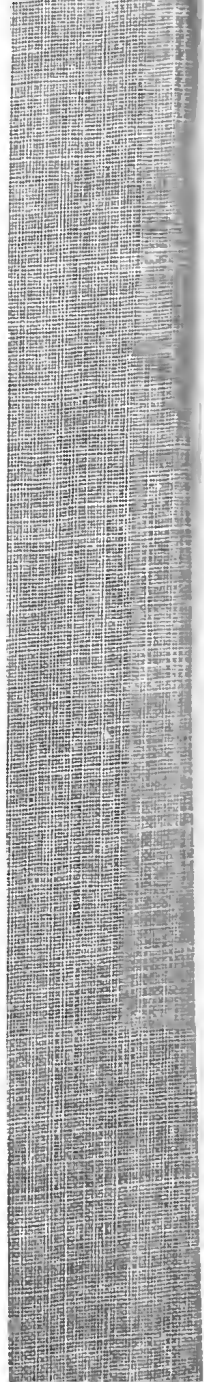


Vol. 144



Cuba

P. Wilson nos. 9122-9134

Jan 8, 1910

Isle of Havana

to Logimar

- 9122
- 9123
- 9124
- 9125
- 9126
- 9127
- 9128
- 9129
- 9130

¹⁰
✓9131

¹¹
✓9132

¹²
✓9133

¹³
✓9134

¹⁴
✓9135

¹⁵
✓9136

¹⁶
✓9137

¹⁷
✓9138

¹⁸
✓9139

¹⁹
✓9140

²⁰
✓9141

²¹
✓142

²²
✓143

²³
✓144

²⁴
✓145

²⁵
✓146

²⁶
✓147

²⁷
✓148

²⁸
✓149

²⁹
✓150

³⁰
✓151

³¹
✓152

[Faint handwritten notes and descriptions, possibly including terms like "Stent", "immature", and "in the"]

[Faint handwritten notes and descriptions, possibly including terms like "Stent", "immature", and "in the"]

³²
9153

³³
9154

Phacelia

Suaeda

Stemodia

Salvia leucantha

Alma

Passiflora

Diplopentia

Ceanothus

December 9, 1970

Guanacaste & vicinity

³⁴
9155 Cissue - Thicket along

³⁵
roadside - vine 3 m.

9156 Vigna - vine 4 m. in

³⁶
thicket

91571 Cyperus
along stream

³⁷
9158

³⁸
9159

³⁹
9160

⁴⁰
9161

⁴¹
9162

⁴²
9163

⁴³
9164

⁴⁴
9165

⁴⁵
9166

⁴⁶
9167

⁴⁷
9168

⁴⁸
9169

⁴⁹
9170

⁵⁰
9171

⁵¹
9172

⁵²
9173

⁵³
9174

⁵⁴
9175

⁵⁵
9176

⁵⁶
9177

in field

in field

in field

in small stream

roadside

in field

Monte La Floria

in field

in field

Shrub 2 m

Shrub 7 m

in field

Shrub 3 m

in field

Tree 10 m

Shrub 1 m

Shrub 3 m - fl.

Shrub 6 m

on cliff

Among rocks - purple

Shrub 5 ft.

9174

Edge

9175

Grass in thicket

9176

Grass

9177

Putucara - Shrub 2-5 m. tall - bark grayish - leaves 1-5-foliate, dark green and lustrous above, paler and dull beneath, compound flowers apparently on separate shrubs - pistillate flowers green - Staminate buds green - leaves alternate

9178

Zanthoxylum - Tree 2 m. leaves dark green, shiny above

9179

Grass - open places in thicket

9180

Compositae - Shrub 7 ft. leaves shiny above - white beneath - fls. old

9181

Jasminum - fls. pale yellow - Shrub 3 ft.

9182

Passiflora - Shrub 3 ft. fls. opposite Corymb

from Punta Grande to Sea coast, etc.

9183

Centrosema - Shrub 10 ft. flowers white - River bank

9184

roadside - fls. purple

9185

Varzea - Shrub 5 ft. roadside flowers pale pink

9186

Lantana - Shrub 3 ft. flowers pale purple

9187

Grass - roadside

9188

Grass - flowers white in open bushes

9189

Varzea - rays yellow - 5 ft

9190

Grass - open bank

9191

Grass - open bank

9192

Tree - 10 m. along river bank

9193

Centrosema - in thicket fls. yellow

9194

Centrosema - roadside

9195 *...*

9196 *...*

9197 *...*

9198 *...*

9199 *...*

...

...

9200 *...*

9201 *...*

9202 *...*

9203 *...*

9207 *...*

9208 *...*

9209 *...*

9210 *...*

9211 *...*

9212 *...*

9213 *...*

9214 *...*

9215 *...*

9216 *...*

9217 *...*

- 9227 ¹³⁶ *...*
 9228 ¹³⁷ *...*
 9229 ¹³⁸ *...*
 9230 ¹³⁹ *...*
 9231 ¹⁴⁰ *...*
 9232 ¹⁴¹ *...*
 9233 ¹⁴² *...*
 9234 ¹⁴³ *...*
 9235 ¹⁴⁴ *...*
 9236 ¹⁴⁵ *...*
 9237 ¹⁴⁶ *...*
 9238 ¹⁴⁷ *...*
 9239 ¹⁴⁸ *...*

- 9240 *...*
 9241 *...*
 9242 *...*
 9243 *...*
 9244 *...*
 9245 *...*
 9246 *...*
 9247 *...*
 9248 *...*
 9249 *...*
 9250 *...*
 9251 *...*
 9252 *...*
 9253 *...*
 9254 *...*
 9255 *...*

- 9256 ¹³⁵ ...
- 9257 ¹³⁵ ...
- 9258 ¹³⁷ ...
- 9259 ¹³⁷ ...
- 9260 ¹³⁹ ...
- 9261 ¹⁴⁰ ...
- 9262 ¹⁴¹ ...
- 9263 ¹⁴² ...
- 9264 ¹⁴³ ...
- 9265 ¹⁴⁴ ...
- 9266 ¹⁴⁵ ...
- 9267 ¹⁴⁶ ...
- 9268 ¹⁴⁷ ...

- 9269 ¹⁴⁷ ...
- 9270 ¹⁴⁷ ...
- 9271 ¹⁵¹ ...
- 9272 ¹⁵¹ ...
- 9273 ¹⁵² ...
- 9274 ¹⁵³ ...
- 9275 ¹⁵⁴ ...
- 9276 ¹⁵⁵ ...
- 9277 ¹⁵⁶ ...
- 9278 ¹⁵⁷ ...
- 9279 ¹⁵⁸ ...
- 9280 ¹⁵⁹ ...
- 9281 ¹⁶⁰ ...
- 9282 ¹⁶¹ ...
- 9283 ¹⁶² ...
- 9284 ¹⁶³ ...
- 9285 ¹⁶⁴ ...
- 9286 ¹⁶⁵ ...

- ¹⁶⁶ 9287 *...*
¹⁶⁷ 9288 *...* for white
¹⁶⁸ 9289 *...*
¹⁶⁹ 9290 *...* bank of
 stream
¹⁷⁰ 9291 *...* left edge
 of stream
¹⁷¹ 9292 *Psychotria* - Shrub 5 ft.
¹⁷² 9293 *Psychotria* - Shrub 5 ft.
 Shrub 3 ft.
¹⁷³ 9294 *...* - Shrub 4 ft.
 Lilliput
¹⁷⁴ 9295 *...*
¹⁷⁵ 9296 *Gongalungaria* - fruit white
 Shrub 4 ft. bank of stream
¹⁷⁶ 9297 *Amaroria* - Along trail
 Open woods
¹⁷⁷ 9298 *Amyris* - Shrub 10 ft. fls
 white
¹⁷⁸ 9299 *Fern* - On tree
¹⁷⁹ 9300 *Erigeron* - on rocks in
 stream bed

- ¹⁸⁰ 9301 *...*
¹⁸¹ 9302 *...* purple in rocks
¹⁸² 9303 *...* - on rocks
¹⁸³ 9304 *...* bank of stream
¹⁸⁴ 9305 *...*
¹⁸⁵ 9306 *...* bank
¹⁸⁶ 9307 *Podalirium* - Shrub 5 ft. fls
 red
¹⁸⁷ 9308 *...* - near stream
¹⁸⁸ 9309 *...* for white bank
¹⁸⁹ 9310 *...* in
¹⁹⁰ 9311 *...* 10 ft. fls white bank
¹⁹¹ 9312 *...* 4 ft. along
 trail in wet soil
¹⁹² 9313 *...* 2 ft. fls red
 in woods

193

93x4

93x5

trail

93x6

along

Dec 16. Trail from Buenaventura
to San Juan de Guacacalla

93x7 Labiales - along trail

93x8 Small Cyperaceae - along trail

93x9 Cyperus - along trail

93x10 Grass - prostrate - along trail

93x11 Steganophyllum - on bank
along trail

93x12 Sida - Edge of trail

93x13 Ecastemma - on rock
in stream93x14 Monarda - large one - fruit
yellow

93x15 Fern - on bank of stream

93x16 Cyperaceae - along trail

93x17 Anemone bank of stream

93x18 Polypodium - bank of stream

205

93x19 Podium - on tree along

Stream

93x20 Fern - on bank of stream

93x21 Passiflora hirsuta

file peruviana - on

93x22 Cyperus - on bank of hill

93x23 Agave - top of hill. leaves - 6
inches - 2 - 2 1/2 ft. long

93x24 Cyperaceae - shrub 3-4 ft.

top of hill

93x25 Solanum - on bank - top of hill

93x26 Cyperus - on bank of stream

side of hill

93x27 Cyperus - 10 ft. - fruit not ripe

side of hill - on bank

93x28 Cyperus - on bank

93x29 Cyperus - shrub 5 ft. x fruit

red

93x30 Cyperus - side of hill

93x31 Tillandsia - on tree

93x32 Euphorbia - see 30x -

side of hill

93x33 Cyperus - on bank

- ²²³
 9345 - *Sage* - *hill*
²²⁴
 9345 - *Ficus* - *hill*
 9346 *Asplenium* - *hill*
fls. white *Shrub*
²²⁶
 9347 *Shrub* - *hillside*
²²⁷
 9348 *Passiflora* - *climbing*
rocks
²²⁸
 9349 *Ficus* - *hill*
²²⁹
 9350 *Euphorbia* - *20 ft.*
²³⁰
 9351 *Shrub* - *hill*
²³¹
 9352 *Gymnanthes* - *20 ft.*
side of hill
²³²
 9353 *Sida* - *in tree*
side of hill
²³³
 9354 *Ficus* - *bank of stream*
²³⁴
 9355 - *Adiantum* - *bank*
Stream
²³⁵
 9356 *Asclepias* *nuda* - *along*
²³⁶
 9357 *Mitrasacme* - " "
²³⁷
 9358 *Conoclinium* - *8 ft.* " "
²³⁸
 9359 *Taraxacum* - *shrub* - *2 ft.* "

- ²³⁹
 9360 *Riverbank* *Trinidad* *Guinea*
Volcan *to* *hill* *side*
Dec. 17
²⁴⁰
 9361 *Sida* - *rock* *bank*
²⁴¹
 9362 *Passiflora* - *climbing* *20 ft.*
bank
²⁴²
 9363 *Ficus* - *rock* *bank*
²⁴³
 9364 *Euphorbia* - " "
²⁴⁴
 9365 *Shrub* " "
²⁴⁵
 9366 *Shrub* - *5 ft.* *hill*
dwarf
²⁴⁶
 9367 *Passiflora* - *climbing* *20 ft.*
²⁴⁷
 9368 *Shrub* - *rock* *bank*
²⁴⁸
 9369 *Shrub* - *rock* *bank*
²⁴⁹
 9370 *Shrub* - *rock* *bank*
along *rock* *bank* X
²⁵⁰
 9371 *Shrub* - *rock* *bank*
²⁵¹
 9372 *Shrub* - " "
²⁵²
 9373 *Sida* - *rock* *bank*
²⁵³
 9374 *Shrub* - *rock* *bank*
small *leaved* *shrub* *to* *3* *feet*
white

254
9375
9376

Small
9377

Along
9378

rocks in
9379

dry bank
9380

dry bank
9381

dry bank
9382

dry bank
9383

16 ft
9384

back from
9385

back in

Bu
18

265
9386

Stream
9387

9388

9389

9390

9391

9392

9393

9394

9395

9396

9397

275
93V9

279
94V10

280
94V11

282
94V12

283
94V13

284
94V14

285
94V15

286
94V16

287
94V17

288
94V18

289
94V19

94V20

94V21

290
94V22

292
94V23

293
94V24

294
94V25

295
94V26

296
94V27

297
94V28

298
94V29

299
94V30

300
94V31

301
94V32

94V33

94V34

- 302
9423
303
9424
9425
10' ...
Trunk ...
dull ...
305
9426 Cornus ... - 3 ft. ...
9427 Rubus ... fls. yellow
yellow. ... 6 ft ...
'dark ...
307
9428 Lanthanum ...
shrub ...
rocky ...
308
9429 ... plant 2-3 ft.
tall ...
309
9430 ...
on hillside, ...
310
9431 Cereus - stem pale green
young ...
climbing ...
311
9432 ...
312
9433 ...
along stream, shaded place.

- 313
9434
314
9435 ...
315
9436 ...
316
9437 ...
317
9438 ...
318
9439 ...
320
9440 ...
along trail
320
9441 ...
321
9442 ...
322
9443 ...
Ba ... + variety
323
9444 ...
324
9445 ...
325
9446 ...

316
9447 *Passiflora* *vitifolia*
327
9448 *Passiflora* *vitifolia*
9449 *Euphorbia* *virginiana*
328
9450 *Euphorbia* *virginiana*
329
9451 *Euphorbia* *virginiana*

330
9451 *Cestrum* - Shrub 7ft. fl. white
open places

331
9452 *Sesuvium* - on shrubs in
thicket & fruit red

332
9453 *Acacia Farnesiana* - open
places - Shrub 5ft.

333
9454 *Jacquinia* - Shrub 2ft.
fruit red - Coastal thicket

334
9455 *Varronia* - Coastal thicket

335
9456 *Verbena* - open places
along trail - 4ft.

336
9457 *Euphorbia* - prostrate
open places

337
9458 *Schreptia* - fl. red
Shrub 8ft. thicket

338
9459 *Zapalana* - fl. white - shaded
places in thicket

339
9460 *Passiflora* *vitifolia* - Shrub 6ft.
fl. pale yellow - open places -
thicket

340
9461 *Passiflora* *vitifolia* - Shrub 6ft.
fl. pale yellow - thicket

341
9462 *Passiflora* *vitifolia* - Shrub 15ft.

342
9463 *Passiflora* *vitifolia* - Tree
12ft. in fruit in thicket

343
9464 *Passiflora* *vitifolia* - Shrub 8ft.
thicket

344
9465 *Passiflora* *vitifolia* - Shrub 5ft.
edge of thicket

345
9466 *Passiflora* *vitifolia* - edge of thicket

346
9467 *Passiflora* *vitifolia* - " " "

347
9468 *Passiflora* *vitifolia* - open places in thicket

348
9469 *Passiflora* *vitifolia* - open places

349
9470 *Passiflora* *vitifolia* - open places

350
9471 *Passiflora* *vitifolia* - open places

351
9472 *Passiflora* *vitifolia* - Thicket
Shrub 8ft.

352
9473 *Papilionaceae* - 2ft.
open places

- 353
9484 Malvaceae - 3 ft. along trail in thicket
- 354
9485 Euphorbia - open place, 2 ft
- 355
9486 Solanum - 4 ft. - open place
- 356
9487 Amyris - Shrub 8 ft. Thicket
- 357
9488 Cassia - hill near Argemone Park
- 358
9489 Compositae - bank near
- 359
9490 Lantana - Shrub 2 ft. open place near river
- 360
9491 Compositae - open
- 361
9492 Lantana
- Dec. 23 (Common)
- 362
9493 Compositae
- 363
9494 Eupatorium - Thicket
- 364
9495 Ficus - 4 ft. - along 5-wooden road
- 365
9496

- 366
9497 Cyperus - in pockets of rock-shaded place
- 367
9498 Grass - Shaded place
- 368
9499 Zanthoxylum jagua - very common in exposed thicket - Shrub 6 ft.
- 369
9490. Physalis - Shady place in thick thicket
- 370
9491 Compositae - fls pale purple - exposed sand
- 371
9492 Heliconia - Shrub 6 ft. - Thicket
- 372
9493 Solanum - Shrub 3 ft. "
- 373
9494 Cassia - open place in Thicket
- 374
9495 Malvaceae - Shrub 3 ft. - edge of Thicket
- 375
9496 Cyperus - Shaded place in Thicket
- 376
9497 Grass - open place
- 377
9498 Thunbergia - 7 ft. - ground white - Thicket
- 378
9499 Thunbergia - prostrate - open place
- 379
9490
- 380
9491 Shrub 8 ft. - Thicket

- 381
9504 Grass - open places
via Incalet
- 382
9505 Capparis - shrub 7ft in
dense thicket
- 383
9504 *Passiflora* - shrub
with large green
leaves
- 384
9505 *Passiflora* - shrub
rocks
- 385
9506 *Passiflora* - shrub
open places
- 386
9507 *Amaranthus crassipes*
erect shrub
- 387
9508 *Ptychopus* - open places
- 388
9509 *Evolvulus* - prostrate open
places
- 389
9500 *Leucaena* - tree
open coast
- 390
9511 *Passiflora* - shrub
crandy
- 391
9512 *Trumbellia* - shrub
open places
- 392
9513 *Passiflora* - shrub
open places

- Mono Castle to Cojimar Dec. 25
- 393
9514 *Acaou* - in dense thicket
filaments cream color
- 394
9515 *Boronia* - shrub 3 ft in
thicket
- 395
9516 *Physalis* - fls purplish and
green - subtropical - roadside
ditch - branches horizontal
- 396
9517 *Conocladia* - very common
open places
- 397
9518 *Guiera* - tree 20 ft.
thicket
- 398
9519 *Passiflora* - shrub 7ft - edge
of thicket
- 399
9520 *Acacia* - vine
3 m. - in thicket
- 400
9521 *Sporaea* - climbing vine
shrubs - fls yellow
- 401
9522 *Passiflora* - roadside
open places
- 402
9523 *Passiflora* - roadside
open places
- 403
9524 *Passiflora* - roadside
open places
- 404
9525 *Passiflora* - roadside
open places

Coastal Thicket between
Rio Cozimar and Playa de
Bocuaran Dec 26

- 464
9525 Euphorbiaceae Shrub 6
lt. white wood
- 465
9526 *Baccharis* Shrub
4 ft. tall
- 466
9527 *Baccharis* Shrub 6 ft. tall
white wood
- 467
9528 *Baccharis* - Sandy stream
- 468
9529 *Physalis* " "
- 469
9530 " " "
- 470
9531 *Crucifera* " "
- 471
9532 *Euphorbia* " "
- 472
9533 *Yucca* (small) 10 ft. tall
Shrub
- 473
9534 *Baccharis* - Sandy stream
- 474
9535 *Baccharis* - Sandy stream
- 475
9536 *Baccharis* - Sandy stream
- 12 ft X *Baccharis* - Sandy stream
- 476
9537 *Baccharis* - Sandy stream

These

- 417
9538 *Baccharis* - Sandy stream
in thicket
- 418
9539 *Baccharis* - Sandy stream
in thicket
- 419
9540 *Baccharis* - Sandy stream
in thicket
- 420
9541 *Baccharis* - Sandy stream
in thicket
- 421
9542 *Baccharis* - Sandy stream
in thicket
- 422
9543 *Baccharis* - Sandy stream
in thicket
- 423
9544 *Baccharis* - Sandy stream
in thicket
- 424
9545 *Baccharis* - Sandy stream
in thicket
- 425
9546 *Baccharis* - Sandy stream
in thicket
- 426
9547 *Baccharis* - Sandy stream
in thicket
- 427
9548 *Baccharis* - Sandy stream
in thicket
- 428
9549 *Baccharis* - Sandy stream
in thicket
- 429
9550 *Baccharis* - Sandy stream
in thicket

⁴²⁵
9549 Rutaceae - Shrub up to
15 ft. - petals greenish - Stamens
5, filaments yellow, anthers
yellow, ovaries globose
dark green and lustrous
Alone, pale fruit
Along

⁴²⁹
9550 *... ..*
Used for
Natural

Dec 27 Laguna Castellana.
⁴³⁰
9551 Cyperus - near
Laguna

⁴³¹
9552 *Veronica* - moist

⁴³²
9553 *Convolvulus* - ditto

⁴³³
9554 *... ..*

⁴³⁴
9555 *... ..*

⁴³⁵
9556 *... ..*

⁴³⁶
9557 *... ..*

⁴³⁷
9558 *... ..*

⁴³¹
9558 Grass - wet place

⁴³²
9559 *... ..* - fls white

⁴³³
9560 Grass - Shady place

⁴³⁴
9561 *Cassia* - Shrub 3 ft

⁴³⁵
9562 *... ..* - in water

⁴³⁶
9563 *... ..* - in "

⁴³⁷
9564 *Sida* - moist place

⁴³⁸
9565 *... ..*

⁴³⁹
9566 *... ..*

⁴⁴⁰
9567 *... ..* - wet place

⁴⁴¹
9568 *... ..* - moist place

⁴⁴²
9569 *... ..* - moist place

Dec 28

Laguna Ariguana, Prov.

⁴⁴³
9570 *Utricularia* - common in

1 - 2 ft of water - flowers:

wind-swept

7V fls yellow

451

951/2 Nymphaea - deep water

And in shallow water - veg

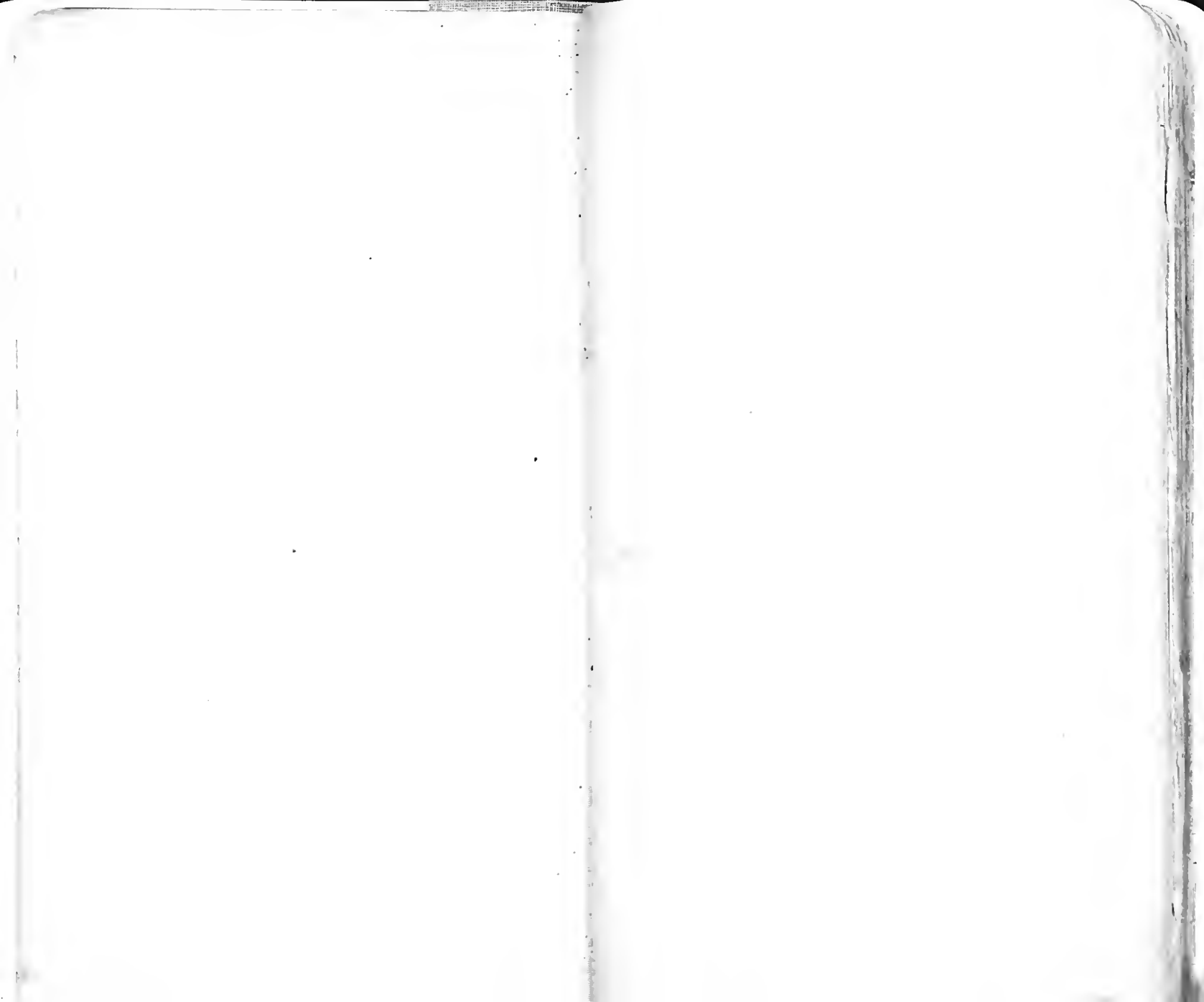
Common

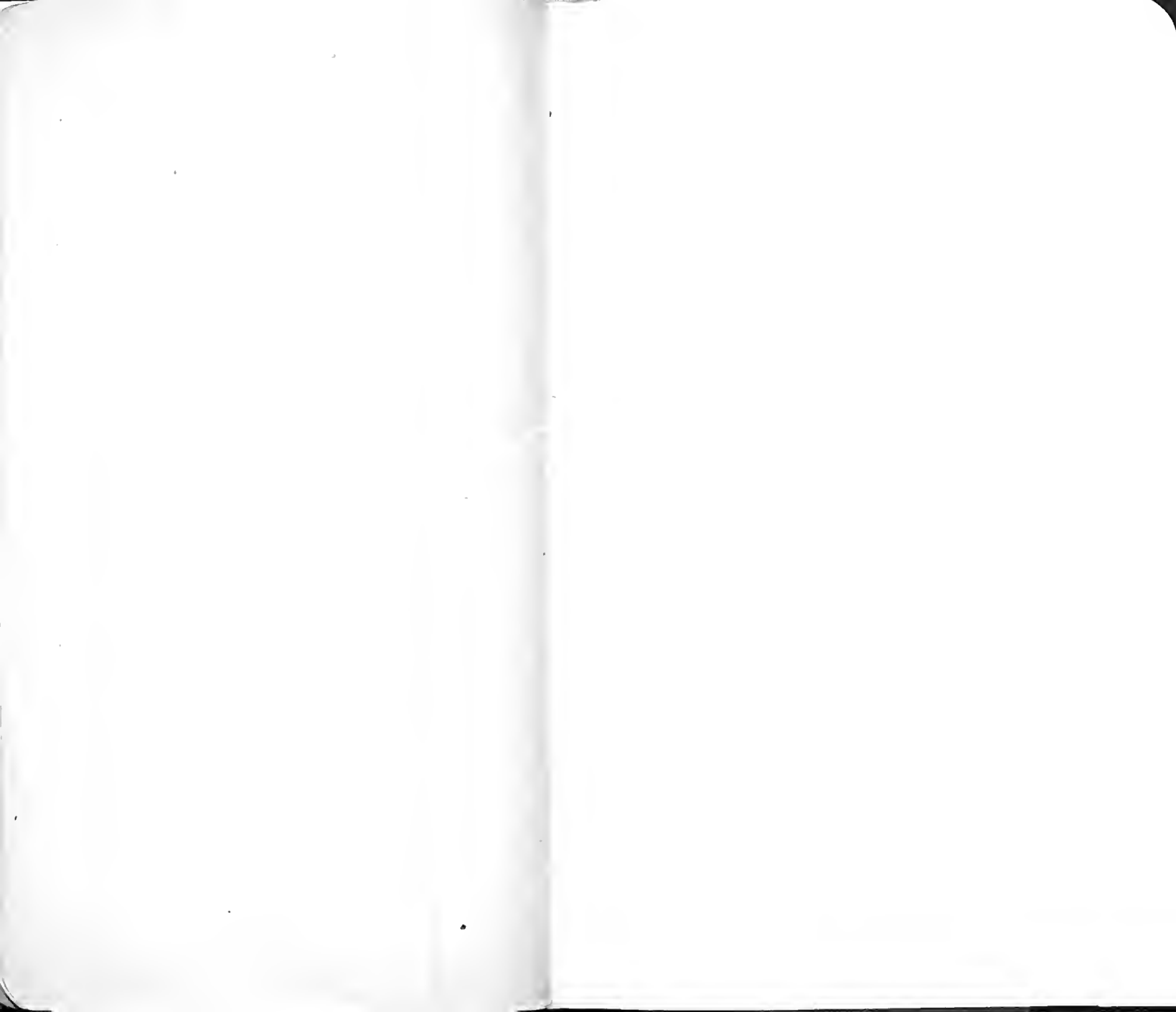
452

951/3 Cabomba - in clear water

453

951/4 Proserpaca - in water





Conservation work performed
1987-1988. NY State
Conservation/Preservation
Discretionary Grant.

