



T. B. Smith

COMSTOCK MEMORIAL
LIBRARY

of
ENTOMOLOGY



Gift from the estate of

DR. JOHN G. FRANCLEMONT
Professor of Entomology

E. W. GLASSEY, F.R.E.S.
ENTOMOLOGICAL BOOKSELLER,
91, BENTON LANE,
FELTHAM, MIDDLESEX.

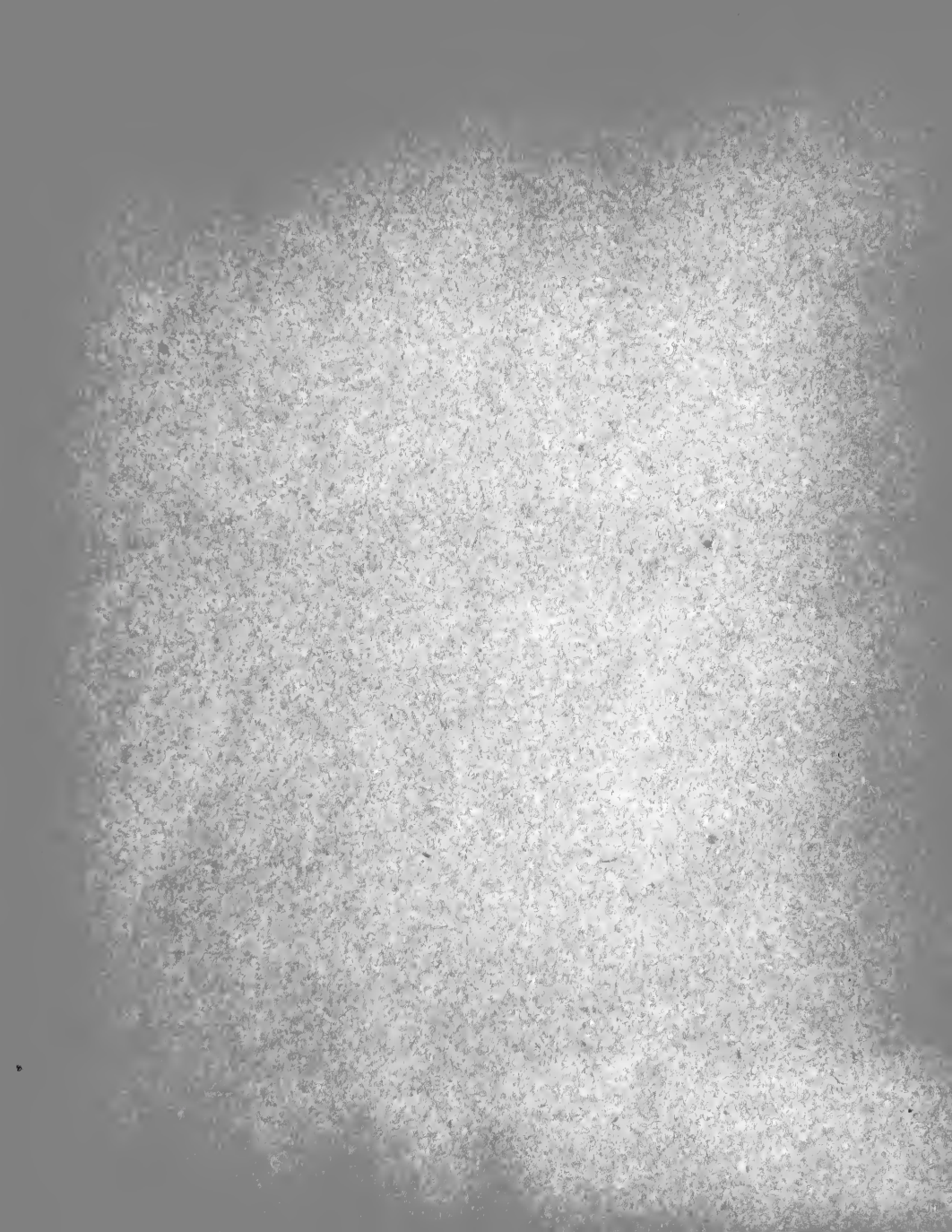
28-58 (1920)

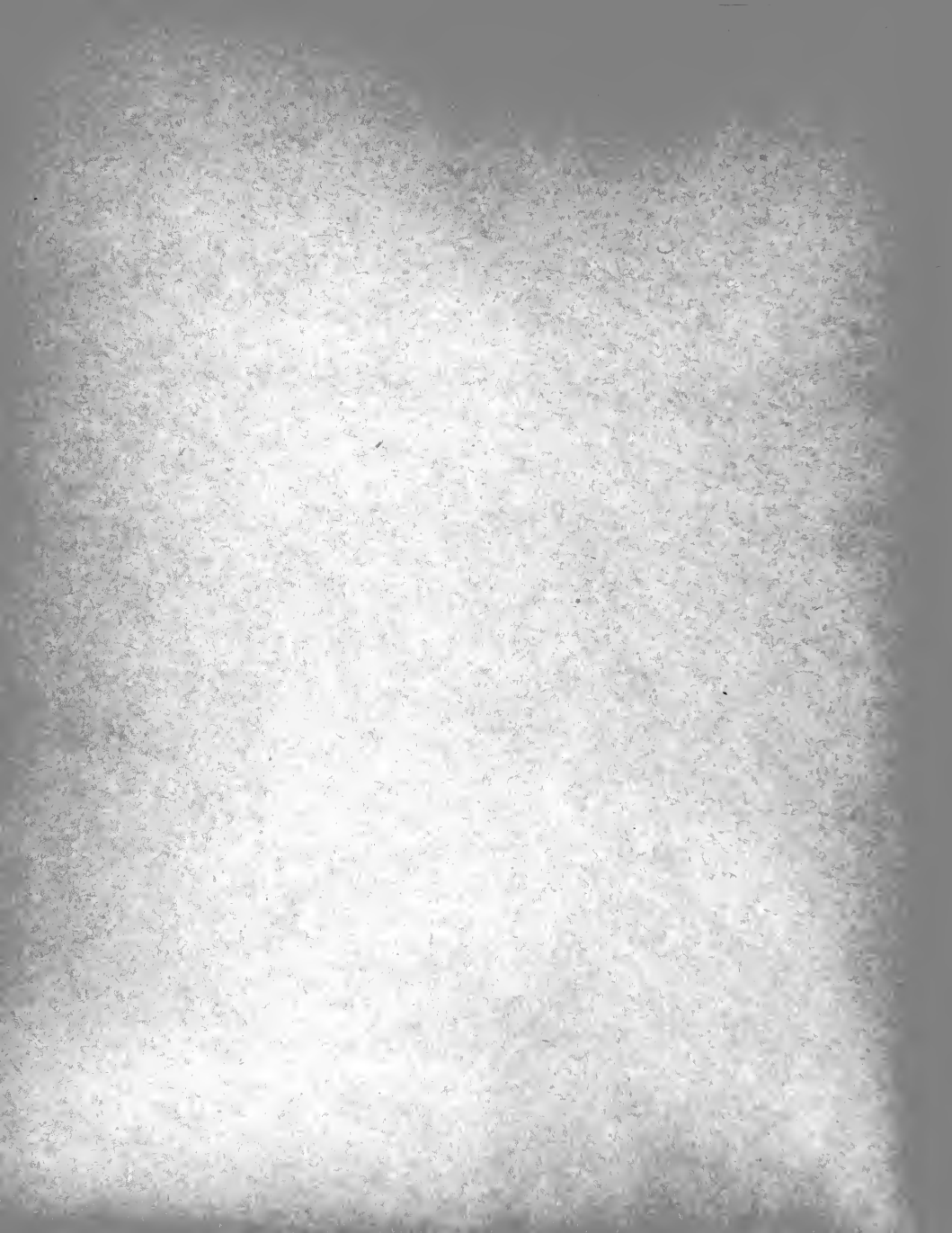
28-59 (1921-41)

The Union of Amer (1912) ...
to ... of ... was ... before the ...

MA
30 X 24

ENT
RAPE
QL
543
H88
H81
1796









N.B. This is the same as the one in the last volume.

Lepidoptera, II.

Sphinges, I.

Papilionoides, A.



1. *Natices*. 2. 3. *Globularia*. 4. *Prani*. 5. *Infaustra*.

		1.		
D.	<i>Natices</i> . 115.	<i>Globularia</i> .	<i>Prani</i> d.	<i>Infaustra</i> d.
E.	Tab. 18. 12. a. b.	40. 160. 52.	45. 129. 2 d. Prani.	36. 14. 11. <i>Infaustra</i> .
	<i>Natices</i> .	<i>Globularia</i> .	47. 6. 11. larva.	

Lepidoptera, II.

Sphinges, I.

Papilionoides, B.



6.



7.



8.



9.



10.



11.

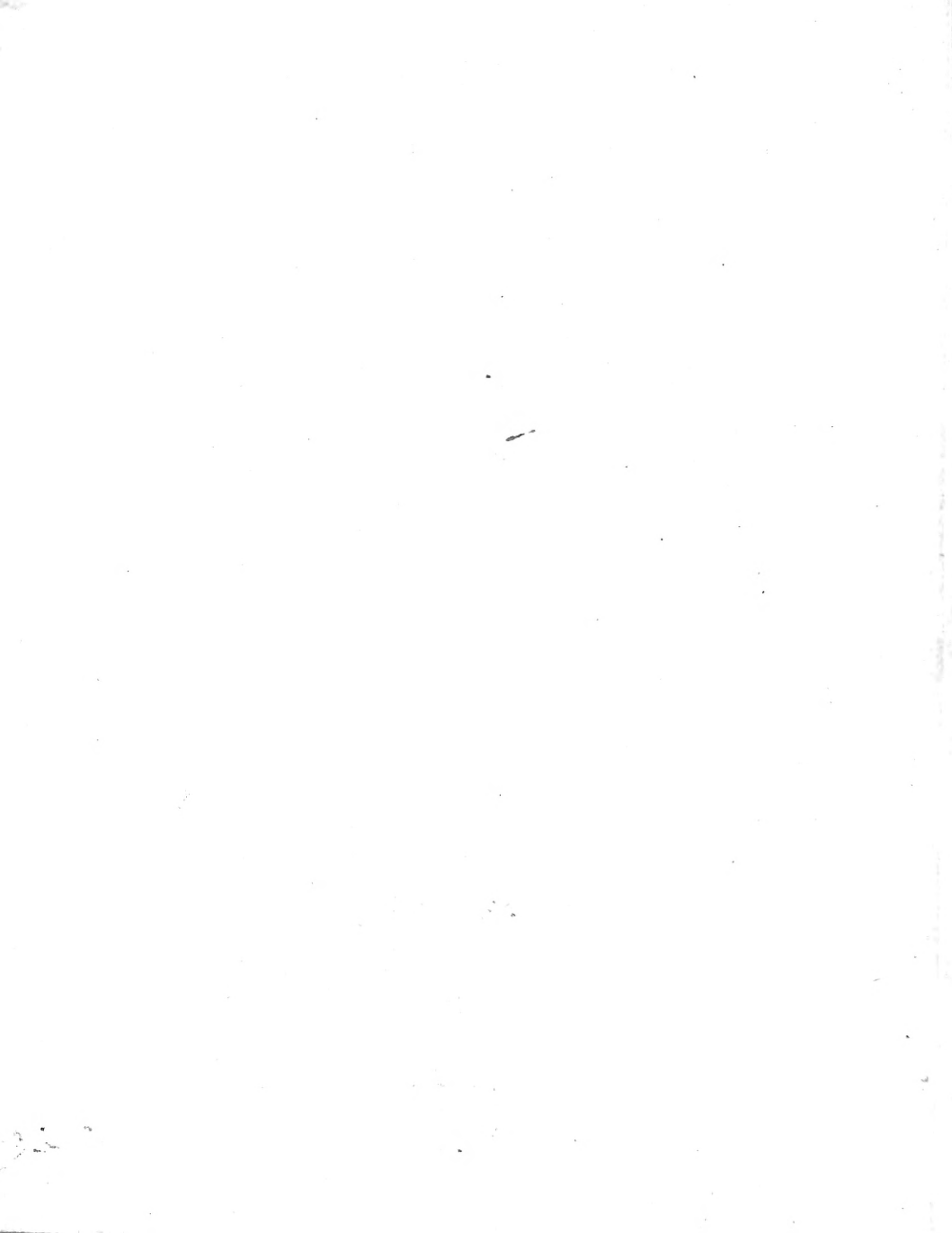


12.

6. *Scabivora*. 7. *Lonicera*. 8. *Minos*. 9. *Sarpedon*. 10. *Bellis*. 11. *Vicia*. 12. *Ceclanus*.
Briza

2.

O.	<i>Briza</i> ♀ 2/85.	<i>onicera</i> 2. 1/10. 2	<i>Minos</i> ♀ 24/1. ab.	<i>Sarpedon</i> 5.	<i>Belilla</i> 2.	<i>Belilla</i> 5.	(1/9 96. 92) <i>Ceclanus</i> ♂. 1/101 ♀
E.		24/1. ab. <i>onicera</i> 27. 1/4-14.	24/1. a. b. <i>Belilla</i> 34/3. <i>Polypalca</i> 47. 1/10. 2. 40. 3-6	40/1. b. <i>Trinacelo</i> 10.		35-1. <i>Belilla</i>	41. 1/1. 2. <i>Ceclanus</i> ♂.



Lépidoptera, II.

Sphinges, I.

Pupilionoides, B.



13.



12.



15.



16.



17.



18.



19.

13. *Coronilla*, 14. *Flavicola*, 15, 19. *Transalpina*, 16. *Dyratidiformis*, 17. *Chrysanthemi*, 18. *Acacus*.

Lepidoptera . II .

Sphinxes , I .

Papilionoidea , B .



20.



21.



22.



23.



24.



25.



26.

20. *Melicospiza*, 21. *Claron*, 22. *Coccos*, 23. *Rhadamanthus*, 24. *Lavandula*, 25. *Spica*, 26. *Cythis*.

2.

O.	<i>Melicospiza</i> 87.	<i>Claron</i> abundant del. Kermel	<i>Peneola</i> nig. 27. 75. 76.	<i>Rhadamanthus</i> 87.	<i>Spica</i> des 8.	<i>Lavandula</i> 87.	<i>Papilio pendula</i> Var. = <i>dula</i> 17. 31. 8. 77. 78.
B.	<i>transalpina</i> 187. 8.	<i>transalpina</i> nig. 87. 8.	<i>Peneola</i> 25. 8.	<i>Rhadamanthus</i> 40. 1. 2.			<i>Papilio pendula</i> 36. 18. 63. 187. 8. 187. 8. 187. 8.



Lepidoptera, II.

Sphinxus, I.

Papilionoides, B.



27.



28.



29.



30.



31.



32.



33.

27. *Fausia*. 28. *Onobrychis*. 29. *Nedysari*. 30. *Phoga*. 31. *Filipendula*. 32. *Lös*. 33. *Falcata*.

5.

	<i>Fausia</i> cf. 1820.	<i>Onobrychis</i>	<i>Onobrychis</i> cf. 1820. 714, 88, 36. 37, 38.	<i>Phoga</i> cf. 1820. 199, 100.	<i>Filipendula</i> cf. 26. var. 17 var.	<i>Filipendula</i> cf. 1820. 17 var. 18/20.	<i>Ephialtes</i> var. A. cf. 1820. 17 var. 18/20.
O.							
E.	18/1. a. b.	17, 4-	a. b.	47, 3	18/20.	18/20.	18/20.
	<i>Fausia</i> .	10, 1.	3, 4.	<i>Phogell</i>	<i>Filipendula</i>	<i>Filipendula</i>	<i>Filipendula</i>
		48, 2.	8.				
		44, 3					
		46, 1.		X 148.			



Lepidoptera, II.

Sphinges, I.

Papilionoides, B.



32.



35.



36.



37.



38.



40.



39.

34. 35. *Laca*. 36. *Nidysari*. 37. *Astragali*. 38. *Melloti*. 39. 40. *Symphoris*.

6.

O.	<i>Laca</i> 340. 352.	<i>Onobri chis</i> 37. 38.	<i>Onobri chis</i>	<i>Onobri chis</i>	<i>Schneemoni</i> 39 409. 2/1120.
8	<i>Laca</i> 461.	17. 4 ab. 16 1. 42 2-34. 44. 7-8. 46. 1.			

Lepidoptera, II.

Sphinges, II.

Hymenopteroides, B.



41.



42.



43.



44.



45.



46.



47.

41. *Phalaenaformis*. 42. *Typhisformis*. 43. *Cyathiformis*. 44. *Agathiformis*. 45. *Culiciformis*. 46. *Tusif*. 47. *Comosif*.

7.

O.	<i>Phalaenaformis</i>	<i>Typhisformis</i>	<i>Cyathiformis</i>	<i>Agathiformis</i>	<i>Culiciformis</i>	<i>Tusif</i>	<i>Comosif</i>
E	37. 7.	31. 3. 4. 6.	19. 1. 2. 3. 4.	21. 2. 6.	38. 4. 9.		
	<i>Typhis</i>	<i>Cyathif</i>	<i>Agathif</i>	<i>Culicif</i>	<i>Tusif</i>		

11.11.11

Lepidoptera, II.

Sphinges, II.

Hymenopteroides, B.



48.



49.



50.



51.



52.



53.



54.

48. Apiförmis. 49. Typuliformis. 50. Sphingiformis. 51. Crabronifö. 52. Tenthredinifö. 53. Chrysalidifö. 54. Tenebrionifö.

8.

C	Wickelform Feb/188.	Tropulidif f.	Nomadafö f.	Apiförmis f. +	Tendrodienfö f.	Chrysalidifö f.	Apiförmis f. +
B		18. f. Tropulidif	31. 12. Tenebrionifö.	14. 2. Apiförmis 29. 2. f. } 36. 2. 31. f. }	32. 1. 2. Chrysalidifö. } 37. 6. Tenebrionifö.	30. 1. Chrysalidifö	29. 1. 2. Tenebrionifö.
				Feb/54.			



Lepidoptera, II.

Sphinxes, III.

Legitima, A.



55.



56.



58.



57.

55. Fuciformis. 56. Bombyliformis. 57. Stellatarum. 58. Oenothera.

9.

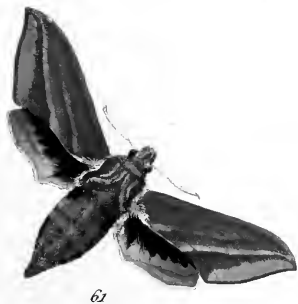
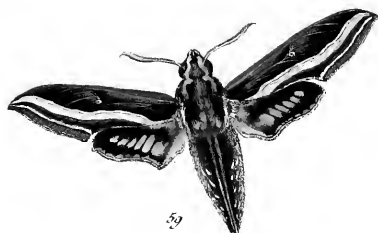
O.	<i>Bombilix</i> ♀.	<i>fuciformis</i> ♀.	<i>stellatarum</i> ♀.	<i>Oenothera</i> ♀.
O	14. 1. a. b. c. <i>fuciformis</i> .	33. 2. <i>Bombilix</i> .	18. 1. 23. <i>Hella</i> 27. 5. <i>G. tarant.</i> 36. 2. <i>G. tarant.</i>	20. 26. 2. 3. <i>Oenothera</i> .



Lepidoptera, II.

Sphinges, III.

Legitimæ, B.



59. *Celerio*.

60. *Porcellus*.
10.

61. *Elpenor*.

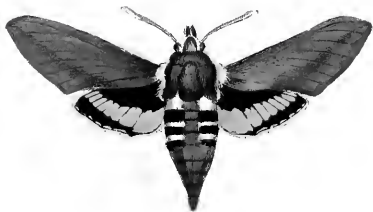
O.	<i>Celerio</i> ♂. Deleph. 146.	<i>Porcellus</i> ♀. Deleph. 25.	<i>Elpenor</i> ♀. Deleph. 25.
S.	7. 1. 2. 3. <i>Celerio</i> . 27. 1. 28. 1.	10. 1. 3. <i>Porcellus</i> .	9. 1. 4. <i>Elpenor</i> . 27. 16.



Lepidoptera. II.

Sphinges, III.

Legitimæ, B.



62



63

62. *Vesperilio*.

63. *Neris*.

II.

O. *Vesperilio* et
def. 103. 104.

B. 22. 4. *Vesperilio*.

Neris ♀.
Ducoph. 25.

27. 1. 2. *Neris*.

Lepidoptera, II.

Sphingidae, III.

Legitimae, B.



64.



65.



66.

64. Galii.

65. Luvornica.

66. Euphorbiae.

12.

♂
♀

Galii ♂

♀. Pallid.

denticata St.
Sf. 1123.

7. 4. Luvornica.
46. 2. 7.

Euphorbiae ♂ ♀.
Sf. 139, 140.

11. 1. - 4. Euphorbiae

Lepidoptera, II.

Sphinges, III.

Legitimae, C.



67



68

67. *Pinarctia*.

68. *Atropos*.

23.

O. *Pinarctia* f.

Atropos f.

O. 18. 1. 2. 3. *Pinarctia*.
26. 7.

7. 1. 2. 3. *Atropos*.

Lepidoptera, II.

Sphinges, III.

Legitimae, C.



69



70

69. Ligustris.

70. Convolvuli.

14

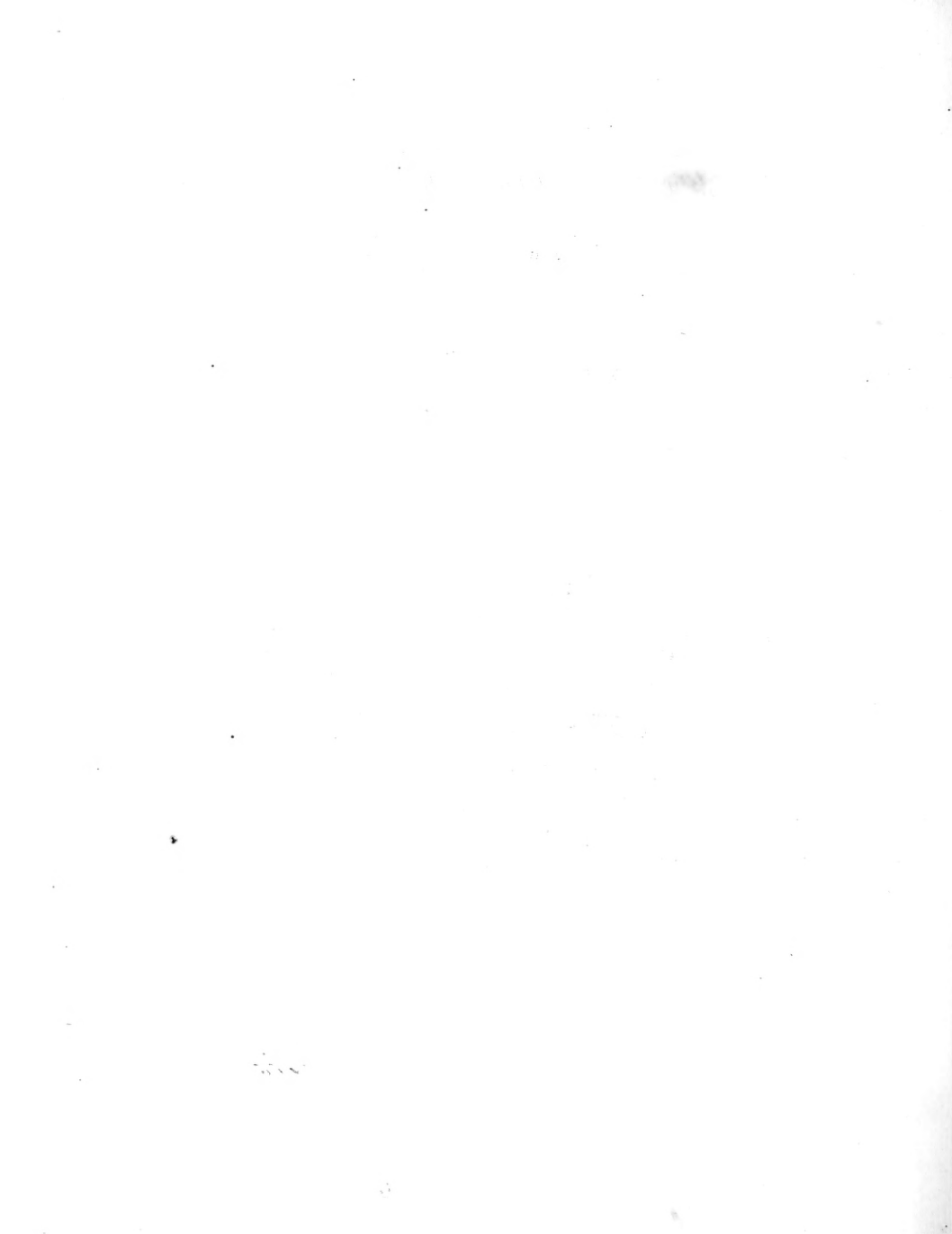
O. Ligustris ♀.

17143

Convolvuli ♂.

E. G. 1. & 3. Ligustris,
42. 1. Pierce!

5. 1. 2. 3. Convolvuli.



Lepidoptera, II.

Sphinges, III.

Leyitima, D.



71



73



72



74

71. Quercus.

72. Filitia.

73. Salicis.

74. Populi.

15.

O.

Quercus ♀
Lf-118.

Filitia ♀.

Ocellata ♀.

Populi ♀.

C.

19. Quercus
26.

3. 15. Filitia.
22. 3.
41. 5.

1. Ocellata.

2.
22. 2. Populi.
36.



Lepidoptera, II.

Sphinxus, I. & II.

Papilionoid. & Nym. B.



75.



76.



77.



78.

75. 76. *Pucedani*.

77.

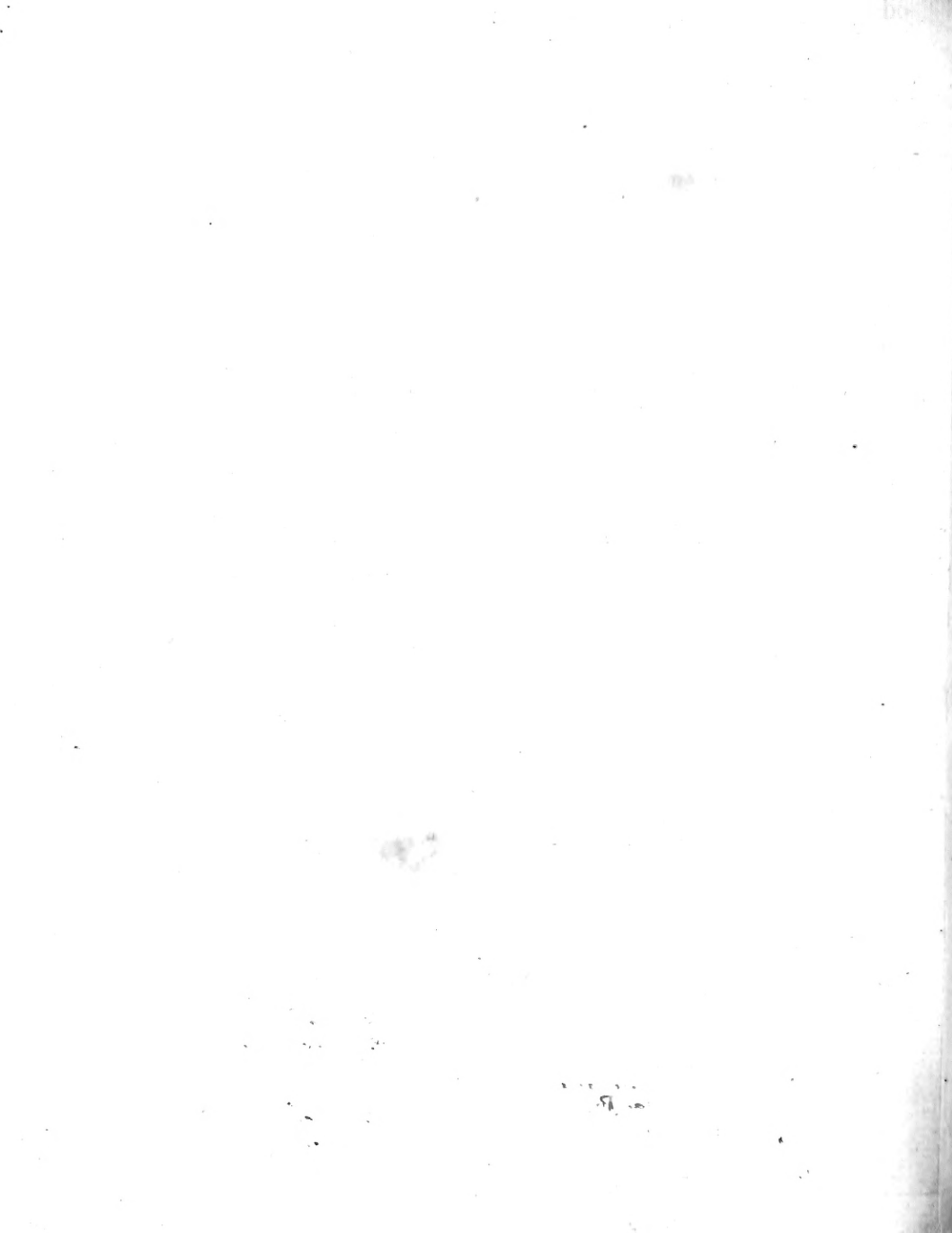
77. 78. *Sphociformis*.

O. *Pucedani*.
75 f. 76 g. et 78 g. *Acacis*.

E. 25 f. *Pucedani*.

Sphociformis. 77 f. 78 g.

30. s. *Sphociformis*.



Lepidoptera, II.

Sphinges, I. & II.

Papilionod. B. &c.



79.



80.



81.



82.



83.



84.

79. Trifoli. 80. Cynara. 81. Pseudani. 82. Lili. 83. Hippocrepis. 84. Schizanthiformis.

				17.		
O.	Melipotis 2	Cynara	Pseudani var B.	Melipotis 5.	Hippocrepis 2/38. 105.	f. ? pag 149.
E.		37/2.24. Cynara 4.		25/3. Melipotis 100. 1	38/1. 101	
		43/1. 11. 1. 1. 1.		139/1-8. Melipotis		

Lepidoptera, II.

Sphinxes, I. & III.

Papilionoides, B. &c.



85.



86.



87.



88.

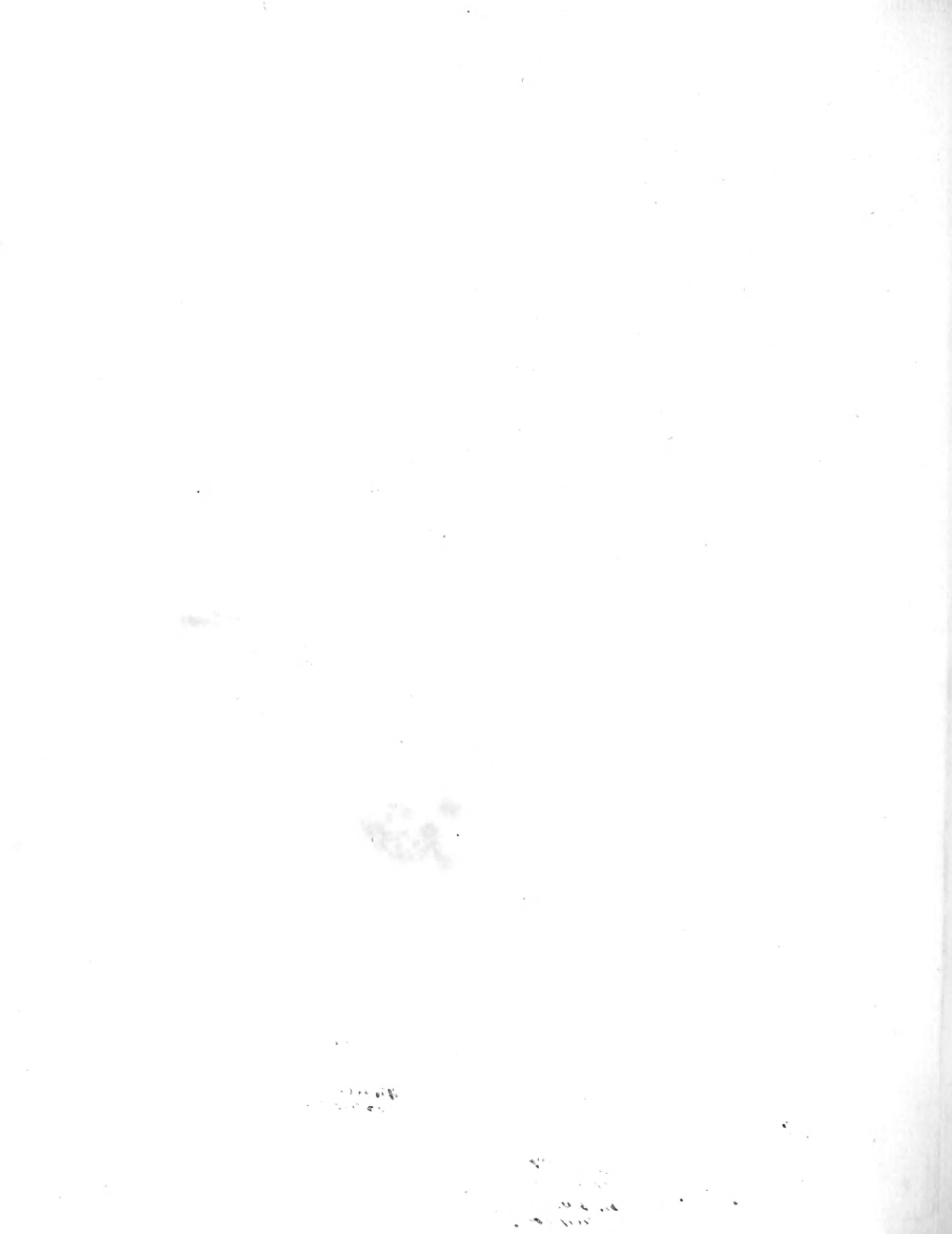


89.

85. *Briza*. 86. *Scabiosa*. 87. *Cyathus*. 88. *Dytkia*. 89. *Sesia*.

18.

O.	<i>Briza</i> f. <i>fig. 6.</i>	<i>Scabiosa</i> f.	<i>Cyathus</i> f.	<i>Plido</i> f.	<i>Croatia</i> , f. <i>Marog</i> : f. 126.
E.					44. 2. <i>Croatia</i> .



Lepidoptera, II.

Phryganeae, II.

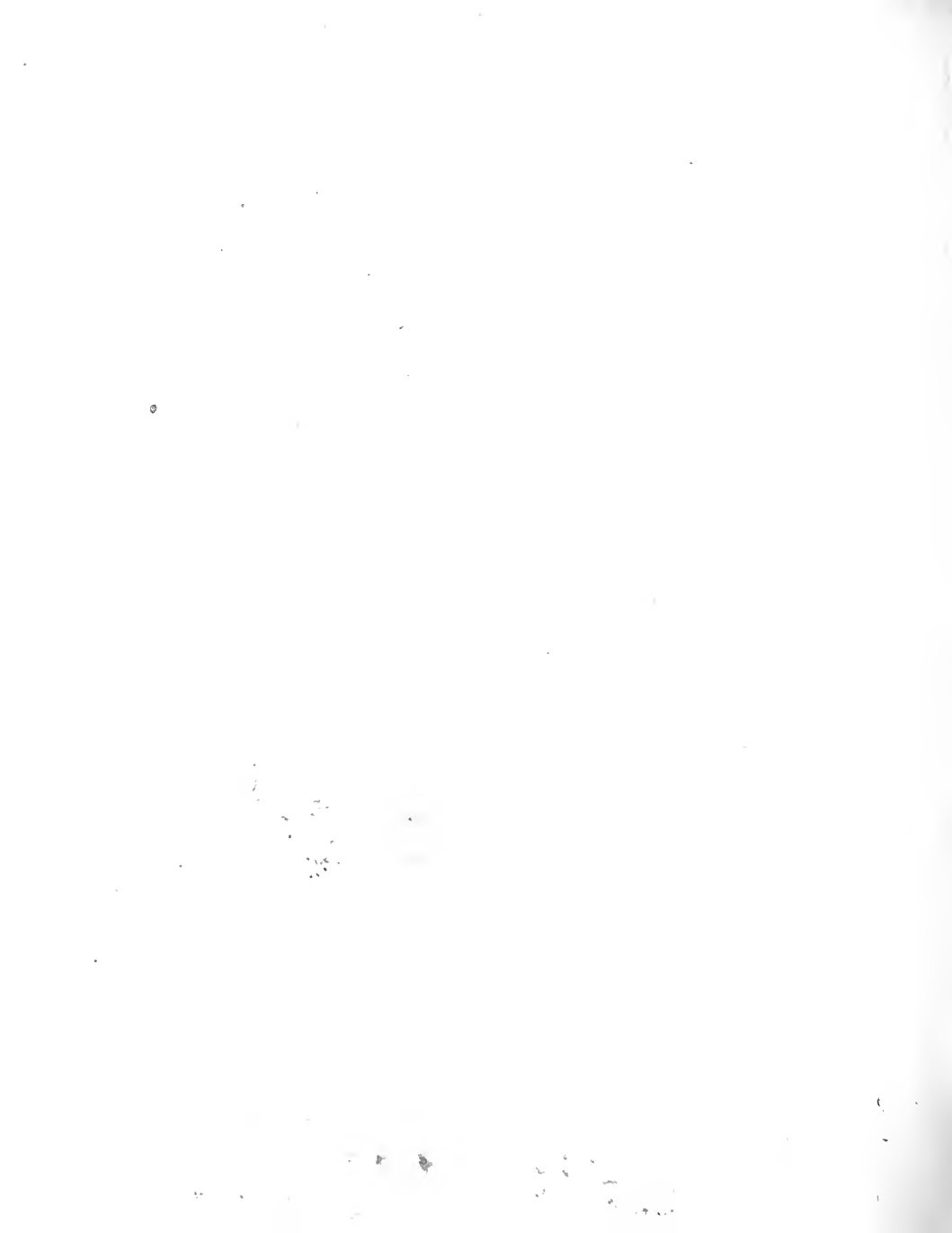
Hymenopteroidea, B.



90. *Nemadiformis*. 91. *Culiciformis*. 92. *Masceformis*. 93. *Chalciformis*. 94. *Empyiformis*. 95. *Cynipiformis*.

	<i>Formicary</i> f.	<i>Mutillary</i> st. 46.	<i>Masce</i> ?	<i>Prospity</i> f.	<i>Masce</i> ? <i>Formicary</i> ?	<i>Cynipiformis</i> f. L/489.
O.						
E.	32. 7. 4. <i>Formicary</i> .	41. 5. 6. <i>Chalciformis</i> .		47. 1. 2. <i>Chalciformis</i> .		31. 3. 4. <i>Cynipiformis</i> . 23. ? <i>Ostriformis</i> .
	30. 3. <i>Formicary</i> .					

162-1920



Lepidoptera, II.

Sphinges, I.

Papilionoides, B, &c.



96.



97.



98.



99.



100.



101.

96, 97. *Tryptolemus*. 98. *Nemboformis*. 99, 100. *Phocea*. 101. *Ecclusus*.
20.

O.	<i>Achillogb.</i>	<i>Nemboformis</i>	<i>Phocea</i>	<i>Ecclusus</i>
E.	110. n. 972.	1847. <i>Megala</i> .	998. 100. f. F	d. f. 12.
	25. 11. a. b. <i>Achillogb.</i>		17. 12. <i>Phocea</i>	
			48. 48. 6	
			Fol/90.	
			146.	

1842 - 1845

12

* 111
1111111111

1111111111

Lepidoptera, II.

Sphinges, I.

Papilionoides, B & c.



105.



106.



107.



108.



109.

105. *Hippocrepis*. 106. 107. *Phaea*. 108. *epiformis*. 109. *Hippophaes*.
22.

O.	<i>Hippocrepis</i> cf 32. 83.	<i>Occitanica</i> . 106 f. 107 g.	<i>epiformis</i> ♂ cf 108 g.	<i>Hippophaes</i> ♀.
E.	35/1. deti.			38. 1. 2. <i>Hippophaes</i> .
				180-181 (10-1)



Papilionera, II.

Sphinges, I.

Papilionoides, B. &.



110.



111.



112.

110. *Cerbera.*

111. *Scolioformis.*

112. *Livornica.*

23.

O.

Croatischer

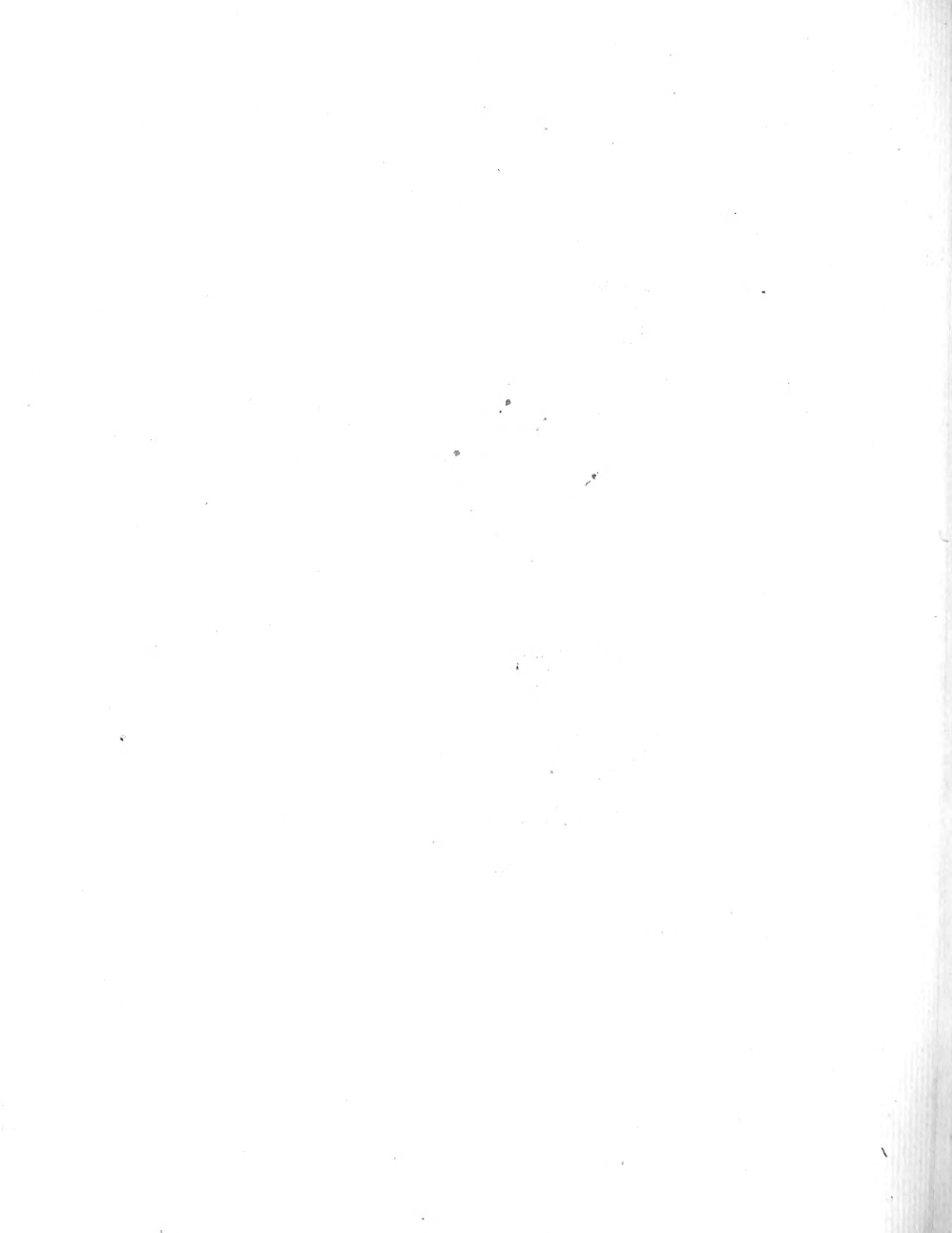
Scolioformis

descriptio
af. B.

8. 4. *Livornica*
46. 7-7.

1810

176



Lepidoptera . II.

Sphinges, I.

Hymenopteroides, B. de.



113.



114.



115.

113. *Systrophiformis*.

114. *Novillaformis*.
24.

115. *Cyparissia*.

D.	<i>Tetramesa monifera</i> d. f. 39. 40.	<i>Novillaformis</i> <i>formosa</i>	<i>Nivea</i> ♀ d. f. 149. 150.
C.	<i>18. e. Lepisformis</i> .		1869 - 10 (7) 11-171



Lepidoptera, II.

Sphinges, II.

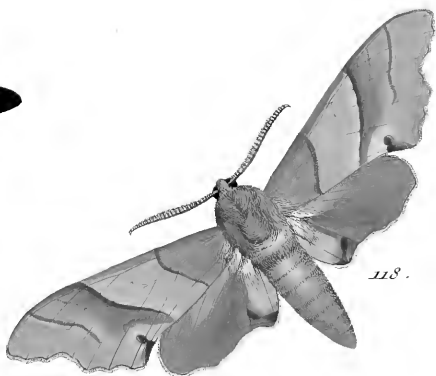
Hymenopteroides, B. &c.



116.



117.



118.

116. *Breviformis*.

117. *Fuciformis*.
25.

118. *Quercus*.

O. *Breviformis* f.
N. p. 173.

Breviformis f.
d. f. 55.

Quercus f.
d. f. 91.

E.

14. l. a. b. c.
Fuciformis.

19. *Quercus*.
26.

1906-1917

(1917)



Papilioptera, II.

Sphingis, I.

Papilionoides, B.



119.



120.



121.



122.



123.

119. *Punctum*. 120. 121. *Angelica*. 122. *Fausta*. 123. *Hilaris*.
26.

C.	<i>Punctum</i> ♂.	<i>Angelica</i> 120 ♂. 121 ♀.	<i>Fausta</i> ♂. 18/10.6. <i>fausta</i> .	<i>Hilaris</i> ♀.
E.				
				1906-1917 1917

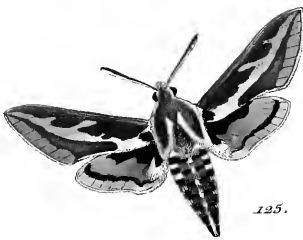
Lepidoptera, II.

Sphingea, II.

Hymenopteroides, B. &c.



124.



125.



126.



127.

124. *Gorgon.*

125. *Zygophylli.*

126. *Banchiformis.*

127. *Ophioniformis.*

27.

O.	<i>Gorgon</i>	<i>Zygophylli</i> &	
E.	<i>Gorgon</i>		
			1800 - 1817 [1815]

Lepidoptera. II.

Sphinges, I.

Papilionoides, A. &c.



128.



129.



130.



131.



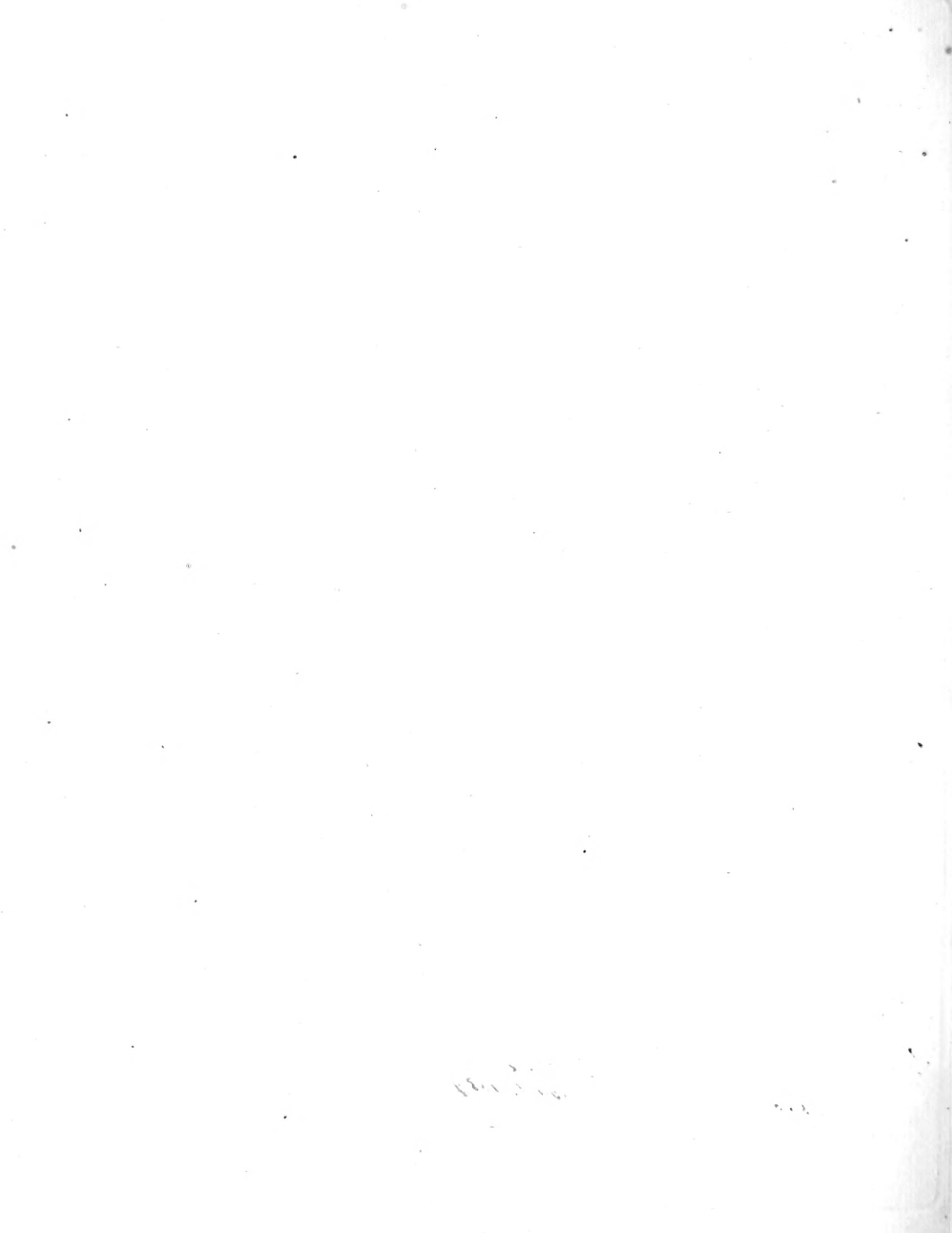
132.

128. 129. Chloros.

130. 131. Geryon.
28.

132. Sidi.

O	<i>St. Stobulari</i> w. 128. 129. 2. 3. 4. 5.	<i>St. Stobulari</i> . 130. 131. 2. 3. 4. 5.	<i>Sidi</i> 132. 133. 14. 15. 16. 17.
Q	43. 16. 17. <i>Stobulari</i>	13. 14. 15. <i>Stobulari</i> .	
			18. 19. 20. 21. 22. 23. 24. 25. 26. 27. 28. 29. 30. 31. 32. 33. 34. 35. 36. 37. 38. 39. 40. 41. 42. 43. 44. 45. 46. 47. 48. 49. 50. 51. 52. 53. 54. 55. 56. 57. 58. 59. 60. 61. 62. 63. 64. 65. 66. 67. 68. 69. 70. 71. 72. 73. 74. 75. 76. 77. 78. 79. 80. 81. 82. 83. 84. 85. 86. 87. 88. 89. 90. 91. 92. 93. 94. 95. 96. 97. 98. 99. 100.



Lepidoptera, II.

Sphinxes, I.

Papilionoides, B. &c.



133.



134.



135.



136.

133. Orobi.

134. 135. Trifolii.

136. Pisia.

29.

C.

1330t.

Trifolii

134 t. 1332.

Croatia.
Moeny 24. d. f. 89.

E.

1914-18-17

(1917)

Di... ..

Lepidoptera II.

Sphinges I.

Papilionoides B. &c.



137. *Rubivandus*

138. *Glycirrhiza*
30.

139. 140. *Euphorbia*.

Euphorbia
N. 662.

Q.

Q.

1071

Lepidoptera. II.

Sphinxes, I.

Papilionoides. B. &c.



141.



142.



143.

141. 142. *Faustina.*

143. *Ligystri.*

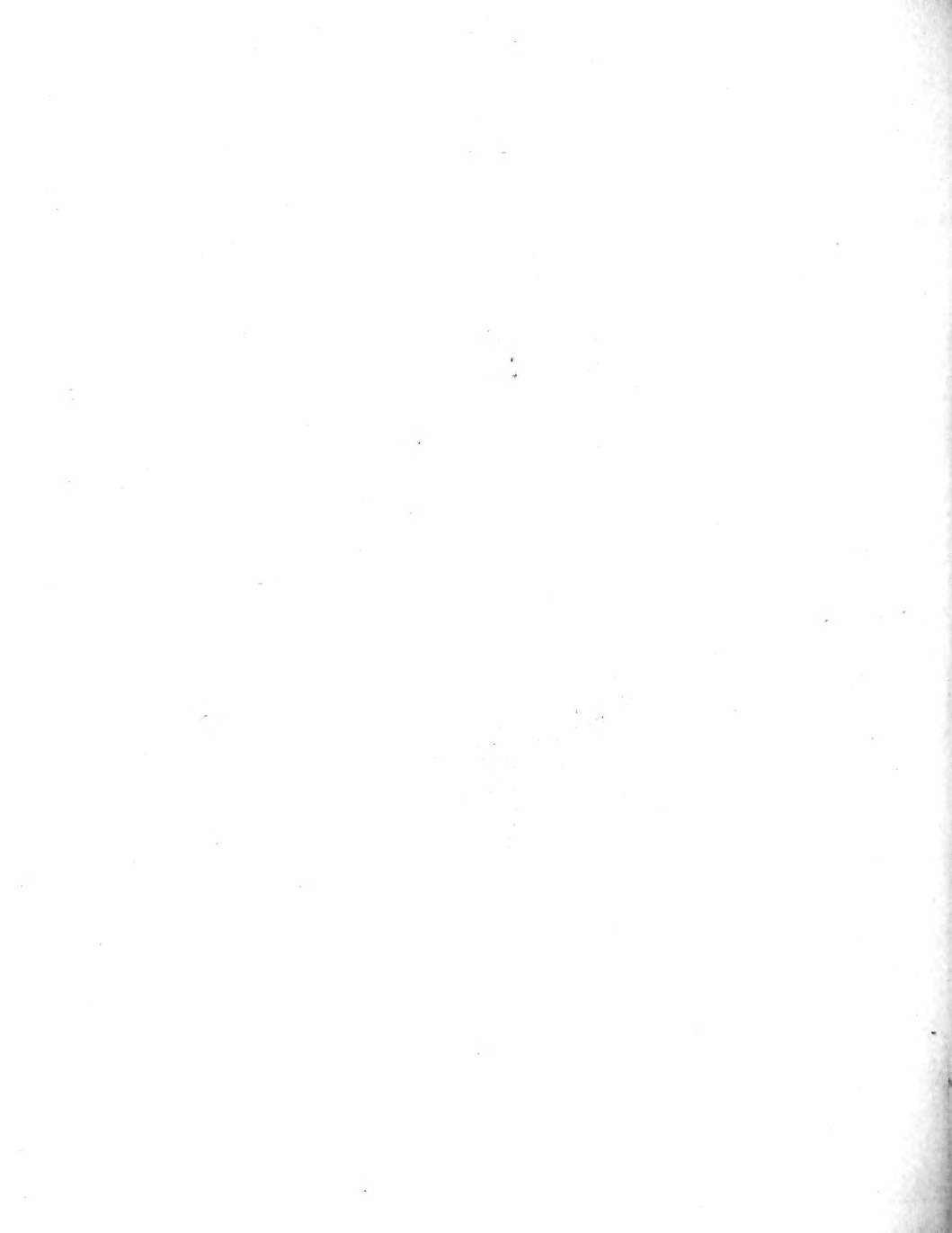
31.

A. *Faustina.*

E.

Ligystri.
1769.

1412 - 1413.



Lepidoptera, II.

Sphinges, I.

Papilionides, A &c.



144.



145.



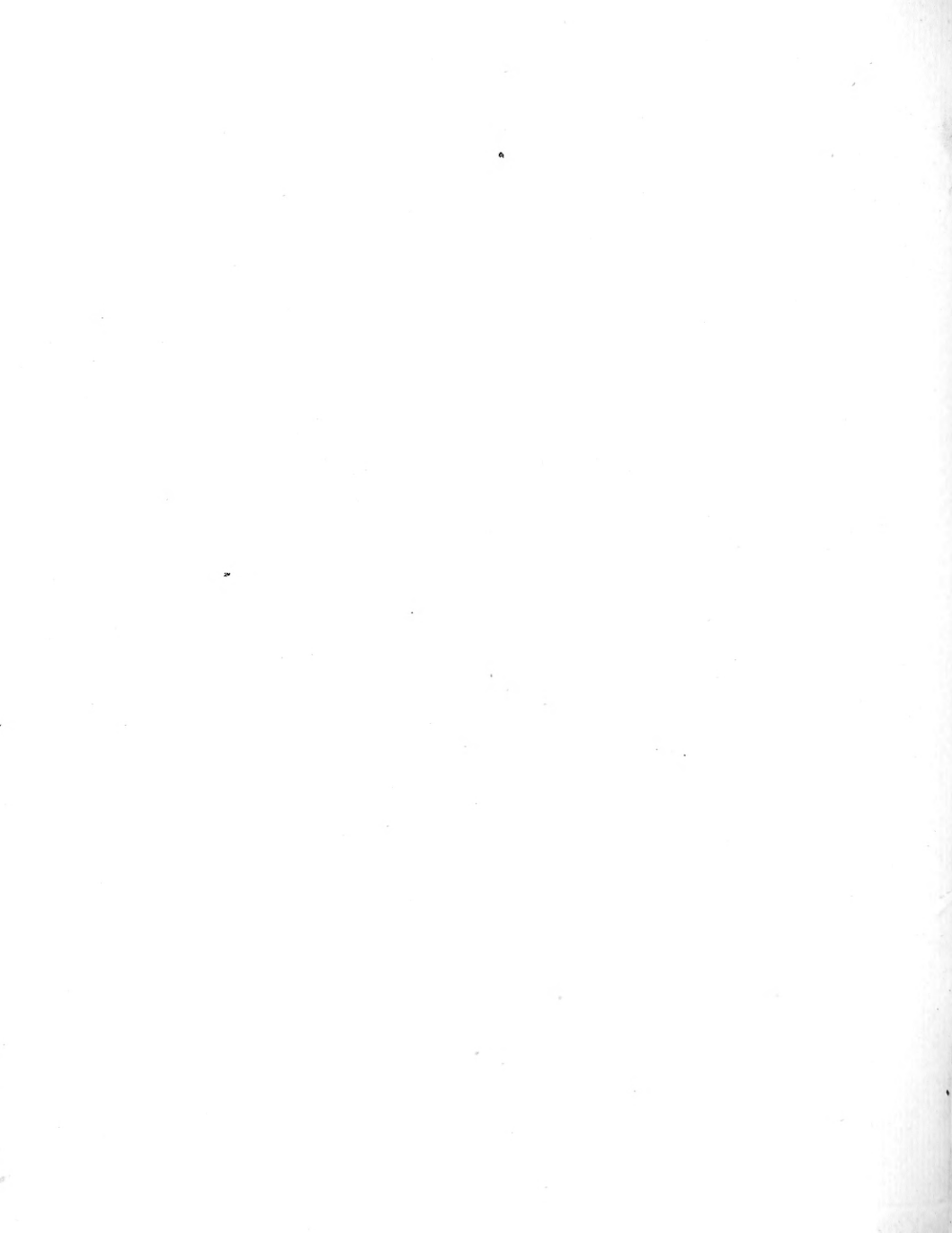
146.

144. *Staticea*

145. *Phoebe*
32.

146. *Celerio*.

O.		The ... / 27 11 126	<i>Celerio</i> Decepti et / 69.
D.			7. 1. 23. <i>Celerio</i> 27. 1. 22. 1.
	in 1824 1. 2.		1824 - 1827 (1627)



Volucrae Lepidopt.

Sphinges II.

Hymenopteroides, B. &c.



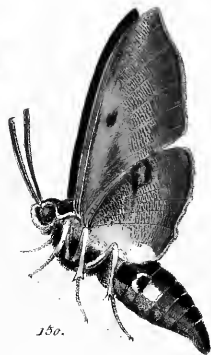
147.



148.



149.



150.

147. 148. *Philanthiformis.*

149. 150. *Nicea.*

♂
♀

Philanthiformis
147. 148.

Nicea
149. 150.

1811-1822
(1822)

Volucrus, Lepidopt. II.

Sphinges, I.

Papilionodes, A. &c.



131.



132.



133.



134.



135.

131. 132. *Caliciformis.* 133. 134. *Ampelophaga.* 135. *Pollatarum.*

34.

D.

E

?

1918 - 1922

(1912)



Volucrae Lepidopt. II. Sphinges, II. Hymenopteroides, A. b.



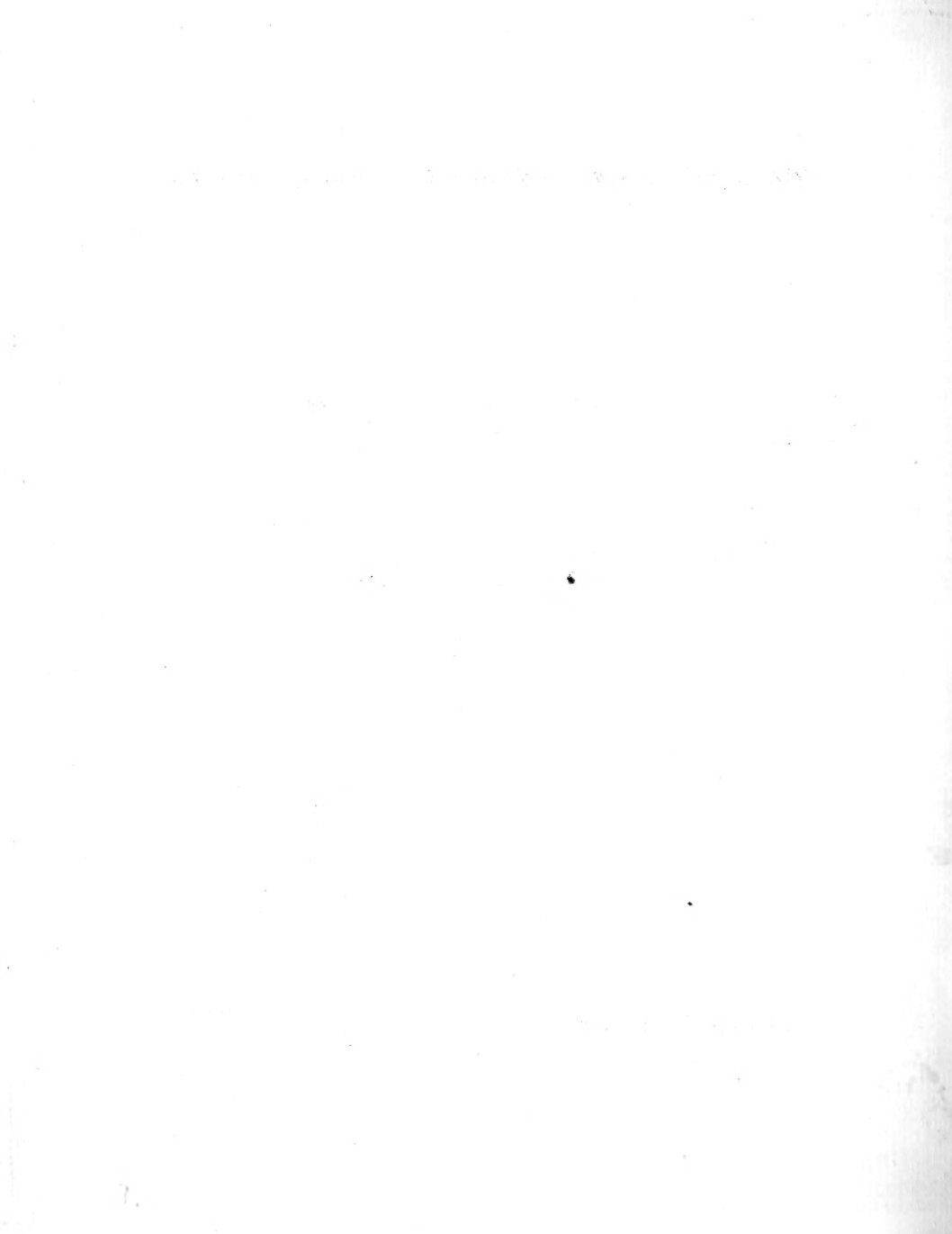
156 - 159. *Laphriaeförmis.*

160. *Lonicerae.*

35.

O.
E

1427



Lepidoptera. II.

Sphinges. III.

Legitima. B.



161 - 164. Dahlia.

36.

Dahlia, nov. spec.

Register 2-3

Tabula Figar

Tabula Figar

A.		
<i>Achilleae</i> Cch.	20	96. 97.
<i>Achilleae</i>	2	10.
<i>Achilleae</i> .. Cch.	2	11 —
<i>Acaëus</i>	3	12.
<i>Acaëus</i>	4	22
<i>Anglicae</i>	26.	120. 121.
<i>Ampelophaga</i>	34.	123.
<i>Aspiformis</i>	22	103. . .
<i>Aspiformis</i> Cch.	8.	54. . .
<i>Aspiformis</i> Cch.	8	31. . .
<i>Aspiformis</i>	8.	48. . .
<i>Astragali</i>	6.	37. . .
<i>Astiliformis</i>	7	44. . .
<i>Astragalus</i>	10	63.

B.

<i>Banohiformis</i>	27.	126. . .
<i>Bellis</i>	2	10. . .
<i>Bembeliformis</i>	20.	92
<i>Bembeliformis</i> Cch.	8.	55. . .
<i>Bembeliformis</i> thal	9	56.
<i>Bonica</i>	2.	"6. . .
<i>Bonica</i>	18.	85
<i>Brosiciformis</i>	25	116. . .

C.		
<i>Calonia</i>	32.	146.
<i>Calonia</i>	10.	59.
<i>Carbena</i> Cret	23.	110
<i>Cyphisi</i>	4	26.
<i>Cynipiformis</i>	17.	35.
<i>Cynipiformis</i> Cch.	7	43.
<i>Cyparisse</i> thal	24.	115.
<i>Cyparisse</i>	17.	81
<i>Cypranthemi</i>	3	1. —
<i>Charon</i>	4	21.
<i>Cassonidae</i>	3	13.
<i>Convolvuli</i>	14.	70.
<i>Cortex</i>	28.	128.
<i>Craboniformis</i>	8.	51
<i>Creatica</i>	18	89
<i>Creatica</i>	29	136.
<i>Culciiformis</i>	7	45. . .
<i>Culciiformis</i>	34	157. . .
<i>Chrysiiformis</i>	8.	53
<i>Culciiformis</i>	17	91. . .

D.

<i>Dahlia</i>	36	141. 164
-----------------------	----	----------

E

	Tabell	Figur
Elpenon " " " "	10	81 " "
Empiförmis " " " "	19	94 " "
Ephiatés Och " " " "	5	33
Emythaus " " " "	13	87
Euphonia " " " "	12	66 " "
Euphonia Varit " " " "	30	139 " "
Exulans " " " "	2	12
Exulans " " " "	20	101

F

Faustina " " " "	31	141 " "
Fausta " " " "	26	122 " "
Fausta " " " "	5	21 " "
Falcular " " " "	5	33
Filipendulae " Varit och Athiji " " " "	4	26 " "
Filipendulae " " " "	5	31 " "
Filicoid " " " "	3	14
Formiciformis " Och " "	17	70 " "
Fuciformis Varit " " " "	25	117 " "
Fuciformis Och " " " "	9	56 " "
Fuciformis Hül " " " "	9	55

G

	Tabell	Figur
Galli " " " "	12	64
Genion " " " "	28	130
Glycomhiza " " " "	30	138
Globularia " " " "	27	129
Gorgon " " " "	21	102
Gorgon " " " "	21	124
Globularia " " " "	1	2, 3

H

Hedisarg " " " "	6	36 " "
Hedisarg V. Och " " " "	5	29
Hilaris " " " "	26	123
Hipocrepis Och " " " "	5	32
Hipocrepis i Phoen? " " " "	22	105
Hipocrepis " " " "	11	83
Hilaciformis " " " "	8	48
mitt naffig brenn. aufstamm? " " " "	22	108
Hipocrepis " " " "	22	109

J.

	Tab.	Ligar
<i>Tobacco-niiformis</i> Och	24	113
<i>Tobacco-niiformis</i> Och..	6	37-40
<i>Tobacco-niiformis</i> ..	17	24..
<i>Infusa</i> ..	1	5 ..

L.

<i>Lavandulae</i> ..	4	24.
<i>Lacta</i> ..	6	34..
<i>Lavandulae</i> .. Och.	4	25..
<i>Laphriiformis</i>	35	156
<i>Lineata</i> o. h ..	23	112..
<i>Livornica</i> Flüb	12	65 ..
<i>Lineata</i> Och ..	12	65..
<i>Ligustri</i> ..	14.	69 ..
<i>Ligustri</i> Varit ..	31	143..
<i>Lonicere</i> ..	35	160.
<i>Lonicere</i> ..	2	1.
<i>Lotti</i> ..	5	33.
<i>Lotti</i> ..	17	82.

M.

	Tab.	Ligar
<i>Masiiformis</i> ..	19	92..
<i>Medicagoe</i> ..	4	26..
<i>Mellilote</i> .. Och. Onobriche	6	38
<i>Mellilote</i> .. Och ..	17	82.
<i>Megileformis</i> ..	24	114.
<i>Mixos</i> ..	2	8..
<i>Mutiliformis</i> ..	7	45..
<i>Mutiliformis</i> Och ..	19	91.

N.

<i>Nenii</i> ..	11	63.
<i>Niccae</i> ..	24	115.
<i>Niccae</i> ..	32	149..
<i>Nomadiformis</i>	19	90.
<i>Nomadiformis</i> Och ..	8.	15..

O.

<i>Oestriiformis</i> ..	7	43.
<i>Oestriiformis</i> ..	14	74..
<i>Ocitanica</i> ..	22	106.10.
<i>Ocellata</i> Och.	15	73.
<i>Outhaera</i> ..	9	58.
<i>Oubriche</i> ..	5	28.
<i>Oubriche</i> Och ..	6	37..
<i>Ophioformis</i> ..	27.	107..
<i>Orobi</i> ..	29	132

P.

	Tab.	Figur
Peucedani	17	81.
Peucedani	16	75
Peucedani Oak	4	22
Phagea	5	30
Phagea Varit	32	145.
Phagea	20.	77, 100.
Philantriformis	53.	147, 148
Pinastri	13	67.
<i>Synalati</i> <i>Synalati</i> formis A <i>Constrina</i>	3	16.
<i>Pythia</i> <i>Phytis</i> F		
Pythia Hab. Varit Phagea	18	87
Ranellus	10	60.
Populi	15	74.
Pluto Oak	18	88.
Propagiformis	19	93
Punctum	21.	119.
Purvi	1	4.

Q

Quercus	15	11.
Quercus	25	118.

R

Rhacomanthus	4	23.
Rhinogeniformis	7	41
Rubicantus	20	131.

S.

	Tab.	Figur
Sarpedan	2	9.
Salicis <i>collato</i> Oak	15	73
Systrophaeformis	24	113.
Symphiformis	2.	50.
Siabiosa	18	86.
Sivlicaeformis	22.	111
Sedi	22	132.
Spicae	4	25.
Sphaeciiformis	16	77, 78.
Stomaxiformis	7	47.
Stellatarum	3	57
Stellatarum	34	155.
Staticee	32	144.
Staticee	1	1
Stoekadis Oak	4	24.

T

<i>trachioniformis</i>	8.	54
<i>trachioniformis</i>	8	52
<i>trachioniformis</i>	1	46
<i>trachioniformis</i>	8	79.
Tiliae	15	72.
Tiphaciformis	7	42
Tranfolpina	3	15.
Trochil	17	79.
Troptalemus	20	76.
Trochil	27	134.

V.

Vespiiformis	6	37
Vespiello	11	62
Vespiello	21	102
Viciae Hab	2	11
Vitis	34	53.

L

Ligophila 27, 102

- 27, 125 -

Lepidoptera, III.

Bombyzo, I.

Sphinxoides, A.



1. 2. *Verficoloria*.

1.

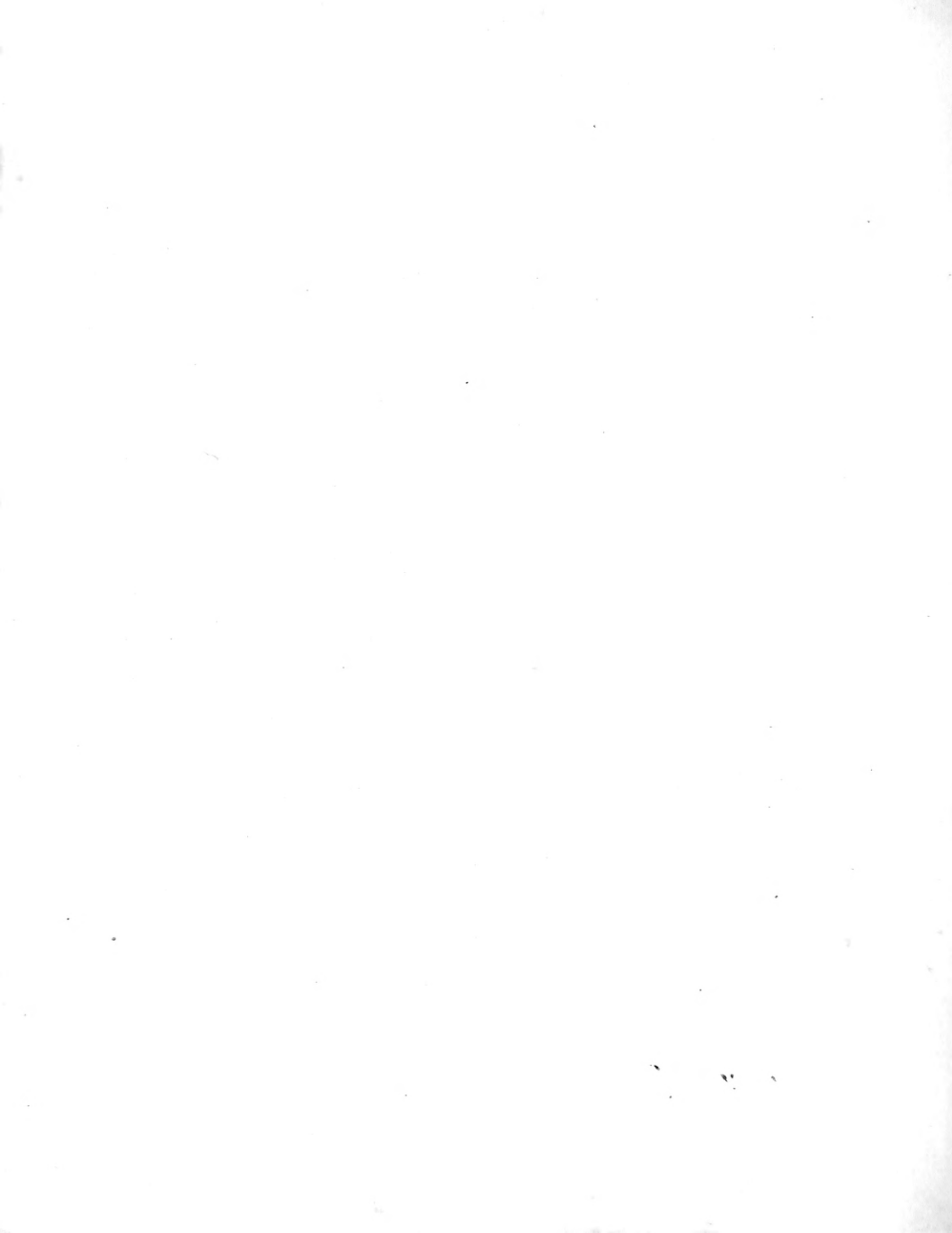
Indr. 31 Verficolora 1. 2.

2. 3.

23. *Verficolora*

0.

8.



Lepidoptera, III.

Bombyces, I.

Sphinxoides, B.



3.



4.



5.



6.

3. 4. *Sphinx*.

2.

5. 6. *Cassinia*.

C. *Noctua Niveoculosa*.

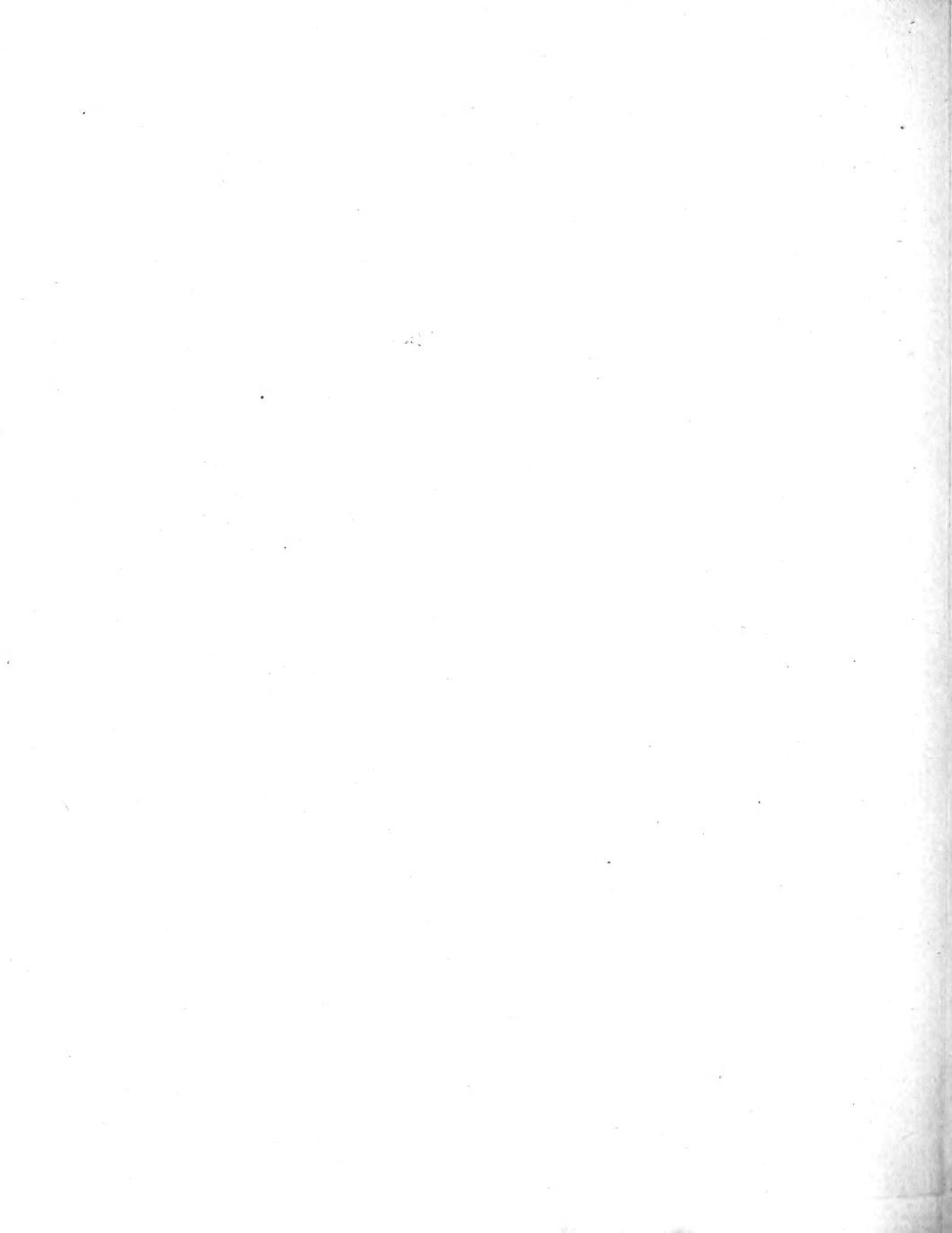
Cassinia Noctua.

E.

29. 1-3. *Bomb. Sphinx*.

In. *Noctua Niveoculosa*
39. 40.

Noctua Californica
50. 62.



Lepidoptera, III.

Bombyces, I.

Sphingoides, C. I.



7. Sericina .

8. Dodonea .

9. Querna .

10. 11. Chaonia .

C. *H. Grogophora*
L. f. 259.

Dodonea f.
N. f. 39.

Querna f.
N. f. 39.

Chaonia 10 f. 11. p.
N. f. 39.

E.

46/1. r. 3.
H. Trimarctus.

48/4. 7.
S. coloris.

Lepidoptera, III.

Bombyces, I.

Ptilingoides, C.



12.



13.



14.



16.



15.

12. *Crenosa*. 13. *Plumigera*. 14. *Melagora*. 15. *tyfena*. 16. *Pulpina*.

4.

O.	<i>brevata</i> F.	<i>Plumigera</i> F.	<i>Melagora</i> F.	<i>Ptilistaris</i> F.	<i>Pulpina</i> F.
	Not 33	Not 33.	Not 33.	Not 33.	Not 33.
E.	47/ 3. 34. (<i>pro nota</i>)	50. 16. 7. <i>Plumigera</i>		58/ 16. <i>Ptilistaris</i>	68/ 1. 4. <i>Pulpina</i> .

Lepidoptera, III.

Bombyces, I.

Sphingoides, C.



17.



18.



19.



21.



20.

17. Argentina. 18. Bicoloria. 19. Camolina. 20. Cuculina. 21. Capucina.
5.

O.	Argentina S. Not 33.	Bicoloria S. Not 33.	Camolina S. Not 33.	Cuculina ♀ Not 33.	Capucina S. Not 33.
Q.	53/1.2. Argentina	41/17. Bicoloria	70/15. Camolina	77/1. Cuculina	91/1. Capucina

Lepidoptera, III.

Bombyces, I.

Sphingoides, C.



22.



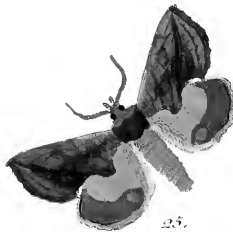
24.



25.



26.



25.

22. *Dictya*.

23. 21. *Dictyodes*.

25. *Thalictri*.

26. *Zicza*.

6.

O. *Dictya* J.
 No 1. 33.

Dictyodes 23 J.
 24 P.
 No 1. 33.

Thalictri No 1.
 Zicza J.
 2. No 1. 33.

E. 38 J. 84 J.
 Dictya.

84 J. *Dictyodes*.

84 J. 23. *Dicid.*
 Capriana.
 Tr. No. 1. Thalictri.

59 J. 14. *Zicza*.

Kemalning

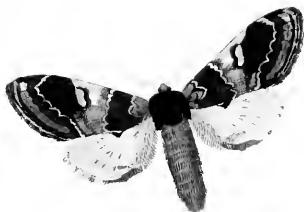
gnoma, torus

10. 2

Lepidoptera, III.

Bombyces, I.

Sphingoides, C.



27.



28.



29.



30.

27. *Torva*.

28. *Bromedaricus*.

29. *Tritophus*.

30. *Tremula*.

♂.

Tritophus
16/14 39.

Bromedaricus ♀.
16/13 39.

Torva ♀.
16/13 39.

Tremula ♀.
16/14 39.

♀.

♂/13 *Tritophus*

♂/13 ♀ *Bromedaricus*

♂/13 ♀ *Tritophus*

♂/14 *Tremula*

17/14

17/14

17/14

17/14

17/14

Lepidoptera, III.

Bombyx, I.

Sphinxoides, D.



31.



32.



33.

31. *Fagi*.

8.

32. 33. *Terrifica*.

Q. *Fagi* ♀. Harp. 32.

Mühlhauseri 32 ♂ 33 ♀.
Harp. 32.

Q. 20. *Fagi*.

21. *Mühlhauseri*.



Lepidoptera, III.

Bombyces, I.

Sphinxoides, E.



34



35

34. *Pinula*

35. *Erminea*

O. *Pinula* L.
 Hagn: 38.
 N. J. 243 fac. *Pinus*. Lj. 340.
 Q. 18. 1-7.
Pinula

Erminea L.
 Hagn: 38.
 N. J. 2. *Erminea*.
 287 4. *Erminea*

Lepidoptera, III.

Bombyces, I.

Sphingoides, E.



36.



38.



39.



37.

36. *Picospis*.

37. *Fujinola*

38. *Bifida*.

39. *Furcula*.

10.

A

Picospis ♀
Harp. 38.

Bifida var.
Lj 38.

Bifida ♀ Harp 38. *Furcula* ♀
Lj 38. var. Harp 38.

E.

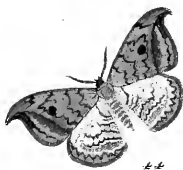
Bifida ♀ Harp 38. *Furcula* ♀
Lj 38. var. *Furcula*.



Lepidoptera, III.

Bombyces, I.

Sphingoides, F.



40. Spinula

41. Spinula

42. 43. ^{Castis} Karpagula

44. Falcula

	40. Spinula	41. Spinula	42. 43. ^{Castis} Karpagula	44. Falcula
O.	<i>N. Spinula</i>	<i>N. Spinula</i>	<i>Nod. Cervicalis</i>	<i>Nod. Falculata</i>
	Nat. 87	Nat. 87		Nat. 87.
E.	83. 6	73. 1. 8. Nojpa.		73. 3. 6
	<i>Bomb. Spinula</i>	74. 2		<i>Bomb. Falcula</i>
Lr.	<i>Spinula Nod.</i>	<i>N. Spinula</i>	<i>Nod. Cervicalis</i> ♀	<i>Nod. Falculata</i> ♀
	♀.			



Lepidoptera, III.

Bombyces, I.

Sphingoides, F.



45. *Uricula.* 46. 47. *Hamula.* 48. *Virgaticula.* 49. *Lucertula.* 50. *Sinacula*

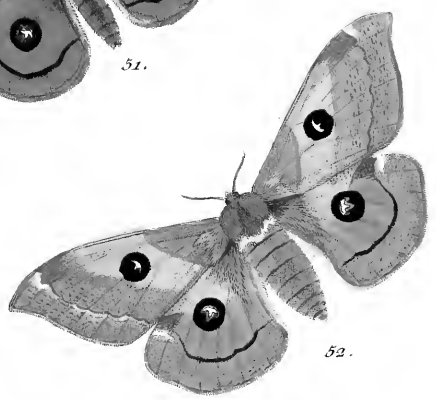
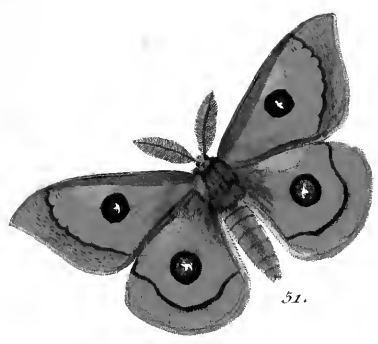
	<i>West-Hamula</i> <i>Var.</i>	<i>West-Hamula</i>	<i>N. Virgaticula</i> <i>12.</i>	<i>W. Lucertula</i>	<i>N. Sinacula</i>
<i>C.</i>	74. 12.	74. 1. 2	74. 14. 7.	72. 3. 6	72. 3. 6.
<i>E.</i>	<i>B. Hamula.</i>	<i>B. Hamula.</i>	<i>B. Sicula.</i>	<i>Bomb. Lucertula.</i>	
<i>F.</i>	<i>N. Hamula.</i> 16. ♀.	<i>West-Hamula</i> 46. ♀. 47. ♀.	<i>N. Virgaticula</i> 18. ♀.	<i>N. Lucertula</i> 10. ♀.	<i>N. Lucertula</i> 11. ♀.
	1/46. 47.	1/45.		1/50. ♀.	

1022

Lepidoptera, III.

Bombyces, I.

Sphinxoides, G.



51. 52. *Tau*.

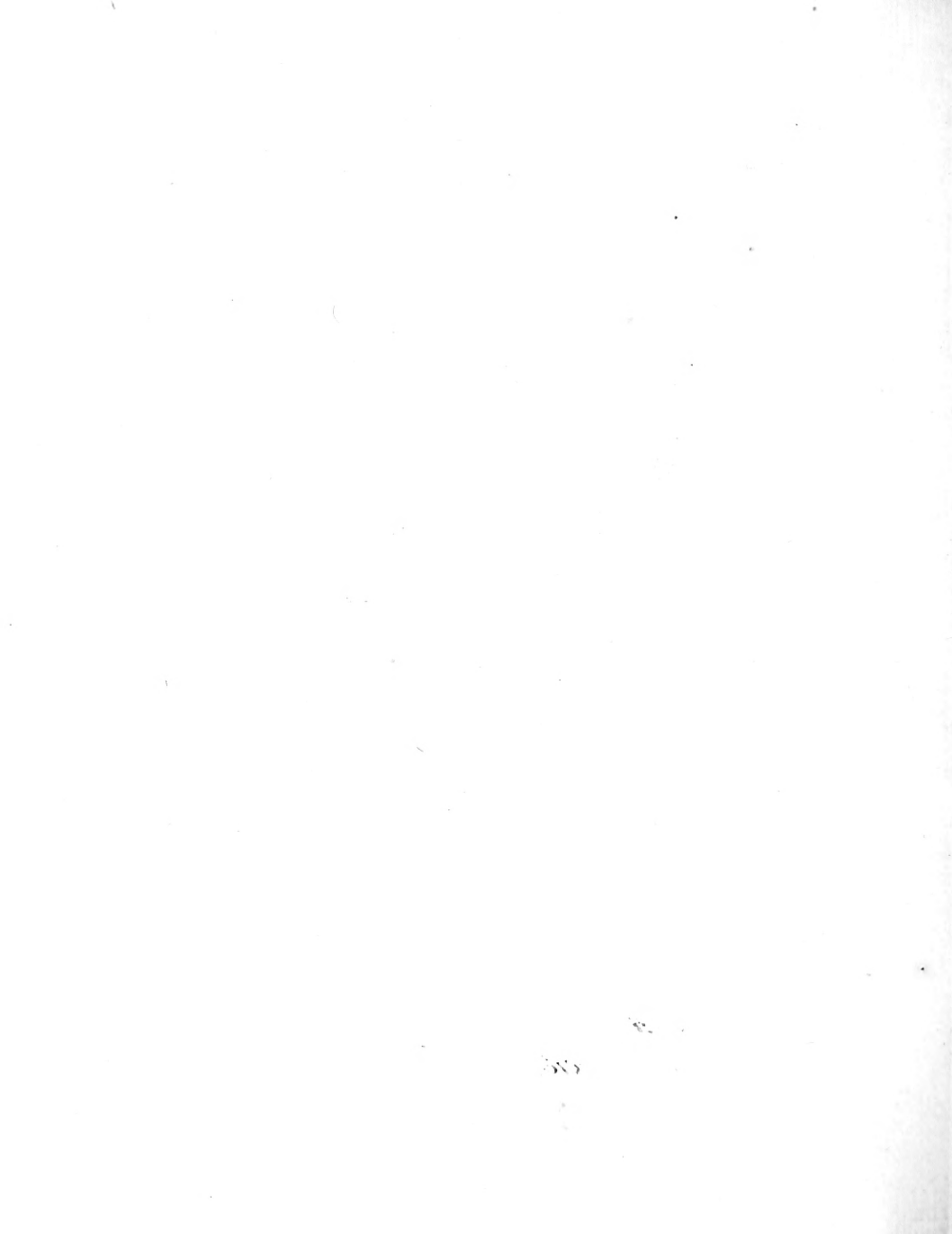
13.

Rep. Soc. Sav. 51 f. 52 f.

O.

O.

5. f. 1-8 Sav.



Lepidoptera, III.

Bombyces, II.

Verve, A.



53.



54.



55.

53. 54. *Carpini*.

55. *Spini*.

14.

Q. *Carpini*. d. f. 288. 276
 Pal.
 Q. 4. f. 16. *Passonia minor*.

Spini. Tab. XXIX.
 3. f. 1. 2. *Passonia medic.*



Lepidoptera, III.

Bombyces, II.

Veræ, A.



56.

56. *Lyri.*
15.

Piri. Natur. XXIX.

1. *Pavonia mqr.*

O.

E.

Lepidoptera, III.

Bombyces, II.

Veræ, B.



57.



58.



59.



61.



60.

57. *Morio*.

58. 59. *Detrita*.
10.

60. 61. *Rubea*.

O.	<i>Morio</i> c. 1/231 232.
Q.	1/231 232. 1/231 232. A. <i>Morio</i> .

<i>Detrita</i> 580. 599.
44/16. A. <i>Detrita</i> .

<i>Rubea</i> 112. 160. 1/231 232.
1/231 232. 1/231 232. A. <i>Rubea</i> .

Lepidoptera, III.

Bombyces, II.

Veræ, B.



62.



63.



64.



65.



66.

62. *Vespa*. 63. 64. *Vada*. 65. *Comarobis*. 66. *Phryganea*.
17.

O.	<i>Mugina</i> st. 17/12.	<i>Mundana</i> 63/12. 64. 17/12.	<i>Mundana</i> st. 17/12. 64.	
E.	87/12. <i>Mugina</i>	63/12. <i>Mundana</i> .	64/12. <i>Mundana</i> .	

Lepidoptera, III.

Bombyces, II.

Veræ, C.



70.



67. Chrysotheca .

68. 69. Euriflua .
18.

70. Salix .

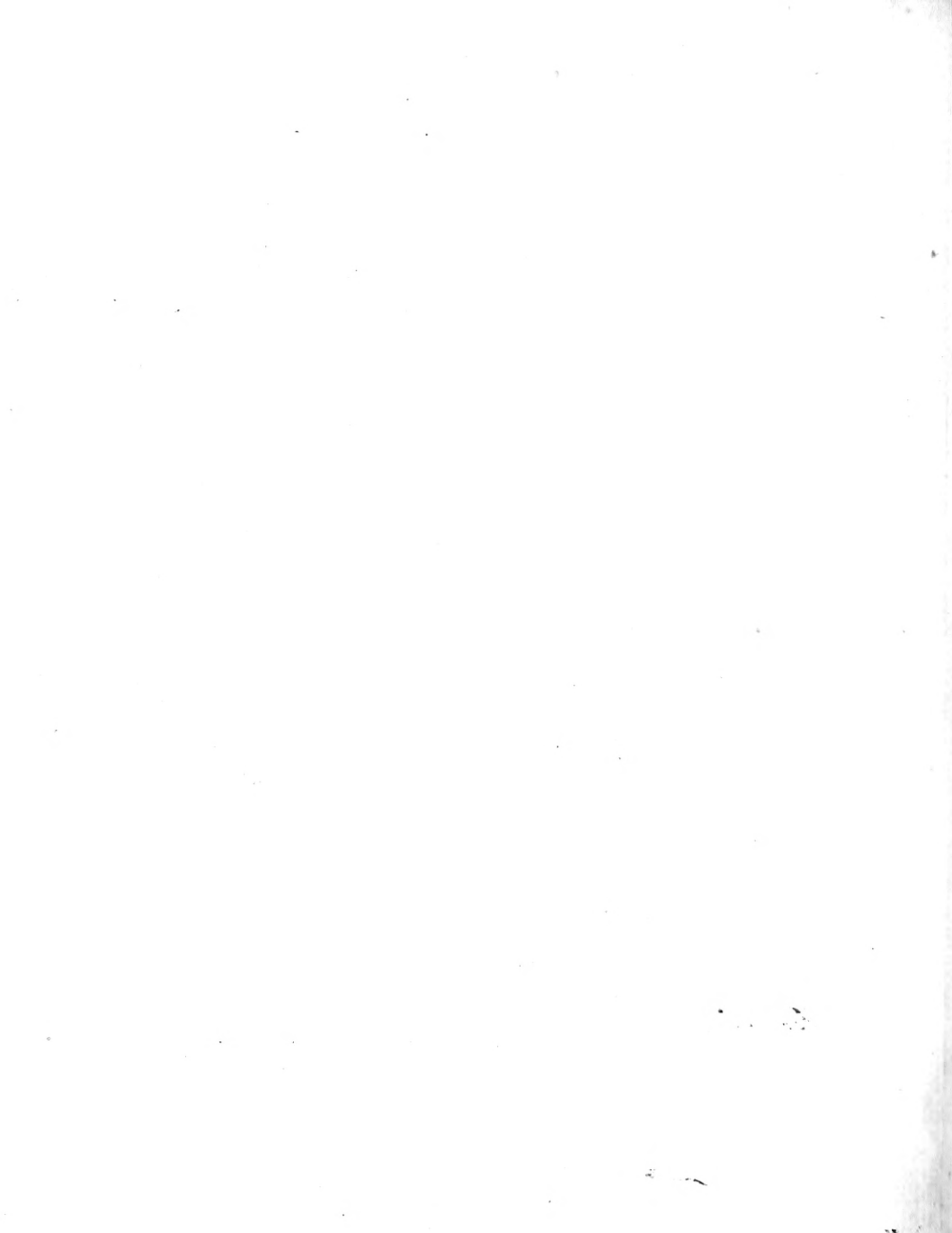
71. Nivea .

O. Chrysotheca s.
d. 1048. 219.
d. 1049. 219.
P. 39/16. A. Euriflua

Euriflua 88 d. 69 g.
d. 1049. 39.
39/12. Chrysotheca.

Salix's g.
d. 1049.
41/16. Salix's.
d. 1049.

V. nigrum g.
d. 1049.
40/1-8
Nivea nigrum.



Lepidoptera, III.

Bombyces, II.

Nereis, C.



72, 73. *Ctenobita*.

74. *Monacha*.
19.

75, 76. *Dispar*.

O. *M. Ctenobita*.
H 508. Bert.

Monacha L. H 508. Bert.
L 512. 79.

Dispar. 750. 769.
L 512. 79. H 508.

E.

37/8. B. *Monacha*.

38/1. B. *Dispar*.

F. *M. Ctenobita*.
T. Sept. 48.

Lepidoptera, III.

Bombyces, II.

Veræ, D.



77. *Antiqua.*

78. *Gonostigma*.
2d.

79. 80. *Lathyræ.*

O.	<i>Antiqua</i> L. <i>Op.</i> 40. d. 235.	<i>Gonostigma</i> L. d. 253. <i>Op.</i> 40.	<i>Selenitica</i> 79 L. 809. <i>Op.</i> 40.
E.	56 f. s. d. <i>Antiqua</i>	56 f. s. 10d. <i>Gonostigma</i>	88 f. s. <i>Selenitica</i> . 88. ?

Lepidoptera, III.

Bombyces, II.

Verre, D.



81.



82.



84.



83.



85.

81. *Medicaginis*.

82. 83. *Abietis*.

84. 85. *Gaylandis*.

21.

A. *Favulinella* ♀.

Org. 40.

Abietis 82. 83.

Org. 40. 1/313 314

Pudibunda 84 85 9.

Org. 40.

E. 85 ♀. *Favulinella*.

82. 1. *Abietis*

91/27

84 ♀ 1-7. *Pudibunda*

Lepidoptera, III.

Bombyces, II.

Nötes, E.



86. Timon. 87. Anisotomosis. 88. Anachoreta. 89. Curtula. 90. Reclusa . .

22.

O.	Timon ♀	Anisotomosis ♀	Anachoreta ♀	Curtula ♀	Reclusa ♀
P.	Pag. 41.	Pag. 41.	Pag. 41.	Pag. 41.	Pag. 41.
	Sept. 4.	Sept. 4.	Sept. 4.	Sept. 4.	Sept. 4.
	B. Anisotomosis.	B. Curtula.	B. Curtula.	B. Curtula.	B. Reclusa.

Lepidoptera, III.

Bombyces, II.

Veræ, F.



91.



92.



93.



94.



95.



97.



96.

91. *Cacrecia*. 92. *Luteola*. 93. *Vrita*. 94. *Rubricollis*. 95. *Stictola*. 96. *Ochrota*. 97. *Grypsola*.

25.

C

<i>P. vesala</i> p. III p. 137. <i>lith</i> 37.	<i>L. luteola</i> p. <i>lith</i> 37.	<i>V. vrita</i> p. <i>lith</i> 37.	<i>R. rubricollis</i> p. <i>lith</i> 37.	<i>S. stictola</i> p. <i>lith</i> 37.	<i>O. ochrota</i> p. <i>lith</i> 37.	<i>G. grypsola</i> p. <i>lith</i> 37.
---	--------------------------------------	------------------------------------	--	---------------------------------------	--------------------------------------	---------------------------------------

D

	<i>P. vesala</i> p. <i>lith</i> 37.	<i>V. vrita</i> p. <i>lith</i> 37.	<i>R. rubricollis</i> p. <i>lith</i> 37.	<i>S. stictola</i> p. <i>lith</i> 37.	<i>O. ochrota</i> p. <i>lith</i> 37.	<i>G. grypsola</i> p. <i>lith</i> 37.
--	-------------------------------------	------------------------------------	--	---------------------------------------	--------------------------------------	---------------------------------------

100

Lepidoptera, III.

Bombyces, II.

Vere, F.



98. *Aurula*. 99. *Cereola*. 100. *Plumbosa*. 101. 102. *Quatra*. 103. *Majocula*. 104. *Verina*.

24.

<i>B.</i>	<i>Aurula</i> L.	<i>Plumbosa</i> L.	<i>Quatra</i> 101 et 102 g.	<i>Majocula</i> G.	<i>Verina</i> G.
	1814 37.	1814 37.	1814 37.	1814 37.	1814 37. 21/266 Var.
<i>E.</i>	102/167.	98/7. <i>Plumbosa</i> .	99/16. <i>Verina</i>	196/45	92/45.
	<i>H. cecilia</i> .		<i>Verina</i>	<i>H. cecilia</i>	<i>H. cecilia</i>

Lepidoptera, III.

Bombyces, II

Vere, F.



105.



106.



108.



107.



110.



109.

105. *Stroea*. 106. 107. *Roscula*. 108. *Completa*. 109. 110. *Imbuta*.

25.

O.	<i>Stroea</i> ♂.	<i>Spicidula</i> 106♂. 107♀.	<i>Alucita</i> ♀.	<i>Draconodes</i> ♂. 109♀.
	coll. 32.	coll. 32.	coll. 32.	coll. 32.
E.	94/3. 4/5 106/	94/ 8/4	94/1.	94/8.
	<i>Stroea</i>	<i>Spicidula</i> .	<i>Alucita</i>	<i>Alucita</i> var.

Lepidoptera, III.

Bombyces, II.

Veræ, G.



111. *Rubicunda*. 112. *Jacobæ*. 113. *Pulchra*. 114. *Ancilla*. 115. *Serva*.
20.

<i>C.</i>	<i>Sarca</i> ♂. alt 17.	<i>Andreas</i> ♂. alt 17.	<i>Pulchra</i> ♀. Egg.	<i>Ancilla</i> ♂. 17/240. 17/24 17.	<i>Ponatala</i> ♂. alt 17. 17/226. 227.
<i>E.</i>	17/17. <i>Bomb. Jovea</i> .	17/6. 7. 8. <i>H. Jacobæ</i> .	184/2. 8. <i>H. Pulchra</i> .	85/1. 2. <i>H. Ancilla</i> .	85/1. 3. <i>H. Ancilla</i> var.

Lepidoptera, III.

Bombyces, II.

Vera, H.



116.



117.



118.

116. *Vera*.

117. 118. *Domina*.

Lepidoptera, III.

Bombyces, II.

Veræ, I.



119.



120.



122.



121.



123.

119. *Color*.

120. 121. *Crubram*.
28.

122. 123. *Grammica*.

A. *Candida* ♀.

Egg 43.

Crubram 120 S. 121 ♀.

Egg 41.

Grammica 122 ♂. 123 ♀.

1/2 var. var. *testata*.

B. 87/2.3
♂ *fibellum*.

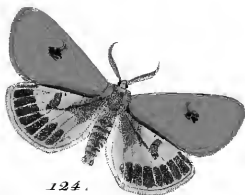
♂ 1. *Crubram*

♂ 88/5.8. *Grammica*
♂ 84/3. var. *Grammica*.

Lepidoptera, III.

Bombyces II.

Vere, K.



124.



125.



126.



127.



128.

124. 125. *Raffula.*

126. — 128. *Plantaginis.*



129.



131.



130.



132.

129. Hebe.

130. 131. Cacia.

132. Flavia.

30.

♂ Hebe L.
Epp 43.

Cacia. 1309 var. 131 f.
Epp 43. d. f. 26. d. f. 501

Flavia g. 1315-319
Epp 42.

♀ 34/1. H. Hebe.

30/1-5. } Cacia.
31/1-4. }

78/1. B. Flavia.

Lepidoptera, III.

Bombyces, II.

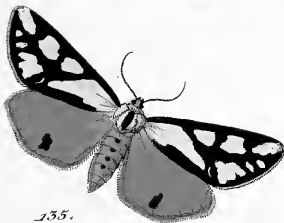
Vera, K.



133.



134.



135.



136.



137.

133. *Gratiola*. 134. *Dedica*. 135. *Colona*. 136. *Villica*. 137. *Cyba*.

Lepidoptera, III.

Bombyces, II.

Nere, K.



138.



139.



140.



141.

138. *Matrona.*

139. *Julia.*

140. 141. *Civica.*

52.

O.

Matronula ♀.
N. 239.

Julia ♂.
Egg 47.

Civialis, 140, 141 ♀.
Egg 47.

Q.

84/1. *M. Matronula*

63/67. *M. Julia*

80/83. *C. Civica* var.

Lepidoptera III.

Bombyces, II.

Nove, K.



142.



143.



144.



145.



146.

142. *Purpurea.* 143. *Fulginea.* 144. 145. *Maculosa.* 146. *Parafita.*
53.

Lepidoptera, III.

Bombyces, II.

Veræ, I.



147.



148.



149.



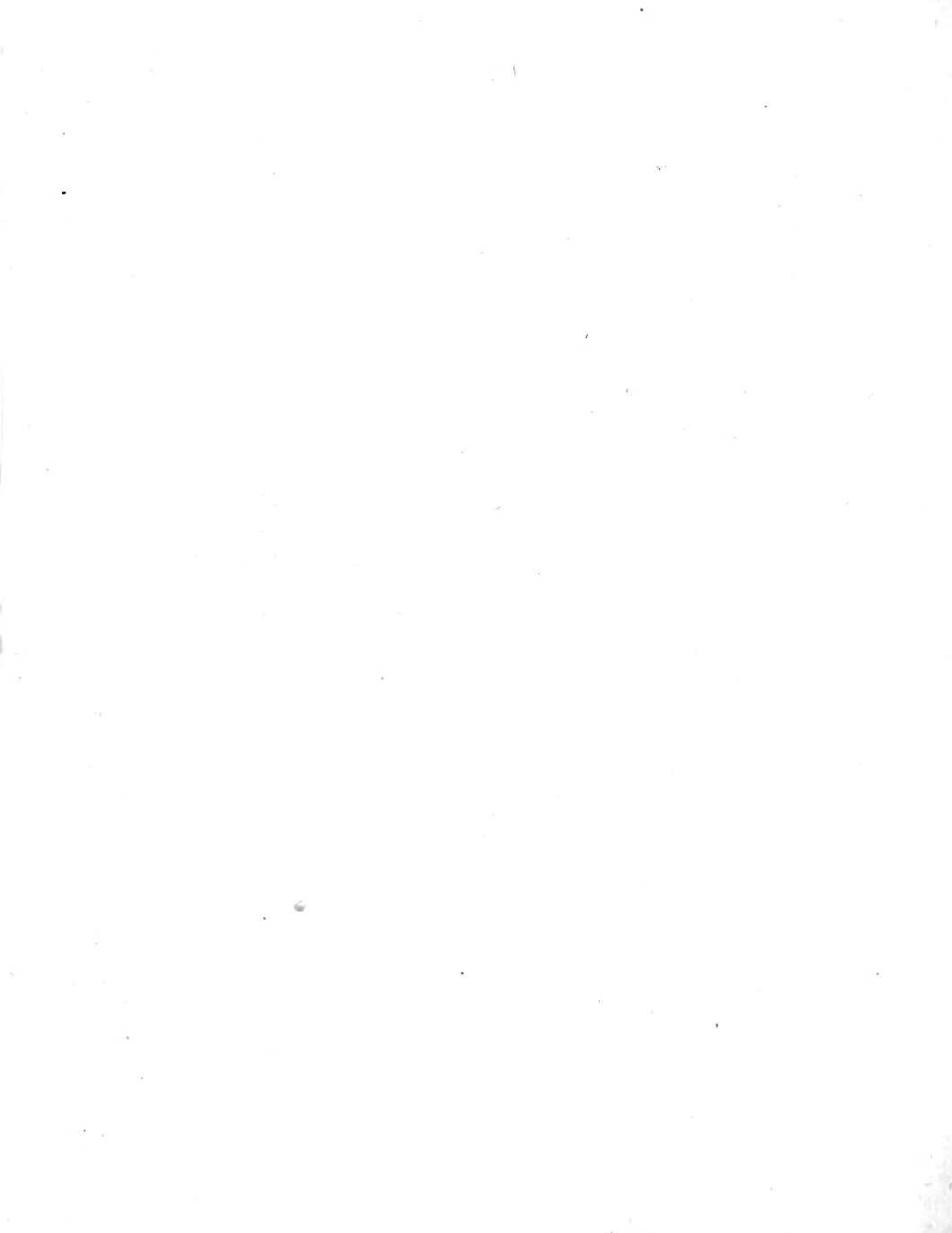
150.



151.

147. *Luctifera*. 148. 149. *Mendica*. 150. *Rustica*. 151. *Pardida*.

P.	<i>Luctifera</i> L. Opp. 43.	<i>Mendica</i> 148 & 149. Opp. 43.			
P.	149. p. 5. <i>Salustifera</i> L.	148 & 149. <i>Mendica</i>			
					152



Lepidopteri, III.

Bombyx, II.

Veræ, I.



152.



153.



155.



154.



156.

152. 153. Menckjiri.

154. Urtice.
35.

155. 156. Lubricipeda.

O.

Menckjiri 152. 153.

Urtice 9.

Lubricipeda 155. 156.

Egg 43.

Egg 43.

Egg 43.

E.

88/6. 10. Menckjiri.

88/2. Urtice

88/1. 5. Lubricipeda

Lepidoptera, III.

Bombyces, II.

Vene, M



156.



157.



162.



161.



159.



163.



160.

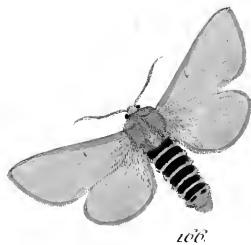
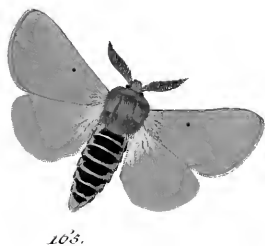
157, 168. *Pantherinus*. 159. 160. *Procepones*. 161. *Ptilocampa*. 162. *Orthis*. 163. *Populi*. 36.

<i>Pantherinus</i>	<i>Procepones</i>	<i>Ptilocampa</i> ♀	<i>Orthis</i> ♀	<i>Populi</i> ♀
157 ♀	159 ♀ 160 ♀			
158 ♀	Part 48.	Part 48.	Part 48.	Part 48.
160 34.				
161 4. 3. <i>Uleus camp.</i> 29/15.	<i>Procepones</i>	29/16. 4.	45/16.	28/12 <i>Populi</i> .
163 9. 10 160.		<i>Ptilocampa</i> .	12. <i>juv. m.</i>	

Lepidoptera, III.

Bombyces, II.

N° 1, X



102. *Dumetis*

103. 106. *Larvacis*

37

O. *Dumetis*. J.
 Part. 42.
 E. 14/3.4 *Dumetis*
 80. 4. 6

Taraxaci. 160. 166g.
 Part. 42.
 3/6.7 *Taraxaci*.

Lepidoptera III.

Bombyces, II.

Vere, O.



106.



107.



108.



109.



110.

106, 107. *Everia*.

108. *Catax*.
58.

109, 110. *Lanestris*.

O. *Everia* 1881. 1892.
Part 49.

Catax f.
Part 49.

Lanestris 1892. 1107.
Part 49.

D. 16/16/92. *S. lentipes*.
17. f.

16/15. *Catax*.

17. f. 8. *Lanestris*.

Pepidoptera, III.

Bombyces, II.

Verre, P.



171.



172.



173.



174.

171. *Trifolii*.

172. *Quercus*.

173. *Spartii*.

174. *Rubi*.

30.

A.	<i>Trifolii</i> L. Part 40.	<i>Quercus</i> L. 1725 p. 270 Part 40.	<i>Quercus</i> Va. <i>Spartii</i> 1724 p. 274 Part 40.	<i>Rubi</i> L. 1725 p. 274 Part 40.	
D.		1724 L. <i>Quercus</i>	1724 p. 274 <i>Quercus</i>	g. J. B. Kerli.	
					152

Lepidoptera, III.

Bombyces, II.

Veræ, Q.



175.



176.



179.



177.



180.



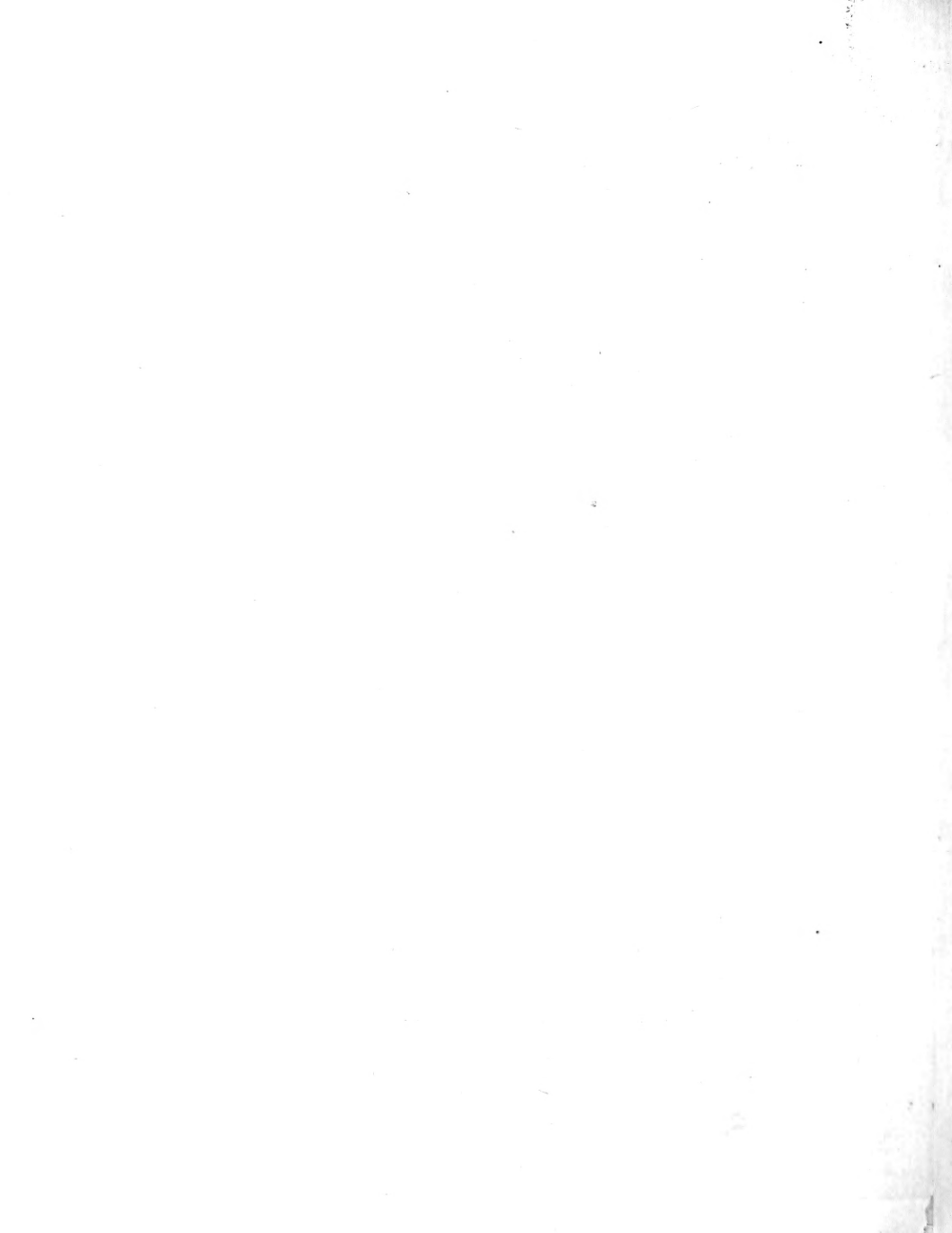
178.

175. 176. *Franconica.*

177. 178. *Cyrenensis.*
40.

179. 180. *Neustria.*

O.	<i>Franconica</i> 175 J. 176 J. Saut 47.	<i>Cyrenensis</i> 177 J. 178 J. Saut 49.	<i>Neustria</i> 179 J. 180 J. Saut 47.
Q.	28 J. 1. 2. <i>Franconica.</i>	28 J. 1. 2. <i>Cyrenensis.</i>	28 J. 1. 2. <i>Neustria.</i> 28 J. 3. <i>Neustria</i> <i>Arvensis</i> L.



Lepidoptera, III.

Bombyces, II.

Vera, R.



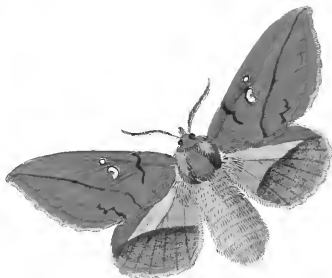
180.



181.



182.



183.

180, 181. *Lobulina*.

41.

182, 183. *Potatoria*.

O. *Lobulina* 180d. 181 g. H.
 Sp. 126. *Vae. Lurigena*.
 Part 49.

P. 20 f. 5. 6. *A. denigera*.
 82 f. 24. *Lobulina*

Potatoria 182d. 183 g.
 Part 49.
 11. f. 15. *Potatoria*.

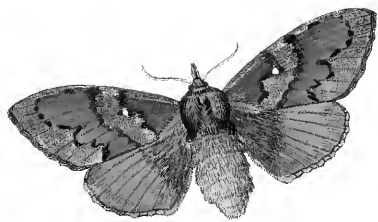
Lepidoptera, III.

Bombyces, II.

Verz, 8.



184.



185.



186.

184. 185. *Pini*.

186. *Pruni*.

42.

Q.	<i>Pini</i> . 184 S. 185 g.
Q.	12. f. 1. b. <i>Pini</i> .

Q.	<i>Pruni</i> g.
Q.	10. f. 1. 4. <i>Pruni</i> .

*Lepidoptera, III.**Bombyces, II.**Verce, 5*

187.



189.



188.

187-188. *Quercifolia*.189. *Populifolia*.

45.

A. *Quercifolia* 187 & 188?
 Part. 42

B. Pl. 2. 7. *Quercifolia*

Populifolia ?
 Pl. 254 Part. 42. Part. 42.

Pl. 34. *Populifolia*.

Lepidoptera, III.

Bombyces, II.

Veres, S.



190.



191.



193.



192.

190. *Betulifolia*.

191. 192. *Illiciifolia*.

193. *Mori*.

O.

Illiciifolia g.

Betulifolia 191. S. 190 g.

1. 271 272 273

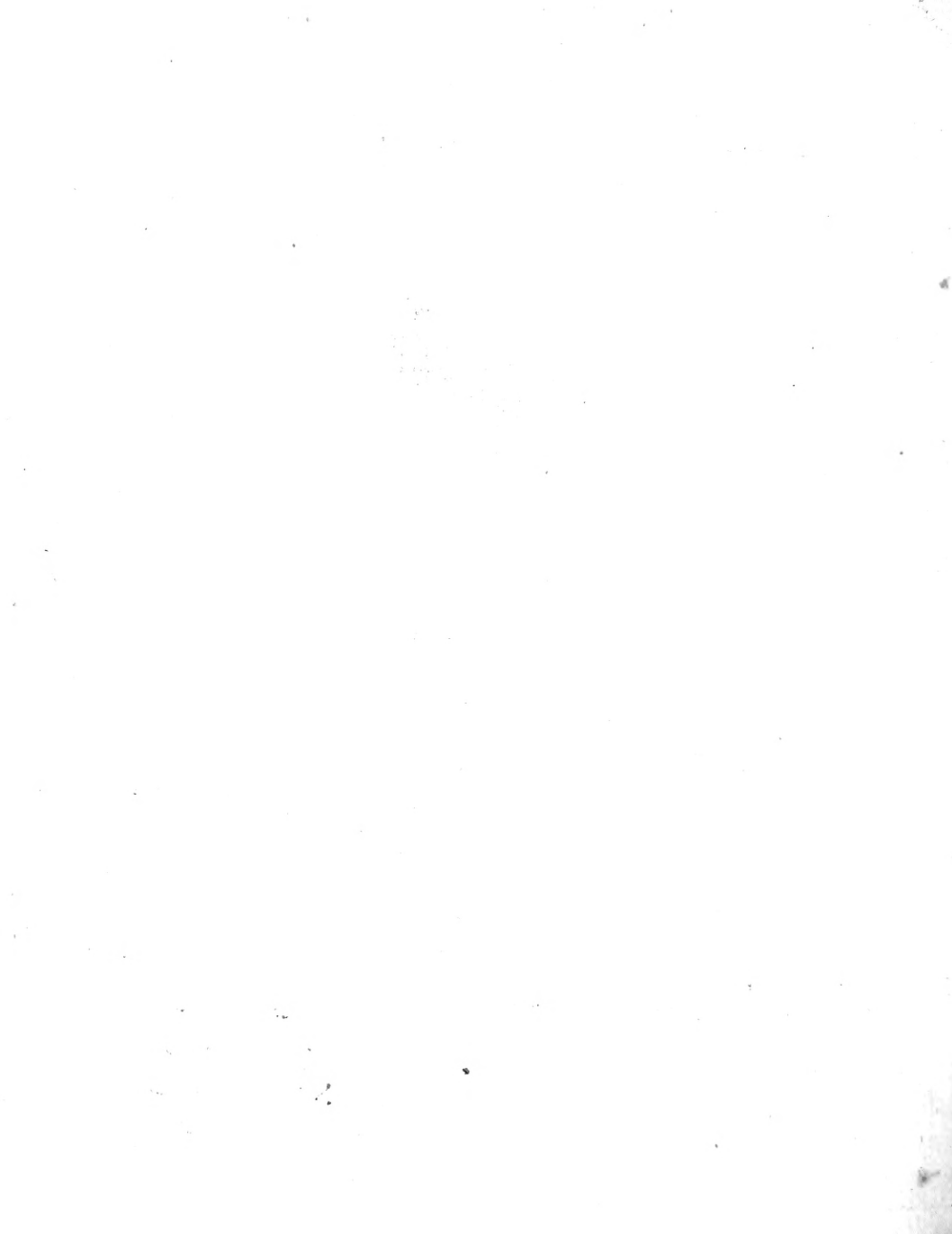
Sart 42.

Sart 42.

E.

v. f. *B. Betulifolia*.

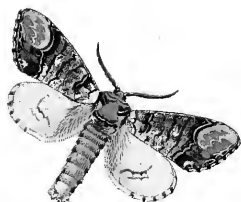
8/1. s. *Illiciifolia*.



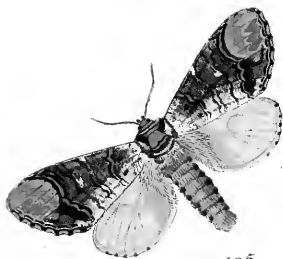
Pepidoptera, III.

Bombyces, II.

Verre, I.



194.



195.



196.

194. 195. *Diacophala*.

196. *Ceruloccephala*.

O. *Diacophala* 1948, 1959.
Exp. 40.

Noctua Ceruloccephala.

P. 22/1.4. *Diacophala*.

58/1-4. *Ceruloccephala*.

Tr. Noct. *Ceruloccephala*,
Eggs 48.

Lepidoptera, III.

Bombyces, III.

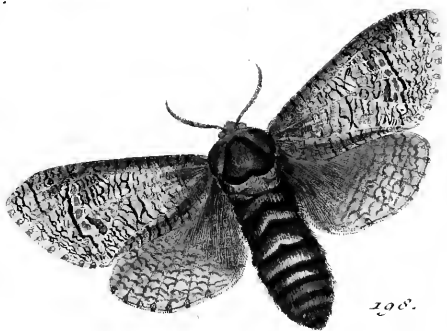
Teredos, A.



197.



199.



198.

197. *Teredos.*

198. *Cossus.*
46.

199. *Cestrum.*

♂

Teredos t.
Cossus 34.

signipenda ♀.
Coss. 34.

Cestrum t.
Cor 34.

♀

80/11 Teredna.

♂. ♀. C. A. Cossus.

Lepidoptera. III.

Rombyces. III

Tersanes. B.



200.



201.



202.

200. 201. *Arundinis.*

202. *Aesculi.*

47.

O. *Arundinis.* 200 ♂. 201 ♀.
Cof. 74.

Q. 94 f. 1. 2. *A. Castanea.*

Aesculi ♀

Cof. 74.

82 f. 7. *A. Aesculi.*

Lepidoptera, III.

Bombyces, III.

Teredines, C.



204.



205.



205.



206.

203. 204. *Humuli*.

205. 206. *Lepulina*.

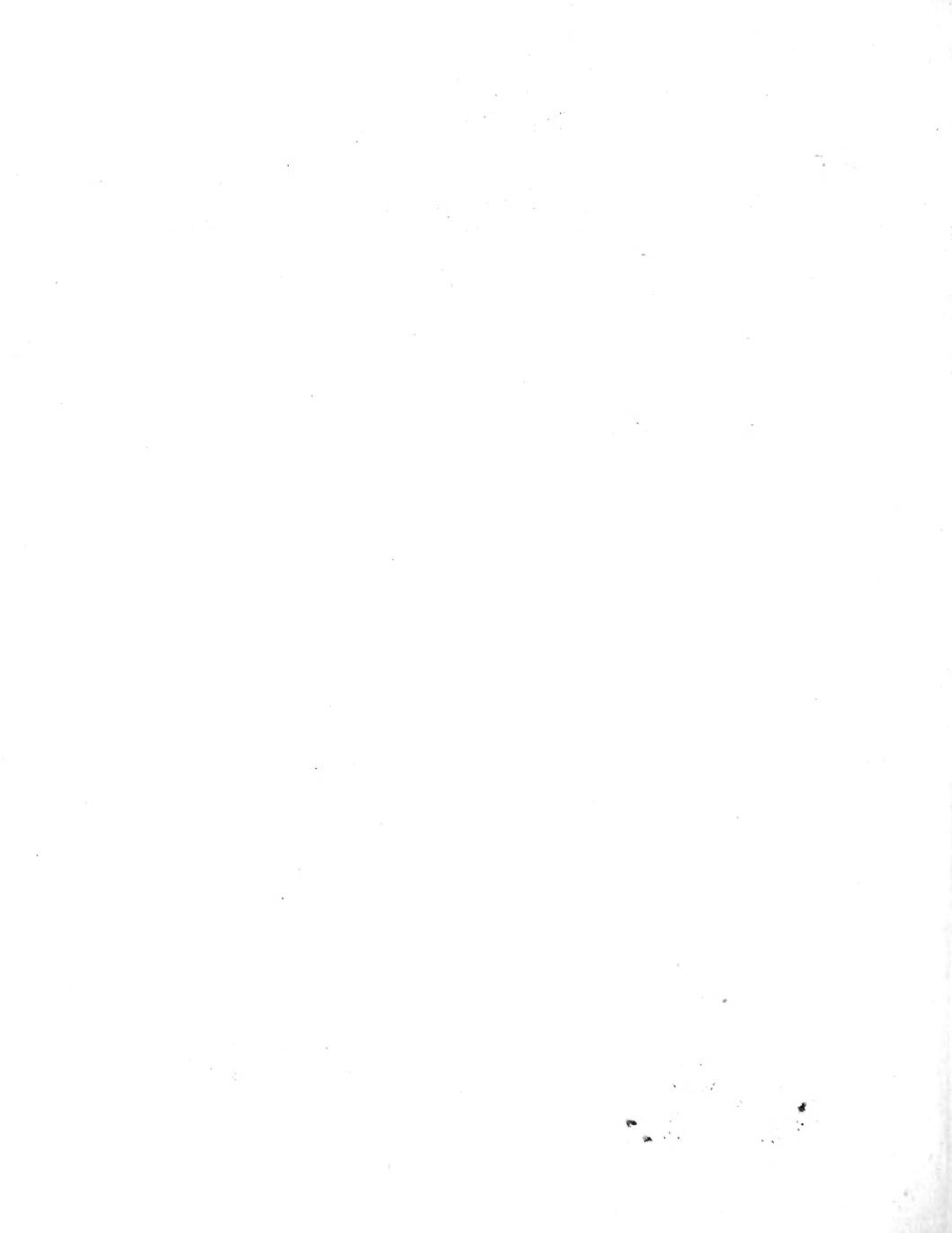
48.

Q. *Humuli* 203 & 204
 Hg. 24.

Q. 80/1-4. *Nectus Humuli*.

Pterinus ros t. 206 g.
 d. 207. 252. *Humuli*
 Hg. 35.
 85/2. 34. *Nect. Pterinus*
 5. 67. *Humuli*.

1912 1309



Lepidoptera, III.

Bombyces, III.

Teredinas, C.



207.



208.



209.



210.



211.

207. *Stamma.*

208. 209. *Sticta.*
49.

210. 211. *Stina.*

Lepidoptera, III.

Bombyces, III.

Tortricae, C.



212.



213.



214.



215.

212. *Vellada.*

213. *Adelta.*

214. *Carnea.*

215. *Panna.*

50.

O.	<i>Vella da S.</i> 1799. 204. 308 1799 28.	<i>Carnea p.</i> 1799 1799 28.	<i>Carnea f.</i> 1799 28. 1/211.	<i>Panna f.</i> 1799 18.
Q.	1799 f. North Vellada	82 f. North Carnea	82 f. North Carnea	
				2-1068 C

Lepidoptera, III.

Bombyces, II.

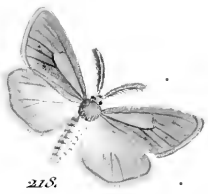
Verre, B. C. &c.



216.



217.



218.



219.



220.



221.



222.

216. 217. *Polyuris*. 218. *Cænosa*. 219. *Cydia*. 220. *Canisla*. 221. *Dulleole*. 222. *Sombra*.

51.

D.	<i>216. Syn. filaris</i> <i>St. 7</i> <i>missa</i>	<i>Canisla</i> <i>St. 10</i> <i>al. 152</i>	<i>Canisla</i> <i>St. 10</i> <i>al. 152</i>	<i>Verita</i> <i>St. 11</i> <i>al. 192</i>	
D.	<i>217. Chim. digubris</i> <i>St. 7</i>	<i>Canisla</i> <i>St. 10</i> <i>al. 152</i>	<i>Canisla</i> <i>St. 10</i> <i>al. 152</i>	<i>Verita</i> <i>St. 11</i> <i>al. 192</i>	
	<i>219. 220.</i>	<i>Canisla</i> <i>St. 10</i> <i>al. 152</i>	<i>Canisla</i> <i>St. 10</i> <i>al. 152</i>	<i>Verita</i> <i>St. 11</i> <i>al. 192</i>	# <i>2. 1/2 St. 6. 1/2 St. 8.</i>

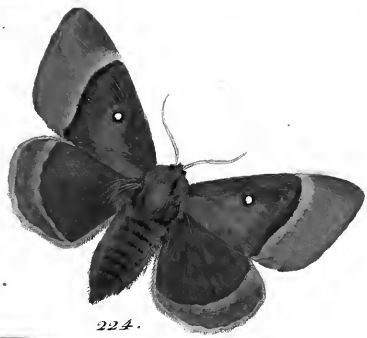
Lepidoptera, III.

Bombyces. II.

Verre, II. &c.



223.



224.



225.

223. *Domina*.

224. *Spartii*.
52.

225. *Quercus*.

Q.	<i>Domineula</i> Var. 15/11/118 89/4	<i>Quercus</i> Var. <i>Spartii</i> . ♀ 15/11/3 15/11/40	<i>Quercus</i> g. d. 172 d. Int. 47.
P.	83/1-4. <i>Domineula</i> 180/4 N. <i>Domina</i>	19/2.3. <i>Quercus</i> .	12/4.6. <i>Quercus</i>

Lepidoptera, III.

Bombyces, II.

Serica, G. &c.



226.



227.



228.



229.



230.

226. 227. Serica. 228. Parasita. 229. Purpurca. 230. Cicia.

53.

Q.	Pencilata 226. S. 227. 9. S. 115.	Parasita f. 228. 116. f. 229. 117. f. n. Pencilata	Purpurca d. ser. 229. 118. 230. 119.	Cicia 9. d. ser. 230. 120.
Q.	85/3. M. Ancilla var.		85/1-5. (Purpurca) 85/1 121.	

Lepidoptera, III.

Bombyces, II.

Nere, B. &c.



232.



231.



233.



234.



235.

231. 232. *Morio.*

233. 234. *Velloda.*

235. *Antiqua.*

54.

O.

Morio 231 d. 232 g.
1754.
1753.

Velloda 233 d. 234 g.
1754. 1755.
1754.

Antiqua g. 1754.
1757.

E.

1756. *Morio.*

1754. *Morio: Velloda*

Lepidoptera III.

Bombyces II.

Vera, B. &.



236.



237.



238.



239.

236. 237. *Seneo*.

238. *Plantaginis*.
55.

239. *Matrona*.

A. *Seneo*. 1862. 237 g.
Nella 37.

Plantaginis L.
27/126. 127. 128.
Egg 47.

Matronula L. 27/128.
Egg 43.

D.

38/1-8. *Plantaginis*.

34/1. *M. Matronula*.



Lepidoptera III.

Bombyces, I.

Sphingoides, E. &c.



240.



241.



242.



243.

240. *Rubea*.

241. 242. *Grammia*.
56.

243. *Vinula*.

A. *Rubea* L. det. 39.
24/10. 62.

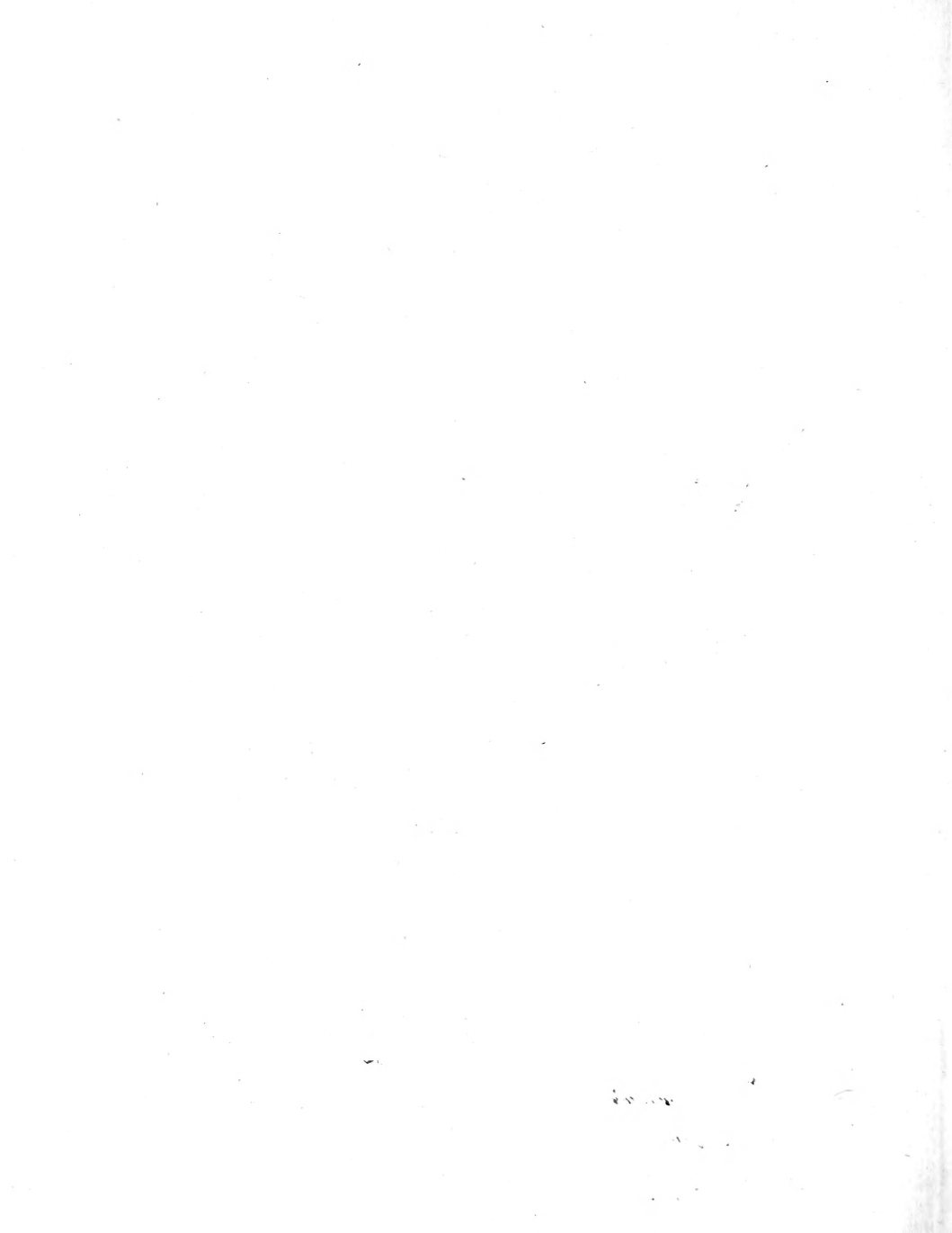
Grammia. var. *striata*
24/10. 103. 241. 242.

Vinula var.
24/34.

C. 89/3. *R. rubea*.

18/1. 8. *Grammia*
83/3. var.

18/1. *Vinula*



Lepidoptera III.

Bombyces, II.

Vera, C. &c.



244.



245.



246.



247.

244. *Terebellum*.

245. *Ancilla*.

246. *Ermita*.

247. *Arvia*.

Epidoptera, III.

Bombyces, I.

Sphingoides, C. &c.



248.



249.



250.



251.

248. 249. *Chrysothoea*.

250. *Plumigera*.
58.

251. *Chrysocephala*.

A

Chrysothoea 248 & 249.

Plumigera 7.

Circinea d.

2/57.

2/18.

Not 33.

Pap 43.

B

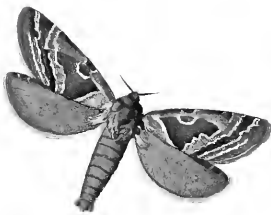
39/57. *Chrysothoea*.

50/67. *Plumigera*.

Lepidoptera, III.

Bombyces, II.

Vinz. D. &c.



252.



253.



254.

252. *Stamma.*

253. *Gonostigma*.
59.

254. *Populifolia.*

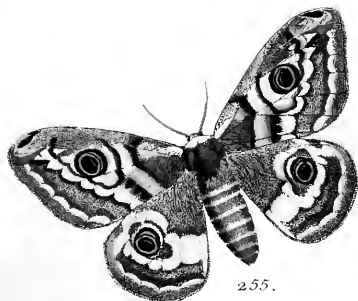
Sylvius ♀.
aff. eos. 206. 207.
211. 74.
82/234. *N. Klina*
167. *Flora*.

Gonostigma ♀.
2/78
8/20.
58/6.10. *Gonostigma*.

Populifolia ♀.
1/189.
2nd 48.

1900 - 1910





255.



258.



256.



257.

255. *Carpini*.

256. 257. *Loti*.

258. *Sticta*.

60.

P.	<i>Carpini</i> g. 1. v. 276 27/27 34. 276	<i>Loti</i> 256 J 257 g. <i>Lactis</i> , 81. 18/11 206	<i>Stictas</i> g. 27 259 209. Nep 36.	11 209 211
Q.	4/16 <i>Clavaria medic.</i>		80/50. 2. N. <i>Sticta</i> . 87. 5. N. <i>Sticta</i> 20- <i>Sticta</i> .	
				1810 - 1817

Lepidoptera, III.

Bombyx I.

Sphingoides, C &c.



259.



260.



261.



262.

259. *Sericina.*

260. *Dyraulæ.*
62.

261. *Dubia.*

262. *Caja.*

O.

morappon

~~*Selenia*~~
~~*stridiv*~~

Caja
2 f 130. 131.
cy p 43

C.

Aurifluella Tristis
Alut. Piranta

Lepidoptera, III.

Bombyces, II.

Vera, C. &c.



263.



264.



265.

263. *Dispar*.

264. *Trifolii*.

265. *Thrips*.

O. *Dispar* & *Var. IV*, p. 202.
dispar 78.
 E. 38/1-8 *Dispar*

Medicaginis *Flor.*
Salt., 42. Pl. p. 206.

Lepidoptera, III.

Bombyces, II.

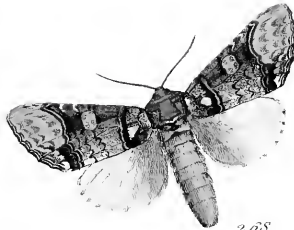
Vara, F. &c.



266.



267.



268.

266. Eborina.

267. 268. Bucophaloides

63.

Eborina J. Var. I. / 104.
- 11. 27. ~~Var.~~ Np. 197.

Bucophaloides. 1678. 2689.
Cyp. 41. III. p. 278. IV. p. 204.

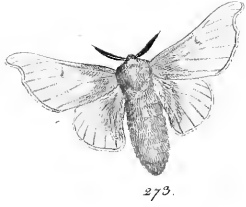
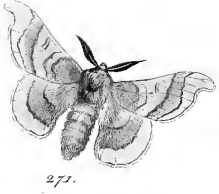
Q

[Faint handwritten notes at the bottom of the page]

Lepidoptera, III.

Bombyces, II.

Vera, K. &c.



269. *Pudica*.

270. *Quercus*.
64.

271. - 273. *Mori*.

Q	134 113	178 228	1193
P	83 - 11 84 - 11 85 - 4		

Lepidoptera. III.

Bombyces. II.


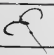
Vera, A. &c.



274. 275. *Requanda.*

276. *Carpini.*

55.

? el leg 385

(1851) 2 of 258 53 31

Notocera Lepidopt. III.

Bombyx I.

Sphingoides, C. &c.



277.



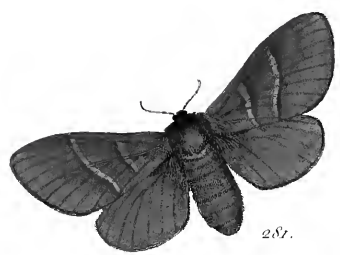
278.



279.



280.



281.

277. 278 *Giraffina.*

279. 280 *Antiquoides,*
66.

281. *Dubi.*

D.	<i>Var. Giraffina</i>		<i>1741</i>
R.		<i>Ericae Treitschke</i>	
<i>Faitschke</i>	<i>Ericae</i>		

Lepidoptera III.

Bombyces, I.

Sphingoides, II.



282.

282. *Cecropia.*

67.

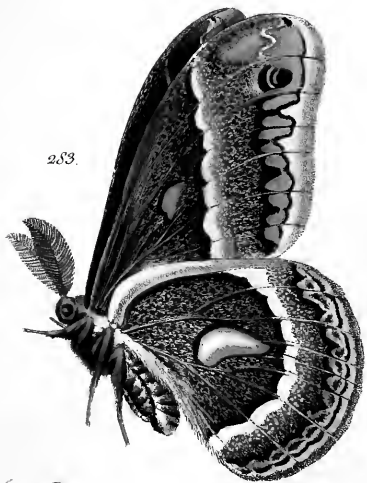
1283

Handwritten scribbles or initials in the bottom left corner.

Lepidoptera, III.

Bombyces, I.

Sphingoides, II. &c.



283. *Ceoropia*.

284. 285. *Albeola*.

286. 287. *Bipuncta*.

68.

A			
P.	282		L. ...

Volucrae Lepidopt. III.

Bombyces, II.

Verac, F. &c.



288.



289.



290.



292.



291.



293.



294.

288. 289. *Arise*, 290. 291. *Kukloecini*, 292. 293. *Compluta*. 294. *Ligubris*.
69.

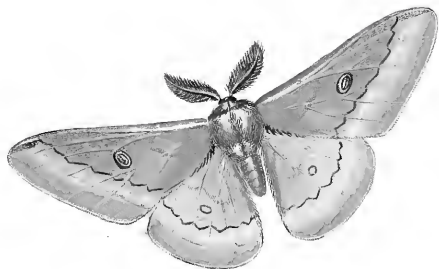
		<p>4104. 6100 1111 1111 1111</p>		<p>18 2216</p>	

Lepidoptera, III.

Bombyces, I.

Sphingoides, II. &c.

299.



300.



301.



299. *Becigena*.

300. *Hamma*.

301. *Caja*.

71.

Becigena, n. 1.
1795. 200-205.

Hamma, n. 1.
1795. 206-208.

Caja, n. 1.
1795. 209.

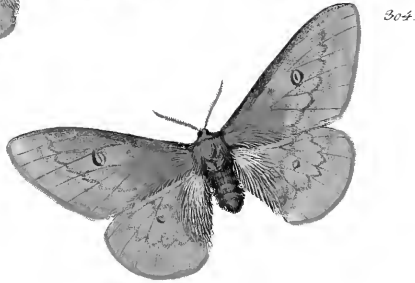
116

1824

Lepidoptera. III.

Bombyces. I.

Sphingoides. II.



302 - 305. *Coccyza*.

72.

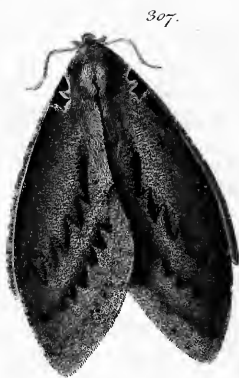
Coccyza ... 1. 258 ...



Lepidoptera, III.

Bombyces, II.

Verae, S. &c.



306. 307. *Dryophaga.*

308. *Velleda.*

Lepidoptera III.

Bombyces, II.

Veræ, I. lxx.

309.



311.



310.



312.



313.

314.



309 - 313. *Alba.*

313. 314. *Abietis.*

72.

Fritschke. Phantasmella

Lepidoptera, III.

Bombyces, II

Verae, E.



315.



317.



316.



318.

315 - 318. *Flavia*.

75.

32.

0.

310.



321.



320.



322.



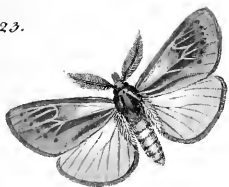
319. - 322. *Fervens.*

Lepidoptera, III.

Bombyces, II.

Verbae, D. &c.

323.



324.



325.



326.



327.



323 - 325. *Caenosa*.

326. 327. *Angelica*.

Lep. Caenosa
1818.

Lepidoptera III.

Bombyces, II.

Verae, S.

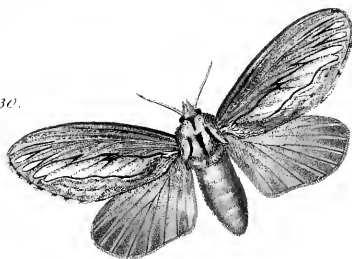
329.



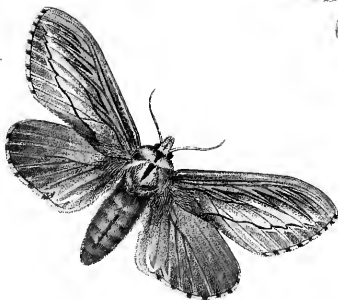
328.



330.



331.



328 - 331. *Lineosa.*

78.

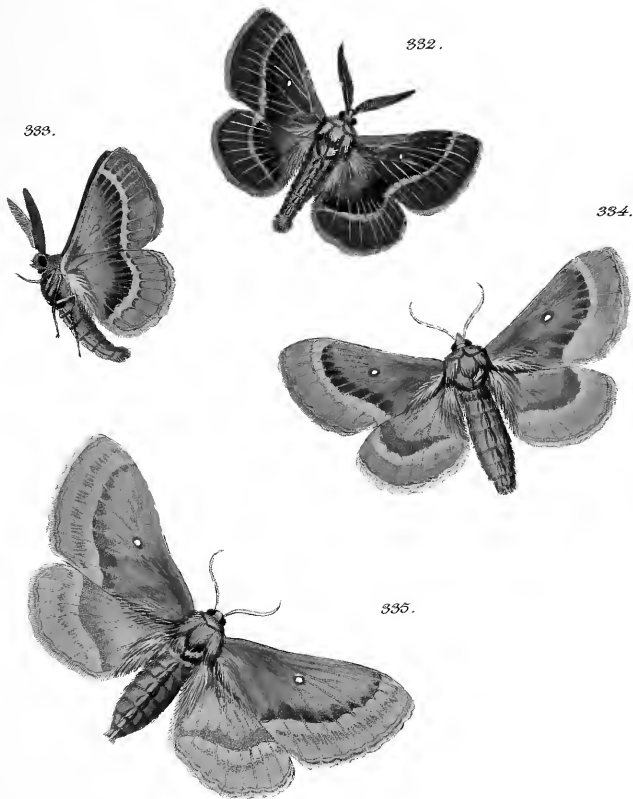
*Section Lineosa. nov. spec. de Villers.
Freyer. fig.*

1831

Lepidoptera, III.

Bombyces II.

Verae, P.



332 — 335. *Cooler.*

79.

Lepidoptera, III.

Bombyces, II.

Verae, C. &c.

336.



337.



338.



339.



340.



336. *Terebellum.* 337. *Albeola.* 338. 339. *Luticosa.* 340. *Vanda.*
80.

O. Jap. Australe.
L. 244.

2

2

Vinculo
L. 244.

1831

Lepidoptera. III.

Bombyces, II.

Veræ, D. &c.

341.



342.



343.



344.



346.



345.



341 - 343. *Tricotophrus*.

344. 345. *Flavicans*.

346. *Repanda*.

51.

Register.

Tabell Figur			Tabell Figur			Tabell Figur		
<u>A.</u>								
<i>Abietis</i>	21	82	<i>Bifida</i> varitat.	10	37.	<i>Ciniza</i> "	32	140
<i>Abietis</i> "	74	313.	<i>Bifida</i>	10	38.	<i>Ceropia</i>	67	282.
<i>Aesculi</i>	47	202.	<i>Bucephala</i> "	45	194.	<i>Chaonia</i> "	3	10.
<i>Abricola</i>	68.	284.	<i>Bucephaloides</i> " .. .	61	267.	<i>Chrysomela</i> " .. .	18	67.
<i>Alba</i>	74	309	<u>C.</u>			<i>Cinerola</i>	24	99
<i>Albica</i>	80	337	<i>Caja</i> "	30	131.	<i>Cinerola</i>	23	91.
<i>Angelica</i>	77	326.	<i>Caja</i> varitat. .. .	30	130.	<i>Cocles</i> "	79	332.
<i>Antiqua</i>	54	235	<i>Caja</i> varit. "	61	262	<i>Compluta</i> "	69	292.
<i>Antique</i>	20	77	<i>Caja</i> varit. "	71	301.	<i>Calona</i> varit. " .. .	31	135
<i>Anastomosis</i> .. .	22	87.	<i>Casta</i> "	31	137.	<i>Cassinia</i> "	53	251.
<i>Anachoreta</i> .. .	22	88.	<i>Casta</i> "	51	219.	<i>Cicubrum</i> "	28	120
<i>Aniella</i>	26	114.	<i>Castea</i> "	38.	163.	<i>Cinerea</i> varit. " .. .	4	12.
<i>Aniella</i>	57	245.	<i>Candida</i> "	28	119.	<i>Crenata</i> var. " .. .	9	12
<i>Arvic</i> "	69	228.	<i>Capucina</i> var. " .. .	5	21.	<i>Crataegi</i>	36	162
<i>Argentina</i>	5	17.	<i>Carminata</i> var. " .. .	5	21.	<i>Crypsorrhoea</i> .. .	53	248.
<i>Arundinis</i>	47.	201.	<i>Camelina</i> "	5	19.	<i>Curialis</i> var. " .. .	32	140
<i>Australis</i> var. " .. .	30	336.	<i>Cassinia</i> " varitas " .. .	2	5.	<i>Cucullina</i> "	5	20.
<i>Austrea</i> var. <i>Velita</i>	4	15.	<i>Carpini</i> "	14	53.	<i>Curratula</i>	11	42.
<i>Auriflua</i> "	18.	68	<i>Castrensis</i>	40	177.	<i>Curtula</i>	22	89.
<i>Aureola</i> "	24.	98.	<i>Caestrum</i> "	46	199.	<u>D.</u>		
<i>Aulica</i> "	32.	139.	<i>Cannus</i> var. "	50	213	<i>Detritta</i>	16	58
<i>Auriflua</i>	61	260.	<i>Caniola</i>	51	220	<i>Dipax</i>	62	263.
<i>Auritta</i> var. " .. .	25	103.	<i>Carpini</i>	60	255	<i>Dipax</i>	19	75
<i>Arvic</i>	52	230	<i>Carpini</i> "	65	276.	<i>Dietacoides</i> " .. .	6	23
<i>Arvic</i>	57	247.	<i>Lactigera</i> "	70	295.	<i>Dietae</i> "	6	22.
<u>B.</u>			<i>Lactigera</i> "	71	299.	<i>Dromedarius</i> .. .	1	28
<i>Betulifolia</i> Hal. . .	44	190	<i>Lactigera</i> "	72	302.	<i>Dominula</i>	27.	117.
<i>Betalifolia</i> var. " .. .	44	191.	<i>Caenosa</i> "	77	323.	<i>Loionca</i> "	3	8.
<i>Bipuncta</i>	68.	286	<i>Canobita</i> varitas " .. .	19	72	<i>Dryophaga</i> " .. .	11.	206.
<i>Bicolora</i> "	3.	18.	<i>Caruleocephala</i> .. .	45	196.	<i>Tubia</i> "	61	267.
<i>Bicuspis</i> "	10	36	<i>Caenosa</i> "	51	218.	<i>Lumeta</i>	37.	164.

	Tabula	Figur
<u>E.</u>		
Eborina ..	24.	104.
Eborina Varit.	63.	266.
Erminea ..	9	35.
Everia ..	38.	166.
Eremita ...	57	246.
Eridae Brit.	66	279.
<u>F.</u>		
Fasciata Och.	39	133.
Fasciularia ..	21	81.
Falcula ..	11	44.
Fagi ..	8	31.
Flavia Och.	75	315.
Flavia Och.	30	132
Flina ..	49	210.
Flavicans ..	81.	344.
Franconica .	40	175.
Fuscinula Hüb	10	37.
Furcula ..	10	37.
Fulgiginosa	33	143.
<u>G.</u>		
Ganna ..	50	214.
Geographica ..	61	259.
Girapina ...	76	267.
Gonostigma	20	78
Gonostigma ..	59	253
Griescola ..	23	97.
Gramica ...	28.	122
Gramica ..	56.	241.

	Tabula	Figur
<u>H.</u>		
Hamma	71.	300
Hamma ...	49	207.
Hammula Brit.	12.	45.
Hammula Hüb.	12	46.
Harpagula ..	11	42.
Heriola ..	23	95.
Hexa ..	27	116.
Hebe ..	30	129
Heita ..	49	208.
Hectus Och.	60	238.
Hebe Varit.	70	276.
Humili ..	48	203.
<u>I.</u>		
Iacobaea ...	26.	112.
Illici folia Och.	44.	170.
Illici folia Hüb.	44	191.
Iodutta ..	50	213.
Innocea ..	25	105
<u>K.</u>		
Kuckweini .	69	270.
<u>P.</u>		
Pamosa Och.	25.	109.
Poclosa ..	22	30
Popanda ..	63.	214.
Popanda ..	81.	346.
Poasca Och.	26.	111.

	Tabula	Figur
Proscida ...	25	106.
Rubca ..	16.	60.
Rudca ..	56	240
Rubi ..	39	174.
Rubi ..	66	281.
Rustica ...	34.	150.
Ruspula ..	29	124.
Rubicundea ..	26	111.
Rubricollis ..	23	94.
<u>O.</u>		
Ochrocola ..	23	96.
<u>P.</u>		
Paraphyta ..	32	146.
Paraphyta ..	53	228.
Patatoria ..	41	182.
Pantarinus ..	36	157.
Palpina ..	4.	16.
Personna ..	52	223.
Personna ..	76	319.
Pini ..	42	184.
Plantaginis ..	27	126.
Plumigera ..	4	19.
Puni ..	42	86.
Plumigera ..	38.	250.
Plantaginis ..	55.	238.
Plumboda ..	24	100.
Pypi ..	15	56.
Pythioicampa	36	161.

	Tab.	Fy.	<u>M</u>	Tab.	Fy.		Tab.	Fy.
<i>Paeipionea</i> "	36	153				<i>Spinax</i> " "	3	4
<i>Populifolia</i> " "			<i>Matronula</i> "	55	129.	<i>Spinula</i> " "	11	40.
der Zwiten	59	254.	<i>Matronula</i> ad.	32	133.	<i>Spini</i> " " "	14	55.
<i>Populi</i> " " "	36.	163.	<i>Maiutosa</i> " "	23	144	<i>Spartii</i> " " "	39	170.
<i>Populifolia</i> " "	43	187.	<i>Malazona</i> "	4	14.	<i>Spartii</i> " " "	53	224.
<i>Puribunda</i> tab.	27	84.	<i>Medizagenis</i> var.			<i>Sylvinus</i> ad.	59	252
<i>Pulehna</i> " " "	26	103.	ad.	62	264.	<i>Spinx</i> " " "	2	3.4.
<i>Pudica</i> " " "	31.	134.	<i>Menthastris</i> "	33.	152.			
<i>Purpurea</i> " "	33	142.	<i>Mendica</i> "	54	148.	<u>F.</u>		
<i>Pudica</i> " " "	64.	267.	<i>Mori</i> " " "	64.	271.	<i>Taraxaci</i> " "	31	165
<i>Punctata</i> " " "	26.	115.	<i>Mori</i> " " "	44.	193	<i>Tau</i> " " "	13	51.
<i>Purpurea</i> varit.	53.	129.	<i>Moris</i> " " "	54	231.	<i>Terebra</i> " " "	46	197.
<i>Punctata</i> ad.	51.	226.	<i>Morica</i> " " "	16.	57.	<i>Terebrillum</i> Est.	57.	244.
			<i>Monocha</i> "	19	74.	<i>Thalict. Kocta</i>	6	25.
<u>L.</u>			<i>Minea viridula</i>	56	243.	<i>Simant</i> " " "	22	86.
<i>Laponica</i> " "	57	247.	<i>Mühlhauferei</i>	8.	32	<i>Torra</i> ad. " " "	7	29
<i>Laponica</i> " " "	53	230	<i>Murina</i> " "	17.	62.	<i>Torra</i> Hub " " "	1	27.
<i>Lacintula</i> —	12	49	<i>Muriana</i> var.	11	65.	<i>Tritophus</i> ad.	1	27.
<i>Lanestris</i> —	38	169	<i>Mustenda</i> " "	24	103	<i>Tritophus</i> Hüb.	7	29.
<i>Lignipenda</i> " "	46	198.				<i>Tromulac</i> " "	1	30
<i>Liniosa</i> " " "	78.	328	<u>V.</u>			<i>Trivali</i> " " "	39	111.
<i>Lotti</i> " " " "	60.	256.	<i>Vinostica</i> " "	40	179.	<i>Trivali</i> " " "	62	264.
<i>Lobulina</i> " "	41	180.	<i>Abuculosa</i> "	2	3.4.	<i>Trips</i> " " "	62	265.
<i>Luctuosa</i> " "	30	338.				<i>Tritotrophus</i> " "	81.	341.
<i>Luteola</i> —	23	92.	<u>S.</u>					
<i>Luteifera</i> —	34.	144.	<i>Salicis</i> " " "	18	70.	<u>U</u>		
<i>Lupricipeda</i> " "	35	155.	<i>Saricina</i> Hüb.	3	1.	<i>venula</i> " " "	12	45.
<i>Lupulina</i> " "	48.	205.	<i>Selenitica</i> " "	20	77.	<i>unquicula</i> " "	12	48.
<i>Luzubris</i> Hüb.	51	216.	<i>Senex</i> " " "	55	236	<i>Unita</i> " " "	22.	72.
<i>Luzubris</i> " " "	69	274.	<i>Sincula</i> " " "	12	50	<i>Unita</i> " " "	51.	221
<i>Lupulinus</i> " "	70	277.	<i>Sicula</i> " " " "	11	41	<i>Urticac</i> " "	35	154.
			<i>Sordida</i> " " "	34.	151.			
			<i>Serva</i> " "	52	226			
			<i>Serva</i> " "	23	15.			

V.

	Fals.	Fy.
Vestita ...	17	69
Vesficulosa	1	12.
Vilida ..	50	212.
Vilida ..	54	233.
Vilida ..	13	508.
Vilida ..	31	126.
Vinula ..	9	34.
Vinula ..	80	340.
V. nigram ..	18	71.
V		

Z.

Zizac ..	6	26.
----------	---	-----

C.

Quadra -	24	101.
Querna ..	3	9.
Quercus ..	39	112.
Quercus ..	52	125.
Quercus ..	64	270.
Quercifolia ..	43	181.

