

## Historic, archived document

Do not assume content reflects current scientific knowledge, policies, or practices.



62 97

1921

# CURRIE'S

# BULBS AND PLANTS

Autumn  
1921

D. N. S. ...



Poet's Narcissus

CURRIE BROS. CO.  
MILWAUKEE, WIS.  
384 EAST WATER ST.

# CURRIE BROTHERS COMPANY

ESTABLISHED 1875. INCORPORATED 1903.

384 EAST WATER STREET, MILWAUKEE, WIS.

## Autumn Catalogue, 1921

All Goods in This Catalogue are offered subject to being resold on receipt of order and the prices quoted are subject to change without notice.

The Prices are Net. We offer no premiums, discounts or gratuities.

In conformity with action taken many years ago by the American Seed Trade Association of which we are members, our goods are sold under and subject to the following non-warranty clause: Currie Bros. Co. give no warranty express or implied as to description, quality, productiveness, or any other matter of any seeds, bulbs or plants we send out, and we will not be in any way responsible for the crop.

Remittances should be made by Express Money Order, P. O. Money Order, Bank Draft or Registered Letter. Money sent in any other manner is done entirely at sender's risk.

Orders from New Customers.—Persons unknown to us, to avoid delay, should send remittance or satisfactory Milwaukee reference with their orders. We decline to ship C. O. D. to unknown customers unless at least 25% (¼) of the value of the goods ordered is sent to guarantee acceptance.

Errors in billing orders, in spite of every precaution, will sometimes creep in. As we will always gladly rectify such errors, however, if they are brought to our attention in time, customers should notify us promptly upon arrival of goods of any mistake that may be found.

Government ruling still forbids the importation of FRENCH ROMAN HYACINTHS, GRAPE HYACINTHS, SNOWDROPS, SCILLAS and many other varieties of flowering bulbs, and these we are, therefore, obliged to omit from the Catalogue again this season.

## PLANTING TABLES

Table showing the number of Tulip bulbs required to fill a round bed of given dimensions, the number in each row from the center outward indicated, the rows five inches apart and the bulbs five inches apart in the rows.

Diameter of Bed	Total number	
3 ft.	143	3 ft.
3½ ft.	177	3½ ft.
4 ft.	211	4 ft.
4½ ft.	245	4½ ft.
5 ft.	279	5 ft.
5½ ft.	313	5½ ft.
6 ft.	347	6 ft.
6½ ft.	381	6½ ft.
7 ft.	415	7 ft.
7½ ft.	449	7½ ft.
8 ft.	483	8 ft.
8½ ft.	517	8½ ft.
9 ft.	551	9 ft.
9½ ft.	585	9½ ft.
10 ft.	619	10 ft.

To ascertain the approximate number of bulbs required for a bed of any size or shape, the area being known, divide

the number of square inches in the bed by the product of the distance of the bulbs apart both ways; for example, a bed of 12 square feet contains 1,728 square inches; if bulbs are to be planted 6 inches apart one way by 4 inches the other, dividing 1,728 by 6 x 4 or 24 will give 72 as the number of bulbs required.

Table of distance and depth to plant leading varieties of bulbs outdoors in good, well-drained soil, the figures indicating inches.

	Distance apart	Depth to top of bulb
Crocuses	2	2
Hyacinths	6-7	5
Jonquils	6	3
Lilies, Candidum	10	3-4
Lilies, Japanese	12	6-9
Lilies, Native	8-10	3-4
Narcissus	6-10	4-5
Tulips	4-5	4

Bulbs planted in pots or pans should be set with the top of the bulb just showing above the ground. Lilies low enough to permit addition later of an inch more of soil to cover the stem roots.

### STANDARD FLOWER POTS, AZALEA POTS AND BULB PANS.

All with rims.

	2 in.	2½ in.	3 in.	3½ in.	4 in.	5 in.	6 in.	7 in.	8 in.	9 in.	10 in.	12 in.	14 in.	16 in.
Each	.04	.05	.06	.07	.08	.14	.18	.28	.40	.50	.70	1.35	2.90	5.75
Doz.	.49	.75	.95	1.05	1.20	1.35	1.80	3.10	4.40	5.50	7.70	14.85		
100	2.00	2.50	3.25	4.00	5.00	9.00	13.50	22.50	32.50					
1000	15.00	18.50	24.00	30.00	37.50	67.50	100.00							

### SAUCERS.

	4 in.	5 in.	6 in.	7 in.	8 in.	9 in.	10 in.	12 in.
Each	.06	.07	.10	.14	.18	.22	.27	.45
Doz.	.75	.70	1.00	1.40	1.80	2.40	3.00	4.95

Prices subject to change.



Fertilize bulb beds or bulb potting soil with Bone Meal or Sheep Manure, spreading on Bone Meal at the rate of 1 pound to 40 sq. ft.; Sheep Manure 1 pound to 20 sq. ft., or using one part Bone Meal to about 50 parts soil or 1 part Sheep Manure to about 25 parts soil. See prices on page 16.

DIBBLES for planting Tulips, Hyacinths and other bulbs, wood handle, steel point, each 70c; all iron, 75c



Dibble



HYACINTH GLASSES

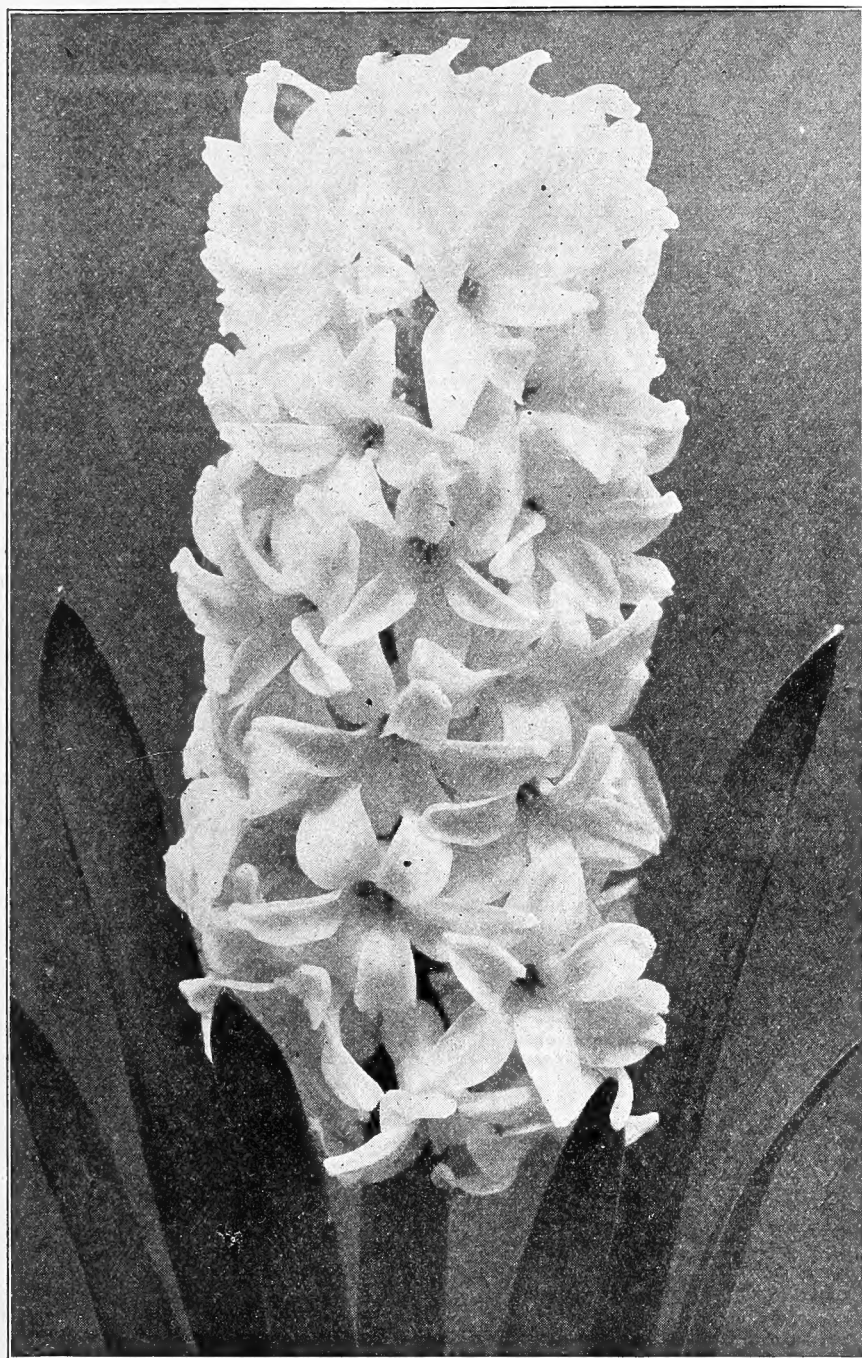
Various Colors. Low and tall.



Each, 40c; by mail, \$ .50  
Per dozen, \$4.40, by express at purchaser's expense.

Prices subject to change.

# Dutch Hyacinths



Single Dutch Hyacinth

## How to Grow Them

**Pot Culture**—Use a 4 or 5 inch pot for each bulb, or plant three in a 6 inch pot; a light, rich, sandy soil is best. The upper surface of the bulb should show above the soil. After potting, water thoroughly and place in a dark, cool cellar, covered up with sand or ashes until well rooted; this generally takes from two to three months.

**Glass Culture**—Fill the glass so that the base of the bulb will just touch the water and set away in a cool, dark place until well rooted. Change the water frequently. A Hyacinth Glass, such as shown on page 2, should be used.

**Outdoor Culture**—Plant in October or early November, about 6 inches apart and 5 inches deep. Cover the bed with straw, leaves or short manure during the winter.

## Choice Named Hyacinths

**Price 15 Cents Each; \$1.60 per Doz.,** Delivered to any Postoffice in the United States. **\$12.00 per 100,** by Express.

**6 OF ONE KIND AT DOZEN RATES AND 25 AT 100 RATES**

### SINGLE RED AND ROSE

**Garibaldi**—Brilliant carmine, early forcer.  
**Gertrude**—Rosy pink, fine truss.  
**Gigantea**—Blush pink, very fine truss.  
**King of Belgium**—Bright red, good truss.  
**La Victoire**—Brilliant scarlet, very fine spike.  
**Lord Macaulay**—Bright, rosy carmine, white eye.  
**Moreno**—Waxy pink, large bells.  
**Robert Steiger**—Bright crimson.  
**Rosea Maxima**—Delicate pink, fine truss.

### SINGLE WHITE

**Albertine**—Purest white, early.  
**Baroness van Thuyll**—Pure white, large truss.  
**La Grandesse**—Pure white, large truss.  
**L'Innocence**—Pure white, large.  
**Mad, Van der Hoop**—Pure white, large bells.  
**Paix de l'Europe**—Pure white, large spike.

### SINGLE BLUE

**Baron van Thuyll**—Dark, large truss.  
**Czar Peter**—Porcelain, large spike.  
**Enchantress**—Porcelain blue, white eye, handsome spike.  
**Grand Maitre**—Deep porcelain, large truss.  
**King of the Blues**—Deep glossy blue.  
**Marie**—Dark blue, shading purple.  
**Queen of the Blues**—Azure blue, large bells.

### SINGLE YELLOW.

**Ida**—Golden yellow, very fine.  
**King of the Yellows**—Bright yellow, compact spike.  
**MacMahon**—Pure yellow, large heavy spike.  
**Yellow Hammer**—Beautiful, pure yellow spike, early.

### DOUBLE RED AND ROSE

**Bouquet Tendre**—Bright red, fine truss.  
**Grootvorst**—Rose, very fine truss.  
**Lord Wellington**—Finest pink, large bells.  
**Prince of Orange**—Dark rose, striped, large truss.

### DOUBLE WHITE

**Bouquet Royal**—Pure.  
**Isabella**—Blush white, splendid spike.  
**Prince of Waterloo**—Pure.  
**La Virginite**—Blush-white, large bells and spike.

### DOUBLE BLUE

**Bloksberg**—Porcelain, large bells and truss.  
**Delicata**—Fine pale blue, good spike.  
**Garrick**—Azure, fine truss.  
**General Anthink**—Porcelain blue, dark center.  
**General Koehler**—Large, bright blue, fine forcer.

### DOUBLE YELLOW

**Bouquet de Orange**—Orange.  
**Goethe**—Sulphur yellow, fine truss.  
**Jaune Supreme**—Pure.  
**Sunflower**—Salmon tinted yellow.

# Tulips

**Garden Culture of Tulips.** All good soil well enriched will suit Tulips. October or early November, is the proper time to plant them. Set them 3 or 4 inches apart and about 3 inches deep. Protect during severe months of winter with a covering of straw or manure.

**Forced Tulips** are supplied for pot culture in the house. The *Duc Van Tholl* varieties can be forced into bloom for the winter. Plant at least 3 or 4 bulbs in each pot.

The earliest blooming varieties are marked a, next b, and so on in their order. The number before the name denotes the height of their growth in inches; 25 bulbs at 100 rate; 250 at 1,000 rate.



**Keiserkroon,  
Breeder Tulips**

Old Dutch self-colored Tulips which have been neglected for many years. The present taste for artistic colors has however called them into prominence once more. Nature's happiest color combinations of Purple and Bronze, Grey and Lake, Yellow and Bronze, Brown and Orange, are revealed to us in this group. The flowers are mostly large, but of perfect form and are borne on tall strong stems.

- Black Chief**—Dark purple black
- Bronze Queen**—Buff tinged apricot, fine for pot culture
- Cardinal Manning**—Blend of mauve and rose changing to orange
- Jaune d'Oeuf**—Golden outside petal shaded apricot
- Mary Hollis**—Soft coral salmon
- Prince of Orange**—Tetracoma with orange edge, very fine
- Yellow Perfection**—Bronze yellow, shaded deep golden

Each \$ .09 Doz. \$ .85 100 \$6.00

## Early Single Tulips

	Each	Doz. 100	1000
9 <b>Artus</b> —Pure scarlet	\$ .06	\$ .55	\$3.75 \$28.00
9 <b>Belle Alliance</b> —Bright scarlet sweet scented	.07	.65	4.50 34.00
8 <b>Canary Bird</b> —Yellow	.08	.75	5.00 40.00
8 <b>Chrysolora</b> —Fine yellow	.07	.65	4.50 34.00
8 <b>Cottage Boy</b> —Yellow edged orange very distinct, fine bodied	.07	.70	4.75 36.00
8 <b>Cottage Maid</b> —Rose border white, true	.07	.70	5.00 40.00
10 <b>Crimson Brilliant</b> —Dazzling crimson scarlet, fine early forcer	.06	.60	4.00 30.00
10 <b>Crimson King</b> —Fine crimson	.07	.70	4.75 36.00
7 <b>Duc Van Tholl</b> —Scarlet	.07	.70	4.75 36.00
10 <b>Duchess de Parma</b> —Orange yellow fine	.07	.70	4.75 36.00
10 <b>Dusart</b> —Finest large, dark scarlet	.08	.75	5.00 38.00
8 <b>Flamingo</b> —Brilliant rosy red on white ground, flowers large, fine forcer	.10	1.00	7.00 . . . .
10 <b>Gold Finch</b> —Pure golden yellow, sweet scented, fine for early forcing, Sport of Yellow Prince	.08	.75	5.00 40.00
10 <b>Golden Queen</b> —Pure yellow, extra large globular flower, very showy	.08	.75	5.00 40.00
8 <b>Joost von Vondel</b> —Rosy red and white	.07	.70	4.75 36.00
8 <b>Joost von Vondel White</b> (Lady Boreel)—Pure white, large flower	.08	.75	5.25 42.00
12 <b>Keiserkroon</b> —Red, bordered yellow	.06	.60	4.00 30.00
9 <b>LaReine</b> , (Queen Victoria)—White, very fine forcing	.06	.55	3.75 28.00
9 <b>LaReine Maximus</b> —Large flowers, white bordered rose, same forcing habit as LaReine	.08	.75	5.00 40.00
9 <b>Le Matelas</b> —Bright rose, fine forcer	.11	1.10	8.00 . . . .
10 <b>Pink Beauty</b> —Deep glowing rose with white flush outside; a very lovely tulip	.08	.80	5.75 46.00
8 <b>Pottelbakker</b> —Scarlet	.07	.65	4.50 34.00
7 <b>Pottelbakker</b> —Pure yellow	.07	.70	4.75 38.00
10 <b>Pottelbakker</b> —White, one of the finest whites	.08	.75	5.00 40.00
9 <b>Primrose Queen</b> —Unique sport of LaReine, fine form, delicate primrose-yellow shade	.06	.60	4.00 30.00
10 <b>Prince of Austria</b> —Fine, deep red with an orange tinge; sweet-scented. Especially desirable for forcing	.07	.70	4.75 35.00
12 <b>Proserpine</b> —Rich, dark rose, splendid, large flower	.10	1.00	7.50 65.00
9 <b>Prosperity</b> —(LaReine des Reines)—Deep pink, grand forcer	.09	.85	6.25 52.00
8 <b>Queen of the Netherlands</b> —Beautiful, soft, rosy pink	.08	.80	5.50 44.00
8 <b>Rose Gris de Lin</b> —Very fine rose	.06	.60	4.00 30.00
8 <b>Rose Luisante</b> —Extra fine, deep rose	.08	.80	5.75 48.00
9 <b>Sir Thomas Lipton</b> —Finest of all scarlets	.08	.80	5.75 48.00
12 <b>Thomas Moore</b> —Bright orange scarlet	.06	.55	3.75 28.00
9 <b>White Hawk</b> (Albion)—Large, pure white	.08	.80	5.75 46.00
8 <b>Yellow Prince</b> —Fine yellow, sweet scented	.06	.55	3.75 28.00

## Early Flowering Mixed Tulips

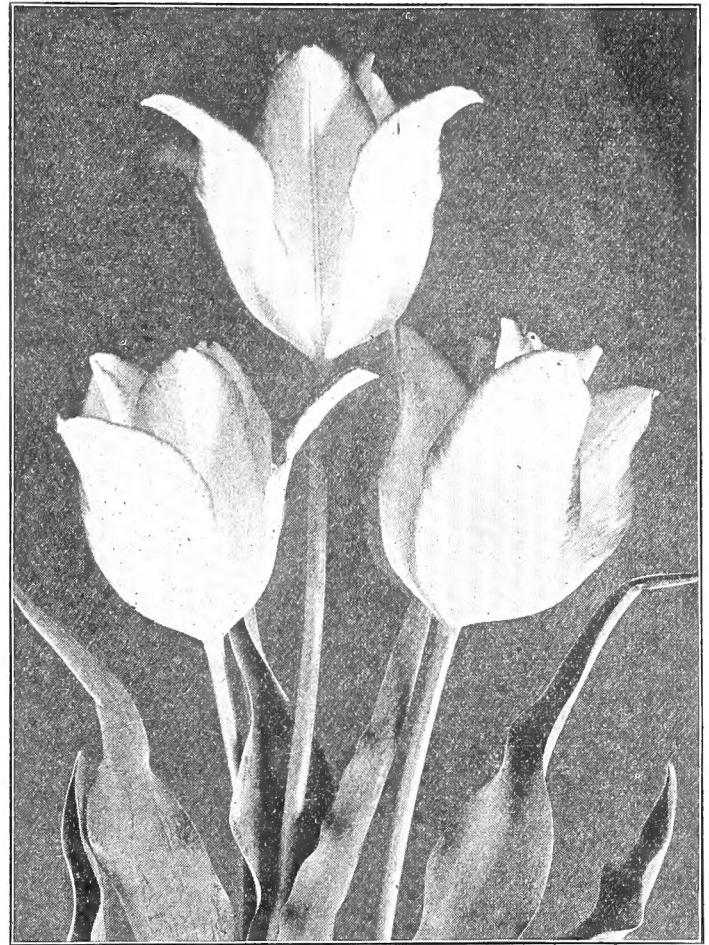
	Doz.	100	1000
<b>Single Fine Mixed</b>	\$ .45	\$3.00	\$20.00
<b>Single Extra Fine Mixed</b>	.50	3.50	24.00
<b>Double Fine Mixed</b>	.50	3.50	24.00
<b>Double Extra Fine Mixed</b>	.55	3.75	28.00

Tulips at dozen and 100 prices delivered free to any Postoffice or Express Office in the United States. At 1000 rates by express at purchaser's expense.

**Single Late Flowering or Cottage Tulips**

A magnificent class of late flowering Tulips, coming into bloom during the latter part of May. They are much more showy than the early varieties, on account of their brilliant colorings and long flower stems, and remain in bloom for a long time.

	Each	Doz.	100
<b>Bouton d'Or</b> —Pure yellow, very fine (Per 1000 \$32.00) .....	\$.07	\$.65	\$4.25
<b>Elegans</b> —Dark crimson, reflexing petals....	.07	.65	4.50
<b>Fairy Queen</b> —A very large, beautiful flower, rosy heliotrope margined with yellow....	.07	.65	4.25
<b>Gesneriana Major</b> —Large dazzling, brilliant scarlet, blue center (Per 1000 \$44.00)....	.08	.80	5.50
<b>Gesneriana Lutea</b> —Beautiful yellow (Per 1000 \$32.00) .....	.07	.65	4.25
<b>Inglescombe Pink, (Salmon Queen)</b> —Salmon rose. A beautiful tulip .....	.07	.65	4.25
<b>Inglescombe Yellow</b> —Canary yellow, in shape resembling the Darwin tulips (Per 1000 \$32.00) .....	.07	.65	4.25
<b>Isabella (Shandon Bells)</b> —Large, salmon pink	.07	.65	4.25
<b>John Ruskin</b> —Apricot-rose, shaded mauve, edges pale yellow.....	.09	.85	5.75
<b>La Merveille</b> —Scarlet, suffused with apricot orange .....	.07	.70	4.75
<b>Maiden's Blush (Picotee)</b> —Large, white, edged pink .....	.06	.60	4.75
<b>Rembrandt</b> —White with pink ground, suffused bright red, strikingly beautiful, choice mixed sorts .....	.07	.70	4.75
<b>Royal White</b> —Very large, white.....	.09	.90	6.50
<b>Striped Beauty</b> —Large, showy flower, flamed white and cherry red.....	.08	.80	5.50
<b>Sweet Nancy</b> —White, edged pink.....	.08	.80	5.50

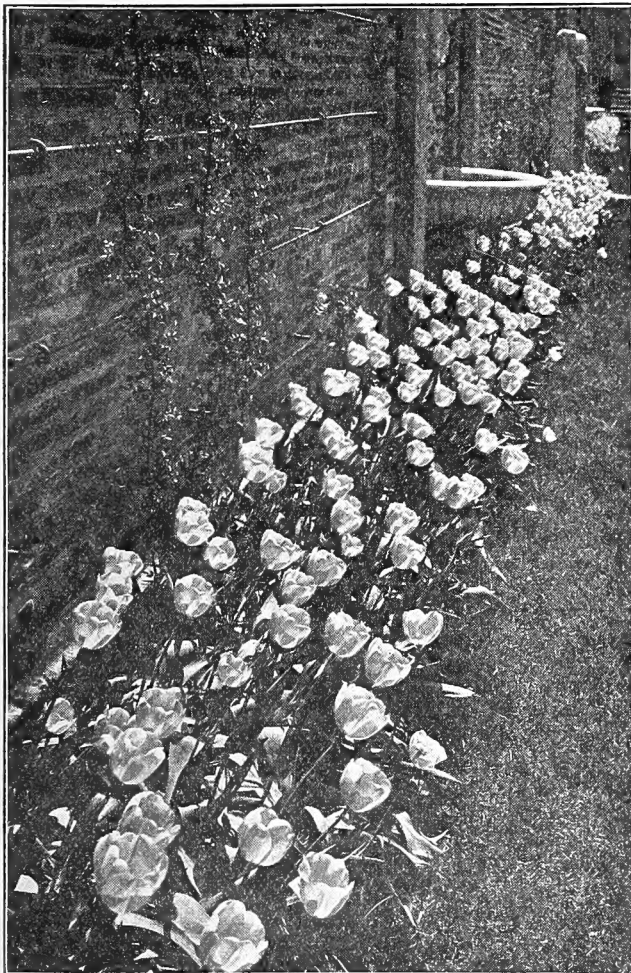


**Maiden's Blush or Picotee Darwin Tulips**

Brilliant, self-colored single late Tulips of immense size, borne on strong stems, many of them 2 feet high. The blooms are of almost every conceivable color, from pale blush to the brightest red, lilac, light blue and purple to almost black, etc.

Darwins have become wonderfully popular during the past few years, a fact not surprising to those acquainted with the perfect beauty of their form and substance, their rich, brilliant colors, their long, straight, stiff stems, the persistence of their blooming period and their adaptability either to outdoor growing or forcing under glass. Most of the varieties may easily be forced into bloom by mid-winter or the end of February.

	Each	Doz.	100
<b>Baron de La Tonnaye</b> —Vivid rose, one of the best \$	.07	\$.65	\$4.50
<b>Bartigon</b> —Fiery red, good forcer .....	.09	.85	6.00
<b>Clara Butt</b> —A lovely shade of soft salmon pink..	.07	.65	4.25
<b>Dream</b> —Large lilac rose.....	.07	.70	4.25
<b>Erguste</b> —Dark heliotrope, inside violet, white base; very fine.....	.08	.75	5.00
<b>Europe</b> —Fine scarlet with striking white base..	.08	.75	5.00
<b>Glow</b> —Brilliant vermilion, center blue, margined white .....	.08	.75	5.25
<b>Gretchen (Margaret)</b> —Charming, soft blush shading to rose.....	.07	.65	4.25
<b>Harry Veitch</b> —Brilliant deep red, blue base.....	.07	.70	4.75
<b>La Tulipe Noire</b> —The famous black tulip.....	.09	.85	6.00
<b>Loveliness</b> —Fine soft, rosy pink.....	.07	.70	4.75
<b>Madame Krelage</b> —Bright rose, light bordered; large fine flower .....	.08	.80	5.50
<b>Marconi</b> —Large purple violet with conspicuous white base .....	.08	.80	5.50
<b>Massachusetts</b> —Bright rose .....	.08	.80	5.50
<b>May Queen</b> —Soft, rose, large and beautiful.....	.07	.70	4.75
<b>Mr. Farncombe Sanders</b> —Extra fine, brilliant orange scarlet .....	.08	.80	5.75
<b>Mrs. Cleveland</b> —Soft, flesh color.....	.08	.75	5.00
<b>Ouida</b> —Fiery red, very fine, tall, erect, brilliant tulip .....	.07	.70	4.75
<b>Painted Lady</b> —Creamy white .....	.07	.65	4.50
<b>Pride of Haarlem</b> —An immense flower, brilliant carmine rose, blue at base.....	.07	.70	4.75
<b>Psyche</b> —Soft rose, silvery rose inside, large long-stemmed flower .....	.07	.70	4.75
<b>The Sultan</b> —Velvety black maroon, large and glossy .....	.07	.65	4.25
<b>White Queen</b> —Large and soft, white, tinged blush .....	.07	.70	4.75
<b>Wm. Copeland</b> —Bright rosy lilac, splendid for early forcing .....	.08	.80	5.75
<b>William Pitt</b> —Deep scarlet tinted purple, blue and white center; excellent for pots.....	.09	.90	6.50
<b>Fine Mixed Darwin Tulips</b> .....	\$.06	\$.60	\$4.00 \$30.00



**Darwin Tulips, Gretchen.**

**"BULBS AND TUBEROUS-ROOTED PLANTS"**  
ILLUSTRATED ALLEN. CLOTH BOUND, \$2.00.

Tulips at dozen and 100 prices delivered to any Postoffice or Express Office in the United States. At 1000 rates by express at purchaser's expense.



Double Tulip Murillo

**Parrot Tulips**

Parrot tulips, so called because of their brilliant, parrot-like colorings, are large, fantastically showy flowers with curled and crested petals. They come into bloom about the middle of May and remain in bloom for a long time.

	Each	Doz.	100	1000
Admiral Constantinople—Red	\$.07	\$.65	\$4.50	\$35.00
Crimoiste Brilliant—Deep crimson, with large, black, star-shaped center	.07	.65	4.50	35.00
Lutea—Yellow	.07	.65	4.50	35.00
Perfecta—Yellow and scarlet	.07	.65	4.50	35.00
Finest Mixed—All colors	.06	.60	4.00	30.00

**Crocus**

Planted in clusters by themselves in the garden or lawn. Crocuses are very effective. A favorite method of planting is to put the bulbs just below the sod in the lawn so that the flowers will come up through the grass in the early spring. They may be grown successfully in the house or greenhouse, the pots or pans in which the bulbs have been planted being kept in a cold cellar until the middle of January, as even a moderately mild temperature before that date will spoil them.

**GIANT NAMED CROCUS**

Cloth of Gold—Golden striped, brown; early			
Cloth of Silver—White striped, lilac; early			
David Rizzio—Large, purple			
King of the Blues—Large dark blue	\$.30	\$2.00	\$15.00
Mont Blanc—Large, white			
Non Plus Ultra—Purple, with white tip			
Sir Walter Scott—White, striped, purple			
Kathleen Parlow—Purest white; large orange anthers, flowers of fine substance	.45	3.00	24.00
	Doz.	100	1000
	Doz.	100	1000

**MIXED CROCUS**

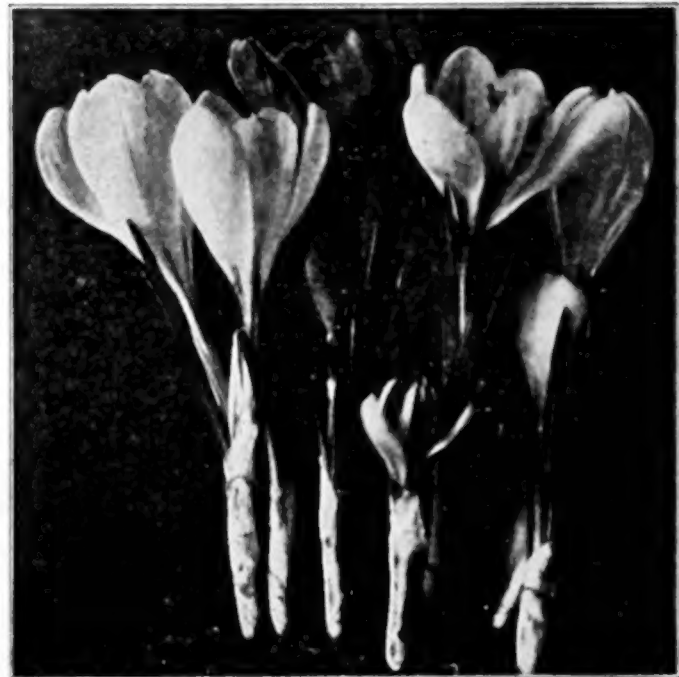
White varieties			
Blue and purple			
Golden yellow	\$.20	\$1.50	\$10.00
Striped and variegated			
Mixed, all colors			

**Early Double Flowering Tulips**

c 8	Boule de Neige (Snowball)—Fine large, pure, double white	\$.07	\$.70	\$4.75	\$38.00
c 8	Cochineal—Large vermilion scarlet	.08	.80	5.50	44.00
c 9	Couronne des Roses—Finest rose	.09	.85	6.25	52.00
b 10	Couronne d'Or—Orange	.07	.70	4.75	38.00
b 6	Duc Van Tholl—Red and yellow	.08	.80	5.50	44.00
c 8	Duke of York—A lovely violet, white bordered	.07	.70	4.75	38.00
c 9	Gloria Solis—Brown and yellow	.07	.70	4.75	38.00
b 8	Imperator Rubrorum—Fine scarlet	.08	.75	5.00	40.00
c 8	La Candeur—Pure white finest	.07	.70	4.75	38.00
c 8	La Grandesse—Deep rose	.07	.70	4.75	38.00
c 8	Lucretia—Beautiful deep rose	.06	.60	4.25	32.00
c 7	Murillo—Light rose	.06	.55	3.75	28.00
c 8	Rex Rubrorum—Fine scarlet	.06	.60	4.25	32.00
c 7	Rubra Maxima—Deep crimson, fine bedder and forcer	.06	.60	4.00	30.00
b 7	Salvator Rosa—Fine Rose	.07	.70	4.75	38.00
b 7	Tearose—Pale yellow, flushed salmon; a distinct shade and a lovely color when forced	.07	.70	4.75	38.00
c 7	Toreador—Scarlet, margined buff yellow, magnificent forcer	.12	1.15	8.50	....
a 9	Tournesoll—Bright red and yellow	.08	.80	5.50	44.00
b 8	Tournesoll—Yellow	.08	.80	5.50	44.00
c 8	Vuurbaak—Dazzling scarlet large, very double; fine for bedding or medium early forcing	.08	.80	5.50	44.00
	Fine Mixed—Early	...	.50	3.80	24.00
	Extra Fine Mixed—Early	...	.55	3.75	28.00

**LATE DOUBLE TULIPS**

K 17	Blue Flag (Blue Celeste)—Violet blue, enormous flowers	\$.69	\$.85	\$6.00	\$50.00
K 16	Marriage de Ma Fille—Magnificent late sort, white feathered, cherry crimson	.09	.90	6.50	55.00
K 10	Yellow Rose—Splendid late golden yellow, very large flower	.08	.75	5.00	40.00



Crocus.

All bulbs on this page at dozen and 100 prices delivered free to any Postoffice or Express Office in the United States. At 1000 rates by express at purchaser's expense.



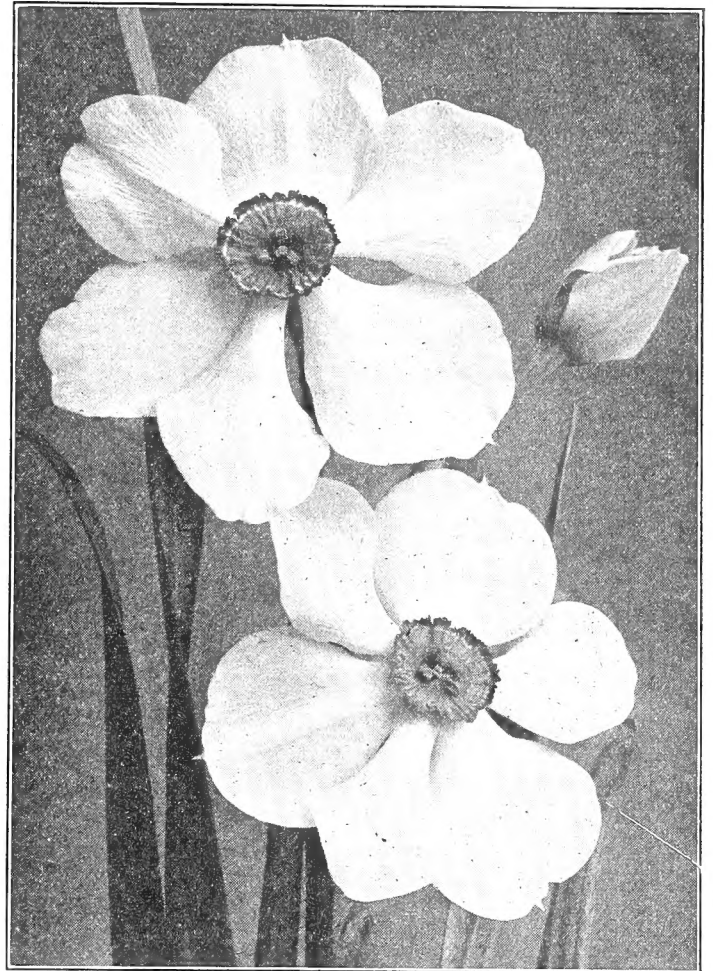
# Narcissus

## DAFFODILS

No class of bulbs is more satisfactory and none so easily taken care of as the Daffodils. They appear just after the snow and ice of winter and enliven our gardens and lawns. Nothing can excel the beauty and chastity of their blooms, and they have the advantage of being good for an unlimited number of seasons, if planted out in some spot where they can be allowed to mature their foliage. They are perfectly hardy and withstand severe winters without protection. Should be given the same treatment as recommended for Hyacinths, either for indoor or outdoor cultivation.

The Poeticus varieties have short crowns or cups; the Barrii, Leedsi and Incomparabilis, medium crowns; the others listed, long, trumpet shaped crowns.

	Each	Doz.	100	1000
<b>Barrii Conspicuus</b> — Primrose crown edged orange .....	\$.07	\$.65	\$4.50	\$35.00
<b>Bicolor Victoria</b> — Extra large flower perianth pure white, trumpet yellow Mammoth Bulbs, producing two or more flowers .....	.07	.65	6.50	35.00
<b>Emperor</b> — Very large, deep, full yellow, of fine substance .....	.09	.90	6.50	56.00
<b>Empress</b> — Flowers very large and of great substance, and a robust grower, trumpet large, rich, full yellow, petals white .....	.07	.65	4.50	35.00
<b>Golden Spur</b> — Early, large, deep yellow trumpet, perianth large and broad.. Mammoth Bulbs, producing two or more flowers .....	.09	.85	6.25	52.00
	.07	.70	4.75	37.00
	.09	.85	6.25	52.00



Narcissus Poeticus.

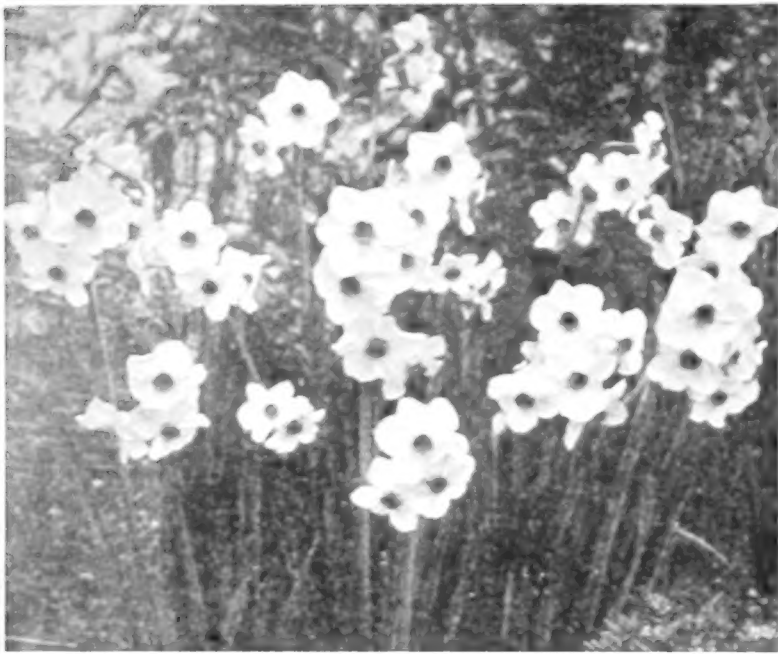


Narcissus Bicolor Victoria.

	Each	Doz.	100	1000
<b>Leedsi, Mrs. Langtry</b> — Silver white perianth, primrose cup .....	\$.06	\$.60	\$4.00	\$30.00
<b>Leedsi, White Lady</b> — Broad, round, overlapping perianth, pale canary cup; very fine .....	.08	.75	5.25	....
<b>Poeticus (Pheasant's Eye)</b> — Snow white, bright orange-scarlet cup .....	.06	.55	3.75	28.00
<b>Poeticus Ornatus</b> — Earlier than the preceding; flowers white, scarlet-margined cup .....	.06	.60	4.25	33.00
<b>Lucifer (Incomparabilis)</b> — Handsome white perianth, cup glowing orange-red .....	.07	.70	4.75	38.00
<b>Stella (Incomparabilis)</b> — Early, white perianth and yellow crown .....	.08	.75	5.00	40.00
<b>Sir Watkin (Incomparabilis)</b> — Enormous flowers, trumpet rich yellow, suffused with orange, sulphur perianth... ..	.07	.70	4.75	36.00
<b>Trumpet Major—Dutch, (Single Von Sion)</b> — Large, yellow.. ..	.08	.75	5.00	40.00
<b>Mixed Varieties</b> — All colors....	.06	.60	4.00	30.00

Make permanent plantings of Narcissus bulbs in clusters or patches in odd corners, in the herbaceous or shrubby border, in the woods or on the bank of lake or stream. The effect is invariably charming. **Poeticus** is particularly effective when "naturalized" in this manner, but all the hardy varieties may be so treated.

Narcissus at dozen and 100 prices delivered free to any Postoffice or Express Office in the United States. At 1000 rates by express at purchaser's expense.



Narcissus Poetaz.

**Poetaz Narcissus**

Selected for its long Poetaz formatus with Polyanthus variety, the result being a strictly hardy, round-flowered kind. Its heavy, gracefully drooping stems, often found in the Poetaz variety, give individual flowers resemble those of the size and white. The following is one of the best.

**Divina**—Pure white, six petals, 2 to 4 large flowers, an erect, densely grown in water. Also suitable for early and three-flowered varieties for outdoor planting. Each Doz. 100

\$ .08 \$ .75 \$5.00

**Daffodils and Jonquils**—will not be confused. The first is a general term for all varieties of Narcissus, and Jonquils are a part of this family as usually called, due to the pale yellow trumpet-flowered variety. Some are double and the latter class Jonquils and double are frequently ordered when the trumpet-flowered varieties are wanted. Jonquils are composed of a series of single flowers with narrow cups and usually the Daffodils have narrow cups of a yellow.

**Polyanthus Narcissus**

**PAPER WHITE GRANDIFLORA.**

The Paper White Narcissus are well adapted for pot and for outdoor planting, and are a very fine. They flower early, usually in the middle of the month of February, and are a very good variety for planting for early and winter. They are a double variety, and are very hardy, and are a very good variety for planting for early and winter. They are a double variety, and are very hardy, and are a very good variety for planting for early and winter.

Large Bulbs \$ .07 \$ .65 \$4.75 \$38.00  
 Extra Selected Bulbs \$ .08 \$ .75 \$5.25 \$42.00

**YELLOW PAPER WHITES.**

Grand Soleil d'Or— \$ .12 \$1.25 \$10.00

**Double Narcissus**

**DAFFODILS**

While the double Daffodils are not considered as attractive as the large flaring single trumpet sorts, they are no less desirable, and are especially adapted for naturalizing in odd corners, where they will thrive and increase for many years.

**DOUBLE VON SION (True Dutch)**—Rich golden yellow, the finest of all double yellow Daffodils, used extensively for forcing as well as for bedding outdoors. Does best north of Central Wisconsin if given some winter protection.

	Each	Doz.	100	1000
Extra selected bulbs	\$ .08	\$ .75	\$5.00	\$40.00
Maximum double ruffled bulbs producing two or more flowers.	.09	.80	6.75	58.00
<b>Alba Plena Odorata</b> —Pure white, sweet scented, resembles a Gardenia. Blooms best in a cool moist situation.	.05	.50	3.50	28.00
<b>Incomparable (Butter and Eggs)</b> —Sulphur yellow, sweet scented.	.07	.70	4.75	36.00
<b>Orange Phoenix</b> —White and orange	.08	.80	5.50	44.00
<b>Fine Mixed Double Sorts</b>	.06	.60	4.25	32.00

**Jonquils**

A species of Narcissus with fragrant, bright yellow flowers, which are produced in great abundance suitable for house and garden culture, requires the same treatment as Narcissus. All the varieties are perfectly hardy, requiring no protection in winter.

	Each	Doz.	100	1000
<b>Large Double</b> —Sweet scented.	\$ .05	\$ .50	\$3.50	\$20.00
<b>Single</b> —Sweet scented.	.05	.50	3.50	26.00
<b>Campernelle</b> —Large yellow.	.05	.50	3.50	26.00
<b>Rugulosus</b> —Giant Jonquils—Rich yellow imbricated perianth with large wrinkled cup.	.06	.55	3.75	28.00



Narcissus Paper White Grandiflora

All bulbs on this page at dozen and 100 prices delivered free to any Postoffice or Express Office in the United States. At 1000 rates by express at purchaser's expense.



Chinese Sacred Lily.

**Chinese Sacred Narcissus**

**ORIENTAL SACRED LILY.**

Water Fairy Flower; Joss Flower. Put in a bowl filled with pebbles, setting the bulb so it will be held firmly in place, then fill with water and place in a warm, sunny window, where it will produce deliciously fragrant white blossoms.

	Each	Doz.
Extra Large Bulbs (by mail, 22c each, \$2.15 per dozen) .....	\$.20	\$2.00
Original basket, containing 30 bulbs, by express at purchaser's expense .....		4.60

**GOLDEN SACRED LILY.**

	Each	Doz.	100
Blooms in water; color beautiful golden yellow and very fragrant. The bulbs are smaller than those of the Chinese Lily and three or four should be placed together .....	\$.12	\$1.20	\$10.00

Bowls for Chinese and Golden Sacred Lily, Paperwhites, etc. 50c to \$2.00, according to size, material and quality. Write for particulars.

All bulbs on this page delivered to any Postoffice or Express Office in the United States at prices named, except where otherwise noted.

**Callas**

	Each	Doz.
White (Calla Ethiopica)—Large size bulbs.....	\$.30	\$3.00
Yellow Calla (Elliottiana)—Flowers rich golden yellow, leaves spotted white, blooms freely and makes a fine pot plant.....	.35	3.50

**Lily of the Valley**

(Ready in November.)

Its favorite spot in the garden is some cool, shady place, in deep, rich soil—not too heavy. The roots should be set about 6 inches apart and about 2 inches deep. For house culture put 6 to 12 crowns in a pot and place in the dark until rooted. Set the crowns an inch below the surface.

	Doz.	100
Select Large Flowering Crowns—By mail.....	\$.95	\$6.30
By express at purchaser's expense.....	.85	6.00

**FREESIA**

An attractive Cape Flower, exquisitely perfumed, originally pure white or faintly yellow but developed latterly to produce many colors. The flower trusses are strikingly beautiful and unexcelled for cutting. The unexpanded blooms opening in the water, fill the air with a moist, delicate fragrance, and their endurance is really remarkable. The bulbs are not hardy and must be grown inside. Plant several in a six-inch pot about two inches below the surface. They will begin to bloom in six weeks.

	Each	Doz.	100	1000
Purity—A pure white Freesia. The flowers are very large and are borne freely on long stiff stems; excellent for cutting.				
Mammoth Bulbs .....	\$.06	\$.60	\$3.85	\$27.00
Large bulbs .....	.05	.50	3.25	23.00
Medium bulbs .....	.04	.40	2.75	17.50

**RAINBOW FREESIAS.**

As the name indicates, these Freesias come in a number of beautiful colors, Yellow, Blue, Violet, Mauve, Pink, Lavender. They are a new variety developed in Japan, and should be grown by all lovers of bulbous flowers. They are easily grown in the house and do not have to be started in the dark.

	Each	Doz.	100
Mixed Colors .....	\$.09	\$.85	\$6.00



Freesia.

# Lilies

## Hardy Native Lilies



BALLMANNI			
CANADENSE	\$ .30	\$3.00	\$23.50
DAURICUM—A large of S.	.20	2.00	15.00
ELEGANS	.15	1.50	10.00
group of red. Mixed colors.	.18	1.75	13.50
PARDALINUM			
SUPERBUM	.25	2.50	18.00
	.20	2.00	15.00

## Japanese Lilies

LONGIFLORUM GIGANTEUM (Dark Stem).

\$ .45 \$4.50 \$32.00  
 .70 7.00 50.00

LONGIFLORUM FORMOSUM.

\$ .40 \$4.00 \$28.00  
 .65 6.50 45.00



Easter Lily

SPECIOSUM—(Lancifolium).

Album			
Roseum	.45	4.50	32.00
Melpomene	.45	4.50	32.00

Auratum and the Speciosum sorts often arrive late. Cover the ground where they are to be planted, with straw, leaves or manure to keep out the frost, or keep them in a dry, cool place in the house, entirely covered with dry sand or soil, until spring, planting them out as soon as the ground can be worked.

Prices subject to change.

CANDIDUM—Annunciation, St. Joseph's, or Madonna Lily.

\$ .25 \$2.50 \$18.00  
 .35 3.50 25.00

Lilium Roseum.

All Lilies offered on this page delivered at single and dozen prices to any Postoffice or Express Office in the U. S. A. At 100 and 1000 rates shipped at purchaser's expense, except where otherwise noted.



# Currie's Giant Pansies

## Currie's 4 Prize Winner Giant Pansy Mixtures

**CURRIE'S TRIUMPH OF THE GIANTS PANSY MIXTURE**—A marvelous strain of Mammoth Pansies introduced in response to a growing demand for a Pansy strain composed entirely of mammoth flowering varieties, of the most striking combinations of colors and markings and embracing at the same time the newest and most attractive forms. A leading feature of the strain is the predominance of the waved forms and the beauty, brilliancy and richness of the colors are most striking. 1,000 seeds, \$1.10; pkt., 30c.

**CURRIE'S INTERNATIONAL PANSY MIXTURE**—A grand combination of Giant Flowering Pansies, comprising the picked strains of the most noted pansy specialists. The blooms are of the largest size, distinct and varied in their markings, of fine substance, containing most delicate rose shades, glowing reds, clear yellows, bronzes and blues, blotched, shaded and mottled varieties. 1,000 seeds, 90c; pkt., 25c.

**CURRIE'S SUPERFINE SCOTCH PANSIES**—Saved for us by one of the largest and most noted Pansy growers in Scotland, from prize-winning varieties; this is one of the finest strains of Pansy in cultivation. It is unexcelled by any in size of flower and for richness of color and beautiful markings it has no equal. 1,000 seeds, 70c; pkt., 20c.

**GIANT PANSY MIXTURE FOR FLORISTS AND AMATEURS**—We have carefully blended a mixture of all the Giant Trimardeau sorts in proper proportions of colors, and have added to it the magnificent strains of Cassiers, Bugnots, Odiers, the new Giant Parisian Stained, and the rich colors of Madame Perret. The best possible combination of the Giant sorts. 1,000 seeds, 50c; pkt., 15c.

### GIANT TRIMARDEAU PANSIES

A distinct class, with immense, showy flowers: one of the best of the Large Flowering Pansy Mixtures, containing solid or selfs, blotched, striped and veined flowers.

	Pkt.
<b>Giant Adonis</b> —Light blue with white eye.....	\$ .10
<b>Giant Beaconsfield</b> —The ground color is purplish violet shaded off in top petals to a white hue.....	.10
<b>Giant Black</b> —Rich blue black, splendid.....	.10
<b>Giant Emperor William</b> —Lovely ultra-marine blue, with distinct dark blue eye.....	.10
<b>Giant Fiery Faces</b> —Purple-scarlet with a yellow margin and a yellow eye, the three lower petals marked with black spots.....	.10
<b>Giant Golden Queen</b> —Pure golden-yellow solid color.....	.10
<b>Giant Madame Perret</b> —Shades of dark wine, pink and red, beautifully veined and frequently edged with white.....	.10
<b>Giant Snow-White</b> —Pure white, without blotches; grand flower.....	.10
<b>Giant Striped</b> —Lovely striped flowers.....	.10
<b>Giant White with Purple Eye</b> —Very beautiful....	.10
<b>Giant Yellow</b> —Very showy, with large black eye.....	.10
<b>Giant Mixed</b> — $\frac{1}{2}$ oz., about 2,000 seeds, 50c.....	.10
Any four of the Giants for 35c. The whole eleven Giants for 80c.	



Currie's Giant Pansies

### ASPARAGUS.

	Pkt.
<b>Plumosus Nanus</b> (Asparagus Fern)—An exceedingly graceful plant for pots or when young for fern dishes. The foliage is as graceful as the most delicate Maiden Hair Fern. Will succeed under ordinary house cultivation. 15 Seeds \$ .10	.10
<b>Asparagus Sprengerii</b> (Emerald Feather)—One of the easiest plants to grow in pots or hanging baskets, producing graceful fronds 4 feet long, flowers white, followed by red berries. Grows readily from Seed. 15 seeds.....	.10

### CALENDULA—Cape Marigold

Showy, free-flowering annuals, valuable for pot culture, blooming abundantly indoors in winter and spring.

	Pkt.
<b>Officinalis Le Proust</b> —Double, nankeen, edged with brown..	\$ .05
<b>Officinalis Meteor</b> —Fine for pot culture, bearing yellow flowers, striped with bright orange; $\frac{1}{2}$ oz., 25c.....	.05
<b>Orange King</b> —Dark orange, flowers large and very double; oz., 35c.....	.05
<b>Pongei, fl. pl.</b> (Pot Marigold)—Double white; per oz., 30c....	.05
<b>Prince of Orange</b> —An improvement on Meteor. Color a deeper shade and striped in the same way; per $\frac{1}{2}$ oz., 25c.....	.05

### CALCEOLARIA

Splendid plants for greenhouse decorations, forming in spring dense masses of pocket-shaped flowers. Sow in September. T. E.

	Pkt.
<b>Hybrida Superba</b> —Saved by a world-famous specialist. Monster flowers of rich and varied colors, including spotted, laced, blotched and self-colored varieties.....	\$ .25

### CINERARIA HYBRIDA.

Exceedingly brilliant greenhouse plants; dense heads of "ray" flowers in many, varying combinations of colors surmount deep-green, luxuriant foliage.

	Pkt.
<b>Currie's Matchless</b> —This strain is unexcelled for size of blooms, brilliancy of colors and fine substance. Many of the flowers are $4\frac{1}{2}$ inches across, and the variety of the coloring is wonderful.....	\$ .25
<b>Hybrida, Mixed</b> —James' Prize Exhibition Strain.....	.15
<b>Hybrida White</b> —"Ball of Snow"—A pure white variety.....	.15
<b>Stellata Hybrida</b> —A beautiful star-shaped Cineraria, excellent for table decoration or for grouping in conservatories, etc.....	.15
<b>Double Large-Flowering Hybrids</b> —Saved from a choice strain.....	.15



Asparagus Plumosus Nanus

New Giant, Extra Early or Winter Flowering Spencer Sweet Peas



Early Wedgwood

Early Asta Ohn	—	\$1.25	.10
Early Heather Bell	—	\$1.25	.10
Early Helen Lewis	—	\$1.25	.10
Early Hercules	—	\$1.25	.10
Early King	—	\$1.25	.10
Early Melody	—	\$1.25	.10
Early Snowflake	—	\$1.25	.10
Early Morning Star	—	\$1.25	.10
Early Othello	—	\$2.00	.15
Early Spring Maid	—	\$1.25	.10
Early Song Bird	—	\$1.25	.10
Early Wedgwood	—	\$1.25	.10
Fordhook Pink and White	—	\$1.25	.10
Mrs. A. A. Skutch	—	\$1.25	.10
Venus	—	\$1.25	.10
White Orchid	—	\$1.25	.10
Yurrawn	—	\$1.25	.10

Extra Early Flowering Grandiflora Varieties

- Le Marquis—Violet Blue
  - Christmas Pink
  - Earliest of All
  - Flamingo—Crimson
  - Christmas White—Pure W
  - Lavender Nora—Light lavender with white eye
  - Mrs. E. J. Dolansky—Dark Blue
  - Mrs. A. Wallace—Pure Lavender
- Each per packet 5¢ per doz. 25¢ per doz. 75¢ per doz.
- Extra Early Flowering Mixed—Per 5¢ per doz. 20¢ per doz. 50¢ per doz. \$2.00 per doz.

FALL SOWING OF SUMMER FLOWERING SWEET PEAS.

Late fall sowing of Sweet Peas is now frequently practiced with much success. The plants will flower and a more vigorous growth result than if sown in November, which is the proper time to sow. The soil should be deep and damp, the soil firmly tamped, and covered the rows. Seeds should be sown in a row, and the ground frozen over with straw, or covered with the water, drawing back to cover for winter. The plants will keep at a good size for the winter, and will return in the spring.

For Lists of Named Varieties, Spencers and Grandiflora, See Pages 71 and 75 of our Spring Catalogue.

INCOMPARABLE MIXTURE NEW GIANT FLOWERED SPENCERS.

This mixture will give you the finest and best of the Waverly Spencer or Butterfly Sweet Peas and have taken every year for the mixture a proper balance of colors. 10¢ per doz. 20¢ per doz. 30¢ per doz. 40¢ per doz. 50¢ per doz. \$2.00 per doz.

Bouquet Collection Mixture. This mixture has for many seasons had the largest and best of our customers. Only the best of the large flowered types of grandiflora varieties have been chosen and we claim this to be an Extra Select Mixture. Per 5¢ per doz. 10¢ per doz. 20¢ per doz. 30¢ per doz. 40¢ per doz. 50¢ per doz. \$2.00 per doz.

CYCLAMEN.

With their exquisite blossoms of great variety and varying from the palest white to the darkest shade, they will flower in about 11 months from sowing.

CURRIE'S GIANT ENGLISH STRAIN

Giganteum "Brilliant Salmon Scarlet"	—	\$1.25	.10
Giganteum Brilliant	—	\$1.25	.10
Giganteum Duke of Life	—	\$1.25	.10
Giganteum Excelstor	—	\$1.25	.10
Giganteum Grandiflora Alba	—	\$1.25	.10
Giganteum Mauve Queen	—	\$1.25	.10
Giganteum Princess May	—	\$1.25	.10
Giganteum Rosy Morn	—	\$1.25	.10
Giganteum Salmon King	—	\$1.25	.10

CURRIE'S SUPERB GERMAN STRAIN

Dark Salmon, Light Salmon, Dark Red, Scarlet, Rose, Light Pink, Pure White and White with Eye. Each 50¢ per doz.

WINTER FLOWERING STOCKS

Beauty of Nee.

Abundance	—	\$1.25	.10
Cantary Yellow	—	\$1.25	.10
Crimson King	—	\$1.25	.10
Peach Blossom	—	\$1.25	.10
Pink	—	\$1.25	.10
Queen Alexandra	—	\$1.25	.10
Violet	—	\$1.25	.10
White	—	\$1.25	.10
Mixed	—	\$1.25	.10



Currie's Giant English Cyclamen

FOR COMPLETE LIST OF SEEDS SEE SPRING CATALOG. Write for current prices on Winter Vetch, Wheat and Rye, Alfalfa, Clovers, Timothy, etc. Wild Rice and other Dutch and Fish Foods on back cover.

# Hardy Flowering Plants

## For the Herbaceous Border.

A condensed list of popular varieties best adapted to northern conditions.

### Paeonies

Fall is the proper time to transplant these tremendously popular, gorgeous-flowered border plants.

- Canari**—White tinted cream, free bloomer.
- Duchess de Nemours**—Pure white, extra large, one of the best. Early.
- Duchess of Orleans**—Deep rose color, large and compact.
- Duke of Wellington**—White, flushed with light primrose; very beautiful, late

- Dr. Nester Pelassy**—Beautiful blush pink; very double and fragrant.
- Edulis Superba**—Very deep pink, early and fragrant.
- Elegans**—Outside petals dark pink, large salmon center; loose, fine, sweet.

- Felix Crousse**—Large, globular, brilliant red; strong grower. Each 85c; per doz., \$8.50.

- Festiva Maxima**—Creamy white with small center of carmine; early. One of the very finest.

- Francis Ortegat**—Fine, large, dark crimson; fragrant.
- Henry Demay**—Violet purple, large, double and fragrant.

- Hercules**—Bright rose with yellow center; immense size.
- Modeste Guerin**—Cherry red, changing to light rose; good keeper.

- Ne Plus Ultra**—Beautiful, clear shell pink, retaining from first to last its exquisite delicate color without fading in the least; very fragrant.

- Officialis Rubra Plena**—Deep crimson, very early; one of the best.
- Officialis Rosea**—Bright salmon pink, very early.

- Rubra Triumphans**—Intense crimson; very fragrant.

Small plants of above, except where noted, each 50c; medium 75c; large \$1.50 to \$2.00.

- ACHILLEA—Milfoil or Yarrow.**  
"The Pearl"—2 feet. Pure white. Each, 25c; per doz. .... \$2.50

- ACONITUM—Monkshood.**  
Napellus—4 feet; dark blue. Each, 30c; per doz. .... \$3.00

- AQUILEGIA—Columbine.**  
Coerulea—1 foot, sepals violet blue, petals pure white.

- Chysantha**—3 feet; golden yellow.
- Glandulosa**—1 foot; sepals deep blue, petals white. Each, 25c; per doz., \$2.50

### BOLTONIA

- Asteroides**—4 feet; white; each, 25c; per doz. .... \$2.50
- Latisquama**—Velvet-blue. Each, 25c; per doz. .... \$2.50

### CALLIOPSIS OR COREOPSIS

- Lanceolata**—2 feet; golden yellow; each, 25c; per doz. .... \$2.50

### SHASTA DAISY.

- Chrysanthemum Leucanthemum Hybridum**—White. Blooms throughout the summer. Each, 25c; per doz. \$2.50

### CAMPANULA—Bluebells.

- Medium (Canterbury Bells)**—White, Pink, Blue. Each, 25c; per doz. .... \$2.50

- Lactiflora Coerulea**—Pale blue, 2½ feet. Each, 30c; per doz. .... \$3.00

- Persicifolia Grandiflora**—Large blue flowers, 3 feet. Each, 30c; per doz. .... \$3.00

### DELPHINIUM—Perennial Larkspur.

- Belladonna**—2 feet. Clear turquoise blue. Each, 30c; per doz. .... \$3.00

- Grandiflorum**—3 feet. Mixed colors. Each, 30c; per doz. \$3.00

### DIANTHUS—Garden Pink.

- Barbatus (Sweet William)**—1 foot. Red, pink, crimson, purple and white.

- Plumarius (Pheasant's Eye Pink)**—1 foot. White and purple.
- Plumarius fl pl.** (Double Hardy Pink)—1 foot. All colors. Each, 25c; per doz., \$2.50.

### DIGITALIS—Foxglove.

- Flowers are about 3 feet long, ranging in color from pure white to purple. Each, 25c; per doz. .... \$2.50

### FUNKIA—Day Lily or Plantain Lily.

- Subcordata Grandiflora**—1½ feet. White. Each, 30c; per doz. .... \$3.00

### GAILLARDIA—Blanket Flower.

- Grandiflora**—2 feet. Red and yellow. Each, 25c; per doz. .... \$2.50

### HOLLYHOCKS.

- Double White, Red, Crimson, Pink, Yellow or Mixed.** Strong roots. Each, 25c; per doz. .... \$2.50

### HELENIUM—Sneezewort.

- Riverton Beauty**—Lemon-yellow with purplish-black disc. Each, 30c; per doz. .... \$3.00

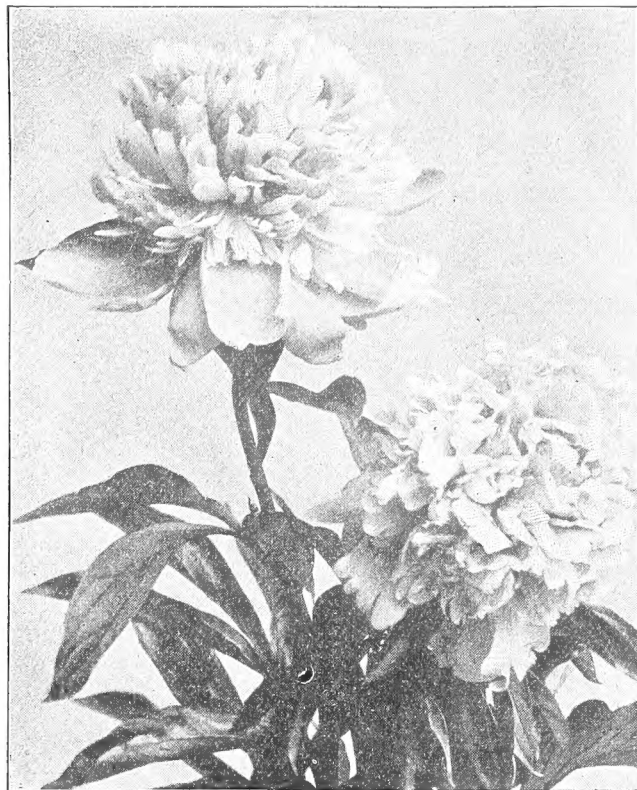
- Riverton Gem**—Old-gold, suffused with bright terracotta. Each, 30c; per doz. .... \$3.00

### HEMEROCALLIS—Day Lily.

- Flava (Yellow Day Lily)**—3 feet.
- Fulva (Orange Day Lily)**—3 feet.

- Thunbergii**—Late flowering, sweet scented, lemon yellow. Each, 25c; per doz. .... \$2.50

FOR COMPLETE LIST OF PERENNIALS, SHRUBS, VINES, ETC., SEE SPRING CATALOGUE.



Paeonies.

### HEUCHERA SANGUINEA—Alum Root.

- Excellent for cutting. Rich, dazzling crimson. Each, 25c; per doz. .... \$2.50

### IMPERIAL JAPANESE IRIS—Iris Kaempferi.

- Our list includes some of the finest varieties, in shades of blue, red and white. See spring catalogue. Each, 30c; per doz., \$3.00.

### GERMAN IRIS—Iris Germanica.

- Fine selection of blues, whites, yellows, etc. See spring catalogue. Each, 25c; per doz., \$2.50.

### LYCHNIS—Lamp Flower.

- Chalcedonica**—2 feet. Deep red. Each 25c; per doz. .... \$2.50

- Viscaria Splendens**—Double deep-red, fragrant, 2 feet. Each 30c; per doz. .... \$3.00

### PHYSOSTEGIA—False Dragon Head.

- Virginica**—3 feet. Shell pink, exceedingly desirable. Each, \$2.50; per doz. .... \$2.50

### POPPY.

- Oriental (Oriental Poppy)**—3 feet. A magnificent Poppy, bearing flowers often measuring 6 inches across; brilliant scarlet. Each, 30c; per doz. .... \$3.00

### PYRETHRUM.

- Uliginosum (Giant Ox-Eye Daisy)**—4 to 5 feet. Large, pure white flowers. Each 25c; per doz. .... \$2.50

### PHLOXES.

#### Tall Choice Perennial Varieties.

- Consul H. Trost**—Pure, red, bright purple eye.
- Coquelicot**—Fine scarlet, crimson eye.
- Eclairer**—Brilliant rosy-crimson, with lighter eye.
- Elizabeth Campbell**—Bright salmon pink, pink eye.
- Frau Anton Buchner**—Unquestionably the finest white.
- George A. Strohlein**—Bright scarlet, crimson red eye.
- Miss Lingard**—Fine pure white.
- Mme. Paul Duetrie**—Delicate lilac rose. Flowers very large.
- Pantheon**—Bright salmon rose; very fine.
- Rosenberg**—Bright reddish-violet with deep red eye.
- R. P. Struthers**—Rosy carmine; claret-red eye.
- Selma**—Pale rose mauve, claret-red eye.
- Siebold**—Bright vermilion, overlaid with orange scarlet; crimson eye.
- Von Hochberg**—A very rich crimson; very desirable.
- Von Lassburg**—Pure white; flowers very large.

Any of the above, each, 30c; per doz., \$3.00.

### RUDBECKIA—Cone Flower.

- "Golden Glow"**—Double golden-yellow. Each, 25c; per doz. .... \$2.50

- Purpurea**—3 feet. Reddish-purple. Each, 25c; per doz. \$2.50

### TRITOMA—Red-Hot Poker.

- Pfitzerii**—3 to 4 feet. Rich orange scarlet. Each, 40c; per doz. .... \$4.00



Herberis Thunbergii

**HERBERIS.****Japanese Barberry.**

**Thunbergii**—A dwarf variety with small compact foliage; very desirable for a low hedge or for massing in front of taller shrubs. Its foliage colors beautifully in fall. Handsome, scarlet berries remain on the plants all winter. Each, 50c; per doz., \$5.00.

**AMAGDALUS—Flowering Almond.**

**Pumila Alba Plena**—Flowers very durable, pure white and produced in great profusion.

**Pumila Rosa Plena**—Like the preceding, an exceedingly free bloomer; flowers double, color a very delicate rose. Each \$1.50; per doz., \$15.00.

**CORNUS—Dogwood**

**Sanguinea (Red Dogwood)**—Fine, hardy shrub, very conspicuous and ornamental in the winter, when the bark is blazed red.

**Sericea (Silky Cornel)**—A variety highly esteemed for its vigorous habit, purple twigs and pale blue berries.

**Siberica (Scarlet Dogwood)**—Upright growing with brilliant scarlet branches conspicuously ornamental during the winter and spring. Flowers white in numerous clusters. Each 60c; per doz., \$6.00.

**DEUTZIA.**

A very handsome and exceedingly useful Japanese shrub, hardy and well adapted to all ordinary soils and situations.

**Crenata**—Double white and pink flowers; very desirable. Each, 60c; per doz., \$6.00.

**FORSYTHIA—Golden Bell.**

Pretty shrubs, producing drooping yellow flowers in the early spring before the leaves appear.

**Intermedia**—Flowers bright yellow, foliage glossy green. Each 50c; per doz., \$5.00.

**Fortunei**—A very handsome variety, with shining foliage and trumpet-shaped, pendulous, bright yellow flowers.

**Suspensa (Weeping Forsythia)**—Drooping, the branches being long and pliant. Very useful on verandas and trellises. Each, 85c; per doz., \$8.50.

**HYDRANGEA.**

These handsome shrubs are now considered quite indispensable in any garden. They are very easy of culture and succeed well in any rich soil.

**Paniculata Grandiflora**—One of the grandest flowering shrubs. It is perfectly hardy, requiring no protection whatever. It begins to flower early in summer and continues until late in fall. Planted singly or in groups it has a charming effect.

Plants 18 inches high, each, \$1.00; per doz., \$10.00.

Plants 24 inches high, each, \$1.25; per doz., \$12.50.

Plants 30 to 36 inches high, each, \$1.35; per doz., \$13.50.

**Hydrangea Arborescens Grandiflora**—The "Snowball Hydrangea," so-called from the similarity of the blossoms to those of the common Snowball. The pure-white flowers appear earlier than those of Hydrangea P. G. Each \$1.25; per doz., \$12.50.

## Hardy Flowering Shrubs

**LIGUSTRUM—Privet.**

A class of sub-evergreen plants, thrifty and robust in habit, suitable for grouping or for hedges.

**Amurensis (Amoor River Privet)**—The hardiest and therefore most satisfactory to plant here. Leaves dark green. Flowers white in erect panicles. Each, 50c; per doz., \$5.00.

**Obota**—An excellent hedge plant, also valuable as a single specimen on the lawn. Leaves turn dark red in fall. Very hardy. Each, 50c; per doz., \$5.00.

**Obota Regelianum**—A beautiful and very graceful shrub, admirably adapted for massing in groups or borders. Foliage assumes a bright red in fall. Each, 50c; per doz., \$5.00.

**LONICERA—Bush Honeysuckle.**

The Bush or Upright Honeysuckles are among the most useful of ornamental shrubs, growing freely in almost any situation.

**Tatarica Alba (Tartarian Honeysuckle)**—A most desirable shrub, blooms profusely; flowers creamy white and fragrant. Each \$1.00; per doz., \$10.00.

**Tatarica Grandiflora**—A beautiful variety, having bright red flowers striped with white. Each, \$1.00; per doz., \$10.00.

**Morrowi**—Very desirable. Pure white flowers, followed in fall by bright red berries. Each, 60c; per doz., \$6.00.

**PHILADELPHUS—Syringa or Mock Orange**

**Coronarius (Garland Syringa)**—A great favorite. Flowers pure white and very fragrant.

**Grandiflorus**—Large flowered; one of the best. Each, 60c; per doz., \$6.00.

**PYRUS—Japan Quince.**

**Japonica (Cydonia Japonica)**—A charming plant; foliage dark green and glossy, flowers deep scarlet, produced in great abundance, followed by large pear-shaped fruit. Each, 85c; per doz., \$8.50.

**RIBES—Flowering Currant.**

A class of plants highly prized for their graceful habit of growth, fine foliage and beautiful flowers.

**Aureum**—An early blooming variety; flowers yellow. Each, 50c; per doz., \$5.00.



Syringa or Lilac.



## Hardy Flowering Shrubs

**RHUS—Sumach.**

Small trees or shrubs, highly ornamental and of much value for lawn adornment, either in groups or single specimens.

**Cotinus** (Purple Fringe or Smoke Tree)—This beautiful shrub is particularly remarkable for the numerous feathery fruit stalks, which after flowering usually completely cover the plant. Each \$1.00; per doz., \$10.00

**SPIRAEA—Meadow Sweet.**

**Anthony Waterer**—Blooms all summer. Makes a dwarf compact bush two to three feet high, crowned with a mass of red flower heads. Each 85c; per doz., \$8.50.

**Arguta**—Flowers white, borne in great profusion early in summer. Each 85c; per doz., \$8.50.

**Billardii**—Bears spikes of pink flowers; very desirable. Each 60c; per doz., \$6.00.

**Collosa Alba**—A dwarf shrub bearing a great abundance of white flowers. Each 60c; per doz., \$6.00.

**Opulifolia** (Nine Bark)—A robust grower; flowers white. Each 60c; per doz., \$6.00.

**Opulifolia Aurea**—Bright golden foliage, presenting a charming effect in contrast with other shrubs. The habit of the plant is bushy and of medium height. Flowers white. Each, 75c; per doz., \$7.50.

**Van Houttei**—This is beyond doubt the handsomest of all Spiraeas; in fact it has few equals among ornamental shrubs. When in full bloom in May and June it seems from a distance to be wreathed with snow, the branches drooping gracefully under the fleecy covering. Plants 18 to 24 inches, 50c each; \$5.00 per doz. 2½ to 3 feet, 75c each; \$7.50 per doz.

**SYMPHORICARPUS.**

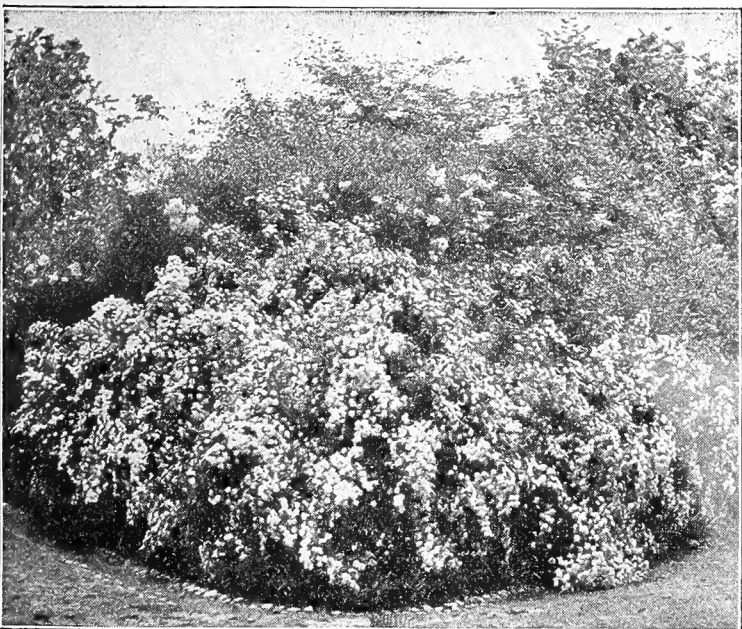
Exceedingly ornamental dwarf shrubs, of the easiest culture, succeeding very well in the shade of over-hanging trees, where few shrubs will grow at all. Their ornamental berries show to advantage in the fall and winter months.

**Racemosus** (Snowberry)—A very pretty and interesting shrub; pinkish white flowers followed by white berries.

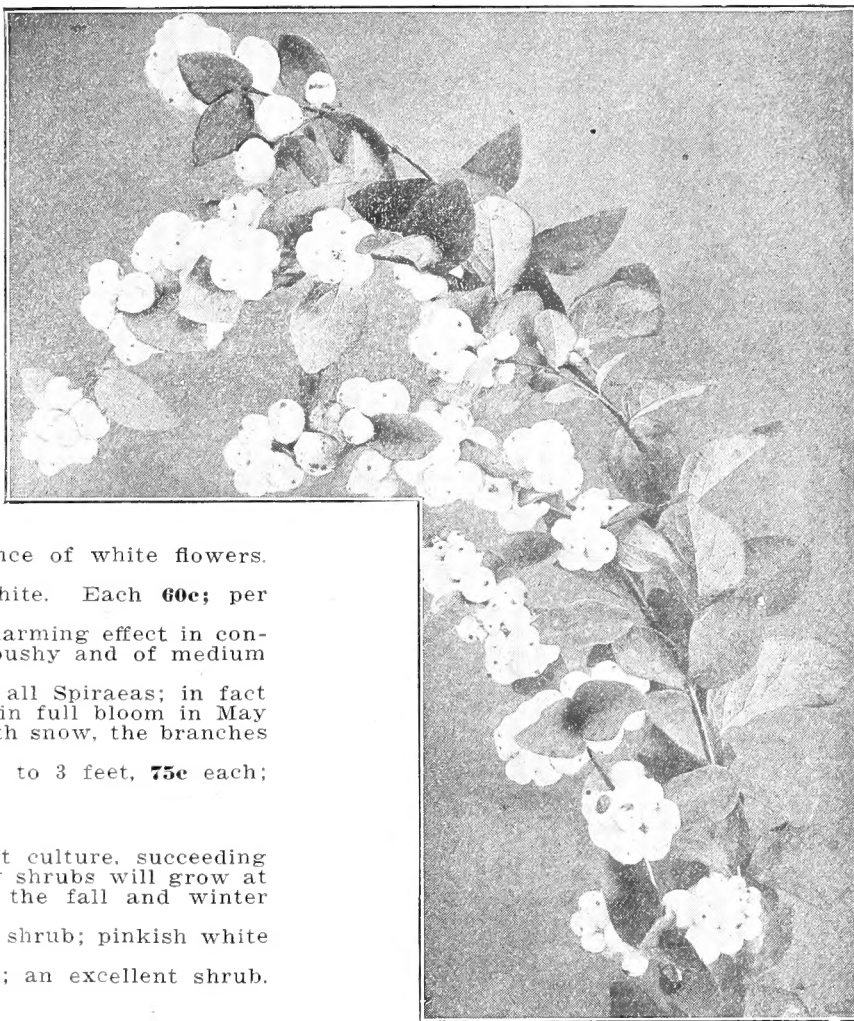
**Vulgaris** (Coral Berry)—This variety bears red berries; an excellent shrub. Each, 50c; per doz., \$5.00.

**SAMBUCUS—Elder.**

**Nigra Aurea** (Golden Elder)—A most attractive and very ornamental shrub. The foliage is large and of the richest golden yellow; very effective and invaluable for grouping to produce striking contrasts. Each, 75c; per doz., \$7.50.



Spiraea Van Houttei



SYMPHORICARPUS RACEMOSUS.

**SYRINGA—Lilac**

These old favorites are so well known that any description would seem superfluous. Suffice to say that they are indispensable.

**Persica** (Persian Lilac)—A very popular plant; flowers purple. Each, \$1.00; per doz., \$10.00.

**Vulgaris** (Common Lilac)—Larger foliage than the former; flowers purple. Each 60c; per doz., \$6.00.

**VIBURNUM.**

A class of highly ornamental and very useful strong-growing shrubs of easy culture, well adapted to all good soils.

**Opulis** (High, or Bush Cranberry)—Resembles the common Snowball in its wood and foliage. The pure white single flowers are borne in great clusters, succeeded in fall by bunches of berries resembling Cranberries. Each 75c; per doz., \$7.50.

**Opulis Sterilis** (Common Snowball)—A well-known favorite shrub of large size, with globular clusters of white flowers in June. Each, \$1.00; per doz., \$10.00.

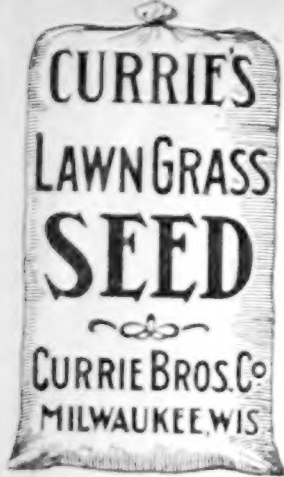
**Plicatum** (Japanese Snowball)—One of the best shrubs in cultivation; grows upright and bushy; foliage attractive; flowers white, produced very abundantly in large heads. Each, \$1.25; per doz., \$12.50.

**WEIGELA.**

One of the most effective and satisfactory shrubs. In habit of growth it is naturally bushy and symmetrical. It grows vigorously, yet not rampant, and is without difficulty kept in good form. All varieties are exceedingly free bloomers.

**Desboisi**—Resembles Rosea in habit, but the flowers are much darker. Each, 75c; per doz., \$7.50.

**Rosea**—Perhaps the most popular shrub yet introduced; bears rose-colored, trumpet-shaped flowers in great profusion on gracefully bending branches. This handsome plant adapts itself admirably to shady places where few shrubs will do well. Each, 60c; per doz., \$6.00.



# CURRIE'S LAWN GRASS MIXTURES

for FALL SOWING

## CURRIE'S SPECIAL LAWN GRASS MIXTURE

THOROUGHLY TESTED AND ANALYZED FOR GERMINATION  
AND PURITY

This splendid mixture is composed of only the finest dwarf-growing evergreen grasses; absolutely free from weed seeds or other impurities, especially adapted and mixed in the proper proportion to suit the American climate. In comparing the cost of our Special Lawn Grass with other mixtures sent out by the trade, remember that the actual weight per measured bushel of our mixture is 20 pounds or more, while that of most mixtures is only 14 pounds per bushel. To obtain this exceptionally heavy weight per bushel, we must and do use only the heaviest and best samples of the various grasses composing the mixture. 1 lb. 30c (by mail 35c); 1 lb. 55c (by mail 62c); 2½ lbs. \$1.30; 5 lbs. \$2.50; 10 lbs. \$4.65; 20 lbs. \$9.00; 50 lbs. \$21.00; 100 lbs. \$41.00.

**CURRIE'S GRASS MIXTURE FOR SHADE**—In our Grass Mixture for Shade we have an excellent combination of those grasses which grow naturally in shady places and under any ordinary circumstances will furnish a close, green, velvety turf during the entire season. However, it is often the case that under trees the ground becomes so impoverished by the action of the multitude of fine tree roots as to render the growing of a nice, close sod of grass almost impossible; in such cases we would recommend a liberal top dressing of Currie's Complete Fertilizer. Price: ½ lb. 35c (by mail 40c); 1 lb. 60c (by mail 67c); 2½ lbs. \$1.40; 5 lbs. \$2.75; 10 lbs. \$5.25; 20 lbs. \$10.25; 50 lbs. \$24.00; 100 lbs. \$47.00.

**THE QUANTITY OF SEED REQUIRED**—When in a hurry for a fine, close turf, we have frequently sown at the rate of seven bushels of 20 lbs. each to the acre with the most gratifying results, but in general the following quantities will produce the best results: One pound to 100 square feet; 5 pounds to 2,000 square feet; 20 pounds to 8,000 square feet; 100 pounds per acre. For renovating old lawns about one-half to three-quarters the above quantities, on the average is required.

## FERTILIZERS for All Purposes

### Currie's Complete Fertilizer

For complete description see page 6 Retail Catalog.

For ordinary purposes use 1 pound to 50 square feet.

5 lb. package ..... \$ 1.40      50 lbs. .... \$23.35  
10 lb. package ..... 2.70      100 lbs. .... 46.70  
25 lbs. .... 6.75

500 to 800 lbs. for one acre, price per 100 lbs. \$3.70

Write for quotation in Ton Lots.

**SHEEP MANURE** (Pulverized)—Makes the richest and safest liquid manure. Using 1 pound to 5 gallons of water once a week is a safe way to apply. Fine for bulb beds and bulb potting soil and should be used in a dry form at the rate of 50 lbs. to every 1,000 square feet, or 1 part manure to 25 parts soil. Price: 25 lbs. \$1.30; 50 lbs. \$2.00; 100 lbs. \$3.50.

**CATTLE MANURE**—(Shredded)—Used for top dressing, mulching, etc. Valuable in a run-down city garden, as it adds humus and vegetable matter which are essential to all vegetation. Use 12 to 40 pounds per 1,000 square feet, or 500 to 2,000 pounds per acre. Price: 100 lbs. \$3.50.

**FERTILIZERS FOR HOUSE PLANTS.**

**STIM-U-PLANT**—Is a 24-grain tablet with a very high guaranteed chemical analysis—11% nitrogen, 12% phosphoric acid, 15% potash, higher than any other plant food. Used (broken up) directly in the soil at the base of the plant or dissolved in water and applied to the soil. 10 tablet size 15c; 30 tablet size 25c.

**Currie's Soluble Food for House Plants**—A high grade fertilizer, put up in small packages to suit the cultivator of house plants. 5 oz. pkg. 15c; 12 oz. pkg. 25c; by mail 25c and 32c.

**Plant Food Tablets**—(Sterlingworth)—Used by dissolving in water. Small pkg. 10c, (by mail 15c); large pkg. 25c, (by mail 30c).

**Pure Bone Meal**—A valuable fertilizer for bulb beds and potting soil and unequalled as a fall top-dressing on the lawn and in the garden. Use a pound to each bushel of soil or as top-dressing 3 to 4 lbs. to 100 square feet. Price: 1 lb. 15c; 5 lbs. 40c; 10 lbs. 70c; 25 lbs. \$1.30; 50 lbs. \$2.35; 100 lbs. \$4.00; 500 lbs. \$18.50; 1000 lbs. \$34.00.

**NITRATE OF SODA**—In a liquid form a tablespoonful to 5 gallons of water is sufficient, taking care not to get it on to the foliage. Price: 1 lb. 20c; 5 lbs. 65c; 10 lbs. \$1.10; 25 lbs. \$2.25; 100 lbs. \$6.50.

**MURIATE OF POTASH**—About 50% potash. 200 to 300 lbs. to the acre. 1 lb. 25c; 5 lbs. 85c; 10 lbs. \$1.50; 25 lbs. \$3.25.

**MAGNESIA LAWN LIME**—Used to neutralize the soil if sour or acid, especially where the top soil is a heavy clay. On the majority of lawns a 100 lb. sack will cover approximately 800 square feet. Price—Put up in two sizes only. 10 lbs. 25c; 100 lbs. \$1.75.

If larger quantity is wanted than quoted above, we will quote special prices upon request. Prices include Bags and are F. O. B. Cars here. PRICES SUBJECT TO MARKET CHANGE WITHOUT NOTICE.

### Insecticides, Etc.

**BLACK LEAF "40"**—Concentrated Nicotine Sulphate. Recommended by all experts as the best for spraying, sheep dipping and similar uses. 1 oz. bottle, 25c; ¼ lb. can, \$1.00; 2 lbs. \$3.25; 10 lbs. \$13.75.

**GRAFTING WAX**—Used in binding up injured trees. ¼ lb. 35c; 1 lb. 60c.

**NICO-FUME PAPER**—For fumigating greenhouses. Does not injure blooms. Tins of 24 sheets, \$1.25; 144 sheets, \$5.00; 288 sheets, \$9.50.

**SLUG SHOT**—Used from ocean to ocean as a reliable destroyer of all leaf-eating insects. 1 lb. carton with perforated top 25c; 5 and 10 lb. lots 12½¢ per lb.; 25 to 50 lbs., 11c per lb.; 100 lbs., \$10.50.

**SUGAR SULPHATE OF IRON**—Sprayed on lawn to kill dandelions and other broad-leaved weeds without injury to grass. 7 lbs. to gallon of water will cover 3,000 sq. ft. Per lb. 10c.

**SULPHO TOBACCO SOAP**—Invaluable to all lovers of flowers. 2 oz. pkg., 15c; by mail, 20c; 8 oz. pkg., 25c; by mail, 30c.

**TOBACCO DUST** (Corona)—½ lb., 12c; 1 lb., 20c; 5 lbs., 85c.

## Attract Wild Ducks



**Wild Celery** (Vallisneria Spiralis). Unfailing attraction for canvasbacks, redheads, blue-bills. Best fishing where it grows, provides food and shelter and keeps water clear and fresh. Grows in fresh or brackish water, ½ to 12 feet deep—preferably 7 to 7 feet—in sand, loam or mud bottom. Sow Sept. 15th to Nov. 1st. Per lb., postpaid, 80c. Winter buds and plants for spring delivery, per 100, \$5.00.

**Wild Rice** (Zizania Aquatica). Exceptionally fine attraction for mallards, teal, pintails, black duck, geese, etc. Does best in sheltered waters, not salty to taste, 6 inches to 2 feet deep, with visible outlet. Rich mud bottom preferred. Sow Sept. 15th to winter. Per lb., postpaid, 80c.

## DUCK AND FISH FOOD SEEDS

**Sago Pond Plant** (Potamogeton Pectinatus). Submerged plant. Tubers and tender vegetation attract practically all wild ducks, but especially teal. Food and shelter for fish. Grows in fresh or brackish water, 1 to 5 feet deep. Sow seed Aug. 15th to Nov. 1st. Per lb., postpaid, \$1.50.

