

Historic, archived document

Do not assume content reflects current scientific knowledge, policies, or practices.

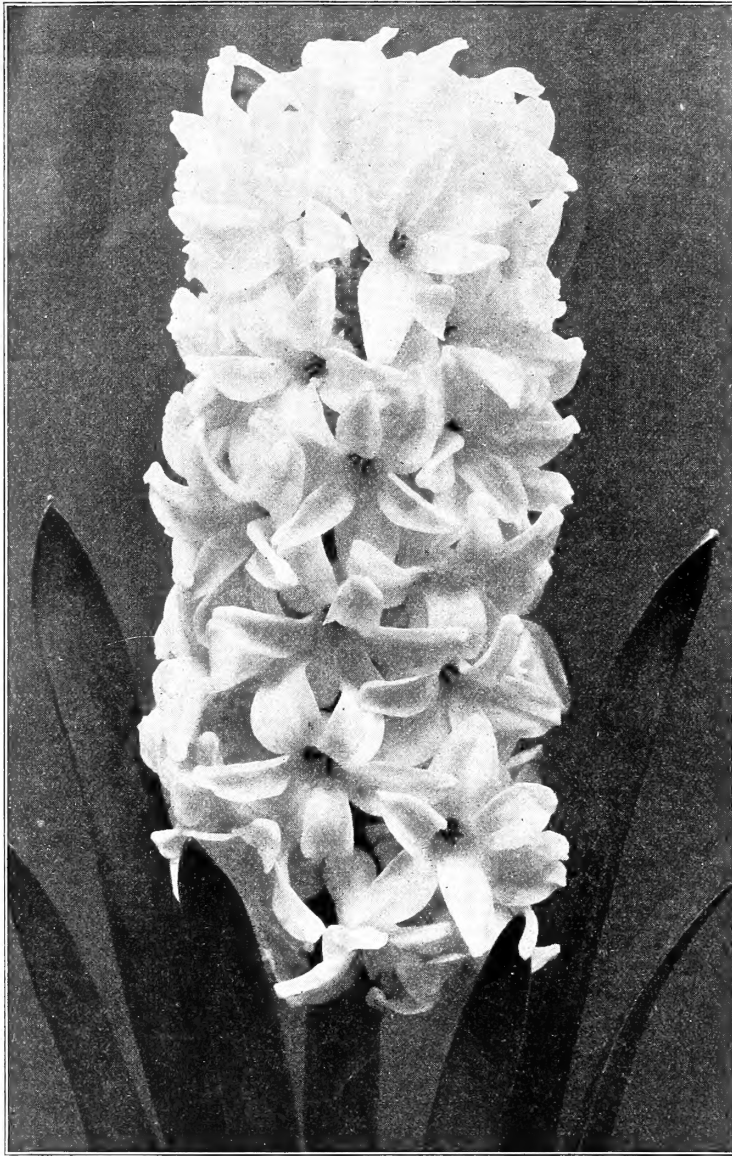
6297

CURRIE'S BULBS and PLANTS

Autumn 1912



CURRIE BROS. CO.
MILWAUKEE, WIS.
108 WISCONSIN ST. 312 BROADWAY.



SINGLE DUTCH HYACINTH.

CHOICE MIXED FORCING AND BEDDING HYACINTHS

In Separate Colors.

These mixtures are second size bulbs selected from the named varieties, for planting outdoors or for forcing in the greenhouse, where a quantity of bloom is desired for cut flower work.

Where only a few bulbs are wanted for specimen plants in pots or glasses, we would advise using the named sorts.

Double—

Dark red.
Light red and rose.
Pure white.
Blush-white.
Dark blue.
Light blue.
Yellow.
Mixed.

Single —

Dark red.
Light red and rose.
Pure white.
Blush-white.
Dark blue.
Light blue.
Yellow.
Mixed.

Price.....	Each	Doz.	100	1000
	\$.06	\$.60	\$4.00	\$31.50

Delivered to any P. O. or Express Office in the U. S.

DUTCH HYACINTHS

How to Grow Them

Pot Culture—Use a 4 or 5 inch pot for each bulb, a light, rich, sandy soil is best. The upper surface of the bulb should show above the soil. After potting, water thoroughly and place in a dark, cool cellar, covered up with sand or ashes until well rooted; this is generally from two to three months.

Glass Culture—Fill the glass so that the base of the bulb will just touch the water and set away in a cool, dark place until well rooted. Change the water frequently.

Outdoor Culture—Plant in October or early November, about 6 inches apart and 4 inches deep. Cover the bed with short manure during the winter.

Choice Named Hyacinths

Price, 10 Cents Each; \$1.15 per Doz.; \$8.50 per 100.

Delivered to any Postoffice or Express Office in the United States.

6 OF ONE KIND AT DOZEN RATES AND 25 AT 100 RATES.

SINGLE RED AND ROSE.

Gertrude—Rosy pink, fine truss.
Gigantea—Blush pink, very fine truss.
King of Belgium—Bright red, good truss.
Lord Macaulay—Bright, rosy carmine, white eye.
Moreno—Waxy pink, large bells.
Norma—Light pink, large bells.
Robert Steiger—Bright crimson.
Rosea Maxima—Delicate pink, fine truss.

SINGLE WHITE.

Baroness van Thuyll—Pure white, large truss.
Grandeur a Merveille—Blush-white, fine spike.
Grand Vedette—Pure white.
La Grandesse—Pure white, large truss.
L'Innocence—Pure white, large.
Mad. Van der Hoop—Pure white, large bells.
Paix de l'Europe—Pure white, large spike.
Voltaire—Blush-white.

SINGLE BLUE.

Baron van Thuyll—Dark, large truss.
Czar Peter—Porcelain, large spike.
Grand Maitre—Deep porcelain, large truss.
King of the Blues—Deep, glossy blue.
Marie—Dark blue, shading purple.
Pieneman—Dark porcelain, large bells.
Queen of the Blues—Azure blue, large bells.
Regulus—Clear, light blue.

SINGLE YELLOW.

Ida—Golden yellow, very fine.
La Pluie d'Or—Rich yellow.
L' or d'Australie—Golden yellow.
Herman—Yellow.
Yellow Hammer—Finest pure yellow.

DOUBLE RED AND ROSE.

Bouquet Tendre—Bright red, fine truss.
Czar Nicholas—Pink, large bells and spikes.
Grootvorst—Blue, very fine truss.
Lord Wellington—Finest pink, large bells.
Noble Par Merite—Very fine rose, large truss.

DOUBLE WHITE.

Anna Maria—Blush, fine truss.
Bouquet Royal—Pure.
La Tour d'Auvergne—Pure, fine truss.
La Virginite—Blue, large bells and spike.
Prince of Waterloo—Pure.

DOUBLE BLUE.

Bloksberg—Porcelain large bells and truss.
Charles Dickens—Light blue, large truss.
Garrick—Azure, fine truss.
Lord Raglan—Dark, fine.
Prince of Saxe Weimar—Rich purple, fine truss.

DOUBLE YELLOW.

Bouquet de Orange—Orange.
Goethe—Sulphur yellow, fine truss.
Jaune Supreme—Pure.

HYACINTHS IN COMBINATIONS OF COLORS MAKE BEAUTIFUL BEDS. WRITE FOR SUGGESTIONS.

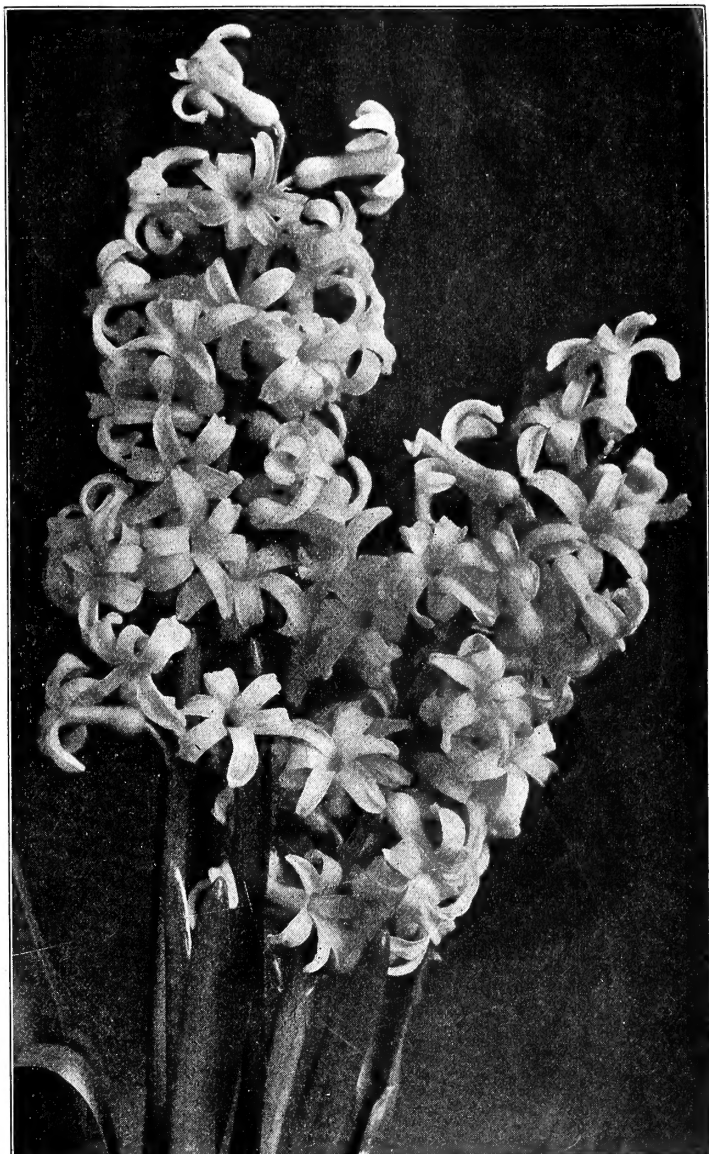
Currie's Selected Early French Roman Hyacinths

These are especially valuable for forcing and pot culture in the house, each bulb producing from two to six spikes of dainty, very fragrant flowers.

If planted early in September they can be brought into flower in November, and by keeping them under cover and bringing into the light when wanted, a succession of bloom may be kept up until May. They are not considered hardy as far north as this, but by protecting well from severe frosts we have had very pretty beds of them early in spring.

Early White—One of the most popular bulbous flowering plants, used by florists in very large numbers for cut flowers. The bulbs planted at intervals from September to December will bloom from November to May. The flowers are deliciously fragrant.

	Each	Doz.	100	1000
Extra selected	\$.04	.40	3.50	30.00
Blush Pink04	.40	3.25	28.00
Blue04	.40	3.25	28.00
Yellow10	1.00	7.00



FRENCH ROMAN HYACINTHS.

Miniature or Dutch Roman Hyacinths

Miniature Single Dutch Hyacinths, suitable for early forcing, each bulb giving one or more neat little spikes of bloom. Very pretty in cut flower work and highly ornamental for winter blooming in the house, the most satisfactory results being obtained by planting about a dozen bulbs in a shallow pan 9 inches in diameter.

	Each	Doz.	100	1000
Rose—Mixed	\$.04	.35	2.50	20.00
White—Mixed				
Blue—Mixed				

Grape Hyacinths

(Hyacinthus Muscari.)

Pretty little spikes of flowers about 6 inches high, resembling miniature bunches of grapes. Very pretty for edging. Perfectly hardy.

	Doz.	100	1000
Blue	\$.12	.75	6.00
White20	1.25	10.00

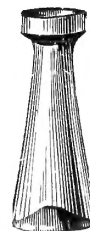
HYACINTH GLASSES



Various colors.
Low and tall.

Each	Doz.
\$.15	1.50

By express at purchaser's expense.



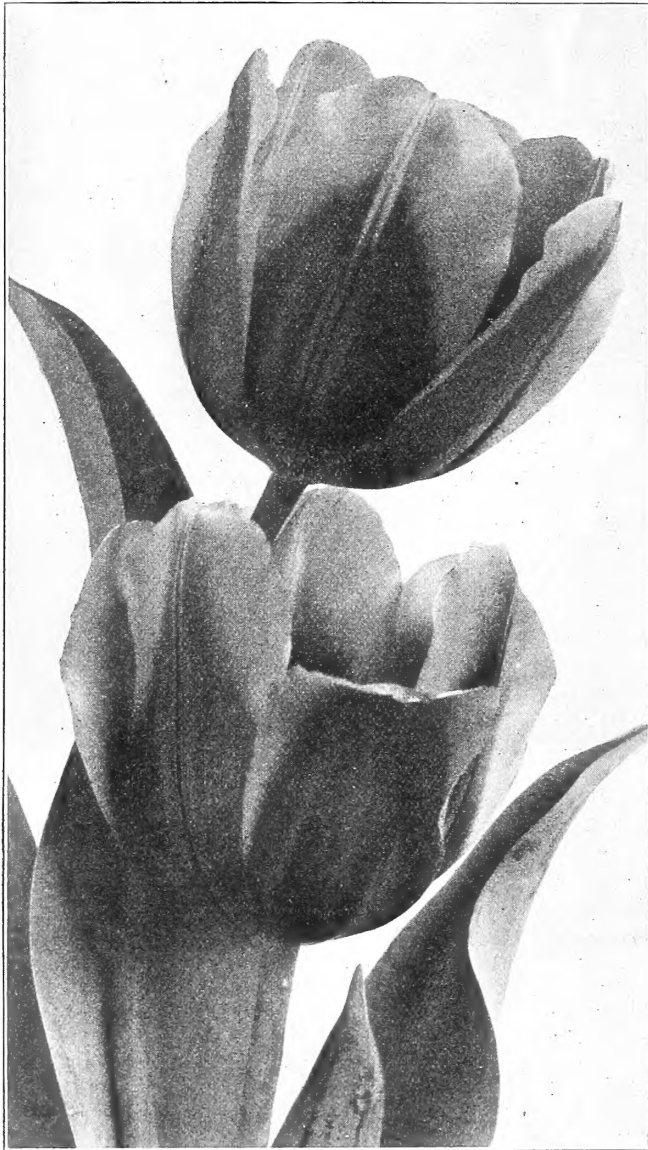
All bulbs on this page delivered to any Postoffice or Express Office in the United States at prices named.

TULIPS

Garden Culture of Tulips—Any good soil, well enriched, will suit Tulips. October, or early in November, is the proper time to plant them. Set them 4 or 5 inches apart, and about 3 inches deep. Protect during the severe months of winter with a covering of straw or manure.

All the early Tulips are adapted for pot culture in the house. The Duc Van Tholl varieties can be forced into bloom for Christmas. Plant at least three or four bulbs in each pot.

The earliest blooming varieties are marked a, next b, and so on in their order. The number before the name denotes the height of their growth in inches. 25 bulbs at 100 rate; 250 at 1,000 rate.



KEISERKROON.

CURRIE'S SPECIAL MIXTURES OF EARLY SINGLE BEDDING TULIPS

These mixtures are made up of fine, large flowering sorts that are of equal height and bloom at the same time.

Special Mixture of Scarlet and Red Single Tulips—
Per 100, \$2.25; per 1000, \$18.00.

Special Mixture of Rose and Pink Single Tulips—
Per 100, \$2.00; per 1000, \$15.00.

Special Mixture of White Single Tulips—
Per 100, \$1.75; per 1000, \$13.00.

Special Mixture of Yellow Single Tulips—
Per 100, \$1.75; per 1000, \$13.00.

Early Single Tulips

	Each	Doz.	100	1000
c 7 Artus —Pure scarlet	\$.03	.30	1.75	13.00
c 9 Belle Alliance —Bright scarlet, sweet scented04	.40	2.50	20.00
c 6 Bizard Verdict —Red and yellow..	.03	.30	1.75	13.00
c 6 Bride of Haarlem —Silver bright cherry, feathered with red.....	.08	.80	6.00
c 6 Brutus —Bright red and yellow...	.03	.30	2.25	18.00
b 9 Canary Bird —Yellow03	.30	2.00	15.00
c 7 Chrysolora —Fine yellow03	.30	1.75	13.00
d 10 Couleur de Cardinal —Bronze, scar- let.....	.04	.40	2.75	22.00
c 8 Couleur Ponceau —Rose and white.	.03	.30	2.00	15.00
c 8 Cottage Maid —Rose, border white, true.....	.03	.30	1.75	13.00
c 7 Crimson King —Fine crimson.....	.03	.30	1.75	13.00
c 8 Duc de Orange —Yellow & orange.	.03	.30	2.25	18.00
a 7 Duc Van Tholl —Scarlet.....	.04	.35	2.25	18.00
a 7 " " " —Crimson03	.30	2.25	16.00
a 6 " " " —White03	.30	2.00	15.00
a 6 " " " —Yellow04	.35	2.25	18.00
a 6 " " " —Rose04	.35	2.25	18.00
a 6 " " " —Red and yellow.	.03	.30	2.00	15.00
c 9 Duchess de Parma —Orange yel- low, fine03	.30	2.00	15.00
c 7 Dusart —Finest large, dark scarlet	.04	.35	2.50	20.00
a 8 Joost von Vondel —Rosy red and white04	.35	2.50	20.00
c 9 Keiserkroon —Red, bord'd yellow.	.03	.30	2.25	16.00
c 7 L'Immaculee —Fine, pure white...	.03	.30	1.75	13.00
c 7 LaReine (Queen Victoria)—White, very fine forcing.....	.03	.30	1.75	13.00
b 8 Mon Tresor —Very large, deep yel- low04	.35	2.25	18.00
b 8 Pottebakker —Scarlet04	.40	2.75	20.00
b 8 " " —Pure yellow04	.40	2.75	22.00
b 7 " " —Yellow striped03	.30	2.25	16.00
b 7 " " —White, finest of all whites04	.35	2.50	20.00
b 7 Proserpine —Rich, dark rose, splendid, large04	.40	3.00	25.00
b 9 Prince of Austria —Orange, shad- ed scarlet04	.35	2.50	20.00
c 7 Queen of the Netherlands —Beau- tiful, soft, rosy pink.....	.04	.40	2.75	22.00
b 6 Rachel Ruish —Rosy pink, fine...	.03	.30	2.25	16.00
a 7 Rembrandt —Crimson04	.40	3.00	25.00
c 6 Rose Gris de Lin —Very fine rose.	.03	.30	2.00	15.00
c 7 Rose Luisante —Extra fine, deep rose04	.40	3.00	25.00
c 9 Sir Thomas Lipton —Finest of all scarlets06	.60	4.00	32.00
d 7 Standard Silver —White and crim- son04	.40	2.75	22.00
d 7 Standard Golden —Red and yellow scarlet06	.60	4.00	32.00
c 12 Thomas Moore —Bright orange scarlet03	.30	2.00	15.00
b 7 Van der Neer —The finest of all violets06	.60	4.00	32.00
b 7 Vermillion Brilliant —Fine red....	.05	.50	3.50	28.00
c 9 White Hawk (Albion)—Large, pure white04	.40	2.75	20.00
c 7 Yellow Prince —Fine yellow, sweet scented03	.30	1.75	13.00

Early Flowering Mixed Tulips

	Doz.	100	1000
Single Fine Mixed.....	\$.20	1.25	7.50
Single Extra Fine Mixed.....	.25	1.50	9.00
Double Fine Mixed.....	.20	1.50	9.00
Double Extra Fine Mixed.....	.25	1.75	10.00

Tulips at dozen and 100 prices delivered free to any Post-office or Express Office in the United States. At 100 and 1,000 rates by express at purchaser's expense.

WRITE FOR SUGGESTIONS REGARDING THE ARRANGEMENT AND PLANTING OF YOUR BULB BEDS.

DOUBLE EARLY FLOWERING TULIPS

	Each	Doz.	100	1000
a 9 Blanche Hative —Large, early, semi-double, white	\$.04	.35	2.25	18.00
c 9 Couronne de Roses —Finest rose05	.50	3.50	30.00
b 10 Couronne d'Or —Orange04	.40	2.75	20.00
b 6 Duc van Tholl —Red and yellow03	.30	1.75	13.00
c 9 Duke of York —Red and white03	.30	2.00	15.00
c 9 Gloria Solus —Brown & yellow04	.35	2.25	18.00
b 8 Imperator Rubrorum —Fine scarlet04	.40	2.75	20.00
c 8 La Candeur —Pure white, finest03	.30	2.25	16.00
b 8 Lady Palmerston —Rosy pink04	.35	2.50	20.00
c 6 La Blazon —Fine rose04	.35	2.25	18.00
c 6 Murillo —Light rose03	.30	2.00	15.00
b 9 Purple Crown —Bronze red04	.35	2.50	20.00
c 8 Rex Rubrorum —Fine scarlet04	.40	2.75	20.00
c 8 Rosine —Light rose04	.40	3.00	22.00
b 7 Salvator Rosa —Fine rose04	.40	3.00	22.00
d 8 Titian —Brown and yellow04	.40	3.00	22.00
d 9 Tournesoll —Bright red and yellow04	.40	3.00	25.00
b 8 Tournesoll —Yellow04	.40	2.75	20.00

DOUBLE LATE FLOWERING TULIPS

	Each	Doz.	100	1000
e 17 Blue Flag (Blue Celeste)—Violet	\$.04	.40	3.00	
12 LaBelle Alliance (Over-Winner)—Blue and white feathered04	.40	2.75	
g 16 Marriage de Ma Fille —White feathered, cherry crimson05	.50	3.50	
g 10 Yellow Rose —Splendid golden yellow, very large flower03	.25	1.75	
Fine Mixed —All colors03	.25	1.50	

PARROT TULIPS

	Each	Doz.	100	1000
Admiral Constantinople —Red03	.30	2.00	15.00
Cramoisie Brilliant —Deep crimson, with large, black, star-shaped center03	.30	2.00	15.00
Lutea —Yellow03	.30	2.00	15.00
Perfecta —Yellow and scarlet03	.30	2.00	15.00
Finest Mixed —All colors03	.25	1.75	12.00

SINGLE LATE FLOWERING TULIPS

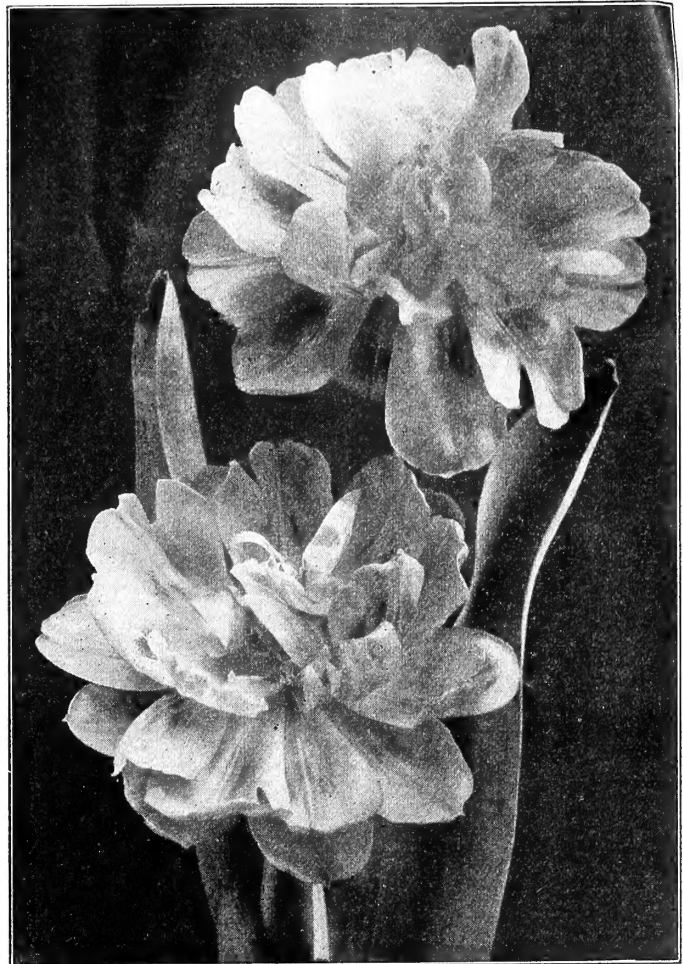
May Flowering Cottage Tulips

A magnificent class of late flowering Tulips, coming into bloom during the latter part of May. They are much more showy than the early varieties, on account of their brilliant colorings and long flower stems.

	Each	Doz.	100	1000
Bouton d'Or —Pure yellow, very fine	\$.03	.30	2.00	15.00
Fairy Queen —A very large, beautiful flower, rosy heliotrope margined with yellow06	.60	4.50
Gesneriana Major —Large, dazzling, brilliant scarlet, blue center04	.35	2.25	16.00
Golden Crown —Deep yellow edged orange, sweet scented04	.35	2.25
Isabella (Shandon Bells)—Large, salmon pink03	.30	2.00	15.00
La Merveille —Scarlet, suffused with apricot orange04	.35	2.25
Maiden's Blush (Picotee)—Large, white, edged pink03	.30	2.00	15.00
Parisian Yellow —Large, golden yellow04	.35	2.50	20.00
Retrofexa —A charming shaped, rich yellow flower04	.35	2.50
Royal White —Very large, white06	.65	5.00
Striped Beauty —Large, showy flower, flamed white and cherry red06	.60	4.50
Sweet Nancy —White, edged pink04	.35	2.50
Bizarres —Ground color yellow, feathered or striped crimson, purple or white, mixed03	.25	1.75	13.00
Bybloemens —Blotched, striped or feathered, blue, lilac, purple or black, mixed03	.30	2.00	15.00
Rembrandt —White with pink ground, suffused bright red, strikingly beautiful, choice mixed sorts05	.50	3.00

One bulb each of the above 30 Single Late Flowering Tulips, including the world famous black tulip, La Tulipe Noire, for \$1.35; 3 bulbs each for \$4.00; 6 bulbs each for \$7.50; 12 bulbs each for \$14.00.

"BULBS AND TUBEROUS-ROOTED PLANTS"—ILLUSTRATED. ALLEN. CLOTH. \$1.50.



DOUBLE TULIP COURONNE D'OR.

Darwin Tulips

Brilliant, self-colored late Tulips of immense size, borne on strong stems, many of them 2 ft. high. The blooms are of almost every conceivable color, from pale blush to the brightest red, lilac, light blue and purple to almost black, etc.

	Each	Doz.	100	1000
Baron de La Tonnaye —Vivid rose, one of the best	\$.05	.50	3.50	
Bartigon —Fiery red, good forcer05	.50	3.50	
Clara Butt —A lovely shade of soft salmon pink05	.50	3.50	
Glow —Brilliant vermilion, center blue, margined white05	.50	3.50	
Gretchen (Margaret)—Charming, soft blush shading to rose04	.35	2.50	
Kate Greenaway —A grand flower, white suffused lilac05	.50	3.50	
La Tulipe Noire —The famous black tulip20	2.00	
Loveliness —Fine, soft, rosy pink05	.50	3.50	
May Queen —Soft rose, large and beautiful05	.50	3.50	
Mr. Farncombe Sanders —Extra fine, brilliant orange scarlet06	.70	5.00	
Mrs. Cleveland —Soft, flesh color10	1.15	7.00	
Painted Lady —Creamy white05	.50	3.50	
Pride of Haarlem —An immense flower, brilliant carmine rose, blue at base05	.50	3.50	
The Sultan —Velvety black maroon, large and glossy04	.35	2.50	
White Queen —Large and soft, white, tinged blush05	.50	3.50	
Fine Mixed Darwin Tulips	\$.04	.35	2.50	20.00

Tulips at dozen and 100 prices delivered to any Post-office or Express Office in the United States. At 1000 rates by express at purchaser's expense.



NARCISSUS BICOLOR VICTORIA.

NARCISSUS

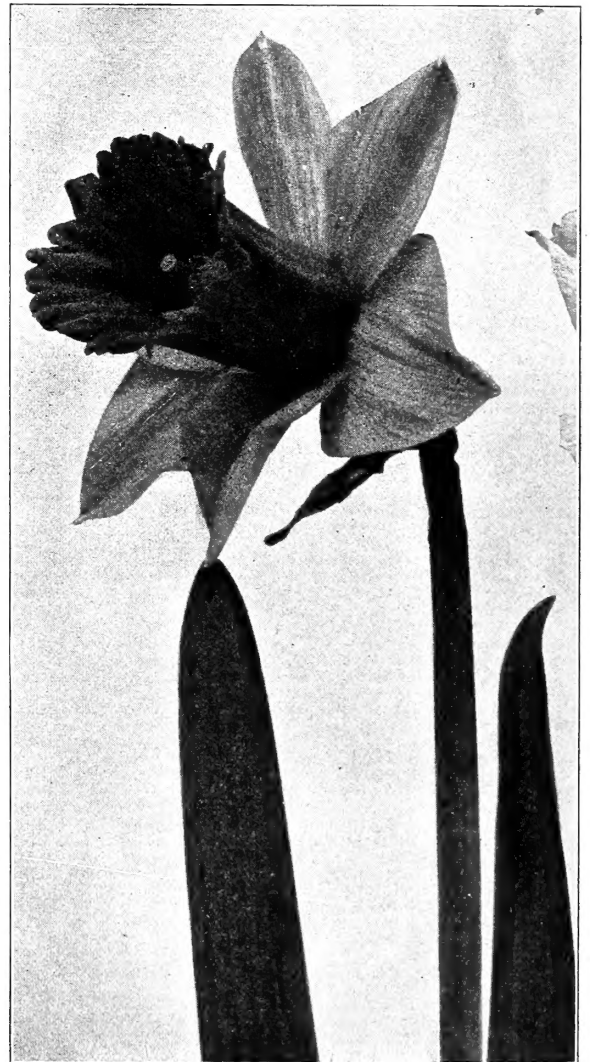
DAFFODILS.

No class of bulbs is more satisfactory and none so easily taken care of as the Daffodils. They appear just after the snow and ice of winter and enliven our gardens and lawns. Nothing can excel the beauty and chastity of their blooms, and they have the advantage of being good for an unlimited number of seasons if planted out in some spot where they can be allowed to mature their foliage. They are perfectly hardy and withstand our severe winters without protection. Should be given the same treatment as recommended for Hyacinths, either for indoor or outdoor cultivation.

	Each	Doz.	100	1000
Ard Righ (Irish King)—Large, early yellow.	\$.05	.50	3.75	30.00
Barrii Conspicuus —Primrose crown, edged orange	.03	.25	1.75	13.00
Bicolor Victoria —Extra large flower, perianth pure white, trumpet yellow.	.04	.40	3.00	22.00
Biflorus —White with yellow cup.	.03	.30	2.00	15.00
Bulbocodium (Large Yellow Hoop Petticoat) —Rich, golden yellow.	.05	.50	4.50	35.00
Cynosure —Yellowish perianth, deep orange stained cup	.03	.25	1.75	13.00
Emperor —Very large, deep, full yellow, of fine substance	.04	.35	2.50	20.00
Empress —Flowers very large and of great substance and a robust grower, trumpet large, rich, full yellow, petals white.	.04	.35	2.50	20.00
Golden Spur —Early, large, deep yellow trumpet, perianth large and broad.	.04	.40	3.00	22.00
Henry Irving —Early, bold flower, rich yellow	.04	.40	3.00	22.00

Narcissus at dozen and 100 prices delivered free to any Postoffice or Express Office in the United States. At 100 rates by express at purchaser's expense.

	Each	Doz.	100	1000
Horsfieldi —Immense flowers, yellow trumpet with white perianth	\$.04	.35	2.25	18.00
Leedsii (Mrs. Langtry)—Silver white perianth, primrose cup.	.03	.25	1.75	13.00
Maximus —Early and large, color deep golden yellow.	.04	.35	2.25	18.00
Poeticus (Pheasant's Eye)—Snow white citron cup.	.03	.25	1.25	8.00
Poeticus Ornatus —Earlier than the preceding; flowers white, scarlet eye	.03	.25	1.35	9.00
Princeps —Large, yellow trumpet with sulphury perianth.	.03	.30	1.75	13.00
Stella —Early, white perianth and yellow crown	.03	.25	1.35	9.00
Sir Watkin —Enormous flowers, trumpet rich yellow, suffused with orange, sulphur perianth	.04	.35	2.50	20.00
Trumpet Major (Single Von Sion) —Large, yellow	.03	.30	2.00	16.00
Trumpet Major —French, selected	.03	.35	2.25	18.00
Mixed Trumpet Varieties —All colors	.03	.30	2.00	10.00



N. EMPRESS.

DOUBLE NARCISSUS

DAFFODILS.

While the double Daffodils are not considered as attractive as the large flowering single trumpet sorts, they are no less desirable, and are especially adapted for naturalizing in odd corners, being perfectly hardy, and will thrive and increase for many years.

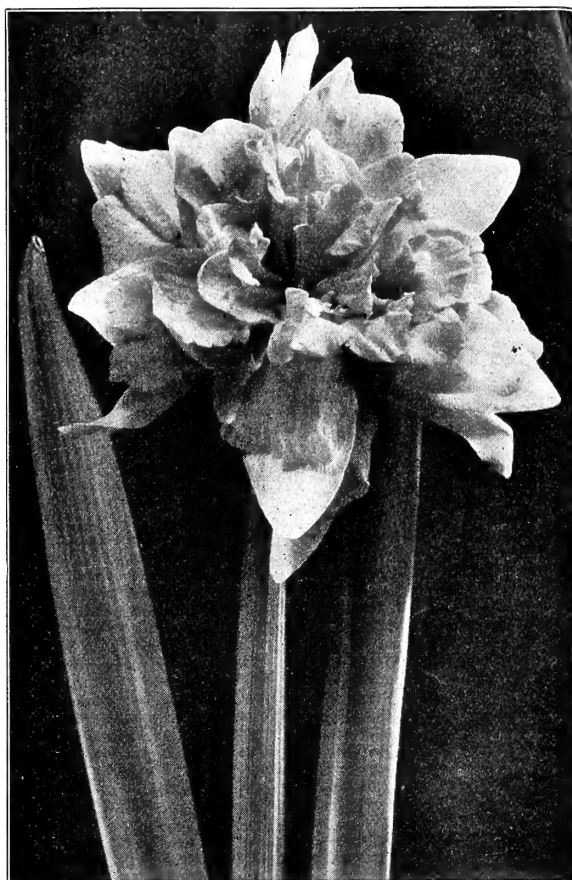
VON SION (True Dutch)—Rich golden yellow, the finest of all double yellow Daffodils, used extensively for forcing as well as for bedding outdoors.

	Each	Doz.	100	1000
Extra selected large bulbs.....	\$.04	.35	2.50	16.00
Mammoth double nosed bulbs that produce two or more flowers.....	.05	.40	3.00	25.00
Albus Plenus Odoratus —Pure white, sweet scented, resembles a Gardenia.....	.03	.20	1.50	9.00
Incomparable (Butter and Eggs)—Sulphur yellow, sweet scented.....	.04	.35	2.00	12.00
Orange Phoenix —White and orange.....	.04	.35	2.00	12.00
Fine Mixed Double Sorts03	.30	1.75	12.00

POLYANTHUS NARCISSUS

The Polyanthus varieties are much esteemed for pot culture indoors, continuing in bloom a long time. They flower very freely and all the varieties are very fragrant.

	Each	Doz.	100
Double Roman —White and yellow.....	\$.04	.40	2.50
Gloriosa —Pure white with orange cup.....	.05	.45	3.25
Grand Monarque —Pure white, citron cup.....	.05	.45	3.25
Grand Soleil d'Or —Golden yellow.....	.05	.45	3.25
Staten General —White.....	.05	.45	3.25
Mixed Polyanthus Narcissus04	.40	2.50



NARCISSUS DOUBLE VON SION.

POLYANTHUS NARCISSUS.

PAPER WHITE GRANDIFLORA.

Produces large trusses of bloom of the purest snow white, largely used for forcing for early cut flowers. There is no more satisfactory bulb for house cultivation. It can be readily brought into bloom for Christmas or earlier. Like the Chinese Sacred Lily, it may be grown in water in a bowl with a few pebbles to keep the bulbs in place. Three or four bulbs should be used in a 6-inch bowl. Grown in this manner, there is no more pleasing object for the parlor.

	Each	Doz.	100	1000
Large bulbs	\$.03	.30	2.00	12.00
Extra Selected Bulbs —For growing in water04	.40	2.50	15.00

JONQUILS

A species of Narcissus with fragrant, bright yellow flowers, which are produced in great abundance, suitable for house and garden culture; requires the same treatment as Narcissus. All the varieties are perfectly hardy, requiring no protection in winter.

	Each	Doz.	100	1000
Large Double —Sweet scented.....	\$.04	.40	2.75	18.00
Single —Sweet scented02	.15	1.00	7.00
Campernelle —Large yellow02	.15	1.00	7.50
Rugulosus (Giant Jonquil)—Rich yellow imbricated perianth with large wrinkled cup.....	.02	.20	1.50	10.00

All the Polyanthus Narcissus and Jonquils are suitable for growing in water in the same manner as the Chinese Sacred Lily.



NARCISSUS PAPER WHITE GRANDIFLORA.

All bulbs on this page at dozen and 100 prices delivered free to any Postoffice or Express Office in the United States. At 1,000 rates by express at purchaser's expense.



CHINESE SACRED LILY.

CHINESE SACRED NARCISSUS

ORIENTAL SACRED LILY.

Water Fairy Flower, Joss Flower. Put in a bowl filled with pebbles, setting the bulb so it will be held firmly in place, then fill with water and place in a warm, sunny window, where it will produce deliciously fragrant white blossoms.

Extra Large Bulbs, by mail.....	Each	Doz.
Original basket, containing 30 bulbs, by express at purchaser's expense	\$.12	1.25
		2.00

GOLDEN SACRED LILY.

Blooms in water; color beautiful golden yellow and very fragrant. The bulbs are smaller and three or four should be placed together.....	Each	Doz.
	\$.03	.25
		1.50

Bowls for Chinese Sacred Lily.

Imitation cut glass, neat pattern and plain crystal....	Each	Doz.
	\$.15	1.50

ALLIUM.

Charming, hardy, spring-flowering plants.

Neapolitanum—Flowers white, borne in umbels; useful for cut flowers.....	Doz.	100	1000
	\$.15	1.00	7.00
Molly—Bright golden yellow.....	Each	Doz.	100
	.15	.75	
Azureum—Intense blue, very showy and effective.....	.06	.60	4.50

All bulbs on this page delivered to any Postoffice or Express Office in the United States at prices named, except where otherwise noted.

ANEMONE.

		Each	Doz.	100
St. Brigid (Irish Anemone)—A magnificent variety with large, semi-double, brilliant colored flowers in all shades from white to the brightest scarlet, blue, mauve, maroon, striped, etc., borne freely on long stems, and are excellent for cut flowers. The tubers may be planted in fall outdoors in sheltered places if well protected.....	\$.04	.40	2.50	
Single (The Bride)—Pure white.....	.02	.20	1.25	
Single (Fulgens)—The most brilliant of all scarlets03	.30	2.25	
Single—Mixed02	.20	1.00	
Double—Mixed03	.25	1.50	

BULBOCODIUM.

Vernum—Rosy purple07	.75	6.00
--------------------------	-----	-----	------

CHIONODOXA.

Lucillae (Glory of the Snow)—Sky blue with white center.....	Doz.	100	1000
	.15	1.00	8.00
Sardensis—Deep blue15	1.00	8.00

CROWN IMPERIAL.

It is one of the earliest spring flowering bulbs, and quite hardy. The bulbs should be planted about 5 inches deep.

Fine Mixed Varieties.....	Each	Doz.
	\$.12	1.25

CROCUS

MIXED CROCUS.

Mixed, all colors.....	} Doz.	100	1000	
White varieties				
Blue and purple.....		.10	.60	5.00
Large yellow				
Striped and variegated.....				

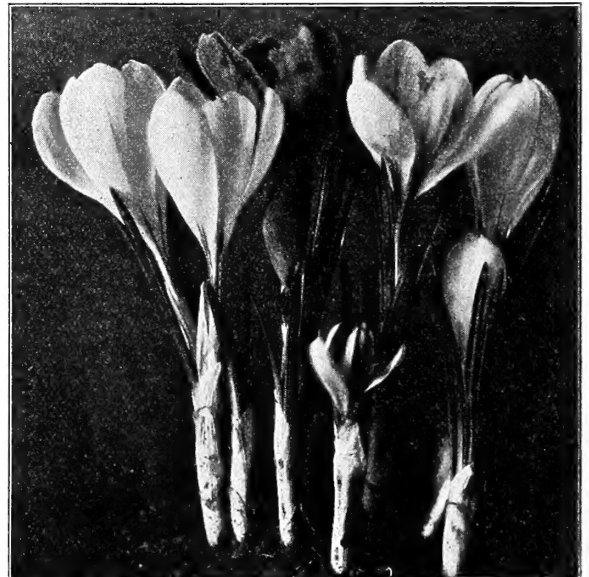
GIANT NAMED CROCUS.

Cloth of Gold—Golden striped, brown.....	} Doz.	100	1000	
Cloth of Silver—White striped, lilac.....				
David Rizzio—Large, purple.....				
Mont Blanc—Large, white.....		.15	.85	7.50
Non Plus Ultra—Purple, with white tip.....				
Sir Walter Scott—White, striped, purple.....				

AUTUMN CROCUS—Colchicum Autumnale.

If planted in fall the leaves make their appearance in spring, while it does not come into bloom until fall. It will bloom equally as well out of the ground as in it. If placed on a shelf without soil or moisture, its pretty, pink flowers will appear just the same as if in the ground.

Large bulbs, 5c each; dozen, 50c; 100, \$3.50.



CROCUS.

LILIES

CANDIDUM AND HARRISII ARE READY TO SHIP IN AUGUST; THE OTHERS IN OCTOBER OR NOVEMBER.

All of the species named, with the exception of *Harrisii*, are perfectly hardy. *L. Candidum* should be planted in September or early in October, in deep, rich, sandy soil, covering the bulbs about 3 inches. The Japanese sorts should be planted in November, covering the bulbs about 9 inches.

**BERMUDA EASTER LILY.
LILIUM HARRISII.**

Flowers pure white; delightfully fragrant and produced freely. Planted in September, may be in bloom for Christmas, and a second crop may be had the same season by starting them into growth again after having rested a short time.

	Delivered in U. S.			Each	Doz.	100
First size bulbs, 5 to 7 in.....	\$.10	1.00	6.00			
Second size bulbs, 6 to 7 in.....	.15	1.25	8.00			
Extra size bulbs, 7 to 9 in.....	.20	1.75	12.00			
Monstrous bulbs, 9 to 11 in.....	.30	3.25	25.00			

LONGIFLORUM MULTIFLORUM.

Flowers trumpet shaped, pure white, delightfully fragrant, perfectly hardy; may be planted outdoors in fall for summer blooming, or indoors for winter flowering.

	Delivered in U. S.			Buyer paying transit		
	Each	Doz.	100	Doz.	100	1000
Large bulbs, 7 to 9 in.....	\$.12	1.25	8.00	1.00	7.50	70.00
Extra strong bulbs, 9 to 10 in..	.15	1.50	12.00	1.35	11.00	100.00

LONGIFLORUM GIGANTEUM (Dark Stem).

Blooms later than either of the above. The flowers are larger and of better substance.

	Delivered in U. S.			Buyer paying transit		
	Each	Doz.	100	Doz.	100	1000
Large bulbs, 7 to 9 in....	\$.15	1.50	10.00	1.35	9.00	85.00
Extra strong bulbs, 9 to 10 in..	.20	2.00	13.50	1.75	12.50	115.00

LONGIFLORUM FORMOSUM.

The earliest of the Japan Longiflorum type, and almost entirely free from disease.

	Delivered in U. S.			Buyer paying transit		
	Each	Doz.	100	Doz.	100	1000
Large bulbs, 7 to 9 in.....	\$.15	1.50	10.00	1.35	9.00	85.00
Extra strong bulbs, 9 to 10 in..	.20	2.00	13.50	1.75	12.50	115.00



LILIUM AURATUM.

AURATUM—The Grandest of All Lilies.

The flowers are pure white, with a gold band through the center of each petal, and beautifully spotted, chocolate crimson, continuing in bloom from June to October, and delightfully fragrant.

	Delivered in U. S.			Buyer paying transit.		
	Each	Doz.	100	Doz.	100	1000
Large bulbs	\$.15	1.50	9.00	1.25	8.00	
Extra large bulbs.....	.20	2.00	14.00	1.75	12.00	

CANDIDUM—Annunciation or Madonna Lily.

The well known pure white, fragrant garden Lily, perfectly hardy.

	Delivered in U. S.			Buyer paying transit		
	Each	Doz.	100	Doz.	100	1000
Extra large bulbs.....	\$.15	1.50	10.00	1.25	8.00	70.00

SPECIOSUM—(Lancifolium).

The Speciosum sorts are the most generally admired of all the Hardy Lilies. They commence blooming in July and continue until frost cuts them down.

	Delivered in U. S.			Each	Doz.	100
Album —White, large bulbs.....	\$.20	2.00	12.00			
Extra large bulbs.....	.30	2.75	18.00			
Roseum (Rubrum)—White suffused and spotted rose, large bulbs.....	.15	1.50	8.00			
Extra large bulbs.....	.20	2.00	12.00			
Melpomene —Rich crimson, heavily spotted, large bulbs.....	.15	1.50	8.00			
Extra large bulbs.....	.20	2.00	12.00			

BATEMANIA.

Flowers reddish orange color, 5 to 10 on a 3 to 4 ft. stem.... .20 2.00 15.00

CANADENSE.

A beautiful, hardy native Lily. Flowers yellow to bright crimson, beautifully spotted..... .10 1.00 8.00

SUPERBUM—Turk's Cap Lily.

A beautiful native Lily, brilliant orange red, spotted..... .12 1.25 8.00

TENUIFOLIUM—Coral Lily.

Bears a profusion of small, brilliant scarlet flowers on slender stems15 1.50 10.00

TIGRINUM SPLENDENS.

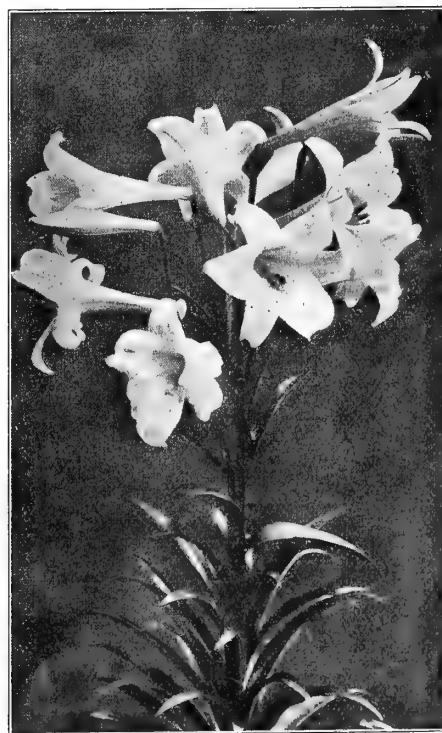
Tiger Lily10 1.00 6.00

TIGRINUM FL. PL.

Double Tiger Lily..... .10 1.00 6.00

UMBELLATUM.

One of the best. Mixed sorts..... .12 1.25 8.00



BERMUDA EASTER LILY.

CALLAS

White (<i>Calla Ethiopica</i>)—	Each	Doz.	
First size bulbs, 1¼ to 1½ inches.....	\$.10	1.00	
Second size bulbs, 1½ to 2 inches.....	.15	1.50	
Large size bulbs, 2 to 2½ inches.....	.20	2.00	
Red Calla (<i>Arum Cornutum</i>)—Flowers red, spotted black, stems mottled white and green and handsome palm-like foliage.....	.15	1.50	
Yellow Calla (<i>Elliottiana</i>)—Flowers rich golden yellow, leaves spotted white, blooms freely....	.35	3.50	

FREESIA.

An attractive Cape Flower, exquisitely perfumed. The trusses of pure white flowers are strikingly beautiful. As cut flowers they are very valuable. The unexpanded blooms opening in the water, fill the air with a moist, delicate fragrance, and their endurance is really remarkable.

Refracta Alba —First size bulbs.....	Each	Doz.	100	1000
Select strong bulbs.....	\$.02	.15	1.00	8.50
Mammoth bulbs.....	.03	.25	1.75	13.50
Purity —A pure white Freesia. The flowers are very large and are borne freely on long, stiff stems; excellent for cutting.				
Select first size.....	.04	.35	2.50	20.00
Extra size bulbs.....	.05	.50	3.00	25.00

GLADIOLUS. (Ready in November.)

	Each	Doz.	100
Colvilli Alba (The Bride)—Pure white. Early requiring only a slight covering of straw or leaves to protect it from the severest frosts.	\$.02	.20	1.35
Blushing Bride —White with crimson flakes..	.02	.20	1.25
Peach Blossom —Delicate rose.....	.03	.25	1.50
America —Beautiful, soft blush pink, large flowers.....	.10	1.00	6.00
Augusta —Pure white, blue antheas.....	.05	.50	3.00
Mrs. Francis King —Fine, light scarlet, very large.....	.10	.75	5.00



FREESIA.

IRIS (Fleur de Lis).

All the varieties are beautiful and very effective in the garden or greenhouse. Use light, rich soil. Cover lightly to protect from severe frosts.

Spanish (<i>Hispanica</i>)—	Doz.	100
Belle Chinoise —Yellow, early.....	\$.15	1.00
Cajanus —Golden yellow, tall.....	.15	1.00
Chrysolora —Extra fine, yellow.....	.15	1.00
British Queen —Pure white.....	.15	1.00
Louise —Large, light blue.....	.15	1.00
Spanish —Mixed, blue, yellow.....	.10	.75
English —A lovely, large flowering variety, mixed, various shades of blue yellow, white, etc.....	.25	1.50
Peacock —Pure white, blue spotted, very handsome.....	.25	1.50

IXIA.

Its little, star-shaped flowers are unassuming, but very pretty and very interesting. They present almost every known color—three or four different hues appearing in almost every flower.

	Each	Doz.	100
Mixed Varieties	\$.02	.15	.75
Crateroides Major —Scarlet.....	.03	.25	1.75

LILY OF THE VALLEY

(Ready in November.)

Its favorite spot in the garden is some cool, shady place, in deep, rich soil—not too heavy. The roots should be set about 6 inches apart and about 2 inches deep. For house culture put 6 to 12 crowns in a pot and place in the dark until rooted. Set the crowns an inch below the surface.

Select Large Flowering Crowns —By mail.....	Doz.	100
	\$.30	2.25
By express at purchaser's expense.....	100	10.00
	2.00	17.00



LILY OF THE VALLEY.

All bulbs on this page delivered to any Postoffice or Express Office in the United States at prices named, except where otherwise noted.



SNOWDROPS.

LEUCOJUM—Snowflake.

Vernum (Spring Snowflake)—One of the earliest spring flowers, with white blossoms, green tipped like very large snowdrops. They are very graceful and have a delicate fragrance like that of the Violet. Should be planted in borders or clumps on the lawn.....\$.03 .25 1.50

Each Doz. 100

OXALIS.

A very pretty and very desirable bulbous plant for pot culture and well adapted for hanging baskets. The graceful flowers are abundantly produced, although the bulbs are quite small. These should be planted not singly, but a number in each pot.

	Each	Doz.	100
Bermuda Buttercup —Bright yellow.....	\$.03	.25	1.50
Howit —Deep rose.....	.03	.25	1.50
Cernua —Single, yellow.....	.02	.20	1.25
Cernua Plena —Double yellow.....	.03	.30	2.00
Deppel Speciosa —Carmine.....	.02	.20	1.25
Hirta Rosea —Pink.....	.02	.20	1.25
Multiflora Alba —White.....	.03	.25	1.50
Versicolor —White bordered.....	.02	.20	1.25

Each Doz. 100

ORNITHOGALUM.

Arabicum (Star of Bethlehem)—Flowers white with a jet black center, borne on stems from 18 inches to 2 feet high.....\$.04 .35 2.50

Each Doz. 100

RANUNCULUS.

A garden or greenhouse plant, also suitable for house culture. It is not quite hardy enough to bear planting in the garden in the fall, but as the bulbs can be kept in a dry state until spring, they may then be planted and will produce an abundance of flowers. Give them a rather shady place in the garden.

	Each	Doz.	100
Double —French mixed.....	\$.02	.15	.75
Double —Persian mixed.....	.02	.15	.75
Double —Turban mixed.....	.02	.15	.75

Each Doz. 100

SCILLA

Siberica—One of the most beautiful, early spring blooming bulbs, bearing a profusion of remarkably pretty, rich blue flowers as soon as the snow has disappeared from the ground. Grown in masses or with Crocuses and Snowdrops, it presents a charming effect. It is perfectly hardy and remains in bloom a long time. It also makes a very showy plant for the conservatory or parlor in winter. Each, 2c; doz., 20c; 100, \$1.35; 1000, \$10.50.

Campanulata (Wood Hyacinth)—Flowers borne on spikes 1 foot high, very graceful and perfectly hardy.

	Each	Doz.	100
Blue	\$.02	.20	1.15
White03	.25	1.35
Rose03	.25	1.35

Nutans—A pretty, blue variety, perfectly hardy, common in the woods of England..... .03 .25 1.75

SNOWDROPS.

The little nodding flowers of this well known plant are generally the first to appear in spring, often rearing their delicate heads above a light covering of snow in early March.

	Each	Doz.	100
Single	\$.02	.20	1.15
Double03	.25	1.50

Elwesi—Giant Single..... .02 .20 1.15

SPARAXIS.

A striking variety of cape bulbs, producing brilliant colored flowers. Each, 2c; doz., 15c; per 100, 75c.

SPIREA

Large, imported clumps. (Ready in November.) If wanted by mail, add 10c to cover postage on each root.

	Each	Doz.	100
Queen Alexandra —A new pink Spirea with dense, compact spikes.....	\$.25	2.00	15.50
Japonica —Extra strong clumps.....	.15	1.00	6.00
Astilboides Floribunda —Dwarf in habit, earlier and blooms more profusely than Japonica....	.15	1.25	8.00
Compacta Multiflora —The blossoms are larger and blooms more profusely than Japonica....	.15	1.25	8.00
Gladstone —The best of all the Spireas, with very large trusses of pure white blossoms.....	.20	1.50	11.00

TUBEROSES.

Excelstor Pearl—Mammoth..... .05 .50 3.00



SPIREA GLADSTONE.

SEASONABLE FLOWER SEEDS

(All hardy except where noted).

We give below a list of those seeds of hardy plants which, to save time, may be sown now, either outdoors in their permanent locations or in pans or pots for later transplanting.



CINERARIA—JAMES' PRIZE STRAIN.

- AQUILEGIA—Columbine.** Pkt.
Chrysantha Grandiflora Alba—A new variety, with very large, snow-white flowers..... .05
Chrysantha—Bright yellow..... .05
Coerulea—Fine porcelain blue, center petals yellow..... .05
Glandulosa (True)—Blue and white..... .05
Skinnerii—Scarlet and yellow..... .10
Choice selected varieties—Mixed..... .05
- ASPARAGUS.** (Not hardy)—
Plumosus Nanus—Maiden Hair Fern..... .10
Sprengeri—Emerald Feather..... .10
- CALCEOLARIA—Hybrida Superba** (Not hardy)—
 Saved from one of the finest strains in cultivation; flowers beautifully spotted and marked..... .25
- CAMPANULA.**
Carpatica Mixed—Blue and white..... .05
Grandiflora—Flowers blue, superb sort..... .05
Persicifolia Grandiflora Mixed—Blue and white..... .05
Pyramidalis Mixed—Blue and white..... .05
- CANTERBURY BELLS—Campanula Medium.**
Single Mixed..... .05
Double Mixed..... .05
"Cup and Saucer"—A beautiful variety with large flowers in many brilliant colors, resembling in shape a cup and saucer; mixed colors; blue, white, rose.... .05
- CANDYTUFT, HARDY PERENNIAL (Iberis).**
Gibraltaria Hybrida—Lilac shading to white..... .05
Sempervirens—White..... .05
- CINERARIA** (Not hardy)—The strain we offer is unequalled for size of blooms, brilliancy of colors and fine substance.
Hybrida, Mixed—James' Prize Strain..... .25
- COREOPSIS—(Calliopsis).**
Lanceolata Grandiflora (California Sunbeams)..... .10
- CYCLAMEN (Giant Flowered)** (Not hardy)—Our Cyclamen seed is grown from the finest selected prize varieties, and plants grown from our seed have been awarded the first premium wherever exhibited.
Giant—Pure white..... .15
Giant—Pale pink (daybreak color)..... .15
Giant—Dark rose..... .15
Giant—Large, white, with crimson eye..... .15
Giant—Bright crimson..... .15
Giant—Finest mixed of above..... .15
- DAISY—Shasta.**
Alaska—Large, pure white..... .10
California—Pale yellow, changing to white..... .10
Westralia—Cream color, semi-double..... .10
- DELPHINIUM—Perennial Larkspur.** Pkt.
New Hybrids—In splendid mixture..... .10
 Our strain of these has been saved from a named collection of double and single flowers.
Formosum—Large, blue and white flowers, 3 feet..... .05
Nudicaule—Scarlet, fine..... .10
Zalil—A handsome yellow variety of branching habit..... .10
- DIANTHUS—Perennial Pinks.**
Plumarius Nanus, Fl. Pl. (Dwarf Erfurt, Double Pink)—A new, hardy class, producing an abundance of many colored, sweet scented flowers..... .10
Plumarius (Pheasant's Eye Pink)—Single, hardy Pink. Choice and mixed colors..... .05
Plumarius, Fl. Pl.—Double hardy Pink. Choice mixed colors..... .10
- DIGITALIS—Foxglove.**
Fine Mixed..... .05
- GAILLARDIA.**
New Perennial Hybrids—A beautiful class... .10
- GLOXINIA** (Not hardy)—Choice hybrids of the finest spotted, marbled and splashed sorts. .15
- HOLLYHOCK—Grown from the finest varieties.**
Double Yellow, Double Mixed, Double Pink, Double Crimson, Double White, Double Salmon, Double Red, Double Black..... .10
Single Mixed..... .05
- LOBELIA—Cardinalis.**
 Flower spikes 8 inches long, of intense scarlet..... .10
- PANSY.**
Currie's International Florists' Mixture—A grand combination of the most noted Pansy specialists in this country and Europe. The blooms are of the largest size, distinct and varied in their markings, of fine substance, containing all the richest and choicest colors to be found in Pansies..... .25
Giant Mixture for Florists and Amateurs—A mixture of all the Giant Trimardeau sorts, Cassiers, Bugnots, Odiers, the new Giant Parisian Stained, and the rich colors of Madam Perret. The best possible combination of the Giant sorts..... .15
Giant Trimardeau Mixed—One of the best of the large flowering mixtures..... .10
- PHLOX—Perennial varieties.** Beautiful, often gorgeously colored plants which should be represented in every garden.
Extra fine mixed..... .10
- POPPIES—Hardy Perennial.**
Oriental—Scarlet, with dark spots..... .05
New Hybrid Oriental—Contains many colors, pink, scarlet, blood-red, etc..... .10
Hardy Yellow Poppies (Meconopsis Integrifolia)—A magnificent new Poppy, bearing immense, rich, yellow flowers similar to the Oriental Poppies..... .50
- PRIMULA** (Not hardy).
Chinese Large Flowering Magnific—Mixed. This mixture is made up from the finest named sorts..... .15
Obconica Gigantea—The blooms are extremely large and are borne on stout stems; in color they range from pale lilac to rose..... .10
Forbesi (Baby Primrose)—Begins to flower three months after sowing..... .10
- PYRETHRUM—Old favorites in the herbaceous border.**
Roseum (Persian Insect Powder Plant)—Rose colored. .10
Uliginosum (Giant Ox-Eye Daisy)—One of the best plants for the perennial border. Flowers white..... .10
- SCABIOSA—Caucasica.**
 One of our most handsome perennials, particularly useful for cutting. Color soft lilac blue..... .10

PAEONIES

CHOICE HERBACEOUS VARIETIES.

Paeonies have continued to increase in popular favor with each succeeding year as pre-eminent among our hardy perennial plants. In response to the increasing demand, cultivators of this beautiful plant have enthusiastically engaged themselves in introducing and propagating new varieties, aiming at more perfect flowers of more delicate tints and deeper, richer shades. The new varieties themselves sufficiently attest the success of these efforts. Not to have seen any of them at its best is to have missed a flower exquisitely lovely. From these and our standard varieties one may find any shade or combination of colors he may desire to enhance the beauty of his lawn or herbaceous border.

No class of plants is more easily grown than Paeonies and few repay the care given them so generously. They are perfectly hardy and thrive in almost any soil, but any extra attention given them will be amply repaid; deeply cultivated and well enriched loam suits them best. In shady places, where few plants will succeed, Paeonies will grow luxuriantly. Such spots are usually to be found, and the colors of the flowers are brighter and they last much longer than if fully exposed to the sun. The plants, however, thrive equally well in sunny situations, and planted in front of shrubbery or on either side of walks they are very effective.

CHOICE VARIETIES OF PAEONIES.

Baron J. Rothschild—A grand Paeony. Outside petals rose, center salmon, sweet, double.

Elegans—Outside petals dark pink, large salmon center; loose, fine, sweet.

Festiva—A very fine dwarf variety. Flowers clear white, spotted with carmine.

Fragrans—Light rose; very fragrant; early.

Fragrantissima—Deep rose; fragrant; late; exceptionally fine.

Humei—Deep rose; very fragrant.

J. B. Rendatler—An exceedingly beautiful pink, large and double; late.

La Martina—Deep red; late.

Lady Darmouth—Pure white; very fine; earliest white.

Louis Van Houtte—Deep rose; early; a superb variety.

Louis d'Estres—Deep rose pink; fragrant.

M. Paillet—Flesh pink; very double and sweet scented; an early bloomer.

Madam Chaumy—A magnificent flower; beautiful satiny rose.

Miss Brice—Pink center, cream tinted lavender.

Ne Plus Ultra—Beautiful, clear shell pink, retaining from first to last its exquisitely delicate color without fading in the least; very fragrant.

Officialis Rubra Plena—Deep crimson; very early; one of the best.

Officialis Rosea—Very early; salmon color.

Plus IX—Dark red; semi-double.

Plutarch—Dark red; semi-double.

Triumph du Nord—Satiny rose, shaded lavender.

Whitleyi (Queen Victoria)—White with creamy center.

Small plants of above varieties, each 25c; medium, 50c; large, \$1.00.

EXTRA CHOICE PAEONIES.

Amabilis Lilacina—Flesh pink, yellow center; very early.

Alice Crousse—Outside petals rose, center white; a superb flower.

Arsene Mernet—Semi-double rose; very fine.

Beaute Francaise—Pink and cream points flecked with carmine; fragrant; very desirable.

Caroline Mather—Crimson, large and full.

Charlemagne—Flesh shading to white chamomis rose; large flower; very late.

Clarissa—A magnificent red; late.

Cornucopia—Delicately shaded pink; very large; a profuse bloomer.

Delicatifissima—A beautiful, clear pink.

Dr. Andry—A beautiful, rosy pink; large and very double.

Dr. Nester Pelassy—Beautiful blush pink; very double and fragrant.

Duke of Wellington—White, flushed with light primrose; very beautiful; late.

Eclair—Bright lavender pink; exceedingly attractive.

Edouard Andre—Very deep, brilliant, amaranth red; unique color.

Festiva Maxima—Creamy white with small center of carmine; early. One of the very finest.

Formosa Alba—Creamy white.

Francis Ortegal—Dark crimson; very large, fine, deep, double and sweet.

Grandiflora—Red; a magnificent flower; late.

La Rostere—Center sulphur yellow with yellowish white border, large and globular.

Madam Coste—Creamy white; lower petals tinged with carmine.

Madam d'Verneville—Pure white, very large, full center; extra fine.

Marie—White, faintly tinged flesh; large, beautiful flower; very late.

Marie Jacquin (Pond Lily)—Pure white, yellow center; just like a pond lily.

Mrs. Jules Elie—Flesh pink with silvery reflex center; petals bordered carmine; very late.

Modele de Perfection—Delicate pink, shading to white; a superb variety and very appropriately named. The flower is large and globular in form.

Perfection—Rose, inside salmon, fragrant.

Phormis—Red; large, full flower.

Porcupine—Outside petals rose; center white, quilled.

Princess Nicholas—Blush, with creamy center; fragrant.

Reine des Francaise—A beautiful variety; outside petals rose, inner petals white.

Souv. d. Expo Universelle—Flesh, beautiful globular flower; a grand variety.

Souvenir de Gaspard Calot—A grand variety; bright rose; edges of petals margined with delicate pink and blush-white; very full and free.

Tenuifolia—Single, deep crimson with deeply cut fringed foliage.

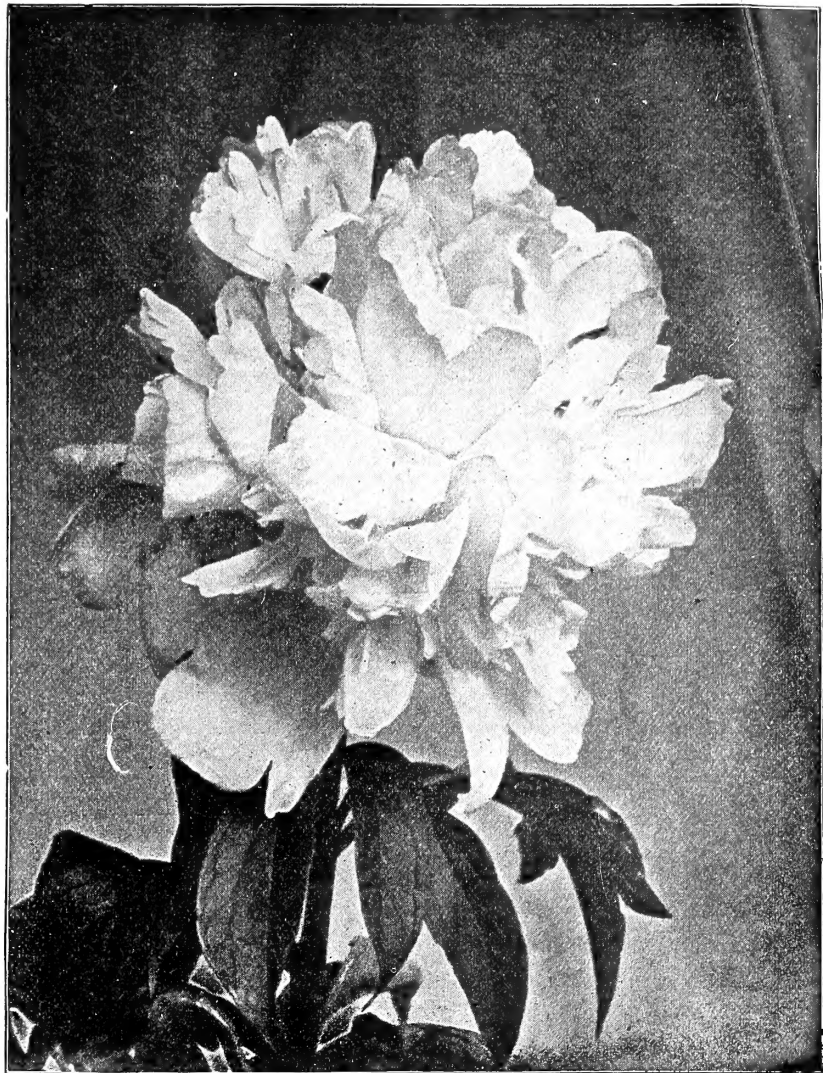
Tenuifolia fl. pl.—Same as the preceding, except that the flowers are double.

Thisbe—A beautiful flesh pink.

Triomphe de L'Exposition de Lille—Delicate pink; large and very double; late.

Zoe Calot—Soft rosy pink; well formed flower.

Small plants of above, each 50c; medium, 75c; large, \$1.50.



Paeonies continued on next page.

PAEONIES—Continued

A SUPERB COLLECTION OF PAEONIES.

Alexandriana—Delicate pink with silvery edge; very fragrant.
Atrosanguinea Superba—Deep carmine; large and very fine.
Augustine d'Hour—Rich red.
Bono—Rose, very fine; large and double.
Bridesmaid—Single, white with yellow center.
De Candole—Deep red; very large, double flower.
Faust—A very fine double; rosy white.
Henri Demay—A striking light crimson of fine form.
L'Esperance—Large, rose pink; fragrant; early.
Madame Barrillet Deschamps—Grand pink flower; petals edged white; late.
Madame Crousse—Pure white; very fine and unique.
Marie Lemoine—Ivory white; large and full; very double.

M. Krelaage—A grand variety; deep wine red.
M. Dupont—Ivory white, marked with carmine; very fragrant.
Madame Geissler—Rosy pink; very large; late.
M. Barral—Clear, rosy pink.
Moderate Guerin—Bright purplish carmine, extra fine; very fragrant.
Potsii Alba—Delicate flesh pink, shading to pure white; very free bloomer; large flower.
Queen Mary—Rose; light center.
Sea Foam—As its name implies, this variety is pure white; very desirable.
Solfaterre—White, tinged sulphur; large and fragrant.
Small Plants of above, each, 75c; medium, \$1.25; large, \$2.00.

A COLLECTION OF THE NEWEST AND FINEST PAEONIES

Albatre—Ivory white, center slightly striped carmine.
Asa Gray—Bright carmine rose; petals spotted very deep carmine; late.
Belle Chatelaine—Grand, full double flower; edge frilled carnation pink, center white salmon carnation.
Roule de Neige—White, margined carmine; exceedingly beautiful.
Claire Dubois—Peach blossom color, large flower; very late.
Coginta—Flesh pink, large, full flower.
Dr. Boisdual—Pink, creamy center.
Eugene Verdier—Blush, changing to pure white in the center.
Formosa Alba Rose—Beautiful white, tinted delicate rose.
Gen. Dodds—Large, flesh pink; late.
Humei Alba—Soft lilac, changing to white; very fine, fragrant.

Irma—Pink, yellowish center, spotted carmine; late.
Jussien—Deep red, semi-double; very beautiful and free.
La Perle—Rose pink, end of petals washed white; very late.
La Tendresse—Pure white with creamy center.
Madame Boulanger—Pale rose; very large flower; late.
Madame Debinson—Shell pink; a grand flower; late.
Madame Fould—White, shaded lovely pink; an enormous flower; late.
Madame Helius—Grand, large, well formed flowers; salmon rose.
Mlle. Rosseau—Sulphur white, center flushed rose; late.
Madame Schmitt—Rose, reverse of petals white; large; late.
Mrs. Charles Leveque—Salmon pink; very free.
Mont Blanc—Pure white with small yellow petals in center.
Ornament des Massifs—White, shaded satiny pink; a very late blooming variety; enormous flowers.
Small Plants of above, \$1.00 each.

MIXTURE OF CHOICE PINK AND ROSE COLORED PAEONIES, UNNAMED; SMALL PLANTS: EACH, 25c; \$2.50 PER DOZ.; MEDIUM, EACH, 50c; \$5.00 PER DOZ.; LARGE, EACH, \$1.00; \$10.00 PER DOZ.

Autumn, rather than spring, transplanting of Paeonies is more favorable to their successful growth. If planted as soon as possible after September 15, they will have become thoroughly established by the time freezing weather sets in and will be ready to bloom the following year. Do not plant too deep. This is a frequent cause of unsatisfactory flowering. The crowns should be but 2 inches below the surface.

THREE REMARKABLE PAEONY OFFERS

ONE PLANT EACH—

BARON J. ROTHCHILD
 J. B. RENDATLER
 LADY DARMOUTH
 NE PLUS ULTRA
 OFFICINALIS RUBRA PLENA
 TRIUMPH DU NORD

FOR \$1.00

WE WILL FURNISH

ONE PLANT EACH—

FESTIVA MAXIMA
 FRANCIS ORTEGAL
 MODELE DE PERFECTION
 REINE DES FRANCAISE

FOR \$1.35

ONE PLANT EACH—

AUGUSTINE D' HOUR
 BOULE DE NEIGE
 ORNAMENT DES MASSIFS
 SOLFATERRE

FOR \$2.50

CHOICE FARM SEEDS FOR FALL SOWING

SAND, HAIRY OR WINTER VETCH.

Vicia Villosa (Sandwicken)—Withstands our Northwestern winters. Hardier than Winter Wheat. Owing to its remarkable earliness and great feeding qualities, no dairy farmer or hog raiser can afford to be without it. Hogs, sheep, cattle and horses eat it with great relish. Sowings made in September prevent soil washing in winter and will furnish a heavy crop of green fodder by the end of April, and, after cutting, a second crop, which may be eaten off by stock or turned under as green manure. Fall pasture 40 to 50 days after sowing. Per lb., 16c; 10 lbs., \$1.50; 50 lbs., \$7.35; 100 lbs., \$14.50.

WINTER WHEAT.

Red Cross—A variety unsurpassed in vigor of growth, magnitude of yield and milling qualities. Peck, 50c; bushel, \$1.65; 5 bushels, \$8.00.

Turkish Red—This wheat, possibly the best known of all winter wheats throughout the Northwest, is remarkable for its hardness. It is a sure cropper and wonderfully productive. Peck, 50c; bushel, \$1.75; 5 bushels, \$8.50.

WINTER RYE.

New Petkus—This rye, originally secured from Germany, was disseminated through the U. S. Dept. of Agriculture some years ago. It is a tall, stiff grower, yields tremendously, the individual kernels being unusually large, and makes an excellent grade of flour. Peck, 50c; bushel, \$1.50.

CLOVERS.

Medium Red or June Clover—Choice re-cleaned Wisconsin-grown seed, free from weed seeds and impurities (60 lbs. per bushel). Per lb., 20c (by mail, 30c); per bushel, \$11.50; 100 lbs., \$18.50.

Mammoth Clover—Re-cleaned. Per lb., 20c (by mail, 30c); per bushel, \$11.75; 100 lbs., \$19.50.

Aisike Clover—Hardest of all clovers, adapting itself to all kinds of soils. Makes finer and better hay than Red Clover. Per lb., 20c (by mail, 30c); bushel (60 lbs.), \$11.75; 100 lbs., \$19.50.

TIMOTHY.

Thoroughly re-cleaned new crop seed. Per bushel (45 lbs.), \$4.25; 100 lbs., \$9.00.

ALFALFA.

Currie's Northern Grown—99.5 per cent pure. The importance of this crop cannot be over-estimated. No farmer should be without it. Per lb., 25c (by mail, 35c); per bushel (60 lbs.), \$12.00; per 100 lbs., \$19.75.

Turkestan Alfalfa—Perfectly hardy. Withstands drought, heat and cold. Well adapted to all soils, including alkaline. Per lb., 20c (by mail, 30c); 10 lbs., \$1.75; bushel (60 lbs.), \$10.00; 100 lbs., \$16.50.

WILD RICE.

Zizania Aquatica—The seed should be sown during September and October, or in the early spring. Sow broadcast in water from 6 inches to 6 feet deep, with a mud bottom. Previous to sowing, sink the seed in bags in water over night to soak it thoroughly, so it will sink to the bottom at once, thereby preventing loss from drifting into deep water or washing ashore. Per lb., 25c (by mail, 35c); 10 lbs., \$2.25; 100 lbs., \$20.00.

Prices of all Seeds on this page subject to market fluctuations. Seamless bags, 20c extra.

SUNDRIES

FLOWER POTS AND SAUCERS.

Pots—	2 in.	2½ in.	3 in.	3½ in.	4 in.	5 in.	6 in.	7 in.	8 in.	9 in.	10 in.	12 in.
Each.....	\$0.02	.03	.03	.04	.04	.05	.06	.10	.17	.20	.35	.50
Per dozen.....	.18	.20	.25	.30	.35	.50	.65	1.00	1.60	2.00	3.50	5.00
Per 100.....	1.10	1.25	1.50	2.00	2.50	3.00	4.50	7.00	11.00	16.00		
Saucers—	4 in.	5 in.	6 in.	7 in.	8 in.	9 in.	10 in.	12 in.				
Per doz.....	\$.20	.30	.40	.50	.80	.90	1.25	1.50				
Per 100.....	1.50	2.00	2.50	3.50	6.00	7.00	9.00	12.00				
Azalea Pots—Size, inches—	5	6	7	8	9	10	12					
Price, each.....	.06	.08	.10	.15	.20	.35	.40					
Per dozen.....	.65	.85	1.00	1.50	2.00	3.50	4.00					
Per 100.....	4.50	6.00	7.00	10.00	14.00							
Fern Pans—Size, inches—	5	6	7	8	10	12						
Price, each.....	.06	.07	.08	.12	.20	.25						
Per dozen.....	.60	.75	.85	1.25	2.00	2.50						
Per 100.....	4.00	5.00	6.00	8.50	12.00	16.00						

BRANDT "PERFECTION" SPRAYER.

Of the high pressure type. The strongest and most powerful sprayer made. Barrel is 7½ in. in diameter, 20 in. high; capacity, 4 gals. Automatic nozzle control; will handle insecticides of all kinds, whitewash, paint, Bordeaux mixture, etc., perfectly. Price: Galvanized, \$5.00; brass, \$6.75; 3 ft., 2-jointed extension for spraying trees, \$1.00.

SPRAYERS.

Success Hand Spray Pump.....	\$4.00
Brandt Compressed Air Sprayer—3 gals., galvanized, \$5.00; Brass.....	6.75
"Easy" Sprayer—½ gal., galvanized, \$2.00; brass.....	3.00
Mastin Compressed Air Sprayer—Galvanized, \$6.50; brass.....	8.50

RUBBER PLANT SPRINKLERS.

Bent Neck Sprinklers.

No. 1, 60c; by mail, 65c; No. 2, 70c; by mail, 80c.

Straight Neck Sprinklers.

No. 1, 50c; by mail, 55c; No. 2, 60c; by mail, 70c.

Scollay's, the Florists' Sprinkler.

No. 1, large.....	\$1.00	By mail.....	\$1.10
No. 2.....	.85	By mail.....	.99
No. 3.....	.75	By mail.....	.80
No. 4.....	.65	By mail.....	.70

RAFFIA.

Largely used in making fancy baskets and for tying—
Per lb., 25c; by mail..... .40

KNIVES.

Pruning, English—Single blade.....	\$1.50
Pruning, English—Two bladed.....	2.00
Budding, German—Single blade, long ivory handle.....	1.25
Budding, Saylor—Single blade, ivory handle.....	1.10
Budding, English—Single blade, ivory handle.....	1.10
Propagating, English—Single blade, ivory handle.....	1.00
Propagating, German—Two bladed.....	1.00

Watering Pots—Heavy, galvanized; brass jointed; two copper-faced roses; long spout; round. 6 qt., \$1.85; 8 qt., \$2.15; 10 qt., \$2.35; 12 qt., \$2.50
Oval (French). 6 qt., \$2.25; 8 qt., 2.50
Eureka Tobacco Fumigators—For fumigating with tobacco stems; made of galvanized iron.

No. 1.....	Height, In. 12	Price \$1.50	No. 3.....	Height, In. 20	Price \$2.50
No. 2.....	16	2.00	No. 4.....	24	3.50

FUNGICIDES AND INSECTICIDES

If by mail, add 16c a pound.

Aphine—A powerful liquid insecticide. Will destroy Aphid, Red Spider, Thrips, Mealy Bug and Scale, without the slightest injury to the plants. ½ pt., 40c; 1 pt., 60c; 1 qt., \$1.00; gallon, \$2.50
Bordeaux Mixture (Liquid)—Ready for use after adding water. Dilute 25 to 50 times, as required. 1 qt., 40c; gal. 1.00
Carbon Bisulphide—A most effective remedy for ants in the lawn. Saturate a small ball of cotton and insert in the hill. 1 lb. tin, each..... .35
Fir Tree Oil—Is a remedy for Mealy Bug, Red Spider and Scale. Dilute ½ pint to about 10 gals. of soft water and apply with sprinkler. ½ pint, 40c; pt., 75c; qt., \$1.25; gallon, 4.00
If by mail, add 25c per pint.
Fir Tree Oil Soap—½ lb. cake..... .25
Hellebore—Being less poisonous than Paris Green, is safer to use on fruit and vegetables. Dust on dry, or dissolve 1 oz. to 3 gals. of water and apply with syringe. Per lb., 20c; by mail..... .40
Slug Shot—Valuable for destroying slugs. Per 5 lb. to 10 lb. pkgs., 7c per lb.; 25 lbs. to 50 lbs., 6c per lb.; 100 lbs., 5.50
In 1 lb. cartons with perforated top, for applying, each..... .15
Kerosene Emulsion—Ready for use by

adding 25 parts water to 1 of emulsion. 1 qt., 40c; 1 gal., 1.00
Nico Fume—Liquid; ¼ pt., 50c; pt., \$1.50; ½ gal., \$5.50; 1 gal., 10.50
Nico Fume—Tobacco paper. Insecticide for fumigating greenhouses. Does not injure blooms and furnishes the easiest method of fumigating ever devised. Packed in special friction-top tins. 24 sheets 75c; 144 sheets \$3.50; 288 sheets 6.50
Nikoteen Liquid—2 oz. bottle 40c; pint. 1.50
Nicofide—Liquid; ¼ pt., 75c; ½ pt., \$1.25; pt., \$2.50; qt., \$4.50; ½ gal., \$8.25; gal. 15.00
Grape Dust—A sure preventive and cure for mildew. Per lb., 10c; 5 lbs., 35c; 10 lbs., 50c; 100 lbs., 4.50
Thrip Juice—A remedy for Mealy Bug, Scale, Thrips, Codling Moth, Canker Worm Beetles, Caterpillars, etc. Pint .40
Paris Green—1 lb., 25c; 5 lbs., 1.15
Sulphur—Powdered, per lb., 10c; 5 lbs., 40c; 25 lbs., \$1.25; 100 lbs., 4.00
Sulpho-Tobacco Soap—Invaluable to all lovers of plants. All insects succumb to it. Directions with each pkg. 3 oz. cake, 10c; by mail, 13c; 8 oz. cake, 20c; by mail, 28
Tobacco Dust—For insects on plants, apply with duster. Per lb., .10
Tobacco Stems—Per lb., 3c; per bbl., 1.00
Whale Oil Soap—Per lb., 15c; 2 lbs., 25c; 10 lbs., 1.00

GLAZING MATERIAL.

Mastica for Glazing Greenhouses—Per gal. \$1.35; 6 gals. \$7.75; 10 gals. \$12.50.
Mastica Machines—Each \$1.25.



Twemlow's Old English Putty—Semi-liquid. Per gal., \$1.55; 5 gals., \$7.50.
Putty Distributor—Scollay's Rubber, 90c; by mail, \$1.00.

Grafting Wax—½ lb. 20c; by mail, 30c; 1 lb., 30c; by mail, 50c.

Greenhouse or Garden Hose—Guaranteed 1 year; ¾ in., 50 to 500 ft. lengths. Per foot, 15c.

Hand Pruning Shears—Imported solid steel.

6 inch, nickel plated.....	\$1.25
8 inch.....	1.25
9 inch.....	1.50
10 inch.....	2.00

Rhodes Double Cutting; hooked blades to prevent slipping. 9 in., \$2.00.

PLANT TUBS.

Union Cypress Plant Tubs—Strong, serviceable tubs, either natural color, cypress, varnished or painted green.

No. 1.....	Diam. 11½ in.	Height 11½ in.	Price \$1.00
No. 2.....	13½ in.	11¾ in.	1.25
No. 3.....	14¾ in.	14 in.	1.65
No. 4.....	16 in.	15 in.	2.00
No. 5.....	19 in.	18 in.	3.00
No. 6.....	22 in.	19½ in.	3.75

Tree Pruners, Water's Improved—

6-foot pole, \$1.00 10-foot pole, \$1.25
8-foot pole, 1.15 12-foot pole, 1.40
Telegraph, without handles, 1.00
Extra knives, each, .20
Plant Protecting Cloth—Per yard, \$1.10
Per piece of 60 yards, per yard, .09
Plant Stakes—Cane, per 100, 1.00



Brandt "Perfection" Sprayer

SOW CURRIE'S LAWN GRASS SEED

Produces a Rich, Thick and Velvety Lawn the First Season

Composed of Evergreen Grasses suitable for our American climate and made up from only the finest and cleanest grades of seed.

Our Mixtures are suitable for Large or Modest Lawns, Embankments, Slopes, Terraces, Putting Greens, and Shady Places, and will keep green from early spring till fall.

Sow at the rate of 1 quart to 250 square feet; 1 pound to 400 square feet; 5 pounds to 2,000 square feet; 20 pounds to 8,000 square feet; 100 pounds per acre.

It is universally conceded that nothing contributes so much to the beauty and attractiveness of the home grounds, the park and the cemetery, as a smooth, uniformly rich-green, well-kept lawn, which, to be perfect and a pleasure to walk on, should have a firm, yet elastic and carpet-like, surface. To secure this should, therefore, be the first consideration in laying out or renovating old grounds.

Turfing with fine old pasture sod, at one time a popular plan of making a lawn, is now almost entirely superseded by seeding, because of the expense and difficulty in obtaining good, clean turf. On the other hand, seeding is not only inexpensive, but is in reality the only means of securing a fine and permanent lawn, depending only for its complete success on the thoroughness with which the ground is prepared, the quality and quantity of the seed sown, and the subsequent care of the lawn.

Our extensive experience in the seeding of lawns and our exhaustive experiments with all kinds of lawn grasses have demonstrated beyond a doubt that many kinds are valueless, being too coarse or bunchy, and that one grass alone cannot be relied upon in our climate to produce and maintain a fine lawn. It is only by using a proper com-

bination of several suitable varieties, sown liberally, that the most satisfactory results can be obtained.

CURRIE'S LAWN GRASS MIXTURES are the result of years of study and careful observation, and, if our directions are followed in seeding, never fail to produce quickly a thrifty growth of fine, velvety, rich green grass, continuous in verdure from early spring to winter, and creating a springy, dense, carpet-like turf and permanently beautiful lawn.

THE QUANTITY OF SEED REQUIRED.—There is no fixed rule, but a liberal sowing is always satisfactory, while a light seeding is a waste of time and usually disappointing. A beautiful lawn may be produced in a few weeks, or it may not approach perfection for two or more seasons, according to the quantity of seed sown. When in a hurry for a fine, close turf we have frequently sown at the rate of 7 bushels of 20 lbs. each to the acre, with the most successful results, but in general the following quantities will produce the best results: 1 qt. to 250 square feet; 1 lb. to 400 square feet; 5 lbs. to 2,000 square feet; 20 lbs. to 8,000 square feet; 100 lbs. per acre. For renovating old lawns, about one-half of the above quantities, on the average, is required.

Mixtures of Lawn Grass Seeds

If required by mail, add 5c per quart, 10c per pound, for postage.

CURRIE'S SPECIAL MIXTURE—This splendid mixture is composed of only the finest dwarf-growing evergreen grasses, absolutely free from weed seeds or other impurities, especially adapted and mixed in the proper proportion to suit the American climate. In comparing the cost of our Special Lawn Grass with other mixtures sent out by the trade, remember that the natural weight per measured bushel of our mixture is 20 lbs. per bushel, while that of most mixtures is only 14 lbs. per bushel. To obtain this exceptionally heavy weight per bushel, we must and do use only the heaviest and best samples of the various grasses which compose our mixture. This is in itself a guarantee against sowing weeds, as the heavier the mixture the more thoroughly re-cleaned have been the component grasses. Pint, 10c; quart, 20c; 1 lb., 30c; 2½ lbs., 70c; 5 lbs., \$1.35; 10 lbs., \$2.60; 20 lbs., \$5.00; 100 lbs., sufficient to seed one acre.....\$23.00

Fine Mixed—Also an excellent mixture, equal in quality to the best mixtures usually offered in the trade. 1 lb., 20c; 5 lbs., 95c; 10 lbs., \$1.85; 20 lbs., \$3.60; 100 lbs..... 17.50

Grass Mixture for Shade—A mixture of dwarf-growing grasses, thriving in shady places under trees. Pint, 15c; quart, 25c; 1 lb., 35c; 5 lbs., \$1.60; 20 lbs., \$6.00; 100 lbs..... 27.50

Grass Mixture for Terraces and Slopes—A mixture designed to do away with the expensive method of sodding; it is composed of dwarf-growing evergreen grasses, possessing strong, fibrous and creeping roots, and especially adapted for growing on sloping banks. Pint, 15c; quart, 25c; 1 lb., 35c; 5 lbs., \$1.60; 20 lbs., \$6.00; 100 lbs..... 27.50

Golf Link Mixture for Putting Green—Composed of the finest and most compact grasses suitable for the purpose. Pint, 15c; quart, 25c; 1 lb., 35c; 5 lbs., \$1.60; 20 lbs., \$6.00; 100 lbs..... 27.50

Golf Link Course Mixture—A mixture of grasses that will stand the wear. 1 lb., 25c; 5 lbs., \$1.00; 20 lbs., \$4.00; 100 lbs..... 18.00

FERTILIZERS

Currie's Complete Fertilizer for Garden and Lawn—A complete manure, specially adapted for top dressing of lawns. It is odorless, clean and convenient to use. It is much easier to use than a top dressing of stable manure, which very

often introduces a large crop of vile weeds into lawns, besides being very unsightly. Use 20 lbs. to every 1,000 square feet of lawn. 5 lbs., 30c; 10 lbs., 50c; 25 lbs., \$1.25; 50 lbs., \$2.00; 100 lbs., \$3.50; 600 lbs., sufficient for an acre, \$17.50.

Currie's Soluble Food for House Plants—A high grade fertilizer, put in small packages to suit the cultivator of house plants. Each, 15c and 25c; by mail, 20c and.....\$.35

Plant Food Tablets—Used by dissolving in water. Directions on every box. Small box, by mail, 10c; large box, by mail..... .25

Pure Bone Meal—5 lbs., 25c; 10 lbs., 40c; 25 lbs., 75c; 50 lbs., \$1.25; 100 lbs., \$2.00; bag of 200 lbs..... 3.50

Guano, Peruvian—1 lb., 10c; 5 lbs., 40c; 10 lbs., 75c; 25 lbs., \$1.50; 50 lbs., \$2.75; 100 lbs..... 5.00

Pulverized Sheep Manure—Makes the richest and safest liquid manure. Use 1 lb. to 5 gals. of water. 25 lbs., 60c; 100 lbs....\$2.00

Nitrate of Soda—10 lbs., 50c; 25 lbs., \$1.15; 100 lbs..... 3.50

Muriate of Potash—10 lbs., 50c; 25 lbs., \$1.00; 100 lbs..... 3.25

Acid Phosphate—10 lbs., 30c; 25 lbs., 50c; 100 lbs..... 1.50

Kainit—10 lbs., 30c; 25 lbs., 50c; 100 lbs.... 1.50

Sulphate of Potash—10 lbs., 50c; 25 lbs., \$1.25; 100 lbs..... 3.75

FOR COMPLETE LIST OF SEEDS, PLANTS, ETC., SEE SPRING CATALOG.

